



Blessings of the season to you and yours
The Sewanee Mountain
MESSENGER

VOL. XXV No. 45

Thursday, December 17, 2009

Published as a public service for the Sewanee community since 1985.



SCC Students Create Gingerbread Sewanee Village

The Sewanee Children's Center's 2- and 3-year-old students in Carrie Mauzy and Heather Rittenberry's class built a little Sewanee gingerbread village this week. The gingerbread church's stained glass windows are made of gumdrops. Diane Thiel and Costa Hadjilambros served as architectural consultants and as sentries to keep all the gumdrops from being eaten during construction. Pictured above from left are Forrest Glover, Christabel Thiel-Hadjilambros and Adison Christie.

County to Clear Brush and Limbs on Domain Road Rights of Way

In order to enhance road safety, Franklin County road crews will clear trees, brush and limbs that extend into county road rights of way. Clearing is scheduled to begin Monday, Jan. 4.

The sides of roads will be cleared to a distance of up to 25 feet from the center line of the road and to a height of up to 14 feet.

The clearing is taking place now in order to be finished before spring. The machine needed for this purpose coarsely cuts the trees and limbs, and the aftermath can be unsightly until new spring growth appears. Leaseholders are advised to consider pruning in advance any trees or plantings that are within the clearing zone, in order to preempt the machine cutting.

All county roads on the Domain will be cleared except the following, which are done by PPS crews on a

more regular basis as part of University grounds care: University Avenue, Tennessee Avenue to the Memorial Cross, Mitchell Avenue, Alabama Avenue to the new McCrady parking lot, DuBose Road to the McClurg loading dock, South Carolina Avenue from University Avenue to Phillips Hall, Georgia Avenue to the Child Care Center, Mississippi Avenue, Texas Avenue to the Wheat House, Florida Avenue from Texas Avenue to just past the football field, and Green's View Road to Green's View.

The Community Council held a discussion of the clearing process at its October meeting. The Council acknowledged that the process and method are necessary to keep roads clear for school buses and other vehicles and suggested that leaseholders begin to identify trees or plantings for advance pruning.

Jones to Hike Appalachian Trail, Raise Funds for Mountain Goat Trail

Sewanee resident Evan Jones plans to hike the Appalachian Trail in its entirety beginning in June 2010. He will leave from Mount Katahdin in Maine with his dog companion, Llew, and will hike southward to Springer Mountain, Ga. The hike will take approximately six months.

Jones will use the hike to raise funds for the Mountain Goat Trail Alliance (MGTA), a local Rails-to-Trails project to revitalize the old Mountain Goat Railroad track bed. The project's first phase is complete; the immediate goal is to extend the Mountain Goat Trail from its current terminus at St. Andrew's-Sewanee School into Monteagle and eventually into Tracy City.

The hike will take Jones and Llew over roughly 2,178 miles. He suggests that anyone interested in donating to the Mountain Goat Trail Alliance's special fund for his project make donations or pledges based on a per mile, walk-a-thon model. For example, donating \$.01 per mile would amount to a donation of \$21.78; \$.05 per mile, \$108.90; \$.10, \$217.80; and

so on. All donations to Jones's fund for the MGTA, a 501(c) not-for-profit organization, are tax-deductible.

Donors will be able to live the experience vicariously, as Jones will regularly update a blog from the trail using his iPhone and the website of Mountain Outfitters, longtime partner of and investor in the Mountain Goat Trail project.

A very modest, ceilinged, administrative percentage of the fund will offset some of Jones' significant personal expenses. Evan, son of Diane Jones and the late Bob Jones of Sewanee, grew up on the Mountain and, like so many community members, has used and loved the Mountain Goat Trail. Since graduating with honors from the University of Tennessee at Chattanooga in 2008, he has returned to the Mountain and has been working since August as the manager of Mountain Outfitters in Monteagle. He can be contacted at <ei.jones@yahoo.com> or at (423) 903-4800 for details of the project. He welcomes suggestions and volunteers.

Advent Hymn Sing Saturday

Join the School of Theology for its first annual Advent hymn sing on Saturday, Dec. 19, at 5 p.m. in the Chapel of the Apostles. Assistant University Organist Daniel Stipe will provide accompaniment. Come on out for this casual and fun keeping of Advent.

Christmas Luncheon Dec. 22 at Senior Center

The Sewanee Senior Citizens' Center will host its annual Christmas luncheon on Tuesday, Dec. 22, at noon. The menu includes baked ham, green beans, Waldorf salad, mac and cheese, corn on the cob, and assorted desserts. Reservations for an eat-in or take-out meal may be made by calling the center at 598-0771 and leaving a message. The meal is \$6 a plate.

The drawing for the "framed squares quilt" will also be held that day. Tickets are still available at the center for \$1 each. The winner does not have to be present to win.

The Christmas Bazaar will remain open, and gift items will be available to purchase through Dec. 22.

Community Chest \$18K to Goal!

The Community Chest Fund Drive has received \$84,845 in pledges and donations toward the goal of \$102,000. Please remember the Community Chest in your year-end giving. Checks, pledges and University payroll deductions can be sent to P.O. Box 99, Sewanee, TN 37375.

Your donation supports more than two dozen organizations serving our community, from Sewanee Elementary School, the Senior Center and the Community Action Committee to this free hometown paper, the Sewanee Mountain Messenger.

Harrison Chapel Christmas Program

The young people of Harrison Chapel Congregational Methodist Church in the Midway Community invite you to attend their program, "The Manger and the Cross," Sunday evening, Dec. 20, at 5:30 p.m. All are welcome.

INSIDE

Letters, Serving, Messenger break
 Holiday closings.....2
 Senior menus, New arrival, Stephens Fund.....3
 Churches.....4
 November emergency svcs reports, Co/State election deadlines, Monteagle sewer rehab update, Blue Monarch: A Dream Realized.....5
 Carey fellows, Humane Soc winner.....6
 Lunch & Learn, CCJP bd openings.....7
 A&E—Journey into the Heart, SAS gets arts grant, Cowan cmty sch, Smoke House singer/songwriter
 New Years Eve dinner/dance.....8-9
 SCHOOL SCOOP—SES menus, SAS holiday outreach.....10-11
 SPORTS—SAS, SES & Tiger reports, Fowler Ctr hours, HOME GAMES, State park offerings.....12-13
 NATURE NOTES, Pets, Weather.....14
 CLASSIFIED advertising.....15
 COMMUNITY CALENDAR.....16

Singer Seeks Reelection to SUD Board

The Sewanee Utility District of Franklin and Marion Counties will conduct an election on Jan. 26, 2010. Two Franklin County seats on the five-member Board of Commissioners of the Sewanee Utility District are up for election. Karen Singer and Rick Sommer, whose terms expire on Jan. 31, currently hold these seats. The term of office is four years and will end Jan. 31, 2014. Singer is seeking re-election (see bio below); Sommer is not. Since no candidate qualified for Sommer's position by the Dec. 11 deadline, the board will need to appoint someone to fill the vacancy until the next election.

All customers of the district, whether residing in Franklin or Marion counties, are eligible to vote. Early voting begins in the SUD office Jan. 4 and ends at 4 p.m. on Jan. 26. Voting can also be Jan. 26, from 4:30 to 7 p.m. before the annual meeting.

An independent election committee, appointed by the SUD, will conduct the election, count the votes and announce the results at the annual meeting.

Karen Singer

I have served on the board of commissioners for a year, having been elected in a special election to fulfill the term of former commissioner Lyle Brecht.

My qualifications for the SUD board follow. I am a 13-year resident



Karen Singer

of Sewanee. My education includes a bachelor's degree from Allegheny College and master's from Kent State University, both in geology.

I have 15 years environmental consulting experience prior to moving to Sewanee, focusing primarily on contaminated soil and groundwater. From 2001 to 2006, I served as special projects coordinator at the University of the South.

From January 2007 to October 2008, I served as assistant director and am currently director of physical plant at St. Andrew's-Sewanee School.

I have also raised three sons, ages 16 to 23. I am very committed to our local community and natural environment would be honored to serve on the Sewanee Utility Board and help preserve these precious resources.

Sewanee Deer Cull 2009–10 Begins Saturday

The Sewanee deer cull 2009-10 begins Saturday, Dec. 19. Deer cull dates are: Dec. 19 through 23; Dec. 26 through 31; and Jan. 1 through 10. There is no hunting Christmas Eve or Christmas Day.

The deer cull is conducted by a veteran deer cull team using archery only. Bow hunters operate at least 100 yards from trails and fire lanes. The hunt is conducted in designated zones on the Domain [See map on page 12], from early morning hours until 10 a.m. and after 2 p.m. In addition to the one published here, maps of the cull areas are located on the community bulletin board outside the Sewanee Market, in the foyer of

duPont Library in SPO and at <www.sewaneemessenger.com>.

The following trails will remain open at all times during the cull: the entire Perimeter Trail, Piney Point trail, Beckwith's Point trail, Solomon's Temple trail in Thumping Dick Hollow, the Tennessee Avenue trail and the Rails-to-Trails bike path.

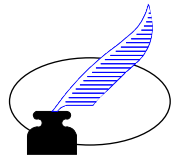
Have a safe and happy holiday.

Shop Sewanee

The Sewanee Business Alliance reminds us to shop local businesses before traveling to the "big cities."

THE SEWANEE MOUNTAIN MESSENGER
 P.O. Box 296
 Sewanee, Tennessee 37375

Letters



ANOTHER HUGE SUCCESS To the Editor:

Yet again the Theta Pi Turkey Trot was a tremendous success, bringing in nearly \$13,000 for Blue Monarch. (Over the past four years this event has raised over \$44,000!) This is always such a fun event—yet also bittersweet—as both the women from Blue Monarch and the students themselves recognize that the life of a college student is a valuable opportunity which some never get to experience. Although this realization may be painful for some of the women of Blue Monarch, it also instills a new sense of determination to create new and better lives for their children.

The Turkey Trot is special in another way, as it develops new philanthropists who learn and experience the tremendous joy of giving to others in powerful ways that ultimately change lives. Thank you to the amazing women of Theta Pi, Theta Kappa Phi, Phi Kappa Epsilon, Kappa Delta, and Alpha Delta Theta—and a special thank you to Heather Dunham and your wonderful team for a hugely successful event—again!

Susan Binkley
Founder, Executive Director
Blue Monarch ■

E.C. HUMANE SOCIETY GRATEFUL TO ALL FOR PICTURES WITH SANTA To the Editor:

On behalf of the Franklin County Humane Society, I would like to thank Tractor Supply for hosting our Pictures with Santa event on Dec. 12 and 13. We are grateful to all the kind people who helped us stage this event: Linda Curty, professional photographer; George Bowers, James Curty and Kyle Tibbo, who were our Santas; all the volunteers who helped with this event; all the people who displayed fliers advertising this event; the Sewanee Mountain Messenger; and the Herald-Chronicle. Many thanks to all our friends who brought their pets in for pictures with Santa. This successful event raised over \$1,000 for the Humane Society's shelter, Animal Harbor.

Mandie Curty, President
E.C. Humane Society ■

LETTER FROM MISS HELEN Dear Friends,

I am now in my own home recovering from a fall and doing fine. I would like to say THANK YOU to all the staff at Emerald-Hodgson Hospital, the inpatient and skilled care nurses, Dr. David Martin and Dr. Louis Koella. Thanks to those of you who visited me, sent cards and called me. And thanks to the Folks at Home volunteers who came to see me. Special thanks go to all my caregivers here at home. I want to remain in my home as long as possible. You are welcome to come visit me whenever you can. I send my love to all of you.

Helen Shedd
Sewanee ■

FUND-RAISER EXCEEDED EXPECTATIONS—THANK YOU To the Editor:

The Stapletons want to thank everyone who came or donated money or food or auction items to their fund-raiser for typhoon relief in the Philippines. We can't name all the names, but you know who you are.

It was a beautiful evening with great food and lots of old and new friends, many of whom had connections to the Philippines. All in all, we raised \$3,010—way beyond our expectations. We sent \$2,500 to the Cordillera People's Alliance, who used the money to provide relief goods, first aid, medical missions and significant assistance to road clearing and retrieval operations, benefiting a total of 5,990 families or 35,940 individuals in Baguio City, Benguet, Mountain Province, and Ifugao. We also sent \$450 to Michael Bengwayan, an environmental activist who has already been commissioned by Benguet province to reforest roadsides to prevent future landslides. We were really touched by how many people were so concerned about a remote corner of the world that we love so much.

The Stapletons
Sewanee ■

LETTERS TO THE EDITOR:

Mail your letter to the Sewanee Mountain MESSENGER, P.O. Box 296, Sewanee, TN 37375, or come by our office, 418 St. Mary's Ln., or send your e-mail to <news_messgr@bellsouth.net>. Please include your name, address and daytime telephone number. Preference is given to letters under 250 words. Unsigned letters will not be used. Letters are edited for space and clarity.

Messenger Breaks for Holidays, Gives Thanks

The Messenger office will close tomorrow, Dec. 18, for a two-week break for the holidays. We will return to our office on Monday, Jan. 4, and will be back in print Thursday, Jan. 7.

Deadlines for our Jan. 7 issue are: Display advertising, noon, Monday, Jan. 4; News/Calendar, 5 p.m., Monday, Jan. 4; and Classified ads, noon, Tuesday, Jan. 5.

At this time I would like to thank our volunteer feature writers—Jean and Harry Yeatman (Nature Notes), Phoebe and Scott Bates (From Bard to Verse), John Bordley (Tintinnabulation) and Pat Wiser (Looks at Books). Their contributions enlighten us, encourage us to see with new eyes, lift our spirits and engage our minds. Thank you.

Thanks also go to our honor roll helpers—Savannah Green, Nora Barnes, Olline Summers, Wes Davis and Sarah Welcher. They have generously helped us identify and recognize our honor students at South Middle School and Franklin County High School.

Have a Merry Christmas and a Bright and Prosperous New Year.

MESSENGER CONTACTS

News & Calendar:

(931) 598-9949

Display Advertising:

Janet Graham

(931) 598-9949

E-Mail Addresses:

News & Calendar—

news_messgr@bellsouth.net

Display Ads—

ads_messgr@bellsouth.net

Classified Ads—

class_messgr@bellsouth.net

FAX: (931) 598-9685

DEADLINES

News & Calendar:

Monday, Jan. 4, 5 p.m.

Display Ads:

Monday, Jan. 4, noon

Display Classifieds:

Monday, Jan. 4, 5 p.m.

Classified Ads:

Tuesday, Jan. 5, noon

HOURS OF OPERATION

Reopening January 4: Monday,

Tuesday, Wednesday & Friday

9 a.m. to 5 p.m.

Thursday

11:30 a.m. to 1:30 p.m.

THE SEWANEE MOUNTAIN MESSENGER

418 St. Mary's Ln.

P.O. Box 296

Sewanee, Tennessee 37375

(931) 598-9949

Fax: (931) 598-9685

www.sewaneemessenger.com



Editor/Publisher:

Geraldine Hewitt Piccard

Staff: Janet B. Graham

Kathy Hamman

Leslie Lytle

April H. Minkler

Peg Palisano

Circulation: Ray Minkler

Contributors:

Phoebe & Scott Bates

John Bordley

Pat Wiser

Jean & Harry Yeatman

Published as a public service to the Sewanee community. 3,700 copies are printed on Thursdays, 46 times a year, and distributed to 26 Sewanee-area locations for pickup free of charge.

This publication is made possible by the patronage of our advertisers and by gifts from The University of the South (print production) and the Sewanee Community Chest.

SUBSCRIPTIONS \$75 first class.



Serving Where Called

Six years ago this column began to support the large number of reservists and National Guard members called up for active duty to serve in the war in Iraq. About 120,000 troops remain in Iraq to support and train their military and assist with counterterrorism.

On Dec. 1, President Barack Obama announced he is sending 30,000 additional troops to Afghanistan to focus on reversing the Taliban's momentum. They will join the 68,000 troops currently deployed in this volatile area.

This is a reminder that someone else is standing guard and facing fire for us. Please keep the following individuals, their families and all those who fight for freedom in your prayers:

Nick Barry

William H. Barton IV

James Gregory Cowan

Peter Green

Robert S. Lauderdale

Kenny Leming

Brian Norcross

Christopher Norcross

Dustin "Dusty" Lee Parker

Michael Parmley

James Smith

Charles Tate

Jeffery Alan Wessel

Nick Worley

We are happy to report that Joshua Rollins has safely returned from Iraq and has rejoined his wife, Sylvia, in California.

If you know of others in our Mountain family who are in harm's way, please give their names to American Legion and Auxiliary member Louise Irwin, 598-5864.

Holiday Closings

The Community Action Committee office will close Friday, Dec. 18, after the community breakfast. Regular hours resume Wednesday, Jan. 6, at 9:30 a.m.

The Hospitality Shop will remain closed until Tuesday, Jan. 12, at 9:30 a.m.

Regions Bank will close at noon on Thursday, Dec. 24, and is closed on Friday, Dec. 25. The bank closes at 2 p.m. on Thursday, Dec. 31; is closed Jan. 1, and reopens at 8:30 a.m. Monday, Jan. 4.

Sewanee Auto will be closed Thursday, Dec. 24, through Sunday, Jan. 3.

The Sewanee Senior Citizens' Center will be closed Wednesday, Dec. 23, through Friday, Dec. 25; and Friday and Saturday, Jan. 1-2.

The administrative offices of St. Andrew's-Sewanee School will be closed Dec. 24-25 and 30-31.

Shenanigans is closed until Jan. 21.

The Sewanee post office will be open on Thursday, Dec. 24, and Thursday, Dec. 31, 9-11 a.m. It will be closed Friday and Saturday, Dec. 25-26 and Jan. 1-2.

Thurmond Library will be closed for the holidays starting on Monday, Dec. 21, and reopening on Monday, Jan. 4.

Curbside Recycling Holiday Schedule

Residential curbside recycling pickup in Sewanee is usually on the first and third Friday of each month. Friday, Dec. 18, will be a pickup day.

The first Friday in January is New Year's Day, so curbside recycling will be picked up on the second Friday, Jan. 8, and again on the usual third Friday, Jan. 15.

Recyclable materials must be separated by type and placed in blue bags by the side of the road no later than 7:30 a.m. Please do not put out general household trash on these days.

We're glad you're reading
the Messenger!

Interior & exterior painting



George Dick, owner

598-5825

Making Sewanee homes and businesses beautiful since 1974

FRANKLIN COUNTY'S ONLY FINE DINING RESTAURANT WITH A FULL BAR!

Featuring Fine Northern Italian Cuisine and the Best Steaks Around!



Arezzo's

LUNCH Mon-Fri 11-2; DINNER Tue-Thu 4:30-9;

Fri & Sat 4:30-10; Closed Mon for Dinner;

SUNDAY BRUNCH 11-2

Reservations Recommended

(931) 962-8680 • www.arezos.com

Located on the square in Historic Downtown Winchester at 100 1st Avenue NW

LOCALS FALL SHOW WELCOMES

CLAY BINKLEY'S
"FUNCTIONAL ART"



ALSO FEATURING

JIMMY

ABEGG



JAMEY "OTIS"

CHERNICKY



SUSAN

CHURCH



TOM

CHURCH



SANFORD

McGEE



LOCALS

OPEN 7 DAYS A
WEEK THROUGH
WINTER CLOSING
ON DECEMBER 19!

11AM TO 5PM
FEATURING
ARTISANS AND CRAFTSMEN
LOCAL TO THE
SEWANEE REGION

49 UNIVERSITY AVENUE
SEWANEE, TN 37375

931.598.0400 OR CAM@EDGE.NET

New Arrivals



Drew Anna Cook

Drew Anna Cook was born on Dec. 15, 2009, at Southern Tennessee Medical Center to Jessica Ladd and Trey Cook of Monteagle. She weighed 9 lbs., 4.2 oz., and measured 20 inches in length. She is the couple's first child.

Maternal grandparents are Willie and JoAnna Ladd of Monteagle. Paternal grandparents are Charles and Brenda Cook of Tracy City.

Senior Center Christmas Bazaar Extended

The Christmas Bazaar at the Sewanee Senior Citizens' Center has been a success and will remain open for shopping through Dec. 22. The center is still accepting white elephant items, crafts and baked goods. Prices can't be beat! Come on down for some Christmas cheer on weekdays, 9:30 a.m.-1:30 p.m. The center is located at 5 Ball Park Rd. behind the Sewanee Market.

VFW Auxiliary to Host Children's Christmas Party

The VFW Ladies' Auxiliary 9586 in Monteagle will host a Children's Christmas Party on Monday, Dec. 21, in the VFW Post for children 12 and under. Presents and candy will be given to the children. All children and their parents are welcome to attend. VFW Post 9586 is located at 8134 Hwy. 41, the road leading to Pelham. Call (931) 924-3470 after 2 p.m. with questions.

Senior Menus

The Sewanee Senior Citizens' Center is open Monday-Friday from 9 a.m. until 1 p.m. Lunch is served at noon. The suggested donation is \$3 (50 years of age or older); \$5, under 50. All prices are suggested donations only. To ensure adequate food preparation, please call 598-0771 the day before to reserve a takeout meal or to eat at the center. Menus follow.

Dec. 21: Vegetable beef soup, slaw, cornbread, apple crisp.

Dec. 22: Baked ham, macaroni/cheese, green beans, corn on cob, Waldorf salad.

(Center is closed Dec. 23-27)

Dec. 28: Cabbage/Polish sausage, pinto beans, fried potatoes, cornbread, gingerbread.

Dec. 29: Pork roast, green lima beans, sweet potato, whole tomato, cornbread.

Dec. 30: Spaghetti pie, salad, corn on cob, garlic bread, fruit whip.

Dec. 31: Chili, crackers, toasted cheese sandwich, banana pudding.

Jan. 4: Swiss steak/gravy, macaroni/cheese, California-blend veggies, bread, dessert.

Jan. 5: Fried chicken/gravy, mashed potatoes, green beans, biscuit, dessert.

Jan. 6: Barbecued beef ribs, slaw, baked beans, bread, lemon pudding.

Jan. 7: Butter beans/ham, cabbage, stewed potatoes, cornbread, applesauce, cookies.

Jan. 8: Tomato soup, crackers, ham/cheese sandwich, assorted desserts.

Menus may vary. For information call the center at 598-0771.

CAC Giving Tree Deadline Friday

The Community Action Committee's annual Christmas Giving Tree is now up outside the CAC office in Otey parish hall. The tree contains the names of special people in our community, most of whom are home-bound or stay in a residential facility.

Everyone is invited to select a name, and purchase and wrap a small, practical gift for someone on the tree. Simple gift ideas include toiletries, calendars, slippers, photo albums, mittens, scarves, lap blankets, and fruit baskets or flowers.

We encourage you to deliver the gift, as many of these people would love a visit during the holiday. Those who cannot make deliveries may leave their gift, with the nametag attached, at the CAC office by Friday, Dec. 18, and CAC will deliver them.

For more information please contact Laura Willis at 598-5927.

Stephens Fund Established

Michael Stephens of the Midway community was in a one-car accident resulting in serious injuries and surgery.

His mother, Tina Stephens, is confronted with medical expenses, house payments and utility bills that must be met. Help is needed.

A fund for community support has been established. Those wishing to help may do so by leaving donations at the Sewanee Senior Citizens' Center, 5 Ball Park Rd.



Seeds for the Spirit

Our feathered friends still make regular visits to the windows of the residents of the Bridge at Monteagle (formerly Monteagle Care and Rehabilitation), thanks to Seeds for the Spirit, an outreach ministry launched 10 years ago at St. James Episcopal Church in Midway. A group of loyal volunteers work on a rotating schedule to keep the 60-plus feeders filled. Contributions may be made in honor or memory of a friend or loved one, with the recipient receiving an announcement of your gift. Please send donations to: "Seeds for the Spirit," St. James Episcopal Church, P.O. Box 336, Sewanee, TN 37375. Make checks payable to the church. Provide a name and address if a gift announcement is to be sent. Call 598-0822 for further information.

GEOFF ROEHM

STRINGED INSTRUMENT
CONSTRUCTION &
REPAIR

OVER 40 YEARS
EXPERIENCE



931-598-5759
ROEHMGUITARS.COM

MERRY
Christmas

It takes all kinds of people to unmake the world.

From "Two-Liners Stolen From Others by Joe F. Pruett"

Sewanee Realty

931.598.9200 www.SewaneeRealty.info
115 University Ave., Sewanee

Margaret Donohue
Broker
931.636.5599

John Brewster
Affiliate Broker
931.636.5864



MLS 1139919 - 1323 Overlook Dr., Monteagle. \$985,000



MLS 1139894 - 2100 Stagecoach Rd., Sewanee. \$342,900



MLS 1110053 - 460 Green's View Rd., Sewanee. \$978,000



MLS 1113783 - 120 University Ave., Sewanee. \$250,000



MLS 1074459 - 115 Brannon Hill Rd., Belvidere. \$156,000



BLUFF - MLS 1101481 - 196 Oleander Lane, Sewanee. \$889,000



MLS 1094735 - 215 Shadow Rock, Monteagle. \$175,000



BLUFF- MLS 1115015 - 187 Carruthers Rd., Sewanee. \$495,000



MLS 1124743 - 296 Sherwood Rd., Sewanee. \$129,000



MLS 1100912 - 236 North Carolina Ave., Sewanee. \$399,999



MLS 998887 - 925 Dogwood Dr., Clifftops. \$240,000



MLS 1071445 - Huckleberry Place, Clifftops. \$339,000



MLS 1094724 - 225 Shadow Rock, Monteagle. \$238,000

BLUFF TRACTS

Old Sewanee Rd	951522	\$248,000
Jackson Point Rd	1111807	\$ 99,000
Jackson Point Rd	1111815	\$ 99,000
Jackson Point Rd	1099422	\$218,000
Jackson Point Rd	1101401	\$ 99,000
Lot 36 North Bluff	1064111	\$125,000
Saddletree Lane	836593	\$ 75,000
Jackson Point Rd	1054636	\$125,000
Stagecoach Rd	1053669	\$215,000
Stagecoach Rd	1053676	\$240,000
Jackson Point Rd	1051241	\$ 99,998
Raven's Den	1015362	\$149,000
Jackson Point Rd	975049	\$245,000
Jackson Point Rd	850565	\$ 80,000



MLS 1049997 - 824 Jim Long St., Monteagle. \$286,000



FARM - MLS 1071074 - 171 Webb Lane, Cowan. \$299,900

LOTS & LAND

Lakeshore	1007617	\$85,000
West Lake Ave	1099224	\$88,000
Bear Den Ct	981360	\$35,000
Bear Den Ct	981371	\$35,000
Bear Den Ct	981377	\$35,000
Saddletree Lane	892954	\$38,000
Saddletree Lane	892958	\$35,700
Saddletree Lane	892961	\$28,700
Jackson Pt. Rd	686392	\$29,000

WAREHOUSE SPACE FOR RENT IN SEWANEЕ.

Church News

This Month at Otey Parish

All are welcome at Otey Parish in the next month during the liturgical seasons of Advent, Christmastide and Epiphany. Each Sunday the Holy Eucharist, Rite II, is celebrated at 8:50 a.m. and 11 a.m.

Between services, Godly Play classes for children ages 3-11 are offered. Youth and interested parents are studying the "Nooma" series each week. Adults may attend one of three classes: the Lectionary Class, coordinated by Pete Trenchi, studies the weekly Gospel lesson; the Seekers Class, led by Cookie Sampson and Stanford Adams, focuses on a weekly Kaleidoscope Bible Study looking at diversity and inclusiveness; the Adult Forum will welcome Waring McCrady on Sunday, Dec. 20, who will share his new book, "All Saint's Chapel."

On Sunday, Dec. 27, bring your family and friends and a dozen cookies to share to the "2nd Annual Hymn

Sing and Cookie Swap," led by the Otey Choir during the Sunday school hour. Regular Sunday school classes will resume Jan. 3.

Nursery care is available on Sundays from 8:30 a.m. to 12:30 p.m. and for all special services:

On Sunday, Dec. 20, Caroling with the Otey Choir will be offered, time to be announced. On Thursday, Dec. 24, Christmas Eve services will be held at 4:30 p.m. (Children's Crèche Service) and at 10:45 p.m. On Friday, Dec. 25, a Christmas Day service will be held at 10 a.m. On Sunday, Jan. 3, at 5 p.m., the Epiphany Pageant will be presented, followed by a potluck meal.

Everyone is welcome to celebrate the birth of the Christ child and find solace, strength and renewal by sharing Christ's love in the world!

For more information call Robin Reed-Spaulding at 636-0010.

Christ Church Monteagle Services

On Sunday, Dec. 20, the fourth Sunday in Advent, Christ Church, Monteagle, will hold "A Service of Lessons and Carols" at 10:30 a.m. Calendars that reflect the entire Christian year with its many special days and remembrances are available at Christ Church.

The traditional 5 p.m. Christmas Eve service will include "God Keeps His Promises," a pageant written by

Martha Millsaps. The pageant's script, available at no cost on the Internet, is being used by several churches in this and other states. More angels and shepherds are always welcome!

The Christmas Day service will be at 10 a.m. on Dec. 25. This is a special offering to people who do not drive at night, although transportation is always available for the Christmas Eve service.

On the first Sunday of Christmas, Dec. 27, at least one baptism will take place at the 10:30 a.m. service. All are invited.

Lunch is served each Sunday after the 10:30 a.m. service and on Wednesdays during Advent and Lent.

Epiphany falls on a Wednesday in 2010, so the service will be at noon. The Epiphany pageant will be on Jan. 10 at 10:30 a.m.

Mountain of Praise Pantry Delivery Saturday

The Mountain of Praise food pantry delivery is Saturday, Dec. 19. (Note change from regular schedule.) Sign up at 11:30 a.m. in the Mountain of Praise Church, 16 Laurel Lake Dr., Monteagle. For more information, contact Dennis and Angie Bliss at (931) 924-3467. Food distribution will proceed as normal in January, being available every second Saturday at 11:30 a.m.



Pictured with cookies they baked for University students are Elaine Goleski, Nancy Bradshaw and Peggy Partin.

Morton Memorial Elves Bake Cookies for University Students

Members of the Nurture Committee at Morton Memorial United Methodist Church in Monteagle baked Christmas cookies for all University dorm residents. Seventeen trays of cookies were delivered to Mary Beth Bankson's office on Dec. 10. Head residents delivered the cookies to students in their dorms.



Suzanne Cahoon (left) will perform an original piece written in collaboration with her daughter, Allie (SAS '08), during the school's Christmas Eve service.

SAS Christmas Eve Service

St. Andrew's-Sewanee School welcomes the public to attend an 11:30 p.m. Celebration of Holy Eucharist on Christmas Eve in its chapel. The Rev. John Thomas, head of school, will preach, and the Rev. Ellis O. Mayfield will be the celebrant. Music Director Katherine Anderson will lead the music for the service. Suzanne Cahoon will perform a song written in collaboration with her daughter, Allie, SAS '08. The service is open to the community.

Winchester Podiatry

CHARLES D. GANIME, DPM

Board Certified in Foot Surgery
Diplomate, American Board of Podiatric Surgery
New Patients of All Ages Welcome! We Treat Your Feet!
Most Insurance Accepted, Including TennCare

We are at 155 Hospital Road, Suite 1, in Winchester.
www.winchesterpodiatry.com

931-968-9191





June Weber
Gooch-Beasley Realtors

Serving the Sewanee and Monteagle area
with quality real estate service:
-38 years of experience
-Mother of Sewanee alumnus

gb www.gbrealtors.com junejweber@bellsouth.net
June Weber, CRB, CRS, GRI Broker 931.636.2246
GOOCH-BEASLEY REALTORS 931.924.5555


SAUSSY

CONSTRUCTION, L.L.C.

Fred Saussy, General Contractor

Residential - Remodeling - New Construction
Licensed & Insured

P.O. Box 3201 • Sewanee, TN 37375 • (931) 598-5981 • fredsaussy@gmail.com



ST. MARY'S SEWANEE

A Center for Spiritual Development

Call (800) 728-1659
or (931) 598-5342
www.StMarysSewanee.org
StMarysSewanee@bellsouth.net

THIS WEEK AND UPCOMING AT ST. MARY'S SEWANEE

YOGA Tuesdays, 9 to 10:15, & Thursdays, 3:30 to 4:45, offered by Hadley Morris, RYT

CENTERING PRAYER SUPPORT GROUP
Tuesdays, 4 to 5:30

THE PRACTICE OF PEACE: A NEW YEAR'S MINDFULNESS RETREAT Dec 30-Jan 1,
The Rev. Gordon Peerman and Kathy Woods

CENTERING PRAYER INTRODUCTORY WORKSHOP Jan 2; **INTENSIVE RETREAT,**
Jan 3-10; The Rev. Tom Ward

ACADEMY FOR LIFELONG LEARNING:
Jan 12, "Shakespeare's Sonnets," Willie Coker



ROB MATLOCK
CONSTRUCTION COMPANY
NEW HOME BUILDING
AND REMODELING

MEMBER, U.S. GREEN BUILDING COUNCIL

PHONE 931-598-5728

MATLOCK

State Licensed • Fully Insured

Pantry Sunday Jan 3.

Pantry Sunday for the Community Action Committee (CAC) is Sunday, Jan. 3. Please take your food offerings to Sunday services. The typical bag of groceries includes rice, beans, pasta, macaroni and cheese, peanut butter, and cans of vegetables, fruit, and soup.

The CAC is an outreach ministry of Otey Parish with generous support from the Sewanee Community Chest and individuals across the Mountain. The CAC provides food, financial assistance and educational support for persons in the greater Sewanee community. For more information, contact the CAC at 598-5927.

St. Mary's Convent Chapel Services

The Community of St. Mary announces the following service schedule: Christmas Day—Holy Eucharist with hymns at 9 a.m. and Evening Prayer at 5:30 p.m.

Daily, Dec. 26 through Jan. 10, (except Wednesday, Dec. 30) Holy Eucharist will be celebrated at 8 a.m., the Noon Office at 12:30 p.m. and Evening Prayer at 5 p.m. Compline is said at 7 p.m. on Monday, Tuesday, Thursday and Friday. All are welcome.

Christ Church Alto Christmas Eve

The Rev. Bill Barton extends an invitation to all to join the congregation of Christ Church, Alto, 9616 Old Alto Hwy., for the Christmas Eve service on Dec. 24 at 7 p.m. The Sunday service is at 9 a.m.

Christmas Eve Service at Trinity in Winchester

Trinity Episcopal Church, located at 213 1st Ave. NW in Winchester, will hold its annual Christmas Eve candlelight service. Singing of Christmas carols will begin at 10:15 p.m., followed by Holy Eucharist at 10:30 p.m. Everyone is welcome.

Centering Prayer Introductory Workshop

A one-day Centering Prayer Introductory Workshop at St. Mary's Sewanee Center for Spiritual Development, located at 770 St. Mary's Lane, is offered on Saturday, Jan. 2, from 9 a.m. to 3 p.m. The fee is \$35.

This workshop is for those who are new to Centering Prayer and for those who would like a refresher course. The Rev. Tom Ward will explain Centering Prayer, and participants will take part in this form of silent, contemplative prayer.

For a printable registration form go to <www.centeringprayermidtn.com/registrationform.pdf>. For more information on St. Mary's Sewanee see <www.stmaryssewanee.org>.

**Green is not a color.
It's a philosophy.**



GOOCH-BEASLEY LLC,
Certified Contractor
Peter R. Beasley
(931) 924-5555
www.gbrealtors.com

November Emergency Services Reports

EMS: Not available at press time.
FIRE: Keith Henley reports the volunteers had five calls in November—four alarms and one landing zone for the emergency helicopter.

POLICE: Chief Robert White reports the department patrolled 4,758 miles in November; investigated four vehicle accidents; made two arrests—one drug law violation and one DUI arrest; ticketed five moving violations, 398 nonmoving violations and issued 37 warnings. Two animals were picked up for Animal Control.

County and State Election Deadlines Announced

Deadlines for the 2010 County Primary and the State Primary/County General Elections have been announced.

County Primary deadlines are: Dec. 20, deadline for political parties to notify election office of having a primary; Feb. 18, qualifying deadline, noon; Feb. 25, withdrawal deadline, noon. The County Primary will be held May 4, 2010.

State Primary and County General Election deadlines are: Jan. 1, first day to issue petitions; April 1, qualifying deadline, noon; April 8, withdrawal deadline. State Primary and the County General Election will be held Aug. 5, 2010.

The State General Election will be held Nov. 2, 2010.

For more information contact the Franklin County Elections office at 967-1893.

So. Central Home Builders Christmas Breakfast

A Christmas breakfast will be held for members of the South Central Home Builders' Association on Dec. 17, 7:30-10:30 a.m., in the Tullahoma Business Center on Wilson Avenue (across from Crockett's Roadhouse) in Tullahoma.

Donated prizes include a Ruger M77 rifle (or equivalent) and a Lorenzo necklace from Woodard's. A donation of \$10 provides one prize ticket and a donation of \$20, three tickets.

Participants need not be present to win; the person with the winning rifle ticket must be 18 years old to claim it.

Pool Gains Pilot Certification

Cydney Pool of Sewanee earned her pilot's certificate on Saturday, Dec. 12, at Sewanee's Jackson/Meyers airport. Pool first became interested in aviation in 2005 as something new and exciting—a change of pace. She took several area flights at the time but did not start her training in earnest until this year, after starting work at the airport.

MOBILE VETERINARY SERVICES

(931) 607-5239
For Dogs, Cats & Horses

TRACI S. HELTON, DVM
Certified in Animal Chiropractic by the American Veterinary Chiropractic Association

CONVENIENT PATIENT SERVICES AT YOUR HOME

Vaccinations, Wellness Exams & Ultrasound Services
Serving Franklin County and Surrounding Areas by Appointment

Town of Monteagle Completes Phase I of Sewer Rehab Project

The Town of Monteagle has completed the first phase, the bidding of contracts, for a \$7.2 million sewer rehab program.

The projects to be completed in this program include repair and/or replace faulty sewer lines; construct a new sewer plant at the current site of the sewer treatment plant (STP) No. 2; convert STP No. 1 to a pump station that will pump the discharge from its current site to STP No. 2; and install a transmission line from the new pump station to STP No. 2.

Damaged and broken sewer lines have been causing inflow and infiltration (I&I) problems that have existed in the sewer system for more than 30

years. It is impossible to completely eliminate I&I, but it will be greatly decreased through a process called "pipe bursting" of damaged sewer lines in both Grundy and Marion counties.

These projects are a requirement of the city's agreement with the Tennessee Department of Environment and Conservation to correct inadequacies in the sewer system.

All projects are expected to be completed by Dec. 31, 2011. If any customer of the Monteagle water or sewer systems has questions about these projects, please call city hall at (931) 924-2265.

Blue Monarch: A Dream Realized

The vision for the Blue Monarch residential treatment program for battered, abused and addicted women occurred to founder Susan Binkley in a dream. At the Dec. 7 Sewanee Civic Association dinner meeting, Binkley talked about the challenges and rewards of seeing that dream become a reality.

A University of Tennessee graduate with a degree in visual arts, Binkley worked for many years as an artist before founding Blue Monarch. The unique treatment and recovery program is a stunning testimony to her creative genius.

The 12-month residential program is one of only five programs in the state that includes children as on-site residents during the recovery process. In the early days of founding the program, Binkley learned from prospective clients' application forms that the majority of the women who came to Blue Monarch began using drugs at the age of 11, that a parent or grandparent had initiated them in drug use, and that most of the women had been sexually abused before the age of 5. Realizing that drug use and the related behavior was generational and taught, Binkley decided that a key component in recovery was breaking that cycle.

Hand in hand with receiving drug and alcohol abuse treatment, the women in the program attend parenting classes, undergo parental assessment by a trained professional and take a nine-week work ethics course, the completion of which qualifies them for employment at the Blue Chair Bakery and Coffee Shop, Binkley's for-profit business. Among the lessons Binkley learned in establishing the Blue Monarch program was that for women enmeshed in the drug culture, where manipulation and dishonesty are key survival tools, simply overcoming addiction was not

sufficient to prepare them for a happy, productive lifestyle.

Binkley referred to the seventh month as the "tipping point" for women in the program. By then the drugs are out of their system, and the women begin to feel the emotional pain and regret engendered by the past, Binkley explained. Some return to drugs for comfort. They have a "huge fear of success," she observed, noting that success is unfamiliar and unpopular in the culture these women come from, and often the women's families turn on them and criticize them when they begin to succeed in the program.

Binkley stressed that there are many measures of success beyond completing the 12-month residency, for example, earning a GED or regaining custody of one's children. All of the women in the program have access to GED classes, counseling, legal help to reestablish contact with children and medical care.

Blue Monarch is also about "saving lives," Binkley added. Seven women gave birth during their residency, children that might have otherwise been born addicted or not born at all.

Since 2003, Blue Monarch has served 95 women. Although Blue Monarch accepts clients from anywhere in Tennessee, most come from Coffee, Franklin and Grundy counties. Binkley emphasized that Blue Monarch is not equipped to provide emergency shelter to domestic violence victims. These "high risk" women must be removed from the abusive circumstance for 30 days before Blue Monarch will accept them into the program.

The Civic Association does not meet in January. The next meeting is Feb. 1.

—Reported by Leslie Lytle

SMOKE HOUSE REALTY
 850 West Main Street • Monteagle, TN 37356
 931-924-4663 (HOME)
 FAX 931-924-3442
 www.smokehouse Realty.com;
 e-mail kimo@realtracs.com

HOMES FOR SALE

*Two 3 BR homes for the price of one in Monteagle - \$130,000
 *2/3 BR, 1 BA home in Tracy - \$71,500
 3 BR, 2 BA home with 3 acres and rental income - \$97,500
 *Handicap-accessible - 3 BR, 1 BA ranch, \$66,500
 *Reduced - Owner says bring offer - 3 BR home in historic Summerfield - \$146,000

BUSINESS FOR SALE

*Tracy City—Go into business for yourself ... Good income potential!


LAND FOR SALE

* Bluff Land, Commercial Land, Land for Double-Wides and more.
 See all of our listings at www.smokehouse Realty.com

Call Us for Help in Selling Your House or Land.

UGLY DOLLS

have just moved
 into The Lemon Fair.
 12 inches. Plush. \$25.99



THE LEMON FAIR

Mon thru Sat 11 to 5 (931) 598-5248
www.thelemonfair.com 60 University Ave. Sewanee

"You must be the change you wish to see in the world."
 —Mahatma Gandhi

Stillpoint

Individual and Group Psychotherapy Massage and Bodywork

Betty Phillips, M.A. Individual & Group Psychotherapy 598-5151
Bethany Lohr, Ph.D. Clinical Psychologist 598-0906
Maryellen McCone, M.A. Individual & Group Psychotherapy 636-4415
Robin Reed-Spaulling, Ph.D. Clinical Psychologist 636-0010
Regina Rourk, LMT, CNMT Massage and Bodywork 636-4806



Mountain Outfitters

Holiday Sale: 20% off

 <p>Mountain Hardwear Men's and Women's Monkey Jackets</p>	 <p>North Face Men's and Women's Denali Jackets</p>	 <p>Patagonia Men's and Women's Better Sweaters</p>	 <p>Gloves, hats, scarves!</p>
---	---	--	---

20% or MORE off EVERYTHING in the store!

Open 10-6 Every Day
 903 West Main St
 Monteagle TN 37356
 931-924-4100
www.themountainoutfitters.com

Simmons Wins Humane Soc. Drawing

The Franklin County Humane Society is pleased to announce Kim Simmons of Cowan won the December drawing for a free spaying or neutering of a dog or cat. Local veterinary clinics perform the surgeries on winners' pets.

The F.C. Humane Society holds a drawing for one free spay/neuter of a cat or dog at each regular monthly meeting. An entry form for the next drawing is below at the right. Everyone who has a pet in need of spaying or neutering is urged to fill out the form. When a pet wins the drawing, all of Franklin County wins.

Blue Monarch Angel Trees Up

There are still a few names left on the Angel Trees at the Blue Chair for the women and children of Blue Monarch, a residential intensive self-help program for women and their children who are recovering from abuse and addictions. (Directions for how the Angel Tree works are posted at the Blue Chair.) The deadline for gifts is Friday, Dec. 18.

Gifts to AASC in Loved Ones' Names

The Animal Alliance-South Cumberland is ready to help with your Christmas gift list. Are any animal lovers on that list? Do you want to give a gift from your heart? Then try this: Give any size donation to AASC in your loved one's name, and he or she will receive a personalized Christmas card from Animal Alliance, saying that you have contributed in the individual's name.

Gifts to AASC's spay/neuter program are tax-deductible and help remedy pet overpopulation on the Mountain. Mail a check, along with a note containing your name and your loved one's name and address, to Animal Alliance, P.O. Box 627, Tracy City, TN 37387.

Those interested in joining the F.C. Humane Society may do so for an annual membership fee of \$12. New members and volunteers are welcomed.

For information about adopting a pet or the Humane Society's monthly meetings, call the Animal Harbor shelter at 962-4472, visit its website, <www.animalharbor.com> or e-mail: <petadoption@charter.net>. Animal Harbor is open to the public Tuesdays-Thursdays, noon-5 p.m.; Fridays, noon-6 p.m.; and Saturdays, 10 a.m.-4 p.m. (Exceptions to these hours occur occasionally.)

VFW and Ladies' Auxiliary Outreach

The Monteagle VFW Ladies' Auxiliary is accepting donations for the annual Children's Christmas Party and Veterans' and Needy Families' Fund. New and used toys, clothing, cash, nonperishable food items, juices and soft drinks are accepted. Donations may be dropped off at the VFW Post, located at 8134 Hwy. 41 N, Monteagle.

The VFW Ladies' Auxiliary is also collecting coats for needy children. All donations of clean used coats and new coats are appreciated. Coats may be dropped off at the post.

The Monteagle VFW, in support of Operation Uplink, is collecting used cell phones to be refurbished and sent to soldiers overseas. For more information on any of the above efforts, call (931) 924-3470 after 2 p.m. The community's support is greatly appreciated.



CCJP Award Nominations Sought

At its annual Spring Awards Banquet, the Cumberland Center for Justice and Peace (CCJP) recognizes individuals and organizations whose work furthers the mission of bringing a measure of justice and peace to the Cumberland Plateau area.

Nominations are being sought for the 2010 awards. Past award recipients have included Susan Binkley and Blue Monarch; Laura Willis and the Community Action Committee; Jess Wilson and the Cumberland Farmers' Market; and Jill Carpenter, Mary Davis, Mary McCleaf and Mary Priestley, for bringing an end to roadside spraying that endangered indigenous plant species on Hwy. 41A.

This year's banquet is scheduled for Feb. 27. The deadline for making award nominations is noon, Jan. 21. If you know of an individual or organization whose work deserves recognition, please contact Leslie Lytle at 598-9979 or <sllytle@bloomberg.net>.

Heifer Intl. Donation Deadline

The Sewanee Outreach Office, located in Bishop's Common, is collecting donations for Heifer International again this Christmas season.

By purchasing an honor card for as little as \$10, you can let a loved one know you bought a share in a goat, a flock of geese, a cow, a water buffalo or other livestock in his or her name. Donations are tax-deductible. You may make donations at the outreach office through Dec. 18.

Heifer works to end global hunger, social inequality and environmental degradation through training and assistance in agriculture and livestock.

For more information contact the outreach office, 598-3201.



Carey Fellows Corbin Allen, Yujia Qian and Samarth Chaddha

Center for Global Commerce Names Carey Fellows

Three sophomore students have been selected as 2010-11 recipients of Carey Fellowships, the business honors program at the University: Corbin Allen, Yujia Qian and Samarth Chaddha.

Carey Fellows take two advanced proseminars in economics and spend a full semester in paid business internships. The fellows also receive a scholarship. Upon successful completion of the program, they will receive special recognition at graduation.

Corbin "Corey" Allen is from Sevierville, Tenn. An economics major and business minor, he worked last summer for Morgan Keegan Equity Research, where he studied defense and security firms. He is a starting member of Sewanee's rugby team and serves as assistant director of a staff program at a summer camp for diabetic children. He is preparing for a career in finance.

Yujia Qian, known as Michelle, is from Suzhou, China. She is the co-founder of Asian Sensation, a student-run club that promotes awareness of Asian cultures at Sewanee, and she is the Class of 2012 representative to the Student Assembly. Last summer she worked in the finance offices of two Chinese firms. She wants to follow her mother's example as a successful businesswoman.

Samarth Chaddha, from Dubai, UAE, is an assistant proctor, treasurer of the Organization for Cross-Cultural Understanding and writes for the Sewanee Purple student newspaper. He is also vice president of the Basic Needs Program, a student-led group that supports orphans in Bangladesh. He spent last summer in Sewanee's Summer in China program, where he studied Chinese private businesses, joint ventures and state-owned enterprises. His interests include social entrepreneurship and sustainable investment.

All three new Carey Fellows are members of the Order of Gownsmen academic honor society.

Applicants for the fellowship program must be sophomores who intend to declare a business minor. Carey Fellows are required to maintain a 3.3 grade point average throughout the period of the fellowship.

The selection of the 2010-11 Carey Fellows was announced by Nick Babson, director of the Center for Global Commerce, and Doug Williams, pre-business adviser and chair of the department of economics. The Carey Fellowships are funded with the generous support of William Polk Carey.

ENTRY FORM

I am a resident of Franklin County and I hereby enter the drawing for one free spaying or neutering for one dog or one cat. (Only one entry per address per month.)

NAME: _____ PHONE: _____

ADDRESS: _____

Please mail to: The Franklin County Humane Society
P. O. Box 187
Winchester, TN 37398

Drawings are held at the regular FCHS monthly meetings. Winners do not have to be present and they will be notified. Contributions are welcome with entry, but not required and do not influence the outcome of the drawing.



Joseph's Remodeling
Solutions
A Division of Sumpter Solutions, LLC.
Historical Restoration, Remodeling, Additions and High Quality Painting
• 20 Years Experience • Licensed Contractor • Insured • References Available
Joseph Sumpter, C'97. Owner • 931.598.5565 • www.sumptersolutions.com

Sernicola's
Steaks, seafood, pastas, brick oven pizza, hot lunch buffet, plus a 22-item fresh and healthy salad bar. Homemade desserts!
106 Tennessee Avenue • Cowan • 962-3380
Open Tuesday-Saturday • Lunch 11-2 • Dinner 5-8:30

Open Monday-Friday 9-5; Saturday 10-2
598-9793
90 Reed's Lane, Sewanee

WOODY'S BICYCLES
is on the Mountain
in the red building behind Shenanigans
AND OFFERS RENTALS!
Full-Service Bike Shop featuring New Bikes by Trek, Gary Fisher, Lemond
All Necessary Accessories and Bicycle Repair
E-mail woody@woodsbicycles.com
www.woodsbicycles.com

BOOK BRAKE
Used and Collectable Books
HOURS: Tues - Thurs @ 3:00 to 7:00 P.M.
Friday @ 3:00 to 9:00 P.M.
Saturday @ 10:00 A.M. to 9:00 P.M.
228 S. Tennessee Ave., Cowan, TN 37318 | 931-636-5752

Allergies? We Fix The Air You Breathe!
Call **AirMax**
Heating, Cooling & Storage
931-596-3050 Geothermal Experts
Contact us via our new website: www.airmaxllp.com

ALLERGY SEASON IS HERE!
72-hour DETAILED air quality analysis now available!

Lunch and Learn Program: Shakespeare's Sonnets

William T. Cocke III will offer the third program in the Lunch and Learn series at St. Mary's Sewanee on Tuesday, Jan. 12, at noon. Cocke, a Shakespearean scholar, will speak on Shakespeare's sonnets.

"These 14-line poems provide an entrée into Shakespeare's world and thought that we could not accomplish with one of the full-length plays, given the time we have," says Cocke. The presentation will begin with a short history of the sonnet and Shakespeare's involvement in the form. Up to six sonnets will be considered. A list of the sonnets to be discussed will be announced in the Messenger before the presentation so that attendees may read them before the event.

Cocke earned a bachelor's degree from the University of the South and enlisted in the U.S. Navy immediately after graduation. After serving his country, he attended Columbia University for graduate studies and taught at Carnegie Institute of Technology before returning to his alma mater as a member of the English department. Cocke received a doctorate from Vanderbilt University. At Sewanee he served as director of the summer school, in addition to his duties in the English department. He also served as a frequent faculty member of British Studies at Oxford University, England. In 1989 he was



Professor Emeritus William Cocke

named Jesse Spalding Professor of English, and in 1997 on his retirement was named Jesse Spalding Professor Emeritus. The Associated Alumni of the University honored Cocke with the Distinguished Faculty Award in 2000.

For many years Cocke served as advisor to Phi Delta Theta fraternity. His engaging contact with students over the years made him a popular teacher and friend, and he continues to befriend alumni who visit him regularly at his home on University Avenue. Willie, as he is affectionately known, is married to the former Loulie Hunt. They have two married sons.

Lunch reservations for Lunch and Learn events are \$10 and may be made by calling St. Mary's Sewanee at 598-5342. People who attend the talk may bring their own lunches; reservations for the talk are not required. A \$10 annual membership may be purchased at the event.

CCJP Accepting Applications for Board Openings

The Cumberland Center for Justice and Peace (CCJP) will elect three new members to its board of directors in March 2010. Applications are currently being accepted.

CCJP board members are responsible for strategic planning to further the organization's goals and mission, budgetary oversight, hiring and supervising the executive director, fund raising through financial contributions or active support of fund raising projects and acting as ambassadors for the organization. In order to fulfill these responsibilities, board members are expected to attend quarterly board meetings and to participate actively on at least one committee.

Serving on the CCJP board of directors is an opportunity to become an agent for positive change. To apply, submit a letter of interest, noting any skills or past experiences that might assist you in fulfilling the role of board member. Letters should be addressed to the attention of the executive director and may be submitted electronically to <slytle@blomand.net> or by postal mail to CCJP, P.O. Box 307, Sewanee, TN 37375. The deadline for sending applications is noon, Jan. 21, 2010.

For more information contact Leslie Lytle, executive director, at the above e-mail, or call 598-9979.

news_messgr@bellsouth.net

GOOCH-BEASLEY REALTORS

9 College St. at Assembly Ave., Monteagle • (931) 924-5555
Peter R. Beasley II, Broker-Owner

www.gbrealtors.com



BLUFF VIEW IN BEAR DEN. Lovely 3 BR home in quiet comfortable community. Enjoy ridge and valley views from a spacious rear deck with hot tub. MLS #1125623. **\$349,000.**

Have You Experienced Tennessee Mountain Living?



www.bluffliving.com

LAND & COMMERCIAL Bluff Rim View Tracts

- Highland Bluffs presales
- Jackson Point
- Deerwood Dr.
- Bridal Veil
- Raven's Den
- Cedar Mountain
- Myers Point



LOG HOME with custom stone fireplace, screened porch. Gardens, vineyards, park-like cascading streams. Over 5 secluded acres. 3 BR, 2 BA. MLS #1101294. **\$299,000.**

STUNNING VIEW BLUFF RIM. 7.7 acres in Cumberlands at Sewanee. Minutes from University, restaurants, shopping, I-24. MLS #1070293. **\$105,000.**



CLIFFTOPS CABIN IN THE WOODS. 3 BR, 2 BA, Western Cedar. 3-car garage. Screened porch, gas logs. Beautiful wooded landscape. MLS #1114776. **\$235,000.**

DRIPPING SPRINGS BLUFF RIM LOTS. Quiet community of attractive homes. Panoramic view over Ladd's Cove looking toward Clifftops. Adjacent lots. #13, **\$70,000.** MLS #1091645. #14, **\$70,000.** MLS #1091661.



MYERS POINT LAKESIDE. Once in a lifetime chance! Hiking, riding trails, stables. Near Sewanee. Exclusive, gated, spectacular. MLS# 1024702. **\$275,000.**



GORGEOUS ROLLING HILLS. 204+/- acre nursery completely stocked with 70 varieties of ornamental trees and shrubs. Stock worth more than asking price. Plus a 35-acre stocked lake. MLS #899562. **\$800,000.**



SEWANEE HOME ON KENTUCKY AVENUE. 3 BR, 3 BA, 1959 sq. ft. Brick, paved drive, screened patio, fireplace. MLS#1078280. **\$195,000.**



WATERFALL VIEWS. 5 acres. **\$260,000.**



www.eaglebluffestates.com



At Sewanee

Tims Ford Wildlife Rehab Grant

Tims Ford Environmental Education Association (TFEEA) has received a \$3,000 grant through the Animal Welfare Fund of the Community Foundation of Middle Tennessee to support its wildlife rehabilitation program. Since TFEEA was founded in 2006, its state and federally licensed rehabilitators have provided care for over 1,500 orphaned and injured hawks, owls, songbirds, small mammals and white-tailed deer.

"Each of our wild patients requires specialized food and caging while they are recuperating" according to LouAnn Partington, certified wildlife rehabilitator and TFEEA chairman. "This grant will allow us to provide the best care possible for each animal that is brought to us."

Happy holidays!

We will close on Christmas Eve at 3 p.m. and reopen January 5.

Sinclair's Emporium

Hwy 50, Decherd • 967-7040
Hours Tues-Sat 10-5:30
Gift Wrapping
Free Delivery

Sewanee Cleaners & Laundry

You can pay more, but you can't get it cleaner!

36 Ball Park Rd. behind Sewanee Mkt • 598-0116

ONE-DAY SERVICE BY REQUEST

Call for pickup & delivery.



Located next to Pizza Hut in Monteagle
(931) 924-GIFT (4438)
www.lorenasgifts.com
Mon-Fri 8-6; Sat-Sun 10-5

CHRISTMAS MUSIC AND DINNER AT LORENA'S

Saturday, Dec. 19, 7 p.m. A delicious candlelit dinner by guest chef June Weber with beautiful instrumental and vocal Christmas music by Gail Drake and Ensemble. \$15 per person. Reservations only!

THE HOLIDAY SEASON

can become such a hustle and bustle, so why not let Lorena's lighten the load by doing the cooking for you? We have wonderful entrées, sides, casseroles, cakes, cookies, and pies! Call and place your orders—we only need 24 hours notice.



Tate and Company

- Real Estate -

25 W. College, Suite 3, Monteagle
(931) 598-0044

DEEPWOODS: New to the market. 5-acre bluff tract with sunset view of Roark's Cove. **\$185,000.**

HAYNES ROAD: 11.5 wooded acres with road frontage on Old Jump-Off Mtn. Road, as well. City water available and property is unrestricted. Only minutes from campus. **\$115,000.**

LAKE O'DONNELL ROAD: Easily maintained 3 bedroom brick home with spacious den and screened porch. New central heat and air. Nice lot with convenient access to hiking trail. **\$149,900.**

NEW BLUFF LISTING: Featured in home and garden section of Chattanooga newspaper, this architect-designed home includes 350 feet of bluff overlooking scenic Roark's Cove. With spacious entertaining areas, three-sided stone fireplace, 3 bedrooms, 2.5 baths and beautiful kitchen, this property is located on 7.4 acres and accessed by private drive. Call for more details.

NEW SEWANEE LISTING: Over eight wooded acres with 2 bedroom rental and spring. Call for details.



SEWANEE AUTO REPAIR

—COMPLETE AUTO & TRUCK REPAIR—

- Tune-ups
- Tires (any brand)
- Tire repair
- Batteries
- Computer diagnostics
- Brakes
- Shocks & struts
- Steering & suspension
- Belts & hoses
- Stereo systems installed

All Makes & Models • Service Calls • Quality Parts
ASE Master Certified Auto Technician • 25 Years Experience
7 to 5 M-F • (931) 598-5743 • Across from Regions Bank

Jeanette S. Banks, Broker, (931) 235-8235, numa@blomand.net
Brenda S. Gordon, Broker, (931) 607-5103, Brenda@bluffliving.com
Peter Hutton, Affiliate Broker, (931) 636-3399, petethehut@charter.net
Lex Orr, Affiliate Broker, (931) 841-0315, lexorriv@charter.net
June Weber, CRB, CRS, GRI Broker, (931) 636-2246, junejweber@bellsouth.net
Ray Banks, Affiliate Broker, (931) 235-3365, banksgrass@yahoo.com
Urla Wolkonowski, Affiliate Broker, (931) 636-2022, chrisurla@blomand.net

www.gbrealtors.com

Journey into the Heart Workshop This Weekend

Darlene Amacher will facilitate an Integrative Breath Workshop Friday, Dec. 18, 7-9 p.m. (getting acquainted and introduction) and Saturday, Dec. 19, 9 a.m.-6 p.m., at St. Mary's Retreat and Conference Center in Sewanee. Amacher is a licensed massage therapist and certified in Soul-based Psychology and Integrative Breathwork.

This workshop is based on the Eupsychia, "well-being," process in soul-based psychology and integrative breathwork. Participants will enter a meditative state by listening to evocative music and focusing on the breath, and then use symbolic artwork to record the experience. This experiential workshop usually reveals long-buried hidden aspects of the self.

The workshop fee of \$85 includes a vegetarian lunch on Saturday. For more information or to register contact Darlene Amacher at <darleneamacher@gmail.com> or call (931) 636-1821. For more information about the Eupsychia process visit <www.Eupsychia.com>.



With the support of a grant from the Tennessee Arts Commission, St. Andrew's-Sewanee School's McCrory Hall for the Performing Arts will host the Blakemore Trio for a free public concert on Jan. 29.

SAS Receives Tennessee Arts Commission Grant

St. Andrew's-Sewanee School has received an Arts Build Communities grant from the Tennessee Arts Commission through the Community Foundation of Middle Tennessee. The grant will help bring the Blakemore Trio to campus on Jan. 29, for a free public concert in McCrory Hall for the Performing Arts.

"The construction of McCrory Hall has put us on fantastic footing to join the top rank of performance

venues in the region for live performances," says John Holleman, director of McCrory Hall and SAS drama instructor. "This concert will be the first of many opportunities to welcome music lovers from the region to this beautiful and acoustically rich facility. We are grateful to the Tennessee Arts Commission for helping us to make cultural events available to our greater community."

Trinity Institute Conference Video Webcasts Viewing Set for Sewanee

"Building an Ethical Economy: Theology and the Marketplace," live video webcasts of Trinity Institute's 40th annual national theological conference, will be held Jan. 27-29 at the School of Theology.

Hosted by the Education for Ministry (EfM) program, the conference will bring together leading theologians and economists to discuss the following topics: the relationship between economics and Christian beliefs/actions; why financial systems can become belief systems rather than neutral mechanisms for exchange; constructive alternatives to present models of economics and consumerism; and ways to build an economy that is both ethical and just.

Scheduled to appear are Arch-

bishop Rowan Williams, the 104th archbishop of Canterbury and head of the Anglican Communion; Sir Partha Dasgupta, professor of economics, University of Cambridge; and Kathryn Tanner, professor of theology, University of Chicago Divinity School. Registered participants will explore the role theology has in an ethical economy through interactive reflection groups led by trained EfM mentors.

Conference participation is open to individuals of all faith traditions. Registration forms are available at the EfM website: <www.sewanee.edu/EFM>. A registration fee of \$30 covers lunches, snacks and conference materials. For more information please contact Kathryn Bruce at 598-1775 or kgb@sewanee.edu.

Tennessee travel conditions: dial 511



CAMPBELL CONSTRUCTION

Owner: Tommy C. Campbell
Call (931) 592-2687

DRIVEWAY WORK • GRAVEL HAULING • DOZER & BACKHOE

plus Concrete Work • Water Lines • Clear Lots • Garage Slabs • Sidewalks • Porches & Decks • Topsoil & Fill Dirt • Roofing • Additions to House • Septic Tanks & Field Lines

www.sewaneerealestate.com



SEWANEEN BRICK RANCH
2 bed, 1.5 bath, newly updated with office space, close to campus on Domain. Sherwood Rd. \$120,500



MOUNTAIN GETAWAY:
Historic hand-hewn logs, vaulted ceiling, masonry fireplace, great light and views, and 11.5 acres. 1825 Gudger Rd. \$265,000

SPEED BARANCO, OWNER/BROKER
931-598-9244
REM@EDGE.NET

SALLY THOMAS, AFFILIATE BROKER
931-636-4993
SALTHOMAS@BELLSOUTH.NET

New Residential Listing—Log cabin with 13.23 acres on Stagecoach Road. \$135,000

RESIDENTIAL LAND AVAILABLE

Taylor Road—29.73-acre tract with 3 streams, county road & electricity, backing onto the state forest. Excellent building sites convenient to infrastructure. \$259,000.

Lightning Bug Subdivision—only 2 lots left!
1.2 acre, \$23,900; 1.1 acre, \$27,900 (has septic and well)

Jump-Off Mountain Road—13.83 partially cleared acres. \$124,500.

Deerwood at Jackson Point—2 adjoining bluff lots. 4.37 and 4.11 acres. \$115,000 each.

6.4 Acres Bluff Land on Partin Farm Road—\$115,000.

COMMERCIAL

Sewanee—5,000 sq. ft. central campus—\$150,000.

Sewanee—141 University Ave. office bldg.—\$250,000.

Sewanee—For Lease—24 University Ave., 1900 sq. ft.

Sewanee—Incredible retail/office bldg. on 41A—\$160,000.

RENTALS

Large Furnished Sewanee Home—Convenient campus location, 4 BR, 4 BA, fireplace, vaulted ceiling family room, huge private deck. \$1,200 per month.



REAL ESTATE MARKETING, LLC

931-598-9244

91 University Ave., Sewanee

www.sewaneerealestate.com

Fowler Center Memberships

Fowler Center memberships are now available. Give a gift of life and health for the new year. Call 598-1323 for more information.

Cinema Guild Film Suggestions?

Sewanee senior Shelby Luigs, who is coordinating the Cinema Guild films this year, is seeking community input on movies you would like to see. Shelby is in the process of getting the list of films for next semester together and will order them over the break. Please send your ideas for films to her at luigsj0@sewanee.edu.



The Heartbreakers

Cannon Co. Arts Center Slates New Year's Eve Dinner and Dance

The Arts Center of Cannon County announces its first New Year's Eve celebration with dinner and live music by Ian Hunt, Heather Moulder and The Heartbreakers. A dance floor will be available to usher in the New Year!

Dinner begins at 8 p.m., and the show starts at 9:30.

Tickets are \$30 each and can be purchased by calling the Arts Center box office at (615) 563-2787 or (800) 235-9073 or online at <www.artscen.terofcc.com>. Visa and MasterCard are accepted, as well as checks.

Arts Center Director Donald Fann states that seating will be limited, and groups wishing to attend together should make their reservations as soon as possible to ensure adjacent seating.

The Arts Center is located on 1424 John Bragg Highway, just west of the town of Woodbury, approximately 20 minutes from Manchester. Box office hours are 10 a.m. to 4 p.m., Monday through Saturday.

BEAT THE FALL RUSH! A-1 CHIMNEY SPECIALIST "For all your chimney needs"

- Dust Free
- Chimneys Swept, Repaired, Relined & Restored
- Complete Line of Chimney Caps
- Waterproofing
- Video Scanning



G. Robert Tubb II, CSIA Certified & Insured
931-967-3595

Need More Room? Mountain Storage

(931) 598-5682

For Your Antiques and Prized Possessions

Climate Control
Temperature and Humidity Regulated

The Gnarled Oak

Fine handmade country furniture, refinishing, caning, seat weaving, and restoration



Cherry Pie Safe

Flat Branch Community
Rural Route 1, Box 2222
Tracy City, Tennessee 37387
(931) 592-9680
Bill Childers, Prop.



RED HAT LADIES CELEBRATE THE HOLIDAY. Sewanee Red Hat Ladies enjoy their "Dirty Santa" Christmas party. For those not in the know, Dirty Santa is a game of gift giving—and taking, if you want a different gift than the one you drew, you take it away from someone else—and the fun ensues.



Greg Perkins (left) and Stella Parton open Smoke House series.

"Singers and Songwriters" Series Kicks Off at Smoke House

Stella Parton and Greg Perkins performed at Jim Oliver's Smoke House Restaurant during the Thanksgiving holiday, kicking off its "Singers and Songwriters" series. Restaurant customers were treated to a special unplugged performance of old-time ballads, country blues, gospel and songs written by each of these legendary singer-songwriters.

More artists will be performing on a regular schedule starting in February 2010. Watch for announcements on <www.thesmokehouse.com>.

Cowan Community School Classes

The Cowan Community School, located in the Cowan Center for the Arts and Training Center, 303 Montgomery St., announces its January class lineup.

Irish Step Dancing, taught by Denise Miller (636-0169), starts Thursday, Jan. 7, at 5:15 p.m. The fee is \$20 for four classes.

Body Sculpt Fitness, taught by Lori Woodall (308-0746), will meet on Tuesdays and Thursdays at 6:30 p.m. Classes begin Jan. 5. The fee is \$5 per class or \$30 per month. Bring light hand weights and a yoga mat for floor work.

Kickin' Kuntry Line Dancing is taught by Sharon Little and Casey Jackson (308-7919 or 580-1049). Beginner Line Dancing, for ages 14 and older, begins Saturday, Jan. 2, 5-6 p.m. Intermediate/Advanced Line Dancing starts Saturday, Jan. 2, 6-7:30 p.m. The \$20 fee for four classes at either level is to be paid at registration.

Clogging, taught by Virginia Sawyer and Ashlie Wells (691-0083), starts Monday, Jan. 4, 5-8 p.m. The first hour is for children or adult beginners. The intermediate class, for children or adults who know the eight basic steps of clogging, starts at 6 p.m. The \$20 fee for four classes at either level is to be paid with registration.

Watercolor, taught by Pat Underwood (call 962-2356 for supply list), starts Thursday, Jan. 7, 9 a.m.-noon. The fee of \$40 for four classes is to be paid with registration.

Coming in February: Intermediate Pastel Workshop, Paula Ford, Feb. 20; Spanish I and Spanish II, Jarod Pearson; Tennessee Music Box, Geoff Roehm; and Jewelry Wire Wrapping, Amelia Roehm. For more information see <www.cowancenterforthearts.org> or call call 962-2356.



The sixth-grade choir was one of seven musical groups to perform at the SAS Winter Concert. Pictured in the bottom row (L-R) are Emma Zeitler, Anna Stapleton, Mason Goodson, Margaret Wilson, Sam Wiegand, Lauren Arnold and Alex Hansen; in the middle row, Isabel Butler, Natasha Kirschling, Joshua Alvarez, Maya Jordan, Jade Sanders, Casey Wofford and Abigail Owsley; and in the top row, Henry Fisher, Michael Schaerer, Abby Mainzer, Scout Parker and Jake Wiley.

SAS Winter Concert Plays to SRO Audience

On Dec. 10, the St. Andrew's-Sewanee School Winter Concert attracted a standing-room-only audience for choral, bell choir, vocal quartet and instrumental ensemble performances of holiday standards, Broadway tunes and popular music under the direction of Katherine Anderson.

The next public concert in McCrory Hall will be a free performance by the Blakemore Trio on Friday, Jan. 29. The concert is being funded in part by the Tennessee Arts Commission.

For more information about events at St. Andrew's-Sewanee School, visit under the direction of Katherine Anderson. <www.sasweb.org>.


Merry Christmas
 and
Happy New Year
 from Kay and Karen
 at The Hair
 Gallery!


J & J GARAGE
COMPLETE AUTO REPAIR
 • Import & Domestic
 • Computerized 4-Wheel Alignments
 • Shocks & Struts • Tune-ups
 • Brakes
 • Our Work is Guaranteed.
 • OVER 26 YEARS EXPERIENCE.
598-5470 Hwy 41-A between Sewanee & Monteagle • Monday-Friday 7:30-5:30
 Jerry Nunley
 Owner

No need to drive to Monteagle,
 Decherd or Winchester now that
Pour Boy's LIQUOR STORE
 is ready to serve you in Cowan.
 504 Cumberland St. W. • 967-1451
 (located between Cowan Laundromat and
 Poor Boy's Discount Tobacco & Beer)
 Open Mon-Thu 10-9; Fri-Sat 10-10



Papa Ron's
 THE ITALIAN STEAKHOUSE
 402 West Main St
 Monteagle, TN 37356
 931-924-3355
 Mon to Thur 11:00 to 9:00
 Fri and Sat 11:00 to 10:00
 Sun 12:00 to 9:00
www.paparons.net



High Point
 HISTORIC DINING ON THE SCENIC
 BETWEEN CHICAGO & PRIME
 224 East Main St
 Monteagle TN 37356
 931-924-4600
 Sun to Thur 5:00 to 9:00
 Fri and Sat 5:00 to 10:00
www.highpointrestaurant.net

Make your holiday party reservations now!

December 18-December 24
OLDHAM THEATER
 Winchester • 967-2516
 Mon-Fri, 7 p.m. • Sat & Sun 2, 4 & 7 p.m.
 Princess and the Frog (G) • Planet 51 (PG)
MONTANA DRIVE-IN
 Estill Springs • 649-3454
 First feature begins at 7:00 p.m.; second feature follows.
 I: Princess and the Frog (G) & Old Dogs (PG)
 II: Blind Side (PG-13) & A Christmas Carol (PG)
 III: New Moon (PG-13) & New Moon (PG-13)
 Check website or call theaters for schedule during Messenger break!
www.montanadrivein.com



CONVENIENCE/ RECYCLING CENTER HOURS

The Convenience Center for household garbage, trash and recycling is located on University Avenue by the golf course. Its regular hours are: Monday, 1-6 p.m.; Tuesday through Friday, 3-6 p.m.; Saturday, 8 a.m.-4 p.m.; closed Sunday and on national holidays. There are recycling bins for metal (tin, appliances, etc.), newspapers/magazines, plastic, plastic bottles, cardboard and aluminum cans. Glass is not recycled here.

School Scoop

SES Happenings

The Sewanee Elementary School students will present their check from the annual Paws for Pennies fundraiser today, Dec. 17, to the Sewanee Volunteer Fire Department volunteers for Operation Noel. Tomorrow, Dec. 18, Bazzania! band will perform for the students.



“I’m all revved up

— AND READY TO RIDE —



— Jerry Forster

Jerry Forster (center) knows that life can change in an instant. In April 2008, he was riding his brother-in-law’s motorcycle in West Virginia. “It was bigger than what I’m use to handling,” explains Jerry, who is the Chief Financial Officer for the University of the South. “I got into a curve, lost control in the wind and crashed.”

Jerry broke his femur and his shoulder in two places. After emergency surgery in West Virginia, Jerry started a week of inpatient therapy at Southern Tennessee Medical Center, where Anna Shasteen (left), supervised his care. Then, working with Becky Campbell (right), he completed a program of outpatient therapy at Emerald Hodgson.

“My goal was to get back on my feet for my daughter’s wedding on June 28, just two months away,” says Jerry. “With Becky and Anna’s help, I was able to walk my daughter down the aisle without crutches. I was really impressed by the staff’s professionalism. They went the extra mile to take care of me.”

Speaking of miles, this past September, Jerry ran in a 15-mile mountain race in Charleston, West Virginia. “My leg feels good,” says Jerry. “I’m planning to run the Music City Half Marathon in April.”

**Southern
Tennessee**
MEDICAL CENTER

**Emerald
Hodgson**
HOSPITAL

Skilled Hands. Caring Hearts.



185 Hospital Road,
Winchester, TN 37398
931-967-8200

Physician Referral Line
1-800-890-8339
www.SouthernTennessee.com

T’WAS THE NIGHT BEFORE CHRISTMAS. Sewanee Elementary School Principal Mike Maxon reads “The Night Before Christmas” to the kindergarten students.

Dates to Remember

January

4 FC Staff development
4 SAS Classes begin
4,5,6,8 SoFT General Ordination exams
5 FC Classes begin
7 First Messenger of 2010
11 MES Classes begin
15 SoFT New student registration
18 FC, MES No classes—
MLK Holiday
18 SoFT Classes begin
19 COL Classes begin
20 SoFT Easter semester Opening Eucharist
26 UNIV Opening Convocation

February

12 SAS Winter long weekend thru 2/15
15 FC, MES No classes—
President’s Day
23 FC Parent-teacher conferences, 3:15-6:15 pm

March

5-21 SAS Spring break begins at 3 pm
10-21 COL/SoFT Spring break begins at 5 pm

April

1 SoFT Maundy Thursday Quiet Day
2 SoFT No classes—Good Friday
2-9 FC, MES Spring break
5 SoFT Easter Monday, no classes
17-18 SAS Trails & Trilliums

May

4 FC Staff development day
5 COL Last day of classes
7 SoFT Last day of classes
12 COL Final exams end
13 SoFT Children’s Crossing
14 SoFT Crossing/Commencement
15 UNIV Baccalaureate
16 COL Commencement
17 SAS Exams, thru 5/21
20 FC Commencement
21 SAS Baccalaureate
22 SAS Honors Day
23 SAS Commencement
25-27 MES Staff development
27 FC Administrative day
28 FC, MES Last day of school, abbreviated day



PO BOX 794
MONTEAGLE
TN 37356
cell 931.205.2475
office 931.924.5997
fax 931.924.5996

PETER A. MOLLI CA
Licensed General Contractor

SAS Students Ramp up Service Efforts for the Holidays

Though service is an essential part of the St. Andrew's-Sewanee School experience throughout the school year, the Advent season adds new dimensions to students' efforts.

Senior Selina Miller has been organizing fund-raisers at the school throughout the year for a school organization she founded called Global Outreach (GO). The idea for GO was percolating in her head when a speaker from Falling Whistles came to campus and catalyzed the notion that one person with determination and a strong network of friends could do some serious good in the world. Selina and other GO members have organized weekly bake sales at SAS, and she and her schoolmates decorated ornaments to sell during the recent CAST-TACA studio tour. Together with sales of the sixth- and seventh-graders' annual woodcut cards, the group netted \$900 in two days. These funds will go to Heifer International.

The Global Outreach team also sponsored an SAS competitive food drive to help restock the Community Action Committee's pantry. The schoolwide drive yielded more than 300 food items. On the Friday before Thanksgiving, students helped gather and load the food to be taken to Otey Parish to replenish the empty shelves. Selina and senior class sponsor Lizzie Duncan unloaded and restocked the shelves that had been emptied to supply CAC Thanksgiving grocery bags.

Latin teacher and middle school boys' basketball coach Bill Seavey has been using his influence to encourage students to support Blue Monarch, a local residential program for women recovering from various life traumas. Seavey organized a work day at Blue Monarch in November and talked several of his basketball players into running in the Turkey Trot, a Blue Monarch fund-raiser at the University. Athletic trainer Reid Fisher and soccer coach Andrea Fisher also ran in the race and encouraged students

and faculty to join them.

The school's Big Brother/Big Sister group recently spent a Sunday afternoon purchasing gifts for children served by Blue Monarch. The group's sponsor, seventh-grade teacher Tracy Randolph, encourages students to use their own money for this project rather than asking mom and dad for a donation. "It's a different, more rewarding feeling to share something you have worked hard for," said Randolph.

In addition to producing cards for the Heifer fund-raiser, sixth-graders sold Christmas wreaths again this year to help fund several outreach programs, including sponsoring education for three students at the Amazing Grace orphanage in Uganda. This effort is in its fourth year. The wreath sale is a local tradition brought to SAS by sixth-grade teacher Cindy Potter.

In addition to special holiday efforts, SAS students give their time and energy to service projects throughout the year: a reading program with students at Tracy City Elementary School, a food reclamation program that provides feed for a local pig farmer, a cleanup of the Tennessee River, peer tutoring and a multi-year trail maintenance project.



Above, members of the SAS middle school boys' basketball team pose before running in the Turkey Trot (L-R): Andrew Heitzenrater, Will Thomas, Hunter Craighill, Coach William Seavey, Dalton Atkins and Alex Hanson.

At right, SAS sixth-graders (from left) Sam Wiegand, Margaret Wilson and Maya Jordan prepare to sell wreaths.



What's Cooking at SES?

Monday-Friday, Jan. 4-8

LUNCH

MON: No school.

TUE: Corn dog, french fries, pork and beans; or yogurt sack.

WED: Barbecue sandwich, tater tots, baked beans; or baked potato tray.

THU: Spaghetti, squash, tossed salad, whole wheat breadstick; or chef salad tray or grilled cheese sack.

FRI: Chicken nuggets, creamed potatoes, green beans, biscuit; or grilled cheese sack.

BREAKFAST

MON: No school

TUE: Breakfast pizza, buttered toast, cereal, fruit or juice.

WED: Sausage biscuit, gravy, cereal, fruit or juice.

THU: Chicken biscuit, cereal, fruit or juice.

FRI: Assorted cereal, buttered toast, fruit or juice.

Milk or juice served with all meals. Menus subject to change.



At Sewanee

Myers Point offers a rare and limited opportunity to be one of twenty-four owners enjoying a 500-acre private community in Sewanee within a protected setting of forests, cultivated lakes and panoramic bluff views overlooking Lost Cove. www.myerspoint.com
931-968-1127

Village Wine & Spirits Inc.
COMPETITIVE PRICES AND FRIENDLY SERVICE
Great Wine Selection ~ Special Orders Available
ALL YOUR FAVORITE MAJOR BRANDS
Next door to the Smokehouse in Monteagle ~ (931) 924-6900
Mike Gifford, Owner; M-Th 11a.m.-9 p.m.; F-Sa 9 a.m.-11 p.m.

C.W. Smith Construction
General & Electrical Contractor
Est. 1986
Sewanee, Tennessee 37375
(931) 598-0500
New Homes • Additions • Remodeling
National Association of Home Builders

GREAT GIFT IDEAS FOR THE HOLIDAYS

- Personalized Note Cards
- Memo Pads
- Photo Calendars
- Photo Restoration
- Print A Photo On Canvas
- Transfer Your Photos To CD
- Transfer VHS to DVD
- Print Photos On Fabric
- Holiday Cards & Invitations
- And MUCH more!

Your Full Service Copy & Fax Center For Your Personal & Business Needs



101 West Ogee Street
931-461-0034
Tullahoma
www.mcmurr.com

LAUREL POINT IN CLIFFTOPS



An executive home on 5 acres of native Tennessee forest with half interest in an adjacent 5 acres. This elegant home sits on the brow rim with spectacular southeasterly views. The 3760 sf main residence has 2 full and 2 half baths, 2-car garage, mountain stone fireplace in great room with skylights and walls of windows. The kitchen has its own fireplace, Corian counters, island in the gathering room, spacious storage and a gas range. Oak floors, modern Kohler bath fixtures, new roof, generator, two hot water heaters and zoned heating/cooling are additional features. The master office area has half bath and kitchen area, easily convertible to a mother-in-law suite. A main floor master with exceptional storage and custom ceiling sits among the treetops. An observation tower lined with windows offers a panoramic view of the forested slopes, valley floor and mountain ridge tops of Dripping Springs Cove. The 600 sf separate studio/workshop building includes a built-in counter area, storage cabinets and murals. There is also a building currently housing a 4-stall stable that could be used for vehicle and equipment storage or converted to storage for utility vehicles or a dream workshop.



A wonderful retreat for permanent residence or mountain retreat, Laurel Point is located in CliffTops Resort, Monteagle's premier gated community offering a full amenity package and privacy for your family. Don't miss the opportunity to see this beautiful home. View first at www.gbrealtors.com, then call for your exclusive showing! MLS #1102436. \$795,000.



A wonderful retreat for permanent residence or mountain retreat, Laurel Point is located in CliffTops Resort, Monteagle's premier gated community offering a full amenity package and privacy for your family. Don't miss the opportunity to see this beautiful home. View first at www.gbrealtors.com, then call for your exclusive showing! MLS #1102436. \$795,000.

Jeanette S. Banks, Broker 931.924.3103
numa@blomand.net
Ray Banks, Affiliate Broker 931.235.3365
banksgrass@yahoo.com
GOOCH-BEASLEY REALTORS
www.gbrealtors.com 931.924.5555

PILATES CLASSES

Come learn the fundamentals of this amazing exercise system. Develop strong and lean abdominals and back muscles, better posture, increase flexibility and find relief from back pain, neck and shoulder tension.

**New Six-Week Session Starts January 5, 2010
Tuesday & Thursday at the Fowler Center in Sewanee.**

Class is \$120 for the six weeks
(See instructor about prorating for absences.)

Beginner class at 11:30 a.m.
Intermediate/advanced Class at 9:30 a.m. and 12:30 p.m.
(Must have previous Pilates experience.)

Private, duet and foursome sessions on Pilates equipment and personal training in cardio and weight training also available Tuesday, Thursday & Friday by appointment.

Contact Kim Butters, AFAA Personal Trainer, PMA Member, Pilates Instructor, (423) 322-1443

www.sewaneemessenger.com

SCENIC MOUNTAIN PROPERTIES

www.gbrealtors.com
www.bridalveilbluffs.com
www.eaglebluffstates.com



CLIFFTOPS-SEWANEЕ HOMES

Laurel Point	\$795,000
Mossy Oaks	\$525,000
Southern Charm	SOLD
The Outpost	\$436,000
Woodlands	\$375,000
Rustic Retreat	\$288,000
Victorian	\$281,640
Mtn Cottage	\$274,900
Stone Peace	\$189,900

MOUNTAINTOP HOMES

Ingman Cliff	\$395,000
Big Creek	\$350,000
Holy Water	\$299,000
Laurel Drive	\$232,980
Bennett Ave	\$199,900
King's Point	SOLD
Windstone	\$ 94,500

LAND

Jackson Point	\$ 90,000
Jackson Point	\$ 93,000
Clifftops	\$ 85,000
Clifftops	\$ 60,000
10.22 Acres	\$129,500
Laurel Lake Dr.	\$ 70,000
Laurel Lake Dr.	\$ 70,000
The Falls	\$260,000
Lake, 12 acres	\$129,900
Lake, 7 acres	\$ 99,000
Savage Bluffs	\$ 89,900
Lake Lot	\$ 69,900
Wooded	\$ 59,900
Bridal Veil from	\$ 49,950
Eagle Bluff from	\$ 33,500
Eagle Nest	\$ 25,000

FOR OTHER QUALITY HOMES AND LARGE ACREAGE TRACTS, CALL:

Ray Banks, Affiliate Broker 931.235.3365
banksgrass@yahoo.com
Jeanette S. Banks, Broker 931.924.3103
numa@blomand.net
GOOCH-BEASLEY REALTORS 931.924.5555
Virtual tours at www.gbrealtors.com



HOME GAMES

Saturday, Dec. 19
1 pm Men's Basketball v Rust
3 pm SAS V Girls' Basketball v Copper Basin
4:30 pm SAS V Boys' Basketball v Copper Basin
Sunday, Dec. 20
3 pm Men's Basketball v Huntingdon
Wednesday, Dec. 30
Noon Women's Basketball v College of St. Scholastica
Friday, Jan. 1
6 pm Women's Basketball v Rhodes College
8 pm Men's Basketball v Rhodes College
Sunday, Jan. 3
1 pm Women's Basketball v Birmingham-Southern College
3 pm Men's Basketball v Birmingham-Southern College
Monday, Jan. 4
6:30 pm SAS MS Girls' Basketball v Coalmont Elementary
Thursday, Jan. 7
7:30 pm SAS MS Girls' Basketball v Pelham Elementary
6:30 pm SES Girls' Basketball v Rock Creek at Townsend
7:30 pm SAS MS Boys' Basketball v Pelham Elementary
7:30 pm SES Boys' Basketball v Rock Creek at Townsend

Sports Scoreboard



Blake Collins (#30) and Kyra Wilson (#14) on a fast break. Photo by Buck Butler

SES Girls' Basketball Update

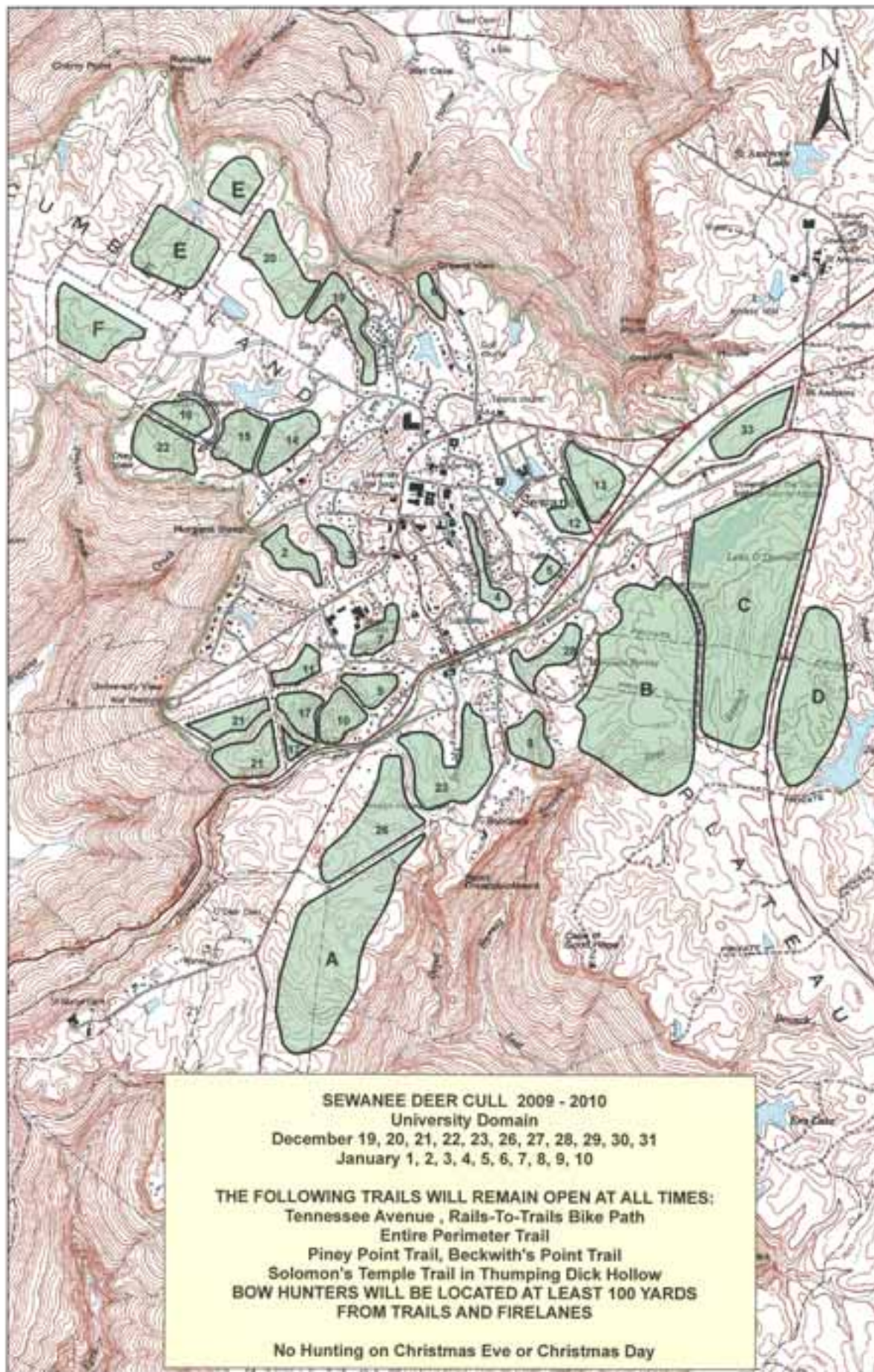
The Sewanee Elementary School Lady Tigers finally put one in the win column, defeating North Lake, 24-4, on Dec. 10. North Lake was no match for the improved team play of the SES starting five, or the SES bench.

Leading scorer for SES was Erin Berner-Coe with six. Blake Collins, Paeton Hill and Kyra Wilson followed with four each. Maggie White scored three, and Abbie Faxon dropped in one.

SES took a commanding lead at the half, 17-2, and never looked back. The game consisted of well-rounded

play, with each team member contributing on rebounds, steals, assists and blocked shots.

Sewanee Deer Cull 2009-10 Map



SAS Boys' Varsity Basketball Report

St. Andrew's-Sewanee School boys' varsity basketball team defeated Berean Academy, 41-56, on Dec. 8. Emmanuel Gabaud led SAS with 20 points and eight rebounds; Chandler Bryant added nine points; Kwangwoo Kim and Justin Thomas had six points each; Josh Owens, Alex Tinsley and Jonathan Jones had four points; and Rocky Reid had three points.

SAS lost to King's Academy, 48-25, in a regional match-up on Saturday, Dec. 12. Bryant was 5 of 6 from the free-throw line. Jones pulled down five rebounds, and Gabaud scored 10 points, including two 3-point shots.

SAS Swim Teams Race in Columbia

The St. Andrew's-Sewanee varsity swim teams competed in Columbia, Tenn., against Franklin County High School and Columbia Central High School on Dec. 8.

Sophomore Zachary Blount swam state qualifying times and placed first in the 50-yard freestyle and the 100-yard butterfly.

The varsity girls' 400-yard medley relay team of sophomores Katie Craighill, Kaity Dudley, Helen Wilson and senior Zoe Petropoulos placed first, setting a new team record. Additional first-place finishers for SAS included Jimmie Joe Boone, 500-yard freestyle and 100-yard backstroke; Kaity Dudley, 500-yard freestyle; Will Evans, 100-yard freestyle and 100-yard breaststroke; Zoe Petropoulos, 50-yard freestyle and 100-yard backstroke; and the girls' 400-yard freestyle relay of Sophie Register, Ellen Goebel, Petropoulos and Craighill.

The varsity and middle school swim teams will race next on Jan. 8 against Coffee County and Tullahoma high schools in Manchester.

Fowler Center Holiday Hours

The Fowler Center building will keep the following schedule during the Christmas break.

Friday, Dec. 18, 6 a.m.-8 p.m.; Saturday, Dec. 19, 9 a.m.-7 p.m.; Sunday, Dec. 20, 11 a.m.-6 p.m.;

Monday, Tuesday, Wednesday, Dec. 21-23, 6 a.m.-7 p.m.;

Thursday, Dec. 24, 9-11 a.m.; Friday, Dec. 25, closed; Saturday, Dec. 26, 9 a.m.-6 p.m.; Sunday, Dec. 27, 1-5 p.m.;

Monday, Tuesday, Wednesday, Dec. 28-30, 6 a.m.-7 p.m.;

Thursday, Dec. 31, 8 a.m.-4 p.m.; Friday, Jan. 1, 6 a.m.-10 p.m.; Saturday, Jan. 2, 9 a.m.-6 p.m.; Sunday, Jan. 3, 10 a.m.-7 p.m.;

Monday, Tuesday, Wednesday, Thursday, Friday, Jan. 4-8, 6 a.m.-7 p.m.

Pool hours are posted at the front desk.

Season's Greetings



RVC
RESIDENTIAL VENTURE CONSTRUCTION CO., INC.

Custom Home Builder
Winchester, Tennessee
931-967-4524 • www.rvcinc.com

Building on a Reputation of Quality and Distinction

Our homes have been featured in Southern Living and Custom Home Magazines

SAS Girls' Varsity Basketball Team Routs Berean Academy

The St. Andrew's-Sewanee School girls' varsity basketball team put two in the win column and recorded one loss in games played Dec. 8 through 12.

SAS defeated Berean Academy, 48-12, on Dec. 8. Avery Shackelford finished with 11 points, seven rebounds and two steals; Allyson Ridley tallied 10 points, nine rebounds, three assists, two steals and two blocked shots; Michaela Shackelford totaled eight points, four steals, three assists and two rebounds; Meredith Earwood chipped in seven points, six rebounds, two steals and two assists; Nikki Johnston finished with four points and six rebounds; Sadie Shackelford scored four points and pulled down three rebounds, along with two steals; Hannah Barry totaled four points, nine rebounds, three assists and four steals; and Elizabeth Gabaud pulled down six rebounds.

On Dec. 11, SAS lost at Donelson Christian Academy, 63-36. Avery Shackelford led the Mountain Lions

with 13 points and nine rebounds. Michaela Shackelford finished with 11 points and three rebounds.

The SAS girls' varsity basketball team defeated King's Academy on Dec. 12, 47-18. A. Shackelford led the Mountain Lions with 20 points and eight rebounds; M. Shackelford finished with 13 points, three rebounds, three steals and three assists. Ridley tallied eight points, eight steals, and seven rebounds, and Barry totaled four points, 10 rebounds and three steals.

"We had a short turnaround after playing in Nashville Friday night, and the girls did a fantastic job of coming out ready to play," said Coach Grover Levy. "As we begin to play with more offensive poise, we are finding ourselves shooting a higher percentage from the field and coming closer to reaching our potential as a team. We will take some time off for exams and get ready to play at Huntland on Dec. 18."

SAS MS Girls' Basketball Team Wins Two

The SAS middle school girls' basketball team won first- and second-round games in the Jingle Bell Classic, improving its record to 12-3. The team will advance to the semifinals Friday, Dec. 18, at Grundy County High School, playing against Pelham.

In the first round of the tournament, SAS knocked off South Pittsburg, 25-21, with 13 points from Montana Rhoton. In this opening round victory, Jenna Burris scored six; Scout Parker, four; and Lucy Howick, two.

In the second round, SAS defeated North of Altamont, 23-16. Burris led the way with nine points and 10 rebounds; Madison Culpepper, eight points and four steals; and Rhoton, four points. Howick also added a bucket in the win. Michiah Posey brings steady leadership to the squad as an eighth-grader, and Cooper Parker adds a strong post presence

coming off the bench. Celeste Bryant, Diana Rinck and Noa Camp lead a strong group of seventh-graders, contributing valuable minutes this season. Parker and Isabel Butler lead the sixth-graders with both offensive and defensive contributions, along with fellow sixth-graders Casey Wofford, Abby Mainzer and Mason Goodson.

The Mountain Lions are tied for second in the Big 8 and have out-of-conference wins against Baylor from Chattanooga and two wins over rival Webb School this season. SAS is also proud of its sixth-grade girls' basketball team, now 1-2 after a win at Monteagle and losses to Palmer and North. Coach John Shackelford is assisted by Caroline Carlin, an all-region and all-conference member of the Sewanee field hockey team who volunteers her time to help coach at SAS.

State Park Offerings

Sunday, Dec. 20

ATLATL DEMONSTRATION—Join Ranger Jamie at Stone Door Ranger Station at 2 p.m. for a demonstration on how to use an atlatl (spear-thrower). This is a tool (or weapon, depending on how you look at it!) that has changed the course of mankind. Visitors will have an opportunity to try their hand at it.

Saturday, Jan. 2

STONE DOOR HIKE—Join Ranger Jamie at Stone Door ranger station at 1:30 p.m. for a two-mile round-trip hike to Great Stone Door and back.

Sunday, Jan. 3

WINTER TREE HIKE—Join the Ranger at Stone Door ranger station at 1:30 p.m. for a short hike to learn about the diverse plateau forest.

For more information on these and other programs offered by South Cumberland State Park, call (931) 924-2980 or visit the website at <www.friendsofscsra.org/activities.htm>.

The Visitors' Center is located on Highway 41 South between Monteagle and Tracy City and is open seven days a week, 8 a.m.-4:30 p.m.

SAS Wrestling: Lookout Valley, Sale Creek and Tullahoma Duels

On Dec. 8, the Mountain Lion mat men took their "A" game to Lookout Valley to keep their record strong by defeating the home team (54-22) and then finishing up with another win against Sale Creek (39-29). The most noteworthy bout came with heavy-weight James Wray losing to a much larger Lookout Valley opponent, yet he recorded his best performance of the year with several near pins.

On Dec. 12, the SAS grappling Lions dropped off the rock to prowl the Tullahoma Wildcat turf, taking on five teams in one day. Action against the Unified Team put SAS in the plus category (48-36), but the Lions lost close ones to Rhea County (33-42) and Notre Dame (39-42). They then took a sound thumping from the im-

pressive Wildcat team (6-76). Another victory at the end of the day against Warren County (45-22) sent the Lions home licking their wounds with a 2 for 3 day on the mats, bringing their overall record to 7-4. Outstanding performances by co-captains Seth Burns (5 for 5), Allan Duggar (4 for 5) and Elijah Cantrell (2 for 4) put the big cats on track each match. Knight Holbrook (4 for 5), Trevor Laymance (2 for 3), Robert Post (3 for 5) and Cody Seals (1 for 5) also kept the mat time exciting.

Covenant Edges Out Sewanee in Men's Basketball

Sewanee played men's basketball at Covenant. After trailing by one point at the half, the Tigers fell 57-54 to the host Scots on Dec. 8.

Zack Mulligan and Garrett Hollingsworth led Sewanee's scoring with 15 and 14 points, respectively. Hollingsworth also earned a double-double with a team-leading 11 rebounds. Sewanee shot 34 percent from the field, while Covenant hit 41 percent of its field goals. The Scots also led in rebounds 43-36.

Sewanee is now 3-4 and 0-1 in the SCAC. The Tigers will host the Lon Varnell Classic Tournament Dec. 19-20 and will host Rhodes and Birmingham-Southern in SCAC play Jan. 1 and 3.

Covenant Women's Basketball Outlasts Sewanee

Covenant's women's basketball team hosted Sewanee on Dec. 8 and before halftime led 45-36. In the second half, Sewanee outscored the Scots 35-28, but Covenant held on for the 73-71 win.

Lauren Gulley led Sewanee's effort with 20 points and nine rebounds in 22 minutes of play. Senior Jamie Robinson had 15 points, and Dani Kabbes had 11. Kabbes also led the Tiger defense with five steals and four blocks. Covenant made 40 percent of its field goals compared with Sewanee's 29 percent. Sewanee was also out-rebounded 58-38.

Sewanee is now 2-5 and is 0-1 in the SCAC. The next Tiger action will be at home on Dec. 30 against St. Scholastica before hosting Rhodes and Birmingham-Southern on Jan. 1 and 3 in SCAC play.

The Messenger will be back in print January 7—**HAPPY 2010!**



MICHELLE M. BENJAMIN, JD Attorney & Counselor at Law

102 FIRST AVENUE, NORTH
WINCHESTER, TENNESSEE 37398

(931) 962-0006
(931) 598-9767

"HOMEMADE ALTERNATIVES FOR GIFT GIVING"

JIM OLIVER'S SMOKE HOUSE TRADING POST

LOCALS, GET OUR SPECIAL V.I.P. DISCOUNT CARD ENTITLING YOU TO 15% DISCOUNTS IN THE GIFT SHOP, 10% OFF RESTAURANT MENU, \$7.95 WEEKDAY BUFFET, \$9.95 WEEKEND BUFFET.

JUST ASK FOR IT AT THE CASH REGISTER!

- TENNESSEE COUNTRY HAMS, FULLY COOKED HAMS, SMOKED TURKEY BREAST, BBQ RIBS, SMOKED BRISKET, SUMMER SAUSAGE & HOOP CHEESE

- 16 FLAVORS OF HOMEMADE FUDGE

- 6 FLAVORS OF FRIED PIES

- 14 FLAVORS BBQ SAUCES

- 28 JAMS, PRESERVES, JELLIES, RELISH, PICKLE, SALSA, HOT SAUCES, DIPS

- CUSTOM GIFT BOXES

- MAIL ORDERS

- SHOP WITH THOSE WHO SUPPORT YOUR LOCAL COMMUNITY PROGRAMS

REAL SOUTHERN COOKING SINCE 1960

Located in Monteagle
931/924-2091 • 800/489-2091
www.thesmokehouse.com

Jim Oliver's
SMOKE HOUSE
RESTAURANT

Take Advantage of What Nature Provides



Save Rainwater!

Well-designed drainage systems use gravel of different sizes and multiple layers of special fabric to keep silt out of buried perforated drain lines.

Building Custom Rainwater Collection Systems and Drainage Systems since 1997.

Water Solutions
A Division of Sumpter Solutions, LLC

931.598.5565 www.sumptersolutions.com

Joseph Sumpter, C'97, owner

American Rainwater Catchment Systems Association
International Rainwater Catchment Systems Association
Licensed and Insured • References Available

Nature Notes



One Swan a Swimming!

On Friday, Dec. 4, Nancy and Lee Glenn were surprised to have a Tundra Swan on their lake by Jump-Off Road. Many bird books still call it a "Whistling Swan," but its proper name has recently been restored in the literature, according to Harry Yeatman. This lone bird stayed all day, but during the night it departed. Perhaps it knew snow was coming.

Tundra Swans are rare migrants in Tennessee, usually as singles or small groups. However, 27 were seen on Woods Reservoir, in Franklin County, on Nov. 27, 1978. Others have been seen on small Tennessee lakes in other years. Be on the lookout this winter for this big, long-necked white swan. Its bill is black and distinguishes it from other kinds of swans. It nests on the tundra of northern Canada.



wm.c.mauzy construction co. Bill Mauzy, Owner, General Contractor

www.mauzyconstruction.com 931.598.0686 (office)
billmauzy@bellsouth.net 931.580.0686 (cell)

Scratch & Patch COLLISION CENTER

24-HOUR TOWING NOW AVAILABLE!
620 David Crockett Hwy., Winchester

OWNER: Michael Penny Ph. 931-962-4556
931-224-1857 Cell 931-224-1857
WE ACCEPT MOST CREDIT CARDS! Fax 931-962-4536

Licensed General Contractor 17 Lake O'Donnell Rd

Steve Green Construction

Let me show you my local projects!

Insured

Office (931) 598-9177

Mobile 308-7899

E-mail sgc@bellsouth.net

DOTSON'S MOUNTAIN MARKET

now open across from
CVS in Monteagle

- Fresh fruits and vegetables
- Florida VINE-RIPENED TOMATOES and oranges
- Mountain-grown apples ... 99¢/lb.
- Huge variety of DISCOUNT GROCERIES
- Country rockers, swings and gliders
- Amish-made jams and jellies
- Handmade crafts
- Sand Mountain honey and molasses

POINSETTIAS
Sale \$5.50

OPEN YEAR-ROUND
Tue-Sat 9-5;
Sun 1-6;
Closed Mon

HOLIDAY
Gift Items and
Home Decor!

Open Christmas
Eve!

Beautiful fresh-made
FRUIT BASKETS
\$10 & up

BULK PRODUCE AT
WHOLESALE COST!

Indian River
NAVAL ORANGES
& TANGERINES



F.C. Humane Society Pets of the Week Meet Blade & Edward

The Franklin County Humane Society's Animal Harbor offers these two delightful pets for adoption. Adopt now so they will have a home for the holidays.

Blade is a handsome young Miniature Pinscher who has the heart of a big dog in his small frame! He has a lot of love to give, but he would do best in an adult-only home. Blade is up to date on shots and neutered.

Beautiful Edward is a fluffy orange cat who has been declawed, so he must be an inside cat. He is also positive for FIV and should be kept away from other cats unless they also have FIV. Edward is house-trained, up to date on shots and neutered.

Call Animal Harbor at 962-4472 for information and check out their other pets at <www.animalharbor.com>.

Please help the Humane Society continue to save abandoned pets by sending your donations to the Franklin County Humane Society, P.O. Box 187, Winchester, TN 37398.

Weather

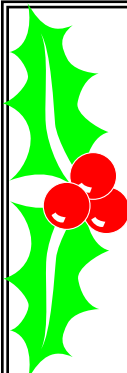
DAY	DATE	HI	LO
Mon	Dec 07	40	33
Tue	Dec 08	46	40
Wed	Dec 09	58	46
Thu	Dec 10	51	19
Fri	Dec 11	31	21
Sat	Dec 12	35	23
Sun	Dec 13	49	27

Week's Stats

Avg max temp= 44
Avg min temp= 30
Avg temp= 36

Total Precipitation= 2.86"

Reported by
Nicole Nunley
Forestry Technician



Enrique Madico, chef/owner
of Matchpoint Catering,
wishes you a Merry Christmas
and Happy New Year
and is especially grateful for
your continued support.

b.true

That fun little boutique in the Log Cabin ...
HOLIDAY SALE NOW IN PROGRESS!
Fall & winter merchandise 30 to 50% off!
Wed-Sat 10-6 • (931) 924-5647 • Monteagle
Closed Dec. 25 through Jan. 20—HAPPY HOLIDAYS!



HEARING HEALTH NEWS

by Debbie Gamache,
M.S. CCC-A Audiologist

EXPECT NOISE

Expect to have difficulty hearing in noisy situations and large groups. A common statement made by persons who experience hearing loss is that they hear fine in quiet situations, but the noisy ones are those in which they need the most help. This is especially common for people who have high frequency hearing loss.

Background noise, however, is a nuisance for all persons, even people with normal hearing sensitivity. As sophisticated as today's technology is, hearing aids still can not completely eliminate background noise for you. Some of the higher digital technology circuitry can reduce the background noise for you, especially if directional microphones are used. If you are in a lot of noisy environments, it is important to discuss this with your Audiologist when talking about hearing aid options so the very best option can be chosen for your hearing needs. In addition, this will also allow you and your Audiologist to set realistic goals for improvement in noise.

We live in a very noisy world today. It is difficult for persons who are just beginning to use hearing aids to adjust to the level of noisiness in today's world. It is important, however, that you discuss your concerns and difficulties with your Audiologist so realistic goals and adjustments can be made. If you have questions or need adjustments on your hearing aids, feel free to contact us at the Hearing Center. We are located at 705B North Atlantic Street or can be contacted at 931-393-2051 or toll-free at 888-303-2051. You can also visit our website at www.thehearingcenterllc.com.

THE HEARING CENTER L.L.C. A Full Service Hearing Center
(931) 393-2051 • 1-888-303-2051
705B North Atlantic St.
Tullahoma

University Job Opportunities

The University of the South announces the following job openings:

EXEMPT POSITIONS—Assistant University Organist; Director of School of Theology Communications and Church Relations; Director of Physical Plant Services; Lay Chaplain; Major Gifts Officer; Vice-Chancellor and President.

NON-EXEMPT POSITIONS—None.

To schedule an office skills or typing test, call Teresa Smith at 598-1381. For information on nonfaculty positions, please call 598-1403, or visit the website: <<http://www.sewanee.edu/personnel/jobs>>.



Closing for
Christmas break
at 1 pm Dec. 17.
Merry Christmas
and Happy New
Year from
Stirling's!

Georgia Avenue, Sewanee
598-1885

Classifieds



CALL US! • 598-9949
Classified Rates:
 \$3.25 first 15 words,
 10 cents each addl. word
Now you can charge it!
(\$10 minimum)

The Pet Nanny
BOOK NOW FOR THE HOLIDAYS!
Pet Sitting in Your Home
 Dogs, Cats & Birds
 Mesha Provo 931.598.9871
 mprovo@bellsouth.net
 http://sewaneepetnanny.blogspot.com

HOUSE FOR RENT IN MONTEAGLE: Brick, 2BR, 1BA, full basement, nice yard. \$600/mo., \$500 security deposit. (931) 924-2933.

Styles UNLIMITED
NAIL TECH ON STAFF!
Sarah Gore & Monica Hughes
 Monica is a stylist and great nail artist!
 598-9551 or 636-1096
 Sewanee Station • Walk-ins welcome
 Tue-Wed 11 till last appt;
 Thu-Sat 8:30 till last appt

FIREWOOD FOR SALE: \$50/rick. Stacked, \$60. If no answer, leave message. (931) 592-9405.

the ARTISAN DEPOT
 Work by local artists
 201 E. Cumberland, Cowan
 931-636-0169

CLIFFTOPS CABIN: 2 BR, 2BA. Available Jan. 1, 2010. (865) 385-6565.

Babysitting, housesitting, pet care
 Ariel Jones
 experienced, references
 598-0775 • (615) 932-0592

SHELIA'S! EVERYTHING ONE-HALF OFF
 price, Saturday, Dec. 19. Gifts, knives, dolls, books, uniforms, shoes, clothes. Work pants and jeans sale price, \$1/pr. Open 9-5. 1401 S. Cedar Ave., So. Pittsburg, (423) 837-0620.

TANKERSLEY'S PAINTING
 • Residential/Commercial
 • New Construction • Existing Homes
 • Barns/Outbuildings
 (931) 691-3617 or (931) 967-7631
 Insured • Roy Tankersley, Owner

TANKERSLEY'S TREE SERVICE
 • Stump or Tree Removal • Topping
 Trimming • Cabling • Firewood
 Feeding • Lot Clearing
 Free Estimates—Insured
 (931) 691-3617 or (931) 967-7631
 Roy Tankersley, Owner

WANTED: Housesitter needed 3 hours per day in afternoons. 3:30-6:30 pm. Starting mid-January thru mid-February, 3-4 weeks. On South Pittsburg Mountain Road (Hwy 156 close to Jump-Off and University.) Please call Eric, (305) 479-4200.

COMPUTER REPAIR/UPGRADES
 23 Years Experience
www.Keith4PCRepair.com
 Free Pick-up and Delivery
 Online & In-home repairs
 toll free: 866-534-8447

BLUE SKY ENTERPRISES
 Now scheduling interior painting projects for fall and winter
 Call George Dick, 598-5825
 Serving the Sewanee community for 35 years

SHAKERAG BLUFF CABIN: Beautiful west-facing bluff view. Extremely secluded. Sleeps 4-5. C/H/A. Pond with dock. Great fishing, swimming. Three miles from University. Week-end, weekly rates. 968-0185.

TRAFFIC REMINDERS
 It is state law to have your headlights on in fog and rain. The speed limit on the University campus is 25 mph.

Another Great
NASHVILLE ORIGINAL
DELTA BLUES
 CLASSIC TEA PUNCH
 Available at The Blue Chair Bakery & Coffee Shop in Sewanee
deltabluesicedtea.com

Needle & Thread
Alterations and Repairs
 Curtains, Throw Pillows, Light Upholstery
 Call Shirley Mooney at 931-598-0766
 or e-mail shirleymooney@att.net

CLAYTON ROGERS ARCHITECT
 claytonrogers@charter.net
 931-598-9425

THE HAPPY GARDENER: Planting, weeding, mulching and maintenance of garden beds. Call Marianne Tyndall, 598-9324.

Under New Ownership!
NEWLY REMODELED TWO BR APARTMENTS FOR RENT
 with wood laminate floors, dishwashers and on-site laundry. Water/sewer furnished. Good rental history or good credit and 12-month lease required.
FIRST TWO MONTHS HALF PRICE & ONLY \$99 DEPOSIT!!!
 (\$450/month regular price.)
Hidden Creek Apartments
 310 Spring St. • Monteagle • (931) 247-7052

LOST COVE BLUFF LOTS
www.myerspoint.com
 931-968-1127

FOR SALE: FIREWOOD
 \$45/rick. Stacked, \$50. Also, gutter-cleaning and leaf-raking. Call Julian Nichols, (931) 592-2941

TERESA'S AVON STORE: Gifts galore and everyday items. Stop by! Open every day except Sunday, 10 a.m. - 5 p.m. Layaway for Christmas! 12441 Hwy. 41 (931) 592-6408.

FULL TIME POSITION for experienced baker. Great atmosphere and schedule. See Michael at The Blue Chair in Sewanee. (931) 598-5434.

Drivers/CDL Career Training
 w/Central Refrigerated.
 We Train, Employ
 w/\$0 Down Financing.
 AVG \$35-\$40K 1st Year!
 800-543-4023

CHARLEY WATKINS PHOTOGRAPHER
 Sewanee, TN
 (931) 598-9257
<http://www.photowatkins.com>

EXPANDING CATERING BUSINESS IN DOWNTOWN SEWANEE looking for an experienced gourmet cook to work M-F 8 a.m.-4 p.m. Starting in Jan./Feb. Need someone who is efficient, can work without direction, follow a recipe easily and loves to try new foods. Needs to work well with others. Please e-mail a résumé to julias@vallnet.com or call 598-0979 (home) or 598-5193 (kitchen).

Henley's Electric and Plumbing
Randall K. Henley
 Over 25 Years Experience
 598-5221 or cell 636-3753

BICYCLE—CITY BIKE OR COMMUTER
 USE: Schwinn 2004 Sierra GSX. Pristine condition. Ridden only 5-6 times. MSRP \$449.99. Asking only \$250 OBO. Many extra accessories, baskets, air horn, pump, etc. available also. Please call (931) 924-1300 for details.

GIVE NANCE A CHANCE TO CLEAN FOR YOU! Houses, offices, churches. Call 598-5463. Ask for Joanna.

MESSAGE THERAPY
 Regina Rourk, LMT, CNMT
 Deep Tissue, Relaxation, Reiki, Seated Massage
www.reginarourk.com
 GIFT CERTIFICATES
 Now accepting major credit cards
 (931) 636-4806 or (931) 442-1433

FOR RENT: 480 s/f efficiency; private entrance, not connected to main house. Two blocks from Shenanigans. Full kitchen, full bath, king size bed. \$125/night, 2-night minimum. (931) 598-9369.

King's Tree Service
 Topping, trimming, bluff/lot clearing, stump grinding and more!
 Bucket truck or climbing
 Free wood chips with job
 Will beat any quoted price!
 Satisfaction guaranteed!!
 Fully licensed and insured—
 Call (931) 598-9004—Isaac King

HOUSE FOR RENT: Lovely, woody home (41 Sherwood Rd.) abutting the University forest, very close to town. Available Feb. 1-Oct. 1, 2010, or a portion of that time. 2BR, 2BA, front porch and back deck on 3 acres. Two-person jacuzzi tub, 50-in. HDTV w/ surround-sound. For information call Barbara Hughes, 598-0229.

RENTALS
 Bluff house and 3 new units for rent near St. Mary's. No pets, no smoking. Call for info. 598-0697.

MAMA PAT'S DAYCARE MONDAY-FRIDAY
 Open 4 a.m.; Close 12 midnight
 3-Star Rating
 Meal & Snack Furnished
 Learning Activities Daily
 Call: (931) 924-3423

TREE SHEPHERDS: Woodlands care, brush + bluff clearing, tree pruning, tree climbing, limb or tree removal. 598-9324.

NEED GRAVEL for your road or driveway, bulldozer work, driveways put in, house site clearing? Call David Williams, 308-0222 or 598-9144.

PET SITTING IN YOUR HOME
 By Appointment Only
 Day, Week or Month
 For Interview & References:
 Call 931-924-3101—Ask for Patricia

Custom Cabinets Furniture & Interior Finish
John J. Malaspino
 Master Carpenter (423) 837-9726

BIGGER DINING ROOM NOW OPEN (and available for party rental!)
BONNIE'S KITCHEN
 Home-Cooked
 Wednesday Lunch, 11 to 1 and Friday Dinner, 4 to 9
 Eat-In • Take-Out • Delivery
 598-0583
 Closing Dec. 21. Reopening Jan. 6.

GREAT HOUSE FOR RENT: Any special occasion throughout the year. Located in Clifftops. Sleeps six. (931) 924-4438, ask for Gail.

Snowwhite
 Laundry & Dry Cleaning Co.

PICKUP & DELIVERY
 Every Wednesday at your home or office in the Sewanee-Monteagle area
(931) 455-3473

Fresh flowers & deliveries daily
TUXEDO RENTALS—
Monteagle Florist
 333 West Main Street, Monteagle
 (931) 924-3292
www.monteagleflorist.com

EXPERIENCED LIVE-IN CAREGIVER services for elderly. References available. (931) 967-9860 or (256) 599-5689.

Oldcraft Woodworkers
 Simply the BEST woodworking shop in the area.
 Continuously in business since 1982.
 Highest quality cabinets, furniture, bookcases, repairs.
 Phone 598-0208. Ask for our free video!

MIDWAY MARKET CONSIGNMENT: New items for winter! Great bargains on adult, children and teen gently-used and new updated clothing. VHS movies \$1. DVDs \$1-500, \$5. Before bringing clothing for consignment, call Wilma, 598-5614. Open Monday-Saturday 12-7. Closed Sunday.

Merry Christmas from RAINBOW'S INN
 Beautiful 2 BR/2 BA Sewanee coach house, 10 minutes from campus, available for short-term rental. Central air & heat, full kitchen, W/D, deck, fireplace. Check us out at <www.rainbowsinn.net>. For rates & availability e-mail <info@rainbowsinn.net> or call 866-334-2954.

ROBERTS PAINT SERVICE: Fall specials. Licensed. Quality guaranteed. We do everything. Will outbid anyone. (931) 581-9548.

Holiday Baking by Maggie Hanson
 Cakes—Cookies—Pies—Brownies
 598-9443 or (931) 273-6091
 Delivery available.

NEEDED: Sewanee area person w/14" rock saw to saw rock. \$35/hr. Steady weekend work. Call (931) 967-7307.

The Moving Man
 Moving Services Packing Services
 Packing Materials
 Local or Long Distance
 1-866-YOU-MOVE (931) 968-1000
www.the-moving-man.com
 Decherd, TN
 Since 1993 U.S. DOT 1335895

Tell them you saw it here!
CHAD'S LAWN & LANDSCAPING
-FREE ESTIMATES-
 * Lawn care & Design (Mulch & Planting)
 ALSO: * Tree Trimming & Removal
 * Pressure Washing * Gutter Cleaning
 * Leaf Pickup & Blowing * Road Grading
 * Garden Tilling * Rock Work
 (931) 962-0803 Home; (931) 308-5059 Cell

DEER-PROOFING SPRAY SERVICE
 Holiday gift certificates for the plant-lovers on your list!
glory be... GARDEN SERVICES
 Janet Graham • (931) 598-0822

Ray Minkler, who specializes in year round **Estate Caretaking** for people with second homes on the mountain, is accepting new clients. Painting, light carpentry, yardwork, repairs, general maintenance, varied creative projects, etc. since 1995. Photos e-mailed of work done for those who live elsewhere. References available. (931) 592-2444 or styraco@blomand.net.

FOR SALE: 1996 Mazda 626. Clean. New paint job. Transmission needs work. \$800 OBO. Call (931) 235-3504.

Alterations, Repairs, Miscellaneous Sewing
Weta Butterfield, (931) 962-2928

!!!!TWINNS CLEANING!!!! Sandy and Brandy will make your home Squeaky Clean!!! Call 308-1493 or 598-0461.

EAGLE LANDSCAPING & LAWN MAINTENANCE CO.
 Now Offering Specials for FALL CLEANUP!
 We offer lawn maintenance, landscaping, hedge/tree trimming & more!
 Please call for your free estimate
(931) 598-0761 or (931) 636-0383

FIREWOOD FOR SALE: Great rates. Ben and Karen Vaughn, 636-1468 or 636-9380

ZZZ—FLOORS SHAKING—ZZZ
SAGGING & FALLING? NEED LEVELED? TERMITE DAMAGE?
 We Repair/Replace/Restore Construction Defects
HAROLD L. GILMORE & SONS
 Construction Since 1960
 800-218-9447 or 931-779-7505

LICENSED PRACTICAL NURSE (LPN)
 Our Ridgcrest group home located on Monteagle mountain has an immediate opening for an LPN. Completion of a state-approved certified nursing program and the successful passing of a competency program which meets state regulations are necessary. Must possess an unrestricted certification as an LPN. Must have at least six months work experience as an LPN in a health care/psychiatric setting. Must have Tennessee license. Experience working with medically fragile and psychiatric clients preferred.
Competitive salaries and excellent benefits. Send résumé to:
VBHCS
 P.O. Box 4755, Chattanooga, TN 37405
 EQUAL OPPORTUNITY EMPLOYER

THE WOOD DEN
 Handmade rustic/traditional furniture built to order. Hutches, bedroom suites, trestle tables, etc.
Steve Sorrell
 (931) 235-3936 or (931) 692-9585
 109 Catherine Ave., Monteagle (behind new CVS)
 Open Fri thru Sun, 10-3

class_messgr@bellsouth.net

HOLIDAY GIFTS GALORE!
WINCHESTER ANTIQUE MALL
 122 1st Avenue - Winchester
 967-9930

Sweeton Home Restoration LLC
931-924-2444
 1010 West Main St. • Monteagle, TN 37356
sweetonhome@blomand.net
 Licensed & Fully Insured

From Bard to Verse

by Scott and Phoebe Bates

Big news this year?
Water on the moon?
No surprise—
Since we already
Run your tides
And light your night breeze,
And play our silent music
In your Christmas trees;
We annually
Drift down like snowflakes
From our home in the sky
And enter your windows
And enter your dreams—

And soon, very soon,
We'll be cultivating
Roses on the moon
And bringing you honey
From our golden bees
In our underground orchards
Of flowering trees—

So Pax Vobiscum!
From Nick Claus and Aurora
Borealis—
From
Out of This World
In our Lunar Palace.

— "Roses on the Moon" by S.B.

community calendar

EVENTS

Today, Dec. 17
3:30 pm Mntop Tumblers, ages 5-7, Sew Cmty Ctr, till 4:30
3:30 pm Yoga w/Hadley, St Marys Sewanee
4:30 pm Mntop Tumblers, Sew Cmty Ctr, ages 8 and up, till 5:30
5:00 pm Tai Chi w/Lance, Sew Cmty Ctr

Friday, Dec. 18
MESSENGER office closed, reopens Jan. 4
7:00 am AA, (open), Holy Comforter, M'eagle
7:30 am Curbside recycling pickup
8:00 am CAC Community breakfast, Otey
8:30 am Iyengar yoga, Sew Cmty Ctr, till 9:40
10:00 am Game day, Sr Cit Ctr, till 11:45
7:00 pm AA, Christ Church, Tracy City
7:00 pm Breathworkshop, St Marys Sew, till 9
7:30 pm ACOA, Otey parish hall

Saturday, Dec. 19
Deer Cull, sunrise-sunset except 10 am-2 pm
9:00 am Breathworkshop, St Marys Sew, till 6
10:00 am Pilates Corefit class, Sew Cmty Ctr
11:30 am Mntop Tumblers, Sew Cmty Ctr, intermediate, till 12:30
5:00 pm S of T Advent Hymn Sing, COTA
7:00 pm NA, Decherd United Methodist
7:30 pm AA (open), Otey parish hall

Sunday, Dec. 20
Deer Cull, sunrise-sunset except 10 am-2 pm
4:00 pm Adult yoga w/Helen, Sew Cmty Ctr
5:30 pm Manger and the Cross, Harrison Chpl Congregational Methodist Church

Monday, Dec. 21
Deer Cull, sunrise-sunset except 10 am-2 pm
8:30 am Body Recall, Sew Cmty Ctr
9:30 am Sew Sr Cit Bazaar, Sr Cit Ctr, till 1:30
11:00 am Chair exercise, Sr Cit Ctr, till 11:45

5:00 pm Women 12-step, Otey parish hall
6:00 pm Tai Chi w/Lance, Sew Cmty Ctr
7:00 pm AA, Christ Church, Tracy City
7:00 pm Centering prayer, Otey sanctuary

Tuesday, Dec. 22
Deer Cull, sunrise-sunset except 10 am-2 pm
9:00 am Yoga w/Hadley, St Marys Sew
9:30 am Sew Sr Cit Bazaar, Sr Cit Ctr, till 1:30
10:30 am Bingo, Sr Cit Ctr, till 11:45
4:00 pm Centering prayer, St Marys, till 5:30
7:00 pm NA, Decherd United Methodist
7:30 pm AA (open), Otey parish hall
7:30 pm Al-Anon, Otey parish hall

Wednesday, Dec. 23
Deer Cull, sunrise-sunset except 10 am-2 pm
7:30 pm AA (open), H Comforter, M'eagle
7:30 pm Meditation class, Sew Cmty Ctr

Thursday, Dec. 24 Christmas Eve
12:00 pm AA (open), 924-3493 for location
12:30 pm EPF, Otey parish hall

Friday, Dec. 25 Merry Christmas!
7:00 am AA, (open), Holy Comforter, M'eagle
7:00 pm AA, Christ Church, Tracy City
7:30 pm ACOA, Otey parish hall

Saturday, Dec. 26
Deer Cull, sunrise-sunset except 10 am-2 pm
7:00 pm NA, Decherd United Methodist
7:30 pm AA (open), Otey parish hall

Sunday, Dec. 27
Deer Cull, sunrise-sunset except 10 am-2 pm
10:00 am Hymn Sing/Cookie Swap, Otey parish hall
6:30 pm AA (open), H Comforter, M'eagle

Monday, Dec. 28
Deer Cull, sunrise-sunset except 10 am-2 pm
8:30 am Body Recall, Sew Cmty Ctr
11:00 am Chair exercise, Sr Cit Ctr, till 11:45
5:00 pm Women 12-step, Otey parish hall
6:00 pm Tai Chi w/Lance, Sew Cmty Ctr
7:00 pm AA, Christ Church, Tracy City
7:00 pm Centering prayer, Otey sanctuary

Tuesday, Dec. 29
Deer Cull, sunrise-sunset except 10 am-2 pm
9:00 am Yoga w/Hadley, St Marys Sew
10:30 am Bingo, Sr Cit Ctr, till 11:45
4:00 pm Centering prayer, St Marys, till 5:30
7:00 pm NA, Decherd United Methodist
7:30 pm AA (open), Otey parish hall
7:30 pm Al-Anon, Otey parish hall

Wednesday, Dec. 30
Deer Cull, sunrise-sunset except 10 am-2 pm
9:30 am CAC open, Otey, till 11:30
10:00 am Quilting class, Sr Cit Ctr
5:30 pm Adult yoga w/Helen, Sew Cmty Ctr
7:30 pm AA (open), H Comforter, M'eagle

Thursday, Dec. 31 New Year's Eve
Deer Cull, sunrise-sunset except 10 am-2 pm
11:00 am Chair exercise, Sr Cit Ctr, till 11:45
12:00 pm AA (open), 924-3493 for location
12:30 pm EPF, Otey parish hall
5:00 pm Tai Chi w/Lance, Sew Cmty Ctr

Friday, Jan. 1 Happy New Year!
Deer Cull, sunrise-sunset except 10 am-2 pm
7:00 am AA, (open), Holy Comforter, M'eagle
7:00 pm AA, Christ Church, Tracy City
7:30 pm ACOA, Otey parish hall

Saturday, Jan. 2
Deer Cull, sunrise-sunset except 10 am-2 pm
9:00 am Centering prayer into wkshp, Ward, St Marys Sew
7:00 pm NA, Decherd United Methodist
7:30 pm AA (open), Otey parish hall

Sunday, Jan. 3
Deer Cull, sunrise-sunset except 10 am-2 pm
4:00 pm Adult yoga w/Helen, Sew Cmty Ctr
5:00 pm Epiphany pageant, Otey, potluck follows
6:30 pm AA (open), H Comforter, M'eagle

Monday, Jan. 4
Deer Cull, sunrise-sunset except 10 am-2 pm
MESSENGER office reopens 8:30 am
8:30 am Body Recall, Sew Cmty Ctr
11:00 am Chair exercise, Sr Cit Ctr, till 11:45
12:00 pm MESSENGER display ad deadline
5:00 pm MESSENGER news deadline
5:00 pm Women 12-step, Otey parish hall
6:00 pm Tai Chi w/Lance, Sew Cmty Ctr
7:00 pm AA, Christ Church, Tracy City
7:00 pm Centering prayer, Otey sanctuary
7:00 pm Civic Assn, Otey

Tuesday, Jan. 5
Deer Cull, sunrise-sunset except 10 am-2 pm
9:30 am CAC open, Otey, till 11:30
8:30 am Iyengar yoga, Sew Cmty Ctr, till 9:40
9:00 am Yoga w/Hadley, St Marys Sew
10:30 am Bingo, Sr Cit Ctr, till 11:45
12:00 pm MESSENGER classified ad deadline
4:00 pm Centering prayer, St Marys, till 5:30
7:00 pm NA, Decherd United Methodist
7:30 pm AA (open), Otey parish hall
7:30 pm Al-Anon, Otey parish hall

Wednesday, Jan. 6
Deer Cull, sunrise-sunset except 10 am-2 pm
9:30 am CAC open, Otey, till 11:30
10:00 am Quilting class, Sr Cit Ctr
5:30 pm Adult yoga w/Helen, Sew Cmty Ctr
7:30 pm AA (open), H Comforter, M'eagle
7:30 pm Meditation class, free, Sew Cmty Ctr

Thursday, Jan. 7
Deer Cull, sunrise-sunset except 10 am-2 pm
8:30 am Body Recall, Sew Cmty Ctr
9:30 am CAC open, Otey, till 1:30
11:00 am Chair exercise, Sr Cit Ctr, till 11:45
12:00 pm AA (open), 924-3493 for location
12:30 pm EPF, Otey parish hall
3:30 pm Mountaintop Tumblers, ages 5-7, Sew Cmty Ctr, till 4:30
3:30 pm Yoga w/Hadley, St Marys Sew
4:30 pm Mountaintop Tumblers, ages 8/up, Sew Cmty Ctr, till 5:30

Cumberland Presbyterian
9:00 am Worship Service
10:00 am Sunday School

Grace Fellowship
10:30 am Sunday School/Worship Service

Harrison Chapel Methodist
10:00 am Sunday School
11:00 am Worship Service

Jump-Off Baptist
10:00 am Sunday School
11:00 am Worship Service
6:00 pm Worship Service

Midway Baptist
10:00 am Sunday School
11:00 am Morning Service
6:00 pm Evening Service

Midway Church of Christ
10:00 am Bible Study
11:00 am Morning Service
6:00 pm Evening Service

Otey Memorial Church
8:50 am Holy Eucharist
10:00 am Christian Education
11:00 am Holy Eucharist

St. James Episcopal
9:00 am Worship and Fellowship
10:15 am Sunday School Adults/Children

St. Mary's Convent
8:00 am Holy Eucharist

Sewanee Church of God
10:00 am Sunday School
11:00 am Morning Service
6:00 pm Evening Service

Society of Friends
9:30 am Meeting, 598-5031

Monday, Dec. 21
7:30 am Morning Prayer, Otey
4:30 pm Evening Prayer, Otey

Tuesday, Dec. 22
7:30 am Morning Prayer, Otey
4:30 pm Evening Prayer, Otey

Wednesday, Dec. 23
7:30 am Morning Prayer, Otey
4:30 pm Evening Prayer, Otey

Thursday, Dec. 24
7:30 am Morning Prayer, Otey
4:30 pm Creche svc, Otey
8:00 pm Christmas Eve svc, St James
10:30 pm Christmas Eve svc, Otey
11:45 pm Holy Eucharist, SAS Chapel

Friday, Dec. 25
7:30 am Morning Prayer, Otey
9:00 am Holy Eucharist, St Marys Chapel
10:00 am Holy Eucharist, Otey
4:30 pm Evening Prayer, Otey
5:30 pm Evening Prayer, St Marys Chapel

Pattern repeats until Jan. 7 with following additions:
Sunday, Dec. 26-Thursday, Jan. 7
8:00 am Holy Eucharist, St Marys Chapel
12:30 pm Noon Office, St Marys Chapel
5:00 pm Evening Prayer, St Marys Chapel
7:00 pm Complines (M/Tu/Th/Fr) St Marys Chapel
(no services St Marys Chapel Wed. Dec 30)
Sunday, Jan. 3 Pantry Sunday
Wednesday, Jan. 6
5:00 pm Holy Eucharist/Healing, St James

CHURCH SERVICES

This Evening, Dec. 17
4:30 pm Evening Prayer, Otey
6:30 pm Worship Service, Church of God

Friday, Dec. 18
7:30 am Morning Prayer, Otey
4:30 pm Evening Prayer, Otey

Sunday, Dec. 20
All Saints' Chapel
8:00 am Holy Eucharist

Home Maintenance, New Construction & Restoration
No job too small! 30 years experience!
including Sunrooms ~ Decks ~ Pole Barns
Tile/Hardwood ~ Vinyl Siding

STINES Home Maintenance & Construction
(931) 728-2639 or (931) 247-5475
References available

Copia's Kennels YOUR DOG'S HOME AWAY FROM HOME
www.copiaskennels.com
Day Care/Boarding/Grooming
Linda Cockburn, Owner/Groomer
321 Rabbit Run Lane, Sewanee
931.691.3222
linda@copiaskennels.com

Residential-Commercial-Industrial Air Duct Cleaning
AIR DUCT CLEANING REMOVES THE SOURCE OF:
• Musty & Pet Odors • Dust • Allergy Breathing Problems
We honor all smoke and water damage insurance claims.

ABBEY ROAD CLEAN-AIRE
728-5600 Manchester Recommended by:
Since 1989 American Lung Association

Pinky, I just can't believe how easy this Christmas has been, just by doing all my shopping at *The blue chair!* I have found **Great Gifts** for everyone on my list and I've fed them fabulously with **Party Platters, Cakes, and the most beautiful Christmas Sugar Cookies!**

Well, I will say, Flossie. This is one time when I'm glad to be on your list of friends. By the way, I could use some more cookies.

Holiday Hours
Monday - Friday 7:00 - 4:30 / Saturday 7:00 - 3:30
Closed Sundays
Closed Only December 24 & 25 / Open New Year's Day!

The blue chair Bakery & Café
41 University Avenue, Sewanee (931) 598-5434

SEWANEE HOME IMPROVEMENT
Homes Painted • Hardwood & Tile Floors Installed • Bathrooms & Kitchens Improved

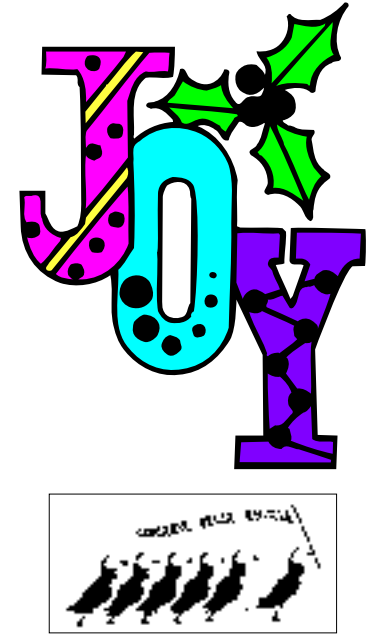
STEPHEN CARTER
Phone 931-598-5485 Cell 931-308-9831

HATCHETT Insurance Agency
Nelson Hatchett
931-967-7546 Grange Insurance

New Year's Eve Dinner
Thursday, December 31, 6:30 p.m.

Four courses plus wine.
\$49.95 per person.
Reservations required.

Monteagle Inn
A Bed and Breakfast & Retreat Center
Call 931.924.3869
204 W. Main Street, Monteagle
www.monteagleinn.com



Christ Church Monteagle
The Episcopal Missionary Church
Dec 20 at 10:30 am: Service of Lessons and Carols
Christmas Eve at 5 pm
Christmas Day at 10 am
Dec 26 at Noon: St. Stephen's Day
Dec 27 at Noon: St. John's Day
Jan 6 at Noon: Epiphany Service
Jan 10 at 10:30 am: Epiphany Pageant
Hwy 41-A 924-2660