

Civic Association Will Run New Merged Email

by Leslie Lytle, Messenger Staff Writer

At the Dec. 8 dinner and business meeting, the Sewanee Civic Association voted to accept responsibility for administering a new community email service, formed through a merger of the community email list and the University's classifieds list. During dinner, the St. Andrew's-Sewanee School choir beautifully performed a selection of holiday songs. Following the business meeting, members and guests learned about the Friends of the South Cumberland and two recently published books written by Friends' president Mary Priestley.

Former Civic Association president Elizabeth Clark Duncan presented an overview of the plan to merge the existing separate community email and classifieds lists. Working with Duncan on the initiative were David Coe, Community Council representative;

Vicki Sells, associate provost; and John Swallow, who will assume the position of acting provost in January.

Duncan established and administers a community email list. Discussing the history of the classifieds list, Swallow said it was set up in 1992 as a community listserv administered by the University. Group Spaces, the server for classifieds, provides the service for free for up to 500 subscribers. After that, the fee is \$180 annually. Classifieds currently has approximately 500 subscribers, and community email has approximately 300. Swallow explained that the merger was simply a matter of moving the community email list to the classifieds Group Spaces list.

The Civic Association approved a motion calling for the Civic

(Continued on page 8)



Lucy Howick, poised to begin her portion of a relay for the St. Andrew's-Sewanee School's swim team at a recent meet at the Fowler Center. For full details, see page 12. Photo by Anne Russell Webb

Deer Cull Opens Today Plans Set for Two-Day Post-Cull "Drive"

The annual deer cull on the Sewanee Domain will begin today (Friday), Dec. 16, and continue through Sunday, Jan. 1. During this time, in-town hunting will be archery only; muzzle loaders, shotguns and archery are allowed in the outer zones. As has happened in past years, there is no hunting allowed on Christmas Eve or on Christmas Day.

The following trails will remain open at all times: Tennessee Avenue, Mountain Goat Trail/bike path, the entire Perimeter Trail, and trails to Bridal Veil Falls, Piney Point, Beckwith's Point, Caldwell Rim and Solomon's Temple. Bow hunters will be located at least 100 yards from trails and fire lanes. Two zones have been added this year for the cull: zone 31—north of Tennessee Avenue—and zone 32—north of Lake Cheston between Wiggins Creek and the lake. Both of these additions come at the request of leaseholders in these areas. (For specifics, see the map on page 9 or in color on the Messenger website.)

Since December of 2000, Sewanee has conducted a deer cull in an effort to reduce the population of the animals.

This year, there is an additional period of hunting after the cull, approved by the Tennessee Wildlife Resources Agency. These TWRA post-season cull opportunities will be a time when the office of Domain management "drives" the deer from in-town to areas where they will be harvested. The post-cull drive dates are Saturday, Jan. 7, and Saturday, Jan. 14.

"This plan has been approved by the TWRA, the Sewanee Police, the University's sustainability program and our office," said Nate Wilson, Domain manager. "It will be conducted by our safest and most trustworthy hunters who have been vetted and approved by Chief Robert White."

Access to all areas affected by the post-cull drive will be physically blocked to hikers, and the areas will be posted well in advance of the two days of hunting. During these two days, hunters will use center-fire rifles at three specific locations.

"Our goal this year was to harvest 230 does throughout the season. Even with a hugely successful cull period, we are likely to fall short of that goal. The post-season drive will help us make up the difference between our biological goals and the limits of our hunters," Wilson said. This should have a broad impact on the size of the herd moving forward, increasing the amount of available forage across the Domain. This increase in natural forage will ultimately reduce the damage to leaseholder gardens and foliage as deer begin to have more desirable forage in the forest.

The three areas of focus for the post-cull drive are: the drainage area adjacent to Laurel Drive (deer from Abbo's Alley and the Mikell Lane areas); the drainage area just off of Clara's Point Road (deer from Wiggins Creek and Lake Cheston); and the drainage just south of KA Point (deer from the community garden, equestrian center and surrounding areas).

Wilson said they need more than 60 people to help on Jan. 7; volunteers will walk slowly, unarmed (except with simple noisemakers and blaze orange), urging deer toward the target sites. If you are interested in being a part of this event, please email Wilson at <wnwilson@sewanee.edu> and plan to attend a 6 p.m., Friday, Jan. 6, meeting at Snowden for more information.

"We can use volunteers of all physical capabilities. While some folks will be working through the woods and brush, we need many folks to simply stand along the roads to redirect animals that may stray from the desired path."

Wilson and Chief White pointed out that there have been no accidents or injuries during the pre-cull or cull in the decade-plus that this has happened on the Domain.

"The deer population is badly out of balance," said Wilson. He said the long-term goal of the University's deer management plan was to achieve a sustainable deer population by reducing the doe-buck ratio from 7:1 to 3:1 and the overall population to at least one-fifth of the current population.

(Continued on page 4)



A young doe at the front door of an area home.

Season's Greetings Facility Review for Area Schools

by K. G. Beavers
Messenger Staff Writer

The Franklin County School Board recently commissioned its first facilities review of all the public schools in the county, and Sewanee Elementary was found to be needing major repairs.

SES needs major renovations at an estimated cost of \$725,000, including work on the roofing, eaves, gutters, and interior ceilings, fixing the brick exterior and water damage to the stone foundation.

Although most of the county's schools need repair, few are in as bad condition as SES. Huntland, for instance, needs roofing in the middle school and repairs to the gym. Most repairs needed at other schools are due to overcrowding, such as Rock Creek and Decherd.

"Now, we have schools falling apart because of the lack of funding. Schools were not properly maintained because the school board has been underfunded all these years," said school board chairman Chris Guess.

"If the renovations are not funded where would the SES students go? Cowan is at capacity with no room for expansion. An addition to another school could cost millions of dollars," school board member Chris McDonough said.

The land and school building were deeded to the county in 1985, so it is up to the county to fund the proposed renovations. No motion has been made by the school board to have the renovations done.

The school now known as Sewanee Elementary School had its cornerstone placed in 1924. It has a long and storied history, demonstrating the Sewanee community's commitment to public education, integration and cooperation with the county. For a very thorough history of public school in Sewanee, go to the school's website at <www.fcstn.net>.



Chorale director Gary Sturgis rehearsing the Sewanee Chorale.

Sewanee Chorale Holiday Concert on Saturday

The Sewanee Chorale Christmas concert will be at 7 p.m., Saturday, Dec. 17, in McCrory Hall for the Performing Arts on the campus of St. Andrews-Sewanee School. Along with wonderful holiday music, the Chorale will sing selections from J.S. Bach's "Sleepers Awake." Under the direction of Gary Sturgis and guest conductor Steven Shrader, the chorale will be accompanied by a chamber orchestra.

The Sewanee Chorale is made up of about 40 local and talented community singers who are dedicated to offering the very best in musical entertainment. And, "rumor has it that the 'man with the bag' will be taking a quick break from the North Pole to make a special holiday appearance" during the show, organizers said. This year a portion of the concert will include a Christmas Carol sing-a-long. The concert is free and open to the public.



Students in Mrs. Whaley's class with their Mr. Jones masks.

Mr. Jones Retires from SES Students, Faculty & Staff Offer a Fond Farewell

Sewanee Elementary went Hawaiian on Dec. 9 to celebrate Larry Jones Day. Mr. Jones, the SES fifth-grade teacher, is retiring today (Dec. 16) after 42 years of teaching.

SES students, teachers, staff and parents entered the assembly to the tune of "Bad to the Bone." Former students from SAS, South Middle, Sherwood and Decherd also joined in on the fun. Even his principal from Decherd, Carl Burnette, was there. Students dressed in Hawaiian garb, complete with leis. Some classes had made "Mr. Jones masks" using a photograph of his face.

(Continued on page 6)

P.O. Box 296
Sewanee, TN 37375

Editor's Note

To our readers:

Janet Graham and I come to the close of 2011 with grateful hearts. You have patiently shared a year of change with us: the move to Friday publication, the new format and masthead, and additional writers, interns and columnists. Thank you for sharing your opinions (the positive and not-so-positive) about this year. We listen and take to heart the comments and suggestions you offer.

The Sewanee Mountain Messenger is a long-term, collaborative endeavor. Without the paths cleared by Phoebe Bates and her staff at the Sewanee Siren, and Geraldine Hewitt Piccard and her staff, you wouldn't be reading this fine paper. It is testimony to our community's commitment to shared information and public service that the Messenger continues to hold an important place on this Mountain.

Our paper's coverage of local news grows as we have added writers to our staff. We appreciate Leslie Lytle and her dedication to the issues of the Civic Association and the Sewanee Utility District; we are delighted to have K.G. Beavers join us this year to address the issues facing Franklin County's schools. We appreciate having the opportunity to publish Lyn Hutcheson's beautiful black-and-white photographs, as well as pictures from so many terrific photographers around town. Sandra Gabrielle, proofreader extraordinaire, saves me from horrible embarrassment each week, catching all my spelling and grammar errors. And nothing would happen in the Messenger office without April Minkler nor would papers get distributed without Ray Minkler. Thank you.

It has been a joy for me to work with interns from the college and St. Andrew's-Sewanee School throughout this year. More than 30 years ago, a great man by the name of Don Nelson gave me my first writing job at my hometown weekly, so this is my way of passing on the craft and love of journalism.

We could not publish each week without our wonderful columnists—the dedicated group that has written for the paper for years: Jean and Harry Yeatman, Phoebe and Scott Bates, John Bordley, John Shackelford and Pat Wiser; and our new columnists: Annie Armour, Kiki Beavers, Virginia Craighill, Buck Gorrell, Margaret Stephens and Peter Trenchi. We are delighted to have so many new voices in the paper, offering provocative and informative writing that engages us. All these folks write as volunteers, receiving only your good words as appreciation for their work. Please let them know you read their columns.

The Messenger was founded because of the foresight and generosity of the Sewanee Community Chest and the University of the South. Both of these institutions helped us greatly this year (the University with support for printing and the Community Chest with support for equipment and software). We are grateful also to the leadership of both these organizations, who have been unwavering in their personal encouragement as Janet and I took over the paper last year.

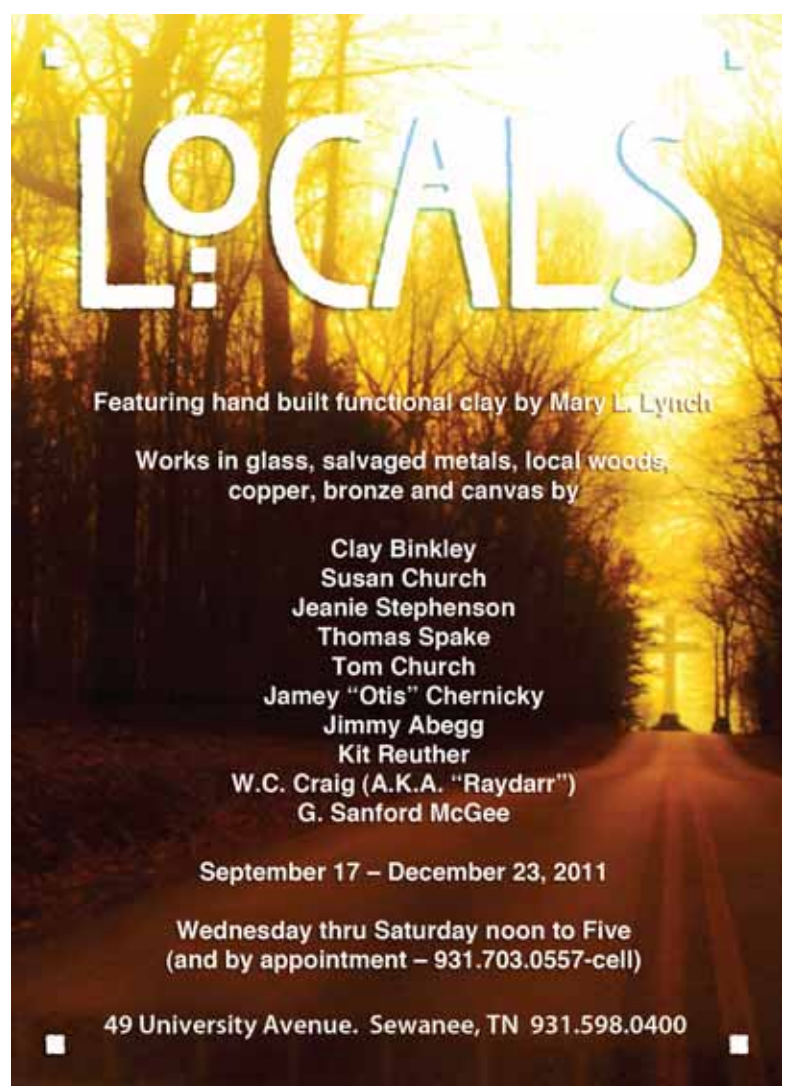
Finally, thank you to our advertisers. We publish 46 times a year, free to more than 3,500 readers across the Plateau, and hundreds more online, because of the paid advertisements of local businesses and eateries. In this time of economic stress, we are so grateful for your continued patronage that keeps this paper afloat. Thank you.

We offer our warmest best wishes to you this holiday season! We'll see you back in print on Jan. 6, 2012.

—Laura Willis, Editor and Co-Publisher



wm.c.mauzy construction co.
Bill Mauzy, Owner, General Contractor
 www.mauzyconstruction.com 931.598.0686 (office)
 billmauzy@bellsouth.net 931.580.0686 (cell)



LOCALS
 Featuring hand built functional clay by Mary L. Lynch
 Works in glass, salvaged metals, local woods, copper, bronze and canvas by
 Clay Binkley
 Susan Church
 Jeanie Stephenson
 Thomas Spake
 Tom Church
 Jamey "Otis" Chernicky
 Jimmy Abegg
 Kit Reuther
 W.C. Craig (A.K.A. "Raydarr")
 G. Sanford McGee
 September 17 – December 23, 2011
 Wednesday thru Saturday noon to Five
 (and by appointment – 931.703.0557-cell)
 49 University Avenue, Sewanee, TN 931.598.0400

Letters

ALL'S WELL AT LEMON FAIR

To the Editor:

As an employee of the Lemon Fair, I am writing to put a rumor to rest. For the last several weeks, many folks have asked if the store is closing. I am happy to report that it is not. Gay and I hope to see you soon!

Robley M. Hood
 Sewanee ■

WINNER OF WILLOWS CONTEST

To the Editor:

The Willows Retreat Company, LLC announces a winner in the contest for ballet lessons with the Sewanee Dance Conservatory and Alabama Youth Ballet. Our winner is Meredith Foster, third-grader at Sewanee Elementary School. Meredith will receive a semester of free lessons in Sewanee.

The Willows gave this prize in special recognition for the huge effort of so many in the Sewanee and Huntsville areas in producing a beautiful performance of "The Nutcracker" in Sewanee this holiday season. As part of our dedication to renewal and creativity, The Willows Retreat Company hopes to encourage the flourishing of the arts in Sewanee and to celebrate the child within us all.

Congratulations, Meredith!

Julie King Murphy
 Hilda C. Vaughan
 Sewanee ■


USE AVAILABLE RESOURCES

To the editor:

Advancements in technology allow the recovery of vast amounts of oil and natural gas in the Western Hemisphere. We have, within our own country and this continent, enough energy to fuel North America for decades, yet there is a drive to force continued purchase of oil from regimes that export hatred of the West. The oil and gas in Canada will be consumed, Keystone XL pipeline or not, it just may be pumped to Canada's west coast, loaded into supertankers and shipped across the oceans. (Note: Mr. Obama didn't stand up to the oil lobby; he played for votes by delaying the pipeline decision.)

Petroleum is concentrated and portable. We would need many thousands of square miles of wind turbines and solar panels to match what we can get from oil. It is foolish to remain at the mercy of far-off regimes (out of sight, out of mind), while we waste our money and future on food-to-power (ethanol), crony capitalism (hundreds

THE SEWANEE MOUNTAIN MESSENGER
 418 St. Mary's Ln.
 P.O. Box 296
 Sewanee, Tennessee 37375
 Phone (931) 598-9949
 Fax (931) 598-9685
 Email messgr@bellsouth.net
 www.sewaneemessenger.com



Contributors
 Phoebe & Scott Bates
 Jean & Harry Yeatman
 John Shackelford
 Annie Armour
 John Bordley
 Virginia Craighill
 Buck Gorrell
 Margaret Stephens
 Peter Trenchi
 Pat Wiser

Published as a public service to the Sewanee community. 3,500 copies are printed on Fridays, 46 times a year, and distributed to 26 Sewanee-area locations for pickup free of charge.
 This publication is made possible by the patronage of our advertisers and by contributions from The University of the South (print production) and the Sewanee Community Chest.
SUBSCRIPTIONS \$75 first class.
 All material in the Sewanee Mountain Messenger and on its website are copyrighted and may not be published or redistributed without written permission.

of millions, even billions wasted on Solyndra, Chevy Volt (ad infinitum) and loans to other countries for their own exploration (Brazil). It is critical that we develop new types of energy, but having politicians and bureaucrats decide where to invest taxpayers money is farcical.

The brokest nation in the history of the planet cannot refuse to use its own resources and hope to survive.

(Brokest= \$15,000,000,000,000 borrowed, \$41,000 more borrowed every second of every day.)

Bill Kershner
 Sewanee ■

OPPOSED TO DON'T ASK, DON'T TELL

To the Editor:

I would like to share an article that appears in the December 2011 American Family Association Journal that may be of interest to you, in particular, if you stepped up to the plate, and served your county in military uniform. The article is titled, "Activists Call for Transgender Individuals in the United States Military".

Allow me to quote a portion of the article, "With the repeal of Don't Ask, Don't Tell [a lone despicable act by the current occupant of the White House] firmly in place, homosexual activists are now calling for the military to remove its ban on transgender individuals serving. This includes transsexuals and cross-dressers." Question: Can pedophiles be far behind? According to the current occupant of the White House, they have rights too.

I would love to think of myself as a great military visionary, however; simply stated, "a blind man could have seen this one coming." I will not speak to the civilian world, but in our (my beloved) military, these acts will not

work without punishing our proud legions. Some may choose to say that the military has always had homosexuals within her ranks, and that would be true; however, they never served openly.

Question: When will we as decent, moral Christian men and women make our voices heard, stand and be counted against this attack on our Christian values, and beliefs? "If we do not stand now, then when?"

May God's blessings always be upon "our" proud legions! Merry Christmas!

Sgt. Maj. Larry E. Williams
 U.S. Army, retired, Monteagle ■

Serving Where Called

Please keep the following individuals, their families and all those who are serving our country in your thoughts and prayers:

Michael Evan Brown
 James Gregory Cowan
 Tanner Hankins
 Kimberly Jacobs Holen
 Brian Jackson
 Robert S. Lauderdale
 Dakota Layne
 Byron A. Massengill
 Alan Moody
 Brian Norcross
 Christopher Norcross
 Dustin "Dusty" Lee Parker
 Brandon Parks
 Michael Parmley
 Charles Schaefer
 Melissa Smartt
 J. Wesley Smith
 Charles Tate
 Jeffery Alan Wessel

If you know of others in our Mountain family who are serving our country, please give their names to American Legion and Auxiliary member Louise Irwin, 598-5864.

Letters to the Editor Policy

Letters to the Editor are welcome at the Sewanee Mountain Messenger and are a vital part of our community's conversation. Letters need to be no longer than 250 words and may be edited for space and clarity. Letters and/or their author must have some relationship to our community. We do not accept letters on national topics from individuals who live outside our circulation area. Please include your name, address and a daytime telephone number with your letter. You may mail it to us at Sewanee Mountain Messenger, P.O. Box 296, Sewanee TN 37375, or come by our office, 418 St. Mary's Ln., or send an e-mail to me at news_messgr@bellsouth.net.—LW



Merry Christmas and a
 Happy New Year to all of
 our friends and neighbors!
Oldcraft Woodworkers
 Sewanee
 Your local source for kitchen cabinets, bookcases, custom furniture (entertainment centers, tables, etc.), furniture and cabinet repairs and more. Call us at 931-598-0208, and we'll be glad to have you visit us, or we'll come see you.

Russell L. Leonard
 ATTORNEY AT LAW
 Office: (931) 962-0447
 Fax: (931) 962-1816
 Toll-Free (877) 962-0435
 rleonard@netcomsouth.com
 315 North High Street
 Winchester, TN 37398

Upcoming Events

Sunday Open House at Chen Hall

John and Bonnie McCardell cordially invite the community to an open house, 4-6 p.m., Sunday, Dec. 18, at Clement Chen Hall, 607 University Avenue. They will have light refreshments and holiday music. All are welcome!

Community Christmas Caroling on Sunday

Community Christmas caroling will be hosted by Shenanigans at 5 p.m., Sunday, Dec. 18. Songbooks and hot chocolate will be provided, so bring your kids, some cookies to share, a candle in a cup, and a joyful voice. There will be traditional carols and kids' songs, so it should be great fun for folks of all ages. Everyone is welcome!

Peace Fellowship Gathers on Thursdays

The Episcopal Peace Fellowship meets at 12:30 p.m. on Thursdays for prayer, study and work directed toward reconciliation and peace. The fellowship meets in the Quintard Room in Otey parish hall.

Blood Drive in Monteagle Dec. 22

Blood Assurance and CVS in Monteagle will host a blood drive from 1 p.m. to 5:30 p.m., Thursday, Dec. 22, at CVS. To be eligible to donate, donors must be at least 17 years old, weigh at least 110 pounds and be in good health. Donors will get a complimentary snack and T-shirt. For more information call Tari-Lee Gates at (931) 461-5773.

Monteagle Rotary Club Meets on Jan. 4

The Rotary Club of Monteagle will meet again on Wednesday, Jan. 4, when the program will feature Candice Turnham and Brac Thomas with the Regional Accelerator Program. Rotary meets at the Smoke House in Monteagle. Coffee begins at 6:50 a.m.; breakfast and the meeting begin at 7 a.m. and end by 8 a.m. To learn more, go to <monteaglerotary.org>.

Academy for Lifelong Learning January Location Change

The deadline to order lunch for the January session of the Academy for Lifelong Learning is Friday, Jan. 6. The meeting will be at noon, Thursday, Jan. 12, at the Clifftops Lake Clubhouse. Sewanee Utility District general manager Ben Beavers will speak on "The Mountaintop Water Supply." If you plan to attend, please contact Anne Davis at (931) 924-4465 or Elaine Goleski at (931) 924-3227 by Friday, Jan. 6. If you would like a box lunch (\$10), please let Anne or Elaine know. Guests are welcome to bring their own lunch.

Silver Thread Group Forming

The Sisters of the Community of St. Mary are starting the "Silver Thread" group for people who are interested in any kind of handwork such as knitting, crocheting, needlework, spinning or weaving. They have a spinning wheel and a large table loom. The first meeting will be at 10 a.m., Saturday, Jan. 7, at the Convent, 1100 St. Mary's Lane.

Births

Alexandre Simon Glacet

Alexandre Simon Glacet was born Dec. 9, 2011, at Harton Hospital in Tullahoma to Sandy and Aymeric Glacet of Sewanee. He weighed 9.4 lbs., and was 22 inches long. Alexandre joins his brother, Arthur.

Rylan James Mills

Rylan James Mills was born October 19, 2011, at Maury County Regional Hospital in Columbia, Tenn., to Jesse and Jennifer Hawkins Mills of Pulaski. He weighed 7 lbs., 8 oz., and was 21.5 inches long. Rylan joins his big brother, Jack.

Maternal grandparents are Marty and Jane Hawkins of Sewanee. Paternal grandparents are Chrissy Mills and the late Sonny Mills of Pulaski.

Jack Quincy Roberts

Jack Quincy Roberts was born on Dec. 10, 2011, at Southern Tennessee Medical Center to Mary Heath and Nick Roberts of Monteagle. He weighed 7 lbs. 12 oz., and was 21 inches long. He joins his brother, Will.



MESSENGER Holiday Break and Deadlines for January

After this issue, the Sewanee Mountain Messenger staff will take a two-week break, Dec. 16-Jan. 1, and return to the office on Monday, Jan. 2, 2012. The Messenger will be back in print Friday, Jan. 6.

Deadlines for the Jan. 6 are: display advertising, 5 p.m. on Monday, Jan. 2; news/calendar, 5 p.m. on Tuesday, Jan. 3; and classified ads, noon on Wednesday, Jan. 4.

Holiday shipping available!

Full Circle Candles
HANDMADE CANDLES
SOY & BEES WAX

fullcirclecandles.com
Order online or from the
Cumberland Farmers Market

10% of profits goes to local and national charities.

In Clifftops



1731 CLIFFTOPS AVE. Two stone fireplaces, chef's kitchen. Screened porch, grand en suite master on the main floor. 4 BR, 4.5 BA. 4900 sf. Good rental history. MLS #1319802. \$549,000.



SKY HIGH. A Tuck-Hinton design on the brow rim. 2453 sf, 3 BR, 3.5 BA. 4th floor deck puts you on a level with soaring hawks and eagles. MLS #1252982. \$797,000



HUMMINGBIRD MANOR brow-front home. 4 BR, 3.5 BA. Upper terrace to view drifting clouds. Lush gardens, paved drive, chef's kitchen, fireplace. MLS #1289338. \$739,000



2470 CLIFFTOPS AVE. Panoramic brow rim views above Bethel Cove. 11.45 acres. 2504 sf, 4 BR, 2.5 BA. Garage, 3 screened porches. Amazing decks, orchardstone hearth, fireplace, courtyard entry. MLS #1320962. \$625,000.



SERENITY ON SARVISBERRY PLACE. Creative custom home. 3 BR, 2.5 BA. 50x27 deck, fireplace, vaulted great room, modern kitchen. MLS #1248121. \$524,000



AT LAST, the mountaintop retreat you've been looking for. 4BR, 3BA, quality built by Robertson Vaughn. 9 ft. ceilings, fireplace, great kitchen, move-in ready. MLS #1303772. \$449,000.



1829 HICKORY PLACE. Wood-burning fireplace, wraparound porch, media room, 4 BR, open floor plan on 5 acres. Enjoy walking trails, beach, tennis. MLS #1304896. \$359,000.



ALMOST HEAVEN II ON HUCKLEBERRY PLACE. 3 BR, 2 BA, large main floor master. Mountain stone fireplace, screened porch. MLS #1244044. \$298,000.



FOGGY TOP ON LAUREL CIRCLE. 3 BR, 2 BA. Full side and rear decks. Walk to pool, tennis, bluff overlook. Stone fireplace, vaulted great room. MLS #1274471. \$249,900.



STILL RUN COTTAGE ON BASSWOOD COURT. 3 BR, 2 BA. New roof, new exterior paint, new HVAC on main level. Wood-burning fireplace, front porch, paved drive. MLS #1250558. \$264,900.



FERN GARDEN. Delightful one level 2 BR, 2 BA log cabin. Fireplace, screened porch. Outdoor fire pit. MLS #1247130. \$249,000.

LOTS FOR SALE

1910 Clifftops	\$198,000
104 Clifftops	\$275,000
1721 Hickory	\$ 87,000
2351 Westlake	\$ 75,000
2461 Clifftops	\$ 70,000

New Price!

Troubled?

Call
CONTACT LIFELINE
of Franklin County
967-7133
Confidential Help

MARY KAY
is on the
mountain and
ready to fill
your gift list!

Arlene Barry 598-5681
arleneb6@marykay.com

PILATES CLASSES

Come learn the fundamentals of this amazing exercise system. Develop strong, lean abdominals and back muscles, better posture, increase flexibility and find relief from back pain, neck and shoulder tension.

New Six-Week Beginner Session Starts Jan. 10 at 11:30 a.m. Tuesday & Thursday at the Fowler Center in Sewanee
(open to nonmembers)

Class is \$120 for the six weeks
(See instructor about prorating for absences.)

Ongoing Intermediate/Advanced Class at 9:30 a.m. and 12:30 p.m. Tuesday & Thursday
(Must have previous Pilates experience).

Private and duet sessions on Pilates equipment and personal training in Cardio and Weight Training also available Fridays by appointment.

Contact **Kim Butters, AFAA Personal Trainer, PMA Pilates Instructor, (423) 322-1443**

**NEW YEAR'S EVE
CHAMPAGNE
DINNER**
Saturday,
December 31,
at 6 p.m.

Four courses and champagne for \$49.99 per person. Call (931) 924-3869 for reservations and entrée selection.

Monteagle Inn
Tallulah's Wine Lounge
(931) 924-3869
www.monteagleinn.com

**PATTON
WATKINS
ARCHITECT**

sustainable
design
+
restoration

Patton Watkins,
AIA, LEED AP

931-598-9006
125 University Ave.
P.O. Box 194
Sewanee, TN 37375

pattonwatkins@hotmail.com

Monteagle Sewanee, REALTORS

www.monteaglerealtors.com

931-924-7253

featuring quality homes and building sites in Clifftops, Cedar Rock, Bridal Veil, Sewanee, Savage Bluffs and all around the Mountain!

Jeanette S. Banks, Broker-Owner, numa@blomand.net
Dee Underhill-Hargis, Broker, 931-808-8948, aunderhill@blomand.net
Ray Banks, Affiliate Broker, 931-235-3365, banksgrass@yahoo.com

PO Box 293 • 20 W. Main St. • Monteagle • Fax 931-924-7254

Obituaries

Katherine "Tassie" Ruth Bryant

Katherine "Tassie" Ruth Bryant, age 54 of Sewanee, died Sept. 25, 2011, in Mobile, Ala. She was born Dec. 21, 1957, in Sewanee. She attended Sewanee Elementary School, the Sewanee Military Academy (C'75) and the University of the South. She was preceded in death by her mother, Polly Hutton Bryant; and her son, John R. Schappell Jr.

She is survived by her daughter, Laura Katherine Hurlley, a senior at Penn State; her father, Walter D. Bryant Jr. (longtime athletic Director at the University); brother, Walter (Trey) D. Bryant III; nephew, Walter D. Bryant IV, all of Mobile, Ala.; and several cousins.

A gathering to remember Tassie will be at 3 p.m., Wednesday, Dec. 21, in the Hearth Room at St. Mary's Sewanee. Please bring prayers and remembrances. For more information about the event, please contact Hilda Vaughan, (931) 636-8836, <hilda.vaughan@gmail.com> or Theresa Shackelford, 598-0422, <shackelfordt@bellsouth.net>.

Randall Cornelius

Randall Cornelius, age 61 of Winchester, died Dec. 6, 2011, at Southern Tennessee Medical Center. He worked for L&N Railroad and later at Arnold Air Force Base as a mechanic for 24 years. He attended First Baptist Church in Cowan. He was preceded in death by his parents, Gillie and Jessie Cornelius.

He is survived by his wife, Rose Cornelius of Winchester; sons, Robin (Stephanie) Cornelius of Tullahoma and Scott Cornelius of Cowan; and three grandchildren.

Funeral services were held Dec. 8 in the funeral home chapel. Interment followed in Watson-North Memorial Park. For complete obituary visit <www.watsonnorth.com>.

Memorial Service

A memorial service for Luther Leibensperger, who died Aug. 11, 2011, will be at 11 a.m., Saturday, Dec. 17, at Christ Episcopal Church, Tracy City.



St. Andrew's-Sewanee students (from left) Sophie Starks, Amelia Forry, Mpilo Ngomane, Grace Pyle and Nick Mays were confirmed at the Dec. 12 Eucharist service in the St. Andrew's Chapel. The Rt. Rev. John Bauerschmidt, Bishop of Tennessee, was celebrant and preacher. Seminarian Mollie Roberts (far left) taught the confirmation classes for the students.

Deer Cull from page 1

Biology professor Deborah McGrath and some of her students conducted extensive research on the deer population that they presented to the Sewanee Community Council earlier this year. The deer are a nuisance for gardeners in the community, but pose a serious safety hazard for vehicles and are destroying the plant diversity on the Domain.

"Heavy deer browse is suspected in the low numbers of young oak regeneration on the Domain," said Wilson. According to Mary Priestley, curator of the Sewanee Herbarium, deer

browse has been found to be so detrimental to native ginseng populations that deer can pose a larger threat to the plant than illegal harvesting. She also noted deer browse on almost all the Cumberland Rosinweed she finds on the domain which keeps this globally rare plant from flowering here.

For more information, contact Wilson via email at <wnwilson@sewanee.edu>, or by phone at 598-1268. If residents are concerned about hunting in their neighborhoods, they are always welcome to call the Police dispatcher at 598-1111.

—Reported by Laura Willis




MOORE-CORTNER FUNERAL HOME

Specializing in pre-funeral arrangements • Offering a full range of funeral plans to suit your wishes • We accept any & all Burial Insurance Plans

967-2222
300 1st Ave. NW, Winchester

We are a father & son management team—
Bob & Jim Cortner
Owners/Directors



THIS WEEK AND UPCOMING

YOGA Tuesdays, 9–10:15 am, & Thursdays, 3:30–4:45 pm, offered by Hadley Morris, RYT

CENTERING PRAYER SUPPORT GROUP
Tuesdays, 4 to 5:30 pm

**THE PRACTICE OF LOVINGKINDNESS:
A NEW YEAR'S MINDFULNESS RETREAT**
Dec 30–Jan 1; The Rev. Gordon Peerman and Kathy Woods, presenters
Residential fee, \$300; Commuter Fee, \$190; Deposit, \$50

INTRODUCTION TO CENTERING PRAYER
One-Day Workshop, Jan 7; The Rev. Tom Ward
Fee, \$35 (includes lunch)

8-DAY CENTERING PRAYER RETREAT
Intensive, Jan 8–15; The Rev. Tom Ward
Residential fee, \$695; Deposit, \$50

ST. MARY'S SEWANEE
The Ayres Center for Spiritual Development
Call (800) 728-1659 or (931) 598-5342
www.StMarysSewanee.org
<reservations@stmaryssewanee.org>

Church News

Otey Parish

Otey Parish invites everyone on Sunday, Dec. 18, to celebrate the community's youth and the contributions they make. Following the 11 a.m. service, Fire on the Mountain will serve a Louisiana lunch (red beans and rice, slaw, rolls, French market coffee and beignets). Bazzania will provide music for the event, and unique art items will be available for silent auction. The cost is \$5 per person or \$10 for a family. For additional information contact Betty Carpenter at 598-5926.

Adult Forum at 10 a.m. will host the third session of its interfaith dialogue series. This week's topic is "How Do Y'all Do These Things?" a discussion of Muslim rites of passage, courtship, marriage, baptism and funerals. The Lectionary Class will also explore the Annunciation to Mary.

Middle school youth are invited to "Photographic Reflections," led by Evan Jones, and High School Youth are invited to attend "Film School," led by Fr. Joe Ballard and Betty Carpenter. The Otey Women's Bible study meets at 4 p.m.

Children who are participating in the Epiphany pageant are invited to gather in the church for practice. Nursery care is available from 8:30 a.m. until after the youth celebration lunch, and again from 3:45 to 5:45 p.m.

The children's choir has rescheduled its Dec. 18 performance to Jan. 22. They will resume rehearsals on Wednesday, Jan. 18.

St. Mary's Sewanee Retreats

St. Mary's Sewanee is hosting a number of retreats to ring in the new year. "The Practice of Lovingkindness: A New Year's Mindfulness Retreat," presented by the Rev. Gordon Peerman and Kathy Woods, will be Friday, Dec. 30–Jan. 1. A one-day "Introduction to Centering Prayer" workshop by the Rev. Tom Ward will be 9 a.m.–3 p.m., Saturday, Jan. 7.

An eight-day "Intensive and Post-Intensive Centering Prayer" retreat will be from Sunday, Jan. 8, through Sunday, Jan. 15.

For more information about these opportunities, including schedules and fees, go to <www.stmaryssewanee.org> or call 598-5342.

Christ Church

The Anglican service of Lessons and Carols can be offered by the smallest mission, said Bp. William Millsaps. Fr. Paul Oxner will be the organist for Christ Church's Lessons and Carols at 10:30 a.m., Sunday, Dec. 18.

Each year Christ Church has either a pageant or a play on Christmas Eve. This year's play takes its name from Vivi Keller of Cowan, age 3.

A few weeks ago in Sunday School, Vivi spun a globe around and spontaneously exclaimed, "He lights the world." Martha Millsaps, one of several writers of plays at Christ Church said, "I knew then what the title and the theme of this year's Christmas play should be. It is amazing what you can learn by listening closely to children."



CHURCH CALENDAR

Monday–Friday, Dec. 19–23

7:00 am Morning Prayer/HE, St. Mary's Convent (not Wed)
7:30 am Morning Prayer, Otey
4:30 pm Evening Prayer, Otey
5:00 pm Evening Prayer, St. Mary's Convent (not Wed.)

Wednesday, Dec. 21

6:00 am Morning Prayer, Cowan Fellowship Church

Thursday, Dec. 22, Dec. 29 and Jan. 5

6:30 pm Worship Service, Church of God

Saturday, Dec. 24

8:00 am Morning Prayer/HE, St. Mary's Convent
4:30 pm Crèche Service, Otey
5:00 pm Christmas Eve Service, Christ Church, Monteagle
5:00 pm Evening Prayer, St. Mary's Convent
10:30 pm Holy Eucharist with music, St. Mary's Convent
10:45 pm Holy Eucharist, Otey
11:30 pm Christmas Eve Service, St. Andrew's-Sewanee Chapel

Monday–Friday, Dec. 26–Jan. 6

8:00 am Morning Prayer/HE, St. Mary's Convent (not Jan. 4)
5:00 pm Evening Prayer, St. Mary's Convent (not Jan. 4)

Wednesday, Dec. 28

12:00 pm Holy Eucharist, St. Mary's Convent
5:00 pm Evening Prayer, St. Mary's Convent

Wednesday, Jan. 4

6:00 am Morning Prayer, Cowan Fellowship Church
5:00 pm Rite III HE/Healing, St. James

Friday, Jan. 6

12:00 pm Feast of the Epiphany, Christ Church, Monteagle

Sunday, Dec. 18, Dec. 25 and Jan. 1

All Saints' Chapel
8:00 am Holy Eucharist

Christ Church Episcopal, Alto
11:00 am Holy Eucharist
11:00 am Children's Sunday School

Christ Church, Monteagle
10:30 am Lessons & Carols Dec. 18
10:30 am Holy Eucharist Dec. 25, Jan. 1
10:45 am Children's Sunday School
12:50 pm Christian formation class

Church of the Holy Comforter, Monteagle
9:00 am Holy Eucharist

Sunday Services (continued)

Cowan Fellowship Church
10:00 am Sunday School
11:00 am Worship Service

Cumberland Presbyterian, Sewanee
9:00 am Worship Service
10:00 am Sunday School

Epiphany Episcopal Church, Sherwood
10:30 am Holy Eucharist
10:30 am Children's Sunday School

Grace Fellowship
10:30 am Sunday School/Worship Service

Harrison Chapel Methodist
10:00 am Sunday School
11:00 am Worship Service

Midway Baptist
10:00 am Sunday School
11:00 am Morning Service
6:00 pm Evening Service

Midway Church of Christ
10:00 am Bible Study
11:00 am Morning Service
6:00 pm Evening Service

Morton Memorial United Methodist, Monteagle
9:45 am Sunday School
11:00 am Worship Service

New Life Church
10:00 am Sunday School
11:00 am Worship Service
6:00 pm Worship Service

Otey Memorial Parish
8:50 am Holy Eucharist Dec. 18
10:00 am Christian formation classes Dec. 18
10:00 am Holy Eucharist, Dec. 25
10:00 am Lessons and Carols/HE, Jan. 1
11:00 am Holy Eucharist Dec. 18

St. James Episcopal
9:00 am Children's Church School
9:00 am Holy Eucharist
10:15 am Godly Play

St. Mary's Convent
8:00 am Holy Eucharist
5:00 pm Evening Prayer

Sewanee Church of God
10:00 am Sunday School
11:00 am Morning Service
6:00 pm Evening Service

Society of Friends
9:30 am Meeting, 598-5031

If your church is in our circulation area and would like to be listed in this calendar, please send service times, church address and contact information to <messgr@bellsouth.net> or phone 598-9949.





• New Construction • Remodeling
• Historical Restoration
• Everything else in between

Kevin Sweeton
Tennessee State Licensed
General Contractor
Fully Insured

[931] 924-2444

sweetonhome@blomand.net
1010 W. Main St.
Monteagle, TN 37356



Troubled?

Call
CONTACT LIFE-LINE
of Franklin County
967-7133
Confidential Help

Henley's Electric & Plumbing

Randall K. Henley
More Than 25 Years' Experience

598-5221 or cell 636-3753

news_messgr@bellsouth.net

*"You can take or give
pleasure, but you have to
share happiness."*

From "Two-Liners Stolen From
Others by Joe F. Pruett"

Sewanee Realty

931.598.9200 or 931.636.5864 www.SewaneeRealty.info
115 University Ave., Sewanee

Margaret Donohue,
Principal Broker
931.636.5599

John Brewster,
Broker
931.636.5864



MLS 1325103 - Clifftops,
1150 Sassafras Ct. \$220,000



BLUFF - MLS 1101481 - 196 Oleander
Lane, Sewanee. \$859,000



MLS 1160269 - 231 North Carolina
Ave., Sewanee. \$366,000



MLS 1260369 - 188 Laurel Dr.,
Sewanee. \$359,000



MLS 1254696 - 921 Poplar Place,
Clifftops. \$590,000



MLS 1312109 - 261 Bob Stewman Rd.,
Sewanee. \$115,000

LOTS & LAND

Crossing Ponds Ln, Winchester	1325118	\$42,000
First St., Monteagle	1325122	\$16,800
5 ac Raven's Den Rd	1315490	\$39,900
Laurel Branch Trail	1286031	\$79,900
Jump Off/Haynes Rd	1254930	\$98,000
Sarvisberry Place	1207077	\$83,000
Sarvisberry Place	1244981	\$85,000
Lot 48 Jackson Pt Rd	1222785	\$96,000
Sarvisberry Place	1207077	\$83,000
Saddletree Lane	892954	\$38,000
Saddletree Lane	892958	\$35,700
Saddletree Lane	892961	\$28,700
Jackson Point Rd	686392	\$29,000



BLUFF - MLS 1177179 - 668 Rattlesnake
Spring Road, Sewanee. \$449,800



MLS 1252128 - Sewanee area home.
\$1,200,000



MLS 1307172 - 569 Haynes Rd.,
Sewanee. \$539,000



MLS 1302707 - 656 Raven's Den Rd.,
Sewanee. \$329,000



MLS 1305453 - 974 Old Sewanee Rd.,
Sewanee. \$324,000



BLUFF - MLS 1321307 - 952 Sunset
Rock Rd., Monteagle. \$299,000



MLS 1244570 - 120 Bob Stewman Rd.,
Sewanee. \$133,000



MLS 1252986 - 370 Curlicue,
Sewanee. \$249,000



MLS 1257094 - 1811 Bear Court,
Monteagle. \$289,000



MLS 1274914 - Pearl's,
15344 Sewanee Hwy. \$375,000



MLS 1298102 - 1521 Jackson Point Rd.,
Sewanee. \$149,900



MLS 1264861 - 170 Tate Rd., Sewanee.
\$325,000



MLS 1309177 - 238 Willie Six,
Sewanee. \$99,800



MLS 1275214 - 245 Running Knob
Hollow Rd., Sewanee. \$280,000



MLS 1203016 - 94 Maxon Lane,
Sewanee. \$399,000



MLS 1262670 - 937 Dogwood Dr.,
Clifftops. \$258,000



BLUFF - MLS 1198478 - 3335 Jackson
Point Rd., Sewanee. \$289,900



MLS 1242107 - 115 North Carolina Ave.,
Sewanee. \$490,000



MLS 1233623 - 824 Jim Long St.,
Monteagle. \$249,900



MLS 1214614 - 336 Nancy Wynn Rd.,
Sewanee. \$249,999



MLS 1262738 - 925 Dogwood Dr.,
Clifftops. \$175,000



MLS 1302421 - 621 Dogwood Dr.,
Clifftops. \$178,000

BLUFF TRACTS

Stagecoach Rd	1308657	\$165,000
Stagecoach Rd	1308659	\$185,000
Ravens Den Rd	1297607	\$ 80,000
Saddletree Lane	1207074	\$ 85,000
Jackson Point Rd	1111807	\$ 99,000
Jackson Point Rd	1111815	\$ 99,000
Jackson Point Rd	1099422	\$218,000
Jackson Point Rd	1101401	\$ 99,000
Lot 36 North Bluff	1064111	\$ 99,900
Saddletree Lane	836593	\$ 75,000
Raven's Den	1015362	\$129,000
Jackson Point Rd	850565	\$ 80,000



Retiring SES teacher Larry Jones (center) with Carl Burnette (left) and SES principal Mike Maxon.

Mr. Jones from page 1

Former students sported nametags with the nicknames Mr. Jones had given them. As Coach Gilliam steered him up to the front of the assembly in a wheelchair, Jones was feted with a song written by former student and current SES aide Ingra Stevens to the tune of "Mr. Grinch." Kim Foster crowned him the "Retired King." Student Meredith Foster presented him with a gigantic bag of Twizzlers.

Next came the "Top Five Things" SES would miss about Mr. Jones.

5. From his grandson and third-grade student Camden Eslick: Our ride home.

4. From principal Mike Maxon: Your radiant smile.

3. From teachers Rebecca Betancourt and Barbara King: Your help with the birthday song (he evidently

"The Mr. Jones Song" (sung to the tune of "You're a Mean One, Mr. Grinch")

You've got style, Mr. Jones,
With your Gumby-esque décor.
To your Jimmy Buffet wardrobe and the throw rugs on the floor, Mr. Jones,
No one could ever accuse of being a bore!

You're an old one, Mr. Jones,
A crusty aged sage.
You were tenured teaching Gaelic at the end of the Ice Age, Mr. Jones,
Your diplomas on a rolled up leather page.

You're a wise one, Mr. Jones,
You helped invent the wheel.
You think "texting" is in Sanskrit to be done with ink and quill, Mr. Jones,
Experience like yours is rarely real.

You're so groovy, Mr. Jones,
The quintessential cool.
Teaching from the daily paper perched upon a Harley stool, Mr. Jones,
You almost make it fun to be in school.

We will miss you, Mr. Jones,
Your biting whip-like wit.
The hallway will be empty where your Einstein's used to sit, Mr. Jones,
Who'll be here to tell us "Stop being a twit!"?

does sign language poorly).

2. From custodian Jenny Gore: Vacuuming your many rugs.

1. From fifth-grader John Beavers: Our nicknames.

Mr. Jones received two nicknames "I AM Gumby" and "Low Rider" from the students.

Mr. Jones is well-known for his gruffness, surfboards, Gumby's, throw rugs, Harley-Davidson motorcycles, civics lessons and having his "Einstein's" sit out in the hall. Jones is

originally from California. He went to Tennessee Tech on a track scholarship. He started teaching in Franklin County at Sherwood Elementary and then moved to Decherd Elementary.

He began teaching at SES in 1995. Alfonso, Molly, the Beav, Ironman, Andy Panda, Giuseppe, Cat, Cookie, Johnny Appleseed and Bob, to name a few, were lucky to have had him in their lives.

—Reported by K.G. Beavers

SES PTO Open Forum on Education

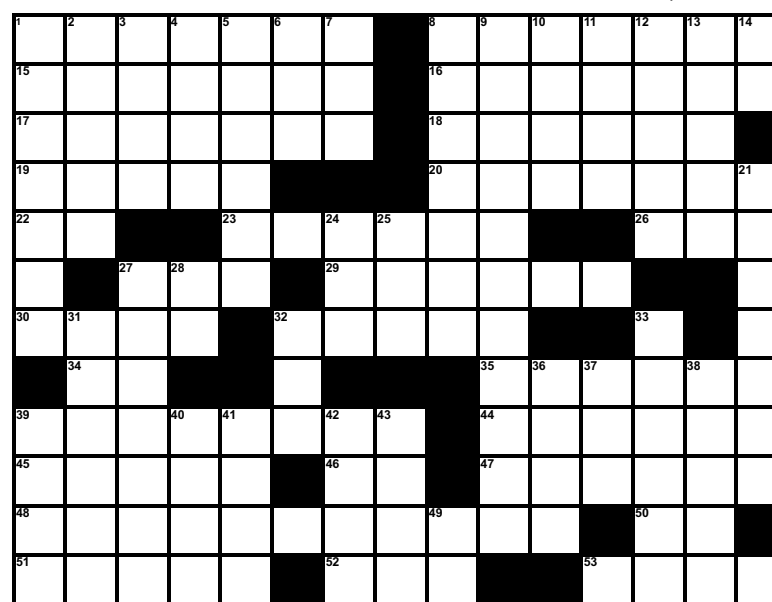
The Sewanee Elementary Parent Teacher Organization is hosting an open forum on the education and budget issues facing our county and state. The open forum will be 6-7 p.m., Tuesday, Jan. 24, in the SES cafeteria.

Topics include the waiver from No Child Left Behind, evaluations, TCAP scores and the Franklin County school board budget. Guest speakers will be on hand to address these issues.

For more information, contact the SESPTO Secretary at <sesptoews@gmail.com>.

A Sewanee Holiday Crossword Puzzle

by Daedalus



ACROSS

- 1 1886 Tower, now with bells
- 8 1964 Residence hall addition
- 15 Political debate topic
- 16 London adieu
- 17 Item used at the Equestrian Center
- 18 Kirby-Smith's wartime self-comparison
- 19 One-on-one student
- 20 Make someone a celebrity
- 22 ___ Bean, catalog and Maine superstore
- 23 ___ de France, biking challenge
- 26 Profs give these out on day one
- 27 Sewanee student lifesavers
- 29 U.S.A.F. term
- 30 ___ Yang Twins of rap
- 32 Longest European river
- 34 Tin, on the table
- 35 Fowler Center pool attire, maybe?
- 39 Chapel of the _____, 2000 campus addition
- 44 Grumman F-14 nickname
- 45 Item in University Corner stone
- 46 The Ocean State
- 47 Solvent used to remove things
- 48 Noah's faith showed itself this way (3 words)
- 50 ___ Shasta
- 51 U.S. playwright, "Waiting for Lefty"
- 52 ___ College Drive
- 53 Frat house staple

DOWN

- 1 The bells in the Tower
- 2 Original Cooley's Rift developer
- 3 In the past, long time ago
- 4 Captain Hook's right-hand man
- 5 Sony and Capitol, for example
- 6 Money-saving option
- 7 Nanjing's main airport, for short
- 8 University's food place
- 9 Prof. Delcamp's role
- 10 Spanish for nothing
- 11 Real-time network acronym
- 12 Notitia de _____, part of Rorigo Bible
- 13 Cardinals' legend Dean
- 14 McCallie's John Strang, to friends
- 21 University's third Chancellor
- 24 Prof. Peterman topic, perhaps?
- 25 Middle East asset
- 27 Make someone more dignified
- 28 Milligram, for short
- 31 Fashion section in UK's Telegraph
- 32 Rocky Top fan
- 33 Evolved
- 36 The Fighting Bishop
- 37 Large Australian bird
- 38 He said there were nine circles
- 39 Alley's namesake, shortened
- 40 Make a long, straight cut
- 41 ___ off, on hole number 1
- 42 Ireland
- 43 Geometry term
- 49 Rootbeer vendor

(Solution is on page 15.)

SAUSSY
CONSTRUCTION, L.L.C.

Fred Saussy, General Contractor

Residential • Remodeling • New Construction
Licensed & Insured

496 Kennerly Rd • Sewanee, TN 37375 • (931) 598-5981
fredsaussy@gmail.com • www.sausseyconstruction.com

FINE DINING AT *The Edgeworth Inn*

Cynthia's **NEW YEAR'S EVE MENU**
ON CHESTNUT HILL

Seating Times: 7:00, 7:30 and 8:00 p.m.

—CHOOSE AN APPETIZER—
*Bang-Bang Shrimp Cakes *Black-Eyed Pea Cakes

—CHOOSE SOUP OR SALAD—
*Lobster Bisque *Cynthia's Salad

—CHOOSE AN ENTREE—
(Served with a vegetable du jour, a starch and bread du jour)
*Champagne Poached Salmon
*Filet Mignon with a Port Reduction Sauce
*Braised Lamb Shanks *Vegetarian Meatballs

—CHOOSE A DESSERT—
*Gingerbread Cake with Eggnog Crème Anglaise
*Chocolate Soufflé Cake *Rum Raisin Apple Cobbler

Reservations required: 931-924-4000.
Bring your own wine- \$1.00 disposal fee per bottle.

Located at The Edgeworth Inn • 19 Wilkins Ave. • Monteagle, TN • 931-924-4000
chestnuthillcafe@mac.com • Full menu at EdgeworthInn.com/Restaurant

More Need Room? *We Sell Boxes!*

Mountain Storage
(931) 598-5682

■ Security Gate Dan & Arlene Barry ■ Security Camera
Hwy 41 - Between Sewanee & Monteagle
5X10 | 10X10 | 10X20

For Your Antiques and Prized Possessions
Climate Control
5X10 10X10 10X15 10X20
Temperature and Humidity Regulated

BBB

HEAVEN ON EARTH...
NOW AVAILABLE IN SEWANEE

Lost Cove photography courtesy of Stephen Alvarez.

The Cumberland Plateau is the world's longest hardwood forested plateau. Widely considered one of the most biologically rich regions on earth. Rivaling the biodiversity of tropical rainforests. It is the home of Myers Point.

Seize your once in a lifetime opportunity! Many will call it a great investment. Others will call it the perfect community of like-minded neighbors. For all who desire to live surrounded by nature, history, beauty, quality and serenity, you'll want to call it home.

- 480-acre private gated community
- 24 exclusive home sites; lakeside living or bluff vista life
- Timeless, organic, craftsman architecture standards
- Land Trust of Tennessee perpetually protected forests
- Over four miles of walking and riding trails
- Community barn, pastures, resting benches, and fire pit
- Panoramic views of Champion Cove, Lost Cove and the Cumberland Plateau
- Minutes from The University of the South

MYERS POINT
At Sewanee

For more information call John Currier Goodson
at (931) 968-1127 or visit our website: www.myerspoint.com

©2010 Myers Point, LLC. All rights reserved.

*Merry
Christmas and
Happy
New Year
from the staff
of the
Messenger!*

Tea on the Mountain

For a leisurely luncheon
or an elegant afternoon tea

11:30 to 4 Thursday through Saturday

DINNERS BY RESERVATION
(931) 592-4832
298 Colyar Street, US 41, Tracy City

Senior Center News

Christmas Luncheon and Drawing for Quilt Plans

The annual Christmas luncheon will be Tuesday, Dec. 20. Make reservations now for the \$6 per plate lunch. The "Follow the Leader" quilt (pictured below), hand-pieced by members of the Senior Center and quilted by Robin Mainzer, will be given away at a luncheon drawing that day. Tickets are available at the center (\$2 each). The winner does not have to be present to win.

The center will be closed Dec. 22-26.



Senior Menus

The Sewanee Senior Center serves lunch at noon Monday through Friday. The suggested donation is \$3 (\$0 or older) or \$5 (under 50). Please call by 10:30 a.m. to order lunch.

Dec. 19: Hamburger, trimmings, french fries, dessert.

Dec. 20: Baked ham, green beans, corn on cob, sweet potatoes, rolls, dessert.

Dec. 21: Teriyaki chicken, egg roll, wonton soup, dessert.

Dec. 22-26: Center closed. Merry Christmas!

Dec. 27: Cheeseburger, home fries, slaw, dessert.

Dec. 28: Open face roast beef, mashed potatoes, green beans, dessert.

Dec. 29: Pinto beans/ham, au gratin potatoes, okra, cornbread, dessert.

Dec. 30: Chili, hotdog, slaw, dessert.

Menus may vary. The center is located at 5 Ball Park Rd. (behind the Sewanee Market). To reserve a meal or for more information about any of the programs, call the center at 598-0771.

ONLINE AND IN COLOR!
www.sewaneemessenger.com



June Weber Gooch-Beasley Realtors

Serving the Sewanee and Monteagle area
 with quality real estate service:
 -39 years of experience
 -Mother of Sewanee alumnus



www.gbrealtors.com junejweber@bellsouth.net
 June Weber, CRB, CRS, GRI Broker 931.636.2246
 GOOCH-BEASLEY REALTORS 931.924.5555



Community Carolling Come All!

Sunday December 18th
 Front Steps at 5:00

Hot Chocolate and Coffee Provided
 Bring Cookies

A Great Good Place

University Job Opportunities

Exempt Positions

Director of Field Education and Lecturer in Contextual Education; Assistant Director of Marketing and Admissions (Sewanee Summer Music Festival); Director of Research.

Non-Exempt Positions

Financial Aid Assistant.

Descriptions of these positions are available at <www.sewaneed.edu/per_sonnell/jobs>. Apply at <<https://www.sewaneed.edu/site/j9UB9e/application>>. For more information, contact Christy Owens, human resources coordinator, at 598-1381 or by email at <ctowens@sewaneed.edu>.

Open Monday-Friday 9-5;
 Saturday 10-2

598-9793
 90 Reed's Lane, Sewanee



**WOODY'S
 BICYCLES**
 is on the Mountain
 in the red building behind Shenanigans
AND OFFERS RENTALS!

Full-Service Bike Shop featuring New Bikes
 by Trek, Gary Fisher, Lemond
 All Necessary Accessories and Bicycle Repair

E-mail
woody@woodysbicycles.com
www.woodysbicycles.com

WOODARD'S

Your Christmas Headquarters



19 Days Till
 Christmas!
 Sunday Opening 1pm to 6pm



Diamonds From Around the World Hand Selected in Antwerp Belgium

\$150 Off*

Any loose diamond of
 \$1,500 or More

Good Thru 12.31.11

*see staff for details

\$100 Off*

Any mounting \$500 or more

Good Thru 12.31.11

*see staff for details



Northgate Mall • Tullahoma • 454-9383 • woodards.net



Lorena's
~ Cafe and Catering ~

Hours:
Tuesday-Saturday 7am-4pm
Friday and Saturday night 5pm-9pm
(Reservations necessary - BYO wine)
Sunday Brunch Buffet 9am-3pm

Friday and Saturday, December 16th and 17th
Dinner Served From 5-8PM
Make reservations now to reserve a table. Bring own wine (no cork fee).

Menu
Roasted Duck with rum raisin sauce
Lamb Chops with mint jelly
Roasted Cornish Hens w/ rosemary sauce
Beef Tenderloin with Bearnaise sauce

Musical Guests
Sarah Givens
Cricket and Snail
Gail Castle

(931) 924-4438
922 West Main Street
Monteagle, TN 37356

We serve and retail
JUMP-OFF MTN JAVA,
a locally roasted coffee.

Blue Monarch Hosts Achievement Ceremony

The community is invited to join Blue Monarch in celebrating the outstanding achievements of their residents, and the successful completion of the long-term program by Stacy Caldwell.

The ceremony will be at 3 p.m., Sunday, Dec. 18.

"This is always a meaningful ceremony, but this year's promises to be extra special," said Susan Binkley, founder and director of the Blue Monarch.

There will be music and performances by the women and their children.

"Completing the Blue Monarch program is a significant accomplishment for the entire family," Binkley said. "We are extremely happy to honor Stacy and her three girls for this enormous milestone."

Stacy plans to continue working for Out of the Blue Granola until she begins college at Austin Peay in the fall.

Stacy and her daughters will be the first residents in the new transitional housing cottage on the Blue Monarch property. There will be a brief dedication of the cottage following the Achievement Ceremony.



Stacy Caldwell

Anyone interested in attending may contact Kim Seavey at (931) 924-8900 or <kim@bluemonarch.org> for directions.

Blue Monarch, a long-term residential program for women and children recovering from abuse and addictions, has served more than 300 women and children from across the state of Tennessee since 2003.

Civic Association

from page 1

Association to create a new list (merging the community classified lists) that will be administered by no less than three Civic Association members; any costs will be shared equally by the Civic Association and University. The new list will be called "Sewanee Email." Current subscribers to both lists will have the opportunity to opt out of the new list. Subscribers will also have the option of receiving only emergency notices and weather bulletins.

Prior to introducing Priestley, Friends of South Cumberland (FSC) board member Margaret Matens talked about the mission and work of the FSC. The organization's mission is "to support, preserve, and protect the South Cumberland Recreation Area," Matens said, but land acquisition is only a small part of the FSC's work.

The organization recently purchased a truck for the rangers. The Friends' work with children includes a park appreciation program for all Grundy County fourth- and fifth-graders; the Junior Ranger program; and a new initiative at Tracy City Elementary geared toward training children to be trail guides in the Fiery Gizzard area.

Priestley spoke about the two recently published books rooted in her close ties to the South Cumberland region. The "Hike 'Em All" trail guide was written in response to a request by the Tennessee Trails Association, which financed the project. The invitation came after Priestley and her hiking partner, Sally Hubbard, hiked all of the more than 80 miles of trails in the South Cumberland region. All proceeds from sale of the guide go to further the work of the Friends.

Priestley wrote the children's book "William's Wildflowers" in response to an invitation by Bill Crutchfield, son of architect and painter William Crutchfield who left a legacy of 465 wildflower paintings featuring South Cumberland area species. "Bea" the honeybee narrates the story, with 50 of Crutchfield's paintings incorporated in the text. Both books were designed by Latham Davis.

The next meeting of the Civic Association will be on Thursday, Jan. 19. It will focus on business issues, including membership recruitment, revising the bylaws and the Community Chest process.

Tell them you read it here!

ISKA H. HOOLE

Attorney at Law
Rule 31 Listed Mediator

143 College Street, Suite 2 • P.O. Box 876 • Monteagle TN 37356
(931) 924-8884 Office • (931) 924-8883 Fax

10:00 am – 6:00 pm
7 Days a Week




Suunto


Merrell


ArcTeryx


Smartwool


Sorel


The North Face


Sperry


Marmot


The North Face


Patagonia


Dansko


Mountain Khakis


FiveFingers

Holiday Sale
Everything At Least
20% Off!
All Down Jackets 25% Off!

50% OFF Upstairs!
All Sales Through Christmas!!

























903 W Main St. Monteagle TN, 37356 (931)924-4100 www.themountainoutfitters.com

Upgrades & Changes at duPont

During the break between semesters, the duPont Library will be having many of its computers upgraded. Part of this process will include a new system for users to log in before using a computer. The move to this new system, which will allow the library to better manage our technological resources, will require individuals who are not now, nor have ever been, University faculty, staff or students to re-register for computer use. These people will need to be assigned a new user name and password. The library staff plans to begin this re-registration process soon.

Additionally, the library will also be initiating a print management system that will contribute to sustainability efforts by allowing library staff to better monitor printing and reduce wasteful or unwanted printing. Beginning in mid-January, individuals who are not current University faculty, staff, students or emeriti will be charged \$.15 per page for printing, the same as the charge for photocopies.

If you have any questions about these changes, please contact the library at 598-1664.

Two Vie for SUD Seat

The Sewanee Utility District of Franklin and Marion Counties (SUD) is an independent government agency. It is governed by a five-person board of commissioners who are elected by the ratepayers. The current commissioners are Ken Smith, Randall Henley, Karen Singer, Cliff Huffman and Doug Cameron. In January 2012, an election will be held to fill the seat now held by Doug Cameron. Cameron will have served two terms and is ineligible for re-election.

The following two candidates have filed petitions to run for the seat. Early voting begins on Jan. 3 and concludes on Jan. 24, in conjunction with the SUD annual meeting.

Art Hanson

I am running for a position on the board of commissioners of the Sewanee Utility District. I have worked at the University for more than 17 years and lived in the Midway area for the past five years. I am currently a volunteer firefighter with the Sewanee Volunteer Fire Department and serve on the national board of directors for the Athletic Equipment Managers Association. Prior to moving to Sewanee, I was with the Foster Falls Volunteer Fire Department, where I also served on the board of directors as a firemen's representative and the board director.

My family; Maggie, Alex and Jacob, enjoy this community and plan on staying in the Midway area for many years. I grew up with my father as a county commissioner for Maury County, Tenn., and understand the importance of serving one's community. I believe that the Sewanee Utility District has made a major difference in the life of this community and can continue by helping to lead in the growth of this area. Now is the best time to make sure our services are competitive with other utility districts so that we continue to add customers, provide services at an efficient cost and protect our natural environment.



Art Hanson

Tom McCawley

I am new to Sewanee, having moved here in August with family. My wife, Ann, is an attorney and my daughter, Annie, is a junior at St. Andrew's-Sewanee School. I also have a son, Stuart, who is a student at North Carolina State University.

I have had a 30-plus year career as a mechanical engineer, working the last 20 years as a consultant specializing in piping systems for industrial applications. I have engineering degrees from Tennessee Tech and Virginia Tech, and am a licensed professional engineer in Tennessee and five other states. I also volunteer with national committees that develop design standards for pressure piping systems.

Water-related consulting projects include the analysis of underground steam and chilled water piping running in tunnels throughout the campus of the University of North Carolina, Chapel Hill. I also investigated the failure of a buried water pipe at the headquarters of TIAA-CREF in Charlotte, N.C. This failure was discovered when the parking lot fell in.

Providing quality water to the Sewanee area at a reasonable price is a challenge. I would welcome the opportunity to serve on the Sewanee water board.



Tom McCawley

SUD December Agenda

The agenda for the 5 p.m., Wednesday, Dec. 28, meeting of the Sewanee Utility District board consists of the following items:

Approval of the agenda; approval of November minutes, (as distributed); general manager's report; and financial report.

Unfinished business: election update—voting begins; the 2012 budget process and approval of 2012 budget.

New business: Does SUD want to utilize federal programs for natural gas-powered vehicles?

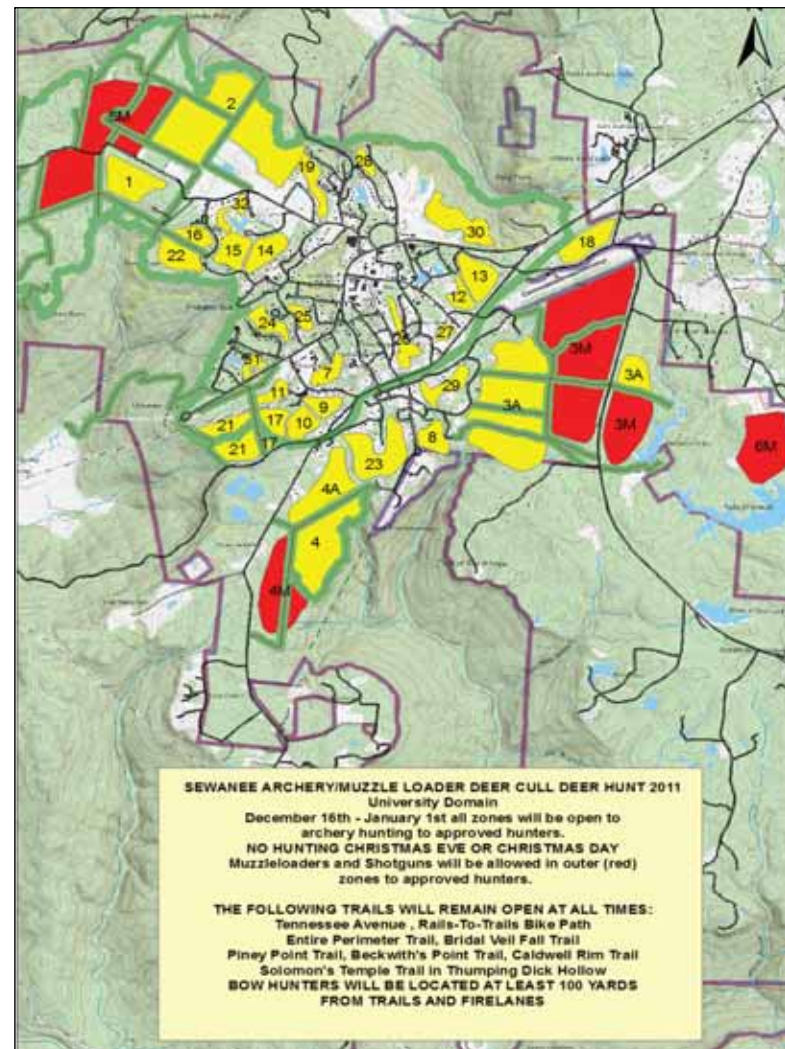
Scheduled meetings: annual meeting is 5 p.m., Tuesday, Jan. 24.

Visitor comments, announcements and adjournment.

Curbside Recycling Jan. 6

Residential curbside recycling pickup in Sewanee is on the first and third Friday of each month. Friday, Jan. 6 will be a pickup day. Recyclable materials must be separated by type and placed in blue bags by the side of the road no later than 7:30 a.m. Please do not put out general household trash on this day.

Blue bags may be picked up in the University Lease Office, 110 Carnegie Hall, at the Physical Plant Services administrative office on Alabama Avenue or at the PPS warehouse on Georgia Avenue.



Sewanee
Chorale
CONCERT

DECEMBER 17 • 7:00 PM
MCCRORY PERFORMING ARTS CENTER
ON THE CAMPUS OF SAINT ANDREWS-SEWANEE

J.S. BACH
R. VAUGHN WILLIAMS
JOHN RUTTER
AND OTHER CHRISTMAS DELIGHTS
WITH CHAMBER ORCHESTRA

GARY W. STURGIS • CONDUCTOR
STEVEN SHRADER • CONDUCTOR

HAPPY HOLIDAYS!
Remember to drink responsibly—we want you as a customer for a long time!

 **Village**
Wine & Spirits Inc.

COMPETITIVE PRICES AND FRIENDLY SERVICE

~ ALL YOUR FAVORITE MAJOR BRANDS
~ Great Wine Selection ~ Special Orders Available
NOW OPEN IN OUR NEW LOCATION!
Across Highway 41A from Monteagle's Piggly Wiggly
(931) 924-6900 ~ Mike Gifford, Owner
Open Mon–Thu 11 a.m.–9 p.m.; Fri–Sat 9 a.m.–11 p.m.



John and Bonnie McCardell
cordially invite you to a
COMMUNITY OPEN HOUSE
at Chen Hall
607 University Avenue
Sewanee

Sunday, December 18, 2011, 4–6 p.m.

THE UNIVERSITY OF THE SOUTH

AT THE MOVIES

Sewanee Union Theatre This Week
Friday–Saturday, Dec. 16–17, 7:30 p.m. and Sunday, Dec. 18, 2 p.m.
Elf

97 Minutes • Rated PG • Admission \$3

Buddy the Elf (Will Ferrell), an orphan who was left as a baby at the North Pole with Santa, travels to New York City in search of his real father, Walter Hobbs (James Caan). Combining the archetypal stories of the journey home, the orphan's search for his parents, and the delights of falling in love, "Elf" is darn near perfect. There are terrific performances from old favorites such as Bob Newhart, Edward Asner and Caan. Zoëy Deschanel is lovely as Buddy's co-worker Jovie, and Ferrell is a delight. "Elf" could be my favorite Christmas movie and is chock-full of wonderful, memorable, quotable lines. "The best way to spread Christmas cheer is singing loud for all to hear." Rated PG for some mild rude humor and language.

—LW

Gallery to Help the Homeless

The River Gallery in Chattanooga is sponsoring the Chattanooga Community Kitchen this holiday season. Donations of canned goods or money are being accepted through Dec. 24 at the River Gallery. Donors will also receive a 5 percent discount on items purchased at the gallery.

The Chattanooga Community Kitchen's mission is to help the homeless in Chattanooga.

The December show at the Gallery is titled "Wearable Art." In December the exhibiting artists prove that the human body can be the perfect canvas. Fiber artist Jen Swearington creates wearable work that is hand-dyed or screen-printed from her illustrations. Jeweler Deb Karash's mechanical, metaphorical and emotional connections play an important role.

The River Gallery is located in the Bluff View Art District, 400 East Second St., Chattanooga, and is open from 10 a.m. to 5 p.m., Monday through Saturday. Contact the gallery at (423) 265-5003.



Pendant by Deb Karash

IONA Offers Books, Life-Size Crèche Display on Saturday

IONA: Art Sanctuary will be open 1 to 3 p.m., Saturday, Dec. 17, for two events.

Twelve boxes of a variety of books are offered for free to anyone who wishes to sort through them for personal reading or to give as a gift for someone. The offer is open to everyone, and will be repeated pre-Easter season 2012. Unfortunately, no children's books are in the assortment. If others wish to join in sharing their books with others, they are welcome to bring them. These books are for individuals to take as many as they wish and for anyone they choose.

Books remaining will be offered to VA hospitals and to prisons.

"This offering is to support the idea behind Occupy Wall Street's People's Library and to acknowledge President Obama's wonderful speech on the economy this past week about sharing our democracy, spreading the wealth throughout our citizenry, and making a real place in our hearts for our homeland," IONA founder, Edward Carlos, said. "This, too, is a way of saluting our returning soldiers from abroad. For anyone wishing a book for veterans and their families, neighbors, your own family members, friends, teachers, students, the infirm, prisoners, or



"Creation: Nativity" by Edward Carlos

others to give as gifts in this holiday season, you are welcome."

In addition, on display will be Carlos' "Creation: Nativity," a life-sized crèche based on mesas in Monument Valley, Utah, that inspired the artist during a camping trip. The colors and the textural surfaces derive from observation of the mesas during two events: full moon and new moon. Last year's Epiphany addition of blue and white lighting will again illuminate the crèche as a floating halo above the figures. Please note that nudity is involved with two figures, male and

female, in the crèche.

Since IONA: Art Sanctuary has no heat, please dress for personal warmth.

For parking, unless it is raining or snowing, enter the open field at the sign at 630 Garnertown Rd., Sewanee, off Route 56 (Sherwood Road) from 41A. Guests may also park on gravel behind the studio by entering at the top of the hill.

HAPPY HOLIDAYS

**exceptional doctors
 DELIVERING
 exceptional care**

The physicians at the Women's Center and the Childbirth Center at Southern Tennessee Medical Center are committed to providing a personal style of care and services to women in all stages of life.

The Women's Center

- Digital Mammography
- Bone Densitometry
- Stereotactic Breast Biopsies
- Preventative and Annual Care Exams

The Childbirth Center

- Newly remodeled OB Unit, for comfort and convenience
- Large Private Labor/Delivery/Recovery Rooms
- State-of-the-art security system for safety of the newborn and families
- Free Childbirth Classes
- Free Breastfeeding Classes

Make an appointment with one of our experienced doctors today
931-967-8200 | www.SouthernTennessee.com
 Physician Referral Line: 800-890-8339



Check out My Baby Expectations, a free, personalized e-newsletter that provides month-by-month pregnancy information and development guide for the baby's first year of life.

Southern Tennessee
 MEDICAL CENTER
Emerald Hodgson
 HOSPITAL
 Skilled Hands. Caring Hearts.

Sewanee Children's Center

Space available in each of these classes after Christmas:
***3- to 5-year-old class (one opening)**
***After-school program (two openings)**

Call Maggie Hanson at 931-598-5928 or sccenterbiz@bellsouth.net for more information.

CAMPBELL CONSTRUCTION

Owner: Tommy C. Campbell
 Call (931) 592-2687

**DRIVEWAY WORK • GRAVEL HAULING
 • DOZER & BACKHOE**

plus Concrete Work • Water Lines • Clear Lots • Garage Slabs
 • Sidewalks • Porches & Decks • Topsoil & Fill Dirt • Roofing
 • Additions to House • Septic Tanks & Field Lines

CSB
CITIZENS STATE BANK

Now Offering Investments
**Contact Barry Rollins in Monteagle
 931-924-7800**

Pam Dent
 Licensed Massage Therapist
 423.718.8925

Massage on the Mountain
 Holiday Gift Certificates
 \$45 for a one-hour massage
 \$100 for a 3-hour partner massage class
 offices in Sewanee and Chattanooga

ANGELWITH ANATTITUDE

by Virginia Craighill



Dear Angel,

Does the world really need another picture frame, scented candle or coffee cup? What can I do to thank the folks who make my life better: teachers at my kids' schools, my bridge group friends and my co-workers? Help!

—Stressed out Soccer Mom

Dear Santa's Little Helper,

Picture frames are obsolete. No one's pictures ever make it out of the digital camera or the computer. Look around any home and you'll see all the framed pictures are at least ten years old. Your single male co-worker would just end up cutting out a picture from the Victoria's Secret catalogue to put in the frame and say it was his girlfriend, which is pathetic. As for the scented candle, how would you feel if your child's teacher's cat set its tail aflame one night and burned her house down? Truly an irresponsible gift! And do people really have bridge groups?

One of the most memorable Christmas gifts of my childhood was from an aunt who gave all the children in our family little envelopes from UNICEF. Inside the envelope, it said a donation had been made in our names for needy children in Africa. Every year at Christmas my brothers, cousins and I would look under the tree, find that UNICEF envelope, and curse her under our collective breath. Suffice it to say that aunt and I never became very close.

So, while I don't recommend making donations in the names of materialistic children, I do think your children's teachers, your bridge club friends and maybe even your single male co-worker might appreciate it if you made a donation in their names to their favorite local charities. That way you will both feel like you've done something worthwhile, and no one has to screw in an extra hook for another "World's Best Teacher" coffee mug.

Dear Angel,

My entire extended family (parents, siblings and their families and a few random cousins) is coming to Sewanee for Christmas and I don't know what to do with them. It's not like we have a shopping mall or movie theater to take them to (so we can avoid fractious family conversations about Uncle Herman's drinking problem or the presidential elections). What to do?

—Hopeless Hostess

Dear Bah Humbug,

It's true the crime rate in Sewanee goes way up over the holidays; the SPD spends its time quelling domestic violence in homes where large family groups have gathered for extended periods of time and cannot decide whether to watch Fox News or MSNBC. Be sure to lay in a greater quantity of wine and eggnog than usual for Uncle Herman since both Christmas and New Year's Day are on a Sunday. If you forget, and his supply gets low, check the fraternity houses.

I might suggest that you tell your family members to bring their compound bows so they can join in the fun of Sewanee's holiday deer cull. If things start to get tense in the kitchen, drive them out to the end of Brakefield Road, drop them off, and tell them not to come back until they have something to contribute to Christmas dinner.

If deer-hunting doesn't solve the problem, send them to duPont library to look for movies. They will spend many pleasant hours in the DVD stacks arguing about whether to watch "A Christmas Story," "It's a Wonderful Life," or Uncle Herman's favorite, "Blue Velvet."

You might also consider inviting your friends and their families over for holiday leftovers. It will give you a chance to see whose family is more dysfunctional and will give your father a chance to explain to the political science professor across the street why he believes Sarah Palin would have been the Republican front-runner if only she'd thrown her hat into the race.

When all else fails, there's always charades.

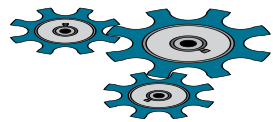
Happy Holidays!

Virginia Craighill invites your questions and queries on matters of etiquette, style and ethics. Send them confidentially to <messgr@bellsouth.net>.

J & J GARAGE

COMPLETE AUTO REPAIR

- Import & Domestic
- Computerized 4-Wheel Alignments
- Shocks & Struts ● Tune-ups ● Brakes
- Our Work is Guaranteed.
- OVER 26 YEARS EXPERIENCE.



Jerry Nunley
Owner

598-5470 Hwy 41-A between Sewanee & Monteagle ● Monday-Friday 7:30-5:30

"Habits are first cobwebs, then cables." —Spanish proverb

Stillpoint

Individual and Group Psychotherapy:

Tamela Sadler, Ph.D.,

931-581-1124

Kate Gundersen, LCSW,

931-235-4498

Maryellen McCone, M.A.,

931-636-4415

Robin Reed, Ph.D., 931-636-0010



Acupuncture, Massage and Bodywork:

Lucie Carlson, 865-591-0012

David Tharp, M.S. LAc,

423-443-2701

Darlene Amacher, LMT,

931-636-1821

Regina Rourk, LMT, CNMT,

931-636-4806

Protected By A
Sewanee Angel

LAUGHING • SINGING • DANCING

Embossed aluminum license plate with a Christi Teasley angel

A HEAVENLY CHRISTMAS GIFT...

Mon-Fri, 12 to 4, Sat 11 to 5

www.thelemonfair.com • (931) 598-5248

60 University Ave., Sewanee

THE LEMON FAIR

Got news? Send it our way! Email news_messgr@bellsouth.net.

Merry Christmas

From our family to yours!!



P.O. Box 39
91 University Ave., Suite 3
Sewanee, TN 37375
www.mysoutherncommunitybank.com
931-598-9113

NOW OPEN!!!!



Fowler Center Holiday Hours

Friday, Dec. 16, 6 a.m.–11 p.m.
 Saturday, Dec. 17 and Sunday, Dec. 18, 9 a.m.–7 p.m.
 Monday, Dec. 19–Friday, Dec. 23, 6 a.m.–7 p.m.
 Saturday, Dec. 24, 9 a.m.–noon
 Sunday, Dec. 25, closed
 Monday, Dec. 26, 6 a.m.–6 p.m.
 Tuesday, Dec. 27–Friday, Dec. 30, 6 a.m.–7 p.m.
 Saturday, Dec. 31, and Sunday, Jan. 1, 9 a.m.–4 p.m.
 Monday, Jan. 2, and Tuesday, Jan. 3, 6 a.m.–7 p.m.
 Wednesday, Jan. 4, 6 a.m.–10:45 p.m.
 Thursday, Jan. 5 and Friday, Jan. 6, 6 a.m.–7 p.m.
 Saturday, Jan. 7, 9 a.m.–7 p.m.
 Sunday, Jan. 8, 9 a.m.–6 p.m.
 Monday, Jan. 9–Friday, Jan. 13, 6 a.m.–7 p.m.
 Saturday, Jan. 14 and Sunday, Jan. 15, 9 a.m.–7 p.m.
 Monday, Jan. 16, regular hours resume, 6 a.m.–11 p.m.
 Contact the Fowler Center at 598-1793 for pool hours.

Bill Barry and the staff of the Fowler Center wish everyone a very Merry Christmas and a happy and healthy New Year!

HAPPY HOLIDAYS, READERS!

Mountaintop Specials In or Near Sewanee



225 SHADOW ROCK. Screened porch, hilltop setting, easy access to I-24 or Sewanee. 3 BR, 2.5 BA. 1816 sf. Garage, brick trim. Fireplace, energy-efficient. Bonus room above garage. Great storage. MLS #1274061. \$172,900.



140 MAXON LANE, SEWANEE. Love mountain stone? On lake, in woods, 2-car garage, lower shop. New HVAC, ext. paint. Fireplace, hardwood, slate floors. 3/3, 2634 sf. MLS #1324620. \$299,000.



BEHIND SAS ON WILDWOOD LANE. 4/2, 1720 sf. Great rental history, modern conveniences, old-timey porches front and rear. MLS #1245267. \$189,000



779 GEORGIA AVE., SEWANEE. Enter from main highway. 4/2, 1563 sf. Country kitchen, fireplace, beautiful grounds! MLS #1208341. \$139,000



389 N SCENIC BATTLE CREEK LOG HOME with upgrades. 2142 sf. 3 BR, 2.5 BA. Dream setting of 6.3 acres with small lake frontage. Covered surround porches with water views from front and side. MLS #1285614. \$279,000



1613 LAUREL LAKE DRIVE ON THE BROW RIM looking at Clifftops. New, full rear deck for entertaining. 3 BR, 2.5 BA plus bonus room. Covered porch, 2-car garage. MLS #1233767. \$475,000



ALL OR PART OF 418 ACRES, some with brow views, no highway noise. Out of foreclosure, ready for sale. Call Ray to see. MLS #1310630. \$1,966,574.

BUILDING LOTS FROM \$15,000
 Bear Den
 Jackson Point
 Bridal Veil
 Savage Bluffs
 Cedar Rock
 Shadow Rock
 Clifftops
 Summerfield

For other homes and building sites, visit our website at www.monteaglerealtors.com

Monteagle Sewanee, REALTORS

www.monteaglerealtors.com

931-924-7253

featuring quality homes and building sites in Clifftops, Cedar Rock, Bridal Veil, Sewanee, Savage Bluffs and all around the Mountain!

Jeanette S. Banks, Broker-Owner, numa@blomand.net
 Dee Underhill-Hargis, Broker, 931-808-8948, aunderhill@blomand.net
 Ray Banks, Affiliate Broker, 931-235-3365, banksgrass@yahoo.com

PO Box 293 • 20 W. Main St. • Monteagle • Fax 931-924-7254



SAS 10th grader Eliza McNair. Photo by Bob Hoagland

SAS Teams Strong at Invitational

Evans Qualifies for State, 11 Swimmers Qualify for Regionals

The St. Andrew's-Sewanee School swim teams competed on Dec. 10 at the Fowler Center, with the middle school and high school teams each placing third in their divisions. In addition, 11 swimmers on the high school team made the regional cuts and one, Will Evans, made the state cut in the 100 butterfly.

Swimmers who made the regional cut are: Zachary Blount (100 breast and 100 back), Jimmie Joe Boone (100 free and 100 back), Katie Craighill (100 free and 100 fly), Ethan Evans (200 IM and 100 fly), Will Evans (200 free and 100 fly), Denise Hernandez (100 breast), Lucy Howick (100 breast), Annie McCawley (200 free and 100 free), Eliza McNair (200 IM and 100 free), Helen Wilson (50 free and 100 back) and Marisa Wilson (100 breast).

The middle school team had a combined score of 134.5 points. It was a close race, with J.T. Moore Middle School of Nashville placing second with a score of 137.5 and Franklin County Junior High placing first with 184.5 points. The SAS girls placed third and the boys placed second out of the six middle school teams that competed at the invitational meet.

The SAS high school team placed third with a combined score of 131 points. It was a close race against Hume-Fogg Academic Magnet School of Nashville, which placed second with a score of 136, and Notre Dame High School of Chattanooga, which placed first with a score of 194 points. Individually, the SAS high school girls placed second and the boys placed third out of 13 high school teams that

participated.

The coaches said they were proud of all the swimmers and noted how well both teams did. The teams have been training since Nov. 1 for this meet.

Middle school team members who had significant time drops included Erin Berner-Coe and Wyatt Lindlau.

Members of the high school team had significant time drops also Ethan Evans, Eliza McNair, Katie Craighill, Sidney Durant and Joseph Carter.

Home Games

Dec. 16–Jan. 6

Friday, Dec. 16

6 pm Women's Basketball v Oglethorpe University
 8 pm Men's Basketball v Oglethorpe University

Sunday, Dec. 18

1 pm Women's Basketball v Birmingham-Southern
 3 pm Men's Basketball v Birmingham-Southern College
 7:30 pm FCHS V Boys' Basketball v Lawrence Co HS

Tuesday, Jan. 3

5 pm FCHS V Wrestling v Eagleville/Warren County

Wednesday, Jan. 4

5 pm Women's Basketball v Covenant College (Ga)
 7 pm Men's Basketball v Covenant College (Ga)

Thursday, Jan. 5

4:30 pm SES Girls' Basketball v Rock Creek at Townsend
 5:30 pm SES Boys' Basketball v Rock Creek at Townsend

Friday, Jan. 6

5:30 pm GCHS V Boys' Basketball v Signal Mountain
 6 pm FCHS V Girls' Basketball v Tullahoma
 7:30 pm FCHS V Boys' Basketball v Tullahoma

Sernicola's

Steaks, seafood, pastas, homestyle pizza, hot lunch buffet, plus a 22-item fresh and healthy salad bar. Homemade desserts!



www.sernicolas.com • 106 Tennessee Avenue • Cowan • 962-3380
 Open *Tuesday-Saturday • Lunch 11-2 • Dinner 5-8:30
 *Closed on 3rd Tuesday for DAV

It's Christmas at The Blue Chair!

Join us during the Christmas season

CLOSED ONLY CHRISTMAS EVE AND CHRISTMAS DAY



Keep up with us on Facebook



The blue chair Café & Bakery

35 University Avenue, Sewanee (931) 598-5434
www.thebluechair.com / susan@thebluechair.com

Monday – Saturday 7:00 – 6:00 / Sunday 7:00 – 2:00

Winchester Podiatry

CHARLES D. GANIME, DPM

Board Certified in Foot Surgery
 Diplomate, American Board of Podiatric Surgery
 New Patients of All Ages Welcome! We Treat Your Feet!
 Most Insurance Accepted, Including TennCare

We are at 155 Hospital Road, Suite I, in Winchester.
www.winchesterpodiatry.com

931-968-9191

The Gnarled Oak

Fine handmade country furniture, refinishing, caning, seat weaving, and restoration



Cherry Pie Safe

Flat Branch Community
 2222 Flat Branch Spur
 Tracy City, Tennessee 37387
 (931) 592-9680
 Bill Childers, Prop.



SAS sixth-grader Jacob Hanson. Photo by Bob Hoagland

SAS Wrestling Wins Two

The St. Andrew's-Sewanee School varsity wrestling team took to the mats once again Dec. 9 to chalk up another pair of wins against Boyd Buchanan (33-27) and Whitwell (42-12). The middle school had also competed in Tullahoma the day before.

Highlights of the matches came with high school team captain Myles Kincaid and Charlie Woodlief maintaining their undefeated streaks. Tyler Privette jumped into the win column pinning Whitwell, but dropped a hard-fought decision against Boyd. Jimmy Kuo and Robert Post added their first pins of the season.

The middle school team of Jacob Hanson, Alex Hanson, Fritz Stine, Christian Taylor and Michael Schaerer also posted a pin each in Tullahoma on Dec. 8.

SAS Girls' Hoops Wrap-Up

The Lady Mountain Lions of St. Andrew's-Sewanee School hosted South Pittsburg High School on Dec. 6 for what proved to be a physical basketball game. Thirty-three fouls were recorded in the "backyard brawl" for bragging rights. With several players on each team who are friends off the court, the tempers and intensity was palpable. The Lady Lions came out on top with a convincing 57-32 win. Monica Molina led all scorers with 24 points. Sadie Shackelford again stepped up for the Lions, tallying 20 rebounds.

On Friday, Dec. 9 the team traveled to Donelson Christian Academy of Nashville to take on the Lady Wildcats. The team came out and commanded the lead from the beginning, but took control for good with an impressive third quarter in which SAS outscored Donelson 21-4. The final score was 55-41, in favor of SAS. All five starters scored in that quarter, showing what a well-rounded effort can produce. Molina led all scorers with 19 points, and Michaela Shackelford had 10 points.

SAS hosted Kings Academy of Knoxville on Dec. 10 for another important region game. SAS never relinquished the lead, winning 48-33. Molina led the team with 16 points, followed by Allyson Hale with 11 points, Madison Culpepper with eight points, Sadie Shackelford with six points, Michaela Shackelford with three points, and two points each for Katelyn Howard and Jenna Burris.

SES Girls' Defeat North Lake

The Sewanee Elementary School girls' basketball team took on North Lake Elementary on Dec. 8. Each team was looking to improve its overall record, but SES came out victorious.

SES started out with good defensive pressure and capitalized on steals. The lead seesawed back and forth, ending with an 8-8 tie at the half. SES made some key defensive adjustments at the half and calmed down enough to run their offense. SES poured on the points, outscoring North Lake 14-3 in the second half, with the final score, 22-11. Outstanding defensive team play helped to garner the win for SES. At least eight members of the team had steals in this game.

Kate Butler led the way offensively with a game-high 12 points. Anna Post in her debut as point guard scored six points. Mariel Rinck scored two, and Delana Pierce got her first basket of the season. The SES girls' team is now 3-2 on the season.



SAS's Monica Molina (left). Photo by Bob Hoagland

OVERTIME

by John Shackelford



Wishful Thinking

'Twas the night before the season and all through the gym,
Not a player was stirring and only Coach McCarthy was grim.
Their uniforms were hung by the lockers with care,
In hopes that the visitors soon would be there.
The fans were nestled all snug in their seat,
With visions of championships that often repeat.
The referee was wearing stripes and an old ball cap,
Many were shouting that he was taking a nap.
When out on the court there arose such a clatter,
Coach Bubba sprung from his seat to see what was the matter.
Away to the rim the Sewanee player jumped in a flash,
To dunk the ball, and return in a dash.
The bright fluorescents on the court with the newly painted lines,
Gave the appearance of a season with many positive signs.

When what to my wondering eyes should appear,
But a 7-foot post with some bulk in his rear!
With a little old facilities manager so frugal and wary,
I knew in a minute it must be Bill Barry.
More rapid than eagles, the three-pointers they came,
Coach McCarthy whistled and shouted and called his girls by name.
On to Birmingham, then Millsaps and Rhodes,
We'll beat Oglethorpe, Trinity and all of our foes,
To the top of the conference, to the top of the poll,
The coach urged his players, then had to cajole.
As with Sewanee footballs that before a fall day fly,
They meet with a quarterback and then mount to the sky.
Up to midfield the lineman they flew,
With a tricky option and Coach Laurendine, too.

And then in a twinkling, I heard on top of Fowler,
The prancing and pawing, it must be a prowler!
I drew in my program and was turning around,
Down the chimney came the VC in a bound.
In his academic gown and regalia from his head to his foot,
He was tarnished from budget battles, but did not seem kaput.
His eyes, how they twinkled, his speeches so merry,
An increase in applications and the diversity seemed to vary.
His message was simple and wrapped up like a bow,
We'll bring you students who are brighter than the snow.
With a tuition freeze held tightly in his presidential fist,
The prospects they circled and seemed to like the Sewanee mist.
With a bundle of recruits he flung on Lee Ann's back,
He looked like a salesman with trophies in his sack.
His face wasn't broad, and he lacked a round belly,
But the team kept scoring, their play wasn't smelly.

The tennis coach was chubby and plump, a right jolly old elf,
So he ran and he dieted in spite of his self.
With a wink of the coach's eye and a change in the score,
We knew we would not lose—any more.
The players spoke not a word, but went straight to study,
They scored touchdowns and baskets and hung out with their buddy.
So McCardell laid a finger beside of his nose,
And giving a nod, up Shapard Tower he rose.
He sprang to his sleigh and gave all the provosts a whistle,
And away they were spending like riding a missile.
I heard him exclaim as he drove off to the beach,
A Merry Christmas to all! Nothing is out of our reach!

www.sewaneerealestate.com



CHARMING SEWANEE COUNTRY HOME on 5 acres surrounded by exquisite English gardens. 4 BR, 4 BA home. \$385,000. MLS #1193694. Adjacent 22.21 acres available, \$111,500. **40.5 ACRES** with fenced pastures, pole barn and creek. \$202,500. MLS #1271703. **28.85 WOODED ACRES** with cleared trails and has access to Franklin State Forest with more riding trails. **Reduced to \$122,612.** MLS #1268681



CENTRAL CAMPUS TRADITIONAL: Recently refurbished Sewanee home with granite, tile and stainless kitchen, formal dining room, foyer and living room with fireplace. 4 bedrooms, 2-car garage. MLS #1233895. **\$425,000**



ELEGANTLY REFURBISHED Sewanee home with 4 BR, 4-1/2 BA, separate rental apartment, great living areas and gorgeous grounds. **\$449,000.** MLS #1177837



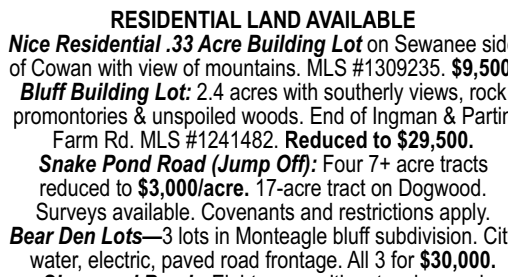
SEWANEE: 237 Lake O'Donnell Rd. Established business location. Perfect for your retail or professional needs. MLS #1296750. **\$145,000**



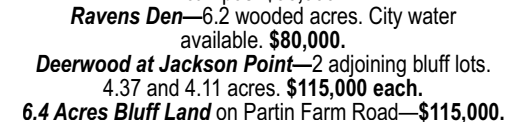
RENOVATED 1930 FARMHOUSE. 1 BR, 1 BA plus office, 1342 sf on .77 acre. Outbuildings: storage building with concrete storm cellar, concrete root cellar and well house. MLS #1298891. **\$74,500**



SCENIC MOUNTAIN LIVING. Perfect spot for lovers of nature and solitude on Cedar Mountain near the University. 3 bedroom, 3 bath house with wrap porch and separate studio or apartment. MLS #1321132. **\$198,500**



SEWANEE RENTAL APARTMENT in Sewanee village. Bright, modern space in great location. \$650/month.



RESIDENTIAL LAND AVAILABLE
Nice Residential .33 Acre Building Lot on Sewanee side of Cowan with view of mountains. MLS #1309235. **\$9,500.**
Bluff Building Lot: 2.4 acres with southerly views, rock promontories & unspoiled woods. End of Ingman & Partin Farm Rd. MLS #1241482. **Reduced to \$29,500.**
Snake Pond Road (Jump Off): Four 7+ acre tracts reduced to **\$3,000/acre.** 17-acre tract on Dogwood. Surveys available. Covenants and restrictions apply.
Bear Den Lots—3 lots in Monteagle bluff subdivision. City water, electric, paved road frontage. All 3 for **\$30,000.**
Sherwood Road—Eight acres with extensive road frontage, city water and spring. Only minutes from campus. **\$95,000.**
Ravens Den—6.2 wooded acres. City water available. **\$80,000.**
Deerwood at Jackson Point—2 adjoining bluff lots. 4.37 and 4.11 acres. **\$115,000 each.**
6.4 Acres Bluff Land on Partin Farm Road—**\$115,000.**

www.sewaneerealestate.com

www.sewaneerealestate.com

REAL ESTATE MARKETING, LLC
931-598-9244 91 University Ave., Sewanee



Speed Baranco, Owner/Broker
931-598-9244 rem@edge.net
Sally Thomas, Affiliate Broker
931-636-4993
salthomas@bellsouth.net
Shirley Tate, Broker
931-598-0044 sj.tate@live.com

www.sewaneerealestate.com

HEARING HEALTH NEWS

by Debbie Gamache,
M.S. CCC-A Audiologist

Listening Harder, Listening Less?



As we reach our 50s, many people begin to experience barely perceptible hearing loss. It is often confusing, as we can still hear most of the conversation but will have difficulty understanding the words. This is because while most of the energy in spoken words is contained in the vowel sounds, the information required to distinguish one word from another or understand is supplied by the consonants, sounds located in the higher frequencies that those in their 50s may find difficult to hear. As a result, it seems as if everyone is mumbling.

If you have hearing loss, you are missing more than just the understanding of words. Hearing keeps you in touch with the world, lets you respond to family and friends and reassures you of changing surroundings. After the age of 50, an annual hearing test should be conducted as part of your yearly physical checkup. **The Hearing Center LLC** offers comprehensive hearing services by a licensed certified audiologist at 705B North Atlantic St., Tullahoma. You can reach us by calling (931) 393-2051 or toll-free (888) 303-2051. You can visit our website at www.thehearingcenterllc.com.

THE HEARING CENTER L.L.C.

A Full Service Hearing Center

(931) 393-2051 • (888) 303-2051
705B North Atlantic St.
Tullahoma



NATURENOTES

By Harry and Jean Yeatman



Sand Hill Cranes from the April 1928 edition of Nature Magazine

Abundant Wildlife

December 1 was a "gold star" day for seeing animals, reports **Jean Yeatman**. "While eating breakfast, I looked out my window to see two Tom Turkeys pecking away in the pasture. Then on the way to town I looked up and saw at least 50 Sand Hill Cranes flying above the airport. "Next," she continued, "I spied a Red-Shouldered Hawk sitting on a log sunning itself. On the way home, two eight-point buck were in the pasture. That night, I flipped on my floodlight to see a Cotton-tail Rabbit in the yard." She said there are 6,000 Sand Hill Cranes and four Whooping Cranes on the Hiwassee Wildlife Preserve NOW!

Circling Hawks

Last Friday, **Jim Jones** tossed a fallen branch from Ely's Lane into the woods and apparently disturbed a large hawk who began circling overhead just above the trees. Looking around he suddenly realized that there were hawks in the treetops all around. The one circling hawk was soon joined by two, three, and finally at least a dozen hawks just above the trees, looking down at him, and not all that far away. "I was actually a bit frightened," he said. "They are really big birds!" After a tense minute or two, the circling hawks slowly drifted off toward the seminary, but he reports then seeing at least 8-10 "stragglers" slowly following, flying from tree to tree behind the group, perhaps juveniles since they were slightly smaller but still impressively large.

Cooper's Hawk at SCC Playground

David Haskell got a call on Dec. 12 from the Sewanee Children's Center: a dead hawk was lying in the playground. He stopped by and did a short impromptu "show and tell" for the kids. The bird was a Cooper's Hawk in its immature plumage. It may have hit a window and fallen to the playground below. Cooper's Hawks hunt other birds by chasing them down at high speeds in the forest canopy. To pull off this feat, the hawk has fairly short rounded wings and a long rudder-like tail. Its legs are also quite long—all the better to fish hiding birds out of tree holes.

The look-alike Sharp-shinned Hawk can be hard to distinguish from Cooper's Hawks. Haskell identified this one as a Cooper's Hawk because of the broad white band at the end of its tail, the relatively fine streaks on the belly that taper off to mostly white, the somewhat rounded end to the tail, and the fact that it is larger than some "Sharpies" (but not all, females can be quite big). Pictures can be seen at <davidhaskell.wordpress.com>.

State Park Offerings

Saturday, Dec. 17

Evergreen Hike—Meet Ranger Jason at 10 a.m. at Grundy Forest parking lot for a moderate two-mile hike through hemlock, pine, fern and moss.

Snakes of Tennessee—Meet Ranger Brent at 2 p.m. at Stone Door ranger station to learn about indigenous area snakes, venomous and harmless, and how to tell the difference between them. You will get an opportunity to touch a live non-venomous snake.

Sunday, Dec. 18

Saddlehorn Overlook Hike—Join Ranger Brent at 2 p.m. at Foster Falls parking lot for this easy two-mile hike out to Saddlehorn Overlook.

Animal Tracks—Join the Ranger at 2 p.m. at Stone Door Ranger Station. You will make an animal track ID book to use to find out what animals have been in the park or in your back yard when you see their tracks.

For more information on these or other programs call (931) 924-2980 or visit the website at <www.friendsofscsra.org/activities.htm>.



Beamer



Tri Spot

Pets of the Week

Meet Beamer and Tri Spot

The Franklin County Humane Society's Animal Harbor offers these two delightful pets for adoption.

Beamer is a loving Chihuahua/Shih Tzu mix puppy who is used to cats. She is small, so she needs a gentle home where she can live inside. Beamer is up-to-date on shots and spayed.

Tri Spot is a sweet black and white kitten with great manners. He is one of the few cats that actually likes dogs. He also gets along great with other cats and with children. Tri Spot is negative for FeLV and FIV, house-trained, up-to-date on shots and neutered.

Every Friday is Black Friday at Animal Harbor. On Fridays, adoption fees will be reduced 50 percent for black or mostly black pets over four months old who have been at Animal Harbor for more than a month. Pets adopted from Animal Harbor qualify for a free post-adoption wellness exam by local veterinarians.

Call Animal Harbor at 962-4472 for information and check out their other pets at <www.animalharbor.com>. Enter their drawing on this site for a free spay or neuter for one of your pets! Please help the Humane Society continue to save abandoned pets by sending your donations to the Franklin County Humane Society, P. O. Box 187, Winchester, TN 37398.

Ways to Have a Green Holiday Season

Tennessee's Department of Environment and Conservation offers the following tips for a greener holiday and new year:

Buy Local—Purchasing local products when possible strengthens the economy, supports jobs and farmers, and even saves fuel and carbon emissions since many items are shipped from across the country

Skip the Excess Wrappings—Most store-bought wrapping paper is not recyclable and ends up in landfills. Try wrapping gifts in recycled paper bags or paper, scarves, or give gifts that don't require excess packaging. Making your own wrapping paper is easy by using old

maps, newspaper (kids love the Sunday comics) or children's artwork. Take reusable cloth bags when shopping—they are environmentally friendly and cost-efficient.

Make the Switch—Look for the Energy Star label this holiday season and your electronic gifts will keep giving throughout the year with greater energy efficiency and cost efficiency. Also look for the Energy Star label on LED decorative light strings to meet your holiday decorating needs.

Shop and Travel Efficiently—Whether it's for holiday shopping or a trip to visit family, reduce your fuel consumption by taking public trans-

portation, carpooling or mapping your route for the greatest efficiency.

Create Memories, Not Waste—Resolve to spend less time shopping and replace some of this chaotic time with fun, outdoor activities or just family time such as a family hike or winter stargazing night. A winter scavenger hunt is a great way to get antsy kids outdoors.

Make or Renew Your Commitment—Make a New Year's resolution to reduce your impact on the planet, whether it's as simple as turning off the water when brushing your teeth, switching to a more energy-efficient light bulb, adjusting the thermostat a degree or two, or buying local and seasonal produce.

Lakefront Lodge in Clifftops

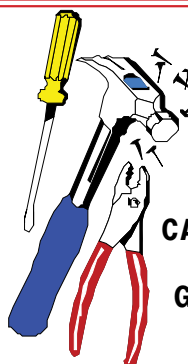


Dock for sunning, watching wildfowl paddle and fish jump! Main level master suite, vaulted heart of home kitchen with granite counters and center island, stainless appliances, screened porch with wood-burning fireplace, covered and open decks, interior gas log fireplaces in living room and great room - and multiple lake views! Guest suite above garage is a welcome feature for visitors with mini kitchen, two full baths and plenty of sleeping spaces; guest suite below has walk out access to lake, en suite bath. 2-car garage and workshop area. Hardiplank, stone exterior, elegant design, quality construction, beautifully landscaped. 5026 sf, this is a home your family will treasure! Appointments welcomed with 24-hour notice, please. MLS #1295102 \$965,000.

Monteagle Sewanee, REALTORS

www.monteaglerealtors.com

931-924-7253



= **EXPERT HANDYMAN** =
Dependable Affordable Responsive

KEN O'DEAR
931-235-3294

CARPENTRY PAINTING TILEWORK PLUMBING
ELECTRICAL HAULING MOVING
GENERAL HOME AND YARD MAINTENANCE
READY TO HELP!



ROB MATLOCK
CONSTRUCTION COMPANY
NEW HOME BUILDING
AND REMODELING

MEMBER, U.S. GREEN BUILDING COUNCIL

PHONE 931-598-5728

MATLOCK

State Licensed • Fully Insured

THIS WEEK'S FEATURED LISTING



1841 RIDGE CLIFF DR. Ready for your Mountain retreat? Great Battle Creek log home at the end of a quiet street. 2 BR, 2 BA. Deck on the rear overlooks a calming pond, with porches off the front to sit and relax. Loft upstairs give you extra space for office, bedroom, etc. Efficient kitchen. MLS #1306345. **\$180,000**

Check out more at
<www.gbrealtors.com>

gb GOOCH-BEASLEY REALTORS
www.gbrealtors.com

9 College St. at Assembly Ave., Monteagle • (931) 924-5555

Peter R. Beasley II, CCIM, Broker, (931) 924-5555, info@gbrealtors.com
June Weber, CRB, CRS, GRI Broker, (931) 636-2246, junejweber@bellsouth.net
Peter Hutton, Affiliate Broker, (931) 636-3399

Weather

DAY	DATE	HI	LO
Mon	Dec 05	61	46
Tue	Dec 06	62	42
Wed	Dec 07	45	31
Thu	Dec 08	40	26
Fri	Dec 09	46	29
Sat	Dec 10	48	27
Sun	Dec 11	48	27

Week's Stats:

Avg max temp =	50
Avg min temp =	33
Avg temp =	36
Precipitation =	2.43"

Reported by Nicole Nunley
Forestry Technician



COFFEE HOUSE

closing for
Christmas
break Dec 15
at 1 pm

Mon-Fri 7:30am-midnight;
Sat & Sun 9am to midnight
Georgia Avenue, Sewanee

598-1885



Classifieds

CALL US! • 598-9949
Classified Rates:
 \$3.25 first 15 words,
 10 cents each addl. word
Now you can charge it!
(\$10 minimum)

WILL BABYSIT IN YOUR HOUSE: Or sit with your loved one in the hospital or at home. 598-0302.

Linda's Laundry & Dry Cleaning
Pickup and delivery in Sewanee, Monteagle & Tracy City. Call Linda (formerly with Sewanee Cleaners) to schedule pickup and delivery. 423-371-0792

FULLY FURNISHED: 1BR or 2BR cottages for rent monthly. Free wi-fi and satellite TV. (931) 924-7275.

WE ARE EXCELLENT CLEANERS!
 Houses • Offices
 Decks • Windows, etc.
 Serving for 30 years.
 Free estimates. References.
(931) 636-4889 or (931) 598-5139

CLASS A CDL DRIVERS: Quickway Transportation is having a hiring seminar Saturday, Dec. 17. Location: Hampton Inn, 2420 Williams St., Chattanooga, Tenn. Times: 10 a.m. and 2 p.m. We offer: Excellent home time, excellent benefits, excellent retirement, high weekly earnings. (877) 600-2121. <www.quickwaycarriers.com>

LOST COVE BLUFF LOTS
 www.myerspoint.com
 931-968-1127

Fresh flowers & deliveries daily
TUXEDO RENTALS
Monteagle Florist
 333 West Main Street, Monteagle
 (931) 924-3292
 www.monteagleflorist.com

MAMA PAT'S DAYCARE
MONDAY-FRIDAY
Open 4 a.m.; Close 12 midnight
 3-Star Rating
 Meal & Snack Furnished
 Learning Activities Daily
Call: (931) 924-3423

RENTALS
2 BR/1 BA & 1 BR/1 BA
DUPLEX UNITS
 No pets, no smoking. Near St. Mary's.
 770-598-6059 or 678-751-5165

CHARLEY WATKINS
PHOTOGRAPHER
 Sewanee, TN
(931) 598-9257
 http://www.photowatkins.com

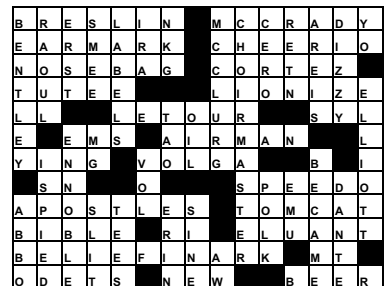
FIFTEEN MINUTES FROM CAMPUS: 3BR, 2BA, 2000+ s/f home, living room, dining room, modern kitchen, C/H/A, basement, covered carport, 100'x150' lot, 2 blocks from Cowan Elementary, \$650/mo. 203 Hines St. in Cowan (turn right onto Garner St. from Hwy. 41, then 2nd left onto Hines St.). (865) 287-3400.

Darlene Amacher
 Licensed Massage Therapist
 Peaceful, transformative, restorative
Massage and Bodywork
 Back at Stillpoint (next to Pearl's)
 Now taking appointments: 931-636-1821

the **ARTISAN** DEPOT
 Work by local artists
 201 E. Cumberland, Cowan
 931-636-0169

MASSAGE
Regina Rourk Childress
 Licensed Massage Therapist
 www.reginarourk.com
 ~ GIFT CERTIFICATES ~
(931) 636-4806

YOUR AD COULD BE HERE!
CALL 598-9949



The Moving Man
Moving Services Packing Services
Packing Materials
Local or Long Distance
1-866-YOU-MOVE (931) 968-1000
 www.the-moving-man.com
 Decherd, TN
 Since 1993 U.S. DOT 1335895

FIREWOOD FOR SALE: \$50/rick. Stacked, \$60. (931) 592-9405. Leave message if no answer.

WATER SOLUTIONS
 Joseph Sumpter
 Owner/Licensed Residential Contractor
 Specializing in drainage and rainwater collection systems
 598-5565
 www.sumptersolutions.com

FIREWORKS SALE! Between Monteagle and Sewanee at Mountain Storage complex. Hours Dec. 16-Jan.2: M-F, 3 p.m. till after dark; Saturdays, 11 a.m. till after dark; Sundays, 1 till 4:30 p.m. (910) 322-3602.

JOSH OF ALL TRADES: Welding, metal fabrication. Water/sewer line installation/repair. Lawn maintenance/landscaping. Tree/brush removal. Junk hauling/more. (931) 636-4562.

King's Tree Service
 Topping, trimming, bluff/lot clearing, stump grinding and more!
 Bucket truck or climbing
 Free wood chips with job
 Will beat any quoted price!
 Satisfaction guaranteed!!
 —Fully licensed and insured—
 Call **(931) 598-9004**—Isaac King

DRIVERS: Central Refrigerated is GROWING! Hiring Experienced & Non-Experienced Drivers. CDL Training Available! Employ Today! Average \$40,000-\$70,000! (800) 567-3867.

A-1 CHIMNEY SPECIALIST
"For all your chimney needs"
 Dust Free • Chimneys Swept, Repaired, Relined & Restored • Complete Line of Chimney Caps • Waterproofing
 Video Scanning
 G. Robert Tubb II, CSIA Certified & Insured
 931-273-8708

THE SEWANEE UTILITY DISTRICT OF FRANKLIN AND MARION COUNTIES BOARD OF COMMISSIONERS will hold its regular meeting on Wednesday, Dec. 28, (note change of day) at 5 p.m. at the utility office on Sherwood Road. If a customer is unable to attend but wishes to bring a matter to the board, call 598-5611, visit the office, or call a board member. Your board members are Doug Cameron, Randall Henley, Cliff Huffman, Karen Singer and Ken Smith.

SEWANEE AUTO REPAIR
—COMPLETE AUTO & TRUCK REPAIR—
 -Tune-ups -Brakes
 -Tires (any brand) -Shocks & struts
 -Tire repair -Steering & suspension
 -Batteries -Belts & hoses
 -Computer diagnostics -Stereo systems installed
All Makes & Models • Service Calls • Quality Parts
ASE Master Certified Auto Technician • 25 Years' Experience
7 to 5 M-F • (931) 598-5743 • Across from Regions Bank

MICHELLE M. BENJAMIN, JD
Attorney & Counselor at Law
 102 FIRST AVENUE, NORTH
 WINCHESTER, TENNESSEE 37398
 (931) 962-0006
 (931) 598-9767

MOBILE VETERINARY SERVICES
 (931) 607-5239
 For Dogs, Cats & Horses
TRACI S. HELTON, DVM
 Certified in Animal Chiropractic by the American Veterinary Chiropractic Association
CONVENIENT PATIENT SERVICES AT YOUR HOME
 Vaccinations, Wellness Exams & Ultrasound Services
 Serving Franklin County and Surrounding Areas by Appointment

KITTENS NEED HOMES: Pretty (5) 8-weeks-old, very friendly, good companion pets; (2) 5-months-old, a little wary of people, good barn cats. (931) 467-3640.

BONNIE'S KITCHEN
Real Home Cooking
 Open Weds 11-2; Fri 4-8:30
 Call for Christmas baking and catering!
598-0583

AVAILABLE FOR GRADUATION AND OTHER SPECIAL WEEKENDS: Spacious 2BR downtown Sewanee apartment. 598-9006.

(931) 598-0033
HAIR DEPOT
 17 Lake O'Donnell Rd., Sewanee
KAREN THROBERRY, owner/stylist
DANIELLE HENSLEY, stylist/nail tech

MIDWAY MARKET CONSIGNMENT: Great bargains in children's, women's, men's clothing! DVDs to rent or buy. Call Wilma before bringing consignment items, 598-5614. Open Mon-Sat 12-7. Closed Sunday.

GARAGE APARTMENT FOR RENT
 Fully furnished, 1BR/1BA, very quiet neighborhood. 2.5 miles from campus. \$650/month includes utilities. \$350 deposit. 598-0646

CLAYTON ROGERS ARCHITECT
 claytonrogers@charter.net
 931-598-9425

SEWANEE SWEETS: Taking Holiday orders for cookies, cakes and pies. Call Ginny, (931) 598-5205.

The Willows Retreat Company, LLC
 Hilda C. Vaughan & Julie King Murphy
 733 St. Mary's Lane
 P.O. Box 44
 Sewanee, TN 37375
 admin@willowsretreatcompany.com
 www.willowsretreatcompany.com

RURAL SEWANEE HOME FOR RENT: On Otter Falls Road. Large yard w/wildlife, hiking and waterfall. 3BR, 1BA, C/H/A, open floor plan. Washer/dryer, appliances, security light. Yard maintenance furnished. Deposit required. \$700/month. Call (931) 636-8458.

The Pet Nanny
BOOK NOW FOR THE HOLIDAYS!
Pet Sitting in Your Home
 Dogs, Cats & Birds
 Masha Provo 931.598.9871
 mprovo@bellsouth.net
 http://sewaneepeppetnanny.blogspot.com

RANCH-STYLE: 4BR, 2BA, Jump Off area, all appliances, no pets, lease, \$650/mo., \$500 deposit. 598-0991. Water included.

Needle & Thread
 *Alterations * Repairs * Light Upholstery
 * Slipcovers * Drapes
 For a reasonable price, contact
Shirley Mooney
 161 Kentucky Ave.
 Sewanee, TN 37375
(931) 598-0766
 shirleymooney@att.net

WHY SEEK an impersonal solution to a personal problem? Private, warm, spirit-filled counseling. Family, individual, adolescent. A Place of Hope. (931) 924-0042. <kerstetter@blomand.net>

DRIVERS: Regional Flatbed 40-45 CPM, Home every weekend. Full benefits, Class A CDL required. Flatbed training available. (800) 992-7863 ext. 158.

Mountain Accounting & Consulting
 * Accounting * Bookkeeping
 * QuickBooks and Quicken
Bridget L. Griffith QuickBooks Pro Advisor
 M.S. Accounting and (931) 598-9322
 Information Systems bh_griffith@yahoo.com

SHAKERAG BLUFF CABIN: Beautiful west-facing bluff view. Extremely secluded. Sleeps 4-5. C/H/A. Great fishing, swimming, 3 miles from University. Weekend or weekly rentals. (423) 653-8874 or (423) 821-2755.

OFFICE SPACE: Partin Professional Bldg., middle of Monteagle. Two-room suite. Call (931) 580-4539.

EAGLE LANDSCAPING & LAWN MAINTENANCE CO.
Now Offering Specials for FALL CLEANUP!
 We offer lawn maintenance, landscaping, hedge/tree trimming & more!
 Please call for your free estimate
(931) 598-0761 or (931) 636-0383

HOME REPAIR/REMODEL: house check/yard maintenance. Local references. Jayson, (423) 304-1260.

CHAD'S LAWN & LANDSCAPING
-FREE ESTIMATES-
 * Lawn care & Design (Mulch & Planting)
 ALSO: * Tree Trimming & Removal
 * Pressure Washing * Gutter Cleaning
 * Leaf Pickup & Blowing * Road Grading
 * Garden Tilling * Rock Work
(931) 962-0803 Home; (931) 308-5059 Cell

FOR RENT OR SALE: 3BR/2BA mobile home Jump Off area. Three years old. Very good condition. Available now. \$460/month, \$300 deposit. References required. 598-0104.

COMPUTER HELP
Tutorial & Troubleshooting
 Individualized instruction.
 Your topics at your own pace.
Judy Magavero, (931) 924-3118

SHELLING WALNUTS? I will pay 30¢ for each perfect half shell, and 75¢ for each perfect matching whole. <christiomsby@aol.com>

EAT IN OR TAKE OUT
Julia's
 fine foods
 Mon-Fri 11-8; Sat 10-8; Sun 10-2
 Sat & Sun Brunch 10-2
 24 University Ave., Sewanee
 931-598-5193 • julias@allnet.com
 www.juliasfinefoods.com

NEED GRAVEL for your road or driveway, bulldozer work, driveways put in, house site clearing? Call David Williams, 308-0222.

RAY'S RENTALS
 931-235-3365
 Weekend Packages and Special Events
 CLIFFTOPS, BRIDAL VEIL,
ALL AROUND THE MOUNTAIN
Monteagle Sewanee Rentals
 931-924-7253
 www.monteaglerealtors.com

DEEPWOODS HOME FOR SALE OR RENT: Available now. 4BR, 2BA, 2-story, C/H/A, all appliances. \$1,000/mo. Call Rusty Leonard, (931) 962-0447 or (931) 598-0744 after 7.

BUG PROBLEMS?
 We can help! Call us for a free inspection!
BURL'S TERMITE & PEST CO.
 TERMITE—PEST—VAPOR CONTROL
 Bonded • Insured • Home-Owned & Operated
 105 Ake St., Estill Springs
(931) 967-4547 or (931) 455-1191
 Charter #3824 • License #17759

Joseph's Remodeling Solutions
 A Division of Sumpter Solutions, LLC.
Joseph Sumpter, Owner/Licensed Residential Contractor
MISSION STATEMENT: To use our collective strengths and expertise, along with the highest quality materials available, for customer renovations, additions, drainage and rainwater needs in a safe and positive environment, being ever mindful of our impact on our community and our world.
OUR STRENGTHS:
 • Most work is performed by our carefully chosen crew members. Our crew consists of eight dedicated and experienced people, including a licensed electrician.
 • Renovations and additions are our specialty. Low-maintenance high-quality finishes, on-site milling options for custom trim and attention to details are our trademark.
 • Safety is paramount on our sites for our crew, our customers, and guests. Jobsites are kept neat, and smoking is not permitted by crew members. We are certified in CPR, and we are EPA lead-safe certified. We have workers comp and liability insurance, and do not sign insurance waivers.
 • Whole house health is always considered in our projects. We are sensitive to mold and mildew concerns.
 • Expertise in rainwater collection systems and drainage systems.
 • Universal design options available.
 • Certified Green Professional and member of National Association of Home Builders, and the Homebuilders Association of Southern Tennessee.
 Call today for a consultation.
 Visit our website at www.sumptersolutions.com.
598-5565



BARDTOVERSE

by Scott and Phoebe Bates

"We are between two infinities: the infinitely large, and the infinitely small."
From Blaise Pascal, 17th century

Above: clouds, planets, and comets;
Dust, stars, gas, and galaxies;

Below: cells, microbes, atoms, electrons,
Neutrons, quarks, protons, and photons;

(And one chosen
Boson).

And In-Between
Below-Above:

Relativity,
Unity,

Flesh and blood;

And millions of memes,
And millions of dreams;

Matter paired
With anti-matter;

E=mc squared.

And in-between,
And in-between

Below, Above:

An empathetic gene
Called "love."

"Particles" by S.B.

Christ Church Monteagle

wishes you a
Merry Christmas
and Blessings for
the New Year.

December 18 at 10:30 am:
Lessons and Carols

Christmas Eve at 5 pm:
Christmas Play: "He lights the world"
Holy Communion with Carols
Christmas Feast Following

Christmas Day at 10:30 am:
Holy Communion

New Year's Day at 10:30 am:
Holy Communion

January 6 at Noon:
The Feast of the Epiphany

TELL THEM YOU SAW IT HERE!

Ivy Wild

36 Ball Park Road Sewanee, Tennessee (931) 598-9000
ivywildrestaurant@gmail.com

New Year's Eve Menu

Saturday, December 31, 2011
One Seating only at 6:30

\$60

Smoked Duck Sausage Corn Dogs
Trio of Sauces

Maryland Blue Crab and Butter-Poached Lobster Terrarium
Corn bisque, Asparagus, Tobiko Caviar

Champagne Jell-O Shooter
Blackberries

Certified Hereford Beef Flat Iron Steak
Grit Cakes, Golden Beets

Jackie Oh! Pillbox Fudge Cake
Jumpoff Java Buttercream

BYO Wine. \$3 Stem Fee.

Community Calendar

Today, Dec. 16

Deer cull begins
Curbside recycling, by 7:30 am
Last day at Franklin and Grundy county Schools, Monteagle Elementary
7:00 am AA, (open), Holy Comforter, Monteagle
8:30 am Yoga with Rebecca, Community Center
9:00 am Senior Center Bazaar, ends at 2 pm
12:00 pm Men's Bible study, Otey
5:15 pm Modern dance, adults, Community Center
7:00 pm AA, Christ Church, Tracy City
7:30 pm "Elf," SUT

Saturday, Dec. 17

1:00 pm IONA: Art Sanctuary open, until 3 pm
7:00 pm Sewanee Chorale Christmas Concert, SAS McCrory Hall
7:30 pm AA (open), Otey parish hall
7:30 pm "Elf," SUT

Sunday, Dec. 18

2:00 pm "Elf," SUT
3:00 pm Blue Monarch achievement ceremony
4:00 pm Community Open House, Chen Hall, until 6
4:00 pm Women's Bible study, Otey
4:00 pm Yoga with Helen, Community Center
5:00 pm Community Caroling, Shenanigans
6:30 pm AA (open), Holy Comforter, Monteagle

Monday, Dec. 19

10:30 am Chair exercise, Senior Center
5:00 pm Women's 12-step, Otey parish hall
7:00 pm AA, Christ Church, Tracy City
7:00 pm Centering Prayer, Otey sanctuary

Tuesday, Dec. 20

Hanukkah begins at sundown
8:30 am Yoga with Carolyn, Community Center
9:00 am Yoga with Hadley, St. Mary's Sewanee
10:30 am Bingo, Senior Center
12:00 pm Christmas luncheon and quilt drawing
4:00 pm Centering Prayer, St. Mary's
7:00 pm NA, Decherd United Methodist
7:30 pm AA (open), Otey parish hall
7:30 pm Al-Anon, Otey parish hall

Wednesday, Dec. 21

9:00 am CAC pantry open, until 11 am
5:30 pm Yoga with Helen, Community Center
6:00 pm Otey adult choir rehearsal, Otey
7:30 pm AA (open), Holy Comforter, Monteagle

Thursday, Dec. 22

Sewanee Senior Center closed
SAS Christmas break begins after 11 am Eucharist
10:30 am Advanced Tai Chi with Kat, Community Center
12:00 pm AA (open), 924-3493 for location
12:30 pm Episcopal Peace Fellowship, Otey Quintard room
3:30 pm Yoga with Hadley, St. Mary's Sewanee
5:00 pm Weight Watchers, Otey parish house, weigh-in 4:30
8:00 pm AA (closed), book study, St. James

Friday, Dec. 23

University offices closed
7:00 am AA, (open), Holy Comforter, Monteagle
8:30 am Yoga with Rebecca, Community Center
12:00 pm Men's Bible study, Otey
7:00 pm AA, Christ Church, Tracy City

Saturday, Dec. 24

No deer hunting
7:30 pm AA (open), Otey parish hall

Sunday, Dec. 25 Christmas Day

No deer hunting
6:30 pm AA (open), Holy Comforter, Monteagle

Monday, Dec. 26

University offices closed through Dec. 30
5:00 pm Women's 12-step, Otey parish hall
7:00 pm AA, Christ Church, Tracy City
7:00 pm Centering Prayer, Otey sanctuary

Tuesday, Dec. 27

Sewanee Senior Center reopens
9:00 am Yoga with Hadley, St. Mary's Sewanee
10:30 am Bingo, Senior Center
4:00 pm Centering Prayer, St. Mary's
7:00 pm NA, Decherd United Methodist
7:30 pm AA (open), Otey parish hall
7:30 pm Al-Anon, Otey parish hall

Wednesday, Dec. 28

9:00 am CAC pantry open, until 11 am
5:00 pm SUD board meeting, Utility office
7:30 pm AA (open), Holy Comforter, Monteagle

Thursday, Dec. 29

10:30 am Advanced Tai Chi with Kat, Community Center
10:30 am Chair exercise, Senior Center
12:00 pm AA (open), 924-3493 for location
12:30 pm Episcopal Peace Fellowship, Otey Quintard room
3:30 pm Yoga with Hadley, St. Mary's Sewanee
5:00 pm Weight Watchers, Otey parish house, weigh-in 4:30
8:00 pm AA (closed), book study, St. James

Friday, Dec. 30

7:00 am AA, (open), Holy Comforter, Monteagle
8:30 am Yoga with Rebecca, Community Center
12:00 pm Men's Bible study, Otey
7:00 pm AA, Christ Church, Tracy City

Saturday, Dec. 31

7:30 pm AA (open), Otey parish hall

Sunday, Jan. 1 New Year's Day

Last day of deer cull
4:00 pm Yoga with Helen, Community Center
6:30 pm AA (open), Holy Comforter, Monteagle

Monday, Jan. 2 • Same as Monday, Dec. 26

Messenger offices reopens

Tuesday, Jan. 3 • Same as Tuesday, Dec. 27

University offices reopen
Early voting begins for SUD commissioner

Wednesday, Jan. 4 • Same as Wed, Dec. 28; no SUD meeting

Franklin County Schools, St. Andrew's-Sewanee resume
7:00 am Monteagle Rotary, Smoke House

Thursday, Jan. 5 • Same events as Thursday, Dec. 29

Grundy, Marion County Schools resume

Friday, Jan. 6 • Same events as Tuesday, Dec. 30

Curbside recycling by 7:30 am
6:00 pm Deer drive volunteer meeting, Snowden

Happy Holidays!

MICHELIN
Performance, security and quality wherever you go

MICHELIN® HydroEdge®

Nitrogen

Go Green

Free Nitrogen Fill
with the purchase of a
set of 4 tires

Extends Life Of Your Tires.
Get Better Gas Mileage

Cannot be combined. See store for
details. Expires 12/31/11

University Special

10% OFF

Any Service for
University Students!

Bring your ID.

Cannot be combined. See store for
details. Expires 12/31/11

HEATH AUTOMOTIVE TIRE PROS

www.heathautomotivetirepros.com

501 1st Ave. SW
Winchester, TN
(931) 967-3880

