



On the side down below Highway 41A and the Cross. Photo by Sandy Gilliam

Black Lives Matter Activists Form Protests

by Kevin Cummings, Messenger Staff Writer

Students and community organizers recently joined a Black Lives Matter (BLM) effort, conducting silent protests at Sewanee's home football games by kneeling during the National Anthem.

Activists plan a similar protest at the Homecoming Game on Nov. 5, and supporters are asked to arrive by 11:40 a.m., dressed in black with any signs they may want to bring.

Brandon Iracks-Edelin, a Sewanee junior and past president of the student-led African American Alliance, encourages people to ask protesters questions about Black Lives Matter and race equality.

"I would like to see attention brought to the issue," he said. "We're not trying to disrespect anybody; in fact, we want to make conversation. If it makes some people uncomfortable, just imagine when a situation makes you uncomfortable every day. Imagine waking up uncomfortable every day because of worrying how others perceive you based on the color of your skin."

Iracks-Edelin has participated in several Black Lives Matter related events in Sewanee, as well as participating in a BLM march with his former high school in Washington, D.C.

"We really want to spark conversations," he said. "It's a learning opportunity for both groups. We're all human, we all make mistakes. We should be able to learn and grow with each other instead of forming rash judgments."

In addition to African American Alliance (AAA) members, others participating in the protests include people from the Cumberland Center for Justice and Peace (CCJP), the School of Theology and University faculty.

Chandler Davenport, a Sewanee sophomore and community service chair of the Alliance, said the protests started after two Sewanee football players, Kirk Murphy and Ronald Hayes, wore Black Lives Matter related messages during games.

(Continued on page 5)



Students and community members kneel during the National Anthem at a recent Sewanee home football game.

University Creates Deputy Fire Chief Position

by Kevin Cummings, Messenger Staff Writer

The University of the South is set to add a deputy chief to the Sewanee Volunteer Fire Department, a person in line to be the next fire chief.

Current chief David Green, who has served the department for 45 years, 37 years as its leader, said he is unsure about the details of and need for the position. "I don't plan on retiring anytime soon," he said.

In a media statement, John McCardell, University vice chancellor, praised Green's work and said the deputy chief will take over when Green decides to retire.

"Chief David Green's service to the department has been of a high quality, and his leadership has, for more than four decades, sustained a department that has risen to every occasion," McCardell said. "He deserves the thanks of every member of our community. At the same time, in anticipation of the day that David decides to lay down the burdens of office, we need to make a provision."

McCardell will appoint the deputy chief, which is an unpaid position, to a three-year term. The deputy chief will assume certain duties that are currently spread among several personnel, including equipment, staffing and procedure planning, as well as inventory, serving on the Fire Department Board, and substituting for the chief as needed.

"Some of these duties have, over the last several decades, been carried out by various members of the fire department," said University provost John Swallow. "Through the new position, these duties will continuously remain with a specific member of the department... The chief may wish to determine other duties for the assistant chief, at the chief's discretion."

No positions will be eliminated, Swallow noted.

Current assistant chief Doug Cameron is not interested in becoming fire chief and he said the deputy chief position is a good idea.

"Since the designation of deputy chief came from above rather than organically from within, I am not sure where I will fit in," Cameron said. "That said, I am 69-years-old and have been saying for a year or so that it is about time to designate a successor so that I can mentor him or her while I still have my wits about me. I'm not going anywhere in the near future, but I would welcome the right person to enter the chain of command."

(Continued on page 5)

Election Day, Nov. 8

On Election Day, Nov. 8, the voting precincts are open 7 a.m.–7 p.m. Voters will need a valid government-issued identification card to participate.

The Franklin County election ballot includes: President and Vice President of the United States, U.S. House of Representatives 4th Congressional District, Tennessee 16th Senatorial District, and Tennessee House of Representatives 39th District.

The general election ballot is at <www.franklincotn.us/departments/election_commission/>. A sample ballot is also on page 5.

Sewanee residents will also elect 12 members to the Sewanee Community Council, two members in each of the four districts and four at-large members. All council seats are open for election. The candidate receiving the most votes in each district will serve a four-year term, with the runner-up serving a two-year term. The same rule applies to at-large seats, with the two candidates receiving the most votes serving four-year terms and the runners-up serving two-year terms.

For more information about voting go to <http://tnsos.org/elections/election_commissions.php>.

Burn Ban Notice in Sewanee

The Office of Environmental Stewardship, in coordination with the Office of Leases and Community Relations, the Office of Risk Management and the Sewanee Volunteer Fire Department is banning open fires on the Domain effective immediately.

The Domain has received less than an inch of rain during the past five weeks and is currently included in an area of extreme drought by the USDA.

Given the danger of wildfire, all open fires are prohibited. This ban applies to open ground fires only. Fires in grills, Turkish fire pits, chiminea or similar fire enclosures on leaseholds remain permitted but should be closely monitored.

This ban will remain in effect until further notice.



It's Time to Fall Back!

Don't forget to set your clock back one hour before you go to bed Saturday night, Nov. 5. Daylight saving time officially ends at 2 a.m., Sunday, Nov. 6, which means everyone gets an extra hour of sleep.

INSIDE THIS ISSUE

LT	Letters to the Editor, Serving Where Called.....Page 2	AE	Arts & Lectures.....Page 13
M	Meetings & Events.....Page 3	Sp	Sports News.....Page 16
Ch	Church News.....Page 4	NN	Nature Notes.....Page 18
Co	Community NewsPage 5	CA	Classified Ads.....Page 19
Ed	Education News.....Page 11	CC	Comm. Calendar.....Page 20

P.O. Box 296
Sewanee, TN 37375

Letters

YOU CAME TOGETHER FOR OUR FAMILY

To the Editor:

Over the past few years this mountain has come together in a big way for our family. During Angela's sickness, our family has been shown an enormous amount of love, prayers, and support.

Thank you to all that have prayed, mailed cards, sent gifts, brought food, been a shoulder to lean on, visited, and came to pray with Angela and Daddy. The list would go on forever.

A special thank you to Sewanee Hospital for accomodating our very large family with grace, on numerous occasions. Another special thank you to Dr. Koella for exceptional care and compassion. Last but not least, thanks to Middle Tennessee Respiratory and Grundy EMS for going above and beyond to meet Angela's needs.

From the bottom of our hearts, thank you. We will never forget the love shown to us and we'll do our very best to return the favor.

*All our love,
The Jacobs Family ■*

AN OPEN LETTER TO JOHN MCCARDELL

To the Editor:


Sewanee is a special and unique place in many ways, not the least of which is its strong tradition of civil discourse and respectful disagreement. Recently, there has been a resurgence of student-led and -initiated "signwaving" protest, often by people who look a bit different than the relatively homogeneous population of Sewanee. Personally, it's been wonderful for me to see groups of both students and community members publicly giving voice to their opinions in our community. Please forgive the reference, but that's the kind of thing that makes America great.

Since you arrived in Sewanee the change I've seen in the comfort level of people here expressing their opinions has been remarkable. I believe this is in large part due to your and other members of the University's leadership in initiating changes to make both the University and broader Sewanee community more open, accepting, inclusive and diverse (in all meanings of the term).

Especially in the last year, seeing the elevation of the voices of people of color is quite striking. Coates' Common Book, speakers and cultural producers of color given a stage, artwork on display from a non-European cultural tradition, all give people of color and others that don't "fit" the traditional mold of Sewanee resident (Sewaneean?) reason to believe that they are valued.

Large institutions have a cultural and institutional momentum that can't turn on a dime, but I appreciate all you are doing to turn Sewanee towards a better and more inclusive future.

*Thank you,
Charles Whitmer, CCJP Executive Director ■*



**Short- and Long-Term
ASSISTED LIVING
Daycare • Hospice
Respite Care**

**328 Cumberland St. West
in Cowan**

*7 minutes from STMC
16 minutes from EHH*

Phone 962-9777


Email seniors@
rockgateseniors.com

www.rockgateseniors.com

A-1 CHIMNEY SPECIALIST

"For all your chimney needs"

Dust Free • Chimneys Swept, Repaired,
Relined & Restored • Complete Line of
Chimney Caps • Waterproofing
Video Scanning



G. Robert Tubb II, CSIA *Certified & Insured*

931-273-8708



Have you seen Sam the Dog?
Call in and tell us you saw
Sam to schedule an on-site
appointment!



931-924-2444

WHERE TO EAT?

Find them at www.TheMountainNow.com.

Rides Offered to the Polls

The Sewanee Community Center, Senior Citizens Center, Folks at Home and Otey Parish are working together to provide rides to Sewanee residents who have challenges in getting to the polls on Tuesday, Nov. 8., Election Day.

To reserve a ride, contact Frieda Gibson at 598-5926 and include your name, address, phone number, preferred time to go vote, voting in which county and if you have any mobility issues.

The Marion County Democratic Party is offering rides to the polling stations for Marion County residents who need transportation on Election Day, Tuesday, Nov. 8. To secure a ride, call Anita Tipton in South Pittsburg at (423) 228-0126 or Bill Longwell in Monteagle at (931) 924-8486. This service is available to all voters in Marion County.

On Election Day, the voting precincts are open 7 a.m.–7 p.m.

Lease Committee October Summary

The following items were approved in the October 2016 Meeting: September minutes; request to transfer Lease No. 677 (Kurtz & Lyle), located at 185 Louisiana Circle, to Lana Matthews Sain; request to transfer Lease No. 1045 (Sims), located at 351 Green's View Road, to Dorothy Crider Gates; request to transfer Lease No. 971 (Skomp & Blackwell), located at 277 Wiggins Creek Drive, to Ernest J. Moench III; request to install porch railings, shutters, and paint the front door on Lease No. 562, located at 722 Georgia Avenue; request to install a patio and fire pit on Lease No. 759, located at 125 Louisiana Circle.

Leasehold information is available online at <leases.sewanee.edu> or by calling the lease office at 598-1998. A county building permit is required for structures with roofs; call (931) 967-0981 for information.

Agenda items are due by the fifth of each month for Lease Committee meetings. If the fifth falls on a weekend or holiday, then agenda items are due on the next business day. Lease Committee meetings are normally the third Tuesday of each month.

MESSENGER Break Ahead

It is hard to imagine, but Thanksgiving is soon, and Christmas is just around the corner.

The Messenger will publish its Thanksgiving issue on Wednesday, Nov. 23. There will be four issues in December: Fridays, Dec. 2, Dec. 9, Dec. 16 and an early edition on Wednesday, Dec. 21. The staff will take a two-week break and return to the office on Monday, Jan. 9, with the first issue of 2017 on Friday, Jan. 13.

Deadlines for the Thanksgiving week issue, which will come out on Wednesday, Nov. 23 are: display advertising at 5 p.m., Friday, Nov. 18 (via email); news/calendar, noon, Saturday, Nov. 19, (via email) and classified ads, noon, Monday, Nov. 21.

If your organization or church has a different schedule during these upcoming holidays than we normally post, please send the updates to <news@sewaneeemessenger.com> or call the office at 598-9959.

Letters to the Editor Policy

Letters to the editor are welcome at the Sewanee Mountain Messenger and are a vital part of our community's conversation. Letters need to be no longer than 250 words and may be edited for space and clarity. We make exceptions from time to time, but these are our general guidelines.

Letters and/or their author must have some relationship to our community. We do not accept letters on national topics from individuals who live outside our print circulation area. Please include your name, address and a daytime telephone number with your letter. You may mail it to us at Sewanee Mountain Messenger, P.O. Box 296, Sewanee, TN 37375, come by our office, 418 St. Mary's Ln., or send your email to <news@sewaneeemessenger.com>. —KB

THE SEWANEE MOUNTAIN MESSENGER

418 St. Mary's Ln.
P.O. Box 296
Sewanee, Tennessee 37375
Phone (931) 598-9949



Email news@sewaneeemessenger.com
www.sewaneeemessenger.com

Kiki Beavers, *editor/publisher*
April H. Minkler, *office manager*
Ray Minkler, *circulation manager*
Leslie Lytle, *staff writer*
Kevin Cummings, *staff writer/sports editor*
Sandra Gabrielle, *proofreader*
Janet B. Graham, *advertising director/publisher emerita*
Laura L. Willis, *editor/publisher emerita*
Geraldine H. Piccard, *editor/publisher emerita*

Published as a public service to the Sewanee community. 3,700 copies are printed on Fridays, 46 times a year, and distributed to numerous Sewanee and area locations across the plateau for pickup free of charge.

This publication is made possible by the patronage of our advertisers and by contributions from the University of the South (print production) and the Sewanee Community Chest.

SUBSCRIPTIONS \$75 first class.

All material in the Sewanee Mountain Messenger and on its website are copyrighted and may not be published or redistributed without written permission.

University Job Opportunities

Exempt Positions: Director of Environmental Stewardship and Sustainability, ES&S; Director of Student Conduct, Dean of Students; International Student Services Coordinator, Global Education; Senior Associate University Registrar, Registrar's Office.

Non-Exempt Positions: in Sewanee Dining: Assistant Manager; Cashier; First Cook; Food Service Worker; Second Cook; Senior Cook.

To apply or learn more go to <www.jobs.sewanee.edu> or call 598-1381.

Veterans' Day Closings

Veterans' Day is Friday, Nov. 11. Federal, state and local government agency offices are closed; banks and the post office are closed.

Sewanee Elementary, St. Andrew's-Sewanee and the University of the South will have classes, and their offices are open. The Sewanee Senior Center is open.

*Welcome back to
the Mountain
Sewanee Alumni
and families!*

Serving Where Called

Please keep the following individuals, their families and all those who are serving our country in your thoughts and prayers:

Cassidy Barry
Michael Evan Brown
Mary Cameron Buck
Lisa Coker
Jennifer Lynn Cottrell
James Gregory Cowan
Nathaniel P. Gallagher
Alex Grayson
Peter Green
Zachary Green
Robert S. Lauderdale
Dakota Layne
Byron A. Massengill
Forrest McBee
Andrew Midgett
Alan Moody
Brian Norcross
Christopher Norcross
Lindsey Parsons
Troy (Nick) Sepulveda
J. Wesley Smith
Charles Tate
Amy Turner-Wade
Ryan Turner-Wade
Tyler Walker
Jeffery Alan Wessel
Nick Worley

If you know of others in our Mountain family who are serving our country, please give their names to American Legion and Auxiliary member Louise Irwin, 598-5864.

MESSENGER DEADLINES & CONTACTS

PHONE: (931) 598-9949

News, Sports & Calendar

Tuesday, 5 p.m.

Kiki Beavers

news@sewaneeemessenger.com

Kevin Cummings

sports@sewaneeemessenger.com

Display Advertising

Monday, 5 p.m.

ads@sewaneeemessenger.com

Classified Advertising

Wednesday, noon

April Minkler

classifieds@sewaneeemessenger.com

MESSENGER HOURS

Monday, Tuesday & Wednesday
9 a.m. –4 p.m.

Thursday—Production Day
9 a.m. until pages are completed
(usually mid-afternoon)

Friday—Circulation Day
Closed



Upcoming Meetings & Events

Crow Creek Festival

The third annual Crow Creek Fall Festival will be at the Crow Creek Community Center in Sherwood. The fun begins at 4 p.m., Saturday, Nov. 5, with live music by Bazzania, and arts and crafts. An auction will feature many antiques and other merchandise. Hot dogs, chili, cole slaw, drinks and desserts will be available.

The festival is presented each fall to raise funds for the care and maintenance of historic Mountain View Cemetery in Sherwood. The event is hosted by the Crow Creek Heritage Preservation Society.

Coffee with the Coach

Coffee with the Coach, an opportunity to learn more about Sewanee's sports teams, will be at 9 a.m., Monday, Nov. 7 with University Vice Chancellor John McCardell. Gather at the Blue Chair Tavern for free coffee and conversation. All are welcome.

Episcopal Church Women to Meet, Nov. 7

All interested women of the area are invited to ECW's second fall meeting of the year on Monday, Nov. 7. The noon luncheon meeting will take place at St. Mark's Hall of Otey Parish. Following up on the recent All Saints' Day, Mary Marcia Cook will present an audience, including devotionals on some interesting saints of the Christian Faith. Reservations for the \$10 luncheon, catered by Jennifer Janeway, must be made by 6 p.m., today (Friday), Nov. 4. Please call Connie Gibson at 598-5583 or email her at <lgibson@sewanee.edu> to make a reservation.

CCJP Election Night Party

After the polls close on Election Day, the Cumberland Center for Justice and Peace (CCJP) is hosting its annual election night party (aka "The Millard Fillmore Underdog Election Night Party") from 6–10 p.m., Tuesday, Nov. 8, at the home of Linda and Clayton Rogers, 874 Lake O'Donnell Road. Food and drink will be provided throughout the evening as the group and new friends in the community watch the election results on television. Everyone in the community is invited and welcome to attend. For more information contact Charles Whitmer at (931) 636-7527 or email <charles@ccjp.org>.

EQB Club

The EQB Club will have a lunch meeting, noon, Wednesday, Nov. 9, at St. Mary's Sewanee.

Area Rotary Club Meetings

The Grundy County Rotary Club meets at 11:30 a.m. on Tuesdays at Dutch Maid Bakery in Tracy City. The Monteagle Sewanee Rotary Club meets at 8 a.m., Thursdays at the Sewanee Inn. Thursday, Nov. 10, the presentation will be by Lee Ann Bachlund, Dean of Admissions and Financial Aid, and Vice President for Enrollment Planning on "The Sewanee Class of 2020 and Beyond: Recruitment and Affordability." The breakfast meeting will begin 15 minutes earlier than usual, at 7:45 a.m.

Sewanee Emeritus Association

The Sewanee Emeritus Association will meet at 3:30 p.m., Thursday, Nov. 10, in the Torian Room of duPont Library. All meetings are free and open to the public. Nicky Hamilton will present the program on the Americorps VISTA programs.

As Senior Associate Director of the Office of Civic Engagement at Sewanee, Nicky Hamilton, C'99, oversees the development and assessment of programs. She also supervises the Americorps VISTA programs and serves as Director of the South Cumberland Community Fund Capacity Building Initiative.

GC Swiss Historical Society

The Grundy County Swiss Historical Society will meet 10 a.m. Saturday, Nov. 12, at the home of Jackie and Marvin Lawley, 370 55th Ave. Gruetli-Laager. For more information call (931) 235-3029.

Sewanee Garden Club

The next meeting of the Sewanee Garden Club will be at 1:30 p.m., Wednesday, Nov. 16, at the home of Ruth Wendling. June Coker will be conducting a Nature Art Workshop and Demonstration. Visitors are welcome. For more information, please contact Flournoy Rogers at 931-598-0733 or <semmesrogers@gmail.com>.

FC Convenience Center Holiday Closings Announced

William Anderson, director of Solid Waste for Franklin County, announces the following holiday hours:

Closed Friday, Nov. 11, for Veterans' Day;

Closed Thursday and Friday, Nov. 24–25, and open Saturday, Nov. 26 for Thanksgiving weekend;

Closed Saturday, Dec. 24 for Christmas, and closed Saturday, Dec.

31 for New Years.

In addition, the hours the Sewanee Recycling Center will be open change as of Sunday, Nov. 6, when Daylight Saving Time ends. The Center will be open 12 noon–5 p.m. on Mondays; 2–5 p.m. Tuesdays–Fridays; and 8 a.m.–4 p.m. on Saturdays, and closed on Sundays.

www.TheMountainNow.com

SWC Reservations Due Nov. 4

The next luncheon meeting for the Sewanee Woman's Club (SWC) will be at 11 a.m., Monday, Nov. 14, at the DuBose Conference Center in Monteagle. Reservations are required and are due by today (Friday), Nov. 4. To make a reservation call Pixie Dozier at (931) 598-5869 or email Marianna Handler at <mariannah@earthlink.net>.

The program, which precedes the noon luncheon, will focus on "Sweet and Savory Day," a fundraiser featuring favorite dishes prepared for the event by a bevy of clever and creative cooks. Five dollars will purchase the chance to sample each culinary creation. Recipes and cooking related items will also be for sale—great additions to everyone's Thanksgiving and Christmas menus.

Lunch (\$13.75) for this meeting will be tossed salad, fancy grilled cheese sandwich, tomato soup and apple crisp, served at noon.

The SWC hosts luncheon meetings on the second Monday of each month, September through May, except January. Club business matters are handled briefly at 1 p.m. Child care is also available; please request this when making a reservation. Please bring a snack for your child.

'Successful Grandparenting' at ALLL

On Thursday, Nov. 10 at noon, the Academy for Lifelong Learning at St. Mary's Sewanee will welcome Raven Rudnitsky as its speaker. Her topic will be "Successful Grandparenting."

Rudnitsky is from Selinsgrove, Pa., where she has been a partner in a family therapy private practice specializing in couples, and multi-generational family therapy, adolescent therapy, women's issues, and stress and time management.

Rudnitsky will share her years of experience and provide guidance on ways in which we can make the most of our own grandparenting situations.

The Academy for Lifelong Learning is a year-round program offering talks every month on a wide range of topics. Membership fee is \$12 annually or \$2 per session. A box lunch (\$12) can be ordered by calling Debbie at (931) 598-5342 or email <reservations@stmaryssewanee.org>. November's lunch choices are a Caesar salad with or without chicken or a ham/Swiss sandwich with side salad, choice of dessert and a drink.

For more information contact Anne Davis at (931) 924-4465.

ads@sewanee
messenger.com



Sewanee Elementary students enjoyed Halloween.
Photo by Dharitri Bhattacharjee

Rotary Club Fundraiser Dinner

On Monday, Nov. 14, the Grundy County Rotary Club will host its annual Fundraiser Dinner at the DuBose Conference Center in Monteagle. Tickets, \$50 per person, are available at all local Citizen Tri-County Bank branches, Tower Bank, Monteagle and Regions Bank, Sewanee, as well as from Rotary Club members.

The social hour with wine begins at 6 p.m. followed by dinner at 7 p.m. Following dinner, Parnassus Productions will present the "Legacy of Galileo," an Encounter with Genius in the DuBose Chapel, featuring Roy Henderson as Galileo Galilei (1564–1642).

Proceeds from the fundraiser will support the Grundy County Imagination Library Program and other Rotary programs in support of the youth of Grundy County.

WINCHESTER DOWNTOWN

28th Annual

HOLIDAY

Open House

Friday November 4th
Saturday November 5th
Sunday November 6th

Sales
Promotions
Door Prizes
Local Restaurant Specials

SHOP Local

Winchester, TN Downtown
1 South Jefferson Street
Winchester, TN 37398
www.winchesterdowntown.com
Facebook:
Holiday Open House - Winchester, Tennessee

BOOK YOUR HOLIDAY PARTY NOW!

Like Us On Facebook

High Point

HISTORIC DINING ON THE SUMMIT
BETWEEN CHICAGO & MIAMI

224 East Main St
Monteagle
931-924-4600
Sun to Thu 5 to 9
Fri and Sat 5 to 10
www.highpointrestaurant.net

Papa Ron's

THE ITALIAN STEAKHOUSE

Let us host your holiday gathering!
Call to reserve now!

402 West Main St. • Monteagle
931-924-3355 • www.paparons.net
Sun–Thu 11–9; Fri and Sat 11–10

Church News

All Saints' Chapel

Growing in Grace will continue Sunday, Nov. 6 at 6:30 p.m., in All Saints' Chapel. The speaker will be Jay Tucker, a senior at the School of Theology.

The Catechumenate will meet Wednesday, Nov. 9 at 6:30 p.m., in the Bairnwick Women's Center. A catered meal will be provided. Catechumenate, from a Greek word meaning "learning and exploring," is a place where we explore what it means to be a human being and what it means to be a person of faith in our community. Email Lay Chaplain Rob McAlister <rvmcalis@sewanee.edu> for directions or more information.

Christ Church

Christ Church Monteagle is extending the celebration of All Saints' this year by marking Sunday, Nov. 6, as All Saints' Sunday. More and different hymns will be added, as we "sing a song of the saints of God," with apologies in our hearts when we have not been "patient" or even "brave."

We will add extra prayers for our country, as Election Day is upon us. Every edition of the Book of Common Prayer has special prayers for the Nation.

Daughters of the King

Daughters of the King will meet at 5:30 p.m., Tuesday, Nov. 8, in the parish hall of St. James Episcopal Church in Midway. All women are invited to attend to learn more about the organization, the oldest Order for Lay Women in the Episcopal Church, established in 1855.

Otey Parish

This Sunday, Nov. 6, in Christian Formation at 10 a.m., the Lectionary Class will explore Sunday's gospel in the Claiborne House, Adult Education Room. Children ages 3–11 are invited to meet their friends for Godly Play. Middle school and high school students have Sunday School in Brooks Hall. Infants 6 weeks to children 4 years old are invited to the nursery beginning at 8:30 a.m. until after the second service. The Adult Forum will be the Rector's Forum.

Reynolds Plaque Dedication

A dedication of a plaque honoring the late Rt. Reverend George Reynolds, ninth Bishop of Tennessee will be at 3:30 p.m., Saturday, Nov. 19, in All Saints' Chapel. All are invited to attend. Contact Barbara Reynolds at (931) 526-3190 for information.

CAC Pantry Sunday, Nov. 6

Pantry Sunday for the Community Action Committee (CAC) is Sunday, Nov. 6, for participating churches: St. James, Otey, Cumberland Presbyterian and All Saints' Chapel. Please bring your food offerings to Sunday services. The typical bag of groceries includes: rice, beans, pasta, macaroni and cheese, peanut butter, and cans of vegetables, fruit and soup. The cost for a complete bag is less than \$15.

The CAC is an outreach ministry of Otey Parish, with generous support from the Sewanee Community Chest and individuals across the Mountain. For more than 36 years, the CAC has provided food, financial assistance and educational support for persons in the greater Sewanee community. For more information contact the CAC at 598-5927.

If your church is in our print circulation area and would like to be listed below, please send service times, church address and contact information to <news@sewanecemessenger.com> or phone 598-9949.

Disaster Chaplaincy Training

The Beecken Center of the School of Theology is partnering with the National Disaster Interfaiths Network (NDIN), Nov. 14–15, to host two trainings in spiritual first-aid, community partnership and human services during disasters. The first offering, Engaging Faith Communities in Disasters on Nov. 14, will train participants when and how to communicate and coordinate with faith institutions during emergency situations. The second, the Volunteer Disaster Chaplaincy Training, Nov. 15–16, will train participants to be disaster chaplains in their own communities or through NDIN's nationwide network of partner organizations.

All faiths are welcome to attend these trainings. Participants are required to provide an endorsement from the leader of their diocese, parish, or faith community, or, in the case of secular participants, the senior executive to whom they report. Other requirements and more information on registration may be found at <beeckencenter.sewanee.edu/events/chaplaincy-training-nov-2016>.

Christmas on the Mountain

Mid Cumberland Mountain Ministries and Morton Memorial Methodist Church will sponsor Christmas on the Mountain, Sunday, Dec. 11. Additional support will be given by St. Andrew's-Sewanee students and the Monteagle Assembly Outreach.

The event will take place at Morton Memorial Methodist Church, 322 W. Main Street, Monteagle. The shopping will start at 1 p.m. and will be by appointment times.

Families with children 17-years old or younger, residing in their household, are eligible to participate.

Applications are available at the Morton Memorial office on Monday, Wednesday and Thursday from 9:30 a.m. to 12:30 p.m. Applications will also be mailed to interested families by request. Call the church office (931) 924-2192 to have an application mailed, or pick up an application. Monday, Nov. 21 is the deadline for registration.

Participating families may purchase two gifts for each child in their household at greatly discounted prices. The purchases will be paid for in cash the day of the sale.

CHURCH CALENDAR

Weekday Services, Nov. 4–11

7 a.m. Morning Prayer, St. Mary's (not 11/7)
7:30 a.m. Morning Prayer, St. Paul's Chapel, Otey
7:30 a.m. Holy Eucharist, St. Mary's (not 11/7)
8:30 a.m. Morning Prayer, Christ the King (11/8)
8:30 a.m. Morning Prayer, St. Augustine's
4 p.m. Evening Prayer, St. Augustine's
4:30 p.m. Evening Prayer, St. Paul's Chapel, Otey
5 p.m. Evening Prayer, St. Mary's (not 11/7)
7 p.m. Taizé, St. Luke's (11/11 only)

Saturday, Nov. 5

7:30 a.m. Morning Prayer/HE, St. Mary's
10 a.m. Sabbath School, Monteagle 7th Day Adventist
11 a.m. Worship Service, Monteagle 7th Day Adventist
5 p.m. Mass, Good Shepherd, Decherd

Sunday, Nov. 6 • CAC Pantry Sunday

All Saints' Chapel

8 a.m. Holy Eucharist
9:30 a.m. St. Augustine's Stone service
11 a.m. Holy Eucharist
6:30 p.m. Growing in Grace

Bible Baptist Church, Monteagle

10 a.m. Worship Service
5:30 p.m. Evening Service
Christ Church, Monteagle
10:30 a.m. Holy Eucharist
10:45 a.m. Children's Sunday School
12:50 p.m. Christian Formation Class

Christ Episcopal Church, Alto

9 a.m. Holy Eucharist
10 a.m. Sunday School

Christ Episcopal Church, Tracy City

10 a.m. Adult Bible Study
11 a.m. Holy Eucharist (child care provided)

Christ the King Anglican, Decherd

9 a.m. Holy Eucharist
10:40 a.m. Sunday School

Church of the Holy Comforter, Monteagle

9 a.m. Holy Eucharist

Cowan Fellowship Church

10 a.m. Sunday School
11 a.m. Worship Service

Cumberland Presbyterian Church, Monteagle

9 a.m. Fellowship
11 a.m. Worship Service

Cumberland Presbyterian Church, Sewanee

9 a.m. Worship Service
10 a.m. Sunday School

Decherd United Methodist Church

9:45 a.m. Sunday School
10:50 a.m. Worship

Epiphany Mission Church, Sherwood

10 a.m. Holy Eucharist
10 a.m. Children's Sunday School

Good Shepherd Catholic Church, Decherd

10:30 a.m. Mass

Grace Fellowship Church

10:30 a.m. Sunday School/Worship Service

Harrison Chapel Methodist Church

9 a.m. Worship Service
10 a.m. Sunday School

Midway Baptist Church

9:45 a.m. Sunday School
10:45 a.m. Morning Service
6 p.m. Evening Service

Midway Church of Christ

10 a.m. Bible Study
11 a.m. Morning Service
6 p.m. Evening Service

Ministry Baptist Church, Old Co-op Bldg., Pelham

10 a.m. Sunday School
10:45 a.m. Breakfast

11 a.m. Worship Service

Monteagle First Baptist Church

10 a.m. Sunday School
11 a.m. Worship Service
6 p.m. Evening Worship

Morton Memorial United Methodist, Monteagle

9:45 a.m. Sunday School
11 a.m. Worship Service

New Beginnings Church, Monteagle

9:30 a.m. Worship Service
11:15 a.m. Worship Service

Otey Memorial Parish Church

8:50 a.m. Holy Eucharist
10 a.m. Christian Formation
11 a.m. Holy Eucharist

Pelham United Methodist Church

9:45 a.m. Sunday School
11 a.m. Worship Service

St. Agnes Episcopal Church, Cowan

11 a.m. Sunday Service (Rite 1)

St. James Episcopal Church

9 a.m. Holy Eucharist

St. Margaret Mary Catholic Church, Alto

8 a.m. Mass

Sewanee Church of God

10 a.m. Sunday School
11 a.m. Morning Service
6 p.m. Evening Service

Sisters of St. Mary's Convent

8 a.m. Holy Eucharist
5 p.m. Evensong

Tracy City First Baptist Church

9:45 a.m. Sunday School
10:45 a.m. Morning Worship
5:30 p.m. Youth

6 p.m. Evening Worship

Trinity Episcopal Church, Winchester

11 a.m. Holy Eucharist
6 p.m. Evening Worship

Valley Home Community Church, Pelham

10 a.m. Sunday School
10 a.m. Worship Service

Wednesday, Nov. 9

6 a.m. Morning Prayer, Cowan Fellowship
12 p.m. Holy Eucharist, Christ Church, Monteagle
5 p.m. KAs, Bible study, meal, Monteagle First Baptist

5:30 p.m. Evening Worship, Bible Baptist, Monteagle
5:45 p.m. Youth, Bible study, meal, Monteagle First Baptist

6 p.m. Bible study, Monteagle First Baptist
6 p.m. Prayer and study, Midway Baptist
6 p.m. Youth (AWANA), Tracy City First Baptist
6 p.m. Prayer, Trinity Episcopal, Winchester
6:30 p.m. Community Harvest Church, Coalmont
6:30 p.m. Prayer Service, Harrison Chapel, Midway
7 p.m. Adult Formation, Epiphany, Sherwood
7 p.m. Evening Worship, Tracy City First Baptist
7:30 p.m. Holy Eucharist, Christ the King, Decherd

Obituaries

Richard Dean Garner

Richard Dean Garner, age 49 of Sherwood, died on Oct. 25, 2016. He was born on Oct. 24, 1967, in Sherwood, to Tellous and Sarah Brown Garner. He worked for Shaw Industries for several years. He was preceded in death by his parents; and brother Donald Ray Garner.

He is survived by his siblings Betty Ann (John T.) Garner of Sherwood, Helen (Phillip) Johnson of Meansville, Ga., Wilma Kildoo (Manuel Payne) of Sewanee, Tellous (Carlyne) Garner of Sherwood, Jerry (Peggy) Garner of Sherwood, Mary (Dale) Posey of Sherwood, Thomas David (Bonnie) Garner of Monteagle; girlfriend, Joy Short of Cowan, and many nieces and nephews.


Funeral services were on Oct. 27, from the Moore-Cortner Funeral Home chapel with Bro. Wayne McCallister officiating. Interment followed in Garner Cemetery. For complete obituary go to <www.moorecortner.com>.

Macy Mae Gass Stevens

Macy Mae Gass Stevens, age 86 of Sherwood, died on Oct. 26, 2016 at Erlanger Hospital in Chattanooga. She was born on May 10, 1930, in Stevenson, Ala., to Lark Alexander and Evia Mae Crowell Gass. She was a member of Church of Christ in Anderson, Tenn. She was preceded in death by her husband, Woodrow Wilson Stevens; sons Donald Faron Stevens and Gary Wayne Stevens; brothers, Floyd, Andrew, Warnie, and Raymond Gass, and sister Lela Crownover.

She is survived by her children Carolyn (Carl) Cole of Irving, Texas, Brenda (Roy) Summers, Ronald Stevens and daughter-in-law Jo-Ann Stevens, all of Sherwood; sisters Lillian (John Wayne) Thompson and Nellie Johnson, both of Stevenson, Ala.; four grandchildren, three great-grandchildren, and several nieces and nephews.

Funeral services were on Oct. 29, from the Rudder Funeral Home chapel with Bro. Johnny Stevens and Bro. Aubrey Dewayne Dunn officiating. Interment followed in Mountain View Cemetery, Sherwood. For complete obituary go to <www.rudderfuneralhomes.com>.



**The Monteagle
Sewanee
Rotary Club
meets at 8 a.m.,
Thursdays, at the
Sewanee Inn**
"Service Above Self"



UPCOMING RETREATS
ONE RIVER WISDOM RETREAT:
EMBRACING ESAU
December 2—December 4
The Rev. Dr. Gordon Peerman
Rabbi Dr. Rami Shapiro, Ph.D.
St. Mary's Hall: \$450 (Single), The Anna House:
\$550 (Single), Commuter: \$350 (Single)

**THREE-DAY ADVENT CENTERING
PRAYER RETREAT**
December 9—December 11
The Rev. Tom Ward, presenter
St. Mary's Hall: \$350 (Single),
The Anna House: \$450 (Single)

Call (931) 598-5342
or (800) 728-1659
www.StMarysSewanee.org
<reservations@
stmaryssewanee.org>

BLM (from page 1)

In the first Black Lives Matter protest during the game against Rhodes College, about 25 people participated; at the next home game that number was 15, Davenport said, noting that an earlier start time may have affected participation.

"The Sewanee community has been very supportive thus far. We have been listening for any possible resistance and checking social media but nothing has surfaced so far," she said.

Charles Whitmer, director of CCJP, has participated in making signs and in the silent protests at football games.

"One thing that's really struck me about Sewanee and the University broadly, is that we say everyone is welcome here. The longer I'm here the more I'm seeing not everyone is welcome. One of the things we need to be asking is, 'Do people feel welcome?'"

Whitmer said he is encouraged that student voices of color seem to be elevated, especially in the past year with the University hosting speakers of color and cultural opportunities.

In addition to protests, activists took "solidarity photos" on the Quad

for personal and organizational social media accounts, Davenport noted.

Elizabeth Skomp, Sewanee's associate dean for faculty development and inclusion, said she is encouraged by the Black Lives Matter effort.

"For my part, I am always glad to see students engaging broadly and deeply with issues of contemporary concern," Skomp said.

The AAA is hosting a showing of the new documentary "13th" on Sunday, Nov. 13, at 5 p.m. in the Mary Sue Cushman room of the Bairnwick Women's Center, with everyone welcome. The Alliance meets the first and third Sunday of the month from 5 to 6 p.m. in the ABC Rooms in McClurg.

"Yes, AAA is a student-run organization, but the issues we are discussing affect our entire community," Davenport said.

For more information, visit the "Sewanee African American Alliance: Sewanaaa" on Facebook and "Sewanaaa" on Instagram. University-related efforts for inclusion and diversity can be found at <provost.sewanee.edu/diversity-inclusion-and-cohesion>.

Deputy Chief (from page 1)

"I hope that it all works out," Cameron added. "We have been running the department from within for all my 44 years on the service. I think we are arguably the best volunteer department in the state."

Swallow said qualifications for deputy chief will include significant fire department experience and the ability to lead the department in the chief's absence.

Cameron, who submitted a recommendation for deputy chief, said the vice chancellor has always been very supportive of the fire department.

"Around the country, volunteer fire departments are having a very hard time finding people willing to serve for a ball cap and a T-shirt," he said. "David Green is the consummate manager of volunteers and we have some of the best. I just hope that the next generation will have such a leader and that the administration will continue to support the department."

According to the University, nominations for deputy chief and expressions of interest should include a brief statement, list of qualifications and three references. Those items can be submitted to the Office of the Vice Chancellor at Walsh-Ellet Hall.

A review of candidates will begin Nov. 14, but Swallow said officials haven't determined the review process.

"Since we do not know all of those who may be expressing interest, it's a bit premature—this may depend on how many candidates we have," he said. "Dr. McCardell will work to review them appropriately and then render a decision."

In addition to fighting fires, the fire department also assists in mountain rescues, vehicle extractions and other emergencies. About 50 firefighters make up the department, with 16 of those University students, Green said.

Sewanee Homecoming, Nov. 4–7

Close to 1,300 college alumni and friends are expected to return to the University of the South campus this weekend for Homecoming. In addition to the receptions and gatherings with old friends, this year will offer several special events and opportunities. The full schedule is online <<http://www.sewaneegateway.com/s/1398/index.aspx?sid=1398&gid=1&pgid=414%20>>.

Friday, Nov. 4, Ayres Hall will be dedicated at 10 a.m. The University's newest residence hall is named in honor of former Vice-Chancellor Bob Ayres, C'49, H'74, and Pat Ayres.

Educational opportunities will also be offered Friday, including a talk about air travel radiation safety by expert Ed Bramlitt, C'56, and updates on plans for Sewanee Village and Arcadia at Sewanee. Alumni authors will hold book signings at the University Bookstore and at McGriff Alumni House. A hike on the Caldwell Rim Trail, led by favorite professors, also is scheduled Friday afternoon.

The Sewanee Herbarium and Biology Department will host an open house and birthday celebration for former professor and Herbarium director emeritus George Ramseur. The event will celebrate the publication of Domain Flora, 20 years of the Plant Press, and the publication of Mary Priestley's Domain botany book "What If Trees Could Walk?," which is a tribute to George Ramseur on the occasion of his 90th birthday.

Arts events Friday evening include a performance of the Neil Simon play "The Good Doctor" at the Tennessee Williams Center (also performed Saturday evening), and the Sewanee Symphony Orchestra's fourth annual Halloween concert in Guerry Auditorium.

The Sewanee community is invited to join in a Homecoming event, "Breakfast and Bluegrass on the Quad," at 9 a.m., Saturday, Nov. 5. The breakfast will be followed by an "all-alumni celebration" and the launch of the Stronger Truer Sewanee campaign at 10 a.m. in All Saints' Chapel.

The Saturday morning celebration will honor the following alumni award winners: Newell Harbin Smith, C'01, will receive the Distinguished Young Alumnus Award; Bill Stamler, C'56, will receive the John R. Crawford Distinguished Service Award; Lacy Hunt, C'64, will be honored as the Distinguished Alumnus; and Robbe Delcamp, professor of music and university organist and choirmaster, and Charles Perry, professor of history, both will receive the Distinguished Faculty Award.

ONLINE AND IN COLOR!
www.sewaneemessenger.com

OPEN HOUSE
FRIDAY
NOV. 4TH
12PM-4PM

A TRULY
RARE OFFERING
305 CLARAS POINT ROAD



PILKERTON REALTORS®
C: 615.349.6266
O: 615.383.7914
Brett.Nashville@gmail.com

BRETT SHERIFF
C: 615.349.6266
O: 615.383.7914
Brett.Nashville@gmail.com

THEO ANTONIADIS
C: 615.838.5701
O: 615.383.7914
Theo.Nashville@gmail.com

SEWANEE REALTY

MARGARET DONOHUE
931.598.9200 | SewaneeRealty@sewanee.com
www.sewaneerealty.info





DEDICATION AND OPEN HOUSE
WINGS COMMUNITY
OF BLUE MONARCH
SATURDAY, NOVEMBER 12
2:00 P.M.

931.924.8900 / INFO@BLUEMONARCH.ORG
BLUEMONARCH.ORG

Sample Ballot for Franklin County, Tennessee

OFFICIAL BALLOT GENERAL ELECTION Franklin County, Tennessee November 8, 2016		Electors For Gary Johnson For President and William F. Weld For Vice President Independent Candidate		UNITED STATES HOUSE OF REPRESENTATIVES 4th CONGRESSIONAL DISTRICT Vote For One (1) 0 selected, incomplete		TENNESSEE HOUSE OF REPRESENTATIVES 39th REPRESENTATIVE DISTRICT Vote For One (1) 0 selected, incomplete	
PRESIDENT AND VICE PRESIDENT OF THE UNITED STATES Vote For One (1) 0 selected, incomplete		Electors For Alyson Kennedy For President and Osborne Hart For Vice President Independent Candidate		Scott DesJarlais Republican Party Nominee Steven Reynolds Democratic Party Nominee Write-In		David Alexander Republican Party Nominee Nancy Silvertooth Democratic Party Nominee Write-In	
Electors For Donald J. Trump For President and Michael R. Pence For Vice President Republican Party Nominee		Electors For Mike Smith For President and Daniel White For Vice President Independent Candidate		TENNESSEE SENATE 16th SENATORIAL DISTRICT Vote For One (1) 0 selected, incomplete Janice Bowling Republican Party Nominee Mike Winton Democratic Party Nominee Write-In		TENNESSEE HOUSE OF REPRESENTATIVES 92nd REPRESENTATIVE DISTRICT Vote For One (1) 0 selected, incomplete Thomas R. Tillis Republican Party Nominee Tamra King Democratic Party Nominee Write-In	
Electors For Hillary Clinton For President and Tim Kaine For Vice President Democratic Party Nominee		Electors For Jill Stein For President and Ajamu Baraka For Vice President Independent Candidate					
Electors For "Rocky" Roque De La Fuente For President and Michael Steinberg For Vice President Independent Candidate		Write-In					

Q&A with U.S. State Department's Thomas Shannon

by Kevin Cummings
Messenger Staff Writer

Thomas A. Shannon, the fourth-ranking official in the U.S. State Department, said he hasn't spoken at a college since his appointment in February as Under Secretary of State for Political Affairs.

"Sewanee's my introduction," he said. "The hospitality has been wonderful and there were some really insightful questions from students."

Shannon, who oversees U.S. bureaus for the Western Hemisphere, Africa, East Asia, the Pacific, Europe, Eurasia, the Near East, and South and Central Asia, among other responsibilities, spoke on Oct. 20 at Sewanee's Gailor Auditorium. He also had breakfast with students on Oct. 21 and spoke to a Peace and Diplomacy class.

Sewanee senior Katie Jannotta, who served as an intern at the U.S. Embassy in Honduras in 2015, invited Shannon to campus. He planned to visit last year, but Secretary of State John Kerry asked him to go to Moscow for talks there, which delayed the trip.

Following his lecture on Oct. 20, the Under Secretary sat down for a question and answer session with the Messenger:

At the last presidential debate, Hillary Clinton mentioned open borders concerning energy. During your travels is this an issue you've had experience with and can you talk about the concept of open borders for energy?

Shannon: "We've been working on something similar in Central America — how you get energy across borders in a way that benefits economies... whether that energy is electrical power, gas or oil, how it moves across borders without excessive taxation or interference. In Central America, where you've got seven countries kind of bunched into a fairly small space, and where you have Mexico and Columbia, two energy producing countries, if you can dramatically reduce the cost of energy in Central America, and if you can ensure easy access to it, you can generate economic growth much more easily than you could otherwise."

How would open borders for energy benefit us?

Shannon: The Western Hemisphere is in the midst of an energy revolution right now. And even with relatively low oil prices, the United States



Under Secretary of State Thomas Shannon talks about foreign affairs on Oct. 20 at Gailor Auditorium. Photo by Kevin Cummings

is on the verge of becoming the largest energy producer in the world. And consider the energy resources that Canada has, the energy resources that Mexico has, and that Colombia, Venezuela, Brazil and Argentina have, not even counting hydropower. This is natural gas, oil, shale gas. The extent to which we can create a hemisphere that is a net exporter of energy, and is capable of providing energy to our countries without being held hostage or to account by countries outside the hemisphere, is a good thing for us.

From your perspective, what does the future look like for U.S.-Russia relations?

Shannon: I really don't know. I think a lot is going to depend on how Russia chooses to behave, but also what our next president decides in terms of engaging with Russia. Russia is an important country and not just militarily but in terms of its military presence both in Europe and Eurasia and in the Middle East. It's a country that needs to be taken seriously but at the same time it's a country that has to show that it's capable of solving problems and not just causing them. And right now it seems to be more of a disruptive force than it is a force for solution. We have a big challenge in front of us, but the Russians, I think, realize that for them to be successful the way they want to be successful, they need to have a much better relationship with us, so they've got a lot of work to do

themselves.

Have you spent much time in Russia?

Shannon: Not much, but I've worked with the Russians a fair bit in different parts of the world and I've seen where we can work together well. There are recent examples; the deal we did with Iran, the Joint Comprehensive Plan of Action to fundamentally change Iran's nuclear program from a weapons-based program to an energy-based program had a positive Russian presence in it. What we're doing in the Arctic in terms of protecting sea lanes and access to minerals and reducing conflict and promoting cooperation has a lot to do with how we work with the Russians. So there are examples out there of us working positively with them.

Given the political climate here, and elements of the foreign policy debate, do people in regions you cover want to see the United States be more active and engaged in world affairs, or less involved? Do they see current policy as too intrusive, too passive or just about right?

Shannon: Depends on who you're talking to and where we are, but one thing I've found as I've made my way around the globe is that American leadership is important and American presence is important. Our ability to show that we understand the challenges that other countries face; that we have the capacity to help them,

either politically, economically or commercially; and that they recognize that their success depends on the kind of relationship that they build with us, is what creates huge space for our diplomacy and our ability to engage globally. But it's a big world. The kinds of problems we're facing out there are really significant and this is why I made the larger point (in my lecture) about alliances and partnerships, because we can't do it by ourselves. We have enough problems that we have to deal with so we need to find countries that share our interests and share our values and have the resources and capabilities to help us address problems globally.

Why do you think the presidential candidates have had such a hard time articulating the strategic (rather than economic) value of the Trans Pacific Partnership?

Shannon: I made the point earlier (in my lecture) that largely because of the economic recession of 2008-09, there's a lot of people out there that think globalization is all about us losing jobs and losing money. And we need to do a much better job of highlighting how important trade is to our economy broadly, and how important it is for us to be a force in innovation and commerce in the world. Because we bring things to the global economy that nobody else has — in terms of finance, in terms of our technological developments, innovation, and our ability to operate in many market environments.

And in order to be a wealthy nation, we need the world. We can't be a wealthy nation only in our own market anymore. And in that sense, what the Trans Pacific Partnership does is it creates a trading relationship in the Pacific that connects not just North America, Central America and South America to a few of the economies, but it brings the entire Pacific. And it gives us an economic and a commercial component to what we're trying to do in Asia, which has been lacking.

You went to the College of William & Mary as an undergrad. Was there anything in particular about studying at a small Southern liberal arts college that helped you in your diplomatic career?

Shannon: First of all, the great thing about small liberal arts colleges is that you get to work directly with

your professors and so there's a level of intellectual dynamism that rubs off on students. It opened my mind to the world and ways of thinking about problems that I really didn't have until that point. I grew up in Southern California and it's really when I moved to William & Mary that I ran into the children of foreign service officers because many of them went to William & Mary. That was the first time I'd been with people who had spent significant parts of their childhood overseas. And they were intriguing. They were different from anybody that I'd known. That's what first kind of peaked my interest.

Diplomas Available for Veterans

For any World War II, Korean War-Era or Vietnam Veterans: If you did not receive your high school diploma due to entry into the Armed Forces of the United States, you may now be awarded a high school diploma by your local high school.

Tennessee state law allows for the awarding of high school diplomas to the honorable men and women who stepped forward to serve their country.

Veterans who fall into this category should contact their local school superintendent to register their name and to request the awarding of a high school diploma. You will have to present your military discharge papers.

If a veteran needs assistance, retired Sergeant Major Larry E. Williams has offered his help; reach him at (931) 924-3000 or (931) 224-3226, email at <tennesseans2@blomand.net >.

Take Sewanee with you when you leave the Mountain!
Go to
www.sewanee-messenger.com



Village Wine & Spirits Inc.

Best Selection of Wine & Spirits



* Now selling cold beer, wine & champagne

* Special orders available for wine & kegs

* 10% Discount to Seniors, Veterans, Students & Staff

*ID is required to get 10% off

~ Visit us on Facebook for the latest products ~

Across Highway 41A from Monteagle's Piggly Wiggly

(931) 924-6900 ~ vwineandspirits@gmail.com

Open Mon–Thu 9 a.m.–10 p.m.; Fri–Sat 9 a.m.–11 p.m.

Come enjoy our annual Thanksgiving Buffet

12 noon, Thursday, November 24

\$34.95 per person, \$14.95 for children

Complimentary glass of champagne.

Reservations required.

**The mountain's best breakfast,
served daily 8–10 a.m.**

Monteagle Inn
& RETREAT CENTER

**Tallulah's
Wine Lounge**

(931) 924-3869 ~ www.monteagleinn.com ~ 204 West Main St.



**EXPERT HANDYMAN
KEN O'DEAR
25 YEARS EXPERIENCE**

DEPENDABLE AFFORDABLE RESPONSIVE

Carpentry
Painting
Tilework
Plumbing
Electrical

Hauling
Moving
Home & Yard
maintenance

**931.235.3294
931.779.5885**

TDEC Asks Residents to Limit Water Usage

The Tennessee Department of Environment and Conservation (TDEC) is asking the public to temporarily limit water usage for non-essential purposes as areas in Tennessee's southeastern counties face extreme drought conditions.

Residents who receive water from the following public utilities are advised to limit their use until drought conditions subside:

Sewanee Utility District—Franklin County
Big Creek Utility District—Grundy County
Monteagle Public Utility Board—Grundy County
Tracy City Water System—Grundy County
Griffith Creek Utility District—Marion County
TN American Sequatchie Valley Water System—Marion County
Fall Creek Falls Utility District—Van Buren County
Pikeville Water System—Bledsoe County
Cagel-Fredonia Utility District—Sequatchie County
Dunlap Water System—Sequatchie County

Many of these public water systems are experiencing difficulties in meeting customer demands, but they have been coordinating efforts to share resources to ensure continued drinking water services.

Non-essential water uses includes: watering of lawns, gardens, trees, shrubs, etc.; watering of athletic fields; washing sidewalks, driveways, parking areas, patios, or any other hard surfaces except for sanitary or safety purposes; non-commercial and commercial washing of motor vehicles, trailers or boats; use of water for dust control or construction compaction; or firefighter training.

Tennessee's southeastern counties have been classified by the U.S. Drought Monitor as experiencing either severe, extreme or exceptional drought conditions. The National Weather service has indicated that precipitation in these areas is as much as 16 inches below normal. No significant precipitation is predicted for the remainder of 2016. The lack of rainfall has resulted in declining surface water and ground water levels across the region.

For additional guidance on how to conserve water, visit <<http://wateruseitwisely.com/100-ways-to-conserve/>> or https://www3.epa.gov/region1/eco/drinkwater/water_conservation_residents.html> or contact your local utility provider.

Community Chest Spotlight: Housing Sewanee

The 2016–17 Sewanee Community Chest (SCC) Fund Drive is underway. Sponsored by the Sewanee Civic Association, the SCC raises money yearly for local charitable organizations serving the area. This year's goal is \$116,850.

For the next few weeks, the Sewanee Mountain Messenger will focus on some of the organizations supported by the Community Chest. This week we shine the spotlight on Housing Sewanee Inc.

Housing Sewanee Inc. (HSI) is a nonprofit organization modeled after Habitat for Humanity.

Since 1993, HSI has built one house a year for an area family in need. These families include the elderly, the sick, the physically or mentally disabled, and grandparents raising their grandchildren.

HSI accepts applicants and selects recipients based on need and ability to sustain a no-interest mortgage. Recipients are expected to help with the building of their house when possible. Many times, their neighbors and families pitch in to help. Most houses are built for approximately \$50,000. HSI provides the capital and volunteer labor to get the house built. When the house is finished, the owners begin to pay a monthly mortgage fee.

HSI newest project is in Sherwood

Springs. HSI has begun the work required for a small development on the six-acre Sherwood Road property it purchased earlier this year. The development will consist of up to eight units incorporating sustainable, low-energy building design and techniques in a small neighborhood that will encourage social interaction.

HSI is requesting \$10,000 from the Community Chest to help with expenses. This organization does receive other funding from individuals, concession sales, summer work groups, and poster sales. HSI does not have paid employees but relies on community volunteers.

Since 1908, the goal of the SCC has been to help citizens by funding the community. Through SCC funding, 26 local organizations can help those caught in the cycle of poverty, improve quality of life through outreach and community initiatives, and provide support for children with a variety of programs. The SCC is a 501(c)(3) nonprofit organization, and donations are tax-deductible. Send your donation to Sewanee Community Chest, P.O. Box 99, Sewanee, TN 37375. For more information, or to make a donation through PayPal, contact <sewaneecommunitychest@gmail.com> or go to <www.sewaneeccivic.wordpress.com>.

Welcome home,
Sewanee alumni!



See, swirl, smell and sip.

Manchester, TN www.beanscreekwinery.com 931 723 2294

Tennessee Wars Commission Grant Program Applications Available

The Tennessee Wars Commission and Tennessee Historical Commission announced today that grant applications will now be accepted for 2017. The program provides funding to protect and interpret Tennessee's historic military sites ranging from the French and Indian War through the American Civil War era.

"Eligible projects for funding include planning grants, archaeological surveys, trail signage and land acquisition," said Tennessee Historical Commission Executive Director Patrick McIntyre. "Since 1994, this program has helped protect more than 7,000 acres of endangered battlefield property in Tennessee, preserving the heritage and history of this state."

Previous projects that have received funding include an archaeological survey at the Civil War Battle of Franklin Cotton Gin site, interpretive signage for the War of 1812 Camp Blount Memorial Park in Fayetteville, and recovery and forensic investigation of remains from the Mexican-American War.

Grant applications can be obtained by contacting Timothy Hyder, program director of the Tennessee Wars Commission at <tim.hyder@tn.gov>, (615) 770-1095 or via mail at 2941 Lebanon Pike, Nashville, TN 37214. Completed applications must be submitted by Thursday, Dec. 1.

For more information about the Tennessee Wars Commission, go to <www.tn.gov/environment/article/thc-tennessee-wars-commission> or call (615) 770-1097.



ACE
The helpful place.

CUSTOMER APPRECIATION

OPEN HOUSE

November 10th-12th, 2016
Henley Ace Home Center

FREE Traeger Grill Demonstration
FREE Food on Friday & Saturday from 10-2 • Door Prizes will be given!

1765 Decherd Blvd • Decherd, TN 37324
(931) 967-0020

WE CARRY THE BEST BRANDS

MONSTER CRAFTSMAN VALSPAR CLARK+KENSINGTON DEWALT WEBER MILWAUKEE PURDY

SHOP NOW FOR CHRISTMAS GIFTS!

November 11th, Veterans Receive A FREE 12"x18" U.S. Flag

THE ANSWER TO ALL YOUR HOME MAINTENANCE NEEDS, RIGHT HERE IN THE NEIGHBORHOOD.

BUCKET SALE!

Each Day of Sale, the first 75 customers will receive a FREE 5 Gallon Bucket. Fill the bucket with non-sale merchandise and receive 20% OFF at the register. Excludes power tools, YETI and coupons.

Sewanee Market (931) 598-5700

Huge Selection of Domestic, Imported and Craft BEER and KEGS! LOW PRICES!

QUANTITY DISCOUNTS!
BETTER PIZZA—14" one-topping pizza \$6.⁹⁹

Open Mon-Fri 6:30 am-10 pm, Sat 7:30 am-10:30 am, Sun 8 am-9:30 pm

GOOCH-BEASLEY REALTORS
www.gbrealtors.com • (931) 924-5555
9 College Street, Monteagle, TN
Shirley Tate, Broker (931) 598-0044
Sally Thomas, Affiliate Broker (931) 636-4993
June Weber, CRB, CRS, GRI, Broker (931) 636-2246
Peter Hutton, Affiliate Broker (931) 636-3399



170 LAUREL POINT LANE, SEWANEE.
Spectacular views off the bluff! Spacious 3 BR, 2 BA with large deck that overlooks beautiful laurel groves. 1.6 AC. 2870 SF. MLS1760258. **\$390,000**



237 LAKE O'DONNELL, SEWANEE.
Commercial, 793 SF. 0.43 acre lot acres. Prime location on the Mountain Goat Trail. Minutes from the Angel Park. Includes 19x13 storage building. MLS1719498. **\$124,000**



174 CUMBERLAND DR., MONTEAGLE. Superb quality throughout this elegant home that overlooks the peaceful Pelham Valley. Custom woodwork throughout, along with heated floors, elevator, spacious master suite that looks onto the bluff, and a great kitchen. Separate garage and office or studio. MLS1737791. **\$989,500.**

—LAND—
Bluff: Ravens Den. 8.66 acres. \$165,000.
Wooded: McBee Rd. 6.2 acres. \$58,000.



1629 CLIFFTOPS AVE., Need room for your whole family? This unique property has a Mother-in-Law suite and a Guest or Nanny suite upstairs. Screened in porch off the kitchen and another porch in the front. Beautiful wooded lot has also has access off Hickory Place. 3 beds, 4 baths, 2,538 SF. MLS1725770. **\$389,900**



4 DEEPWOODS BLUFF, MONTEAGLE. Excellent Bluff view lot in the Sewanee community. Build your new home on the level lot facing East. 1.12 AC. MLS1722980. **\$70,000**



186 SHERWOOD TRL., SEWANEE. 4 beds, 2 baths, 2,165 SF. MLS1729864. **\$379,000**



2626 RAVENS DEN RD. 20 AC. MLS1771392. **\$399,900**

WE ARE YOUR LOCAL YETI DEALER!

YETI Mug \$39.⁹⁹
YETI Mug \$29.⁹⁹
YETI Cooler \$349.⁹⁹

20lb Propane Tank Refill

\$999

Hurry in, offer valid Nov. 10 through 12!

ACE

Check out our holiday decorations!

ACE
The helpful place.

HENLEY HOME CENTER

Mon.-Fri. 7 a.m.-6 p.m.,
Sat. 8 a.m.-5 p.m., closed Sun.



*“Homecoming
means football,
festivities and
friendship.”*

Sewanee Realty

SewaneeRealty@inSewanee.com
www.SewaneeRealty.com
115 University Ave., Sewanee, Tenn.

Margaret Donohue,
Principal Broker • 931.598.9200

Patsy Truslow,
Broker • 931.636.4111



MLS 1776800 - 1256 Sollace Freeman Hwy., Sewanee. \$584,000



MLS 1775366 - 143 Winns Circle, Sewanee. \$385,000



BLUFF - MLS 1775532 - 305 Clara's Point Rd., Sewanee. \$949,000



BLUFF - 3480 Sherwood Rd., Sewanee. \$349,000



MLS 1774336 - 1848 Ridge Cliff Dr., Monteagle. \$283,000



BLUFF - MLS 1773059 - 1804 Clifftops Ave, 6.9 acres, Monteagle. \$995,000



BLUFF - MLS 1656823 - 1613 Laurel Lake Dr., Monteagle. 5.3 acres. \$449,900

BLUFF TRACTS

Eva Rd. 2.8 ac	SOLD	1756247	\$228,000
Laurel Lake Dr. 66.7 ac		1748867	\$395,000
16 Jackson Pt. Rd. 4.51ac		1710188	\$84,800
590 Haynes Rd. 11+ac		1687354	\$132,000
15 Saddletree Ln. 6.12ac		1680519	\$88,000
16 Laurel Lake Rd.		1722522	\$97,500
223 Timberwood Tr. 5.12ac		1604345	\$169,000
Old Sewanee Rd. 53ac		1643144	\$296,000
3 Horseshoe Ln. 5.6ac		1608010	\$60,000
1 Raven's Den 5.5ac		1685926	\$62,000
Long View Ln. 2.56ac		1572284	\$108,000
36 Long View Ln.		1503912	\$99,000
7 Jackson Pt. Rd.		1714853	\$75,000
37 Jackson Pt. Rd.		1579614	\$75,000
Jackson Pt. Rd. 12.45ac		1579007	\$125,600
12 Saddletree Ln.		1578117	\$79,500
Jackson Pt. Rd. 19+ac		1531331	\$120,000
Jackson Point Rd.		1648895	\$199,000
7 Saddletree Ln.		1726054	\$70,000
25 Old Sewanee Rd. 5.2 ac		1741756	\$119,000



MLS 1771204 - 351 Greens View Rd., Sewanee. \$285,000



MLS 1744462 - 706 Old Sewanee Rd., Sewanee. +30 acres. \$299,500



MLS 1698101 - 41 Sherwood Rd., Sewanee. \$229,000



BLUFF - MLS 1772358 - 569 Haynes Rd., Sewanee. \$589,000



BLUFF - MLS 1646170 - 3335 Jackson Point Rd., Sewanee. 5 acres. \$289,000



BLUFF - MLS 1703687 - 294 Jackson Point Rd., Sewanee. 20 acres. \$327,000



BLUFF HOME - MLS 1696535 - 1105 North Bluff Cir., Monteagle. \$368,000



MLS 1692858 - 21 Mont Parnasse Blvd., Sewanee. 3.4 acres. \$329,000



MLS 1770160 - 12147 Sewanee Hwy., Sewanee. \$169,000



MLS 1752200 - 1116 University Ave., Sewanee. \$449,900



BLUFF - MLS 1648470 - 245 Coyote Cove Ln., Sewanee. 29.5 acres. \$469,900



MLS 1725646 - 277 Wiggins Creek Dr., Sewanee. \$289,000



MLS 1743681 - 1091 Timberwood Tr., Monteagle. 26.4 acres. \$689,000



MLS 1667542 - 36 Lake Bratton Ln., Sewanee. \$429,000



MLS 1688434 - 324 Rattlesnake Springs Rd., Sewanee. 4.9 acres. \$349,500



MLS 1730527 - 565 Haynes Rd., Sewanee. 5.4 acres. \$249,900



BLUFF - MLS 1712150 - 3442 Sherwood Rd., Sewanee. \$589,000



MLS 1514972 - 202 Main St., Monteagle. \$112,000



MLS 1740978 - 94 Parsons Green Cir., Sewanee. \$299,900



MLS 1703913 - 134 Tomlinson Ln., Sewanee. \$539,000



MLS 1740557 - 786 Old Sewanee Rd., Sewanee. 15 acres. \$329,000



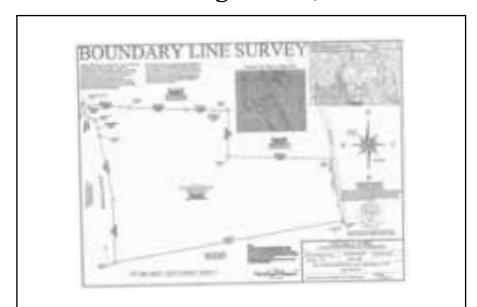
MLS 1711778 - 844 Fairview, Winchester Cabins - Commercial - \$369,500



BLUFF - MLS 1692347 - 1043 North Bluff Cir., Monteagle. \$250,000



BLUFF - MLS 1657852 - 1819 Bear Ct., Monteagle. \$249,000



BLUFF - MLS 1748867 - Laurel Lake Dr., Monteagle. 66.7 acres. \$395,000

LOTS & LAND

Taylor Rd. 29.73ac	1754324	\$159,000
Oliver Dr. 10.4ac	1707115	\$38,000
Bear Dr. 2ac	1708016	\$29,000
Jackson Pt. Rd. 4.8ac	1714849	\$37,500
Ingman Rd. 0.809ac	1696338	\$17,000
Haynes Rd. 6.5ac	1690261	\$75,000
43 Bluff Wodds	1774625	\$28,000
57 Edgewater Ct. Winch	1668196	\$35,000
Highlander Dr. 15ac	1669734	\$79,500
111 Clifftops Dr. 5.25ac	1646127	\$58,900
Hwy 41 Monteagle 5.3ac	1714856	\$47,500
Shadow Rock Dr. 0.99ac	1572178	\$23,000
5ac Montvue Dr.	1714856	\$59,000
Sarvisberry Pl.	1628195	\$69,000
8 Jackson Point Rd.	1734341	\$36,000
9 Jackson Point Rd.	1734307	\$39,000

Prelude to A Luncheon

Exciting, scrumptious food and more will be center stage when the Sewanee Woman's Club hosts "Sweet and Savory Day" at the DuBose Center in Monteagle at 11 a.m., Monday, Nov. 14. Members and visitors are invited to sample some delicious treats as part of the Club's fundraiser. The regular luncheon (\$13.75, reservations required) will be preceded by the chance to taste a bevy of standout dishes. Five dollars will purchase the opportunity to sample all the entries. Recipes for each dish will be available for \$1 apiece.

The initial tasting will begin at 11 a.m., preceding the noon luncheon. If you have filled up on the delicious nibbles, there will be take-out boxes provided for any part of the luncheon that you might want to save for later.

For more information, contact Flounoy Rogers at <semmesrogers@gmail.com> or 598-0733.

University Deer Hunt

The 2016 University deer hunt continues through Jan. 13, 2017. The archery only season runs through Dec. 21, and the regular season begins on Dec. 22.

Hunting is allowed on most weekends from sunrise to 10 a.m. and 2 p.m. until sunset. Additionally, hunting is allowed weekdays from sunrise to 8:30 a.m. in all zones and 3:30 p.m. to sunset in zones 3, 4 and 6. There is no hunting on Homecoming Weekend (Nov. 4-6), Thanksgiving Day, Christmas Eve or Christmas Day. There will be a limited firearms hunt that will start the day after Christmas.

For more information and a map, go to <<http://www.sewanee.edu/offices/oess/the-domain/ecosystem-management/hunting/>>.

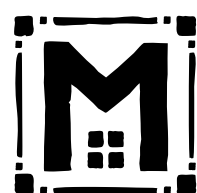
We're glad you're reading the Messenger!



The blue chair Café & Tavern
41 university avenue
sewanee, tennessee




(931) 598-5434
thebluechair.com



MOLLIKA
CONSTRUCTION LLC

931 205 2475

WWW.MOLLIKACONSTRUCTION.COM

- CRAFTSMANSHIP •
- CREATIVITY •
- SUSTAINABILITY •



Taylor's Mercantile celebrated its 33rd annual Holiday Open House last weekend.

Ayres Hall Dedication

The dedication of Ayres Hall will be at 10 a.m., today (Friday), Nov. 4. Immediately following there will be a reception in honor of Pat and Bob Ayres.

Prior to the dedication, 9-10 a.m., tours of Ayres Hall will be offered. The community is welcome.

Robert Moss Ayres Jr. is a member of Sewanee's Class of 1949 and a businessman from San Antonio, Texas. His leadership during a time of fiscal crisis in the mid-1970s and his continued generous support of the school have led many to consider Ayres one of the "modern founders" of the University of the South. As vice-chancellor from 1977-1988, Ayres imposed fiscal discipline on the University, erasing a \$1.2 million deficit in the first five years of his service. Thanks to the success of his Century II Campaign (the University's first capital campaign in 20 years) and careful management, the University's endowment more than tripled during the Ayres years.

In 2011, the St. Mary's-Sewanee Board of Trustees announced the naming of its new campus—the Ayres Center for Spiritual Development—in honor of Bob and Pat Ayres. Together, the remarkable couple have been known for their diligence, faithfulness, and generosity, and for nurturing values of service and stewardship in others.

Your Place for Organic & Local Products

- ◆ Natural Foods
- ◆ Personal Care Products
- ◆ Garden Supplies
- ◆ Yarn & Knitting Supplies
- ◆ Local Arts & Crafts
- ◆ Jewelry
- ◆ Gifts
- ◆ Antiques

Mooney's
Market & Emporium

OPEN DAILY 10-6
931-924-7400 • 1265 W Main Street • Monteagle, TN



SHARE YOUR NEWS!

news@sewaneemessenger.com

FAST, FRIENDLY, LOCAL!
— EST. 1916 —



SERVICE YOU CAN COUNT ON!

Since 1916, Auto-Owners Insurance has been teaming up with your local independent agent—a person focused on you, the customer. It's a break from the norm... and that feels good. That's why we've been doing business this way for the last 100 years.

Contact your friendly local agent today!

BILL NICKELS
INSURANCE AGENCY
931-728-9623 • 931-247-5549
bill@billnickelsins.com

Auto-Owners
INSURANCE
LIFE • HOME • CAR • BUSINESS

Would you love to be entertaining in areas personally designed for your lifestyle?



Custom home remodeling begins with...

Joseph's Remodeling Solutions
A Division of Sampson Solutions, LLC

Taking Quality to the Next Level

Licensed - Insured - Green Certified

931-598-5565

joseph@josephsremodelingsolutions.com
www.josephsremodelingsolutions.com

Did You Know?

The Sewanee Community Chest has raised more than \$1 million in the last decade to help area organization and initiatives.

Visit sewaneecivic.wordpress.com to get involved.

"Lake Suzanne"



Only steps from the Assembly North Gate lie four, 1+ acres lots elegantly dressed in virgin timber that reach high into the clouds from a blanket of mountain laurel, dogwoods, redbuds and sugar maples. All four lots enjoy generous frontage on the rippling waters of Lake Suzanne. A magnificent property of 6.9+ acres including a private 2.5+ acre lake that has beckoned anglers from generations of Assembly dwellers. Stories of 10+ lb large mouth bass have long echoed from the shore line of this beautiful lake lined with shade trees reaching out over the water for the sunshine and silhouetted in the water itself. Water fowl and bass play happily together on and in this amazing spring fed lake often observed only by a pair of strolling deer delighting in a sparkling sip or two. Close your eyes and imagine finding a clear piece of heaven right across the street from the historical "Assembly Grounds" and less than one half a mile from Monteagle's main street yet quiet and secluded as any haven in the deep woods.

The property has both a front and a rear entrance and is surrounded by woods on all sides. What a place to build your summer home, your winter retreat or your weekend getaway.

How about developing a compound with old friends or classmates from Sewanee or St. Andrews? Privacy, security and convenience are but a few of the features of this unique property located a stone's throw from the Assembly on Central Avenue.

This property is the last large space available across the street from the Assembly. Secure your place on the mountain for the future before it is all gone.

This unique property is offered by Dr. George and Mrs. Suzanne Elder, whose family has summered in the Assembly for 7 generations. You are invited to call George or Suzanne and schedule a leisurely stroll or golf cart ride through this rare and inviting property.

Home: 931-924-3144 / Cell: 931-636-8150
Email: george@psychemedics.com



Sewanee Elementary loves our volunteers. A huge thank you goes out to Mary Hess for sprucing up our totems with new paint.

Broadband Feasibility Survey

Duck River Electric Membership Corporation (DREMC) has launched a broadband feasibility study in its service area. Information will be gathered from various sources, including surveys and meetings with business and community leaders.

The goal is to identify opportunities to help bridge to the “digital divide” that keeps tens of thousands of DREMC members from connecting to the Internet at speeds that meet the Federal Communications Commission’s definition of broadband.

The broadband feasibility study will explore how the proposed fiber-optic loop might help improve connectivity in rural areas served by DREMC. A nationally recognized consulting company, Magellan Advisors, will aid DREMC with data collection and analysis. DREMC members, both residential and business, should go to the co-op’s website <www.dremc.com> to fill out one of the two special broadband surveys.

Tried and Trusted Professionals

Call for a free on-site estimate!

**Professional Residential Maid Service
Commercial Janitorial Service**
Bonded • Insured

931-808-5178
thecleanmachine1.com



Ivy Wild
Restaurant and Catering

36 Ball Park Road, Sewanee, Tennessee (931) 598-9000
www.ivywildsewanee.com

Progressive American cuisine prepared
with seasonal and local ingredients.

Thursday through Sunday 5 p.m.–9 p.m.

Ivy Wild’s new bar is OPEN!

Full bar, complete with a craft cocktail list. Wine, too!

Call Heather at 931-598-9000 or email
reservations@ivywildsewanee.com
We look forward to serving you!

Chef Keri Moser, 2014 StarChefs Rising Star Chef Award Winner

Caregiver Group

Folks at Home (F@H) sponsors a weekly Caregiver Group for those who are taking care of chronically or terminally ill relatives or friends. The group meets Thursdays, 1:30–3 p.m. in Otey’s Claiborne Parish Hall. Confidentiality is a treasured value here. For information, contact Folks at Home Director Kathleen O’Donohue, at (931) 598-0303 or <folksathomesewanee@gmail.com>.

Breakfast and Bluegrass

The Sewanee community is invited to join in a Homecoming event, “Breakfast and Bluegrass on the Quad,” at 9 a.m., Saturday, Nov. 5. The breakfast will be followed by an “all-alumni celebration” and the launch of the Stronger Truer Sewanee campaign at 10 a.m. in All Saints’ Chapel.

Community members are asked to email <StrongerTruer@sewanee.edu> if they plan to attend.

Associated Colleges of the South Awarded \$2.7 Million Grant

R. Owen Williams, president of the Associated Colleges of the South, has announced that the organization has received \$2.7 million in funding from the Andrew W. Mellon Foundation to support a five-year faculty advancement program.

The grant will enable the Associated Colleges of the South (ACS) to provide significant financial support for faculty innovation at its 16 member colleges and universities. The University of the South is a member of the consortium. Funding will be available for projects in three areas: innovative instruction, collaborative curriculum and inclusive teaching. The new programs developed will promote collaboration among the ACS institutions.

“ACS has already begun to work on several elements of this project,” Williams said. “In its recent meeting at the University of the South, the ACS Council of Deans devoted their attention to this topic, and various faculty members are already working on aspects of the program.”

A portion of the grant will be used to continue the ACS’s agenda of providing grants to faculty to fund initiatives in innovative pedagogy. Other projects will experiment with providing new, collaborative curricula, as well as combining resources across campuses to create entirely new courses and programs. A third emphasis will be on faculty diversity and inclusion.

“ACS allows its member institutions to build programs that would be difficult for each individual school to create. These funding opportunities will assist Sewanee’s efforts to build a world-class faculty and create innovative academic programs that complement and build on our traditional disciplines,” said John McCardell, University of the South vice-chancellor.

The Mellon Foundation helps colleges and universities respond to the current challenges affecting higher education, and fosters collaborations within and among institutions. “During a period of dramatic demographic change and constant pressure to demonstrate the ‘value proposition’ of a liberal arts education, the ACS’s determination to address the challenges of diversity, equity, inclusion, and financial equilibrium are worthy of support,” observed Eugene Tobin, senior program officer in higher education and scholarship in the humanities. “Over two decades ago, ACS’s willingness to use technology to create a virtual classics program demonstrated the intellectual benefits of academic collaboration. This grant,” Tobin noted, “will enable a new generation of students and faculty to share resources and pedagogies that combine the strengths of a residential education with the latest advances in technology.”

The Associated Colleges of the South is a consortium of 16 nationally recognized liberal arts colleges spread across 12 states extending from Virginia to Texas and representing approximately 3,000 faculty and 30,000 undergraduates.

Tell them you read it here!



“Done Right, the First Time”

We Handle Insurance Claims

777 St. Claire Street, Tracy City, TN 37387

Ph: 931.592.3274 | Cell: 931.235.3316

Email: lakesidecollision00@gmail.com

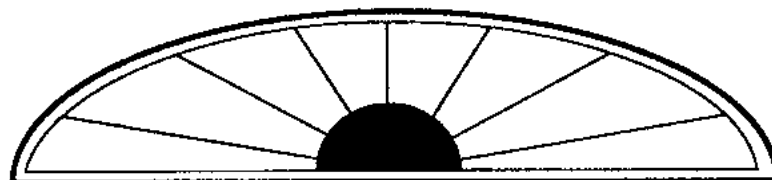


**June Weber
Gooch-Beasley Realtors**

**Serving the Sewanee and Monteagle area
with quality real estate service:
-45 years of experience
-Mother of Sewanee alumnus**

gb

www.gbrealtors.com junejweber@bellsouth.net
June Weber, CRB, CRS, GRI Broker 931.636.2246
GOOCH-BEASLEY REALTORS 931.924.5555



wm.c.mauzy construction co.
Bill Mauzy, Owner, General Contractor

www.mauzyconstruction.com 931.598.0686 (office)
billmauzy@me.com 931.580.0686 (cell)

Senior Center News

Volunteers Needed

The Center needs volunteers who can help in the kitchen to prepare lunch and to help clean up and wash dishes. Call the center at 598-0771 or 598-0915 to volunteer.

Menus

The Sewanee Senior Center serves lunch at noon, Monday through Friday. The suggested donation is \$4, regardless of your age. Please call 598-0771 by 9 a.m. to order lunch.

Nov. 7: Chicken salad on croissant, chips, dessert.

Nov. 8: Lasagna, salad, garlic bread, dessert.

Nov. 9: Salmon patty, white beans, turnip greens, cornbread, dessert.

Nov. 10: Open-face roast beef, mashed potatoes, slaw, dessert.

Nov. 11: Barbecue chicken, potato salad, baked beans, roll, dessert.

Menus may vary.

Thanksgiving Luncheon

The annual Sewanee Senior Center Thanksgiving Luncheon will be at noon, Tuesday, Nov. 15. The menu is turkey and dressing, yams, green beans, corn on the cob, roll and dessert. The cost will be \$7 and reservations must be made by Fri., Nov. 11, by calling the Center at 598-0771.

The Senior Center will be closed Nov. 24 and Nov. 25 for the Thanksgiving holiday.

Christmas Bazaar

The Sewanee Senior Citizens Center will be having its annual Christmas Bazaar and bake sale Dec. 5–10. Donations are now being accepted at the Center located at 5 Ball Park Road. Donations of clothing are not accepted.

Daily Activity Schedule

Chair exercises, Mondays and Wednesdays, 10:30–11:15 a.m.; Tuesdays at 10:30 a.m., the group plays bingo, with prizes; Wednesdays at 10 a.m., the writing group gathers at 212 Sherwood Rd.; Fridays at 10 a.m. is game time.

Center Participation

The Sewanee Senior Center does not charge any membership fee. All persons 50 or older who take part in any of the activities are considered members.

The Center is located at 39 Ball Park Rd. in Sewanee.



Tea on the Mountain

*For a leisurely luncheon
or an elegant afternoon tea*

11:30 to 4 Thursday through Saturday

DINNERS BY RESERVATION

(931) 592-4832

298 Colyar Street, US 41, Tracy City

SES Menus

**Monday–Friday,
Nov. 7–11
LUNCH**

Monday, Nov. 7: Barbecue, mozzarella cheese sticks, baked beans, potato wedges, marinara sauce, fruit, hamburger bun.

Tuesday, Nov. 8: No school.

Wednesday, Nov. 9: Mexican pasta bake, macaroni and cheese, green beans, side salad, veggie juice, fruit, garlic bread-stick.

Thursday, Nov. 10: Corn dog, hamburer, potato side-winder, pinto beans, sandwich trims, fruit, hamburger bun.

Friday, Nov. 11: Pizza, chili, cheese sandwich, side salad, steamed broccoli, buttered corn, crackers, fruit, cookie.

BREAKFAST

Each day, students select one or two items.

Monday, Nov. 7: Yogurt or breakfast pizza.

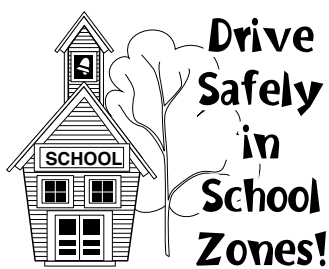
Tuesday, Nov. 8: No school.

Wednesday, Nov. 9: Chocolate muffin or mini cinnis.

Thursday, Nov. 10: Biscuit, gravy, jelly, or banana bread slice.

Friday, Nov. 11: Cinnamon roll or pancake/sausage stick, syrup.

Options available every breakfast: assorted cereal, assorted fruit and juice, milk varieties. Menus subject to change.



Did You Know?

Beginning in 1908, the Sewanee Civic Association's primary purpose was to raise money the town could not raise in taxes because it was unincorporated, in order to make municipal improvements.

**Visit
sewaneecivic.
wordpress.com
for more
information.**

Howard to Join St. Andrew's-Sewanee

St. Andrew's-Sewanee Head of School Karl Sjolund recently announced the successful completion of the school's search for a Director of Development. Jay Howard, currently Director of Development of Webb School of Knoxville, will join SAS in late November.

During Howard's eight-year tenure at Webb, he raised more than \$15.3 million, completed an \$8.2 million capital campaign, increased annual giving by 60 percent and increased planned giving expectancies from \$3 million to \$9.2 million. Prior to joining Webb, Howard served as the vice president for development at

The Hermitage and Battle Ground Academy, as a senior consultant for the Independent School Counsel, and in development positions at Flint Hill School, Alton Ochsner Medical Foundation and New Orleans Museum of Art. Early in his career, he taught social studies and coached at St. Martin's Episcopal School in New Orleans and coached at the Academy of the Holy Cross and Sidwell Friends School in Washington, DC.

Howard is a graduate of University of Richmond, Sidwell Friends School and The Potomac School. He completed graduate course work in education at the University of New Orleans.

Local Students Make SAS Honor Roll

The following students from Franklin, Grundy and Marion counties have been named to the Honors Lists at St. Andrew's-Sewanee School for the most recent grading period. Overall, 87 students, including 28 boarding and 59 day students, achieved academic distinction for the first quarter.

Students who earn an average of 93 or above with no grade below 83 are named to the High Honors List for academic achievement. Students with average ranges between 83 and 92 and who have received no grade below 80 are named to the Honors List. Satisfactory completion of afternoon programs is required for students to be eligible for the Honor Roll.

High Honors

Andrew Bachman
Carolyn Bruce
Kate Butler
Chloe Fontenelle
Evan Fox
Jack Haight
Harrison Hartman
Sophia Hartman
Saje Mangru
Daniel McNair
Sophia Patterson
Gabriel Pongdee
Genevieve Rogers
Tessa Shackelford
Jack Simons
Aidan Smith
Isabel Spinelli
Fritz Stein
Kyra Wilson

Honors

Rachel Alvarez
Eli Andrews
Lydia Angus
Kip Barksdale

John Beavers
Lucy Carroll
Anna Fox
Madison Gilliam
Peter Haight
Larson Heitzenrater
Sarah Beth Hobby
Sylvan Huber-Feely
Katie Finn Hurst
Camila Hwang-Carlos
Kendale James
Sarah Johnson
Daniel McDonough
Jonathan Miller
Anna Post
Mariel Rinck
Grace Rowell
Bo Sain
Evelyn Seavey
Sarah Simons
Samuel Smith
Dustin Stensby
Ryan Val
Lindsey Wall
Maggie White
Kia Whitman



Some of the ghosts and goblins from the Sewanee Children's Center pose in front of Sewanee Elementary.

Sewanee Children's Center Halloween Party

The Sewanee Children's Center (SCC) celebrated Halloween on Friday, Oct. 28. Parents and teachers organized spooky snacks and fun activities. To conclude the festivities, the children trick or treated in downtown Sewanee.

The SCC thanks Otey Parish (Frieda Hawkins Gipson), CAC (Betty

Carpenter, and all), Sewanee Post Office, Sewanee Auto Repair, Lemon Fair, Blue Chair, Regions Bank, and Beauty by Tabitha who dressed up and welcomed the children with candies and smiles.

Thank you for your generosity and your contribution to create fun memories for the children.

LONG'S LAWN SERVICE

- landscaping & lawn care
- leaf removal • mulch

Local references available.

Jayson Long

(931) 924-LAWN (5296)



ROB MATLOCK
CONSTRUCTION COMPANY
NEW HOME BUILDING
AND REMODELING

MEMBER, U.S. GREEN BUILDING COUNCIL

PHONE 931-598-5728

MATLOCK

State Licensed • Fully Insured



Heart Healthy & Diabetic Friendly Thursdays!

**11AM–8PM, Lunch & Dinner
Great New Dishes Every Week
Smoke House Restaurant - Monteagle**

J & J GARAGE

COMPLETE AUTO REPAIR

- Import & Domestic
- Computerized 4-Wheel Alignments
- Shocks & Struts • Tune-ups • Brakes
- Our Work is Guaranteed.
- OVER 26 YEARS EXPERIENCE.

598-5470 Hwy 41-A between Sewanee & Monteagle • Monday-Friday 7:30-5:30

Jerry Nunley
Owner

TOMMY C. CAMPBELL

FOR YOUR IMPROVEMENTS
Call (931) 592-2687
Free Estimates • No Job Too Small!

DRIVEWAY WORK • GRAVEL HAULING • DOZER & BACKHOE

plus Land Clearing • Concrete Work • Water Lines • Garage Slabs • Sidewalks • Porches & Decks • Topsoil & Fill Dirt
Septic Tanks & Field Lines

The Sewanee Dance Conservatory.
Perpetual Motion &
the Alabama Youth Ballet Theatre present...

the Nutcracker

a Yuletide Ballet

**November 12, 2016
2:30 PM & 7 PM**

**Guerry Auditorium
The University of the South**

Tickets
\$5 students
\$10 adults
at the door.

if music asks
you to dance,
Sewanee
DANCE
Conservatory
www.sewaneeconservatory.com

AlabamaYouthBallet.org

SPREAD GOOD NEWS.

Help friends get information. Help local businesses succeed.
Help our Mountain communities.

SHARE YOUR NEWS.

Area Residents Inducted into the Order of Gownsmen

Cody Allen Bartz of Estill Springs, the son of Leslie and Wayne A. Bartz; Allison Morgan Bruce of Monteagle, the daughter of Kathryn and Alex Bruce; Eva Marie Faison of Monteagle, the daughter of Sharon T. Faison; Eva Claire Miller of Sewanee the daughter of Katherine Lehman and Stephen Miller; Tieta May Keetle of Sewanee, the daughter of Lisbeth and Stephen L. Keetle; Julie Kay Glenn of Winchester, the daughter of Tabettha and Kenneth

The wearing of the gown is both a sign of academic achievement and a promise to continue the ideals and traditions of the University.

Help friends get information. Help local businesses succeed.
Help our Mountain communities.

For the complete combined calendar, go to <www.themountainnow.com>.

DONATE TODAY

It does the community a world of good!

Helping 26 Local Organizations

Sewanee
COMMUNITY CHEST

PO Box 99 • Sewanee, TN 37375

sewaneecivic.wordpress.com



St. Andrew's-Sewanee senior class members, from left, Daniel McNair, Carolyn Graham, Cooper Nickels, Hadley Parsons and Issac Lee performed in their final fall production for the SAS Players. The ensemble presented "Universal Robot" last weekend. Photo by St. Andrew's-Sewanee

Arts Notes

Tracy City Jam

The Tracy City Tuesday Jam will change its meeting time to 5 p.m. for its winter schedule beginning Tuesday, Nov. 8. All skill levels and acoustic instruments welcome. The jam meets in the Arts Council Room of the Water Building beside the old high school in Tracy City.

SSO Halloween Concert

Nearly 500 area elementary school children are invited to the fourth annual Halloween concert at 10 a.m., Friday, Nov. 4, in Guerry Auditorium. The SSO underwrites this spooky educational concert, including the cost of transportation, as a part of its community outreach.

Then at 7:30 p.m. in Guerry, the SSO will perform a concert including "Pirates of the Caribbean" by Badelt/Rickets, "Totentanz" by F. Liszt, "Overture to Orpheus in the Underworld" by J. Offenbach, and "Kashmir" by Led Zeppelin/Povey.

'a hand's width'

The Carlos Gallery in the Nabit Art Building presents "a hand's width," an exhibition by artist Anderson Wrangle. The exhibition continues through Dec. 16. An artist talk and reception will be at 4:30 p.m., Friday, Nov. 11, in the Carlos Gallery.

Gallery hours are from 8 a.m. to 5 p.m. Monday through Friday and 1–5 p.m. Saturday and Sunday. The gallery is located at 105 Kennerly Road.

SAS Art Gallery

Functional Clay: Five Contemporary Artists will be in the St. Andrew's-Sewanee Gallery through Nov. 14. The exhibition features the work of artists Burki Gladstone, Mary Lynch, Claire Reishman, Merissa Tobler and Ursula Vann. The SAS Art Gallery is located in the Simmonds Building on the St. Andrew's-Sewanee School campus. Hours are Monday through Friday, 9 a.m.–3 p.m., and by appointment.

'Communal Spirit'

"Communal Spirit: 3,000 Years of Mexican Artistry" incorporates diverse Pre-Columbian artifacts from both western and eastern Mexico, representing eight different indigenous civilizations. The 20th-century folk art presented features many of the same regions, inspiration and creative techniques. The exhibition will continue through Dec. 16.

'Love Thy Neighbor'

The University Art Gallery presents Jessica Wohl's "Love Thy Neighbor," an exhibition of quilts and drawings that grapples with the fear, intolerance and polarization the artist sees dividing communities and cities across the country, and answers those divisions with objects that evoke empathy and comfort. The exhibition will be on view through Jan. 27.

Wohl will speak about her work at 4:30 p.m., Friday, Nov. 11, in Convocation Hall with a reception to follow.

The University Art Gallery is located on Georgia Avenue. Hours are 10

a.m.–5 p.m. Tuesday through Friday and noon–4 p.m. on Saturday and Sunday. Call 598-1223 for more information or go to <gallery.sewanee.edu>.

Foothills Crafts Festival

The Foothills Crafts Christmas Arts and Crafts Festival celebrates its 31st annual event 9 a.m.–5 p.m., Friday and Saturday Nov. 11 and 12, at the Manchester-Coffee County Conference Center, 147 Hospitality Blvd., Manchester.

Parking and admission are free. Local exhibitors include Carol and Glenn Vanden Bosch and Carolyn and Chuck Tocco. For more information contact Luise Richards, (931) 454-1090.



Brown's Body Shop

Leonard Brown - Owner
Steve Young - Gen. Mgr.
Steve Hartman - Shop Mgr.

710 College St. • Winchester
931-967-1755 • Fax 931-967-1798

*Come by and see us.
We appreciate your business.
Our Work is Guaranteed!*

THE LOCAL MOVER
615-962-0432

Need ^{More} Room?

We Sell
Boxes!

Mountain Storage
(931) 598-5682

■ Security Gate Dan & Arlene Barry ■ Security Camera
Hwy 41 - Between Sewanee & Monteagle

U-HAUL MOVING BOXES and SUPPLIES!
—Various Sizes—

KIT TO PROTECT YOUR FLAT-SCREEN TV!



No Time to Cook for Thanksgiving?

St. Mary's Sewanee Can Help

Traditional Thanksgiving Family Meal

Cost: \$75.00 Serves: Six

Meal Includes: Turkey, Dressing, Gravy, Green Beans, Sweet Potatoes, Corn, Cranberry Relish and Corn Muffins

Pickup Dates:
November 22 (8:00AM - 4:30 PM)
November 23 (8:00AM - 10:00AM)

ADD A PIE TO YOUR
FAMILY MEAL:

Southern Deep Dish
Pecan Pie \$12.00

Traditional
Pumpkin Pie \$ 9.50

ORDERS ARE LIMITED Order Deadline: Noon, November 17th

For information or to place an order, 931-598-5342



LOOKSATBOOKS

by Pat Wiser for Friends of duPont Library

What better beginning to a family visit than a six-year-old's exclamation, "Oh, goody! You've got books!" as she bounds into the house after a year's absence and spies the wall of bookcases. The enthusiastic first grader, assigned to read, read, read during fall break, became our family's second generation to laugh aloud at Bernard Wiseman's "Morris the Moose" stories. The silly critter traveled back to California in her backpack, for reading again and again. Thurmond Library held more enticing books about Morris, and duPont Library offered a new favorite, "Dream Girl, Drum Girl," Margarita Engle's picture book biography of Milla Castro Zaldarriaga, who convinced her elders in 1930's Havana that girls could be drummers too. Raphael Lopez's masked dancers and neon-like jungle scenes captivated us all. These were much preferred to the bland Disney "Doc McStuffins" series mentioned in my last column.

Her older sister was engrossed in "The Children of Willesden Lane," concert pianist Mona Golabek's memoir about her mother who arrived in England from Vienna in 1938 via Kindertransport, the program that rescued more than 10,000 Jewish children from the Nazis. Next for this eighth-grader's class: "To Kill a Mockingbird." So many 13-year-olds seem to thrive on reading and discussing the themes presented by youthful characters in good literature. It will be interesting to follow my great granddaughter's reactions to "Mockingbird," the book most frequently assigned to American eighth and ninth graders for decades.

I have enjoyed reading and discussing "They May Not Mean To, but They Do," by Cathleen Schine, described by "New Yorker" cartoonist and writer Roz Chast as a coming of age novel—old age. The title is an inversion of a line from Philip Larkin's poem, "This Be the Verse," with a key phrase which I can't quote here. Let's just say that the underlying message is that adult children may not mean to mess up their parents' lives, but...

Joy, age 86, and her daughter Molly anchor the story. The clash of Molly's good intentions with Joy's independent spirit is simultaneously poignant and funny. Some will wince when Molly proudly gives Joy an iPad pre-loaded with dozens of songs by Mom's beloved Frank Sinatra. Others will shake their heads ruefully about brilliant ideas for an ageing parent's pleasure. What could possibly go wrong with a life-long New Yorker's leaving her cozy apartment, with its gossip, kind doormen and convenient restaurants that deliver, for an extended stay with her highly organized daughter and her partner in Southern California? Schine skillfully presents the answer in excruciating detail.

Son Daniel makes his own missteps, even with dutiful regular visits, where he assumes that Mom will always prepare their weekly meal, and, of course, clean up. The Passover seder is the setting for high drama when Joy decides to invite a friend from college days (male) to the family holiday event.

National Public Radio's Maureen Corrigan asks, "Who needs a novel about colostomy bags and grief? Oh but you do need Shine's novel, at least you do if you're a reader who relishes acute psychological perceptions and lots of laughter to lighten the existential grimness." This astute comment leads me to suggest that those who have recently suffered great loss not read this book any time soon.

Many will, as did I, recognize their own culpability in this inter-generational tale. Who has been an intrusive child of a parent coping with old age? A stubbornly independent parent or grandparent? Even the not-guilty can share the sadness and joy of this close family whose conflict is a reflection of their deep love for one another.

As always, check duPont Library for books reviewed here and let me know your thoughts.

Spread good news!

Michael A. Barry LAND SURVEYING & FORESTRY

★ ALL TYPES OF LAND SURVEYS
★ FORESTRY CONSULTING

(931) 598-0314 | (931) 308-2512

WOODARD'S DIAMONDS & DESIGN



We Celebrate Life and Love



PANDORA
UNFORGETTABLE MOMENTS
DEALER

woodards.net
(931) 454-9383

Inside Northgate Mall, Tullahoma
Mon–Fri • 10–7 | Saturday • 10–6

**PATTON
WATKINS
ARCHITECT**

Sustainable Design
+
Construction

Registered Architect
Licenced Contractor
LEED A.P.

931-598-9006
125 University Avenue
P.O. Box 194
Sewanee, Tennessee 37375
pattonwatkins@hotmail.com

THE INSATIABLE CRITIC

by Elizabeth Ellis



The Sewanee Union Theatre serves up a series of heavy dramas from the backwoods of the Pacific Northwest all the way into the far-flung future. Evening out the adult-oriented week is a family-friendly adventure that brings an old sci-fi franchise favorite out of retirement. Live long, and prosper, and read on!

The Rating System

Stars are so overused, and there's nothing on the planet more critical than cats, so one feature each week is rated from one to five Jackaroos. The more Jackaroos there are, the better it is!



Jackaroo

Captain Fantastic

7:30 p.m., Friday, Nov. 4 through Sunday, Nov. 6
2016, Rated R, 118 minutes

Viggo Mortensen, who first made superstardom 15 years ago as the classic fantasy ranger-turned-king in "Lord of the Rings: Fellowship of the Ring" is back in the spotlight, and still in the woods, as Ben, a father raising six children with his wife in the wilds of the Pacific Northwest. The family lives off the land in a challenging but idyllic existence, sheltered from the technological norms of the average person's every day. When tragedy strikes, Ben and his brood are thrust headlong into the mainstream modernity that they have forsaken for so long. Two worlds collide as extended family, concerned for welfare of the children, begin to talk Ben out of returning to their remote existence. Can the two sides come to a compromise? A heartfelt look at the pros and cons of parenthood off-the-grid, this indie venture written and directed by Matt Ross (known for "The Aviator") has captured the hearts of audiences worldwide with its unexpected twists and turns. With the combination of heavy subject matter, language and brief extensive nudity, this one is best reserved for older teens and adults.

Looper

7:30 p.m., Wednesday, November 9
2012, Rated R, 120 minutes

What if the enemy you had to kill turned out to be you? In this time and mind-bending thriller, Joe (Joseph Gordon-Levitt) is an assassin in Kansas City who shoots people who appear from 30 years in the future, in 2074. He and his kind are called "Loopers." By this point, tracking technology has rendered the discreet disposal of bodies impossible, so mob bosses have turned to time travel, which is possible but illegal, to get rid of people that are no longer serving them. Jeff Daniels does a wonderful turn at being Abe, Joe's boss, who acts as a liaison between the past and the present. Unfortunately, this arrangement cannot go on indefinitely as the future has a bad habit of turning into the present, so routinely mobs send the Loopers' future selves back to them to be killed, thus eliminating them both. This is called "closing the loop." Joe finds himself face-to-face with his future self (Bruce Willis) but can't bring himself to go through with the job—causing massive time fractures. "Looper" has been praised by critics and audiences alike for its combination of original storytelling and solidly choreographed and shot action sequences. Rated R for strong violence, language, and some sexuality and drug content, this film is best served to older teens and adults who appreciate a thought-provoking sci-fi adventure.

Star Trek Beyond

7:30 p.m., Thursday, Nov. 10 through Sunday, Nov. 13
2016, Rated PG-13, 122 minutes

Our favorite crew of the starship U.S.S. Enterprise is back for more traversing through the final frontier! The latest and most successful of this venerable sci-fi franchise's recent reboots, this film picks up where it left off after the end of 2013's "Star Trek Into Darkness." Halfway through their five-year mission, Captain James T. Kirk (Chris Pine) is now a respected official and undisputed leader. However, his title will be put to the ultimate test when the Enterprise is savagely attacked outside of an unknown planet. Stranded with few options and no communication, the crew must again band together and try to piece together their next plan—however, an enemy from the past is determined to make Star Fleet pay. More plot-based and less action-packed than the previous two installments, "Beyond" succeeds in not only being a great movie in its own right, but a worthy addition to the Star Trek canon. Rated PG-13 for general fantasy violence, it is appropriate for older children accompanied by parents as well as older teens and adults.



For more reviews and fun, visit <http://theinsatiablenovels.blogspot.com/>!

Art Wednesday

The Franklin County Arts Guild invites community members interested in the visual arts to come on over to the Cowan Center for the Arts Education building for Art Wednesdays. Anyone can participate: age and skill level do not matter. The group meets every Wednesday from 10 a.m. to 12:30 p.m. Everyone brings their own art supplies and projects. Sometimes everyone works on individual projects and sometimes one of the members does a mini-workshop for anyone interested.

Art Wednesday is a great place to seek advice on technique, supplies and get input on projects from the group. Sometimes there is even a field trip to art exhibits in the area. The idea is to have fun making art and learning from one another. There are no fees associated with Art Wednesday, though a small donation for use of the space is accepted.

The Cowan Center for the Arts is located at 301-303 Montgomery Street in Cowan, at the corner of Hodges and Montgomery, one block behind Cowan City Hall.

'Chitty Chitty' at Arts Center

"Chitty Chitty Bang Bang" will be at the Arts Center of Cannon County at 7:30 p.m., Fridays and Saturdays through Nov. 19, and at 2 p.m. Sundays, Nov. 6 and 13. There will be a special 10:30 a.m. show on Saturday, Nov. 5.

"Chitty Chitty Bang Bang," a stage musical based on the 1968 film of the same name, tells the story of Caractacus Potts, a widowed father and eccentric inventor, who cares for his two children, Jeremy and Jemima Potts, and their Grandpa. The children discover a car in a rural scrap yard and, with much begging and pleading, convince their father to buy and fix up the car for them. After hearing the unusual sounds the car produces, they nickname the car Chitty Chitty Bang Bang. Along the way, they meet Truly Scrumptious, a beautiful upper class woman, the daughter of Lord Scrumptious, a major confectionery manufacturer.

Tickets are \$15 with discounts available for students and seniors and can be purchased by calling (615) 563-2787 Tuesday through Saturday, 10 a.m.—4 p.m. or online at <artscenterofcc.com> and (subject to availability) at the door one hour prior to show time.

'Wizard of Oz' at Millennium

The Manchester Arts Center Theater makes its way to Oz by way of Kansas, Nov. 11–20. Evening performances are Fridays and Saturdays at 7:30 p.m. and Sundays at 2 p.m., plus a special performance by an all-youth cast of home school students on Saturday, Nov. 18, at 2 p.m. Adult tickets are \$15; students, military and seniors are \$13 and available at <millenniumrep.org> or (931) 570-4489.

The cast of more than 30, which includes a youth and adult ensemble as Munchkins and Ozians, presents the Royal Shakespeare Company version of "The Wizard of Oz" with book adaptations that follow the famous motion picture.



Kalynn Harrington and Will Johansson are pictured here in the "A Defenseless Creature" story from "The Good Doctor." Show times for "The Good Doctor" are 7:30 p.m., Friday and Saturday, Nov. 4–5. All performances will take place at the Proctor Hill Theater. Admission is free but reservations are strongly suggested due to space limitations. Reservations may be placed at <artssewanee.sewanee.edu/tickets>. Phone calls and emails are not accepted. Photo by Lyn Hutchinson

'The Nutcracker' Yuletide Ballet, Nov. 12

The Sewanee Dance Conservatory in partnership with Perpetual Motion and the Alabama Youth Ballet Theatre return to Guerry Auditorium at the University of the South on Saturday, Nov. 12, to present the Nutcracker: A Yuletide Ballet. Performances are on Saturday at 2:30 p.m. and 7 p.m. Tickets will be on sale at the door: \$5 students/children and \$10 adults.

The production combines the Alabama Youth Ballet Theater dancers

with more than 40 local dancers of all ages, from 6 to 50. Come experience a magical production with music, dance, costumes, and a colorful cast of familiar faces. Special thanks to David Herriott and Ashley McManamay Jenkins and the many sponsors who support the arts in the community.

For more information, please contact <lisa.s.hartman@gmail.com> or <eric.e.hartman@gmail.com>.

Monteagle Sewanee, REALTORS

The Waterfall House

7+A 2498 SF 3/3



MLS#1748887 ~ 374 Monteagle Falls Rd. \$225,000

Pastoral Setting

3.86 A 2178 SF 3/2.5



MLS#1748537 ~ 307 N Scenic Rd. \$249,900

Competent, Caring, Friendly, Fair
We're Here for You!

www.monteaglerealtors.com • 931-924-7253

337 West Main St., Monteagle

Find all the local MLS listings on our updated website!



Like the Messenger?
Let us know on
Facebook!

Russell L. Leonard

ATTORNEY AT LAW

Office: (931) 962-0447
Fax: (931) 962-1816
Toll-Free (877) 962-0435
rleonard@netcomsouth.com

315 North High Street
Winchester, TN 37398

Timely Topics Confronted in One- Man Show

The Department of Theatre and Dance of the University of the South in Sewanee will present professional actor/writer and Sewanee graduate Raymond McAnally in a unique and personal one-man show, "Size Matters," at 7:30 p.m., Thursday and Friday, Nov. 10 and 11, at the Tennessee Williams Center.

"Size Matters" begins with our resident big guy, Ray, on a self-imposed crash diet just two months before his wedding. While his fiancée, Whitney, loves him regardless, Ray is constantly reminded of his girth by his career in comedy. Thinking he has all the answers to a skinnier happiness, Ray is blindsided by a five-day visit from his biggest fan—his overweight 10-year-old nephew, Morgan.

As uncle and nephew bond over bellies and bullies, Ray realizes that he needs to really look at himself in order to answer Morgan's most important questions. Through comedy and honesty, Ray explores his life to not only find answers for Morgan, but for the audience as well.

The show hits home for anyone who struggles with confidence. Hilarious and deeply moving, "Size Matters" is an autobiographical one-man performance with 15 characters. The play addresses hot topics such as bullying and body issues from a refreshing and often unheard male perspective.

Ray McAnally graduated from Sewanee as a theatre and philosophy major. His acting credits include film, television, voiceovers, video games and multiple award-winning stage performances. McAnally is the son of a former Miss Tennessee; he is proud of his Tennessee roots and the state's storytelling traditions that led him to a career in the arts.

Admission to "Size Matters" is free but seating is limited for this event. Reservations are available at artssewanee.sewanee.edu/tickets.



Ray McAnally

Gallery Walk Features Art, Music, Dance & Food

The University of the South will host the sixth Annual Campus Gallery Walk from 4-7 p.m., Saturday, Nov. 12. The University Art Gallery, the Museum Gallery of Archives and Special Collections, and the Carlos Gallery of the Nabit Art Building will host dance and music performances in each venue. Each venue will serve refreshments prepared by Ivy Wild, specifically designed to complement the exhibit at each gallery.

Current exhibitions at the galleries are Jessica Wohl's "Love Thy Neighbor" at the University Art Gallery; "Communal Spirit: 3,000 Years of Mexican Artistry" at the Museum Gallery of University Archives and Special Collections; and Anderson Wrangle's "a hand's width" at the Carlos Gallery in the Nabit Art Building.

Music performances are coordinated by César Leal, artistic director of the Sewanee Symphony Orchestra and assistant professor of music, and Courtney World, assistant professor of dance. Performances will be repeated three times in each space, at 4:30 p.m., 5:15 p.m. and 6 p.m., so that visitors may attend in any order.

A map of the galleries will be available at each location and signs will be posted along the route between galleries. More information is available at artssewanee.sewanee.edu.

Stirling's
COFFEE HOUSE_{SM}

**Welcome back home alumni!
Come join us for a latte**

Mon-Wed, 7:30am-midnight;
Thurs & Fri, 7:30am-10pm;
Sat, 9am-10pm; Sun, 9am-midnight
Georgia Avenue, Sewanee

598-1786

Like Us On for specials and updates

WOODY'S BICYCLES
SALES, SERVICE AND RENTALS
A Full-Service Trek Bicycle Dealer

Mon-Fri 9-5 • Sat 10-2 • 90 Reed's Lane
598-9793 • woodybike@gmail.com

Check out www.woodysbicycles.com for rates, trail maps, photos, bike club links, races and much more!

The Lemon Fair

OPEN SUNDAY!!!

5% OFF

WELCOME HOME ALUMNI!!!

Downtown Sewanee

Art Gallery and Alum Create New Sewanee Homecoming Tradition

Joseph Riley Land (C'98) of Riley/Land [A Gourmet Pantry] will be setting up shop in the back of Locals featuring his curated collection of functional art. The event will take place at 49 University Ave., Thursday, Nov. 3 through Saturday, Nov. 5, noon-5 p.m.

Land has been curating his collection of shelf-stable foods since March 2013, when he launched Riley/Land in Harlem, just before the upper part of Manhattan hit its rebirth. In 2015, he relocated to Nashville to take advantage of smaller rents and a burgeoning food revolution in the growing southern city. His product line boasts a pedigree that includes soft Award winners (the highest honor awarded to small batch foods) to Martha Stewart's American Made Award recipients to mentions in various national magazines (Southern Living, Bon Appetit, Garden & Gun, Food & Wine, etc.). Additionally, Land has an expanded functional art assortment that includes wooden bowls, cutting boards, spoons, cake stands and more, all handmade in Tennessee.

Riley/Land [A Gourmet Pantry] is a curated collection of small-batch, artisanal foods, all handmade and local to the region from which they were picked. Land has partnered with small businesses around the US to put together an assortment of varied yet homogenous pantry staples, carrying



Functional art.

things such as handmade nut butters from Raleigh to bacon jam from Seattle to barbecue sauces from Chicago to Bloody Mary mix from Nashville. Land also has a line of kitchen towels and aprons that make excellent gifts.

Locals once housed a grocery, a dry cleaner and a bank until the interior was renovated by local craftsmen in wood, stone and brick in the style of Arts and Crafts. Now a living part of the Sewanee Village, Locals is a place where life around the Mountain is reflected in art.

Shop and dine locally!

Leading Change Lecture

The community is invited to Marty Rodgers' talk on "Leadership, Identity and Social Change." The event will be at 4:30 p.m., Wednesday, Nov. 9, at the McGriff Alumni House.

Rodgers is the office managing director for Accenture's Washington, D.C. Metro Office as well as the executive director of the firm's Nonprofit Group and International Public Sector Practice. He is an international leader in the community service, workforce skills, and social impact fields. Following his talk titled "Leadership, Identity and Social Change," there will be an opportunity to engage in conversation with Marty and Karen Proctor, the Advent Semester Brown Foundation Fellow.

myerspoint.net

MYERS POINT at Sewanee offers a rare opportunity to enjoy a private community that celebrates American architecture, lifestyle, protected forests, cultivated lakes and panoramic views on Middle Tennessee's Cumberland Plateau. If you want to live surrounded by nature, history, beauty, quality and serenity, you'll want to call it home.

- 480-acre private gated community
- 24 exclusive home sites; lakeside or bluff vista
- Timeless, organic, craftsman architecture standards
- Land Trust for Tennessee perpetually protected forests
- Over four miles of walking and riding trails
- Community barn, pastures, resting benches and fire pit
- Minutes from the University of the South

John Goodson • (931) 703-0558 • jgoodson@myerspoint.com

K&N Maintenance and Repair
Your "honey-do" list helper!

A one-stop solution for all your home improvement needs

931-691-8656

Adaptive Landscape Lighting
Crafted LED Illumination of Architecture, Landscape, Outdoor Living Spaces, Security and Safety Concerns

Beautify and add hours to your outdoor living. Subtly illuminate dark, uneven steps and pathways. Save on electric bills! Receive a complimentary consultation. Call us today!

Bonded : Insured : Experienced : Residential and Commercial

Paul Evans : 931-952-8289
Sewanee • pevans@adaptiveenergy.org

Mountain Lions Drop Season Opener

The St. Andrew's-Sewanee middle school boys' basketball team played hard but fell on Oct. 25 to North Elementary School (Altamont) 43-30, in its season opener.

Nathan King stood out for SAS, scoring six 3-pointers (four in the first half) to keep it close.

SAS's Cam Weaver played good defense against standout Braxton Norris and Peyton Zeitler ruled the boards, which kept SAS in the game.

SAS newcomer Cameron Harmon was impressive on both ends of the court, as was Curtis Davis.

Reserve players Ethan Hargis and Elijah Seavey gave quality minutes, and sixth-graders Ryan Ostrowski and Huxley Hume-Allingham experienced their first moments in a game.

The Mountain Lions executed several pick-and-rolls to perfection, but did not convert on layups or free throws in the second half.

Men's Cross Country Earns Second Place at SAA Championship

Led by six All-Southern Athletic Association runners, Jackson Goodwin, Logan Stockton, Owen Legrone, Chris Hornsby, Mark McAlister and Ash Midyett, the Sewanee men's cross country team finished second at the SAA Conference Championship meet on Oct. 29, in Jackson, Miss. The Tiger women's team, led by All-SAA performer Katie Jannotta, finished fifth.

On the men's side, Sewanee had its best league finish in 20 years. The Tigers finished with 49 total points, 26 points behind winner Rhodes. Sewanee was ahead of third place finisher Berry and fourth place finisher Birmingham-Southern. Centre, Oglethorpe, Hendrix and Millsaps rounded out the league standings.



Sewanee's Purple Haze rugby club beat Covenant College's rugby club handily on Oct. 22. Photo by Lyn Hutchinson



The Sewanee Crew team had a fun filled and successful past weekend, at the Oak Ridge/UT regatta. Their efforts resulted in bringing home five Gold medals and five Silver medals. Pictured are the Gold medalists in the women's four.

SAS Cross Country Teams Complete Season

The St. Andrew's-Sewanee School cross country teams finished out their season on Oct. 27 at the TSSAA regional meet at Percy Warner Park in Nashville.

Scoring for the boys' team were Seth Walker (21:22), Elliott Duncan (21:49), Isaac Tang (21:58), Davis Gill (22:05) and Sylvan Huber-Feely (22:58). They ran well as a team and finished the season strong.

The girls fielded a team for the first time in years. Scoring for SAS were Sarah Beth Hobby (27:02), Sophia Patterson (28:10), Winnie Fang (28:29), Cayla Riehl (36:44) and Evelyn Seavey (37:20).

For the season, all the varsity and middle school runners either set personal bests or season bests and ran hard in every meet.

SAS to Host State Mountain Biking Championship

St. Andrew's-Sewanee School will be hosting the Tennessee State Championship mountain biking race for high school and middle school on Sunday, Nov. 13. The state championship race concludes a four-race series for the NICA Tennessee League's 2016 event schedule. Weekend activities for the riders include a course pre-ride Saturday afternoon concluding with an all-team dinner and senior slide show in the evening.

Races will begin on Sunday morning at 10 a.m. with the individual and team award ceremony scheduled for 4 p.m.

Race venue setup will begin at 8 a.m., Saturday. Volunteers are needed to help with course marking, start and finish line setup. Community members are also welcome to volunteer for various race support positions on Sunday. For more information go to <www.tennesseemtbo.org/volunteer/>.

Middle School Girls' Basketball Opens 1-1

The St. Andrew's-Sewanee middle school girls' basketball team started their season with two exciting games: an Oct. 25 loss against North Elementary School and an Oct. 27 win against Tracy City.

The 1-1 Mountain Lions are averaging 22 points a game, led by Lakin Laurendine and Madison King. In the game against North, Laurendine had 12 points and four blocked shots.

In the game against Tracy City, Laurendine and King combined for 18 points and 10 steals.

Sarah Grace Burns and Jenna Black played outstanding defense as the Mountain Lions limited the scoring of Tracy City to under 10 points.

The team will play Pelham Elementary School at SAS at 6 p.m. on Nov. 8 and North Elementary School at SAS on Nov. 10 at 6 p.m.

Sewanee Falls at Millsaps in SAA Quarterfinals

Despite a goal by sophomore Kyle Johnston that sent the match into overtime with less than five seconds remaining in regulation, the Sewanee men's soccer team dropped a 3-2 Southern Athletic Association Tournament quarterfinal contest on Oct. 29 at Millsaps College.

The Tigers ended their season with a 7-10-2 overall record. Battling injuries all season, Sewanee dropped five matches by a single goal.

Millsaps opened the scoring as All-SAA performer Nico Roth netted two goals, which gave the Majors a 2-0 advantage with 33 minutes left in regulation.

Sewanee answered back when senior Ramsey Seagle scored in the 63rd minute off a pass from Matt Hawse.

That was followed by the drama in the final minute. After two shots, one by Hawse and one by Seagle, were both blocked, Millsaps gave Sewanee a free kick at the 88:32 mark. On the ensuing penalty kick, Johnston netted the equalizer.

Millsaps put home the game-winner with less than a minute left in the opening overtime period when Alex Bourland scored.

A back and forth match throughout, Millsaps edged Sewanee in shots 25-15. Sewanee keeper Will Merriman finished with 10 saves while Hawse and Ben Vaeth led the Tigers in shots with three attempts.

With the win, Millsaps advances to the semifinals against Oglethorpe.

Tree of Life Homecare, LLC

"Neighbors Helping Neighbors"

- * Licensed and insured home-based services for the elderly and disabled
- * CHOICES provider, Private Pay, Veterans Affairs* Long-term care plans

931-592-8733
treeoflifehomecare.com

NOW ACCEPTING APPLICATIONS FOR CAREGIVERS



MICHELLE M. BENJAMIN, JD Attorney & Counselor at Law

201 FIRST AVENUE, NORTHWEST
WINCHESTER, TENNESSEE 37398

(931) 962-0006
Fax: (931) 967-8613

Dave's 
Modern Tavern
Out of this World Food.
Down to Earth Prices.

Homecoming Specials

- Southwest Cheese Soup with Corn & Black Beans
- Bluepoint Oysters
- Roasted beet salad with feta & rosemary EVOO
- Made To Order Guacamole
- Blackened Grouper with Corn & Avocado Relish
- Grilled Ribeye with Mushroom Demi
- Veggie Enchiladas with Asparagus, Sweet Peppers & Goat Cheese
- Baby Back Ribs with Ancho BBQ Sauce
- Fried Peach Pie & Ice Cream
- Butter Pecan Brulee

14 Draft Beers and Over 80 Bottled Beers • Full Bar and Wines
Dave's Modern Tavern • 38 W. Main St. • Monteagle • 931-924-8363
Weekend Hours: Friday 11-2:30, 4:30-9 Saturday 11-9
Sunday Brunch 11-2:30 and dinner 4:30-7:30

Bradford's

Nursery & Landscaping
on the Boulevard in Winchester

NOW STOCKING FOR THE
FALL PLANTING SEASON!

LARGE ASSORTMENT OF MUMS!

Perennials, ferns, trees, shrubs, ornamentals, grasses,
groundcovers, concrete statuary, fountains,
bird baths and much more.

Come by and let us help you make the right selection for your
landscape, or call for free estimate on professional landscaping.
We do it right the first time!

Open Mon-Sat 9-5:30; Sun 12:30-4:30 • 931-967-0825
1136 Dinah Shore Blvd. in Winchester

Re-Elect

Text or Call us at 931-434-7753

**Marilyn
Campbell
Rodman** 

Monteagle Mayor 

Vote November 8th, 2016

Paid for by candidate

www.marilynformayor.com

**Folks want
to know
your
business!**

Reasonable rates.
Loyal readership.
Reach more than
5,000 weekly
users with your
advertisement.

(931) 598-9949
ads@sewaneemessenger.com
www.sewaneemessenger.com



Michael Whitehead (left) and Kipling Klimas congratulate each other after Sewanee's win in the 200 medley relay; Mac McNally and Kyle Schnell raced the other two legs for the team. Photo by Lyn Hutchinson

Sewanee Swimmers, Divers Finish Third at Invitational

The Sewanee swimming and diving teams concluded their annual Sewanee Invitational on Oct. 29 in the Fowler Center pool with third place finishes for both the men's and women's team.

After a number of successful Oct. 28 performances, the Tigers opened the day with a win in the men's 200 medley relay. The Sewanee team of Michael Whitehead, Kipling Klimas, Mac McNally and Kyle Schnell combined for a winning time of 1:41.52.

Individually, Caty Hueske finished fourth in the women's 400 individual medley with a time of 5:02.54. That was followed by a fourth place finish by Whitehead in the men's 400 individual medley with a mark of 4:29.89.

In the women's 100 breaststroke, Kaylee Pierson finished fourth with a time of 1:13.54, while Klimas was fourth in the same men's event with a mark of 1:02.68.

Those performances were followed by a third place finish from Meghan Mulhern in the women's 200 freestyle. Mulhern was less than a second behind winner Jessica Richardson of Emory & Henry with a time of 2:01.33. Teammate Mary McCarthy finished third in the women's 200 fly with a time of 2:19.93, while McNally (2:06.04) and Peter McCarthy (2:09.05) went third and fourth in the men's 200 fly.

In her next race, Mulhern finished as the runner-up in the women's 500 free. The long distance specialist was only two seconds behind the winner in a time of 5:21.98. Hueske followed with another top-five finish as she placed third in the women's 200 backstroke at 2:17.10. Pierson then went 2:36.28 in the women's 200 breaststroke, while Klimas finished second in the 200 men's breaststroke when he touched the wall at 2:19.07.

Finally, McNally finished fourth in the men's 100 fly in 56.25 seconds, while Whitehead went 2:05.92 in the men's 200 individual medley for third place.

Tigers' Volleyball Splits in Finale

The Sewanee volleyball team closed out its regular season on Oct. 29 by splitting a pair of matches at Covenant College.

The Tigers first swept Wesleyan 3-0 (25-8, 25-9, 25-14) before falling against the host Scots 3-1 (25-21, 25-20, 22-25, 25-13).

In the match against Wesleyan, Sewanee hit a season-high .455, while Diamond Stewart and Rebecca Rowan both finished with double-digit kills. Stewart added 15 kills and Rowan finished with 14. Setters Constance Connolly (14) and Mo Rooker (12) both finished with double-digit assists.

Additionally, the Tigers finished with a season-high 13 aces against the Wolves.

SHARE the TRAIL

Rule #2
Stay to the right, pass on the left. Cyclists alert pedestrians when passing: say "on your left."

WALK • RUN • CYCLE TOGETHER
mountaingoattrail.org

Tigers Advance to the SAA Semifinals

In tournament play, you must simply survive and advance. Despite scoring only once against the top Southern Athletic Association keeper, the Sewanee women's soccer team advanced to the SAA Tournament semifinals by edging Hendrix in penalty kicks, 4-2.

The Tigers, who are the No. 3 seed, will play No. 2 seed Rhodes, next weekend on the campus of No. 1 seed Centre.

Sewanee scored midway through the first half as Savannah Williams netted a goal off a great pass from senior Elizabeth Eidson.

The score remained in favor of the Tigers until the 76th minute. After Hendrix fired a hard shot that was blocked, forward Hagan Griffith ripped a high shot over the head of two Tigers on her rebound attempt.

Sewanee, which outshot Hendrix a combined 18-5 the final three periods, was unable to score on Warrior keeper Jordan Rausch. Rausch made a number of great saves for a total of 10 on the afternoon.

After neither team scored in both 10-minute overtime periods, Sewanee had the first penalty kick in the shootout.

Sewanee's Dayla LaRocque opened with a goal, but Hendrix also scored. Both teams then missed each of their second attempts. Senior Tasha Saunders and Rausch then scored for each team.

In the fourth round, Nikki Johnston ripped a hard shot into the corner of the net. Hendrix's next attempt by Sydney Blevins was saved by Sewanee keeper Samantha Bourgeois. Needing one goal for the win, Frances McDonald kicked home the winner for the Tigers.



The Sewanee women's soccer team is elated with its shootout win on Oct. 29 against Hendrix College in the conference tournament. Photo by Lyn Hutchinson



Sewanee defensive back Lee Menefee celebrates his interception and touchdown in the first half on Oct. 29. Photo by Lyn Hutchinson

Chicago Outlasts Sewanee

Despite building an early 17-0 lead, the Sewanee football team could not hold off a record-setting performance by University of Chicago quarterback Blake Moser, as the visiting Maroons rallied for a 49-30 win on Oct. 29 in Sewanee.

Moser set a new Southern Athletic Association record for passing yards by going 26-for-42 for 558 yards. He also tied the SAA record for single-game touchdown passes with seven.

The Tigers finished with a season-high 393 total yards and held a 45:43 to 14:17 advantage in time of possession.

Individually, Sewanee quarterback Sam Hearn gutted out a career-high 235 total yards and two touchdowns. Mickey Plancher added 91 rushing yards and a score, while Steven Hearn had 10 catches for 96 receiving yards.

On defense, B.J. Addison and Montana Willis led Sewanee with four stops apiece. Addison also added a sack.



Contact Mike Maxon,
C'73, (931) 308-7801
maxonm@bellsouth.net
Offering professional
and courteous service
from Tims Ford Lake to the
Mountain since 1985.



Roarks Cove - Secluded setting at the foot of Shakerag Hollow; with almost 3400 sf of living space, this 4 bedroom/4.5 bath home has a full basement and is ideally situated on 32 acres with panoramic views of the Plateau, fields, woods, and a creek (which flows from its own "Wet Cave") from its many porches and decks....



Tims Ford Lake Elklure - Year round water with dock. 3 bedroom, 3 bath home.



Tims Ford Lake - 5000 sf, 5 bedroom, 3 bath home with over 250 ft of year round water



Georgia Avenue - Charming and well-maintained 3 bedroom, 1-1/2 bath cottage



655 Bob Stewman Road - With over 2500 sf of living space, this 3 BR, 2-1/2 bath home is situated on a 2.5+/- acre tract just minutes from the Domain and the Village. No lease fee, no restrictions. Well-landscaped for its natural environment; this property has its own potting shed/workshop, spacious deck with screened gazebo, sunroom, MBR w/ fireplace, hardwood/tile/stone flooring, and so much more. Great home for entertaining, inside and out.

Acreage - 6+ wooded acres on Sherwood Rd

Acreage - 10 wooded acres on Haynes Road

Acreage - 15 wooded acres on Cedar

COMMERCIAL - 6.8 acres between Cowan and Winchester on Highway 41 A

Down Home, Down the Street
754 West Main St., Monteagle
(931) 924-3135
8 a.m. to 9 p.m. 7 days a week

Winchester Podiatry
CHARLES D. GANIME, DPM
Board Certified in Foot Surgery
Diplomate, American Board of Podiatric Surgery
New Patients of All Ages Welcome! We Treat Your Feet!
Most Insurance Accepted, Including TennCare
We are at 155 Hospital Road, Suite 1, in Winchester.
www.winchesterpodiatry.com
931-968-9191

SEWANEE AUTO REPAIR
Complete Auto & Truck Repair
Tune-ups • Tires • Tire Repair • Brakes • Steering
• Oil Changes • Batteries • Computer Diagnostics
All Makes & Models • Service Calls • Quality Parts
ASE Master Certified Auto Technician • 30 Years' Experience
Open 7 to 5 M-F
(931) 598-5743 • 76 University Ave.

NATURENOTES



University student Roy Flaig measuring the water level of Lake Jackson.

The Current Drought

The dry conditions we have been experiencing in the Sewanee area have their origins in the early spring of this year. Since March, we have had a total rainfall of just 23 inches. Compare this to 43 inches for the same time period last year and 25 inches during the great drought of 2007. The shortfall in precipitation has caused a corresponding drop in lake levels.

This week, Lake Jackson (one of our reservoir lakes) was 15.1 ft. below lake-full levels. Last year at this time the lake was only 3 ft. lower than capacity. In October of 2007, however, the lake was already 34 ft. below lake-full levels.

Since all groundwater is fed by rain, we are also experiencing near record declines in the water table and spring flow. The water level in the well at Snowden Hall on the campus is 4 ft. lower than at the same time last year. Tremlett Spring in Abbo's Alley is flowing at near record low levels of 7,000 gallons per day. On the same date in 2007 Tremlett Spring was producing 6,300 gallons of water per day.

—Reported by Martin Knoll, Professor of Hydrology and Ben Beavers, General Manager of the Sewanee Utility District.

Sewanee Herbarium Events

Meet in the Herbarium (Spencer 171) for a Homecoming Open House 4–5 p.m., Friday, Nov. 4. There is much to celebrate, including the publication of the “Domain Flora,” 20 years of “The Sewanee Plant Press” and the debut of “What If Trees Could Walk?” There will be an open house and book signing to celebrate several milestones, including Herbarium founder George Ramseur’s 90th birthday.

All receipts go to support the Herbarium. The book is available at the University Bookstore and on <amazon.com>.

A Botanical Watercolor Workshop will be offered 9–11:30 a.m., Saturday, Nov. 12. This workshop, led by Chattanooga watercolorist Margaret Patten Smith, gives people of all ability levels an opportunity to try their hand at capturing beauty in watercolors. Participants are invited to bring in their own objects to paint, or choose from a variety provided. Bring your own painting materials and meet in the Herbarium on the first floor of Spencer Hall. The workshop is free, but space is limited and reservations are recommended.

For more information call the Herbarium at 598-3346 or go to <http://lal.sewanee.edu/herbarium>.

WHAT IF TREES COULD WALK?

A SEWANEE TREE BOOK



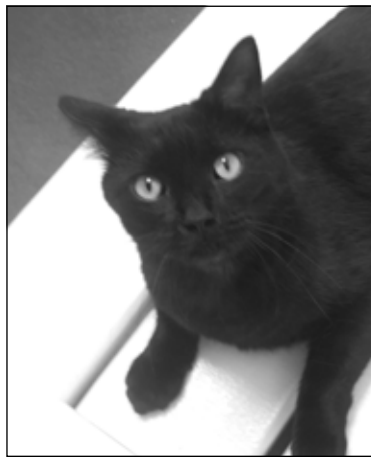
MARY PATTEN PRIESTLEY

INSPIRED BY

GEORGE S. RAMSEUR, SR.



Wilder



Lilly

Pets of the Week

Meet Wilder and Lilly

Animal Harbor offers these two delightful pets for adoption.

Wilder is a little Terrier mix who loves people and is always excited to make new friends. As an older guy, he is mild-mannered, but he always enjoys attention. Wilder is heartworm-negative, up-to-date on shots, and microchipped, and he will be neutered before he goes home with you.

Lilly is a bold, outgoing kitty with a lot to say! She loves to cuddle up to you and meow about her day. She is a very unique kitty cat—she has only 3 paws! Because of her special circumstances she would need to be an indoor-only cat. Lilly is negative for FeLV and FIV, house-trained, up-to-date on shots, microchipped, and she will be spayed before she goes home.

Every Friday is Black Friday at Animal Harbor. On Fridays, adoption fees will be reduced 50 percent for black or mostly black pets more than 4 months old who have been at Animal Harbor for more than a month. Pets adopted from Animal Harbor qualify for a free post-adoption wellness exam by local veterinarians.

Animal Harbor is located at 56 Nor-Nan Road, off AEDC Road, in Winchester. Call Animal Harbor at 962-4472 for information and check out the other pets at <www.animalharbor.org>. Enter the drawing on this site for a free spay or neuter for one of your pets. Help Animal Harbor continue to save abandoned pets by sending donations to Animal Harbor, P.O. Box 187, Winchester, TN 37398.

Pioneers of the Park

On Saturday, Nov. 5, at the Big Red Barn in Beersheba Springs, the Friends of South Cumberland will honor “Pioneers of the Park,” including former Tennessee Governor Winfield Dunn, on the 45th anniversary of his historic trek into Savage Gulf. Gov. Dunn is looking forward to a return trip to the area that he was instrumental in adding to South Cumberland State Park.

Family-friendly events will include an 11 a.m. hike in the Savage Gulf area of the park (leaving from the Big Red Barn), as well as the 8 a.m. Adventurer Series hike into the Old Growth Forest in the bottom of Savage Gulf. Adventurer hike has a \$25 fee; register and get directions at <www.meetup.com/Friends-of-South-Cumberland-State-Park>.

Back at the Big Red Barn, there will be family-friendly pioneer activities from 11 a.m. to 3 p.m. Admission is free; lunch, water and soft drinks will be available for purchase on-site.

Trail Closed

The Fiery Gizzard Trail is temporarily closed from Raven Point south for two miles due to the forest fire in that area.

Please check with the park office (931-924-2980) for trail status before planning any end-to-end hikes on the Gizzard.

Watch this two-minute video of the damage: <http://www.friendsofsouthcumberland.org/fiery-gizzard-fire>.

Weather

DAY	DATE	HI	LO
Mon	Oct 24	79	52
Tue	Oct 25	75	50
Wed	Oct 26	68	64
Thu	Oct 27	77	53
Fri	Oct 28	80	55
Sat	Oct 29	80	65
Sun	Oct 30	79	59

Weekly Averages:

Avg max temp =	77
Avg min temp =	57
Avg temp =	67
Precipitation =	0.0"

October Monthly Averages:

Avg max temp =	77
Avg min temp =	55
Avg temp =	66
Total Precipitation =	0.30"

October 58-Year Averages:

Avg max temp =	68
Avg min temp =	49
Avg temp =	57
Precipitation =	3.82"
YTD Avg Rainfall =	49.95"
YTD Rainfall =	38.47"

Reported by Nathan Wilson
Domain Manager

91 University Ave. Sewanee

UNIVERSITY
REALTY

SEWANEE
TENNESSEE



Lynn Stubblefield (423) 838-8201

Ed Hawkins (866) 334-2954

Susan Holmes (423) 280-1480



NORTH CAROLINA AVE.

Spacious single story central campus. 2 living rooms, 2 kitchens, 4 bedrooms, 2.5 baths, three decks, garage, large fenced in yard. Beautiful setting.



LOUISIANA CIRCLE.

Location, location! Native stone home, 2 fireplaces, 2 living rooms, library, office, screened in porch, room for everyone, lovely private lot. \$315,000.



CAN TEX. 10 or 42 beautifully wooded acres in a great location close to town. \$8,500 per acre.

COMMERCIAL. 1+ acres behind Citizens Tri-County Bank on Spring St. All utilities in place.

SHADOW ROCK DR. 1.18-acre charming building lot with meadow.



KENTUCKY AVE. Lovely, well maintained home, spacious single story, 4 br, 2.5 baths, 2 fireplaces, screened in porch, deck, patio, barn.



CLIFFTOPS RESORT. One level, spacious rooms with lots of light, 2 master suites, guest house, 2 fireplaces, 2-car garage, many extras.



NORTH BLUFF. 5-acre bluff lot. 5 miles from campus. \$100,000.



BLUFF LOT. Laurel Lake Dr with amazing sunset view, great looking hardwoods, gently rolling, private & secluded 15.9 acres \$125,000.



SHERWOOD RD. & St Marys Ln on campus. Private setting. Brick single story, recently renovated, open floor plan, native mountain stone fireplace, granite counter tops, dining room, 2 brs, 1.5 ba, fenced back yard. Large garage. \$189,000.

ST. MARY'S LANE. 10 acres next to St. Mary's pasture. \$65,000.

SNAKE POND RD. 30 wooded acres close to campus.

BLUFF TRACTS Stunning view of Lost Cove on Sherwood Road. 3 miles from University Ave. Over 1,600 feet on the bluff and the road. Easy to develop. 17.70 acres

BLUFF LOT overlooking Lost Cove. Beautiful sunrise, cool evenings. 4.08 acres. \$80,000.

LAUREL LAKE DR. 8 wooded acres, very private entrances on LL Dr and Chickory Ln., most utilities at the road.

CHICKORY LN. 1.23 ac lot nicely wooded, 4.97 acres entrances on Chickory and Laurel Lake Dr. Very secluded and very pretty!

SNAKE POND RD. 6.20 acres w/ septic, water & electric. \$48,000.

WE HAVE BUYER'S AGENTS TO REPRESENT YOUR INTEREST AT NO CHARGE

BUG PROBLEMS?

We can help! Call us for a free inspection!

BURL'S TERMITE & PEST CO.

TERMITE—PEST—VAPOR CONTROL
Bonded • Insured • Home-Owned & Operated
105 Ake St., Estill Springs
(931) 967-4547 or www.BurIsTermite.com
Charter #3824 • License #17759



Classifieds

ART/WOODWORKING

Stephenson's
**SCULPTURES
IN BRONZE**
Jeanie Stephenson
(931) 691-3873
www.stephensonsbronze.com

The Gnarled Oak
Antique
furniture refinishing and
Chair caning
(931) 592-9680
Bill Childers, Prop

CATERING

**Sewanee
SWEETS**
Sinfully Delicious.
(931) 598-5205
sewaneesweets@gmail.com

COMPUTERS

COMPUTER HELP
Troubleshooting & Tutorial
Computer slowed down over
time? Call for a tune-up.
Judy Magavero, (931) 924-3118

EMPLOYMENT

CELLO TEACHER WANTED: Sewanee/
Monteagle area for adult beginner. Contact
Glyn Ruppe Melnyk at <g.ruppemelnyk2015@
gmail.com> or (610) 357-6813. Student teacher
welcome, flexible schedule.

DRIVERS: Local & Regional-home weekly!
Great Benefits! 401K, Paid vacation/holidays.
CDL-A, 1 year experience. <www.gptruck.com>
(800) 922-1147.

NURSE MANAGER: Immediate full-time
opening at Ridgecrest Group Home in
Monteagle for Nurse Manager. Duties/Re-
sponsibilities: Coordinate the operation of
the Supportive Living Facility for the medi-
cally fragile utilizing knowledge of nursing
practices and procedures. Qualifications:
Registered Nurse with Tennessee license
with five years' clinical nursing experience
and some mental health experience. RNC
is preferred.

PSYCHIATRIC TECHNICIAN:
Ridgecrest Group Home in Monteagle has
immediate opening for a part-time Psychi-
atric Technician. Qualifications: High school
diploma or GED required. Mental health
experience or resident worker experience
preferred. Must have a valid Tennessee
driver's license with an "F" endorsement.
Certification in CPR and First Aid is also
required. Competitive salaries and excel-
lent benefits.

For both positions send resumé to: VBHCS
Human Resources, P.O. Box 4755, Chat-
tanooga, TN 37405. Equal Opportunity
Employer.

MECHANIC/TECH II: Excellent Hourly
Pay, Full Comprehensive Benefits, Retirement
Plan+more! Many Opportunities for Advance-
ment! Penske Truck Leasing: (855) 395-1826.

PART TIME: Highly motivated, energetic, profes-
sional, caring, individual needed for busy natural
health care clinic. Must be able to multi-task ef-
ficiently and enjoy hands on work with patients.
We will train. Fax resume to (931) 962-1988 or
mail to 1025 S. College St., Winchester, TN 37398.

**PART TIME LICENSED MASSAGE
THERAPIST:** Needed for busy natural health
care clinic. Must be highly motivated, professional,
energetic, caring, and capable of efficiently multi-
tasking. Fax resume to (931) 962-1988 or mail to
1025 S. College St., Winchester, TN 37398.

FOR RENT

FOR RENT: 4BR/2BA house on Gudger
Road. All appliances, C/H/A. (931) 212-0447.
SHAKERAG BLUFF CABIN: Beautiful
west-facing bluff view. Near University. Extremely
secluded. Sleeps 4-5. C/H/A. Great fishing,
swimming. Weekend or weekly rentals. (423)
653-8874 or (423) 821-2755.

STONE COTTAGE FOR RENT: Available Jan.
1 through graduation 2017 and other selected
dates. Near School of Theology, 3BR/2BA, fire-
place, patio, deck. Fully furnished, all appliances
including washer/dryer. C/H/A, wi-fi, cable TV.
Email <dgc983@gmail.com>.

FOR RENT

ROOMMATE WANTED: Eclectic artist seeks
dependable person w/references. Must like and
may have a pet. Large home on a quiet country
setting acre in Monteagle. Call (423) 596-0623.

TOM'S PLACE
An Event Hall
for your business or
personal gathering.
335 W. Main St., Monteagle
Tom Banks
tombanks9@yahoo.com
931-636-6620

FOR SALE

**LOST COVE
BLUFF LOTS**
www.myerspoint.net
931-703-0558

FOR SALE: Christmas ornaments, wreaths and
garlands, \$50-\$20. New Wavel fine china coffee/
dessert set, 27 pieces, \$95. Call for photos. (931)
308-8924 or 967-0438.

For Sale
ATS 1405 Air Rower
(rowing machine).
Firewood.
Call (931) 598-5543

FIREWOOD FOR SALE: \$60/rick, \$70
stacked. Call (931) 592-9405. Leave message.

HOME FOR SALE: 3BR/2BA double-
wide, on in-ground foundation. Front porch,
large back deck. Extensively renovated
master suite, new paint, new roof. On 1+
acre in Monteagle, six miles from Sewanee,
45 minutes from Chattanooga. Partially
furnished, appliances. \$60,000. Must see to
appreciate. (423) 488-8366.

Your ad could be here.

CALL US! • 598-9949
Classified Rates:
\$3.25 first 15 words,
10 cents each addl. word
Now you can charge it!
(\$10 minimum)

GARBAGE/RECYCLING

CURBSIDE RECYCLING

Residential curbside recycling
pickup in Sewanee is on the first
and third Friday of each month.
Recyclable materials must be
separated by type and placed in
blue bags by the side of the road no
later than 7:30 a.m. Please do not
put out general household trash on
this day. Blue bags may be picked
up in the University Lease and
Community Relations Office, 400
University Ave. (the Blue House) or
at the Physical Plant Services office
on Georgia Avenue.



CONVENIENCE/ RECYCLING CENTER HOURS

The Convenience Center for
household garbage, trash and re-
cycling is located on Missouri Ave-
nue. Its regular hours are: Monday,
1-5 p.m.; Tuesday through Friday,
3-5 p.m.; Saturday, 8 a.m.-4 p.m.;
Closed Sunday. Closed on national
holidays. There are blue recycling
bins for metal (tin, appliances,
etc.), newspapers/magazines, plas-
tic, plastic bottles, cardboard and
aluminum cans. Glass recycling is
on Kennerly Avenue behind PPS.

HAIR SALONS

(931) 598-0033
HAIR DEPOT
17 Lake O'Donnell Rd., Sewanee
KAREN THRONEBERRY, owner/stylist
TOBBIN NICOLE, stylist/nail tech

LAWN/TREE CARE

B&M
Complete
House & Lawn Care
Painting Pressure Washing
Lawn Mowing Weed Eating
Raking Leaves Sewing
Reasonable Rates
(931) 691-1420

BUCK'S LAWN SERVICE
reliable experience you can trust
for all your lawn needs
Buck Summers
598-0824 | Sewanee, TN

**CHAD'S LAWN &
LANDSCAPING**
-FREE ESTIMATES-
* Lawn care & Design (Mulch & Planting)
ALSO: * Tree Trimming & Removal
* Pressure Washing * Gutter Cleaning
* Leaf Pickup & Blowing * Road Grading
* Garden Tilling * Rock Work
(931) 308-5059

**EAGLE LANDSCAPING &
LAWN MAINTENANCE CO.**
Now Offering Specials for
FALL CLEANUP!
We offer lawn maintenance, landscaping,
hedge/tree trimming & more!
Please call for your free estimate
(931) 598-0761 or (931) 636-0383

King's Tree Service
Topping, trimming,
bluff/lot clearing, stump
grinding and more!
* Bucket truck or climbing*
Free wood chips with job
Will beat any quoted price!
Satisfaction guaranteed!!
-Fully licensed and insured-
kingstreeservice.com
Call (931) 598-9004—Isaac King

LOCAL SERVICES

COWAN COIN LAUNDRY: Seven scenic miles
from Sewanee. Standard and large machines.
213 E. Cumberland next to Cowan Post Office.
Open 24/7.

K&K CLEANING SERVICE: Residential
and office. Sewanee, Monteagle, Tracy City.
call Katie at (615) 278-0248 for rates and
references.

MAMA PAT'S DAYCARE
MONDAY-FRIDAY
Open 4 a.m.; Close 12 midnight
3-Star Rating
Meal & Snack Furnished
Learning Activities Daily
(931) 924-3423 or (931) 924-4036

MASSAGE
Regina Rourk Childress
Licensed Massage Therapist
www.reginarourk.com
~ GIFT CERTIFICATES ~
(931) 636-4806

SARGENT'S SMALL ENGINES: Repairs to All
Brands of Equipment: Lawn mowers (riding or
push), String trimmers, Chainsaws, Chainsaw
sharpening. New saw chains. Pickup and Delivery
Available. (931) 212-2585, (931) 592-6536.

WATER SOLUTIONS
Joseph Sumpter
Owner/Licensed Residential Contractor
Specializing in drainage and rainwater
collection systems
598-5565
www.josephsremodelingsolutions.com

CHARLEY WATKINS
PHOTOGRAPHER
Sewanee, TN
(931) 598-9257
http://www.photowatkins.com

LOCAL SERVICES

KT TAXI SERVICE
local & further
no website, just call/text
\$12/hr. cash/check/paypal
256-426-0232

"day was night, up was down,
things they might a funny go
round." ~anon

Adam Randolph ~ psychotherapist
randolph.adam@gmail.com

Walk-In Cooler Filled with Flowers!
—TUXEDO RENTALS—
Monteagle Florist
333 West Main Street, Monteagle
(931) 924-3292

MOVING HELP

THE LOCAL MOVER
Available for Moving Jobs
Call or Text Evan Barry
615-962-0432
Reviews at <www.thelocalmoverusa.com>.

The Moving Man
Moving Services • Local or Long Distance
Packing Services • Packing Materials
1-866-YOU-MOVE (931) 968-1000
www.themovingman.com
Since 1993 U.S. DOT 1335895

PUBLIC NOTICE

**SEWANEE SENIOR CITIZENS ANNUAL
CHRISTMAS BAZAAR:** Monday-Friday
(9-2) Saturday (9-1) Dec. 5-10. Tickets
for chance to win \$250 cash, antique quilt
[1910] or new sewing machine on sale as of
Nov. 1. There will be three separate drawings;
one ticket enters you for all three. \$2 per
ticket. Drawing will be held Tuesday, Dec.
13, at Center Christmas lunch. Donations
for the white elephant sale are being accepted
now at the Center. No clothing accepted.
Need donations of arts and crafts and canned
goods. Baked goods accepted during week of
Bazaar. Door prizes will be given away each
day of the Bazaar. Don't have to be present to
win door prizes or main drawing. For more
info call Judy Rollins, 598-0645.



New to town and want to get
on Sewanee Classifieds?

go to

groupspaces.com/Sewanee/

1. Request to Join Group.
2. Follow the instructions.
3. Submit membership payment,
\$10 annual.

When payment is received, the
Director of Classifieds will go
through your request and
approve membership.
Announcements Only are
free of charge.

Contact the Director of Classifieds at
sewaneecciv@gmail.com
Sponsored by the
Sewanee Civic Association
www.sewaneecciv.wordpress.com

**www.sewanee
messenger.com**

LIGHTS ON!
It is state law to have
your headlights on in
fog and rain.

YARD SALE/FLEA MARKET

YARD SALE: Saturday, Nov. 5, 9am-??, 2556
Sherwood Rd. No Early Birds please! Laz-A-Boy
recliner, hutch, kitchen table, roll-top desk, pedes-
tal sink, tons of clothes, men's, women's and kids'
toys, home items, decorations for all holidays, dog
accessories, so much more! All cheap! Must go!
More info text (931) 636-5956.

I-24 Flea Market
200 Vendors!
22 Years!
I-24 Exit 134
Saturday & Sunday
(931) 235-6354

INSIDE YARD SALE: Fall & Winter Apparel
for All Family Members + games, movies, more!
Friday/Saturday, 8 a.m.-?? Midway Market, 969
Midway Rd., Sewanee.

MESSENGER DEADLINES

News & Calendar:

Tuesday, 5 p.m.

Display Advertising:

Monday, 5 p.m.

Classified Advertising:

Wednesday, noon

**TRAFFIC
REMINDERS**
It is state law to have your
headlights on in fog and rain.
The NEW speed limit on
the University campus is 20
mph, except for Texas Avenue
(around the Fowler Cen-
ter), Morgan's Steep Road,
Georgia Avenue and Finney
Avenue, where it is 15 mph.



UNIVERSITY LIBRARY HOURS

Mon-Thu 7:30-1 a.m.
Friday 7:30 a.m.-10 p.m.
Saturday 9 a.m.-6 p.m.
Sunday 11 a.m.-1 a.m.



Bookmark it! www.
TheMountainNow.com



BE SAFE! OBEY THE BICYCLE HELMET LAW

Tennessee law requires all persons
under the age of 12 to wear a hel-
met while riding a bicycle on any
state road. University Avenue is a
state road and, therefore subject to
the law. The act also contains pro-
visions requiring restraining seats
on bicycles for passengers who are
children under 40 pounds or who
are less than 40" tall.

Support local businesses!



BARDTOVERSE

by Phoebe Bates

Election Day November 8, 2016

The proudest now is but my peer,
The highest not more high;
Today, of all the weary year,
A king of men am I.
Today, alike are great and small,
The nameless and the known,
My palace is the people's hall,
The ballot-box my throne!
Who serves today upon the list
Beside the served shall stand;
Alike the brown and wrinkled fist,
The gloved and dainty hand!
The rich is level with the poor,
The weak is strong to-day;
The sleekest broadcloth counts no more
Than homespun frock of gray
Today let pomp and vain pretense
My stubborn right abide;
I set a plain man's common sense
Against the pedant's pride.
Today shall simple manhood try
The strength of gold and land;
The wide world has not wealth to buy
The power in my right hand!
While there's a grief to seek redress,
Or balance to adjust,
Where weighs our living manhood less
Than Mammon's vilest dust,—
While there's a right to need my vote,
A wrong to sweep away,
Up! clouted knee and ragged coat!
A man's a man today!
—A Poor Voter on Election Day,
by John Greenleaf Whittier (1852)

24th
Annual Show

Highlander
Oriental Rugs

NOV 4-5-6
8 TO 5

SEWANEE
LEGION
HALL

865-604-0864

e-mail highlanderrug@gmail.com

Shop and dine locally!

The Depot Emporium

367 Railroad Ave., Tracy City
(931) 808-2590

Specializing in Antiques, Gifts and Things

Open Thur-Fri-Sat 10 a.m.–5 p.m.

Community Calendar

Today, Friday, Nov. 4

Sewanee Woman's Club luncheon reservation deadline
ECW lunch reservation deadline

University Homecoming Weekend

- 7 a.m. Curbside recycling
- 8:30 a.m. Yoga with Carolyn, Comm Ctr
- 9 a.m. CAC office open, until 11 a.m.
- 10 a.m. Dedication Ayres Hall, Alabama Ave.
- 10 a.m. Games day, Senior Ctr
- 10 a.m. SSO Halloween Concert for Kids, Guerry
- 12 p.m. Spinal Spa with Kim, Fowler Ctr
- 4 p.m. Herbarium open house, Spencer Hall room 171
- 7:30 p.m. Dept of Theatre comedy, "The Good Doctor," Proctor Hill Theatre, 406 Kentucky Ave.
- 7:30 p.m. Movie, "Captain Fantastic," SUT
- 7:30 p.m. SSO Halloween Concert "Underworld" (free), Guerry

Saturday, Nov. 5

- 8:30 a.m. Yoga with Richard, Community Center
- 9 a.m. Breakfast and Bluegrass on the Quad
- 9:30 a.m. Hospitality Shop open, until noon
- 10 a.m. Stronger/Truer Sewanee Campaign launch, All Sts
- 4 p.m. Crow Creek Festival, Crow Creek Comm Ctr, Sherwood
- 7:30 p.m. Dept of Theatre comedy, "The Good Doctor," Proctor Hill Theatre, 406 Kentucky Ave.
- 7:30 p.m. Movie, "Captain Fantastic," SUT

Sunday, Nov. 6 • CAC Pantry Sunday

Daylight Saving Time ends (fall back)

- 3 p.m. Knitting circle, instruction, Mooney's, until 5 p.m.
- 4 p.m. Yoga with Helen, Community Ctr
- 7:30 p.m. Movie, "Captain Fantastic," SUT

Monday, Nov. 7

Lease agenda items due, 598-1998

St. Andrew's-Sewanee School no classes

- 9 a.m. CAC office open, until 11 a.m.
- 9 a.m. Coffee with V-C McCardell, Blue Chair
- 9 a.m. Yoga with Sandra, St. Mary's Sewanee
- 10:30 a.m. Chair exercise with Ruth, Senior Ctr
- 12 p.m. ECW, St. Mark's Hall, Otey
- 5:30 p.m. Yoga with Sandra, St. Mary's Sewanee
- 5:30 p.m. Yoga for Healing with Lucy, Comm Center
- 6 p.m. Karate, youth, Legion Hall; adults, 7 p.m.
- 7 p.m. Centering Prayer, Otey sanctuary
- 7 p.m. Health care lecture, Sandler, Torian Rm, duPont
- 7 p.m. Sewanee Chorale rehearsal, 203 Guerry Hall

Tuesday, Nov. 8 • Election Day

Franklin County School no classes

- 9 a.m. CAC office open, until 11 a.m.
- 9 a.m. Pilates with Kim, beginners, Fowler Ctr
- 9:30 a.m. Hospitality Shop open, until 1 p.m.
- 9:30 a.m. Crafting ladies, Morton Memorial, Monteagle
- 10:30 a.m. Bingo, Sewanee Senior Ctr
- 10:30 a.m. La Leche League, Comm Ctr
- 11:30 a.m. Grundy County Rotary, Dutch Maid, Tracy
- 12 p.m. Pilates with Kim, intermediate, Fowler Ctr
- 5 p.m. Acoustic jam, water bldg next to old GCHS
- 5:30 p.m. Daughters of the King, St. James
- 6 p.m. Election Night Party, 874 Lake O'Donnell Rd., until 10
- 7 p.m. FCDP Election Watch Party, 371 4th Ave., Decherd
- 7:30 p.m. Sewanee Symphony rehearsal, Guerry, until 9:30 p.m.

Wednesday, Nov. 9

- 9 a.m. CAC office open, until 11 a.m.; also 1–3 p.m.
- 10 a.m. Pilates with Kim, intermediate, Fowler Ctr
- 10 a.m. Senior Center writing group, 212 Sherwood Rd.
- 10:30 a.m. Chair exercise with Ruth, Senior Ctr
- 12 p.m. Pilates with Kim, beginners, Fowler Center

- 12 p.m. EQB Meeting, St. Mary's Sewanee
- 4:30 p.m. Leading Change Lecture, McGriff House
- 5:30 p.m. Yoga with Helen, Comm Ctr
- 6:30 p.m. Folk music collective, St. Luke's Chapel
- 7 p.m. Catechumenate, Women's Center
- 7:30 p.m. Cineman Guild, "Looper," SUT

Thursday, Nov. 10

- 7:45 a.m. Monteagle Sewanee Rotary, Sewanee Inn
- 9 a.m. CAC office open, until 11 a.m.
- 9 a.m. Nature journaling, Sewanee Herbarium
- 9 a.m. Pilates with Kim, beginners, Fowler Ctr
- 9:30 a.m. Hospitality Shop open, until 1 p.m.
- 11 a.m. Tai Chi with Kathleen, inter/adv, Comm Ctr
- 12 p.m. ALLL, Rudnitsky, St. Mary's Sewanee
- 12 p.m. Pilates with Kim, intermediate, Fowler Ctr
- 12:30 p.m. Episcopal Peace Fellowship, Brooks Hall, Otey
- 1:30 p.m. Folks@Home support group, 598-0303
- 2 p.m. Knitting circle, Mooney's, until 4 p.m.
- 3:30 p.m. Emeriti, Hamilton, Torian Rm, duPont
- 6 p.m. Sewanee Soup crowdfunding, Women's Center
- 7:30 p.m. Movie, "Star Trek Beyond," SUT
- 7:30 p.m. Theatre/Sewanee, "Size Matters," McAnally, TN Williams Center

Friday, Nov. 11 • Veterans Day

Foothills Arts & Crafts Festival, Manchester, through Nov. 12

Senior Center Thanksgiving lunch reservation deadline, 598-0771

- 9 a.m. CAC office open, until 11 a.m.
- 10 a.m. Games day, Senior Ctr
- 12 p.m. Spinal Spa with Kim, Fowler Ctr
- 4:30 p.m. Art talk, reception, Wohl, Convocation Hall
- 4:30 p.m. Art talk, reception, Wrangle, Carlos Gallery
- 5:30 p.m. World healing meditation, Comm Ctr
- 7:30 p.m. Movie, "Star Trek Beyond," SUT
- 7:30 p.m. Dept of Theatre, "Size Matters," McAnally, TN Williams Center

LOCAL 12-STEP MEETINGS

Friday

- 7 a.m. AA, open, Holy Comforter, Monteagle
- 7 p.m. AA, open, Christ Church, Tracy City

Saturday

- 7:30 p.m. NA, open, Decherd United Methodist
- 7:30 p.m. AA, open, Claiborne Parish House, Otey

Sunday

- 6:30 p.m. AA, open, Holy Comforter, Monteagle

Monday

- 5 p.m. Women's 12-step, Brooks Hall, Otey
- 7 p.m. AA, open, Christ Church, Tracy City

Tuesday

- 7 p.m. AA, open, First Baptist, Altamont
- 7:30 p.m. AA, open, Claiborne Parish House, Otey
- 7:30 p.m. CoDA, open, Holy Comforter, Monteagle

Wednesday

- 10 a.m. AA, closed, Clifftops, (931) 924-3493
- 4:30 p.m. AA, "Tea-Totallers" women's group, Clifftops, (931) 924-3493
- 7 p.m. NA, open, Decherd United Methodist
- 7:30 p.m. AA, open, Holy Comforter, Monteagle

Thursday

- 12 p.m. AA, (931) 924-3493 for location

Black Friday. Cyber Monday.

#GIVINGTUESDAY™

November 29, 2016

D.D.S.

Designated Doodle Space

Custom cabinetry, design services, remodeling and new construction!

Sweeton

Home Restoration

931-924-2444 sweetonhome.com

Bridging the gap between high design and practical living