



THE SEWANEE MOUNTAIN MESSENGER

Volume XXXVI No. 21

Published as a public service since 1985

Friday, June 12, 2020



Example of infrastructure tucked under the bleachers behind fence

Proposal of Cell Tower Location Announced

As many community members will recall, the University of the South, in partnership with Vogue Towers, over the last 15 months has considered more than 10 locations for a possible cell tower. The tower would support antennas to improve emergency communications and cell coverage from Verizon as the lead provider, with other providers expected to follow, such as AT&T and T-Mobile/Sprint.

The public process has included community meetings, Franklin County zoning meetings, and discussions at Sewanee Community Council meetings (most recently Feb. 24, 2020).

At the February Community Council meeting, the Council gave unanimous support to a proposal to locate a cell tower at the football field, replacing one of the four existing football field lights with a monopole. The field lights would be remounted on the new monopole at the same level as currently. All previous proposed tower locations that were satisfactory to the anchor tenant Verizon were met with community objections, and all proposed locations preferable to community members were not acceptable to Verizon.

The modified proposal for a location behind the football field addresses as many of the community concerns as possible. It provides effective cellular propagation across campus and in the Village with the lowest possible tower and smallest footprint. This is the only potential site which would not require being lit night and day due to FAA (airport traffic) regulations. The new location moves the tower farther away from the nearest home than the previously reviewed stadium site. In terms of aesthetics, the compound and carrier equipment can be hidden under the bleachers and behind fencing. No trees would need to be removed or otherwise disturbed, no access road is needed, and the tower will not intrude on the tailgate area.

The University had an independent tower engineer review alternative locations; this review resulted in additional consideration of the water tower and Lake Cheston sites. However, neither of those sites were as desirable as the pole replacement strategy at the football field.

Note that in terms of possible health concerns, the American Cancer Society says that "Cell phone towers are not known to cause any health effects." The FCC guidelines for evaluating human exposure to radio frequency fields from cellular sites are identical to those recommended by the National Council on Radiation Protection and Measurements, a nonprofit corporation chartered by Congress to develop information and recommendations concerning radiation protection.

A cell tower has been located in Shapard Tower on central campus since early 2013 and has caused no known issues of illness or noise.

Current status:

A contract has been signed to lease this location to Vogue Towers.

A site visit has been completed with Vogue Towers and their engineering firm.

Vogue Towers will update the applications for all local, state, and federal regulators (Franklin County Zoning, the State Historic Preservation Office, NEPA, FAA, etc.).

The timeframe for a response from the regulatory agencies is not certain but will be reported by Vogue Towers.

When more information is available about the timeline and next steps, the University will provide another update both in the Sewanee Mountain Messenger and via email to University leaseholders.

Leave-Taking Ceremony and Introduction of 17th Vice-Chancellor, June 16 & 17

A brief gathering in All Saints' Chapel will observe the "Leave-Taking" of the 16th vice-chancellor of the University of the South. The service will be held at 1:30 p.m., Tuesday, June 16, in All Saints' Chapel on the Sewanee campus. Due to restrictions on public gatherings necessitated by the COVID-19 pandemic, attendance will be limited to invited guests only and the service will be livestreamed for the community.

After 10 years of service as the university's 16th vice-chancellor, John M. McCardell Jr. will assume his new role on June 17 as vice-chancellor emeritus and a member of the College faculty as professor of history. On the same day, Reuben E. Brigety II will begin his work as Sewanee's 17th vice-chancellor.

During the June 16 service, McCardell will make farewell remarks, which will be followed by short prayers and a hymn. The service will also recognize the Rt. Rev. J. Neil Alexander, vice

(Continued on page 7)

Franklin County Schools: Worrisome Changes

by Leslie Lytle
Messenger Staff Writer

At the June 9 meeting, the Franklin County School Board grappled with two pressing needs for change. With the COVID-19 pandemic still an ever-present reality, the board must reach a decision on what instruction will look like when school resumes for the 2020-21 academic year. Also center-front on the board's radar screen was unexpected news of possible state funding cuts which would drastically impact the 2020-21 budget the board approved just three weeks ago.

Director of Schools Stanley Bean called the board's attention to the "Fall 2020 School Opening" stakeholders survey, which was posted on the Franklin County Schools website. Although directed at parents and students, anyone can respond to the survey. The survey presents three options for instruction: physically in school building with safety measures; fully online with current Franklin County teachers delivering standardized course content virtually; a combination of the other two options, with students attending school

(Continued on page 7)

SSMF Commissions Creation of Original Composition

by Bailey Basham, Messenger Staff Writer

June and July will be uncharacteristically quiet on the Mountain this year.

Chamber music won't echo through the quad as students of the Sewanee Summer Music Festival (SSMF) practice in Guerri Auditorium.

Passersby on campus will not hear notes reverberating off the strings of cellos and violins, none strumming steadily as the student musicians tune their instruments for performing.

In Sewanee, fans of classical music typically have weekly opportunities to assemble at the University for chamber ensembles and orchestral performances. But this year, with the festival cancelled, the calendar pages are bare.

According to festival leadership, however, there is still work being done to ensure the success of the festival.

As part of a project in
(Continued on page 8)

March Scheduled for Friday

A march and call to action in support of the Black Lives Matter movement will take place in Sewanee at 5 p.m. this Friday afternoon, June 12. All are invited; please wear a mask and practice social distancing. Details are below.

Participants will meet between 4:45 and 5 p.m. Friday at the St. Mark's Community Center on Alabama Avenue. The march will begin promptly at 5 p.m.

Please walk to St. Mark's if possible. Those who need to drive may either park in the downtown Sewanee area and proceed to St. Mark's, or park in the large parking lot at the north end of Alabama Avenue. (Alabama will be blocked at Hwy. 41; to reach the parking lot, turn on Kennerly Road off of Hwy. 41, proceed left onto Magnolia, and then take a right onto Alabama.)

For everyone's protection, please wear a mask and practice social distancing.

Strollers and wheelchairs are welcome; please do not bring bikes, skateboards, scooters, etc.

The march will begin at St. Mark's, head up Willie Six Road, turn left onto Sartain Road, and then proceed right up University Avenue. The march will end on the University Quad for a formal program.

For the safety of the marchers, the Sewanee Police Department and Fire Department will close the streets along the route to traffic.

People unable to join the walk are encouraged to stand along the University Avenue sidewalk to support the marchers. You are also welcome to meet the march at the Quad between 5:30 and 5:45 p.m.

Sewanee Police will block off University Avenue at Georgia Avenue; all parking on Georgia Avenue will be reserved for those with mobility and health challenges. SPD will be happy to assist anyone who might need help.

Participants are welcome to make and bring signs and posters.

The formal program will consist of reflections, a moment of silence, and a call to action. Education and advocacy resources, as well as ways to contribute financially to Multicultural Student Affairs, the Roberson Project on Slavery, Race, and Reconciliation, and to NAACP, also will be shared.



The march in Winchester last Saturday was well attended and peaceful.

P.O. Box 296
Sewanee, TN 37375

Letters

COMMUNITY CHEST FUNDS GRANTS

To the Editor:

The Sewanee Civic Association Board is pleased to announce that the Sewanee Community Chest will be fully funding the 2019-20 grant recipients. While COVID-19 is negatively impacting many Chest grantees, this situation is that some are not able to operate this year. Those organizations withdrew their request for funding, so that Chest funds can be focused on those still in need. In all efforts to surpass goal, the Board extended the fundraising campaign this year to June 1. We want to express our heartfelt gratitude to the donors that have made this fundraising campaign a success.

I am extremely proud of what this year's Civic Association Board has accomplished. Each individual has not only brought unique talents and insight to the table, but applied themselves in such a way to make Sewanee a better place to live. It is a commendable service to the community. Four of our Board members will be rolling off at our Annual Meeting (currently TBD for a date in August); Theresa Shackelford (Past President), Jesse Bornemann (Secretary), Steve Burnett (Member at Large), and Jade Barry (Vice President). Erin Kunz (Treasurer), Bentley Cook,

(Director of Classifieds) and myself (moving to Past President) will remain on the Board. I also want to recognize Christina Sorenson who volunteered with our Community Chest Committee and helped wrap up this year's fundraising campaign, and Ed Hawkins for serving with the Sewanee Classifieds Committee. It has been a pleasure to work with this team of community focused volunteers.

Since 1908 the Sewanee Civic Association has been raising funds to meet needs within our small town, and is the acting steward to the Sewanee Community Chest. The Community Chest has worked to raise money to support local organizations and projects that have benefited virtually everyone in our community. One hundred percent of the money donated to the Chest gets distributed directly back to the Sewanee community. To make this possible, SCA has a Community Chest endowment that covers annual operating expenses and also contributes to the annual fundraising goal. It is important to remember that funds raised in excess of the Chest's annual fundraising campaign goal, or outside fundraising campaign cycles, can be used to address emergency requests from organizations within the community. Our current crisis has created much more need within Sewanee, so it's not too late to donate. If your organization needs emergency funding, please

reach out to us at sewaneecommunitychest@gmail.com, and we will do our best to help. There are several simple ways to contribute: mail a check today to P.O. Box 99, Sewanee, TN 37375; donate via PayPal at www.sewaneeccivic.org; enroll in a payroll deduction if you are an employee of the University of the South; shop AmazonSmile and make the Sewanee Community Chest the beneficiary. For more information about how you can make a difference in your community, or to read about the organizations supported, go to www.sewaneeccivic.org.

Brandon Barry, for the SCA

TRIBUTE

To the Editor:

After reading the thoughtful obituary for David Driskell, former chair of Fisk University's Art Department, in The Washington Post, I want to add tribute by mentioning that Driskell directed our Capital's Barnett-Aden Gallery of Art, sponsored by Eleanor Roosevelt in the early 1960s, making public my oil paintings with my first exhibition.

In keeping with his recent death at 88 years, and the thousands of souls departing this earth in the same week and since from coronavirus, I share a death poem by another artist who died at the same age, Sengai Gibon:

"He who comes knows only his coming / He who goes knows only his end. /

To be saved from the chasm / Why cling to the cliff? / Clouds floating low /

Never know where the breezes will blow them."

David loved Earth, and with his customary gentleness taught me about healing capacities of plants sharing his garden's beauty. The night I learned of David Driskell's demise the air beneath the moon was pink; I imagined David and those who with him brushing the moon pink to celebrate relationship - our stepping into the night air to be bathed in such illumination.

With warm hospitality, gentleness, kindness, and camaraderie of brotherhood, David taught me drinking the mix of whiskey and milk demonstrating his humor, our fellowship, his depth of concern placing my photograph reminiscent of bondage in the Van Vechten Gallery; when David was chair, Fisk University's arts flourished. The Art Department faculty during the 1970s exhibited full force in Sewanee's University Gallery well received by community and university alike.

Thank you, David, for your artistry and your constant spreading of brotherhood, for your life well-lived - a life of serving many others, and indeed one who mattered. Farewell, my friend.

Ed Carlos, Sewanee

THANK-YOU FROM MMUMC

To the Editor:

Morton Memorial United Methodist Church would like to share our appreciation for all the local support for our food mission. The generosity of this community is overwhelming. We have been very fortunate to be a recipient of sev-



THE SEWANEE MOUNTAIN MESSENGER

Published as a public service to the community since 1985, this newspaper is printed on Fridays, 46 times a year. Free of charge, copies are distributed to 100 locations, including businesses and post offices across the Plateau. This publication is made possible by the patronage of our advertisers and by contributions from the University of the South (print production) and the Sewanee Community Chest.

Kiki Beavers
editor/publisher
April Minkler
office manager
Ray Minkler
circulation manager
Sandra Gabrielle
proofreader

Leslie Lytle
staff writer
Bailey Basham
staff writer
Janet Graham
publisher emerita
Laura Willis
editor/publisher emerita
Geraldine Piccard
editor/publisher emerita

SUBSCRIPTIONS \$75 first class

418 St. Mary's Lane, P.O. Box 296, Sewanee, TN 37375
Phone (931) 598-9949 | news@sewaneeemessenger.com

All material in the Sewanee Mountain Messenger and on its websites are copyrighted and may not be published or redistributed without written permission.

SERVING WHERE CALLED

Please keep the following individuals, their families and all those who are serving our country in your thoughts and prayers:

Blaze Cassidy Barry
James Gregory Cowan
Mark Gallagher
Nathaniel P. Gallagher
Peter Green
Zachary Green
Steven Tyler Jeffery
Cheyenne N. Kelly
Gabriel Lloyd
Forrest McBee
Andrew Midgett
Jose D. Ramirez III
Troy (Nick) Sepulveda
Zachary Sherrill
Nick Worley

If you know of others in our Mountain family who are serving our country, please give their names to American Legion and Auxiliary member Louise Irwin, 598-5864.

MESSENGER CONTACTS

Phone: (931) 598-9949

News and Calendar

Tuesday, 5 p.m.
Kiki Beavers
news@sewaneeemessenger.com

Sports

Tuesday, 5 p.m.
sports@sewaneeemessenger.com

Display Advertising

Monday, 5 p.m.
ads@sewaneeemessenger.com

Classified Advertising

Wednesday, noon
April Minkler
classifieds@sewaneeemessenger.com

MESSENGER HOURS

Monday, Tuesday and Wednesday
9 a.m.—4 p.m.

Thursday—Production Day
9 a.m. until pages are completed
(usually mid-afternoon)

Friday—Circulation Day
Closed

DEPENDABLE AFFORDABLE RESPONSIVE HOME REPAIR AND REMODELING EXPERT HANDYMAN

KEN O'DEAR
25 YEARS EXPERIENCE
SATISFACTION GUARANTEED
931.235.3294
931.779.5885



HOUSE CALL SERVICE AVAILABLE

Full Service Veterinary Care for Dogs, Cats & Horses
Offering Acupuncture, Chiropractic & Herbal Therapies



Traci S. Helton
DVM

Jessie Richardson
DVM

Monday—Friday 7:30 am—6 pm; Saturday 8 am—noon

AFTER-HOURS EMERGENCY SERVICE AVAILABLE

931-962-3411

505 S. Jefferson St., Winchester (41-A toward Winchester. First left after Domino's Pizza)

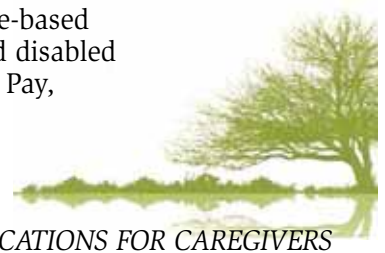
Tree of Life Homecare, LLC

"Neighbors Helping Neighbors"

- * Licensed and insured home-based services for the elderly and disabled
- * CHOICES provider, Private Pay, Veterans Affairs, AAD

931-592-8733
treeoflifehomecare.com

NOW ACCEPTING APPLICATIONS FOR CAREGIVERS



The Lemon Fair

OPEN 11-4

Call 931.598.5248 for curbside pick up
thelemonfair.com



MICHELLE M. BENJAMIN, JD Attorney & Counselor at Law

201 FIRST AVENUE, NORTHWEST
WINCHESTER, TENNESSEE 37398

(931) 962-0006
Fax: (931) 967-8613

Free Summer Meals for Plateau Children

Meals will be served weekly at Grundy County Elementary Schools and at Monteagle Elementary beginning Monday, June 15. Throughout the summer, meals will be available Mondays at Tracy City, Coalmont, Pelham and Monteagle Elementary Schools. Beginning Tuesday June, 16 meals will be available Tuesdays at North, Swiss and Palmer Elementary Schools. Meals will continue to be served at schools through July 28.

Each week all children 18 years and under may receive five breakfasts and five lunches free of charge. Meals will be distributed in the familiar "grab-and-go" fashion from 10 a.m.-noon at all school locations. Children need not be present during meal distribution at schools. This means parents may pick-up meals for children who remain at home.

The University of the South in partnership with the South Cumberland Community Fund encourages all plateau families with children to participate in this free meal program. All children 18 years and younger are welcome to receive meals at no charge regardless of race, color, national origin, sex, age or disability. Additionally, meals will be provided throughout the summer at six Franklin County locations listed below on our complete delivery schedule. Meals will be distributed at the following dates and times:

Grundy Housing Authority, 187 Raulston Ave., Monteagle, June 17-July 29, Wednesdays, 9-11 a.m.

Tracy Elementary School, 276 3rd St., Tracy City, Monday, June 15-July 27, 10 a.m.-noon

DuBose Healthy Roots, 635 College St., Monteagle, July 6-10, Monday-Friday, 10 a.m.-noon

Coalmont Elementary School, 7862 SR 56, Coalmont, Monday, June 15-July 27, 10 a.m.-noon

Pelham Elementary School, 2402 SR 50, Pelham, Monday, June 15-July 27, 10 a.m.-noon

Palmer Elementary School, 226 Palmer Rd., Palmer, Tuesday, June 16-July 28, 10 a.m.-noon

North Elementary School, 309

16-July 28, 10 a.m.-noon

Swiss Memorial School, 477 55th Ave., Gruetli Laager, Tuesday, June 16-July 28, 10 a.m.-noon

Monteagle Elementary School, 120 E. Main St., Monteagle, Monday, June 15-June 29, 10 a.m.-noon, Monday, July 13-July 27, 10 a.m.-noon

Rain Teen Center, 626 Bennett Cemetery Rd., Decherd, June 17-July 29, Wednesday, 5-7:30 p.m.

Grace Center for Hope, 912 S. College St., Winchester, June 16-July 30, Tuesday, Wednesday, Thursday, 11:30 a.m.-1:30 p.m.

Franklin Co. Prevention Coalition, 900 S. Shepard St., Winchester, June 15-July 28, Monday and Tuesday, 5:30-7:30 p.m.

Camp Rain, 626 Bennett Cemetery Rd., Decherd, June 15-18 and July 5-11, 8-10 a.m., and 11:30 a.m.-1:30 p.m.

The 2020 Summer Food Service Program (SFSP) is administered in Tennessee by the Department of Human Services under an agreement with the U.S. Department of Agriculture (USDA). If you wish to file a Civil Rights program complaint of discrimination, complete the USDA Program Discrimination Complaint Form, found online at <<https://www.ascr.usda.gov/filing-program-discrimination-complaint-usda-customer>> or at any USDA office, or call (866) 632-9992 to request the form. You may also write a letter containing all of the information requested in the form. Send your completed complaint form or letter to us by mail to:

U.S. Department of Agriculture, Director, Office of Adjudication, 1400 Independence Avenue, S.W., Washington, DC 20250-9410,

By fax at (202) 690-7442, or email at <program.intake@usda.gov>.

Individuals who are deaf, hard of hearing or have speech disabilities may contact USDA through the Federal Relay Service at (800) 877-8339; or (800) 845-6136 (Spanish).

USDA is an equal opportunity provider and employer.

Voting Information

Aug. 6, 2020 is voting day for the State Primary and County General Election. Early voting in Franklin County takes place July 17-Aug. 1. You may request ballots to be mailed until July 30.

If you are unable to appear at your polling place on Election Day or during the Early Voting period, you may request an absentee ballot.

Voter registration deadline is July 7.

Offices up in the Election State Primary are United States Senate, United States House of Representatives, Tennessee State Senate, and Tennessee House of Representatives. Offices up for Election County General in Franklin County include winners from primaries, and School Board Members Districts 2, 4, 5, 6, 7, and 8.

For more information, go to Franklin County <www.franklin-countytn.us>, or call (931) 967-1893. In Grundy County <grundycountytn.net>, phone (931) 692-3551. In Marion County <marionvotes.com>, phone (423) 942-2108.

Contact information for election offices, sample ballots and more can also be found at <<https://sos.tn.gov/elections>>.

Tennesseans voting on Election Day should remember to bring valid state or federal photo identification with them to the polls. For information about what types of ID are acceptable, visit <GoVoteTN.com> or call (877) 850-4959.

Voters can also download the GoVoteTN app. Voters can find early voting and Election Day polling locations, view sample ballots, see names of elected officials and districts, as well as access online election results through the application. Go to <GoVoteTN.com>.

Upcoming Meetings

Franklin County Commissioners

The Franklin County Board of Commissioners will meet at 7 p.m., Monday, June 15, in the Franklin County Annex Building, Winchester.

SUD Meeting

The Sewanee Utility District of Franklin and Marion Counties Board of Commissioners will have its regular meeting at 5 p.m., Tuesday, June 16, at the utility office on Sherwood Road. If a customer is unable to attend but wishes to bring a matter to the board, call 598-5611, visit the office, or call a board member. Your board members are Doug Cameron, Paul Evans, Randall Henley, Ronnie Hoosier, and Charlie Smith.

Franklin County School Board

The Franklin County School Board will meet via Zoom at 6 p.m., Tuesday, June 16.

Rotary Club Meeting

The Monteagle-Sewanee Rotary will meet via Zoom on Thursday, June 18, at 8 a.m. The guest speaker will be Paul Schutz, who will discuss the Community Council. For non-Rotarians, contact John Solomon to receive a Zoom email invitation at <johncsolomon@gmail.com>.

Sewanee Community Council

The next meeting of the Community Council is scheduled for Monday, June 22, 2020, at 7 p.m. Items for the agenda were due on June 10.

Assessment Sites Open

The Tennessee Department of Health (TDH) has COVID-19 assessment sites available across the southeast region. A full list of sites can be accessed <www.tn.gov/health/cedep/ncov.html>.

Currently, there is free drive-through testing available from 9 a.m. until noon local time, Monday through Friday, at the health departments in Bradley, Franklin, Grundy, McMinn, Rhea, and Sequatchie. Call ahead for an appointment. Residents in Bledsoe, Marion, Meigs, and Polk counties may also call their local health department during regular business hours for assistance in getting testing.

Tennessee's Coronavirus Public Information Lines are open from 10 a.m. to 10 p.m., CDT daily at (833) 556-2476 or (877) 857-2945.

Franklin County Health Department, 266 Joyce Lane, Winchester, TN 37398, (931) 967-3826.

Grundy County Health Department, 1372 Main Street, Altamont, TN 37301, (931) 692-3641.

Marion County Health Department, 24 East 7th Street, Jasper, TN 37347, (423) 942-2238.



Sweeton

HOME RESTORATION

931-924-2444 sweetonhome.com

Main St., Altamont, Tuesday, June

SHULL | CHIROPRACTIC CLINIC, PLLC

Dr. Kurt A. Shull
1025 S. College St. • Winchester
931.967.4232
www.shullchiropractic.com
Mon. Wed. Thurs. - 9 am-noon, 2-6 pm
Tue. 9-11 am | Fri. 8-9 am | Sat. by appointment only
A Chiropractic, Wellness, Nutritional, Dry Needling, Non-Surgical, Spinal Decompression Clinic



423-834-6424

RESIDENTIAL & COMMERCIAL ****NO HIDDEN FEES**** FREE INSPECTIONS
FREE ESTIMATES
LICENSED • BONDED • INSURED



5 BEDROOMS

5.1 BATHS

6,057 SQUARE FEET

\$985,000

305 CLARAS POINT ROAD

Sewanee, TN 37375

Exquisite Sewanee bluff estate, sunlit Southern view. Meticulously & tastefully refurbished, old-world charm w/modern amenities. Precisely proportioned, orig. design by one of Nashville's premier architects. Secluded, lush, short walk to all Sewanee, on Perimeter Trail. 5 bdms, 5 full baths, 10 ft ceilings, multiple built-ins, floor to ceiling windows, 3 fireplaces, mult. terraces, hardwood floors, balconies. Perfect for relaxing/entertaining. Recent successful Airbnb SuperHost (see reviews).

Zeitlin

INTERNATIONAL REALTY

Sotheby's

INTERNATIONAL REALTY

WARD AND SHELLEY CAMMACK

615.319.9862

ward.cammack@zeitlin.com

Green Hills 615.383.0183 | Belle Meade 615.202.7777 | Franklin 615.794.0833 | zeitlin.com

The accuracy of all information is not guaranteed or warranted and should be independently verified. Each office is independently owned and operated.

Church News

The National Synod of The Episcopal Missionary Church

Beginning with Evening Prayer on Wednesday, June 17, at 5:30 p.m., and continuing through Friday at noon, the National Synod of The Episcopal Missionary Church will be held at Christ Church Monteagle with all meals at the Smokehouse. On Thursday, June 18, at 4:30 p.m., the consecration of Fr. Peter Waganga is scheduled. Fr. Peter was called back from retirement recently to serve the State of Texas as a civil servant. He is the head of the EMC Missions Team, and he has established a Dental and Medical Center in Kenya. He is an attorney and has served in programs of the government of Kenya. He and his wife Anna, who has been a Montessori teacher have three daughters. The eldest, Phyllis is an R.N. and is a nurse at Banner Hospital in Mesa, Arizona. She is caring for COVID-19 patients, and therefore cannot attend the consecration. Phyllis has assisted with

our clinic in Kenya as well. Grace is an Entero Bacteriologist Research Scientist. Their youngest, Jessica, is a Montessori teacher. The father of Fr. Peter is an Anglican priest, who has recently retired at age 91.

We had hoped to invite everyone to all of the meetings and services, but the COVID19 pandemic brought about the need for Social Distancing and even Masks, so we will depend on live streaming and professional videos. We are very grateful to the Smokehouse for planning two banquets and helping Christ Church host the synod.

With regard to Sundays, Christ Church is offering Morning Prayer at 10:45 a.m. The Wednesday noon service is also being held each week.

Good Shepherd

Good Shepherd Catholic Parish has resumed a schedule of Masses, with many changes to the services to safeguard the health of those participating. Mass is at Good Shepherd Church in Decherd at 5 p.m. on Saturday and 8 a.m. and

10:30 a.m. on Sunday, with a 2 p.m. Spanish Mass on Sunday. St. Margaret Mary Mission Church is temporarily meeting at Good Shepherd Church. See the website, <goodshepherdtn.com> for more information.

Otey Memorial Parish

Sunday worship services will be online at the Otey Memorial Parish Facebook Page and YouTube channel at 8:30 a.m., 11 a.m., and afterward.

The Community Action Committee continues to serve the needy while observing sensible precautions, 9–11 a.m., Monday–Friday. Please call (931) 598-5927.

The parish office is staffed limited hours and staff members are completing the rest of their work remotely. The office phone (598-5926) and email <oteyparish@gmail.com> are being monitored and we are responding to messages. To arrange to meet with a staff member, please call or email in advance.

Put the Messenger to work for your business.
Phone 598-9949 or email us at <ads@sewanee-messenger.com>
SHARE YOUR NEWS!

Church Calendar

Monteagle Seventh-Day Adventist

11 a.m. Worship, Saturday

Morton Memorial United Methodist, Monteagle (services available online)

9:45 a.m. Sunday School, Sunday

11 a.m. Worship Service, Sunday

6 p.m. Bible Study, Wednesday

Mountain of God Tabernacle, Monteagle (online worship services via Zoom. Info: call (931) 924-5339 or go online, <www.WildfireOnTheMountain.com>)

11 a.m. Worship Service, Sunday

6 p.m. Prayer Service, Wednesday

New Beginnings Church, Monteagle

10:45 a.m. Worship Service, Sunday

5 p.m. Worship Service, Sunday

New Beginnings Church, Pelham

9:45 a.m. Worship Service, Sunday

New Creations Ministries, Rayburn Chapel

4 p.m. Prayer Meeting, Sunday

New Hope Church of God in Christ, Cowan

11 a.m. Sunday Service, Sunday

6 p.m. Sunday Service, Sunday

Otey Memorial Parish Church

8:30 a.m. (and available afterward)—Sunday service on the Otey Memorial Parish Facebook page and the Otey Memorial Parish YouTube channel. For info on how to participate in Sunday School or Forum, contact <oteyformation@gmail.com>. Repeats at 11 a.m.

Pelham United Methodist Church (services online)

9:45 a.m. Sunday School, Sunday

11 a.m. Worship Service, Sunday

St. Agnes' Episcopal Church, Cowan

11 a.m. Holy Eucharist, Sunday

St. James Episcopal Church

9 a.m. Morning Prayer Rite II, conference call

St. Margaret Mary Catholic Church, Alto

(temporarily meeting at Good Shepherd, Decherd)

St. Mary's Sewanee

(all activities canceled until further notice)

3:30 p.m. Centering Prayer, Tuesday, via Zoom

4 p.m. Centering Prayer, McRae Room, Wednesday

Sewanee Church of God

10 a.m. Sunday School, Sunday

11 a.m. Morning Service, Sunday

6 p.m. Evening Service, Sunday

Sisters of St. Mary's Convent

(Convent and Chapel closed until further notice)

8 a.m. Holy Eucharist, Sunday

5 p.m. Evensong, Sunday

7 a.m. Morning Prayer, Tuesday–Friday

7:30 a.m. Eucharist, Tuesday–Friday

5 p.m. Evening Prayer, Tuesday–Sunday

7:45 p.m. Compline, Tuesday–Friday

7:30 a.m. Morning Prayer, Saturday

8 a.m. Eucharist, Saturday

Tracy City First Baptist Church

10:45 a.m. Morning Worship, Sunday

Tracy City First United Methodist Church (services canceled until further notice)

8:30 a.m. Early Service, Sunday

9:45 a.m. Sunday School, Sunday

11 a.m. Morning Worship, Sunday

6 p.m. Evening Bible Study, Sunday

5:30 p.m. Youth Fellowship, Wednesday

Trinity Episcopal Church, Winchester (services canceled until further notice)

9:15 a.m. Adult Forum, Sunday

10:30 a.m. Holy Eucharist, Sunday

United Pentecostal, Monteagle

10 a.m. Sunday School, Sunday

11 a.m. Worship, Sunday

7 p.m. Worship, Wednesday

Unitarian Universalist, Tullahoma

(services canceled until further notice)

10 a.m. Service, Sunday

6 p.m. Tullahoma Sangha, Wednesday



Obituaries

Samantha Marie Dykes

Samantha Marie Dykes, age 28 of Tracy City, died unexpectedly on June 3, 2020, at her home. She was born on Sept. 3, 1991, in McMinnville, Tenn. She was an active member of Tracy City First United Methodist Church.

She is survived by her parents, Russell and Tammy O'Dear Brown; sister, Tiffany Michelle (Nicolas) Reid; grandfather, Hembree Brown Jr.; companion, Aaron Nolan; nephews, Gauge Layne, Caiden Scissom and Reilly Reid; a host of loving, aunts, uncles, cousins and very close loving friends.

Funeral services were on June 7, 2020 in the Foster and Lay Chapel with Minister Danny Coffelt officiating. Interment followed in Pryor Ridge Cemetery. For complete obituary go to <www.cumberlandfuneralhome.net>.

Ralph Clinton Meeks

Ralph Clinton Meeks, age 83 of Pelham, died on June 1, 2020, at Signature Health Care in Monteagle. He was born on June 30, 1936, in Paynes Cove, Tenn., to Cheatum Clinton Meeks and Mattie James Meeks. He was a member of the Pelham United Methodist Church and lifelong farmer in the Pelham Valley. He was preceded in death by his parents; wife, Helen Ruth Medley Meeks; daughter Rhonda Pleasant; sisters, Opal Stubblefield and Nancy Meeks; and brothers, Johnny and David Meeks.

He is survived by his daughter Cindy (Tom) McCord of Austin, Texas; son, Richard (Preston) Meeks of Murfreesboro, two grandchildren, and several nieces and nephews.

Graveside funeral services were on June 4, 2020 at the Church of Christ Cemetery at Pelham with Minister De Hennessy officiating. For complete obituary go to <www.cumberlandfuneralhome.net>.

Jesse Earl Pack Jr.

Jesse Earl Pack Jr., age 73, formerly of Sewanee, died on April 23, 2020. He was born on Feb. 10, 1947, to Jesse and Willie Mae Pack. He was a retired Navy veteran who had also devoted over 50 years of service to the Sewanee Lodge F. & A. M. of Tracy City. He was actively involved with his former classmates of Grundy County High School, Disabled American Veterans, and the Warriors to Warriors Organization. He was preceded in death by his wife of 45 years, Donna Mae Pack.

He is survived by his daughter, Tracy Pack of Union City, Calif.; sister, Debra (Steven) Milner of Sewanee; and brother, Terry Pack of Sun City, Calif.

Funeral services were on May 23, 2020 from the Cumberland Funeral Home Chapel, Monteagle. Interment followed at Monteagle Cemetery. An additional Celebration of Life will be announced at a later date by his family. For complete obituary go to <www.cumberlandfuneralhome.net>.

Betty Louise Kennedy Rose

Betty Louise Kennedy Rose, age 88 of Alto, died on May 21, 2020, in Nashville. She was born on July 12, 1931, in Franklin County, to Georgia Mae Kennedy and James B. Kennedy Jr. She obtained her degree from MTSU and was a teacher for 30 years, most of which were spent as a much-loved first grade teacher at Decherd Elementary School. She was a long-time member of Christ Episcopal Church Alto, where she served on the Altar Guild and mission council for several terms. She was preceded in death by her parents; husband of 64 years, Charles Edward Rose, and brother, James H. Kennedy.

She is survived by sons, Charles Dennis (Elissa) of Knoxville and Glenn Benton (Barbara) of Nashville, and seven grandchildren.

Private funeral services were followed by interment in Mount Garner Cemetery, Decherd. In lieu of flowers, donations should be made to the American Macular Degeneration Foundation, or the charity of your choice. For complete obituary go to <www.moorecortner.com>.

All Saints' Chapel

(services canceled until further notice)

8 a.m. Holy Eucharist, Sunday

8:30 a.m. Morning Prayer, Monday–Friday

4 p.m. Evening Prayer, Monday–Friday

Bible Baptist Church, Monteagle

10 a.m. Worship Service, Sunday

5:30 p.m. Evening Service, Sunday

5:30 p.m. Evening Worship, Wednesday

Chapman Chapel Church of the Nazarene, Pelham

9:30 a.m. Sunday School, Sunday

10:45 a.m. Morning Worship, Sunday

6 p.m. Evening Worship, Sunday

7 p.m. Bible study, Wednesday

Christ Church, Monteagle

10:45 a.m. Holy Eucharist, Sunday

noon Service, Wednesday

Christ Episcopal Church, Tracy City

(services canceled until further notice)

10 a.m. Adult Bible Study, Sunday

11 a.m. Holy Eucharist, Sunday

Christ the King Anglican Church, Decherd

(services available on CtK's FB page)

9 a.m. Sunday Service, Sunday

11 a.m. Bible Study, Wednesday

6:30 p.m. Bible Study, Wednesday

Cowan Fellowship Church

11 a.m. Worship Service, Sunday

Cumberland Presbyterian Church, Cowan

(www.facebook.com/cowanpcchurch/)

10 a.m. Sunday School, Sunday

11 a.m. Worship, Sunday

Cumberland Presbyterian Church, Monteagle

9:30 a.m. Bible Study, Sunday

11 a.m. Worship Service, Sunday

Cumberland Presbyterian Church, Sewanee

9 a.m. Worship Service, Sunday

10 a.m. Sunday School, Sunday

Decherd United Methodist Church

9:45 a.m. Sunday School, Sunday

10:50 a.m. Worship Service, Sunday

Epiphany Mission Church, Sherwood

(services canceled until further notice)

10:30 a.m. Holy Eucharist, Sunday

First Baptist Church, Cowan

9:15 a.m. Sunday School, Sunday

10:25 a.m. Worship, Sunday

First Church of the Nazarene, Cowan

11 a.m. Worship Service, Sunday

Good Shepherd Catholic Church, Decherd

8 a.m. Mass, Sunday

10:30 a.m. Mass, Sunday

2 p.m. Spanish Mass, Sunday

5 p.m. Mass, Saturday

Grace Fellowship Church

10:30 a.m. Sunday School/Worship Service, Sunday

Harrison Chapel Methodist Church, Midway

(FB Live service below)

8 a.m. Radio Show, Sunday (WSGM 104.7 FM)

11 a.m. Worship Service, Sunday (FB Live)

Hobbs Hill Community Church, Tracy City

10 a.m. Sunday School, Sunday

11 a.m. Morning Service, Sunday

5 p.m. Evening Service, Sunday

6 p.m. Evening Service, Wednesday

Midway Baptist Church

9:45 a.m. Sunday School, Sunday

10:45 a.m. Morning Service, Sunday

6 p.m. Evening Service, Sunday

6 p.m. Bible Study, Wednesday

Midway Church of Christ

10 a.m. Bible Study, Sunday

11 a.m. Morning Service, Sunday

6 p.m. Evening Service, Sunday

Monteagle Church of Christ

11 a.m. Morning Service, Sunday

6 p.m. Bible Study, Wednesday

Monteagle First Baptist Church (FB Live services until further notice)

11 a.m. Worship Service, Sunday

6 p.m. Bible Study, Wednesday

*“Love is a fruit in
season at all times,
and within reach of
every hand.”
Mother Teresa*

Sewanee Realty

Working to Achieve Your Goals
Realtors@SewaneeRealty.com
www.SewaneeRealty.com
115 University Ave., Sewanee, Tenn.

Margaret Donohue,
Principal Broker • 931.598.9200
Patsy Truslow,
Broker • 931.636.4111
Marie Ferguson,
Affiliate Broker • 931.952.2468
Alice Van Hooser Roberts,
Affiliate Broker • 931.581.9082



MLS 2154396 - 114 Maxon Ln., Sewanee. \$379,000



MLS 2155746 - 118 Cobbs Ln., Sewanee. \$294,9000



MLS 2136495 - 222 Lily Ln., Jasper. \$99,500



MLS 2151468 - 1834 Lynchburg Rd. \$265,000



MLS 2116520 - 394 Dykes Hollow Rd. 10+/- acres.
\$245,000



MLS 2133351 - 112 Maple St., Sewanee.
\$223,000



BLUFF - MLS 2063145 - 185 Turning Point Ln.,
Sewanee. 12+acres. \$698,000



MLS 2142189 - 283 Green's View Rd., Sewanee. \$389,000



MLS 2112396 - 1020 Sherwood Rd.,
Sewanee. \$192,000



MLS 2101257 - 149 Gudger Rd., Sewanee.
5 acres. \$269,000



MLS 2143607 - 2230 Sherwood Rd., (renovated)
Sewanee. 1 acre. \$169,000



MLS 2145687 - 72 Maxon Ln., Sewanee. \$479,500

LOTS & LAND		
Deepwoods Rd. Lot 125, 8.46 ac	2152060	\$49,000
Cooley's Rift Lot 10, 4.63 ac	2151255	\$99,000
Roarks Cove SOLD , 15+ ac	2136490	\$42,500
Roarks Cove SOLD , 17+ ac	2136512	\$32,500
Bear Ct., .51 ac, #18	2130056	\$29,000
Bear Ct., .5 ac, #19	2130059	\$29,000
Bear Ct., .58 ac, #20	2130058	\$29,000
13 Browbend Dr., 1.9ac	2130040	\$54,000
14 Browbend Dr., 1.5 ac	2130051	\$54,000
8 Jackson Pt. Rd. 5 ac	2115740	\$36,000
1159 Sassafra Ct., 5.27 ac	2072615	\$59,000
57 Edgewater Ct. Win.	2062210	\$28,900
0 Gipson Ln. SOLD ac	2089624	\$499,500
Will divide into tracts, 15 acres +		

BLUFF TRACTS		
9 Jackson Pt. Rd. 12.66 ac	2105112	\$159,000
36 Long View Ln. 2.57 ac	2073074	\$60,000
2 Jackson Pt. SOLD 3 ac	2014037	\$88,000
16 Laurel Lake Dr.	1989467	\$97,500
14 Jackson Pt. Rd 18.6 ac	1803643	\$129,500
15 Saddletree Ln. 6.12 ac	1978549	\$68,000



MLS 2138387 - 1528 Monteagle Falls Rd., six rental units.
\$190,000



771 Breakfield Rd., Sewanee. \$489,000

Town of Monteagle 2019 Water Quality Report

Is my drinking water safe?

Yes, our water meets all of EPA’s health standards. We have conducted numerous tests for over 80 regulated contaminants that may be in drinking water. As you will see in the chart below, we detected 12 of these contaminants and found all 12 to be at safe levels.

What is the source of my water?

Your water comes from Laurel Lake. Our goal is to protect our water from contaminants and we are working with the State to determine the vulnerability of our water source to potential contamination. The Tennessee Department of Environment and Conservation (TDEC) has prepared a Source Water Assessment Program (SWAP) Report for the untreated water sources serving this water system. The SWAP Report assesses the susceptibility of untreated water sources to potential contamination. To ensure safe drinking water, all public water systems treat and routinely test their water. Water sources have been rated as reasonably susceptible, moderately susceptible or slightly susceptible based on geologic factors and human activities in the vicinity of the water source. The Town of Monteagle’s source rated as slightly susceptible to potential contamination. An explanation of the Tennessee Source Water Assessment Program, the Source Water Assessment summaries, susceptibility scorings and the overall TDEC report to the EPA can be viewed online at <https://www.tn.gov/environment/article/wr-wq-source-water-assessment> or you may contact the water system to obtain copies of specific assessments.

Why are there contaminants in my water?

Drinking water, including bottled water, may reasonably be expected to contain at least small amounts of some contaminants. The presence of contaminants does not necessarily indicate that water poses a health risk. More information about contaminants and potential health effects can be obtained by calling the Environmental Protection Agency’s Safe Drinking Water Hotline (800-426-4791).

Other Information

The sources of drinking water (both tap water and bottled water) include rivers, lakes, streams, ponds, reservoirs, springs, and wells. As water travels over the surface of the land or through the ground, it dissolves naturally-occurring minerals and in some cases, radioactive material, and can pick up substances resulting from the presence of animals or from human activity.

Contaminants that may be present in source water:

- Microbial contaminants, such as viruses and bacteria, which may come from sewage treatment plants, septic systems, agricultural livestock operations, and wildlife.
- In organic contaminants such as salts and metals, which can be naturally-occurring or result from urban stormwater runoff, industrial, or domestic wastewater discharges, oil and gas production, mining, or farming.
- Pesticides and herbicides, which may come from a variety of sources such as agriculture, urban stormwater runoff, and residential uses.
- Organic chemical contaminants, including synthetic and volatile organic chemicals, which are by-products of industrial processes and petroleum production, and can also come from gas stations, urban storm water runoff, and septic systems.
- Radioactive contaminants. Which can be naturally-occurring or be the result of oil and gas production and mining activities.

Is our water system meeting other rules that govern our operations?

In order to ensure that tap water is safe to drink, the EPA and the Tennessee Department of Environment and Conservation prescribe regulations which limit the amount of certain contaminants in water provided by public water systems. Food and Drug Administration (FDA) regulations establish limits on contaminants in bottled water which must provide the same protection for public health.

How can I get involved?

The Monteagle City Council usually meets at 6:00 p.m. on the last Tuesday of each month in the conference room at city hall, 16 Dixie Lee Avenue. Please feel free to participate in these meetings.

Other Information

Due to all water containing dissolved contaminants, occasionally your water may exhibit slight discoloration. We strive to maintain the standards to prevent this. We at the Town of Monteagle work around the clock to provide top quality water to every tap. We ask that all our customers help us protect our water sources, which are the heart of our community, our way of life and our children’s future.

DO I NEED TO TAKE SPECIAL PRECAUTIONS?

Some people may be more vulnerable to contaminants in drinking water than the general population. Immuno-compromised persons such as persons with cancer undergoing chemotherapy, persons who have under-gone organ transplants, people with HIV/AIDS or other immune system disorders, some elderly, and infants can be particularly at risk from infections. These people should seek advice about their drinking water, food preparation, personal hygiene, and precautions in handling infants and pets from their health care providers. EPA/CDC guidelines on appropriate means to lessen the risk of infection by Cryptosporidium and other microbiological contaminants are available from the Safe Drinking Water Hotline (800-426-4791).

Lead in Drinking Water

If present, elevated levels of lead can cause serious health problems, especially for pregnant women and young children. Lead in drinking water is primarily from materials and components associated with service lines and home plumbing. Monteagle utility is responsible for providing high quality drinking water, but cannot control the variety of materials used in plumbing components. When your water has been sitting for several hours, you can minimize the potential for lead exposure by flushing your tap for 30 seconds to 2 minutes before using water for drinking or cooking. If you are concerned about lead in your water, you may wish to have your water tested. Information on lead in drinking water, testing methods, and steps you can take to minimize exposure is available from the Safe Drinking Water Hotline or at <http://www.epa.gov/lead/protect-your-family%23water%23water>.

Unless otherwise noted the data presented in this table is from sampling performed during the 2019 calendar year.								
Regulated Contaminants:								
Contaminant	Violation Yes/No	Level Detected	Range of Detections	Date of Sample	Unit Measurement	MCLG	MCL	Likely Source of Contamination
Total Coliform Bacteria (RTCR)	No	0		2019		0	TT Trigger	Naturally present in the environment
Turbidity ¹	No	0.064 AVG.	0.05 - 0.18	2019	NTU	N/A	TT (95% <.3 NTU)	Soil runoff
Fluoride	No	0.640 AVG.	0.519 - 0.730	2019	ppm	4 ppm	4 ppm	Erosion of natural deposits; water additive which promotes strong teeth; discharge from fertilizer and aluminum factories
Copper*	No	90% = 0.189 ppm		*2019*	ppm	1.3	AL=1.3	Corrosion of household plumbing systems; erosion of natural deposits; leaching from wood preservatives
Lead*	No	90% <1.00 ppb		*2019*	ppb	15	AL=15	Corrosion of household plumbing systems, erosion of natural deposits
Nitrate (as Nitrogen)	No	.107		2-19-19	ppm	10	10	Runoff from fertilizer use; Leaching from septic tanks, Sewage, erosion of natural deposits
Sodium	No	12.1		5-30-19	ppm	N/A	N/A	Erosion of natural deposits; used in water treatment.
THM [Total trihalomethane]	No	45.95	27.2 – 88.5	2019	ppb	80 ppb	80 ppb	By-product of drinking water chlorination
Halocetic Acids(HAA5)	No	36.34	27.9 – 46.8	2019	ppb	60 ppb	60 ppb	By-product of drinking water disinfection.
Chlorine	No	1.74 AVG.	0.70 - 2.72	2019	ppm	MRDLG =4 ppm	MRDL= 4 ppm	Water additive used to control microbes.
Total Organic Carbons ²	No	1.27 AVG.	0.846 – 1.59	2019	ppm	TT	TT	Naturally present in the environment.
Combined radium	No	2.26		7-30-14	pCi/l	0	5.0	Erosion of natural deposits.

*During the most recent round of Lead and Copper testing, 0 out of 10 households sampled contained concentrations exceeding the action level.
¹ 100% of our samples were below the turbidity limit.
² The Treatment Technique requirements for Total Organic Carbon were met in 2019.

Unregulated Contaminants:
The Town of Monteagle was selected for additional testing of 26 unregulated contaminants. Of the 26 unregulated contaminants, we detected 4 listed in the chart below:

Contaminant	Violation Yes/No	Level Detected	Range of Detections	Date of Sample	Unit Measurement	MCLG	MCL	Likely Source of Contamination
Manganese	NO	9.70 AVG.	<1 - 33	2015	ppb	N/A	N/A	Naturally-occurring element;
Strontium	NO	75.92 AVG.	35.3 - 110	2015	ppb	N/A	N/A	Naturally-occurring element;
Chlorate	NO	228.56 AVG.	24.6 - 473.0	2015	ppb	N/A	N/A	Agricultural defoliant; used in production of chlorine dioxide
Chromium-6	NO	0.047 AVG.	<0.03 – 0.068	2015	ppb	N/A	N/A	Naturally-occurring element; used in making steel and other alloys. Used for chrome plating, dyes and pigments, leather tanning, and wood preservation.

Unregulated contaminants are those for which EPA has not established drinking water standards. The purpose of unregulated contaminant monitoring is to assist EPA in determining the occurrence of unregulated contaminants in drinking water and whether future regulation is warranted. For additional information call the Safe Drinking Water Hotline at (800) 426-4791.

Violations on purchased water from Tracy City Public Utility								
Contaminant	Violation Yes/No	Level Detected	Range of Detections	Date of Sample	Unit Measurement	MCLG	MCL	Likely Source of Contamination
THM	Yes	83.48 ppb (highest LRAA at site 250)	26-113 ppb	2019	ppb	80	80ppb	By-product of drinking water chlorination
HAA5	Yes	70.98 ppb (highest LRAA at site 250)	14.0-85.2 ppb	2019	ppb	60	60ppb	By-product of drinking water disinfection

Water System Security

Following the events of September 2001, we realize that our customers are concerned about the security of their drinking water. We urge the public to report any suspicious activities at any utility facilities, including treatment plants, pumping stations, tanks, fire hydrants, etc. to 924-2265.

Think before you flush!

Flushing unused or expired medicines can be harmful to your drinking water. Properly disposing of unused or expired medications helps protect you and the environment. Keep medications out of Tennessee’s waterways by disposing in one of our permanent pharmaceutical take back bins. There are nearly 100 take back bins located across the state, to find a convenient location please visit: <https://www.tn.gov/environment/article/sp-unwanted-pharmaceuticals>

For more information about your drinking water, please call the Monteagle Water Plant at 924-2708.
Este informe contiene información muy importante.

Tradúscalo o hable con alguien que lo entienda bien.

Water Quality Data

What does this chart mean?
• **MCLG** - Maximum Contaminant Level Goal, or the level of a contaminant in drinking water below which there is no known or expected risk to health. MCLGs allow for a margin of safety.
• **MCL** - Maximum Contaminant Level, or the highest level of a contaminant that is allowed in drinking water. MCLs are set as close to the MCLGs as feasible using the best available treatment technology.
• **AL** - Action Level, or the concentration of a contaminant which, when exceeded, triggers treatment or other requirements which a water system must follow.
• **Parts per million (ppm) or Milligrams per liter (mg/l)** – explained as a relation to time and money as one part per million corresponds to one minute in two years or a single penny in \$10,000.
• **Parts per billion (ppb) or Micrograms per liter** — explained as a relation to time and money as one part per billion corresponds to one minute in 2,000 years, or a single penny in \$10,000,000. • **Nephelometric Turbidity Unit (NTU)** — nephelometric turbidity unit is a measure of the clarity of water. Turbidity in excess of 5 NTU is just noticeable to the average person.
• **RTCR – Revised Total Coliform Rule.** This rule went into effect on April 1, 2016 and replaces the MCL for total coliform with a Treatment Technique Trigger for a system assessment.
• **TT - Treatment Technique**, or a required process intended to reduce the level of a contaminant in drinking water.
• **MRDL – Maximum Residual Disinfectant Level**, means a level of a disinfectant added for water treatment that may not be exceeded at the customers tap without a unacceptable possibility of adverse health effects.
• **MRDLG – Maximum Residual Disinfectant Level Goal**, the level of a disinfectant in drinking water below which there is no known or expected risk to health. MRDLGs allow for a margin of safety.
• **Picocuries per liter (pCi/l)—picocuries per liter** is a measure of radioactivity in water

Ceremony (from page 1)

president and dean of the School of Theology, and the Very Rev. Thomas E. Macfie Jr., University chaplain and dean of All Saints' Chapel, who are stepping down from those roles. Alexander will return to teach at the School of Theology. The new dean of the School of Theology, the Rev. Canon Dr. James Turrell, and the new University chaplain, the Rev. Peter Gray, will be introduced, along with Vice-Chancellor-Elect Brigety.

Brigety, former dean of the Elliott School of International Affairs at The George Washington University and former U.S. ambassador to the African Union, was elected by the Board of Trustees in February following a national search. He will begin his first day in office with a special sunrise Morning Prayer service at 7 a.m. on Wednesday, June 17, followed by remarks to the Sewanee community at 1 p.m., both via video.

The services and address can be found at these links:

June 16 Leave-Taking: <https://new.sewanee.edu/news/leave-taking-livestream/>

June 17 Morning Prayer and address: <https://new.sewanee.edu/sewanee-s-17th-vice-chancellor-introducing-vice-chancellor-reuben-brigety/>

Christianity and Race

The protests and demonstrations we see around the world are responding to generations of systemic violence against Black people in the United States. Even as many in The Episcopal Church now join these protests, we know that historically The Episcopal Church has participated in slavery, segregation, and abuse of civil rights. As part of the School of Theology's Advanced Degrees Program, a public lecture via Zoom will be held on June 15 at 7 p.m. CDT titled Christianity and Race: The story goes on (and on). Panelists will speak about the origins and continuation of racial injustice in Sewanee, the Church, the nation, and the world, while also highlighting the African Americans who, in the face of such violence, have shaped us for the better. The panelists are the Rt. Rev. Carlye Hughes, bishop of the Diocese of Newark; Dr. Woody Register, Francis S. Houghteling Professor of American History at the University of the South; Dr. Jody Lynn Allen, assistant professor of history at William & Mary University; and the Rev. Dr. Ben King, associate professor of Church history at the School of Theology.

Registration is required and may be found here: https://zoom.us/webinar/register/WN_45U9Qn_XT4u9lsUxrtZ-2Vw.

Electric Upgrades, Right-Of-Way Clearance Planned for Sewanee Area

Duck River Electric Membership Corporation (DREMC) will be making necessary upgrades to the electric system in Sewanee in the coming weeks, with an expected start date of June 22. The work will begin at the intersection of University and Tennessee avenues, continue down Tennessee Avenue onto Kentucky Avenue, and will end near the Tomlinson Lane/Stephens Drive intersection, just beyond the Tennessee Williams Center.

Before tree-trimming crews start their work, DREMC staff will be communicating with members via personal visits and door hangers with details about the upcoming work.

"This upgrade is important and timely because it will increase DREMC's capacity to ensure electric reliability, provide safety for our crews and our members, and maintain affordable electricity for the growing population in Sewanee," said Steven Hopkins, DREMC's Sewanee Area Manager. "Specifically, we must increase the clearance needed to install three-phase electric transmission lines that will benefit the entire area."

Tree trimming will precede the line work to provide for safe conditions while linemen reconfigure the energized lines and install the new conductors. Hopkins said that DREMC would be communicating directly with leaseholders during this process. "Our goal is to aesthetically trim trees without affecting natural growth and beauty while doing what is necessary to create safe space for our crews to work," he said.

In addition to this service upgrade, regular maintenance of trees and other vegetation will take place in the Sewanee area throughout the summer. This practice, known as "right of way" work, is critical to maintaining electric service reliability.

"Regular tree trimming is a proven way to ensure the dependability of every member's electric service," said Patrick Jordan, DREMC's vice president of operations, "We saw this in real-time recently when trees downed by strong storms in the Columbia area caused widespread damage to DREMC's distribution lines and left thousands of people without power." Good right-of-way work can prevent this kind of damage," Jordan said.

"Right-of-way clearing is one of the most beneficial investments a cooperative can make to increase both reliability and safety while also minimizing future cost of delivered power," said DREMC President and CEO Scott Spence. "Continued strategic investments in keeping the area around the power lines clear will benefit members of today as well as tomorrow."

New Yoga Class at DuBose

Certified Kripalu Yoga Teacher Anneli Virkhaus will be offering a new yoga class that is for every body type and everyone.

The class will be held in the outdoor pavilion at DuBose Conference Center starting Tuesday, June 16, from 10:30 a.m.-noon. Anneli will have a few extra mats for those who don't have their own, and she will thoroughly sanitize them afterwards. The class is donation based, suggested \$10-20, or pay whatever you can.

The class focuses on bringing ease to your body, mind, and soul. Her class has an emphasis on breathwork, warm-up movements to increase mobility, and introduction to a slow yoga flow. The class closes with a 10-15 minute savasana, known as the resting pose, in which she leads you through a guided relaxation and plays live sound healing music with her crystal bowls, voice, and chimes.

Come and be in community and do something nice for yourself. Bring your own mat, set it 6-feet apart, and discover the joy of being present in your body. There are so many health benefits to yoga, on physical, mental, emotional, and spiritual levels. You just have to experience it for yourself.

For more information contact Anneli at <virkhausam@gmail.com>.

BUG PROBLEMS?

We can help! Call us for a free inspection!

BURL'S TERMITE & PEST CO.

TERMITE—PEST—VAPOR CONTROL
Bonded • Insured • Home-Owned & Operated
105 Ake St., Estill Springs
(931) 967-4547 or www.BurIsTermite.com
Charter #3824 • License #17759



Tea on the Mountain

Dining room is open. All health requirements are in place.

11:30 to 4 Thursday through Saturday

DINNERS BY RESERVATION
(931) 592-4832

178 Oak Street, Tracy City

a bounty of
good health
a small-group wellness retreat
July 13 - 16, 2020 | Monteagle

Retreat activities include farm-to-table cooking and exploration, self reflection, healing practices, yoga, creative planning, and more. This event is for four days and three nights and is intended for adults.

Scholarships available for local residents who may not otherwise be able to afford to attend.

Visit online for more information, packing list, facility information, pricing, retreat lead bio, and other details. Register by June 22.

duboseconferencecenter.org/bounty

hosted by Healthy Roots a program of DuBose Conference Center

School Board (from page 1)

physically and online in a way that minimizes face-to-face contact with other students.

Bean said of the 1,344 responses, 57 percent favored in-the-school-building instruction, 15 percent favored online instruction, and 27 percent favored a combination of the two. Bean noted the 1,344 responses amounted to 25 percent of the student body.

"At the end of the last school year the state said we couldn't count virtual learning scores," observed school board representative Lance Williams. "Will we be held to that this coming year?"

"I don't think so," Bean said. The state has offered no recommendations or guidance on how schools should proceed.

Board member Sarah Marhevsky asked if there would be an option for parents who wanted to keep their children home if the school district decided on in-the-building instruction.

Bean said there would be, but stressed that parents would need to give notice by mid-July to allow for organizing the procedure. "It would amount to parents homeschooling their children."

The survey will remain open until June 15. To access the survey, go to the Franklin County Schools Facebook page.

The other critical issue before the board resulted from Bean learning earlier that day the governor had said he would pull the 2 percent increase in Basic Education Program (BEP) funding earmarked for teacher raises. The 2 percent equals \$241,000 for the Franklin County Schools and would fund the step-increase for certified employees with 21-25 years of experience. This group received no wage increase last year.

County Deputy Finance Director Cindy Latham said she anticipated receiving a BEP funding update on June 12. The board recessed and will reconvene on June 16, at 6 p.m., to take up the need for budget revision depending on the BEP determination. The board voted to ask the county commission to return the schools budget so revisions could be made if necessary.

Construction manager Gary Clardy said the two new middle schools will be finished in time for the beginning of the 2020-21 school year. A ribbon cutting ceremony is scheduled for Sunday, Aug. 2, at 1 p.m. at South Middle School, and 3 p.m. at North Middle School. Clardy anticipates opening the buildings to administrators by mid-July and opening the buildings to teachers to set up their classrooms the last week of July. Clardy said there was \$25,000-\$30,000 set aside in the budget for anything that might have been overlooked in terms of equipment.

Looking to school policy, the board approved a revision to the Web Pages procedures approved last October. The Tennessee School Board Association objected to allowing use of student photos in schools online publications unless parents opted out. The revised policy requires parents to opt-in by submitting a form giving permission for the schools to use photos, videos, and voice recordings of their children.

Need More Room? **We Sell Boxes!**

Sewanee Mountain Storage
(931) 598-5682
Evan Barry
Hwy 41 - Between Sewanee & Monteagle

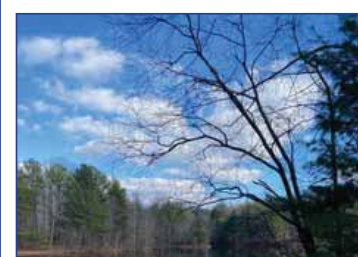
■ Video Monitoring 5x10 | 10x10 | 10x20 ■ Security Camera

Temperature Controlled Units
5x5 | 5x10 | 10x10 | 10x15 | 10x20
Temperature and Humidity Regulated

91 University Ave. Sewanee
sewaneehouses.com (931) 598-9244

UNIVERSITY REALTY SEWANEE TENNESSEE

Lynn Stubblefield (423) 838-8201
Susan Holmes C'76 (423) 280-1480
Freddy Saussy, C'99 (931) 636-9582



LAKE EVA.



1722 TIMBERWOOD TRACE.



117 OAK ST.



SUNSET BLUFF VIEW.



771 BREAKFIELD RD.



195 TENNESSEE AVE.

A PORTION OF SALES MADE THROUGH OUR OFFICE WILL BE DONATED TO HOUSING SEWANEE

Census Bureau is Recruiting Temporary Workers

The U.S. Census Bureau is looking for nearly 400 applicants for temporary jobs in Franklin County to support the 2020 Census. The census is underway now and more than half of households have already responded, but workers are needed to follow up with households that do not respond on their own.

The U.S. Constitution requires a count of every person living in the United States and its territories every 10 years. The information produced by the census determines how much influence each state has in our federal government, it is used in setting boundaries for local voting districts, and it affects funding for local public services. Census workers ensure that we count everyone once, only once, and in the right place.

Most of the jobs offer flexible work hours including opportunities for daytime, evening and weekend hours. In Franklin County, the pay rate begins at \$14.00/hour plus 58 cents per mile for driving, and all positions include paid training.

Available jobs:

Recruiting assistants travel throughout geographic areas to visit with community-based organizations, attend promotional events and conduct other recruiting activities.

Census field supervisors conduct fieldwork to support and conduct on-the-job training for census takers and/or to follow-up in situations where census takers have confronted issues, such as not gaining entry to restricted areas.

Census takers work in the field. Some field positions require employees to work during the day to see addresses on buildings. Other field positions require interviewing the public, so employees must be available to work when people are usually at home, such as in the evening and on weekends.

The application process is all online at <www.2020Census.gov/jobs>. The process should take about 30 minutes and includes assessment questions about education, work and other experience.

Applicants will be asked to provide their Social Security number, a home address, email address and phone number, and date and place of birth.

Those who are being considered for a position will receive a telephone interview. If offered a job, they will receive instructions on next steps via email.

Applicants will be placed in an applicant pool for 2020 Census field positions for positions they qualify for and will be contacted as work becomes available in their area. For more information, contact 1-855-JOB-2020. Applicants may also contact the Federal Relay Service at 1-800-877-8339.

For more information, please visit <www.2020census.gov>.

Tell them you read it here!

P.O. BOX 88
SEWANEE, TN 37375

McBee Dozing




**Tree Stump Grinding
Skid Steer Work**

JOHNNY McBEE
OWNER

(931) 308-8453
jmcbee@bellsouth.net

Windows are the eyes of the home. Size, placement and quality all affect the look, the light and the long-term function. Call us to "see" the difference.



"Open your door to all the possibilities"

Custom home remodeling begins with...

Joseph's Remodeling Solutions
A Division of Sumpter Solutions, LLC

Taking Quality to the Next Level
Licensed - Insured - Green Certified

931-598-5565
joseph@josephsremodelingsolutions.com
www.josephsremodelingsolutions.com

A Bounty of Good Health

In the Bounty of Good Health retreat we are exploring how the building blocks of "whole health wellness" fit in to our unique life paths, learning positive ways to approach and embrace our nutritional, physical, social, mental, and personal spiritual needs. You will be guided in activities and conversations as you discover, step by step, the "bounty" of goodness that is available within yourself.

Retreat activities include farm-to-table cooking and exploration, self reflection, healing practices, yoga, creative planning, and more. After going through this program, you will have the knowledge to implement these wellness practices into your daily life so that you can continue to reap the benefits of embracing whole health beyond the bounds of the retreat.

This event, scheduled for July 13 - 16, 2020, is for four days and three nights and is intended for adults. During this time, DuBose Conference Center will provide hotel-style lodging, all meals, programming instruction, and activities. Visit the Bounty of Good Health webpage <duboseconferencecenter.org/bounty> for pricing information, retreat lead info, packing list, special COVID-19 information, and other details. Scholarships, generously subsidized by South Cumberland Community Fund, are available to local residents who would not otherwise be able to afford to attend the retreat.

From Summer Conferences

Advanced Degrees Program

Directed by the Reverend Doctor Benjamin King, professor of Church History, the Advanced Degrees Program at the School of Theology seeks to forge connections between ministry and theological studies for ordained ministers pursuing the degree of either Doctor of Ministry or Master of Sacred Theology. This year, the students in the program include Episcopalians, Lutherans, Methodists, Presbyterians, and Baptists, who join from around the globe and across time zones—from New Zealand to Malawi to Sewanee! This year the program is operating online from June 8th to June 25th, with world-class scholars teaching courses entitled "Race, the Episcopal Church, and the University of the South," "Preaching Philipians," "Pandemic Christianity," and "Baptism and Confirmation."

Invite Welcome Connect

Since 2017, the University of the South has been the home of Invite Welcome Connect, a ministry of transformation that equips and empowers individuals and communities of faith to cultivate intentional practices of evangelism, hospitality, and belonging. Invite Welcome Connect has reached congregations across the globe, and a book that lays out the guiding principles of the ministry, Invite Welcome Connect, is in its third printing. Mary Parmer, the author of the book, created the ministry and directs it from the Beecken Center at the School of Theology.

As a result of the Covid-19 pandemic, the fifth national Invite Welcome Connect Summit was canceled and on June 10, a Digital Gathering was held. Using God's gifts of creativity in ways that transform lives is at the core of the ministry of Invite Welcome Connect, and adaptability, flexibility, and innovation are in its DNA. During the Digital Gathering seasoned clergy and lay leaders shared ideas, resources, and creative best practices for proclaiming the Gospel with 1,600+ clergy and lay leaders from around the world.

ARE YOU REGISTERED TO VOTE?
<<https://sos.tn.gov/elections>>



ARCHIVAL FRAMING & RESTORATION
ART CONSULTING

Open by Appointment
PLEASE WEAR A MASK

CALL HARRIET: (919) 260-2021

12569 Sewanee Hwy. • Downtown Sewanee
(931) 463-2300 • framegallerysewanee@gmail.com



Anne Chenoweth Deutsch
REALTOR®

931.205.1299
Anne.Sewanee@gmail.com
annechenoweth.villagerealestate.com

Find your Sewanee Home.

VILLAGE REAL ESTATE
615.383.6964 | VILLAGEREALSTATE.COM

SEWANEE AUTO REPAIR

Complete Auto & Truck Repair

Tune-ups • Tires • Tire Repair • Brakes • Steering
• Oil Changes • Batteries • Computer Diagnostics

All Makes & Models • Service Calls • Quality Parts

ASE Master Certified Auto Technician • 33 Years' Experience

Open 7 to 5 M-F
(931) 598-5743 • 76 University Ave.



SSMF (from page 1) —

conjunction with Carnegie Hall, George Mason University and The Boulanger Institute, the Sewanee Summer Music Festival has commissioned the creation of an original composition by American composer and musician Tyondai Braxton.

This piece will be performed at next year's festival by Third Coast Percussion, a Chicago-based Grammy Award-winning American percussion ensemble, alongside choreography by Charles "Lil Buck" Riley, a Memphis-born dancer specializing in a style of street dance called jookin, and artist and choreographer Jon Boogz.

John Kilkenny, artistic director for the festival, said to be collaborating with such high-level artists is significant.

"It's exciting that a piece we are going to commission will tour the world over the next several years and each time that takes place, the music festival will be mentioned as part of that work. I think that's exciting for our alumni, our supporters, our students and the university as well," he said. "It's wonderful to still be involved in a creative process, especially as we are always interested in supporting individuals who are seeking to create new works."

In addition to the commissioning project, the festival is also hosting an international call for new compositions. The call for scores for orchestral and chamber music is aimed at diversifying the repertoire SSMF students pore over.


Traditionally, the festival has included classic works in its repertoire, but Kilkenny said to show the students how to be good citizens of the musical world, investing in the creation and expansion of new music is critical.

"Part of our mission with the fest is to continue to present classic works and repertoire, but this project is aimed at looking at what it means to lean into the idea of not just engaging the music we already have but really looking to further the art that we're all engaged in," he said.

So far, the call for scores has garnered 40 commissions, but there is no limit to the final number of pieces the committee can select to be performed at next summer's festival. Kilkenny added that, if appropriate, winning composers will be offered scholarships to attend the next festival.

"Know that we'll be here in the future thanks in large part to the relationships we have in the community. That we are part of the fabric that makes up the Mountain is so meaningful to us," said Kilkenny.

For those interested in submitting to the composition competition, visit <www.ssmf.sewanee.edu/experience/call-for-scores/>.



**ST. MARY'S
SEWANEE**

The Ayres Center for
Spiritual Development

www.StMarysSewanee.org

St. Andrew's-Sewanee Offers Online Summer Courses

With on-campus summer camps canceled or postponed, several of SAS's most inspiring teachers have stepped up to offer fun and instructional academic enrichment. The great news is that these courses may be enjoyed from anywhere with a good internet connection. This is a wonderful opportunity for kids with time on their hands to meet new friends who share their interests, explore new topics, and develop deeper skills. Class fees range from \$100-\$225.

Creative Writing: Exploring The Edges Of Genre, June 22-26, 1-4 p.m., Instructor: SAS English Department Chair Malia Carlos, Grades: 9-11—Want to be part of a community of writers? Want to create new works each day? Explore different genres, including poetry, fiction, and hybrid genres such as the Japanese zuihitsu, and discover how genre can be used to transform the writing journey.

The Man, The Myths, And The Musical (Hamilton), July 7-30, Tuesdays/Thursdays 10 a.m.—noon, Instructor: SAS History Teacher Christine Monahan, Grades: 8-12—The musical is amazing, but just how accurate is it? Should Alexander Hamilton be on the center stage? We will read THE Hamilton biography by Ron Chernow, view the musical together and do some Hamilton research to see if the hype is justified. The dream workshop for any Hamilton fan!

Electoral Politics: Is Democracy Open To Everyone?, July 8-29, Wednesdays, 7-9 p.m., Instructor: SAS History Teacher Christine Monahan, Grades: 8-12—This class focuses on electoral politics from America's founding to today, exploring the questions: Is everyone's voice heard? Who is silenced? Is the electoral college still necessary?

Build Your Writing Superpower!, July 13-17, 10 a.m.—noon, Instructor: SAS Humanities Teacher Tracy Randolph, Grades: 5-8—Identify and strengthen your writing skills, whether you need help with organization, sentence writing, or punctuation and grammar. Each day offers the chance to write in a variety of ways with the group helping one another to hunt down mistakes to create expressive and powerful writing.

SAS Summer Book Club, July 14-31, Tuesdays and Fridays 2-4 p.m., Instructors: SAS English Teachers Kira Tharp and John Wheeler, Ages: 15-18—Have you ever read a book or short story that you really wanted to talk to a friend about? Participants will read The Hobbit and a variety of short stories and come together in each session to have relaxing conversations and lively debates - a perfect mixture of academic routine and leisurely reading.

Graph It Up!, July 27-31, 3-5 p.m., Instructor: SAS Physics Teacher Peggy Ankney, Grade: Rising ninth—Get ready for high school science classes. Learn how to read data represented visually. You will complete project-based activities, collect data using items found around the house or online, and learn to use simple graphing software to present and analyze data.

College Admission and Application Boot Camp, July 27-31, 9 a.m.—noon, Instructor: SAS Director of College Counseling Dan Monahan, Grades: 11-12—Let an experienced professional guide you through the necessary steps to explore college options, discuss what is important in your college search, write an application essay, and complete the Common Application. Special guest lecturers will include college admission officers from across the country.

More information at <www.sasweb.org/summer>.



SAS Director of College Counseling Dan Monahan will offer "College Admission and Application Boot Camp" for students in grades 11-12.

Pre-K Applications

Monteagle Elementary School is still registering for Pre-K 2020-2021 school year. Your child must be 4-years old on or before Aug. 15. You must be a resident of Marion County or live within Monteagle City Limits. Registration packets will be in the office all summer. Limited space is available, so register as soon as you can. Please call (931) 924-2136 and someone will assist you.

Applications for Pre-K are still available for Franklin County Schools. Call the Board of Education at (931) 967-0626, and ask for Beth or Patti.

Artisan Depot Gallery 'Covid Creations 2020'

"Covid Creations 2020" will be on display at the Artisan Depot Gallery in Cowan. This work will be hung and available to view at the Artisan Depot Gallery from June 11. The Open House/ reception for this exhibition will be throughout the day of June 19, noon-6 p.m., at the Artisan Depot Gallery, Cowan.

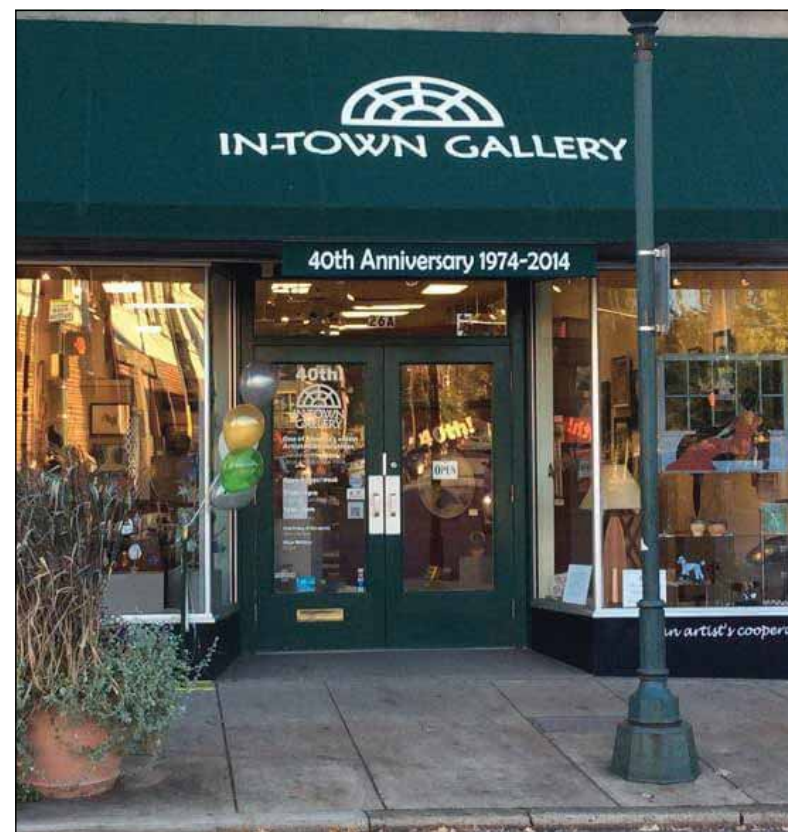
For more information contact Pippa Browne <pippabrowne@hotmail.com> or text at (937) 636-5317.

We are glad you are reading The Messenger!
<sewaneemessenger.com>

Mooney's
Market & Emporium

- ♦ CALL FOR CURB SERVICE
- ♦ ORGANIC, LOCAL FOODS
- ♦ SUPPLEMENTS & TOILETRIES
- ♦ GARDEN & BIRD SUPPLIES
- ♦ YARN & ACCESSORIES
- ♦ ANTIQUES, JEWELRY, GIFTS

Store open 10-6 daily
931-924-7400
1265 W Main • Monteagle



In-Town Gallery Reopening

In-Town Gallery has reopened in accordance with the health guidelines for COVID-19. We welcome the art lovers of Chattanooga back to the city's oldest and finest art gallery. Our new temporary hours are Thursday through Saturday, noon to 5 p.m., Sunday, 1-5 p.m. In-Town Gallery is located at 26A Frazier Avenue, Chattanooga.

As part of our adherence to CDC guidelines, visitors will be limited and are asked to social distance. Hand sanitizers and masks will be available and surfaces will be cleaned throughout the day. We will be wearing masks to respect your health and ask that you wear a face-covering as well.

ADAPTIVE LANDSCAPE LIGHTING

Paul Evans | 931.952.8289
adaptivelandscape-lighting.com

G. Robert Tubb II, Owner
931-967-3595
A1ChimneySpecialist.com

CSIA Certified Technicians
Video Inspections • Sweeping
Restoration • Masonry Repair
Custom Caps & Dampers
Leak Repair & Water Proofing
Wood Stove & Chimney Installs
Gas Log Service & Installs
Dryer Vent Cleaning/Repair

A-1 CHIMNEY SPECIALIST

TOMMY C. CAMPBELL
FOR YOUR IMPROVEMENTS
Call (931) 592-2687
Free Estimates • No Job Too Small!

DRIVEWAY WORK • GRAVEL HAULING • DOZER & BACKHOE

plus Land Clearing • Concrete Work • Water Lines • Garage Slabs • Sidewalks • Porches & Decks • Topsoil & Fill Dirt
Septic Tanks & Field Lines

Monteagle Sewanee, REALTORS®

Dedicated to Service!



Deb Banks, Realtor
(931) 235-3385
debbanks8@gmail.com



Ray Banks, Broker/Owner
(931) 235-3365
rbanks564@gmail.com



Dee Underhill Hargis, Broker
(931) 808-8948
aduhargis@gmail.com



Tom Banks, Realtor
(931) 636-6620
tombanks9@yahoo.com

Competent, Caring, Friendly, Fair—We're Here for You!

www.monteaglerealtors.com • 931-924-7253

337 West Main St., Monteagle

Find all the area MLS listings on our updated website!

WOODY'S BICYCLES

SALES, SERVICE AND RENTALS
A Full-Service Trek Bicycle Dealer

Mon-Fri 9-5 • Sat 10-2 • 90 Reed's Lane
598-9793 • woodybike@gmail.com

Check out www.woodysbicycles.com for rates, trail maps, photos, bike club links, races and much more!

NATURENOTES

by Yolande Gottfried



Yellow-billed Cuckoo, from <wikipedia.org>.

The heavy rains earlier this week have knocked the male cones off the pine trees on our road and elsewhere. Pines have separate male and female cones on the same tree, and once the pollen is dispersed, the male cones have done their job and are no longer needed. The female cones with their seeds take two years to mature, and in some cases remain on the tree for several years after the seeds are released. Pines are in the plant group known as gymnosperms, referring to the naked seeds borne on the scales of the cone. The flowering plants have seeds that are protected inside a structure formed from the pistil of the flower. Most of our trees are indeed flowering plants, though the flowers may be small and inconspicuous.

Two newly-arrived and distinctive bird calls have been heard recently at our place, the loud “wheep” of the Great Crested Flycatcher and the “ku-ku-ku-ku-kow-kow-kow” of the Yellow-billed Cuckoo, kind of like someone running a stick along a picket fence.

Last Friday, June 5, around 8 p.m., under calm conditions and clear skies, we heard something seeming to fall from the sky, making loud splatting noises, even in the pond, causing ripples, and on the porch roof, as well as on the ground, and over a largish area. There were a dozen or more of these, with several minutes between splats. A rain of frogs? The sky is falling? Did anyone else observe this? Please let Nature Notes know-thanks!



Tator Tot



Libby & Sugar

Pets of the Week Meet Tator Tot, Libby & Sugar

Tator Tot is a precious light orange tabby and white cat with the sweetest personality and golden eyes that are sure to charm anyone. Tator Tot begs for attention at every chance he gets and will be the best companion cat for a loving family. Tator Tot came to us as a stray, but is a very affectionate cat that has been handled by humans and is by no means feral. Tator Tot is awaiting his neuter and microchipping procedure, but is up-to-date on vaccinations, FIV/FelV negative and almost ready to go into his adoptive home. If you would like a sweet ginger to follow you around and lie on your lap at the end of a long day, he is the cat for you!

Libby (beagle mix) and Sugar (daschund/schnauzer mix) are quite the dynamic doggie duo at the shelter. Libby and Sugar are seven-year-old bonded sisters, obviously not biological, that grew up together and we plan to keep them together in their forever home. When their owner was forced to move where he could not take them, he was heartbroken, but knew Animal Harbor was the best place for a temporary home. I don't think you could find a cuter and sweeter pair of dogs. Sugar is a wild child spirit, while more mature/aware sister Libby is more reserved and watches out for her “little sister”. Libby watches every move Sugar makes and when pulled away from each other temporarily, they struggle to be apart. These two cuddle and love each other deeply. If you can find it in your heart to give these two a new fresh start in their forever home, they would love that. Both are up-to-date on vaccinations, heartworm-negative, spayed, and microchipped. To inquire about the dynamic duo, please submit our online adoption application at <www.animalharbor.org>.

Animal Harbor is located at 56 Nor-Nan Rd., off AEDC Road, in Winchester. Call Animal Harbor at 962-4472 for information and check out the other pets at <www.animalharbor.org>. Enter their drawing on this site for a free spay or neuter for one of your pets. Help Animal Harbor continue to save abandoned pets by sending your donations to Animal Harbor, P.O. Box 187, Winchester, TN 37398.

State Park Offerings

Please note: To confirm that these events will occur as listed go to <http://instatoparks.com/parks/events/southcumberland/#/?park=southcumberland> or call (931) 924-2980.

Friday, June 12

Rock Hop from Greeter Falls to Boardtree Falls (\$6)—Meet Ranger Spencer Baxter at 1:45 p.m. (CDT) at 550 Greeter Falls Rd., Altamont, for a rock-hop hike in the bottom of the gulf, from Greeter Falls to Boardtree Falls. See how the water has reshaped the gulf, showcasing rushing cascades and stunning cliffs. Expect to get wet! Wear appropriate footwear and clothing, and bring water and some sun/bug protection. Please be aware that snakes are known to live in this area and can be present during this hike. Must be 15 or older and accompanied by an adult.

Snakes of South Cumberland (free)—Join Ranger Austin Holman at 3 p.m. (CDT) at the Stone Door Trailhead, 1183 Stone Door Rd., Beersheba Springs, to learn about snakes and other reptiles of the area. Great for adults and children. Learn about the benefits snakes provide, how to identify them, and some of the myths surrounding them. No live animals will be present during this program. *Covid-19 social distance guidelines will be followed.

Saturday, June 13

Rattlesnake Point/Savage Falls Hike (free; must pre-register)—Join Seasonal Interpretive Recreator William Allen at 2:30 p.m. (CDT) at Savage Gulf State Natural Area, 3177 TN. Hwy. 399, Palmer, for a beautiful, moderate 5-mile, 4.5-hour hike to Rattlesnake Point and Savage Falls, which will feature a stunning overlook and give participants the opportunity to swim in the crystal clear pool at the bottom of the Falls. Participants will learn about the native plants and animals in the region. Participants should bring sturdy hiking shoes, swimwear and water shoes, if they choose to swim, as well as lots of drinking water, bug spray and sunscreen.

Hike to South Rim Champion Overlook (\$10)—Join Ranger Austin Holman at 9 a.m. (CDT) at Savage Gulf State Natural Area, 3177 TN. Hwy. 399, Palmer, for this difficult 6-mile hike. Lunch break will be at the overlook, with a stop by Savage Falls and pool. Sturdy boots/shoes are a must. Bring at least 64 ounces of water and lunch or a snack. Dress for the weather, and bring an adventurous attitude! *Covid-19 social distance guidelines will be followed. It is recommended to bring a mask.

Friday, June 19

Waterfall Hike (\$10) (Limited to 9 people; please pre-register)—Join Ranger Dan Wescoat at 8:30 a.m. (CDT) at Grundy Forest Trailhead, 131 Fiery Gizzard Rd., Tracy City, for this roughly 3-mile hike along creeks and past three waterfalls. Terrain is rocky with lots of tree roots. Wear sturdy boots/shoes, bring plenty of water and snacks.

The South Cumberland State Park Visitors' Center is located on Highway 41 South between Monteagle and Tracy City and is open 8 a.m.–4:30 p.m. seven days a week. For more information call (931) 924-2980.

Russell L. Leonard

ATTORNEY AT LAW

Office: (931) 924-0447

Fax: (931) 924-1816

1016 W. Main St., Suite 3
Monteagle, TN 37356

rleonardlegal@gmail.com
www.rleonardlegal.com



ROB MATLOCK
CONSTRUCTION COMPANY
NEW HOME BUILDING
AND REMODELING

PHONE: 931-598-5728
CELL: 931-580-5728

EMAIL: RMATLOCKCONSTR@GMAIL.COM

MATLOCK

State Licensed • Fully Insured

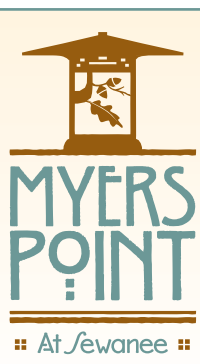
Brown's Body Shop

Steve and Kim Young - Owners
Steve Hartman - Shop Manager

710 College St. • Winchester
931-967-1755 • Fax 931-967-1798

Come by and see us. We appreciate your business.

Our Work is Guaranteed!



MYERS' POINT at Sewanee offers a rare opportunity to enjoy a private community that celebrates American architecture, lifestyle, protected forests, cultivated lakes and panoramic views on Middle Tennessee's Cumberland Plateau. If you want to live surrounded by nature, history, beauty, quality and serenity, you'll want to call it home.

John Goodson ■ (931) 703-0558
myerspoint.net ■ jgoodson@myerspoint.com



Open for dine-in,
take-out, curbside
and delivery service.
Social distancing
will be enforced. No
bar hours.

Call us or order online!
https://shenanigans1974.com

931.598.5774

downtown Sewanee since 1974

WEATHER

DAY	DATE	HI	LO
Mon	June 01	80	63
Tue	June 02	83	65
Wed	June 03	82	67
Thu	June 04	80	68
Fri	June 05	84	68
Sat	June 06	87	67
Sun	June 07	89	70

Week's Stats:
Avg max temp = 84
Avg min temp = 67
Avg temp = 75
Precipitation = 1.29"

Reported by Sandy Gilliam
Domain Ranger

PHOTO ARCHIVE!

<sewaneemessenger.
smugmug.com>

ENGINE REPAIR

SARGENT'S SMALL ENGINES: Repairs to All Brands of Equipment: Lawn mowers (riding or push), String trimmers, Chainsaws, Chainsaw sharpening, New saw chains. Pickup and Delivery Available. (931) 212-2585, (931) 592-6536.

FOR LEASE

COMMERCIAL OFFICE/RETAIL SPACE: For lease. Adjacent to High Point Restaurant. Call (615) 974-0133.

FOR SALE

FOR SALE: 3-piece dark-brown fabric sectional: loveseat, chaise, sofa. Excellent condition. \$800/OBO. (404)256-6311, (770)377-1295, <sbminotto@aol.com>

HOUSE FOR SALE

HOUSE FOR SALE: 3BR/2BA brick. 902 DuBose St., Monteagle. (931) 924-2779 or (931) 308-9043.

HOUSE TO RENT WANTED

WANTED: Small house in Sewanee area to rent for the month of July. Only one person, but have well-beloved and well-behaved pets. If interested, please call Joanne Boyd (205) 515-8870 or email <jboydlaw@gmail.com>.

INSIDE YARD SALE**White Elephant Sale**
"The Original"

Indoor Yard Sale at the **Annex Building, large meeting room**

855 Dinah Shore Blvd., Winchester
Friday, June 19, 8 to 5
Saturday, June 20, 8 to 1
Household items, clothes, shoes, toys, jewelry, and more

LAND FOR SALE

2.3-ACRE WOODED HOME-SITE: Laurel Lake Drive. R-1 zoned. All services available. \$22K. Lot and construction terms available. (850) 261-4727 or (850) 259-5988.

LOST COVE BLUFF LOTS
www.myerspoint.net
931-703-0558

LAWN CARE

CHAD'S LAWN & LANDSCAPING
-FREE ESTIMATES-
* Lawn care & Design (Mulch & Planting)
ALSO: * Tree Trimming & Removal
* Pressure Washing * Road Grading
* Stone Patio/Fireplace * Garden Tilling
* Leaf Pickup & Blowing
(931) 308-5059

LONG'S LAWN SERVICE
• landscaping & lawn care
• leaf removal • mulch
Local references available.
Jayson Long
(931) 924-LAWN (5296)

EAGLE LANDSCAPING & LAWN MAINTENANCE CO.
Now Offering Specials for the **SPRING!**
We offer lawn maintenance, landscaping, hedge/tree trimming & more!
Please call for your free estimate
(931) 598-0761 or (931) 636-0383

Messenger Classifieds

LOCAL SERVICES

Jacobs Electric and Plumbing Repair
LICENSED + INSURED
Rinnai Tankless install + technicians
CELL 931-636-7719

MARK'S HOME REPAIR
KITCHEN AND BATH REMODELING
Insured. Decks, Roofing, Electrical, Plumbing, Drywall, Tile & Hardwood Floors, Outbuildings, Pressure Washing.
MARK GREEN, owner
931-636-4555 | mdgreen41@gmail.com

CLEANING W/ DISTINCTION: Now taking new clients. Detailed house cleaning with reasonable rates. Call Marie at (931) 315-0413.

King's Tree Service
Topping, trimming, bluff/lot clearing, stump grinding and more!
Bucket truck or climbing
Free wood chips with job
Will beat any quoted price!
Satisfaction guaranteed!!
—Fully licensed and insured—
kingstreeservice.com
Call **(931) 598-9004**—Isaac King

SMALL MAINTENANCE: Indoor/outdoor. Sink installation, some gutters, lawns, yardwork, housecleaning. Free estimates. References. Call/text (931) 409-4019, (931) 743-0431.

CHARLEY WATKINS
PHOTOGRAPHER

Sewanee, TN
(931) 598-9257
http://www.photowatkins.com

THERAPEUTIC MASSAGE AND BODYWORK: Discount on first massage! Gift certificates available. Text or call Aaron Bridgers-Carlos, L.M.T. (931) 691-0321.

CAR WASH/DETAIL SERVICE: Mini Detail, \$50 (wash, inside wipe-down, vacuum); Complete Detail, \$75 (Mini Detail plus wax and carpet shampoo). Large vehicles, add \$20. Prices may vary based on vehicle condition. Pickup/drop-off available (dependent on location). Call Sherrie Releford in Monteagle, (931) 235-4876, for information or appointment.

MONTEAGLE SECURITY OPERATIONS
CCTV, BURGLAR & FIRE ALARMS
931-924-3216 800-764-7489
monsecurity.com TN license 1912

Lakeside Collision
"Done Right, the First Time"
103 Mabree Ave., Monteagle
Ph: 931.924.3316 | Cell: 931.235.3316
lakesidecollision00@gmail.com

Lyn Hutchinson PHOTOGRAPHY
lynhutchinson.smugmug.com

Read what you have been missing!
<www.sewanee messenger.com>

LOCAL SERVICES

ART MOSAIC & TILE
Sewanee, Tennessee
New construction, renovation, repair.
Over 30 years in the science & the art of ceramic, marble, & porcelain installation.
931 636 4227
ARTMOSAICANDTILE@GMAIL.COM

MASSAGE

Regina Rourk Childress
Licensed Massage Therapist
www.reginarourk.com
~ GIFT CERTIFICATES ~
(931) 636-4806

RESUME WRITER

Let me help you stand out during the hiring process!
Samples, references available. Rates start at \$75.

baileybasham.com/contact

PUBLIC NOTICE

AT&T Mobility, LLC is proposing to construct a 295-foot tall overall height self-supporting lattice telecommunications structure located off Spring Street, Sherwood, Franklin County, Tennessee (N35° 4' 7.5", W85° 55' 24.2"). The tower is anticipated to utilize FAA Style E (dual medium intensity) lighting. AT&T Mobility, LLC invites comments from any interested party on the impact the proposed undertaking may have on any districts, sites, buildings, structures, or objects significant in American history, archaeology, engineering, or culture that are listed or determined eligible for listing in the National Register of Historic Places under National Historic Preservation Act Section 106. Comments may be sent to Environmental Corporation of America, ATTN: Megan Gomez, 1375 Union Hill Industrial Court, Suite A, Alpharetta, GA 30004 or via email to publicnotice@eca-usa.com. Ms. Gomez can be reached at (770) 667-2040 x 405 during normal business hours. Comments must be received within 30 days of the date of this notice. In addition, any interested party may also request further environmental review of the proposed action under the FCC's National Environmental Policy Act rules, 47 CFR §1.1307, by notifying the FCC of the specific reasons that the action may have a significant impact on the quality of the human environment. This request must only raise environmental concerns and can be filed online using the FCC pleadings system at www.fcc.gov or mailed to FCC Requests for Environmental Review, Attn: Ramon Williams, 445 12th Street SW, Washington, DC 20554 within 30 days of the date that notice of this proposed action is published on the FCC's website. Refer to File No. A1167635 when submitting the request and to view the specific information about the proposed action. W1982 CMJ

THE SEWANEE UTILITY DISTRICT OF FRANKLIN AND MARION COUNTIES BOARD OF COMMISSIONERS will have its regular meeting at 5 p.m., Tuesday, June 16, at the utility office on Sherwood Road. If a customer is unable to attend but wishes to bring a matter to the board, call 598-5611, visit the office, or call a board member. Your board members are Doug Cameron, Paul Evans, Randall Henley, Ronnie Hoosier, and Charlie Smith.

This sidewalk isn't big enough for the both of us.

I'll step aside.

SEWANEE
NEIGHBORS HELPING NEIGHBORS

**Letters to the Editor Policy**

Letters to the editor are welcome at the Sewanee Mountain Messenger and are a vital part of our community's conversation. Letters need to be no longer than 250 words and may be edited for space and clarity. We make exceptions from time to time, but these are our general guidelines. We strive to print all letters we receive, but publication is not guaranteed. Letters should be factually accurate. Letters that are deemed unsuitable for publication shall not be printed elsewhere in the newspaper, including as a paid advertisement.

Letters and/or their author must have some relationship to our community. We do not accept letters on national topics from individuals who live outside our print circulation area. Please include your name, address and a daytime telephone number with your letter. You may mail it to us at Sewanee Mountain Messenger, P.O. Box 296, Sewanee, TN 37375, come by our office, 418 St. Mary's Ln., or send your email to <news@sewanee messenger.com>. —KB



Mobile Health Unit will be at Morton Memorial United Methodist Church

Saturday, June 13th, 2020

9:00am – 1:00pm

No appointment necessary!

Open to all members of the community.

Only one patient on the MHU at a time.

Services offered

- **Limited medications, when needed, are available free of charge to patients seen on the MHU. Prescriptions will be mailed.**
- **No opioids through MHU.**
- **Acute illnesses**
(Examples include but not limited to: Coughs, colds, ear infections, skin irritations, allergies, fever or flu-like symptoms)
- **Well-Child Exams** (No immunizations offered at this time)
- **Annual Physicals**
- **COVID testing is not available.**

All patient costs for services provided today are covered by donations made to the Saint Thomas Health Foundation. We will file your insurance if you are insured. Copays, deductibles, etc. will be covered by the donation.

Morton Memorial UMC
322 W Main Street
Monteagle, TN 37356

**Local 12-Step Meetings**

Friday
7 p.m. AA, open, Christ Church, Tracy City

Saturday
7 p.m. NA, open, Decherd United Methodist

Sunday
6:30 p.m. AA, open, Morton Memorial, Wesley House, Monteagle - canceled

Monday
5 p.m. Women's Recovery, Brooks Hall, Otey Parish - canceled
7 p.m. AA, open, Christ Church, Tracy City

Tuesday
7 p.m. AA, open, First Baptist, Altamont

Wednesday
10 a.m. AA, closed, Clifftops, (931) 924-3493
7 p.m. NA, Decherd United Methodist
7:30 p.m. AA, open, Holy Comforter, Monteagle

Thursday
6 p.m. Al-Anon, Morton Memorial, Wesley House, Monteagle - canceled
7 p.m. Al-Anon, First UMC, Winchester



BARDTOVERSE

by Phoebe Bates

What is so rare as a day in June?
Then, if ever, come perfect days;
Then Heaven tries the earth if it be in tune,
And over it softly her warm ear lays:
Whether we look, or whether we listen,
We hear life murmur, or see it glisten;
Every clod feels a stir of might,
An instinct within it that reaches and towers,
And, groping blindly above it for light,
Climbs to a soul in grass and flowers;
The flush of life may well be seen
Thrilling back over hills and valleys;
The cowslip startles in meadows green.
The buttercup catches the sun in its chalice,
And there's never a leaf nor a blade too mean
To be some happy creature's palace;
The little bird sits at his door in the sun,
Atilt like a blossom among the leaves,
And lets his illumined being o'errun
With the deluge of summer it receives;
His mate feels the eggs beneath her wings,
And the heart in her dumb breast flutters and sings;
He sings to the wide world, and she to her nest,—
In the nice ear of Nature which song is the best?

--James Russell Lowell, June

12-step listings on page 11
of this issue.

Michael A. Barry
**LAND SURVEYING
& FORESTRY**
★ ALL TYPES OF LAND SURVEYS
★ FORESTRY CONSULTING
(931) 598-0314 | (931) 308-2512

Compassionate Home Care
and Medical Staffing
"Providing Care From The Heart"
5 Hours of Homecare Services
ONLY \$49*
*Call for details
931-327-5276 (office)
Office Hours, M–F, 8:30a–4p | 125 University Ave., Sewanee

piggly wiggly
Down Home, Down the Street
754 West Main St., Monteagle
(931) 924-3135
8 a.m. to 9 p.m. 7 days a week

Community Calendar

Friday, June 12
8 a.m. Walking Program, F@H, Fowler Center, (canceled until further notice)
8:30 a.m. Deep Stretch Yoga, Daryllann, Community Center (canceled until further notice)
9 a.m. CAC office open, until 11 a.m.
9 a.m. Pilates, golf/tennis, Angel Park/Zoom; email <kim_butters59@hotmail.com>
10 a.m. Game day, Senior Center (canceled until further notice)
noon Stretch/Straighten, Angel Park/Zoom; email <kim_butters59@hotmail.com>
4:45 p.m. March in support of Black Lives Matter movement, meet at St. Mark's Community Center, Alabama Ave.: march will end at U of S Quad for formal program
6:30 p.m. Stress Relief Class, Kim, (free), Angel Park/Zoom; email <kim_butters59@hotmail.com>
Saturday, June 13
7 a.m. FC Farmers Market, Dinah Shore Blvd, Winchester, until 1 p.m.
8 a.m. Sewanee Gardener's Market, Hawkins Lane, until 10 a.m.
8:30 a.m. Gentle Yoga, Robie, (\$8), Community Center (canceled until further notice)
9 a.m. St. Thomas Mobile Health Unit, Morton Memorial UMC, 322 W. Main St., Monteagle, until 1p.m.
Sunday, June 14 • Flag Day
8:30 a.m. Vinyasa Yoga, Community Center, until 9:45 a.m. (canceled until further notice)
2 p.m. Knitting Circle, Mooney's, until 4 p.m. (canceled until further notice)
4 p.m. Hatha Yoga, Helen, Community Center (canceled until further notice)
5 p.m. Ring to Honor Frontline Workers until 5:15 p.m.
Monday, June 15
8 a.m. Walking Program, F@H, Fowler Center, (canceled until further notice)
9 a.m. Pilates, intermediate, Angel Park/Zoom; email <kim_butters59@hotmail.com>
9:30 a.m. Yoga, Daryllann, (\$8), St. Mary's Sewanee (canceled until further notice)
10 a.m. Summer Feeding Program, Coalmont Elementary, until noon, Monteagle Elementary, until noon, Pelham Elementary, until noon, Tracy City Elementary, until noon
10:30 a.m. Chair Exercise, Ruth, Senior Center (canceled until further notice)
noon Pilates, beginners, Angel Park/Zoom
5:30 p.m. Gentle Yoga, Robie, DuBose upper room, until 6:45 p.m. (canceled until further notice)
5:30 p.m. Pilates, beginner, Angel Park/Zoom
5:30 p.m. Summer Feeding Program, FC Prevention Coalition, until 7:30 p.m.
6 p.m. Karate, youth, Legion Hall; adults 7 p.m. (canceled until further notice)
7 p.m. Franklin County Commissioners, FC Annex Bldg, Winchester
Tuesday, June 16
7 a.m. FC Farmers Market, Dinah Shore Blvd, Winchester, until 1 p.m.
7 a.m. Qi Gong on the Bluff, Wall, St. Mary's Sewanee (canceled until further notice)
8 a.m. GC Food Bank, Tracy City, until 10 a.m.
8:30 a.m. Deep Stretch Yoga, Daryllann, Community Center (canceled until further notice)
9 a.m. CAC office open, until 11 a.m.
9 a.m. Pilates, beginners, Angel Park/Zoom
10 a.m. Summer Feeding Program, North Elementary, until noon, Swiss Elementary, until noon
10:30 a.m. Bingo, Senior Center (canceled until further notice)
10:30 a.m. Yoga for Every Body, Anneli, DuBose Pavilion, until noon
11:30 a.m. Summer Feeding Program, Grace Center for Hope, until 1:30 p.m.
noon Pilates, intermediate, Angel Park/Zoom; email <kim_butters59@hotmail.com>
4:30 p.m. South Cumberland Farmers' Market, curbside pickup, Community Center, until 6:30 p.m.
5 p.m. SUD Board meeting, Utility office
5 p.m. Yoga, Daryllann, (\$8), St. Mary's Sewanee (canceled until further notice)
5:30 p.m. Summer Feeding Program, FC Prevention Coalition, until 7:30 p.m.
Wednesday, June 17
8 a.m. Walking Program, F@H, Fowler Center (canceled until further notice)
8:30 a.m. Gentle Yoga, Robie, (\$8), Community Center (canceled until further notice)
9 a.m. CAC office open, until 11 a.m.
9 a.m. Pilates, intermediate, Angel Park/Zoom; email <kim_butters59@hotmail.com>
10 a.m. Summer Feeding Program, Coalmont Elementary, until noon, Monteagle Elementary, until noon, Pelham Elementary, until noon, Tracy City Elementary, until noon
10 a.m. Senior Writing Group, 212 Sherwood Rd. (canceled until further notice)
10:30 a.m. Chair Exercise, Ruth, Senior Center (canceled until further notice)
11:30 a.m. Summer Feeding Program, Grace Center for Hope, until 1:30 p.m.
noon Pilates, beginners, Angel Park/Zoom
noon Agenda items due for Sewanee Community Council Meeting
5 p.m. Summer Feeding Program, Rain Teen Center, until 7:30 p.m.
5:30 p.m. Hatha Yoga, Helen, Community Center (canceled until further notice)
Thursday, June 18
7 a.m. FC Farmers Market, Dinah Shore Blvd, Winchester, until 1 p.m.
7 a.m. Qi Gong on the Bluff, Wall, St. Mary's Sewanee (canceled until further notice)
8 a.m. Monteagle-Sewanee Rotary, via Zoom
9 a.m. CAC office open, until 11 a.m.
9 a.m. Pilates, beginner, Angel Park/Zoom; email <kim_butters59@hotmail.com>
9 a.m. Yoga, Daryllann, (\$8), Community Center (canceled until further notice)
10 a.m. Summer Feeding program, North Elementary, until noon, Swiss Elementary, until noon
11:30 a.m. Summer Feeding Program, Grace Center for Hope, until 1:30 p.m.
noon Pilates, intermediate, Angel Park/Zoom
1 p.m. F@H Caregiver Group, Brooks Hall, Otey (canceled until further notice)
2 p.m. Knitting Circle, Mooney's, until 4 p.m. (canceled until further notice)

Winchester Podiatry
CHARLES D. GANIME, DPM
Board Certified in Foot Surgery
Diplomate, American Board of Podiatric Surgery
New Patients of All Ages Welcome! We Treat Your Feet! Most Insurance Accepted, Including TennCare
155 Hospital Road Suite 1, Winchester.
www.winchesterpodiatry.com
931-968-9191

MR. POSTMAN, INC.
209 South Jefferson St., Winchester
One block off square across from PO
(931) 967-5777 Fax (931) 967-5719
**DHL/Fed Ex/ UPS
DROPOFF LOCATION**
We accept packages with preprinted labels.
Drive-Thru Window on Side of Building • Open Mon-Fri 9-5

Z-MAN'S
**PRESSURE
WASHING**
Driveways • Sidewalks
Siding • Brick • Concrete
Decks • Stonework • Grills
Patio Furniture • Pools
Vehicles • Tile
Ezri Davis
423.785.6955
Call for pricing and to
schedule a cleaning.