



THE SEWANEE MOUNTAIN MESSENGER

Volume XXXVI No. 28

Published as a public service since 1985

Friday, Aug. 7, 2020

Launching the 37375 Campaign for Local COVID-19 Funding

During these uncertain times, one thing is clear. There is a greater need for health and safety products to help keep the community safe.

The first positive coronavirus case for Tennessee was in the beginning of March. By the middle of March, all schools, non-essential businesses, organizations, and churches were all closed. Tennessee Governor Bill Lee signed a number of Executive Orders, including a State of Emergency. People were told to stay home, unless it was absolutely necessary to go out in public. The state of emergency is in place until Aug. 29, 2020.

Some of the restrictions in place by the Executive Orders were eventually lifted. Businesses and organizations were allowed to phase-in reopening. The K-12 schools, colleges and universities all remained closed, and offered online classes and instruction. Churches only offered services online. Organizations had meetings via Zoom online. Some local nonprofits, such as the Seawanee Senior Center and Folks at Home, ceased their normal program offerings to the public.

Seawanee restaurants and area retail businesses offered online ordering and curbside pick-up to stay afloat. When they were allowed to start to reopen, they asked the customers to wear masks. These businesses offered masks if the customer did not have one, and had hand sanitizer available. They stepped up their cleaning and sanitation efforts. And, as with the toilet paper shortage back in March, these health and sanitation items are now in short supply on the shelves at the local grocery stores, retail giants such as Walmart, or even ordering them online.

Almost daily, the state, the Departments of Health, the Centers for Disease Control and the World Health Organization released new guidance on how to protect yourself and others during this pandemic, which included wearing a mask, washing your hands, physical distancing yourself, and other necessary sanitation measures.

On July 3, University of the South Vice-Chancellor Reuben Brigety instituted a mandatory mask directive for all persons on the Seawanee Domain—to include residents, visitors, students, faculty, and staff. Local schools such as Seawanee Elementary, the Seawanee Children's Center and St. Andrew's-Seawanee also instituted a mask wearing directive, and other mandatory safety precautions.

"This is when I knew we needed to do something to help our community," said Joseph Sumpter, Seawanee Business Alliance (SBA) president. "We had to make sure everyone in this community had access to health and safety products. We had to make the town, organizations and the local business district as safe as possible during this pandemic."

The SBA approached the key local nonprofit, the Seawanee Civic Association, to partner in a campaign to raise necessary funding for the purchase and distribution of COVID-19 health and safety products for the local Seawanee community and organizations.

The Seawanee Civic Association (SCA) is the sponsor of the Seawanee Community Chest, its nonprofit. Since 1908, the Seawanee Community Chest (SCC) has raised money the town could not raise in taxes because it was unincorporated, in order to make municipal improvements. The SCC raises money annually to support basic needs in the community such as books, food, elder care, animal care, recreational spaces, children's programs and more.

The SCA and the SBA are partnering on this new fundraising campaign, the 37375 Campaign, to raise funds for the purchase and distribution of health and safety products and services. These goods and services will then be distributed to Seawanee's nonprofit organizations, SBA members, senior citizens organizations, churches, and PreK-12 schools on the Domain and its outskirts. The goal of this campaign is to raise \$37,375.

"Special fundraising for projects deemed beneficial to the community in addition to the annual Seawanee Community Chest campaign is supported by the Seawanee Civic Association," said Brandon Barry, president of the SCA. "We are the organization who has and will continue to help facilitate both infrastructural improvements and drive social change within the Seawanee community. In promoting social and service opportunities, this 37375 Campaign is fully within the mission of the SCA."

The 37375 Campaign fundraising is modeled after the successful SCA For the Parks campaign, where more than \$69,000 was raised to refurbish Elliott Park in addition to the \$101,000 SCC fundraiser that year. A number of partnerships from community members, the University, foundations, and grant allocations made that campaign successful.

"There are those who need protective equipment and supplies for their jobs, to go to school, to attend places of worship, to participate as normally and safely as possible," said Barry. "We want to make sure all these organizations and businesses have what they need to function, and provide them with the necessary products and aid to maintain operations during this crisis. The 37375 Campaign has the flexibility to meet the needs of our local organizations."

"With this partnership, we are assisting our friends and neighbors by acting responsibly and locally during a global pandemic," said Barry.

This unique special project for local COVID-19 health and safety donations will end on Sept. 30, 2020. Anything raised in excess of the stated goal will go towards the annual SCC fundraising effort for 25 area nonprofits, which is scheduled to begin this fall.

To make a donation, send a check payable to Seawanee Community Chest 37375 Campaign, P.O. Box 99, Seawanee, TN 37375. You may also use PayPal for online giving at <<https://www.paypal.com/fundraiser/charity/119597>>. The SCC is a 501 (c) (3) organization, and donations are tax-deductible.

Monteagle Police Make Heroin and Meth Arrests

by Leslie Lytle
Messenger Staff Writer

Within a 15-hour window, Monteagle Police made drug arrests for heroin and methamphetamine, as well as a small quantity of marijuana. "We've been busy lately," said Assistant Police Chief Jared Nunley, lead officer in both cases.

At 4 p.m. on the afternoon of July 29, Nunley pulled over a car with a busted windshield for "obstruction of view." The driver said Police Chief Jack Hill had already written a ticket for the busted windshield. Nunley smelled marijuana.

"I got the driver out of the car. The driver failed the field sobriety for DUI and then the passenger told on the suspect," Nunley said. "When you deal with drugs somebody's always going to snitch when you separate them."

Monteagle Police Officer Donnie Burnett joined Nunley.

A cigarette pack in the suspect's possession contained marijuana and .54 grams of heroin. Based on the quantity of heroin and packaging, the suspect was charged with distribution, Nunley said. The suspect was also charged with possession of marijuana and DUI.

Around 7 a.m. the following morning, the police department

(Continued on page 6)

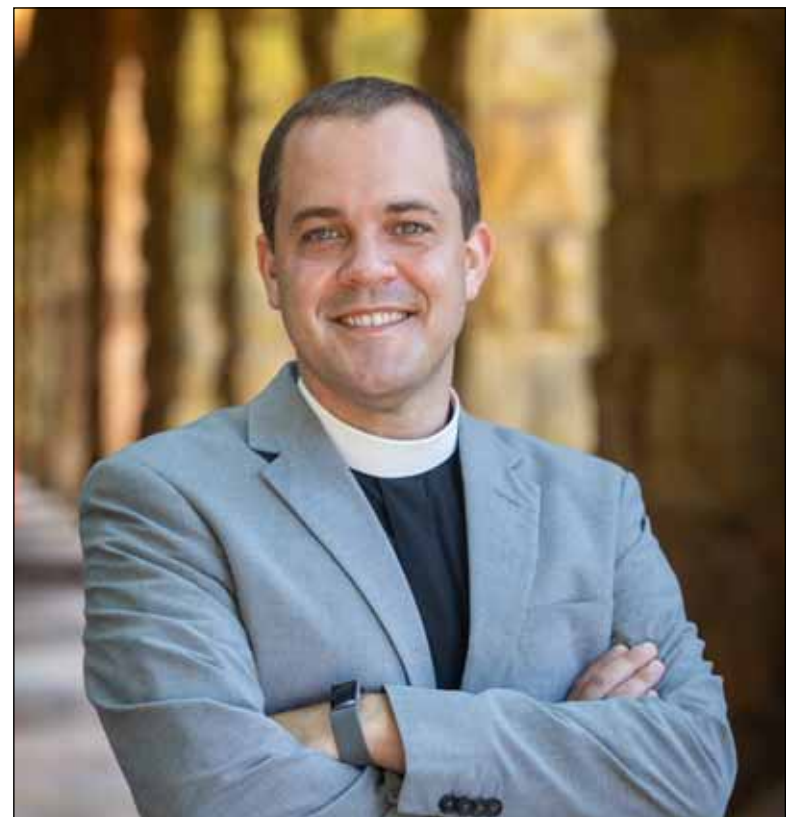
Raffle to Benefit the Mountain Goat Trail

The Mountain Goat Trail Alliance (MGTA) is partnering with The Retreat at Water's Edge to offer chances to win a property lot in the development in Tracy City. All proceeds from the raffle will go to the MGTA.

The lot, worth approximately \$25,000, is one of 140 properties at The Retreat at Water's Edge, a luxury tiny home community opened in 2019 on the Tracy City Reservoir. The Retreat at Water's Edge, still in development, will offer community firepits, pavilions, a saltwater pool, playground, private trails, access to the 95-acre calm water lake, and more. Water's Edge residents also have access to all of the amenities at The Retreat at Deer Lick Falls, their sister community down the road in Monteagle.

Chances will be offered online at the MGTA website, <mountain-goattrail.org> at \$5 for one chance, \$50 for 12 chances, and \$100 for 30 chances. The chances will be numbered and gathered into a random digital generator; on Aug. 8, a number will be chosen by the owner of the Retreat at Water's Edge onsite, and the winner announced. You need not be present to win.

More information can be found at <mountain-goattrail.org/watersedge/>.



Rev. Peter Gray

Rev. Gray's Cantillation: "We're in this together"

by Leslie Lytle, Messenger Staff Writer

Asked about his spiritual vision for the Seawanee community, the Rev. Peter Whittlesey Gray said, "We're at a time in which we are all having to make sacrifices for the care of our neighbors. The most significant spiritual and physical matter that we face is the fact that we're in this together. The decisions we make have ripple effects for the entire community."

Gray recently assumed the role of chaplain of the University of the South. "I was elected chaplain, and two weeks later the world shut down," Gray observed, remarking on the challenges of the times.

Conducting worship services remotely was "a novelty" at first, Gray conceded. But an unsettling awareness quickly settled in. "How do you continue to care for people in new and creative ways when you don't have the luxury of them walking in the door?"

"The challenges of isolation and loneliness are real as are the challenges of selfishness and self-absorption," Gray said. "They're at opposite ends of the seesaw. The more we lean into one, the more the other is a threat."

Gray praised the University's media resources for the streaming platform, which enables worshippers to attend in person or remotely by employing high definition cameras that "can give a sense of being in the place."

"But in church ministry what feels most familiar to us we do in person," Gray stressed. "Handshakes, hugs, singing, being human together with other people."

"We muddle our way through trying to figure out how to nurture people in faith and spirituality at a remove. Six months ago, it would have felt unfulfilling and weird building relationships with folks you've never met when you only know what the top third of their face looks like. And yet, our need and capacity for human connection has the ability to transcend the obstacles we have to deal with."

An obstacle Gray faced at his previous ministry in Mississippi is illustrative. To ward off de facto segregation, a coalition of black and white pastors looked for ways "to create a space" where Christians could come together across racial and denominational barriers. With a colleague, Gray founded a 6:45 a.m. Sunday morning one-hour gathering held at a different church each month. Following breakfast and a two-minute mini sermon, those gathered shared personal concerns for their families and communities. They then prayed out loud for each other's needs.

"I dreaded that early morning alarm," Gray admitted. "But there was never a morning when I didn't leave feeling refreshed by the relationships that were being formed. The slow drip of sharing bits of one's life and having your concerns prayed for by someone else." Gray's colleague called the monthly event "building a tent over the railroad tracks that separate us."

(Continued on page 6)

P.O. Box 296
Seawanee, TN 37375

Letters

REMEMBERING JOHN LEWIS

To the Editor:

John Lewis was our congressional representative from 1987 in the 5th district of Atlanta until we moved to Sewanee in 2008. He was always accessible and (seemingly), always in the news seeking and rooting out “good trouble.” He was an activist in the best sense of the word and always encouraged non-violent responses to thoughtless indignities.

He spoke from our pulpit at St. Luke’s Episcopal one Sunday morning about growing up near Troy, Alabama, born to sharecroppers. His book “Walking with the Wind” tells of living in a shack with nine other siblings and how the little shack shook when the wind blew. John had a speech impediment, quite noticeable to the congregation that morning. We learned later that his diction was still affected by the severe beating he endured 30 years earlier in Selma.

We’ll miss his endurance and his willingness to move on in the name of “Good Trouble.” Rest in peace.
Stephen Burnett, Sewanee

BROTHERS FOREVER

To the Editor:

In the day-to-day deadly conflict of Vietnam we all watched each other’s backs; black, white, brown and, in one case, yellow. There was no real distinction when the bullets were flying. It was all for one and one for all.

In one tense situation, I shared a perimeter bunker with a black friend. We were overrun by the enemy. He left the bunker at great peril to his life, telling me to keep firing from within, while he engaged a superior force hand-to-hand outside.

We survived that night.

In another instance, on a recon mission, I was able to detect a ‘booby-trap’ that would have killed both of us and several others besides. We lived to fight another day.

Life is precious for all of us. We watch out for and respect each other—regardless of color—or we all go down together.

Don Shannonhouse, Monteagle

NEWS FROM ST. MARY’S SEWANEE

To the Editor:

One of the joys of being part of the Sewanee community is how we — the people, the organizations, and the institutions — pull together

to help one another in challenging times. I write to tell you of one way this is happening now.

St. Mary’s Sewanee is leasing its two primary residential buildings to the University of the South until May 2021. This arrangement means that the University has a place for its students to live safely with greater social distancing than is available on campus. By adding our almost 60 rooms to their housing options, the University expands its ability to offer safe education and housing at a time when we cannot be open.

Since March 15, St. Mary’s Sewanee has been closed. No workshops. No in-person retreats. No personal retreats. Our space has sat empty as the Covid pandemic has spread across our country. It seems that opening the retreat center to guests will not be possible until next summer, at the earliest.

As a way of keeping St. Mary’s Sewanee financially secure, and as a way to offer aid to our neighbors at the University, the SMS board believes this partnership provides financial sustenance to the retreat center for this year while providing an important service to the University.

We think that Bob Ayres, our beloved founder and friend, would give this partnership his blessing: it is a way of helping out these two institutions that he valued so deeply. It is with this spirit — the Christian imperative to help one’s neighbor — that we embark on this collaboration.

While the physical space at St. Mary’s Sewanee will be unavailable to the public until next summer, the essence of St. Mary’s Sewanee and our retreats continue through new channels and with new online programming. Look for details about these offerings in the com-



— THE SEWANEE MOUNTAIN — MESSENGER

Published as a public service to the community since 1985, this newspaper is printed on Fridays, 46 times a year. Free of charge, copies are distributed to 100 locations, including businesses and post offices across the Plateau. This publication is made possible by the patronage of our advertisers and by contributions from the University of the South (print production) and the Sewanee Community Chest.

Kiki Beavers
editor/publisher
April Minkler
office manager
Ray Minkler
circulation manager
Sandra Gabrielle
proofreader

Leslie Lytle
staff writer
Bailey Basham
staff writer
Janet Graham
publisher emerita
Laura Willis
editor/publisher emerita
Geraldine Piccard
editor/publisher emerita

SUBSCRIPTIONS \$75 first class

418 St. Mary’s Lane, P.O. Box 296, Sewanee, TN 37375
Phone (931) 598-9949 | <news@sewaneeemessenger.com>

All material in the Sewanee Mountain Messenger and on its websites are copyrighted and may not be published or redistributed without written permission.

ing weeks. We are maintaining a reduced staff during this upcoming year. If you have any questions, please reach out to Kylene McDonald, Acting Director, at (931) 598-5342 or by email to <kylene.mcdonald@stmaryssewanee.org>.

St. Mary’s Sewanee is not going away.

We are not selling the property nor are we closing the retreat center.

We are responding to this global crisis by acting locally to assist our friends and neighbors.

No doubt you, like we, are disappointed that there will not be retreats or groups at St. Mary’s Sewanee this academic year. But we also hope that you, like we, are heartened to know that the space is being utilized in a way that assures we will return to sharing our

(Continued on page 3)

Computer Services
Problem Diagnostics
Zoom Video Conference;
your home; your office
931-924-1300
Walter Castle
‘Senior for Seniors’
36 years experience
Satisfaction Guaranteed
castlecomputing@gmail.com





Anne Chenoweth Deutsch
REALTOR®
931.205.1299
Anne.Sewanee@gmail.com
annechenoweth.villagerealestate.com

Find your Sewanee Home.
VILLAGE REAL ESTATE
615.383.6964 | VILLAGEREAL ESTATE.COM

SEWANEE AUTO REPAIR
Complete Auto & Truck Repair
Tune-ups • Tires • Tire Repair • Brakes • Steering
• Oil Changes • Batteries • Computer Diagnostics
All Makes & Models • Service Calls •
Quality Parts
ASE Master Certified Auto Technician •
33 Years’ Experience
Open 7 to 5 M-F
(931) 598-5743 • 76 University Ave.

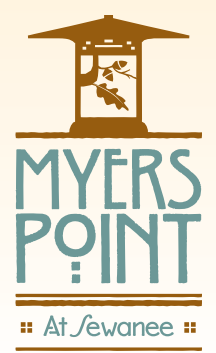




The Lemon Fair

OPEN 11-4

Call 931.598.5248 for curbside pick up
thelemonfair.com



MYERS POINT at Sewanee offers a rare opportunity to enjoy a private community that celebrates American architecture, lifestyle, protected forests, cultivated lakes and panoramic views on Middle Tennessee’s Cumberland Plateau. If you want to live surrounded by nature, history, beauty, quality and serenity, you’ll want to call it home.

John Goodson ■ (931) 703-0558
myerspoint.net ■ jgoodson@myerspoint.com




Sweeton
HOME RESTORATION
931-924-2444 sweetonhome.com

Letters to the Editor Policy

Letters to the editor are welcome at the Sewanee Mountain Messenger and are a vital part of our community’s conversation. Letters need to be no longer than 250 words and may be edited for space and clarity. We make exceptions from time to time, but these are our general guidelines. We strive to print all letters we receive, but publication is not guaranteed. Letters should be factually accurate. Letters that are deemed unsuitable for publication shall not be printed elsewhere in the newspaper, including as a paid advertisement.

Letters and/or their author must have some relationship to our community. We do not accept letters on national topics from individuals who live outside our print circulation area. Please include your name, address and a daytime telephone number with your letter. You may mail it to us at Sewanee Mountain Messenger, P.O. Box 296, Sewanee, TN 37375, leave it at our office, 418 St. Mary’s Ln., or send your email to <news@sewaneeemessenger.com>. —KB



SERVING WHERE CALLED

Please keep the following individuals, their families and all those who are serving our country in your thoughts and prayers:

Blaze Cassidy Barry
James Gregory Cowan
Mark Gallagher
Nathaniel P. Gallagher
Peter Green
Zachary Green
Steven Tyler Jeffery
Cheyenne N. Kelly
Gabriel Lloyd
Forrest McBee
Andrew Midgett
Jose D. Ramirez III
Troy (Nick) Sepulveda
Zachary Sherrill
Nick Worley

If you know of others in our Mountain family who are serving our country, please give their names to American Legion and Auxiliary member Louise Irwin, 598-5864.

MESSENGER INFORMATION

Phone: 598-9949

News and Calendar

Tuesday, 5 p.m.

Kiki Beavers

<news@sewaneeemessenger.com>

Display Advertising

Monday, 5 p.m.

<ads@sewaneeemessenger.com>

Classified Advertising

Wednesday, noon

April Minkler

<classifieds@sewaneeemessenger.com>

MESSENGER HOURS

Monday, Tuesday and Wednesday

9 a.m.—4 p.m. The office is currently closed to visitors at this time. The phone is being monitored, as are the email accounts.

Thursday—Production Day
9 a.m.—noon

Friday—Circulation Day
Closed

Letters (from page 2)

ministry of hospitality through workshops and events for many years to come after this crisis is over.

R. Dale Grimes, Board Chair

THE SOARING SPROUT HOUSE

To the Editor:

I have always heard the phrase “it takes a village...,” I never knew the value of it until I started working at Tracy City Elementary. I have had the joy of working alongside Alexis Picklesimer with our greenhouse initiative. We have named it “The Soaring Sprout House,” and we are very proud of it. Over the past few weeks we have been working to improve the greenhouse and have had so much help from our community.

The Sewanee Woman’s Club has donated to our greenhouse. Those donations have provided a lot of the materials and tools needed for our various projects.

Jacob Picklesimer with Extreme Lawn Care has been working diligently to restore our beds by donating material and time to lengthen and deepen the beds. Silver Bait donated a truckload of worm castings. Caleb Stiefel was my hero today and helped deliver and unload it from his truck. I have never been so amazed at the work a worm can do, then in this moment as I stare at the beautiful mound!

We also want to thank the Vista workers and Make a Difference Day. The volunteers from that day helped with weeding and finish constructing a table for students to work, experiment and observe different parts of the planting process. We have had teachers and their family members come on their own time to assist with watering, weed-eating, tilling and maintenance. There are so many more people who have assisted with the preservation of this greenhouse. TCE is working towards becoming a STEM school and the greenhouse provides a great opportunity for our students to apply science, technology, engineering, math and so much more while working in this area.

Carolyn McCullough, Tracy City Elementary



Inside the Soaring Sprout House at Tracy City Elementary.

DEPENDABLE AFFORDABLE RESPONSIVE HOME REPAIR AND REMODELING EXPERT HANDYMAN

KEN O'DEAR

25 YEARS EXPERIENCE
SATISFACTION GUARANTEED

931.235.3294

931.779.5885



piggly wiggly

Down Home, Down the Street

754 West Main St., Monteagle
(931) 924-3135

8 a.m. to 9 p.m. 7 days a week

Food Pantry and Mobile Health Unit at MMUMC

On Saturday, Aug. 8, Morton Memorial Church’s monthly curbside food distribution will begin at 8 a.m. and continue until 10 a.m. The St. Thomas Mobile Medical Unit will be on site from 9 a.m. until 1 p.m.

In order to maintain social distancing, drivers should enter the food distribution line from behind the church where they will be directed to the loading area. If you are unable to load your own vehicle, volunteers will be there to help you. Morton Memorial United Methodist Church is located at 322 West Main St., Monteagle. All are welcome.

University Job Opportunities

Exempt Positions: Area Coordinator, Residential Life; Off Campus Housing Coordinator, Risk Management & EHS.

Non-Exempt Positions: Custodian (Temporary), Facilities Management; Food Service Worker (Temporary), Sewanee Dining.

For more information call (931) 598-1381. Apply at <jobs.sewanee.edu>.

Upcoming Meetings

Franklin County School Board

The Franklin County School Board is scheduled to meet at 6 p.m., Monday, Aug. 10.

Sewanee La Leche League

The La Leche League breastfeeding support meeting is at 10:30 a.m., Tuesday, Aug. 11. Email <LaLecheLeaguesewanee@gmail.com> for a Zoom link to the meeting.

Rotary Club Meeting

The Monteagle-Sewanee Rotary will meet at 8 a.m., Thursday, Aug. 13, at the Sewanee Inn. The meeting will also be available to members and interested guests via Zoom transmission. Guest speaker will be Clint Smith on COVID-19 and testing. To eat breakfast at the Sewanee Inn, contact May Kamalick <maykamalick@gmail.com> on Monday each week to make a reservation.

SUD Meeting

The Sewanee Utility District of Franklin and Marion Counties Board of Commissioners is scheduled to meet at 5 p.m., Tuesday, Aug. 18, at the utility office on Sherwood Road. If a customer is unable to attend but wishes to bring a matter to the board, call 598-5611, visit the office, or call a board member. Your board members are Doug Cameron, Randall Henley, Ronnie Hoosier, Charlie Smith and Paul Evans.

Sewanee Community Council Meeting Schedule

The Sewanee Community Council has announced its meeting schedule for 2020-21. Meetings are at 7 p.m., and are currently held via Zoom.

Monday, Sept. 14; Monday, Oct. 26; no meetings in November or December; Monday, Jan. 11; Monday, March 22; Monday, May 24.

There are meeting dates held in reserve, should agenda items warrant a meeting: Monday, Feb. 22, hold on reserve; Monday, April 19, hold on reserve; Monday, June 28, hold on reserve.

The Community Council consists of 19 elected and appointed members. It meets throughout the year to discuss matters concerning the Sewanee community. The public is invited to attend these meetings.



91 University Ave. Sewanee
sewaneehouses.com | (931) 598-9244

**UNIVERSITY
REALTY**

SEWANEE
TENNESSEE

Lynn Stubblefield
(423) 838-8201
Susan Holmes C'76
(423) 280-1480
Freddy Saussy, C'99
(931) 636-9582
Dana Yokley
(931) 691-8162



1722 TIMBERWOOD TRACE.
Custom log home w/ 1,129 linear feet incredible view, 2,000 sq ft deck loaded with extras. YouTube Mallison Home Monteagle, TN \$935,000



SHERWOOD BLUFF LOT.
Overlooking Lost Cove. 4 acres. Lots of bluff frontage. Three miles from Sewanee. Small family cemetery. Stunning view. \$80,000



482 TENNESSEE AVE. Coming soon! 3 or 4 Br., 3 Ba., large master, sleeping porch, 2 fireplaces, large living room, central campus.



SUNSET BLUFF VIEW. 15 acres, private and close to town, priced at \$125,000



101 CARRUTHERS RD. Extraordinary sunset view on the Domain. 2820 sq. ft. w/unfinished basement. Two fireplaces and views from every room. \$574,000



CHICKORY LANE. 1.23 acres. \$20,000



LAKE EVA. Wishing for a sunset bluff and a private lake? This is it! Eva Lake is a lovely acreage looking for a house. Come build your dream home.



771 BREAKFIELD RD. Absolutely lovely new home in Wiggins Creek Ph II, in Sewanee. Front porch view of the bucolic equestrian center directly across the street. Completely finished in-law or large family quarters, walk-out basement with 3 additional bedrooms, full bath and large common room. Perfect for a large family or a short-term rental.



195 TENNESSEE AVE. 4,000+ sq. ft. of heated living space. House and studio/guest house w/separate drive, gourmet kitchen, 2 masters, 2 fireplaces, formal dining, hardwood floors, beautiful skylights, on an acre. \$589,000



SHERWOOD RD. Stunning sunrise view over Lost Cove. 3.3 miles from Univ. Ave. 1,000+ feet of view 17.70 ac. \$315,000



JUMP OFF MOUNTAIN RD. 3 Br., 2 Ba. Workshop on 3 acres \$189,900



A PORTION OF SALES MADE THROUGH OUR OFFICE WILL BE DONATED TO HOUSING SEWANEE

Church News

All Saints' Chapel

Instead of pre-recording our service, the Chapel will live stream on Sunday morning at 10 a.m. on our website <<https://new.sewanee.edu/campus-life/believing/all-saints-chapel/>>. If you can't remember that link, you can simply google "All Saints Chapel Sewanee" to find us easily. In addition to the live stream, you can also find on our website a link to the day's service bulletin. There you will also find archived videos of each live stream in case you happen to miss the morning service in real-time.

Good Shepherd

Good Shepherd Catholic Parish has resumed a schedule of Masses, with many changes to the services to safeguard the health of those participating. Mass is at 5 p.m. on Saturday and 8 a.m. and 10:30 a.m.

on Sunday, with a 2 p.m. Spanish Mass on Sunday. St. Margaret Mary Mission Church is temporarily meeting at Good Shepherd Church.

Morton Memorial UMC

During the pandemic, Morton Memorial has suspended worship in the Sanctuary but makes the weekly service available through Morton's web page and Facebook. You can view the service any time after 11 a.m. on Sunday via a link at <Mortonmemorialumc.com>. Past messages are also available. Prayer requests can be sent to <mortonmemorialumc@gmail.com>.

Otey Memorial Parish

Our Sunday worship service will stream live at 8:30 a.m. on our Facebook page. The service record-

ing will also be available at 11 a.m. and afterward on our YouTube channel and our Facebook page.

The Community Action Committee continues to serve the needy while observing sensible precautions, 9–11 a.m., Monday–Friday. Please call (931) 598-5927.

The parish office is staffed limited hours and staff members are working remotely. The office phone (598-5926) and email <oteyparish@gmail.com> are being monitored and we are responding to messages. To arrange to meet with a staff member, please call or email in advance.

Sisters of St. Mary

In today's world, you can't always change the amount of stress

around you, but you can change the way you respond to it. This is where adaptogens come in. Adaptogens work with your body to improve your ability to not only handle stress, but to rise above it. This diverse class of herbs is found on every continent and has been used by every traditional culture, indicating the ancient wisdom of applying adaptogens to the modern world.

Join us and learn from the Herb Girls, one of whom is Eileen Brantley, a member of the Community of St. Mary Board of Advisors, and one of the first Organic Prayer Program interns at the convent.

Brantley graduated from the University of the South in 2013 with a Bachelor of Science De-

gree in Ecology. She went on to become a Certified Permaculture Designer from the Asheville Institute, a Master Gardener of TN in Davidson County, a Certified Holistic Herbalist from the Blue Ridge School of Herbal Medicine, a Nutritional Therapy Practitioner, and a Certified RESTART Instructor. Brantley obtained her Master's Degree in Agribusiness from the University of Georgia in 2019.

This 90-minute session will be held on Saturday, Aug. 29, from 10–11:30 a.m. online on Zoom and will involve a presentation and demonstration as well as time for questions. The cost of the session is \$20, and participants can register at <www.communityofstmarysouth.org>.

Church Calendar

Abundant Life Assembly of God, Cowan

10:30 a.m. Worship, Sunday

All Saints' Chapel

(Please join us for worship on our website <<https://new.sewanee.edu/campus-life/believing/all-saints-chapel/>>

10 a.m. Holy Eucharist, Sunday

Bible Baptist Church, Monteagle

10 a.m. Worship Service, Sunday

5:30 p.m. Evening Service, Sunday

5:30 p.m. Evening Worship, Wednesday

Chapman Chapel Church of the Nazarene, Pelham

9:30 a.m. Sunday School, Sunday

10:45 a.m. Morning Worship, Sunday

6 p.m. Evening Worship, Sunday

7 p.m. Bible study, Wednesday

Christ Church, Monteagle

10:45 a.m. Holy Eucharist, Sunday

noon Service, Wednesday

Christ Episcopal Church, Tracy City

(services canceled until further notice)

10 a.m. Adult Bible Study, Sunday

11 a.m. Holy Eucharist, Sunday

Christ the King Anglican Church, Decherd

9 a.m. Sunday Service, Sunday

6:30 pm. Healing/prayer service

(services also available on Ctk's FB Live page)

Cowan Fellowship Church

11 a.m. Worship Service, Sunday

Cumberland Presbyterian Church, Cowan

11 a.m. Worship, Sunday

(also www.facebook.com/cowancpchurch/)

Cumberland Presbyterian Church, Monteagle

9:30 a.m. Bible Study, Sunday

11 a.m. Worship Service, Sunday

Cumberland Presbyterian Church, Sewanee

9 a.m. Worship Service, Sunday

10 a.m. Sunday School, Sunday

Decherd United Methodist Church

9:45 a.m. Sunday School, Sunday

10:50 a.m. Worship Service, Sunday

Epiphany Mission Church, Sherwood

(services canceled until further notice)

10:30 a.m. Holy Eucharist, Sunday

First Baptist Church, Cowan

9:15 a.m. Sunday School, Sunday

10:25 a.m. Worship, Sunday

First Church of the Nazarene, Cowan

11 a.m. Worship Service, Sunday

Good Shepherd Catholic Church, Decherd

8 a.m. Mass, Sunday

10:30 a.m. Mass, Sunday

2 p.m. Spanish Mass, Sunday

5 p.m. Mass, Saturday

Goshen Cumberland Presbyterian Church

11 a.m. Worship Service, Sunday

Grace Fellowship Church

10:30 a.m. Sunday School/Worship Service, Sunday

Harrison Chapel Methodist Church, Midway

(FB Live service below)

8 a.m. Radio Show, Sunday (WSGM 104.7 FM)

11 a.m. Worship Service, Sunday (FB Live)

Hobbs Hill Community Church, Tracy City

10 a.m. Sunday School, Sunday

11 a.m. Morning Service, Sunday

5 p.m. Evening Service, Sunday

6 p.m. Evening Service, Wednesday

Midway Baptist Church

9:45 a.m. Sunday School, Sunday

10:45 a.m. Morning Service, Sunday

6 p.m. Evening Service, Sunday

6 p.m. Bible Study, Wednesday

Midway Church of Christ

10 a.m. Bible Study, Sunday

11 a.m. Morning Service, Sunday

6 p.m. Evening Service, Sunday

Monteagle Church of Christ

11 a.m. Morning Service, Sunday

6 p.m. Bible Study, Wednesday

Monteagle First Baptist Church

11 a.m. Worship Service, Sunday

6 p.m. Bible Study, Wednesday

Monteagle Seventh-Day Adventist

11 a.m. Worship, Saturday

Morton Memorial United Methodist, Monteagle

(service available online afterward, link is at

<Mortonmemorialumc.com>)

11 a.m. Worship Service, Sunday

6 p.m. Bible Study, Wednesday

Mountain of God Tabernacle, Monteagle

(online worship services via Zoom. Info: call (931)

924-5339 or go online, <www.WildfireOnTheMountain.com>)

11 a.m. Worship Service, Sunday

6 p.m. Prayer Service, Wednesday

New Beginnings Church, Monteagle

10:45 a.m. Worship Service, Sunday

5 p.m. Worship Service, Sunday

New Beginnings Church, Pelham

9:45 a.m. Worship Service, Sunday

New Creations Ministries, Rayburn Chapel

4 p.m. Prayer Meeting, Sunday

New Hope Church of God in Christ, Cowan

11 a.m. Sunday Service, Sunday

6 p.m. Sunday Service, Sunday

Otey Memorial Parish Church

8:30 a.m. (and available afterward)—Sunday service on the Otey Memorial Parish Facebook page and the Otey Memorial Parish YouTube channel. For info on how to participate in Sunday School or Forum, contact <oteyformation@gmail.com>. Repeats at 11 a.m.

Pelham United Methodist Church

9:45 a.m. Sunday School, Sunday

11 a.m. Worship Service, Sunday

St. Agnes' Episcopal Church, Cowan

11 a.m. Holy Eucharist, Sunday

St. James Episcopal Church

9 a.m. Morning Prayer Rite II, conference call

St. Margaret Mary Catholic Church, Alto

(temporarily meeting at Good Shepherd, Decherd)

Sewanee Church of God

10 a.m. Sunday School, Sunday

11 a.m. Morning Service, Sunday

6 p.m. Evening Service, Sunday

Sisters of St. Mary's Convent

(Convent and Chapel closed until further notice)

8 a.m. Holy Eucharist, Sunday

5 p.m. Evensong, Sunday

7 a.m. Morning Prayer, Tuesday–Friday

7:30 a.m. Eucharist, Tuesday–Friday

5 p.m. Evening Prayer, Tuesday–Sunday

7:45 p.m. Compline, Tuesday–Friday

7:30 a.m. Morning Prayer, Saturday

8 a.m. Eucharist, Saturday

Tracy City First Baptist Church

10:45 a.m. Morning Worship, Sunday

Tracy City First United Methodist Church

(services canceled until further notice)

8:30 a.m. Early Service, Sunday

9:45 a.m. Sunday School, Sunday

11 a.m. Morning Worship, Sunday

6 p.m. Evening Bible Study, Sunday

5:30 p.m. Youth Fellowship, Wednesday

Trinity Episcopal Church, Winchester

(services canceled until further notice)

9:15 a.m. Adult Forum, Sunday

10:30 a.m. Holy Eucharist, Sunday

United Pentecostal, Monteagle

10 a.m. Sunday School, Sunday

11 a.m. Worship, Sunday

7 p.m. Worship, Wednesday

Unitarian Universalist, Tullahoma

(services canceled until further notice)

10 a.m. Service, Sunday

6 p.m. Tullahoma Sangha, Wednesday



Obituaries

Ruby Mae Johnson

Ruby Mae Johnson, age 96 of Sewanee, died on July 26, 2020, at her home. She was born on Oct. 26, 1923, in Sewanee, to Charlie William and Gladys Mae Rousey Johnson. She had been previously employed at the shoe factory, Sewanee Steam Laundry, and at the Sewanee Children's Center. She was a member of Midway Baptist Church. She was preceded in death by her parents; and brothers Charles Johnson, Jackie Johnson, and Joe Johnson.

She is survived by her siblings Betty Johnson, Buddy Johnson, Johnny Johnson, and Judy Johnson, all of Sewanee, and Jim Johnson of Estill Springs, and many nieces, nephews, great-nieces and -nephews.

Funeral Services were on July 29, 2020, from the Chapel of Moore-Cortner Funeral Home with Minister Michael Johnson officiating. Interment followed in Eastern Star Cemetery. In lieu of flowers, the family requests memorial donations be made to Midway Baptist Church. For complete obituary go to <www.moorecortner.com>.

Wesley John Latham

Wesley "Wee-eye" John Latham, age 52, died on July 14, 2020, in Manchester. He was born on Dec. 24, 1967, in Winchester, and was a 1986 graduate of Huntland High School. He attended Shelbyville Vocation Technical School. He was preceded in death by his grandparents, John Alexander and Bernice Latham, and Albert Cray Williams.

He is survived by his parents, Howard and Elaine Latham of Huntland; sisters, Patricia (Dwayne) Stevens of Sherwood, Nancy May of Madison, Ala., and Marie (Jeff) Stevenson of Huntland; grandmother, Lela Mae Williams of Monroe, N.C., four nieces, three nephews, one great-niece, and two great-nephews.

A Celebration of Life Service was on July 16, 2020 from the Chapel of Moore-Cortner Funeral Home with Bro. Mike Robertson officiating. Interment followed in Maxwell Cemetery. In lieu of flowers, memorial donations may be made to Multi-County Cancer Support Network (MCCSN), 501 W. Broad Street, Decherd, TN 37324. For complete obituary go to <www.moorecortner.com>.

Kenneth Owen Layne

Kenneth Owen Layne, age 77 of Pelham, died on June 20, 2020, at St. Thomas Rutherford Hospital. He was born on May 29, 1943, to Jay and Huerta Gilliam Layne. He had a passion for cooking and for being a chef at Clifftops. He was preceded in death by his parents; brothers, Harlon, Fred and Lonnie Layne; and sisters Linda O'Neal, Ella Mae Blankenship, Gladys Sanders, Telma Layne, Louise Shield and Juanita Layne.

He is survived by his wife, Bunia Nunley Layne; sons, Kenneth "Kenny" Layne and Timothy Layne; sister Arlene Layne and two grandchildren.

A Memorial Service was on July 25, 2020, at Bethel Cemetery in Pelham, Tenn. For complete obituary go to <www.cumberlandfuneralhome.net>.

Marlan Agnes King McBee

Marlan Agnes King McBee, age 69 of Sewanee, died on Aug. 2, 2020, at St. Thomas Rutherford Medical Center, Murfreesboro. She was born on June 28, 1951, in Sewanee to Thomas Preston and Mary O'Dear King. Before her retirement, she had been employed for 10 years at the University of the South as a custodian. She was preceded in death by her parents; sister, Lisa Tate; and brother, Clinton King.

She is survived by her loving husband of 51 years, LeRoy McBee of Sewanee; children, Dawn Thomson and Jennifer (Michael) French, both of Sewanee, and Shane (Chanda) McBee of Monteagle; siblings Jeff (Amanda) King of Monteagle, Joyce (Billy) Sells of Sewanee, Mary Miller of Illinois, Doris (Lewis) Haney of Sewanee; seven grandchildren, eight (almost nine) great-grandchildren; and many nieces and nephews. Private family services are planned. For complete obituary go to <www.moorecortner.com>.

*“A somebody was
once a nobody who
wanted to and did.”
John Burroughs*

Sewanee Realty

Working to Achieve Your Goals
Realtors@SewaneeRealty.com
www.SewaneeRealty.com
115 University Ave., Sewanee, Tenn.

Margaret Donohue,
Principal Broker • 931.598.9200
Patsy Truslow,
Broker • 931.636.4111
Marie Ferguson,
Affiliate Broker • 931.952.2468
Alice Van Hooser Roberts,
Affiliate Broker • 931.581.9082



MLS 2173080 - 1045 Winterberry Dr., Monteagle. \$365,000



MLS - 191 Girault Jones, Sewanee. \$410,000

**FOR RENT - 2 bed, 2 bath, bluff home
in Monteagle, fully furnished,
\$1,500 per month.
Contact Marie Ferguson 931-952-2468**



MLS 2159634 - 647 Carter Rd. \$249,000



MLS 2133351 - 112 Maple St., Sewanee. \$196,000



MLS 217490 - 125 Palmetto Ave., Sewanee. \$175,000



MLS 2155746 - 118 Cobbs Ln., Sewanee. \$294,900



MLS 2145687 - 72 Maxon Ln., Sewanee. \$479,500



MLS 2159858 - 1387 Cooleys Rift. \$396,000



MLS 2116520 - 394 Dykes Hollow Rd. 10+/- acres. \$245,000



MLS 2166468 - 10879 US 41, Monteagle. \$318,000



MLS 2112396 - 1020 Sherwood Rd., Sewanee. \$189,000



MLS 2136495 - 222 Lily Ln., Jasper. \$99,500



MLS 2154396 - 114 Maxon Ln., Sewanee. \$379,000



17 Oliver Ln., Monteagle. Four homes. \$199,900



MLS 2143607 - 2230 Sherwood Rd., Sewanee. \$169,000



MLS 2151468 - 1834 Lynchburg Rd. \$265,000

BLUFF TRACTS		
9 Jackson Pt. Rd. 12.66 ac	2105112	\$159,000
36 Long View Ln. 2.57 ac	2073074	\$65,000
16 Laurel Lake Dr.	1989467	\$82,000
14 Jackson Pt. Rd 18.6 ac	1803643	\$129,500
0 Eagle Rock Rd., lot 34	2163623	\$25,000

LOTS & LAND		
Deepwoods Rd. Lot 125, 8.46 ac	2152060	\$49,000
Cooley's Rift Lot 10, 4.63 ac	2151255	\$99,000
Bear Ct., .51 ac, #18	2130056	\$29,000
Bear Ct., .5 ac, #19	2130059	\$29,000
Bear Ct., .58 ac, #20	2130058	\$29,000
13 Browbend Dr., 1.9ac	2130040	\$54,000
14 Browbend Dr., 1.5 ac	2130051	\$54,000
8 Jackson Pt. Rd. 5 ac	2115740	\$36,000
1159 Sassafraas Ct., 5.27 ac	2072615	\$59,000



BLUFF - MLS 2169233 - 1833 Laurel Lake Dr.,
Monteagle. \$429,000



BLUFF - MLS 2063145 - 185 Turning Point Ln.,
Sewanee. 12+acres. \$698,000

Gray (from page 1)

After college, Gray considered pursuing a Ph.D. in theology. Enrolled in the graduate program at Vanderbilt Divinity School, a professor in one of his classes told the story of the people of Israel sent into slavery in Egypt and Moses leading them out. "How he used familiar biblical narrative to interpret the world as it is struck a chord with me," Gray said. "I was interacting with the bible in a new way and it was enlivening." Gray realized bringing others to that sort of interaction with scripture was "what I wanted to do with my life and the place where that sort of work would happen most frequently would be in the pulpit."

Joining Gray in Sewanee are his wife, Julianna Gray Cappelletti, a priest and counselor, and their two children, Joseph, age nine, and Francesca, age six.

Gray acknowledged the pandemic has made it take longer "to put down roots." Yet Gray finds the challenging times "energizing professionally and giving a clarity of focus to what the fall's ministry will look like."

In response to the observation that due to the pandemic he assumed his new role with little fanfare, Gray said. "Actually, it's fine. Having a low-key entrance suits me."

July Lease Committee Summary

The following items were approved: June minutes; request to transfer Lease No. 501 (Wilson/Moseley), located at 118 Cobbs Ln., to Jess and Elmore Hill, Jr.; request to transfer Lease No. 693 (Swygart), located at 640 Georgia Ave., to the LaGard and Ruth Smith Trust; request to transfer Lease No. 136 (formerly Naylor Estate), located at 127 Powhatan Cir., to Robert and Nancy Grimes; request to transfer Lease No. 992, located at 238 Wiggins Creek Dr., to the Jane Benton Fort Revocable Trust; request from Carolyn Wofford, Lease No. 637, located at 98 Palmetto Ave., to add Benjamin Wofford to lease; request to add shed and pergola to Lease No. 1066, located at 653 Georgia Ave.

Leasehold information is available online at <leases.sewanee.edu> or by calling the lease office at 598-1998.

Please be sure and contact the Franklin County Planning and Zoning for any needed permits as well as the local utility companies to ensure there are no issues before beginning your project.

Planning and Zoning office, (931) 967-0981; Duck River Electric Membership Corporation, (931) 598-5228; Sewanee Utility District, water and sewer, (931) 598-5611; Elk River Public Utility District, natural gas, (931) 967-2110.

Agenda items are due by the fifth of each month for Lease Committee meetings. If the fifth falls on a weekend, then items are due the following Monday. Lease Committee meetings are normally the third Tuesday of the month.



COVID test site signs line University and Tennessee avenues to guide University students to the testing site. The University is not offering testing to the public.

Sewanee Masking Directive Reminder

Earlier this month University Vice-Chancellor Reuben Brigety, instituted a mandatory mask directive for all persons on the Domain, including residents, visitors, students, faculty, and staff. The directive went into effect July 3, 2020, in response to the serious threat to public health posed by the increasing incidence of the novel coronavirus in Tennessee.

Signage reminding customers of the directive is posted at downtown businesses and additional, larger signs will make visitors aware.

Security officers are in the downtown Sewanee area to help remind visitors and Domain residents to wear masks when they are within six feet of other people. The officers will not use force to bring about compliance, but will issue a friendly reminder and offer a mask to someone who is not wearing one.

"Our strategy for keeping our community safe as we prepare to welcome back students from around the country is to keep transmission of the virus to a minimum and to be able to track the virus so that we can stop its transmission," said Brigety. "A universal testing regime and masking requirement are essential to this effort. If it fails, we

may be forced to go into lockdown and/or evacuate students from the Mountain."

"I am asking everyone in our community to encourage others to comply. Please remind others to wear a mask when they are within six feet of one another and to have a mask handy at all times when they are in public."

The University posts frequent updates to its COVID-19 website <www.COVID19.sewanee.edu> to keep the campus and Sewanee community informed.

The masking directive states: All residents of, and visitors to, Sewanee are required to wear face coverings over their nose and mouth when in public or inside buildings other than private residences, with five exceptions: when they are alone; when they are asleep; when they are eating or drinking; when they are maintaining a physical distance of six feet or more from any other person; and if they have a documented medical condition that precludes their wearing a face covering. If in doubt, individuals should wear a mask. Everyone is asked to have a mask on their person at all times so that they may don it when circumstances require.

Arrests (from page 1)

received a call from a resident of the Raulston Avenue apartments who said she heard a young couple talking about selling drugs.

"I pulled up and there was a young woman sitting in a car," Nunley said. A young man came out of the residence briefly. Nunley discovered the temporary tags on the car had been altered.

"That's when I decided everybody's detained," Nunley said. "We're going to find out what's going on."

Nunley called Grundy County Sheriff's Deputy Leslie Turner for assistance.

The young man agreed to cooperate and turned over amounts of marijuana and methamphetamine, warranting charges of possession. The young woman is a minor. The couple did not live at the residence and were visiting a relative.

Nunley said lab tests showed none of the drugs confiscated in the two arrests contained the narcotic Fentanyl. Earlier in the summer, illegal drugs containing Fentanyl resulted in a death. Other users' lives were saved when Monteagle Police administered Narcan.

Monteagle Police Chief Jack Hill also assisted with the July 29 and July 30 arrests.

"The Monteagle Police Department is doing an outstanding job of cleaning up the drugs in the town," said Monteagle Vice Mayor Tony Gilliam.

Phased Reopening Plans

The duPont Library building is currently open for University faculty, staff and students only. The library will continue to provide contactless pick-up for all patrons.

To request materials, email <reserves@sewanee.edu> or call (931) 598-1664. Be sure to include: the title of the material(s) you want; a call number would be appreciated; your name, phone number, and email address. For more information go to <https://library.sewanee.edu/library>.

The Fowler Center is opening back up in phases. Currently, it is open on a modified schedule for University students, faculty, staff and University retirees only. Go to <sewaneeetigers.com> for more information.

Stirling's will reopen on Monday, Aug. 10. There will not be any walk up ordering. Pre-order by downloading the Toast Takeout app, or call 598-1786. Orders can be picked up on the side porch. Please wear a mask unless actively eating, and follow the one-way direction.

ADAPTIVE LANDSCAPE LIGHTING

Paul Evans | 931.952.8289
adaptivelandscape-lighting.com



Need More Room?

We Sell Boxes!

Sewanee Mountain Storage

(931) 598-5682

Evan Barry

Hwy 41 - Between Sewanee & Monteagle

■ Video Monitoring 5x10 | 10x10 | 10x20 ■ Security Camera

Temperature Controlled Units

5x5 | 5x10 | 10x10 | 10x15 | 10x20

Temperature and Humidity Regulated



TOMMY C. CAMPBELL

FOR YOUR IMPROVEMENTS

Call (931) 592-2687

Free Estimates • No Job Too Small!

DRIVEWAY WORK • GRAVEL HAULING

• **DOZER & BACKHOE**

plus Land Clearing • Concrete Work • Water Lines • Garage Slabs • Sidewalks • Porches & Decks • Topsoil & Fill Dirt • Septic Tanks & Field Lines



ROB MATLOCK
CONSTRUCTION COMPANY
NEW HOME BUILDING
AND REMODELING

PHONE: 931-598-5728
CELL: 931-580-5728
EMAIL: RMATLOCKCONSTR@GMAIL.COM

MATLOCK

State Licensed • Fully Insured

BLUE OAK PROJECTS, LLC

Now hiring Project Managers with residential & commercial construction experience, full time

Pay based on experience & outlook, with growth potential

Benefits package includes:

- Health/dental/vision insurance
- Voluntary life insurance
- Voluntary accident, critical illness & disability
- Performance bonuses
- Paid holidays

For more information, please call 931-962-1655 or send us an email at <info@blueoakprojects.com> • www.blueoakprojects.com



Monteagle Sewanee, REALTORS®

Dedicated to Service!



Deb Banks, Realtor
(931) 235-3385
debbanks8@gmail.com



Ray Banks, Broker/Owner
(931) 235-3365
rbanks564@gmail.com



Dee Underhill Hargis, Broker
(931) 808-8948
aduhargis@gmail.com



Tom Banks, Realtor
(931) 636-6620
tombanks9@yahoo.com

Competent, Caring, Friendly, Fair—We're Here for You!

www.monteaglerealtors.com • 931-924-7253

337 West Main St., Monteagle

Find all the area MLS listings on our updated website!

Delivering a Complete and Accurate 2020 Census Count

The U.S. Census Bureau continues to evaluate its operational plans to collect and process 2020 Census data. Today, we are announcing updates to our plan that will include enumerator awards and the hiring of more employees to accelerate the completion of data collection and apportionment counts by our statutory deadline of Dec. 31, 2020, as required by law and directed by the Secretary of Commerce. The Census Bureau's new plan reflects our continued commitment to conduct a complete count, provide accurate apportionment data, and protect the health and safety of the public and our workforce.

Complete Count: A robust field data collection operation will ensure we receive responses from households that have not yet self-responded to the 2020 Census.

We will improve the speed of our count without sacrificing completeness. As part of our revised plan, we will conduct additional training sessions and provide awards to enumerators in recognition of those who maximize hours worked. We will also keep phone and tablet computer devices for enumeration in use for the maximum time possible.

We will end field data collection by Sept. 30, 2020. Self-response options will also close on that date to permit the commencement of data processing. Under this plan, the Census Bureau intends to meet a similar level of household responses as collected in prior censuses, including outreach to hard-to-count communities.

Accurate Data and Efficient Processing: Once we have the data from self-response and field data collection in our secure systems, we plan to review it for completeness and accuracy, streamline its processing, and prioritize apportionment counts to meet the statutory deadline. In addition, we plan to increase our staff to ensure operations are running at full capacity.

Flexible Design: Our operation remains adaptable and additional resources will help speed our work. The Census Bureau will continue to analyze data and key metrics from its field work to ensure that our operations are agile and on target for meeting our statutory delivery dates. Of course, we recognize that events can still occur that no

one can control, such as additional complications from severe weather or other natural disasters.

Health and Safety: We will continue to prioritize the health and safety of our workforce and the public. Our staff will continue to follow Federal, state, and local guidance, including providing appropriate safety trainings and personal protective equipment to field staff.

The Census Bureau continues its work on meeting the requirements of Executive Order 13880 issued July 11, 2019 and the Presidential Memorandum issued July 21, 2020. A team of experts are examining methodologies and options to be employed for this purpose. The collection and use of pertinent administrative data continues.

We are committed to a complete and accurate 2020 Census. To date, 93 million households, nearly 63 percent of all households in the Nation, have responded to the 2020 Census. Building on our successful and innovative internet response option, the dedicated women and men of the Census Bureau, including our temporary workforce deploying in communities across the country in upcoming weeks, will work diligently to achieve an accurate count.

We appreciate the support of our hundreds of thousands of community-based, business, state, local and tribal partners contributing to these efforts across our Nation. The 2020 Census belongs to us all. If you know someone who has not yet responded, please encourage them to do so today online at 2020census.gov, over the phone, or by mail.

Statement from U.S. Census Bureau Director Steven Dillingham

Grundy County Diaper Drive Underway

The Grundy Safe Baby Court team together with Judge William "Trey" Anderson III is pleased to announce the annual Grundy County Diaper Drive, which will be held for the duration of August 2020. Diaper donation bins can be found throughout Grundy County at the locations listed below. All diaper donations go directly to Grundy County families.

Families storing a surplus of outgrown diapers or those who simply want to help local families are encouraged to participate. According to the National Diaper Bank Network (NDBN), 1 in 3 American families struggle to afford diapers. Without access to clean diapers, babies are exposed to more health risks and are less likely to be accepted to daycare, which limits the ability of parents to work.

Donation bins will be available at the following locations throughout the month of August. New diaper donation sites will be added as the drive continues:

Pilot Gas Station (Monteagle); Citizens Tri County Bank (both Tracy City branches; Palmer branch); First United Methodist Church (Tracy City); Mike's Pharmacy (Tracy City); Living Water Church (Tracy City); Rock Creek Pharmacy (Coalmont); L&L Gas Station (Coalmont); Palmer Drug (Palmer); Barker's Cove Community Church (Palmer); Wiley's Pharmacy (Altamont); Grundy County Courthouse (Altamont); and Cumberland Bible Chapel (Beersheba Springs).

Heritage Center Reopens

The Heritage Center, located at 465 Railroad Ave., Tracy City, has reopened to the public as of Aug. 1, after a 5-month closure due to Coronavirus precautions. It will maintain its regular hours of Monday through Friday 10 a.m.–4 p.m., and Saturday 10 a.m.–2 p.m. Covid-19 remains a serious concern. Coronavirus precautions as set forth in guidelines of the Center for Disease Control (CDC) will be adhered to at the Heritage Center.

The Heritage Center consists of three components, a museum, an assembly hall and a library and research center. Only 10 persons will be permitted in a component at one time. The 10 persons will include visitors and Heritage Center staff. If the staff person in charge determines that more than 10 persons are in a component, a request will be made to move into another component where there are fewer than 10 persons. We ask that all visitors respect any such request and do their best to maintain at least 6-foot spacing from other persons.

Masks will be provided for all persons in the Heritage Center. We ask that masks be worn when in a component of the Heritage Center with other persons present. Hand sanitizers will also be provided for use of visitors and staff.

All are welcome at the Heritage Center. We hope visitors enjoy their visit and respect the Heritage Center's effort to comply with social distancing guidelines recommended by CDC.

New Grundy Pets Program

MARC-Marion Animal Resource Connection, is very thankful to be entrusted with money from Animal Alliance South Cumberland (AASC) to carry on the work of decreasing the number of unwanted pets in Grundy County, Tennessee through their aggressive spay/neuter assistance program. AASC stopped their program a few months ago and is transferring their remaining funds to MARC with the stipulation these funds be used for spaying or neutering dogs and cats of low-income pet owners living in Grundy County. Kathy Bouldin and the AASC volunteers worked tirelessly for many years and made a huge impact on reducing the unwanted pet population on the mountain. By granting their remaining money to MARC, their work will continue.

AASC's mission fits well with MARC's mission to improve the lives of animals through spay/neuter, humane education, and rescue/rehoming. If you live in Grundy County and receive food stamps or TennCare, then you are eligible through this program to get your dogs or cats "fixed" through MARC. If you do not receive food stamps or TennCare, but are still low income, please call and ask for help. There may be other ways to verify your income status.

To schedule your dog or cat to be spayed or neutered call MARC's message line at (423) 240-9074 and choose option one, then leave a brief message with your name, and phone number. A MARC volunteer will call you back. To learn more about MARC, go to <http://marc4change.org>.

Brown's Body Shop

Steve and Kim Young - Owners
Steve Hartman - Shop Manager

710 College St. • Winchester
931-967-1755 • Fax 931-967-1798

Come by and see us. We appreciate your business.

Our Work is Guaranteed!

Tree of Life Homecare, LLC

"Neighbors Helping Neighbors"

- * Licensed and insured home-based services for the elderly and disabled
- * CHOICES provider, Private Pay, Veterans Affairs, AAAD

931-592-8733

treeoflifehomecare.com

NOW ACCEPTING APPLICATIONS FOR CAREGIVERS

Shenanigans RESTAURANT

PUB & GRILL / PIZZA / DELI / CATERING
CALL FOR CURBSIDE, TAKE-OUT & DELIVERY

HOURS: 11 am-9 pm Sunday -Wednesday
11 am-10:30 pm Thursday-Saturday

DOWNTOWN SEWANEE SINCE 1974

ORDER: <https://shenanigans1974.square.site>

CALL: 931.598.5774

FIND YOUR HAPPY PLACE AT SHENANIGANS

June Weber Gooch-Beasley Realtors

Serving the Sewanee and Monteagle area
with quality real estate service:
-48 years of experience
-Mother of Sewanee alumnus

gb

www.gbrealtors.com juneweber@me.com
June Weber, CRB, CRS, GRI Broker 931.636.2246
GOOCH-BEASLEY REALTORS 931.924.5555



**Drive Safely
in School
Zones!**

Mooney's
Market & Emporium

- ♦ CALL FOR CURB SERVICE
- ♦ ORGANIC, LOCAL FOODS
- ♦ SUPPLEMENTS & TOILETRIES
- ♦ GARDEN & BIRD SUPPLIES
- ♦ YARN & ACCESSORIES
- ♦ ANTIQUES, JEWELRY, GIFTS

Store open 10-6 daily
931-924-7400
1265 W Main • Monteagle

**Need a designated study
space in your home? We are
full of ideas. Let's talk...**



Custom home remodeling begins with...

Joseph's Remodeling Solutions
A Division of Sumpter Solutions, LLC

Taking Quality to the Next Level

Licensed - Insured - Green Certified

931-598-5565

joseph@josephsremodelingsolutions.com
www.josephsremodelingsolutions.com

State Parks Host Virtual Bicycle Ride Across Tennessee

Tennessee State Parks has announced that the Bicycle Ride Across Tennessee (BRAT) will be a virtual event this year for the health and safety of riders and park personnel.

“This is a great event for cyclists across our state, and the virtual format will allow everyone to participate while still practicing social distancing,” Jim Bryson, deputy commissioner of the Tennessee Department of Environment and Conservation, said. “It’s a way to maintain personal goals but still follow safety guidelines in light of COVID-19.”

Under the virtual format of the month-long event, Sept. 1-30, riders can log their miles on <lovetoride.net> as part of the Bicycle Ride Across Tennessee Cycling Club. The goal is for participants to ride 688 miles, the distance from Bristol to Memphis, in the month of September. Since this year is the 31st annual Bicycle Ride Across Tennessee, the club has a goal of 31,000 miles collectively.

In the past, riders would take out-and-back rides together. The virtual ride encourages riders to keep riding with shared goals in an online community and with shared routes across the state. The ride is non-competitive.

The cost to participate is \$150. Riders can register at <<https://tn-stateparks.com/blog/the-bicycle-ride-across-tennessee-is-bringing-riders-together-virtually>> and connect with the BRAT on its Facebook page.

All participants will receive:

Access to trusted routes from past BRAT rides at multiple Tennessee State Parks through Ride with GPS;

2020 BRAT jersey and T-shirt;

Eligibility to win prizes throughout September;

Access to invitation-only small group rides located across the state of Tennessee with the BRAT director;

The opportunity to build your own cycling vacation around the provided routes with lodging at Tennessee State Parks;

The opportunity to enjoy park activities and guided programs just like you would at the normal Bike Ride Across Tennessee.

Participants do not have to live in Tennessee to participate and are welcome to log their miles any way they choose, including road cycling, indoor cycling, gravel or mountain biking.

Proceeds go to the development and protection of the Cumberland Trail, a 300-mile-long footpath down the eastern edge of the Cumberland Mountains, and the Tennessee Park Rangers Association, which provides scholarships and training for park rangers throughout the state to continue education in order to provide the highest level of protection for Tennessee State Parks.

Our readers want to know your business!

<ads@sewaneemessenger.com>

A Record of 173 Sewanee Student-Athletes Named to Honor Roll

The Southern Athletic Association (SAA) has announced the Winter/Spring 2020 Academic Honor Roll. A record 173 student-athletes earned the honor at The University of the South for the Easter Semester of the 2019-20 academic year.

To qualify, SAA student-athletes must have had a minimum Grade Point Average (GPA) of 3.25 or higher for the term and be a regular member of a varsity athletic team in a sport sponsored by the conference.

Along with the University best in total representatives, seven sports saw program bests: men’s basketball, women’s basketball, baseball, softball, men’s golf, women’s golf and women’s lacrosse. Additionally, two sports tied program marks: women’s swimming and diving, and men’s tennis.

Here is the breakdown of scholars for each sport: men’s basketball, 10; women’s basketball, eight; men’s swimming and diving, eight; women’s swimming and diving, 16; baseball, 28; softball, eight; men’s golf, nine; women’s golf, seven; men’s lacrosse, 14; women’s lacrosse, 21; men’s tennis, 10; women’s tennis, 11; men’s track and field, 12; women’s track and field, 11.

Go to <<https://sewaneetigers.com/landing/index>> for more information.



William Yelverton of Sewanee, posted a time of 57.49 in the 400m sprint event at the American Track League meet in Marietta, Ga., on July 25, at Life University. This is presently the fastest 400m time in the world this year in the M60 (60-64) age group, and would have medaled in the last two Masters World Championships. This was Yelverton’s first race in almost 2 years, after sitting out the 2019 season with an injury. Yelverton is Visiting Professor of Music at the University of the South where he teaches classical guitar, and is a five-time USATF Masters National Champion sprinter in the 400m event, and a Masters World Champion in the indoor 200m event. He has also competed in 54 college track meets since turning 50.

Project HELP from DREMC

Duck River Electric Membership Corporation (DREMC) continues to support their members by providing payment assistance through Project HELP.

The goal of this program is to enable DREMC members to stay current on their electric bills during times of financial stress, such as the COVID-19 pandemic and associated rise in unemployment.

This emergency residential energy assistance program is facilitated by generous monthly and one-time donations from members and DREMC employees and is overseen by local nonprofit organizations in each of the seven counties served by the cooperative. Over the past five years, Project HELP has yielded more than \$214,000 in donations. A contribution of an additional \$30,000 was recently made by DREMC and was matched by the Tennessee Valley Authority through their COVID-19 Community Care Fund.

“Helping our members during difficult times makes a difference to the families who are struggling,” said DREMC President and CEO Scott Spence. “With support from Project HELP, many are receiving assistance with electric bill payments as economic challenges continue.”

Locally DREMC partners with Franklin County Good Samaritan Association to offer Project HELP assistance year-round.

“Project HELP gives Duck River Electric employees a resource to offer members in a time of need,” said Office Supervisor Amy Holcomb. “Members can apply for immediate relief of their financial need through Project HELP rather than extending due dates and prolonging the worry associated with making a payment. Project HELP is a great support for those in need of assistance.”

To determine program eligibility and apply for assistance through Project HELP, visit the Franklin County Good Samaritan Association at 1725 Decherd Blvd., in Decherd. Normal hours are Mondays, Wednesdays and Fridays from 10 a.m. until 2 p.m. To speak with someone at the organization, call (931) 967-9336.

Community donations are vital to the success of Project HELP. To make a monthly donation, check the appropriate box on your DREMC billing statement, contact your local office or visit <www.dremc.com>. One-time donations are also accepted at any DREMC office. All donations go directly to help those who qualify for Project HELP assistance.

“If you are unable to pay the electric bill, remember that Project HELP may provide part or all of the solution,” said Spence.



5
BEDROOMS

305 CLARAS POINT ROAD
Sewanee, TN 37375

5.1
BATHS

Exquisite Sewanee bluff estate, sunlit Southern view. Meticulously & tastefully refurbished, old-world charm w/modern amenities. Precisely proportioned, orig. design by one of Nashville’s premier architects. Secluded, lush, short walk to all Sewanee, on Perimeter Trail. 5 bdrms, 5 full baths, 10 ft ceilings, multiple built-ins, floor to ceiling windows, 3 fireplaces, mult. terraces, hardwood floors, balconies. Perfect for relaxing/entertaining. Recent successful Airbnb SuperHost (see reviews).

6,057
SQUARE FEET

\$985,000

Zeitlin | Sotheby’s
INTERNATIONAL REALTY

WARD AND SHELLEY CAMMACK
615.319.9862
ward.cammack@zeitlin.com

Green Hills 615.383.0183 | Belle Meade 615.202.7777 | Franklin 615.794.0833 | zeitlin.com
The accuracy of all information is not guaranteed or warranted and should be independently verified. Each office is independently owned and operated.

Winchester Podiatry

CHARLES D. GANIME, DPM

Board Certified in Foot Surgery
Diplomate, American Board of Podiatric Surgery
New Patients of All Ages Welcome! We Treat Your Feet! Most Insurance Accepted, Including TennCare

155 Hospital Road Suite 1, Winchester.
www.winchesterpodiatry.com

931-968-9191

G. Robert Tubb II, Owner
931-967-3595
A1ChimneySpecialist.com

CSIA Certified Technicians
Video Inspections • Sweeping
Restoration • Masonry Repair
Custom Caps & Dampers
Leak Repair & Water Proofing
Wood Stove & Chimney Installs
Gas Log Service & Installs
Dryer Vent Cleaning/Repair

SCHOOL CALENDAR

Aug. 8

Boarding Students Return, SAS

Aug. 10

First day of classes, Grundy County

Aug. 13

Orientation new students, College of Arts & Sciences

Aug. 14

Orientation begins, School of Theology

Aug. 17

Classes Begin, SAS
First day of classes, College of Arts & Sciences

Aug. 24

First day of classes, School of Theology

Sept. 7

Labor Day, no class, Franklin County, Grundy County

Sept. 8

First day of classes, Marion County

QUICK LINKS

Schedules may change.
Franklin County <<https://www.fcstn.net>>
Grundy County <<http://www.grundycoschools.com>>
Marion County <<https://www.marionschools.org>>
St. Andrew's-Sewanee <<https://www.sasweb.org>>
University of the South <<http://www.sewanee.edu>>

Fresh Food at Area Markets

The Sewanee Gardeners' Market is open every Saturday, 8–10 a.m. in the summer. The Market is located on Highway 41A, next to Hawkins Lane.

The South Cumberland Farmers' Market has breads, fruits and vegetables, eggs, coffee and meats available. Learn more online at <<http://sewanee.locallygrown.net>>. There is also an option to help support the local food banks on the website.

The Franklin County Farmers' Market is open 7 a.m.–1 p.m., Tuesday, Thursday and Saturday on Dinah Shore Boulevard, Winchester, next to the Franklin County Annex building.



Tea on the Mountain

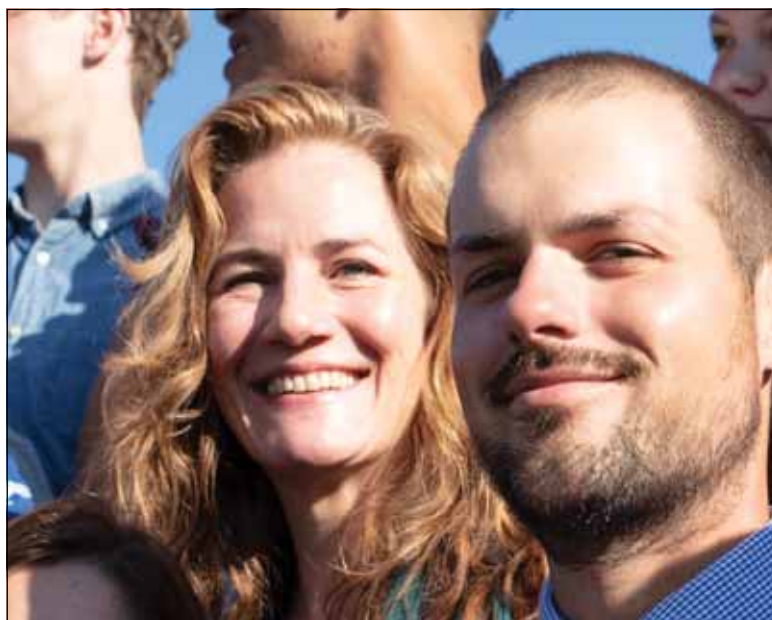
Dining room is open. All health requirements are in place.

11:30 to 4 Thursday through Saturday

DINNERS BY RESERVATION

(931) 592-4832

178 Oak Street, Tracy City



Malia Carlos and Neal Johnson were recently honored with named chairs at St. Andrew's-Sewanee School.

Carlos and Johnson Honored with Named Chairs

St. Andrew's-Sewanee School teachers Malia Carlos and Neal Johnson have been honored with named chairs at St. Andrew's-Sewanee School. Malia Carlos was recently named to the Fort Chair in Writing; Malia, a 1987 graduate of SAS, returned to the school in 2013 as Learning Resources Coordinator. She soon joined the English department staff and has since served as English department chair and directed the SAS Summer Creative Writing Camp. Carlos was recently named co-chair of the humanities department. In addition to teaching, she advises the school's Be the Change Club and is a member of the Cum Laude Society. Carlos formerly advised the Race Awareness and Dialogues Club and led the Writing Center. She formerly taught English at Amherst Regional High School and Northampton Center for Children and Families in Massachusetts. She is involved in numerous creative community endeavors including the Sewanee Praise Gospel Choir and Sewanee Spoken Word. A model of lifelong learning, Carlos holds an MFA from New England College, an MEd from the University of Massachusetts, Amherst, and a BA from Tufts University, and has participated in numerous theater and art workshops.

The Fort Chair was established in 1995 in appreciation of a major gift from Dudley Clark Fort, Sr., in honor of his daughter-in-law, Priscilla Carter Fort, and is awarded to an outstanding faculty member. The gift provides a stipend to the recipient as well as funds for professional development for the faculty in the area of writing. Past recipients include Susan Core, Phil White, Mark Brunton, Tom Gladstone, Tracy Randolph, and Geoffrey Smith.

Newly appointed mathematics department chair Neal Johnson was recently named to the Cissy Patterson Chair in Mathematics. Johnson joined the mathematics faculty at SAS in 2018. He teaches middle school and upper school classes including Math 7, Algebra I, Algebra II, and Calculus. A residential faculty member, Johnson has also served as a coach in track and field, cross country, football, and basketball. He recently served on the COVID Planning Committee for Teaching and Learning and on the mathematics hiring committee. A 2015 graduate of the University of the South, Johnson was previously Assistant Director of Annual Giving at the university where he worked closely with the athletic department to assist with donor strategy and retention, managed senior class giving opportunities, and helped to orchestrate Sewanee's annual giving days. As a student, he was a member of the varsity football team and was twice named to Southern Athletic Association Honor Roll.

Named or endowed chairs are a long-held tradition in education, dating back to Athens, Greece in AD 176. The first endowed chair in America was established at Harvard University in 1721.

BUG PROBLEMS?

We can help! Call us for a free inspection!

BURL'S TERMITE & PEST CO.

TERMITE—PEST—VAPOR CONTROL
Bonded • Insured • Home-Owned & Operated
105 Ake St., Estill Springs
(931) 967-4547 or www.BurIsTermite.com
Charter #3824 • License #17759



Local Residents Named to Sewanee's Dean's List

The following students have been named to the Dean's List at the University of the South for the Spring 2020 term. To earn a place on Sewanee's Dean's List, a student must earn a minimum grade point average of 3.625 on a 4.0 scale.

Ashley Helen Stewart of Belvidere, daughter of Judy and R. Eric Stewart.

Fiona Leigh Charnow of Decherd, daughter of Malina A. Charnow and James B. Chadwick.

Emily Hunter Green of Gruetli Laager, daughter of Ladonna and Eric D. Green.

Donald Charles Rung IV of Sewanee, son of Lisa and Donald C. Rung III.

Isabel McTague Butler of Sewanee, daughter of Sarah A. and Robert S. Butler.

Katherine McLamb Butler of Sewanee, daughter of Sarah A. and Robert S. Butler.

Rachel Marie Alvarez of Sewanee, daughter of April and Stephen L. Alvarez.

Maria Claire Mattingly, daughter of Gina and Hayden T. Mattingly of Sewanee.

Abigail Huntington Shipp, daughter of Sydney and David H.W. Shipp, Sr. of Sewanee.

John Stephen Haight II, son of Catherine E. Cavagnaro of Sewanee.

Wesley Everett Smith is the son of Jennifer and W. Scott Smith of Sewanee.

Bryan William Walker of Winchester, son of Therese and Jack B. Walker.

Voting Information

Nov. 3 is the Federal and State General Election. Early voting takes place Oct. 14–29. Voter registration deadline is Oct. 5. Dates to request ballots to be mailed is through Oct. 27.

Contact information for election offices, sample ballots and more can be found at <<https://sos.tn.gov/elections>>.

For more information, go to Franklin County <http://franklincotn.us/election_commission.html>, phone (931) 967-1893. In Grundy County email <grundycountyttn.net>, phone (931) 692-3551. In Marion County <www.marionvotes.com>, phone (423) 942-2108.



ARCHIVAL FRAMING & RESTORATION
ART CONSULTING

Open by Appointment
PLEASE WEAR A MASK

CALL HARRIET: (919) 260-2021

12569 Sewanee Hwy. • Downtown Sewanee
(931) 463-2300 • framegallerysewanee@gmail.com

Michael A. Barry

LAND SURVEYING & FORESTRY

★ ALL TYPES OF LAND SURVEYS
★ FORESTRY CONSULTING

(931) 598-0314 | (931) 308-2512



MICHELLE M. BENJAMIN, JD
Attorney & Counselor at Law

201 FIRST AVENUE, NORTHWEST
WINCHESTER, TENNESSEE 37398

(931) 962-0006
Fax: (931) 967-8613



SALES, SERVICE AND RENTALS A Full-Service Trek Bicycle Dealer

Mon–Fri 9–5 • Sat 10–2 • 90 Reed's Lane
598-9793 • woodybike@gmail.com

Check out www.woodysbicycles.com for rates, trail maps, photos, bike club links, races and much more!

BLUE OAK PROJECTS, LLC

Now hiring Lead Man position with
residential & commercial construction
experience, full time

Pay based on experience
with growth potential



Benefits package includes:

Health/dental/vision insurance
Voluntary life insurance
Voluntary accident, critical illness & disability
Paid holidays

For more information, please call 931-962-1655 or send us an email at <info@blueoakprojects.com> • www.blueoakprojects.com

NATURENOTES

by Yolande Gottfried



Coreopsis. Photo by Yolande Gottfried

Bypass Wildflower Beds

Many folks have noticed the display of wildflowers along 41A (the Bypass) and have been curious about what they are and how they got there. It seems that TDOT has adopted a new objective of establishing roadside plants that support pollinators. Jeremy Price, District Operations Manager for TDOT and a graduate of the Tennessee Naturalist Program, along with his colleagues Sam Penny and Aaron Hawkins, identified the two areas for planting. In consultation with Domain Manager Nate Wilson, they chose a Southeast mixture of wildflower seeds from the Applewood Seed Company that contained New England Aster, several species of Coreopsis/Tickseed, Sulfur Cosmos, Purple Coneflower, Indian Blanket (Gaillardia), Gaura, Annual Baby's Breath, Gilia, Tree Mallow, Gayfeather, Scarlet Flax, Lemon Mint, Corn Poppy, Annual Red Phlox, Clasp Coneflower, Black-Eyed Susan, Scarlet Sage, and Moss Verbena. The bright yellow flowers that seemed to be the first to bloom are one of the Coreopsis or Tickseed species, probably Goldenwave Tickseed. Next, the brilliant red flowers of (I believe) Corn Poppy have showed up. Judging from the seed list, there is much more variety and color ahead.



Like the Messenger?
Let us know on Facebook!



Animal Harbor

Bone Drop 2020

WILL YOU BE A
WINNER THIS YEAR?

SATURDAY AUGUST 8, 2020

NOON

MEET US AT THE SHELTER!
(YOU DO NOT HAVE TO BE PRESENT TO WIN)
\$100 PER BONE

More Chances to Win!!

1st Place \$3,000 - Closest to the Bullseye
2nd Place \$1,500 - Second Closest to the Bullseye
3rd Place \$500 - Third Closest to the Bullseye

Prize money rewarded contingent on selling 150 bones

Drop off Payment at the Harbor: include the Bone Drop Sign-up Form and \$100 for each "bone" purchased. Cash or check only.
Mail Payment: Animal Harbor, P.O. Box 187, Winchester, TN 37398.

SIGN UP FORM MAY BE FOUND ON OUR WEBSITE: www.animalharbor.org
ENVELOPES MUST BE RECEIVED BY NOON AUGUST 7, 2020.

For more information:
Call the shelter: (931) 942-4472
Email: sheltermanager@animalharbor.org

Check out photos from last year's event!!





Register for the Tennessee Naturalist Program

Registration is now open for the 2020-21 Tennessee Naturalist Program (TNP), sponsored by the Friends of the South Cumberland.

TNP is a series of 10, four-hour classes that are designed to introduce adult learners to the natural history of Tennessee. Graduates join a critical corps of volunteers providing nature education, outreach and service to the South Cumberland State Park (SCSP).

The cost for the classes is \$250 per person for current members of the Friends of South Cumberland State Park. For those who are not current members, the fee is \$275 per person, which includes a one-year individual membership in the Friends.

Classes are limited to 20 participants. To register or for more information, visit www.friendsofsouthcumberland.org, or email todd.wright@tn.gov.

'Picture the Park' Photo Contest

Area photographers are invited to submit their most picturesque photos of the South Cumberland State Park (SCSP) to the annual Picture the Park photo contest sponsored by the Friends of South Cumberland (FOSC).

Winners will be named in several categories, and the photos will be used on the Friends' website, in printed literature, in physical products offered in exchange for donations to the Friends, or to sell in order to raise money for projects facilitated for the SCSP.

"By entering our contest and donating your photos to the Friends, you'll help us tell the amazing story of the park and receive much-deserved recognition for your photographic talents," said Friends board member Rick Dreves.

Deadline to submit photos is midnight on Sept. 13. More information, submission requirements and categories are available at www.friendsofsouthcumberland.org.



Sweet Ellie



Hildi

Pets of the Week

Meet Sweet Ellie & Hildi

Sweet Ellie is a nine-year-old jack russell terrier mix that was returned to the shelter by no fault of her own. Sweet Ellie was given her "local restaurant name" due to her personality being just as sweet and bubbly as the treats at the restaurant. Ellie has a little age on her, but don't let that fool you, for she is just as spunky as a young dog with no health issues. We think she will go on to live a very happy life and make the perfect fit for an adoptive family. Sweet Ellie has been medically assessed, is up-to-date on vaccinations, heartworm-negative, spayed, and microchipped. If you think your family would be a good fit for Sweet Ellie, please fill out our online adoption application at <https://www.animalharbor.org/adoption-application> and our adoption coordinator will be in touch with you.

Hildi is a two-year-old grey tabby cat. Hildi is a sweet girl, but also shy until she spends time getting to know you. She loves her time spent outdoors on our cat patio where she posts on the highest shelf to gaze down at everything around her. She would love a home where she can lay in a window and watch birds. Hildi is friendly with children and other cats. She is so soft and cuddly, and we think she would make a variety of families a great loving companion. Hildi is up-to-date on all vaccinations, FIV/FelV negative, medically cleared, spayed, and microchipped. If you are interested in adopting Hildi, please visit our website at www.animalharbor.org to complete our online adoption application.

Animal Harbor is located at 56 Nor-Nan Rd., off AEDC Road, in Winchester. Call Animal Harbor at 962-4472 for information and check out the other pets at www.animalharbor.org. Enter their drawing on this site for a free spay or neuter for one of your pets. Help Animal Harbor continue to save abandoned pets by sending your donations to Animal Harbor, P.O. Box 187, Winchester, TN 37398.

State Park Offerings

Please note: To confirm that these events will occur as listed go to <http://tnstateparks.com/parks/events/southcumberland/#/?park=south-cumberland> or call (931) 924-2980.

Saturday, Aug. 8

Invasive Weed Wrangle (free)—Join Park Ranger and AmeriCorps member Austin Holman at 9 a.m. at Grundy Lakes parking lot, 587 Lakes Rd., Tracy City, to help him remove some of the non-beneficial invasive plants that are overcrowding our native species at Grundy Lakes. Learn the importance of invasive removal and which species are invasive, and then spend a little time making Grundy Lakes look nicer and more beneficial to our native wildlife. Bring some water and a snack. Wear closed-toed shoes or boots; trousers are recommended, as well as insect repellent. CDC social distancing guidelines will be followed throughout this program. (Program repeats on at 9 a.m. CDT Sunday, Aug. 9)

Stone Door Night Hike and Critter Hunt (\$5)—Join Ranger and Interpreter Austin Holman at 8 p.m. CDT at Stone Door Ranger Station, 1183 Stone Door Rd., Beersheba Springs, for a short 2-mile total hike to Stone Door Overlook at night. We'll search for critters along the trail and listen for their night sounds as the evening falls. Bring a bottle of water, and wear closed-toed shoes. Meet at the Stone Door Ranger station at 8 p.m. Central.

Sunday, Aug. 9

Yoga at Stone Door (\$8)—Meet Ranger Kristin Willis at 6 p.m. CDT at Stone Door Ranger Station, 1183 Stone Door Rd., Beersheba Springs, to walk with her to a group site to enjoy some light yoga and isometric stretches in the great outdoors. Please bring your own mat / towel and water to the program.

Wednesday, Aug. 12

Greeter Falls Trash Clean-Up (donation, from \$0-\$20)—Join Ranger Spencer Baxter at 2 p.m. CDT at Greeter Falls Parking Lot, 550 Greeter Falls Rd., Altamont, to assist him in keeping the Greeter Falls area beautiful and free of garbage during this volunteer trash cleanup. Trash bags and gloves will be provided. Participants should wear sturdy shoes or boots and weather-appropriate clothing.

Thursday, Aug. 13

Hike to Stone Door (free; please pre-register)—Meet Seasonal Interpretive Recreator William Allen at 12:30 p.m. CDT at Stone Door Ranger Station, 1183 Stone Door Rd., Beersheba Springs, for a 2-mile over moderate terrain. During the hike, we will discuss the geological makeup of Tennessee, specifically the Cumberland Plateau, along with native plant species. Guests should come prepared with sturdy footwear and water. Group size will be limited, so please register before attending.

WEATHER

DAY	DATE	HI	LO
Mon	July 20	89	71
Tue	July 21	87	71
Wed	July 22	85	69
Thu	July 23	84	70
Fri	July 24	85	69
Sat	July 25	83	67
Sun	July 26	87	70

Week's Stats:
Avg max temp = 86
Avg min temp = 70
Avg temp = 78
Precipitation = 0.63"

DAY	DATE	HI	LO
Mon	July 27	87	71
Tue	July 28	86	69
Wed	July 29	84	71
Thu	July 30	83	73
Fri	July 31	85	69
Sat	Aug 01	79	64
Sun	Aug 02	80	66

Week's Stats:
Avg max temp = 83
Avg min temp = 69
Avg temp = 76
Precipitation = 3.41"

Reported by Sandy Gilliam
Domain Ranger

Messenger Classifieds

ART

Stephenson's SCULPTURES IN BRONZE

Jeanie Stephenson
(931) 691-3873
www.stephensonsbronze.com

ENGINE REPAIR

SARGENT'S SMALL ENGINES: Repairs to All Brands of Equipment: Lawn mowers (riding or push), String trimmers, Chainsaws, Chainsaw sharpening. New saw chains. Pickup and Delivery Available. (931) 212-2585, (931) 592-6536.

FOR LEASE

COMMERCIAL OFFICE/RETAIL SPACE: For lease. Adjacent to High Point Restaurant. Call (615) 974-0133.

COMMERCIAL BUILDING: On S. College St., Winchester. Approx. 2,000 s/f, 2 large offices plus smaller ones, waiting/reception area w/ glassed partition, upstairs meeting room, total four half baths; paved parking 17 spaces. \$1,000/mo. (931) 924-5296, <jaysontlong@yahoo.com>.

FOR RENT

APARTMENT FOR RENT: Furnished 1BR/1BA available Aug. 15. Private, quiet setting. Utilities, internet included. No smokers. Pets negotiable. Call/text (965) 604-4164.

HOME FOR RENT: 2BR/1BA on 2.5 acres. Available now for 3- or 6-month lease. \$1,200/month. First and last month at move-in; application required. Contact <eastcoast-plays@gmail.com>.

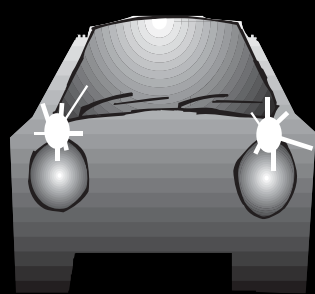
INDOOR MOVING SALE

INDOOR MOVING SALE: Aug. 5-9, 9 a.m.-4 p.m. Antique furniture, glassware, books, etc. 135 Oak St., Tracy City.

LAND FOR SALE

LOST COVE BLUFF LOTS

www.myerspoint.net
931-703-0558



TRAFFIC REMINDER

It is state law to have your headlights on in fog and rain.

MESSENGER DEADLINES

News and Calendar:
Tuesday, 5 p.m.
Display Advertising:
Monday, 5 p.m.
Classified Advertising:
Wednesday, noon

LAWN CARE

CHAD'S LAWN & LANDSCAPING

-FREE ESTIMATES-
* Lawn care & Design (Mulch & Planting)
ALSO: * Tree Trimming & Removal
* Pressure Washing * Road Grading
* Stone Patio/Fireplace * Garden Tilling
* Leaf Pickup & Blowing
(931) 308-5059

EAGLE LANDSCAPING & LAWN MAINTENANCE CO.

Now Offering Specials for the SUMMER!
We offer lawn maintenance, landscaping, hedge/tree trimming & more!
Please call for your free estimate
(931) 598-0761 or (931) 636-0383

Jason's Lawn Service
When You Need Your Weekend Back!

Serving:
Cowan, Sewanee,
Monteagle, Pelham, and
Near By Areas

Mowing
Weed Eating
Bull Hogging
Box Blade Work
Pressure Washing

Call 931-580-2916

REACH MORE PEOPLE WITH
YOUR AD! <ads@sewaneemessenger.com>

LOCAL SERVICES

King's Tree Service
Topping, trimming,
bluff/lot clearing, stump
grinding and more!
Bucket truck or climbing
Free wood chips with job
Will beat any quoted price!
Satisfaction guaranteed!!
—Fully licensed and insured—
kingstreeservice.com
Call (931) 598-9004—Isaac King

**Lyn Hutchinson
PHOTOGRAPHY**
lynhutchinson.smugmug.com

CLEANING W/ DISTINCTION:
Now taking new clients. Detailed house cleaning with reasonable rates. Call Marie at (931) 315-0413.

**W. F. McBEE
ELECTRIC**
Over 40 Years Experience
Licensed and Insured
Free Estimates
Phone 598-9339

LOCAL SERVICES

Lakeside Collision
"Done Right, the First Time"
103 Mabee Ave., Monteagle
Ph: 931.924.3316 | Cell: 931.235.3316
lakesidecollision00@gmail.com

CHARLEY WATKINS PHOTOGRAPHER

Sewanee, TN
(931) 598-9257
http://www.photowatkins.com

THERAPEUTIC MASSAGE AND BODYWORK: Discount on first massage! Gift certificates available. Text or call Aaron Bridgers-Carlos, L.M.T. (931) 691-0321.

MASSAGE
Regina Rourk Childress
Licensed Massage Therapist
www.reginarourk.com
~ GIFT CERTIFICATES ~
(931) 636-4806

**Avoid traffic jams!
One-Stop Transportation
Information: dial 511**

LOCAL SERVICES

**MONTEAGLE
SECURITY OPERATIONS**
CCTV, BURGLAR & FIRE ALARMS
931-924-3216 800-764-7489
monsecurity.com TN license 1912

MARK'S HOME REPAIR

KITCHEN AND BATH REMODELING
Insured. Decks, Roofing, Electrical,
Plumbing, Drywall, Tile & Hardwood
Floors, Outbuildings, Pressure Washing.
MARK GREEN, owner
931-636-4555 | mdgreen41@gmail.com

PUBLIC NOTICE

NOTICE: The Monteagle Planning Commission will have a special called meeting on Tuesday, Aug. 18, at 5 p.m. The purpose of this meeting is to discuss the Petro and the Thomas Variance.

PUPPY WANTED

WANTED: Jack Russell Terrier puppy. Call (931) 691-5297.

YARD SALE

INSIDE/OUTSIDE YARD SALE: Friday and Saturday, 8 a.m.-3 p.m. Everything inside half price! Apparel for men/women/children, games, CDs/DVDs, household goods, you name it! Tables outside \$1/bag. 969 Midway Rd., Sewanee. (931) 308-3159.



ENTER BY MIDNIGHT FRIDAY!

WIN A HOMESITE AT THE RETREAT AT WATER'S EDGE

THE RETREAT AT WATER'S EDGE
PROPERTY RAFFLE TO BENEFIT
THE MOUNTAIN GOAT TRAIL

PURCHASE RAFFLE TICKETS AT:
MOUNTANGOATTRAIL.ORG/WATERSEDGE

RAFFLE WINNER WILL BE ANNOUNCED ON
SATURDAY, AUGUST 8TH AT 2:00PM CENTRAL



SPONSORS:





BARDTOVERSE

by Phoebe Bates

Back to School

Round and round the playground,
Marching in a line,
I'll hold your hand.
You hold mine.

Round and round the playground
Skipping in a ring,
Everybody loves it
When we all sing.

Round and round the playground,
That's what we like,
Climbing on the climbing ring
Riding on a bike.

Round and round the playground,
All together friends.
We're sad, sad
When the school day ends.

—Round and Round the Playground,
by John Kitching

New to the Mountain?

Read what you have been missing!
<www.sewanee-messenger.com>

LONG'S LAWN SERVICE

- landscaping & lawn care
- leaf removal • mulch

Local references available.
Jayson Long



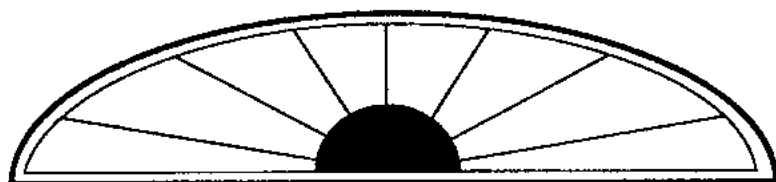
(931) 924-LAWN (5296)

The Depot Emporium

367 Railroad Ave., Tracy City
(931) 808-2590

Specializing in Antiques, Gifts and Things

Open Thur-Fri-Sat 10 a.m.–5 p.m.



wm.c.mauzy construction co.

Bill Mauzy, Owner, General Contractor

www.mauzyconstruction.com 931.598.0686 (office)
billmauzy@me.com 931.580.0686 (cell)



Contact Mike Maxon, C'73,
for all your real estate
needs. (931) 308-7801
maxonm@bellsouth.net



Offering professional and courteous service from Tims Ford Lake
to the Mountain since 1985.

Community Calendar

Friday, Aug. 7

- 12:01 a.m. Tax-Free Weekend on restaurant sales,
until 11:59 p.m. on Sunday, Aug. 9
- 8 a.m. COVID testing, Marion County Health
Department, until 4:30 p.m., Monday
through Friday, call ahead, (423) 942-
2238
- 8:30 a.m. Drive-thru COVID testing, Franklin
County (931) 967-3826, and Grundy
County (931) 692-3641, Health De-
partments, until 10:30 a.m., Monday
through Friday
- 9 a.m. CAC office open, until 11 a.m.
- 9 a.m. Pilates, golf/tennis, Angel Park/Zoom,
email Kim <Kim_Butters59@hotmail.com>
- noon Stretch/Straighten, Angel Park/Zoom,
<Kim_Butters59@hotmail.com>

Saturday, Aug. 8

- 8 a.m. Morton Memorial UMC Food Ministry,
322 W. Main St., Monteagle, until 10 a.m.
- 8 a.m. Sewanee Gardener's Market, Hawkins
Lane, until 10 a.m.
- 8:30 a.m. Outdoor Gentle Yoga, Robie, (\$15)
Mooney's Yoga Yard, (weather permit-
ting); email <robeyogamtn@gmail.com>
- 9 a.m. St. Thomas Mobile Medical unit, 322 W.
Main St., Monteagle, until 1 p.m.
- noon Animal Harbor Bone Drop

Monday, Aug. 10

*Virtual Learner Breakfast and Lunch Meal Pick-up
pre-registration due, Franklin County, <www.fcstn.net>*

- 9 a.m. CAC office open, until 11 a.m.
- 9 a.m. MC Schools drive-thru meal service,
Jasper Elementary, Monteagle Elemen-
tary, S. Pittsburg Elementary, Whitwell
Elementary, until 10 a.m.
- 9 a.m. Pilates, intermediate, Angel Park/Zoom,
<Kim_Butters59@hotmail.com>
- 10:30 a.m. Chair Exercise, Ruth, Senior Center,
until 11:15 a.m.
- 6 p.m. FC School Board meeting

Tuesday, Aug. 11

- 7 a.m. FC Farmers Market, Dinah Shore Blvd.,
Winchester, until 1 p.m.
- 8 a.m. GC Food Bank, Tracy City, until 10 a.m.
- 9 a.m. CAC office open, until 11 a.m.
- 9 a.m. Pilates, beginners, Angel Park/Zoom,
<Kim_Butters59@hotmail.com>
- 10:30 a.m. La Leche League, via Zoom, email
<LaLecheLeaguesewanee@gmail.com>
- 10:30 a.m. Yoga for Every Body, Anneli, DuBose
Pavilion, until noon

- noon Pilates, intermediate, Angel Park/Zoom,
<Kim_Butters59@hotmail.com>
- 4:30 p.m. South Cumberland Farmers' Market,
curbside pickup, Community Center,
until 6:30 p.m.
- 5:30 p.m. Pilates, beginner, Angel Park/Zoom,
<Kim_Butters59@hotmail.com>
- 7 p.m. Tracy Acoustic Jam, Pavilion on Railroad
Ave., Tracy City, until 8:30 p.m.

Wednesday, Aug. 12

- 9 a.m. CAC office open, until 11 a.m.
- 9 a.m. MC Schools drive-thru meal service,
Jasper Elementary, Monteagle Elemen-
tary, S. Pittsburg Elementary, Whitwell
Elementary, until 10 a.m.
- 9 a.m. Pilates, intermediate, Angel Park/Zoom,
<Kim_Butters59@hotmail.com>
- 10:30 a.m. Chair Exercise, Ruth, Senior Center,
until 11:15 a.m.
- 3:30 p.m. Virtual Learner Breakfast and Lunch
Meal Pick-up, Franklin County, until
4:30 p.m., pre-registration required

Thursday, Aug. 13

College of Arts & Sciences new student orientation

- 7 a.m. FC Farmers Market, Dinah Shore Blvd.,
Winchester, until 1 p.m.
- 8 a.m. Monteagle-Sewanee Rotary, Sewanee
Inn, also via Zoom
- 9 a.m. CAC office open, until 11 a.m.
- 9 a.m. Pilates, beginner, Angel Park/Zoom,
<Kim_Butters59@hotmail.com>
- noon Pilates, intermediate, Angel Park/Zoom,
<Kim_Butters59@hotmail.com>
- 10:30 a.m. Kundalini Yoga, Pippa, via Zoom;
<pippabrowne64@gmail.com> for
invitation
- 5:30 p.m. Pilates, beginner, Angel Park/Zoom,
<Kim_Butters59@hotmail.com>
- 6 p.m. Cowan Acoustic Jam, 303 Montgomery
St., until 9 p.m.

Friday, Aug. 14

School of Theology orientation begins

- 9 a.m. CAC office open, until 11 a.m.
- 9 a.m. MC Schools drive-thru meal service,
Jasper Elementary, Monteagle Elemen-
tary, S. Pittsburg Elementary, Whitwell
Elementary, until 10 a.m.
- 9 a.m. Pilates, golf/tennis, Angel Park/Zoom,
<Kim_Butters59@hotmail.com>
- noon Stretch/Straighten, Angel Park/Zoom,
<Kim_Butters59@hotmail.com>
- 6:30 p.m. Stress Relief Class, Kim, (free), Angel
Park/Zoom, <Kim_Butters59@hotmail.com>

Local 12-Step Meetings

Friday

- 7 p.m. AA, open, Christ Church, Tracy City

Saturday

- 7 p.m. NA, open, Decherd United Methodist

Sunday

- 6:30 p.m. AA, open, Morton Memorial, Wesley House, Monteagle

Monday

- 5 p.m. Women's Recovery, Otey Parish on Zoom, call (606) 275-
9562 for link
- 7 p.m. AA, open, Christ Church, Tracy City

Tuesday

- 7 p.m. AA, open, First Baptist, Altamont

Wednesday

- 10 a.m. AA, closed, Clifftops, (931) 924-3493
- 7 p.m. NA, Decherd United Methodist
- 7:30 p.m. AA, open, Holy Comforter, Monteagle

Thursday

- 6 p.m. Al-Anon, Morton Memorial, Wesley House, Monteagle -
canceled
- 7 p.m. Al-Anon, First UMC, Winchester



THE SEWANEE MOUNTAIN MESSENGER

We are grateful for the advertisers, subscribers, and supporters,
including the University of the South and the Sewanee
Community Chest... and you, the readers of this weekly publication.

Thank you!