



# — THE SEWANEE MOUNTAIN — MESSENGER

Volume XXXV No. 36

Published as a public service since 1985

Friday, Oct. 4, 2019

## Community Council Special Election

The Sewanee Community Council will be conducting a special election to fill a Council Representative position for District 4, the boundaries of which are Tennessee Avenue, University Avenue, Texas Avenue, and down Alto Road/Roarks Cove Road to the edge of the Domain. The term will run until December 2022.

To be a candidate, residents must reside in or on a boundary of District 4, be a registered voter in Sewanee, and turn in a petition with the signatures of 10 resident voters in District 4 to the Provost's Office by noon, Friday, Oct. 4. Petitions are available at the Office of Leases and Community Relations (Blue House). If there is more than one eligible candidate, District 4 resident voters will be able to vote from Monday, Oct. 7 to Friday, Oct. 25 during business hours at the Office of Leases and Community Relations (Blue House).

More information about the Sewanee Community Council and a map of the districts can be found at: <http://www.sewanee.edu/offices/leases/community-council/>.

## Ninth Annual Sewanee AngelFest Tonight

The ninth annual AngelFest will begin Friday, Oct. 4, at 4:30 p.m. Joseph's Remodeling Solutions is sponsoring three full hours of children and family activities during AngelFest in the Angel Park at Sewanee. Activities include make and take art, science fun, two bounce houses, inflatable wrecking ball, snow cones, cotton candy, wildlife to pet and hold, face painting, Animal Harbor pets, Red-tailed Hawk animal ambassador, and a lot more. There will also be a crafters and farmers market this year.

Headlining the AngelFest will be the band, the EagleManiacs. They will take the stage on the pavilion at 6:30 p.m.

The Reverse Raffle will also take place at the AngelFest. Tickets are \$100 each. The grand prize of up to \$5,000 will be awarded during the evening's festivities. Proceeds from the raffle will go to Housing Sewanee and Sewanee Angel Park. Tickets will be for sale up to the drawing. Tickets can also be purchased at several of the local Sewanee merchants and on the web at [www.sewaneeangelpark.com](http://www.sewaneeangelpark.com).

There will be plenty of food and refreshments available. University Avenue will be closed to traffic to ensure everyone's safety. The Sewanee Business Alliance along with the AngelFest sponsors offers all of this free to the community.

For more information go to <http://sewaneeangelfest.blogspot.com>.



*Sewanee Elementary School students offered acts of kindness by collecting canned and dry goods for the Community Action Committee (CAC), the food bank that serves the local Sewanee area. Students then delivered the food to the CAC. Pictured are William Layne, Myles McLaurin, Cy Hoosier, Callista Palagi, Brodie Fricker and Patch Wilson.*

## Monteagle Purchases Emergency Access; MGT Approval Pending

by Leslie Lytle, Messenger Staff Writer

At the Sept. 30 meeting, the Monteagle City Council voted to purchase a 50 feet by 141 feet right of way on Wells Road to provide emergency access for Laurel Lake residents in the event of flooding. Also top on the agenda, the board agreed to a special called meeting before Oct. 15 to vote on authorizing the Mountain Goat Trail Alliance (MGTA) to apply for a \$1 million multi-modal grant on the city's behalf. "The grant would rehab the old railroad bridge and get the trail across I-24," said Nate Wilson MGTA board president.

The Wells Road tract cost \$10,000. "It will give Laurel Lake residents a road in and out in a disaster," said Vice Mayor Tony Gilliam. Last February, flooding made Laurel Lake Road impassable. Gilliam thanked James David

Oliver for the temporary easement during the flooding which enabled the 90 Laurel Lake residents to reach their homes.

Elaborating on the specifics of the railroad bridge grant, Wilson said the grant would pay for 95 percent of the project with the MGTA funding the remaining 5 percent. In an earlier meeting with the MGTA, Gilliam and City Recorder Debbie Taylor stressed Monteagle lacked operating capital to cash flow the 95 percent portion of the grant, even though the city would be reimbursed for expenses every 30 days. On behalf of the city, the MGTA has appealed to Mountain Valley Bank to draft a proposal to enable Monteagle to participate in the grant opportunity. At the special called meeting, the council will

(Continued on page 7)

## Grundy County Junior Appalachian Musicians

by Bailey Basham, Messenger Staff Writer

In Appalachia, music has always been critical. It has served as a way to tell stories, to remember our history and to honor the community and its love of the land. Each Appalachian community has its own translation, and Bob Townsend said it was learning of Grundy's version that inspired him to make preserving the history possible.

Through a program called JAM, Townsend and the Grundy Area Arts Council (GAAC) are sharing the region's traditional music with a new generation.

JAM, which is short for Junior Appalachian Musicians, is an after-school program that provides students with an opportunity to learn and play traditional Appalachian music. JAM Kids provides instruction in small groups for students interested in learning instruments that are commonly found in Appalachia, such as the fiddle, banjo and guitar.

Field trips, visiting artists and an introduction to the rich history of music unique to each local community further supplement program offerings. Each JAM program is encouraged to foster musical traditions by teaching local styles of traditional mountain music and dance to children. Instructors are also encouraged to teach students to learn music by ear, as to preserve oral traditions as much as possible.

JAM has 53 programs spanning four states and 39 counties. Through their affiliate programs, they are able to serve more than 1,500 student musicians every year. The local chapter of JAM was born from a local jam group and is funded and operated by the GAAC.

Townsend, who plays with the Fiery Gizzard String Band, is the director of Grundy's JAM program. He said he remembers the first time he was exposed to traditional music, he was just 6-years-old, and is an experience he will never forget.

"I was at a fair, and I don't know if the two men were paid to be there or if they just gathered because there were people around to listen, but they were sitting on a bench playing a fiddle and a banjo, and I thought, 'That is it. That is what I want to do,'" he said.

Since then, Townsend has been playing music.

"I'm in a band called the Fiery Gizzard String Band, and our claim to fame is kind of that we play local fiddle tunes. A great number of them came from recordings of and learning directly from fiddlers in Grundy that are all gone away. The local tradition has pretty much died out, and we would like to see it make a comeback with local kids," he said.

For students, the benefits to learning to play music are great. Learning an instrument increases memory skills, improves coordination and math skills and nurtures self-expression, but for Townsend and the GAAC, the JAM project is about fostering a sense of community among the kids.

"My biggest satisfaction comes from just seeing the kids be able to join in to play in a group. Our goal is not to create professional musicians. If that happens, great, but we just want to teach these kids a style of music that they can sit around the house and enjoy themselves or with their family and friends," he said. "To see the kids get to the level where they can come join in and feel like they're a part of this big group of musicians playing and having fun is what makes me the most happy."

Grundy's branch of JAM is run entirely on donations, both in the form of funding and instrument donations. To get involved or to support the work of Grundy's JAM program, email [grundyjammkids@gmail.com](mailto:grundyjammkids@gmail.com).

## Village Update: Single Family Homes Reign Supreme

by Leslie Lytle, Messenger Staff Writer

"Single family homes reign supreme," said Frank Gladu at the Oct. 1 Sewanee Village update meeting summarizing the takeaways from the recent meeting between University faculty and staff and BP Construction. BP is the lead developer in the Sewanee Village initiative headed up by Gladu. The purpose of the meeting with BP was to develop a housing strategy. "It's complicated and multi-dimensional," Gladu said.

There were both "the rental market and for purchase market"

to consider when deciding what to build, Gladu pointed out. There were also the subsets of University employees and non-employees wanting to live in Sewanee.

"First and foremost, the University needs places for employees to live," Gladu insisted. "Single family homes are priced out of reach of a lot of people."

Based on input from the two sessions where employees voiced their housing preferences, Gladu described the "ideal" as a small two

(Continued on page 7)



*Sewanee Elementary School held its annual Peace Pole ceremony on Sept. 27. Representatives from each fourth-grade class presented their research about Romania and added the phrase "May Peace Prevail on Earth" in Romanian to the school's peace pole. The fifth-grade class, under the direction of Rebecca Van de Ven offered a joyful song to conclude the ceremony. Pictured are Ben Lu, Marin Owens and Catherine Barnett.*

P.O. Box 296  
Sewanee, TN 37375



# Letters

## SCCF THANK YOU

### To the Editor:

Thank you to all our supporters who came out to Monteagle Sunday School Assembly this past Saturday night for “An Evening with Stephen Alvarez.”

Sewanee native Alvarez gave a powerful presentation on his work with National Geographic and the Ancient Art Archive, a worldwide effort spearheaded by Alvarez for the purpose of exploring and preserving ancient artworks left by humanity’s first ancestors. We would also like to thank event chair Dot Neale and her committee, as well as in-kind donors Corner Market Catering Co. and Taylor’s Mercantile; without the assistance of our volunteers and the generosity of local vendors we would not have been able to realize the success of this event.

Proceeds from “An Evening with Stephen Alvarez” will benefit South Cumberland Community Fund (SCCF) and its collaborations with nonprofits in the region to bring hope and prosperity to the communities of the Plateau.

*Janet Cooper, SCCF Director*

## ANIMAL HARBOR IS SWEET SIXTEEN!

### To the Editor:

It is hard to believe that The Franklin County Humane Society, known as Animal Harbor, has been in operation for sixteen years. Another cause for celebration: the new shelter at 56 Nor-Nan Road is nearing its five-year anniversary thanks to the many residents who gave generously for its construction.

Thousands of pets passing through our doors have gone on

to find loving homes and a second chance at a life without fear, hunger, illness, and importantly - free of endless litters of kittens and puppies.

To celebrate these milestones, Animal Harbor will host “Keep the Harbor Light Burning” as the kick-off event for our first annual Fund Drive. Join us for a festive dinner and dancing on Saturday, Nov. 9, at 5 p.m. in St. Mark’s Parish Hall, Otey Memorial Church. Tickets will be on sale soon at the Harbor, on our website, and from board members. Each ticket will ensure that the Harbor Light will burn brightly into the future, exposing cruelty, and gathering lost and abandoned pets under its beam.

We invite county residents to invest in the future and sustainability of our shelter as we rescue thousands more companion animals in the decades to come.

*Susan Rupert, President*

## RESPONSE TO ‘SUD WILL VOTE ON DISCONTINUING FLUORIDE’

### To the Editor:

I was amazed and delighted to read in the issue of Aug. 30, 2019 that the Sewanee Utility District Board of Commissioners would vote on discontinuing fluoride in the public water supply. Amazed because this happens exceedingly rarely and delighted because it is a partial step in ceasing the flooding of human bodies with a known toxin. The board was wise in considering this because of the vast amount of fluoride in prepared food (and from other sources) and because of the corrosion of pipes.

*George Bushnell, Tracy City*

# Mobile Health Unit

St. Thomas | Ascension Health will be providing medical services every second Saturday of the month in their Mobile Medical Van at Morton Memorial United Methodist Church (MMUMC) in Monteagle. The next service is 9 a.m.–1 p.m., Saturday, Oct. 12. No appointment is necessary for these services, which are open to all members of the community.

Services offered include primary care (treating acute illnesses; immunizations; well-child exams; and annual physicals). Patients under 18 must bring a parent or legal guardian.

# Community Funding Application

The Sewanee Community Funding Project Committee in conjunction with the Sewanee Community Council is again seeking proposals for physical improvements and amenities on the Domain. When completed, these improvements should enhance the community and improve the quality of life of residents and possibly visitors.

We welcome projects both big and small from individuals as well as organizations. The total funding available is \$20,000.

To access the online application, please email <sewaneeecfproject@sewanee.edu> and a link to the form will be emailed to you. Copies can be picked up at various locations in Sewanee. Mail those paper forms to Pixie Dozier at 133 Carriage Lane, Sewanee, TN 37375 by Friday, Nov. 1.

## FC Fire Department Expo 2019

All of the Franklin County Fire, Rescue and EMS departments will host an expo from 10 a.m.–2 p.m., Saturday, Oct. 5, at the Franklin County Annex Building in Winchester. Everyone is invited to attend and learn about safety and fire prevention.

## Tree of Life Homecare, LLC

*“Neighbors Helping Neighbors”*

- \* Licensed and insured home-based services for the elderly and disabled
- \* CHOICES provider, Private Pay, Veterans Affairs, AAAD

931-592-8733  
treeoflifehomecare.com

NOW ACCEPTING APPLICATIONS FOR CAREGIVERS

## Letters to the Editor Policy

Letters to the editor are welcome at the Sewanee Mountain Messenger and are a vital part of our community’s conversation. Letters need to be no longer than 250 words and may be edited for space and clarity. We make exceptions from time to time, but these are our general guidelines.

Letters and/or their author must have some relationship to our community. We do not accept letters on national topics from individuals who live outside our print circulation area. Please include your name, address and a daytime telephone number with your letter. You may mail it to us at Sewanee Mountain Messenger, P.O. Box 296, Sewanee, TN 37375, come by our office, 418 St. Mary’s Ln., or send your email to <news@sewaneeemessenger.com>. —KB



# — THE SEWANEE MOUNTAIN — MESSENGER

Published as a public service to the community since 1985, this newspaper is printed on Fridays, 46 times a year. Free of charge, copies are distributed to 100 locations, including businesses and post offices across the Plateau. This publication is made possible by the patronage of our advertisers and by contributions from the University of the South (print production) and the Sewanee Community Chest.

Kiki Beavers  
editor/publisher  
April Minkler  
office manager  
Ray Minkler  
circulation manager  
Sandra Gabrielle  
proofreader

Leslie Lytle  
staff writer  
Bailey Basham  
staff writer  
Janet Graham  
publisher emerita  
Laura Willis  
editor/publisher emerita  
Geraldine Piccard  
editor/publisher emerita

## SUBSCRIPTIONS \$75 first class

418 St. Mary’s Lane, P.O. Box 296, Sewanee, TN 37375  
Phone (931) 598-9949 | <news@sewaneeemessenger.com>

*All material in the Sewanee Mountain Messenger and on its websites are copyrighted and may not be published or redistributed without written permission.*

# University Job Opportunities

**Exempt Positions:** Access Services Librarian, Collections Management; Area Coordinator, Residential Life; Assistant Farm Manager, University Farm; Associate Dean of Students, Student Life Administration; Business Analyst, General, Strategic Digital Infrastructure; Digital Technology Leader & Project Administrator, Southern Studies/Mellon Grant; Processing Archivist, Southern Studies/Mellon Grant; University Chaplain and Dean of All Saints’ Chapel, Chaplain’s Office; Wellness Coordinator, University Wellness Center.

**Non-Exempt Positions:** Administrative Assistant, Academic Services & Institutional Research; Assistant Manager, Sewanee Dining; Catering Attendants (on-call), Sewanee Catering; Equestrian and Farm Hand (on-call), University Farm; Food Service Worker-Catering (multiple positions), Sewanee Catering; Food Service Worker (Temporary), Sewanee Dining; Office Coordinator, Campus Planning, Design & Construction.

For more information call (931) 598-1381. Apply at <jobs.sewanee.edu>.

# SERVING WHERE CALLED

Please keep the following individuals, their families and all those who are serving our country in your thoughts and prayers:

Blaze Cassidy Barry  
James Gregory Cowan  
Mark Gallagher  
Nathaniel P. Gallagher  
Peter Green  
Zachary Green  
Steven Tyler Jeffery  
Cheyenne N. Kelly  
Gabriel Lloyd  
Forrest McBee  
Andrew Midgett  
Jose D. Ramirez III  
Troy (Nick) Sepulveda  
Zachary Sherrill  
Nick Worley

If you know of others in our Mountain family who are serving our country, please give their names to American Legion and Auxiliary member Louise Irwin, 598-5864.

## MESSENGER CONTACTS

Phone: (931) 598-9949

### News and Calendar

Tuesday, 5 p.m.  
Kiki Beavers  
news@sewaneeemessenger.com

### Sports

Tuesday, 5 p.m.  
sports@sewaneeemessenger.com

### Display Advertising

Monday, 5 p.m.  
ads@sewaneeemessenger.com

### Classified Advertising

Wednesday, noon  
April Minkler  
classifieds@sewaneeemessenger.com

## MESSENGER HOURS

Monday, Tuesday and Wednesday  
9 a.m.–4 p.m.

Thursday—Production Day  
9 a.m. until pages are completed  
(usually mid-afternoon)

Friday—Circulation Day  
Closed

## Brown's Body Shop

Steve and Kim Young - Owners  
Steve Hartman - Shop Manager

710 College St. • Winchester  
931-967-1755 • Fax 931-967-1798

*Come by and see us. We appreciate your business.*

**Our Work is Guaranteed!**

## ADAPTIVE LANDSCAPE LIGHTING

**Paul Evans | 931.952.8289**  
adaptivelandscape-lighting.com

Come Enjoy The Mountain's Best Gourmet Breakfast, 8 to 10 Each Morning. Saturday Wine Social, 4 to 7 p.m., in Tallulah's Wine Lounge



Tallulah's Wine Lounge  
(931) 924-3869  
www.monteagleinn.com



## Upcoming Meetings

### Coffee with the Coach

Coffee with the Coach, an opportunity to learn more about Sewanee's sports teams, continues at 9 a.m., Monday, Oct. 7, with women's volleyball coach Nancy Mueller. Gather at the Blue Chair Tavern for free coffee and conversation.

### Monteagle City Council

There will be a Special Called Meeting of the Monteagle City Council on Monday, Oct. 7, at 4 p.m. in the conference room at City Hall. The purpose of this meeting is to discuss the Mountain Goat Trail.

### International P.E.O. Sisterhood

The October Meeting of Chapter Z Tennessee of the International P.E.O. Sisterhood will be at 10 a.m., Tuesday, Oct. 8. All unaffiliated Members of the P.E.O. Sisterhood who are in the Middle Tennessee area are welcome to attend. Call (931) 962-0202 for more information.

### La Leche League

The next meeting of the La Leche League, which provides breastfeeding support and information for new mothers, will be at 10:30 a.m., Tuesday, Oct. 8, at the Sewanee Community Center, 39 Ball Park Rd. All pregnant women, mothers and babies are welcome. For more information call Pippa, (931) 463-2050.

### EQB Meeting

Members of the EQB Club will gather at 11:30 a.m., Wednesday, Oct. 9, at St. Mary's Sewanee. Lunch will be served at noon. At about 12:30 p.m., we will have the pleasure of a Lead by Laura Rice, "An Artist's Path with Detours," about her experiences as a voice teacher at Washington National Opera and Director of Co-OPERative Program. Interested non-members are welcome to arrive at 12:30 p.m. and sit in on the presentation.

### Trustee Community Relations Committee Meeting

The Trustee Community Relations Committee will be in Sewanee on Wednesday, Oct. 9, at which time the Community Council will update the Trustees on topics of interest and concern to our community. Community members are invited to join the Trustees and Council members for a reception at 5 p.m. on Wednesday, Oct. 9, at Shenanigans.

### Monteagle- Sewanee Rotary Club Meeting

The Monteagle-Sewanee Rotary Club will meet at 8 a.m., Thursday, Oct. 10, at the Sewanee Inn. Charlie Barron will present the program on the InterAct Club at St. Andrew's-Sewanee School.

### Caregivers Groups

The Folks at Home's Caregivers Group meets weekly on Thursday, 1-2:30 p.m., in Brooks Hall at Otey Parish. Contact Folks at Home at (931) 598-0303 or <folksathomesewanee@gmail.com> for more information.

### South Cumberland Conservative Network

On Saturday, Oct. 12, the speaker will be Christie Shaw, Education Specialist with "Decisions Choices & Options in Southern TN." The program will be on the abstinence program in our schools. Please join us at 300 1st Ave., NW, Winchester. The meet and greet is at 5:30-6 p.m., with light refreshments and the program beginning at 6 p.m.

### Franklin County School Board

The Franklin County School Board will meet at 6 p.m., Monday, Oct. 14, at the Franklin County Board of Education Building, 215 S. College St., Winchester.

### UDC Kirby-Smith Chapter 327 Sewanee

The UDC Kirby-Smith Chapter 327 Sewanee will meet at the Oak Restaurant in Manchester, at 11 a.m., Saturday, Oct. 19.

## Grundy County Rotary Club to Hold Irregular Meeting

The Grundy County Rotary Club, which currently meets Tuesdays at lunch in Tracy City, is trying to assess whether or not there is adequate interest in an evening meeting time for Grundy Rotary. To gauge interest and give an opportunity for Grundy community members to learn about Rotary, the club will be holding a social meeting at 5:30 p.m., Tuesday, Oct. 8, at the Fiery Gizzard Sportsman Club. This meeting will be held instead of Grundy County Rotary's usual meeting.

The Grundy County Rotary Club will be cooking out hotdogs and hamburgers, and will have information available on Rotary International and Grundy County Rotary's service projects.

Come enjoy some good company and learn about the Rotary Club's good causes, including the club's work with the Governor's Books from Birth program, the Dictionary Program, and little library program.

To get to the Fiery Gizzard Sportsman Club in Tracy City, drive east on Main Street passing Dutch Maid Bakery. Turn right (south) on 10th Street (first street beyond Railroad Avenue). In two blocks, turn left (east, at a church) onto 5th Street. Go 3 and a half blocks to a road on right across from Fiery Gizzard Sportsman Club sign (on left). Turn right onto the one-lane road (Thompson Street) and continue until arriving at the Club entrance gate. Continue to parking around the covered pavilion.

## Sewanee Woman's Club Meets Oct. 14

The Sewanee Woman's Club (SWC) will have their second meeting of the year on Monday, Oct. 14. An optional social hour begins at 11:30 a.m. Lunch is served at noon. SWC meets at the Dubose Conference Center in Monteagle. Dues are \$10 per year and lunch is \$14.

The theme of this year's meetings is "Make Yourself Count."

The program for the October meeting will be presented by one of our own, May Kamalick. The title of her program is "Arabs & Arab-Americans: A Conversation in Diversity—Making Every Voice Count." This is an interactive presentation that explores a specific segment of immigrants, Arabs and Arab-Americans, to foster diversity and enhance understanding.

With a master's degree in English and Education, Kamalick began her U.S. government service with the FBI shortly after 9/11, first as a linguist, and then as a manager, developing, coordinating, and analyzing strategic plans and recommending improvements for quality of translation and the development of linguists. Prior to this government service, she worked on two continents and in three U.S. states as a corporate trainer and college instructor in English, Communications, Public Relations, and Arabic. She moved to Sewanee from the DC area a year ago and is now teaching intermediate Arabic, making new friends, and enjoying one set of her grandchildren.

The menu for the October meeting is a cup of soup, gourmet grilled cheese sandwich, apple salad, and peach cobbler.

Reservations are required. Please make reservations no later than Oct. 4 at noon. To make reservation contact Janet Miller-Schmidt by email: <jrms2777@gmail.com> or cell phone, (504) 858-5221 or Susan Peek by email <susan.peek@gmail.com> or by phone (615) 504-5404.



1866 REVIVAL

ECCLECTIC VINTAGE WARES



An Eclectic mix of  
Antiques,  
Home Decor, and Vintage  
Vinyl

We have a lot of items to  
choose from that you  
won't see anywhere else!

24 University Ave., Sewanee

WED-FRI 11-6 • SAT-SUN 10-6



## Backlund Presents at ALLL

Lee Ann Backlund will present "Enrollment Trends and Troubles" at the Monday, Oct. 7 gathering of the Academy for Lifelong Learning.

College enrollment in the U.S. has decreased for the eighth consecutive year, according to new data released in May by the National Student Clearinghouse Research Center. This is due in large part to an ongoing decline in the number of students graduating from high school. Most private colleges, even those with significant endowments, are highly dependent on tuition revenue. When enrollments decline, colleges face tough choices including whether to reduce some academic programs, to limit financial aid, and, in the extreme, whether to merge with another institution or to cease to exist. This has created a difficult, competitive environment for colleges.

Backlund is the Vice President for Enrollment Planning and the Dean of Admission and Financial Aid at the University of the South. Her career spans 38 years in education including six years at Agnes Scott College where she served as the director of admission and associate vice president for enrollment and dean of admission. In addition, she spent three years as the director of college counseling at Porter-Gaud School in Charleston, S.C. Backlund is currently chair of the Common App Board of Advisors and is a past-president of the Southern Association for College Admission Counseling.

The Academy, part of the Sewanee Seminars Series, meets from noon to 1 p.m. in Lower Cravens Hall at 439 Kentucky Ave., Sewanee. The cost for a single session is \$3 and an annual membership is available for \$20. Coffee, water and cookies are available, and attendees are invited to bring a sack lunch.

There is ample parking in the parking lot adjacent to Cravens. Sewanee parking regulations require that the vehicle's rear bumper be visible from the parking lot aisles, so attendees are advised to avoid backing into a space or pulling through.

For all questions contact John Hille at (814) 599-5768.

## Upcoming Presentation on The University Farm

The Sewanee Emeritus group announces its October meeting for Thursday, Oct. 10. Carolyn Hoagland, the manager of the University Farm, will be the guest speaker. You may have seen the large herd of goats in the fields at the farm. They are only one of Hoagland's projects and responsibilities. She also brings experience as a greenhouse nursery manager, Army Reserve vehicle mechanic, and internet database programmer.

Much of the food grown on the farm now goes to McClurg dining hall. Bee hives are also maintained there, and Hoagland supervises a number of students who are interested in farming. She has a masters' degree in soil and crop science from Colorado State University, and a permaculture design certificate from Oregon State University. She studies microbial communication in soils, and enjoys robotic development. All are welcome to hear this person of many talents in the Torian Room, duPont Library, Thursday, Oct. 10, at 3:30 p.m. Refreshments will follow her presentation.



**Caps Roofing**

Locally  
owned

423-834-6424

RESIDENTIAL &  
COMMERCIAL

**\*\*NO HIDDEN FEES\*\***

FREE INSPECTIONS  
FREE ESTIMATES

**LICENSED • BONDED • INSURED**



**CUSTOM FRAMING**

ARCHIVAL FRAMING & RESTORATION  
ART CONSULTATION

Tue-Fri: 10-5, Sat: 10-2  
(931) 463-2300

12569 Sewanee Hwy.  
Sewanee, TN 37375



Betty Barton Blythe  
Amy Burns  
Bob Burns

Sally Harding  
Alex Hoole  
Martha Keeble  
Pat Kirby

Susan Lane  
Linda Lankewicz  
Debbie Racka  
Annette Smith

*Painting Together*  
**OCTOBER 1-26**

**Reception Tonight • 5:30-7:00**



# Church News

## All Saints’ Chapel

Growing in Grace continues Sunday, Oct. 6, at 6:30 p.m. in All Saints’ Chapel. The Rev. Hannah Pommersheim, research associate for the Roberson Project on Slavery, Race, and Reconciliation, will share her story with us. For our semester-long series One Step Before Me, we’re asking each of our speakers to share about another person—from history or from their own life—who has impacted or shaped them. In reflecting on a “personal saint” who made their path clearer, our speakers allow us all the opportunity to experience gratitude for all who have given us strength to wander and learn. Email Lay Chaplain Kayla Deep if you have any questions. We hope to see you there—and bring a friend!

Choral Evensong will be sung Sunday afternoon, Oct. 6, at 4 p.m. in All Saints’ Chapel. The university choir will sing pieces by Tallis, Phillips, Dyson, Gardiner, and Wood. The choir is conducted by Geoffrey Ward, university organist & choirmaster and accompanied by Zachary Zwahlen, assistant university organist.

The Catechumenate continues Wednesday, Oct 9, at 7 p.m. in the Bairnwick Women’s Center. Catechumenate, from a Greek word meaning “learning and exploring,” is a place where we explore what it means to be a human being and what it means to be a person of faith in our community. This is a great place to meet new people and build relationships. Food, prayer, questions, and conversation power this process. This week we will be discussing the call of Samuel. Contact Lay Chaplain Kayla Deep for directions or more information <kayla.deep@sewanee.edu>.

## Blessing of the Animals

On Sunday, Oct. 6, at 4 p.m., Otey Memorial Parish and St. James Church will hold a joint service celebrating the Feast Day of St. Francis with a blessing of God’s creatures. The community is invited to attend and bring their animals and pets to receive a blessing. The service will take place at the St. James Midway Community Park, at 898 Midway Rd., Sewanee.

## Blessing of the Animals

Join us at Trinity Episcopal Church in Winchester for a pet blessing in observance of the Feast of St. Francis of Assisi. The service will take place in the Parish Hall at 4:30 p.m. on Sunday, Oct. 13. Cats, dogs, and other pets are welcome. Treats will be provided for humans and pets alike.

## Christ the King

Christ the King Anglican Church will host a Fall Fest Weekend, from 8 a.m.–2 p.m., Oct. 4–5. There will be a yard sale, crafts, ven-

dors, bake sale, and barbecue plates. Boston butts will also be for sale. To reserve a Boston butt, please call (931) 636-3014. Proceeds will benefit the Burn the Note Campaign and Feed the Lambs program with Feed America First. The church is located at 1231 Cumberland St., Decherd.

## Morton Memorial UMC

Sunday, Oct.6, is the Celebration of World Communion Sunday, which calls the Church to be the universal, inclusive Church. The day was first observed by Presbyterians in 1936, adopted by the Federal Council of Churches in 1940, and shortly thereafter observed in Methodist and Evangelical United Brethren churches. World Communion Sunday was named during a time the world was divided in what became a devastating world war and continues to hold the vision that the table of Communion will lead us into a time when barriers will be crossed, communities united, and all Gods children will be united.

To help prepare for the communion, Pastor Jody McCullah will remind worshippers of “The Vision of the Table,” by looking to the prophet Habakkuk (1:1-4, and 2:1-4.

Also on Oct. 6, Pastor Jodi will begin a four-week class on United Methodist beliefs. The class will meet in the Education Building at 9:30 a.m. and look at “Living Our Beliefs” by Kenneth L. Carder. This is an opportunity for lifelong Methodists to refresh and deepen their understanding of the denomination and for others to explore what it means to be part of a local and world-wide Methodism.

## St. James Book Discussion

As the days grow shorter and the nights longer, Barbara Brown Taylor, well-known Episcopal priest, author and preacher, can help us negotiate the dark as we read “Learning to Walk in the Dark.” The series began on Wednesday, Oct. 2 and will meet each Wednesday through Oct. 30.

Each session will begin with a 5:30 p.m. Evening Prayer in the St. James sanctuary, followed at 6 p.m. by a simple meal of casserole, salad and bread in the Parish Hall.

The discussion will be from 6:30–7:30 p.m., also in the Parish Hall.

## Otey Parish

This Sunday, Youth meet at 9:45 a.m. in the Hethcock Room in Claiborne Hall for Sunday Service Hour. Infants 6 weeks to children 4 years old are invited to the nursery beginning at 8:30 a.m. There will be nursery for both services and the Sunday School Hour. Children ages 3-11 are invited to join us in the Godly Play 2 room Claiborne

Parish House.

Adult Forum—“A Christian Response to Abuse.” Society has become increasingly aware of the frequency of different kinds of abuse. As Christians we pray and work for such behavior to come to an end. The Rev. Rob Lamborn will address abuse prevention, reporting, and means of recourse both within the church and in wider society.

Parents Involved in Faith Formation: John Simpson and Otey Parish are offering a class this fall on how we as adults shape and model the kind of faith that our children will carry into adulthood. The class will include reflection,

mutual support, education, and exchanging ideas. No books to read, and the only weekly assignment will be to reflect on some part of your own faith formation that was especially important.

We’ll meet for six weeks in October and November in the St. Paul’s-on-the-Mountain, down the hall from Godly Play. Dates: Oct. 6, Our stories; Oct. 13, Worship; Oct. 27, Prayer; Nov. 3, The Bible; Nov. 10, Praxis; and Nov. 24, Rhythms of life/Trial and Error.

Simpson is a senior at the School of Theology at Sewanee, and is serving as Otey’s seminarian until the end of the semester. This class

is part of his field education, but is a topic he has been fascinated by for well on a decade now. We hope you’ll join us!

## Tullahoma Sangha

Tullahoma Sangha, a Zen Buddhist meditation and study group, meets each Wednesday at 6 p.m. at Unitarian Universalist Church of Tullahoma. Newcomers are welcome; please call ahead and we will have a short orientation at 5:45 p.m. For more information, or if you would like to be added to the email group, call (931) 455-8626.

# Church Calendar

## Weekday Services Sept. Oct. 4–11

- 7 a.m. Morning Prayer, St. Mary’s Convent, (Tu–F)
- 7:30 a.m. Morning Prayer, Otey (M–F)
- 7:30 a.m. Holy Eucharist, St. Mary’s Convent, (Tu–F)
- 8:30 a.m. Morning Prayer, St. Augustine’s (M–F)
- 9 a.m. Centering Prayer, Taylor’s Creek Greenway, Estill Springs (W)
- 9 a.m. Communion, Good Shepherd, Decherd (M,W)
- 9 a.m. Mass, Good Shepherd, Decherd (T/Th/F)
- 11:30 a.m. Prayer/Healing, Morton Memorial (1st and 3rd Th)
- 3:30 p.m. Centering Prayer, St. Mary’s Sewanee (T)
- 4 p.m. Centering Prayer, McRae Room, adjacent to Anna’s House, St. Mary’s Sewanee (W)
- 4 p.m. Evening Prayer, St. Augustine’s (M–F)
- 4:30 p.m. Evening Prayer, Otey (M–F)
- 5 p.m. Evening Prayer, St. Mary’s Convent, (Tu–F)
- 7 p.m. Centering Prayer, St. Paul’s, Otey (M)
- 7 p.m. Contemplative Prayer Service, St. Mary’s Convent (10/11)
- 7 p.m. Spanish Mass, Good Shepherd, Decherd (Th)
- 7 p.m. Worship Service, Christian Tabernacle, Decherd (Tu)

## Saturday, Oct. 5

- 7:30 a.m. Morning Prayer, St. Mary’s Convent
- 10 a.m. Sabbath School, Monteagle Seventh Day Adventist
- 11 a.m. Worship Service, Monteagle Seventh Day Adventist
- 5 p.m. Evensong, St. Mary’s Convent
- 5 p.m. Mass, Good Shepherd, Decherd

## Sunday, Oct. 6 •CAC Pantry Sunday All Saints’ Chapel

- 8 a.m. Holy Eucharist
- 11 a.m. Holy Eucharist
- 4 p.m. Choral Evensong
- 6:30 p.m. Growing in Grace
- Bible Baptist Church, Monteagle**
- 10 a.m. Worship Service
- 5:30 p.m. Evening Service
- Chapman Chapel Church of the Nazarene, Pelham**
- 9:30 a.m. Sunday School
- 10:45 a.m. Morning Worship
- 6 p.m. Evening Worship
- Christ Church, Monteagle**
- 10:45 a.m. Holy Eucharist
- Christ Episcopal Church, Tracy City**
- 10 a.m. Adult Bible Study
- 11 a.m. Holy Eucharist (child care provided)
- Christ the King Anglican, Decherd**
- 9 a.m. Sunday Service
- Christian Tabernacle, Decherd**
- 10 a.m. Worship Service
- 6 p.m. Evening Worship
- Cowan Fellowship Church**
- 10 a.m. Sunday School
- 11 a.m. Worship Service
- Cowan First Baptist Church**
- 9:15 a.m. Sunday School
- 10:25 a.m. Sunday Worship
- 6 p.m. Sunday Worship
- Cumberland Presbyterian Church, Monteagle**
- 9:30 a.m. Bible Study
- 11 a.m. Worship Service
- Cumberland Presbyterian Church, Sewanee**
- 9 a.m. Worship Service
- 10 a.m. Sunday School
- Decherd United Methodist Church**
- 9:45 a.m. Sunday School
- 10:50 a.m. Worship Service
- Epiphany Mission Church, Sherwood**
- 10 a.m. Holy Eucharist Rite II
- Good Shepherd Catholic Church, Decherd**
- 10:30 a.m. Mass
- 2 p.m. Spanish Mass

## Goshen Cumberland Presbyterian Church

11 a.m. Worship Service

## Grace Fellowship Church

10:30 a.m. Sunday School/Worship Service

## Harrison Chapel Church

10 a.m. Sunday School  
11 a.m. Worship Service  
5 p.m. Worship Service

## Midway Baptist Church

9:45 a.m. Sunday School  
10:45 a.m. Morning Service  
6 p.m. Evening Service

## Midway Church of Christ

10 a.m. Bible Study  
11 a.m. Morning Service  
6 p.m. Evening Service

## Monteagle First Baptist Church

10 a.m. Sunday School  
11 a.m. Worship Service  
6 p.m. Evening Worship

## Morton Memorial United Methodist, Monteagle

9:30 a.m. Sunday School  
11 a.m. Worship Service

## New Beginnings Church, Monteagle

10:30 a.m. Worship Service

## New Beginnings Church, Pelham

9:45 a.m. Worship Service

## Otey Memorial Parish Church

8:30 a.m. Holy Eucharist  
9:45 a.m. Christian Formation  
11 a.m. Holy Eucharist  
4 p.m. Blessing of the Animals (at St. James)

## Pelham United Methodist Church

9:45 a.m. Sunday School  
11 a.m. Worship Service

## St. Agnes’ Episcopal Church, Cowan

11 a.m. Holy Eucharist

## St. James Episcopal Church

9 a.m. Holy Eucharist Rite II  
9 a.m. Children’s Chapel  
4 p.m. Blessing of the Animals

## St. Margaret Mary Catholic Church, Alto

8 a.m. Mass

## Sewanee Church of God

10 a.m. Morning Service

## Sisters of St. Mary Convent

8 a.m. Holy Eucharist  
5 p.m. Evensong

## Tracy City First Baptist Church

9:45 a.m. Sunday School  
10:45 a.m. Morning Worship  
5:30 p.m. Youth Group  
6 p.m. Evening Worship

## Trinity Episcopal Church, Winchester

9:30 a.m. Christian Formation  
10:30 a.m. Holy Eucharist Rite II

## Valley Home Community Church, Pelham

10 a.m. Sunday School, Worship Service

## Wednesday, Oct. 9

- 6 a.m. Morning Prayer, Cowan Fellowship
- 7 a.m. Morning Prayer, St. Mary’s Convent
- 7:30 a.m. Holy Eucharist, St. Mary’s Convent
- 9 a.m. Communion, Good Shepherd, Decherd
- 10 a.m. Bible Study, Sewanee C.P. Church
- Noon Service, Christ Church, Monteagle
- 5 p.m. KAs/Bible study/meal, Monteagle First Baptist
- 5:30 p.m. Evening Prayer, St. James; potluck, book discussion follow (through Oct. 30)
- 5:30 p.m. Worship, Bible Baptist, Monteagle
- 5:45 p.m. Youth Bible study/meal, Monteagle First Baptist
- 6 p.m. Bible study, Monteagle First Baptist
- 6 p.m. Prayer and Bible study, Midway Baptist
- 6 p.m. Evening Prayer, Trinity, Winchester
- 6:30 p.m. Community Harvest Church, Coalmont
- 6:30 p.m. Prayer Service, Harrison Chpl, Midway
- 6:30 p.m. Youth group, Tracy City First Baptist
- 7 p.m. Adult Formation, Epiphany, Sherwood
- 7 p.m. Bible study, Chapman’s Chapel, Pelham
- 7 p.m. Catechumenate, Women’s Ctr., Sewanee
- 7 p.m. Evening Worship, Tracy First Baptist



*"Trust yourself. Create the kind of self that you will be happy to live with all your life. Make the most of yourself by fanning the tiny, inner sparks of possibility into flames of achievement." Golda Meir*

# Sewanee Realty

SewaneeRealty@inSewanee.com  
www.SewaneeRealty.com  
115 University Ave., Sewanee, Tenn.

**Margaret Donohue,**  
*Principal Broker • 931.598.9200*  
**Patsy Truslow,**  
*Broker • 931.636.4111*  
**Marie Ferguson,**  
*Affiliate Broker • 931.952.2468*



MLS 1983502 - 174 Carpenter Cir., Sewanee. \$475,000



MLS 1995053 - 114 Maxon Ln., Sewanee. \$399,000



MLS 2078548 - 246 Curlicue Rd., Sewanee. \$374,000



MLS 2070485 - 283 Green's View Rd., Sewanee. \$398,000

LOTS & LAND			
1159 Sassafras Ct., 5.27 ac	2072615	\$59,000	
57 Edgewater Ct. Win.	2062210	\$28,900	
Montvue <b>SOLD</b>	1714856	\$54,900	

BLUFF TRACTS			
36 Long View Ln. 2.57 ac	2073074	\$75,000	
1639 Jackson Pt. Rd. 17+ ac	2066610	\$69,000	
2 Jackson Pt. Rd. 8.63 ac	2014037	\$88,000	
16 Laurel Lake Dr.	1989467	\$97,500	
14 Jackson Pt. Rd 18.6 ac	1803643	\$129,500	
3 Horseshoe Ln. 5.6 ac	1608010	\$60,000	
15 Saddletree Ln. 6.12 ac	1978549	\$68,000	



CABIN WITH BLUFF VIEW - MLS 2053333 - 160 Vanderbilt Ln., Sewanee. \$449,000



BLUFF - MLS 2063145 - 185 Turning Point Ln., Sewanee. 12+acres. \$698,000



BLUFF - MLS 1974844 - 1613 Laurel Lake Dr., Monteagle. 5.3 acres. \$445,000



MLS 2024156 - 1573 Carter Rd., Decherd. \$229,500



BLUFF - MLS 1923054 - 1833 Laurel Lake Dr., Monteagle. \$429,000



MLS 2042359 - 2120 Lakeshore, Clifftops. 5.03 acres. \$439,000.



LAKEFRONT - MLS 2023698 - 1175 Cooley's Rift Blvd., Monteagle. \$549,000



MLS 2016115 - 52 Sherwood Trail, Sewanee. 2.46 acres. \$339,500



MLS 2070547 - 328 Bob Stewman Rd., Sewanee. \$299,000



MLS 2059512 - 148 Proctors Hall Rd., Sewanee. \$348,000



MLS 2052244 - 310 Wiggins Creek, Sewanee. \$359,000



BLUFF - MLS 2065242 - 294 Jackson Point Rd., Sewanee. 20.9 acres. \$299,000

**RENTAL - 114 Maxon Ln., Sewanee. 4bed, 3bath, \$1,600 per month. No pets. Call Patsy or Marie**



MLS 2047706 - 300 S. Carolina Ave., Sewanee. \$468,000



MLS 2034484 - 171 Maple St., Sewanee. \$249,500



MLS 2060991 - 240 Maple St., Sewanee. \$225,000



# THE MONTEAGLE-SEWANEE & GRUNDY CO. ROTARY CLUBS

# HUNGER WALK

## THANK THESE 2019 PARTNERS

TITLE  
PARTNERS



TOWER  
COMMUNITY BANK  
*A Higher Standard*



CITY OF  
MONTEAGLE



GRUNDY COUNTY  
HEALTH COUNCIL



HOWELL ADAMS • SCOTT & LAURA ANDERSON • NICK & MARY BABSON • RHEA & NANCY BOWDEN • CASSELL FAMILY • BILL & ANNE DAVIS  
JESSICA & JOEY FAVALORO • BILL & KNOWLES HARPER • DAN & CAROLYN HATFIELD • JOHN & TAN HILLE • HUNTER & PRESTINE HUCKABAY  
CHARLIE & MELANIE KETTLE • SCOTT LANDIS • TOM & LEE LIMBIRD • GREG & PAM MALOOF • MIKE MARCHETTI • JOHN & BONNIE McCARDELL  
ALEX MOSELEY • JOHN & KAREN NOFFSINGER • MICHAEL & JEANNIE PAYNE • JIM PIERCE • LANE & JULIAN PRICE • ANNE & JERRY SITZ  
KARL & SUSAN SJOLUND • RICH WYCKOFF & RUTH PATTERSON

THANK YOU ♥ THANK YOU ♥ THANK YOU ♥ THANK YOU ♥ THANK YOU

ALL PROCEEDS GO DIRECTLY TO



A PROJECT OF  
Grundy County &  
Monteagle-Sewanee

Rotary



"LORD, MAKE US HUNGRY UNTIL ALL YOUR PEOPLE ARE FED."  
-THE REV. ROB LAMBORN-



**Monteagle (from page 1)**

weigh the suitability of the proposal to determine whether to go forward with the grant. The grant application deadline is Oct. 15.

Aldermoman Rebecca Byers asked if the city would be responsible for maintenance of the bridge.

"The bridge will be completely rehabbed as part of the project," Wilson said. "No one knows who owns it."

In other business, the council approved a \$15,540 bid for a new roof on the post office. The council also approved on first reading an amendment to a city ordinance that would relieve the city of the burden of funding depreciation. "We don't have the money," Taylor said.

Fire Chief Mike Holmes reported the fire department received a \$99,222 Assistance for Firefighters grant to purchase air packs. The city's portion is \$4,724. Holmes will get bids for the equipment. Delivery will take 45-60 days from purchase.

Aldermoman Jessica Blalock announced Monteagle would host a Halloween parade Oct. 26 beginning at noon at the elementary school. The parade will end at Harton Park. Businesses and citizens are invited to set up tables or do trunk-or-treat to offer goodies.

Asked how the city's water supply was holding up in the drought conditions, utility manager John Condra said, "We're alright. We can get down to 7 feet 3 inches." The lake level was 9 feet 10 inches on Oct. 1. Updating the community on other operations, Condra explained smoke observed coming from the wastewater collection system was due to smoke testing of the sewer lines to check for leaks.

Following the meeting, Gilliam was asked about progress in negotiations to replace an 80-year-old cast iron water service line. At present, the city must leave water running in the service line to a property owned by an LLC to avoid rust, Gilliam said. The city is losing 8,000 gallons of water per day. The city had reached an agreement about replacing the line, Gilliam said, but the Monteagle city attorney recently received a letter from the attorney for the LLC asking for changes.

Gilliam was also asked about leadership of Monteagle's police department. Gilliam said following the September council meeting where Chief Jack Hill resigned, Hill reconsidered and agreed to accept the chief position.

**7th Annual Holiday Market**

The seventh annual Holiday Market will be held on Friday, Nov. 1 and Saturday, Nov. 2 at the Franklin County Annex Building, Winchester. A few booth spaces are still available. Vendor applications are available online along with the current booth layout at <www.SouthernTnLadies.com> or contact Sandi Mackey at <stlsHolidayMarket@gmail.com> or (570) 656-6118.

This is an all-indoor event with more than 50 booths that range in price from \$ 50 to \$ 75. STLS is looking for vendors that offer homemade items suitable for the gift-giving season. It is not a juried event.

Last year the event offered items such as wreaths, ornaments, jewelry, quilts, custom embroidery, wooden signs, seasonal décor, T-shirts, soaps and candles, pottery and an array of artistic items. All proceeds from this event benefit the Southern TN Ladies' Society Scholarship Foundation.

*Support local businesses!*

**Village Update (from page 1)**

bedroom, two bath home, approximately 1,500 square foot in size, in the \$200,000-\$250,000 price range.

According to the opinions expressed at the meetings, "Duplexes, triplexes, quadplexes, and townhouses don't fit here," Gladu said. "Shared walls make living space more affordable, but affordability doesn't trump the single family home." Single-family homes as rentals were viewed as acceptable, Gladu added, while the rental cost of newly constructed apartments could be prohibitive.

Community resident Anne Griffin pointed to the housing needs of interns and the many VISTA volunteers now serving the community.

Gladu observed the VISTA volunteers often "cobbed roommates together to split the cost" and rented a house. "A newly built 1,200-1,500 square foot home could be a sale property or rental. The rentals offered by the University are almost always full."

Asked about housing opportunities for non-employees who wanted to live in Sewanee, Gladu pointed to the Parsons Green subdivision, which initially offered 15 lots and still had three lots available. The covenants of the subdivision state the homebuilder must be a permanent resident and the homes can only be sold to permanent residents. Except for Parsons Green, only employees can build on the domain.

Gladu said three lots were also unspoken for among the lots the University released last October for employees to construct homes on. After six months the unspoken for lots were to be made available to non-employee residents, Gladu noted, "but that hasn't happened."

Community resident Joe Porter observed the \$18,000 infrastructure fee at Parson's Green was prohibitive.

Housing is one of five Village priority projects. Gladu gave a timeline on other projects. He anticipates the new bookstore will open Easter semester and BP Construction will break ground on the mixed-use food market and apartment building in late 2019 or early 2020.

Plans also call for engaging a landscape architect to create a conceptual design for the Village Green proposed for the current Sewanee Market site, Gladu said. He stressed the mixed-use food market building would need to be completed before the Village Green project could proceed. Having a conceptual design was important because it would provide a cost estimate for Village Green, Gladu said. Funds would need to be raised for the construction since the Village Green was not an income-producing project.

**Rotaract Club Relay for Life**

The Rotaract Club of Sewanee is sponsoring an American Cancer Society Relay for Life. Relay for Life represents the hope that those lost to cancer will never be forgotten, that those who face cancer will be supported, and that one day cancer will be eliminated. This event will take place from 4 p.m.-8 p.m., Saturday, Oct. 26, at the Hardee-McGee Field at Harris Stadium. For more information on how to donate, form a team or get involved, go to <www.relayforlife.org/sewaneetn> or email <ama-soek0@sewaneec.edu>.

**Jerk Chicken Dinner**

The St. Andrew's-Sewanee School InterAct Club is hosting a Jerk Chicken Dinner at 5:45 p.m., Saturday, Oct. 12, at the Robinson Dining Hall on campus. The event is to raise money for Hurricane Dorian aid response. For a flat fee of \$10, you and your family can eat student-prepared food from the home countries of our student body (Jamaica, China, etc.). All proceeds will be donated to hurricane relief.



Students and their families enjoy browsing the many selections available in the Fall Scholastic Book Fair at SES. The variety of books available makes it easy for everyone to find something they would enjoy. Proceeds go to support the school library. Pictured is Sidney Rollins.

**The Depot Emporium**

367 Railroad Ave., Tracy City  
(931) 808-2590

*Specializing in Antiques, Gifts and Things*

Open Thur-Fri-Sat 10 a.m.-5 p.m.

Downtown Sewanee  
thelemmonfair.com  
(931) 598-5248

# The Lemon Fair

Bags, Coolers,  
ID Cases,  
Trunks, Purses,  
Accessories

Scout SALE!!!  
20% OFF!

**Swiss Pantry**  
Belvidere, TN  
Hwy 64W, Belvidere, TN • (931) 962-0567

**One Day Only!**

# Sale!

**10% Off**  
STOREWIDE - excluding baked goods

**Free Samples**  
of Our Christmas Specialties:  
Fruitcakes, Party Mix, Cheese Balls  
and Fresh Apple Butter

**Donut Saturday**  
Call ahead reserve your dozen!  
931-962-0567

**LUNCH**  
Proceeds to benefit:

**FREE Donuts & Coffee!**

**Doorprizes**  
Apple butter Cooked  
in old-fashioned copper kettle!  
Local vendors in attendance!

**blue monarch**

f i t

# Rest Renew Reconnect

**ST. MARY'S SEWANEE**  
The Ayres Center for Spiritual Development

www.stmaryssewaneec.org (931) 598-5342

*We're glad you're reading the Messenger!*



## Blue Monarch Receives \$200,000 Matching Gift to Expand Campus

Blue Monarch's 50-acre campus sits on a beautiful farm in Coffee County, Tennessee. Since 2003, this property has served as a place for healing for almost 800 women and children who were recovering from abuse and addictions. The Christian nonprofit offers a long-term residential program that addresses a wide spectrum of issues, many of which are generational.

"A lot of the women who come to us were taught to use drugs by a parent or grandparent. Naturally, if everyone in the home is doing it, why not?", said Susan Binkley, founder and president of Blue Monarch. "When one looks at the trauma they experienced, even as children, it is no surprise the women we serve were drawn to something that would numb them from the pain."

Blue Monarch is completely funded by private individuals and does not request or receive any government funding. The original property was acquired in 2003 through a bank loan for nearly a million dollars, secured by benefactors, Madeline and Howell Adams. "Even though I was a perfect stranger to them with an ambitious plan on paper, they offered to bor-

row the money and we just had to make the note payments," Binkley said. "Fortunately, we paid that off completely in 2014, which was a great day!"

Since that time, Blue Monarch has experienced tremendous growth. Through a substantial gift from the Robert and Jacqueline Peters family, the non-profit developed the WINGS Transitional Program for Graduates in 2016 to offer housing to four more families. "Fortunately, the family agreed with me that the cottages should be extraordinary. That's why the WINGS Community actually looks like colorful beach houses. No reason it can't be fun, too," said Binkley.

This extended opportunity for Blue Monarch graduates proved to be even more successful than anticipated, resulting in a 93 percent success rate since the transitional program began in 2016. "Following the first year after a woman has completed our core program, we measure three categories; repeated incarceration, loss of custody or visitation rights with children, and the ability to maintain employment or school. We found that this extended program of account-

ability, not supervision, allowed a gentler transition into the real world, resulting in greater success," states Binkley. This year, through a generous anonymous gift, Blue Monarch was able to construct four additional cottages, allowing them to now serve eight families in the WINGS Transitional Program for Graduates.

At any given time, the organization has over 200 families on the waiting list. This number has dramatically increased from 50 families in just two years. Because of this fact, Blue Monarch has looked at expanding its campus by purchasing the 58-acre adjacent farm.

"We received a very unexpected, extremely generous challenge grant of \$200,000 from a couple that also wishes to remain anonymous," said Binkley. "They wanted to see us purchase the farm next door so we could serve more families. Thankfully, we were able to raise the matching funds and the closing should happen very soon."

Blue Monarch can currently serve 19 families, but the expanded campus and proposed structures will allow Blue Monarch to serve 40 families at one time, or 120

individuals with each family having an average of 2 children. The additional land will also provide space for a much-needed multi-purpose building, an updated commercial kitchen for the organization's rapidly growing granola business, a daycare that could also serve the surrounding community, and an equine therapy program.

"There are several aspects of our program that set us apart. But the primary ones are the intense focus we put on the child's recovery and the mother's ability to parent that child effectively," said Blue Monarch's founder and president. "That's the reason we have over 200 families seeking our help. We have no choice but to find a way to serve more."

Through Blue Monarch's program, since 2003 over 265 children have been reunited with their mothers who had lost custody. "This is an exciting new chapter for us," said Binkley. We are enormously grateful for what this will mean for many more women and children in the years to come," said Binkley.

For more information go to <[www.bluemonarch.org](http://www.bluemonarch.org)> or call 931-924-8900.

## CAC Pantry Sunday

Pantry Sunday for the Community Action Committee (CAC) is Sunday, Oct. 6, for participating churches: St. James, Otey, Cumberland Presbyterian and All Saints' Chapel. Please bring your food offerings to Sunday services. The typical bag of groceries includes: rice, beans, pasta, macaroni and cheese, peanut butter, and cans of vegetables, fruit and soup. The cost for a complete bag is less than \$15.

The CAC is an outreach ministry of Otey Parish, with generous support from the Sewanee Community Chest and individuals across the Mountain. For more than 45 years, the CAC has provided food, financial assistance and educational support for persons in the greater Sewanee community. For more information contact the CAC at 598-5927.

## Alzheimer's 101 Training Class

The South Central office of Alzheimer's Tennessee is offering an Alzheimer's 101 Training Class on Tuesday, Oct. 15, 8:30 a.m. until 1 p.m., at First Christian Church in Tullahoma. Designed primarily for family care partners, featured speakers are Dr. Raymond Capps, neurologist; Jim Conley, attorney; and Pat Caron, care specialist. A fee of \$15 will cover materials and lunch. To register go to <[www.alzTennessee.org](http://www.alzTennessee.org)> or call (931) 434-2348.

## Swiss Pantry Annual Open House

Swiss Pantry will be hosting its annual open house and customer appreciation day from 8 a.m.-5 p.m., Saturday, Oct. 5. There will be Christmas specialties to sample such as apple butter, fruitcake and cheese balls. There will be a variety of vendors in attendance. Swiss Pantry will be serving free donuts, hot chocolate and coffee. A yard sale will be available to benefit Aid for Haiti. Purchases at the food tent will benefit the Blue Monarch. Plus, there will be a 10 percent off store-wide sale, except for baked goods. The Swiss Pantry is located at 10026 David Crockett Pkwy., Belvidere.

**2<sup>ND</sup> ANNUAL**

# WAREHOUSE SALE

**FOOD • MUSIC • FUN**

**LODGE**

• CAST IRON •

**OCT. 4-6**

**8AM - 6PM**

**LODGE FACTORY STORE**  
**220 EAST 3RD STREET**  
**SOUTH PITTSBURG, TENNESSEE**

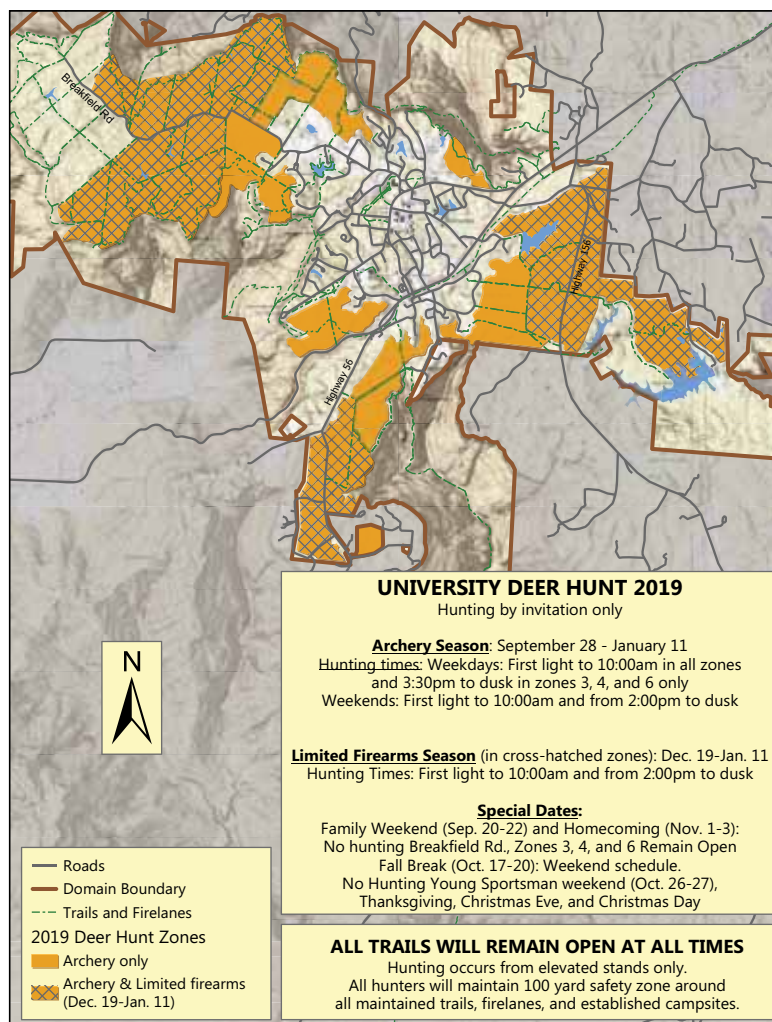
HEAVEN ON EARTH... NOW AVAILABLE IN SEWANEE

At Sewanee

**M**YERS POINT at Sewanee offers a rare opportunity to enjoy a private community that celebrates American architecture, lifestyle, protected forests, cultivated lakes and panoramic views on Middle Tennessee's Cumberland Plateau. If you want to live surrounded by nature, history, beauty, quality and serenity, you'll want to call it home.

John Goodson  
**(931) 703-0558**  
[jgoodson@myerspoint.com](mailto:jgoodson@myerspoint.com)  
[myerspoint.net](http://myerspoint.net)





For more information go to <<http://sustain.sewanee.edu/domain/ecosystem-management/deer-hunting/>>.

## Sewanee Deer Hunt 2019-20

The 2019 hunting season in Sewanee runs discontinuously until Jan. 11, 2020. This year marks the 17th year of organized hunting on the Domain after a resolution passed by the University trustees in 2001 requested that the deer herd be controlled.

The program has continually evolved in response to herd populations, community input, and ever-expanding datasets on the impacts of the herd on the ecological and human community.

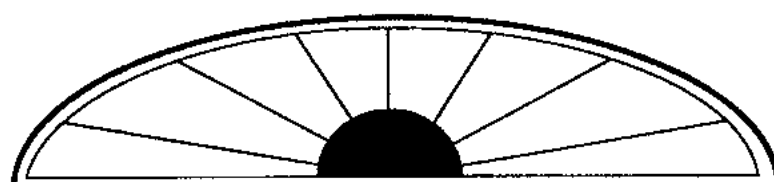
The current hunt is organized around the 2016 White tailed deer management plan, <[http://www.sewanee.edu/media/offices/domain-management/White\\_tail\\_deer\\_management\\_plan\\_Final\\_1\\_26\\_2016.pdf](http://www.sewanee.edu/media/offices/domain-management/White_tail_deer_management_plan_Final_1_26_2016.pdf)>. This document outlines both the population and habitat goals, and the steps involved to reach those goals. In general, our goal is to bring the population down to what the Tennessee Wildlife Resources Agency feels is a sustainable population (approximately 25-30 deer per square mile) in a way that maximizes safety, minimizes impacts to the non-hunting members of our community, and maximizes student-led monitoring of the ecological and social impacts.

This year there are minor changes to the hunting areas. Areas on both sides of the water tower trail have been reopened to full season hunting after being limited for

the last two years. As was the case last year, limited hunting will be allowed during Homecoming in zones away from heavy recreational activity. There will be no hunting on Breakfield Road during Homecoming to ensure ample hiking opportunities for guests. As always, all trails and firelanes remain open to recreational use during the season and hunters maintain a 100-yard safety zone around all recreational trails.

This invitation only hunt is open to all approved University faculty and staff, as well as their direct relatives. The hunt is also open to approved students. All participants must complete the Tennessee Bowhunter Safety Course (or other state equivalent), undergo a background check by the Sewanee Police Department, and participate in all mandatory meetings. All hunters are required to possess a valid TN hunting license and follow all TWRA rules and regulations at all times.

As in previous years, there may be a surplus of animals available for local families. If you are interested in picking up a field-dressed deer for processing, please email <[domain@sewanee.edu](mailto:domain@sewanee.edu)>. For more information on the University hunting program and specific rules and times, go to <<http://sustain.sewanee.edu/domain/ecosystem-management/deer-hunting/>>.



**wm.c.mauzy construction co.**  
Bill Mauzy, Owner, General Contractor

[www.mauzyconstruction.com](http://www.mauzyconstruction.com) 931.598.0686 (office)  
billmauzy@me.com 931.580.0686 (cell)

**New to the Mountain?**  
**Read what you have been missing!**  
**<[www.sewaneemessenger.com](http://www.sewaneemessenger.com)>**

## Bald Eagle Comes Home

An injured Bald Eagle came home to Monteagle on Saturday. Last spring the eagle was discovered on the ground, unable to fly. After spending months at the American Eagle Foundation (AEF) in Pigeon Forge, he was deemed ready for release, and over 100 gathered to watch. When his crate was opened, the young male — nicknamed “Cliff” — flew all the way across the lake as the crowd cheered.

In late May, the eagle had been spotted on the side of the road in Clifftops, a residential community in Monteagle. Margaret Matens, a local TWRA wildlife rehabilitator, enlisted help to orchestrate its capture. According to Matens, the downed eagle could spread its wings and hop but could not take flight. Realizing the young male eagle would not survive if left on its own, she contacted TWRA officers Sgt. Brandon Selvig from Grundy County and Marty Griffith from Marion County, who arrived within an hour.

Matens said, “Marty, my sister, and I surrounded the eagle and tried to chase him towards

Brandon, who had the net. The eagle hopped and flapped to elude capture. At one point, it landed in a creek, which was a blessing as the wet feathers slowed it down. After a 10-minute chase, Brandon was able to net the exhausted eagle. We wrapped him in quilts, disentangled its talons from the net, and gingerly eased him into a big crate.”

With the help of Ziggy’s Tree Rehabilitation Center in Tullahoma, “Cliff” was transported to the U.T. Vet School, the only facility in Tennessee whose veterinarians are permitted to treat a Bald Eagle. After the UT staff found no evidence of fractures or other injuries, they sent him on to the American Eagle Foundation (AEF) in Pigeon Forge for further testing. In partnership with Dollywood, the AEF is an internationally recognized Bald Eagle conservation organization.

“Last week, we received word that he was coming home,” said Matens. Louann Partington, a volunteer with Ziggy’s Tree, transported the eagle to Monteagle. Residents of Clifftops and members of the local community were



Jack Matens, left, and volunteer rehabilitator Louann Partington open the crate to set Cliff free. Photo by Anne Davis

invited to the eagle’s launch party, and cheers broke out when he rose from the ground and flew across the lake.

Bald Eagles have been in evidence around the large lake in past years, though no nests have been spotted.

91 University Ave. Sewanee  
sewaneehouses.com | (931) 598-9244

**UNIVERSITY REALTY** SEWANEE TENNESSEE

Lynn Stubblefield (423) 838-8201  
Susan Holmes C'76 (423) 280-1480  
Freddy Saussy, C'99 (931) 636-9582

**482 TENNESSEE AVE.** Central Campus, spacious single story, 3 or 4 bedrooms, 2 fireplaces, hardwood throughout. Beautiful yard. \$399,000

**336 TENNESSEE AVE.** Freshly painted exterior 3 bedrooms, 2 full baths, 1 half bath spacious on campus.

**180 LAKE O'DONNELL RD.** Post Civil War cottage walking distance to downtown and all of Sewanee. \$145,000

**588 N. BLUFF CIRCLE AND HARDBARGER.** Amazing 3 bedroom home completely renovated from the roof to footers. Hardy plank exterior, 3 BR, 2 BA, great room, new kitchen w/ granite counter tops, two large covered porches, one overlooks a pond, wonderful dry finished basement. \$175,000

**101 CARRUTHERS RD.** Extraordinary sunset view on the Domain. 2820 sq. ft. w/unfinished basement. Two fireplaces and views from every room. \$574,000

**1722 TIMBERWOOD TRACE.** Custom log home with 1,129 linear feet of incredible bluff view, native stone fireplace, 2,600 sq ft deck over bluff. So much more! Timberwood is a gated community. \$935,000

**12147 SEWANEE HWY.** Completely remodeled stone house with a great yard, new appliances, plantation shutters, tongue & grove spruce ceilings, native stacked stone fireplace, refinished floors. \$235,000

**117 OAK ST.** Charming Sewanee campus cottage. 3 BR and 1 BA. Nice large front and back yards. \$110,000

**STILLPOINT 15260 SEWANEE HWY.** Completely renovated large 2 bedroom on two private acres joining the Mountain Goat Trail. \$237,000

**MYERS POINT.** 480-acre gated community w/ 24 exquisite bluff or lake home sites overlooking Lost & Champion Coves. Exceptional amenities. Call Lynn Stubblefield (423) 838-8201 for a private tour. Prices begin at \$275,000

**SUNSET BLUFF VIEW.** 15 acres, private and close to town, priced at \$125,000

**SHERWOOD RD.** Stunning sunrise view over Lost Cove. 3.3 miles from Univ. Ave. 1,000+ feet of view 17.70 ac. \$315,000

Get your raffle ticket for the \$5,000 drawing at AngelFest at our office 91 University. 25% of the proceeds will go to Housing Sewanee to build houses for those in need.



## SENIOR CENTER NEWS

The Sewanee Senior Center serves lunch at noon Monday through Friday. The suggested donation is \$4, regardless of your age. Please call 598-0771 by 9 a.m. to order lunch. Menus follow:

**Monday, Oct. 7:** Barbecue sandwich, pasta salad, baked beans, dessert.

**Tuesday, Oct. 8:** Chicken strips, baked potato, salad, roll, dessert.

**Wednesday, Oct. 9:** Country fried steak, mased potatoes, sprouts/cheese, cornbread, dessert.

**Thursday, Oct. 10:** Black bean chili, grilled cheese sandwich, dessert.

**Friday, Oct. 11:** Baked chicken, mashed potatoes, green beans, roll, dessert.

Menus may vary. For information call the center at 598-0771.

### Regular Activity Schedule

Chair exercises, Mondays and Wednesdays, 10:30–11:15 a.m.; Tuesdays at 10:30 a.m., the group plays bingo, with prizes; Wednesdays at 10 a.m., the writing group gathers at 212 Sherwood Rd.; Fridays at 10 a.m. is game time.

Volunteers who are willing to deliver lunches on Wednesday through Friday are needed at the Sewanee Senior Center. This takes about one hour to accomplish and someone will show any new volunteers what is involved. Call the Senior Center at 598-0771 or Connie Kelley at 598-0915 for more information.

The Sewanee Senior Center does not charge any membership fee. All persons 50 or older who take part in any of the activities are considered members.

## Tigers Don't Leave Tracks!

Tigers Don't Leave Tracks!—a program aimed at educating students about sustainability and helping them reduce their use of single-use plastics, continues at Sewanee Elementary.

The Piggly Wiggly is hosting a draw in support of the project for prize drawings. When you bring your own bags to The Pig, write the name of a teacher or a class on the back of your receipt (grade 2, Mrs. Camp's class, Principal's Choice, etc.) and put it in the Tigers Don't Leave Tracks! jar at the front of the store. Local businesses also support 'Tigers Don't Leave Tracks! Mooney's, the Lemon Fair, Village Wine and Spirits, the Sewanee Market, the Piggly Wiggly, and Joseph's Remodeling Solutions have offered their support to the Tigers Don't Leave Tracks! Reusable Bag project, making donations when you use reusable bags in local stores, and by making possible our student prizes. Please thank them for their support, and bring your reusable bags when you shop.

## St. Mary's Sewanee Offers Workshop on Zen Buddhism

St. Mary's Sewanee: The Ayres Center for Spiritual Development is pleased to announce a new one-day workshop, "The Ten Oxherding Pictures," on Saturday, Nov. 16. The workshop will begin at 9 a.m., and includes lunch.

"The Ten Oxherding Pictures" is a way of exploring the Zen training path to enlightenment. In this day-long workshop led by Richard Dubé, participants will explore the history and meaning of this ancient tradition. The sketches are an examination of one's Buddha nature and ego, and how those evolve as people approach enlightenment. Ultimately, Dubé says, the workshop is about uncovering the real person who resides beneath the false self.

As part of this journey of self-discovery, participants will explore a greater understanding of the trinity of self (physical, intellectual and spiritual); the three commitments (doing no harm to yourself and others, engaging in compassionate acts everywhere and accepting the world as it unfolds); what enlightenment looks and feels like; and the practice of Zazen meditation.

Dubé—a naturalist, author, photographer, and educator—is the leader of this event. He is the author of three nonfiction books – "Natural Pattern Forms," "Natural Stonescapes" and "Landscaping Makes Cents." He is a lecturer and public speaker on topics including Japanese garden design, permaculture, forestry and birding.

For more information about this event, including making reservations, call St. Mary's Sewanee at (931) 598-5342, email <reservations@stmaryssewanee.org>, or go online to <www.stmaryssewanee.org>.

LIKE THE MESSENGER? LET US KNOW ON FACEBOOK!



# BIGFOOT BLUES FESTIVAL

**BAGGENSTOSS FARMS • TRACY CITY, TENNESSEE**

---

## FEATURING

# KENNY WAYNE SHEPHERD BAND

**RONNIE EARL & THE BROADCASTERS • SHEMEKIA COPELAND**

**ERIC GALES • SUE FOLEY • DAVY KNOWLES • JOHN NEMETH • MONSTER MIKE WELCH**

**SAMMY EUBANKS • JOHNNY LONG • BIZZ & EVERYDAY PEOPLE**

---

## FAMILY ★ FUN ★ ADVENTURE

**FERRIS WHEEL • ZIPLINE • KID ZONE • FOOD TRUCKS**

**ARTS & CRAFTS • SUNDAY GOSPEL MUSIC • KIDS UNDER 12 FREE**

---

# OCT 18-20, 2019

**GET YOUR TICKETS TODAY**

**BIGFOOTBLUESFESTIVAL.COM**



BIGFOOT ADVENTURE • CHATTANOOGA MARKET • HUTTON & SMITH BREWING COMPANY  
JIM OLIVER'S SMOKE HOUSE • KZ 106 • MOUNTAIN GOAT MARKET  
MOUNTAIN GOAT TRAIL • QUALITY INN • SHENANIGANS RESTAURANT  
SOUTH CUMBERLAND STATE PARK • TENNESSEE RECOVERY & MONITORING • WOODY'S BICYCLES

---

**PROCEEDS TO BENEFIT MENTAL ILLNESS AWARENESS & SUICIDE PREVENTION**

---

## SPECIAL PROMO CODES: \$20off1DAY ★ \$25off2DAY





The entire seventh-grade class at Monteagle Elementary earned the top attendance percentage for the first month of the 2019-20 school year. Their rate came in at 98.5 percent. The entire school had an attendance rate of 97.05 percent for the first month of school. We are very proud of everyone's efforts. Keep up the wonderful work with attendance!

## Collect Box Tops to Help Sewanee Elementary

There is an easy way to support Sewanee Elementary School. Take a few minutes and clip the "Box Tops for Education" from many of the groceries you already buy at the store.

Last year the school earned almost \$1,000 through the Box Tops program, money that went directly to SES to support teachers and education.

Please keep clipping! You can drop the box tops off at SES or in the box in the entry area of the Sewanee Post Office.

There is a complete list of participating items online at <www.boxtops4education.com/products/participating-products>. For more information visit <www.btfe.com>.

Eventually the Box Tops program will become digital-only. Participating brands are starting to change their packaging from a traditional Box Tops clip to the new Box Top label.

If you see this label, use the new Box Tops app to scan your receipt. Box Tops are still worth 10 cents each for your school. The app will find participating products purchased at any store and instantly add cash to your school's earnings online.

No more clipping. No more sending Box Tops to school. All you need is your phone. Download the ALL-NEW Box Tops app, shop as you normally would, then simply scan your store receipts within 14 days of purchase to find participating products. The app will automatically credit your school's Box Tops earnings online.



## SCHOOL CALENDAR

Oct. 4, Fair Day, No School, Franklin County

Oct. 7-11, Fall Break, Franklin County

Oct. 11, No School, Grundy County

Oct. 14-18, Fall Break, Marion County

Oct. 14-18, Fall Break, Grundy County

Oct. 17-20, Fall Break, St. Andrew's-Sewanee

Oct. 17-20, Reading Period, School of Theology

Oct. 17-20, Fall Break, College of Arts & Sciences

Oct. 21, Classes Resume, University of The South



**It's the law:  
no texting or  
handheld phone  
use in an active  
school zone!**

## TN Promise Mentors Needed

With the deadline less than three months away, tnAchieves needs an additional 5,000 volunteer mentors across the state to support TN Promise applicants from the Class of 2020. Locally, Franklin County needs 31 mentors to meet student demand.

Mentors spend one hour a month assisting students as they transition from high school to college. They remind students of important deadlines, serve as a trusted college resource and, most importantly, encourage students to reach their full potential.

"The financial support that TN Promise provides students is critical, but we know that the support from a local mentor is equally important to student success," said Krissy DeAlejandro, tnAchieves Executive Director. "TN Promise students are graduating at a rate 21 percentage points higher than their non-TN Promise peers at the same institutions. The guidance and encouragement students receive from a mentor cannot be understated — they are the difference maker for many of our TN Promise students."

TN Promise, in partnership with tnAchieves, allows every graduating high school senior the opportunity to attend a community or technical college, as well as several universities, tuition free with mentor support. Many of the students that apply for the scholarship will be the first in their family to attend college and mentors work with students to overcome barriers that previously prevented students from accessing higher education.

"We understand that navigating the college-going process can be very challenging," said tnAchieves Deputy Director of Partnerships, Graham Thomas. "Mentors serve as a resource for students and their families in a process that may contain many unknowns. Understanding that someone is available to answer questions and walk this journey with them can be very impactful for students."

Potential mentors must be 21 years of age, are subject to a background check and complete a one-hour training. For more information or to apply, you can visit <www.tnachieves.org> or contact tnAchieves Deputy Director of Outreach Graham Thomas at (615) 604-1306 or <graham@tnachieves.org>.

<www.sewaneeessenger.com>

**G. Robert Tubb II, Owner**  
931-967-3595  
A1ChimneySpecialist.com

**CERTIFIED CHIMNEY SWEEP**

**HELP!**

**A-1 CHIMNEY SPECIALIST**

**CSIA Certified Technicians**  
Video Inspections • Sweeping  
Restoration • Masonry Repair  
Custom Caps & Dampers  
Leak Repair & Water Proofing  
Wood Stove & Chimney Installs  
Gas Log Service & Installs  
Dryer Vent Cleaning/Repair

**YOUNG LIVING**  
ESSENTIAL OILS  
Independent Distributor

Ray and April Minkler  
styraco@blomand.net, aprilminkler@blomand.net  
931-592-2444 931-434-6206  
For over 8,700 testimonials see  
www.oil-testimonials.com/1860419

## Sewanee Student Receives Change Ringing Award

The North American Guild of Change Ringers has awarded Sewanee's Class of 2020 Senior, Carlos Zayas-Pons, the Jeff Smith Memorial Young Ringer Award. The award recognizes Carlos' bell ringing achievement and his commitment to the local ringing community. Carlos, a double major in English and Spanish, was very quick to master the art of change bell ringing, something he attributes to his love of solving puzzles and his ability to see patterns. Carlos has varied interests including creative writing, acting, and a love of music. He is also one of two Sewanee seniors nominated as candidates to vie for a Rhodes Scholarship.

In addition to strengthening the abilities of the Sewanee band of change ringers, Carlos was one of six ringers to ring a Plain Bob Doubles quarter peal before Sewanee's opening Lessons & Carols service. A quarter peal contains a series of at least 1,250 permutations rung in rapid succession according to rules that ensure no permutations are repeated. A quarter peal takes about 45 minutes of concentration and cooperation among the band of ringers. The permutations create a hauntingly beautiful ribbon of sound.

Change ringing developed in England and is traditionally heard following royal weddings as well as before and after most English church services. It requires a group of ringers working in tight coordination to ring the bells in constantly changing permutations. Because each tower bell takes over a second to complete its full 360-degree rotation, the bells cannot ring traditional music or melodies. That constraint led to an intricate system of generating unique permutations known as change ringing. Sewanee is one of five educational institutions in the United States that has both change bells and a carillon. The Bentley Bells are a ring of eight bells that are typically rung before the 11 a.m. Sunday service at All Saints' Chapel and for special University events such as convocations and graduation ceremonies. The Guild also rings, upon request, for weddings, on special holidays, and after football victories.

The Sewanee Guild of Change Ringers welcomes students and new members. Please contact Ray Gotko at <rmgotko@sewanee.edu> or John Solomon at <jcsolomo@sewanee.edu>.

## SAS Admission Open House

St. Andrew's-Sewanee School welcomes families seeking better educational options to its annual fall admission open house on Sunday, Oct. 6, at 2 p.m. Families with children in grades four-11 will enjoy campus tours, information sessions, mini-classes, and an introduction to the admission and financial aid application process. Check-in for the event begins at 1:30 p.m. at McCrory Hall for the Performing Arts on the school's campus.

For more information about St. Andrew's-Sewanee School and the Admission Open House, go to <www.sasweb.org>. Registration for the event is recommended.

**Advertising in the Messenger works! Contact us at 598-9949 to find out how to make it work for you.**

**June Weber**  
**Gooch-Beasley Realtors**

Serving the Sewanee and Monteagle area  
with quality real estate service:  
-48 years of experience  
-Mother of Sewanee alumnus

**www.gbrealtors.com**    **juneweber@me.com**  
**June Weber, CRB, CRS, GRI Broker**    **931.636.2246**  
**GOOCH-BEASLEY REALTORS**    **931.924.5555**

**MATLOCK**  
State Licensed • Fully Insured

ROB MATLOCK  
CONSTRUCTION COMPANY  
NEW HOME BUILDING  
AND REMODELING

PHONE: 931-598-5728  
CELL: 931-580-5728  
EMAIL: RMATLOCKCONSTR@GMAIL.COM

**Tea on the Mountain**  
For a leisurely luncheon  
or an elegant afternoon tea  
11:30 to 4 Thursday through Saturday  
**DINNERS BY RESERVATION**  
(931) 592-4832  
178 Oak Street, Tracy City

**WOODY'S BICYCLES**  
**SALES, SERVICE AND RENTALS**  
**A Full-Service Trek Bicycle Dealer**  
Mon-Fri 9-5 • Sat 10-2 • 90 Reed's Lane  
598-9793 • woodybike@gmail.com  
Check out [www.woodysbicycles.com](http://www.woodysbicycles.com) for rates, trail maps,  
photos, bike club links, races and much more!



## Register for Lifelong Learning Courses

The Center of Lifelong Learning at the University of the South is excited to announce our new courses. Contact Dan Backlund at <lifelong@sewanee.edu> for further information and to register before the classes are full. The enrollment fee for each course is only \$60 and includes six hours of formal learning time.

**Secret Messages: Old and New Methods of Encryption**—This course will look at simple and complex substitution cyphers (think of Poe's "The Gold Bug") and then spend time exploring how computers encode text. After realizing that messages on a computer are just a string of zeros and ones, students will spend just enough time with some mathematics to be able to understand modern encryption techniques. At the end, the course will examine potential encryption techniques which might be used when much more powerful computers are available. Instructor: Laurence Alvarez, Professor Emeritus of Mathematics, Tuesdays, Oct. 29, Nov. 5, 12, and 19, from 1–3 p.m.

**Feuding Couples in Theatre and Film (the Comic Version)**—Comedy is a particularly powerful means of exploring relationship anxieties, which is why some of our great comedies use the battle of the sexes for their

structuring tension. In this course we will apply different theories of laughter and of the comic. Instructor: Robin Bates, Professor Emeritus of English, Mondays, Oct. 28, Nov. 4, 11, and 18, from 2–4 p.m.

**Matthew Arnold (1822-1888): A Man For Our Season**—Among all of the major Victorian poets and cultural critics, Matthew Arnold was especially attuned to the unique contours and problems of industrial society and capitalist global economy. His poetic voice and stance anticipate many of the major themes and techniques of 20th and 21st century poetry. His capacity to "see life steadily and to see it whole" especially recommend him to readers of our age. In this brief course we will begin in the first of four sessions by considering an Arnoldian essay (The Study Of Poetry) in which he makes his claims for the role of poetry in the modern life: then we will read and discuss Arnold's major poems that address the human condition in the context of the modern landscape. Text: Victorian Prose and Poetry (the Oxford Anthology Of English Literature); eds. Lionel Trilling and Harold Bloom; ISBN 0-19-501616-5; paperback edition. (This is the same text used in the previous Robert Browning Course offered in the winter of 2018.) Instructor:

John Reishman, Professor Emeritus of English, Wednesdays, Oct. 30, Nov. 6, 13, and 20, from 9–11 a.m.

**New Classical Music: Learning from the classics while experiencing the modern**—This class will explore the differentiation between classical music in differing time periods while also exploring new compositions and how to understand them as a listener. We love the "classic" aspect of classical music, but what is it that makes it so classic? And, what about modern classical music? Just like we exercise our palates with cuisine, this class will strengthen your palate within classical music. Instructor: Hilary Dow Ward, Thursdays, Oct. 31, Nov. 7, and Nov. 21, from 2–4 p.m.

## Lodge® Cast Iron's Second Annual Warehouse Sale

On Oct. 4-6, come visit Lodge Cast Iron's Warehouse Sale for up to 80 percent off warehouse inventory, including discontinued, overstocked, and limited-release items.

The second annual Warehouse Sale was turned into a three-day event, due to the successful turnout of its inaugural event in 2018. The sale, located at the first shipping bay around the side of the Factory Store, will be open 8 a.m. to 6 p.m. on Friday, Oct. 4, and Saturday, Oct. 5. On Sunday, the sale will be open from 9 a.m. to 5 p.m.

Shoppers are encouraged to park at the Lodge Employee Center, located at 345 Railroad Ave., South Pittsburg. Signs will be placed around town with directions to the Employee Center. Additional parking is available at the Factory Store, if needed.

The three-day event will also feature live music, local barbecue, and games and activities for the whole family.

## Senate District 16 Receives \$720,000 in Highway Safety Grants

State Senator Janice Bowling (R-Tullahoma), said she was informed Senate District 16 has been awarded \$726,528 in Highway Safety Grants to promote public safety on local roads and to curb drunk driving. Bowling made the announcement after being informed by the Department of Safety and Homeland Security.

All seven counties in Senate District 16, Coffee, Franklin, Grundy, Marion, Sequatchie, Van Buren and Warren Counties, are receiving grants.

"I am very pleased that so many law enforcement agencies in our Senate District, will receive these grants," said Senator Bowling. "I'm especially pleased that these grants can be used to aid in our efforts to protect our citizens against drunk driving."

The awards include:  
\$24,924 to Coffee County Sheriff's Department for High Visibility Enforcement;

\$23,000 to Coffee County to the Manchester Police Department for Alcohol and Impaired Driving Enforcement;

\$185,700 to Coffee County to the Tennessee District Attorney General, 14th Judicial District for DUI Prosecution;

\$15,019 to Coffee County to the Tullahoma Police Department for Police Traffic Services;

\$5,000 to Franklin County to the Cowan Police Department for High Visibility Enforcement;

\$5,000 to Franklin County to the Decherd Police Department for High Visibility Enforcement;

\$5,000 to Franklin County to the Estill Springs Police Department for High Visibility Enforcement;

\$9,999 to the Franklin County Sheriff's Office for Alcohol and Impaired Driving Enforcement;

\$29,998 to Franklin County to the University of the South for Distracted Driving;

\$5,000 to Franklin County to

the Winchester Police Department for High Visibility Enforcement;

\$16,500 to the Grundy County Sheriff's Department for Alcohol and Impaired Driving Enforcement;

\$5,000 to Grundy County to the Tracy City Police Department for High Visibility Enforcement;

\$5,000 to Marion County to the Jasper Police Department for High Visibility Enforcement;

\$20,000 to Marion County to the Kimball Police Department for Police Traffic Services;

\$20,000 to the Marion County Sheriff's Department for Alcohol and Impaired Driving Enforcement;

\$20,000 to Marion County to the South Pittsburg police Department for Police Traffic Services;

\$10,000 to Sequatchie County to the Dunlap Police Department for Alcohol and Impaired Driving Enforcement;

\$10,000 to the Sequatchie County Sheriff's Department;

\$5,000 to Van Buren County to the Spencer Police Department for High Visibility Enforcement;

\$5,000 to the Van Buren County Sheriff's Department for High Visibility Enforcement;

\$20,088 to Warren County to the McMinnville Police Department for Police Traffic Services;

\$261,300 to Warren County to the Tennessee District Attorney General, 31st Judicial District for DUI Prosecution;

\$20,000 to the Warren County Sheriff's Department for Police Traffic Services.

"These investments will give our local communities additional funds that should help upgrade their efforts to make our roads safer. I will continue to work to ensure our citizens are kept safe and our roads are made safer in the next General Assembly," added Bowling.

The grant awards will be disbursed by the Tennessee Highway Safety Office (THSO). The grants are provided to agencies that successfully applied for funding who meet the required data-driven criteria and highway safety standard. Grant applications must be in line with THSO's mission to reduce traffic crashes, injuries and fatalities.

## WOODARD'S DIAMONDS & DESIGN



**We're still open inside  
Northgate Mall – Tullahoma**  
(while new store is under construction)

**931.454.9383**

woodards.net



OPEN: MON-SAT 10a-6p CLOSED SUNDAY

**Join Us TONIGHT!**  
*Sewanee AngelFest*  
**Family Fun @ 4:30pm**  
**Concert will follow @ 6:30pm**

*"Open your door to all  
the possibilities"*



Custom home remodeling begins with...

**Joseph's Remodeling Solutions**  
A Division of Sampson Solutions, LLC

**Taking Quality to the Next Level**

Licensed - Insured - Green Certified

**931-598-5565**

joseph@josephsremodelingsolutions.com  
www.josephsremodelingsolutions.com

## SEWANEE AUTO REPAIR Complete Auto & Truck Repair

**Tune-ups • Tires • Tire Repair • Brakes • Steering  
• Oil Changes • Batteries • Computer Diagnostics**



**All Makes & Models • Service Calls •**

**Quality Parts**

**ASE Master Certified Auto Technician •**

**31 Years' Experience**

Open 7 to 5 M-F

(931) 598-5743 • 76 University Ave.



## Monteagle-Sewanee Rotary Club

—Service Above Self

*Visit one of our meetings and get to know what Rotary is all about.*

Attend a local meeting and meet some of our Monteagle-Sewanee Rotarians. Our Rotary Club often hosts programs of interest to our community at large, including presentations by artists, business leaders and government representatives. Visitors are always welcome!

**Breakfast Meeting Thursday, 8 a.m., Sewanee Inn**  
(please check the Messenger for occasional location changes)

This month's events:

Oct. 3: Club Assembly

Oct. 10: Interact—Charlie Barron

Oct. 17: Grundy County Tourism—Andy Baggenstoss

Oct. 24: Membership Committee—Donna Rather

For more information, or to plan a visit,  
email John Solomon <jcsolomo@sewanee.edu>  
website: [www.monteaglesewanerotary.org](http://www.monteaglesewanerotary.org)



**COFFEE HOUSE**

**Feed the gremlins  
decaf only. But  
you come on in  
for your caffeine  
needs!**

Mon-Wed, 7:30am-midnight;  
Thurs & Fri, 7:30am-10pm;  
Sat, 9am-10pm; Sun, 9am-midnight  
Georgia Avenue, Sewanee



**598-1786**



Like Us On Facebook for specials and updates

*We're glad you're  
reading the  
Messenger!*



## At the Galleries

### Artisan Depot

The community show “All Creatures” will be on display through Oct. 27. Also on display is “Textures, Layers, and Beauty,” an exhibition of work by Karen Ingle, Emily May Ragland and Mary Beth Lockmiller.

The Artisan Depot is located at 204 Cumberland St., Cowan. Gallery hours are from noon to 5 p.m., Thursday, Friday and Sunday and 11 a.m. to 5 p.m. on Saturday.

### The Frame Gallery

“Painting Together” is on display at the Frame Gallery through October. The opening reception will be from 5:30–7 p.m., Friday, Oct. 4.

The Frame Gallery is located at 12569 Sollace M. Freeman Hwy., Sewanee. Hours are 10 a.m. to 5 p.m., Tuesday through Friday, and 10 a.m. to 2 p.m. on Saturday.

### Locals

Locals is displaying art from area craftsmen. Locals is located at 49 University Ave., in Sewanee.

Locals celebrates Tennessee Craft Week with an additional 10 percent off all Tennessee artists through Oct. 11. Locals is open Wednesday to Saturday, noon to 5 p.m.

For more information, call (865) 567-5563.

### SAS Gallery

Textile artist Christi Teasley will have an exhibition Oct. 4–Nov. 6 at the SAS Gallery.

SAS Gallery hours are Monday through Friday, 9 a.m.–3 p.m., and by appointment. Contact the Gallery at <sasgallery@sasweb.org> for more information.

### University Art Gallery

The University Art Gallery is honored to host “Prints and Quilts from Gee’s Bend,” on view through Oct. 13. Informed by the tradition of quilting, the art objects on view—created by artists Mary Lee Bendolph, Louisiana Bendolph, Thornton Dial, and Lonnie Holley—were carefully selected from the Arnett collection to represent a new chapter in the long story of quilting and the community of Gee’s Bend, Ala.

University Art Gallery is open 10 a.m.–5 p.m. Tuesday through Friday and noon–4 p.m. on Saturday and Sunday. The University Art Gallery is located on Georgia Avenue. Call (931) 598-1223 for more information, visit our website at <gallery.sewanee.edu>, or follow us on Facebook.

## Blues Music Festival at Baggenstoss Farms

Baggenstoss Farms has announced the first-ever blues music festival to be held in Tracy City, Tenn. The inaugural Bigfoot Blues Festival, a two-day music festival to be held Oct. 18-19, is headlined by renowned blues rock guitarist/songwriter Kenny Wayne Shepherd Band who will delight music lovers and outdoor enthusiasts along with a lineup of celebrated artists and exciting activities, including a KidsZone.

Ticket prices begin at \$90 for a single day pass. Tickets are available in three tiers for one or both days. There is tent, RV and car camping. Tickets are available for purchase now on <https://www.bigfootblues-festival.com>.

Bigfoot Blues Festival will be the region’s first blues-centric event to be held on the grounds of Baggenstoss Farms. More information may be found online at <https://www.bigfootbluesfestival.com> or on Facebook.

## Apprentice Program with Tennessee Craft

Tennessee Craft, in partnership with the Tennessee Arts Commission, announces the opening of the 2020 Master Artist/Apprentice Program (MAAP) application process. This mentoring program offers emerging artists a unique opportunity to learn traditional and contemporary craft skills firsthand from master craft artists.

All artists in the program choose challenging goals that will advance their skills and knowledge as craft artists. The MAAP was created to boost artists to the next level of their professional development during an intensive six-month one-on-one mentorship, not typically available in most learning environments.

Awarded apprentices receive a \$1,800 stipend to work with their chosen master from Dec. 1, 2019 to June 15, 2020. Deadline for applications is Nov. 1. For more information, email <info@tennesseecraft.org>.

## Slim Wednesday at Shenanigans

On Wednesday, Oct. 9, Slim Wednesday hits the upstairs of Shenanigans with funky soul music straight out of New Orleans.

Slim Wednesday brings southern psychedelic soul, mixing some new sounds with some fan favorites.

The show starts at 8:30 p.m. and tickets are \$15. Tickets can be purchased on <eventbrite.com>.

## Art Wednesdays at Artisan Depot

The Franklin County Arts Guild invites community members interested in the visual arts to come to the Artisan Depot Gallery & Gift Shop for Art Wednesdays. Anyone can participate. Age and skill level do not matter.

The group meets every Wednesday from 10 a.m. to 12:30 p.m. Everyone brings their own art supplies and projects. Sometimes everyone works on individual projects and sometimes we get one of the members to do a mini-workshop for anyone interested. Art Wednesday is a great place to seek advice on technique, supplies, and get input on projects from the group. There are no fees. Artisan Depot Gallery is located at 204 Cumberland St. E, Cowan.

## 41st Annual Tennessee Fall Craft Fair

Continuing the hand-crafted tradition, the 41st annual Fall Tennessee Craft Fair is scheduled for Oct. 11–13 at Centennial Park. Professional artisans from Tennessee and the surrounding states join craft artists traveling from around the country to serve approximately 50,000 visitors.

The Fall Tennessee Craft Fair continues to motivate and galvanize future generations of craft artists and collectors through valuable year-round programming including educational workshops, opportunities to showcase handcrafted work, mentoring, workshops, and scholarships. Purchasing artisan work forges a personal connection between the makers and the public.

The Fall Tennessee Craft Fair will be open Friday and Saturday from 10 a.m. until 6 p.m. and Sunday from 10 a.m. until 4 p.m.

## blue chair Café & Bakery

Where Our Community Gathers



### TRIVIA NIGHT EVERY-OTHER-TUESDAY

OCT. 1, 15, 29  
NOV. 12, 26  
DEC. 10

Winning Team: \$50 Gift Card

### SPOKEN WORD EVERY-OTHER-TUESDAY

OCT. 8, 22  
NOV. 5, 19  
DEC. 3, 17

### NEW MENU • FEATURING KERI'S SWEET CREAM BISCUITS

FORK-N-KNIFE SAMMIES UNLIKE ANYTHING ON THE MOUNTAIN!  
**35 UNIVERSITY AVE. • 931-598-5434**

## AT THE MOVIES

### SEWANEE UNION THEATRE

Friday–Sunday, Oct. 4–6, 7:30 p.m.

*The Farewell*

PG • 100 minutes

Billi’s family returns to China under the guise of a fake wedding to stealthily say goodbye to their beloved matriarch, the only person that doesn’t know she only has a few weeks to live.

### CINEMA GUILD

Wednesday, Oct. 9, 7:30 p.m., free

*Fantastic Mr. Fox* (2009)

PG • 88 minutes

After 12 years of bucolic bliss, Mr. Fox (George Clooney) breaks a promise to his wife (Meryl Streep) and raids the farms of their human neighbors, Boggis, Bunce and Bean. Giving in to his animal instincts endangers not only his marriage but also the lives of his family and their animal friends. When the farmers force Mr. Fox and company deep underground, he has to resort to his natural craftiness to rise above the opposition.

### SEWANEE UNION THEATRE

Thursday–Sunday, Oct. 10–13, 7:30 p.m.

*The Lion King*

PG • 118 minutes

Simba idolizes his father, King Mufasa, and takes to heart his own royal destiny on the plains of Africa. But not everyone in the kingdom celebrates the new cub’s arrival. Scar, Mufasa’s brother, and former heir to the throne, has plans of his own. The battle for Pride Rock is soon ravaged with betrayal, tragedy and drama, ultimately resulting in Simba’s exile. Now, with help from a curious pair of newfound friends, Simba must figure out how to grow up and take back what is rightfully his.

*Movies are \$3 for students and \$5 for adults, unless otherwise noted. The SUT accepts credit/debit cards. The SUT is located on South Carolina Avenue, behind Thompson Union.  
The SUT will be closed Oct. 16–20 for fall break.*

## Workshops at Artisan Depot

The Franklin County Arts Guild (FCAG) is offering a variety of Art Workshops this fall and early winter at the Artisan Depot in Cowan.

These workshops are taught by local artist-educators working in media such as acrylic paints, ceramics, paper, stained glass, fabric, collage and wax resist. Each workshop provides an opportunity to learn art skills and walk away with a completed project.

In addition to the workshops for adults, the FCAG has included a Family Art Time series of classes. These workshops are appropriate for children ages 8 and up, and all children must be accompanied by an adult.

Registration is available online <www.franklincoarts.org>.

Adult Workshops and dates: Ceramic Planters, Oct. 12; Stained Glass Stars, Oct. 18; and Paper Christmas, Nov. 23.

Family Art Time: Peace/Hope Flags, Oct. 19; Gratitude Collage, Nov. 16; and Northern Lights Winterscape, Dec. 14.

The Artisan Depot is located at 204 Cumberland St., Cowan.

## DEPENDABLE AFFORDABLE RESPONSIVE HOME REPAIR AND REMODELING EXPERT HANDYMAN

### KEN O'DEAR

25 YEARS EXPERIENCE  
SATISFACTION GUARANTEED

**931.235.3294**

**931.779.5885**



*Shop and dine locally!*



**piggly wiggly**

### Down Home, Down the Street

754 West Main St., Monteagle  
(931) 924-3135

8 a.m. to 9 p.m. 7 days a week

**Mooney's**  
Market & Emporium

- ✦ ORGANIC, LOCAL FOODS
- ✦ SUPPLEMENTS & TOILETRIES
- ✦ GARDEN & BIRD SUPPLIES
- ✦ YARN & ACCESSORIES
- ✦ ANTIQUES, JEWELRY, GIFTS
- ✦ CRESCENT CAFE JUICE BAR  
NOW OPEN EVERY DAY 11-3

**Store open 10-6 daily**  
**931-924-7400**  
1265 W Main • Monteagle



## Butka at Sewanee Spoken Word

Brenda Butka, a widely published Nashville poet, will be the leadoff reader at the Tuesday, Oct. 8 session of Sewanee Spoken Word.

Butka, who's also a retired Vanderbilt pulmonologist, has had her work anthologized by Annals of Internal Medicine. That journal awarded her "Intensive Care" its top poetry prize in 2017. Literary journals such as The Florida Review and The Threepenny Review have also featured her work.

Sewanee Spoken Word is a free celebration of creative writing at the Blue Chair Cafe. It occurs at 7 p.m. on the second and fourth Tuesdays of most months. Co-hosts include local writers Brooks Egerton, Naomi Buck Palagi and Michael Cimino-Hurt.



Brenda Butka

For more information, or to sign up for a reading slot, please see <www.facebook.com/FogPoets>.

## New Exhibit at Frame Gallery

For the second year in a row, Frame Gallery is pleased to host Painting Together, a collection of recent works by artists in Martha Keeble's painting group. The exhibit will open with a reception for the artists on Friday, Oct. 4, 5:30-7:00 p.m. All are welcome. The exhibit will continue through Oct. 28.

The painting group meets every week in Brooks Hall at Otey Parish in Sewanee under the tutelage of Martha Keeble. Whether it's the Thursday class or the Friday class, the group has been creating together since 2009.

This exhibition includes paintings of landscapes, still lifes and animals and reveals the creative energy that happens when painting together. Martha Keeble, received her BFA in drawing and painting at University of Georgia and her MAEd at Georgia State University and has been painting and teaching ever since.

Artists exhibited will include Betty Barton Blythe, Amy Burns, Bob Burns, Sally Harding, Alex Hoole, Martha Keeble, Pat Kirby, Susan Lane, Debbie Racka, Annette Smith and Linda Lankewicz.

## Ralston Listening Events

The William Ralston Listening Library, a state of the art listening room on the second floor of the Jessie Ball duPont Library, is hosting several upcoming events, which are free and open to the public.

Monday, Oct. 7, 6-7 p.m., Kanye West's Comeback with My Beautiful Dark Twisted Fantasy, Jackson Campbell; 7-8 p.m., A Vinyl Exploration of Dave Brubeck, Logan Stewart; 8-9 p.m., Throwback: Jesse McCartney, Aly & AJ, Hilary Duff, Isabel Butler & Heidi Hayne.

Tuesday, Oct. 8, 3-4 p.m., The Soundtrack of Mishima; A Life in Four Chapters, Chris Talbot; 8-9 p.m., Bossa Nova, Wilder McCoy.

Wednesday, Oct. 9, 3-4:30 p.m., Mahler's 4th Symphony, Nathan Stewart; 5-6 p.m., Cuban Jazz, Sergio Rodriguez; 7-8 p.m., A Night with Polo and Pan, Henry Fisher.

Thursday, Oct. 10, 5-6 p.m., Chamber Music of Camille Saint-Saens, Annie Bowers; 8-9 p.m., Johann Sebastian Bach, Part 1 - The Early Years, Jeremy O'Neill.

Friday, Oct. 11, 3-4 p.m., Friends of Fall by Crooked Still, Nicholas Liston-Avnaim; 5-6 p.m., Weyes Blood, Caleb Thorn.

Sunday, Oct. 6, 6-9 p.m., Berlioz's Béatrice et Bénédict from Glyn-debourn, Caiti Berends.

*We're glad you're reading the Messenger!*



**MICHELLE M. BENJAMIN, JD**  
Attorney & Counselor at Law

201 FIRST AVENUE, NORTHWEST  
WINCHESTER, TENNESSEE 37398

(931) 962-0006  
Fax: (931) 967-8613



- Full-Service Doggie Day Care
- Short- or Long-Term Boarding in Doggie Suites
- Obedience Training
- 34 Indoor/Outdoor Kennels

1660 Dechard-Estill Rd. • Winchester  
www.wagsandwigglesn.com • 931.247.1699

Monday-Friday 6 a.m.-6:30 p.m.  
Saturday 6:30 a.m.-12:30 p.m., 4-6:30 p.m.  
Sunday 6:30-11:30 a.m., 4-6:30 p.m.



A photo by actor/singer Jack Chambers of a section of "The Celestial Sky - Messiah" at IONA: Art Sanctuary

## IONA: Art Sanctuary Winter Festival of Fine Arts

IONA: Art Sanctuary's Winter Festival of Fine Arts is scheduled for Oct. 15-17, beginning each night at 7 p.m. and at 5 p.m. on Oct. 18.

Tuesday, Oct. 15 will feature an art exhibit by Franklin County Art Guild members, and poets Malcolm McLaurin, Mandy Tu, Jackson Harwell and creative writer Virginia Craighill.

On Oct. 16, creative writer Patrick Dean will read. Dean is a content ambassador for Territory Run Co. Dean's first book, on Hudson Stuck and the 1913 first ascent of Denali, is under contract to Pegasus Books. Dean will be followed by Aaron Bridgers-Carlos and Sean Bridgers. Cellist David Kearley will perform an arrangement of "Swing Low, Sweet Chariot" to mark the 400th anniversary of slaves coming to this country and are as much American founders as those who founded Plymouth in Massachusetts and Jamestown in Virginia.

On Oct. 17, poets Leigh Ann Couch and Wyatt Prunty will read and will be followed by performances by Gary Sturgis and Kathy Sturgis.

Also, on Friday, Oct. 18, at 5 p.m., Linda Heck, multimedia artist, musician, writer, producer and founder of Electric Arcadia will be presenting as Infanta Silhouette, creating from chance procedures an evolving palette of processed field and studio recording. Her digital compositions (softwares such as Ableton) involve moving into sonic other-topias, and in this instance to celebrate the new IONA field constellation work.

Heck is accompanied by Adam Latham of the Sewanee Writers' Conference whose short story on Adam and Eve (depicted with two six foot high start portraits) within a modern vocabulary idiom is hilarious. Naomi Buck Palagi participates too and whose poetry has been published in Spoon River Review, Otolits, Masque and Spectacle, Eleven Eleven, BlazeVOX and The Esthetic Apostle. Palagi's contribution to the celebration at IONA is a poem, Night Sky, that ascends into a lilt-ing, lovely, lullaby.

The Celestial Sky-Messiah will be lit from 6:30 to 8:45 each evening of the festival. The next such lighting will be on Christmas Eve 2019, and again on Epiphany, Monday, Jan. 6, 2020.

IONA is located at 630 Garnertown Rd., off Hwy. 56 south from Hwy. 41A. All readings are free, and parking is available at IONA.

**Need More Room?** **We Sell Boxes!**

**Sewanee Mountain Storage**  
(931) 598-5682

■ Security Gate    Dan & Arlene Barry    ■ Security Camera  
Hwy 41 - Between Sewanee & Monteagle

**U-HAUL MOVING BOXES and SUPPLIES!**  
—Various Sizes—

**KIT TO PROTECT YOUR FLAT-SCREEN TV!**

**Firebrick Oven Pizza**  
**Pasta & Salad Bars • Cold Beer**  
**Open Thur, Fri, Sat, • noon~8pm**

106 Tennessee Ave. S.,  
Cowan  
931.313.5907

**NICK'S**

Pizza & Pasta

**Sweeton**  
**HOME RESTORATION**

931-924-2444    sweetonhome.com

## Sewanee Theatre & Dance Opens Season with 'Our Country's Good'

On Oct. 10, Sewanee's department of Theatre & Dance will open their 2019-20 mainstage season with "Our Country's Good," an Olivier Award-winning play by Timberlake Wertenbaker. In honor of the 50th anniversary of women at Sewanee, their season will shine the spotlight on the work of women playwrights.

"Our Country's Good" is adapted from "The Playmaker" by Thomas Keneally, an Australian novelist best known for writing Schindler's List. Set in 1789, the play dramatizes the period in history when the British government began to export their criminal convicts to Australia, which up until that point had been inhabited only by Aboriginal Australians.

Many of the officers view the convicts as less than human, but one of them decides to put on a play with the convicts acting in it. The play looks at the disruptive and liberating impact of this small artistic endeavor. "Our Country's Good" is a compelling and surprisingly funny examination of colonialism, class, criminal justice and the redemptive power of art.

Performances will be at the Tennessee Williams Center at the University of the South from Oct. 10-12, at 7:30 p.m. and Oct. 12-13, at 2 p.m.

Tickets are free and may be reserved in advance at <www.Eventbrite.com>.

The play contains adult themes and language and is not recommended for those younger than 13.

The play features a cast of 23 Sewanee students, and will be directed by James Crawford with scenic design by John Marshall, costume design by Jennifer Matthews and lighting design by Liam Corley, C'20. The stage manager is Kate Graham, C'20 and the dramaturg was Annie Ramsey, C'22.

## Kerry Ginger Voice Recital Nov. 6

The University of the South welcomes Kerry Ginger this fall to the faculty in the College as an Assistant Professor of Voice. She will present her first recital in conjunction with the celebration of 50 years of Women at Sewanee on Wednesday, Nov. 6 at 7:30 p.m. in Guerry Auditorium.

Ginger will be accompanied for this recital by the University Assistant Organist, Zach Zwahlen. This recital will feature works by female composers and new works of the 20th and 21st century.

Kerry Ginger, mezzo-soprano, is active nationally as a voice pedagogue, performer, clinician, and scholar. Currently an assistant professor of voice, she earned her Doctorate of Musical Arts in voice and Master of Music in opera performance at Arizona State University. As a voice instructor, Ginger enables her students to find a free and vibrant vocal production in all styles.

The concert is free and open to the public.



## FROM THE HERITAGE CENTER

Grundy County Historical Society



President Taft on the unfinished porch of All Saints' Chapel.

### Why President Taft Came to Sewanee Part 2

by David Bowman

On May 6, 1911, the U.S. Supreme Court upheld the Sherman Antitrust Act and its order to dissolve the Standard Oil Company into six competing companies. Taft's administration continued to show considerable resolve in pursuing other trust busting actions, so when the U.S. Steel Corporation - under the leadership of J. P. Morgan, Judge Elbert Gary, and Henry Clay Frick - announced they would be acquiring the Tennessee Coal Iron & Railroad Company, President Taft and his Attorney General George Wickersham organized their opposition.

TCI, we should remember, began life as the Sewanee Coal Mining Company in 1853. It moved from acquiring mining properties to the more profitable buying and selling of railroad companies, like the Nashville & Chattanooga Railroad, which came through Cowan, just down the mountain from Sewanee. TCI was headquartered first in Nashville, then later in Birmingham, where the South's great steel hopes would materialize. (see Note 2)

So it's intriguing that Archie Butt should persuade his boss, en route from Nashville to Birmingham, to side-track at Sewanee. By the fall of 1911, Taft and Wickersham, with considerable secrecy, initiated a suit in equity against the U.S. Steel Corporation.

Some of the background for this motivation is exposed in Henry F. Pringle's highly readable *The Life and Times of William Howard Taft* (Farrar & Rinehart, 1939). A two-volume biography, but of course any motivation about the President's travel schedules would not necessarily be documented.

Pringle notes, for example, that Taft had "dined with H.C. Frick of the United States Steel Corporation, to the consternation of Archie Butt" but that the President "certainly had no reverence for the company itself." Among the company's problems were its "barbaric labor conditions, whereby it was shown that a quarter of some 90,000 workers in the iron and steel industry labored twelve hours daily for seven days a week" and that "almost half of these employees were paid less than eighteen cents an hour" (p. 671).

Wickersham's bill was filed on October 26, 1911. No wonder Taft, Butt & Company seemed so keen to get out of Washington for 58 days!

Sewanee Mining Company was reorganized in 1860 as Tennessee Coal and Railroad Company and again after the Civil War. In 1886 it became Tennessee Coal, Iron and Railroad Company. In 1887 it divested itself of its railroad to Nashville, Chattanooga and St. Louis Railroad. TCI was headquartered in Tracy City until June 1904 when it closed its Tracy City mines and began moving its operations and offices to Ensley Town, Alabama a few years after it had acquired in 1886 the Pratt Coal and Iron Company and its subsidiaries including Ensley Land Company in Alabama. By 1892 TCI had gained the third position in the nation's production of pig iron, the basic ingredient needed for the production of iron and steel products, and controlled 60 percent of the coal and iron ore reserves in Tennessee and Alabama. With the acquisition of Alabama Steel & Ship building Co. in 1898 it became a direct producer of steel.

*Note 2: Sewanee Mining Company was organized in 1852 to mine coal on the plateau. It built a railroad, known as the Mountain Goat, to reach the coal fields. Mining began in 1856 at Coal Bank in the vicinity of St. Andrews - Midway area. There was not much coal there and what was there was of poor quality. The Coal Bank site was abandoned and the railroad was extended ten miles through the forest to where coal had originally been discovered on the plateau at the site the mining company named Tracy City for its president and principal organizer.*

*The notes to this article were prepared by Oliver W. Jervis of the Heritage Center. This article was originally published in Keystone Newsletter of the Sewanee Trust, Winter 2012. It is republished here with permission of Sewanee Trust for Historic Preservation and the author, David Bowman.*

Readers are invited to visit the Heritage Center Monday through Friday, 10 a.m.-4 p.m., and Saturday, 10 a.m.-2 p.m.

## Chanticleer to Perform in October

Called "the world's reigning male chorus" by the New Yorker, the San Francisco-based GRAMMY® award-winning ensemble Chanticleer has just celebrated the 40th anniversary of its 1978 founding.

Chanticleer will perform in Sewanee on Tuesday, Oct. 29, at 7 p.m. The performance will be in All Saints' Chapel, and seating will begin at 6:30 p.m.

Praised by the San Francisco Chronicle for its "tonal luxuriance and crisply etched clarity," Chanticleer is known around the world as "an orchestra of voices" for its seamless blend of 12 male voices ranging from soprano to bass and its original interpretations of vocal literature, from Renaissance to jazz and popular genres, as well as contemporary composition.

Tickets are \$20 and can be purchased at the door the evening of the performance or in advance by emailing <hrward@sewanee.edu>.

## Kohlhaas to Discuss Tennessee Williams

Karen Kohlhaas will speak on the relationship between Tennessee Williams and his grandparents, the Rev. Walter Edwin Dakin and Rosina Otte Dakin.

Walter Dakin taught in Tullahoma, Tenn., before Bishop Charles Todd Quintard convinced him to attend Sewanee's Episcopal Theological School. After his ordination, Rev. Dakin held a position at a church in Cleveland, Tenn., before moving to Mississippi.

Tennessee Williams spent the first years of his life living with his grandparents in Columbus, then Clarksdale, Miss. Williams left his estate to Sewanee in honor of his beloved "Grandfads," the Rev. Walter Dakin.

Kohlhaas will speak on Thursday, Oct. 10, from 4:30-6 p.m. in the University Archives. For more information, contact Virginia Craighill <vcraighi@sewanee.edu>.

## Cruise-in Oct. 12

The Fannie Moffitt Autumn Stomp and Cruise-in starts at 10 a.m., Saturday, Oct. 12, on Cumberland Street in Altamont. Admission is free.



"Summer Reel" by Christi Teasley

## Teasley's 'Interior Threads' in SAS Gallery

"Interior Threads," an exhibition of textile art by Christi Teasley, opens in the St. Andrew's-Sewanee School Art Gallery on Friday, Oct. 4 and runs through Nov. 6. A reception for the artist is on Thursday, Oct. 24, from 5 to 7 p.m.

There will be a public workshop on Saturday, Oct. 26 from 9 a.m. to 3 p.m. The \$25 fee for the workshop includes lunch. For more information and to register, contact the SAS Gallery at <sasgallery@sasweb.org>.

This exhibit of Teasley's recent work combines repurposed materials and newly-created fiber pieces into an inviting installation. The result is a show rooted in the decorative arts that dazzles the viewer with dyed, printed, stitched and hooked objects.

Teasley is an artist educator living and working in Monteagle, Tenn. She discovered her love of repeated patterns and printing fabric as a high-school student at St. Andrew's-Sewanee School and honed her study of textile dyeing, printing, surface design, and construction at the Rhode Island School of Design earning a B.F.A. in Textiles and an M.A. in Art Education. She taught art and directed the SAS Art Gallery and Visiting Artist Program at SAS until 2016. Teasley is on the executive team for Shakerag Workshops, and she operates Teasley Textiles, a small textile design studio specializing in cloth made with ecologically sustainable methods and materials.

SAS Art Gallery hours are Monday through Friday, 9 a.m.-3 p.m., and by appointment. Contact the gallery at <sasgallery@sasweb.org> for more information.

## SSO Halloween Concerts

The Sewanee Symphony Orchestra will perform two concerts on Thursday, Oct. 31, under the direction of their new leader, Visiting Assistant Professor, Mathew L. Ward. The orchestra will perform at 11 a.m. to an audience of school-aged children from Grundy and Franklin County Schools in a kid friendly presentation of some spooky classics. The SSO will perform again on Oct. 31 at 7:30 p.m., on the Guerry Auditorium Stage. This concert is free and does not require ticketing.

## BUG PROBLEMS?

We can help! Call us for a free inspection!

### BURL'S TERMITE & PEST CO.

TERMITE—PEST—VAPOR CONTROL

Bonded • Insured • Home-Owned & Operated

105 Ake St., Estill Springs

(931) 967-4547 or [www.BurlsTermite.com](http://www.BurlsTermite.com)

Charter #3824 • License #17759



## Monteagle Sewanee, REALTORS®

Dedicated to Service!



Deb Banks, Realtor  
(931) 235-3385  
debbanks8@gmail.com



Ray Banks, Broker/Owner  
(931) 235-3365  
rbanks564@gmail.com



Dee Underhill Hargis, Broker  
(931) 808-8948  
aduhargis@gmail.com



Tom Banks, Realtor  
(931) 636-6620  
tombanks9@yahoo.com

Competent, Caring, Friendly, Fair—We're Here for You!

[www.monteaglerealtors.com](http://www.monteaglerealtors.com) • 931-924-7253

337 West Main St., Monteagle

Find all the area MLS listings on our updated website!

TELL THEM YOU SAW IT HERE!



The St. Andrews-Sewanee middle school boys' basketball team held off a fourth quarter rally to defeat the visiting Monteagle Hornets in the first game of this year's Big-8 season, 38-37. Eighth-grader Ethan Allen led all scorers with 12, all but two of those from smooth post moves in the first half. Robbie Johnston chipped in nine including two 3-pointers, Cecil Rodgers added eight on heads-up play and slashing drives, Raulston Barnett seven points, including one trey, and Isaac Simmons two points for the SAS offense. Defensively sixth-grader Samuel Goodpaster came off the bench to spark aggressive play. All 12 Mountain Lions, half of them new to the Big-8 or even the game itself, saw key moments on the floor. Bryce Harwell, Gavin Knight and Colton Jarrett shone offensively for the Hornets.

**Saturday, Oct. 5**  
Equestrian Hunter Seat Show  
11 a.m., University Volleyball  
vs. Millsaps  
1 p.m., University Football vs. Berry  
2 p.m., University Women's Soccer vs. Oglethorpe  
4:30 p.m., University Men's Soccer vs. Oglethorpe  
**Sunday, Oct. 6**  
1 p.m., University Volleyball vs. Birmingham-Southern  
**Monday, Oct. 7**  
7 p.m., SAS MS Boys' Basketball vs. Altamont



*St. Andrew's-Sewanee varsity volleyball team lost to Enrichment Fellowship on Sept. 27, 25-20, 25-22, 26-24. Morgan Phares had her best match of the season, recording five aces and five kills; Katie Finn Hurst added five kills and eight digs; Kendale James 21 assists; Meredith Foster nine kills; Madison King three aces; Zoe Wallace five digs; Sage Mangru three kills; Lucy Cassell five digs; Luciana Mollica five kills.*

*SAS honored eight volleyball seniors before the start of the match. Head Coach Rob Zeidler said, "The thing that stands out about this group of seniors is the love they have for their teammates and their positive presence in the SAS community. It has been an honor to coach them and get to know them as individuals. They are an amazing group." Pictured are the seniors with family and friends.*

# OCTOBER 4, 2019

Kid's Fun • 4:30 | Concert • 6:30

SEWANEE BUSINESS ALLIANCE  
PRESENTS THE NINTH ANNUAL

# SEWANEE ANGEL PARK

Sewanee, Tennessee

# sewanee Angelfest

VENDORS • BOUNCE HOUSES  
FACE PAINTING • COTTON CANDY  
DANCE • BEER • BBQ

FEATURING

## EagleManiacs

**TITLE SPONSOR**  
 Joseph's Remodeling Solutions

**REVERSE RAFFLE DRAWING**

# WIN \$5000

TICKETS SALES (\$100) benefit Sewanee Angel Park &

# Housing Sewanee

Get tickets now (\$100) at local merchants or at night of the event or online: [sewaneeangelpark.com](http://sewaneeangelpark.com)





Freshman Bea Richardson playing in Sept. 28, 0-0 tie with Berry College. Photo by Lyn Hutchinson



Senior Jack Barganier led the race in the men's 8K on Sept. 28. Photo by Lyn Hutchinson

## Sewanee Cross Country Teams Win Sewanee Invitational

The Sewanee cross country teams picked up wins in dual meets at the 2019 Sewanee Invitational, held on The Course at Sewanee on Saturday morning.

Molly Joseph finished with a 25:10.3 time in the first 6K race of the season for Sewanee to finish in second place.

Ellie Herron (25:35.60) and Ann Chapman Haynes (25:55.30) finished fourth and fifth, respectively, in the race. Haynes set a new personal best in the 6K.

Janie Schmitt finished in seventh with a time of 26:18.40, and Patricia Hammett scored with a 27:39.90.

Other scorers include Elizabeth Chandler (28:16.30) and Madison Sellers (28:28.90).

Sewanee held off Ouachita Baptist, an NCAA Division II institution, by posting 26 points to OBU's 29. Two Oglethorpe runners also participated in the meet.

Jack Barganier won the men's 8K race with a season-best time of 27:46.00, 36 seconds ahead of Oglethorpe's Sam Hunt.

## 5K MGT Parkrun

The Mountain Goat Trail Parkrun is a free, weekly, timed 5K event. The fun starts on Saturdays at 9 a.m. at Pearl's in Sewanee.

All skill levels are welcome and participants can walk, jog or run. Register at <parkrun.us/register>, print out the bar code and join the fun.

## Volleyball Defeats Petrels

The Sewanee volleyball team defeated the Stormy Petrels of Oglethorpe University, 3-1, in Southern Athletic Association (SAA) play on Sept. 29, from the Dorrough Field House.

The contest started out strong for the home team, pushing to an early 5-2 lead.

The Tigers rallied to claim the lead going on a 7-0 run to lead 9-5. After the Petrels made it a 9-7 affair thanks to a Sewanee service error and an attack error, the Purple and Gold went strong from there, finishing the set on 16-4 run to win, 25-11.

In the opening set, Sewanee committed just one attack error in 21 attempts, while Oglethorpe had 13 in 30.

In the second set, Oglethorpe, tied at 20 points each, pushed the lead to a 22-20 lead.

After each team traded the next two points, it was Oglethorpe leading 23-21. Sewanee took the next three points to claim set point, 24-23.

The Petrels responded by claiming the next three points to seal the set, 26-24.

Sewanee bounced back in the third set, winning the first seven points of the set en route to a 12-2 start.

The Tigers used a .524 attack percentage (13-2-21) to win the third set, 25-13, and take a 2-1 match lead.

In the fourth set, no team had more than a three-point deficit until the final points. Trailing 19-18, the Tigers went on a 5-0 run thanks to kills by Lydia Goffi and Stephanie Price, a Sewanee ace and back-to-back attack errors by OU.

However, the 23-19 lead did not last long, as the Petrels responded by tying the set by winning the next four points.

The Tigers responded with winning the final two points of the set to win, 25-23, and take the match, three games to one.

Destiny Stewart recorded her fourth double-double in a row with 17 digs and 14 kills.

Lydia Goffi posted 11 kills, while Constance Connolly added 39 assists.

Sydney White and Lilly Reilly each had four service aces. White added a match-high 22 digs.

In Sunday's contest, the Tigers had a .237 attack percentage (51-19-135), the highest mark in conference play this season.



The men's team celebrates with freshman Bryan Franklin for his winning overtime goal against Berry on Sept. 28. Photo by Lyn Hutchinson

## Franklin's 99th Minute Goal Lifts Men's Soccer to Victory in Conference Opener

The Sewanee men's soccer team started the conference schedule with three points and a victory thanks to a 99th minute goal by Brian Franklin, as the Tigers defeated the Vikings of Berry College, 2-1, Saturday afternoon from Puett Field in the Southern Athletic Association (SAA) opener for both teams.

After being held without a shot for 12-plus minutes, Sewanee responded in the 34th minute. Ethan Dutka found Andile Tshuma for his first goal of 2019 to give Sewanee the upper hand, 1-0.

Despite allowing the goal, the Vikings had 10 total shots, five on goal, in the first 45 minutes, but it was the home team that had the 1-0 advantage at the break.

In the 61st minute, the Vikings evened the match with the 10th goal of the season from SAA leader Jake Williamson.

Both teams had ample opportunities in the final 30 minutes of regulation to break the tie, but the match was forced to overtime.

By the 95th minute, each team had a shot in the overtime period, but things changed in the 99th minute. After a Berry foul, Alpo Sipilä took the free kick and found Bryan Franklin, who entered the game nearly two minutes prior, for the game-winning goal.

Thompson Schollaert led the Tigers with three total shots. Tashinga Vhumisai, Christian Kirk, Andrew Turk and Severin Velasco each had two total shots. James Murray (6-2-1) posted eight saves in 99 minutes.

**If it matters to you,  
it matters to the  
community.**



Share your good news with more people weekly!  
call: (931) 598-9949

email: [news@sewaneemessenger.com](mailto:news@sewaneemessenger.com)  
view: [www.sewaneemessenger.com](http://www.sewaneemessenger.com)

## Winchester Podiatry

**CHARLES D. GANIME, DPM**

Board Certified in Foot Surgery  
Diplomate, American Board of Podiatric Surgery  
New Patients of All Ages Welcome! We Treat Your Feet! Most Insurance Accepted, Including TennCare  
155 Hospital Road Suite 1, Winchester.  
[www.winchesterpodiatry.com](http://www.winchesterpodiatry.com)

**931-968-9191**



P.O. BOX 88  
SEWANEE, TN 37375

**McBee Dozing**

**Stump Grinding**

**Skid Steer Work**



JOHNNY McBEE  
OWNER



(931) 308-8453  
[jmcbec@bellsouth.net](mailto:jmcbec@bellsouth.net)

The Sewanee institution since 1974

# Shenanigans

## RESTAURANT

=====

**PUB & GRILL / PIZZA / DELI / CATERING**  
**CALL FOR TAKE-OUT OR DELIVERY**  
**931-598-5774**

**OPEN EVERY DAY 11 a.m. to 11:30 p.m. (later on weekends!)**  
12595 Sollace M Freeman Hwy, Sewanee, TN  
(on the corner of University Ave and 41A)

**FIND YOUR HAPPY PLACE...AT SHENANIGANS**



# NATURENOTES

by Yolande Gottfried



Photo by Sycamore Shoals State Historic Park.

## The Other Sycamore Moon Tree

Sewanee's "Moon Tree," an American Sycamore, had a sister tree at Sycamore Shoals State Historic Park in Elizabethton, Tenn. It was planted in 1976 as part of the ceremonies for the dedication of the Park. I had hoped to see it this past summer when we attended a production there of "Liberty!", an outdoor drama about the colonial history of the area. Sadly, I learned that it had died. It had been planted in the middle of the reconstructed fort, where conditions were not good for its survival. The Park had people come from UT in Knoxville before the tree was cut down to take cuttings and have been growing them for about a year or so. Out of the 10 cuttings that they took, eight are in good shape and one was reported to be about knee high already. Four of those are intended to be returned to the Park to be planted. The park was told that the cuttings that they took from the actual Moon Tree are considered "Moon Tree" as long as they are viable and came from that "Moon Tree." In essence, they are considered clones. The photo shows the original tree in decline.

Tennessee received four "Moon" seedlings from the Forest Service for use in commemoration of the bicentennial year of the USA—two loblolly and two sycamore. Their seeds had been carried on the Apollo 14 flight launched from Cape Kennedy by NASA on Jan. 31, 1971, which returned to earth on Feb. 9 after nine days in space and 34 orbits around the moon. This joint NASA/USFS PROJECT came about because the Apollo 14 Command Module Pilot was Stuart Roosa, a former U.S. Forest Service smokejumper, who had a strong interest in forest resources. He was contacted by Ed Cliff, Chief of the Forest Service, about bringing seeds into space. Roosa carried about 400-500 seeds in small containers in his personal kit as he orbited the moon in the Command Module while Alan Shepard and Edgar Mitchell walked on the surface.

Monarch update: Stephanie Smith reports two monarchs successfully "hatching" from the chrysalis in the last few days at the Smith-Boeth Monarch Waystation.

## Burn Permits Required Burn Ban in Effect for Franklin and Marion Counties

A burn permit is required to start an open air fire within 500 feet of any forest, grassland or woodland. Permits will be issued by phone or through the online system, if conditions allow. Check local restrictions in your area prior to conducting any burning activity. Go to <<http://burnsafetn.org>> for more information.

To report illegal burning, please call toll-free 1-888-891-TDEC.

A burn ban is in effect for Franklin, Marion, Robertson, Rutherford, Sequatchie, Smith, Sumner, Van Buren and Wilson counties. The burn ban is effective immediately and will remain in place until further notice.

The ban applies to all open-air burning including leaf and woody debris and construction burning, campfires, outdoor grills and other fire activity in areas outside of municipalities where local ordinances apply.

Counties not listed under the ban require a safe debris burning permit now through May 15, 2020 from the Tennessee Department of Agriculture (TDA) Division of Forestry (exceptions: Davidson, Knox, Madison and Shelby, which never allow debris burning). Permits will only be issued where and when it is determined to be safe to do so.

A violation of a burn ban issued by the Commissioner is considered reckless burning and is punishable as a Class A misdemeanor which carries a fine of \$2,500 and/or up to 11 months 29 days in jail.

## Sewanee Herbarium Fall Calendar of Events

**Meadow Trail (South Cumberland State Park)**—Saturday, Oct. 5, 10 a.m., with Yolande Gottfried. Meet at the South Cumberland State Park Visitor's Center to walk this easy trail behind the Center. Tall native grasses and numerous asters, goldenrods, thoroughworts, and many other wildflowers should still be in bloom.

**Lake Dimmick (Day Lake)**—Sunday, Oct 6, 2 p.m., with Mary Priestley. Meet at St. James Church, Midway. We'll see wetland plants and have an optional hike up "Little Mountain" to see the renovated log cabin. Some of the last wildflowers to bloom are found around our lake shores. In any case, fall color should be starting to reflect in the water. This walk may be wet, so wear suitable foot wear.

A group meets for nature journaling Thursdays from 9-11 a.m. Bring an unlined journal (or a few sheets of unlined paper) and a pen or pencil. No experience needed. As the seasons transition, we gather in different places, so contact <[mpriestley0150@gmail.com](mailto:mpriestley0150@gmail.com)> for information on the meeting place.

## WEATHER

DAY	DATE	HI	LO
Mon	Sep 23	81	65
Tue	Sep 24	84	57
Wed	Sep 25	88	67
Thu	Sep 26	86	65
Fri	Sep 27	87	67
Sat	Sep 28	88	67
Sun	Sep 29	91	68

Week's Stats:

Avg max temp = 86

Avg min temp = 65

Avg temp = 76

Precipitation = 0.06"

Reported by Sandy Gilliam  
Domain Ranger

**MOUNTAIN  
GOAT TRAIL**

**SHARE the TRAIL**

**Rule #5**  
Dogs must be on a 6' leash. Clean up after your dog.

**WALK • RUN • CYCLE  
TOGETHER**

[mountaingoattrail.org](http://mountaingoattrail.org)

*Hiking  
enthusiast?  
Click on "See"  
on [www.themountainnow.com](http://www.themountainnow.com)  
for a description  
of local options.*



Besse & Gertrude



Sienna

## Pets of the Week Meet Bessie, Gertrude & Sienna

Bessie and Gertrude are one-year-old cat siblings with the sweetest personalities. We call these sisters the "cow cats" and gave them traditional cat names due to their black and white markings. Both are meek cats, but love to be petted and even offer cat kisses! Gertrude is more reserved, and has quite an obsession with her hideout coffee box, while Bessie is more open and outgoing. Seemingly healthy upon intake, a week into their stay at the harbor they became gravely ill. Thanks to Town and Country Vet and dedicated staff members and volunteers, we were able to nurse them back to health. We are so pleased to say they are now healthy enough to be adopted! And while it is not mandatory, we would love to see them go into a home together. Both are up to date on vaccines, spayed, microchipped, FIV/FelV negative, and ready to begin a new adventure in a loving home.

Sienna is a three-year-old chocolate lab mix with a huge personality, which includes a ton a spunk, energy, and affection. Sienna was found dumped in bad health condition due to a flea infestation which caused an allergic reaction resulting in all over hair loss. A good Samaritan was able to foster her during her medical treatment, and we are happy to report that she has regained most of her hair back and is doing much better. Unfortunately, the shelter environment is very stressful for her and we would love to get her adopted as soon as possible. She is up-to-date on vaccinations, heartworm-negative, and awaiting her spay and microchipping procedure. If you would like to meet Sienna and start the adoption process for this loving girl, please contact us!

Animal Harbor is located at 56 Nor-Nan Rd., off AEDC Road, in Winchester. Call Animal Harbor at 962-4472 for information and check out the other pets at <[www.animalharbor.org](http://www.animalharbor.org)>. Enter their drawing on this site for a free spay or neuter for one of your pets. Help Animal Harbor continue to save abandoned pets by sending your donations to Animal Harbor, P.O. Box 187, Winchester, TN 37398.

## State Park Offerings

*Please note: To confirm that these events will occur as listed go to <<http://tnstateparks.com/parks/events/southcumberland/#/?park=southcumberland>> or call (931) 924-2980.*

### Saturday, Oct. 5

**Foster Falls to Small Wilds Hike (free)**—Join Seasonal Interpretive Ranger Justine at 10 a.m. at Foster Falls trailhead, 498 Foster Falls Rd., Sequatchie, (take U.S. Hwy. 41/S.R. 50 out of Tracy City, look for signs on right) for an approximately 5-mile roundtrip hike from Foster Falls to Small Wilds, taking the lower climber's loop of the trail on the way there, and taking the upper climber's loop (on the plateau) on the way back. There will be a lunch break near the Small Wilds campground, so please pack enough food and water for your party. This hike is moderately difficult, (there are a few rocky places) so bring good hiking shoes! The hike is free but will be limited to 15 people, so make sure to register in advance.

### Thursday, Oct. 10

**Savage Gulf Trail Work (free)**—Meet Ranger Mark Greenwood at 8:15 a.m. Savage Gulf Ranger Station, 3157 SR 399, Palmer, to assist with needed trail repair and maintenance at Savage Gulf State Natural Area. Bring or wear work clothes, sturdy footwear, gloves, plenty of water, and food for the trail. Hand tools will be provided but you are welcome to bring your own. More info: <[mark.greenwood@tn.gov](mailto:mark.greenwood@tn.gov)>.

### Friday, Oct. 11

**Civilian Conservation Corp. Camp Tour (free)**—Join Ranger

James Holland at 4 p.m. for a tour of the historic CCC Camp. We will meet at the Grundy Forest Trailhead, 131 Fiery Gizzard Rd., Tracy City, beginning with a 1/4-mile ranger-led hike to the CCC Camp Interpretive Area. Once there the ranger will lead a tour of the historic Camp and educate visitors on the Civilian Conservation Corps. You'll learn about the daily camp life of members and some of the challenges they faced during the difficult time period in which they lived, and also the valuable contributions they made to our society and natural areas.

### Saturday, Oct. 12

**Tree Cookie Canvas (free)**—Join Ranger James Holland at 2 p.m. at Grundy Forest Pavilion, 131 Fiery Gizzard Rd., Tracy City, to express your creative side using a tree cookie disc canvas for painting our favorite nature scenes. Tree cookie discs and painting supplies will be provided and participants will be allowed to keep the items they make. Registration is required and program size is limited to 12 participants.

### Sunday, Oct. 13

**Ravens Point Fall Colors (\$30)**—Join Ranger Ryan Harris at 8:30 a.m. at Grundy Forest trailhead, 131 Fiery Gizzard Rd., Tracy City, for a 9-mile roundtrip hike to Ravens Point and back. This is a very difficult and strenuous hike over uneven, rocky, and rooty terrain. Please come prepared by bringing a minimum of 64 ounces of water, some snacks, and a small lunch to eat on the trail. Dress weather appropriately and be sure to wear sturdy hiking shoes or boots.




# Classifieds

## ART

Stephenson's  
**SCULPTURES  
IN BRONZE**  
Jeanie Stephenson  
(931) 691-3873  
www.stephensonsbronze.com

## EMPLOYMENT



**THE SEWANEE  
UTILITY DISTRICT**  
is taking applications for a field crew/sewer plant operator position. Starting pay depends on experience, with licensed collection system and plant operators given preference. SUD offers competitive pay and excellent benefits. Applications will be taken in person until a suitable candidate is selected. For more information, call our office @ 598-5611. The Sewanee Utility District is an equal opportunity employer and a drug-free workplace.

## ENGINE REPAIR

**SARGENT'S SMALL ENGINES:** Repairs to All Brands of Equipment: Lawn mowers (riding or push), String trimmers, Chainsaws, Chainsaw sharpening. New saw chains. Pickup and Delivery Available. (931) 212-2585, (931) 592-6536.

## FIREWOOD

**FIREWOOD FOR SALE:** \$50/rick, average 16 to 20 inches. You pick up or we deliver. (931) 924-2455.

## FLORIST

Walk-In Cooler Filled with Flowers!  
**Monteagle Florist**  
333 West Main Street, Monteagle  
(931) 924-3292

## HAIR SALON

(931) 598-0033  
**HAIR DEPOT**  
17 Lake O'Donnell Rd., Sewanee  
KAREN THRONEBERRY, owner/stylist  
CISSI LANCASTER, stylist

## LAND FOR SALE

**LOST COVE  
BLUFF LOTS**  
www.myerspoint.net  
931-703-0558

**2.3-ACRE WOODED HOME-SITE:** Laurel Lake Drive. R-1 zoned. All services available. \$22K. Lot and construction terms available. (850) 261-4727 or (850) 259-5988.

**Laurel Brae  
Beautiful  
Wooded Home Site**  
1.71 acres, Lot 16,  
Appletreewick St.  
Convenient to SAS  
& Sewanee Campus  
JUST OFF THE DOMAIN  
CALL (256) 536-9009

## LAWN CARE

**CHAD'S LAWN &  
LANDSCAPING**  
-FREE ESTIMATES-  
\* Lawn care & Design (Mulch & Planting)  
ALSO: \* Tree Trimming & Removal  
\* Pressure Washing \* Road Grading  
\* Stone Patio/Fireplace \* Garden Tilling  
\* Leaf Pickup & Blowing  
(931) 308-5059

**EAGLE LANDSCAPING &  
LAWN MAINTENANCE CO.**  
Now Offering Specials for the  
**FALL!**  
We offer lawn maintenance, landscaping,  
hedge/tree trimming & more!  
Please call for your free estimate  
(931) 598-0761 or (931) 636-0383

**LONG'S LAWN SERVICE**  
• landscaping & lawn care  
• leaf removal • mulch  
Local references available.  
Jayson Long  
(931) 924-LAWN (5296)

## LOCAL SERVICES

**THERAPEUTIC MASSAGE AND  
BODYWORK:** Discount on first  
massage! Gift certificates available.  
Text or call Aaron Bridgers-Carlos,  
L.M.T., (931) 691-0321.

**Eagle Military  
ANTIQUES**  
Buyers of Civil War, WW1, WW2  
military weapons, uniforms, equip-  
ment, and all interesting antiques.  
Call Colonel (ret.) Ron Bailey, 931-636-1794

**MARK'S HOME REPAIR**  
**KITCHEN AND BATH REMODELING**  
Insured. Decks, Roofing, Electrical,  
Plumbing, Drywall, Tile & Hardwood  
Floors, Outbuildings, Pressure Washing.  
MARK GREEN, owner  
931-636-4555 | mdgreen41@gmail.com

**CHARLEY WATKINS  
PHOTOGRAPHER**  
Sewanee, TN  
(931) 598-9257  
http://www.photowatkins.com



**WHERE DO I  
RECYCLE THIS?**  
**Special Garbage:**  
Items for drop off only at  
Franklin County Solid Waste  
Management, 419 Joyce Lane,  
Winchester:  
Electronics  
Computers and Monitors  
Televisions  
All Other Electronics  
Ink Cartridges  
Rechargeable Batteries

**Special Waste:**  
Waste Oil and Waste Anti-  
freeze: Used oil (oil must  
be oil only and not contain  
any gas, water or antifreeze)  
and antifreeze is collected for  
recycling at Franklin County  
Solid Waste Management  
located on Joyce Lane in  
Winchester and at the fol-  
lowing Convenience Centers:  
Alto, Capital Hill, Center  
Grove, Cowan, Estill Springs,  
Lexie Crossroads, Old Salem,  
Sewanee and Winchester  
Springs.  
Don't clog up your pipes  
and sewer lines; take your  
used cooking oil to 419 Joyce  
Lane, Winchester.

## LOCAL SERVICES



**Lyn Hutchinson  
PHOTOGRAPHY**  
lynhutchinson.smugmug.com

**CLEANING WITH DISTINC-  
TION:** Now taking new clients.  
Detailed house cleaning with rea-  
sonable rates. Call Marie at (931)  
315-0413.

**DAVID M. BURNETT**  
LADAC II, NCAC I, QCS  
ADDICTIONS & CODEPENDENCY  
COUNSELOR  
DAVIDM.BURNETT1@GMAIL.COM  
PHONE: 423-280-0756



**Lakeside  
Collision**  
"Done Right, the First Time"  
103 Mabee Ave., Monteagle  
Ph: 931.924.3316 | Cell: 931.235.3316  
lakesidecollision00@gmail.com

**HVAC SERVICE  
Winterizing Special**  
  
Starts at \$100. Includes cleaning coil,  
ductwork inspection. Insured, local  
references, EPA-certified,  
6+ years experience.  
**Chris Fowler  
(931) 327-5053**

**MASSAGE**  
**Regina Rourk Childress**  
Licensed Massage Therapist  
www.reginarourk.com  
~ GIFT CERTIFICATES ~  
(931) 636-4806

**RESUME WRITER**  
Let me help you stand out  
during the hiring process!  
Samples, references avail-  
able. Rates start at \$75.  
baileybasham.com/contact

Your Ad  
Could Be Here!

# GLASS RECYCLING GUIDELINES

■ **Recycle empty glass  
containers only.**  
Remove caps and lids.

■ **Keep it clean.**  
No food residue.  
No ceramics,  
mirrors, lightbulbs,  
drinking glasses.

■ Glass recycling bins are available on Kennerly Avenue in Sewanee,  
behind the Facilities Management compound.  
This effort in landfill waste reduction and glass recovery is provided  
by the University of the South.

## LOCAL SERVICES



**King's Tree Service**  
Topping, trimming,  
bluff/lot clearing, stump  
grinding and more!  
\*Bucket truck or climbing\*  
Free wood chips with job  
Will beat any quoted price!  
Satisfaction guaranteed!!  
—Fully licensed and insured—  
kingstreeservice.com  
Call (931) 598-9004—Isaac King

**Needle & Thread**  
\*Alterations \*Repairs \*Cushions & Pillows  
For a reasonable price contact  
Shirley Mooney  
161 Kentucky Ave.  
Sewanee, TN 37375  
(931) 598-0766  
Monday—Wednesday, 9 a.m. to 4 p.m.

**Madame C**  
**GYPSY CARD & PALM READING**  
available for  
**PARTIES ∞ FUNDRAISERS**  
**EVENTS ∞ PERSONAL**  
**ECLECTIC ∞ ECCENTRIC**  
**ELECTRIC ∞ ENJOYABLE**  
931.308.3518

**MONTEAGLE  
SECURITY OPERATIONS**  
CCTV, BURGLAR & FIRE ALARMS  
931-924-3216 800-764-7489  
monsecurity.com TN license 1912

**BLACK WALNUT HARVEST:**  
Oct. 1–Nov. 2, 2019. 1330  
Dinah Shore Blvd., Winchester,  
Monday–Friday 12 noon–5 p.m.;  
Saturday 9–5. \$15.00 per 100  
lbs. (after hulling). (931) 588-  
2186 (home) or (931) 636-2126.

## PUBLIC NOTICE

**NOTICE:** There will be a Special  
Called Meeting of the Monteagle City  
Council on Monday, Oct. 7, 2019, at  
4 p.m. in the conference room at City  
Hall. The purpose of this meeting is  
to discuss the Mountain Goat Trail.



**BE SAFE!  
OBEY THE BICYCLE  
HELMET LAW**  
Tennessee law requires all persons  
under the age of 12 to wear a hel-  
met while riding a bicycle on any  
state road. University Avenue is a  
state road and, therefore, subject to  
the law. The act also contains provi-  
sions requiring restraining seats  
on bicycles for passengers who are  
children under 40 pounds or who  
are less than 40" tall.

## RENTALS

**HOUSE FOR RENT:** Monteagle,  
near McDonald's. 2BR/2BA. Laun-  
dry. \$750/mo+utilities; \$500 deposit.  
One-year lease. Good references. No  
smoking. No pets. Call Scott, (615)  
400-0444.

**LONG TERM RENT (2-3 YEARS):**  
Ingman Cliff Road. 15 miles from  
Campus. Lovely 3BR/2BA home on  
bluff overlooking Bridal Veil. Open  
plan kitchen, breakfast bar, airy  
dining room, wall-to-wall windows.  
French doors open out to decks,  
screened-in porch with fantastic  
views. Large living room, south-  
facing windows, fireplace, multiple  
seating arrangements possible. At-  
tached garage/workshop. Front and  
back gardens, large pagoda/swing.  
Pets negotiable. \$2,100/mo. Available  
Oct/Nov 2019. Contact Steve Win-  
ney, (931) 592-2041 or <winney63@  
hotmail.com>.

**OFFICE SPACE AVAILABLE**  
Newly constructed office space available  
with high speed internet service for  
professional individual seeking a quiet,  
comfortable and convenient location,  
close to Sewanee and Monteagle. Call  
931-924-5565 for more information.

## SALES

**MIDWAY MARKET!** New Fall/  
Winter items in! Apparel, great mov-  
ies/games, household items, antique  
furniture pieces, Coca-Cola collect-  
ibles. Amazing prices. Open 8 a.m.–??  
Friday/Saturday. 969 Midway Rd.,  
Sewanee. (931) 598-5614.

## WANTED

**WANTED:** Someone with portable  
Sawmill who will come to my Log  
Yard and make lumber out of logs.  
Call Dan Sargent, (931) 212-2585.

**CURBSIDE  
RECYCLING**  
Residential curbside recycling  
pickup in Sewanee is on the first  
and third Friday of each month.  
Recyclable materials must be  
separated by type and placed in  
blue bags by the side of the road no  
later than 7:30 a.m. Please do not  
put out general household trash on  
this day. Blue bags may be picked  
up in the University Lease and  
Community Relations Office, 400  
University Ave. (the Blue House) or  
at the Facilities Management office  
on Georgia Avenue.

**One-Stop  
Transportation  
Information:  
dial 511**

**MESSENGER DEADLINES**  
News and Calendar:  
Tuesday, 5 p.m.  
Display Advertising:  
Monday, 5 p.m.  
Classified Advertising:  
Wednesday, noon





# BARDTOVERSE

by Phoebe Bates

somewhere in the unknown world  
a yellow eyed woman  
sits with her daughter  
quilting  
some other where  
alchemists mumble over pots  
their chemistry stirs  
into science. their science  
freezes into stone.  
in the unknown world  
the woman threading together her need  
and her needle  
nods toward the smiling girl  
remember  
this will keep us warm  
how does this poem end?  
do the daughters’ daughters quilt?  
do the alchemists practice their tables?  
do the worlds continue spinning  
away from each other forever?

quilting poem by Lucille Clifton

Michael A. Barry

LAND SURVEYING  
& FORESTRY

★ ALL TYPES OF LAND SURVEYS  
★ FORESTRY CONSULTING

(931) 598-0314 | (931) 308-2512

TOMMY C. CAMPBELL

FOR YOUR IMPROVEMENTS

Call (931) 592-2687

Free Estimates • No Job Too Small!

DRIVEWAY WORK • GRAVEL HAULING  
• DOZER & BACKHOE

plus Land Clearing • Concrete Work • Water Lines • Garage  
Slabs • Sidewalks • Porches & Decks • Topsoil & Fill Dirt  
Septic Tanks & Field Lines

BUCK’S LAWN SERVICE

reliable experience  
you can trust  
for all your lawn needs

Buck Summers

598-0824  
636-0857  
rosummers024@gmail.com

K&M CONSTRUCTION SERVICES, LLC

Ken Petrey  
Owner  
kmconstructionservicesllc@gmail.com

708-560-6794  
P.O. Box 345  
Palmer TN 37365

Concrete Contractor Licensed and Insured in Tennessee  
Quality Work That You Can Trust to Last  
www.kmconstructionservice.com

Speak Up.

Help friends get information. Help local businesses  
succeed.  
Help our Mountain communities.  
Tell businesses when you see their ads.  
Let businesses know what they’re doing right.  
Share your news. Spread good news!

Your voice matters. Speak up.

# Community Calendar

- Friday, Oct. 4**  
*FC Schools No Classes - Fair Day*  
7:30 a.m. Curbside Recycling  
8 a.m. Fall Fest Weekend, Christ the King Anglican, 1231 Cumberland St., Decherd, until 2 p.m.  
8:30 a.m. Deep Stretch Yoga, Darrylann, Comm. Ctr.  
9 a.m. CAC office open, until 11 a.m.  
10 a.m. Game day, Senior Ctr.  
Noon Spinal Spa, Kim, Fowler Center  
3 p.m. Ralston Room, Music from North Mississippi, until 4 p.m.,  
4:30 p.m. AngelFest, Kids Fun, Angel Park; Eagle-Maniacs at 6:30 p.m.  
5 p.m. Ralston Room, Faye Webster, until 6 p.m.  
5:30 p.m. Art Reception, “Painting Together,” Frame Gallery, 12569 Sewanee Hwy., until 7 p.m.  
6:30 p.m. Dance, Kickin’ Country, FC Senior Ctr. 74 Clover Drive, Winchester, until 9:30 p.m.  
7:30 p.m. “The Farewell,” SUT

- Saturday, Oct. 5**  
8 a.m. Fall Fest Weekend, Christ the King Anglican, 1231 Cumberland St., Decherd, until 2 p.m.  
8 a.m. Cycle Sequatchie  
8:30 a.m. Gentle Yoga, Robie, Comm. Ctr.  
9 a.m. MGT 5K Parkrun, Pearl’s parking lot  
9:30 a.m. Hospitality Shop open, until 1 p.m.  
10 a.m. Franklin County Fire, Rescue and EMS Expo, Franklin County Annex Bldg., until 2 p.m.  
10 a.m. Herbarium Meadow Trail walk, Gottfried, meet at SCSP Visitors’ Center, 11745 U.S. Hwy 41, Monteagle  
Noon Yoga, Emily, Community Center  
7:30 p.m. “The Farewell,” SUT

- Sunday, Oct. 6 • CAC Pantry Sunday**  
*EQB Reservation deadline for Oct. 9 meeting, email <alorenz@sewanee.edu>*  
1:30 p.m. St. Andrew’s-Sewanee School Admission Open House check-in, McCrory Hall  
2 p.m. Herbarium Lake Dimmick walk, Priestley, meet at St. James Church, Midway  
2 p.m. Knitting Circle, Mooney’s, until 4 p.m.  
4 p.m. Hatha Yoga, Helen, Comm. Ctr.  
6 p.m. Ralston Room, Gluck’s Alceste, until 8 p.m.  
7:30 p.m. “The Farewell,” SUT

- Monday, Oct. 7**  
*FC Schools Fall Break, through Oct. 11*  
*Lease Agenda deadline, <crfulmer@sewanee.edu>*  
9 a.m. Body Recall, Judy, Monteagle City Hall  
9 a.m. CAC office open, until 11 a.m.  
9 a.m. Coffee with the Coach, Mueller, Blue Chair  
9 a.m. Pilates, intermediate, Kim, Fowler Ctr  
9:30 a.m. Yoga, Darrylann, (\$8), St. Mary’s Sewanee  
10:30 a.m. Chair Exercise, Ruth, Senior Ctr.  
Noon Academy for Lifelong Learning, L. Backlund, Lower Cravens Hall, 439 Kentucky Ave.  
3 p.m. “Squares that Look Round,” Woods Lab, Room 121  
4 p.m. Monteagle City Council special called meet ing, Mtn Goat Trail, Conf. Room, City Hall  
5:30 p.m. Gentle Yoga, Robie, DuBose Conference Ctr., upper room  
5:30 p.m. Yoga, Strength/Healing, Pippa, Comm. Ctr.  
6 p.m. Karate, youth, Legion Hall; adults 7 p.m.  
6 p.m. Ralston Room, Kanye West Fantasy, until 7 p.m.  
7 p.m. Ebey Lecture, Blackman Auditorium  
7 p.m. Ralston Room, Vinyl Brubeck, until 8 p.m.  
8 p.m. Ralston Room, Throwback, until 9 p.m.

- Tuesday, Oct. 8**  
7 a.m. Qi Gong on the Bluff, Wall, St. Mary’s Sewanee  
7:30 a.m. Godly Play/PMO, Otey, until 10:30 a.m.  
8 a.m. GC Food Bank, Tracy City, until 10 a.m.  
8:30 a.m. Deep Stretch Yoga, Darrylann, Comm. Ctr.  
9 a.m. CAC office open, until 11 a.m.  
9 a.m. Pilates, beginners, Kim, Fowler Ctr.  
9:30 a.m. Hospitality Shop open, until 1 p.m.  
10 a.m. P.E.O. Sisterhood Chapter Z, (931) 962-0202  
10:30 a.m. Bingo, Senior Ctr.

- 10:30 a.m. La Leche League, Comm. Ctr.  
Noon Pilates, intermediate, Kim, Fowler Ctr.  
3 p.m. Ralston Room, Mishima, until 4 p.m.  
5 p.m. Daughters of the King, St. James  
5 p.m. Yoga, Darrylann, (\$8), St. Mary’s Sewanee  
5:30 p.m. GC Rotary Special Meeting, Fiery Giz-zard Sportsman’s Club, Tracy City  
7 p.m. Acoustic Jam, Water Bldg., Tracy City  
8 p.m. Ralston Room, Bossa Nova, until 9 p.m.

- Wednesday, Oct. 9**  
9 a.m. CAC office open, until 11 a.m.  
9 a.m. Pilates, intermediate, Kim, Fowler Ctr.  
10 a.m. Art Wednesday, Artisan Depot, until 12:30 p.m.  
10 a.m. Senior Writing Group, Sherwood Rd.  
10:30 a.m. Chair Exercise, Ruth, Senior Ctr.  
11:30 a.m. EQB, St. Mary’s Sewanee; lunch at noon; lead, Laura Rice, at 12:30 p.m.  
2:30 p.m. F@H book discussion, Brooks Hall, Otey  
3 p.m. Ralston Room, Mahler’s 4th, until 4:30 p.m.  
5 p.m. U of S Trustee Community Relations Committee reception, Shenanigans  
5 p.m. Ralston Room, Cuban Jazz, until 6 p.m.  
5:30 p.m. Hatha Yoga, Helen, Comm. Ctr.  
7 p.m. Ralston Room, Polo & Pan, until 8 p.m.  
7:30 p.m. “Fantastic Mr. Fox,” Cinema Guild, SUT, free  
8:30 p.m. Slim Wednesday (\$15), Shenanigans upstairs

- Thursday, Oct. 10**  
7 a.m. Qi Gong on the Bluff, Wall, St. Mary’s Sewanee  
8 a.m. Monteagle-Sewanee Rotary, Sewanee Inn  
9 a.m. Body Recall, Judy, Monteagle City Hall  
9 a.m. CAC office open, until 11 a.m.  
9 a.m. Nature Journaling, for location email <mpriestley0150@gmail.com>  
9 a.m. Pilates, beginners, Kim, Fowler Ctr.  
9:30 a.m. Hospitality Shop open, until 1 p.m.  
10:30 a.m. Chair Exercise, Judy, Monteagle City Hall  
Noon Pilates, intermediate, Kim, Fowler Ctr.  
1 p.m. F@H Caregiver Group, Brooks Hall, Otey  
2 p.m. Knitting Circle, Mooney’s, until 4 p.m.  
3:30 p.m. Emeritus Association, Hoagland, Torian Room, duPpont  
4:30 p.m. “Grands and Grandfads,” Kohlhaas, Univ. Archives  
5 p.m. Ralston Room, Saint-Saens, until 6 p.m.  
6 p.m. Karate, youth, Legion Hall; adults 7 p.m.  
7 p.m. Acoustic Jam, Artisan Depot, until 10 p.m.  
7:30 p.m. Theatre Sewanee, “Our Country’s Good,” TN Williams Center  
7:30 p.m. “The Lion King,” SUT  
8 p.m. Ralston Room, Early Bach, until 9 p.m.

- Friday, Oct. 11**  
*GC Schools No Classes; Fall Break, through Oct. 18*  
8:30 a.m. Deep Stretch Yoga, Darrylann, Comm. Ctr.  
9 a.m. CAC office open, until 11 a.m.  
10 a.m. Game day, Senior Ctr.  
Noon Spinal Spa, Kim, Fowler Center  
3 p.m. Ralston Room, Crooked Still, until 4 p.m.  
5 p.m. Ralston Room, Weyes Blood, until 6 p.m.  
7:30 p.m. Theatre Sewanee, “Our Country’s Good,” TN Williams Center  
7:30 p.m. “The Lion King,” SUT

Local 12-Step Meetings

**Friday**  
7 p.m. AA, open, Christ Church, Tracy City

**Saturday**  
7 p.m. NA, open, Decherd United Methodist

**Sunday**  
6:30 p.m. AA, open, Morton Memorial, Wesley House, Monteagle

**Monday**  
5 p.m. Women’s 12-step, Brooks Hall, Orey  
7 p.m. AA, open, Christ Church, Tracy City

**Tuesday**  
7 p.m. AA, open, First Baptist, Altamont

**Wednesday**  
10 a.m. AA, closed, Clifftops, (931) 924-3493  
7 p.m. NA, Decherd United Methodist  
7:30 p.m. AA, open, Holy Comforter, Monteagle

**Thursday**  
6 p.m. Al-Anon, Morton Memorial, Wesley House, Monteagle  
7 p.m. Al-Anon, First UMC, Winchester