

School Board Considers New Option for Middle Schools

by Leslie Lytle, Messenger Staff Writer

At the Nov. 7 working session of the Franklin County School Board, Stanley Bean, North Middle School principal and Capital Building Program Committee chair, proposed a yet unconsidered solution to the problem posed by the county's two aging middle schools. In January 2016, the board retained the engineering firm Oliver, Little, and Gipson (OLG) to conduct a planning study and guide the committee in its deliberation. In June, OLG proposed two options: renovating the schools at a cost of \$16,500,000–\$17,500,000 each or building a new consolidated middle school, cost \$29,000,000–\$33,500,000. Three subsequent town meetings and responses to a county-wide survey prompted the committee to ask OLG to estimate the cost and construction requirements of a third option: two new middle schools located on the same sites as the existing schools.

Of 752 survey respondents, 52 percent favored renovating the middle schools, with 42 percent favoring a new consolidated middle school, and 5 percent neutral. Responses calculated separately for community members, middle school teachers, and middle school students, showed a similar trend: 63 percent of community members favored renovation; 74 percent of North Middle School (NMS) teachers favored renovation; 52 percent of South Middle School (SMS) teachers favored renovation; and 50 percent of students favored renovation.

A top concern of community members was lack of individual attention in a large consolidated school with 1,100–1,200 students. Bean noted that a larger school “did not necessarily mean larger class size.”

Teachers echoed the concern that students would be overlooked, but cited the benefits of a new consolidated school with better technological resources and a more welcoming school environment without the school rivalry and competition prevalent now.

(Continued on page 6)



SAS celebrates Armistice Day with the ringing of the bells in St. Andrew's Chapel

‘Chocolate Bells’ to Ring at SAS Today

Each year, St. Andrew's-Sewanee School celebrates Armistice Day with an 11-minute ringing of the St. Andrew's Chapel “Chocolate Bells” at 11:11 a.m. The ritual commemorates the sacrifices of our veterans, is a celebration of peace and serves as a token of thanks to those who provided the bells for the school's bell tower. The community is invited to join in this event today (Friday), Nov. 11.

The ritual of ringing the “Chocolate Bells” began in 1918. Before World War I ended, the women in a small Episcopal church in Morristown, N.J., began collecting money to send chocolates to American soldiers overseas. When the war ended, they decided to allocate the balance of their “War Time Chocolate Fund” to some other worthy cause. Through one of their parishioners, they heard about St. Andrew's School, an Episcopal boarding school in Sewanee, Tenn., which had recently completed building a chapel but lacked money for bells in the bell tower.

The churchwomen sent the money for three bells as an Armistice Thanksgiving and asked that the bells be dedicated to three archangels—Uriel, Raphael and Michael. In return, the school agreed to ring the bells for 11 minutes on the eleventh day of the eleventh month at 11:11 a.m. every year in memory of those who died in World War I and as a prayer for peace.

The St. Andrew's Chapel was recently restored and rededicated thanks to more than \$1.35 million in donations. The entire student body meets there three times each week, including a Monday morning Eucharist. One of the many traditions surrounding the Chapel is the ringing of the Chapel bells following athletic victories.

Community Council Election

On Nov. 8, Sewanee voters elected Community Council members. The candidates receiving the most votes in each district will serve a four-year term, with the runner-up serving a two-year term. For the at-large seats, the two candidates receiving the most votes serve four-year terms and the runners-up serve two-year terms. Fifteen voters took advantage of early voting for the Community Council election at the Lease Office.

District One (two seats available):

David Coe, 124 votes, four-year term ending 2020;

Flournoy Rogers, 39 votes, two-year term ending 2018;

District Two (two seats available):

Pamela Byerly, 25 votes, two-year term ending 2018;

Louise Irwin, 46 votes, four-year term ending 2020;

District Three: (two seats available):

Pixie Dozier, 53 votes, four-year term ending 2020;

Charles Whitmer, 31 votes, two-year term ending 2018;

District Four (two seats available):

Richard Barrali, 29 votes, two-year term ending 2018;

Phil White, 151 votes, four-year term ending 2020;

At-Large Candidates (four seats available):

Annie Armour, 155 votes, two-year term ending 2018;

Cindy Potter, 359 votes, four-year term ending 2020;

Katherine Reed, 117 votes, two-year term ending 2018;

Theresa Shackelford, 195 votes, four-year term ending 2020.

Election Results

Voters went to the polls on Nov. 8. In Franklin County, 10,127 votes were cast, 63.6 percent of voters. In Sewanee, 1,200 voters went to the poll, with 62.34 percent voter turnout.

Scott Desjarlais (R) defeated Steven Reynolds (D) in the race for the 4th Congressional District seat of the U.S. House of Representatives; David Alexander (R) will return to the Tennessee House of Representatives for the 39th District. Janice Bowling (R) defeated Mike Winton (D) in the race for Tennessee Senate 16th District.

In the Monteagle Mayor race, (includes votes from Franklin, Grundy, Marion) Marilyn Campbell-Rodman received 225, Alexander “Lex” Orr 78 and David Sampley 240 votes.

For Monteagle Alderman, two seats open, (includes votes from Franklin, Grundy, Marion) Jessica D. Blalock received 381 votes, Kenneth Wayne Gipson 118 votes, Harry Parmley 172 votes and Alvin Powell Jr. 175 votes. These results for Monteagle do not include provisional ballots and are unofficial until they are certified by the respective county election commissions.

For more information go to <<http://elections.tn.gov/results.php>>. For more information on the Franklin County elections go to <http://www.franklincotn.us/election_results/index.html>.



By the trains in Cowan. Photo by Alex Lipscomb

Gallery Walk Features Art, Music, Dance & Food

The University of the South will host the sixth Annual Campus Gallery Walk 4-7 p.m., Saturday, Nov. 12. The University Art Gallery, the Museum Gallery of Archives and Special Collections, and the Carlos Gallery of the Nabit Art Building will host dance and music performances in each venue. Each venue will serve refreshments prepared by IvyWild, specifically designed to complement the exhibit at each gallery.

Current exhibitions at the galleries are Jessica Wohl's “Love Thy Neighbor” at the University Art Gallery; “Communal Spirit: 3,000 Years of Mexican Artistry” at the Museum Gallery of University Archives and Special Collections; and Anderson Wrangle's “a hand's width” at the Carlos Gallery in the Nabit Art Building.

Music performances are coordinated by César Leal, artistic director of the Sewanee Symphony Orchestra and assistant professor of music, and Courtney World, assistant professor of dance. Performances will be repeated three times in each space, at 4:30 p.m., 5:15 p.m. and 6 p.m., so that visitors may attend in any order.

A map of the galleries will be available at each location and signs will be posted along the route between galleries. More information is available at <artssewanee.sewanee.edu>.

‘The Nutcracker’ Yuletide Ballet

The Sewanee Dance Conservatory in partnership with Perpetual Motion and the Alabama Youth Ballet Theatre return to Guerry Auditorium on Saturday, Nov. 12, to present The Nutcracker: A Yuletide Ballet. Performances are on Saturday at 2:30 p.m. and 7 p.m. Tickets will be on sale at the door: \$5 students/children and \$10 adults.

The production combines the Alabama Youth Ballet Theater dancers with more than 40 local dancers of all ages, from 6 to 50. Come experience a magical production with music, dance, costumes and a colorful cast of familiar faces.

For more information, please contact <lisa.s.hartman@gmail.com> or <eric.e.hartman@gmail.com>.

INSIDE THIS ISSUE

LT	Letters to the Editor, Serving Where Called.....Page 2	AE	ArtsPage 10
M	Meetings & Events.....Page 3	Sp	Sports NewsPage 12
Ch	Church News.....Page 4	NN	Nature NotesPage 14
Co	Community NewsPage 6	CA	Classified AdsPage 15
Ed	Education News.....Page 9	CC	Comm. Calendar.....Page 16

P.O. Box 296
Sewanee, TN 37375

Letters

CONSERVING WATER

To the Editor:

It has been hard to watch the drought dry up our creeks and cause our plants and animals stress, so I was heartened to learn in the Nov. 4, 2016 Messenger that the Tennessee Department of Environment and Conservation (TDEC) has asked us to limit our water use because of our drought. There's no significant rain expected through the rest of the year, and TDEC has asked us to refrain from using water for nonessential purposes (washing driveways, boats, cars, etc.). That is great. It's good to feel that I can do something that helps in response to the water stress that's increasing in a large number of areas.

I wonder: might we in Sewanee up our game? Might we go the extra mile in conserving water? Just to show we can? Just to show we care? If so, how about we all put buckets in our showers to catch any overflow and use that water for other purposes? We can follow the if-it's-yellow-let-it-mellow code of toilet flushing and cut off the faucet when we're brushing our teeth and take shorter showers. Now might be the time for those who don't have low-flow shower heads to buy and install them, too. Sewanee can do it. Let's use the rest of this year to show that we can.

Sid Brown, Sewanee ■

SSO THANK YOU

To the Editor:

On behalf of the nearly 400 children who attended the fourth annual Halloween Concert presented by the Sewanee Symphony Orchestra, thank

you to our sponsors, contributors, and the invaluable assistance and energy of the sisters of Phi Kappa Epsilon (PKE).

Woody's Bicycles, Joseph's Remodeling Solutions, and Tower Bank of Monteagle gave leadership donations, providing bus service for the school children, and Dutch Maid Bakery of Tracy City underwrote the cost of 450 cookies. Malina and James Chadwick, Elise Kikis and Stephen Miller, Mountain Valley Bank, Monteagle, Margaret Donohue at Sewanee Realty and Sweeton's Home Restoration also contributed.

The sisters of PKE sponsored a fundraiser, decorated the auditorium, prepared treat bags (with those delicious cookies), and prepared a skit for the performance that introduced the children to the instruments of the orchestra.

We are grateful for the many friends and supporters who made this event a delightful and educational experience for the students.

César Leal, conductor
Sewanee Symphony Orchestra ■

ALL LIVES MATTER

To the Editor:

The founders of our great nation never intended to create all the divisiveness we see today—mostly a product of those forces that seek to undermine and destroy our country.

Granted the ideals of "liberty and justice for all" have not been fully realized yet, but with a nation divided, they never will be. United we stand.

Don Shannonhouse, Monteagle ■

Convenience Center Holiday Closings Announced

William Anderson, director of Solid Waste for Franklin County, announces the following holiday hours:

Closed today (Friday), Nov. 11, for Veterans' Day;

Closed Thursday and Friday, Nov. 24–25, and open Saturday, Nov. 26 for Thanksgiving weekend;

Closed Saturday, Dec. 24 for Christmas, and closed Saturday, Dec. 31 for New Years' Eve.

In addition, the hours the Sewanee Recycling Center will be open have changed. The Center will be open noon–5 p.m. on Mondays; 2–5 p.m. Tuesdays–Fridays; and 8 a.m.–4 p.m. on Saturdays, and closed on Sundays.

Sewanee Police Report

The Sewanee Police Department recently issued its report on its activities for the month of October 2016.

Last month, the SPD patrolled 5,909 miles, investigated one vehicle accident and issued 38 moving violations. It also issued 673 non-moving traffic violations and 13 warnings.

It made 16 arrests for drug law violations, 13 arrests for liquor law violations, and filed seven theft reports. Five arrests were made in the month.

SPD offered mutual aid to Franklin County six times last month. SPD physically checked buildings on 1,354 occasions and assisted with locking or unlocking buildings 83 times.



MESSENGER Break Ahead

It is hard to imagine, but Thanksgiving is soon, and Christmas is just around the corner.

The Messenger will publish its Thanksgiving issue on Wednesday, Nov. 23. There will be four issues in December: Fridays, Dec. 2, Dec. 9, Dec. 16 and an early edition on Wednesday, Dec. 21. The staff will take a two-week break and return to the office on Monday, Jan. 9, with the first issue of 2017 on Friday, Jan. 13.

Deadlines for the Thanksgiving week issue, which will come out on Wednesday, Nov. 23 are: display advertising at 5 p.m., Friday, Nov. 18 (via email); news/calendar, noon, Saturday, Nov. 19 (via email) and classified ads, noon, Monday, Nov. 21.

If your organization or church has a different schedule during these upcoming holidays than we normally post, please send the updates to <news@sewaneemessenger.com> or call the office at 598-9959.

Letters to the Editor Policy

Letters to the editor are welcome at the Sewanee Mountain Messenger and are a vital part of our community's conversation. Letters need to be no longer than 250 words and may be edited for space and clarity. We make exceptions from time to time, but these are our general guidelines.

Letters and/or their author must have some relationship to our community. We do not accept letters on national topics from individuals who live outside our print circulation area. Please include your name, address and a daytime telephone number with your letter. You may mail it to us at Sewanee Mountain Messenger, P.O. Box 296, Sewanee, TN 37375, come by our office, 418 St. Mary's Ln., or send your email to <news@sewaneemessenger.com>. —KB



THE SEWANEE MOUNTAIN MESSENGER

418 St. Mary's Ln.
P.O. Box 296
Sewanee, Tennessee 37375
Phone (931) 598-9949



Email news@sewaneemessenger.com
www.sewaneemessenger.com

Kiki Beavers, editor/publisher
April H. Minkler, office manager
Ray Minkler, circulation manager
Leslie Lytle, staff writer
Kevin Cummings, staff writer/sports editor
Sandra Gabrielle, proofreader
Janet B. Graham, advertising director/publisher emerita
Laura L. Willis, editor/publisher emerita
Geraldine H. Piccard, editor/publisher emerita

Published as a public service to the Sewanee community. 3,700 copies are printed on Fridays, 46 times a year, and distributed to numerous Sewanee and area locations across the plateau for pickup free of charge.

This publication is made possible by the patronage of our advertisers and by contributions from the University of the South (print production) and the Sewanee Community Chest.

SUBSCRIPTIONS \$75 first class.

All material in the Sewanee Mountain Messenger and on its website are copyrighted and may not be published or redistributed without written permission.

Veterans Day Closings

Veterans Day is Friday, Nov. 11. Federal, state and local government agency offices are closed; banks and the post office are closed.

Sewanee Elementary, St. Andrew's-Sewanee and the University of the South will have classes, and their offices are open. The Sewanee Senior Center is open.

University Job Opportunities

Exempt Positions: Director of Environmental Stewardship and Sustainability, ES&S; Director of Student Conduct, Dean of Students; International Student Services Coordinator, Global Education; Senior Associate University Registrar, Registrar's Office.

Non-Exempt Positions: in Sewanee Dining: Assistant Manager; Cashier; First Cook; Food Service Worker; Second Cook; Senior Cook.

To apply or learn more go to <www.jobs.sewanee.edu> or call 598-1381.

Shop and dine locally!

Serving Where Called

Please keep the following individuals, their families and all those who are serving our country in your thoughts and prayers:

Cassidy Barry
Michael Evan Brown
Mary Cameron Buck
Lisa Coker
Jennifer Lynn Cottrell
James Gregory Cowan
Nathaniel P. Gallagher
Alex Grayson
Peter Green
Zachary Green
Robert S. Lauderdale
Dakota Layne
Byron A. Massengill
Forrest McBee
Andrew Midgett
Alan Moody
Brian Norcross
Christopher Norcross
Lindsey Parsons
Troy (Nick) Sepulveda
J. Wesley Smith
Charles Tate
Amy Turner-Wade
Ryan Turner-Wade
Tyler Walker
Jeffery Alan Wessel
Nick Worley

If you know of others in our Mountain family who are serving our country, please give their names to American Legion and Auxiliary member Louise Irwin, 598-5864.

MESSENGER DEADLINES & CONTACTS

PHONE: (931) 598-9949

News, Sports & Calendar

Tuesday, 5 p.m.

Kiki Beavers

news@sewaneemessenger.com

Kevin Cummings

sports@sewaneemessenger.com

Display Advertising

Monday, 5 p.m.

ads@sewaneemessenger.com

Classified Advertising

Wednesday, noon

April Minkler

classifieds@sewaneemessenger.com

MESSENGER HOURS

Monday, Tuesday & Wednesday

9 a.m. –4 p.m.

Thursday—Production Day

9 a.m. until pages are completed
(usually mid-afternoon)

Friday—Circulation Day

Closed

ONLINE AND IN COLOR!
www.sewaneemessenger.com

J & J GARAGE

COMPLETE AUTO REPAIR

- Import & Domestic
- Computerized 4-Wheel Alignments
- Shocks & Struts ● Tune-ups ● Brakes
- Our Work is Guaranteed.
- OVER 26 YEARS EXPERIENCE.

598-5470 Hwy 41-A between Sewanee & Monteagle ● Monday-Friday 7:30-5:30

Jerry Nunley
Owner

Will adding a guest room
for visiting family and
friends make your
holidays very merry?



Custom home remodeling begins with...

Joseph's Remodeling
Solutions
A Division of Sumpter Solutions, LLC

Taking Quality to the Next Level

Licensed - Insured - Green Certified

931-598-5565

joseph@josephsremodelingsolutions.com
www.josephsremodelingsolutions.com

Upcoming Meetings & Events

Veterans Supper

American Legion Post 51 and Ladies Auxiliary invites everyone to attend the Veterans Supper at 6 p.m., today (Friday), Nov. 11 at the Legion Hall on University Avenue. Please bring a covered dish and help support our Veterans. If you have an American flag that needs to be retired, bring it for a respectfully disposal flag ceremony.

GC Swiss Historical Society

The Grundy County Swiss Historical Society will meet 10 a.m. Saturday, Nov. 12, at the home of Jackie and Marvin Lawley, 370 55th Ave., Gruetli-Laager. For more information call (931) 235-3029.

Coffee with the Coach

Coffee with the Coach, an opportunity to learn more about Sewanee's sports teams, will be at 9 a.m., Monday, Nov. 14 with women's volleyball coach Shawna Laurendine and head football coach Tommy Laurendine. Gather at the Blue Chair Tavern for free coffee and conversation. All are welcome.

STHP Meeting

The Sewanee Trust for Historic Preservation will meet at 4:30 p.m., Monday, Nov. 14, at Otey's Claiborne Parish Hall in the Adult Education Room. Possible projects will be described and discussed. Any interested community members, faculty and students are welcome to attend and get involved.

P.E.O. Sisterhood

Chapter Z of the International P.E.O. Sisterhood will meet at 10 a.m., Tuesday, Nov. 15, in Tullahoma. All unaffiliated members of the P.E.O. Sisterhood who are in the Middle Tennessee area are welcome. For more information call (931) 962-0202.

EQB Club

The EQB Club will meet at noon, Wednesday, Nov. 16, at St. Mary's Sewanee. Henry Blizzard will present the lead on "The Electoral College" at 12:30 p.m.

Sewanee Garden Club

The next meeting of the Sewanee Garden Club will be at 1:30 p.m., Wednesday, Nov. 16, at the home of Ruth Wendling. June Coker will be conducting a Nature Art Workshop and Demonstration. Visitors are welcome. For more information, please contact Flournoy Rogers at 931-598-0733 or <semmesrogers@gmail.com>.

Area Rotary Club Meetings

The Grundy County Rotary Club meets at 11:30 a.m. on Tuesdays at Dutch Maid Bakery in Tracy City. The Monteagle Sewanee Rotary Club meets at 8 a.m., Thursdays at the Sewanee Inn. Thursday, Nov. 17 the presentation will be by Nate Wilson, Domain Manager of University of the South and President of the Mountain Goat Trail Alliance with an update on the status of the trail and new developments.

Sewanee Book Club Meeting

The Sewanee Book Club will meet at 1:30 p.m., Monday, Nov. 21 at the home of Flournoy Rogers. Marcia Mary Cook will review "Fifth Business" a novel by Canadian novelist Robertson Davies. For more information or directions contact Debbie Racka at 692-6088 or email <debbie811123@gmail.com>, or Flournoy Rogers at 598-0733 or email <semmesrogers@gmail.com>.

Rotary Club Fundraiser Dinner

On Monday, Nov. 14, the Grundy County Rotary Club will host its annual Fundraiser Dinner at the DuBose Conference Center in Monteagle. Tickets, \$50 per person, are available at all local Citizen Tri-County Bank branches, Tower Bank, Monteagle and Regions Bank, Sewanee, as well as from Rotary Club members.

The social hour with wine begins at 6 p.m. followed by dinner at 7 p.m. Following dinner, Parnassus Productions will present the "Legacy of Galileo," an Encounter with Genius in the DuBose Chapel, featuring Roy Henderson as Galileo Galilei (1564-1642).

Proceeds from the fundraiser will support the Grundy County Imagination Library Program and other Rotary programs in support of the youth of Grundy County.

Broadband Feasibility Survey

Duck River Electric Membership Corporation (DREMC) has launched a broadband feasibility study in its service area.

The goal is to identify opportunities to help bridge to the "digital divide" that keeps tens of thousands of DREMC members from connecting to the Internet at speeds that meet the Federal Communications Commission's definition of broadband.

The broadband feasibility study will explore how the proposed fiber-optic loop might help improve connectivity in rural areas served by DREMC.

Both residential and business should go to the co-op's website <www.dremc.com> to fill out one of the two special broadband surveys.

Party for Paws

The 2016 Fall Party for Paws Fundraiser for Animal Harbor will be on Saturday, Nov. 19, from 6-8:30 p.m. at St. Mark's Hall, Otey Parish. Enjoy fabulous food catered by Natural Bridge Sewanee, a full bar, music, and both live and silent auctions full of treasures. Tickets are \$55 and can be purchased online at <www.animalharbor.org>, at the shelter (56 Nor-Nan Road), at the veterinarian clinics in Winchester, or by calling Susan Rupert at 967-8903. Join us for a delightful evening and be a Harbor Hero to our four-footed friends who are waiting for their forever homes.

Balsam Wreath Sale to Benefit CAC

The annual Balsam Wreath Sale has begun. A tradition for more than 20 years with sixth graders at Sewanee Elementary and then St. Andrew's Sewanee participating, the profits from this sale now benefit the outreach work of the Community Action Committee, an organization that helps the greater Sewanee area.

The wreaths measure at least 22" and come with a big red bow and pine cones. The wreaths cost \$25 and will arrive between Dec. 7-14. The CAC

will contact you when your wreath arrives, and will be available for pickup at the CAC at Otey Parish. If requested, wreaths can be delivered.

To order wreaths, email <cacchristmaswreaths@gmail.com> or <cynthiadehondpotter@gmail.com> or call Cindy Potter at 598-5773. Order forms are also available at the CAC office at Otey. Be sure to include your name, number of wreaths you want and contact information. Your order will be confirmed by email or phone.



From the archives Nov. 16, 2012: St. Andrew's-Sewanee School students (from left) Carolynn Bruce, Genevieve Rogers and Sloan Jolly enjoy balsam wreaths during last year's sale.

Michael A. Barry LAND SURVEYING & FORESTRY

★ ALL TYPES OF LAND SURVEYS
★ FORESTRY CONSULTING

(931) 598-0314 | (931) 308-2512



**EXPERT HANDYMAN
KEN O'DEAR
25 YEARS EXPERIENCE**

DEPENDABLE AFFORDABLE RESPONSIVE

Carpentry
Painting
Tilework
Plumbing
Electrical
Hauling
Moving
Home & Yard
maintenance

**931.235.3294
931.779.5885**

SPREAD GOOD NEWS.

Help friends get information. Help local businesses succeed.
Help our Mountain communities.

ADVERTISING THAT WORKS FOR YOU:
ads@sewaneemessenger.com

University Deer Hunt

The 2016 University deer hunt continues through Jan. 13, 2017. The archery only season runs through Dec. 21, and the regular season begins on Dec. 22.

Hunting is allowed on most weekends from sunrise to 10 a.m. and 2 p.m. until sunset. Additionally, hunting is allowed weekdays from sunrise to 8:30 a.m. in all zones and 3:30 p.m. to sunset in zones 3, 4 and 6.

There is no hunting Thanksgiving Day, Christmas Eve or Christmas Day. There will be a limited firearms hunt that will start the day after Christmas.

For more information and a map, go to <http://www.sewanee.edu/offices/oess/the-domain/ecosystem-management/hunting/>.

myerspoint.net

MYERS POINT at Sewanee offers a rare opportunity to enjoy a private community that celebrates American architecture, lifestyle, protected forests, cultivated lakes and panoramic views on Middle Tennessee's Cumberland Plateau. If you want to live surrounded by nature, history, beauty, quality and serenity, you'll want to call it home.

- 480-acre private gated community
- 24 exclusive home sites; lakeside or bluff vista
- Timeless, organic, craftsman architecture standards
- Land Trust for Tennessee perpetually protected forests
- Over four miles of walking and riding trails
- Community barn, pastures, resting benches and fire pit
- Minutes from the University of the South

John Goodson • (931) 703-0558 • jgoodson@myerspoint.com

The Sewanee Dance Conservatory, Perpetual Motion & the Alabama Youth Ballet Theatre present...

the Nutcracker

a Yuletide Ballet

November 12, 2016
2:30 PM & 7 PM

Guerry Auditorium
The University of the South

Tickets
\$5 students
\$10 adults
at the door.

if music asks you to dance,
SEWANEE DANCE CONSERVATORY
www.sewaneeconservatory.com

AlabamaYouthBallet.org

Operation Christmas Child

This ministry of Samaritan's Purse invites the community to pack more than 500 shoeboxes for Operation Christmas Child. This will be from 1–5 p.m. and 7–9 p.m., Tuesday, Wednesday or Thursday, Nov. 15–17 in the Hearth Room at the Bishop's Common. This ministry of Samaritan's Purse goes out to children in more than 120 different foreign countries. The shoeboxes will include clothing, shoes, school supplies, toiletries including a toothbrush and soap and washcloth, plus many other fun items such as stuffed animals, toys, sunglasses, etc. Each box requires a \$7 donation for shipping. There is a GoFundMe account set up to help with those costs <<https://www.gofundme.com/sewaneeshoeboxes>>.

For more information contact Penny Cowan at <pcowan@sewanee.edu> or 636-3686.

Christmas on the Mountain

Mid-Cumberland Mountain Ministries and Morton Memorial Methodist Church will sponsor Christmas on the Mountain, Sunday, Dec. 11.

The event will take place at Morton Memorial Methodist Church, 322 W. Main Street, Monteagle. The shopping will start at 1 p.m. and will be by appointment times.

Families with children 17-years old or younger, residing in their household, are eligible to participate.

Applications are available at the Morton Memorial office on Monday, Wednesday and Thursday, 9:30 a.m.—12:30 p.m. Applications will also be mailed to interested families by request. Call the church office (931) 924-2192 to have an application mailed, or pick up an application. Monday, Nov. 21 is the deadline for registration.


Obituary

Billy Cherry Yates

Billy Cherry Yates, age 84 of Sewanee, died on Oct. 18, 2016, at the University of Michigan Hospital in Ann Arbor, Mich. He was born on Jan. 4, 1932, in Sewanee, to William Herman Yates and Edna May Cherry Yates. He graduated from Franklin County High School in 1950. He was a U.S. Army veteran of Korea, and was a barber in Ann Arbor for many years. He was preceded in death by his parents; stepfather, Robert Redden; brother, Bob Yates; sister Betty Ruth Saren; grandparents, Benjamin and Mary Josephine Long Cherry, William Henry and Maude Norwood Yates.

He is survived by his wife, Margaret; daughters, Valorie Jean (Bill) Angilan and Katherine Elaine (Dan) Piccolo; sisters Erma Lou Yates Fromm and Linda Ann Redden Gilson; brother-in-law, Jack Saren; two grandchildren, one great-granddaughter, and several nieces, nephews, cousins and friends.

He is buried at Washtenong Memorial Park, Ann Arbor, Mich.



MR. POSTMAN, INC.
209 South Jefferson St., Winchester
One block off square across from PO
(931) 967-5777 Fax (931) 967-5719

Email and Scan Service

—SHIPPING AND PACKING SERVICES—
Authorized shippers for UPS, Fed Ex & DHL • Open Mon-Fri 9-5



**DEDICATION AND OPEN HOUSE
WINGS COMMUNITY
OF BLUE MONARCH
SATURDAY, NOVEMBER 12
2:00 P.M.**

931.924.8900 / INFO@BLUEMONARCH.ORG
BLUEMONARCH.ORG



UPCOMING RETREATS
ONE RIVER WISDOM RETREAT:
EMBRACING ESAU
December 2—December 4
The Rev. Dr. Gordon Peerman
Rabbi Dr. Rami Shapiro, Ph.D
St. Mary's Hall: \$450 (Single), The Anna House: \$550 (Single), Commuter: \$350 (Single)

THREE-DAY ADVENT CENTERING
PRAYER RETREAT
December 9—December 11
The Rev. Tom Ward, presenter
St. Mary's Hall: \$350 (Single),
The Anna House: \$450 (Single)

Church News

All Saints' Chapel

Growing in Grace continues Sunday, Nov. 13, at 6:30 p.m. in All Saints' Chapel. The speaker will be Brooke Irvine, a member of the class of 2016. This informal worship service is designed for students and community members with student-led acoustic music, guest speakers, and Holy Communion. This Advent semester, Growing in Grace will focus on moments in our life where we find ourselves at a "Crossroads."

The Catechumenate continues Wednesday, Nov. 16, at 7 p.m. in the Bairnwick Women's Center. Desserts and coffee will be provided. Catechumenate, from a Greek word meaning "learning and exploring," is a place where we explore what it means to be a human being and what it means to be a person of faith in our community. Email Lay Chaplain Rob McAlister <rvmcalis@sewanee.edu> for directions or more information.

Greening of the Chapel begins at 9 a.m., Friday, Dec. 2, in preparation for the 57th Annual Festival of Lessons and Carols, Dec. 3–4.

Christ Church

Christ Church Monteagle will

have the blessing of the Shoeboxes for Samaritans Purse, and also keep this Sunday, Nov. 13, as the International Day of Prayer (IDOP) for the Persecuted Church.

For thousands of churches the IDOP was kept on Nov. 6 this year. But, in part, because of All Saints' Sunday, many Anglican and Episcopal Churches chose another Sunday. The service at Christ Church begins at 10:30 a.m. All are welcome.

Daughters of the King

Daughters of the King will meet at 5:30 p.m., Tuesday, Nov. 15, in the parish hall of St. James Episcopal Church in Midway. All women are invited to attend to learn more about the organization, the oldest Order for Lay Women in the Episcopal Church, established in 1855.

Otey Parish

This Sunday, Nov. 13, in Christian Formation at 10 a.m., the Lectionary Class will explore Sunday's gospel in the Claiborne House, Adult Education Room. Children ages 3–11 are invited to meet their friends for Godly Play. Middle school and high school students have Sunday School in Brooks

Hall. Infants 6 weeks to children 4 years old are invited to the nursery beginning at 8:30 a.m. until after the second service.

The Adult Forum will be presented by Abby Colbert on "Whose Children Are These? Immigration at Home and Abroad." All are invited to attend.

Reynolds Plaque Dedication

A dedication of a plaque honoring the late Rt. Reverend George Reynolds, ninth Bishop of Tennessee will be at All Saints' Chapel, Saturday, Nov. 19 at 3:30 p.m. Relatives and friends are invited to attend. Contact Barbara Reynolds at (931) 526-3190 for information.

Taizé Service Nov. 11

A Taizé service will be at 7 p.m., today (Friday), Nov. 11, in St. Luke's Chapel. All are welcome to this contemplative time of prayer, silence, and song. Taizé is sponsored by All Saints' Chapel, and it is led by students from both the college and the School of Theology. For more information contact seminarian Melanie Rowell, 598-3422 or <rowelmg0@sewanee.edu>.

CHURCH CALENDAR

Weekday Services, Nov. 11–18

7 a.m. Morning Prayer, St. Mary's (not 11/14)
7:30 a.m. Morning Prayer, St. Paul's Chapel, Otey
7:30 a.m. Holy Eucharist, St. Mary's (not 11/14)
8:30 a.m. Morning Prayer, Christ the King (11/15)
8:30 a.m. Morning Prayer, St. Augustine's
4 p.m. Evening Prayer, St. Augustine's
4:30 p.m. Evening Prayer, St. Paul's Chapel, Otey
5 p.m. Evening Prayer, St. Mary's (not 11/14)
7 p.m. Taizé, St. Luke's (11/11 only)

Saturday, Nov. 12

7:30 a.m. Morning Prayer/HE, St. Mary's
10 a.m. Sabbath School, Monteagle 7th Day Adventist
11 a.m. Worship Service, Monteagle 7th Day Adventist
5 p.m. Mass, Good Shepherd, Decherd

Sunday, Nov. 13

All Saints' Chapel

8 a.m. Holy Eucharist
9:30 a.m. St. Augustine's Stone service
11 a.m. Holy Eucharist
6:30 p.m. Growing in Grace

Bible Baptist Church, Monteagle

10 a.m. Worship Service
5:30 p.m. Evening Service

Christ Church, Monteagle

10:30 a.m. Holy Eucharist
10:45 a.m. Children's Sunday School
12:50 p.m. Christian Formation Class

Christ Episcopal Church, Alto

9 a.m. Holy Eucharist
10 a.m. Sunday School

Christ Episcopal Church, Tracy City

10 a.m. Adult Bible Study
11 a.m. Holy Eucharist (child care provided)

Christ the King Anglican, Decherd

9 a.m. Holy Eucharist
10:40 a.m. Sunday School

Church of the Holy Comforter, Monteagle

9 a.m. Holy Eucharist

Cowan Fellowship Church

10 a.m. Sunday School
11 a.m. Worship Service

Cumberland Presbyterian Church, Monteagle

9 a.m. Fellowship
11 a.m. Worship Service

Cumberland Presbyterian Church, Sewanee

9 a.m. Worship Service
10 a.m. Sunday School

Decherd United Methodist Church

9:45 a.m. Sunday School
10:50 a.m. Worship

Epiphany Mission Church, Sherwood

10 a.m. Holy Eucharist
10 a.m. Children's Sunday School

Good Shepherd Catholic Church, Decherd

10:30 a.m. Mass

Grace Fellowship Church

10:30 a.m. Sunday School/Worship Service

Harrison Chapel Methodist Church

9 a.m. Worship Service
10 a.m. Sunday School

Midway Baptist Church

9:45 a.m. Sunday School
10:45 a.m. Morning Service
6 p.m. Evening Service

Midway Church of Christ

10 a.m. Bible Study
11 a.m. Morning Service
6 p.m. Evening Service

Ministry Baptist Church, Old Co-op Bldg., Pelham

10 a.m. Sunday School
10:45 a.m. Breakfast
11 a.m. Worship Service

Monteagle First Baptist Church

10 a.m. Sunday School
11 a.m. Worship Service
6 p.m. Evening Worship

Morton Memorial United Methodist, Monteagle

9:45 a.m. Sunday School
11 a.m. Worship Service

New Beginnings Church, Monteagle

9:30 a.m. Worship Service
11:15 a.m. Worship Service

Otey Memorial Parish Church

8:50 a.m. Holy Eucharist
10 a.m. Christian Formation
11 a.m. Holy Eucharist

Pelham United Methodist Church

9:45 a.m. Sunday School
11 a.m. Worship Service

St. Agnes Episcopal Church, Cowan

11 a.m. Sunday Service (Rite 1)

St. James Episcopal Church

9 a.m. Holy Eucharist

St. Margaret Mary Catholic Church, Alto

8 a.m. Mass

Sewanee Church of God

10 a.m. Sunday School
11 a.m. Morning Service
6 p.m. Evening Service

Sisters of St. Mary's Convent

8 a.m. Holy Eucharist
5 p.m. Evensong

Tracy City First Baptist Church

9:45 a.m. Sunday School
10:45 a.m. Morning Worship
5:30 p.m. Youth

6 p.m. Evening Worship

Trinity Episcopal Church, Winchester

11 a.m. Holy Eucharist
6 p.m. Evening Worship

Valley Home Community Church, Pelham

10 a.m. Sunday School
10 a.m. Worship Service

Wednesday, Nov. 16

6 a.m. Morning Prayer, Cowan Fellowship
12 p.m. Holy Eucharist, Christ Church, Monteagle
5 p.m. KA's, Bible study, meal, Monteagle First Baptist

5:30 p.m. Evening Worship, Bible Baptist, Monteagle
5:45 p.m. Youth, Bible study, meal, Monteagle First Baptist

6 p.m. Bible study, Monteagle First Baptist
6 p.m. Prayer and study, Midway Baptist
6 p.m. Youth (AWANA), Tracy City First Baptist

6 p.m. Prayer, Trinity Episcopal, Winchester
6:30 p.m. Community Harvest Church, Coalmont
6:30 p.m. Prayer Service, Harrison Chapel, Midway

7 p.m. Adult Formation, Epiphany, Sherwood
7 p.m. Evening Worship, Tracy City First Baptist
7:30 p.m. Holy Eucharist, Christ the King, Decherd

“Positive thinking will let you do everything better than negative thinking will.”

Sewanee Realty

SewaneeRealty@inSewanee.com
www.SewaneeRealty.com
115 University Ave., Sewanee, Tenn.

Margaret Donohue,
Principal Broker • 931.598.9200
Patsy Truslow,
Broker • 931.636.4111
Kipper Worthington,
Affiliate Broker • 615.948.1077



MLS 1711778 - 844 Fairview, Winchester Cabins - Commercial - \$369,500



BLUFF - MLS 1692347 - 1043 North Bluff Cir., Monteagle. \$250,000



BLUFF - MLS 1657852 - 1819 Bear Ct., Monteagle. \$249,000



MLS 1752200 - 1116 University Ave., Sewanee. \$449,900



BLUFF - MLS 1648470 - 245 Coyote Cove Ln., Sewanee. 29.5 acres. \$469,900



MLS 1725646 - 277 Wiggins Creek Dr., Sewanee. \$289,000



MLS 1514972 - 202 Main St., Monteagle. \$112,000

BLUFF TRACTS

Laurel Lake Dr. 66.7 ac	1748867	\$395,000
16 Jackson Pt. Rd. 4.51ac	1710188	\$84,800
590 Haynes Rd. 11+ac	1687354	\$132,000
15 Saddletree Ln. 6.12ac	1680519	\$88,000
16 Laurel Lake Rd.	1722522	\$97,500
223 Timberwood Tr. 5.12ac	1604345	\$169,000
Old Sewanee Rd. 53ac	1643144	\$296,000
3 Horseshoe Ln. 5.6ac	1608010	\$60,000
1 Raven's Den 5.5ac	1685926	\$62,000
Long View Ln. 2.56ac	1572284	\$108,000
36 Long View Ln.	1503912	\$99,000
7 Jackson Pt. Rd.	1714853	\$75,000
37 Jackson Pt. Rd.	1579614	\$75,000
Jackson Pt. Rd. 12.45ac	1579007	\$125,600
12 Saddletree Ln.	1578117	\$79,500
Jackson Pt. Rd. 19+ac	1531331	\$120,000
Jackson Point Rd.	1648895	\$199,000
7 Saddletree Ln.	1726054	\$70,000
25 Old Sewanee Rd. 5.2 ac	1741756	\$119,000



MLS 1743681 - 1091 Timberwood Tr., Monteagle. 26.4 acres. \$689,000



MLS 1740557 - 786 Old Sewanee Rd., Sewanee. 15 acres. \$329,000



MLS 1776800 - 1256 Sollace Freeman Hwy., Sewanee. \$584,000



MLS 1775366 - 143 Winns Circle, Sewanee. \$385,000



BLUFF - MLS 1775532 - 305 Clara's Point Rd., Sewanee. \$949,000



MLS 1771204 - 351 Greens View Rd., Sewanee. \$285,000



MLS 1744462 - 706 Old Sewanee Rd., Sewanee. +30 acres. \$299,500



MLS 1698101 - 41 Sherwood Rd., Sewanee. \$229,000



BLUFF - MLS 1772358 - 569 Haynes Rd., Sewanee. \$589,000



BLUFF - MLS 1646170 - 3335 Jackson Point Rd., Sewanee. 5 acres. \$289,000



BLUFF - MLS 1703687 - 294 Jackson Point Rd., Sewanee. 20 acres. \$327,000



BLUFF HOME - MLS 1696535 - 1105 North Bluff Cir., Monteagle. \$368,000



MLS 1692858 - 21 Mont Parnasse Blvd., Sewanee. 3.4 acres. \$329,000



MLS 1770160 - 12147 Sewanee Hwy., Sewanee. \$169,000



MLS 1740978 - 94 Parsons Green Cir., Sewanee. \$299,900



MLS 1703913 - 134 Tomlinson Ln., Sewanee. \$539,000



BLUFF - MLS 1777974 - 3480 Sherwood Rd., Sewanee. \$349,000



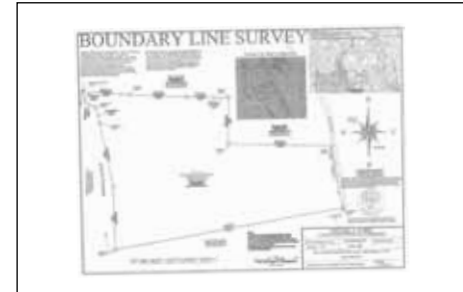
MLS 1774336 - 1848 Ridge Cliff Dr., Monteagle. \$283,000



BLUFF - MLS 1773059 - 1804 Clifftops Ave, 6.9 acres, Monteagle. \$995,000



BLUFF - MLS 1656823 - 1613 Laurel Lake Dr., Monteagle. 5.3 acres. \$449,900



BLUFF - MLS 1748867 - Laurel Lake Dr., Monteagle. 66.7 acres. \$395,000



MLS 1667542 - 36 Lake Bratton Ln., Sewanee. \$429,000



MLS 1688434 - 324 Rattlesnake Springs Rd., Sewanee. 4.9 acres. \$349,500



MLS 1730527 - 565 Haynes Rd., Sewanee. 5.4 acres. \$249,900



BLUFF - MLS 1712150 - 3442 Sherwood Rd., Sewanee. \$589,000

LOTS & LAND

Taylor Rd. 29.73ac	1754324	\$159,000
Oliver Dr. 10.4ac	1707115	\$38,000
Bear Dr. 2ac	1708016	\$29,000
Jackson Pt. Rd. 4.8ac	1714849	\$37,500
Ingman Rd. 0.809ac	1696338	\$17,000
Haynes Rd. 6.5ac	1690261	\$75,000
43 Bluff Wodds	1774625	\$28,000
57 Edgewater Ct. Winch	1668196	\$35,000
Highlander Dr. 15ac	1669734	\$79,500
111 Clifftops Dr. 5.25ac	1646127	\$58,900
Hwy 41 Monteagle 5.3ac	1714856	\$47,500
Shadow Rock Dr. 0.99ac	1572178	\$23,000
5ac Montvue Dr.	1714856	\$59,000
Sarvisberry Pl.	1628195	\$69,000
8 Jackson Point Rd.	1734341	\$36,000
9 Jackson Point Rd.	1734307	\$39,000

School Board *(from page 1)*

Pointing to another benefit of a consolidated school, Bean said “research shows cost savings in personnel and transportation.”

For the more than 600 students responding to the survey, a primary concern was a large consolidated school would offer fewer clubs and extracurricular activities.

Addressing the students’ concern, South Middle School sixth-grade teacher Ashley Magrini said, “with more teachers at once site, students can expect a greater number and greater variety in extracurricular activity opportunities.” A Building Program Committee member, Magrini also spoke favorably of the community ambiance of the three consolidated schools the committee visited, Blackman Middle School (Murfreesboro), Coffee County Middle School (Manchester) and Stewarts Creek Middle School (Smyrna).

Commenting on the survey results and opinions expressed at the town meetings, Bean said, “the biggest issue with renovation is the effect of construction on education and the time it will take away from student learning.” OLG estimated renovating the schools would take 15–18 months.

If the county adopted the third option, building two new middle schools on the sites of the existing schools, NMS and SMS would remain operable throughout the construction process. Following completion of the new schools, the existing buildings would be demolished except for the gymnasium and band pod. If the new structures included an auxiliary gym, the former gym and band pod would be available for community uses such as adult education and GED classes, Bean said.

OLG presented two designs for new schools on the existing school sites, one including a new auxiliary gym (total cost for both schools, \$51,000,000-\$55,000,000) and one without a new auxiliary gym (total cost for both schools, \$48,000,000-\$52,000,000). The cost estimate includes demolition of the old schools.

Reviewing the cost of the other two options, Bean said the estimated renovation cost did not include the portables that would be needed to house students during construction. The price for the new consolidated school did not include site acquisition and infrastructure costs. OLG proposed a site adjoining Franklin County High School on Bypass Road.

For all three options—renovation, consolidation or two new schools—additional classrooms could easily be added as needed Tim Little with OLG said.

Board member Christine Hopkins suggested the county could save money in renovation if the construction was not done simultaneously since the same portables could be used at both schools.

Little cautioned that construction costs were increasing 6–7 percent annually.

Responding to a question by Sewanee school board representative Adam Tucker about the expected longevity of the schools if renovated, Little said, “There are no glaring structural concerns. The buildings are steel and concrete.”

Board Chair Cleijo Walker asked board members to review the three proposed concepts and prepare questions for the regular board meeting on Nov. 14.



Youth soccer season in Sewanee ended on Nov. 5. The top photo is the Little Kickers. Bottom photo is the U8 team. Soccer started in September. Mary Heath, Leyla King and Julie Elrod generously gave of their time to take over the coordination of Sewanee soccer this year. Photos by Dharitri Bhattacharjee

Did You Know?

The Sewanee Community Chest is raising money for basic needs in the community such as books, food, recreational spaces, elder care, children’s programs and more.

Visit sewaneecivic.wordpress.com and click on the PayPal Donate button.



Village Wine & Spirits Inc.

Best Selection of Wine & Spirits
Now Selling Cold Beer, Wine & Champagne
 10% Discount to Seniors, Veterans, Students & Staff (ID required)
 Special Orders Available for Wine & Kegs
 Visit us on Facebook for the latest products.
 Across 41A from Monteagle's Piggly Wiggly ~ (931) 924-6900
 Mon–Thu 9 a.m.–10 p.m.; Fri–Sat 9 a.m.–11 p.m.



The Monteagle Sewanee Rotary Club

meets at 8 a.m., Thursdays, at the Sewanee Inn
“Service Above Self”



The Lemon Fair

Downtown Sewanee
 Locals discount 15% off Tu–Th

Chattanooga-Based Cloth Diaper Service Expands Service Area

Wee Care Diaper Service, a cloth diaper delivery and laundering service based in Chattanooga, Tenn., announces new ownership and expands service to homes between Chattanooga and Nashville.

Wee Care Diaper service will continue providing weekly bundles of prefold cloth diapers to Chattanooga-area households under new owners Maureen and Frank Gibson. They have also begun offering service between Chattanooga and Nashville including South Pittsburg, Sewanee and Murfreesboro.

“We are pleased to offer this service to a larger area,” said Frank Gibson,

who purchased the company in October 2016 with business partner and wife Maureen Gibson. “It is an exciting time for our family to return to Chattanooga amidst so much growth, and we look forward to watching the company grow.”

Frank and Maureen Gibson both grew up in the Chattanooga area. Frank was raised on Lookout Mountain, Ga., and Maureen grew up in Cleveland, Tenn. They began using a cloth diaper delivery service with the arrival of their first child in 2014 while living in Charlotte, N.C. After relocating to Chattanooga, they connected with Wee Care to continue using

cloth diapers before they purchased the company.

“Running the service is an extension of habits in our own home,” said Maureen Gibson. “We choose cloth because it is a healthy option for our children and a sustainable choice for the environment. We are glad to provide that option for other families as well.”

Wee Care Diaper Service was established in 2012 to provide cloth diaper home delivery service for cloth diaper users in the Chattanooga area. For more information on Wee Care Diaper Service go to <<http://www.weecarediaperservice.com>>.

Your Place for Organic & Local Products

- ◆ Natural Foods
- ◆ Personal Care Products
- ◆ Garden Supplies
- ◆ Yarn & Knitting Supplies
- ◆ Local Arts & Crafts

- ◆ Jewelry
- ◆ Gifts
- ◆ Antiques



Mooney's
Market & Emporium

OPEN DAILY 10-6

931-924-7400 • 1265 W Main Street • Monteagle, TN

THE LOCAL MOVER
615-962-0432

Need More Room?

Mountain Storage
(931) 598-5682

■ Security Gate

Dan & Arlene Barry

■ Security Camera

Hwy 41 - Between Sewanee & Monteagle

5X10 | 10X10 | 10X20

For Your Antiques and Prized Possessions

Climate Control
5X10 10X10 10X15 10X20
Temperature and Humidity Regulated

BBB



The blue chair
Café & Tavern

41 university avenue
sewanee, tennessee



(931) 598-5434
thebluechair.com

Community Chest Spotlight: Sewanee Elementary School

The 2016-17 Sewanee Community Chest (SCC) Fund Drive is underway. Sponsored by the Sewanee Civic Association, the SCC raises money yearly for local charitable organizations serving the area. This year's goal is \$116,850 for 26 organizations that have requested basic needs funding for quality of life, community aid, children's programs, and those who are beyond Sewanee but still serve the entire community.

For the next few weeks, the Sewanee Mountain Messenger will focus on some of the organizations supported by the Community Chest. This week we shine the spotlight on Sewanee Elementary.

Since 1867 there has been a long-standing relationship between the community and the public school. For years this voluntary community commitment maintained the educational system, such as St. Paul's on the Mountain school and the school on Billy Goat Hill.

When the Sewanee Civitan Club (now the Sewanee Civic Association) was first organized, its objective of good citizenship included "a comprehensive program for the betterment and improvement of every phase of community activity." (Chitty) This included providing school facilities. At that time, the Franklin County Board of Education agreed to pay the salaries of teachers, but did not provide the buildings. The University at that time was unable to help with the expenses. Funding for a new public school became a community goal. The school building would be on University leasehold land, owned by the Sewanee Civitan Club, and operated by the Franklin County School Board.

Funds were raised in the community and the Sewanee Public School was completed in 1927 through volunteer efforts. In 1933, the community built the Roosevelt Addition. In 1943, more than half of the town's SCC budget went to maintain the school, and fund programs for enrichment and the purchase of supplies. The county took over the maintenance of the school in 1955 when the building and land were turned over to the county as long as a school remained on that site.

The Sewanee Elementary School (SES) continues to rely on yearly funding from the SCC to meet the school's needs. This funding commitment "has served the intentional purpose of eliminating the door-to-door fundraising." (Chitty)

The Sewanee Elementary Parent Organization (SES PO), a 501(c)(3) nonprofit organization, requests and disburses the SCC funds each year for SES. All money received is used for

yearly support to the school. The SES PO works with teachers and staff to find solutions to specific educational needs of the school that are not met by the Franklin County School system funding or services.

The SCC is the primary source of revenue for the SES PO operating expenses. The SES PO also receives money through annual dues and small fundraisers such as T-shirt sales. This year the SES PO will receive \$24,200 if the SCC goal is met.

The money raised for the school will help to fund: classroom supplies, including the purchase of a new kiln for the art program; the library for new books, eBooks and material purchases; enrichment funds for Friday School, Field Day and academic tutoring; work study salaries for part-time University student classroom helpers; and professional development funds to support travel and registration costs for dyslexia/autism training, writing and math conferences.

Since 1908, the goal of the SCC has been to help citizens by funding the community. Through SCC funding, local organizations can help those caught in the cycle of poverty, improve quality of life through outreach and community initiatives, and provide support for children with a variety of programs. The SCC is a 501(c)(3) nonprofit organization, and donations are tax-deductible. Send your donation to Sewanee Community Chest, P.O. Box 99, Sewanee, TN 37375. For more information, or to make a donation through PayPal, contact <sewaneecommunitychest@gmail.com> or go to <www.sewaneeccivic.wordpress.com>.

**Tell them
you read it
in the
Messenger!**

Facility Rental for Non- University Events

There are several University facilities that may be rented for non-University events. The University Office of Facility Rentals handles the inquiries for wedding receptions, banquets, private birthday parties, professional meetings, and more.

By renting and reserving space you ensure that it will be available for your event. There have been several instances when multiple groups felt that the use of these spaces was on a first come, first served basis. This process puts some safeguards in place to avoid that situation.

Based on availability, the spaces below may be reserved for non-University events:

Abbo's Alley and Gazebo; Cravens Hall (upper and lower); Memorial Cross; Green's View; EQB Meeting; Lake Cheston Pavilion and Amphitheater; McGriff Alumni House; Mary Sue Cushman Room (in the Bairnwick Women's Center).

These spaces can be reserved year round by contacting Jessica Gunn in the Office of Facility Rentals at <facilityrentals@sewanee.edu> or by calling 598-1125.

The Sewanee Inn, the Golf Lodge and their adjacent outdoor spaces can be scheduled by contacting Nicole Christison at <events@sewanee-inn.com> or 598-3627.



No Time to Cook for Thanksgiving?
St. Mary's Sewanee Can Help
Traditional Thanksgiving Family Meal

Cost: \$75.00 Serves: Six
Meal Includes: Turkey, Dressing, Gravy, Green Beans, Sweet Potatoes, Corn, Cranberry Relish and Corn Muffins

ADD A PIE TO YOUR FAMILY MEAL:
Southern Deep Dish Pecan Pie \$12.00
Traditional Pumpkin Pie \$ 9.50

Pickup Dates:
November 22 (8:00AM - 4:30 PM)
November 23 (8:00AM - 10:00AM)

***ORDERS ARE LIMITED* Order Deadline: Noon, November 17th**

For information or to place an order, 931-598-5342

Lakeside Collision

"Done Right, the First Time"
We Handle Insurance Claims
777 St. Claire Street, Tracy City, TN 37387
Ph: 931.592.3274 | Cell: 931.235.3316
Email: lakesidecollision00@gmail.com

A-1 CHIMNEY SPECIALIST
"For all your chimney needs"

Dust Free • Chimneys Swept, Repaired, Relined & Restored • Complete Line of Chimney Caps • Waterproofing
Video Scanning

G. Robert Tubb II, CSIA *Certified & Insured*
931-273-8708



Homecoming King Fridien Nana Tchokoua, the PST candidate and a biochemistry major, and Homecoming Queen Huguette Ciza, the GSP candidate and an economics major, both of the 2016 senior class, celebrate their coronation at half-time during the Homecoming football game. Photo by Lyn Hutchinson

**Heart Healthy & Diabetic
Friendly Thursdays!**
11AM-8PM, Lunch & Dinner
Great New Dishes Every Week
Smoke House Restaurant - Monteagle

CHIROPRACTIC OUTLOOK



By
Dr. Kurt Shull

BACK PAIN IN THE WORKPLACE

You don't have to be an ironworker to be at risk for back injury on your job. Every occupation, however physically undemanding it seems, carries the potential for back injury. Even office work can pose problems. A physically intense job might put a person at greater risk for a serious accident, but the sedentary practice of sitting at a desk all day brings its own set of physical concerns.

Hunching over a keyboard or over paperwork all day can put considerable stress on a person's back, particularly if one does not constantly remind oneself of maintaining good posture. Add a long commute at each end of the work day and you have another ingredient in the formula for back trouble. Some studies have shown that office workers, as a group, are less likely to seek treatment for back pain because they're simply resigned to the situation as part of the job.

You can help prevent back pain at the office by making sure your chair is adjusted properly. You should be leaning back at an angle of at least 110 degrees. And make sure your computer screen is at eye level so you're not bending your neck constantly as you look at it. And force yourself to get up periodically and walk around. Talk with your chiropractor about ways you can work in some exercises at the office to help protect your back.

We are now accepting new patients.

Call our office for a free consultation.

Presented as a service to the community by:

Dr. Kurt Shull
SHULL CHIROPRACTIC CLINIC, PLLC
1025 S. College St. • Winchester
931-967-4232
www.shullchiropractic.com

**Offering Wellness, Nutritional &
Non Surgical Spinal Decompression Consultation**

Have you seen Sam the Dog?
Call in and tell us you saw Sam to schedule an on-site appointment!

Sweeton
Home Restoration
931-924-2444

**Folks want
to know
your
news!**

**Send your message
to more than
5,000 weekly
readers.**

(931) 598-9949
news@sewaneeessenger.com
www.sewaneeessenger.com



The water level at Lake Jackson. Photo by Sandy Gilliam

Sewanee Utility District Board of Commissioners



There will be an election in January 2017 for a seat on the Board of the Sewanee Utility District. All SUD customers in good standing are eligible to serve on the Board. The Board usually meets once a month and the term of office is for 4 years.

Prospective candidates should contact Election Coordinator Randall Henley via the SUD office, 598-5611, or, submit a petition with 10 SUD customer signatures by Jan. 4, 2017.

Voting for the SUD commissioner election begins Jan. 5 and will continue through Jan. 24 at the SUD office, 150 Sherwood Rd., Sewanee, during regular business hours, Monday–Friday, 8 a.m.–4 p.m.

Half-Price Sale at the Hospitality Shop

The Hospitality Shop is a project of the Emerald-Hodgson Hospital Auxiliary, staffed by volunteers.

It is located at 1096 University Ave., in a yellow house just past Mississippi Avenue, and is open Tuesdays and Thursdays from 9:30 a.m. until 1 p.m., and on Saturdays from 9:30 a.m. until noon.

A half-price sale on most clothing in the women's department and men's departments will be in effect until the Shop closes for the Thanksgiving break.

Even if you don't "need" anything, a visit to the Shop is an opportunity to slowdown, look around and be in a space where the phrase "reduce, reuse, recycle" are taken to the level of an art form.

The Shop will be closed for the Thanksgiving break starting at noon on Saturday, Nov. 19 through Monday, Nov. 28, reopening at 9:30 a.m. on Tuesday, Nov. 29.

Donations are welcome; they may be left in the bin at the rear of the building. Please do not leave items which should go to the recycling center, i.e. garbage or waste, nor large pieces of furniture, nor electronic devices which are not operational.

For more information call (931) 598-0136 when the Shop is open.

Senior Center News

Volunteers Needed

The Center needs volunteers who can help in the kitchen to prepare lunch and to help clean up and wash dishes. Call the center at 598-0771 or 598-0915 to volunteer.

Thanksgiving Luncheon

The annual Sewanee Senior Center Thanksgiving Luncheon will be at noon, Tuesday, Nov. 15. The menu is turkey and dressing, yams, green beans, corn on the cob, roll and dessert. The cost will be \$7 and reservations must be made by today (Friday), Nov. 11, by calling the Center at 598-0771.

The Senior Center will be closed Nov. 24 and Nov. 25 for the Thanksgiving holiday.

Menus

The Sewanee Senior Center serves lunch at noon, Monday through Friday. The suggested donation is \$4, regardless of your age. Please call 598-0771 by 9 a.m. to order lunch.

Nov. 14: Pizza, salad, dessert.

Nov. 15: Thanksgiving Luncheon (\$7): Turkey, dressing, yams, green beans, corn on cob, roll, dessert.

Nov. 16: Sub sandwich, chips, dessert.

Nov. 17: Chipped beef on toast, green beans, dessert.

Nov. 18: Pork chop, mashed potatoes, broccoli, roll, dessert.

Menus may vary.

Christmas Bazaar

The Sewanee Senior Citizens Center will be having its annual Christmas Bazaar and bake sale Dec. 5–10. Donations are now being accepted at the Center located at 5 Ball Park Road. Donations of clothing are not accepted.

Daily Activity Schedule

Chair exercises, Mondays and Wednesdays, 10:30–11:15 a.m.; Tuesdays at 10:30 a.m., the group plays bingo, with prizes; Wednesdays at 10 a.m., the writing group gathers at 212 Sherwood Rd. ; Fridays at 10 a.m. is game time.

Center Participation

The Sewanee Senior Center does not charge any membership fee. All persons 50 or older who take part in any of the activities are considered members.

The Center is located at 39 Ball Park Rd. in Sewanee.

Caregiver Group

Folks at Home (F@H) sponsors a weekly Caregiver Group for those who are taking care of chronically or terminally ill relatives or friends. The group meets Thursdays, 1:30–3 p.m. in Otey's Claiborne Parish Hall. Confidentiality is a treasured value here. For information, contact Folks at Home Director Kathleen O'Donohue, at (931) 598-0303 or <folksathomesewanee@gmail.com>.

Did You Know?

Your donation to the Sewanee Community Chest will help 26 local organizations.

Visit sewaneecivic.wordpress.com for more information.

ROB MATLOCK
CONSTRUCTION COMPANY
NEW HOME BUILDING
AND REMODELING

MEMBER, U.S. GREEN BUILDING COUNCIL

PHONE 931-598-5728

State Licensed • Fully Insured

Ray and April Minkler
styraco@blomand.net, aprilinkler@blomand.net
931-592-2444 931-434-6206
For over 8,700 testimonials see
www.oil-testimonials.com/1860419

931 205 2475

WWW.MOLLICACONSTRUCTION.COM

- CRAFTSMANSHIP ▪
- CREATIVITY ▪
- SUSTAINABILITY ▪

Leonard Brown - Owner
Steve Young - Gen. Mgr.
Steve Hartman - Shop Mgr.

710 College St. • Winchester
931-967-1755 • Fax 931-967-1798

*Come by and see us.
We appreciate your business.*

Our Work is Guaranteed!

Reliable Rental has everything you need to make that fall or winter wedding an event to remember...

Tents, tables (round and rectangular), chairs, brass candelabra, china, crystal, flatware, chafers, trays, disposables, etc. Call or come by to check out the great savings you will realize by doing it yourself at a rental (not sale) price!

RELIABLE RENTAL
OF FRANKLIN COUNTY

104 E. Petty Lane • Winchester, TN 37398
931/962-0406 or 1-800/453-RENT

Tea on the Mountain

*For a leisurely luncheon
or an elegant afternoon tea*

11:30 to 4 Thursday through Saturday

DINNERS BY RESERVATION
(931) 592-4832
298 Colyar Street, US 41, Tracy City

SES Menus

**Monday–Friday,
Nov. 14–18**

LUNCH

Monday, Nov. 14: Chicken fajita, corn dog nuggets, side salad, pinto beans, roasted veggies, fruit, tortilla.

Tuesday, Nov. 15: Taco, ham sandwich or wrap, refried beans, buttered corn, lettuce/tomato cup, salsa, fruit tortilla chips.

Wednesday, Nov. 16: Chicken patty, pork chop, mashed potatoes, cheesy broccoli, veggie juice, fruit, roll.

Thursday, Nov. 17: Ravioli, fish, potato smiles, veggie cup, green beans, fruit, hush puppies.

Friday, Nov. 18: Cheesy bread sticks, hot dog, ranch potatoes, side salad, salsa, cookie, fruit, hot dog bun.

BREAKFAST

Each day, students select one or two items.

Monday, Nov. 14: Pancake, waffle or French toast sticks, syrup.

Tuesday, Nov. 15: Biscuit, chicken, gravy, jelly.

Wednesday, Nov. 16: Buttered toast, jelly or breakfast bun.

Thursday, Nov. 17: Poptart or cinnamon twists.

Friday, Nov. 18: Biscuit, sausage, gravy, jelly.

Options available every breakfast: assorted cereal, assorted fruit and juice, milk varieties. Menus subject to change.

MES Students of the Week

Monteagle Elementary School would like to acknowledge the following students:



Zade Frederick

Zade Frederick is an energetic first grader in Mrs. Kristy Sartain's homeroom. He loves sports, especially football. Zade is also interested in dinosaurs. He enjoys playing with his friends at recess and spending time with his family. Consider yourself lucky if you can call Zade your friend. He is a true pal to all his classmates.



Siennah Miller

Siennah Miller is in third grade at MES. She has a twin brother named Sage, who is only minutes older than her. She enjoys swimming, listening to country music, and writing. Siennah is also very artistic. Her favorite color is black and her favorite food is French fries. Siennah is a sweet young lady with a creative imagination.



Bryton French

Bryton French is a new student at MES. He is in Mr. Oliver's 6th grade class. Bryton is originally from Delaware. He enjoys drawing Anime and spending time with friends. His greatest fear is heights, and his favorite food is pizza. Bryton enjoys spending time at home with his family. Bryton is a wonderful new addition to MES.



Sewanee Elementary students got ready for Halloween and the SES Parent Organization sponsored Reverse Parade by bringing decorated pumpkins to school.

School Calendar

Nov. 16, Grundy County Early Dismissal at 12:30 p.m., Professional Dev. 1–3 p.m.

Nov. 19–27, Thanksgiving Break, St. Andrew's-Sewanee

Nov. 21–25, Thanksgiving Break, Marion County

Nov. 23–25, Thanksgiving Break, Franklin County

Nov. 23–25, Thanksgiving Break, Grundy County

Nov. 23–28, Thanksgiving Break, University of the South, School of Theology

Dec. 2, Last Day of Classes, School of Theology

Dec. 3–4, Service of Lessons and Carols

Dec. 8, Early Dismissal @ 12:30, Professional Dev. 1–3 p.m., Grundy County

Dec. 9, Last Day of Final Examinations, School of Theology

Dec. 14, Last Day of Classes, University of the South

Dec. 16–30, Christmas Break, Marion County

Dec. 16–Jan. 3, Christmas Break, St. Andrew's-Sewanee

Dec. 17–Jan. 1, Christmas Break, Grundy County

Dec. 20, Abbreviated Day (8–9:30), Franklin County

Dec. 21, Last Day of Final Examinations, University of the South

Dec. 21–Jan. 2, Break, no school, Franklin County

Jan. 16, Class resumes, School of Theology

Jan. 17, Class resumes, University of the South

For the complete combined calendar, go to <www.themountainnow.com>.



TOMMY C. CAMPBELL
FOR YOUR IMPROVEMENTS
Call (931) 592-2687

Free Estimates • No Job Too Small!

**DRIVEWAY WORK • GRAVEL HAULING
• DOZER & BACKHOE**

plus Land Clearing • Concrete Work • Water Lines • Garage Slabs • Sidewalks • Porches & Decks • Topsoil & Fill Dirt • Septic Tanks & Field Lines

Come enjoy our annual
Thanksgiving Buffet

12 noon, Thursday, November 24

\$34.95 per person, \$14.95 for children

Complimentary glass of champagne.

Reservations required.

**The mountain's best breakfast,
served daily 8–10 a.m.**

Monteagle Inn
RETREAT CENTER

**Tallulah's
Wine Lounge**

(931) 924-3869 ~ www.monteagleinn.com ~ 204 West Main St.

Share your news to spread good news!

SAS Mock Election Results

The St. Andrew's-Sewanee School History Club sponsored a mock presidential election for the school on Election Day, Tuesday, Nov. 8. Under the guidance of history teacher Geoffrey Smith, a polling station was set up in Robinson Dining Hall with realistic ballots, a display that explained how the history of voting in the United States and how the electoral college works, private polling areas and a ballot box.

Mr. Smith's B period World History class tabulated the results with considerable help from freshmen Aidan Smith and Gabriel Pongdee who offered Excel expertise and confirmed the results.

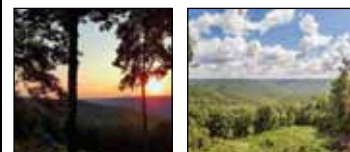
With students, faculty and staff voting, Hillary Clinton won the popular vote with 121 votes. Donald Trump received 45 votes. The electoral college (based on grade levels) outcome was 465 electors for Hillary Clinton and 57 electors for Donald Trump. Thirty-three ballots were cast for third-party or write-in candidates, including several votes each for Mr. Smith and for sixth grade Humanities teacher Michael Short. Fifty-seven percent of the student vote went to Hillary Clinton and 25 percent to Donald Trump. In looking at grade levels, Trump took one grade, eighth.

"I commend the History Club and Mr. Smith for taking the opportunity of this Election Day to teach our students more about the election process and civic involvement," said Head of School Karl Sjolund. "Whatever the outcome of the national race, we look forward to helping to model for our students the grace, generosity of spirit, and civil decency needed to move us forward as one nation."

SUR LA MONTAGNE

sur la Montagne is a private residence that sits atop the mountain in Sewanee. Home has spectacular bluff views. At an elevation of 1929 ft. sur la Montagne provides an ideal advantage point for viewing spectacular sunsets. Home is within 10 minutes to University of the South. Home sits on 2.36 ac with 3 bedrooms, 3 full bathrooms.

The large deck off the back has glorious views of the valley. The master bedroom is on the main floor, the kitchen opens into a dining room with a fireplace, there is a living area, bonus room and 2 additional bedrooms for guest. This outdoor space is a fabulous place to entertain your family and friends. The kitchen has stainless appliances, solid wood cabinetry, beautiful quartz counter-tops and a tile back splash. The dining room area overlooks the brow. The other side of the home's 2nd floor is a large bonus room with a full bath. Bluff views on this level are fantastic. Other features include a garage with a curved driveway and a beautifully natural landscaped yard and much more. Truly a one of a kind home to call your own.



**REAL ESTATE
PARTNERS
CHATTANOOGA LLC**



PAULA PALMER
REAL ESTATE PARTNERS
CHATTANOOGA, LLC
PRIMARY: 423-595-5741
OFFICE: 423-265-0088
PG.PALMER@COMCAST.NET



**Village Laundry &
Dry Cleaning**

Professional laundry & dry cleaning services: Wash & fold on all clothing plus bed linens, uniforms, tablecloths & more. Offering alterations & repair services.

Hours: Monday–Friday, 9–5 | Saturday, 9:30–1

12569-C Sollace M. Freeman Hwy., Sewanee | 931.463.2045

THE INSATIABLE CRITIC

by Elizabeth Ellis



All the features at the Sewanee Union Theatre have a common theme this week—digging deep into fighting enemies of the past in order to create a better tomorrow, from the distant reaches of outer space to the American Western Frontier to the Far East.

The Rating System

Stars are so overused, and there's nothing on the planet more critical than cats, so one feature each week is rated from one to five Jackaroos. The more Jackaroos there are, the better it is!



Jackaroo

Star Trek Beyond

7:30 p.m., Friday, Nov. 11 through Sunday, Nov. 13 2016, Rated PG-13, 122 minutes

Our favorite crew of the starship U.S.S. Enterprise is back for more traversing through the final frontier! The latest and most successful of this venerable sci-fi franchise's recent reboots, this film picks up where it left off after the end of 2013's "Star Trek Into Darkness." Halfway through their five-year mission, Captain James T. Kirk (Chris Pine) is now a respected official and undisputed leader. However, his title will be put to the ultimate test when the Enterprise is savagely attacked outside of an unknown planet. Stranded with few options and no communication, the crew must again band together and try to piece together their next plan; however, an enemy from the past is determined to make Star Fleet pay. More plot-based and less action-packed than the previous two installments, "Beyond" succeeds in not only being a great movie in its own right, but a worthy addition to the Star Trek canon. Rated PG-13 for general fantasy violence, it is appropriate for older children accompanied by parents as well as older teens, and adults.



Dances with Wolves

7:30 p.m., Wednesday, Nov. 16 1990, Rated PG-13, 181 minutes

Sometimes when you are lost is when you are most likely to find yourself. This film, which took home seven Oscars in the 1991 Academy Awards, including Best Picture, defined Kevin Costner's career not only as an actor but also as a director. Costner plays John Dunbar, a disillusioned lieutenant in the Civil War for the Union who requests a position on the Western frontier. At first he finds it largely deserted, his only companion a wolf he occasionally sees that he nicknames "Two-socks" due to the wolf's coloring. Little by little as he learns to survive off the land, a Sioux tribe learns to respect—and in time—love him and call him as one of their own. But Dunbar will find when the Union Army comes calling for him that he has two worlds he must choose between. An unforgettable tale of self-discovery, bravery and compassion combined with incredible cinematography that has gone on to inspire other tales of its kind (e.g., "The Revenant") this is not to be missed. Rated PG-13 for wartime violence and heavy themes, this and the lengthy running time make it best suited for older children accompanied by parents as well as teens and adults.

Kubo and the Two Strings

7:30 p.m., Thursday, Nov. 17 through Sunday, Nov. 20 2016, Rated PG, 101 minutes

Take a trip to Japan in the gorgeously animated, family friendly animated feature about an extraordinary one-eyed boy named Kubo that must fight his demons from the past. When Kubo (Art Parkinson) learns from his mother that he has magical powers deep inside of him, he gets a little too carried away...and accidentally summons an ancient vengeful spirit bent on destruction due to age-old grudges. Having to clean up the mess he made, he finds help in a droll white monkey (Charlize Theron) and a large, anthropomorphic black beetle (not as gross as it sounds) voiced by—all right all right all right!—Matthew McConaughey. Aided by a traditional Japanese musical instrument called a shamisen with unusual powers, they will learn the true story of Kubo's late father, the greatest samurai warrior ever known. Supporting voice talent includes Ralph Fiennes, Rooney Mara and the unduplicated George Takei (Star Trek fans, anyone?). Original and spellbinding, this film is rated PG for scary images and some action but is wholly suitable for children and adults alike.

For more reviews and fun, visit <http://theinsatiablenecritic.blogspot.com/>

Showtimes, unless otherwise noted, are at 7:30 p.m. Ticket prices are \$3 for children and students, and \$4 for adults. Wednesday night Cinema Guild movies are free of charge.



Like the Messenger?
Let us know on
Facebook!

Russell L. Leonard

ATTORNEY AT LAW

315 North High Street
Winchester, TN 37398

Office: (931) 962-0447
Fax: (931) 962-1816
Toll-Free (877) 962-0435
rleonard@netcomsouth.com



America Nation of Many Stars, acrylic, Glenn Vanden Bosch, Veteran

Veterans Day Art Celebration

The Franklin County Arts Guild is honoring area veterans with an open house event today (Friday), Nov. 11, featuring two arts shows at the Artisan Depot in Cowan. The Community Art Show "Patriotism" opened on Oct. 27 with work by community members of all ages with their interpretations of what Patriotism means to them. The second show celebrates the art produced by area veterans in various media, styles and themes. Veterans serving from World War II up through the present are participating in this event. An Open House for both shows will be on Veterans Day, today (Friday), Nov. 11, from 1–6 p.m. All community members are invited to come to the open house and join the celebration. The local Home Depot is supporting the event by providing door prizes especially for veterans attending; there will be additional door prizes of art and flowers offered hourly for all visitors. Come and celebrate with us. Both shows will run through Nov. 20.

The Artisan Depot is operated by the Franklin County Arts Guild and is located at 204 Cumberland St. East, Cowan. Gallery hours are noon–5 p.m. on Thursdays, Fridays, and Sundays and 11 a.m.–5 p.m. on Saturdays.

For more information about upcoming community art shows, the gallery or the guild visit us at <www.fcaguild.wordpress.com> or <www.facebook.com/artisandepot> or contact Diana Lamb at (931) 308-4130.

Electric Arcadia 'Wizard of Oz' at Fundraiser Millennium

Electric Arcadia presents an evening of folk, soul and rock n' roll, Saturday, Nov. 19, 7–10 p.m. at the Sewanee American Legion Hall, 36 University Avenue.

Featuring sets by special guest artist Lahna Deering (of Deering and Down from Memphis <<http://deeringanddown.com>>, Wet Bar (Sewanee's own Thomas Macfie and Linda Heck), the Linda Heck Experiment (debut performance of St. Andrew's-Sewanee student/guitar wizard Alex Lipscomb on bass), and seminarian Tom Adamson, the evening concludes with a glorious all-star demonstration of "The Art Of Rock."

This is a fundraiser towards the release of Wet Bar's 4-song ep "Promise." A \$5 donation is requested at the door.

Art Wednesday

The Franklin County Arts Guild invites community members interested in the visual arts to come to the Cowan Center for the Arts Education building for Art Wednesdays. Anyone can participate: age and skill level do not matter. The group meets every Wednesday from 10 a.m. to 12:30 p.m. Everyone brings their own art supplies and projects. Sometimes everyone works on individual projects and sometimes one of the members does a mini-workshop for anyone interested.

'Leading Change, Stories from the Field'

"Leading Change, Stories from the Field" a talk and conversation with Karen Proctor, Advent 2016 Brown Foundation Fellow will be at 4:30 p.m., Thursday, Nov. 17, at the McGriff Alumni House.

Proctor is founder and principal of Harbour Workshop LLC, a social innovation firm. She established the firm to help social impact leaders and organizations design solutions for lasting social change. Proctor's career has been devoted to working across the public and private sectors to address issues ranging from hunger to school reform. She has been the chief social responsibility administrator and strategist for global corporations including the National Basketball Association and Scholastic. A nationally recognized leader in the social impact space, Proctor has advised corporate CEOs, non-profit, and philanthropic chief executives, as well as federal and state senior level officials. She is currently a senior fellow with Babson College's Lewis Institute for Social Innovation. Proctor is a graduate of the University of Notre Dame.

Edens Publishes Novel 'Death Be Not Pwned'

Sewanee writer Mark Edward Edens has published his first novel, "Death Be Not Pwned," a darkly comic story of a high school senior's coming of age. The student's struggle to finish the perfect college application essay takes a nightmare turn when he accidentally runs over Death and has to spend the weekend before the application deadline chauffeuring the injured Grim Reaper to his fatal appointments. The title comes from the video gamer slang term "pwn" (pronounced "pone"), originating in a common typo for "own" and meaning "to defeat."

Edens has written TV movies for Joan Rivers and the Mike Hammer franchise, the Disney Channel movies "Don't Look Under the Bed" and "The Luck of the Irish," multiple episodes of the shows Young Hercules and Snapped, and scripts for dozens of animated series, including The X-Men, Beetlejuice and The Real Ghostbusters. He is known locally as the author of the historical plays "Lost" and "The Round Forest" and as the main writer for the Mountain Goat Radio Show.

"Death Be Not Pwned" is available as an e-book from Amazon.

www.sewaneemessenger.com



Down Home, Down the Street

754 West Main St., Monteagle
(931) 924-3135

8 a.m. to 9 p.m. 7 days a week

Arts Notes

‘Love Thy Neighbor’

The University Art Gallery presents Jessica Wohl’s “Love Thy Neighbor,” an exhibition of quilts and drawings that grapples with the fear, intolerance and polarization the artist sees dividing communities and cities across the country, and answers those divisions with objects that evoke empathy and comfort. The exhibition will be on view through Jan. 27.

Wohl will speak about her work at 4:30 p.m., today (Friday), Nov. 11, in Convocation Hall with a reception to follow.

‘Size Matters’

The Department of Theatre and Dance at the University of the South will present professional actor/writer and Sewanee graduate Raymond McAnally in a unique and personal one-man show, “Size Matters,” at 7:30 p.m., today (Friday), Nov. 11, at the Tennessee Williams Center. Admission to “Size Matters” is free but seating is limited for this event. Reservations are available at <artssewanee.sewanee.edu/tickets>.

‘a hand’s width’

The Carlos Gallery in the Nabit Art Building presents “a hand’s width,” a solo exhibition by artist Anderson Wrangle. The exhibition continues through Dec. 16. A closing reception and artist talk will be at 4:30 p.m., Thursday, Dec. 15. Gallery hours are from 8 a.m. to 5 p.m. Monday through Friday and 1–5 p.m. Saturday and Sunday. The gallery is located at 105 Kennerly Road.

SAS Art Gallery

Functional Clay: Five Contemporary Artists will be in the St. Andrew’s-Sewanee Gallery through Nov. 14. The exhibition features the work of artists Burki Gladstone, Mary Lynch, Claire Reishman, Merissa Tobler and Ursula Vann. The SAS Art Gallery is located in the Simmonds Building on the St. Andrew’s-Sewanee School campus. Hours are Monday through Friday, 9 a.m.–3 p.m., and by appointment.

‘Communal Spirit’

“Communal Spirit: 3,000 Years of Mexican Artistry” incorporates diverse Pre-Columbian artifacts from both western and eastern Mexico, representing eight different indigenous civilizations. The 20th-century folk art presented features many of the same regions, inspiration and creative techniques. The exhibition will continue through Dec. 16 at the University Archives.

Makins to Give Folk/Americana Concert, Nov. 12

Award-winning songwriter Daniel Makins will perform a concert of original music at 6:30 p.m., Saturday, Nov. 12, in Hamilton Hall’s Hargrove Auditorium at The School of Theology. His songs cover interpersonal, but common ground with wit and honesty. Admission is free and open to the public.

Makins is from San Angelo, Texas. He is a three-time finalist at the prestigious Kerrville Folk Festival New Folk Competition, a winner of the Wildflower and Gig Harbor Folk Festivals. The Daily Texan calls him, “One

of the top five new artists most likely to be seen on Austin City Limits.”

Makins is a relative of famed music archivist, John A. Lomax, and was raised in a musical family. Ten years of classical piano preceded a decade of touring as a jazz drummer and another decade working as a professional singer-songwriter-guitarist performing more than 150 nights annually. He has recorded eight albums and been included on a compilation released by the Center for Texas Music History. For more information go to <danielmakins.com>.

news@sewanee messenger.com



Winchester Podiatry
CHARLES D. GANIME, DPM
*Board Certified in Foot Surgery
 Diplomate, American Board of Podiatric Surgery
 New Patients of All Ages Welcome! We Treat Your Feet! Most Insurance Accepted, Including TennCare*
155 Hospital Road #1, in Winchester.
www.winchesterpodiatry.com
931-968-9191



MOUNTAIN GOAT TRAIL
SHARE the TRAIL
Rule #3
 Be safe.
 Yield to cars at all road crossings.
WALK • RUN • CYCLE TOGETHER
mountaingoattrail.org



Custom cabinetry, design services, remodeling and new construction!

Sweeton Home Restoration
 931-924-2444 sweetonhome.com
Bridging the gap between high design and practical living



Catherine Rodland

Performing Arts Series Presents Catherine Rodland

Catherine Rodland, artist-in-residence at St. Olaf College, Northfield, Minn., will perform an organ recital at 7:30 p.m., Friday, Nov. 18, in All Saints’ Chapel.

The Friday evening concert will include Bach’s Concerto in A Minor, transcribed from Vivaldi, in addition to works of Buxtehude and Vienne. At 10 a.m., Saturday, Nov. 19, Rodland will teach a master class featuring organists from the University of the South. The public is invited to listen and observe from the choir seats in All Saints’ Chapel. Both events are free and open to the public.

Rodland is a prizewinner in several competitions including the 1994 and 1998 American Guild of Organists Young Artists Competition, the 1994 Calgary International Organ Competition, and the 1988 International Organ Competition at the University of Michigan, for which she received first prize. Rodland has concertized extensively throughout the United States and Canada, and has been featured often on the syndicated radio program “Pipedreams” on National Public Radio. She graduated cum laude with departmental distinction in organ performance from St. Olaf in 1987, and received both the M.M. and D.M.A. from the Eastman School of Music in Rochester, New York, where she was a student of Russell Saunders. At Eastman, Rodland received the prestigious Performer’s Certificate and the Ann Anway Award for excellence in organ performance.

Rodland teaches music theory and ear training classes as well as organ students at St. Olaf. A specialist in Baroque and 20th century music, she has presented numerous recitals and master classes on Baroque performance practice, and is a regular part of the Belvedere Chamber Music Festival in Memphis.



BOOKMARKED

A Column for Young Adult Readers and Adults Who Appreciate The Genre

by Margaret Stephens

Behind the Façade

Much as I enjoy the ability to catch up with old friends’ doings at the click of a mouse, I have to be careful how much I look at Facebook. I don’t know if you’ve found this, but my news feed sometimes feels relentless in its presentation of post after post of beaming faces celebrating awesome deeds achieved in the most scenic of locations. It’s worse than those annual “here’s-what-we-did!” Christmas letters because night or day, those posts just keep rolling out. Aren’t there ever any dark and cloudy days on Facebook? Yes, I know we’re not supposed to compare our lives with anyone else’s, but after a few sessions with Facebook I’m left believing the rest of the world is younger, snazzier, happier and much, much more traveled than I’ll ever be.

It’s hard to remember that many posts are photoshopped and edited versions of carefully-selected moments in people’s lives.

That’s why reading Sarah Dessen’s 2015 YA novel “Saint Anyone” seemed such a relief. A novel about real people dealing with real issues! Or rather, a novel giving us an intimate look inside the life of a family that seems to have it all.

That’s Sydney’s family. Two perfect children with perfect teeth enrolled in the finest private school with two loving parents, all living in a huge home complete with a gym and recording studio in the basement. The father is a lawyer who spends his time resolving corporate conflicts; the mother devotes her life to organizing and orchestrating her children’s.

Until Sydney’s older brother Peyton spins out of even their mother’s control. After a series of drug-and alcohol-related incidents, he hits and seriously injures another teenager in a late-night DUI. When the novel opens, he’s serving jail time, which their mother attempts to spin as a kind of educational retreat. In fact, throughout the novel, we never actually see him, just overhear the phone conversations he’s allowed from prison. Sydney herself seems invisible in a family fixated on taking care of Peyton. When not in school, she leads a lonely existence in front of the television.

In an unusual (for her) act of self-assertion, she decides to transfer to public high school to escape her brother’s reputation. There she meets the Chatham family, who own a nearby pizzeria, and her life is never the same.

The Chathams are kind of the flip opposite of Sydney’s family: all three children work in the family business and aren’t expected to do much else. Instead of a McMansion, they live on top of one another in a tiny, cluttered house which centers around the needs of their mother, who is wheelchair-bound with MS. And the relationships—sibling-to-sibling or child-to-parent—are close, caring and honest.

How Sydney becomes involved with them, and how this alters not just her life but that of her own family’s, makes up the bulk of the story, with a couple of romances and the ominous presence of one of Peyton’s creepier friends thrown in for good measure. I highly recommend it. Dessen has 11 other novels, one of which, “Someone Like You,” won a School Library Best Book Award and was made into a film, “How to Deal.” She’s been writing since the 90s, and I feel like I’m late to the party in discovering her, which I only did thanks to my daughter-in-law’s bookshelf. Her novels seem like a good antidote to Facebook, revealing the very real people who reside behind what seem like perfect façades.

So, enjoy the ongoing chatter on Facebook, then do your brain and self-esteem a favor and pick up a real book instead.

Questions? Comments? Email me at <mgtstep@gmail.com> or find me at <My2ndfreshmanyear.wordpress.com>.

Dine and Shop Locally.

HOUSE CALL SERVICE AVAILABLE
 Full Service Veterinary Care for Dogs, Cats & Horses
 Boarding & Grooming



Traci S. Helton DVM

Nathan L. Putman DVM

Monday–Friday 7:30 am–6 pm; Saturday 8 am–1pm
AFTER-HOURS EMERGENCY SERVICE AVAILABLE
931-962-3411
 505 S. Jefferson St., Winchester (41-A toward Winchester. First left after Domino’s Pizza)



Charming cottage situated on approx. 8.29 acres with recently completed 4 acre lake, with 2 wet springs. 40 yr metal roof, two 10ft x 30ft porches. Private get-away offers an open concept design with an oversized insulated one car garage. NO HOA



Angie Miller, Affiliate Broker
 Winchester, TN 37398
 931-224-2838 Cell
 931-967-8999 Office
 931-967-2185 Fax



Re/Max Mountain Views Realty



SAS mountain bike team members, from left, are Riley Burnette, Ashton Milford, Madeline Sumpter, Emma Diamond, Hanna Rosman and Lindsey McBride.

SAS Mountain Bikers Take on Gallatin's Lock 4

St. Andrew's-Sewanee School's mountain biking team raced in the Tennessee High School Cycling League's third event of the season at the Lock 4 trail in Gallatin, Oct. 29.

The race featured 128 high school riders and 63 middle school riders representing 13 schools from across the state competing in multiple race categories. The Lock 4 trail is one of the most technically challenging courses of the race series with short, steep climbs and a rocky section to navigate. Lap lengths were approximately five miles, with riders completing one to four laps depending upon race categories.

Twelve riders competed for SAS in middle school categories. First-time racers Riley Burnette and Madeline Sumpter rode with determination in the girls' category, with Burnette sprinting in strong at the finish line. Cole Palmertree, Spears Askew, Colin DeLorme and Huxley Hume-Allingham all rode competitively in their first middle school mountain bike race for the season, completing the difficult course and finishing with confidence and smiles.

In high school categories, Ashton Milford, Hanna Rosman and Emma Diamond competed for the SAS girls' group with Rosman earning fourth place in the sophomore category. In the freshman boys' category, Aidan Smith overcame a flat tire and crash by riding smart and fast to earn fourth place in a very competitive group of riders.

Other top finishes for SAS were Matthew Mollica (sixth place, varsity boys), Zhaoqi Zhang (eighth place, junior varsity boys), Fritz Stine (11th place, junior varsity boys) and Jack Gu (15th place, junior varsity boys).

In current team rankings, St. Andrew's-Sewanee is in fourth place behind Marshall County (Ky.), Harpeth Youth Cycling and Williamson County Composite. The state championship race for the Tennessee League will be held Nov. 12-13 at SAS. Community members interested in volunteering for Saturday morning course setup and Sunday race duties may sign up on the league's website at <Tennesseemt.org>.

SAS coaches Speed Baranco and Beth Pride Ford would like to thank our athletic directors, Rob Zeitler and Margot Burns, and community volunteers Robin Mainzer, Christina and Jeff McBride, Sian Baranco, Pete and Jill Mollica, John and Barbara Fox, Alex Neubauer, and SAS teacher Michael Short for their support of the school biking program. The coaches said they are also grateful for team and league-level race day support from middle school and upper school parents.

Mountain Lions Nip Palmer

On Nov. 3, the St. Andrew's-Sewanee middle school girls' soccer team defeated Palmer Elementary, 22-20.

Lakin Laurendine led SAS with 16 points and Abi Cassell added two clutch free throws with seconds left in the fourth quarter. Sarah Grace Burns and Madison King both played outstanding defense, combining for nine steals and eight assists.

On Nov. 1, SAS lost their first home game to Monteagle Elementary, 25-15. The Mountain Lions played stellar defense in the first half, limiting Monteagle to 11 points. SAS made a good run in the second half led by Laurendine and Jenna Black, but were unable to close the gap. Burns and Cassell played outstanding defense and King led the team with six assists.

After those two games, the Mountain Lions moved to 2-2 this season.

SAS Middle School Boys Earn First Win

The St. Andrew's-Sewanee middle-school boys' basketball team went 1-3 on the season.

On Nov. 3, the boys brought home their first win, stealing an exciting game from Palmer Elementary, 30-29. Nathan King scored the go-ahead point with 8.4 seconds left in the game.

On Nov. 1, the Mountain Lions mounted a spirited second half in a losing cause against a fast, good-passing Monteagle Elementary team, 48-30. King scored 14 for SAS, while Payton Zeitler, Cam Weaver and Cameron Harmon performed well underneath. Harmon also pitched in with a couple of baskets late in the game to bring the score closer. Sean Willis played impressive defense.

On Oct. 27, Tracy City Elementary's 6' 2" Gage Reeves proved too much as he chipped in 17 points from around the basket. Tracy City won 27-19. For the Mountain Lions, Harmon had 10, King scored five, and Weaver and Willis added two each.

On Oct. 25, SAS opened the season with a 43-30 loss against North Elementary at Altamont.



Coaches' Award winners, front row, from left: Seth Walker (cross country), Erin Berner-Coe (soccer), Madison Gilliam (volleyball) and Lydia Angus (volleyball); (back row) Wyatt Lindlau (football), Charles Jenkins (football), Jack Gu (mountain biking), Sophia Patterson (cross country) and Sarah Johnson (soccer).

SAS Fall Upper School Athletic Awards

Fall varsity athletes at St. Andrew's-Sewanee School were recently honored at a morning all-school assembly. Athletes were presented with the Most Improved Player, the Most Valuable Player and the Coaches' awards. The players on the teams select Most Improved Player and Most Valuable Player awards.

SAS celebrated the achievements of the varsity fall teams, including cross country, football, golf, mountain biking, girls' soccer and volleyball.

Four-time state qualifier Hannah Powell, a senior, won the 2016 TSSAA Division II-A State Golf Tournament. She qualified this year for the state tournament by placing second in the Division II-A regional tournament.

SAS soccer players, Kyra Wilson, a senior, and sophomore Kate Butler were named to the Division II-A East/Middle All-District Team. The girls' soccer team finished the season with a 5-7-1 record.



MIP award winners, front row, from left: Jerry Lin (cross country), Jeson Rwalinda (mountain biking), Gio Hui (golf) and Justin Elgouhary (football); (back row) Aubrey Black (golf), Mika Shaked (soccer) and Izzie Spinelli (volleyball).



Most Valuable Player award winners, front row, from left: Skylar Moss (volleyball), Isaac Tang (cross country) and Kyra Wilson (soccer); (back row) Zhaoqi Zhang (mountain biking), Hannah Powell (golf) and Christian Taylor (football).

BUG PROBLEMS?

We can help! Call us for a free inspection!

BURL'S TERMITE & PEST CO.

TERMITE—PEST—VAPOR CONTROL
Bonded • Insured • Home-Owned & Operated
105 Ake St., Estill Springs
(931) 967-4547 or www.BurlsTermite.com
Charter #3824 • License #17759



Tell people
you saw
it in the
Messenger.

Monteagle Sewanee, REALTORS®

Dedicated to Service!



Deb Banks, Realtor
(931) 235-3385
debbanks8@gmail.com



Ray Banks, Broker/Owner
(931) 235-3365
rbanks564@gmail.com



Dee Underhill Hargis, Broker
(931) 808-8948
aduargis@gmail.com



Tom Banks, Realtor
(931) 636-6620
tombanks9@yahoo.com

Competent, Caring, Friendly, Fair—We're Here for You!

www.monteaglerealtors.com • 931-924-7253

337 W. West Main St., Monteagle

Find all the area MLS listings on our updated website!

K&N Maintenance and Repair

Your "honey-do" list helper!

A one-stop solution
for all your home
improvement needs

931-691-8656



SEWANEE AUTO REPAIR

Complete Auto & Truck Repair

Tune-ups • Tires • Tire Repair • Brakes • Steering
• Oil Changes • Batteries • Computer Diagnostics

All Makes & Models • Service Calls •
Quality Parts

ASE Master Certified Auto Technician •
30 Years' Experience

Open 7 to 5 M-F

(931) 598-5743 • 76 University Ave.



Eidson and Frank Lead Five All-SAA selections

Led by senior Elizabeth Eidson and junior Mary "Sissy" Frank, the Sewanee women's soccer team had five student-athletes selected to Southern Athletic Association (SAA) All-Conference teams, the league announced on Nov. 8.

Both Eidson and Frank were named to the All-SAA First Team, while Erin Gill was honored with a spot on the All-SAA Second Team. Freshman goalkeeper Samantha Bourgeois and sophomore forward Savannah Williams were named to the All-SAA Honorable Mention Team.

In her final year as a defender,

Eidson was the anchor on the Tigers' backline. Along with teammates Baker Walls and Martha Dinwiddie, Eidson led the Sewanee defense to five shutouts and a low 1.42 goals per game average.

Despite playing one of the toughest schedules in the nation, Sewanee's defense also allowed only 14.4 shots per game.

In her third season with the Tigers, Frank controlled the midfield for Sewanee. Often a player that helped set the pace of play, Frank finished with one assist and 25 shots.



Elizabeth Eidson



Mary "Sissy" Frank



Sewanee's mascot celebrates Homecoming at the Nov. 5 football game against Millsaps College. Photo by Lyn Hutchinson



Wide receiver Steven Hearn races for a Sewanee touchdown in the second half of the Nov. 5 game against Millsaps. Photo by Lyn Hutchinson

Sewanee's Comeback Falls Short on Homecoming

Despite a career-high 250 passing yards and three touchdowns from freshman quarterback Sam Hearn on Nov. 5, the Sewanee football team could not complete a comeback on Homecoming, as the Tigers fell to conference foe Millsaps, 33-30.

The loss dropped Sewanee to 0-9, while the Majors earned their third victory in 2016.

Millsaps led 12-0 until midway through the second quarter. Sewanee kicker Michael Jacobs made a 24-yard field goal, which capped off a 16-play, 58-yard drive for the Tigers. Millsaps pushed its lead to 19-3 when Taz Watson scored from four yards out. Sewanee answered back when Hearn tossed a 30-yard score to his older brother Steven Hearn on fourth and four.

Down 26-10 at halftime, Steven Hearn's 55-yard touchdown catch and Mikey Plancher's five-yard touchdown run in the third pulled Sewanee to within three, 26-23. Watson plunged in from one yard out with 9:07 to play in the fourth, but Sewanee answered back. This time it was Hearn to Allan Puri on a 42-yard touchdown pass on fourth down with 2:11 left.

Sewanee recovered the ensuing onside kick with just more than two minutes to play. Unfortunately, Reid Evans forced a Hearn fumble after the Tiger quarterback had to scramble. That gave Millsaps the ball back at midfield with 1:26 remaining. From there, the Majors ran out the clock.

Overall, both teams were close statistically. Sewanee finished with 311 yards of total offense while Millsaps gained 326 yards.

Individually, Steven Hearn finished with six catches for 107 yards and two scores, while Puri added 69 receiving yards and a score. On defense, Hayden Reece led the Tigers with 11 tackles and one pass breakup. Lee Menefee also played well with eight stops, 1.5 tackles for a loss, and a breakup.

The Majors signal caller boasted 222 passing yards and two scores. Hector Sandoval, who recovered the late fumble for the Majors, added a game-high 15 tackles, two sacks and three tackles for a loss.

Sewanee Completes Developing Rider Series

For the first time ever, the Sewanee equestrian team hosted their own "Developing Rider Series" event on Oct. 31 at the Howell Equestrian Center.

Ashlyn Avent, who rode Solitaire, performed very well. Avent completed a sweep in the walk-trot-canter, cross rails, maiden over fences, and limit over fences.

Hannah Cable, who won her two classes in the walk-trot and walk-trot-canter, followed that.

Additionally, Margaret Dupree, who rode Movie Star, finished second in the walk-trot-canter and limit over fences, while placing third in the maiden over fences.

Joining her in the top three were Caroline Godsey on Mayo, who was second in the walk-trot and third in the individual walk-trot-canter along with Tess Myers, who rode Rio. Myers placed third in the walk-trot-canter and second in the maiden over fences and cross rails.


Finally, Caroline Wright, on Sparky, finished third in the cross rails, while Madison Betcher, on Chrissy, earned fourth in the same event.

The equestrian program would like to thank Leslie Goodman, Megan Hopson, Cal Oakley, Morgan Roudabush, and Parker Van de Water, along with all the volunteers for helping with the event.

Johnston and Sipillä Honored

Sewanee soccer players Kyle Johnston and Alpo Sipillä were named to the Southern Athletic Association Honorable Mention Team on Nov. 8.

Johnston led the league in assists with six and finished with 12 points. Sipillä ranked 21st in goals (3), ninth in assists (3), and 20th in points (9).



Quality of Life.
Children.
Community Aid.
Beyond Sewanee.

\$116,850 goal for 26 community organizations.

Donate today: PO Box 99 | Sewanee, TN 37375
SewaneeCivic.wordpress.com | sewaneecommunitychest@gmail.com

Folks want
to know
your
business!

Reasonable rates.
Loyal readership.
Reach more than
5,000 weekly
users with your
advertisement.


(931) 598-9949
ads@sewaneeessenger.com
www.sewaneeessenger.com




COFFEE HOUSE.


Come on in and
try our new
Vegan Chicken
Salad!

Mon-Wed, 7:30am-midnight;
Thurs & Fri, 7:30am-10pm;
Sat, 9am-10pm; Sun, 9am-midnight
Georgia Avenue, Sewanee



598-1786



Like Us On  for specials
and updates

91 University Ave. Sewanee



www.ursewanee.com

UNIVERSITY
REALTY

SEWANEE
TENNESSEE

Lynn Stubblefield (423) 838-8201
Ed Hawkins (866) 334-2954
Susan Holmes (423) 280-1480



NORTH CAROLINA AVE.
Spacious single story central campus. 2 living rooms, 2 kitchens, 4 bedrooms, 2.5 baths, three decks, garage, large fenced in yard. Beautiful setting.



KENTUCKY AVE. Lovely, well maintained home, spacious single story, 4 br, 2.5 baths, 2 fireplaces, screened in porch, deck, patio, barn.



SHERWOOD RD. & St Marys Ln on campus. Private setting. Brick single story, recently renovated, open floor plan, native mountain stone fireplace, granite counter tops, dining room, 2 brs, 1.5 ba, fenced back yard. Large garage. \$189,000.



LOUISIANA CIRCLE. Location, location! Native stone home, 2 fireplaces, 2 living rooms, library, office, screened in porch, room for everyone, lovely private lot. \$315,000.



BLUFF LOT. Laurel Lake Dr with amazing sunset view, great looking hardwoods, gently rolling, private & secluded 15.9 acres \$125,000.



BLUFF TRACTS Stunning view of Lost Cove on Sherwood Road. 3 miles from University Ave. Over 1,600 feet on the bluff and the road. Easy to develop. 17.70 acres



CAN TEX. 10 or 42 beautifully wooded acres in a great location close to town. \$8,500 per acre.



CHICKORY LN. 1.23 ac lot nicely wooded, 4.97 acres entrances on Chickory and Laurel Lake Dr. Very secluded and very pretty!



SNAKE POND ROAD. 6.20 acres with septic, water & electric. \$48,000



COMMERCIAL. 1+ acres behind Citizens Tri-County Bank on Spring St. All utilities in place.



LAUREL LAKE DR. 8 wooded acres, very private entrances on LL Dr and Chickory Ln., most utilities at the road.



SHADOW ROCK DR. 1.18-acre charming building lot with meadow.



BLUFF LOT overlooking Lost Cove. Beautiful sunrise, cool evenings. 4.08 acres. \$80,000.



ST. MARY'S LANE. 10 acres next to St. Mary's. \$65,000.



SNAKE POND RD. 30 wooded acres close to campus.

WE HAVE BUYER'S AGENTS TO REPRESENT YOUR INTEREST AT NO CHARGE

NATURENOTES



Pickerel weed in Basin 3

Constructed Wetlands

Sewanee is currently participating with the University of Georgia in an experimental constructed wetlands project for treatment of wastewater from the Sewanee Utility District. The utility coordinated a tour on Saturday, October 29, with the researchers and students, including Sewanee faculty Deb McGrath and Scott Torreano as well as visiting UGA faculty member Laurie Fowler, a Sewanee alum. Among many interesting features were the plants being used to see how well they remove pollutants from the water. All the plants are native to the region.

There are three basins of decreasing elevation and depth. The following information on plant species used was received from Scott Torreano. Basin 1 contains the inlet pool and a marsh of soft-stem bullrush (*Schoenoplectus tabernaemontani* [synonym: *Scirpus validus*]), a rhizomatous emergent plant. These plants can be 8 feet high and were growing in lush profusion. Basin 2 contains unvegetated areas and nine 1-foot tall mounds vegetated with broadleaf herbaceous plants. Plant species on these mounds include: swamp milkweed (*Asclepias incarnata*) (which had been devastated by an insect infestation), boneset (*Eupatorium perfoliatum*), marsh hibiscus (*Hibiscus moscheutos*) (with a few blooms remaining), and blue flag (*Iris versicolor*). Mary Priestley has reported finding blue flag at Lake Finney. Basin 3 contains a marsh of pickerel weed (*Pontederia cordata*), and an unvegetated area. The pickerel weed was in bloom with purple flowers and was attracting many butterflies, among them the Gulf fritillary. The blue flag and the boneset are the only ones of this group of plants that have been found on the Domain.

—reported by Yolande Gottfried

SHARE YOUR NEWS
news@sewaneeessenger.com

WOODY'S BICYCLES
SALES, SERVICE AND RENTALS
A Full-Service Trek Bicycle Dealer
Mon-Fri 9-5 • Sat 10-2 • 90 Reed's Lane
598-9793 • woodybike@gmail.com

Check out www.woodsbicycles.com for rates, trail maps, photos, bike club links, races and much more!

ACE HENLEY
HOME CENTER
The helpful place.

YETI Mug \$39.99

YETI Mug \$29.99

YETI Cooler \$349.99

Made in Tennessee! Installation available

CALL OR COME IN FOR FREE QUOTE FINANCING AVAILABLE

Replacement Windows Starting at \$189 Installed!

Financing Available

1765 Decherd Blvd. • Decherd, TN • 931-967-0020
Mon.-Fri. 7 a.m.-6 p.m., Sat. 8 a.m.-5 p.m., closed on Sun.

Sewanee Herbarium Event

A Botanical Watercolor Workshop will be offered 9–11:30 a.m., Saturday, Nov. 12. This workshop, led by Chattanooga watercolorist Margaret Patten Smith, gives people of all ability levels an opportunity to try their hand at capturing beauty in watercolors. Participants are invited to bring in their own objects to paint, or choose from a variety provided. Bring your own painting materials and meet in the Herbarium on the first floor of Spencer Hall. The workshop is free, but space is limited and reservations are recommended.

For more information call the Herbarium at 598-3346 or go to <<http://lal.sewanee.edu/herbarium>>.

Native American Storytelling at Russell Cave, Nov. 12

In observance of National American Indian Heritage Month, there will be traditional Native storytelling presented by several members from the Eastern Band of Cherokee Indians, 10 a.m.–4 p.m. CST, Saturday, Nov. 12, at Russell Cave National Monument. There is no charge for admission.

There will also be cultural demonstrations of tools and weapons throughout the day.

Russell Cave National Monument is located at 3729 County Road 98, Bridgeport, AL 35740. For more info call (256) 495-2672 or visit <www.nps.gov/RUCA> or <<https://www.facebook.com/RussellCaveNPS>>.

Weather

DAY	DATE	HI	LO
Mon	Oct 31	81	56
Tue	Nov 01	82	57
Wed	Nov 02	78	59
Thu	Nov 03	76	55
Fri	Nov 04	72	47
Sat	Nov 05	70	55
Sun	Nov 06	71	47

Week's Stats:
Avg max temp = 76
Avg min temp = 54
Avg temp = 65
Precipitation = 0.0"

Reported by Sandy Gilliam
Domain Ranger



Missy



Lorelei

Pets of the Week

Meet Missy and Lorelei

Animal Harbor offers these two delightful pets for adoption.

Missy is an excited, playful Old English Bulldog ready to find her perfect home! She needs to be the only pet in an adult-only household. She can be nervous and suspicious of strangers, but she loves treats and will cuddle with anyone she gets to know well! Missy's adoption fee will be \$300 because she is a registered Old English Bulldog. She is heartworm-negative, up-to-date on shots and microchipped, and she will be spayed before she goes home with you.

Lorelei is an elegantly beautiful cat who is selectively loving and very independent. Her sassy, playful personality will make her a perfect barn cat. That means her adoption fee will be substantially reduced. Lorelei is negative for FeLV and FIV, house-trained, up-to-date on shots and spayed.

Every Friday is Black Friday at Animal Harbor. On Fridays, adoption fees will be reduced 50 percent for black or mostly black pets more than 4 months old who have been at Animal Harbor for more than a month. Pets adopted from Animal Harbor qualify for a free post-adoption wellness exam by local veterinarians.

Animal Harbor is located at 56 Nor-Nan Road, off AEDC Road, in Winchester. Call Animal Harbor at 962-4472 for information and check out the other pets at <www.animalharbor.org>. Enter the drawing on this site for a free spay or neuter for one of your pets. Help Animal Harbor continue to save abandoned pets by sending donations to Animal Harbor, P.O. Box 187, Winchester, TN 37398.

Fiery Gizzard Trail Work Crews Needed

With Phase One of the trail completed and Phase Two nearly there, volunteers are needed. Join us every Saturday and Sunday this fall, 9 a.m.–3 p.m., to flex that volunteer muscle and help create a positive, lasting impact on this beautiful park. There are jobs for everyone, and many do not involve moving rocks. This exciting reroute will cut through some rugged and beautiful terrain, so be prepared with sturdy footwear and plenty of water/snacks. If you have a favorite tool or pair of gloves, feel free to bring them. Meet at the Grundy Forest parking lot, 131 Fiery Gizzard Rd., Tracy City, TN 37387. For more info or if you want to bring a large group, email Ranger Jason Reynolds at <jason.reynolds@tn.gov>.

Advertising in the Messenger works!
Phone 598-9949
to find out how to make it work for you.

Trail Closed

The Fiery Gizzard Trail is temporarily closed from Raven Point south two miles due to the forest fire in that area that started on Oct. 29 and flared up again on Nov. 2. One of the newly-constructed wooden staircases is out and will need to be replaced.

Please check with the park office (931-924-2980) for trail status before planning any end-to-end hikes on the Gizzard.

State Park Events

Tuesday, Nov. 22

Natural Bridge Geology—Meet Ranger Park at 2 p.m. for a short walk to one of the park's most impressive geological features. Meet at Natural Bridge parking area, 591 Natural Bridge Rd., Sewanee, TN 37375.

Friday, Nov. 25

Hike Against Hunger—Burn off those Thanksgiving calories and help the less fortunate in our area by participating in one of four "Hikes Against Hunger," taking place the Friday morning after Turkey Day in four locations across the park. Bring canned goods or a monetary donation to any of the hikes, each of which benefits a local community food bank.

Sunday, Nov. 27

Grundy Forest Nature Hike—Meet up with Ranger Park at 2 p.m. for an investigation into the fall nature scenes surrounding the Grundy Forest. This 2 mile loop hike will showcase some of the most picturesque waterfalls and early winter scenery. Meet at Grundy Forest parking area, 131 Fiery Gizzard Rd., Tracy City, TN 37387.

The South Cumberland State Park Visitors' Center is located on Highway 41 South between Monteagle and Tracy City and is open 8 a.m.–4:30 p.m. seven days a week. For more information call (931) 924-2980.

For more information about Friends of the South Cumberland go to <<http://www.friendsofsouthcumberland.org>>.

WOODARD'S
DIAMONDS & DESIGN

We Celebrate Life and Love

WOODARD'S
DIAMOND SIGNATURE

PANDORA
UNFORGETTABLE MOMENTS DEALER

woodards.net
(931) 454-9383

Inside Northgate Mall, Tullahoma
Mon-Fri • 10-7 | Saturday • 10-6

Classifieds

ART/WOODWORKING

The Gnarled Oak 

Antique
furniture refinishing and
Chair caning
(931) 592-9680
Bill Childers, Prop

the **ARTISAN** DEPOT
Gallery & Gifts
NOW JURYING FOR FINE CRAFTS
204 E. Cumberland St., Cowan
Open Thurs-Sun • 931-308-4130

Oldcraft Woodworkers
Excellence in custom
woodworking.
Kitchen and bath cabinets,
bookcases, furniture and
furniture repairs.
Est. 1982. Phone 931-598-0208

CATERING

Sewanee SWEETS
Sinfully Delicious.
(931) 598-5205
sewaneesweets@gmail.com

EMPLOYMENT

PART TIME LICENSED MESSAGE THERAPIST: Needed for busy natural health care clinic. Must be highly motivated, professional, energetic, caring, and capable of efficiently multi-tasking. Fax resume to (931) 962-1988 or mail to 1025 S. College St., Winchester, TN 37398.

CELLO TEACHER WANTED: Sewanee/Monteagle area for adult beginner. Contact Glyn Ruppe Melnyk at <g.ruppemelnyk2015@gmail.com> or (610) 357-6813. Student teacher welcome, flexible schedule.

DRIVERS: Local & Regional-home weekly! Great Benefits! 401K, Paid vacation/holidays. CDL-A, 1 year experience. <www.gptruck.com> (800) 922-1147.

NURSE/MANAGER: Immediate full-time opening at Ridgecrest Group Home in Monteagle for Nurse Manager. Duties/Responsibilities: Coordinate the operation of the Supportive Living Facility for the medically fragile utilizing knowledge of nursing practices and procedures. Qualifications: Registered Nurse with Tennessee license with five years clinical nursing experience and some mental health experience. RNC is preferred.

PSYCHIATRIC TECHNICIAN: Ridgecrest Group Home in Monteagle has immediate opening for a part-time Psychiatric Technician. Qualifications: High school diploma or GED required. Mental health experience or resident worker experience preferred. Must have a valid Tennessee driver's license with an "F" endorsement. Certification in CPR and First Aid is also required. Competitive salaries and excellent benefits.

For both positions send resumé to: VBHCS Human Resources, P.O. Box 4755, Chattanooga, TN 37405. Equal Opportunity Employer.

MECHANIC/TECH II: Excellent Hourly Pay, Full Comprehensive Benefits, Retirement Plan+more! Many Opportunities for Advancement! Penske Truck Leasing: (855) 395-1826.

PART TIME: Highly motivated, energetic, professional, caring, individual needed for busy natural health care clinic. Must be able to multi-task efficiently and enjoy hands on work with patients. We will train. Fax resume to (931) 962-1988 or mail to 1025 S. College St., Winchester, TN 37398.

MESSENGER DEADLINES

News & Calendar:

Tuesday, 5 p.m.

Display Advertising:

Monday, 5 p.m.

Classified Advertising:

Wednesday, noon

FOR RENT

FOR RENT: 4BR/2BA house on Gudger Road. All appliances, C/H/A. (931) 212-0447.
SHAKERAG BLUFF CABIN: Beautiful west-facing bluff view. Near University. Extremely secluded. Sleeps 4-5. C/H/A. Great fishing, swimming. Weekend or weekly rentals. (423) 653-8874 or (423) 821-2755.

STONE COTTAGE FOR RENT: Available Jan. 1 through graduation 2017 and other selected dates. Near School of Theology, 3BR/2BA, fireplace, patio, deck. Fully furnished, all appliances including washer/dryer. C/H/A, wi-fi, cable TV. Email <dgc983@gmail.com>.

ROOMMATE WANTED: Eclectic artist seeks dependable person w/ references. Must like and may have a pet. Large home on a quiet country setting acre in Monteagle. Call (423) 596-0623.

TOM'S PLACE

An Event Hall
for your business or
personal gathering.
335 W. Main St., Monteagle
Tom Banks
tombanks9@yahoo.com
931-636-6620

HOUSE FOR RENT: 3 bedrooms, 2 1/2 baths, large kitchen, livingroom and family room. On campus, utilities included in the rent. Call (931) 308-7259.

FOR SALE

LOST COVE BLUFF LOTS
www.myspoint.net
931-703-0558

FIREWOOD FOR SALE: \$60/rick, \$70 stacked. Call (931) 592-9405. Leave message.

For Sale
ATS 1405 Air Rower
(rowing machine).
Firewood.
Call (931) 598-5543

HOME FOR SALE: 3BR/2BA double-wide, on in-ground foundation. Front porch, large back deck. Extensively renovated master suite, new paint, new roof. On 1+ acre in Monteagle, six miles from Sewanee, 45 minutes from Chattanooga. Partially furnished, appliances. \$60,000. Must see to appreciate. (423) 488-8366.

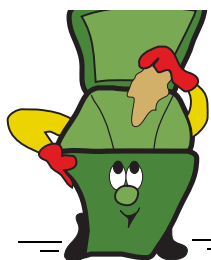
GARBAGE/RECYCLING



CONVENIENCE/RECYCLING CENTER HOURS

The Convenience Center for household garbage, trash and recycling is located on Missouri Ave. Its regular hours are: Monday, noon-5 p.m.; Tuesday through Friday, 2-5 p.m.; Saturday, 8 a.m.-4 p.m.; Closed Sunday. Closed on national holidays. There are blue recycling bins for metal (tin, appliances, etc.), newspapers/magazines, plastic, plastic bottles, cardboard and aluminum cans. Glass recycling is on Kennerly Ave. behind PPS.

Keep the Mountain Beautiful!



Please Don't Litter!

CURBSIDE RECYCLING

Residential curbside recycling pickup in Sewanee is on the first and third Friday of each month. Recyclable materials must be separated by type and placed in blue bags by the side of the road no later than 7:30 a.m. Please do not put out general household trash on this day. Blue bags may be picked up in the University Lease and Community Relations Office, 400 University Ave. (the Blue House) or at the Physical Plant Services office on Georgia Avenue.

Glass Recycling in Sewanee



Available 7 a.m. to 6 p.m.,
Monday through Saturday,
outside of the PPS Warehouse on
Kennerly Avenue.
Reuse Reduce Recycle

HAIR SALONS

(931) 598-0033
HAIR DEPOT
17 Lake O'Donnell Rd., Sewanee
KAREN THRONEBERRY, owner/stylist
TOBBIN NICOLE, stylist/nail tech

LAWN/TREE CARE

B&M Complete House & Lawn Care 

Painting Pressure Washing
Lawn Mowing Weed Eating
Raking Leaves Sewing

Reasonable Rates
(931) 691-1420

BUCK'S LAWN SERVICE

reliable experience you can trust
for all your lawn needs
Buck Summers
598-0824 | Sewanee, TN

CHAD'S LAWN & LANDSCAPING
-FREE ESTIMATES- 

* Lawn care & Design (Mulch & Planting)
ALSO: * Tree Trimming & Removal
* Pressure Washing * Gutter Cleaning
* Leaf Pickup & Blowing * Road Grading
* Garden Tilling * Rock Work
(931) 308-5059

EAGLE LANDSCAPING & LAWN MAINTENANCE CO.

Now Offering Specials for
FALL CLEANUP!
We offer lawn maintenance, landscaping, hedge/tree trimming & more!
Please call for your free estimate
(931) 598-0761 or (931) 636-0383

LONG'S LAWN SERVICE

• landscaping & lawn care
• leaf removal • mulch 
Local references available.
Jayson Long
(931) 924-LAWN (5296)

King's Tree Service 
Topping, trimming,
bluff/lot clearing, stump
grinding and more!
* Bucket truck or climbing*
Free wood chips with job
Will beat any quoted price!
Satisfaction guaranteed!!
—Fully licensed and insured—
kingstreeservice.com
Call (931) 598-9004—Isaac King

LOCAL SERVICES

COWAN COIN LAUNDRY: Seven scenic miles from Sewanee. Standard and large machines. 213 E. Cumberland next to Cowan Post Office. Open 24/7.

K&K CLEANING SERVICE: Residential and office. Sewanee, Monteagle, Tracy City. Call Katie at (615) 278-0248 for rates and references.

MAMA PAT'S DAYCARE

MONDAY-FRIDAY
Open 4 a.m.; Close 12 midnight
3-Star Rating
Meal & Snack Furnished
Learning Activities Daily
(931) 924-3423 or (931) 924-4036

MASSAGE

Regina Rourk Childress
Licensed Massage Therapist
www.reginarourk.com
~ GIFT CERTIFICATES ~
(931) 636-4806

SARGENT'S SMALL ENGINES: Repairs to All Brands of Equipment: Lawn mowers (riding or push), String trimmers, Chainsaws, Chainsaw sharpening. New saw chains. Pickup and Delivery Available. (931) 212-2585, (931) 592-6536.

WATER SOLUTIONS

Joseph Sumpter
Owner/Licensed Residential Contractor
Specializing in drainage and rainwater
collection systems
598-5565
www.josephsremodelingsolutions.com

CHARLEY WATKINS

PHOTOGRAPHER

Sewanee, TN
(931) 598-9257
http://www.photowatkins.com

KT TAXI SERVICE
local & further
no website, just call/text
\$12/hr. cash/check/paypal
256-426-0232

"day was night, up was down,
things they might a funny go
round." ~anon

Adam Randolph ~ psychotherapist
randolph.adam@gmail.com

Walk-In Cooler Filled with Flowers!
—TUXEDO RENTALS—

Monteagle Florist

333 West Main Street, Monteagle
(931) 924-3292

The Pet Nanny
Reliable & Experienced Pet Sitting
Mesha Provo 

Dogs, Cats & Birds
931-598-9871
mprovo@bellsouth.net

Your ad could be here.

MOVING HELP

THE LOCAL MOVER

Available for Moving Jobs
Call or Text Evan Barry
615-962-0432
Reviews at <www.thelocalmoverusa.com>.

The Moving Man

Moving Services • Local or Long Distance
Packing Services • Packing Materials
1-866-YOU-MOVE (931) 968-1000
www.themovingman.com
Since 1993 U.S. DOT 1335895

Support local businesses!

CALL US! • 598-9949
Classified Rates:
\$3.25 first 15 words,
10 cents each addl. word
Now you can charge it!
(\$10 minimum)

PUBLIC NOTICE



Reporting Fires

For any kind of fire everyone should contact their nearest area police department/dispatch. Dispatch will notify the correct department for that jurisdiction. Most woods/brush fires will be handled by the state forestry department. Sewanee's fire department will respond to fire emergencies when a home or structure is in danger for our area. Also Sewanee's fire department provides mutual aid to other departments and the forestry. Sewanee Police Department's phone number is: 931-598-1111; Franklin County Sheriff's Dept. is 931-967-2331; Monteagle's Police/Fire is 931-924-2077. For life threatening emergencies dial 911.

SEWANEE SENIOR CITIZENS ANNUAL CHRISTMAS BAZAAR: Monday-Friday (9-2) Saturday (9-1) Dec. 5-10. Tickets for chance to win \$250 cash, antique quilt [1910] or new sewing machine on sale as of Nov. 1. There will be three separate drawings; one ticket enters you for all three. \$2 per ticket. Drawing will be held Tuesday, Dec. 13, at Center Christmas lunch. Donations for the white elephant sale are being accepted now at the Center. No clothing accepted. Need donations of arts and crafts and canned goods. Baked goods accepted during week of Bazaar. Door prizes will be given away each day of the Bazaar. Don't have to be present to win door prizes or main drawing. For more info call Judy Rollins, 598-0645.



New to town and want to get
on Sewanee Classifieds?

go to

groupspaces.com/Sewanee/

1. Request to Join Group.
2. Follow the instructions.
3. Submit membership payment, \$10 annual.

When payment is received, the Director of Classifieds will go through your request and approve membership. Announcements Only are free of charge.

Contact the Director of Classifieds at
sewanee@civic@gmail.com
Sponsored by the
Sewanee Civic Association
www.sewanee@civic.wordpress.com

YARD SALE/FLEA MARKET

I-24 Flea Market
200 Vendors!
22 Years!
I-24 Exit 134
Saturday & Sunday
(931) 235-6354

INSIDE YARD SALE: Fall & Winter Apparel for All Family Members + games, movies, more! Friday/Saturday, 8 a.m.-?? Midway Market, 969 Midway Rd., Sewanee.



UNIVERSITY LIBRARY HOURS

Mon-Thu 7:30-1 a.m.
Friday 7:30 a.m.-10 p.m.
Saturday 9 a.m.-6 p.m.
Sunday 11 a.m.-1 a.m.

Shop the Mountain!



BARDTOVERSE

by Phoebe Bates

Armistice Day, November 11, 1918

What passing-bells for these who die as cattle,
Only the monstrous anger of the guns.
Only the stuttering rifles' rapid rattle
Can patter out their hasty orisons.
No mockeries for them from prayers or bells,
Nor any voice of mourning save the choirs,—
The shrill, demented choirs of wailing shells;
And bugles calling for them from sad shires.
—*Anthem for Doomed Youth, by Wilfred Owen (1893-1918)*

ONLINE AND IN COLOR!
www.sewaneemessenger.com



MICHELLE M. BENJAMIN, JD Attorney & Counselor at Law

201 FIRST AVENUE, NORTHWEST
WINCHESTER, TENNESSEE 37398

(931) 962-0006
Fax: (931) 967-8613

Adaptive Landscape Lighting

Crafted LED Illumination of Architecture, Landscape,
Outdoor Living Spaces, Security and Safety Concerns



Beautify and add hours to your outdoor living. Subtly illuminate dark, uneven steps and pathways. Save on electric bills! Receive a complimentary consultation. Call us today!

Bonded : Insured : Experienced : Residential and Commercial

Paul Evans : 931-952-8289

Sewanee • pevans@adaptiveenergy.org

Bradford's

Nursery & Landscaping
on the Boulevard in Winchester

**NOW STOCKING FOR THE
FALL PLANTING SEASON!**

LARGE ASSORTMENT OF MUMS!

Perennials, ferns, trees, shrubs, ornamentals, grasses,
groundcovers, concrete statuary, fountains,
bird baths and much more.

*Come by and let us help you make the right selection for your
landscape, or call for free estimate on professional landscaping.
We do it right the first time!*

Open Mon-Sat 9-5:30; Sun 12:30-4:30 • 931-967-0825
1136 Dinah Shore Blvd. in Winchester

**BOOK YOUR HOLIDAY
PARTY NOW!**

Like Us On
facebook

High Point

HISTORIC DINING ON THE SUMMIT
BETWEEN CHICAGO & MIAMI

224 East Main St
Monteagle
931-924-4600
Sun to Thu 5 to 9
Fri and Sat 5 to 10
www.highpointrestaurant.net

Papa Ron's

THE ITALIAN STEAKHOUSE

**Let us host your holiday gathering!
Call to reserve now!**

402 West Main St. • Monteagle
931-924-3355 • www.paparons.net
Sun-Thu 11-9; Fri and Sat 11-10

Community Calendar

Today, Friday, Nov. 11 • Veterans Day

Banks, post offices, state and local government offices closed

Foothills Arts & Crafts Festival, Manchester, through Nov. 12

Senior Ctr Thanksgiving lunch reservation deadline, (\$7) 598-0771

- 9 a.m. CAC office open, until 11 a.m.
- 10 a.m. Games day, Senior Ctr
- 11:11 a.m. Chocolate Bells ring, St. Andrew's-Sewanee
- 12 p.m. Patriotic Art Shows, Artisan Depot, Cowan, until 5
- 12 p.m. Spinal Spa with Kim, Fowler Ctr
- 4 p.m. Peace Vigil, corner of 41A and Univ. Ave.
- 4:30 p.m. Art talk, reception, Wohl, Convocation Hall
- 5:30 p.m. World healing meditation, Comm Ctr
- 6 p.m. Veterans' Day covered dish supper, Legion Hall
- 7:30 p.m. Movie, "Star Trek Beyond," SUT
- 7:30 p.m. Dept of Theatre, "Size Matters," McAnally, TN Williams Center

Saturday, Nov. 12

- 8:30 a.m. Yoga with Richard, Community Center
- 9 a.m. Botanical Watercolor workshop, Smith, Herbarium, Spencer Hall, until 11:30a.m.
- 9:30 a.m. Hospitality Shop open, until noon
- 10 a.m. GC Swiss Historical Society, 370 55th Ave., Gruetli
- 2 p.m. Wings Dedication, Blue Monarch
- 2:30 p.m. The Nutcracker, A Yuletide Ballet, Guerry
- 4 p.m. Gallery Walk, University Gallery, Carlos Gallery and University Archives, until 7 p.m.
- 6:30 p.m. Concert, Makins, S of T Hargrove Auditorium
- 7 p.m. The Nutcracker, A Yuletide Ballet, Guerry
- 7:30 p.m. Movie, "Star Trek Beyond," SUT

Sunday, Nov. 13

- 3 p.m. Knitting circle, instruction, Mooney's, until 5 p.m.
- 4 p.m. Yoga with Helen, Community Ctr
- 7:30 p.m. Movie, "Star Trek Beyond," SUT

Monday, Nov. 14

- 9 a.m. CAC office open, until 11 a.m.
- 9 a.m. Coffee with Coaches Laurendine, Blue Chair
- 9 a.m. Yoga with Sandra, St. Mary's Sewanee
- 10 a.m. Pilates with Kim, intermediate, Fowler Ctr
- 10:30 a.m. Chair exercise with Ruth, Senior Ctr
- 11 a.m. Sewanee Woman's Club fundraiser, DuBose
- 12 p.m. Pilates with Kim, beginner, Fowler Ctr
- 4:30 p.m. STHP, Adult Ed Room, Claiborne Hall, Otey
- 5:30 p.m. Yoga with Sandra, St. Mary's Sewanee
- 5:30 p.m. Yoga for Healing with Lucy, Comm Center
- 6 p.m. Karate, youth, Legion Hall; adults, 7 p.m.
- 6 p.m. GC Rotary fundraising dinner, DuBose
- 7 p.m. Centering Prayer, Otey sanctuary
- 7 p.m. Sewanee Chorale rehearsal, 203 Guerry Hall

Tuesday, Nov. 15

- 9 a.m. CAC office open, until 11 a.m.
- 9 a.m. Pilates with Kim, beginners, Fowler Ctr
- 9:30 a.m. Hospitality Shop open, until 1 p.m.
- 9:30 a.m. Crafting ladies, Morton Memorial, Monteagle
- 10:30 a.m. Bingo, Sewanee Senior Ctr
- 11:30 a.m. Grundy County Rotary, Dutch Maid, Tracy
- 12 p.m. Pilates with Kim, intermediate, Fowler Ctr
- 5 p.m. Acoustic jam, water bldg next to old GCHS
- 5:30 p.m. Daughters of the King, St. James
- 7:30 p.m. Sewanee Symphony rehearsal, Guerry, until 9:30 p.m.

Wednesday, Nov. 16

- 9 a.m. CAC office open, until 11 a.m.; also 1-3 p.m.
- 10 a.m. Art Wednesdays, 104 Monterey St., Cowan

**One-Stop Transportation
Information: dial 511**

- 10 a.m. Pilates with Kim, intermediate, Fowler Ctr
- 10 a.m. Senior Center writing group, 212 Sherwood Rd.
- 10:30 a.m. Chair exercise with Ruth, Senior Ctr
- 12 p.m. Pilates with Kim, beginners, Fowler Center
- 12 p.m. EQB Meeting, St. Mary's Sewanee
- 12:30 p.m. EQB Lead, Blizzard, St. Mary's Sewanee
- 1:30 p.m. Sewanee Garden Club, Ruth Wendling residence
- 5 p.m. Coffee and Conversation with Karen Proctor, Co-Ho, corner Ala & Mitchell avenues
- 5:30 p.m. Yoga with Helen, Comm Ctr
- 6:30 p.m. Folk music collective, St. Luke's Chapel
- 7 p.m. Catechumenate, Women's Center
- 7:30 p.m. Movie, (CG), "Dances with Wolves," (free), SUT

Thursday, Nov. 17

- 8 a.m. Monteagle Sewanee Rotary, Sewanee Inn
- 9 a.m. CAC office open, until 11 a.m.
- 9 a.m. Nature journaling, Sewanee Herbarium
- 9 a.m. Pilates with Kim, beginners, Fowler Ctr
- 9:30 a.m. Hospitality Shop open, until 1 p.m.
- 11 a.m. Tai Chi with Kathleen, inter/adv, Comm Ctr
- 12 p.m. Pilates with Kim, intermediate, Fowler Ctr
- 12:30 p.m. Episcopal Peace Fellowship, Brooks Hall, Otey
- 1:30 p.m. Folks@Home support group, 598-0303
- 2 p.m. Knitting circle, Mooney's, until 4 p.m.
- 4:30 p.m. Leading Change talk, Proctor, McGriff House
- 7:30 p.m. Movie, "Kubo and the Two Strings," SUT

Friday, Nov. 18

- 9 a.m. CAC office open, until 11 a.m.
- 10 a.m. Games day, Senior Ctr
- 12 p.m. Spinal Spa with Kim, Fowler Ctr
- 7:30 p.m. Movie, "Kubo and the Two Strings," SUT
- 7:30 p.m. Organ recital, Rodland, All Saints

LOCAL 12-STEP MEETINGS

Friday

- 7 a.m. AA, open, Holy Comforter, Monteagle
- 7 p.m. AA, open, Christ Church, Tracy City

Saturday

- 7:30 p.m. NA, open, Decherd United Methodist
- 7:30 p.m. AA, open, Claiborne Parish House, Otey

Sunday

- 6:30 p.m. AA, open, Holy Comforter, Monteagle

Monday

- 5 p.m. Women's 12-step, Brooks Hall, Otey
- 7 p.m. AA, open, Christ Church, Tracy City

Tuesday

- 7 p.m. AA, open, First Baptist, Altamont
- 7:30 p.m. AA, open, Claiborne Parish House, Otey
- 7:30 p.m. CoDA, open, Holy Comforter, Monteagle

Wednesday

- 10 a.m. AA, closed, Clifftops, (931) 924-3493
- 4:30 p.m. AA, "Tea-Totallers" women's group, Clifftops, (931) 924-3493

Thursday

- 7 p.m. NA, open, Decherd United Methodist
- 7:30 p.m. AA, open, Holy Comforter, Monteagle
- 12 p.m. AA, (931) 924-3493 for location

Black Friday. Cyber Monday.

#GIVINGTUESDAY™

November 29, 2016



AFFORDABLE Home Repair

Remodeling • Additions • Decks • Painting
House/Floor Leveling and More

Experienced & Honest

423-593-3385

Tree of Life Homecare, LLC

"Neighbors Helping Neighbors"

- * Licensed and insured home-based services for the elderly and disabled
- * CHOICES provider, Private Pay, Veterans Affairs* Long-term care plans

931-592-8733
treeoflifehomecare.com

NOW ACCEPTING APPLICATIONS FOR CAREGIVERS

