

## Operation Noel

### Providing Abundant Holidays for All

In just a few weeks, it will be Christmas. While many are already planning ahead about gifts to buy and food to eat, there are those not so fortunate. In our area, there are children who may not get presents and families that may not have an abundant holiday meal.

Each year the Sewanee Volunteer Fire Department (SVFD), in conjunction with FROST (the department's Fund Raising Operational Support Team), organizes the purchasing and distribution of food and toys for these families. All items will be delivered the morning of Dec. 23 by the SVFD and FROST.

But this important program cannot happen without help from the community. Please consider making a donation of money, nonperishable food items or new toys to Operation Noel this year and give back to your community this Christmas season.

Families eligible for Operation Noel must live in the following communities: Sewanee, Midway, Jump Off and Sherwood Road to the top of Sherwood Mountain (but not into Sherwood).

Every family needs to fill out a new application, even if they have received from Operation Noel before. An application ensures that organizers have all the pertinent information so they can provide for everyone in need. The application is on page 8 of this week's issue of the Messenger. The deadline for returning applications is Monday, Dec. 12.

If you would like to make a donation of money, nonperishable food items or new toys, please take items to Fire Chief David Green's office at the fire hall behind duPont Library, or Print Services next door to University Book and Supply Store. For more information call 598-3400 and leave a message.



Photo from the Clifftops-Laurel Lake fire sight. The fire is still smoldering in places. The new leaf fall is an obvious concern increasing the chance of reburn. Photo by Leslie Lytle

## Forest Fire Update, Multi-County Burn Ban

by Leslie Lytle, Messenger Staff Writer

As of Nov. 16, the Tennessee Department of Agriculture Division of Forestry reported 16 active fires burning in the Franklin-Grundy-Marion region of the Cumberland District of Tennessee: two in Franklin County, 11 in Grundy County, and three in Marion County.

Last weekend forestry service firefighters battled an 80-acre blaze of unknown origins in the gorge between Clifftops and Laurel Lake and a smaller fire attributed to arson in the Haven of Rest-Lankford Town Road vicinity of Tracy City. Two new fires broke out Sunday, a field fire in the Broadview-Belvidere area of Franklin County and a fire in the gulch on the Grundy County-Sequatchie County line. Tuesday, new fires broke out in the Gizzard Creek, Clouse Hill, and Gruetli-Laager areas of Grundy County and the Cades Cove and Prentice Cooper State Forest areas of Marion County.

Statewide, 67 active forest fires are burning, impacting 15,914 acres, with more than 20 new fires since last Friday. On Nov. 10 the Tennessee Emergency Management Agency declared a Level 3 State of Emergency. On Nov. 15, Governor Bill Haslam banned all fires including campfires and trash burning in 51 counties, Franklin, Grundy and Marion among the counties named.

"All fires in the Franklin-Grundy-Marion region are currently contained," said Steve Rymer, Service Technician heading up Grundy County Forest Service. But Rymer cautions, "Fires from two weeks ago are still smoking. With dry leaves dropping from the trees, there's the possibility of reburn. We're monitoring all sites."

Franklin-Grundy-Marion firefighters have responded to more than 40 blazes in the past month, impacting more than 3,000 acres, with 893

(Continued on page 6)



Anja Dombrowski, Catherine Money, Eli Wilson and Maple Landis-Browne dancing the Gingerbread Children's dance during "The Nutcracker" performance in Sewanee last weekend. Photo by Lyn Hutchinson

## Electric Arcadia an Elastic Labor of Love

by Kevin Cummings  
Messenger Staff Writer

On Saturday, Nov. 19, at 7 p.m., the American Legion Hall in Sewanee will house "An Evening of Folk, Soul and Rock 'n' Roll," presented by Electric Arcadia, an artist-driven venture designed to encourage collaboration and creativity.

The concert is a melding of varied talents, said Linda Heck, musician and founder of Electric Arcadia.

"The concept of Electric Arcadia is emergent and elastic, and could grow into a non-profit musical making space with room for demonstrations and performances," she said. "...I thought that (Sewanee) students especially might be interested in such a musical making space, where people can come together to learn about, experience and create electric, experimental or any kind of music. I love all kinds of music, and most especially the blurring together of genres — or obliterating the idea of genre entirely."

Proceeds from the show will help produce an EP by "Wet Bar," which consists of Heck on guitar, Thomas Macfie on vocals and guitar, St. Andrew's-Sewanee student Alex Lipscomb on bass, seminarian Tom Adamson on cello, and Lahna Deering on vocals and percussions.

The group's members will also perform solo sets in addition to other collaborations. Macfie, a poet and journalist when he's not making music, said Wet Bar carries a spirit of experimentation, mutual support and therapy.

"I've always been I think secretly interested in writing more Americana influenced music, some way to explore myself as a Southerner. But I really needed Linda's help," he said. "...And as others became involved, the project really manifested, really became a free and open space for mutual creativity and help. I feel truly blessed by these four people; there is a real familial feel, a real sense of love."

People who listen to the EP may hear the influences of groups such as Silver Jews and Uncle Tupelo, Macfie

(Continued on page 6)

## Tree Lighting Kicks Off Holidays on Dec. 2

The University will join with the community for two holiday tree lightings on Friday, Dec. 2. Students and community members will gather at 4 p.m. in the University Quad for music and snacks. The campus tree lighting will be at 4:30 p.m.

Music will begin in Angel Park in downtown Sewanee at 5 p.m.

A Sewanee fire engine will carry Santa Claus and friends to downtown around 5:15 p.m.

The tree lighting at Angel Park will be at 5:30 p.m. Cookies and hot beverages will be available afterward, and Santa and the Grinch will be posing for photos.

Joe David McBee, road commissioner for the first district of Franklin County, reports that the county has given permission for University Ave. to be closed, 4–7 p.m., Friday, from Regions Bank to State Highway 41A for the event.

The Sewanee Chorale will lead Christmas caroling. Please bring unwrapped toys for Operation Noel. Gifts of money and nonperishable food will be collected for the Community Action Committee.

In case of inclement weather, the post-tree-lighting activities will move inside to the Blue Chair Bakery and Tavern.

Decorating of the Christmas tree at Angel Park will be at 9 a.m., Wednesday, Nov. 30. All are welcome to come help with this festive activity.

This event is co-sponsored by the University and the Sewanee Business Alliance.

## Local Farm Supplies Turkey for Thanksgiving Feast

by Leslie Lytle, Messenger Staff Writer

The turkey served Nov. 17 at the Sewanee Dining Thanksgiving dinner wasn't quite as fresh as what folks used to get when grandpa lobbed the head off the turkey Thanksgiving morning in the back yard, but it was darn close. Arriving at the Sewanee Dining loading dock early on the morning of Nov. 15, Fountain Springs Farm delivered 30 fresh—not frozen—pasture raised turkeys slaughtered and processed on the Morrison, Tenn., family farm just the day before.

"We put a deposit on the chicks in March so we'd be sure to have enough locally raised turkey for the meal," Sewanee Dining Director Rick Wright said. Wright anticipated needing 600-1,000 pounds of turkey for the annual event, held the week before Thanksgiving.

"The turkeys weighed 13-20 pounds each. The toms typically weigh more than the hens," explained Fountain Springs farmer Eric Earle.

Raised in a poly-netting fenced pasture with an outbuilding for shade, the turkeys take 18-20 weeks to grow to maturity. "We supplement the turkeys' diet with non-GMO grain,"

(Continued on page 6)



Is it popcorn?

## SES "Turkey Protection" Project

The Sewanee Elementary School first-grade students have once again created disguises for their turkey friends to help them survive the upcoming holiday and avoid being the main course for dinner.

Turkeys are "hiding" throughout this issue of the Messenger and might just try to sneak in next week. See them all in color at <www.sewanee-messenger.com>.

P.O. Box 296  
Sewanee, TN 37375





Antique quilt

## Senior Center Christmas Bazaar

This antique quilt (ca 1910) was made by Lena Ann Green, born in Bern, Switzerland on May 30, 1881, and married to George Washington Green Sr. on June 25, 1906. It was donated to the Sewanee Senior Center by her granddaughter, Barbara Finney Swygart.

This quilt is part of the Senior Citizen Center's Christmas Bazaar. The quilt, \$250 in cash and a new sewing machine will be given away at 1 p.m., Dec. 13. Tickets are \$2 each and are available at the Senior Center. The Christmas Bazaar will be Dec. 5–10, Monday–Friday, 9 a.m.–2 p.m., and Saturday, 9 a.m.–1 p.m.



### Lakeside Collision

**“Done Right, the First Time”**

We Handle Insurance Claims

777 St. Claire Street, Tracy City, TN 37387

Ph: 931.592.3274 | Cell: 931.235.3316

Email: lakesidecollision00@gmail.com



## MATLOCK

State Licensed • Fully Insured

ROB MATLOCK  
CONSTRUCTION COMPANY  
NEW HOME BUILDING  
AND REMODELING

MEMBER, U.S. GREEN BUILDING COUNCIL

PHONE 931-598-5728



**THE LOCAL MOVER**  
615-962-0432

**Need More Room?**

**Mountain Storage**  
(931) 598-5682

■ Security Gate Dan & Arlene Barry ■ Security Camera

Hwy 41 - Between Sewanee & Monteagle

5X10 | 10X10 | 10X20

For Your Antiques and Prized Possessions

**Climate Control**

5X10 10X10 10X15 10X20

Temperature and Humidity Regulated



## WOODY'S BICYCLES

SALES, SERVICE AND RENTALS

A Full-Service Trek Bicycle Dealer

Mon-Fri 9-5 • Sat 10-2 • 90 Reed's Lane

598-9793 • woodybike@gmail.com



Check out [www.woodysbicycles.com](http://www.woodysbicycles.com) for rates, trail maps, photos, bike club links, races and much more!

## Thanksgiving Holiday Closings

Thanksgiving Day is Thursday, Nov. 24. All federal, state and county offices will be closed, including the banks and post offices. Other closings include the offices of the University and St. Andrew's-Sewanee School, the Messenger and the Sewanee Senior Center.

The University Archives and duPont Library will be closed Thursday, Nov. 24 and Friday, Nov. 25. Hours for duPont are 10 a.m.–2 p.m., Saturday, Nov. 26, 1–5 p.m., Sunday, Nov. 27, and back to regular hours on Monday, Nov. 28.

## Convenience Center Hours

Franklin County Convenience Centers holiday hours are:

closed Thursday and Friday, Nov. 24–25, and open Saturday, Nov. 26 for Thanksgiving weekend;

closed Saturday, Dec. 24 for Christmas, and closed Saturday, Dec. 31 for New Year's Eve.

## University Deer Hunt

The 2016 University deer hunt continues through Jan. 13, 2017. The archery only season runs through Dec. 21, and the regular season begins on Dec. 22.

Hunting is allowed on most weekends from sunrise to 10 a.m. and 2 p.m. until sunset. Hunting is allowed weekdays from sunrise to 8:30 a.m. in all zones and 3:30 p.m. to sunset in zones 3, 4 and 6.

There is no hunting Thanksgiving Day, Christmas Eve or Christmas Day. There will be a limited firearms hunt that will start the day after Christmas.

For more information and a map, go to <<http://www.sewanee.edu/offices/oess/the-domain/ecosystem-management/hunting/>>.



Is it Legos?

### Letters to the Editor Policy

Letters to the editor are welcome at the Sewanee Mountain Messenger and are a vital part of our community's conversation. Letters need to be no longer than 250 words and may be edited for space and clarity. We make exceptions from time to time, but these are our general guidelines.

Letters and/or their author must have some relationship to our community. We do not accept letters on national topics from individuals who live outside our print circulation area. Please include your name, address and a day-time telephone number with your letter. You may mail it to us at Sewanee Mountain Messenger, P.O. Box 296, Sewanee, TN 37375, come by our office, 418 St. Mary's Ln., or send your email to <[news@sewaneemessenger.com](mailto:news@sewaneemessenger.com)>. —KB



### THE SEWANEE MOUNTAIN MESSENGER

418 St. Mary's Ln.  
P.O. Box 296  
Sewanee, Tennessee 37375  
Phone (931) 598-9949



Email [news@sewaneemessenger.com](mailto:news@sewaneemessenger.com)  
[www.sewaneemessenger.com](http://www.sewaneemessenger.com)

Kiki Beavers, *editor/publisher*  
April H. Minkler, *office manager*  
Ray Minkler, *circulation manager*  
Leslie Lytle, *staff writer*  
Kevin Cummings, *staff writer/sports editor*  
Sandra Gabrielle, *proofreader*  
Janet B. Graham, *advertising director/publisher emerita*  
Laura L. Willis, *editor/publisher emerita*  
Geraldine H. Piccard, *editor/publisher emerita*

*Published as a public service to the Sewanee community. 3,700 copies are printed on Fridays, 46 times a year, and distributed to numerous Sewanee and area locations across the plateau for pickup free of charge.*

*This publication is made possible by the patronage of our advertisers and by contributions from the University of the South (print production) and the Sewanee Community Chest.*

**SUBSCRIPTIONS** \$75 first class.

All material in the Sewanee Mountain Messenger and on its website are copyrighted and may not be published or redistributed without written permission.

## Messenger Break Ahead

It is hard to imagine, but Thanksgiving is soon, and Christmas is just around the corner.

The Messenger will publish its Thanksgiving issue on Wednesday, Nov. 23.

Deadlines for the Thanksgiving week issue, which will come out on Wednesday, Nov. 23 are: display advertising at 5 p.m., Friday, Nov. 18 (via email); news/calendar, noon, Saturday, Nov. 19 (via email) and classified ads, noon, Monday, Nov. 21.

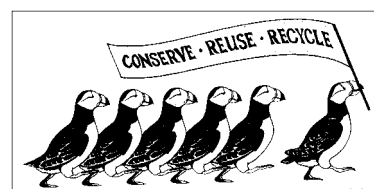
If your organization or church has a different schedule during these upcoming holidays than we normally post, please send the calendar updates to <[news@sewaneemessenger.com](mailto:news@sewaneemessenger.com)> or call the office at 598-9949.

## University Job Opportunities

Exempt Positions: Director of Environmental Stewardship and Sustainability, ES&S; Director of Student Conduct, Dean of Students; International Student Services Coordinator, Global Education; Senior Associate University Registrar, Registrar's Office.

Non-Exempt Positions: in Sewanee Dining: Assistant Manager; Cashier; First Cook; Food Service Worker; Second Cook; Senior Cook.

To apply or learn more go to <[www.jobs.sewanee.edu](http://www.jobs.sewanee.edu)> or call 598-1381.



## Serving Where Called

Please keep the following individuals, their families and all those who are serving our country in your thoughts and prayers:

Cassidy Barry  
Michael Evan Brown  
Mary Cameron Buck  
Lisa Coker  
Jennifer Lynn Cottrell  
James Gregory Cowan  
Nathaniel P. Gallagher  
Alex Grayson  
Peter Green  
Zachary Green  
Robert S. Lauderdale  
Dakota Layne  
Byron A. Massengill  
Forrest McBee  
Andrew Midgett  
Alan Moody  
Brian Norcross  
Christopher Norcross  
Lindsey Parsons  
Troy (Nick) Sepulveda  
J. Wesley Smith  
Charles Tate  
Amy Turner-Wade  
Ryan Turner-Wade  
Tyler Walker  
Jeffery Alan Wessel  
Nick Worley

If you know of others in our Mountain family who are serving our country, please give their names to American Legion and Auxiliary member Louise Irwin, 598-5864.

### MESSENGER DEADLINES & CONTACTS

PHONE: (931) 598-9949

#### News, Sports & Calendar

Tuesday, 5 p.m.

Kiki Beavers

[news@sewaneemessenger.com](mailto:news@sewaneemessenger.com)

Kevin Cummings

[sports@sewaneemessenger.com](mailto:sports@sewaneemessenger.com)

#### Display Advertising

Monday, 5 p.m.

[ads@sewaneemessenger.com](mailto:ads@sewaneemessenger.com)

#### Classified Advertising

Wednesday, noon

April Minkler

[classifieds@sewaneemessenger.com](mailto:classifieds@sewaneemessenger.com)

### MESSENGER HOURS

Monday, Tuesday & Wednesday

9 a.m. –4 p.m.

Thursday—Production Day

9 a.m. until pages are completed (usually mid-afternoon)

Friday—Circulation Day

Closed



## Upcoming Meetings & Events

### Bake Sale Today

There will be a benefit bake sale at Citizens Tri-County Bank and Mountain Valley Bank in Monteagle, today (Friday), Nov. 18, at 9 a.m. until all has sold. Proceeds will benefit the Women on Mission from First Baptist Church, Monteagle.

### Little League Info Meeting Today

A community meeting regarding getting a Little League charter back for Sewanee Little League will be at 6 p.m., today (Friday), Nov. 18, at the Little League field on Ball Park Road. The Little League District Administrator will be there to answer any questions. All are welcome.

### United Daughters of the Confederacy

The UDC Kirby-Smith Chapter 327, Sewanee will hold its monthly meeting at 10 a.m., Saturday, Nov. 19, at the Franklin-Pearson House in Cowan. For more information, call (931) 924-3000. Meetings are open to the public.

### Animal Harbor's Party for Paws Benefit

The Party for Paws fundraiser for Animal Harbor will be on Saturday, Nov. 19, 6–8:30 p.m. at St. Mark's Hall, Otey Parish. Enjoy fabulous food catered by Natural Bridge Sewanee, a full bar, music, and both live and silent auctions full of treasures. Tickets are \$55 and can be purchased online at <www.animalharbor.org>, at the shelter (56 Nor-Nan Road), at the veterinarian clinics in Winchester, or by calling Susan Rupert at 967-8903.

### Black Anvil Open House

Black Anvil Equestrian is having an open house 2–4 p.m., Sunday, Nov. 20. Black Anvil is located at 875 Riva Lake Rd., Winchester. Participants can register for door prizes, tour the barn, meet the trainer Cat Dye and more.

### Coffee with the Coach

Coffee with the Coach, an opportunity to learn more about Sewanee's sports teams, will be at 9 a.m., Monday, Nov. 21 with women's basketball coach Dickie McCarthy. Gather at the Blue Chair Tavern for free coffee and conversation. All are welcome.

### Sewanee Book Club Meeting

The Sewanee Book Club will meet at 1:30 p.m., Monday, Nov. 21 at the home of Flournoy Rogers. Marcia Mary Cook will review "Fifth Business" a novel by Canadian novelist Robertson Davies. For more information or directions contact Debbie Racka at 692-6088 or email <debbie811123@gmail.com>, or Flournoy Rogers at 598-0733 or email <semmesrogers@gmail.com>.

### SUD Meeting

The Sewanee Utility District of Franklin and Marion Counties Board of Commissioners will have its regular meeting at 5 p.m., Monday, Nov. 21, at the utility office on 150 Sherwood Road.

### Area Rotary Club Meetings

The Grundy County Rotary Club meets at 11:30 a.m. on Tuesdays at Dutch Maid Bakery in Tracy City. The Monteagle Sewanee Rotary Club meets at 8 a.m., Thursdays at the Sewanee Inn. The Monteagle Sewanee Rotary Club will not meet on Thursday, Nov. 24.

### GAAC Holiday Feast

The Grundy Area Arts Council will hold its annual holiday feast and meeting Monday, Dec. 5 at 5:30 p.m. at the Dutch Maid Bakery in Tracy City. Entertainment will be provided by dancers from the recent Sewanee production of "The Nutcracker." Dinner will be a Christmas buffet featuring a holiday ham. Come and hear about present and future projects advancing the arts in the area. Contact <grundyareaarts@gmail.com> to reserve your dinner seat. Dinner costs \$10 per person, and reservations should be made by Monday, Nov. 28.

## Lessons and Carols Tickets

The 57th annual Festival of Lessons and Carols at the University of the South will be celebrated at three services, two on Dec. 3 at 5 p.m. and 8 p.m. and one on Dec. 4 at 5 p.m.

At once solemn and joyful, the Festival of Lessons and Carols evokes the meaning of the Advent season through the radiant music of the University Choir and selected readings by members of the University and Sewanee community. The service is based on one that has been sung annually since 1918 at King's College Chapel in Cambridge, England. It features the University Choir under the direction of University organist and choirmaster Geoffrey Ward.

As part of the University mission and the program of education and formation of All Saints' Chapel, the Festival Service of Lessons and Carols offers students, faculty, and staff the opportunity to experience one of the oldest traditions of Anglican music and Advent expectation.

The Chapel is pleased to welcome the public by offering any available places in the services for reservation; however, the number of places available to the public may be limited. Online reservations for the public opened Nov. 16.

For more information and waitlist ticket options go to <http://sewanee.edu/student-life/spiritual-life/festival-service-of-lessons-and-carols/>.

## Food with Friends

There will be a Thanksgiving Feast at noon, Friday, Nov. 25, in St. Mark's Hall sponsored by the Community Action Committee and Food with Friends.

The meal is prepared by Chef Rick Wright and University Dining. Please join us to share good food and fellowship. Those who signed up to receive a turkey can pick them up after the lunch. All are invited to attend.



Is it Santa?

## Balsam Wreath Sale to Benefit CAC

The annual Balsam Wreath Sale has begun. A tradition for more than 20 years with sixth graders at Sewanee Elementary and then St. Andrew's-Sewanee participating, the profits from this sale now benefit the outreach work of the Community Action Committee, an organization that helps the greater Sewanee area.

The wreaths measure at least 22" and come with a big red bow and pine cones. The wreaths cost \$25 and will arrive between Dec. 7–14. The CAC will contact you when your wreath arrives to pickup at the CAC at Otey Parish. If requested, wreaths can be delivered.

To order wreaths, email <cacchristmaswreaths@gmail.com> or <cynthia dehondpotter@gmail.com> or call Cindy Potter at 598-5773. Order forms are also available at the CAC office at Otey. Be sure to include your name, number of wreaths you want and contact information. Your order will be confirmed by email or phone. Orders are due on Friday, Dec. 2.



From the archives: The St. Andrew's-Sewanee sixth graders (now seniors in high school!) get ready to package the Balsam wreath orders.

November's  
**Sparkle Award**  
recipient is  
**Allie Welch,**  
age 4, of Winchester

Each month, Dr. Chris Mathews draws the name of one member of his "No cavity club" from a hat! For more information, call 598-0088.

## Heart Healthy & Diabetic Friendly Thursdays!

11AM–8PM, Lunch & Dinner  
Great New Dishes Every Week  
Smoke House Restaurant - Monteagle

## WOODARD'S DIAMONDS & DESIGN

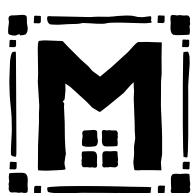


We Celebrate Life and Love

**PANDORA**  
UNFORGETTABLE MOMENTS DEALER

woodards.net  
**(931) 454-9383**  
Inside Northgate Mall, Tullahoma  
Mon–Fri • 10–7 | Saturday • 10–6

We're glad you're  
reading the  
Messenger!  
sewaneeemessenger.com



**MOLICA**  
CONSTRUCTION LLC

931 205 2475

WWW.MOLICA.CONSTRUCTION.COM

- CRAFTSMANSHIP •
- CREATIVITY •
- SUSTAINABILITY •

### Your Place for Organic & Local Products

- ◆ Natural Foods
- ◆ Personal Care Products
- ◆ Garden Supplies
- ◆ Yarn & Knitting Supplies
- ◆ Local Arts & Crafts
- ◆ Jewelry
- ◆ Gifts
- ◆ Antiques

**Mooney's**

Market & Emporium

OPEN DAILY 10-6

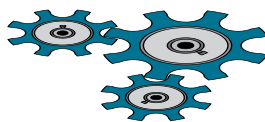
931-924-7400 • 1265 W Main Street • Monteagle, TN



## J & J GARAGE

### COMPLETE AUTO REPAIR

- Import & Domestic
- Computerized 4-Wheel Alignments
- Shocks & Struts
- Tune-ups
- Brakes
- Our Work is Guaranteed.
- OVER 26 YEARS EXPERIENCE.



Jerry Nunley  
Owner

**598-5470** Hwy 41-A between Sewanee & Monteagle • Monday-Friday 7:30-5:30



## Christmas on the Mountain

Mid-Cumberland Mountain Ministries and Morton Memorial Methodist Church will sponsor Christmas on the Mountain, Sunday, Dec. 11.

The event will take place at Morton Memorial Methodist Church, 322 W. Main Street, Monteagle. The shopping will start at 1 p.m. and will be by appointment times.

Families with children 17-years old or younger, residing in their household, are eligible to participate.

Applications are available at the Morton Memorial office on Monday, Wednesday and Thursday, 9:30 a.m.–12:30 p.m. Applications will also be mailed to interested families by request. Call the church office (931) 924-2192 to have an application mailed, or pick up an application. Monday, Nov. 21 is the deadline for registration.

Participating families may purchase two gifts for each child in their household at greatly discounted prices. The purchases will be paid for in cash the day of the sale.

A postcard with designated shopping times will be mailed to each family prior to the event.

## Greening of the Chapel

On Friday, Dec. 2, members of the Sewanee community are invited to join in the Greening of All Saints' Chapel in preparation for the 57th Annual Festival of Lessons and Carols. Work begins at 9 a.m. and all levels of experience are welcomed and very much needed. Please bring any treasures from your garden (dried hydrangea, nandina and other berries, unusual evergreen clippings, etc.) which can be used to decorate wreaths and garlands. Coffee and pastries are served throughout the morning, and a light lunch will be offered at noon. Ken Taylor, of Taylor's Mercantile, will direct the day's activities.

*If your church is in our print circulation area and would like to be listed in the calendar, please send service times, church address and contact information to <news@sewanee-messenger.com> or phone 598-9949.*

## Obituary

### Boyd Fults

Boyd Fults, age 71, died on Nov. 12, 2016. He was born on July 30, 1945, in Whitwell, to Wesley and Parthenia McHone Fults. He was preceded in death by his parents; and brother Paul Fults.

He is survived by his wife of 51 years, Linda VanHoosier Fults; daughter, Vicky Fults; son, Dewayne (Kristi) Fults; sisters, Zella (Horace Ray) Slatton, Linda Jones and Barbara King; brothers Melvin (Faye), Hoyt (Amy) and David (Charlotte) Fults, four grandchildren, seven great-grandchildren, and several nieces and nephews.

Funeral services were Nov. 15 in the Layne Funeral Home chapel with the Rev. Mack Hampton officiating. Interment followed in Palmer Cemetery. For complete obituary go to <www.laynefuneralhome.com>.



## Keele Memorial Service

The memorial service for Rob Keele will be at 11 a.m., Saturday, Nov. 19, at Otey Parish Church. A reception will follow the service in St. Mark's Hall at Otey Parish.



### MOORE-CORTNER FUNERAL HOME

*Specializing in pre-funeral arrangements • Offering a full range of funeral plans to suit your wishes • We accept any & all Burial Insurance Plans*



We are a father & son management team—  
Bob & Jim Cortner  
Owners/Directors

**967-2222**  
300 1st Ave. NW, Winchester



**ST. MARY'S SEWANEE**  
The Ayres Center for Spiritual Development

Call (931) 598-5342  
or (800) 728-1659  
www.StMarysSewanee.org  
<reservations@stmaryssewanee.org>

### UPCOMING RETREATS

**ONE RIVER WISDOM RETREAT:**  
**EMBRACING ESAU**  
December 2—December 4  
*The Rev. Dr. Gordon Peerman*  
*Rabbi Dr. Rami Shapiro, Ph.D.*  
St. Mary's Hall: \$450 (Single), The Anna House: \$550 (Single), Commuter: \$350 (Single)

**THREE-DAY ADVENT CENTERING PRAYER RETREAT**  
December 9—December 11  
*The Rev. Tom Ward, presenter*  
St. Mary's Hall: \$350 (Single), The Anna House: \$450 (Single)



**The Monteagle Sewanee Rotary Club meets at 8 a.m., Thursdays, at the Sewanee Inn**  
"Service Above Self"

## Church News

### All Saints' Chapel

Growing in Grace continues Sunday, Nov. 20, at 6:30 p.m. in All Saints' Chapel. The speaker will be Curtis Johnson, a member of the class of 2014 and an assistant director of Admission. This informal worship service is designed for students and community members with student-led acoustic music, guest speakers, and Holy Communion. This Advent semester, Growing in Grace will focus on moments in our life where we find ourselves at a "Crossroads."

The Catechumenate will resume Wednesday, Nov. 30, at 7 p.m. in the Bairnwick Women's Center. Desserts and coffee will be provided. Catechumenate, from a Greek word meaning "learning and exploring," is a place where we explore what it means to be a human being and what it means to be a person of faith in our community. Email Lay Chaplain Rob McAlister <rvmcalis@sewanee.edu> for directions or more information.

Morning and Evening Prayer will be suspended while the University is on break, beginning Wed, Nov. 23. These services will resume Tuesday,

Nov. 29. Next Sunday, the Eucharist will be offered at 8 a.m. only at the High Altar. The 11 a.m. Eucharist will resume on Sunday, Dec. 4.

### Cowan Presbyterian

There will be a Cowan Community Thanksgiving Service at 6:30 p.m., Sunday, Nov. 20, at Cowan Cumberland Presbyterian Church. The speaker will be Rev. Lee Singley and special music will be provided by the host congregation. The service is sponsored by the Cowan Ministerial Association. For more information visit the website <www.cowanchurches.org>.

### First Baptist Church

First Baptist Church, Tracy City, will be hosting the Community Thanksgiving Service Tuesday, Nov. 22 at 7 p.m.

This is an annual gathering of First Baptist, First United Methodist and Christ Church Episcopal. Everyone is invited to worship with us this Thanksgiving season. There will be a time of fellowship following the service.

### Bake Sale and Gift Gallery

The Women's Ministry of the Winchester Cumberland Presbyterian Church will host their Christmas Bake Sale and Gift Gallery on Saturday, Nov. 19 from 8 a.m. to 1 p.m. There will be baked goods of all kinds, craft items, Christmas decorations, gifts and vendors with their gift items. All are invited to attend.

### Otey Parish

This Sunday, Nov. 20, there will be no Adult Forum or Lectionary Class and only one Godly Play class.

There will be no 8:50 a.m. service. There is a combined service at 11 a.m. due to the Annual Meeting at 9:30 a.m.

### Reynolds Plaque Dedication

A dedication of a plaque honoring the late Rt. Reverend George Reynolds, ninth Bishop of Tennessee will be at All Saints' Chapel, Saturday, Nov. 19 at 3:30 p.m. Relatives and friends are invited to attend. Contact Barbara Reynolds at (931) 526-3190 for information.

## CHURCH CALENDAR

### Weekday Services, Nov. 18–25

7 a.m. Morning Prayer, St. Mary's (not 11/21)  
7:30 a.m. Morning Prayer, St. Paul's Chapel, Otey  
7:30 a.m. Holy Eucharist, St. Mary's (not 11/21)  
8:30 a.m. Morning Prayer, Christ the King (11/22)  
8:30 a.m. Morning Prayer, St. Augustine's (not 11/23–25)  
10 a.m. Thanksgiving Day Eucharist, Otey (11/24)  
4 p.m. Evening Prayer, St. Augustine's (not 11/23–25)  
4:30 p.m. Evening Prayer, St. Paul's Chapel, Otey  
5 p.m. Evening Prayer, St. Mary's (not 11/21)  
7 p.m. Community Thanksgiving Service, First Baptist Church, Tracy City (11/22 only)

### Saturday, Nov. 19

7:30 a.m. Morning Prayer/HE, St. Mary's  
10 a.m. Sabbath School, Monteagle 7th Day Adventist  
11 a.m. Worship Service, Monteagle 7th Day Adventist  
5 p.m. Mass, Good Shepherd, Decherd

### Sunday, Nov. 20

#### All Saints' Chapel

8 a.m. Holy Eucharist  
11 a.m. Holy Eucharist  
6:30 p.m. Growing in Grace

#### Bible Baptist Church, Monteagle

10 a.m. Worship Service  
5:30 p.m. Evening Service  
**Christ Church, Monteagle**  
10:30 a.m. Holy Eucharist  
10:45 a.m. Children's Sunday School  
12:50 p.m. Christian Formation Class  
**Christ Episcopal Church, Alto**

9 a.m. Holy Eucharist  
10 a.m. Sunday School

#### Christ Episcopal Church, Tracy City

10 a.m. Adult Bible Study  
11 a.m. Holy Eucharist (child care provided)

#### Christ the King Anglican, Decherd

9 a.m. Holy Eucharist  
10:40 a.m. Sunday School

#### Church of the Holy Comforter, Monteagle

9 a.m. Holy Eucharist

#### Cowan Fellowship Church

10 a.m. Sunday School  
11 a.m. Worship Service

#### Cumberland Presbyterian Church, Cowan

6:30 p.m. Community Thanksgiving Service  
**Cumberland Presbyterian Church, Monteagle**

9 a.m. Fellowship  
11 a.m. Worship Service

#### Cumberland Presbyterian Church, Sewanee

9 a.m. Worship Service  
10 a.m. Sunday School

#### Decherd United Methodist Church

9:45 a.m. Sunday School  
10:50 a.m. Worship

#### Epiphany Mission Church, Sherwood

10 a.m. Holy Eucharist  
10 a.m. Children's Sunday School

#### Good Shepherd Catholic Church, Decherd

10:30 a.m. Mass  
**Grace Fellowship Church**

10:30 a.m. Sunday School/Worship Service  
**Harrison Chapel Methodist Church**

9 a.m. Worship Service  
10 a.m. Sunday School

#### Midway Baptist Church

9:45 a.m. Sunday School

10:45 a.m. Morning Service

6 p.m. Evening Service

#### Midway Church of Christ

10 a.m. Bible Study  
11 a.m. Morning Service

6 p.m. Evening Service

#### Ministry Baptist Church, Old Co-op Bldg., Pelham

10 a.m. Sunday School  
10:45 a.m. Breakfast

11 a.m. Worship Service

#### Monteagle First Baptist Church

10 a.m. Sunday School  
11 a.m. Worship Service

6 p.m. Evening Worship

#### Morton Memorial United Methodist, Monteagle

9:45 a.m. Sunday School  
11 a.m. Worship Service

#### New Beginnings Church, Monteagle

9:30 a.m. Worship Service  
11:15 a.m. Worship Service

#### Otey Memorial Parish Church • Annual Meeting

9:30 a.m. Godly Play  
11 a.m. Holy Eucharist

#### Pelham United Methodist Church

9:45 a.m. Sunday School  
11 a.m. Worship Service

#### St. Agnes Episcopal Church, Cowan

11 a.m. Sunday Service (Rite 1)

#### St. James Episcopal Church

9 a.m. Holy Eucharist

#### St. Margaret Mary Catholic Church, Alto

8 a.m. Mass

#### Sewanee Church of God

10 a.m. Sunday School  
11 a.m. Morning Service

6 p.m. Evening Service

#### Sisters of St. Mary's Convent

8 a.m. Holy Eucharist  
5 p.m. Evensong

#### Tracy City First Baptist Church

9:45 a.m. Sunday School  
10:45 a.m. Morning Worship

5:30 p.m. Youth

6 p.m. Evening Worship

#### Trinity Episcopal Church, Winchester

11 a.m. Holy Eucharist  
6 p.m. Evening Worship

#### Valley Home Community Church, Pelham

10 a.m. Sunday School  
10 a.m. Worship Service

### Wednesday, Nov. 23

6 a.m. Morning Prayer, Cowan Fellowship  
12 p.m. Holy Eucharist, Christ Church, Monteagle  
5 p.m. KA's, Bible study, meal, Monteagle First Baptist

5:30 p.m. Evening Worship, Bible Baptist, Monteagle  
5:45 p.m. Youth, Bible study, meal, Monteagle First Baptist

6 p.m. Bible study, Monteagle First Baptist  
6 p.m. Prayer and study, Midway Baptist

6 p.m. Youth (AWANA), Tracy City First Baptist  
6 p.m. Prayer, Trinity Episcopal, Winchester

6:30 p.m. Community Harvest Church, Coalmont  
6:30 p.m. Prayer Service, Harrison Chapel, Midway

7 p.m. Adult Formation, Epiphany, Sherwood  
7 p.m. Evening Worship, Tracy City First Baptist



*“When love  
and skill work  
together, expect a  
masterpiece.”*

# Sewanee Realty

SewaneeRealty@inSewanee.com  
www.SewaneeRealty.com  
115 University Ave., Sewanee, Tenn.

**Margaret Donohue,**

*Principal Broker • 931.598.9200*

**Patsy A. Truslow,**

*Broker • 931.636.4111*

**Kipper Worthington,**

*Affiliate Broker • 615.948.1077*



MLS 1711778 - 844 Fairview, Winchester Cabins - Commercial - \$369,500



BLUFF - MLS 1692347 - 1043 North Bluff Cir., Monteagle. \$250,000



BLUFF - MLS 1657852 - 1819 Bear Ct., Monteagle. \$239,000



MLS 1752200 - 1116 University Ave., Sewanee. \$449,900



BLUFF - MLS 1648470 - 245 Coyote Cove Ln., Sewanee. 29.5 acres. \$469,900



MLS 1725646 - 277 Wiggins Creek Dr., Sewanee. \$289,000



MLS 1514972 - 202 Main St., Monteagle. \$112,000

## BLUFF TRACTS

1605 Laurel Lake Dr. 5.3 ac	1780151	\$149,000
Laurel Lake Dr. 66.7 ac	1748867	\$395,000
16 Jackson Pt. Rd. 4.51ac	1710188	\$84,800
590 Haynes Rd. 11+ac	1687354	\$132,000
15 Saddletree Ln. 6.12ac	1680519	\$88,000
16 Laurel Lake Rd.	1722522	\$97,500
223 Timberwood Tr. 5.12ac	1604345	\$169,000
Old Sewanee Rd. 5.3ac	1643144	\$296,000
3 Horseshoe Ln. 5.6ac	1608010	\$60,000
1 Raven's Den 5.5ac	1685926	\$62,000
Long View Ln. 2.56ac	1572284	\$108,000
36 Long View Ln.	1503912	\$99,000
7 Jackson Pt. Rd.	1714853	\$75,000
37 Jackson Pt. Rd.	1579614	\$75,000
Jackson Pt. Rd. 12.45ac	1579007	\$125,600
12 Saddletree Ln.	1578117	\$79,500
Jackson Pt. Rd. 19+ac	1531331	\$120,000
Jackson Point Rd.	1648895	\$199,000
7 Saddletree Ln.	1726054	\$70,000
25 Old Sewanee Rd. 5.2 ac	1741756	\$119,000



BLUFF - MLS 1775532 - 305 Clara's Point Rd., Sewanee. \$949,000



MLS 1740557 - 786 Old Sewanee Rd., Sewanee. 15 acres. \$329,000



MLS 1776800 - 1256 Sollace Freeman Hwy., Sewanee. \$584,000



MLS 1743681 - 1091 Timberwood Tr., Monteagle. 26.4 acres. \$689,000



BLUFF - MLS 1646170 - 3335 Jackson Point Rd., Sewanee. 5 acres. \$289,000



BLUFF - MLS 1777974 - 3480 Sherwood Rd., Sewanee. \$349,000



MLS 1744462 - 706 Old Sewanee Rd., Sewanee. +30 acres. \$299,500



MLS 1771204 - 351 Greens View Rd., Sewanee. \$285,000



BLUFF - MLS 1772358 - 569 Haynes Rd., Sewanee. \$589,000



MLS 1775366 - 143 Winns Circle, Sewanee. \$385,000



BLUFF - MLS 1703687 - 294 Jackson Point Rd., Sewanee. 20 acres. \$327,000



BLUFF HOME - MLS 1696535 - 1105 North Bluff Cir., Monteagle. \$368,000



MLS 1692858 - 21 Mont Parnasse Blvd., Sewanee. 3.4 acres. \$329,000



MLS 1770160 - 12147 Sewanee Hwy., Sewanee. \$169,000



MLS 1740978 - 94 Parsons Green Cir., Sewanee. \$299,900



MLS 1703913 - 134 Tomlinson Ln., Sewanee. \$539,000



MLS 1698101 - 41 Sherwood Rd., Sewanee. \$229,000



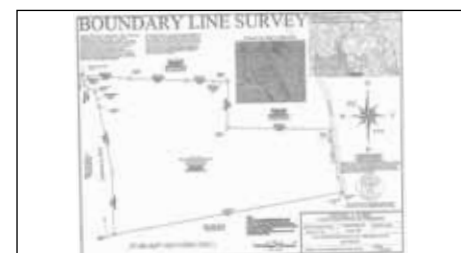
MLS 1774336 - 1848 Ridge Cliff Dr., Monteagle. \$283,000



BLUFF - MLS 1773059 - 1804 Clifftops Ave, 6.9 acres, Monteagle. \$995,000



BLUFF - MLS 1656823 - 1613 Laurel Lake Dr., Monteagle. 5.3 acres. \$449,900



BLUFF - MLS 1748867 - Laurel Lake Dr., Monteagle. 66.7 acres. \$395,000



MLS 1667542 - 36 Lake Bratton Ln., Sewanee. \$429,000



MLS 1688434 - 324 Rattlesnake Springs Rd., Sewanee. 4.9 acres. \$349,500



MLS 1730527 - 565 Haynes Rd., Sewanee. 5.4 acres. \$249,900



BLUFF - MLS 1712150 - 3442 Sherwood Rd., Sewanee. \$589,000

## LOTS & LAND

Taylor Rd. 29.73ac	1754324	\$159,000
Oliver Dr. 10.4ac	1707115	\$38,000
Bear Dr. 2ac	1708016	\$24,000
Jackson Pt. Rd. 4.8ac	1714849	\$37,500
Ingman Rd. 0.809ac	1696338	\$17,000
Haynes Rd. 6.5ac	1690261	\$75,000
43 Bluff Wodds	1774625	\$28,000
57 Edgewater Ct. Winch	1668196	\$35,000
111 Clifftops Dr. 5.25ac	1646127	\$58,900
Hwy 41 Monteagle 5.3ac	1714856	\$47,500
Shadow Rock Dr. 0.99ac	1572178	\$23,000
5ac Montvue Dr.	1714856	\$59,000
Sarvisberry Pl.	1628195	\$69,000
8 Jackson Point Rd.	1734341	\$36,000
9 Jackson Point Rd.	1734307	\$39,000



**Turkey** (from page 1)

Earle said. Fountain Springs blends their own feed to guarantee it's antibiotic and hormone free.

Offering locally raised turkey is a first for Sewanee Dining, but a year ago in keeping with the commitment to devote 30 percent of the budget to locally raised products, Sewanee Dining began serving locally raised fried chicken every Sunday.

Fountain Springs also supplies Sewanee Dining with chicken. Eric and his wife Suzanne began farming full-time in 2007. One of the first on-farm poultry processing facilities in the state, Fountain Springs began offering chicken on the wholesale market just six years ago when state regulations relaxed to allow on-farm processing.

Earle contributes much of their success to Laura Damron, coordinator for the Rooted Here Food Hub, the wholesale arm of the South Cumberland Farmers' Market (SCFM). Fountain Springs also sells directly to consumers through the SCFM website <www.sewanee.locallygrown.net>. Consumers who want a fresh turkey for next Thanksgiving need to preorder in June.

"I turned down 10-15 customers who wanted turkeys this year," Earle said.

The University Thanksgiving meal also featured locally grown sweet potatoes, yams and greens.

Student clubs, department associates, families and other groups often reserve tables for the annual event, with more than 20 table reservations made for this year's feast. Open to University affiliates and community members alike, the Sewanee Dining Thanksgiving dinner is an opportunity for the wider community to give thanks together over a shared meal celebrating the bountiful harvest from food raised by neighboring farms.

And if that isn't enough to be thankful for, there's yet another blessing. "Any unused ingredients were donated to Otey Parish," Wright said, "to feed the community in a free meal the following day."



Fountain Springs Farm delivers turkeys to Sewanee Dining, left to right Jeanie Thompson, Food Services, Laura Damron, Food Hub coordinator, and Eric Earle, farmer. Photo by Leslie Lytle

**Fire** (from page 1)

acres still actively burning in Marion County, 231 acres in Grundy County and 16 acres in Franklin County.

"I've only had one day off since Oct. 7," said Travis Lawyer, a dozer operator with the Franklin County Forestry Service. "People phone in and don't understand why we won't issue them a burn permit to burn leaves. It's so dry the root systems are burning off and trees are falling."

Each county forestry station is staffed with an initial attack crew of five to six firefighters, who assist in the neighboring counties as needed. Franklin and Grundy counties recently received backup support from north and west Tennessee forestry service firefighters.

In the past month, more than 6,000 acres have burned in Bledsoe, Hamilton, Monroe and Sequatchie counties south and east of Sewanee, contributing to the smoke lingering in the air from local fires. Active fires in Bledsoe and Hamilton counties impacting more than 3,200 acres remain uncontained.

On Nov. 11, the Tennessee Department of Environment and Conservation (TDEC) issued a Code Orange air quality alert for the Chattanooga metropolitan area. A Code Orange Alert means "unhealthy for sensitive groups," persons with heart and lung disease, older adults and children. As of Nov. 16, the Air Quality Index map showed Sewanee and the surrounding plateau region in the Orange Alert or Red Alert category, a Red Alert meaning "everyone may begin experiencing ill health effects."

The Tenn. Forestry Service has established Incident Management Posts in Kimball, Cookeville and Knoxville to coordinate firefighting efforts. On Nov. 10, three 20-person federal hand crews from Florida reported for service at the Kimball post.

A late October fire in the Raven's Point area of South Cumberland State park destroyed a bridge and stair case on the new reroute part of the trail. The fire is still smoldering, and the trail is closed along the reroute area until further notice, said Park Ranger George Shinn.

"There is no end in sight," said Rymer stressing the severity of the situation. Long range forecasts show no significant precipitation in Tennessee through the remainder of 2016.

As of Nov. 1, the Sewanee Utility District reported only 23 inches of rainfall for the year, less than the great drought of 2007, when the area received 25 inches for the same time period.

Rymer estimated 70 percent of the fires were arson, 30 percent were debris fires, and a few were caused by equipment sparks.

"Most of the fire investigators in the state are working the area," Rymer said. "They are taking the issue more seriously than in the past." Officials recently brought charges against an arsonist responsible for Sequatchie County fires.

Violation of a burn ban is considered reckless burning and is punishable as a Class A misdemeanor, which carries a fine of \$2,500 and/or up to 11 months 29 days in jail.

**More on the Burn Ban**

On Nov. 14 Governor Haslam issued a proclamation declaring a regional burn ban that includes Franklin, Marion and Grundy counties. This ban supersedes the burn ban issued by the Sewanee Police Department on Oct. 26 and includes all outdoor fires, including those in Turkish fire pits, chimeneas and all other similar exterior fire enclosures. Charcoal grills remain permitted.

Tim Phelps, spokesman for the Tennessee Division of Forestry Administration wants everyone to know about the arson tip hotline: 1-800-762-3017. Tips leading to an arrest are worth \$2,500, up from the previous \$1,500 offered.

**Arcadia** (from page 1)

said, adding that he's also heavily influenced by musician friends around the country. Wet Bar recorded the music for "Promise" in Sewanee and Memphis, where Deering lives and performs with her regular band, Deering and Down.

Deering, who is making her second trek to Sewanee, describes her sound as "sexy music."

"It's more for a joke, but not really," she said. "It's kind of a groove. It's gonna be a magical evening, I know it. I'm just looking forward to seeing all the beautiful people there."

Deering praised Heck's efforts to increase musical opportunities. If Electric Arcadia does expand to include a music-making space, Heck said the program could include "episodic rock camps," similar to Youth Empowerment Through Arts and Humanities, Inc., which hosts rock band camps in Nashville and Murfreesboro.

"I'm most interested in combining or juxtaposing existing energies, and have been networking here and in Memphis, Nashville and Murfreesboro," Heck said. "Rock On the Rock" is one hypothetical program sharing the art of rock, and would give folks tools to collaborate, play and explore, whether they consider themselves musicians or not—whether for stress relief and just plain fun, or as a way for people to connect, maybe even as a team-building exercise."

Macfie, who grew up in Sewanee, said he would like to see Heck's vision come to fruition.

"It's a tough place to grow up in and be interested in rock and roll—there's just no one to play with—but an all-ages space could unite that energy, stoke people's creative passions. I believe that would have so many social and therapeutic benefits to the community," Macfie said. "It's helped me; I would love to share that ministry."

Admission is \$5 at the door and advance tickets can be purchased at <Eventbrite.com> by searching "Electric Arcadia." Concert goers are asked to bring their own beverages.



# Welcome!

## Michelle S. Val, MD

### Board Certified Family Physician

Southern Tennessee Regional Health System welcomes Dr. Michelle Val to our medical community. Dr. Val provides comprehensive care for all ages – from children to seniors. Her specialties include:

- Well child care, including routine immunizations & school physicals
- Diagnostic & preventive screenings
- Acute illness & injury requiring medical care
- Sports physicals, injuries & exercise prescriptions
- Management of chronic medical conditions (hypertension, diabetes, COPD, asthma, high cholesterol)
- Women's health care (routine breast exams, pelvic exams & pap smears)
- Contraceptive management
- Minor procedures (skin biopsies, cyst removals, repair of lacerations, wart removal)
- EKGs

**OFFICE LOCATION**

Mountain Medical Clinic | 21 First St. | Monteagle, TN 37356

**OFFICE HOURS**

Monday – Friday: 7 AM – 6 PM

Saturdays: 8 AM – 2 PM

**BACHELOR OF SCIENCE**

United States Military Academy  
West Point, NY

**MEDICAL DOCTORATE**

Temple University School  
of Medicine  
Philadelphia, PA

**INTERNSHIP & RESIDENCY**

B. Martin Army  
Community Hospital  
Fort Benning, Georgia

Appointments may be made by calling 931-924-8000



**SOUTHERN TENNESSEE**  
REGIONAL HEALTH SYSTEM

SouthernTennessee.com





The sheep come on stage with their Shepherd during "The Nutcracker" performance in Sewanee last weekend.  
Photo by Lyn Hutchinson

## Community Chest Spotlight: South Cumberland Farmers' Market

The 2016-17 Sewanee Community Chest (SCC) Fund Drive is underway. Sponsored by the Sewanee Civic Association, the SCC raises money yearly for local charitable organizations serving the area. This year's goal is \$116,850 for 26 organizations that have requested basic needs funding for quality of life, community aid, children's programs, and those who are beyond Sewanee but still serve the entire community.

For the next few weeks, the Sewanee Mountain Messenger will focus on some of the organizations supported by the Community Chest. This week we shine the spotlight on the South Cumberland Farmers' Market (SCFM).

The South Cumberland Farmers' Market is an organization of farmers and agricultural producers who work together to facilitate and expand the sales of local products; provide education and support to farmers and consumers; and lay the groundwork for a just, equitable and sustainable local food economy. The vision of the SCFM is to create a vibrant local food economy that provides prosperity to farmers and rural communities and increases access to fresh, healthy, local food for everyone.

More than 60 farm/producer families are registered growers who benefit economically by selling through the SCFM. The SCFM serves an average of 50 customer families a week who have access to reasonably priced, fresh locally grown food by purchasing through the market. It's not uncommon for small farmers and producers who get their start at the market to expand their business to wholesale customers. The Bread Peddler, whose baked goods are now available at the Piggly Wiggly and elsewhere, and Brown's Hollar Creations, which is now the primary source for eggs purchased by University Food Services, are two examples.

The SCFM is requesting \$1,000 to aid in increasing the market manager's salary to a level comparable to minimum wage. The market manager is the only paid employee. Volunteers contribute nearly 100 hours a month to facilitate the operation of the market. In 2016, the market manager typically worked 15-20 hours a week with average earnings of less than \$3.50 per hour.

Since 1908, the goal of the SCC has been to help citizens by funding the community. Through SCC funding, local organizations can help those caught in the cycle of poverty, improve quality of life through outreach and community initiatives, and provide support for children with a variety of programs. The SCC is a 501(c)(3) nonprofit organization, and donations are tax-deductible. Send your donation to Sewanee Community Chest, P.O. Box 99, Sewanee, TN 37375. For more information, or to make a donation through PayPal, contact <sewaneecommunitychest@gmail.com> or go to <www.sewaneecciv.wordpress.com>.

## Fiery Gizzard Trail Work Crews Needed

With Phase One of the trail completed and Phase Two nearly there, volunteers are needed. Join us every Saturday and Sunday this fall, 9 a.m.-3 p.m. There are jobs for everyone, and many do not involve moving rocks. This exciting reroute will cut through some rugged and beautiful terrain, so be prepared with sturdy footwear and plenty of water/snacks. If you have a favorite tool or pair of gloves, feel free to bring them. Meet at the Grundy Forest parking lot, 131 Fiery Gizzard Rd., Tracy City, TN 37387. Email Ranger Jason Reynolds at <jason.reynolds@tn.gov> for more information.



Don't touch my candy.

## Rotarians Recognized at Meeting

On Nov. 10, the Monteagle-Sewanee Rotary Club awarded the Paul Harris Fellowship Award to eight of the members. This prestigious award is given to Rotarians who have attained \$1,000 or more in donations to support the work of Rotary International.

Speaking at the meeting, Rotary District Governor J. Fred Heitman explained the wide variety of projects supported by Rotary International that includes schools, water projects, microloans, medical care and hunger relief around the world. The awards were presented by Monteagle-Sewanee Rotary Club Foundation Chair Dan Hatfield, District Foundation Chair Beth Stubbs and District Governor J. Fred Heitman to Barry Rollins, Tracy Temples, Mike Roark, Woody Deutsch, Henry Blizzard, John Solomon, Haynes Roberts, and Scott Anderson. The awards were followed by a presentation by Lee Ann Backlund, Vice President for Admissions for the University of the South.



Rotary members, from left, Woody Deutsch, Haynes Roberts, Fred Heitman, Henry Blizzard, Tracy Temples, Barry Rollins and Mike Roark at the Monteagle Sewanee Rotary Club meeting. Not pictured: John Solomon and Scott Anderson.

## Brown's Body Shop

Leonard Brown - Owner  
Steve Young - Gen. Mgr.  
Steve Hartman - Shop Mgr.

710 College St. • Winchester  
931-967-1755 • Fax 931-967-1798

*Come by and see us.  
We appreciate your business.  
Our Work is Guaranteed!*

Will adding a guest room  
for visiting family and  
friends make your  
holidays very merry?



Custom home remodeling begins with...

Joseph's Remodeling Solutions  
A Division of Sumpter Solutions, LLC

Taking Quality to the Next Level  
Licensed - Insured - Green Certified

931-598-5565  
joseph@josephsremodelingsolutions.com  
www.josephsremodelingsolutions.com

The blue chair  
Café & Tavern  
41 university avenue  
sewanee, tennessee  
(931) 598-5434  
thebluechair.com

Michael A. Barry  
**LAND SURVEYING  
& FORESTRY**  
★ ALL TYPES OF LAND SURVEYS  
★ FORESTRY CONSULTING  
(931) 598-0314 | (931) 308-2512

## A-1 CHIMNEY SPECIALIST "For all your chimney needs"

Dust Free • Chimneys Swept, Repaired,  
Relined & Restored • Complete Line of  
Chimney Caps • Waterproofing  
Video Scanning



G. Robert Tubb II, CSIA Certified & Insured  
931-273-8708

All the Information You Need:  
www.TheMountainNow.com



## Sewanee Operation Noel Application

Please mail completed form to Tracie Sherrill by  
Monday, Dec. 12.

138 Lake O'Donnell Rd., Sewanee TN 37375 or email all infor-  
mation to tsherril@sewanee.edu.

FAMILY NAME: \_\_\_\_\_

# of Family Members: \_\_\_\_\_

Delivery Address: \_\_\_\_\_

City: \_\_\_\_\_

FOOD ONLY: \_\_\_\_\_ YES \_\_\_\_\_ NO

### FOOD AND TOYS:

Please fill out information below for each child age 16 yrs &  
under to receive toys.

CHILD'S NAME: \_\_\_\_\_

Age: \_\_\_\_\_ Gender: \_\_\_\_\_

CHILD'S NAME: \_\_\_\_\_

Age: \_\_\_\_\_ Gender: \_\_\_\_\_

Attach additional sheet if necessary.



Sergeant Major Larry Williams US Army, Retired addresses the students and faculty at South Middle School about who is considered a veteran during their program of observation for Veterans Day. Included in the program were drama students, who presented a series of dramatic readings based on letters written home by veterans and patriotic music performed by the SMS band.



Robert Benson

## Benson to Speak at Friends of the Library Meeting

Friends of the Library of Sewanee: The University of the South invites the community to attend a talk by Robert Benson, professor emeritus of English. Benson will discuss his book, "Wedding the Wild Particular." The Friends meeting will be in the Torian Room of Jessie Ball duPont Library on Wednesday, Nov. 30 at 4:30 p.m. A reception will follow the talk.

Benson, a native of New Orleans, was educated at Vanderbilt University and the University of North Carolina at Chapel Hill. He taught at the University of Southern Mississippi, Southeastern Louisiana University, the University of Dallas, and the University of Georgia before moving to Sewanee, where he taught medieval English literature at the University of the South. He retired in 2009 and divides his time between Sewanee and Gulf Shores, Ala.

For more information about the Friends of the Library go to <<http://libguides.sewanee.edu/FOL>>. For more information on Friends of the Library contact Tim Garner at 598-1265 or <[tgarner@sewanee.edu](mailto:tgarner@sewanee.edu)>.

## Senior Center News

### Volunteers Needed

The Center needs volunteers who can help in the kitchen to prepare lunch and to help clean up and wash dishes. Call the center at 598-0771 or 598-0915 to volunteer.

### Menus

The Sewanee Senior Center serves lunch at noon, Monday through Friday. The suggested donation is \$4, regardless of your age. Please call 598-0771 by 9 a.m. to order lunch.

**Nov. 21:** Chicken fried steak, gravy, mashed potatoes, veggie blend, roll, dessert.

**Nov. 22:** Cheeseburger, French fries, dessert.

**Nov. 23:** Chef salad, crackers, dessert.

**Nov. 24:** Center closed.

**Nov. 25:** Center closed.

Menus may vary.

### Christmas Bazaar

The Sewanee Senior Citizens Center will be having its annual Christmas Bazaar and bake sale Dec. 5-10. Donations are now being accepted at the Center located at 5 Ball Park Road. Donations of clothing are not accepted.

### Daily Activity Schedule

Chair exercises, Mondays and Wednesdays, 10:30-11:15 a.m.; Tuesdays at 10:30 a.m., the group plays bingo, with prizes; Wednesdays at 10 a.m., the writing group gathers at 212 Sherwood Rd.; Fridays at 10 a.m. is game time.

### Center Participation

The Sewanee Senior Center does not charge any membership fee. All persons 50 or older who take part in any of the activities are considered members.

The Center is located at 39 Ball Park Rd. in Sewanee.

## Half-Price Sale at the Hospitality Shop

The Hospitality Shop is a project of the Emerald-Hodgson Hospital Auxiliary, staffed by volunteers.

It is located at 1096 University Ave., in a yellow house just past Mississippi Avenue, and is open Tuesdays and Thursdays from 9:30 a.m. until 1 p.m., and on Saturdays from 9:30 a.m. until noon.

A half-price sale on most clothing in the women's department and men's departments will be in effect until the Shop closes for the Thanksgiving break.

The Shop will be closed for the Thanksgiving break starting at noon on Saturday, Nov. 19 through Monday, Nov. 28, reopening at 9:30 a.m. on Tuesday, Nov. 29.

Donations are welcome; they may be left in the bin at the rear of the building. Please do not leave items which should go to the recycling center, i.e. garbage or waste, nor large pieces of furniture, nor electronic devices which are not operational.

For more information call (931) 598-0136 when the Shop is open.

## Winchester Podiatry

**CHARLES D. GANIME, DPM**

Board Certified in Foot Surgery  
Diplomate, American Board of Podiatric Surgery  
New Patients of All Ages Welcome! We Treat Your Feet! Most Insurance Accepted, Including TennCare

155 Hospital Road #1, in Winchester  
[www.winchesterpodiatry.com](http://www.winchesterpodiatry.com)

**931-968-9191**

## June Weber Gooch-Beasley Realtors

Serving the Sewanee and Monteagle area with quality real estate service:  
-45 years of experience  
-Mother of Sewanee alumnus

**gb** [www.gbrealtors.com](http://www.gbrealtors.com) [junejweber@bellsouth.net](mailto:junejweber@bellsouth.net)  
June Weber, CRB, CRS, GRI Broker **931.636.2246**  
GOOCH-BEASLEY REALTORS **931.924.5555**

**DEPENDABLE AFFORDABLE RESPONSIVE**

Carpentry	Hauling
Painting	Moving
Tilework	Home & Yard maintenance
Plumbing	
Electrical	

**EXPERT HANDYMAN KEN O'DEAR**  
25 YEARS EXPERIENCE

**931.235.3294**  
**931.779.5885**

## Village Wine & Spirits Inc.

**Best Selection of Wine & Spirits**  
**Now Selling Cold Beer, Wine & Champagne**  
10% Discount to Seniors, Veterans, Students & Staff (ID required)  
Special Orders Available for Wine & Kegs  
Visit us on Facebook for the latest products.  
Across 41A from Monteagle's Piggly Wiggly ~ (931) 924-6900  
Mon-Thu 9 a.m.-10 p.m.; Fri-Sat 9 a.m.-11 p.m.

**SAVE THE DATE!**

**#GIVINGTUESDAY**

Come enjoy our annual

## Thanksgiving Buffet

**12 noon, Thursday, November 24**  
\$34.95 per person, \$14.95 for children  
Complimentary glass of champagne.  
Reservations required.

**The mountain's best breakfast, served daily 8-10 a.m.**

*Monteagle Inn* **Tallulah's Wine Lounge**  
RETREAT CENTER

(931) 924-3869 ~ [www.monteagleinn.com](http://www.monteagleinn.com) ~ 204 West Main St.

One seat on the Sewanee Utility District's board of commissioners is up for election in January 2017.

Nomination is by petition. Prospective candidates should contact Election Coordinator Randall Henley via the SUD office, 598-5611, or submit a petition with 10 SUD customer signatures by Jan. 4, 2017.

For more information or to pick up a petition, go to the office at 150 Sherwood Road.  
[www.sewaneeutility.org](http://www.sewaneeutility.org)





These SES students received the Templeton Award for Kindness for the six weeks. Front row, from left: Mason Rudder, Mae Turrentine, Letty Brunton, Leo Bunch, Azzaellea McFarland and Eliza Jacobs; back row, from left: Griff Wilson, Kaitlyn King, Ellie Kelleher, Maya Mauzy and Emma Wockasen. Not pictured: Kara Guess



These students received the Citizenship Award at SES for the six weeks. Front row, from left: Gracie Hoosier, Jaxon Rudder, Rowan Osborne, Marin Owens, Tristan Prater and Theo Schrader; back row, from left: Evyn Burge, Zachary Anderson, Cameron Crawford and Elliott Benson. Not pictured: Abigail Williston and Will Turrell

## Sewanee Elementary Announces Honor Rolls, Award Recipients

Sewanee Elementary School principal Kim Tucker announced honor rolls and award recipients for the most recent six-week period during a recent school assembly.

### First Honor Roll

**Third Grade**—Thomas Anderson, Mollye Casey, Beau Cassell, Jack Cassell, Kira Dombrowski, Eliza Griffy, Kiran Malde, Caroline Neubauer, Amelia Pond, Eliot Sparacio, Ally Syler and Mia Val;

**Fourth Grade**—Zachary Anderson, Julia Calhoun, Loulie Frazier, Ivy Moser, Zayn Nimis-Ibrahim, Fiona Reynolds, Will Turrell and Toby VandeVen;

**Fifth Grade**—Elliott Benson, Anja Dombrowski, Jackson Frazier, Nailah Hamilton, Cason Harmon, Ellie Jenkins, Reese Michaels and Eva Vaughan.

### Second Honor Roll

**Third Grade**—Zoey Byrd, Nick Evangelista, Cal Makins, Amelia McBride, Miles Mundkowsky, Sarah Russell Roberson, River Robinson, Madeline VandeVen, Sam Weintraub and Griff Wilson;

**Fourth Grade**—Karen Badgley, Sienna Barry, Ann Wright Carlson, Maggie DesJarlais, Parker Kovalski, Maya Mauzy, Christopher Moore, Robbie Philipp, Emery Preslar, Julia Sumpter, Saida Thomas, Emma Wockasen and Libbie Young;

**Fifth Grade**—Isaiah Gilliam, Sara Knight, Amelia Maxon-Hane and Melanie Val.

### BUG Club

**Third Grade**—Zoey Byrd, Eliza Griffy, Sarah Russell Roberson and Judah Thomas;

**Fourth Grade**—Andrew Dykes, Loulie Frazier, Parker Kovalski, Christopher Moore, Emery Preslar, Ellie Roberts and Saida Thomas.

**Fifth Grade**—Jackson Frazier, Brianna Garner, Kaleb Jacobs, Ellie Jenkins and Melanie Val.

### Citizenship Award

(selected by their teachers)

**Pre-K**—Gracie Hoosier; **K**—Rowan Osborne and Jaxon Rudder; **First Grade**—Marin Owens and Tristan Prater; **Second Grade**—Theo Schrader; **Third Grade**—Evyn Burge and Abigail Williston; **Fourth Grade**—Zachary Anderson and Will Turrell; **Fifth Grade**—Elliott Benson and Cameron Crawford.

### Templeton Award

(selected by their peers as most exemplifying the character trait "Kindness")

**Pre-K**—Mason Rudder; **K**—Kara Guess and Mae Turrentine; **First Grade**—Letty Brunton and Leo Bunch; **Second Grade**—Azzaellea McFarland; **Third Grade**—Eliza Jacobs and Griff Wilson; **Fourth Grade**—Maya Mauzy and Emma Wockasen; **Fifth Grade**—Ellie Kelleher and Kaitlyn King.

### Good Listener Award

Attentiveness is one of the traits we focus on with our Sewanee ROARS positive behavior program. Our "Good Listeners" for the second grading period are the following:

**Pre-K**—Kyla Kilgore; **K**—Robert Earl Flowers and Harris Young; **First Grade**—Ayden Allen and Bo Vinson; **Second Grade**—Clara Guess; **Third Grade**—Caroline Neubauer and Kai Walker; **Fourth Grade**—Loulie Frazier and Julia Sumpter; **Fifth Grade**—Reese Michaels and Eva Vaughan.

## Patterson Presents at the Royal Society of Medicine

On Nov. 1, University of the South Professor of Politics Amy Patterson presented at the Royal Society of Medicine in London her recent research, which examined how health issues become political priorities in the global health arena. The Society, which was established by Royal Charter in 1905, is composed of more than a dozen medical specialty colleges. Patterson was invited to speak to the annual conference of the Royal College of Pathologists, who met on the theme "Pathology Is Global." The presentation drew on research she had conducted during summer 2016 about responses to Ebola in Liberia, and was entitled "The Politics of Public Health Emergencies: When Do They Become International Concerns?"

In her presentation, Patterson provided background on the International Health Regulations and the power they give the World Health Organization (WHO) to declare a public health emergency of international concern. She analyzed the relationship between the WHO and donor states that politically and financially support the WHO. This political dynamic plays a crucial role in the ways that WHO prioritizes diseases such as Zika in 2016, Ebola in 2014-2015 and H1N1 influenza in 2009.

Although she is not a medical specialist, Patterson said that she gained several important insights from the conference. First, she became more acutely aware of the logistical challenges of health-care provision in war-torn areas, such as northern Iraq. Second, Patterson learned more about the role of diaspora populations in providing health care in humanitarian crises. For example, Syrian health-care workers in Western Europe have dedicated time, energy, and resources to health-care centers in refugee camps in Jordan and Turkey. Finally, she learned how global cooperation through Interpol facilitates the grim but necessary process of disaster victim identification.

## Carlson Receives the 2016 Freeman Award for Merit

The School of Theology awarded the 2016 Freeman Award for Merit to Jeremy L. Carlson, T'18, a M.Div. student from the Diocese of Alabama. The award was announced and presented by the Rt. Rev. J. Neil Alexander, dean of the School, during the annual DuBose Lectures and Alumni Gathering banquet.

At the beginning of each academic year, the School's faculty chooses the recipient of the Freeman Award from the members of the middler class. When asked about this year's selection, Alexander noted, "Jeremy has distinguished himself as a careful and thoughtful student and has taken his place as a devoted member of the seminary community. I look forward to his continuing contribution to our common life both academically and spiritually."

Carlson and his wife, Laura, are from Birmingham, Ala., and have two daughters, Alice and Ann Wright. Carlson, a graduate of the University of Alabama and the University of Alabama School of Law, worked as a teacher and as a lawyer before enrolling in the School of Theology.

After receiving the award, Carlson said, "I am so very thrilled to have received the 2016 Freeman Award and am deeply grateful to both the Freeman family for its generosity in creating the award and to the faculty for considering me worthy of it."

## SES Menus

Monday–Friday,  
Nov. 21–25  
LUNCH

**Monday, Nov. 21:** Chicken and waffle, grilled cheese sandwich, French fries, vegetable soup, carrots, dip, fruit.

**Tuesday, Nov. 22:** Turkey sub, Philly steak and cheese, black-eyed peas, steamed broccoli, side salad, fruit, cookie.

**Wednesday, Nov. 23–Friday, Nov. 25:** No school.

### BREAKFAST

Each day, students select one or two items.

**Monday, Nov. 21:** Oatmeal bar or Aunt Jemima blueberry pancake.

**Tuesday, Nov. 22:** Biscuit, sausage, gravy, jelly.

**Wednesday, Nov. 23–Friday, Nov. 25:** No school.

Options available every breakfast: assorted cereal, assorted fruit and juice, milk varieties. Menus subject to change.

## Did You Know?

Your donation to the Sewanee Community Chest will help 26 local organizations including the Sewanee Elementary Parent Organization.

Visit [sewaneeccivic.wordpress.com](http://sewaneeccivic.wordpress.com) for more information.



Charming cottage situated on approx. 8.29 acres with recently completed 4 acre lake, with 2 wet springs. 40 yr metal roof, two 10ft x 30ft porches. Private get-away offers an open concept design with an oversized insulated one car garage. NO HOA



Angie Miller, Affiliate Broker  
Winchester, TN 37398  
931-224-2838 Cell  
931-967-8999 Office  
931-967-2185 Fax

**RE/MAX**  
Re/Max Mountain Views Realty

## School Calendar

Nov. 19–27, Thanksgiving Break, St. Andrew's-Sewanee

Nov. 21–25, Thanksgiving Break, Marion County

Nov. 23–25, Thanksgiving Break, Franklin County

Nov. 23–25, Thanksgiving Break, Grundy County

Nov. 23–28, Thanksgiving Break, University of the South

Dec. 8, Early Dismissal @ 12:30, Professional Dev. 1–3 p.m., Grundy County

Dec. 14, Last Day of Classes, University of the South

Dec. 16–30, Christmas Break, Marion County

Dec. 16–Jan. 3, Christmas Break, St. Andrew's-Sewanee

Dec. 17–Jan. 1, Christmas Break, Grundy County

Dec. 20, Abbreviated Day (8–9:30), Franklin County

Dec. 21, Last Day of Final Examinations, University of the South

Dec. 21–Jan. 2, Break, no school, Franklin County

**Have you seen Sam the Dog?**  
Call in and tell us you saw Sam to schedule an on-site appointment!

**Sweeton**  
Home Restoration  
931-924-2444

ONLINE AND IN COLOR!  
[www.sewaneeemessenger.com](http://www.sewaneeemessenger.com)



## THE INSATIABLE CRITIC

by Elizabeth Ellis



The Sewanee Union Theatre will be taking a break during Thanksgiving week. There will not be any movies shown at the SUT Nov. 24–26. The SUT will be back on Wednesday, Nov. 30 with Raiders of the Lost Ark. The movie Sully will be shown Dec. 1–4.

### Kubo and the Two Strings

7:30 p.m., Friday, Nov. 18 through Sunday, Nov. 20  
2016, Rated PG, 101 minutes

Take a trip to Japan in the gorgeously animated, family friendly animated feature about an extraordinary one-eyed boy named Kubo that must fight his demons from the past. When Kubo (Art Parkinson) learns from his mother that he has magical powers deep inside of him, he gets a little too carried away...and accidentally summons an ancient vengeful spirit bent on destruction due to age-old grudges. Having to clean up the mess he made, he finds help in a droll white monkey (Charlize Theron) and a large, anthropomorphic black beetle (not as gross as it sounds) voiced by—all right all right all right!—Matthew McConaughey. Aided by a traditional Japanese musical instrument called a shamisen with unusual powers, they will learn the true story of Kubo's late father, the greatest samurai warrior ever known. Supporting voice talent includes Ralph Fiennes, Rooney Mara and the unduplicated George Takei (Star Trek fans, anyone?). Original and spellbinding, this film is rated PG for scary images and some action but is wholly suitable for children and adults alike.

For more reviews and fun, visit <http://theinsatiablenovels.blogspot.com/>

Showtimes, unless otherwise noted, are at 7:30 p.m. Ticket prices are \$3 for children and students, and \$4 for adults. Wednesday night Cinema Guild movies are free of charge.

## Organ Recital Today

Catherine Rodland, artist-in-residence at St. Olaf College, Northfield, Minn., will perform an organ recital at 7:30 p.m., today (Friday), Nov. 18, in All Saints' Chapel.

The Friday evening concert will include Bach's Concerto in A Minor, transcribed from Vivaldi, in addition to works of Buxtehude and Vienne.

At 10 a.m., Saturday, Nov. 19, Rodland will teach a master class featuring organists from the University of the South. The public is invited to listen and observe from the choir seats in All Saints' Chapel. Both events are free and open to the public.

## Sounds of Sewanee

Sounds of Sewanee will be 5 p.m., today (Friday), Nov. 18, at Guerry Auditorium. Sounds of Sewanee is a fundraiser to benefit the Blue Monarch, a local organization that supports women recovering from addiction and abuse.

In its second year, Sound of Sewanee, a musical talent show, welcomes the community for an evening of music, dance, and fun. Donations will be accepted at the door. The admission fee of \$3 is accepted in cash, by check or by Venmo. This is open to the community.



Is it me?



With 50 exhibits in the FootHills Arts and Crafts Fair in Manchester, Tenn., this past weekend, Carol and Glenn VandenBosch's booth of original and unique mosaic art was selected as Best of Show. The artists were presented with \$75 as well as a festive red, white and blue ribbon.

## SSO Celebrates the Season

In collaboration with the Sewanee Chorale (Ruth Cobb, music director), the Sewanee Symphony Orchestra (SSO) is bringing back the popular Celebrate the Season winter concert at 7:30 p.m., Friday, Dec. 9. Orchestral performances include "Around the World at Christmas Time," "A Christmas Festival" and "Festive Songs of Chanukah." The Sewanee Chorale will join the orchestra for seasonal favorites including "O Holy Night," "O Come all ye faithful" (with audience participation), "We wish you a Merry Christmas," "Twas the Night Before Christmas" and selections from Handel oratorios "Judas Maccabeus" and "Messiah."

All SSO performances are free and open to the public.

## Community Art Show

The Community Art Show "Patriotism" has work by community members of all ages with their interpretations of what Patriotism means to them. The second show celebrates the art produced by area veterans in various media, styles and themes. Veterans serving from World War II up through the present are participating in this show. Both shows will run through Sunday, Nov. 20.

The Artisan Depot is operated by the Franklin County Arts Guild and is located at 204 Cumberland St. East, Cowan. Gallery hours are noon–5 p.m. on Thursdays, Fridays and Sundays and 11 a.m.–5 p.m. on Saturdays.

For more information about upcoming community art shows, the gallery or the guild go to <[www.fcguild.wordpress.com](http://www.fcguild.wordpress.com)> or <[www.facebook.com/artisandepot](http://www.facebook.com/artisandepot)> or contact Diana Lamb at (931) 308-4130.

## SEWANEE AUTO REPAIR

### Complete Auto & Truck Repair

Tune-ups • Tires • Tire Repair • Brakes • Steering  
• Oil Changes • Batteries • Computer Diagnostics



All Makes & Models • Service Calls •  
Quality Parts

ASE Master Certified Auto Technician •  
30 Years' Experience



Open 7 to 5 M-F  
(931) 598-5743 • 76 University Ave.

91 University Ave. Sewanee

## UNIVERSITY REALTY

SEWANEE  
TENNESSEE



[www.ursewanee.com](http://www.ursewanee.com)

Lynn Stubblefield (423) 838-8201

Ed Hawkins (866) 334-2954

Susan Holmes (423) 280-1480



### NORTH CAROLINA AVE.

Spacious single story central campus. 2 living rooms, 2 kitchens, 4 bedrooms, 2.5 baths, three decks, garage, large fenced in yard. Beautiful setting.



### LOUISIANA CIRCLE.

Location, location! Native stone home, 2 fireplaces, 2 living rooms, library, office, screened in porch, room for everyone, lovely private lot. \$315,000.



**CAN TEX.** 10 or 42 beautifully wooded acres in a great location close to town. \$8,500 per acre.

**COMMERCIAL.** 1+ acres behind Citizens Tri-County Bank on Spring St. All utilities in place.

**BLUFF LOT** overlooking Lost Cove. Beautiful sunrise, cool evenings. 4.08 acres. \$80,000.



**KENTUCKY AVE.** Lovely, well maintained home, spacious single story, 4 br, 2.5 baths, 2 fireplaces, screened in porch, deck, patio, barn.



**BLUFF LOT.** Laurel Lake Dr with amazing sunset view, great looking hardwoods, gently rolling, private & secluded 15.9 acres \$125,000.



**CHICKORY LN.** 1.23 ac lot nicely wooded, 4.97 acres entrances on Chickory and Laurel Lake Dr. Very secluded and very pretty!

**LAUREL LAKE DR.** 8 wooded acres, very private entrances on LL Dr and Chickory Ln., most utilities at the road.

**ST. MARY'S LANE.** 10 acres next to St. Mary's picture. \$65,000.



**SHERWOOD RD.** & St Marys Ln on campus. Private setting. Brick single story, recently renovated, open floor plan, native mountain stone fireplace, granite counter tops, dining room, 2 brs, 1.5 ba, fenced back yard. Large garage. \$189,000.



**BLUFF TRACTS** Stunning view of Lost Cove on Sherwood Road. 3 miles from University Ave. Over 1,600 feet on the bluff and the road. Easy to develop. 17.70 acres



**SNAKE POND ROAD.** 6.20 acres with septic, water & electric. \$48,000

**SHADOW ROCK DR.** 1.18-acre charming building lot with meadow.

**SNAKE POND RD.** 30 wooded acres close to campus.



Quality of Life.  
Children.  
Community Aid.  
Beyond Sewanee.

\$116,850 goal for 26 community organizations.

Donate today: PO Box 99 | Sewanee, TN 37375  
[SewaneeCivic.wordpress.com](http://SewaneeCivic.wordpress.com) | [sewaneecommunitychest@gmail.com](mailto:sewaneecommunitychest@gmail.com)

## LONG'S LAWN SERVICE

- landscaping & lawn care
- leaf removal • mulch

Local references available.  
Jayson Long



(931) 924-LAWN (5296)

## HAIR DEPOT

KAREN THRONEBERRY, owner/stylist  
TOBBIN NICOLE, stylist/nail tech  
Find us on Facebook!

17 Lake O'Donnell Rd. • (931) 598-0033 • Sewanee  
Tuesdays thru Fridays, 9 a.m. to 5 p.m.  
Saturdays, 9 a.m. till last appointment

SHARE YOUR NEWS! [news@sewanee-messenger.com](mailto:news@sewanee-messenger.com)

WE HAVE BUYER'S AGENTS TO REPRESENT YOUR INTEREST AT NO CHARGE



## ANGELWITH ANATTITUDE

by Virginia Craighill



Dear Angel,  
What with the presidential election on the eighth and the wildfires burning all over the South, I'm beginning to feel a little nervous. Are these signs of the Apocalypse? Should I get Right with the Lord?

Signed,  
Hope It's Not Too Late

Dear Left Behind,  
I'm not sure whether your Lord prefers you to get Right, Left or Center, but the drought, the election and the wildfires do seem to have vaguely biblical undertones. One would hope that God's apocalyptic symbolism would be more nuanced and creative, since, frankly, it's been done before. However, to quote Flannery O'Connor on why she used violence in her stories, the Divine One "may well be forced to take ever more violent means to get his vision across to this hostile audience." O'Connor continues, "you have to make your vision apparent by shock — to the hard of hearing you shout, and for the almost blind you draw large and startling figures." If only she'd added "orange" to "large and startling figures," we'd know who she meant.

But to think about it another way, maybe the message is coming from elsewhere. The smell of smoke from the forest fires might remind some of us who lived around here in the 70s and early 80s of a local dining establishment near Cowan called "The Red Devil." If you ever ate at The Red Devil, your clothes were forever saturated with the smell of the Pit (the barbecue pit, that is), and the smoke this week has that same sulfurous quality. Perhaps Satan is barbecuing up quite a few souls on his grill, not the souls who voted, no matter who they voted for, but the souls who didn't bother to vote, and the souls who kept other people from voting. If that's the case, we can expect the smoke to get a lot heavier.

Signed,  
Angel

## Arts Notes

### 'a hand's width'

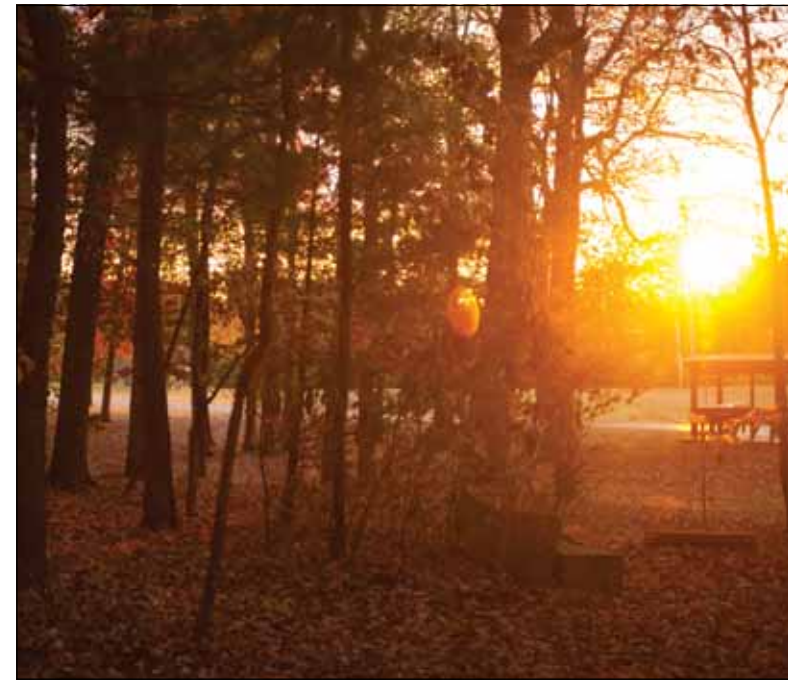
The Carlos Gallery in the Nabit Art Building presents "a hand's width," a solo exhibition by artist Anderson Wrangle. The exhibition continues through Dec. 16. A closing reception and artist talk will be at 4:30 p.m., Thursday, Dec. 15. Gallery hours are from 8 a.m. to 5 p.m. Monday through Friday and 1–5 p.m. Saturday and Sunday. The gallery is located at 105 Kennerly Road.

### 'Communal Spirit'

"Communal Spirit: 3,000 Years of Mexican Artistry" incorporates diverse Pre-Columbian artifacts from both western and eastern Mexico, representing eight different indigenous civilizations. The 20th-century folk art presented features many of the same regions, inspiration and creative techniques. The exhibition continues through Dec. 16 at the University Archives.

### 'Love Thy Neighbor'

The University Art Gallery presents Jessica Wohl's "Love Thy Neighbor," an exhibition of quilts and drawings that grapples with the fear, intolerance and polarization the artist sees dividing communities and cities across the country, and answers those divisions with objects that evoke empathy and comfort. The exhibition will be on view through Jan. 27.



What a day. Photo by Alex Lipscomb

## In-Town Gallery Presents 'Unbolted' in December

Two artists, Coyee Langston and Barbara Murnan, have collaborated on a theme, "Unbolted," for the December front wall feature show. The show was inspired by a quotation of 13th Century Persian poet Rumi, "Sometimes you hear a voice through the door calling you... this turning toward what you deeply love saves you." These artists turned towards their own doors finding the inspiration for their new works. Each looked for ways to best express what lies within themselves. One creates in color with brushes on canvas and one in jewelry design with smithed copper, sterling and stone. Painter Coyee Langston's acrylic canvas collages pair nicely with the handmade jewelry of Barbara Murnan. Come meet the artists at the opening reception 5–8 p.m., Dec. 2.

In-Town Gallery, located at 26A Frazier Avenue, on the North shore, is open every day year round, except for major holidays. Hours are 11 a.m.–6 p.m., Monday–Saturday, and 1–5 p.m., Sunday. For more information call (423) 267-9214, or visit <www.facebook.com/intowngallery>.

www.sewanee  
messenger.com



## Tea on the Mountain

For a leisurely luncheon  
or an elegant afternoon tea  
11:30 to 4 Thursday through Saturday

DINNERS BY RESERVATION  
(931) 592-4832  
298 Colyar Street, US 41, Tracy City

## Hike Against Hunger on Nov. 25

Burn off those Thanksgiving calories and help the less fortunate in our area by participating in one of our four "Hikes Against Hunger," taking place on Friday, Nov. 25, in four locations across the Park. Wear sturdy shoes. Please bring canned goods or a monetary donation to any of the hikes, each of which benefits a local community food bank.

In Franklin County, join Ranger Jason at 8 a.m. at the Carter State Natural Area, 6231 Sherwood Rd., Sewanee, for a strenuous beautiful four-mile hike. Learn about the life and times of our native wild turkey. Bring the whole family and bring canned goods and monetary donations for the Franklin County Food Bank.

In Grundy County, join Ranger Park at 9 a.m. CT for a hike at Grundy Lakes parking lot, 587 Lakes Road, Tracy City TN 37387, for a moderate 2-mile hike to learn the history of the area. Step back in time and walk among the ruins of a once-booming coal mine. Peer into the depths of the fiery coke ovens, and walk along the paths once used by mine workers and convict laborers. Canned goods and monetary donations for the Grundy County Food Bank will be welcome.

In Marion County join Ranger John at 10 a.m. CT at Denny Cove, the park's newest addition, just across the street from the Foster Falls Volunteer Fire Department, on US 41/TN 150, about 2 miles south of the entrance to Foster Falls, to hike 3 miles of the partially completed trail to the back of the cove, portions of which are still rather rough. Bring canned goods and monetary donations for the Marion County Community Ministries Food Bank.

In Sequatchie County, join Ranger Murray at 10 a.m. CT at Savage Gulf Ranger Station, 3157 SR 399 Palmer TN 37365, for a 4.2-mile hike on the Savage Day Loop. Learn about the history of the area and the plants and animals that call the southern Cumberland Plateau home. Along the trail we visit Rattlesnake Point, a beautiful overlook of Savage Gulf. Canned goods and monetary donations for the Sequatchie County Food Bank will be welcome.

Custom cabinetry, design services, remodeling and new construction!

**Sweeton**  
Home Restoration  
931-924-2444 sweetonhome.com

Bridging the gap between high design and practical living

**Ivy Wild**  
Restaurant and Catering

36 Bill Park Road, Sewanee, Tennessee (931) 598-9000  
www.ivywildsewanee.com

Progressive American cuisine prepared with seasonal and local ingredients.

Thursday through Sunday 5 p.m.–9 p.m.

**Ivy Wild's new bar is OPEN!**

Full bar, complete with a craft cocktail list. Wine, too!

Call Heather at 931-598-9000 or email  
reservations@ivywildsewanee.com  
We look forward to serving you!

Chef Keri Moser, 2014 StarChefs Rising Star Chef Award Winner

**Bradford's**  
Nursery & Landscaping  
on the Boulevard in Winchester

**CUT CHRISTMAS TREES**  
7–12 ft. Fraser Firs  
Available Nov. 25

**Two locations: Winchester and Northgate Mall**

Open Mon–Sat 9–6; Sun 12:30–4:30 • 931-967-0825  
1136 Dinah Shore Blvd. in Winchester

**FAST, FRIENDLY, LOCAL!**  
— EST. 1916 —

**SERVICE YOU CAN COUNT ON!**

Since 1916, Auto-Owners Insurance has been teaming up with your local independent agent — a person focused on you, the customer. It's a break from the norm... and that feels good. That's why we've been doing business this way for the last 100 years.

Contact your friendly local agent today!

**BILL NICKELS**  
INSURANCE AGENCY  
931-728-9623 • 931-247-5549  
bill@billnickelsins.com

**Auto-Owners**  
INSURANCE  
LIFE • HOME • CAR • BUSINESS





SAS's Lakin Laurendine (center) and Madison King (right) compete in a recent middle school girls' basketball game against Monteagle.

## Mountain Lions Split Pair of Home Games

The St. Andrew's-Sewanee middle school girls' basketball team defeated Pelham Elementary before falling to North Elementary (Altamont) in two recent home games.

The Mountain Lions secured a win on Nov. 8 against Pelham with stellar play by Lakin Laurendine and Madison King. Laurendine had 13 points and four blocked shots, and King added six points and five assists. Sarah Grace Burns, Abi Cassell and

Jenna Black all played tremendous defense, out-rebounding Pelham in both halves.

The Mountain Lions fell to North Elementary two days later. The game was close at halftime, as the Warriors led the Mountain Lions, 12-8, but the Warriors stretched their lead by 12 in the third quarter. The Warriors stayed undefeated and SAS continued to play balanced and competitive games with a record of 3-3.

## SAS Snowflake Invitational Recap

The St. Andrew's-Sewanee middle school swimmers hosted the 13-team Snowflake Invitational at the Fowler Center on Nov. 12 and boasted a number of standout performances.

Many SAS swimmers set personal records in the meet and several athletes beat their career records and set season best times. Notably, Libby Neubauer set a personal record in the 100 freestyle, 100 backstroke and 50 free (1:17.6, 1:29.76 and 33.55) and Hannah Warmbrod dropped an impressive 8.97 seconds in the 50 free.

Zolon Knoll also set the bar high by breaking two school records. Knoll is now the SAS record holder for the 50 free with a time of 25.16 and the 100 fly with a time of 1:02.18. This broke the previous records of 25.67 in the 50 free set by Will Evans in 2008 and 1:02.44 in the 100 fly set by Ralph Long in 2001. Coaches Jake Miller and Nan Long attribute Knoll's success to his dedicated approach to the sport and his hard work at practice.

"Zolon puts in a solid effort and has worked hard every day. We are excited to see him continue to grow as an athlete going forward," Miller said.

Overall the team finished fourth in the meet, with the boys finishing fourth and the girls eighth. The Mountain Lions will take the pool for their next meet on Dec. 1 at the Fowler Center.



Is it a medalist?

## SAS Swimmers Open Season

Both the middle and upper school swim teams at St. Andrew's-Sewanee School competed at the Fowler Center on Nov. 8 in a scrimmage versus Franklin County School.

Many Mountain Lion swimmers competed for the first time and performed admirably. Notably Myers Gorrell swam his first competitive event (50 freestyle) with an impressive time of 35.36 seconds.

Other newcomers to the sport include: Beth Dougherty, Serena Zeng, Ester Yang, Hannah Warmbrod and Karolina Bolimowska, who competed in three events in her first meet.

Some standout performances from returning swimmers included: junior Catherine Gray, who made a region qualifying cut in both the 200 free and the 100 backstroke with times of 2:22.76 and 1:10.38, respectively. Senior Sam Smith and eighth grader Zolon Knoll both made regional cuts in the 100 fly finishing with times of 1:04.76 and 1:03.65, respectively.

The team's coaches expressed excitement about the swim season.

"The team learned a lot from Tuesday's scrimmage and will continue to grow individually and as a team," said coach Jake Miller.



SAS 10th-grader Hannah Rosman competes in the Tennessee State Mountain Biking Championships at St. Andrew's-Sewanee School the weekend of Nov. 12.

## SAS Topped by North

The St. Andrew's-Sewanee middle school boys' basketball team lost at home on Nov. 10 to North Elementary (Altamont) by a score of 34-24.

The game was actually much closer, but when SAS was down by a few points with three minutes left they took risks and fouled intentionally and the Warriors took advantage.

The SAS boys hustled and contested every shot. North took the early lead, but SAS got back in the game and tied or outscored North in the middle and down the stretch; North scored only two points in the third quarter.

Nathan King led SAS with 10 points; followed by Cameron Harmon with six; Payton Zeitler with five; Cam Weaver with two; and Sean Willis scored one point.

## Varsity Drops Home Opener

St. Andrew's-Sewanee School's varsity basketball team lost in the season home opener on Nov. 15 against Look-out Valley, 51-33. Dustin Stensby led SAS with 10 points; John Grammer had seven; Jaylon Tillman scored five; Emmanuel Thombs had four; Larson Heitzenrater scored three; Jonathan Rwalinda had two; and Aubrey Black posted two points.

**GEORGE HAMILTON**  
**LAND AND**  
**AUCTION CO. TAL 1557**

**PIZZA RESTAURANT**  
**327 Railroad Avenue, Tracy City, TN**  
**FOR SALE: \$47,500**



~ CONTENTS INCLUDE ~

2592 Square Foot Building  
8 Booths: Four Person Seat/Table Combos  
Flat Grill with 7' Larkin Hood  
Scotsman Ice Maker  
Stainless Steel Prep Counters  
Deep Fryer

Walk-in Refrigerator  
Walk-in Freezer  
Hobart Mixer  
Hobart Slicer  
Electric Dough Roller  
2 Pizza Ovens

Plus Much More!

**CONTACT US FOR MORE DETAILS**  
**Telephone: 423-554-3933 Email: col.ghamilton@gmail.com**

**BOOK YOUR HOLIDAY PARTY NOW!**

**High Point**  
HISTORIC DINING ON THE SUMMIT  
BETWEEN CHICAGO & MIAMI

224 East Main St  
Monteagle  
931-924-4600  
Sun to Thu 5 to 9  
Fri and Sat 5 to 10  
www.highpoint  
restaurant.net

**Papa Ron's**

**THE ITALIAN STEAKHOUSE**

**Let us host your holiday gathering!**  
**Call to reserve now!**

402 West Main St. • Monteagle  
931-924-3355 • www.paparons.net  
Sun-Thu 11-9; Fri and Sat 11-10

**TOMMY C. CAMPBELL**  
FOR YOUR IMPROVEMENTS  
Call (931) 592-2687  
Free Estimates • No Job Too Small!

**DRIVEWAY WORK • GRAVEL HAULING**  
**• DOZER & BACKHOE**  
plus Land Clearing • Concrete Work • Water Lines • Garage  
Slabs • Sidewalks • Porches & Decks • Topsoil & Fill Dirt  
Septic Tanks & Field Lines

**Tree of Life Homecare, LLC**  
"Neighbors Helping Neighbors"

- \* Licensed and insured home-based services for the elderly and disabled
- \* CHOICES provider, Private Pay, Veterans Affairs\* Long-term care plans

931-592-8733  
treeoflifehomecare.com  
NOW ACCEPTING APPLICATIONS FOR CAREGIVERS

**Russell L. Leonard**  
ATTORNEY AT LAW

Office: (931) 962-0447  
Fax: (931) 962-1816  
Toll-Free (877) 962-0435  
rleonard@netcomsouth.com

315 North High Street  
Winchester, TN 37398





Corey Caulder

## Covenant Downs Sewanee

Behind a great shooting performance beyond the three-point line, host Covenant College opened the 2016-17 season with a 68-58 win over the Sewanee women's basketball team on Nov. 15 in Lookout Mountain, Ga.

The Lady Scots made 43.8 percent of their three-point attempts. Along with their seven threes, Covenant outrebounded Sewanee 49-24. That helped Covenant to a 25-12 advantage in second-chance points.

Covenant opened the second quarter on a 10-0 run. That allowed the Lady Scots to build their advantage to 24-11 with 5:22 left in the half. From there, Sewanee rallied.

A jumper from Taylor sparked an 11-0 run by the purple and gold. During that stretch, Taylor scored eight points.

Covenant led 29-25 at the half.

Sewanee pulled to within six, 62-56, after a pair of Taylor free throws with 1:20 left in the game. However, Covenant held off the Tigers down the stretch.

As a team, the Tigers made 40 percent of their shot attempts. Individually, Bella Taylor led all players with 24 points, four rebounds and four assists.

Hannah McCormack added 14 points and four boards while Corey Caulder pitched in 10 points.

Emma Grimes paced Covenant with 17 points and five rebounds.



Is it a soccer player?



Try "The Wild Thirsty Turkey"  
Pumpkin Spice, Cinnamon,  
Ghirardelli Chocolate,  
Espresso, Steamed Milk, &  
topped with Cinnamon

Mon-Wed, 7:30am-midnight;  
Thurs & Fri, 7:30am-10pm;  
Sat, 9am-10pm; Sun, 9am-midnight  
Georgia Avenue, Sewanee



598-1786



Like Us On for specials and updates

## Local USA Swimmers Compete in Area Meets

During the weekend of Nov. 5-6, seven swimmers from the Sewanee community competed in area swim meets.

Mountain Aquatic Club (MAC) swimmers Sam Frazier, Loulie Frazier, Konrad Knoll, Maya Mauzy and Sarah Russell Roberson, and Tullahoma Swim Club (TSC) swimmer Zolon Knoll, competed in TSC's annual Great Pumpkin Swim Meet in Tullahoma. Winchester Swim Team (WST) swimmer Jackson Frazier also competed in Baylor's Martha Bass Invitational in Chattanooga.

At the Great Pumpkin Meet, all MAC swimmers had significant time drops. On average, the swimmers dropped about nine seconds per swim, for a team improvement of 23 percent.

Several swimmers competed legally in new events as well. In the boys' eight and under category, Sam Frazier (seven-years-old) finished 12th in the 25-yard freestyle with a time of 22.56 seconds (9.43 second drop); 22nd in the 25-yd. backstroke with a time of 28.35 (1.39 drop); and ninth in the 25-yd. breaststroke.

Also in the same category, Konrad Knoll (six) finished seventh in the 25 freestyle with a time of 20.41 (8.16 drop); 12th in the 25 butterfly with a time of 29.18; 16th in the 25 backstroke with a time of 27.28 (5.97 drop); and 11th in the 25 breaststroke with a time of 39.37.

In the girls' eight and under category, Sarah Russell Roberson (eight) finished 21st in the 25 freestyle with a time of 22.76 seconds (6.77 drop); 23rd in the 25 butterfly with a time of 32.61 (10.73 drop); 15th in the 25 backstroke in 24.96 (4.74 drop); and

18th in the 25 breaststroke in 31.71 seconds (15.13 drop).

In the girls' ages nine to 10 category, Loulie Frazier (nine) finished eighth in the 50 freestyle with a time of 37.41 (13.55 drop); 16th in the 50 backstroke in 47.43 seconds; and sixth in the 100 freestyle in 1.25.51 seconds.

In the same category, Maya Mauzy (nine) finished 10th in the 50 freestyle in 37.77 seconds (11.57 drop); seventh in the 50 backstroke in 41.74 seconds; and fourth in the 50 breaststroke in 49.59 seconds.

Swimming for TSC, Zolon Knoll (13) dominated the ages 13-14 boys' category at the Great Pumpkin meet, taking first in all individual events and earning the 13-14 Boys' High Point honors.

Knoll swam the 200-yd. individual medley in 2:27 seconds; the 50 freestyle in 25.92; the 100 butterfly in 1:08.58; the 100 breaststroke in 1:19.28; and the 100 freestyle in 59.9.

At the Martha Bass Invitational, competing with WST in the boys' 15-18 category, Jackson Frazier (11), swam the 100 breaststroke, finishing 24th overall with a time of 1:22.04; the 200-yd freestyle in a time of 2:40.37 (46th overall); the 200 breaststroke in 2:57.91 (23rd); and the 100 backstroke in 1:29.14 (41st).

In the 11-12 boys' category, Frazier also swam the 200 individual medley, finishing 24th overall with a time of 2:53.96; the 100 breaststroke in 1:21.50 (eighth overall); and the 50 butterfly in 38.93 (31st overall).

Frazier qualified for Southeastern Swimming's Short Course Yards Championships in the 50 breaststroke and the 100 breaststroke.

## Sewanee Football Falls to Hendrix

Despite a season-high 320 yards of total offense, the Sewanee football team ended its 2016 season with a 62-14 loss on Nov. 12 against Hendrix College in Conway, Ark.

Overall, the Warriors compiled 609 yards, which included 480 yards through the air. Other keys for Hendrix were forcing three Tiger fumbles and sacking Sewanee quarterback Sam Hearn three times.

Hearn led Sewanee's offense with 146 passing yards. Running back Mikey Plancher added 85 rushing yards, while freshman Thomas Richardson averaged 5.8 yards per carry on five attempts. On defense, Tony Dykes led the Tigers with nine tackles. Hayden Reece also played well with eight stops including 0.5 tackles for a loss. Hendrix quarterback Sam Peters finished with 414 passing yards and a conference-record seven touchdowns.

"When you own your breath, nobody can steal your peace." —unknown



### SATURDAY MORNING YOGA

8:30-9:45, with Richard Barrali  
at the Sewanee Community Center

All levels welcome.

Practice is somewhere between challenge and ease.

Classes for every BODY!

For more info call 423-667-9075 or email richbarrali@gmail.com



### Down Home, Down the Street

754 West Main St., Monteagle  
(931) 924-3135

8 a.m. to 9 p.m. 7 days a week



Sewanee freshman Michael Barry launches a shot against Emory &amp; Henry.

## Wasps Sting Tigers by 26

Down 28 points at halftime, the Sewanee men's basketball team could not overcome its slow start, falling 83-57 at Emory & Henry College on Nov. 15 in Emory, Va.

The Tigers made only 22.2 percent of their attempts the opening 20 minutes. Comparably, the host Wasps hit 52.6 percent of their shots in the first half.

Sewanee never led in the game. Individually, senior Jordan Williams paced Sewanee with 21 points. Freshman Adrian Thomas added 12 points, while Brody Stone finished with five points and five rebounds.

Reserve Colin Molden led five Emory & Henry players in double figures with 16 points.

Sewanee will host its first home game of the season against Boyce today (Friday). Tipoff is scheduled for 6 p.m. inside Juhan Gymnasium.

**Fireflies**  
Twinkling Diamonds Light Up Her World

SCAN TO VIEW A VIDEO OF FIREFLIES IN MOTION  
[bit.ly/fireflies.com/video.html](http://bit.ly/fireflies.com/video.html)

Center Diamonds Move & Twinkle

**diamonds for you**

**Dollar Tree Plaza  
Decherd, TN  
(931) 967-4028  
M - F - 9:00 - 5:30  
Open SAT 11/26/16  
Full Service Jeweler  
Since 1984  
[www.diamondsforyou.org](http://www.diamondsforyou.org)**

**K&N Maintenance and Repair**  
Your "honey-do" list helper!  
A one-stop solution  
for all your home  
improvement needs  
**931-691-8656**

**MICHELLE M. BENJAMIN, JD**  
Attorney & Counselor at Law

201 FIRST AVENUE, NORTHWEST  
WINCHESTER, TENNESSEE 37398

(931) 962-0006  
Fax: (931) 967-8613

**ACE**  
The helpful place.

**HENLEY HOME CENTER**

CALL OR COME IN  
FOR A FREE QUOTE  
FINANCING AVAILABLE

Comfort Built Storm Door  
**GOOD \$69.99 BETTER \$99.99**  
Larson Storm Door **BEST \$229.99** **HOT BUY!**

**YETI Mug \$39.99**  
**YETI Mug \$29.99**  
**YETI Cooler \$349.99**

1765 Decherd Blvd. • Decherd, TN • 931-967-0020  
Mon.-Fri. 7 a.m.-6 p.m., Sat. 8 a.m.-5 p.m., closed on Sun.

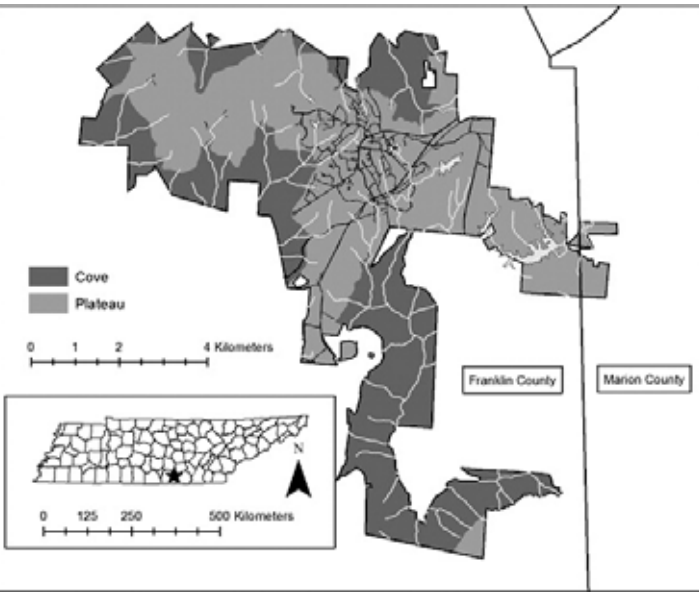


# NATURENOTES

Last week's Nature Note photo, Pickerel weed in Basin 3, was by Mary Priestley.

### Bald Eagle Sighting

Annie Armour reports "Chuck and I were just driving towards Tracy City when a Bald eagle crossed the road in front of us and sailed off into the woods with something big in its talons. I've never seen a bald eagle around here before so it was a real treat."



Map of the University of the South lands with location within Tennessee. Plateau forest type is shown in dark gray, and cove forest type is shown in lighter gray. Streams and water bodies are shown in light gray. Paved roads and county lines overlay the map in black. From The Vascular Flora of the University of the South, Sewanee, Tennessee

### Celebrate the Herbarium

On Nov. 4, as part of the Homecoming events, the Sewanee Herbarium held an open house celebrating several accomplishments of the Herbarium and honoring Director Emeritus George Ramseur. Next week's Nature Note will elaborate on Ramseur and the book he inspired, authored by Mary Priestley.

This week, the focus is on the flora of the Domain, which was published in the September issue of Castanea, the journal of the Southern Appalachian Botanical Society, and is available online at <castaneajournal.org/doi/full/10.2179/16-086>, thanks to the University. This flora is a list of the 1,118 different vascular plants found on the 13,000 acres of the Domain. It represents 20 years of work by many volunteers and students under the direction of current Herbarium Director Jon Evans and plant collections that began with the arrival of Harry and Jean Yeatman and even before that time. The significance of this flora shows in that it represents 39 percent of the number of vascular plants in the recently published flora of the state of Tennessee and 69 percent of the plant species in the southern Cumberland Plateau region. This makes the flora list and plant collection a great resource for scientific research and for management of the Domain. It is also the first publication to describe the plant communities of the Domain, 15 of them, ranging from sandstone outcrop and bluff to lawn and floodplain. A unique accomplishment in many ways.

—reported by Yolande Gottfried



Painted Snake Coiled Forest snails (*Anguispira picta*) found at Buck Creek Cove in Franklin Co. (Photo Courtesy: Alan Cressler)

## Sherwood Forest Conservation Effort Protects Endangered Wildlife Habitat

The Conservation Fund and the Land Trust for Tennessee, in partnership with the State of Tennessee, announced the protection of 4,061 acres of forestland in the South Cumberland region. With funding from the Land and Water Conservation Fund (LWCF)—through both the U.S. Forest Service's Forest Legacy Program and the U.S. Fish and Wildlife Service's Cooperative Endangered Species Conservation Fund—more than eight miles of streams in the Crow Creek Valley and vital habitat for more than one-third of all the federally threatened painted snake coiled forest snails known to exist have been conserved.

Located an hour west of Chattanooga and adjacent to Franklin State Forest and Carter State Natural Area, the surface of the property will be managed by the State for public access and recreation, drinking water quality for the downstream community of Sherwood, wildlife habitat protection and sustainable forest management. The Tennessee Department of Agriculture's Division of Forestry will manage a portion of the newly protected land as part of Franklin State Forest, expanding future hunting access. The Tennessee Department of Environment and Conservation will manage the rest as part of Carter State Natural Area and South Cumberland State Park.

"By providing protection of threatened species and preserving one of Tennessee's most scenic lands, Tennessee State Parks will preserve and protect this wild place forever," said Brock Hill, Deputy Commissioner for Parks and Conservation. "The South Cumberland State Park area is unique in many ways. We look forward to managing this land for public recreation and the benefit of all state park guests."

The Conservation Fund, with transactional support from The Land Trust for Tennessee, purchased 3,893 acres earlier this year from a private mining company, which retained the rights to mine limestone underneath the property for the next 50 years. This will allow the company to continue operations and maintain local mining jobs. In agreement with the U.S. Fish and Wildlife Service, the company donated an additional 168 acres to mitigate for impacts to the painted snake coiled forest snail habitat.

This innovative conservation effort was made possible with funding from the LWCF—a bipartisan, federal program that uses a percentage of proceeds from offshore oil and gas royalties, not taxpayer dollars—which was provided through the merit-based Forest Legacy Program and was implemented in partnership with the Tennessee Department of Agriculture. LWCF funding has leveraged significant public and private funding from the Tennessee State Lands Acquisition Fund, the Open Space Institute's Resilient Landscapes Initiative and South Cumberland Landscape Fund and the U.S. Fish and Wildlife Service's Recovery Land Acquisition Grants program, provided through Section 6 of the Endangered Species Act. LWCF is annually funded by the U.S. Congress, including Tennessee's U.S. delegation representing Franklin and Marion counties: U.S. Senator Lamar Alexander, U.S. Senator Bob Corker and U.S. Representative Scott Desjarlais.

The painted snake coiled forest snail is only found in Franklin County, Tennessee, with the entire known population inhabiting privately owned land prior to this conservation effort. In addition to the snail, this project protects habitat supporting the federally endangered Morefield's leather flower as well as seven additional rare species of plants and animals. Identified as a "hot spot" for ecological resiliency, the land is also likely to support wildlife far into the future.

The Sherwood Forest project was supported through the Open Space Institutes' Resilient Landscapes Initiative and Southern Cumberland Land Protection Fund, which are made possible with funding from the Doris Duke Charitable Foundation, Lyndhurst Foundation, Benwood Foundation and Merck Family Fund. These initiatives seek to build capacity of land trusts working to respond to climate change.



Jocelyn



Lady Jinglehopper

## Pets of the Week

Animal Harbor offers these two delightful pets for adoption.

Jocelyn is a delightful young adult Lab/Shepherd-mix girl who is very happy and sociable. She'll snuggle right up to you and make the perfect companion on a cold winter night. Jocelyn is heartworm-negative, up-to-date on shots, microchipped and spayed.

Lady Jinglehopper is a 4-month-old orange and white Tabby kitty. She is very playful, but she also enjoys her lounging time as well. If a cuddle buddy is what you seek, look no further! Lady is negative for FeLV and FIV, house-trained, up-to-date on shots, and she will be spayed before she goes home.

Every Friday is Black Friday at Animal Harbor. On Fridays, adoption fees will be reduced 50 percent for black or mostly black pets more than 4 months old who have been at Animal Harbor for more than a month. Pets adopted from Animal Harbor qualify for a free post-adoption wellness exam by local veterinarians.

Animal Harbor is located at 56 Nor-Nan Road, off AEDC Road, in Winchester. Call Animal Harbor at 962-4472 for information and check out the other pets at <www.animalharbor.org>. Enter the drawing on this site for a free spay or neuter for one of your pets. Help Animal Harbor continue to save abandoned pets by sending donations to Animal Harbor, P.O. Box 187, Winchester, TN 37398.

## BUG PROBLEMS?

We can help! Call us for a free inspection!

### BURL'S TERMITE & PEST CO.

TERMITE—PEST—VAPOR CONTROL  
Bonded • Insured • Home-Owned & Operated  
105 Ake St., Estill Springs  
(931) 967-4547 or [www.BurIsTermite.com](http://www.BurIsTermite.com)  
Charter #3824 • License #17759



myerspoint.net

MYERS POINT at Sewanee offers a rare opportunity to enjoy a private community that celebrates American architecture, lifestyle, protected forests, cultivated lakes and panoramic views on Middle Tennessee's Cumberland Plateau. If you want to live surrounded by nature, history, beauty, quality and serenity, you'll want to call it home.

- 480-acre private gated community
- 24 exclusive home sites; lakeside or bluff vista
- Timeless, organic, craftsman architecture standards
- Land Trust for Tennessee perpetually protected forests
- Over four miles of walking and riding trails
- Community barn, pastures, resting benches and fire pit
- Minutes from the University of the South

John Goodson • (931) 703-0558 • [jgoodson@myerspoint.com](mailto:jgoodson@myerspoint.com)

### Adaptive Landscape Lighting

Crafted LED Illumination of Architecture, Landscape, Outdoor Living Spaces, Security and Safety Concerns

Beautify and add hours to your outdoor living. Subtly illuminate dark, uneven steps and pathways. Save on electric bills! Receive a complimentary consultation. Call us today!

Bonded • Insured • Experienced • Residential and Commercial

**Paul Evans : 931-952-8289**  
Sewanee • [pevans@adaptiveenergy.org](mailto:pevans@adaptiveenergy.org)

## Weather

DAY	DATE	HI	LO
Mon	Nov 07	72	47
Tue	Nov 08	66	49
Wed	Nov 09	60	39
Thu	Nov 10	66	40
Fri	Nov 11	62	40
Sat	Nov 12	63	42
Sun	Nov 13	62	38
<b>Week's Stats:</b>			
Avg max temp =		64	
Avg min temp =		42	
Avg temp =		53	
Precipitation =		0.0"	

Reported by Sandy Gilliam  
Domain Ranger



# Classifieds

## MESSENGER DEADLINES

News & Calendar:  
Tuesday, 5 p.m.  
Display Advertising:  
Monday, 5 p.m.  
Classified Advertising:  
Wednesday, noon

## ART/WOODWORKING

### The Gnarled Oak

Antique  
furniture refinishing and  
Chair caning  
(931) 592-9680  
Bill Childers, Prop

Stephenson's  
**SCULPTURES**  
**IN BRONZE**  
Jeanie Stephenson  
(931) 691-3873  
www.stephensonsbronze.com

## CATERING

**Sewanee SWEETS**  
Sinfully Delicious.  
(931) 598-5205  
sewaneesweets@gmail.com

## COMPUTERS

### COMPUTER HELP

Troubleshooting & Tutorial  
Computer slowed down over  
time? Call for a tune-up.  
Judy Magavero, (931) 924-3118

## EMPLOYMENT

**CELLO TEACHER WANTED:** Sewanee/  
Monteagle area for adult beginner. Contact  
Glyn Ruppe Melnyk at <gruppemelnyk2015@  
gmail.com> or (610) 357-6813. Student teacher  
welcome, flexible schedule.

**DRIVERS:** CO & O/OP'S OTR Excellent  
Pay, Home-time & Benefits \$3500 Sign-On,  
CO Only. CDL-A w/Tank/Haz end. (855)  
252-1634

**DRIVERS:** Local & Regional-home weekly!  
Great Benefits! 401K, Paid vacation/holidays.  
CDL-A, 1year experience. <www.gptruck.com>  
(800) 922-1147.

**MECHANIC/TECH II:** Excellent Hourly  
Pay, Full Comprehensive Benefits, Retirement  
Plan+more! Many Opportunities for Advance-  
ment! Penske Truck Leasing: (855) 395-1826.

**SALONS?**  
**CATERING?**  
**ANIMAL**  
**CARE?**  
**EXERCISE**  
**CLASSES?**  
**MOVERS?**  
**PAINTERS?**  
**DAY CARE?**

Bookmark it! <www.  
TheMountainNow.com>.

## FOR RENT

**FOR RENT, COWAN:** 1BR furnished apart-  
ment. All utilities paid. Beautiful view of Sewanee  
mountain. (931) 967-2967.

**HOUSE FOR RENT:** 3 bedrooms, 2 1/2 baths,  
large kitchen, livingroom and family room.  
On campus, utilities included in the rent. Call  
(931) 308-7259.

**P/T SEWANEE SENIOR STUDENT:**  
Seeking rental housing for Easter semester  
2017. Close to campus preferred but not  
required. Non smoker, no pets. January–May  
2017. Email <nbg.stonetable@gmail.com>.

**ROOMMATE WANTED:** Eclectic artist seeks  
dependable person w/references. Must like and  
may have a pet. Large home on a quiet country  
setting acre in Monteagle. Call (423) 596-0623.

**SHAKERAG BLUFF CABIN:** Beautiful  
west-facing bluff view. Near University. Extremely  
secluded. Sleeps 4–5. C/H/A. Great fishing,  
swimming. Weekend or weekly rentals. (423)  
653-8874 or (423) 821-2755.

**STONE COTTAGE FOR RENT:** Available Jan.  
1 through graduation 2017 and other selected  
dates. Near School of Theology, 3BR/2BA, fire-  
place, patio, deck. Fully furnished, all appliances  
including washer/dryer. C/H/A, wi-fi, cable TV.  
Email <dgc983@gmail.com>.

## TOM'S PLACE

An Event Hall  
for your business or  
personal gathering.  
335 W. Main St., Monteagle  
Tom Banks  
tombanks9@yahoo.com  
931-636-6620

## FOR SALE

**FIREWOOD FOR SALE:** \$60/rick, \$70  
stacked. Call (931) 592-9405. Leave message.

**FOR SALE OR RENT:** 4BR/2BA 2-story house  
with all appliances, C/H/A. On Gudger Rd.  
(931) 212-0447.

**HOME FOR SALE:** 3BR/2BA double-  
wide, on in-ground foundation. Front porch,  
large back deck. Extensively renovated  
master suite, new paint, new roof. On 1+  
acre in Monteagle, six miles from Sewanee,  
45 minutes from Chattanooga. Partially  
furnished, appliances. \$60,000. Must see to  
appreciate. (423) 488-8366.

## LOST COVE

**BLUFF LOTS**  
www.myerspoint.net  
931-703-0558

**TWO BEAUTIFUL WOODED HOMESITES:**  
R-1 zoned in Monteagle. All utilities and city  
services. 1.2 acres, \$21,000. 2.3 acres, \$31,000.  
(850) 261-4727 or (850) 255-5988.

## GARBAGE/RECYCLING

### CURBSIDE RECYCLING

Residential curbside recycling  
pickup in Sewanee is on the first  
and third Friday of each month.  
Recyclable materials must be  
separated by type and placed in  
blue bags by the side of the road no  
later than 7:30 a.m. Please do not  
put out general household trash on  
this day. Blue bags may be picked  
up in the University Lease and  
Community Relations Office, 400  
University Ave. (the Blue House) or  
at the Physical Plant Services office  
on Georgia Avenue.

### Glass Recycling in Sewanee



Available 7 a.m. to 6 p.m.,  
Monday through Saturday,  
outside of the PPS Warehouse on  
Kennerly Avenue.

**Reuse Reduce Recycle**



## CONVENIENCE/ RECYCLING CENTER HOURS

The Convenience Center for  
household garbage, trash and  
recycling is located on Missouri  
Avenue. Its regular hours are:  
Monday, noon–5 p.m.; Tuesday  
through Friday, 2–5 p.m.; Saturday,  
8 a.m.–4 p.m.; Closed Sunday.  
Closed on national holidays. There  
are blue recycling bins for metal  
(tin, appliances, etc.), newspapers/  
magazines, plastic, plastic bottles,  
cardboard and aluminum cans.  
Glass recycling is on Kennerly Ave.  
behind PPS.

## LAWN/TREE CARE

**CHAD'S LAWN &  
LANDSCAPING**  
-FREE ESTIMATES-  
\* Lawn care & Design (Mulch & Planting)  
ALSO: \* Tree Trimming & Removal  
\* Pressure Washing \* Gutter Cleaning  
\* Leaf Pickup & Blowing \* Road Grading  
\* Garden Tilling \* Rock Work  
(931) 308-5059

### EAGLE LANDSCAPING & LAWN MAINTENANCE CO.

Now Offering Specials for  
**FALL CLEANUP!**  
We offer lawn maintenance, landscaping,  
hedge/tree trimming & more!  
Please call for your free estimate  
(931) 598-0761 or (931) 636-0383



**King's Tree Service**  
Topping, trimming,  
bluff/lot clearing, stump  
grinding and more!  
\*Bucket truck or climbing\*  
Free wood chips with job  
Will beat any quoted price!  
Satisfaction guaranteed!!  
—Fully licensed and insured—  
kingstreeservice.com  
Call (931) 598-9004—Isaac King

**MOWN AND GROWN:** Autumn leaves  
can be your lawn's friend. Don't rake; let  
us mulch them! We'll take care of your  
yardwork so you don't have to! Call for free  
estimate: (931) 636-7111.

*Support local businesses!*

**CALL US! • 598-9949**  
**Classified Rates:**  
\$3.25 first 15 words,  
10 cents each addl. word  
**Now you can charge it!**  
**(\$10 minimum)**

## One-Stop Transportation Information: dial 511



### SHARE the TRAIL

#### Rule #4

No motorized vehicles,  
except motorized  
wheelchairs.

WALK • RUN • CYCLE  
TOGETHER

mountaingoattrail.org

## LOCAL SERVICES

**K&K CLEANING SERVICE:** Residential  
and office. Sewanee, Monteagle, Tracy City.  
Call Katie at (615) 278-0248 for rates and  
references.

**COWAN COIN LAUNDRY:** Seven scenic miles  
from Sewanee. Standard and large machines.  
213 E. Cumberland next to Cowan Post Office.  
Open 24/7.

**MAMA PAT'S DAYCARE**  
**MONDAY-FRIDAY**  
**Open 4 a.m.; Close 12 midnight**  
3-Star Rating  
Meal & Snack Furnished  
*Learning Activities Daily*  
**(931) 924-3423 or (931) 924-4036**

Walk-In Cooler Filled with Flowers!  
—TUXEDO RENTALS—  
*Monteagle Florist*  
333 West Main Street, Monteagle  
(931) 924-3292

## MASSAGE

**Regina Rourk Childress**  
Licensed Massage Therapist  
[www.reginarourk.com](http://www.reginarourk.com)  
~ GIFT CERTIFICATES ~  
(931) 636-4806

### CHARLEY WATKINS PHOTOGRAPHER

Sewanee, TN  
(931) 598-9257  
<http://www.photowatkins.com>

"Just a trifle? Ha! There is nothing  
so important as a trifle!" ~A.C.D.

Adam Randolph ~ psychotherapist  
randolph.adam@gmail.com

**SARGENT'S SMALL ENGINES:** Repairs to All  
Brands of Equipment: Lawn mowers (riding or  
push), String trimmers, Chainsaws, Chainsaw  
sharpening. New saw chains. Pickup and Delivery  
Available. (931) 212-2585, (931) 592-6536.

**KT TAXI SERVICE**  
local & further  
no website, just call/text  
\$12/hr. cash/check/paypal  
256-426-0232

### WATER SOLUTIONS

Joseph Sumpter  
Owner/Licensed Residential Contractor  
Specializing in drainage and rainwater  
collection systems  
598-5565  
[www.josephsremodelingsolutions.com](http://www.josephsremodelingsolutions.com)

## MOVING HELP

**THE LOCAL MOVER**  
Available for Moving Jobs  
Call or Text Evan Barry  
**615-962-0432**  
Reviews at <www.thelocalmoverusa.com>.

### The Moving Man

Moving Services • Local or Long Distance  
Packing Services • Packing Materials  
**1-866-YOU-MOVE (931) 968-1000**  
[www.themovingman.com](http://www.themovingman.com)  
Since 1993 U.S. DOT 1335895



### BE SAFE! OBEY THE BICYCLE HELMET LAW

Tennessee law requires all persons  
under the age of 12 to wear a hel-  
met while riding a bicycle on any  
state road. University Avenue is a  
state road and, therefore, subject to  
the law. The act also contains provi-  
sions requiring restraining seats  
on bicycles for passengers who are  
children under 40 pounds or who  
are less than 40" tall.

## PUBLIC NOTICE

**THE SEWANEE UTILITY DISTRICT  
OF FRANKLIN AND MARION COUNTIES  
BOARD OF COMMISSIONERS** will hold its  
regular meeting at 5 p.m. on MONDAY, Nov.  
21, at the utility office on Sherwood Road. If a  
customer is unable to attend but wishes to bring a  
matter to the board, call 598-5611, visit the office,  
or call a board member. Your board members are  
Art Hanson, Randall Henley, Ronnie Hoosier,  
Karen Singer and Ken Smith.

**SEWANEE SENIOR CITIZENS ANNUAL  
CHRISTMAS BAZAAR:** Monday–Friday  
(9–2) Saturday (9–1) Dec. 5–10. Tickets  
for chance to win \$250 cash, antique quilt  
[1910] or new sewing machine on sale as  
of Nov. 1. There will be three separate draw-  
ings; one ticket enters you for all three. \$2 per  
ticket. Drawing will be held Tuesday, Dec. 13,  
at Center Christmas lunch. Donations for the  
white elephant sale are being accepted now  
at the Center. No clothing accepted. Need  
donations of arts and crafts and canned  
goods. Baked goods accepted during week  
of Bazaar. Door prizes will be given away  
each day of the Bazaar. Don't have to be  
present to win door prizes or main drawing.  
For more info call Judy Rollins, 598-0645.



## Reporting Fires

For any kind of fire everyone  
should contact their nearest area  
police department/dispatch. Dis-  
patch will notify the correct depart-  
ment for that jurisdiction. Most  
woods/brush fires will be handled  
by the state forestry department.  
Sewanee's fire department will  
respond to fire emergencies when  
a home or structure is in danger  
for our area. Also Sewanee's fire  
department provides mutual aid to  
other departments and the forestry.

Sewanee Police Department's  
phone number is: 931-598-1111;  
Franklin County Sheriff's Dept.  
is 931-967-2331; Monteagle's Po-  
lice/Fire is 931-924-2077. For life  
threatening emergencies dial 911.



New to town and want to get  
on Sewanee Classifieds?  
go to  
[groupspaces.com/Sewanee/](http://groupspaces.com/Sewanee/)  
1. Request to Join Group.  
2. Follow the instructions.  
3. Submit membership payment,  
\$10 annual.

When payment is received, the  
Director of Classifieds will go  
through your request and  
approve membership.  
Announcements Only are  
free of charge.

Contact the Director of Classifieds at  
[sewaneeecivic@gmail.com](mailto:sewaneeecivic@gmail.com)  
Sponsored by the  
Sewanee Civic Association  
[www.sewaneeecivic.wordpress.com](http://www.sewaneeecivic.wordpress.com)

## YARD SALE/FLEA MARKET

**INSIDE YARD SALE:** Fall & Winter Apparel  
for All Family Members + games, movies, more!  
Friday/Saturday, 8 a.m.–?? Midway Market, 969  
Midway Rd., Sewanee.

**I-24 Flea Market**  
**200 Vendors!**  
**22 Years!**  
**I-24 Exit 134**  
**Saturday & Sunday**  
**(931) 235-6354**

## Advertising in the Messenger works!

Phone 598-9949  
to find out how to make it  
work for you.





## BARDTOVERSE

by Phoebe Bates

O wild West Wind, thou breath of Autumn's being,  
Thou, from whose unseen presence the leaves dead  
Are driven, like ghosts from an enchanter fleeing,

Yellow, and black, and pale, and hectic red,  
Pestilence-stricken multitudes: O thou,  
Who chariotest to their dark wintry bed

The winged seeds, where they lie cold and low,  
Each like a corpse within its grave, until  
Thine azure sister of the Spring shall blow

Her clarion o'er the dreaming earth, and fill  
(Driving sweet buds like flocks to feed in air)  
With living hues and odours plain and hill:

Wild Spirit, which art moving everywhere;  
Destroyer and preserver; hear, oh hear!

from "Ode to the West Wind," by Percy Bysshe Shelley

# Community Calendar

### Today, Friday, Nov. 18

- 7 a.m. Curbside recycling
- 9 a.m. Bake sale, Citizen's Tri-County Bank, Monteagle
- 9 a.m. CAC office open, until 11 a.m.
- 10 a.m. Games day, Senior Ctr
- 12 p.m. Spinal Spa with Kim, Fowler Ctr
- 5 p.m. Sounds of Sewanee concert, Blue Monarch fundraiser, Guerry Hall
- 6 p.m. Little League meeting, LL Field, Ball Park Road
- 7:30 p.m. Movie, "Kubo and the Two Strings," SUT
- 7:30 p.m. Performing Arts, organ recital, Rodland, All Saints'

### Saturday, Nov. 19

- St. Andrew's-Sewanee Thanksgiving Break, through Nov. 27
- 8:30 a.m. Yoga with Richard, Community Center
- 9:30 a.m. Hospitality Shop open, until noon
- 10 a.m. UDC Meeting, Cowan
- 3:30 p.m. Reynolds plaque dedication, All Saints'
- 6 p.m. Animal Harbor Party for Paws, St. Mark's Hall, Otey, until 8:30 p.m.
- 7 p.m. Electric Arcadia fundraiser, Legion Hall, until 10 p.m.
- 7:30 p.m. Movie, "Kubo and the Two Strings," SUT

### Sunday, Nov. 20

- 3 p.m. Knitting circle, instruction, Mooney's, until 5 p.m.
- 4 p.m. Yoga with Helen, Community Ctr
- 7:30 p.m. Movie, "Kubo and the Two Strings," SUT

### Monday, Nov. 21

- MC Schools Thanksgiving Break, through Nov. 25
- 9 a.m. CAC office open, until 11 a.m.
- 9 a.m. Coffee with Coach Dickie McCarthy, Blue Chair
- 9 a.m. Yoga with Sandra, St. Mary's Sewanee
- 10:30 a.m. Chair exercise with Ruth, Senior Ctr
- 1:30 p.m. Sewanee Book Club, more info 598-0733
- 5 p.m. Sewanee Utility District board, 150 Sherwood Rd.
- 5:30 p.m. Yoga with Sandra, St. Mary's Sewanee
- 5:30 p.m. Yoga for Healing with Lucy, Comm Center
- 6 p.m. Karate, youth, Legion Hall; adults, 7 p.m.
- 7 p.m. Centering Prayer, Otey sanctuary

### Tuesday, Nov. 22

- 9 a.m. CAC office open, until 11 a.m.
- 9 a.m. Pilates with Kim, beginners, Fowler Ctr
- 9:30 a.m. Crafting ladies, Morton Memorial, Monteagle
- 10:30 a.m. Bingo, Sewanee Senior Ctr
- 11:30 a.m. Grundy County Rotary, Dutch Maid, Tracy
- 12 p.m. Pilates with Kim, intermediate, Fowler Ctr
- 5 p.m. Acoustic jam, water bldg next to old GCHS

### Wednesday, Nov. 23

- Messenger on Break, through Nov. 27
- FC Schools Thanksgiving Break, through Nov. 25
- GC Schools Thanksgiving Break, through Nov. 27
- University, School of Theology Thanksgiving Break, through Nov. 28
- 9 a.m. CAC office open, until 11 a.m.; also 1-3 p.m.
- 10 a.m. Art Wednesdays, 104 Monterey St., Cowan
- 10 a.m. Pilates with Kim, intermediate, Fowler Ctr
- 10 a.m. Senior Center writing group, 212 Sherwood Rd.
- 10:30 a.m. Chair exercise with Ruth, Senior Ctr
- 12 p.m. Pilates with Kim, beginners, Fowler Center
- 5:30 p.m. Yoga with Helen, Comm Ctr

### Thursday, Nov. 24 • Thanksgiving Day

### Friday, Nov. 25

- 8 a.m. Franklin Co. Hunger Hike, Carter State
- 9 a.m. Grundy Co. Hunger Hike, Grundy Lakes
- 10 a.m. Marion Co. Hunger Hike, Denny Cove
- 10 a.m. Sequatchie Co. Hunger Hike, Palmer
- 12 p.m. CAC Food with Friends, St. Mark's Hall, Otey

### LOCAL 12-STEP MEETINGS

#### Friday

- 7 a.m. AA, open, Holy Comforter, Monteagle
- 7 p.m. AA, open, Christ Church, Tracy City

#### Saturday

- 7:30 p.m. NA, open, Decherd United Methodist
- 7:30 p.m. AA, open, Claiborne Parish House, Otey

#### Sunday

- 6:30 p.m. AA, open, Holy Comforter, Monteagle

#### Monday

- 5 p.m. Women's 12-step, Brooks Hall, Otey
- 7 p.m. AA, open, Christ Church, Tracy City

#### Tuesday

- 7 p.m. AA, open, First Baptist, Altamont
- 7:30 p.m. AA, open, Claiborne Parish House, Otey
- 7:30 p.m. CoDA, open, Holy Comforter, Monteagle

#### Wednesday

- 10 a.m. AA, closed, Clifftops, (931) 924-3493
- 4:30 p.m. AA, "Tea-Totallers" women's group, Clifftops, (931) 924-3493
- 7 p.m. NA, open, Decherd United Methodist
- 7:30 p.m. AA, open, Holy Comforter, Monteagle

#### Thursday

- 12 p.m. AA, (931) 924-3493 for location

Monteagle Sewanee, REALTORS®

Lakefront Homesite

3+A Cooley's Rift



MLS#1775947 ~ Lake Louisa Loop  
\$69,900

Clifftops Corner Lot

5+A Perked, Corners Marked



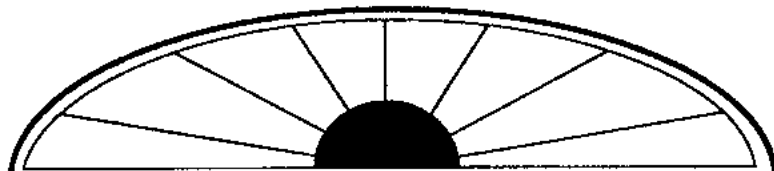
MLS#1688511 ~ Winterberry Drive  
\$82,900

Competent, Caring, Friendly, Fair  
We're Here for You!

www.monteaglerealtors.com • 931-924-7253

337 West Main St., Monteagle

Find all the local MLS listings on our updated website!



wm.c.mauzy construction co.

Bill Mauzy, Owner, General Contractor

www.mauzyconstruction.com

931.598.0686 (office)

billmauzy@me.com

931.580.0686 (cell)

## Speak Up.

Help friends get information. Help local businesses succeed.  
Help our Mountain communities.

Tell businesses when you see their ads. Let businesses know  
what they're doing right. Spread good news!



The first graders at SES enjoyed "Arthur" Day in their classrooms. Photo by Sewanee Elementary