

Santa Claus is Coming!

Lighting of the Angel Park's Christmas Tree

The shops of downtown Sewanee will light up at 4:30 p.m., Friday, Nov. 30, in Angel Park for the very first "Lighting of the Christmas Tree." Bonnie and John McCardell will be there to turn the lights on for the tree. Santa Claus will stop by, and parents are encouraged to bring their cameras for snapshots with Santa and the kids.

Community members are asked to bring unwrapped toys for Operation NOEL, which will be collected by members of the Sewanee Fire Department and distributed to children in need across the Sewanee community. Also, gifts of money and nonperishable food will be collected for the Community Action Committee (CAC), which provides food and financial assistance to families in the greater Sewanee community.

Refreshments will be served during the event. The Sewanee Chorale will be leading everyone in Christmas carols. Organizers hope that this celebration can be a new holiday tradition in Sewanee.

This event is organized and sponsored by the Sewanee Business Alliance, an informal group of business owners and leaders in Sewanee that promote, plan and execute community and business projects to improve Sewanee's image. For more information go to < <http://sewanee.biz/> >

In case of inclement weather for the tree lighting, refreshments and Santa will be hosted by Locals, across the street from Angel Park in the Sewanee Village.



Is it Col. Sanders?

SES "Turkey Protection" Project

Sewanee Elementary School first-grade students created disguises for their turkey friends to help them survive the upcoming Thanksgiving holiday and avoid being turned into the main course for dinner.

Many of their imaginative creations are scattered throughout this week's paper. See them in color at < www.sewaneeessenger.com >.



Meredith Foster (left) and Madison King dance in the Gingerbread Scene of "The Nutcracker: A Yuletide Ballet" on Nov. 17. Photo by Lyn Hutchinson

Decorating All Saints' Chapel for Advent

Come help in the greening of All Saints' Chapel on Friday, Nov. 30. This annual workday is in preparation for the 53rd Annual Festival of Lessons and Carols on the first weekend in December. Work begins at 9 a.m. on Friday and continues through the day.

Area residents who have unique items from their gardens are encouraged to contact Ken Taylor at Taylor's Mercantile. He is especially interested in Nandina and holly berries, hydrangea and anything that might be unusual and pretty in the arrangements.

All levels of experience are welcome. Coffee and pastries are served throughout the morning, and a light lunch will be offered at noon. Taylor will direct the day's activities.

To make a contribution toward the flowers and poinsettias used during the festival weekend, either in thanksgiving or in memory of a loved one, contact Virginia Cunningham at the chapel office at 598-1274, or by email to < vcunning@sewanee.edu > by Monday, Nov. 26. These names will be listed in the Sunday morning bulletin on Dec. 2.



The Tennessee State Museum inducted Sewanee artist Arlyn Ende into its Costume and Textile Institute on Nov. 9 in Nashville. Also inducted were costumer Katy Kattelman of New York and Nashville; Phillip Nappi, Italian artisan shoemaker with a studio in Germantown; and Big Kenny Alphin, country music star and humanitarian. Ende was honored for her lifelong career as an internationally known fiber artist. She stands here with her hand-tufted rug, "Beneath the Pond Skaters," a recent museum acquisition.

Haskell Receives National Outdoor Book Award

Stunning underwater photography. A coming-of-age story of three women. Wonder and magic in a small patch of forest. Nail biting adventure.

These are some of the themes found among the winners of the 2012 National Outdoor Book Awards. The annual awards program recognizes the best in outdoor writing and publishing.

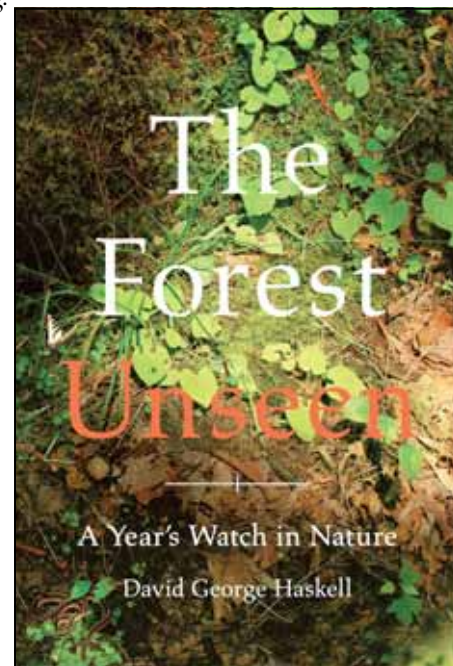
"The Forest Unseen" by David Haskell is the winner of the Natural History Literature category. Haskell describes the natural processes occurring on one square meter of an old growth forest.

"It's quite a unique and fascinating perspective," said Ron Watters, chairman of the Awards Program. "Haskell works wonders, using only a tiny patch of forest, and creates for the reader a mesmerizing account of the natural world."

Haskell is a professor of biology at Sewanee. His book focuses on a patch of forest in Shakerag Hollow on the University's campus.

Other books cited for excellence were "Beneath Cold Seas: The Underwater Wilderness

of the Pacific Northwest," by David Hall; "Almost Somewhere: Twenty-Eight Days on the John Muir Trail," by Suzanne Roberts; and "The Ledge: An Adventure Story of Friendship and Survival on Mount Rainier," by Jim Davidson and Kevin Vaughan. The awards program is sponsored by the National Outdoor Book Awards Foundation, Idaho State University and the Association of Outdoor Recreation and Education.



Community Chest Spotlight: Sewanee Elementary School

The 2012-13 Sewanee Community Chest Fund Drive is underway. The power of people helping people makes a difference in the life of the community. Sponsored by the Sewanee Civic Association, the Community Chest raises money yearly for local charitable organizations serving the area. This year's goal is \$90,000.

Since 1867 there has been a longstanding relationship between the community and the public school. For years this voluntary community commitment maintained the educational system, such as St. Paul's on the Mountain school and the school on Billy Goat Hill.

When the Sewanee Civitan Club (now the Sewanee Civic Association) was first organized, its objective of good citizenship included "a comprehensive program for the betterment and improvement of every phase of community activity." This included providing school facilities.

The Sewanee Public School was completed in 1927 through volunteer efforts and community funds. At that time, the Franklin County Board of Education agreed to pay the salaries of teachers in Sewanee, but did not provide a building because they were concerned about placing a public building on leasehold land.



The University was unable to help at that time. The school building would be on a University lease, owned by the Sewanee Civitan Club, and operated by the Franklin County School Board.

In 1933, the community built the Roosevelt Addition. In 1943, more than half of the town's Community Chest budget went to maintain the school, and pay for enrichment programs and school supplies. The county took over the maintenance of the school in 1955, when the building and land were turned over to the county as long as a school remained on that site. For a complete history of the public schools, see "Sewanee Sampler" by Arthur Ben and Elizabeth N. Chitty, 1978.

Now, the Sewanee Elementary School (SES) continues to rely on yearly funding from the Community Chest to meet the school's needs. Money from the Community Chest is used for technology and software purchases, professional development, classroom supplies, new books for

(Continued on page 4)

P.O. Box 296
Sewanee, TN 37375

AWORDFROM THEEDITOR

by Laura L. Willis



During this week of Thanksgiving, here's what I'm thankful for this year, in a mostly A to Z list:

Aaron's chocolate-chip cookies and Addison's scrambled eggs; Adirondack chairs and solar path lights; airlines that get family members home safely; all the people who keep me informed of meetings, events, lectures and concerts across the Plateau;

Angels; antibiotics; art created by friends; the autumn sunset turning pink, orange and purple from my kitchen window;

BBC's "Doctor Who" and "Sherlock;" bicycle lanes; brussels sprouts; Carmex; chit-chat at the post office; the Community Action Committee; cowboy boots; my Dad's stories; donations in honor of someone for holiday giving (skip the crowds, avoid the "stuff" mentality, and help charities in need); dragonflies; the movie "Elf;" my dog Ellie and her daily run up the oak tree; English Premiere League football;

The First Amendment; Folks at Home; free and fair elections; fresh ciabatta, croissants and Naam; friends who bring dinner when times are tough; the gazebo in Abbo's Alley; getting lost in a great book; god-children; going to the beauty shop; the Green House and Community Engagement House;

Handwritten snail mail; hydrangeas; homemade ice cream; John's special-blend coffee; KA Point; knowing the names of all the folks on the prayer list at my church (and knowing someday I'll be on that list and will be grateful that people pray for me); Lessons & Carols (and the All Saints' Chapel staff, the choir and Ken Taylor and friends who make it possible); life, liberty and the pursuit of happiness; the lunch ladies at SES, dining hall staffs of SAS and the University;

Members of the Community Council, the SUD board, the school board and the county commission; the Messenger columnists (Phoebe and Scott Bates, Jean and Harry Yeatman, John Shackelford, Annie Armour, John Bordley, Daniel Church, Virginia Craighill, Buck Gorrell, Margaret Stephens, Peter Trenchi, Pat Wiser, and Francis Walter); the Messenger's amazing staff: (April Minkler, Ray Minkler, Sandra Gabrielle, Leslie Lytle, Kiki Beavers and my partner, Janet Graham);

My Mom's pumpkin cake; Mountain family dinners with SAS kids; the Mountain Goat Trail; the murmurs of napping dogs and family members; a new brother-in-law; the nurses, physicians and staff of Emerald-Hodgson Hospital; Operation NOEL; Outreach Office spring break trips;

Pairs of pileated woodpeckers playing chase in the forest; people who work at Sewanee Utility District and Duck River Electric; the Piggy Wiggly; the QWERTY keyboard; red-shouldered hawks keening; the "regulars' table" at the Blue Chair; relationships with friends from across the political spectrum; a roaring fire in the fireplace; salted caramel anything; SAS's Wade Hall and its nifty cistern system; Sewanee's police department, fire department and EMTs; Shakerag Hollow;

Shopping locally; silent retreats at St. Mary's Sewanee; slow speed limits; "So many books, so little time"—JoAnn's motto; sunglasses; a trip to the beauty shop; turkey pot pies made with leftovers; twinkle lights year-round; unconditional love; Uno card game; veterans and active duty military personnel; a walk around Lake Cheston on Thanksgiving afternoon; the Willis family dinner conversation starter: "What's the most interesting thing that happened to you today?"; the milky Way galaxy on a moonless night; yellow ginkgo leaves; and

You, the readers of the Sewanee Mountain Messenger. Thank you. Happy Thanksgiving.

Letters

AMAZING WOMEN

To the Editor:

A huge thank you to Anna Flock and Taylor Baird of Theta Pi for organizing and promoting this year's Turkey Trot, which benefits Blue Monarch. Not only did you design the best shirts ever, but you went one step further and made sure your group understood the significance of your project by establishing friendships and relationships with our women and children beforehand. You are amazing women helping amazing women, and I wanted to thank you for a hugely successful event and for making our Blue Monarch women feel special like "one of the gang." The Theta Pi visionaries who started the Turkey Trot eight years ago would be very proud of you! Thank you, thank you, thank you!

Susan Binkley

Founder and Executive Director
Blue Monarch ■

COMMUNITY CHEST FUNDS

To the Editor:

With the Thanksgiving holiday approaching, it is time to sit and reflect on all that we are thankful for. We are thankful for the community, which makes this area such a wonderful place to live, work and visit.

We would like to thank all the community members for their support in the annual Sewanee Community Chest Fund Drive. To date, we have reached 50 percent of our goal.

Special thanks to Aaron Welch at Big A Designs for donating his graphic design skills and time for this year's fund drive promotional pieces. Thank you to Carol Ingle for keeping the bank statements, tax returns and audits for the Community Chest in order. Thank you to Marty Hawkins for putting up our Community Chest sign in front of the Sewanee Post Office. And thank you to Otey Parish and the Senior Citizens Center for their help.

Thank you to each and everyone who has donated or pledged to this year's fund drive. Your donations support local organizations that improve the quality of life for everyone in the community.

On behalf of all the 25 organizations requesting funds to help their programs, we thank you for your commitment to keep the community strong and vital.

Theresa Shackelford

President

Sewanee Civic Association ■

We're glad
you're reading
the Messenger.

THE SEWANEE MOUNTAIN MESSENGER

418 St. Mary's Ln.

P.O. Box 296

Sewanee, Tennessee 37375

Phone (931) 598-9949

Fax (931) 598-9685

Email info@sewaneemessenger.com

www.sewaneemessenger.com

Laura L. Willis, *editor/publisher*
Janet B. Graham, *advertising director/publisher*
April H. Minkler, *office manager*
Ray Minkler, *circulation manager*
Leslie Lytle, *staff writer*
K.G. Beavers, *staff writer*
Sandra Gabrielle, *proofreader*
Geraldine H. Piccard, *editor/publisher emerita*



Contributors
Phoebe & Scott Bates
Jean & Harry Yeatman
John Shackelford
Annie Armour
John Bordley
Daniel Church
Virginia Craighill
Buck Gorrell
Margaret Stephens
Peter Trenchi
Pat Wiser
Francis Walter

Published as a public service to the Sewanee community. 3,500 copies are printed on Fridays, 46 times a year, and distributed to 26 Sewanee-area locations for pickup free of charge.

This publication is made possible by the patronage of our advertisers and by contributions from The University of the South (print production) and the Sewanee Community Chest.

SUBSCRIPTIONS \$75 first class.

All material in the Sewanee Mountain Messenger and on its website are copyrighted and may not be published or redistributed without written permission.

PARTY FOR PAWS A SUCCESS

To the Editor:

We want like to thank all the participating restaurants, businesses and individuals who contributed to the Franklin County Humane Society's Fall 2012 Party for Paws, held on Nov. 17. The buffet, the bar and the silent auction were a huge success. We were able to raise nearly \$6,000 for Animal Harbor because of your generosity and support.

The local restaurants outdid themselves, and it is because of them that we had such a spectacular and delicious buffet: Julia's Fine Foods, the Blue Chair, Dave's Modern Tavern, Ivy-Wild, Natural Bridge Events, Pearl's, Shelley and Ward Cammack, Sysco, Sernicola's and Arezzo's. A special thanks also to Mike and Tina Gifford (Village Wine and Spirits), to Ken Taylor for the flowers, to the University of the South for the use of Cravens Hall and to volunteers Jennifer Jane-way, Lynne Vogel, Lizzie Duncan, Walter Castle, Gloria Stuart, and University students Lindsey Selden and Carol Anne Poyman. We could not have done it without you.

And finally, thank you to all who attended the event and made it a success. It is wonderful to see such support for the homeless dogs and cats of Franklin County.

Patricia Thompson

President

Franklin County Humane Society ■

Serving Where Called

Please keep the following individuals, their families and all those who are serving our country in your thoughts and prayers:

Michael Evan Brown
Jennifer Lynn Cottrell
James Gregory Cowan
Nathaniel Andrew Garner
Robert S. Lauderdale
Dakota Layne
Byron A. Massengill
Alan Moody
Brian Norcross
Christopher Norcross
Dustin "Dusty" Lee Parker
Michael Parmley
Peter Petropoulos
Charles Schaerer
Melissa Smartt
J. Wesley Smith
Charles Tate
Tyler Walker
Jeffery Alan Wessel
Nick Worley

If you know of others in our Mountain family who are serving our country, please give their names to American Legion and Auxiliary member Louise Irwin, 598-5864.



402 West Main St. • Monteagle • 931-924-3355
www.paparons.net
Sunday–Thursday 11–9
Friday and Saturday 11–10

**Don't forget to
include Papa Ron's
in your holiday
celebrations!**



**Call today
to book your
holiday gathering!**



High Point
HISTORIC DINING ON THE SUMMIT
BETWEEN CHICAGO & MIAMI
224 East Main St
Monteagle
931-924-4600
Sun to Thu 5 to 9
Fri and Sat 5 to 10
www.highpointrestaurant.net

MESSENGER Break Ahead

It is hard to imagine, but Christmas is around the corner. The next issue of the Messenger will be published on Friday, Nov. 30. There will be three issues in December: Dec. 7, Dec. 14 and Dec. 21.

The staff will take a two-week break and return to the office on Monday, Jan. 7, with the first issue of 2013 on Friday, Jan. 11.

EMAIL IT!

news@sewaneemessenger.com



Is it a UT football player?

Bradford's

Nursery & Landscaping in Winchester

STOCKED FOR ALL YOUR FALL PLANTING NEEDS

Maple ~ Oak ~ River Birch ~ Cleveland Pear ~ Dogwood
Yoshino Cherry ~ Redbud ~ Cypress ~ Holly ~ Laurel ~ Boxwood
Bottle-brush Buckeye ~ Grasses ~ Ground Cover ~ Azalea

CHRISTMAS TREES ARRIVING SOON

Balled Hemlock ~ Pine ~ Norway Spruce ~ Cypress
Cut Frazier Fir ~ White Pine



Come by and see what Richard, Nancy and Matt Bradford have for you.

Quality plants, reasonable prices, friendly faces.

FREE ESTIMATES

1136 Dinah Shore Blvd. • Winchester • Mon-Sat 9–5 • 931-967-0825

Meetings & Events

Agenda Items due for Community Council Meeting

Agenda items for the next meeting of the Sewanee Community Council are due to the provost's office by noon, Monday, Nov. 26. The council will meet again at 7 p.m., Monday, Dec. 3, at the Senior Center.

Sewanee Garden Club

The Sewanee Garden Club will meet at 1:30 p.m., Monday, Nov. 26, at the home of Claudia Porter, 43 Carriage Lane, Sewanee. James Gunnick will present the program on creating bonsai gardens. For more information and directions, contact Judy Magavero at (931) 924-3118.

EQB Gathers on Nov. 26

Jim Pierce is giving a presentation to the EQB Club at 3:30 p.m., Monday, Nov. 26, in the Torian Room of duPont Library. He will talk about "The Joys and Mysteries of Bee-keeping." This event is open to the public. For more information call Gail Watson at 598-0120.

Area Rotary Club Meetings

The Grundy County Rotary Club meets at 11:30 a.m., Tuesdays, at the Dutch Maid Bakery in Tracy City.

The Monteagle/Sewanee Rotary Club meets at the Smoke House Restaurant on Wednesday mornings. Coffee begins at 6:50 a.m.; breakfast and the meeting begin at 7 a.m. and end by 8 a.m. The Monteagle/Sewanee Rotary Club hosts a noon Thursday meeting and program at the EQB Club on the University campus.

Reservations due for Southern Tennessee Ladies Society

The Southern Tennessee Ladies' Society will meet at 10 a.m., Wednesday, Dec. 5, at the Franklin County Country Club. They will have a Christmas Bazaar at the event, as well as a buffet lunch for \$10. Reservations are due by noon, Tuesday, Nov. 27; call Tina at 967-4813 or Iris at 967-6095.

SUD Board Meeting Tuesday

The board of commissioners of the Sewanee Utility District of Franklin and Marion counties will meet at 5 p.m., Tuesday, Nov. 27, at the SUD office. The agenda includes: approval of the October minutes; the general manager's report and financial report; unfinished business—update on the constructed wetlands study and update on the build-out study; new business—upcoming election for seat A; consideration of the 2013 budget; fluoridation of treated water; and resolution authorizing wire transfers. The board will go into executive session following this meeting for the general manager evaluation.

The next meeting of the SUD board is Tuesday, Dec. 18.

Nomination Deadline for Community Center Board

Nominations for the Sewanee Community Center board are due Wednesday, Nov. 28. Self-nominations are allowed. Contact board member Lisa Rung via email at <rung.lisa@gmail.com> or call 598-0696 to submit a nomination. Board members will be elected at the next board meeting at 6 p.m., Dec. 11.

Reservations due for Sewanee Woman's Club

The Sewanee Woman's Club will meet on Monday, Dec. 10, when the St. Andrew's-Sewanee choir, under the direction of Katherine Anderson, will present a holiday program. Reservations for this meeting are due by Friday, Nov. 30. Call Caroline Shoemaker at 598-0982 or email Marianna Handler at <mariannah@earthlink.net>. The meeting at the DuBose Conference Center in Monteagle will begin with social hour at 11:30 a.m., lunch at noon, followed by the program.

Jump Off Fire Hall Open House Dec. 1

The Jump Off Fire Hall will host an open house and celebration of the new mini-pumper truck, 2–4 p.m., Saturday, Dec. 1. Come meet the volunteer firefighters and meet Engine #2. There will be cookies and hot cider to share with neighbors and friends. The purchase of the mini-pumper truck was made possible by the generous donations of residents in Jump Off and surrounding areas.



Is it a Baby?

Woman's Club Holiday Home Tour on Dec. 8

The Sewanee Woman's Club is hosting its Second Annual Holiday Home Tour, 2–6 p.m., Saturday, Dec. 8. Guests are invited to enjoy five private Sewanee homes, the exclusive Templeton Library and the beautiful All Saints' Chapel, all decorated for the holiday season.

This is a self-guided tour, with hostesses at each home. Each home is unique in its architecture, setting or furnishings. The unifying element that all share are the delightful Christmas decorations, many of which are long-time family traditions. The homes on the tour this year are: Marge Wagner (Templeton Library, 730 Templeton Way); Alleen Cater and Lyle Hohnke (121 Sherwood Trail); Amy and Bob Burns (39 John Allin Drive); Joan and Michael Hurst (49 Roark's Cove Road); Virginia and Chip Craighill (97 Roark's Cove Road); and Bobbye and Joe Ballard (290 Clara's Point Road).

The tour ends at 5 p.m. at All Saints' Chapel, when Ken Taylor of Taylor's Mercantile explains how he coordinates the "greening of the Chapel" for the Lessons and Carols service.

The cost for the tour is \$15 per person, and proceeds will be used to benefit local charities.

Tickets are available at Taylor's Mercantile in Sewanee and Citizen's State Bank in Monteagle and Tea on the Mountain in Tracy City. Tickets will also be available that day at each home. For more information call 598-5869. Email questions to <peggy@cregoradventures.com>.

The Sewanee Woman's Club is grateful to sponsors Clayton Rogers Architect, Cregor Adventures Travel, June Weber (realtor with Gooch Beasley Realtors), Taylor's Mercantile and Tea on the Mountain in Tracy City.

Homes with Views In or Near Sewanee



CABIN IN THE CLOUDS. 336 Nancy Winn Dr. Custom log cabin w/loft overlooking Sweeton's Cove. Rustic but modern living quarters 720 sf above a 32x28 ft. garage/utility/rec room. Views you won't believe. Quiet and peaceful, no traffic noise. 7.87 acres, some on slope below brow rim. MLS #1394306. \$219,000.



2120 CLIFFTOPS AVE., brow rim lot, 5.1 acres on Dripping Springs Cove. Lot 98. Rare view homesite priced below tax appraisal. MLS #1404265. \$189,000.



ML#1364293. 1610 Clifftops Ave. Scenic view southeasterly across Dripping Springs Cove. 1700 sf. 3BR 2BA. Main floor bedroom suite, roomy screened porch along bluff. Stainless kitchen appliances, wood floors, wood-burning mountain stone fireplace. \$449,000.



MLS#1387679. 1517 Laurel Lake Dr. 4.98 acres with spectacular bluff frontage above Dripping Springs Cove. 3 bedroom, 2 full, 2 half baths. Main floor master w/en suite bath, kitchen, entry powder room are some of renovations. Many custom features, and the views will amaze you! \$487,000.



MLS#1252982. Sky High at 2140 Clifftops Ave. A Tuck-Hinton architectural wonder. Tennessee tobacco barn style, walls of windows with open views of receding ridgetops. 3BR, 3.5 BA, 2453 sf. Open decks on main level and at rooftop to watch soaring hawks and eagles! Just Reduced to \$749,000.



ML#1389769. 2063 Laurel Lake Dr. 2BR, 2.5BA custom mountain home on the brow. Over 2 acres with detached workshop, extra garage. Fab landscaping. \$549,000.



MLS#1334185. 929 Cedar Mountain Rd. Unending vista across Roark's Cove. 10+ acres wildlife sanctuary, 3 mountain springs, fenced, gated. Includes 4-room cabin, workshop/garage. 15 min. from University. \$199,000.



THE EAGLE'S NEST high above Bridal Veil Cove. 172 Ingman Cliff Rd. 3BR, 2.5BA, 2306 sf. Hardboard, wood/tile floors, granite, stainless appliances. Wood-burning fireplace, great room with views on 2.2 acres. Quality workmanship, custom features. MLS #1392668. \$329,000.

—ON THE EDGE BUILDING SITES—

1402783	Sewanee-Cowan Hwy.	\$47,000
1356677	Jackson Point lots,	from \$74,000
1070454	8 Savage Highland Dr.	\$78,500
1356773	Horseshoe Lane lots	from \$74,000
1312034	0 Highland Bluffs	\$75,000
1361476	Hwy 56 Beersheba Springs	\$80,000
1374314	Lots 13 and 14 Laurel Lake Dr., each	\$60,000
1345522	18 Old Falls Trail, at waterfall	\$149,000
1310630	1924 Highland Bluffs, 400+ acres, some brow	\$1,590,000

Monteagle Sewanee, REALTORS®

www.monteaglerealtors.com

931-924-7253

Sewanee Angel Legend tees

A Lemon Fair exclusive.
S/M/L/XL \$15.99

THE LEMON FAIR

(931) 598-5248
60 University Ave., Sewanee
www.thelemonfair.com

Open Monday–Friday 12 to 4; Saturday 11 to 5



GENERAL CONTRACTORS

Residential & Commercial

SPECIALIZING IN CUSTOM HOMES OF UNIQUE DESIGN

Winchester, Tennessee • 931-967-4524
www.rvcinc.com

Obituaries

Brownie Carney

Brownie Carney, age 87, of Chattanooga, died Nov. 15, 2012. He was born in Rhea County and had lived in Chattanooga since 1951.

He was a veteran of World War II and was retired from DuPont. He was a member of the Chattanooga Scottish Rite, Alhambra Shrine and the American Legion Summers Whitehead Post 14. He was preceded in death by his parents, William H. Carney and Nora Carney; his wife, Faye Garrison Carney; and several brothers and sisters.

He is survived by his daughter, Lynn (Ken) Taylor of Sewanee, one granddaughter, several cousins, nieces and nephews.

Funeral services were Nov. 18 in the funeral home chapel with the Rev. Clyde Fitzgerald officiating. Masonic services were also held. Interment with military honors followed in Rhea Memory Gardens.

Memorial gifts may be made to Alhambra Shrine Transportation Fund, 1000 Alhambra Dr., Chattanooga, TN 37421-3701. For complete obituary visit <www.legacyfuneralhome.com>.

Ronald Ward Goodman

Ronald Ward Goodman, age 93 of Sewanee, died Nov. 16, 2012, at his residence. He was born July 16, 1919, in the Mountain View community near Pelham, to William "Will" and Myrtle Conry Goodman. He worked at the University from 1945 to 1984.

He was preceded in death by his parents, Will and Myrtle Conry Goodman; wife, Alice Frances Mooney Goodman; daughter Linda Lee Goodman; brothers, Jamie Goodman and Clifford Goodman; sisters, Florence Wilson, Loretta Drake, Hazel Sanders, Emily Ikard and Doris Gilliam.

He is survived by children Barbara Jo Quick of Batesburg, S.C., Ronald Ward Goodman Jr. of Sewanee, William Larry (Linda) Goodman of Winchester and Frieda Elaine (Jackie) Sherrill of Hillsboro; nine grandchildren and eight great-grandchildren.

Funeral services were Nov. 20 at Chapman's Chapel in Pelham with Pastor Robbie Cain officiating. Interment followed in Eastern Star Cemetery in Sewanee. For full obituary visit <www.watsonnorth.com>.



Chorale Hosts Messiah Community Sing-A-Long

The Sewanee Chorale is hosting a community sing-a-long of Handel's "Messiah" at 3 p.m., Saturday, Dec. 8, in All Saints Chapel.

People are invited to sing along with the Chorale; if you have a copy of the score, please bring it.

If you are not a singer, come and be a part of the audience. Several members of the Chorale will be performing the solo pieces from the Christmas portion of this majestic work. The Chapel's beautiful Christmas décor will serve as a magnificent backdrop to this holiday event.

Gary Sturgis directs the group, which is comprised of more than 40 community members.

"Nothing will bring you the spirit of Christmas faster than to hear Handel's marvelous work performed in the splendor of All Saints' Chapel," Sturgis said.

The concert is free and open to the public. For more information contact Sturgis at (931) 636-5294 or by email to <gksturgis@yahoo.com>.

Church News

All Saints' Chapel

Catechumenate will meet at 7 p.m., Wednesday, Nov. 28, in the Mary Sue Cushman Room of the Bairnwick Women's Center.

Christ Church, Monteagle

Christ Church will celebrate Holy Eucharist at noon, Thursday, Nov. 22. This service will be followed by a Thanksgiving Day meal. All are welcome.

Harrison Chapel Methodist

Harrison Chapel Methodist Church, 40 Otter Falls Rd., Midway, will have a special prayer service at 6:30 p.m., Tuesday, Nov. 27. Dr. Benny Tate, senior pastor at Rock Springs, Ga., Methodist Church, will be the guest preacher. All are welcome.

Morton Memorial Angel Tree

Morton Memorial United Methodist Church in Monteagle is sponsoring its annual Angel Tree, which will be located at the Piggly Wiggly in Monteagle. The tree will go up on Wednesday, Nov. 28.

The church gathers names from Monteagle Elementary School, the Department of Human Services and Mountain Christian Center (Morton

Memorial's food ministry), as well as from community members who know families in need.

There will be instructions with each angel. For more information contact Mary Alice Bradley at (931) 924-7770 or by email <mabradley@blomand.net> or Marietta Poteet at (931) 924-7666 or email <nannietta@blomand.net>.

Otey Parish

Otey Parish will celebrate Holy Eucharist Rite II at 8:50 a.m. and 11 a.m., Sunday, Nov. 25.

At 10 a.m., the parish will host its annual Advent wreath-making event on the porch of Brooks Hall. Bring garden clippers and gloves. Wreath supplies will be available at a nominal cost.

Children ages 3–11 will meet for Godly Play. The Lectionary Class, led by Pete Trenchi, will also meet at 10 a.m. Nursery care is available from 8:30 a.m. until after coffee hour, which follows the second service.



CHURCH CALENDAR

Weekday Services, Monday–Friday

7:00 am Morning Prayer/HE, St. Mary's (not 11/21, 22)
7:30 am Morning Prayer, Otey (not 11/22)
8:10 am Morning Prayer, Chapel of the Apostles (resumes 11/26)
8:30 am Morning Prayer, St. Augustine's (not 11/21–23)
12:00 pm Holy Eucharist, Chapel of the Apostles (resumes 11/26)
12:00 pm Noonday Prayer, St. Mary's (not 11/21–22)
12:05 pm Healing Service, Otey (Thu; not 11/22)
4:00 pm Evening Prayer, St. Augustine's (not 11/21–23)
4:30 pm Evening Prayer, Otey
5:00 pm Evening Prayer, St. Mary's (not 11/21)
5:40 pm Evening Prayer, Chapel of the Apostles (resumes 11/26)

Thursday, Nov. 22 • Thanksgiving Day

8:00 am Morning Prayer/HE, St. Mary's
9:00 am Mass, Good Shepherd Catholic Church
10:00 am Holy Eucharist, Otey
12:00 pm Holy Eucharist, Christ Church, Monteagle

Saturday, Nov. 24

8:00 am Morning Prayer, St. Mary's
5:00 pm Mass, Good Shepherd Catholic Church, Decherd

Sunday, Nov. 25

All Saints' Chapel

Bible Baptist Church, Monteagle

10:00 am Morning Service

5:30 pm Evening Service

Christ Church Episcopal, Alto

11:00 am Holy Eucharist

11:00 am Children's Sunday School

Christ Church, Monteagle

10:30 am Holy Communion

10:45 am Children's Sunday School

12:50 pm Christian formation class

Church of the Holy Comforter, Monteagle

9:00 am Holy Eucharist

Cowan Fellowship Church

10:00 am Sunday School

11:00 am Worship Service

Cumberland Presbyterian Church, Sewanee

9:00 am Worship Service

10:00 am Sunday School

Decherd United Methodist Church

9:45 am Sunday School

10:50 am Worship

Epiphany Episcopal Church, Sherwood

10:30 am Holy Eucharist

10:30 am Children's Sunday School

Good Shepherd Catholic Church, Decherd

10:30 am Mass

Grace Fellowship

10:30 am Sunday School/Worship Service

Harrison Chapel Methodist

10:00 am Sunday School

11:00 am Worship Service

Midway Baptist Church

10:00 am Sunday School

11:00 am Morning Service

6:00 pm Evening Service

Midway Church of Christ

10:00 am Bible Study

11:00 am Morning Service

6:00 pm Evening Service

Morton Memorial United Methodist, Monteagle

9:45 am Sunday School

11:00 am Worship Service

New Beginnings Church, Jump Off

10:30 am Worship Service

Otey Memorial Parish

8:50 am Holy Eucharist

10:00 am Christian Education

11:00 am Holy Eucharist

Pelham United Methodist Church

9:45 am Sunday School

11:00 am Worship Service

St. James Episcopal

9:00 am Children's Church School

9:00 am Holy Eucharist

10:15 am Godly Play

St. Margaret Mary Catholic Church, Alto

8:00 am Mass

St. Mary's Convent

8:00 am Holy Eucharist

5:00 pm Evensong

Sewanee Church of God

10:00 am Sunday School

11:00 am Morning Service

6:00 pm Evening Service

Society of Friends

9:30 am Meeting, 598-5031

Tracy City First Baptist Church

9:45 am Sunday School

10:45 am Morning Worship

5:30 pm Youth

6:00 pm Evening Worship

Tuesday, Nov. 27

6:30 pm Prayer Service, Harrison Chapel

Methodist

Wednesday, Nov. 28

6:00 am Morning Prayer, Cowan Fellowship

12:00 pm Holy Eucharist, Christ Church, Monteagle

5:30 pm Evening Worship, Bible Baptist, Monteagle

6:00 pm Youth (AWANA), Tracy City First Baptist

7:00 pm Adult Christian Formation,

Epiphany Episcopal Church, Sherwood

7:00 pm Evening Worship, Tracy City First Baptist

If your church is in our circulation area and would like to be listed here, please send service times, church address and contact information to <news@sewancemessenger.com> or phone 598-9949.

Elementary School (from page 1)

the library and school operations. This funding commitment has served to eliminate the need for door-to-door fund raising.

"Sewanee's Community Chest goes far beyond what any public school could imagine," said SES principal Mike Maxon. "While most schools are seeking ways to raise additional revenue by having their students participate in magazine sales, candy sales, etc., the Community Chest raises money for us. The teachers can concentrate on teaching, not collecting money each morning. The students can concentrate on learning, not selling products. Donations through the Community Chest do support the school," said Maxon.

The Sewanee Elementary Parent Teacher Organization (SES PTO), a non-profit organization, requests and disburses the Community Chest funds each year for SES. All money received from the Community Chest is used for yearly support of the school. The SES PTO works with teachers and staff to find solutions to specific educational needs of the school that are not met by the Franklin County School system funding or services.

The Community Chest currently funds almost 90 percent of the SES PTO operating expenses for the school. The SES PTO also receives money through annual dues and small fund-raisers such as T-shirt sales. SES receives additional money from school pictures, two book fairs and BoxTops. This year the SES PTO will receive \$20,000 if the Community Chest goal is met.

SES always welcomes community members to art shows, musicals and science fairs. Volunteers are always needed to help in the library, teach Friday School or read to the children. For more information, go to <http://www.edline.net/pages/Sewanee_Elementary_School>.

The goal of the Sewanee Community Chest is to help citizens by funding the community. Donations to the Community Chest can be mailed any time to P.O. Box 99, Sewanee, TN 37375. For more information, or to make a donation through PayPal, contact <sewaneecommunitychest@gmail.com>.

[Editor's Note: The Sewanee Mountain Messenger was founded in part by the Sewanee Civic Association; however, the Messenger no longer requests Community Chest funding.]

*What a lovely surprise to finally discover how
unlonely being alone can be. —Ellen Burstyn*

Stillpoint

Individual and Group
Psychotherapy:

Acupuncture, Massage
and Body/Energy Work:

Robin Reed, Ph.D. 931-636-0010

Wanda D. Butner, LSPE

931-361-1333

Tamela Sadler, Ph.D. 931-581-1124

Kate Gundersen, LCSW

931-235-4498

Maryellen McCone, LPC/MHSP

931-636-4415

Regina Rourk Childress,

LMT, CNMT

931-636-4806

Lucie Carlson, Reiki

865-591-0012

David Tharp, Acupuncture

423-870-8870

THIS WEEK AND UPCOMING

YOGA Mon & Wed, 5:30 to 7 pm; Tue, 9–10:30 am;
Thu, 4–5:30 pm, with Hadley Morris, RYT

CENTERING PRAYER SUPPORT GROUP

Tuesdays at a new time! 3:30 to 5 pm

EXPLORING THE SPIRITUALITY OF THE MIDDLE

December 7–9; Dr. Lauren Winner, presenter

Residential Fee, \$300; Commuter fee, \$190; Deposit, \$50

WHY ARE FAIRY TALES SO POPULAR TODAY?

December 13, 12 to 1 pm; Jim Davidheiser, presenter
Academy for Lifelong Learning Membership Fee, \$10 annually;
Boxed Lunch, \$10 (optional). Call for lunch reservation.

3-DAY CENTERING PRAYER RETREAT

December 14–16; The Rev. Margaret Marshall, presenter
Residential Fee, \$300; Deposit, \$50



Call (931) 598-5342
or (800) 728-1659
www.StMarysSewanee.org
<reservations@
stmaryssewanee.org>

“Be proud of your town and make your town proud of you.”

From “Two-Liners Stolen From Others by Joe F. Pruett”

Sewanee Realty

931.598.9200 or 931.636.5864 www.SewaneeRealty.info
115 University Ave., Sewanee

Margaret Donohue,
Principal Broker
931.636.5599

John Brewster,
Broker
931.636.5864



BLUFF - MLS 1408523 -
1710 Stagecoach Rd., Sewanee. \$980,000



MLS 1339897 - 104 Old Farm Rd.,
Sewanee. \$495,000



MLS 1382594 - 1841 Clifftops Ave.,
Clifftops. \$440,000



MLS 1408568 - 2056 Laurel Lake Dr.,
Monteagle. \$239,000



MLS 1254696 - 921 Poplar Place,
Clifftops. \$548,000



MLS 1390576 - 276 Tennessee Ave.,
Sewanee. \$449,000



BLUFF - MLS 1360522- 53 Valley View
Dr., Monteagle. \$599,000



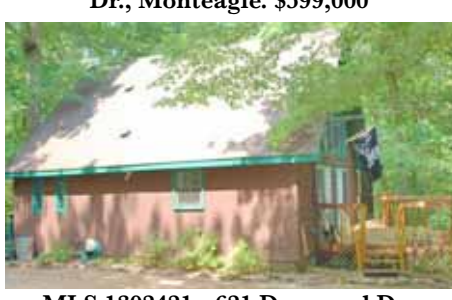
BLUFF - MLS 1351562 - 1449 Stagecoach
Rd., Sewanee + 100 acres. \$650,000



The Lemon Fair - MLS 1382725 -
60 University Ave., Sewanee. \$389,000



MLS 1378327 - 58 Oklahoma Ave.,
Sewanee. \$375,000



MLS 1302421 - 621 Dogwood Dr.,
Clifftops. \$169,000



BLUFF - MLS 1198478 - 3335 Jackson
Point Rd., Sewanee. \$269,900



MLS 1359603 - 846 Gudger Rd.,
Sewanee - \$244,000



MLS 1358150 - 100 Tomlinson Lane,
Sewanee. \$679,000



BLUFF - MLS 1333452 - 570 Payne
Cove Dr., Marion County. \$395,000



MLS 1379047 - 136 Appletreewick St.,
Laurel Brae. \$429,000



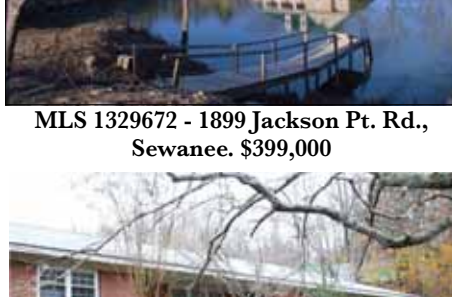
MLS 1395263 - 452 Tate Rd.,
Sewanee. \$179,000



MLS 1360532 - 80 Parson's Green Circle,
Sewanee. \$239,000



MLS 1395737 - Shenanigans
in Sewanee. \$575,000



MLS 1329672 - 1899 Jackson Pt. Rd.,
Sewanee. \$399,000



MLS 1374219- 32 Abbott Martin Lane,
Sewanee. \$279,000



MLS 1397328 - 974 Old Sewanee Rd.,
Sewanee. \$299,000



MLS 1348692 - 188 Laurel Dr.,
Sewanee. \$325,000



MLS 1264861 - 170 Tate Rd., Sewanee.
\$298,000



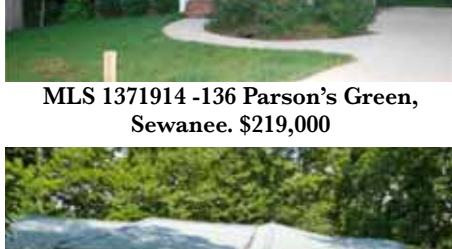
BLUFF - MLS 1385537 - 2015 Laurel
Lake Dr., Monteagle. \$699,000



MLS 1325103 - Clifftops,
1150 Sassafras Ct. \$219,000



MLS 1398302 - 293 Ball Park Rd.,
Sewanee. \$242,000



MLS 1371914 -136 Parson's Green,
Sewanee. \$219,000

BLUFF TRACTS		
Ravens Den Rd	1297607	\$ 80,000
Saddletree Lane	1207074	\$ 85,000
Jackson Point Rd	1099422	\$218,000
Jackson Point Rd	1101401	\$ 99,000
Lot 36 North Bluff	1064111	\$ 75,000
Saddletree Lane	836593	\$ 75,000
Raven's Den	1015362	\$ 99,000



MLS 1342198 - 392 Hardbarger Rd.,
Monteagle. \$67,900



MLS 1302707 - 656 Raven's Den Rd.,
Sewanee. \$329,000



MLS 1366803 - 275 North Carolina,
Sewanee. \$399,000

LOTS & LAND

36 Azalea Ridge Rd.	1378840	\$79,000
First St., Monteagle	1325122	\$16,800
Sarvisberry Place	1207077	\$83,000
Sarvisberry Place	1244981	\$85,000
Lot 48 Jackson Pt Rd	1222785	\$96,000



LOOKSATBOOKS

by Pat Wiser for Friends of duPont Library

As we make the annual Thanksgiving resolution to diminish contributions to the teetering stacks of gifts at homes of friends and family, consider the present of one book which can be enjoyed by a range of ages.

My first choice for a multi-age gift is Maryann Hoberman's "Forget-Me-Not: Poems to Learn by Heart." This new book captured my attention following a session led by friend Ann Seiders for my Children's Literature students. This master teacher enthralled 18 young adults with readings and activities, sharing her conviction that enjoying and reciting poetry brings a class together around something beautiful. That concept can apply to families, too. More than 100 poems range from the silly and short—Edward Lear's limericks—to Robert Frost's more complex "A Time to Talk." Clear guidelines for memorizing poetry are appended. This colorful anthology, illustrated by Michael Emberley, invites everyone to take a turn.

Many households will also welcome the new Candlewick Press edition of "The Odyssey," retold by Gillian Cross, illustrated by Neil Packer. Author, illustrator and publisher agreed that their creation would not be released as an e-book. They described this engaging work to National Public Radio interviewer Lynn Neary as "rich, with lavish illustration [which] insists on being physical ... tactile, something to linger over." Neary added, "It seems like a book that might appeal to adults as well as children—a perfect book perhaps to read with a child." I agree. (For ages 8 and up.)

Beyond these favorites, we can narrow lists by consulting national awards. Here are a few ideas.

Caldecott Medal for Outstanding Illustration: "A Ball for Daisy," written and illustrated by Chris Raschka. An almost-wordless portrayal of the emotions of a dog with a lost ball. (For ages 2–5.)

Newbery Medal for Distinguished Writing: "Dead in Norvelt" by Jack Gantos. The website <guysread.com> (a good site for books for boys) calls the novel "true and fictional. And always entertaining. Lots of strange adventures, and quite possibly a murder mystery. Great stuff." I'd add offbeat, great for the right reader. (For ages 10–14.)

Coretta Scott King Award, Commemorating the Work of Dr. Martin Luther King Jr. and Mrs. King: "Heart and Soul: The Story of America and African Americans," written and illustrated by Kadir Nelson. Beginning during colonial times, the narrator concludes a powerful epic, illustrated by 46 dramatic oil paintings, by casting her vote for the first African American president. (For ages 8 and up.)

Jane Addams Children's Book Awards for Quality Literature with Themes of Peace and Justice: For younger readers, "The Mangrove Tree: Planting Trees to Feed Families" by Susan Roth and Cindy Trumbore. Women in Eritrea plant mangrove trees that turn carbon dioxide to oxygen, attract fish and feed goats, thus giving nourishment to children. Simple rhyme, careful documentation and Roth's unique collage appeal to ages 5–9. For older readers, "Sylvia and Aki" by Winifred Conkling. When Aki's family is sent to a Japanese internment camp, Sylvia's family rents their home. The local school's requirement that Sylvia attend an inferior "Mexican" school results in the landmark legal precedent for the 1954 Supreme Court desegregation decision. (For ages 9–13.)

A reliable source for good books is the American Library Association Notables, a program that recognizes books of quality and interest. Consult <ala.org> for more ideas for children and adults. Here are a few of this year's choices.

"Bring on the Birds" by Susan Stockdale. Colorful art, rhyming couplets and basic information are just right for budding preschool ornithologists.

"Goodnight, Goodnight, Construction Site" by Sherri Duskey Rinker, illustrated by Tom Lichtenheld. Small truck fans can be tucked into bed, along with the fascinating machines which bid goodnight to their friends at the end of the day.

"Little Treasures: Endearments from around the World" by Jacqueline K. Ogbum, illustrated by Christopher Raschka. Engaging text and images make a charming book about small children who are loved in every language.

"Balloons over Broadway: The True Story of the Puppeteer of Macy's Parade," written and illustrated by Melissa Sweet. The genius and humor of Tony Sarg lead to the Thanksgiving tradition of the Macy's Parade helium balloons. Also a Sibert Medalist for a Distinguished Information Book. (For ages 7–9.)

"Tales for Very Picky Eaters" by Josh Schneider. After vividly depicted "gross" offerings (pre-chewed gum, smelly socks) by clever Dad, James chooses broccoli. (For ages 6 and up; an "easy reader.")

The New York Times announced its 10 Best Illustrated Children's Books last week. Sure to please many readers is science writer and illustrator Steve Jenkins' fascinating text and illustration in "The Beetle Book." One of four creatures on the planet is a beetle and these small beings have made striking adaptations over millennia in response to their environment and predators. (For ages 7–12.)

You'll find many of these books at duPont Library. Please remember that publishers' age guides are arbitrary; reading aloud works for almost everyone; older children often enjoy a book we assume too young for them, and good nonfiction interests many young readers. Contact me by email at <lonewise@bellsouth.net> with ideas and questions.

The Art of Building

AWARD-WINNING BUILDER



Certified **Green** Builder



GOOCH-BEASLEY BUILDERS
9 College St. at Assembly Ave., Monteagle
(931) 924-5555

Sewanee Operation Noel Application

Mail completed application by Monday, Dec. 10, to
Tracie Sherrill, 138 Lake O'Donnell Rd., Sewanee, TN 37375 OR
email all information to <tsherril@sewanee.edu>.

FAMILY NAME _____
NUMBER OF FAMILY MEMBERS _____
DELIVERY ADDRESS _____
CITY _____
FOOD ONLY _____ Yes _____ No

FOOD AND TOYS:

(Please fill out information below for each child
age 16 yrs. & under to receive toys.)

CHILD'S NAME _____
AGE: _____ GENDER: _____ Male _____ Female
CHILD'S NAME _____
AGE: _____ GENDER: _____ Male _____ Female
CHILD'S NAME _____
AGE: _____ GENDER: _____ Male _____ Female

Attach additional sheet if necessary.

Operation Noel: Providing Abundant Holidays for All

In just a few weeks, it will be Christmas. While many are already planning ahead about the gifts to buy or the food to eat, there are those not so fortunate. In our area, there are children who may not get presents and families that may not have an abundant holiday meal.

Each year the Sewanee Volunteer Fire Department (SVFD) in conjunction with FROST (the department's Fund Raising Operational Support Team) organizes the purchasing and distribution of food and toys for these families. All items are delivered Christmas Eve morning by the SVFD and FROST.

But this important program cannot happen without help from our community. Please consider making a donation of money, nonperishable food items or new toys to Operation Noel this year and give back to your community this Christmas season.

Families eligible for Operation Noel must live in the following communities: Sewanee, Midway, Jump Off and Sherwood Road to the top of Sherwood Mountain, (but not into Sherwood).

Every family needs to fill out a new application, even if they have received from Operation Noel before. An application ensures that organizers have all the pertinent information so they can provide for everyone in need.

The deadline for returning applications is Monday, December 10.

If you would like to make a donation of money, nonperishable food items or new toys, please take items to Fire Chief David Green's office, located in the Sewanee Police Department building or Print Services in Van Ness Hall.

For more information call 598-3400 and leave a message.

Speak Up.

Help friends get information.
Help local businesses succeed.
Help our Mountain communities.

Tell businesses when you see their ads.
Let businesses know what they're doing right .
Write a Letter to the Editor. Spread good news!

Your voice matters. Speak up.



Counting our Blessings

We're thankful for the community we share, and for
the loyalty of our customers. Happy Thanksgiving.

Call 931.967.7546 or visit protectmebetter.com



November Lease Committee Report

The following agenda items were approved: the October minutes; request to repaint the exterior on Lease No. 759 located at 125 Louisiana Circle; request to put an addition to Lease No. 987 located at 370 Curlicue Rd.; request to repaint the exterior on Lease No. 536 located at 34 Running Knob Hollow Rd.; and request to reroof Lease No. 6 located at 341 Kentucky Ave.

Leaseholds offered for sale, current policies, meeting dates, and other leasehold information are available online at <www.sewanee.edu/leases> (please check back often for the most current information) or by calling the lease office at 598-1998. A county building permit is required for structures with roofs; call 967-0981 for information.

The next meeting is scheduled for Wed., Dec. 19. Agenda items are due in the lease office no later than Wednesday, Dec. 12.



Are these Super Heroes?

Kevin Sweeton

Owner/Licensed General Contractor

Sweeton Home Restoration, LLC

New Construction, Remodeling and
Historical Restoration. Building more
than a decade of long-term client
relationships.

15 Catherine Ave.
Monteagle, TN
Ph: 931-924-2444
Fax: 877-837-7152
sweetonhome@gmail.com
Ask about our Home Maintenance and
Repair Services to Second Homes and
Vacation Properties.



Troubled?

Call: CONTACT LIFELINE
of Franklin County
967-7133
Confidential Help

Upcoming Readings, Book Signings & Lectures

Nashville Mayor Karl Dean on Nov. 26

Karl Dean, mayor of the Metropolitan Government of Nashville and Davidson County, will speak at 4 p.m., Monday, Nov. 26, in Convocation Hall. The talk will focus on sustainability, local governance and the Nashville Green Ribbon Plan. Dean's lecture is sponsored by the Policy & Change Living-Learning Community and the Department of Environmental Studies. There will be a reception following Dean's talk.



Karl Dean

Wilson at Friends of the Library Nov. 28

The Friends of the Library welcomes author Kevin Wilson for a lecture and a reading at 4 p.m., Wednesday, Nov. 28, in Convocation Hall. The author of the New York Times bestseller "The Family Fang" and the short story collection "Tunneling to the Center of the Earth," Wilson is an assistant professor in the English department at Sewanee. There will be a reception and book signing after the talk.



Kevin Wilson

HealthSouth Ethical Issues Nov. 28

"The HealthSouth Debacle: Four Different Perspectives," will be the topic of a 4:30 p.m., Wednesday, Nov. 28 lecture and discussion at Gailor Auditorium. Aaron Beam, founder and former chief financial officer of HealthSouth, will offer insider's perspective on the company's accounting fraud in 2003.

Following his presentation, he will participate in a panel discussion with theologian the Rev. Julia Gatta, philosophy professor Andrew Moser and John Q. Summerville, the attorney who won a \$2.9 billion civil judgment against HealthSouth's CEO Richard Scrushy.

This event, which is free and open to the public, is sponsored by the Babson Center for Global Commerce, the School of Theology, the department of philosophy and the pre-law program at Sewanee.



Aaron Beam

Jon Meacham Book Signing Dec. 8

Pulitzer Prize winning author and Sewanee alumnus Jon Meacham, C'91, will be in Sewanee to sign copies of his new book, "Thomas Jefferson: The Art of Power," at noon, Saturday, Dec. 8, at University of the South Bookstore.

About the book, historian Gordon Wood wrote, "This is probably the best single-volume biography of Jefferson ever written; it is certainly the most readable."



Jon Meacham

J & J GARAGE

COMPLETE AUTO REPAIR

- Import & Domestic
- Computerized 4-Wheel Alignments
- Shocks & Struts ● Tune-ups ●
- Brakes
- Our Work is Guaranteed.
- OVER 26 YEARS EXPERIENCE.

598-5470 Hwy 41-A between Sewanee & Monteagle ● Monday-Friday 7:30-5:30

Jerry Nunley
Owner

Senior Center News

Thanksgiving Week

Because of the holiday this week, all regular activities are canceled and will resume on Monday, Nov. 26.

Senior Center Plans Christmas Bazaar

The Senior Center will host its annual Christmas Bazaar from 8:30 a.m. to 2 p.m., Monday-Friday, Dec. 10-14. This is the Center's primary fund raising event each year, so please come out and support the Center.

Donations of items for the White Elephant Sale of the bazaar may be dropped off by Monday, Dec. 10. Canned items (vegetables, jams and relishes) as well as baked goods, are also welcome.

A "fun and done" handmade quilt will be given away at noon, Dec. 18. Tickets for the quilt are \$2. You do not need to be present to win. Tickets can be purchased by calling the Center during regular hours.

Senior Menus

The Sewanee Senior Center serves lunch at noon Monday through Friday. The suggested donation is \$3 (\$0 or older) or \$5 (under 50). Please call by 10:30 a.m. to order lunch. This week's menus are:

Nov. 26: Soup, grilled cheese sandwich, dessert.

Nov. 27: Beef tips and noodles, salad, roll, dessert.

Nov. 28: Pork loin, German potato salad, slaw, roll, dessert.

Nov. 29: El Paso beans, fried okra, cornbread, dessert.

Nov. 30: Cheeseburger, fries, Jello with cottage cheese.

The center is located at 5 Ball Park Rd. (behind the Sewanee Market). To reserve a meal or for more information, call the center at 598-0771.

MESSENGER HOURS

Monday, Tuesday & Wednesday
9 a.m. - 5 p.m.

Thursday—Production Day
9 a.m. until pages are completed (usually mid-afternoon)

Friday—Circulation Day
Closed

Bountiful Thanksgiving Feast
Thursday, Nov. 22, 12 to 2
Time to book your holiday gatherings with us.
Luncheons ~ Parties
Dinners
Mountain Gourmet Breakfast
Available to the public
8 to 10 every morning.

Monteagle Inn
Tallulah's Wine Lounge
(931) 924-3869
www.monteagleinn.com

SHARE YOUR NEWS!
news@sewaneemessenger.com

gb GOOCH-BEASLEY REALTORS
www.gbrealtors.com



1307 CLIFFTOPS AVE. Great home with loads of extras! Kitchen is a cook's delight and opens into the living and dining areas. Stone patio off back and hot tub on deck off master bath. Lots of light from the many windows. Most of the furniture will remain and a pool table to enjoy. MLS #1398193. **\$338,500**



GREAT STONE COLUMNS AT YOUR DRIVEWAY welcome you into this brick home perched up on the hill in Monteagle. 2 or 3 bedrooms plus den or office make this a home for you to see. New HVAC and new roof are done for you! Spacious screened-in porch and a deck to enjoy being outside. MLS #1378341. **\$113,000**



1841 RIDGE CLIFF DR. Ready for your Mountain retreat? Great Battle Creek log home at the end of a quiet street. 2 BR, 2 BA. Deck on the rear overlooks a calming pond, with porches off the front to sit and relax. Loft upstairs gives you extra space for office, bedroom, etc. Efficient kitchen. MLS #1306345. **\$180,000**



516 LAUTZENHEISER PL. Ready to make your life simpler? Great home with 2 BR, 2 BA, spacious living room and separate dining, plus an eat-in kitchen. Lots of cabinets give you storage galore in the kitchen, along with a large garage and inside utility room. Comfortable patio off living room. MLS #1306258. **\$119,000**



SPACIOUS HOME ON 29 ACRES IN TRACY CITY with warm and inviting stone fireplace in the living room and huge eat-in kitchen with new granite countertops. 3 BR on the first floor and 3 upstairs; many are large enough for sitting or play areas in the rooms. Basement has heat/air. MLS #1297462. **\$225,900**



MOUNTAINSIDE RETREAT ON 40 ACRES. Great log home on the side of the mountain with over 600 sq. ft. of decks and porches to enjoy the views. Andersen windows, wooden walls, floors and beautiful vaulted ceilings throughout the home. Open floor plan and master on first floor. MLS #1359297. **\$350,000**



SEWANEE BRICK RANCHER NEAR SEMINARY AND VILLAGE. 3 BR/3 BA home with huge great room, eat-in kitchen and sun porch complete with fireplace. Wooded back yard and loads of beautiful plants. Storage building in yard as well. MLS #1367076. **\$172,000**

gb GOOCH-BEASLEY REALTORS
www.gbrealtors.com

9 College St. at Assembly Ave., Monteagle • (931) 924-5555

Peter R. Beasley II, CCIM, Broker, (931) 924-5555, info@gbrealtors.com
June Weber, CRB, CRS, GRI Broker, (931) 636-2246, junejweber@bellsouth.net
Peter Hutton, Affiliate Broker, (931) 636-3399

ROTARY TREE SALE

HOLIDAY SPECIAL

The Monteagle Sewanee Rotary Club would like to thank all who have supported our fund-raising efforts over the years. Your generosity has helped us support education initiatives in our community!

We are offering quality container-grown trees for planting this season. There are discounts (up to 25%) for purchases of four or more trees! You can buy a tree for your yard for spring blooms, give a tree to a local organization, or buy trees in honor or in memory of a loved one. We will gladly write a note to the family to announce your gift, in addition to planting the tree at your request.

■ THREE-GALLON/CONTAINER-GROWN/5 FT. TREES	4 or more special: \$80!
White Flowering Dogwood [CORNUS kousa]	\$25
White Oak [QUERCUS alba]	\$25
Eastern Red Bud [CERCIS canadensis]	\$25
Sarvisberry [AMELANCHIER canadensis]	\$25
3 gal/3-4 ft. Norway Spruce [PICEA abies]	\$25

Supporting Rotary by buying a tree is as easy as ① ② ③

- ① Order online at www.monteaglerotary.org. See list of beneficiary organizations on our website.
- ② Select variety and number of trees; indicate recipient's name and where to plant.
- ③ Calculate total and provide delivery instructions. Delivery will be on **Saturday, Dec. 8.**

Questions? Contact Bob Askew 931.598.5311 or bobaskew@askewart.com



The Lady Express soccer team, including Ella Masters (#3 standing, far right) of Monteagle

Area Soccer Team Wins Columbia Tourney

Ella Masters, who attends Monteagle Elementary School, played soccer for the Lady Express this past season. This is a select team of 7- and 8-year-olds playing for the Tri-Lake Futbol Club in Tullahoma. These girls played up an age division all season and had a

very successful year. They ended their season Nov. 10 by placing second at the Columbia Cup Tournament to an all-star team of 8- and 9-year-olds from Nashville. Earlier in the month, they finished in second place at the Kohl's Cup Tournament in Tullahoma

to another 8- and 9-year-old all-star team. Ella is a daughter of Elizabeth and Brian Masters.

For more information about the Tri-Lake Futbol Club go to <<https://trilakefc.org>>.



ONLY 15 MINUTES FROM CAMPUS

Charming 3 bedroom, 2 bath home located right on Littell Lake! This 1943 sq ft. home sits on approx. 1.6 acres. Home has been modernized with tile and hardwood in majority of the home except recreational room, which has carpet. Bathrooms have gorgeous hardware and vanities. The wraparound porch offers many wooded and lake views. CONTACT PAM PECK with Century 21 Mid-State Realty, LLC, (931) 580-8321.

www.sewanee-messenger.com



piggly wiggly®

Down Home, Down the Street

754 West Main St., Monteagle • (931) 924-3135
8 a.m. to 9 p.m. 7 days a week

Congratulations to NENA ROSE, our October winner of WIN WHAT YOU SPEND TUESDAYS!

Sewanee Elementary Announces Honor Rolls, Award Recipients

Sewanee Elementary School principal Mike Maxon announced honor rolls and award recipients for the most recent six-week period during assembly earlier this month.

First Honor Roll

3rd grade—Trey Cash, Gus Croom, Mac Croom, Michaela Gifford, Tanner King, Iris Love and Namtso Norbu.

4th grade—Sara Grace Burns, Haley Cash, Lillian Holloway, Hunter Hoosier, Brooks Murphy, Porter Neubauer, Justine Rogers, Diana Rung and Sean Willis.

5th grade—Sam Cochran, Chloe Fontenelle, Harrison Hartman, Saje Mangru, Tessa Shackelford and Aidan Smith.

Second Honor Roll

3rd grade—Riley Burnette, Rylie Grandmason, Dixie Knight, Dallan Marshall, Sage Pool, Elijah Seavey, Eli Thompson, Autumn Welch and McKeon Whitsett.

4th grade—Abi Cassell, Camden Eslick, Meredith Foster, Gus Goldsmith, Myers Gorrell, Nathan King, Zolon Knoll, Luciana Mollica and Isabella Randolph.

5th grade—Cate Bachman, Ward Cammack, Lucy Carroll, Evan Fox, Katie Finn Hurst, Gabriel Pongdee, Aden Rung, Thomas Stapleton and Laura Whitsett.

ABBA BABBA Club

(all As and Bs)

3rd grade—Makayla Cash, Olivia Curtis, Colin Delorme, Rhys Fricker, Layla Gilliam, Hunter Hawkins, Avery Milford, Michael Poggi and Eden Sells.

4th grade—John Turner Jenkins, Calem Knight, Fiona Lancaster, Lauren Ostrowski, Brock Peterson, Mary B. Smith, Elijah Stephens, Emma Stevenson, Allie Vaughan and Seren Yelk.

5th grade—Chase Cunningham, Emma Diamond, Sarah Beth Hobby, Christina Jolly, Daniel McDonough, Isaac Smith and Polly Thurman.

BUG Club

(students who brought up grades without letting any go down)

3rd grade—Dixie Knight, Autumn Welch and McKeon Whitsett.

4th grade—Derek Burge, Haley Cash, Meredith Foster, Fiona Lancaster, Brock Peterson, Patrick Prince and Sean Willis.

Citizenship Award

(selected by their teachers)

Pre-K—Kailee Clark; **K**—Charlotte Bell and Lilly Evans; **1st grade**—Lillie Grace Hartley and Kaleb Jacobs; **2nd grade**—Jordan Gore and Ava Sanson;

3rd grade—Gus Croom and Eden Sells; **4th grade**—Derek Burge and Hunter Hoosier; **5th grade**—Jack Bailey and Dalton King.

Templeton Award

(selected by their peers as most exemplifying the character trait "kindness")

Pre-K—Zoey Byrd; **K**—Austin Cash and Julia Sumpter; **1st grade**—Jackson Frazier and Isaiah Gilliam; **2nd grade**—Lakin Laurendine and Sophie Roberts; **3rd grade**—Makayla Cash and Trey Cash; **4th grade**—Haley Cash and Caroline McCullough; **5th grade**—Chloe Fontenelle and Zoe Wallace.

Your ad could be here.



Is it a Hippie?

LOCALS

WORKS IN GLASS, CANVAS, COPPER, WOOD,
SALVAGED METALS, CLAY & BRONZE

JIMMY ABEGG, CLAY BINKLEY, JAMEY "OTIS" CHERNICKY
SUSAN CHURCH, JEANIE STEPHENSON, TOM CHURCH
W.C. CRAIG (AKA "RAYDARR"), G. SANFORD MCGEE
THOMAS SPAKE

WELCOMING
JIM ANN HOWARD, DENICE BIZOT & JOHN COOPER RAY

FALL HOURS
SEPTEMBER 15-DECEMBER 22, 2012
(OR BY APPOINTMENT 931.703.0557)
WEDNESDAY THRU SATURDAY, NOON TO FIVE

49 University Avenue, Sewanee, TN
931.598.0400 localsgallery@att.net www.myerspoin.com/locals

University Job Opportunities

Exempt Positions—Area Coordinator; Chief of Police; HR Generalist; Web Developer.

Non-Exempt Positions—Cook, Server and Utility Workers for Sewanee Dining; Office Coordinator.

Descriptions of these positions are available on the website at <www.sewanee.edu/personnel/jobs>.

Apply for these positions at: <<https://www.sewanee.edu/site/j9UB9e/application>>.



MOLLI CA
CONSTRUCTION LLC

931 205 2475

WWW.MOLLIACONSTRUCTION.COM

- CRAFTSMANSHIP ▪
- CREATIVITY ▪
- SUSTAINABILITY ▪



Could the turkey be hiding as one of these clever girls?



SES Menus

Monday–Friday
Nov. 26–30

LUNCH

MON: Chicken nuggets, roll, burrito, Capri-blend vegetables, pinto beans.

TUE: Salisbury steak, Korean barbecue chicken with brown rice, green beans, mashed potatoes.

WED: Hamburger, corn dog, baked beans, harvest-blend vegetables.

THU: Chicken nuggets, roll, Frito chili pie, green beans, corn.

FRI: Pizza, fish nuggets, hush puppies, broccoli, slaw.

Options available every day: turkey or ham sandwich, with or without cheese; peanut butter and jelly. A variety of fruits and vegetables are served.

BREAKFAST

MON: French toast sticks.

TUE: Breakfast pizza.

WED: Breakfast on a stick.

THU: Egg and cheese biscuit.

FRI: Waffles.

Options available every day: Scrambled eggs, sausage, biscuit, gravy, variety of fruit. Milk or juice served with all meals.

Menus subject to change.

SAS Senior Gets First College Nod

St. Andrew's-Sewanee School senior Russell Mays is the first of his classmates to receive that coveted "thick envelope," news that he has been admitted to college.

Mays, who intends to pursue a career with the Navy, was admitted to Auburn University on a Naval ROTC scholarship and University of Kansas. The Tier I ROTC scholarship covers all tuition costs, as well as a stipend for books, any educational or lab fees, and a monthly allowance. In exchange, Mays would commit to additional coursework in naval science, history and strategy, as well as physical fitness training. If he accepts the scholarship, Mays will spend each summer working for the Navy and have a five-year commitment to the Navy upon graduation. Mays is hoping to receive a bid from the U.S. Naval Academy and will make his decision once that is determined.

An honors student and outstanding athlete, Mays has won recognition in geology, biology, football and baseball. He is the co-chair of the school's Fellowship of Christian Athletes and serves as a Proctor, the school's highest student leadership position. Last summer, Mays was chosen to attend the 2012 NFL-Wharton Prep Leadership Program at the Wharton School of the University of Pennsylvania.

He is the son of Foster and Linda Mays of Sewanee. Foster is a student at the School of Theology, representing the Episcopal Diocese of Bethlehem (Penn.). Linda is director of development at St. Mary's Sewanee.



Tea on the Mountain

For a leisurely luncheon
or an elegant afternoon tea

11:30 to 4 Thursday through Saturday

DINNERS BY RESERVATION

(931) 592-4832

298 Colyar Street, US 41, Tracy City

10:00 am – 6:00 pm
7 Days a Week

Upstairs 50% Off!



SUNCLOUD

EXOFFICIO

KEEN

ORIGINAL HYBRID FOOTWEAR

CAMELBAK

COSTA

emo

nalgene
MADE IN USA

SALEWA

FITS
sock co.

HORNY TOAD

SALOMON

YETI
COOLERS

BEAR GRYLLS
by CRAGHOPPERS

SUUNTO

smartwool

MERRELL

PETZL

MOUNTAIN
HARD WEAR

vibram
fivefingers

dansko

SPERRY
TOP-SIDER

THE
NORTH
FACE

SOREL

AMK

Maui Jim

patagonia

GoPro
Be a HERO.

KAVU

ARC'TERYX

903 W Main St. Monteagle TN, 37356 (931)924-4100 www.themountainoutfitters.com

AT THE MOVIES

Cinema Guild Offering
Wednesday, Nov. 28, 7:30 p.m.

Beautiful

Rated R • 148 minutes • Free

Uxbal (Javier Bardem) is just an ordinary man, attempting to deal with being a single parent. He's perfectly normal, if you don't count the fact that he has the ability to speak to the dead. When he is diagnosed with terminal cancer, he attempts to use his position in the Barcelona underground world of illegal immigration in order to ensure his children are safe and happy after he is gone. In Spanish with subtitles. Rated R for disturbing imagery, language, sexual content and drug use. —CG

Sewanee Union Theatre's Next Film

Thursday–Sunday, Nov. 29–Dec 2, 7:30 p.m.

The Amazing Spider-Man

Rated PG-13 • 136 minutes • \$3

In Marc Webb's 2012 reboot of the Spiderman film franchise, young high schooler Peter Parker (Andrew Garfield) is trying to figure out his place in the world and the reason behind his parents' disappearances. His search takes him to his father's old colleague Dr. Connors (Rhys Ifans), during which he is bitten by a radioactive spider that gives him powers that transform him into Spiderman. Emma Stone plays Gwen Stacy, Parker's love interest. Also starring Denis Leary, Martin Sheen, Sally Field and Campbell Scott. Rated PG-13 for sequences of action and violence. —CG

Sernicola's

Steaks, seafood, pastas, homestyle
pizza, hot lunch buffet, plus a
22-item fresh and healthy salad bar.
Homemade desserts!



www.sernicolas.com • 106 Tennessee Avenue • Cowan • 962-3380
Open *Tuesday-Saturday • Lunch 11-2 • Dinner 5-8:30
*Closed on 3rd Tuesday for DAV

Put this space to work
for your business.

Call 598-9949 or email

<ads@sewanee
messenger.com>.

LAKEFRONT, STREAM OR RIVER FRONTAGE



MLS#1390754. Reagles Retreat on small private lake in Ridge Cliff Estates. 708 Mountain Shadows Dr. 2/2 log cabin with 3 porches. Paddle boat stays. 1248 sf. \$178,500.

—WATERFRONT HOMES AND BUILDING SITES—

MLS#1345416	Highlander Folk School Library	\$179,000
MLS#1400825	266 Rosewood Lake Dr.	\$190,000
MLS#1228265	Modern Home on Elk River	\$239,000
MLS#1338784	Summerfield, 78 acres at Deer Lick Falls	\$899,000
MLS#1390462	Canyon Dr. 20 ^{acres} PENDING	\$50,000
MLS#1228265	River Edge Lane, long Elk River frontage	\$65,000
MLS#1285934	7RC Savage Highland Dr. on Ranger Creek	\$159,000
MLS#1285963	4RC Bobcat Hollow Rd. on Ranger Creek	\$169,000
MLS#1342407	1 Summerfield Pointe on stream	\$285,000

Monteagle Sewanee, REALTORS

www.monteaglerealtors.com

931-924-7253

featuring quality homes and building sites in Clifftops, Cedar Rock, Bridal Veil, Sewanee, Savage Bluffs and all around the Mountain!

Jeanette S. Banks, Broker-Owner, numa@blomand.net
Dee Underhill-Hargis, Broker, 931-808-8948, aunderhill@blomand.net
Ray Banks, Affiliate Broker, 931-235-3365, banksgrass@yahoo.com
Heather Olson, Affiliate Broker, 804-839-3659, holson@realtracs.com



PO Box 293 • 20 W. Main St. • Monteagle • Fax 931-924-7254

Wohl's "Domestic Disurbance" Show Opens at University Gallery

Sewanee's University Art Gallery presents "Jessica Wohl: Domestic Disturbance," opening at 4:30 p.m., Friday, Nov. 30, with a reception and a conversation between the artist and history professor Kelly Whitmer in Convocation Hall.

"Domestic Disturbance" combines installation and embroidered drawings to pull the viewer into an unsettling domestic environment, at once deeply familiar and deeply alienating. Wohl is fascinated by the disjunction between the glossy perfection of the houses and lives represented in advertising imagery and the conflicts and disappointments of much-less-perfect lived experience.

Wohl is an assistant professor of art, teaching drawing and painting at Sewanee. She received a B.F.A. from the Kansas City Art Institute in 2001 and an M.F.A. from the University of Georgia in 2010. Originally trained as an illustrator, her current studio practice includes drawing, painting, collage, installation and performance. Her work has been exhibited nationally and internationally at venues in New York, Miami, Atlanta, Kansas City, Nashville, Finland, Norway and Italy.

The gallery, located on Georgia Avenue, is free, accessible and open to the public. Hours are 10 a.m.–5 p.m., Tuesday through Friday and noon–4 p.m. on Saturday and Sunday. For more information call 598-1223 or go to <www.sewanee.edu/gallery>.

Seminary Craft Fair & Bake Sale Set for Dec. 6

The fourth annual Seminary Craft Fair will be 8 a.m.–8 p.m., Thursday, Dec. 6, at Hamilton Hall. This fair was created by seminarian spouses to showcase the talents of members of the seminary community (spouses, children and students). It is open to the entire community.

Each year, 10 percent of the sales are tithed to a special project; this year's money will be donated to the Episcopal Relief and Development Fund for Hurricane Sandy relief.

Items for sale will include hand-crafted jewelry in a variety of styles; bow ties; handmade cards and maps; embroidered purses and aprons from El Salvador; knitted purses, stoles, fingerless gloves and bibs; and handmade rosaries and prayer beads. There is also a sale of homemade baked goods



Artwork by Rebecca Cato

as part of the craft fair. For more information contact Rachel Erdman at 598-3402, Rebecca Cato at 598-3476 or Ivey Lowry at 598-3408.



Tina Packer and Nigel Gore

Two Nights of "Women of Will"

"Women of Will," Tina Packer's look at the female characters in Shakespeare's plays, will be performed at the Tennessee Williams Center at 7:30 p.m., Wednesday and Thursday, Nov. 28–29. The shows are part of the University's 2012–13 Performing Arts Series.

The complete "Women of Will" is in five parts, each conceived as a complete evening of theatre. Sewanee will present two of the segments: part one, "The Warrior Women, from Violence to Negotiation," on Wednesday, Nov. 28, and part four, "Chaos is Come Again, the Lion Eats the Wolf," on Thursday, Nov. 29.

Packer is the founder and artistic director emeritus of Shakespeare & Company, which she founded in 1978. She is joined in the performances by veteran actor Nigel Gore.

This event is jointly presented by the Performing Arts Series and Sewanee's department of theatre arts. Call 598-3260 for reservations and ticket information.



Is it Santa Claus?



Fred Saussey, General Contractor

Residential - Remodeling - New Construction
Licensed & Insured

496 Kennerly Rd • Sewanee, TN 37375 • (931) 598-5981
fredsaussey@gmail.com • www.sausseyconstruction.com



Drive Safely
in School
Zones!

NEW YOGA FLOW CLASS



Photo by
Greg
Petropolous

THURS 6:15-7:15 PM
Beginning Dec. 6
Sewanee Community Center
Flowing with Strength,
Grace and Peace
www.rebecaallredyoga.com

SEWANEE AUTO REPAIR

—COMPLETE AUTO & TRUCK REPAIR—
reminds you that it's time to
WINTERIZE!

All Makes & Models • Service Calls • Quality Parts
ASE Master Certified Auto Technician • 25 Years' Experience
7 to 5 M-F • (931) 598-5743 • Across from Regions Bank

ANGELWITH AN ATTITUDE

by Virginia Craighill



Dear Angel,

I've noticed that Sewanee students no longer give the traditional "passing hello" that used to make Sewanee such a friendly place. As an alumna and an employee of the University, I wonder what has changed that keeps students from acknowledging the person walking by them with a smile or a nod of the head?

Feeling Sadly Passed By

Dear Smiley Face:

I would say the students are too busy talking or texting on their cell phones, but that would suggest we had cell phone service. Besides cell phones, however, there's a whole range of electronic devices to keep us from being present in the world. Next time someone ignores you on the street, check for ear buds; they could be listening to a tiny iPod that might be embedded beneath their skin. They might be finishing a game of "Halo 4" on some handheld device. Or it may be that they can no longer register the subtleties of a nod, a smile or a hand lifted in greeting.

Whatever it is that keeps them unaware of friendly pedestrians, it is clear we need to take drastic measures. If the "passing hello" is too subtle for this generation, perhaps we need to "friend" them in a more obvious way. How about the "passing chest bump" or "sidewalk body slam" or the "super-affable open-handed-slap?" Unfortunately, aggressive friendliness can be misconstrued. If you try to "hi five" someone who's not paying attention, it could result in a lawsuit.

We all benefit from living in a community where we can look each other in the eye and smile, or even stop for a conversation. But being socially perceptive takes practice. Just keep smiling and nodding until you either break through or get hauled off to the local asylum.

Dear Angel,

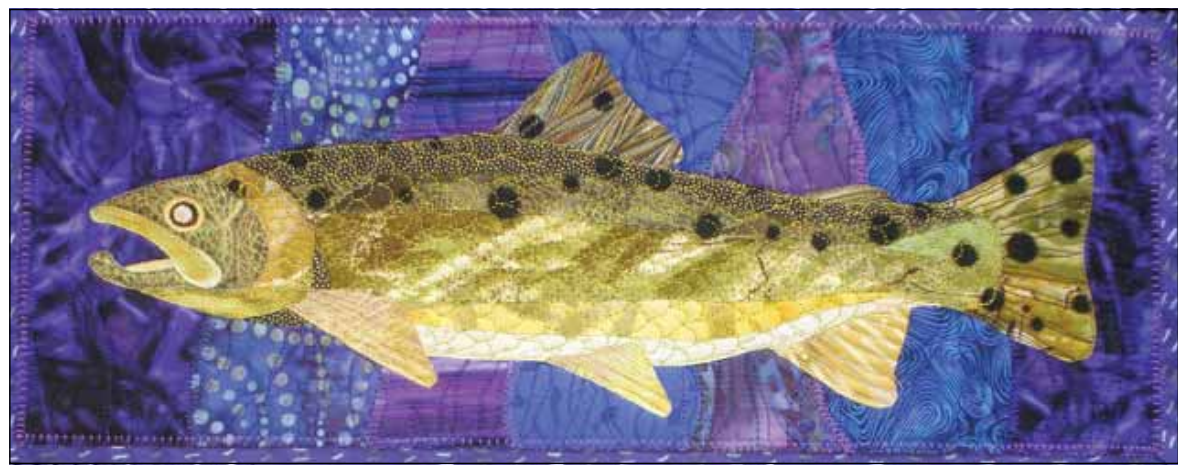
I always like to shop for Christmas on Black Friday, but what should I do if I'm spending the weekend in Sewanee?

Santa's Little Shopper

Dear L'il Shopper:

If you enjoy the adrenaline rush of being crushed by frenzied, sweating crowds at 5 a.m. to buy a toy that your child will tire of by New Year's, and if you like to participate in the massive economic steroid shot called Black Friday, Sewanee is probably not the place for you this week.

If you must experience a stampede to feel as if the holidays have arrived, stand in front of the herds of deer on University Avenue at dawn Friday morning trying to avoid the pre-cull. I could also round up all my relatives who will be in town, send them shopping and ask them to shove you every time you try to grab an item. If you have set aside this one day to spend all your hard-earned Christmas money, I suggest buying local. Depending on your budget, there are a couple of unique presents you can acquire right here in our town. How about a brick for the Angel Park? Or maybe Shenanigans restaurant? This way, you'd be giving Sewanee an economic shot in the arm instead of the evil empire of the big-box retailers.



White Bubbles, textile art, by Linda K. White

Crafts Artists Studio Tour Dec. 1-2

The Craft Artists of Southern Tennessee (CAST) invites the public to the 17th annual Holiday Studio Tour in the beautiful Monteagle and Sewanee communities on the Cumberland Plateau. This year the tour takes place 10 a.m.-5 p.m., Saturday, Dec. 1, and noon-5 p.m., Sunday, Dec. 2. CAST is the local chapter of the Tennessee Association of Craft Artists (TACA). More than 30 local and regional artists will show their work, which ranges from textiles, sculpture, jewelry, pottery and glass to paintings, cast bronze, metal work and wood work.

Sewanee artists who will open their studios to the public during the tour include Bob Askew, Jill Carpenter, Dan Pate, Ben Potter, Claire Reishman, Archie Stapleton and Merissa Tobler. Other locations displaying work are the American Legion Hall, Locals Gallery, the Sewanee Community Center, the Edgeworth Inn, Mooney's Market and Emporium and St. Andrew's-Sewanee School (in the Spencer Room and the SAS Art Gallery). Most sites will host several different artists showing their work, while the SAS Art Gallery presents the group exhibition "Full CAST 2012." Light refreshments will be available at many locations.

Several sponsors for the CAST Holiday Studio Tour are clustered in the downtown Sewanee area and include Crust, Locals Gallery and the Blue Chair. Locals Gallery features the work of local and regional artists and is a part of the studio tour along with the Artisan Depot in Cowan, also a Studio Tour sponsor. They are displaying the artwork of the Franklin County Arts Guild. The Monteagle Inn, another sponsor, is a year-round boutique, bed, breakfast, and retreat center in Monteagle.

The St. Andrew's-Sewanee Gallery presents the "Full CAST 2012" exhibition featuring work from most tour participants, CAST-TACA members, and SAS faculty and staff. Most works featured in the "Full CAST" exhibition are also for sale.

Bright yellow signs mark the tour route and maps are available at all locations on the tour as well as at all sponsors' locations. For more information go to <www.cast-taca.org>.

**One-Stop Transportation
Information: dial 511**

Payne at Grundy County Historical Society

The Christmas luncheon of the Grundy County Historical Society will be at noon, Thursday, Dec. 6, at the Parish House, Christ Church Episcopal, 530 10th St., Tracy City, Tennessee 37387.

Syndicated columnist Weldon Payne will be the speaker. Please make lunch reservations by Monday, Dec. 3 by calling (931) 592-6008 or email <history@blomand.net>.

The cost of the lunch is \$15. All are welcome to attend this meeting.

www.sewanee-messenger.com



Bull Pen Market

just across the tracks in Cowan

**Check out the Imported Beer
selection in our new BEER CAVE!**

—Must be at least 21 to purchase beer—

**We take orders for kegs:
(931) 967-7696**



NEW CONSTRUCTION REMODELING

931-434-6415
wflowers76@yahoo.com

Henley's Electric & Plumbing

Randall K. Henley

More Than 25 Years' Experience

598-5221 or cell 636-3753



TOMMY C. CAMPBELL

FOR YOUR IMPROVEMENT
Call (931) 592-2687

Free Estimates • 20 Years Experience

**DRIVEWAY WORK • GRAVEL HAULING
• DOZER & BACKHOE**

plus Concrete Work • Water Lines • Clear Lots • Garage Slabs
• Sidewalks • Porches & Decks • Topsoil & Fill Dirt • Roofing
• Additions to House • Septic Tanks & Field Lines

MONTEAGLE DINER

*Friday Night
SEAFOOD BUFFET*

*Saturday and Sunday
BREAKFAST BUFFET*

*Sunday
NOON BUFFET*

**Our grill is always open for
your other favorites!**

*Burger Baskets - Chicken Strips -
Chicken Livers*

Carry-Outs Available:
931-924-4177

**Look us up on Facebook for
Monday-Friday Buffet and
Evening Specials and
Weekly Changes**

Open Mon-Sat 7am-8pm;
Sun 7am-2pm

740 W. Main (close to Piggly Wiggly)

WOODLAND HOMESTEADS AND HOMESITES



207 WIGGINS CREEK DR. in Sewanee. Sophisticated custom home with cherry woodwork. Crown molding, master and guest, with two bathrooms down; one large combination bedroom, sitting room and bath upstairs. 3/3. Built 2004. 2072 sf. \$349,000. **MLS#1326074.**



1829 HICKORY PLACE in Clifftops. Private woodlands wonderland on secluded paved street. 4BR, open floor plan on 5 acres. Screened porch, garage, media room. Wrap porches, central kitchen, wood-burning fireplace. Main level master w/en suite bath. \$300,000. **MLS#1304896.**



ALMOST HEAVEN II ON HUCKLEBERRY PLACE. 3 BR, 2 BA, large main floor master. Mountain stone fireplace, screened porch. **MLS #1244044. \$269,000.**



821 CLIFFTOPS AVE. Remodeled kitchen and bathrooms, 3BR, 2BA. 1908 sf. Fantastic open deck, hot tub porch, spacious screened porch with second stone fireplace. **MLS#1351398. \$329,000.**

MLS#1338671	253 Oak St.	\$56,000
MLS#1403290	12147 State Route 56	\$69,900
MLS#1373209	524 Ingman Cliff Rd.	\$75,000
MLS#1405020	51 Lydia St.	\$129,000
MLS#1393623	293 Morris Dr.	\$133,500
MLS#1384097	2599 Highland Heights	\$139,000
MLS#1394287	622 W. 1st St.	\$145,000
MLS#1394292	79 Hilton St.	\$180,000
MLS#1375978	1349 Ingman Rd.	\$199,500
MLS#1394244	1805 Laurel Lake Dr.	\$210,000
MLS#1391534	5384 Colony Rd., 6.9 acres	\$235,000
MLS#1247130	1131 Tulip Tree Ct.	\$239,000
MLS#1337362	474 Pigeon Springs Rd.	\$269,000
MLS#1346454	1097 Savage Highland Dr.	\$495,000
MLS#1383077	10 Summerfield Rd.	\$ 9,500
MLS#1383043	Elgin Dr. one of several	\$10,000
MLS#1374807	10139 US 41	\$20,000
MLS#1343151	Ingman Rd.	\$24,000
MLS#1407072	12.25 acres Tipple Rd.	\$30,000
MLS#1371654	10 Boulder Lake Dr.	\$48,000
MLS#1248666	102 Timberwood Trace	\$50,000
MLS#1374272	8+ acres on Laurel Branch Trail	\$51,900
MLS#1377790	Hummingbird Lane	\$79,900
MLS#1332072	2240 Sarvisberry - Clifftops	\$80,000
MLS#1374005	1721 Hickory Place - Clifftops	\$85,000
MLS#1361653	67 Acres off Hideaway Cabin Rd.	\$119,900
MLS#1336962	20th Ave N. - 100 Acres Timbered	\$189,000

Monteagle Sewanee, REALTORS

www.monteaglerealtors.com

931-924-7253



The Sewanee Elementary School boy's basketball team working under the board against Rock Creek on Nov. 15. Photo by Christi Pierce



the blue chair
Tavern
BLACK FRIDAY

OPEN FRIDAY
But Closed Thanksgiving Day

Get away from the shopping craze and relax with the Jackalope!



REGULAR HOURS
Monday, Thursday, Friday • 4:00-10:30 p.m.
Saturday & Sunday • 11:30 a.m.-10:30 p.m.

Find Us on  to Get Daily Specials

The Full Court Press

Basketball Updates

St. Andrew's-Sewanee Girl's Middle School

The middle school girl's basketball team lost to Monteagle Elementary 37-10 on Nov. 15. Mariel Rinck and Kate Butler scored four points each. Lexie Laurendine added two.

St. Andrew's-Sewanee Boy's Middle School

The Mountain Lions faced a tough squad at Monteagle on Nov. 15, succumbing to missed opportunities and good passing by the Hornets. The Mountain Lions picked up the pace and made it a six-point game in the third quarter, but Monteagle held on for the win, 43-31. Sam Smith scored 13 working in the paint. He, Sam Thomas and Blaise Zeitler provided tough defensive play. Joseph McDonough came off the bench to help spark a fourth-quarter run.

St. Andrew's-Sewanee Girl's Varsity

The varsity girl's basketball team lost to Lookout Valley High, 57-24, on Nov. 13. Michaela Shackelford finished with 22 points.

The Lady Mountain Lions fell to Richard Hardy Memorial, 71-17, on Nov. 15. Isabel Butler led the team with 10 points.

St. Andrew's-Sewanee Boy's Varsity

The varsity boy's basketball team defeated Richard Hardy Memorial, 75-19. James Beasley led all scorers with 13 points; Alex Tinsley, 12 points and seven steals; Eric Baynard, 11 points and five steals; Andrew Heitzenrater, 10 points; Casey Willis, eight points and three steals; Josh Owens, six points; Jacob Schott, six points and eight rebounds; Levi Higgins, four points; and Tinashe Zimbwa, five points and 12 rebounds.

University Women's Basketball

The Lady Tigers won the basketball season opener against Welch, 59-31, on Nov. 15.

Sewanee shot 40 percent from the field, including an 11-for-28 total from behind the arc. Defensively, the Lady Tigers forced a game-high 18 turnovers, while Kayla Sewell, Haley McDonough and Jamie Chauvin combined for seven blocks.

Paige Lowe and Dee Bradford led the Lady Tigers with 12 points each. Along with her blocks, Sewell finished with four points and a game-high 12 rebounds.

University Men's Basketball

The Tigers won the season opener against Webster, 76-68, on Nov. 17. Sewanee shot 54.2 percent from the floor, including an 11-of-21 effort (52.4 percent) from beyond the three-point line.

Lewis Affronti finished with a game-high 17 points. Tyler Brown finished with 16 points and six rebounds. Seth Brown added six boards and 14 points. Valentino Bryant added 12 points and a game-high six assists, while Brett Bouldin pitched in 11 points.

The Sewanee men's basketball team stayed unbeaten with a 72-64 victory over MacMurray on Nov. 18.

Affronti was named the Cavallo Classic most valuable player and forward Tyler Brown was named to the all-tournament team.

Overall, the Tigers shot the ball well for the second straight day. Sewanee finished 25-of-58 (43.1 percent) from the floor, which included an 8-for-20 effort outside the 3-point line.

Affronti led Sewanee with a team-high 16 points on 4-of-10 shooting, and was 4-for-4 at the free throw line. Bouldin finished with 15 points while Brown added a 13-point, eight-rebound effort. Bryant also added 13 points to go along with a game-high six assists, four rebounds and two steals.



Is it an Olympian?

Heath Oil Supports County Soccer

The Michelin Soccer Program and Heath Oil Automotive Tire Pros donated more than \$1,150 in funds and equipment to the Franklin County Soccer Association. These funds provide scholarships, uniforms and other soccer essentials for the participating leagues. Giving back to the community is a top priority for Michelin.

The Michelin Soccer Program partners tire dealers with local youth soccer organizations, providing the dealers the opportunity to reach out to the community. The leagues in turn receive funds and equipment. The soccer leagues are sent certificates that can be redeemed at the dealer's store for a free soccer ball during a 30-day promotional period, while supplies last. After a 60-day tire rebate promotion included on the certificate, Michelin donates \$2 to the soccer organization for each tire sold during the program.

Steve Heath of Heath Oil in Winchester is an avid supporter of the program. "The Michelin Soccer Program is an incredible way to connect with families and young players," he said. "The look on the child's face as you hand them a soccer ball is priceless. I encourage all the Michelin dealers to find a local soccer league and support them through this program."


Sports Notes

Fowler Center

The Fowler Center will be closed all day on Thursday, Nov. 22.

NFHCA All-Region Team



Three Sewanee field hockey players were named to the 2012 National Field Hockey Coaches Association All-Region team. Anne Booke, Anna Morrow and Mary Kate McAlister all earned Second-Team All-Great Lakes honors.



Skirling's
COFFEE HOUSE

closed for Thanksgiving break until Monday, Nov. 26, at 7:30am

Mon-Fri 7:30am-midnight;
Sat & Sun 9am to midnight
Georgia Avenue, Sewanee
598-1885



Shop Locally!



At Sewanee Angel Park
NOVEMBER 30 • 4:30 PM
Tree Lighting with Dr. McCardell • 5:00

Cookies
Hot Cider
Hot Cocoa
Carols

SEWANEE CHRISTMAS
Together

Please Bring Unwrapped Toys, Food and Money Gifts for Charity!

Join other Sewanee families and our firemen to light the town Christmas tree, sing carols with the Sewanee Chorale and gather food, presents and financial gifts for **CAC and Operation Noel**. Even Santa is joining us at the Angel Park!



Purple Haze rugby scored a big win over Covenant College on Nov. 17. Photo by Lyn Hutchinson

Sewanee Swimmers Earn Third and Fourth

Led by Carolyn Rice's new school record, the Sewanee swimming and diving teams wrapped up the second day of the Western Kentucky Invitational with a number of outstanding finishes on Nov. 16.

Rice broke the 400 IM school record from 2000 (Dana Woods, 4:44.96) with a time of 4:43.10.

In the relays, both the men's and women's teams set new Southern

Athletic Association season times in the 200 medley relay. In the women's race, Haley Shepherd, Astrid Escobar, Sara Neil and Katie Wakefield touched the wall with a time of 1:52.56. In the men's race, Jackson Cromer, Phillip Link, Evan Escobar and Brian Glatt placed third with a time of 1:37.28.

Edward Dennis finished third in the men's 400 IM event at 4:24.90.

In the women's 100 fly, S. Neil (third) edged out Erin Neil (11th) with a time of 58.20.

In the men's 200 free, Glatt touched the wall in 1:43.81 for second place. Link placed fifth in the men's 100

breaststroke with a new league time of 58.79.

In the men's 100 backstroke, Cromer broke his own season conference mark with a time of 54.19.

On Nov. 17, A. Escobar and S. Neil earned NCAA B cut times.

As a team, the men's squad finished in third place with 313 points. On the women's side, the Lady Tigers were fourth with 132 points.

Other highlights of the meet included Glatt's second-place swim in the men's 100 free (48.10) and E. Escobar's third-place finish in the 200 fly (1:58.74).



Home Games This Week

Today, Nov. 21

4:30 pm SAS V Girls' Soccer
v Signal Mountain High School
6 pm Lady Tigers Volleyball
v Birmingham Southern
6 pm Tigers Basketball
v Emory & Henry
7 pm FCHS V Football
v Lincoln County High School
(Senior Night)

Tuesday, Nov. 27

6 pm SAS MS Girls' Basketball
v Tracy City Elementary
7 pm SAS MS Boys' Basketball
v Tracy City Elementary

Wednesday, Nov. 28

7 pm SAS MS Boys' Basketball
v Webb School (scrimmage)

Thursday, Nov. 29

4:30 pm SES Girls' Basketball
v North Lake at Townsend Gym
5 pm FCHS V Wrestling Meet
v SAS and Forrest
5 pm SAS V Girls' Basketball
v Berean Academy
5:30 pm SES Boys' Basketball
v North Lake at Townsend Gym
6:30 pm SAS V Boys' Basketball
v Berean Academy

6:30 pm SAS V Swimming
v Lincoln Co. High
6:30 pm SAS MS Swimming
v Lincoln Co. MS

Friday, Nov. 30

10 am Tigers/Lady Tigers Sewanee
Winter Invitational Swim Meet

The Perfect Time
To Say Thanks...
for all our blessings and continued
support from the community.



Custom home remodeling begins with...

Joseph's Remodeling
Solutions

Taking Quality to the Next Level
Licensed - Insured - Green Certified

931-598-5565

joseph@josephsremodelingsolutions.com

- Newly Renovated
- Menu Featuring Classic Favorites
- Unique Additions & Seasonal Specials

"Come in the back door."

NOW SERVING LUNCH TUESDAY-FRIDAY 11 to 2

Closed Thanksgiving Day, Nov. 22, and Friday, Nov. 23
Open for Dinner Sat., Nov. 24, and Brunch on Sun., Nov. 25

Open for Lessons and Carols All Weekend

Open New Year's Eve 9 pm to 1 am. Live Jazz!
Limited Seating • Call 931.598.5770 for reservations.

Visit Us on Facebook. Happy Holidays!

Pearl's
FOGGY MOUNTAIN CAFÉ

THE VISITING TEAM

by Kiki Beavers



John Wendling really wants people to compete in the Senior Olympics.

Mr. Wendling competed in the Senior Olympics for the first time in July. He kicked some serious butt, winning gold medals in the pole vault (state record), high jump, triple jump (state record) and 100-yard backstroke (state record). He earned silver medals in the 100-meter run, discus, 50-yard backstroke and 50-yard freestyle. He placed fourth in the javelin and shot put.

The other day, Mr. Wendling talked with my husband, Ben (who is reaching the senior landmark status soon), about competing. Back in the day, Ben played football, basketball and baseball, and competed in throwing events for track and field. He later joined a rugby club because his mother told him football was too physical of a sport.

I do not know if Ben can compete in the Senior Olympics. He does not have his AARP card yet. But Mr. Wendling convinced Ben to at least think about it.

My fondest memories of Mr. Wendling are from the Sewanee Academy days. He was the physics teacher. I played basketball and volleyball with his daughter, Alicia. At an event for the junior class, I was in the middle of my best Gilda Radner "Roseanne Roseannadanna" impersonation about eating a hamburger, and Mr. Wendling had to walk out of the building. My physical fitness at this point would probably also gross him out.

Mr. Wendling reminded Ben that I was almost at the magical age to compete in the Senior Olympics. "And the best thing is they have three-on-three basketball competitions," he said.

Ben relayed the conversation, and I started making excuses. "I am too old. I am out of shape. My knees hurt. Technically, I am 39 years old and still holding." But then I got kind of excited. Is it half-court or full-court? That makes all the difference. I would probably still be good for about five minutes of full-court play before needing oxygen.

Then I thought about my dream team. I would have to have Nancy Ladd. She was a Lady Vol, after all. I remember seeing her on TV when I was a child. She still has the same haircut and better yet, is still physically fit. With Nancy as the point guard, I would only have to stand there and look fierce. This is something I am still good at.

Who could possibly be the Ladd/Beavers wingman? You have to have an outside shooter if you already have a good ball handler out front and a big one to clog up the middle. Christi Teasley is a good bet, as she was MVP for her varsity basketball team. I thought about Cindy Gipson from Coalmont. Cindy is a long-time Big 8 basketball coach. She is also a heck of a 3-point shooter, even though those did not count as treys when she played varsity basketball. Of course, Cindy may be taller than I am now and may be the better post player.

Then I thought, "Is it three-on-three by gender only or mixed?" Bill Seavey could be the point guard, and Rob Zeitler could be the wingman. Go check them out at a SAS basketball practice sometime. These guys have mad basketball skills despite their age. The fact that they don't qualify yet for their AARP card may be a wrinkle in my plan. Sparky Edgin is another good candidate. He has an almost unstoppable hook shot and can pick and roll with the best of them. I see my dream team coming together.

The more I thought about this, the more I realized there were lots of events in which I could compete. I could probably still run the 400 if they gave me about a two-minute head start and there was a promise of a bar cart at the end. I could probably let one fly as if I was on fire in the triple jump, but then thought about the inevitable landing and possible fractured bones. I could be in the 200-relay with Ellis Mayfield running all four legs just because I still remember the proper baton hand-off procedure. That is not how it works and I would still have to run kind of fast. Hmmm. What is a girl to do? My competitive head is telling me "yes." My old lady knees are telling me "no." Mr. Wendling has me thinking. In the next couple of years, count me in.

John Wendling really wants people to compete in the Senior Olympics. For more information, go to <www.tennesseeseniolympics.com>. Or better yet, call him at 598-9517.

CUSTOM Design Studio

Allow us to create
your masterpiece.



Repairs, too.



WOODARD'S

Toll-free
(800)
455-9383

DIAMONDS & DESIGN
MASTER JEWELER

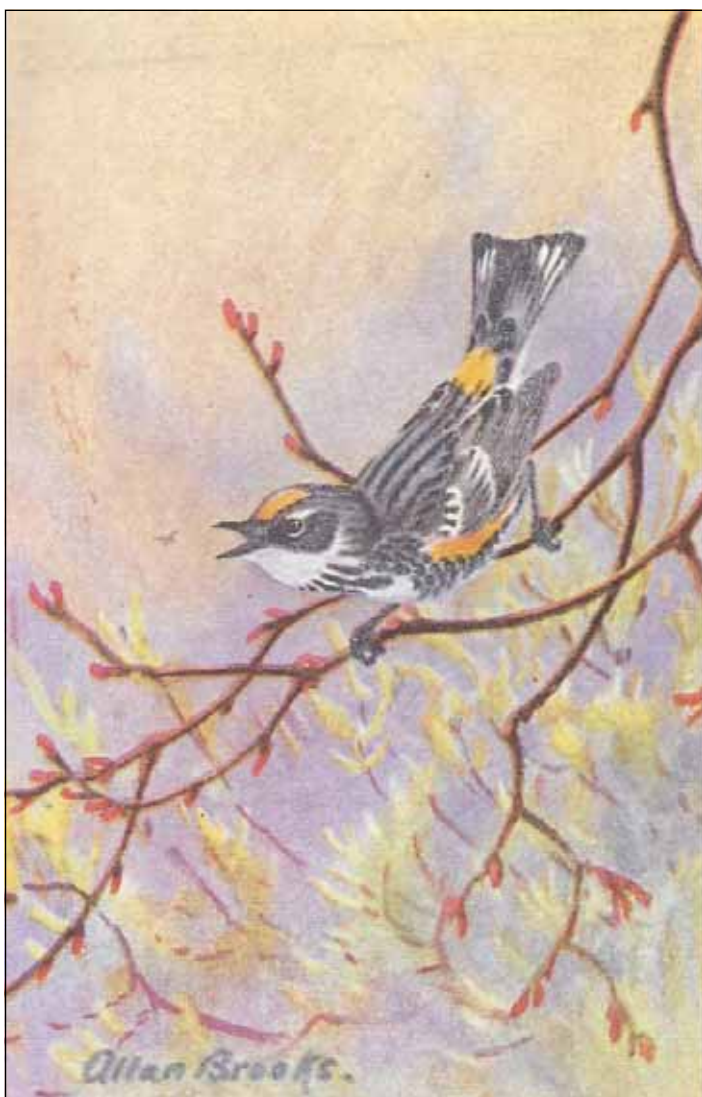
www.
Woodards
.net

Inside Northgate Mall in Tullahoma



NATURENOTES

By Harry and Jean Yeatman



Yellow-rump Warbler illustrated by Allan Brooks from "Birds of the South"

Yellow-rump Warbler

Jean and Harry Yeatman looked out the window at their bird feeder, and were delighted to see a Yellow-rump Warbler sitting on the suet. This warbler spends its winters in the South. It is easy to identify because of its brilliant yellow patch at the base of its tail. The birds are about five and one-half inches long. They are blue-gray, streaked with black; the throat is white, the breast and upper belly are heavily streaked with black; the lower belly is white; and there are two white wing-bars and large white spots on the outer tail feathers. They eat insects, weed seeds and berries such as sumac, poison ivy, holly, etc.

On Saturday, Jean saw a Red-tailed Hawk laboriously flying across Eva Road with a large gray squirrel in its talons. A friend saw the same thing on Raven Den Road, so maybe the hawks will cut down on the squirrel population.

Happy Thanksgiving!

BUG PROBLEMS?

We can help! Call us for a free inspection!

BURL'S TERMITE & PEST CO.

TERMITE — PEST — VAPOR CONTROL
Bonded • Insured • Home-Owned & Operated
105 Ake St., Estill Springs
(931) 967-4547 or (931) 455-1191
Charter #3824 • License #17759



Russell L. Leonard

ATTORNEY AT LAW

Office: (931) 962-0447
Fax: (931) 962-1816
315 North High Street
Winchester, TN 37398
Toll-Free (877) 962-0435
rleonard@netcomsouth.com



Village Wine & Spirits Inc.

COMPETITIVE PRICES AND FRIENDLY SERVICE

Great Wine Selection ~ Special Orders Available
ALL YOUR FAVORITE MAJOR BRANDS

Across 41A from Monteagle's Piggly Wiggly ~ (931) 924-6900
Mike Gifford, Owner; M-Th 9 a.m.-9 p.m.; F-Sa 9 a.m.-11 p.m.

Fresh Trees Available from Rotary

The Monteagle-Sewanee Rotary Club's annual tree sale is underway. The proceeds from this project fund education initiatives in both the Monteagle and Sewanee communities. The club is offering 5-foot to 6-foot sarvisberry, dogwood, redbud and oak trees this year.

In the past, the proceeds from the tree sale have funded a University of the South scholarship for Grundy County students, provided for the purchase of T-shirts for Rotary's "Don't Meth With Us" drug awareness program and supported dictionary gifts for Monteagle Elementary.

For more information, go to <www.monteaglerotary.org> or call Bob Askeew at 598-5311.



SAS Wreath Sale Continues

The deadline for ordering balsam wreaths from St. Andrew's-Sewanee School sixth-graders is Thursday, Nov. 29.

The students are selling wreaths to help with several different outreach projects, both locally and abroad.

The sweet-smelling balsam wreaths are shipped fresh from Maine. The wreaths cost \$24, measure at least 22 inches, and come with a big red bow, six pine cones and several sprigs of red berries.

To order wreaths, contact any SAS sixth-grade student or teacher Cindy Potter at <cpotter@sasweb.org> or 598-5651, ext. 1019. Payment is due when you place your order or when you pick up your wreath.



Smidgen



Stripes

Pets of the Week

Meet Smidgen and Stripes

The Franklin County Humane Society's Animal Harbor offers these two delightful pets for adoption.

Smidgen is a tiny young Chihuahua who would love to be the companion of an older person or couple. A perfect lapdog, she is a little shy at first, but she becomes a real cuddle bug as soon as she gets to know you. Smidgen is up-to-date on shots and spayed.

Stripes is a sweet Tabby kitten with a distinctive striped coat. He will make a good companion for another cat. Stripes is negative for FeLV and FIV, house-trained, up-to-date on shots and neutered.

Animal Harbor is offering a "Fall in Love" cat adoption special from now until the end of the year. Take \$10 off the regular adoption fee for cats and kittens at least 4 months old. In addition, take home a free bag of food with your new kitty.

Every Friday is Black Friday at Animal Harbor! On Fridays, adoption fees will be reduced 50 percent for black or mostly black pets over 4 months old who have been at Animal Harbor for more than a month.

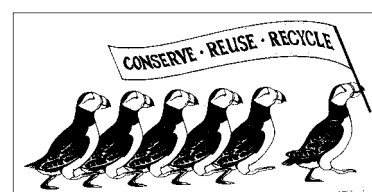
Pets adopted from Animal Harbor qualify for a free post-adoption wellness exam by local veterinarians.

Call Animal Harbor at 962-4472 for information and check out their other pets at <www.animalharbor.com>. Enter their drawing on this site for a free spay or neuter for one of your pets.

Please help the Humane Society continue to save abandoned pets by sending your donations to the Franklin County Humane Society, P. O. Box 187, Winchester, TN 37398.



Is it a Penguin?



State Park Offerings

Saturday, Nov. 24

Turkey Tromp—Meet Ranger Jason at 11 a.m. at the Buggytop trailhead (about seven miles from Sewanee off Hwy. 56 at Carter State Natural Area) to learn about the life and times of our Tennessee turkey. This program will involve a mile or two of moderate hiking, so bring water and a snack.

The South Cumberland State Park Visitors' Center is located on Highway 41 South between Monteagle and Tracy City and is open 8 a.m.-4:30 p.m. seven days a week. For more information call (931) 924-2980.

MESSENGER DEADLINES

News & Calendar:

Tuesday, 5 p.m.

Display Advertising:

Monday, 5 p.m.

Classified Advertising:

Wednesday, noon



CONVENIENCE/RECYCLING CENTER HOURS

The Convenience Center for household garbage, trash and recycling is located on University Avenue by the golf course. Its regular hours are: Monday, 1-6 p.m.; Tuesday through Friday, 3-6 p.m.; Saturday, 8 a.m.-4 p.m.; Closed Sunday. Closed on national holidays. There are blue recycling bins for metal (tin, appliances, etc.), newspapers/magazines, plastic, plastic bottles, cardboard and aluminum cans. Glass recycling has moved to Kennerly Avenue behind PPS.

WOODY'S BICYCLES—SALES, SERVICE AND RENTALS

A Full-Service Trek Bicycle Dealer

Mon-Fri 9-5 • Sat 10-2 • 598-9793

woody@woodysbicycles.com • 90 Reed's Lane
(the red building behind Shenanigans in Sewanee)



Check out www.woodysbicycles.com for rates, trail maps, photos, bike club links, races and much more!

Classifieds

CALL US! • 598-9949
Classified Rates:
 \$3.25 first 15 words,
 10 cents each addl. word
Now you can charge it!
(\$10 minimum)

FIREWOOD FOR SALE: \$50/rick. Stacked, \$60. (931) 592-9405. Leave message if no answer.

MISS GRACIE'S IN COWAN
 931-308-4745
Country cooking and
homemade desserts
 Acoustic jam on Thursday nights
 open to everyone!
LIVE MUSIC on Saturday nights

NANCE CLEANING: Homes, offices, churches. Sewanee and Monteagle area. References available. (931) 598-5463.

MAMA PAT'S DAYCARE
MONDAY-FRIDAY
Open 4 a.m.: Close 12 midnight
 3-Star Rating
 Meal & Snack Furnished
Learning Activities Daily
Call: (931) 924-3423

SARGENT'S SMALL ENGINES: Repairs to All Brands of Equipment: Lawnmowers, riding or push, String trimmers, Chainsaws, Chainsaw sharpening, New saw chain. (931) 212-2585, (931) 592-6536. Pickup and Delivery Available.

The Moving Man
Moving Services Packing Services
Packing Materials Truck Rental
Local or Long Distance
1-866-YOU-MOVE (931) 968-1000
www.themovingman.com
 Decherd, TN
Since 1993 U.S. DOT 1335895

TIME BANK SEEKS a regional Time Bank Coordinator. Candidate should have strong skills in organization development, administration, public speaking and outreach. Ability to work in a team-based model with flexibility is required. Position estimated for 10-15 hours/week, negotiable. Applications should be emailed to <folksathomesewanee@gmail.com> or mailed to Folks at Home, PO Box 291, Sewanee, TN 37375-0291 by Monday, December 3.

CLAYTON ROGERS ARCHITECT
 claytonrogers@charter.net
 931-598-9425

DRIVERS: Make \$63,000/year or more. \$2,500 Driver Referral Bonus & \$1,200 Orientation Completion Bonus! CDL-A OTR Experience required. Call Now! (800) 283-3872.

EAT IN OR TAKE OUT

Julia's
 fine foods
 Mon-Fri 11-8; Sat 10-8; Sun 10-2
 Sat & Sun Brunch 10-2
 24 University Ave., Sewanee
 931-598-5193 • juliasfinefoods.com
 www.juliasfinefoods.com

RENT OR SALE: Amazing 2 or 3BR/2BA (a real "friend magnet") brick home in wonderful condition. Large living room, dry stacked stone fireplace with stunning view of private patio and full size swimming pool. Garage bonus room and much more Call me! Lynn Stubblefield, Cliffside, (423) 838-8201.

Let D&A Delivery Service do it for you:
931-588-6129
 Groceries, dessert, liquor, dry cleaning, appointments (to and from), whatever you need ... 24/7. **Ask for Dana.**

DRIVERS: CLASS-A CDL DRIVER TRAINING. NO EXPERIENCE? We Train and Employ! Experienced Drivers also Needed! Central Refrigerated (800) 567-3867.

The Pet Nanny
 Reliable & Experienced Pet Sitting
Mesha Provo

 Dogs, Cats & Birds
931-598-9871
 mprovo@bellsouth.net
 sewaneepetnanny.blogspot.com

MESSENGER CONTACTS
 PHONE: (931) 598-9949
 FAX: (931) 598-9685
News & Calendar:
 Laura Willis
 news@sewaneemessenger.com
Display Advertising:
 Janet Graham
 ads@sewaneemessenger.com
Classified Advertising:
 April Minkler
 classifieds@sewaneemessenger.com

Tell them you saw it here!

WATER SOLUTIONS
 Joseph Sumpter
 Owner/Licensed Residential Contractor
Specializing in drainage and rainwater collection systems
 598-5565
 www.sumptersolutions.com

NEWLY RENOVATED: 3BR campus home for rent for all UoS events. Available for Lessons & Carols. Walk to everything. Sleeps 6+. Harry, (239) 370-2813; email <goodkind@comcast.net>


PHAT Sobrina's
 Celebration Cakes and Receptions
 ~ From simple to extravagant to fit your needs
 ~ Over 20 years experience
 ~ Contact Emily Wallace at wallacem73@gmail.com or 931-691-7706

JOSH OF ALL TRADES: Welding, metal fabrication, water and sewer line installation/repair, lawn maintenance, landscaping. Tree/brush removal. Junk hauling and more. (931) 636-4562.

Fresh-Baked Breads

 Cakes Pies
Dutch Maid Bakery
 Established 1902
 Catering (931) 592-3171 Events
 Large or Small Groups

CARE-TAKING: Wide-ranging handyman skills. Larry Kilgore, (931) 636-2809.


TERRY STEPHENS
Bobcat & Dozer Services
 • Tree Work • Driveways
 • Topsoil • Fill Dirt • Firewood
931-308-5510
 Email tstephens@franklincotn.us
 FREE ESTIMATES • REFERENCES

THE SEWANEE UTILITY DISTRICT OF FRANKLIN AND MARION COUNTIES BOARD OF COMMISSIONERS will hold its regular meeting on Tuesday, Nov. 27, at 5 p.m. at the Utility office on Sherwood Road. If a customer is unable to attend but wishes to bring a matter to the Board, call 598-5611, visit the office, or call a board member. Your board members are Doug Cameron, Cliff Huffman, Karen Singer, Ken Smith and Rick Sommer.

BLUE SKY ENTERPRISES
 Thinking about interior painting projects?
Call George Dick, 598-5825
 Serving the Sewanee community for 37 years

Oliver's Feed & Farm Supply
Full line of pet and farm supplies—specializing in Diamond dog and cat food
 82 Ballpark Rd., Pelham; 931-467-2676 (CORN)
 M-T-Th-F 8-5; Sat 8-12; closed Wed & Sun

A-1 CHIMNEY SPECIALIST
"For all your chimney needs"
 Dust Free • Chimneys Swept, Repaired, Relined & Restored • Complete Line of Chimney Caps • Waterproofing
 Video Scanning
 G. Robert Tubb II, CSIA Certified & Insured
 931-273-8708


MICHELLE M. BENJAMIN, JD
Attorney & Counselor at Law
 102 FIRST AVENUE, NORTH
 WINCHESTER, TENNESSEE 37398
 (931) 962-0006
 (931) 598-9767


Rockgate Seniors' Residence
A HOME AWAY FROM HOME FOR THE ELDERLY
Short- and Long-Term ASSISTED LIVING Daycare • Hospice
 328 Cumberland St. West in Cowan
 7 minutes from STMC
 16 minutes from EHH
Phone 962-9777
 Email <sandydavis@rockgateseniors.com>
 www.rockgateseniors.com

HOUSE CLEANING: Residential or business. Call Ida York at (931) 636-5769.

COMPUTER HELP
Tutorial & Troubleshooting
 A slow computer may not be a healthy computer.
Judy Magavero, (931) 924-3118

ROBBIE'S GREEN CLEANING SERVICE: All work done with environmentally friendly products. Reasonable rates. Homes, churches and small businesses. References upon request. Call Robbin and leave message at (931) 598-9241.


RAY'S RENTALS
 931-235-3365
 Weekend Packages and Special Events
 CLIFFTOPS, BRIDAL VEIL, ALL AROUND THE MOUNTAIN
Monteagle Sewanee Rentals
 931-924-7253
 www.monteaglerealtors.com

ONE 1 BR UNIT
TWO 2 BR UNITS
TWO 2 BR DUPLEXES
 No pets, no smoking.
 (931) 691-4840 or (770) 598-6059

AVON TO BUY OR SELL AVON
KATHY PACK
 AVON REPRESENTATIVE
 www.youravon.com/kathypack
 katpac56@aol.com
 931-598-0570 931-691-3603

CHARLEY WATKINS
PHOTOGRAPHER
 Sewanee, TN
(931) 598-9257
 http://www.photowatkins.com

SCULPTURE IN WOOD: Carvings. Bowls. Vases. Church icons. U.S. Hwy. 41 North, one mile from Monteagle. (931) 924-2970.

Mountain Accounting & Consulting
 * Accounting * Bookkeeping
 * Consulting
Bridget L. Griffith QuickBooks Pro Advisor
 M.S. Accounting and Information Systems (931) 598-9322
 bh_griffith@yahoo.com

LOST COVE BLUFF LOTS
 www.myerspoint.com
 931-968-1127

MASSAGE
Regina Rourk Childress
 Licensed Massage Therapist
 www.reginarourk.com
 ~ GIFT CERTIFICATES ~
(931) 636-4806

Your ad could be here.


King's Tree Service
 Topping, trimming, bluff/lot clearing, stump grinding and more!
 Bucket truck or climbing
 Free wood chips with job
 Will beat any quoted price!
 Satisfaction guaranteed!!
 —Fully licensed and insured—
 Call (931) 598-9004—Isaac King

HELP WANTED: Forest brush-cutter. Must have experience, chainsaw. No smokers. \$15/hour. Call (931) 967-7307.

BONNIE'S KITCHEN
Real Home Cooking
 Open Wed 11-2; Fri 4-8:30
 NOW OPEN FOR SUNDAY BUFFET 11-2
Midway Road - 598-0583

GILLIAM'S OUTDOORS: Grass-cutting, gutter-cleaning, leaves, plantings. Firewood available. No job too big or small. Local references available. Cory Gilliam, 308-4869.


(931) 598-0033
HAIR DEPOT
 17 Lake O'Donnell Rd., Sewanee
KAREN THRONEBERRY, owner/stylist
DANIELLE HENSLEY, stylist/nail tech

QUILTS/ART/COLLECTIBLES: A Pre/Post Estate Sale. Hand-quilted quilts. Sizes range from lap/baby size to queen/king. Prices range \$100-\$1000. By appointment only. Call Reba Simmons, (931) 235-1863, or leave message at (931) 592-2448.

WHY SEEK an impersonal solution to a personal problem? Private, warm, spirit-filled counseling. Family, individual, adolescent. A Place of Hope. (931) 924-0042. <kerstetter@blomand.net>.


CHAD'S LAWN & LANDSCAPING
-FREE ESTIMATES-
 * Lawn care & Design (Mulch & Planting)
 ALSO: * Tree Trimming & Removal
 * Pressure Washing * Gutter Cleaning
 * Leaf Pickup & Blowing * Road Grading
 * Garden Tilling * Rock Work
(931) 962-0803 Home; (931) 308-5059 Cell

SHAKERAG BLUFF CABIN: Beautiful west-facing bluff view. Near University. Extremely secluded. Sleeps 4-5. C/H/A. Great fishing, swimming. Weekend or weekly rentals. (423) 653-8874 or (423) 821-2755.


SIMPLER TIMES
 We're ready for the HOLIDAYS! Come see us. Handcrafted treasures and much, much more!
 112 Tennessee Ave. in Cowan
 931-703-6414 Open Wed-Sat

Email <classifieds@sewaneemessenger.com> or phone 598-9949.



Photo courtesy of Stephen Alvaraz.

The Cumberland Plateau is the world's longest hardwood forested plateau—widely considered one of the most biologically rich regions on earth, rivaling the biodiversity of tropical rainforests. It is the home of Myers Point. Many will call it a great investment. Others will call it the perfect community of like-minded neighbors. For all who desire to live surrounded by nature, history, beauty, quality and serenity, you'll want to call it home.

- 480-acre private gated community
- 24 exclusive home sites; lakeside living or bluff vista life
- Timeless, organic, craftsman architecture standards
- Land Trust of Tennessee perpetually protected forests
- Over four miles of walking and riding trails
- Community barn, pastures, resting benches and fire pit
- Panoramic views of Champion Cove, Lost Cove and the Cumberland Plateau
- Minutes from The University of the South

The Lipman Group | Sotheby's INTERNATIONAL REALTY
Sewanee Realty®
 John Currier Goodson

(615) 463-3333
 thelipmangroupsothebysrealty.com

John Brewster (931) 636-5864
 sewaneerealty.info (931) 598-9200
(931) 703-0558
©2012 Myers Point, LLC All rights reserved.

THE LUNCH BOX
 —Home of the Mega Burger—
 268 Colyar St., Tracy City
 (931) 592-GOOD
Burgers made to order from 100% pure beef.
 Dine in or call ahead to have your food ready for pickup.

Needle & Thread
 *Alterations * Repairs * Light Upholstery
 * Slipcovers * Drapes
 For a reasonable price, contact
Shirley Mooney
 161 Kentucky Ave.
 Sewanee, TN 37375
(931) 598-0766
 shirleymooney@att.net

YARDS NEED WORK ALL YEAR LONG: Varied handyman services. Jayson Long, (931) 924-5296 or email <jaysontlong@yahoo.com>.

Oldcraft Woodworkers
 Simply the BEST woodworking shop in the area.
 Continuously in business since 1982.
 Highest quality cabinets, furniture, bookcases, repairs.
 Phone 598-0208. Ask for our free video!

EAGLE MOUNTAIN STONE

Rock Solid Masonry
(423) 838-3172

AVAILABLE NOW: Large studio apartment in Clifftops. Furnished and fully equipped. Beautiful setting. \$500. (949) 275-6766.

EAGLE LANDSCAPING & LAWN MAINTENANCE CO.
Now Offering Specials for FALL CLEANUP!
 We offer lawn maintenance, landscaping, hedge/tree trimming & more!
 Please call for your free estimate
(931) 598-0761 or (931) 636-0383

STONE COTTAGE FOR RENT: Available starting Jan. 5, 2013, through end of April and after graduation except July 22–Aug. 4. Near School of Theology. 3BR/2BA, fireplace, patio, deck. Fully furnished, all appliances including W/D. C/H/A, wi-fi, cable TV. Email <gard983@comcast.net> or call (404) 310-1589.

Walk-In Cooler Filled with Flowers!
 —TUXEDO RENTALS—
Monteagle Florist
 333 West Main Street, Monteagle
 (931) 924-3292
 www.monteagleflorist.com



BARDTOVERSE

by Scott and Phoebe Bates

He moves about as ship prepared to sail,
He hoists his proud rotundity of tail,
The half-seal'd eyes and changeful neck he shows,
Where, in its quick'ning colours, vengeance glows;
From red to blue the pendent wattles turn,
Blue mix'd with red, as matches when they burn;
And thus th'intruding snarler to oppose,
Urged by enkindling wrath, he gobbling goes.
—*"The Turkey" by George Crabbe*

The Vulture eats between his meals
And that's the reason why
He very, very rarely feels
As well as you and I.

His eye is dull, his head is bald,
His neck is grower thinner.
Oh! what a lesson for us all
To only eat at dinner!

—*"The Vulture" by Hillaire Belloc*

Winchester Podiatry

CHARLES D. GANIME, DPM

Board Certified in Foot Surgery
Diplomate, American Board of Podiatric Surgery
New Patients of All Ages Welcome! We Treat Your Feet!
Most Insurance Accepted, Including TennCare

We are at 155 Hospital Road, Suite I, in Winchester.
www.winchesterpodiatry.com

931-968-9191



IMAGINE owning or gifting personal or family stories, tributes, and special occasion books designed especially for you. How about hearing and seeing a loved one on DVD?

Celebrate. Share your life with the gift of memoir.

Patricia West, Personal Historian
931.598.5913 or 931.636.6069



ROB MATLOCK
CONSTRUCTION COMPANY
NEW HOME BUILDING
AND REMODELING

MEMBER, U.S. GREEN BUILDING COUNCIL

PHONE 931-598-5728

MATLOCK

State Licensed • Fully Insured

Mooney's
Christmas Tree Stop



Featuring
**Premium Fresh-cut
Fraser Fir & Blue Spruce;
Wreaths & Garland**

Tree lot opens Friday after
Thanksgiving, Nov. 23
1265 W. Main St.,
across from the sand plant
on 41A

931-924-7400

Plus!
**Specialty Foods
Books
Yarn
Antiques
Gifts**

Shop locally!

Buy farm fresh trees straight from the northeast Tennessee and North Carolina mountains.
Don't settle for a chain-store or colorant-treated tree!

Community Calendar

Today, Nov. 21

Franklin County, Grundy County, Marion County schools,
St. Andrew's-Sewanee School and University of the South Thanksgiving
break, through Nov. 23

- 7:00 am Monteagle/Sewanee Rotary, Smoke House
- 5:30 pm Yoga with Helen, Community Center
- 7:00 pm Bible study, Midway Baptist Church

Thursday, Nov. 22

Thanksgiving Day

Fowler Center closed

- 2:00 pm Carillon concert, Gotko, University quad

Friday, Nov. 23

- 8:30 am Yoga with Rebeca, Community Center

Saturday, Nov. 24

- 9:00 am Tracy City Farmers' Market open, until noon
- 10:00 am Silver Threads, St. Mary's Convent

Sunday, Nov. 25

- 4:00 pm Yoga with Helen, Community Center
- 5:00 pm Women's Bible Study, Midway Baptist

Monday, Nov. 26

- 9:00 am CAC office open, until 3 pm
- 10:00 am Chair Exercise, Senior Center
- 12:00 pm Community Council agenda items due
- 1:30 pm Sewanee Garden Club, Flournoy Rogers residence
- 3:30 pm EQB Lead, Jim Pierce, Torian Room, duPont
- 4:00 pm Mayor Dean lecture, Convocation Hall
- 5:30 pm Gentle Yoga with Hadley, St. Mary's Sewanee
- 5:30 pm Naam Yoga with Lucie, Community Center
- 7:00 pm Centering prayer, Otey sanctuary
- 7:00 pm Sewanee Chorale rehearsal, Hamilton Hall

Tuesday, Nov. 27

- 8:30 am Yin Yoga with Lucie, Community Center
- 9:00 am Yoga with Hadley, St. Mary's Sewanee
- 9:00 am CAC office open, until 11 am
- 9:00 am Hospitality Shop open until 2 pm
- 10:30 am Bingo, Senior Center
- 11:30 am Grundy County Rotary, Dutch Maid, Tracy City
- 3:30 am Centering Prayer, St. Mary's Sewanee
- 5:00 pm Sewanee Utility Board meeting, utility office

Wednesday, Nov. 28

- 7:00 am Monteagle/Sewanee Rotary, Smoke House
- 9:00 am CAC pantry day, until 11 a.m.; 1-3 pm
- 4:00 pm Friends of Library, Wilson, Convocation Hall
- 4:30 pm Healthcare talk & discussion, Gailor Auditorium
- 5:30 pm Yoga with Hadley, Flow, St. Mary's Sewanee
- 5:30 pm Yoga with Helen, Community Center
- 7:00 pm Bible study, Midway Baptist Church
- 7:00 pm Catechumenate, Bairnwick Women's Center
- 7:30 pm Performing Arts, "Women of Will," Tn Williams Ctr

Thursday, Nov. 29

- 9:00 am CAC office open, until 11 am; 1-3 pm
- 9:00 am Nature journaling, Abbo's Alley gazebo
- 9:30 am Hospitality Shop open, until 2 pm
- 10:30 am Chair exercise, Senior Center
- 12:00 pm Monteagle/Sewanee Rotary, McClurg
- 12:30 pm Episcopal Peace Fellowship, Brooks Hall, Otey
- 1:00 pm Tracy City Farmers' Market open, until 5 pm
- 1:30 pm Folks@Home support group, Brooks Hall, Otey
- 4:00 pm Gentle Yoga with Hadley, St. Mary's Sewanee
- 5:00 pm Weight Watchers, Otey parish hall, weigh-in 4:30
- 5:15 pm Buddhist sitting group, St. Augustine's Chapel
- 6:30 pm Acoustic jam, Miss Gracie's Restaurant, Cowan
- 7:30 pm Film, "The Amazing Spider-man," SUT
- 7:30 pm Performing Arts, "Women of Will," Tn Williams Ctr

Friday, Nov. 30

Reservations due for Sewanee Woman's Club Dec. 10

- 8:30 am Yoga with Rebeca, Community Center
- 9:00 am CAC office open, until 11 am
- 9:00 am Greening of All Saints' Chapel, all day
- 10:00 am Games day, Senior Center
- 1:00 pm Tracy City Farmers' Market open, until 5 pm
- 3:30 pm Modern Dance, 7-11, Community Center
- 4:30 pm Artist talk, reception, Wohl, Convocation Hall
- 4:30 pm Creative Dance, 5-6, Community Center
- 4:30 pm Tree lighting & Santa, Angel Park
- 7:30 pm Movie, "The Amazing Spider-man," SUT

Local 12-Step Meetings

Friday

- 7:00 am AA, open, Holy Comforter, Monteagle
- 7:00 pm AA, open, Christ Church, Tracy City

Saturday

- 7:30 pm NA, open, Decherd United Methodist
- 7:30 pm AA, open, Brooks Hall, Otey

Sunday

- 6:30 pm AA, open, Holy Comforter, Monteagle

Monday

- 5:00 pm Women's 12-step, Brooks Hall, Otey
- 7:00 pm AA, open, Christ Church, Tracy City

Tuesday

- 7:00 pm AA, open, First Baptist, Altamont
- 7:30 pm AA, open, Brooks Hall, Otey
- 7:30 pm Al-Anon, Brooks Hall, Otey

Wednesday

- 7:00 pm NA, open, Decherd United Methodist
- 7:30 pm AA, open, Holy Comforter, Monteagle

Thursday

- 7:00 pm AA, closed, Big Book study, St. James
- 7:30 pm ACA, Brooks Hall, Otey

Email <news@sewaneemessenger.com>

MICHELIN

Get a MICHELIN® tire that stops shorter¹

\$70

and get a

MasterCard® Reward Card after rebate.¹

See us today for expert service and tires backed by the Michelin Promise Plan.²

Buy any set of four new MICHELIN® brand passenger or light truck tires, and get a \$70 MasterCard® Reward Card after rebate.²

NOVEMBER 1 – 24, 2012

¹ See Michelin.com for more details on the rebate offer for specific MICHELIN brand passenger and light truck tires. ² See participating retailer participating dealers for complete offer details. Offer expires 11/30/12. Void where prohibited. The MasterCard Reward Card cannot be redeemed with additional funds. For use it be used as an ATM (Automated Teller Machine). Terms and conditions apply and other fees may apply to Reward Cards. For complete terms and conditions see "The MasterCard Reward Card Cardholder Agreement" and the activities included in the card package. MasterCard Reward Cards are issued by U.S. Bank National Association, pursuant to a license from MasterCard International Incorporated. MasterCard is a registered trademark of MasterCard International Incorporated. Copyright © 2012 Michelin North America, Inc. All rights reserved. The Michelin Man is a registered trademark owned by Michelin North America, Inc.

Nitrogen

Go Green

**Free Nitrogen Fill
with the purchase
of a set of 4 tires**

**Extends Life Of Your Tires.
Get Better Gas Mileage**

Cannot be combined. See store for details. Expires 11/30/12

University Special

10% OFF

**Any Service for
University Students!**
Bring your ID.

Cannot be combined. See store for details. Expires 11/30/12

**HEATH AUTOMOTIVE
TIRE PROS**

www.heathautomotivetirepros.com



501 1st Ave. SW
Winchester, TN
(931) 967-3880