

## McClurg & Chef Rick Introduce Locally Sourced Sunday Lunch

Area Farms Will Provide Chicken, Fruits & Vegetables Each Week

by Leslie Lytle  
Messenger Staff Writer

Most people have never eaten locally raised fried chicken, a culinary delight about as readily available as mushrooms from the moon. But that is about to change.

Beginning on Sunday, Nov. 8, Sewanee Dining located in McClurg Hall will offer farm-fresh locally raised fried chicken at the noon meal on Sunday, the crown jewel in the all-local menu. Executive Chef Rick Wright plans for one meal each week.

In keeping with a commitment to promote sustainability and support the local food shed, the University charged Wright with dedicating 30 percent of his \$300,000 budget to purchasing locally raised products. That translates into \$100,000 a year infused into the local economy.

Three years into the program, Wright has reached the 20 percent mark. He buys all his milk locally, as well as all his eggs, most coming from a Tracy City farmer. He also buys nearly 500 pounds of ground beef each week from local farmers, as well as fruit and vegetables, purchasing from the Sewanee-based South Cumberland Farmers' Market Food Hub, other farmers' markets and individual farms.

Wright needs 500 pieces of chicken for each Sunday dinner; that's more than 60 birds. Two local farms have upped production and on-farm processing to fill the quota, Fountain Springs in Morrison, Tenn., and Nature's Wealth in Skymont, Tenn.

Both farms raise antibiotic-free, grass-fed poultry, supplementing the birds' diet with locally grown non-GMO corn and soy meal.

A relatively new product, pastured poultry from family farms is becoming



A member of Sewanee Dining prepares locally grown tomatoes.

available as a result of a USDA ruling allowing farms who raised fewer than 20,000 chickens to apply for an exemption to process birds on the farm without an inspector present.

"It took over a year to get licensed," said Fountain Springs farmer Eric Earle. He and his family began on-farm processing of the chickens they raise just five years ago. Fountain Springs also sells farm-raised turkeys and hogs.

In addition to chicken, Nature's Wealth farm sells eggs, popcorn, potatoes and tomatoes, along with extras from the family vegetable garden.

Both farms are family-run operations. Both the Earle (Fountain Springs) and Diller (Nature's Wealth)

families come from a farming background and found a niche that let them keep farming by tapping into the market for local food.

Chef Wright needs "more local product," and he's seeing farmers increase production and extending the season with hoop houses to meet the demand. Locally raised food "is not cheap," Wright said, "but the payback is spiritual, in part." Instead of supporting the corporate poultry industry and its negative impact on the community and contributing to a model based on wretched working conditions and low pay for farm workers, the University program is building local agriculture and helping boost the local economy.

The University farm supplies Wright with lettuces and some eggs. He praised new farm manager Carolyn Hoagland, who has developed an innovative composting program and has plans for extending the season with greenhouses and hoop houses. In 1960, the University farm supplied all the school's needs. Today the demand is much greater. Wright stressed the need for local farms to help the University reach the goal of "a community that can feed itself."

Preparing fresh food "from scratch" has its challenges. Wright cited the example of the kitchen staff not knowing how to cut up a whole chicken. But the new skills employees learn increase their pay, Wright said, and they often transition from minimum wage to a living wage.

Among those benefitting the most from the program are students, according to Chef Wright. "We serve students the freshest, best tasting product, while helping them understand the importance of purchasing local, how it benefits them personally, benefits the environment and benefits the community."

Join in the local fried chicken Sunday feast (\$10.38 per person) and celebration on Nov. 8.

## Benefit for Sewanee Children's Center

The University's department of music will present a concert to benefit the Sewanee Children's Center (SCC) at 3 p.m., Sunday, Nov. 15, in St. Luke's Chapel on campus. The event is free; donations to SCC will be accepted at the door.

Faculty members Bernadette Lo, Rebecca Van de Ven and Rebecca Murphy will join Larry Sims, retired director of SCC, in presenting this magical blend of narration and classical music.

At this informal event, children may sit on the floor with their favorite blankets or snuggly toys and listen to Francis Poulenc's "The Story of Babar the Little Elephant" and Robert Muczynski's "Fuzzette the Tarantula." Lo is a visiting assistant professor of piano; Van de Ven (oboe) and Murphy (flute) are both adjunct faculty at the University.



St. Andrew's-Sewanee School students (from left) Gracie Rowell and Vanessa Moss, with Caroline Graham (standing) in the recent production of "A Comedy of Errors."

## Nov. 21 New Date for Elliott Park Opening

The date for the community work day to install the required surface material to complete the new playground at Elliott Park has been changed to Saturday, Nov. 21.

Ongoing delays due to weather resulted in the need to move the date for the installation of playground equipment, which will take place during the week of Nov. 9. A variety of physical plant items will then be taken care of during the days prior to the final steps of spreading the fiber mulch.

The work will begin at 10 a.m. on Nov. 21. Festivities to celebrate the completion and opening of the playground will begin at 3 p.m., with live music and the Shenanigans truck.

Please sign up ahead of time at <<http://www.signupgenius.com>>; search for the event by using the email address <[eduncan@sasweb.org](mailto:eduncan@sasweb.org)>.

The Sewanee Civic Association, in partnership with the University of the South, has brought to completion the second project in the Sewanee community parks system. The community, along with the South Cumberland Community Fund, the Sewanee Community Council Funding Project, the Kaj Krogstad Memorial Fund, the Joel and Trudy Cunningham Charitable Fund, the Montegale Sewanee Rotary and donations through a designated fund with the Sewanee Community Chest, donated more than \$56,000 to purchase and install the new playground equipment, which is located in Elliott Park on University Avenue adjacent to the bookstore.

## Sewanee & UGa Conduct Water Issue Survey

Faculty and students from the University of the South and the University of Georgia's Odum School of Ecology will be conducting a short survey to learn about the Sewanee community's knowledge of, and attitudes toward, local and global water issues. This project is part of the ongoing collaboration between the two schools.

The surveys will be conducted in

person at several locations around the community, including duPont Library, Sewanee Elementary School and downtown, on Thursday and Friday, Nov. 12-13. An electronic version will be available later this month for people who want to participate online. For more information contact Deborah McGrath by email, <[dmcgrath@sewanee.edu](mailto:dmcgrath@sewanee.edu)>.

## School Board Considers Technology to Detect Sexual Predators

by Leslie Lytle, Messenger Staff Writer

At the Nov. 2 working session, the Franklin County Board of Education considered installing Raptor visitor management software designed to detect sexual predators at two county schools on a pilot basis.

Director of Schools Amie Lonas and Brian Norwood recently met with Raptor representatives. Norwood is assisting Transportation and Safety Director Ellis Counts, who will retire Jan. 1.

"The school resource officers (SROs) brought the technology to our attention," Norwood said. He provided the board with an overview of the program.

At all county schools presently, to-be visitors must request admittance via an electronic notification device before the office will unlock the doors. With the Raptor technology, visitors would be required to scan their photo ID at a kiosk located immediately inside the entrance. The software then searches more than 700 websites for sexual predator information. If the software shows no matches, the system prints a visitor's badge with a photo ID and information on the visitor's intended destination within the school.

In the case of an alert, the system summons an SRO and informs the visitor an error code registered, requiring the visitor to go to the office. The SRO will then take action as necessary.

The software can generate detailed reports and databases on visitor activity; automatically notify other schools in the system of suspicious activity, such as a vehicle cruising the parking lot; send a call for police with a single emergency button; and be input with checkout data for children indicating which adults have permission to pick them up. Add-ons to the basic system allow for background checks and volunteer tracking. The basic system costs \$1,600 for each school and an additional \$480 annually per school after the first year.

Lonas asked the board to consider installing the basic software on a pilot basis at Franklin County High School (FCHS) and Clark Memorial Elementary, the largest high school and largest elementary school in the district.

(Continued on page 7)

P.O. Box 296  
Sewanee, TN 37375

# Letters

## MOUNTAIN GOAT UPDATE

### To the Editor:

On behalf of the Mountain Goat Trail Alliance (MGTA), I would like to thank Franklin County Mayor Richard Stewart for his purchase of additional road signage on the Mountain Goat Trail at Hawkins Lane, Lake O'Donnell Road and Airport Road.

Mayor Stewart responded to our request for the additional signage after several near misses at these intersections due to the ever-increasing pedestrian and bicycle traffic on the trail.

The Mountain Goat Trail Alliance is proud of our partnerships with municipalities along the trail: the Sewanee section of the trail was built in partnership with the Franklin County mayor's office, and the newest section connecting Sewanee to Monteagle is the result of collaboration between the MGTA and the Town of Monteagle. Look for new trail construction next year in Tracy City, as the Mountain Goat Trail grows in Grundy County.

As we continue the expansion of the trail along its original route from Cowan to Palmer, these partnerships with municipalities will help us grow this community asset into a regional one with new trail, as well as keep the trail in top condition.

If you would like to get involved with the trail, please visit our website to learn how your support of time and money can be put to use: <www.mountaingoastrail.org>.

Nate Wilson  
Board President  
Mountain Goat Trail Alliance ■

## FREE YOGA THIS MONTH

### To the Editor:

I've been teaching yoga for 10 years in Sewanee. I received my certification from Stone Door Yoga Retreat in Beersheba Springs back in October of 2005 after an eight-weekend teacher training program. To show my appreciation to the community, all yoga classes for the month of November are free of charge.

This is a perfect opportunity to give yoga a try, with classes for all levels and ages. I always offer alternate versions of the pose if the standard version is not an option. A typical class includes breathing exercises, strengthening and balancing poses, stretching the spine in all four directions with attention on



Sewanee Elementary School student Will Turrell dressed as a fireman for the SES Reverse Halloween Parade.

keeping the hips and shoulders flexible, occasional inversions, and always ending with deep relaxation.

The main reason people give for not trying yoga is that they're not flexible. I always reply that it doesn't matter how far you stretch, the important thing is to stretch at all. Even if you only move a few centimeters, you are waking up and bringing circulation to dormant tissues. You go there to become more flexible in body and mind and, most importantly, to experience a moment of peace and contentment. Once you experience just a few moments in yoga class, it becomes easier to apply that to all situations. I promise that you will leave class in a much better state of mind than when you came.

Classes are at the Sewanee Community Center every Wednesday at 5:30 p.m., and every Sunday at 4 p.m. Drop-in is \$8, and a 10-class pass is \$75.

Helen Stapleton  
Sewanee ■

## GRATITUDE TO HOME HEALTH

### To the Editor:

Over the course of several months Home Health Care of East Tennessee provided expert nursing and loving personal care for my husband, Herbert Wentz.

This hospice group became a second family for us. A middle-of-the-night emergency? A nurse was soon at our door. Herbert anticipated scheduled visits, and I knew that I was never alone.

In a very difficult situation, we enjoyed reassurance, companionship and laughter. These extraordinary caregivers have my heartfelt gratitude.

Sofia Wentz  
Sewanee ■

## THE SEWANEE MOUNTAIN MESSENGER

418 St. Mary's Ln.

P.O. Box 296

Sewanee, Tennessee 37375

Phone (931) 598-9949

Fax (931) 598-9685



Email news@sewaneemessenger.com  
www.sewaneemessenger.com

Laura L. Willis, editor/publisher  
Janet B. Graham, advertising director/publisher  
April H. Minkler, office manager  
Ray Minkler, circulation manager  
Leslie Lytle, staff writer  
Kevin Cummings, staff writer/sports editor  
Sandra Gabrielle, proofreader  
Geraldine H. Piccard, editor/publisher emerita

Contributors  
Phoebe Bates  
John Shackelford  
John Bordley  
K.G. Beavers  
Virginia Craighill  
Patrick Dean  
Buck Gorrell  
Margaret Stephens  
Peter Trenchi  
Francis Walter  
Pat Wiser

Published as a public service to the Sewanee community. 3,700 copies are printed on Fridays, 47 times a year, and distributed to 26 Sewanee-area locations for pickup free of charge.

This publication is made possible by the patronage of our advertisers and by contributions from the University of the South (print production) and the Sewanee Community Chest.

SUBSCRIPTIONS \$75 first class.

All material in the Sewanee Mountain Messenger and on its website are copyrighted and may not be published or redistributed without written permission.

## Veterans Day Closings

Veterans Day is Wednesday, Nov. 11. Federal, state and local government agency offices will be closed, as well as banks and the post office.

Sewanee Elementary, St. Andrew's Sewanee and the University of the South will hold classes, and their offices will be open. The Sewanee Senior Center is open.

To sign up to help at  
the Elliott Park  
workday on  
Nov. 21, go to:

<<http://www.signupgenius.com/go/60b0f4aaec2fa31-elliott>>

## Serving Where Called

Please keep the following individuals, their families and all those who are serving our country in your thoughts and prayers:

Michael Evan Brown  
Mary Cameron Buck  
Lisa Coker  
Jennifer Lynn Cottrell  
James Gregory Cowan  
Nathaniel P. Gallagher  
Alex Grayson  
Peter Green  
Robert S. Lauderdale  
Dakota Layne  
Byron A. Massengill  
Forrest McBee  
Andrew Midgett  
Alan Moody  
Brian Norcross  
Christopher Norcross  
Lindsey Parsons  
Peter Petropoulos  
Troy (Nick) Sepulveda  
J. Wesley Smith  
Charles Tate  
Tyler Walker  
Jeffery Alan Wessel  
Nick Worley

If you know of others in our Mountain family who are serving our country, please give their names to American Legion and Auxiliary member Louise Irwin, 598-5864.

## OUR SEWANEE CUSTOMERS SAY IT BEST:

*"When I moved my auto and homeowner's insurance to the Hatchett Agency, my premiums were much lower, and the policies were with superior companies."*

—John Reishman

**HATCHETT**  
Insurance  
Agency

Nelson Hatchett  
931-967-7546

**Grange**  
Insurance®



**MR. POSTMAN, INC.**  
209 South Jefferson St., Winchester  
One block off square across from PO  
(931) 967-5777 Fax (931) 967-5719

**Full Line Packing Supplies**

—SHIPPING AND PACKING SERVICES—  
Authorized shippers for UPS, Fed Ex & DHL • Open Mon-Fri 9-5

**Michael A. Barry**  
**LAND SURVEYING & FORESTRY**  
★ ALL TYPES OF LAND SURVEYS  
★ FORESTRY CONSULTING  
(931) 598-0314 | (931) 308-2512

**J & J GARAGE**  
**COMPLETE AUTO REPAIR**  
• Import & Domestic  
• Computerized 4-Wheel Alignments  
• Shocks & Struts • Tune-ups • Brakes  
• Our Work is Guaranteed.  
• OVER 26 YEARS EXPERIENCE.  
598-5470 Hwy 41-A between Sewanee & Monteagle • Monday-Friday 7:30-5:30  
Jerry Nunley  
Owner

**Adaptive Landscape Lighting**  
Crafted LED Illumination of Architecture, Landscape, Outdoor Living Spaces, Security and Safety Concerns  
Bonded : Insured : Experienced : Residential and Commercial  
pevans@adaptivelighting.net • www.adaptivelighting.net  
**Paul Evans : 931-952-8289**  
Sewanee, TN

**Avoid traffic jams!**  
**One-Stop Transportation**  
**Information: dial 511**

## The Gnarled Oak

Furniture refinishing,  
chair caning, seat weaving  
and furniture repair



Victorian Sea Captain's Desk

Flat Branch Community  
2222 Flat Branch Spur  
Tracy City, Tennessee 37387  
(931) 592-9680  
Bill Childers, Prop.

## Upcoming Meetings

### Coffee with the Coach on Monday

Coffee with the Coach will meet at 9 a.m., Monday, Nov. 9, at the Blue Chair Tavern. The guest will be Sewanee men's basketball coach Bubba Smith. Come and enjoy good conversation and free coffee.

### Sewanee Woman's Club Gathers on Monday

The Sewanee Woman's Club will meet at noon, Monday, Nov. 9 at the DuBose Conference Center in Monteagle; the speaker will be Nate Wilson, University domain manager. He will talk about "White-tailed Deer on the Mountain: A Cloven-Hoof-Centric History of the South Cumberlands." In his job, Wilson is responsible for the implementation of land management decisions across the Domain.

### Franklin County Democrats Meet on Monday

The Franklin County Democratic Party will meet at 5:30 p.m., Monday, Nov. 9, in the Franklin County Annex Building, 839 Dinah Shore Blvd., Winchester. For more information contact Nancy Silvertooth by email, <nsilvertooth@bellsouth.net>.

### Sewanee Leaseholders Meeting Monday

People interested in reconstituting the Sewanee Leaseholders Association will gather at 6 p.m., Monday, Nov. 9, at the Senior Center. For more information contact Louise Irwin at 598-5864.

### La Leche League Meets Tuesday

La Leche League will meet at 10:30 a.m., Tuesday, Nov. 10, at the Sewanee Community Center. All pregnant women, mothers and babies are welcome. For more information call Pippa at (931) 463-2050.

### Lease Committee Agenda Deadline Tuesday

The next meeting of the Lease Committee will be on Tuesday, Nov. 17. Agenda items are due by 4:30 p.m., Tuesday, Nov. 10. Items can be delivered to the Office of the Superintendent of Leases in the Blue House, 400 University Ave., or submitted by email to <barbara.schlichting@sewanee.edu> or <peggy.alsup@sewanee.edu>.

### Daughters of the King Meet Tuesday

Daughters of the King will meet at 5:30 p.m., Tuesday, Nov. 10, in the parish hall of St. James Episcopal Church in Midway.

### EQB on Wednesday

EQB will meet for lunch at noon, Wednesday, Nov. 11, at St. Mary's Sewanee. Lelia Blizzard will present a cameo talk about TN Promise and tAchieves, programs to help students get scholarships and guide them through the transition from high school to college.

### American Legion Post 51 Meets Wednesday

American Legion Post 51 will have its annual Veterans' Day gathering at 6 p.m., Wednesday, Nov. 11. The potluck dinner will be followed by speaker Michael Parmley, U.S. Air Force (retired), who will talk about his service in Afghanistan.

### Dialogue on Race and Diversity Wednesday

There will be a "Dialogue on Race and Diversity in Sewanee," at 6 p.m., Wednesday, Nov. 11, in the Ayres Multi-Cultural Center. It will include an informal supper and small group discussion. The event is sponsored by the Office of Multi-Cultural Affairs, the African American Alliance, the School of Theology and Cumberland Center for Justice and Peace.

### Area Rotary Club Meetings

The Grundy County Rotary Club meets at 11:30 a.m., Tuesdays, at Dutch Maid Bakery in Tracy City.

The Monteagle Sewanee Rotary Club meets 8-9 a.m., Thursdays, at the Sewanee Inn. On Nov. 12, the program will be an update on the South Cumberland Community Fund by Margaret Woods and Laura Willis.

### Academy for Lifelong Learning on Thursday

The Academy for Lifelong Learning at St. Mary's Sewanee will welcome the Rev. William S. Wade, at its noon meeting, Thursday, Nov. 12. Wade will talk about "St. Andrew's School: Not Just Another School." To order a box lunch call Debbie Yelk at 598-5342.

### Sewanee Emeritus Assn. Meets on Thursday

The Sewanee Emeritus Association will meet at 3:30 p.m., Thursday, Nov. 12, in the Torian Room of duPont Library. University Vice-Chancellor John McCardell will be the guest speaker.

### University Hosts Two Planning Workshops on Thursday

The University is hosting a planning session at 4 p.m., Thursday, Nov. 12, in Convocation Hall, to gather input on how to develop a plan for the University Avenue corridor. Along with Town Planning and Urban Design Collaborative, the University is hosting a workshop about community planning, 5-7 p.m., Thursday, Nov. 12, upstairs in McClurg Hall.

### Sewanee Woman's Club Book Club Meeting on Nov. 16

The Sewanee Woman's Club Book Club will meet at 1:30 p.m., Monday, Nov. 16, in the home of Flournoy Rogers (please note the location change). Sally Hubbard will review "All the Light We Cannot See" by Anthony Doerr. For more information email Debbie Racka at <debbie811@comcast.net> or contact Rogers at 598-0733.

### Garden Club Meeting on Nov. 18

The Sewanee Garden Club will meet at 1:30 p.m., Wednesday, Nov. 18, at the Clifftops Lake Club House (please note the date change). The program will feature Darlene Seagroves talking about "Much Ado About Bee's Wax." For more information contact Flournoy Rogers at (931) 598-0733 or email <semmesrogers@gmail.com>.

## October Lease Committee Report

The following items were approved at the October meeting of the Lease Committee: September minutes; request to transfer Lease No. 912 (Southern Community Bank), located at 141 University Ave., to Folks at Home; request from Housing Sewanee to build a handicap ramp on Lease No. 308, located at 332 Alabama Ave.; request to convert the existing garage into an apartment on Lease No. 438, located at 257 North Carolina Ave.; request to paint trim, fascia, window frames and front door on Lease No. 811, located at 912 Lake O'Donnell Rd.; request to paint exterior doors, remove an outbuilding, re-roof, replace siding, and paint two buildings, remove the perimeter fence and privacy fence and replace it with black steel fence panels on Lease No. 600, located at 31 Hawkins Lane;

Request to build an addition connected to the house with a garden gate on Lease No. 1033, located at 64 Laurel Dr.; request from Brandy and Ben Tiernan for approval of house plans, materials, colors, and tree protection plan for Lot No. 30 in Wiggins Creek II; request to transfer Lease No. 741 (CitiFinancial), located at 280 Bob Stewman Road, to Sarah Marhevsky and Matthew Rudd; request to transfer Lease No. 590 (Hamby), located at 630 Alabama Ave., to Rob MacSwain.

Leasehold information is available online at <leases.sewanee.edu> or by calling the lease office at 598-1998. A county building permit is required for structures with roofs; call 967-0981 for information.



**NEW CONSTRUCTION**

**REMODELING**

**HISTORIC RESTORATION**

**LICENSED • INSURED • TRUSTED**

**931-924-2444** [sweetonhome.com](http://sweetonhome.com)

## Brown's Body Shop

**Leonard Brown - Owner**  
**Steve Young - Gen. Mgr.**  
**Steve Hartman - Shop Mgr.**

710 College St. • Winchester  
**931-967-1755**  
**Fax 931-967-1798**

*Come by and see us.*  
*We appreciate your business.*

**Our Work is Guaranteed!**

**TELL THEM YOU READ IT HERE!**

## Winchester Podiatry

**CHARLES D. GANIME, DPM**

*Board Certified in Foot Surgery*  
*Diplomate, American Board of Podiatric Surgery*  
*New Patients of All Ages Welcome! We Treat Your Feet!*  
*Most Insurance Accepted, Including TennCare*

We are at 155 Hospital Road, Suite 1, in Winchester.  
[www.winchesterpodiatry.com](http://www.winchesterpodiatry.com)

**931-968-9191**

91 University Ave. Sewanee

**UNIVERSITY  
REALTY**

SEWANEE  
TENNESSEE



**(931) 598-9244**

Lynn Stubblefield (423) 838-8201  
 Ed Hawkins (866) 334-2954  
 Susan Holmes (423) 280-1480



**CLIFFTOPS RESORT.** Ranch style, single story, 2 master suites, guest house, 2 fireplaces, 2-car garage, many extras.



**LOOKING FOR A SMALL FARMHOUSE** with a barn on Campus? This is it! 372 Lake O'Donnell. \$150,000.



**LAUREL LAKE.** Private and secluded 6.5 acres, small lake and spacious, lovely 3-bedroom home. \$239,900

**BLUFF LOT.** Partin Farm Road. 6.42 acres. \$75,000.



**BLUFF LOTS** on Sherwood Road. 3 miles from University Ave. Stunning view of Lost Cove, spectacular sunrises, road frontage. 4.08 acres and 17.70 acres.



**WATERFALL PROPERTY.** 30 acres on the bluff with an amazing waterfall. True story-book setting.



**PEARL'S FOGGY MOUNTAIN CAFÉ** for sale. Business, furnishings, equipment and good will.



**LAUREL TRAILS CAMPGROUND:** 30 acres, RV hookups, cabins, lake, campsites, pavilion, bath houses and much more. \$499,000.

**SHADOW ROCK DR.** 1.18-acre charming building lot with meadow in front, beautiful trees in back.

**GAP RD. CAVE** (large entrance). Bluff view, 15 acres. \$48,500.

**SEWANEE SUMMIT.** 60 acres, build on it or hunt on it. \$89,000.

**SNAKE POND RD.** 30 beautifully wooded acres on the corner of Snake Pond and Stagecoach. Water, electric, Internet. All usable land.



**RESIDENTIAL OR COMMERCIAL:** Stillpoint, excellent location on Hwy 41A beside Pearl's Cafe. Two acres, 225' of frontage, adequate parking, consistent rental history. \$260,000.



**SEWANEE HOUSE ON THE BLUFF** behind St. Andrew's-Sewanee, pastoral view of Roarks Cove. 3800 sq. ft. 5.77 acres.



**CLIFFTOPS RESORT.** 5 acres, year-round creek, joins University, private & secluded. \$79,000.



**SEWANEE HWY.** Charming Cedar 4 BR 2 baths on 2 acres. Mtn. Goat Trail runs behind it. 1 mile from University Ave \$260,000.

**WE HAVE BUYER'S AGENTS TO REPRESENT YOUR INTEREST AT NO CHARGE**

## Obituary

### Robert Marshall Epperson

Robert Marshall Epperson, formerly of Sherwood, died on Oct. 26, 2015, in Tallahassee, Fla. He was preceded in death by his parents, Allen and Eunice Steele Epperson; brothers, Fred, Clarence and Lewis Epperson; and sisters Vivian Smith, Ethel King, Louise Garner and Marylee Hannah.

He is survived by his wife, Jean Ann Epperson of Tallahassee; daughters, Janet Epperson (John) Weeks of Crawfordville, Fla., and Brandy Epperson of Decherd; sister Dorothy Rae Sheealy; and two grandchildren and several nieces and nephews.

Memorial services were on Oct. 30 at Christ Church Anglican, Medart, Fla. A memorial service will be held at a date to be announced at Epiphany Mission, with interment in Mountain View Cemetery in Sherwood.

For complete obituary go to <www.bevisfh.com>.

## Holiday Wreaths Benefit CAC

The Community Action Committee (CAC) is sponsoring the sale of holiday balsam wreaths.

Orders will be accepted until Nov. 25. The cost of the wreaths is \$25; they will arrive in early December. If you want a wreath before Dec. 4, please order by Nov. 15 and note that you want it early. The rest should arrive during the week of Dec. 7 and will be available for pickup at the CAC at Otey Parish. If requested, wreaths can be delivered.

To order wreaths, either email <cacchristmaswreaths@gmail.com> or call Cindy Potter at 598-5773. Be sure to include your name, the number of wreaths you want and contact information. An order form will also be available at the CAC office; for details call 598-5927.

## Lamborn Installation Service on Saturday at Otey

Episcopal Diocese of Tennessee Bishop John Bauerschmidt will preside at the Renewal of Ministry and Welcoming as Rector service for the Rev. Dr. Robert C. Lamborn, 11 a.m., Saturday, Nov. 7, at Otey Memorial Parish. A reception in St. Mark's Hall will follow the service. Child care will be available.

Lamborn began his ministry at Otey in August. Before coming to Sewanee, Lamborn most recently was interim rector at St. James the Less Episcopal Church in Scarsdale, N.Y. For close to eight years (2004–12), he was rector at Christ Church Riverdale in the Bronx, where he led a campaign to add handicapped accessibility, build a new pipe organ and address decades of deferred maintenance on the historic property. He was rector at St. John's Episcopal Church in Crawfordville, Ind., 1996–2004.

Lamborn is a 1994 graduate of the School of Theology in Sewanee, where he earned a Master of Divinity degree. He earned a bachelor of music, summa cum laude, in 1987 from University of Georgia.

Before coming to Sewanee for seminary, he was in a Ph.D. program in musicology at Indiana University. He earned a doctor of ministry in ministry development in 2007 from Virginia Theological Seminary. He was ordained to the priesthood in 1995.



Rob Lamborn

## Church News

### All Saints' Chapel

Growing in Grace will meet at 6:30 p.m., Sunday, Nov. 8, in All Saints' Chapel. The speaker will be Charlie Williams, C'12. Catechumenate will meet at 7 p.m., Wednesday, Nov. 11, in the Bairnwick Women's Center.

### Christ Church, Monteagle

On Nov. 8, which is the Sunday within the Octave of All Saints, Christ Church will continue packing shoeboxes for Samaritan's Purse and Operation Christmas Child.

### Harrison Chapel Church

The singing group New Desire Christian Ministries from Aragon, Ga., will be at the 5 p.m. service, Sunday, Nov. 8, at Harrison Chapel in Midway. Everyone is welcome.

### Otey Memorial Parish

At 10 a.m., Sunday, Nov. 8, Otey Parish's Adult Forum will hear a program on "I am a Christian: Perpetua, Martyrdom, and the Origin of the Cult of Saints," by history professor Susan Ridyard.

## CHURCH CALENDAR

### Weekday Services, Nov. 6–12

7:00 am Morning Prayer/HE, St. Mary's (not 11/9)  
7:30 am Morning Prayer, Otey  
8:30 am Morning Prayer, Christ the King Anglican (11/10)  
8:30 am Morning Prayer, St. Augustine's  
12:30 pm Noon Prayer, St. Mary's (not 11/9)  
4:00 pm Evening Prayer, St. Augustine's  
4:30 pm Evening Prayer, Otey  
5:00 pm Evening Prayer, St. Mary's (not 11/9)  
7:00 pm Taizé, St. Luke's (11/6)

### Saturday, Nov. 7

7:30 am Morning Prayer/HE, St. Mary's  
10:00 am Sabbath School, Monteagle 7th Day Adventist  
11:00 am Installation of Rev. Rob Lamborn at Otey  
11:00 am Worship Service, Monteagle 7th Day Adventist  
3:00 pm Shabbat, Sons of Tzadok, Monteagle  
5:00 pm Mass, Good Shepherd Catholic, Decherd

### Sunday, Nov. 8

#### All Saints' Chapel

8:00 am Holy Eucharist  
11:00 am Holy Eucharist  
6:30 pm Growing in Grace

#### Bible Baptist Church, Monteagle

10:00 am Morning Service  
5:30 pm Evening Service

#### Christ Church Episcopal, Alto

9:00 am Holy Eucharist  
9:00 am Children's Sunday School

#### Christ Church Episcopal, Tracy City

11:00 am Holy Eucharist  
11:00 am Children's Sunday School

#### Christ Church, Monteagle

10:30 am Holy Eucharist  
10:45 am Children's Sunday School  
12:50 pm Christian formation class

#### Christ the King Anglican Church, Decherd

9:00 am Worship Service

#### Church of the Holy Comforter, Monteagle

9:00 am Holy Eucharist

#### Community Harvest Church of God, Coalmont

10:00 am Sunday School  
11:00 am Worship Service  
5:30 pm Evening Service

#### Cowan Fellowship Church

10:00 am Sunday School  
11:00 am Worship Service

#### Cumberland Presbyterian Church, Sewanee

9:00 am Worship Service  
10:00 am Sunday School

#### Decherd Mission Church

11:00 am Worship Service

#### Decherd United Methodist Church

9:45 am Sunday School  
10:50 am Worship

#### Epiphany Episcopal Church, Sherwood

10:30 am Holy Eucharist  
10:30 am Children's Sunday School

#### First United Methodist Church, Winchester

8:30 am Traditional Worship (also at 11 am)  
9:00 am Contemporary Worship  
9:45 am Sunday School

#### Good Shepherd Catholic Church, Decherd

10:30 am Mass

### Grace Fellowship

10:30 am Sunday School/Worship Service

### Harrison Chapel Methodist Church

10:00 am Sunday School  
11:00 am Worship Service  
5:00 pm Worship Service, special singing

### Midway Baptist Church

10:00 am Sunday School  
11:00 am Morning Service

6:00 pm Evening Service

### Midway Church of Christ

10:00 am Bible Study  
11:00 am Morning Service  
6:00 pm Evening Service

### Ministry Baptist Church, S.R. 50, Pelham

10:30 am Breakfast Fellowship  
11:00 am Morning Service  
6:00 pm Evening Service

### Morton Memorial United Methodist, Monteagle

9:45 am Sunday School  
11:00 am Worship Service

### New Beginnings Church, Jump Off

10:30 am Worship Service

### Otey Memorial Parish Church

8:50 am Holy Eucharist  
10:00 am Godly Play  
10:00 am Lectionary Class/Adult Forum  
11:00 am Holy Eucharist

### Pelham United Methodist Church

9:45 am Sunday School  
11:00 am Worship Service

### St. Agnes' Episcopal, Cowan

10:00 am Sunday School  
11:00 am Holy Eucharist

### St. James Episcopal

9:00 am Holy Eucharist

### St. Margaret Mary Catholic Church, Alto

8:00 am Mass

### St. Mary's Convent

8:00 am Holy Eucharist  
5:00 pm Evensong

### Sewanee Church of God

10:00 am Sunday School  
11:00 am Morning Service  
6:00 pm Evening Service

### Society of Friends

9:30 am Meeting, 598-5031

### Tracy City First Baptist Church

9:45 am Sunday School  
10:45 am Morning Worship  
5:30 pm Youth  
6:00 pm Evening Worship

### Valley Home Community Church, Pelham

10:00 am Sunday School  
11:00 am Worship Service  
5:00 pm Evening Service

### Wednesday, Nov. 11

6:00 am Morning Prayer, Cowan Fellowship  
12:00 pm Holy Eucharist, Christ Church, Monteagle  
5:30 pm Evening Worship, Bible Baptist, Monteagle  
6:00 pm Youth (AWANA), Tracy City First Baptist  
6:30 pm Worship, Community Harvest Church of God, Coalmont  
7:00 pm Adult Formation, Epiphany, Sherwood  
7:00 pm Evening Worship, Tracy City First Baptist  
7:00 pm Prayer Service, Harrison Chapel, Midway

ROB MATLOCK  
CONSTRUCTION COMPANY  
NEW HOME BUILDING  
AND REMODELING

MEMBER, U.S. GREEN BUILDING COUNCIL

PHONE 931-598-5728

State Licensed • Fully Insured

**UPCOMING RETREATS**

**Three-Day Advent Centering Prayer Retreat**

Friday, December 11–Sunday, December 13  
*The Rev. Tom Ward, presenter*  
St. Mary's Hall, \$350 (single);  
The Anna House, \$450 (single); Commuter, \$250

**Writing as a Spiritual Practice**

Friday, February 5–Sunday, February 7  
*Anne Bright, presenter*  
St. Mary's Hall, \$350 (single);  
The Anna House, \$450 (single); Commuter, \$250

Call (931) 598-5342 or (800) 728-1659  
www.StMarysSewanee.org  
<reservations@stmaryssewanee.org>

*I merely took the energy it takes to pout and wrote some blues. —Duke Ellington*

www.stillpointsewanee.com

**Stillpoint**

Individual and Group Psychotherapy     Acupuncture, Massage and Body/Energy Work

**Eva Malaspino, RN, Reiki Master**  
423-413-0094

**Kate Gundersen, LCSW**  
931-235-4498

**David Tharp, Acupuncture**  
423-870-8870

**Regina Rourk Childress, LMT, CNMT**  
931-636-4806

**Lucie Carlson, Reiki**  
lucie.carlson@gmail.com

**Wanda D. Butner, LSPE**  
931-361-1333

**Maryellen McCone, LPC/MHSP**  
931-636-4415

**L&L MART**

Groceries, Deli, Pizza, Gas & Diesel  
Open 24/7 • (931) 692-2402

**L&L RENTAL**  
(including U-Haul)

Let Us Help Make Your Job Easier!  
(931) 692-RENT (7368)  
Jeremy Brown, Mgr.

Bring this ad in for a free key!

**L&L HARDWARE**  
Plumbing and Electric Supplies  
(931) 692-2106 • Weldon Brown, Mgr.

Call for more information or email llmart@blomand.net

**Junction of Highways 56 & 108 in Coalmont**

***“You’ll never get dizzy  
by doing too many  
good turns.”***

From “Two-Liners Stolen From  
Others” by Joe F. Pruett

# Sewanee Realty

SewaneeRealty@inSewanee.com  
www.SewaneeRealty.com  
115 University Ave., Sewanee, Tenn.

**Margaret Donohue,**  
Principal Broker • 931.598.9200

**Patsy Truslow,**  
Affiliate Broker • 931.636.4111



MLS 1630351 - 706 Old Sewanee Rd.  
+30 acres, Sewanee. \$332,000



MLS 1639161 - 1829 Hickory Place,  
Clifftops. \$369,000



15 acres - MLS 1541012 -  
786 Old Sewanee Rd., Sewanee. \$349,000



MLS 1637317 - 109 Wiggins Creek Dr.,  
Sewanee. \$439,000



MLS 1553768 - 324 Rattlesnake Springs,  
Sewanee. \$379,000



MLS 1651531 - 231 North Carolina Ave.,  
Sewanee. \$417,000

## BLUFF TRACTS

1 Jackson Point Rd. 8.6ac	1676821	\$76,000
1605 Laurel Lake 5.3ac	1659882	\$149,000
223 Timberwood 5.12ac	1604345	\$189,000
Old Sewanee Rd. 53ac	1643144	\$369,000
3 Horseshoe Lane 5.6ac	1608010	\$65,000
1 Raven's Den 5.5ac	1612744	\$69,000
Long View Lane 2.56ac	1572284	\$108,000
36 Long View Lane	1503912	\$99,000
7 Jackson Pt. Rd.	1503910	\$82,000
37 Jackson Pt. Rd.	1579614	\$75,000
Jackson Pt. Rd. 12.45ac	1579007	\$125,600
4 Saddletree Lane	1577042	\$109,180
12 Saddletree Lane	1578117	\$79,500
Jackson Pt. Rd. 19+ac	1531331	\$120,000
Jackson Point Rd.	1648895	\$199,000
7 Saddletree Lane	1417538	\$70,000



MLS 1618092 - 21 Mont Parnasse Blvd.,  
Sewanee. \$349,000



BLUFF - MLS 1648470 - 245 Coyote Cove  
Lane, Sewanee. \$469,900



BLUFF - MLS 1670758 - 1899 Jackson  
Point Rd., Sewanee. \$319,000



BLUFF - MLS 1659472 - Can-Tex Rd.,  
Sewanee. 43+ acres. \$859,000



BLUFF - MLS 1656823 - 1613 Laurel Lake  
Drive, Monteagle. \$469,000



MLS 1566093 - 612 Dogwood Dr.,  
Clifftops. \$172,000



MLS 1671270 - 171 Maple St., Sewanee.  
\$148,500



BLUFF - MLS 1662801 - 827 Scenic Rd.,  
Monteagle. \$293,500



MLS 1624987 - 1116 Trussell Rd.,  
Monteagle. \$79,900



BLUFF - MLS 1646170 - 3335 Jackson  
Point Rd., Sewanee. \$289,000



BLUFF - MLS 1657852 - 1819 Bear Ct.,  
Monteagle. \$259,000



MLS 1660431 - 10+ acres and buildings.  
310 Dixie Lee Ave., Monteagle. \$1,810,000



MLS 1667542 - 36 Lake Bratton Lane,  
Sewanee. \$429,000



BLUFF - MLS 1670579 - 225 Hollingworth  
Cove Rd., Monteagle. \$398,000



MLS 1677920 - 631 Dogwood Dr.,  
Clifftops. \$299,500



BLUFF - MLS 1626882 -  
3442 Sherwood Rd., Sewanee. \$589,000



BLUFF - MLS 1642589 -  
3480 Sherwood Rd., Sewanee. \$399,900



MLS 1514972 - 202 Main St.,  
Monteagle. \$112,000



MLS 1637818 - Commercial - 6 Cabins -  
884 Fairview Rd., Winchester. 389,000



MLS 1576618 - 127 O'Dear Rd.,  
Sewanee. \$99,500

## LOTS & LAND

13 Horseshoe Ln. 3.19ac	1679661	\$39,000
57 Edgewater Ct, Winch	1668196	\$37,500
Highlander Dr. 15ac	1669734	\$79,500
18 Deerwood Dr. 2.9 ac	1677612	\$35,000
21 Jackson Point Rd.	1677613	\$19,000
20 Jackson Point Rd.	1677614	\$19,000
111 Clifftops Dr. 5.25ac	1646127	\$58,900
Hwy 41 Monteagle 5.3 ac	1632373	\$64,000
Jump Off Rd. 37ac	1618636	\$196,000
29 Azalea Ridge Rd 8.4ac	1593095	\$27,500
34 Azalea Ridge Rd 5.4ac	1593097	\$18,500
Shadow Rock Dr. 1.01ac	1572176	\$23,000
Shadow Rock Dr. .99ac	1572178	\$23,000
5 ac Montvue Dr.	1524683	\$59,000
36 Azalea Ridge Rd.	1378840	\$29,900
Sarvisberry Place	1628195	\$69,000
Sarvisberry Place	1244981	\$69,000

## SES Menus

Nov. 9–13

### LUNCH

**MON:** Chicken patty, ravioli, potato smiles, cooked broccoli, fresh salad, garlic bread stick.

**TUE:** Fish, hamburger, pinto beans, French fries, fresh veggie cup, hamburger bun, hush puppies.

**WED:** Pork chop, chicken and dumplings, mashed potatoes, green beans, fresh salad, roll.

**THU:** Barbecue, mozzarella cheese sticks, baked beans, potato wedges, marinara sauce, hamburger bun.

**FRI:** Pizza, soup, cheese sandwich, fresh salad, buttered corn, vegetable juice, cookie.

### BREAKFAST

Each day, students select one or two items

**MON:** Yogurt, Sunrise bites, or breakfast pizza.

**TUE:** Biscuit, steak, gravy, jelly.

**WED:** Waffle or banana bread slice, syrup.

**THU:** Biscuit or blueberry muffin, gravy, jelly.

**FRI:** Cinnamon roll or egg and cheese on bun.

*Options available every breakfast: Assorted cereal, assorted fruit and juice, milk varieties. Menus subject to change.*

**TELL  
THEM  
YOU  
SAW IT  
HERE!**

EAT IN OR TAKE OUT  
**You can still have dinner from Julia's!**  
**Just pick it up by 3.**

**Julia's**  
of Sewanee

**Open 11 to 3, Monday thru Saturday**

24 University Ave., Sewanee • 931-598-5193  
julias@vallnet.com • www.juliasofsewanee.com  
*Contact us about catering your next event!*

**AIR DUCT CLEANING**  
**ABBAY ROAD CLEAN-AIRE**  
MANCHESTER, TN • SINCE 1989  
GET RID OF DUST, ALLERGY PROBLEMS  
**(931) 952-0051 or (931) 273-8899**  
*"We're Your Solution To Indoor Pollution"*

## Tree of Life Homecare, LLC

*"Neighbors Helping Neighbors"*

- \* Licensed and insured home-based services for the elderly and disabled.
- \* CHOICES provider, Private Pay, Veterans Affairs

Call 931-592-8733 for a free, no obligation assessment



Second-grade students at Sewanee Elementary School, including Miles Mundkowsky (above), prepared book reports by decorating bags and pumpkins to depict characters or scenes from their chosen book.

## Monteagle Elementary Honor Roll

The principal and staff at Monteagle Elementary School have announced the Principal's List, Honor Roll and perfect attendance records for the first nine weeks of school.

### Principal's List

**Third Grade:** Amelia Thomas, Kyla Colston, Tayler Meeks, Logan Hammond;

**Fourth Grade:** Josh King, Colton Meeks, Brady Everett;

**Fifth Grade:** Ella Masters, Kierra Buchanan, Ethan Myers, Caden Rose, Hannah Watts;

**Sixth Grade:** Namtso Norbu, Breezy Rollins, Morgan Peters, Kendal Winton, Luke Meeks;

**Seventh Grade:** Seren Yelk, Brett Everett, Hannah Custer, Dana Martin, Aly Cummings, Makayla Dykes;

**Eighth Grade:** Abi Colston, Joseph Hamby, Haleigh Ferrell, Hannah Gingrich, Dhara Patel.

### Honor Roll

**Third Grade:** Shianne Layne, Anna King, Emily Dees, Danica Parmley, Stella Wilson, Gavin Knight, Aaron Burney, Colton Jariett, Loren Vinson, Josie Layne;

**Fourth Grade:** Dara Brown, Kathryn Lusk, Javon Liles, Brooklyn Grandmason, Javon Brown, Brianna

Cook, Lucy- Lee Hewuse, Emma Ladd, Madi Stiefel, Ashlin White;

**Fifth Grade:** Ali Long, Ashlyn Alexander, Jacob Church, Madi Meeks, Nathan Lamproe, Gauge Foshee;

**Sixth Grade:** Braxton Coffelt, Rylee Westerfield, Makayla O'Neal, A.J. Wade, Layla Gilliam, Kaylee Lawson, Phoebe Foshee, Cassandra Ladd, Caitlin Hatcher;

**Seventh Grade:** Garrett Dees, Summer Dees, Alora Meeks, Abby Newsome, Jacob Dixon, Ashley Green;

**Eighth Grade:** Mikaylee Harris, Molly Layne, Shelby Layne, Zoé Harrison, Yulie Yang.

### Perfect Attendance

**Pre-K:** Bailey Northcutt;

**Kindergarten:** Camden Nunley;

**First Grade:** Alexis Brown, Riley Kilgore, Paul Watts;

**Second Grade:** Ashlynn Alexander, Chanten Colston, Enzley Hargis, Lukas Lawson, Jacob Layne, Siennah Miller, Lilly Anderson;

**Third Grade:** Anna King, Amber Gault, Jacob Gault, Bryson Sanders, Josie Layne;

**Fourth Grade:** Ethan Thomas, Lauren Haynes, Josh King;

**Fifth Grade:** Kierra Buchanan, Zachery Cook, Taylor Cunningham, Alexis Hampton, Hayden Jariett, Caden Rose, Hannah Watts;

**Sixth Grade:** Kaylee Lawson, Luke Meeks, Eli Wilson, Lily Gipson;

**Seventh Grade:** Zoe Scott, Traci Foshee;

**Eighth Grade:** Molly Layne, Joseph Hamby, Hannah Gingrich.

## TINTINNABULATIONS

by John Bordley



### The Sewanee–Chicago Connection

It turns out that Sewanee has long had a connection with Chicago, at least relating to matters of the carillon! Perhaps in preparation for the new carillon at Sewanee that was installed in 1958, Albert Bonholzer, Sewanee's first carillonneur, took lessons from Harold B. Simonds at St. Chrysostom's Episcopal Church on North Dearborn Street, Chicago. Simonds was the carillonneur and organist/choirmaster from 1927 to 1964. After studying with Simonds, Bonholzer took lessons with James B. Lawson, carillonneur at the University of Chicago's Rockefeller Chapel from 1953 to 1960.

Jumping ahead to 2010, the annual Guild of Carillonneurs in North America congress was held in Naperville, Ill. During that event there was a field trip to Chicago to hear the Rockefeller Carillon and the carillon at the Chicago Botanic Garden. I was particularly struck [figuratively!] and impressed by the five-bell peal of the Rockefeller Carillon. At that time our carillon here in Sewanee had a one-bell peal, i.e., an electric striker could toll the largest bell at an adjustable rate. Returning to Sewanee after the congress, I had electric strikers added to three other bells so that now the Leonidas Polk Carillon has an impressive four-bell peal, albeit perhaps not quite as impressive as the Chicago peal, which sounds bells that are bigger, and thus lower in pitch, than our bells. Before the 11 a.m. Sunday service at All Saints' Chapel, a sacristan uses the switching mechanism at the tower entrance to sound the bourdon (largest bell) for 30 seconds. After the service, as people are leaving the chapel, we play the four-bell peal for two minutes, using the switching mechanism in the tower cabin; at big convocations we sound the peal for three minutes or more. The bourdon also strikes the hour at the start of the Lessons and Carols services.

Two years ago Carolyn and I were in Chicago for a long weekend. On Sunday morning I was invited to play the Rockefeller Carillon and played duets with the assistant carillonneur, Jim Fackenthal. That was an interesting experience, as the instrument is the second heaviest in the world in terms of masses of the bells. With 72 bells, a much longer keyboard and bells going down almost an octave lower than our carillon, the carillon is quite a bit different than ours.

And coming to the present, Wylie Crawford will be in Sewanee on Tuesday, Nov. 10; we will play our usual Tuesday carillon concert from 12:15 to 1 p.m. Crawford, university carillonneur at the University of Chicago for 31 years, is now senior university carillonneur there. He also continues as resident carillonneur for the Chicago Botanic Garden, Glencoe, Ill., a position he has held since 1986. Crawford has been a member of the Guild of Carillonneurs in North America for 41 years, serving in a number of capacities, including three years as vice president. He has also been president of the World Carillon Federation since 2006 and was the WCF treasurer from 1990 to 2006.

And to complete the "connection," Joey Brink, who performed here this summer with his wife, Vera Brink, on both the Polk Carillon and the Mobile Millennium Carillon, has been chosen as Crawford's replacement as university carillonneur at the University of Chicago.

"Will the circle be unbroken?..."

**YOUNG LIVING™**  
ESSENTIAL OILS  
Independent Distributor

Ray and April Minkler  
styraco@blomand.net, aprilminkler@blomand.net  
931-592-2444 931-434-6206  
For over 8,700 testimonials see  
www.oil-testimonials.com/1860419

## Monteagle Sewanee, REALTORS®

*Dedicated to Service!*



Deb Banks, Realtor  
(931) 235-3385  
debbanks8@gmail.com



Ray Banks, Broker/Owner  
(931) 235-3365  
rbanks564@gmail.com



Dee Underhill Hargis, Broker  
(931) 808-8948  
aunderhill@blomand.net



Tom Banks, Realtor  
(931) 636-6620  
tombanks9@yahoo.com

**Competent, Caring, Friendly, Fair—We're Here for You!**

**www.monteaglerealtors.com • 931-924-7253**

**We've moved to 337 W. West Main St., Monteagle!**

For special event rentals or sales information, your visit is always welcome!



**Keep up from the road!**  
**www.sewaneeemessenger.com**

## Senior Center News

### Senior Center Bazaar Set

Sewanee Senior Center's annual Christmas Bazaar will be from 9 a.m. to 3 p.m., Monday, Nov. 30, through Saturday, Dec. 5, at the Center.

Crafts, baked goods, canned goods, handmade items and white elephant items will be available. Donations for the white elephant sale can be dropped off at the center, 9 a.m. to 1 p.m., weekdays. Please note that the center will not accept donations of clothing. For more information call 598-0771.

### Lunch Menus

The Sewanee Senior Center serves lunch at noon on weekdays. The suggested donation is \$3 (\$0 or older) or \$5 (under 50). Please call by 9 a.m. to order lunch. If you make a reservation for lunch but do not come eat, please be prepared to pay for your meal. Menus may vary.

**Nov. 9:** Chicken salad on croissant, chips, dessert.

**Nov. 10:** Baked spaghetti, salad, garlic bread, dessert.

**Nov. 11:** Bacon, lettuce and tomato soup, grilled cheese sandwich, dessert.

**Nov. 12:** Meat loaf, mashed potatoes, green beans, roll, dessert.

**Nov. 13:** Chicken strips, baked potatoes, salad, roll, dessert.

### Participation at the Center

The Sewanee Senior Center does not charge any membership fee. All persons 50 or older who take part in any of the activities are considered members. The center is located at 5 Ball Park Rd., behind the Sewanee Market. To reserve a meal or for more information, call 598-0771.



## Tea on the Mountain

For a leisurely luncheon  
or an elegant afternoon tea  
11:30 to 4 Thursday through Saturday

### DINNERS BY RESERVATION

(931) 592-4832  
298 Colyar Street, US 41, Tracy City

## Community Chest Spotlight

# Folks at Home

The 2015-16 Sewanee Community Chest Fund Drive is underway. The power of people helping people makes a difference in the life of our community. Sponsored by the Sewanee Civic Association, the Community Chest raises money yearly for local charitable organizations serving the area. This year's goal is \$100,000.

Folks at Home (F@H) is a non-profit organization developed for and dedicated to assisting its members in continuing a dignified and comfortable lifestyle in the community through coordination of services they need during elder years. Anyone of any age is invited to participate.

In 2014 F@H provided more than 2,500 services, including transportation, home visits, consultations, care and service coordination, information and referrals, as well as the pro bono equipment exchange of accessibility items. F@H provides services at no cost. In addition to the 56 subscribing members, F@H provided pro bono services to more than 80 individuals and 10 groups. The number of pro bono clients who received services tripled from 2013 to 2014, an indication of the need for these services. The F@H director, assistant and volunteers provided these services. Thirty community volunteers contributed more than 148 hours of direct service to 22 people, while three volunteers gave more than 100 hours of office support. Seven University students gave 48 hours to 10 households via Community Engaged Learning.

F@H will receive \$5,000 from the Sewanee Community Chest. For more information about F@H, contact Director Kathleen O'Donohue at <folksathomesewanee@gmail.com>.

## School Board (from page 1)

FCBS has two entrances, making the total cost for the pilot installations at both schools \$3,970.

Lonas stressed the school system was "not interested in policing" or gathering other information about visitors beyond the sexual predator criterion.

Norwood said many other schools in the region use the software, including Lawrence, Maury, Rutherford and Williamson counties. In the first two weeks of use, Maury County identified a to-be visitor as a sexual predator.

The board expressed strong interest in the program and asked for more feedback from area schools using the software.

In other business Lonas summarized data from the Tennessee State Report Card, which provides academic performance and progress indicators comparing Franklin County schools to other schools in the state. She said it would be difficult to measure the effectiveness of any instructional changes made in response to this year's report card, because next year's report card would use a different assessment mechanism based on the Common Core curriculum.

In response to a request from Lonas, Sewanee school board representative Adam Tucker proposed revisions to the Student Transportation Management policy. If adopted, the revised policy would establish criteria requiring a bus driver involved in an accident to be tested for drug and alcohol use and to refrain from driving until test results were received. If test results are negative, the driver would be paid for the days off work. In addition, bus drivers not requiring testing under the criteria could request to be tested. The board will vote on the revised policy at the Nov. 9 meeting.

Lonas announced negotiations had resumed with the buyer who earlier expressed interest in purchasing the Oak Grove School property. The buyer made a \$5,000 earnest payment.

The board will meet again on Nov. 9 at the Huntland School cafeteria.



## AFFORDABLE Home Repair

Remodeling • Additions • Decks • Painting  
House/Floor Leveling and More  
**Experienced & Honest**  
Licensed & Insured

**423-593-3385**



## MICHELLE M. BENJAMIN, JD Attorney & Counselor at Law

102 FIRST AVENUE, NORTH  
WINCHESTER, TENNESSEE 37398

(931) 962-0006  
(931) 598-9767



**High Point**  
HISTORIC DINING ON THE SUMMIT  
BETWEEN CHICAGO & MIAMI

224 East Main St  
Monteagle  
931-924-4600  
Sun to Thu 5 to 9  
Fri and Sat 5 to 10  
www.highpoint  
restaurant.net



Let us host your holiday gathering!  
Call to reserve now!

402 West Main St. • Monteagle  
931-924-3355 • www.paparons.net  
Sun-Thu 11-9; Fri and Sat 11-10

## Ephods & Pomegranates

Local Mountain Handweavers

Glyn & Will Ruppe-Melnyk

Sewanee Graduates

Christmas & Thanksgiving  
Placemats & Runners

Personal Shawls

Clergy Stoles

Custom Orders



610-357-6813

See Our Complete Line at

www.ephodsandpomegranates.com

Selected Items at Taylor's Mercantile in Sewanee

YOUR AD COULD BE HERE!

## WOODY'S BICYCLES—SALES, SERVICE AND RENTALS

A Full-Service Trek Bicycle Dealer

Mon-Fri 9-5 • Sat 10-2 • 598-9793

woodybike@gmail.com • 90 Reed's Lane  
(the red building behind Shenanigans in Sewanee)



Check out www.woodysbicycles.com for rates, trail maps,  
photos, bike club links, races and much more!

## NO TIME TO COOK?

Call on St. Mary's Sewanee to take care of all your needs for  
Thanksgiving. You can get an entire meal for the family or a pie  
or side dish to take along.

~Traditional Meal of Turkey, Dressing, Gravy, Green Beans, Sweet Potatoes,  
Corn, Cranberry Relish & Corn Muffins for \$65.99, feeds up to 6 people.

~Southern Deep Dish Pecan Pie for \$9.50

~Traditional Pumpkin Pie for \$9.00

Orders Due Monday, Nov. 23, by Noon for Tuesday or Wednesday pickup.  
Pickups will be Tuesday, 8:30am-4:30pm, and Wednesday, 8:30am-10am.

Please call or email Emily at St. Mary's Sewanee with orders or questions!  
598-5342 or <emily.wallace@stmaryssewanee.org>.



**piggly wiggly®**

## Down Home, Down the Street

754 West Main St., Monteagle

(931) 924-3135

8 a.m. to 9 p.m. 7 days a week



The Monteagle  
Sewanee  
Rotary Club  
meets at 8 a.m.,  
Thursdays, at the  
Sewanee Inn

"Service Above Self"

## THE INSATIABLE CRITIC

by Elizabeth Ellis



### Trainwreck

7:30 p.m. • Friday–Sunday, November 6–8  
2015 • Rated R • 125 minutes

Comedienne Amy Schumer stars as lead writer and actress in this unapologetically crude comedy with Bill Hader about a woman who believes in living the wild life with no strings attached. Schumer's character (also named Amy) is a journalist who fully commits to the work-hard, play-hard lifestyle. Taking the advice from her bitter divorcee Dad that monogamy is unrealistic, Schumer's love life is a series of one-night stands until she starts falling for Aaron, a handsome sports doctor who is the subject of a feature she is writing. Never one to fall into destiny, Schumer immediately begins to recite her personal credo regarding commitment and lack thereof, but this may be the first situation of her life she can't walk away from. Directed by Judd Apatow, who is known for such hits as "Knocked Up" and "Bridesmaids," audiences can relate to the realistic characters. And the chemistry between Schumer and Hader is real. But the broad, no-holds-barred humor may not be to everyone's taste. Rated R for strong sexual content, nudity, language and some drug use, this feature is best suited for older teens and adults.

### Excalibur

7:30 p.m. • Wednesday, Nov. 11  
1981 • Rated R • 140 minutes

We're back to the Knights of the Round Table this semester with this deadly serious retelling of the myth surrounding the Sword of Excalibur, given by Merlin first to Uthur Pendragon and eventually leading to Arthur becoming king. Directed by John Boorman, who is also known for "Deliverance" (the ultimate weekend trip gone wrong), "Excalibur" is a product of its time despite being a period piece. For those of us who grew up in the 1980s, it has a cheesy nostalgia factor that involves occasional overacting and charmingly low-end special effects. Still, the lavish costumes and sweeping cinematography earned it an Oscar nomination and make it worth a watch. Rated R for war violence, bloodshed and adult themes, including one uncomfortable moment of forced intimacy, this one is best saved for older teens and adults.

### Steve Jobs: The Man in the Machine [documentary]

7:30 p.m., Thursday–Sunday, Nov. 12–15  
2015 • Rated R • 128 minutes

Some people loved him and some hated him, but with an iPhone in every third person's pocket, no one can deny the impact Steve Jobs had on the world. "Beautiful, haunting, brilliant" are just some of the adjectives describing Jobs and his personality, an intense mind that never turned off.



This documentary takes audiences through the good, the bad and the ugly by means of interviews with the people closest to him at work, as well as Chrisann Brennan, his first girlfriend. When Brennan discovered she was pregnant just as Jobs was rising to power, he initially denied that the child was his and refused to pay any child support. There are stories of employees whose personal lives were ruined because of the commitment Jobs supposedly forced upon them. According to Brennan, Jobs even foretold his own untimely demise, stating back when they were in their 20s that he didn't think he would live very long. He died of cancer at age 56 in October 2011.

Directed by Alex Gibney, this documentary does focus more on the sensationalism surrounding Jobs rather than the intricacies of his creations, but it still makes for fascinating viewing. Rated R for some language and adult themes, this feature is tame enough to be appropriate for older children accompanied by parents who may be interested in the subject matter, although older audiences may get more out of the experience.

For more reviews and fun, go to <theinsatiablenovcritic.blogspot.com>.

## "Sewanee as a Place" Collaborative Art Exhibit

The Carlos Gallery in the Nabit Art Building at University of the South is pleased to present a collaborative drawing installation by artist Amanda Burnham and the drawing and painting students from the University. The artist's talk and opening reception are at 4:30 p.m., today (Friday), Nov. 6, in the Carlos Gallery.

Burnham makes drawings and drawing installations based on her explorations of and encounters with the city. Often working on site, outside or in her car, she reads the landscape for found fragments of language and records the poetics of vacant lots, moveable type signs, billboards, and row houses with ink and other water-based media on paper.

To create the installation, Burnham will collaborate with senior art majors and students currently enrolled in drawing and painting courses at Sewanee. Working over a number of days, the final installation will explore "Sewanee as a Place," as Burnham asks students to consider what defines Sewanee for them. Students will be collecting drawn and photographic images they make themselves as inspiration for the work, which will cover the Carlos Gallery in the Nabit Art Building.

Burnham's work has been exhibited widely, both in the United States and internationally. In summer 2016, she will be an artist-in-residence at the Swatch Art Peace Hotel in Shanghai, China. A graduate of Harvard University and Yale University, she is presently an associate professor at Towson University.



Amanda Burnham, in front of one of her installations.

## Yelverton Guitar & Lute Concert

William Yelverton will perform a solo classical guitar and lute concert at 7:30 p.m., Monday, Nov. 16, in St. Luke's Chapel on the Sewanee campus.

Admission is free and open to the public. The program will contain music from the Spanish and English Renaissance, a suite by G.F. Handel (originally for harpsichord), Brazilian choros, Spanish Flamenco, and contemporary music from Russia, Brazil and the United States, including works by Koshkin, Gismonti and more.

Yelverton is presently serving as visiting professor of guitar at the University while on sabbatical from Middle Tennessee State University. He has performed throughout the United States and in a dozen foreign countries. He is a prize winner in the Guitar Foundation of America International Competition. Soundboard Magazine wrote that his exceptionally diverse programs of solo guitar and lute have "kept audiences spellbound."

## University Job Opportunities

**Exempt Positions:** Business Analyst, Finance; Content Manager/Copywriter, Marketing and Communications; IT Project Manager; Operations Manager, Sewanee Dining; Systems Administrator; Senior Systems Administrator; Telecommunication and Network Analyst.

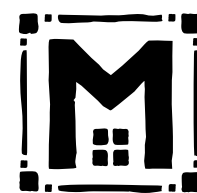
**Non-Exempt Positions:** Access Services Specialist; Computing Help Desk Coordinator; Custodian (two positions); Database Assistant (part-time); School of Theology; Dispatcher, Sewanee Police Department; HVAC Technician; Office Coordinator; Office Program Specialist; Dean of Students; First Cook, Second Cook and Food Service Worker, Sewanee Dining.

To apply or learn more, go to <www.jobs.sewanee.edu> or call 598-1381. The University is committed to creating and maintaining a diverse campus environment.

## Moon Signs 2016 Calendar

Local photographer and graphic designer Mark Mears has created the first calendar to correctly show the Moon sign for any time on any day of the year. A campaign to fund the printing of the calendar has been launched on <www.kickstarter.com>; search for "moon calendar."

Unlike some calendars that incorrectly show a single Moon sign for each day, the Moon Signs 2016 calendar offers the sign at a glance, even when the sign changes in the middle of a day.



**MOLICA**  
CONSTRUCTION LLC

931 205 2475

WWW.MOLICA.CONSTRUCTION.COM

- CRAFTSMANSHIP •
- CREATIVITY •
- SUSTAINABILITY •

## Come enjoy our annual Thanksgiving Buffet

12 noon, Thursday, November 26

\$34.95 per person, \$14.95 for children

Complimentary glass of champagne.

Reservations required.

The mountain's best breakfast,  
served daily 8–10 a.m.

*Monteagle Inn* **Tallulah's Wine Lounge**  
& RETREAT CENTER

(931) 924-3869 ~ www.monteagleinn.com ~ 204 West Main St.



865-604-0864

e-mail highlanderrug@gmail.com



**Billy Freeze**  
Agent

2295 Decherd Boulevard  
Decherd, TN 37324-3827  
Bus 931-967-2257  
Fax 931-967-0285  
www.billyfreezeinsurance.com

Good Neighbor Agent since 1968



*Your Place for Organic & Local Products*

- ◆ Natural Foods
- ◆ Personal Care Products
- ◆ Garden Supplies
- ◆ Yarn & Knitting Supplies
- ◆ Local Arts & Crafts
- ◆ Jewelry
- ◆ Gifts
- ◆ Antiques

*Mooney's*

OPEN DAILY 10-6

Market & Emporium

931-924-7400 • 1265 W Main Street • Monteagle, TN



# Sewanee Surprise: Tigers in Semifinals

Coming off a huge upset of the No. 1 seed, the Sewanee men's soccer team plays today (Friday) at Rhodes College in the semifinals of the Southern Athletic Association tournament.

A game-winning goal by Bobby Zolper in a shoot-out lifted No. 8-seeded Sewanee to a 0-0 (4-2 PKs) win over No. 1-seeded Oglethorpe University on Oct. 31 during quarterfinal action.

After neither team scored during regulation or two overtime periods, Sewanee opened the shoot-out with a goal by Matt Hawse. Oglethorpe then tied the tally at 1-1, when Arturo Hernandez converted his attempt. Sewanee's Kyle Johnston pushed the Tigers back in front with his goal.

Oglethorpe then missed for the second time, which set up Luke Deimer's attempt. The Tiger freshman made his shot to put Sewanee up 3-1.

That set up the drama by Sewanee's Zolper. After Tophier Marshall kept Oglethorpe alive with a goal, all eyes turned to the St. Petersburg, Fla., native. Needing just one more goal to close out the match, Zolper ripped in his shot past Oglethorpe's goalie, Vaughn Moore.

Sewanee was able to stay in the match despite Oglethorpe's 27 shots. That included seven shots on-goal. Tiger keeper Will Merriman was outstanding with seven saves.



SAS riders participate in the 2014 Tennessee High School Cycling League State Championship Race.

## SAS to Host State Championship Bike Race

The National Interscholastic Cycling Association (NICA) brings the final of four 2015 Tennessee High School Cycling League mountain bikers to the St. Andrew's-Sewanee School campus, 10 a.m. to 2 p.m., Sunday, Nov. 8. This is the state championship event for both high school and middle school competitive mountain biking teams.

The course is set on a rigorous 4.5-mile lap featuring a sustained climb of just under a half mile and many technical sections. Girls' and boys' school teams will compete with total race distances ranging from 4.5 to 18 miles.

Teams from throughout the state, including St. Andrew's-Sewanee, Memphis, Collierville, Nashville, Franklin, Chattanooga, Knoxville,

Sevierville, Mt. Juliet and Marshall County, Ky., will bring about 150 riders and their families to Sewanee for the weekend. The league now has 12 teams, 188 riders (115 high school and 73 middle school) and 58 coaches.

Founded in 2009, NICA develops high school mountain biking programs for student-athletes across the United States. NICA provides leadership, services and governance for local leagues to produce quality mountain bike events and supports development of every student-athlete.

Watching the race is exciting and easy at the open start/finish area in the front fields of campus and from many other vantage points throughout campus and on course.

For more information go online to <tennesseemtb.org>.

## OVERTIME

by John Shackelford



It was a rainy Halloween night, and the coming of November had quickly darkened the windows of the Fowler Center. The lone glimpse of sunlight in the indoor tennis courts filtered through the cracks of the creaky exhaust fan vent, and those narrow openings revealed an ominous exit of dreary damp blackness facing me as I made my way toward the parking lot and safe passage home. There was still one couple playing tennis, so I decided to exit the building at the rear exit and make my way to the parking lot across the murkiness of the rear alleyway.

My path was simple. A right turn out of the door, 50 yards along the immense rear wall that had eclipsed any hope of stars or moonlight, and then one final right turn around the edge of the building bringing me face-to-face with a sharp drop-off into the ravine of Abbo's Alley.

I am not easily scared, and years of living in our peaceful small town had assured me that it was unlikely I would meet a predator on this dark October night. After only a few steps along my journey I sensed some small movement just ahead and along the edge of the deteriorating concrete foundation. A flicker of car lights coming from across the bridge made known to me that my companion was a small furry creature that appeared to be a large fluffy white cat. She was moving slowly along the edge of the building and had obviously not detected my stealth-like presence. When my eyes adjusted to the darkness I learned that my adversary was not a cat but a waddling black-and-white striped skunk.

I've spent more of my life on the athletic fields than hiking in the woods, but my limited anatomical knowledge warned me that I would rather be in front of this creature than behind it. My first instinct was to be sure I did not frighten this terrifying beast. I had known of her presence for several years now, as she had left clues of her existence in the bowels of the old gymnasium that had filtered its way into my basement office. Certain that I did not want to find out what would become of me if my escort detected my presence, I hung back and considered my options.

Waiting there in the rain assured me that I would be soaking wet, if not smelly. Would returning back inside make me a ridiculous coward? Years of athletic and competitive training had not prepared me to defeat this crafty rival should she decide to unleash the bomb she had stored inside of her three-pound package of fury. Staying back, I continued to my vehicle in hopes that she would go into the dark woods.

Like a chess master anticipating my next move, this malodorous varmint disappeared. As I approached the corner I knew not what to expect as I turned into the Halloween darkness. My movement triggered the motion detector, and the exterior safety lights flashed on instantly, causing the animal to stop suddenly in her tracks and directly in front of the lone mini-van in the parking lot. I hesitated once again, trying to remain invisible to an animal that surely had her own set of sensory preceptors for protection. She found a bit of food in the grass to her left that interested her and gave me the opening I needed. I slid around to her right and advanced toward my waiting car. Just as I passed, she finally caught sight of me and slid deeper into the bush. Jumping into my driver's seat, our eyes met as she peered out from behind the tall weeds and through my windshield. My beady eyes were staring into the darkness, and hers were looking right back at me. I glanced down to notice the car vents and realized I was still not safe from her atomic attack.

We sat there face-to-face, trying to decide who was more frightened on this scariest of nights and came to the mutual conclusion that this match was a draw. I smelled of sweaty tennis clothes, and she carried with her a reputation that frightened away any would-be friends. I wanted to reach across the net and shake her hand for a battle well-fought.

## Home Games This Week

Thursday, Nov. 12

4:30 pm SES Girls' Basketball

v North Lake at Townsend Gym

5:30 pm SES Boys' Basketball

v North Lake at Townsend Gym

Friday, Nov. 13

5 pm Tigers Swim/Dive v Berry

7 pm Tigers Men's Basketball

v Huntingdon



The **blue chair**  
Café & Tavern

41 university avenue  
sewanee, tennessee



(931) 598-5434  
thebluechair.com

**D.D.S.**

Designated Doodle Space

## WOODARD'S DIAMONDS & DESIGN

**Need Extra Cash?**

**WE BUY GOLD**

- ✓ Deal With Tullahoma's most trusted name in jewelry
- ✓ Highest Prices Paid
- ✓ Get 20% MORE Towards Jewelry Purchase
- ✓ FREE Gas Card when you sell us your gold\*

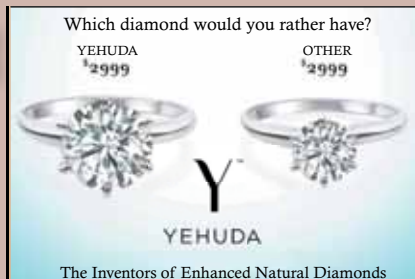
2013 Your Favorite Jeweler

\* See Store Staff For Details



Jim Woodard  
Diamond Hunter

**CUSTOM Design Studio**  
Repairs, too.



Northgate Mall • Tullahoma • 454-9383 • woodards.net

Get Your Favorite  
Priest or Seminarian a  
**Beautiful Handmade Stole**  
for Christmas

Taylor's Mercantile  
Holiday Open House  
November 7 & 8

Woven by  
Glyn & Will Ruppe-Melnyk  
(SOT '81 & '92)  
EphodsandPomegranates.com  
610-357-6813



Would you love to be  
entertaining in areas  
personally designed for  
your lifestyle?



Custom home remodeling begins with...

**Joseph's Remodeling Solutions**  
A Division of Sumpter Solutions, LLC

Taking Quality to the Next Level  
Licensed - Insured - Green Certified

**931-598-5565**  
joseph@josephsremodelingsolutions.com  
www.josephsremodelingsolutions.com

## NATURENOTES



Janet Green captured the full moon setting one recent morning as she arrived at Sewanee Elementary School.

### Invasive Non-Native Plants

The Fall 2015 newsletter of the North Carolina Botanical Garden carries an article, "Invasive plants are not for the birds!" by Johnny Randall, NCBG director of conservation programs. The article, reports **Yolande Gottfried**, "makes some points new to me concerning the problem of invasive non-native plants.

"We are all aware of dispersal by birds of the seeds of fleshy fruits—think colorful droppings on your car—or your hat! A greater percentage of invasive plant species in the Southeast have these fleshy fruits than do the native species, including some of the major offenders—Chinese privet, English ivy, multiflora rose, Oriental bittersweet and Japanese honeysuckle. And these fruits are often high in carbohydrates, while the fruits of native species are often higher in protein and fats, which could have unforeseen consequences for bird nutrition. Who knew birds had to worry about their carbs?

"As the paper's author puts it, "Birds are ... choosing candy bars over cheeseburgers." In addition, these fruits are often available later into the winter season than those of native plants. If birds prefer or consume greater quantities of non-native fruits and disperse them, it aids those plants in out-competing the natives in natural areas. Something to consider as we choose plants for fall landscaping."



Quality of Life.  
Children.  
Community Aid.  
Beyond Sewanee.

**\$100,000 goal for 25 community organizations.**

Donate today: PO Box 99 | Sewanee, TN 37375  
SewaneeCivic.wordpress.com | sewaneecommunitychest@gmail.com



91 University Ave. Sewanee  
**(931) 598-9244**

Lynn Stubblefield  
(423) 838-8201



**RESIDENTIAL OR COMMERCIAL:**  
*Stillpoint, excellent location on Hwy 41A beside Pearl's Cafe. Two acres, 225' of frontage, adequate parking, consistent rental history. \$260,000*

## Russell L. Leonard

ATTORNEY AT LAW

Office: (931) 962-0447  
Fax: (931) 962-1816  
315 North High Street  
Winchester, TN 37398  
Toll-Free (877) 962-0435  
rleonard@netcomsouth.com

## BUG PROBLEMS?

We can help! Call us for a free inspection!

### BURL'S TERMITE & PEST CO.

TERMITE—PEST—VAPOR CONTROL  
Bonded • Insured • Home-Owned & Operated  
105 Ake St., Estill Springs  
**(931) 967-4547 or www.BurlsTermite.com**  
Charter #3824 • License #17759



## Raised Garden Beds and Composting Class

For fresh food lovers and flower enthusiasts alike, raised garden beds are a simple and valuable way to extend the growing season, to produce higher crop yields and to utilize even the most difficult growing sites. To learn firsthand about how to build and use raised garden beds and compost units, St. Mary's is offering a workshop, 9:30 a.m.–noon, on Saturday, Nov. 14, led by Leonard King. This is part of the new Ora et Labora Program Series. There is a \$25 fee for attendance. To register or for more information call 598-0046.

While this type of gardening may sound similar to using planters, the two methods are entirely different approaches. Raised beds are open to the ground, allowing plants to grow as deep as needed. These beds are also larger than planters, making them ideal for vegetable growing or for larger flower gardens.

With raised garden beds, the soil quality in the beds can be controlled, and with a protective barrier around the bed, erosion and soil compaction ceases to be an issue. The control over soil quality ensures proper drainage and retention of water, further promoting healthy plants. Additionally, the temperature of the soil is controlled, allowing for the soil to warm up earlier and stay warm later, extending the growing season.

## State Park Offerings

**Saturday, Nov. 7**

**Savage Falls Hike**—Meet Ranger Gheesling at 1 p.m. at Savage Gulf Ranger Station (3177 Hwy. 399, Palmer) for this relatively flat, easy 4-mile round-trip hike. The 30-foot waterfall marks the head of Savage Creek Gulf.

**Sunday, Nov. 8**

**Astronomy**—Join Ranger Park at 8 p.m. at the Visitor's Center parking lot for a look into the beautiful night sky. You will be outside for a good portion of the program, so dress warmly and bring gloves. If you have a good set of binoculars, bring them, as well.

**Wednesday, Nov. 11**

**Trail Run, Savage Day Loop**—Like to run with others? Meet Ranger Gheesling at 8:30 a.m. at Savage Gulf Ranger Station for a 4.2-mile run along the relatively flat, but exciting and scenic, Savage Day Loop. Runners at all levels are welcome.

**Friday, Nov. 13**

**Hike to Laurel Gorge**—Meet Ranger Park at 2 p.m. at Foster Falls parking area for a 5-mile hike to view gorgeous overlooks, stunning waterfalls, and the intricate beauties of the dense forest. Some areas will be on uneven ground, so please wear sturdy shoes, and bring plenty of water.

The South Cumberland State Park Visitors' Center is located on Highway 41 South between Monteagle and Tracy City and is open 8 a.m.–4:30 p.m. seven days a week.

For more information call (931) 924-2980.

## Weather

DAY	DATE	HI	LO
Mon	Oct 26	69	58
Tue	Oct 27	59	52
Wed	Oct 28	58	55
Thu	Oct 29	65	54
Fri	Oct 30	69	39
Sat	Oct 31	63	47
Sun	Nov 01	63	53

**Week's Stats:**  
Avg max temp = 64  
Avg min temp = 51  
Avg temp = 57  
Precipitation = 0.98"

Reported by Elizabeth Tilly  
Domain Manager's Assistant

### HOUSE CALL SERVICE AVAILABLE

Full Service Veterinary Care for Dogs, Cats & Horses  
Boarding & Grooming



Traci S. Helton  
DVM

Nathan L. Putnam  
DVM

Monday–Friday 7:30 am–6 pm; Saturday 8 am–1pm  
**AFTER-HOURS EMERGENCY SERVICE AVAILABLE**

**931-962-3411**

505 S. Jefferson St., Winchester (41-A toward Winchester. First left after Food Lion)

myerspoint.net

**MYERS POINT** at Sewanee offers a rare opportunity to enjoy a private community that celebrates American architecture, lifestyle, protected forests, cultivated lakes and panoramic views on Middle Tennessee's Cumberland Plateau. If you want to live surrounded by nature, history, beauty, quality and serenity, you'll want to call it home.

- 480-acre private gated community
- 24 exclusive home sites; lakeside or bluff vista
- Timeless, organic, craftsman architecture standards
- Land Trust for Tennessee perpetually protected forests
- Over four miles of walking and riding trails
- Community barn, pastures, resting benches and fire pit
- Minutes from the University of the South

John Goodson • (931) 703-0558 • johngoodson@bellsouth.net

Like the Messenger?  
Let us know on Facebook!



Tywin



Titus

## Pets of the Week

### Meet Twyin & Titus

The Franklin County Humane Society's Animal Harbor offers these two delightful pets for adoption.

Tywyn is a humorous little 4-month-old "kitten". There is nothing that entertains him more than something that dangles. He is adventuresome and imagines himself to be a jungle cat. Not only will Tywin be a wonderful pet, but he shows the potential to keep pesky rodents out of your pantry. Tywin is negative for FeLV and FIV, house-trained, up-to-date on shots, micro-chipped and neutered.

Titus is a very handsome, regal young dog. He is just over a year old, and is very affectionate and well behaved. Titus looks to be a Rhodesian Ridgeback mix, and he weighs just over 60 pounds. He is heartworm-negative, up-to-date on shots, micro-chipped and neutered.

Every Friday is Black Friday at Animal Harbor. On Fridays, adoption fees are reduced 50 percent for black or mostly black pets over 4 months old who have been at Animal Harbor for more than a month.

Pets adopted from Animal Harbor qualify for a free post-adoption wellness exam by local veterinarians. Animal Harbor is now open at its new shelter at \$6 Nor-Nan Rd., off AEDC Road in Winchester.

Call 962-4472 for information, and check out other pets at <www.animalharbor.com>.

We're glad  
you're reading  
the Messenger.



Sandwiches, Salads,  
Teas, Espresso Drinks  
and more prepared and  
served by your favorite  
college students!

Mon–Wed, 7:30am–midnight;  
Thurs & Fri, 7:30am–10pm;  
Sat, 9am–10pm; Sun, 9am–midnight  
Georgia Avenue, Sewanee



**598-1963**



Like Us On  
facebook for specials  
and updates

**CALL US! • 598-9949**  
**Classified Rates:**  
 \$3.25 first 15 words,  
 10 cents each addl. word  
**Now you can charge it!**  
**(\$10 minimum)**

**FOR RENT, SEWANEE:** 3BR/2BA Double-wide on ±2.5 acres in residential area. Full living and dining room, kitchen and laundry area. All appliances, C/H/A. Pets Negotiable. Located 3 miles from University. \$650/Mo. (615) 669-5480.

"The existence of a world carries with it the proof of a world-maker, as the table guarantees the preexistence of the carpenter." —Arthur Conan Doyle, 1895

Adam Randolph  
 psychotherapist  
 randolph.adam@gmail.com

**FOR SALE:** 2003 Dodge Van. Needs motor and transmission. No title. Good for some parts. VIN#1D4GP25363B234745. \$2000. (931) 580-0620.

**NOW HIRING:**  
**EXPERIENCED TRADESMAN**  
 Joseph's Remodeling Solutions is seeking a full-time, permanent, experienced tradesman. Strong work ethic, honesty and excellent work references required. Job sites are tobacco-free. Company participates in Tennessee Drug-Free Workplace program. Competitive rates and benefits offered to qualified individuals. 931-598-5565 or email <joseph@josephsremodeling.com>.

**CHARMING RENOVATED FARM HOME WITH BARN:** On campus. 2BR. Huge LR, kitchen w/ barnwood shelving. Sunroom, two covered porches, overlooks 1.5-acre gorgeous wooded lot. Original hardwood floors. Mexican tile. Whirlpool tub. Private yet close to town. 372 Lake O'Donnell Rd., \$150,000. Call Lynn, (423) 838-8201.

**Oldcraft Woodworkers**  
 Excellence in custom woodworking.  
 Kitchen and bath cabinets, bookcases, entertainment centers, furniture. Furniture repairs and refinishing.  
 Est. 1982. Phone 931-598-0208

**WATER SOLUTIONS**  
 Joseph Sumpter  
 Owner/Licensed Residential Contractor  
 Specializing in drainage and rainwater collection systems  
 598-5565  
 www.josephsremodelingsolutions.com

**RENTAL: Monteagle**  
 2 bedroom, 2 bath beautiful sunny house, large open living-dining room, hardwood floors, stone fireplace, screened porch & large deck, 1.5 acres, woods & garden, near lake, less than 10 minutes from university. \$700 + utilities + deposit. Nonsmoking. Pets negotiable. (310) 909-3554

**SARGENT'S SMALL ENGINES:** Repairs to All Brands of Equipment: Lawn mowers (riding or push), String trimmers, Chainsaws, Chainsaw sharpening, New saw chains. Pickup and Delivery Available. (931) 212-2585, (931) 592-6536.

**DIRT WORK**  
 • Bush Hogging  
 • Driveway Maintenance  
 • Gravel/Sand/Mulch  
 • Large or Small Jobs  
 Michael, 615-414-6177

**I-24 Flea Market**  
**200 Vendors!**  
**22 Years!**  
**I-24 Exit 134**  
**Saturday & Sunday**  
**(931) 235-6354**

(931) 598-0033  
**HAIR DEPOT**  
 17 Lake O'Donnell Rd., Sewanee  
 KAREN THRONEBERRY, owner/stylist  
 TOBBIN NICOLE, stylist/nail tech

**YOUR AD  
 COULD BE  
 HERE!**

# Classifieds

**Tell them you saw it here.**

**King's Tree Service**  
 Topping, trimming, bluff/lot clearing, stump grinding and more!  
 \*Bucket truck or climbing\*  
 Free wood chips with job  
 Will beat any quoted price!  
 Satisfaction guaranteed!!  
 —Fully licensed and insured—  
 kingstreeservice.com  
 Call (931) 598-9004—Isaac King

**SHAKERAG BLUFF CABIN:** Beautiful west-facing bluff view. Near University. Extremely secluded. Sleeps 4–5. C/H/A. Great fishing, swimming. Weekend or weekly rentals. (423) 653-8874 or (423) 821-2755.

**EAGLE LANDSCAPING & LAWN MAINTENANCE CO.**  
 Now Offering Specials for **FALL CLEAN-UP!**  
 We offer lawn maintenance, landscaping, hedge/tree trimming & more!  
 Please call for your free estimate  
**(931) 598-0761 • (931) 636-0383**  
 www.sewaneeemessenger.com

**OFFICE SPACE:** Partin Professional Bldg., middle of Monteagle, just across the street from Mountain Goat Market. One- and two-room suites. Call (931) 580-4538 or (931) 580-4539.

**FIREWOOD FOR SALE:** \$60/rick. \$70 stacked. Call (931) 592-9405. Leave message.

**CLAYTON ROGERS ARCHITECT**  
 931-636-8447  
 c@claytonrogersarchitect.com

**DRIVERS:** CDL-A 1yr. Guaranteed Home Time. Excellent Pay Package. Monthly Bonus Program. 100% No-Touch. BCBS/Dental/Vision. Plenty of miles. (877) 704-3773.

**THE LOCAL MOVER**  
 Available for Moving Jobs  
 Call or Text Evan Barry  
**615-962-0432**  
 Reviews at <www.thelocalmoverusa.com>.

**SEWANEE SENIOR CITIZENS' ANNUAL CHRISTMAS BAZAAR:**  
 9 a.m.–3 p.m., Monday, Nov. 30–Saturday, Dec. 6. Crafts, baked goods, canned goods, handmade items, white elephant items. Center began accepting donations for white elephant sale Nov. 1. All donations are appreciated, except WE DO NOT ACCEPT DONATIONS OF CLOTHES.

**THE LOCAL MOVER**  
 615-962-0432 **Need More Room?** **We Sell Boxes!**  
**Mountain Storage**  
 (931) 598-5682  
 ■ Security Gate Dan & Arlene Barry ■ Security Camera  
 Hwy 41 - Between Sewanee & Monteagle  
**U-HAUL MOVING BOXES and SUPPLIES!**  
**—Various Sizes—**  
**KIT TO PROTECT YOUR FLAT-SCREEN TV!**



**Roarks Cove -** Secluded setting at the foot of Shakerag Hollow; with almost 3400 sf of living space, this 4 bedroom/4.5 bath home has a full basement and is ideally situated on 32 acres with panoramic views of the Plateau, fields, woods, and a creek (which flows from its own "Wet Cave") from its many porches and decks.... making for quite a tranquil setting away from the hustle and bustle of city life.

Formerly a B & B known as Full Circle; this custom-built home has hardwood floors, a fireplace, formal dining area, wet bar, a full basement with sauna, a detached artist's studio, and by virtue of its proximity to the University of the South, many other amenities such as golfing, tennis and cultural events.

Adjacent to the University, an additional 120 +/- acres are available for sale, where wildlife abounds and can make for that ideal hunting lodge, horse ranch, or additional home sites.  
**Motivated Seller!**

**655 Bob Stewman Road -** With over 2500 sf of living space, this 3 BR, 2-1/2 bath home is situated on a 2.5+/- acre tract just minutes from the Domain and the Village. No lease fee, no restrictions. Well-landscaped for its natural environment; this property has its own potting shed/workshop, spacious deck with screened gazebo, sunroom, MBR w/fireplace, hardwood/tile/stone flooring, and so much more. Great home for entertaining, inside and out.



**Georgia Avenue -** Charming and well-maintained 3 bedroom, 1-1/2 bath cottage with hardwood floors and mountain stone fireplace. Replumbed in 2003, rewired in 2008. Large workshop has 220 service. 1430 +/- sf. Must see to appreciate.

**Acreage - 6+ wooded acres on Sherwood Rd with natural spring.**

Call Mike Maxon, (931) 308-7801  
 or email maxonm@bellsouth.net  
 4470 Mansford Road, Winchester  
 www.samhatfield.com

**FOR SALE**  
 Sam  
**HATFIELD**  
 Realty, Inc.  
 931-968-0500

**CHAD'S LAWN & LANDSCAPING**  
**-FREE ESTIMATES-**  
 \* Lawn care & Design (Mulch & Planting)  
 ALSO: \* Tree Trimming & Removal  
 \* Pressure Washing \* Gutter Cleaning  
 \* Leaf Pickup & Blowing \* Road Grading  
 \* Garden Tilling \* Rock Work  
**(931) 308-5059**

**DRIVERS:** SE DEDICATED RUN NC, SC, FL, GA, TN, MS, AL Areas. Home Weekly/Full Benefit Pkg. 100% No Touch/75% Drop & Hook CDL A with 1 yr. experience. (888) 406-9046.

**T's Antique Mall**  
**FABULOUS SALE!**  
 Antiques, Collectibles and Crafts  
 Historic Downtown Cowan

**FOR SALE:** Yamaha Tyros 3 Keyboard, Axiom M-Audio MIDI Controller, Kurzweil PC2R rack module with added sounds. All in excellent condition. \$2500 firm. (931) 598-0321; <tojar63@bellsouth.net>.

**LOST COVE BLUFF LOTS**  
 www.myspoint.net  
 931-703-0558

**STEPHENSON'S SCULPTURES IN BRONZE:** Bronzes make great gifts. Pet portraits/other commissions. (931) 691-3873.

**MASSAGE**  
 Regina Rourk Childress  
 Licensed Massage Therapist  
 www.reginarourk.com  
 ~ GIFT CERTIFICATES ~  
**(931) 636-4806**

**FOR SALE:** Rattan Bar with lighted glass top and 2 stools. \$100. <tojar63@bellsouth.net>; (931) 598-0321.

## SEWANEE AUTO REPAIR

**—COMPLETE AUTO & TRUCK REPAIR—**  
 -Tune-ups -Brakes  
 -Tires (any brand) -Shocks & struts  
 -Tire repair -Steering & suspension  
 -Batteries -Belts & hoses  
 -Computer diagnostics -Stereo systems installed  
 All Makes & Models • Service Calls • Quality Parts  
 ASE Master Certified Auto Technician • 25 Years Experience  
 7 to 5 M-F • (931) 598-5743 • Across from Regions Bank

**Sernicola's**  
  
 (931) 962-3380  
 106 TN Ave. S.  
 Cowan, TN. 37318  
 Tues–Sat 5:00–8:30 p.m.  
 Closed on the 3rd Tuesday for DAV  
 www.sernicolas.com

## BIG MOVING SALE

**10 a.m. to 5 p.m., Saturday, Nov. 7**  
**at the Hughes'**

**41 Sherwood Rd., Sewanee**  
**(third left just after the turn on Highway 56)**

• BARBARA CLOTHING  
 • BOOKS • CUT GLASS AND CHINA  
 • SPORTING GOODS  
 • AFRICAN SCULPTURE AND CLOTH  
 • GOOD KNICK-KNACKS  
**and much more!**

Questions? Email bhughes@sewanee.edu

## TOMMY C. CAMPBELL

**FOR YOUR IMPROVEMENTS**  
 Call (931) 592-2687  
 Free Estimates  
 20 Years Experience



## TRIM OR CUT DAMAGED TREES

Driveway & Right-of-Way Clearing  
 Free Wood Chips • Landscaping



# BARDTOVERSE

by Phoebe Bates

## Armistice Day, November 11, 1918

At dawn the ridge emerges massed and dun  
In the wild purple of the glow'ring sun  
Smoldering through spouts of drifting smoke that shroud  
The menacing scarred slope; and, one by one,  
Tanks creep and topple forward to the wire.  
The barrage roars and lifts. Then, clumsily bowed  
With bombs and guns and shovels and battle-gear,  
Men jostle and climb to meet the bristling fire.  
Lines of gray, muttering faces, masked with fear,  
They leave their trenches, going over the top,  
While time ticks blank and busy on their wrists,  
And hope, with furtive eyes and grappling fists,  
Flounders in mud. O Jesus, make it stop!

—“Attack” (France 1917) by Siegfried Sassoon

Bradford's

Nursery & Landscaping in Winchester

### STOCKED FOR ALL YOUR FALL PLANTING NEEDS

White and Red Oak ~ Maple ~ Ginkgo ~ Mahonia ~ Lenten Rose  
Laurel ~ Boxwood ~ Ground Cover ~ Ornamental Grass ~ and more

### CHRISTMAS TREES ARRIVING THIRD WEEK IN NOVEMBER!


7 to 12-Foot Cut Fraser Fir  
Balled Norway Spruce ~ Balled Hemlock



Call for an estimate on professional landscaping by Richard.  
Quality plants, reasonable prices, friendly faces.

1136 Dinah Shore Blvd. • Winchester • Mon-Sat 9-5 • 931-967-0825

www.sewaneemessenger.com




## Seasons & Good Things To Eat

Frosted windows, the smell of pine boughs and hot apple cider, Old World Santas, heirloom ornaments, heavenly angels, wreaths, bells and bows.

We're excited about the treasures that we've collected to help make your Christmas the most joyous ever.

It's our 32nd Annual Holiday Open House  
Saturday, Nov. 7th,  
and Sunday the 8th.  
Refreshments, Door Prizes  
and Special Savings.



10 University Ave. • Sewanee • 931/598-5893

Gifts • Florist • Housewares • Gardener's Supplies

One of  
Tennessee's  
Rising Star  
Award Winners  
for Best New  
Business



15344  
Sewanee  
Hwy

931.598.5770  
for  
Reservations



## Pearl's

FOGGY MOUNTAIN CAFÉ  
*Full Liquor Mahogany Bar*  
Happy Hour  
Tuesday-Friday 5-6

*Fine Dining*  
Tues-Thur 5-9; Fri and Sat 5-10

*Kash Wright's Jazz*  
Friday & Saturday

# Community Calendar

## Today, Nov. 6

Marion County Schools staff development day

Curbside recycling, before 7:30 am

- 9:00 am CAC office open, until 11 am
- 10:00 am Game day, Senior Center
- 3:30 pm Dance with Debbie, 4-7, Comm Ctr
- 4:15 pm Dance with Debbie, 8/up, Comm Ctr
- 4:30 pm Art talk, reception, Burnham, Carlos Gallery
- 5:00 pm Bible study, Mtn of God Tabernacle, Monteagle
- 7:30 pm Movie, "Trainwreck," SUT

## Saturday, Nov. 7

- 8:30 am Yoga with Richard, Comm Center
- 10:00 am Hospitality Shop open, until noon
- 4:00 pm Crow Creek Heritage Festival, Sherwood
- 7:30 pm Movie, "Trainwreck," SUT

## Sunday, Nov. 8

- 12:00 pm Fried Chicken Lunch at McClurg
- 4:00 pm Yoga with Helen, Comm Center
- 5:00 pm Women's Bible Study, Midway Baptist
- 7:30 pm Movie, "Trainwreck," SUT

## Monday, Nov. 9

- 9:00 am CAC office open, until 11 am
- 9:00 am Yoga with Sandra, St. Mary's Sewanee
- 9:00 am Coffee with Coach, Bubba Smith, Blue Chair
- 10:30 am Chair exercise with Ruth, Senior Center
- 12:00 pm Sewanee Woman's Club, Nate Wilson, DuBose
- 5:30 pm Franklin Co. Democrats, 839 Dinah Shore, Winch
- 5:30 pm Yoga for healing with Lucie, Community Center
- 5:30 pm Yoga with Sandra, St. Mary's Sewanee
- 6:00 pm Karate, youth @ 6; adults @ 7, Legion Hall
- 6:00 pm Sewanee Leaseholders, Senior Center
- 7:00 pm Centering Prayer, Otey sanctuary
- 7:00 pm Sewanee Chorale practice, Hargrove Auditorium

## Tuesday, Nov. 10

- 9:00 am CAC office open, until 11 am
- 9:30 am Hospitality Shop open, until 2 pm
- 10:30 am La Leche League, Community Center
- 10:30 am Bingo, Senior Center
- 11:30 am Grundy County Rotary, Dutch Maid, Tracy City
- 12:00 pm Pilates with Kim, intermediate, Fowler Center
- 12:15 pm Carillon concert, Crawford, Shapard Tower
- 3:30 pm Centering Prayer support, St. Mary's Sewanee
- 4:30 pm Lease agenda deadline, Lease Office
- 5:00 pm Acoustic Jam, water bldg. next to old GCHS
- 5:30 pm Daughters of the King, St. James
- 6:30 pm Prayer and study, 7th Day Adventist, Monteagle

## Wednesday, Nov. 11 • Veterans Day

- 9:00 am CAC office pantry day, until 11 am
- 10:00 am Pilates with Kim, intermediate, Fowler Center
- 10:00 am Senior Center writing group, Kelley residence
- 10:30 am Chair exercise with Ruth, Senior Center
- 12:00 pm EQB luncheon, Blizzard, St. Mary's Sewanee
- 5:30 pm Yoga with Helen, Comm Center
- 6:00 pm American Legion Post 51 Veterans Day celebration
- 6:00 pm Dialogue on Race & Diversity, Multi-Cultural Ctr
- 7:00 pm Bible study, Midway Baptist Church
- 7:00 pm Big Chess, Angel Park, until 10 pm
- 7:00 pm Catechumenate, Women's Center
- 7:30 pm Movie, "Excalibur," (free), SUT

## Thursday, Nov. 12

- 8:00 am Monteagle-Sewanee Rotary, Sewanee Inn
- 9:00 am CAC office open, until 11 am
- 9:00 am Nature journaling, for location contact <marypriestley@bellouth.net> or 598-0157
- 9:00 am Yoga with Becky, Comm Center
- 9:30 am Hospitality Shop open, until 2 pm
- 11:00 am Tai Chi with Kathleen, advanced, Comm Ctr
- 12:00 pm Lifelong Learning, Wade, St. Mary's Sewanee
- 12:00 pm Pilates with Kim, intermediate, Fowler
- 12:30 pm Carillon concert, Shapard Tower
- 12:30 pm Episcopal Peace Fellowship, Otey
- 1:30 pm Folks@Home Support Group, 598-0303
- 2:00 pm Knitting circle, Mooney's, until 4 pm
- 3:30 pm Emeritus Assn., McCardell, Torian Room, duPont
- 4:00 pm University Ave. planning session, Convocation Hall
- 5:00 pm Downtown planning session, upstairs McClurg
- 6:00 pm Karate, youth@6, adults@7, Legion Hall
- 7:00 pm Survivors' support group, Morton Memorial
- 7:30 pm Movie, "Steve Jobs: The Man in the Machine," SUT

## Friday, Nov. 13

College Homecoming Weekend

- 9:00 am CAC office open, until 11 am
- 10:00 am Game day, Senior Center
- 12:00 pm Spinal spa with Kim, Fowler Center
- 3:30 pm Dance with Debbie, 4-7, Comm Ctr
- 4:15 pm Dance with Debbie, 8/up, Comm Ctr
- 5:00 pm Bible study, Mtn of God Tabernacle, Monteagle
- 5:30 pm World healing meditation, Comm Ctr
- 7:30 pm Movie, "Steve Jobs: The Man in the Machine," SUT

### LOCAL 12-STEP MEETINGS

#### Friday

- 7:00 pm AA, open, Christ Church, Tracy City

#### Saturday

- 7:30 pm NA, open, Decherd United Methodist
- 7:30 pm AA, open, Claiborne Parish House, Otey

#### Sunday

- 6:30 pm AA, open, Holy Comforter, Monteagle

#### Monday

- 5:00 pm Women's 12-step, Claiborne Parish House, Otey
- 7:00 pm AA, open, Christ Church, Tracy City

#### Tuesday

- 7:00 pm AA, open, First Baptist, Altamont
- 7:30 pm AA, open, Claiborne Parish House, Otey

#### Wednesday

- 10:00 am AA, closed, Clifftops, (931) 924-3493
- 4:30 pm AA, "Tea-Totallers" women's group, Clifftops, (931) 924-3493
- 7:00 pm NA, open, Decherd United Methodist
- 7:30 pm AA, open, Holy Comforter, Monteagle

#### Thursday

- 12:00 pm AA, (931) 924-3493 for location
- 7:00 pm AA, open, St. James
- 7:30 pm Adult Children of Alcoholics, Dysfunctional Families, Claiborne Parish House, Otey

www.TheMountainNow.com



# Holiday Market

## Franklin County Annex

839 Dinah Shore Blvd, Winchester

**November 13<sup>th</sup>, 9:00am – 5:00pm**  
**November 14<sup>th</sup>, 9:00am – 4:00pm**

Come do your holiday shopping!  
Over 45 Local Artists and Crafters, Free Admission,  
STLS Meet and Greet, Handmade Holiday Décor, Handcrafted Items,  
Jewelry, Homemade Baked Goods, Concessions and much, much, more!  
For more information contact Edith Nunley at 962-4526 or  
stlsholidaymarket@gmail.com

Shop for unique holiday gifts while supporting the Southern TN Ladies' Society Scholarship Foundation for  
Coffee, Franklin, Grundy, Lincoln, and Moore Counties