



Alice Sholey (left) visits with Santa Claus (Louise Irwin) at the Blue Chair Tavern. Photo by Theresa Shackelford

December Lease Committee Report Shenanigans Sale Approved

At the Dec. 17 meeting of the Lease Committee, the following items were approved: November minutes; request to change the paint color of the shed, carport and fence and to move the shed on Lease No. 715 located at 12721 Sollace M. Freeman Hwy.; request to tear off the back of the house and put an addition on Lease No. 590 located 630 Alabama Ave.; request to add a split-rail fence on Lease No. 890 located at 215 Proctor's Hall Rd.; and the request to transfer Lease No. 698 (Shenanigans) located at 12595 Sollace Freeman Hwy. to Bill Elder and Nelson Byrd. A request to change the exterior color of Lease No. 493 located at 68 Mikell Lane was approved outside of the meeting.

There was continuing discussion about fees and services.

Leasehold information is available online at <leases.sewanee.edu> or by calling the lease office at 598-1998. A county building permit is required for structures with roofs; call 967-0981 for information.

The next meeting is scheduled for Tuesday, Jan. 21. Agenda items are due in the lease office no later than Tuesday, Jan. 14.

SUD Sets 2014 Budget with No Rate Increase in 2014

by Leslie Lytle
Messenger Staff Writer

At the Dec. 17 meeting of the Board of Commissioners of the Sewanee Utility District of Franklin and Marion Counties, the board approved the 2014 budget. The utility plans to complete the automated meter reading (AMR) installation without taking out a loan and with no rate increase until 2015.

At the November meeting, SUD Manager Ben Beavers said SUD had sufficient cash reserves to implement AMR without taking out a loan, although SUD's cash reserves would drop to approximately \$850,000 by the end of 2015. The board asked Beavers if any regulations bound SUD to maintain a set amount in cash reserves. At the December meeting, Beavers reported that the only cash reserve requirement binding SUD was a USDA grant for sewer rehabilitation. The required reserve amount is determined by a formula taking into account SUD's operating budget and debt payments. By the formula, SUD's required cash reserve above and beyond the amount already set

aside for debt payment is \$391,000. SUD's projected 2015 cash reserve of \$842,000 is well within the limit.

The 2014 budget projects \$1.375 million in revenue and \$1.722 million in expenses. The \$347,000 deficit will come from cash reserves. A 3 percent rate increase would have made it unnecessary to draw on the cash reserves. SUD's long-range plan calls for a 4 percent annual rate increase in keeping with the recommendation of SUD's consulting firm, Raftelis Financial, Inc. A 3 percent rate increase is projected for 2015.

The board also approved the Modified Safety Plan presented by Beavers. Beavers explained that the plan differed from the current plan only in language and was modified in keeping with the Tennessee Occupational Safety and Health Administration (TOSHA) decision to adopt international definitions and symbols as the standard for state regulations. SUD has never been cited by TOSHA for any substantial violation.

Updating the board on the Midway pumping station project, which will

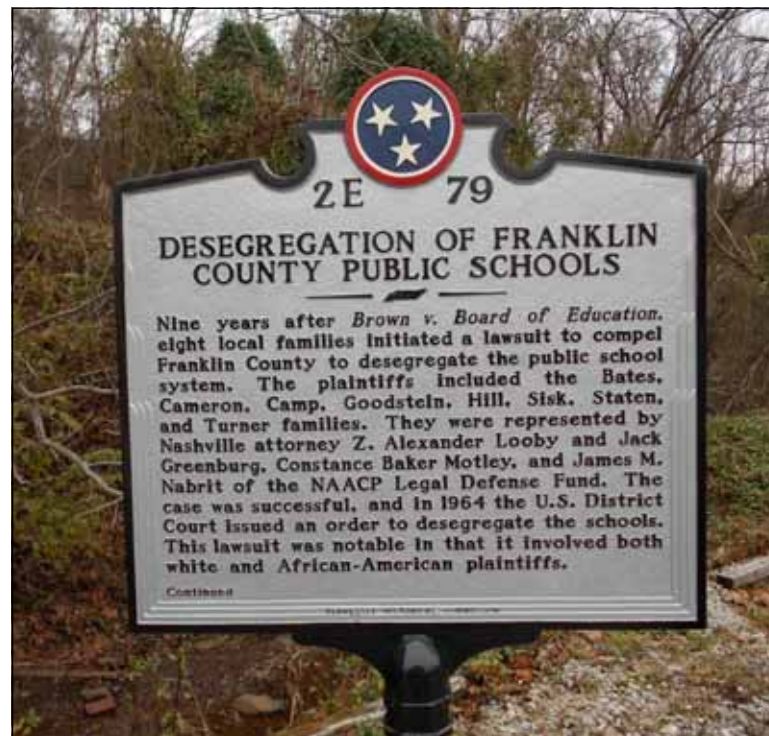
(Continued on page 6)

Historic Lawsuit in Franklin County Celebration in January

by Elizabeth Clark Duncan
Special to the Messenger

On Sunday, Jan. 19, 2014, there will be a momentous gathering in downtown Sewanee to mark the 50th anniversary of the desegregation of the Franklin County school system, as part of a series of community-wide events surrounding Martin Luther King Jr. Day.

Last spring, the Sewanee Civic Association (SCA) began working on plans to honor the 50th anniversary as a tribute to the Sewanee community and eight local families who played a major role in the historic integration. During the early to mid-60s, there were numerous lawsuits nationwide regarding desegregation; however, the local suit was unique in that there were four black and four white families working together; for this reason the NAACP and its legal defense fund embraced the suit. Additionally, to further strengthen the case for integration, the Sewanee community banded together to provide funding for construction to enlarge the physical plant of the school, as well as facilitating a tutoring program to ensure that all students would thrive in the newly integrated public school. In 1964, the U.S. District Court issued an order to desegregate the schools and August of that same year saw the system begin to assimilate all children into the



The historical marker that will be installed on University Avenue on Jan. 19.

classroom regardless of race.

A permanent and officially sanctioned Tennessee State Historical marker to be placed at the Sewanee Elementary School (SES) was unanimously approved by the SCA as a first step of commemoration. Despite rigid guidelines, the marker and suggested text were endorsed in the first round

of subcommittees in Nashville and approved by the full Historical Commission in October. Linda Wynn, assistant director for state programs for the Tennessee Historical Commission and a civil rights educator, indicated the uniqueness of the suit and

(Continued on page 6)

Sewanee Community Chest You Can Make a Difference

The Sewanee Community Chest fund drive has reached 67 percent of its goal to date, \$72,608. Since 1908, the Sewanee Civic Association and its precursors have believed in the power of area citizens to help sustain community projects and programs. Through these associations, the community has funded many worthwhile endeavors, such as building and maintaining parks and the elementary school, helping to complete Alto Road, funding a state highway to the Marion County line, and underwriting blueprints for the stone gates.

The Sewanee Civic Association continues to organize the volunteer-led Community Chest, which raises tens of thousands of dollars yearly for local organizations. Through Community Chest funding, these organizations help those caught in the cycle of poverty, improve lives through outreach and community initiatives, and provide support for children with a variety of programs.

This year, the Community Chest has a goal of \$108,000 to help fund 28 area programs and initiatives. The money raised in the community goes directly to organizations that support the following:

\$28,000 for Community Aid (for organizations such as Community Action Committee, Folks at Home, Cumberland Center for Justice and Peace, South Cumberland Time Bank and St. Mark's Community Center); \$37,300 for Children (Sewanee Elementary School PTO, Sewanee Children's Center, Campora Family Resource Center, TigerSharks, Little League and Scouting); \$34,500 for Quality of Life (Phil White Dog Park, Fourth of July Celebration, Sewanee Senior Center, Sewanee Community Center, Thurmond Memorial Library, Sewanee Chorale, Sewanee Angel Park, Sewanee Chorale and the Messenger); and \$8,200 for Beyond Sewanee (Grundy County Food Bank, Franklin County Humane Society, Blue Monarch, Haven of Hope and Mountain Goat Trail).

Every dollar raised stays in the community, including paying for expenses such as printing and mailing. The Community Chest uses local print, graphic design and postal services. The website and email is staffed by a volunteer.

The Sewanee Civic Association encourages all of you who benefit from life in this community whether you live, work, or just visit, to give to the Community Chest. The Sewanee Community Chest is a 501(c)(3) organization, and donations are tax-deductible.

For more information go to <sewaneeccivic.wordpress.com>.



Highlights of MLK Day 2014

Sewanee will observe Martin Luther King Day with three events. All events are open to the public.

At 2 p.m. on Sunday, Jan. 19, at Sewanee Elementary School (SES), there will be an observance paying tribute to the 50th anniversary of the 1964 desegregation of SES. A historical marker commemorating the event will be unveiled at the ceremony. A reception will follow at Brooks Hall.

The 29th annual Martin Luther King Birthday Celebration will be held on Monday, Jan. 20, in the Bishop's Common Hearth Room beginning with a potluck dinner at 5:30 p.m. Student performers include the Sewanee Praise choir, poet Adrian Bowie and praise dancer Yubisan Ventura. Featured speaker Marilyn Davidheiser will provide an overview of the lawsuit leading to the desegregation of SES.

At 8 p.m., Monday, Jan. 20, in All Saints' Chapel, François Clemmons, acclaimed singer, playwright and lecturer will perform. As founder/director of the world-famous Harlem Spiritual Ensemble, he performs throughout America, Europe and Asia, carrying on his vision for preserving, sustaining and commissioning new and traditional arrangements of American Negro Spirituals for future generations.

P.O. Box 296
Sewanee, TN 37375

AWORDFROM THEEDITOR

by Laura L. Willis



As I come to the end of 2013, I reflect on this year and remember the many remarkable things that have happened. Our community has reached a new level of meaningful engagement and cooperative spirit. Janet Graham and I are grateful that the Sewanee Mountain Messenger is part of all this positive activity.

This year, the Messenger launched a new partner website, <www.TheMountainNow.com>, a calendar and events site designed to provide up-to-date information about goings-on across the Plateau. We've been able to do this because of the support of the website's sponsors: the Blue Chair Bakery & Tavern, Citizens State Bank, Joseph's Remodeling Solutions, Monteagle Sunday School Assembly, Sewanee Business Alliance, Sewanee Community Chest, South Cumberland Community Fund, St. Andrew's-Sewanee School and Sewanee: the University of the South. Kiki Beavers has made this website someplace you'll want to bookmark and visit each day.

There would be no newspaper without the fine work of our staff. Kudos to staff writers Leslie Lytle, K. G. Beavers, Kevin Cummings, photographer Lyn Hutcheson, proofreader Sandra Gabrielle, circulation manager Ray Minkler and office manager April Minkler.

We lost two of our beloved columnists this year: Scott Bates and Harry Yeatman. And yet, their columns remain in the paper because they were always shared with their wonderful spouses, Phoebe Bates and Jean Yeatman. What would the Messenger be without a weekly dose of "Bard to Verse" and "Nature Notes?" Thank you, Phoebe and Jean, for carrying on these important parts of our paper.

A big thank-you to the dedicated columnists who are a regular part of the Messenger: Annie Armour, Kiki Beavers, John Bordley, Virginia Craighill, Patrick Dean, Buck Gorrell, John Shackelford, Margaret Stephens, Peter Trenchi, Francis Walter and Pat Wiser. All these folks write as volunteers, receiving only your good words as appreciation for their effort. Please let them know you read their columns.

The Messenger was founded because of the foresight and generosity of the Sewanee Community Chest, the Sewanee Woman's Club and the University of the South. We continue to receive assistance from two organizations—the University's contributions pay for a portion of the printing costs each week and the Community Chest's donation ensures that we can remain a free newspaper and do not have to charge you a nickel to read it each week.

And thank you to our advertisers. We publish 47 issues a year, free to more than 3,700 readers across the Plateau, and hundreds more online, because of the paid advertisements of local businesses and eateries. We are grateful for the continued patronage that keeps the Messenger afloat.

This newspaper is a long-term, collaborative endeavor that Janet Graham and I carry on with gratitude and appreciation. Without the paths cleared by Phoebe Bates and her staff at the Sewanee Siren, and Geraldine Hewitt Piccard and her staff, you wouldn't hold this paper in your hands. It is testimony to our community's commitment to shared information and public service that the Messenger continues to hold an important place on this Mountain.

Earlier this year I had the opportunity to tour the Chicago Tribune building, which was a great delight for me. Etched into the walls of the foyer are a number of quotes about the importance of newspapers, the power of the press, and the value of truth. It is hard to select just one, but I think my favorite of the quotes was this from Abraham Lincoln: "Let the people know the facts, and the country will be safe."

Lincoln's words, now more than 150 years old, still resonate today. They are a good guide to our communal life together: let us share the facts so that we can make informed judgements together. And all shall be well.

I offer my warmest best wishes to you this holiday season! We look forward to another new year together. We'll be back in print on Jan. 10, 2014.

Letter

SEWANEE EMAIL CLASSIFIEDS To the Editor:

The Sewanee Classifieds email membership has been brought up-to-date, and all accounts that have not purchased a \$10 yearly subscription have been removed. If you were previously using the Sewanee Classifieds and now find it no longer working, this is the reason.

If your account has been disabled, it is extremely easy to sign up. Simply go to the Sewanee Civic Communications page at <www.groupspaces.com/sewanee> and select "join group." Once a subscription has been purchased, the account will be activated.

It has been our aim that no paid accounts were accidentally deleted but as we all know, human error can take its toll. If you find your paid account is no longer working, please (A) accept our apologies and (B) contact us directly at <sewaneeccivic@gmail.com> so we may remedy the situation.

Many thanks for everyone's patience during this exciting time and happy holidays.

Elizabeth Duncan, Sewanee Civic Association Classifieds ■

MESSENGER Holiday Break & January Deadlines

After this issue, the Sewanee Mountain Messenger staff will take a two-week break.

We will return to the office on Monday, Jan. 6. The Messenger will be back in print Friday, Jan. 10.

Deadlines for the Jan. 10 issue are: display advertising, 5 p.m. on Monday, Jan. 6; news and calendar items, 5 p.m. on Tuesday, Jan. 7; and classified ads, noon on Wednesday, Jan. 8.

Letters to the Editor Policy

Letters to the Editor are welcome at the Sewanee Mountain Messenger and are a vital part of our community's conversation. Letters need to be no longer than 250 words and may be edited for space and clarity. Letters and/or their author must have some relationship to our community. We do not accept letters on national topics from individuals who live outside our circulation area. Please include your name, address and a daytime telephone number with your letter. You may mail it to us at Sewanee Mountain Messenger, P.O. Box 296, Sewanee TN 37375, or come by our office, 418 St. Mary's Ln., or send an email to <news@sewaneemessenger.com>.—LW

THE SEWANEE MOUNTAIN MESSENGER

418 St. Mary's Ln.

P.O. Box 296

Sewanee, Tennessee 37375

Phone (931) 598-9949

Fax (931) 598-9685

Email news@sewaneemessenger.com

www.sewaneemessenger.com

Laura L. Willis, *editor/publisher*
Janet B. Graham, *advertising director/publisher*
April H. Minkler, *office manager*
Ray Minkler, *circulation manager*
Leslie Lytle, *staff writer*
K.G. Beavers, *staff writer*
Kevin Cummings, *staff writer*
Sandra Gabrielle, *proofreader*
Geraldine H. Piccard, *editor/publisher emerita*



Contributors
Phoebe Bates
Jean & Harry Yeatman
John Shackelford
Annie Armour
John Bordley
Virginia Craighill
Patrick Dean
Buck Gorrell
Margaret Stephens
Peter Trenchi
Pat Wiser
Francis Walter

Published as a public service to the Sewanee community. 3,500 copies are printed on Fridays, 47 times a year, and distributed to 26 Sewanee-area locations for pickup free of charge.

This publication is made possible by the patronage of our advertisers and by contributions from The University of the South (print production) and the Sewanee Community Chest.

SUBSCRIPTIONS \$75 first class.

All material in the Sewanee Mountain Messenger and on its website are copyrighted and may not be published or redistributed without written permission.

Fog Safety

Wintery weather is here, and that means more of the Mountain's infamous dense fog. And with fog comes greater concerns about traffic safety.

The Sewanee police department reminds folks of the following safety recommendations for driving in the fog.

"People need to really slow down, turn on their headlights and use extreme caution," said Sewanee Police Chief Marie Eldridge. Traffic accidents increase in the fog, whether it is because of deer in the roadways that are hard to see or vehicle collisions.

Tennessee state law requires that car headlights be turned on for rain, fog or precipitation. "When in doubt," she said, "turn those headlights on."

Flashing emergency hazard lights should not be used in the fog by a moving vehicle. Use these only for emergency situations, otherwise you confuse other drivers.

Other safety tips for driving in the fog include:

When visibility is limited, turn off any music, roll down your car window and listen for traffic you cannot see.

Stay on the roadway by following the white stripe adjacent to the right shoulder of the road. This is easier to see than the middle stripes in dense fog, and oncoming headlights are not in your eyes.

Remember that other drivers have a limited sight distance, and fog can leave roadways slick. Use your turn signals, and when you use your brakes, don't stomp on them.

When in doubt, turn on your car lights, but make sure your high beams are not on. High beams direct light up into the fog, making it difficult for you to see. Low beams direct light down onto the road and help other drivers to see you.

Serving Where Called

Please keep the following individuals, their families and all those who are serving our country in your thoughts and prayers:

Cole Adams
Michael Evan Brown
Mary Cameron Buck
Lisa Coker
Jennifer Lynn Cottrell
James Gregory Cowan
Nathaniel Andrew Garner
Tanner Hankins
Robert S. Lauderdale
Dakota Layne
Byron A. Massengill
Andrew Midgett
Alan Moody
Brian Norcross
Christopher Norcross
Michael Parmley
Peter Petropoulos
Troy (Nick) Sepulveda
Melissa Smartt
J. Wesley Smith
Charles Tate
Tyler Walker
Jeffery Alan Wessel
Nick Worley

If you know of others in our Mountain family who are serving our country, please give their names to American Legion and Auxiliary member Louise Irwin, 598-5864.

MESSENGER CONTACTS

PHONE: (931) 598-9949

FAX: (931) 598-9685

News & Calendar:

Laura Willis

news@sewaneemessenger.com

Display Advertising:

Janet Graham

ads@sewaneemessenger.com

Classified Advertising:

April Minkler

classifieds@sewaneemessenger.com



Dollar Tree Plaza
Decherd, TN
(931) 967-4028
M – Sat – 9:00 – 5:30
Come by and say Hi to
Scott Bunch –
Diamond Consultant
www.diamondsforyou.org

Interior & exterior painting



George Dick, owner

598-5825

Making Sewanee homes and businesses beautiful since 1974



Down Home, Down the Street

754 West Main St., Monteagle
(931) 924-3135

8 a.m. to 9 p.m. 7 days a week

Martha's Corner House Tea Room

Open for lunch
11 to 2 Wed thru Sun;
and 5 to 8 on Friday
for Around-the-World
Theme Dinners

SUNDAY BUFFET

featuring lunch
and brunch items

401 E. Cumberland St.
931-967-3910
Cowan

Upcoming Meetings and Events

Festival of Trees at Heritage Center

The fourth annual Festival of Trees is now on display at the Heritage Center part of the Grundy County Historical Society, 465 Railroad Ave., Tracy City. The display of 12 decorated Christmas trees will remain up through December. The Heritage Center is open 10 a.m.–4 p.m., Mondays–Fridays, and 10 a.m.–2 p.m., Saturdays. There is no admission charge. Several local organizations have worked with the Heritage Center staff to develop the displays, including a tree that honors the communities, state park and other operations in Grundy County. For more information call (931) 592-6008.

Help Available for Health Care Registration

Need help navigating the Affordable Care Act (Obamacare) website to shop for affordable quality healthcare insurance? Come to Julia's Fine Foods on University Avenue in Sewanee between 2:30 p.m. and 5 p.m. every Sunday through March. There will be computers and volunteers who will help you find insurance opportunities. The volunteers are not insurance salespeople, just neighbors who can help.

Brown Book Signing Sunday

Author Kate Murray Brown will sign copies of her new book, "Sassafras Tales," 11 a.m.–2 p.m., Sunday, Dec. 22, at the Smoke House in Monteagle. "Sassafras Tales" are fun stories, full of interesting characters and life lessons and set in a place richly imagined and colorfully drawn. For more information go to <www.sassafrastales.com>.

Holiday Garbage Schedule

Joe B. Long reports the following plans for garbage pickup for the holidays. There will not be garbage pickup on Christmas Day, Wednesday, Dec. 25. Garbage pickup will resume on Thursday, Dec. 26, and the crews will be picking up both Wednesday and Thursday garbage on that day. There will be garbage pickup on New Year's Day, Wednesday, Jan. 1.

Curbside Recycling on Jan. 3

Residential curbside recycling pickup in Sewanee is on the first and third Friday of each month. Friday, Jan. 3, will be a pickup day. Recyclable materials must be separated by type and placed in blue bags by the side of the road no later than 7:30 a.m.

Please do not put out general household trash on this day. Blue bags may be picked up in the University Lease Office, 110 Carnegie Hall, at the Physical Plant Services administrative office on Alabama Avenue or at the PPS warehouse on Georgia Avenue.

Benefit Low Country Boil in Monteagle Jan. 18

The fourth annual Low Country Boil will be 4–7 p.m., Saturday, Jan. 18, at the Tennessee National Guard Armory (107 Armory Rd., Monteagle, on Hwy. 41 between Monteagle and Tracy City). Tickets are \$15 per person in advance; \$18 per person at the door.

Proceeds from the event will benefit Friends of South Cumberland, the Monteagle Food Bank and the Monteagle Mountain Chamber of Commerce.

The menu includes shrimp, potatoes, sausages and corn, all cooked in a Cajun seasoning, dirty rice, bread pudding with rum sauce and tea. Bazzania will perform. For more information or to purchase tickets, call (931) 924-5353 or email <mmtnchamber@blomand.net>.

Academy Announces January Program

The Academy for Lifelong Learning at St. Mary's Sewanee will meet at 12 p.m., Thursday, Jan. 16, at St. Mary's Sewanee. Bonnie McCardell and Emily Partin will speak on "Harvesting New Initiatives on the Cumberland Plateau." They will discuss many new projects that have been developed by people across the Plateau in an effort to create positive change in Grundy County. Box lunches (\$10) are available; to reserve lunch, call 598-5342 or email <reservations@stmaryssewanee.org>.

Emily Partin grew up in Grundy County, left for 20 years to pursue her education and has worked in Grundy since 2000 as a family resource director for the Grundy County Schools. She serves on several local nonprofit boards, is president of Rotary Club of Grundy County and is the choir director of her church. She serves on the Grundy County Commission.

Bonnie McCardell grew up in Baltimore, and after college graduation, lived in Middlebury, Vt., where she was a journalist. She earned a master's degree in early childhood education. Since arriving in Sewanee, she has worked tirelessly to form partnerships across the Plateau between local organizations and service providers around the country.

The Academy welcomes new members. For more information call Anne Davis at (931) 924-4465 or Debbie Kandul at (931) 924-3542.

The Gnarled Oak

Furniture refinishing,
chair caning, seat weaving
and furniture repair



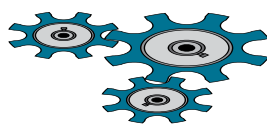
Victorian Sea Captain's Desk

Flat Branch Community
2222 Flat Branch Spur
Tracy City, Tennessee 37387
(931) 592-9680
Bill Childers, Prop.

J & J GARAGE

COMPLETE AUTO REPAIR

- Import & Domestic
- Computerized 4-Wheel Alignments
- Shocks & Struts ● Tune-ups ● Brakes
- Our Work is Guaranteed.
- OVER 26 YEARS EXPERIENCE.



Jerry Nunley
Owner

598-5470 Hwy 41-A between Sewanee & Monteagle ● Monday-Friday 7:30-5:30

GLASS RECYCLING GUIDELINES

at Glass Recycling Site on Kennerly Avenue behind PPS in Sewanee



- ~ Sort glass into four colors: green, brown, clear, blue.
- ~ Bottles must be EMPTY, but washing out is not required. You must WASH food out of food jars.
- ~ REMOVE all ceramic, wire, metal, plastic caps, lids, collars or neck rings. Paper labels are allowed.
- ~ The following glass containers are recyclable:
Iced tea and soda bottles
Food jars
Beer bottles
Wine and liquor bottles
Juice and water containers
- ~ The following glass is not recyclable:
Ceramic cups, plates and pottery
Clay garden pots
Laboratory glass
Windshields and window glasses
Crystal and opaque drinking glasses
Mirrors
Heat-resistant ovenware (e.g. Pyrex)
Light bulbs

OPEN MONDAY THROUGH SATURDAY, 7 A.M. TO 6 P.M.

Jim Long's Import Auto Service

Exclusive Volvo Automobile Facility

931-596-2217
931-596-2633

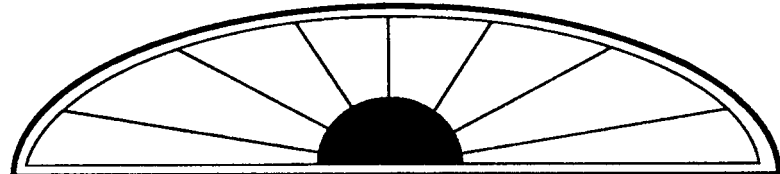


We stock new, used and rebuilt Volvo parts.
We service and repair Volvos.
We buy running, disabled or wrecked Volvos.

1741 Howell Rd.
Hillsboro, TN 37342

Same owner - Same location for more than 38 years
ASE Master Certification for more than 20 years

www.TheMountainNow.com

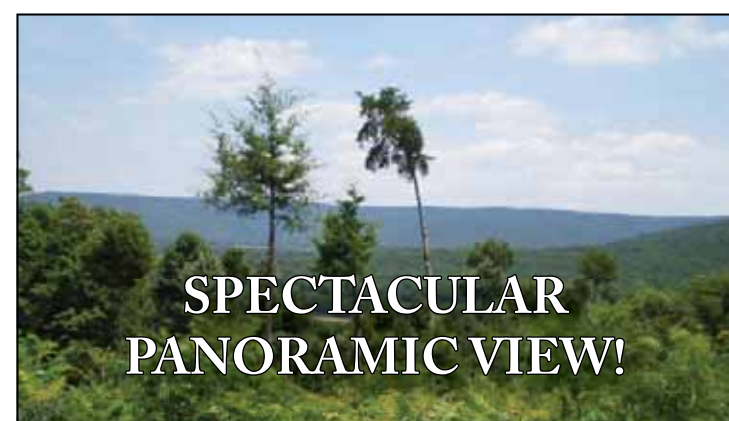


wm.c.mauzy construction co.

Bill Mauzy, Owner, General Contractor

www.mauzyconstruction.com
billmauzy@bellsouth.net

931.598.0686 (office)
931.580.0686 (cell)



SPECTACULAR PANORAMIC VIEW!



11 acres—completely fenced—with fresh-water mountain springs and a panoramic 180-degree view of the valley. Located 15 minutes from the University of the South on a two-mile private, gated road. Includes a two-story, four-room hunting cabin; a 600-square-foot paneled, insulated workshop; and a 12-person party gazebo. Must-sell price: \$119,000.

Century 21
Mid-State Realty

Please call Pam Peck at 931-580-8321
or 931-967-4321.

Henley's Electric & Plumbing

Randall K. Henley

More Than 25 Years' Experience

598-5221 or cell 636-3753



Obituaries

Betsy L. Robertson Collins

Betsy L. Robertson Collins, age 86 of Huntland, died on Dec. 13, 2013, at her home. She was born on Nov. 29, 1927, in Huntsville, Ala., to James H. and Jessie Hatchett Robertson. She was a secretary at Redstone Arsenal Logistics and Supply. She was preceded in death by her parents; husband, Charles Collins; and brothers, Harold and John Robertson.

She is survived by her son, James Ed (Vivan) Collins of Sewanee; and brother, Reese (Sue) Robertson of Belvidere.

Funeral services were on Dec. 16 in the funeral home chapel with Bro. Bruce Shockley officiating. Interment followed in Franklin Memorial Gardens, Winchester. For complete obituary go to <www.moorecortner.com>.

Joseph David Cushman

Joseph David Cushman, age 88 of Sewanee, died on Nov. 25, 2013, at his home. He was a graduate of the University of the South in history. He received his Ph.D. from Florida State University and served as a member of FSU's faculty for 10 years. He was a veteran of World War II and received two Purple Heart medals and a good conduct medal while fighting in Europe. He returned to Sewanee with his family in 1968 and served on the history department faculty until his retirement in 1993. He continued to be active with the University and in the community, helping maintain Abbo's Alley for several years.

He is survived by his sons, David (Quynh) Cushman of New Orleans, La., and Clay (Cheryl) Cushman of Fayetteville, Ga.; and one grandson.

Funeral services were on Nov. 25 in All Saints' Chapel, Sewanee; he was interred following the service, with his wife of 58 years, Mary Sue, in the University Cemetery. In lieu of flowers the family asks that donations be made to the Joseph Cushman History Scholarship at the University of the South, 735 University Ave., Sewanee TN 37383. For complete obituary go to <www.cumberlandfuneralhome.net>.

Mary Susan Livingstone Cushman

Mary Susan Livingstone Cushman, age 81 of Sewanee, died on Nov. 21, 2013, at her home. She was born in 1932, in Grosse Pointe, Mich. She attended Wellesley College and received a master's degree from Harvard. She moved to Sewanee with her family in 1968 and served as principal of Sewanee Elementary School in the early 1970s. In 1972, she became Dean of Women at the University of the South, holding that position until 1992, when she became the first Dean of Students at the University, remaining in that position until she retired in 1994.

She is survived by her sons, David (Quynh) Cushman of New Orleans, La. and Clay (Cheryl) Cushman of Fayetteville, Ga.; and one grandson.

Funeral services were on Nov. 25 in All Saints' Chapel. Interment followed in the University Cemetery. In lieu of flowers the family asks that donations be made to the Mary Sue Cushman Scholarship fund at the University of the South, 735 University Ave., Sewanee TN 37383. For complete obituary go to <www.cumberlandfuneralhome.net>.

Alton Lee Perry

Alton Lee Perry, age 72 of Winchester, died on Dec. 13, 2013, at Williamson County Medical Center. He was a boilermaker at Arnold Engineering and a childhood member of the Alto Methodist Church. He also attended Gum Creek Cumberland Presbyterian Church. He was preceded in death by his parents, Leo Perry and Lucy Henley Perry; and brothers, Babe and Albert Perry.

He is survived by his wife of 51 years, Molly Perry; and sisters, Rachel (Jimmy) Long and Sarah (Bud) Sutherland of Sewanee.

Funeral services were on Dec. 16 in the funeral home chapel with the Rev. Rocky Whray officiating. Interment followed in Franklin Memorial Gardens. For complete obituary go to <www.moorecortner.com>.



MOORE-CORTNER FUNERAL HOME

Specializing in pre-funeral arrangements • Offering a full range of funeral plans to suit your wishes • We accept any & all Burial Insurance Plans



We are a father & son management team—
Bob & Jim Cortner
Owners/Directors

967-2222

300 1st Ave. NW, Winchester




MATLOCK

State Licensed • Fully Insured

ROB MATLOCK
CONSTRUCTION COMPANY
NEW HOME BUILDING
AND REMODELING

MEMBER, U.S. GREEN BUILDING COUNCIL

PHONE 931-598-5728



ST. MARY'S SEWANEE

The Ayres Center for
Spiritual Development

Call (931) 598-5342
or (800) 728-1659
www.StMarysSewanee.org
<reservations@
stmaryssewanee.org>

UPCOMING RETREATS

The Practice of Compassion: A New Year's Mindfulness Retreat

Monday, December 30–Wednesday, January 1
*Kathy Woods and the Rev. Dr. Gordon Peerman,
presenters*

New building, \$450 (single); Commuter, \$250

ONE-DAY CENTERING PRAYER WORKSHOP

Saturday, January 4
The Rev. Tom Ward, presenter
\$50, Lunch included

Presiding Bishop to Celebrate at St. Andrew's Chapel Centennial

The Rev. John Taliaferro Thomas, head of St. Andrew's Sewanee School, announced that the presiding bishop of the Episcopal Church, the Most Rev. Katharine Jefferts Schori, will celebrate a special Eucharist service in the school's St. Andrew's Chapel on Saturday, June 7. Bishop Jefferts Schori's visit coincides with the school's alumni weekend and is in tribute to the centennial celebration of St. Andrew's Chapel.

"We look forward to the honor of having Bishop Jefferts Schori with us for the centennial celebration of the chapel," said Thomas. "We are grateful to her for making time in her busy schedule to be with us as we celebrate the birth of the physical manifestation of the spiritual center of our community."

The cornerstone for St. Andrew's Chapel was laid in 1913 by Bishop Guerry of South Carolina. The first mass was

sung in the Chapel on Feb. 22, 1914, and the structure was consecrated that May. Except for brief interruptions over the years for renovations, students have gathered in the chapel at least three times per week for prayer and community.

The chapel is the setting for alumnus and Pulitzer Prize-winning author James Agee's "The Morning Watch," a recounting of a young boy's experience during the Easter vigil.

More information will be shared about the May centennial celebration as it becomes available.

Church News is on page 7.

CHURCH CALENDAR

Today, Dec. 20

7:00 am Morning Prayer/Holy Eucharist, St. Mary's
7:30 am Morning Prayer, Otey
12:00 pm Noon Office, St. Mary's
4:30 pm Evening Prayer, Otey
5:00 pm Evening Prayer, St. Mary's

Saturday, Dec. 21, Dec. 28, Jan. 4

St. Mary's Convent

8:00 am Holy Eucharist with hymns (12/28)
5:00 pm Evensong

Monteagle Seventh-day Adventist Church

10:00 am Sabbath School/Bible study
11:00 am Worship Service

Good Shepherd Catholic Church, Decherd

5:00 pm Mass
Trinity Episcopal Church, Winchester
6:30 pm Blue Christmas (solace for loss or grief)

Sunday, Dec. 22, Dec. 29, Jan. 5

All Saints' Chapel

8:00 am Holy Eucharist
Bible Baptist Church, Monteagle

10:00 am Morning Service
5:30 pm Evening Service

Christ Church Episcopal, Alto

11:00 am Holy Eucharist
11:00 am Children's Sunday School

Christ Church, Monteagle

10:30 am Lessons and Carols, 12/22
10:30 am Holy Eucharist, 12/29
10:30 am Feast of the Epiphany, 1/5/14
10:45 am Children's Sunday School
12:50 pm Christian formation class

Church of the Holy Comforter, Monteagle

9:00 am Holy Eucharist
Cowan Fellowship Church

10:00 am Sunday School
11:00 am Worship Service

Cumberland Presbyterian Church, Sewanee

9:00 am Worship Service
10:00 am Sunday School

Decherd United Methodist Church

9:45 am Sunday School
10:50 am Worship

Epiphany Episcopal Church, Sherwood

10:30 am Holy Eucharist
10:30 am Children's Sunday School

Good Shepherd Catholic Church, Decherd

10:30 am Mass
Grace Fellowship

10:30 am Sunday School/Worship Service
Harrison Chapel Methodist

10:00 am Sunday School
11:00 am Worship Service

Midway Baptist Church

10:00 am Sunday School
11:00 am Morning Service

6:00 pm Evening Service

Midway Church of Christ

10:00 am Bible Study
11:00 am Morning Service

6:00 pm Evening Service
Morton Memorial United Methodist, Monteagle

9:45 am Sunday School
11:00 am Worship Service

New Beginnings Church, Jump Off

9:00 am Worship Service, Christmas play (12/22)
10:45 am Worship Service, Christmas play (12/22)

Otey Memorial Parish

8:50 am Holy Eucharist (Rite II 12/29)
10:00 am Christian Ed, Cookies & Carols (12/29)

11:00 am Holy Eucharist (Rite II 12/29)
4:30 pm Epiphany Pageant (1/5/14)

Pelham United Methodist Church

9:45 am Sunday School
11:00 am Worship Service

St. Agnes' Episcopal, Cowan

11:00 a.m. Holy Eucharist Rite I

St. James Episcopal

9:00 am Children's Church School
9:00 am Holy Eucharist, Lessons and Carols (12/22)
10:15 am Godly Play

St. Margaret Mary Catholic Church, Alto

8:00 am Mass

St. Mary's Convent

8:00 am Holy Eucharist with hymns (12/29)
5:00 pm Evensong

Sewanee Church of God

10:00 am Sunday School
11:00 am Morning Service
6:00 pm Evening Service

Society of Friends

9:30 am Meeting, 598-5031

Tracy City First Baptist Church

9:45 am Sunday School
10:45 am Morning Worship

5:30 pm Youth

6:00 pm Evening Worship

Trinity Episcopal Church, Winchester

5:00 pm Lessons and Carols (12/22)

Monday, Dec. 23

7:30 am Morning Prayer, Otey
4:30 pm Evening Prayer, Otey

Tuesday, Dec. 24 • Christmas Eve

8:00 am Morning Prayer/Eucharist, St. Mary's
4:00 pm Christmas Eve Mass, St. Agnes, Cowan
4:30 pm Communion, Sewanee C.P. Church
4:30 pm Holy Eucharist, Crèche Service, Otey
5:00 pm Holy Communion, Christ Church Monteagle
5:30 pm Candlelight Communion, Decherd Presbytn
6:00 pm Christmas Communion, Cowan Fellowship
7:00 pm Christmas Eve service, Christ Church Alto
10:00 pm Christmas Eve, Trinity Episcopal, W'chstr
10:30 pm Christmas Eve Eucharist, Otey
10:45 pm Midnight Mass, special music, St. Mary's
11:00 pm Christmas Eve Eucharist, St. James
11:30 pm Holy Eucharist, Epiphany, Sherwood
11:30 pm Christmas Eve Service, SAS Chapel

Wednesday, Dec. 25 • Christmas Day

8:00 am Morning Prayer, St. Mary's
9:00 am Christmas Service, Trinity Episcopal
10:00 am Christmas Holy Eucharist, Otey
10:30 am Holy Communion, Christ Church M'eagle
11:00 am Holy Eucharist, Christ Church Alto
5:30 pm Evening Prayer, St. Mary's

Wednesday, Jan. 1, Jan. 8

6:00 am Morning Prayer, Cowan Fellowship
7:00 am Holy Eucharist, St. Mary's
12:00 pm Holy Eucharist, Christ Church, Monteagle
5:00 pm Holy Eucharist, Rite III, St. James (1/1, Healing; 1/8 Anglican Rosary)
5:30 pm Evening Worship, Bible Baptist, Monteagle
6:00 pm Prayer and study, Midway Baptist
6:00 pm Youth (AWANA), Tracy City First Baptist
6:30 pm Prayer Service, Harrison Chapel, Midway
7:00 pm Adult Christian Formation, Epiphany, Sherwood
7:00 pm Evening Worship, Tracy City First Baptist

Monday–Friday, Dec. 30–Jan. 3, Jan. 6–10

7:00 am Morning Prayer/HE, St. Mary's (not 12/30)
7:30 am Morning Prayer, Otey
10:00 am Feast Day of St. Stephen, Otey (12/26)
10:00 am Feast Day of the Holy Innocents, Otey (12/28)
12:30 pm Noon Office, St. Mary's (not 12/30)
4:30 pm Evening Prayer, Otey
5:00 pm Evening Prayer, St. Mary's (not 12/30)

*"We make a living by
what we get, but a life
by what we give."*

From "Two-Liners Stolen From
Others by Joe F. Pruett"

Sewanee Realty

931.598.9200 or 931.636.5864 www.SewaneeRealty.info
115 University Ave., Sewanee

Margaret Donohue,
Principal Broker
931.598.9200

John Brewster,
Broker
931.636.5864

May you be blessed with the spirit of Christmas now and in 2014!



BLUFF - MLS 1494787 -
253 Arcadia Lane, Sewanee. \$1,298,000



BLUFF - MLS 1397328 -
974 Old Sewanee Rd., Sewanee. \$299,000



MLS 1487540 - 109 Wiggins Creek,
Sewanee. \$473,000



BLUFF - MLS 14335874 -
250 Sherwood Trail, Sewanee. \$399,900



BLUFF- MLS 1437123 - 3442 Sherwood Rd.
+ cottage, Sewanee. \$789,000



BLUFF - MLS 1503907 - 1801 Bear Court,
Monteagle - \$299,000



MLS 1379047 - 136 Appletreewick St.,
Laurel Brae. \$399,000

BLUFF TRACTS

36 Long View Lane	1503912	\$ 75,000
7 Jackson Pt. Rd.	1503910	\$ 82,000
37 Jackson Pt. Rd.	1493957	\$ 90,000
1 Jackson Pt. Rd.	1493960	\$125,600
4 Saddletree Lane	1493962	\$109,180
12 Saddletree Lane	1493961	\$ 79,500
Jackson Pt. Rd. 19+a	1440564	\$120,000
Jackson Point Rd	1426464	\$ 99,000
Jackson Pt. Rd. 8.63a	1414073	\$ 89,000
Saddletree Lane	1207074	\$ 85,000
Jackson Point Rd	1099422	\$199,000
Jackson Point Rd	1101401	\$ 99,000
7 Saddletree Lane	1417538	\$ 70,000
Raven's Den	1015362	\$ 79,000



BLUFF - MLS 1458099 -
540 Monteagle Falls Rd., \$389,000



MLS 1431112 - 727 Deepwoods Rd.,
Sewanee. \$398,000



MLS 1490245 - 191 Girault Jones,
Sewanee. \$349,000



BLUFF - MLS 1440974 -
1804 Ridge Cliff Dr., Monteagle. \$199,900



BLUFF - MLS 1329672 -
1899 Jackson Pt. Rd., Sewanee. \$365,000



BLUFF - MLS 1437112 -
47 Poplar Lane, Sewanee. \$398,000



BLUFF - MLS 1490457 -
3217 Sherwood Rd., Sewanee. \$770,000



MYERS POINT
bluff and lake tracts



MLS 1482575 - 226 Shadow Rock Dr.,
Monteagle. \$265,000



MLS 1371914 - 136 Parson's Green,
Sewanee. \$199,500



MLS 1499101 - 107 Blackberry Lane,
Sewanee. \$289,000



MLS 1302421 - 621 Dogwood Dr.,
Clifftops. \$165,000



MLS 1490967 - 776 Georgia Ave.,
Sewanee. \$224,000



BLUFF - MLS 1484663
13 Sherwood Trail, Sewanee. \$975,000



MLS 1423183 - 202 Main St.,
Monteagle. \$112,000



MLS 1503887 - 15 Oklahoma Ave,
Sewanee - \$225,000



MLS 1395737 - Shenanigans
in Sewanee. \$525,000



MLS 1492310 - 280 Carpenter Circle,
Sewanee. \$348,000



MLS 1479185 - 1150 Sassafras Ct.,
Clifftops. \$224,900

—LONG-TERM RENTAL—
Jackson Pt. Rd - \$1,200



BLUFF - MLS 1360522-
53 Valley View, Monteagle. \$449,000



MLS 1358150 - 100 Tomlinson Lane,
Sewanee. \$598,000



BLUFF + 30 ACRES - MLS 1408523 -
1710 Stagecoach Rd., Sewanee. \$980,000



MLS 1476919 - 47 Parson's Green,
Sewanee. \$179,000



MLS 1411133 - 204 Trussell Rd.,
Monteagle. \$147,000



MLS 1467709 - 52 Sherwood Trail,
Sewanee. \$379,900

LOTS & LAND

Big Springs Rd. 5.83a	1497419	\$ 70,000
Taylor Rd., Sew., 29a	1470665	\$189,000
36 Azalea Ridge Rd.	1378840	\$ 59,000
First St., Monteagle	1325122	\$ 16,800
Sarvisberry Place	1207077	\$ 83,000
Sarvisberry Place	1244981	\$ 85,000

Historic Lawsuit (from page 1)

suggested added language to the marker as a highlight of its importance. The marker is in final production at Ohio-based Sewah Studios and will be erected on University Avenue prior to the January ceremony.

The group that bonded to make history were the African-American families of Hill, Sisk, Staten and Turner and the white families of Bates, Cameron, Camp and Goodstein. In January, members of those families, including Robin Bates, Doug Cameron, Marvin Goodstein, Juliette Larkins and Sandra Turner Davis, are planning to speak, as well as Vice-Chancellor John McCardell. It is hoped that Wynn from the Historical Commission will also be present, along with former Sewanee community member and previous SCA president and fund-raiser for the public school expansion, Felder Dorn from New Jersey.

Also expressing interest in attending is former University chaplain, the Very Rev. David B. Collins, Dean Emeritus of the Cathedral of St. Philip in Atlanta. His daughter Melissa, who

was in the seventh grade at the time, has begun work with Barbara Reid Bedford to organize their entire class to reconnect and attend the event. Local school board officials are also expected to be present, along with SES principal Mike Maxon and others.

The program will commence with the majority of speakers inside SES and will move outside for the marker's unveiling and dedication by McCardell. At the conclusion, all will cross the street to enjoy a reception in Brooks Hall at Otey Parish.

Otey Parish was instrumental in forging community relationships for the tutoring of many students prior to enrolling at Sewanee Public School (as it was called then), and it was due to devoted School of Theology students and spouses that the adjunct teaching program reached its ultimate success.

Leading the SCA planning efforts have been Elizabeth Duncan, Susan Holmes and Cameron Swallow, with help from Frank and Barbara Hart and Barbara Schlichting.

SUD Board (from page 1)

increase water pressure for Midway customers, Beavers said difficulty getting an easement for property tied up in an estate settlement was preventing the project from moving forward. Beavers will investigate getting an easement on University land so the project can proceed.

Reporting on the pilot Constructed Wetlands project, a joint initiative proposed by University of the South and University of Georgia students who collaborated on a feasibility study, SUD Commissioner Ken Smith said the University of the South is looking into possible corporate funding sources.

Voting in the SUD commissioners election begins Jan. 2 and will continue through Jan. 28 at the SUD office during regular business hours, 8 a.m.-4 p.m.

Commissioners Randall Henley and Karen Singer are running for reelection uncontested.

Votes will be counted at the next business meeting of the board, scheduled for 5 p.m., Tuesday, Jan. 28.



Sewanee Elementary School teacher Gail Rothermund helps "Stripes" the Tiger accept the Paws for Pennies donations from schoolchildren at SES. Each year, this event raises money for Operation Noel.

CCJP Seeks Nominations for Community Award

At the annual spring Awards Banquet, the Cumberland Center for Justice and Peace (CCJP) recognizes individuals and organizations whose work furthers the mission of bringing a measure of justice and peace to the Cumberland Plateau area. Nominations are currently being sought for the 2014 awards ceremony.

Past award recipients include Susan Binkley and Blue Monarch; the Community Action Committee; Jess Wilson and the Cumberland Farmers' Market; Carol and Glenn Vanden Bosch and the Grundy County Food Bank; the Sewanee Mountain Grotto for preserving the Russell Cave watershed; Elizabeth Clark Duncan for establishing the Sewanee Community email list serve; Christine Hopkins for establishing the Franklin County Community Reentry program; Courtney Hinkle for uniting the community in a national call to action opposing the Keystone Pipeline; and Joe Porter for nurturing community understanding of diverse faiths.

This year's banquet is set for Saturday, Feb. 22. CCJP invites nominations for this year's award recipients.

The deadline for making award nominations is noon, Friday, Jan. 17.

Please submit the name of the award candidate and briefly describe their contribution (100 words or less), explaining why the individual or group deserves recognition.

Nominations may be submitted either by email or by post to Leslie Lytle at sllytle@blomand.net or P.O. Box 307, Sewanee, TN 37375.

HEAVEN ON EARTH... NOW AVAILABLE IN SEWANEE



MYERS' POINT at Sewanee offers a rare opportunity to enjoy a private community that celebrates American architecture, lifestyle, protected forests, cultivated lakes and panoramic views on Middle Tennessee's Cumberland Plateau. If you want to live surrounded by nature, history, beauty, quality and serenity, you'll want to call it home.

- 480-acre private gated community
- 24 exclusive home sites; lakeside or bluff vista
- Timeless, organic, craftsman architecture standards
- Land Trust for Tennessee perpetually protected forests
- Over four miles of walking and riding trails
- Community barn, pastures, resting benches and fire pit
- Minutes from the University of the South

The Lipman Group | Sotheby's (615) 463-3333
INTERNATIONAL REALTY thelipmangroupsothebysrealty.com

Sewanee Realty John Brewster (931) 636-5864
sewanee Realty info (931) 598-9200

John Currier Goodson (931) 703-0558



At Sewanee



=KEN O'DEAR=

EXPERT HANDYMAN & REMODELER

931-779-5885 or 931-235-3294

Maintenance & Remodeling

Repair & New Construction

SEWANEE, CLIFFTOPS, MSSA

NEW TO THE AREA?

Go to www.TheMountainNow.com to learn more about your new hometown. Information about Cowan, Monteagle, Sewanee and Tracy City.

Give For A Good Cause

There are numerous organizations and programs across the Mountain that need financial support, especially at this time of the year. Some are mentioned in other places in the Messenger; here are a few others to consider:

Community Action Committee

In this season of giving, the Community Action Committee continues to see its client list grow. The needs of people in the greater Sewanee Community are vast. CAC depends on the generosity of others so it can offer assistance to those who need it.

The CAC is an outreach ministry of Otey Parish, with generous support from the Sewanee Community Chest and individuals across the Mountain. For more than 35 years, the CAC has provided food, financial assistance and educational support for persons in the greater Sewanee community. For more information contact the CAC at 598-5927.

Operation Noel

Each year the Sewanee Volunteer Fire Department (SVFD) in conjunction with FROST (the department's Fund Raising Operational Support Team) organizes the purchasing and distribution of food and toys for families. All items are delivered Christmas Eve morning by the SVFD and FROST.

This important program cannot happen without help from our community. Please consider making a donation of money, nonperishable food items or new toys to Operation Noel this year and give back to the community this Christmas season.

To donate money, nonperishable food items or new toys, please take items to Fire Chief David Green's office, located in the Sewanee Police Department building or Print Services in Van Ness Hall. For more information call 598-3400 and leave a message.

Happy Holidays

Celebrating 13 Years!
2000-2013

A High Point

gift certificate is perfect for
the special folks on your list!





224 East Main St
Monteagle
931-924-4600
Sun to Thu 5 to 9
Fri and Sat 5 to 10
www.highpointrestaurant.net

AASC Spay/Neuter Program

The Animal Alliance South Cumberland (AASC), a local spay/neuter program, is accepting donations for Christmas made in honor of a family member or friend. AASC will send a Christmas card to the pet lover. Donations can be made to AASC, P.O. Box 627, Tracy City, TN 37387. AASC provides low-cost spay and neuter services to pets on the Mountain. For more information call AASC at (931) 235-9006 or go to www.AnimalAllianceSouthCumberland.org.

Blue Monarch

Blue Monarch, a local residential recovery program for women and their children, invites community members to give a gift that will last well beyond the holidays. Blue Monarch's purpose is to offer women and their children an opportunity to escape the horrors and mistakes of their past, and to start anew. The local Christian nonprofit offers women and their precious children a second chance at life and this Christmas they are inviting the community to join with them in this priceless effort.

"We are prepared to send Christmas gift acknowledgements the same day we receive the donation," says Alicia Alexander, Blue Monarch's fund-raising specialist. "We just need all the necessary contact information to get it in the mail as soon as possible." To make a gift go to www.blumonarch.org or call (931) 924-8900.

"Light Up Lives" Cards

The Community Fund of the South Cumberland Plateau is offering holiday cards as a creative alternative to empty holiday gift giving. For a \$10 donation, folks will receive a "Light Up Lives" card that reads: "A gift to the Community Fund of the South Cumberland Plateau has been made in your honor." The person who purchased the card fills in the name of the family member or friend they want to remember and mails the card in the envelope provided. Light Up Lives cards are available for purchase at businesses across the Plateau.



THE ITALIAN STEAKHOUSE

402 West Main St. • Monteagle • 931-924-3355
www.paparons.net
Sunday-Thursday 11-9
Friday and Saturday 11-10

Make their holidays
merrier with a Papa
Ron's gift certificate!

Senior Center News

Holiday Schedule

The Center will be closed Tuesday, Christmas Eve, Dec. 24; Wednesday, Christmas Day, Dec. 25; and Wednesday, New Year's Day, Jan. 1.

Daily Activities

The Senior Center has something fun to do each day of the week. Join them for any of these activities:

Mondays at 10:30 a.m., there is chair exercise.

Tuesdays at 10:30 a.m., the group plays bingo with prizes.

Wednesdays at 10 a.m., the writing group gathers.

Thursdays at 10:30 a.m., there is chair exercise.

Fridays at 10 a.m. is game day.

Senior Menus

The Sewanee Senior Center serves lunch at noon on weekdays. The suggested donation is \$3 (50 or older) or \$5 (under 50). Please call by 9 a.m. to order lunch.

Dec. 23: Cheeseburger, French fries, dessert.

Dec. 24: Closed

Dec. 25: Closed

Dec. 26: Steak, gravy, mashed potatoes, green peas, roll, dessert.

Dec. 27: Vegetable soup, ham and cheese sandwich, dessert.

Dec. 30: Chicken salad wrap, chips, dessert.

Dec. 31: Mexican lasagna, salad, dessert.

Jan. 1: Closed.

Jan. 2: Bacon, lettuce and tomato sandwich, tomato bisque soup, dessert.

Jan. 3: Stuffed peppers, mashed potatoes, peas and carrots, roll, dessert.

Jan. 6: Chili, pimento cheese sandwich, dessert.

Jan. 7: Fried chicken, pinto beans, creamed corn, cornbread, dessert.

Jan. 8: Baked spaghetti, salad, garlic bread, dessert.

Jan. 9: Roast beef, gravy, mashed potatoes, slaw, roll, dessert.

Jan. 10: Lena's El Paso beans, salad, Mexican cornbread, dessert.

Menus may vary.

The center is located at 5 Ball Park Rd., behind the Sewanee Market. To reserve a meal or for more information, call the center at 598-0771.



Shop and dine locally!

Church News

Christ Church Monteagle

Christ Church is having its Lessons and Carols service at 10:30 a.m., Sunday, Dec. 22. Readers will range from children through older adults. The service is followed by a luncheon.

At 5 p.m., Tuesday, Dec. 24, Christ Church will have a pageant and Holy Communion followed by a Christmas feast. Christmas Day services will be at 10:30 a.m., Wednesday, Dec. 25.

On the first Sunday of the Christmas season, Dec. 29, Christ Church will have its regular service at 10:30 a.m. Celebration of Epiphany will be at 10:30 a.m., Sunday, Jan. 5.

Decherd Presbyterian Candlelight Service

Decherd Presbyterian Church (USA) will have its Christmas Eve candlelight communion service at 5:30 p.m., Tuesday, Dec. 24. The service will be led by the Rev. John Richard Todd. The church is located at 501 Broad St., Decherd.

Otey Memorial Parish Church

On Sunday, Dec. 22, Otey Parish's "Hunger: Faith in Action" series continues at 10 a.m., with conversation with the Rev. Jess Reeves, interim rector. The Lectionary Class will also meet. Children ages 3-11 will continue preparations for the Epiphany pageant. Nursery care is available for infants six weeks to children 5 years old from 8:30 a.m. until the coffee hour.

The community is invited to celebrate Advent with Otey Parish at a potluck meal after the 11 a.m. service, Sunday, Dec. 22, at St. Mary's Sewanee. Roast pork with cranberry stuffing and chicken will be provided; guests may bring a side dish, salad or dessert to share. Kathy and Gary Sturgis will lead the group in singing Christmas carols after the meal.

Otey will have its traditional Crèche Service at 4:30 p.m., Tuesday, Dec. 24. Children interested in participating in the service may arrive early (4 p.m.) to choose their part in the story. For more information call Robin Reed (931) 636-0010. At 10:30 p.m., on Dec. 24, there will be a celebration of Holy Eucharist.

Holy Eucharist will be celebrated at 10 a.m., Wednesday, Dec. 25; 10 a.m., Thursday, Dec. 26 (Feast of St.

Stephen, Deacon and Martyr); and 10 a.m., Saturday, Dec. 28 (Feast of the Holy Innocents). At 10 a.m., Sunday, Dec. 29, there will be cookies and caroling between the 8:50 a.m. and 11 a.m. services.

Otey's Epiphany pageant will be at 5 p.m., Sunday, Jan. 5.

Rutledge Falls Baptist Church

Rutledge Falls Baptist Church will present the musical "Glory in the Highest" by Mark Parks, at 6:30 p.m., (today), Friday, Dec. 20, and at 8:30 a.m. and 11 a.m. on Sunday, Dec. 22. For more information, call (931) 455-8879. The church is located at 1289 Rutledge Falls Rd., in Tullahoma.



Pantry Sunday January 5

Pantry Sunday for the Community Action Committee (CAC) is Sunday, Jan. 5, for participating churches: St. James, Otey, Cumberland Presbyterian and All Saints' Chapel. Please bring your food offerings to Sunday services. The typical bag of groceries includes: rice, beans, pasta, macaroni and cheese, peanut butter, and cans of vegetables, fruit and soup. The cost for a complete bag is less than \$15.

The CAC will be closed Dec. 23 through Jan. 2.

In case of an emergency, contact CAC director Betty Carpenter at 598-5926.



Full Service Veterinary Care for Dogs Cats & Horses

Midtown Veterinary

Services & Hospital

505 S. Jefferson St.
Winchester, TN 37398

931-262-3411 office
931-607-5232 after hours - emergency

Tred S. Melton DVM
Nathan L. Putman DVM

NEW YEAR'S EVE AT PEARL'S
with the music of
Jim and Inge Wood:
jazz standards of
the 30s and 40s and
soft bluegrass!

Pearl's

FOGGY MOUNTAIN CAFÉ

Full Liquor Mahogany Bar
Happy Hour Tuesday-Friday 5-6

Open for Lunch
Tuesday-Friday 11-2

Open for Sunday Brunch 11-2

Fine Dining
Tuesday-Thursday 5-9
Friday and Saturday 5-10

15344
Sewanee Hwy
931.598.5770
for Reservations

One of Tennessee's Rising Star Award
Winners for Best New Business



TOMMY C. CAMPBELL

FOR YOUR IMPROVEMENTS

Call (931) 592-2687

Free Estimates • 20 Years Experience

DRIVEWAY WORK • GRAVEL HAULING • DOZER & BACKHOE

plus Concrete Work • Water Lines • Clear Lots • Garage Slabs
• Sidewalks • Porches & Decks • Topsoil & Fill Dirt • Roofing
• Additions to House • Septic Tanks & Field Lines

www.TheMountainNow.com



Merry Christmas and Happy 2014

from your friends at Monteagle Sewanee, Realtors



2320 CLIFFTOPS AVE. 5.1 acres on the brow. Elegant mountain home with walk-out basement. Two fireplaces, 4733 sf, 4BR, 3.5BA. Modern kitchen, sunporch, garage. MLS#1491202 \$830,000.



BLUE BIRD HILL. 1610 Clifftops Ave. 3BR, 2BA, 1700 sf. Stone fireplace, remodeled kitchen. MLS#1364293. \$394,900.



1517 LAUREL LAKE DR. 4.98 acres. 3BR, 2BA, 2 Half BA, 3104 sf. Amazing views, privacy. MLS#1387679. \$487,000.



215 SHADOW ROCK DR. 2 or 3 BR, 2BA, 1357 sf. Built 2006. Wood-burning fireplace. 2-car garage, easy maintenance Hardiboard. MLS#1346558 \$158,900.



CREEKSIDE MOUNTAIN RETREAT IN CLIFFTOPS. 723 Dogwood Dr. 5.9 acres of parklike terrain. 3386 sf, 4/3. Streams, gardens, workshop, creekside decks, gazebo and trails. MLS#1479846. \$398,600.



CLIFFTOPS LAKEFRONT COTTAGE. 2334 Westlake. 5.28 acres, 370 feet shoreline. Two docks. 3 BR, 2 BA, 1700 sf. Vaulted great room, wood-burning fireplace. MLS#1468783. \$580,000.



EAGLE BLUFF ESTATES. Panoramic brow-view homesites for \$59,900 or less. Wooded lots from \$19,900. Gated community. Hard surface roads, DSL, electric, city water.



STREAMS IN THE LAURELS. 1221 Cliff-tops Ave. Log siding, metal roof, stone fireplace. 4096 sf, 3/2.5. Wood floors, 9' ceilings on main, wheelchair ramp. MLS#1429185. \$399,500.



SKY HIGH, a magical place at 2140 Cliff-tops Ave. Fireplace, above-the-clouds observation deck. Floor-to-ceiling views on the brow. 2453 sf, 3BR, 3.5BA. MLS#1252982. \$669,000.



SEWANEE CHALET IN THE CLOUDS. 336 Nancy Winn Rd. Cabin on the brow rim. 7.87 acres with spectacular views. MLS #1431163. \$179,900.

Monteagle Sewanee, REALTORS

View these and other quality homes and building sites at

www.monteaglerealtors.com



Then call **931-924-7253**

Deb Banks, Realtor, 931-235-3385, dbanks@realtracs.com
Dee Hargis, Broker, 931-808-8948, aunderhill@blomand.net
Heather Olson, Realtor, 804-839-3659, heatheromom@yahoo.com
Ray Banks, Realtor, 931-235-3365, banksgrass@yahoo.com
Jeanette S. Banks, Broker-Owner, banksnjb@gmail.com

ANGEL WITH AN ATTITUDE



by Virginia Craighill

Dear Angel,

I was trying to find the number for University Relations in the new campus directory, but it doesn't appear to exist anymore. I am feeling lucky and hope I will win the lottery. If I want to donate my multimillion dollar winnings to the University, who do I call?

Confused Giver

Dear Confused,

The 2013-14 abridged Campus Directory can be confusing, particularly if you don't have a magnifying glass handy. "University Relations" had such a benign, familial sound to it, as if you could call the number listed and chat with your auntie or some first cousins-once-removed to whom you would certainly give money if they asked. But the office formerly known as University Relations is now called University Advancement, which has a more aggressive connotation, like a term used in military strategies or football. Google's dictionary provides a fitting example sentence: "the troops advanced on the capital," if by troops it means the people in that office who are coming after your assets. Or maybe the new name means you can call them if you need a cash advance. It's worth a try.

The Office of Advancement still has some sub-groups involving relations, however, such as Alumni Affairs. It's not clear whether you call this number to find out which alumni are having affairs, or whether you call it if you are an alumna/us seeking to have an affair. Development, a synonym for "advancement," is still listed beneath the heading, but it sounds like a more positive category unless you refer to it, as a friend who once worked there did, as the "Devil-ment" Office. He didn't work there long.

Every so often, other disturbing name changes appear in the catalogue, such as the shift from Personnel to Human Resources. Like "University Relations," "Personnel" sounded warm and fuzzy, friendly and, well, personal, but Human Resources sounds like a place where you might go to acquire an indentured servant or harvest a kidney. And why is "Admission" singular? Doesn't the University hope to have more than one student admitted to Sewanee each year? We're selective, yes, but that would really hurt University Advancement.

If you still cannot find the right office in the directory for your donation, consider donating to Angel with an Attitude. I won't be changing my name.

Angel

Stringer a Bonner Scholar at Earlham

Zoe Stringer, an Earlham College junior and daughter of Mary Clark of Monteagle, is serving as a Bonner Scholar this semester at Girls, Inc.

The Bonner Scholars Program is a scholarship and leadership opportunity that calls for 10 hours of volunteer work a week during the academic year, as well as two summers of service. The program is designed to assist students with financial need, and the Bonner scholars must also possess a genuine desire to engage in community service and a willingness to devote time and energy to the success of the program.

The hope is that the scholars will become part of his or her service community and spend their college career developing skills such as leadership.

Every year, the Bonner Scholars Program accepts 15 incoming first-year students to participate in the four-year program.

One-Stop Transportation Information: dial 511

SES Menus

Monday-Friday, Jan. 7-10, 2014 LUNCH

MON: No school.

TUE: Spaghetti, meatballs, hot dog, garden salad, steamed carrots, green beans, fruit, roll.

WED: Barbecue sandwich, yogurt, cheese stick muffin, baked beans, baked fries, slaw, fruit, cookie.

THU: Chicken Alfredo, sun butter and jelly sandwich, steamed broccoli, sweet potato fries, vegetable juice, fruit, roll.

FRI: Pizza, tuna chef salad, baked potato, garden salad, whole dill pickle, fruit, graham crackers.

BREAKFAST

Each day, students select one or two items

MON: No school.

TUE: Toaster pastry, cinnamonis.

WED: Biscuit, sausage, gravy, jelly.

THU: Oatmeal or cereal bar or French toast sticks or pancake sausage stick, syrup.

FRI: Biscuit, egg, gravy, jelly.

Options available every breakfast: Assorted cereal, assorted fruit and juice, milk varieties.

Menus subject to change.

University Job Opportunities

Exempt Positions—Assistant Director of Operations, School of Theology; Director of Marketing and Communications, School of Theology; Health Promotion and Wellness Coordinator; IT Administrator, School of Theology; Operations Manager, Sewanee Dining; Programmer/Analyst.

Non-Exempt Positions—Cook, Server and Utility Worker for Sewanee Dining; Food Service Worker, Catering.

Apply online at <http://hr.sewanee.edu/job_postings>. For more information call 598-1381.


**DOMESTIC VIOLENCE
24-HOUR CRISIS LINE
1-800-435-7739**


**MOLICA
CONSTRUCTION**
931 205 2475
WWW.MOLICA.CONSTRUCTION.COM
▪ CRAFTSMANSHIP ▪
▪ CREATIVITY ▪
▪ SUSTAINABILITY ▪



This holiday season reminds us that we are blessed to be a part of this great community. Southern Tennessee Medical Center and Emerald Hodgson Hospital wish you and your loved ones a safe, healthy and happy holiday season.

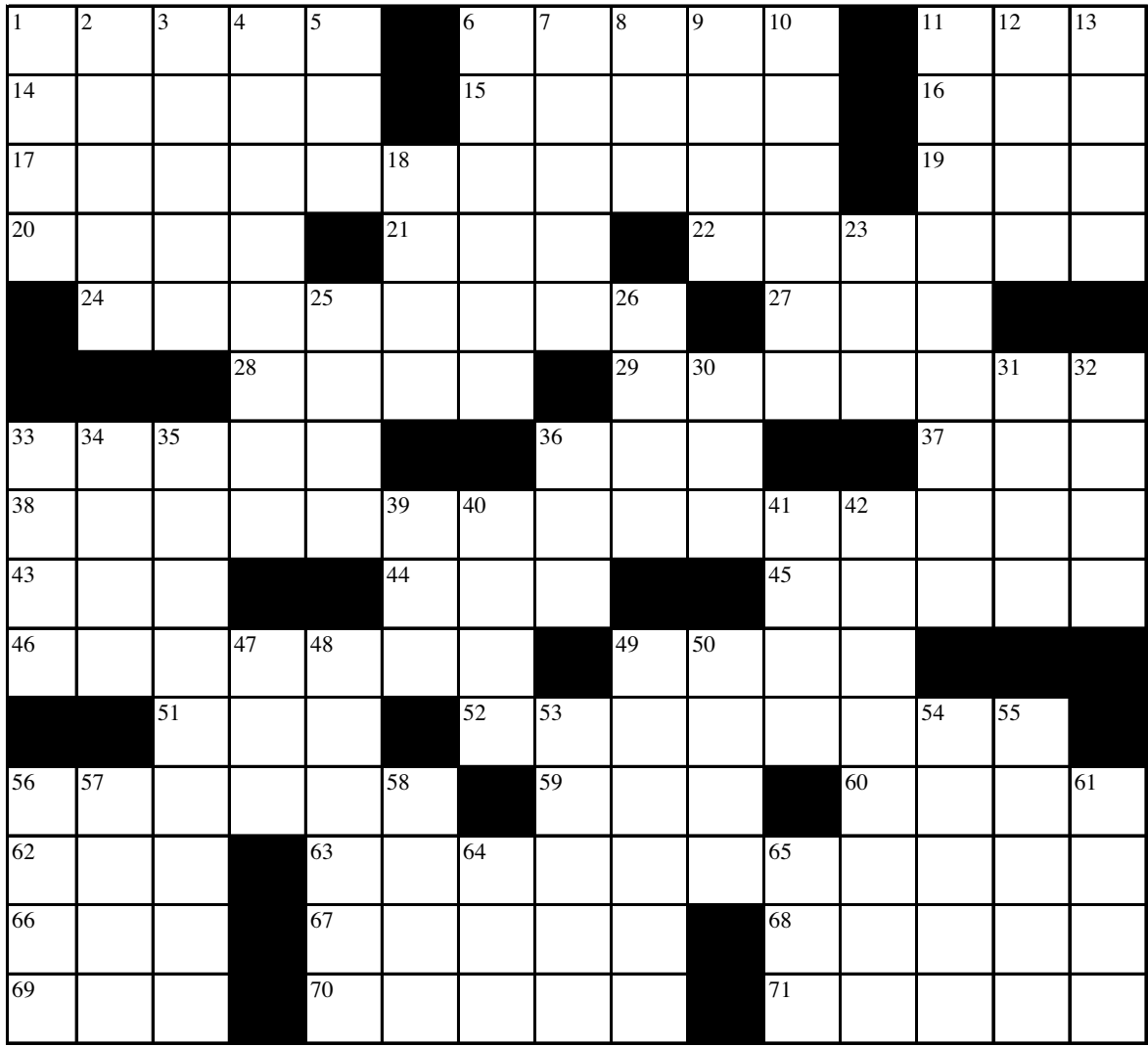
We will be open Christmas Eve and Christmas Day. We are here when you need us – 24 hours a day, 7 days a week.


Southern Tennessee MEDICAL CENTER
Emerald Hodgson HOSPITAL
leading the way

www.southerntennessee.com | (931) 967-8200 | 185 Hospital Road | Winchester, TN 37398

Holiday Crossword Puzzle

by Daedalus



ACROSS

1. Dr. Yeatman
6. _____ Hilton
11. ATO members, e.g.
14. French farewell
15. Initial substance of the universe
16. City southeast of Amsterdam
17. Sleigh sound?
19. Racket
20. Proud father's boast, "_____
boy!"
21. Mr. in Helsinki
22. Change genetically
24. Going to the bottom
27. Suffix with arbor or ether
28. Obey
29. Hoofed helmsman?
33. Nervous walker
36. Goal
37. Desired test score
38. Ralphie's remembrance?
43. Blacken
44. Sewanee cheerleader's goal
45. 1492 participant
46. Three-ball project in the Quad
49. Not us

51. Prefix with classical
52. They match in some holiday
photos?
56. Cupid's headgear?
59. Comparative suffix
60. Meadows
62. Common Market inits.
63. Taciturn twilight?
66. ISP option
67. Ph.D. exams
68. Studio sign
69. Sault _____ Marie
70. Impoverished
71. Peach _____

DOWN

1. Muslim pilgrim
2. Mine entrances
3. Dentist's request
4. Pick up again
5. Actor Brynner
6. Gas-electric car, e.g.
7. "..._____ and hungry look"
8. First word of Dante's "Inferno"
9. Um, rm, ___, ____
10. Gave out
11. Award hung on a ribbon
12. George Core does this to the
"Sewanee Review"
13. Hawaii's state bird

18. "Pride and Prejudice" star
Jennifer _____
23. Way of the East
25. Actress Hatcher
26. Yago Sant' _____ (wine brand)
30. Sounds of hesitation
31. Left at sea
32. Georgetown player
33. Foxboro favorites
34. _____ of worms
35. Many a newspaper?
36. Roadie's load
39. Relaxation center
40. Lord's-a-Leaping number?
41. Small barracuda
42. Dr. McCardell's teaching tool
47. Knotted
48. Merger partner of Coors
49. Wee
50. Male deer
53. Manipulate
54. Buick model
55. Indian honorific
56. Kings and queens
57. Break
58. Joyce's homeland
61. With "ight" it's like an arrow
64. New Guinea port
65. ____ de plume

Solution on page 14

Haven of Hope Provides Shelter

The Haven of Hope provides emergency shelter for victims in danger, as well as outreach services inclusive of order of protection assistance, violence assessment and safety planning, referral information and support, as well as educational information to victims in Bedford, Coffee, Franklin, Lincoln, Marshall and Moore counties.

For assistance with issues of domestic/dating violence, sexual assault or stalking, please call the crisis hotline at (800) 435-7739.

For outreach services in Franklin County, call (931) 968-4994.

For information on making a donation or other administrative items, call (931) 728-1133.

The Haven of Hope is funded in part by United Way and Emergency Food and Shelter Boards of Coffee, Franklin and Bedford Counties; Avon Foundation, Baptist Healing Trust; and grants from the Tennessee Office of Criminal Justice Programs and Tennessee Coalition Against Domestic and Sexual Violence.

We're glad you're reading
the Messenger!

A-1 CHIMNEY SPECIALIST "For all your chimney needs"

Dust Free • Chimneys Swept, Repaired,
Relined & Restored • Complete Line of
Chimney Caps • Waterproofing
Video Scanning



G. Robert Tubb II, CSIA Certified & Insured
931-273-8708

PILATES CLASSES

Beginning January 6 at the Fowler Center in Sewanee

The class will start with the fundamentals of healthy movement that aligns and protects your bones and joints and improves balance. Then learn how to strengthen that pattern of healthy movement with the Pilates Mat exercises. You will look and feel like a new person!!

~Beginner Classes will meet at 12 noon on Monday/Wednesday
or 9 a.m. on Tuesday/Thursday.

~Intermediate Classes will meet at 10 a.m. on Monday/Wednesday
or 12 noon on Tuesday/Thursday.

Private and duet sessions on Pilates Equipment available
by appointment Monday through Friday.

~Contract/Release Stretching and Fascial Release Classes

will meet at 8 a.m. Tuesday/Thursday and 12 noon on Friday.

Classes are \$12 per single class, \$10 if purchased in monthly blocks.

Discounts for attending four or more classes per week.

Contact Kim Butters, PMA Pilates Instructor
and AFAA Personal Trainer
(423) 322-1443 or kim_butters59@hotmail.com

**Smoke'n B's will be closed
Dec 24-26 for Christmas
and Dec 31-Jan 2 for New Year's.
HAPPY HOLIDAYS!**

Mon-Sat
9am-8pm
I-24 Exit 135
next to Wendy's

www.smoken
bsbbq.com

931-924-7383

Dine-in or
drive through



Happy holidays!

Ivy Wild

Restaurant and Catering

36 Ball Park Road, Sewanee, Tennessee (931) 598-9000

www.ivywildsewanee.com

**Cheers! We are looking forward
to celebrating New Year's Eve
with you at IvyWild**



*It is tradition and with great
pleasure, Chef Keri and your
friends at IvyWild invite you to
enjoy the most exquisite New
Year's Eve dining menu in
our region. Celebrating New
Year's Eve begins with The
Art of Fine Dining at IvyWild.*

Seating is limited, please make your
reservations early! One seating at 6:30
PM. \$65 per person.

Call Mary Jane at 931-598-9000 or
email reservations@ivywildsewanee.com.

The Art of Fine Dining is enjoyed throughout the year
Thursday through Sunday
5 p.m.-9 p.m.
BYOB

Our best wishes for
your Christmas and
Holiday Season.



Custom home remodeling begins with...

Joseph's Remodeling
Solutions

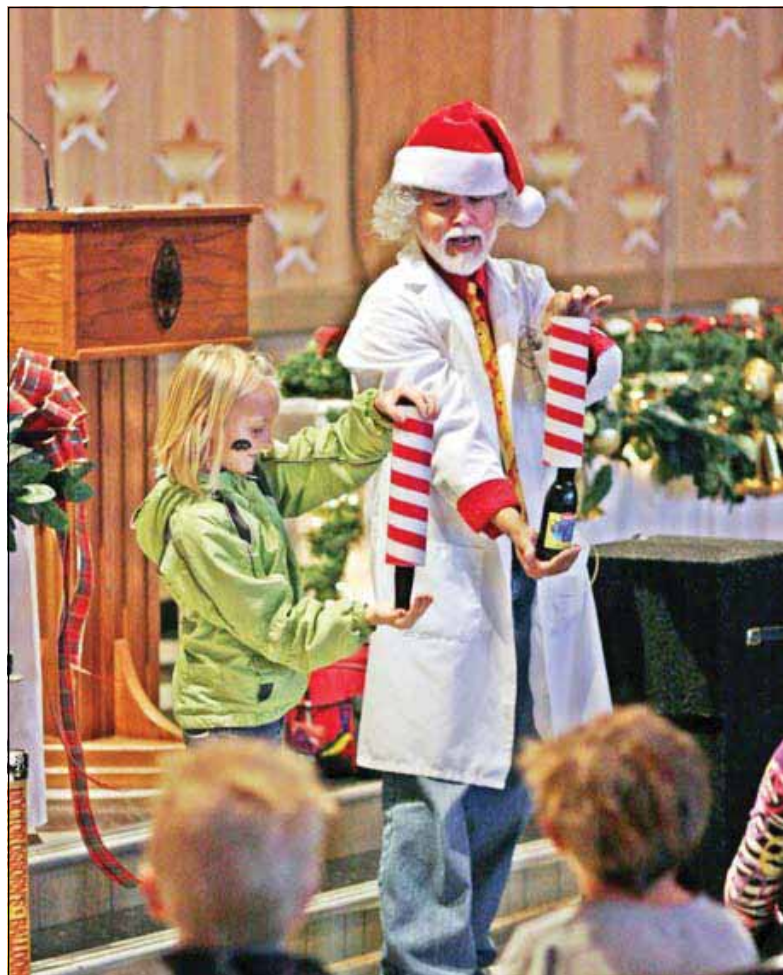
A Division of Sumpter Solutions, LLC

Taking Quality to the Next Level

Licensed - Insured - Green Certified

931-598-5565

joseph@josephsremodelingsolutions.com



At the annual Sewanee Children's Christmas Party hosted by Bonnie and John McCardell on Dec. 14, young people enjoyed making marshmallow sculptures and being entertained by Dr. Osborn, the "Magical Mad Scientist" (far left). Photos by Michael Ostrowski

Sewanee Seniors Nominated for Watson Fellowships

With proposals to explore a range of topics from soccer refereeing to conserving agricultural diversity, four Sewanee seniors have been nominated for a prestigious year-long Watson Fellowship during 2014-15. Offered by the Thomas J. Watson Foundation, the Watson Fellowships offer college graduates a year of independent exploration and travel outside the United States.

This year's nominees from the College are: Robert Goeller, "Bully-

ing, Bigotry, and the Beautiful Game: Refereeing Soccer around the Globe;" Parker Haynes, "The Princess and the Frog;" Kelsey Koontz, "Drawing Out and Giving Back: The Othermother, and Women Supporting Women;" and Tarver Shimek, "Saving Seeds and Breeds: The Global Conservation of Agricultural Biodiversity."

A Watson Foundation representative will be on campus in January to interview the nominees. The recipients of the fellowships, who will receive

stipends of \$28,000 each, will be announced in March.

Rob Goeller, an economics major from Rowayton, Conn., cites a recent Economist article that noted, "You only have to watch Brazilians and Germans playing football to realize that there are profound cultural differences between different groups." Goeller proposes a study of these cultural differences and the subsequent impact on referees. A year studying soccer refereeing would take him to three World Cup venues, FIFA's headquarters, and the birthplace of the modern game. In visits to Brazil, South Africa, Qatar, Switzerland, and Great Britain he would study bigotry, high stress situations and the evolution of soccer to determine how refereeing differs by country, and hopes to discover the crucial and changing role that referees play in maintaining the laws of the game.

Parker Haynes proposes travel to Guatemala, Ecuador, Madagascar, Malaysia, Portugal, Ireland and Wales, where the environmental studies and chemistry major would study thin skin. To understand her own love for amphibians, Haynes would explore the idea of vulnerability in frogs, toads and salamanders, which are threatened worldwide. She expects her own conservation ethic will be shaped by her travels, and would redefine "thin skin" to mean vulnerability at its best: embracing new experiences to explore humanity's role in nature.

Kelsey Koontz hopes to explore organizations that provide care and advocacy for women who have been silenced by violence, stigma or discrimination, with specific interest in groups that balance the tension between respecting women's personal boundaries and shattering societal barriers. In Belize, Ireland, Kyrgyzstan and the Philippines, Koontz would live among women whose passion, like her own, is protecting other women and drawing out their powerful stories. She is a political science major and women's studies minor.

Tarver Shimek, an environmental studies major from Towson, Md., proposes a project that would allow her to explore the world's remaining agricultural variety and learn from the researchers, farmers and communities working to protect it. Her project is threefold: to learn about the integration of agricultural biodiversity into ecosystems by working on farms that focus on seed-saving and heirloom cultivation, to investigate the relationship between local agricultural biodiversity and the culture of surrounding communities, and to explore the scientific processes involved in seed preservation by participating in seed banks. Shimek proposes travel to the Peruvian Andes, southern India, Indonesia, the Himalayan region of India and Ireland.

Sewanee Deepwoods Home on Beautiful Wooded Lot



This home has all the extras: hardwood and tile floors, central vac system, laundry chute, flat-screen TVs, lots of closet space. Oak cabinets in the eat-in kitchen with work island and extra seating. Lovely master bedroom with beautiful views. Master spa bath has whirlpool and double vanities. Tongue-and-groove ceilings. Barn-style storage area with lots of room for a workshop. Price is \$439,900. MLS#1469629.



Contact John or Pam Peck at 931-580-8321 or 931-967-4321. Email inquiries to <pampeck@century21.com> or visit <www.johnandpampeck.com>.

Need More Room? *We Sell Boxes!*

Mountain Storage
(931) 598-5682

■ Security Gate Dan & Arlene Barry ■ Security Camera
Hwy 41 - Between Sewanee & Monteagle
5X10 | 10X10 | 10X20

For Your Antiques and Prized Possessions
Climate Control
5X10 10X10 10X15 10X20
Temperature and Humidity Regulated BBB



MICHELLE M. BENJAMIN, JD Attorney & Counselor at Law

102 FIRST AVENUE, NORTH
WINCHESTER, TENNESSEE 37398

(931) 962-0006
(931) 598-9767



HEARING HEALTH NEWS

by Debbie Gamache,
M.S. CCC-A Audiologist

AND EVEN MORE...

Hearing loss is so prevalent among Americans that it is sometimes referred to as the "silent epidemic." According to estimates, 28 million Americans currently experience some degree of hearing loss. Approximately one in three persons over the age of 65 have hearing loss. More recently, hearing experts have noted a growing number of persons between the ages of 45 and 64 who experience hearing loss. This number has increased by 26% for the past few decades. With this in mind, those approaching middle age should have their hearing evaluated. If correctable causes of hearing loss, such as ear wax or ear infections are ruled out, hearing instruments may help.

At THE HEARING CENTER, LLC, our primary mission is to help as many people as possible improve their quality of life. We want to help the hearing-impaired better enjoy the world through education, advanced technology and friendly, compassionate service. For answers to your questions by a knowledgeable audiologist please contact us at (931) 393-2051 or toll-free at (888) 303-2051. We are located at 705B Northwest Atlantic St. in Tullahoma. You can visit our website at <www.thehearingcenterllc.com>.

A Full Service Hearing Center
(931) 393-2051 • (888) 303-2051
705B NW Atlantic St.
Tullahoma

NEW YEAR'S EVE DINNER

Tuesday, December 31,
at 6:30 p.m.

4 courses, 5 wines. \$59.95
Designated Drivers, \$49.95
Come and ring the New Year
in with bubbles! Call for your
reservation today!

Tallulah's Wine Lounge
(931) 924-3869
www.monteagleinn.com

Donna Dougherty Studios at Woodwoe Hair and Relaxation Services

The Deluxe Haircut
*Haircut & Style
*Relaxation Shampoo
*15 min. warm stone neck massage
* Save \$10 on The Deluxe Haircut (with this ad)
Great Gift for Him or Her! Reg. price \$40

100 1st Ave. SW Suite 300
Winchester, Tn. 37398
931.308.1044 ph
www.woodwoe.com

VIEW FROM THE DUMP

by Francis Walter



No view from the Dump today. My day did start with separating and loading scads of old spiral-bound calendars and notebooks and other trash into the pick up. Ever try to get those pesky spirals to turn loose of tightly-held pages?

While working at it, I noticed the sweetshrub growing beside the garage. It looked as if a demented fairy had strung the bush with white cotton thread going every which way. The threads seemed made of tiny ice crystals. It was foggy, and the temperature was hovering at 32 degrees. Frozen fog? When I blew gently on a thread, it disappeared. I got the camera and photographed this great sight.



Suddenly, realizing that I couldn't take the picture to Harry, I was overcome with sadness. Jean and Harry Yeatman were among the first people who befriended us after we moved to Sewanee. Shortly after arriving, I asked Harry to read over a Lost Cove fairy story I was writing. In it our granddaughter Leah was snatched from the Lost Cove Cave trail into Fairy Land. She became an eldritch princess with her own walnut shell chariot pulled by two pink-spotted black salamanders. A couple of days later Harry drove up our driveway, unexpected. He implored me not to have pink spots on the salamanders. There *were* no such animals. However, there *were* black salamanders with yellow spots.

I was moved by his interest and concern. But I held my ground because, as I told him, Leah was in Fairy Land where there were pink-spotted salamanders. (Besides, little girls like pink.) Harry drove away disappointed, though he was too much the gentleman to argue.

Harry provided me with an article he wrote about flora and fauna to be seen on a walk to Lost Cove Cave. The article became a lengthy footnote to my story, and from then on I was captivated by the Yeatmans.

I again blew on a white thread and took a closer look. I saw a barely visible spider silk that had provided a scaffold for the frozen fog droplets.

As I drove down the driveway headed for the Dump, I passed the plastic mesh deer fence around the vegetable garden. The meshes were festooned with the same aimless threads, hundreds of them. Of course the spider silks had been there since last fall, but were too small to be noticeable. Almost every mesh was arranged with the icy threads. When I returned from the Dump all of them were gone.

Here is a theory. It was foggy and right at freezing. Objects with small diameters such as sweetshrub twigs and fence meshes had fallen just below freezing; larger objects had not. There was no snow, no freezing rain, only fog droplets right at the freezing point. The attached spider silk was also just below the freezing point. Any larger objects were just above freezing. Fog droplets hitting the silk strands on sweetshrub or fence meshes froze on contact.

Okay that explains part of it. How to explain the quantity and random patterns of the display? When hatchling spiders leave the egg case, when atmospheric conditions are right, when they feel like it, baby spiders toss a filament into the air and float away. How to get lift from a string? The wind can do its part, both away and up. But the sun must do its part to provide lift to a linear balloon for each little spider aeronaut. My guess is the sun heats the silk, air molecules surrounding it are heated and begin to move up the filament. Enough of them stay close to the silk to provide lift.

Thousands float "all on a summer's day." Like all balloonists, the babies have no control over where they end up. Leaving their aircraft wherever, on sweetshrub or fence, they set out to begin spiderly life. Perhaps a Messenger reader knows about this phenomenon to challenge or corroborate my speculation and write the editor.

If I could call Harry, that would not be necessary.

Season's Greetings

*The good life is a process, not a state of being.
It is a direction, not a destination.* —Carl Rogers

www.stillpointsewanee.com

Stillpoint

Open Nightly
Til 7

Open Sunday
1 - 6

WOODARD'S

YOUR LAST MINUTE HEADQUARTERS

LARGE
Selection of
Round, Princess,
Cushion, Marquise
and Solitaires
Your Choice

\$875 REF NOW \$595
\$1600 REF NOW \$995
\$2250 REF NOW \$1495
\$3000 REF NOW \$1995
\$4350 REF NOW \$2995
\$5250 REF NOW \$3995

PANDORA
UNFORGETTABLE MOMENTS

FREE
Pandora Holiday Ornament with
the purchase of \$125 or more.
Limited one per person. While supplies last.

14K Diamond Ring 3/8 ctw \$1199
14K Diamond Pendant 1/3 ctw \$999
14K Diamond Pendant 1/3 ctw \$899
YOUR CHOICE Silver Diamond Infinity Pendant, 1/4 ctw \$199
YOUR CHOICE Silver Diamond Infinity Ring 1/4 ctw \$199
Silver Diamond Cross \$149
14K Gold Diamond Cross 1/10 ctw, \$249 1/5 ctw, \$299 1/4 ctw, \$399 1/3 ctw, \$499
YOUR CHOICE 14K ROL Diamond Pendant \$699
14K Diamond Pendant 3/8 ctw \$1,199
14K Engagement Ring, 1 ctw \$3499 2 ctw, \$9999
14K Diamond Jacket 1/5 ctw \$499
14K Diamond Studs 1/4 ctw, \$149 1/2 ctw, \$799 3/4 ctw, \$1299 1 ctw, \$1899
14K Diamond PR Studs 1/2 ctw, \$799 3/4 ctw, \$1299 1 ctw, \$1899
Your Choice 14K Diamond Earrings 1/4 ctw \$699 1/2 ctw, \$1099 1 ctw, \$2199
Your Choice Silver Bracelets \$199
Your Choice Gold Mixables \$249

Northgate Mall Tullahoma 454-9383 woodards.net

DIAL "911"

**When You Need a Police Officer,
a Fire Truck or an Ambulance**

Always dial "911" for fire or suspicious smoke, medical emergencies and police emergencies. And if you aren't sure what you need in an emergency situation, always call "911."

Sewanee residents should only call 598-1111 for non-emergency issues.



OUTSIDEIN

by Patrick Dean

Jackson the dog and I were headed to one of our favorite trails that follows a large stream for a quarter-mile or so. On the five-minute walk on the feeder trail to get there, I noticed the brittle sunshine and the frozen perfect pear-shaped droplets on leaf-ends like Christmas ornaments.

I was too focused on the return of the sun after many days of cold fog to think about water. But when we neared the fire lane that led to the stream-side section of the trail, there—for the first time in months—I heard the stream before I saw it.

My heart leapt. Today the water was back. As I rock-hopped across it and turned left on the trail to parallel the stream, something I can only describe as gratitude filled me as I encountered the miracle of flowing water.

I was surrounded in sound. The all-suffusing rush filled the small ravine and covered up all other noises, including our footsteps. As I hopped down and up the rock-strewn path, I had glimpses of flashing movement to my left when the stream revealed itself through the rhododendron and mountain laurel. Further downstream I felt and heard the soft booming of a cascade below an overhanging rock slab.

It occurred to me how perverse it was of the water to be so icily plentiful in winter. Not so long ago, in the dry heat of autumn, when Jackson needed desperately to cool off, there hadn't been so much as a belly-flop's worth in the deepest pool.

As I walked, I thought of my youth in the Mississippi Delta, a massively engineered and adulterated landscape, former swamp turned into farmland, streets and yards. What water there was sat still, or flowed imperceptibly. The rich alluvial nutrients leaching into it made it the color of tea. (Even, in my town, as it left the faucet and filled glass, sink or bathtub.)

There's no doubt why I so vividly recall visiting the Blue Ridge Parkway as a young teenager. There, at a roadside stop, was a small waterfall: clear, cold water, mossy boulders and aqueous sounds—the inimitable dance of free liquid motion.

Decades later, the existence of the tiniest rapids, such as the ones we cross on our Sewanee trail, seem magic. Those tiny gurgles, flashing the thinnest sheen of water over baseball-sized rocks or roots, the occasional leaf pinned beneath, hold as much wonder for me as the deafening power of the main stream.

There are several places within a block or two of my house where I can encounter flowing water in something akin to its natural state. I study it for lessons in hydrology on a miniature scale: tiny pebbly sand-bars form, heavy rains pile flotsam against the small bank-side trees. I can't resist taking a stout stick to the small logjams that sometimes impede the flow, feeling satisfaction as the dam breaks and the pent-up water rushes to restore equilibrium.

I think it's no accident that I live where the basic elements of the landscape are water, stone and moss. They speak to me in a way that other ecosystems don't, answering some deep internal need for connection. As some people feel at home in the desert, valley or shoreline, this Plateau's terrain answers for me some deep internal need for connection. I am home.

www.TheMountainNow.com

SAS Varsity Now 5-2

St. Andrew's-Sewanee varsity boys' basketball team defeated Richard Hardy Memorial School on Dec. 13, 69-26. SAS was led by James Beasley with 22 points; Andrew Heitzenrater, 16 points; Kenneth Thomas, nine points; Pablo Ramos, eight points; Burton Dorrough, four points; Eric Baynard, three points; Levi Higgins, three points; Andres Nylander, two points; Will Pratt, one point; and Jake Berman, one point. SAS is 5-2 on the season.

Fowler Center Holiday Hours

The Fowler Center has announced its holiday schedule. The Center will be open Friday, Dec. 20, through Monday, Dec. 23, from 6 a.m. to 7 p.m.

On Tuesday, Dec. 24, it will be open 9 a.m.-noon. It will be closed all day Wednesday, Dec. 25, and reopen Thursday, Dec. 26, from 6 a.m. to 6 p.m.

After that, the hours will be: Friday-Monday, Dec. 27-30, 6 a.m.-7 p.m.; Tuesday, Dec. 31, 8 a.m.-6 p.m.; Wednesday, Jan. 1, closed; Thursday, Jan. 2-Thursday, Jan. 9, 6 a.m.-7 p.m.; Friday, Jan. 10, 6 a.m.-10:30 p.m.; and Saturday-Sunday, Jan. 11-12, 9 a.m.-7 p.m.

Regular hours begin on Monday, Jan. 13, from 6 a.m. to 11 p.m.



Anna Post goes for the basket during a recent SAS game against Palmer in Big 8 basketball action. Photo by Paul Klekotta.



SAS player Ryan Toomey making a cut to the basket at a recent game. Larson Heitzenrater, No. 54 looks on. Photo by Paul Klekotta.

MS Boys' Basketball Continues to Improve

The St. Andrew's-Sewanee middle school boys' basketball team lost a hard-fought battle Dec. 12 against the visiting Palmer Bulldogs, 38-31. The game was closer than the final score indicates. It was tied 27-27 late in the fourth quarter, and the difference was less than three points for most of the last minute.

Blaise Zeitler improved on his second outing this year, contributing 12 points on mostly mid-distance jump shots. Dustin Stensby added 10 with good defense; Ryan Toomey, six; and John Grammer, three.

The defensive effort was impressive until the Bulldogs' Trey Hampton figured out how to run the full court and scored 22 points in the second half, 30 overall.

The Mountain Lions returned

Dec. 14 from the opening game of the Jingle Bell tournament with a win over the Coalmont Warriors, 50-18. SAS came out controlled but determined and left the half with a 23-10 lead. The team went on a 23-6 tear in the third quarter, led by a vicious half-court trap that allowed the Warriors to get the ball within shooting distance only four times.

Ryan Toomey held Coalmont standout Noah Bean to 14 points while scoring 20 himself; Dustin Stensby profited from steals by converting 12; Blaise Zeitler added 10; John Grammer, four; and Aubrey Black and Isaac Smith, two each. The boys will face their next opponent on Dec. 20 in the semifinals, assuring them of a game on Dec. 21 either in the championship or consolation game.



SAS player No. 11 Tessa Shackelford attempts a shot during the Jingle Bell Tournament. Photo by Buck Butler.

Light up Lives WITH A GIFT OF COMMUNITY

This holiday season, give the "gift of community" to your family and friends. For each \$10 contribution to the **COMMUNITY FUND OF THE SOUTH CUMBERLAND PLATEAU** you will receive a Holiday Card that acknowledges your gift in honor of those you wish to remember. The Community Fund is lighting up lives across the Plateau from Beersheba Springs to Sewanee, from Pelham to Palmer.

Cards may be purchased from these generous partners:

the Blue Chair, Citizens State Bank, Citizens Tri-County Bank, Dutch Maid Bakery, the Grundy County Courthouse, the Grundy Heritage Center, Julia's Fine Foods, the Monteagle Mountain Chamber of Commerce, the Monteagle Inn, and Southerm Community Bank.



SEWANEE AUTO REPAIR —COMPLETE AUTO & TRUCK REPAIR—

- Tune-ups
- Tires (any brand)
- Tire repair
- Batteries
- Computer diagnostics
- Brakes
- Shocks & struts
- Steering & suspension
- Belts & hoses
- Stereo systems installed

All Makes & Models • Service Calls • Quality Parts
ASE Master Certified Auto Technician • 25 Years Experience
7 to 5 M-F • (931) 598-5743 • Across from Regions Bank

Pilates Classes Starting Jan. 6

Beginner pilates classes offered by Kim Butters at the Fowler Center in Sewanee start with the fundamentals of healthy movement that aligns and protects bones and joints and improves balance. Students then learn how to strengthen that pattern of healthy movement with pilates mat exercises.

Beginner classes will meet at 12 p.m. on Monday and Wednesday or 9 a.m. on Tuesday and Thursday.

Prices are \$12 for a single class, \$10 per class if paid monthly, or \$9 per class if taking four or more classes per week paid monthly (allowing students to include stretching classes, if desired).

The intermediate class continues to build and strengthen patterns of healthy movement with more advanced pilates mat exercises and the added challenges of using the stability ball, foam roller, light weights and resistance bands.

Intermediate classes will meet at 10 a.m. on Monday and Wednesday or 12 p.m. on Tuesday and Thursday.

Prices are \$12 for a single class, \$10 per class if paid monthly, or \$9 per class for four or more classes a week paid monthly (allowing students to include stretching classes, if desired).

Contract/release stretching and fascial release classes uses the technique of short muscle contractions during stretches, allowing muscle to release more effectively. The class will also be using foam rollers, small massage balls and other techniques to help release trigger points and fascia that can often keep stretching from being effective.

Stretching classes will meet on at 8 a.m. on Tuesday and Thursday and Friday at 12 p.m.

Prices are \$12 for a single class, \$10 per class if paid monthly, or \$9 per class for four or more classes a week paid monthly (allowing students to include pilates classes, if desired).

Private and duet sessions on the pilates reformer, Wunda chair and small barrel can be half-hour or hour-long sessions designed to work on particular challenges or issues and to give the body the added challenge that the apparatus provides. Students can be completely new to pilates, have medical issues, or be a seasoned veteran looking for a new challenge. The instruction is designed specifically for the individual.

Appointments are available Monday–Friday. Call or email Butters to for available times.

Prices are \$40 per single hour session/\$20 per duet partner or for a single half-hour session. Packages include: pay for five sessions and get a sixth for half-price, or pay for 10 sessions and receive an 11th for free.

For more information, contact Butters, PMA pilates instructor and AFPA personal trainer at (423) 322-1443 or <kim_butters59@hotmail.com>.

Email <news@sewanee messenger.com>



Tea on the Mountain
will be on vacation
until February 6, 2014.
Happy holidays!



SAS Lady wrestlers bring home the medals. From left, Hannah Dempsey, Abby Mainzer and Ferah Fortune.

St. Andrew's-Sewanee Wrestlers Victorious

The St. Andrew's-Sewanee wrestling team has stayed busy before Christmas. In the past two weeks, the Mountain Lions have faced off against Franklin County, Lee Huntsville, Boyd Buchanan, Brainerd, Sequatchie County and Knox Webb. The highlight of these efforts comes from the win against Knox Webb, led by a pinning effort from Jason Shao. The win over Knox Webb gives SAS a vital boost in

the State Duals seeding.

The St. Andrew's-Sewanee girls' wrestling team had its first outing and raked in the medals. Abby Mainzer placed first, Zefarah Fortune placed second, and Hannah Dempsey placed third.

"We're very proud of our girls," said Coach McLain Still, "and we look forward to seeing them progress as wrestlers."

The Course at Sewanee is Renovation of the Year

The Course at Sewanee has been named the 2013 Golf Magazine Nine-Hole U.S. Renovation of the Year.

The long-time on-campus course began renovations during Homecoming 2011 by world-renowned golf course architect Gil Hanse.

While the original hole routing remains the same, Hanse has reimagined, redesigned and rebuilt almost every other aspect of the course, including all nine green complexes, challenging new bunkers and a distinct set of alternate tees. For more information, go to <www.golf.com>.



"I can help you find a HOME ... not just a house." —HEATHER OLSON
Serving the Sewanee-Monteagle community
holson@realtracs.com • (804) 839-3659
Monteagle Sewanee, REALTORS
www.monteaglerealtors.com
931-924-7253

www.purerevitalizingenergy.com

For those who want to claim a beautiful destiny, right now!

Member, Tennessee Licensed Professional Counselors Association



Rocky Top Restaurant

Home-Cooked Meals Served Family Style
featuring the Best Fried Chicken on the Mountain

ALL-YOU-CAN EAT SEAFOOD BUFFET
including Prime Rib and Crab Legs
SATURDAYS, 5 P.M. TO 9 P.M.

Open Monday–Thursday, 6am–8pm;
Friday–Saturday, 6am–9pm; Sunday, 6am–6pm

360 Dixie Lee Ave. in Monteagle
(931) 924-6400

OVERTIME

by John Shackelford



A few days ago my wife, Conchie, and I were making our lists and checking them twice, trying to decide which of our children had been naughty, and who among them had been nice. I asked her a simple question, "What was your best Christmas present ever?" A smile came across her face as she reached back into childhood memory and easily recalled a Cinderella watch and matching glass figurine from 1967. Why was this simple gift so significant and memorable? Conchie was 7 years old, and the gift was from a young Marine who was dating her older sister Mary in one of the many Marine Corps base towns scattered across this country where they grew up. At the time Vietnam had crashed into the soul of America, changing and altering thousands of young lives. This Marine wrapped the small gifts for each sibling, left them in the family garage behind the backyard alley, and headed into an unknown and faraway world.

During his long absence Mary began to date another man named Leroy, who would soon become her husband and the father of their two children. The Marine wrote from halfway across the globe and offered to return and marry Mary, who he understood was pregnant at the time with her first son, Chris. Conchie and Mary's mother, Virginia, was simultaneously expecting for her seventh and final time, with a son who they would name John Chester after a cousin lost in this same brutal war. Mary's son, Chris, and Virginia's son, Johnny, were born in the same year, while the Cinderella timepiece and the glass doll were still the most precious of Conchie's childhood treasures. The young man who gave these presents slipped away from this growing family, but is still remembered in the satisfaction of his simple yet kind childhood gifts, and the strength of his character.

Ten years later Mary took her two sons on a hike in the Rocky Mountains of Colorado. Chris was growing and full of confidence. He ran ahead on the trail, leaving his mother and baby brother Eric behind. Chris was never found. No trace of a body was ever recovered by the huge search party that combed Rocky Mountain National Park for weeks. His counterpart and uncle Johnny grew up, graduated from Purdue, and joined the Army. At age 23 his brain was attacked as brutally as a Vietnam battle by schizophrenia. Johnny moved back home, where Virginia cared for him just as she had for many years before.

As the pair grew older and Johnny began to get a handle on the many complicated parts of his illness, his mother, Virginia, was battling Alzheimer's. Their symbiotic relationship was remarkable in that two people who struggled so hard to survive independently could care for each other in such a giving way.

Most families eventually face that question of where mom or dad (or brother) will go and who will provide the care that was once given to them. Where do Johnny and Virginia live today? They live in Colorado, in the shadow of the Rocky Mountains where Chris was lost and where his mother, Mary, can now care for her mother and younger brother.

What is the best present you ever received? A watch and glass princess from a compassionate young Marine, or the winding story wrapped around those presents of a family that gives and cares for each other through all the happiness and heartache that this life hands to us? As we tie ribbons around the all-too-easily purchased packages on our varied lists, we can smile and know that those ribbons will wind their way through the connections of this new set of lives and that the best gifts will always be in the blessings of family.

EVENTS IN YOUR INBOX

It's easy to subscribe to The Mountain Now and get instant updates on Mountain events via email. Go to <themountainnow.blogspot.com> and submit your email address in the "Follow by Email" box in the lower right corner of the page.



TREES
Are Here!



Premium Fresh-cut Fraser Fir Trees, Wreaths and White Pine Garland

Gifts!
Jewelry, Knitting Supplies, Books, Socks, Gift Certificates

Mooney's
Market & Emporium
1265 W. Main Street,
across from the sand plant on 41A
931-924-7400

NATURENOTES

By Jean Yeatman



Female Northern Harrier

Raptors!

Jean Yeatman and her son, **Clay Yeatman**, drove from Sewanee to Columbia, Tenn., on Thursday, via Highway 53 and Interstate 65, and they were impressed by the number of hawks and other raptors (all members of the order *Falconiformes*) they saw sitting in trees along the way. "There were 10 Red-tailed Hawks, two Northern Harriers, one American Kestrel and numerous Black Vultures," she commented.

"The Red-tailed Hawk is the most widely dispersed and commonly seen buteo. When sitting in a tree, its pale chest catches your eye, and when it is flying, its heavy body and red tail are easy to identify as it soars in a circle overhead and drops upon its prey (which are mice and rabbits, and other rodents).

"The Northern Harrier is quite a large bird," she continued. "It is usually seen hunting, flying slowly a few feet above a field or over a marsh. Its white rump is the easiest identifying feature on both the gray male and the larger brown female. They have an owl-like facial disk that helps them to hunt by sound, as well as by sight.

"The American Kestrel is a very small falcon with bright plumage—blue wings, rusty brown back and striped chest. It hunts from poles, wires or trees, frequently hovers, and eats primarily insects.

"The Black Vulture is easy to identify by its black head, and in flight, by its white patches near the wing tips. This carrion-eater often invades settlements to feed on garbage, as well as small animals.

"I think," she concluded, "that the bad weather up north has driven the hawks south this winter."

Good Ideas for a Green Christmas

If you're looking to do some good this holiday season why not have a green Christmas by making a few simple substitutions? There are lots of places where you can make greener choices. Here are just a few.

Carpool: Doing some holiday shopping? Grab some shopping buddies and reduce carbon emissions.

Recycle: Look for recycled gift wrap and cards. If you really want to go green, send an ecard to family and friends. And if you're feeling crafty, make your own gift boxes out of cereal boxes. Make sure you recycle gift wrap materials from Christmas morning. Save bags, bows and ribbon for next year.

LED lights: Use LED Christmas lights this year. LED lights are up to 90 percent more efficient than incandescent bulbs. LED lights are also safer because they do not produce heat, and they last much longer than incandescent bulbs.

Meals: Buy local and organic. Reduce burning of fossil fuels by supporting local farmers and businesses.

Use non-disposable: Think less trash. By using real plates and cloth napkins for holiday gatherings, you can reduce the amount of trash your household produces.

The tree: Recycle your tree. It can be ground up for mulch or composted and help to make many more green things grow. Or buy a live tree with roots. Keep it watered and it will be less of a fire hazard because the needles won't dry out. Then plant the tree in your yard. It can shade your house from the hot sun in summer and block the cold winds in winter.



Star



Kallie

Pets of the Week

Meet Star and Kallie

The Franklin County Humane Society's Animal Harbor offers these two delightful pets for adoption.

Star is a lovely young adult Blue Heeler who is very clever and playful. Her Christmas wish is to find a new family to love her forever. Star is up-to-date on shots and spayed.

Kallie is a gorgeous adult Calico/Torbie cat who is accustomed to living inside and outside. She will be very happy to have a new home where she can stay inside when it is cold, but she may enjoy going outside sometimes if she's in a cat-safe neighborhood. Kallie is negative for FeLV and FIV, house-trained, up-to-date on shots and spayed.

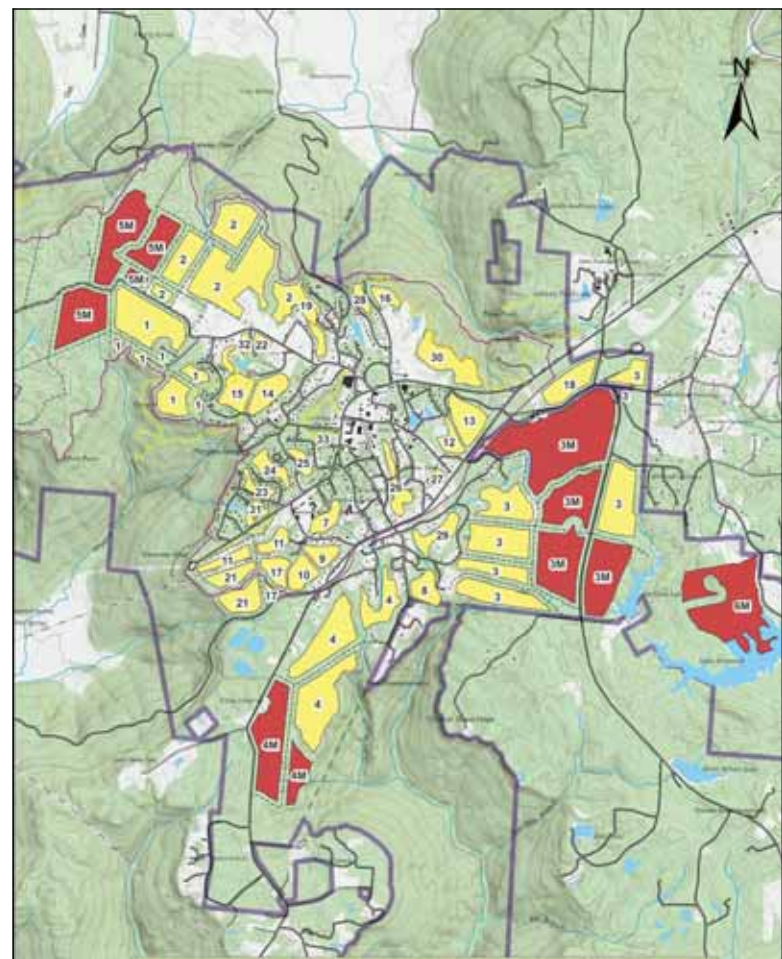
For a limited time, two kittens may be adopted together for one adoption fee of \$75. Having two kittens is better than one because they play together and keep each other company. Adult cats may be adopted for a \$40 fee during this special.

Every Friday is Black Friday at Animal Harbor. On Fridays, adoption fees will be reduced 50 percent for black or mostly black pets more than 4 months old who have been at Animal Harbor for more than a month. Pets adopted from Animal Harbor qualify for a free post-adoption wellness exam by local veterinarians.

Call Animal Harbor at 962-4472 for information and check out the other pets at <www.animalharbor.com>.

Please help the Humane Society continue to save abandoned pets by sending your donations to the Franklin County Humane Society, P. O. Box 187, Winchester, TN 37398.

2013–14 Deer Cull Map



Sewanee Archery/Muzzleloader Deer Cull

Hunting is allowed Wednesday, Dec. 18–Sunday, Jan. 5: all zones will be open to archery hunting for approved hunters. There is no hunting on Tuesday, Dec. 24, or Wednesday, Dec. 25.

Muzzleloaders and shotguns will be allowed in outer zones (marked in red on the color map available at <www.sewaneemessenger.com>) to approved hunters.

All trails will remain open at all times. Bow hunters will maintain a 100-yard safety zone around trails and fire lanes.

Crossword solution

H	A	R	R	Y		H	A	N	O	I		M	E	N
A	D	I	E	U		V	L	E	M	S		E	D	E
J	I	N	G	L	E	B	E	L	L	S		D	I	N
I	T	S	A		H	R	A		M	U	T	A	T	E
	S	E	T	T	L	I	N	G		E	A	L		
			H	E	E	D		R	U	D	O	L	P	H
P	A	C	E	R		A	I	M		J	O	O		
A	C	H	R	I	S	T	M	A	S	T	O	R	Y	
T	A	R		P	E	P		P	I	N	T	A		
S	N	O	W	M	A	N		T	H	E	M			
	N	E	O		S	W	E	A		T	E	R	S	
B	R	I	D	L	E		I	E	R		L	E	A	S
E	E	C		S	I	L	E	N	T		N	I	G	H
D	S	L		O	R	A	L	S		O	N	A	I	R
S	T	E		N	E	E	D	Y		M	E	L	B	A

State Park Offerings

Wednesday, Jan. 1

First Hike of 2014—Meet Ranger Jason at 10 a.m. at Greeter Falls parking lot for a moderate 1.8-mile hike on a very rocky trail, passing waterfalls, cliffs and gorgeous hemlocks. Please wear appropriate footwear for this rugged hike.

Wednesday, Jan. 8

Carter Exploration—Meet Ranger Jason at 10 a.m. at Buggytop Cave parking lot for a challenging, rugged 4.5-mile hike through beautiful, interesting terrain. Be prepared with boots, water and snacks.

The South Cumberland State Park Visitors' Center is located on Highway 41 South between Monteagle and Tracy City and is open 8 a.m.–4:30 p.m. seven days a week. For more information call (931) 924-2980.

Weather

DAY	DATE	HI	LO
Mon	Dec 09	47	37
Tue	Dec 10	49	28
Wed	Dec 11	46	24
Thu	Dec 12	37	23
Fri	Dec 13	40	20
Sat	Dec 14	33	22
Sun	Dec 15	38	25

Week's Stats:
 Avg max temp = 41
 Avg min temp = 26
 Avg temp = 30
 Precipitation = 3.41"

Reported by
 Nicole Nunley
 Forestry Technician

the blue chair Tavern

SNOWMAN STOUT
An absolutely good winter stout

New Seasonal "Sewanee Fog"

Tavern Hours
Mon–Thu • 4-10:30p | Fri • 4-11:30p
Sat • 11a-11:30p | Sun • 11a-10:30p

the blue chair Café & Bakery

Happy Holidays
from the Blue Chair team!

We're open regular hours during Christmas Break, except the 24th & 25th.

Café & Bakery Hours
Mon–Sat • 7:00 a.m.–6:00 p.m.
Sunday • 7:00 a.m.–2:00 p.m.

SAUSSY CONSTRUCTION, L.L.C.

Fred Saussey, General Contractor

Residential - Remodeling - New Construction
Licensed & Insured

496 Kennerly Rd • Sewanee, TN 37375 • (931) 598-5981
fredsaussey@gmail.com • www.sausseyconstruction.com

Village Wine & Spirits Inc.

BIG HOLIDAY SALE! in the store
10% OFF EVERYTHING except shots now through Jan. 1

Across 41A from Monteagle's Piggly Wiggly ~ (931) 924-6900
 Mike Gifford, Owner; M–Th 9 a.m.–9 p.m.; F–Sa 9 a.m.–11 p.m.

Classifieds

CALL US! • 598-9949
Classified Rates:
 \$3.25 first 15 words,
 10 cents each addl. word
Now you can charge it!
 (\$10 minimum)

EAGLE LANDSCAPING & LAWN MAINTENANCE CO.
 Now Offering Specials for
FALL CLEANUP!
 We offer lawn maintenance, landscaping,
 hedge/tree trimming & more!
 Please call for your free estimate
(931) 598-0761 or (931) 636-0383

RAY'S RENTALS
 931-235-3365
 Weekend Packages
 and Special Events
 CLIFFTOPS, BRIDAL VEIL,
 ALL AROUND THE MOUNTAIN
Monteagle Sewanee Rentals
 931-924-7253
 www.monteaglerealtors.com

SEWANEE BLUFF HOME FOR RENT:
 3BR/3BA, 2176 s/f, 2 car garage. Walk-out base-
 ment. Loads of storage. Private setting. Views!
 9 yrs old, pristine. 20 mins to campus. \$1100/
 month, (239)370-2813.

WHY SEEK an impersonal solution to a
 personal problem? Private, warm, spirit-
 filled counseling. Family, individual, ado-
 lescent. A Place of Hope. (931) 924-0042.
 <kerstetter@blomand.net>.

RETIRED PROFESSIONAL
COUPLE seeks a clean 3/2
house to rent on a large lot or
acreage, in a quiet community.
Will rent long-term.
(931) 924-2001.

the **ARTISAN** DEPOT
 Work by local artists
 201 E. Cumberland, Cowan
 Open Thurs-Fri-Sat, 12-5
 931-308-4130

We're glad you're
reading the
Messenger!

YOU COULD BE
READING YOUR
AD HERE!

LOYAL
readership...
AFFORDABLE
rates!

Email
ads@sewanee
messenger.com



CONVENIENCE/ RECYCLING CENTER HOURS

The Convenience Center for household garbage, trash and recycling is located on Missouri Avenue. Its regular hours are: Monday, 1-6 p.m.; Tuesday through Friday, 3-6 p.m.; Saturday, 8 a.m.-4 p.m.; Closed Sunday. Closed on national holidays. There are blue recycling bins for metal (tin, appliances, etc.), newspapers/magazines, plastic, plastic bottles, cardboard and aluminum cans. Glass recycling is on Kennerly Avenue behind PPS.

Oldcraft Woodworkers
 Excellence in custom woodworking.
 Kitchen and bath cabinets, bookcases,
 entertainment centers, furniture.
 Furniture repairs and refinishing.
 Est. 1982. Phone 931-598-0208

DRIVERS: Sign-on Bonus-Trainees & OTR
 Drivers! Paid Orientation. Wiley Sanders Truck
 Lines, Inc. Recruiting: (855) 777-9785

BONNIE'S KITCHEN
Real Home Cooking
 Open Wed 11-2; Fri 4-8:30
 NOW OPEN FOR SUNDAY BUFFET 11-2
Midway Road - 598-0583

JUMP OFF: 4BR/2BA, new carpet, gas logs,
 DSL, DirectTV hookup. \$700 w/city water. First
 & last month's rent. \$250 deposit, references.
 (931) 598-0991, after 5 p.m.

Alma Mater Theater in Tracy City
"The Hobbit: The Desolation of Smaug"
 December 20-December 22
 PG-13 • 2 hours, 50 mins
7 pm Fri-Sat; 3 pm Sun
 (931) 592-8222

NANCE CLEANING: Homes, offices, churches.
 Sewanee and Monteagle area. References avail-
 able. (931) 598-5463.

Mountain Accounting & Consulting
 * Accounting * Bookkeeping
 * QuickBooks and Quicken
Bridget L. Griffith QuickBooks Pro Advisor
 M.S. Accounting and (931) 598-9322/636-2624
 Information Systems bh_griffith@yahoo.com

AVON TO BUY OR SELL AVON
KATHY PACK
 AVON REPRESENTATIVE
 www.youravon.com/kathypack
 katpac56@aol.com
 931-598-0570 931-691-3603

RENTAL: 2 bedroom, 2 bath, fireplace, beautiful
 covered porch, central heat & air. Private 2-acre
 lot with fenced-in back yard. University Realty,
 (423) 838-8201.

CHAD'S LAWN & LANDSCAPING
-FREE ESTIMATES-
 * Lawn care & Design (Mulch & Planting)
 ALSO: * Tree Trimming & Removal
 * Pressure Washing * Gutter Cleaning
 * Leaf Pickup & Blowing * Road Grading
 * Garden Tilling * Rock Work
 (931) 962-0803 Home; (931) 308-5059 Cell

FIREWOOD FOR SALE: \$60/rick, \$70/
 stacked. Call (931) 592-9405, leave message.

COMPUTER HELP
Tutorial & Troubleshooting
 8 years of experience improving
 computer performance.
Judy Magavero, (931) 924-3118

LOST COVE BLUFF LOTS
 www.myerspoint.com
 931-968-1127

BUILDING FOR SALE OR RENT: Downtown
 Monteagle. The big space formerly known as the
 Saloon, across from CVS. Call Lynn Stubblefield,
 Owner/Agent. (423) 838-8201.

MASSAGE
Regina Rourk Childress
 Licensed Massage Therapist
 www.reginarourk.com
 ~ GIFT CERTIFICATES ~
(931) 636-4806

THE LOCAL MOVER
 Available for Moving Jobs
 Call or Text Evan Barry
615-962-0432

SHAKERAG BLUFF CABIN: Beautiful west-
 facing bluff view. Near University. Extremely
 secluded. Sleeps 4-S. C/H/A. Great fishing,
 swimming. Weekend or weekly rentals. (423)
 653-8874 or (423) 821-2755.

BEAUTIFUL APARTMENT
 for rent at the Templeton Library
BREATHTAKING BLUFF VIEW
 Quiet, peaceful surroundings.
 2 bedrooms.
 (931) 636-7873

Laurel Leaf Studio
 2197 Main Street • Altamont
 931-692-3879 or 931-235-1012
 Visit our FB page
 "Bringing artists together for
 learning and sharing"

CHARLEY WATKINS
PHOTOGRAPHER
 Sewanee, TN
 (931) 598-9257
 http://www.photowatkins.com

Email <classifieds@
 sewaneemessenger.com>

Sweeton Home Restoration, LLC
 • New Construction
 • Remodeling
 • Historic Restoration
 New website! www.sweetonhome.com
 New email! sweetonhome@gmail.com
 15 Catherine Ave.
 Monteagle, TN 37356
[931] 924-2444
 ACCREDITED BUSINESS NAHB

Russell L. Leonard
 ATTORNEY AT LAW
 Office: (931) 962-0447
 Fax: (931) 962-1816
 Toll-Free (877) 962-0435
 rleonard@netcomsouth.com
 315 North High Street
 Winchester, TN 37398

June Weber
Gooch-Beasley Realtors
 Serving the Sewanee and Monteagle area
 with quality real estate service:
 -42 years of experience
 -Mother of Sewanee alumnus
 www.gbrealtors.com junejweber@bellsouth.net
 June Weber, CRB, CRS, GRI Broker 931.636.2246
 GOOCH-BEASLEY REALTORS 931.924.5555

The Moving Man
 Moving Services Packing Services
 Packing Materials Truck Rental
 Local or Long Distance
 1-866-YOU-MOVE (931) 968-1000
 www.themovingman.com
 Decherd, TN
 Since 1993 U.S. DOT 1335895

DEEPWOODS: 4BR/2BA home. Lease.
 Behind SAS. \$1,000/mo. Non-smokers. (931)
 212-0447.

SCULPTURE IN WOOD
 Carvings, Bowls, Vases,
 Church Icons.
 U.S. Hwy. 41 North, one mile from
 Monteagle. (931) 924-2970

SARGENT'S SMALL ENGINES: Repairs to All
 Brands of Equipment: Lawn mowers (riding or
 push), String trimmers, Chain saws, Chain saw
 sharpening, New saw chain. (931) 212-2585,
 (931) 592-6536. Pickup and Delivery Available.

(931) 598-0033
HAIR DEPOT
 17 Lake O'Donnell Rd., Sewanee
KAREN THRONEBERRY, owner/stylist
DANIELLE HENSLEY, stylist/nail tech

CATAWBA LANDSCAPING
 Specializing in native plantings and
 wildscapes, as well as routine lawn and
 landscape maintenance. Professional
 plant care from forest to garden.
(931) 636-7111

NOTICE
 SAESEWANEE CORP. ("Corp."), a Ten-
 nessee nonprofit corporation, will hold a
 meeting of all members/stockholders
 on Jan. 11, 2014, at 10 a.m. CST at the
 Bishop's Common, located at 735 Univ.
 Ave., Sewanee, TN, for the limited express
 purpose of electing a new slate of direc-
 tors to dissolve the Corp. and convey
 its assets. All members/stockholders
 are invited to attend. Counsel for Corp.,
 J. Patrick Warfield, Stites & Harbison
 PLLC, Nashville, TN.

Needle & Thread
 *Alterations * Repairs * Light Upholstery
 * Slipcovers * Drapes
 For a reasonable price, contact
Shirley Mooney
 161 Kentucky Ave.
 Sewanee, TN 37375
 (931) 598-0766
 shirleymooney296@yahoo.com

FOR RENT IN SEWANEE: Or weekends on
 the mountain. 2BR/1BA. Lots of hardwood.
 Large yard which I maintain. Quiet location.
 (931) 308-7899.

BUILDING FOR SALE OR RENT: Monteagle.
 A-frame building across from Piggly Wiggly
 and beside Kangaroo gas station. Call Lynn
 Stubblefield, Owner/Agent. (423) 838-8201.

CLAYTON ROGERS ARCHITECT
 claytonrogers@charler.net
 931-598-9425

Walk-In Cooler Filled with Flowers!
 —TUXEDO RENTALS—
Monteagle Florist
 333 West Main Street, Monteagle
 (931) 924-3292
 www.monteagleflorist.com

DRIVERS: Training, Class A CDL. Train and
 work for us! Professional and focused training
 for your Class A CDL. You choose between
 Company Driver, Owner Operator, Lease Op-
 erator or Lease Trainer. (800) 567-3867 <www.
 centraltruckdrivingjobs.com>.

King's Tree Service
 Topping, trimming,
 bluff/lot clearing, stump
 grinding and more!
 Bucket truck or climbing
 Free wood chips with job
 Will beat any quoted price!
 Satisfaction guaranteed!!
 —Fully licensed and insured—
 http://kingstreeservice.vpweb.com
 Call (931) 598-9004—Isaac King

FOR RENT IN MONTEAGLE: Older home,
 right behind elementary school. 4/5BR, 2BA,
 large yard. All appliances. \$900/month plus one
 month security deposit. Available immediately.
 Call (931) 924-3669, leave message.

RENTALS
 Beautiful Bluff View
 1 Bedroom or 2 Bedroom
 Apartments.
 Call (931) 691-4840.

GILLIAM'S OUTDOORS: Grass cutting,
 gutter cleaning, leaves, plantings. Firewood avail-
 able. No job too big or small. Local references
 available. Cory Gilliam, 308-4869.

PRIME BLUFF PROPERTY FOR SALE:
 Five acres behind Monteagle Assembly.
 House. Barn. Million-dollar view. (423)
 298-4549.

WATER SOLUTIONS
 Joseph Sumpter
 Owner/Licensed Residential Contractor
 Specializing in drainage and rainwater
 collection systems
 598-5565
 www.sumptersolutions.com

Winchester Podiatry
CHARLES D. GANIME, DPM
 Board Certified in Foot Surgery
 Diplomate, American Board of Podiatric Surgery
 New Patients of All Ages Welcome! We Treat Your Feet!
 Most Insurance Accepted, Including TennCare
 We are at 155 Hospital Road, Suite 1, in Winchester.
 www.winchesterpodiatry.com
931-968-9191

BUG PROBLEMS?
 We can help! Call us for a free inspection!
BURL'S TERMITE & PEST CO.
 TERMITE—PEST—VAPOR CONTROL
 Bonded • Insured • Home-Owned & Operated
 105 Ake St., Estill Springs
 (931) 967-4547 or (931) 455-1191
 Charter #3824 • License #17759

The Art of Building
AWARD-WINNING BUILDER
Certified Green Builder
GOOCH-BEASLEY BUILDERS
 9 College St. at Assembly Ave., Monteagle
 (931) 924-5555



BARDTOVERSE

by Phoebe Bates

They came in on Interstate 93
Past a dozen signs of NO VACANCY

And finally stopped at the Holiday Inn
Where she stayed in the car while he went in

And was politely given the information
They unfortunately had made no advance reservation

And although it was regrettable considering her condition
They were all booked up and in any case had no resident physician

So it was at Cohen's Garage that it came about
With Cohen and his night man helping out

And some workers from the factory across the street
Bringing in beer and something to eat

And finding the babe wrapped in a tarpaulin
And lying in a station wagon

Between a pickup truck and a Dodge V-8
And staying all night to celebrate

So all in all it was quite a night
And she was relieved that everything went all right

And thought to herself that it could have been worse
And welcomed him into the universe

—“Item” by Scott Bates

Sernicola's

Steaks, seafood, pastas, homestyle
pizza, hot lunch buffet, plus a
22-item fresh and healthy salad bar.
Homemade desserts!



www.sernicolas.com • 106 Tennessee Avenue • Cowan • 962-3380
Open *Tuesday-Saturday • Lunch 11-2 • Dinner 5-8:30
*Closed on 3rd Tuesday for DAV

Christ Church Monteagle



wishes you

Christmas Blessings and a Good New Year.



December 22 at 10:30 am:
Lessons and Carols

Christmas Eve at 5 pm:
Holy Communion with Carols
Christmas Feast Following

Christmas Day at 10:30 am:
Holy Communion

December 29 at 10:30 am:
Holy Communion

January 5 at 10:30 am:
The Eve of Epiphany

WOODY'S BICYCLES—SALES, SERVICE AND RENTALS
A Full-Service Trek Bicycle Dealer

Mon–Fri 9–5 • Sat 10–2 • 598-9793

woody@woodysbicycles.com • 90 Reed's Lane
(the red building behind Shenanigans in Sewanee)



Check out www.woodysbicycles.com for rates, trail maps,
photos, bike club links, races and much more!



AFFORDABLE Home Repair

Remodeling • Additions • Decks • Painting
House/Floor Leveling and More

Experienced & Honest

423-593-3385

Community Calendar

Today, Dec. 20

Curbside recycling, before 7:30 am

Franklin, Grundy and Marion county Schools abbreviated day

8:30 am Yin yoga with Carolyn, Sewanee Comm Center
6:00 pm Advent Bible study, Christ Church Episcopal, Alto

Saturday, Dec. 21

First Day of Winter

10:00 am Silver Threads, St. Mary's Convent

Sunday, Dec. 22

11:00 am Brown book signing, Smoke House, until 2 pm
2:30 pm Affordable Care Act assistance, Julia's, until 5 pm
4:00 pm Yoga with Helen, Community Center
5:00 pm Women's Bible Study, Midway Baptist

Monday, Dec. 23

10:30 am Chair Exercise, Senior Center
3:30 pm Centering prayer support group, St. Mary's Sewanee
7:00 pm Centering Prayer support group, Otey sanctuary

Tuesday, Dec. 24 • Christmas Eve

6:30 pm Prayer/Study, 7th Day Adventist, Monteagle

Wednesday, Dec. 25 • Christmas Day

7:00 pm Bible study, Midway Baptist Church

Thursday, Dec. 26

10:30 am Chair exercise, Senior Center
10:30 am Tai Chi with Kathleen, Community Center
5:00 pm Weight Watchers, St. Joseph's Hall, St. Mary's,
weigh-in 4:30 pm
7:00 pm Bible study, Midway Baptist Church

Friday, Dec. 27

10:00 am Game day, Senior Center
7:00 pm Bible study, Mtn of God Tabernacle, Monteagle
7:00 pm Film, "The Hobbit 2," Alma Mater, Tracy City

Saturday, Dec. 28

10:00 am Silver Threads, St. Mary's Convent

Sunday, Dec. 29

2:30 pm Affordable Care Act assistance, Julia's, until 5 pm
4:00 pm Yoga with Helen, Community Center
5:00 pm Women's Bible Study, Midway Baptist

Monday, Dec. 30

9:00 am Yoga with Sandra, St. Mary's Sewanee, until 10:30 am
10:30 am Chair exercise, Senior Center
5:30 pm Yoga with Sandra, St. Mary's Sewanee, until 7 pm
6:00 pm Karate, youth, American Legion Hall; adults, 7 pm
7:00 pm Centering Prayer, Otey sanctuary

Tuesday, Dec. 31 • New Year's Eve

9:30 am Crafting Ladies, Morton Memorial, Monteagle
10:30 am Bingo, Sewanee Senior Center
6:30 pm Prayer/Study, 7th Day Adventist, Monteagle

Wednesday, Jan. 1 • New Year's Day

7:00 pm Bible study, Midway Baptist Church

Thursday, Jan. 2

9:00 am CAC office open, until 11 am
10:30 am Chair exercise, Senior Center
10:30 am Tai Chi with Kathleen, adv, Comm Center
12:30 pm Episcopal Peace Fellowship, Brooks Hall, Otey
5:00 pm Weight Watchers, St. Joseph's Hall, St. Mary's,
weigh-in 4:30 pm
6:00 pm Karate, youth, American Legion Hall; adults, 7 pm
7:00 pm Film, "The Hobbit 2," Alma Mater, Tracy City

Friday, Jan. 3

Curbside recycling, before 7:30 am

9:00 pm CAC office open, until 11 am
10:00 am Game day, Senior Center
7:00 pm Bible study, Mtn of God Tabernacle, Monteagle
7:00 pm Film, "The Hobbit 2," Alma Mater, Tracy City

Saturday, Jan. 4

10:00 am Silver Threads, St. Mary's Convent
7:00 pm Film, "The Hobbit 2," Alma Mater, Tracy City

Sunday, Jan. 5

2:30 pm Affordable Care Act assistance, Julia's, until 5 pm
4:00 pm Yoga with Helen, Community Center
5:00 pm Women's Bible Study, Midway Baptist

Monday, Jan. 6

9:00 am CAC office open, until 11 am
9:00 am Messenger office re-opens
9:00 am Yoga with Sandra, St. Mary's Sewanee, until 10:30
10:00 am Pilates with Kim, intermediate, Fowler
10:30 am Chair exercise, Senior Center
12:00 pm Pilates with Kim, beginners, Fowler Center
5:30 pm Yoga with Sandra, St. Mary's Sewanee, until 7 pm
6:00 pm Karate, youth, American Legion Hall; adults, 7 pm
7:00 pm Centering Prayer, Otey sanctuary

Tuesday, Jan. 7

8:00 am Contract/release stretching with Kim, Fowler
9:00 am CAC office open, until 11 am

9:00 am Pilates with Kim, beginners, Fowler
9:30 am Crafting Ladies, Morton Memorial, Monteagle
10:30 am Bingo, Sewanee Senior Center
10:30 am Pilates with Kim, beginners, Fowler Center
11:30 pm Grundy Co. Rotary, Dutch Maid, Tracy City
12:00 pm Pilates with Kim, inter/adv, Fowler
3:30 pm Centering Prayer support group, St. Mary's Sewanee
6:30 pm Prayer/Study, 7th Day Adventist, Monteagle

Wednesday, Jan. 8

7:00 am Monteagle Sewanee Rotary, Smoke House
9:00 am CAC office open, until 11 am; and 1–3 pm
10:00 am Pilates with Kim, intermediate, Fowler
10:00 am Senior Center writing group, 212 Sherwood Rd.
12:00 pm Pilates with Kim, beginners, Fowler Center
1:30 pm Duplicate bridge, Templeton, call 598-9344
5:30 pm Yoga with Helen, Community Center

Thursday, Jan. 9

8:00 am Contract/release stretching with Kim, Fowler
9:00 am CAC office open, until 11 am
9:00 am Pilates with Kim, beginners, Fowler
10:30 am Chair exercise, Senior Center
10:30 am Tai Chi with Kathleen, adv, Comm Center
12:00 pm Monteagle Sewanee Rotary, Blue Chair Tavern
12:00 am Pilates with Kim, intermediate, Fowler
12:30 pm Episcopal Peace Fellowship, Brooks Hall, Otey
1:30 pm Folks@Home Support Group, Brooks Hall, Otey
5:00 pm Weight Watchers, St. Joseph's Hall, St. Mary's,
weigh-in 4:30 pm
6:00 pm Karate, youth, American Legion Hall;
adults, 7 pm
7:00 pm Film, "The Hobbit 2," Alma Mater, Tracy City

Friday, Jan. 10

9:00 pm CAC office open, until 11 am
10:00 am Game day, Senior Center
12:00 pm Contract/release stretching with Kim, Fowler
7:00 pm Bible study, Mtn of God Tabernacle, Monteagle
7:00 pm Film, "The Hobbit 2," Alma Mater, Tracy City

LOCAL 12-STEP MEETINGS

Friday

7:00 am AA, open, Holy Comforter, Monteagle
7:00 pm AA, open, Christ Church, Tracy City

Saturday

7:30 pm NA, open, Decherd United Methodist
7:30 pm AA, open, Brooks Hall, Otey

Sunday

6:30 pm AA, open, Holy Comforter, Monteagle

Monday

5:00 pm Women's 12-step, Brooks Hall, Otey
7:00 pm AA, open, Christ Church, Tracy City

Tuesday

7:00 pm AA, open, First Baptist, Altamont
7:30 pm AA, open, Brooks Hall, Otey

Wednesday

10:00 am AA, closed, Clifftops, (931) 924-3493
7:00 pm NA, open, Decherd United Methodist
7:30 pm AA, open, Holy Comforter, Monteagle

Thursday

12:00 pm AA, (931) 924-3493 for location
7:00 pm AA, closed, Big Book study, St. James
7:30 pm ACA, Brooks Hall, Otey



and Happy New
Year from your
friends at the
Messenger!