



# — THE SEWANEE MOUNTAIN — MESSENGER

Volume XXXIV No. 46

sewaneemessenger.com

Friday, Dec. 21, 2018

## SUD Waterline Replacement Almost Complete; Candidate Slate Approved

by Leslie Lytle, Messenger Staff Writer

At the Dec. 18 meeting of the Sewanee Utility District (SUD) Board of Commissioners, the board reviewed SUD manager Ben Beavers' update on the extensive waterline replacement project. The board also approved a slate of candidates for the upcoming commissioners' election.

In midsummer, SUD undertook replacement of the aging, constricted cast iron waterlines on Florida Avenue, South and North Carolina Avenues, and Clara's Point Road. Some of the lines had been in service since the 1920s. All the replaced lines have been inspected and sanitized except for a 140-foot segment on Clara's Point Road still under construction.

"You can't tell a whole lot went on except for the straw on the ground where the grass was reseeded," said Commissioner Ronnie Hoosier commenting on how little disruption occurred as a consequence of the construction.

SUD financed the project by drawing on cash reserves rather than borrowing money.

Turning to other business, the board approved the slate of candidates for the upcoming commissioners' election. Randall Henley will seek reelection to the open seat and Hoosier to the Marion County seat.

Others interested in serving as commissioner can still declare their candidacy. Commissioners receive a \$50 per meeting stipend. Prospective candidates can self-nominate by submitting a petition signed by 10 SUD customers. For the Marion County commissioner's seat, the signatures must be from SUD customers residing in Marion County. The deadline for submitting nominating petitions is Jan. 2.

Voting will take place from Jan. 2 through Jan. 22 during regular business hours at the SUD office.

The board also voted to continue to employ Melanie Sane to perform a monthly review of financial transactions. Beginning in April, the board retained Sane in response to the recommendation of the Tennessee Association of Utility Districts.

(Continued on page 7)



The St. Olaf Choir.

## St. Olaf Choir to Perform in Sewanee, Jan. 31 Tickets Available Now

The famous St. Olaf Choir will be starting their Winter tour on Thursday, Jan. 31, 2019, at All Saints' Chapel at the University of the South. This special recital is a ticketed event and will feature the 75-voice choir under the direction of Anton Armstrong. The choir was founded in 1912 and they have been singing for capacity audiences in the U.S. and abroad for more

than a century. The members of the choir are full-time undergraduate students who rehearse five times weekly. This St. Olaf Choir Tour will include recitals in Tennessee, South Carolina, Georgia and Florida. This is an event that you must experience. The start time for the recital is 7:30 p.m. Tickets are available for purchase on the St. Olaf website at <events.stolaf.edu>.

## Monteagle Steps Up Town Beautification

by Leslie Lytle  
Messenger Staff Writer

In keeping with appointing a codes enforcement officer to address property maintenance violations, Monteagle will erect a fence at the city maintenance facility on South Central Avenue.

"If we're going to make everyone clean up their place, the city needs to clean up, too" said Alderman Ken Gipson at the Dec. 19 special called meeting of the city council. The fence will screen the lot from view.

"It's an eyesore for the community," said Alderman Tony Gilliam.

Safety consideration also played into the decision. "A lot of kids live in that area," said Alderwoman Jessica Blalock.

"It's a wonder someone hasn't been hurt already," Gilliam said.

The city will pursue getting bids for the project. An amendment to the maintenance budget, which falls under Water and Sewer, will be needed to account for the expense.

Newly appointed codes enforcement officer John Knost will begin on Jan. 2.

(Continued on page 5)

## Woodard's Closing Northgate Mall Location

by Bailey Basham  
Messenger Staff Writer

Jim Woodard has been in the jewelry business since he was 16-years-old. Born and raised in Winchester, he'd worked at gas stations, local farms and grocery stores before he found his calling after taking a job at Jennings Jewelers in Tullahoma. He said it was then that he fell totally in love with the jewelry business.

"By the time I was 16, I already knew what hard work was about, and when I started working in jewelry, I just really enjoyed the people and serving customers, helping them pick things that were really cool, like engagement rings or birthday presents or anniversary gifts," he said. "It was so cool to be able to help people find something special for someone."

In 1991, Woodard bought the store from the Jennings family and changed the name—now, the Woodard family is preparing for another change.

"We're moving to the new location so we can offer something bigger and better for our valued customers," he said. "I have purchased a piece of property, and I've also got two or three locations that we are looking at, all in Tullahoma. We want something free-standing, probably about 4,500 square-feet or larger. We're just looking to add more categories and services."

(Continued on page 7)



First snow in December. Photo by Lyn Hutchinson

## 'Under the Microscope'

by Bailey Basham, Messenger Staff Writer

Matt Reynolds has been in archives for the last 15 years. When he got to Sewanee a couple years ago, he was struck by the University's collection—particularly one big, shiny, copper object.

"Someone had transferred into the archives this early 20th century autoclave. It's this big, cylindrical, copper thing, and it's just a stunning piece. I wanted to figure out a way to get that on display at some point, and I wanted to keep a lookout for science exhibitions," said Reynolds, the associate director of University Archives and Special Collections. "Sewanee is thought of as purely a liberal arts school, but there's actually a really rich history of the sciences being taught here."

A partnership between the archives and assistant professor of art and art history Alison Miller's Introduction to Museum Studies class made the exhibition of many of Sewanee's historical objects possible.

Between 1870 and 1987, Sewanee scholars discovered much about the domain. "Under the Microscope: An Exploration of Sewanee's Scientific Past" displays those findings alongside the research of current students from the museum studies class.

"I think there is a significance here in how the objects reflect Sewanee's position in teaching science. Local forestry and archaeology are really rooted in this particular spot, but at the same time, we have a global reach—the Syrian brick and some botany samples reflect that. You can think about how students throughout time have had a similar experience to what they have today," Miller said.

(Continued on page 5)

P.O. Box 296  
Sewanee, TN 37375



# Letter

## IONA THANK-YOU

### To the Editor:

As 2018 draws in, the reverberations of gifted writers, musicians, and artists who, at IONA: Art Sanctuary, heralded their angelic gifts presented in the four seasons' Festivals of the Fine Arts. Each inspired. With gratitude for those participants who brought audiences ever enlarging I acknowledge Pippa Browne, Trudy Cunningham, Kevin Cummings, Cheri Magid, Virginia Craighill, Jerry and Phil White, Peter Trenchi, Adam Randolph, Erin McGraw, Mark Edens, Rev. Francis and Faye Walter, Bruce Manuel, Lynn Cimino-Hurt, Bennett Bridgers-Carlos, Richard Tillinghast, Spencer Hupp, Brooks Egerton, Sally Hubbard, Dudley Delffs, Patrick Dean, Shelby Knauss, Naomi Buck Palagi, Laura Wilson, Helen Stapleton, David Baker, Connie Keetle, Aaron Welch, David Clough, Gary and Kathleen Sturgis, Stephen Feeley, Michael Cimino Hurt, and Jennifer Michael. Thank you all for your awareness, grace, and majestic thoughts.

As to succeeding expressions of concerns, issues, lamentations, and praises, Richard Tillinghast shared his eloquence with these

lines—concluding words to one of his poems, “And And And”—“What is someone like me doing awake at this hour of the night? / Yet here I am cold in this chair, listening to the clock tick, rendered sleepless by things / I know are badly wrong but over which I have no control. / And I haven’t even mentioned the shaved-head men in hoodies / on the bridges of Dublin and London and New York nodding over a paper cup with pennies in it. / And the CEO of Goldman Sachs who makes \$100 a minute even when he’s asleep, while 85 percent of the world’s population survives on less than \$5 a day. / And I’m leaving out Columbine and Virginia Tech and Fort Hood and the 4.4 firearms for every household in the US. / And and and.”

As therein suggested, blessings to everyone.

Edward Carlos,  
Sewanee



## CAC Pantry Sunday

Pantry Sunday for the Community Action Committee (CAC) is Sunday, Jan. 6, for participating churches: St. James, Otey, Cumberland Presbyterian and All Saints' Chapel. Please bring your food offerings to Sunday services. The typical bag of groceries includes: rice, beans, pasta, macaroni and cheese, peanut butter, and cans of vegetables, fruit and soup. The cost for a complete bag is less than \$15.

The CAC is an outreach ministry of Otey Parish, with generous support from the Sewanee Community Chest and individuals across the Mountain. For more than 42 years, the CAC has provided food, financial assistance and educational support for persons in the greater Sewanee community. For more information contact the CAC at 598-5927.



## — THE SEWANEE MOUNTAIN — MESSENGER

Published as a public service to the community since 1985, the newspaper is printed on Fridays, 46 times a year. Free of charge, copies are distributed to 100 locations, including businesses and post offices across the Plateau. This publication is made possible by the patronage of our advertisers and by contributions from the University of the South (print production) and the Sewanee Community Chest.

### SUBSCRIPTIONS \$75 first class

Kiki Beavers  
editor/publisher  
April Minkler  
office manager  
Ray Minkler  
circulation manager  
Leslie Lytle  
staff writer  
Bailey Basham  
staff writer

Sandra Gabrielle  
proofreader  
Janet Graham  
publisher emerita  
Laura Willis  
editor/publisher emerita  
Geraldine Piccard  
editor/publisher emerita

owned by the Mountain Messenger, LLC

418 St. Mary's Lane, P.O. Box 296, Sewanee, TN 37375  
Phone (931) 598-9949 | <news@sewaneemessenger.com>

All material in the Sewanee Mountain Messenger and on its websites are copyrighted and may not be published or redistributed without written permission.



In our continuing efforts to teach our students to be kind, contributing members of our community, Sewanee Elementary recently conducted our annual Tiger Paws for Pennies campaign to raise money for Operation Noel. This year our giving totaled \$1,175.14. Thank you to all our students and families who brought in their spare change.



91 University Ave. Sewanee  
sewaneehouses.com | (931) 598-9244

**UNIVERSITY REALTY**  
SEWANEE TENNESSEE



Lynn Stubblefield  
(423) 838-8201  
Susan Holmes C'76  
(423) 280-1480  
Freddy Saussy, C'99  
(931) 636-9582



**30.50 ACRES** Bluff views, waterfall, creek, rocky face, giant hemlocks. 30.50 acres \$200,000



**MLS#1992853.** Beautifully re-decorated. Punches all the buttons. Pale gray with white trim. New laminate in bathrooms, new carpet in bedrooms, fresh and squeaky clean! Great small subdivision close to Cowan Elementary, South Middle and Franklin County High School. If you are seeking a quiet, safe place for kids and dogs, or a one-level how for your tired knees, this is IT! You won't find another one like this at this amazing price! \$112,000.

**CAN-TEX RD.** 10.56 beautifully wooded acres joining the University. All utilities at the road, gently rolling, easy to build on.



**SHERWOOD RD.** Stunning sunrise view over Lost Cove. 3.3 miles from Univ. Ave 1,000+ feet of view 17.70 ac. \$330,000



**101 CARRUTHERS RD.** Extraordinary sunset view on the Domain. 2820 sq. ft. w/unfinished basement. Two fireplaces and views from every room.



**414 TATE RD.** Charming new country home on 2.44 beautiful acres w/detached garage. Priced to sell. \$175,000



**SUNSET BLUFF VIEW.** 15 acres, private and close to town, priced at \$125,000

**1.08 ACRE LOT #1** Saussy Subdivision. Very nice building lot. \$23,500



**219 LIGHTNING BUG LANE.** Fantastic new construction. 3 BR, 2 BA. Minutes from campus, beautiful wooded lot. \$219,000



**20+ PICTURESQUE ACRES.** Near Savage Gulf, open pasture, barn and pond. Simply stunning!



**807 TIMBERWOOD TRACE.** Stunning custom home, gated community, gourmet kit, 5 BR 3 BA, 5.54 ac. Loaded with extras. \$445,000



**1728 RIDGE CLIFF DR.** Custom log home with a wonderful view. Great rm, large screened in porches. Priced to sell. \$219,500



**MYERS POINT.** 480-acre gated community w/ 24 exquisite bluff or lake home sites overlooking Lost & Champion Coves. Exceptional amenities. Call Lynn Stubblefield 423-838-8201 for a private tour. Prices begin at \$275,000

## Serving Where Called

Please keep the following individuals, their families and all those who are serving our country in your thoughts and prayers:

Blaze Cassidy Barry  
James Gregory Cowan  
Nathaniel P. Gallagher  
Peter Green  
Zachary Green  
Cheyenne N. Kelly  
Gabriel Lloyd  
Forrest McBee  
Andrew Midgett  
Jose D. Ramirez III  
Troy (Nick) Sepulveda  
Zachary Sherrill  
Nick Worley

If you know of others in our Mountain family who are serving our country, please give their names to American Legion and Auxiliary member Louise Irwin, 598-5864.

## Letters to the Editor Policy

Letters to the editor are welcome at the Sewanee Mountain Messenger and are a vital part of our community's conversation. Letters need to be no longer than 250 words and may be edited for space and clarity. We make exceptions from time to time, but these are our general guidelines.

Letters and/or their author must have some relationship to our community. We do not accept letters on national topics from individuals who live outside our print circulation area. Please include your name, address and a daytime telephone number with your letter. You may mail it to us at Sewanee Mountain Messenger, P.O. Box 296, Sewanee, TN 37375, come by our office, 418 St. Mary's Ln., or send your email to <news@sewaneemessenger.com>. —KB



A PORTION OF SALES MADE THROUGH OUR  
OFFICE WILL BE DONATED TO HOUSING SEWANEE



## Lease Committee Summary

The following items were approved: November minutes; request to transfer Lease No. 611, located at 212 Tennessee Ave., to Mary L. Belechak; request to construct a shed on Lease No. 1052, located at 94 Parson's Green Cir.; request to build an attached carport on Lease No. 705, located at 388 Alabama Ave.; request to build a new commercial building on Lease No. 1063, located on University Avenue; request to replace the roof on Lease No. 851, located at 191 South Carolina Ave.

Leasehold information is available at <leases.sewanee.edu> or by calling the lease office at 598-1998.

Please be sure and contact the Franklin County Planning and Zoning for any needed permits, as well as the local utility companies to ensure there are no issues before beginning your project.

Planning and Zoning office, (931) 967-0981; Duck River Electric Membership Corporation, 598-5228; Sewanee Utility District, water and sewer, 598-5611; Elk River Public Utility District, natural gas, 967-2110.

Agenda items are due by the fifth of each month for Lease Committee meetings. If the fifth falls on a weekend, then items are due the following Monday. Lease Committee meetings are normally the third Tuesday of the month.

## University Job Opportunities

**Exempt Positions:** Assistant Athletic Trainer, Athletics; Director, Student Accessibility Services; Student Life Administration; Head Field Hockey Coach, Athletics; Director, Advancement Services; University Advancement.

**Non-Exempt Positions:** Administrative Assistant, Student Life; Barn/Stable Worker, Equestrian Center; Campus Security Officer (10 positions), Police Department; Catering Attendants (on-call), Sewanee Catering; Classroom and Computer Lab Technician, Technology Access & Support; Custodian (multiple positions), Facilities Management; Farm Hand (on-call), University Farm; Food Service Worker (Temporary), Sewanee Dining; Food Service Worker, Sewanee Catering; Mentor Network Manager, Thriving in Ministry; Part-Time Police Officer, Police Department.

For more information call (931) 598-1381. Apply at <jobs.sewanee.edu>.

### Holiday appointments filling fast!

Book your appointments now!

Call (931) 313-9950  
or book online  
www.zoom-groom.com

**Serving Franklin, Coffee  
and Marion counties**



### K&N Maintenance and Repair Your "honey-do" list helper!

A one-stop solution  
for all your home  
improvement needs

**931-691-8656**



## Upcoming Meetings

### Area Rotary Club Meetings

The Grundy County Rotary Club meets at 11:30 a.m., Tuesdays at Dutch Maid Bakery in Tracy City. The Monteagle-Sewanee Rotary will not meet on Dec. 27. The Monteagle-Sewanee Rotary Club will meet at 8 a.m., Thursday, Jan. 3, at the Sewanee Inn for a club assembly. On Thursday, Jan. 10, Claude Buckley, artist, will present the program.

### Lifelong Learning to Meet Jan. 3

The Sewanee Seminars/Academy for Lifelong Learning will welcome Liz Norell, political commentator, at noon, Thursday, Jan. 3. Norell, a Sewanee resident, will offer her apolitical views in the context of "We hold these truths to be Self-Evident: How to Keep Your Sanity in a Highly Partisan America."

This session will be held in Lower Cravens at 435 Kentucky Ave. The hour long session will begin promptly at noon. Coffee, water and cookies will be provided. Ample parking will be available at the Tennessee Williams Center lot. Cost is \$3 for this session, or \$20 for the academic year. For more information contact Stephen Burnett at (931) 598-5479.

### Village Update Meeting

Meet with Frank Gladu, Special Assistant to the Vice-Chancellor, to discuss the Village development updates. Meet at 10-11 a.m., Tuesday, Jan. 8, at the Blue Chair Tavern. Coffee will be served and everyone in the community is welcome.

### La Leche League

The La Leche League, which provides breastfeeding support and information for new mothers, will meet at 10:30 a.m., Tuesday, Jan. 8, at the Sewanee Community Center, 39 Ball Park Rd. All pregnant women, mothers and babies are welcome. For more information call Pippa, (931) 463-2050.

### Franklin County School Board

The Franklin County School Board will meet at 6 p.m., Monday, Jan. 14, at the Franklin County Board of Education Building, 215 S. College St., Winchester.

### Franklin County Commission

The Franklin County Board of Commissioners will meet at 7 p.m., Tuesday, Jan. 15, at the Franklin County Courthouse, Winchester.

## Holiday Closings

The Hospitality Shop is closed until Tuesday, Jan. 15, when it will reopen at 9:30 a.m.

The Community Action Committee will be closed Dec. 24-Jan. 2.

The convenience center will be closed Dec. 24-Dec. 25, and Dec. 31-Jan. 1. Joe B. Long will not pick up garbage on Dec. 25. All scheduled pickups for Dec. 25 will be on Dec. 26.

Federal holidays are Dec. 25 and Jan. 1. The post office and banks will be closed.

The Fowler Center will be closed on Dec. 25.

The Messenger office is closed until Monday, Jan. 7.

The Jessie Ball duPont Library will be closed Saturday, Dec. 22-Tuesday, Jan. 1.

HEAVEN ON EARTH... NOW AVAILABLE IN SEWANEE

**MYERS POINT** at Sewanee offers a rare opportunity to enjoy a private community that celebrates American architecture, lifestyle, protected forests, cultivated lakes and panoramic views on Middle Tennessee's Cumberland Plateau. If you want to live surrounded by nature, history, beauty, quality and serenity, you'll want to call it home.

John Goodson  
(931) 703-0558  
jgoodson@myerspoint.com  
myerspoint.net

**The blue chair  
Café & Tavern**

41 university avenue  
sewanee, tennessee

(931) 598-5434  
thebluechair.com

*Shop and dine locally!*



*The Monteagle Elementary School kindergarten class enjoyed an afternoon of decorating gingerbread houses with their family.*



Thank you for a fantastic 2018! Merry Christmas and Happy New Year from Adaptive Landscape Lighting.

**ADAPTIVE LANDSCAPE LIGHTING**

**adaptivelandscape-lighting.com 931.952.8289**

**WOODARD'S  
DIAMONDS & DESIGN**

**STORE  
CLOSING  
SALE**

**WE'RE MOVING!**

**UP  
TO 70%  
OFF!**

**PLUS, UP TO EXTRA**

**20%  
OFF**  
ALL SALE PRICES

**EXTENDED  
HOLIDAY  
HOURS**

**NORTHGATE  
MALL  
TULLAHOMA  
931-454-9383**

Like us on  
Facebook

**FOR YOUR CHANCE TO WIN  
JEWELRY, GIFT CARDS & MORE!  
AND FOR ALL SALE UPDATES!**



# Church News

### All Saints’ Chapel

Beginning Sunday, Dec. 23, there will only be an 8 a.m. Eucharist held during Christmas break. The 11 a.m. Eucharist will resume on Jan. 20, 2019. Daily services will resume on Tuesday, Jan. 15, beginning with Morning Prayer at 8:30 a.m. The chapel offices will be closed Monday, Dec. 24 through Tuesday, Jan. 1.

### Christ Church Monteagle

Sunday, Dec. 23, is Advent 3, a quiet and solemn service. After lunch we will complete decorating the church for Christmas. The Christmas Eve service at 5 p.m. includes our pageant, and our Christmas Feast, to which all are welcome. On Christmas Day our service is at 11 a.m.

### Christ the King Anglican Church

Christ the King Anglican Church located at 1241 Cumberland St., Decherd, invites everyone to attend a Service of Lessons and Carols on Sunday, Dec. 23, at 9 a.m. and to their Christmas Eve candle lighting services on Dec. 24. The early service will begin at 4:40 p.m. and the late service will begin at 10:40 p.m.

### Otey Parish

On Monday, Dec. 24, there will be a Crèche Service at 4:30 p.m. At 9:30 p.m., there is a musical prelude before the 10 p.m. Festival Holy

Eucharist. On Tuesday, Dec. 25, the Christmas Holy Eucharist with Carols begins at 10 a.m.

### St. Agnes’ Episcopal

St. Agnes’ Episcopal Church in Cowan will celebrate “The Nativity of Our Lord” at 4 p.m., Dec. 24. This will be a traditional Christmas Eve service with lessons and hymns. Following the service all are invited to the Father Werlein Memorial Christmas Reception in the church parish hall. St. Agnes’ is located at 105 England St. East, Cowan. For more information call the church at (931) 636-6313.

### St. James

St. James Episcopal in Midway will have a Blue Christmas Service of Prayer, at 6 p.m., Friday, Dec. 21. At 9 a.m., Sunday, Dec. 23, there will be Lessons and Carols and the Holy Eucharist. At 6 p.m., Monday, Dec. 24, the Holy Eucharist is followed by a cookie fest. Please bring goodies to share.

### Unitarian Universalist

The Unitarian Universalist Church of Tullahoma’s speaker this Sunday will be Wyatt Gogolin on “Christ: the Man, the Myth, the Legend?” The service begins Sunday at 10 a.m. The church is located at 3536 New Manchester Hwy., Tullahoma. For more information, call (931) 455-8626, or visit the church’s website at <www.tullahomauu.org>.

# Obituaries

### Evelyn Landress Chamberlain

Evelyn Landress Chamberlain, age 101 of Chattanooga, and the mother of George Chamberlain of Sewanee, died on Dec. 15, 2018, five days after her birthday. Memorial services were on Dec. 19, at the Church of the Good Shepherd, 211 Franklin Rd., Lookout Mountain. A private family graveside service at Forest Hills Cemetery preceded the Memorial service. In lieu of flowers, memorial contributions may be made to the Church of the Good Shepherd at <www.gslookout.com>, the Tennessee Camp for Diabetic Children at <https://tcdctype1.org/donate>, the Community Kitchen at <www.homelesschattanooga.org>, or a charity of your choice. For full obituary go to <www.wannfuneralhome.com>.

### Elizabeth Moore Engsberg

Elizabeth Moore “Betty” Engsberg, a much-loved member of Sewanee’s community, died on Dec. 9, 2018, her 93rd birthday, at her home in Alexian Village, Signal Mountain, Tenn. She was born on Dec. 9, 1925, in Wytheville, Va. She was preceded in death by her parents; and her husband, Paul.

She is survived by her son, Towson Paul (Dede) Engsberg of Chattanooga; daughter, Elizabeth E. (Robert) Meyer of Charlotte, N.C., and one grandson.

A Memorial Service will be at 11 a.m., Saturday, Jan. 5, 2019, in All Saints’ Chapel. Immediately following the service there will be a reception at the McGriff Alumni House. In lieu of flowers, memorials may be made to the Sewanee Community Chest and/or The University of the South.



## MOORE-CORTNER FUNERAL HOME

*Specializing in pre-funeral arrangements • Offering a full range of funeral plans to suit your wishes • We accept any & all Burial Insurance Plans*



We are a father & son management team—  
Bob & Jim Cortner  
Owners/Directors

### 967-2222

300 1st Ave. NW, Winchester



Quiet  
tuesdays

Come spend Tuesdays at St. Mary’s Sewanee for a day of quiet reflection each week.

*Bring lunch if you’d like to enjoy the campus between events.*

7 am	Qi Gong on the Bluff
Noon	Contemplative Eucharist & Healing
3:30 pm	Centering Prayer
5 pm	Yoga (\$8/session) *note new time

*Rest Renew Reconnect*

AT ST. MARY’S SEWANEE:  
THE AYRES CENTER FOR  
SPIRITUAL DEVELOPMENT

# Church Calendar

### Weekday Services Dec. 21–Jan. 11, 2019

- 7 a.m. Centering Prayer, Taylor’s Creek Greenway, Estill Springs, (W)
- 7:30 a.m. Morning Prayer, Otey
- 7:30 a.m. Morning Prayer, St. Mary’s Convent (not M, not 12/26 and not 1/7–1/12)
- 8 a.m. Holy Eucharist, St. Mary’s Convent (not M, not 12/26 and not 1/7–1/12)
- 9 a.m. Communion, Good Shepherd, Decherd (M,W)
- 9 a.m. Mass, Good Shepherd, Decherd (T/Th/F)
- 11:30 a.m. Prayer/Healing, Morton Memorial (1st/3rd Th)
- 3:30 p.m. Centering Prayer, St. Mary’s Sewanee (T)
- 4 p.m. Centering Prayer, McRae Room, adjacent to Anna’s House, St. Mary’s Sewanee (W)
- 4:30 p.m. Evening Prayer, Otey (M–F)
- 6 p.m. Blue Christmas, St. James (12/21)
- 7 p.m. Centering Prayer, St. Paul’s, Otey (M)
- 7 p.m. Spanish Mass, Good Shepherd, Decherd (Th)

### Saturday, Dec. 22, Dec. 29, Jan. 5, 2019

- 7:30 a.m. Morning Prayer, St. Mary’s Convent
- 8 a.m. Holy Eucharist, St. Mary’s Convent
- 10 a.m. Sabbath School, Monteagle Seventh Day Adventist
- 11 a.m. Worship Service, Monteagle Seventh Day Adventist
- 5 p.m. Evensong, St. Mary’s Convent
- 5 p.m. Mass, Good Shepherd, Decherd

### Sunday, Dec. 23, Dec. 30, and Jan. 6, 2019 • CAC Pantry Sunday All Saints’ Chapel

- 8 a.m. Holy Eucharist
- Bible Baptist Church, Monteagle**
  - 10 a.m. Worship Service
- 5:30 p.m. Evening Service
- Chapman Chapel Church of the Nazarene, Pelham**
  - 9:30 a.m. Sunday School
  - 10:45 a.m. Morning Worship
  - 6 p.m. Evening Worship
- Christ Church, Monteagle**
  - 10:30 a.m. Holy Eucharist
  - 10:30 a.m. Epiphany Service, (1/6/19)
- Christ Episcopal Church, Alto**
  - 9 a.m. Sunday School
  - 10 a.m. Holy Eucharist
- Christ Episcopal Church, Tracy City**
  - 10 a.m. Adult Bible Study
  - 11 a.m. Holy Eucharist (child care provided)
- Christ the King Anglican, Decherd**
  - 9 a.m. Sunday Service, Lessons and Carols
- Cowan Fellowship Church**
  - 10 a.m. Sunday School
  - 11 a.m. Worship Service
- Cumberland Presbyterian Church, Monteagle**
  - 9:30 a.m. Bible Study
  - 11 a.m. Worship Service
- Cumberland Presbyterian Church, Sewanee**
  - 9 a.m. Worship Service
  - 10 a.m. Sunday School
- Decherd United Methodist Church**
  - 9:45 a.m. Sunday School
  - 10:50 a.m. Worship Service
- Epiphany Mission Church, Sherwood**
  - 10 a.m. Holy Eucharist Rite II
- Good Shepherd Catholic Church, Decherd**
  - 10 a.m. Mass
  - 2 p.m. Spanish Mass
- Grace Fellowship Church**
  - 10:30 a.m. Sunday School/Worship Service
- Harrison Chapel Methodist Church**
  - 10 a.m. Sunday School
  - 11 a.m. Worship Service
  - 5 p.m. Worship Service
- Midway Baptist Church**
  - 9:45 a.m. Sunday School
  - 10:45 a.m. Morning Service
  - 6 p.m. Evening Service
- Midway Church of Christ**
  - 10 a.m. Bible Study
  - 11 a.m. Morning Service
  - 6 p.m. Evening Service
- Monteagle First Baptist Church**
  - 10 a.m. Sunday School
  - 11 a.m. Worship Service
  - 6 p.m. Evening Worship
- Morton Memorial United Methodist, Monteagle**
  - 9:45 a.m. Sunday School
  - 11 a.m. Worship Service
- New Beginnings Church, Monteagle**
  - 10:45 a.m. Worship Service

### New Beginnings Church, Pelham

- 9:45 a.m. Worship Service
- Otey Memorial Parish Church**
  - 8:30 a.m. Holy Eucharist
  - 9:45 a.m. Lectionary Class, Adult Forum, Godly Play
  - 11 a.m. Holy Eucharist
- Pelham United Methodist Church**
  - 9:45 a.m. Sunday School
  - 11 a.m. Worship Service
- St. Agnes’ Episcopal Church, Cowan**
  - 11 a.m. Holy Eucharist Rite I
- St. James Episcopal Church**
  - 9 a.m. Holy Eucharist Rite II 12/23, Lessons/Carols, 12/30 Reception for Vicar Linda Hutton’s last Sunday as Vicar at St. James
- St. Margaret Mary Catholic Church, Alto**
  - 8 a.m. Mass
- Sewanee Church of God**
  - 10 a.m. Sunday School
  - 11 a.m. Morning Service
  - 6 p.m. Evening Service
- Sisters of St. Mary’s Convent**
  - 8 a.m. Holy Eucharist
  - 5 p.m. Evensong
- Tracy City First Baptist Church**
  - 9:45 a.m. Sunday School
  - 10:45 a.m. Morning Worship
  - 5:30 p.m. Youth Group
  - 6 p.m. Evening Worship
- Trinity Episcopal Church, Winchester**
  - 9:30 a.m. Christian Formation
  - 10:30 a.m. Lessons 7 Carols w/Eucharist (12/23)
  - 10:30 a.m. Holy Eucharist Rite II (12/30, 1/6)
- Valley Home Community Church, Pelham**
  - 10 a.m. Sunday School, Worship Service

### Monday, Dec. 24 • Christmas Eve

- 4 p.m. Christmas Eve service, St Agnes’, Cowan
- 4:30 p.m. Crèche Service, Otey
- 4:40 p.m. Candle-lighting service, Christ the King
- 5 p.m. Holy Communion with Carols, Christ Church Monteagle
- 5 p.m. Christmas Eve Communion, Cowan Cumberland Presbyterian Church
- 5 p.m. Mass, St. Margaret Mary
- 6 p.m. Candlelight Communion, Cowan First Baptist
- 6 p.m. Holy Eucharist, cookie fest, St. James
- 7 p.m. Holy Eucharist, Christ Church Alto
- 9:30 p.m. Musical Prelude, Otey, Festival Eucharist, 10 p.m.
- 10 p.m. Holy Eucharist, Trinity, Winchester
- 10:30 p.m. Holy Eucharist, Christ Church Tracy
- 10:40 p.m. Candle-lighting Service, Christ the King
- 10:45 p.m. Carol singing, Christmas Mass, St. Mary’s Convent
- 11:30 p.m. Holy Eucharist, Epiphany, Sherwood
- 12 a.m. Mass, Good Shepherd

### Tuesday, Dec. 25 • Christmas Day

- 8 a.m. Morning Prayer, St. Marys Convent
- 10 a.m. Christmas Eucharist/Carols, Otey
- 10 a.m. Mass, Good Shepherd
- 11 a.m. Holy Communion, Christ Church Monteagle
- 5:30 p.m. Evensong, St. Marys Convent

### Wednesday, Dec. 26, Jan. 2, Jan. 9, 2019

- 6 a.m. Morning Prayer, Cowan Fellowship
- 9 a.m. Communion, Good Shepherd, Decherd
- 10 a.m. Bible Study, Sewanee C.P. Church
- Noon Communion, Christ Church, Monteagle
- 5 p.m. KAs/Bible study/meal, Monteagle First Baptist
- 5:30 p.m. Evening Worship, Bible Baptist, Monteagle
- 5:45 p.m. Youth Bible study/meal, Monteagle First Baptist
- 6 p.m. Bible study, Monteagle First Baptist
- 6 p.m. Prayer and Bible study, Midway Baptist
- 6 p.m. Evening Prayer, Trinity, Winchester
- 6:30 p.m. Community Harvest Church, Coalmont
- 6:30 p.m. Prayer Service, Harrison Chpl, Midway
- 6:30 p.m. Youth group, Tracy City First Baptist
- 7 p.m. Adult Formation, Epiphany, Sherwood
- 7 p.m. Bible study, Chapman’s Chapel, Pelham
- 7 p.m. Evening Worship, Tracy First Baptist





## The Earthquake on Dec. 12

by Bran Potter, Professor, Earth and Environmental Systems

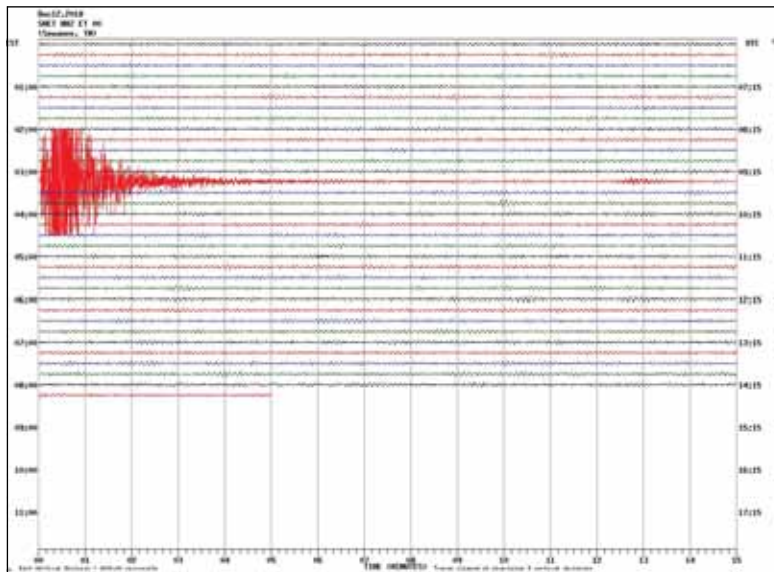
On Dec. 12, many Sewanee residents and students were awakened at 3:14 a.m. by the 4.4 magnitude earthquake that originated near Decatur, Tenn.

The epicenter is in the folded and faulted Valley and Ridge Province, a more deformed part of the Appalachians than our Cumberland Plateau. It was felt as far south as Atlanta. The focal point of the quake, where slippage began, is 8 km below the surface, and most of the remaining stress was relieved over the next hours and days by aftershocks. This earthquake is similar to the 4.6 magnitude quake near Fort Payne, Ala., in 2003, although the 2003 quake was much more widely felt in Sewanee.

Martin Knoll polled all Sewanee students with some interesting re-

sults; of the 450 University of the South students that responded to our survey, only 20 percent felt the quake. Of these, 66 percent reported being on the second or third floor of their dormitory. This is likely due to the fact that the upper portions of buildings are more prone to shaking and swaying during a quake. It's good to know our students sleep so soundly as exams approach.

Sewanee's seismograph, located on bedrock beneath the horse pasture near our water tank, registered strong shaking for several minutes, with a characteristic waning of the shaking over a period of 3 to 4 minutes. Each horizontal line on the seismograph image represents 15 minutes, and each vertical line is a minute.



Each horizontal line on the seismograph image represents 15 minutes, and each vertical line is a minute.

## St. Mary's Open House

St. Mary's Sewanee: The Ayres Center for Spiritual Development invites community members to come for a Christmas Open House, 3-6 p.m., Saturday, Dec. 22. The event will feature Nativity scenes (also known as crèches) from around the world that members of the community will provide on loan for the afternoon.

## Hutton Event at St. James

Please join St. James Church in Midway in celebrating the Rev. Linda Hutton's ministry on the Mountain Sunday, Dec. 30. The service begins at 9 a.m. Following the service we will celebrate with a potluck dinner. St. James hopes you will join us in celebrating Linda, as she retires and begins a new chapter in her life.

**Mooney's**  
Market & Emporium

- ♦ ORGANIC, LOCAL FOODS
- ♦ SUPPLEMENTS & TOILETRIES
- ♦ GARDEN & BIRD SUPPLIES
- ♦ YARN & ACCESSORIES
- ♦ ANTIQUES, JEWELRY, GIFTS
- ♦ CRESCENT CAFE JUICE BAR

**NOW OPEN EVERY DAY 11-3**

Store open 10-6 daily  
931-924-7400  
1265 W Main • Monteagle

## Monteagle (from page 1)

"Monteagle has a good set of rules. They're not unreasonable," Knost said. "We just need to enforce them and get folks used to complying."

A notice on water bills informed residents of Knost's appointment and the city's intention to enforce property maintenance regulations.

At the January meeting, the council will address securing a vehicle for Knost. At an earlier meeting, Police Chief Virgil McNeese proposed the Police Department's no longer in use Crown Victory would make a good car for Knost. The Crown Victory has relatively low mileage, McNeese said. The department has two additional backup vehicles.

Revisiting the November discussion about repairs needed at the Community Center, which houses the May Justus Memorial Library, Gilliam recommended retaining a single contractor for the project. Gilliam identified three areas needing to be addressed: replacing roof shingles that had blown off, repairing duct work condensation leaks and repairing condensation leak damage to the ceiling.

The budget allocated \$15,000 for the project, said city recorder Debbie Taylor.

"We should be able to do it for half of that," Gilliam said.

Plans initially called for replacing the entire roof. Inspection by Gilliam revealed condensation, not roof leaks, caused the water stains on the ceiling.

The city will seek bids for the project specifying a single contractor perform all the tasks.

The Monteagle City Council meets next Jan. 28.

Support local businesses!

ROB MATLOCK  
CONSTRUCTION COMPANY  
NEW HOME BUILDING  
AND REMODELING

MEMBER, U.S. GREEN BUILDING COUNCIL

PHONE 931-598-5728

**MATLOCK**

State Licensed • Fully Insured

BBB ACCREDITED BUSINESS

THE Sewanee institution since 1974

**Shenanigans RESTAURANT**

PUB & GRILL / PIZZA / DELI / CATERING  
CALL FOR TAKE-OUT OR DELIVERY  
931-598-5774

OPEN EVERY DAY 11 a.m. to 11:30 p.m. (later on weekends!)

12595 Sollace M Freeman Hwy, Sewanee, TN  
(on the corner of University Ave and 41A)

FIND YOUR HAPPY PLACE...AT SHENANIGANS

**The Lemon Fair**

FREE GIFT WRAPPING

MON.-SUN.  
DOWNTOWN SEWANEE  
598.5248

## 'Under the Microscope' (from page 1)

For the exhibit, each student chose two historical objects to research.

"And, as a class we worked on coming up with a title for the exhibit, figuring out how to display certain items and brainstorming ideas for exhibit events such as the opening and lectures about it," said Campbell Stuart, a student in the class.

Stuart was responsible for the research and exhibition of a first edition of Charles Darwin's "The Expression of the Emotions in Man and Animals" and geologic folio of Sewanee from 1984 for the Geologic Atlas of the United States.

"The whole idea is that in archives, we're supposed to find ways to tie these materials to the curriculum so they can be used for research or any other number of things. By partnering with Dr. Miller, we sort of created a learning lab for the students," Reynolds said. "They're coming in, doing research, propose layouts for the exhibits, suggest programming, writing the text that goes on the walls. They got a 360 degree view."

Stuart agreed. "So many of our objects required research going beyond just looking something up on Google. I was sending emails to people I had never met, asking people if they knew other people, and I felt a little bit like a detective," she said. "I think sometimes Sewanee's scientific outlets can get overlooked, and having an exhibit focused on the history of science at Sewanee hopefully offers insight into how the scientific pursuits have changed over time, how they have become embedded into the liberal arts approach to learning that Sewanee offers."

Miller said she hopes overall, the project will offer as much to the community as it does to the archives.

"The project as a whole contributes back to the community. People can come in and learn something about the topic we're covering, and it gives information back to the archives as well," she said.

The exhibit will be on display through Jan. 22, 2019. Normal exhibit hours are Monday-Friday, from 1-5 p.m. Due to the University winter break, the exhibit will reopen on Jan. 3.

## Merry Christmas

Season's Pleasures

Frosted windows. The smell of pine boughs and hot apple cider. Old World Santas. Heirloom ornaments. Heavenly angels, bells, bows and wreaths. We are excited about the treasures we have collected to help make your Christmas the most joyous ever.

**TAYLOR'S MERCANTILE**  
GIFTS • FLOWERS • EVENT DESIGN

10 University Ave. • Sewanee • 931.598.5893



The beauty of small town Sewanee life is that our lives are all interconnected here. The Community Chest is a perfect example of this. By giving to the Chest, we are supporting the Sewanee Children's Center, which helped shape our children into the lovely people they are today. The Chest supports the Mountain Goat Trail Alliance, which provides the walking path where our son has pet many, many dogs taking their owners (our neighbors) for a walk. It makes our community stronger, creating a ripple effect that reaches every one of us.

Robin Hille, David Michaels and family—community volunteers



Donate today!  
PO Box 99, Sewanee TN 37375  
www.sewaneeccivc.org





**Ward Cammack,**  
*Affiliate Broker • 615.319.9862*

**Shelley Cammack,**  
*Affiliate Broker • 615.289.2453*

# Sewanee Realty

SewaneeRealty@inSewanee.com  
www.SewaneeRealty.com  
115 University Ave., Sewanee, Tenn.

**Margaret Donohue,**  
*Principal Broker • 931.598.9200*

**Patsy Truslow,**  
*Broker • 931.636.4111*

*“Write it on your heart that every day is the best day in the year.” Ralph Waldo Emerson*



Merry Christmas & Happy New Year! from Margaret, Patsy, Shelley & Ward



MLS 1975436 - 57 Diamond Dr.,  
Winchester. \$235,000



BLUFF - MLS 1878711 - 226 Rattlesnake  
Springs Ln., Sewanee. \$749,000



MLS 1994452 - 24 Overton Ave.,  
Monteagle. \$219,000



LAKEFRONT - MLS 1949994 - 681  
Magnolia Dr., Winchester. \$779,500



MLS 1995053 - 114 Maxon Ln., Sewanee.  
\$449,900



BLUFF - MLS 1923054 - 1833 Laurel  
Lake Dr., Monteagle. \$439,000

CAMPUS RENTAL - 2 bd, 2 ba, \$1,400  
monthly - call 931-598-9200



MLS 1901778 - 52 Sherwood Trail,  
Sewanee. \$348,000



BLUFF - MLS 1964395 - 211 Rising Sun  
Lane, Sewanee. 5.26 acres. \$295,000



MLS 1956405 - 171 Maple St.,  
Sewanee. \$274,500



BLUFF - MLS 1974844 - 1613 Laurel Lake  
Dr., Monteagle. 5.3 acres. \$445,000



MLS 1891347 - 715 Orange Hill Rd.,  
Tracy City. \$279,000



MLS 1952909 - 1573 Carter Rd.,  
Decherd. \$229,500



BLUFF - MLS 1994448 - 294 Jackson  
Point Rd., Sewanee. 20.9 acres. \$299,500



MLS 1983502 - 174 Carpenter Cir.,  
Sewanee. \$525,000



MLS 1924650 - 890 Boswell Ct.,  
Monteagle. 3+ acres. \$319,000



MLS 1982786 - 212 Tennessee Ave.,  
Sewanee. \$315,000



MLS 1884814 - 143 Winns Circle,  
Sewanee. \$375,000



MLS 1975100 - 677 Breakfield Rd.,  
Sewanee. \$479,000



MLS 1986674 - 246 Curlicue Rd.,  
Sewanee. \$348,000



BLUFF - MLS 1930811 - 146 Jackson  
Point Rd., Sewanee. 13+ acres. \$299,500



BLUFF - MLS 1850420 - 1710 Stage  
Coach Rd., Sewanee. 31+ acres.  
\$765,000



BLUFF - MLS 1886899 - 569 Haynes  
Rd., Sewanee. 5.1 acres. \$499,900



BLUFF - MLS 1945408 - 506 Ingman Cliff  
Rd., 3.05 acres. \$688,000



BLUFF - MLS 1906326 - 208 Vanderbilt Ln.,  
Sewanee. \$849,000

## BLUFF TRACTS

Old Sewanee Rd. 53+ac	1846822	\$296,000
14 Jackson Pt. Rd 18.6 ac	1803643	\$129,500
3 Horseshoe Ln. 5.6 ac	1608010	\$60,000
38 Long View Ln. 2.56 ac	1954806	\$99,000
1 Jackson Pt. Rd. 12.45 ac	1911600	\$125,600
11 Jackson Pt. Rd. 19+ ac	1911497	\$120,000
7 Saddletree Ln.	1954791	\$75,000
15 Saddletree Ln. 6.12 ac	1978549	\$75,000
Partin Farm Rd. 6.5 ac	1902508	\$64,500
9 Saddletree Ln. 2.01 ac	1948632	\$66,000
37 Jackson Pt. Rd. 3.97 ac.	1965687	\$85,000
12 Saddletree Ln. 2.15 ac	1960834	\$79,500

## LOTS & LAND

20 Jackson Pt Rd.	1974540	\$37,500
126 Deep Woods 6.4 ac	1948499	\$34,900
127 Deep Woods 5.8 ac	1948503	\$34,900
13 Deerwood Dr. 2.98 ac	1946339	\$18,500
14 Deerwood Dr. 2.97 ac	1946347	\$18,500
16 Deerwood Dr. 2.98 ac	1946349	\$18,500
33 Westlake Ave. 5.3 ac	1800077	\$60,000
57 Edgewater Ct. Win.	1906419	\$32,000
St. Mary's Ln. 10 ac	1820182	\$85,000
Montvue Dr. 5 ac	1714856	\$54,900
55 Lake Louise	1900500	\$38,880
Pine Dr. 16.1 ac	1894605	\$149,000
Pine Dr. 3.22 ac	1894027	\$40,000
#22 Shadow Rock 1.18 ac	1906497	\$24,000
362 Haynes Rd. 10 ac	1910953	\$84,000
Hwy 41, Jasper 10 ac.	1906899	\$125,000



**SUD** (from page 1) —

Sane represents the Murfreesboro-based Tennessee Utility Assistance.

By hiring someone to perform a monthly review of financial transactions, the board hopes to avoid SUD being cited for “inadequate segregation of duties,” an audit finding frequently received by small utilities that lack the staff to provide the required degree of financial oversight and lack the resources to hire additional staff.

“We’ll see if the audit shows anything different this year,” said Board President Charlie Smith.

Sane’s monthly review checks for timely payment of invoices; approval of the invoices by the management; that expenses appear to be routine; that the amount of the invoice matches the amount paid; and that the payee on the check matches the vendor name on the invoice. The board will revisit whether to continue employing Sane after receiving the 2018 audit.

## Winter Convocation

The University of the South’s Winter Convocation will be held at 4 p.m., Friday, Jan. 18, in All Saints’ Chapel. Honorary degrees will be presented and new members will be inducted into the Order of the Gown. The Rt. Rev. Robert Skirving will be installed as chancellor of the University.

Ellen Lehman, the founding president of the Community Foundation of Middle Tennessee, will give the Convocation address and will receive an honorary degree. Honorary degrees also will be conferred upon François Clemmons, a professionally trained operatic tenor and founder of the Harlem Spiritual Ensemble; the Rt. Rev. Brian Cole, bishop of the Diocese of East Tennessee; internationally acclaimed and Pulitzer Prize-winning poet Paul Muldoon; and Alice Parker, a renowned composer, conductor, and teacher.

The Rt. Rev. Robert Skirving, bishop of the Diocese of East Carolina, in October was elected the 25th chancellor of the University of the South. He will be installed during the Convocation.



*The Monteagle Elementary School Jr. BETA Club would like to thank Morton Memorial Methodist Church and Monteagle First Baptist Church for allowing us to volunteer with their food pantry and food deliveries once each month. At Morton Memorial, our students helped stock the food pantry with supplies from the food bank. At First Baptist, our students helped prepare to-go plates for the elderly and shut-ins in our community. Our students really enjoyed volunteering and plan to continue throughout the school year. Volunteering is an important aspect of the Jr. BETA Club. To become good leaders in the future, our students must first learn to serve. We are proud to be able to give back to our community in this way. If you are aware of other volunteer opportunities in the Monteagle area, please contact our school at (931) 924-2136.*



*Coalmont pre-K students led the Pledge of Allegiance at last week’s Grundy County Board of Education meeting. Pictured left to right are Barbara Bryant, Coalmont Elementary pre-K teacher, Saban Bryant, Lily Higgins, Journey Rhea, Jace Sweeton, Karmyn Fults, Kenley Parks, Elaina Jackson, and Glenda Dykes, Grundy County Director of Schools.*



### MICHELLE M. BENJAMIN, JD Attorney & Counselor at Law

201 FIRST AVENUE, NORTHWEST  
WINCHESTER, TENNESSEE 37398

(931) 962-0006  
Fax: (931) 967-8613

**Woodard** (from page 1) —

Over the years, Woodard has made more than 30 trips to places such as Tel Aviv and Antwerp, Belgium, the diamond capital of the world.

“My first trip was to Tel Aviv in 1979, and then about 1985 or so, I went to Belgium for the first time to select diamonds for the store,” he said. “We have brought back thousands of carats over the years. We buy diamonds today from diamond cutters in Israel, Russia, Mumbai—our diamonds can be sourced from around the world, and most all will flow through Antwerp.”

Woodard said one of his favorite parts about the business is getting to help someone choose a diamond that might become a family heirloom.

“The things that you purchase from the jewelry store have a pretty long shelf life, so when you give a diamond ring, that can be a gift for the next generation. Believe it or not, since I started in 1974, I’m now on the third generation of families coming in for engagement rings.”

Now at 60, he still credits his late mother, Mary Ruth Woodard, her hard-working nature and love of serving for all his years of success at Woodard’s Diamonds & Design.

“I learned my passion of serving from her—she was a kindergarten teacher and principal and she would always set a good example on serving others. She was a good role model for me to follow,” he said. “If the good Lord will let me have good health, I’ll work for 15 or 20 more years. I love what I do, so as long as I’ve got good health then I’ll be here.”

As part of the move, Woodard is holding a huge store closing and moving sale with up to 70 percent discounts on jewelry. Hours at the store have changed for the sale—Woodard’s Diamonds & Design is open until 7 p.m. each night, with Sunday, Dec. 23, being the last day of the season.

#### HOUSE CALL SERVICE AVAILABLE

Full Service Veterinary Care for Dogs, Cats & Horses  
Offering Acupuncture, Chiropractic & Herbal Therapies



Monday–Friday 7:30 am–6 pm; Saturday 8 am–noon

**AFTER-HOURS EMERGENCY SERVICE AVAILABLE**

**Traci S. Helton, DVM 931-962-3411**

505 S. Jefferson St., Winchester (41-A toward Winchester. First left after Domino’s Pizza)

## Tree of Life Homecare, LLC

“Neighbors Helping Neighbors”

- \* Licensed and insured home-based services for the elderly and disabled
- \* CHOICES provider, Private Pay, Veterans Affairs, AAAD

931-592-8733

[treeoflifehomecare.com](http://treeoflifehomecare.com)

NOW ACCEPTING APPLICATIONS FOR CAREGIVERS

## WOODY’S BICYCLES

SALES, SERVICE AND RENTALS

A Full-Service Trek Bicycle Dealer

Mon–Fri 9–5 • Sat 10–2 • 90 Reed’s Lane

598-9793 • [woodybike@gmail.com](mailto:woodybike@gmail.com)



Check out [www.woodysbicycles.com](http://www.woodysbicycles.com) for rates, trail maps, photos, bike club links, races and much more!

## ST. MARY’S SEWANEE CHRISTMAS OPEN HOUSE



3 to 6 p.m., Saturday, December 22

The event will feature Nativity scenes (also known as crèches) from around the world that members of the community will provide on loan for the afternoon, as well as light refreshments, Christmas music, and beautiful holiday decorations.

Community members are invited to participate by sharing their interesting or special Nativity scenes. Please deliver crèches to the retreat center 9 - 11 a.m., on Saturday, Dec. 22 for set up. Call St. Mary’s Sewanee at 598-5342 for more information



## piggly wiggly

**Down Home, Down the Street**

754 West Main St., Monteagle  
(931) 924-3135

8 a.m. to 9 p.m. 7 days a week



## SENIOR CENTER NEWS

The Sewanee Senior Center serves lunch at noon Monday through Friday. Suggested donation is \$4, regardless of your age. Please call 598-0771 by 9 a.m. to order lunch. Menus follow:

**Monday, Dec. 24 – Friday, Dec. 28:** Center closed. Merry Christmas!

**Monday, Dec. 31:** Black bean chili, pimento cheese sandwich, dessert.

**Tuesday, Jan. 1, 2019:** Center closed. Happy New Year!

**Wednesday, Jan. 2:** Cheeseburger, onion rings, dessert.

**Thursday, Jan. 3:** Salmon patty, fried potatoes, black-eyed peas, cornbread, dessert.

**Friday, Jan. 4:** Vegetable soup, crackers, dessert.

**Monday, Jan. 7:** Black bean chili, pimento cheese sandwich, dessert.

**Tuesday, Jan. 8:** Chicken strips, baked potato, kale salad, roll, dessert.

**Wednesday, Jan. 9:** Pork roast, red potatoes, green beans, roll, dessert.

**Thursday, Jan. 10:** Spaghetti, salad, garlic bread, dessert.

**Friday, Jan. 11:** Grilled chicken salad, crackers, dessert.

*Menus may vary. For information call the center at 598-0771.*

## Four New Art Classes at Artisan Depot in January

The Artisan Depot in Cowan has announced four art classes scheduled for January 2019.

On Jan. 5, painter Bradley Wilson will lead a workshop, "Acrylic Painting for Everyone." While the workshop is appropriate for beginners, experienced painters will find inspiration and enjoyment in the class.

Durinda Cheek, noted watercolorist, will lead a day-long "Watercolor Bootcamp" to teach basic watercolor techniques on Jan. 19. The workshop will be lively and filled with information, and participants will do their own paintings in the last part of the class.

In preparation for Valentines Day, Nashville collage artist Pam Larson will be leading a class geared for fun and creative exploration in "My Crazy Valentine" on Jan. 20. Participants will discover a looser, more whimsical style of working. This workshop includes a bonus envelope-making portion.

Jan. 22 is the next in a series of "Paint & Sip" events with Carolyn Evey of Mountain Painting Parties. Easels, acrylic paints, and 11 by 14 inch canvases are included with the registration fee. Participants may bring their favorite wine or beer; water and iced tea will be available. The gallery will also provide light snacks.

Pre-registration is required for all workshops at the Artisan Depot. Online registration is available at <[www.franklincoarts.org/workshop-details](http://www.franklincoarts.org/workshop-details)> and people age 14 and up may participate (except for Paint & Sip events, for which participants must be age 21 or older).

The Artisan Depot is the gallery and gift shop of the Franklin County Arts Guild and is located at 204 Cumberland St. E, in Cowan. Questions? Call workshop coordinator Kim Phillips at (615) 829-0772.



Acrylic painting.



## VILLAGEREPORT

by Frank X. Gladu



It has been nearly 2 years since I was appointed by John McCardell as a Special Assistant to the Vice-Chancellor to head up the Sewanee Village Development project. Although planning for the development of Downtown Sewanee has been happening for decades, current planning began in 2011 culminating in the Village Implementation plan in 2016. I'll be the first to admit that it has been a slow go. Comments that I commonly hear are "nothing has happened... it is all talk... how long do we have to wait?" Well, the reality is that if it was easy, it would have been done long ago.

I am more optimistic than ever that progress will be visible in the near future. We are on track to achieve substantial completion of the five priority projects with the narrowing of Highway 41A, a new bookstore, a food market, more housing and a Village green before our current Freshman class graduates in 2022—and that is right around the corner!

As we close the book on 2018, the Village project continues to focus on creating a vibrant place for people to live, work and shop in our special small town. Here is the year in review and specific progress that has occurred.

The Road Project Right-of-Way was completed by the Tennessee Department of Transportation. Finalization of the design and construction schedule is expected in 2019.

Local and regional builders and developers were solicited to submit their qualifications to build homes in the Village. Several did and they have been invited to provide proposals for adding housing for the Village. By spring 2019 we will have a better idea of the possibilities for more housing in Sewanee that fit the needs and budget of those who work here.

Arrangements with a developer to build a mixed-use building to contain a specialty food market and apartments are coming close to an agreement.

Construction on the new University Bookstore located on University Avenue is expected to start in early 2019 and will take about 7 months to complete. We are hopeful that it will open for business by this time next year.

A market study was completed by an economist that identified both retail and housing demand. In addition, the study suggested that we pursue an arts and cultural heritage venue to draw visitors to Sewanee and increase market demand.

A stormwater study has been in progress this fall. A final report with recommendations is expected in January. This study was aided by several key stakeholders including those with subject matter expertise from the faculty, Domain management staff, community members and our town planner. The results of this study will assist us in identifying ways to mitigate storm runoff as we proceed with specific development projects in the Village.

The design of a new building on University Avenue for a Pilates studio has been completed and its construction could begin in the first half of 2019.

A conceptual parking plan has been completed and will be utilized as we move forward with development.

Monthly reports have been published in the Sewanee Mountain Messenger.

Community update meetings have been held monthly to provide opportunities for questions and comments. These meetings have also been reported in the Messenger.

Thanks to all those who have offered comments and questions over the past year. I especially want to thank the participants on the advisory committee and all those who have attended the monthly update meetings. It is much appreciated!

The first Community update meeting for 2019 will be held on Tuesday, Jan. 8, at 10 a.m. at the Blue Chair. I hope that you will be able to attend.

Happy New Year to you. 2019 promises to be an active one for the Village project.

Frank X. Gladu is a Special Assistant to the Vice-Chancellor and project Manager for the Sewanee Village Development. He can be reached at <[fxgladu@sewanee.edu](mailto:fxgladu@sewanee.edu)> or (931) 598-3397. More information can be obtained at <[www.sewanee.edu/village](http://www.sewanee.edu/village)>.

## Russell L. Leonard

ATTORNEY AT LAW

Office: (931) 962-0447

Fax: (931) 962-1816

Toll-Free (877) 962-0435

[rleonard@netcomsouth.com](mailto:rleonard@netcomsouth.com)

315 North High Street  
Winchester, TN 37398

**Sweeton**  
Home Restoration  
LICENSED • INSURED • TRUSTED

931-924-2444 [sweetonhome.com](http://sweetonhome.com)

NEW  
CONSTRUCTION  
REMODELING  
HISTORIC  
RESTORATION

Skirling's



COFFEE HOUSE

Closed for  
Christmas Break,  
Dec. 22-Jan. 1.  
Reopen Jan. 2-14,  
7:30-4:30,  
Monday-Friday,  
closed Saturday &  
Sunday.

598-1786

Like Us On Facebook for specials and updates

## PROFESSIONAL MASSAGE THERAPY



Mitzi Rigsby, LMT. Tina Barrett, LMT. Diana Summers, LMT.  
Ginger Money, LMT. Heather Todd, Natural Health Practitioner.  
15 Veterans Dr. Decherd | 931-308-8364 | [www.mitzirigsbypmt.com](http://www.mitzirigsbypmt.com)  
Hours: 9am-6pm M-F, Sat 8am-12pm

THE LOCAL MOVER  
615-962-0432

Need More Room?

We Sell Boxes!

**Sewanee Mountain Storage**  
(931) 598-5682  
Dan & Arlene Barry

Hwy 41 - Between Sewanee & Monteagle  
5x10 | 10x10 | 10x20

■ Security Gate

■ Security Camera

For Your Antiques and Prized Possessions

Climate Control

5x5 | 5x10 | 10x10 | 10x15 | 10x20

Temperature and Humidity Regulated



BBB

## Monteagle Sewanee, REALTORS



Ray Banks, Broker/  
Owner  
931-235-3365  
[rbanks564@gmail.com](mailto:rbanks564@gmail.com)



Deb Banks, Realtor  
931-235-3385  
[debbanks8@gmail.com](mailto:debbanks8@gmail.com)



Dee Underhill Hargis,  
Broker  
931-808-8948  
[aduhargis@gmail.com](mailto:aduhargis@gmail.com)



Tom Banks, Realtor  
931-636-6620  
[tombanks9@yahoo.com](mailto:tombanks9@yahoo.com)



Anne C. Deutsch,  
Affiliate Broker  
931-205-1299  
[anne.sewanee@gmail.com](mailto:anne.sewanee@gmail.com)

Competent, Caring, Friendly, Fair—We're Here for You!

[www.monteaglerealtors.com](http://www.monteaglerealtors.com) • 931-924-7253

337 W. West Main Street, Monteagle

Find all the area MLS listings on our updated website!



## SAS MS Swim Team Hosts Snowflake Invitational

On Dec. 8, the St. Andrew's-Sewanee School middle school swim team hosted the Snowflake Invitational at the Sewanee Natatorium. Middle school swimmers came from Oakland, Catholic Middle School, Coffee County, Goodpasture Christian, Westwood, Fayetteville, Highland Rim, Riverside Christian, and Unity schools to compete against SAS and each other in this event. Despite missing several key swimmers, the Mountain Lions remained competitive due to the tenacity displayed by many swimmers who had to compete in events that were new challenges for them.

The Mountain Lions started out strong with two top-three finishes in the first two events, the boys' and girls' 200-yard medley relays. The girls' relay team, composed of eighth grader Madeline Sumpter, seventh grader Reese Michaels, and sixth graders Loulie Frazier and Sienna Barry, took third place with a time of 2:27.21. The boys then took second place in their relay thanks to strong performances by eighth graders Dylan Kinningham and Caleb Palmertree, seventh grader Jackson Frazier, and sixth grader Toby Van de Ven, posting a time of 2:27.88. Michaels then went on to take second place in the 50-yard breaststroke and third in the 500-yard freestyle, while Frazier took first in the same event for boys, respectively posting times of 40.34 and 31.97. Frazier also came in first in the boys' 200-yard freestyle, with a time of 2:15.11, and the boys' 100-yard butterfly, with a time of 1:12.19. The 50-yard backstroke was another strong event for the SAS boys, with Kinningham, Palmertree, and Van de Ven placing third, fourth and fifth.

Impressive performances also came from sixth grader Elisabeth Perkins, who lowered her 100-yard freestyle time from the beginning of the season by 14 seconds to 1:21.91 and was a key part of her relay teams; Van de Ven and Kinningham, who took third and fourth in the boys 500-yard free despite never swimming the event before; Sumpter, who swam a variety of different strokes and filled in for some of the inactive members of the team; sixth grader Chris Moore, who placed sixth in the boys 100-yard freestyle and fifth in the boys 50-yard breaststroke; and eighth grader Huxley Hume-Allingham, who placed third in the boys 50-yard breaststroke.

Overall, the Mountain Lions came in second in the meet with a combined team score of 182. The boys placed second with 127 points, while the girls placed fifth with 55 points.



On Nov. 18, Loulie Frazier broke the middle school 500 free record with a swim of 6:47.53. A second record fell on Dec. 14 when the SAS middle school girls' 400 free relay team of Sienna Barry, Libby Neubauer, Reese Michaels, and Loulie Frazier swam a 4:48.26, crushing the old 2008 record of 5:21.60!

## SES MENUS

Monday–Friday,  
Jan. 7–11  
LUNCH

**Monday, Jan. 7:** Manager's choice.

**Tuesday, Jan. 8:** Cheesy spaghetti, ham and swiss cheese sandwich, green peas, baby baked potatoes, carrot dippers, garlic breadstick, fruit.

**Wednesday, Jan. 9:** Chicken nachos, pulled pork nachos, pinto beans, buttered corn, salsa, tortilla chips, fruit.

**Thursday, Jan. 10:** Macaroni and cheese, barbecued chicken sliders, steamed broccoli, emoji potatoes, garden salad, cookie, fruit.

**Friday, Jan. 11:** Pizza, chicken and noodles, buttered corn, pinto beans, emoji potatoes, dinner roll, fruit.

### BREAKFAST

Each day, students select one or two items.

**Monday, Jan. 7:** Manager's choice.

**Tuesday, Jan. 8:** Biscuit, sausage or chicken, gravy, jelly.

**Wednesday, Jan. 9:** Egg omelet, donut holes, banana bread slice or breakfast bun.

**Thursday, Jan. 10:** Biscuit, ham, gravy, jelly.

**Friday, Jan. 11:** Oatmeal bar, cheese stick or panake/sausage stick.

Options available every breakfast: assorted cereal, assorted fruit and juice, milk varieties.

Menus subject to change.



Bella Taylor, a University women's basketball team member, poses with some of her SES kindergarten buddies.

## Student-Athletes Aid in Athlete Buddies Program

More than 50 Sewanee student-athletes participated in a program called Athlete Buddies, supported by Sewanee Elementary School (SES). In total, 64 student-athletes across 10 sports helped out at the elementary school this past semester at the school.

The program was started by assistant men's lacrosse coach Nick DiBernardo and Jalee Walters, one of the fifth grade teachers at SES.

"When Nick and I approached the idea of Athlete Buddies, we did not expect it to reach almost 70 athletes in less than a year," said Walters. "It is rewarding to see the relationships that are being built among our Elementary students and University students. As a teacher, it is extremely gratifying to watch our students light up when their 'buddy' shows up to their classroom."

"On behalf of Sewanee Elementary School, we would like to thank the Sewanee Athletic Department and all the student-athletes who participated for volunteering their time in our community. We look forward to a new group of volunteers next semester."

## Michael A. Barry LAND SURVEYING & FORESTRY

- ★ ALL TYPES OF LAND SURVEYS
- ★ FORESTRY CONSULTING

(931) 598-0314 | (931) 308-2512

## Christ Church Monteagle

wishes you

Christmas Blessings  
and a  
Good New Year.



Christmas Eve at 5 pm:  
Holy Communion with Carols  
Christmas Feast Following

Christmas Day at 11 am:  
Holy Communion

December 30 at 10:30 am:  
Holy Communion

January 6 at 10:30 am:  
Epiphany Service



## Tea on the Mountain

For a leisurely luncheon  
or an elegant afternoon tea

11:30 to 4 Thursday through Saturday

**DINNERS BY RESERVATION**

(931) 592-4832

178 Oak Street, Tracy City



**MOLLIKA  
CONSTRUCTION LLC**

931 205 2475

WWW.MOLLIKACONSTRUCTION.COM

- CRAFTSMANSHIP ▪
- CREATIVITY ▪
- SUSTAINABILITY ▪

## BUG PROBLEMS?

We can help! Call us for a free inspection!

### BURL'S TERMITE & PEST CO.

TERMITE—PEST—VAPOR CONTROL  
Bonded • Insured • Home-Owned & Operated  
105 Ake St., Estill Springs  
(931) 967-4547 or [www.BurIsTermite.com](http://www.BurIsTermite.com)  
Charter #3824 • License #17759



## Squeaky Clean Housekeeping

My reputation is built upon your satisfaction.  
Dependable, hardworking, fast service and  
reasonable rates!

VACUUMING  
DUSTING  
LAUNDRY  
FLOORS



FREE ESTIMATES  
**KATHY WILSON**  
(520) 260-5959



PLANT CARE  
BATHROOMS  
DISHES  
FURNITURE



G. Robert Tubb II, Owner  
931-967-3595  
[A1ChimneySpecialist.com](http://A1ChimneySpecialist.com)



**A-1  
CHIMNEY  
SPECIALIST**

CSIA Certified Technicians  
Video Inspections • Sweeping  
Restoration • Masonry Repair  
Custom Caps & Dampers  
Leak Repair & Water Proofing  
Wood Stove & Chimney Installs  
Gas Log Service & Installs  
Dryer Vent Cleaning/Repair



## SEWANEE AUTO REPAIR Complete Auto & Truck Repair

Tune-ups • Tires • Tire Repair • Brakes • Steering  
• Oil Changes • Batteries • Computer Diagnostics

**All Makes & Models • Service Calls •**

**Quality Parts**

**ASE Master Certified Auto Technician •**

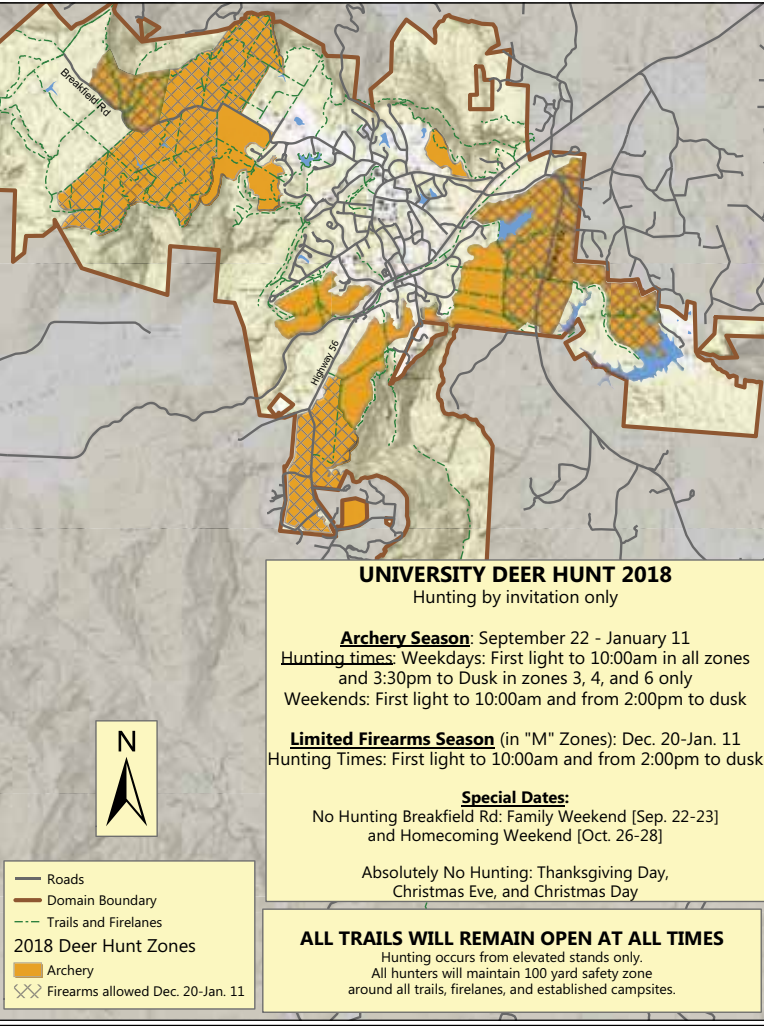
**31 Years' Experience**

Open 7 to 5 M-F

(931) 598-5743 • 76 University Ave.







Deer hunt map.

# Deer Hunt 2018-2019

The 2018 hunting season in Sewanee runs discontinuously until Jan. 11, 2019. This year marks the 16th year of organized hunting on the Domain after a resolution passed by the University trustees in 2001 requested that the deer herd be controlled. The University deer hunt is a private hunt by invitation only. No hunting is allowed without explicit written permission.

The current hunt is organized around the 2016 White tailed deer management plan, <[http://www.sewanee.edu/media/offices/domain-management/White\\_tail\\_deer\\_management\\_plan\\_Final\\_1\\_26\\_2016.pdf](http://www.sewanee.edu/media/offices/domain-management/White_tail_deer_management_plan_Final_1_26_2016.pdf)>. This document outlines both the population and habitat goals, and the steps involved to reach those goals.

The archery hunt is first light to 10 a.m. on weekdays in all zones. In zones 3, 4, and 6, hunting will be from 3:30 p.m. to dusk. On weekends hunting times are first light to 10 a.m., and 2 p.m. to dusk. A limited firearms season (in "M" zones) is first light to 10 a.m. and from 2 p.m. to dusk. There will be no hunting on Christmas Eve or Christmas Day. As always, all trails and firelanes remain open to recreational use during the season and hunters maintain a 100-yard safety zone around all recreational trails.

As in previous years, there may be a surplus of animals available for local families. If you are interested in picking up a field-dressed deer for processing, please email <[domain@sewanee.edu](mailto:domain@sewanee.edu)>. For more information on the University hunting program and specific rules and times, please visit <<http://www.sewanee.edu/offices/oess/domain/ecosystem-management/deer-hunting/>>.

**HEARING HEALTH NEWS**  
*by Debbie Gamache,*  
*M. S. CCC-A Audiologist*  
**HEARING AID CARE**

**CHRISTMAS**  
The Gift of Love  
The Gift of Peace  
The Gift of Happiness  
May all these be yours  
at Christmas  
**MERRY CHRISTMAS!**  
FROM  
*Debbie Gamache's*  
**THE HEARING CENTER L.L.C.**

*A Full Service Hearing Center*  
(931)393-2051  
705 NW Atlantic St. Suite B Tullahoma, TN  
**www.thehearingcenterllc.com**



Amias



Allie

# Pets of the Week

## Meet Amias & Allie

Amias was originally picked up by the local animal control as a stray. We transferred him over to our facility for a potential adopter, and sadly he was too much to handle for the family that had another pet in the home. We are now looking for a very special home with no children under the age of 16. We would also love for Amias to be the only pet in the home, due to the special attention he will need. He is certainly a special needs dogs, with limited vision in one eye and mostly deaf. He is very sweet and playful, but he does have some minor behavior issues, that with the proper training should improve. He is very vocal and energetic. He loves toys, treats, and long naps. He is currently recovering from demodex mange (not contagious). He will be neutered and available to go home after he is cleared medically by the vet. If you are interested in Amias, come spend some time with him at the shelter and see if you can give him the special attention he needs and deserves.

Allie is a sweet, charming and beautiful tabby cat. She is one of our senior cats at five-years old. You will notice Allie has a clipped/tipped ear. This is because she was once a feral cat—it was surgically clipped to ID her as a sterilized feral cat. She has come out of her shell in the past few weeks and is thriving in her environment here at the shelter. She loves to observe the world from a window in our Golden Girl adult community room. She does not play with toys, for she thinks she is too mature for that! If you show her some affection, you will steal her heart and be a forever friend. She would love a home of her own where she can spend time indoors gazing out a nearby window. Come see Ms. Allie and let her steal your heart. Allie is current on all vaccinations, spayed, and ready for her furever home!

Animal Harbor offers substantial adoption fee discounts for seniors and veterans. Pets adopted from Animal Harbor qualify for a free post-adoption wellness exam by local veterinarians.

Animal Harbor is located at 56 Nor-Nan Rd., off AEDC Road, in Winchester. Call Animal Harbor at 962-4472 for information and check out the other pets at <[www.animalharbor.org](http://www.animalharbor.org)>. Enter the drawing on this site for a free spay or neuter for one of your pets. Please help Animal Harbor continue to save abandoned pets by sending your donations to Animal Harbor, P.O. Box 187, Winchester, TN 37398.

# Season's Greetings

**Winchester Podiatry**  
**CHARLES D. GANIME, DPM**  
Board Certified in Foot Surgery  
Diplomate, American Board of Podiatric Surgery  
New Patients of All Ages Welcome! We Treat Your Feet! Most Insurance Accepted, Including TennCare  
155 Hospital Road Suite 1, Winchester.  
[www.winchesterpodiatry.com](http://www.winchesterpodiatry.com)  
**931-968-9191**

**DEPENDABLE AFFORDABLE RESPONSIVE**  
**HOME REPAIR AND REMODELING**  
**EXPERT HANDYMAN**  
**KEN O'DEAR**  
25 YEARS EXPERIENCE  
SATISFACTION GUARANTEED  
**931.235.3294**  
**931.779.5885**

**J & J GARAGE**  
**COMPLETE AUTO REPAIR**  
• Import & Domestic  
• Computerized 4-wheel alignments  
• Shocks & Struts • Tune-ups • Brakes  
Our work is guaranteed  
More than 37 years of experience  
Hwy 41-A between Sewanee & Monteagle  
Mon.-Fri. 7:30-5:30

Jerry Nunley,  
owner  
598-5470

# NATURE NOTES

by Yolande Gottfried

## White Pine

Earlier this week I was uprooting white pine seedlings and small saplings in the woods around our house, planning to use the greenery for decorations. One might wonder why I thought it was OK to pull up white pines. The main reason is that we are trying to control their spread on our property—two large, mature white pines at the entrance to the driveway are reproducing widely.

White pines are the easiest among our local pines to learn to identify. They have needles in clusters of five and branches in whorls along the trunk. In the eastern U.S., they are the most shade-tolerant pine and the only one that will grow under deciduous trees. For that reason, they could easily become well-established under our oaks. But, they are not a part of the native flora on the Southern Cumberland Plateau. In Tennessee, they are native in the northern part of the plateau and east in the mountains, and in disjunct areas on the western Highland Rim. Around Sewanee they have been planted and have spread from there. Studies are being done at the University to learn the effect of this locally invasive species on native hardwood communities and on the native pines and to eradicate it in some areas, hoping to promote the establishment and growth of the native pines and hardwoods. We will continue to harvest them on our property and use some, though scraggly, as our Christmas trees.

# State Park

Tuesday, Jan. 1

**Stone Door New Year's Day Hike (free)**—Join Ranger Dan Wescoat at 7 a.m. at Stone Door parking lot, 1183 Stone Door Rd. Beersheba Springs, to greet the first sunrise of 2019. The Great Stone Door was used by early settlers as a passageway from the top of the plateau into the gorges below. Like a giant door left ajar, the crack is 10 feet wide and 100 feet deep. The surrounding cliffs offer spectacular views across the Savage Gulf State Natural Area. Wear sturdy shoes, bring a bottle of water, and don't forget your camera!

The South Cumberland State Park Visitors' Center is located on Highway 41 South between Monteagle and Tracy City and is open 8 a.m.-4:30 p.m. seven days a week. For more information call (931) 924-2980.

# WEATHER

DAY	DATE	HI	LO
Mon	Dec. 10	33	21
Tue	Dec. 11	43	32
Wed	Dec. 12	46	39
Thu	Dec. 13	54	48
Fri	Dec. 14	51	41
Sat	Dec 15	41	39
Sun	Dec 16	46	38
Week's Stats:			
Avg max temp =		45	
Avg min temp =		37	
Avg temp =		41	
Precipitation =		1.42"	
Reported by Sandy Gilliam			
Domain Ranger			



# Classifieds

## ART

the **ARTISAN** DEPOT  
Gallery & Gifts  
**NOW JURYING FOR FINE CRAFTS**  
204 E. Cumberland St., Cowan  
Open Thurs-Sun • 931-308-4130

## ENGINE REPAIR

**SARGENT'S SMALL ENGINES:** Repairs to All Brands of Equipment: Lawn mowers (riding or push), String trimmers, Chainsaws, Chainsaw sharpening, New saw chains. Pickup and Delivery Available. (931) 212-2585, (931) 592-6536.

## EVENT VENUE

**SHELTON FARMS** in beautiful Pelham valley would love to host your special day or event. Check us out on Facebook! (931) 580-3663.

## FLORIST

Walk-In Cooler Filled with Flowers!  
**Monteagle Florist**  
333 West Main Street, Monteagle  
(931) 924-3292

## FOR SALE

**TWO BEAGLES FOR SALE:** Eight months old, spayed, good hunters. Asking \$120/negotiable. Call (931) 592-2629.

## HOMES FOR RENT/SALE

**FOR RENT:** 3BR/2BA log cabin with bluff view. In Monteagle. Furnished. No pets. No smoking. \$800/mo. + utilities. (931) 592-6895 or (931) 924-2270.

**FOR RENT, AVAILABLE NOW:** Very nice 2BR/2BA coach house in Sewanee. Four miles from campus. Fully furnished. All utilities included. C/H/A. W/D. WiFi. Satellite TV/DVR. \$1,100/mo. Contact University Realty, (931) 598-9244, or Ed Hawkins, <edhawkins@bellsouth.net>.

**FOR RENT:** 3BR/2BA mobile home. Beautiful setting in a meadow, just past Gudger Road. Open living room, kitchen. No smoking; no pets. \$700/month + utilities. University Realty, (931) 598-9244, or Ed Hawkins, <edhawkins@bellsouth.net>.

**FOR RENT WITH OPTION TO PURCHASE:** 4BR/2BA home on 8 private acres, Deepwoods, behind SAS. All appliances, C/H/A, private, quiet, yet close to SAS. Four miles from Sewanee. Magnificent bluff view. Call (931) 212-0447 days.

## INSIDE YARD SALE

**MIDWAY MARKET:** Great bargains on everything! Children's/adults' apparel, household items, movies/games and more. Open Friday/Saturday, 8 a.m.-?? 969 Midway Rd., Sewanee. (931) 598-5614.

## LAND FOR SALE

**BEAUTIFUL WOODED HOME-SITE:** 2.3 acres. R-1 zoned. Laurel Lake Road in Monteagle. All utilities/city service. Spring-fed creek. \$27,000. Terms. Call (850) 261-4727 or (850) 255-5988.

**LOST COVE BLUFF LOTS**  
www.myspoint.net  
931-703-0558

## LAWN CARE

**CHAD'S LAWN & LANDSCAPING**  
-FREE ESTIMATES-  
\* Lawn care & Design (Mulch & Planting)  
ALSO: \* Tree Trimming & Removal  
\* Pressure Washing \* Road Grading  
\* Stone Patio/Fireplace \* Garden Tilling  
\* Leaf Pickup & Blowing  
(931) 308-5059

**EAGLE LANDSCAPING & LAWN MAINTENANCE CO.**  
Now Offering Specials for the WINTER!  
We offer lawn maintenance, landscaping, hedge/tree trimming & more!  
Please call for your free estimate  
(931) 598-0761 or (931) 636-0383

**LONG'S LAWN SERVICE**  
• landscaping & lawn care  
• leaf removal • mulch  
Local references available.  
Jayson Long  
(931) 924-LAWN (5296)



**If it matters to you,  
it matters to the  
community.**



Share your good news with more people weekly!  
call: (931) 598-9949  
email: news@sewaneemessenger.com  
view: www.sewaneemessenger.com

## LOCAL SERVICES

**MARK'S HOME REPAIR**  
KITCHEN AND BATH REMODELING  
Insured. Decks, Roofing, Electrical,  
Plumbing, Drywall, Tile & Hardwood  
Floors, Outbuildings, Pressure Washing.  
MARK GREEN, owner  
931-636-4555 | mdgreen41@gmail.com

**WATER SOLUTIONS**  
Joseph Sumpter  
Owner/Licensed Residential Contractor  
Specializing in drainage and rainwater  
collection systems  
598-5565  
www.josephsremodelingsolutions.com

**MONTEAGLE SECURITY OPERATIONS**  
CCTV, BURGLAR & FIRE ALARMS  
931-924-3216 800-764-7489  
monsecurity.com TN license 1912

**CHARLEY WATKINS PHOTOGRAPHER**  
Sewanee, TN  
(931) 598-9257  
http://www.photowatkins.com

**DAVID M. BURNETT**  
LADAC II, NCAC I, QCS  
ADDICTIONS & CODEPENDENCY  
COUNSELOR  
DAVIDM.BURNETT1@GMAIL.COM  
PHONE: 423-280-0756  
WWW.DAVIDMBURNETT.COM

**MASSAGE**  
Regina Rourk Childress  
Licensed Massage Therapist  
www.reginarourk.com  
~ GIFT CERTIFICATES ~  
(931) 636-4806

**GUTTERS CLEANED:**  
Reasonable rates. Call Sandy  
Gilliam, (931) 691-4435

**KEEP IN TOUCH**  
www.sewaneemessenger.com  
www.themountainnow.com  
ads@sewaneemessenger.com  
f i b e

**YOUNG LIVING**  
ESSENTIAL OILS  
Independent Distributor  
Ray and April Minkler  
styraco@blomand.net, april@minkler@blomand.net  
931-592-2444 931-434-6206  
For over 8,700 testimonials see  
www.oil-testimonials.com/1860419

## LOCAL SERVICES

**Lyn Hutchinson PHOTOGRAPHY**  
lynhutchinson.smugmug.com

**Needle & Thread**  
\*Alterations \*Repairs \*Cushions & Pillows  
For a reasonable price contact  
Shirley Mooney  
161 Kentucky Ave.  
Sewanee, TN 37375  
(931) 598-0766  
Monday-Wednesday, 9 a.m. to 4 p.m.

**Eagle Military ANTIQUES**  
Buyers of Civil War, WW1, WW2  
military weapons, uniforms, equip-  
ment, and all interesting antiques.  
Call Colonel (ret.) Ron Bailey, 931-636-1794

**Lakeside Collision**  
"Done Right, the First Time"  
103 Mabree Ave., Monteagle  
Ph: 931.924.3316 | Cell: 931.235.3316  
lakesidecollision00@gmail.com

**King's Tree Service**  
Topping, trimming,  
bluff/lot clearing, stump  
grinding and more!  
\*Bucket truck or climbing\*  
Free wood chips with job  
Will beat any quoted price!  
Satisfaction guaranteed!!  
—Fully licensed and insured—  
kingstreeservice.com  
Call (931) 598-9004—Isaac King

## MOBILE WELDING

**MOBILE WELDING:** Skid-Steer, Track Loader, Dirt Work. Franklin, Grundy, Marion Counties. References. Reasonable Rates. Quick Response. Call Paul, (615) 796-8720.

**CALL US! • 598-9949**  
Classified Line Ad Rates:  
\$3.25 first 15 words,  
10 cents each addl. word  
You can charge it!  
(\$10 minimum)

## PUBLIC NOTICE

**Retel Services (on behalf of Vogue Towers LLC)** is proposing to construct a 199-foot overall height monopole telecommunications tower located off Texas Avenue, Sewanee, Franklin County, Tennessee (N35° 12' 34.0"; W85° 55' 23.4"). The tower is anticipated to have FAA Style E (L-864/L-865/L-810) lighting.

Vogue Towers LLC invites comments from any interested party on the impact the proposed undertaking may have on any districts, sites, buildings, structures or objects significant in American history, archaeology, engineering, or culture that are listed or determined eligible for listing in the National Register of Historic Places. Comments pertaining specifically to historic resources may be sent to Environmental Corporation of America, ATTN: Dina Bazzill, 1375 Union Hill Industrial Court, Suite A, Alpharetta, Georgia 30004. Ms. Bazzill can be reached at (770) 667-2040 ext. 111. Comments must be received within 30 days of the date of this notice.

In addition, any interested party may also request further environmental review of the proposed action under the FCC's National Environmental Policy Act rules, 47 CFR §1.1307, by notifying the FCC of the specific reasons that the action may have a significant impact on the quality of the human environment. This request must only raise environmental concerns and can be filed online using the FCC pleadings system at www.fcc.gov or mailed to FCC Requests for Environmental Review, Attn: Ramon Williams, 445 12th Street SW, Washington, DC 20554 within 30 days of the date that notice of this proposed action is published on the FCC's website. Refer to File No. A1121324 when submitting the request and to view the specific information about the proposed action. U2817 CVG

## WOODWORKING

**The Gnarled Oak**  
Antique  
furniture refinishing  
(931) 592-9680  
Bill Childers, Prop

## Support local businesses!

**CURBSIDE RECYCLING**  
Residential curbside recycling pickup in Sewanee is on the first and third Friday of each month. Recyclable materials must be separated by type and placed in blue bags by the side of the road no later than 7:30 a.m. Please do not put out general household trash on this day. Blue bags may be picked up in the University Lease and Community Relations Office, 400 University Ave. (the Blue House) or at the Facilities Management office on Georgia Avenue.

# GLASS RECYCLING GUIDELINES

■ **Recycle empty glass containers only.**  
Remove caps and lids.

■ **Keep it clean.**  
No food residue.  
No ceramics,  
mirrors, lightbulbs,  
drinking glasses.

■ **Separate by color:**  
■ **BLUE/GREEN**  
■ **BROWN**  
■ **CLEAR**

■ **Do not leave items outside of bins. Do not leave trash and boxes behind.**



Glass recycling bins are available on Kennerly Avenue in Sewanee, behind the Facilities Management compound. This effort in landfill waste reduction and glass recovery is provided by the University of the South.





# BARDTOVERSE

by Phoebe Bates

## The Night before Christmas on the Moon

by Scott Bates

'Twas the night before Christmas, and up on the moon  
The earth was as bright as a big blue balloon;  
The stockings were hung in the station with care  
In hopes that Saint Nicholas could find his way there;  
The kids were all snug in their pneumatic sacks  
While visions of mooncycles raced up their backs,  
And Mom in her curlers and I in my phones  
Had just settled down like a couple of drones,  
When over the radar there rose such a ringing,  
I hopped from my hammock to see what was swinging.  
To the airlock I flew and unfastened the catch,  
Adjusted my helmet and opened the hatch.  
The earth on the layers of meteor dust  
Gave a heavenly glow to the crater's rough crust,  
When what should appear like a vision from Mars  
But a miniature spacecraft and eight tiny stars  
With a miniature pilot, so cheerful and quick,  
I knew it could only be "Outer-Space Nick!"  
More rapid that rockets his comets they came,  
And I heard him by radio call them by name:  
"Now, Castor! now Pollux! now, Phoenix and Pharus!  
On, Isaac! On, Tycho! On Pi and Polaris!  
To the top of the tanks! To the nuclear boom!  
Now, blast away! blast away! blast away! ZOOM!"  
As sailplanes before the low stratus clouds fly  
When they meet with a thermal, rise up to the sky,  
So up to the dome-top the comets they soared  
With the capsule of toys and its pilot aboard.  
And then in a moment, I heard on my set,  
The phizzing and whizzing of each little jet.  
As I closed up the hatch and was turning around,  
Down the fuel shaft Saint Nicholas came with a bound.  
He was dressed all in metal, impeccably shined,  
And his outerspace jacket with stardust was lined;  
In a pack on his back he had toys without measure,  
And he looked like a skindiver loaded with treasure!  
His eyes—how they sparkled! His teeth, how they shone!  
His cheeks were like novae, his nose like a cone!  
Like the bow of the Archer, his mouth it was drawn,  
And the beard on his chin was as white as the Swan;  
His belt was bejeweled like the belt of Orion,  
And his mane was as frosty as Leo's the Lion;  
From his shoulders guide rockets projected like wings,  
And his head was, like Saturn, surrounded by rings;  
His eyes were so bright, and his smile was so mellow,  
There never was ever a farther-out fellow!  
A wink of his eye and a wave of his hand,  
Soon gave me to know he had everything planned;  
He said not a word, but went straight to his job,  
And filled all the stockings; then, turning a knob  
And pressing a switch on his oxygen hose,  
And giving a spring, up the fuel-shaft he rose;  
He jumped in his ship, gave a buzz to his team,  
And away they shot off like a nuclear stream.  
But as I turned back to our little moon station,  
I spied in the heavens a new constellation;  
There was spelled out in space, in great letters of light,  
MERRY CHRISTMAS TO ALL, AND TO ALL A  
SPACE FLIGHT!

## Community-wide Calendar on the go!

WWW.SEWANEEMESSENGER.COM/  
CALENDAR/



**NEW YEAR'S  
EVE DINNER**

**\$59.99 per person**

Monday, December 31,  
at 6:30 p.m.  
Complimentary glass of  
champagne!  
Call for your table today!  
(931) 924-3869.



Mountain's best breakfast 8-10 a.m., daily.  
Tallulah's Wine Lounge  
(931) 924-3869 ~ www.monteagleinn.com

# Community Calendar

## Today, Friday, Dec. 21 • Winter begins

- 7 a.m. Curbside Recycling
- 8:30 a.m. Deep Stretch Yoga, Comm Ctr.
- 9 a.m. CAC office open, until 11 a.m.
- 10 a.m. Game day, Senior Ctr.
- Noon Spinal Spa, Kim, Fowler Ctr.

## Saturday, Dec. 22

- 9 a.m. MGT 5K Parkrun, Pearl's parking lot, <parkrun.us/register>
- 3 p.m. Christmas Open House, St. Mary's Sewanee, until 6 p.m.

## Sunday, Dec. 23

- 2 p.m. Knitting circle, Mooney's, until 4 p.m.
- 4 p.m. Hatha Yoga, Comm Ctr.

## Monday, Dec. 24 • Christmas Eve

- 5 p.m. Yoga, Strength/Healing, Comm Ctr.

## Tuesday, Dec. 25 • Merry Christmas!

## Wednesday, Dec. 26

- 5:30 p.m. Hatha Yoga, Comm Ctr.

## Thursday, Dec. 27

- 7 a.m. Qi Gong on the Bluff, Wall, St. Mary's Sewanee
- 10 a.m. Tai Chi, intermed., Comm Ctr.
- 11 a.m. Tai Chi, advanced, Comm Ctr.
- 1 p.m. Folks@Home caregiver's group, St. Mark's Hall, Otey
- 2 p.m. Knitting circle, Mooney's, until 4 p.m.
- 6 p.m. Karate, youth, Legion Hall; adults, 7 p.m.

## Friday, Dec. 28

- 8:30 a.m. Deep Stretch Yoga, Comm Ctr.

## Saturday, Dec. 29

- 9 a.m. MGT 5K Parkrun, Pearl's parking lot, <parkrun.us/register>

## Sunday, Dec. 30

- 2 p.m. Knitting circle, Mooney's, until 4 p.m.

## Monday, Dec. 31 • NewYear's Eve

- 9:30 a.m. Yoga, St. Mary's Sewanee
- 10:30 a.m. Chair Exercise, Ruth, Senior Ctr.

## Tuesday, Jan. 1, 2019 • Happy New Year!

## Wednesday, Jan. 2

- 9 a.m. CAC office open, until 11 a.m.
- 10:30 a.m. Chair Exercise, Ruth, Comm. Ctr.

## Thursday, Jan. 3

- 7 a.m. Qi Gong on the Bluff, Wall, St. Mary's Sewanee
- 8 a.m. Monteagle-Sewanee Rotary, Sewanee Inn
- 9 a.m. CAC office open, until 11 a.m.
- 10 a.m. Tai Chi, intermed., Comm Ctr.
- 11 a.m. Tai Chi, advanced, Comm Ctr.
- Noon Lifelong Learning, Lower Cravens Hall
- 1 p.m. Folks@Home caregiver's group
- 2 p.m. Knitting circle, Mooney's, until 4 p.m.
- 6 p.m. Karate, youth, Legion Hall; adults, 7 p.m.

## Friday, Jan. 4

- 7 a.m. Curbside Recycling
- 8:30 a.m. Deep Stretch Yoga, Comm Ctr.
- 9 a.m. CAC office open, until 11 a.m.
- 10 a.m. Game day, Senior Ctr.

## Saturday, Jan.5

- 9 a.m. MGT 5K Parkrun, Pearl's parking lot, <parkrun.us/register>

## Sunday, Jan. 6 • CAC Pantry Sunday

- 2 p.m. Knitting circle, Mooney's, until 4 p.m.
- 4 p.m. Hatha Yoga, Comm Ctr.

## Monday, Jan. 7

Classes resume Grundy, Marion county schools

- 9 a.m. CAC office open, until 11 a.m.
- 9 a.m. Pilates, intermediate, Kim, Fowler Ctr.
- 10:30 a.m. Chair Exercise, Ruth, Senior Ctr.
- 5 p.m. Pilates, Golfers, Kim, Fowler Ctr.
- 5:30 p.m. Yoga for Strength/Healing, Comm Ctr.

## Tuesday, Jan. 8

Classes resume Franklin, St. Andrew's-Sewanee schools

- 7 a.m. Qi Gong on the Bluff, Wall, St. Mary's Sewanee
- 8 a.m. Godly Play/PMO, Otey, until 10:30 a.m. <oteyformation@gmail.com>
- 8:30 a.m. Deep Stretch Yoga, Darrylann, Comm Ctr.
- 9 a.m. CAC office open, until 11 a.m.
- 9 a.m. Pilates, beginners, Kim, Fowler Ctr.
- 10 a.m. Village Update, Gladu, Blue Chair
- 10:30 a.m. La Leche League, Comm Ctr.
- Noon Pilates, intermediate, Kim, Fowler Ctr.
- 5:30 p.m. Yoga, Darrylann, St. Mary's Sewanee
- 6 p.m. Tracy Acoustic Jam, Water Bldg, Tracy

## Wednesday, Jan. 9

- 9 a.m. CAC office open, until 11 a.m.
- 9 a.m. Pilates, intermediate, Kim, Fowler Ctr.
- 10:30 a.m. Chair Exercise, Ruth, Comm. Ctr.
- 5 p.m. Pilates. Tennis, Kim, Fowler Ctr.
- 5:30 p.m. Hatha Yoga, Helen, Comm Ctr.

## Thursday, Jan. 10

- 7 a.m. Qi Gong on the Bluff, Wall, St. Mary's Sewanee
- 8 a.m. Monteagle-Sewanee Rotary, Sewanee Inn
- 9 a.m. CAC office open, until 11 a.m.
- 9 a.m. Pilates, beginners, Kim, Fowler Ctr.
- 10 a.m. Tai Chi, intermed., Comm Ctr.
- 11 a.m. Tai Chi, advanced, Comm Ctr.
- Noon Pilates, intermediate, Kim, Fowler Ctr.
- 1 p.m. Folks@Home caregiver's group
- 2 p.m. Knitting circle, Mooney's, until 4 p.m.
- 6 p.m. Karate, youth, Legion Hall; adults, 7 p.m.

## Friday, Jan. 11

- 8:30 a.m. Deep Stretch Yoga, Comm Ctr.
- 9 a.m. CAC office open, until 11 a.m.
- 10 a.m. Game day, Senior Ctr.
- Noon Spinal Spa, Kim, Fowler Ctr.

## Our best wishes for your Christmas and holiday season.



Custom home remodeling begins with...

**Joseph's Remodeling Solutions**  
A Division of Sumpter Solutions, LLC

**Taking Quality to the Next Level**  
Licensed - Insured - Green Certified

**931-598-5565**

joseph@josephsremodelingsolutions.com  
www.josephsremodelingsolutions.com

## Local 12-Step Meetings

### Friday

- 7 p.m. AA, open, Christ Church, Tracy City

### Saturday

- 7:30 p.m. NA, open, Decherd United Methodist
- 7:30 p.m. AA, open, Clai-borne Parish House, Otey

### Sunday

- 6:30 p.m. AA, open, Holy Comforter, Monteagle

### Monday

- 5 p.m. Women's 12-step, Brooks Hall, Otey
- 7 p.m. AA, open, Christ Church, Tracy City

### Tuesday

- 7 p.m. AA, open, First Baptist, Altamont
- 7:30 p.m. AA, open, Clai-borne Parish House, Otey

### Wednesday

- 10 a.m. AA, closed, Cliff-tops, (931) 924-3493
- 7 p.m. NA, open, Decherd United Methodist
- 7:30 p.m. AA, open, Holy Comforter, Monteagle

### Thursday

- 6 p.m. ACA, open, St. James Episcopal, Midway
- 7 p.m. Al-Anon, First UMC, Winchester