



Saida Thomas, a fourth-grader at Sewanee Elementary School, reads during Lessons and Carols. Photo by Lyn Hutchinson

Sewanee Ensembles Sing and Play During the Holidays

University of the South music ensembles will present a variety of concerts as the semester closes and the holidays approach. All performances are free and open to the public.

The Folk Music Collective, directed by James Carlson, visiting professor of music, will present a concert at 6:30 p.m., Wednesday, Dec. 14, in St. Luke's Chapel. The group will perform Irish, Czech, Klezmer, and French folk music.

Three Sewanee a cappella groups will join forces to present a concert at 7 p.m., Wednesday, Dec. 14, in Guerry Auditorium. The 18-member group Cambiata will perform an eclectic program including "Run to You" by Pentatonix and "This Christmas" by Donny Hathaway. Cadence, a women's ensemble of 20, will perform a variety of selections including "The Way I Am" by Ingrid Michaelson, and "One and Only" by Adele. Key of D, the nine-member men's group formed four years ago, will also perform on the program.

At 7:30 p.m., today (Friday), Dec. 9, the Sewanee Symphony Orchestra (SSO) will perform a winter concert, Feelin' Festive, in Guerry Auditorium with Artistic Director César Leal conducting. The Sewanee Chorale, under the direction of Ruth Cobb, will join the orchestra in the performance of John Rutter's arrangements of "O Holy Night" and "We wish you a Merry Christmas." Jessica Usherwood, visiting assistant professor of voice, is guest soloist. Movements from two Handel oratorios will also be performed, "And the Glory of the Lord" from Messiah, and "Hallelujah, Amen" from Judas Maccabeus. Willcock's well-known arrangement of "O Come all ye Faithful" will include audience participation. The program will also include orchestral selections "Around the World at Christmas Time" by Chase, "Festive Songs of Hanukah" by Holcombe, and "A Christmas Festival" by Anderson.

Help Provide Holiday Joy for Others

In just a few weeks, it will be Christmas. While many are already planning ahead about gifts to buy and food to eat, there are those not so fortunate. In our area, there are children who may not get presents and families that may not have an abundant holiday meal.

Each year the Sewanee Volunteer Fire Department (SVFD), in conjunction with FROST (the department's Fund Raising Operational Support Team), organizes the purchasing and distribution of food and toys for these families. All items will be delivered the morning of Dec. 23 by the SVFD and FROST.

But this important program cannot happen without help from the community. Please consider making a donation of money, nonperishable food items or new toys to Operation Noel this year and give back to your community this Christmas season.

Families eligible for Operation Noel must live in the following communities: Sewanee, Midway, Jump Off and Sherwood Road to the top of Sherwood Mountain (but not into Sherwood).

Every family needs to fill out a new application, even if they have received from Operation Noel before. An application ensures that organizers have all the pertinent information so they can provide for everyone in need. The deadline for returning applications is Monday, Dec. 12. A form can be found on page 8. If you would like to make a donation of money, nonperishable food items or new toys, please take items to Fire Chief David Green's office at the fire hall behind duPont Library, or Print Services next door to University Book and Supply Store. For more information call 598-3400 and leave a message.



The Christmas tree in downtown Sewanee was lit on Dec. 2, during the Light Up the Village Festival.

'Sewanee Review' Revises Itself

by Kevin Cummings
Messenger Staff Writer

One of the top-tier literary magazines in the country is in the midst of a renovation, as editor Adam Ross now carries the torch of the 124-year-old "Sewanee Review."

With a new home, moving from central campus to the two-story Watson-Torian house on South Carolina Ave., the Review will release its next edition in January, featuring a design revamp by acclaimed book designers Peter Mendelsund and Oliver Munday. The blue cover is gone and will vary issue to issue, and the Review will include photos for the first time, Ross said.

"The magazine has been updated and it's given it a more modern look and feel," he said. "Part of that is to give the Review more shelf appeal as we move back into bookstores over the coming year."

Ross, an accomplished novelist and journalist, assumed the helm of the Review when George Core retired this year after 43 years as editor.

"While we've preserved the original spirit of the Sewanee Review in terms of its dedication to excellent writing in poetry, fiction, criticism and non-fiction, obviously there's an overhaul taking place," Ross said.

In addition to subscriptions and bookstore purchases, readers will also be able to access The Review online. The website is part of the overhaul,

(Continued on page 6)



Betty Carpenter, left, of the Community Action Committee and Amy Jones Wilson of the Morton Memorial Food Ministry were presented with plaques and proceed checks for \$6,000 each from the Monteagle Sewanee Rotary Club sponsored Hunger Walk fundraiser.

INSIDE THIS ISSUE

LT Letters to the Editor, Serving Where Called.....	AE ArtsPage 10
M Meetings & Events.....	Sp Sports NewsPage 12
Ch Church News.....	NN Nature NotesPage 14
Co Community News	CA Classified AdsPage 15
Ed Education News.....	CC Comm. CalendarPage 16

P.O. Box 296
Sewanee, TN 37375

Letter

MAGICAL FESTIVAL

To the Editor:

There was a sense of anticipation and the air was brisk. It seemed as if everyone knew St. Nick was on his way. Cookies, hot chocolate and warm cider were all prepared with love, and hundreds of community members counted down to light the tree.

What a wonderful event each year in Angel Park. Thanks to all of the businesses and community members who work hard to make our annual "Light Up The Village" festival so magical. When we asked "can you?" everyone responded "of course!" It is with humble reverence that I am happy to say thank you!

The Sewanee Business Alliance makes our downtown village a special place to be. I know many of you brought gifts for Operation Noel and the Community Action Committee and for that we are truly grateful. I wish everyone could experience this hamlet. We are truly blessed.

On behalf of the SBA, I wish you all a very Merry Christmas and a healthy and prosperous New Year. God bless Sewanee and all who dwell here.

Ed Hawkins
Sewanee Business Alliance ■

Burn Ban Still in Effect

Recent rains have begun to alleviate the current drought and have lowered the wildfire risk in our community. However, Franklin County remains under a burn ban issued by the Governor that supersedes the ban issued by the University on Oct. 26. Until the Governor's ban is lifted, all outdoor burning remains prohibited in Sewanee and the surrounding areas until at least Dec. 15.

There is an arson tip hotline: 1-800-762-3017. Tips leading to an arrest are worth \$2,500.



Like the Messenger!
Let us know on
Facebook!

University Job Opportunities

Exempt Positions: Assistant/Associate University Registrar for Curriculum, Publications, and Communications, Registrar's Office; Director of Disability Support Services, Wellness Center; Director of Student Conduct, Dean of Students; International Student Services Advisor, Global Education.

Non-Exempt Positions: Access Services Specialist, LITS; Assistant Manager, Sewanee Dining; Cashier, Sewanee Dining; First Cook, Sewanee Dining; Food Service Worker, Sewanee Dining; Police Officer, Sewanee Police Department; Second Cook, Sewanee Dining; Senior Cook, Sewanee Dining. To apply or learn more go to <www.jobs.sewanee.edu> or call 598-1381.

THE SEWANEE MOUNTAIN MESSENGER

418 St. Mary's Ln.
P.O. Box 296
Sewanee, Tennessee 37375
Phone (931) 598-9949



Email news@sewaneemessenger.com
www.sewaneemessenger.com

Kiki Beavers, *editor/publisher*
April H. Minkler, *office manager*
Ray Minkler, *circulation manager*
Leslie Lytle, *staff writer*
Kevin Cummings, *staff writer/sports editor*
Sandra Gabrielle, *proofreader*
Janet B. Graham, *advertising director/publisher emerita*
Laura L. Willis, *editor/publisher emerita*
Geraldine H. Piccard, *editor/publisher emerita*

Published as a public service to the Sewanee community. 3,700 copies are printed on Fridays, 46 times a year, and distributed to numerous Sewanee and area locations across the plateau for pickup free of charge.

This publication is made possible by the patronage of our advertisers and by contributions from the University of the South (print production) and the Sewanee Community Chest.

SUBSCRIPTIONS \$75 first class.

All material in the Sewanee Mountain Messenger and on its website are copyrighted and may not be published or redistributed without written permission.

MESSENGER Break Ahead

The Messenger will be on hiatus during the holidays. There will be two more issues in December: Friday, Dec. 16 and an early edition on Wednesday, Dec. 21. The staff will take a two-week break and return to the office on Monday, Jan. 9, with the first issue of 2017 on Friday, Jan. 13.

The Dec. 21 issue, affectionately known as the "coffee table issue" will contain three weeks worth of news and calendars. Plan accordingly if you have information to submit.

Deadlines for the Dec. 21 issue are display advertising Friday, Dec. 16, at 5 p.m.; news/calendar, noon, Saturday, Dec. 17; and classified ads, noon, Monday, Dec. 19.



Christmas Sale!

December 12-16
10 a.m. to 5 p.m.

All Christmas related
items 25% off

Like Cabin Fever On Facebook

Remember Shop Local!

Located adjacent to CVS
25 Catherine Ave., Monteagle
(931) 308-9150



www.sewaneemessenger.com



Have you seen Sam the Dog?

Call in and tell us you saw
Sam to schedule an on-site
appointment!

Sweeton
Home Restoration
931-924-2444

Letters to the Editor Policy

Letters to the editor are welcome at the Sewanee Mountain Messenger and are a vital part of our community's conversation. Letters need to be no longer than 250 words and may be edited for space and clarity. We make exceptions from time to time, but these are our general guidelines.

Letters and/or their author must have some relationship to our community. We do not accept letters on national topics from individuals who live outside our print circulation area. Please include your name, address and a day-time telephone number with your letter. You may mail it to us at Sewanee Mountain Messenger, P.O. Box 296, Sewanee, TN 37375, come by our office, 418 St. Mary's Ln., or send your email to <news@sewaneemessenger.com>. —KB



Serving Where Called

Please keep the following individuals, their families and all those who are serving our country in your thoughts and prayers:

Cassidy Barry
Michael Evan Brown
Mary Cameron Buck
Lisa Coker
Jennifer Lynn Cottrell
James Gregory Cowan
Nathaniel P. Gallagher
Alex Grayson
Peter Green
Zachary Green
Robert S. Lauderdale
Dakota Layne
Byron A. Massengill
Forrest McBee
Andrew Midgett
Alan Moody
Brian Norcross
Christopher Norcross
Lindsey Parsons
Troy (Nick) Sepulveda
J. Wesley Smith
Charles Tate
Amy Turner-Wade
Ryan Turner-Wade
Tyler Walker
Jeffery Alan Wessel
Nick Worley

If you know of others in our Mountain family who are serving our country, please give their names to American Legion and Auxiliary member Louise Irwin, 598-5864.

MESSENGER DEADLINES & CONTACTS

PHONE: (931) 598-9949

News, Sports & Calendar

Tuesday, 5 p.m.

Kiki Beavers

news@sewaneemessenger.com

Kevin Cummings

sports@sewaneemessenger.com

Display Advertising

Monday, 5 p.m.

ads@sewaneemessenger.com

Classified Advertising

Wednesday, noon

April Minkler

classifieds@sewaneemessenger.com

MESSENGER HOURS

Monday, Tuesday & Wednesday

9 a.m. - 4 p.m.

Thursday—Production Day

9 a.m. until pages are completed
(usually mid-afternoon)

Friday—Circulation Day

Closed

Bradford's

Nursery & Landscaping
on the Boulevard in Winchester

CUT CHRISTMAS TREES

7-12 ft. Frasier Firs

Available now in

Two locations: Winchester and Northgate Mall

Open Mon-Sat 9-6; Sun 12:30-4:30 • 931-967-0825
1136 Dinah Shore Blvd. in Winchester

BUG PROBLEMS?

We can help! Call us for a free inspection!

BURL'S TERMITE & PEST CO.

TERMITE—PEST—VAPOR CONTROL
Bonded • Insured • Home-Owned & Operated
105 Ake St., Estill Springs

(931) 967-4547 or www.BurlsTermite.com

Charter #3824 • License #17759



**Village Laundry &
Dry Cleaning**

Professional laundry & dry cleaning services: Wash & fold on all clothing plus bed linens, uniforms, tablecloths & more. Offering alterations & repair services.

Hours: Monday-Friday, 9-5 | Saturday, 9:30-1
12569-C Sollace M. Freeman Hwy., Sewanee | 931.463.2045



MR. POSTMAN, INC.

209 South Jefferson St., Winchester
One block off square across from PO
(931) 967-5777 Fax (931) 967-5719

Mailbox Suite Rentals

—SHIPPING AND PACKING SERVICES—
Authorized shippers for UPS, Fed Ex & DHL • Open Mon-Fri 9-5

SEWANEE AUTO REPAIR

Complete Auto & Truck Repair

Tune-ups • Tires • Tire Repair • Brakes • Steering
• Oil Changes • Batteries • Computer Diagnostics

All Makes & Models • Service Calls •
Quality Parts

ASE Master Certified Auto Technician •
30 Years' Experience

Open 7 to 5 M-F

(931) 598-5743 • 76 University Ave.



Upcoming Meetings & Events

Pancake Breakfast Benefit

The Franklin County A.M. Rotary Club will be hosting a free pancake breakfast Saturday, Dec. 10, from 7:30 a.m. to 10 a.m. at San Miguel's event center in Winchester. Donations are being accepted to go to the East Tennessee Sevier County rescue efforts.

UDC Meets Dec. 10

The United Daughters of the Confederacy, Kirby-Smith Chapter 327, Sewanee monthly meeting will be at 10 a.m., Saturday, Dec. 10, at the Franklin-Pearson House, Cowan. Following the meeting members will have a luncheon at noon at Western Sirloin Steak House in Decherd.

Christmas Expo Fundraiser

There will be a Christmas Expo and a fundraiser for the Haven of Rest in Tracy City. The event will be 11 a.m.-4 p.m., Saturday, Dec. 10, at the American Legion Hall in Sewanee. There will be crafts, vendors and Christmas gifts for purchase. In addition, there is a silent auction that ends at 3:30 p.m. Proceeds will be made to the Haven of Rest to assist with funding and supplies for the residents. There will also be an Elderly tree to place donations under such as socks, mittens, gifts and other necessities.

FCDP Monthly Meeting

The Franklin County Democratic Party will have its monthly meeting at 5:30 p.m., Monday, Dec. 12, at the Norris Cope Jr. Annex, 371 4th Ave., South, Decherd. All are invited to attend.

La Leche League Meets Dec. 13

The December La Leche League meeting for breastfeeding support and information will be at 10:30 a.m., Tuesday, Dec. 13, at the Community Center, 39 Ball Park Rd. All pregnant women, mothers and babies are welcome. For more information call Pippa, (931) 463-2050.

Chapter Z of the International P.E.O. Sisterhood

The annual Christmas luncheon and auction of Chapter Z of the International P.E.O. Sisterhood will be at 9:30 a.m., Tuesday, Dec. 13, in Tullahoma. All unaffiliated members or former members of the P.E.O. Sisterhood who are in the Middle Tennessee area are welcome. For more information call (931) 962-0202.

Sewanee Utility District, Dec. 13

The Sewanee Utility District of Franklin and Marion Counties Board of Commissioners will have its regular meeting at 5 p.m., Tuesday, Dec. 13, at the utility office on Sherwood Road. If a customer is unable to attend but wishes to bring a matter to the board, call 598-5611, visit the office, or call a board member. Your board members are Art Hanson, Randall Henley, Ronnie Hoosier, Karen Singer and Ken Smith.

Sewanee Garden Club

The next meeting of the Sewanee Garden Club will be at 1:30 p.m., Wednesday, Dec. 14, at the home of Pixie Dozier. Jim Peters will be highlighting "Birds at Our Feeders."

Members are requested to bring a non-perishable food item for the Community Action Committee. Any members eager to bake for the holidays may bring a dozen or less of a favorite cookie as a treat to share with the group.

Guests and visitors are always welcome. For more information, please contact Flournoy Rogers at (931) 598-0733 or <semmes-rogers@gmail.com>.

German Christmas Service and Party, Dec. 14

The 2016 German Christmas service will be in St. Augustine's Chapel, Wednesday, Dec. 14, at 7:30 p.m. The service offers traditional German Christmas songs and readings and will be followed by the Weihnachtsfest or Christmas party at the German House. As is the custom, a Feuerzangenbowle or flaming punch will be served along with German Christmas cookies and stollen. Everybody is welcome.

Area Rotary Club Meetings

The Grundy County Rotary Club meets at 11:30 a.m., Tuesdays at Dutch Maid Bakery in Tracy City. The Monteagle Sewanee Rotary Club meets at 8 a.m., Thursdays at the Sewanee Inn. At the Dec. 15 meeting, Chancellor Jeff Stewart will talk about the drug court.

FCRW Meeting, Dec. 15

The Franklin County Republican Women (FCRW) monthly meeting will be at 11:30 a.m., Thursday, Dec. 15, at Ruby Tuesday's in Tullahoma. The meeting includes nominations and election of club officers. All members are encouraged to attend. For more information please call (931) 924-3000.

Volunteers Needed to Deliver Christmas Food Boxes

Christmas gift food boxes will be delivered to needy military veterans on Saturday, Dec. 17. Volunteers are needed to deliver them. To help, meet at the VFW on Woods Reservoir (Estill Springs/Decherd) at 9 a.m. For more information and to volunteer, please contact Bobby Clark or Michele Stovall at the Franklin County Veterans Service Office, (931) 967-9322.

SCA Meeting, Dec. 14

The Sewanee Civic Association (SCA) will meet at 5:30 p.m., Wednesday, Dec. 14, at the EQB Building.

Social time with wine begins at 5:30 p.m., and dinner begins at 6 p.m. Dinner costs \$13 per person. The business meeting begins promptly at 6:30 p.m., followed by a brief program. The program portion of the evening is free and open to the public.

Jim Peterman, University of the South professor of Philosophy, and Director of Civic Engagement, will present the program on "The Dao (Way) of Civic Engagement on the South Cumberland Plateau, 2010-16."

In his talk, Peterman will discuss the way in which the University of the South has recently sought to deepen its commitment to both local and distant communities as a way of enhancing its students' preparation for responsible, engaged citizenship.

Peterman has held various roles in Sewanee's civic engagement programs since 2011, taking on the directorship of an integrated six-person office in 2015. He was a recipient of a 2015 Harold Love Outstanding Commu-

nity Service Award. The awards are presented by the Tennessee Higher Education Commission to recognize demonstrated effectiveness in public service. In 2014, he was recognized by Cumberland Center for Justice and Peace with a service award for calling attention to the need for universal health care in the U.S. and coordinating signup events to help community members apply for Affordable Care Act coverage. His community work arises from his academic teaching and research on ethics, social justice and early Chinese Philosophy.

This year, the SCA is celebrating 108 years of civic opportunities in the community. The association brings together community members for social and community awareness. The SCA is the sponsoring organization for Cub Scout Pack 152, Sewanee Classifieds and the Sewanee Community Chest. Any adult who resides in the area and shares concerns of the community is invited to participate.

For more information go to <www.sewaneeccivic.wordpress.com>.

Willis to Present at the Academy, Dec. 15

The Academy for Lifelong Learning at St. Mary's Sewanee will meet at noon, Thursday, Dec. 15. University of the South professor John Willis will present the program entitled "Landscape and Memory."

Willis' talk is based on an environmental history study he is conducting on this part of Appalachia. He will assist us in understanding and "reading" the landscape as a way of relating to the past; 50 years, 150 years and even 9,500 years ago. These marks and signs of human history are present today and Willis will talk about some of these observations and the findings of his research.

Willis has conducted and published numerous research projects around the South, working under the auspices of the American Historical Society and the Mellon and DuPont foundations. He holds a degree from Baylor University and advanced degrees from the University of Virginia.

The Academy for Lifelong Learning at St. Mary's Sewanee provides a program each month covering a wide range of topics. The public is invited to attend and become a member. Each session runs for one hour. Membership to the Academy is \$12 per year. A box lunch (\$12) can be ordered by calling (931) 598-5342. Participants may bring their own lunch. For more information contact Stephen Burnett at (931) 598-5479.

Caregiver Group

Folks at Home (F@H) sponsors a weekly Caregiver Group for those who are taking care of chronically or terminally ill relatives or friends. The group meets Thursdays, 1:30-3 p.m. in Otey's Claiborne Parish Hall. Confidentiality is a treasured value here. For information contact Folks at Home Director Kathleen O'Donohue, at (931) 598-0303 or <folksathomesewanee@gmail.com>.

We're glad you're reading the Messenger!



Need an idea for that special Christmas gift? Gift certificates for riding lessons at Black Anvil Equestrian are available. Or ask about our Deluxe Christmas Buckets. For information call 931-607-6687 or 931-308-2688.

Garden Tunnel Framing Workshop

The University Farm will host a Garden Tunnel Framing workshop at 1 p.m., Saturday, Dec. 17. The workshop will feature a tour of the University's recently built high tunnel greenhouses and a discussion of the construction techniques and requirements. A variety of tube bending implements will be available for use. Workshop attendees can bring their own 1/2" or 3/4" EMT conduit to make low tunnel frames that are 3' high, or a chain link fence "top rail" to make high tunnel, caterpillar, and gothic style tunnel frames.

Plastic coverings will also be discussed and samples of several types of coverings will be on hand to inspect. There is no charge, but space is limited. To reserve a spot, contact Vista Season Extending Curriculum Coordinator Sarah Hess at <sewaneevistaseas@gmail.com>. The workshop will be at the University Farm on Breakfield Road, in Sewanee.

Rollins Birthday Party, Dec. 18

Cmdr. James Rollins of American Legion Post 51 invites all Legionaires, Auxiliary, friends and neighbors to his birthday party, from noon until 2 p.m., Sunday, Dec. 18, at the Legion Hall in Sewanee. Gifts are not necessary. A light lunch will be provided.

Heart Healthy & Diabetic Friendly Thursdays!

11AM-8PM, Lunch & Dinner
Great New Dishes Every Week
Smoke House Restaurant - Monteagle

Put this space to work for your business.

Reliable Rental has everything you need to finish that indoor project this winter...

Reliable has blower heaters, floor nailers, drum sanders, wallpaper removers, plus much more to assist the do-it-yourselfer in completing that addition or renovation this winter. Call or come by to check out the great savings you will realize by doing it yourself at a rental (not sale) price!



RELIABLE RENTAL OF FRANKLIN COUNTY

104 E. Petty Lane • Winchester, TN 37398
931/962-0406 or 1-800/453-RENT

K&N Maintenance and Repair Your "honey-do" list helper!

A one-stop solution for all your home improvement needs
931-691-8656





WINGS Community dedication ceremony.

Blue Monarch WINGS Expansion Complete

Nov. 12 marked a glorious day in the 13-year history of Blue Monarch. Close to 200 friends and family gathered to celebrate the dedication and open house of the Mildred Jacqueline Peters WINGS Community, consisting of four individual cottages with a playground. Each cottage provides independent housing for one mother and her children as they adjust to increased responsibilities while still benefitting from the supportive environment Blue Monarch provides. This special ceremony culminated as the four Peters' siblings, along with their father, and the four Blue Monarch families who will occupy the new cottages, completed the ribbon cutting. The beautiful homes were then opened for the first time to be viewed and celebrated by all in attendance. For more information go to <www.bluemonarch.org>.

Obituaries

Steve Samuel Cowan

Steve Samuel Cowan, age 57 of Cowan, died on Dec. 1, 2016, at Southern Tennessee Regional Health System, Winchester. He was born on Nov. 13, 1959, in Franklin County, to John S. Cowan and Carlotta Pickney. He was a U.S. Navy veteran and a farmer. He was preceded in death by his father.

He is survived by his wife, Kathy Cowan of Cowan; mother, Carlotta Pickney of Winchester; son, Scott (Jessica) Cowan of Winchester; daughter, Mandy (Jeff) Steeley; brother, Mark (Penny) Cowan of Cowan; sister, Gail (David) Gipson of Fayetteville; nine grandchildren, and many nieces, nephews, and other relatives.

Funeral services were on Dec. 3, in the Moore-Cortner Funeral Home chapel. Interment followed in Franklin Memorial Gardens. For complete obituary go to <www.moorecortner.com>.

James Carlton Thomas

James Carlton Thomas, age 94 of Monteagle, died on Nov. 30, 2016, at his home. He was born on July 31, 1922, in Monteagle, to Charlie and Nettie Holder Thomas. He was a WWII U.S. Army veteran, and a POW near the end of the war. He was a master carpenter and built many homes and commercial buildings in the area. He was preceded in death by children J.C. Thomas, Terry Thomas and three infant children; brothers, Robert and David Thomas; sister Charlene Lowrie.

He is survived by his wife, June Thomas; son, Charles E. Thomas of the University of the South Physical Plant Services; eight grandchildren, 11 great-grandchildren, and several nieces and nephews.

Funeral services were on Dec. 2, in the Cumberland Funeral Home chapel with the Rev. Danny Coffelt and Bro. Bob Lowrie officiating. Interment followed in Monteagle Cemetery with full military honors provided by Sequatchie Valley Veterans' Honor Guard. For complete obituary go to <www.cumberlandfuneralhome.net>.

Christ Church Monteagle

wishes you
**Christmas Blessings
and a
Good New Year.**



December 18 at 10:30 am:
Lessons and Carols

Christmas Eve at 5 pm:
Holy Communion with Carols
Christmas Feast Following

Christmas Day at 10:30 am:
Holy Communion

January 1 at 10:30 am:
Holy Communion

January 8 at 10:30 am:
Epiphany Service



The Ayres Center for
Spiritual Development

Call (931) 598-5342
or (800) 728-1659
www.StMarysSewanee.org
<reservations@stmaryssewanee.org>

UPCOMING RETREATS ONE-DAY INTRODUCTION TO CENTERING PRAYER WORKSHOP

*Saturday, December 31
9:00 am–3 pm*

The Rev. Tom Ward, presenter

EIGHT-DAY INTENSIVE AND POST- INTENSIVE CENTERING PRAYER RETREAT

*January 1–January 8
The Rev. Gordon Peerman, presenter*
St. Mary's Hall: \$795 (Single),
The Anna House: \$995 (Single)

Church News

All Saints' Chapel

Growing in Grace will resume Sunday, Dec. 11, at 6:30 p.m. in All Saints' Chapel for our last meeting of the semester. The speaker will be Forbes Mann, a member of the class of 2016 and a current junior in the School of Theology. This informal worship service is designed for students and community members with student-led acoustic music, guest speakers, and Holy Communion. Email Lay Chaplain Rob McAlister <rvmcalis@sewanee.edu> for directions or more information.

Christ Church

This Sunday, Dec. 11, is Rose or "Rejoice Sunday" for us. Next Sunday, Dec. 18, is our Lessons and Carols at Christ Church Monteagle. Join us at 10:30 a.m.

Live Nativity Dec. 10–11

Chapman's Chapel Church of Nazarene, located in Pelham, is hosting a

live nativity, "More than a Manger," 5–8 p.m., Saturday and Sunday, Dec. 10–11. Admission is free.

Otey Parish

This Sunday, Dec. 11, in Christian Formation at 10 a.m., the Lectionary Class will explore Sunday's gospel in the Claiborne House, Adult Education Room. Children ages 3–11 are invited to meet their friends for Godly Play. Middle school and high school students have Sunday School in Brooks Hall. Infants 6 weeks to children 4 years old are invited to the nursery beginning at 8:30 a.m. until after the second service.

On Sunday, Dec. 11, at 10 a.m., Deborah A. McGrath, professor of biology at the University of the South, will speak to Otey's Adult Education Forum on "Climate Change: How to Meet the Challenge" for this year's series on Culture and Society in Theological Perspective.

Besides teaching in the biology department, McGrath is the project

director of the Wetlands Research Station at Sewanee and is director of Finding Your Place, the interdisciplinary first-year program at Sewanee that she initiated in 2012.

On Dec. 18, Steve Blount will speak on "Practicing Law to Create a More Just Society" during the Adult Forum.

St. James

There will be a Celebration of St. Nicholas Day at 5 p.m., today (Friday), Dec. 9, at St. James Midway Community Park. St. Nicholas will be present, along with caroling, hot chocolate and candy canes.

Unitarian Universalist Church

The Unitarian Universalist Church of Tullahoma's speaker at 10 a.m., Sunday, Dec. 11, will be Denise Gyauchon, "How We Saved Christmas." The service is followed by refreshments and a discussion period. The church is located at 3536 New Manchester Hwy., Tullahoma. Call (931) 455-8626, or go to <www.tullahomauu.org>.

CHURCH CALENDAR

Weekday Services, Dec. 9–16

7 a.m. Morning Prayer, St. Mary's (not 12/12)
7:30 a.m. Morning Prayer, St. Paul's Chapel, Otey
7:30 a.m. Holy Eucharist, St. Mary's (not 12/12)
8:30 a.m. Morning Prayer, Christ the King (12/13)
8:30 a.m. Morning Prayer, St. Augustine's
4 p.m. Evening Prayer, St. Augustine's
4:30 p.m. Evening Prayer, St. Paul's Chapel, Otey
5 p.m. Evening Prayer, St. Mary's (not 12/12)

Saturday, Dec. 10

7:30 a.m. Morning Prayer/HE, St. Mary's
10 a.m. Sabbath School, Monteagle 7th Day Adventist
11 a.m. Worship Service, Monteagle 7th Day Adventist
5 p.m. Mass, Good Shepherd, Decherd

Sunday, Dec. 11

All Saints' Chapel

8 a.m. Holy Eucharist
11 a.m. Holy Eucharist
6:30 p.m. Growing in Grace

Bible Baptist Church, Monteagle

10 a.m. Worship Service
5:30 p.m. Evening Service

Christ Church, Monteagle

10:30 a.m. Holy Eucharist
10:45 a.m. Children's Sunday School
12:50 p.m. Christian Formation Class

Christ Episcopal Church, Alto

9 a.m. Holy Eucharist
10 a.m. Sunday School

Christ Episcopal Church, Tracy City

10 a.m. Adult Bible Study
11 a.m. Holy Eucharist (child care provided)

Christ the King Anglican, Decherd

9 a.m. Holy Eucharist
10:40 a.m. Sunday School

Church of the Holy Comforter, Monteagle

9 a.m. Holy Eucharist
10 a.m. Sunday School

Cowan Fellowship Church

10 a.m. Sunday School
11 a.m. Worship Service

Cumberland Presbyterian Church, Cowan

6:30 p.m. Community Thanksgiving Service
Cumberland Presbyterian Church, Monteagle

9 a.m. Fellowship
11 a.m. Worship Service

Cumberland Presbyterian Church, Sewanee

9 a.m. Worship Service
10 a.m. Sunday School

Decherd United Methodist Church

9:45 a.m. Sunday School
10:50 a.m. Worship

Epiphany Mission Church, Sherwood

10 a.m. Holy Eucharist
10 a.m. Children's Sunday School

Good Shepherd Catholic Church, Decherd

10:30 a.m. Mass
Grace Fellowship Church

10:30 a.m. Sunday School/Worship Service
Harrison Chapel Methodist Church

9 a.m. Worship Service
10 a.m. Sunday School

Midway Baptist Church

9:45 a.m. Sunday School
10:45 a.m. Morning Service

Midway Church of Christ

6 p.m. Evening Service
10 a.m. Bible Study
11 a.m. Morning Service

6 p.m. Evening Service

Ministry Baptist Church, Old Co-op Bldg., Pelham

10 a.m. Sunday School

10:45 a.m. Breakfast

11 a.m. Worship Service

Monteagle First Baptist Church

10 a.m. Sunday School
11 a.m. Worship Service

6 p.m. Evening Worship

Morton Memorial United Methodist, Monteagle

9:45 a.m. Sunday School

11 a.m. Worship Service

New Beginnings Church, Monteagle

9:30 a.m. Worship Service

11:15 a.m. Worship Service

Otey Memorial Parish Church • Annual Meeting

8:50 a.m. Holy Eucharist

9:30 a.m. Christian Formation

11 a.m. Holy Eucharist

Pelham United Methodist Church

9:45 a.m. Sunday School

11 a.m. Worship Service

St. Agnes Episcopal Church, Cowan

11 a.m. Sunday Service (Rite 1)

St. James Episcopal Church

9 a.m. Holy Eucharist

St. Margaret Mary Catholic Church, Alto

8 a.m. Mass

Sewanee Church of God

10 a.m. Sunday School

11 a.m. Morning Service

6 p.m. Evening Service

Sisters of St. Mary's Convent

8 a.m. Holy Eucharist

5 p.m. Evensong

Tracy City First Baptist Church

9:45 a.m. Sunday School

10:45 a.m. Morning Worship

5:30 p.m. Youth

6 p.m. Evening Worship

Trinity Episcopal Church, Winchester

11 a.m. Holy Eucharist

6 p.m. Evening Worship

Valley Home Community Church, Pelham

10 a.m. Sunday School

10 a.m. Worship Service

Wednesday, Dec. 14

6 a.m. Morning Prayer, Cowan Fellowship
12 p.m. Holy Eucharist, Christ Church, Monteagle
5 p.m. KA's, Bible study, meal, Monteagle First Baptist

5:30 p.m. Evening Worship, Bible Baptist, Monteagle
5:45 p.m. Youth, Bible study, meal, Monteagle First Baptist

6 p.m. Bible study, Monteagle First Baptist
6 p.m. Prayer and study, Midway Baptist

6 p.m. Youth (AWANA), Tracy City First Baptist

6 p.m. Prayer, Trinity Episcopal, Winchester

6:30 p.m. Community Harvest Church, Coalmont

6:30 p.m. Prayer Service, Harrison Chapel, Midway

7 p.m. Adult Formation, Epiphany, Sherwood

7 p.m. Evening Worship, Tracy City First Baptist

7:30 p.m. German Christmas service, St. Augustine's

CHURCH CALENDAR ON THE GO!

<www.sewaneemessenger.com>

<www.themountainnow.com>

"Like snowflakes, my Christmas memories gather and dance—each beautiful, unique and too soon gone."
~ Deborah Whipp

Sewanee Realty

SewaneeRealty@inSewanee.com
www.SewaneeRealty.com
115 University Ave., Sewanee, Tenn.

Margaret Donohue,

Principal Broker • 931.598.9200

Patsy A. Truslow,

Broker • 931.636.4111

Kipper Worthington,

Affiliate Broker • 615.948.1077



BLUFF - MLS 1773059 - 1804 Clifftops Ave., Monteagle. 6.9 acres. \$995,000



BLUFF - MLS 1703687 - 294 Jackson Point Rd., Sewanee. 20 acres. \$327,000



BLUFF - MLS 1772358 - 569 Haynes Rd., Sewanee. \$589,000



BLUFF - MLS 1712150 - 3442 Sherwood Rd., Sewanee. \$589,000



BLUFF HOME - MLS 1696535 - 1105 North Bluff Cir., Monteagle. \$368,000



MLS 1771204 - 351 Greens View Rd., Sewanee. \$285,000



BLUFF - MLS 1775532 - 305 Clara's Point Rd., Sewanee. \$949,000

BLUFF TRACTS

1605 Laurel Lake Dr. 5.3 ac	1780151	\$149,000
Laurel Lake Dr. 66.7 ac	1748867	\$395,000
16 Jackson Pt. Rd. 4.51ac	1710188	\$84,800
590 Haynes Rd. 11+ac	1687354	\$132,000
15 Saddletree Ln. 6.12ac	1680519	\$88,000
16 Laurel Lake Rd.	1722522	\$97,500
223 Timberwood Tr. 5.12ac	1604345	\$154,900
Old Sewanee Rd. 53ac	1643144	\$296,000
3 Horseshoe Ln. 5.6ac	1608010	\$60,000
1 Raven's Den 5.5ac	1685926	\$62,000
Long View Ln. 2.56ac	1572284	\$108,000
36 Long View Ln.	1503912	\$99,000
7 Jackson Pt. Rd.	1714853	\$75,000
37 Jackson Pt. Rd.	1579614	\$75,000
Jackson Pt. Rd. 12.45ac	1579007	\$125,600
12 Saddletree Ln.	1578117	\$79,500
Jackson Pt. Rd. 19+ac	1531331	\$120,000
Jackson Point Rd.	1648895	\$199,000
7 Saddletree Ln.	1726054	\$70,000
25 Old Sewanee Rd. 5.2 ac	1741756	\$119,000



BLUFF - MLS 1648470 - 245 Coyote Cove Ln., Sewanee. 29.5 acres. \$469,900



MLS 1514972 - 202 Main St., Monteagle. \$112,000



BLUFF - MLS 1657852 - 1819 Bear Ct., Monteagle. \$239,000



MLS 1752200 - 1116 University Ave., Sewanee. \$449,900



BLUFF - MLS 1777974 - 3480 Sherwood Rd., Sewanee. \$349,000



MLS 1744462 - 706 Old Sewanee Rd., Sewanee. +30 acres. \$299,500



MLS 1711778 - 844 Fairview, Winchester Cabins - Commercial - \$369,500



BLUFF - MLS 1692347 - 1043 North Bluff Cir., Monteagle. \$250,000



MLS 1725646 - 277 Wiggins Creek Dr., Sewanee. \$289,000



MLS 1774336 - 1848 Ridge Cliff Dr., Monteagle. \$283,000



MLS 1688434 - 324 Rattlesnake Springs Rd., Sewanee. 4.9 acres. \$349,500



MLS 1730527 - 565 Haynes Rd., Sewanee. 5.4 acres. \$249,900



MLS 1740978 - 94 Parsons Green Cir., Sewanee. \$299,900



MLS 1703913 - 134 Tomlinson Ln., Sewanee. \$539,000



MLS 1740557 - 786 Old Sewanee Rd., Sewanee. 15 acres. \$329,000



MLS 1776800 - 1256 Sollace Freeman Hwy., Sewanee. \$584,000



MLS 1743681 - 1091 Timberwood Tr., Monteagle. 26.4 acres. \$689,000



BLUFF - MLS 1656823 - 1613 Laurel Lake Dr., Monteagle. 5.3 acres. \$449,900



MLS 1667542 - 36 Lake Bratton Ln., Sewanee. \$429,000



MLS 1698101 - 41 Sherwood Rd., Sewanee. \$229,000



MLS 1692858 - 21 Mont Parnasse Blvd., Sewanee. 3.4 acres. \$329,000



MLS 1770160 - 12147 Sewanee Hwy., Sewanee. \$169,000



BLUFF - MLS 1748867 - Laurel Lake Dr., Monteagle. 66.7 acres. \$395,000



MLS 1775366 - 143 Winns Circle, Sewanee. \$385,000

LOTS & LAND

Taylor Rd. 29.73ac	1754324	\$159,000
Oliver Dr. 10.4ac	1707115	\$38,000
Bear Dr. 2ac	1708016	\$24,000
Jackson Pt. Rd. 4.8ac	1714849	\$37,500
Ingman Rd. 0.809ac	1696338	\$17,000
Haynes Rd. 6.5ac	1690261	\$75,000
43 Bluff Wodds	1774625	\$28,000
57 Edgewater Ct. Winch	1668196	\$35,000
111 Clifftops Dr. 5.25ac	1646127	\$58,900
Hwy 41 Monteagle 5.3ac	1714856	\$47,500
Shadow Rock Dr. 0.99ac	1572178	\$23,000
5ac Montvue Dr.	1714856	\$59,000
Sarvisberry Pl.	1628195	\$69,000
8 Jackson Point Rd.	1734341	\$36,000
9 Jackson Point Rd.	1734307	\$39,000

Sewanee Review (from page 1)



Adam Ross, new editor of "The Sewanee Review," is overseeing a number of changes at the acclaimed literary magazine. Photo by Alec Hill

with a redesign, livelier content and a new URL, <thesewaneeereview.com>.

Behind the print and online renovation is an expanded staff, up from three to five. The new team consists of four Sewanee English graduates, Alec Hill (C'16) Ansley McDurmon (C'16), Aiken Taylor intern Lily Davenport (C'16), and last year's intern Robert Walker (C'15).

"Adam said we might have a job and when it came to fruition I was just so excited it just felt like the right move," said McDurmon, a native of Rome, Ga. "Sometimes someone offers you something and you don't feel yourself just leaping into it; I think when you do feel like leaping, it's a good sign."

Hill, who hails from Philadelphia, said he hopes to one day write for "The New Yorker."

"This is just an amazing first step for someone who wants to get into writing and I want to do journalism more than fiction or poetry, but this has been an amazing crash course in writing of all kinds," he said. "We're reading constantly, we're reading submissions, and editing some of the stuff that we accept."

How writers submit work has also changed, with the Review now accepting submissions through the Submittable online program. Walker said submissions are up tremendously since the online option started in September.

The Review is also looking more at Sewanee for its content, from graduates to writers affiliated with the School of Letters and Sewanee Writers' Conference. In addition to new writers and other established authors, this issue will include content from internationally-recognized writers with Sewanee ties such as Jon Meacham (C'91), John Jeremiah Sullivan (C'97), Writers' Conference guest and poet Mary Jo Salter, and Adam Kirsch, a poet, critic and past Sewanee lecturer.

"There was a tacit understanding that this first issue that's coming out would draw heavily on Sewanee power," Ross said. "There's a trove of riches just here on the mountain."

On the shelves in the planning room of the Review's new home, where marketing and content plans fill the dry erase board, are bound volumes of every issue dating back to 1892—the oldest continuously published periodical. Notable contributors to The Review include William Faulkner, C.S. Lewis, Cormac McCarthy, Ezra Pound and Flannery O'Connor. There's rich history here and Ross said subscribers are key to the continued success of today's literary voices.

"Great writing isn't free. Great art isn't free. People in the greater Sewanee area and Montecle area are supporting an institution, but also something that's important to the culture," he said.



Gail Watson preparing the hanging wreath during the Greening of the Chapel. Photo by Lyn Hutchinson



The Advent wreath hung over an empty All Saints' Chapel after temporary seating brought in for Lessons and Carols was removed to be replaced by the Chapel's regular seating. Photo courtesy of the University of the South



diamonds for you

**Dollar Tree Plaza
Decherd, TN
(931) 967-4028
M – Sat – 9:00 – 5:30**

In-store Repairs
www.diamondsforyou.org



**Christmas
Tea**

**Saturday, Dec. 10,
at 2:30 p.m.**
\$20 per person. Call
(931) 592-4832 for reservations.

**Tea on the
Mountain**
298 Colyar Street, US 41, Tracy City



AFFORDABLE Home Repair

Remodeling • Additions • Decks • Painting
House/Floor Leveling and More
Experienced & Honest
Licensed & Insured

423-593-3385



The Lemon Fair

Complimentary Gift Wrapping!!!



**A MERRY LITTLE
DOWNTOWN
CHRISTMAS**

**DECEMBER 9th 4 PM-8 PM
DECEMBER 10th 8 AM-2PM**

HISTORIC DOWNTOWN WINCHESTER, TN

Christmas fun for the whole family!

Visit our website and like us on Facebook for all the details! www.winchesterdowntown.com



MICHELLE M. BENJAMIN, JD
Attorney & Counselor at Law

201 FIRST AVENUE, NORTHWEST
WINCHESTER, TENNESSEE 37398

(931) 962-0006
Fax: (931) 967-8613

Sewanee Community Chest Spotlight: Sewanee Senior Citizens

The 2016-17 Sewanee Community Chest (SCC) Fund Drive is under way. Sponsored by the Sewanee Civic Association, the SCC raises money yearly for local charitable organizations serving the area. This year's goal is \$116,850 for 26 organizations that have requested basic needs funding for quality of life, community aid, children's programs, and those who are beyond Sewanee but still serve our entire community. Currently, 41 percent of the goal has been reached in donations and pledges.

This week we shine the spotlight on the Sewanee Senior Citizens Center.

The Sewanee Senior Citizens Center is a 501(c)(3) nonprofit organization. It began in 1978 with state funds from Title V for building renovations. Volunteers completed the work on the building. Part of the director's salary at that time was paid from Franklin County Senior Citizens funding. Meals were offered through the state's Nutrition Program (Title VII).

In 1997, the satellite relationship with Franklin County Senior Citizens became tenuous when their board voted to cease contributing to the director's salary. The Sewanee Community Chest increased its donation. An anonymous donor remained committed to matching funds. The Center survived.

In September 2002, the Sewanee Center was excluded from the state's Nutrition Program. Meals were available again in October 2002 when Lena McBee and Frances Lappin prepared food at home and brought it to the center for distribution. Because of their efforts and the funds received from the Franklin County Commission and the Sewanee Community Chest, the Center now has cooks. These cooks prepare more than 8,000 lunches annually.

In addition to meals for seniors and shut-ins, the Center provides various activities, which are scheduled weekly for 75 seniors and other members of the community. Activities include games, exercise groups, musical programs, blood pressure checks, reading groups and information sessions regarding nutrition and health care.

The Senior Citizens Center relies on the Community Chest for ap-

proximately 25 percent of its operating budget. Other funding for the Center comes from the Franklin County Commission, bake sales, individuals, and an annual Christmas bazaar. The Senior Citizens Center is requesting \$12,000 this year to pay for the cook's salaries and associated taxes. The cooks are the only paid staff at the Center.

The Center is open Monday through Friday. For more information, contact the Sewanee Senior Citizens Center at 598-0771, or drop by for a visit at 5 Ball Park Road. The Center always welcomes visitors and volunteers.

Since 1908, the goal of the Sewanee Community Chest has been to help citizens by funding the community. Through Community Chest funding, local organizations help those caught in the cycle of poverty, improve quality of life through outreach and community initiatives, and provide support for children with a variety of programs. The Sewanee Community Chest is a 501(c)(3) nonprofit organization, and donations are tax-deductible. Send your donation to Sewanee Community Chest, P.O. Box 99, Sewanee, TN 37375. For more information, or to make a donation through PayPal, contact <sewaneecommunitychest@gmail.com> or go to <www.sewanee-civic.wordpress.com>.

Support Local Charities

There are numerous organizations and programs across the Mountain that need financial support, especially at this time of the year.

Many charities use PayPal as a way to collect donations. If the organization is listed with PayPal Giving Fund, <<http://paypal.com/giving>>, 100 percent of your donation goes to the charity you choose. During the holidays, PayPal will also match your donation by 1 percent.

AmazonSmile is a website operated by Amazon with the same products, prices and shopping features as <Amazon.com>. The difference is that when you shop on AmazonSmile, the AmazonSmile Foundation will donate 0.5 percent of the purchase price of eligible products to the charitable organization of your choice. Learn more at <smile.amazon.com>.



Susan Rupert presents Jarod Pearson with the Jeane Patton Humanitarian Award.

Animal Harbor Presents Awards at Party for Paws

Area animal lovers came together on Nov. 19, to attend Animal Harbor's annual Party for Paws fund-raising event at Otey Parish Hall in Sewanee. Cat and dog lovers alike shared food and friendship while bidding on silent auction items that raised money for the ongoing care of animals at the shelter. Susan Walton set a festive mood with her piano selections, and Barbara Bull volunteered as auctioneer for the live auction. Everyone present was full of enthusiasm, good will, and a desire to see the mission and work of the Harbor continue in 2017, which will mark 14 years of rescues and adoptions.

Every year the Harbor awards volunteers who have given of their time and energy to work with the animals. The Volunteer of the Year for 2015, Anna Marie Goodwin from Winchester, is now a student at Middle Tennessee State University studying Animal Science with a specialty in horses. Anna Marie said that she enjoyed every minute of seeing cats, dogs, the occasional rabbit, and even two pot-bellied pigs find their forever homes.

Barbara Hart and Megan Griffith, a grandmother/granddaughter duo from Sewanee, shared the limelight as Volunteers of the Year for 2016. Barbara can be seen every Saturday morning at the shelter, sporting unique earrings, taking on any task needed, and sharing with Megan the importance of kindness and empathy, and of rewards, paid not in wages and perks, but in wags and purrs.

The Jeane Patton Humanitarian Award for 2016 was given to Jarod Pearson of Cowan. This award was established in 2003 in honor of Jeane Patton, who provided initial support for the creation of Animal Harbor, and is presented each year to one or more persons who have made a significant contribution towards reducing pet overpopulation and improving the lives of companion animals in Franklin County. During the past several years, Jarod has paid for vaccinations, medical treatment, food, and most importantly, the spaying and neutering of countless cats who have, as he said, "chosen him" as their advocate and protector. Jarod exemplifies what one person can do to make a lasting difference, one animal at a time.

WINTER WELLNESS PACKAGE

**Includes Initial Complimentary
Visit of Consultation,
Examination
and X-Rays
(If Needed)**

**OFFER FOR THE GOAL OF GOOD HEALTH
AND WELLNESS**

**SHULL
CHIROPRACTIC CLINIC, PLLC**

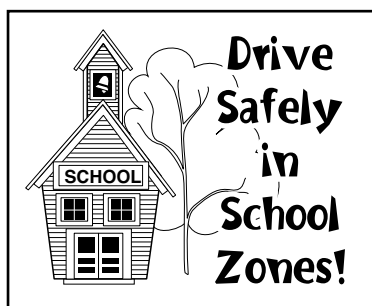
A Nutritional • Wellness • Spinal Decompression Clinic

(Must bring advertisement to initial visit)

(Federal Law excludes Medicare/Medicaid recipients)

931-967-4232

Dr. Kurt A. Shull, D.C.
1025 S. College St., Winchester, TN 37398
www.shullchiropractic.com



**Folks want
to know
your
news!**

**Send your message
to more than
5,000 weekly
readers.**

(931) 598-9949
news@sewanee-messenger.com
www.sewanee-messenger.com

J & J GARAGE

COMPLETE AUTO REPAIR

- **Import & Domestic**
- **Computerized 4-wheel alignments**
- **Shocks & Struts • Tune-ups • Brakes**

Our work is guaranteed
More than 35 years experience
Hwy 41-A between Sewanee & Monteagle
Mon.-Fri. 7:30-5:30



Jerry Nunley,
owner
598-5470



TOMMY C. CAMPBELL
FOR YOUR IMPROVEMENTS
Call (931) 592-2687
Free Estimates • No Job Too Small!

**DRIVEWAY WORK • GRAVEL HAULING
• DOZER & BACKHOE**

plus Land Clearing • Concrete Work • Water Lines • Garage
Slabs • Sidewalks • Porches & Decks • Topsoil & Fill Dirt
Septic Tanks & Field Lines



FOR SALE BY OWNER

We wouldn't leave this pristine home
With its wonderful neighbors
And the deer freely roam
(Not the neighbors, the deer)

But the kids have moved North
And they are our heart
So we're heading on up
To make a new start.

If you need a place
This log home's for you!
So for \$242K,
here's what you do.
Send your inquiry to:
ttopblue@hotmail.com

**Put this space
to work for
your business.
Call
931-598-9949**

National Cornbread Cook-Off Seeking New Champion

It's time to increase your creative cooking skills in the kitchen. Lodge® Cast Iron, Martha White® and the Michael P. Hennen Hospitality and Culinary Center are searching the nation for the best original main dish cornbread recipes in the 21st annual National Cornbread Cook-Off.

Now through Jan. 31, 2017, Cook-Off Applicants can submit an original main dish recipe prepared with at least one package of Martha White Cornbread Mix and prepared in Seasoned Lodge Cast Iron cookware. Ten finalists will be selected to compete during the National Cornbread Festival on April 29, 2017, in South Pittsburg, Tenn.

"Cooks across the country continue to impress me with their creative

twists on classic recipes and trendy dishes reinvented with cornbread," said Martha White baking expert, Linda Carman. "Past cook-off contestants have stretched beyond Southern cuisine, preparing Caribbean, Tex-Mex and Mediterranean-style recipes."

Main Dish recipes are Entrée, or Main Course recipes. Cook-Off competitive ranges are provided by FiveStar® Professional Cooking Equipment. The recipe submitted to Cook-Off judges must be prepared in a Lodge Cast Iron Skillet or other Lodge Cast Iron products.

Cook-Off competitors may not be culinary professionals, chefs or bloggers who have received any form of compensation.

Along with the coveted cast iron

skillet crown, the Cook-Off champion will receive a \$5,000 cash prize and a 30-inch stainless steel gas range (a \$3,250 value) from FiveStar Professional Cooking Equipment, a division of Brown Stove Works, Inc., and special gifts from Lodge Cast Iron and Martha White.

The second prize winner will receive \$1,500, and the third prize winner will receive \$1,000. The remaining seven finalists will walk away with \$150, and all finalists will receive a \$500 travel reimbursement and a gift basket courtesy of Lodge® and Martha White. South Pittsburg hosts the National Cornbread Festival the last full weekend of April. The 2017 event is set for April 29-30.

For complete details on entering the National Cornbread Cook-Off, go to <www.nationalcornbread.com>.

Share your news to spread good news!



NEW YEAR'S EVE DINNER
with Champagne Toast
Saturday, December 31,
at 6:30 p.m.
Come and ring the New Year
in with bubbles!
Reservations required: call
(931) 924-3869.

Monteagle Inn
Tallulah's Wine Lounge
(931) 924-3869
www.monteagleinn.com



Winchester Podiatry
CHARLES D. GANIME, DPM
Board Certified in Foot Surgery
Diplomate, American Board of Podiatric Surgery
New Patients of All Ages Welcome! We Treat Your Feet! Most Insurance Accepted, Including TennCare
155 Hospital Road #1, in Winchester.
www.winchesterpodiatry.com
931-968-9191



YOU'RE INVITED TO A
CHRISTMAS Expo
PLEASE JOIN US FOR
CRAFTS & VENDORS
& **Christmas Gifts**
SATURDAY DECEMBER 10th 11-4
American Legion Hall 36 University Avenue Sewanee, TN 37375

Senior Center Menus

The Sewanee Senior Center serves lunch at noon, Monday through Friday. The suggested donation is \$4, regardless of your age. Please call 598-0771 by 9 a.m. to order lunch.

Dec. 12: Bacon/lettuce/tomato sandwich, chips, dessert.

Dec. 13: Christmas Luncheon (\$7): pecan crust pork loin, garlic potatoes, glazed carrots, broccoli, cranberry salad, dessert.

Dec. 14: Taco salad, dessert.

Dec. 15: Chicken livers, mashed potatoes, slaw, biscuit, dessert.

Dec. 16: Spaghetti, meatballs, salad, garlic bread, dessert.

Menus may vary.

Daily Activity Schedule

Chair exercises, Mondays and Wednesdays, 10:30-11:15 a.m.; Tuesdays at 10:30 a.m., the group plays bingo, with prizes; Wednesdays at 10 a.m., the writing group gathers at 212 Sherwood Rd.; Fridays at 10 a.m. is game time.

Center Participation

The Sewanee Senior Center does not charge any membership fee. All persons 50 or older who take part in any of the activities are considered members. The Center is located at 5 Ball Park Rd. in Sewanee.

Safety Tips for Driving in Mountain Fog

With the prediction of cooler, wet weather in the coming days, the Mountain's infamous dense fog is likely to return. And with fog comes greater concerns about traffic safety.

Traffic accidents increase in the fog, whether it is because of deer in the roadways that are hard to see or vehicle collisions.

Tennessee state law requires that car headlights be turned on for rain, fog or precipitation. When visibility is limited, turn off any music, roll down your car window and listen for traffic you cannot see.

Stay on the roadway by following the white stripe adjacent to the right shoulder of the road. This is easier to see than the middle stripes in dense fog, and oncoming headlights are not in your eyes.

Remember that other drivers have a limited sight distance and fog can leave roadways slick. Use your turn signals, and when you use your brakes, don't stomp on them.

If an accident occurs, pull as far off the road as possible and turn on your flashing emergency lights. If there is no safe place to stand, stay inside your car.

Before getting in to drive, make sure your car is defrosted and the interior windows are defogged.

When in doubt, turn on your car lights, but make sure your high beams are not on. High beams direct light up into the fog, making it difficult for you to see. Low beams direct light down onto the road and help other drivers see you.

Sewanee Operation Noel Application

Please mail completed form to Tracie Sherrill by Monday, Dec. 12.

138 Lake O'Donnell Rd., Sewanee TN 37375 or email all information to tsherril@sewanee.edu.

FAMILY NAME: _____

of Family Members: _____

Delivery Address: _____

City: _____

FOOD ONLY: ____ YES ____ NO

FOOD AND TOYS:

Please fill out information below for each child age 16 yrs & under to receive toys.

CHILD'S NAME: _____

Age: ____ **Gender:** _____

CHILD'S NAME: _____

Age: ____ **Gender:** _____

Attach additional sheet if necessary.



The Monteagle Sewanee Rotary Club meets at 8 a.m., Thursdays, at the Sewanee Inn
"Service Above Self"

Russell L. Leonard

ATTORNEY AT LAW

315 North High Street
Winchester, TN 37398

Office: (931) 962-0447
Fax: (931) 962-1816
Toll-Free (877) 962-0435
rleonard@netcomsouth.com

A-1 CHIMNEY SPECIALIST "For all your chimney needs"

Dust Free • Chimneys Swept, Repaired, Relined & Restored • Complete Line of Chimney Caps • Waterproofing Video Scanning



G. Robert Tubb II, CSIA Certified & Insured
931-273-8708



Art Opening at Stirling's Photographic Works by FYP 2016 Students Wednesday, Dec. 14 @4:30

598-1786
Like Us On facebook for specials and updates

SES Menus

**Monday–Friday,
Dec. 12–16**
LUNCH

Monday, Dec. 12: Chicken, waffle, grilled cheese sandwich, French fries, pinto beans, carrots, dip, fruit.

Tuesday, Dec. 13: Turkey sub, Philly steak and cheese, bean soup, steamed broccoli, side salad, fruit, crackers, cookie.

Wednesday, Dec. 14: Breakfast for lunch: sausage, egg, yogurt, potato sidewinders, cherry tomatoes, biscuit, Grahams, fruit, gravy, jelly.

Thursday, Dec. 15: Oriental chicken, spaghetti, buttered corn, veggie cup, roasted vegetables, fruit, rice, garlic breadstick.

Friday, Dec. 16: Pizza, taco soup, kale chips, ranch potatoes, vegetable juice, fruit, spicy cracker bites.

BREAKFAST

Each day, students select one or two items.

Monday, Dec. 12: Oatmeal bar or blueberry pancake.

Tuesday, Dec. 13: Biscuit, sausage, gravy, jelly.

Wednesday, Dec. 14: Buttered toast, jelly, egg patty, cheese.

Thursday, Dec. 15: Yogurt or mini donuts.

Friday, Dec. 16: Biscuit, gravy, jelly or Dutch waffle.

Options available every breakfast: assorted cereal, assorted fruit and juice, milk varieties. Menus subject to change.

School Calendar

Dec. 14, Last Day of Classes, University of the South

Dec. 16–30, Christmas Break, Marion County

Dec. 16–Jan. 3, Christmas Break, St. Andrew's-Sewanee

Dec. 17–Jan. 1, Christmas Break, Grundy County

Dec. 20, Abbreviated Day (8–9:30), Franklin County

Dec. 21, Last Day of Final Examinations, University of the South

Dec. 21–Jan. 2, Break, no school, Franklin County

Jan. 17, Class resumes, University of the South

For the combined school calendar go to <themountainnow.com>.

Shop and dine locally!



**MOLICA
CONSTRUCTION**

931.205.2475

WWW.MOLICACONSTRUCTION.COM

- CRAFTSMANSHIP •
- CREATIVITY •
- SUSTAINABILITY •



The Montecagle Elementary eighth-graders participated in the second annual eighth-grade College Fair.

MES Hosts College Fair

On Dec. 4, Montecagle Elementary School (MES) hosted its second annual eighth-grade College Fair, and it was a huge success. Organized by Natalie Burkard (seventh- and eighth-grade reading teacher) and April Dalton (guidance counselor), the goal of the College Fair was to show students their many options for schools after high school.

The day began with Jamie Ensley from Ed. South speaking to the students about setting their goals high and the importance of beginning to think about college now. Then, the students and their parents moved to the gymnasium where they were able to mingle and speak with the college representatives. The University of the South, Chattanooga State, Middle Tennessee State University, University of Tennessee at Chattanooga, University of Tennessee at Knoxville, Motlow State, Tennessee State University, Vanderbilt University and Watkin's College of Art were all represented. They presented the eighth-graders with information to help them prepare for college, such as what their ACT score requirements are.

In just a few short months, these students will be registering for high school and will have to choose a path that will prepare them for their post-secondary goals. After speaking with the representatives from the colleges, the students brought their college interests to local high school counselors who showed them which paths their school had to offer to help them prepare for the college path they wanted.

Grundy County High School, South Pittsburg High School, St. Andrew's-Sewanee School and Marion County High School all participated in the day at MES to show their support of our motto of "College isn't a dream. It's our plan." A representative from TN Promise was also there telling them when the process begins in high school to qualify for two free years of college.

Many people are here to support these students including the school, their parents and the community. Morton Memorial showed their support by donating draw-string bags that said "Preparing for our Future" for all of the eighth-graders. MES Student Council donated shirts to each eighth-grader with the motto of "College isn't a dream. It's the Plan." Citizens Tri-County Bank donated clipboards and pens for the students as well. MES wants to thank everyone that showed and continues to show support of its students.

Tree of Life Homecare, LLC

"Neighbors Helping Neighbors"

- * Licensed and insured home-based services for the elderly and disabled
- * CHOICES provider, Private Pay, Veterans Affairs* Long-term care plans

931-592-8733

treeoflifehomecare.com

NOW ACCEPTING APPLICATIONS FOR CAREGIVERS



**Quality of Life.
Children.
Community Aid.
Beyond Sewanee.**

\$116,850 goal for 26 community organizations.

Donate today: PO Box 99 | Sewanee, TN 37375
SewaneeCivic.wordpress.com | sewaneecommunitychest@gmail.com

DEPENDABLE AFFORDABLE RESPONSIVE



**EXPERT HANDYMAN
KEN O'DEAR**

**25 YEARS EXPERIENCE
SATISFACTION GUARANTEED**

931.235.3294

931.779.5885

SHARE YOUR NEWS!
news@sewaneemessenger.com



Second- and third-grade music classes at Sewanee Elementary show their patriotism with the play "American Heart." The performance was directed by SES music teacher, Cynthia Gray.

THE LOCAL MOVER
615-962-0432

*Need More
Room?*

**We Sell
Boxes!**

Sewanee Mountain Storage
(931) 598-5682
Dan & Arlene Barry

Hwy 41 - Between Sewanee & Monteagle

■ Security Gate

5x10 | 10x10 | 10x20

■ Security Camera

For Your Antiques and Prized Possessions

Climate Control

5x5 | 5x10 | 10x10 | 10x15 | 10x20

Temperature and Humidity Regulated



Michael A. Barry
**LAND SURVEYING
& FORESTRY**

- ★ ALL TYPES OF LAND SURVEYS
- ★ FORESTRY CONSULTING

(931) 598-0314 | (931) 308-2512

WOODARD'S

Mon. - Fri. 10-7 Sat. 10-6 Sun. 1-6

ONLY 19 DAYS TIL CHRISTMAS

AVAILABLE NOW
**FREE
ORNAMENT**
WITH YOUR \$125 PANDORA PURCHASE

PANDORA™

UNFORGETTABLE MOMENTS

In store only. While supplies last, limit one per customer. Valid only at participating PANDORA retailers. Void where prohibited. Not valid with prior purchase. Ornament gift box included. Not valid with gift card purchase.



RHYTHM OF LOVE
Diamonds that move with her heart beat

Silver Diamond Pendant \$79	Silver Diamond Earrings \$299	Silver Diamond Pendant \$199	Silver Diamond Pendant \$199
Silver Diamond Pendant \$199	Silver Diamond Ring 1/10 ctw. \$249	Gold and Silver Diamond Ring 1/10 ctw. \$299	YOUR CHOICE Silver Diamond Bangle 1/4 ctw. \$299
Silver Diamond Ring 1/10 ctw. \$249	Silver Diamond Ring 1/7 ctw. \$299	Silver Diamond Ring 1/8 ctw. \$299	

Twogether™
"When ONE plus ONE equals US"

Silver Diamond Ring 1/4 ctw. \$299	14K Two-Tone Diamond Ring 1/5 ctw. \$549	14K Diamond Ring 1/4 ctw. \$599	14K Diamond Ring 1/2 ctw. \$999
1/2 ctw. \$999 - 1 ctw. \$1999			

PASSION

1.00 ctw. NOW \$3499
15 Months Same As CASH
*As low as \$175 per month



Bridal Starting at \$599

Northgate Mall • Tullahoma • 454-9383 • woodards.net

THE INSATIABLE CRITIC

by Elizabeth Ellis



Upcoming features at the Sewanee Union Theater have a little something for everyone. December was once traditionally a time for ghost stories, and this week kicks off with a bone-chilling one. Lighting the mood mid-week is a Disney animated feature based in South America, bringing color to our gray foggy mountain, with a grand finale for the semester in the form of supervillains doing what they do best – blowing things up. What's hot and what's not? Never fear—the Critic's got your back.

The Rating System

Stars are so overused, and there's nothing on the planet more critical than cats, so one feature each week is rated from one to five Jackaroos. The more Jackaroos there are, the better it is!



Jackaroo

Lights Out

7:30 p.m., Friday, Dec. 9 through Sunday, Dec. 11 2016, Rated PG-13, 81 minutes

It's hard to let go of the ones we love that have passed on. But what if they couldn't let go of us, either? This jump-scare feature's brilliance is in its simplicity, focusing on stellar cinematography contrasting light and shadow to tell the story as much as the script. Rebecca (Teresa Palmer), a young woman living on her own, discovers that her younger brother Martin (Gabriel Bateman) is falling asleep at school when Child Protective Services gets in touch with her after they are unsuccessful in reaching their mother, Sophie. Martin tells her their mom has been talking to someone named Diana in the dark, which has been causing him to stay up at night with the lights on out of fear. Upon arriving at Sophie's house, Rebecca realizes that her mom hasn't been taking her antidepressant medications. Not sure what else to do, Rebecca takes Martin to her place, but much to her horror receives a visit from Diana herself. When they later discover that Diana was a childhood friend of their mother's who died violently, this uncovers a Pandora's box of paranormal mysteries to be unraveled. Praised for delivering solid scares while being refreshingly light on the gore, "Lights Out" succeeds in being accessible for teens and older children accompanied by parents (with a stout heart) as well as adults. Rated PG-13 for terror throughout and violence including disturbing imagery.

The Emperor's New Groove

7:30 p.m., Wednesday, Dec. 14 2000, Rated G, 78 minutes

Take a trip to Peru with this zany animated comedy that has become a cult classic. This is one of the few Disney films whose characters constantly "break the fourth wall," as in, talking directly to the audience, for comedic effect, and made it a standout from their more traditional musical/drama formula. The film focuses on the fictional self-absorbed Emperor Kuzco, voiced by David Spade with trademark sarcastic wit. However, Kuzco's never-ending "me" train is about to get severely derailed when he's transformed into a llama by his conniving advisor Yzma (Eartha Kitt), shortly after deciding to bulldoze a small village to build his new water park. His ego having taken a large hit, Kuzco reluctantly allies himself with Pacha (John Goodman), a resident of the village he planned to destroy, to take back his kingdom from Yzma. Hilarious with a heartwarming message, it is the perfect popcorn film families, kids, and kids at heart can enjoy together.



Suicide Squad

7:30 p.m., Thursday, Dec. 15 through Sunday, Dec. 18 2016, Rated PG-13, 123 minutes

Sometimes to do good, you gotta be bad. This DC Comics action thriller, focusing on supervillains rather than superheroes, takes on the old adage of fighting fire with fire to save Midway City. With Superman out of commission, the U.S. government is forced to think outside the box to defeat the latest in a series of nefarious foe—and Amanda Waller (Viola Davis) is just the woman for the job. She gathers together some of the most dangerous criminal minds, Harley Quinn, Deadshot, Diablo and Croc, to name a few, to go on what basically amounts to a suicide mission. If they try to rebel or escape from the task at hand, a small bomb implanted in their necks will go off. However, Quinn's boyfriend, the psychotic Joker (Jared Leto), has a wild card up his sleeve. Largely panned by critics as not living up to the long-hyped marketing campaign, nevertheless it raked in audiences around the country who enjoyed seeing some of their favorite comic book characters on the big screen for the first time. Rated PG-13 for violence, action and disturbing behavior (AKA: people acting crazy) as well as suggestive content, "Suicide Squad" despite the odds remains a crowd pleaser for teens, adults, and older children accompanied by parents.

For more reviews and fun, visit <http://theinsatiablenecritic.blogspot.com/>

Showtimes, unless otherwise noted, are at 7:30 p.m. Ticket prices are \$3 for children and students and \$4 for adults. Wednesday night Cinema Guild movies are free of charge.

Sewanee Memoirist Pens Story of a Great Southern Family

"The Carolina Brattons: Courage, Honor, and Country Since 1766," is a family history written by Patricia West and commissioned by John Bratton of Sewanee, grandson of Bishop Theodore DuBose Bratton, ninth Chancellor of The University of the South. Bratton's primary interest in having the book written was to further explore the legacy of his grandfather, whose positions on race and the importance of education, especially for women, were ahead of his time. Bratton also wanted to honor at least three other well-known Bratton ancestors, including a Revolutionary War hero, a Civil War hero, and a successful entrepreneur who donated millions to charity and to education.

John Bratton chose Patricia West to write his family's story, which involved extensive research, including a trip to South and North Carolina. He has been delighted with the wealth of information that she was able to uncover. Luke Austin, author of "General John Bratton: Sumter to Appomattox, in Letters to His Wife," states that the book is "packed with drama and analytical insight," and that "her fast paced narrative integrates the social, political, and military events that dominated their lives and shaped the region's history." He added that "The Carolina Brattons' is not only a well-told story of a remarkable family; it is also an ambitious, scholarly narrative that should appeal to anyone interested in American History."

"The Carolina Brattons" was published in September 2016 and is now available online through <amazon.com> and other online retailers such as Barnes and Noble. It is also available at the University Bookstore.

Patricia West is the founder of Tree of Life Memoirs and lives in Sewanee with her husband. She has written and published eight memoirs since 2012 and collaborated on three others. Patricia has written family histories and life stories since the early '80s. As a member of the Association of Personal Historians since 2013, she co-founded the Tennessee chapter. More information on Patricia, her business and her books can be found on her website <TreeofLifeMemoirs.com>. She can also be reached by phone (931) 598-5913 or (931) 636-6069.

Reading by Poet Tiana Clark

The Mountain Goat and the Sewanee Review invite the community to a reading by poet Tiana Clark, author of "Equilibrium." Clark is the winner of the 2016 Academy of the American Poets Prize and 2015 Rattle Poetry Prize. Her writing has appeared in or is forthcoming from Sewanee Review, Rattle, Best New Poets of 2015, Southern Indiana Review, and many more.

Free and open to the community, the reading will be at 7 p.m., Monday, Dec. 12, at the Watson House on South Carolina Ave.

St. Paul's Presents EYA: Natus Est Rex

St. Paul's Artist Series presents EYA: Natus est Rex, A Medieval Candlelight Christmas, featuring music for women's voices from the 11th through the 15th centuries. The concert takes place at 7:30 p.m., Tuesday, Dec. 13, at St. Paul's Episcopal Church (305 W. 7th Street at Pine). Tickets are \$20 for adults; \$15 for seniors; \$10 for students. For more information go to the St. Paul's website <stpaulschatt.org/concert-series/>.

EYA (Crossley Hawn, soprano; Alison Mondel, soprano, director; Kristen Dubenion-Smith, mezzo-soprano) is an award-winning vocal ensemble based in Washington, D.C., specializing in the interpretation of medieval music for women's voices. Launched in 2010 and directed by Allison Mondel, EYA has established its place in the Washington, D.C. community as an early music ensemble of impeccable vocal quality and deep, creative spirit. EYA presents concert programs that interweave diverse repertoires of the 12th through 15th centuries, from Hildegard von Bingen to Notre Dame to the flyleaves of early English manuscripts and beyond. Through this lens, these programs seek to tell a story that forges new points of connection between contemporary audiences and medieval repertoire, underlining our common humanity with these early poets and composers.

Arts Notes

'a hand's width'

The Carlos Gallery in the Nabit Art Building presents "a hand's width," a solo exhibition by artist Anderson Wrangle. The exhibition continues through Dec. 16.

Gallery hours are from 8 a.m. to 5 p.m. Monday through Friday and 1–5 p.m. Saturday and Sunday. The gallery is located at 105 Kennerly Road.

'Communal Spirit'

"Communal Spirit: 3,000 Years of Mexican Artistry" incorporates diverse Pre-Columbian artifacts from both western and eastern Mexico, representing eight different indigenous civilizations. The 20th-century folk art presented features many of the same regions, inspiration and creative techniques. The exhibition continues through Dec. 16 at the University Archives.

'Love Thy Neighbor'

The University Art Gallery presents Jessica Wohl's "Love Thy Neighbor," an exhibition of quilts and drawings that grapples with the fear, intolerance and polarization the artist sees dividing communities and cities across the country, and answers those divisions with objects that evoke empathy and comfort. The exhibition will be on view through Jan. 27.

HAIR DEPOT

KAREN THRONEBERRY, owner/stylist
TOBBIN NICOLE, stylist/nail tech
Find us on Facebook!

17 Lake O'Donnell Rd. • (931) 598-0033 • Sewanee
Tuesdays thru Fridays, 9 a.m. to 5 p.m.
Saturdays, 9 a.m. till last appointment

myerspoint.net

MYERS POINT at Sewanee offers a rare opportunity to enjoy a private community that celebrates American architecture, lifestyle, protected forests, cultivated lakes and panoramic views on Middle Tennessee's Cumberland Plateau. If you want to live surrounded by nature, history, beauty, quality and serenity, you'll want to call it home.

- 480-acre private gated community
- 24 exclusive home sites; lakeside or bluff vista
- Timeless, organic, craftsman architecture standards
- Land Trust for Tennessee perpetually protected forests
- Over four miles of walking and riding trails
- Community barn, pastures, resting benches and fire pit
- Minutes from the University of the South

John Goodson • (931) 703-0558 • jgoodson@myerspoint.com

Custom cabinetry, design services, remodeling and new construction!

Sweeton Home Restoration
931-924-2444 sweetonhome.com

Bridging the gap between high design and practical living



LOOKSATBOOKS

by Pat Wiser for Friends of duPont Library

Gifts that Last

I often find that a perfect gift for a family is a book which may be enjoyed by multiple generations. Consider the re-issued edition of Lucy Dawson's "Dogs as I See Them," the 1937 original replicated with notes and drawings irresistible to dog lovers of any age. Ann Patchett, Nashville writer and co-owner of Parnassus Books, with ever-present canine greeters, writes in the forward that Dawson "drew the personality of every dog she met." Simple lines communicate Binkie's impatience to chase a ball and spoiled Nankie Poo's imperious dismissal of the artist. Although Ann doesn't mention her role, according to a bookstore staffer she convinced HarperCollins to reprint this treasure. I'm sending it to a family for ages 4 through 70.

Another welcome reappearance: a hardcover facsimile of "Rudolph the Red-Nosed Reindeer," the 1939 Montgomery Ward Department Store booklet written in rhyme by employee Robert L. May. A give-away to customers, the story was a huge success even before the popular 1949 Gene Autry song. The era's muted colors and simple illustrations by Denver Gillen allow Rudolph and his amazing nose to stand out in this enduring Christmas tale.

The Caldecott Award for illustration brings more history for varying ages. Lindsay Mattick, great-granddaughter of World War I Canadian soldier Harry Colebourn, teamed with illustrator Sophie Blackall in "Finding Winnie: The True Story of the World's Most Famous Bear." On his way to tend horses at the European front, the young veterinarian buys a baby bear from a trapper at a train depot, naming her Winnipeg. Winnie is a beloved morale booster until combat looms, and Harry must leave her. The illustrator realistically portrays the London Zoo's austere animal enclosure that becomes Winnie's home. There she makes friends with a little boy, Christopher Robin Milne, who imagines the adventures which became the basis for his father's "Winnie-the-Pooh" stories. Harry's diary and photographs of Winnie with the troops add to the appeal for adults and older children. The illustrator blends visual story telling with the narrative, with water color and ink capturing historical details and lovable characters. Ages 5-8 (I'd go much older).

We visit the 1950s with the Jane Addams Children's Book Award winner, "New Shoes," by Susan Lynn Meyer, illustrated by Eric Velasquez. One subject for these awards is young people creatively solving problems of injustice. Ella Mae is humiliated when she is not allowed to try on shoes and must instead trace her feet for size. Her ingenious response is working hard to refurbish used shoes for her own store where everyone may "try on all the shoes they want." We meet problem solvers, not victims. Bright pastel dresses shine through the warm background in this blend of history and storytelling, presenting a difficult subject in an age appropriate way. Ages 6-9.

Another example of history of multi-generational interest is the Belpre award to "a Latino illustrator celebrating culture through literature." When choosing library books recently, my great-granddaughter was drawn to Rafael López's vibrant neon-like scenes in acrylic paint on wood, which enhance "Drum Dream Girl," Margarita Engle's biography of Millo Castro Zaldarriaga. The world-famous jazz musician persevered to convince her elders in 1930's Havana that girls could be drummers too. Get out the bongos for this one. Ages 6-9.

For middle grade readers' gifts, investigate the many popular series, all good for reading together. From Sewanee Elementary School librarian Kathryn Bruce's helpful list of popular sets, here are two fantasies which work well for grades three or four and up: Chris Colfer's "Land of Stories" features twins whose fairy tale book is the portal to a land of familiar characters, plus an array of new ones. Tui T. Sutherland's "Wings of Fire" is a dragon saga with a mysterious prophecy, endless battles, and ancient lost treasure. For more about series which spend little time on SES library shelves, consult Kathryn, myself or a child.

Ages are suggested by publishers. Older children often enjoy a book seen as too young for them, and reading aloud works for almost everyone. Merry Reading!

The blue chair
Café & Tavern

41 university avenue
sewanee, tennessee

The blue chair
Café & Tavern

JACKALOPE

(931) 598-5434
thebluechair.com

MGT

**MOUNTAIN
GOAT TRAIL**

SHARE the TRAIL
Rule #7
Listen for others.
Headphones impair your
ability to hear and react to
dangerous situations.
WALK • RUN • CYCLE
TOGETHER
mountaingoattrail.org

"Anything Goes" at the Artisan Depot

Amongst a festival of lights and handcrafted Christmas ornaments and gifts, the Franklin County Arts Guild is closing 2016 with two great art shows. The community show, "Anything Goes" features a wide variety of watercolor, acrylic and oil pieces as well as fiber pieces. The traditional end of year Member Show features work from contributing artists at the Artisan Depot. Both shows are on display until Dec. 24.

The Artisan Depot is operated by the Franklin County Arts Guild and is located at 204 Cumberland St. East, Cowan. Gallery hours are noon to 5 p.m., Thursdays, Fridays and Sundays, and 11 a.m. to 5 p.m., Saturdays. The Artisan Depot will be open on Christmas Eve.

For more information about upcoming community art shows, the gallery or the guild go to <www.fcaguild.wordpress.com> or <www.facebook.com/artisandepot> or contact Diana Lamb at (931) 308-4130.



"ELF the Musical, Jr." at Arts Center

The Arts Center of Cannon County presents "ELF the Musical, Jr." The show will run today (Friday), Dec. 9, at 7:30 p.m., Saturday, Dec. 10, at 10 a.m. and 2 p.m., and Sunday, Dec. 11, at 2 p.m. Ticket prices are \$10 and may be purchased by calling the Arts Center box office at (615) 563-2787. Tickets may also be purchased online at <www.artscenterofcc.com>. Tickets will be sold at the door, space permitting.

Buddy, a young orphan, mistakenly crawls into Santa's bag of gifts and is transported to the North Pole. The would-be elf is raised, unaware that he is actually a human, until his enormous size and poor toy-making abilities cause him to face the truth. With Santa's permission, Buddy embarks on a journey to New York City to find his birth father and discover his true identity. Faced with the harsh reality that his father is on the naughty list and that his half-brother doesn't even believe in Santa, Buddy is determined to win over his new family and help New York remember the true meaning of Christmas.

The Arts Center is located on 1424 John Bragg Hwy., just west of the town of Woodbury, approximately 20 minutes from Murfreesboro, Manchester, and McMinnville and one hour southeast of Nashville.

Dine Locally

BEGINNING PILATES CLASSES

Starting January 10 at the Fowler Center in Sewanee
Gift Certificates Available!

The class will start with the fundamentals of healthy movement that aligns and protects your bones and joints and improves the balance. Then learn how to strengthen that pattern of healthy movement with the Pilates Mat exercises. You will look and feel like a new person!!

~Beginner Classes will meet at 9 am on Tuesday/ Thursday.

~Intermediate Classes will meet 10 am on Monday/Wednesday or noon on Tuesday/Thursday.

Private and Duet sessions on Pilates Equipment available by appointment Monday through Friday.

~Spinal Spa and Fascial Release Class at noon on Friday.

Classes are \$12 per single class, \$10 if purchased in monthly blocks.

Discounts for attending 4 or more classes per week.

Contact Kim Butters, PMA Pilates Instructor

and AFAA Personal Trainer

(423) 322-1443 or kim_butters59@hotmail.com

91 University Ave. Sewanee

**UNIVERSITY
REALTY**

SEWANEE
TENNESSEE



www.ursewanee.com

Lynn Stubblefield (423) 838-8201

Ed Hawkins (954) 830-4760

Susan Holmes C'76 (423) 280-1480



KENTUCKY AVE. Lovely, well maintained home, spacious single story, 4 br, 2.5 baths, 2 fireplaces, screened in porch, deck, patio, barn.



LOUISIANA CIRCLE. Location, location! Native stone home, 2 fireplaces, 2 living rooms, library, office, screened in porch, room for everyone, lovely private lot. \$315,000



SHERWOOD RD. & St Marys Ln on campus. Private setting. Brick single story, recently renovated, open floor plan, native mountain stone fireplace, granite counter tops, dining room, 2 brs, 1.5 ba, fenced back yard. Large garage. \$189,000

COMMERCIAL. 1+ acres behind Citizens Tri-County Bank on Spring St. All utilities in place.



BLUFF TRACTS Stunning view of Lost Cove on Sherwood Road. 3 miles from University Ave. Over 1,600 feet on the bluff and the road. Easy to develop. 17.70 acres



BLUFF LOT. Laurel Lake Dr with amazing sunset view, great looking hardwoods, gently rolling, private & secluded 15.9 acres \$125,000



SNAKE POND ROAD. 6.20 acres with septic, water & electric. \$48,000



CAN TEX. 10 or 42 beautifully wooded acres in a great location close to town. \$8,500 per acre.



FIRST OFFERING. 199 Cloudcroft Place, the 17.9 acre Yeatman estate on the bluff. Located in picturesque Eva Lake area with a sunset view. The house is a 3 bedroom 3 bath house, native stone fireplace, hardwood floors, new roof and new CHA, partial basement, pond, two barns and much more! \$490,000



CHICKORY LN. 1.23 ac lot nicely wooded, 4.97 acres entrances on Chickory and Laurel Lake Dr. Very secluded and very pretty!

SHADOW ROCK DR. 1.18-acre charming building lot with meadow.

SNAKE POND RD. 30 wooded acres close to campus.

BLUFF LOT overlooking Lost Cove. Beautiful sunrise, cool evenings. 4.08 acres. \$80,000.

LAUREL LAKE DR. 8 wooded acres, very private entrances on LL Dr and Chickory Ln., most utilities at the road.

WE HAVE BUYER'S AGENTS TO REPRESENT YOUR INTEREST AT NO CHARGE

ads@sewaneeemessenger.com



SAS and Monteagle battle for the ball in a Nov. 29 middle school game.
Photos by Michael Ostrowski

SAS Boys' Middle School Basketball Action

On Dec. 1, St. Andrew's-Sewanee middle school boys' basketball team suffered its worst loss of the season to a Webb School team that acquired an eighth-grader during the offseason who could start on many varsity teams.

Jordan Jenkins scored 13 points (11 in the first quarter) to lead his team to a

53-15 romp. After a demoralizing first quarter, the Mountain Lions lost any momentum and played listless basketball. Nathan King had five points; Payton Zeitler added four; and Sean Willis, Cameron Harmon and Ethan Hargis had two each.

On Nov. 30, SAS lost to Tracy City Elementary, 41-25. Gage Reeves for Tracy City went on a tear, scoring four full-court layups and a 3-pointer in the second quarter alone (he ended with 15) to defeat SAS.

The SAS boys rushed many shots, but King still found the target on a few, scoring 13, including three 3-pointers. Zeitler added six before fouling out of his second game in a row; Willis, Cam Weaver and Hargis added two each.

SAS also lost to Monteagle Elementary on Nov. 29, 41-30.

SAS made a good run of it until late in the game when Zeitler fouled out. Prior to that the game was neck-in-neck, a great improvement over the first game.

Weaver led SAS with eight points, followed by Harmon with five; King and Zeitler scored four each, Hargis added three, and Willis had two.



Cameron Harmon looks for a teammate in the game against Palmer.

SAS Swimmers Brew Up Big Win Over Coffee County

The upper and middle school swimmers from St. Andrew's-Sewanee took the pool on Dec. 1, against Coffee County, winning the meet 64-54.

The SAS boys finished the home meet with a score of 34, edging out Coffee County by 18 points, while the SAS girls fell by a narrow margin of eight points.

Several SAS swimmers had standout performances. Among them was Serena Zeng in her first season with the team; she dropped nearly 30 seconds off her time in the 100 freestyle, finishing with a personal best time of 1 minute, 34.44 seconds. Sophia Patterson swam the 500 freestyle for the first time and performed admirably, coming in at 7:57.02.

Beth Dougherty dropped an impressive four seconds off her 50 free, finishing with a personal best of 35.23. Sam Smith, Aidan Smith, Alexander Milford and Jack Haight competed together as a relay team for the first time this season, recording a 2:02.56 in the medley and 1:47.38 in the 200 free relay.

Sarah Beth Hobby managed to take five seconds off her 100 breaststroke, finishing with a time of 1:34.45. Finally, Karolina Bolimowska improved her time in the 100 freestyle by dropping seven seconds and finishing with a personal best time of 1:33.70.

Several athletes set new personal bests. Coaches Nan Miller and Jake Long said many of the swimmers are continuing to improve as a direct result of the hard work they are putting into practice. They also noted that they are excited to see where this team will go.



The St. Andrew's-Sewanee varsity swim team.

SAS Invites Alumni to Rally Night

St. Andrew's-Sewanee School invites former students to take part in a special alumni rally night on Thursday, Dec. 15, at the SAS varsity basketball games.

Courtesy of the Alumni Office, gate admission for former students is free and they will also receive a complimentary SAS rally towel!

School officials encourage alumni to greet good friends during the holiday while they cheer for the Mountain Lions against local rival Marion County High School.

Girls' varsity plays at 5:30 p.m. and the boys' game will start at 7:30 p.m. There will be a junior varsity game kicking off the action at 4:30 p.m.



Mariel Rinck at the charity stripe. Photo by St. Andrew's-Sewanee

SAS Varsity Girls' Recap

The St. Andrew's-Sewanee School varsity girls' basketball team finished 1-4 in a stretch of games to open the season.

On Dec. 2, SAS lost to Riverside Christian Academy, 49-38. The Mountain Lions battled back from a deficit of 27 points to bring the game within 10 points in the fourth quarter.

Mariel Rinck led SAS in scoring with 12 points; Sarah Johnson added eight; Anna Post had seven; Elsie Uwera scored four points, Kate Butler had four; and Isabel Spinelli added two.

The day before on Dec. 1, the Mountain Lions defeated Berean Academy, 30-23. SAS was led by a balanced offensive attack with Johnson, Butler and Post leading team scoring with six points each.

SAS overcame an 11-point first half deficit to pull within three points at the start of the fourth quarter. The Lions defensive pressure and a timely 3-point shot by Butler propelled the Mountain Lions to their first win of the season.

Mariel Rinck scored four points; Tessa Shackelford added four; and Uwera and Spinelli scored two points each.

On Nov. 29, SAS lost to Richard Hardy Memorial School, 46-18.

On Nov. 17, the Mountain Lions lost to Whitwell High School, 59-20.

SAS also lost its season opener against Lookout Valley High School on Nov. 15, 52-35.

Butler led the Mountain Lions with 15 points; Johnson had 10; Rinck scored five; Uwera chimed in with three; and Post had two points.

Home Games

Saturday, Dec. 10

11 a.m./noon, SES Basketball vs. Decherd, North Middle

1:30 p.m., SAS JV Boys' Basketball vs. Donelson Christian Academy

2 p.m., University Women's Basketball vs. Berea

2:30 p.m., SAS V Girls' Basketball vs. Donelson Christian Academy

4:30 p.m., SAS V Boys' Basketball vs. Donelson Christian Academy

Thursday, Dec. 15

4:30 p.m., SAS JV Boys' Basketball vs. Marion County High School

5:30 p.m., SAS V Girls' Basketball vs. Marion County High School

6:30/7:30 p.m., Clark Memorial vs. SES, Cowan Gym

7:30 p.m., SAS V Boys' Basketball vs. Marion County High School

Brown's Body Shop

Leonard Brown - Owner
Steve Young - Gen. Mgr.
Steve Hartman - Shop Mgr.

710 College St. • Winchester
931-967-1755 • Fax 931-967-1798

*Come by and see us.
We appreciate your business.*
Our Work is Guaranteed!

WOODY'S BICYCLES
SALES, SERVICE AND RENTALS
A Full-Service Trek Bicycle Dealer
Mon-Fri 9-5 • Sat 10-2 • 90 Reed's Lane
598-9793 • woodybike@gmail.com

Check out www.woodysbicycles.com for rates, trail maps, photos, bike club links, races and much more!

HOUSE CALL SERVICE AVAILABLE
Full Service Veterinary Care for Dogs, Cats & Horses
Boarding & Grooming

Midtown Veterinary
Services & Hospital

Traci S. Helton DVM Nathan L. Putman DVM

Monday-Friday 7:30 am-6 pm; Saturday 8 am-1pm
AFTER-HOURS EMERGENCY SERVICE AVAILABLE
931-962-3411
505 S. Jefferson St., Winchester (41-A toward Winchester. First left after Domino's Pizza)

piggly wiggly
100 years

Down Home, Down the Street
754 West Main St., Monteagle
(931) 924-3135
8 a.m. to 9 p.m. 7 days a week



Bella Taylor

Taylor Named the TSWA Player of the Week

The Tennessee Sports Writers Association (TSWA) recently named Sewanee athlete Bella Taylor as the TSWA Women's Basketball Player of the Week winner.

The weekly award is given to the top player in the state of Tennessee regardless of collegiate division. Taylor was awarded the honor alongside Joshua Dobbs (University of Tennessee), Chris Morley (University of Memphis), and Josh Robinson (Austin Peay State University), who were the male winners in football and men's basketball.

Taylor garnered the honor after posting 17.7 points, 3.3 assists, 4.0 rebounds and 2.0 steals in three games for the Tigers.

The Sparta, Tenn., native started the week with 24 points, four boards, and four assists against Covenant College on Nov. 15, hitting 10-of-14 shots with a pair of 3-pointers. The sophomore netted 20 points with four rebounds and four assists at Wesleyan College as well, connecting on 9-of-18 shots with two more triples.

Taylor registered nine points, four rebounds and three steals in Sewanee's other contest during the week against Emory & Henry. Taylor is Sewanee's first-ever weekly TSWA award winner regardless of sport.

**SPREAD
GOOD
NEWS.
SHARE
YOUR
NEWS.**

Maryville Men Rally Past Sewanee in OT

In-state rival Maryville rallied from a late double-digit deficit to defeat the Sewanee men's basketball team 83-70 in overtime on Dec. 6 inside Juhan Gymnasium.

After back-to-back losses, Sewanee is now 4-3 overall while Maryville improved to 6-1.

Sewanee led by as much as 13 points with 10:30 left to play in the second half. With the Tiger lead at 12, 62-50, with 3:44 left in regulation, Maryville rallied. After a Dante Hoppa layup and a Sewanee turnover, Tyler Spicer knocked down a three.

Maryville scored 12 of the next 17 points, including a three by Calvin Songster and a layup by Colt Nokes with under a minute to play. The last field goal by Nokes tied the game at 67-67 to send the game into overtime.

In the extra frame, it was all Maryville. The Scots finished 3-for-3

from the field and 9-of-10 from the free throw line. That helped Maryville outscore the Tigers 16-3 the final five minutes. In fact, Sewanee's lone field goal in overtime came when Clay Born hit a layup with four seconds left.

After a slow start, Maryville finished at 46.2 percent shooting. The Tigers also played well on offense with a 51.9 field goal percentage. The Tigers were undone by 21 turnovers and a 6-of-14 performance at the free throw line.

Individually, Sewanee's Jordan Williams finished with a game-high 28 points on 11-for-16 shooting. Clay Born added 13 points and six rebounds, while Leo Born pitched in 10 points.

Forward Colt Nokes paced Maryville with 20 points and eight rebounds. Songster and Hoppa also added 13 points each for the Scots.

Whitehead Leads Sewanee Swimmers at Transy Invitational

Led by a win from Michael Whitehead, the Sewanee swimming and diving teams wrapped up the elite Transylvania Invitational on Dec. 4 on the campus of the University of Kentucky.

Sewanee immediately opened the final evening session with a top-five finish when Emily Gay was fifth in the women's 400 individual medley. Gay's time of 5 minutes, .06 seconds, was the fastest Tiger 400 IM time of the season. In fact, Gay's mark beat her previous best by 11 seconds.

That was followed by Whitehead's victory in the men's 400 IM. His time of 4:10.07 was more than three seconds faster than runner-up Garrett Beauprez of Rose-Hulman. Like Gay, Whitehead crushed his season-best time in the 400 IM. His previous mark was 4:14.45.

Andrew Freibert continued season-best times when he finished in sixth place in the men's 50 freestyle with a mark of 22.01 seconds. Caty Hueske then finished third in the women's 100 backstroke with a time of 59.24.

The Tigers continued their top-five finishes in event 27, the women's 200 free. Junior Meghan Mulhern finished fifth when she touched the wall in 2:01.84.

Her teammate Kaylee Pierson then finished eighth in the 200 breaststroke in 2:33.45. Finally, Freibert capped off a great weekend when he finished the men's 100 fly in sixth in 52.07 seconds. That was also a season-best time for Freibert.

Overall, the men's team finished fifth behind winner Rose-Hulman, Franklin, Rhodes and Wittenberg. The women's squad was seventh, two points behind host Transylvania. Rhodes won the event with 640 points.



Michael Whitehead



**Village
Wine & Spirits Inc.**

Best Selection of Wine & Spirits

Now Selling Cold Beer, Wine & Champagne

10% Discount to Seniors, Veterans, Students & Staff (ID required)

Special Orders Available for Wine & Kegs

Visit us on Facebook for the latest products.

Across 41A from Monteagle's Piggly Wiggly ~ (931) 924-6900

Mon-Thu 9 a.m.-10 p.m.; Fri-Sat 9 a.m.-11 p.m.

Monteagle Sewanee, REALTORS®

Dedicated to Service!



Deb Banks, Realtor
(931) 235-3385
debbanks8@gmail.com



Ray Banks, Broker/Owner
(931) 235-3365
rbanks564@gmail.com



Dee Underhill Hargis, Broker
(931) 808-8948
aduhargis@gmail.com



Tom Banks, Realtor
(931) 636-6620
tombanks9@yahoo.com

Competent, Caring, Friendly, Fair—We're Here for You!
www.monteaglerealtors.com • 931-924-7253

337 W. West Main St., Monteagle

Find all the area MLS listings on our updated website!



Sewanee's Sue Kim drives the ball against Centre College.

Tigers End Road Test with Tough Loss to Centre

After seven road games to start the season, the Sewanee women's basketball team will play its first home game on Dec. 10 at 2 p.m. The Tigers wrapped up the road test with a 65-62 loss to Centre College in Danville, Ky. to move to 2-5 this season.

After both teams traded the lead early in the first quarter, Sewanee jumped back in front at 9-7 after a Bella Taylor jumper. From there, Sewanee outscored the Colonels 6-3 the final three minutes of the quarter to take a 15-10 lead at the end of one.

The Tigers then extended their advantage to as much as nine points after Taylor and Corey Caulder made back-to-back field goals to start the second. After another Taylor layup with 8:19 left in the first half, Centre answered with a 12-6 run to end the quarter.

From there, Sewanee and the Colonels traded the lead eight times in the third before a Marlee Smith free throw with two seconds left tied the contest at 44-44 at the end of the quarter.

In the final 10 minutes, the score remained close. Sewanee took its largest lead down the stretch, four

points, when Caulder hit a three with 5:43 to play. After Centre responded, Caulder hit another three, which tied the contest at 60-60 with 2:03 left. From there, a Day Vance layup and a Caroline Andreassen three pushed the Colonels in front 65-60 with 49 seconds left.

Taylor answered back for Sewanee with a layup on the Tigers' next possession. Sewanee got the ball back one final time, but a three by Sue Kim at the buzzer missed.

Overall, Sewanee shot the ball well. The Tigers made 44.6 percent of their attempts. The purple and gold also forced 18 Centre turnovers but were undone by the Colonels' outside shooting. Centre made 50 percent of its three-point attempts along with outrebounding Sewanee, 40-25.

Individually, Caulder and Taylor led four Tiger starters in double figures with 15 points. Senior Savannah Rose added 14 points and six rebounds, while Hannah McCormack pitched in 10 points, two rebounds, five assists and four steals.

Vance paced Centre with a game-high 17 points and seven rebounds.

ROB MATLOCK
CONSTRUCTION COMPANY
NEW HOME BUILDING
AND REMODELING

MEMBER, U.S. GREEN BUILDING COUNCIL

PHONE 931-598-5728

MATLOCK

State Licensed • Fully Insured

Adaptive Landscape Lighting

Crafted LED Illumination of Architecture, Landscape, Outdoor Living Spaces, Security and Safety Concerns

Beautify and add hours to your outdoor living. Subtly illuminate dark, uneven steps and pathways. Save on electric bills! Receive a complimentary consultation. Call us today!

Bonded : Insured : Experienced : Residential and Commercial

Paul Evans : 931-952-8289
Sewanee • pevans@adaptiveenergy.org

Your Place for Organic & Local Products

- ◆ Natural Foods
- ◆ Personal Care Products
- ◆ Garden Supplies
- ◆ Yarn & Knitting Supplies
- ◆ Local Arts & Crafts
- ◆ Jewelry
- ◆ Gifts
- ◆ Antiques

Mooney's

Market & Emporium

OPEN DAILY 10-6

931-924-7400 • 1265 W Main Street • Monteagle, TN

NATURENOTES



Poinsettia

Christmas Plants

Many plants are associated with Christmas, perhaps especially the holly, as in the carols, “The Holly and the Ivy” and “Deck the Halls with Boughs of Holly.” Since those carols come from the British Isles, the holly would be the English holly, *Ilex aquifolium*. It is similar in appearance to our native evergreen holly, *Ilex opaca*. The verses of the first carol even mention the botanical features of the holly-white flowers (small), red berries, prickles of the leaf margins and a bitter bark. There are also other species of holly in our woods, but they are deciduous and therefore less conspicuous, unless in fruit.

Also common in our woods is the Christmas fern, although it is not mentioned in any carols that I know. It is probably called Christmas fern since its fronds stay green through the winter, but there are many related memory devices based on the shape of the divisions of the leaf or frond: a Christmas stocking, Santa’s boot or Santa’s sleigh.

Having mentioned a flowering plant and a fern, there is another plant group with Christmas associations-clubmoss, specifically Southern Running-Pine. As its name suggests, it trails along the ground and stays green in winter. The “clubs” are the upright, spore-bearing structures. Despite the name it is not a moss but a vascular plant. It was used, at least in the past, as a Christmas decoration and its relatives are still used as such in places like Mexico.

Mexico, and parts of Central America, are the native home of the poinsettia. I still remember being amazed by the large poinsettia shrubs in our yard, blooming in January when we first went to Guatemala in 1979. Joel R. Poinsett introduced it to the U.S. in 1828, when he was then a minister in Mexico.

Juncoes

The juncoes are back! Ours are the Slate-colored subspecies of the Dark-eyed Junco. They breed in summer in the northern part of the continent, then return to us in the winter in small flocks, foraging on open ground. Note their white underbelly and white outer tail feathers, especially noticeable in flight.

—reported by Yolande Gottfried



Delilah



Cleo

Pets of the Week

Meet Delilah & Cleo

Animal Harbor offers these two delightful pets for adoption.

Delilah is a sweet purebred Bluetick Hound. She is a big girl with a big heart that has plenty of room for love. Delilah likes to run and explore, but she loves to hang out with people the most. She is very active and would love to have someone to play and run with. Delilah will be spayed, microchipped and up-to-date on all shots at the time of her adoption.

Cleo is a spunky Calico kitty with beautiful markings. She’s smart, playful and funny, and she’s constantly on an adventure. Out of all her toys, Cleo plays with her bells the most! She is negative for FeLV and FIV, house-trained, up-to-date on shots and spayed.

Animal Harbor offers substantial adoption fee discounts for veterans and seniors. Every Friday is Black Friday at Animal Harbor. On Fridays, adoption fees will be reduced 50 percent for black or mostly black pets more than 4 months old who have been at Animal Harbor for more than a month. Pets adopted from Animal Harbor qualify for a free post-adoption wellness exam by local veterinarians.

Animal Harbor is located at 56 Nor-Nan Road, off AEDC Road, in Winchester. Call Animal Harbor at 962-4472 for information and check out the other pets at <www.animalharbor.org>. Enter the drawing on this site for a free spay or neuter for one of your pets. Help Animal Harbor continue to save abandoned pets by sending donations to Animal Harbor, P.O. Box 187, Winchester, TN 37398.

Good Ideas for a Green Christmas

If you’re looking to do some good this holiday season, why not have a green Christmas by making a few simple substitutions? There are lots of places where you can make greener choices. Here are a few.

Carpool: Doing some holiday shopping? Grab some shopping buddies and reduce carbon emissions.

Recycle: Look for recycled gift wrap and cards. If you really want to go green, send an ecard to family and friends. And if you’re feeling crafty, make your own gift boxes out of cereal boxes. Make sure you recycle gift wrap materials from Christmas morning. Save bags, bows and ribbon for next year.

LED lights: Use LED Christmas lights this year. LED lights are up to 90 percent more efficient than incandescent bulbs. LED lights are also safer because they do not produce heat, and they last much longer than incandescent bulbs.

Meals: Buy local and organic. Reduce burning of fossil fuels by supporting local farmers and businesses.

Use non-disposable: Think less trash. By using plates and cloth napkins for gatherings, you can reduce

the amount of trash your household produces.

The tree: Recycle your tree. It can be ground up for mulch or composted and help to make many more green things grow. Or buy a live tree with roots. Keep it watered, and it will be less of a fire hazard because the needles won’t dry out. Then plant the tree in your yard. It can shade your house from the hot sun in summer and block the cold winds in winter.

Weather

DAY	DATE	HI	LO
Mon	Nov 28	61	46
Tue	Nov 29	67	49
Wed	Nov 30	59	39
Thu	Dec 01	50	34
Fri	Dec 02	55	39
Sat	Dec 03	42	40
Sun	Dec 04	44	51

Weekly Averages:

Avg max temp =	54
Avg min temp =	41
Avg temp =	48
Precipitation =	4.5”

November Monthly Averages:

Avg max temp =	64
Avg min temp =	43
Avg temp =	54
Total Precipitation =	3.60”

November 58-Year Averages:

Avg max temp =	57
Avg min temp =	39
Avg temp =	48
Precipitation =	4.71”
YTD Avg Rainfall =	53.13”
YTD Rainfall =	42.07”

Reported by Nate Wilson
Domain Manager

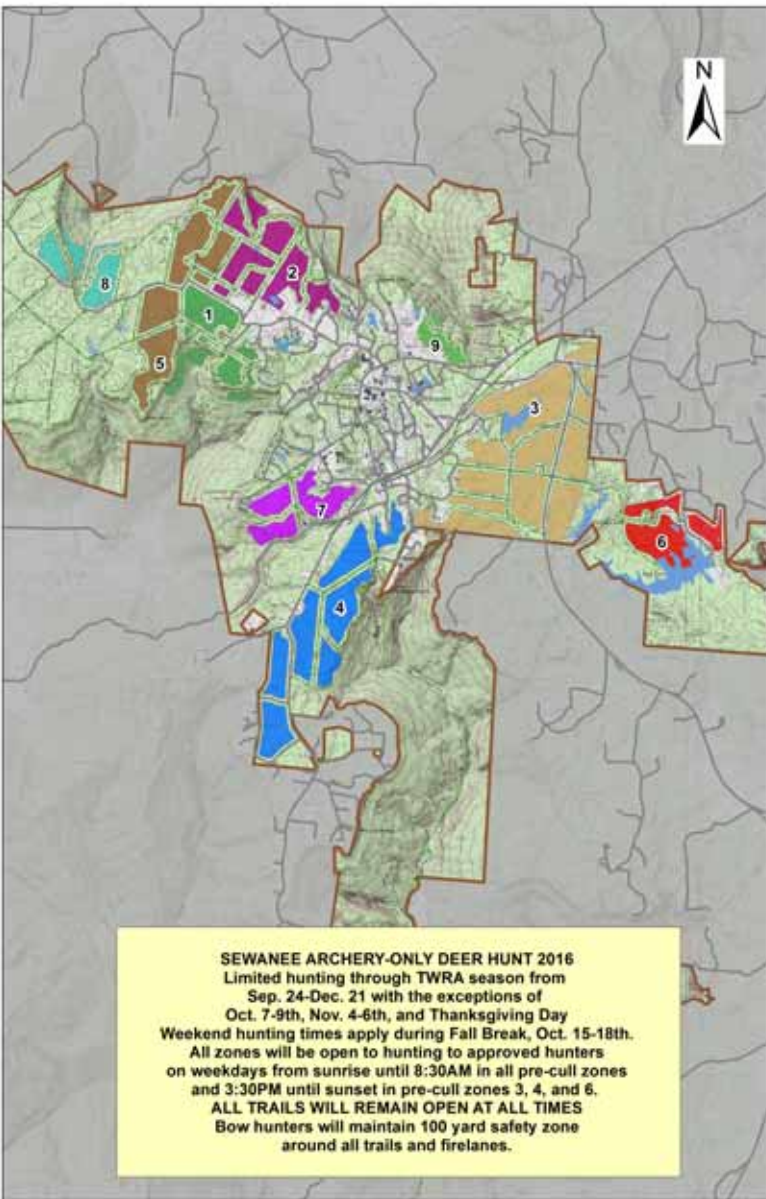
University Deer Hunt

The 2016 University deer hunt continues through Jan. 13, 2017. The archery-only season runs through Dec. 21, and the regular season begins on Dec. 22. The University deer hunt is a private hunt by invitation only. No hunting is allowed without explicit written permission.

Hunting is allowed on most weekends from sunrise to 10 a.m. and 2 p.m. until sunset. Hunting is allowed weekdays from sunrise to 8:30 a.m. in all zones and 3:30 p.m. to sunset in zones 3, 4 and 6.

There is no hunting Christmas Eve or Christmas Day. There will be a limited firearms hunt that will start the day after Christmas.

For more information go to <www.sewanee.edu/offices/oess/the-do-main/ecosystem-management/hunting/>. The zone map is shown below.



For Generations to Come...
Live Beautifully ~
Comfortably ~ Authentically



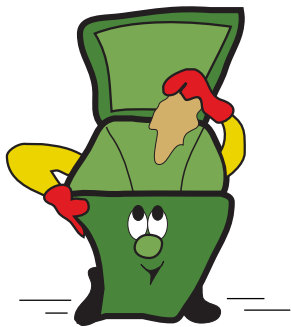
Custom home remodeling begins with...

Joseph's Remodeling Solutions
A Division of Sumpter Solutions, LLC.

Taking Quality to the Next Level
Licensed - Insured - Green Certified

931-598-5565
joseph@josephsremodelingsolutions.com
www.josephsremodelingsolutions.com

Keep the
Mountain
Beautiful!



PLEASE DON'T
LITTER!

Classifieds

CALL US! • 598-9949
Classified Rates:
 \$3.25 first 15 words,
 10 cents each addl. word
Now you can charge it!
(\$10 minimum)

ART/WOODWORKING

the **ARTISAN** DEPOT
 Gallery & Gifts
NOW JURING FOR FINE CRAFTS
 204 E. Cumberland St., Cowan
 Open Thurs-Sun • 931-308-4130

The Gnarled Oak
 Antique
 furniture refinishing and
 Chair caning
 (931) 592-9680
 Bill Childers, Prop

Oldcraft Woodworkers
Excellence in custom woodwork.
 Kitchen and bath cabinets,
 bookcases, furniture and
 furniture repairs.
 Est. 1982. Phone 931-598-0208

CATERING

Sewanee SWEETS
 Sinfully Delicious.
 (931) 598-5205
 sewaneesweets@gmail.com

EMPLOYMENT

DRIVERS: CO & O/OP'S OTR Excellent Pay, Home-time & Benefits \$3500 Sign-On, CO Only. CDL-A w/Tank/Haz end. (855) 252-1634.

EXPERIENCED GRILL COOK: High Point Restaurant, Monteagle. (931) 924-4600. Apply at <highpointrestaurant@yahoo.com>.

NOTICE
TOWN OF MONTEAGLE
 The Town of Monteagle is accepting applications for a full-time police officer. Must be post certified. Applications may be picked up at City Hall during regular business hours. All applications must be returned by December 20, 2016.

MARTEN
 "Expect the Best!"
Marten Transport, a Leading Refrigerated carrier, is now hiring in Chattanooga, TN for **Refrigeration Technician**. Competitive pay based on exp. & full benefits including: Medical/Dental/Vision Ins. +401(K). Paid Vacation & holidays. Apply online today: www.marten.com/careers.html
 EEOE functioning under an AAP

PSYCHIATRIC TECHNICIAN: Ridgecrest Group Home in Monteagle has immediate opening for a full-time Psychiatric Technician. High school diploma or GED required. Mental health experience or resident worker experience preferred. Must have a valid Tennessee driver's license with an F endorsement. Certification in CPR and First Aid is also required. Competitive salaries and excellent benefits. Send resume to: VBHCS Human Resources, P.O. Box 4755, Chattanooga, TN 37405. Equal Opportunity Employer.

FOR RENT

FOR RENT, COWAN: 1BR furnished apartment. All utilities paid. Beautiful view of Sewanee mountain. (931) 967-2967.

FOUR-BEDROOM HOUSE: Cliff tops. Two-night minimum. Sleeps 8-10 comfortably. Bluff view. Call (678) 640-7829 or email <fleet.lester@emoryhealthcare.org>

SHAKERAG BLUFF CABIN: Beautiful west-facing bluff view. Near University. Extremely secluded. Sleeps 4-5. C/H/A. Great fishing, swimming. Weekend or weekly rentals. (423) 653-8874 or (423) 821-2755.

TOM'S PLACE

An Event Hall
 for your business or
 personal gathering.
 335 W. Main St., Monteagle
 Tom Banks
tombanks9@yahoo.com
 931-636-6620

FOR SALE

CASIO KEYBOARD: CTK-(5 octaves), Songbook and Stand, \$75. Radio Shack Keyboard-MD1700 (5-1/2 octaves), \$50. (931) 598-5869.

FIREWOOD FOR SALE: \$60/rick, \$70 stacked. Call (931) 592-9405. Leave message.

(251) 968-8499
Firewood for sale
\$50/rick

FOR SALE OR RENT: 4BR/2BA, 2-story house with all appliances, C/H/A. On Gudger Rd. (931) 212-0447.

LOST COVE BLUFF LOTS

www.myerspoint.net
 931-703-0558

GARBAGE/RECYCLING

CURBSIDE RECYCLING

Residential curbside recycling pickup in Sewanee is on the first and third Friday of each month. Recyclable materials must be separated by type and placed in blue bags by the side of the road no later than 7:30 a.m. Please do not put out general household trash on this day. Blue bags may be picked up in the University Lease and Community Relations Office, 400 University Ave. (the Blue House) or at the Physical Plant Services office on Georgia Avenue.



CONVENIENCE/RECYCLING CENTER HOURS

The Convenience Center for household garbage, trash and recycling is located on Missouri Avenue. Its regular hours are: Monday, noon-5 p.m.; Tuesday through Friday, 2-5 p.m.; Saturday, 8 a.m.-4 p.m.; Closed Sunday. Closed on national holidays. There are blue recycling bins for metal (tin, appliances, etc.), newspapers/magazines, plastic containers #1-#7, cardboard and aluminum cans. Glass recycling is on Kennerly Ave. behind PPS.

One-Stop Transportation
Information: dial 511

Glass Recycling in Sewanee



Available 7 a.m. to 6 p.m.,
 Monday through Saturday,
 outside of the PPS Warehouse on
 Kennerly Avenue.

Reuse Reduce Recycle

LAWN/TREE CARE

CHAD'S LAWN & LANDSCAPING
 -FREE ESTIMATES-
 * Lawn care & Design (Mulch & Planting)
 ALSO: * Tree Trimming & Removal
 * Pressure Washing * Gutter Cleaning
 * Leaf Pickup & Blowing * Road Grading
 * Garden Tilling * Rock Work
 (931) 308-5059

EAGLE LANDSCAPING & LAWN MAINTENANCE CO.
 Now Offering Specials for
FALL CLEANUP!
 We offer lawn maintenance, landscaping, hedge/tree trimming & more!
 Please call for your free estimate
(931) 598-0761 or (931) 636-0383

King's Tree Service
 Topping, trimming,
 bluff/lot clearing, stump
 grinding and more!
 * Bucket truck or climbing*
 Free wood chips with job
 Will beat any quoted price!
 Satisfaction guaranteed!!
 -Fully licensed and insured-
kingstreeservice.com
 Call **(931) 598-9004**-Isaac King

Mown and Grown
 Autumn leaves can be your lawn's friend. Don't rake; let us mulch them! We'll take care of your yard work so you don't have to! Call for free estimate: (931) 636-7111.

LOCAL SERVICES

SARGENT'S SMALL ENGINES: Repairs to All Brands of Equipment: Lawn mowers (riding or push), String trimmers, Chainsaws, Chainsaw sharpening. New saw chains. Pickup and Delivery Available. (931) 212-2585, (931) 592-6536.

WILL CLEAN HOMES, OFFICES, ETC.
 Have references in the Monteagle/Sewanee area. Call or text Candice Coutu, (615) 319-2595 or email <candicebrooks8@gmail.com> to set up free estimate.

K&K CLEANING SERVICE: Residential and office. Sewanee, Monteagle, Tracy City. Call Katie at (615) 278-0248 for rates and references.

MAMA PAT'S DAYCARE
MONDAY-FRIDAY
 Open 4 a.m.; Close 12 midnight
 3-Star Rating
 Meal & Snack Furnished
 Learning Activities Daily
(931) 924-3423 or (931) 924-4036

WATER SOLUTIONS
 Joseph Sumpter
 Owner/Licensed Residential Contractor
 Specializing in drainage and rainwater collection systems
 598-5565
www.josephsremodelingsolutions.com

Walk-In Cooler Filled with Flowers!
 —TUXEDO RENTALS—
Monteagle Florist
 333 West Main Street, Monteagle
 (931) 924-3292

MASSAGE
Regina Rourk Childress
 Licensed Massage Therapist
www.reginarourk.com
 ~ GIFT CERTIFICATES ~
(931) 636-4806

LOCAL SERVICES

The Pet Nanny
 Book Now for the Holidays!
Mesha Provo
 Dogs, Cats & Birds
931-598-9871
mprovo@bellsouth.net

CHARLEY WATKINS
PHOTOGRAPHER
 Sewanee, TN
 (931) 598-9257
<http://www.photowatkins.com>

"He puzzled three hours til his puzzler was sore, then the Grinch thought of something he hadn't before!" ~ Dr. Suess
 Adam Randolph ~ psychotherapist
randolph.adam@gmail.com

Lakeside Collision
 "Done Right, the First Time"
 777 St. Claire Street, Tracy City
 Ph: 931.592.3274 | Cell: 931.235.3316
lakesidecollision00@gmail.com

MOVING HELP

THE LOCAL MOVER
 Available for Moving Jobs
 Call or Text Evan Barry
615-962-0432
 Reviews at <www.thelocalmoverusa.com>.

The Moving Man
 Moving Services • Local or Long Distance
 Packing Services • Packing Materials
1-866-YOU-MOVE (931) 968-1000
www.themovingman.com
 Since 1993 U.S. DOT 1335895

PUBLIC NOTICE

NOTICE: COAT DRIVE
 There will be a Road Block this Saturday at 10 a.m. in Monteagle for COATS FOR KIDS fund raiser. You can donate money or a new coat. All donations are appreciated. Coats may also be dropped off at City Hall.

THE SEWANEE UTILITY DISTRICT OF FRANKLIN AND MARION COUNTIES BOARD OF COMMISSIONERS will hold its regular meeting at 5 p.m. on Tuesday, Dec. 13, at the utility office on Sherwood Road. If a customer is unable to attend but wishes to bring a matter to the board, call 598-5611, visit the office, or call a board member. Your board members are Art Hanson, Randall Henley, Ronnie Hoosier, Karen Singer and Ken Smith.

Sewanee CIVIC ASSOCIATION
 New to town and want to get on Sewanee Classifieds?
 go to
groupspaces.com/Sewanee/
 1. Request to Join Group.
 2. Follow the instructions.
 3. Submit membership payment, \$10 annual.
 When payment is received, the Director of Classifieds will go through your request and approve membership. Announcements Only are free of charge.
 Contact the Director of Classifieds at sewaneecivic@gmail.com
 Sponsored by the Sewanee Civic Association
www.sewaneecivic.wordpress.com

Advertising in
The Messenger
works!
Phone 598-9949
to find out
how to
make it
work for you.

YARD SALE/FLEA MARKET

INSIDE YARD SALE: Fall & Winter Apparel for All Family Members + games, movies, more! Friday/Saturday, 8 a.m.-?? Midway Market, 969 Midway Rd., Sewanee.

I-24 Flea Market
200 Vendors!
22 Years!
I-24 Exit 134
Saturday & Sunday
(931) 235-6354

Support local businesses!

Love Doesn't Have to Hurt. Help is Free.
 Call the
Haven of Hope
 Victim Hotline
1-800-435-7739



Reporting Fires

For any kind of fire everyone should contact their nearest area police department/dispatch. Dispatch will notify the correct department for that jurisdiction. Most woods/brush fires will be handled by the state forestry department. Sewanee's fire department will respond to fire emergencies when a home or structure is in danger for our area. Also Sewanee's fire department provides mutual aid to other departments and the forestry department.

Sewanee Police Department's phone number is: 931-598-1111; Franklin County Sheriff's Dept. is 931-967-2331; Monteagle's Police/Fire is 931-924-2077. For life threatening emergencies dial 911.



TRAFFIC REMINDERS

It is state law to have your headlights on in fog and rain. The speed limit on the University campus is 20 mph, except for Texas Avenue (around the Fowler Center), Morgan's Steep Road, Georgia Avenue and Finney Avenue, where it is 15 mph.



Bookmark it! www.TheMountainNow.com



BARDTOVERSE

by Phoebe Bates

Miss Cadbury's epiphanies occur
Yearly where new fledged cherubs flock
On platforms lugged here by the janitor

Who also brings out the same box
full of carols, cheesecloth wings, cheap
velvet, sheets, Christ doll & other props.

Nostrils full of chalk--week after week,
she trains her pupils to show
a miracle of shepherds without sheep.

Stiff-robed they stray into the sequence
strange as freaks, at last spy the god--
these three crowned dwarfs--and cap sublime events.

Each brings a vacant, castoff pot
for what's frankincense now? or myrrh?
Today kings walk into the plot

from giggling in the corridor.

—*In the Kindergarten*, by Bink Noll



John and Bonnie McCardell
cordially invite you to a
COMMUNITY OPEN HOUSE
with holiday music and refreshments
at Chen Hall
607 University Avenue
Sewanee

Sunday, December 11, 2016, 4–6 p.m.

THE UNIVERSITY OF THE SOUTH

ONLINE AND IN COLOR!
www.sewaneemessenger.com

The Sewanee Symphony Orchestra
and the Sewanee Chorale present

Feelin'
Festive

FRIDAY, DECEMBER 9, 2016
7:30 PM, GUERRY AUDITORIUM
FREE AND OPEN TO THE PUBLIC
DOORS OPEN AT 7:10 PM

30 YEARS OF MUSIC
SSO
SEWANEE SYMPHONY ORCHESTRA

Community Calendar

Today, Friday, Dec. 9

S of T Last day of final examinations

- 8:30 a.m. Yoga with Carolyn, Comm Ctr
- 9 a.m. CAC office open, until 11 a.m.
- 9 a.m. Sewanee Sr Christmas Bazaar, Sr. Ctr., until 2 p.m.
- 12 p.m. Spinal Spa with Kim, Fowler Ctr
- 4 p.m. Peace Vigil, corner 41A/University Avenue
- 5:30 p.m. St. Nicholas' Day celebration, St. James
- 5:30 p.m. World healing meditation, Comm Ctr
- 7:30 p.m. Movie, "Lights Out," SUT
- 7:30 p.m. SSO/Chorale Holiday Concert, Guerry

Saturday, Dec. 10

- 8:30 a.m. Yoga with Richard, Comm Ctr
- 9 a.m. Sewanee Sr Christmas Bazaar, Sr. Ctr., until 1 p.m.
- 9:30 a.m. Hospitality Shop open, until noon
- 10 a.m. UDC, Franklin-Pearson House, Cowan
- 11 a.m. Christmas Expo, Legion Hall, until 4 p.m.
- 6 p.m. Tracy City Christmas Parade, lineup 5 p.m.
- 7:30 p.m. Movie, "Lights Out," SUT

Sunday, Dec. 11

- 3 p.m. Knitting circle, instruction, Mooney's, until 5 p.m.
- 4 p.m. Yoga with Helen, Community Ctr
- 7:30 p.m. Movie, "Lights Out," SUT

Monday, Dec. 12

Last day for Operation Noel applications, <tsherril@sewaneedu>

- 9 a.m. CAC office open, until 11 a.m.
- 9 a.m. Yoga with Sandra, St. Mary's Sewanee
- 10:30 a.m. Chair exercise with Ruth, Senior Ctr
- 12 p.m. Sewanee Woman's Club, DuBose, social 11:30 a.m.
- 5:30 p.m. FCDP, 855 Dinah Shore Blvd, Winchester
- 5:30 p.m. Yoga for Healing with Lucy, Comm Center
- 5:30 p.m. Yoga with Sandra, St. Mary's Sewanee
- 6 p.m. Karate, youth, Legion Hall; adults, 7 p.m.
- 7 p.m. Centering Prayer, Otey sanctuary
- 7 p.m. Poetry reading, Clark, Watson House (SC Ave.)

Tuesday, Dec. 13

- 8:30 a.m. Yoga with Carolyn, Comm Ctr
- 9 a.m. CAC office open, until 11 a.m.
- 9 a.m. Pilates with Kim, beginners, Fowler Ctr
- 9:30 a.m. Crafting ladies, Morton Memorial, Monteagle
- 9:30 a.m. Hospitality Shop open, until 1 p.m.
- 10:30 a.m. Bingo, Sewanee Senior Ctr
- 10:30 a.m. La Leche League, Comm Ctr
- 11:30 a.m. Grundy County Rotary, Dutch Maid, Tracy
- 12 p.m. Pilates with Kim, intermediate, Fowler Ctr
- 5 p.m. Acoustic jam, water bldg next to old GCHS
- 5 p.m. Sewanee Utility District board, Utility office
- 5:30 p.m. Daughters of the King, St. James
- 5:45 p.m. Yoga with Richard, Legion Hall

Wednesday, Dec. 14

U of S last day of classes

- 9 a.m. CAC office open, until 11 a.m.; also 1–3 p.m.
- 10 a.m. Art Wednesdays, 104 Monterey St., Cowan
- 10 a.m. Pilates with Kim, intermediate, Fowler Ctr
- 10 a.m. Senior Center writing group, 212 Sherwood Rd.
- 10:30 a.m. Chair exercise with Ruth, Senior Ctr
- 12 p.m. EQB Luncheon, St. Mary's Sewanee
- 12 p.m. Pilates with Kim, beginners, Fowler Center
- 1:30 p.m. Sewanee Garden Club, Peters, Dozier residence
- 5:30 p.m. Yoga with Helen, Comm Ctr
- 6 p.m. Civic Association, EQB Bldg, social 5:30 p.m.
- 6:30 p.m. Folk Music Collective Concert, St. Luke's Chapel
- 7 p.m. A capella groups of Sewanee concert, Guerry
- 7:30 p.m. Movie, "Emperor's New Groove," (CG), SUT
- 8:30 p.m. German Christmas party, 29 Louisiana Cir

Thursday, Dec. 15

- 8 a.m. Monteagle Sewanee Rotary, Sewanee Inn
- 9 a.m. CAC office open, until 11 a.m.
- 9 a.m. Pilates with Kim, beginners, Fowler Ctr
- 9:30 a.m. Hospitality Shop open, until 1 p.m.
- 11 a.m. Tai Chi with Kathleen (advanced), Comm Ctr
- 11:30 a.m. FCRW, Ruby Tuesday's, Tullahoma
- 12 p.m. ALLL, Willis, St. Mary's Sewanee
- 12 p.m. Pilates with Kim, intermediate, Fowler Ctr
- 12:30 p.m. Episcopal Peace Fellowship, Brooks Hall, Otey
- 1:30 p.m. Folks@Home support group, 598-0303
- 2 p.m. Knitting circle, Mooney's, until 4 p.m.
- 7:30 p.m. Movie, "Suicide Squad," SUT

Friday, Dec. 16

MC Schools Christmas Break, through Dec. 30

SAS Christmas Break, through Jan. 3, 2017

- 7 a.m. Curbside recycling
- 8:30 a.m. Yoga with Carolyn, Comm Ctr
- 9 a.m. CAC office open, until 11 a.m.
- 12 p.m. Spinal Spa with Kim, Fowler Ctr
- 4 p.m. Peace Vigil, corner 41A/University Ave.
- 7:30 p.m. Movie, "Suicide Squad," SUT

LOCAL 12-STEP MEETINGS

Friday

- 7 a.m. AA, open, Holy Comforter, Monteagle
- 7 p.m. AA, open, Christ Church, Tracy City

Saturday

- 7:30 p.m. NA, open, Decherd United Methodist
- 7:30 p.m. AA, open, Claiborne Parish House, Otey

Sunday

- 6:30 p.m. AA, open, Holy Comforter, Monteagle

Monday

- 5 p.m. Women's 12-step, Brooks Hall, Otey
- 7 p.m. AA, open, Christ Church, Tracy City

Tuesday

- 7 p.m. AA, open, First Baptist, Altamont
- 7:30 p.m. AA, open, Claiborne Parish House, Otey
- 7:30 p.m. CoDA, open, Holy Comforter, Monteagle

Wednesday

- 10 a.m. AA, closed, Clifftops, (931) 924-3493
- 4:30 p.m. AA, "Tea-Totallers" women's group, Clifftops, (931) 924-3493
- 7 p.m. NA, open, Decherd United Methodist
- 7:30 p.m. AA, open, Holy Comforter, Monteagle

Thursday

- 12 p.m. AA, (931) 924-3493 for location

CROSS•ROADS

Featuring Singaporean Cuisine

Come Celebrate the Holidays at Crossroads:

Open – Dec 21 to 24

Dec 28 to 31, 2016

38 Ball Park Road, Sewanee, TN
Tel: (931) 598-9988

www.crossroadscasesewanee.com

Wednesday to Saturday
Lunch & Dinner



Speak Up.

Help friends get information. Help local businesses succeed.
Help our Mountain communities.

Tell businesses when you see their ads. Let businesses know
what they're doing right. Spread good news!