

Plan for a Razzle Dazzle Fourth of July

This year's Fourth of July celebration in Sewanee, a "Razzle Dazzle Fourth," will include some of the community's favorite events.

The second annual Fourth of July Pie-Eating contest will be at 1 p.m., Friday, July 4, in Guerry Garth. Contestants will vie for \$100 in cash, as well as gift certificates, services and other great prizes as they eat their way to pie nirvana. Sign up early, as there are a limited number of spaces. A small fee of \$5 per contestant will be charged to cover costs. Sign up by calling Ginny at 598-5205 or show up before the contest.

Returning after its 2013 rain delay, the Fourth of July Mutt Show will be in Manigault Park. Registration begins at 9 a.m.; the show begins at 10 a.m. Lizzie Duncan will be back as the show's emcee. All dogs are welcome to compete—no talent necessary.

The categories for this year's show have changed: best dressed, Razzle Dazzle doggie, owner/dog look-alike, best trick and judges' choice. Entrants may register for one category or one category plus judges' choice. An entry form will be in upcoming issues of the Messenger.

Dr. Matt Petrilla's fabulous trophies will be awarded to winners. In case of rain this year, the Mutt Show will be held in the indoor riding arena at the Equestrian Center.

The Fourth of July Cake Contest will offer two levels of competition. There will be a youth level, to include all bakers 12 years and under, and an adult level to include all bakers age 13 years and older.

Within each level, a prize will be awarded in each of three categories: best tasting, best decorated and best representation of the theme, "Razzle Dazzle Fourth of July."

(Continued on page 6)



The Most Rev. Katherine Jefferts Schori (left), Presiding Bishop of the Episcopal Church of the United States, delivered the sermon for the Centennial Celebration of St. Andrew's Chapel on St. Andrew's-Sewanee School's campus last weekend. The service was part of the school's Alumni Weekend that welcomed close to 300 alumni and friends back to campus. Bishop Jefferts Schori is with the Rev. John Taliaferro Thomas, head of St. Andrew's-Sewanee School.

Summer Music Festival Earns ASCAP Award

Sewanee Summer Music Festival is one of 27 American orchestras to be honored with a 2013–14 ASCAP Award for Adventurous Programming at the League of American Orchestras National Conference in early June.

Sewanee Summer Music Festival (SSMF) was selected as the second-place recipient in the festival category, along with first-place winner Cabrillo Festival of Contemporary Music (Santa Cruz, Ca.) and third-place recipient Aspen Music Festival and School (Aspen, Colo.).

SSMF was selected for this award because of its contemporary programming in the 2013–14 season, featuring works from composers such as Mason Bates, Jan Bach and Thomas Sleeper, as well as a commissioned piece by current SSMF artist-faculty member Sidney King. The League and ASCAP present the awards each year to orchestras of all sizes for programs that challenge the audience, build the repertoire, and increase interest in new music. Approximately \$750,000 has been bestowed on orchestras since the awards were established in 1947.

"We are humbled to be presented with this award," said Katherine Lehman, festival director. "To be recognized by ASCAP and the League of American Orchestras is a huge honor. Sewanee Summer Music Festival believes the

(Continued on page 6)

Buses Will No Longer Pick Up Marion County Students

by Kevin Cummings, Messenger Staff Writer

For decades Marion County schoolchildren living in the Jump Off community near Sewanee could ride the bus to Franklin County schools, but that practice is being eliminated for the 2014–15 school year. In the midst of financial struggles, Franklin County School System leaders have ended busing for students who live just outside the county.

Chris McDonough, Sewanee's representative on the Franklin County Board of Education, said he is sad about the change.

"Some of those students may happen to be from Marion County, but they think of themselves as being part of the larger community," he said. "My understanding is that we need space for Franklin County students on the bus. At the end of the day, the bus is funded by Franklin County tax dollars for Franklin County students."

Those students can still attend Franklin County Schools, but transportation will not be provided for them.

No one from Jump Off spoke at Monday's Board of Education meeting, but a group of families in the Huntland area passionately challenged the board to reverse a bus decision there. Beginning in August, a bus will no longer carry 13 Huntland-area students to Broadview Elementary, South Middle or Franklin County High School. Students can attend those schools, but now must find a ride.

"My kids don't want to change schools," said Derek Crawford, a Huntland father of three. "My little girl's pretty mad about it, as a matter of fact."

Some parents said they could not provide rides, and students will lose out because Huntland School does not offer the same programs. School leaders said eliminating out-of-county pickups and streamlining routes saves the system

(Continued on page 6)



People gathered at All Saints' Chapel on June 8 to celebrate and offer thanksgivings for the recent decision by the University to allow the blessing of a same-sex marriage. For more details, see page 2. Photo by Buck Butler

Why Did the Turtle Cross the Road?

by Kristen Cecala
Special to the Messenger

With the arrival of warm weather, you may have noticed our slow-moving, reptilian neighbors have emerged onto the roads. Sewanee is home to several turtle species, including box turtles, snapping turtles and red-eared sliders that often cross the roads that bisect their habitats. Pond-dwelling turtles such as snapping turtles require aquatic habitat for overwintering and foraging but must lay their eggs in sunny terrestrial habitats that ensure proper egg development.

The search for high-quality nesting habitat often requires that they cross the road.

For some turtles, grassy roadsides represent ideal nesting locations. Likewise, terrestrial box turtles cross roads not only for egg-laying but also to access overwintering locations, food, water and mates.

Turtles are long-lived animals that may not breed until they are 10 years old, and each hatchling has less than a 5 percent chance of making it to adulthood. Therefore it is essential to the long-term viability of turtle populations to protect the adult turtles that are producing eggs every year. Turtles are declining throughout the southeastern United States for a multitude of reasons, but cars are now one of the leading threats to turtles as they slowly cross roads to complete their life cycle.



Photo by Todd Pierson

How can you help turtles?

Look for turtles on the road and help them cross.

First and foremost, be safe when pulling over to the side of the road and in crossing the road. Move the turtle safely to the side of the road to which it was traveling. If you place the turtle back on the side it came from, it will often try to cross the road again. For larger turtles, such as snapping turtles, never pick them up by the tail, and take care to avoid being bitten. To move these large turtles, you may pick them up by the back of their shell and pull them to the other side of the road pointing their heads away from the road.

(Continued on page 6)

Friday Nights in the Park Kicks Off June 20

Friday nights in Sewanee just got better. Starting on June 20 the downtown village of Sewanee will come alive with food, drink and live music at Angel Park. University Avenue will be closed at 7 p.m. for this annual outdoor family-friendly event. Local vendors will be offering food, ice cream and beverages.

The music will begin at 7:30 p.m. each night. Bring a lawn chair or blanket to enjoy the music and conversation. Performing under the Angel Park Pavilion this year will be: June 20—Towson Engsberg & Friends; June 27—Southern Proof; July 11—Hard Times Band; and July 18—Boy Named Banjo.

For more information send an email to <info@sewanee.biz>.

P.O. Box 296
Sewanee, TN 37375

Letters

AASC SALE A SUCCESS

To the Editor:

The May 24 yard sale to benefit Animal Alliance-South Cumberland was a big success. The proceeds from this sale will help provide many more low-cost spaying and neutering operations for our mountain area dogs and cats.

All the volunteers at Animal Alliance want to thank everyone who donated items to make it our largest yard sale yet. A special thanks goes to Monteagle Elementary School for allowing us to use their yard. We also want to thank all the volunteers for the countless hours of sorting, pricing, packing items, and for lending a trailer and their trucks to transport these items, and all the volunteers who donated their time to sell items that day. Of course, we certainly want to thank everyone who came to the event and spent his or her hard-earned money for this worthy cause.

Events such as this one are also an opportunity for AASC volunteers to network with pet owners and to educate the public about the need and importance of spaying and neutering pets, and the importance of adopting abandoned animals.

We ask that pet owners please contact us and schedule an appointment for their cats and dogs and help us stop the birth of unwanted and subsequent abandonment of dogs and cats on our Mountain.

For more information about AASC, please contact us at (931) 235-9006.

Kathy Bouldin
Executive Director
Animal Alliance-South Cumberland ■

QUESTIONS FOR THE SURVEY

To the Editor:

With regard to the Sewanee community survey mentioned in the June 6, 2014, issue of the Messenger:

I was puzzled by the questions, both as a community resident of the main campus and as an employee of the Lemon Fair. Most of the items listed on the survey seemed irrelevant (especially those regarding new retail shops, as my experience has taught me there is an extremely limited and seasonal customer base).

Just after I finished taking the survey on June 6, a customer walked into the Lemon Fair and asked, "Where is

the public restroom?" I almost laughed because I had just thought, Where can I add that we need public restrooms? Gay Alvarez, owner of the Lemon Fair (the oldest continuing business in the village), and I are asked that question every day, sometimes many times on any given day. Even Bell Buckle, a far smaller community, has a public restroom. Why can't we?

And why can't restrooms be a priority instead of a writer's coffeehouse or more events at Angel Park, which, during the daytime, sometimes decrease our store traffic?

A second important issue is the lack of easily available and accessible parking. With increased restaurant patronage (a good thing), our customers sometimes cannot park anywhere near the shop. In addition, I see people recklessly driving the wrong way between the bank and Locals to park. I am surprised I haven't witnessed a head-on collision.

Why were these items—certainly as important as the Senior Citizens' and Community centers—omitted from the survey? And why were we given no opportunity to add items to the survey? The results might have been more useful to the "planners" mentioned in the article.

Robley M. Hood
Sewanee ■

SES YEAR-END THANKS

To the Editor:

To our parents and the myriad of volunteers, I want to say thank you for another successful school year. It is you who make Sewanee Elementary School such a special place for our children. From our Friday School volunteers, reading tutors, science fair judges, Partners in Education, to our parent volunteers and coaches, we wouldn't be SES without you.

To quote from the last line of our alma mater, "Friends forever, learning ever, SES all hail." We are truly a community of learners! I consider myself most fortunate to be part of "the team."

Mike Maxon
Principal
Sewanee Elementary School ■

ONLY \$860 TO GO!

To the Editor:

I wanted everyone to know how things stand on the renovation of the

Vegetable Arbor at the University Farm. We have raised \$7,900 of the \$8,760 needed to complete the project.

We lack only \$860! No work can begin until all the funds are raised.

I am grateful to everyone who has made contributions and hope that others can help us restore this special place.

To make a gift, send it to Gift Records, University of the South, 735 University Ave., Sewanee TN 37383. Please note that the gift is for the Farm Gazebo. Thank you.

Paul Mooney
Sewanee ■

SHOP UPDATE

To the Editor:

I want to say how much we appreciate the donations we have been receiving at the Hospitality Shop. I would like to remind people of these guidelines for donations.

When bringing large donations, such as boxes of books or other large items, we would appreciate being called in advance (598-0136) to make the necessary arrangements. We have limited storage space and might need to do some rearranging in order to accommodate your donation.

Also, if a donation is brought and the bin is already full, please do not try to stuff more into the bin. And please do not leave bags or boxes outside the bin. It would be better not to leave the donation and bring it another day.

Please do not leave loose items in the bin; donations should be put in small or medium-sized garbage bags or boxes. In addition, please do not donate clothing that is torn or stained.

I hope this information will be helpful, and your cooperation will be greatly appreciated.

Malinda Sutherland
Hospitality Shop Manager ■

BEHOLD HOW GOOD!

Dear Editor,

I want to thank everyone who helped bring about the "Behold How Good" celebration and fund-raiser on June 8. Between the first part of the event (a community embrace of All Saints' Chapel) and the second part, a party and fund-raiser in Angel Park, we had more than 150 participants.

Lauryl Tucker
Sewanee ■

Letters to the Editor Policy

Letters to the editor are welcome at the Sewanee Mountain Messenger and are a vital part of our community's conversation. Letters need to be no longer than 250 words and may be edited for space and clarity. We make exceptions from time to time, but these are our general guidelines.

Letters and/or their author must have some relationship to our community. We do not accept letters on national topics from individuals who live outside our circulation area. Please include your name, address and a day-time telephone number with your letter. You may mail it to us at Sewanee Mountain Messenger, P.O. Box 296, Sewanee, TN 37375, come by our office, 418 St. Mary's Ln., or send your email to <news@sewaneemessenger.com>.—LW



Shop Locally

HOUSECLEANING

Residential/business. Reliable.

Excellent references.

Call for estimate.

(931) 287-5694—leave message.

THE SEWANEE MOUNTAIN MESSENGER

418 St. Mary's Ln.
P.O. Box 296
Sewanee, Tennessee 37375
Phone (931) 598-9949
Fax (931) 598-9685

Email news@sewaneemessenger.com
www.sewaneemessenger.com

Laura L. Willis, *editor/publisher*
Janet B. Graham, *advertising director/publisher*
April H. Minkler, *office manager*
Ray Minkler, *circulation manager*
Leslie Lytle, *staff writer*
K.G. Beavers, *staff writer*
Kevin Cummings, *staff writer*
Sandra Gabrielle, *proofreader*
Geraldine H. Piccard, *editor/publisher emerita*



Contributors
Phoebe Bates
Jean Yeatman
John Shackelford
Annie Armour
John Bordley
Virginia Craighill
Patrick Dean
Buck Gorrell
Margaret Stephens
Peter Trenchi
Pat Wiser
Francis Walter

Published as a public service to the Sewanee community. 3,700 copies are printed on Fridays, 47 times a year, and distributed to 26 Sewanee-area locations for pickup free of charge.

This publication is made possible by the patronage of our advertisers and by contributions from The University of the South (print production) and the Sewanee Community Chest.

SUBSCRIPTIONS \$75 first class.

All material in the Sewanee Mountain Messenger and on its website are copyrighted and may not be published or redistributed without written permission.

Serving Where Called

Please keep the following individuals, their families and all those who are serving our country in your thoughts and prayers:

Cole Adams
Michael Evan Brown
Mary Cameron Buck
Lisa Coker
Jennifer Lynn Cottrell
James Gregory Cowan
Nathaniel P. Gallagher
Nathaniel Andrew Garner
Tanner Hankins
Robert S. Lauderdale
Dakota Layne
Byron A. Massengill
Andrew Midgett
Alan Moody
Brian Norcross
Christopher Norcross
Michael Parmley
Lindsey Parsons
Peter Petropoulos
Troy (Nick) Sepulveda
Melissa Smartt
J. Wesley Smith
Charles Tate
Tyler Walker
Jeffery Alan Wessel
Nick Worley

If you know of others in our Mountain family who are serving our country, please give their names to American Legion and Auxiliary member Louise Irwin, 598-5864.

MESSENGER DEADLINES and CONTACTS

PHONE: (931) 598-9949
FAX: (931) 598-9685

News, Sports & Calendar

Tuesday, 5 p.m.

Laura Willis

news@sewaneemessenger.com

Display Advertising

Monday, 5 p.m.

Janet Graham

ads@sewaneemessenger.com

Classified Advertising

Wednesday, noon

April Minkler

classifieds@sewaneemessenger.com

MESSENGER HOURS

Monday Tuesday & Wednesday

9 a.m. – 5 p.m.

Thursday—Production Day

9 a.m. until pages are completed

(usually mid-afternoon)

Friday—Circulation Day

Closed

Is Your Porch Designed for Family Fun?



Custom home remodeling begins with...

Joseph's Remodeling Solutions
A Division of Sangster Solutions, LLC

Taking Quality to the Next Level

Licensed - Insured - Green Certified

931-598-5565

joseph@josephsremodelingsolutions.com

www.josephsremodelingsolutions.com

Upcoming Events & Meetings

Creighton's Store Benefit Saturday

Creighton's Store in Coalmont is hosting a "Spring Fling" bake sale, yard sale and day of entertainment, Saturday, June 14. Activities will begin at 10 a.m. and last throughout the day. For more information call Lyn at (931) 592-9360 or (865) 696-1344.

Friends of South Cumberland Meeting Saturday

Members and others interested in the Friends of the South Cumberland (FSC) will gather at 12 p.m., Saturday, June 14, at the park visitor center in Monteagle for FSC's annual meeting. The gathering will begin with a potluck picnic (fried chicken and beverages will be provided). For more information email Rhonda Pilkington at <scsra@comcast.net>.

Grundy Historical Society Annual Meeting Saturday

The annual meeting of members of the Grundy County Historical Society will be at 2 p.m., Saturday, June 14, in the Heritage Center. The public is welcome. Catalina Jordon Alvarez will be showing her videos, including one about the Grundy Area Arts Council's production of "The Other Side of the Mountain." Alvarez wrote a play adapted from a 1931 novel by local author May Justus with students at Coalmont Elementary School. The project was sponsored by Grundy Area Arts Council and funded by South Cumberland Community Fund.

Fourth of July Planning Tuesday

Sewanee's Fourth of July planning committee will meet at 5:30 p.m., Tuesday, June 17, in the Sewanee Senior Center. Future meetings will be on June 24 and July 1. This is a great way to make new friends, give back to the community and help with this great Sewanee tradition.

Rotary Club Meetings

The Grundy County Rotary Club meets at 11:30 a.m., Tuesdays, at Dutch Maid Bakery in Tracy City.

The Monteagle Sewanee Rotary Club meets at the Smoke House Restaurant in Monteagle on Wednesday mornings. Coffee begins at 6:50 a.m. with breakfast and the meeting beginning at 7 a.m. and ending by 8 a.m. On June 18, Henry Blizzard will discuss "Estate Planning."

The Monteagle Sewanee Rotary Club also meets at 12 p.m., Thursday, at the Blue Chair Tavern in Sewanee. On Thursday, June 19, Dave Ramsey, executive director of the DuBose Conference Center, will present an overview of the center's activities.

Future of Anglican Liturgy Lecture on Wednesday

Louis Weil will lecture on the "Challenges and Possibilities in the Anglican Liturgical Future" at 7 p.m., Wednesday, June 18, in Hamilton Hall's Hargrove Auditorium. The public is invited to attend. Weil is in Sewanee as a guest instructor for the School of Theology's 2014 Advanced Degrees Program session. There will be a reception immediately following the lecture, where Weil will sign copies of his books.

Curbside Recycling June 20

Residential curbside recycling pickup in Sewanee is on the first and third Friday of each month. Friday, June 20, will be a pickup day. Recyclable materials must be separated by type and placed in blue bags by the side of the road no later than 7:30 a.m.

Please do not put out general household trash on this day. Blue bags may be picked up in the University Lease Office, 110 Carnegie Hall, at the Physical Plant Services administrative office on Alabama Avenue or at the PPS warehouse on Georgia Avenue.

Monteagle VFW Hosts Benefit Sale June 21-22

VFW Post 9586 in Monteagle is hosting an arts and crafts sale and yard sale, 10 a.m.-6 p.m., Saturday, June 21, and 12-5 p.m. on Sunday, June 22. All proceeds will benefit the Needy Veterans' Family Fund.

Tables are available inside (with air conditioning), and space is available outside (bring your own table). People wishing to be vendors should contact Patsy, after 3 p.m., Tuesday-Saturday, at (931) 924-3470. The Post is located at 8134 U.S. Hwy. 41 in Monteagle.

University Job Opportunities

Exempt Positions—Area Coordinator; Assistant Athletic Trainer; Assistant Chief of Police; Assistant Director of Community Engagement; Director of Environmental Stewardship; Health Promotion and Wellness Coordinator; IT Administrator; School of Theology; Programmer/Analyst; Staff Psychologist.

Non-Exempt Positions—Cook, Server and Utility Worker for Sewanee Dining; Coordinator, Sewanee Dining.

To apply online or learn more go to <http://hr.sewanee.edu/job_postings>. For more information call 598-1381.

Community Survey Deadline

In conjunction with the community meetings in Sewanee regarding the downtown planning process, a survey is being conducted so that the broader community can share their thoughts and opinions.

Please use the link <<https://sewanee.wufoo.com/forms/sewanee-village-community-survey/>> to access the survey and offer input for the planners. The survey is open through June 13.

Participation in this project will help as the planning moves forward.

Local, Fresh Food at Area Markets

Fresh foods grown in our area are plentiful and available in a number of locations.

The Sewanee Gardener's Market is held 8-10 a.m. every Saturday, rain or shine, through September, next to the Hair Depot. Locally grown produce, plants, flowers and baked goods are available.

The Tracy City Farmer's Market is now located near the old high school. It is open 9 a.m. to 12 p.m., Saturdays, and 2:30-5:30 p.m., Thursdays. It has fresh eggs, locally grown plants and produce, local grass-fed beef and pork, and Mountain-made crafts. EBT/SNAP cards are accepted.

The Cumberland Farmer's Market has breads, fruits and vegetables, eggs, coffee, and meats available. Learn more online at <<http://sewanee.locallygrown.net>>.

Editor's Note

With this issue we welcome Kevin Cummings as the Messenger's new staff writer who is responsible for covering the Franklin County School system, including Sewanee Elementary School and the school board. Cummings has been writing the "Meet Your Neighbor" features for the Messenger for two years. Kiki Beavers will continue her "I Like to Watch" column and manage the Messenger's partner website <TheMountainNow.com>.

We also welcome Paul Klekotta as a contributing photographer. Klekotta is a freelance photographer and Emmy-nominated videographer who lives on the Mountain. Look for him around the community as he helps capture and document events large and small.—LW

CIMINO HURT
FINANCIAL GROUP LLC
(931) 723-3440
cimino-hurt-financial.com

www.TheMountainNow.com

Henley's Electric & Plumbing

Randall K. Henley
More Than 25 Years' Experience

598-5221 or cell 636-3753

The Village Tavern
Where Our Community Gathers

GO GARY & CÉSAR!
Thank you for leading our parade
as co-grand marshals, as we
CELEBRATE on JULY 4!

Tavern Hours
Mon-Thu • 4-10:30p | Fri • 4-11:30p
Sat • 11a-11:30p | Sun • 11a-10:30p

Café Hours
Mon-Sat • 7:00 a.m.-6:00 p.m.
Sunday • 7:00 a.m.-2:00 p.m.

**Your neighbors can tell
you how good we are!
Give us a call.**

Professional Residential Maid Service

• Licensed • Bonded • Insured
Call for a free on-site estimate!

931-808-5178



WOODARD'S
DIAMONDS & DESIGN



**CUSTOM
Design Studio**

Need Extra Cash?

**WE
BUY
GOLD**

- ✓ Deal With Tullahoma's most trusted name in jewelry
 - ✓ Highest Prices Paid
 - ✓ Get 20% MORE Towards Jewelry Purchase
 - ✓ FREE Gas Card when you sell us your gold*
- * See Store Staff For Details

2013
Your
Favorite
Jeweler

Northgate Mall • Tullahoma • 454-9383 • woodards.net

THE LOCAL MOVER
615-962-0432

Need More Room?

Mountain Storage
(931) 598-5682

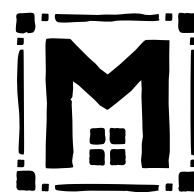
■ Security Gate Dan & Arlene Barry ■ Security Camera
Hwy 41 - Between Sewanee & Monteagle

5X10 | 10X10 | 10X20

For Your Antiques and Prized Possessions

Climate Control
5X10 10X10 10X15 10X20
Temperature and Humidity Regulated

BBB



MOLICA
CONSTRUCTION LLC

931 205 2475

WWW.MOLICACONSTRUCTION.COM

- CRAFTSMANSHIP ▪
- CREATIVITY ▪
- SUSTAINABILITY ▪

Obituaries

Michael Larkin

Michael Larkin died on May 26, 2014, in Homington, England. He was born April 12, 1948 in Mobile, Ala.

Survivors include his wife, Susan Brettmann Larkin; children, Matt and Elena Larkin, Amber Larkin, Justin Larkin, Annabelle Larkin and Dylan Larkin; grandchildren, Maya Larkin and Will Larkin; stepchildren, Laura Tyne and Emily Jonhede; and step-grandchildren, Oscar Jonhede and Lily Jonhede.

Funeral services will be at 2 p.m., Wednesday, June 18, in All Saints' Chapel in Sewanee with the Rev. Rob MacSwain officiating. There will be a committal of ashes in the Brettman family plot in the University Cemetery, following the service.

Alfred "John" Verner

Alfred "John" Verner died on June

4, 2014. He was born on April 23, 1938, in Waupun, Wis. John was a lifelong member of the Trinity Episcopal Church in Oshkosh, Wis., serving on the vestry, as an usher and as a youth leader.

He is survived by his wife, Bonnie (Seifeldt) Verner; two sons, Jeffrey (Christine Morrissey) Verner of Appleton, Wis., and Steve (Lynette) Verner of Navarre, Fla.; daughter, Amy Verner Haque of Oshkosh; five grandchildren, including Tracy Green (J.R.) King of Sewanee; and many other grandchildren and family.

Funeral services were on June 12 in Oshkosh.

Michael Blasingame

Michael Blasingame, age 58, brother of Carol Ingle of Sewanee, died on May 24, 2014, in Chicago, Ill. Private services will be at a later date.

Vacation Bible School Listings

Is your church hosting Vacation Bible School this summer? The Messenger wants to help spread the word. Send information by email to <news@sewaneemessenger.com> or phone 598-9949 with the theme, time, date and place, plus specific details that might be important to area children and their families.

WHERE TO EAT? THINGS TO SEE? NEED A SERVICE? WHERE TO SHOP?

The answer to these questions and many more can be found at www.TheMountainNow.com.

New to the Mountain?

There are lots of ways to get news in our community.

- The new issue of the Messenger goes online each Thursday evening around 7 p.m.
- The print version of the newspaper is distributed to businesses and post offices across the Plateau by 10:30 a.m. each Friday morning.
- And, the Messenger's partner website, <TheMountainNow.com>, is always available online with the events calendar and links to area attractions, dining, shopping and lots of useful information.

**The Sewanee Mountain Messenger
Spread Good News**

=KEN O'DEAR=
EXPERT HANDYMAN & REMODELER
931-779-5885 or 931-235-3294
Maintenance & Remodeling
Repair & New Construction
SEWANEE, CLIFFTOPS, MSSA



The Ayres Center for
Spiritual Development

Call (931) 598-5342
or (800) 728-1659
www.StMarysSewanee.org
<reservations@
stmaryssewanee.org>

UPCOMING RETREATS

One Day Centering Prayer Workshop

Saturday, July 26
The Rev. Tom Ward, presenter
\$50, Lunch included

Introduction to Dreamwork: Unopened Letters from God

Saturday, September 13
Marsha Carnahan, presenter
\$25, Lunch included

Church News

Christ Church, Monteagle

Christ Church, Monteagle, will celebrate Trinity Sunday and Father's Day on Sunday, June 15. Bishop William Millsaps will preach. The hymn "I bind unto myself today the strong name of the Trinity," and other hymns that refer to the Trinity will be sung. The service begins at 10:30 a.m.; lunch is served about 12 p.m.

First Baptist Church, Cowan

Cowan First Baptist Church is hosting its annual barbecue fund-raiser and sale. Orders are being taken now; pickup is 8 a.m. to 12 p.m., Saturday, July 5. Items available are ribs (\$20), Boston butts (\$35) and chicken (\$10).

To place an order email Teresa Bennett at <tbennett@sewanee.edu>. The money raised goes to the Cowan First Baptist Benevolence Committee and the projects the church supports during the year.

First Baptist Church, Monteagle

The First Baptist Church in Monteagle is hosting a benefit waffle supper for Gail Harris of Monteagle, 4-7 p.m., Thursday, June 19, at the church. All donations will be greatly appreciated.

James Ordination Anniversary

Community members and friends are invited to celebrate the 45th anniversary of the Rev. Scott James' ordination to the priesthood. Evening prayer will be at 7 p.m., Wednesday, June 18, at Trinity Episcopal Church in Winchester. A reception will follow the service. The church is located at 213 1st Ave., N.W., Winchester.



Scott James

Otey Memorial Parish Church

Otey Parish invites friends to a "walkabout" of the new Claiborne Parish House after each service (8:50 and 11 a.m.), Sunday, June 15. Members of the Construction Committee

will be on hand to answer any questions. A "coffee hour" will be offered during both tour times. The building is nearly completed, but the church is waiting on finishing touches before it will have its certificate of occupancy. The official dedication will be later in the summer. Come and see the beautiful new space!

In preparation for Otey's search for a new rector, "An Overview of the Search Committee Process and Guidelines" will be presented by the Rev. Canon Pamela Snare at 10 a.m., Sunday, July 6, in the Otey Parish church nave. If you are interested in learning more about the creation and responsibilities of a Search Committee, please plan to attend.

Otey Parish will have a family Eucharist, followed by a picnic potluck supper at 5 p.m., Sunday, June 22. Worship will be a come-as-you-are service with a short homily and a few hymns. The parish will provide fried chicken and beverages. Please RSVP for supper to Pratt Paterson at <prattpaterson@gmail.com>. Future dates will be July 13 and Aug. 10.

Vacation Bible School Meeting

There will be a planning meeting for this summer's Vacation Bible School at 10 a.m., Saturday, June 14, in the St. James parish hall. "Workshop of Wonders—Imagine and Build with God" is the theme for the community-wide VBS hosted by St. James, July 7-11. Children age 4 (who have had structured preschool) to those entering grade five are welcome as campers. Youth entering grades six through 12 are welcome as guides and helpers. Sponsoring churches are St. James, Southeastern Tennessee Episcopal Ministries and Otey Parish.

Volunteers are needed for music leader (DVD provided), crafts, outdoor activities, snacks, group guides, science activity related to the scripture for the day and Bible storyteller.

For more information contact the Rev. Linda Hutton by email, <justlinda@charter.net>.

CHURCH CALENDAR

Monday—Friday, June 16—20

7:00 am Morning Prayer, St. Mary's (not Monday)
7:30 am Morning Prayer, Otey
8:00 am Holy Eucharist, St. Mary's (not Monday)
12:30 pm Noon Prayer, St. Mary's (not Monday)
4:30 pm Evening Prayer, Otey
5:00 pm Evening Prayer, St. Mary's (not Monday)

Saturday, June 14

7:30 am Morning Prayer, St. Mary's
8:00 am Holy Eucharist, St. Mary's
9:30 am Holy Eucharist, St. Andrew's-Sewanee Chapel
10:00 am Monteagle 7th Day Adventist Sabbath School
11:00 am Monteagle 7th Day Adventist Worship Service
5:00 pm Evening Prayer, St. Mary's
5:00 pm Mass, Good Shepherd Catholic, Decherd

Sunday, June 15 • Trinity Sunday

All Saints' Chapel

8:00 am Holy Eucharist (Pilgrims' Blessing)

11:00 am Holy Eucharist

Bible Baptist Church, Monteagle

10:00 am Morning Service

5:30 pm Evening Service

Christ Church, Monteagle

10:30 am Holy Eucharist

10:45 am Children's Sunday School

12:50 pm Christian formation class

Christ Church Episcopal, Alto

11:00 am Holy Eucharist

11:00 am Children's Sunday School

Christ Church Episcopal, Tracy City

11:00 am Holy Eucharist

11:00 am Children's Sunday School

Church of the Holy Comforter, Monteagle

9:00 am Holy Eucharist

Cowan Fellowship Church

10:00 am Sunday School

11:00 am Worship Service

Cowan Montgomery Cemetery

6:30 am Community Sunrise Service

Cumberland Presbyterian Church, Sewanee

9:00 am Worship Service

10:00 am Sunday School

Decherd United Methodist Church

9:45 am Sunday School

10:50 am Worship

Epiphany Episcopal Church, Sherwood

10:30 am Children's Sunday School

10:45 am Holy Eucharist

First United Methodist Church, Tracy City

8:30 am Worship Service

9:45 am Sunday School

11:00 am Worship Service

6:00 pm Bible study, prayer meeting

Good Shepherd Catholic Church, Decherd

10:30 am Mass

Grace Fellowship

10:30 am Sunday School/Worship Service

Harrison Chapel Methodist

10:00 am Sunday School

11:00 am Worship Service

5:00 pm Evening Worship Service

Midway Baptist Church

10:00 am Sunday School

11:00 am Morning Service

6:00 pm Evening Service

Midway Church of Christ

10:00 am Bible Study

11:00 am Morning Service

6:00 pm Evening Service

Morton Memorial United Methodist, Monteagle

9:45 am Sunday School

11:00 am Worship Service

New Beginnings Church, Jump Off

10:30 am Worship Service

Otey Memorial Parish

8:50 am Holy Eucharist

10:00 am Lectionary Class, Brooks Hall

11:00 am Holy Eucharist

Pelham United Methodist Church

9:45 am Sunday School

11:00 am Worship Service

St. Agnes' Episcopal, Cowan

11:00 am Holy Eucharist Rite I

St. James Episcopal

9:00 am Holy Eucharist Rite II

St. Margaret Mary Catholic Church, Alto

8:00 am Mass

St. Mary's Convent

8:00 am Holy Eucharist

5:00 pm Evensong

Sewanee Church of God

10:00 am Sunday School

11:00 am Morning Service

6:00 pm Evening Service

Society of Friends

9:30 am Meeting, 598-5031

Tracy City First Baptist Church

9:45 am Sunday School

10:45 am Morning Worship

5:30 pm Youth

6:00 pm Evening Worship

Trinity Episcopal, Winchester

9:00 am Holy Eucharist

10:00 am Children's Sunday School

Wednesday, June 18

6:00 am Mornng Prayer, Cowan Fellowship

12:00 pm Holy Eucharist, Christ Church, Monteagle

5:30 pm Evening Worship, Bible Baptist, Monteagle

5:30 pm Youth Fellowship, 1st United Methodist, Tracy

6:00 pm Youth (AWANA), Tracy City First Baptist

6:30 pm Evening Prayer, Trinity, Winchester

7:00 pm Evening Worship, Harrison Chapel, Midway

7:00 pm Adult Christian Ed, Epiphany, Sherwood

7:00 pm Evening Worship, Tracy City First Baptist

***“Worth remembering:
Excuses never improve a
product or a result.”***

From “Two-Liners Stolen From
Others by Joe F. Pruett”

Sewanee Realty

931.598.9200 or 931.636.5864 www.SewaneeRealty.info
115 University Ave., Sewanee

Margaret Donohue,
Principal Broker • 931.598.9200

John Brewster,
Broker • 931.636.5864

Patsy Truslow,
Affiliate Broker • 931.636.4111



**BLUFF - MLS 1494787 -
253 Arcadia Lane, Sewanee. \$1,298,000**



**MLS 1492310 - 280 Carpenter Circle,
Sewanee. \$348,000**



**BLUFF - MLS 1503907 - 1801 Bear Court,
Monteagle. \$279,000**



**MLS 1526416 - 145 Parsons Green Circle,
Sewanee. \$249,000**



**MLS 1503887 - 15 Oklahoma Ave.,
Sewanee. \$225,000**



**BLUFF - MLS 15131957 - 952 Sunset
Rock Rd., Monteagle. \$289,900**



**MLS 1528157 - 2300 Lakeshore Dr.,
Clifftops. \$299,900**



**MLS 1528475 - 92 Carpenter Circle,
Sewanee. \$399,000**

BLUFF TRACTS

36 Long View Lane	1503912	\$ 75,000
7 Jackson Pt. Rd.	1503910	\$ 82,000
37 Jackson Pt. Rd.	1493957	\$ 90,000
Jackson Pt. Rd.	1493960	\$125,600
4 Saddletree Lane	1493962	\$109,180
12 Saddletree Lane	1493961	\$ 79,500
Jackson Pt. Rd. 19+a	1440564	\$120,000
Jackson Point Rd.	1426464	\$ 99,000
Jackson Pt. Rd. 8.47a	1510413	\$ 89,000
Saddletree Lane	1207074	\$ 85,000
Jackson Point Rd.	1099422	\$199,000
Jackson Point Rd.	1101401	\$ 99,000
7 Saddletree Lane	1417538	\$ 70,000
Raven's Den	1015362	\$ 79,000



**BLUFF+ 40ac - MLS 1528769 -
1710 Stagecoach Rd., Sewanee. \$885,000.**



**10 acres - MLS 1499101 -
107 Blackberry Lane, Sewanee. \$262,000**



**BLUFF- MLS 1492405 - 3442 Sherwood Rd.
+ cottage, Sewanee. \$789,000**



**MLS 1516929 - 706 Old Sewanee Rd.
+30 ac, Sewanee. \$349,000**



**MLS 1547630 - 645 Nickajack Trail,
Monteagle. \$149,900**



**15 acres - MLS 1541012 -
786 Old Sewanee Rd., Sewanee. \$349,000**



**MLS 1358150 - 100 Tomlinson Lane,
Sewanee. \$598,000**



**MLS 1526530 - 21 Mont Parnasse Blvd.,
Sewanee. \$369,000**



**BLUFF- MLS 1437112 -
47 Poplar Lane, Sewanee. \$350,000**



**LAKE - MLS 1548250 - 311 Mountain
View Lane, Tracy City. \$358,000**



**MLS 1513077 - 111 Louisiana Ave.,
Sewanee. \$323,000**



**MLS 1542948 - 7829 Sewanee Hwy.,
Cowan. \$119,000**



**MLS 1476919 - 47 Parson's Green,
Sewanee. \$179,000**



**BLUFF - MLS 1484663 -
13 Sherwood Trail, Sewanee. \$975,000**



**MLS 1490245 - 191 Girault Jones,
Sewanee. \$349,000**



**MLS 1534857 - 290 Clara's Point Rd.,
Sewanee. \$399,000**



**MLS 1536114 - 291 Wiggins Creek Dr.,
Sewanee. \$285,000**



**MLS 1379047 - 136 Appletreewick St.,
Laurel Brae. \$399,000**



**MLS 1547868 - 1405 Cooley's Rift Blvd.,
Monteagle. \$328,900**



**MLS 1548725 - 508 Cowan St. E.,
Cowan. \$145,000**



**MLS 1467709 - 52 Sherwood Trail,
Sewanee. \$349,000**



**BLUFF - MLS 1397328 -
974 Old Sewanee Rd., Sewanee. \$299,000**



**MLS 1514972 - 202 Main St.,
Monteagle. \$112,000**



**MYERS POINT
bluff and lake tracts**



**BLUFF - MLS 1510405 -
1899 Jackson Pt. Rd., Sewanee. \$365,000**



**MLS 1479185 - 1150 Sassafras Ct.,
Clifftops. \$224,900**



**MLS 1487540 - 109 Wiggins Creek,
Sewanee. \$473,000**



**MLS 1522506 - 2461 Clifftops Ave.,
Monteagle. \$394,900**

LOTS & LAND

5 ac Montvue Dr	1524863	\$ 59,000
Big Springs Rd. 5.83ac	1497419	\$ 70,000
Taylor Rd., Sew., 29ac	1470665	\$179,000
36 Azalea Ridge Rd.	1378840	\$ 59,000
First St., Monteagle	1325122	\$ 16,800
Sarvisberry Place	1207077	\$ 83,000
Sarvisberry Place	1244981	\$ 85,000

Buses (from page 1)

money and also frees up bus space.

"Out in north Franklin County, I have a bad overcrowding problem," said Ellis Counts, director of transportation for the school system. He said at times bus drivers in north Franklin County have come close to parking and waiting for a relief bus because of overcrowding. Board chairman Kevin Caroland said school leaders will revisit the Huntland bus change at the July 14 board meeting.

In other business at Monday's board meeting:

— Rebecca Sharber, director of schools, said eight candidates have applied to be the new principal of South Middle School. Sandra Stewart retired at the end of the school year. The deadline for applications is June 13, and she expects to hire someone soon.

— Board members continued discussion of the 2014–15 school system budget, which is pending consideration by the Franklin County Board of Commissioners. If it clears the county's finance committee, the earliest that commissioners will consider the school budget is in July. The budget includes a 7-cent property tax hike for schools. Caroland said county mayor Richard Stewart conducted a straw poll, and most commissioners said they will not support a property tax hike. If commissioners reject the budget, the school board will be forced to make deeper cuts and submit a new budget.

Fourth of July (from page 1)

In addition to the three categories, a grand prize (\$100) will be awarded to the best all-around cake. The best all-around prize is offered by acclaimed IvyWild Restaurant owner and chef Keri Moser, who will present the prize at 12 p.m. The winner of the best all-around cake will also have the opportunity to wear the winner's special hat and ride in the parade.

Winners of the best tasting, best decorated and best representation of theme categories in the youth competition will each receive \$5 and a Blue Chair Café gift certificate for two ice cream cones.

Winners of the best tasting, best decorated and best representation of theme categories in the adult competition will each receive a \$50 IvyWild gift certificate.

Cake registration and set-up will take place from 9 a.m. to 9:45 a.m. at the Blue House on University Avenue. Registration will close at 9:45 a.m., when the judging will begin. Winners will be announced at 12 p.m. Following the awards presentation, the com-

munity is invited to view and sample the cakes.

The contest is an annual event sponsored by the Sewanee Women's Club with the generous co-sponsorship of IvyWild Restaurant and the Blue Chair Café and Tavern.

For more information call Flournoy Rogers at 598-0733 or Mandy Grubbs at (931) 691-4310.

People interested in being food vendors need to register by June 30. A limited number of spots are also available for Thursday night's street dance festival downtown and at the Lake Cheston fireworks display Friday. All vendors must register to expedite proper placement along the parade route. Vendors not registered may not receive a placement area for either venue.

To register email <luwin@bell south.net> with name, phone numbers, list of foods/drinks offered and email for the vendor distribution list that will provide more information. Because Sewanee is not incorporated, vendors are not required to have a business license.



Turtles (from page 1)

Don't take turtles home. Turtles have detailed knowledge of their home ranges that have taken a lifetime to acquire. They know where to find food, water and shelter from cold weather or predators. In novel habitats such as your backyard, they become confused and begin to wander, which increases their risk of starvation, freezing, predation and road mortality.

Reduce large-scale mowing during turtle nesting season. The height of turtle shells means that they can be damaged from the rotating blades of mowers. Turtles are on the move in June to find mates and lay their eggs, and hatchlings emerge from nests in August and September. Limiting mowing during these times reduces the risk of injury.

Notify Kristen Cecala of locations where you see turtles crossing roads. Turtles brought to her from the Domain will be measured, aged and marked for inclusion in a database designed to predict the future of turtles on the Domain. Call 598-3153 or email <kkcecala@sewanee.edu>.

Cecala is an assistant professor of biology at Sewanee.

Your ad could be here.

SSMF (from page 1)

exploration of new music is vital to artistic and cultural growth, both in Middle Tennessee and in the global music arena."

The Sewanee Summer Music Festival is an internationally acclaimed summer festival combining a month-long program for advanced music students and a professional concert series. This year's Festival will be June 21–July 20. A major highlight of the Sewanee Summer Music Festival 2014 repertoire is a world premiere of an original work by banjo virtuoso Béla Fleck on July 19. Other contemporary music highlights will include Kevin Puts' "Millennium Canons," Michael Daugherty's "Raise the Roof" for timpani and orchestra (featuring soloist John Kilkenny), and a performance of Fleck's "The Imposter" at the concert on July 20. Tickets and this season's full calendar of events can be found at <sewanee music festival.org>.

Selective enrollment of students from around the world, a unique curriculum, frequent performance opportunities and close mentoring with renowned artists position the young musicians at Sewanee Summer Music Festival as leaders in a changing musical landscape.

The League of American Orchestras leads, supports, and champions America's orchestras and the vitality of the music they perform.

"We are proud to partner with ASCAP in recognizing the ever-growing commitment of America's orchestras to the music of our time," said League President and CEO Jesse Rosen.

The League's diverse membership of approximately 800 orchestras across North America runs the gamut from world-renowned symphonies to community groups, from summer festivals to student and youth ensembles. The only national organization dedicated solely to the orchestral experience, the League is a nexus of knowledge and innovation, advocacy and leadership advancement for managers, musicians, volunteers and boards. Its conferences and events, award-winning Symphony magazine, website and other publications inform music-lovers around the world about orchestral activity and developments. Founded in 1942 and chartered by Congress in 1962, the League links a national network of thousands of instrumentalists, conductors, managers and administrators, board members, volunteers and business partners. Visit <americanorchestras.org> to learn more.

Established in 1914, ASCAP is the first and leading U.S. performing rights organization representing the world's largest repertory, totaling over 9 million copyrighted musical works of every style and genre from more than 500,000 songwriter, composer and music publisher members. ASCAP has representation arrangements with similar foreign organizations so that the ASCAP repertory is represented in nearly every country around the world where copyright law exists. ASCAP protects the rights of its members and foreign affiliates by licensing the public performances of their copyrighted works and distributing royalties based upon surveyed performances.

myerspoint.net

MYERS POINT at Sewanee offers a rare opportunity to enjoy a private community that celebrates American architecture, lifestyle, protected forests, cultivated lakes and panoramic views on Middle Tennessee's Cumberland Plateau. If you want to live surrounded by nature, history, beauty, quality and serenity, you'll want to call it home.

- 480-acre private gated community
- 24 exclusive home sites; lakeside or bluff vista
- Timeless, organic, craftsman architecture standards
- Land Trust for Tennessee perpetually protected forests
- Over four miles of walking and riding trails
- Community barn, pastures, resting benches and fire pit
- Minutes from the University of the South

John Goodson • (931) 703-0558 • johngoodson@bellsouth.net

MICHELLE M. BENJAMIN, JD
Attorney & Counselor at Law

102 FIRST AVENUE, NORTH
WINCHESTER, TENNESSEE 37398

(931) 962-0006
(931) 598-9767

Sernicola's

Steaks, seafood, pastas, homestyle pizza, hot lunch buffet, plus a 22-item fresh and healthy salad bar. Homemade desserts!

www.sernicolas.com • 106 Tennessee Avenue • Cowan • 962-3380
Open *Tuesday-Saturday • Lunch 11-2 • Dinner 5-8:30
*Closed on 3rd Tuesday for DAV

94 MAXON LANE

Wonderful bright home on Lake Bratton. Central campus location. This house has so much space! 3200 sq. ft., great room w/fireplace, master suite, formal dining, great kitchen, upstairs loft, downstairs apartment or office w/fireplace, large back deck, fenced-in yard and so much more!

NEW LISTING!
111 PROCTORS HALL RD.

Beautiful 4 bedrooms, 3 baths, large living room, sunroom, 2nd master suite downstairs with fireplace and wet bar (large enough for a rental or relative), garage, good storm room. \$279,900

PENDING

LAKESHORE DR., CLIFFTOPS RESORT

Panoramic view of Clifftops Lake from every room! Grand and gracious great room with a screened-in porch to match. Native stone fireplaces. Two master suites. 4 bedrooms, 3.5 baths, large dock. \$530,000.

LOIS LANE

Picture-perfect view from this large custom log home with ultimate privacy. Two stories with full basement and 2-car garage. 3 BR, 3 BA, every room is its own suite. Native stone fireplace in great room. The ultimate in privacy and seclusion.

CLIFFTOPS RESORT

Two fantastic 5-acre wooded lots in Clifftops. One corner lot and one with an amazing creek.

SLAKE POND RD.

30 beautifully wooded acres on the corner of Snake Pond and Stagecoach. Water, electric, Internet. All usable land.

UNIVERSITY REALTY SEWANEE TENNESSEE

91 University Ave. Sewanee
(931) 598-9244
cell (423) 838-8201

FASTER THAN GOOGLE

Go to www.TheMountainNow.com to find a yoga class, the hours of the convenience center, school and church calendars, and links to hundreds of area services. Click "Resources."



University Vice-Chancellor John McCardell speaking at the dedication ceremony at the new Sewanee Inn. Photo courtesy of the University of the South

New Sewanee Inn Hosts Formal Dedication

Almost 200 University of the South regents, former regents, building committee members, numerous alumni and representatives from architect Earl Swensson Associates, Charlestowne Hotels and others joined University administrators on June 8 for the dedication of the new Sewanee Inn. The inn's public spaces were filled with the sound of conversation as guests mingled and explored the rooms, parlors and galleries during a reception before the dedication ceremony.

Provost John Swallow began the program with welcoming remarks, calling the inn the perfect venue for extending hospitality to friends both old and new. He then introduced Vice-Chancellor John McCardell.

McCardell recalled the goal for the new inn, which "should extend hospitality to guests on a scale and at a level commensurate with the quality of the University." He recognized and thanked many of those in attendance for helping to achieve that goal: architects, contractors and designers, regents and former regents who were involved in the planning, and the many Sewanee friends who made investments in the inn.

McCardell gave a brief history of guest housing on the Mountain, reminding everyone that the last inn on the same site, built in 1957, had been a "destination" for visitors from Middle Tennessee and beyond. He concluded that today the new inn offers suitable accommodations that will "extend Sewanee's tradition of generous hospitality for many years to come."

The unveiling of the dedication plaque and prayers by the chancellor and university chaplain closed the ceremony.

Seventy-five percent of the wood in the inn was harvested on 1.75 acres of the Domain. The project gave forestry students an opportunity to look at real-world questions, provided resources for construction and boosted the local economy. A local sawmill, kiln and processor were used to turn the wood into flooring.

Domain Manager Nate Wilson said of the forestry research and production process, "Hopefully we can help sustain not only the ecology of the South Cumberland region, but also the forest-based economy."

The Birmingham and Nashville Suites were made possible by members of the Sewanee Clubs in those cities, and the Sewanee Club of Charleston sponsored the Lookout Parlor. Other named spaces reflect gifts from individuals, families, classes and Sewanee's Phi Delta Theta chapter, among other groups.



CONVENIENCE/ RECYCLING CENTER HOURS

The Convenience Center for household garbage, trash and recycling is located on Missouri Avenue. Its regular hours are: Monday, 1–6 p.m.; Tuesday through Friday, 3–6 p.m.; Saturday, 8 a.m.–4 p.m.; Closed Sunday. Closed on national holidays. There are blue recycling bins for metal (tin, appliances, etc.), newspapers/magazines, plastic, plastic bottles, cardboard and aluminum cans. Glass recycling is on Kennerly Avenue behind PPS.

Monteagle Assembly Program Highlights for June 15–21

The Monteagle Sunday School Assembly in Monteagle continues its 132nd consecutive summer season of enrichment. The eight-week season will continue through Sunday, Aug. 3, featuring numerous visiting lecturers who will present morning and evening programs in Warren Chapel that are open free of charge to the public.

The second week of the season features four Bible lectures on the topic "Overlooked Biblical Images for God," led by Lauren F. Winner. Winner is an Episcopal priest and assistant professor of Christian Spirituality at Duke Divinity School. She has appeared on PBS's Religion and Ethics News-weekly and served as a commentator on NPR's "All Things Considered."

Winner has written for the New York Times Book Review, the Washington Post Book World, Publishers Weekly, Books and Culture, and Christianity Today, and her essays have been included in several volumes of the Best Christian Writing. Her lectures will be at 11 a.m. daily, Tuesday–Friday, June 17–20, in Warren Chapel.

On Thursday, June 19, John Chappell will present "Mark Twain on Stage," at 8:15 p.m., in Warren Chapel. This promises to be a magical evening of theater. Chappell has been wandering around the country delighting audiences for more than a dozen years now. His appearances as Mark Twain "out on a raid" have kept folks in stitches in town halls and on college campuses from the Atlantic to the Pacific. He has performed on a riverboat deck, in the eye of a hurricane, and even in Samuel Langhorne Clemens's hometown of Hannibal, Mo.



Lauren Winner

Additional free public lectures in Warren Chapel during the second week of the 2014 season include:

Tuesday, June 17, 8:15 p.m.—Joe York, viewing and discussion of "Pride and Joy: A Southern Foodways Alliance Film Project."

Wednesday, June 18, 3:30 p.m.—Judith Humphreys and Emily Frith, "Creating a Culinary Herb Garden and Other Herb Tidbits."

Saturday, June 21, 4:30 p.m.—Family Concert, Big Kid Band!, at the Maney-McLeod Art Pavilion.

Monteagle Sunday School Assembly dates back to 1882, when the Sunday School Convention of Tennessee created an educational congress for Sunday school teachers. From ancient language to music, Sunday school teachers from across the South attend-

ed summer classes at the Assembly to broaden their experience.

In those early years, the Assembly maintained close ties with the first Assembly in Lake Chautauqua, New York. Chautauqua was created to combine the training of Sunday school teachers with a broader range of educational and cultural pursuits, and soon, MSSA was recognized as the southern headquarters for the Chautauqua Literary and Scientific Circle. While many Chautauqua organizations were started by individual church denominations, Monteagle Assembly was ecumenical from the start.

For more information or the full schedule, drop by the Assembly office, telephone (931) 924-2286, or go to the Assembly's website at <www.mssa1882.org>.

ELDER CARE SERVICES

- ♦ Hourly, daily & weekly rates
- ♦ Daytime care in my home
- ♦ Over 25 years of nursing experience
- ♦ Private nursing practice
- ♦ Licensed & insured

Call (931) 636-0911 for private consultation.



Wine Social Every Saturday

4 to 7 p.m., throughout Summerfest

Best Gourmet Breakfast
on the Mountain
Served Daily 8–10 a.m.



Tallulah's
Wine Lounge

(931) 924-3869 ~ www.monteagleinn.com ~ 204 West Main St.

FRIDAY NIGHTS IN THE PARK

FREE

UNIVERSITY REALTY TITLE SPONSOR

7:00-9:30 PM

JUNE 20 Towson & Friends

JUNE 27 Southern Proof

JULY 11 Hard Times Band

JULY 18 Boy Named Banjo

DINE
sewanee

WOODY'S
BICYCLES

Sewanee Utility District of Franklin and Marion Counties Water Quality Report 2013



Is my drinking water safe?

Yes, our water meets all of EPA's health standards. We have conducted numerous tests for over 80 contaminants that may be in drinking water. As you'll see in the chart below, we detected only 11 of these contaminants. We found all of these contaminants at safe levels.

What is the source of my water?

Your water, which is surface water, comes from Lakes O'Donnell and Jackson. Our goal is to protect our water from contaminants and we are working with the State to determine the vulnerability of our water source to *potential* contamination. The Tennessee Department of Environment and Conservation (TDEC) has prepared a Source Water Assessment Program (SWAP) Report for the untreated water sources serving this water system. The SWAP Report assesses the susceptibility of untreated water sources to *potential* contamination. To ensure safe drinking water, all public water systems treat and routinely test their water. Water sources have been rated as reasonably susceptible, moderately susceptible or slightly susceptible based on geologic factors and human activities in the vicinity of the water source. The Sewanee Utility District of Franklin and Marion Counties (SUD) sources rated as slightly susceptible to potential contamination.

An explanation of Tennessee's Source Water Assessment Program, the Source Water Assessment summaries, susceptibility scorings and the overall TDEC report to EPA can be viewed online at www.state.tn.us/environment/dws/dwassess.shtml, or you may contact the Water System to obtain copies of specific assessments.

Why are there contaminants in my water?

Drinking water, including bottled water, may reasonably be expected to contain at least small amounts of some contaminants. Community water systems are required to disclose the detection of contaminants; however, bottled water companies are not required to comply with this regulation. The presence of contaminants does not necessarily indicate that water poses a health risk. More information about contaminants and potential health effects can be obtained by calling the Environmental Protection Agency's Safe Drinking Water Hotline (800-426-4791).

For more information about your drinking water, please call Water Superintendent James Smartt at 598-5201.

Este informe contiene información muy importante. Tradúscalo o hable con alguien que lo entienda bien.

How can I get involved?

Our Board of Commissioners meets on the fourth Tuesday of every month at 5:00 PM at the Utility Office. Please feel free to participate in these meetings. The SUD Board is elected and consists of five members. Each member serves a four-year term. Decisions by the Board on customer complaints brought before the Board under the District's complaint policy may be reviewed by the Utility Management Review Board of the Tennessee Department of Environment and Conservation pursuant to Section 7-82-703 (7) of Tennessee Code Annotated. You can also visit our website, <www.sewaneeutility.org>, for more information.

Is our water system meeting other rules that govern our operations?

The State and EPA require us to test and report on our water on a regular basis to ensure its safety. We have met all of these requirements. Results of unregulated contaminant analysis are available upon request. We want you to know that we pay attention to all the rules.

Other Information

The sources of drinking water (both tap water and bottled water) include rivers, lakes, streams, ponds, reservoirs, springs, and wells. As water travels over the surface of the land or through the ground, it dissolves naturally-occurring minerals and, in some cases, radioactive material, and can pick up substances resulting from the presence of animals or from human activity.

Contaminants that may be present in source water:

- Microbial contaminants, such as viruses and bacteria, which may come from sewage treatment plants, septic systems, agricultural livestock operations, and wildlife.
- Inorganic contaminants, such as salts and metals, which can be naturally-occurring or result from urban stormwater runoff, industrial or domestic wastewater discharges, oil and gas production, mining, or farming.
- Pesticides and herbicides, which may come from a variety of sources such as agriculture, urban stormwater runoff and residential uses.
- Organic chemical contaminants, including synthetic and volatile organic chemicals, which are by-products of industrial processes and petroleum production, and can also come from gas stations, urban stormwater runoff, and septic systems.
- Radioactive contaminants, which can be naturally-occurring or be the result of oil and gas production and mining activities.

In order to ensure that tap water is safe to drink, EPA and the Tennessee Department of Environment and Conservation prescribe regulations which limit the amount of certain contaminants in water provided by public water systems. SUD's water treatment processes are designed to reduce any such substances to levels well below any health concern. FDA regulations establish limits for contaminants in bottled water which must provide the same protection for public health.

Due to all water containing dissolved contaminants, occasionally your water may exhibit slight discoloration. We strive to maintain the standards to prevent this. We at SUD work around the clock to provide top quality water to every tap. We ask that all our customers help us protect our water sources, which are the heart of our community, our way of life and our children's future.

Do I need to take special precautions?

Some people may be more vulnerable to contaminants in drinking water than the general population. Immuno-compromised persons such as persons with cancer undergoing chemotherapy, persons who have undergone organ transplants, people with HIV/AIDS or other immune system disorders, some elderly, and infants can be particularly at risk from infections. These people should seek advice from their health care providers about not only their drinking water, but food preparation, personal hygiene, and precautions in handling infants and pets. EPA/CDC guidelines on appropriate means to lessen the risk of infection by *Cryptosporidium* and other microbiological contaminants are available from the Safe Drinking Water Hotline (800-426-4791).

Lead in Drinking Water

If present, elevated levels of lead can cause serious health problems, especially for pregnant women and young children. Lead in drinking water is primarily from materials and components associated with service lines and home plumbing. The Sewanee Utility District is responsible for providing high quality drinking water, but cannot control the variety of materials used in plumbing components. When your water has been sitting for several hours, you can minimize the potential for lead exposure by flushing your tap for 30 seconds to 2 minutes before using water for drinking or cooking. If you are concerned about lead in your water, you may wish to have your water tested. Information on lead in drinking water, testing methods, and steps you can take to minimize exposure is available from the Safe Drinking Water Hotline or at <www.epa.gov/safewater/lead>.

Water System Security

Following the events of September 2001, we realize that our customers are concerned about the security of their drinking water. We urge the public to report any suspicious activities at any utility facilities, including treatment plants, pumping stations, tanks, fire hydrants, etc., to 598-5611.

Water Quality Data

What does this chart mean?

- **MCLG:** Maximum Contaminant Level Goal, or the level of a contaminant in drinking water below which there is no known or expected risk to health. MCLGs allow for a margin of safety.
- **MCL:** Maximum Contaminant Level, or the highest level of a contaminant that is allowed in drinking water. MCLs are set as close to the MCLGs as feasible using the best available treatment technology. To understand the possible health effects described for many regulated constituents, a person would have to drink 2 liters of water every day at the MCL level for a lifetime to have a one-in-a-million chance of having the described health effect.
- **MRDL:** Maximum Residual Disinfectant Level: the highest level of a disinfectant allowed in drinking water. There is convincing evidence that addition of a disinfectant is necessary for the control of microbial contaminants.
- **MRDLG:** Maximum Residual Disinfectant Level Goal: the level of a drinking water disinfectant below which there is no known or expected risk to health. MRDLGs do not reflect the benefits of the use of disinfectants to control microbial contaminants.
- **BDL:** Below Detection Level: laboratory analysis indicates that the contaminant is not present at a level that can be detected.

Contaminant	Violation Yes/No	Level Detected	Range of Detections	Date of Sample	Unit Measurement	MCLG	MCL	Likely Source of Contamination
Total Coliform Bacteria	NO	0		2013		0	<2 positive samples	Naturally present in the environment
Turbidity ¹	NO	0.03	0.02-0.14	2013	NTU	n/a	TT	Soil runoff
Chlorine	NO	1.9	1.6-2.1	2013	ppm	4	4	Water additive used to control microbes.
Copper	NO	90%= 0.04	0.0011- 0.12	2012	ppm	1.3	AL=1.3	Corrosion of household plumbing systems; erosion of natural deposits; leaching from wood preservatives
Fluoride	NO	0.56	0.51-0.61	2013	ppm	4	4	Erosion of natural deposits; water additive which promotes strong teeth; discharge from fertilizer and aluminum factories
Lead ²	NO	90%= .0013	.0010- .0036	2012	ppb	0	AL=15	Corrosion of household plumbing systems, erosion of natural deposits
Nitrate (as Nitrogen) ³	NO	BDL	BDL	2013	ppm	10	10	Runoff from fertilizer use; leaching from septic tanks, sewage; erosion of natural deposits
Sodium	NO	9.7	9.7	2013	ppm	N/A	N/A	Erosion of natural deposits; used in water treatment
TTHM ⁴ [Total trihalomethanes]	NO	38	21-63	2013	ppb	n/a	80	By-product of drinking water chlorination
Haloacetic Acids (HAA5)	NO	28	18-45	2013	ppb	N/A	60	By-product of drinking water disinfection.
Total Organic Carbon ⁵	NO	1.06	1.00-1.14	2013	ppm	TT	TT	Naturally present in the environment.

Contaminant	Violation Yes/No	Level Found	Range of Detections	Date of Sample	Unit Measurement	MRDLG	MRDL	Likely Source of Contamination
Chlorine	NO	1.9	1.6-2.1	2013	ppm	4	4	Water additive used to control microbes.

- **AL:** Action Level, or the concentration of a contaminant which, when exceeded, triggers treatment or other requirements which a water system must follow.
- **Parts per million (ppm) or Milligrams per liter (mg/L):** explained as a relation to time and money as one part per million corresponds to one minute in two years or a single penny in \$10,000.
- **Parts per billion (ppb) or Micrograms per liter:** explained as a relation to time and money as one part per billion corresponds to one minute in 2,000 years, or a single penny in \$10,000,000.
- **NTU:** Nephelometric Turbidity Unit: nephelometric turbidity unit is a measure of the clarity of water. Turbidity in excess of 5 NTU is just noticeable to the average person.
- **TT:** Treatment Technique, or a required process intended to reduce the level of a contaminant in drinking water.

During the most recent round of Lead and Copper testing, 0 out of 20 households sampled contained concentrations exceeding the action level.

¹ 100% of our samples were below the turbidity limit.

² Infants and young children are typically more vulnerable to lead in drinking water than the general population. It is possible that lead levels at your home may be higher than at other homes in the community as a result of materials used in your home's plumbing. If you are concerned about elevated lead levels in your home's water, you may wish to have your water tested and flush your tap for 30 seconds to 2 minutes before using tap water. Additional information is available from the Safe Drinking Water Hotline (800-426-4791).

³ Nitrate in drinking water at levels above 10 ppm is a health risk for infants of less than six months of age. High nitrate levels in drinking water can cause blue baby syndrome. Nitrate levels may rise quickly for short periods of time because of rainfall or agricultural activity. If you are caring for an infant you should ask advice from your health care provider.

⁴ While your drinking water meets EPA's standard for trihalomethanes, it does contain low levels. Some people who drink water containing trihalomethanes in excess of the MCL over many years may experience problems with their liver, kidneys, or central nervous system, and may have an increased risk of getting cancer.

⁵ We have met all treatment technique requirements for Total Organic Carbon removal.

Senior Center News

Annual Meeting & Lunch Wednesday

The annual meeting of the Sewanee Senior Citizens will be at 12:30 p.m., Wednesday, June 18, at the Senior Center. At the meeting the nominating committee will give a report of the names they recommend as board members. All are welcome.

Volunteers Still Needed

The center needs volunteer help during the summer on Tuesdays and Thursdays. Call the center to inquire.

Senior Menus

The Sewanee Senior Center serves lunch at noon on weekdays. The suggested donation is \$3 (\$0 or older) or \$5 (under 50). Please call by 9 a.m. to order lunch. If you have made a reservation for lunch but do not come eat, please be prepared to pay for your meal. Menus may vary.

June 16: Taco salad, dessert.

June 17: Baked spaghetti, salad, garlic bread, dessert.

June 18: Barbecued pork, potato salad, baked beans, dessert.

June 19: Cabbage roll, peas, scalloped potatoes, cornbread, dessert.

June 20: Grilled chicken sandwich, tater tots, dessert.

Summer Activities

The Senior Center will have many continuing activities this summer. Please note that the writing group will not meet in June, but will reconvene on July 2. The chair exercise group will not meet again until September.

On Tuesdays at 10:30 a.m., the group plays bingo with prizes. Wednesdays at 10 a.m., the writing group gathers at 212 Sherwood Rd. Fridays at 10 a.m. is game day.

Participation at the Center

The Sewanee Senior Center does not charge any membership fee. All persons 50 or older who take part in any of the activities are considered members of the Sewanee Senior Center organization. All are welcome to attend board meetings and the quarterly covered-dish lunches.

The center is located at 5 Ball Park Rd., behind the Sewanee Market. To reserve a meal or for more information, call 598-0771.

Meacham Offers Lecture on “The Art of Writing History” at Shakerag

The Shakerag Lecture Series continues with Pulitzer-prize winning author Jon Meacham as the second Shakerag lecturer. Meacham will speak at 7:30 p.m., Wednesday, June 18, in McCrory Hall for the Performing Arts on the campus of St. Andrew's-Sewanee School. He will talk about “The Art of History: Writing About the Past.”

Executive editor and executive vice president of Random House, Meacham is a contributing editor to Time magazine and a former editor of Newsweek. He has written for the New York Times and the Washington Post, among other publications. The lecture is open to the public and will be followed by a reception in the St. Andrew's-Sewanee Gallery honoring the Shakerag lecturer and the Shakerag faculty artists.

Meacham is the author, most recently, of “Thomas Jefferson: The Art of Power,” a New York Times bestseller that has been named one of the best books of the year by the New York Times Book Review, the Washington Post, Entertainment Weekly, the Seattle Times and the St. Louis Post-Dispatch. Meacham received the Pulitzer Prize for “American Lion,” his bestselling 2008 biography of Andrew Jackson. He is also the author of the New York Times bestsellers “Franklin and Winston” and “American Gospel.” He is a regular contributor on Meet the Press, Morning Joe, and Charlie Rose.

Shakerag faculty members give brief presentations about their work on other weekday evenings at 7:15 p.m. in McCrory Hall, and these lectures are also open to the public. The second session faculty talks are:

Monday, June 16—Steven Hill, pottery; Nathalie Miebach, basket weaving; and Mira Gerard, painting.

Tuesday, June 17—Yoshiko Wada, Japanese folk textiles; Cal Patch, sewing and pattern-making; and Lisa Pedolsky, ceramics.

Thursday, June 19—Béatrice Coron, papercutting and Roger Vail, photography.

For 11 years, St. Andrew's-Sewanee School has welcomed accomplished and aspiring artists to Shakerag Workshops for two one-week sessions of studio classes and lectures. For more information about the Shakerag Workshops evening programs, please go to <www.shakerag.org> or contact director Claire Reishman at 598-5651, ext. 3165.



Jon Meacham

Area Students Named to SAS Honors Lists

The following students from Sewanee, Monteagle and Decherd have been named to the Honors Lists at St. Andrew's-Sewanee School for the fourth quarter and/or academic year of 2013–14. Overall, 109 students, including 42 boarding students and 67 day students, achieved academic distinction on the Honors List.

Student	Quarter 4	Year
Joshua Alvarez	Honors	Honors
Andrew Bachman	High Honors	High Honors
Alyson Barry	High Honors	Honors
Ashley Barry	High Honors	Honors
Sarah Beavers	High Honors	High Honors
Jackson Berkhouse	High Honors	High Honors
Emily Blount	High Honors	High Honors
Allison Bruce	High Honors	High Honors
Isabel Butler	Honors	Honors
Hunter Craighill	High Honors	Honors
Ethan Evans	High Honors	High Honors
John Farris	Honors	Honors
Daryllann Ferguson	Honors	Honors
Fields Ford	High Honors	High Honors
Anna Fox	High Honors	High Honors
Madison Gilliam	High Honors	High Honors
Caroline Graham	Honors	Honors
Sadie Graves	High Honors	High Honors
Levi Higgins	High Honors	High Honors
Lucy Howick	Honors	Honors
Georgie Huber	High Honors	High Honors
Camila Hwang-Carlos	High Honors	Honors
Edwin Keeble	Honors	
Tieta Keetle	High Honors	High Honors
Rebecca Lundberg	High Honors	High Honors
Abby Mainzer	Honors	Honors
Noah McIndoo	Honors	Honors
Daniel McNair	High Honors	High Honors
Eliza McNair	High Honor	High Honors
Ashton Milford	High Honors	High Honors
Shalon Mooney	High Honors	Honors
Vanessa Moss	High Honors	High Honors
Namkha Norbu		High Honors
Tommy Oliver	High Honors	High Honors
Nathan Olson	High Honors	High Honors
Diana Rinck	High Honors	
Evelyn Seavey	High Honors	High Honors
Sam Smith	High Honors	High Honors
Margaret Stapleton	High Honors	High Honors
Fritz Stine	High Honors	High Honors
Sam Stine	High Honors	High Honors
Ruth Swallow	High Honors	High Honors
Sophie Swallow	High Honors	High Honors
Sam Thomas		Honors
Patrick Toomey	Honors	Honors
Aaron Willis	High Honors	Honors
Kyra Wilson	High Honors	High Honors
Marisa Wilson	High Honors	High Honors
Emma Zeitler	Honors	Honors

For area information go to
www.TheMountainNow.Com

CROSSROADS



Live Music on Saturday Nights at our Outdoor Patio

Celebrate Father's Day with Sunday Lunch on June 15

Singaporean Cuisine	Catering	Cooking Class
38 Ball Park Road, Sewanee TN		931-598-9988



TOMMY C. CAMPBELL

FOR YOUR IMPROVEMENTS

Call (931) 592-2687

Free Estimates • 20 Years Experience

DRIVEWAY WORK • GRAVEL HAULING • DOZER & BACKHOE

plus Land Clearing • Concrete Work • Water Lines • Garage Slabs • Sidewalks • Porches & Decks • Topsoil & Fill Dirt Roofing • Additions to House • Septic Tanks & Field Lines



426 Ragsdale Road
Manchester, TN 37355
931-723-2294

www.beanscreekwinery.com

Free Wine Tasting and Tours
Music on Saturdays starting in May



AFFORDABLE Home Repair

Remodeling • Additions • Decks • Painting
House/Floor Leveling and More

Experienced & Honest

423-593-3385

Russell L. Leonard

ATTORNEY AT LAW

Office: (931) 962-0447

Fax: (931) 962-1816

315 North High Street
Winchester, TN 37398

Toll-Free (877) 962-0435
rleonard@netcomsouth.com



Peter Keeble • 931-598-0777
plateauproductions76@gmail.com

PRODUCTION DESIGN

Music Performance • Recording
Records - Radio - Video
Concerts - Festivals - Clubs

AUDIO PRODUCTION/ENGINEERING

Studio • Live Mixing
Multi-Track Recording

ARTIST-WRITER DEVELOPMENT

Production • Publishing • Management

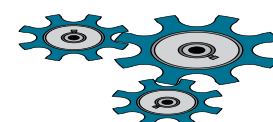
CONSULTING

Design • Development • Management

J & J GARAGE

COMPLETE AUTO REPAIR

- Import & Domestic
- Computerized 4-Wheel Alignments
- Shocks & Struts • Tune-ups • Brakes
- Our Work is Guaranteed.
- OVER 26 YEARS EXPERIENCE.



Jerry Nunley
Owner

598-5470 Hwy 41-A between Sewanee & Monteagle • Monday-Friday 7:30-5:30

AT THE MOVIES

SEWANEE UNION THEATRE

Friday–Monday, June 13–16, 7:30 p.m.

The Monuments Men

Rated PG-13 • 118 minutes

George Clooney's latest project, "The Monuments Men," is the most-ly true story of how a group of unlikely soldiers save art masterpieces from the Nazis in World War II. Clooney adapted the book, directed, stars in (and probably paid for) the film, along with his buddies, Matt Damon, Bill Murray, John Goodman, Bob Balaban and Cate Blanchett. There's nothing wrong with a Clooney film/party, but "Monuments Men" misses the opportunity to be a great movie and ends up feeling a little dull. Still, there's lots of eye candy for women of a certain age. Rated PG-13 for some images of war violence and historical smoking.

SEWANEE UNION THEATRE

Thursday–Monday, June 19–23, 7:30 p.m.

Divergent

Rated PG-13 • 139 minutes

Based on the very popular book series by Veronica Roth, "Divergent" is about Tris (Shailene Woodley), who learns that she will never be part of society because she is "divergent." She joins with others who have been marked this way to foil a plot to destroy them. The movie also stars Theo James and Kate Winslet. Reviewers gave this so-so marks and praised Woodley's outstanding performance. Rated PG-13 for intense violence and action, thematic elements and some sensuality. —LW

Coming up at the SUT:

"Muppets Most Wanted" (PG) June 26–30

"Captain America: The Winter Soldier" (PG-13) July 10–14



Die Geschwister (The Siblings), Middle Tennessee's more-or-less authentic German trio, will perform 5–7 p.m., Friday, June 20, at the Artisan Depot in Cowan. This performance celebrates the opening of the "It's Just Trash" art exhibit. Band members (from left) Mary Priestley, Tom Patten and George Patten will sing and play a mix of much-loved drinking songs and classic favorites.

Area Arts Events and Festivals

Tracy City SummerFest 2014

During SummerFest 2014, folks can enjoy food, nature and culture in Tracy City.

Each Monday and Friday, at 9:30 a.m., Dutch Maid Bakery is having a bread-making class. There is a fee for the class. At 10:30 a.m., go around the corner to the Heritage Center for a tour and presentation on the rich history of the area. At 11:30 a.m., go a few doors down to Sue and Jim Parrott's Depot Emporium, with a great selection of antiques and gifts. After that, visit Flury's Mercantile, one of the area's most venerable shops.

At each location participants can receive a free gift. For more information, call (931) 592-3171 and ask for the SummerFest planner.

Movie in Harton Park June 20

"Hope Floats" starring Sandra Bullock will be shown in Monteagle's Harton Park at 7 p.m., Friday, June 20. Bring your lawn chair and enjoy the evening outdoors with family and friends. This movie is rated PG-13.

Music by the Lake June 21

Ten bands will be playing at Tims Ford Lake, starting at 7 p.m., rain or shine, on Saturday, June 21, at Winchester City Park. Admission is free. There will be children's activities and concessions. Bring your lawn chairs. The evening is sponsored by the Franklin County Kiwanis Club.

Smithville Fiddlers' Jamboree

The 43rd annual Smithville Fiddlers' Jamboree begins at 9 a.m., Friday and Saturday, July 4–5, on the square in downtown Smithville. Cash prizes totaling almost \$14,000 will be awarded in 28 categories of Appalachian singing, dancing and instrumental performance for individuals and groups of all ages. Admission is free. Call (615) 597-8500 or go to <www.smithville-jamboree.com> for more information.

Events at Artisan Depot

The Artisan Depot will be featuring the works of Franklin County Arts Guild member AK Anderson through July 12, 2014. Anderson has studied art in New York and Venice, Italy. Exhibited in her show are drawings using pen and ink, acrylics, oil on linen, charcoal and academic figure studies in charcoal. Subjects include trees and the human figure. Anderson is a retired Franklin County High School art teacher and lives in Belvidere.

The next community arts show will have a theme of "It's Just Trash." It will open on June 20. All community art shows welcome original contributions from Franklin County artists of all ages in multiple types of art media. Membership in the Guild and gallery fees are not required for these shows. All work in the show is for sale. Artists wishing to submit work for the June show may submit their work June 12–14.

Gallery hours are 12–5 p.m. on Thursdays and Fridays, and 11 a.m.–5 p.m. on Saturdays. The Artisan Depot is located at 201 Cumberland St. East in Cowan, and is operated by the Franklin County Arts Guild.

Performing Arts Camp for Children

A performing arts camp will be held at the Community Center in Sewanee in June and July. Places are still available at both sessions.

Children will learn all kinds of dance styles and working with different media to tell stories through movement. They will learn acting, improvisation, working with live musicians, use of props, poetry with movement, storytelling, musical theater, costuming, music, crafting and how to create their own dances. Children will perform their works on the Friday of camp week for family and friends.

For ages 7 and up, there will be two camps; each camp is different and children may sign up for both. (There will be no classes on Tuesdays.)

On June 23–27 and on July 21–25, the group will meet 9 a.m. to 12 p.m. on Monday and Wednesday. On Thursday and Friday, they will meet 12–3 p.m. There will be a mini-demonstration for families and friends at 3 p.m. on Fridays. The fee is \$90 each week. Students need to bring a snack and water.

For ages 4–6, performing arts camp will be July 14–18. The group will meet 9–11 a.m. on Monday and Wednesday, and 12–2 p.m. on Thursday and Friday. The mini-demonstration will be at 2 p.m., Friday. The fee is \$80 per week. Students should bring a snack and water.

For more information or to register, call Debbie Welch at (931) 636-4717 or email her at <debbie@fullcirclecandles.com>.

Like the Messenger?
Let us know on Facebook!

The Mountain **NOW.COM**

Information & Events on the South Cumberland Plateau

The Mountain Now is a new community service provided by **The Sewanee Mountain Messenger**. This comprehensive website provides information on area events and services. It is intended to be a one-stop site for everyone on the South Cumberland Plateau for accurate, at-a-glance information. Share your photos and knowledge to make this the best possible source for those who live on the Mountain or those coming to visit.

HOME

The **HOME** page is your guide to current and upcoming events. A quick glance offers the time, date and place, with a web link to more information, when available. You'll also find a Calendar and a Search option. Click on the **Next Page** to see what is coming.

VOICES

VOICES are blogs from area writers, including authors David B. Coe and David Haskell, photographer Pradip Malde, outdoor enthusiast Patrick Dean, plus musings from Chris McDonough and Sewanee Herbarium members.

WHERE TO ...

This site provides information on local attractions, places to eat and stay, services you might need and where to shop. If you have a local business within the Sewanee Mountain Messenger's print circulation area and do not see your free listing here, email themountainnow@gmail.com.

RESOURCES

RESOURCES is a vital resource for living on or visiting the Mountain. Need to find out the library hours or a link to a church's website? Bookmark this page and all the information you need will be just one click away.

YOUR TOWN

YOUR TOWN is a comprehensive list of information and services for towns within The Sewanee Mountain Messenger's area of print circulation. From Cowan to Tracy City and everywhere in between, these pages help link us all together. Check it out and let us know if something is missing.

CONTACT

Cannot find what you are looking for? Want to add your event, information or listing to the site? Just submit the form on the **CONTACT** page or email themountainnow@gmail.com.

Stay in touch...
BOOKMARK IT!





Village Wine & Spirits INC.

COMPETITIVE PRICES AND FRIENDLY SERVICE

Great Wine Selection ~ Special Orders Available
ALL YOUR FAVORITE MAJOR BRANDS

Across 41A from Monteagle's Piggly Wiggly ~ (931) 924-6900
Mike Gifford, Owner; M–Th 9 a.m.–9 p.m.; F–Sa 9 a.m.–11 p.m.

Welcome, summer guests!



David Young

DREMC Staff Changes

With five district offices and three satellite centers, Duck River Electric Membership Corporation (DREMC) is committed to providing services and programs at the community level. To further enhance this emphasis on local delivery, the co-op has announced the creation of a new department and named a 25-year veteran employee as its director.

David Young will lead the new district services group. He is currently the Manchester district manager. Young's promotion takes effect July 1, the start of DREMC's 2015 fiscal year.

"This is a position of great responsibility. I am delighted that someone of David Young's experience, enthusiasm and dedication has agreed to take on the challenge," said DREMC President and CEO Michael Watson.

District Services comprise operations at Columbia, Lewisburg, Decherd, Manchester and Shelbyville, the service centers at Lynchburg, Sewanee and Chapel Hill (under construction) and the co-op's dispatch center in Shelbyville. More than two-thirds of the co-op's employees work at the district level, where routine business is transacted and special programs and services are delivered.

Young will be based at the Shelbyville headquarters but work extensively with the district managers, their staffs and employees. His successor at Manchester has not yet been named. Young joined DREMC in 1989 as an electrical engineer.



The Gnarled Oak

Furniture refinishing,
chair caning, seat weaving
and furniture repair



Flat Branch Community
2222 Flat Branch Spur
Tracy City, Tennessee 37387
(931) 592-9680
Bill Childers, Prop.

Click it or Ticket It Comes to Sewanee

The Governor's Highway Safety office is partnering with local law enforcement agencies to spread the word about seat belt safety. Sewanee Police Department has joined in the effort to educate residents.

Every hour, at least one person in this country dies because he or she did not buckle up. Failure to use a seat belt contributes



to more fatalities than any other single traffic safety-related behavior.

More than 60 percent of vehicle occupants killed in crashes in Tennessee were not wearing safety belts. Research shows it is almost nine times safer to wear a safety belt.

Unrestrained children are 4.2 times more likely to die in a crash than restrained children. Fewer than 1 percent of children properly restrained were killed.

The Sewanee Police Department reminds area residents that drivers are responsible for themselves and for all child passengers under the age of 18 in the front or back seat. Licensed passengers 16 or older are responsible for themselves and will be ticketed instead of the driver.

The 2004 Law allows law enforcement to stop a vehicle if the driver and passengers are not properly restrained, whereas, previously they would have to be stopped for another offense before being ticketed. Tennessee's local and state law enforcement officials work strenuously to educate every Tennessean through the Click It or Ticket campaign as to the necessity of seat belt usage by utilizing safety checkpoints and public information messages.

Click It or Ticket is a high-visibility education and enforcement campaign of Tennessee's seat belt laws. Sponsored by the Governor's Highway Safety Office, Tennessee's law enforcement agencies and public health officials, Click It or Ticket aims at reducing serious injuries and fatalities on Tennessee's roadways by reminding everyone to buckle up.



Friends (from left) Ty Klekotta, Emma Diamond and Macy Higgins take the plunge from a floating dock in an area lake. Photo by Paul Klekotta

TRAVELING OFF THE MOUNTAIN THIS SUMMER?



Keep up from the road!

<www.sewanee-messenger.com>



Open 10-6 Every Day



Suunto



Columbia



Temple Fork Outfitters



Chaco



YETI



Costa

Father's Day Sale
June 13th-16th
20%-50% Off All
Shoes and Clothing



Simms



GoPro



Benchmade



MOUNTAIN KHAKIS
JACKSON HOLE • WYOMING



Patagonia



Salewa



Keen

Mountain Outfitters
903 W Main St, Monteagle, TN
(931) 924-4100

Unique Mountain Properties



340 LAKE LOUISA LOOP in Cooley's Rift. On a peninsula, this beautiful Robertson-Vaughn home has water views on 3 sides. 2451 sf, 3/3.5. MLS#1530963. \$649,000.



IN THE HEART OF CLIFFTOPS. 2235 Sarvisberry Place. Wrap and screened porches, downstairs master suite. Stone fireplace. 5.35 secluded acres. 3BR, 2.5BA, 2048 sf. MLS#1455290. \$349,000.



DEER RUN. 1205 Clifftops Ave. New master bath, granite counters, screened porch, decks, hot tub. Split plan on one level. Great family retreat. 2753 sf, 3/2.5. MLS#1524154. \$348,900.



EAGLE BLUFF ESTATES. Panoramic brow-view homesites for \$59,900 or less. Wooded lots from \$19,900. Gated community. Hard surface roads, DSL, electric, city water.



2460 CASTLEROCK COURT. Extraordinary geothermal brow-view home. Decks, screened porch, 2 master suites on the main level. 2 guest BR and bonus room upstairs. 3881 sf, 4/3.5. MLS#1518851. \$1,150,000.



SEWANEE CHALET. 336 Nancy Winn. Living quarters w/view and garage for expansion. 7.87 acres. MLS#1531822. \$179,900.



1091 TIMBERWOOD TRACE. 26.7 acres. Exceptional quality home built in 2006. Wood, brick floors, granite counters, 3 on-demand water heaters. 3-car garage. 4138 sf, 4/3.5. MLS#1547403. \$689,000



LOST COVE PANORAMA from 3217 Sherwood Rd. 2339 sf, 3/2, gated. Woodlands carpeted with daffodils. Windowed gathering room has full view. Outdoor terraces, patios. MLS#1528954. \$699,950.



BEAUTIFUL HOME ON LAKE BRATTON IN SEWANEE. 36 Lake Bratton Lane. 3273 sf. 4/3, stone fireplace. Large closets, den. 896 sf apt. w/tenant for extra income. MLS#1480668. \$479,000.



CLIFFTOPS LAKEFRONT. 2230 Westlake. 2 docks, ramp, gazebo, large deck, partial stone. Long water frontage. 3875 sf, 4BR, 3.5BA. MLS#1534145. \$749,000.



2063 LAUREL LAKE DR. Custom brow rim home. Two garages. Wrap decks, bonus room. Natural wood throughout. 2.3 acres, 2134 sf, 2/2.5. MLS#1538300. \$354,900.



THE AERIE. 2015 Laurel Lake Dr. Aviator-like view, sitting on a point! 4/3 main house. Guest apt. 2/1. Pool. Vacation rental potential. MLS#1531518. \$669,000.

Monteagle Sewanee, REALTORS

View these and other quality homes and building sites at
www.monteaglerealtors.com



Then call **931-924-7253**

Deb Banks, Realtor, 931-235-3385, dbanks@realtracs.com
Dee Hargis, Broker, 931-808-8948, aunderhill@blomand.net
Heather Olson, Realtor, 804-839-3659, heatheromom@yahoo.com
Ray Banks, Realtor, 931-235-3365, banksgrass@yahoo.com
Jeanette S. Banks, Broker-Owner, banksnjb@gmail.com

“Every Child in the Park” Program Continues

The Friends of South Cumberland State Park continued its focus on environmental outreach to area children by sponsoring “Every Child in the Park” programs for Grundy County students in late May. Children from Coalmont, North Elementary, Pelham School, Swiss Memorial School, Tracy Elementary and Palmer School are given the opportunity each year to visit one of the South Cumberland parks and participate in a wildlife program about native species.

Each fifth-grade class was treated to a ranger-led hike to Stone Door. The FSC organizes the field trips, funds the school buses and provides adult volunteers to help supervise the year-end hikes. Wildlife rehabilitator Margaret Matens presented a program to all six of the Grundy fourth-grade classes, giving children the opportunity to learn about and handle snakes, turtles, toads and other native creatures.

According to FSC President Ty Burnette, “Since so many of the South Cumberland parks are in Grundy County, the FSC believes it is important to connect children to the state parks so that they will come to know and value these beautiful spaces.”



Tracy City fifth-graders with Ranger George Shinn at an overlook near Stone Door. Photo by Charles Beaumont.



A fourth grader from Pelham School has an up-close encounter with Charlie the Corn Snake. Photo by Rick Dreves

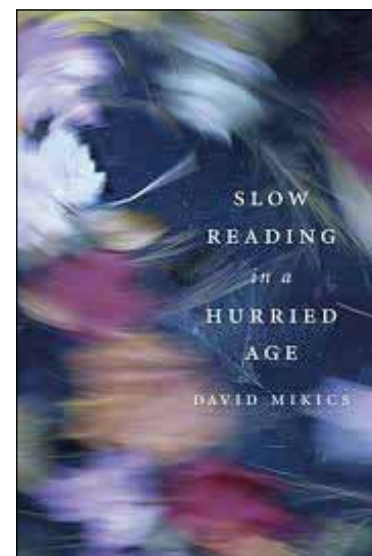
If you are planning a wedding, party or special event, THINK RENTAL!



Reliable Rental of Franklin County has everything you need—Marquee tents (available with side walls and lighting), white wooden chairs, a popcorn machine, selected white lattice items, round and rectangular tables, chairs, brass candelabras, china, crystal, flatware, chafers, trays, disposables, etc. Call or come by to check out the great savings you will realize by doing it yourself at a rental (not sale) price!

RELIABLE RENTAL OF FRANKLIN COUNTY

104 E. Petty Lane • Winchester, TN 37398
931/962-0406 or 1-800/453-RENT



“Slow Reading” Lecture

The Sewanee School of Letters and the Friends of the duPont Library are sponsoring a lecture by critic David Mikics at 4:30 p.m., Wednesday, June 18, in Gailor Auditorium. There will be a reception in the foyer afterward.

Mikics is the author of “Slow Reading in a Hurried Age,” a practical guide for anyone who yearns for a more fulfilling reading experience. It reminds the reader of another mode of reading—the kind that requires one’s full attention and that has as its goal not the mere gathering of information but the deeper understanding that only good books can offer.

“There is much solid wisdom and penetrating advice in these pages. David Mikics is an inspired teacher, and he has brought his rich pedagogic imagination to life in this book, which teaches us to fall in love again with great literature,” said Phillip Lopate.

Other books by Mikics include “The Annotated Emerson,” “The Art of the Sonnet,” “Who Was Jacques Derrida?: An Intellectual Biography” and “A New Handbook of Literary Terms.” He is currently at work on a book that will be published in 2015 on Saul Bellow called “Bellow’s People.”

Mikics grew up in Carteret, N.J., and Atlanta. He attended NYU and earned a Ph.D. at Yale. He lives in Brooklyn and teaches at the University of Houston, where he is John and Rebecca Moores Professor of English.

The event is free and open to the public.

Help us put this space to good use.

Organizations in the Sewanee Mountain Messenger’s circulation area with 501(c)(3) tax-exempt status or those that have received funds from the Sewanee Community Chest are eligible for one FREE ad this size per year!

Call 598-9949 for details or email
ads@sewaneemessenger.com.

Happy Father's Day!



Two College students safely fish in an area lake. Photo by Paul Klekotta

American Red Cross Offers Water Emergency Tips

Many aquatic emergencies can happen quickly and silently. The American Red Cross encourages people to learn to recognize the signs of distress and know how to respond.

If a swimmer is in distress or is drowning—A distressed swimmer or drowning victim needs help immediately. A swimmer in distress may still try to swim but makes little or no forward progress. If not helped, a swimmer in distress will soon become a drowning victim.

An active drowning victim may be vertical in the water but unable to move forward or tread water. An active drowning victim may try to press down with the arms at the side in an instinctive attempt to keep the head above the water.

A passive drowning victim is motionless and floating face down on the bottom or near the surface of the water.

Do not assume that a swimmer in distress is joking or playing around.

Know how to respond to an aquatic emergency.

If someone is missing, check the water first. Reach or throw, don't go. Know how and when to call 9-1-1 or the local emergency number. Enroll in Red Cross water safety, first aid and CPR courses to learn what to do.

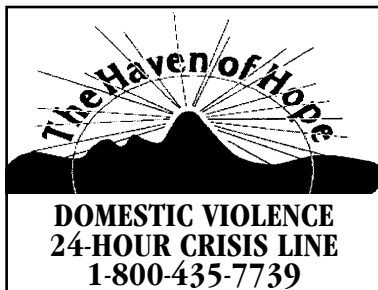
Have the right equipment. Have reaching and throwing equipment on hand, such as ring buoys or reaching poles, or even a water jug tied to a rope or a broom.

Whenever boating or near water, even if you don't expect to go in, always have U.S. Coast Guard-approved life jackets available. Life jackets should be the proper size for each individual and in good condition.

Have cell phones or portable phones nearby to help ensure that you can quickly call 9-1-1 in the event of an emergency.

Have a well-stocked first aid kit on hand. Ensure that you know how to use the equipment and that expiration dates have not passed.

For more information and for other safe summer tips go to <www.redcross.org>.



5K Run for Animal Harbor

The second annual Bow Wow 5K Run, organized by the Bon Temps Club of Franklin County, will be Saturday, June 21, at Winchester City Park. All proceeds will be used toward the building of Animal Harbor's new shelter.

Registration (\$25) starts at 7:30 a.m. on the day of the event. The run begins at 8 a.m. Pre-registration guarantees an event T-shirt. Register at local veterinarians—Animal Care Center, Midtown or Town and Country—or register online at <www.active.com>. For more information email <bowwowwalkand5krun@gmail.com> or call (931) 636-0388.

CFM Seeks Gallery Exhibitors

The Cumberland Farmers Market (CFM) will host a sales gallery exhibit featuring the work of area artists in conjunction with Taste of the Market, 12-4 p.m., Saturday, June 28, at the Sewanee Community Center.

Taste of the Market is an opportunity for the community to sample the Market's products and to meet the CFM growers and producers, who will be on hand to answer questions about what goes on behind the scenes at their farms and home kitchens. The event is free and open to the public.

Contact Art in the Market coordinator Leslie Lytle, <sllytle@blomand.net> or (931) 592-6594. Deadline for registration is June 14.

SEWANEE AUTO REPAIR

—COMPLETE AUTO & TRUCK REPAIR—

- Tune-ups
- Tires (any brand)
- Tire repair
- Batteries
- Computer diagnostics
- Brakes
- Shocks & struts
- Steering & suspension
- Belts & hoses
- Stereo systems installed

All Makes & Models • Service Calls • Quality Parts
ASE Master Certified Auto Technician • 25 Years Experience
7 to 5 M-F • (931) 598-5743 • Across from Regions Bank

BUG PROBLEMS?

We can help! Call us for a free inspection!

BURL'S TERMITE & PEST CO.

TERMITE — PEST — VAPOR CONTROL
Bonded • Insured • Home-Owned & Operated
105 Ake St., Estill Springs
(931) 967-4547 or www.BurIsTermite.com
Charter #3824 • License #17759



Members of the Franklin County United Rockets U-10 soccer team.

Franklin Co. United U-10 Soccer Team Ranked 10th in State

The Franklin County United under-10 girls select soccer team recently concluded its inaugural season with a 25-5-1 record.

They reached three straight tournament finals and finished the spring season ranked 10th in the state. Four of the 10 girls were playing up at least one age division.

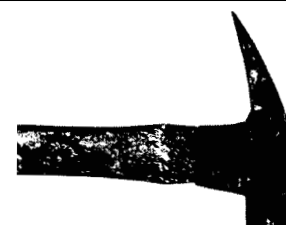
The team included (kneeling from left): Libby Vincent, Erin Worthington and Khloe Dwyer; (front row) Tara Shull, Lauren Worthington, Mariah Shull, Macee Vincent, Ella Masters, Kara McDaniel and Paris Reed; (back row) coaches Brian Masters and Kurt Shull.



Down Home, Down the Street

754 West Main St., Monteagle
(931) 924-3135

8 a.m. to 9 p.m. 7 days a week



ROB MATLOCK
CONSTRUCTION COMPANY
NEW HOME BUILDING
AND REMODELING

MEMBER, U.S. GREEN BUILDING COUNCIL

PHONE 931-598-5728

MATLOCK

State Licensed • Fully Insured



Professors, teachers, veterans & U.S. military: 10% OFF THE ALREADY LOW SHELF PRICES AT MONTEAGLE WINE & SPIRITS

This includes all sizes, even pints and half pints.
The only exceptions are 50mls and already greatly reduced sale and closeout items. We are fully stocked and ready to give you the best prices in the area.

New name! Under new management!
MONTEAGLE WINE & SPIRITS

507 W. Main St. • Monteagle • (931) 924-8888
Just past McDonald's • Free ATM Service
facebook.com/monteaglewineandspirits
Open Mon–Thu 9 am to 10 pm; Fri & Sat 9 am to 11 pm



**DRIVE A LITTLE FURTHER
AND SAVE A WHOLE LOT MORE!**





NATURENOTES

By Jean Yeatman



Serviceberry

"The serviceberry is full of ripe fruit now," **Jean Yeatman** reports, "and the birds are feasting upon it. The first bird I noticed was an unusual color; it was a reddish brown. Upon closer inspection I saw it had a black bill, so I realized it was a juvenile male cardinal, as all young cardinals have black bills. Other birds coming to feed were Red-bellied Woodpeckers, thrashers, cedar waxwings, chickadees, Tufted Titmice, robins and blue jays.

"On Saturday morning," she continued, "**Scott Ekis**, with son **Allan** and friend **Kenneth Dykes**, brought a very large turtle to my house to find out what kind it was. It was 12.75 inches long, and 11 inches wide, with a flat body shape, very beautiful markings on its shell, and its skin

was greenish with yellow lines, so we think it was a type of map turtle.

"They found it on Otter Falls Road," she concluded, "and Mr. Ekis, who has lived in Midway all his life, had never seen one like it."

Swallows at the Hospitality Shop

Virginia Sloan and others at the Hospitality Shop have been enjoying watching this nest of swallows (below) nestled in the corner of the roof overhang outside the middle window in the gift room, on the front west side of the Hospitality Shop.



Thunderstorm Produces Large Hail

Mesha Provo submitted this photograph of a hailstone (below) at her house in Jump Off during the afternoon thunderstorm on June 10.



TELL THEM YOU
SAW IT HERE!

Hike 'Em All

Sycamore Falls

Meet at the Grundy Forest picnic shelter at 9 a.m., Saturday, June 21, for this three-mile hike to Sycamore Falls, one of the best swimming holes in the park. There will also be stops at Hanes Hole Falls and Blue Hole Falls to swim. Tennessee Naturalists Naullain Kendrick will lead the hike.

For more information go to <www.friendsofscsra.org>.

State Park Offerings

Saturday, June 21

Hike to Laurel Gorge Overlook—Meet Ranger Park at 9 a.m. at Foster Falls parking lot for a refreshing, moderate five-mile round-trip hike to Laurel Gorge and back.

Critter Inspection—Bring your powers of observation and your critter-catching skills and come at 1 p.m. to the Visitors' Center to help the Ranger identify and inspect the critters around the grounds.

Friday, June 27

Hiking Through History—Meet Ranger Park at 9 a.m. at Grundy Lakes parking lot for a moderate two-point-three-mile loop hike to learn about the turbulent past of this region.

Sunday, June 29

Grundy Forest Hike—Meet the naturalist at 8 a.m. at Grundy Forest parking lot for a moderate three-mile hike to explore the headwaters of Fiery Gizzard creek.

For all hikes: wear sturdy shoes, dress for the weather and bring water.

The South Cumberland State Park Visitors' Center is located on Highway 41 South between Monteagle and Tracy City and is open 8 a.m.–4:30 p.m. seven days a week. For more information call (931) 924-2980.

Pets of the Week

Meet Boo and Iggy



Boo



Iggy

The Franklin County Humane Society's Animal Harbor offers these two delightful pets for adoption.

Boo is a sweet, submissive Husky/Lab mix who is about 1-1/2 years old. He is used to living outside with a dog friend and having a good bit of fenced property to patrol. Boo is up-to-date on shots and neutered.

Iggy is a lovable Tabby kitten who can talk your ear off when he's in a chatty mood. He's around 3 months old and very precious. Iggy is negative for FeLV and FIV, house-trained, up-to-date on shots and neutered.

Every Friday is Black Friday at Animal Harbor. On Fridays, adoption fees will be reduced 50 percent for black or mostly black pets more than 4 months old who have been at Animal Harbor for more than a month. Pets adopted from Animal Harbor qualify for a free post-adoption wellness exam by local veterinarians.

Call Animal Harbor at 962-4472 for information and check out the other pets at <www.animalharbor.com>. Please help the Humane Society continue to save abandoned pets by sending donations to the Franklin County Humane Society, P.O. Box 187, Winchester, TN 37398.

Dark Skies, Starry Nights Program at Russell Cave

Russell Cave National Monument is hosting a "Dark Skies Program: Starry Nights at Russell Cave," at 7:30 p.m., Friday, June 20.

Sponsored in conjunction with the Barnard Astronomical Society, participants will have a spectacular night of dark skies. Look through telescopes to see the moon, Ursa Minor, and other Milky Way constellations. A short presentation with be presented in the visitor center with stargazing to follow. Visitors should remember to dress accordingly for the weather and get ready for a night of dark sky exploration.

For more information go to <www.nps.gov/ruca>.

TINA BARRETT

Licensed Massage Therapist

10% OFF

any service scheduled with Tina
when you mention this ad.

Professional Massage Therapy

County Plaza Shopping Center
2146 Decherd Blvd., Decherd
(931) 308-8364

www.mitzirigsbypmt.com

HAIR DEPOT

KAREN THRONEBERRY, owner/stylist
DANIELLE HENSLEY, stylist/nail tech
Find us on Facebook!

17 Lake O'Donnell Rd. • (931) 598-0033 • Sewanee
Tuesdays thru Fridays, 9 a.m. to 5 p.m.
Saturdays, 9 a.m. till last appointment

NEWLY OPENED

Full Service Veterinary Care for Dogs, Cats & Horses
Boarding & Grooming



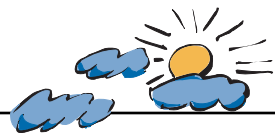
Traci S. Helton
DVM

Nathan L. Putnam
DVM

A division of Mobile Veterinary Services, LLC

931-962-3411

505 S. Jefferson St., Winchester (41-A toward Winchester. First left after Food Lion)



Weather

DAY	DATE	HI	LO
Mon	Jun 02	84	66
Tue	Jun 03	78	63
Wed	Jun 04	80	63
Thu	Jun 05	78	61
Fri	Jun 06	81	61
Sat	Jun 07	81	61
Sun	Jun 08	78	60

Week's Stats:

Avg max temp =	80
Avg min temp =	63
Avg temp =	68
Precipitation =	2.23"

Reported by Walter Nelson and
Duncan Connelly,
Summer Interns

June is Busting Out All Over

A Dinner at



Tea on the Mountain

6 p.m., Saturday, June 21

\$30 per person. Choice of Salmon or
Cornish Hen. Reservations required.
Call (931) 592-4832. Limited Seating.

298 Colyar Street, US 41, Tracy City

Classifieds

CALL US! • 598-9949
Classified Rates:
 \$3.25 first 15 words,
 10 cents each addl. word
Now you can charge it!
(\$10 minimum)

Alma Mater Theater in Tracy City
How to Train Your Dragon 2
 June 13–June 16
 PG • 1 hour, 45 minutes
7 pm Fri-Sat and Mon; 3 pm Sun
 (931) 592-8222

EAGLE LANDSCAPING & LAWN MAINTENANCE CO.

Now Offering Specials for
SPRING CLEANUP!
 We offer lawn maintenance, landscaping,
 hedge/tree trimming & more!
 Please call for your free estimate
(931) 598-0761 or (931) 636-0383
 AVAILABLE FOR WEEKENDS AND/OR
 GRADUATION: 4BR/2.5BA fully-equipped
 home on bluff behind St. Andrew's-Sewanee
 School. Call (931) 598-0744 evenings or (931)
 212-0447 days.

CHAD'S LAWN & LANDSCAPING
-FREE ESTIMATES-
 * Lawn care & Design (Mulch & Planting)
 ALSO: * Tree Trimming & Removal
 * Pressure Washing * Gutter Cleaning
 * Leaf Pickup & Blowing * Road Grading
 * Garden Tilling * Rock Work
 (931) 962-0803 Home; (931) 308-5059 Cell

AVAILABLE IMMEDIATELY (one-year lease
 required): 2BR/1BA single family home, on
 campus in Sewanee. Single car garage, sun porch,
 huge fenced yard. Within walking distance from
 downtown. No smoking, no cats, approved dog
 with pet deposit required. \$1,000/mo. includes
 garbage service and lawn service. First month
 and security deposit required to move in. Please
 contact Ed Hawkins at (866)334-2954 or email
 <edhawkins@bellsouth.net> or Lynn Stubble-
 field, (423)838-8201, for further information.

WATER SOLUTIONS
 Joseph Sumpter
 Owner/Licensed Residential Contractor
 Specializing in drainage and rainwater
 collection systems
 598-5565
 www.sumptersolutions.com

MAD RIVER CANOE PADDLE: New, wood,
 bent shaft, \$60. Chic jeans, size 2.5, \$10 each.
 (931) 967-0438

Walk-In Cooler Filled with Flowers!
—TUXEDO RENTALS—
Monteagle Florist
 333 West Main Street, Monteagle
 (931) 924-3292

BIG SOUTH FORK CABIN FOR SALE:
 2BR/2BA (1 w/ jacuzzi tub); 2 attached
 barn stalls, full loft, on 1.49 fenced acres
 near Big South Fork Park. Ride your horses to
 Mill Creek Trailhead; ride for miles. Also
 close to ATV and mountain bike trails, hik-
 ing and fishing. Located in White Oak De-
 velopment, Allardt, Tenn., just minutes from
 Jamestown. \$155,000. More info/pictures,
 call/email J.R. Henderson, (931) 952-0287,
 <jrharley31@aol.com> or Janice, (931)
 434-1305, <jhenderson196790@gmail.
 com>. Can also be rented at <VRBO.com>.

LOST COVE BLUFF LOTS
 www.myerspoint.net
 931-703-0558

ST. ANDREW'S SEWANEE SCHOOL
 (<www.sasweb.org>) seeks an organized and
 hard-working administrative assistant/reception-
 ist. Candidates should be friendly, detail-oriented,
 and possess excellent writing, proofreading, and
 Excel abilities. This is a part-time (38-week), 8
 AM-4:30 PM, non-exempt position, beginning
 August 6. More information, including instruc-
 tions for applying, is available at <www.sasweb.
 org/about-sas/employment>.

Put this space to work for your business.

THE LOCAL MOVER
 Available for Moving Jobs
 Call or Text Evan Barry
615-962-0432

UNFURNISHED COTTAGE FOR RENT:
 2BR/1.5BA, five minutes from University. 125
 Long's Lane, off Bob Stewman Rd. \$550/mo.
 Contact Connie Warner, (931) 308-9400; Steve
 Makris, (618) 236-9548.

Needle & Thread
 * Alterations * Repairs * Light Upholstery
 * Slipcovers * Drapes
 For a reasonable price, contact
 Shirley Mooney
 161 Kentucky Ave.
 Sewanee, TN 37375
 (931) 598-0766
 shirleymooney296@yahoo.com

MOVING SALE: Antiques—furniture,
 clocks, sewing machines, Silvertone Vic-
 torola, 200 records. Roll-top desk. Cherry
 chest, dresser w/ mirror, two night stands.
 Many more beautiful tables, chairs. Art
 and collectibles. Solid oak 5-pc. bedroom
 suite. Complete Budweiser Holiday Stein
 collection. No reasonable offer refused.
 Everything must go (931) 308-3680.

SARGENT'S SMALL ENGINES: Repairs to All
 Brands of Equipment: Lawn mowers (riding or
 push), String trimmers, Chain saws, Chain saw
 sharpening, New saw chain. (931) 212-2585,
 (931) 592-6536. Pickup and Delivery Available.

Mountain Accounting & Consulting
 * Accounting * Bookkeeping
 * Churches
 Bridget L. Griffith QuickBooks Pro Advisor
 M.S. Accounting (931) 598-9322/636-2624
 Information Systems bh_griffith@yahoo.com

HOUSE FOR RENT: Fully furnished, Aug 15-
 Dec 31, 2014, \$900/mo+utilities, lovely home
 on bluff, 2.5 mi from campus, 3BR/3BA, fireplace,
 screened porch, deck, comfortable, detached
 garage/workshop. Mature couples, families pre-
 ferred; bluff not for young children. No smoking.
 (931) 598-0753.

REIKI
 Eva Malaspino, RN, Reiki Master
 Now Accepting Clients
 at Stillpoint in Sewanee
 423-413-0094 or
 firstfemale13@yahoo.com

Ron's Computer Services
 Locally Owned and Operated
 Monteagle, TN 931-607-7841

- Computer Sales and Repairs
- Office Networking
- Website Development
- Web Hosting—eCommerce
- Sound Systems Setup

Email <classifieds@sewaneemessenger.com>
 or phone 598-9949.

PAUL KLEKOTTA
 National Emmy-Nominated Videographer/Photographer
 30 Years of Professional Broadcast and Photography Experience
HI-RES DIGITAL PHOTOS • HD VIDEO
 Steadicam Owner/Operator
 Commercials • Documentaries • Music Videos
 Weddings • Sports • Special Events
 Excellent Local and National References
423-596-0623
 Email paulklekotta@charter.net

Fantastic Opportunity \$\$\$\$

• Temp to Hire Positions
 • Earn Up To \$13/hour In First 90 Days

Ideal candidates will have:

- Ability to go back and forth between day and night schedule
- Ability to work 12 hour rotating shifts
- Want to have a career opportunity; not just a job
- Have good job and attendance history
- Pass pre-employment screening

If you meet these requirements, apply now at:

First, Apply Online at:
www.staffingsolutions.com
 Then bring in two forms of
 ID for personal interview.

Staffing Solutions®
 1802 N. Jackson Street, Tullahoma, TN
 (in the Kmart Parking Lot; behind Taco Bell)

Oldcraft Woodworkers
 Excellence in custom woodworking.
 Kitchen and bath cabinets, bookcases,
 entertainment centers, furniture.
 Furniture repairs and refinishing.
 Est. 1982. Phone 931-598-0208

LONG'S LAWN SERVICE
 • landscaping & lawn care
 • leaf removal • mulch
 Local references available.
 Jayson Long
(931) 924-LAWN (5296)

CLAYTON ROGERS ARCHITECT
 931-636-8447
 crc@claytonrogersarchitect.com

COMPUTER HELP
 Tutorial & Troubleshooting
 8 years of experience improving
 computer performance.
 Judy Magavero, (931) 924-3118

FOR RENT: Cypress-sided house, two bed-
 rooms and a sleepable loft (we will use the second
 bedroom for our things, but the computer table
 will be available), 2BA (one with a jacuzzi), on 3.5
 acres of meadow and trees and next to the Uni-
 versity forest. Downstairs is wood paneled. Deck,
 picnic table out back, front porch with swing. It is
 a beautiful place. \$900/month includes utilities.
 Available Aug. 18 to Dec. 18. We will be gone in
 the summer, but back for a week in August. Email
 <bhughes@sewanee.edu>.

HOUSE FOR RENT/LEASE: Beautiful country
 home located in Winchester on 3 acres; 1.5 miles
 from Tims Ford Lake; .75 miles from hospital and
 golf course; 2 miles from town square. Ideal for
 retired couple. 3BR/2BA, C/H/A. Refrigerator,
 stove, washer, dryer included. \$700/mo. Refer-
 ences and security deposit required. No pets! Ser-
 ious inquiries only please! Call (931) 967-4559.

The Pet Nanny
 Reliable & Experienced Pet Sitting
 Mesha Provo
 Dogs, Cats & Birds
 931-598-9871
 mprovo@bellsouth.net
BOOK NOW FOR SUMMER!

CHARLEY WATKINS
PHOTOGRAPHER
 Sewanee, TN
 (931) 598-9257
 http://www.photowatkins.com

SEEKING PART-TIME EMPLOYEE AT THE LEMON FAIR. Must be familiar with using a
 credit card machine, enjoy interacting with cus-
 tomers and assist in keeping the store clean and
 neat. References required. 598-5248.

The Moving Man
 Moving Services Packing Services
 Packing Materials Truck Rental
 Local or Long Distance
 1-866-YOU-MOVE (931) 968-1000
 www.themovingman.com
 Decherd, TN
 Since 1993 U.S. DOT 1335895

DRIVERS: START WITH OUR TRAINING OR CONTINUE YOUR SOLID CAREER!
 You Have Options! Company Drivers, Lease
 Purchase, and Owner Operators Needed. (800)
 567-3867 or <www.centraltruckdrivingjobs.com>

BONNIE'S KITCHEN
Real Home Cooking
 Open Wed 11-2; Fri 4-8:30
 NOW OPEN FOR SUNDAY BUFFET 11-2
Midway Road - 598-0583

BABY/PET/HOUSE SITTER AVAILABLE
 June 13 through July 17. 20-year-old Sewanee
 student with own transportation. References
 available upon request. For more information
 call Kat, (203) 979-6413, or email <kellykr0@
 sewanee.edu>.

Holland
 Holland's
 Chattanooga,
 TN, Terminal is
 hiring FT Local &
 FT Regional drivers.
 Drivers must be 21 yrs. old, having
 a CDLA w/hazmat & tanker w/1 yr or
 50k miles experience. Apply online at
 <www.hollandregional.com/careers>.
 Company-paid health insurance for
 full-time drivers after probation.
 EEO/AE Minorities/Females/Persons
 with Disabilities/Protected Veterans

MASSAGE
Regina Rourk Childress
 Licensed Massage Therapist
 www.reginarourk.com
 ~ GIFT CERTIFICATES ~
(931) 636-4806

A-1 CHIMNEY SPECIALIST
"For all your chimney needs"
 Dust Free • Chimneys Swept, Repaired,
 Relined & Restored • Complete Line of
 Chimney Caps • Waterproofing
 Video Scanning
 G. Robert Tubb II, CSIA Certified & Insured
 931-273-8708

Tell them you saw it here.

AVON TO BUY OR SELL AVON
KATHY PACK
 AVON REPRESENTATIVE
 www.youravon.com/kathypack
 katpac56@aol.com
 931-598-0570 931-691-3603

Laurel Leaf Studio
 2197 Main Street • Altamont
 931-692-3879 or 931-235-1012
 Visit our FB page
"Bringing artists together for learning and sharing"

Winchester Podiatry
CHARLES D. GANIME, DPM
 Board Certified in Foot Surgery
 Diplomate, American Board of Podiatric Surgery
 New Patients of All Ages Welcome! We Treat Your Feet!
 Most Insurance Accepted, Including TennCare
 We are at 155 Hospital Road, Suite 1, in Winchester.
 www.winchesterpodiatry.com
931-968-9191

Sweeton
Home Restoration, LLC
 LICENSED • INSURED • TRUSTED
931-924-2444 sweetonhome.com

NEW CONSTRUCTION REMODELING HISTORIC RESTORATION

Jim Long's Import Auto Service 931-596-2217
 Exclusive Volvo Automobile Facility 931-596-2633

We stock new, used and rebuilt Volvo parts.
 We service and repair Volvos.
 We buy running, disabled or
 wrecked Volvos.

1741 Howell Rd.
 Hillsboro, TN 37342

Same owner - Same location for more than 38 years
 ASE Master Certification for more than 20 years

DEDICATED OPERATION: Swing Transport
 needs Drivers at Cleveland, TN facility. No-
 Touch, Great weekly pay, Benefits! CDL-A 2 yrs
 Experience. 1-(855) 349-2758.

SEEKING RENTAL
 Desirable tenants in search of
 a clean 3/2 house in a quiet
 community on a large lot or
 acreage. Will rent long-term.
(931) 924-2001.

DIESEL MECHANIC: Great Pay/Benefits.
 APPLY <www.durhamschoolservices.com>,
 2501 Dodds Avenue Chattanooga, TN 37407.
 (423) 209-5680.

RAY'S RENTALS
 931-235-3365
 Weekend Packages
 and Special Events
 CLIFFTOPS, BRIDAL VEIL,
 ALL AROUND THE MOUNTAIN
Monteagle Sewanee Rentals
 931-924-7253
 www.monteaglerealtors.com

WHY SEEK an impersonal solution to a
 personal problem? Private, warm, spirit-
 filled counseling. Family, individual, ado-
 lescent. A Place of Hope. (931) 924-0042.
THERAPY DOGS ON SITE.

King's Tree Service
 Topping, trimming,
 bluff/lot clearing, stump
 grinding and more!
 Bucket truck or climbing
 Free wood chips with job
 Will beat any quoted price!
 Satisfaction guaranteed!!
 —Fully licensed and insured—
 http://kingstreeservice.vpweb.com
 Call (931) 598-9004—Isaac King

INSIDE/OUTSIDE YARD SALE: Midway
 Market, 969 Midway Rd. Friday/Saturday,
 June 13–14, 8 a.m. on. All items outside 50%
 OFF. Extreme bargains. 598-5614.

RENTALS
 Beautiful Bluff View
 1 Bedroom or 2 Bedroom
 Apartments.
 Call (931) 691-4840.

Crossroads Café Seeking Staff
 Located in Sewanee, Crossroads Café
 features Singapore and Asian Cuisines.
 - Seeking staff in a variety of positions im-
 mediately and for summer.
 - Experience is preferred, but not necessary.
 Students and housewives welcome.
 - A willingness to learn and take responsibil-
 ity in a fast-paced environment is required.
 Please send résumé to <irenetemory@
 yahoo.com> or call 931-598-9988 for an
 interview at 38 Ball Park Road.



BARDTOVERSE

by Phoebe Bates

WINNING

Call questionable balls his way, not yours:
You lose the point but have your concentration,
The grail of self-respect. Wear white. Mind losing.
Walk, never run, between points: it will save
Your breath, and hypnotize him, and he may think
That you are tired, until your terrible
Swift sword amazes him. By understanding
Your body, you will conquer your fatigue.
By understanding your desire to win
And all your other desires, you will conquer
Discouragement. And you will conquer distraction
By understanding the world, and all its parts.

—Robert Pinsky

One of Tennessee's Rising Star Award
Winners for Best New Business

Pearl's

FOGGY MOUNTAIN CAFÉ

Full Liquor Mahogany Bar
Happy Hour Tuesday-Friday 5-6

Open for Sunday Brunch 11-2

Fine Dining

Tuesday-Thursday 5-9
Friday and Saturday 5-10

Kash Wright's Jazz
Friday & Saturday



Welcome,
summer residents
and guests!
Enjoy the slower
pace of the season
with a memorable
evening at
Pearl's.

15344 Sewanee Hwy
931.598.5770
for Reservations

**A man is not old until his regrets take
the place of his dreams. —John Barrymore**

www.stillpointsewanee.com

Stillpoint

- ◆ Natural Foods
- ◆ Supplements
- ◆ Personal Care Products
- ◆ Garden Supplies
- ◆ Plants
- ◆ Bird Seed
- ◆ Jewelry
- ◆ Gifts
- ◆ Antiques
- ◆ Yarn & Knitting Supplies
- ◆ Felting Supplies
- ◆ Local Arts & Crafts



Mooney's
Market & Emporium

◆ Your Place for ◆
Organic & Local Products



Like us!

OPEN 10-6 EVERY DAY
931-924-7400

1265 W Main Street • Monteagle, Tenn.

Community Calendar

Today, June 13

- 8:00 am GC Clothing Bank open, old GCHS, until noon
- 8:30 am Yin Yoga with Carolyn, Community Center
- 9:00 am CAC office open, until 11 am
- 10:00 am Game day, Senior Center
- 11:00 am MSSA lecture, Ridley Wills, Warren Chapel
- 12:00 pm Contract/Release stretching with Kim, Fowler Center
- 5:30 pm World healing meditation, Community Center
- 7:00 pm Bible study, Mtn of God Tabernacle, Monteagle
- 7:00 pm Film, "...to Train Your Dragon 2," Alma Mater, Tracy City
- 7:30 pm Film, "The Monuments Men," SUT

Saturday, June 14

- 8:00 am Sewanee Gardeners' Market, Hawkins Lane
- 9:00 am American Legion Post 51, Legion Hall
- 9:00 am Hike "Em All, meet at Grundy Forest picnic shelter
- 9:00 am Tracy City Farmers' Market, old GCHS parking lot
- 10:00 am Creighton's Store benefit, Coalmont, until 10 pm
- 10:00 am Hospitality Shop open, University Avenue, until noon
- 10:00 am Silver Threads, St. Mary's Convent
- 10:00 am VBS Planning meeting, St. James parish hall
- 12:00 pm FSC annual meeting/potluck, SCSP, Monteagle
- 2:00 pm Grundy Historical Society annual meeting
- 6:30 pm Dance lessons, Cowan Center for the Arts
- 7:00 pm Film, "...Train Your Dragon 2," Alma Mater, Tracy City
- 7:30 pm Film, "The Monuments Men," SUT

Sunday, June 15

Shakerag Workshops, Session II, through June 21

- 3:00 pm Film, "...Train Your Dragon 2," Alma Mater, Tracy City
- 4:00 pm Yoga with Helen, Community Center
- 5:00 pm Women's Bible Study, Midway Baptist
- 7:30 pm Film, "The Monuments Men," SUT

Monday, June 16

- 9:00 am Yoga with Sandra, St. Mary's Sewanee
- 9:00 am Pilates with Kim, intermediate, Fowler Center
- 12:00 pm Pilates with Kim, beginners, Fowler Center
- 5:30 pm Yoga with Sandra, St. Mary's Sewanee
- 6:00 pm Karate, youth, American Legion Hall
- 7:00 pm Centering Prayer support group, Otey sanctuary
- 7:30 pm Karate, adult, American Legion Hall
- 7:00 pm Film, "...Train Your Dragon 2," Alma Mater, Tracy City
- 7:00 pm Film, "The Monuments Men," SUT

Tuesday, June 17

- 8:30 am Yin Yoga with Carolyn, Community Center
- 9:00 am CAC office open, until 11 am
- 9:00 am Pilates with Kim, beginners, Fowler Center
- 10:30 am Bingo, Sewanee Senior Center
- 11:00 am MSSA lecture, Winner, Warren Chapel
- 11:30 am Grundy County Rotary, Dutch Maid, Tracy City
- 12:00 pm Pilates with Kim, intermediate, Fowler Center
- 3:30 pm Centering Prayer, St. Mary's Sewanee
- 5:30 pm Fourth of July planning meeting, Senior Center
- 8:15 pm MSSA film and lecture, York, Warren Chapel

Wednesday, June 18

- 9:00 am CAC pantry day, until 11 am; 1-3 pm
- 9:00 am Pilates with Kim, intermediate, Fowler Center
- 11:00 am MSSA lecture, Winner, Warren Chapel
- 12:00 pm Pilates with Kim, beginners, Fowler Center
- 1:30 pm Duplicate bridge, Templeton; call 598-9344
- 12:30 pm Sewanee Senior Citizens annual meeting, Senior Center
- 3:30 pm MSSA, Humphries/Frith, Harton Dining Hall
- 4:30 pm Lecture, Mikics, Gailor, reception follows
- 5:30 pm Yoga with Helen, Community Center
- 7:00 pm Bible study, Midway Baptist Church
- 7:00 pm Lecture, Weil, SofT Hamilton Hall, reception follows
- 7:30 pm Shakerag lecture, Meacham, SAS McCrory Hall

Thursday, June 19

- 8:00 am GC Clothing bank open, old GCHS, until noon
- 9:00 am CAC office open, until 11 am
- 9:00 am Nature journaling, Abbo's Alley gazebo, until 11
- 9:00 am Pilates with Kim, beginners, Fowler Center
- 10:00 am Summer reading program, May Justus Library
- 10:30 am Tai Chi with Kathleen, (advanced) Comm Center
- 11:00 am Body Recall with Judy, Monteagle City Hall
- 11:00 am MSSA lecture, Winner, Warren Chapel
- 12:00 pm Monteagle Sewanee Rotary, Blue Chair Tavern
- 12:00 pm Pilates with Kim, intermediate, Fowler Center
- 12:30 pm Episcopal Peace Fellowship, Brooks Hall, Otey
- 1:30 pm F@H care partners' support group, 598-0303
- 2:30 pm Tracy City Farmers Market, old GCHS parking lot
- 4:00 pm Benefit waffle supper, First Baptist Church, Monteagle
- 5:00 pm Weight Watchers, weigh-in 4:30 pm
- 7:00 pm Abuse survivors group, 330 W. Main, Monteagle
- 7:30 pm Film, "Divergent," SUT
- 8:15 pm MSSA Performance, "Mark Twain on Stage"

Friday, June 20

Curbside recycling, before 7 a.m.

- 8:00 am GC Clothing Bank open, old GCHS, until noon
- 8:30 am Yin Yoga with Carolyn, Community Center
- 9:00 am CAC office open, until 11 am
- 10:00 am Game day, Senior Center
- 11:00 am MSSA lecture, Winner, Warren Chapel
- 12:00 pm Contract/Release stretching with Kim, Fowler Center
- 5:00 pm Die Geschwister (The Siblings) at Artisan Depot, Cowan
- 7:00 pm Bible study, Mtn of God Tabernacle, Monteagle
- 7:00 pm Film, "Hope Floats," Harton Park, Monteagle
- 7:00 pm Film, "...Train Your Dragon 2," Alma Mater, Tracy City
- 7:30 pm Film, "Divergent," SUT
- 7:30 pm Friday Night in Angel Park, Towson Engsborg & Friends perform, until 9

LOCAL 12-STEP MEETINGS

Friday

- 7:00 am AA, open, Holy Comforter, Monteagle
- 7:00 pm AA, open, Christ Church, Tracy City

Saturday

- 7:30 pm NA, open, Decherd United Methodist
- 7:30 pm AA, open, Brooks Hall, Otey

Sunday

- 6:30 pm AA, open, Holy Comforter, Monteagle

Monday

- 5:00 pm Women's 12-step, Brooks Hall, Otey
- 7:00 pm AA, open, Christ Church, Tracy City

Tuesday

- 7:00 pm AA, open, First Baptist, Altamont
- 7:30 pm AA, open, Brooks Hall, Otey

Wednesday

- 10:00 am AA, closed, Clifftops, (931) 924-3493
- 7:00 pm NA, open, Decherd United Methodist
- 7:30 pm AA, open, Holy Comforter, Monteagle

Thursday

- 12:00 pm AA, (931) 924-3493 for location
- 7:00 pm AA, open, St. James
- 7:30 pm Adult Children of Alcoholics, Dysfunctional Families, Brooks Hall, Otey

Dine locally!

Celebrating 14 Years!
2000-2014

**It's the
perfect time of year to
dine in our courtyard!**



High Point

HISTORIC DINING ON THE SUMMIT
BETWEEN CHICAGO & MIAMI

224 East Main St
Monteagle
931-924-4600
Sun to Thu 5 to 9
Fri and Sat 5 to 10
www.highpoint
restaurant.net



402 West Main St. • Monteagle • 931-924-3355
www.paparons.net
Sunday-Thursday 11-9
Friday and Saturday 11-10

**Our patio is ready
for your outdoor
dining pleasure.**