

## Benjamins to Lead the Fourth of July Parade

The Fourth of July committee is proud to announce the grand marshals for the 31st annual celebration are Eric and Michelle Benjamin, Sewanee residents for more than 36 years.

Eric and Michelle (Mitchell) have lived most of their married life in Sewanee. Eric grew up the oldest of three children and Michelle grew up the second oldest of 10 children in North Carolina. After graduating from Marist School in Atlanta, Eric started his freshman year at the University of the South in 1969.

After graduating from law school, Eric and Michelle married in 1980. In 1981, they moved to Sewanee. Eric, an alumni of the University, accepted the offer to begin a Minority Student Affairs Program, with leadership provided by members of the faculty. There were two African American students on campus that year. Eric worked diligently to increase the number of African American and other multi-cultural students on the campus and his success is demonstrated by those students having a high retention rate at the college. In 1981, Michelle began employment as a staff attorney with Legal Services and in 1989 opened her private law office in Winchester, where she continues to practice. Michelle was founding member of the Franklin County Community Association and has served on the Board of the Tennessee Trial Lawyers, Tennessee Judicial Selection Committee and the Board of Professional Responsibility.

The Benjamins have three children, Vincent, Keenan, and Michael, who attended Sewanee Elementary School and St. Andrew's-Sewanee School. Along the way, they played soccer, t-ball, baseball, tennis and basketball. Team participation was a great way for the family to get to know and make life-long friends with members of the Sewanee community.

Vincent, his wife Heather, and their two daughters live in New Jersey. Keenan is living in Delhi, India and Michael lives in North Carolina.

The Benjamins appreciate the honor of serving as grand marshals of the Fourth of July parade.

## SUD Gets Update on Constructed Wetlands

by Leslie Lytle, Messenger Staff Writer

At the June 20 meeting, student researchers updated the Sewanee Utility District Board on the Constructed Wetlands project located at the SUD Wastewater Treatment Plant (WWTP), a pilot study undertaken jointly by the University of Georgia (UGA) and the University of the South, examining wetlands' effectiveness in removing contaminants and noxious nutrients from wastewater.

Water is pumped from the WWTP lagoons into a supply tank that feeds three sequential basins planted with native Tennessee species known to be effective in absorbing nutrients. This summer marks the first year of the wetlands operation.

Environment and Sustainability major Megan Hopson, a May graduate of the University of the South, said her thesis project looked at the wetlands effectiveness in reducing nitrogen, phosphorus and E. coli bacteria. Tests showed dramatic decreases in nitrogen and bacteria levels and modest but significant decreases in levels of phosphorus. Phosphorus is retained in sediment, Hopson explained, making it necessary to monitor data over several years to accurately interpret results.

Data showing a leveling off, or plateau effect, in nutrient removal over time suggested a need to replace the plants in a basin, Hopson said.

In addition to efficacy in absorbing nutrients, "plants were selected for their tolerance to water depth in the basin where they were planted, beauty, and the ability to attract pollinators," said biology professor Deborah McGrath, who along with forestry professor Scott Torreano, heads up the Sewanee research team.

Charged with developing and implementing a public outreach campaign, UGA graduate student Philipp Nussbaum said the historic drought of 2007 spawned the project as researchers began to look at wastewater treatment with a view to possible water reuse.

(Continued on page 9)



Constructed wetland.

## Friday Nights in the Park Concert Today

Friday Nights in the Park, sponsored by the Sewanee Business Alliance, begins today (Friday), June 23, with the Little Russell Band from Nashville. The rain location is the American Legion Hall.

The Little Russell Band was founded in January 2016 featuring Russ Harkins, guitarist and vocalist, Mark Carbone, bassist and Vocals and newest member, Rickey Morris on drums and vocals.

These guys have been friends since the early 80s and have played in numerous bands together over the years.

All members have played and performed professionally with many well known artists from many genres of music such as Chubby Checker, Aretha Franklin, Little Anthony & the Imperials, T. Graham Brown, The Jordanares, Mel McDaniel, Freddy Weller, Johnny Lee, Juice Newton and many more.

The Little Russell Band has captured a huge sound in a small package. With only three musicians onstage, they cover a lot of ground and give the listener plenty of music to enjoy. They can perform more than 200 songs ranging from Jimi Hendrix, Cream, Eric Clapton, Wilson Pickett, to Stevie Wonder, Bonnie Raitt, BB King, Van Morrison, Garth Brooks, Hank Jr., and The Band.

University Avenue will be closed at 6 p.m. for the annual outdoor family event, with food and drink from local vendors available for purchase. The entertainers play from 7:30 p.m. to 9:30 p.m. in the Angel Park Pavilion. This event is free and open to the public. A reverse raffle prize give away is drawn at 8:30 p.m. Ticket holders must be present to win.

The rest of the lineup for Friday Nights in the park is The Yellow Dandies on June 30, Top Tier Band on July 7, and C-Mac and the Madras Men on July 14.

## County Commission Approves Budget Resolutions

by Bailey Basham  
Messenger Staff Writer

Resolutions to all budgets, fund balances and lease purchases were approved by the Franklin County Board of Commissioners during the June 19 meeting.

Andrea Smith, Director of Finance, said amendments to the Report of Revenues and Expenditures for March and April were commonplace for this time of year.

"This is just the year-end clean up amendment," said Smith. "We had some revisions come up since the finance committee meeting."

According to Smith, those revisions entail project preservation being operated out of the county general fund; an increase in revenue from the Health Department and a reduction in the funds for local health services to pay

(Continued on page 9)



School Board member Christine Hopkins, left, Governor Bill Haslam and Franklin County Mayor Richard Stewart attended the ground breaking ceremony of the Tennessee College of Applied Technology's, a project over 10 years in the making. The project was made possible by the longtime efforts of Hopkins, in addition to a \$20 million budget allocation by Haslam, \$4.5 million from the Tennessee Senate and a \$1 million pledge from local government. Hopkins dedicated the project to all graduates of the original Franklin County High School. Photo by Bailey Basham

## MSSA to Host Music City Roots

Today (Friday), June 23, the Monteagle Sunday School Assembly (MSSA) will host Music City Roots, a Franklin, Tenn.-based radio show in a rare out-of-Nashville performance. Nationally recognized for its lively mix of vintage variety radio and cutting-edge Americana music, the show will feature music and interviews with Sam Lewis, Sarah Potenza, Farmer & Adele, and the Dave Eggar Band.

"We are thrilled to bring this show to Monteagle Assembly again this year, and we invite our community to join in the fun," said Virginia Curry, MSSA program spokesperson. "It is a not-to-be-missed event and a truly unique experience. Seating in the auditorium will be on a first-come, first-served basis, but there is plenty of outdoor seating—bring a blanket and a picnic and enjoy the music under the stars."

Admission is free. The doors of the Assembly's historic auditorium will open at 6 p.m., and the show will start at 7 p.m. Picnic fare is welcome. Those wishing to attend should stop by the front gate at the Assembly to get a free four-hour grounds pass.

Music City Roots is a weekly live radio show and HD webcast featuring the finest roots and Americana music based in or passing through Nashville. Since going on the air in October 2009, Music City Roots has broadcast the authentic sound of today's Music City, embracing the traditional and the progressive in equal measure. Every Wednesday at 7 p.m. central, four guest

(Continued on page 10)

## Behind the Scenes at the SSMF

by Bailey Basham  
Messenger Staff Writer

For festival-goers, the Sewanee Summer Music Festival (SSMF) doesn't begin until June each year. But for those who work to put on the festival, planning and organization begins months in advance.

Evelyn Loehrlein, who came to Sewanee as a student in the late '80s, serves as the director of the festival, overseeing everything that goes into making the month-long event a success. She spends months working with others behind the scenes of the festival, recruiting students, managing all artistic aspects, deciding on the conductors for each year and the pieces they conduct and hiring and supervising all faculty and music teachers.

"I've already started preparing now for next year's festival," said Loehrlein. "I'm in the process of setting our dates now. I have to work with summer conferences to make sure all the spaces will be available. There's about 250 of us so where everybody lives is a big piece of the puzzle. I actually started talking last year to summer conferences about 2018. I sent a message to the dean proposing dates and I've already started working with admissions to design a postcard for next year."

Loehrlein said things are slow for a couple months after the festival, but soon things pick up as the recruitment and hiring processes begin again. Recruitment is one of the biggest and

(Continued on page 10)

P.O. Box 296  
Sewanee, TN 37375

# Editorial

## School Board Policy and Voting

by Adam Tucker, Franklin County School Board

On June 12, the Franklin County School Board voted to appoint Stanley Bean, a County Commissioner and current School Board employee, to serve as Franklin County's new Director of Schools. As the Mountain Messenger reported last week, I cast one of two dissenting votes. The Winchester Herald Chronicle also published two stories on Mr. Bean's selection, including one based entirely on an email that I had sent to approximately 50 constituents seeking guidance on how we might respond to the Board's action.

In the email, which was disclosed to the Herald Chronicle by one of the email's recipients, I expressed my anger and disappointment that the selection was made without advertising the position, without receiving let alone reviewing any applications, and without conducting any interviews. I also stated that I believed: (1) that the selection was made, in violation of Board policy, which provides that "final selection [of the Director of Schools] shall rest with the Board, after a thorough consideration of qualified applicants"; (2) that the decision to offer Mr. Bean the position was arranged by several members of the Board in advance of the meeting in violation of the Tennessee Open Meetings Act; and (3) that this concerted action was supported by other high ranking County officials. I further indicated that I was seriously considering filing a lawsuit challenging the Board's action, but only if members of the broader community—both on the mountain and in the valley—supported such action.

The failure of the Board to follow proper procedures has substantive implications. Most significantly, it calls Board members' motives and credibility into question. Specifically, the speed with which Mr. Bean was nominated and then selected raises questions about whether they are truly putting children first. Linda Jones nominated Mr. Bean for the position a scant few seconds after the Board Chair announced that the next item on the agenda was the search for a new Director of Schools. Twenty minutes later, the Board voted to appoint a new Director of Schools.

To be clear, the vote was not, as some have understood it, to appoint Mr. Bean as interim director while the Board conducted a thorough search for a successor to Amie Lonas. Rather, the vote was to offer him a two-year contract to succeed Dr. Lonas as the Director of Schools on an ongoing basis. Under state law, this contract can be extended or renewed an indefinite number of times.

The School Board's attorney had proposed a search process that contemplated having a new director in place as early as September 1. Moreover, the quoted price was only around \$2,000, or roughly 60 percent less than what the Board spent on its search in 2015. Yet, the majority never seriously considered this proposal. If Mr. Bean is the most qualified person for the job, wouldn't he be the most qualified on September 1, after the Board conducted a search? The majority failed to offer any reasonable and persuasive explanation for the rush to appoint him. Rather, the main argument for his nomination hinged on the apparently rhetorical question, "how can we deny Stanley this opportunity?"

It's not as if no other viable candidates had expressed interest. To the contrary, at least four well qualified educators had expressed interest in the job. In terms of education, credentials, and experience, all of these individuals would have been strong candidates. Moreover, all of them live and work in either Franklin County or a neighboring county. And while Mr. Bean was a finalist for the Director of Schools' position in 2015, none of these four other individuals applied for the position at that time. This would have been a new applicant pool. Mr. Bean, however, had reportedly informed several individuals that he did not want to go through another search process. So, the majority found an alternative—don't conduct a search.

This alternative offers no assurance that the Board has selected the best qualified person. For example, the decision precluded the Board from exploring which of these individuals was best prepared to restructure middle school education in the County and

(Continued on page 3)

# Letters

## TAKE CARE WHEN MOWING

### To the Editor:

Please be courteous and don't discharge mowed grass into roads. Slippery grass on the road could make an unsafe situation for an automobile emergency stop or slow down, especially for motorcycles. If you find yourself discharging grass onto a road, please be courteous and don't leave it—clean it up. Some mower decks have whistles called a mulcher, which is just a cover for the mower deck discharge port. You may find this handy to use when mowing in a situation where your grass may wind up in a road or other place you don't want to have to sweep up.

John Corbett, Sewanee ■

## SHAKESPEARE GARDEN

### To the Editor:

Miss Charlotte Gailor and the Sewanee Garden Club were the beginning planners for the Shakespeare Garden and for many years has been maintained by the club. The site of the garden was the Virginia cottage. A sun dial was unearthed and put in by the English Speaking Union. Father Husk and boys from Sherwood built the steps. Some original plants in the garden were English daisies, a Pomegranate and ivy from Shakespeare's own grave. The garden is a lovely place to rest, relax and reflect.

The garden has a totally new look. Large private hedges were removed and replaced with low growing boxwoods to allow sun on the garden. There are front and back gates with arbors. The sun dial was refurbished by Cheri and John Anderson. The front entrance has been set with new stone and a railing for easier walking down the steps.

There are many plants labeled that are found in Shakespeare's plays, sonnets, and poems. There are lovely heirloom roses which smell incredible, plus many colors of Columbine and an herb bed (with herbs to cut) and a pomegranate. The garden has blooming plants from spring to late fall.

The Garden Club holds an annual meeting in the garden, which has included a variety of programs such as tributes to William Shakespeare on his April birthday, How to Attract Butterflies, and Herbs in the Garden with refreshments using herbs for tasting.

Many thanks go to June Mays, Leonard King, Ricky Meeks, Thomas Hughes, Michele Dozier, Ken Taylor (for plants), Kim King, who replaced the stone at the entrance, and members of the Garden Club for the caring maintenance of the garden. The PPS department at the University provides outside maintenance of the garden.

Pixie Dozier, Sewanee ■

Shop and Dine Locally!



sewaneemessenger.com      themountainnow.com



Published as a public service to the community since 1985, 3,700 copies are printed on Fridays, 46 times a year, and distributed to 96 locations across the Plateau for pickup, free of charge. This publication is made possible by the patronage of our advertisers and by contributions from the University of the South (print production) and the Sewanee Community Chest.

**SUBSCRIPTIONS \$75 first class**

**Kiki Beavers**  
*editor/publisher*  
**Leslie Lytle**  
*staff writer*  
**Kevin Cummings**  
*staff writer/sports editor*  
**Bailey Basham**  
*staff writer*  
**Sandra Gabrielle**  
*proofreader*

**April Minkler**  
*office manager*  
**Ray Minkler**  
*circulation manager*  
**Janet Graham**  
*publisher emerita*  
**Laura Willis**  
*editor/publisher emerita*  
**Geraldine Piccard**  
*editor/publisher emerita*

418 St. Mary's Lane, P.O. Box 296 Sewanee, TN 37375  
Phone (931) 598-9949 | news@sewaneemessenger.com  
All material in the Sewanee Mountain Messenger and on its websites are copyrighted and may not be published or redistributed without written permission.

## University Job Opportunities

**Exempt Positions:** Assistant University Organist, University Organist & Choir; Assistant/Associate University Registrar for Data Resource Management, Registrar's Office; Assistant Women's Basketball Coach, Athletics; Grant Coordinator, Wellness Center; Nurse Practitioner, Wellness Center; Title IX Deputy Coordinator, Provost's Office; Vice President and General Counsel, Executive Offices.

**Non-Exempt Positions:** Assistant Manager, Sewanee Dining; Cashier, Sewanee Dining; Catering Driver, Sewanee Dining; Custodian, Physical Plant Services; First Cook, Sewanee Dining; Food Service Worker, Sewanee Dining; Office Coordinator, Advancement; Part-Time Dispatcher, Police Department; Part-Time Police Officer, Police Department; Second Cook, Sewanee Dining; Senior Cook, Sewanee Dining.

For more information call (931) 598-1381. Apply at <jobs.sewanee.edu>.



### LIGHTS ON!

It is state law to have your headlights on in fog and rain.



### Letters to the Editor Policy

Letters to the Editor are welcome at the Sewanee Mountain Messenger and are a vital part of our community's conversation. Letters need to be no longer than 250 words and may be edited for space and clarity. Letters and/or their author must have some relationship to our community. We do not accept letters on national topics from individuals who live outside our print circulation area. Please include your name, address and a daytime telephone number with your letter. You may mail it to us at Sewanee Mountain Messenger, P.O. Box 296, Sewanee, TN 37375, or come by our office, 418 St. Mary's Ln., or send an email to <news@sewaneemessenger.com>. —KB

## Serving Where Called

Please keep the following individuals, their families and all those who are serving our country in your thoughts and prayers:

**Cassidy Barry**  
**Michael Evan Brown**  
**Mary Cameron Buck**  
**Lisa Coker**  
**Jennifer Lynn Cottrell**  
**James Gregory Cowan**  
**Nathaniel P. Gallagher**  
**Alex Grayson**  
**Peter Green**  
**Zachary Green**  
**Robert S. Lauderdale**  
**Dakota Layne**  
**Byron A. Massengill**  
**Forrest McBee**  
**Andrew Midgett**  
**Alan Moody**  
**Brian Norcross**  
**Christopher Norcross**  
**Lindsey Parsons**  
**Troy (Nick) Sepulveda**  
**J. Wesley Smith**  
**Charles Tate**  
**Amy Turner-Wade**  
**Ryan Turner-Wade**  
**Tyler Walker**  
**Jeffery Alan Wessel**  
**Nick Worley**

If you know of others in our Mountain family who are serving our country, please give their names to American Legion and Auxiliary member Louise Irwin, 598-5864.

### MESSENGER DEADLINES & CONTACTS

Phone: (931) 598-9949

#### News, Sports & Calendar

Tuesday, 5 p.m.

Kiki Beavers

news@sewaneemessenger.com

Kevin Cummings

sewaneesports@gmail.com

#### Display Advertising

Monday, 5 p.m.

ads@sewaneemessenger.com

#### Classified Advertising

Wednesday, noon

April Minkler

classifieds@sewaneemessenger.com

### MESSENGER HOURS

Monday, Tuesday & Wednesday

9 a.m. – 4 p.m.

Thursday—Production Day

9 a.m. until pages are completed (usually mid-afternoon)

Friday—Circulation Day

Closed

## Tree of Life Homecare, LLC

"Neighbors Helping Neighbors"

- \* Licensed and insured home-based services for the elderly and disabled
- \* CHOICES provider, Private Pay, Veterans Affairs\* Long-term care plans

931-592-8733

treeoflifehomecare.com

NOW ACCEPTING APPLICATIONS FOR CAREGIVERS



## Monteagle Sewanee, REALTORS®

Dedicated to Service!



Deb Banks, Realtor  
(931) 235-3385  
debbanks8@gmail.com



Ray Banks, Broker/Owner  
(931) 235-3365  
rbanks564@gmail.com



Dee Underhill Hargis, Broker  
(931) 808-8948  
aduuhargis@gmail.com



Tom Banks, Realtor  
(931) 636-6620  
tombanks9@yahoo.com

Competent, Caring, Friendly, Fair—We're Here for You!

www.monteaglerealtors.com • 931-924-7253

337 W. West Main St., Monteagle

Find all the area MLS listings on our updated website!

## Upcoming Meetings & Events

### Benefit for American Legion

American Legion Auxiliary Unit #51 will be selling hot dogs, chips, dessert and drinks at the Legion Hall in Sewanee on Friday, June 23, and Friday, June 30, from 6:30 p.m. until sold out. Proceeds go to the American Legion Auxiliary Unit #51. Everyone is invited.

### UDC Meets June 24

United Daughters of the Confederacy (UDC) Chapter 327 Kirby-Smith, Sewanee will meet at 10 a.m. on Saturday, June 24, at the Franklin-Pearson House in Cowan.

### Monteagle Town Council

A public hearing on the 2017-18 budget will be held during the next council meeting scheduled for 6 p.m., Monday, June 26, at City Hall.

### Dining with the Doc

Southern Tennessee Regional Health System Winchester presents Dining with the Doc. The event will be 5:30-6:30 p.m., Tuesday, June 27, at the Sleep Center, 94 Hospital Rd., Winchester. The guest speaker will be Dr. Kurt Shull on "Natural/Non-Drug Solutions to Fibromyalgia." For more information or to RSVP, contact Skye Maxon at (931) 967-8165.

### Area Rotary Club Meetings

The Grundy County Rotary Club meets at 11:30 a.m., Tuesdays at Dutch Maid Bakery in Tracy City. The Monteagle Sewanee Rotary Club will meet at 8 a.m., Thursday, June 29, at the Sewanee Inn.

### PFLAG Winchester

PFLAG Winchester will have a potluck and float decorating evening, Friday, June 30 at the Sewanee Community Center. All interested persons are invited to join us. Bring a dish to share. We will gather at 5:30 p.m.

### Franklin County School Board

The Franklin County School Board will have a work session at 5:30 p.m., Monday, July 3 and a regular meeting at 5:30 p.m., Monday, July 10, at 215 South College Street, Winchester.

### FCDP Yard Sale

The Franklin County Democratic Party is holding a yard sale fundraiser on Saturday, July 15, from 7 a.m. to 1 p.m. in the shady area under the trees next to the County Annex Building, 839 Dinah Shore Blvd., Winchester. We invite everyone in the community to donate your "White Elephants" for a good cause. For drop-off details call Pat Heck 463-5000 (Sewanee), Pat Tabor 580-3796 (Estill Springs), or Cheryl Bolden 247-0129 (Estill Springs). Rain location: large room in back of the Annex.

## Editorial (from page 2)

manage a \$37.5 million construction budget. It precluded the Board from evaluating which of these individuals could best implement the Board's vision of expanding opportunities in the fine arts, STEM (science, technology, engineering, and math), and CTE (Career, and Technical Education) for students throughout the District. Finally, the decision precluded the Board from assessing which of these individuals could most easily empathize with the experience of individuals and groups who historically have been marginalized in our society and would best ensure that all students have equal access to a safe and supportive learning environment.

I have little doubt that several of my colleagues violated the Tennessee Open Meetings Act and Board Policy, and I have evidence to back up this belief. Nevertheless, I have concluded that despite these violations, filing a lawsuit is not in the best interest of students. Even if a court were to void the Board's decision, a lawsuit probably would not change who assumed the role of Director of Schools. The primary purpose of a lawsuit would have been to shed light on what I believe to be an example of bad government and poor governance. The Herald Chronicle's article (albeit not by design) has largely achieved that goal.

I hope Stanley Bean is the right person for the job. It's regrettable, however, that the majority foreclosed any opportunity for him (before he assumes the job) to transform my hope into belief. It's unfortunate that we may never know whether there was another person better suited for the job. And it's a shame, no matter how well Mr. Bean performs his job, that their action has undermined my trust—and perhaps the public's trust—that they are motivated foremost by that which they believe is in the best interest of the children of Franklin County. What had been trust is now only hope.

### Adaptive Landscape Lighting

Crafted LED Illumination of Architecture, Landscape, Outdoor Living Spaces, Security and Safety Concerns



Beautify and add hours to your outdoor living. Subtly illuminate dark, uneven steps and pathways. Save on electric bills! Receive a complimentary consultation. Call us today!

**Bonded : Insured : Experienced : Residential and Commercial**

**Paul Evans : 931-952-8289**

Sewanee • pevans@adaptiveenergy.org

## Summer Conferences on Campus

### Junior Tennis 4

The final round of Sewanee's Junior Tennis Camp will be June 25-30. Young players of all skill levels are invited to participate and will receive instruction from mentors and coaches alike. These six days are sure to be packed with drills, matches, and more!

### Summer Seminar I

The first session of the 42nd annual Summer Seminar will begin on June 25 through July 1. Each day will begin with a lecture, followed by group discussions and subsequent talks. Afternoons offer movies and site visits, while evenings are left open and allow participants to fellowship with one another and explore the Domain. Look for information on Session II in early July.

### SEI June 25-July 8


The Sewanee Environmental Institute (SEI) is a two-week program for high school students who are interested in exploring and learning about the natural world. University faculty will provide educational instruction and guide students' study of Sewanee's 13,000-acre domain.

## Input Needed for Mountain T.O.P. Grant

Mountain T.O.P. is applying for a USDA Grant Housing Preservation Grant. This grant would give Mountain T.O.P. a sum of money that would be used in Grundy County to do minor and major home repair using volunteer labor. Mountain T.O.P. and the USDA have established a relationship with one another and with many families in Grundy county to make home improvements. Because of our use of volunteer labor, all monies granted are applied toward building materials. This practice allows the money to help many more families. We desire to pursue this grant because it will allow us to help your families and friends, who may not qualify for grants or loans otherwise.

To qualify for this grant, it is necessary to announce its potential to the area in which we will serve and receive feedback from the community. If you have any comments on whether Mountain T.O.P. should receive this grant and why, please mail them to the office address, P.O. Box 128, Altamont, TN 37301, or drop them off at our camp on Old Highway 56 in Cumberland Heights. The deadline for submitting supporting letters is June 30.

HEAVEN ON EARTH... NOW AVAILABLE IN SEWANEE



**MYERS POINT**  
At Sewanee

MYERS POINT at Sewanee offers a rare opportunity to enjoy a private community that celebrates American architecture, lifestyle, protected forests, cultivated lakes and panoramic views on Middle Tennessee's Cumberland Plateau. If you want to live surrounded by nature, history, beauty, quality and serenity, you'll want to call it home.

John Goodson  
(931) 703-0558  
jgoodson@myerspoint.com  
myerspoint.net



The United Daughters of the Confederacy Kirby Smith Chapter 327 collected 175 pairs of eyeglasses and other assorted eyewear to be donated to the Tullahoma chapter of the Lions Club of America. Pictured are UDC members Patricia Street and Kirby-Smith Chapter President Ginger Delius.

## Road Work Continues on I-24 East

The Tennessee Department of Transportation reports road work impacting our area.

Marion County, I-24 East resurfacing from the Grundy County Line (LM 0.00/MM 134) to east of the bridge over Cave Cove Creek (LM 6.36/MM 141) in Monteagle. Work on this project began on June 17, with under-drainage work between mile markers 135-139 from 7 a.m. to 7 p.m. The truck inspection station will be closed during this time. Once the drainage work is complete, the contractor will begin nightly milling and paving on I-24 East between mile markers 133-141.

All milling and paving work on this project will take place on Sunday through Thursday evenings between the hours of 7 p.m. and 6 a.m. This work will require temporary lane closures on I-24 East. THP will assist with traffic control. Motorists are advised to use extreme caution during this project. Estimated project completion date is August 2017. For more information go to <<https://www.tn.gov/news/51024#sthash.pojLlfJA.dpuf>>.

Tennessee travelers can access road and travel conditions online at <[www.tn511.com](http://www.tn511.com)> or by dialing 511 from a cellular or landline phone.


The TDOT website featuring TNSmartWay provides real-time traffic information on highway incidents, construction activities, and weather-related road conditions, including streaming traffic cameras, messages displayed on overhead Dynamic Message Signs, and speed data. Cameras and message boards are live in Memphis, Nashville, Chattanooga, and Knoxville. Similar traffic information is also "tweeted" to the public through TDOT Twitter pages.

Tennessee 511 uses an automated voice response system where callers are guided through the menu through a series of requests. Callers can ask for specific roadways or regions, and the system will provide information.

## FYI: Joe B. Long will be running his normal garbage schedule on Tuesday, July 4, in Sewanee.

CITIZENS TRI-COUNTY BANK

### Citizens Tri-County Bank Makes Banking EASY AND QUICK.



With services like Remote Deposit Anywhere, I can deposit my check with my phone, so I can spend time on the important things in life. Plus they made getting a loan super easy! It's the only community bank we'll ever need!

**CITIZENS TRI-COUNTY BANK**

Monteagle • 80 East Main St. • Monteagle, TN 37356 • (931) 924-4242  
www.citizenstricounty.com • 24 Hr. Banker 592-1111

The only community bank you'll ever need.

# Obituary

## Harriet Lowndes Rhett Maybank Hutson

Harriet Lowndes Rhett Maybank Hutson, age 78 of Charleston, S.C., died on June 15, 2017. She was born on Dec. 28, 1938, in Charleston, to John Frampton Maybank and Lavinia Ingelsby Huguenin Maybank. She was a lifelong educator and guidance counselor, and a tireless volunteer for numerous causes wherever she lived, including here on the mountain when she and her husband were involved in the leadership of Sewanee Academy. She was preceded in death by her husband of 53 years, Henry; and her brothers John Frampton Maybank and David Huguenin Maybank.

She is survived by her daughter, Mary Pope Maybank Hutson of Sweet Briar, Va.; son, William Elliott (Bonnie Stevenson) Hutson II of Charleston, S.C.; sister, Lavinia Maybank Grimball of Charleston; brother Thomas Huguenin (Bee) Maybank of Rocky Face, Ga.; sisters-in-law, Helen S. Maybank and Ann E. Maybank, both of Charleston, and many nieces and nephews.

Funeral services were on June 17 in St. Philip's Church, Charleston. For complete obituary go to <www.jhenrystuh.com>.



**UPCOMING RETREATS**  
**One River Wisdom School**  
**I am that I am:**  
**Reclaiming the Deepest**  
**Self Beyond Self**  
**July 7 - 9, 2017**  
The Rev. Dr. Gordon Peerman  
Rabbi Dr. Rami Shapiro, Ph.D.  
The Anna House: \$450.00 (Single)  
St. Mary's Hall \$350.00 (Single)  
Commuter: \$250.00 (Single)  
**The House**  
**as Metaphor for Self:**  
**A Mixed Media Workshop**  
**August 11-13, 2017**  
Presenter: Lendon Hamilton Noe  
The Anna House: \$450.00 (Single)  
St. Mary's Hall \$350.00 (Single)  
Commuter: \$250.00 (Single)  
stmaryssewanee.org  
reservations@stmaryssewanee.org

**(931) 598-5342**  
**(800) 728-1659**



Ray and April Minkler  
styraco@blomand.net, aprilminkler@blomand.net  
931-592-2444 931-434-6206  
For over 8,700 testimonials see  
www.oil-testimonials.com/1860419



**Sweeton**  
**Home Restoration**  
LICENSED • INSURED • TRUSTED

**NEW CONSTRUCTION**  
**REMODELING**  
**HISTORIC RESTORATION**

**931-924-2444** [sweetonhome.com](http://sweetonhome.com)



**Leonard Brown - Owner**  
**Steve Young - Gen. Mgr.**  
**Steve Hartman - Shop Mgr.**

710 College St. • Winchester  
**931-967-1755 • Fax 931-967-1798**  
*Come by and see us. We appreciate your business.*  
Our Work is Guaranteed!



**TOMMY C. CAMPBELL**  
FOR YOUR IMPROVEMENTS  
Call (931) 592-2687  
Free Estimates • No Job Too Small!

**DRIVEWAY WORK • GRAVEL HAULING**  
**• DOZER & BACKHOE**  
plus Land Clearing • Concrete Work • Water Lines • Garage Slabs • Sidewalks • Porches & Decks • Topsoil & Fill Dirt  
Septic Tanks & Field Lines

ONLINE AND IN COLOR  
[www.sewanee-messenger.com](http://www.sewanee-messenger.com)

# Church News

## Midway Baptist Church

The last Mission Adventures is on Wednesday, June 28, featuring Latin America. We will be introduced to a missionary from that country. We will do a craft and will taste snacks from that country. We will also learn how we too can be a missionary wherever we go. The adventure begins at 6 p.m. and will continue until 8 p.m. Ages for these adventures are 3 to adult.

## Otey Parish

This Sunday, June 25, in Christian Formation at 10 a.m., the Lectionary Class will explore Sunday's gospel in the Claiborne House, Adult Education Room. There will not be youth Sunday School or Godly Play this Sunday. All ages are welcome in the Lectionary Class. Infants 6 weeks to children 4-years-old are invited to the nursery beginning at 8:30 a.m. until after the second service.

## Tulahoma Sangha

Tulahoma Sangha, a Zen Buddhist meditation and study group, meets each Wednesday at 6 p.m. at Unitarian Universalist Church of Tulahoma. The service will consist of zazen (meditation), kinhin (walking meditation) and a short lesson and discussion. Newcomers are welcome; please call ahead and we will have a short orientation at 5:45 p.m. The church is located at 3536 New Manchester Hwy., Tulahoma. For more information, or if you would like to be added to the email group, call (931) 455-8626.

Church calendar on the go!  
[www.sewaneemessenger.com](http://www.sewaneemessenger.com)

# CHURCH CALENDAR

## Weekday Services, June 23-30

7 a.m. Morning Prayer, St. Mary's Convent (not Mon)  
7:30 a.m. Holy Eucharist, St. Mary's Convent (not Mon)  
7:30 a.m. Morning Prayer, Otey  
8:30 a.m. Morning Prayer, Christ the King (Tues)  
11 a.m. Centering Prayer, Trinity Episcopal, W'chester (Wed)  
12:15 p.m. Holy Eucharist, Otey  
3:30 p.m. Centering Prayer, St. Mary's Sewanee (Tues)  
4:30 p.m. Evening Prayer, Otey  
5 p.m. Evening Prayer, St. Mary's Convent (not Mon)  
7 p.m. Centering Prayer, Otey sanctuary (Mon)

## Saturday, June 24

7:30 a.m. Morning Prayer, St. Mary's Convent  
10 a.m. Sabbath School, Monteagle 7th Day Adventist  
11 a.m. Worship Service, Monteagle 7th Day Adventist  
5 p.m. Mass, Good Shepherd, Decherd

## Sunday, June 25

### All Saints' Chapel

8 a.m. Holy Eucharist  
11 a.m. Holy Eucharist

### Bible Baptist Church, Monteagle

10 a.m. Worship Service  
5:30 p.m. Evening Service  
**Christ Church, Monteagle**  
10:30 a.m. Holy Eucharist  
10:45 a.m. Children's Sunday School  
12:50 p.m. Christian Formation Class

### Christ Episcopal Church, Alto

9 a.m. Sunday School  
10 a.m. Holy Eucharist

### Christ Episcopal Church, Tracy City

10 a.m. Adult Bible Study  
11 a.m. Holy Eucharist (child care provided)

### Christ the King Anglican, Decherd

9 a.m. Holy Eucharist  
10:40 a.m. Sunday School

### Cowan Fellowship Church

10 a.m. Sunday School  
11 a.m. Worship Service

### Cumberland Presbyterian Church, Monteagle

9 a.m. Fellowship  
11 a.m. Worship Service

### Cumberland Presbyterian Church, Sewanee

9 a.m. Worship Service  
10 a.m. Sunday School

### Decherd United Methodist Church

9:45 a.m. Sunday School  
10:50 a.m. Worship Service

### Epiphany Mission Church, Sherwood

10 a.m. Holy Eucharist Rite II

### Good Shepherd Catholic Church, Decherd

10:30 a.m. Mass

### Grace Fellowship Church

10:30 a.m. Sunday School/Worship Service

### Harrison Chapel Methodist Church

10 a.m. Sunday School  
11 a.m. Worship Service  
5 p.m. Worship Service

### Midway Baptist Church

9:45 a.m. Sunday School  
10:45 a.m. Morning Service  
6 p.m. Evening Service

# Memorial Service

All of the Christ Church Monteagle family and friends are encouraged to be part of the remembrance and thanksgiving service this Sunday morning, June 25, as we give thanks for the life and ministry of Fr. Stan Matthews. Fr. Stan was to retire on June 30 as an N.P. at the Alvin York VA Center in Murfreesboro. He was so faithful in being at work each day that the VA called for a welfare check when he did not show up on June 16. His heart had stopped and he was surrounded by his eight little dogs. Bishop Millsaps said, "We are very thankful for the Coffee County Sheriff's Department and for the immediate call they made to me. No obituary could adequately describe the love that Stan had both for people and for pets. All of the little dogs have been placed in homes, and we are grateful to each person who has come forward to help. At the regular service on Sunday, we will use some of Fr. Stan's favorite hymns and all who attend are invited for lunch following. If you have responsibilities at your own church, please join us for lunch after your service."

## Midway Church of Christ

10 a.m. Bible Study  
11 a.m. Morning Service  
6 p.m. Evening Service

## Ministry Baptist Church, Old Co-op Bldg., Pelham

10 a.m. Sunday School  
10:45 a.m. Breakfast  
11 a.m. Worship Service

## Monteagle First Baptist Church

10 a.m. Sunday School  
11 a.m. Worship Service  
6 p.m. Evening Worship

## Morton Memorial United Methodist, Monteagle

9:45 a.m. Sunday School  
11 a.m. Worship Service

## New Beginnings Church, Monteagle

10:30 a.m. Worship Service

## Otey Memorial Parish Church

8:50 a.m. Holy Eucharist  
10 a.m. Christian Formation  
11 a.m. Holy Eucharist

## Pelham United Methodist Church

9:45 a.m. Sunday School  
11 a.m. Worship Service

## St. Agnes Episcopal Church, Cowan

11 a.m. Sunday Service (Rite I)

## St. James Episcopal Church

9 a.m. Holy Eucharist (Rite II)

## St. Margaret Mary Catholic Church, Alto

8 a.m. Mass

## Sewanee Church of God

10 a.m. Sunday School  
11 a.m. Morning Service  
6 p.m. Evening Service

## Sisters of St. Mary's Convent

8 a.m. Holy Eucharist  
5 p.m. Evensong

## Tracy City First Baptist Church

9:45 a.m. Sunday School  
10:45 a.m. Morning Worship  
5:30 p.m. Youth  
6 p.m. Evening Worship

## Trinity Episcopal Church, Winchester

9:30 a.m. Adult/Youth Christian Formation

## Warren Chapel, Monteagle S.S. Assembly

11 a.m. Interdenominational Worship

## Valley Home Community Church, Pelham

10 a.m. Sunday School  
10 a.m. Worship Service

## Wednesday, June 28

6 a.m. Morning Prayer, Cowan Fellowship  
Noon Holy Eucharist, Christ Church Monteagle  
12:30 p.m. STEM Book Study, Trinity Episcopal  
5 p.m. KA's, Bible study/meal, Monteagle First Baptist  
5:30 p.m. Evening Worship, Bible Baptist, Monteagle  
5:45 p.m. Youth Bible study/meal, Monteagle First Baptist  
6 p.m. Bible study, Monteagle First Baptist  
6 p.m. Prayer and study, Midway Baptist  
6 p.m. Youth (AWANA), Tracy City First Baptist  
6 p.m. Evening Prayer, Trinity Episcopal, Winchester  
6:30 p.m. Community Harvest Church, Coalmont  
6:30 p.m. Prayer Service, Harrison Chapel, Midway  
7 p.m. Adult Formation, Epiphany, Sherwood  
7 p.m. Evening Worship, Tracy City First Baptist

*“With each new  
day comes strength  
and new thoughts.”  
-Eleanor Roosevelt*

# Sewanee Realty

SewaneeRealty@inSewanee.com

www.SewaneeRealty.com

115 University Ave., Sewanee, Tenn.

**Margaret Donohue,**  
Principal Broker • 931.598.9200

**Patsy Truslow,**  
Broker • 931.636.4111



290 University Ave., Sewanee. \$498,500



150 Bobtown Circle, Sewanee. \$219,000



MLS 1833858 - 80 Parsons Green,  
Sewanee. \$292,000



MLS 1827972 - 426 Wiggins Creek Dr.,  
Sewanee. \$588,000



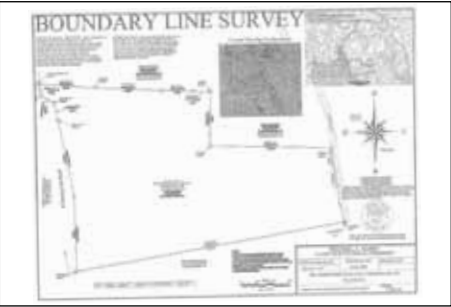
MLS 1730527 - 565 Haynes Rd.,  
Sewanee. 5.4 acres. \$249,900

## BLUFF TRACTS

1605 Laurel Lake Dr. 5.3 ac	1780151	\$149,000
14 Jackson Pt. Rd 18.6 ac	1803643	\$129,500
Laurel Lake Dr. <b>SOLD</b>	1801545	\$395,000
16 Jackson Pt. Rd. 4.51 ac	1821166	\$99,500
590 Haynes Rd. 11+ ac	1687354	\$115,000
15 Saddletree Ln. 6.12 ac	1680519	\$75,000
16 Laurel Lake <b>SOLD</b>	1722522	\$97,500
3 Horseshoe Ln. 5.6 ac	1608010	\$60,000
1 Raven's Den 5.5 ac	1685926	\$62,000
38 Long View Ln. 2.56 ac	1787091	\$99,000
36 Long View Ln.	1503912	\$99,000
7 Jackson Pt. Rd.	1714853	\$75,000
37 Jackson Pt. Rd.	1579614	\$75,000
Jackson Pt. Rd. 12.45 ac	1579007	\$125,600
12 Saddletree Ln.	1578117	\$79,500
Jackson Pt. Rd. 19+ ac	1531331	\$120,000
7 Saddletree Ln.	1726054	\$70,000
25 Old Sewanee Rd. 5.2 ac	1741756	\$119,000



BLUFF - MLS 1773059 - 1804 Clifftops  
Ave., Monteagle. 6.9 acres. \$995,000



BLUFF - MLS 1801545 - Laurel Lake Dr.,  
Monteagle. 66.7 acres. \$395,000



MLS 1743681 - 1091 Timberwood Tr.,  
Monteagle. 26.4 acres. \$689,000



BLUFF - MLS 1656823 - 1613 Laurel Lake  
Dr., Monteagle. 5.3 acres. \$449,900



MLS 1698101 - 41 Sherwood Rd.,  
Sewanee. \$194,000



MLS 1810617 - 107 Blackberry Ln.,  
Sewanee. 10.5 acres. \$259,000



MLS 1688434 - 324 Rattlesnake Springs  
Rd., Sewanee. 4.9 acres. \$349,500



MLS 1740557 - 786 Old Sewanee Rd.,  
Sewanee. 15 acres. \$329,000



MLS 1514972 - 202 Main St.,  
Monteagle. \$112,000



MLS 1775366 - 143 Winns Circle,  
Sewanee. \$385,000



BLUFF - MLS 1810644 - 294 Jackson  
Point Rd., Sewanee. 20.9 acres. \$299,500



BLUFF - MLS 1817475 - 1819 Bear  
Court, Monteagle. \$229,000



BLUFF - MLS 1777974 - 3480 Sherwood  
Rd., Sewanee. \$349,000



BLUFF - MLS 1772358 - 569 Haynes  
Rd., Sewanee. 5.1 acres. \$525,000



MLS 1770160 - 12147 Sewanee Hwy.,  
Sewanee. \$160,000



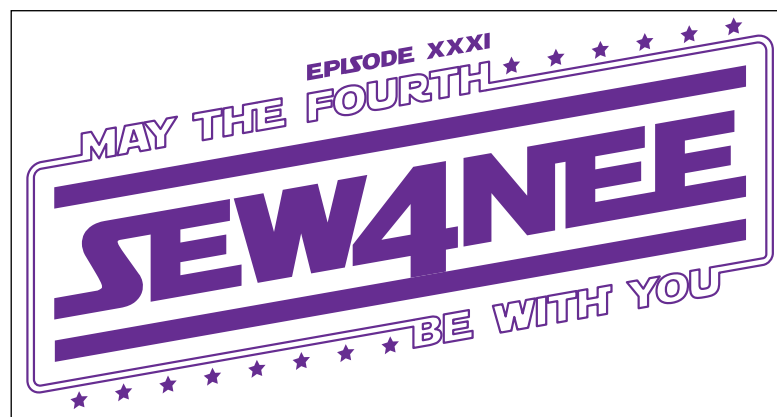
MLS 1776800 - 1256 Sollace Freeman  
Hwy., Sewanee. \$584,000



BLUFF - MLS 1712150 -  
3442 Sherwood Rd., Sewanee. \$589,000

## LOTS & LAND

Highland Tr Lot 26	1827481	\$48,500
36 Mtn. Sha <b>SOLD</b>	1823346	\$21,900
Taylor Rd. 29.73 ac	1754324	\$159,000
33 Westlake Ave. 5.3 ac	1800077	\$75,000
Bear Dr. 2 ac	1708016	\$19,500
Jackson Pt. Rd. 4.8 ac	1714849	\$37,500
Haynes Rd. 6.5 ac	1690261	\$75,000
43 Bluff Woods	1774625	\$28,000
111 Clifftops Dr. 5.25 ac	1646127	\$58,900
2335 Sarvisberry 5.3 ac	1831124	\$49,000
St. Mary Ln. 10 ac	1820182	\$85,000
Montvue Dr. 5 ac	1714856	\$54,900
Sarvisberry Pl.	1628195	\$69,000
8 Jackson Point Rd.	1734341	\$36,000
9 Jackson Point Rd.	1734307	\$39,000



## Sewanee Fourth of July!

The last "May the Fourth Be With You" planning meeting is at 5 p.m., Friday, June 30, at the Sewanee Senior Center. Logo provided by Aaron Welch of Big A Marketing.

### May the Fourth Be With You!

This year's Fourth of July celebration in Sewanee will include some of the community's favorite events and an unforgettable theme that we hope everyone will enjoy.

### Street Dance

The celebration will begin on Sunday, July 3rd, with the Street Dance at the Sewanee Market at 8 p.m. featuring Bad Nayer.

### Flag Raising

Fourth of July events begin at 8 a.m. with the 45th Annual Flag Raising at Juhan Bridge in Abbo's Alley. Please use the entrance at Florida Avenue. The Sewanee Summer Music Festival's brass quintet will perform, and Boy Scout Troop 14 will raise the flag. Afterward, enjoy a potluck breakfast; Friends of Abbo's Alley provides coffee and juice. For more information or to volunteer, call Margaret Beaumont Zucker at 598-5214.

### Pub Run

The Monteagle Sunday School Assembly is hosting their 40th Annual

Pub Run at 8 a.m. Runners will meet at the MSSA Front Gate and run to Shenanigans (6.4 miles) on the Mountain Goat Trail. Walkers may start at Dollar General. The fee for the run is \$15. Pre-register at the MSSA Office or call 924-2286 for more information.

### Arts and Crafts Fair

The Arts and Crafts Fair will begin at 9 a.m. in Shoup Park. For more information or to sign up as a vendor, contact Bracie Parker at 691-4791.

### Cake Contest

The Fourth of July Cake Contest registration is 9–9:45 a.m. at Sewanee Elementary. There will be a youth level (age 12 years and under) and an adult level. Prizes will be awarded for the Best Tasting, Best Decorated, and Best Representation of the Theme. In addition, the winner of the Best All-Around Cake gets \$100 cash, courtesy of IvyWild. Contact Susan Peek at (615) 504-5404 for more information.

### Mutt Show

Enter your favorite pooch in the 2017 Fourth of July Mutt Show! All dogs are welcome to compete—no

talent necessary. Registration for the Mutt Show will take place from 9–9:45 a.m. in Manigault Park. The show begins at 10 a.m. Trophies will be awarded for these canine categories: Best Dressed, Owner/Dog Look-Alike, Best Theme, Best Trick and Judges' Choice. Entrants may register to compete in two categories. The registration fee is \$5 per category, and all proceeds will go to the Fourth of July Fireworks. Audience members may contribute to Animal Harbor and MARC. In case of rain, the Mutt Show will take place in the Equestrian Center. Registration form is found on page 7.

### Food and Drink I

Vendors along University Avenue will begin selling food and drinks at 10 a.m.

### Children's Games, New Location

Children's games, fortune telling, face painting and a bounce house will be available from 11 a.m. to 1 p.m. in the Quad (please note the new location).

### Get Your Picture Taken, New Event

A new addition for this year will be Patriotic Portraits by Sewanee native Elizabeth Burns from 11 a.m. to 1 p.m. next to the children's games. Elizabeth is a professional photographer in Chattanooga and we are excited to offer the ability to capture your July 4th memories. A digital copy of your portrait can be purchased for \$3 a photo. All proceeds will benefit future Fourth of July celebrations. You can see more of Elizabeth's work at <elizabethburnsphotos.com>.

### Corn Hole Contest

Test your aim this Fourth of July with a corn hole contest at the Quad from 11 a.m. to 1 p.m. Adults are welcome to enter the contest for a small fee and play for prizes. The cornhole contest will be next to the children's games, so the whole family can play in the same area.

### Food and Drink II

At Angel Park, enjoy lunch, music, and beer from 11 a.m. to 1 p.m. with music by JackWagon, barbecue by the Blue Chair and Jackalope beer. With some of the most multi-talented and versatile musicians in Middle Tennessee, JackWagon offers super tight vocals and instrumental virtuosity.

### STHP History Event, New

Another new event by the Sewanee Trust for Historic Preservation (STHP) is "Leave Us a Sewanee Memory - you have up to 4 Minutes!" from 11 a.m. to 2 p.m. at the Folks at Home office just below Reed Lane and Sewanee Elementary School. The STHP wants to gather residents, visitors, former residents, relatives of residents, and anyone else who has a story to tell about people, places, or events in Sewanee. The participants in this oral history event will need to provide their name and signature allowing the recording for future use. We hope those

who "Leave Us a Sewanee Memory" will have fun telling their stories—and maybe they will want to have a longer interview with STHP members later in the summer. Information on the Oral History program for the community and the Sewanee Trust organization will be available.

### Pie Eating Contest

The fourth annual Pie Eating Contest will be at 11:30 a.m. in Guerry Garth. This year, we will have a children's pie eating contest (ages 12 and under) from 11:30 a.m. to 12:30 p.m., and the adult (ages 13 and above) contest will begin at 12:30 p.m. A clean up area will be provided. Sign up early (the fee is \$5) as there are a limited number of spaces. For more information call Gary Sturgis at 598-5324 or 636-5294.

### Cake Winners Announced

The winners of the Cake Decorating Contest will be announced at noon at Sewanee Elementary. Following the awards presentation, the community is invited to view and sample the cakes.

### Change-Ringers Performance

At noon, The University of the South Guild of Change-Ringers will perform at Breslin Tower.

### Downtown Planning, New Event

We have another new event from noon to 2 p.m.—See Sewanee's Future at The Blue House. This will be an open house featuring the downtown development project plans. Take the opportunity to see the future of Sewanee and learn about the Master Plan for the additions to downtown Sewanee. This project has been in the planning stages since 2012 and is now on the brink of action with specific projects to revitalize downtown Sewanee. University Special Assistant to the Vice Chancellor, Frank Gladu and Director of Implementation from Town Planning and Urban design Collaborative, Becky Timmons, will be on hand to describe the plan, the projects and answer questions. All are welcome including developers and investors who are needed to bring the plan to life. Learn more at <sewanee.edu/village>.

### Carillon Recital

Raymond Gotko, Sarah Strickland and Charlene Williamson will perform a Carillon Recital at 1 p.m. Bring a chair to All Saints' Chapel to enjoy the music.

### Parking

**Please do not park on university avenue.** All vehicles must be moved before 1:00 pm to make room for the parade.

### The Parade

The Sewanee Fourth of July parade will begin at 2 p.m. starting at the Sewanee Market and will travel through town, turning on to Hall Street and ending in the parking lot behind the Hospitality Shop. All sirens will be turned off at the Kirby-Smith monument. To enter the parade, contact Leigh Anne Couch at 598-5068. Please note: All entrants in the parade

must complete and return an entry form. Form is found on page 7.

### Attention Parade Bicyclists

Part of what makes Sewanee's parade so sweet on the Fourth is that whole families can be involved, from a toddler pulled in a wagon to kids on tricycles, training wheels, and bikes. Some years it can be like a mini Tour de France! If you and your kids want to be in the parade this year, please fill out an entry form and meet at Woody's on the Fourth of July at 1 p.m. Woody will judge the best decorated bicycles this year and in addition to a medal the first-place winner will get a special prize from Woody's shop (Thank you, Woody!)

After the judging all bicyclists will be lead by a parade volunteer over to the Shenanigan's parking lot facing University Avenue, where they will join the parade when it passes. The parade ends at Hall Avenue just before the Hospital. We'll turn right at Hall and then right again into the big parking lot that runs behind the Hospitality Shop.

To ride your bike in the parade, we need the following from you:

- 1) An entry form
- 2) To be at Woody's no later than 1:40 p.m. (1 p.m., if you want to be in best decorated bike contest)
- 3) Helmet
- 4) An adult accompanying all children under 16

### Food and Drink III

There will be music and barbecue following the parade in Angel Park featuring the Thumping Richards.

### Air Show and Rides

Weather permitting, the Air Show will take place at 3:30 p.m. at the Sewanee Airport.

Airplane rides will be available for adults and children after the parade until 6 p.m. at the Sewanee Airport. Parents must be present to give written permission for children ages 16 and under to ride. A \$15 donation is suggested.

### SSMF Patriotic Celebration

The Sewanee Summer Music Festival students will perform a Patriotic Celebration at 7 p.m. in Guerry Auditorium.

### The Fireworks Show

After dark, the Fireworks Show will be at Lake Cheston. There will be a suggested donation of \$1 to contribute to next year's fireworks. Parking at the Lake will be limited to handicapped and special needs only.

If you get hungry waiting for the fireworks, the following will be available for purchase: ice cream, prepackaged picnic boxes, loaded baked potatoes, and food from the Shenanigan's food truck.

### Handicap or Special Need Parking Pass

Chief Marie Eldridge asks that if you need a handicap or special need parking pass for the fireworks show,

(Continued on page 7)

**Come Enjoy The Mountain's  
Best Gourmet Breakfast,  
8 to 10 Each Morning,  
and Saturday Wine Social,  
4 to 7 p.m., in Tallulah's  
Wine Lounge**



**Tallulah's  
Wine Lounge**

(931) 924-3869 ~ [www.monteagleinn.com](http://www.monteagleinn.com) ~ 204 West Main St.



**BENNETT'S PHARMACY**

1201 Dinah Shore Blvd., Winchester

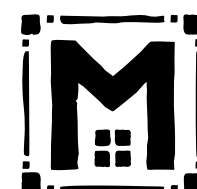
[www.bennettspharmacywinchester.com](http://www.bennettspharmacywinchester.com)

phone: 931-967-2777

hours: Mon-Sat, 8 am-8 pm | Sun, 8-11 am, 1-7 pm



FREE gift wrapping! Great value!  
Something for everyone! [thelemonfair.com](http://thelemonfair.com)



**MOLICA  
CONSTRUCTION LLC**

931 205 2475

[WWW.MOLICA.CONSTRUCTION.COM](http://WWW.MOLICA.CONSTRUCTION.COM)

- CRAFTSMANSHIP •
- CREATIVITY •
- SUSTAINABILITY •

Fourth of July (from page 6)

please go by the Sewanee Police Station. Simply go to the window at the station, give your name, and you will be given a pass. If you have a permanent handicap tag you will not need a temporary one.

Additional Parade Information

Line up begins at noon on Lake O'Donnell Road—judging begins at 1 p.m. Please enter Lake O'Donnell at the end closest to the airport. Bicycles are to be at Woody's Bike Shop at 1 p.m. for judging.

We appreciate your help in making the parade safe and enjoyable for everyone.

If you will be throwing candy, please be sure to throw it as close to the curb as you can. We want to keep our little ones as safe as possible by

keeping them from running out into the road. I know, not an easy task, but we can try. Also, if you have a horn or other type of loud noise, please turn it off when your entry reaches the Kirby-Smith Monument. There are those who do not like to hear the sirens and they will be seated at or near the hospital. Due to insurance precautions, we will once again be asking that you sign a release form. Someone will be there the day of the parade to take care of this.

And last but not least, if you will be riding a motorcycle or four-wheeler, please wear your helmet and be very cautious in your driving. Remember, there are children all along the parade route. Your help in this will be greatly appreciated.

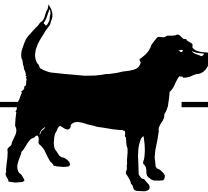
Monteagle Fourth of July Celebration

Monteagle's Fourth of July parade registration and line up will be at 9 a.m. on Tuesday, July 4. Walkers and horses start at Monteagle Church of Christ. Floats, ATV's and cars meet at the Smokehouse. Firetrucks and police cars meet at Freds. The parade will begin at 10 a.m. This year's theme is "Forever Stars and Stripes."

From 11 a.m.–2 p.m. at Hannah Pickett Park, there will be food, a live band, corn hole, dunk tank, watermelon eating contest and more fun for kids of all ages. Fireworks will light up the sky at 9 p.m. at the Monteagle Ball Field.

The Town of Monteagle is handling all arrangements for the parade. If you wish to volunteer to help with this parade please contact Monteagle City Hall at 924-2265.

SHARE GOOD NEWS!  
news@sewaneemessenger.com



Sewanee Mutt Show Registration  
July 4, 2017

Entry No. \_\_\_\_\_ (assigned at registration)

- Registration, 9–9:45 a.m., Manigault Park, in front of St. Luke's Hall.
- Show, 10 a.m., Manigault Park.
- Please arrive early.
- Use a separate form for each dog shown.
- All dogs must be kept on a leash.
- Bring your completed form to the registration desk to get your entry number.

Name of Dog: \_\_\_\_\_

Breed of Dog (if known): \_\_\_\_\_

Person Showing Dog: \_\_\_\_\_

Please check each class you want to enter. Registration is \$5 per category.

All proceeds go to the Fourth of July fireworks.

Contributions are accepted for Animal Harbor and MARC.

- |                               |                         |
|-------------------------------|-------------------------|
| _____ 1. Best Dressed         | _____ 3. Best Theme     |
| _____ 2. Owner/Dog Look-Alike | _____ 4. Best Trick     |
|                               | _____ 5. Judges' Choice |

Parade form due by July 1!



Sewanee 4<sup>th</sup> of July Parade Entry Form  
2017 Theme: "May the Fourth Be With You"  
Tuesday, July 4, 2017



Parade Start: 2:00 pm

Line-up: Begins at Noon on Lake O'Donnell Road -- judging begins at 1:00 pm. Please ENTER Lake O'Donnell at the end closest to the airport. Bicycles are to be at Woody's Bike Shop at 1:30 pm for judging.

Name of Group: \_\_\_\_\_

Contact Name: \_\_\_\_\_

Phone Number(s): \_\_\_\_\_

Group Size: \_\_\_\_\_ Number of Animals: \_\_\_\_\_

Number of Vehicles: \_\_\_\_\_ Is one of your vehicles a float? Yes No

Will your group be playing music? Yes No

Brief description of your group:

\_\_\_\_\_  
\_\_\_\_\_  
\_\_\_\_\_

**THIS YEAR ALL FORMS MUST BE RETURNED by Saturday, July 1,  
for your group TO BE IN THE PARADE**

**There are three ways to submit your form**

\*Drop it off in the "May the 4<sup>th</sup> Be With You" jar by the door at the Blue Chair

\*E-mail it to: [Leighannecouch@gmail.com](mailto:Leighannecouch@gmail.com)

\*Mail it to: Leigh Anne Couch, 245 Running Knob Hollow Rd., Sewanee, TN 37375

**We appreciate your help in making the parade safe and enjoyable for everyone.**

If you will be **throwing candy**, please be sure to throw it as close to the curb as you can. We want to keep our little ones as safe as possible by keeping them from running out into the road. I know, not an easy task, but we can try. Also, if you have a horn or other type of **loud noise**, please turn it off when your entry reaches the Kirby-Smith Monument. There are those who do not like to hear the sirens and they will be seated at or near the hospital. **Due to insurance precautions, we will once again be asking that you sign a release form. Someone will be there the day of the parade to take care of this. And last but not least, if you will be riding a motorcycle or 4-wheeler, please wear your helmet and be very cautious in your driving. Remember, there are children all along the parade route. Your help in this will be greatly appreciated. May the 4<sup>th</sup> be with you!**



21 First Street, Monteagle TN

931-924-8000

[www.mountainmedicalclinic.com](http://www.mountainmedicalclinic.com)

Monday–Friday • 7 a.m.–5 p.m.

Walk-ins and same day appointments available



Michelle S. Val, MD

Family Friendly  
Medical Care

- Family Healthcare
- DOT Medical Exams
- Sick & Well Child Visits
- Immunizations
- School Physicals
- Diagnostic & Preventive Screenings
- Management of Chronic Medical Conditions
- Sports Injuries
- Personalized Exercise Programs
- Hypertension Treatment
- Diabetes Management
- COPD
- Asthma
- High Cholesterol
- Sports Physicals
- Woman's Health Services
- Minor in Office Procedures: biopsies, cyst removal, laceration repair, wart removal
- EKG's
- Flu Shots
- Urine drug screening



Anne Porcher Burnett, NP-C



Jennifer O'Neal, MSN, FNP BC

# FRIDAY NIGHTS IN THE PARK

SPONSORED BY



THAT'S 100 BENJAMINS!



\*PROCEEDS TO BENEFIT THE COMMUNITY ACTION COMMITTEE & SEWANEE ANGEL PARK

## WIN \$10,000

REVERSE RAFFLE DRAWING • JULY 14

**\$100 TICKET\***

AVAILABLE FROM  
LOCAL MERCHANTS OR  
[SEWANEEANGELPARK.COM](http://SEWANEEANGELPARK.COM)

## SEWANEE ANGEL PARK

RAIN VENUE: AMERICAN LEGION HALL

**JUNE 23 ★ 7:30**

**JUNE 29 ★ 5:30**

**JUNE 30 ★ 7:30**

**JULY 4 ★ 11:00**

**JULY 4 ★ 3:15**

**JULY 7 ★ 7:30**

**JULY 14 ★ 7:30**

Little Russell Band

SSMF Brass

The Yellow Dandies

JackWagon

The Thumping Richards

Top Tier Band

G-Mac & The Madras Men

BROUGHT TO YOU BY THE SEWANEE BUSINESS ALLIANCE

# MUSIC ★ BEER ★ DANCE ★ FOOD

**Wetland** (from page 1) —

The advantages of wetlands wastewater treatment are superior effectiveness in removing nutrients and low operating costs, Nussbaum said.

"A constructed wetlands system could replace the SUD spray-fields wastewater treatment method," Nussbaum speculated.

One of the questions researchers hope to answer is whether further treatment by spray-field application is necessary to achieve water of potentially potable quality.

The water from the SUD wetlands is returned to the lagoons.

Making a comparison to the water-reuse concept, board member Karen Singer noted that water slated for treatment as drinking water is frequently drawn from rivers in which upstream communities discharge treated wastewater.

SUD manager Ben Beavers was quick to point out, "We're not doing this tomorrow." SUD currently has no plans to pursue implementing water reuse practices.

Nussbaum said a 2015 survey of the Sewanee community showed that most people were unaware of what happened to their water after it went down the drain. He directed those wanting more information about the wetlands to the project website at <sewaneeetlands.org>.

The board requested annual updates on the project and expressed an interest in serving on an advisory committee charged with heightening public awareness about the community's water supply.

In other business, Beavers updated the board on easement contract negotiations for the Cooley's Rift development. Beavers said the SUD attorney was drafting a contract calling for a common rather than an exclusive easement requiring at least three feet of separation between SUD lines and lines from other utility providers. Beavers will present the finalized contract to the board for approval. He anticipates construction will begin in Aug.

The Midway pressure boosting station was in the final stages, Beavers said. "Everything is ready to go except for connecting the electrical and smoke testing." Signing of the final easement necessary for completion of the project is expected in the near future. The SUD board meets next on July 25.

## Mountain Market for Arts and Crafts

The 58th Annual Monteagle Mountain Market Arts and Crafts Show will be 9 a.m.–5 p.m., Saturday, July 29 and 9 a.m.–4 p.m., Sunday, July 30. The event is behind Monteagle City Hall, 16 Dixie Lee Avenue.

Talented artisans and crafters will display their handmade creations. There are a few vendor spaces available.

For more information call the South Cumberland Chamber of Commerce at (931) 924-5353 or email <info@southcumberlandchamber.com>.



## Tea on the Mountain

For a leisurely luncheon  
or an elegant afternoon tea  
11:30 to 4 Thursday through Saturday

**DINNERS BY RESERVATION**  
(931) 592-4832

298 Colyar Street, US 41, Tracy City

# Monteagle Sunday School Assembly Highlights for June 25-July 1

The Monteagle Sunday School Assembly in Monteagle continues its 135th consecutive summer season of enrichment with an interdenominational worship service Sunday at 11 a.m. in the Assembly's Warren Chapel. The eight-week season will continue through Sunday, Aug. 6, featuring numerous visiting lecturers who will present morning and evening programs in Warren Chapel that are open free of charge to the public; unless otherwise noted, morning lectures begin at 10:45 a.m. and evening lectures at 8:15 p.m. Anyone interested in a full schedule of the Monteagle Assembly's 2017 program is welcome to pick one up at the Assembly Office, call (931) 924-2286, or to peruse the schedule on the Assembly's website at <www.mssa1882.org>.

A variety of programs this week touch on aspects of political and social matters, beginning with the life of Jacqueline Bouvier Kennedy Onassis. On Monday, June 26, at 10:45 a.m., Nancy Ashley will discuss "The Literary Life of Jacqueline Kennedy Onassis." Ashley graduated with a Masters of Arts in Teaching from Vanderbilt and taught high school English in Nashville. She and her husband moved to Dallas in 1980; she has led Bible studies, church organizations, and world mission trips, along with serving in leadership roles for many other civic and social organizations. Then, on Wednesday, June 28, the CBS documentary, "Jackie Kennedy Onassis: In a Class of Her Own" will be screened in the Pulliam Center at 8:15 p.m. The film touches on many periods of Jackie's life, including her life in New York and academic career at Vassar, her infamous televised tour of The White House in the early 1960s, and a 1950s interview given by Jackie and her husband John F. Kennedy, then a US senator.

Brooke Barnett joins the Assembly at 10:45 a.m., Thursday, June 29, to lecture on "Shooting the Messengers: Freedom of Expression, Journalism, and Political Protest." Barnett is a former television host, news director, and reporter who now teaches at Elon University in North Carolina. She has published a number of articles and five books on a range of topics, from journalists' work in an era of growing threat from terrorism to a guide on how college faculty can create more inclusive classrooms. Barnett also created documentary films with her husband, Tom Mould, who also lectures at the Assembly this week. Mould will speak at 10:45 a.m., Friday, June 30, on the topic, "American Legend." Mould's research centers on oral narrative, sacred narrative, American Indian studies, Mormon studies, ethnography, and more. His newest book, "Overthrowing the Queen: The Real Stories of Welfare in America," is due out in 2018.

Rounding out the week's featured lectures is Jason Huddleston, who will speak at 8:15 p.m., Thursday, June 29, about "Redfacing: Media and the Stereotyping of Native American Cultures." Huddleston, a professor of English at Chattanooga State Community College, is fascinated by the representation of native cultures in American literature and film. In his lecture, he will challenge the audience to reconsider non-Indian cultures perceptions of Native American cultures by contrasting many of these stereotypic media depictions—excerpts from television shows (from The Lone Ranger to Looney Tunes), films (from westerns to Disney's Peter Pan), and novels (from "The Last of the Mohicans" to "Moby Dick")—with accurate cultural depictions from these same media.

The Sewanee Summer Music Festival's students will join us Tuesday, June 27, at 8:15 p.m. in Warren Chapel for the second of three SSMF concerts this summer.

Additional free events this week at the Monteagle Assembly include the following:

Tuesday, June 27, 10:45 a.m., Warren Chapel—A dramatic performance with Cathy Kaemmerlen as "Abigail Adams, Dear Friend."

Wednesday, June 28, 10:45 a.m., Warren Chapel—Liz Norell lectures on "Syria, Explained: How did we get here, where might we go?"

**Commission** (from page 1) —

for the increase from the Health Department.

"The only fund where we had to use fund balance is the general debt service fund number, fund 151, for debt issuance on the jail construction expansion. There's some upfront cost on that, which we don't generally have budgeted," said Smith. "We had a lot of maintenance issues this year which had been abnormal over the past few years—[things like] equipment, all funds and maintenance of buildings, as well as the normal ups and downs for jail inmate expenses."

A motion to approve the recommendation from the Franklin County Regional Planning Commission for the rezoning of a 2.52-acre property on Highway 64 and Walnut Hill Road was carried by the commission.

Amendments to the Board of Education's general purpose school budget were approved. Smith said she expects the final budget will be submitted for review by the finance committee early next month.

Also approved was a resolution to adopt a new public records policy.

"We currently have a public records policy for anyone to do a request for the county. The state passed the legislation earlier in the year, and they put more stipulations in the minimum requirements. We worked with Ben Lynch [city attorney] and looked at our current policy to draft a new policy. It has to be approved by June 30."

This policy states that the policy is being adopted to "provide economical and efficient access to public records as provided under the Tennessee Public Records Act (TPRA)."

Iris Rudder, seat B for the 1st District, motioned to approve a litigation fee request by Haven of Hope, a shelter for victims of domestic violence.

The next county commission meeting will be at 7 p.m., Monday, July 17, in the Franklin County Courthouse.



The flags are up along the parade route in Sewanee in preparation for the Fourth of July festivities.

### Your Place for Organic & Local Products

- ◆ Natural Foods
- ◆ Personal Care Products
- ◆ Garden Supplies
- ◆ Yarn & Knitting Supplies
- ◆ Local Arts & Crafts

- ◆ Jewelry
- ◆ Gifts
- ◆ Antiques

**Mooney's**

Market & Emporium

**OPEN DAILY 10-6**

931-924-7400 • 1265 W Main Street • Monteagle, TN



## K&N Maintenance and Repair

Your "honey-do" list helper!

A one-stop solution  
for all your home  
improvement needs

**931-691-8656**



### MICHELLE M. BENJAMIN, JD

Attorney & Counselor at Law

201 FIRST AVENUE, NORTHWEST  
WINCHESTER, TENNESSEE 37398

(931) 962-0006  
Fax: (931) 967-8613

Full Service Salon

### Cuttin' Up

Salon and Day Spa

Midway Rd. • Sewanee

**Saturday, July 18 a.m. – 1 p.m.**

**Special for All Ladies**

Choose any 3 of 6 options for \$100

• manicure • pedicure

• 30 minute basic back treatment • mini facial • haircut

• shampoo/blow dry or set

Call for your package (931) 308-9400 or (931) 273-0490

Does your home have a hot spot?  
High efficiency ductless  
split units are the coolest!



Custom home remodeling begins with...

**Joseph's Remodeling Solutions**

A Division of Sanyer Solutions, LLC

Taking Quality to the Next Level

Licensed - Insured - Green Certified

**931-598-5565**

joseph@josephsremodelingsolutions.com  
www.josephsremodelingsolutions.com

## Senior Center News

The Sewanee Senior Center serves lunch at noon Monday through Friday. The suggested donation is \$4, regardless of your age. Please call 598-0771 by 9 a.m. to order lunch. Menus follow:

**June 26:** Chipped beef on toast, green beans, dessert.

**June 27:** Chicken salad, fresh fruit.

**June 28:** Meat loaf, mashed potatoes, green beans, roll, dessert.

**June 29:** Pastrami and Swiss on rye, pasta salad, dessert.

**June 30:** Barbecue chicken, mashed potatoes, green beans, roll, dessert.

### Volunteers Needed

Sewanee Senior Center needs volunteers through the month of June for the following:

Preparing lunches on Thursday and Friday, 10 a.m.–noon.

Cleaning up and doing dishes Thursday and Friday, 12:30–1:30 p.m.

All volunteers are greatly appreciated. Please call the Senior Center at 598-0771 or Connie Kelley at 598-0915 or email at <jpkelley934@gmail.com> if you can help.

### Regular Activity Schedule

Chair exercises, Mondays and Wednesdays, 10:30–11:15 a.m.; Tuesdays at 10:30 a.m., the group plays bingo, with prizes; Wednesdays at 10 a.m., the writing group gathers at 212 Sherwood Rd.; Fridays at 10 a.m. is game time.



## piggly wiggly

### Down Home, Down the Street

754 West Main St., Monteagle  
(931) 924-3135  
8 a.m. to 9 p.m. 7 days a week

## Sewanee School of Letters

**Summer 2017 Events**  
all events are free and open to the public

**Author David Haskell**

Wednesday, June 28 at 4:30 p.m.

Gailor Auditorium, reception following

**Translator Alana Levinson-LaBrosse**

Wednesday, July 5 at 4:30 p.m.

Gailor Auditorium, reception following

Co-sponsored with The Friends of the Library

**SCRABPOCALYPSE 3**

Scrabpocalypse Never Dies Scrabble Tourney

Thursday, July 6 at 6:30 p.m.

Blue Chair Cafe and Tavern

**MFA Candidate Readings**

Wednesday, July 12 at 4:30 p.m.

Gailor Auditorium, reception following

**For more information:**

<http://letters.sewanee.edu/readings/>



## SSMF (from page 1)

most important processes that occurs behind the scenes.

"When you recruit for a musical festival like ours, you basically have to get the exact right instruments for an orchestra. It's not like band where anyone who showed up got to play. Recruitment is a big jigsaw puzzle. You have to get exactly the right number for two orchestras. That is very complicated and a lot of work," said Loehrlein. "My goal is to have a few more violins and violas than we have, but I'm happy to say we're really close to our target numbers. In 2014, we had 162 students. We have 200 students this year, so we have grown a lot since then."

César Leal, assistant professor of musicology at the University and artistic director of the Sewanee Symphony Orchestra, began working with the festival last year.

Leal also serves as a member of the Artistic Advisory Committee for the festival, helping to decide what direction the program will go in each year.

"We start to talk about programs, which is a very delicate process, and that takes about a month. When the conductors suggest what pieces they want to conduct with the orchestras, we get together and analyze the pieces. We see the program from an artistic, narrative standard, and we must decide whether adding that piece to the program is cohesive and makes sense," said Leal.

Leal said because each of the students have different needs and come to the festival at varying levels, the preparation begins early enough to consider all the students.

"The needs are different so we strive to give them the opportunity to play pieces they will find later in their careers. We coordinate with our music librarian who gets all the music prepared to challenge the students to the max of their abilities while understanding their preparation, artistic level, and music maturity," said Leal.

Both Loehrlein and Leal say the aim of the festival is to provide the students with a professional-level experience.

"The format of the festival very much mimics the professional experience, with four or five rehearsals before the students must perform the piece in concert, change conductors and repeat the process. The festival aims to get the students the opportunity to experience the real life of a professional orchestral musician," said Leal. "When I lived in Paris, I would often get a last-minute phone call—"Somebody gave us your name. Can you be here at 7:30?"

"They learn repertoire here that will allow them to say yes when those calls come," said Loehrlein. "We're really focused on training them in things that they need to know when they go to college or when they become a professional."

In addition to gaining professional-level training and performance experience, students of the SSMF learn discipline and how to overcome limitations both in their musical ventures and in life in general.

"Students know from an early age what it's like to be a professional musician. Performance can be very unfair—you're measured only by the results, not the process. A five-minute audition in which you put years and years and years of work can be decisive, so we help them understand how that process affects their professional life. A lot of the students come from different states and countries, bringing with them different experiences, different teachers and styles. They get the experience of comradery and of learning from their peers, and they get good exposure to the future leaders of musical ensembles," said Leal.

For Loehrlein, the 11 months of work that goes into executing the festival is absolutely worth it.

"I love getting to know the kids and their families. I feel like I'm part of their family when they get here. They're so happy to see me because they understand all the work I've done to get them to come. That part is a lot of fun. It's just off the charts rewarding when it's going on. I just have goosebumps for four weeks," said Loehrlein. "Sewanee is a magical place. When you add the

special things about the music festival to what's already special about this place, it just becomes magical."

That Sewanee magic is not lost on Leal either.

"Getting to work with young musicians is one of the most rewarding experiences. When you see these kids playing a piece of music at the level we have here, their eyes just sparkle. They are blossoming in a month," said Leal. "Small things like a passage they have not been able to play for the last year, they play and practice and all of a sudden, they experience what music can do for them and have a feeling of accomplishment and being able to express themselves and getting to put themselves in the music. Getting to witness that is a privilege."

## Music City (from page 1) —

artists perform to an audience of 300-800 people in Liberty Hall in the Factory at Franklin. They reach thousands of viewers worldwide via <Livestream.com> and the Roots Radio Network. The show also goes out nationwide as a 14-week series on American Public Television.

For more information go to <MSSA1882.org> or call the the Monteagle Sunday School Assembly office at (931) 924-2286.

## Quickbooks Workshop

The University of Tennessee Extension program in Grundy County will sponsor a financial record keeping training sessions for nurseries, small farms, and small businesses on July 27–28. The record keeping software taught at the seminar will be QuickBooks Premier 2017. This is also an opportunity for people to learn about QuickBooks Pro since both of these software programs are similar. Dallas Manning, UT Extension Manage Specialist, will teach and take participants through a step-by-step process so that everyone can learn collaboratively during the workshop. The training sessions will be at the Grundy Co. Extension Office in Coalmont, 9 a.m.–4 p.m., Thursday, July 27, and 9 a.m.–noon, Friday, July 28. The cost of the training session will be \$50 per company (for one representative) and an additional \$25 for each additional participant.

For more information or a reservation, contact the UT Extension, Grundy County Office at (931) 592-3971. The University of Tennessee Extension offers its programs to all eligible persons regardless of race, color, national origin, sex, age, disability, religion or veteran status, and is an Equal Opportunity Employer.

[ads@sewaneeessenger.com](mailto:ads@sewaneeessenger.com)



...it's the little things

### WebForU2, LLC

[www.webforu2.com](http://www.webforu2.com)

**COMPLETE MEDIA SOLUTIONS**

Proudly serving local business in Middle Tennessee

Tom.Womack@webforu2.com  
615.995.5640

Sue.Womack@webforu2.com  
615.975.5969

**DEPENDABLE AFFORDABLE RESPONSIVE**



**EXPERT HANDYMAN  
KEN O'DEAR**

**25 YEARS EXPERIENCE**

**SATISFACTION GUARANTEED**

**931.235.3294**

**931.779.5885**

## WOODY'S BICYCLES

**SALES, SERVICE AND RENTALS**

A Full-Service Trek Bicycle Dealer

Mon–Fri 9–5 • Sat 10–2 • 90 Reed's Lane

598-9793 • [woodybike@gmail.com](mailto:woodybike@gmail.com)



Check out [www.woodysbicycles.com](http://www.woodysbicycles.com) for rates, trail maps, photos, bike club links, races and much more!





## MEET YOUR NEIGHBOR

by Kevin Cummings  
Messenger Staff Writer

### Helen Stapleton

Helen Stapleton grew up playing “Charlie’s Angels” in Alexandria, La., fighting pretend crime on the bayou, throwing figs and despising fishing.

“I was always glad that I was born a girl so I wouldn’t be expected to fish and hunt, because all the boys had to fish and hunt,” she says. “My daddy would sometimes take me fishing but I hated it.”

The Franklin County Commissioner and coordinator of Sewanee’s language lab says growing up in care-free Louisiana was wonderful.

“We’d be going all over the neighborhood on bikes or roller skates and basically we’d have wars,” she says. “Whatever was in season that’s what we would hurl at each other. If it was pecan season we’d be throwing pecans; if it was fig season we’d be throwing figs.”

Helen’s father was an attorney and former JAG lawyer in the Army, her British mother was a homemaker and English teacher. The couple had four girls, with Helen the youngest by eight years.

“I was almost like an only child,” she says.

Over lox and bagels at a local eatery, Helen, 48, waxes freely about politics and her work as secretary of the local Democratic Party. She’s passionate about many issues, including universal health care, the environment and economic justice.

“I was very apolitical growing up and in college; I really didn’t start caring until I had kids and then it really started to matter to me,” she says.

Her work as a county commissioner is mostly nonpartisan, she says, where the issues are usually cut and dried when it comes to making sure roads, schools and the sheriff’s department are funded and operating.

One unexpected part of being commissioner is the legal authority to perform marriages, and she’s performed ceremonies for hundreds

of couples as one of the few county officials still officiating weddings. In 2015, when the Supreme Court legalized same-sex marriage, most Franklin County public officials decided not to perform marriage ceremonies at all for fear of being sued for refusing to marry same-sex couples.

Helen has taken up a lot of slack in the nuptial department. Couples looking to wed will meet her during lunch breaks or after work and marry at the Memorial Cross or somewhere else on campus. She has performed three same sex weddings and she expects other county officials will eventually adjust to marriage equality.

“I realize this is a big shock for county officials and it’s going to take them a few years to let it sink in—‘OK, the sky didn’t fall, gays are getting married and it hasn’t ruined the world.’ I’m not making a big deal about the fact that they’re not doing their job,” she says. “I think they just need a little time to wrap their head around it—I think eventually they will.”

Helen went to college at Sewanee after initially enrolling at Tulane in New Orleans. One of her older sisters attended Sewanee and Helen visited campus at her mother’s insistence.

“It happened to be one of those perfect spring weekends,” she says. “If I had come on a foggy, ugly, cold spring weekend, I probably would have gone to Tulane and had a whole other life.”

At Sewanee, she met her future husband Archie, whose father was an Episcopal priest. Helen and Archie have three children now, Margaret, a Sewanee senior; Anna, a sophomore at Roanoke College; and Thomas, a sophomore at St. Andrew’s-Sewanee.

Between bites of bagel, Helen talks about the family’s farm in Alto, where

she grows the vegetables she cooks in dishes like gumbo, borscht and sinigang, a Filipino dish.

“Living in Guinea (in the Peace Corps) and the Philippines, I saw people who were completely self-sufficient growing all their own food, raising all their own animals and I’ve always wanted to live that way,” she says.

Besides growing vegetables and cooking, the other activities that make Helen happiest in life are a good game of Scrabble and completing The New York Times crossword puzzle. She has a love for words and languages, speaks French and Spanish, and has studied German, Russian and the Igorot language of the Philippines.

She and Archie lived there for a couple of years before returning to the Mountain.

“My dream is to be able to go back to the Philippines and speak fluent Igorot,” she says. “My ideal life would be to spend half the year there and half the year in Sewanee. The town where we lived, Sagada, is kind of like Sewanee. It’s a small mountaintop town that’s centered on the Episcopal Church.”

There’s plenty of lox left after the interview is over and she packs the salmon in a to-go box because she doesn’t like to waste food (at least not as much as her fig-throwing days) and the former Charlie’s Angel steps into the summer sun.

## SSMF Launches Season with Record Number of Students and New Staff

More than 200 music students, 25 faculty artists and 14 staff members have assembled in Sewanee to form one of the largest festivals in recent years. As new students and faculty acquaint themselves with the University and the festival routine, the Sewanee Summer Music Festival (SSMF) is completing a leadership transition. Evelyn Loehrlein has been affiliated with the SSMF since 2013. Acting director through the 2016 festival, she now fills the role on a permanent basis. A professional flutist, she serves as principal flute of the Huntsville (Alabama) Symphony Orchestra and is a trustee of the Louisville Orchestra.

Loehrlein announces that Ruth Cobb, assistant director for marketing and development, is moving to a new role as the assistant to the chaplain for ministry and student development at All Saints’ Chapel. Cobb also conducts the Sewanee Chorale.

Hilary Ward, visiting assistant professor in the Department of Music and the School of Theology, has been named assistant director of the SSMF. Before moving to Sewanee, Ward worked and taught for Uncommon Charter Schools in New York City. Ward has completed more than 200 hours of Teaching Artist Training through Lincoln Center Education at the Juilliard School in New York City. Ward moved to Sewanee last year with her husband Geoffrey, who is the University organist and choirmaster.



The new Assistant Director of the SSMF Hilary Ward, left, poses with SSMF Director Evelyn Loehrlein and Assistant to the Chaplain for ministry and Student Development, Ruth Cobb. Photo by the University of the South

### J & J GARAGE

#### COMPLETE AUTO REPAIR

- Import & Domestic
- Computerized 4-wheel alignments
- Shocks & Struts • Tune-ups • Brakes



Our work is guaranteed

More than 35 years experience  
Hwy 41-A between Sewanee & Monteagle  
Mon.-Fri. 7:30-5:30

Jerry Nunley,  
owner  
598-5470

#### HOUSE CALL SERVICE AVAILABLE

Full Service Veterinary Care for Dogs, Cats & Horses  
Offering Acupuncture, Chiropractic & Herbal Therapies



Monday-Friday 7:30 am-6 pm; Saturday 8 am-noon

AFTER-HOURS EMERGENCY SERVICE AVAILABLE

Traci S. Helton, DVM 931-962-3411

505 S. Jefferson St., Winchester (41-A toward Winchester. First left after Domino's Pizza)



The Monteagle  
Sewanee  
Rotary Club  
meets at 8 a.m.,  
Thursdays, at the  
Sewanee Inn  
“Service Above Self”

### A-1 CHIMNEY SPECIALIST “For all your chimney needs”

Dust Free • Chimneys Swept, Repaired,  
Relined & Restored • Complete Line of  
Chimney Caps • Waterproofing  
Video Scanning



G. Robert Tubb II, CSIA Certified & Insured  
931-273-8708



Come check out  
our new space  
after all the  
renovations!

Summer hours are through July  
15, 7:30 a.m.-10:30 p.m., Monday  
through Sunday. Closed on July 4.  
Georgia Avenue, Sewanee

598-1786

Like Us On facebook for specials and updates

ROB MATLOCK  
CONSTRUCTION COMPANY  
NEW HOME BUILDING  
AND REMODELING

MEMBER, U.S. GREEN BUILDING COUNCIL

PHONE 931-598-5728

**MATLOCK**

State Licensed • Fully Insured

**Winchester Podiatry**

**CHARLES D. GANIME, DPM**

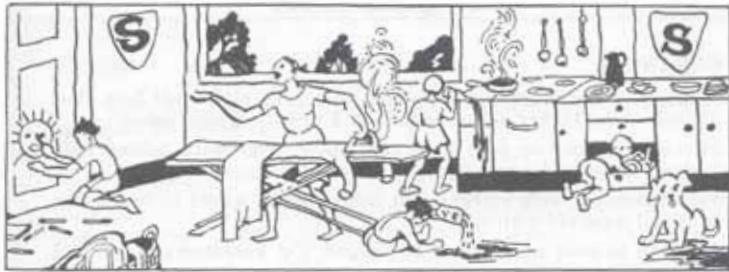
Board Certified in Foot Surgery  
Diplomate, American Board of Podiatric Surgery  
New Patients of All Ages Welcome! We Treat Your Feet! Most Insurance Accepted, Including TennCare

155 Hospital Road Suite 1, Winchester.  
www.winchesterpodiatry.com

**931-968-9191**

## SEWANEE NOW AND THEN

*Sewanee Trust for Historic Preservation*



The Sewanee Cookbook was first published in 1926. Along with “receipts” contributed by ladies in the Sewanee community, is this selection from the list of household remedies:

**Pneumonia Cure:** Six or 10 onions, according to size, chopped fine; put in a large spider over hot fire and add about the same quantity of rye meal and vinegar to make it a thick paste. Stir thoroughly and let simmer 5 or 10 minutes. Then put in a cotton bag large enough to cover lungs and apply as hot as patient can bear. When it cools, apply another and thus continue by reheating the poultices. In a few hours the patient will be out of danger; usually three or four applications being sufficient. This simple remedy has never failed in this too often fatal malady. A New England physician, one of the best of many years ago, formulated this simple remedy, and never lost a patient when thus treated. He won his renown by saving patients by simple remedies after the best medical talent had pronounced their case hopeless. This cure for pneumonia was taken from the New York Sun many years ago and has been used by me in the country for the past 18 years, never having lost a patient using this treatment. (Mrs. G. A. Washington nee Queenie Woods).

**To Cure the Sting of a Bee or Wasp:** Bind on common baking soda, dampened with water. Or mix common earth with water to about the consistency of mud.

**To Cure Earache:** Take a bit of cotton batting, put on it a pinch of black pepper, gather it up and tie it, dip it in sweet oil, and insert it in the ear; put a flannel bandage over the head to keep it warm; it often gives immediate relief. Tobacco smoke, puffed into the ear, has oftentimes been effectual.

**Cure for Lockjaw—Said to Be Positive:** Let any one who has an attack of lockjaw take a small quantity of spirits of turpentine, warm it, and pour it in the wound—no matter where the wound is or what its nature is—and relief will follow in less than one minute.

**Sunstroke:** Wrap a wet cloth bandage over the head; wet another cloth, folded small, square, cover it thickly with salt, and bind it on the back of the neck; apply dry salt behind the ears. Put mustard plasters to the calves of the legs and soles of the feet. This is an effectual remedy.

**Fainting:** Immediately place the person fainting in a lying position, with head lower than body. In this way consciousness returns immediately, while in the erect position it often ends in death.

**A Burn:** Lay a piece of charcoal on a burn and the pain will cease. Keep it there an hour to heal the wound, or use equal parts of linseed oil and lime water.

**Relief for Choking:** A raw egg swallowed immediately will generally carry down a fish bone or other substance which cannot be removed otherwise.

**Cure for Hiccough:** Sit erect and inflate the lungs fully. Then, retaining the breath, bend forward slowly until the chest meets the knees. After slowly rising again to the erect position, slowly exhale the breath. Repeat this process a second time, and the nerves will be found to have received an access of energy that will enable them to perform their natural functions.



*Frida Visits Venice, digital collage, by Frances Perea*

## Summer Begins with New Community Show, ‘Vacation’

The Franklin County Arts Guild welcomes the beginning of the summer with its community show “Vacation.” An opening reception will be 5–7 p.m., today (Friday), June 23. Come meet all our community artists and talk with them about their interpretation of the theme. Come see if your idea of a vacation is in any of the work on exhibit. Is it the beach, the mountains, a good book, or lemonade on a hot day? Or is it something else altogether? The show runs through July 30.

The Franklin County Arts Guild invites original contributions from Franklin County artists of all ages in any media for inclusion in its Community Arts Shows at the Artisan Depot. Individuals wishing to submit work for the next community show “American Retro” should submit their work at the Artisan Depot from July 27–30 during gallery operating hours. Each artist is free to interpret the theme of each show as they wish.

The Artisan Depot is operated by the Franklin County Arts Guild and is located at 204 Cumberland St. East, Cowan. Gallery hours are noon to 5 p.m. on Thursday, Friday and Sunday, and 11 a.m. to 5 p.m. on Saturday.

For more information about upcoming community art shows, the gallery or the guild visit us at <[www.franklincoarts.org](http://www.franklincoarts.org)> or <[www.facebook.com/artisandepot](https://www.facebook.com/artisandepot)> or contact Diana Lamb at (931) 308-4130.

## Reverse Raffle Tickets Available from SBA

The Sewanee Business Alliance (SBA) is sponsoring a reverse raffle to benefit Angel Park and the Community Action Committee, with a chance for participants to win up to \$10,000.

Tickets are \$100 each and are for sale at the following local businesses: The Blue Chair, Locals, Lemon Fair, University Realty and Woody’s Bicycles. Tickets may also be purchased online at <[www.sewaneevillage.com/park/](http://www.sewaneevillage.com/park/)>.

During each Friday Nights in the Park event, there will be a drawing for a special prize. The ticket drawn will be placed back in the pool for another chance to win. Ticket holders must be present to win the drawing. On the last night, July 14, the \$10,000 grand prize drawing will be held.

University Avenue will be closed at 6 p.m. each of these nights for the annual outdoor family event, with food and drink available for purchase. The entertainers play from 7:30 p.m. to 9:30 p.m. in the Angel Park Pavilion. The events are free and open to the public. Rain location is American Legion Hall.

## Bradford's

*Nursery & Landscaping  
on the Boulevard in Winchester*

**FULLY STOCKED FOR THE  
SPRING SEASON!**

**NEW STOCK ARRIVING DAILY!**

Annuals, perennials, ferns, trees, shrubs, ornamentals, grasses, groundcovers, concrete statuary, fountains, bird baths and much more.

*Come by and let us help you make the right selection for your landscape, or call for free estimate on professional landscaping. We do it right the first time!*

Open Mon–Sat 9–5:30; Sun 12:30–4:30 • 931-967-0825  
1136 Dinah Shore Blvd. in Winchester

## SEWANEE SUMMER Music FESTIVAL

## SSMF Music Events

The Sewanee Summer Music Festival (SSMF) continues. For complete information and to purchase tickets, please go to <[sssmf.sewanee.edu](http://sssmf.sewanee.edu)>. Advance tickets are \$15 or \$20 at the door.

### SSMF for KIDS

Elizabeth Blakeslee and the SSMF harp studio present an engaging demonstration of their instruments for the young and curious. (There’s ice cream, too!) This free demonstration will be at 3 p.m., Saturday, June 24, at Convocation Hall.

The SSMF for KIDS concert is presented with the generous support of Pam and Greg Maloof in honor of Martha McCrory, director of the SSMF for 35 years.

### Faculty Chamber Music Concert

At 7:30 p.m., Saturday, June 24, there will be a Faculty Chamber Music Concert in Guerry Auditorium, with Robert Moody, conductor. Repertoire includes “Suite from the Monterey Hills,” by Morley Calvert (1928–1991); “String Quintet No. 2, Op. 77,” by Antonín Dvořák (1841–1904) and “Serenade for String Trio, Op. 10” Ernő Dohnányi (1877–1960).

At 7:30 p.m., Wednesday, June 28, the Faculty Chamber Music Concert will be in Guerry Auditorium. Selections include “Sonata for Flute, Viola and Harp, L. 137,” Claude Debussy (1862–1918), “Sonatine for Brass Quintet,” Eugène Bozza (1905–1991) and “Piano Quintet in F Minor, M. 7” César Franck (1922–1890). Tickets are required.

### Leonidas Polk Carillon

There will be a free Carillon Concert at 1:45 p.m., Sunday, June 25, by Raymond Gotko.

### Cumberland Orchestra & Sewanee Symphony

Sunday, June 25, at 2:30 p.m., the Cumberland Orchestra will play in Guerry Auditorium with Gene Moon, conductor. Selections include “Festive Overture, Op. 96” Dimitri Shostakovich (1906–1975) and “Scheherazade, Op. 35” Nikolai Rimsky–Korsakov (1844–1908).

At 3:30 p.m. the Sewanee Symphony will play in Guerry Auditorium, with Robert Moody, conductor. Selections include “Rainbow Body (2000)” Christopher Theofanidis (b. 1967) and “Symphony No. 2 in E Minor, Op. 27” Sergei Rachmaninoff (1873–1943). Tickets are required.

### Brass Concert

At 5:30 p.m., Thursday, June 29, the Brass Concert will be held at the Angel Park in downtown Sewanee. The program will be announced from the stage.

### Student Chamber Music Concert

At 7:30 p.m., Thursday, June 29, the concert will be held at the Sewanee Inn. The program will be announced from the stage.

*Pearl's*

POP  
UP

ART  
& RUG  
SALE!

**STANFORD FINE ART**

**Becky Braddock Pottery**

**MorningSide Rugs & Art**

**SUNDAY**

**JULY 2**

**1–7 PM**

**CHAMPAGNE**

**AND CANAPÉS**

**WILL BE SERVED**

**FINE ART • TURKISH & PERSIAN RUGS • CRAFT ART**

*'Power of Powerlessness' by Pippa Browne*

## Summer Festival of Artists and Authors at IONA

The Summer Festival of Artists and Authors at IONA: Art Sanctuary opens Tuesday, June 27 with readings and art exhibits. The public is welcome, all events are free, and parking is available. Readings begin at 5 p.m. and a reception follows. There will be an exhibition of paintings "dogs as fantasy angel spirits and carers of the dark" by Pippa Browne through July 2.

Browne was born and lived most of her life in Zimbabwe, Africa. In 1985 she obtained a bachelor's degree in fine art and psychology and post-graduate diploma in education from the University of Natal, South Africa.

While she was teaching in Zimbabwe, her art was regularly selected for the Zimbabwean National Heritage exhibitions at the National Gallery of Zimbabwe, and she participated in solo and group exhibitions in other galleries in Harare.

In 1995, Browne started illustrating children's books for the publisher Barefoot Books of Bath, UK. Between 1996 and 2000 her illustrations were selected for a number of international traveling exhibitions. Browne has shown her paintings in galleries in Salinas, Calif., Memphis and Sewanee where she now lives.

At 5 p.m., Tuesday, June 27, Sewanee Spoken Word is hosting with the theme "The Island Within." Scheduled to read are Erich Eichler, from Sewanee, short story; Kasey Johnson, Seattle, Wash., poetry; Jessica Wohl, Sewanee, essay. Browne will introduce her show and talk about her art.

Wednesday, June 28, at 5 p.m., readers include Peter Trenchi and Walter William Melnyk.

Trenchi is a graduate of the School of Letters and a writer of poetry. Melnyk is a novelist, poet, violinist and weaver. He lives in a small log cabin in the woods near Monteagle. He is an alumnus of the School of Theology at Sewanee, and served as an Episcopal priest for 25 years until 2005. His latest novel is "Pavel's Violin: A Song of Hope."

On Thursday, June 29, at 5 p.m., creative writers include April Alvarez, Megan Roberts and Adam Latham.

Alvarez is the Administrator for the School of Letters. A native of North Carolina, she holds a B.A. in English and Journalism from The University of North Carolina at Chapel Hill. She received her M.F.A. in 2015 from the School of Letters. She serves on the creative council of Rivendell Writers' Colony. She worked for the National Geographic Society before moving to Sewanee, where she lives with her husband, photographer Stephen Alvarez, and two children. Roberts is the Associate Director of Programs and Finance for the Sewanee Writers' Conference. A 2003 graduate of the University of the South, she received her M.F.A. in fiction from the School of Letters in 2013. She lives in Sewanee with her husband, Haynes, and their daughters. Latham's stories have appeared in Mississippi Review and Blackbird. He graduated from the University of the South and holds a master's degree in publishing from NYU. He is the Associate Director of Marketing and Admission for the Sewanee Writers' Conference.

At 5 p.m., Friday, June 30, readers will include Erika Cannon, Kevin Cummings and Elizabeth Savage.

Cannon is a storyteller. She wrote short novels in elementary school, chronicled school life in junior high and high school yearbooks, majored in journalism at the University of South Carolina, then told stories of small town life in the Sumter Daily Item, one of the country's last afternoon newspapers. She continues her storytelling through a blog, As We Live <www.as-we-live.com>, in which she looks at moments of her life through the filter of scripture, and tries to listen for God's direction. She lives in Sewanee with husband Michael, a student at the School of Theology, and daughter Isabel. Cummings is a poet, journalist and freelance writer, and co-founder of Sewanee Poetry Night (now Sewanee Spoken Word). Cummings will perform poetry at IONA that is visceral, truth-seeking and occasionally frilly. He has written for numerous publications and served as editor, publisher and reporter at various newspapers in Oregon, the Dakotas, Tennessee and Georgia. Kevin is currently a staff writer and sports editor for the Sewanee Mountain Messenger. Savage is a native of southwestern Indiana. She lives in Newburgh and teaches high school English in Mount Carmel, Ill. She has a short story published on 1 in 1000. She is an M.F.A. student of poetry at the Sewanee School of Letters.

On Saturday, July 1, and Sunday, July 2, from 1–3 p.m., IONA is open for viewing of Browne's paintings. IONA: Art Sanctuary is located on 630 Gartnertown Road.

[www.TheMountainNow.com](http://www.TheMountainNow.com)

## Haskell at School of Letters Reading, June 28

Each summer the School of Letters invites writers, poets, publishers and scholars to speak each week that school is in session. These events are free and open to the public. A reception follows.

At 4:30 p.m., Wednesday, June 28, in Guerry Auditorium, author David Haskell will be the reader. Haskell's work integrates scientific, literary and contemplative studies of the natural world. His latest book, "The Songs of Trees: Stories from Nature's Great Connectors" (Viking, 2017), examines the many ways that trees and humans are connected. Deborah Blum, Pulitzer winner, author of "The Poisoner's Handbook," and director of the Knight Science Journalism program at MIT says, "David George Haskell may be the finest literary nature writer working today. 'The Songs of Trees' – compelling, lyrical, wise – is a case in point."

His first book, "The Forest Unseen: A Year's Watch in Nature" (Viking, 2012), was winner of the National Academies' Best Book Award for 2013, finalist for the 2013 Pulitzer Prize in nonfiction, winner of the 2013 Reed Environmental Writing Award, winner of the 2012 National Outdoor Book Award for Natural History Literature, runner-up for the 2013 PEN E. O. Wilson Literary Science Writing Award, and winner, in its Chinese translation, of the 2016 Shenzheng Dapeng Nature Writing Award.

Haskell is a 2014-2015 Fellow of the John Simon Guggenheim Memorial Foundation. He holds degrees from the University of Oxford (B.A.) and from Cornell University (PhD). He is professor of biology and environmental studies at the University of the South.

For more School of Letters events, go to <letters.sewanee.edu>.



David Haskell

Like the Messenger? Let us know on Facebook!

## AT THE MOVIES

SEWANEE UNION THEATRE  
Friday–Monday, June 23–26,  
7:30 p.m.

**Smurfs: The Lost Village**  
PG • 91 minutes

Best friends Smurfette (Demi Lovato), Brainy (Danny Pudi), Clumsy (Jack McBrayer) and Hefty (Joe Manganiello) use a special map that guides them through the Forbidden Forest, an enchanted wonderland that's filled with magical creatures. Their adventure leads them on a course to discover the biggest secret in Smurf history as they race against time and the evil wizard Gargamel (Rainn Wilson) to find a mysterious village.

Admission is \$3 for students and \$4 for adults.

The SUT will be closed during Fourth of July weekend. The July schedule will be announced soon.

THE LOCAL MOVER  
615-962-0432

Need More Room?

We Sell Boxes!

**Sewanee Mountain Storage**  
(931) 598-5682  
Dan & Arlene Barry

Hwy 41 - Between Sewanee & Monteagle

■ Security Gate

5x10 | 10x10 | 10x20

■ Security Camera

For Your Antiques and Prized Possessions

Climate Control

5x5 | 5x10 | 10x10 | 10x15 | 10x20

Temperature and Humidity Regulated



91 University Ave. Sewanee

**UNIVERSITY REALTY**  
SEWANEE TENNESSEE



sewaneehouses.com | (931) 598-9244

Lynn Stubblefield (423) 838-8201

Ed Hawkins (954) 830-4760

Susan Holmes C'76 (423) 280-1480



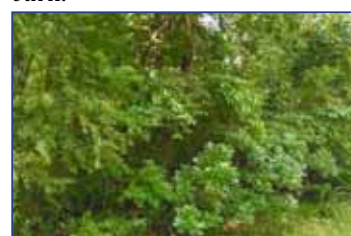
**LOG CABIN.** Beautiful custom home on the bluff, vaulted ceilings, great room, master on 1st floor, screened in porch up and down stairs, loft overlooking living rm, two additional bluff lots available. \$219,000



**3932 JUMP OFF RD., SEWANEE.** Custom house and guest house, open floor plan, trey ceilings, amazing kitchen, formal dining, 3 BR, 2.5 BA. Guest house 2 BR, 1.5 BA, 2 car finished & heated garage, 5.9 acres, close to town. ADA compliant.



**CENTRAL CAMPUS, KENTUCKY AVE.** Lovely, well maintained home, spacious single story, 4 br, 2.5 baths, 2 fireplaces, screened in porch, deck, patio, barn.



**LAUREL LAKE DR.** 6 Laurel Lake Drive, lot 6, Monteagle. 8.850 acres. \$108,000



**CHICKORY LN.** 1.23 ac lot nicely wooded, 4.97 acres entrances on Chickory & Laurel Lake Dr. Very secluded and very pretty!



**1824 RIDGE CLIFF DR.** Monteagle. Beautiful maintenance free home on the bluff. 3 bedrooms, 2 baths, custom kitchen, large wrap around porch, 2 car garage, workshop in dry basement. \$350,000



**BLUFF LOT.** Laurel Lake Dr. with amazing sunset view, great looking hardwoods, gently rolling, private & secluded 15.9 acres \$125,000

**COMMERCIAL.** 1+ acres behind Citizens Tri-County Bank on Spring St. All utilities in place.

**BLUFF TRACTS** Stunning view of Lost Cove on Sherwood Road. 3 miles from University Ave. Over 1,600 feet on the bluff and the road. Easy to develop. 17.70 acres

**BLUFF LOT** overlooking Lost Cove. Beautiful sunrise, cool evenings. 4.08 acres. \$80,000.

A PORTION OF SALES MADE THROUGH OUR OFFICE WILL BE DONATED TO HOUSING SEWANEE

## NATURENOTES



Notice the umbrella-like stalks of Queen Anne's lace.  
Photo by Yolande Gottfried

### Queen Anne's Lace

Queen Anne's lace is in its glory on our roadsides and in our fields and gardens, reports **Yolande Gottfried**. It seems that the first flowering heads of each season are the largest, though the plant usually produces several heads. And these flower heads are amazing. They are compound umbels (from the flowering stalks, radiating from a central point like the ribs of an umbrella) composed of 75 smaller umbels with a grand total of 2, 500 florets per head! Look at the flowers closely to marvel at their intricacy and delicacy, with differences among the tiny petals.

Queen Anne's Lace is listed in the category "alert" by the Tennessee Exotic Pest Plant Council, as it can be an exotic pest plant in similar or nearby habitats. Yet it was a prized garden plant in England and was brought to our shores on purpose by the first European settlers. Even the early Greeks and Romans used it as a medicinal plant. It was also eaten as a vegetable, though only as a pot herb when young. If you have pulled it up as a weed, you have noticed the carrot-y smell.

So how did this tough, stringy wild carrot become the vegetable we eat today? Research and plant breeding programs at the time of World War I and its attendant food emergencies led to the carrot we know today, making it a relatively recent food item in our general diet.

The common name comes from a legend that as Queen Anne, the wife of James I of England, sat in the summer with her ladies in a garden which included this plant, she challenged them to make a lace as beautiful as the flower. Of course, no one could (or would) outshine the Queen at lace-making, and the plant inherited the name we now use.

[The red flower in the center is thought to represent a blood droplet where Queen Anne pricked herself with a needle when she was making the lace. The function of the tiny red flower, colored by anthocyanin, is to attract insects. —from Wikipedia]

Share your nature notes!  
[news@sewaneemessenger.com](mailto:news@sewaneemessenger.com)

## BUG PROBLEMS?

We can help! Call us for a free inspection!

### BURL'S TERMITE & PEST CO.

TERMITE—PEST—VAPOR CONTROL  
Bonded • Insured • Home-Owned & Operated  
105 Ake St., Estill Springs  
(931) 967-4547 or [www.BurIsTermite.com](http://www.BurIsTermite.com)  
Charter #3824 • License #17759



### STEVE A SWEETON YOUR LOCAL LICENSED BUILDER

SWEETON HOME BUILDERS  
GENERAL CONSTRUCTION  
REMODELING • REPAIRS  
763 WHITE CITY CIRCLE  
TRACY CITY, TN 37387  
423-593-3385 CELL • 931-592-6554 RES  
[steveasweeton@gmail.com](mailto:steveasweeton@gmail.com)

## State Park Offerings

Saturday, June 24

Friends of South Cumberland Annual Meeting, Picnic and Family Fun Day, Big Red Barn, Beersheba Springs—A full day of hikes, demonstrations and fun are planned for the Friends Annual Meeting and Picnic. All Friends members are welcome to attend this free event:

8:30–11:00 a.m.—Hike at Greeter Falls/Boardtree Falls, led by Ranger Aaron Reid (meet at Greeter Falls Parking Area, 550 Greeter Falls Rd., Altamont);

11:30 a.m.–1:30 p.m.—Friends Annual Meeting & Picnic, Big Red Barn, Beersheba Springs, (special kids' program with Ranger Murray Gheesling from 11:30 a.m. to noon);

2–4 p.m.—Rock Climbing demonstration & "try-it-out" at Stone Door with Ranger Jason Reynolds and Asst. Park Mgr. Bill Knapp.

"Livin' the CCC Life" (TN Promise event)—All area high school and college students are invited to join Ranger Park Greer at 9 a.m. at Grundy Forest Parking Area, 131 Fiery Gizzard Rd., Tracy City, for a chance to give back to the community while earning valuable volunteer hours toward your TN Promise commitment. The Grundy Day Loop, also the northernmost part of the Fiery Gizzard Trail, was originally constructed back in the 1930s and has since been a popular destination for hikers, campers and nature lovers from all around the world, but 80+ years of use have led to some major wear and tear on our favorite trail. Students will be working much the same way the Tracy City chapter of the Civilian Conservation Corps (CCC) did in the 1930s, to create new sections of trail, repair existing sections, build rock steps, and relieve the daily life of a CCC trail boss. All tools will be provided. Bring a lunch, water, sturdy shoes, and, if you have them, a pair of work gloves. Donuts, fruit, coffee and juice will be provided for breakfast. Teachers, friends and family members are welcome. To register, sign up online and choose "South Cumberland State Park" as the place where you're volunteering. Please contact Ranger Park Greer if you have any questions.

"The Waterfall Trifecta"—Join Ranger Jessie at 10 a.m. at Grundy Forest parking area, 131 Fiery Gizzard Rd., Tracy City, for this 3-mile hike to see three beautiful waterfalls on the Fiery Gizzard Trail. Blue Hole, Sycamore, and Hanes Hole falls are some of the best in the park, and you'll also learn about some of the geologic and botanical wonders of the area, too.

Wednesday, June 28

Coffee with Ranger John (BYOC)—Come to the The South Cumberland State Park Visitors' Center, on Hwy. 41 South between Monteagle and Tracy City at 8:30 a.m. to go for a 1.5-mile walk on the Meadow Trail with Ranger John to find out all the jobs a Ranger does.

The South Cumberland State Park Visitors' Center is located on Highway 41 South between Monteagle and Tracy City and is open 8 a.m.–4:30 p.m. seven days a week. For more information call (931) 924-2980.



Tabby



Jack

## Pets of the Week

### Meet Tabby & Jack

Animal Harbor offers these two delightful pets for adoption.

Tabby is a loving kitten who is cute, playful, and ready to cuddle. If you want a rambunctious new friend to entertain you, he will be the perfect new addition to your family. Tabby is negative for FeLV and FIV, house-trained, up-to-date on shots, microchipped and neutered.

Jack is a sweet Beagle-Dachshund mix who loves attention! This young adult is always ready for a new adventure and can't wait to meet you! Jack is heartworm-negative, up-to-date on shots, microchipped and neutered.

Animal Harbor offers substantial adoption fee discounts for veterans and seniors. Every Friday is Black Friday at Animal Harbor. On Fridays, adoption fees will be reduced 50 percent for black or mostly black pets more than 4 months old who have been at Animal Harbor for more than a month. Pets adopted from Animal Harbor qualify for a free post-adoption wellness exam by local veterinarians.

Animal Harbor is located at 56 Nor-Nan Road, off AEDC Road, in Winchester. Call Animal Harbor at 962-4472 for information and check out the other pets at <[www.animalharbor.org](http://www.animalharbor.org)>. Enter the drawing on this site for a free spay or neuter for one of your pets. Help Animal Harbor continue to save abandoned pets by sending donations to Animal Harbor, P.O. Box 187, Winchester, TN 37398.

## Tennessee Naturalist Program Registration

Friends of South Cumberland State Park has set the schedule for the 2017-18 session TN Naturalist Program (TNP) classes. This will be the sixth year the program has been offered. The classes, all taught by individuals knowledgeable in their fields, many of them Sewanee professors, are divided between lectures, hands-on activities and many hours of outdoor immersion. Topics include local geology, forests, animals, plants, fungi, aquatic biology and astronomy.

The 10 four-hour classes will meet Saturdays throughout the fall and spring of the year, sometimes at South Cumberland State Park, sometimes on the Sewanee campus. To earn certification as a Tennessee Naturalist, students need to attend the classes plus do 40 hours of volunteer work in support of a natural area.

The cost for the classes is \$250. In addition, students must be a member of the Friends of South Cumberland, which has a \$25 registration fee.

To learn more about the instructors and the topics and to register for the class please visit: <<http://www.friendsofsouthcumberland.org/tn-naturalist-application.html>>. Only the first 20 people who register and pay will be guaranteed a spot in the class. All qualified registrants will be contacted in early August via email.

## Weather

DAY	DATE	HI	LO
Mon	June 12	85	65
Tue	June 13	84	65
Wed	June 14	85	68
Thu	June 15	84	62
Fri	June 16	81	63
Sat	June 17	75	70
Sun	June 18	82	66

### Week's Stats:

Avg max temp =	83
Avg min temp =	65
Avg temp =	74
Precipitation =	2.2"

Reported by Sandy Gilliam  
Domain Ranger



### SHARE the TRAIL

#### Rule #4

No motorized vehicles, except motorized wheelchairs.

WALK • RUN • CYCLE  
TOGETHER

[mountaingoattrail.org](http://mountaingoattrail.org)

## SEWANEE AUTO REPAIR

### Complete Auto & Truck Repair

Tune-ups • Tires • Tire Repair • Brakes • Steering  
• Oil Changes • Batteries • Computer Diagnostics



### SEWANEE AUTO WILL BE CLOSED JULY 1-9.

Open 7 to 5 M-F  
(931) 598-5743 • 76 University Ave.

Hiking  
enthusiast?  
Click "SEE"  
on [www.  
TheMountain  
Now.com](http://www.TheMountainNow.com)

# Classifieds

## ART

the **ARTISAN** DEPOT  
Gallery & Gifts  
**NOW JURYING FOR FINE CRAFTS**  
204 E. Cumberland St., Cowan  
Open Thurs-Sun • 931-308-4130

## CLEANING

Sparkle  
**HOUSE  
CLEANING**  
Call Wanda 423-680-9923

**I CLEAN HOUSES AND OFFICES IN THE AREA.** References available. Call (931) 409-4520. Leave message.

## ENGINE REPAIR

**SARGENT'S SMALL ENGINES:** Repairs to All Brands of Equipment: Lawn mowers (riding or push), String trimmers, Chainsaws, Chainsaw sharpening. New saw chains. Pickup and Delivery Available. (931) 212-2585, (931) 592-6536.

## MOVING/YARD SALE FLEA MARKET/

**ESTATE / MOVING SALE:** Friday, June 30 and Saturday, July 1, 8:30 a.m.-?? No Early Birds. Wide range of wonderful items/great stuff! 107 Blackberry Lane, Sewanee, Jumpoff neighborhood. (931) 598-0559.

**I-24 Flea Market**  
**200 Vendors!**  
**24 Years!**  
**I-24 Exit 134**  
**Saturday & Sunday**  
**(931) 235-6354**

**INSIDE/OUTSIDE YARD SALE!** Summer items are here! Clothing for all, movies, games, household items. Friday and Saturday 8 a.m.-??, Midway Market, 969 Midway Rd., Sewanee. Come see us for really great bargains!

## FOR SALE

**FOR SALE:** 2006 Subaru Forester. 61K miles. Automatic. Updated. Excellent condition. \$9,500. (931) 924-3549.

**LOST COVE  
BLUFF LOTS**  
www.myspoint.net  
931-703-0558

## HAIR SALONS

(931) 598-0033  
**HAIR DEPOT**  
17 Lake O'Donnell Rd., Sewanee  
**KAREN THRONEBERRY**, owner/stylist  
**JESSICA HONEYCUTT**, stylist/nail tech

## HELP WANTED

**SEEKING EXPERIENCED CAREGIVER:** For elderly woman with dementia. Start immediately, \$25 per hour, 3 hours per day, flexible schedule. Saturday, Monday, Wednesday, and Friday. Please send an email to <SHWNZP@GMAIL.COM>.

**CORNERS CUSTOM FRAMING:** Has a part-time position available. Previous experience is preferred but not necessary. All applicants must be able to read a tape measure, add and subtract fractions, and have an appreciation for all styles of decor. Apply in person 10 a.m. to noon, Monday-Friday.

**ISO VARIOUS CREW AND CAST:** No experience necessary! for a 16mm film about an immigrant lost in Appalachia. Shoot takes place July 6-9. To inquire, email Catalina Jordan, <Catalinafilm@gmail.com>.

Seeking experienced caregiver for elderly woman with dementia. Start immediately, \$25 per hour, 3 hours per day, flexible schedule. Saturday, Monday, Wednesday, and Friday. Please send an email to shwnzp@gmail.com

## LAWN CARE

**CHAD'S LAWN & LANDSCAPING**  
-FREE ESTIMATES-  
\* Lawn care & Design (Mulch & Planting)  
ALSO: \* Tree Trimming & Removal  
\* Pressure Washing \* Gutter Cleaning  
\* Leaf Pickup & Blowing \* Road Grading  
\* Garden Tilling \* Rock Work  
(931) 308-5059

**EAGLE LANDSCAPING & LAWN MAINTENANCE CO.**  
Now Offering Specials for SUMMER!  
We offer lawn maintenance, landscaping, hedge/tree trimming & more!  
Please call for your free estimate  
(931) 598-0761 or (931) 636-0383

**LONG'S LAWN SERVICE**  
• landscaping & lawn care  
• leaf removal • mulch  
Local references available.  
Jayson Long  
(931) 924-LAWN (5296)

## LOCAL SERVICES

**BEHAVIORAL MENTAL HEALTH**  
A Place of Hope  
W.C. Kerstetter  
Limited Openings  
Family & Individual  
931-213-4033

**DIRT WORK**  
• Bush Hogging  
• Driveway Maintenance  
• Gravel/Sand/Mulch  
• Large or Small Jobs  
Michael, 615-414-6177

**King's Tree Service**  
Topping, trimming, bluff/lot clearing, stump grinding and more!  
\*Bucket truck or climbing\*  
Free wood chips with job  
Will beat any quoted price!  
Satisfaction guaranteed!!  
—Fully licensed and insured—  
kingstreeservice.com  
Call (931) 598-9004—Isaac King

**MASSAGE**  
**Regina Rourk Childress**  
Licensed Massage Therapist  
www.reginarourk.com  
~ GIFT CERTIFICATES ~  
(931) 636-4806

Walk-In Cooler Filled with Flowers!  
**Monteagle Florist**  
333 West Main Street, Monteagle  
(931) 924-3292

**PROFESSIONAL NANNY/AU PAIR:**  
In Sewanee area. Full- or part-time availability. CPR certified. Infant/toddler teacher certified. Montessori-based learning and development. Work with all ages. Call/text (918) 998-6425 or email <Tiffanyhawkins415@gmail.com>.

**WATER SOLUTIONS**  
Joseph Sumpter  
Owner/Licensed Residential Contractor  
Specializing in drainage and rainwater collection systems  
598-5565  
www.josephsremodelingsolutions.com

**CHARLEY WATKINS**  
**PHOTOGRAPHER**  
Sewanee, TN  
(931) 598-9257  
http://www.photowatkins.com

**CLASSIFIED LINE AD RATES:**  
**\$3.25 first 15 words,**  
**10 cents@ additional word**  
**Now you can charge it!**  
**\$10 minimum**  
**VISA or MC**  
**CALL US! • 598-9949**

## MOVERS

**THE LOCAL MOVER**  
Available for Moving Jobs  
Call or Text Evan Barry  
**615-962-0432**  
Reviews at <www.thelocalmoverusa.com>.

**The Moving Man**  
Moving Services • Local or Long Distance  
Packing Services • Packing Materials  
**1-866-YOU-MOVE (931) 968-1000**  
www.themovingman.com  
Since 1993 U.S. DOT 1335895

## PETS

**FREE TO GOOD HOME:** Five adorable kittens dropped off, looking for their forever home. 8 weeks old, 3 females and 2 males. Call (931) 273-3361.

## TO BUY

**I BUY VINYL RECORDS:** 45s, 78s, LPs and VINTAGE STEREO COMPONENTS. (828) 719-6360 or <bbbfantzt@yahoo.com>.

## WOODWORKING

**The Gnarled Oak**  
Antique  
furniture refinishing and  
Chair caning  
(931) 592-9680  
Bill Childers, Prop

**Oldcraft Woodworkers**  
Excellence in custom  
woodworking.  
Kitchen and bath cabinets,  
bookcases, furniture and  
furniture repairs.  
Est. 1982. Phone 931-598-0208

Your ad could be here.

**TRAFFIC REMINDERS**  
It is state law to have your headlights on in fog and rain.  
The NEW speed limit on the University campus is 20 mph, except for Texas Avenue (around the Fowler Center), Morgan's Steep Road, Georgia Avenue and Finney Avenue, where it is 15 mph.

Shop and dine locally!

**Spring Hours**  
**CONVENIENCE/  
RECYCLING  
CENTER HOURS**

The Convenience Center for household garbage, trash and recycling is located on Missouri Avenue. Its spring hours are: Monday, 1-6 p.m.; Tuesday through Friday, 3-6 p.m.; Saturday, 8 a.m.-4 p.m.; Closed Sunday. Closed on national holidays. There are blue recycling bins for metal (tin, appliances, etc.), newspapers/magazines, plastic containers #1-#7, cardboard and aluminum cans. Glass recycling is on Kennerly Ave. behind PPS.

Love Doesn't  
Have to Hurt.  
Help is Free.

Call the  
**Haven of Hope**  
Victim Hotline  
**1-800-435-7739**



## CURBSIDE RECYCLING

Residential curbside recycling pickup in Sewanee is on the first and third Friday of each month. Recyclable materials must be separated by type and placed in blue bags by the side of the road no later than 7:30 a.m. Please do not put out general household trash on this day. Blue bags may be picked up in the University Lease and Community Relations Office, 400 University Ave. (the Blue House) or at the Physical Plant Services office on Georgia Avenue.

## Glass Recycling in Sewanee



**Available 7 a.m. to 6 p.m.,  
Monday through Saturday,  
outside of the PPS Warehouse on  
Kennerly Avenue.**

**Reuse Reduce Recycle**

## Contact Information for Your Local Elected Officials

### SEWANEE COMMUNITY COUNCIL

District 1  
David Coe: 598-9775  
Flournoy Rogers: 598-0733

District 2  
Pam Byerly: 598-5957  
Louise Irwin: 598-5864

District 3  
Pixie Dozier: 598-5869  
Charles Whitmer: 636-7527

District 4  
Richard Barrali: (423) 667-9075  
Phil White: 598-5846

At-large Representatives  
Annie Armour: 463-2033  
Cindy Potter: 598-5773

Kate Reed: 598-3271  
Theresa Shackelford: 598-0422

### FRANKLIN COUNTY COMMISSIONER

Johnny Hughes: 598-5350  
Helen Stapleton: 598-9731

### FRANKLIN COUNTY SCHOOL BOARD REPRESENTATIVE

Adam Tucker: 598-0648

### SEWANEE UTILITY DISTRICT BOARD

Art Hanson: 598-9443  
Randall Henley: 636-3753  
Ronnie Hoosier: 598-9372  
Karen Singer: 598-9297  
Charlie Smith: 598-0500

### FRANKLIN COUNTY ROAD COMMISSIONER

Joe David McBe: 598-5819

### FRANKLIN COUNTY MAYOR RICHARD STEWART

Website: www.franklincotn.us  
Email: Richard.Stewart@franklincotn.us  
1 South Jefferson St.  
Winchester, TN 37398  
Phone: (931) 967-2905 • Fax: (931) 962-0194



# BARDTOVERSE

by Phoebe Bates

## Sewanee Summer Music Festival Opening

Lorenzo: ... The man that hath no music in himself,  
Nor is not moved with concord of sweet sounds,  
Is fit for treasons, stratagems and spoils;  
The motions of his spirit are dull as night,  
And his affections dark as Erebus:  
Let no such man be trusted, Mark the music.  
*Shakespeare, Merchant of Venice, Act V, sc. 1*

Michael A. Barry

LAND SURVEYING  
& FORESTRY

★ ALL TYPES OF LAND SURVEYS  
★ FORESTRY CONSULTING

(931) 598-0314 | (931) 308-2512

Spread good news!

Chris Search

csearch2013@gmail.com

(937) 815 6551

facebook.com/SearchsServices

One call may solve it all

Search's Services

Home Improvement/Residential Maintenance

South Cumberland  
Farmer's Market

Weekly Features

Soy Wax Candles from Cherokee Purple Tomatoes

Full Circle Candles from Bountiful Harvest Farm

Order online Friday, 9 p.m. to Monday, 10 a.m.  
sewanee.locallygrown.net/  
Pickup Tuesday, 4:30-6 p.m.  
Sewanee Community Center

Music City Roots on the Mountain!

Join us Friday evening for a night of music at the Monteagle Sunday School Assembly Auditorium.

Free admission  
Doors open at 6pm | Show starts at 7pm  
www.mssa1882.org | www.facebook.com/mssa1882

Featuring musical guests Sarah Potenza, Farmer & Adele, Sam Lewis, and the Dave Egger Band.

# Community Calendar

## Today, June 23

- 9 a.m. CAC office open, until 11 a.m.
- 10 a.m. Game day, Senior Center
- 10:45 a.m. MSSA Bible lecture, McCullough, Warren Chpl
- Noon Spinal Spa/Fascial Release with Kim, Fowler Ctr
- 5 p.m. Reception, "Vacations," Artisan Depot, until 7 p.m.
- 6 p.m. Friday Night in the Park, Angel Park, rain location American Legion Hall
- 6:30 p.m. American Legion benefit
- 7 p.m. MSSA Music City Roots Radio show, Auditorium
- 7:30 p.m. Music, Little Russell Band, Angel Park
- 7:30 p.m. Movie, "Smurfs: Lost Village," SUT

## Saturday, June 24

- 7 a.m. Cowan Farmers' Mkt, corner Cumberland/TN Sts
- 8 a.m. Sewanee Gardeners' Market, Hawkins Lane
- 8:30 a.m. Yoga with Richard, Comm Ctr
- 9:30 a.m. Hospitality Shop open, 1096 Univ Ave, until noon
- 10 a.m. Kirby-Smith chpt 327 UDC, Franklin-Pearson Hse
- 11:30 a.m. FSCRA annual meeting, Big Red Barn, Beersheba Springs
- 3 p.m. SSMF for Kids, ice cream, Convo Hall
- 7:30 p.m. SSMF Faculty Chamber Concert, Guerry
- 7:30 p.m. Movie, "Smurfs: Lost Village," SUT

## Sunday, June 25

- 1:45 p.m. Carillon concert, Gotko, Shapard Tower
- 2 p.m. Knitting circle, Mooney's, until 4 p.m.
- 2:30 p.m. SSMF Cumberland Orchestra, Guerry
- 3:30 p.m. SSMF Sewanee Symphony, Guerry
- 4 p.m. Yoga with Helen, Community Ctr
- 7:30 p.m. Movie, "Smurfs: Lost Village," SUT

## Monday, June 26

- 9 a.m. CAC office open, until 11 a.m.
- 9 a.m. Pilates with Kim, intermediate, Fowler Center
- 10:30 a.m. Chair exercise with Ruth, Sr Ctr
- 10:45 a.m. MSSA literary lecture, Ashley Warren Chpl
- 3 p.m. Tai Chi with Kathleen, beginners, Comm Ctr
- 6 p.m. Karate, youth, Legion Hall; adults, 7 p.m.
- 6 p.m. Monteagle Town Council mtg, City Hall
- 7:30 p.m. Movie, "Smurfs: Lost Village," SUT

## Tuesday, June 27

- 8:30 a.m. Yoga with Carolyn, Comm Ctr
- 9 a.m. CAC office open, until 11 a.m.
- 9 a.m. Pilates with Kim, beginner, Fowler Center
- 9:30 a.m. Hospitality Shop open, 1096 Univ Ave., until 1 p.m.
- 9:30 a.m. Crafting ladies, Morton Memorial, Monteagle
- 10:30 a.m. Bingo, Sewanee Senior Ctr
- 10:45 a.m. MSSA historical performance, "Abigail Adams, Dear Friend," Kaemmerlen, Warren Chpl
- 11:30 a.m. Grundy County Rotary, Dutch Maid, Tracy City
- Noon Pilates with Bruce, beginners mat, 91 Univ Ave
- Noon Pilates with Kim, intermediate, Fowler Centerll
- 5 p.m. Pilates with Bruce, beginners mat, 91 Univ Ave
- 5 p.m. IONA: Readings, 630 Garnertown Rd.
- 5 p.m. Taco Tuesday Bike Ride, meet@Hawkins Lane
- 7 p.m. Acoustic jam, old water bldg, Tracy, until 8:30 p.m.
- 8:15 p.m. MSSA Concert, SSMF students, Warren Chapel

## Wednesday, June 28

- 9 a.m. CAC office open, until 11 a.m.
- 9 a.m. Pilates with Kim, intermediate, Fowler Center
- 10 a.m. Senior Center writing group, 212 Sherwood Rd.
- 10:30 a.m. Chair exercise with Ruth, Senior Ctr
- 10:45 a.m. MSSA Syria lecture, Norell, Warren Chpl
- 3 p.m. Tai Chi with Kathleen, beginners, Comm Ctr
- 4:30 p.m. Sol. Reading, Haskell, Gailor, reception
- 5 p.m. IONA: Readings, 630 Garnertown Rd.
- 5:30 p.m. Yoga with Helen, Comm Ctr
- 6 p.m. VBS Mission Adventure, Midway Baptist Church
- 7:30 p.m. SSMF Faculty Chamber Concert, Guerry
- 8:15 p.m. MSSA documentary, "Jackie Kennedy Onassis: In a Class of Her Own," Pulliam Center

## Thursday, June 29

- 8 a.m. Monteagle Sewanee Rotary, Sewanee Inn
- 9 a.m. CAC office open, until 11 a.m.
- 9 a.m. Nature Journaling, Herbarium, Spencer Hall
- 9 a.m. Pilates with Kim, beginner, Fowler Center
- 9:30 a.m. Hospitality Shop open, 1096 Univ Ave, until 1 p.m.
- 10 a.m. Summer reading, May Justus Library, Monteagle
- 10:45 a.m. MSSA journalism lecture, Barnett, Warren Chpl
- 11 a.m. Tai Chi with Kathleen (advanced), Comm Ctr
- Noon Pilates with Bruce, beginners mat, 91 Univ Ave
- Noon Pilates with Kim, intermediate, Fowler Center
- 1:30 p.m. Folks@Home support group, 598-0303
- 2 p.m. Knitting circle, Mooney's, until 4 p.m.
- 5 p.m. IONA: Readings, 630 Garnertown Rd.
- 5 p.m. Pilates with Bruce, beginners mat, 91 Univ Ave
- 5:30 p.m. SSMF Brass Concert, Angel Park
- 6 p.m. Karate, youth, Legion Hall; adults, 7 p.m.
- 7:30 p.m. SSMF Student Chamber Concert, Sewanee Inn
- 8:15 p.m. MSSA stereotyping native cultures lecture, Huddleston, Warren Chpl

## Friday, June 30

- 8:30 a.m. Yoga with Carolyn, Comm Ctr
- 9 a.m. CAC office open, until 11 a.m.
- 10 a.m. Game day, Senior Center
- 10:45 a.m. MSSA ethnography lecture, Mould, Warren Chpl
- 5 p.m. IONA: Readings, 630 Garnertown Rd.
- 5p.m. Sewanee 4th of July planning, Senior Ctr
- 6 p.m. Friday Night in the Park, Angel Park, rain location American Legion Hall
- 6:30 p.m. American Legion benefit

## LOCAL 12-STEP MEETINGS

### Friday

- 7 a.m. AA, open, Holy Comforter, Monteagle
- 7 p.m. AA, open, Christ Church, Tracy City

### Saturday

- 7:30 p.m. NA, open, Decherd United Methodist
- 7:30 p.m. AA, open, Claiborne Parish House, Otey

### Sunday

- 6:30 p.m. AA, open, Holy Comforter, Monteagle

### Monday

- 5 p.m. Women's 12-step, Brooks Hall, Otey
- 7 p.m. AA, open, Christ Church, Tracy City

### Tuesday

- 7 p.m. AA, open, First Baptist, Altamont
- 7:30 p.m. AA, open, Claiborne Parish House, Otey
- 7:30 p.m. CoDA, open, Holy Comforter, Monteagle

### Wednesday

- 10 a.m. AA, closed, Clifftops, (931) 924-3493
- 7 p.m. NA, open, Decherd United Methodist
- 7:30 p.m. AA, open, Holy Comforter, Monteagle

Advertising in the Messenger works!  
Email [ads@sewaneemessenger.com](mailto:ads@sewaneemessenger.com) to find out how to make it work for you.

buy local neighborhood merchants

shop local

Small BUSINESS support community

downtown markets brick and mortar shops