



St. James Episcopal Church in Midway received a \$2,000 grant from the South Cumberland Community Fund and a \$2,000 grant from the Sewanee Community Chest. The grant monies provided for a new play set and installation.

Summer Bash at the Community Playground

Midway Community Playground will celebrate the end of summer, the beginning of a new school year and the New Treasure Trove II Playground Set during the Summer Bash, 1 p.m., Saturday, Aug. 12, at St. James Episcopal Church. Everyone is invited to attend. Hot dogs will be provided. Please bring a covered dish to share.

Grants from the Sewanee Community Chest and the South Cumberland Community Fund were used to purchase the new playground set.

St. James Episcopal Church sponsors Midway Community Playground. The playground was established in 1960 and has been a gathering place ever since. St. James, as part of their outreach program, provides the upkeep and insurance. Refurbishment was completed in the 1970s, in 2013, and this summer with the new addition.

St. James will be offering a Tutoring Program on Wednesday afternoon. This program is sponsored by St. James and the Community Action Committee. The start date will be announced soon.

To reserve the park for large gatherings, please contact the Rev. Linda Hutton at (931) 636-2377.

Monteagle Council Appoints Alderman; Addresses Town Beautification

by Leslie Lytle, Messenger Staff Writer

At its July 31 meeting, the Monteagle Town Council voted to appoint Anna (Susie) Zeman to fill the remaining vacancy on the board of alderman. The council also addressed town beautification issues and passed a telecommunications ordinance and a budget amendment.

The board of alderman vacancies resulted from the resignation of Rusty Leonard and Delores Knott earlier in the year. At the June 26 meeting, the council appointed Chris Ladd to fill one of the two vacancies.

In discussion leading up to the appointment of Zeman, a resident complained the community had “no say so” in the appointment of Ladd and questioned his qualifications.

Ladd replied he was a sheriff’s deputy. “I don’t think you need a college degree to know how to care about people,” Ladd said.

Mayor David Sampley noted the council had the authority to appoint aldermen to serve for the remainder of the term when vacancies occurred.

Zeman worked for the police department for 25 years and previously served two terms as an alderman.

In a related matter, the council passed on first reading an ordinance altering alderman’s terms from four years to two years and eliminating staggering the terms. Aldermen elected to fill seats coming open in 2018 will serve for two years, as will alderman elected to fill seats coming open in 2020.

Turning to town beautification, Monteagle attorney Harvey Cameron presented an ordinance requiring “fencing to screen from view” any vehicles, boats, trailers, etc. “in a junked condition.” The city already had a junkyard fencing ordinance, Cameron explained, but this expanded the ordinance to include residences, wrecker services and other commercial enterprises.

“How long do they have to erect the fence?” asked Vice-Mayor Jessica Blalock. Cameron suggested giving those in violation of the ordinance 30 days to comply.

The council approved on first reading the amended ordinance stating from the date of notification of violation property owners had 30 days to begin erecting a fence and 60 days to complete the fence, which must be at least six feet tall. There will be no grandfathering-in excluding established businesses from complying.

A resident who recently received a citation for a property maintenance violation objected she had been unfairly “singled out” since a neighboring residence had not been cited.

(Continued on page 5)

Maintaining FC Property Tax Rate Approved

by Bailey Basham
Messenger Staff Writer

During a specially-called meeting of the county commission last month, the commissioners voted 10–3 in favor of an \$800,000 increase in the general education budget. Prior to the vote, the school board fund balance was sitting at \$5 million. The \$800,000 includes covering an increase in medical insurance and half of the 2 percent salary increase for certified teachers and support employees.

The commission also voted unanimously to approve that the current 2.67 property tax rate be maintained.

Stanley Bean, director of schools and former commissioner, thanked the commission for what he said was a vote for the future of students in Franklin County.

“There’s two groups of people in FC we need to take care of—senior citizens and children. This vote was not a school budget vote. It was a children’s future vote. No matter how you think about it, what you voted on affects children’s futures. This money is going to be used for the futures of the children in Franklin County,” said Bean.

County Mayor Richard Stewart spoke to the commission in favor of the tax rate remaining the same.

“If you remember 2008 and thereafter, we got in a pickle. There are several projects that the county has already committed to. I don’t want to see any budget cuts, and I’d hate to see these projects tossed aside. The school needs their budget. When a middle school student has to be bussed to the high school to take algebra, that needs to be fixed. When a middle school athletic team can’t get to a football game because they can’t get a bus, that needs to be corrected. I’m all in favor of leaving the tax rate where it is,” he said.

(Continued on page 6)

Summer Meal Program Served 7,800 Meals

by Bailey Basham
Messenger Staff Writer

The South Cumberland Summer Meal Program served 7,800 meals to about 700 kids this summer. That’s up 2,000 meals from last year. The number of kids served stayed at 700, according to Sarah Hess, a VISTA with AmeriCorps working in the area.

The purpose of the program, which ran from June 5 to July 28 this year, is to be supplemental to local kids during the summer when meals may not be as frequent as those provided at school. There were 20 different sites this year, each of which was run by a member of the community.

“The program is run through the USDA and the Tennessee Department of Human Services coordinates it. Because of the way the grant is set up, the program is funded month-by-month,” said Liz Sirney, Hunger Relief and Literacy Coordinator.

Sirney, a VISTA with AmeriCorps, just finished her second year working

(Continued on page 6)

Local Area to Experience Near Total Solar Eclipse

by Leslie Lytle, Messenger Staff Writer

On Monday, Aug. 21 at 1:31:35 p.m., the moon will obscure 99.1 percent of the sun from view for people living in Sewanee. Just 26 miles northeast, the moon will block the sun completely. The entire United States, including Alaska and Hawaii, will experience at least a partial solar eclipse, with 21 million people living in the path of the rare spectacle of the total eclipse.

The last total solar eclipse touching the United States occurred in 1979. It has been 99 years since the entire country had the opportunity to view a solar eclipse. In Sewanee, starting at 12:01 p.m., the moon will begin blocking a small then gradually increasing portion of the sun’s disk until only a small sliver is visible. For those in the path of the 70-mile-wide total eclipse shadow, the moon will block the sun entirely for about two minutes, depending on the location. Dunlap is the nearest town in the path of totality, and much of Savage Gulf State Park will experience a total eclipse.

Three circumstances need to coincide for a total solar eclipse to occur. The moon needs to be in the new moon or dark moon phase; this happens approximately once a month when the moon is between the earth and sun. Usually, though, because the moon’s orbit is tilted, the shadow the moon casts in the new moon phase is above or below the earth; for a total solar eclipse, the new moon’s shadow must fall directly on the earth, which only occurs twice a year. And finally, the moon, whose orbit is elliptical not round, must be at or near the point closest to the earth so the moon appears sufficiently large to block the sun entirely; this occurs every 27 and one-half days.

The three conditions necessary for a total solar eclipse only coincide every 18 months. In any given location, the phenomenon only recurs every 375 years!

But rightfully eager eclipse viewers should use caution.

Do not view the eclipse without approved eyewear. It’s never safe to look at the sun. The sun’s intense light can damage the retina causing permanent scotoma or ‘blind spot’ in the central vision. Normally people squint or blink when

(Continued on page 5)

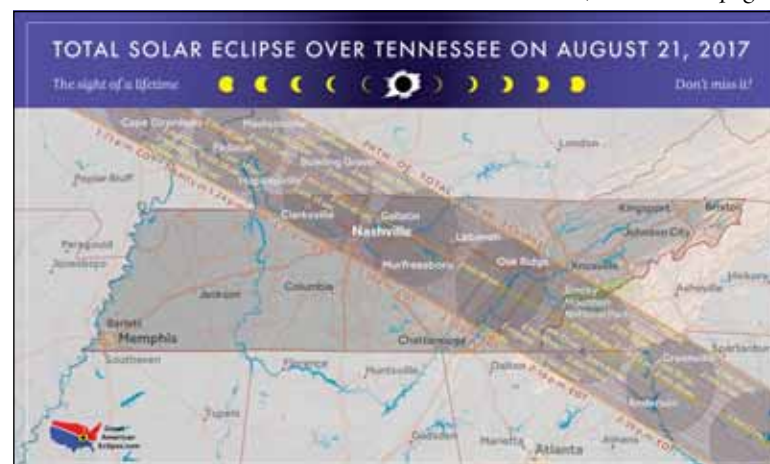


Image from <<https://www.greatamericaneclipse.com/tennessee/>>.

INSIDE THIS ISSUE

LT Letters to the Editor, Serving Where Called.....Page 2	AE Arts & EventsPage 11
M Meetings.....Page 3	Sp Sports NewsPage 12
Ch Church News.....Page 4	NN Nature NotesPage 14
Co Community NewsPage 5	CA Classified AdsPage 15
Ed Education News.....Page 10	CC Comm. CalendarPage 16

P.O. Box 296
Sewanee, TN 37375



Barbara Schlichting, right, was presented with a plaque from the Sewanee Business Alliance honoring her lifetime of service and devotion to the Sewanee community.

Brown's Body Shop

Leonard Brown - Owner
Steve Young - Gen. Mgr.
Steve Hartman - Shop Mgr.

710 College St. • Winchester
931-967-1755 • Fax 931-967-1798
Come by and see us. We appreciate your business.
Our Work is Guaranteed!

The Lemon Fair

11-5 Mon-Sat
thelemonfair.com
931.598.5248

Downtown
Sewanee

Locals Discount: 15% OFF every Tues-Th!!!

ROB MATLOCK
CONSTRUCTION COMPANY
NEW HOME BUILDING
AND REMODELING

MEMBER, U.S. GREEN BUILDING COUNCIL

PHONE 931-598-5728

MATLOCK

State Licensed • Fully Insured

BBB
ACCREDITED
BUSINESS

Bradford's

Nursery & Landscaping
on the Boulevard in Winchester

**FULLY STOCKED
FOR THE SEASON!**

NEW STOCK ARRIVING DAILY!
Annuals, perennials, ferns, trees, shrubs, ornamentals,
grasses, groundcovers, concrete statuary, fountains,
bird baths and much more.

*Come by and let us help you make the right selection for your
landscape, or call for free estimate on professional landscaping.
We do it right the first time!*

Open Mon-Sat 9-5:30; Sun 12:30-4:30 • 931-967-0825
1136 Dinah Shore Blvd. in Winchester

SCC Funding Applications Available

The Sewanee Community Chest (SCC) announces the beginning of the 2017-18 fundraising campaign. Sponsored by the Sewanee Civic Association (SCA), the SCC raises funds for local nonprofit organizations that serve the common good.

Funding applications are now being accepted. The deadline for submission is Friday, Sept. 15. Please contact <sewaneecommunitychest@gmail.com> to have an application either emailed or mailed to your organization. A downloadable request for funds form is available at <https://sewaneecciv.wordpress.com>.

Nonprofit organizations serving the Mountain are encouraged to apply. The SCC does not allocate funds to those organizations discriminating on the basis of race, creed, sex or national origin.

Since 1943, the SCA has sponsored the SCC, which in the last decade has raised more than \$1 million for local organizations in a three-county area.

Through the generous support of the entire community last year, the SCC was able to help 26 organizations and initiatives with a total of \$116,850.

The SCA encourages everyone who benefits from life in this community, whether you live, work or visit, to give to the SCC. The SCC is a 501(c)(3) organization and donations are tax deductible. Donations and pledges are accepted at any time at PO Box 99, Sewanee, TN 37375. There are two on-line options to donate to the Sewanee Community Chest through PayPal and <AmazonSmile.com>.

For more information go to <sewaneecciv.wordpress.com>.

duPont Library Hours

The duPont Library hours are 8 a.m.-5 p.m., Monday-Friday, and closed Saturday and Sunday. Aug. 16 through Aug. 27, duPont Library hours are 8 a.m.-10 p.m., Monday-Thursday, 8 a.m.-8 p.m., Friday, 9 a.m.-6 p.m., Saturday, and 1-10 p.m., Sunday. For more information go to <http://library.sewanee.edu/hours>.

Tree of Life Homecare, LLC

"Neighbors Helping Neighbors"

- * Licensed and insured home-based services for the elderly and disabled
- * CHOICES provider, Private Pay, Veterans Affairs* Long-term care plans

931-592-8733
treeoflifehomecare.com

NOW ACCEPTING APPLICATIONS FOR CAREGIVERS

Letters to the Editor Policy

Letters to the editor are welcome at the Sewanee Mountain Messenger and are a vital part of our community's conversation. Letters need to be no longer than 250 words and may be edited for space and clarity. We make exceptions from time to time, but these are our general guidelines.

Letters and/or their author must have some relationship to our community. We do not accept letters on national topics from individuals who live outside our print circulation area. **Please include your name, address and a day-time telephone number with your letter.** You may mail it to us at Sewanee Mountain Messenger, P.O. Box 296, Sewanee, TN 37375, come by our office, 418 St. Mary's Ln., or send your email to <news@sewaneeemessenger.com>. —KB



sewaneeemessenger.com themountainnow.com

Published as a public service to the community since 1985, 3,700 copies are printed on Fridays, 46 times a year, and distributed to 96 locations across the Plateau for pickup, free of charge. This publication is made possible by the patronage of our advertisers and by contributions from the University of the South (print production) and the Sewanee Community Chest.
SUBSCRIPTIONS \$75 first class

Kiki Beavers
editor/publisher
Leslie Lytle
staff writer
Kevin Cummings
staff writer/sports editor
Bailey Basham
staff writer
Sandra Gabrielle
proofreader

April Minkler
office manager
Ray Minkler
circulation manager
Janet Graham
publisher emerita
Laura Willis
editor/publisher emerita
Geraldine Piccard
editor/publisher emerita

418 St. Mary's Lane, P.O. Box 296, Sewanee, TN 37375
Phone (931) 598-9949 | news@sewaneeemessenger.com
All material in the Sewanee Mountain Messenger and on its websites are copyrighted and may not be published or redistributed without written permission.

University Job Opportunities

Exempt Positions: Assistant Athletic Trainer, Athletics; Assistant Chief of Police, Sewanee Police Department; Assistant University Organist, University Organist & Choir; Associate Director of Human Resources, Human Resources; Coordinator of Fraternity and Sorority Life, Student Life; Title IX Deputy Coordinator, Provost's Office; Grant Coordinator, Wellness Center; Purchasing Manager, Business Services; Vice President and General Counsel, Executive Offices.

Non-Exempt Positions: Assistant Manager, Sewanee Dining; Campus Security Officer (10 positions), Police Department; Cashier, Sewanee Dining; Catering Driver, Sewanee Dining; First Cook, Sewanee Dining; Food Service Worker, Sewanee Dining; Gift Processing Coordinator, Advancement; Landscape Analysis Lab Technician, Environmental Studies; Part-Time Dispatcher, Police Department; Part-Time Police Officer, Police Department; Police Officer, Police Department; Second Cook, Sewanee Dining; Senior Cook, Sewanee Dining.

For more information call (931) 598-1381. Apply at <jobs.sewanee.edu>.

Shop and dine locally!

Serving Where Called

Please keep the following individuals, their families and all those who are serving our country in your thoughts and prayers:

Cassidy Barry
Michael Evan Brown
Mary Cameron Buck
Lisa Coker
Jennifer Lynn Cottrell
James Gregory Cowan
Nathaniel P. Gallagher
Alex Grayson
Peter Green
Zachary Green
Robert S. Lauderdale
Dakota Layne
Byron A. Massengill
Forrest McBee
Andrew Midgett
Alan Moody
Brian Norcross
Christopher Norcross
Lindsey Parsons
Troy (Nick) Sepulveda
J. Wesley Smith
Charles Tate
Amy Turner-Wade
Ryan Turner-Wade
Tyler Walker
Jeffery Alan Wessel
Nick Worley

If you know of others in our Mountain family who are serving our country, please give their names to American Legion and Auxiliary member Louise Irwin, 598-5864.

MESSENGER DEADLINES & CONTACTS

Phone: (931) 598-9949

News, Sports & Calendar

Tuesday, 5 p.m.

Kiki Beavers

news@sewaneeemessenger.com

Kevin Cummings

sewaneesports@gmail.com

Display Advertising

Monday, 5 p.m.

ads@sewaneeemessenger.com

Classified Advertising

Wednesday, noon

April Minkler

classifieds@sewaneeemessenger.com

MESSENGER HOURS

Monday, Tuesday & Wednesday

9 a.m. - 4 p.m.

Thursday—Production Day

9 a.m. until pages are completed
(usually mid-afternoon)

Friday—Circulation Day

Closed

Upcoming Meetings & Events

Morning Yoga Classes End Aug. 11

Carolyn Fitz announces, with sadness, that she will no longer teach Morning Yoga at the Sewanee Community Center after Friday, Aug. 11. Namasté.

FC School Board

The Franklin County School Board will have a regular meeting at 5:30 p.m., Monday, Aug. 14, at 215 S. College St., Winchester.

Bloodmobile at Hospital on Aug. 16

You can help meet the critical need for blood in our community with your friends at Southern TN Regional Hospital in Sewanee. Please join Blood Assurance from 1 p.m. to 6 p.m. on Wednesday, Aug. 16. Call (423) 756-0966 or go online at <bloodassurance.org> to schedule an appointment. Appointments are preferred but not required; walk-ins are welcome. All donors receive a T-shirt and a snack.

Area Rotary Club Meetings

The Grundy County Rotary Club meets at 11:30 a.m., Tuesdays at Dutch Maid Bakery in Tracy City. The Monteagle Sewanee Rotary Club will meet at 8 a.m., Thursday, Aug. 17, at the Sewanee Inn for a presentation by Marichal Gentry, Vice President for Student Life and Dean of Students at the University of the South.

Franklin County Republican Women

The FCRW will meet at 11:30 a.m., Thursday, Aug. 17, at the Oasis Restaurant, Winchester. The meeting will begin immediately following lunch.

Farewell Reception for Isiah Robinson

The Franklin County Republican Party will host a farewell reception for Isiah Robinson, Congressman Scott DesJarlais' field representative in Franklin County. The reception will be 5-8 p.m., Thursday, Aug. 17, at the large community room in the Franklin County Annex Building, Winchester.

This reception is open to everyone and please invite your friends to attend. Isiah has been an extremely valuable asset to the people of Franklin County and we want this to be a huge send-off for him.

Please bring light finger foods to share. The FCRP will supply lemonade, tea and water.

United Daughters of the Confederacy

The Kirby-Smith Chapter 327 Sewanee of the United Daughters of the Confederacy will meet at 11 a.m., Saturday, Aug. 19, at the Oak Restaurant in Manchester.

Community Council

The next scheduled meeting of the Community Council is at 7 p.m., Monday, Aug. 28, at the Sewanee Senior Citizens' Center. Items for the agenda should be submitted to the Provost's office by noon on Wednesday, Aug. 16.

American Legion Post 51 Update

American Legion Post 51 next regular meeting will be at 9 a.m., Saturday, Sept. 9. Anyone wishing to rent the American Legion Hall on University Avenue in Sewanee should contact Stephen Cardwell, (931) 598-0643, or mail request to The American Legion, P.O. Box 438, Sewanee, TN 37375.

www.sewaneemessenger.com



STEVE A SWEETON YOUR LOCAL LICENSED BUILDER

SWEETON HOME BUILDERS
GENERAL CONSTRUCTION
REMODELING • REPAIRS
763 WHITE CITY CIRCLE
TRACY CITY, TN 37387
423-593-3385 CELL • 931-592-6554 RES
steveasweeton@gmail.com

WOODY'S BICYCLES
SALES, SERVICE AND RENTALS
A Full-Service Trek Bicycle Dealer
Mon-Fri 9-5 • Sat 10-2 • 90 Reed's Lane
598-9793 • woodybike@gmail.com

Check out www.woodysbicycles.com for rates, trail maps, photos, bike club links, races and much more!

DREMC Annual Meeting Aug. 19

Duck River Electric Membership Corporation (DREMC) will hold its Annual Meeting of Members on Saturday, Aug. 19, starting at 9:30 a.m. in the auditorium of Harris Middle School, 570 Eagle Blvd., Shelbyville. Those attending the meeting will have an opportunity to elect their representatives to serve on the DREMC Board of Directors as well as hear operational reports about the cooperative. Those who have been nominated for election to serve three-year terms on the Board of Directors by the Nominating Committee are:

Zone 1: Coffee and Warren counties – Mike England.
Zone 2: Franklin, Grundy and Marion counties – Philip Duncan.
Zone 4: Bedford and Rutherford counties – Barry Cooper.
Zone 6: Maury, Hickman, Lawrence, Lewis & Williamson counties – Anthony Kimbrough.

Registration will begin at 8:30 a.m. Several door prizes will be awarded to members at the conclusion of the business session. Attendance gifts will also be given to the first 300 members to register.

Any member with special needs planning to attend the Annual Membership Meeting is asked to contact the Cooperative's Member Services Department at (931) 680-5881 prior to the meeting so that appropriate accommodations can be made.

Duck River EMC, a Touchstone Energy® cooperative, is a not-for-profit, member-owned organization providing electric and other services to more than 74,000 homes and businesses in southern Middle Tennessee. Duck River EMC serves an area of approximately 2,500 square miles in Bedford, Coffee, Franklin, Giles, Grundy, Hickman, Lawrence, Lewis, Lincoln, Marion, Marshall, Maury, Moore, Rutherford and Williamson counties in southern middle Tennessee.

Hospitality Shop Update

The Hospitality Shop, located at 1096 University Ave., in Sewanee, is operated by volunteers of the Emerald-Hodgson Hospital Auxiliary. Hours are Tuesday and Thursday, 9:30 a.m.-1 p.m., and Saturday, 9:30 a.m.-noon. A half price sale on all women's clothes and accessories, all men's clothes and accessories excluding T-shirts, all children's clothes and accessories, all videos, VHS, CDs, DVD, Blue-ray Discs, cassettes, and vinyl records is in progress and will continue until the Shop closes for a break at noon on Saturday, Aug. 12, reopening at 9:30 a.m. on Tuesday, Aug. 29. Proceeds from sales are used for scholarships to area graduates who wish to enter healthcare professions, and also to assist our local hospital employees with their continuing education.

If you would be interested in volunteering either at the Shop or in the hospital, call (931) 598-0136 for further information when the Shop is open.

Area Festivals

Beersheba Springs Arts/Crafts

The 51st annual Beersheba Springs Arts and Crafts festival will be from 10 a.m.-6 p.m., Saturday, Aug. 26 and 10 a.m.-5 p.m., Sunday, Aug. 27, at the Beersheba Springs Assembly grounds, located on U.S. Highway 56, 25 miles from Monteagle.

Exhibitors from several states will have varied quality arts and crafts for sale. Several new food booths will be on the grounds as well. The Hotel dining room will serve meals both days, and there will be live entertainment both days.

For more information please check out <www.facebook.com/beershebcrafts> or contact Melissa (931) 692-3029 or (931) 692-3852 or Tim at (931) 636-6296.

Franklin County Fair

The Franklin County Fair will be Aug. 22-26 at the Southern Middle Tennessee Pavillion, 1041 Wilton Circle, Winchester. For more information go to <www.franklincountyfairtn.com>.

Grundy County Fair

The Grundy County Fair will be Aug. 14-19. The theme is "Country Nights and Carnival Lights."

Admission to the fair is free. Parking is a \$5 donation. All parking proceeds go to participating fire departments. Armbands for the rides are for sale.

There will be exhibits, games, activities, crafts, music and old-fashioned fun. The fair is located at 55th Ave. Recreation Park Rd., Gruetli-Laager.

91 University Ave. Sewanee

**UNIVERSITY
REALTY** SEWANEE
TENNESSEE



sewaneehouses.com
(931) 598-9244
Lynn Stubblefield
(423) 838-8201
Susan Holmes C'76
(423) 280-1480



LOG CABIN. Beautiful custom home on the bluff, vaulted ceilings, great room, master on 1st floor, screened in porch up and down stairs, loft overlooking living rm, two additional bluff lots available. \$219,000



3932 JUMP OFF RD., SEWANEE. Custom house and guest house, open floor plan, tray ceilings, amazing kitchen, formal dining, 3 BR, 2.5 BA. Guest house 2 BR, 1.5 BA, 2 car finished & heated garage, 5.9 acres, close to town. ADA compliant. Main house 2399 ft², 1122 ft² guest house.



CENTRAL CAMPUS, KENTUCKY AVE. Lovely, well maintained home, spacious single story, 4 BR, 2.5 BA, 2 fireplaces, screened in porch, deck, patio, barn.



1120 SASSAFRASS COURT. Custom built, hardieplank, energy efficient, 3264 ft², hardwood, fireplace, spacious master suite, screened in, covered and grilling porches, 2 car garage.



LAUREL LAKE DR. 6 Laurel Lake Drive, lot 6, Monteagle. 8.850 acres. \$108,000



1824 RIDGE CLIFF DR. Monteagle. Beautiful maintenance free home on the bluff. 3 BR, 2 BA, custom kitchen, large wrap around porch, 2 car garage, workshop in dry basement. \$325,000



BLUFF LOT. Laurel Lake Dr. with amazing sunset view, great looking hardwoods, gently rolling, private & secluded 15.9 acres \$125,000

COMMERCIAL. 1+ acres behind Citizens Tri-County Bank on Spring St. All utilities in place.

BLUFF TRACTS. Stunning view of Lost Cove on Sherwood Road. 3 miles from University Ave. Over 1,600 feet on the bluff and the road. Easy to develop. 17.70 acres

BLUFF LOT overlooking Lost Cove. Beautiful sunrise, cool evenings. 4.08 acres. \$80,000.

A PORTION OF SALES MADE THROUGH OUR OFFICE WILL BE DONATED TO HOUSING SEWANEE

Shop and Dine Locally!



Obituaries

Paul Edward Keller Sr.

Paul Edward Keller Sr. age 81, died on Aug. 4, 2017 at Tennova Harton Hospital in Tullahoma. He was born on June 15, 1936, in Washington, Ind., to Anna Bernadine Bordenet Keller and Harold Alvin Keller. He was an entrepreneur, serving in many areas of industry. He was preceded in death by his parents; and brothers Joseph Elbert Keller and Harold Alvin Keller, Jr.

He is survived by sons, Paul E. Keller Jr. of Winchester and Christopher M. Keller of Greenville, N.C.; daughters, Marie B. (Bill) Bowman of Estill Springs, Mary C. “Peanut” (Burke) Hare of Brownsboro, Ala., and Meghan D. Leonard of Melbourne, Fla.; brothers David Leo (Emma Jean) Keller of Winchester, William Albert (Isabell) Keller of Sewanee, Bernard John Keller of Decherd; sisters, Mary Louise (Robert) Lybecker of San Antonio, Texas and Patricia Ann Keller of Antioch, Tenn., six grandchildren, and two great-grandchildren.

Funeral Mass was on Aug. 9, at Good Shepherd Catholic Church in Decherd. Interment followed in Franklin Memorial Gardens.

In lieu of flowers the family suggests donations to the James and Sue Douglas Memorial Scholarship Fund at Franklin County High School, the Alzheimer’s Association or the American Heart Association. For complete obituary go to <www.davesculbertsonfuneralhome.com>.

Hershel Franklin “Frank” Kilgore

Hershel Franklin “Frank” Kilgore, age 86, died on July 29, 2017, at his home. He was born near Foster Falls in Marion County on Dec. 15, 1930, to Hershel Amos Kilgore and Minnie E. Harris Kilgore Burnett. He was a retired 20-year veteran of the U.S. Army, serving in Korea and Vietnam. He was a member of American Legion Post 74 and the VFW. He was preceded in death by his parents; wife, Anna Cleo Green Kilgore; brother, Lee Roy Kilgore; sisters Carolyn Burnett and Bonnie Burnett Collins. He was of the Episcopal faith.

He is survived by his son, David Kilgore of Tracy City; daughters, Carolyn (Ronnie) Scott of Estill Springs and Debra (Benny) Darden of Hillsboro, Barbara (Rickey) Hill of Decherd, Freda Hughes of Cowan; sisters Hazel (G.C.) Brown of Tracy City and Sarah Stephenson of Whitwell; special friends, Gary and Cindy Day and family of Tracy City and Bo Hughes of Monteagle, eight grandchildren, eight great-grandchildren, and several nieces and nephews.

Funeral services were on Aug. 8 in the Foster and Lay Funeral Home Chapel with Minister Jerry Stockwell officiating. Interment followed in the Burns Cemetery, with military honors bestowed by Sequatchie Valley Honor Guard. For complete obituary go to <www.cumberlandfuneralhome.net>.

Alton C. Limbaugh Sr.

Alton C. Limbaugh Sr., age 78 of Cowan, died on Aug. 5, 2017. He was born on Dec. 29, 1938, in the Buncombe community to Barbara Amacher Limbaugh and Chester Limbaugh. He was a lifelong farmer, and also retired from Marquette Cement Plant after 13 years. He was a member of Cowan Cumberland Presbyterian Church and of the Old Timers gospel singing group. He was preceded in death by his parents; sister Agnes Clark; and brothers Conley and Glen Limbaugh.

He is survived by sons, Clayton (Sharon) Limbaugh of Dale City, Va., Charlie (Sarah) Limbaugh of Manchester, Mark (Lisa) Limbaugh of Decherd, and Bryan (Amanda) Limbaugh of Murfreesboro; sister Chrysta (Ronnie) McBee of Winchester; brother Paul (Betty) Limbaugh of Chattanooga; uncle, Tipton Hall; mother of their children, Nona Fretz; a special friend, Marie Ashley, 11 grandchildren, seven great-grandchildren, and many nieces and nephews.

Funeral services were on Aug. 9 in Moore-Cortner Funeral Home Chapel. Interment followed in Walnut Grove Cemetery. For complete obituary go to <www.moorecortner.com>.

Robert Mitchell “Pop” Short

Robert Mitchell “Pop” Short, age 73 of Sewanee, died on July 24, 2017, at Southern Tennessee Regional Health Sewanee. He was born in Sewanee on May 26, 1944, to Ida Mae Edith Short and Johnny William Short. He was a member and Past Master of Sewanee Lodge #405 F & AM, a U.S. Army veteran of Vietnam and Desert Storm, and attended Grace Village Church. He was preceded in death by his parents; wife, Virginia Carol Nunley Short; daughter Shawna Short; sister, Mary Short; and grandson Kory Short.

He is survived by his son, Kip (Penny) Short; daughters Misha (Harvey) Hammock and Trina (Evan) Nunley; nine grandchildren, and four great-grandchildren.

Funeral services were on Aug. 10 in the Foster and Lay Funeral Home Chapel with military honors bestowed by Sequatchie Valley Honor Guard. Interment followed in Coalmont Cemetery. A Masonic service was on Aug. 9, at Cumberland Funeral Home, Tracy City. For complete obituary go to <www.cumberlandfuneralhome.net>.

Lethia Jacobs Watson

Lethia Jacobs Watson, age 84, died on Aug. 7, 2017, in Sewanee. She was born on May 28, 1933, in Bridgeport, Ala., to Elmer Pruitt and Geneva Givan Jacobs. She spent much of her life in Monteagle and came “full circle,” returning to the mountain in 1983. She was well known for her gallery where she sold McCarty’s pottery and paintings by local artists.

She is survived by her children, Herman “Chuck” Austin (Anne) Watson of Bozeman, Mont.; James Hundley (Jane) Watson of Seattle, Wash.; Elmer “Jake” Jacobs (Mary Tally) Watson and John “Jack” Sevier (Sheila) Watson, both of Huntsville, Ala.; brother, Rice Abner Jacobs of Montgomery, Ala., eight grandchildren, many nieces and nephews and Lily, her 14-year-old Poodle.

Funeral services will be at 1 p.m. on Saturday, Aug. 12, at Warren Chapel in the Monteagle Assembly. Interment will follow in the Assembly’s cemetery, followed by a celebration of Lethia’s life at Harton Dining Hall. In lieu of flowers, contributions may be made to the Monteagle Assembly Endowment Fund. For complete obituary go to <www.cumberlandfuneralhome.net>.

Clayton Memorial Service Aug. 12

A brief memorial service will be held at 1 p.m. on Saturday, Aug. 12, in St. Augustine’s Chapel, to celebrate the life of Doris R. Clayton, who died on March 15, 2017. The service will be followed by interment of her ashes in the University of the South cemetery next to those of her husband, James W. Clayton.

Calendars: www.sewaneemessenger.com

Church News

Christ Church Monteagle

School begins so early in August that churches are sometimes caught by surprise. Since the Christ Church Sunday School never “shuts down,” it never has to “crank up” again. However, the beginning of a new school year is an opportunity to offer a special welcome to all. From tiny children to college and graduate students, Christ Church reaches out to not only those who use the Mountain Goat Trail, which has had wonderful foot and bicycle traffic all summer, but also to travelers who pull off I-24 to see what Monteagle Mountain has to offer.

The Sunday service starts around 10:30 a.m. and concludes before noon. Lunch always follows. It is sometimes a great feast and sometimes a light picnic, but there is always food and good fellowship.

Transfiguration was Aug. 6, but the hymns written for that day are often used throughout August, and Christ Church thinks that is a good thing. Come and sing with us, and enjoy the gardens and the many flowers! The Passion flowers will be blooming soon, and the late Zinnias are just beginning

to be at their best. Some of the Zinnias are called “cut and come again,” and we are happy to share.

Cumberland Presbyterian

The Sewanee Cumberland Presbyterian Church will have a weekly Bible Study at 10 a.m., Wednesdays, at the church on Cumberland Circle. All are welcome to attend.

Otey Parish

This Sunday, Aug. 13, in Christian Formation at 10 a.m., the Lectionary Class will explore Sunday’s gospel in the Claiborne House, Adult Education Room. Children ages 3–11 are invited to meet their friends for Godly Play. Middle school and youth ministry will meet in Brooks Hall. Infants 6 weeks to children 4 years old are invited to the nursery beginning at 8:30 a.m. until after the second service. Adult Forum will begin again on Aug. 27.

On Aug. 27 after the second service, we will enjoy our annual Welcome Picnic and Ministry Fair.

The picnic is one way we welcome newcomers to the mountain, and

re-engage with one another after a summer of altered schedules. Expect games for all ages, great food, and relaxed conversation. The Ministry Fair encourages various groups at Otey to tell or show you what they do. Often you can join a ministry right there at the table. Some lay ministry roles have been difficult to fill lately, and some days they go unfilled. Your participation is vital to creating both the worship environment and ministry beyond the walls of Otey Parish.

Parish Life will be providing fried chicken and bread. Tea and lemonade will be provided. Adults bring other beverages if they want. The rest will be potluck. We are hoping for people with last names that begin with A-H bring salads, names that begin with I-Q bring sides, and those that begin R-Z bring desserts.

To list your church in the calendar, send service times, church address and contact information to news@sewaneemessenger.com or phone 598-9949.

CHURCH CALENDAR

Weekday Services Aug. 11–18

7 a.m. Morning Prayer, St. Mary’s Convent (Tu–Fri)
7:30 a.m. Morning Prayer, Otey
8:30 a.m. Morning Prayer, Christ the King (Tues)
11 a.m. Centering Prayer, Trinity, Winchester (Wed)
12:15 p.m. Holy Eucharist, Otey
3:30 p.m. Centering Prayer, St. Mary’s Sewanee (Tues)
4:30 p.m. Evening Prayer, Otey
5 p.m. Evening Prayer, St. Mary’s Convent (not Mon)
7 p.m. Centering Prayer, Otey sanctuary (Mon)

Saturday, Aug. 12

7:30 a.m. Morning Prayer, St. Mary’s Convent
10 a.m. Sabbath School, Monteagle 7th Day Adventist
11 a.m. Worship Service, Monteagle 7th Day Adventist
5 p.m. Mass, Good Shepherd, Decherd

Sunday, Aug. 13

All Saints’ Chapel

8 a.m. Holy Eucharist

Bible Baptist Church, Monteagle

10 a.m. Worship Service
5:30 p.m. Evening Service

Christ Church, Monteagle

10:30 a.m. Holy Eucharist
10:45 a.m. Children’s Sunday School
12:50 p.m. Christian Formation Class

Christ Episcopal Church, Alto

9 a.m. Sunday School
10 a.m. Holy Eucharist

Christ Episcopal Church, Tracy City

10 a.m. Adult Bible Study
11 a.m. Holy Eucharist (child care provided)

Christ the King Anglican, Decherd

9 a.m. Holy Eucharist
10:40 a.m. Sunday School

Cowan Fellowship Church

10 a.m. Sunday School
11 a.m. Worship Service

Cumberland Presbyterian Church, Monteagle

9 a.m. Fellowship
11 a.m. Worship Service

Cumberland Presbyterian Church, Sewanee

9 a.m. Worship Service
10 a.m. Sunday School

Decherd United Methodist Church

9:45 a.m. Sunday School
10:50 a.m. Worship Service

Epiphany Mission Church, Sherwood

10 a.m. Holy Eucharist Rite II

Good Shepherd Catholic Church, Decherd

10:30 a.m. Mass

Grace Fellowship Church

10:30 a.m. Sunday School/Worship Service

Harrison Chapel Methodist Church

10 a.m. Sunday School
11 a.m. Worship Service
5 p.m. Worship Service

Midway Baptist Church

9:45 a.m. Sunday School
10:45 a.m. Morning Service

6 p.m. Evening Service

Midway Church of Christ

10 a.m. Bible Study

11 a.m. Morning Service

6 p.m. Evening Service

Ministry Baptist Church, Old Co-op Bldg., Pelham

10 a.m. Sunday School
10:45 a.m. Breakfast

11 a.m. Worship Service

Monteagle First Baptist Church

10 a.m. Sunday School
11 a.m. Worship Service

6 p.m. Evening Worship

Morton Memorial United Methodist, Monteagle

9:45 a.m. Sunday School
11 a.m. Worship Service

New Beginnings Church, Monteagle

10:30 a.m. Worship Service

Otey Memorial Parish Church

8:50 a.m. Holy Eucharist
10 a.m. Christian Formation
11 a.m. Holy Eucharist

Pelham United Methodist Church

9:45 a.m. Sunday School
11 a.m. Worship Service

St. Agnes Episcopal Church, Cowan

11 a.m. Sunday Service (Rite I)

St. James Episcopal Church

9 a.m. Holy Eucharist (Rite II)

St. Margaret Mary Catholic Church, Alto

8 a.m. Mass

Sewanee Church of God

10 a.m. Sunday School
11 a.m. Morning Service

6 p.m. Evening Service

Sisters of St. Mary’s Convent

8 a.m. Holy Eucharist
5 p.m. Evensong

Tracy City First Baptist Church

9:45 a.m. Sunday School
10:45 a.m. Morning Worship

5:30 p.m. Youth

6 p.m. Evening Worship

Trinity Episcopal Church, Winchester

9:30 a.m. Adult/Youth Christian Formation

Warren Chapel, Monteagle S.S. Assembly

11 a.m. Interdenominational Worship

Valley Home Community Church, Pelham

10 a.m. Sunday School
10 a.m. Worship Service

Wednesday, Aug. 16

6 a.m. Morning Prayer, Cowan Fellowship
10 a.m. Bible Study, Sewanee Cumb Presb Church
Noon Holy Eucharist, Christ Church, Monteagle
5 p.m. KA’s, Bible study/meal, Monteagle First Baptist
5:30 p.m. Evening Worship, Bible Baptist, Monteagle
5:45 p.m. Youth Bible study/meal, Monteagle First Baptist
6 p.m. Bible study, Monteagle First Baptist
6 p.m. Prayer and study, Midway Baptist
6 p.m. Youth, Tracy City First Baptist
6 p.m. Evening Prayer, Trinity Episcopal, Winchester
6:30 p.m. Community Harvest Church, Coalmont
6:30 p.m. Prayer Service, Harrison Chapel, Midway
7 p.m. Adult Formation, Epiphany, Sherwood
7 p.m. Evening Worship, Tracy City First Baptist

Eclipse (from page 1)

looking at the sun. During an eclipse the moon obscuring part of the sun makes the sun's brilliance easier to look at, but the sun's rays are every bit as dangerous.

Regular sunglasses don't block enough light. Eclipse viewers need eyewear blocking all but 0.003 percent of the visible light. Welders goggles meet the standard, but eclipse glasses cost as little as \$1. Look for NASA approved eclipse eyewear manufacturers—American Paper Optics, Rainbow Symphony, Thousand Oaks Optical, and TSE 17. The American Astronomical Society also sanctions Baader Planetarium eclipse glasses.

The first thing those viewing the eclipse will see is a crescent shape beginning to obscure the sun. Bits of light called Bailey's beads appear around the edges of the crescent because of the moon's cratered and creviced rough surface.

Right before totality, the last glimpse of light from the sun gives the image a diamond ring effect with a glittering jewel at the apex.

The Space Science Institute distributed two million pairs of eclipse glasses to 4,800 public libraries. The Franklin County Public Library and Coffee County Manchester Public Library will host eclipse programs offering free eyewear beginning at 10 a.m. on Aug. 21.

Sewanee Elementary School has a variety of activities planned. All teachers, students, and staff will wear black in honor of the eclipse and don safety glasses to view the rare event.

The next total solar eclipse will begin over the Southern Pacific then pass across Chile and Argentina. The next total solar eclipse touching the continental United States won't occur until 2024.

SAS to Participate In All-School Eclipse Viewing

St. Andrew's-Sewanee School students, faculty and staff will be taking a break on the first day of classes for an all-school viewing of the solar eclipse on Monday, Aug. 21.

During orientation and opening meetings on Saturday, Aug. 19, the science faculty will share a video on the history and significance of eclipses. Following the video, they will explain the science of an eclipse and provide instructions on how to view the eclipse safely.

On Monday, Aug. 21, after an eclipse-themed lunch, the entire school community will gather in St. Andrew's Chapel at 1 p.m. to receive viewing glasses. Everyone will proceed to the varsity field in time for the expected 1:27–1:33 p.m. viewing. Classes will resume at 1:45 p.m.

SAS science teacher Jen Bachman, who is helping to organize the event, said, "We are grateful to have the flexibility in our classes and schedule to be able to make room for special teachable moments like this. This is the type of event that brings our classroom learning to life!"

ADVERTISING THAT WORKS FOR YOU:
ads@sewaneemessenger.com

Monteagle (from page 1)

Building inspector Earl Geary explained that notices of violation "don't all go out at the same time. It depends on how long it takes me to get contact information and a mailing address."

Geary asked to be relieved of property maintenance violation enforcement responsibilities, but said he would continue with the duties of codes inspections and issuing building permits.

A visitor reminded the council that at the June meeting he recommended the council appoint someone to assist Geary with property maintenance violation issues.

Sampley said the expense "had not been budgeted for."

The council approved on second reading a budget amendment removing expenses for projects the council didn't wish to continue and addressing unbudgeted expenses.

Sampley cited the example of the contested mayoral election, which cost the town \$11,000. (Note: Judge Thomas Graham dismissed the case filed by mayoral candidate Marilyn Campbell Rodman when Rodman failed to meet deadlines set for the hearing.)

The council also approved on second reading an ordinance setting standards for telecommunication businesses seeking to locate in Monteagle. In 2016, Geary denied a permit to a telecommunications business with a history of poor performance.

The council meets next on Monday, Aug. 28.



Diane Nunn strikes her Japanese gong at the memorial gathering on Hiroshima Day, Aug. 6, held by the CCJP on the Quad. Photo by Lyn Hutchinson

MCCSN Hosts 24th Annual Walk-A-Thon

Cancer has impacted the lives of countless families in Bedford, Coffee, Franklin, Grundy, Marion, Lincoln, Moore and Warren counties during the past 24 years. During that time the Multi-County Cancer Support Network (MCCSN) and its team of volunteers have stepped up to help those families. Financial, educational and emotional support are the core products MCCSN provides to those afflicted in the eight county Middle Tennessee area.

Financial assistance to the families comes from local donors and fundraisers, so it makes sense that it is distributed to only local families in need. MCCSN's primary annual fundraiser is the Walk-A-Thon, which will be held at the football stadium at 839 Dinah Shore Blvd., beside the Franklin County Annex building in Winchester, 6–11 p.m., Friday, Sept. 8.

There's still time to form teams for the Walk-a-Thon. Teams must consist of a minimum of six walkers contributing \$50 each. Team money can be raised by having bake sales, car washes, yard sales, or other creative means. Luminary candles in memory of or in honor of cancer victims can also still be purchased as well as quilt raffle tickets.

This year at the Walk-A-Thon there will be a tent or canopy decorating contest, so plan your team and decorations now.

To form teams, purchase luminary candles, or for any other information regarding MCCSN or the Walk-A-Thon, please visit <www.MCCSN.org> or call (931) 393-4443.

EIGHTH ANNUAL SUNSET SERENADE

ST. MARY'S SEWANEE

The Ayres Center for Spiritual Development

SUNDAY - SEPTEMBER 3

5:30 - 8:00

RSVP Required (931) 598-5342

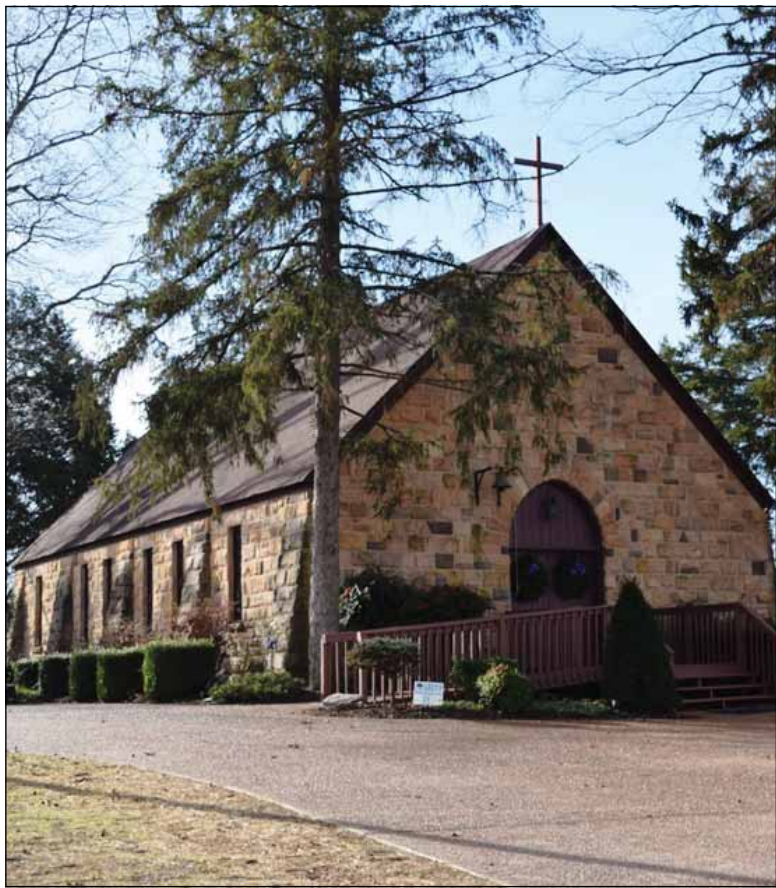
\$100.00/person

Themed Basket Silent Auction

Music by Noel Workman and Friends

Food, wine and beer included





Saint Margaret Mary Catholic Mission

Sites Added to the National Register of Historic Places

The Tennessee Historical Commission announced today the addition of three Tennessee sites to the National Register of Historic Places.

"These additions to the National Register of Historic Places are a testament to Tennessee's diverse and historically relevant heritage," said Patrick McIntyre, state historic preservation officer and executive director of the Tennessee Historical Commission. "This church, radio station and historic railroad tunnel are part of our state's unique past and are worthy of being recognized on this prestigious list."

Three sites recently added to the National Register of Historic Places are Saint Margaret Mary Catholic Mission (Alto – Franklin County), WJMM Radio Station and Tower (Lewisburg – Marshall County) and Sixteen Tunnel (Sunbright – Morgan County).

Situated in the northeast part of Franklin County along the Old Alto Highway, the Saint Margaret Mary Catholic Mission was constructed in 1938. The one-story, gable roof building is constructed of rusticated and coursed Franklin County sandstone, which is similar to the popular Crab Orchard sandstone seen throughout the state. Stone buttresses and stained glass windows delineate the sides of the Gothic Revival chapel. Important architectural features inside include the wood ceiling supported by wood bracing, wood floors and pews, solid stone walls, and brick quoins surrounding window and door openings. The church was operated by the Paulists, who's mission to promote their religion resulted in them being known in the early 20th century for innovative outreach ideas. At the Mission they used radio, film screening, print media, and even had a "motor chapel" – a trailer with a sleeping room in the front and an altar at the back.

The National Register of Historic Places is the nation's official list of cultural resources worthy of preservation. It is part of a nationwide program that coordinates and supports efforts to identify, evaluate and protect historic resources. For more information, visit <<http://tnhistoricalcommission.org>>.

**www.sewanee
messenger.com**

The Depot Emporium

367 Railroad Ave., Tracy City
(931) 808-2590

Specializing in Antiques, Gifts and Things

Open Thur-Fri-Sat 10 a.m.–5 p.m.



August's
Sparkle Award
recipient is
Kyla Kilgore,
age 5, of Monteagle

Each month, Dr. Chris Mathews
draws the name of one member
of his "No cavity Club"
from a hat! For more
information, call 598-0088.

Tax (from page 1)

"The thing we need to do with education is to expand to surrounding counties for different types of arts, music and cultural enrichment. There will be no growth if we go to the certified rate. We'll be in trouble again."

David Eldridge, seat A for the seventh district and member of the finance committee, said he has worked on eight different budgets for the county, but this year's is the one he has thought most about. Eldridge said the general education budget is going to have to be increased every year, and that the approval of the additional \$800,000 is just a first step.

David Van Buskirk, seat A in the third district, disagreed.

"The word from people in district three is they're upset that we have an unsigned fund balance of \$5 million. We need to see some results for the money you have. People are not happy about it in my district for the amount of money we have on hand and the lack of programming we have," he said.

Iris Rudder of the first district agreed with Van Buskirk, saying she could not vote in favor of the increase.

"I look at this fund balance of \$5 million, and I see an excess of \$346,000. We know every budget is inflated—that's to be expected. I can't in good conscience vote to increase the budget by \$800,000. It is a maintenance of effort situation we'll be faced with year after year. I would like to see, in the next year, if some of the programs, like more advanced placement classes, could be implemented with that fund balance," said Rudder.

Eldridge said the approval of the budget just makes sense when maintaining the current tax rate.

"If we retain the tax rate at 2.67 percent, the school, for the last appraisal period, has basically been held at \$1.04 out of that 2.67 for their property. This \$800,000 is less than what they would have gotten if that share had been maintained. They have, in essence, asked for less than their share of their value of the property," he said.

The Franklin County School Board projected a total of \$43.5 million in expected revenue for 2017–18. Estimated expenses for the 2017–18 school year are \$45.5 million. By law, the school board has to keep 3 percent of its expected revenue as a reserve, which is maintained in case of unexpected expenses or lack of revenue. The fund balance for the 2017–18 school year is now at \$2.8 million. The next county commission meeting will be Sept. 18 at 7 p.m.

SAS Orientation and Opening

Opening events for St. Andrew's-Sewanee School's 2017–18 school year begin on Wednesday, Aug. 16, with the Middle School New Family Gathering. On Friday, Aug. 18, new boarding students move to campus and all students new to the Upper School begin orientation. Returning boarding students move in on Saturday, Aug. 19. Senior parents meet that morning with Director of College Counseling Christine Asmussen to kick off the college application season. Also on Saturday, all students, Middle School parents, and returning parents come to campus for presentations and advisory meetings. All students will participate in orientation activities on Saturday.

Orientation and opening activities for parents include meetings with their child's house parents and advisors, training on the school's learning management system and other school technology, and information on health services, private music lessons, afternoon programs and learning resources.

On Monday, Aug. 21, the student body will gather at 8 a.m. for its first all-school Eucharist in the school's newly renovated Chapel. There will be a special all-school solar eclipse celebration and viewing in the afternoon.

SAS welcomes 44 new students this year representing 11 countries. Thirty-two of the new students are boarding students, including four boarding students in the eighth grade, a new option for eighth graders. The complete schedule of events is available at <www.sasweb.org/calendar>.



See, swirl, smell and sip.

Manchester, TN www.beanscreekwinery.com 931 723 2294

AFFORDABLE GENTLEMAN'S FARM



Enjoy gorgeous views from this 5.44 acre gentleman's farm at the foot of Sewanee Mountain. This lovely home, built in 2013, has custom cabinets, self-closing drawers, huge tiled master shower with seat, covered back deck facing the mountains, 30x40 insulated shop and exterior lean-tos for storage, fencing, extra insulation for low utilities, propane gas grill, 2 water heaters and so much more. Just 3.4 miles from this home's driveway to the center of the University of the South campus in Sewanee. Call Patricia Mathis at 931-580-8898 to set up a tour of this wonderful property. \$259,900.



Meals (from page 1)

with the program. Her role as hunger relief coordinator is to coordinate the meal program.

"AmeriCorps Volunteers in Service to America (VISTA) members bring their passion and perseverance where the need is greatest: to organizations that help eradicate poverty. An AmeriCorps VISTA member serves as a catalyst for change, living and working alongside community members to advance local solutions," according to the Corporation for National & Community Service.

Though the program provides local kids with a meal and fellowship, it also provides a space for continued learning throughout the summer.

"A lot of the sites had programming, like the libraries and the summer reading programs. At two of the sites, we piloted this new thing called free play. We bought a bunch of materials—boxes, string, paint—and the kids would come and do whatever they wanted. It's supposed to be child-led, and the adults aren't supposed to tell them what to do," said Sirney.

Sirney said her favorite part about working with the meal program is getting to know and learn from all the kids that come through.

"I don't usually get to hang out with the kids, so it's a really big joy to get out of the office and see them," she said. "They're always so excited and sweet and so happy to be there. That's definitely my favorite part."

Another of the biggest pluses that comes from the meal program is an increased sense of community.

"It's inspiring to see the type of care this community has for each other," she said. "I think people who otherwise wouldn't really interact are able to meet through this program. Summertime can be kind of a drag for a lot of kids, especially in this rural area, so this provides something fun and something for them to do to learn throughout the summer. It's really great to see the community supporting itself and supporting each other and filling in where there are gaps."

Poetry Reading at FYP

On Saturday, Aug. 19, at 4:30 p.m., Richard Tillinghast will give a reading from his poems, "Sewanee in Ruins" and "Sewanee When We Were Young" to incoming students from the University's Finding Your Place (FYP) program. The event, in Convocation Hall, is open to the public. This reading has become an annual event in the program, which brings a group of incoming students to the Mountain to learn about the wider community and life around Sewanee, as well as discovering their feelings for their new home.



MYERS POINT at Sewanee offers a rare opportunity to enjoy a private community that celebrates American architecture, lifestyle, protected forests, cultivated lakes and panoramic views on Middle Tennessee's Cumberland Plateau. If you want to live surrounded by nature, history, beauty, quality and serenity, you'll want to call it home.

John Goodson
(931) 703-0558
jgoodson@myerspoint.com
myerspoint.net

Community Gathering and Art Exhibit

Everyone is invited to the Neighborhood Gathering 10 a.m.–noon, Saturday, Aug. 12, in Historic Downtown Tracy City (next to the Grundy County History Museum). There will be live music and storytelling, an art exhibit displaying photos from local summer camps, and the dedication of the Places Project. All ages are welcome. The artwork on display includes work from Camp Discover, Mountain Top, Grundy 4-H, and the Camp Discover Together Art and Writing Workshop. Exhibition of student photography from summer programs made possible by Tennessee Arts Commission and hosted by Depot Emporium, Annex Cafe, GCHS Museum, Mountain Valley Bank and Dutchmaid Bakery.

Around Here: The Places Project is the community-based research project of Margo Shea and her students at the University of the South. Margo, a public historian, works with the Collaborative for Southern Appalachian Studies. The project research assistant is Halie Monroe, a recent graduate of Grundy County High School who currently studies at Motlow State.

The purpose of this project is to make people's history visible and shareable and to tell the many stories about attachment to place in a way that allows them to "share space" without diminishing the unique cultures and experiences of those of us who share this mountain and its valleys. The Places Project aims to create a living archive of place from a diverse array of community members' perspectives—from the seventh generation local to the newly arrived student.

The GIS map will be available and accessible to all and a traveling art exhibit will be shared with all the communities on the mountain as well as valley communities of Pelham, Tarlton Valley, Winchester, Estill Springs, Cowan and Whitwell.

The Places Project discovers and demonstrates how our diverse knowledge and experiences of the South Cumberland Plateau make it what it is and how together we can help envision and create a flourishing future. To share your story, go to <<https://theplacesproject.org/participate-in-the-places-project/>>.



Library Renovation to Create Learning Commons

Just as the 2016-17 academic year came to a close in May, preparations for a significant renovation of the main floor of Sewanee's Jessie Ball duPont Library started ramping up. The project to create a new Learning Commons in the library is the result of several years of planning.

The Learning Commons project responds to growing student needs for more collaborative spaces and up-to-date technology for practicing class presentations, while retaining the traditional study and social spaces that the library has offered for years. Faculty, staff, and students worked to create a design for the Learning Commons during Easter Semester 2017.

The plan will be implemented in two phases, the first of which involves the area on the main floor of the library with large windows facing the Bishop's Common. Phase I will be completed before students return to campus in August.

"Student input was important to the planning process and reinforced our desire to maintain the traditional reading room atmosphere of the space," says Vicki Sells, associate provost for Library and Information Technology Services. "The wooden tables and chairs original to duPont when the building opened in 1965 will be refinished. The wood paneling will be restored to its original color and beauty. Comfortable furniture will be added to the space as well as more electrical outlets and improved Wi-Fi to support the increasing use of mobile devices."

The University's Writing Center and the new Center for Speaking and Listening will have designated spaces in the Learning Commons. Group-study rooms will be available for collaborative student projects, practice presentations, and for quiet study. The two balcony areas at each end of the space are being renovated to provide group-study and consultation rooms.

"Given that the functions of the Writing Center and the Speaking and Listening Center are very similar, we thought, why not share the space," says Sean O'Rourke, professor of rhetoric and director of the Center for Speaking and Listening. "That way we can share not only some of the equipment but the student resources as well." When the centers are closed, the space will be available for studying as it has been in the past.

In the Center for Speaking and Listening, students will be able to use some high-tech tools to hone their speaking skills. Smartphones can be mounted on a device that will follow students' movements in the room as it records their presentations. "It puts you into a kind of TED Talk position, where you're not locked to a lectern and a microphone, and that's truthfully how it is in most classrooms, anyway," says O'Rourke.

Another addition in Phase I of the renovation is a café operated by Sewanee Dining Services just off the main lobby, offering coffee, drinks, and grab-and-go food items.

Students Begin to Arrive for FYP, PRE and Orientation

Following summers working, traveling, or interning in locations from Tennessee, Atlanta, and Montana, to Switzerland, Mongolia, and Uganda, returning Sewanee students will arrive back on campus late this month.

They will be preceded by first-year students who will arrive for Finding Your Place (Aug. 16), PRE (Aug. 23), and Orientation (Aug. 26). Classes will begin Aug. 30.

Finding Your Place (FYP) allows new students to discover and become connected to Sewanee and the larger community, and to begin developing strong relationships with classmates, student mentors, and professors. Participants will enjoy plenary sessions, smaller individual sections, and numerous field trips ranging from campus locations to Beersheba, Buggytop, museums, and Nashville's Hindu temple.

PRE-Orientation offers more than 200 incoming students the opportunity to familiarize themselves with Sewanee's 13,000-acre Domain through activities such as rock climbing, crawling through winding passages in Walker Springs Cave, or building a house with Sewanee Outreach.

Orientation for all new students in the College runs from Aug. 26–29.

AIR DUCT CLEANING

ABBAY ROAD CLEAN-AIRE
MANCHESTER, TN • SINCE 1989

GET RID OF DUST, ALLERGY PROBLEMS

(931) 952-0051 or (931) 273-8899

"We're Your Solution To Indoor Pollution"

RESIDENTIAL
COMMERCIAL
INDUSTRIAL

New to the Mountain?

There are lots of ways to get news in our community.

- The new issue of the Messenger goes online each Thursday around 7 p.m., sewaneemessenger.com
- The print version of the newspaper is distributed to 96 locations across the Plateau by 10:30 a.m. each Friday.
- The Messenger's partner website, *TheMountainNow.Com*, is always available online with the events calendar and links to area attractions, dining, shopping and lots of useful information.

The Sewanee Mountain Messenger • Spread Good News

Senior Center News

The Sewanee Senior Center serves lunch at noon Monday through Friday. The suggested donation is \$4, regardless of your age. Please call 598-0771 by 9 a.m. to order lunch. Menus follow:

Aug. 14: Bacon, lettuce and tomato soup, grilled cheese sandwich, dessert.

Aug. 15: Fried chicken, creamed corn, pinto beans, cornbread, dessert.

Aug. 16: Steak, gravy, mashed potatoes, broccoli and cheese, roll, dessert.

Aug. 17: Sub sandwich, chips, dessert.

Aug. 18: Pork chop, mashed potatoes, veggie blend, roll, dessert.

Regular Activity Schedule

Chair exercises, Mondays and Wednesdays, 10:30–11:15 a.m.; Tuesdays at 10:30 a.m., the group plays bingo, with prizes; Wednesdays at 10 a.m., the writing group gathers at 212 Sherwood Rd.; Fridays at 10 a.m. is game time.

The Sewanee Senior Center does not charge any membership fee. All persons 50 or older who take part in any of the activities are considered members. The Center is located at 5 Ball Park Road in Sewanee.

ads@sewaneemessenger.com

BUG PROBLEMS?

We can help! Call us for a free inspection!

BURL'S TERMITE & PEST CO.

TERMITE—PEST—VAPOR CONTROL
Bonded • Insured • Home-Owned & Operated
105 Ake St., Estill Springs
(931) 967-4547 or www.BurIsTermite.com
Charter #3824 • License #17759



DEPENDABLE AFFORDABLE RESPONSIVE HOME REPAIR AND REMODELING EXPERT HANDYMAN

KEN O'DEAR

25 YEARS EXPERIENCE
SATISFACTION GUARANTEED
931.235.3294
931.779.5885



**The Monteagle
Sewanee
Rotary Club
meets at 8 a.m.,
Thursdays, at the
Sewanee Inn**

"Service Above Self"

HOUSE CALL SERVICE AVAILABLE

Full Service Veterinary Care for Dogs, Cats & Horses
Offering Acupuncture, Chiropractic & Herbal Therapies



Monday–Friday 7:30 am–6 pm; Saturday 8 am–noon

AFTER-HOURS EMERGENCY SERVICE AVAILABLE

Traci S. Helton, DVM 931-962-3411

505 S. Jefferson St., Winchester (41-A toward Winchester. First left after Domino's Pizza)

K&N Maintenance and Repair Your "honey-do" list helper!

A one-stop solution
for all your home
improvement needs

931-691-8656



“Go forth under the open sky, and list To Nature’s teachings.”
William C. Bryant

Sewanee Realty

SewaneeRealty@inSewanee.com
www.SewaneeRealty.com
115 University Ave., Sewanee, Tenn.

Margaret Donohue,
Principal Broker • 931.598.9200

Patsy Truslow,
Broker • 931.636.4111



MLS 1850420 - 1710 Stage Coach Rd.,
Sewanee. 31+ acres. \$765,000



MLS 1514972 - 202 Main St.,
Monteagle. \$112,000



MLS 1827972 - 426 Wiggins Creek Dr.,
Sewanee. \$588,000



MLS 1833858 - 80 Parsons Green,
Sewanee. \$292,000



BLUFF - MLS 1656823 - 1613 Laurel Lake
Dr., Monteagle. 5.3 acres. \$449,900



MLS 1776800 - 1256 Sollace Freeman
Hwy., Sewanee. \$584,000

BLUFF TRACTS

1605 Laurel Lake Dr.	1780151	\$149,000
14 Jackson Pt. Rd.	1803643	\$129,500
Laurel Lake Dr.	1801545	\$395,000
16 Jackson Pt. Rd.	1821166	\$99,500
15 Saddletree Ln.	1680519	\$75,000
16 Laurel Lake Rd.	1722522	\$97,500
3 Horseshoe Ln.	1608010	\$60,000
38 Long View Ln.	1787091	\$99,000
36 Long View Ln.	1503912	\$99,000
7 Jackson Pt. Rd.	1714853	\$75,000
37 Jackson Pt. Rd.	1579614	\$75,000
Jackson Pt. Rd.	1579007	\$125,600
12 Saddletree Ln.	1578117	\$79,500
Jackson Pt. Rd.	1531331	\$120,000
7 Saddletree Ln.	1726054	\$70,000
25 Old Sewanee Rd.	1741756	\$119,000



BLUFF - MLS 1712150 -
3442 Sherwood Rd., Sewanee. \$589,000



804 Midway Road , Sewanee, 3BD, 2
BA - FOR LEASE \$1400 per month.
contact Patsy Truslow for details @
931-636-4111



BLUFF - MLS 1847887 - 1832 Ridge Cliff
Dr., Monteagle. \$299,900



MLS 1810617 - 107 Blackberry Ln.,
Sewanee. 10.5 acres. \$259,000



BLUFF - MLS 1777974 - 3480 Sherwood
Rd., Sewanee. \$349,000



BLUFF - MLS 1810644 - 294 Jackson
Point Rd., Sewanee. 20.9 acres. \$299,500



MLS 1842325 - 150 Bobtown Circle,
Sewanee. \$219,000



BLUFF - MLS 1817475 - 1819 Bear
Court, Monteagle. \$229,000



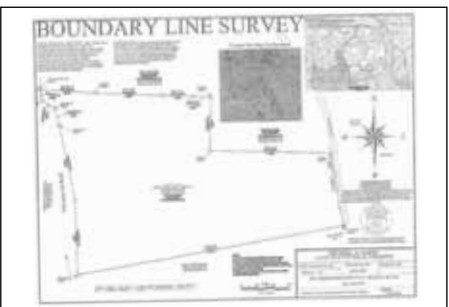
MLS 1770160 - 12147 Sewanee Hwy.,
Sewanee. \$160,000



BLUFF - MLS 1773059 - 1804 Clifftops
Ave., Monteagle. 6.9 acres. \$995,000



MLS 1839346 - 324 Rattlesnake Springs
Rd., Sewanee. 4.9 acres. \$349,500



BLUFF - MLS 1801545 - Laurel Lake Dr.,
Monteagle. 66.7 acres. \$395,000



MLS 1775366 - 143 Winns Circle,
Sewanee. \$385,000



BLUFF - MLS 1772358 - 569 Haynes
Rd., Sewanee. 5.1 acres. \$525,000



MLS 1843620 - 2120 Lakeshore Dr.,
Clifftops. 5 acres. \$469,000



MLS 1850892 - 194 Texas Ave., Sewanee.
\$439,000



MLS 1698101 - 41 Sherwood Rd.,
Sewanee. \$194,000



MLS 1839878 - 290 University Ave.,
Sewanee. \$498,500

LOTS & LAND

Highland Tr L	1827481	\$48,500
Taylor Rd. 29.73 ac	1754324	\$159,000
33 Westlake Ave. 5.3 ac	1800077	\$75,000
Bear Dr. 2 ac	1708016	\$19,500
Jackson Pt. Rd. 4.8 ac	1714849	\$37,500
Haynes Rd. 6.5 ac	1690261	\$75,000
43 Bluff Woods	1774625	\$28,000
111 Clifftops Dr. 5.25 ac	1646127	\$58,900
2335 Sarvisberry 5.3 ac	1831124	\$49,000
St. Mary Ln. 10 ac	1820182	\$85,000
Montvue Dr. 5 ac	1714856	\$54,900
Sarvisberry Pl.	1628195	\$69,000
8 Jackson Point Rd.	1734341	\$36,000
9 Jackson Point Rd.	1734307	\$39,000



Volunteers help install aluminum arches for high tunnel frame at Tracy City Elementary School July 29. The high tunnel will host new hands-on labs for TCE students starting this fall. Photo by Ashley Pancoast

Tracy City Elementary Celebrates New School Garden

“Woohoo!” echoed from the west side of Tracy City Elementary School the morning of July 29. Alexis Picklesimer, the school’s second-grade teacher, shouted her excitement and thanks as around 25 volunteers raised the school’s new high tunnel.

The 45-by-18 feet high tunnel now stands on a bed of soil built by the volunteers. This fall it will be incorporated into the school as an outdoor classroom for multiple grade levels. While the primary goal of the garden is to supplement science education, additional uses and benefits are plentiful.

“We already teach the curriculum; now we have the outdoor lab,” Picklesimer said, “It’s not just a book, it’s not just a picture.”

Picklesimer, who will be TCE’s garden manager, said she and many other teachers have memories of gardening as children. When they thought of the lessons they already teach that include plants, they wanted their students to be able to create strong memories with a garden, too.

Picklesimer has been working with Erin Lee, an AmeriCorps VISTA serving as network coordinator for the plateau’s Cumberland Teaching Gardens (CTG), to design the garden and its role at the school. School gardens have been shown to increase students’ consumption of fresh vegetables and to make them more engaged in school overall, Lee said.

Working with CTG has been an exciting process, Picklesimer said.

“The organization and Erin have

gone above and beyond to not only build the high tunnel, but to also provide our school with several resources to make it a success,” she said.

With help from the University of the South’s farm, Lee planned and brought the infrastructure side of the day’s events together. Various community members, including TCE teachers, AmeriCorps VISTAs and Sewanee students shoveled gravel and dirt, placed landscape blocks and constructed the high tunnel frame under direction from Lee and Carolyn Hoagland, the Sewanee farm manager.

“The outpouring of enthusiasm and support the organization and volunteers displayed Saturday building our high tunnel truly touched me as well as my fellow coworkers,” Picklesimer said.

The CTG is a project sponsored by the South Cumberland Community Fund, the University of the South and AmeriCorps VISTA. The Cumberland Teaching Gardens network strives to connect schools and individuals across the plateau to help the creation and growth of teaching gardens.

“The teaching gardens don’t just supplement school curriculum,” Lee said, “they provide nutrition education, exercise and opportunities that foster curiosity and teach valuable real-world skills.”

More information can be found on the network’s Facebook page, Cumberland Teaching Gardens.

The Cumberland Teaching Gar-

dens network strives to connect key stakeholders across the South Cumberland Plateau to facilitate the implementation, growth, and success of teaching gardening programs. It exists to provide support, resources and direction for community leaders to establish teaching gardens that serve their community. There are six teaching gardens involved in the network and additional sites in various stages of development. The project is sponsored by the South Cumberland Community Fund, the University of the South and AmeriCorps VISTA to address poverty and hunger across the plateau.

Keep the Mountain Beautiful!



Please Don’t Litter!



MOLICA
CONSTRUCTION LLC

931 205 2475

WWW.MOLICA.CONSTRUCTION.COM

- CRAFTSMANSHIP ▪
- CREATIVITY ▪
- SUSTAINABILITY ▪



Around 20 volunteers from Winchester to Tracy City came to Tracy City Elementary School to help construct a high tunnel. Photo by Ashley Pancoast



Community volunteers layer gravel and dirt along the wall for a high tunnel at Tracy City Elementary School. Photo by Ashley Pancoast

Adaptive Landscape Lighting

Crafted LED
Illumination of
Architecture,
Landscape,
Outdoor
Living Spaces,
Security
and Safety
Concerns



Beautify and add hours to your outdoor living. Subtly illuminate dark, uneven steps and pathways. Save on electric bills! Receive a complimentary consultation. Call us today!

Bonded : Insured : Experienced : Residential and Commercial

Paul Evans : 931-952-8289

Sewanee • pevans@adaptiveenergy.org

CUSTOM CUTS PORTABLE SAWMILL SERVICE



Turn your logs into valuable lumber at your place or mine!

Belvidere, TN | 931-691-7953 | Owner/Operator Danny Nunley

CITIZENS TRI-COUNTY BANK

Citizens Tri-County Bank Makes Banking
EASY AND QUICK.



With services like Remote Deposit Anywhere, I can deposit my check with my phone, so I can spend time on the important things in life. Plus they made getting a loan super easy! It's the only community bank we'll ever need!



CITIZENS
TRI-COUNTY
BANK

Monteagle • 80 East Main St. • Monteagle, TN 37356 • (931) 924-4242

www.citizenstricounty.com • 24 Hr. Banker 592-1111

The only community bank you'll ever need.

SEWANEE AUTO REPAIR

Complete Auto & Truck Repair

Tune-ups • Tires • Tire Repair • Brakes • Steering
• Oil Changes • Batteries • Computer Diagnostics



All Makes & Models • Service Calls •
Quality Parts
ASE Master Certified Auto Technician •
30 Years' Experience

Open 7 to 5 M-F
(931) 598-5743 • 76 University Ave.

Local service.

Bill Nickels Insurance
(931) 728-9623
www.billnickelsins.com

Great insurance.

Auto-Owners
INSURANCE
LIFE • HOME • CAR • BUSINESS

SES Menus

**Monday–Friday,
Aug. 14-18
LUNCH**

Monday, Aug. 14: Fajita's or corn dog nuggets, french fries, pinto beans, roasted vegetables, fruit, tortilla, milk.

Tuesday, Aug. 15: Barbecue rib sandwich or hot dog, side salad, mini roasted potato bakers, veggies w/cheese sauce, fruit, hot dog bun, cookie, milk.

Wednesday, Aug. 16: Chicken dippers or meatloaf, mashed potatoes, cheesy broccoli, veggie juice, fruit, dinner roll, milk.

Thursday, Aug. 17: Pizza or fish, potato smiles, fresh veggie cup, green beans, fruit, hushpuppies, milk.

Friday, Aug. 18: Taco or cheesy breadsticks, refried beans, buttered corn, lettuce/tomato cup, salsa, fruit tortilla, chips, milk.

BREAKFAST

Each day, students select one or two items.

Monday, Aug. 14: Assorted cereal, pancake or waffle w/ bacon or french toast sticks w/ bacon.

Tuesday, Aug. 15: Assorted cereal, biscuit, chicken pattie.

Wednesday, Aug. 16: Assorted cereal, toast, peanut butter, graham crackers, or mini cinnis.

Thursday, Aug. 17: Assorted cereal, yogurt or donut.

Friday, Aug. 18: Assorted cereal, biscuit, sausage.

Options available every breakfast: assorted cereal, assorted fruit and juice, milk varieties. Menus subject to change.

New Teachers Join SAS

St. Andrew's-Sewanee School is pleased to announce that David Prehn and Rebecca Van de Ven will join the school's teaching faculty in August.

David Prehn will teach English and history. He comes to SAS from City Kids Wilderness Project where he was High School Program Coordinator in Washington, D.C., and High School Intern Coordinator in Jackson, Wyoming. David is a graduate of the University of the South and Saint James School, an Episcopal boarding school in Maryland. David majored in history and English at Sewanee and graduated magna cum laude with honors in history. He received the Clarence Day Community Service Award at the university and was a member of Omicron Delta Kappa, Phi Alpha Theta (the national history honor society), the Order of the Gownsmen (the university's academic honor society), and the Honor Council. As a Bonner Leader, David designed, developed, and led a youth empowerment program for students in area high schools and a program to help students at Franklin County High School with the college application process. He led caving and hiking trips as trip leader and pre-orientation leader for Sewanee and is certified in crisis intervention and wilderness advanced first aid.

Rebecca Van de Ven, a concert oboist, will teach music, direct the school's musical ensembles, and provide music for the Chapel program. Rebecca will also teach oboe and coach chamber music at MTSU. Rebecca has taught private oboe and clarinet lessons at the University of the South as well as piano, oboe, saxophone, and clarinet lessons in her private studio. She performs with the Nashville Symphony and has performed with chamber ensembles, including the San Francisco Symphony Orchestra and Grand Rapids Symphony. She can be heard on many recordings including Season 3 of the hit TV series "Fargo" and video games such as Minecraft and Star Wars Battlefront. Rebecca was Chamber Music Coordinator and Coach at the Sewanee Summer



David Prehn



Rebecca Van de Ven

Music Festival for four years, organizing chamber groups for 50 woodwind students and coaching three chamber groups. She was formerly on the faculty of Albion College where, in addition to private lessons and ensemble coaching, she taught a seminar on Music in the Movies. Rebecca holds an M.M. from the San Francisco Conservatory of Music and a B.S. from the University of Wisconsin. She also attended the Music Academy of the West and Pierre Monteux School for Conductors. Rebecca studied under Eugene Izotov, principal oboe for the San Francisco Symphony Orchestra, William Banovetz, principal oboe of the San Francisco Ballet Orchestra, and Marc Fink, principal oboe of the Madison Symphony Orchestra.

Burns and Smith Honored with Named Academic Chairs

St. Andrew's-Sewanee School faculty members Doug Burns and Geoffrey Smith have been honored with named academic chairs.

Math Department Coordinator Doug Burns was named to the Cissy Patterson Chair in Mathematics. The Cissy Patterson Chair, established by the Cissy Patterson Trust, is awarded to an experienced and highly qualified mathematics teacher at SAS. This is the second time that Burns, who joined the SAS faculty in 1990, has received this honor. Past recipients have included: Margot Burns, Liz Quinn-Stine, Cameron Sisson, Allison Paterson, Patty Milner, Sarah Carlos and Jerry White.

History Department Coordinator Geoffrey Smith received the Fort Chair in Writing in recognition of his work on leading the school's "Writing Across the Curriculum" initiative and his Humanities Teachers of Tennessee honors, and work on Holocaust

Studies. The Fort Chair in Writing was established in 1995, in appreciation for a major gift from Dudley Clark Fort, Sr., in honor of his daughter-in-law, Priscilla Carter Fort. Past recipients of the Fort Chair have included: Claire Reishman, Tracy Randolph, Tom Gladstone, Mark Brunton, Phil White and Susan Core.

Both chairs are awarded for a 3-year period. They provide a stipend for the recipient and an additional \$1,000 in professional development for use by a faculty member in the designated academic area.

Head of School Karl Sjolund was pleased to make these most recent awards. "I am grateful to the donors who have made it possible for us to honor the hard work of our talented faculty," he said. "Doug and Geoffrey represent true leadership among our teachers in their commitment to their craft and to the school."

Hamby Receives Award For Psychology Research

Sherry Hamby, research professor of psychology at the University of the South, last week received the award for Outstanding Contributions to the Science of Trauma Psychology from the Trauma Psychology Division during the 125th meeting of the American Psychological Association (APA). This annual award recognizes distinguished contributions to scientific research on trauma. The award may be given in recognition of a particular discovery or for a sustained body of research and scholarship.

Hamby has worked for more than 20 years on the problem of violence, including front-line crisis intervention and treatment, involvement in grassroots organizations, and research leading to the publication of more than 150 articles and books. Her work on the National Survey for Children's Exposure to Violence—the largest study of youth victimization ever conducted in the U.S.—is the empirical foundation of the U.S. Department of Justice's Defending Childhood Initiative. She is the founding editor for the APA journal Psychology of Violence, and has served on three expert panels for the Centers for Disease Control and Prevention.

The APA is the leading scientific and professional organization representing psychology in the United States, with more than 115,700 researchers, educators, clinicians, consultants and students as its members.



Sherry Hamby



NEW CONSTRUCTION

REMODELING

HISTORIC RESTORATION

931-924-2444 sweetonhome.com

HAIR DEPOT

KAREN THRONEBERRY, owner/stylist
JESSICA HONEYCUTT, stylist/nail tech

Find us on Facebook!

17 Lake O'Donnell Rd. • (931) 598-0033 • Sewanee
 Wednesdays thru Fridays, 9 a.m. to 5 p.m.
 Saturdays, 9 a.m. till last appointment

WOODARD'S

DIAMONDS & DESIGN



We Celebrate Life and Love

HOURS
 Mon–Fri • 10–7
 Saturday • 10–6
 Closed Sunday

woodards.net
(931) 454-9383
 Northgate Mall
 Tullahoma

Support local businesses!



Southern Pride Masonry

Rock solid stone creations. Rock bottom prices.
Free consultation. 931.304.0159



MICHELLE M. BENJAMIN, JD
Attorney & Counselor at Law

201 FIRST AVENUE, NORTHWEST
 WINCHESTER, TENNESSEE 37398

(931) 962-0006
 Fax: (931) 967-8613

Michael A. Barry

LAND SURVEYING & FORESTRY

★ ALL TYPES OF LAND SURVEYS
 ★ FORESTRY CONSULTING

(931) 598-0314 | (931) 308-2512

School Calendar

Aug. 16, Finding Your Place, for first-year students, University of the South

Aug. 18–27, Orientation, School of Theology

Aug. 19, Opening Weekend, St. Andrew's-Sewanee

Aug. 21, First Day of Classes, St. Andrew's-Sewanee

Aug. 23, PRE-Orientation, University of the South

Aug. 25, No School - Fair Day, Franklin County

Aug. 26–29, Orientation for New Students, University of the South

Aug. 28, Quiet Day, School of Theology

Aug. 29, First Day of Classes, School of Theology

Aug. 30, First Day of Classes, University of the South



Tea on the Mountain

*For a leisurely luncheon
 or an elegant afternoon tea*

11:30 to 4 Thursday through Saturday

DINNERS BY RESERVATION
 (931) 592-4832
 298 Colyar Street, US 41, Tracy City

AT THE MOVIES

SEWANEE UNION THEATRE
Thursday–Sunday, Aug. 17–20,
7:30 p.m.

Guardians of the Galaxy 2
 PG-13 • 138 minutes

The “Awesome Mix” tape is back! Chris Pratt, as Peter Quill (Star-Lord), leads the ragtag renegade family of Guardians who are hired to protect the precious batteries of the Sovereign, an alien race of golden, genetically perfect individuals. When Rocket (voiced by Bradley Cooper) takes some batteries for himself, the Sovereign fight back. After crash landing on a nearby planet, the unlikely band of heroes encounter Ego (Kurt Russell), an immortal Celestial who claims to be Quill’s birth father. Ego takes them to his own planet. While Quill jumps at the chance to learn more about his mysterious family tree and bond with his father, his companions have their doubts—they are up against a devastating new menace who is out to rule the galaxy.

Rated PG-13 for sequences of sci-fi action and violence, language and brief suggestive content.

Movies are \$3 for students and \$4 for adults. The SUT is located on South Carolina Ave., behind Thompson Union.

Come Dance with Us

The Sewanee Dance Conservatory will start classes on Monday, Aug. 14, and registration forms are available for ages 3-adult at <<https://sewanee-danceconservatory.com/register-for-classes/>>.

The schedule will remain mostly the same as the previous year. The schedule is designed for dancers to take back-to-back classes on Sundays, Mondays, Tuesdays, Wednesdays and Thursdays. Participants can try a new class, in addition to continuing previous lessons.

Classes are located in one of three locations:

- 1) Dance Studio in the Fowler Center at The University of the South
- 2) Tennessee Williams Center Dance Studio (advanced ballet/pointe)
- 3) Parish Hall at Otey Memorial Parish Church (youngest ages)

For more information and to register, go to <<https://sewaneedanceconservatory.com>>.



Come enjoy Jumpin' Monkey—our new coffee smoothie made with banana, peanut butter, soy milk & hemp seeds

Aug. Hours: Mon–Fri, 7:30am–4:30pm
 Georgia Avenue, Sewanee
598-1786



New Getty Show at Stirling's

Telling stories in fabric and thread has special appeal and meaning for artist Diane Getty, who has always treasured textiles—woven, knit, crocheted, and felted.

“Although I appreciate and honor traditional quilting methods,” she says, “I am more likely to ‘draw’ on fabric collage with freeform machine stitching, or to embroider by hand, following no rules or set patterns.”

“‘Harvesting’ images from pur-

chased materials or painting yardage to create my own are my primary techniques to gather materials,” she adds.

Getty’s topics spring from experiences of life and her reactions to them. To explore a topic, she experiments with materials, concepts, and expressions of all the joy, wonder, sadness, and confusion in an ordinary life.

Her current show can be seen at Stirling’s. A reception will be from 2–4 p.m. on Thursday, Aug. 17.



Tree of Life by Diane Getty

Open Studio at GAAC

The Grundy Area Arts Council (GAAC) is sponsoring a weekly Open Studio for area artists, on Fridays, 1–3 p.m., at Grundy Area Arts Council Studio, 14371 US-41, Tracy City, TN 37387. This program is free as a service to the community.

Open Studio is an informal opportunity for visual artists (sketching, collage, painting, etc.) to come together to work on projects of their own choosing. GAAC will provide the space, the tables and chairs as well as drying drawers so that wet articles can be left to dry. Participants bring their preferred art supplies, ideas and enthusiasm. For more information contact Barbara Camm at (931) 636-0629, <bjcamm@hotmail.com> or <grundyareaarts@gmail.com>.



Thompson Law

Christopher “Kim” Thompson

Belle Meade Center
 85 White Bridge Road, Suite 300
 Nashville, TN 37205

615-832-2335 fax 615-242-7853

kim@thompsonslawoffice.com

www.thompsonlawtn.com

Personal Injury, Criminal, Divorce



piggly wiggly

Down Home, Down the Street

754 West Main St., Monteagle
 (931) 924-3135

8 a.m. to 9 p.m. 7 days a week



Everyone is invited to the “flotsam, jetsam, lagan, and derelict” show by artist Austin Reavis.

SAS Gallery Welcomes Austin Reavis

St. Andrew’s-Sewanee School’s SAS Gallery is pleased to welcome the work of artist Austin Reavis. Reavis’ sculpture, paintings and photography will be in the gallery through Sept. 24.

A reception celebrating the exhibition will be in the SAS Gallery on Sunday, Sept. 14 from 4:30–6:30 p.m. The public is invited to attend.

Reavis grew up in Sewanee in a house in the woods built by his parents. After graduating from St. Andrew’s-Sewanee School in 2005, Reavis built his own tiny house in those same woods, where he lived (miserably) without electricity or water for a year before leaving for Herron School of Art and Design in Indianapolis, Ind.

Since completing a B.F.A. in Sculpture at Herron in 2010, Reavis has worked as an assistant food stylist in New York, and as an art handler at the Frist Museum and Cheekwood Center for the Arts in Nashville. Reavis currently lives in Nashville, and has no intention of living in his tiny home again.

Reavis’ work has been shown in Indiana, New York and most recently at Bijan Ferdowsi Gallery and Red Arrow Gallery in Nashville. The Tennessean described his vivid, abstract watercolor series “Abecedarium,” as “meditating on arbitrary symbols, such as the alphabet, and their ability to represent complex realities -- how a letter can signify a place, or a word can summarize a deep feeling.” His recent body of sculpture juxtaposes found and repurposed materials to conjure mysterious and singular objects that are by turns comical, frightening, endearing and disorienting.

Reavis will offer a one-day workshop “Drawing with Peripheral Senses,” 9 a.m.–3:30 p.m., Saturday, Sept. 16. The workshop fee is \$25 and includes all materials and lunch. Contact Gallery Director Julie Jones at <jjones@sasweb.org> for more information.

SAS Gallery Hours are Monday through Friday, 9 a.m.–3 p.m., and by appointment.

Do You Suffer From:

- Achilles Tendonitis or Plantar Fasciitis
- Arthritis, Chronic Tendonitis, Bursitis
- Shin Splints
- Sciatica | Piriformis Syndrome
- Spinal Disc Problems, Low Back Pain
- Tennis | Golfers Elbow
- Recurrent Sport Injuries
- Other Musculoskeletal Problems

**You may be a candidate for
 INTRAMUSCULAR
 STIMULATION (IMS)
 DRY NEEDLING**

*Offering Wellness, Nutritional & Non Surgical
 Spinal Decompression Consultation*

www.shullchiropractic.com

**Call Today for
 FREE CONSULTATION**

967-4232

SHULL CHIROPRACTIC CLINIC, PLLC

Dr. Kurt Shull

**1025 S. College St.
 Winchester, TN 37398**



A Wellness, Nutritional, Spinal Decompression Clinic

Perseid Meteor Shower Peaks Aug. 11-12

Make plans now to stay up late or set the alarm early this weekend to see a cosmic display of "shooting stars" light up the night sky. Known for its fast and bright meteors, the annual Perseid meteor shower is anticipated to be one of the best potential meteor viewing opportunities this year.

The Perseids show up every year in August when Earth ventures through trails of debris left behind by an ancient comet. This year, Earth may be in for a closer encounter than usual with the comet trails that result in meteor showers, setting the stage for a spectacular display.

"Forecasters are predicting a Perseid outburst this year with double normal rates on the nights of Aug. 11-12," said Bill Cooke with NASA's Meteoroid Environments Office in Huntsville, Ala. "Under perfect conditions, rates could soar to 200 meteors per hour."

An outburst is a meteor shower with more meteors than usual. The last Perseid outburst occurred in 2009.

Every Perseid meteor is a tiny piece of the comet Swift-Tuttle, which orbits the sun every 133 years. Each swing through the inner solar system can leave trillions of small particles in its wake. When Earth crosses paths with Swift-Tuttle's debris, specks of comet-stuff hit Earth's atmosphere and disintegrate in flashes of light. These meteors are called Perseids because they seem to fly out of the constellation Perseus.

Most years, Earth might graze the

edge of Swift-Tuttle's debris stream, where there's less activity. Occasionally, though, Jupiter's gravity tugs the huge network of dust trails closer, and Earth plows through closer to the middle, where there's more material.

This may be one of those years. Experts at NASA and elsewhere agree that three or more streams are on a collision course with Earth.

"Here's something to think about. The meteors you'll see this year are from comet flybys that occurred hundreds if not thousands of years ago," Cooke said. "And they've traveled billions of miles before their kamikaze run into Earth's atmosphere."

The best way to see the Perseids is to go outside between midnight and dawn on the morning of Aug. 12. Allow about 45 minutes for your eyes to adjust to the dark. Lie on your back and look straight up. Increased activity may also be seen on Aug. 12-13.

For stargazers experiencing cloudy or light-polluted skies, a live broadcast of the Perseid meteor shower will be available via Ustream overnight on Aug. 11-12 and Aug. 12-13, beginning at 9 p.m. Central Time. —from <nasa.gov/topics/solarsystem/features/watchtheskies/perseid-meteor-shower-aug11-12.html>.



An outburst of Perseid meteors in 2009.

Tims Ford Park Hosting Eclipse Event

The public is invited to visit Tims Ford State Park on Monday, Aug. 21, from 11 a.m. to 3 p.m. at the park softball field and picnic shelter No. 2 to celebrate the Great American Solar Eclipse.

While the park is not in the line of totality, Winchester and Tims Ford Lake will experience 95.55 percent of totality. Enjoy a hotdog sale hosted by the park followed by a series of lectures and activities about the solar eclipse, what it is, and how best to enjoy it as officials count down for the main event at 1:30 p.m.

Visitors should bring a chair or blanket to sit on as they enjoy the show. They should also bring snacks or beverages to go with the hotdogs. Tims Ford invites everyone for the moon's awe-inspiring "swallowing of the sun."

Jackson to Lead Tigers' Sports Media Team

The University of the South recently announced Layton Jackson as the new director of athletic communications for Sewanee, overseeing the promotion for the Tigers' 24 varsity sports.

Jackson comes to Sewanee from Belhaven University in Jackson, Miss., as a graduate assistant in the Athletics Communication department, where he was the lead statistician for all 17 sports, as well as serving as media contacts for the volleyball, baseball, women's basketball, cross country/track and field, and men's and women's soccer teams during his two seasons at the NCAA Division III institution.

Jackson also was the play-by-play broadcaster for the baseball program on the Blazers Sports Network, and he was the voice during the Blazers' softball run at the National Christian College Athletic Association (NCCAA) postseason, including calling play-by-play at the NCCAA World Series for the Green and Gold.



Student-athletes from St. Andrew's-Sewanee School recently participated in pre-season practices in football, girls' soccer and volleyball.



Save the Date!

End of Summer Wine Dinner

6 p.m., Saturday, September 2

5 wines, 4 courses. Reservations required.

The mountain's best breakfast,
served daily 8–10 a.m.

Monteagle Inn Tallulah's
Wine Lounge

(931) 924-3869 ~ www.monteagleinn.com ~ 204 West Main St.

SOUTHERN TENNESSEE REGIONAL HEALTH SYSTEM SEWANEE

invites you to an
Open House & Cook Out
Wednesday, August 30
11am- 1pm
Come have lunch with us
and see the newly renovated
and expanded
Physical Rehabilitation Center!

For additional
information, call
Carla Sandlin at
931-598-5691

CERTIFIED CHIMNEY SWEEP

G. Robert Tubb II, Owner
931-967-3595
A1ChimneySpecialist.com

CSIA Certified Technicians
Video Inspections • Sweeping
Restoration • Masonry Repair
Custom Caps & Dampers
Leak Repair & Water Proofing
Wood Stove & Chimney Installs
Gas Log Service & Installs
Dryer Vent Cleaning/Repair

HELP! **A-1 CHIMNEY SPECIALIST**

Instagram Facebook Twitter Google+

THE LOCAL MOVER
615-962-0432

Need More Room?
We Sell Boxes!

Sewanee Mountain Storage
(931) 598-5682

■ Security Gate Dan & Arlene Barry ■ Security Camera
Hwy 41 - Between Sewanee & Monteagle

U-HAUL MOVING BOXES and SUPPLIES!
—Various Sizes—

KIT TO PROTECT YOUR FLAT-SCREEN TV!

Your Place for Organic & Local Products

- ◆ Natural Foods
- ◆ Personal Care Products
- ◆ Garden Supplies
- ◆ Yarn & Knitting Supplies
- ◆ Local Arts & Crafts
- ◆ Jewelry
- ◆ Gifts
- ◆ Antiques

Mooney's
Market & Emporium

OPEN DAILY 10-6
931-924-7400 • 1265 W Main Street • Monteagle, TN

Facebook

Home Games

Tuesday, Aug. 15

5 p.m. SAS Middle School Girls' Soccer vs. South Middle School, Scrimmage

Tuesday, Aug. 22

4 p.m. SAS Varsity Golf vs. TBD, Sewanee Golf Course

5 p.m. SAS Middle School Girls' Soccer vs. Liberty

Wednesday, Aug. 23

4:30 p.m. SAS JV Volleyball vs. Grundy County High School

5:30 p.m. SAS Varsity Volleyball vs. Grundy County High School

Thursday, Aug. 24

5 p.m. SAS Varsity Girls' Soccer vs. Central High School

Put this
space
to work
for your
business.

Sewanee Swimmers Compete in Open Water 'Kingdom Swim'

Blount noted the importance of the

Wai also highlighted the joys of yacking, saying, "Piloting is a heck of a lot of fun. You enjoy a beautiful lake and experience the weather in the fullest, you also have the opportunity to practice a little maritime navigation by chart, compass and line of sight, and you have the satisfaction of aiding the

"I'm not sure I have lake water in my blood like Sam and Zach do," Bruce said, "but it was a fun challenge. And I got homemade beef jerky as my third-place prize, so I think I was the big winner for the weekend."

"It is always one of our top team goals to excel academically, and we feel that our academic successes fuel our achievement in the pool. It is an honor to work with such an intrinsically motivated group," said head

“Sewanee is providing its students with intangible educational experiences that will stay with them throughout their lives. Thanks to Coach Obermiller, Sewanee is equipping its swimming and diving teams with confidence, courage, perseverance and teamwork,” said Susan Teeter, president of the CSCAA.

Both the men's and women's squads were also selected to the All-Academic Team. The ITA All-Academic Team award is open to any ITA program that has a cumulative team grade point average of 3.20 or above (on a 4.00 scale). All varsity letter winners should be factored into the cumulative team GPA for the current academic year (including fall 2016 and spring 2017).

www.sewaneemessenger.com

Making Pets Feel Right at Home

Full-Service Doggie Day Care • Full Grooming Services
34 Indoor/Outdoor Kennels



WAGS AND WIGGLES
Doggie Day Care, Boarding and Grooming

 1660 Decherd-Estill Rd. • Winchester
www.wagsandwigglesn.com • 931.247.1699

[illegible]The logo is a circular emblem with a blue outer ring containing the text "DUCK RIVER" at the top and "MEMBERSHIP CORPORATION" at the bottom in white. The center features a yellow background with two red lightning bolts and the word "Electric" in a red script font.

Please join us!

Annual Membership Meeting

8.19.17

Registration opens at 8:30 am ~ Meeting begins at 9:30 am

Harris Middle School Auditorium
570 Eagle Blvd. ~ Shelbyville, TN

A Touchstone Energy® Cooperative 

NATURENOTES



Earthstars

Notes from Abbo's Alley

Approaching the Sanborn Gate entrance to Abbo's Alley walking alongside the Fowler Center, you may first encounter a cluster of rounded earthstars, a type of puffball, under one of the dogwoods. Tap the ball lightly and a puff of spores should emerge. Approaching the gates, there is a very large patch of tree moss, well hydrated after our recent rains. This is one of the largest and most conspicuous mosses in our area. A horizontal underground stem sends up upright branches that take the form of (very) small trees. Once on the path through the Alley you may encounter several arching fruiting stems of jump seed, a knotweed often identified on spring wildflower walks as lady's-thumb due to the reddish blotch on the basal leaves that are present in the spring. Run your fingers along the stem and the fruits may "jump" off. Near the koi pond and Pons Puckettensis is a flowering stem of crane fly orchid, usually hard to spot against a background of leaf litter. Its leaf, too, is often pointed out on spring wildflower walks for the bright purple underside, but the leaf has disappeared by the time it blooms. At the Bratton Bridge, across the stream from the storage shed (Aedificium Ayrensis) is a patch of devil's walkingstick, conveniently labeled. Look up and see the large cluster of small white flowers attracting many insects. Interestingly, this shrub or small tree is in the same plant family as spikenard, English ivy, and ginseng, with similar flower arrangements. The huge compound leaves are often 3 feet long and 2 feet wide and may be over 5 feet long, qualifying them as the largest of any temperate tree in the continental U.S. Bright red cardinal flower is starting to bloom-look for it at stream crossings.

—reported by Yolande Gottfried

State Park Offerings

Saturday, Aug. 12

Wild Edibles Wilderness Survival Course—Join Ranger Park Greer at 10 a.m. at Grundy Forest parking lot, 131 Fiery Gizzard Rd., Tracy City, for a hands-on lesson in the wonderful wild edibles found this time of year. A few dishes will be pre-prepared with recipes for participants to take home. Folks are often surprised just how much one can gather and eat from nature!

"Hawk Talk" in Grundy Forest—Join Ranger Jessie McNeel at 4 p.m. at Grundy Forest parking lot, 131 Fiery Gizzard Rd., Tracy City, to hear the story of our nonreleasable Red-Tailed Hawk as well as the role her species plays in the ecosystem. Don't forget to bring your questions and your camera for an up close and personal experience. No dogs please; they tend to offend the bird.

Tuesday, Aug. 15

Firecraft Wilderness Survival Course—Meet up with Ranger Park Greer at 10 a.m. at Grundy Forest parking area, 131 Fiery Gizzard Rd., Tracy City, for an in depth training into the use of various non-match-or-lighter tools to create fire. Using both primitive and modern methods, participants will get a chance to not only practice starting fires, but how to identify good fuels, or what do if the fuel is wet. Come prepared with plenty of water and snacks, and comfortable clothes for the weather. Rain or shine.

Thursday, Aug. 17

Edible and Medicinal Plants—Meet Ranger James Holland at 10 a.m. at Savage Gulf Ranger Station, 3177 State Road 399, Palmer, to learn about some of the common edible and medicinal plants found in our area and their traditional uses. You'll then venture into the forest for field identification of some of the plants about which we have learned.

The South Cumberland State Park Visitors' Center is located on Highway 41 South between Monteagle and Tracy City and is open 8 a.m.–4:30 p.m. seven days a week. For more information call (931) 924-2980.



Golden Boy



Sandra Dee

Pets of the Week

Meet Golden Boy & Sandra Dee

Animal Harbor offers these two delightful pets for adoption.

Come meet Golden Boy! He is a lover, not a fighter, a sleek Orange Tabby about five months old. Once in your lap, he will rev up his purr machine to top gear. His favorite things are catnip, treats, chasing after toys (and "whiskers on kittens"). Golden Boy is negative for FIV/FelV, up-to-date on shots and neutered.

"Look at me, I'm Sandra Dee!" And I'm every bit as cute and talkative as the original. Sandra is a caramel-colored cutie who gets along well with other dogs and children. She will be a great family pet! Sandra is 3 months old, heartworm-negative, up-to-date on shots and spayed.

Animal Harbor offers substantial adoption fee discounts for veterans and seniors. Every Friday is Black Friday at Animal Harbor. On Fridays, adoption fees will be reduced 50 percent for black or mostly black pets more than four-months-old who have been at Animal Harbor for more than a month. Pets adopted from Animal Harbor qualify for a free post-adoption wellness exam by local veterinarians.

Animal Harbor is located at 56 Nor-Nan Road, off AEDC Road, in Winchester. Call Animal Harbor at (931) 962-4472 for information and check out the other pets at <animalharbor.org>. Enter the drawing on this site for a free spay or neuter for one of your pets. Help Animal Harbor continue to save abandoned pets by sending donations to Animal Harbor, P.O. Box 187, Winchester, TN 37398.

Volunteers Needed for Trail Work and Maintenance in Parks

Denny Cove Trail Work

Denny Cove, the newest area of the park, is now officially open (weekends only, until the trail build is complete). Help us complete the 1.5 mile main access trail out to Denny Falls, so this area of the park can be open on a daily basis. Volunteers are needed to help Ranger John Ball and Seasonal Ranger Spencer Baxter get the job done. Trail work will primarily be moderate to strenuous and will involve working on loose/uneven ground. Meet them at 9 a.m., every Saturday, at the Denny Cove parking area, 5917 US 41 (TN-150), Sequatchie. Look for a gravel road with a small brown park sign and bar gate, across from the Foster Falls Volunteer Fire Department on US 41, about 1.5 miles south of Foster Falls. Follow the gravel road about 3/4 of a mile to the Denny Cove parking area, on your right. The trail head is at the far corner of the parking area, opposite where you drove in. Call the Park office at (931) 924-2980 if you have questions about this opportunity.

Grundy Forest Trail Maintenance

Join us in flexing your volunteer muscle and help create a positive, lasting impact on this beautiful park. Grundy Forest trail maintenance takes place on the second Saturday of each month at 10 a.m., at the Grundy Forest Parking Area, 131 Fiery Gizzard Rd., Tracy City. There are jobs for everyone, and many do not involve moving rocks. Please be prepared with sturdy footwear and plenty of water/snacks. If you have a favorite tool or pair of gloves, feel free to bring them. For more information, contact Ranger Park Greer or call the Park office at (931) 924-2980.

Grundy Lakes Trail Maintenance

With the Fiery Gizzard reroute complete, attention now turns to trails in Grundy Lakes. Grundy Lakes trail maintenance takes place on the second Sunday of each month, at 1 p.m., at the Grundy Lakes Parking Area, 587 Lakes Road, Tracy City. There are jobs for everyone, and many do not involve moving rocks. Please be prepared with sturdy footwear and plenty of water/snacks. If you have a favorite tool or pair of gloves, feel free to bring them. For more information, contact Ranger Park Greer or call the Park office at (931) 924-2980.

Tims Ford Trail Work

On Saturday, Aug. 19, Tims Ford State Park will host a Volunteer Trail Work Day to improve walking trails throughout the park. Volunteers should meet at the Visitor Center with closed-toe shoes and plenty of water. Gloves and tools will be provided. The event is eligible for TN Promise or community service hours. The work day will be 8 a.m.–noon. Tims Ford State Park is located at 70 Tims Ford Dr., Winchester.

Tell them you saw it here.

FARRIS CHIROPRACTIC

Dr. Dale Farris

1210 West Main St.

Decherd, TN 37324

931-313-5276

931-313-5375

office

fax

HOURS Tues and Thurs 8 a.m.–6 p.m., Fri 2 p.m.–7 p.m., Sat 8 a.m.–noon.

J & J GARAGE

COMPLETE AUTO REPAIR

- Import & Domestic
- Computerized 4-wheel alignments
- Shocks & Struts • Tune-ups • Brakes

Our work is guaranteed

More than 35 years experience
Hwy 41-A between Sewanee & Monteagle
Mon.–Fri. 7:30–5:30



Jerry Nunley,
owner
598-5470

Winchester Podiatry

CHARLES D. GANIME, DPM

Board Certified in Foot Surgery
Diplomate, American Board of Podiatric Surgery
New Patients of All Ages Welcome! We Treat Your Feet! Most Insurance Accepted, Including TennCare

155 Hospital Road Suite I, Winchester.
www.winchesterpodiatry.com

931-968-9191

www.sewanee
messenger.com

Weather

DAY	DATE	HI	LO
Mon	Jul 24	86	69
Tue	Jul 25	88	68
Wed	Jul 26	88	73
Thu	Jul 27	89	71
Fri	Jul 28	75	66
Sat	Jul 29	81	63
Sun	Jul 30	80	60

Week's Stats:

Avg max temp =	85
Avg min temp =	69
Avg temp =	77
Precipitation =	3.00"

DAY	DATE	HI	LO
Mon	Jul 31	81	63
Tue	Aug 01	80	64
Wed	Aug 02	83	63
Thu	Aug 03	84	66
Fri	Aug 04	80	57
Sat	Aug 05	82	63
Sun	Aug 06	83	63

Week's Stats:

Avg max temp =	81
Avg min temp =	62
Avg temp =	72
Precipitation =	0.35"

Reported by Sandy Gilliam
Domain Ranger



Classifieds

HELP WANTED

INTEGRATED CARE MANAGER/THERAPIST: Mountain Valley Mental Health Center connection office, Tracy City has an immediate Full-time opening. **EXEMPLARY DUTIES/RESPONSIBILITIES:** The Integrated Care Manager/Therapist will be the Liaison supporting technology-driven care and trusted relationships between the patient and provider. The position is community based, assisting each site with accessing telehealth, using telehealth equipment, scheduling appointments, locating services and referrals on behalf of participants and overseeing all coordination of services. The ICM/Therapist will develop a strong therapeutic alliance and rapport for successful telehealth interventions and provide patient therapy to children, adults and families. **QUALIFICATIONS:** Minimum of a Master's degree with experience providing therapeutic services. Knowledge of available resources and ability to work with others in the community to access services. Ability to work as a team member to meet program goals and expectations. Public relation skills with speaking abilities. Competitive salaries and excellent benefits. Send resumé to: VBHCS • Human Resources • P.O. Box 4755 • Chattanooga, TN 37405. EQUAL OPPORTUNITY EMPLOYER.

NOW HIRING: EXPERIENCED TRADESMAN

Joseph's Remodeling Solutions has a position open for an experienced tradesman specializing in Electrical, Plumbing and/or Carpentry. Qualifications are remodeling experience in all trades, strong work ethic, honesty and excellent work references required. Company participates in the Tennessee Drug-Free Work Place. Job sites are tobacco-free. Full-time, permanent position with competitive rates and benefits offered to qualified individuals. Call 931-598-5565 or email work history and professional references to: office. teamsumpter@gmail.com.

DRIVERS: Great Benefits, 401k! Vacation/Holidays. Texas, Regional & Home daily positions. Late model equipment. CDL-A, one year experience. (866)792-5221. **THERAPY ASSISTANT:** Are you highly motivated, caring, professional, energetic and like hands on work with patients and can multi-task with clerical duties? You may be the individual that we are looking for to join our busy natural health care clinic team. The position available is for therapy assistant and will average 27–30 hours per week. We will train. Fax resumes to (931) 962-1988 or mail to: Therapy Assistant, 1025 S. College St., Winchester, TN 37398.

LAWN CARE

CHAD'S LAWN & LANDSCAPING
-FREE ESTIMATES-
* Lawn care & Design (Mulch & Planting)
ALSO: * Tree Trimming & Removal
* Pressure Washing * Gutter Cleaning
* Leaf Pickup & Blowing * Road Grading
* Garden Tilling * Rock Work
(931) 308-5059

EAGLE LANDSCAPING & LAWN MAINTENANCE CO.
Now Offering Specials for SUMMER!
We offer lawn maintenance, landscaping, hedge/tree trimming & more!
Please call for your free estimate
(931) 598-0761 or (931) 636-0383

LONG'S LAWN SERVICE
• landscaping & lawn care
• leaf removal • mulch
Local references available.
Jayson Long
(931) 924-LAWN (5296)

KEEP IN TOUCH
www.sewaneemessenger.com
www.themountainnow.com
ads@sewaneemessenger.com



LOCAL SERVICES

WATER SOLUTIONS
Joseph Sumpter
Owner/Licensed Residential Contractor
Specializing in drainage and rainwater collection systems
598-5565
www.josephsremodelingsolutions.com

CHARLEY WATKINS
PHOTOGRAPHER
Sewanee, TN
(931) 598-9257
<http://www.photowatkins.com>

DIRT WORK
• Bush Hogging
• Driveway Maintenance
• Gravel/Sand/Mulch
• Large or Small Jobs
Michael, 615-414-6177

King's Tree Service
Topping, trimming, bluff/lot clearing, stump grinding and more!
Bucket truck or climbing
Free wood chips with job
Will beat any quoted price!
Satisfaction guaranteed!!
—Fully licensed and insured—
kingstreeservice.com
Call (931) 598-9004—Isaac King

MASSAGE
Regina Rourk Childress
Licensed Massage Therapist
www.reginarourk.com
~ GIFT CERTIFICATES ~
(931) 636-4806

Walk-In Cooler Filled with Flowers!
Monteagle Florist
333 West Main Street, Monteagle
(931) 924-3292

One-Stop Transportation Information: dial 511

MOVERS

THE LOCAL MOVER
Available for Moving Jobs
Call or Text Evan Barry
615-962-0432
Reviews at <www.thelocalmoverusa.com>.

The Moving Man
Moving Services • Local or Long Distance
Packing Services • Packing Materials
1-866-YOU-MOVE (931) 968-1000
www.themovingman.com
Since 1993 U.S. DOT 1335895

TO BUY

I BUY VINYL RECORDS: 45s, 78s, LPs and VINTAGE STEREO COMPONENTS. (828) 719-6360 or <bbbfrantz@yahoo.com>.

WOODWORKING

The Gnarled Oak
Antique furniture refinishing and Chair caning
(931) 592-9680
Bill Childers, Prop

Oldcraft Woodworkers
Excellence in custom woodworking.
Kitchen and bath cabinets, bookcases, furniture and furniture repairs.
Est. 1982. Phone 931-598-0208

Online and in color!
sewaneemessenger.com

YOUNG LIVING
ESSENTIAL OILS
Independent Distributor
Ray and April Minkler
styraco@blomand.net, aprilminkler@blomand.net
931-592-2444 931-434-6206
For over 8,700 testimonials see www.oil-testimonials.com/1860419

CURBSIDE RECYCLING

Residential curbside recycling pickup in Sewanee is on the first and third Friday of each month. Recyclable materials must be separated by type and placed in blue bags by the side of the road no later than 7:30 a.m. Please do not put out general household trash on this day. Blue bags may be picked up in the University Lease and Community Relations Office, 400 University Ave. (the Blue House) or at the Physical Plant Services office on Georgia Avenue.

Glass Recycling in Sewanee



Available 7 a.m. to 6 p.m., Monday through Saturday, outside of the PPS Warehouse on Kennerly Avenue.
Reuse Reduce Recycle



DOMESTIC VIOLENCE 24-HOUR CRISIS LINE
1-800-435-7739



Aluminum
Clean Foil
Pie Pans

Metal Cans
Food Cans, etc.

Cardboard
Packing Boxes, Food Boxes (Cereal & Cracker Boxes)

Plastic Containers
#1-#7
NO Styrofoam
NO Plastic Grocery Bags
NO Packaging Wrap
NO Food Containers
NO Clam Shells
NO Buckets or Hard Plastics (coolers, gas jugs, etc.)
NO Toys
NO Garden Hose
NO PVC Pipe
NO Vinyl Siding

Paper
Office/Mixed Paper
White Ledger Paper
Colored Paper
Notebook Paper
Stationery
Junk Mail
Hard/Paperback Books
Newspapers
Magazines
Catalogs
Phone Books

The Convenience Center for household garbage, trash and recycling is located on Missouri Ave. Its spring hours are: Monday, 1–6 p.m.; Tuesday through Friday, 3–6 p.m.; Saturday, 8 a.m.–4 p.m.; Closed Sunday. Closed on national holidays. There are blue recycling bins for metal (tin, appliances, etc.), newspapers/magazines, some plastic containers #1-#7, cardboard and aluminum cans. Glass recycling is on Kennerly Ave. behind PPS. For more information <http://www.franklincotn.us/departments/solid_waste/index.html>.

CLASSIFIED LINE AD RATES:
\$3.25 first 15 words,
10 cents@ additional word
Now you can charge it!
\$10 minimum
VISA or MC
CALL US! • 598-9949

ART

the **ARTISAN** DEPOT
Gallery & Gifts
NOW JURYING FOR FINE CRAFTS
204 E. Cumberland St., Cowan
Open Thurs-Sun • 931-308-4130

ENGINE REPAIR

SARGENT'S SMALL ENGINES: Repairs to All Brands of Equipment: Lawn mowers (riding or push), String trimmers, Chainsaws, Chainsaw sharpening, New saw chains. Pickup and Delivery Available. (931) 212-2585, (931) 592-6536.

GARAGE/YARD SALE FLEA MARKET/

INSIDE/OUTSIDE YARD SALE!
Clothing for all, movies, games, household items. Friday and Saturday 8 a.m.–??, Midway Market, 969 Midway Rd., Sewanee. Come see us for really great bargains!

I-24 Flea Market
200 Vendors!
24 Years!
I-24 Exit 134
Saturday & Sunday
(931) 235-6354

FOR RENT

HOUSE FOR RENT: 4BR/2BA house on Gudger Road. All appliances, C/H/A. (931) 212-0447.

HOUSE FOR RENT: On Sherwood Road. 3BR/2BA. Living room, dining room, large kitchen w/eat-in area, large deck, C/H/A. No pets. \$750/mo., \$400 deposit. (931) 308-5100.

FOR SALE

FRESH SEWANEE CHICKEN EGGS: Brown or white. \$2/dozen. Call me at (931) 308-3427.

FIREWOOD FOR SALE: \$60/rick. \$70/stacked. Call (931) 592-9405. Leave message.

FOR SALE: Frigidaire Professional Coffee maker. KitchenAide coffee grinder. Barely used. Call (423) 298-4549.

SIX LEADED STAIN GLASS WINDOWS: Also original frames. From St. Mary's Chapel-1910. Windows are perfect. Assorted other items including oak columns. Price \$9,000. <gaylesf@tds.net>

HOMES/LAND FOR SALE

4BR/2BA HOME FOR SALE: On approximately 1 acre. Gudger Road. All appliances. C/H/A. Call (931) 212-0447.

LOVELY ENGLISH COTTAGE: 1900+s/E Tudor-style home on main road in Cowan. 3BR/2BA, C/H/A. Renovated 2008. \$115,900. Email <civylwildrestaurant@gmail.com> for pictures. (931) 273-3171.

2 BEAUTIFUL WOODED HOME-SITES: R-1 zoned. In Monteagle. All utilities and city service. 1.2 acres, \$18,000. 2.3 acres, \$29,000. Call (850) 255-5988.

LOST COVE BLUFF LOTS
www.myerspoint.net
931-703-0558

Tell them you saw it here.



BARDTOVERSE

by Phoebe Bates

Back to School Days

I love to rise in a summer morn,
When the birds sing on every tree;
The distant huntsman winds his horn,
and the sky-lark sings with me.
O, what sweet company.

But to go to school in a summer morn
O! it drives all joy away;
Under a cruel eye outworn
The little ones spend the day
In sighing and dismay,

-William Blake, *The School Boy*



TOMMY C. CAMPBELL

FOR YOUR IMPROVEMENTS

Call (931) 592-2687

Free Estimates • No Job Too Small!

DRIVEWAY WORK • GRAVEL HAULING • DOZER & BACKHOE

plus Land Clearing • Concrete Work • Water Lines • Garage
Slabs • Sidewalks • Porches & Decks • Topsoil & Fill Dirt
Septic Tanks & Field Lines

Need a designated study
space in your home? We are
full of ideas. Let's talk...



Custom home remodeling begins with...

Joseph's Remodeling Solutions
A Division of Sumpter Solutions, LLC

Taking Quality to the Next Level

Licensed - Insured - Green Certified

931-598-5565

joseph@josephsremodelingsolutions.com

www.josephsremodelingsolutions.com

Community Calendar

Today, Friday, Aug. 11

8:30 a.m. Yoga with Carolyn, Comm Ctr
9 a.m. CAC office open, until 11 a.m.
10 a.m. Game day, Senior Center
Noon Spinal Spa with Kim, Fowler Ctr

Saturday, Aug. 12

7 a.m. Cowan Farmers' Mkt, corner Cumberland/TN Sts
8 a.m. Sewanee Gardeners' Market, Hawkins Lane
9:30 a.m. Hospitality Shop open, 1096 Univ Ave, until noon
(then closed until Tuesday, Aug. 29)
10 a.m. Young Photographers' Exhibit, Tracy City, until noon
1 p.m. Summer Bash, Midway Playground, until 3 p.m.

Sunday, Aug. 13

2 p.m. Knitting circle, Mooney's, until 4 p.m.
4 p.m. Yoga with Helen, Community Ctr

Monday, Aug. 14

Dance Conservatory classes begin

Grundy County Fair, Gruetli-Laager, through Aug. 19

9 a.m. CAC office open, until 11 a.m.
9 a.m. Pilates with Kim, intermediate, Fowler Ctr
10:30 a.m. Chair exercise with Ruth, Sr Ctr
5:30 p.m. FCBOE meeting, 215 S. College St., Winchester
5:30 p.m. FCDP, small meeting room, 839 Dinah Shore Blvd.
6 p.m. Karate, youth, Legion Hall; adults, 7 p.m.

Tuesday, Aug. 15

9 a.m. CAC office open, until 11 a.m.
9 a.m. Pilates with Kim, beginner, Fowler Center
9:30 a.m. Crafting ladies, Morton Memorial, Monteagle
10:30 a.m. Bingo, Sewanee Senior Ctr
11:30 a.m. Grundy County Rotary, Dutch Maid, Tracy City
Noon Pilates with Kim, intermediate, Fowler Center
5 p.m. SOA Health care rally, Winchester square, until 6 p.m.
7 p.m. Acoustic jam, old water bldg, Tracy, until 8:30 p.m.

Wednesday, Aug. 16

9 a.m. CAC office open, until 11 a.m.
9 a.m. Pilates with Kim, intermediate, Fowler Ctr
10 a.m. Senior Center writing group, 212 Sherwood Rd.
10:30 a.m. Chair exercise with Ruth, Senior Ctr

SHARE the TRAIL

Rule #2
Stay to the right, pass on the left. Cyclists alert pedestrians when passing: say "on your left."

WALK • RUN • CYCLE
TOGETHER

mountaingoattrail.org

1 p.m. Bloodmobile, STRH, until 6 p.m.
3 p.m. Gymnastics with Georgia, (preK-2nd), Comm Ctr
5:30 p.m. Yoga with Helen, Comm Ctr
6 p.m. SAS middle school new family gathering

Thursday, Aug. 17

8 a.m. Monteagle Sewanee Rotary, Sewanee Inn
9 a.m. CAC office open, until 11 a.m.
9 a.m. Nature Journaling, Lake Cheston pavilion
9 a.m. Pilates with Kim, beginner, Fowler Ctr
11 a.m. Tai Chi with Kathleen (advanced), Comm Ctr
11:30 a.m. FCRW, Oasis Restaurant, Winchester
Noon Pilates with Kim, intermediate, Fowler Ctr
1:30 p.m. Folks@Home support group, 598-0303
2 p.m. Art reception, Getty, Stirling's, until 4 p.m.
2 p.m. Knitting circle, Mooney's, until 4 p.m.
3:30 p.m. Gymnastics with Georgia, (3rd gr+), Comm Ctr
4 p.m. Tracy Farmers' Market, Old HS parking lot, until 5:30
6 p.m. Karate, youth, Legion Hall; adults, 7 p.m.
7:30 p.m. Movie, "Guardians of the Galaxy 2," SUT

Friday, Aug. 18

SAS boarding students move on campus

SAS new upper school orientation

School of Theology orientation, through Aug. 27

9 a.m. CAC office open, until 11 a.m.
10 a.m. Game day, Senior Center
Noon Spinal Spa with Kim, Fowler Ctr
4 p.m. SAS Parents' reception, Ayres House
7:30 p.m. Movie, "Guardians of the Galaxy 2," SUT

LOCAL 12-STEP MEETINGS

Friday

7 a.m. AA, open, Holy Comforter, Monteagle
7 p.m. AA, open, Christ Church, Tracy City

Saturday

7:30 p.m. NA, open, Decherd United Methodist
7:30 p.m. AA, open, Claiborne Parish House, Otey

Sunday

6:30 p.m. AA, open, Holy Comforter, Monteagle

Monday

5 p.m. Women's 12-step, Brooks Hall, Otey
7 p.m. AA, open, Christ Church, Tracy City

Tuesday

7 p.m. AA, open, First Baptist, Altamont
7:30 p.m. AA, open, Claiborne Parish House, Otey
7:30 p.m. CoDA, open, Holy Comforter, Monteagle

Wednesday

10 a.m. AA, closed, Clifftops, (931) 924-3493
7 p.m. NA, open, Decherd United Methodist
7:30 p.m. AA, open, Holy Comforter, Monteagle

Speak Up.

Help friends get information. Help local businesses succeed.

Help our Mountain communities.

Tell businesses when you see their ads. Let businesses know what they're doing right. Write a Letter to the Editor.

Spread good news!

Monteagle Sewanee, REALTORS®

Dedicated to Service!



Deb Banks, Realtor
(931) 235-3385
debbanks8@gmail.com



Ray Banks, Broker/Owner
(931) 235-3365
rbanks564@gmail.com



Dee Underhill Hargis, Broker
(931) 808-8948
aduhargis@gmail.com



Tom Banks, Realtor
(931) 636-6620
tombanks9@yahoo.com

Competent, Caring, Friendly, Fair—We're Here for You!

www.monteaglerealtors.com • 931-924-7253

337 W. West Main St., Monteagle

Find all the area MLS listings on our updated website!

Share good news with more than 5,000 people weekly.
call: (931) 598-9949
email: news@sewaneemessenger.com
view: www.sewaneemessenger.com