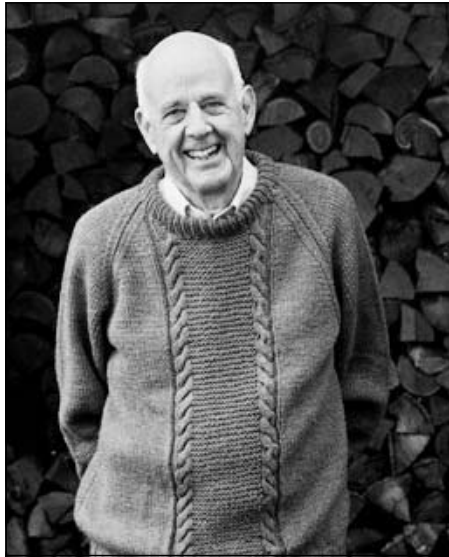


Wendell Berry Reading on Thursday

Participates in First Year Program for New Students

Distinguished author Wendell Berry will offer a public reading at 4:30 p.m., Thursday, Aug. 20, in Guerry Auditorium on the Sewanee campus. Berry's award-winning publications include more than 40 books of fiction, poetry and essays.

Berry's visit to Sewanee takes place in conjunction with the College's Finding Your Place (FYP) program and the associated freshman course to which he is contributing. FYP students, faculty and visiting contributors will be reflecting together on the theme "Imaginative Education: Learning to Know a Place, Care for a Place." Other participants in these FYP sessions include Mary Berry, executive director of the Berry Center in New Castle, Ky.; Leah Bayens, director of the Berry Farming Program at St. Catharine College; and Norman Wirzba, professor of theology, ecology and rural life at Duke University.



Wendell Berry. Photo by Guy Mendes

The seed of this visit was planted two years ago on Berry's front porch during a visit there by Michael Thompson, a fellow at the Center for Religion and Environment at Sewanee. During this first conversation, Berry and his wife, Tanya, introduced Thompson to the Berry Center's efforts, which is directed by their daughter, Mary.

Mary Berry and Bayens came to Sewanee more than a year ago, when discussions of the potential of a deeper relationship between Sewanee and the Berry Center began. Robin Gottfried, Director of the Center for Religion and Environment at Sewanee, English professor John Gatta and Thompson visited St. Catharine College to learn how they integrated the work of the Berry Center into their program.

The Berry Center is working to transform America's food and farm system into one that is healthy and sustainable for all people and the planet. The center is

(Continued on page 6)



The remains of the once vibrant Elliott Park.

Elliott Park Playground Project Deadline Nears

Fifteen years ago, Elliott Park was the place where schoolchildren and families gathered for play dates, birthday parties and Saturday afternoon get-togethers. There were swings, climbing structures, a sand box and many other age-appropriate and safe places to play at this park, open to all.

But Elliott Park has fallen into disrepair; most of the equipment has been removed, and little of the park remains. There is no community playground in Sewanee. Seeing this problem, the Sewanee Civic Association (SCA) began its For the Parks campaign.

The For the Parks campaign needs approximately \$36,000 to reach its goal for the Elliott Park playground equipment and installation project. To date, \$29,000 has been raised for the project, including major support from the Sewanee Community Council Funding Project, the South Cumberland Community Fund and the Kaj Krogstad Memorial Fund. The deadline to raise the funds is Sept. 30.

Elliott Park is a prime location as a central playground and meeting place for families—an outdoor space where members from across the community can connect. Located adjacent to University Avenue near the Book and Supply Store, All Saints' Chapel and the center of the University campus, it is the place where a playground can be created again for children of all ages, and provide a place for newcomers to meet others, fostering a sense of community.

The plans for redeveloping Elliott Park include swing sets, a balance beam, bridge, climbing structures, spinning elements and a musical component. The

(Continued on page 12)

Director of Schools Supports Teacher Autonomy

by Leslie Lytle
Messenger Staff Writer

At the Aug. 10 meeting of the Franklin County School Board, Director of Schools Amie Lonas talked about her plans "to push some of the decision-making down to the school level, both the principals and teachers."

Since assuming responsibility as director on July 1, Lonas has met with all the school principals and many of the faculty to share her leadership philosophy. Lonas said teachers seemed enthusiastic about having more autonomy in the classroom.

"I want the teachers to take ownership," Lonas said, "but with ownership comes responsibility for performance and test scores."

Lonas proposed the school board hold some of its meetings at the schools, to give the board members an opportunity to visit all the schools in the county. The board approved the suggestion. Lonas will draft a meeting location schedule.

Assistant superintendent Linda Foster said all certified positions were filled for the 2015–16 school year, with the exception of a new position for a second-grade teacher at North Lake Elementary School. Interviews would

(Continued on page 6)



At the Sewanee Post Office recently, Postmaster Ronda Rogers presented safe driving awards to three staff members (from left): Rogers; Roxanne Gilliam (one-year safe driver award); Billy Hargis (9-year safe driver award); and Linda Pearson (18-year and 19-year safe driver awards). Pearson will be retiring on Sept. 30 after 19 years of full-time service.

New Sewanee Students Arrive on Campus

About 495 new college students are arriving on the University of the South campus for the start of this semester—almost 480 first-year students and 17 transfer students.

More than 140 first-year students who are participating in the Finding Your Place program arrived and moved into their dorms on Aug. 12. During this year's program and its associated first-year course, students, faculty and visiting contributors will be reflecting together on the theme of "Imaginative Education: Learning to Know a Place, Care for a Place." The 10-day interdisciplinary immersion ends the afternoon of Aug. 21.

Sewanee Outing Program's PRE-Orientation (PRE) will offer about 200 incoming Sewanee freshmen the opportunity to get to know Sewanee in a unique and exciting atmosphere. Students arrive at Elliott Hall on Wednesday, Aug. 19. While familiarizing themselves with the 13,000-acre Domain during the three-day experience, new students meet other freshmen and upperclassmen in an environment that creates trust and establishes new friendships. Whether rock climbing for the first time, crawling through winding passages in a local cave, or building a house with Sewanee Outreach, PRE provides memories and friendships that will last a lifetime.

The University welcomes the entire Class of 2019 and other new students with orientation beginning Saturday, Aug. 22, following Finding Your Place and PRE. In addition to residence hall meetings and numerous information sessions, the week includes meetings with academic advisors, a class photo, a welcome address by Vice-Chancellor John McCardell and the solemn signing of the Honor Code. All students will be back on campus by Wednesday, Aug. 26, the first day of classes in the College.

SUD Board Discusses Wastewater Collection, Examines Audit

by Leslie Lytle, Messenger Staff Writer

Much of the discussion focused on wastewater collection at the Aug. 4 meeting of the Board of Commissioners of the Sewanee Utility District of Franklin and Marion Counties. Leaks, overflows and customer responsibility for sewer lines were top on the agenda.

SUD manager Ben Beavers said the 50-year-old pumping station at Mikell Lane needs immediate attention to reduce overflows during heavy rainfall. The pumping station will be a "big-ticket item," Beavers cautioned. Beavers will provide details on the cost at the next meeting. The pumping station on Roarks Cove Road (aka Alto Road) also needs to be refurbished or replaced.

Sani-Tech has completed the video camera inspection of SUD's sewer lines, Beavers said. Data from the video survey will be entered into a computer program that will prioritize information on which sewer lines are most in need of being repaired or replaced and the related cost. Inflow and infiltration of water into the sewer lines puts strain on SUD's wastewater treatment plant.

"My goal is to do the needed repairs and keep customer rates low," Beavers said.

In response to a question by board member Randall Henley, Beavers said customers were responsible for maintenance and repair of the sewer line between their residence and the sewer main, even if the line crossed other residents'

(Continued on page 7)

P.O. Box 296
Sewanee, TN 37375

LETTERS

BIKE HELMETS

To the Editor:

Eighty-seven out of 100. How about those odds? Would they encourage you to play the lottery? Maybe. Would you bet your life to play? Maybe not.

Yet those odds describe the number of deaths per 100 bicycle riders in accidents who were not wearing helmets. Even though riding a bike is a great form of exercise and a relatively safe endeavor (the odds of dying are only 0.024 percent), riding without a helmet can lead to debilitating or deadly consequences in the event of an accident.

Why take the chance?

We are fortunate to live in a community that is newly committed to bicycling. There will be more bikers sharing the road with vehicles, more families enjoying the Mountain Goat Trail and more riders on the dirt trails.

Let's show our support for cycling by also encouraging safety. State law requires all children under 16 to wear helmets. Hopefully, more adults will hop on the helmet wagon and buckle up before riding a bike.

Beth Pride Ford
Assistant Mountain Biking Coach
St. Andrew's-Sewanee School ■

SAVE FULFORD HALL

To the Editor:

A lot has happened on the Save Fulford Hall campaign.

The wave of enthusiasm from all directions is amazing and continues to grow: \$2,000 has been raised at <gofundme.com> in just a few days. There are 1,000 members of the Facebook page.

Alumni from all classes, as well as current students and residents of Sewanee, are reaching out every day, joining hands to ensure Fulford Hall's central place on the campus, where it has stood for 125 years as a reminder of the varied history of the University.

We on the vice-chancellor's ad hoc advisory committee ask you to get in touch with us and to join the campaign in whatever way you can. If you'd like a bumper sticker, there will be a short wait. The supply has been exhausted once again.

Leslie Richardson
Richard Tillinghast
Sewanee ■

SHARE YOUR NEWS! news@sewaneemessenger.com

Need a designated study space in your home? We are full of ideas. Let's talk...



Custom home remodeling begins with...

Joseph's Remodeling Solutions
A Division of Sumpter Solutions, LLC

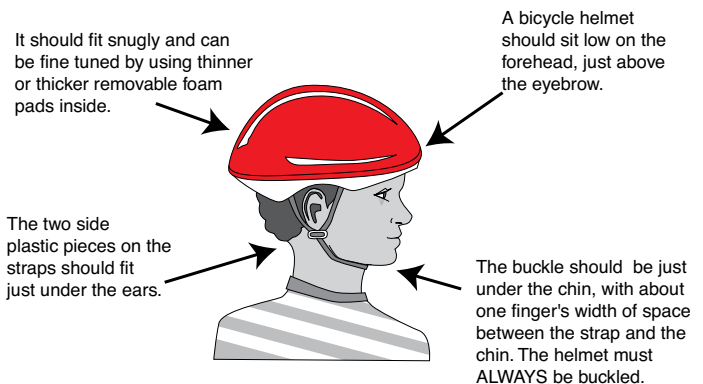
Taking Quality to the Next Level

Licensed - Insured - Green Certified

931-598-5565

joseph@josephsremodelingsolutions.com
www.josephsremodelingsolutions.com

Fitting a Bicycle Helmet



For a final check, gently try to roll the helmet back and forth on the head. The helmet should not move more than 1/2 inch in any direction.

Information provided by the Contra Costa Childhood Injury Prevention Coalition

Community Fund Announces "Make A Difference" Contest

What would you do if you had \$1,000 to make a difference in your community? That is the question the South Cumberland Community Fund is asking the youth in grades K-12 from Sewanee, Monteagle and Grundy County to consider in a contest this fall. The winning project in each of three age categories will receive \$1,000 to make their ideas a reality, and all participants will receive a special contest T-shirt.

"We're excited about this chance to get the young people of the Plateau interested in the idea of philanthropy," said Margaret Woods, board chair of the Community Fund. "Change tends to be longer-lasting and more effective when it comes from local ideas and involvement, and we want to get our kids thinking in terms of 'How can we help?'" she said.

Deadline for submissions is Sept. 25.

Finalists will be selected based on the difference the project will make, creativity and originality, and evidence of youth leadership. Winning projects for each age group will be determined by public vote. Youth may participate through school groups or community youth groups. All projects must be completed between November and April 30, 2016.

Established in 2012, the mission of the South Cumberland Community Fund is to improve the quality of life across the Plateau by increasing philanthropic giving and providing community leadership to build on the strength of the area's people, communities and natural setting; enhance community capacity and collaboration; and support innovative ways to solve community problems.

For more information, go to <southcumberlandcommunityfund.org> or email <difference@southcumberlandcommunityfund.org>.

Curbside Recycling Next Friday

Residential curbside recycling pickup in Sewanee is on the first and third Friday of each month.

Friday, Aug. 21, will be a pickup day. Recyclable materials must be separated by type and placed in blue bags by the side of the road no later than 7:30 a.m. Please do not put out general household trash on this day. Blue bags may be picked up in the University Lease and Community Relations Office, 400 University Ave. (the Blue House) or at the Physical Plant Services office on Georgia Avenue.

THE SEWANEE MOUNTAIN MESSENGER

418 St. Mary's Ln.

P.O. Box 296

Sewanee, Tennessee 37375

Phone (931) 598-9949

Fax (931) 598-9685

Email news@sewaneemessenger.com

www.sewaneemessenger.com

Laura L. Willis, *editor/publisher*
Janet B. Graham, *advertising director/publisher*
April H. Minkler, *office manager*
Ray Minkler, *circulation manager*
Leslie Lytle, *staff writer*
Kevin Cummings, *staff writer/sports editor*
Sandra Gabrielle, *proofreader*
Geraldine H. Piccard, *editor/publisher emerita*



Contributors
Phoebe Bates
Jean Yeatman
John Shackelford
John Bordley
K.G. Beavers
Virginia Craighill
Patrick Dean
Buck Gorrell
Margaret Stephens
Peter Trenchi
Francis Walter
Pat Wiser

Published as a public service to the Sewanee community. 3,700 copies are printed on Fridays, 47 times a year, and distributed to 26 Sewanee-area locations for pickup free of charge.

This publication is made possible by the patronage of our advertisers and by contributions from the University of the South (print production) and the Sewanee Community Chest. **SUBSCRIPTIONS** \$75 first class.

All material in the Sewanee Mountain Messenger and on its website are copyrighted and may not be published or redistributed without written permission.



Letters to the Editor Policy

Letters to the editor are welcome at the Sewanee Mountain Messenger and are a vital part of our community's conversation.

Letters need to be no longer than 250 words and may be edited for space and clarity. We make exceptions from time to time, but these are our general guidelines.

Letters and/or their author must have some relationship to our community. We do not accept letters on national topics from individuals who live outside our circulation area. Please include your name, address and a daytime telephone number with your letter.

You may mail it to us at Sewanee Mountain Messenger, P.O. Box 296, Sewanee, TN 37375, come by our office, 418 St. Mary's Ln., or send your email to <news@sewaneemessenger.com>.—LW

Avoid traffic jams!
One-Stop Transportation
Information: dial 511

Serving Where Called

Please keep the following individuals, their families and all those who are serving our country in your thoughts and prayers:

Michael Evan Brown
Mary Cameron Buck
Lisa Coker
Jennifer Lynn Cottrell
James Gregory Cowan
Nathaniel P. Gallagher
Alex Grayson
Peter Green
Tanner Hankins
Robert S. Lauderdale
Dakota Layne
Byron A. Massengill
Forrest McBee
Andrew Midgett
Alan Moody
Brian Norcross
Christopher Norcross
Lindsey Parsons
Peter Petropoulos
Troy (Nick) Sepulveda
J. Wesley Smith
Charles Tate
Tyler Walker
Jeffery Alan Wessel
Nick Worley

If you know of others in our Mountain family who are serving our country, please give their names to American Legion and Auxiliary member Louise Irwin, 598-5864.

MESSENGER DEADLINES and CONTACTS

PHONE: (931) 598-9949

FAX: (931) 598-9685

News & Calendar

Tuesday, 5 p.m.

Laura Willis

news@sewaneemessenger.com

Display Advertising

Monday, 5 p.m.

Janet Graham

ads@sewaneemessenger.com

Classified Advertising

Wednesday, noon

April Minkler

classifieds@sewaneemessenger.com

MESSENGER HOURS

Monday, Tuesday & Wednesday
9 a.m. – 5 p.m.

Thursday—Production Day
9 a.m. until pages are completed (usually mid-afternoon)

Friday—Circulation Day
Closed



(931) 962-3380
106 TN Ave. S.
Cowan, TN. 37318

Tues–Sat 5:00–8:30 p.m.
Closed on the 3rd Tuesday for DAV
www.sernicolas.com



The Ayres Center for Spiritual Development
Call (931) 598-5342
or (800) 728-1659
www.StMarysSewanee.org
<reservations@stmaryssewanee.org>

UPCOMING RETREATS

Diving Back In: Reclaiming Our Baptismal Spirituality

Friday, October 30–Sunday, November 1

The Rev. Martin L. Smith, presenter

St. Mary's Hall, \$350 (single);

The Anna House, \$450 (single); Commuter, \$250

Retirement as a Spiritual Journey:

From Success to Significance

Friday, November 20–Sunday, November 22

Dr. Richard P. Johnson, presenter

St. Mary's Hall, \$350 (single);

The Anna House, \$450 (single); Commuter, \$250

Upcoming Meetings & Events

DREMC Annual Meeting on Saturday

The 2015 annual meeting of the Duck River Electric Membership Corporation will be at 9:30 a.m., Saturday, Aug. 15, at Harris Middle School in Shelbyville. Registration starts at 8:30 a.m. The first 300 co-op members to register will receive special attendance prizes; door prizes include an energy-efficient upright freezer. Information tables staffed by co-op employees will be featured.

UDC Gathers on Saturday

The United Daughters of the Confederacy Kirby-Smith Chapter #327 will meet at 10 a.m., Saturday, Aug. 15, at the Franklin-Pearson House in Cowan. Following the meeting, the group will have lunch at "Tea on the Mountain" in Tracy City. The meeting is open to the public. For more information call (931) 924-3000.

Tillinghast to Read Sewanee Poem on Saturday

Writer Richard Tillinghast will read from his poem, "Sewanee When We Were Young" at 4 p.m., Saturday, Aug. 15, in Convocation Hall. The event is free and open to the public. The reading is part of the University's first-year program, "Finding Your Place," which began on Aug. 12.

Community Council Agenda Items Due by Wednesday

Agenda items for the next meeting of the Sewanee Community Council must be submitted by noon, Wednesday, Aug. 19. The meeting is scheduled for 7 p.m., Monday, Aug. 31, at the Sewanee Senior Center. Future meetings are planned for Oct. 26; and Jan. 25, March 28 and May 23 in 2016.

Area Rotary Club Meetings

The Grundy County Rotary Club meets at 11:30 a.m., Tuesdays, at Dutch Maid Bakery in Tracy City.

The Monteagle Sewanee Rotary Club meets 8-9 a.m., Thursdays, at the Sewanee Inn. On Aug. 20, Sewanee's head football coach, Tommy Laurendine, will preview the Tiger football season.

Franklin Co. Republican Women Meet Thursday

The Franklin County Republican Women will gather at 11:30 a.m., Thursday, Aug. 20, at the Franklin-Pearson House in Cowan. Lunch will be served at noon, with the meeting immediately following. For more information call (931) 924-3000.

Herbarium Walk on MGT on Aug. 23

Join Yolande Gottfried of the Sewanee Herbarium for a stroll along a short section of the extended Mountain Goat Trail. Meet behind Pearl's restaurant at 2 p.m. on Sunday, Aug. 23, for this easy walk. There will be an optional side trip afterward to the airport area if flowers of interest are in bloom there.

Franklin County Democratic Women Meet on Aug. 24

The Franklin County Democratic Women will meet at 6 p.m., Monday, Aug. 24, at Fiesta Grill in Cowan. Members and guests are welcome.

Ladies' Society Meeting Reservations Due by Aug. 25

Reservations are due by noon, Tuesday, Aug. 25, for the next meeting of the Southern Tennessee Ladies Society. The group will meet at 10 a.m., Wednesday, Sept. 2, at the Franklin County Country Club. A program will be given by Jeff Arnett, master distiller at Jack Daniels. Social time begins at 9:30 a.m.; a buffet lunch (\$12) will be available. For more information or to make a reservation call Tina at 967-4813.

Civic Association Meeting on Aug. 26

A special called business meeting for the Sewanee Civic Association (SCA) will be held at 6 p.m., Wednesday, Aug. 26, in St. Mark's Hall, Claiborne House, at Otey Parish. The meeting will consist of discussing and voting on a memorandum of understanding between the SCA and the University of the South for the Elliott Park playground. Specific details include a five-year term for the MOU, site preparation, installation and contingency planning, should the site be needed for other purposes. For more information go to <www.sewaneecciv.wordpress.com>.

Locally grown vegetables, fruits, flowers and plants, plus home-baked and home-canned items!



Sewanee Food and Flower Gardener's Market

8-10 A.M. EVERY SATURDAY
at the corner of Hwy 41A and Hawkins Lane

Birth

Alba Marta Pascua

Alba Marta Pascua was born on June 24, 2015, in Boca Raton, Fla., to Alicia Gottfried Pascua and Dario Pascua Ponce. She weighed 8 pounds and was 19.5 inches long, the same birth measurements exactly as her older brother, Daniel Dario Pascua.

Maternal grandparents are Yolande and Robin Gottfried of Sewanee. Paternal grandparents are Mr. and Mrs. Juan Francisco Pascua of Sevilla, Spain.

Job Fair and Career Day in Monteagle

A Tri-County Job Fair and Career Day will be 1-6 p.m. on Thursday, Aug. 20, at Monteagle City Hall, 16 Dixie Lee Ave., Monteagle.

The Tennessee Department of Labor and Workforce Development's Career Coach, a mobile computer lab with ten workstations and internet access, will be on site to assist individuals in preparing résumés. Some of the educational institutions expected to be present include Motlow State Community College, Tennessee College of Applied Technology at McMinnville and Grundy County Adult Education.

Other agencies expected to participate include the U.S. Small Business Administration, Bridgestone/Firestone at McMinnville, Lodge Manufacturing, Resource Manufacturing, Staff Mart, JSP, Colonial Chemical, Inc., Platinum Recruiting, Toyo Seat, Yorozu, O'Neil Color & Compounding, Mountain T.O.P., and the University of the South.



Georgia Avenue - Charming and well maintained 3 bedroom, 1 1/2 bath cottage with hardwood floors and mountain stone fireplace. Replumbed w/copper in 2003, rewired in 2008. Large workshop has 220 service. 1430 +/- sf. Must see to appreciate.

Call Mike Maxon, (931) 308-7801 or email maxonm@bellsouth.net



4470 Mansford Road, Winchester
www.samhatfield.com

Russell L. Leonard

ATTORNEY AT LAW

Office: (931) 962-0447

Fax: (931) 962-1816

Toll-Free (877) 962-0435

rleonard@netcomsouth.com

315 North High Street
Winchester, TN 37398

Adaptive Landscape Lighting

Crafted LED Illumination of Architecture, Landscape, Security and Safety Concerns, Outdoor Living Spaces and more.



Bonded : Insured : Experienced : Residential and Commercial
pevans@adaptivelighting.net • www.adaptivelighting.net

Paul Evans : 931-952-8289

Sewanee, TN

French Wine Dinner

6 p.m., Saturday, August 29

5 wines, 4 courses. \$60.

Please reserve your table today! Call 931-924-3869.

The mountain's best breakfast,
served daily 8-10 a.m.

Monteagle Inn
& RETREAT CENTER

Tallulah's
Wine Lounge

(931) 924-3869 ~ www.monteagleinn.com ~ 204 West Main St.

TELL THEM YOU SAW IT HERE!

A PLACE OF HOPE LIFE COACHING
DECISION MAKING AND PHYSICIAN CONSULTATIONS
SPIRITUALLY BASED
NATIONALLY CERTIFIED
Sliding Fee
BOX 572
MONTEAGLE, TN 37356
(931) 924-0042
(931) 924-0043
kerstetter@blomand.net
MICA# 6:8

New to the Mountain?

There are lots of ways to get news in our community.

- The new issue of the Messenger goes online each Thursday evening around 7 p.m.
- The print version of the newspaper is distributed to businesses and post offices across the Plateau by 10:30 a.m. each Friday morning.
- And, the Messenger's partner website, <TheMountainNow.Com>, is always available online with the events calendar and links to area attractions, dining, shopping and lots of useful information.

The Sewanee Mountain Messenger • Spread Good News

Obituaries

Hessie Sublett Jarvie Baxter

Hessie Sublett Jarvie Baxter, age 77, formerly of Franklin County, died on Aug. 4, 2015, at Westfield Nursing and Rehab Center in Sanford, N.C. She was born Oct. 23, 1937, to Rufus and Avis (Gilliam) Sublett. She was an elementary school teacher in the Franklin County school system until her retirement. She was preceded in death by her parents; husband, Aubrey Baxter; and son, David Mark Jarvie.

She is survived by her brothers, Tom (Jan) Sublett of Colorado, Pat (Megan) Sublett of Sewanee and Mike (Sandra) Sublett of Sanford, N.C.; cousin, Patsy Garner of Alto; and several nieces and nephews. Interment was on Aug. 7 in Mt. Garner Cemetery, Decherd. For complete obituary go to <www.moorecortner.com>.

Eileen M. Degen

Eileen M. Degen, age 92 of Sewanee, died on July 27, 2015, at her residence. She was born on July 1, 1923, in Bath, England, to Arthur and Amy Dawkins. She graduated from Bedford College of the University of London. She came to the United States in 1947 to study at Syracuse University, where she earned a master's degree in geography. She moved to Sewanee in 1951 when her husband, Bob, joined the faculty of the University of the South. She began her teaching career in 1967 at St. Mary's School. She continued teaching at Sewanee Military Academy from 1968 to 1971, Sewanee Academy from 1971 to 1981 and St. Andrew's-Sewanee School from 1984 to 1985. She was preceded in death by her husband.

She is survived by her daughters, Catherine Andreen of Tuscaloosa, Ala., and Barbara Degen (Andrew Cogdell) of Morganton, N.C.; and three granddaughters and two great-granddaughters.

A memorial service will be announced at a later date. The family requests that memorial donations be made to the Community Action Committee of Otey Parish, P. O. Box 267, Sewanee TN 37375, or Folks at Home, P. O. Box 281, Sewanee TN 37375.

Geneva Bell "Bluie" Elliott

Geneva Bell "Bluie" Elliott, age 94 of Sewanee, died on July 27, 2015, at Avalon Hospice in Chattanooga. She was born April 20, 1921, in Monteagle, to Silas Samuel and Mattie Thomas Gregory. She worked as kitchen manager at the Sewanee Inn and was a member of Eastern Star. She was preceded in death by her parents; husbands, Ernest Glenn Lautzenheiser and William A. Elliott; brothers, James Collis Gregory, Oliver Charles Gregory, Samuel Kingley Gregory, and Robert Lee Gregory; and sisters, Virginia

Adline Griswold, Aurelia Dell Smith, Roberta Ann Alexander and Janet G. Gragson.

She is survived by her daughters, Loretta (Jack) Johnson and Geneva (Ray) Shelton; stepson, Ernest Glenn Lautzenheiser Jr.; and six grandchildren, four great-grandchildren and two great-great-grandchildren.

Funeral services were on July 30 in the funeral home chapel with interment following in Franklin Memorial Gardens. For complete obituary go to <www.moorecortner.com>.

Irene Lewisy Bean "Reenie" Fulton

Irene Lewisy Bean "Reenie" Fulton died on Aug. 1, 2015, at her home in Monteagle. She was born Nov. 14, 1947, in Northport, N.Y., to George and Dorothea Lewisy. She was an artist, a writer and an art collector. She was preceded in death by her mother, Dorothea Jeanne Lewisy.

She is survived by her father, George (Mary) Lewisy of Vero Beach, Fla.; children, Chase (Julia) Bean of Kansas City, Mo., Rachel (Sean) Owen of Lake Oswego, Ore., and David (Olivia) Bean of Georgetown, Texas; sister, Deborah (Greg) Rose of Southold, N.Y.; and four grandchildren.

A memorial celebration is planned later in the fall at Morton Memorial United Methodist Church, Monteagle. In lieu of flowers, memorial donations may be made to Vanderbilt Idiopathic Pulmonary Fibrosis Center, Attn: Wendi Mason, 1301 Medical Center Dr., Suite B817, Nashville, TN 37232-5735; or to the Hunter Museum of American Art, 10 Bluff View Ave., Chattanooga, TN 37403. For complete obituary go to <www.moorecortner.com>.

Bobby "D" Garner

Bobby "D" Garner, age 75 of Cowan, died on July 27, 2015, at St. Thomas Rutherford Hospital. He was born Feb. 28, 1940, in Sherwood, to the late Lawrence and Hulda Fowlkes Garner. He served in the U.S. Army in Korea and later was the owner of Bobby D's Restaurant in Cowan. He was preceded in death by his parents; sisters Catherine Stevens, Vera Johnson, Mary Etta Taylor, Linda Stevens and Brenda Roberts; and brother Lawrence Garner.

He is survived by his sons, Bobby Shetters of Talladega, Ala., and Paul Shetters of Winchester; brothers Leon Garner of Cowan and Winston (Betty) Garner of Estill Springs; sisters Betty (Melvin) Roberts of Cowan, Elizabeth Ann Davenport of Chatsworth, Ga., Patsy (Tim) Stephens of Sherwood, and Shelia (Eddie) Rorex of Stevenson, Ala.; brother-in-law, Jessie Roberts of Cowan; one grandson, Labrone Shetters of Cowan; special friend, Elizabeth Sherman; and several nieces and nephews.

Funeral services were on July 30 in the funeral home chapel with Bro. Ray Winton officiating. Interment followed in Mt. View Cemetery, Sherwood. In lieu of flowers donations may be made by contacting Grant Funeral Services. For complete obituary go to <www.grantfuneralservices.net>.

Emma Jeanette Hamilton

Emma Jeanette Hamilton, age 88, of Woodbury, died on July 29, 2015, at Stones River Hospital in Woodbury. She was born July 1, 1927, in Simpson County, Ky., to Luther Webster Harrell and Zula Perry Harrell.

She was a laboratory technician at Emerald-Hodgson Hospital for many years, and was a member of Cumberland Presbyterian Church in Sewanee. She was preceded in death by her parents; and husband, William John Hamilton.

She is survived by her son, Webster (Jackie) Hamilton of Woodbury; and sisters, Patsy Absher of Bowling Green, Ky., and Laurette Brackin of Hopover,

Ky.

Memorial services were on Aug. 1 at Cumberland Presbyterian Church in Sewanee. In lieu of flowers memorial donations may be made to Sewanee Senior Citizens Center, 5 Ball Park Rd., Sewanee, TN 37375. For complete obituary go to <www.cumberlandfuneralhome.net>.

Marion Inez Hawkins

Marion Inez Brooks Hawkins, age 84 of the Midway community, died on July 31, 2015, at her daughter's home in Decherd. She was born Sept. 1, 1930. She was preceded in death by her mother, Thelma Brooks; husband, Glen H. "Hub" Hawkins; brother, Horton Brooks; and sister Elizabeth Kemp.

She is survived by her daughters, Becky (Jimmy Wayne) Sanders of Decherd, Lynn Hawkins (Rep. Jimmy Jr.) Duncan of Knoxville; sister Beulah Mitchell of California; and nine grandchildren, 19 great-grandchildren and a great-grandson due in November.

Graveside services were on Aug. 3 in Eastern Star Cemetery, Sewanee, with Brother Terry Long officiating. For complete obituary go to <www.cumberlandfuneralhome.net>.

Sunset Serenade at St. Mary's Sewanee

St. Mary's Sewanee will host its sixth annual Sunset Serenade, 5:30 to 8 p.m., Sunday, Sept. 6, at the center.

This year all of the proceeds of the event will go toward enhancing and increasing the center's program offerings.

"Sunset Serenade has become a major highlight on our community's calendar, and it's a really important fund-raiser for us, also," said Pratt Paterson, director of advancement.

Along with delicious food by Lee Towery Catering and music by Noel Workman and the Accidentals, the event will feature a 50-item silent auction, including art from notable regional artists, vacation packages, local activities and dining, photo shoots and much more.

For 25 years, St. Mary's Sewanee has offered programs to meet the needs of individuals and groups looking for rest, renewal and reconnection.

Reservations are open; tickets are \$60 per person, with all food and drink included. To register call St. Mary's Sewanee at 598-5342 or email <reservations@stmaryssewanee.org>.

Church News

Otey Memorial Parish

On Sunday, Aug. 16, the Rev. JoAnn Barker will be the preacher and celebrant at both the 8:50 a.m. and 11 a.m. services. Otey's lectionary class will meet at 10 a.m. Nursery care is available for children 6 weeks old to 4 years old from 8:30 a.m. until after the coffee hour following the second service.

St. James Episcopal Church

There will not be a 9 a.m. service at St. James Episcopal Church on Sunday, Aug. 23, as St. James is participating in the Regional Celebration of Ministry and Mission scheduled for that date. Holy Eucharist will be at 10:30 a.m. at the DuBose Pavilion in Monteagle. A potluck picnic will follow. The swimming pool and other activities will be available.

Winchester Church of Christ

Author and editor Brad Harrub will speak at 7 p.m., Wednesdays, through Aug. 26, at Winchester Church of Christ. The events are open to all. The church is located at 1230 S. College St., Winchester. For more information call 967-1441.

CHURCH CALENDAR

Weekday Services, Aug. 14–21

7:00 am Morning Prayer/HE, St. Mary's (not 8/17)
7:30 am Morning Prayer, Otey
8:30 am Morning Prayer, Christ the King Anglican (8/18)
12:30 pm Noon Prayer, St. Mary's (not 8/17)
4:30 pm Evening Prayer, Otey
5:00 pm Evening Prayer, St. Mary's (not 8/17)

Saturday, Aug. 15

7:30 am Morning Prayer/HE, St. Mary's
10:00 am Sabbath School, Monteagle 7th Day Adventist
11:00 am Worship Service, Monteagle 7th Day Adventist
5:00 pm Mass, Good Shepherd Catholic, Decherd

Sunday, Aug. 16

All Saints' Chapel

8:00 am Holy Eucharist, Tennessee Laymen

Bible Baptist Church, Monteagle

10:00 am Morning Service
5:30 pm Evening Service

Christ Church, Monteagle

10:30 am Holy Eucharist
10:45 am Children's Sunday School
12:50 pm Christian formation class

Christ Church Episcopal, Alto

9:00 am Holy Eucharist
9:00 am Children's Sunday School

Christ Church Episcopal, Tracy City

11:00 am Holy Eucharist
11:00 am Children's Sunday School

Christ the King Anglican, Decherd

9:00 am Worship Service
10:40 am Adults' and Children's Sunday School

Church of the Holy Comforter, Monteagle

9:00 am Holy Eucharist
Community Harvest Church of God, Coalmont

10:00 am Sunday School
11:00 am Worship Service
5:30 pm Evening Service

Cowan Fellowship Church

10:00 am Sunday School
11:00 am Worship Service

Cumberland Presbyterian Church, Sewanee

9:00 am Worship Service
10:00 am Sunday School

Decherd Mission Church

11:00 am Worship Service

Decherd United Methodist Church

9:45 am Sunday School
10:50 am Worship

Epiphany Episcopal Church, Sherwood

10:30 am Holy Eucharist
10:30 am Children's Sunday School

Good Shepherd Catholic Church, Decherd

10:30 am Mass

CHURCH CALENDAR ON THE GO!

<www.sewaneemessenger.com>
<www.themountainnow.com>

Grace Fellowship

10:30 am Sunday School/Worship Service

Harrison Chapel Methodist

10:00 am Sunday School
11:00 am Worship Service

Midway Baptist Church

10:00 am Sunday School
11:00 am Morning Service
6:00 pm Evening Service

Midway Church of Christ

10:00 am Bible Study
11:00 am Morning Service
6:00 pm Evening Service

Morton Memorial United Methodist, Monteagle

9:45 am Sunday School
11:00 am Worship Service

New Beginnings Church, Jump Off

10:30 am Worship Service

Otey Memorial Parish

8:50 am Holy Eucharist
10:00 am Lectionary Class
11:00 am Holy Eucharist

Pelham United Methodist Church

9:45 am Sunday School
11:00 am Worship Service

St. Agnes' Episcopal, Cowan

11:00 am Holy Eucharist

St. James Episcopal

9:00 am Holy Eucharist

St. Margaret Mary Catholic Church, Alto

8:00 am Mass

St. Mary's Convent

8:00 am Holy Eucharist
5:00 pm Evensong

Sewanee Church of God

10:00 am Sunday School
11:00 am Morning Service
6:00 pm Evening Service

Society of Friends

9:30 am Meeting, 598-5031

Tracy City First Baptist Church

9:45 am Sunday School
10:45 am Morning Worship
5:30 pm Youth

6:00 pm Evening Worship

Trinity Episcopal, Winchester

11:00 am Holy Eucharist
11:00 am Children's Sunday School

Valley Home Community Church, Pelham

10:00 am Sunday School
11:00 am Worship Service
5:00 pm Evening Service

Wednesday, Aug. 19

6:00 am Morning Prayer, Cowan Fellowship
12:00 pm Holy Eucharist, Christ Church, Monteagle
5:30 pm Evening Worship, Bible Baptist, Monteagle
6:00 pm Youth (AWANA), Tracy City First Baptist
6:30 pm Worship, Community Harvest Church of God, Coalmont
6:30 pm Prayer Service, Harrison Chapel, Midway
7:00 pm Adult Formation, Epiphany, Sherwood
7:00 pm Evening Worship, Tracy City First Baptist

MEMORIAL SERVICES

John Livingston Janeway IV

A memorial service for John Livingston Janeway IV, who died on July 3, will be at 10 a.m. on Saturday, Aug. 15, in All Saints' Chapel. In lieu of flowers, memorial donations may be made to the School of Theology St. Luke's Fund, 735 University Ave., Sewanee, TN 37375.

Julia Marsman

A memorial service for Julia Marsman, the mother of Sewanee resident George Dick, will be at 4 p.m. on Sunday, Aug. 16, at Otey Memorial Parish Church. Following the service will be a reception at Brooks Hall.

*“Days hurry by when
you enjoy what you are
doing.”*

From “Two-Liners Stolen From
Others” by Joe F. Pruett

Sewanee Realty

SewaneeRealty@inSewanee.com
www.SewaneeRealty.com
115 University Ave., Sewanee, Tenn.

Margaret Donohue,
Principal Broker • 931.598.9200

Patsy Truslow,
Affiliate Broker • 931.636.4111



BLUFF - MLS 1642589 -
3480 Sherwood Rd., Sewanee. \$412,000



BLUFF - MLS 1646170 - 3335 Jackson
Point Rd., Sewanee. \$289,000



MLS 1637317 - 109 Wiggins Creek Dr.,
Sewanee. \$439,000



MLS 1639161 - 1829 Hickory Place,
Clifftops. \$369,000



MLS 1514972 - 202 Main St.,
Monteagle. \$112,000



MLS 1623837 - 5430 Greenhaw Rd.,
Decherd. \$224,900



MLS 1656823 - 1613 Laurel Lake Drive,
Monteagle. \$469,000

BLUFF TRACTS		
223 Timberwood 5.12ac	1604345	\$189,000
Old Sewanee Rd. 53ac	1643144	\$369,000
3 Horseshoe Ln 5.6ac	1608010	\$65,000
1 Raven's Den 5.5ac	1612744	\$69,000
Long View Ln 2.56ac	1572284	\$108,000
36 Long View Lane	1503912	\$99,000
7 Jackson Pt. Rd.	1503910	\$82,000
37 Jackson Pt. Rd.	1579614	\$75,000
Jackson Pt. Rd. 12.45ac	1579007	\$125,600
4 Saddletree Lane	1577042	\$109,180
12 Saddletree Lane	1578117	\$79,500
Jackson Pt. Rd. 19+ac	1531331	\$120,000
Jackson Point Rd.	1648895	\$199,000
7 Saddletree Lane	1417538	\$70,000



BLUFF - MLS 1659472 - 43+ acres,
Can-Tex Dr., Sewanee. \$859,000



MLS 1647079 - 388 Alabama Ave.,
Sewanee. \$149,000



MLS 1606906 - 21 Oak St.,
Sewanee. \$79,000



MLS 1624987 - 1116 Trussell Rd.,
Monteagle. \$79,900



MLS 1476919 - 47 Parsons Green,
Sewanee. \$179,000



MLS 1553768 - 324 Rattlesnake Springs,
Sewanee. \$379,000



BLUFF - MLS 1503907 - 1801 Bear Court,
Monteagle. \$279,000



MLS 1618092 - 21 Mont Parnasse Blvd.,
Sewanee. \$349,000



BLUFF - MLS 1626882 -
3442 Sherwood Rd., Sewanee. \$589,000



BLUFF - MLS 1648470 - 245 Coyote Cove
Lane, Sewanee. \$469,900



MLS 1574787 - 1425 Clifftops Ave.,
Monteagle. \$215,000



MLS 1580142 - 127 Mountain Memories
Lane, Monteagle. \$75,900



MLS 1635581 - 147 Louisiana Circle,
Sewanee. \$419,000



MLS 1630351 - 706 Old Sewanee Rd.
+30 acres, Sewanee. \$332,000



MLS 1657852 - 1819 Bear Ct.,
Monteagle. \$259,000



MLS 1651531 - 231 North Carolina Ave.,
Sewanee. \$417,000



BLUFF - MLS 1626086 -
974 Old Sewanee Rd., Sewanee. \$299,000



MLS 1576618 - 127 O'Dear Rd.,
Sewanee. \$99,500



MLS 1566093 - 612 Dogwood Dr.,
Clifftops. \$172,000



15 acres - MLS 1541012 -
786 Old Sewanee Rd., Sewanee. \$349,000



MLS 1618480 - 52 Sherwood Trail,
Sewanee. \$319,000

LOTS & LAND

111 Clifftops Dr. 5.25ac	1646127	\$75,000
Hwy 41 Monteagle 5.3 ac	1632373	\$64,000
Jump Off Rd. 37ac	1618636	\$196,000
29 Azalea Ridge Rd 8.4ac	1593095	\$27,500
34 Azalea Ridge Rd 5.4ac	1593097	\$18,500
Trussell & Wells 14ac	1590252	\$37,500
Jump Off Mt Rd. 11.52ac	1574877	\$98,000
Shadow Rock Dr. 1.01ac	1572176	\$23,000
Shadow Rock Dr. .99ac	1572178	\$23,000
Smith Rd. 6.12ac	1570390	\$80,000
5 ac Montvue Dr	1524683	\$59,000
Taylor Rd., Sew., 29ac	1470665	\$179,000
36 Azalea Ridge Rd.	1378840	\$29,900
Sarvisberry Place	1628195	\$69,000
Sarvisberry Place	1244981	\$69,000

Berry (from page 1)

putting Berry's writings to work by advocating for farmers, land-conserving communities and healthy regional economies. It focuses on issues confronting small farming families in Kentucky and around the country. By collecting and archiving the papers of the Berry family, the center gives people the opportunity to study and work to learn from the past in order to shape the future. Issues of land use, farm policy and local food infrastructure are central to the center's mission.

"We are hopeful that this symposium is the beginning of a consortium of sorts, linking us with the Berry's work and other institutions who share in this ethos and contemplation of place by learning to listen to the land," Thompson said. "Sewanee's natural beauty and surroundings, along with the long and rich literary history on the mountain, provides a meaningful place to cultivate this effort and way of life which Wendell, Tanya, and now Mary and the Berry Center puts forth."

Campus sponsors of these events include the Center for Religion and Environment, which has also played the leading role in planning and arrangements; the Collaborative for Southern Appalachian and Place-Based Studies; the University Lectures Committee; Rivendell Writers Colony; and Vice-Chancellor John McCardell and Bonnie McCardell.

Schools (from page 1)

begin tomorrow, Foster said.

Lonas said enrollment had increased by more than 200 students in just the past few weeks.

"Our current enrollment is only one student less than last year," Sewanee has two very large classes, Lonas said, as did several other schools. Additional teachers may be needed.

In her financial report, Lonas said the school system finished the 2014-15 school year without drawing on the fund balance held in reserve for when expense exceeds revenue.

Negotiations are continuing with the Franklin County Commission for operating budget debt relief. At a July 27 meeting with the commission's school committee, the commission asked the school board to draft a debt relief resolution taking into account the commission's concerns. The commission is reluctant to lock the county into a long-term commitment based on sales tax, which can fluctuate widely from year to year.

The next meeting of the school board is Sept. 14.



Locally grown, fresh vegetables are available now at area farmers' markets.

Academy for Lifelong Learning Begins 2015-16 Season

The Academy for Lifelong Learning begins its seventh season with a full slate of speakers, who will bring learning opportunities to the Mountain once a month for noonday conversation.

On Thursday, Sept. 10, the Academy will welcome David Brose from the John Campbell Folk School, who will talk about "John and Olive Campbell: A Search for Ballads, Folk Art and a Folk-Based Education."

The schedule for the 2015-16 year is:

Oct. 8: David Spaulding, "The Theory and Practice of Positive Psychology"

Nov. 12: The Rev. Bill Wade, "The History of St. Andrew's School"

Dec. 10: Professor Gerald Smith, "The Rebel's Rest Excavation"

Jan. 14: Jacob Zalewski, "Sewanee Volunteer Fire Department: Service Through Dedication"

Feb. 11: Erin Cassell, "Don't Fear Technology"

March 10: Jason Morgan, "The Jack Daniels Legacy"

April 14: Dr. John Thompson, "Defending the Indefensible: Dachau, 1945"

May 12: Dan Backlund, "Underwater Rescues"

June 9: Bob Bernhardt, "Boot Camp with Bob." This is a special presentation, 10 a.m. to 3 p.m., that will include lunch and two talks by Bernhardt that will take an in-depth look at composers and their music. Reservations for the event (\$35) are required.

July 14: Elizabeth Strand, "Healing Through Animals: The Human/Animal Connection from a Veterinary Social Worker's Perspective"

Aug. 11: Dr. Chapman Sledge, "The Prescription Drug Epidemic"

St. Mary's Sewanee chef Emily Wallace will have delicious box lunches available for \$12; reserve in advance by calling 598-5342 or emailing <reservations@stmaryssewanee.org>.

Now is the time to join the Academy or renew a membership. The \$12 fee helps cover a small gift for the speakers and pays for audio-visual equipment, as needed.

Organizers for this year's programs include Steve Burnett, and John and Tan Hille. For more information call Anne Davis, (931) 924-4465, or Debbie Kandul, (931) 924-3542.

EQB Meetings Resume on Wednesday

The Ecce Quam Bonum (EQB) Club begins its 2015-16 series of lunches on Wednesday, Aug. 19, at St. Mary's Sewanee. There is a social time at 11:30 a.m., and lunch is served at noon.

All members of the community are invited to become EQB members. Potential members are invited to a lunch as guests of the club. Please contact club president Frank Hart (598-0110) or email <fhart@sewanee.edu> or Anne Lorenz, treasurer and the person in charge of lunch reservations (598-0205 or email <alorenz@sewanee.edu>) by the Sunday preceding the Wednesday you would like to attend and eat lunch.

The EQB is a vibrant group, with an average of about 30-35 people at each lunch. Presentations, historically referred to as "leads," are scheduled about every three weeks during the semester.

The first lead, on Sept. 9, will be by John C. Campbell Folk School folklorist David Brose.

The club, founded in 1870, takes its name from the first three Latin words of the first verse of Psalm 133. The entire verse is the motto of the University, "Behold, how good and how pleasant it is for brethren to dwell together in unity." Originally a male society made up of faculty members, administrators and some Sewanee residents, the club met fortnightly to hear presentations from its members.

Changes took place gradually. Women were invited to be members. An effort was made to make the club into a faculty club. A luncheon series, first popular in the 1970s and 1980s, continues today. Dinners were sometimes planned for members, and at least since the 1970s, a popular mint julep party has taken place on the afternoon of the Kentucky Derby.

Membership is open to everyone in the wider Sewanee community. Currently the club is meeting at St. Mary's Sewanee for lunch every Wednesday from late August until mid May.

Winchester Podiatry

CHARLES D. GANIME, DPM

Board Certified in Foot Surgery
Diplomate, American Board of Podiatric Surgery
New Patients of All Ages Welcome! We Treat Your Feet!
Most Insurance Accepted, Including TennCare

We are at 155 Hospital Road, Suite 1, in Winchester.
www.winchesterpodiatry.com

931-968-9191

Tried and Trusted Professionals

Call for a free on-site estimate!

Professional Residential Maid Service

Commercial Janitorial Service

Bonded • Insured

931-808-5178

thecleanmachine1.com



Your Place for Organic & Local Products

- ◆ Natural Foods
- ◆ Personal Care Products
- ◆ Garden Supplies
- ◆ Yarn & Knitting Supplies
- ◆ Local Arts & Crafts
- ◆ Jewelry
- ◆ Gifts
- ◆ Antiques

Mooney's

Market & Emporium

OPEN DAILY 10-6

931-924-7400 • 1265 W Main Street • Monteagle, TN



TOMMY C. CAMPBELL

FOR YOUR IMPROVEMENTS

Call (931) 592-2687

Free Estimates • 20 Years Experience

DRIVEWAY WORK • GRAVEL HAULING

• DOZER & BACKHOE

plus Land Clearing • Concrete Work • Water Lines • Garage Slabs • Sidewalks • Porches & Decks • Topsoil & Fill Dirt Roofing • Additions to House • Septic Tanks & Field Lines



Bill and Bruce love Hatchett Insurance, and you will, too.

Call or email Nelson at 967-7546 or <nelson@hatchettinsurance.com>. He can hook you up with the best in car, home, life, health and business insurance.

HATCHETT Insurance Agency

Nelson Hatchett
931-967-7546

Grange® Insurance

SUD (from page 1)

property or University property. SUD offers financial assistance for the portion of repairs off the customer's property. Contact the SUD office for details.

Updating the board on the faulty meters installed in conjunction with the upgrade to automated meter reading technology, Beavers said the manufacturer, Itron, had agreed to replace the encoder receiver transmitter (ERT) in all the units or, if necessary, to replace the entire meter. Itron will pay all labor-related costs. SUD has already replaced most of the residential meters that had problems, Beavers said. The faulty ERTs resulted in meter reading errors. The replacement installation should be completed before the end of the year.

SUD will receive a "fresh warranty" on all the meters.

On another issue related to water supply, Beavers said recent hydrant maintenance revealed eight to 10 hydrant leaks, some as much as two to three gallons per minute, contributing to SUD's unaccounted-for water loss.

SUD will rebuild the hydrants at a cost of \$150 per unit, rather than contract out the repair, which could cost four times as much.

SUD's recent audit has been submitted to the state for review. The auditor reported two minor discrepancies, one a recurring issue for which SUD has no remedy: inadequate segregation of duties. To satisfy the requirement, SUD would need to hire additional office employees, Beavers said, and SUD's volume of business doesn't justify the expense. The audit also faulted SUD for failure to supply adequate internal controls of inventory, providing a monthly accounting of each item and its use. Beavers will investigate solutions and propose including the cost in the 2016 budget. Beavers said SUD has very few items in inventory, because most of SUD's needs can be satisfied with next-day delivery. He questioned the wisdom of purchasing costly accounting software to satisfy the requirement.

The SUD board meets next on Sept. 22.

Senior Center News

Lunch Menus

The Sewanee Senior Center serves lunch at noon on weekdays. The suggested donation is \$3 (50 or older) or \$5 (under 50). Please call by 9 a.m. to order lunch. If you make a reservation for lunch but do not come eat, please be prepared to pay for your meal. Menus may vary.

Aug. 17: Bayou chicken, salad, garlic biscuit, dessert.

Aug. 18: Meat loaf, pinto beans, slaw, cornbread, dessert.

Aug. 19: Pork and pinto beans, salad, dessert.

Aug. 20: Chuck wagon sandwich, chips, dessert.

Aug. 21: Lena's chicken, green beans, corn, roll, dessert.

Daily Activity Schedule

The Senior Center has fun things to do each week:

Tuesdays at 10:30 a.m., the group plays bingo with prizes.

Wednesdays at 10 a.m., the writing group gathers at 212 Sherwood Rd. Members read short passages from their own work or from that of another author. For more information call Connie Kelley, 598-0915.

Fridays at 10 a.m. is the time for games.

Participation at the Center

The Sewanee Senior Center does not charge any membership fee. All persons 50 or older who take part in any of the activities are considered members. The center is located at 5 Ball Park Rd., behind the Sewanee Market. To reserve a meal or for more information, call 598-0771.

WHERE TO EAT?
THINGS TO SEE?
SERVICES TO USE?
SHOPS TO VISIT?
PLACES TO STAY?
BLOGS TO READ?

Find them all at www.TheMountainNow.com.

WELCOME,
MOUNTAIN VISITORS ...
Hope you enjoy your stay!

Selected Commercial/ Investment/Homesites

Find More at www.monteaglerealtors.com!



Wells St.
Campbell Rd.
10 Boulder Lake Dr.
6 Ingman Farm Rd.
Across from Clifftops
412 Dixie Lee Center
747 W. Main
23 Colyar St.
1045 W. Main

.59 Acres in Monteagle
5.29 Acres in Altamont
3.75 Acres in Savage Bluffs
5+ Acres in Bridal Veil Bluffs
One of 4 Comm. Sites, Each \$50K
Once BBQ Place, off Exit 135
Across from Shell Station
Dollar General, Tracy
Monteagle/Sewanee Hwy

MLS#1627047 \$ 13,900
MLS#1620546 \$ 30,000
MLS#1493096 \$ 48,000
MLS#1448559 \$ 49,900
MLS#1596666 \$ 50,000
MLS#1571186 \$139,000
MLS#1561237 \$139,000
MLS#1556068 \$275,000
MLS#1578056 \$640,000

Monteagle Sewanee, REALTORS®

Deb Banks, Realtor, 931-235-3385, debbanks8@gmail.com
Dee Underhill Hargis, Broker, 931-808-8948, aduhargis@gmail.com
Ray Banks, Broker-Owner, 931-235-3365, rbanks564@gmail.com
Tom Banks, Realtor, 931-636-6620, tombanks9@yahoo.com



YouTube: Monteagle Sewanee
Scenic Properties

931-924-7253

J & J GARAGE

COMPLETE AUTO REPAIR

- Import & Domestic
- Computerized 4-Wheel Alignments
- Shocks & Struts • Tune-ups •
- Brakes
- Our Work is Guaranteed.
- OVER 26 YEARS EXPERIENCE.

Jerry Nunley
Owner

598-5470 Hwy 41-A between Sewanee & Monteagle • Monday-Friday 7:30-5:30

Ivy Wild

Restaurant and Catering

36 Ball Park Road Sewanee, Tennessee (931) 598-9000
www.ivywildsewanee.com

Progressive American cuisine
prepared with seasonal and local
ingredients create the ultimate
dining experience.

Thursday through Sunday 5 p.m.-9 p.m. • BYOW

Call Mary Jane at 931-598-9000 or email
reservations@ivywildsewanee.com
We look forward to serving you!

Chef Keri Moser, 2014 StarChefs Rising Star Chef Award Winner

Shop Locally



Village Wine & Spirits Inc.

COMPETITIVE PRICES AND FRIENDLY SERVICE

Great Wine Selection ~ Special Orders Available

ALL YOUR FAVORITE MAJOR BRANDS

Across 41A from Monteagle's Piggly Wiggly ~ (931) 924-6900
Mike Gifford, Owner; M-Th 9 a.m.-10 p.m.; F-Sa 9 a.m.-11 p.m.



piggly wiggly®

Down Home, Down the Street

754 West Main St., Monteagle
(931) 924-3135

8 a.m. to 9 p.m. 7 days a week

**Have you seen something
interesting in your
backyard? In the woods?**

**We welcome
submissions
to "Nature Notes."**

Email [<news@sewanee-messenger.com>](mailto:news@sewanee-messenger.com)

SES Menus

**Aug. 17–21
LUNCH**

MON: Chicken tenders, steak, gravy, mashed potatoes, green peas, roasted carrots, roll.

TUE: Taco, cheese, yogurt, cheese stick, refried beans, buttered corn, lettuce and tomato cup, salsa, Doritos.

WED: Spaghetti, corn dog nuggets, fresh salad, pinto beans, turnip greens, garlic bread stick.

THU: Breakfast for lunch: steak, eggs, potato wedges, cherry tomatoes, biscuit, gravy.

FRI: Chicken quesadilla, chili cheese dog, french fries, fresh salad, hot dog bun, cinnamon roll.

BREAKFAST

Each day, students select one or two items

MON: Pancake, french toast sticks; condiments: syrup.

TUE: Biscuit, steak; condiments: gravy, jelly.

WED: Cinnamon toast or breakfast bun.

THU: Pop tart or peanut butter and jelly sandwich.

FRI: Chocolate muffin or "build-your-own" breakfast parfait.

Options available every breakfast: Assorted cereal, assorted fruit and juice, milk varieties.

Menus subject to change.

Children's Center Opens for 66th Year

The Sewanee Children's Center (SCC) opened its doors for the 66th year to full capacity with 38 families and 47 children, ages 2 to 8, enrolled in the preschool and after-school programs.

Returning classroom teachers are Lauren Bordelon, Sandy Glacet, Carrie Mauzy, Christie Pierce and DV Sanders. Farris Ralston is new to SCC this year. Teacher assistants are Nadia Peters, Grace Pyle and Teri Robertson.

SCC's new director, Harriet Runkle, said, "I am overwhelmed by the generous support of this community! Otey Parish lends us our space at no cost, and we receive generous funding from the Sewanee Community Chest to support our scholarship fund and programs."

Runkle noted that SCC received a grant from the South Cumberland Community Fund. "For the first time, we have received a grant for a school and community garden," she said. "We plan to break ground in early September. We will be working with Dan Pate and his crew to build the garden."

The SCC has also established a recycling and reusing program, thanks to the generosity of Marvin Pate and the University's Office of Environmental Stewardship and Sustainability, who have provided the preschool with recycling containers. SCC also encourages waste-free meals by asking families to send lunches and snacks in reusable containers, and the school curriculum emphasizes good stewardship of our natural resources.

The Sewanee Children's Center opened in 1949 and is constituted as a parents' cooperative and operated by parents through a board of directors. Parental participation is the lifeblood of the school. SCC offers a comprehensive early learning program designed to meet the developmental needs of each child and is responsive to the needs of local families and children. For more information about the Sewanee Children's Center, please go to <www.sewaneechildrenscenter.org> or call 598-5928.



On the first day of school (from left) Jaxon Rudder, Elijah Bunting and Mason Milner enjoy playing in the sandbox.



New staff at SAS (from left) Judy Chamberlain, Mandy Grubbs, Melissa Gilliam, Jaime Cleek, Claire Forbes, Sara Bunemann and Kenneth Alexander.

New Academic Year Brings New Faces to SAS

This school year St. Andrew's-Sewanee School welcomes 58 new students and several new members to the faculty and staff.

Judy Chamberlain joined SAS as the interim head of school on July 1. A lifelong educator and seasoned administrator, Chamberlain is the former head of Giffit Hill School in St. John, U.S. Virgin Islands; Calmont School in Topanga, Calif.; Ransom Everglades School in Miami, Florida; and Winchester Thurston School in Pittsburgh, Pa. She has built her career on managing enrollment and reimagining K–12 learning, integrating experiential learning into a standards-based curriculum. She began her career as a Latin teacher in the District of Columbia Public Schools, going on to serve for 13 years as a teacher and the director of the middle school at National Cathedral School in Washington, DC. Chamberlain holds a B.A. in Latin from George Washington University and an M.A. in Latin from the Catholic University of America.

Mandy Grubbs, who manages the SAS Farm, is assuming an expanded role with the Adventure Education curriculum. She received a B.A. from the University of Georgia. She is passionate about farming and has 12 years of experience with organic farming. Grubbs leads the farming afternoon program, where students learn basic principles of sustainable and biodynamic land practices.

Melissa Gilliam joins the school's health clinic staff as school nurse. She is an experienced registered nurse with 16 years of clinical and emergency medical experience and a certified critical care paramedic and pediatric emergency nurse. She most recently worked at Sewanee Pediatrics.

Jaime Cleek joins the faculty and staff as a part-time academic technology assistant. Her most recent experience included working as the assistant to the Franklin County School System chief technology officer and IT man-

ager at Midway Veterinary. She holds a B.S. in environmental studies, an M.S. in environmental policy and management, and an M.Ed.

Claire Forbes recently joined SAS as the admissions associate. Forbes is a recent graduate of the University of the South, where she received a B.A. and several awards in history. She most recently was the senior interviewer for the University of the South admission office and served Sewanee as a member of the orientation committee and as an Arcadian (tour guide and ambassador).

Sara Bunemann is already hard at work with SAS's fall athletes as the athletic trainer. She received her B.S. in athletic training from East Carolina University and M.S. in educational leadership from Union College. Bunemann's clinical experience includes working with the soccer, cross country, track and cycling teams at Union College in Barboursville, Ky.

Kenneth Alexander joins the faculty as a mathematics teacher and tennis coach. He is a 1989 graduate of the University of the South with a B.S. in mathematics. He most recently worked for the Polk County Schools in North Carolina, where he received two Teacher of the Year awards and two Excellence in Teaching awards. Alexander also coached the golf, softball and tennis teams at Polk County and was on staff at Sewanee Tiger Tennis Camp.

In addition to these new members of the faculty and staff, the Rev. Molly Short, who served as a residential house head last year, has an expanded role as assistant chaplain. Short holds a B.S. in earth and environmental sciences from Furman University and an M.Div. from Duke Divinity School. She was ordained in the Episcopal Church this summer.

St. Andrew's-Sewanee School is a private, coeducational, Episcopal day and boarding college preparatory school.

91 University Ave. Sewanee

**UNIVERSITY
REALTY** SEWANEE
TENNESSEE



(931) 598-9244

Lynn Stubblefield (423) 838-8201

Ed Hawkins (866) 334-2954

Susan Holmes (423) 280-1480



**PEARL'S FOGGY
MOUNTAIN CAFÉ** for sale.
Business, furnishings, equipment
and good will.



**SEWANEE HOUSE ON
THE BLUFF** behind St.
Andrew's-Sewanee, pastoral view
of Roarks Cove. 3800 sq. ft. 5.77
acres, perfect condition. \$775,000.



HWY 50: 183 acres, beautiful trees,
bluff views, waterfalls, lots of road
frontage. No restrictions.



WATERFALL PROPERTY.
30 acres on the bluff with an
amazing waterfall. True story-
book setting.



LAUREL LAKE. Private and
secluded 6.5 acres, small lake
and spacious, lovely 3-bedroom
home. \$275,000



INVESTMENT PROPERTY:
Stillpoint, excellent location on
Hwy 41A beside Pearl's Cafe. Two
acres, 225' of frontage, adequate
parking, consistent rental history.
\$300,000.



LOG CABIN: 2856 sq ft & 1960
sq ft basement/garage. Best buy
for a large house on the mountain!
\$170,000.

SHADOW ROCK DR. 1.18-acre
charming building lot with meadow
in front, beautiful trees in back.

GAP RD. CAVE (large entrance).
Bluff view, 15 acres. \$48,500.

SEWANEE SUMMIT. 60 acres,
build on it or hunt on it. \$89,000.

SNAKE POND RD. 30 beautifully
wooded acres on the corner of Snake
Pond and Stagecoach. Water, elec-
tric, Internet. All usable land.



DEEPWOODS: Sunset view,
great room, 4 bedrooms, 4 baths,
den, 21x15 bonus room, garage.



CLIFFTOPS RESORT. 5 acres,
year-round creek, joins University,
private & secluded. \$79,000.



CAMPUS HOME: 544 Kennerly
Lane. Native mountain stone,
2 bedrooms, 1 bath, large living
room, beautiful yard. Many recent
improvements \$150,000.



**LAUREL TRAILS
CAMPGROUND:** 30 acres,
RV hookups, cabins, lake, camp-
sites, pavilion, bath houses and
much more. \$499,000.

SIMPLER TIMES CERAMICS & CRAFTS

invites you to

MONDAY MADNESS

9 a.m. to 3 p.m.

Come in and choose your discount ... up to 25% off!

100 Cumberland St. in Cowan • (931) 703-1998



AFFORDABLE Home Repair

Remodeling • Additions • Decks • Painting
House/Floor Leveling and More
Experienced & Honest
Licensed & Insured

423-593-3385

WE HAVE BUYER'S AGENTS TO REPRESENT YOUR INTEREST AT NO CHARGE

TINTINNABULATIONS

by John Bordley



The Mobile Millennium Carillon Rings in Joy

Chime Master's Mobile Millennium Carillon not only brought joy to Sewanee while it was here from June 20 to July 20, it also educated Sewanee listeners in a way that I have not been able to achieve previously. Since I started playing the carillon in 2001, I have been only marginally successful in getting people to understand what a carillon is. Having two towers with bells is also a problem; people are confused as to which tower is producing the sound they are hearing, and they think everything is automatic. A camera/monitor system that we use for more formal concerts helps, but there is no comparison to the audience sitting with the mobile instrument right in front of them, where people could hear the sound and see the players, the stationary bells, and the wires and clappers moving. I have never received so many comments—all positive—both from people I knew and people I didn't know.

The event that aroused the most interest was the mobile carillon's appearance in Sewanee's Fourth of July parade. Thanks to a good truck driver, the ride in the carillon cabin was quite smooth, except at the very end, when conflicting signals from a policeman resulted in a very sudden stop. We barely held on as the bells clanged, we stopped playing, and the trailer bumped into the cab! People who had been along the parade route told me later that when they heard the carillon and saw the truck coming that at first they thought the sound was coming from the cab. Then when they saw the bells, they figured the bells were being played automatically.

When the door to the cabin came parallel to where they were and they could see in and that we were playing, their looks were of utter astonishment. It turns out I had seen this very same look once before.

While living in Belgium, Carolyn and I took the train to Antwerp one morning. The trains usually paused at Berchem and then went into the main station. On this morning, however, Berchem was the end station of the rush hour train we had taken. As the train was pulling out of the station to go sit in a huge train yard on the east side of town, the conductor, who was supposed to have walked down the aisle making sure everyone had gotten off, walked along the outside of the train. When he looked into our window and saw that we were still there, he had the same look of astonishment and disbelief that the parade viewers had.

That story had a happy ending, as the train engineer unlocked the doors and escorted us by foot to the main station. We stopped en route for coffee and learned about his family and work!

Parks Greene, assistant university organist and budding carillonneur, decided there should be a duet played on the carillon in the tower and on the mobile instrument. He made an arrangement of "Yankee Doodle Dandy" that was played twice. At the very start of the Fourth of July carillon concert that Ray Gotko and I played from the tower, Ray played the tower carillon, and Parks played the mobile instrument. Then when the truck got to the chapel in the parade, the truck stopped, and the piece was performed again, this time with Ray playing the mobile carillon and Parks playing in the tower. A video of the duet for two carillons can be viewed: <<http://www.sewanee.edu/carillon/video-recordings/>>.



Photo by Carolyn Fitz



Charlene Williamson (left) and John Bordley.
Photo by Ray Gotko



Surprise! Photo by Charlene Williamson



A view of the mobile carillon from Shapard Tower.
Photo by Parks Greene

Finally, just having the mobile instrument on the campus was a bonus. One of many passersby was Rachel Farnsworth, a high school student from Huntsville, Ala., who was a piano student at the Sewanee Summer Music Festival. She stopped when we were practicing one day and expressed interest. She will now be coming to Sewanee once a month for carillon lessons and will be able to practice in Huntsville at the First Baptist Church, thanks to arrangements made by the church's carillonneur.

Education Notes

Cabe a Leader at Wofford Orientation

Lauren Elisabeth Cabe of Sewanee is part of the orientation staff for Wofford College in Spartanburg, S.C., as it welcomes the class of 2019. This leadership team helps plan, organize and manage activities designed to help first-year college students make the transition from high school to college.

Willis on Dean's List at UT-Knoxville

Addison Willis was named to the University of Tennessee-Knoxville Dean's List, summa cum laude, for the Spring 2015 semester. To earn this honor, a student must earn a term GPA of 3.8–4.0. Addison is the son of Laura and John Willis of Sewanee.

Sewanee Announces Dean's List

The following area students have been named to the Dean's List at the University of the South for the Easter 2015 term: Elise Anderson of Monteagle, daughter of Katherine M. Anderson; Amanda Carl of Monteagle, daughter of Dr. and Mrs. Stephen Paul Carl; Ethan Burns of Sewanee, son of Margot and Doug Burns; Emmie Oliver of Sewanee, daughter of Katie and Parker Oliver; Sam Stine of Sewanee, daughter of Liz Quinn-Stine and Larry Stine; and Elaine Taylor of Sewanee, daughter of Jeannie Kay Babb.

To earn a place on Sewanee's Dean's List, a student must earn a minimum GPA of 3.625.

MES Substitute Training

Monteagle Elementary will be having substitute training sessions that are required before teaching in the school.

The sessions will be 4–5 p.m., on Tuesday, Aug. 25, and on Thursday Aug. 27, in the school library.

Anyone interested in substituting at Monteagle Elementary should attend and bring one form of identification with photo. Candidates should be aware that if selected, they will have to successfully pass a background check and drug testing.

For more information or with questions, contact Janet Layne at (931) 924-2136 or email <jlayne@mctns.net>.

A Special Dinner to Commemorate the 200th Anniversary of the

Battle of Waterloo

—Featuring Beef Wellington—

Saturday, August 22, at 6 p.m.

\$40 per person, by reservation,
(931) 592-4832



Tea on the Mountain

298 Colyar Street, US 41, Tracy City

UNIVERSITY REALTY

91 University Ave. Sewanee

(931) 598-9244

Lynn Stubblefield
(423) 838-8201



INVESTMENT PROPERTY:

Stillpoint, excellent location on Hwy 41A beside Pearl's Cafe. Two acres, 225' of frontage, adequate parking, consistent rental history. \$300,000

We're glad you're reading the Messenger!



**The Monteagle
Sewanee
Rotary Club
meets at 8 a.m.,
Thursdays, at the
Sewanee Inn**

"Service Above Self"

**YOGA?
KARATE?
DANCE?
PILATES?**

Find them all at www.TheMountainNow.com.
Click on Services, then
on Exercise Instruction.



August 15, 2015

Duck River EMC Annual Membership Meeting

Harris Middle School Auditorium
570 Eagle Blvd.
Shelbyville, TN 37160

Registration opens at
8:30 a.m. & the meeting
begins at 9:30 a.m.

**Door prizes, refreshments, & business meeting
Attendance prizes to first 300 members**



THE INSATIABLE CRITIC

by Elizabeth Ellis

Sir Toby, The Critic's valiant sidekick: Every good critic needs a good rating system, and there's nothing on the planet more critical than cats, so one movie each week is rated from one to five Tobys. The more Tobys there are, the better it is!



Sir Toby

Tomorrowland

7:30 p.m., Today and Saturday, Aug. 14–15, and Saturday, Aug. 22
2015 • PG • 107 minutes

Brad Bird is one of my favorite directors, because we share a particular fascination with the way the '50s and '60s were obsessed with sci-fi and "the future." Despite the trailer for the film being a tad confusing, I was buoyed by Bird's successes of the past such as Pixar's "The Incredibles" and "The Iron Giant" and had high hopes. I ended up walking away unsettled, like eating at a restaurant highly recommended and still leaving hungry. "Tomorrowland" has the feel of something half-baked; there are a lot of good concepts and plain ol' sci-fi fun floating around, but it doesn't quite come together in a coherent way for adult viewers (although the kids sitting behind me had a total blast, and for them, I was happy). Unlike some of Bird's other features, there were two other writers involved in the screenplay on this one, and they all seemed to be competing against Bird for first place. The film begins with George Clooney playing Frank Walker, and his cohort, precocious teen Casey Newton (Britt Robertson), arguing over who is going to tell the story first. This becomes weirdly appropriate as the film trundles along on shaky tracks. It starts out as Frank's story and his childhood, captured in bright and buoyant colors, entering and growing up in Tomorrowland, which is simultaneously a nostalgic tribute to Disneyland's days of yore and full of wondrous little touches, such as large, imposing, but ultimately helpful and friendly robots and the rocket pack, a purposeful wink to adults in the audience who would remember one of the favorite Disney films of my childhood, "The Rocketeer." It then switches to being Casey's story, and this is the point where the plot unravels into the weird and convoluted. The main problem is that there are far too many things happening in the movie all at once, as well as too many things left on the table and never addressed again. We get a short glimpse at Walker's father and saw he wasn't a super nice guy, but did he ever mourn his son's loss when Walker chose to stay in Tomorrowland for 20 years? It is those things I wondered about on an adult level. I am not sorry I saw "Tomorrowland," but it left me sad knowing it could have been so much more. Rated PG for moments of sci-fi action, violence, thematic elements and language, it is wholly appropriate for families of young children who want to take in something that will be fun visually to watch, but not require too much thought to enjoy.

Check out Liz's blog at <<http://theinsatiablenecritic.blogspot.com>>.

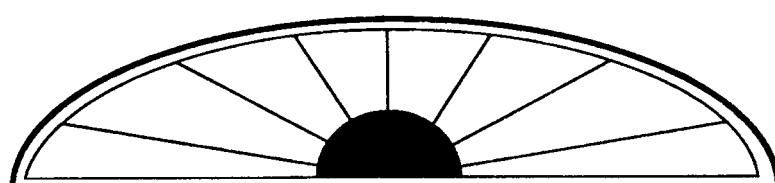
With 30 years of experience in real estate and having recently retired from public education, I am now ready to be your full-time Realtor.

Please do not hesitate to call me at (931) 308-7801 or email <maxonm@bellsouth.net> for all your real estate needs.

Offering professional and courteous service.



Call Mike Maxon, C'73
(931) 308-7801
maxonm@bellsouth.net



wm.c.mauzy construction co.
Bill Mauzy, Owner, General Contractor

www.mauzyconstruction.com 931.598.0686 (office)
billmauzy@bellsouth.net 931.580.0686 (cell)



MR. POSTMAN, INC.
209 South Jefferson St., Winchester
One block off square across from PO
(931) 967-5777 Fax (931) 967-5719

**DHL/Fed Ex/ UPS
DROPOFF LOCATION**

We accept packages with preprinted labels.
Drive-Thru Window on Side of Building • Open Mon-Fri 9-5

Sewanee Dance Conservatory Announces New Director, Class Schedules

Ashley McManamay has been named as the new director for the Sewanee Dance Conservatory. The dates for the fall session will be Aug. 17–Nov. 6, with the final week for family observation. In the spring, the session will be Jan. 11–April 9, with the spring recital set for April 9.

McManamay was born and raised in Northern Virginia, and her training, passion and love for dance began at age 3. She studied ballet, tap, jazz, lyrical, hip-hop and modern at her local studio, as well as at conventions and intensive programs all over the East coast. She has more than a decade of dance instruction experience, in addition to experience in community theatre.

She attended Shenandoah University, where she earned her bachelor of fine arts in dance. While at Shenandoah, she received the Dance Ensemble Award and had her choreography featured at festivals in Northern Virginia. Upon graduation, she auditioned for Stiletto Entertainment and had the privilege of working for Holland America Line. Dancing on cruise ships for seven years, she is returning to Sewanee after traveling the world dancing in production shows, as well as having served as dance captain and company manager for traveling companies.

In 2013, McManamay ended her career on ships and moved back to her hometown of Centerville, Va. She returned to teaching at Encore Performers, where she grew up dancing. At Encore, she was the assistant to the director in their performing arts company. She has always had a

passion for dance and teaching and is excited to be a part of the Sewanee Dance community. She is coming to Sewanee to join her fiancé, David Jenkins, head baseball coach at Sewanee.

The Sewanee Dance Conservatory has enjoyed a meaningful relationship with Alabama Youth Ballet Theater over the last several years and hopes to continue to partner with them for future Nutcracker performances.

For more information go to <www.sewaneedanceconservatory.com> or email McManamay at <ashleymcmanamay@gmail.com>.



Ashley McManamay

Mountain Arts & Crafts Festival a Success

The Monteagle Mountain Chamber of Commerce completed the 56th Annual Mountain Arts & Crafts Market. With ideal weather conditions, the event had an excellent turnout. Thanks to the efforts of Rhonda Pilkington and her team of volunteers and particularly the social media campaign on Facebook, visitors came from all over Tennessee and North Georgia, many choosing to spend the whole weekend on the Mountain to enjoy the South Cumberland State Park, the Mountain Goat Trail, restaurants and area attractions.

This year a number of new first-time vendors participated in the market and enthusiastically signed up for 2016, each reporting their sales

were excellent and that they loved the experience in Monteagle, saying they were overwhelmed with the kindness of the local people. They added they were impressed with the vendor dinner on Friday night, which is not done at other craft fairs. Special thanks to Boo Beavers and Sue Herrick, who coordinated the dinner, and to The Bridge, DuBose Conference Center, Monteagle Inn, Papa Ron's, Piggly Wiggly, Village Wine and Spirits, the Smokehouse, Priscilla Graham and Debbie Layne, who generously donated the food.

This year there was a wide variety of vendors, ranging from the chain saw guys and their hourly demonstrations, newcomers who had monogrammed wooden initials which were a huge hit, re-purposed furnishings, bird houses, bee catchers, unique jewelry, pottery, screen prints, pencil sketches, photography, wood works and crafted items, soapstone, face-painting, honey, relishes, pickles and so much more.

In addition to the vendors, there was a huge variety of food, catering to all palettes. Special thanks to the Town of Monteagle for its valued help with manpower, park set-up and electrical connection.

HOUSE CALL SERVICE AVAILABLE
Full Service Veterinary Care for Dogs, Cats & Horses
Boarding & Grooming

Midtown Veterinary
Services & Hospital

Traci S. Helton DVM Nathan L. Putnam DVM

Monday–Friday 7:30 am–6 pm; Saturday 8 am–1pm
AFTER-HOURS EMERGENCY SERVICE AVAILABLE
931-962-3411
505 S. Jefferson St., Winchester (41-A toward Winchester. First left after Food Lion)

CONVICTED Christian Evidences Dr. Brad Harrub

Wednesday Evenings at 7 PM
Through August 26
Winchester Church of Christ



August 19 “Jesus on Trial in 2015”

August 26 “Is the Bible More Than
Just a Good Book?”

Dr. Harrub earned a doctorate in Anatomy and Neurobiology from UT. He is the Executive Director of Focus Press, co-editor of *Think* magazine and author of *Convicted: A Scientist Examines the Evidence for Christianity*.

For more information, call 931-967-1441.



BOOKMARKED

A Column for Young Adult Readers and Adults Who Appreciate The Genre
by Margaret Stephens

In Grateful Memory of Eileen Degen

To my husband, Eileen Degen was the “sweetest, kindest, most patient” math teacher, whose small but commanding presence could still a class of adolescents and who had a passion for baseball, particularly the San Francisco Giants.

To my children and me, she was “the library lady.”

When we moved to Sewanee 20-odd years ago, Mrs. Degen was head of Thurmond Library. She WAS, to us, Thurmond Library, and our visits there quickly became the high point of each week.

She kept up with my children’s ever-changing tastes in books as they raced through them, growing from “Boxcar Children” to “Baby-sitters’ Club,” and always had something to suggest, and if that makes her sound like any librarian, it’s because I can’t, on paper, capture the sound of that British accent with its frequent twist of wry humor or depict her welcoming smile as she ushered my kids onto the book-mobile, urging them to “check out lots of books!”

Or recreate the way she often began responses with a soft-spoken “Right.” Which generally meant you weren’t.

She kept the library’s board meetings brisk and productive, yet was always open to new ideas, including my then-wacky one of starting a read-aloud-on-the-Chapel-steps-hour during summers.

The two of us discussed issues such as: At what age one could begin to indulge in the luxury of novel-reading in the morning? But she was also one of those adults who conversed with children like they were intelligent beings. Aware of my son Tommy’s obsession with history, she gave him the amazing gift of a German map of occupied France from her time spent working in (I think) as a British Intelligence office during the war.

So, in honor of Eileen Degen, a British author with a similar dry wit....

E. Nesbit wrote well over 40 books for children and is credited with inventing that fantasy genre where contemporary children move from their very realistic, often-troubled world to a magical one of equal realism, kind of a literary grandmother to C. S. Lewis, Edward Eager and J. K. Rowling.

Her “Five Children and It” series features a wish-granting creature, the Psammead, discovered by a family of children who then go on to a succession of (mostly mis-)adventures.

Her earlier books about the Bastable children, whose well-meaning attempts to restore their father’s finances invariably end in disaster, begin with “The Story of the Treasure Seekers.” That Nesbit mixes humor with page-turning plots is clear in sentences like “... she used to make jolly good puddings for us, and let us have the dish on the floor and pretend it was a wild boar we were killing with our forks.” Eminently read-aloudable.

But the book my children most remember is “The Railway Children,” and not just because of its excellent film adaptations. It just doesn’t read like something from the early 20th century. Nesbit knows how to hold readers—no lingering descriptions, not a trace of moralizing, just characters very aware of their faults and flaws. And in this book, too, are Nesbit’s witty turns-of-phrase, as when she introduces the three children whose London life is interrupted by their father’s sudden disappearance and their subsequent move to the country: “... and the youngest was Phyllis, who meant extremely well.”

That reads like something Mrs. Degen might have said.

Beersheba Springs Arts & Crafts Festival

The 49th annual Beersheba Springs Arts and Crafts Festival will be from 10 a.m. to 6 p.m. on Saturday, Aug. 22, and 10 a.m.–5 p.m. on Sunday, Aug. 23, at the Beersheba Springs Assembly Grounds.

More than 100 exhibitors from several states will be present, offering a fine variety of arts and crafts. Several new food booths will be on the grounds. The hotel dining room will also serve meals both days. Admission and parking are free. There will be entertainment at 7 p.m. on Saturday evening.

Proceeds from the festival are used for Beersheba Springs library, rescue squad, community center, North Elementary School, Grundy County Exceptional Citizens Center and food baskets.

Beersheba Springs is on U.S. Hwy. 56, 25 miles from Monteagle. For more info contact Fran Holt, (931) 692-3733.

Diplomas Available for Veterans

For any World War II, Korean War-Era or Vietnam Veterans: If you did not receive your high school diploma due to entry into the Armed Forces of the United States, you may now be awarded a high school diploma by your local high school.

Tennessee state law allows for the awarding of high school diplomas to the honorable men and women who stepped forward to serve their county.

Veterans who fall into this category should contact their local school superintendent to register their name and to request the awarding of a high school diploma.

If a veteran needs assistance, retired Sergeant Major Larry E. Williams has offered his help. Contact him at (931) 924-3000 or (931) 224-3226.



The Culprits

The Culprits Return to Sewanee on Saturday

Sewanee’s homegrown band, The Culprits, will be back in town for a special performance at 9 p.m., Saturday, Aug. 15, at Shenanigans. The band features Nick Evans, Will Evans and Zach Blount, all Sewanee natives and graduates of St. Andrew’s-Sewanee School. They will be joined by Hong Kong native Mason Lin on lead guitar.

Another busy year of study and work has kept the band members scattered across the globe: Nick in Berlin, Germany; Will at the University of Virginia; and Zach and Mason at Davidson College. Despite the distance, the four have been practicing, performing and producing in preparation for a post-college Culprits’ project. Their latest work digs deep into Americana roots with flavors of what’s to come.

All ages are welcome. There is no cover charge.

ROB MATLOCK
CONSTRUCTION COMPANY
NEW HOME BUILDING
AND REMODELING

MEMBER, U.S. GREEN BUILDING COUNCIL

PHONE 931-598-5728

MATLOCK

State Licensed • Fully Insured

GOAT MILK SOAPS, CANDLES, POTPOURRI AND MORE
made with premium natural ingredients

Open Tues–Thur 10 to 5; Fri–Sat 10 to 6 • cricklewoodcandleco.com
112 Tennessee Ave., Cowan • (931) 703-6414 or (931) 703-1998

Brown's Body Shop

Leonard Brown - Owner
Steve Young - Gen. Mgr.
Steve Hartman - Shop Mgr.

710 College St. • Winchester
931-967-1755
Fax 931-967-1798

*Come by and see us.
We appreciate your business.*

Our Work is Guaranteed!

**ALWAYS
TAKE THE
MESSENGER
WITH YOU!**
<www.sewanee
messenger.com>

The Gnarled Oak

Furniture refinishing,
chair caning, seat weaving
and furniture repair



Victorian Sea Captain's Desk

Flat Branch Community
2222 Flat Branch Spur
Tracy City, Tennessee 37387
(931) 592-9680
Bill Childers, Prop.

L&L MART

Groceries, Deli, Pizza, Gas & Diesel
Open 24/7 • (931) 692-2402

L&L RENTAL
(including U-Haul)
Let Us Help Make Your Job Easier!
(931) 692-RENT (7368)
Jeremy Brown, Mgr.

Bring this ad in for a free key!

L&L HARDWARE
Plumbing and Electric Supplies
(931) 692-2106 • Weldon Brown, Mgr.

Call for more information or
email llmart@blomand.net

Junction of Highways
56 & 108 in Coalmont

AIR DUCT CLEANING
ABBEY ROAD CLEAN-AIRE
MANCHESTER, TN • SINCE 1989
GET RID OF DUST, ALLERGY PROBLEMS
(931) 952-0051 or (931) 273-8899
“We’re Your Solution To Indoor Pollution”

RESIDENTIAL
COMMERCIAL
INDUSTRIAL

Sunday, September 6

Please join St. Mary's Sewanee for the sixth annual Sunset Serenade at 5:30 on Sunday, September 6. Honorary Chair Dale Grimes will welcome the group, and this year, 100% of proceeds will go toward increasing and enhancing our program offerings. We will offer a 50-item silent auction, dine on delicious food from Lee Towery Catering, and enjoy music throughout the evening from Noel Workman and the Accidentals.

*\$60 per person, food and drink included.
To register, please contact St. Mary's Sewanee.*

Sunset Serenade
St. Mary's Sewanee

ST. MARY'S SEWANEE
The Ayres Center for Spiritual Development

Call (931) 598-5342
www.StMarysSewanee.org
Email <reservations@stmaryssewanee.org>

Park (from page 1)

approved design also includes use of natural and local materials. The park will be ADA-compliant and accessible, with access ramps at the adjoining sidewalk and parking lot.

Originally designated in 1870, Elliott Park has a history of community support with much of its playground equipment built by the community or purchased with donations. A swing set, chin-up bars, wooden step structure, and sand box (now removed) were installed under the leadership of Sandy Baird and Yolande Gottfried in the 1980s. In 1998, community member Dana Lesesne spearheaded the addition of a pirate ship constructed by the Sewanee chapter of Phi Gamma Delta (Fiji), with support from various sources, including the Kaj Krogstad Memorial Fund.

In 2012, several wooden play elements were in disrepair and removed from Elliott Park, leaving behind little more than an aging swing set in what was once a vibrant place for children to play.

The SCA is working on the next chapter of this community-supported park. The goal of the SCA is to help improve municipal conditions and equipment, and raise money the town cannot raise in taxes because it is unincorporated. Since Sewanee is unincorporated, it does not qualify for many state and federal grants that municipalities rely on for projects such as playgrounds, parks and community development. The community, and the Civic Association, have a long history of identifying needs, raising the necessary money, and building projects

needed by the community.

The SCA will enter into a memorandum of understanding with the University of the South concerning maintenance, drainage control and parking lot improvements, and contingency planning for the equipment should the University ever need to relocate the playground. The SCA Parks Committee will be the point of contact for Elliott Park moving forward. This project will be a collaborative effort with the University's Physical Plant Services, neighboring organizations, and community volunteers to maintain and enhance the park, creating a sense of ownership to ensure the long-term care and upkeep of this important part of the community.

The For the Parks project will benefit the whole community and our many visitors by reminding us that Sewanee is not only a place where families live, but is a place where families are valued.

To make a donation, send a check payable to SCA For the Parks, P.O. Box 222, Sewanee, TN 37375. All money raised will go through a designated fund with the Sewanee Community Chest, a 501(c)(3) organization and are tax deductible. There is an online campaign to use a credit card at gofundme.com/fortheparks.

The SCA is the managing organization of For the Parks, the Sewanee Classifieds and the Sewanee Community Chest, and the sponsoring organization for Cub Scout Pack 152.

For more information or to volunteer, contact fortheparks@gmail.com, or go to www.sewanee.org/civic.



William Yelverton

Yelverton Wins at Masters Nationals

Sewanee resident William Yelverton won the USA Track and Field Masters National Championship in the 400-meter event at University of North Florida in July. Competing in his age group M55 (55–59), his time of 55.29 ranked as second fastest in the world in M55. In the race, he beat three former National Champions in a decisive manner, winning the race by several meters. He also won a bronze medal in the 200-meter dash with a personal best of 24.48, which ranks him third in the world in M55.

Yelverton will be representing the United States in the World Masters Athletics Championships in Lyon, France, in August.

A professor of music at Middle Tennessee State University, he will also be performing a solo concert tour in the fall in his other discipline, classical guitar and lute.

"This has been a rewarding pursuit; it's a lifestyle," he said. "I love the empirical nature of achievement in track and field. Unlike music, there is no subjectivity, your performance is measured electronically by computer, and you either 'bring it' ... or you don't. In sprinting, there is no judgement. It's about the purest athletic endeavor there is."

Dombrowski Honored by Coaches Association

After a historic season in 2015, Sewanee women's lacrosse head coach Michele Dombrowski has been named the Intercollegiate Women's Lacrosse Coaches Association (IWLCA) Division III West Region Coach of the Year.

Along with earning her second Southern Athletic Association (SAA) Coach of the Year honor, Dombrowski led the Tigers to a 17-2 record.

During the season, Sewanee posted its best regular-season record in school history since 1963.

The Tigers also set the school's longest winning streak, while ranking second in the nation in scoring. Sewanee ranked nationally in scoring margin (10th), win percentage (second), and in draws (eighth). During the season, Sewanee defeated previous unbeaten programs Rhodes and Piedmont, as well.

Additionally, Sewanee made its first trip to the NCAA Tournament second-round, while also receiving the program's first-ever at-large bid into the Big Dance.

Under Dombrowski, five players earned IWLCA All-Region honors, while nine student-athletes garnered All-SAA honors, including SAA Offensive Player of the Year Ellie Murphy.



Michele Dombrowski

New Yoga for Healing Series

Lucie Carlson is offering an eight-week Yoga for Healing series, meeting from 5:30 to 6:45 p.m. (sometimes continuing a little later) on Monday evenings, Aug. 3–Sept. 21 at the Sewanee Community Center.

This class is based on Kundalini yoga and also includes other time-proved healing systems and techniques that work quickly on body and spirit. Participants report increased energy, improving back problems and other health issues, better mood throughout the week and being spiritually uplifted. Work is on improving the function of organs and decreasing stress, as well as specific physical and emotional issues and needs of the participants.

All are welcome, whether you have taken any of her previous series or not. Live violin music during relaxation, appropriate for all ages and levels. The price is \$64 for the series or \$11 per class for drop-ins. For questions contact Lucie Carlson at (931) 598-9852 or luce.carlson@gmail.com.

FIND INFORMATION FOR YOUR TOWN



The Mountain NOW.COM

myerspoint.net

MYERS POINT at Sewanee offers a rare opportunity to enjoy a private community that celebrates American architecture, lifestyle, protected forests, cultivated lakes and panoramic views on Middle Tennessee's Cumberland Plateau. If you want to live surrounded by nature, history, beauty, quality and serenity, you'll want to call it home.

- 480-acre private gated community
- 24 exclusive home sites; lakeside or bluff vista
- Timeless, organic, craftsman architecture standards
- Land Trust for Tennessee perpetually protected forests
- Over four miles of walking and riding trails
- Community barn, pastures, resting benches and fire pit
- Minutes from the University of the South

John Goodson • (931) 703-0558 • johngoodson@bellsouth.net



MICHELLE M. BENJAMIN, JD Attorney & Counselor at Law

102 FIRST AVENUE, NORTH
WINCHESTER, TENNESSEE 37398

(931) 962-0006
(931) 598-9767

One of Tennessee's Rising Star Award Winners for Best New Business

Pearl's

FOGGY MOUNTAIN CAFÉ
Full Liquor Mahogany Bar
Happy Hour
Tuesday-Friday 5-6

Fine Dining
Tues-Thur 5-9; Fri and Sat 5-10

Kash Wright's Jazz
Friday & Saturday

15344 Sewanee Hwy
931.598.5770 for Reservations

Help us put this space to good use.

Organizations in the Sewanee Mountain Messenger's circulation area with 501(c)(3) tax-exempt status or those that have received funds from the Sewanee Community Chest are eligible for one FREE ad this size per year!

Call 598-9949 for details or email
ads@sewaneeemessenger.com.

UT Extension Office Offers Water Testing

The UT Extension in Grundy County is offering a one-time opportunity for area residents to get their wells water-tested. This offer is a joint effort between Grundy Soil Conservation, UT Extension-Grundy County Office, and Tennessee Tech Analytical Laboratory.

The cost for the basic test is \$25; it includes total coliform and E. coli bacteria. The basic-plus test is \$100 and includes total coliform, E. coli bacteria and other metals. Other tests can be performed at an additional cost, upon request.

In order to participate in either test, a water testing bottle must be obtained from the UT Extension Office or Soil Conservation Office by Friday, Aug. 21. The testing bottle with the water and full payment must be received between 8 and 9 a.m. on Monday, Aug. 24.

The water testing bottles will be taken to Cookeville for the test. It may take up to two weeks to receive results. For more information contact the UT Extension Office at (931) 592-3971 or Grundy County Soil Conservation at (931) 592-5220.

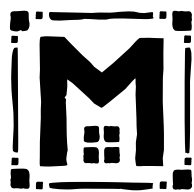
University Job Opportunities

Exempt Positions: Assistant Dean of Students and Chief Conduct Officer; Assistant Manager, Sewanee Dining; Assistant Men's Lacrosse Coach; Assistant Treasurer; Case Manager, University Wellness Center; Content Manager/Copywriter, Marketing and Communications; Equestrian Center Director; Health Promotion and Wellness Coordinator; Systems Administrator.

Non-Exempt Positions: Administrative Assistant; Computing Help Desk Coordinator; Coordinator, First Cook, Second Cook, Food Service Worker and Utility Worker, Sewanee Dining; Post-Baccalaureate Research Associate.

To apply or learn more, go to <www.jobs.sewanee.edu> or call 598-1381.

The University is committed to creating and maintaining a diverse campus environment. It is an equal opportunity educational institution and welcomes all qualified applicants without regard to race, color, religion, gender, sexual orientation, national origin, disability, age or veteran status.



MOLICA
CONSTRUCTION LLC

931 205 2475

WWW.MOLICA.CONSTRUCTION.COM

- CRAFTSMANSHIP ▪
- CREATIVITY ▪
- SUSTAINABILITY ▪



The gardens at Highclere Castle. Photo by June Mays



A look at the path to the castle's secret garden with a rich blend of colors and textures within wavy borders. Photo by June Mays

"Downton Abbey" Gardens Come to Sewanee

Garden designer June Mays will present a program on "The Gardens of Downton Abbey: What You Have Always Wanted to See," at 3 p.m., Sunday, Aug. 30, at St. Mary's Sewanee. Mays has just returned from touring and photographing the gardens at Highclere Castle, which is the filming location for "Downton Abbey." She also had a chance while at Highclere to visit with the gardeners on staff. In addition, she will be showing images of other gardens of the Edwardian period. Anglophiles, fans of the BBC program and gardeners will love this presentation.

Because filming of "Downton Abbey" takes place in the winter months, the gardens are off limits to crew and staff. However, Mays discovered that these gardens contain many of the plants and flowers that can be grown in Sewanee.

Admission is \$20, part of which will be a donation to St. Mary's Sewanee. For more information contact Mays at 598-9014 or email <junemays@bell.south.net>.

THE LOCAL MOVER
615-962-0432

Need More Room? **We Sell Boxes!**

Mountain Storage
(931) 598-5682

■ Security Gate Dan & Arlene Barry ■ Security Camera
Hwy 41 - Between Sewanee & Monteagle

U-HAUL MOVING BOXES and SUPPLIES!
—Various Sizes—

KIT TO PROTECT YOUR FLAT-SCREEN TV!

WOODY'S BICYCLES—SALES, SERVICE AND RENTALS
A Full-Service Trek Bicycle Dealer

Mon–Fri 9–5 • Sat 10–2 • 598-9793
woodybike@gmail.com • 90 Reed's Lane
(the red building behind Shenanigans in Sewanee)

Check out www.woodysbicycles.com for rates, trail maps, photos, bike club links, races and much more!

Area Ash Trees in Jeopardy from Pests

The University has received word from the Tennessee Department of Forestry that the emerald ash borer (EAB), an invasive insect that destroys ash trees, has arrived in Franklin County. This is not good news for our forests, said Ken Smith, professor of forestry at Sewanee.

"This exotic pest first arrived in Michigan 15 years ago in wood packing material, and it has killed millions of ash trees in the United States since then," he said.

Insecticides are available to treat individual trees or small groups of trees, Smith said, so home owners do have some options. Unfortunately, if the EAB spreads, it will likely kill most of the ash trees in area forests. Tennessee now has 46 counties under state and federal EAB quarantine.

According to the Tennessee Department of Forestry, the adult insects are dark green, one-half inch in length and one-eighth inch wide, and fly only from April until September. Infested trees display "D" shaped holes in the bark, and trees typically start to lose leaves one or two years after infestation. If Sewanee residents have large ash trees on their property, it would be a good idea to watch for signs of the insect.

The EAB quarantine prohibits the movement of firewood, ash nursery stock, ash timber and other material that can spread EAB. Citizens should report any symptomatic ash trees to the Department of Agriculture. TDA's Division of Forestry estimates that there are 261 million ash trees on public and private timberland in Tennessee, potentially valued as high as \$9 billion.

Additional information about the insect and signs of tree damage can be found at <www.tn.gov/agriculture/topic/ag-businesses-eab>.



An ash tree with a thinning canopy (above) is a sign of infestation by the emerald ash borer.

Sweeton
Home Restoration, LLC
LICENSED • INSURED • TRUSTED

NEW CONSTRUCTION
REMODELING
HISTORIC RESTORATION

931-924-2444 sweetonhome.com

TELL THEM YOU READ IT HERE!

SEWANEE AUTO REPAIR
—COMPLETE AUTO & TRUCK REPAIR—

- Tune-ups
- Tires (any brand)
- Tire repair
- Batteries
- Computer diagnostics
- Brakes
- Shocks & struts
- Steering & suspension
- Belts & hoses
- Stereo systems installed

All Makes & Models • Service Calls • Quality Parts
ASE Master Certified Auto Technician • 25 Years Experience
7 to 5 M-F • (931) 598-5743 • Across from Regions Bank

the blue chair Café and Bakery
70 West Over Community College
Downtown Sewanee
(931) 598-5434

the blue chair Tavern

Welcome to our Mountain FRESHMEN & PARENTS!

KEEP WATCH FOR TRIVIA NIGHTS & STUDENT DISCOUNTS!

Café Hours
Mon–Sat • 7:00 a.m.–6:00 p.m.
Sunday • 7:00 a.m.–2:00 p.m.

Tavern Hours
Mon–Thu • 4–10:30p | Fri • 4–11:30p
Sat • 11a–11:30p | Sun • 11a–10:30p



Click on **"VOICES"**
at www.TheMountainNow.com
to enjoy the musings of local bloggers.

NATURENOTES



The male fox at the Kershner's bird feeder. Photo by Jim Kershner

Family of Gray Foxes

Bill Kershner, who lives in the Deepwoods area of Sewanee, reports, "We've had a pair of gray foxes coming to eat birdseed at our feeder for the past few months, along with raccoons, squirrels and even some birds. We knew the foxes had a litter somewhere close, based on timing and the Mom's appearance."



One of the fox pups sitting next to the bird feeder pole. Photo by Jim Kershner

Submit your Nature Notes to
news@sewaneemessenger.com



Ray and April Minkler
styraco@blomand.net, aprilminkler@blomand.net
931-592-2444 931-434-6206
For over 8,700 testimonials see
www.oil-testimonials.com/1860419

3217 SHERWOOD ROAD • SEWANEE



This lovely prestige home has 3 bedrooms, 2 full baths, large living room with gas log fireplace, nice size den, formal dining room, kitchen with granite countertops, tile backsplash. This gorgeous bluff retreat with custom stone and frame was designed by Nashville architect Charlie Waterfield. Home features fabulous mountain views overlooking Lost Cove with approximately 5.71 acres.



CRYE-LEIKE,
REALTORS®

Office: 423-892-1515



Presented by

Agnes Hellmann
423-580-5552
and **Johnny Christian**
423-883-7369

Call The Realtors Who Follow
Through With You—Buying & Selling!

agnes.hellmann@crye-leike.com

Animal Alliance Helps Sewanee-Area Pet Owners

In an ongoing effort to help control overpopulation of unwanted and abandoned dogs and cats across the Plateau, Animal Alliance-South Cumberland (AASC) has money available to help low-income pet owners who live in the Sewanee area "fix" their pets, thanks to the Sewanee Community Chest.

If you live in Franklin County on the Mountain and have a dog or cat who is 8 weeks to 8 years of age, be a part of the solution to help end the tragedy of "oops litters" that nobody planned and nobody wants. With a \$14 co-pay, the dog or cat gets fixed and gets a free rabies vaccination, if needed, improving the health of your pet.

For more information call (931) 235-9006 and ask about this \$14 spay or neuter special. If you have a lot of pets and can't afford \$14 for each, just let us know you need extra help. Leave a message, and one of our volunteers will call to set up an appointment.

For the purpose of this grant, low income is defined as a recipient of Social Security as the sole source of income; on Medicaid, or on food stamps, SSI, or other government income assistance program; or have a total household income of less than \$35,000 per year.

Thanks to the Sewanee Community Chest for this funding to help low-income pet owners spay/neuter their pets.



Damon



Cinderella

Pets of the Week

Damon & Cinderella

The Franklin County Humane Society's Animal Harbor offers these two delightful pets for adoption.

Damon is a handsome, sweet blue-eyed kitty. He spends his day waiting for the next person to come to pet and cuddle him. Damon is about 7 months old and he gets along with other cats and dogs. He is negative for FeLV and FIV, house-trained, up-to-date on shots, micro-chipped and neutered.

Cinderella is a sporty young lady who loves to play and is friendly with other dogs. She has boundless enthusiasm that is easily managed with exercise and attention. Cinderella is heartworm-negative, up-to-date on shots, micro-chipped and spayed.

Every Friday is Black Friday at Animal Harbor. On Fridays, adoption fees are reduced 50 percent for black or mostly black pets over 4 months old who have been at Animal Harbor for more than a month.

Pets adopted from Animal Harbor qualify for a free post-adoption wellness exam by local veterinarians.

Animal Harbor is now open at its new shelter at 56 Nor-Nan Rd., off AEDC Road in Winchester.

Call Animal Harbor at 962-4472 for information, and check out their other pets at www.animalharbor.com.

State Park Offerings

Saturday, Aug. 15

Summer Trail Days—Help with a major trail reroute along the Fiery Gizzard trail, which will cut through some rough, beautiful terrain. Wear sturdy footwear, and bring plenty of water and snacks. Feel free to bring favorite tools or gloves. Meet at 9 a.m. at Grundy Forest parking lot; work until early afternoon. For more info or if you want to bring a large group, email Ranger Park at Charles.greer@tn.gov.

Hike to Laurel Gorge—Meet Ranger Park at 2 p.m. at Foster Falls parking lot for a moderate, out-and-back 5-mile hike to Laurel Gorge Overlook. A great beginners' hike! Wear sturdy shoes; bring plenty of water.

Foster Falls Geology—Meet Ranger Park at 7 p.m. at Foster Falls Overlook to learn and see the natural history of these powerful waterfalls and gorges.

Sunday, Aug. 16

Lost Cove Cave Hike (\$3 per person; reservation required)—Join Ranger Park at 8 a.m. at Carter State Natural Area parking lot for a difficult 5-mile hike and cave tour. Descend 2.5 miles into the gorge to the mouth of Buggytop Cave, where you'll take a wild tour of the cave. Call (931) 924-2980 for more information or to sign up.

Friday, Aug. 21

Foster Falls Investigative Hike—Join Ranger Park at 2 p.m. at Foster Falls parking lot for an exciting off-trail experience. Wear sturdy shoes and long pants. Bring plenty of water!

Grundy Forest Nature Hike—Meet Ranger Park at 5 p.m. at Grundy Forest parking lot for a moderate 2-mile hike. Be sure to bring sturdy shoes and plenty of water.

The South Cumberland State Park Visitors' Center is located on Highway 41 South between Monteagle and Tracy City and is open 8 a.m.–4:30 p.m. seven days a week. For more information call (931) 924-2980.

Weather

DAY	DATE	HI	LO
Mon	Jul 20	90	72
Tue	Jul 21	88	72
Wed	Jul 22	87	70
Thu	Jul 23	78	69
Fri	Jul 24	78	70
Sat	Jul 25	84	65
Sun	Jul 26	86	68

Weekly Averages:

Avg max temp =	84
Avg min temp =	69
Avg temp =	77
Precipitation =	0.84"

DAY	DATE	HI	LO
Mon	Jul 27	88	70
Tue	Jul 28	89	71
Wed	Jul 29	89	74
Thu	Jul 30	89	70
Fri	Jul 31	86	64
Sat	Aug 01	84	65
Sun	Aug 02	87	63

Weekly Averages:

Avg max temp =	87
Avg min temp =	68
Avg temp =	78
Precipitation =	0.01"

July Monthly Averages:

Avg max temp =	84
Avg min temp =	69
Avg temp =	76
Total Precipitation =	8.45"

July 57-Year Averages:

Avg max temp =	84
Avg min temp =	66
Avg temp =	74
YTD Avg Rainfall =	35.42"
YTD Rainfall =	39.71"

DAY	DATE	HI	LO
Mon	Aug 03	87	62
Tue	Aug 04	89	68
Wed	Aug 05	91	70
Thu	Aug 06	92	67
Fri	Aug 07	71	66
Sat	Aug 08	82	63
Sun	Aug 09	88	66

Weekly Averages:

Avg max temp =	86
Avg min temp =	66
Avg temp =	76
Precipitation =	0.74"

Reported by Joel Stewart
Domain Management Intern



LIGHTS ON!

It is state law to have your
headlights on in fog and rain.

Call 598-9949 and learn
how to put this space to
work for your business.

EAT IN OR TAKE OUT
You can still have dinner from Julia's!
Just pick it up by 3.



Open 11 to 3, Monday thru Saturday

24 University Ave., Sewanee • 931-598-5193
julias@vallnet.com • www.juliasofsewanee.com
Contact us about catering your next event!

Classifieds

CALL US! • 598-9949
Classified Rates:
 \$3.25 first 15 words,
 10 cents each addl. word
Now you can charge it!
 (\$10 minimum)

Oldcraft Woodworkers
 Excellence in custom woodworking.
 Kitchen and bath cabinets, bookcases,
 entertainment centers, furniture.
 Furniture repairs and refinishing.
 Est. 1982. Phone 931-598-0208

DAVE'S MODERN TAVERN is looking for waiters and cooks for the restaurant and for the Fiery Gizzard Taco Co. trailer. 38 W. Main St., Monteagle. (931) 924-8363.

I-24 Flea Market
200 Vendors!
22 Years!
I-24 Exit 134
Saturday & Sunday
(931) 235-6354

HOMEFORRENTMONTEAGLE: Spacious 3BR/2BA, large living room, large kitchen, possibly separate entry suite. C/H/A. Most lawn service provided. One year lease, with first and last months' rent. \$675/mo. (931) 924-2355.

Walk-In Cooler Filled with Flowers!
—TUXEDO RENTALS—
Monteagle Florist
 333 West Main Street, Monteagle
(931) 924-3292

TWO CARPETS: 8'x11', India heavy wool, beige/brown, floral accent. Lightly used but perfect. Cost \$1200 new. Only \$150 each OBO. Monteagle. (850) 261-4727.

LONG'S LAWN SERVICE
 • landscaping & lawn care
 • leaf removal • mulch
 Local references available.
 Jayson Long
(931) 924-LAWN (5296)

Needle & Thread
 *Alterations * Repairs * Light Upholstery
 * Slipcovers * Drapes
 For a reasonable price, contact
 Shirley Mooney
 161 Kentucky Ave.
 Sewanee, TN 37375
(931) 598-0766
 Monday–Friday, 8 a.m. to 4 p.m.

EXCELLENT CLEANERS, in business 20+ years, will clean houses, offices, move-in/move out; windows, pressure wash any surface. Local references. (931) 636-4889.

A-1 CHIMNEY SPECIALIST
"For all your chimney needs"
 Dust Free • Chimneys Swept, Repaired,
 Relined & Restored • Complete Line of
 Chimney Caps • Waterproofing
 Video Scanning
 G. Robert Tubb II, CSIA Certified & Insured
931-273-8708

TOM'S PLACE
 An Event Hall
 for your business or
 personal gathering.
 335 W. Main St., Monteagle
 Tom Banks
 tombanks9@yahoo.com
 931-636-6620

SARGENT'S SMALL ENGINES: Repairs to All Brands of Equipment: Lawn mowers (riding or push), String trimmers, Chainsaws, Chainsaw sharpening, New saw chains. (931) 212-2585, (931) 592-6536. Pickup and Delivery Available.

**Put this
 space
 to work
 for your
 business.**

RAY'S RENTALS
 931-235-3365
 Weekend Packages
 and Special Events
 CLIFFTOPS, BRIDAL VEIL,
 ALL AROUND THE MOUNTAIN
Monteagle Sewanee Rentals
 931-924-7253
 www.monteagle rentals.com

EAGLE LANDSCAPING & LAWN MAINTENANCE CO.
 Now Offering Specials for
SUMMER CLEANUP!
 We offer lawn maintenance, landscaping,
 hedge/tree trimming & more!
 Please call for your free estimate
(931) 598-0761 or (931) 636-0383

STEPHENSON'S SCULPTURES IN BRONZE: Bronzes make great gifts. Pet portraits/other commissions. (931) 691-3873.

HOUSE FOR RENT: Pretty English Tudor, Cowan, 1900+SF, 3BR/2BA, C/H/A. \$800/mo. <keri@ivywildsewanee.com> or (931) 598-9000.

LOST COVE BLUFF LOTS
 www.myserspoint.net
931-703-0558

LAUTZENHEISER PLACE TOWNHOUSE: For sale in Monteagle, 2BR/2BA, 2-car garage, large kitchen, large living room w/natural gas stacked-stone fireplace. 20x22 finished bonus room. Central HVAC, in-ground swimming pool. Granite countertops, tile and hardwood floors. Energy-efficient. Reasonably priced at \$139,000 OBO. (423) 779-8263.

BEAUTIFUL APARTMENT
 for rent at the Templeton Library
BREATHTAKING BLUFF VIEW
 Quiet, peaceful surroundings.
 1 bedroom.
 (931) 636-7873

WATER SOLUTIONS
 Joseph Sumpter
 Owner/Licensed Residential Contractor
 Specializing in drainage and rainwater
 collection systems
 598-5565
 www.josephsremodelingsolutions.com

Drivers: SE DEDICATED RUN
 NC, SC, FL, GA, TN, MS, AL Areas
 Home Weekly/Full Benefit Pkg.
 100% No Touch/75% Drop & Hook
 CDL A with 1 yr. experience
888-406-9046

SCULPTURE IN WOOD
 Carvings, Bowls, Vases,
 Church Icons.
 U.S. Hwy. 41 North, one mile from
 Monteagle. (931) 924-2970

Your ad could be here.

June Weber Gooch-Beasley Realtors
 Serving the Sewanee and Monteagle area
 with quality real estate service:
 -42 years of experience
 -Mother of Sewanee alumnus
 www.gbrealtors.com junejweber@bellsouth.net
June Weber, CRB, CRS, GRI Broker 931.636.2246
GOOCH-BEASLEY REALTORS 931.924.5555

It is no measure of health to be well-adjusted to a profoundly sick society. —Krishnamurti

www.stillpointsewanee.com

Stillpoint
 Individual and Group Psychotherapy Acupuncture, Massage and Body/Energy Work

Lucie Carlson, Reiki
 lucie.carlson@gmail.com

Regina Rourk Childress, LMT, CNMT
 931-636-4806

Eva Malaspino, RN, Reiki Master
 423-413-0094

Wanda D. Butner, LSPE
 931-361-1333

Maryellen McCone, LPC/MHSP
 931-636-4415

David Sharp, Acupuncture
 423-870-8870

Kate Gundersen, LCSW
 931-235-4498

DIRT WORK
 • Bush Hogging
 • Driveway Maintenance
 • Gravel/Sand/Mulch
 • Large or Small Jobs
 Michael, 615-414-6177

CLAYTON ROGERS ARCHITECT
931-636-8447
 cr@claytonrogersarchitect.com

The Moving Man
 Moving Services Packing Services
 Packing Materials Truck Rental
 Local or Long Distance
 1-866-YOU-MOVE (931) 968-1000
 www.themovingman.com
 Decherd, TN
 Since 1993 U.S. DOT 1335895

NEWLIFETN, formerly the Franklin County Adult Activity Center, is hiring for the position of Director of Development. A nonprofit agency primarily serving individuals with intellectual and developmental disabilities, we are looking to increase our presence and expand our services into new fields. Essential duties and responsibilities include (but are not limited to): New program development; Explore and establish new possibilities of persons to serve from additional funding sources; Job development for service recipients in conjunction with Supported Employment; Oversight of Choices Program; New Life leader for all Public Relations/marketing, including Chamber of Commerce events, United Way functions, etc.; Assist. Director of Human Resources in interviewing, orienting and training new staff, as needed. Qualifications: Bachelor's Degree and 10 years related work experience; Current Class 'D' license, good driving record as defined by New Life; 'F' Endorsement required within 30 days of hire. Ideal candidate will be self-directed, capable of working closely with others, outgoing, personable and able to generate new business and establish new relationships. Knowledge of computer usage is essential. Salary range: \$29,120–\$49,920 annually. Pay commensurate with experience. Equal Opportunity Employer. Applicants must pass background check, drug screen. Apply: Email <jeff.mathews@newlifetn.com>; download application at <www.newlifetn.com>; or in person at 702 Hundred Oaks St., Winchester, TN 37398, (931) 967-0100.

Shop and dine locally!

Bluff view with pond!

TWELVE WOODED ACRES FOR SALE: 300-ft bluff view. Space for house cleared. Driveway and underground utilities in. Two-acre pond stocked with fish. Sign on property. Jackson Point Road. 12 miles from Kimball Walmart and Sewanee. (423) 718-5796.

King's Tree Service
 Topping, trimming, bluff/lot clearing, stump grinding and more!
 Bucket truck or climbing
 Free wood chips with job
 Will beat any quoted price!
 Satisfaction guaranteed!!
 —Fully licensed and insured—
 kingstreeservice.com
 Call (931) 598-9004—Isaac King

MAMA PAT'S DAYCARE
 MONDAY-FRIDAY
 Open 4 a.m.; Close 12 midnight
 3-Star Rating
 Meal & Snack Furnished
 Learning Activities Daily
(931) 924-3423 or (931) 924-4036

the **ARTISAN** DEPOT
 Work by local artists
 201 E. Cumberland, Cowan
 Open Thurs–Fri–Sat, 12–5
 931-308-4130

Pearl's
 FOGGY MOUNTAIN CAFÉ
STILL SEEKING QUALIFIED KITCHEN HELP
 Line cooks, grill cooks, salad and dessert help
 Apply mornings or anytime before 5 p.m. at 15344 Sewanee Hwy.
 Résumé helpful, but not necessary. No phone calls, please.

MASSAGE
Regina Rourk Childress
 Licensed Massage Therapist
 www.reginarourk.com
 ~ GIFT CERTIFICATES ~
(931) 636-4806

WREN'S NEST RANCHER in Monteagle for sale. Quiet two acres, two great storage buildings, 3BR/2.5BA, laundry room, kitchen, dining, den, huge living room, 2-car garage. New energy windows, new roof, new HVAC system, new kitchen and new bathrooms. Gas fireplace. \$168,000 OBO. (423) 779-8263.

THE LOCAL MOVER
 Available for Moving Jobs
 Call or Text Evan Barry
615-962-0432
 Reviews at <www.thelocalmoverusa.com>.

SHAKERAG BLUFF CABIN: Beautiful west-facing bluff view. Near University. Extremely secluded. Sleeps 4–5. C/H/A. Great fishing, swimming. Weekend or weekly rentals. (423) 653-8874 or (423) 821-2755.

You are the door to your universe.

Adam Randolph
 psychotherapist
 randolph.adam@gmail.com

T's Antique Mall
15 DEALERS
 Antiques, Collectibles and Crafts
 Weds–Sat 10–4; Sun 12–3
 Historic Downtown Cowan

FIREWOOD FOR SALE: \$60/rick. \$70/stacked. Call (931) 592-9405. Leave message.

KSC Construction
SCOTT COKER
 Licensed & Insured
 * Home Repairs/Remodeling
 * Interior & Exterior Painting
 Phone (931) 598-0843 After 4:00 PM
 Cell Phone (931) 636-1098

Tell them you saw it here.

CHAD'S LAWN & LANDSCAPING
-FREE ESTIMATES-
 * Lawn care & Design (Mulch & Planting)
 ALSO: * Tree Trimming & Removal
 * Pressure Washing * Gutter Cleaning
 * Leaf Pickup & Blowing * Road Grading
 * Garden Tilling * Rock Work
(931) 308-5059

CHARLEY WATKINS PHOTOGRAPHER
 Sewanee, TN
(931) 598-9257
 http://www.photowatkins.com

PAUL KLEKOTTA
 National Emmy-Nominated Videographer/Photographer
 30 Years of Professional Broadcast and Photography Experience
HI-RES DIGITAL PHOTOS • HD VIDEO
 Steadicam Owner/Operator
 Commercials • Documentaries • Music Videos
 Weddings • Sports • Special Events • Corporate Promotions
 Excellent Local and National References
423-596-0623
 Email paulklekotta@charter.net

State Farm

Billy Freeze
 Agent

2295 Decherd Boulevard
 Decherd, TN 37324-3827
 Bus 931-967-2257
 Fax 931-967-0285
 www.billyfreezeinsurance.com

Good Neighbor Agent since 1968



Secluded at the foot of Shakerag Hollow, 3,400 (+) sq. ft., 4 BR, 4½ BA house on 32 acres with panoramic views of the Cumberland Plateau; fields, woods, creek; easy access to Sewanee, I-24 and State Parks; artist's studio and outbuildings. Additional 120 acres (joins Univ. of the South) with two house sites (well & electric service installed) available. Motivated Seller!

FOR SALE
Sam HATFIELD Realty, Inc.
931-968-0500



4470 Mansford Road,
 Winchester
 www.samhatfield.com

Call Mike Maxon at (931) 308-7801 or email maxonm@bellsouth.net



BARDTOVERSE

by Phoebe Bates

Your TV cable's on the fritz.
Your Xbox is corroded.
Your iPod sits in useless bits.
Your Game Boy just imploded.

Your cell phone? Static's off the scale.
Your land line? Disconnected.
You've got no mail—E, junk or snail.
Your hard drive is infected.

So here you idle, dumb and blue,
With children, spouse and mother—
And wish you knew what people do
To entertain each other.

—“Nightmare” by Melissa Balmain

Jim Long's Import Auto Service

931-596-2217

Exclusive Volvo Automobile Facility

931-596-2633



We stock new, used and rebuilt Volvo parts.
We service and repair Volvos.
We buy running, disabled or wrecked Volvos.

1741 Howell Rd.
Hillsboro, TN 37342

Same owner - Same location for more than 38 years
ASE Master Certification for more than 20 years

WOODARD'S

DIAMONDS & DESIGN

Need Extra Cash?

WE BUY GOLD



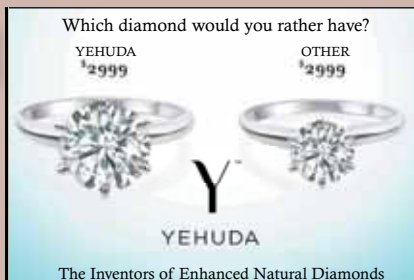
- ✓ Deal With Tullahoma's most trusted name in jewelry
- ✓ Highest Prices Paid
- ✓ Get 20% MORE Towards Jewelry Purchase
- ✓ FREE Gas Card when you sell us your gold*

* See Store Staff For Details



Jim Woodard
Diamond Hunter

CUSTOM
Design
Studio
Repairs, too.



The Inventors of Enhanced Natural Diamonds

Northgate Mall • Tullahoma • 454-9383 • woodards.net



The Knowledge Nook offers a safe, nurturing environment where your child will get the attention

and care that he or she needs. We have a great Summer opportunity for kids in our community! **The Knowledge Nook** is a great place for your child or children to keep their brains working this summer! We offer fun/educational camps for most all ages! We offer Book Clubs, Writing, Art, Poetry, and Shakespeare Camps! We also will have Pre-K and Kindergarten Readiness Camps! With more camps to come! Check us out on our Facebook page! This business is owned and operated by Certified Tennessee Teachers! We would love for you to come check out our little Nook! We are located in Decherd beside the new Taco Bell!

Phone: (931) 607-0108

Email: katie tankersley@yahoo.com

<http://www.theknowledgenook.org/>

<https://www.facebook.com/knowledgenookwinchester>

BUG PROBLEMS?

We can help! Call us for a free inspection!

BURL'S TERMITE & PEST CO.

TERMITE—PEST—VAPOR CONTROL
Bonded • Insured • Home-Owned & Operated
105 Ake St., Estill Springs
(931) 967-4547 or www.BurIsTermite.com
Charter #3824 • License #17759



Community Calendar

Today, Aug. 14

- 8:30 am Yoga with Carolyn, Community Center
- 9:00 am CAC office open, until 11 am
- 10:00 am Game day, Senior Center
- 12:00 pm Contract/release stretching with Kim, Fowler
- 7:30 pm Movie, "Tomorrowland," SUT

Saturday, Aug. 15

- 8:00 am Sewanee Gardeners' Market, until 10 am
- 8:30 am Yoga with Richard, Community Center
- 10:00 am Hospitality Shop open, until noon
- 10:00 am Kirby-Smith #327 UDC, Franklin-Pearson House
- 10:30 am Tracy City Farmers' Market open, until noon
- 4:00 pm Cowan Cruise-In, Cowan Welcome Center
- 4:00 pm Poetry reading, Tillinghast, Convocation Hall
- 7:30 pm Movie, "Tomorrowland," SUT
- 9:00 pm Music, "The Culprits," Shenanigans

Sunday, Aug. 16

- 3:00 pm Knitting circle, instruction, Mooney's, until 5 pm
- 4:00 pm Yoga with Helen, Community Center
- 5:00 pm Women's Bible Study, Midway Baptist

Monday, Aug. 17

- 9:00 am CAC office open, until 11 am
- 9:00 am Pilates with Kim, intermediate, Fowler Center
- 9:30 am Yoga with Sandra, St. Mary's Sewanee
- 10:30 am A Course in Miracles study group, Mooney's
- 12:00 pm Pilates with Kim, beginners, Fowler Center
- 5:30 pm Yoga for healing with Lucie, Community Ctr
- 5:30 pm Yoga with Sandra, St. Mary's Sewanee
- 6:00 pm Karate, youth@6; adult@7, Legion Hall
- 7:00 pm Centering Prayer, Otey sanctuary

Tuesday, Aug. 18

- 8:00 am Grundy County Food Bank open, until 10 am
- 8:30 am Yoga with Carolyn, Comm Ctr
- 9:00 am CAC office open, until 11 am
- 9:00 am Pilates with Kim, beginners, Fowler Center
- 9:30 am Hospitality Shop open, until 2 pm
- 10:30 am Bingo, Senior Center
- 11:00 am Tai Chi with Kathleen, intermediate, Comm Center
- 11:30 am Grundy County Rotary, Dutch Maid, Tracy City
- 12:00 pm Pilates with Kim, intermediate, Fowler Center
- 3:30 pm Centering Prayer support group, St. Mary's Sewanee
- 6:30 pm Prayer and study, 7th Day Adventist, Monteagle
- 7:00 pm Acoustic jam, Water Bldg, next to old GCHS

Wednesday, Aug. 19

- 9:00 am CAC office pantry day, until 11 am; and 1-3 pm
- 9:00 am Pilates with Kim, intermediate, Fowler Center
- 10:00 am Senior Center writing group, Kelley residence
- 12:00 pm Community Council agenda deadline, Provost's office
- 12:00 pm EQB lunch, St. Mary's Sewanee, social time 11:30 am
- 12:00 pm Pilates with Kim, beginners, Fowler Center
- 5:30 pm Yoga with Helen, Community Center
- 7:00 pm Bible study, Midway Baptist Church

Thursday, Aug. 20

St. Andrew's-Sewanee School opening weekend

- 8:00 am GC Clothing Bank open, until noon, old GCHS
- 8:00 am Monteagle-Sewanee Rotary, Sewanee Inn
- 9:00 am CAC office open, until 11 am
- 9:00 am Nature journaling, Trink's Terrace, Abbo's Alley
- 9:00 am Pilates with Kim, beginners, Fowler
- 9:30 am Hospitality Shop open, until 2 pm
- 10:30 am Tai Chi with Kathleen, advanced, Comm Center
- 11:30 am FC Repub Women, Franklin-Pearson House
- 12:00 pm Pilates with Kim, intermediate, Fowler
- 12:30 pm Episcopal Peace Fellowship, Otey
- 1:00 pm Job Fair, Monteagle City Hall, until 6 pm
- 1:30 pm Folks@Home Support Group, 598-0303
- 2:00 pm Knitting circle, Mooney's, until 4 pm
- 4:00 pm Tracy City Farmers' Market open, until 5:30 pm
- 4:30 pm Poetry reading, Wendell Berry, Guerry
- 6:00 pm Karate, (youth@6; adults@7), Legion Hall
- 7:00 pm Survivors' support group, Morton Memorial Auditorium

Friday, Aug. 21

Curbside recycling, before 7 a.m.

- 8:00 am GC Clothing Bank open, until noon, old GCHS
- 9:00 am CAC office open, until 11 am
- 10:00 am Game day, Senior Center
- 12:00 pm Contract/release stretching with Kim, Fowler Center
- 5:00 pm Bible study, Mtn of God Tabernacle, Monteagle

LOCAL 12-STEP MEETINGS

Friday

- 7:00 am AA, open, Holy Comforter, Monteagle
- 7:00 pm AA, open, Christ Church, Tracy City

Saturday

- 7:30 pm NA, open, Decherd United Methodist
- 7:30 pm AA, open, Claiborne Parish House, Otey

Sunday

- 6:30 pm AA, open, Holy Comforter, Monteagle

Monday

- 5:00 pm Women's 12-step, Claiborne Parish House, Otey
- 7:00 pm AA, open, Christ Church, Tracy City

Tuesday

- 7:00 pm AA, open, First Baptist, Altamont
- 7:30 pm AA, open, Claiborne Parish House, Otey

Wednesday

- 10:00 am AA, closed, Clifftops, (931) 924-3493
- 4:30 pm AA, "Tea-Totallers" women's group, Clifftops, (931) 924-3493

Thursday

- 7:00 pm NA, open, Decherd United Methodist
- 7:30 pm AA, open, Holy Comforter, Monteagle
- 12:00 pm AA, (931) 924-3493 for location
- 7:00 pm AA, open, St. James
- 7:30 pm Adult Children of Alcoholics, Dysfunctional Families, Claiborne Parish House, Otey

Welcome, new residents.

Your guide to easy living is at

<www.TheMountainNow.com>.

Celebrating 15 Years!
2000-2015

Enjoy a
memorable starlit evening
on our patio.



224 East Main St
Monteagle
931-924-4600
Sun to Thu 5 to 9
Fri and Sat 5 to 10
www.highpointrestaurant.net



402 West Main St. • Monteagle • 931-924-3355
www.paparons.net
Sunday-Thursday 11-9
Friday and Saturday 11-10

Try our fresh
chicken salad on
a croissant.