



# THE SEWANEE MOUNTAIN MESSENGER

Volume XXXIV No. 29

sewaneemessenger.com

Friday, Aug. 17, 2018

## Housing Sewanee Advances in Sherwood Springs

by Kevin Cummings, Messenger Staff Writer

The first of nine planned energy-efficient homes in Housing Sewanee's Sherwood Springs subdivision should be complete by the end of this year, officials said.

Housing Sewanee, operating through donations and volunteers, builds homes for people who cannot afford a house, while offering low- or no-interest mortgages. The new homeowner is required to contribute time during construction, similar to Habitat for Humanity.

"This is beyond a lot of their dreams," said Mickey Suarez, Housing Sewanee design and construction manager. "They're deserving people, the only difference is they didn't quite get in the right profession or have the opportunity to develop those skills. They're solid, hard-working people who deserve a lot more, a lot of times, than the shakes that they get."

The family moving into the house, a single mother and her young son and college-age daughter, lived in a pickup truck camper for several years, Suarez noted, as he provided a tour of the upstairs bedroom.

The two-bedroom home under construction in Sherwood Springs boasts a number of energy-saving amenities, including a geothermal heating and cooling system and special Icynene foam insulation.

Icynene protects the house against air leaks and drafts, but with good insulation comes concern for the quality of air inside, Suarez said. To remedy that, Panasonic donated an energy recovery ventilator (ERV), which brings in fresh air and expels stale air, while exchanging heat in the air cycle to save energy.

Utilizing natural resources is part of the plan for making the homes energy efficient and better for the environment.

"We built this house with as small a carbon footprint as we possibly could," Suarez said.

Builders are also using some reclaimed wood to help construct the home, and a healthy spring behind the house will supply water.

"The plumbing is set up so you can take advantage of spring water, but if we go dry, you can go to SUD (Sewanee Utility District) water," Suarez said. "The summer was so dry, the spring dropped down to about a gallon and a half a minute, which is still a lot of water. Right now, the spring is probably producing 12 to 15 gallons a minute, so it's really pouring out of there."

(Continued on page 5)



Jessica Kaup, a Sewanee sophomore and VISTA volunteer, helps paint a Housing Sewanee home on Aug. 1, in the Sherwood Springs subdivision. Photo by Kevin Cummings

## Community Chest Grant Applications Available

Since 1908, the Sewanee Civic Association (SCA) has overseen the distribution of grants to nonprofit organizations across the Cumberland Plateau. Sponsored by the SCA, the Sewanee Community Chest (SCC) is pleased to announce the beginning of the 2018-19 grant cycle. All nonprofits that benefit the community are encouraged to apply.

The 2018-19 funding application can be downloaded from the website at <www.sewaneecivic.org>. Interested nonprofits may also request an application by emailing the SCC at <sewaneecommunitychest@gmail.com>. The deadline for submission is Saturday, Sept. 15.

The SCC is a nonprofit organization and relies on funding from the community in order to support charitable programs throughout the greater Sewanee area. As the 2018-19 grant cycle begins, the SCC is also kicking off its yearly fundraising campaign.

The SCA urges everyone who benefits from life in this community, whether you live, work, or visit, to give generously. Donations are tax deductible. Contributions, payroll deductions and pledges are accepted at any time at P.O. Box 99, Sewanee, TN 37375.

Donations can also be made online through the PayPal and Amazon Smile links on the SCA website.

## MES Will Not Close

by Leslie Lytle  
Messenger Staff Writer

Monteagle Elementary School (MES) will not be closing anytime in the foreseeable future. Dispelling rumors, MES principal Janet Layne cited recent capital upgrades to the school including a new roof and \$40,000 spent on refurbishing the gym.

"The gym walls were painted, the floor refinished, and we got new mats, a new scoreboard, and electronically operated retractable bleachers. Marion County spent a tremendous amount of money to upgrade the building just in the past year."

"The county also placed a full-time School Resource Officer in the school beginning this year," Layne said. "You hear these rumors about the school closing every year. The director of schools has reassured me that's just people talking."

(Continued on page 5)

## Grandparents Raising Kids Rely on Food Banks

by Kevin Cummings  
Messenger Staff Writer

*Note: This is the first in a series of articles related to the Monteagle-Sewanee Rotary Club's Hunger Walk on Sept. 1, which will raise funds for local food banks. The names of the grandparents have been changed to help protect the families' privacy.*

The 79-year-old woman canned soup—tomatoes, peppers, corn and onions—while her six-year-old was at school.

Anna and her husband, Charles, have raised their great-granddaughter since she was in diapers; the little girl's parents were drug users, both in and out of jail.

"It was like God put her in my arms because I was standing there holding her when the police arrested them and took them away," Anna said during a phone interview, canning while she talked. "Sometimes we're not looking for something like this, but you know, she's been a blessing to us. She'll pray with us when we're sick; she'll lay her little hands on us and pray."

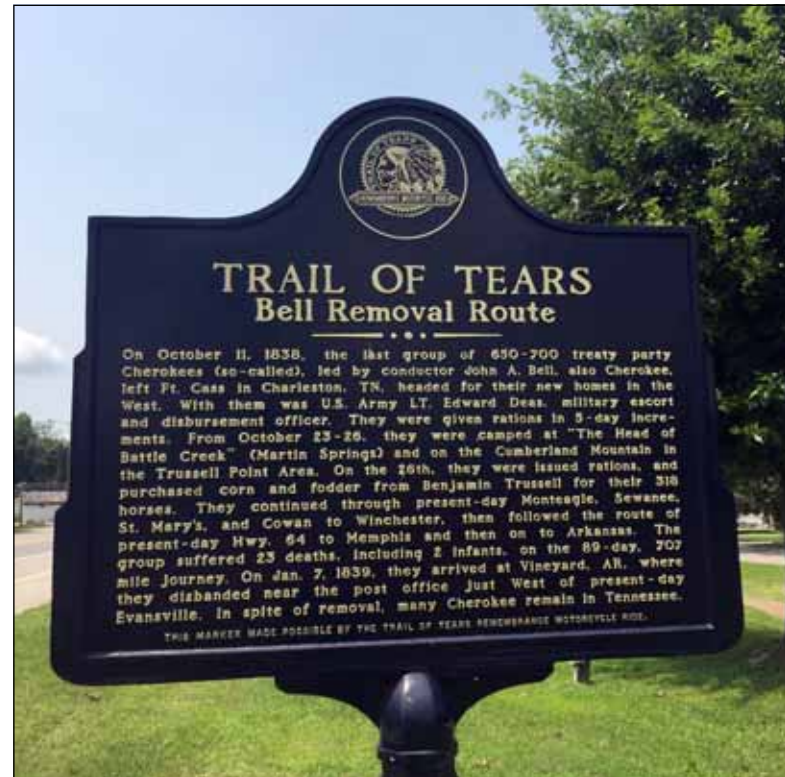
Local food banks help grandparents like Anna and Charles feed themselves and the children they're caring for.

Betty Carpenter, director of Community Action Committee (CAC) at Otey Parish in Sewanee, said about eight grandparents caring for grandkids pick up food from CAC.

"The grandparents are elderly and/or have significant health issues, which makes it difficult for them to work," she said. "The situation comes from the parents being incarcerated or deceased. In most cases, this living situation was not planned but the grandparents provide the most stable environment."

Amy Wilson, director of Morton

(Continued on page 6)



The Trail of Tears Bell Removal Route marker is up in Monteagle, at the Mountain Goat Trail across from the DuBose Conference Center. The marker was made possible by the Trail of Tears Remembrance Motorcycle Ride.

## Binkley Garcia Selected to Design Middle Schools

by Leslie Lytle, Messenger Staff Writer

At the Aug. 8 special called meeting, the Franklin County School Board voted to offer the contract for design of the two new middle schools to Binkley Garcia Architecture (BGA) based in Nashville. The decision followed extensive interviews with the top candidates, which included the Knoxville-based firms McCarty Holsaple McCarty (MHM) and Red Chair Architects.

"All three are excellent," said school board representative Adam Tucker. "For me, the driving considerations are the scale of the firm relative to our needs, the individualized focus we're going to get from them, and on a personal and professional level what will work best for us."

While all three firms have extensive experience designing and renovating PreK through 12 schools, BGA's primary focus is educational structures, with more than 60 schools to their credit. Several BGA schools have received awards, among them Tusculum Elementary in Metro Nashville. Like the Franklin County middle schools project, the design included retaining the existing gym with classes continuing in the old school during construction. Other projects followed a similar model, part demolition and part new construction.

In terms of firm size, BGA occupied the middle ground compared to MHM, the largest firm in Knox-

ville, and the three person team at Red Chair Architects.

"Who you see here tonight will be involved all the way through the process," said BGA principal Roy Garcia. Garcia will be in charge of the production and design process; Drew Ewing will serve as project manager, team leader, and coordinate with the engineers; and principal Joseph Binkley will be the primary contact.

"We have a good working relationship with contractors throughout middle Tennessee," Binkley stressed, "and throughout the design process consult with them about current costs and cost changes."

Describing what to expect during the design process, Binkley said, "You determine who the representatives from the user groups are. It's important for us to get together with them from the beginning, to get around the table with the appropriate people."

"We design around your needs," Garcia said. "How the end users experience the building is what matters."

Binkley described the firm's office environment as an open space with architects, project managers and support staff working together in a single large room "with everyone involved in what's going on."

"We have a quality control check list we use in all stages and keep a running tab of issues on sticky

(Continued on page 5)

P.O. Box 296  
Sewanee, TN 37375



# Letter

## DEAR COACH MEEKS

In early spring of 1970 I received a phone call from you. You asked me if I would consider running track and cross country for The University of the South. That phone call changed my life. I think I had heard of Sewanee, but I had no idea where it was. You asked me to come and visit, and half way down University Avenue I knew that it was the place for me. As they say, the rest was history.

Today we honor you and Martha for long and faithful service to the University and to this community. I might add that you touched the lives of many during your tenure here who, consciously or unconsciously, embody your influence in their lives. They couldn't all

be here today, and if they were, the town would not be large enough to hold them all.

I am sad and grieving today. This good-bye should not be happening. This community is not whole because it does not have a place for Martha and you to safely age in place. Sewanee is a wonderful place to live if one is healthy. Regrettably, there are not enough services and medical care or places to care for those with impairments. This is a shame. I promise you that I will work diligently to rectify this situation. Maybe someday soon I can call you on the phone and tell you that we have a place for you, here, in the Sewanee you love.

*With Deepest Respect,  
Tom Phelps, M.D., Sewanee*

## University Job Opportunities

**Exempt Positions:** Assistant Director, Sewanee Fund (two positions), University Advancement; Assistant/Associate University Registrar for Catalog, Curriculum, and Scheduling, Registrar's Office; Assistant Women's Lacrosse and Assistant Field Hockey Coach, Athletics; Benefits Administrator, Human Resources; Coordinator for Fraternity/Sorority Life, Student Life; Director, Community Standards, Student Life; Purchasing Manager, Business Services.

**Non-Exempt Positions:** Campus Security Officer (10 positions), Police Department; Food Service Worker (Temporary), Sewanee Dining; Part-Time Police Officer, Police Department; Student Program Coordinator, Babson Center.

For more information call (931) 598-1381. Apply at <jobs.sewanee.edu>.



## — THE SEWANEE MOUNTAIN — MESSENGER

Published as a public service to the community since 1985, the newspaper is printed on Fridays, 46 times a year. Free of charge, copies are distributed to 100 locations, including businesses and post offices in Sewanee, Monteagle and Tracy City. This publication is made possible by the patronage of our advertisers and by contributions from the University of the South (print production) and the Sewanee Community Chest.

### SUBSCRIPTIONS \$75 first class

Kiki Beavers  
*editor/publisher*  
April Minkler  
*office manager*  
Ray Minkler  
*circulation manager*  
Leslie Lytle  
*staff writer*  
Kevin Cummings  
*staff writer/sports editor*

Sandra Gabrielle  
*proofreader*  
Janet Graham  
*publisher emerita*  
Laura Willis  
*editor/publisher emerita*  
Geraldine Piccard  
*editor/publisher emerita*

*owned by the Mountain Messenger, LLC*

418 St. Mary's Lane, P.O. Box 296, Sewanee, TN 37375  
Phone (931) 598-9949 | <news@sewaneeemessenger.com>

*All material in the Sewanee Mountain Messenger and on its websites are copyrighted and may not be published or redistributed without written permission.*

## Squeaky Clean Housekeeping

My reputation is built upon your satisfaction. Dependable, hardworking, fast service and reasonable rates!

VACUUMING  
DUSTING  
LAUNDRY  
FLOORS



FREE ESTIMATES  
**KATHY WILSON**  
**(520) 260-5959**



PLANT CARE  
BATHROOMS  
DISHES  
FURNITURE

## Rotaract Club Relay for Life

The Rotaract Club of Sewanee is sponsoring an American Cancer Society Relay for Life as its first community event. Relay for Life represents the hope that those lost to cancer will never be forgotten, that those who face cancer will be supported, and that one day cancer will be eliminated. This event engages the entire community of cancer survivors, caregivers and citizens in uniting to defeat all cancers.

This event will take place from 11 a.m.–9 p.m., Saturday, Oct. 6, at the Hardee-McGee Field at Harris Stadium. The goal for the event is to raise \$20,000. For more information on how to donate, form a team or get involved, go to <www.Relayforlife.org/sewanee> or email <sewanee.relayforlife@gmail.com>.

## Serving Where Called

Please keep the following individuals, their families and all those who are serving our country in your thoughts and prayers:

Cassiday Barry  
James Gregory Cowan  
Nathaniel P. Gallagher  
Peter Green  
Zachary Green  
Forrest McBee  
Andrew Midgett  
Jose D. Ramirez III  
Troy (Nick) Sepulveda  
Nick Worley

If you know of others in our Mountain family who are serving our country, please give their names to American Legion and Auxiliary member Louise Irwin, 598-5864.

91 University Ave. Sewanee  
sewaneehouses.com | (931) 598-9244

## UNIVERSITY REALTY

SEWANEE TENNESSEE

**727 DEEPWOODS RD.** Stunning workmanship, light fills every room. 3 BR, 2.5 BA, fireplace, dining room, living room, lg kitchen, study, move-in ready.

**SHERWOOD RD.** Sewanee. Stunning bluff views, sunrise over Lost Cove. Towering hardwoods, old mountain stone home place. 17.700 acres.

**1930s VINTAGE HOUSE** on Popular St., Cowan. Completely renovated top to bottom, 3 BR, 2 BA, hardwood floors, bright sun room overlooking fenced-in back yard. Carport, storage bldg. \$115,000

**30.50 ACRES** Overlooking Bridal Veil, magnificent bluff views, large waterfall, peaceful creek, large rock face, towering hemlocks. \$200,000

**1.08 ACRE LOT #1** Saussy Subdivision. Very nice building lot. \$23,500

**3932 JUMP OFF RD.** Stunning open floor plan, 3 BR, 2.5 BA. Guest house 2 car garage heated and finished. 5.9 ac. ADA compliant.

**101 CARRUTHERS RD.** Extraordinary sunset view on the Domain. 2820 sq. ft. w/unfinished basement. Two fireplaces and views from every room.

**MYERS POINT.** Lake lots starting at \$275,000

**A PORTION OF SALES MADE THROUGH OUR OFFICE WILL BE DONATED TO HOUSING SEWANEE**

Lynn Stubblefield (423) 838-8201  
Susan Holmes C'76 (423) 280-1480  
Freddy Saussy, C'99 (931) 636-9582

NEWS@SEWANEEMESSENGER.COM



## MICHELLE M. BENJAMIN, JD Attorney & Counselor at Law

201 FIRST AVENUE, NORTHWEST  
WINCHESTER, TENNESSEE 37398

(931) 962-0006  
Fax: (931) 967-8613

## DEPENDABLE AFFORDABLE RESPONSIVE HOME REPAIR AND REMODELING EXPERT HANDYMAN

### KEN O'DEAR

25 YEARS EXPERIENCE  
SATISFACTION GUARANTEED

**931.235.3294**

**931.779.5885**



## Moroccan Night

**6:30 p.m., August 26**

Reservations required, one sitting  
\$55 per person, BYOB

**Lamb Tangine, Moroccan Salmon, Roasted Chickpeas, Couscous, Grilled Vegetables, Moroccan Orange Cake**

**931-463-2222**

15344 Sewanee Hwy. Sewanee - [www.pearlsdining.com](http://www.pearlsdining.com)

## Letters to the Editor Policy

Letters to the editor are welcome at the Sewanee Mountain Messenger and are a vital part of our community's conversation. Letters need to be no longer than 250 words and may be edited for space and clarity. We make exceptions from time to time, but these are our general guidelines.

Letters and/or their author must have some relationship to our community. We do not accept letters on national topics from individuals who live outside our print circulation area. Please include your name, address and a daytime telephone number with your letter. You may mail it to us at Sewanee Mountain Messenger, P.O. Box 296, Sewanee, TN 37375, come by our office, 418 St. Mary's Ln., or send your email to <news@sewaneeemessenger.com>. —KB



## MESSENGER DEADLINES & CONTACTS

Phone: (931) 598-9949

### News and Calendar

Tuesday, 5 p.m.

Kiki Beavers

[news@sewaneeemessenger.com](mailto:news@sewaneeemessenger.com)

### Sports

Kevin Cummings

[sewaneesports@gmail.com](mailto:sewaneesports@gmail.com)

### Display Advertising

Monday, 5 p.m.

[ads@sewaneeemessenger.com](mailto:ads@sewaneeemessenger.com)

### Classified Advertising

Wednesday, noon

April Minkler

[classifieds@sewaneeemessenger.com](mailto:classifieds@sewaneeemessenger.com)

## MESSENGER HOURS

Monday, Tuesday and Wednesday  
9 a.m.–4 p.m.

Thursday—Production Day  
9 a.m. until pages are completed  
(usually mid-afternoon)

Friday—Circulation Day  
Closed



## Upcoming Meetings

### FCDP Monthly Meeting

The Franklin County Democratic Party will have their regular meeting at 9 a.m., Saturday, Aug. 18 at the FCDP Headquarters, 420 E. Main St., in Decherd. Please bring a folding chair, and help to plan for the vote in November. The headquarters is open through the Nov. 6 election.

### Sewanee Trust for Historic Preservation

The Sewanee Trust for Historic Preservation will meet at 4 p.m., Monday, Aug. 20, in the Adult Education Room at Otey Parish House. Everyone is invited to attend.

### Franklin County Commissioners

The Franklin County Commissioners will have a special called meeting at 7 p.m., Monday, Aug. 20 at the Franklin County Courthouse in Winchester.

### Area Rotary Club Meetings

The Grundy County Rotary Club meets at 11:30 a.m., Tuesdays at Dutch Maid Bakery in Tracy City. The Monteagle-Sewanee Rotary Club will meet at 8 a.m., Thursday, Aug. 23, at St. Mary's Sewanee. The presentation will be given by the Chattanooga Food Bank and Second Harvest.

### Cowan Commerical Club

The Cowan Commercial Club will meet at 6 p.m., Monday, Aug. 27, in the library section at Cowan Center for the Arts.

### Monteagle City Council

The Monteagle City Council will meet at 6 p.m., Monday, Aug. 27, in the Conference Room at City Hall.

### Sewanee Community Council

The next meeting of the Community Council is scheduled for 7 p.m., Monday, Aug. 27, at the Senior Citizens' Center.

### SUD Meeting

The Sewanee Utility District of Franklin and Marion Counties Board of Commissioners will have its regular meeting at 5 p.m., Tuesday, Aug. 28, at the utility office on Sherwood Road. If a customer is unable to attend but wishes to bring a matter to the board, call 598-5611, visit the office, or call a board member. Your board members are Art Hanson, Randall Henley, Ronnie Hoosier, Charlie Smith and Paul Evans.

### Caregivers Group

The Folks at Home's Caregivers Group meets weekly on Thursday, 1-2:30 p.m., in Otey Parish's St. Mark's Hall. Those taking care of chronically or fatally ill loved ones come together to tell the week's ups and downs, to listen to each other from the heart, to cry and laugh, to share something that worked, or to recommend a residential facility or employee who can help us get through the days or nights. We honor everything we feel, even if it's socially unacceptable, like feeling numb or disgusted, angry or abandoned, inadequate, or grieving the loss of someone while he or she still lives. We emphasize self-care first, last and always. There is no charge and new members are welcome. Contact Folks at Home at (931) 598-0303 or <folksathomesewanee@gmail.com>.

## DREMC Annual Membership Meeting

DREMC will have its annual membership meeting on Saturday, Aug. 18, at the Manchester Coffee County Conference Center. Registration starts at 8:30 a.m. with the business session scheduled for 9:30 a.m.

The first 300 co-op members to

register will receive special attendance prizes. DREMC employees will be on hand to assist with energy efficiency questions and any other questions related to the cooperative. This year's grand prize is a portable generator.

Election results for DREMC Director for Zone 5 will be announced.

## McCardell Is Opening Speaker for 10th Season of ALLL

The 10th season of The Academy for Lifelong Learning (ALLL) at Sewanee will begin on Thursday, Sept. 6. The Academy will be pleased to welcome John McCardell Jr., the 16th Vice-Chancellor of the University of the South as the opening speaker for the new season. John's talk will be "Writing Southern History: Where to Begin." This talk will consider that question, identify possible answers, and invite all present into the discussion.

John McCardell, President Emeritus of Middlebury College, became Sewanee's Vice Chancellor in July 2010. He served as Middlebury's president from 1992-2004. Prior to his appointment as President, he served on the History Faculty at Middlebury. He came out of a short retirement to take the helm at The University of the South. He is a distinguished historian and respected national leader in liberal arts education. He possesses a record of achievement as a scholar of the American South, as the chief executive of one of America's finest liberal arts colleges, and as a respected national figure in the public discussion about higher education and student life.

A prolific writer, McCardell is the author of "The Idea of a Southern Nation," developed from his Ph.D. dissertation, as well as many essays, chapters, articles and book reviews. His specialty is U.S. History in the 19th century with special emphasis on the Old South and on American Historiography.

A Maryland native, lifelong Episcopalian, and a 1971 graduate of Washington and Lee University, he did graduate work at The Johns Hopkins University and then at Harvard University, where he received his Ph.D. in history in 1976. McCardell has received honorary degrees from Washington and Lee University and from St. Michael's College.

McCardell's talk will begin promptly at noon in Lower Cravens, on Kentucky Avenue in Sewanee. Parking is available in the Tennessee Williams Parking Lot, adjacent to Lower Cravens. Plan to arrive at 11:30 a.m. to renew your membership in the Academy or join for the first time. Coffee and homemade cookies will be available. The annual membership fee is \$20 or one may pay \$3 per session. If you prefer to pre-register, please send a check for \$20, made out to Sewanee Seminars, to Anne Davis, PO Box 425, Monteagle, TN 37356. For more information about the program, call Anne Davis at (931) 924-4465.

## Register for the Fourth Annual Hunger Walk

Did you know that in 2014 it was estimated that in Franklin County 13.3 percent of the population (5,480 people) were suffering from food insecurity or did not have access to adequate nutritious food; in Marion County this is estimated at 14.6 percent (4,110 people); while in Grundy County the percentage increases to 17.8 percent (2,460 people)? Together in the tri-county area there are more than 12,000 people who do not have access to adequate nutritious food. This problem does not only affect our area—14.3 percent of families nationwide struggle with food insecurity.

There are numerous organizations dedicated to addressing the problem of food insecurity in the community, including Morton Memorial Church and the Community Action Committee. Through a joint effort in the fourth annual Hunger Walk, the Monteagle-Sewanee Rotary Club hopes to raise awareness about these hunger issues as well as raise money to help end them.

The best way to support The Hunger Walk is to be a community partner through sponsorships. By donating \$250, businesses and individuals can become a partner and have their logo/name featured on Hunger Walk posters and participant T-shirts.

Another way to help out is to walk showing your support. Registration is free for children under 12, \$15 for students and \$25 for adults. Register to walk at <www.thehungerwalk.com>.

Registration may also be completed on the day of the walk, Saturday, Sept. 1, at Angel Park in Sewanee. Registration begins at 8 a.m. with the walk starting at 9 a.m. Each walker will receive a T-shirt and a "Hunger is not a Game" sticker.

For more information, go to <www.thehungerwalk.com> or <www.facebook.com/SewaneeHungerWalk/>.

## SPREAD GOOD NEWS.

Help friends get information. Help local businesses succeed. Help our Mountain communities.

## WOODARD'S DIAMONDS & DESIGN



We Celebrate Life and Love

**HOURS**  
Mon-Fri • 10-6  
Saturday • 10-6  
Closed Sunday

**woodards.net**  
(931) 454-9383  
Northgate Mall  
Tullahoma



Southern Tennessee  
Regional Health System

welcomes

**Clive A. Wasson, DO**  
General Surgeon

### Specializes in:

- Breast Surgery
- Colonoscopy/Endoscopy
- Colon/Rectal Surgery
- Gallbladder Removal
- Hernia Repair
- Thyroid/Parathyroid Surgery

**WINCHESTER  
SURGEONS**  
83 Memorial Dr.  
Winchester, TN  
37398

MEDICAL SCHOOL  
Kansas City University  
of Medicine  
Kansas City, MO

RESIDENCY  
Brookwood Baptist Health  
Birmingham, AL



Accepting new  
patients  
**931.967.3966**

southernwinchester.com



931 205 2475

WWW.MOLICA.CONSTRUCTION.COM

- CRAFTSMANSHIP •
- CREATIVITY •
- SUSTAINABILITY •

THE Sewanee Institution since 1974

# Shenanigans

## RESTAURANT

=====

**PUB & GRILL / PIZZA / DELI / CATERING**  
**CALL FOR TAKE-OUT OR DELIVERY**  
**931-598-5774**

**OPEN EVERY DAY 11 a.m. to 11:30 p.m. (later on weekends!)**  
**12595 Sollace M Freeman Hwy, Sewanee, TN**  
**(on the corner of University Ave and 41A)**

**FIND YOUR HAPPY PLACE...AT SHENANIGANS**



# Church News

## Bible Baptist Church

Bible Baptist Church will present Crystle Elam in concert at 10 a.m., Sunday, Aug. 26. Bible Baptist Church is located at 360 Wells St., in Monteagle. Everyone is invited to attend. For more information contact Josh Garner at (931) 691-2042.

## Christ Church Celebration

Christ Church, the oldest continuously operating Episcopal Church on the South Cumberland Plateau, will celebrate its 150th anniversary, Sept. 8-9. The public is invited to the community celebration, which dates its beginning from an outdoor service at a sawmill in Tracy City in 1868.

On the Rock, a gospel quartet from Gruetli-Laager, will open with Southern and traditional gospel songs on Saturday, Sept. 8, at 11 a.m., followed by a barbecue at noon on the church grounds.

Bazzania, an all-girl band from Sewanee, will perform bluegrass and folk music at 1 p.m.

At 2 p.m., organist Lenda Sherrell of Monteagle, will present an organ recital of classical and sacred music in the church.

Registration for the event begins Saturday at 9 a.m. in the Father Adamz Memorial Parish House with complimentary coffee and pastries. The parish house will also be the site of exhibits.

On Sunday, Sept. 9, starting at 11 a.m., there will be a traditional worship service in the church, which is listed on the National Register of Historic Places, followed by a reception in the parish house.

For more information, visit the church's website at <www.christ-church-tc.org>.

Christ Church is part of the worldwide Anglican Communion, the Episcopal Diocese of Tennessee, and a member of the Southeast Tennessee Episcopal Ministry, which also includes Christ Church, Alto; Epiphany, Sherwood; Holy Comforter, Monteagle; and Trinity, Winchester.

## Otey Parish

This Sunday, the Lectionary Class will explore Sunday's gospel, in the Claiborne Parish House, Adult Education Room. Children ages 3–11 are invited to meet their friends for Godly Play. Infants 6 weeks to children 4 years old are invited to the nursery beginning at 8:30 a.m. There will be nursery for both services and the Sunday School Hour.

## Tullahoma Sangha

Tullahoma Sangha, a Zen Buddhist meditation and study group, meets each Wednesday at 6 p.m. at Unitarian Universalist Church of Tullahoma. The service will consist of zazen (meditation), kinhin (walking meditation) and a short lesson and discussion. Newcomers are welcome; please call ahead and we will have a short orientation at 5:45 p.m. For more information, or if you would like to be added to the email group, call (931) 455-8626.

## Unitarian Universalist Church

The Unitarian Universalist Church of Tullahoma' service begins Sunday at 10 a.m., followed by refreshments and a discussion period. The church is located at 3536 New Manchester Hwy., Tullahoma. For more information, call (931) 455-8626, or visit the church's website at <www.tullahomauu.org>.

## Wings of Hope

Wings of Hope Widows Ministry will meet at 1 p.m., Monday, Aug. 20, at the Winchester Cumberland Presbyterian Church, 200 2nd Ave. NW. Joy Gallagher will present a history lesson and there will be pie tasting. Need a "Chicken Soup" bag for a new widow? Call or text Pam Brown at (931) 703-9515 and she will bring one to our next meeting. For more information go to <www.Wingsof-HopeWidowsMinistry.com>.

# Obituary

## Teresa Rose Barnes Wiseman

Teresa Rose Barnes Wiseman, age 60 of Estill Springs, died on Aug. 12, 2018. She was born on June 15, 1958, in Winchester, to Charles and Pauline Jackson Barnes. She was a member of Sherwood Emmanuel Apostolic Church where she sang and played the piano, and served as Sunday School teacher, youth minister, treasurer, Vacation Bible School Director and producer of church plays. She was a dedicated teacher in the Franklin County school system for 37 years. She was preceded in death by her parents; sister Charlcie Barnes; and sister-in-law, Beverly Barnes.

She is survived by daughter, Brittany (Patrick) Hegde; son, Tyler (Stephanie) Wiseman; sisters Linda Barnes and Susan (Bob) Prince; brothers, David Barnes, Clinton (Imogene) Barnes, Tony (Mary) Barnes and Marvin (Tammy) Barnes; and many nieces and nephews.

Funeral services were on Aug. 16, from Moore-Cortner Funeral Home Chapel with Bro. Michael Hill and Bro. Clinton Barnes officiating. Interment followed at Franklin Memorial Gardens. For complete obituary go to <www.moorecortner.com>

**Upcoming Retreats**

**Centering Prayer as the 11th Step**  
An 8-Day Retreat for People in 12-Step Programs  
September 7–14  
*Presenters Carolyn Goddard & Joelle Mitchell*

**A Labyrinth Journey**  
Connecting with Your Creativity through Walking & Writing  
September 28–30  
*Presenters Margy Oehmig and Terry Price*  
Call or email for more information.

# Otey Parish Events

This summer, members and friends of Otey Parish were invited to read a book together. "The Immortal Life of Henrietta Lacks" by Rebecca Skloot tells the story of the poor black tobacco farmer whose cells were taken without her knowledge in 1951. Cells originating from hers have been used in developing the polio vaccine, cloning, gene mapping, and in vitro fertilization, all without compensation to her or her family.

Made into a movie on HBO last year, the award-winning book treats race, ethics and medicine in the context of the history of medical experiments on African Americans and the effect

of such treatment on subsequent generations. We will discuss our responses at the first Adult Forum session at 10 a.m., Aug. 26.

On Aug. 26 at noon, Otey Parish will host its annual Welcome Picnic and Ministry Fair. This event will welcome newcomers to the mountain and reconnect people after a summer of altered schedules. Expect fun games, great food and relaxed conversation. Information will be available about ways to serve and grow in faith.

Fried chicken, bread, tea and lemonade will be provided. Adults can bring other beverages if they want. The rest of the meal will be potluck. People with last names that begin with A-H should bring

salads, names that begin with I-Q should bring sides, and those that begin R-Z should bring desserts.

If you have received an Evite, please respond. Or, if you would rather respond by voice or email you can call Frieda Hawkins at (931) 598-5926 or email to <oteyparish@gmail.com> to RSVP.

Starting in September, Otey will make a trial change to its Sunday schedule. Effective Sept. 2, the early service will begin at 8:30 a.m., and Christian Education for children and adults will be at 9:45 a.m. The late service will remain at 11 a.m. Toward the end of the year the effectiveness of the trial schedule will be evaluated.

# Church Calendar

## Weekday Services Aug. 17–24

7:30 a.m. Morning Prayer, Otey  
7:30 a.m. Morning Prayer, St. Mary's Convent (not M)  
8 a.m. Holy Eucharist, St. Mary's Convent (not M)  
9 a.m. Communion, Good Shepherd, Decherd (M,W)  
9 a.m. Mass, Good Shepherd, Decherd (T/Th/F)  
11:30 a.m. Prayer/Healing, Morton Memorial (1st/3rd Th)  
3:30 p.m. Centering Prayer, St. Mary's Sewanee (T)  
4 p.m. Centering Prayer, St. Mary's Sewanee (W)  
4:30 p.m. Evening Prayer, Otey (M–F)  
7 p.m. Centering Prayer, St. Paul's, Otey (M)  
7 p.m. Spanish Mass, Good Shepherd, Decherd (Th)

## Saturday, Aug. 18

7:30 a.m. Morning Prayer, St. Mary's Convent  
10 a.m. Sabbath School, Monteagle 7th Day Adventist  
11 a.m. Worship Service, Monteagle 7th Day Adventist  
4:30 p.m. Evening Prayer, St. Mary's Convent  
5 p.m. Mass, Good Shepherd, Decherd

## Sunday, Aug. 19

### All Saints' Chapel

8 a.m. Holy Eucharist

### Bible Baptist Church, Monteagle

10 a.m. Worship Service  
5:30 p.m. Evening Service

### Chapman Chapel Church of the Nazarene, Pelham

9:30 a.m. Sunday School  
10:45 a.m. Morning Worship  
6 p.m. Evening Worship

### Christ Church, Monteagle

10:30 a.m. Holy Eucharist

### Christ Episcopal Church, Alto

9 a.m. Sunday School  
10 a.m. Holy Eucharist

### Christ Episcopal Church, Tracy City

10 a.m. Adult Bible Study  
11 a.m. Holy Eucharist (child care provided)

### Christ the King Anglican, Decherd

9 a.m. Sunday Service

### Cowan Fellowship Church

10 a.m. Sunday School  
11 a.m. Worship Service

### Cumberland Presbyterian Church, Monteagle

9:30 a.m. Bible Study  
11 a.m. Worship Service

### Cumberland Presbyterian Church, Sewanee

9 a.m. Worship Service  
10 a.m. Sunday School

### Decherd United Methodist Church

9:45 a.m. Sunday School  
10:50 a.m. Worship Service

### Epiphany Mission Church, Sherwood

10 a.m. Holy Eucharist Rite II

### Good Shepherd Catholic Church, Decherd

10 a.m. Mass  
2 p.m. Spanish Mass

### Grace Fellowship Church

10:30 a.m. Sunday School/Worship Service

### Harrison Chapel Methodist Church

10 a.m. Sunday School  
11 a.m. Worship Service  
5 p.m. Worship Service

## Midway Baptist Church

9:45 a.m. Sunday School  
10:45 a.m. Morning Service

6 p.m. Evening Service

## Midway Church of Christ

10 a.m. Bible Study  
11 a.m. Morning Service

6 p.m. Evening Service

## Monteagle First Baptist Church

10 a.m. Sunday School  
11 a.m. Worship Service

6 p.m. Evening Worship

## Morton Memorial United Methodist, Monteagle

9:45 a.m. Sunday School  
11 a.m. Worship Service

## New Beginnings Church, Monteagle

10:30 a.m. Worship Service

## New Beginnings Church, Pelham

9:45 a.m. Worship Service

## Otey Memorial Parish Church

8:50 a.m. Holy Eucharist  
10 a.m. Lectionary Class, Godly Play  
11 a.m. Holy Eucharist

## Pelham United Methodist Church

9:45 a.m. Sunday School  
11 a.m. Worship Service

## St. Agnes' Episcopal Church, Cowan

11 a.m. Holy Eucharist Rite I

## St. James Episcopal Church

9 a.m. Holy Eucharist Rite II

## St. Margaret Mary Catholic Church, Alto

8 a.m. Mass

## Sewanee Church of God

10 a.m. Sunday School  
11 a.m. Morning Service  
6 p.m. Evening Service

## Sisters of St. Mary's Convent

8 a.m. Holy Eucharist  
5 p.m. Evensong

## Tracy City First Baptist Church

9:45 a.m. Sunday School  
10:45 a.m. Morning Worship

5:30 p.m. Youth Group

6 p.m. Evening Worship

## Trinity Episcopal Church, Winchester

9:30 a.m. Christian Formation  
10:30 a.m. Holy Eucharist Rite II

## Valley Home Community Church, Pelham

10 a.m. Sunday School, Worship Service

## Wednesday, Aug. 22

6 a.m. Morning Prayer, Cowan Fellowship  
9 a.m. Communion, Good Shepherd, Decherd  
10 a.m. Bible Study, Sewanee C.P. Church  
Noon Communion, Christ Church, Monteagle  
5 p.m. KAs/Bible study/meal, Monteagle First Baptist

5:30 p.m. Evening Worship, Bible Baptist, Monteagle  
5:45 p.m. Youth Bible study/meal, Monteagle First Baptist

6 p.m. Bible study, Monteagle First Baptist  
6 p.m. Prayer and Bible study, Midway Baptist  
6 p.m. Evening Prayer, Trinity, Winchester

6:30 p.m. Community Harvest Church, Coalmont  
6:30 p.m. Prayer Service, Harrison Chpl, Midway

6:30 p.m. Youth group, Tracy City First Baptist  
7 p.m. Adult Formation, Epiphany, Sherwood  
7 p.m. Bible study, Chapman's Chapel, Pelham  
7 p.m. Evening Worship, Tracy First Baptist

Church Calendar on the go!

WWW.SEWANEE MESSENGER.COM



**MES (from page 1)**

Layne acknowledged that due to size and facility restrictions, “we’re limited to the number of kids we can serve.” MES is atypical in serving students from three counties, Franklin, Grundy and Marion. Portions of Monteagle lie in each of these counties.

Following eighth grade, MES students have a choice about where to attend high school, Layne said, dispelling other rumors that students graduating from MES would not be allowed to attend South Pittsburg High School in Marion County in the future.

“Most of our students go to Grundy County High School, because there is bus service available. There has never been bus service to South Pittsburg High School,” Layne confirmed. “But, we have 14 students attending South Pittsburg, and we’re working on an arrangement to provide bus service, at least in the morning.”

At present, students who attend South Pittsburg High School need to arrange for their own transportation. Usually parents drive them. A proposal under consideration would designate MES as a pickup point for students. After dropping off elementary school students at MES, the same bus would transport students to South Pittsburg.



*James Jackson is the Monteagle Elementary School's full-time School Resource Officer.*



*MES's new electronically operated retractable bleachers.*

**Housing (from page 1)**

A garage at the first Sherwood Springs home will serve as a training center, with information for people to learn more about conservation and energy efficiency, such as building a rainwater collection system or using solar power.

Suarez noted that volunteers are needed during the current phase of the home's construction, especially those with carpentry skills. There is cabinet work ahead, in addition to landscaping and installing donated oak tongue-and-groove flooring.

Volunteers in Service to America program recently spent time painting, and this summer volunteers from the Church of the Advent in Spartanburg, S.C., stopped by again to help with construction—the 21st straight year they have sent a group, Suarez said.

In addition to plans in Sherwood Springs, another single mother and her two children are moving into a Housing Sewanee home in the Midway community. Suarez said the organization built the house in the 1990s and recently reacquired it.

Leigh Ann Summers, who originally qualified for a future home in Sherwood Springs, will move into the three-bedroom house with her nine-year-old son and 11-year-old daughter.

Summers, 33, currently lives in a two-bedroom apartment in Monteagle. The caregiver for Tree of Life said her family has outgrown the apartment and she sleeps in the living room on a sleeper sofa.

“I’m very happy to have my own room now,” she said. “Everyone has their own bedroom and own closet; I mean, that’s major.”

She said the extra space will be nice, but the yard is the biggest perk.

“We’ve lived here (at the apartment) six years and my kids have been shafted when it came to going outside to play in the yard and they’re finally getting a yard,” she said.

“This is really impacting our lives tremendously,” she said. “We’re super thankful to everybody who has helped this become a thing for us.”

To volunteer, contact Suarez at <suareztn@aol.com> or (931) 636-0843. For more information, visit <housingsewaneeinc.com>.

**Architects (from page 1)**

notes on the wall,” Garcia said.

“We all see it on the wall until it’s resolved,” Binkley added. “We’ll come to you for plan review comments and keep them on file until the project is completed. We’ll help you administer the bid process and

represent you throughout construction.”

BGA projected finalizing design documents in 8-12 weeks. The proposed timeline calls for the two new schools to be completed in 2020.

## Franklin County Schools Finish Year Under Budget

*by Leslie Lytle, Messenger Staff Writer*

“The school system ended the 2017–18 school year with \$100,000 more in the fund balance than anticipated,” Franklin County Deputy Finance Director Cindy Latham told the school board at the Aug. 13 meeting. The figure took into account outstanding encumbrances.

“That’s a good thing,” observed school board representative Christine Hopkins applauding the news.

The unused portion of the fund balance will roll into the 2018–19 budget. In June, the board voted to award all employees a 2 percent cost of living raise, which will draw the fund balance to an all time low, putting the school system in danger of not being able to make payroll, depending on when state funds are received.

Turning to the new school year, Assistant Superintendent Linda Foster said three positions remained unfilled: a librarian at North Lake Elementary; a music teacher to serve the Cowan and Sewanee elementary schools; and an interim English Language Learners teacher to fill in for a teacher on leave.

Director of Schools Stanley Bean announced Binkley Garcia Architecture accepted the offer to serve as designer for the two new middle schools. The board approved the contract finalizing the appointment.

The board also approved a revision to the medical leave policy allowing employees to use all of their available sick leave during maternity leave instead of only 30 days of the sick leave accumulated. The Tennessee School Board Association recommended the change.

Looking to the coming year, the board approved the agenda which delineates items to be addressed by the board on a month by month basis.

“The agenda is the same as last year,” said Board Chair Cleijo Walker, “with the exception of moving the director of schools evaluation to July.” The board recently evaluated Bean. The agenda change will keep the evaluation on a 12-month rotation.

Maranda Wilkinson, coordinator of the STREAM summer camp program, presented a video highlighting camp activities created by students in the videography class. The STREAM acronym represents science, technology, research, engineering, art and math. More than 200 students participated in the summer day camp. Activity clusters were arranged by grade level: Arts (K-second); Science (third–fifth); Technology (sixth–eighth); and Engineering (ninth–12th). Students made maracas, cracked geodes, learned to fly drones, designed waterwheels and much more. Field trips included the Tennessee Aquarium, Rock City and Ruby Falls, the Adventure Science Center in Nashville, and the Space and Rocket Center in Huntsville.

Equipment purchased for the program will be available for teachers to check out for classroom use, Wilkinson said. Funders included the Franklin County Kiwanis Club, Nissan and the PEN Foundation.

Huntland resident Greg Alverson addressed the board complaining about the school system’s failure to mow and maintain the lot purchased for a soccer practice field. Alverson resides on adjoining property. When he inquired about why the lot hadn’t been maintained, he said he was told it was “too wet to mow.” Alverson cited board policy stating the school system was responsible for maintaining property owned by the district.

CATERING & TAKE-OUT

**blue chair**  
Café & Tavern

Where Our Community Gathers

**Mike's Meat-n-3**

DAILY: CHICKEN • MON: MEATLOAF • TUE: COUNTRY FRIED STEAK  
WED: CHICKEN & DUMPLINGS • THU: CHICKEN PARMESAN • FRI: CATFISH

MONDAY-FRIDAY • 11:00-1:00 • \$7.85

Welcome to the Mountain  
**Student Athletes & The Class of '22**

CAFÉ HOURS  
7:00a–4:00p  
Everyday • 7a–4p

TAVERN HOURS  
Mon–Fri • 4:00p–10:30p  
Sat–Sun • 11:00a–10:30p

(931) 598-5434  
thebluechair.com

**ELECTRONIC SECURITY SYSTEMS**

**MONTEAGLE SECURITY OPERATIONS**

**MIKE ROARK**  
931-924-3216  
800-764-7489

**CRIME SEEN**  
Security Cameras  
Burglar Alarms  
Fire Alarms

www.monsecurity.com  
TN License 1912

**SEWANEE AUTO REPAIR**  
Complete Auto & Truck Repair

Tune-ups • Tires • Tire Repair • Brakes • Steering  
• Oil Changes • Batteries • Computer Diagnostics

**All Makes & Models • Service Calls • Quality Parts**  
**ASE Master Certified Auto Technician • 31 Years' Experience**

Open 7 to 5 M-F  
(931) 598-5743 • 76 University Ave.

**THE WALL DOCTOR**  
JOHNNY PARKS • (931) 317-1042 • (423) 394-3863

HANG • FINISH • TEXTURE • PAINT  
**DRYWALL, PLASTER, DOORS, WINDOWS AND SIDING**

Interior and exterior repairs

FREE ESTIMATES  
INSURED



## Hunger (from page 1)

Memorial UMC Food Ministry in Monteagle, estimated a significant number of grandparents who get food there are also raising kids who are not their own.

“The most common reason is because of drugs or the parent is in jail,” Wilson said.

Carpenter also cited drug problems as the primary reason that grandparents are now parents again.

“Once a grandparent working minimum wage was informed by DHS (Department of Human Services) that she had custody of five grandchildren and fortunately we can provide groceries for her,” Carpenter said. “Most of our grandparent stories follow those lines...parents in jail, grandparents have custody.”

Mary, who is in her late 50s, has raised her two teenage grandsons for much of their lives. The boys’ father is serving a long sentence in jail and their mother, a drug user, is dead. Mary has a job, but doesn’t make enough to provide sufficient food, she said, adding that she earns too much to qualify for food stamps. She comes to CAC for help.

“I couldn’t make ends meet. I couldn’t put food on the table if it wasn’t for this place,” Mary said.

Raising a child at their age is a challenge for Anna and Charles, but they say they’re doing the best they can with God’s help; faith is an integral part of their lives.

“I try to do everything I can to keep my baby happy,” Anna said. “I’m not ashamed to get out and play with her. If she wants me to get in the sand box or she wants me to help her build a playhouse, I’m going to do it.”

The great-grandparents are protective of the little girl and have lessened the trauma of losing both her natural parents and the damage they did before they left her. The little girl is healthy, Anna added, and doing well in school.

“I’m praying the Lord will let us stay with her for a good long while; I want to see that she gets big enough to know right from wrong and knows how to take care of herself,” Anna said.

For more information on the Hunger Walk, visit <monteaglerotary.org/hunger.html>.

## New Centering Prayer Support Group at St. Mary’s Sewanee

A new Centering Prayer Support Group will meet weekly on Wednesdays at 4 p.m., in the McRae Room (adjacent to the new Anna House) at St. Mary’s Sewanee. The group, which will be led by Tom Ward, will finish by 5:30 p.m. and is open to new and experienced practitioners.

Centering Prayer is a receptive method of silent prayer that prepares us to receive the gift of contemplative prayer, prayer in which we experience God’s presence within us, closer than breathing, closer than thinking, closer than consciousness itself. This method of prayer is both a relationship with God and a discipline to foster that relationship.

Centering Prayer is not meant to replace other kinds of prayer. Rather, it adds depth of meaning to all prayer and facilitates the movement from more active modes of prayer - verbal, mental or affective prayer - into a receptive prayer of resting in God. Centering Prayer emphasizes prayer as a personal relationship with God and as a movement beyond conversation with Christ to communion with Christ.

This new Wednesday group is in addition to the group that meets at 7 p.m., Mondays, at Orey Parish and the group that meets at 3:30 p.m., Tuesdays, at St. Mary’s Sewanee.

For more information, please call St. Mary’s Sewanee at (931) 598-5342.

## Monteagle Approves Jesse’s Grill Permits

At the Aug. 13 special called meeting by the Monteagle City Council, a discussion continued concerning the business permit and beer license for Jesse’s Grill.

Jesse’s Grill had already received a temporary business permit from the Monteagle City Council, a Marion County business license, and a license from the state to sell liquor by the drink.

Monteagle zoning ordinances forbids sale of beer or liquor by the drink within 300 feet of a playground, church or school. Jesse’s Grill, which opened two weeks ago, is across the street from the ball field.

In a previous meeting to discuss the application for a business license with the Council, the owner of Jesse’s Grill was told to take down the sign attached to the roof of the building, and to clean up the property around the dumpster and the kitchen area.

“We are trying to enforce the ordinances with new businesses,” said Alderman Ron Terrill.

“We want to work together,” said Alderman Kenneth Gipson.

The council approved the business permit and the beer sales permit for Jesse’s Grill. Terrill said the beer permit also needs to go to the beer board.

There were no more bids for demolition of the church on Layne Avenue. Codes Enforcement Officer Earle Geary said there needs to be an environmental survey done before another bid process is undertaken.

Geary said he’d had difficulty determining who owned the property. A certified letter was sent to an owner 15 years ago but was never picked up or signed for.

“The legal notification process has happened and the council can take action,” said Geary.

The Council will contact the city attorney to look at eminent domain procedures.

Three applicants sent in their resumes for the part-time codes enforcement officer job. The Council will interview all three candidates.

In Alderman business, the council decided to begin looking for a new city attorney. They will keep the current city attorney until a new attorney is found.

The Council approved the new zoning ordinance and holiday pay for city employees on the second readings.

—reported by Kiki Beavers

## A Treasure Trove of Local History

by Leslie Lytle, Messenger Staff Writer

Visitors to the History Room at the Franklin County Library pass through a magical portal into the past—the treasure trove of historical records collected and curated by the Franklin County Historical Society (FCHS). Filing cabinets filled with folders containing documents, letters and photographs line one wall. A cabinet across the room is home to maps delineating the county’s former boundaries. And there’s more, so much more.

Referencing an early map, FCHS volunteer Jerry Limbaugh explained “Tennessee became a state in 1796, but couldn’t grant land titles until 1806 because the Cherokee owned the land. The Sewanee area remained in the Cherokee Nation until 1819.”

Limbaugh and other FCHS volunteers are themselves a History Room resource directing visitors to the texts, files, and microfilm entries needed to answer their questions.

“Mary Sharp College founded in 1851 vies with Brown for the distinction of being the oldest women’s college in the U.S.,” said Limbaugh citing a milestone in county history recounted in detail in the Franklin County Historical Review.

This FCHS quarterly published from 1969-2005 is available in full, with some issues theme-based and others treating diverse topics. Sewanee native Waring McCrady’s indexed the collection. To preview the index visit the FCHS website, <<http://www.franklincountytynhistory.com>>.

Cross-referenced indexing of family and topical files likewise simplifies research. For example, the entry for the name Brown might also direct the researcher to the names Colyer and Williams. Anyone can start a file or add to a file.

Rich in microfilm resources, offerings include the Home Journal, a county newspaper published from 1856-1884. The publisher took the print archive with him when he moved to Louisiana, but historical society volunteers tracked down and microfilmed the entire collection.

In 1968, librarian Mrs. J. D. Lunsford appealed to the Franklin County Library Board of Directors for help dealing with the inordinate number of requests for historical and genealogical information. The board allocated \$100 for file folders, index cards and mimeographing. The Franklin County Business and Professional Women and Home

Demonstration Clubs got behind the effort, collecting records and recording cemetery inscriptions. Chartered as a nonprofit in 1969, the FCHS began as a cardboard box of material and in just a few years grew to shelves of books, indexed library cards, a microfilm reader and three filing cabinets, filled to the brim.

In 1972, the FCHS leased the old jail from the county for \$1 a year and founded the Old Jail Museum. When the county ran out of space for records and intended to burn them, area residents launched Project Preservation, indexing documents and finding them a home at the old Smith Hospital and later the old Catholic School. As a 501c3, FCHS provided the structure for receiving funding on the project’s behalf.

Eventually the Old Jail Museum formed a separate nonprofit. The county records are now stored at the Franklin County Annex.

Family files often include pre-U.S. immigration information. Cemetery records include a list of all the graves moved from the floodplain when Tims Ford Lake was created in the 1960s. Other files include records from churches and service organizations like Rotary.

Bound references range from the Civil War, Revolutionary War, and Native American histories to school annuals and a collection highlighting businesses once located on the Winchester square.

For those doing genealogical research, the library offers free access to <[genealogy.com](http://genealogy.com)>.

The theme-based programs at FCHS quarterly meetings have recently featured Estill Springs—once a thriving tourist town—the Trail of Tears, and the former WWII prisoner of war camp, now the site of AEDC.

FCHS also publishes a quarterly newsletter “Historical Tidings,” featuring carefully researched stories and articles.

The History Room is open during library hours, from 8 a.m. to 6 p.m., provided a FCHS volunteer staffer is available.

“Volunteers are needed to assist History Room visitors,” said FCHS President David Moore, “as well as to help with indexing records and researching topics for the Tidings and ongoing projects.”

The FCHS opens the door to better understanding the present by coming face to face with the past. For more information call Susan James at (931) 962-1476 or email <[historicalfc@gmail.com](mailto:historicalfc@gmail.com)>. Dues (\$20/annually) can be mailed to P.O. Box 130, Winchester, TN 37398-0130. Membership includes a subscription to Tidings, available in both electronic and print format.



ROB MATLOCK  
CONSTRUCTION COMPANY  
NEW HOME BUILDING  
AND REMODELING

MEMBER, U.S. GREEN BUILDING COUNCIL

PHONE 931-598-5728

**MATLOCK**

State Licensed • Fully Insured



**CUSTOM FRAMING**

ARCHIVAL FRAMING & RESTORATION  
ART GALLERY  
ART CONSULTING & INSTALLATION

---

**ON EXHIBIT**  
PAINTING TOGETHER  
Works by Artists in  
Martha Keeble’s Painting Class  
**AUGUST 1-31**

**(931) 463-2300**  
12569 Sewanee Hwy.  
Tue-Fri: 10-5, Sat: 9-1



**FRAME GALLERY**



**June Weber  
Gooch-Beasley Realtors**

Serving the Sewanee and Monteagle area  
with quality real estate service:  
-47 years of experience  
-Mother of Sewanee alumnus

**gb** [www.gbrealtors.com](http://www.gbrealtors.com) [juneweber@me.com](mailto:juneweber@me.com)  
June Weber, CRB, CRS, GRI Broker 931.636.2246  
GOOCH-BEASLEY REALTORS 931.924.5555

**THE LOCAL MOVER**  
615-962-0432

**Need More Room?**

**Sewanee Mountain Storage**  
(931) 598-5682  
Dan & Arlene Barry  
Hwy 41 - Between Sewanee & Monteagle  
5x10 | 10x10 | 10x20

■ Security Gate ■ Security Camera

For Your Antiques and Prized Possessions  
Climate Control  
5x5 | 5x10 | 10x10 | 10x15 | 10x20  
Temperature and Humidity Regulated



**Opening Soon**

**At a new location!**  
**Stay tuned.**



**Tea on the Mountain**



## Beersheba Springs Arts and Crafts Festival Aug. 25–26

The 52nd Annual Beersheba Springs Arts and Crafts Festival will be Aug. 25 and 26, at the Beersheba Springs Assembly Grounds in Beersheba Springs. The hours on Saturday are 10 a.m.–6 p.m., and on Sunday, 10 a.m.–5 p.m. Parking and admission to the show are both free.

More than 175 exhibitors from several states will feature many exciting arts and crafts. Food booths will be on the grounds with a variety of tasty offerings, and the hotel dining room will serve meals both days.

Proceeds from the festival go to the Beersheba Springs Library, Rescue Squad, Community Center project, Grundy County Center for Exceptional Citizens, North Elementary School, and food baskets for shut-in community members.

Members of the Beersheba Springs Rescue Squad and Fire Department will be in charge of parking. Fair board members are Melissa Scruggs, Tim and Cardelia Spicer, Ramona Forsyth and Logan Thompson.

Beersheba Springs is located on U.S. Hwy. 56, 25 miles from Monteagle.

Vendors interested in participating in the 2018 show should call (931) 692-3852, (931) 692-3029 or (931) 636-6296.

## St. Mary's Sewanee Offers New Retreats

On Sept. 7, St. Mary's Sewanee will host a Contemplative Outreach Eight-Day 12-Step Centering Prayer Retreat designed to help individuals in recovery engage in Centering Prayer as the 11th Step. For those who live by the 12 Steps found in AA, Al-Anon, and other 12-step programs, a Centering Prayer practice can be a key support system in the process of recovery and transformation.

The retreat will be led by Joelle Mitchell and Carolyn Goddard. Mitchell has been an active member of the 12-Step recovery community for over 35 years and has been practicing Centering Prayer as an 11th step practice since 2002. Goddard has, since 1986, practiced both Centering Prayer and participated in Al-Anon. For 12 years, she served as associate pastor at Christ the King Catholic Church in Nashville.

The fee for this retreat includes all programming, meals and seven nights lodging. The cost is \$795 for a single in St. Mary's Hall; \$995 for a single in the Anna House. Scholarships are available; contact St. Mary's Sewanee for more information.

A Labyrinth Journey: Connecting Your Creativity through Walking and Writing is a three-day retreat, Sept. 28–30.

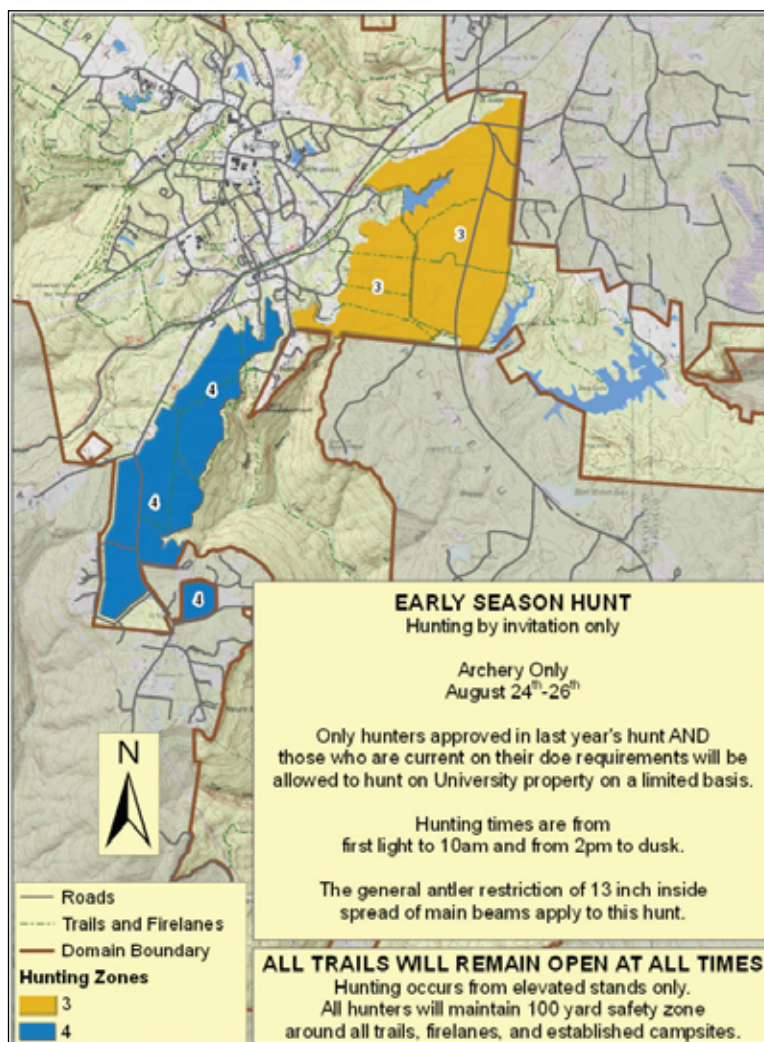
"When external events compel us to look outward is precisely when we need to examine inwardly" said Margy Oehmig, one of the retreat leaders. "Living in complex times requires creativity and a sense of grounding that is found in the spiritual." Join Oehmig and Terry Price for a weekend discovery through labyrinth walking followed by reflection and writing. This will be a special time to retreat away from the noise and distraction of the world in order to refresh, reflect, and reemerge better equipped to creatively reconnect with the divine.

Oehmig received training as a labyrinth facilitator at Chartres Cathedral. She has a master of fine arts degree in art history and has held a variety of positions in the arts and education in Chattanooga. Price is a Tennessee-based writer and photographer who leads workshops on using the labyrinth as both a spiritual and creative tool.

This retreat begins at 5 p.m., Friday, Sept. 28, and concludes at 11 a.m., Sunday, Sept. 30. The fee includes all programming, meals and two nights lodging. The cost is \$365 for a single in St. Mary's Hall; \$465 for a single in the Anna House.

For more information, including making reservations, call St. Mary's Sewanee at (931) 598-5342, email <reservations@stmaryssewanee.org>, or go online to <www.stmaryssewanee.org>.

**Put the Messenger to work  
for your business.  
Phone 598-9949 or email  
<ads@sewaneeemessenger.com>**



## Early Hunting Begins Aug. 24

This year, Tennessee Wildlife Resources Agency has added a three day early hunt to the hunting season, Aug. 24–26. Some limited hunting will occur on the Domain off of Sherwood Road and Jumpoff Road. All trails and firelanes will remain open. There will be no hunting in any zones near Breakfield Road. The regular University hunt will begin Sept. 22. More information will be available in early September.

## Sale at Hospitality Shop

The Hospitality Shop announces a shop-wide half price sale through Saturday, Aug. 18 at noon, when the shop will close to change over to fall merchandise, reopening at 9 a.m. on Tuesday, Sept. 4. There are wonderful bargains on quality clothing, household items, decorative items, books, etc., and a visit to the shop is always an opportunity to just slow down and see what presents itself.

Proceeds from sales are used for scholarships to area high school graduates going into health care professions.

For more information call (931) 598-0136 during hours of operation, Tuesdays and Thursdays 9:30 a.m.–1 p.m., and Saturdays 9:30 a.m.–noon.

## Purple Out Day

Join Tennesseans on Friday, Sept. 14, by wearing purple and decorating offices, classrooms and homes to raise awareness and support for Alzheimer's Tennessee's mission. The fourth annual Purple Out Day is championed by more than 200 Court Clerks across Tennessee.

Businesses, schools and individuals are encouraged to join in to make the Volunteer State purple and show our support for families facing Alzheimer's disease.

Go to <alztennessee.org/purple-out> to order your official T-shirt to benefit Alzheimer's Tennessee.

## Senior Center News

The Sewanee Senior Center serves lunch at noon Monday through Friday. The suggested donation is \$4, regardless of your age. Please call 598-0771 by 9 a.m. to order lunch.

**Monday, Aug. 20:** Grilled chicken salad, crackers, dessert.

**Tuesday, Aug. 21:** Meatloaf, pinto beans, fried okra, cornbread, dessert.

**Wednesday, Aug. 22:** Baked chicken, mashed potatoes, green pea salad, roll, dessert.

**Thursday, Aug. 23:** Pimento cheese sandwich, black bean chips, dessert.

**Friday, Aug. 24:** Pork chop, mashed potatoes, peas/carrots, roll, dessert.

Menus may vary. For information call the center at 598-0771.

### Regular Activity Schedule

Chair exercises, Mondays and Wednesdays, 10:30–11:15 a.m.; Tuesdays at 10:30 a.m., the group plays bingo, with prizes; Wednesdays at 10 a.m., the writing group gathers at 212 Sherwood Rd.; Fridays at 10 a.m. is game time.

The Sewanee Senior Center does not charge any membership fee. All persons 50 or older who take part in any of the activities are considered members.

## Join Girl Scouts

Girl Scouts of Middle Tennessee invites you to learn more about becoming a Girl Scout and joining a Sewanee area troop. Parents of girls interested in scouting are invited to meet at 3 p.m., Monday, Aug. 20, at the Sewanee Community Center. For more information, contact Tammy Lambert at (615) 460-0256 or <tlambert@gsmidtn.org>.



### ARE YOU REGISTERED TO VOTE?

Register to vote online from your computer, tablet or mobile device. Tennessee's online voter registration system offers a convenient way for people to easily register to vote or change their address if they move. The system allows U.S. citizens with a driver's license or photo ID issued by the Tennessee Department of Safety and Homeland Security to register online.

You can also download a Tennessee voter registration application and submit it to your county election commission.

Tennesseans must still register online or use a paper form at least 30 days before an election to vote.

You can also check your status or learn more about the registration process.

Go to <http://www.govotetn.com> for more information.

*Tennessee ranks at the bottom in the nation for voter turnout. Tennessee ranks 40th in the nation for voter registration. More than 838,000 Tennesseans are not registered to vote, and 60 percent are under the age of 45!*

## Tree of Life Homecare, LLC

*"Neighbors Helping Neighbors"*

- \* Licensed and insured home-based services for the elderly and disabled
- \* CHOICES provider, Private Pay, Veterans Affairs\* Long-term care plans

931-592-8733  
treeoflifehomecare.com

NOW ACCEPTING APPLICATIONS FOR CAREGIVERS

## Winchester Podiatry

**CHARLES D. GANIME, DPM**

Board Certified in Foot Surgery  
Diplomate, American Board of Podiatric Surgery  
New Patients of All Ages Welcome! We Treat Your Feet! Most Insurance Accepted, Including TennCare

155 Hospital Road Suite 1, Winchester.  
www.winchesterpodiatry.com

**931-968-9191**

**Mooney's**  
Market & Emporium

- ✦ ORGANIC, LOCAL FOODS
- ✦ SUPPLEMENTS & TOILETRIES
- ✦ GARDEN & BIRD SUPPLIES
- ✦ YARN & ACCESSORIES
- ✦ ANTIQUES, JEWELRY, GIFTS
- ✦ CRESCENT CAFE JUICE BAR

**NOW OPEN EVERY DAY 11-3**

**Store open 10-6 daily**  
**931-924-7400**

1265 W Main • Monteagle



*“Always remember  
that you are Absolutely  
unique. Just like  
everyone else.”  
Margaret Mead*

# Sewanee Realty

SewaneeRealty@inSewanee.com  
www.SewaneeRealty.com  
115 University Ave., Sewanee, Tenn.

**Margaret Donohue,**  
*Principal Broker • 931.598.9200*

**Patsy Truslow,**  
*Broker • 931.636.4111*



**BLUFF - MLS 1959372 - 1844 Ridge Cliff Dr., Monteagle. \$338,000**



**MLS 1952909 - 1573 Carter Rd., Winchester. \$234,500**



**MLS 1884814 - 143 Winns Circle, Sewanee. \$385,000**



**BLUFF - MLS 1773059 - 1804 Clifftops Ave., Monteagle. 6.9 acres. \$995,000**



**BLUFF - MLS 1945408 - 506 Ingman Cliff Rd., 3.05 acres. \$688,000**

## BLUFF TRACTS

Old Sewanee Rd. 53+ac	1846822	\$296,000
14 Jackson Pt. Rd 18.6 ac	1803643	\$129,500
16 Laurel Lake Rd.	1722522	\$97,500
3 Horseshoe Ln. 5.6 ac	1608010	\$60,000
38 Long View Ln. 2.56 ac	1787091	\$99,000
7 Jackson Pt. Rd. <del>1800077</del>	1714853	\$75,000
Jackson Pt. Rd. 12.45 ac	1911600	\$125,600
Jackson Pt. Rd. 19+ ac	1911497	\$120,000
7 Saddletree Ln.	1726054	\$75,000
25 Old Sewanee Rd. 5.2 ac	1741756	\$119,000
Partin Farm Rd. 6.5 ac	1902508	\$64,500
9 Saddletree Ln. 2.01 ac	1948632	\$66,000



**LAKEFRONT - MLS- 1949994 - 681 Magnolia Dr., Winchester. \$779,500**



**BLUFF - MLS 1850420 - 1710 Stage Coach Rd., Sewanee. 31+ acres. \$765,000**



**BLUFF - MLS 1878711 - 226 Rattlesnake Springs Ln., Sewanee. \$799,000**



**BLUFF - MLS 1656823 - 1613 Laurel Lake Dr., Monteagle. 5.3 acres. \$449,900**



**BLUFF - MLS 1886899 - 569 Haynes Rd., Sewanee. 5.1 acres. \$499,900**



**BLUFF - MLS 1777974 - 3480 Sherwood Rd., Sewanee. \$310,000**



**BLUFF - MLS 1923054 - 1833 Laurel Lake Dr., Monteagle. \$439,000**

**RENTAL - 3 bd, 2 ba, \$1,500 monthly, no pets, available for the academic year. Call 931-598-9200**



**BLUFF - MLS 1936071 - 162 St. Clare Lane, Sewanee. 7+acres. \$528,000**



**BLUFF - MLS 1810644 - 294 Jackson Point Rd., Sewanee. 20.9 acres. \$299,500**



**MLS 1514972 - 202 Main St., Monteagle. \$112,000**



**MLS 1901778 - 52 Sherwood Trail, Sewanee. \$348,000**



**MLS 1956405 - 171 Maple St., Sewanee. \$274,500**



**MLS 1891347 - 715 Orange Hill Rd., Tracy City. \$279,000**



**MLS 1933943 - 13052 Hwy 41, Tracy City. 4 acres. \$149,500**



**MLS 1905336 - 204 Wiggins Creek Dr., Sewanee. \$390,000**



**BLUFF - MLS 1930811 - 146 Jackson Point Rd., Sewanee. 13+acres. \$299,500**



**MLS 1924650 - 890 Boswell Ct., Monteagle. 3+acres. \$319,000**



**BLUFF - MLS 1906326 - 208 Vanderbilt Ln., Sewanee. \$849,000**

## LOTS & LAND

126 Deep Woods 6.4 ac	1948499	\$39,900
127 Deep Woods 5.8 ac	1948503	\$39,900
13 Deerwood Dr. 2.98 ac	1946339	\$18,500
14 Deerwood Dr. 2.97 ac	1946347	\$18,500
16 Deerwood Dr. 2.98 ac	1946349	\$18,500
33 Westlake Ave. 5.3 ac	1800077	\$75,000
Jackson Pt. Rd. 4.8 ac	1714849	\$37,500
43 Bluff Woods	1774625	\$28,000
57 Edgewater Ct. Win.	1813506	\$32,000
2335 Sarvisberry 5.3 ac	1831124	\$39,000
St. Mary's Ln. 10 ac	1820182	\$85,000
Montvue Dr. 5 ac	1714856	\$54,900
8 Jackson Point Rd.	1734341	\$36,000
55 Lake Louisa 4.2 ac	1900500	\$38,800
Pine Dr. 16.1 ac	1894605	\$149,000
Pine Dr. 3.22 ac	1894027	\$40,000
#22 Shadow Rock 1.18 ac	1906497	\$24,000
362 Haynes Rd. 10 ac	1910953	\$84,000



## SAS Welcomes New Faculty and Staff

St. Andrew's-Sewanee School is excited to welcome several new faculty and staff members in the 2018-19 school year.

J.R. Ankney will be the school's music teacher and musical director. Mr. Ankney is an experienced arts administrator, boarding school teacher, and conductor with outstanding successes in the classroom, theatre, and church sanctuary and on the stage. Ankney holds a bachelor's degree in music education from Berklee College of Music and studied vocal jazz and conducting.

Peggy Ankney will teach advanced physics and conceptual physics. Peggy holds a B.S. in physics from University of Wisconsin-Parkside, an M.S. in physics from North Texas State University, and a Ph.D. in Physics from the University of Central Florida. Peggy was most recently a physics lecturer at Penn State-Harrisburg where she taught introductory physics and laboratories.

Melissa Askins is the new admission and accounting associate. Askins holds an Ed.S. in curriculum and instruction from Tennessee Tech, an M.A. in education from Cumberland University, and a B.S. in accounting from University of Charleston. She has worked in the Manchester and Tullahoma middle schools as a math, language arts and English teacher. Her son Jon will be in the seventh grade class at SAS.

Assistant Chaplain Beth Barksdale holds a Master of Divinity, magna cum laude, from Wake Forest University and a B.A. in psychology and communications from Salem College. She is proficient in theological reflection, liturgy and worship, pastoral care and counseling of youth and adults, and mission partnerships for student engagement.

Neal Johnson is a 2015 graduate of the University of the South with a degree in mathematics. He was a member of the varsity football team and twice named to the Southern Athletic Association Honor Roll. In addition to teaching Algebra I and Math 7, Neal will be assistant coach for cross country and track and field.

Cheryl MacPherson is the new assistant dean and director of middle school. In addition to her classroom teaching experience, Cheryl brings experience in curriculum mapping, English language instruction, theme-based course development, differentiated course instruction, new teacher mentoring in instructional design and classroom management, experiential student travel, and Model



SAS welcomes new faculty and staff. Back row, left to right: John Wheeler, Cheryl MacPherson, Thomas Priestley, Melissa Askins, Anna Palmer, Neal Johnson, Dan Monahan, J.R. Ankney, Marcus Murphy; front row, left to right: Christine Monahan, Katherine Mulloy, Kira Tharp, Kimberly Perkins, Amanda Skrezckoski, Peggy Ankney, Beth Barksdale; Not pictured: Curt Williams and Nicholas Womack.

United Nations programming. Cheryl holds a B.A. from Fordham University and an M.Ed. in secondary education from The George Washington University.

Christine Monahan will join SAS as a history teacher and lead house parent. Monahan holds a B.A. in history from College of the Holy Cross with a concentration in African American studies. She earned her M.A.T. in social studies from Rivier University. She is currently working on an M.Ed. Tech from Boise State. Christine is married to incoming Director of College Counseling Dan Monahan. They will live in Colmore.

Dan Monahan was most recently director of college counseling at Cheshire Academy, a coeducational boarding school in Connecticut. Dan planned and administered all aspects of the college counseling process at Cheshire, beginning with academic career planning in the ninth grade and continuing with guidance in the sophomore and junior years. Dan holds a B.A. in history from College of the Holy Cross, where he played varsity football, and an M.S. in management nonprofit leadership from New England College.

Marcus Murphy is the international student coordinator and Chinese teacher. Murphy taught Chinese at McCallie School for six years, directed the international student program, and was an outdoor program leader. He is a 2007 graduate of Sewanee with a B.S. in natural resources and a minor in Asian studies. He received his M.A. from Qingdao University in Teaching Mandarin as a Second Language. He is Wilderness First Responder certified.

Anna Palmer will join SAS as admission counselor. Anna is a graduate of the University of the

South with a major in psychology and minor in business. She was a Wm. Polk Carey Fellow in the university's Babson Center for Global Commerce.

SAS 1996 alumnus Thomas Priestley joins the faculty as a teacher of mathematics. Thomas received his B.A. in philosophy from Davidson College and his M.Ed. in learning and instruction with an emphasis on mathematics from Vanderbilt University. He has 11 years of teaching experience, having taught mathematics, geography, cultural studies, earth science, and creative writing for international schools in China, Slovakia and, most recently, in Malta.

Amanda Skrezckoski is the SAS athletic trainer. Amanda holds a degree in athletic training from University of Wisconsin-La Crosse.

Kira Tharp, '12, is the alumni and campaign assistant. Tharp is a 2017 graduate of the University of the South with a major in English.

John Wheeler is The Father Flye Fellow. Wheeler is a 2018 cum laude graduate of The University of the South with a B.A. in English. He was a varsity baseball player at Sewanee, Community Service Chairman of ATO, and on the Dean's List and Student Disciplinary Board.

Curt Williams is the new golf coach. Coach Williams coached and taught for 23 years in Georgia before retiring and moving to our area.

Nicholas Womack joins SAS as the Computer Support Technician. Nicholas is a graduate of Franklin County High School and Lenoir Community College's paramedic program. He is currently completing a degree in information technology security and virtualization through Colorado State University.



Coalmont Elementary students Teanna McElroy and Dixie McElroy led the Pledge of Allegiance at last week's Grundy County Board of Education meeting. Pictured left to right are Glenda Dykes, Grundy County Director of Schools, Teanna McElroy, Dixie McElroy, and Coalmont Elementary Principal Russell Ladd.

## SES MENUS

Monday-Friday,  
Aug. 20-24  
LUNCH

**Monday, Aug. 20:** Chicken nuggets or Fish, scalloped potatoes, pinto beans, roasted Brussels sprouts, dinner roll/hush puppies, fruit variety.

**Tuesday, Aug. 21:** 'Breakfast for Lunch': Chicken or sausage, eggs, potato sidewinders, cherry tomatoes, Cool Tropics slush, biscuit, fruit variety.

**Wednesday, Aug. 22:** Mexican pasta bake or cheesy dunkers, green beans, baby baked potatoes, garden salad, marinara sauce, garlic breadstick, fruit variety.

**Thursday, Aug. 23:** Taco or hot dog, refried beans, oven fries, salsa, taco trimmings, tortilla tube, fruit variety.

**Friday, Aug. 24:** Pizza or chicken sliders, buttered corn, garden salad, potato smiles, slider roll, cookie, fruit variety.

### BREAKFAST

Each day, students select one or two items.

**Monday, Aug. 20:** Cheese stick, Cheez-its, or Dutch waffle.

**Tuesday, Aug. 21:** Egg omelet, toast/jelly or Frudel.

**Wednesday, Aug. 22:** Biscuit, sausage or chicken, gravy, jelly.

**Thursday, Aug. 23:** Yogurt, Elf grahams, or breakfast burrito.

**Friday, Aug. 24:** Biscuit, sausage or chicken, gravy, jelly.

Options available every breakfast: assorted cereal, assorted fruit and juice, milk varieties. Menus subject to change.

## HOME REMODELERS

Additions • Decks • Porches  
• Floors • Driveways Sealed

Local & Experienced  
"Quality Work  
with Discounted Prices"

423-680-9924

Free Estimates

## Summer Savings

Special  
Prices!

On Decks, Porches  
and All of Your  
Remodeling

HEAVEN ON EARTH... NOW AVAILABLE IN SEWANEE



MYERS POINT at Sewanee offers a rare opportunity to enjoy a private community that celebrates American architecture, lifestyle, protected forests, cultivated lakes and panoramic views on Middle Tennessee's Cumberland Plateau. If you want to live surrounded by nature, history, beauty, quality and serenity, you'll want to call it home.

John Goodson  
(931) 703-0558  
jgoodson@myerspoint.com  
myerspoint.net

Tell them you saw  
it here!

## J & J GARAGE

### COMPLETE AUTO REPAIR

- Import & Domestic
- Computerized 4-wheel alignments
- Shocks & Struts • Tune-ups • Brakes

Our work is guaranteed  
More than 37 years of experience  
Hwy 41-A between Sewanee & Monteagle  
Mon.-Fri. 7:30-5:30



Jerry Nunley,  
owner  
598-5470



G. Robert Tubb II, Owner  
931-967-3595  
A1ChimneySpecialist.com



A-1  
CHIMNEY  
SPECIALIST

CSIA Certified Technicians  
Video Inspections • Sweeping  
Restoration • Masonry Repair  
Custom Caps & Dampers  
Leak Repair & Water Proofing  
Wood Stove & Chimney Installs  
Gas Log Service & Installs  
Dryer Vent Cleaning/Repair



Come Enjoy The Mountain's  
Best Gourmet Breakfast,  
8 to 10 Each Morning,  
and Saturday Wine Social,  
4 to 7 p.m., in Tallulah's  
Wine Lounge



Tallulah's  
Wine Lounge

(931) 924-3869 ~ www.monteagleinn.com ~ 204 West Main St.



## MOUNTAIN DIETITIAN

by Mary Pate-Bennett

### What does it mean to be Healthy?

When you think of the word healthy, what are the images that come to mind? Do you see a nutritionally packed ice-cold smoothie, or heaps of apples and oranges? Do you see a bed of local organically grown broccoli and kale, or fresh whole grain bread? Perhaps you see the many small, lean, muscular bodies used in marketing to sell any number of products.

Although eating mostly nutrient dense foods (i.e., non-processed and non-packaged foods) allows our bodies to function maximally, being in a small body does not necessarily mean that a person is healthy. A study released in February 2016 from the International Journal of Obesity\* found that 54 million Americans, who had no markers of disease, were labeled “unhealthy” due to an elevated Body Mass Index (BMI). In the same study, roughly 21 million people were considered “healthy” with a normal BMI despite being in a state of disease. (In this study, markers of disease included abnormal levels for blood pressure, cholesterol, c-reactive protein, glucose, insulin resistance, and triglycerides.) Therefore, on its own, BMI cannot be used as an indicator of health—period.

I wish the field of medicine and insurance companies would accept this information. For a long time, however, BMI has been considered a gold standard for determining both the state of one’s health and how much insurance plans will cover. So we must face the science ourselves—I urge you to reassess your views on health. What are your automatic judgments when you think of your health or others? Do you think that someone in a large body must be lazy and/or unhealthy? Challenge those thoughts. Our genetics and environment play a much bigger role in one’s body size versus thinking someone should simply “have more self-control.”

The more our culture promotes large bodies as lazy and unequal, the more frustrated and unhealthy our society will become. Research\*\* shows that both chronic stress and social stigma associated with living in a large body cause a great deal more damage internally than any one disease causes on its own. Let us set aside our bias and learn to accept our own limits. Each of us is an individual, with a unique set of physical traits. We must treat our bodies’ health accordingly.

*\*Misclassification of cardiometabolic health when using body mass index categories in NHANES 2005–2012. A J Tomiyama, J M Hunger, J Nguyen-Cuu & C Wells. International Journal of Obesity volume 40, pages 883–886 (2016).*

*\*\*Weight Science: Evaluating the Evidence for a Paradigm Shift. L Bacon & L. Aphramor. Nutrition Journal 2011 10:9.*

## ‘Bone Drawings’ in SAS Art Gallery

The SAS Gallery at St. Andrew’s-Sewanee School will open the 2018-19 gallery season with sublime, highly-detailed drawings of Tara Shukla. Shukla’s “Bone Drawings” will be in the SAS Gallery through Sept. 21, with a public artist’s reception Thursday, Aug. 30, 3-6 p.m.

Shukla’s recent drawings of bones are based on specimens borrowed from the Grinnell College Biology Department and are inspired by traditions of trompe l’œil painting, natural history, and scientific illustration.

Shukla’s work was recently part of the exhibition, “Making Life Visible: Art, Biology and Visualization” at Grinnell College’s Faulconer Gallery. Her larger-than-life bone drawings have been described as “... intricate and life-like ... with delicate yet forceful detail.” (Drawing and Conversation with Tara Shukla, Zoe Fruchter in The Scarlet & Black, April 29, 2018).

In conjunction with the SAS exhibit, Shukla will offer a one-day public drawing workshop, “Nature Close Up: Drawing Natural Forms from Observation,” from 9 a.m.–4 p.m., Saturday, Sept. 1. The workshop will begin with exercises to develop observational skills and build to a more sustained drawing. Elements of drawing from line to form, value, and texture will be explored, emphasizing the detailed charcoal technique visible in Shukla’s drawings. The workshop also will look at the work of diverse artists who have drawn and interpreted nature using a range of drawing styles from expressive to botanically accurate. Contact Gallery Director Julie Jones at <sasgallery@sasweb.org> for more information and to register.

## UAG Presents ‘Fabrics of Socialism’

The University Art Gallery (UAG) proudly presents Vesna Pavlović’s “Fabrics of Socialism,” on view from Aug. 29 – Oct. 14. Offering “a psychological portrait of an era burdened with photographic representation of socialist propaganda,” Pavlović invites visitors to consider the role of photography in the fabrication and remembrance of communal identity.

As a nine year-old growing up in the former Yugoslavia, Pavlović participated alongside thousands of others in the spectacular and carefully recorded Youth Day celebration held in 1979 in honor of President Josip Broz Tito’s 87th birthday. Her participation is captured in a film of the event housed in Tito’s official archive, held in the Museum of Yugoslav History (now the Museum of Yugoslavia). Individual recollection and official state record meet in the photographic image and in the archive, for Pavlović invoking “the friction between personal and political narratives.”

In “Fabrics of Socialism,” photographs and footage of state events and celebrations—propagandistic images of political unity from the former Yugoslavia, a country which disintegrated into brutal sectarian violence in the early 1990s—are exposed as manufactured. Viewers are asked to consider the photographic image as a physical object, in the words of art historian Morna O’Neill “to think about not only what they see, but how they see...” Photographs, and the archives in which they are housed, are fragile. They have lives, as do the memories and official records and ideologies invested in them. For Pavlović, “political obsolescence becomes legible as such through technological obsolescence.” Visions of state propaganda, in all their monumentality and performance of unity, are

revealed to be fragile, distorted and obscured by time.

Please join us at 5 p.m., Friday, Sept. 14, in Convocation Hall for Pavlović’s presentation of “Fabrics of Socialism” and a reception. The event is free and open to the public.

On Sunday, Oct. 14, Pavlović, professor Woody Register and students from History 328: Slavery, Race and the University will host a Community Screening Event in Convocation Hall. This Community Screening will be dedicated to the presentation and interpretation of materials from the Lovell Family Papers housed in University Archives and Special Collections. The event will begin at 4 p.m. and is free and open to the public.

Born in Kladovo, Serbia, Pavlović now makes her home in Nashville. She is Associate Professor of Art at Vanderbilt University where she teaches photography and digital media. She earned her B.F.A. in Cinematography from the University of Belgrade in 2002, and her M.F.A. in Visual Arts from Columbia University, New York, NY in 2007. She has exhibited widely, including recent solo exhibitions at the Hanes Art Gallery, Wake Forest University, Winston-Salem, NC (2016), at The Contemporary, Atlanta, GA (2017), at Zeitgeist Gallery, Nashville. Recent honors and awards include a Fulbright Scholar Award (2018), a Howard Foundation Fellowship, Brown University, Providence, R.I., (2017) and a Contemporary Art Foundation Emergency Grant, New York, NY (2014).

This exhibition has been made possible with the support of Art, Art History and Visual Studies, Politics, the Project on Slavery, Race and Reconciliation, the Friends of the University Art Gallery, the University Lectures Committee, Vanderbilt University Chancellor Fellowship Funds, and the Museum of Yugoslavia.

Sewanee’s University Art Gallery is located on Georgia Avenue. The gallery is free, accessible, and open to the public. Hours are 10 a.m.–5 p.m. Tuesday through Friday and noon–4 p.m. on Saturday and Sunday. Please note that the UAG is closed during academic breaks. Call (931) 598-1223 for more information, visit our website at <gallery.sewanee.edu>, or follow us on Facebook.

### If you are planning a wedding, party or special event, THINK RENTAL!



Reliable Rental of Franklin County has everything you need—Marquee tents (available with side walls and lighting), white wooden chairs, a popcorn machine, selected white lattice items, round and rectangular tables, chairs, brass candelabras, china, crystal, flatware, chafers, trays, disposables, etc. Call or come by to check out the great savings you will realize by doing it yourself at a rental (not sale) price!

#### RELIABLE RENTAL OF FRANKLIN COUNTY

104 E. Petty Lane • Winchester, TN 37398  
931/962-0406 or 1-800/453-RENT



### TOMMY C. CAMPBELL FOR YOUR IMPROVEMENTS

Call (931) 592-2687

Free Estimates • No Job Too Small!

### DRIVEWAY WORK • GRAVEL HAULING • DOZER & BACKHOE

plus Land Clearing • Concrete Work • Water Lines • Garage Slabs • Sidewalks • Porches & Decks • Topsoil & Fill Dirt  
Septic Tanks & Field Lines

## Brown's Body Shop

Leonard Brown - Owner  
Steve Young - Gen. Mgr.  
Steve Hartman - Shop Mgr.

710 College St. • Winchester  
931-967-1755 • Fax 931-967-1798

Come by and see us. We appreciate your business.

Our Work is Guaranteed!

**The Lemon Fair**

11-5, Mon-Sat  
thelemonfair.com  
FREE gift wrapping  
Downtown Sewanee

student/fac/staff discount: 15% OFF every Tues-Th

## Tell them you saw it here.



COFFEE HOUSE

Hours through  
Aug. 28!

Monday-Friday  
7:30a-4:30p

Closed Saturday & Sunday

Regular hours on Aug. 29

Georgia Avenue, Sewanee



598-1786



Like Us On  
facebook for specials  
and updates



### Down Home, Down the Street

754 West Main St., Monteagle  
(931) 924-3135  
8 a.m. to 9 p.m. 7 days a week

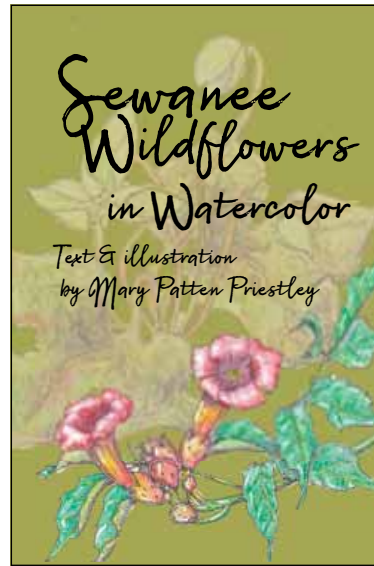
WWW.SEWANEEMESSENGER.COM



## 'Sewanee Wildflowers in Watercolor'

The Sewanee Herbarium's latest publication, "Sewanee Wildflowers in Watercolor" by Mary Priestley, is a celebration of the beauty and diversity of the flowering plants of the Domain. The University's 13,000 acres are home to more than 1,100 species of plants, of which the 50-or-so species highlighted in the book are but a teaser. There is beauty everywhere here, and much of it is reflected in the delicate wildflowers. As William Alexander Percy described them, "The rest of the flowers you wouldn't believe in if I told you."

"Sewanee Wildflowers in Watercolor" is the latest in a series of books published by the herbarium that are designed to connect people to plants. It combines four of Priestley's passions: botany, art, Sewanee and story-telling. As a Sewanee alumnus and long-term resident, she reflects on the passage of seasons here by portraying the lives of representative wildflowers through drawings and short natural history vignettes. The flowers are introduced in more-or-less the order of their appearance each year. From February to May and then all the way to frost, the book traces the wildflowers through the seasons. "Sewanee Wildflowers in Watercolor" is available at the University Book and Supply Store and Mooney's Emporium, and on <amazon.com>.



## ATTHEMOVIES

The Sewanee Union Theatre has announced its upcoming fall schedule of movies. Movies are \$3 for students and \$4 for adults. Cinema Guild movies on Wednesdays are free. The SUT is located on South Carolina Avenue behind Thompson Union. The SUT accepts Domain Dollars and credit cards.

Aug. 30–Sept. 2, *Avengers: Infinity War*  
 Sept. 5, *Jurassic Park*  
 Sept. 6–9, *Jurassic Park: Fallen Kingdom*  
 Sept. 12, *Spaceballs*  
 Sept. 13–16, *Solo: A Star Wars Story*  
 Sept. 19, *The Incredibles*  
 Sept. 20–23, *Incredibles 2*  
 Sept. 26, *The Italian Job*  
 Sept. 27–30, *Oceans 8*  
 Oct. 4–7, *The First Purge*

## Sewanee Chorale Prepares for 53rd Season

Sewanee Chorale begins its 53rd season on Monday, Aug. 27, at 6:30 p.m. in Guerry Hall room 202 (choir room). The Chorale will prepare two performances this semester, the first on Friday, Nov. 9, includes a breadth of music genres. Guest artists will join the Chorale to perform both choral and instrumental arrangements of the familiar tune, "Nun danket alle Gott" (Now Thank We All Our God), and "Thanks Be to Thee," which is (incorrectly, but that's another article) attributed to Handel. Copland's "Ching a Ring Shaw," and arrangements of "Shenandoah," "This Land is Your Land," and "Down in the River to Pray" are of a uniquely American flavor. Broadway melodies "Singing in the Rain" and "Over the Rainbow" will also be on the program.

On Sunday afternoon, Dec. 16, the Chorale will lead a community Christmas sing with music to delight young and old. "You're a Mean One Mr. Grinch," "Jingle Bell Rock," and "We Need a Little Christmas" are featured popular selections. The Spanish Renaissance villancico, "Riu, Riu, Chiu" is a rollicking, a capella piece accompanied by ferocious percussion. Rutter's "What Sweeter Music" and James MacMillan's "O Radiant Dawn" offer a contrasting reflective tone. The afternoon performance will include opportunities for the audience to join in singing seasonal favorites both secular and religious.

Singers include students, faculty, staff and community members from Sewanee and surrounding areas who enjoy the humor and hard work in joining together to learn a wide variety of choral music and sing it to the best of their ability. Rehearsals are every Monday from 6:30 until 7 p.m. and singers are asked to contact the Chorale at <TheSewaneeChorale@gmail.com> prior to attending so that a music folder can be prepared in advance. The Chorale is supported through individual contributions, the Sewanee Community Chest, and members' donations toward music.

## Workshops at the Artisan Depot

On Saturday, Aug. 25, from 10 a.m. to 3 p.m., Chattanooga artist Catherine Norrell will be leading a workshop where participants will create clay plant pockets. A perennial favorite teacher and artist, Norrell will show participants how to hand-build plant pockets of their own design for wall, door, or fence.

The class fee is \$60. The materials fee is \$25 for materials and firing, payable to the instructor at the class. Participants should wear work clothes and bring a lunch. Class size is limited to 10; early registration is recommended.

Local artist Pat Rollie will lead a painting workshop on Sunday, Sept. 23, from 1–3 p.m. In this

class, participants will learn to paint simple designs with a palette knife on canvas or board. The finished piece will be a 12" x 16" masterpiece.

This workshop is an adult class but teens age 15 and over are welcome. It is geared for beginners, but experienced painters will enjoy it as well. The class fee is \$45. There is an additional \$5 materials fee payable to the instructor at the beginning of the class. Seating is limited to eight people; early registration is recommended.

For more information, go to <<http://www.franklincoarts.org/workshop-details.html>>.

## At the Galleries

### Artisan Depot

The Artisan Depot is pleased to host Dick Wollam's "One Man Show" member show. The exhibit will be up through Sept. 16. An opening reception will be 5–7 p.m., Friday, Aug. 17.

The Artisan Depot will display a new community show "Craft: Art Made by Hand" through Oct. 14.

The Artisan Depot is operated by the Franklin County Arts Guild and is located at 204 Cumberland St. East, Cowan. Gallery hours are noon to 5 p.m. on Thursday, Friday and Sunday, and 11 a.m. to 5 p.m. on Saturday. For more information contact Diana Lamb at (931) 308-4130.

### Frame Gallery

The Frame Gallery Custom Frames and Art will display "Painting Together" through Aug. 30, featuring works by artists in Martha Keeble's painting group.

The Frame Gallery is at 12569 Sollace M. Freeman Hwy., in Sewanee. The frame shop and gallery's regular hours are 10 a.m. to 5 p.m., Tuesday through Friday, and 9 a.m. to 1 p.m. on Saturday.

## Mountain Princess Pageant

The Mountain Princess Pageant will be on Saturday, Sept. 8, at 14th Street in Tracy City. Registration deadline is Aug. 24.

The pageant starts at 10 a.m. and attire is Sunday's best. Registration fee is \$25, which includes side awards. The gate admission the day of the pageant is \$2.

For more information contact Heather Childers, 931-235-1334.

# We want your feedback!

## What are the health needs in our community?

**Southern Tennessee Regional Health System Sewanee** together with the **South Cumberland Health Network**, has recently started a comprehensive Community Health Needs Assessment (CHNA), which will provide helpful information for improving and promoting the health of each community member.

The focus of the community health needs assessment is **Franklin, Marion and Grundy Counties**.

Your participation in this study is voluntary. The community health survey is 13 short questions. We greatly value your thoughts on the health needs of the community. The survey will be analyzed by Stratasan, our community health needs assessment partner. The last question provides an opportunity for you to add any comments, suggestions or advice you wish to offer.

**Please go to our website, [www.southerntnsewanee.com](http://www.southerntnsewanee.com) and click "Please take a short survey here!"**

Thank you for your time.



**SOUTHERN  
TENNESSEE**  
REGIONAL HEALTH SYSTEM  
**SEWANEE**



# Mountain Goat Mud Run Set for Oct. 20 in Tracy

The first Mountain Goat Mud Run, sponsored by Tenacity Adventure Fitness and the Mountain Goat Trail Alliance, will be in Tracy City on Saturday, Oct. 20.

"I personally love doing obstacle course races, and ever since moving to the Mountain I've thought it's the perfect place for a mud run," said Micah Sparacio, owner of Tenacity Adventure Fitness and race organizer. "Obstacle course runners are diehard, and with our location between Chattanooga and Nashville I figured we could attract a good-sized crowd to enjoy all our natural beauty. We're hoping to do this every year to celebrate the fall season with live local music and fun for adults and kids alike."

The Mountain Goat Mud Run is a three-mile obstacle course mud run with 15 natural obstacles on the side and top of a mountain on Cove Creek Farm in Tracy City. The event opens at 2 p.m. and continues until after sunset when there will be a bonfire, live music beginning at 5 p.m., and a pig roast to celebrate the fall harvest. Local vendors will be present.

The run begins at 3 p.m. and runners will be released in groups of 20 every 15 minutes until there are no runners left.

The cost for adults is \$50 in advance or \$65 the week of the event. The cost for kids is \$20 in advance or \$35 the week of the event. All participants will receive a free t-shirt and locally made competition medal.

All proceeds from the run go to the Mountain Goat Trail Alliance. For more information or to register, visit <mountaingoattrail.org/race>.

## Sewanee Golfers Compete in Amateur Tournaments

Three Sewanee men's golfers competed recently in the Tennessee and North Carolina State Amateurs.

Gray Matthews participated in the 94th Carolinas Open presented by BB&T, while Tommy Oliver and Nic Vandeventer played in the

103rd Tennessee State Amateur. Matthews flirted with the top spot in the event at the Starmount Forest Country Club in Greensboro, N.C., on Aug. 7-9. Through 18 holes, Matthews fired a 65, the

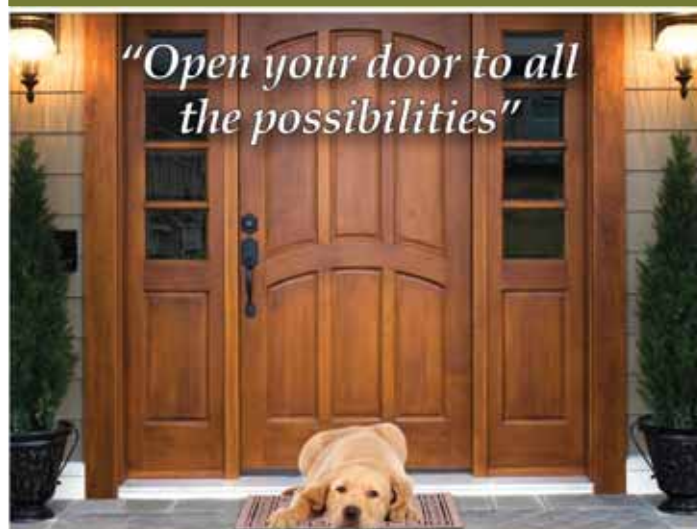
(Continued on page 13)

### PROFESSIONAL MASSAGE THERAPY



Mitzi Rigsby, LMT. Tina Barrett, LMT. Diana Summers, LMT. Ginger Anderson, LMT. Heather Todd, Natural Health Practitioner.  
15 Veterans Dr. Decherd | 931-308-8364 | www.mitzirigsbypmt.com  
Hours: 9am-6pm M-F, Sat 8am-12pm

New and Returning Students,  
Faculty and Staff.  
Welcome to the Mountain!



Custom home remodeling begins with...

**Joseph's Remodeling Solutions**  
A division of Sunstar Solutions, LLC

Taking Quality to the Next Level  
Licensed - Insured - Green Certified

931-598-5565

joseph@josephsremodelingsolutions.com  
www.josephsremodelingsolutions.com



Tullahoma Swim Club invited MAC (Mountain Aquatic Club) to join them in hosting Olympic medalist Kara Lynn Joyce for two days of training and a private dinner. The two teams were able to get sponsorships and donations from friends, family and local businesses to help pay for this opportunity. The recent training sessions consisted of demonstrations and then drills. The Olympian observed each swimmer during drills and worked with individuals on specific techniques. After two days of training in the water, swimmers joined Joyce for dinner and listened to the story of her journey to the Olympics. Below: MAC swimmer Sarah Russell Roberson gets an autograph from Joyce.



## Sewanee Women's Hoops Releases 2018-19 Schedule

Eleven home contests and two tournaments highlight the 2018-19 Sewanee women's basketball team's schedule, recently announced by second-year head coach Tracey Braden.

The Purple and Gold will begin the campaign on the road in Decatur, Ga., with the Agnes Scott Classic Nov. 10-11. Sewanee will

battle with Piedmont, winners of the USA South Tournament a season ago.

The Lions and Tigers will meet for the first time since 2010, and Piedmont (Ga.) has a 5-2 advantage in the head-to-head series. Sewanee last defeated the team from

(Continued on page 13)

## LONG'S LAWN SERVICE

- landscaping & lawn care
- leaf removal • mulch

Local references available.

Jayson Long

(931) 924-LAWN (5296)

## WOODY'S BICYCLES

SALES, SERVICE AND RENTALS  
A Full-Service Trek Bicycle Dealer

Mon-Fri 9-5 • Sat 10-2 • 90 Reed's Lane  
598-9793 • woodybike@gmail.com



Check out www.woodysbicycles.com for rates, trail maps, photos, bike club links, races and much more!

## Competitive Swimming Opportunity

The Mountain Aquatic Club (MAC) will be back in the water at the Fowler Center on Monday, Aug. 27. Parents with a son or daughter who want the challenge of competing, can email John Noffsinger, MAC head coach, at <noffsij@gmail.com>. Learn more about the program by visiting the club website <mountinaquatic-club.wordpress.com>

## Mountain Goat Trail Parkrun

The Mountain Goat Trail Parkrun is a free, weekly, timed 5k event. The fun starts on Saturdays at 9 a.m. at Pearl's.

All skill levels are welcome and participants can walk, jog or run. The event is stroller and kid friendly—children under 11-years-old should be within an arm's reach. Dogs are welcome, but limited to one per person on a short lead.

Register at <parkrun.us/register>, print the barcode and show up.

## HOME GAMES

### Thursday, Aug. 23

4 p.m., SAS MS Girls' Soccer vs. South Middle School

5:30 p.m., SAS V Girls' Soccer vs. Chattanooga School for the Arts & Sciences

### Monday, Aug. 27

5 p.m., SAS Volleyball vs. Richard Hardy Memorial School

### Tuesday, Aug. 28

5 p.m., SAS V Girls' Soccer vs. Grace Baptist Academy

### Thursday, Aug. 30

5 p.m., SAS V Girls' Soccer vs. Warren County High School

6:30 p.m., SAS Volleyball vs. Fayetteville City School

### Friday, Aug. 31

3:30 p.m., University Women's Soccer vs. Meredith

### Saturday, Sept. 1

10 a.m., University Field Hockey vs. Ohio Wesleyan

4:30 p.m., University Women's Soccer vs. Huntingdon

### Sunday, Sept. 2

University Women's Golf vs. Belmont

Noon, University Field Hockey vs. East Mennonite

### Tuesday, Sept. 4

4 p.m., SAS Golf vs. Chattanooga Christian School, Collingdale Academy

4:30 p.m., SAS MS Girls' Soccer vs. Lady Patriots

7 p.m., University Men's Soccer vs. Covenant

### Thursday, Sept. 6

4 p.m., SAS Golf vs. Grundy County High School, Middle Tennessee Christian School

5 p.m., SAS MS Girls' Soccer vs. Cascade Middle School

### Friday, Sept. 7

4p.m., SAS Football vs. Franklin Christian Academy

### Saturday, Sept. 8

University Women's Golf vs. Oglethorpe

1 p.m., University Football vs. Washington & Lee

Take us with you when  
you travel:  
sewanee  
messenger.com





The St. Andrew's-Sewanee middle school girls' soccer team works during pre-season practice. The team has scheduled a home game on Aug. 23, at 4 p.m. versus South Middle School. Photo by St. Andrew's-Sewanee

## Golfers (from page 12)

second-lowest score in the round thanks to six birdies, including four in a row from holes seven to 10.

Despite shooting a 74 in the final round, Matthews finished the three-round event in a tied for sixth place out of 60 qualifiers with a five-under, 208 (65-69-74). The Raleigh, N.C., native, finished with a par or better in 47 of the 54 holes he played, including 13 birdies.

The 2017-18 season saw Matthews earn First Team All-Conference honors in the Southern Athletic Association (SAA) with a third-place finish for the rising junior.

Oliver and Vandeventer spent their week in Collierville outside of Memphis at the 103rd Tennessee State Amateurs at the Spring Creek Ranch on Aug. 7-10. The duo competed at the State Amateurs a year ago in Nashville.

Oliver finished 51st in the event with a 305 (73-78-78-76) with 10 birdies. In the final round on Aug. 10, the SAA Co-Player of the Year fired a 34 on the back nine thanks to three birdies and one bogey for the Sewanee native.

Vandeventer played in two rounds of the Amateur Championships before being cut. The Bristol native fired a 167 (89-78).

The fall session of the 2018-19 golf schedule begins on Sunday, Sept. 9, with the SAA Preview at the Greystone Golf Club in Dickson.

**Tell them you read it here!**

## Hoops (from page 12)

Demorest on Feb. 22, 2007, at home, 74-63.

The weekend tourney concludes with a contest with host Agnes Scott (Ga.) on Nov. 11. The two teams will meet up for the first time since 2015 when the Tigers defeated the Scotties, 90-48 on Nov. 24. Sewanee has the upper hand in the series, 12-3.

Sewanee's home opener will take place on Tuesday, Nov. 13, with Berea (Ky.) at 6 p.m. inside Juhan Gymnasium. Despite Berea having a 13-5 advantage head-to-head, the teams are 3-3 in Sewanee.

The Tigers end the regular season at home against Centre on Feb. 27. The Purple and Gold have a four-game losing streak against the Kentucky institution.

The SAA Tournament is Feb. 22-24. The Tigers finished the 2017-18 season at 10-15 (5-9).



For several days in July, St. Andrew's-Sewanee eighth-grade mountain biker Alex Waldrup (front row, second from left) and his father, Chris Waldrup (from row, third from left), attended a 2018 Trek Certified Assembly Technician Service Course at Trek headquarters in Waterloo, Wis. Trek Bikes offers various levels of Certified Service Courses throughout the year for people who are interested in learning more about bike assembly, repair and maintenance from master bike industry instructors. In addition to learning skills in the classroom, the Waldrups also toured the Trek Test Lab and rode Trek-provided bikes on the company mountain bike trails. After completing the course, they were awarded a Trek Certified Service Certificate for their efforts.

# Shackelford Promoted, Tigers Name New Tennis Coach

After 32 seasons as head coach of the men's tennis program, the University of the South has promoted John Shackelford to director of tennis and appointed associate coach Felix Mann as the new head coach.

Shackelford becomes the director for both the men's and women's teams, where he will oversee recruiting, athlete development and fundraising.

Shackelford posted a 551-282 record as the men's tennis coach, making him the winningest coach in Sewanee men's sports history. He led the Tigers to all 16 NCAA appearances the men's tennis program has achieved.

In six years with the Southern Athletic Association (SAA), Shackelford was named Coach of the Year in 2014 and 2018.

In 2017, after earning a trip to the Round of 16 in the NCAA Championships, he was named the Intercollegiate Tennis Association (ITA) Atlantic South Coach of the Year.

Conchie Shackelford, John's wife, will remain head coach of the women's tennis team.

"Conchie, Felix and I will continue to work side by side to provide individual coaching opportunities for all our men's and women's tennis players with the goal of continuing to create a positive championship culture in both programs," John said. "This change ensures that our coaching staff will remain intact for many years to come. My role will essentially remain the same, serving to administer both programs and assisting both Conchie and Felix



New University of the South men's tennis head coach Felix Mann.

wherever needed with our practices and competition schedule."

Mann has served as the associate tennis coach for both the men's and women's programs for the last three seasons.

In 2017, the Intercollegiate Tennis Association (ITA) named Mann the Atlantic South Men's Assistant Coach of the Year.

Mann came to the Domain from Averett University, where he served as the head coach of the men's and women's teams in 2014 and 2015.

Mann spent two seasons as the assistant coach at Rhodes College, where he helped the program to its highest conference finish ever, finishing second both seasons he was there.

Mann had a successful collegiate playing career at Oglethorpe University. Mann finished third for conference player of the year

his junior and senior seasons. In his junior season, he finished regionally ranked top 15 in singles play.

He ended his career at Oglethorpe as the No. 12 ranked singles player and No. 7 ranked doubles team with partner Ross Beall in the Atlantic South region.

"Under the superb leadership of John and Conchie Shackelford, Tiger tennis has been an exemplary program for Sewanee Athletics for decades," said Mark Webb, University of the South's director of athletics. "With the promotion of Felix Mann to head men's tennis coach, our new coaching structure will maximize the strengths of our staff to enhance the recruitment of blue-chip prospects as well as improve the overall development of current players. I am confident our new structure will enable Tiger tennis to achieve even greater heights on the national landscape."

## Michael A. Barry LAND SURVEYING & FORESTRY

★ ALL TYPES OF LAND SURVEYS  
★ FORESTRY CONSULTING

(931) 598-0314 | (931) 308-2512

**Sweeton**  
Home Restoration  
LICENSED • INSURED • TRUSTED

NEW  
CONSTRUCTION  
REMODELING  
HISTORIC  
RESTORATION

931-924-2444 sweetonhome.com

## Monteagle Sewanee, REALTORS®

Dedicated to Service!



Deb Banks, Realtor  
(931) 235-3385  
debbanks8@gmail.com



Ray Banks, Broker/Owner  
(931) 235-3365  
rbanks564@gmail.com



Dee Underhill Hargis, Broker  
(931) 808-8948  
aduhargis@gmail.com



Tom Banks, Realtor  
(931) 636-6620  
tombanks9@yahoo.com

Competent, Caring, Friendly, Fair—We're Here for You!

www.monteaglerealtors.com • 931-924-7253

337 W. West Main St., Monteagle

Find all the area MLS listings on our updated website!

## ADAPTIVE LANDSCAPE LIGHTING

Paul Evans | 931.952.8289

adaptivelandscape-lighting.com

## Zoom Groom Mobile Pet Spa

We love your pets as much as you do!

Laura Lee Ray  
Owner/Groomer  
Serving South Middle Tennessee

(931) 313-9950 • (423) 403-0123

mail@zoom-groom.com

www.zoom-groom.com





## NATURENOTES

by Yolande Gottfried



Cypress Swamp

### Loxahatchee National Wildlife Refuge

While on a family trip to Florida, we visited the Loxahatchee National Wildlife Refuge, protecting the northern Everglades and cypress swamps. This is one place where an invasive exotic is being welcomed. The native Florida apple snail is the food of the snail kite, found in North America only in central and southern Florida, in its habitat of shallow, fresh-water marshes. A larger non-native apple snail is moving into this habitat, providing an additional food source for this bird, which is locally endangered due to changes in water levels affecting the apple snail population. In contrast, in the “sea of grass” that is the Everglades, a native species is becoming unwelcome. Cattails become established where excess levels of nutrients enter the water, displacing the sawgrass, actually a sedge. This is a problem because the cattails are a poor habitat for the fish and birds of the region.

A boardwalk trail took us through a part of the cypress swamp, the largest intact one in the eastern Everglades. Large ferns such as sword and giant leatherleaf were abundant in the herbaceous layer. The shrub layer included pond apple in fruit, with evidence of the fruit’s contents in raccoon scat on the boardwalk rail. In the trees above, epiphytes abound. Some of those are also ferns, like the familiar resurrection fern and the unfamiliar strapfern, while others are bromeliads, including Spanish moss—actually a bromeliad. Of course, numerous cypress “knees” rose above the water level, their function still not really understood.



James



Bane

## Pets of the Week

### Meet James & Bane

James is a beautiful 1-year-old domestic medium hair cat. He likes to give little love nibbles but he definitely is not trying to hurt anyone. James has been neutered, FeLV/FIV tested, which came back negative, and he has received all of his vaccines including his rabies.

Bane is a wonderful 5-year-old Australian Shepherd mix. He likes to be assertive with other dogs so he would prefer to be an only dog. He is also house trained, kennel trained, and knows how to sit on command. Bane is a very playful, loving dog who would like to play fetch for hours. He has been neutered, received all vaccines and has a microchip.

Animal Harbor offers substantial adoption fee discounts for seniors and veterans. Pets adopted from Animal Harbor qualify for a free post-adoption wellness exam by local veterinarians.

Animal Harbor is located at 56 Nor-Nan Road, off AEDC Road, in Winchester. Call Animal Harbor at 962-4472 for information and check out their other pets at [www.animalharbor.org](http://www.animalharbor.org). Enter their drawing on this site for a free spay or neuter for one of your pets. Please help Animal Harbor continue to save abandoned pets by sending your donations to Animal Harbor, P.O. Box 187, Winchester, TN 37398.

## National Honey Bee Day Celebration

Celebrate National Honey Bee Day at South Cumberland State Park Visitors’ Center, 11745 U.S. Hwy. 41, Monteagle. From noon–1 p.m. explore the Meadow Trail wildflowers with Trae Moore; 12:30–1 p.m. Paula and Adele will read Mary Priestley’s book “William’s Wildflowers” and there will be fun songs and costumes for kids to dress up and sing with; from 1–2 p.m. at the Visitors’ Center’s new Native Herb Garden on the Meadow Trail, Emily Heid will talk about why bees are important to agriculture and make some fun foods; from 2–3:30 p.m. meet the Park’s resident Bee Expert, Nathaniel Mann, who will have

a Small Bee Colony (also known as a Nucleus) set up to teach you about all things Bee-related, as well as being a Bee Keeper. Nathaniel has 48 years of experience in the world of bee keeping, an Associate’s Degree in commercial bee keeping technology, and has taken his expertise abroad. At 3:30 p.m. or whenever Nathaniel finishes, there will be another Wildflower hike with Trae Moore, and another round of “William’s Wildflowers” and singing with Paula and Adele. There will also “Bee” an info table about honey bees, and a Dress-up/photo Area for you to capture this Bee-filled day.

## Join Trail Friends Fall Season

Trail Friends are volunteers from the Friends of South Cumberland State Park, a nonprofit support organization headquartered in Sewanee. Trail Friends, offering a cheery welcome and much-needed information about the Park, the natural surroundings, and the specifics of the trails, staff five of the busiest trailheads in the South Cumberland State Park. Trail Friends also walk their assigned trails and their help is very much appreciated.

The group is accepting new members and online training is now available. The fall season begins Saturday, Sept. 1, and extends on weekends through Sunday, Nov. 18. Literally thousands of people have been helped by this small group of enthusiastic outdoor lovers.

The Kickoff Meet and Greet takes place at 3 p.m., Sunday, Sept. 9, at the South Cumberland State Park Visitor Center Pavilion. To find out more about this dynamic group, follow this link <<https://www.friendsofsouthcumberland.org/trail-friends.html>>.

## BUG PROBLEMS?

We can help! Call us for a free inspection!

### BURL’S TERMITE & PEST CO.

TERMITE—PEST—VAPOR CONTROL  
Bonded • Insured • Home-Owned & Operated  
105 Ake St., Estill Springs  
(931) 967-4547 or [www.BurlsTermite.com](http://www.BurlsTermite.com)  
Charter #3824 • License #17759



Share your news!

NEWS@SEWANEEMESSENGER.COM

## State Park Offerings

Please note: To confirm that these events will occur as listed go to <<http://tnstateparks.com/parks/events/southcumberland/#/?park=southcumberland>> or call (931) 924-2980.

### Saturday, Aug. 18

**Mountain Oak Loop (\$10)**—Join Ranger Aaron Reid at 9 a.m. at Savage Gulf Ranger Station, 3177 S.R. 399, Palmer, (931) 779-3532 for a moderate 10-mile hike around the Mountain Oak Loop, which includes views of Savage Falls, Rattlesnake Point and many other beautiful overlooks. Hike time will be approximately 5–6 hours. Come prepared with sturdy shoes, backpack, lunch, snacks, camera and water.

**Stone Door Geology Hike (free)**—Join Seasonal Interpretive Ranger Spencer Baxter at 10 a.m. at Stone Door Ranger Station, 1183 Stone Door Rd., Beersheba Springs, for a 2-mile round-trip scenic hike to explore the geology of South Cumberland State Park. Traverse the grand stone staircase and see the breath-taking views of Savage Gulf. Find out how the park was formed and learn a lot about the geology of Tennessee. Bring water, a camera and sun/bug protection, and wear sturdy shoes or hiking boots.

### Sunday, Aug. 19

**Hawk Talk at Foster Falls (free)**—Join Seasonal Ranger Spencer Baxter at 10 a.m. at Foster Falls pavilion, 498 Foster Falls Rd., Sequatchie, to meet Artemis the Red-tailed Hawk. See Artemis up close but not too personal. Safety precautions for both visitors and the bird will be taken (Artemis does not like dogs.)

**Cast Iron Cooking (\$8)**—Join Ranger James Holland at 4:30 p.m. at South Cumberland State Park’s Visitors Center, 11745 U.S. Hwy. 41, Monteagle, to experience outdoor cooking using traditional cast iron methods such as the Dutch Oven and cast iron skillet. The menu will include a main course, bread and dessert but additional recipes are always welcome. Feel free to bring your favorite cast iron cooking item or use one that will be provided. Your presence is requested to share in a meal around the campfire.

The South Cumberland State Park Visitors’ Center is located on Highway 41 South between Monteagle and Tracy City and is open 8 a.m.–4:30 p.m. seven days a week. For more information call (931) 924-2980.

**Save the date for the Goldenrod Gala! Saturday, Oct. 6 at The Caverns in Pelham**

## WEATHER

DAY	DATE	HI	LO
Mon	Aug 06	87	69
Tue	Aug 07	83	67
Wed	Aug 08	82	68
Thu	Aug 09	79	65
Fri	Aug 10	83	69
Sat	Aug 11	84	65
Sun	Aug 12	83	63

Week’s Stats:  
Avg max temp = 83  
Avg min temp = 67  
Avg temp = 75  
Precipitation = 2.05”

Reported by Sandy Gilliam  
Domain Ranger

## K&N Maintenance and Repair Your “honey-do” list helper!

A one-stop solution  
for all your home  
improvement needs

931-691-8656



Neapolitan style wood-fired pizza and wine on tap!

Thursday–Saturday, 3–10 p.m., Sunday 3–9 p.m.

36 Ball Park Rd • 931.598.9000 • [octopisewanee.com](http://octopisewanee.com)



# Classifieds

**CALL US! • 598-9949**  
**Classified Line Ad Rates:**  
 \$3.25 first 15 words,  
 10 cents each addl. word  
**You can charge it!**  
**(\$10 minimum)**

## ART

Stephenson's  
**SCULPTURES**  
**IN BRONZE**  
 Jeanie Stephenson  
 (931) 691-3873  
 www.stephensonsbronze.com

## ENGINE REPAIR

**SARGENT'S SMALL ENGINES:**  
 Repairs to All Brands of Equipment:  
 Lawn mowers (riding or push), String  
 trimmers, Chainsaws, Chainsaw  
 sharpening, New saw chains, Pickup  
 and Delivery Available. (931) 212-  
 2585, (931) 592-6536.

## FLORIST

Walk-In Cooler Filled with  
 Flowers!  
**Monteagle Florist**  
 333 West Main Street, Monteagle  
 (931) 924-3292

## FOR SALE

**FOR SALE:** Two 55-gal. aquariums.  
 Good for reptiles. Not guaranteed  
 leakproof. \$25/each; \$40/both. (931)  
 636-2235 evenings.

**FOR SALE:** Small supply of lumber  
 in storage. Various types, lengths and  
 thicknesses. Of interest to contrac-  
 tors, remodelers, handymen, etc. Call  
 (931) 924-7480.

**2008 Dodge**  
**Caravan**  
**rear entry**  
**wheelchair van**  
 109,902 miles. Automatic everything.  
 Asking \$15,000.  
 Call Gabrielle Beasley 598-5320

**MILLER FAMILY**  
**FARMS**  
**FARM RAISED**  
**ANGUS BEEF**  
**Belvidere, TN**  
 Grass fed and grain finished.  
 No Steroids. No Antibiotics. No  
 Growth Hormones. All beef is  
 USDA inspected/certified.  
 1/4 Beef - \$550  
 1/2 Beef - \$1,000  
**931-581-5235**  
 Follow us on Facebook at  
 Miller Family Farms

## GARAGE SALES

**GARAGE/MOVING SALE:** Friday,  
 Aug. 17 (9-5:30)/Saturday, Aug. 18  
 (9-2). Men's/women's. Lots of stuff.  
 Barbara Brock's home, 14275 Hwy.  
 41, Tracy.

**GARAGE & YARD SALE THIS**  
**WEEKEND:** Vintage, antiques, lots  
 of household things. House on 1-1/2  
 acres. 283 Littell Rd., Tracy City.  
 Reba Simmons, (931) 235-1863.

## HAIR SALON

(931) 598-0033  
**HAIR DEPOT**  
 17 Lake O'Donnell Rd., Sewanee  
**KAREN THRONEBERRY**, owner/stylist  
**JESSICA HONEYCUTT**, stylist/nail tech

## HOMES FOR LEASE

**BLUFF VIEW HOUSE FOR**  
**LEASE:** 3BR/2BA Sewanee house  
 available for lease. Newly renovated  
 kitchen. Bluff views and semi-private  
 lake access. 1216 Eva Lake Rd.,  
 Sewanee. \$1750/month. 12-month  
 minimum. (865) 382-4678.

**3BR/2BA HOUSE:** 1750 s.f. Front  
 and back porch. Includes washer,  
 dryer, dishwasher, C/H/A. Adjacent  
 to Mountain Goat Trail near Pearl's  
 restaurant. \$1,100/month with one  
 year lease. (931) 598-9006.

## HOMES FOR RENT/ SALE

**FOR RENT:** Private 1BR log cabin w/  
 loft. No indoor pets. \$800/mo. (931)  
 691-1058.

**FOR RENT OR FOR SALE:**  
 4BR/2BA house on Guder  
 Road. Approximately one acre. All  
 appliances, C/H/A. (931) 212-0447.

**MGT**  
**MOUNTAIN**  
**GOAT TRAIL**  
**SHARE the TRAIL**  
**Rule #6**  
 Children under 16  
 must wear a helmet when  
 riding a bicycle.  
**WALK • RUN • CYCLE**  
**TOGETHER**  
 mountaingoattrail.org

news@sewaneemessenger.com

**WHERE DO I**  
**RECYCLE THIS?**  
**Special Garbage:**  
 Items for drop off only at  
 Franklin County Solid Waste  
 Management, 419 Joyce Lane,  
 Winchester:  
 Electronics  
 Computers and Monitors  
 Televisions  
 All Other Electronics  
 Ink Cartridges  
 Rechargeable Batteries

**Special Waste:**  
 Waste Oil and Waste Anti-  
 freeze: Used oil (oil must  
 be oil only and not contain  
 any gas, water or antifreeze)  
 and antifreeze is collected for  
 recycling at Franklin County  
 Solid Waste Management  
 located on Joyce Lane in  
 Winchester and at the fol-  
 lowing Convenience Centers:  
 Alto, Capital Hill, Center  
 Grove, Cowan, Estill Springs,  
 Lexie Crossroads, Old Salem,  
 Sewanee and Winchester  
 Springs.  
 Don't clog up your pipes  
 and sewer lines; take your  
 used cooking oil to 419 Joyce  
 Lane, Winchester.

## LAND FOR SALE

**BEAUTIFUL WOODED HOME-**  
**SITE:** 2.3 acres. R-1 zoned. Laurel  
 Lake Road in Monteagle. All utili-  
 ties/city service. Spring-fed creek.  
 \$29,000. Call (850) 261-4727 or  
 (850)255-5988.

**LOST COVE**  
**BLUFF LOTS**  
 www.myerspoint.net  
 931-703-0558

## LAWN CARE

**CHAD'S LAWN &**  
**LANDSCAPING**  
**-FREE ESTIMATES-**  
 \* Lawn care & Design (Mulch & Planting)  
 ALSO: \* Tree Trimming & Removal  
 \* Pressure Washing \* Road Grading  
 \* Stone Patio/Fireplace \* Garden Tilling  
 \* Leaf Pickup & Blowing  
 (931) 308-5059

**EAGLE LANDSCAPING &**  
**LAWN MAINTENANCE CO.**  
 Now Offering Specials for  
**SUMMER!**  
 We offer lawn maintenance, landscaping,  
 hedge/tree trimming & more!  
 Please call for your free estimate  
 (931) 598-0761 or (931) 636-0383

## LOCAL SERVICES

**DAVID M. BURNETT**  
 LADAC II, NCAC I, QCS  
 ADDICTIONS & CODEPENDENCY  
 COUNSELOR  
 DAVIDM.BURNETT1@GMAIL.COM  
 PHONE: 423-280-0756  
 WWW.DAVIDMBURNETT.COM

**Elliott's**  
**Painting & Handyman**  
**Services**  
 Large or Small Projects  
 Call Matthew.  
 931-308-2354

**WATER SOLUTIONS**  
 Joseph Sumpter  
 Owner/Licensed Residential Contractor  
 Specializing in drainage and rainwater  
 collection systems  
 598-5565  
 www.josephsremodelingsolutions.com

**Troubled?**  
 Call  
 CONTACT LIFELINE  
 of Franklin County  
 967-7133  
 Confidential Help

## LOCAL SERVICES

**MARK'S HOME REPAIR**  
**KITCHEN AND BATH REMODELING**  
 Insured. Decks, Roofing, Electrical,  
 Plumbing, Drywall, Tile & Hardwood  
 Floors, Outbuildings, Pressure Washing.  
 MARK GREEN, owner  
 931-636-4555 | mdgreen41@gmail.com

**King's Tree Service**  
 Topping, trimming,  
 bluff/lot clearing, stump  
 grinding and more!  
 \*Bucket truck or climbing\*  
 Free wood chips with job  
 Will beat any quoted price!  
 Satisfaction guaranteed!!  
 —Fully licensed and insured—  
 kingstreeservice.com  
 Call (931) 598-9004—Isaac King

**Lakeside**  
**Collision**  
 "Done Right, the First Time"  
 103 Mabey Ave., Monteagle  
 Ph: 931.924.3316 | Cell: 931.235.3316  
 lakesidecollision00@gmail.com

**MASSAGE**  
**Regina Rourk Childress**  
 Licensed Massage Therapist  
 www.reginarourk.com  
 ~ GIFT CERTIFICATES ~  
 (931) 636-4806

**CHARLEY WATKINS**  
**PHOTOGRAPHER**  
 Sewanee, TN  
 (931) 598-9257  
 http://www.photowatkins.com

931-636-3405  
**Sanders Electric**  
 Residential and Commercial

classifieds@sewaneemessenger.com

**KEEP IN TOUCH**  
 www.sewaneemessenger.com  
 www.themountainnow.com  
 ads@sewaneemessenger.com

**TENNESSEE**  
**ONLINE VOTER**  
**REGISTRATION**  
 #GoVoteTN  
**VOTER REGISTRATION DEADLINE**  
**for the November 6 Federal and State General**  
**Election is October 9!**  
**Are You Registered to Vote?**  
 Register to vote online! You can also check your status or learn more  
 about the registration process. Go to http://www.govotetn.com  
 for more information.

## MOVER

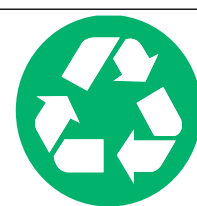
**THE LOCAL MOVER**  
 Available for Moving Jobs  
 Call or Text Evan Barry  
**615-962-0432**  
 Reviews at <www.thelocalmoverusa.com>.

## WOODWORKING

**The Gnarled Oak**  
 Antique  
 furniture refinishing  
 (931) 592-9680  
 Bill Childers, Prop

## YARD SALE

**HALF PRICE SALE:** Summer  
 items! Children's/adults' apparel,  
 household items, movies/games.  
 Open Friday/Saturday, 8 a.m.-??.  
 Midway Market, 969 Midway Rd.,  
 Sewanee. (931) 598-5614.



## CONVENIENCE/ RECYCLING CENTER HOURS

The Convenience Cen-  
 ter for household gar-  
 bage, trash and recycling  
 is located on Missouri  
 Avenue. Its hours are:  
 Monday, 1-6 p.m.; Tuesday  
 through Friday, 3-6 p.m.;  
 Saturday, 8 a.m.-4 p.m.;  
 Closed Sunday. Closed on  
 national holidays. There  
 are blue recycling bins  
 for metal (tin, appliances,  
 etc.), newspapers/maga-  
 zines, some plastic #1-#7,  
 cardboard and aluminum  
 cans.

# GLASS RECYCLING GUIDELINES

■ **Recycle empty glass**  
**containers only.**  
**Remove caps and lids.**

■ **Keep it clean.**  
**No food residue.**  
**No ceramics,**  
**mirrors, lightbulbs,**  
**drinking glasses.**

■ **Separate by color:**  
 ■ **BLUE/GREEN**  
 ■ **BROWN**  
 ■ **CLEAR**

■ **Do not leave items**  
**outside of bins. Do**  
**not leave trash and**  
**boxes behind.**

Glass recycling bins are available on Kennerly Avenue in Sewanee,  
 behind the Facilities Management compound.  
 This effort in landfill waste reduction and glass recovery is provided  
 by the University of the South.

ads@sewaneemessenger.com





# BARDTOVERSE

by Phoebe Bates

## Back to College

A little learning is a dangerous thing.  
Drink deep or taste not the Pierian spring;  
There shallow drafts intoxicate the brain  
And drinking largely sobers us again.  
Fired at first sight with what the Muse imparts,  
In fearless youth we tempt the heights of Arts  
While from the bounded level of our mind  
Short views we take, nor see the lengths behind,  
But, more advanced, behold with strange surprise  
New distant scenes of endless science rise!  
So, pleased at first the towering Alps we try  
Mount o'er the vales and seem to tread the sky;  
The eternal snows appear already past,  
And the first clouds and mountains seem the last;  
But those attained, we tremble to survey  
The growing labours of the lengthened way;  
The increasing prospect tires our wandering eyes,  
Hills peep o'er hills, and Alps on Alps arise!

A Little Learning, by Alexander Pope



**wm.c.mauzy construction co.**

**Bill Mauzy, Owner, General Contractor**

[www.mauzyconstruction.com](http://www.mauzyconstruction.com)

**931.598.0686 (office)**

[billmauzy@me.com](mailto:billmauzy@me.com)

**931.580.0686 (cell)**

# New Retreat at St. Mary's Sewanee

SEPTEMBER 28-30

## A LABYRINTH JOURNEY

CONNECTING WITH YOUR CREATIVITY  
THROUGH WALKING AND WRITING



Living in complex times requires creativity and a sense of grounding that is found in the spiritual. Join Margy Oehmig and Terry Price for a weekend of joy and discovery through labyrinth walking followed by reflection and writing. This will be a time to get away from the noise and distraction of the world.

**5 pm, Friday Sept. 28 to 11 am, Sunday, Sept. 30**  
**\$365/\$465 includes lodging and meals**  
**\$265 for commuters**

For more information or to register, call 931-598-5342,  
email <reservations@stmaryssewanee.org>  
or go online to <[www.stmaryssewanee.org](http://www.stmaryssewanee.org)>.



**ST. MARY'S  
SEWANEE**

The Ayres Center for  
Spiritual Development

# Community Calendar

## Today, Friday, Aug. 17

*Annual Conference of TN Episcopal Churchmen,  
DuBose Conference Center, through Aug. 19*  
*New Upper School Orientation, St. Andrews-Sewanee  
Orientation, School of Theology, through Aug. 26*

- 7 a.m. Curbside recycling
- 8:30 a.m. Deep Stretch Yoga, Darrylann, Comm Ctr.
- 9 a.m. CAC office open, until 11 a.m.
- 10 a.m. Game day, Senior Ctr.
- 4 p.m. SAS Parents' reception, Ayres House, SAS, until 6:30 p.m.
- 5 p.m. Reception, Wollam, Artisan Depot, 204 E. Cumberland St., Cowan, until 7 p.m.

## Saturday, Aug. 18

*National Honeybee Day*  
8 a.m. Sewanee Gardeners' Market, until 10 a.m.  
8:30 a.m. Yoga, Richard, Comm Ctr., until 10 a.m.  
9 a.m. FCDP, 420 E. Main St., Decherd  
9 a.m. MGT 5K Parkrun, meet at Pearl's parking lot  
9:30 a.m. Hospitality Shop open, 1096 Univ Ave., until noon (then closed until Sept. 4)

## Sunday, Aug. 19

- Noon National Honeybee Day celebration, SCSP Visitors' Center, until 4 p.m.
- 2 p.m. Knitting circle, Mooney's, until 4 p.m.
- 4 p.m. Hatha Yoga, Helen, Comm Ctr.

## Monday, Aug. 20

*Classes begin, SAS*  
*Grundy County Fair, Gruetli-Laager Recreation Park*  
9 a.m. CAC Office open, until 11 a.m.  
9 a.m. Pilates, intermediate, Kim, Fowler Ctr.  
9:30 a.m. Yoga, Darrylann, St. Mary's Sewanee  
10:30 a.m. Chair Exercise, Ruth, Comm Ctr.  
1 p.m. Wings of Hope, Gallagher, 200 2nd Ave NW, Winchester (bring a pie to share)  
3 p.m. Girl Scouts info session, Comm Ctr.  
4 p.m. Sewanee Trust for Historic Preservation, Adult Ed Room, Otey Parish House  
5 p.m. Yoga for Strength/Healing, Pippa, Comm Ctr.  
6 p.m. Karate, youth, Legion Hall; adults, 7 p.m.  
7 p.m. Franklin County Commissioners, Courthouse, Winchester

## Tuesday, Aug. 21

- 7 a.m. Qi Gong on the Bluff, Wall, St. Mary's Sewanee
- 8 a.m. Godly Play/PMO, Otey, until 10:30 a.m. <oteyformation@gmail.com>
- 8:30 a.m. Deep Stretch Yoga, Darrylann, Comm Ctr.
- 9 a.m. CAC office open, until 11 a.m.
- 9 a.m. Pilates, beginners, Kim, Fowler Ctr.
- 9:30 a.m. Crafting ladies, Morton Memorial, Monteagle
- 10:30 a.m. Bingo, Senior Ctr.
- 11:30 a.m. Grundy Co. Rotary, Dutch Maid Bakery
- Noon Pilates, intermediate, Kim, Fowler Ctr.

- 5:30 p.m. Yoga, Darrylann, St. Mary's Sewanee
- 6:30 p.m. Beginners ballroom dance, Valerie and Phillip, Comm Ctr.; intermed. 7:30 p.m.

## Wednesday, Aug. 22

- 9 a.m. CAC office open, until 11 a.m.
- 9 a.m. Pilates, intermediate, Kim, Fowler Ctr.
- 10 a.m. Writers' group, 212 Sherwood Rd.
- 4:30 p.m. Centering Prayer Group, St. Mary's Sewanee
- 10:30 a.m. Chair Exercise, Ruth, Comm Ctr.
- 5:30 p.m. Hatha Yoga, Helen, Comm Ctr.

## Thursday, Aug. 23

- 7 a.m. Qi Gong on the Bluff, Wall, St. Mary's Sewanee
- 8 a.m. Monteagle-Sewanee Rotary, St. Mary's Sewanee
- 9 a.m. CAC office open, until 11 a.m.
- 9 a.m. Nature Journaling, Woods Lab G-10
- Noon Pilates, intermediate, Kim, Fowler Ctr.
- 12:30 p.m. Episcopal Peace Fellowship, Brooks Hall, Otey
- 1 p.m. Folks@Home caregiver's group, St. Mark's Hall, Otey
- 2 p.m. Knitting circle, Mooney's, until 4 p.m.
- 6 p.m. Karate, youth, Legion Hall; adults, 7 p.m.

## Friday, Aug. 24

- 8:30 a.m. Deep Stretch Yoga, Darrylann, Comm Ctr.
- 9 a.m. CAC office open, until 11 a.m.
- 10 a.m. Game day, Senior Ctr.
- Noon Spinal Spa, Kim, Fowler Ctr.

## Local 12-Step Meetings

- Friday**  
7 p.m. AA, open, Christ Church, Tracy City
- Saturday**  
7:30 p.m. NA, open, Decherd United Methodist
- 7:30 p.m. AA, open, Claiborne Parish House, Otey
- Sunday**  
6:30 p.m. AA, open, Holy Comforter, Monteagle
- Monday**  
5 p.m. Women's 12-step, Brooks Hall, Otey  
7 p.m. AA, open, Christ Church, Tracy City
- Tuesday**  
7 p.m. AA, open, First Baptist, Altamont  
7:30 p.m. AA, open, Claiborne Parish House, Otey
- Wednesday**  
10 a.m. AA, closed, Clifftops, (931) 924-3493  
7 p.m. NA, open, Decherd United Methodist
- 7:30 p.m. AA, open, Holy Comforter, Monteagle
- Thursday**  
6 p.m. ACA, open, St. James Episcopal, Midway  
7 p.m. Al-Anon, First UMC, Winchester



— THE SEWANEE MOUNTAIN —

# MESSENGER

**KEEP IN TOUCH**

[www.sewaneemessenger.com](http://www.sewaneemessenger.com) | [www.themountainnow.com](http://www.themountainnow.com)

[ads@sewaneemessenger.com](mailto:ads@sewaneemessenger.com)

**931-598-9949**





YOUNG LIVING™  
ESSENTIAL OILS  
Independent Distributor

Ray and April Minkler  
[styraco@blomand.net](mailto:styraco@blomand.net), [aprilminkler@blomand.net](mailto:aprilminkler@blomand.net)  
931-592-2444 931-434-6206  
For over 8,700 testimonials see  
[www.oil-testimonials.com/1860419](http://www.oil-testimonials.com/1860419)

**COMMUNITY CALENDAR ON THE  
GO!**

**WWW.SEWANEEMESSENGER.COM**

**D.D.S.**

Designated Doodle Space