

## Sewanee Names Director of Environmental Stewardship

Committed to the ongoing development of the Domain as a national center for environmental learning, the University has appointed Kevin Hiers, C'96, director of environmental stewardship.

As the chief administrator for the use of land beyond residential, commercial and campus areas, Hiers will organize the growing scientific activity on the land beyond the center of campus. He will also, through planning and partnerships with other institutions, encourage and facilitate new projects that study the Domain for the public good.

University Provost John Swallow sees this new position as the next step in realizing the Domain's exceptional potential.

"For generations, the Domain has offered opportunities for the first-hand study of the environment that are available at no other liberal arts college," he said. "The environmental richness and the sheer proximity of the land enable our students, mentored by faculty members, to develop deep skills that distinguish them from their peers, whether at scientific conferences or in the job market. The potential to develop further research opportunities on the Domain and to be recognized widely for the nature of those opportunities is significant for the University's future. By creating this new position, the University is investing in further national distinction."

Hiers will work as part of a recently formed Office of Environmental Stewardship and Sustainability that brings together several staff members toward common objectives. Professor Jon Evans, assistant provost for environmental stewardship and sustainability, said he is delighted by the addition of Hiers to the team.

"Kevin Hiers' expertise, long experience and connections to professionals in the region and across the country are truly extraordinary," Evans said. "As the Domain gains greater regional and national recognition, he will be able to plan and administer the Domain so that faculty and students from Sewanee

(Continued on page 6)



Kevin Hiers

## Council to Discuss Municipal Fee Use

The Sewanee Community Council will meet at 7 p.m., Monday, Aug. 25, when members will consider a motion to adjust the municipal fee paid by leaseholders and how to allocate the funds collected. They will also consider a motion to change the group's constitution.

At the June 30 meeting, the Sewanee Community Council approved increasing the municipal service fee paid by all leaseholders to generate \$10,000 to \$20,000 in funds to be used by the Community Council for municipal improvements. The fee increase is for a trial two-year period.

The fee increase would be based on home value according to the Franklin County tax assessment. For example, to generate \$10,000 of revenue, the owner of a home valued at \$300,000 would see a fee increase of \$56, said John Swallow, provost of the University, at the June 30 meeting. The average leasehold fee increase would be \$22 annually.

Community Council meetings are open to the public; questions and comments from guests are welcome.



St. Andrew's-Sewanee School students James Pitts (left) and Blaise Zeitler at a recent cross-country practice on the Mountain Goat Trail. Photo by Paul Klekotta

## Ground Breaking Set for Mountain Goat Trail & Pedestrian Project

Official ground-breaking ceremonies will be on Monday, Aug. 25 for the Monteagle-to-Sewanee portion of the Mountain Goat Trail as well as for the Monteagle pedestrian enhancement project.

The ceremonies will begin at 4 p.m., next to Monteagle City Hall, for the pedestrian enhancement project. At 4:30 p.m., the group will gather next to Dollar General in Monteagle to break ground for the Mountain Goat Trail project.

"These two projects will improve our quality of life in Monteagle, Sewanee and the surrounding area," said Marilyn Rodman Campbell, mayor of Monteagle. "By expanding walking and cycling opportunities, we're helping make our communities safer, healthier and happier."

The three-mile Monteagle-to-Sewanee section of the Mountain Goat Trail will extend from the Dollar General store in Monteagle west to the current end of the paved trail on Highway 156 in Sewanee. With the completion of the new segment, the Mountain Goat Trail will be a five-mile walking and biking path linking Monteagle and Sewanee.

"This is the culmination of years of work by so many people. The Mountain Goat Trail Alliance (MGTA) especially wants to thank the landowners along the Monteagle-Sewanee section of the Trail who donated easements and made this

(Continued on page 6)

## Tennessee Promise Sends Kids to College

Gov. Bill Haslam's vision to provide a tuition-free opportunity for every Tennessee student to earn a college credential is now a reality, beginning with students graduating high school in 2015.

In Franklin County, Mayor Richard Stewart, in partnership with Franklin County schools, has designated tnAchieves to serve as the partnering organization to organize and support Tennessee Promise locally. Tennessee Promise offers two years of tuition-free community or technical college to high school graduates.

"Tennessee Promise and its impact on our students, families and communities can be a real game-changer as we prepare more of our students for the jobs of today and tomorrow," said Stewart. "I strongly encourage all of our high school seniors and their families to talk with their guidance counselors about the Tennessee Promise, and I hope all Franklin County residents who want to make a real, positive impact on the lives of these students and the future of our local economy will sign up as volunteer mentors. By working together, we can be a model for Tennessee and the nation."

tnAchieves is a post-secondary access and success program with the goal of increasing higher education opportunities for Tennessee students by providing last-dollar scholarships

(Continued on page 6)



Students, parents, teachers and staff of Sewanee Elementary School attended an open house at SES on Aug. 19. A large crowd enjoyed touring the school, visiting classrooms and meeting with teachers. The Sewanee Parent Organization at SES sponsored the event.

## University Welcomes College Class of 2018

All of the approximately 467 members of the Class of 2018 will be on the Sewanee campus by Saturday, Aug. 23, for the start of orientation in the College. The program will acquaint all new students with the school's programs, services, and faculty and staff, and make the transition to Sewanee easier. It will conclude with an Aug. 26 event in All Saints' Chapel for the campus community to "launch the new year," with remarks from Vice-Chancellor John McCardell and from student leaders. College classes begin Aug. 27.

About 120 new Sewanee students arrived on campus on Aug. 13 to participate in "Finding Your Place." The program, now in its second year, comprises both a full-credit course, Discovering a Sense of Place—Upon and Beyond the Domain, and co-curricular activities led by student life.

More than 150 students who are participating in field hockey, volleyball, football, and men's and women's soccer also arrived in Sewanee early to begin practicing for their fall sports. A third group of students began PRE-Orientation on Aug. 20. "PRE," as it is more commonly known, offers new students the opportunity to get to know Sewanee through trips run by the Sewanee Outing Program and student leaders.

The incoming class includes 16 international students, 10 students with dual citizenship and four U.S. citizens who reside abroad.

There are 79 first-generation college students among this year's new students. Twenty-four percent of the class hails from Tennessee, with the rest of the class coming from 39 other states, including Maine, Hawaii and Washington state. Fourteen of the incoming students participated in the Sewanee Environmental Institute, the Bridge Program or the Sewanee Young Writers' Conference.



Georgia Mooney

## Georgia Mooney Turns 100

The community is invited to help celebrate Georgia Mooney's 100th birthday, 2–4 p.m., Saturday, Aug. 23, in Lower Cravens Hall. Look for signs on Kentucky Avenue. All are welcome.

## New Officials Take Oath of Office

The oath of office ceremony for newly elected Franklin County officials will take place at 1 p.m., Friday, Aug. 29, in the Franklin County Courthouse in the courtroom on the second floor.

The Hon. Chancellor Jeffrey F. Stewart will administer the oath of office to all the elected officials including those for District 5: county commissioners Johnny Hughes and Helen Stapleton, constable Sandy Gilliam, road commissioner Joe David McBee and school board member Adam Tucker. Also taking the oath of office will be newly elected mayor Richard Stewart and sheriff Tim Fuller. Officials elected in Districts 1–8 will also be installed at this time.

The ceremony is open to the public.

P.O. Box 296  
Sewanee, TN 37375



# Letters

## REAL REASON FOR VOTER ID? To the Editor:

In his letter in the Aug. 15 issue of the Messenger, Bill Kershner's reference to voter fraud protection is flawed. Proof is necessary, but unreasonable requirements are not.

Tennessee voter fraud is imperceptible, and nonexistent in most of the 30 other states with extended ID requirements and limited voting opportunities. Nationwide there has been very, very few cases of one voter fraud case reported for every 15 million prospective voters.

The imposition of tools limiting both days for voting and acceptable forms of identification are designed to discourage participation of black voters.

Here is what Republicans had to say on this subject. Pennsylvania House Majority Leader Mike Turzai told Republicans the voter identification law would "allow Governor Romney to win the state of Pennsylvania," in the 2012 presidential election.

Florida GOP Chairman Jim Greer publicly stated that the state's voter ID law was for suppression of Democratic party candidates: "Early voting is bad for the Republican Party candidates."

There has been a level of disrespect for Barack Obama beyond that of any previous president. Ostensibly, much of this is subliminal racial prejudice, but it is overt on some occasions as from a U.S. Representative from South Carolina who yelled out at President Obama during an address to Congress in 2009, "You lie!" No Southerner in Congress would ever have thought to hurl such an insult at a white president.

John Bratton  
Sewanee ■

## THANK YOU FOR THE VOTES To the Editor:

Thank you for each of the 1,283 complimentary votes on Election Day, Aug. 7. I appreciate the votes from each of the following communities in the First Road District of Franklin County, which includes Districts 1 and 5: Sewanee, 488 votes; Sherwood, 43 votes; Keith Springs Mountain, 54 votes; and the Annex (Winchester), 698 votes. Thanks again.

Joe David McBee  
Sewanee ■



The Tracy City Farmers Market has a new location. It is now in the parking lot at the old Grundy County High School. It is open 2–5:30 p.m., Thursdays, and 9 a.m.–12 p.m., Saturdays.

## St. Andrew's-Sewanee School Welcomes Students

St. Andrew's-Sewanee School opened its 2014–15 school year on Aug. 18 with a chapel message from the Rev. Drew Bunting, chaplain, and a 1993 graduate of the school. Bunting looked back at his time as a student and how this is the same place but not the same school. "We need to be open for all things God revealed among us in the midst of ever-changing reality," said Bunting.

During opening weekend, the Rev. John T.

Thomas, head of school, helped to welcome 248 students, which included 71 new students.

"You are welcome here, and now you belong. You are about to receive a great blessing as SAS students and families. We are here because of a rich history and now to make history," Thomas said.

The student body represents 15 countries, including China, Cuba, Germany, Holland, Jamaica, Korea, Mexico, Poland, Saudi Arabia, Singapore, South Africa, Sweden, Taiwan, Thailand and the United States. Eleven U.S. states are represented—Alabama, California, Florida, Georgia, Louisiana, Michigan, New York, North Carolina, Tennessee, Texas, Virginia and the District of Columbia.

There are 35 new students in the middle school, including 30 new sixth-graders and 36 new students in the upper school. The upper school includes 96 day students and 71 boarders.

Families who are considering applying to St. Andrew's-Sewanee for mid-year or the 2015–16 school year are encouraged to begin the process soon. Online inquiries and applications are already in process for next year. For more information go to <[www.sasweb.org/admission](http://www.sasweb.org/admission)>.



## One-Stop Transportation Information: dial 511

### Letters to the Editor Policy

Letters to the editor are welcome at the Sewanee Mountain Messenger and are a vital part of our community's conversation. Letters need to be no longer than 250 words and may be edited for space and clarity. We make exceptions from time to time, but these are our general guidelines.

Letters and/or their author must have some relationship to our community. We do not accept letters on national topics from individuals who live outside our circulation area. Please include your name, address and a daytime telephone number with your letter. You may mail it to us at Sewanee Mountain Messenger, P.O. Box 296, Sewanee, TN 37375, come by our office, 418 St. Mary's Ln., or send your email to <[news@sewaneemessenger.com](mailto:news@sewaneemessenger.com)>.—LW



### THE SEWANEE MOUNTAIN MESSENGER

418 St. Mary's Ln.

P.O. Box 296

Sewanee, Tennessee 37375

Phone (931) 598-9949

Fax (931) 598-9685

Email [news@sewaneemessenger.com](mailto:news@sewaneemessenger.com)

[www.sewaneemessenger.com](http://www.sewaneemessenger.com)

Laura L. Willis, *editor/publisher*  
Janet B. Graham, *advertising director/publisher*  
April H. Minkler, *office manager*  
Ray Minkler, *circulation manager*  
Leslie Lytle, *staff writer*  
K.G. Beavers, *staff writer*  
Kevin Cummings, *staff writer*  
Sandra Gabrielle, *proofreader*  
Geraldine H. Piccard, *editor/publisher emerita*



*Contributors*  
Phoebe Bates  
Jean Yeatman  
John Shackelford  
Annie Armour  
John Bordley  
Virginia Craighill  
Patrick Dean  
Buck Gorrell  
Margaret Stephens  
Peter Trenchi  
Pat Wisner  
Francis Walter

Published as a public service to the Sewanee community. 3,700 copies are printed on Fridays, 47 times a year, and distributed to 26 Sewanee-area locations for pickup free of charge.

This publication is made possible by the patronage of our advertisers and by contributions from The University of the South (print production) and the Sewanee Community Chest.

**SUBSCRIPTIONS** \$75 first class.

All material in the Sewanee Mountain Messenger and on its website are copyrighted and may not be published or redistributed without written permission.

## Serving Where Called

Please keep the following individuals, their families and all those who are serving our country in your thoughts and prayers:

**Cole Adams**  
**Michael Evan Brown**  
**Mary Cameron Buck**  
**Lisa Coker**  
**Jennifer Lynn Cottrell**  
**James Gregory Cowan**  
**Nathaniel P. Gallagher**  
**Nathaniel Andrew Garner**  
**Tanner Hankins**  
**Robert S. Lauderdale**  
**Dakota Layne**  
**Byron A. Massengill**  
**Andrew Midgett**  
**Alan Moody**  
**Brian Norcross**  
**Christopher Norcross**  
**Michael Parmley**  
**Lindsey Parsons**  
**Peter Petropoulos**  
**Troy (Nick) Sepulveda**  
**Melissa Smartt**  
**J. Wesley Smith**  
**Charles Tate**  
**Tyler Walker**  
**Jeffery Alan Wessel**  
**Nick Worley**

If you know of others in our Mountain family who are serving our country, please give their names to American Legion and Auxiliary member Louise Irwin, 598-5864.

### MESSENGER HOURS

*Monday, Tuesday & Wednesday*

9 a.m.–5 p.m.

*Thursday—Production Day*

9 a.m. until pages are completed  
(usually mid-afternoon)

*Friday—Circulation Day*

Closed



**MOLLI CA**  
CONSTRUCTION LLC

931 205 2475

[WWW.MOLLIACONSTRUCTION.COM](http://WWW.MOLLIACONSTRUCTION.COM)

- CRAFTSMANSHIP ▪
- CREATIVITY ▪
- SUSTAINABILITY ▪

Where Our Community Gathers  
Downtown Sewanee  
(931) 598-5434

**Welcome**  
to our  
**Mountain**  
FRESHMEN  
& PARENTS!

**KEEP WATCH**  
FOR TRIVIA NIGHTS & STUDENT DISCOUNTS!

**Café Hours**  
Mon–Sat • 7:00 a.m.–6:00 p.m.  
Sunday • 7:00 a.m.–2:00 p.m.

**Tavern Hours**  
Mon–Thu • 4–10:30p | Fri • 4–11:30p  
Sat • 11a–11:30p | Sun • 11a–10:30p

**Jim Long's Import Auto Service** 931-596-2217  
Exclusive Volvo Automobile Facility 931-596-2633

We stock new, used and rebuilt Volvo parts.  
We service and repair Volvos.  
We buy running, disabled or wrecked Volvos.

1741 Howell Rd.  
Hillsboro, TN 37342

Same owner - Same location for more than 38 years  
ASE Master Certification for more than 20 years



## Upcoming Events & Meetings

### New Women's AA Group Forms

A new Alcoholics Anonymous (AA) group for women meets at 4:30 p.m. on Fridays, at 524 Sweetberry Dr. in Clifftops. For more information and directions, call (931) 924-3493.

### Askew Offers Free Sketching Workshop on Saturdays

Local artist Bob Askew will offer outdoor sketching tips and techniques on Saturdays in August. At 9 a.m., Saturday, Aug. 23, the group will gather at Angel Park. Bring pencils, straight edge, sketchbook, bug spray and a folding chair. The session will end at 12 p.m. The free three-hour informal workshop is open to all, including children. For more information, contact Askew at <bobaskew@askewart.com>.

### SUD Board Meets on Tuesday

The board of commissioners of the Sewanee Utility District will meet at 5 p.m., Tuesday, Aug. 26, at the SUD office. The agenda for the meeting is: approval of the agenda; approval of the July 8 minutes; general manager's report and financial report; unfinished business: update on the Constructed Wetlands Study; new business: unaccounted-for water loss. There will be time for announcements and visitor comments. The next meeting is scheduled for Tuesday, Sept. 23.

### Rotary Club Meetings

The Grundy County Rotary Club meets at 11:30 a.m., Tuesdays, at Dutch Maid Bakery in Tracy City. On Aug. 26, Joan Almon will talk about early childhood development as an introduction to a discussion of the club's project to build a playground in Coalmont in Phipps Park.

The Monteagle Sewanee Rotary Club meets at the Smoke House Restaurant in Monteagle on Wednesday mornings. Coffee begins at 6:50 a.m., with breakfast and the meeting beginning at 7 a.m. and ending by 8 a.m. On Aug. 27, Pat West will discuss "The Power of Personal History."

The Monteagle Sewanee Rotary Club also meets at 12 p.m., Thursdays, at the Blue Chair Tavern in Sewanee. On Aug. 28, Sewanee's head football coach Tommy Laundrine will give a preview of the upcoming season.

### Sunset Serenade Set for Aug. 31

St. Mary's Sewanee: The Ayres Center for Spiritual Development will host its fifth annual Sunset Serenade beginning at 5 p.m., Sunday, Aug. 31.

Guests will be entertained with music by Noel Workman and Friends, John Jarvis, Don Cook and Bill Labounty. Tapas will be provided by Lee Towery Catering from Chattanooga.

Reservations are required. Please contact St. Mary's Sewanee at 598-5342 or email <reservations@stmaryssewanee.org>. Tickets are \$60 per person; beer and wine are included.

### MCMC Inside Yard Sale Set

An inside yard sale benefitting Mid-Cumberland Mountain Ministries will be from 8:30 a.m. to 3 p.m., Tuesday and Wednesday, Sept. 2 and 3, at Holy Comforter Episcopal Church, 16 First St., Monteagle. Clothing for men, women and children, toys and other items will be available at great prices. Donations are being accepted. To arrange for pickup or drop-off, call Cathy at (931) 924-3380.

### Birders Gather for Meeting on Sept. 2

The Highland Rim Chapter of the Tennessee Ornithological Society will meet on Tuesday, Sept. 2, at the First Presbyterian Church in Tullahoma. The business meeting will begin at 6 p.m., with light refreshments at 6:30 p.m., followed by a talk at 7 p.m. by Polly Rooker on "Birding in Panama."

The group will also gather at 7 p.m., Saturday, Sept. 6, at the Tullahoma High School parking lot for "Swift Night Out." Bring a chair and binoculars and watch chimney swifts dive by the thousands into the school's chimney. For directions or more information call Lisa Trail at (931) 728-6045.

### South Cumberland Regional Land Trust meeting Sept. 6

The Jumpoff Community Land Trust (JCLT) invites newcomers to the Mountain, friends and those interested in sustainable living to attend the South Cumberland Regional Land Trust 22nd annual meeting on Saturday, Sept. 6. The potluck supper will begin at 5:30 p.m. Please bring a favorite side dish or dessert to share. Also, there will be a presentation by biologist Sanford McGee on JCLT's first Bioblitz diversity survey.

Feel free to bring a musical instrument for jamming around the bonfire. Children are welcome, but please leave dogs at home. Some seating will be provided, but a lawn chair and bug repellent is recommended.

The event will be in Alf's Field at JCLT. To get there: From Hwy. 41A, turn south onto Route 156 at the St. Andrew's-Sewanee School blinking yellow light. Continue on 156 around the end of the Sewanee airfield. Continue on 156 for three miles Turn left at the Marion County line sign. Turn left on Tate Road and continue for one-half mile to Tate Trail. Turn left onto Tate Trail and enjoy a glorious one-mile woodland drive to Alf's Field (on the right).

## Woman's Club Opens New Year

The first meeting of the Sewanee Woman's Club will be at 12 p.m., Monday, Sept. 8 at the DuBose Conference Center in Monteagle. Reservations for the September meeting are due by Friday, Aug. 29. Lunch (\$13.25) will be grilled chicken chef's salad, broccoli soup, cheese biscuits and peach cobbler. There is an optional social hour at 11:30 a.m. Reservations can be made by calling Pixie Dozier at 598-5869 or email to Marianna Handler at <mariannah@earthlink.net>.

Program chairman Jane Flynn has put together an outstanding list of programs for the 2014-15 year.

At the September meeting, professor Bill McKee will present a program on "Tennessee Women Who Have Broken the Glass Ceiling." McKee is Cumberland University's vice president for academic affairs.

On Oct. 13, Annie Armour will tell "Sewanee Ghost Stories." Armour was the University archivist for 28 years.

John Shackelford, Sewanee men's tennis coach and Messenger columnist, will present the program on Nov. 10.

On Dec. 8, theatre arts professor Dan Backlund will offer a program on "World War I's First Christmas: The Truce of 1914 and a Song it Inspired."

Mountain Goat Trail board chairman Janice Thomas will talk at the Feb. 9 meeting about the history and future of the Mountain Goat Trail.

On March 9, historian Woody Register will discuss "Turning Bad Boys into Good Men: One New York City Street Urchin's Troubled Rise to Respectability, 1890-1930."

Sally Hubbard will present her "Impressions of Uganda" at the April 13 meeting.

"Porch Posts and Other Literary Amusements," is the topic of the Rev. Diane Moore's talk on May 11.

Programs begin at 12:30 p.m., with club business following around 1 p.m. Vegetarian meals and child care are available; please request these when making a reservation.

Sewanee Woman's Club annual dues are \$5. These dues and the proceeds of the club's fund-raising events support Thurmond Library and community projects.



The remnants of the Yellow House on Lake O'Donnell Road.

## Yellow House Torn Down

The University's director of physical plant services, Mike Gardner, reports that the yellow house adjacent to the Sewanee Community Center, at the corner of Lake O'Donnell Road and Prince Lane, was torn down on Aug. 18.

"This decision was made due to the building's structural instability and a very high cost to renovate it," Gardner said. "The old house has seen

a number of varied uses of late, most recently as a temporary space used by the Community Action Committee of Otey Parish."

An increasing number of issues surrounding the main building systems led to the decision to raze the structure, Gardner said, including significant structural integrity concerns, plumbing failure, an antiquated electrical system and a failing roof.

## Sewanee Community Chest Applications Available

Funding applications for the Sewanee Community Chest 2014-15 are now being accepted. Sponsored by the Sewanee Civic Association, the Sewanee Community Chest raises funds for local organizations that serve the common good. The deadline for submission is Friday, Sept. 12. Please contact <sewaneecommunitychest@gmail.com> to have an application either emailed or mailed to your organization. A downloadable request for funds form is available at <<https://sewaneecivic.wordpress.com/community-chest/funding-request/>>.

Nonprofit organizations serving the Plateau are encouraged to apply. The Sewanee Community Chest does not allocate funds to organizations that discriminate on the basis of race, creed, sex or national origin.

The Sewanee Community Chest has met the needs of the community since 1908, including those living in Franklin, Grundy and Marion counties. The Sewanee Community Chest strives to fund organizations that help those caught in the cycle of poverty, that improve lives through outreach and community initiatives, and that provide support for children with a variety of programs.

Through the generous commitment of the entire community last year, the Sewanee Community Chest was able to help 28 organizations and initiatives with a total of \$107,725.

Donations and pledges are accepted at any time at P.O. Box 99, Sewanee, TN 37375. PayPal and AmazonSmile are also donation options. For more information or to read about the organizations supported, go to <[sewaneecivic.wordpress.com](http://sewaneecivic.wordpress.com)>.



*Elegant tapas menu by Lee Towery Catering*

Music by  
-Noel Workman and Friends  
-Grammy winner John Jarvis, Grammy winner Don Cook and  
award-winning artist Bill Labounty

**\$60 per person, beer and wine included.**

*All proceeds benefit St. Mary's Sewanee's programs, retreats, and scholarships.*

**Reservations required.**

Contact us at 931-598-5342 or [reservations@stmaryssewanee.org](mailto:reservations@stmaryssewanee.org).

You may also register online through our secure website at:  
[stmaryssewanee.org/about/events](http://stmaryssewanee.org/about/events).

THE LOCAL MOVER  
615-962-0432

*Need More Room?*

**Mountain Storage**  
(931) 598-5682

■ Security Gate    Dan & Arlene Barry    ■ Security Camera  
Hwy 41 - Between Sewanee & Monteagle

5X10    |    10X10    |    10X20

For Your Antiques and Prized Possessions

**Climate Control**  
5X10    10X10    10X15    10X20    BBB  
Temperature and Humidity Regulated

*We Sell Boxes!*



# Obituaries

### David Lee Abernathy

David Lee Abernathy, age 81 of Pulaski, died on Aug. 13, 2014, in National Health Care, Pulaski. He was born in Pulaski on Aug. 14, 1932, to Raymond G. and Maude Dunnivant Abernathy, and was a lifelong resident of Giles County. He was a cattleman, served in the National Guard, and was a member of First United Methodist Church. He was preceded in death by his parents; and sisters Elise Rost and Emily Burrus.

He is survived by his daughter, Pamela Abernathy (Bude) Van Dyke of Sewanee; son, Mark Lloyd Abernathy of Huntsville, Ala.; sisters Martha and Marie Abernathy; and two grandchildren, three great-grandchildren, and many family and friends.

Graveside services were on Aug. 16 in Maplewood Cemetery, Pulaski.

Memorials may be made to Circle of Care, First United Methodist Church, 200 West Jefferson St., Pulaski, TN 38478 or Tennessee Alzheimer's Association, 1459 Interstate Dr., #211, Cookeville, TN 38501.

For complete obituary go to <<http://www.dignitymemorial.com/carr-erwin-funeral-home/en-us/index.page>>.

### Joseph Roy Hickerson III

Joseph Roy "Joe" Hickerson III, age 70 of Greeneville, Tenn., died on Aug. 9, 2014. He was born on Sept. 16, 1943, in Greeneville, to Katherine Doughty and Joe R. Hickerson Jr. He graduated from Sewanee Military Academy in 1961. He was manager of Doughty-

Stevens Furniture Company and later worked for Doughty-Stevens Funeral Home. He was a lifelong member of Greeneville Cumberland Presbyterian Church.

He is survived by his sons, Richard Doughty Hickerson and John Lindsay Hickerson; daughters, Kelly Charles Phillips and Jan Charles; the mother of his children, Judy Lindsay; brother, Bill (Melinda) Hickerson; and 10 grandchildren, one niece and three nephews.

Funeral services were on Aug. 12 at Greeneville Cumberland Presbyterian Church with the Rev. Jamie Lively and the Rev. Roy Blakeburn officiating. Interment followed in Oak Grove Cemetery, Greeneville. For complete obituary go to <[www.doughty-stevens.com](http://www.doughty-stevens.com)>.

# Memorial Service

### Michael A. Gipson

The family of Michael A. Gipson, who died on Dec. 20, 2013, will gather at 3 p.m., Saturday, Aug. 30, to lay his stone in the Gudger Family Cemetery. Family and friends are invited for this informal gathering.

To get to the cemetery, travel out Jump Off Road; turn right on Gudger Road; turn right onto McBee Lane; continue to the cemetery, which will be on the left side of the road. For more information call Glenda at (910) 409-1031.

# New Class on Kabbalah

A six-week introductory course about Kabbalah will be offered by Tom Boughan at the Sewanee Community Center. The first class will meet at 4 p.m., Saturday, Aug. 23, and on the following five Saturdays. There is a \$10 charge for each class. Participants do not have to attend all the classes to be a part of the group; drop-ins are welcome.

Boughan said Kabbalah, the Jewish mysticism, is the root of Western mysticism such as Masons, Rosicrucians, Theosophical Society, etc. It is also root to the Jewish sect Hasidism. Boughan learned Kabbalah in 1973, took an introduction course to Hasidism in 1976, became a fifth degree Rosicrucian in 1985, and has been in the Franklin County area since 1990.

For more information email Boughan at <[jongaeyu@hotmail.com](mailto:jongaeyu@hotmail.com)>.

*If your church is in our circulation area and would like to be listed below, please send service times, church address and contact information to <[news@sewaneemessenger.com](mailto:news@sewaneemessenger.com)> or phone 598-9949.*

# Church News

### Christ Church Monteagle

Bishop William Millsaps reports, "For people who keep liturgical calendars this coming week is especially rich in Christian heroes," including St. Bartholomew, St. Louis and St. Augustine of Hippo. Christ Church Monteagle invites people to learn more about these at the 10:30 a.m. service on Sunday, Aug. 24, and the 12 p.m. service each Wednesday.

### Midway Baptist Church

Midway Baptist Church is having its annual Homecoming services Saturday and Sunday, Aug. 23-24.

Saturday night singing will begin at 6 p.m., and will feature the Cavaliers Quartet, who have been coming for more than 40 years. The Donny Green Family will also be singing, as well as Jamie Terrill and Justin Terrill.

Sunday services start with Sunday school at 9:45 a.m., then the Cavaliers will sing at 10:30 a.m., followed by the morning message with Bill Woodard. A fellowship meal will close out the morning. All are invited to attend. For more information call Dina Green at (931) 308-4047.

### Otey Parish Church

On Sunday, Aug. 24, Otey will have its annual parish picnic. This welcome-back event is for

newcomers and members. At 5 p.m., there will be an introduction to lay opportunities at Otey in the new St. Mark's Hall of the Claiborne Parish House. Supper on the lawn will follow. Hamburgers and hot dogs will be provided.

To help with the menu, parishioners are asked to look at the poster in Brooks Hall to sign up to bring food for the event. Bring a folding chair or a blanket. The official Otey Ice Cream will make its debut appearance. There will be babysitting and games for children.

At 12 p.m., Monday, Aug. 25, Otey Parish will celebrate Holy Eucharist, Rite 1, for Saint Bartholomew the Apostle.

### St. James Episcopal Church

St. James Episcopal Church is planning "An Episco-What?" inquiry class.

What is the Episcopal Church? Where did it begin? What about the Bible, anyway? What is a "real" baptism? What about the bread and the wine? What makes one an Episcopalian?

Plan now to be a part of a six-week fun and informative journey to explore "An Episco-What?"

The group will meet 6-7 p.m., on six consecutive Wednesdays, Sept. 10-Oct. 15, in the parish hall at St. James Episcopal Church in Midway. All are welcome.

# CHURCH CALENDAR

### Weekdays, Aug. 22-29

7:00 am Morning Prayer, St. Mary's Convent (not Monday)  
7:30 am Morning Prayer, Otey  
8:00 am Holy Eucharist, St. Mary's Convent (not Monday)  
8:30 am Morning Prayer, St. Augustine's (begins Wednesday)  
12:00 pm Holy Eucharist Rite 1, Otey (Monday, Aug. 25)  
12:30 pm Noon Prayer, St. Mary's Convent (not Monday)  
4:00 pm Evening Prayer, St. Augustine's (begins Wednesday)  
4:30 pm Evening Prayer, Otey  
5:00 pm Evening Prayer, St. Mary's Convent (not Monday)

### Saturday, Aug. 23

7:30 am Morning Prayer, St. Mary's Convent  
8:00 am Holy Eucharist, St. Mary's Convent  
10:00 am Monteagle 7th Day Adventist Sabbath School  
11:00 am Monteagle 7th Day Adventist Worship Service  
5:00 pm Evening Prayer, St. Mary's Convent  
5:00 pm Mass, Good Shepherd Catholic, Dechard

### Sunday, Aug. 24

#### All Saints' Chapel

10:30 am Holy Eucharist-Orientation

#### Bible Baptist Church, Monteagle

10:00 am Morning Service

5:30 pm Evening Service

#### Christ Church, Monteagle

10:30 am Holy Eucharist  
10:45 am Children's Sunday School  
12:50 pm Christian formation class

#### Christ Church Episcopal, Alto

11:00 am Holy Eucharist

11:00 am Children's Sunday School

#### Christ Church Episcopal, Tracy City

11:00 am Holy Eucharist  
11:00 am Children's Sunday School

#### Church of the Holy Comforter, Monteagle

9:00 am Holy Eucharist

#### Cowan Fellowship Church

10:00 am Sunday School

11:00 am Worship Service

#### Cumberland Presbyterian Church, Sewanee

9:00 am Worship Service  
10:00 am Sunday School

#### Dechard United Methodist Church

9:45 am Sunday School  
10:50 am Worship

#### Epiphany Episcopal Church, Sherwood

10:30 am Children's Sunday School  
10:45 am Holy Eucharist

#### First United Methodist Church, Tracy City

8:30 am Worship Service  
9:45 am Sunday School  
11:00 am Worship Service

6:00 pm Bible study, prayer meeting

#### Good Shepherd Catholic Church, Dechard

10:30 am Mass

#### Grace Fellowship

10:30 am Sunday School/Worship Service

#### Harrison Chapel Methodist

10:00 am Sunday School

11:00 am Worship Service  
5:00 pm Evening Worship Service  
**Midway Baptist Church • Homecoming**  
9:45 am Sunday School  
10:30 am Special singing, Cavaliers  
11:00 am Morning Service -Bill Woodard  
12:15 pm Fellowship Meal  
6:00 pm Evening Service

#### Midway Church of Christ

10:00 am Bible Study  
11:00 am Morning Service  
6:00 pm Evening Service

#### Morton Memorial United Methodist, Monteagle

9:45 am Sunday School  
11:00 am Worship Service

#### New Beginnings Church, Jump Off

10:30 am Worship Service

#### Otey Memorial Parish

8:50 am Holy Eucharist  
10:00 am Godly Play, Brooks Hall  
10:00 am Lectionary Class, Brooks Hall  
11:00 am Holy Eucharist  
5:00 pm Annual parish picnic

#### Pelham United Methodist Church

9:45 am Sunday School  
11:00 am Worship Service

#### St. Agnes' Episcopal, Cowan

11:00 am Holy Eucharist Rite I

#### St. James Episcopal

9:00 am Holy Eucharist Rite II

#### St. Margaret Mary Catholic Church, Alto

8:00 am Mass

#### St. Mary's Convent

8:00 am Holy Eucharist  
5:00 pm Evensong

#### Sewanee Church of God

10:00 am Sunday School  
11:00 am Morning Service  
6:00 pm Evening Service

#### Society of Friends

9:30 am Meeting, 598-5031

#### Tracy City First Baptist Church

9:45 am Sunday School  
10:45 am Morning Worship  
5:30 pm Youth  
6:00 pm Evening Worship

#### Trinity Episcopal, Winchester

9:00 am Holy Eucharist  
10:00 am Children's Sunday School

### Wednesday, Aug. 27

6:00 am Morning Prayer, Cowan Fellowship  
12:00 pm Holy Eucharist, Christ Church, Monteagle  
5:30 pm Evening Worship, Bible Baptist, Monteagle  
5:30 pm Youth Fellowship, 1st United Methodist, Tracy  
6:00 pm Youth (AWANA), Tracy City First Baptist  
6:30 pm Evening Prayer, Trinity, Winchester  
7:00 pm Evening Worship, Harrison Chapel, Midway  
7:00 pm Adult Christian Ed, Epiphany, Sherwood  
7:00 pm Evening Worship, Tracy City First Baptist



## MOORE-CORTNER FUNERAL HOME

*Specializing in pre-funeral arrangements • Offering a full range of funeral plans to suit your wishes • We accept any & all Burial Insurance Plans*



We are a father & son management team—  
**Bob & Jim Cortner**  
*Owners/Directors*

### 967-2222

300 1st Ave. NW, Winchester

## Welcome back, students!

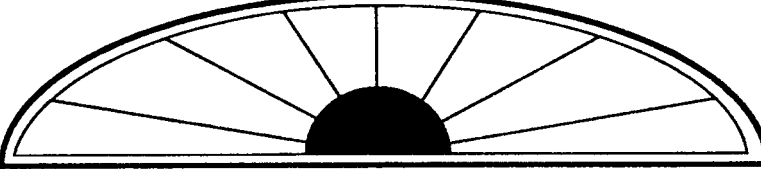
*Your Place for Organic & Local Products*

- ◆ Natural Foods
- ◆ Personal Care Products
- ◆ Garden Supplies
- ◆ Yarn & Knitting Supplies
- ◆ Local Arts & Crafts

**Mooney's**  
Market & Emporium

931-924-7400 • 1265 W Main Street • Monteagle, TN






## wm.c.mauzy construction co.

**Bill Mauzy, Owner, General Contractor**

[www.mauzyconstruction.com](http://www.mauzyconstruction.com) 931.598.0686 (office)  
[billmauzy@bellsouth.net](mailto:billmauzy@bellsouth.net) 931.580.0686 (cell)



**ST. MARY'S SEWANEE**  
The Ayres Center for Spiritual Development

Call (931) 598-5342  
or (800) 728-1659  
[www.StMarysSewanee.org](http://www.StMarysSewanee.org)  
<[reservations@stmaryssewanee.org](mailto:reservations@stmaryssewanee.org)>

### UPCOMING RETREATS

#### One River Wisdom School

Friday, September 5-Sunday, September 7  
*Rabbi Rami Shapiro, presenter*  
New Building, \$450; St. Mary's Hall, \$350;  
Commuter, \$250

#### Introduction to Dreamwork: Unopened Letters from God

Saturday, September 13  
*Marsha Carnahan, presenter*  
\$25, Lunch included



*“See good in others,  
and others will see good  
in you.”*

From “Two-Liners Stolen From  
Others by Joe F. Pruett”

# Sewanee Realty

931.598.9200 or 931.636.5864 [www.SewaneeRealty.info](http://www.SewaneeRealty.info)  
115 University Ave., Sewanee

**Margaret Donohue,**  
*Principal Broker • 931.598.9200*

**John Brewster,**  
*Broker • 931.636.5864*

**Patsy Truslow,**  
*Affiliate Broker • 931.636.4111*



MLS 1566093 - 612 Dogwood Dr.,  
Clifftops. \$172,000



MLS 1379047 - 136 Appletreewick St.,  
Laurel Brae. \$399,000



MLS 1487540 - 109 Wiggins Creek,  
Sewanee. \$473,000



MLS 1358150 - 100 Tomlinson Lane,  
Sewanee. \$598,000



BLUFF - MLS 1510405 -  
1899 Jackson Pt. Rd., Sewanee. \$365,000



MLS 1547630 - 645 Nickajack Trail,  
Monteagle. \$149,900



LAKE - MLS 1548250 - 311 Mountain  
View Lane, Tracy City. \$358,000



MLS 1516929 - 706 Old Sewanee Rd.  
+30 ac, Sewanee. \$349,000



MLS 1492310 - 280 Carpenter Circle,  
Sewanee. \$348,000



BLUFF - MLS 1492405 - 3442 Sherwood Rd.  
+ cottage, Sewanee. \$789,000

## LOTS & LAND

|                        |         |           |
|------------------------|---------|-----------|
| Smith Rd. 7.73ac       |         | \$ 72,000 |
| 5 ac Montvue Dr        | 1524863 | \$ 59,000 |
| Big Springs Rd. 5.83ac | 1497419 | \$ 70,000 |
| Taylor Rd., Sew., 29ac | 1470665 | \$179,000 |
| 36 Azalea Ridge Rd.    | 1378840 | \$ 59,000 |
| First St., Monteagle   | 1325122 | \$ 16,800 |
| Sarvisberry Place      | 1207077 | \$ 83,000 |
| Sarvisberry Place      | 1244981 | \$ 85,000 |



MLS 1479185 - 1150 Sassafras Ct.,  
Clifftops. \$224,900



BLUFF - MLS 15131957 - 952 Sunset  
Rock Rd., Monteagle. \$289,900



MLS 1526530 - 21 Mont Parnasse Blvd.,  
Sewanee. \$369,000



MLS 1514972 - 202 Main St.,  
Monteagle. \$112,000



MLS 1526416 - 145 Parsons Green Circle,  
Sewanee. \$249,000



MLS 1553073 - 13 Sewanee Summit  
Trail, Decherd. \$78,000



MLS 1547868 - 1402 Cooley's Rift Blvd.,  
Monteagle. \$328,900



BLUFF - MLS 1503907 - 1801 Bear Court,  
Monteagle. \$279,000



MLS 1536114 - 291 Wiggins Creek Dr.,  
Sewanee. \$285,000



BLUFF - MLS 1494787 - 253 Vanderbilt  
Lane, Sewanee. \$1,298,000



MLS 1549962 - 263 Marshall Rd.,  
Belvidere. \$265,000



MLS 1555888 - 615 Haynes Rd.,  
Sewanee. \$399,000



15 acres - MLS 1541012 -  
786 Old Sewanee Rd., Sewanee. \$349,000



MLS 1476919 - 47 Parson's Green,  
Sewanee. \$179,000



MYERS POINT  
bluff and lake tracts



MLS 1528475 - 92 Carpenter Circle,  
Sewanee. \$399,000



MLS 1542948 - 7829 Sewanee Hwy.,  
Cowan. \$119,000



MLS 1467709 - 52 Sherwood Trail,  
Sewanee. \$349,000



MLS 1534857 - 290 Clara's Point Rd.,  
Sewanee. \$399,000



MLS 1503887 - 15 Oklahoma Ave.,  
Sewanee. \$225,000



10 acres - MLS 1499101 -  
107 Blackberry Lane, Sewanee. \$262,000



MLS 1528157 - 2300 Lakeshore Dr.,  
Clifftops. \$299,900



MLS 1522506 - 2461 Clifftops Ave.,  
Monteagle. \$394,900



MLS 1553768 - 324 Rattlesnake Springs  
Rd., Sewanee. \$439,000



BLUFF + 30ac - MLS 1528769 -  
1710 Stagecoach Rd., Sewanee. \$885,000



MLS 1548725 - 508 Cowan St. E.,  
Cowan. \$145,000



BLUFF - MLS 1397328 -  
974 Old Sewanee Rd., Sewanee. \$299,000



MLS 1513077 - 111 Louisiana Ave.,  
Sewanee. \$298,000



BLUFF - MLS 1562244 -  
53 Valley View Rd., Monteagle. \$449,000



BLUFF - MLS 1484663 -  
13 Sherwood Trail, Sewanee. \$975,000



MLS 1545326 - 1805 Laurel Lake Dr.,  
Monteagle. \$179,000

## BLUFF TRACTS

|                       |         |           |
|-----------------------|---------|-----------|
| 36 Long View Lane     | 1503912 | \$ 75,000 |
| 7 Jackson Pt. Rd.     | 1503910 | \$ 82,000 |
| 37 Jackson Pt. Rd.    | 1493957 | \$ 90,000 |
| Jackson Pt. Rd.       | 1493960 | \$125,600 |
| 4 Saddletree Lane     | 1493962 | \$109,180 |
| 12 Saddletree Lane    | 1493961 | \$ 79,500 |
| Jackson Pt. Rd. 19+a  | 1531331 | \$120,000 |
| Jackson Point Rd.     | 1426464 | \$ 99,000 |
| Jackson Pt. Rd. 8.47a | 1510413 | \$ 89,000 |
| Jackson Point Rd.     | 1099422 | \$199,000 |
| 7 Saddletree Lane     | 1417538 | \$ 70,000 |
| Raven's Den           | 1015362 | \$ 79,000 |



**MGTA** (from page 1)

possible," said Janice Thomas, MGTA board president.

The pedestrian corridor extension project will install about 2,000 feet of five-foot-wide sidewalks on the east side of Highway 64 beginning at Dubose Street heading south to Elgin Drive. The sidewalk will extend access to the multi-use trail and park in downtown Monteagle. A new pedestrian crosswalk will also be created across Highway 64 at the Monteagle City Ball Park. The town of Monteagle was awarded a \$216,320 grant from the Tennessee Department of Transportation (TDOT) for this project.

The Mountain Goat Trail project is being funded by a TDOT Transportation Enhancement grant. The MGTA funded five years of engineering and development costs totaling more than \$140,000, made possible by the financial support of individuals and private foundations. At the June 30 Monteagle City Council meeting, MGTA board members presented the Town of Monteagle with a check for \$85,843.68 toward construction costs for the project.

The Mountain Goat Trail is a rail-to-trail community outdoor recreation project that is converting an abandoned railroad right-of-way into a multi-use recreational corridor between Grundy and Franklin counties on the Cumberland Plateau in Middle Tennessee.

**Promise** (from page 1)

with mentor guidance. The program has experienced substantial success utilizing volunteers in business and community-based organizations to guide its students through the college access and success processes.

While all public high school students are eligible for tnAchieves, the program focuses primarily on first-generation, low-income students.

"tnAchieves is excited to partner with local leaders in Franklin County and Gov. Haslam's Tennessee Promise to create a more qualified workforce in the community and also provide students with a promise for a brighter future," said Randy Boyd, chairman of the board of tnAchieves.

Coupled with the Tennessee Promise scholarship, every student will be paired with a mentor to support the student through admission and financial aid paperwork, motivate the student to meet deadlines, and perhaps most importantly, encourage the student to reach his/her potential.

tnAchieves is currently recruiting volunteer mentors in Franklin County. Mentors spend approximately one hour monthly working with high school seniors to ensure they make a smooth transition from high school to college. tnAchieves will train all mentor applicants, provide them with a mentor handbook, and communicate with them throughout their experience with the program.

**Volunteer to be a Student Mentor**

As part of the partnership between Tennessee Promise and tnAchieves, tnAchieves is recruiting volunteer mentors in Franklin County.

Mentors spend about one hour a month working with high school seniors to ensure they make a smooth transition from high school to college.

tnAchieves trains all mentors, provides them with a handbook and guidance, and communicates with them throughout the program.

To learn more or apply go to <[www.tnachieves.org/mentor-application](http://www.tnachieves.org/mentor-application)>.



Matthew Mollica, a member of the St. Andrew's-Sewanee School mountain biking team, before a recent team ride. Photo by Paul Klekotta

**Hiers** (from page 1)

and beyond can make even greater advances in science and for the public good."

Rounding out the group are Nate Wilson, Domain manager, who will assist Hiers in his efforts, and Marvin Pate, director of sustainability integration.

Before returning to Sewanee, Hiers was acting chief of the Wildland Fire Center, established in 2012 at Florida's Eglin Air Force Base as part of the Air Force Civil Engineer Center. In that capacity, Hiers was responsible for overseeing all Air Force wildfire and prescribed burning activities on nine million acres of installations and ranges across the United States. Hiers developed and directed the ecological monitoring program at Eglin and also secured more than \$7 million in funding for collaborative ecological research involving academic partners. Prior to Eglin, he worked as a research ecologist for the Jones Ecological Research Center in Newton, Georgia. Hiers has published more than 40 scientific articles on ecological forestry, restoration of longleaf pine ecosystems, fire effects on wildlife habitat, fire behavior, and forest ecology.

Faculty and students in archaeology, biology, forestry, geology, history, and religion have found the Domain a valuable resource for research projects.

**Lectures on WWI Poisonous Gases**

John Bordley, professor emeritus of chemistry, will give three talks about "Poisonous Gases in World War I" to commemorate the centennial of the beginning of that war. The public is invited to each of the talks.

Bordley will speak at 7 p.m., Monday, Aug. 25, to the Highland Rim Chapter of the Tennessee Trails Association, at the D. W. Wilson Community Center, 501 N. Collins St., Tullahoma.

This talk will highlight the topography of Flanders to explain why the Germans marched across Belgium in August 1904. It will also look at why poisonous gases were introduced into the war in 1915 and the problems with gas warfare resulting from the largely flat countryside.

Following the EQB lunch at St. Mary's Sewanee at 12:40 p.m., on Wednesday, Aug. 27, Bordley's talk will focus on the predominate position of the German chemical industry between 1871 and 1914. Close cooperation among several chemical firms and between industry and the government allowed Germany to produce large quantities of poisonous gases once the decision was made to use the gases.

Bordley will talk at 1:30 p.m., Friday, Aug. 29, about the chemistry of chlorine, phosgene and mustard gas, as well as address such questions as: Why were these gases chosen? How were they produced? How did troops protect themselves against gas attacks? This chemistry department seminar will be in Woods Lab room 216.

Bordley attended the World Carillon Federation Congress in Belgium. A visit to the Fields of Flanders Museum in Ieper piqued his interest in the use of poisonous gases in the war.



**Village Wine & Spirits Inc.**

**COMPETITIVE PRICES AND FRIENDLY SERVICE**

Great Wine Selection ~ Special Orders Available  
ALL YOUR FAVORITE MAJOR BRANDS

Across 41A from Monteagle's Piggly Wiggly ~ (931) 924-6900  
Mike Gifford, Owner; M-Th 9 a.m.-9 p.m.; F-Sa 9 a.m.-11 p.m.

**Brown's Body Shop**

**Leonard Brown - Owner**  
**Steve Young - Gen. Mgr.**  
**Steve Hartman - Shop Mgr.**

710 College St. • Winchester  
**931-967-1755**  
**Fax 931-967-1798**

*Come by and see us.*  
*We appreciate your business.*

**Our Work is Guaranteed!**

One of Tennessee's Rising Star Award  
Winners for Best New Business

**Pearl's**

FOGGY MOUNTAIN CAFÉ

**Full Liquor Mahogany Bar**  
Happy Hour Tuesday-Friday 5-6

**Open for Sunday Brunch 11-2**

**Fine Dining**  
Tuesday-Thursday 5-9  
Friday and Saturday 5-10

**Kash Wright's Jazz**  
Friday & Saturday



Welcome back, Sewanee and SAS students and staff! Enjoy a celebratory dinner with Kash Wright on the piano this weekend.

15344 Sewanee Hwy  
931.598.5770  
for Reservations

To apply, visit [www.tnachieves.org/mentor-application](http://www.tnachieves.org/mentor-application).

tnAchieves' mission aligns with Gov. Haslam's "Drive to 55" campaign which seeks to increase the post-secondary attainment rate to 55 percent by 2025.

Founded in 2008 as knoxAchieves, tnAchieves will operate in at least 80 counties and serve 93 percent of the state's graduating seniors. The program has experienced substantial success utilizing volunteers from business and community-based organizations to guide its students through the college access and success processes.

In only six years, more than 12,000 students have enrolled at a postsecondary institution with tnAchieves support. Of these students, more than 65 percent were the first in their families to attend college and nearly 70 percent come from families who earn less than \$50,000 annually. The program has a 90 percent FAFSA filing rate; a 71 percent fall-fall retention rate (average Tennessee community college retention rate is 59 percent); and a 33 percent three-year graduation rate (average Tennessee community college three-year graduation rate is 11 percent). tnAchieves students have also given back nearly 100,000 hours of community service since 2008.

For information on tnAchieves, contact Krissy DeAlejandro, executive director, at (865) 621-9223 or email <[krissy@tnachieves.org](mailto:krissy@tnachieves.org)>.



**New and Returning Students,  
Faculty and Staff**  
**Welcome to the Mountain!**



Custom home remodeling begins with...

**Joseph's Remodeling Solutions**  
A Division of Saenger Solutions, LLC

**Taking Quality to the Next Level**  
Licensed • Insured • Green Certified

**931-598-5565**

[joseph@josephsremodelingsolutions.com](mailto:joseph@josephsremodelingsolutions.com)  
[www.josephsremodelingsolutions.com](http://www.josephsremodelingsolutions.com)

**The Gnarled Oak**

Furniture refinishing,  
chair caning, seat weaving  
and furniture repair



Cherry Pie Safe

Flat Branch Community  
2222 Flat Branch Spur  
Tracy City, Tennessee 37387  
(931) 592-9680  
Bill Childers, Prop.



## Senior Center News

### Senior Menus

The Sewanee Senior Center serves lunch at noon on weekdays. The suggested donation is \$3 (\$0 or older) or \$5 (under 50). Please call by 9 a.m. to order lunch. If you make a reservation for lunch but do not come eat, please be prepared to pay for your meal. Menus may vary.

**Aug. 25:** Chicken Alfredo, salad, dessert.

**Aug. 26:** Pork loin, hash-brown casserole, steamed broccoli, roll, dessert.

**Aug. 27:** Ham and cheese sandwich on rye, soup, dessert.

**Aug. 28:** Spaghetti, salad, garlic bread, dessert.

**Aug. 29:** Chicken salad plate, fresh fruit, crackers, dessert.

### Daily Activities

Join them for any of these activities:

Tuesdays at 10:30 a.m., the group plays bingo with prizes.

Wednesdays at 10 a.m., the writing group gathers.

Fridays at 10 a.m. is game day.

### Participation at the Center

The Sewanee Senior Center does not charge any membership fee. All persons 50 or older who take part in any of the activities are considered members.

The center is located at 5 Ball Park Rd., behind the Sewanee Market. To reserve a meal or for more information, call 598-0771.

## University Job Opportunities

Exempt Positions: Area Coordinator; Assistant Director of Advancement Services; Associate University Registrar for Technology and Operations; Director of Sewanee Dining; Head Baseball Coach; IT Administrator, School of Theology; Manager of Sewanee Catering; Treasurer/Chief Financial Officer.

Non-Exempt Positions: Catering Truck Driver, Sewanee Dining; Cook, Server and Utility Worker, Food Service Worker Lead, Sewanee Dining; Police Officer (part-time); Police Officer (full-time).

To apply online or learn more go to <[http://hr.sewanee.edu/job\\_postings](http://hr.sewanee.edu/job_postings)>. For more information call 598-1381.



**Orientation hours:**  
8am-5pm,  
August 23-26;  
7:30am-5pm,  
August 27 & 28

Georgia Avenue, Sewanee



# School of Theology Opens New Academic Year

The School of Theology welcomes two new members to the faculty—Dr. Andrew Thompson and the Rt. Rev. James Tengatenga, Ph.D.

Thompson is the postdoctoral fellow in environmental ethics, a position made possible by a grant from the Arthur Vining Davis Foundation. He will divide his time between the seminary and the Beecken Center in the areas of environmental ethics and related subjects.

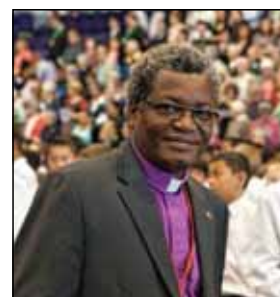
Tengatenga is the distinguished visiting professor of global Anglicanism. He will teach courses in missiology and contemporary global Anglicanism.

Anne Chenoweth, C'81, is a major gifts officer as part of the advancement team at the School of Theology. She is the first major gifts officer the School has ever had. Chenoweth began on July 1.

This year's incoming seminarian



Andrew Thompson



James Tengatenga



Anne Chenoweth



Trey Kennedy

class comes to Sewanee from 17 different dioceses, bringing the diocesan representation for the entire student body to 35, including three international students from Tanzania and Bermuda. There are 24 master of divinity students among the incoming class of 36, with 33 percent who are under the age of 30 and 36 percent who are single.

The School of Theology's student exchange partnership with Westcott House, Cambridge, U.K., continues with seminarians experiencing prayer, study and community life abroad in their middler year. Antonio Garcia Fuerte has arrived to spend his Advent semester in Sewanee and middler Trey Kennedy, T'16, will leave for Cambridge shortly.

Sewanee's School of Theology educates women and men to serve the broad whole of the Episcopal Church in ordained and lay vocations. The School develops leaders who are learned, skilled, informed by the Word of God and committed to the mission of Christ's church, in the Anglican tradition of forming disciples through a common life of prayer, learning and service.

Sewanee's seminary education and worldwide programs equip people for ministry through the gift of theological reflection in community.

For more information about the School of Theology go to <<http://theology.sewanee.edu>>.

## Unique Mountain Properties



**1728 TIMBERWOOD TRACE.** Unbelievable brow rim views of Pelham Valley. 5+ acres, long brow frontage. 3-car garage. 3812 sf, 3/2.5. MLS#1553971. \$569,000.



**THE AERIE.** 2015 Laurel Lake Dr. Aviator-like view, sitting on a point! 4/3 main house. Guest apt. 2/1. Pool. Vacation rental potential. MLS#1531518. \$669,000.



**2056 LAUREL LAKE DR.** Mountain cabin sits high above a small lake. Basement adds 816 sf, w/full bath. 1776 sf, 2/3. MLS#1555745. \$199,000.



**CLIFFTOPS.** 2331 Lakeshore Dr. Spacious one-level home w/over 500 ft lake frontage. Sun porch facing lake, gazebo, meditation bench at lake edge. 3250 sf, 5BR, 4BA. MLS#1565259. \$625,000.



**DEER RUN.** 1205 CliffTops Ave. New master bath, granite counters, screened porch, decks, hot tub. Split plan on one level. Great family retreat. 2753 sf, 3/2.5. MLS#1524154. \$348,900.



**2405 WESTLAKE AVE.** Log cabin in CliffTops near the lake. Stone fireplace. Vaulted great room. Wood floors. Split plan. 1380 sf, 2/2. MLS#1523529. \$229,000.



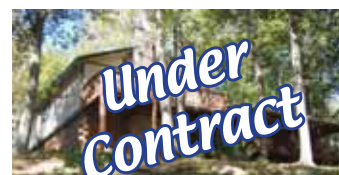
**2063 LAUREL LAKE DR.** Custom brow rim home. Two garages. Wrap decks, bonus room. Natural wood throughout. 2.3 acres, 2134 sf, 2/2.5. MLS#1538300. \$354,900.



**607 LONG VIEW LANE.** Monteagle. Quality log home. Stack stone features. Wood flooring. 1612 sf, 2/2. MLS#1552038. \$289,000.



**2306 WESTLAKE AVENUE.** Private dock. Great room, stone fireplace, vaulted great room and screened porch. 2377 sf, 3/2.5 on one level. MLS#1554601. \$590,000.



**506 LITTELL CIRCLE W.** Private dock. 2456 sf, 4/2 log/frame split level. New roof, floors. MLS#1490350. \$199,500.



**IN THE HEART OF CLIFFTOPS.** 2235 Sarvisberry Place. Wrap and screened porches, downstairs master suite. Stone fireplace. 5.35 secluded acres. 3BR, 2.5BA, 2048 sf. MLS#1455290. \$329,000.



**CLOUDS ARE WAKING!** Brow rim. 1931 Laurel Lake Dr. Brick w/ 1633 sf finished basement. Upstairs 2BR, 2BA, 1648 sf. Total 3281 sf. MLS#1550562. \$329,000.



**361 SADDLETREE LANE.** Sewanee. Custom Mollica home. Open plan. Rumsford fireplace. 1736 sf, 3/3. MLS#1560095. \$439,000.



**340 LAKE LOUISA LOOP** in Cooley's Rift. On a peninsula, this beautiful Robertson-Vaughn home has water views on 3 sides. 2451 sf, 3/3.5. MLS#1530963. \$649,000.



**CLIFFTOPS LAKEFRONT.** 2230 Westlake. 2 docks, ramp, gazebo, large deck, partial stone. Long water frontage. 3875 sf, 4BR, 3.5BA. MLS#1534145. \$749,000.



**1817 HICKORY PLACE.** Classic Craftsman cottage by Mollica Construction. Downstairs master, wide plank floors throughout. Partin landscaping. 2038 sf 3/2.5. MLS#1556607. \$549,000.



**816 LAKE O'DONNELL RD.** Sewanee. Walk to Mtn. Goat Trail. All-brick home, well-maintained. Screened porch. 1510 sf, 3/1. MLS#1564620. \$147,000.



**2460 CASTLEROCK COURT.** Extraordinary geothermal brow-view home. Decks, screened porch, 2 master suites on the main level. 2 guest BR and bonus room upstairs. 3881 sf, 4/3.5. MLS#1518851. \$1,150,000.



**34 LAKE LOUISA LOOP.** Cooley's Rift. Screened porch. Furnished. Fireplace, stone accents. 2138 sf, 3/2.5. MLS#1531400. \$429,000.



**BEAUTIFUL HOME ON LAKE BRATTON IN SEWANEE.** 36 Lake Bratton Lane. 3273 sf. 4/3, stone fireplace. Large closets, den. 896 sf apt. w/tenant for extra income. MLS#1480668. \$449,000.



**1837 HICKORY PLACE.** Classic Craftsman cottage by Mollica Construction. Downstairs master, wide plank floors throughout. Partin landscaping. 2038 sf 3/2.5. MLS#1556607. \$549,000.



**710 AZALEA COURT IN CLIFFTOPS.** Crafted by Mollica Construction. Master on the main. Impressive kitchen. 2040 sf, 3/2. MLS#1563326. \$419,000.



**Competent, Caring, Friendly, Fair—  
We're Here for You!**

Deb Banks, Realtor, 931-235-3385, [dbanks@realtracs.com](mailto:dbanks@realtracs.com)  
Dee Hargis, Broker, 931-808-8948, [aunderhill@blomand.net](mailto:aunderhill@blomand.net)  
Heather Olson, Realtor, 804-839-3659, [heatheromom@yahoo.com](mailto:heatheromom@yahoo.com)  
Ray Banks, Realtor, 931-235-3365, [banksgrass@yahoo.com](mailto:banksgrass@yahoo.com)  
Jeanette S. Banks, Broker-Owner, [banksnjb@gmail.com](mailto:banksnjb@gmail.com)

**Monteagle Sewanee, REALTORS**

View these and other quality homes and building sites at

[www.monteaglerealtors.com](http://www.monteaglerealtors.com)



Then call **931-924-7253**



# MEET YOUR NEIGHBOR

## Louise Irwin

by Kevin Cummings  
Messenger Staff Writer

Helen Louise Prince Irwin grew up in a little house tucked into the woods off Hat Rock Road, the daughter of a strict father and a mother who looked for the good in everybody.

When her mom saw the old town drunk hanging around she wouldn't bad-mouth him, she would mention how well he could whistle.

Louise, 76, also looks for the good in people. She is a prolific volunteer in Sewanee, a friend to many, and a woman with a heart for helping.

"I just figure if somebody needs me I'm going to be there," she says. "They can call me day or night."

During our conversations she is extremely welcoming in her home, but a little reluctant for people to read about her.

"Everybody knows what I've done, and they don't want to hear it or see it anymore," she says good-naturedly.

Her parents had six kids, four girls and twin boys, and she remembers weenie roasts with the family and

many picnics at Natural Bridge or the pavilion between the cross and Highway 41A.

"I grew up poor, but I didn't know I was poor," she says.

Lack of money didn't keep her and the neighborhood kids from having fun. They had a playhouse in the woods where they would cook in the make-believe kitchen and shop at the imaginary store. Pebbles in old tin cans served as peas or beans and briar leaves and mud became hamburgers.

Louise gets a phone call—a neighbor she has helped since he was a kid needs some advice. She quickly offers guidance and returns her attention to the interview.

"We got to go to the Wednesday night movie if we got the corn shucked for the pigs," she remembers. "They had double features on Wednesday nights. I went with my brothers, but of course they didn't like me tagging along."

When she was 19, Louise moved to a Chicago suburb to live with her sister. There she met her husband, Dick, who was a railroad man until



multiple sclerosis forced him to retire. Dick thought it best that they return to Louise's hometown in 1972.

"He wanted me back with my people because he knew more than I did about the disease and how he felt, but he would never let you know," she says. "He was just a funny guy. He would have spasms and he would say, 'Anybody want to dance?'"

When Dick died in 1974, Louise made a decision that she would never marry again.

"I said, 'God, if you will help me

raise these children, I will follow you, and I'm not looking for any man. And I had love with my husband. We were only married 13 years," she says.

At the time their kids were 7, 10 and 12, and with help from her mom, she raised them. Her oldest child, Jeff, is now a banker in Nashville. Her daughter, Vicki, works at MTSU in Murfreesboro and the youngest child, Patrick, a champion cyclist, lives in Alaska, where he and his wife run a sports clothing business. Like his dad, Patrick has also been diagnosed with

MS and no longer rides competitively.

Louise proudly shows pictures of her children and relatives on the walls, occasionally taking one down for a closer look. She studies some of the older photos and notes that somewhere there's a politician in her bloodline. She served eight years as a Franklin County commissioner (1998–2006) and also ran unsuccessfully for property tax assessor.

Whatever endeavor she takes on, it's driven by faith. She has been active at Otey Parish for decades, becoming an acolyte in the 1970s, when many Episcopal dioceses didn't allow female acolytes.

In addition to her church work, Louise also serves on a number of community boards, and is vice president of the local American Legion Auxiliary. She was also the chair of Sewanee's Fourth of July Committee from 1986 until 2011, and still announces at the Fourth of July events, armed with her bullhorn.

"I enjoy everything I do," she says.

### SIMPLER TIMES CERAMICS & CRAFTS

**Come In & Have Some Fun!**  
10 to 4 Tuesday–Saturday  
**Adults/Children Classes, Parties, Etc.**  
Ladies' Night—6 to 9 Tuesdays  
Makes & Takes Starting at \$5  
Senior Day—Thursdays—10% Off  
All Paint—6 to 9 Thursdays

100 Cumberland St. • Cowan • (931) 308-3696

### PAUL KLEKOTTA

National Emmy-Nominated Videographer/Photographer  
30 Years of Professional Broadcast and Photography Experience

#### HI-RES DIGITAL PHOTOS • HD VIDEO

Steadicam Owner/Operator  
Commercials • Documentaries • Music Videos  
Weddings • Sports • Special Events

Excellent Local and National References

**423-596-0623**

Email paulklekotta@charter.net

## SPREAD GOOD NEWS.

Help friends get information. Help local businesses succeed.  
Help our Mountain communities.

## SHARE YOUR NEWS.

## UPCLOSE

**Louise Irwin**

**Favorite coffee:** Folgers

**Hobbies:** Cooking and traveling

**Favorite vacation spot:** Italy

**Dislikes:** Shopping

**Favorite season:** Winter

**cricklewood**  
and Company

112 Tennessee Ave. • (931) 703-6414  
cricklewoodcandleco.com  
cricklewood@pvtnetworks.net

**Sernicola's**

Steaks, seafood, pastas, homestyle  
pizza, hot lunch buffet, plus a  
22-item fresh and healthy salad bar.  
Homemade desserts!

www.sernicolas.com • 106 Tennessee Avenue • Cowan • 962-3380  
Open Tuesday-Saturday • Lunch 11-2 • Dinner 5-8:30  
\*Closed on 3rd Tuesday for DAV



**Polly's  
Pleasure**

Antiques, Vintage Linens,  
Collectibles.

Polly Hughes

"Come for Fudge"

FRANKLIN COUNTY  
**UNITED**  
BANK

Simple Banking  
... Superior  
Service.

Mon-Thu 8:30 to 4:30; Fri 8:30 to 5:30; Sat 8:30 to noon  
Cowan  
105 S. Front St. FDIC 2030 Decherd Blvd.  
967-2900 968-3282

Welcome to  
**Cowan**

**FALL  
HERITAGE  
FESTIVAL**  
Sept. 19 - 21, 2014  
COWAN, TN  
Nestled in the Foothills of the Cumberland Mountains



### SIMPLER TIMES CERAMICS & CRAFTS

**Come In & Have Some Fun!**  
10 to 4 Tuesday–Saturday  
**Adults/Children Classes, Parties, Etc.**  
Ladies' Night—6 to 9 Tuesdays  
Senior Day—Thursdays—10% Off  
100 Cumberland St. • (931) 308-3696

TELEPHONE (931) 967-7092

**E. Bryan Elkins, D.D.S.**  
FAMILY DENTISTRY

9 A.M. TO 5 P.M. MONDAY–FRIDAY

109 SOUTH FRONT STREET • P.O. Box 516  
COWAN, TN 37318



**Classic  
Cuts**

Jack Richardson 931-636-5875  
Next To Sernicola's  
104 Tennessee Ave  
Cowan, TN 37318

**Harry's Garden Center**  
220 East Cumberland Street, Cowan, TN 37318  
Adam Nelson 931-838-0592  
James Brock 931-308-9208  
harrysgardencentar@gmail.com



**Crazy Vapes**

E-Cig Juice Bar & Lounge  
205 Cumberland St.  
(931) 691-7867  
-Batteries, Tanks, Etc.  
-Flavors Mixed to  
Customer's Choice

WEEKLY  
SPECIALS!



**Knickerbockers'**

Old Time Soda Shop

Sandwiches • Soups • Ice Cream • Treats

**Open Every Day 11 to 7**

111 Cumberland St., Cowan



Sun-Thu 11-9:30; Fri-Sat 11-10

To See Our On-Line Menu Scan Here  
226 S. Tennessee Ave. | Cowan, TN 37318  
P 931-962-9939 | www.fiesta-grill.net

**Sherman  
Veterinary  
Services**  
PLLC



Dr. Courtney Sherman  
(931) 308-6440

8041 Sewanee Highway  
Cowan, TN 37318

Nestled among the foothills of the Cumberland Mountains; the junction where history meets beautiful scenery and cultural attractions.



# VisitCowan.com



**REDUCED! REDUCED! REDUCED!**



**The source for all your real estate needs**

Cell: 423-903-6404 • Office: 423-664-1900





# AT THE MOVIES

SEWANEE UNION THEATRE

Thursday–Sunday, Aug. 28–31

*A Million Ways to Die in the West*

Rated R • 116 minutes

When a cowardly sheep farmer (Seth MacFarlane) falls in love with a mysterious beautiful stranger (Charlize Theron), he must gather his courage to fight her outlaw husband to win her heart. MacFarlane has a very specific kind of humor: some call it misogynistic, scatological and racist. Others, however, think he is the funniest writer-actor of his generation. You can decide for yourself if you choose to see "A Million Ways to Die..." Audience reviews were mixed; most journalists were pretty harsh with their comments. One trusted reviewer wrote, "Some of the gags do land—maybe one in four. But the genre-parody genre with big stars and poop jokes needs a little more class than MacFarlane is capable of providing." Rated R for strong crude and sexual content, language throughout, some violence and drug material. —LW

## Upcoming Films

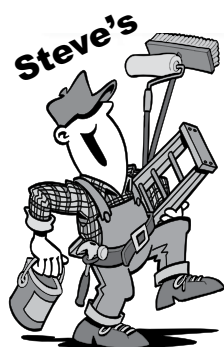
SUT and Cinema Guild have announced the lineup for the first weeks of the semester:

Sept. 3: *Rushmore* (R)Sept. 4–7: *The Fault in Our Stars* (PG-13)Sept. 10: *Dr. Strangelove* (PG)Sept. 11–14: *Edge of Tomorrow* (PG-13)Sept. 17: *Duck Soup* (not rated)Sept. 18–21: *22 Jump Street* (R)

[news@sewaneemessenger.com](mailto:news@sewaneemessenger.com)

**YOUNG LIVING**  
ESSENTIAL OILS  
Independent Distributor

Ray and April Minkler  
styraco@blomand.net, aprilinkler@blomand.net  
931-592-2444 931-434-6206  
For over 8,700 testimonials see  
[www.oil-testimonials.com/1860419](http://www.oil-testimonials.com/1860419)



## AFFORDABLE Home Repair

Remodeling • Additions • Decks • Painting  
House/Floor Leveling and More

**Experienced & Honest**

**423-593-3385**

*Henley's Electric & Plumbing*

**Randall K. Henley**

*More Than 25 Years' Experience*

598-5221 or cell 636-3753

## PILATES CLASSES

**Beginning Sept. 1 at the Fowler Center in Sewanee**

The class will start with the fundamentals of healthy movement that aligns and protects your bones and joints and improves balance. Then learn how to strengthen that pattern of healthy movement with the Pilates Mat exercises. You will look and feel like a new person!!

~**Beginner Classes** will meet at 12 noon on Monday/Wednesday

~**Intermediate Classes** will meet at 10 a.m. on Monday/Wednesday or 12 noon on Tuesday/Thursday.

*Private and duet sessions on Pilates Equipment available by appointment Monday through Friday.*

~**Contract/Release Stretching and Fascial Release Classes** will meet at noon on Friday. (More classes can be scheduled if there is interest.)

*Classes are \$12 per single class, \$10 if purchased in monthly blocks. Discounts for attending four or more classes per week.*

Contact Kim Butters, PMA Pilates Instructor and AFAA Personal Trainer  
(423) 322-1443 or [kim\\_butters59@hotmail.com](mailto:kim_butters59@hotmail.com)



**June Weber  
Gooch-Beasley Realtors**

Serving the Sewanee and Monteagle area  
with quality real estate service:  
-42 years of experience  
-Mother of Sewanee alumnus

**gb**

[www.gbrealtors.com](http://www.gbrealtors.com) [junejweber@bellsouth.net](mailto:junejweber@bellsouth.net)  
June Weber, CRB, CRS, GRI Broker 931.636.2246  
GOOCH-BEASLEY REALTORS 931.924.5555



## Archives Sets Special Hours for Icons

Sewanee's University Archives and Special Collections announces special hours and two upcoming lectures as part of its exhibition of Russian icons, "Windows into Heaven: Russian Icons from the Robicsek Family Collection of Religious Art."

On Saturday, Aug. 23, the Archives will be open 2:30–5 p.m.

Jeanne Marie Warzeski, curator at the North Carolina Museum of History, will give a talk at 5 p.m., Thursday, Sept. 4.

Distinguished iconographer Sandy Kezar will speak at 6 p.m., Tuesday, Sept. 16. Both talks will be in the Museum Gallery of University Archives and Special Collections. Look for more information in next week's Messenger. The University Archives and Special Collections gallery is open 1–5 p.m. on weekdays; the Icon exhibit runs through Oct. 18.

## Area Music

### Crossroads Cafe

Beginning at 6 p.m., Saturday, Aug. 23, musician Regina Rourke Childress will perform at Crossroads Cafe in Sewanee. Paul Schutz will perform on Saturday, Aug. 30. For more information call 598-9988.

### The Smoke House

Angela Easley will perform today (Friday), Aug. 22, at 7 p.m., at the Smoke House in Monteagle. Following her set, Ty Warner, Herb Bushnell and Lexi Case will play until 10:30 p.m.

Flat River Band will play at 7 p.m., Saturday, Aug. 23. For more information visit [thesmokehouse.com/events](http://thesmokehouse.com/events).

### Beans Creek Winery

Utopia will perform at 7 p.m., Saturday, Aug. 23, at Beans Creek Winery in Manchester. For more information go to [www.beanscreekwinery.com](http://www.beanscreekwinery.com).

## Area Fairs and Festivals

The **Franklin County Fair** continues today (Friday) and Saturday, Aug. 22–23, at the county fairgrounds in Winchester. This year's theme is "Tractors, Dirt and Muddy Shirts." General admission to the fair is \$5 per person; children age 5 and younger are free. Tickets for the carnival rides and the tractor pull are also available. For directions to the fairgrounds and other information go to [www.franklincotnfair.org](http://www.franklincotnfair.org).

### The 48th annual Beersheba Springs Arts and Crafts Festival

is open 10 a.m. to 6 p.m., Saturday and Sunday, Aug. 23–24. There is no admission charge. The festival includes more than 135 exhibitors from several states, a variety of good food from vendors on the grounds and at the hotel, and entertainment by Bazzania Girls' Band at 7 p.m., Saturday, in the hotel. Proceeds from the festival benefit Beersheba Springs Library, rescue squad, community center, North Elementary School and Grundy County Center for Exceptional Citizens. Beersheba Springs is on U.S. Hwy. 56, 25 miles from Monteagle. The Beersheba Springs hotel is on the National Registry of Historic Places.

The 2014 Marion County Fair begins on Saturday, Sept. 6, with a 5K race and car show. The fair activities will be Sept. 9–13 at the Marion County Fairgrounds in Jasper. The main entrance is located just off Main Street in Jasper, behind the Dairy Queen. For more information go to [www.marioncountyfair.com](http://www.marioncountyfair.com).



Beersheba Springs Hotel circa 1913



Addison Marie Hannaway and Amelia Stone Hane in the 2013 production of "The Nutcracker." Photo by Eric Hartman

## Sewanee Dance Conservatory Adds Classes

The Sewanee Dance Conservatory's fall schedule has expanded to include contemporary modern dance, Scottish Highland dance and an all-guys dance class. Parents can find the full schedule and register their children online at [sewaneedanceconservatory.com](http://sewaneedanceconservatory.com).

There will be an open house 12–1 p.m., and 4–5:30 p.m., Monday, Sept. 1, in the Fowler Center dance studio. Parents and students can also register then, as well as get more information about the program.

The Conservatory will continue to partner with Alabama Youth Ballet, including a Nutcracker performance. Auditions for Nutcracker will be 2–4 p.m., Sunday, Sept. 7. The Nutcracker show is scheduled for 2:30 p.m. and 7 p.m., Saturday, Nov. 15, in Guerry Auditorium.

**Celebrating 14 Years!**  
**2000-2014**

*It's the  
perfect time of year to  
dine in our courtyard!*



**High Point**  
HISTORIC DINING ON THE SUMMIT  
BETWEEN CHICAGO & MIAMI

224 East Main St  
Monteagle  
931-924-4600  
Sun to Thu 5 to 9  
Fri and Sat 5 to 10  
[www.highpointrestaurant.net](http://www.highpointrestaurant.net)



402 West Main St. • Monteagle • 931-924-3355  
[www.paparons.net](http://www.paparons.net)  
Sunday–Thursday 11–9  
Friday and Saturday 11–10

**Our patio is ready  
for your outdoor  
dining pleasure.**







# WOODARD'S

## DIAMONDS & DESIGN

### THE BIG BIG *Manufacturer's Liquidation* EVENT



DIAMONDS  
PEARLS  
WATCHES  
NECKLACES  
GEMSTONES  
SILVER AND GOLD  
PENDANTS  
EARRINGS  
RINGS

# 61%

Save Up To

## Sale Starts Thur. Aug. 21st

Northgate Mall Tullahoma 454-9383 woodards.net



DuBose Conference Center

## DuBose Hosts Camp for Families

DuBose Conference Center is hosting its second annual DuBose Family Camp on Labor Day weekend. Plan to arrive on Friday, Aug. 29, and depart on Monday, Sept. 1.

Come for a weekend of fun, fellowship, and relaxation on the Mountain. Warm days and cool nights make this the perfect time to be at DuBose!

This camp is designed for families of all ages to gather and enjoy a DuBose experience together. There will be age-appropriate counselor-led activities for children so that adults can relax or join in as they choose.

There will also be guided hikes to some favorite swimming holes and overlooks, games, campfires, swimming, optional group worship, and arts and crafts in the barn.

Several different levels of lodging are available to suit family needs and budgets.

For more information or to register go to <duboseconf.org/familycamp> or email Kathryn Jasper at <CGM@duboseconferencecenter.org>.

**Your ad could be here.**



**TOMMY C. CAMPBELL**  
FOR YOUR IMPROVEMENTS

Call (931) 592-2687

Free Estimates • 20 Years Experience

**DRIVEWAY WORK • GRAVEL HAULING  
• DOZER & BACKHOE**

plus Land Clearing • Concrete Work • Water Lines • Garage Slabs • Sidewalks • Porches & Decks • Topsoil & Fill Dirt  
Roofing • Additions to House • Septic Tanks & Field Lines

## Russell L. Leonard

ATTORNEY AT LAW

Office: (931) 962-0447

Fax: (931) 962-1816

315 North High Street  
Winchester, TN 37398

Toll-Free (877) 962-0435  
rleonard@netcomsouth.com

**WOODY'S BICYCLES—SALES, SERVICE AND RENTALS**  
A Full-Service Trek Bicycle Dealer

Mon-Fri 9-5 • Sat 10-2 • 598-9793

woody@woodysbicycles.com • 90 Reed's Lane  
(the red building behind Shenanigans in Sewanee)



Check out [www.woodysbicycles.com](http://www.woodysbicycles.com) for rates, trail maps, photos, bike club links, races and much more!

Put this space to work for your business.

Phone 598-9949 or email <ads@sewaneeemessenger.com>



# SAS Mountain Bike Team Competes in First Race of the Season

The St. Andrew's-Sewanee School mountain biking team competed in its first race of the Tennessee High School Cycling League's 2014 season on Aug. 9-10. The competition was held on the trails at AEDC in Tullahoma. Ten SAS students competed in a field of more than 50 high school riders from across Tennessee and Kentucky in gender- and grade-related categories, racing for approximately one hour over a 12-mile course in high heat and humidity. The course was challenging, with narrow trails, many hills and tight turns through forested sections. The entire SAS team rode with determination and a competitive spirit.

Ashton Milford, competing in her first mountain biking race, led the Mountain Lions with a first-place finish in the sophomore girls' category. SAS junior Abby Mainzer and senior Namkha Norbu rode to fourth- and fifth-place finishes in the junior varsity girls' category, while Fritz Stine, Andrew Bachman and Crawford Emory finished in 10th, 11th and 13th places, respectively, in the sophomore boys' category. Fields Ford, Matthew Baranco and Joshua Alvarez competed in the boys' junior varsity race; Ford and Baranco earned sixth and seventh place, respectively. Alvarez was in eighth place after the first lap, but a flat tire during the second lap prevented him from maintaining his lead over the other junior varsity riders. Freshman first-time racer Matthew Mollica rounded out the day for SAS with his finish in the freshman boys' race.

Head coach Speed Baranco and assistant coaches Beth Pride Ford and Rob Bachman would like to thank SAS parents Robin and Jim Mainzer, Irene and Richard Emory, Casey Milford, Sian Baranco, and Steven Alvarez for providing race day support for the team and the Tennessee High School Cycling League.

In addition, the Tennessee league



SAS junior Abby Mainzer (left) at the start of the junior varsity girls race.

sends a special "thank you" to the U.S. Air Force and AEDC Outdoor Recreation Services for the use of venue facilities.

The next mountain biking race will be held at Herb Parsons Lake in Memphis on Sept. 21. The Tennessee league championship is set for Nov. 2 at St. Andrew's-Sewanee School. Community members interested in volunteering at races can sign up on the league website <tennesseemtb.org>.

## SAS Golf

The St. Andrew's-Sewanee School's golf team has played in two recent matches, both at the Course at Sewanee. The team's record now stands at 7-0. On Aug. 19, SAS defeated Chattanooga Christian and Grundy County High. SAS players were: Tommy Oliver, 36; Andrew Heitzenrater, 41; Sam Thomas, 42; and Jake Wiley, 43. For Grundy County High: John Meeks, 47; Zack Bourne, 48; Ethan Smith, 49; and Hunter Ladd, 51.

On Aug. 14, SAS beat South Pittsburg High and Marion County High. For SAS: Tommy Oliver, Jake Wiley and Andrew Heitzenrater tied with a 41, and Sam Thomas shot a 43.

## Home Games This Week

**Monday, Aug. 25**  
4 pm SAS V Coed Golf v Huntland School  
**Tuesday, Aug. 26**  
4 pm GCHS V Golf v Coffee County at The Course at Sewanee  
5 pm FCHS V Volleyball v Tullahoma  
6 pm FCHS V Girls' Soccer v Riverdale  
6 pm FCHS Girls' Soccer v Ooltewah  
**Wednesday, Aug. 27**  
1:45 pm GCHS V Volleyball v Warren County  
3 pm GCHS JV Volleyball v Warren County  
**Thursday, Aug. 28**  
4 pm SAS V Coed Golf Meet v FCHS, Cascade  
4 pm SAS MS Girls' Soccer v South Middle School  
4 pm SAS JV Volleyball v Marion County  
4:30 pm SAS V Football v TN School for the Deaf  
5 pm SAS V Volleyball v Marion County  
**Friday, Aug. 29**  
7 pm Tigers Women's Soccer v Bryan  
7 pm FCHS Football v Lebanon  
7 pm GCHS V Football v Grace Baptist Academy

## OVERTIME

by John Shackelford



They were all sitting around our breakfast table last Saturday morning. Pancakes were stacked high, maple syrup was on the stove, eggs were frying in the pan, and laughter was thicker than the aroma of brewing coffee. They were all home. A geological technician from Houston, a financial officer for a health care start-up in Nashville, a medical school student from Arkansas, an admissions counselor from an independent boarding school in North Carolina, a law school student from South Carolina, an aide to a Southern U.S. senator now living and working in Washington D.C., a banker in training from Charlotte, N.C., who had just returned from a year-long internship in London, an executive assistant with an alternative energy company in Nashville and a third-grade teacher from Atlanta. Only a couple of years ago they were bound together as Sewanee students and members of our tennis program; now they were twenty-somethings making their way in this world. They were in town to witness a former teammate's wedding and gathered together to share omelets, strawberries and stories of their new lives.

Julia Wood was there. I can still see her in a singles match against Trinity University in 2011 with the match on the line in the semifinals of the conference championship, and everyone gathered around her court to watch the third set. Win or go home. She had suffered through a season with an inconsistent serve, but she pulled out the win. Two years later she sat in our living room with tears in her eyes, uncertain if the NCAA would allow her one more year of competition. They did, and she had the opportunity to help her team into the third round of the NCAA tournament. She told me now she is starting out as the low man on the totem pole. Jay Hill was there with a plate full of bacon and eggs and a memory full of matches that mattered to everyone at that table. He played number six as a freshman and lost a heartbreaker of a season-ending match in a third-set tiebreaker. Jay bounced back to become our number one player. He told me about his new job. But the most impressive thing he told me was that he didn't care as much about his salary as he did about making a difference in people's lives. He wanted to work with real people instead of seeing their lives translated onto a balance sheet.

Lindsey Wilburn is in her second year of law school and is planning her turn as the bride-to-be when she graduates next spring; her good friend Derry Roberson is happy to be back in the South recruiting boarding school students in Asheville. Will Holloway told me of his trip back to his native Augusta to visit a nuclear energy plant that provides 11,000 jobs in the region. His role was to help advise his boss about the need for federal funding. Jeff Lepley talked about how his new company converts waste into energy. Laura Szyperski told us that her third-graders call her "Miss S," but she still makes them learn to spell "Szyperski" on their spelling test.

Laura and Lindsey were doubles partners in college. When they walked off the court for the last time, Conchie and I gave them a big hug and told them that it was never over. That they would come back to Sewanee many more times with all of these friends. I couldn't foresee this impromptu brunch at a yet-unplanned wedding on that day, but I knew that they would all smell the frying bacon and warm syrup and find their way back home.

# Stay Well!

### FAMILY PRACTICE

JoAnn Filchock, MD  
21 First. St./Monteagle  
924-8000

Rita Milner,FNP  
21 First. St./Monteagle  
924-8000

Matthew Petrilla, DO  
1314 University Ave./Sewanee  
598-5648

Louis Koella, MD  
1314 University Ave./Sewanee  
598-5648

David Martin, DO  
1314 University Ave./Sewanee  
598-5648

Cathy Martin, PA  
1314 University Ave./Sewanee  
598-5648

John McKeown, MD  
2578 Main St./Palmer  
779-3691

Wanda Hart, FNP  
2578 Main St./Palmer  
779-3691

### INTERNAL MEDICINE (Adult Medicine)

Arnold Eko, MD  
25 Spring Street/Monteagle.  
924-2120

Tenzing Chounzom , MD  
15 S. Central Ave./Monteagle  
924-4045

### PEDIATRICS (Child & Adolescent Medicine)

Mary Heath, MD  
1318 University Ave./Sewanee  
598-9761

Amy Evans, MD  
1318 University Ave./Sewanee  
598-9761

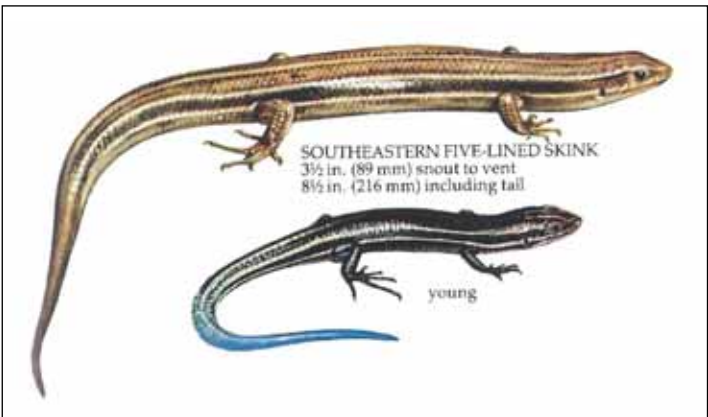
Eric Bornemann, CPNP  
1318 University Ave./Sewanee  
598-9761





## NATURENOTES

By Jean Yeatman



### Five-lined Skink

"On Aug. 17," Jean Yeatman reports, "I was sitting on my deck watching a species of small bumble bee swarming over my begonias. They were moving so rapidly over the flowers' anthers that they seemed to be dancing with you. They were mixing pollen with nectar and putting it in their pollen baskets to take back to the nest. There were also three butterflies on other plants: a Cloudless Sulfur, a Silver Spotted Skipper, and a magnificent newly-emerged Tiger Swallowtail.

"I looked down at the railing," she continued, "and saw what appeared to be a miniature dragon, lashing its electric-blue tail and walking along investigating under the lichens. Then it came to my cold juice glass, where it raised itself up a little and lapped the condensation. I recognized it as a newly-hatched Southeastern Five-lined Skink.

"This skink has five light stripes on the blackish background of its body, with an electric-blue tail in the young. As they grow older, they lose the blue tail, and become striped from head to tail. Red or orange appears on the heads of the adult males as a sex recognition characteristic during breeding season.

Most skinks are terrestrial and very territorial. They forage by day and take shelter at night. Insects and other arthropods are their chief food, but large skinks can also manage sizeable prey such as baby mice or birds in the nest. Females lay their eggs in some debris, and guard them during the incubation period."

### Bat Encounter

Lelia Blizzard reports that a bat (right) was caught on the screened porch at her home in Monteagle recently. Using a fishing net and a fishing pole with a hook, her grandsons Wyatt and Reed, helped remove it to the yard. "Interesting and fun experience for all," she said, noting that the bat was not ever touched by any human hands.



Take the Mountain with you when you travel:  
[www.sewaneemessenger.com](http://www.sewaneemessenger.com)



**piggly wiggly®**

*Down Home, Down the Street*

754 West Main St., Monteagle  
(931) 924-3135

8 a.m. to 9 p.m. 7 days a week

## SEWANEE AUTO REPAIR

—COMPLETE AUTO & TRUCK REPAIR—

- Tune-ups
- Tires (any brand)
- Tire repair
- Batteries
- Computer diagnostics
- Brakes
- Shocks & struts
- Steering & suspension
- Belts & hoses
- Stereo systems installed

All Makes & Models • Service Calls • Quality Parts  
ASE Master Certified Auto Technician • 25 Years Experience  
7 to 5 M-F • (931) 598-5743 • Across from Regions Bank

## Pets of the Week

### Meet Boop & April

The Franklin County Humane Society's Animal Harbor offers these two delightful pets for adoption.

Boop is a precious little Lop-Eared/Lionhead bunny who is very sweet and cuddly. Come meet her and see if a house rabbit is the right pet for you! Boop has been spayed.

April is a young Lab/Shepherd mix who loves everyone. She is very active and would love a family who will play with her. April is up-to-date on shots, heartworm-negative and spayed.

Animal Harbor announces a Summer of Love special. Now through Saturday, Aug. 23, adopt two kittens for one adoption fee of \$85. All Animal Harbor kittens are negative for FeLV and FIV, house-trained, up-to-date on shots and spayed or neutered.

Every Friday is Black Friday at Animal Harbor. On Fridays, adoption fees will be reduced 50 percent for black or mostly black pets more than 4 months old who have been at Animal Harbor for more than a month. Pets adopted from Animal Harbor qualify for a free post-adoption wellness exam by local veterinarians.

Call Animal Harbor at 962-4472 for information and check out the



Boop



April

other pets at <[www.animalharbor.com](http://www.animalharbor.com)>. Enter their drawing on this site for a free spay or neuter for one of your pets.

Please help the Humane Society continue to save homeless pets by sending your donations to the Franklin County Humane Society, P.O. Box 187, Winchester, TN 37398.

## State Park Offerings

### Saturday, Aug. 23

**Lost Cove Cave Trip**—Join Ranger Park at 8 a.m. at Carter State Natural Area parking lot for a strenuously challenging journey to and through the amazing Buggytop Cave. The very technical (hands-feet-elbows) crawl through some impressive cave formations is preceded and followed by a 2.5-mile hike to and from the cave. Call for more information and reservations, (931) 924-2980.

### Sunday, Aug. 24

**Trail Run to Big Creek Rim and Laurel Trails**—Join Ranger Aaron at 9 a.m. at Stone Door parking lot for a moderate seven-mile trail run, on the Big Creek Rim trail. Runners must be able to keep at least a 12 minute/mile pace.

**Foster Falls Critter Catch**—Join Ranger Park at 1 p.m. at Foster Falls parking area for a ramble downstream from Foster Falls to search for aquatic insects, amphibians and reptiles.

### Monday, Aug. 25

**Natural Bridge Geology**—Join Ranger Park at 2 p.m. at Natural Bridge parking lot for a short walk to Sewanee's Natural Bridge.

The South Cumberland State Park Visitors' Center can be reached at (931) 924-2980.



Peter Keeble • 931-598-0777  
[plateauproductions76@gmail.com](mailto:plateauproductions76@gmail.com)

### PRODUCTION DESIGN

Music Performance • Recording  
Records • Radio • Video  
Concerts • Festivals • Clubs

### AUDIO PRODUCTION/ ENGINEERING

Studio • Live Mixing  
Multi-Track Recording

### ARTIST-WRITER DEVELOPMENT

Production • Publishing • Management

### CONSULTING

Design • Development • Management

### Knowledgeable, Friendly, Fair HEATHER OLSON

[holson@realtracs.com](mailto:holson@realtracs.com), (804) 839-3659  
Serving the Sewanee-Monteagle community  
*Dedicated to Service!*

### Monteagle Sewanee, REALTORS®

[www.monteaglerealtors.com](http://www.monteaglerealtors.com)

931-924-7253



Reported by Nicole Nunley  
Forestry Technician

Professors, teachers, veterans & U.S. military:

## 10% OFF THE ALREADY LOW SHELF PRICES AT MONTEAGLE WINE & SPIRITS

This includes all sizes, even pints and half pints.

The only exceptions are 50mls and already greatly reduced sale and closeout items. We are fully stocked and ready to give you the best prices in the area.

### Now carrying beer, cigarettes & soda! MONTEAGLE WINE & SPIRITS

507 W. Main St. • Monteagle • (931) 924-8888

Just past McDonald's • Free ATM Service

[facebook.com/monteaglewineandspirits](https://facebook.com/monteaglewineandspirits)

Open Mon–Thu 9 am to 10 pm; Fri & Sat 9 am to 11 pm



DRIVE A LITTLE FURTHER  
AND SAVE A WHOLE LOT MORE!



# Classifieds

**CALL US! • 598-9949**  
**Classified Rates:**  
 \$3.25 first 15 words,  
 10 cents each addl. word  
**Now you can charge it!**  
**(\$10 minimum)**

**RAY'S RENTALS**  
 931-235-3365  
 Weekend Packages and Special Events  
 CLIFFTOPS, BRIDAL VEIL,  
 ALL AROUND THE MOUNTAIN  
**Monteagle Sewanee Rentals**  
 931-924-7253  
 www.monteaglerealtors.com

**EXCELLENT CLEANERS:** Houses, offices, any type building. Pressure washing buildings, decks, windows. Move-out houses/garages. (931) 636-4889.

**Oldcraft Woodworkers**  
 Excellence in custom woodworking.  
 Kitchen and bath cabinets, bookcases, entertainment centers, furniture. Furniture repairs and refinishing.  
 Est. 1982. Phone 931-598-0208

**FOR SALE:** 2003 Ford F150, 186k, V-8, auto, lwb, good shape. \$2850. John, 598-0208.

**CLAYTON ROGERS ARCHITECT**  
 931-636-8447  
 cr@claytonrogersarchitect.com

**WANTED TO RENT:** 2 to 3BR/1 to 2BA apartment or house in Franklin County. Prefer \$400-\$600/month depending on space. Call (731) 333-9878.

**BEAUTIFUL APARTMENT**  
 for rent at the Templeton Library  
**BREATHTAKING BLUFF VIEW**  
 Quiet, peaceful surroundings.  
 1 bedroom.  
 (931) 636-7873

**EAGLE LANDSCAPING & LAWN MAINTENANCE CO.**  
 Now Offering Specials for  
**SUMMER CLEANUP!**  
 We offer lawn maintenance, landscaping, hedge/tree trimming & more!  
 Please call for your free estimate  
**(931) 598-0761 or (931) 636-0383**

**Needle & Thread**  
 \*Alterations \* Repairs \* Light Upholstery  
 \* Slipcovers \* Drapes  
 For a reasonable price, contact  
**Shirley Mooney**  
 161 Kentucky Ave.  
 Sewanee, TN 37375  
**(931) 598-0766**  
 shirleymooney296@yahoo.com

**THE MARKETPLACE'S 20TH ANNUAL FALL CONSIGNMENT SALE** is Sept. 6-13 at Monterey Station, 104 Monterey St., Cowan. Big savings on gently-used clothing and more, for infants to children to juniors/college, plus toys, equipment, furniture. Drop-off days for bringing your quality, stylish clothing (only sizes girls' 0 to 16, boys' 0 to 20, along with junior/college sizes and styles), nursery equipment, sporting goods, furniture, toys, books, DVDs, and more, are: 10 a.m. to 6 p.m., Friday, Saturday, Monday and Tuesday, Aug. 29-Sept. 2 (closed Sunday, Sept. 7). Consignors earn 70% of their sales, pay a \$10 consignor fee, are eligible to win shopping certificates, and may attend a special preview sale. Sale opens to the public 10 a.m. to 6 p.m., Saturday, Sept. 6, through Saturday, Sept. 13 (closed Sunday, Sept. 7). The final two days are clearance days; many items half-price. More info or to be a sale helper (shop early!), call (931) 308-7324 or email <gina@marketplaceconsignment.com> (put "consignment" in subject line). Check out all the sale details at <www.marketplaceconsignment.com>.

  
**Tea on the Mountain**  
 For a leisurely luncheon  
 or an elegant afternoon tea  
 11:30 to 4 Thursday through Saturday  
**DINNERS BY RESERVATION**  
 (931) 592-4832  
 298 Colyar Street, US 41, Tracy City

**JEFF'S HOME IMPROVEMENTS:**  
 NO JOB TOO BIG OR TOO SMALL.  
 CALL (931) 636-6525.

**FOR RENT:** 2BR/1BA 2-story townhouse on New College Drive. \$715/month. Available in September. <emwhite@sewanee.edu>.

**SCULPTURE IN WOOD**  
**Carvings, Bowls, Vases, Church Icons.**  
 U.S. Hwy. 41 North, one mile from Monteagle. (931) 924-2970

**THE SEWANEE UTILITY DISTRICT OF FRANKLIN AND MARION COUNTIES BOARD OF COMMISSIONERS** will hold its regular meeting on Tuesday, Aug. 26, at 5 p.m. at the utility office, 134 Sherwood Road. If a customer is unable to attend but wishes to bring a matter to the board, call 598-5611, visit the office, or call a board member. Your board members are Art Hanson, Randall Henley, Cliff Huffman, Karen Singer and Ken Smith.

**Stillpoint**  
**OFFICE SPACE AVAILABLE**  
 Suitable for behavioral health provider or massage/bodywork practitioner.  
 Call Maryellen at (931) 636-4415

**THE LOCAL MOVER**  
 Available for Moving Jobs  
 Call or Text Evan Barry  
**615-962-0432**

**REIKI**  
 Eva Malaspino, RN, Reiki Master  
 Now Accepting Clients  
 at Stillpoint in Sewanee  
 423-413-0094 or  
 firstfemale13@yahoo.com

**FULLY FURNISHED:** 2BR mountain home on five wooded acres. Big porch. High ceilings. Wood floors. Available mid-September to May. Monteagle. \$650 to \$950/mo, based on term and references. (850) 261-4727 or (850) 255-5988.

**BOOKMARK IT!**  
**www.TheMountainNow.com**

**Laurel Leaf Studio**  
 2197 Main Street • Altamont  
 931-692-3879 or 931-235-1012  
 Visit our FB page  
 "Bringing artists together for learning and sharing"

**MASSAGE**  
**Regina Rourk Childress**  
 Licensed Massage Therapist  
 www.reginarourk.com  
 ~ GIFT CERTIFICATES ~  
**(931) 636-4806**

**King's Tree Service**  
 Topping, trimming, bluff/lot clearing, stump grinding and more!  
 \*Bucket truck or climbing\*  
 Free wood chips with job  
 Will beat any quoted price!  
 Satisfaction guaranteed!!  
 —Fully licensed and insured—  
 http://kingstreeservice.vpweb.com  
 Call (931) 598-9004—Isaac King

**COMPUTER HELP**  
 Tutorial & Troubleshooting  
 8 years of experience improving computer performance.  
**Judy Magavero, (931) 924-3118**

**BASEBOARD HEATER:** Used. 10-ft. 220 volt. \$50. (850) 261-4727 or (850) 255-5988.

**WATER SOLUTIONS**  
 Joseph Sumpter  
 Owner/Licensed Residential Contractor  
 Specializing in drainage and rainwater collection systems  
 598-5565  
 www.sumptersolutions.com

**WHY SEEK** an impersonal solution to a personal problem? Private, warm, spirit-filled counseling. Family, individual, adolescent. A Place of Hope. (931) 924-0042. THERAPY DOGS ON SITE.

**the ARTISAN DEPOT**  
 Work by local artists  
 201 E. Cumberland, Cowan  
 Open Thurs-Fri-Sat, 12-5  
 931-308-4130

**LONG'S LAWN SERVICE**  
 • landscaping & lawn care  
 • leaf removal • mulch  
 Local references available.  
 Jayson Long  
**(931) 924-LAWN (5296)**

  
**ALL JOBS painting by ANDREW PLATT**  
 931-636-9504

  
**MICHELLE M. BENJAMIN, JD**  
 Attorney & Counselor at Law  
 102 FIRST AVENUE, NORTH  
 WINCHESTER, TENNESSEE 37398  
 (931) 962-0006  
 (931) 598-9767

  
**Sweeton Home Restoration, LLC**  
 LICENSED • INSURED • TRUSTED  
**931-924-2444 sweetonhome.com**

**The Moving Man**  
 Moving Services Packing Services  
 Packing Materials Truck Rental  
 Local or Long Distance  
 1-866-YOU-MOVE (931) 968-1000  
 www.themovingman.com  
 Decherd, TN  
 Since 1993 U.S. DOT 1335895

Walk-In Cooler Filled with Flowers!  
 —TUXEDO RENTALS—  
**Monteagle Florist**  
 333 West Main Street, Monteagle  
 (931) 924-3292

**SARGENT'S SMALL ENGINES:** Repairs to All Brands of Equipment: Lawn mowers (riding or push), String trimmers, Chain saws, Chain saw sharpening, New saw chain. (931) 212-2585, (931) 592-6536. Pickup and Delivery Available.  
**IN-HOUSE MOVING SALE:** Saturday, Sept. 6, 7 a.m. until ?? Cash only. 1805 Laurel Lake Dr., Monteagle.

**(931) 598-0033**  
**HAIR DEPOT**  
 17 Lake O'Donnell Rd., Sewanee  
 KAREN THRONEBERRY, owner/stylist  
 DANIELLE HENSLEY, stylist/nail tech

**TWELVE WOODED ACRES FOR SALE:** 300-ft bluff view. Space for house cleared. Driveway and underground utilities in. Two-acre pond stocked with fish. Sign on property. Jackson Point Road. (423) 718-5796.

**RENTALS**  
 Beautiful Bluff View  
 1 Bedroom or 2 Bedroom Apartments.  
 Call (931) 691-4840.

**SHAKERAG BLUFF CABIN:** Beautiful west-facing bluff view. Near University. Extremely secluded. Sleeps 4-5. C/H/A. Great fishing, swimming. Weekend or weekly rentals. (423) 653-8874 or (423) 821-2755.

**FOR SALE:** 2003 Chevy Silverado. New brakes, rotaries, exhaust, shocks. Serviced every 3,000 miles. \$9,000. (931) 636-2333.

**LOST COVE BLUFF LOTS**  
 www.myerspoint.net  
**931-703-0558**

Alma Mater Theater in Tracy City  
**Teenage Mutant Ninja Turtles**  
 August 15-17  
 PG-13 • 1 hour, 45 minutes  
**7 pm Fri and Sat; 3 pm Sun**  
 (931) 592-8222

**CHAD'S LAWN & LANDSCAPING**  
 -FREE ESTIMATES-  
 \* Lawn care & Design (Mulch & Planting)  
 ALSO: \* Tree Trimming & Removal  
 \* Pressure Washing \* Gutter Cleaning  
 \* Leaf Pickup & Blowing \* Road Grading  
 \* Garden Tilling \* Rock Work  
**(931) 962-0803 Home; (931) 308-5059 Cell**

**PLYWOOD:** 150 pieces. 3x4 and 5x4. \$.2. each. Minimum 20. Also 100 pieces 2x1 drop ceiling panels. \$20. (850) 261-4727 or (850) 255-5988.

**AVON TO BUY OR SELL AVON**  
**KATHY PACK**  
 AVON REPRESENTATIVE  
 www.youravon.com/kathypack  
 katpac56@aol.com  
 931-598-0570 931-691-3603

**SPECTACULAR:** 3BR/2BA Sewanee bluff custom home overlooking Lost Cove for lease: Fully renovated. Hardi-plank siding, new HVAC, new insulated windows, updated kitchen & baths. Spacious living area w/stone fireplace, view of Lost Cove; 5.7 acres w/hundreds of daffodils. 2-car garage. \$1,500/mo. Annual lease, first month and security deposit required. May consider pets (additional pet deposit required). Call Ed Hawkins, (866) 334-2954 for more info/appointment to see.

**Tell them you saw it in the Messenger!**

**Winchester Podiatry**  
**CHARLES D. GANIME, DPM**  
 Board Certified in Foot Surgery  
 Diplomate, American Board of Podiatric Surgery  
 New Patients of All Ages Welcome! We Treat Your Feet!  
 Most Insurance Accepted, Including TennCare  
 We are at 155 Hospital Road, Suite 1, in Winchester.  
 www.winchesterpodiatry.com  
**931-968-9191**

**J & J GARAGE**  
**COMPLETE AUTO REPAIR**  
 • Import & Domestic  
 • Computerized 4-Wheel Alignments  
 • Shocks & Struts • Tune-ups •  
 Brakes  
 • Our Work is Guaranteed.  
 • OVER 26 YEARS EXPERIENCE.  
**598-5470** Hwy 41-A between Sewanee & Monteagle • Monday-Friday 7:30-5:30  
 Jerry Nunley  
 Owner

  
**ST. MARY'S SEWANEE**  
 The Ayres Center for Spiritual Development  
**PART-TIME KITCHEN ASSISTANT**  
 St. Mary's Sewanee: the Ayres Center for Spiritual Development is currently seeking a part-time Kitchen Assistant to join our growing team. The kitchen assistant is responsible for assisting the Center's food service department in preparing and serving our guests, and cleaning and maintaining food service facilities. The person in this position must embody the spiritual dimensions of hospitality and flexibility, and graciously serve the needs of guests and retreat leaders. As part of the kitchen team, the assistant will be asked to perform all elements of Kitchen work—prep work, dishwashing, waiting on customers, plating food beautifully and more. Teamwork, flexibility, commitment to maintaining a safe workplace and a strong work ethic are all vital for success. This position requires evening and weekend work. To apply, please email your résumé to Emily Wallace at <emily.wallace@stmaryssewanee.org>. For more information about St. Mary's Sewanee and its programs, please visit <stmaryssewanee.org>.

**www.TheMountainNow.com**





# BARDTOVERSE

by Phoebe Bates

Vacation is over;  
It's time to depart  
I must leave behind  
(although it breaks my heart)

Tadpoles in the pond,  
A can of eels,  
A leaky rowboat,  
Abandoned car wheels;

For I'm packing only  
Necessities:  
A month of sunsets  
And two apple trees.

—“Leavetaking”  
by Eve Merriam

Join us under the stars  
through October, weather permitting

## Thursday Night Supper Club

prix fixe  
\$28.95

For reservations and menus, contact  
Michael@naturalbridgeevents.com

The Grove at Natural Bridge  
44 Natural Bridge Road, Sewanee  
931-598-5566



I shut my eyes in order to see.

—Paul Gauguin

www.stillpointsewanee.com



myerspoint.net



MYERS POINT at Sewanee offers a rare opportunity to enjoy a private community that celebrates American architecture, lifestyle, protected forests, cultivated lakes and panoramic views on Middle Tennessee's Cumberland Plateau. If you want to live surrounded by nature, history, beauty, quality and serenity, you'll want to call it home.

- 480-acre private gated community
- 24 exclusive home sites; lakeside or bluff vista
- Timeless, organic, craftsman architecture standards
- Land Trust for Tennessee perpetually protected forests
- Over four miles of walking and riding trails
- Community barn, pastures, resting benches and fire pit
- Minutes from the University of the South



John Goodson ■ (931) 703-0558 ■ johngoodson@bellsouth.net



Fred Saussy, General Contractor

Residential - Remodeling - New Construction  
Licensed & Insured

496 Kennerly Rd • Sewanee, TN 37375 • (931) 598-5981  
fredsaussy@gmail.com • www.saussyconstruction.com

# Community Calendar

## Today, Aug. 22

Franklin County Schools no classes (Franklin County Fair)

- 8:00 am GC Clothing Bank open, old GCHS, until noon
- 8:30 am Yoga with Carolyn, Community Center
- 9:00 am CAC office open, until 11 am
- 10:00 am Game day, Senior Center
- 12:00 pm Contract/Release stretching with Kim, Fowler Ctr
- 5:30 pm World healing meditation, Community Center
- 7:00 pm Film, "Madagascar 3," Harton Park, Monteagle
- 7:00 pm Film, "Teenage Mutant...", Alma Mater, Tracy City

## Saturday, Aug. 23

College Orientation begins, through Aug. 26

- 8:00 am Sewanee Gardeners' Market, Hawkins Lane
- 9:00 am Sketching with Bob Askew, Angel Park
- 9:00 am Tracy City Farmers' Market, old GCHS parking lot
- 10:00 am Beersheba Springs Arts and Crafts Festival, until 9 pm
- 10:00 am Silver Threads, St. Mary's Convent
- 12:00 pm College Orientation begins
- 2:00 pm Georgia Mooney's 100th birthday, Lower Cravens
- 4:00 pm Kabalah class, Boughan, Community Center
- 6:00 pm Midway Baptist Church homecoming singing
- 7:00 pm Film, "Teenage Mutant...", Alma Mater, Tracy City

## Sunday, Aug. 24

- 10:00 am Beersheba Springs Arts and Crafts Festival, until 6 pm
- 2:00 pm Carillon Concert, Bordley, Shapard Tower
- 3:00 pm Film, "Teenage Mutant...", Alma Mater, Tracy City
- 4:00 pm Yoga with Helen, Community Center
- 5:00 pm Otey Parish annual picnic, Claiborne Parish House
- 5:00 pm Women's Bible Study, Midway Baptist

## Monday, Aug. 25

- 9:00 am CAC office open, until 11 am
- 9:00 am Yoga with Sandra, St. Mary's Sewanee
- 9:00 am Pilates with Kim, intermediate, Fowler Center
- 12:00 pm Pilates with Kim, beginners, Fowler Center
- 4:00 pm Ground-breaking for Monteagle Pedestrian Project, next to Monteagle City Hall
- 4:30 pm Ground-breaking for Mountain Goat Trail Sewanee-Monteagle phase, Dollar General, Monteagle
- 5:00 pm South Middle School open house
- 6:00 pm Karate, youth, American Legion Hall
- 7:00 pm WWI lecture, Bordley, Tullahoma
- 7:00 pm Centering Prayer support group, Otey sanctuary
- 7:00 pm Sewanee Community Council, Senior Center
- 7:30 pm Karate, adult, American Legion Hall

## Tuesday, Aug. 26

- 8:30 am Yoga with Carolyn, Community Center
- 9:00 am CAC office open, until 11 am
- 9:00 am Pilates with Kim, beginners, Fowler Center
- 9:30 am Hospitality Shop reopens, until 2 pm
- 10:00 am Crafting Ladies, Morton Memorial UMC, Monteagle
- 10:30 am Bingo, Sewanee Senior Center
- 11:30 am Grundy County Rotary, Dutch Maid, Tracy City
- 12:00 pm Pilates with Kim, intermediate, Fowler Center
- 3:30 pm Centering Prayer, St. Mary's Sewanee
- 5:00 pm Cowan Elementary open house
- 5:00 pm Sewanee Utility District board, 134 Sherwood Rd
- 6:30 pm FC Dem women, Oasis Restaurant, Winchester

## Wednesday, Aug. 27

First day of College classes

- 7:00 am Monteagle Sewanee Rotary, Smoke House
- 8:30 am Franklin County Schools late start
- 9:00 am CAC pantry day, until 11 am; 1-3 pm
- 9:00 am Pilates with Kim, intermediate, Fowler Center

- 10:00 am Writing Group, Kelley residence, call 598-0915
- 12:00 pm EQB, Bordley, St. Mary's Sewanee
- 12:00 pm Pilates with Kim, beginners, Fowler Center
- 1:30 pm Duplicate bridge, Templeton; call 598-9344
- 5:30 pm Yoga with Helen, Community Center
- 7:00 pm Bible study, Midway Baptist Church

## Thursday, Aug. 28

- 8:00 am GC Clothing bank open, old GCHS, until noon
- 9:00 am CAC office open, until 11 am
- 9:00 am Nature journaling, Abbo's Alley gazebo, until 11 am
- 9:00 am Pilates with Kim, beginners, Fowler Center
- 9:30 am Hospitality Shop open, until 2 pm
- 10:30 am Tai Chi with Kathleen, (advanced) Comm Center
- 11:00 am Body Recall with Judy, Monteagle City Hall
- 12:00 pm Monteagle Sewanee Rotary, Blue Chair Tavern
- 12:00 pm Pilates with Kim, intermediate, Fowler Center
- 12:30 pm Episcopal Peace Fellowship, Brooks Hall, Otey
- 2:30 pm Tracy City Farmers Market, old GCHS parking lot
- 5:00 pm Weight Watchers, weigh-in 4:30 pm
- 6:00 pm Karate, youth, American Legion Hall
- 7:00 pm Film, "A Million Ways to Die...", SUT
- 7:00 pm Karate, adult, American Legion Hall

## Friday, Aug. 29

DuBose family camp, DuBose Conference Center, through Sept. 1

Sewanee Woman's Club lunch reservation deadline

- 8:00 am GC Clothing Bank open, old GCHS, until noon
- 8:30 am Yoga with Carolyn, Community Center
- 9:00 am CAC office open, until 11 am
- 10:00 am Game day, Senior Center
- 12:00 pm Contract/Release stretching with Kim, Fowler Ctr
- 1:00 pm Oath of Office ceremony, Franklin Co. Courthouse
- 1:30 pm Chemistry talk, Bordley, Woods Lab room 216
- 3:30 pm Creative movement, 4-7 yr., Community Center
- 4:00 pm Kabalah class, Boughan, Community Center
- 4:15 pm Creative movement, 8-12 yr., Community Center
- 7:00 pm Film, "Teenage Mutant...", Alma Mater, Tracy City
- 7:00 pm Film, "A Million Ways to Die...", SUT

## LOCAL 12-STEP MEETINGS

### Friday

- 7:00 am AA, open, Holy Comforter, Monteagle
- 4:30 pm AA, "Tea-Totallers" women's group, Clifftops, (931) 924-3493
- 7:00 pm AA, open, Christ Church, Tracy City

### Saturday

- 7:30 pm NA, open, Decherd United Methodist
- 7:30 pm AA, open, Brooks Hall, Otey

### Sunday

- 6:30 pm AA, open, Holy Comforter, Monteagle

### Monday

- 5:00 pm Women's 12-step, Brooks Hall, Otey
- 7:00 pm AA, open, Christ Church, Tracy City

### Tuesday

- 7:00 pm AA, open, First Baptist, Altamont
- 7:30 pm AA, open, Brooks Hall, Otey

### Wednesday

- 10:00 am AA, closed, Clifftops, (931) 924-3493
- 7:00 pm NA, open, Decherd United Methodist
- 7:30 pm AA, open, Holy Comforter, Monteagle

### Thursday

- 12:00 pm AA, (931) 924-3493 for location
- 7:00 pm AA, open, St. James
- 7:30 pm Adult Children of Alcoholics, Dysfunctional Families, Brooks Hall, Otey

## NEW TO THE AREA?

Go to [www.TheMountainNow.com](http://www.TheMountainNow.com) to learn more about your new hometown.  
Information about Cowan, Monteagle, Sewanee and Tracy City.



Made of sterling silver with  
"Protected by A Sewanee Angel" hand-etched on  
the inside by our favorite metalsmith, Hanni.

# THE LEMON FAIR

60 University Ave., Sewanee  
(931) 598-5248 • [www.thelemonfair.com](http://www.thelemonfair.com)

Open Mon-Fri, 12 to 4, Sat 11 to 5

