



Parents, students, teachers, staff and community members gathered at Sewanee Elementary School on Aug. 20 for an Open House hosted by the SES PTO to celebrate the completion of more than \$500,000 of renovations at the school. Also in attendance were school board members Chris McDonough, Kevin Caroland, Clejo Walker, Christine Hopkins, principal Mike Maxon, director of schools Rebecca Sharber, Franklin County Mayor Richard Stewart, county commissioner Sherwood Ebey, and PTO officers. Photo by Messenger staff

Mountain Goat Trail Receives Major Grant for Grundy Segment

Tennessee Department of Environment and Conservation announced a grant of \$200,000 to the Mountain Goat Trail Alliance (MGTA). The funds from the TDEC Recreational Trails Program will be used to build approximately two miles of the trail in Grundy County.

"We are very pleased and gratified that TDEC has seen fit to recognize the worth of our mission in this way," said Janice Thomas, MGTA board president. "This grant funding is a crucial piece of our efforts to provide the Cumberland Plateau with the economic and health benefits of a biking and walking trail while joining the communities along the former route of the Mountain Goat Railroad."

The mission of the MGTA is to create a multi-purpose, multi-modal trail along the rail bed of the historic Mountain Goat Railroad.

Tennessee Governor Bill Haslam, in announcing the \$1.6 million in RTP grants on Aug. 16, said: "These grants assist local governments and organizations in improving community amenities such as trails, greenways and recreational facilities, making the outdoors more accessible to Tennesseans. The health and wellness of our residents is a top priority and these amenities provide another step to make our state healthier."

The Recreational Trails Program is a federally-funded program established to distribute funding for diverse recreation trail projects. The funds are available to federal, state and local government agencies, as well as non-profit organizations that have obtained IRS 501 (c) (3) status and have a written trail management agreement with the agency that owns the property where the trail project is located. Grant recipients were selected through a scoring process with careful consideration given to the projects that met the selection criteria and expressed the greatest local recreation need.

The Mountain Goat Trail is a rail-to-trail community outdoor recreation project to convert the abandoned Mountain Goat railroad right-of-way into a multi-use recreational corridor connecting Grundy, Marion and Franklin counties. Donations to the MGTA are tax-deductible. For more information go to <www.mountaingoattrail.org> or email <info@mountaingoattrail.org>.



It is time to start planning for Lessons and Carols. Photo by Lyn Hutchinson

Reserve Now for Lessons & Carols

For more than 50 years, people have been coming to the University of the South campus to attend the Festival of Lessons and Carols. The 54th Annual Festival of Lessons and Carols will take place at 5 p.m., Saturday, Dec. 7, and at 5 p.m. and 8 p.m., Sunday, Dec. 8, in All Saints' Chapel. The service is based on one that has been sung annually since 1918 at King's College Chapel in Cambridge, England.

The University is making an effort to improve the experience for everyone who attends Lesson and Carols. This year, guests are encouraged to reserve seats for their preferred service. It is hoped that this process will eliminate the need for guests to wait outside the chapel before the service begins.

More information and links to reserve tickets for the services may be found at <life.sewanee.edu/believe/festival-of-lessons-and-carols>. The online ticket reservation site went live on Aug. 20. Based on previous years' experience, each service is expected to be filled close to capacity.

Schlichting Named to Community Post

University of the South Vice-Chancellor John McCardell has tapped Barbara Schlichting, a lifelong Sewanee resident, to take on responsibility for community relations for the university.

Schlichting is active in the Sewanee Business Alliance and has played a key role in the development of downtown Sewanee and Parsons Green. She is a member of the Community Council, the Sewanee Civic Association, and Leaseholders' Association. Schlichting also serves as the university administration liaison to the Board of Trustees' Community Relations Committee.

"Barbara's work as superintendent of leases and in the university's division responsible for community relations since 1989 has prepared her well for this new role," said McCardell. "I look forward to even stronger relationships between the university and community members in the future."

"Sewanee is a great community and it is important that all of us better understand how we can best live and work together," Schlichting said of her expanded role.

Schlichting will continue in her role as Superintendent of Leases. Community members and leaseholders may reach her at 598-1998 or by email to <barbara.schlichting@sewanee.edu>.



Barbara Schlichting

Sewanee Welcomes Record- Size College Class of 2017

The College Class of 2017—expected to be 494 young people—will be on campus by Saturday, Aug. 24, for the official start of orientation. About 130 of them arrived on campus on Aug. 21, for the PRE-Orientation Outing Program, joining the 105 freshmen who participated in the Finding Your Place program.

Orientation will acquaint all new students with the school's programs, services and faculty and staff, and help make the transition to Sewanee easier. It will conclude with a 4 p.m., Tuesday, Aug. 27 event in All Saints' Chapel for the entire campus community to "launch the new year," with remarks from Vice-Chancellor John McCardell and student leaders. College classes begin Aug. 28.

The Class of 2017 includes 10 students with dual citizenship, 73 first-generation college students, and almost 400 from outside Tennessee. Eighteen of the incoming students are already familiar with campus because they have participated in the Sewanee Environmental Institute, the Bridge Program, or the Sewanee Young Writers' Conference.

The new class represents a variety of interests and accomplishments including a student who has already published journal articles on herpetology; a beekeeper; traditional Scottish, Korean and Irish dancers; talented artists; a long-distance kayaker; an environmental award winner; and students who have taught and volunteered around the world.

Sewanee Dog Park Dream Is Now a Reality

After years of planning, fund-raising and organizing, the Sewanee Dog Park is now open to the public, humans and dogs. The grand opening will occur some time in the early fall.

Located adjacent to Lake Cheston, off of Breakfield Road, the Dog Park is a .8-acre area that is set aside for dogs to run freely and play. There are two segments in the park: one for dogs under 20 pounds and elderly dogs, and a more spacious area for larger dogs.

Phil White, a Sewanee Community Council member who has spearheaded this project, said he is very pleased with the final result.

"In the two days the Dog Park has been open, I have already met three very nice people I probably would not have had the chance to get to know," White said. "Things can only get better for Sewanee when more community members become acquainted with one another and share ideas. And the dog park is a natural place for that to happen."

Anyone is free to use the park at any time. Pet owners must use poop bags from the dispenser to pick up after their dogs. The rules for the park are clearly posted at the location.

When White was mowing the large lot on Aug. 19, some patrons were running their dogs in the small-dog area.

"When I stopped mowing, they praised the construction and appearance of the park very highly. They found the materials blending in beautifully with the setting, and thought that the location is excellent," he said.

There is still work to be done to complete the effort, White said. Grass will be planted later, and a rain shelter for pet owners and other additions to the park are planned.

(Continued on page 6)

P.O. Box 296
Sewanee, TN 37375

Letters

WATER OF LIFE

To the Editor:

I live on top of the hill above the Hatrock Spring on Bob Stewman Road and I have been drinking this water for 77 years. I have never heard of anyone getting sick or dying of cancer. I will drink this water as long as I live. I am almost 82 years old. I say, enjoy the water.

Larry Prince
Sewanee ■

[Editor's Note: The University advises that Harrison Spring or Hatrock Spring is not intended to be a drinking source.—LW]

PARKS & PLAYGROUNDS NEED PUBLIC INPUT

To the Editor:

Children are back in school, visiting relatives have gone home, and now we might reflect on entertaining children outside. If there is a child in your family who uses or might use a playground, we'd like to hear from you.

As you may have seen earlier this week via postcard or email, the Parks/Playground Committee, a subcommittee of the Sewanee Civic Association, is conducting a survey concerning playgrounds on the Domain.

We would appreciate hearing your opinions and ideas. The results will be used to devise a plan and a budget for playground upgrades and enhancements.

The brief survey, which will require only a few minutes to complete, can be accessed online at <<http://about.sewanee.edu/playgroundsurvey>>.

Please complete the survey before Monday August 26.

Thank you,

Stephen Burnett
Emily Puckette
Sewanee Civic Association ■



Ed Camp, Bill Hethcock and Betty Carpenter enjoy the porch swing at the Blue House during the Aug. 20 South Cumberland Plateau Timebank Open House.

GUIDELINES FOR HOSPITALITY SHOP DONATIONS

To the Editor:

The staff of the Hospitality Shop would like to thank everyone for their generous donations. These donations make it possible for the Hospital Auxiliary to purchase much-needed equipment for our hospital and support continuing medical education and training for our nurses and physical therapists. We would ask that you keep some guidelines in mind as you prepare to bring donations.

If the donation bin happens to be full, please do not try to put more items in. If it's on a day when the Shop is open, you may come inside and notify someone that you have donations. Should we be closed and there's no room in the bin, you may need to bring your donations on another day.

Donations should not be left at the front of the building nor on or under the back porch. Most items should be put into manageable garbage bags and tied at the top. Smaller boxes may

also be used. Loose items should not be placed in the bin. All clothing and linens should be clean with no tears nor stains.

We cannot sell toys or other items that are broken or do not work. We have a sign on the bin that details what we do not accept.

Please take care when you are bagging donations for the Hospitality Shop and do not put something in that was intended for the Convenience Center.

We hope these guidelines will be helpful and we will appreciate your cooperation. If you have questions, please telephone me at 598-0136.

Malinda Sutherland
Manager, Hospitality Shop
Sewanee ■

**Tell people
you saw
it in the
Messenger.**

THE SEWANEE MOUNTAIN MESSENGER

418 St. Mary's Ln.

P.O. Box 296

Sewanee, Tennessee 37375

Phone (931) 598-9949

Fax (931) 598-9685

Email news@sewaneemessenger.com

www.sewaneemessenger.com

Laura L. Willis, *editor/publisher*
Janet B. Graham, *advertising director/publisher*
April H. Minkler, *office manager*
Ray Minkler, *circulation manager*
Leslie Lytle, *staff writer*
K.G. Beavers, *staff writer*
Kevin Cummings, *staff writer*
Sandra Gabrielle, *proofreader*
Geraldine H. Piccard, *editor/publisher emerita*



Contributors
Phoebe & Scott Bates
Jean & Harry Yeatman
John Shackelford
Annie Armour
John Bordley
Virginia Craighill
Patrick Dean
Buck Gorrell
Margaret Stephens
Peter Trenchi
Pat Wiser
Francis Walter

Published as a public service to the Sewanee community. 3,500 copies are printed on Fridays, 47 times a year, and distributed to 26 Sewanee-area locations for pickup free of charge.

This publication is made possible by the patronage of our advertisers and by contributions from The University of the South (print production) and the Sewanee Community Chest.

SUBSCRIPTIONS \$75 first class.

All material in the Sewanee Mountain Messenger and on its website are copyrighted and may not be published or redistributed without written permission.

MESSENGER HOURS

Monday, Tuesday & Wednesday

9 a.m. – 5 p.m.

Thursday — Production Day

9 a.m. until pages are completed
(usually mid-afternoon)

Friday — Circulation Day

Closed

MESSENGER DEADLINES and CONTACTS

PHONE: (931) 598-9949

FAX: (931) 598-9685

News & Calendar

Tuesday, 5 p.m.

Laura Willis

news@sewaneemessenger.com

Display Advertising

Monday, 5 p.m.

Janet Graham

ads@sewaneemessenger.com

Classified Advertising

Wednesday, noon

April Minkler

classifieds@sewaneemessenger.com

Letters to the Editor Policy

Letters to the editor are welcome at the Sewanee Mountain Messenger and are a vital part of our community's conversation. Letters need to be no longer than 250 words and may be edited for space and clarity. We make exceptions from time to time, but these are our general guidelines.

Letters and/or their author must have some relationship to our community. We do not accept letters on national topics from individuals who live outside our circulation area. Please include your name, address and a day-time telephone number with your letter. You may mail it to us at Sewanee Mountain Messenger, P.O. Box 296, Sewanee, TN 37375, come by our office, 418 St. Mary's Ln., or send your email to <news@sewaneemessenger.com>.—LW



gb GOOCH-BEASLEY REALTORS www.gbrealtors.com

9 College St. at Assembly Ave., Monteagle • (931) 924-5555



NEAR MORGAN'S STEEP: Located on Laurel Circle, this lovely stone rancher features 4 bedrooms, 2 fireplaces and a great screened porch for entertaining. **\$260,000.** MLS #1415856.



ADORABLE 1940S BUNGALOW in Cowan adjacent to elementary school. Brand new roof. Hardwood floors. Updated heat pump and kitchen cabinets, new stove, separate laundry, detached storage, covered parking, 3rd bedroom/office w/separate entrance. Sun porch. **\$59,900.** MLS #1467662.



SPACIOUS RANCH IN SEWANEE: Inviting deck overlooking woods. Large living/dining combo with "Earth" stove to enjoy. Large eat-in kitchen with loads of light. Den with full bath. **\$118,000.** MLS #1441988.



922 SUNSET ROCK ON THE BLUFF. Charming and cozy wood-and-stone cottage on 2.68 acres behind MSSA in Monteagle. MLS #1446308. **\$160,000**



CEDAR MOUNTAIN: Three-level, 2004 sf 3BR, 2BA home with a great view from all levels. Three separate decks (one with hot tub). Two wood-burning stoves. **\$174,900.** MLS #1477413.



821 CLIFFTOPS AVE. Enjoy the two screened porches, one with great stone fireplace and beautiful views into the woods. Master includes a comfy sitting room area, updated baths and kitchen. Sun porch off dining room. MLS #1440952. **\$299,500**



SEWANEE: 237 Lake O'Donnell Rd. Established business location. Perfect for your retail or professional needs. MLS #1415857. **\$145,000**



100-YEAR-OLD "GEM" near downtown Cowan ready for renovation. Large shaded lot. MLS #1454541. **\$53,200**

Peter R. Beasley II, CCIM, Broker, (931) 924-5555
June Weber, CRB, CRS, GRI Broker, (931) 636-2246
Peter Hutton, Affiliate Broker, (931) 636-3399
Sally Thomas, Affiliate Broker, (931) 636-4993
Shirley Tate, Broker, (931) 598-0044
Bess Jenkins, Affiliate Broker, (334) 300-1214

Napa Valley Wine Dinner

Saturday, September 21, 6 p.m.

Five wines, four courses, \$49.95.

Please call for reservations.

The mountain's best
breakfast, served daily.



Tallulah's
Wine Lounge

(931) 924-3869 ~ www.monteagleinn.com ~ 204 West Main St.



LIGHTS ON!

It is state law to have your
headlights on in fog and rain.



Tea on the Mountain

For a leisurely luncheon
or an elegant afternoon tea

11:30 to 4 Thursday through Saturday

DINNERS BY RESERVATION

(931) 592-4832

298 Colyar Street, US 41, Tracy City

Meetings & Events

Tour Breslin Tower Saturday

Breslin Tower will be open 9 a.m.–4 p.m., Saturday, Aug. 24, for tours and an open house for members of the community, students and parents. The Tower is next to Convocation Hall; take the adjacent stairs to the Paul Engsborg ringing room, where Tower captain Gail Watson and other ringers will welcome guests.

Yoga for Healing Series Begins Monday

Lucie Carlson is offering a six-week Yoga for Healing series, starting at 5:30 p.m. on Monday, Aug. 26, at the Sewanee Community Center. This 90-minute class is based on Kundalini yoga. The fee is \$42 for the series or \$10 for drop-ins. For more information contact Carlson at (865) 591-0012 or email <Lucie.carlson@gmail.com>.

Community Council Meets Monday

The Sewanee Community Council will meet at 7 p.m., Monday, Aug. 26, in the Senior Center. The agenda includes approval of the June minutes; a proposal to change June meeting date (Swallow); a proposed by-law change (Swallow); election of representatives to Lease Committee; and time for announcements and/or questions.

EQB Club Meets Wednesday

The EQB lunch series continues on Wednesday, August 28, at St. Mary's Sewanee. The social time begins at 11:30; lunch is served at noon. Tom Watson will give a cameo update on the status of the plans for a retirement community in Sewanee.

Duplicate Bridge Group Forming

A new duplicate bridge group is forming and plans to play from 1:30–4:30 p.m. every Wednesday at the Templeton Library. For more information call 598-9344.

Area Rotary Club Meetings

The Grundy County Rotary Club meets at 11:30 a.m., Tuesdays at the Dutch Maid Bakery in Tracy City.

The Monteagle Sewanee Rotary Club meets at the Smoke House Restaurant on Wednesday mornings. Coffee begins at 6:50 a.m.; breakfast and the meeting begins at 7 a.m. and ends by 8 a.m.

The Monteagle Sewanee Rotary Club hosts a noon Thursday meeting at the Blue Chair Tavern.

Sunset Serenade Reservations Deadline Aug. 26

The reservation deadline is Monday, Aug. 26, for the fourth annual Sunset Serenade at 5 p.m., Sunday, Sept. 1, at St. Mary's-Sewanee. The evening will include music by Noel Workman and friends, a silent auction and a sunset view from the bluff. Lee Towery Catering is providing the meal, which will include mini New England lobster rolls, mushroom marsala strudels, endive with crabmeat remoulade, and other tapas, as well as wine and beer. To make a reservation call Pratt Paterson at 598-5342 or email <pratt.paterson@stmaryssewanee.org>.

Music at Crossroads Café Friday

Come hear Celtic Music by Slendered Banshee (a couple of members of the band Slandered Banshee can't make it), 6:30–8:30 p.m., Friday, Aug. 30 at Crossroads Café.

Sewanee Woman's Club Reservations Due Aug. 30

The first meeting of the year of the Sewanee Woman's Club will be at noon, Monday, Sept. 9, at the DuBose Conference Center in Monteagle. Reservations for the September meeting are due by Friday, Aug. 30.

Program chairwoman Jane Flynn has put together a lineup of outstanding speakers. Harold Goldberg, the David Underdown Distinguished Professor of European History will look at some of the sites 30 students visited in England, France and Germany this past summer. The September menu will be creamy broccoli and cheese soup, grilled chicken caesar salad and peach cobbler for dessert.

Reservations are required for lunch and can be made by calling Pixie Dozier at 598-5869 or email Marianna Handler at <mariannah@earthlink.net>. Luncheon meetings are on the second Monday of each month, September through May (except January). There is an optional social hour at 11:30 a.m. Lunch is served at noon. The cost of lunch is \$12.

Births

Olivia Quinn Gilliam

Olivia Quinn Gilliam was born on July 18, 2013, at Harton Memorial Hospital in Tullahoma, to Diana and Kane Gilliam of Monteagle. She weighed 8 lbs., and was 19.5 in. long. She joins brothers Derran and Wyatt.

Maternal grandparents are Paula and Kirk Phillips of Gruetli-Laager and Bona and David Nunley of Sparta. Paternal grandparents are Susie and Dan Gilliam of Monteagle.

Jasper Quinn Saussy

Jasper Quinn Saussy was born on Aug. 9, 2013, at Erlanger Baroness Campus in Chattanooga, to Leigh Lentile and Fred Saussy of Sewanee. He weighed 9 lbs., 3 oz., and was 22.5 in. long. Jasper joins sister, Adelie, and brothers, Spencer and Wyatt.

Maternal grandparents are Linda and Hugh G. Lentile of Chester, Ga. Maternal great-grandmother is Mary Clyde Strickland of Lyons, Ga. Paternal grandparents are the late H.B. Saussy of Sewanee, and the late William "Bill" R. Saussy of Marathon, Fla.

Academy for Lifelong Learning Begins Sept. 12

On Thursday, Sept. 12, the Academy for Lifelong Learning will begin its fifth season. The Academy's mission is to bring lifelong learning opportunities during the lunch hour, once a month to residents of the Plateau and its greater environs.

The Rev. John Runkle, the new executive director at St. Mary's-Sewanee, will be the first speaker of the season. He will talk about "Reconstruction of Holy Trinity Cathedral in Port-au-Prince, Haiti, after the Earthquake of 2010."

This year box lunches will be available from St. Mary's-Sewanee. Emily Wallace, the new food service manager, will be offering a choice of grilled chicken wrap filled with fresh vegetables or a very veggie wrap. These will be served with a side choice of fresh fruit or chips and a brownie or shortbread cookie for dessert, and a drink.

Box lunches (\$10) must be reserved in advance by calling 598-5342 or email <reservations@stmaryssewanee.org>.

September is the time to join the Academy or renew membership. The \$10 fee helps cover a small gift for our speakers and pay for audio-visual equipment as needed.

For more information about the Academy call Anne Davis (931) 924-4465 or Debbie Kandul (931) 924-3542.



Residential & Commercial

BUILDING ON A REPUTATION OF QUALITY AND DISTINCTION

Winchester
931-967-4524
www.rvcinc.com

Music at the

CROSSROADS

Friday, 8/23 - Greg Thorpe & Regina R Childress

Friday, 8/30 - Slandered Banshee

Featuring Singaporean Cuisine

38 Ball Park Road, Sewanee, TN

Tel: (931) 598-9988

SEWANEE AUTO REPAIR

—COMPLETE AUTO & TRUCK REPAIR—

- Tune-ups
- Tires (any brand)
- Tire repair
- Batteries
- Computer diagnostics

- Brakes
- Shocks & struts
- Steering & suspension
- Belts & hoses
- Stereo systems installed

All Makes & Models • Service Calls • Quality Parts
ASE Master Certified Auto Technician • 25 Years Experience

7 to 5 M-F • (931) 598-5743 • Across from Regions Bank



THE CULPRITS

BBQ & BEER AT THE CONCERT

FRIDAY the 23rd • 7:30 p.m. at the ANGEL PARK

Tavern Hours
Mon–Fri • 4:00-10:30 p.m.
Sat–Sun • 11 a.m.-10:30 p.m.



Café & Bakery Hours
Mon–Sat • 7:00 a.m.-6:00 p.m.
Sunday • 7:00 a.m.-2:00 p.m.

Russell L. Leonard

ATTORNEY AT LAW

Office: (931) 962-0447
Fax: (931) 962-1816
Toll-Free (877) 962-0435
rleonard@netcomsouth.com

315 North High Street
Winchester, TN 37398

Fine Oils Art Jewelry Collectibles Furniture Decor Rugs Oriental Rare Books Prints Maps

Harvest Moon Market

September 20 to 22

Antiques & Modern

Downtown SEWANEE

A Portion of Every Sale will Benefit Animal Harbor!



Women Caring For Women

Two convenient locations:

325 South Cedar Ave.
Ste 2
South Pittsburg, TN. 37380

Diagnostic Center
(located next to Parkridge Medical Center)
2205 McCallie Ave.
Ste 507
Chattanooga, TN. 37404




Rena A. Azar, MD, F.A.C.O.G. Kristin M. Williams, CRNP

Specializing in all aspects of women's health, including:

- * Well-Woman Exams
- * Hormone Replacement Therapy
- * Laparoscopic Surgery
- * NON- MESH Prolapse/Bladder Surgery
- * Treatment of STD's
- * Contraception Management (including the Mirena IUD)

- * Endometriosis Treatment
- * Colposcopy
- * Infertility Work-up
- * Problematic Periods

Call for an appointment:
423-837-5801

Obituaries

Billy Eugene Campbell

Billy Eugene Campbell, age 82 of Sewanee, died on Aug. 13, 2013, at Emerald-Hodgson Hospital in Sewanee. He was born on Feb. 21, 1931, in Sewanee. He was a veteran of the U.S. Air Force, serving during the Korean War. He was an electrician, retired from the University of the South after 37 years of service. He was preceded in death by his parents, James William and Florence Yates Campbell; brother-in-law, Eugene Nunley; and nephew Terry Nunley.

He is survived by his wife, Hazel Worby Campbell; a sister, Mamie Nunley of Winchester; daughters, Beverly (Danny) Meaker of Decherd; Megan (Patrick) Sublett of Sewanee, and Nell (Mark) Sholey of Decherd; aunt, Jay Yates of Sewanee, four grandchildren, five great-grandchildren, two nephews and one great-niece.

Funeral services were on Aug. 18 in Otey Memorial Parish Church in Sewanee with the Rev. Joseph H. Ballard Jr. and the Rev. Christopher Bryan officiating. Interment followed in Eastern Star Cemetery with full military honors. In lieu of flowers, the family requests donations be made to the Alzheimer's Association, 4825 Trousdale Drive, Suite 220, Nashville, TN 37220. For complete obituary visit <www.watsonnorth.com>.

James Carl "Stoney" Champion

James Carl "Stoney" Champion died on Tuesday, July 30, 2013. He was born on Feb. 23, 1942, in Decherd, to Mose and Myra Cola Champion. He was preceded in death by his parents; and brother Mose B. Champion.

He is survived by son, Carl Prentice (Betty) Hill of Sewanee; three daughters, Marilyn R. Hill of Atlanta, Ga., Romona (Carl) Whitmore of Huntsville, Ala. and Melita L. Burnett of Toney, Ala.; brother Nathaniel "Than" Champion of Decherd; sisters Pauline Champion of Decherd, and Juanita Nance of Ft. Lauderdale, Fla.; three step-daughters, Robbin (William) Burks and Pamela (Floyd) Farris, both of Decherd, and Darlene (Tom) Robinson of Nashville; devoted friend, Frances Bass, seven grandchildren, one great-grandchild, and nieces, nephews, great-nieces, great nephews, and friends.

Funeral services were on Aug. 3 in the funeral home chapel. Interment followed in Watson-North Memorial Park, Winchester. For complete obituary visit <www.watsonnorth.com>.

Leonard Ray Green

Leonard Ray Green, age 53 of the Jumpoff community near Sewanee, died on Aug. 18, 2013, at his residence. He was born Feb. 1, 1960, in Sewanee, to Phenie Mae Green and Herman Lee Green. He was a carpenter and roofer for 30 years. He was preceded in death by his mother.

He is survived by his father; children, Jesse Ray Green of Winchester, Kaylia Rae (Jessie) Green-Seymore of Cowan, Jason Ray Green and Karen Elise Green, both of Nashville; brothers, Randall Green, Ricky Green and Ranson Green; sister, Teresa Johnson, and five grandchildren.

Funeral services were on Aug. 20 in the funeral home chapel with Bro. Kenny Green officiating. Interment followed in Harrison Cemetery. For complete obituary visit <www.moorecortner.com>.

Dale Gulley

Dale Gulley, age 69 of Decherd, died on Aug. 9, 2013, at Centennial Medical Center in Nashville. He was born on Nov. 7, 1943, in Franklin County to Murphy and Reba Norris Gulley. He served for 46 years as a Laboratory Manager at Southern Tennessee Medical Center and Emerald-Hodgson Hospital. He was a member of the United Methodist Church in Winchester. He was preceded in death by his parents; and wife, Donna Sue Gulley.

He is survived by his daughter, Cindy (Stan) Henn of Winchester; son, Marty (Marilyn) Gulley of Tullahoma; five grandchildren, three step-grandchildren, and many nieces, nephews and cousins.

Funeral services were on Aug. 13 in the funeral home chapel with the Rev. Randy Brown and the Rev. Steve Angus officiating. Interment followed in Franklin Memorial Gardens. Memorial contributions may be made to the Multi-County Cancer Support Network. For complete obituary visit <www.watsonnorth.com>.

James Ralph McGee

James Ralph "Blue Eyes" McGee, age 78 of Belvidere, died on Aug. 17, 2013, at Harton Regional Medical Center. He was born on Aug. 2, 1935. He was preceded in death by his parents; brother Willard McGee; and sisters Geneva McGee and Vera Benton.

He is survived by his wife Lila McGee of Belvidere; brothers Hubert McGee and Wayne (Kathy) McGee, both of Winchester, Ed (Olphia) McGee of Lynchburg; sisters Lucilla Smith of Little Rock, Eva (Jim) Snead of Clarksville, Anna Birdsong of Texas, Betty (Larry) Shockley of Belvidere, Opal (Bob) Hartog of Gary, Ind., Rita (Tommy) Langston of Winchester, Peggy (Ed) Kennedy of Decherd and Gail (Ron) Smith of Sewanee; sister-in-law, Wanda McGee of Winchester and many nieces, nephews and other relatives.

Funeral services were on Aug. 20 in the funeral home chapel with Bro. William Steele officiating. Interment followed in Maxwell Cemetery. For complete obituary visit <www.watsonnorth.com>.

Jacqueline Skillman

Jacqueline Skillman, age 84 of Cowan, died on Aug. 19, 2013, at her residence.

She is survived by her children, Kathy Branch of Strawberry Plains, Tenn., Shawn Franklin of Cowan, Sarah (John) Groomes of Killeen, Texas, Alice (Steve) Hayworth of Estill Springs, Lucy (Raymond) Dyer of Winchester, Robert (Linda) Skillman of San Jose, Calif., Joseph (Anita) Skillman of Killeen, Texas and John (Karrie) Skillman of Lugoff, S.C.; brother, Don Billings of Ottawa, Ill.; and several grandchildren.

No services are planned. For complete obituary visit <www.moorecortner.com>.

Gracie Wilson

Gracie Wilson, age 79 of Cowan, died on Aug. 16, 2013 at Southern Tennessee Medical Center. She was born on Jan. 27, 1934. She was employed for more than 20 years by the Franklin County Election Commission. She was preceded in death by her parents; husband, James C. "Crock" Wilson; sister Lil Townsend; brothers, Clarence, David and Charles Tenant.

She is survived by her daughter, Regina (Dave) Myers of Decherd; sons, Carlos (Lori) Nichols of Estill Springs and Bryan Nichols of Justin, Texas; step-daughter, Carla Wilson Money of Cowan; sister Wilma Martin of St. Louis; special friend, Wilson Prince; five grandchildren, four step-grandchildren, and many great-grandchildren, nieces and nephews.

Funeral services were on Aug. 19 in the funeral home chapel. Interment followed in Cowan Montgomery Cemetery. For complete obituary visit <www.watsonnorth.com>.

If your church is in our circulation area and would like to be listed here, please send service times, church address and contact information to <news@sewaneemessenger.com> or phone 598-9949.

Church News

Christ Church, Monteagle

At Christ Church Monteagle, eight children and their parents are being instructed in the preparation for the Service of Holy Baptism that is coming up soon. On Sunday, Aug. 25, the theme of the day will be "Learning about the Sacrament of Belonging."

Otey Parish

At 10 a.m., Sunday, Aug. 25, Otey Parish will resume Sunday School for people of all ages. This year's theme is "Hunger: Faith in Action." Adults and youth are invited to hear Amy Patterson introduce the theme for this year; breakfast will be served. The Lectionary Class and Godly Play will also be available between services. Nursery care is available from 8:30 a.m. until coffee hour, which follows the 11 a.m. service.

Unitarian Universalist, Tullahoma

Annie Armour of Sewanee will be the guest speaker at 10 a.m., Sunday, Aug. 25, at the Unitarian Universalist Church of Tullahoma. She will discuss "My Morbid Fascination with Yellow Fever." Following the service there will be refreshments and a discussion period. The church is located at 3536 New Manchester Hwy. in Tullahoma. For more information, call (931) 455-8626, or go to <www.uutullahoma.org>.

CHURCH CALENDAR

Weekdays, Aug. 26-31

7:00 am Morning Prayer/HE, St. Mary's (not 8/28)
7:30 am Morning Prayer, Otey
8:10 am Morning Prayer, Chapel of the Apostles (starts 8/29)
12:00 pm Eucharist, Chapel of the Apostles (starts 8/29)
12:30 pm Noon Prayer, St. Mary's (not 8/28)
4:30 pm Evening Prayer, Otey
5:00 pm Evening Prayer, St. Mary's (not 8/28)
5:10 pm Evening Prayer, Chapel of the Apostles (starts 8/30)

Saturday, Aug. 24

Monteagle Seventh-day Adventist Church

10:00 am Sabbath School / Bible Study

11:00 am Worship Service

Good Shepherd Catholic Church, Decherd

5:00 pm Mass

St. Mary's Convent

8:00 am Morning Prayer

Sunday, Aug. 25

All Saints' Chapel

9:00am Orientation Service

Bible Baptist Church, Monteagle

11:00 am Worship Service

5:30 pm Evening Service

Christ Church Episcopal, Alto

11:00 am Holy Eucharist

11:00 am Children's Sunday School

Christ Church, Monteagle

10:30 am Holy Eucharist

10:45 am Children's Sunday School

12:50 pm Christian Formation class

Church of the Holy Comforter, Monteagle

9:00 am Holy Eucharist

Cowan Fellowship Church

10:00 am Sunday School

11:00 am Worship Service

Cumberland Presbyterian Church, Sewanee

9:00 am Worship Service

10:00 am Sunday School

Epiphany Episcopal Church, Sherwood

10:30 am Children's Sunday School

10:45 am Holy Eucharist

Good Shepherd Catholic Church, Decherd

10:30 am Mass

Grace Fellowship

10:30 am Sunday School/Worship Service

Harrison Chapel Methodist

10:00 am Sunday School

11:00 am Worship Service

Holy Comforter Episcopal, Monteagle

9:00 am Holy Eucharist

Midway Baptist Church

9:45 am Sunday School

10:45 am Worship Service

6:00 pm Evening Service

Midway Church of Christ

10:00 am Bible Study

11:00 am Morning Service

6:00 pm Evening Service

Morton Memorial United Methodist, Monteagle

9:45 am Sunday School

11:00 am Worship Service

New Beginnings Church, Jump Off

10:30 am Worship Service

Otey Memorial Parish

8:50 am Holy Eucharist

10:00 am Christian Formation

11:00 am Holy Eucharist

Pelham United Methodist Church

9:45 am Sunday School

11:00 am Worship Service

St. Agnes' Episcopal, Cowan

11:00 am Holy Eucharist Rite I

St. James Episcopal

9:00 am Bible story time for little ones

9:00 am Holy Eucharist

St. Luke's Chapel

7:30 am Holy Eucharist

St. Margaret Mary Catholic Church, Alto

8:00 am Mass

St. Mary's Convent

8:00 am Holy Eucharist

5:00 pm Evensong

Sewanee Church of God

10:00 am Sunday School

11:00 am Morning Service

6:00 pm Evening Service

Society of Friends

9:30 am Meeting, 598-5031

Tracy City First Baptist Church

9:45 am Sunday School

10:45 am Morning Worship

5:30 pm Youth

6:00 pm Evening Worship

Tuesday, Aug. 27

All Saints' Chapel

4:00 pm Launching a New Year service, picnic follows

Wednesday, Aug. 28

6:00 am Morning Prayer, Cowan Fellowship

12:00 pm Holy Eucharist, Christ Church, Monteagle

5:30 pm Evening Worship, Bible Baptist, Monteagle

6:00 pm Prayer and study, Midway Baptist Church

6:00 pm Youth (AWANA), Tracy City First Baptist

6:30 pm Prayer Service, Harrison Chapel, Midway

7:00 pm Adult Christian Ed., Epiphany, Sherwood

7:00 pm Evening Worship, Tracy City First Baptist

A LAKE HOUSE
WITH A DOCK
FOR ONLY

\$84,900?

Check this out!



Call or Text

Pam Peck at 931-580-8321

Century 21 Mid-State Realty, LLC

931-967-4321

The Art of Building

AWARD-WINNING BUILDER

Certified **Green** Builder



GOOCH-BEASLEY BUILDERS

9 College St. at Assembly Ave., Monteagle
(931) 924-5555

*"If you can't write it and
sign it, don't say it."*

From "Two-Liners Stolen From
Others by Joe F. Pruett"

Sewanee Realty

931.598.9200 or 931.636.5864 www.SewaneeRealty.info
115 University Ave., Sewanee

Margaret Donohue,
Principal Broker
931.598.9200

John Brewster,
Broker
931.636.5864



1150 Sassafras Ct., Clifftops. \$224,900



MLS 1358150 - 100 Tomlinson Lane,
Sewanee. \$598,000



BLUFF - MLS 1329672 -
1899 Jackson Pt. Rd., Sewanee. \$365,000



MLS 1408568 - 2056 Laurel Lake Dr.,
Monteagle. \$182,000



MLS 1423183 - 202 Main St.,
Monteagle. \$112,000



MLS 1359603 - 846 Gudger Rd.,
Sewanee. \$235,000



MLS 1339897 - 104 Old Farm Rd.,
Sewanee. \$495,000



MLS 1378327 - 58 Oklahoma Ave.,
Sewanee. \$350,000

LOTS & LAND

Taylor Rd., Sew., 29a	1470665	\$189,000
Monteagle Falls Rd.	1431474	\$19,900
36 Azalea Ridge Rd.	1378840	\$59,000
First St., Monteagle	1325122	\$16,800
Sarvisberry Place	1207077	\$83,000
Sarvisberry Place	1244981	\$85,000



BLUFF - MLS 1437123 -
3442 Sherwood Rd., Sewanee. \$789,000



375 Caldwell Rd.,
Sewanee. \$179,900



BLUFF - MLS 1411478 -
146 Jackson Pt. Rd., Sewanee. \$299,000



BLUFF - MLS 1440974 -
1804 Ridge Cliff Dr., Monteagle. \$199,900



MLS 1454027 - 114 Parson's Green,
Sewanee. \$245,000



MLS 1390576 - 276 Tennessee Ave.,
Sewanee. \$369,900



BLUFF - MLS 1377144 - 3335 Jackson
Point Rd., Sewanee. \$258,800



MLS 1467709 - 52 Sherwood Trail,
Sewanee. \$379,900



MLS 1264861 - 170 Tate Rd., Sewanee.
\$298,000



BLUFF - MLS 1437112 -
47 Poplar Lane, Sewanee. \$428,000



BLUFF - MLS 1397328 -
974 Old Sewanee Rd., Sewanee. \$299,000



MLS 1302421 - 621 Dogwood Dr.,
Clifftops. \$165,000



MLS 1431112 - 727 Deepwoods Rd.,
Sewanee. \$398,000



MYERS POINT
bluff and lake tracts



BLUFF + 30 ACRES - MLS 1408523 -
1710 Stagecoach Rd., Sewanee. \$980,000



MLS 1475659 - 110 Willie Six,
Sewanee. \$135,000



BLUFF - MLS 1360522-
53 Valley View, Monteagle, \$449,000



MLS 1476919 - 47 Parson's Green,
Sewanee. \$179,000



BLUFF - MLS 1439736 -
1626 Clifftops Ave., \$399,000



MLS 1379047 - 136 Appletreewick St.,
Laurel Brae. \$399,000



MLS 1395737 - Shenanigans
in Sewanee. \$525,000



BLUFF - MLS 1458099 -
540 Monteagle Falls Rd., \$389,000



MLS 1371914 -136 Parson's Green,
Sewanee. \$199,500



MLS 1411133 - 204 Trussell Rd.,
Monteagle. \$169,000



BLUFF - MLS 14335874 -
250 Sherwood Trail, Sewanee, \$399,900

BLUFF TRACTS

Jackson Pt. Rd. 19+a	1440564	\$120,000
Jackson Point Rd	1426464	\$99,000
Jackson Pt. Rd. 8.63a	1414073	\$ 89,000
Ravens Den Rd	1297607	\$ 59,000
Saddletree Lane	1207074	\$ 85,000
Jackson Point Rd	1099422	\$199,000
Jackson Point Rd	1101401	\$ 99,000
Lot 36 North Bluff	1064111	\$ 75,000
7 Saddletree Lane	1417538	\$ 70,000
Raven's Den	1015362	\$ 99,000



Dog Park (from page 1)

"Thanks again to everyone who has donated time and money to this much needed addition to the campus, and thanks to all the University officials who granted the space and spent so much time and money clearing and running the water lines," White said. He also thanked Kay Rhodes, Tim and Mesha Provo, Caroline Shoemaker, Carolyn and Richard O'Connor, Marney Babbit, John Vineyard and Nate Wilson.

The exercise ramp donated by the Girl Scouts will be completed soon, and Eagle Scout candidate Mack Lindau will be building an attractive kiosk for announcements.

Because of the generosity of donations from community members, White said, "The park is built out of such high quality materials that it should outlast our children and probably our grandchildren with minimum maintenance."

In his initial proposal to the Community Council about the park, White said, "Regular dog park visitors report that in parks their dogs become socialized—learn how to behave around strangers and other dogs. They often report that after a few visits to a dog park, their dogs no longer bark at every dog that passes their house."

Community Fund Calls for Fall 2013 Grant Proposals

The Community Fund of the South Cumberland Plateau (CFSCP) announces the deadline for its fall grant cycle and invites the community to an informational meeting about grant applications.

At 5 p.m., Thursday, Sept. 5, there will be an informational program for those interested in applying for Community Fund grants at the Coalmont Community Center. The deadline for fall grants is Oct. 1. Grant application forms and grant guidelines are available online at <www.cfscp.org>. Paper copies of these documents are available from CFSCP administrator Shirley Winn at <info@cfscp.org> or 931-383-9044.

The Grants Committee members will be available at the informational meeting to answer questions about the process and provide assistance to non-profits and schools that want to learn more about CFSCP grants.

The CFSCP, founded in 2012, has completed two grant cycles to date. In November 2012, it awarded grants totaling \$101,673 to 11 nonprofit organizations; and in June, \$65,000 was given to seven additional groups. The CFSCP funds projects in support of economic growth, education, arts, recreation, healthcare, job training, elder care and community building.



Recent CFSCP recipients, Folks at Home director Kat O'Donohue (left) and Susan Holmes, director of the South Cumberland Plateau Timebank.

University Job Opportunities

Exempt Positions—Dining Operations Manager, Sewanee Dining; Director of Archives and Special Collections; Director of Physical Plant Services; Grounds Supervisor; Head Golf Coach; Special Gift Officer.

Non-Exempt Positions—Advancement Office Coordinator; Cook, Server, and Utility Worker for Sewanee Dining; Dispatcher; Financial

Aid Assistant; Financial Aid Technology Specialist; Office & Logistics Coordinator; Office Program Specialist—School of Theology; Office Program Specialist—PPS.

Descriptions of these positions are available on the website at <www.sewanee.edu/personnel/jobs>. For more information call 598-1381.



BOOKMARK IT!
www.TheMountainNow.com



Therapy dogs (from left) Sabbath, Mickey and Weezy are looking forward to visiting Franklin County's children this year. Tail Waggin' Tutors is a program of Therapy Dogs International <www.tdi-dog.org>. For information locally, contact TDI Chapter 234 director Sarah Doyi at <hendrixmom1997@yahoo.com> or (931) 636-8893.

Sewanee Community Chest Requests Due Sept. 13

The Sewanee Community Chest Fund Drive is gearing up for its fall campaign. Sponsored by the Sewanee Civic Association, the Community Chest raises funds for local organizations. Funding applications are now being accepted. The deadline for submission is Friday, Sept. 13.

Each year the Community Chest raises funds for organizations that serve the common good. Sponsored by the Sewanee Civic Association, the Sewanee Community Chest supports youth sports, outreach, community and educational programs across the Plateau.

Please send an email to <sewaneecommunitychest@gmail.com> to have an application emailed or mailed to your organization.

For more information go to <www.sewaneecciv.wordpress.com>. Through the generous commitment of the community last year, the Community Chest was able to help 25 organizations with funding. Donations to the Community Chest are accepted at any time at P.O. Box 99, Sewanee, TN 37375.

SHARE YOUR NEWS!

Email <news@sewaneeemessenger.com>

Please join us for our 4th annual Sunset Serenade



ST. MARY'S SEWANEE

The Ayres Center for Spiritual Development

Sunday, September 1
5:00 p.m. to 8:00 p.m.

Tapas menu by Lee Towery Catering
Music by Noel Workman and Friends~Silent Auction

Silent Auction Items include:

Artwork by: Mitzi Roess, Susan Church, Tom Church, Carol Wray, Alec Moseley, Kim Barrick, Claire Reishman, Maggie Little, Leslie Lockhart, Jan Pate, Bill Mauzy, RaRa Schlitt, Rene Stubblefield, Susan Ries, Louis Rice, Rick Pride, Joseph Presley, Hallelujah Pottery, Cheryl Lankhaar

Gift Certificates: Dave's Modern Tavern, Pearl's, Tea on the Mountain, Piggly Wiggly, Crossroads Café, Monteagle Florist, Ivy Wild, Mountain Outfitters, The Lemon Fair, The Blue Chair, Vanderbilt Integrative Health Center, Monteagle Inn wine tasting

Services: private art lessons, estate planning, landscape design, photo shoot, deer proofing, massage, private golf lesson, private tennis lesson, portrait

Adventures: aerial tour of Sewanee, margarita party for 20, stay at a Gunter'sville lake house, hike and picnic, a weekend at Edgeworth Inn, bicycle trek and picnic lunch

Items: heirloom Batiste christening gown, Doors of Sewanee framed poster, hammock and straps, case of Coppola wine, load of compost, Fowler Center passes, scarves, brunch basket, bluebird house, knitted socks and baby hats, gluten-free basket, handmade walking stick, luxurious spa basket, decorative pillows, handblown vases, sculpture, porcelain bowl, pottery

Reservations required—Call 931-598-5342 to reserve your ticket.

\$60.00 per person.

Proceeds will benefit St. Mary's Sewanee's programs, retreats and scholarships.

Free Screening of Film about 1963 March

The community is invited to a free screening of "John Lewis Marches On," Bill Moyers' interview with Congressman Lewis in observance of the 50th anniversary of the Aug. 28, 1963, march on Washington, D.C. The film will begin at 6:30 p.m., Thursday, Aug. 29, at the Ayers Multi Cultural Center. Community members active in the civil rights movement of the 1960s will be on hand to lead a discussion following the 57-minute video.

An estimated 250,000 people participated in the March for Jobs and Freedom where Martin Luther King Jr., delivered his famous "I have a dream"



Bill Moyers (left) with John Lewis



Jenkins Joins Realtors

Gooch Beasley Realtors is pleased to announce that Bess Jenkins has recently joined their firm as an Affiliate Broker.

Jenkins has been a realtor in Montgomery, Ala., since 2005 where she has had a successful career working with both buyers and sellers. She has a wealth of real estate experience with a variety of clients from the first-time homebuyer to those seeking to purchase vacation or investment properties.

She is married to John, a student in the School of Theology, and they have two children, John Turner and Ellie. Please contact her at (334) 300-1214 or <bess@bessjenkins.com>.

speech. Lewis was the youngest of ten speakers that day and is the only one still living.

Special thanks to Moyers & Company/BillMoyers.com for permission to offer a free public screening of the interview. The program includes original footage from the 1963 march and other civil rights demonstrations earlier that same year.

The Cumberland Center for Justice and Peace (CCJP) Diversity Awareness Committee, University Office of Multicultural Affairs, and School of Theology are sponsoring the event. Funding from the Sewanee Community Chest helps support CCJP's film-discussion series. For more information contact CCJP director Leslie Lytle at 598-9979 or email <sllytle@blomand.net>.

Senior Center News

Daily Activity Schedule

The Senior Center has something fun to do each day of the week. Join them for any of these activities:

Mondays at 10:30 a.m., there is chair exercise.

Tuesdays at 10:30 a.m., the group plays bingo with prizes.

Wednesdays at 10 a.m., the writing group gathers.

Thursdays at 10:30 a.m., there is chair exercise.

Fridays at 10 a.m. is game day.

Senior Menus

The Sewanee Senior Center serves lunch at noon on weekdays. The suggested donation is \$3 (\$5 or older) or \$5 (under 50). Please call by 9 a.m. to order lunch.

Aug. 26: Cuban Reuben sandwich, potato logs, dessert.

Aug. 27: Chicken strips, white beans and tomatoes, salad, dessert.


Aug. 28: Pig in poncho, slaw, chips, dessert.

Aug. 29: Cabbage roll, field peas, cream corn, cornbread, dessert.

Aug. 30: Steak and gravy, mashed potatoes, green peas, roll, dessert.

Menus may vary.

The center is located at 5 Ball Park Rd., behind the Sewanee Market. To reserve a meal or for more information, call the center at 598-0771.



**PATTON
WATKINS
ARCHITECT**

Sustainable Design
+
Construction

Registered Architect
Licenced Contractor
LEED A.P.

931-598-9006
125 University Ave.
P.O.Box 194
Sewanee, TN 37375
pattonwatkins@hotmail.com

Extension Office Offers Farming Seminars

The UT Extension Office in Grundy County will be offering several seminars beginning on Sept. 3. The first is a series called "Can I Farm...and Be Profitable?" All programs in this series are from 6-8 p.m. on Tuesday evenings in September.

Farm Business Management and Marketing will be on Sept. 3; Goats and Beef Cattle will be on Sept. 10; Organic or Traditional Vegetables will be on Sept. 17, and Fruits, Berries and Nut Crops will be on Sept. 24.

Registration cost is \$10 for each program or \$25 for all, and includes dinner. The classes will be at the Extension Service office, 27 Phipps St., just off Highway 56 in Coalmont. Registration deadline is Aug. 29.

UT Extension offers its programs to all eligible persons regardless of race, color, national origin, sex, age, disability, religion or veteran status, and is an Equal Opportunity Employer.

For more information call Creig Kimbro, the director of the Grundy County office, (931) 592-3971.



36 Ball Park Road, Sewanee, Tennessee (931) 598-9000
www.ivywildsewanee.com

**FINE DINING
SEATING FROM 5:00 TO 9:00
THURSDAY - SUNDAY EVENINGS**

BYO Wine

PILATES CLASSES

Come learn the fundamentals of this amazing exercise system. Develop strong, lean abdominals and back muscles, better posture, increase flexibility and find relief from back pain, neck and shoulder tension.

***New Beginner Session Starts Sept. 3 at 10:30 a.m.
Tuesday & Thursday at the Fowler Center in Sewanee
(open to nonmembers with class pass)**

Class is \$80 for the month

(See instructor about prorating for absences.)

***New Contract/Release Stretching Class Starts Sept. 3 at
12:00 p.m. Fridays; Class is \$60 for six sessions**

***Ongoing Intermediate/Advanced Class at 9:30 a.m. & 12:30
p.m. Tuesday & Thursday (Must have previous Pilates experience).**

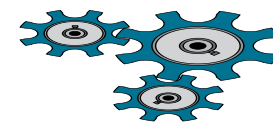
Private and duet sessions on Pilates equipment and personal training in Cardio and Weight Training also available Fridays by appointment.

**Contact Kim Butters, AFAA Personal Trainer,
PMA Pilates Instructor, (423) 322-1443**

J & J GARAGE

COMPLETE AUTO REPAIR

- Import & Domestic
- Computerized 4-Wheel Alignments
- Shocks & Struts • Tune-ups •
- Brakes
- Our Work is Guaranteed.
- OVER 26 YEARS EXPERIENCE.



Jerry Nunley
Owner

598-5470 Hwy 41-A between Sewanee & Monteagle • Monday-Friday 7:30-5:30

Welcome, University families!

Unique Mountain Properties



CHICKADEE'S NEST! 1402 Cooley's Rift Blvd. Gated community, fish or boat on beautiful Lake Louisa. Brown rim view home. Garage. 2303 sf, 3/2.5. \$339,000. MLS#1475858.



STREAMS IN THE LAURELS. 1221 Clifftops Ave. Log siding, metal roof, stone fireplace. 4096 SF, 3/2.5. Wood floors, 9' ceilings on main, wheelchair ramp. MLS#1429185. \$424,000.



2063 LAUREL LAKE DR. 2+ Acres. Detached workshop, extra garage. Log siding, wood details, wide decks to view. 2BR, 2.5BA, 2134 SF. MLS#1389769. \$449,500.



1517 LAUREL LAKE DR. 4.98 acres. 3BR, 2BA, 2 Half BA, 3104 SF. Amazing views, privacy. MLS#1387679. \$487,000.



THE TIGER'S DEN. 2054 Lakeshore Dr. in Clifftops. Two masters on main level. Best floor plan around for entertaining. 5BR, 4BA, 2772 sf. MLS#1442383. \$395,000.



GRANDVIEW ON THE BROW behind SAS. Large or multi-family Federal Style. Saltwater in-ground pool, barn, plenty of privacy and acreage. In-law suite, 4 fireplaces. Decks to view. Investment/rental potential. 6BR, 5.5 baths, 6000+ SF. MLS#1454090. \$739,000



IN THE HEART OF CLIFFTOPS. 2235 Sarvisberry Place. Wrap and screened porches, downstairs master suite. Stone fireplace. 5.35 secluded acres. 3BR, 2.5BA, 2048 SF. MLS#1455290. \$359,000.



BUTTERFLY HEIGHTS ON THE BROW. 827 Scenic Rd., east of Monteagle. Panoramic sky and cliffs vista. Custom home w/great storage space. 2-car garage. 3BR, 2.5BA, 2922 sf. 6.8 acres. MLS#1474731. \$325,000.



120 OLD HIGHLANDER LANE. Historic library. 3220 sf, 3/4. Lakefront. \$179,000. MLS#1345416.



SKY HIGH, a magical place at 2140 Clifftops Ave. Fireplace, above-the-clouds observation deck. Floor-to-ceiling views on the brow. 2453 SF, 3BR, 3.5BA. MLS#1252982. \$669,000



CLIFFTOPS LAKEFRONT RETREAT. 2334 Westlake. 5.28 acres, 370 feet shoreline. Two docks, 3 BR, 2 BA, 1006 sf main level, plus guest bedroom, bath up. Vaulted great room, wood-burning fireplace. MLS#1468783. \$580,000.



BLUE BIRD HILL. 1610 Clifftops Ave. 3BR, 2BA, 1700 SF. Stone fireplace, remodeled kitchen. MLS#1364293. \$429,000.

Monteagle Sewanee, REALTORS

View these and other quality homes and building sites at

www.monteaglerealtors.com



Then call **931-924-7253**

Deb Banks, Realtor, 931-235-3385, dbanks@realtracs.com
Dee Hargis, Broker, 931-808-8948, aunderhill@blomand.net
Heather Olson, Realtor, 804-839-3659, heatheromom@yahoo.com
Ray Banks, Realtor, 931-235-3365, banksgrass@yahoo.com
Jeanette S. Banks, Broker-Owner, banksnjb@gmail.com



Rebecca Sharber, director of schools and president of the Franklin County A.M. Rotary Club, hosted a cookout at her home to honor newly-arrived Rotary Youth Exchange Student Rodolfo Viola of Brazil. Rodolfo will stay at the Sewanee home of Don and Lisa Rung during the first half of his visit here and attend Franklin County High School. At the cookout (from left): Lisa Rung, Rodolfo Viola from Brazil, Sharber and Don Rung.

Civic Association Sets 2013–14 Meetings

The Sewanee Civic Association (SCA) has announced the dates for its 2013–14 meetings. The group will gather at the EQB House on the following Wednesdays: Sept. 4, Oct. 2, Nov. 13, Feb. 5, March 5 and April 16. Social time with wine begins at 6 p.m., and dinner begins at 6:30 p.m. The business meeting begins promptly at 7 p.m., followed by a brief program. The program portion of the evening is free and open to the public. Annual dues of \$10 are payable at the door.

At the Sept. 4 meeting, Emily Puckette and Steve Burnett will give an update on the park and playground project and report on the preliminary findings of the survey [see page 2].

This year, the SCA is celebrating 105 years of civic opportunities in the community. The association brings together community members for social and community awareness. The SCA is the sponsoring organization for Cub Scout Pack 152, Sewanee Classifieds and the Sewanee Community Chest. Any adult who resides in the area and shares concerns of the community is eligible for active membership.

For more information, go to <www.sewaneecivic.wordpress.com>.

Have you noticed?
Our remodeling worksites are
neat, clean and respectful of
homeowner lifestyles.



*"Open your door to all
the possibilities"*

Custom home remodeling begins with...



Joseph's Remodeling Solutions
A Division of Sumpter Solutions, LLC

Taking Quality to the Next Level
Licensed - Insured - Green Certified

931-598-5565
joseph@josephsremodelingsolutions.com



MICHELLE M. BENJAMIN, JD
Attorney & Counselor at Law

102 FIRST AVENUE, NORTH
WINCHESTER, TENNESSEE 37398

(931) 962-0006
(931) 598-9767

SES Menus

**Monday–Friday,
Aug. 26–30
LUNCH**

MON: Chicken nuggets, tuna sandwich, chips, green beans, mashed potatoes, baby carrots, dip, canned fruit or fruit juice, roll.

TUE: Corn dog, peanut butter and jelly sandwich, snack mix, garden salad, black-eyed peas, roasted vegetables, baked potato smiles, canned or fresh fruit, Rice Krispy bar.

WED: Cowboy cavatini, yogurt, cheese sticks, muffin, baked potato, garden salad, lima beans, canned or fresh fruit, breadstick.

THU: Taco, peanut butter and jelly sandwich, tater tots, refried beans, garden salad, canned or fresh fruit, tortilla shell, cinnamon graham.

FRI: Barbecue, hot dog, baked beans, fries, dill pickles, canned fruit or fruit juice, hamburger bun, hotdog bun.

BREAKFAST

Students select one or two items

MON: Breakfast pizza, mini pancakes.

TUE: Biscuit, sausage, gravy, jelly, syrup.

WED: Yogurt, graham crackers, oatmeal bar.

THU: Cereal bar, cheese stick, breakfast pizza, mini French toast.

FRI: Biscuit, chicken patty, gravy, jelly, syrup.

*Options available every breakfast:
Assorted cereal, assorted fruit and juice, milk varieties.*

Menus subject to change.



**Drive Safely
in School
Zones!**

PEDESTRIANS and BIKERS – EXERCISE CAUTION!

When you are out getting your exercise, following a few simple rules will keep you on the go. When biking on Sewanee sidewalks, cyclists should slow down when passing pedestrians since some may not hear a warning bike bell and know to step to the right. Walkers should walk on the left-hand side of the road, traveling against the traffic; bicyclers should travel in the right-hand lane, going with the flow of traffic. During the day, both walkers and bikers should wear clothing of bright, easily seen colors, and, from dusk on, wear light, reflective clothing. In any case, don't just assume drivers can see you. Be on the lookout ... for your own safety.

SAS Welcomes Students and Faculty

Classes begin at St. Andrew's-Sewanee School on Monday, Aug. 26, but the campus has already been buzzing with pre-season athletes, faculty meetings, and new student orientation. Monday morning, the first day of classes, will see more than 250 students stream into St. Andrew's Chapel for morning worship, including 71 new students. Thirty sixth-grader students will begin their SAS careers.

New student orientation began on Aug. 22, although many of the school's international students have been in residence since last weekend. New student orientation continues today (Friday), Aug. 23. That evening boarding students and any day students who would like to attend will enjoy a free concert by The Culprits in Sewanee's downtown Angel Park. The Culprits, whose band members are all alumni of SAS, are offering this concert as a gift to the entire community. All are welcome.

On Saturday, all students and parents of returning students will be on campus for registration, advisory meetings, and class activities designed to ease students and parents into the school year. Parents of seniors will attend a college counseling meeting facilitated by SAS College Counselor Christine Asmussen and Sewanee's Associate Dean of Admission and Financial Aid Beth Cragar. The afternoon is filled with activities for students and culminates in an ice cream social.

A full list of Orientation and Opening Weekend events, including parent meetings, are available on the SAS calendar <www.sasweb.org/calendars>.



Testing Results for Franklin County Schools

by K. G. Beavers, Messenger Staff Writer

Test results for individual schools in grades 3–8 and 9–12 have been released by the Tennessee Department of Education. The Tennessee Comprehensive Assessment Program (TCAP) Achievement Test and End of Course (EOC) tests are mandatory for students in grades 3–8 and 9–12. These test scores count as part of a student's final report card grade and are also used in teacher and administrator evaluations.

As a district, Franklin County declined in the percentage of students scoring proficient and advanced on all TCAP assessments. For EOC testing, as a district Franklin County improved only in Algebra I, Algebra II and English I.

For individual Franklin County schools, most declined in the percentage of students who scored proficient and advanced on the TCAP tests. Huntland had the biggest gain in math for grades 3–8, with 50.1 percent or advanced, a 10.2 gain.

For Sewanee Elementary School, 68.3 percent of students were proficient/advanced in math, a decline of 9.5 percent. SES had the highest percentage in the county of students scoring proficient/advanced in reading/language arts with 70 percent, a decline of 7.8. In science, 79.2 percent of students scored proficient/advanced, a decline of 2.9 percent. In social studies, there was an increase of 0.4 percent with 93.4 percent of students scoring proficient/advanced.

Broadview Elementary had the highest TCAP proficient/advanced score in science, with 80.6 percent, an increase of 5.1. Broadview also had the

highest proficient/advanced score in social studies, with 98.5 percent, an increase of 2. North Lake Elementary had the highest proficient advanced score in math with 73.7 percent, an increase of 7.3.

South Middle School declined in all four testing areas. North Middle School declined only in math. Huntland high school had gains in Algebra I and English II. Franklin County high school had gains in Algebra I, Algebra II and English I.

The state also looks at the amount of growth, or the value added effectiveness, known as Tennessee Value-Added Assessment System (TVAAS) student growth measure. TVAAS is a statistical method that compares actual growth to a student's projected growth, or how much a student actually progresses year to year. It measures how much students have learned according to the curriculum and how they performed on standardized testing.

The ratings go from Level 5 as the most effective or making the most progress in growth, to Level 1, least effective or making substantially less progress in growth. Overall includes all the TCAP tests for grades 3–8, and EOC tests for grades 9–12. Literacy includes TCAP reading/language arts tests, and EOC English I, II and III tests. Numeracy includes the TCAP math test, and the EOC Algebra I and II tests. Literacy and numeracy are a combination of the math and reading/language arts tests.

As a district, Franklin County received 1 in overall, 1 in literacy, 2 in numeracy, and 1 in literacy and numeracy. North Lake made 5's in overall, literacy, numeracy, and literacy/numeracy. SES scored a 5 in composite and literacy, a 3 in numeracy, and a 4 in literacy/numeracy. Broadview had 3, 3, 2 and 2. North Middle School scored a 1 in all four areas. South Middle School scored 1, 2, 3 and 2.

For complete information, go to <www.tn.gov/education>. For more information on the TVAAS, go to <http://www.tn.gov/education/assessment/test_results.shtml>.

KEN O'DEAR
EXPERT HANDYMAN
ALL AREAS OF HOME MAINTENANCE
REPAIR AND REMODELING
Build a Porch, Tile a Bath, Add a Room, Paint a House
If it is broken, I can fix it!
DEPENDABLE AFFORDABLE RESPONSIVE
18 YEARS OF SATISFIED PLATEAU CUSTOMERS
931-235-3294 OR 931-779-5885

Open 10am - 6pm
EveryDay



Welcome Back to School Sale!
50% Off Patagonia Samples
10% Off Everything with

Student ID

*Offer Only Applies to Regularly Priced Items



903 W. Main St, Monteagle, TN 37356 (931) 924-4100
www.themountainoutfitters.com

Sewanee Welcomes New Faculty Members to Campus

The University of the South is pleased to announce eight new long-term faculty members in the College, as well as two Brown Foundation Fellows for 2013-2014. New faculty members are Kristen Cecala, Eugenii Uliev Donev, Aaron Elrod, Maggie Fritz-Morkin, César Leal, Mayumi Manabe, James Ross Macdonald and Courtney World. This year's Brown Foundation Fellows are the Rev. Canon Gideon Byamugisha and Antonio Momplet.

New adjunct faculty appointments for the coming year were also announced: James Myron Bateman, visiting assistant professor of mathematics and computer science; Jacquelyn Theresa Bush, visiting assistant professor of theatre; Phillip Matthew Byers, visiting assistant professor of chemistry; David Colbert-Goicoa, visiting assistant professor of Spanish; Caroline Frank, visiting instructor of German (Easter semester); William Hastings Hensel Jr., visiting instructor of English; Kevin Michael Hobbs, visiting instructor of forestry and geology (Easter semester); Frank Keith Lochner, visiting instructor of biology; Farhana Loonat, visiting instructor of politics; David Andrew Meola, visiting assistant professor of history; David Alan Neely, visiting assistant professor of biology; and Colt Brazill Segrest, visiting assistant professor of French. Bush, Hensel, Hobbs and Segrest are Sewanee alumni.

Additional appointments for the coming year are: Justyna Anna Beinek, who will begin in the Easter semester for a three-year term as director of the new Mellon Globalization Forum and visiting associate professor of International and Global Studies and Russian.

Jason Farris, assistant University organist since 2010, will assume duties in the School of Theology and will teach in the College as visiting assistant professor of music. Anna Lee George will teach Introduction to Environmental Education in the Advent semester. Since 2006, she has served as chief research scientist and director at the Tennessee Aquarium Conservation Institute in Chattanooga.

Kristen Cecala joins the faculty as an assistant professor of biology and watershed science. Holding a Ph.D. in Wildlife Ecology and Management from the University of Georgia, Cecala is a Davidson graduate who brings to this appointment a promising record of publication and valuable research experience in herpetology and amphibian diversity. Her expertise in the biotic life of Appalachian freshwater streams is particularly relevant to Sewanee's programs in watershed science and environmental studies. Cecala's research and teaching experience will allow her to guide students in research ventures focused on opportunities available throughout the immediate region.

The University welcomes back **Eugenii Uliev Donev**, C'03, newly appointed as assistant professor of physics. Donev graduated from Sewanee magna cum laude with a double major in physics and German. He completed his graduate study and Ph.D. research at Vanderbilt University. His professional training includes further work as a postdoctoral scholar at the University of Kentucky, as a research associate at the Brookhaven National Laboratory in Long Island, and as a research associate at the University of North Carolina, Chapel Hill. He is

the author of more than a dozen peer-reviewed journal publications, which address a number of research topics including micro and nanotechnology and the fabrication of new materials.

Aaron Elrod, newly appointed assistant professor of economics, completed his M.A. and Ph.D. in economics at George Washington University. He has taught both there and at Centenary College. He has also served as an economist with the Bureau of Economic Analysis in Washington, D.C., and as a researcher at the U.S. Census Bureau's Center for Economic Studies. Elrod brings to Sewanee expertise in disciplines ranging from applied microeconomics to public economics and environmental and natural resource economics. Research interests include topics such as environmental regulation and the implications of production in the paper industry.

Visiting assistant professor **Maggie Fritz-Morkin** joins the faculty this year as Sewanee's first full-time professor of Italian language and culture. Fritz-Morkin completed her M.A. and Ph.D. work at the University of Chicago. Her language proficiency extends beyond Italian (and English, of course) to German and French, in addition to a reading knowledge of Latin. She has taught courses ranging from elementary and intermediate Italian language, and an offering on "Italian through Dante," to a humanities sequence on "Human Being and Citizen." She has special interest in medieval Italian literature.

César Leal, newly appointed conductor of the Sewanee Symphony Orchestra and instructor of music, grew up in Bogotá, Columbia, playing the saxophone in a musical family. After graduating from Javeriana University in Bogotá, he continued studying at Florida International University and

then, combining work in conducting and musicology, in the University of Kentucky's doctoral program. He is committed to performing new music, having founded and serving as artistic director of the contemporary chamber group Ensemble of Variable Geometry (EnVaGe). He has conducted chamber orchestras, full orchestras, and opera, and has led ensembles in the U.S., Colombia, France, and the Ukraine.

Mayumi Manabe brings to Sewanee this fall her considerable expertise in Japanese language, literature and culture, all of which promise to enhance the curricular offerings in Asian Studies. Manabe completed her undergraduate studies at the University of Chicago and her Ph.D. at the University of California, Irvine. Before joining the faculty as an assistant professor, she taught at Illinois Wesleyan University, Colgate University and Vassar College. She also served as a postdoctoral fellow at UCLA's Terasaki Center for Japanese Studies. Research she began as part of her doctoral dissertation focuses on literature that dramatizes the emergence of consumer culture, and the response of working-class women to this development, in interwar Japan.

James Ross Macdonald joins the English Department this year as an assistant professor with expertise in the literature of Early Modern England. Macdonald is a graduate of Harvard University and recently completed his Ph.D. in English at Yale. He has taught courses on Shakespeare, Milton, "Religion and Otherness in Renaissance Drama," and other topics at Yale, as well as at Connecticut College. He is the author of articles and conference presentations on subjects including Shakespeare's doctors and Witchcraft and Confessional Calvinist theology in Macbeth. Macdonald is fluent in

French and Italian, in addition to possessing a reading knowledge of Old English, Latin, and Spanish.

Courtney World, who joins the faculty this year as visiting assistant professor of dance in the Theatre Department, becomes Sewanee's first full-time instructor of dance. World is a graduate of the State University of New York, Buffalo, and completed an MFA in performance and choreography at the State University of New York, Brockport. She has taught courses or presented master classes at a number of institutions, and has performed as a dancer with numerous productions offered at sites throughout upstate New York and near New York City.

Brown Foundation Fellows

The Rev. Canon Gideon Byamugisha is an Anglican priest, scholar, activist and teacher from Uganda. He was the first African religious leader to declare publicly that he is HIV positive, encouraging others to acknowledge the disease. In 2002 he went on to form the Africa Network of Religious Leaders Living with or Personally Affected by HIV and AIDS. By 2007, the organization had become an international network numbering more than 7,000 lay and religious leaders from all faith traditions. Canon Gideon has taught courses on the religious aspects of HIV and AIDS at universities in Uganda and the U.K. and has been widely recognized for his leadership on AIDS, poverty, and human rights issues. In addition to his involvement with various governments and NGOs, he has edited two books on theological questions and on church activism in relation to AIDS. At Sewanee he will teach a course dealing with religion, AIDS, and activism in Africa.

Antonio Momplet has previously taught at Sewanee as a Brown Foundation Fellow, in addition to his instruction on the university's behalf as a faculty member in the Semester-in-Spain program and Road to Santiago course, which he cofounded with Professor Tom Spaccarelli. He first came to campus in 1989 as a Fulbright Scholar in Residence. An expert on the art and architecture of the pilgrimage road and the Mosque of Córdoba, he has served as professor of art history at the Universidad Complutense in Madrid. In the Advent term here he will offer a new course on Islamic art.

WOODARD'S

DIAMONDS & DESIGN

YEHUDA

DIAMOND EVENT

\$3 MILLION

FOR

3 DAYS

Thurs - Sat Aug. 22 - 24



YEHUDA IS FAMOUS FOR THEIR ABILITY TO DELIVER LARGER DIAMONDS AT SMALLER PRICES.

THEIR PROPRIETARY TECHNOLOGY ALLOWS THEM TO CUT A MUCH BIGGER DIAMOND FROM THE SAME DIAMOND CRYSTAL.

THIS DIAMOND EVENT INCLUDES THE FOLLOWING
RINGS - EARRINGS - BRACELETS - 3-STONE RINGS
DIAMOND BANDS - UNIQUE ONE OF A KIND PIECES
LOOSE DIAMONDS

1/2 CT NOW \$995
1.00 CT NOW \$2995
UP TO 18.26 CT. TW FOR \$262,500

EXTENDED HOURS: THURS - FRI. 10 - 8 • SAT. 10 - 6

Northgate Mall • Tullahoma • 454-9383 • woodards.net



June Weber

Gooch-Beasley Realtors

Serving the Sewanee and Monteagle area
with quality real estate service:
-42 years of experience
-Mother of Sewanee alumnus



June Weber, CRB, CRS, GRI Broker
GOOCH-BEASLEY REALTORS

www.gbrealtors.com
junejweber@bellsouth.net
931.636.2246
931.924.5555



Village

Wine & Spirits Inc.

COMPETITIVE PRICES AND FRIENDLY SERVICE

~ ALL YOUR FAVORITE MAJOR BRANDS
~ Great Wine Selection ~ Special Orders Available

Across Highway 41A from Monteagle's Piggly Wiggly
(931) 924-6900 ~ Mike Gifford, Owner
Open Mon-Thu 9 a.m.-9 p.m.; Fri-Sat 9 a.m.-11 p.m.

WELCOME, STUDENTS & FAMILIES!

Remember to drink responsibly—we want you as a customer for a long time!



Meg Beasley

Beasley Named Interim Archivist

Meg Beasley has been named Interim Archivist at the University's Archives and Special Collections. A Sewanee alumna, Beasley also earned a Master's degree in liberal studies from Dartmouth and a Doctor of Arts degree in history with a concentration in historic preservation from Middle Tennessee State University.

Beasley has taught at the University as a visiting professor in both the history, and the art and art history departments, and she has served as the coordinator of the Sewanee School of Letters. She has worked in various capacities with the Traveller's Rest Historic House Museum, the Tennessee Civil War National Heritage Area and the Center for Historic Preservation at MTSU.

In the community, Beasley has been active in the Sewanee Trust for Historic Preservation, the Friends of the Library and many other programs.

"We are so pleased to have Meg and all she brings at the Archives," said Kevin Reynolds, assistant University Librarian for Learning and Access Services, in announcing her appointment.

Tom Watson continues to serve as Interim Director of Archives and Special Collections, as the search for a permanent director continues.



Guyear to Lead Discover Together in Tracy

Retired Tracy City Elementary School teacher Sherry Guyear has been hired as the site director for Discover Together: A Place for Families. The program will reopen at the Tracy United Methodist Church next month for families with children ages 6 weeks to 5 years. There will be a visit and registration time 9:30 a.m.–10:30 a.m. at the church on Wednesday, Sept. 4. The program begins on Monday, Sept. 9.

This is a program that started in January, 2013 and was closed for the summer. In reopening, it will offer a gathering place for young children and their parents or caregivers on Monday and Wednesday mornings. The program is free of charge.

During the registration on Sept. 4, children can enjoy the play space while parents talk with Guyear and complete the paperwork.

Both children and the adult accompanying them share in learning activities and fun exploration and adult participants will have time to meet and share interests and support each other. Operating as a cooperative, Discover Together is a shared-care program and adult participants receive one morning off each week.

Guyear recently retired from Tracy after a 35-year teaching career including a number of years teaching kindergarten and first grade. According to Guyear, she is excited about leading the Tracy program.

"I love working with parents, many of whom I've taught, and working with families and young children is a real passion of mine," Guyear said. She also noted that her mother, Betty Church, was the lead teacher for Head Start in the same space 45 years ago.

Discover Together is a partnership of the South Cumberland Collaborative for Children and Families, Scholastic, the University of the South and Yale Child Study Center. Funding for the program was also made possible through a grant from the Community Fund of the South Cumberland Plateau. The program meets at Tracy United Methodist Church but is not church-affiliated.

For more information call (931) 592-5088 or email <southcumberland-families@gmail.com>.

New to the Mountain?

There are lots of ways to get information in our community.

The new issue of the Messenger goes online each Thursday evening around 7 p.m.

The print version of the newspaper is distributed to businesses and post offices across the Plateau by 10:30 a.m. each Friday morning.

And, the Messenger's partner website, <TheMountainNow.Com>, is always available online with the events calendar and links to area attractions, dining, shopping and lots of useful information.

**The Sewanee Mountain Messenger •
Spread Good News**



At Discover Together children explore their environment to learn with family members about nature and their community.

"I can help you find a HOME ... not just a house." —HEATHER OLSON
Serving the Sewanee-Monteagle community
holson@realtracs.com • (804) 839-3659

Monteagle Sewanee, REALTORS®

www.monteaglerealtors.com
931-924-7253

**When patterns are broken, new worlds
can emerge.—Tuli Kupferberg**

www.stillpointsewanee.com

Stillpoint

HEAVEN ON EARTH... NOW AVAILABLE IN SEWANEE



MYERS' POINT at Sewanee offers a rare opportunity to enjoy a private community that celebrates American architecture, lifestyle, protected forests, cultivated lakes and panoramic views on Middle Tennessee's Cumberland Plateau. If you want to live surrounded by nature, history, beauty, quality and serenity, you'll want to call it home.

- 480-acre private gated community
- 24 exclusive home sites; lakeside or bluff vista
- Timeless, organic, craftsman architecture standards
- Land Trust for Tennessee perpetually protected forests
- Over four miles of walking and riding trails
- Community barn, pastures, resting benches and fire pit
- Minutes from the University of the South

The Lipman Group | Sotheby's (615) 463-3333
INTERNATIONAL REALTY thelipmangroupsothebysrealty.com

Sewanee Realty® John Brewster (931) 636-5864
sewanee Realty info (931) 598-9200

John Currier Goodson (931) 703-0558

myerspoint.net



**Celebrating 13 Years!
2000-2013**

**Dining
in the courtyard is
summertime at its best!**



High Point
HISTORIC DINING ON THE SUMMIT
BETWEEN CHICAGO & MIAMI

224 East Main St
Monteagle
931-924-4600
Sun to Thu 5 to 9
Fri and Sat 5 to 10
www.highpointrestaurant.net



402 West Main St. • Monteagle • 931-924-3355
www.paparons.net
Sunday-Thursday 11-9
Friday and Saturday 11-10

**Celebrate summer!
Join us for dining
on the patio.**



Fred Saussy, General Contractor

Residential - Remodeling - New Construction
Licensed & Insured

496 Kennerly Rd • Sewanee, TN 37375 • (931) 598-5981
fredsassy@gmail.com • www.sausseyconstruction.com

AT THE MOVIES

SEWANEE UNION THEATRE

Thursday–Saturday, Aug. 22–24, 7:30 p.m.

Oblivion

Rated PG-13 • 125 minutes

"Oblivion" is set in the year 2077, 60 years after an alien invasion rendered the Earth largely uninhabitable. Tom Cruise stars as Jack Harper, one of a handful of people left on the planet. The other survivors have long since relocated to Titan. Harper and his colleagues remain as technicians, servicing robot drones that defend resource-gathering stations from alien stragglers. My favorite reviewer, Roger Ebert (who died this year), wrote this about the film: "If nothing else, 'Oblivion' will go down in film history as the movie where Tom Cruise pilots a white, sperm-shaped craft into a giant space uterus. The scene is most interesting to describe than it is to watch." Most reviewers thought it was visually striking but thinly scripted. See if you can get that Ebert image out of your mind, however, if you decide to go.

Rated PG-13 for sci-fi action violence, brief strong language and some sensuality/nudity.—LW

Thursday–Sunday, Aug. 29–Sept. 1, 7:30 p.m.

Stoker

Rated R • 99 minutes

Sewanee was all abuzz in the fall of 2010 when Chan-wook Park and his team came to town to film "Stoker," a creepy family mystery. Nicole Kidman plays the emotionally unstable and icy mother of "India" (Mia Wasikowska) who is still grieving the loss of her husband, India's father. When "Uncle Charlie" (Matthew Goode) joins the family, India suspects something is amiss. "Stoker" was widely dismissed by critics, but look for scenes of Guerry Garth, the Quad and some interiors filmed at St. Joseph's at St. Mary's. Rated R for disturbing violent and sexual content.

SUT & Cinema Guild Announce September Films

Sept. 4 • *Rocky Horror Picture Show*

Sept. 5–8 • *Admission*

Sept. 11 • *Amelie*

Sept. 12–15 • *Star Trek Into Darkness*

Sept. 18 • *The Great Gatsby* (1974)

Sept. 19–22 • *The Great Gatsby* (2013)



The Culprits

The Culprits Perform Tonight in Angel Park

The Culprits are playing a free show at 7:30 p.m., today (Friday), Aug. 23, in Angel Park in downtown Sewanee.

The Culprits offer a retro-indie-Brit-pop sound. The band's members all grew up in Sewanee and graduated from St. Andrew's-Sewanee School. Nick Evans is a rising senior at Davidson College and is just returning from a year abroad in Germany and a solo tour through several European capitals. Zach Blount is a rising sophomore at Davidson. Will Evans is a rising sophomore at the University of Virginia.

In April 2013 the band released their first album, "Alive Enough," produced by John Keane (who has worked with the bands R.E.M. and Widespread Panic). They had previously released two EPs. The Culprits have played concerts, parties and festivals in Tennessee, North Carolina and Pennsylvania.

IONA Begins Fall Season of Readings

The Autumn Assembly of Authors at IONA: Art Sanctuary opens on Sunday, Sept. 1. Founder Ed Carlos has scheduled a wide variety of local writers and area artists to present their work this fall. The public is welcome; all events are free, parking is available and refreshments are served.

At 2 p.m., Sunday, Sept. 1, there will be poetry readings by Stephen Feeley and his sons; Lee Steenhuis will offer an exhibit of photography and visual presentation.

At 7 p.m., Friday, Sept. 6, Clayton Rogers will display his sculpture and offer comments about it; Steenhuis' exhibit will continue; and there will be readings by Patrick Dean and Laura Lapins Willis.

At 2 p.m., Sunday, Sept. 8 there will be a tribute to Jean and Harry Yeatman, with readings from the Yeatman's Nature Notes column in the Sewanee Mountain Messenger. Readers will include Nancy Berner, Margaret Donohue, Jon Evans, John Gatta, David Haskell, Sally Hubbard, Marion Knoll, John Mc-

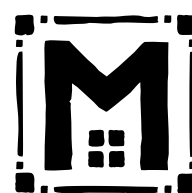
Cardell, April Minkler, John Palisano, Cindy Potter, Mary Priestley, George Ramseur, Remington Rose-Crossley, John Swallow, John Thomas and John Willis.

At 7 p.m., Friday, Sept. 13, Charley Watkins will show his paintings and photography. Linda Heck will offer music and readings. Kevin Cummings and Kiki Beavers will also read.

At 2 p.m., Sunday, Sept. 15, the Watkins art exhibit continues and there will be readings by Pat Wiser, David Landon and college students studying theatre with Landon.

IONA: Art Sanctuary, founded by Sewanee artist Ed Carlos, exists "to offer a place for writers and artists to share their creative work with each other and the community, and our emphasis is the source: creativity and spirituality."

IONA: Art Sanctuary is located at 630 Garnertown Road in Sewanee.



MOLICA
CONSTRUCTION LLC

931 205 2475

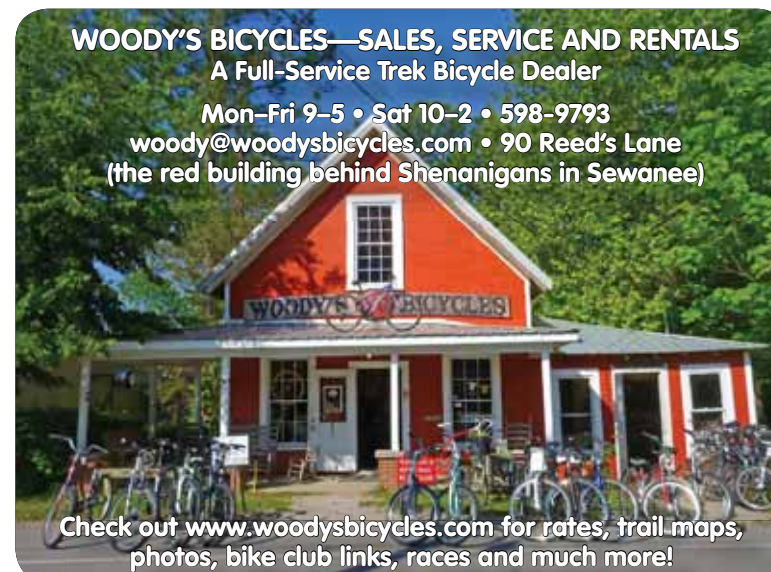
WWW.MOLICA.CONSTRUCTION.COM

- CRAFTSMANSHIP ▪
- CREATIVITY ▪
- SUSTAINABILITY ▪

WOODY'S BICYCLES—SALES, SERVICE AND RENTALS
A Full-Service Trek Bicycle Dealer

Mon–Fri 9–5 • Sat 10–2 • 598-9793

woody@woodysbicycles.com • 90 Reed's Lane
(the red building behind Shenanigans in Sewanee)



Check out www.woodysbicycles.com for rates, trail maps, photos, bike club links, races and much more!

Sewanee Arts Festival Sept. 11–21

The University of the South will hold the inaugural Sewanee Arts Festival, Sept. 11–21. (Some exhibits will be open before and after these dates, but most talks and special events are scheduled during the festival period.) Events will include dance performances, photography exhibits, plays and readings and music. Other events may be added to the schedule; check the Messenger or university website <www.sewanee.edu> for updates.

The University Art Gallery opens the 2013–14 exhibition season with Pradip Malde's "The Third Heaven, Photographs from Haiti, 2006-2012," on view from Sept. 3 through Oct. 18. Free admission.

Exhibition of 15 photographs by William Eggleston tentatively opens Sept. 6 in the University Archives and Special Collections. Photos are from the collection of university regent Chris Hehmeyer. Free admission.

Monica Bill Barnes & Company (contemporary American dance) perform at the Tennessee Williams Center at 7:30 p.m., Sept. 11–12. Part of the Performing Arts Series; admission is free, reservations are encouraged <mcook@sewanee.edu>.

Pradip Malde presents "The Third Heaven, Photographs from Haiti, 2006-2012" in an artist's talk in Convocation Hall at 4:30 p.m., Friday, Sept. 13, followed by a light reception.

Laura Lapins Willis will read from "Finding God in a Bag of Groceries" at Rivendell Writers' Colony at 7 p.m., Sunday, Sept. 15. Reception will follow. Free admission; please RSVP to 598-5555.

Reading of "Requiem for August Moon," a new play by Tennessee Williams Playwright Elyzabeth Wilder will be Tuesday, Sept. 17, at 5:30 p.m., at the Tennessee Williams Center. The reading will be performed by a cast of university students. Free admission.

Poetry reading by Rodney Jones and Maurice Manning at 4:30 p.m., Wednesday, Sept. 18, in Gailor Auditorium. Part of the Sewanee Writers' Conference Reading Series.

Third annual Sewanee Angel Festival, 7–11 p.m., Friday, Sept. 20, downtown Sewanee. Music by Towson Engsberg and Friends, and the Stagger Moon Band. Free event.

Gallery walk and reception Saturday, Sept. 21, on the University of the South campus (tentative): the Carlos Gallery 4:30 p.m., Archives and Special Collections 5:15 p.m., University Art Gallery 6 p.m.

The Performing Arts Series presents the Blind Boys of Alabama, 7:30 p.m., Saturday, Sept. 21, in Guerry Auditorium. Tickets are \$25 for adults, \$20 for seniors, \$10 for non-Sewanee students.

Winchester Podiatry

CHARLES D. GANIME, DPM

Board Certified in Foot Surgery
Diplomate, American Board of Podiatric Surgery
New Patients of All Ages Welcome! We Treat Your Feet!
Most Insurance Accepted, Including TennCare

We are at 155 Hospital Road, Suite I, in Winchester.
www.winchesterpodiatry.com

931-968-9191



**SALLY THOMAS, a
Nashville transplant who
has never looked back!**

**A Realtor since 2003 who loves helping
people realize their dream of owning a
piece of the Mountain.**

gb

www.gbrealtors.com

salthomas@bellsouth.net

Sally Thomas Home 931-598-9243; Cell 931-636-4993

GOOCH-BEASLEY REALTORS

931-924-5555

Need More Room?
Mountain Storage
(931) 598-5682

■ Security Gate Dan & Arlene Barry ■ Security Camera
Hwy 41 - Between Sewanee & Monteagle
5X10 | 10X10 | 10X20

For Your Antiques and Prized Possessions

Climate Control
5X10 10X10 10X15 10X20
Temperature and Humidity Regulated



BUG PROBLEMS?

We can help! Call us for a free inspection!

BURL'S TERMITE & PEST CO.

TERMITE—PEST—VAPOR CONTROL
Bonded • Insured • Home-Owned & Operated
105 Ake St., Estill Springs
(931) 967-4547 or (931) 455-1191

Charter #3824 • License #17759





The middle school soccer team celebrates a hard fought game and a teammate's birthday. Photo by St. Andrew's-Sewanee

MS Soccer Drops Opener

The St. Andrew's-Sewanee middle school girls' soccer team opened up their season with a home match against South Middle School. It was an intense matchup that saw SAS control most of the possessions. However, an early SAS mistake in defense was pounced on by South, giving them the lead. SAS continued to press and create chances, but could not finish. The game ended 1-0.



SAS varsity volleyball team gets last minute instructions. Photo by St. Andrew's-Sewanee

SAS Volleyball Wins

The St. Andrew's-Sewanee School varsity volleyball team opened the season at home against Franklin County High School, defeating the Rebels 25-22, 25-23 and 25-6.

Lexie Laurendine led the team

with five aces; Sierra Mushett had 12 assists; Sam Stine had eight kills; Aly Barry had 10 digs; Allison Bruce had five blocks.

The junior varsity also won against the FCHS JV team, 2-1.

Sports Briefs

Sewanee Little League

Sewanee Little League needs new board members. Contact Shellie Green if you are interested in being a board member or taking her place as board president at <segreen@sewanee.edu> or 598-0843 or 636-6228. The new board needs to be formed now to prepare for the spring season.

Tiger Football Fan Day

Head football coach Tommy Laurendine announced that the Tigers will host a Fan Day on Saturday, Aug. 31. Fans in attendance will have an

opportunity to meet the team and coaching staff and watch the Tigers in action during a situational scrimmage.

All local kids are welcome to participate in a punt, pass and kick contest that will begin around 11 a.m.

Fowler Center Hours for Fall

The Fowler Center will be open Monday through Thursday from 6 a.m. to 11 p.m. On Fridays, it will be open from 6 a.m. to 10 p.m. Hours for Saturday are 8 a.m.-9 p.m. On Sunday, hours are 9 a.m.-10 p.m. Contact the Fowler Center at 598-1793 for pool hours.

SAS Golf Team 4-0

On Aug. 13, the St. Andrew's-Sewanee golf team defeated Huntland, and Moore County. The Mountain Lions were led by Tommy Oliver with a one over score of 36. Andrew Heitzenrater shot a 41, followed by Jake Wiley with a 47. Sam Thomas rounded out the scoring with a 51. Aubrey Black shot 52 and Jackson Sain had a 53.

On Aug. 15, SAS defeated Moore County and South Pittsburgh schools. Tommy led the way with a score of 37, followed by Jenna Burris with a score of 40. Heitzenrater shot a 41 and Wiley had a 47. Thomas had a 48, and Black and Sain each had a 51.

Home Games

Today, Aug. 23

4:30 pm SAS V Football

v Webb School

6 pm GCHS V Football

v Marion County HS

7 pm FCHS V Football

v Chattanooga Central

Monday, Aug. 26

5 pm GCHS JV Volleyball

v Coffee County HS

6 pm GCHS V Volleyball

v Coffee County HS

Tuesday, Aug. 27

4 pm SAS V Golf v Marion Co HS

and Webb School

4 pm SAS V Volleyball

v Berean Academy

4:30 pm GCHS JV Volleyball

v Signal Mountain

4:30 pm SAS V Girls' Soccer

v Zion Christian Academy

5 pm SAS JV Volleyball

v Berean Academy

5:30 pm GCHS V Volleyball

v Signal Mountain

Thursday, Aug. 29

4 pm SAS V Golf v Huntland School

4:30 pm GCHS JV Volleyball

v Chattanooga Christian School

4:30 pm SAS JV Volleyball

v Marion County HS

5 pm FCHS JV Volleyball

v Columbia

5:30 pm GCHS V Volleyball

v Chattanooga Christian School

5:30 pm SAS V Volleyball

v Marion County HS

6 pm FCHS V Volleyball v Columbia

Friday, Aug. 30

Sewanee Invitational Volleyball Tourney

through Aug. 31

2 pm Tigers v Brescia University

6 pm Tigers v Pikeville

OVERTIME

by John Shackelford



I am standing at sunset on the south rim of the Grand Canyon admiring the natural architecture miraculously created by pressure and time.

Following the advice of my good friend Laurence Alvarez, I decided to take my daughter Michaela on a father-daughter camping and rafting trip into the Grand Canyon last week. Despite years of engaging in multiple sports activities out-of-doors and seeing so much sun that my skin is now actually made of "fine Corinthian leather," I would not describe myself or any of my family members as outdoorsmen. We play games on pavement, cut grass, or hardwood bordered with white lines, and locker rooms with hot showers. The Grand Canyon does not come equipped with a shower, save the monsoon rains, 80-foot waterfalls and the icy cold silt brown Colorado River rushing past our campsite.

The campsites were incredible. As I lay in my sleeping bag gazing up at a stunning array of meteor showers (unlike anything I would ever see from my usual nightly spot on the living room couch), a bat is swooping just above my head. Just one more canyon friend joining the scorpion that crawled under our tent as we set it up, and the snake that hid under a tree near our toilet.

The toilet. There is another entire Overtime Column about the toilet. It is basically a metal can welded to two handles with a seat perched on top, tucked behind a small cactus along the river. We lost any sense of privacy when we learned that we should stand in the river along with companions to pee. The can was carried in and carried out. You leave no trace behind in this beautiful wilderness. What goes in must come out.

Somehow I failed to mention the peeing, pooping and showering instructions to my 17-year-old daughter while selling her on this five-day camping expedition with dad. I also failed to tell her of the 5:30 a.m. daily wake-up call as the sun crawls over the rim of the canyon. If you aren't packing up your tent and rolling up your bag by 5:35 a.m., you will miss breakfast and the day. We board the raft and ride through huge roiling rapids and are soaked in 50-degree water coming at us in giant waves and splashes. The great thing about the water bursts is that they clean the clothes you are wearing. Which is a good thing, since they need a rinse because you slept in them the night before and wore them all day yesterday. There is no point in changing. The river's rinse cycle is followed by the sandy beach cycle that comes just before the 110-degree desert heat drying cycle.

The geology lessons from our river guides are instructional and the rocks are awe-inspiring. (Why didn't I pay attention to my earth science class?) We come across countless walls of 1.8 billion year old Vishnu Schist, but I took it for granite. (Read that last sentence out loud. It is the oldest and most oft-repeated joke in the canyon.) Next time I do this, I am bringing Bran Potter so that I don't fail the pop quizzes given by our boatman who wants me to describe the process of intrusion, the flowing stripes of pink granite forced into the cracks and imperfections of the black schist painting the canyon walls with natural graffiti. For all of this miraculous scenery to be created, all you need is pressure and time.

I love spending time with my children one on one. It offers a chance to really know them and talk to them. Being a parent for 21 years with four very different children allows me to see the many varying layers and nuances of their personalities, their interests, and their dreams. Michaela and I shared this journey down the river with 19 other incredibly diverse river runners: six Canadians, a young woman from Australia, a family of four from Michigan, a father-son pair from Baltimore, and two couples who had relocated to North Carolina. We sat in a community circle at every meal without cell phones or iPads and just talked. We shared the pressures of our lives outside the canyon walls and the pressure of dealing with the river's hardships. In a short time we were friends and family, with our lives and stories intruded into one another like molten granite finding a seam through a vulnerable opening. What an adventure to share with one of my favorite people. Perhaps that is what brings people together: pressure and time.

Nitrogen

Go Green

**Free Nitrogen Fill
with the purchase
of a set of 4 tires**

**Extends Life Of Your Tires.
Get Better Gas Mileage**

Cannot be combined. See store for details. Expires 8/31/13

University Special

20% OFF

**Any Service for
University Students!**
Bring your ID.

Cannot be combined. See store for details. Expires 8/31/13

**HEATH AUTOMOTIVE
TIRE PROS**
www.heathautomotivetirepros.com

501 1st Ave. SW
Winchester, TN
(931) 967-3880



NOW OPEN!

Rocky Top Restaurant

**Home-Cooked Meals Served Family Style
featuring the Best Fried Chicken on the Mountain**

**Monday thru Saturday, 6 a.m. to 8 p.m.
Sunday, 8 a.m. to 3 p.m.**

**360 Dixie Lee Ave. in Monteagle
(931) 924-6400**



NATURENOTES

By Harry and Jean Yeatman



One of the Yeatman's many catches

Rattlesnake!

"One never knows when the next adventure might come calling," reports **Jean Yeatman**. "I had just laid down to take a nap when the phone rang, and a quivering voice said, 'Who do I call? I have a rattlesnake at my front door!' 'How about me?' I said. 'Would you come?' 'Of course,' I said. 'Just let me get my snake stick.' And so the adventure began.

She went next door to **Will Winton's** house, and there was Will, pointing to the tail of a rattlesnake sticking up in a patch of pachysandra. "How big is this snake?" she asked. He told her it was a small one, but when she poked the plants and this huge head stuck up, she thought, no, this is a big snake! She asked Will to get a large can to put the snake in when she had caught it. While he was away looking for a can, Jean found and caught the snake. Then when Will came back, he was reluctant to approach, but Jean told him she couldn't do it alone. So he came up with the can and she dropped the snake into it, but it was very lively and did not want to stay in the can. Jean had to keep stuffing it back in with a stick, while Will went to look for a lid for the can, which he could not find, so he brought a large box lid which they weighted down with rocks. Jean went back to her house to get the Yeatmans' snake can, wondering how in the world she was going to transfer this lively rattlesnake into another can. Will picked up the can containing the snake, and they dumped the snake into the other can, put the lid on and secured it. Then they transported it in Will's truck to Franklin Forest, where they released it by turning the can onto its side and slowly sliding the snake onto a bed of leaves. It lay there awhile and began flicking its tongue out to smell its new surroundings. Then it slowly slid away to its new adventure. "If you are quiet and move slowly," Jean said, "you can handle rattlesnakes without their getting aggressive. This snake never rattled or struck at me."

Pets of the Week

Meet Ninja and Rayna

The Franklin County Humane Society's Animal Harbor offers these two delightful pets for adoption.

Ninja is a dear little kitten who was raised around children. His brother and sister were adopted last weekend, and now he's very lonely by himself in his condo. Ninja is negative for FeLV and FIV, house-trained, up-to-date on shots and neutered.

Rayna is a darling little Terrier who loves to be held and showered with attention. She loves to play with her siblings and she was around cats while in foster care. Rayna is up-to-date on shots and spayed.

For a limited time, two kittens may be adopted together for one adoption fee of \$75. Having two kittens is better than one because they play together and keep each other company. Adult cats may be adopted for a \$40 fee during this special.

Every Friday is Black Friday at Animal Harbor. On Fridays, adoption fees will be reduced 50 percent for black or mostly black pets over 4 months old who have been at Animal Harbor for more than a month. Pets adopted from Animal Harbor qualify for a free post-adoption wellness exam by local veterinarians.

Call Animal Harbor at 962-4472 for information and check out the other pets at <www.animalharbor.com>. Enter their drawing on this site for a free spay or neuter for one of your pets. Please help the Humane Society continue to save abandoned pets by sending your donations to the Franklin County Humane Society, P. O. Box 187, Winchester, TN 37398.



Ninja



Rayna

State Park Offerings

Saturday, Aug. 24

Fiery Gizzard Creek Walk—Join Park at 10 a.m. at Grundy Forest parking lot for a short one-mile hike to Little Fiery Gizzard Creek to examine the aquatic world. Wear clothes you can get wet.

Investigative Hike—Meet Ranger Park at 1 p.m. at Grundy Forest Pavilion for an off-trail experience to really get into the flora and fauna of the region. Wear sturdy shoes and long pants.

Sunday, Aug. 25

Grundy Forest Geology—Meet Ranger Park at 10 a.m. at Grundy Forest parking area for a moderate three-mile hike to Sycamore Falls to learn about the natural forces that shaped our region. Bring sturdy shoes and water.

Grundy Lakes Canoe Float—Meet Ranger Park at 2 p.m. at Grundy Lakes parking lot for a fun time paddling around the lakes. Wear clothes you can get wet. Call ahead for reservations: (931) 924-2956 (or bring your own canoe).

The South Cumberland State Park Visitors' Center is located on Highway 41 South between Monteagle and Tracy City and is open 8 a.m.—4:30 p.m. seven days a week. For more information call (931) 924-2980.

Weather

DAY	DATE	HI	LO
Mon	Aug 12	85	68
Tue	Aug 13	83	67
Wed	Aug 14	79	68
Thu	Aug 15	77	63
Fri	Aug 16	75	58
Sat	Aug 17	74	60
Sun	Aug 18	70	61

Week's Stats:

Avg max temp =	78
Avg min temp =	64
Avg temp =	65
Precipitation =	0.42"

Reported by
Nicole Nunley
Forestry Technician

DREMC Plans Vegetation Maintenance in Area

Contractors for Duck River Electric Membership Corporation (DREMC) are scheduled to perform work along rights-of-way in the Sewanee area during the end of August and into September to ensure continued reliability of electric service.

DREMC's Integrated Vegetation Management (IVM) program is a systematic approach that utilizes several methods of controlling trees and brush under DREMC's power lines. Through line clearing and herbicide application, DREMC ensures that its members experience fewer service interruptions related to falling trees, broken limbs and branches, and woody brush growing into lines.

"When trees and brush are not effectively controlled, the difficulty and time needed for inspection and restoration from storm damage increases, making outages longer," said DREMC forester Jim Barnhart.

All four of the electric circuits serving the Sewanee community are scheduled for herbicide management this year. Official notices were sent to members on these circuits during the May billing cycle. Southeast Woodlands is the state-licensed contractor (charter #1861) that will be doing the application.

While the applicators are in the Sewanee area, a local DREMC coordinator will be working with them on a daily basis. For more information, call DREMC at 598-5228, or go to <www.dremc.com> for more details on IVM.

The co-op's line clearance tree-trimming program conforms to guidelines for the industry's best management practices set by the International Society of Arboriculture (ISA) and the American National Standards Institute (ANSI). DREMC also has been recognized by the National Arbor Foundation and the Tennessee Department of Forestry for meeting the standards required for "Tree Line USA."

Barnhart said there are a number of maintenance options available when it comes to managing brush along rights of way. DREMC uses low-volume, backpack herbicide application techniques to selectively target species that, if allowed to reach mature height, would interfere with the operation and maintenance of electric lines.

Alternatives include bush-hogging, high-volume herbicide application and hand-clearing. The available research indicates that DREMC's chosen method of vegetation management has the least impact on the environment and promotes bio-diversity along the rights of way. IVM promotes native habitat that allows wild turkeys, quail and deer to flourish in the border zone between woodlands and the floor of the right of way.

<Disclosure notice: Messenger Editor/Publisher Laura Willis is a compensated member of the Duck River Electric Membership Corporation's board of directors, appointed by the University's Board of Regents to represent Sewanee.>

Sernicola's

Steaks, seafood, pastas, homestyle pizza, hot lunch buffet, plus a 22-item fresh and healthy salad bar. Homemade desserts!



www.sernicolas.com • 106 Tennessee Avenue • Cowan • 962-3380
Open *Tuesday-Saturday • Lunch 11-2 • Dinner 5-8:30
*Closed on 3rd Tuesday for DAV

Welcome, University students and families!

FULL LUNCH & DINNER MENU

Located at
Exit 135 off
I-24 next to
Wendy's
www.
smokenbsbbq.
com

931-924-7383



MR. POSTMAN, INC.

209 South Jefferson St., Winchester
One block off square across from PO
(931) 967-5777 Fax (931) 967-5719

Fingerprinting/
Background Checks

—SHIPPING AND PACKING SERVICES—
Authorized shippers for UPS and Fed Ex • Open Mon-Fri 9-5

We're glad you're reading the Messenger!



• New Construction • Remodeling
• Historical Restoration
• Everything else in between

Kevin Sweeton

Tennessee State Licensed
General Contractor
Fully Insured

[931] 924-2444

New website! www.sweetonhome.com
New email! sweetonhome@gmail.com

15 Catherine Ave.
Monteagle, TN 37356



Check
this
out!



WILDLIFE SANCTUARY FOR SALE

Seeking Forester, Botanist, Biologist or Zoologist.
Will make special deal.

11-acre cedar forest, fenced, gated wildlife sanctuary, on the mountain with fresh-water mountain springs and a panoramic 180-degree view of the valley. Located 15 minutes from the University of the South on a 2-mile private gated road. Single owner has spent the last 30 years habituating all of the wildlife in this sanctuary. Includes a 2-story, 4-room cabin and a 600-square-foot paneled, insulated, workshop and a 12-person party gazebo. Must-sell price: \$149,000. Please call Pam Peck at 931-580-8321 or 931-967-4321.

Classifieds

CALL US! • 598-9949
Classified Rates:
 \$3.25 first 15 words,
 10 cents each addl. word
Now you can charge it!
(\$10 minimum)

JOSH OF ALL TRADES: Welding, metal fabrication, water and sewer line installation/repair, lawn maintenance, landscaping. Tree/brush removal, junkhauling and more. (931) 636-4562.

SUMMER RENTALS

Students welcome. Call
 (931) 691-4840 for information.

NANCE CLEANING: Homes, offices, churches. Sewanee and Monteagle area. References available. (931) 598-5463.

EAGLE LANDSCAPING & LAWN MAINTENANCE CO.

Now Offering Specials for SUMMER CLEANUP!
 We offer lawn maintenance, landscaping, hedge/tree trimming & more!
Please call for your free estimate
(931) 598-0761 or (931) 636-0383

LAND FOR SALE: 9 acres on Caldwell Rd. in Sewanee, bordering Clifftops and the University's property. \$58,000. For more information call Angie Miller at (931) 224-2838. Re/Max Mountain Views Realty, (931) 967-8999.

Oldcraft Woodworkers

Excellence in custom woodworking.

Kitchen and bath cabinets, bookcases, entertainment centers, furniture. Furniture repairs and refinishing.

Est. 1982. Phone 931-598-0208

YARD SALE: Saturday, Aug. 24, 8-11 a.m. No early birds. Miscellaneous items. 256 Appletree Wick, Sewanee.

WATER SOLUTIONS

Joseph Sumpter
 Owner/Licensed Residential Contractor
Specializing in drainage and rainwater collection systems
 598-5565
 www.sumptersolutions.com

SHAKERAC BLUFF CABIN: Beautiful west-facing bluff view. Near University. Extremely secluded. Sleeps 4-5. C/H/A. Great fishing, swimming. Weekend or weekly rentals. (423) 653-8874 or (423) 821-2755.

Alma Mater Theater in Tracy City
"SMURFS 2"
 August 23-26
 PG • 1 hr 45 min
7 pm Fri-Sat-Mon; 3 pm Sun
 (931) 592-8222

EAGLE MOUNTAIN STONE

All phases custom rock and concrete work including
 *Front Entryways featuring wrought iron with powder-coated finish
 *Walls *Patios *Walkways
 *Water Features, including Waterfalls
 Free estimates. Local references.
(423) 598-6404

MASSAGE

Regina Rourk Childress
 Licensed Massage Therapist
 www.reginarourk.com
 ~ GIFT CERTIFICATES ~
(931) 636-4806

HIKING ENTHUSIAST?
 Click "SEE"
 on www.
TheMountainNow.com for a description of local options.

the **ARTISAN** DEPOT
Work by local artists
 201 E. Cumberland, Cowan
 Open Thurs-Fri-Sat, 12-5
 931-308-4130

CLAYTON ROGERS ARCHITECT
 claytonrogers@charter.net
 931-598-9425

BONNIE'S KITCHEN

Real Home Cooking
 Open Wed 11-2; Fri 4-8:30
 NOW OPEN FOR SUNDAY BUFFET 11-2
Midway Road - 598-0583

PRESCHOOL TEACHER: The Parents' Morning Out program at The School of Theology currently has an opening for a preschool teacher on Tuesdays and Thursdays from 7:30 a.m. to 12:30 p.m. Please contact Charlotte at <cdgreen@sewanee.edu> to discuss this opportunity.

CHAD'S LAWN & LANDSCAPING
-FREE ESTIMATES-
 *Lawn care & Design (Mulch & Planting)
 ALSO: *Tree Trimming & Removal
 *Pressure Washing *Gutter Cleaning
 *Leaf Pickup & Blowing *Road Grading
 *Garden Tilling *Rock Work
 (931) 962-0803 Home; (931) 308-5059 Cell

FOR RENT: 4BR/2BA 2-story house on Gudgey Rd. All appliances, C/H/A. \$800/month. (931) 212-0447.

A-1 CHIMNEY SPECIALIST
"For all your chimney needs"
 Dust Free • Chimneys Swept, Repaired, Relined & Restored • Complete Line of Chimney Caps • Waterproofing
 Video Scanning
 G. Robert Tubb II, CSA Certified & Insured
 931-273-8708

THE SEWANEE UTILITY DISTRICT OF FRANKLIN AND MARION COUNTIES BOARD OF COMMISSIONERS will hold its regular meeting on Tuesday, Aug. 27, at 5 p.m. at the utility office on Sherwood Road. If a customer is unable to attend but wishes to bring a matter to the board, call 598-5611, visit the office, or call a board member. Your board members are Art Hanson, Randall Henley, Cliff Huffman, Karen Singer and Ken Smith.

Laural Leaf Studio

2197 Main Street • Altamont
 931-692-3879 or 931-235-1012
Visit our FB page
"Bringing artists together for learning and sharing"

MAMA PAT'S DAYCARE
MONDAY-FRIDAY
Open 4 a.m.; Close 12 midnight
 3-Star Rating
 Meal & Snack Furnished
Learning Activities Daily
Call: (931) 924-3423

Your ad could be here.

BEAUTIFUL APARTMENT
for rent at the Templeton Library
BREATHTAKING BLUFF VIEW
 Quiet, peaceful surroundings.
 2 bedrooms.
 (931) 636-7873

The Gnarled Oak

Furniture refinishing,
 chair caning, seat weaving
 and furniture repair



Flat Branch Community
 2222 Flat Branch Spur
 Tracy City, Tennessee 37387
 (931) 592-9680
 Bill Childers, Prop.

LOG HOME: Off Highway 156/Jump-off Road between South Pittsburg and Sewanee. Secluded, modern, furnished, 3BR/2BA, C/H/A, fireplace, nice view. \$1500 deposit + \$1500/mo, 1-year lease. (423) 316-9504.



King's Tree Service

Topping, trimming,
 bluff/lot clearing, stump
 grinding and more!
 Bucket truck or climbing
 Free wood chips with job
 Will beat any quoted price!
 Satisfaction guaranteed!!
 —Fully licensed and insured—
 http://kingstreeservice.vpweb.com
 Call (931) 598-9004—Isaac King

SARGENT'S SMALL ENGINES: Repairs to All Brands of Equipment: Lawn mowers (riding or push), String trimmers, Chain saws, Chain saw sharpening, New saw chain. (931) 212-2585, (931) 592-6536. Pickup and Delivery Available.

MOUNTAIN AUTO SALES & SERVICE

Certified A/C work. New tires, all brands. Oil changes. Tune-ups. Brake work. Shocks and struts. Car detailing. Free pickup for Sewanee and Monteagle. Best garage rates.

USED CARS—

'96 Saturn...\$900
 '98 Cherokee 4x4...\$1,200
 '91 Acura...\$1,600
 '91 Camry...\$1,600
 '95 Cargo Van...\$1,600
 '00 Isuzu Trooper...\$1,600
 '98 Mercedes C230...\$1,600
 '00 Cavalier...\$1,900
 '95 Thunderbird (V8)...\$1,900
 '98 VW Cabrio Convertible...\$1,900
 '05 Malibu...\$2,000
 '97 Ford Explorer...\$2,400
 '99 Sebring Convertible...\$2,600
 '00 Impala...\$2,900
 '02 Volvo V70XC...\$2,900
 '99 Dodge Durango...\$3,500
9880 U.S. 41, Monteagle
(931) 924-2886 (AUTO)

FIREWOOD FOR SALE: \$60/rick, \$70/stacked. Call (931) 592-9405, leave message.

Walk-In Cooler Filled with Flowers!

—TUXEDO RENTALS—

Monteagle Florist

333 West Main Street, Monteagle
 (931) 924-3292
 www.monteagleflorist.com

RAY'S RENTALS
 931-235-3365
 Weekend Packages
 and Special Events
 CLIFFTOPS, BRIDAL VEIL,
 ALL AROUND THE MOUNTAIN
Monteagle Sewanee Rentals
 931-924-7253
 www.monteaglerealtors.com

DUNCAN

Electrical Service
 Licensed & Insured
 20 Years Experience
931-636-1123

CATAWBA LANDSCAPING
Specializing in native plantings and wildscapes, as well as routine lawn and landscape maintenance. Professional plant care from forest to garden.
(931) 636-7111

HISTORIC CABIN FOR SALE BY OWNER: On the bluff at Bragg's Point behind Monteagle Assembly. Five acres of secluded privacy. 2BR/2.5BA. Large garage/workshop outbuilding. Upper deck with grand view. Priced to sell. Phone: (423) 298-4549.

LOST COVE BLUFF LOTS

www.myspoint.com
 931-968-1127

RANCH-STYLE HOUSE: 4BR/2BA. All appliances available. No pets. \$750/mo. rent includes water. First/last month + \$250 deposit. References. (931) 308-9128.

CHARLEY WATKINS PHOTOGRAPHER

Sewanee, TN
(931) 598-9257
 http://www.photowatkins.com

DRIVERS: Training, Class-A CDL. Train and work for us! Professional, focused training for your Class-A CDL. You choose between Company Driver, Owner Operator, Lease Operator or Lease Trainer. (800) 567-3867 <www.central-truckdrivingjobs.com>.

The Moving Man

Moving Services Packing Services
 Packing Materials Truck Rental
 Local or Long Distance
 1-866-YOU-MOVE (931) 968-1000
 www.themovingman.com
 Decherd, TN
 Since 1993 U.S. DOT 1335895

GILLIAM'S OUTDOORS: Grass cutting, gutter cleaning, leaves, plantings. Firewood available. No job too big or small. Local references available. Cory Gilliam, 308-4869.

AVON TO BUY OR SELL AVON

KATHY PACK
 AVON REPRESENTATIVE
 www.youravon.com/kathypack
 katpac56@aol.com
 931-598-0570 931-691-3603

STONE COTTAGE FOR RENT: Available January through May 2014. Near School of Theology. 3BR/2BA, fireplace, patio, deck. Fully furnished, all appliances including washer/dryer. C/H/A, Wi-Fi, cable TV. Email <gard983@comcast.net> or call (404) 310-1589.



ROB MATLOCK
 CONSTRUCTION COMPANY
 NEW HOME BUILDING
 AND REMODELING

MEMBER, U.S. GREEN BUILDING COUNCIL

PHONE 931-598-5728

MATLOCK

State Licensed • Fully Insured

FOR RENT: Fully furnished 1BR/1BA cottage. Large screened porch. Very private. Utilities included in rent. No pets. No smoking. (931) 308-6475.

Mountain Accounting & Consulting

* Accounting * Bookkeeping
 * Financial Counseling

Bridget L. Griffith QuickBooks Pro Advisor
 M.S. Accounting and Information Systems (931) 598-9322/636-2624
 bh_griffith@yahoo.com

DRIVERS: Great Pay/ Benefits! Paid Vacation! Rider Program. Dry Bulk, Longhaul. CDL-A w/ Haz; 6mos exp, 21yoa. (855) 777-WSTL.

LONG'S LAWN SERVICE

• landscaping & lawn care
 • leaf removal • mulch
 Local references available.
 Jayson Long

(931) 924-LAWN (5296)

JOE'S AUTO GLASS

Auto glass replacement.
 Free mobile service.
 Toll-free
1-888-JOES AUTO

FOR SALE: Recumbent exercise bike, dehumidifier, two bar chairs, small kitchen island, hutch, queen light wood 5-piece bedroom suite. (931) 598-0710.

SCULPTURE IN WOOD: Carvings. Bowls. Vases. Church icons. U.S. Hwy. 41 North, one mile from Monteagle. (931) 924-2970.

ELIZABETH'S FARRIER SERVICES: Hot shoes, natural trims, traction devices and tail scratches. Your horse will go better with custom fit horseshoes and/or trims. New to Franklin County; call me to talk hooves. (859) 519-6828 or email <elizabeththefarrier@gmail.com>.

(931) 598-0033
HAIR DEPOT
 17 Lake O'Donnell Rd., Sewanee
KAREN THRONEBERRY, owner/stylist
DANIELLE HENSLEY, stylist/nail tech

NEW ORLEANS HOUSE: Listed at new price, \$129,500. <www.gardnerrealtors.com/Home/959671/NWX/2518-MARTIN-LUTHER-KING-BL-NEW-ORLEANS-LA-70113>. Call Agent Monique Davis at (504) 383-5893 for showing.

WHY SEEK an impersonal solution to a personal problem? Private, warm, spirit-filled counseling. Family, individual, adolescent. A Place of Hope. (931) 924-0042. <kerstetter@blomand.net>.

ABSOLUTE

ESTATE AUCTION

Estate of Tim Batson
SATURDAY - SEPT. 7 - 10:00 A.M.
564 WRENS NEST AVE - MONTEAGLE

featuring 4 BR/2 BA BRICK HOME ON BLUFF, DETACHED GARAGE AND STUDIO, LOCATED ON LARGE CORNER LOT WITH MILLION-DOLLAR VIEWS plus furniture, appliances, electronics, household items, rugs, power tools and many items too numerous to list.

Terms: 10% down with signed contract, balance at closing on or before 30 days, Subject to Court Approval.

****There will be a 10 ten day window left open for bidders on the home as per statute****

Cash or good check day of Auction. Everything being sold AS IS/WHERE IS. No guarantees being made.

Homes built before 1978, may contain lead-base paint, this ad serves as notice for an assessment to be made prior to Auction.
 Attorney for the Estate: Jerry Hood: Office 931-967-0838

Century 21
 MID-STATE REALTY, LLC

Century21 Mid-State Auction Division
 1810 Sharp Springs Rd
 Winchester TN 37398
 Firm # 5098 931-967-4321
 Auctioneer Aaron Miller # 2178
 931-841-6063
 Auctioneer John Peck # 5853
 931-607-5331



BARDTOVERSE

by Scott and Phoebe Bates

It rained and it rained and it rained. Piglet told himself that never in all his life, and *he* was goodness knows *how* old—three, was it, or four?—never had he seen so much rain. Days and days and days...

For it was rather exciting. The little dry ditches in which Piglet had nosed about so often had become streams, the little streams across which he had splashed were rivers, and the river, between whose steep banks they had played so happily, had sprawled out of its own bed and was taking up so much room everywhere, that Piglet was beginning to wonder whether it would be coming into *his* bed soon.

—Excerpted from "Winnie the Pooh" by A.A. Milne



Pearl's
FOGGY MOUNTAIN CAFÉ

Kash Wright Jazz Keyboard on Friday and Saturday night.

Full Liquor Mahogany Bar
Happy Hour Tuesday-Friday 5-6

Open for Lunch
Tuesday-Friday 11-2

Open for Sunday Brunch 11-2

15344 Sewanee Hwy
931.598.5770
for Reservations

Fine Dining
Tuesday-Thursday 5-9
Friday and Saturday 5-10

Henley's Electric & Plumbing

Randall K. Henley
More Than 25 Years' Experience

598-5221 or cell 636-3753

Get rid of Japanese beetles for 10-15 years by applying Milky Spore now. We have it!

Mooney's

Market & Emporium

931-924-7400

1265 W Main St • Monteagle, TN

Like us on Facebook!

Natural Foods, Local Produce
Antiques, Yarn, Art
Local Cheese
Garden Supplies



piggly wiggly®

Down Home, Down the Street

754 West Main St., Monteagle
(931) 924-3135

8 a.m. to 9 p.m. 7 days a week

Community Calendar

Today, Aug. 23

Franklin County Fair, through Aug. 24

Franklin County Schools no classes

Grundy County Schools in-service

SAS Opening Weekend

- 8:30 am Yoga with Carolyn, Community Ctr
- 9:00 am CAC office open, until 11 am
- 10:00 am Game day, Senior Center
- 5:30 pm World healing meditation, Community Center
- 7:30 pm Concert, The Culprits (free), Angel Park
- 7:30 pm Film, "Oblivion," Sewanee Union Theatre

Saturday, Aug. 24

Beersheba Springs Arts and Crafts Festival, through Aug. 25

- 8:00 am Sewanee Gardeners' Market, until 10 am
- 9:00 am Bentley Bells Open House, Breslin Tower, until 4
- 9:00 am Tracy City Farmers' Market open, until noon
- 10:00 am Hospitality Shop open, until noon
- 7:30 pm Film, "Oblivion," Sewanee Union Theatre

Sunday, Aug. 25

- 4:00 pm Bible study, Otey Parish
- 4:00 pm Yoga with Helen, Community Center
- 5:00 pm Women's Bible study, Midway Baptist

Monday, Aug. 26

Grundy County Schools first full day of classes

Sunset Serenade reservations deadline, 598-5342

SAS first day of classes

- 9:00 am CAC office open, until 11 am
- 10:30 am Chair exercise, Senior Center
- 4:30 pm Slow Flow & Yin Yoga with Sarah, Fowler Center
- 5:00 pm Sunset Serenade reservation deadline, 598-5342
- 5:00 pm Women's 12-Step, Brooks Hall, Otey
- 5:30 pm Yoga for Healing with Lucie, Community Center
- 6:00 pm Power Yoga with Sarah, Fowler Center
- 7:00 pm Centering prayer, Otey sanctuary
- 7:00 pm Community Council, Senior Center

Tuesday, Aug. 27

- 6:30 am Flow & Go Yoga with Sarah, Fowler Center
- 8:00 am Grundy County Food Bank open, until 10 am
- 8:30 am Yoga with Carolyn, Community Center
- 9:00 am CAC office open, until 11 am
- 9:30 am Blood pressure checks, Sewanee Senior Center
- 9:30 am Hospitality Shop open, until 2 pm
- 10:00 am Crafting Ladies, Morton Memorial, Monteagle
- 10:30 am Bingo, Sewanee Senior Center
- 11:30 am Grundy Co. Rotary, Dutch Maid, Tracy City
- 3:30 pm Centering prayer, St. Mary's Sewanee
- 5:00 pm Sewanee Utility District board meeting, Utility office
- 6:15 pm Bible study, Monteagle Seventh Day Adventist Church

Wednesday, Aug. 28

School of Theology first day of classes

College first day of classes

- 6:50 am Monteagle Sewanee Rotary Club, Smoke House
- 9:00 am CAC pantry day, until 11 am; 1-3 pm
- 11:30 am EQB Club, St. Mary's Sewanee (lunch at noon)

5:30 pm Yoga with Helen, Community Center

Thursday, Aug. 29

- 9:00 am CAC office open, until 11 am
- 9:00 am Nature journaling, meet at Stirling's
- 9:30 am Hospitality Shop open, until 2 pm
- 10:30 am Chair exercise, Senior Center
- 10:30 am Tai Chi with Kathleen, (advanced), Community Center
- 11:00 am Body Recall with Judy, Monteagle City Hall
- 12:00 pm Monteagle Sewanee Rotary, Blue Chair Tavern
- 12:30 pm Episcopal Peace Fellowship, Brooks Hall, Otey
- 2:00 pm Tracy City Farmers' Market open, until 5 pm
- 3:30 pm Mountaintop Tumblers, beg./inter, Community Center
- 4:30 pm Mountaintop Tumblers, advanced, Community Center
- 5:00 pm Weight Watchers, St. Joseph's Hall, St. Mary's
- 6:00 pm Karate, youth, American Legion Hall
- 6:30 pm Documentary, "John Lewis Marches On," Ayres Multi-cultural Center, discussion follows
- 7:00 pm Abuse survivors group, 330 W. Main, Monteagle
- 7:30 pm Film, "Stoker," Sewanee Union Theatre
- 7:30 pm Karate, adult, American Legion Hall

Friday, Aug. 30

Franklin County Leadership application deadline, 967-6788

Sewanee Woman's Club reservation deadline

- 8:30 am Yoga with Carolyn, Community Center
- 9:00 am CAC office open, until 11 am
- 10:00 am Game day, Senior Center
- 3:30 pm Creative movement, age 4-6, Community Center
- 4:30 pm Creative movement, age 7 & up, Community Center
- 7:30 pm Film, "Stoker," Sewanee Union Theatre

LOCAL 12-STEP MEETINGS

Friday

- 7:00 am AA, open, Holy Comforter, Monteagle
- 7:00 pm AA, open, Christ Church, Tracy City

Saturday

- 7:30 pm NA, open, Decherd United Methodist
- 7:30 pm AA, open, Brooks Hall, Otey

Sunday

- 6:30 pm AA, open, Holy Comforter, Monteagle

Monday

- 5:00 pm Women's 12-step, Brooks Hall, Otey
- 7:00 pm AA, open, Christ Church, Tracy City

Tuesday

- 7:00 pm AA, open, First Baptist, Altamont
- 7:30 pm AA, open, Brooks Hall, Otey

Wednesday

- 10:00 am AA, closed, Clifftops, (931) 924-3493
- 7:00 pm NA, open, Decherd United Methodist
- 7:30 pm AA, open, Holy Comforter, Monteagle

Thursday

- 12:00 pm AA, (931) 924-3493 for location
- 7:00 pm AA, closed, Big Book study, St. James
- 7:30 pm ACA, Brooks Hall, Otey

Your ad could be here!

**DECORATE YOUR CASTLE,
home, office or dorm room!**



THE LEMON FAIR

Mon-Fri, 12 to 4, Sat 11 to 5
(931) 598-5248
www.thelemonfair.com
60 University Ave., Sewanee