



Winners of the Summer Super Reader Program

SES Summer Super Readers

Sewanee Elementary School PTO held its first Summer Super Reader Program this summer, encouraging students to read as much as possible and document their progress. Recognized for reading the most were (pictured above, from left) fifth-grade runner-up Sarah Beth Hobby and winner Katie Finn Hurst; third-grade winner Iris Love and runner-up Namtso Norbu; second-grade winner Emily Bailey and runner-up Madeline Sumpter; fourth-grade runner-up Porter Neubauer and winner Diana Rung. Awards were made at the Friday Assembly on Aug. 17, with the support of the University Bookstore, Barnes and Noble, Winchester Parks and Recreation and the Monteagle Sewanee Rotary Club, which is focused on literacy programs through the year. Janet Moore (back row, left), University Bookstore manager, presented awards to the winner of each grade, along with Joan Hurst (center), PTO president, and Kathryn Bruce, SES librarian (right).



Blythe Ford

A Dancer's Dream Fulfilled

by Blythe Ford
Messenger Intern

All my life I have loved to dance. And as I have grown up in Sewanee, I always hoped that I would someday dance in a full-length production of a ballet on the stage in Guerry Auditorium. I had this opportunity last year in "The Nutcracker." The fact that it was my first performance wearing pointe shoes only gave me a greater sense of joy and accomplishment.

Tchaikovsky's "The Nutcracker," often performed at Christmas, is one of ballet's best-known traditions, one that until last year the Mountain had gone without for decades. In late summer 2011 David Herriott (director of the Sewanee Dance Conservatory and artistic director of Alabama Youth Ballet) began the process of gathering support in Sewanee for a production of the yuletide ballet. His dedication resulted in two performances of this beloved work on Nov. 19, 2011, complete with Tchaikovsky's music and Herriott's choreography.

(Continued on page 8)

Sewanee Woman's Club Theme This Year: "Sewanee At Home and Abroad"

The first meeting of the year of the Sewanee Woman's Club will be at noon, Monday, Sept. 10. Program chairwoman Jane Flynn, has put together a lineup of outstanding speakers on the theme "Sewanee: At Home and Abroad."

The September program will feature Vice-Chancellor John McCardell on the topic "Status of the University."

The September menu will be grilled chicken Caesar salad, potato soup, garlic and cheese biscuit, and lemon bars. Reservations for the September meeting are due by Thursday, Aug. 30. Because many of the sites at which the club normally meets are in transition this year, the group will meet at the DuBose Conference Center in Monteagle. The new location requires a new reservation schedule.

The DuBose deadline for reservations is 10 days before the luncheon, and reservations are required. The Woman's Club asks that members make reservations 12 days in advance of the meeting date. Reservations can be made to Caroline Shoemaker at 598-0982 or to Marianna Handler at <mariannah@earthlink.net>.

Luncheon meetings are on the second Monday of each month, September through May except January. There is an optional social hour at 11:30 a.m. Lunch is served at noon. The cost of lunch is \$12.

Programs begin at 12:30 p.m., with club business following at 1 p.m. Vegetarian meals and child care are available; please request these when making a reservation.

The annual dues are \$5. These dues and the proceeds of the club's fund-raising events support Thurmond Library and community projects.

Mountain Goat Trail Hike

The Sewanee Herbarium is hosting a hike of the Mountain Goat Trail at 9 a.m., Saturday, Aug. 25. Meet Mary Priestley at Pearl's parking lot on Hwy. 41A between Sewanee and Monteagle, to explore the newest section of the trail (and maybe some of the older section) and see what's in bloom (or leaf). This is an easy walk on an unpaved trail.



The new mini-pumper truck for the Jump Off district of the Sewanee Fire Department, purchased with help from donations by community members

Franklin County Fails to Pass Budget

by K. G. Beavers, Messenger Staff Writer

The Franklin County Commissioners met Monday, Aug. 20, in a special called session to vote on the entire 2012-13 county budget and approve the certified tax rate from the state. Eight commissioners voted "yes" to approve the budget, and seven commissioners voted "no," with one absent, which was not the majority vote required to pass the budget. Since the budget did not pass, the commissioners adjourned and no action was taken on the certified tax rate.

The Franklin County Commission will have a special called session at 7 p.m., Tuesday, Sept. 4, at the Franklin County Annex Community Room (855 Dinah Shore Blvd., Winchester) to revisit the budget.

"I have no idea why the budget did not pass," said fifth-district county commissioner Johnny Hughes of Sewanee. "The commissioners have held numerous budget workshop meetings, and no concerns were brought up during those discussions." In a July budget meeting, the county commission had approved the new certified tax rate.

If the commission wanted to lower or raise the tax rate, a public hearing would have to be held, as is law. With the 2012-13 budget, "We are going to have to start from square one," said Hughes. He said this means each county department will have to meet with the commission in new budget workshops.

Voting "no" were commissioners James Cantrell, David Eldridge, Angie Fuller, Charles Stines, Jean Snead, Scottie Riddle and John Page. Commissioner Anthony DeMatteo was absent.

"We all assumed the budget was going to pass on Aug. 20, as everything went smoothly in the prior budget workshop discussions," said fifth-district county commissioner Sherwood Ebey of Sewanee. "Now Franklin County does not have a working budget for this year."

"If a budget is not approved by Oct. 1, the state of Tennessee will step in," said Hughes.

It was the opinion of several commissioners that others voted "no" so they could be on the record as voting "no" due to the increase in the property tax rate.

"I do not think anyone learned anything from 2007," said Hughes. "Where are you going to get revenue and where are you going to cut?"

The seven commissioners who voted against the budget should have made their concerns known during the budget workshops so we could have been working on this beforehand," said Hughes. Budget discussions included the general budget, where the certified tax rate was discussed, the highway budget and the school budget. Each department also had discussions with its committee starting in January. The committees include members of the individual departments and representatives from the county commission.

At issue is the certified property tax rate set by the state. Whether a county resident's property tax goes up depends on the property appraisal.

"The certified tax rate from the state makes sure that the county is getting the same equivalent amount of money from last year," said Ebey. "Property appraisals were down across the county, except for Sewanee, from the last appraisal to this new appraisal year. For most people in Franklin County, their taxes would have stayed the same or have been less, which means most people would have been paying the same or less in property taxes." Greenbelt farmland also saw a 30 percent increase in value, according to the property assessor office.

For Franklin County schools, if a budget is not in place by Oct. 1, the state can halt funding for the schools.

"Oct. 1 is Doomsday," said fifth-district school board member Chris McDonough. "If the county does not have a budget passed by then, the state will not give us our education funding allocation, and Franklin County schools will close indefinitely."

"It's very disappointing that the seven commissioners who voted against the budget have failed to understand that. I almost wonder if they value their own political careers more than the needs of the county's schoolchildren," said McDonough.

The Franklin County school system receives approximately \$27.6 million of its estimated \$42 million in revenue from the state. Almost \$13.4 million of the school budget revenue comes from local taxes, such as property and sales tax.

For 2012-13, the Franklin County budget proposed expenditures totaling \$72,432,152. The proposed revenue totals \$69,909,463, a deficit of approximately \$2.5 million. The fund balance would have been \$9,027,358.

The next regular meeting of the county commissioners is Sept. 17.

P.O. Box 296
Sewanee, TN 37375

Letters

ST. MARY'S SEWANEE EVENT To the Editor:

On Sept. 2, St. Mary's Sewanee will begin its 25th year of serving the local community, as well as people from all over the world. You may be surprised to know that each year close to 5,000 people cross St. Mary's Sewanee's threshold for retreat, renewal and learning.

St. Mary's Sewanee strives to be a place where guests "encounter beauty and simplicity, silence and tranquility, warm welcome and spiritual friendship." Many of us in our community have personally benefited from this special place.

Once a year, the community gathers at St. Mary's Sewanee for its Annual Sunset Serenade. It is an evening filled with new and old friends, laughter, music, wonderful food and an auction.

It is the organization's only fund-raising event of the year, and it is the community's opportunity to give back to St. Mary's Sewanee.

This year many master artisans have donated pieces of their works to the auction, as well as local businesses who have given goods and gift certificates. In addition, Dr. and Mrs. Walter Merrill and Mr. and Mrs. Charlie Wray have donated their homes for the University's parents and graduation weekend.

On behalf of the 18 volunteer committee members who have spent the last year organizing the event, we encourage you to join us at this event. Reservations are required, so please call St. Mary's Sewanee at 598-5342 to save your space.

Amy Burns
Sewanee ■

Georgia Mooney Celebrates 98th

Georgia Mooney is celebrating her 98th birthday from 2 to 4 p.m. on Saturday, Aug. 25, at 116 Kentucky Ave. in Sewanee.

Her family invites you to join in the festivities. Cake and punch will be served.

LEARN ABOUT THE ISSUES To the Editor:

I hope voters will educate themselves on the issues as the November elections approach, looking past slogans ("war on women," "assault on union rights," "attack on voter rights") and misleading labels ("assault weapons") to learn the details. Research will give a clear picture of what's going on. Learn which organizations or individuals benefited from the stimulus and auto bailouts or investigate the Affordable Healthcare Act (aka "Obama Care") passage.

If a conservative president increased government intrusion like Mr. Obama has via the Department of Health and Human Services' mandates (the 2,000-page health-care bill gives 100,000 pages of bureaucratic fiat), executive orders and executive privilege ("Fast and Furious," where the Bureau of Alcohol, Tobacco and Firearms provided 2,000 guns to Mexican cartels), the cries of outrage would be deafening, and it would be condemned by the mainstream media.

The financial crisis can be traced back to (and beyond) Presidents Johnson, Carter and Clinton with enthusiastic assistance from Republican presidents and congresses of both stripes.

We are drowning in national debt. Almost \$5 trillion (12 zeroes) added under Mr. Obama's watch, with more than \$3,000,000,000 (billion) borrowed, printed or made up every day of the year.

Is this what we want to leave to our children?

I believe that some of the government programs of the last 50-plus years have, to some degree, hurt our society by weakening the ideals of self-sufficiency, personal responsibility and the family. It is imperative that voters use a variety of sources to gather information. This country is approaching a crisis.

Bill Kershner
Sewanee ■

Tell them you saw it here.

OBAMA'S PROMISES UNFULFILLED

To the Editor:

I would like to preface this by saying that I was a lifelong Democrat. I believed George W. Bush was the worst president during my lifetime. I was wrong. He comes in second.

Barack Obama made a lot of promises during his campaign four years ago and since being elected. He pledged that healthcare reform would not add a cent to the deficit. But the Congressional Budget Office and the Joint Committee on Taxation estimate that the insurance-coverage provisions of the Affordable Care Act will have a net cost of close to \$1.2 trillion over the next 10 years.

He promised to "build the roads and bridges, the electric grids and digital lines that feed our commerce and bind us together." He promised to "restore science to its rightful place and wield technology's wonders to raise healthcare's quality and lower its cost." And he promised to "transform our schools and colleges and universities to meet the demands of a new age." Promises come cheap.

Obama is pitting one segment of society against another. He appeals to the large segment that pay no income taxes but reap all the benefits from those who do. We have seen what has happened in other countries when spending and benefits get out of control. Bill Clinton understood this. Obama doesn't.

The question confronting the country nearly four years later is not who was the better candidate four years ago. It is whether the winner has delivered on his promises. And the sad truth is that he has not.

Gordon Lane
Sewanee ■

CAC RECEIVES DONATION

To the Editor:


The Community Action Committee would like to extend its gratitude to Shelley and Ward Cammack, owners of Shenanigans. The refrigerators donated by the Cammacks are wonderful assets to the CAC, as well as the members of the community we serve. We are now able to hold twice as many fresh fruits, vegetables and perishables. I only wish you could witness the joy our CAC friends express when we now offer milk, cheese, salad, yogurt, eggs and meat. Thank you so much!

Luwin Lewis, Director
Community Action Committee ■

MESSENGER HOURS

Monday, Tuesday & Wednesday
9 a.m. - 5 p.m.
Thursday—Production Day
9 a.m. until pages are completed
(usually mid-afternoon)
Friday—Circulation Day
Closed

THE SEWANEE MOUNTAIN MESSENGER
418 St. Mary's Ln.
P.O. Box 296
Sewanee, Tennessee 37375
Phone (931) 598-9949
Fax (931) 598-9685
Email messgr@bellsouth.net
www.sewaneemessenger.com



Contributors
Phoebe & Scott Bates
Jean & Harry Yeatman
John Shackelford
Annie Armour
John Bordley
Virginia Craighill
Buck Gorrell
Margaret Stephens
Peter Trenchi
Pat Wiser

Published as a public service to the Sewanee community. 3,500 copies are printed on Fridays, 46 times a year, and distributed to 26 Sewanee-area locations for pickup free of charge.
This publication is made possible by the patronage of our advertisers and by contributions from The University of the South (print production) and the Sewanee Community Chest.
SUBSCRIPTIONS \$75 first class.
All material in the Sewanee Mountain Messenger and on its website are copyrighted and may not be published or redistributed without written permission.

Corrections

Last week's article about new School of Theology faculty member Lewis Connolly misidentified his educational background. He is an alumnus of Westcott House, Cambridge.

In the Aug. 10 article about wooly adelgid treatment, the number of trees being treated was incorrect. Domain manager Nate Wilson reports that there are 300–400 trees on central campus in the inventory.

University Job Opportunities

Exempt Positions—Assistant Baseball Coach; Assistant Director of Alumni and Parent Relations; Assistant/Associate Director of Annual Giving; Assistant University Counselor/Staff Psychologist; Chief of Police; Design Director; HR Generalist; Staff Therapist; Web Developer.

Non-Exempt Positions—Cook, Server and Utility Workers for Sewanee Dining; Greenskeeper; Office Program Specialist; Police Officer (part-time).

Descriptions of these positions are available on the website at <www.sewanee.edu/personnel/jobs>. Apply for these positions at: <<https://www.sewanee.edu/site/j9UB9e/application>>.

MESSENGER CONTACTS

PHONE: (931) 598-9949
FAX: (931) 598-9685
News & Calendar:
Laura Willis
news_messgr@bellsouth.net
Display Advertising:
Janet Graham
ads_messgr@bellsouth.net
Classified Advertising:
April Minkler
class_messgr@bellsouth.net

Serving Where Called

Please keep the following individuals, their families and all those who are serving our country in your thoughts and prayers:

PFC **Peter Petropoulos** is an active duty Marine at Camp Lejeune in North Carolina. He is a 2007 graduate of St. Andrew's Sewanee School and the son of Rachel and Greg Petropoulos of Sewanee.

Michael Evan Brown
Jennifer Lynn Cottrell
James Gregory Cowan
Robert S. Lauderdale
Dakota Layne
Byron A. Massengill
Alan Moody
Brian Norcross
Christopher Norcross
Dustin "Dusty" Lee Parker
Michael Parmley
Charles Schaefer
Melissa Smartt
J. Wesley Smith
Charles Tate
Jeffery Alan Wessel

If you know of others in our Mountain family who are serving our country, please give their names to American Legion and Auxiliary member Louise Irwin, 598-5864.

MESSENGER DEADLINES

News & Calendar:
Tuesday, 5 p.m.
Display Ads:
Monday, 5 p.m.
Display Classifieds:
Monday, 5 p.m.
Classified Ads:
Wednesday, noon

BUG PROBLEMS?

We can help! Call us for a free inspection!
BURL'S TERMITE & PEST CO.
TERMITE—PEST—VAPOR CONTROL
Bonded • Insured • Home-Owned & Operated
105 Ake St., Estill Springs
(931) 967-4547 or (931) 455-1191
Charter #3824 • License #17759



Welcome Sewanee Students!

**REGIONS OFFERS
STUDENTS AN
EASIER WAY
TO BANK.**

**MORE FEATURES. MORE FREEDOM.
SEE HOW REGIONS MAKES BANKING
EASY FOR STUDENTS.**

For your banking needs and convenience, the **Sewanee Office** will be open from **10:00 a.m. to 5:00 p.m. on Saturday, August 25.**

To find out more, stop by our office on Saturday. While you're here, we will treat you to lunch and you can register to win a Cruiser Bicycle!

 **REGIONS**
It's time to expect more.

MEMBER FDIC © 2012 Regions Bank. All deposit accounts are subject to the terms and conditions of the Regions Deposit Agreement. Regions Now Card is subject to separate terms and conditions and additional fees and charges. Visit regions.com/banking or use a Regions associate for details.

ONLINE ONLY AUCTION

**10 Tracts
2 Farms
150+/- Acres
Snake Pond Road
Sewanee, Tennessee**



Bid NOW Until Tues. August 28th @ 6 PM CST

Or join us at the Bid Center - 120 Snake Pond Rd. (Tract 1)
on Tuesday, August 28th starting at 4:00pm

LOCATED NEAR UNIVERSITY OF THE SOUTH AND ST. ANDREW'S-SEWANEE SCHOOL

PREVIEW: SUNDAY, AUGUST 26TH FROM 1-2 PM
CALL OR SEE WEBSITE FOR MORE DETAILS!

Please Review All Online Terms Prior To Bidding. This sale has an auto-extend feature. 10% Buyers Premium added to the final bid price to determine final selling price. For complete terms and directions, please visit us online at ComasMontgomery.com.

 **COMAS MONTGOMERY REALTY & AUCTION**
615-895-0078 • 800-825-5523    **MARKNET ALLIANCE**

COMASMONTGOMERY.COM

Community News

Hatrock Spring Unsafe for Drinking

The University has posted new signs at the spring located in Sewanee off Hatrock Road ("Hatrock Spring") to let community members know that the water is not suitable for drinking. The spring is on University property.

April Johnson, a student researcher in the University's chemistry department, has noted elevated bacteria levels in the water flowing out of the pipe, and these findings have been confirmed.

"Our data indicate that the spring is not well-protected," said Emily White, assistant professor of environmental chemistry. "We found evidence of contamination at levels far above the standard for drinking water."

Community members should be aware that this water is not intended to be a drinking source.

Aggressive Dog a Threat to Community

Sewanee Police and the Franklin County Animal Control are in the process of trying to remove an aggressive dog from the Wiggins Creek area of Sewanee, after the dog chased residents and attacked another dog. The dog does not have an owner and has been living in the neighborhood for many weeks.

Acting Sewanee Police Chief Marie Eldridge said that local officers are working in conjunction with Animal Control to capture the dog as humanely as possible. An Animal Control officer shot at the dog early in the morning on Aug. 20, but it only wounded the animal.

"This situation is upsetting to all of us," Eldridge said. "We don't want to have to put an animal down, but we do have an obligation to protect the members of our community. This is a very unpleasant part of our job, and we greatly appreciate the support we receive from community members when it is necessary to take actions such as putting an aggressive animal down," she said.

The animal was shot after attempts to trap it had failed.

Jerod Bradford, an officer with Franklin County Animal Control, said that tranquilizing the dog was not an option available to the unit.

"Because of state regulations, we would have to have a licensed veterinarian prepare the tranquilizers and then use an expensive GPS tracking system on the animal," Bradford said. "We don't want to have to resort to lethal action to control this animal, but we must keep county citizens safe."

The officers are setting humane traps in hopes of capturing the dog.

Numerous Wiggins Creek residents have filed reports of being chased by the dog, which is reportedly part pit bull. One Wiggins Creek resident's dog was attacked by the dog.

Eldridge reminded residents to review the University's dog policy, found online at <www2.sewanee.edu/provost/dog_policy>.

New Police Officer in Sewanee

Dan Ferguson has joined the Sewanee Police Department as an officer. Ferguson was on motorcycle patrol with the Winchester Police Department before joining the Sewanee department.

Speed Limit Signs Under Review

Joe David McBee, road commissioner for district one of Franklin County, reports that engineers from the Tennessee Department of Transportation visited Sewanee on Aug. 23 to evaluate the newly erected speed limit signs across the community.

Residents have expressed concern and confusion about the signs on University Avenue, because they are known as "Speed Limit Change Ahead" signs, with the arrow indicating that the speed limit is about to change. However, on University Avenue, they indicate the existing speed limit.

McBee said that he wanted the engineers to review the signage. Technically, he said, there would be "Speed Limit Change Ahead" signs, followed 25 yards later with Speed Limit Signs, much as exist on Highway 41A. However, he said, this would double the number of signs on University Avenue.

"It is my goal to not add more signs," McBee said. "I hope we will switch out the signs and clear up any confusion."

Monteagle Water Sewer Ban Lifted

Tennessee Department of Environment and Conservation Commissioner Bob Martineau announced earlier in August that a seven-year sewer connection moratorium for the town of Monteagle has been lifted due to major improvements made to the town's wastewater treatment plant and collection system and the town's ability to meet the requirements of an Agreed Order issued in January 2005.

Following a tour of the improvements, Martineau said, "Mayor [Marilyn] Nixon and the entire town of Monteagle should be commended for the community's cooperative spirit in proactively addressing its wastewater challenges, while positioning their town for long-term economic growth. These upgraded infrastructure efforts will help protect the community's water quality, natural resources and serve as a boost to its economy."

ONLINE AND IN COLOR!

www.sewanee
messenger.com

Upcoming Meetings

CCJP Fall Retreat

The Cumberland Center for Justice and Peace will hold its annual retreat 4-8 p.m., Saturday, Aug. 25, at the home of Debbie and Aaron Welch at 170 Faculty Circle, Sewanee. Guests and visitors are welcome to attend and encouraged to introduce ideas for projects. For more information contact Leslie Lytle by email at <sllytle@blomand.net> or 598-9979.

Girl Scout Recruitment

There will be a Girl Scout recruitment meeting at 4 p.m., Monday, Aug. 27, at the Sewanee Community Center. For more information email Lisa Rung at <rung.lisa@gmail.com>.

Community Council Monday

The Sewanee Community Council will meet at 7 p.m., Monday, Aug. 27 at the Senior Center. Agenda items include reports on the Greenhaw quarry cull, the airport beacon, the deer cull, new speed limit signs, animal feeding policy, the dog park and bikelanes.

SUD Board Meeting Tuesday

The board of commissioners of the Sewanee Utility District will meet at 5 p.m., Tuesday, Aug. 28. The agenda is approval of agenda; approval of July 2012 minutes (as distributed); general manager's report; financial report; unfinished business—constructed wetlands study and proposal, build-out study, dedication of water treatment plant (details on page 6). The next meeting is Tuesday, Sept. 25.

County Democratic Women Meet Tuesday

The Franklin County Democratic Women will meet at 6:30 p.m., Tuesday, Aug. 28, at the party headquarters, 2142 Decherd Hwy., Winchester.

STHP Board Meets Thursday

The board of the Sewanee Trust for Historic Preservation will meet at 4:30 p.m., Thursday, August 30, in the Blue House on University Avenue. The first event sponsored by the Trust will be at 4:30 p.m., Thursday, Sept. 20.

Area Rotary Club Meetings

The Grundy County Rotary Club meets at 11:30 a.m. Tuesdays at the Dutch Maid Bakery in Tracy City.

The Monteagle/Sewanee Rotary Club meets at the Smoke House Restaurant on Wednesday mornings. Biology professor Deborah McGrath will talk about "Using Payment For Ecosystem Services to Restore Degraded Lands and Alleviate Poverty in Haiti." Coffee begins at 6:50 a.m.; breakfast and the meeting begin at 7 a.m. and end by 8 a.m.

The Monteagle/Sewanee Rotary Club hosts a noon Thursday meeting and program at the EQB Club on the University campus. Lunch is available for \$10.

WOODLAND HOMESTEADS AND HOMESITES



MLS#1375978. 1349 Ingman Rd. Beautiful brick home on 4+ acres. Secluded woodlands. Wood floors, all bedrooms on main level. 3/2. Upstairs media room. \$229,000.



MLS#1244044. 611 Huckleberry Place in Clifftops. 3BR, 2BA. Screened porch, mountain stone floor-to-ceiling fireplace in vaulted great room. Main floor master, roomy, comfortable. Reduced to \$269,000.



MLS#1304896. 1829 Hickory Place in Clifftops. Private woodlands wonderland on secluded paved street. 4BR, open floor plan on 5 acres. Screened porch, garage, media room. Wrap porches, central kitchen, wood-burning fireplace. Main level master w/en suite bath. \$339,000.



MLS#1303772. 1120 Sassafras Ct. in Clifftops. At Last, the mountain retreat you have dreamed of. 9 ft ceilings, wood floors, woodburning fireplace, radiant heat in master bath, just off the main level bedroom. 4BR, 3BA, room for attic expansion. Great landscaping, brick trim with easy to maintain hardi-board. \$429,000.



MLS#1247130. 1131 Tulip Tree Court in Clifftops. Delightful one level, 2BR, 2BA log home. Fireplace, screened porch, outdoor fire pit. All on 5 acres near the lake. \$239,000.



MLS#1351398. 821 Clifftops Ave. Remodeled kitchen and bathrooms, 3BR, 2BA. 1908 sf. Fantastic open deck, hot tub porch, spacious screened porch with second stone fireplace. \$329,000.



MLS#1326074. 207 Wiggins Creek Dr. in Sewanee. Sophisticated custom home with cherry woodwork. Crown molding, master and guest, with two bathrooms down; one large combination bedroom, sitting room and bath upstairs. 3/3. Built 2004. 2072 sf. \$349,000.



MLS#1346454. 1097 Savage Highland Dr. in Savage Bluffs, a conservation-minded community of active homeowners. Wood and tile floors throughout—all on one level with huge bonus room above garage. Hardi-board with rustic stone trim. 3/2.5, almost 3600 sf. \$495,000.

MLS#1338671	253 Oak St.	\$62,000
MLS#1387694	1345 Ingman Rd.	\$68,900
MLS#1373209	524 Ingman Cliff Rd.	\$75,000
MLS#1383875	1831 Ridge Cliff Dr.	\$136,000
MLS#1384097	2599 Highland Heights Rd.	\$139,000
MLS#1346558	215 Shadow Rock Rd.	\$172,000
MLS#1246975	2405 Clifftops Ave.	\$239,000
MLS#1337362	474 Pigeon Springs Rd.	\$269,000
MLS#1359954	843 Cullen Savage Rd.	\$329,000
MLS#1383077	10 Summerfield Rd.	\$9,500
MLS#1383043	Elgin Dr. one of several	\$10,000
MLS#1374807	10139 US 41	\$20,000
MLS#1343151	Ingman Rd.	\$24,000
MLS#1334244	Hwy 108	\$24,900
MLS#1314656	Bear Ct., others available	\$29,000
MLS#1371654	10 Boulder Lake Dr.	\$48,000
MLS#1248666	102 Timberwood Trace	\$50,000
MLS#1374272	8+ acres on Laurel Branch Trail	\$51,900
MLS#1377790	Hummingbird Lane	\$79,900
MLS#1332072	2240 Sarvisberry - Clifftops	\$80,000
MLS#1374005	1721 Hickory Place - Clifftops	\$85,000
MLS#1361653	67 Acres off Hideaway Cabin Rd.	\$119,900
MLS#1336962	20th Ave N. - 100 Acres Timbered	\$189,000

Monteagle Sewanee, REALTORS

www.monteaglerealtors.com

931-924-7253

featuring quality homes and building sites in Clifftops, Cedar Rock, Bridal Veil, Sewanee, Savage Bluffs and all around the Mountain!

Jeanette S. Banks, Broker-Owner, numa@blomand.net

Dee Underhill-Hargis, Broker, 931-808-8948, aunderhill@blomand.net

Ray Banks, Affiliate Broker, 931-235-3365, banksgrass@yahoo.com



PO Box 293 • 20 W. Main St. • Monteagle • Fax 931-924-7254

Pearl's
FOGGY MOUNTAIN CAFÉ

UNDER NEW OWNERSHIP

- Newly Renovated
- Menu Featuring Classic Favorites, Unique Additions & Seasonal Specials

"Chef Joy invites you to make yourself at home! Come in the back door!"

15344 Sewanee Hwy • 931.598.5770
Tue-Wed-Thu 5 to 9; Fri-Sat 5 to 10; Sun Brunch 12 to 3
Closed Monday

OBITUARIES

Veda Mae Condra

Veda Mae Condra, age 86 of Monteagle, died Aug. 19, 2012, at Golden Living In Winchester. She was a daughter of Edward LaFayette and Rhoda O'Dear Condra. She was a waitress in Monteagle for many years. She was a member of Morton Memorial United Methodist Church. She was preceded in death by her brothers, Charles, Douglas, Vinson and James Condra.

She is survived by her sister, Martha Worley of Winchester, and numerous nieces, nephews and friends.

Funeral services were held Aug. 22 in the funeral home chapel with the Rev. J.D. Spencer officiating. Interment followed in Monteagle Cemetery. Memorials may be made to Monteagle Cemetery Association, P.O. Box 283, Monteagle, TN 37356. For complete obituary visit <www.cumberlandfuneralhome.net>.

Charles Allen Hubbard Sr.

Charles Allen Hubbard Sr. died at his home in Sewanee on Aug. 19, 2012. He was born June 4, 1931, in Orange, Texas. He was a retired architect. He and his wife, Sarah ("Sally") McCrady Shumate, moved to Sewanee in 2005. He was preceded in death by his parents, Hugh Allen and Inez Foreman Hubbard; son Gerald Matthew Hubbard; and brother, Albert L. Adams Jr.

In addition to his wife, he is survived by his daughters, Annette H. Baker of Park City, Utah, and Chee H. (Chuck) Claus of Salt Lake City, Utah; son C. Allen Hubbard Jr. of Clifton, Texas; stepdaughter, Anna Dowling Heath of San Francisco, Calif.; stepson, E. Hayne (Katie) Shumate III of Fort Worth, Texas; 10 grandchildren and one great-granddaughter.

Funeral services will be held in All Saints' Chapel, Sewanee, at 10 a.m., Saturday, Sept. 8, followed by interment in the University of the South Cemetery. In lieu of flowers, memorial donations may be made to Monteagle Rotary Club, All Saints' Chapel or the University of Houston College of Architecture. For complete obituary visit <www.moorecortner.com>.



Deborah Rains

Rains Retires from New Life

The Franklin County Adult Activity Center/New Life announced the retirement of Deborah Rains, executive director.

Rains served the agency for the past 25 years. She was instrumental in assisting to support many individuals in Franklin County with developmental and intellectual disabilities. Her work helped pave the way in the state of Tennessee for people to live as independently as possible.

Under her leadership, the Activity Center was rebuilt as "New Life" with new opportunities for the people the agency serves. Rains has given countless hours to the agency and to the community, and received numerous honors, the most recent of which was being recognized with a lifetime membership to the Tennessee Community Organization.

Robert Wright comes on board as the new executive director for the agency.

Church News

Bible Baptist, Monteagle

Pastor James Taylor and the congregation of Bible Baptist Church are hosting a benefit gospel singing, featuring Greg Finch and other artists, 10 a.m.–2 p.m., Saturday, Aug. 25.

There will be a yard sale, as well as soup, sandwiches and drinks. The event will be at 360 Wells Circle, Monteagle. For more information call (423) 322-4922.

Midway Baptist Church

Midway Baptist Church in Sewanee invites everyone to its 54th annual homecoming services.

Services begin at 6 p.m., Saturday, Aug. 25, with a singing featuring the Cavaliers. The celebration will continue on Sunday morning, with Sunday School starting at 9:45 a.m., morning singing with the Cavaliers at 10:30 a.m., morning preaching with former pastor Tom Watson at 11:30 a.m., and a potluck dinner following the morning service. For more information call Dina Green at (931) 308-4047.

Christ Church, Monteagle

The Rev. Stan Matthews, deacon and organist at Christ Church will preach, as Fr. Paul Oxner returns to the organ bench for the 10:30 a.m. service on Sunday, Aug. 26. Bishop William Millsaps will be the celebrant. Lunch follows the service.

The Wednesday noon Eucharist at Christ Church is a "round the table" informal service in the Parish Hall or Library. All are welcome.

Otey Parish

Otey Parish will celebrate the Holy Eucharist, Rite II, at 8:50 a.m. and 11 a.m. Between services, the Lectionary

Class will meet. Nursery care begins at 8:30 a.m. and will be available until after coffee hour.

Otey Parish will host its annual welcome back picnic at 4:30 p.m., Sunday, Sept. 9. Sunday school classes begin at 10 a.m., Sunday, Sept. 16.

All Saints' Chapel and Chapel of the Apostles Daily Services

During the school year, Morning Prayer is offered at 8:30 a.m., and Evening Prayer at 4 p.m., Monday through Friday, in St. Augustine's Chapel, which is located inside All Saints' Chapel, near the Chapel offices. These services begin on Wednesday, Aug. 29.

Morning and Evening Prayer and Holy Communion are offered in the School of Theology's Chapel of the Apostles, beginning on Thursday, Aug. 30. Service times and days for some services vary, and all are listed in the Messenger's church calendar. The community is welcome at all services.

Healing Workshops

Author and healer Peter Calhoun will be offering workshops in Sewanee on Sept. 29–30, at the American Legion Hall in Sewanee.

On Sept. 29, he will host "A Life Without Limits." The workshop is \$75 per person if registered before Sept. 1; after that, registration is \$85 per person. On Sunday, Sept. 30, Calhoun and Astrid Ganz will host a Shamanic Healing Workshop. This workshop is \$100 per person before Sept. 1; \$115 after that date.

To register or for more information, contact Martha Keeble via email at <martha.keeble@gmail.com>.

TRAFFIC REMINDERS

It is state law to have your headlights on in fog and rain. The NEW speed limit on the University campus is 20 mph, except for Texas Avenue (around the Fowler Center), Morgan's Steep Road, Georgia Avenue and Finney Avenue, where it is 15 mph.

PATTON WATKINS ARCHITECT

sustainable design + restoration

Patton Watkins, AIA, LEED AP

931-598-9006
125 University Ave.
P.O. Box 194
Sewanee, TN 37375

pattonwatkins@hotmail.com

SEWANEE AUTO REPAIR

—COMPLETE AUTO & TRUCK REPAIR—

-Tune-ups	-Brakes
-Tires (any brand)	-Shocks & struts
-Tire repair	-Steering & suspension
-Batteries	-Belts & hoses
-Computer diagnostics	-Stereo systems installed

All Makes & Models • Service Calls • Quality Parts
ASE Master Certified Auto Technician • 25 Years Experience
7 to 5 M-F • (931) 598-5743 • Across from Regions Bank

36 Ball Park Road Sewanee, Tennessee (931) 598-9000
www.ivywildsewanee.com

FINE DINING
SEATING FROM 5:00 TO 9:00
THURSDAY - SUNDAY EVENINGS

BYO Wine

THIS WEEK AND UPCOMING
YOGA Tuesdays, 9–10:15 am, & Thursdays, 3:30–4:45 pm, offered by Hadley Morris, RYT
CENTERING PRAYER SUPPORT GROUP Tuesdays at a new time! 3:30 to 5 pm
ONE-DAY SPIRITUALITY AND THE BODY RETREAT September 19, Sister Mary McGehee, presenter
Fee, \$35, includes lunch
THREE-DAY CENTERING PRAYER RETREAT September 23–25, The Rev. Geoffrey Butcher, presenter
Residential fee, \$300; Deposit, \$50
FROM EMOTIONAL CHAOS TO CLARITY: THE POWER OF MINDFULNESS AND INTENTION TO CHANGE YOUR LIFE September 28–30; Phillip Moffitt, presenter
Commuter fee, \$190; Deposit, \$50

The Ayres Center for Spiritual Development
Call (800) 728-1659 or (931) 598-5342
www.StMarysSewanee.org
<reservations@stmaryssewanee.org>

CHURCH CALENDAR

Weekday Services, Monday–Friday

7:00 am Morning Prayer/HE, St. Mary's (not Wed)
7:30 am Morning Prayer, Otey
8:10 am Morning Prayer, COTA (starts 8/30)
8:30 am Morning Prayer, St. Augustine's (starts 8/29)
12:00 pm Holy Eucharist, COTA (M,T,F starts 8/30)
4:00 pm Evening Prayer, St. Augustine's (starts 8/29)
4:30 pm Evening Prayer, Otey
5:00 pm Evening Prayer, St. Mary's (not Wed)
5:40 pm Evening Prayer, COTA (starts 8/30)

Saturday, Aug. 25

8:00 am Morning Prayer/HE, St. Mary's

Sunday, Aug. 26

All Saints' Chapel

9:00 am Orientation Sunday Service

Christ Church Episcopal, Alto

11:00 am Holy Eucharist
11:00 am Children's Sunday School

Christ Church, Monteagle

10:30 am Holy Communion
10:45 am Children's Sunday School
12:50 pm Christian formation class

Church of the Holy Comforter, Monteagle

9:00 am Holy Eucharist

Cowan Fellowship Church

10:00 am Sunday School
11:00 am Worship Service

Cumberland Presbyterian, Sewanee

9:00 am Worship Service
10:00 am Sunday School

Dechard United Methodist Church

9:45 am Sunday School
10:50 am Worship

Epiphany Episcopal Church, Sherwood

10:30 am Holy Eucharist
10:30 am Children's Sunday School

Grace Fellowship

10:30 am Sunday School/Worship Service

Harrison Chapel Methodist

10:00 am Sunday School
11:00 am Worship Service

Midway Baptist

10:00 am Sunday School
11:00 am Morning Service
6:00 pm Evening Service

Midway Church of Christ

10:00 am Bible Study
11:00 am Morning Service
6:00 pm Evening Service

Morton Memorial United Methodist, Monteagle

9:45 am Sunday School
11:00 am Worship Service

New Beginnings Church, Jump Off

10:30 am Worship Service

Otey Memorial Parish

8:50 am Holy Eucharist
10:00 am Christian formation classes
11:00 am Holy Eucharist

St. James Episcopal

9:00 am Children's Church School
9:00 am Holy Eucharist

10:15 am Godly Play

St. Margaret Mary Catholic, Alto

8:00 am Mass

St. Mary's Convent

8:00 am Holy Eucharist
5:00 pm Evensong

Sewanee Church of God

10:00 am Sunday School
11:00 am Morning Service
6:00 pm Evening Service

Society of Friends

9:30 am Meeting, 598-5031

Tracy City First Baptist

9:45 am Sunday School
10:45 am Morning Worship
5:30 pm Youth
6:00 pm Evening Worship

Wednesday, Aug. 29

6:00 am Morning Prayer, Cowan Fellowship
12:00 pm Holy Eucharist, Christ Church, Monteagle
6:00 pm Youth, Tracy City First Baptist
7:00 pm Evening Worship, Tracy City First Baptist

If your church is in our circulation area and would like to be listed here, please send service times, church address and contact information to <messgr@bellsouth.net> or phone 598-9949.

Area Residents Graduate from Sewanee

[Editor's Note: The Messenger did not receive the following information in May and regret the delayed announcement of the accomplishments of these young people.]

The following local residents were honored at the University of the South's 2012 commencement ceremonies held in All Saints' Chapel on the Sewanee campus on May 13.

Jared Ross Davis of Sewanee was awarded a B.S. in computer science. He is the son of Sarah Mooney, and Jackie and Jason R. Davis.

Megan Briana Barry of Monteagle was awarded a B.A. in economics. She is the daughter of Denise and James R. Barry.

John Elliot Bowman Ladd of Monteagle was awarded a B.A. in English. He is the son of Nancy Ladd.

Mark Alexander Cowan of Sewanee was awarded a B.A. in classical languages. He is the son of Penny and Mark Cowan.

Margaret Neal Jones of Sewanee was awarded a B.A. in international and global studies, cum laude. She is the daughter of Robie Jackson and John Holleman.

Hampton Field Mauzy of Sewanee was awarded a B.A. in political science. He is the son of Carrie and Bill Mauzy.

Breeanne Michelle Reid of Sewanee was awarded a B.A. in religion. She is the daughter of Violet J. Reid.

Lani Mae Skidmore of Winchester, was awarded a B.A. in political science. She is the daughter of June and John W. Skidmore.



American mastodon tooth

Mastodon Tooth in Sinking Cove

The University has received a beautifully preserved American mastodon (*Mammuth americanum*) tooth found recently in a cave near campus in Sinking Cove. The tooth is on loan from Kenny Summers, a local resident and owner of the cave in which the tooth was found. After it is cleaned and preserved, it will be on display on the second floor of Snowden Hall.

According to professor Martin Knoll of the department of forestry and geology, this is the second such tooth found in the area. The first was found near Wet Cave in the 1960s by biology professor Harry Yeatman. Knoll had that tooth radiocarbon-dated to 12,769 years before present and hopes to date the new tooth, as well.

American mastodons were part of an assemblage of large animals at the end of the last ice age, most of whose members went extinct around 11,000 years ago. Mastodons had the general appearance of woolly mammoths, but they were generally smaller, lacked the large hump on their back, and grazed on leaves and twigs instead of grasses.

They inhabited the Sewanee area along with giant ground sloths, giant beavers, mammoths, dire wolves and jaguars. A Pleistocene jaguar skeleton was discovered in a cave near Sinking Cove in the 1940s by Vice-Chancellor Edward McCrady.



MOLLICA
CONSTRUCTION LLC

931 205 2475

WWW.MOLLICACONSTRUCTION.COM

- CRAFTSMANSHIP ▪
- CREATIVITY ▪
- SUSTAINABILITY ▪

SES Menus

Aug. 27-31

LUNCH

MON: Chicken nuggets, breaded pork chop patty, au gratin potatoes, green beans.

TUE: Spaghetti hot pocket, broccoli, carrots.

WED: Teriyaki chicken with rice, Salisbury steak, mashed potatoes, steamed spinach.

THU: Soft beef taco, ravioli, pinto beans, vegetable blend.

FRI: Pizza, pulled pork, mixed vegetables, California-blend vegetables.

Options available every day: turkey or ham sandwich, with or without cheese, peanut butter and jelly.

BREAKFAST

MON: Pancakes.

TUE: Cinnamon roll.

WED: Chicken biscuit.

THU: French toast sticks.

FRI: Breakfast pizza.

Options available every day: Scrambled eggs, sausage, biscuit, gravy, variety of fruit. Milk or juice served with all meals.

Menus subject to change.

FINE DINING AT *The Edgeworth Inn*

Cynthia's **DINNER MENU**
ON CHESTNUT HILL
edgeworthinn@charter.net **August 24-28**

Spinach Artichoke Dip
Black-eyed Pea Cakes or Shrimp Cakes
~~~~~

**Soup or Salade du jour**  
~~~~~

Filet Mignon with Green Peppercorn Sauce
Pan-Seared Salmon Buerre Blanc
Chicken with Champagne Cream Sauce
~~~~~

**Fresh Fruit**  
**Flourless Chocolate Torte**  
**Apple Tarte Tatin**  
~~~~~

37.50 PER PERSON, BYOB
Reservations 24 Hours in Advance: 931-924-4000 or edgeworthinn@charter.net

Located at The Edgeworth Inn • 19 Wilkins Ave. • Monteagle • 931-924-4000
Monteagle Sunday School Assembly • www.edgeworthinn.com

WELCOME BACK STUDENTS


SouthernTM
COMMUNITY BANK

Unlike all the rest

NO ATM Transaction Fees • **NO** Monthly Fees

Stop By Our Open House

FREE Hot Dogs • **FREE** Drinks • **FREE** T-shirt
(with new account)

AUGUST 25 • 8AM-4PM

At Southern Community Bank in Sewanee Village

91 University Avenue, Suite 3 • (931) 598-9113 • MySouthernCommunityBank.com



**Welcome, University
students and families!**
**SMOKE'N B'S WILL BE
OPEN ON LABOR DAY!**

**FULL LUNCH &
DINNER MENU**

**Located at
Exit 135 off
I-24 next to
Wendy's**

**www.
smokenbsbbq.
com
931-924-7383**



Shop Locally



Joseph Sumpter, Owner/Licensed Residential Contractor

MISSION STATEMENT: To use our collective strengths and expertise, along with the highest quality materials available, for customer renovations, additions, drainage and rainwater needs in a safe and positive environment, being ever mindful of our impact on our community and our world.

OUR STRENGTHS:

- Most work is performed by carefully chosen crew members. Our crew consists of educated and experienced people, including a licensed electrician.
- Renovations and additions are our specialty. Low-maintenance high-quality finishes, on-site milling options for custom trim and attention to details are our trademark.
- Safety is paramount on our sites for our crew, our customers, and guests. Jobsites are kept neat, and smoking is not permitted by crew members. We are certified in CPR, and we are EPA lead-safe certified. We have workers comp and liability insurance, and do not sign insurance waivers.
- Whole house health is always considered in our projects. We are sensitive to mold and mildew concerns.
- Expertise in rainwater collection systems and drainage systems.
- Universal design options available.
- Certified Green Professional and member of National Association of Home Builders, and the Homebuilders Association of Southern Tennessee.

Call today for a consultation.

Visit our website at www.sumptersolutions.com.



598-5565



**JUST WHAT YOUR
ANGEL DESERVES.**

A lovely solid sterling silver 2 mm thick cuff/
bracelet (open at the back and will fit all angels).
Inscribed with "Protected by a Sewanee angel."
Delightfully whimsical and handmade by
Erik and Kristin Larson.

THE LEMON FAIR

Mon-Fri 12-4; Sat 11-5 • (931) 598-5248
www.thelemonfair.com 60 University Ave., Sewanee



An aerial view of the new DREMC solar farm

DREMC Opens Solar Farm for Member Investors

Duck River Electric Membership Cooperative became the first electric cooperative in the seven-state TVA service territory offering members access to green power through the newly constructed 25.92kW solar farm. Ribbon-cutting festivities were on Aug. 15. The DREMC Solar Farm Limited Partnership is located at 1411 Madison St. in Shelbyville, adjacent to the cooperative's offices and three Bedford County schools.

The new DREMC Solar Farm Limited Partnership allows members to invest in solar energy without installing or maintaining their own system.

"Many people don't want to incur the cost of home solar installation or their location isn't ideal for solar because of their home design or an abundance of shade trees in the yard," said Jim Allison, president and chief executive officer of DREMC. "This allows our members to participate in solar energy sustainability efforts at a fraction of the cost of installing their own system."

DREMC members can invest beginning at \$600 for one unit of limited partnership interest. They will see an energy credit on their monthly bill for the duration of their ownership of the unit(s) of interest in the DREMC Solar Farm. Member investors will receive premium pricing offered by TVA in their Generation Partners Program that will help offset their original investment. DREMC will also provide its members with financing for up to a year.

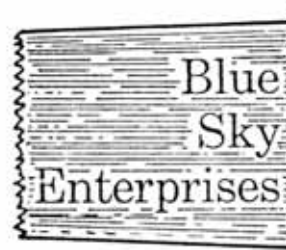
"The partnership with TVA gives our members the opportunity to get in on the ground floor of the solar industry," said Allison. "We're proud to offer our members the chance to support efforts in making green energy more widely available and have located this installation in proximity to elementary, middle and high schools so that it can be used as a teaching tool as well."

Duck River Electric is the fourth largest electric cooperative in the state providing power to approximately 71,000 homes and businesses in all or portions of Bedford, Coffee, Franklin, Giles, Grundy, Hickman, Lawrence, Lewis, Lincoln, Marion, Marshall, Maury, Moore, Rutherford, Warren and Williamson counties. For more information go to www.dremc.com.

[Disclosure notice: Messenger Editor/Publisher Laura Willis is a compensated member of the Duck River Electric Membership Corporation's board of directors, appointed by the University's Board of Regents to represent Sewanee.]

**Tell them you saw it in
the Messenger!**

Interior & exterior painting



George Dick, owner

598-5825

Making Sewanee homes and businesses beautiful since 1974

Sernicola's

Steaks, seafood, pastas, homestyle
pizza, hot lunch buffet, plus a
22-item fresh and healthy salad bar.
Homemade desserts!



www.sernicolas.com • 106 Tennessee Avenue • Cowan • 962-3380
Open *Tuesday-Saturday • Lunch 11-2 • Dinner 5-8:30
*Closed on 3rd Tuesday for DAV

Need More Room?
Mountain Storage
(931) 598-5682

■ Security Gate Dan & Arlene Barry ■ Security Camera
Hwy 41 - Between Sewanee & Monteagle
5X10 | 10X10 | 10X20

For Your Antiques and Prized Possessions

Climate Control
5X10 10X10 10X15 10X20
Temperature and Humidity Regulated



SUD Open House

Following the Sewanee Utility District's board of commissioners meeting on Tuesday, Aug. 28, SUD will be hosting an Open House for its new water plant, located at 260 Lake O'Donnell Rd. There will be tours of the plant, and a picnic dinner will be served.

The event should begin about 6 p.m., following the 5 p.m. board meeting.

For more information, call SUD at 598-5611.

PowerSave Efforts on Campus

Members of PowerSave Campus, a student internship program that leads sustainability efforts, turned up the thermostats and turned off the lights this summer, as they worked to increase energy efficiency on the Sewanee campus.

PowerSave intern Jordan Long, C'14, analyzed occupancy schedules and temperatures in campus buildings to develop strategies for using the buildings in the most energy-efficient way possible. A new policy, which PowerSave helped implement, promotes setting thermostats on campus at 76° during the summer.

Grace Saunders, C'14, also did work for PowerSave this summer measuring water flow in dorm faucets. She found that some faucets were producing water at a rate as high as five gallons per minute, when the recommended amount is less than one gallon. Saunders will continue her project by installing energy-efficient faucets.

PowerSave team manager Jonathan Brenes Salazar, C'14, also helped decrease water waste in the dorms by installing low-flow showerheads.

PowerSave interns collaborated with another energy-conservation internship program sponsored by the Jessie Ball duPont Fund to remove unnecessary light bulbs above the library stacks, said director of sustainability integration Marvin Pate. A light meter showed that some areas had been lit too brightly.

PowerSave's sustainability efforts extend beyond this summer's work. Members have conducted multiple projects as part of the year-round internship. One of the largest projects was "Sewanee Unplugged," an energy-conserving competition among residence halls that took place last November. Total energy savings during the month were \$1,500 and 20,600 pounds of carbon dioxide.

Other projects included installing four low-temperature streetlamps that were donated by Tennessee Valley Authority (TVA), and meeting with the architects designing a new residence hall and renovating the Sewanee Inn to discuss energy-efficient designs.

PowerSave Campus, formerly called the Green Campus Network, is administered by the Alliance to Save Energy and evolved out of a nine-year program based in California. Last year, Sewanee was chosen to be part of the TVA-funded program, along with six other institutions in the area.

Long said she thinks sustainability-focused campus organizations are important because they help students become aware of their own environmental impact.

"PowerSave in particular gives students the practical tools needed to take accountability and make a real change," she said.

*“Successful men wear
out shoes before trouser
seats.”*

From “Two-Liners Stolen From
Others by Joe F. Pruett”

Sewanee Realty

931.598.9200 or 931.636.5864 www.SewaneeRealty.info
115 University Ave., Sewanee

Margaret Donohue,
Principal Broker
931.636.5599

John Brewster,
Broker
931.636.5864



BLUFF - MLS 1351562 - 1449 Stagecoach Rd., Sewanee + 100 acres. \$650,000



BLUFF - MLS 1353141 - 1844 Ridge Cliff Dr., Monteagle. \$328,000



136 Parson's Green, Sewanee.
\$239,000



MLS 1312109 - 261 Bob Stewman Rd.,
Sewanee. \$115,000



The Lemon Fair - MLS 1382725 -
60 University Ave., Sewanee. \$389,000



MLS 1264861 - 170 Tate Rd., Sewanee.
\$298,000



MLS 1374219- 32 Abbott Martin Lane,
Sewanee. \$279,000



BLUFF - MLS 1101481 - 196 Oleander
Lane, Sewanee. \$859,000



MLS 1302707 - 656 Raven's Den Rd.,
Sewanee. \$329,000



MLS 1366803 - 275 North Carolina,
Sewanee. \$399,000



MLS 1358150 - 100 Tomlinson Lane,
Sewanee. \$679,000



MLS 1382594 - 1841 Clifftops Ave.,
Clifftops. \$440,000



BLUFF - MLS 1305453 - 974 Old Sewanee
Rd., Sewanee. \$324,000



MLS 1339897 - 104 Old Farm Rd.,
Sewanee. \$495,000



BLUFF - MLS 1333452 - 570 Payne
Cove Dr., Marion County. \$395,000



MLS 1254696 - 921 Poplar Place,
Clifftops. \$548,000



MLS 1360532 - 80 Parson's Green Circle,
Sewanee. \$249,000



MLS 1325103 - Clifftops,
1150 Sassafras Ct. \$220,000



MLS 1378327 - 58 Oklahoma Ave.,
Sewanee. \$395,000



MLS 1262738 - 925 Dogwood Dr.,
Clifftops. \$175,000



BLUFF - MLS 1198478 - 3335 Jackson
Point Rd., Sewanee. \$269,900



BLUFF - MLS 1360522- 53 Valley View
Dr., Monteagle. \$599,000



MLS 1244570 - 120 Bob Stewman Rd.,
Sewanee. \$133,000



MLS 1348692 - 188 Laurel Dr.,
Sewanee. \$325,000



MLS 1359603 - 846 Gudger Rd.,
Sewanee - \$244,000



MLS 1342198 - 392 Hardbarger Rd.,
Monteagle. \$67,900



MLS 1329672 - 1899 Jackson Pt. Rd.,
Sewanee. \$399,000



BLUFF - MLS 1385537 - 2015 Laurel
Lake Dr., Monteagle. \$699,000

LOTS & LAND

36 Azalea Ridge Rd.	1378840	\$79,000
First St., Monteagle	1325122	\$16,800
Sarvisberry Place	1207077	\$83,000
Sarvisberry Place	1244981	\$85,000
Lot 48 Jackson Pt Rd	1222785	\$96,000



MLS 1262670 - 937 Dogwood Dr.,
Clifftops. \$258,000



MLS 1242107 - 115 North Carolina Ave.,
Sewanee. \$395,000



MLS 1302421 - 621 Dogwood Dr.,
Clifftops. \$173,000

BLUFF TRACTS

Ravens Den Rd	1297607	\$ 80,000
Saddletree Lane	1207074	\$ 85,000
Jackson Point Rd	1099422	\$218,000
Jackson Point Rd	1101401	\$ 99,000
Lot 36 North Bluff	1064111	\$ 75,000
Saddletree Lane	836593	\$ 75,000
Raven's Den	1015362	\$ 99,000



Thank you, FRANKLIN COUNTY—I would like to express my heartfelt thanks to everyone who cast a vote in the recent primary election. Your vote is your voice, and this time around I am delighted to be the person to speak for you going forward in the General Election. Thank you for believing in me and showing me that you want to send me BACK to the State Senate. I ask for your continued support as we go forward and WIN in November. —*Jim Lewis*

(Paid for by candidate)

gb GOOCH-BEASLEY REALTORS www.gbrealtors.com



SEWANEE BRICK RANCHER NEAR SEMINARY AND VILLAGE. 3 BR/3 BA home with huge great room, eat-in kitchen and sun porch complete with fireplace. Wooded back yard and loads of beautiful plants. Storage building in yard as well. MLS #1367076. **\$172,000**



SPACIOUS HOME ON 29 ACRES IN TRACY CITY with warm and inviting stone fireplace in the living room and huge eat-in kitchen with new granite countertops. 3 BR on the first floor and 3 upstairs; many are large enough for sitting or play areas in the rooms. Basement has heat/air. MLS #1297462. **\$225,900**



3217 SHERWOOD RD., SEWANEE. Beautiful bluff view over Lost Cove. Remodeled with all new appliances and HVAC. Large living area for entertaining. 3 BR, 2-car garage and 5.71 acres. See more at www.gbrealtors.com. MLS #1362374. **\$850,000**



1841 RIDGE CLIFF DR. Ready for your Mountain retreat? Great Battle Creek log home at the end of a quiet street. 2 BR, 2 BA. Deck on the rear overlooks a calming pond, with porches off the front to sit and relax. Loft upstairs gives you extra space for office, bedroom, etc. Efficient kitchen. MLS #1306345. **\$180,000**



UNBELIEVABLE BLUFF VIEW. Unique mountain stone and wood cabin overlooking Lost Cove and Champion Cove. See over 5 ridges from your living room and master bedroom. 2 bedrooms, 2 baths, 2 mountain stone fireplaces. MLS #1214392. **\$232,000**



MOUNTAINSIDE RETREAT ON 40 ACRES. Great log home on the side of the mountain with over 600 sq. ft. of decks and porches to enjoy the views. Andersen windows, wooden walls, floors and beautiful vaulted ceilings throughout the home. Open floor plan and master on first floor. MLS #1359297. **\$350,000**



516 LAUTZENHEISER PL. Ready to make your life simpler? Great home with 2 BR, 2 BA, spacious living room and separate dining, plus an eat-in kitchen. Lots of cabinets give you storage galore in the kitchen, along with a large garage and inside utility room. Comfortable patio off living room. MLS #1306258. **\$119,000**



GREAT STONE COLUMNS AT YOUR DRIVEWAY welcome you into this brick home perched up on the hill in Monteagle. 2 or 3 bedrooms plus den or office make this a home for you to see. New HVAC and new roof are done for you! Spacious screened-in porch and a deck to enjoy being outside. MLS #1378341. **\$113,000**

gb GOOCH-BEASLEY REALTORS www.gbrealtors.com

9 College St. at Assembly Ave., Monteagle • (931) 924-5555

Peter R. Beasley II, CCIM, Broker, (931) 924-5555, info@gbrealtors.com
June Weber, CRB, CRS, GRI Broker, (931) 636-2246, junejweber@bellsouth.net
Peter Hutton, Affiliate Broker, (931) 636-3399

Nutcracker from page 1

Last year's performance included many of the Sewanee Dance Conservatory student dancers, dancers from the University and community volunteers, alongside Herriott's students from Alabama Youth Ballet. I was among the Sewanee dancers who participated.

The Sewanee cast began rehearsing in September, once a week until the week of the performance. Unlike the yearly demonstration recital put on by the Sewanee Dance Conservatory, "The Nutcracker" required us to rehearse many scenes without the dancers who would join us onstage for the performance. We did not rehearse with the full Alabama and Sewanee cast until the morning of the production. It challenged us to know our parts so well that we could simply slip into place alongside the other dancers. After the morning rehearsal that day, very few of us felt ready, but we were there, dancers of all ages, and we were due onstage in only an hour.

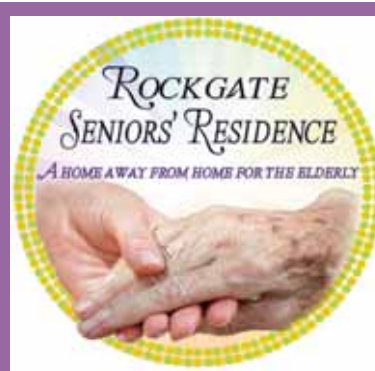
It was a glorious experience.

Rehearsals don't quite compare to the experience of dressing in full costume, makeup heavy on our faces, and moving through well-drilled steps with more grace than we would have thought possible only moments before. "The Nutcracker" is, at heart, a childlike ballet, full of scenes of magic and imagination contrasted with the realistic party scene and the image of a young girl sneaking downstairs to retrieve her Christmas present. Nothing captures a dancer's imagination the same way, and our dancing reflected the lighthearted beauty of the story.

After months of practice, hours of frantically taping toes to prevent blisters, long minutes of pain when the tape failed and endless seconds of anticipation, we were on stage. Our dancing was not perfect, but it didn't have to be. We were enjoying ourselves, the audience was enjoying itself, and the event was a success.

Now Herriott intends to repeat that experience for the lucky friends I danced alongside last year. I wish I was going to be here, but I suppose I will have to depend on hearing all about it when I return from college.

One-Stop Transportation Information: dial 511



Short- and Long-Term ASSISTED LIVING Daycare • Hospice

328 Cumberland St. West in Cowan

7 minutes from STMC

16 minutes from EHH

Phone 962-9777

Email <sandydavis@rockgateseniors.com>

www.rockgateseniors.com



Fred Saussey, General Contractor

Residential - Remodeling - New Construction
Licensed & Insured

496 Kennerly Rd • Sewanee, TN 37375 • (931) 598-5981
fredsaussey@gmail.com • www.sausseyconstruction.com



TOMMY C. CAMPBELL

Call (931) 592-2687

Free Estimates • 20 Years Experience

DRIVEWAY WORK • GRAVEL HAULING • DOZER & BACKHOE

plus Concrete Work • Water Lines • Clear Lots • Garage Slabs
• Sidewalks • Porches & Decks • Topsoil & Fill Dirt • Roofing
• Additions to House • Septic Tanks & Field Lines



Amy Macy and Bruce Nemerov

Celtic Concert Aug. 31

Amy Macy and Bruce Nemerov will perform at 7:30 p.m., Friday, Aug. 31, at the Cannon County Arts Center. Exploring the intersection of Celtic and Appalachian Music through guitar, banjo, fiddle and vocal harmony, Nemerov and Macy perform songs and tunes that are regarded as deep-rooted southern American folk music but often have little-known ancestors in England, Scotland and Ireland.

Macy is a banjo player, fiddler and singer. She has performed locally at the Ryman and toured internationally. Nemerov is a Grammy-winning guitarist and music historian. Tickets are \$15 for adults and \$12 for seniors, students or groups; to purchase, call the Arts Center box office at (800) 235-9073. The Arts Center is located at 1424 John Bragg Highway, just west of the town of Woodbury. For more information go to <www.artscenterofcc.com>.

Nutcracker Auditions Set

Following the very well-received production last winter in Sewanee's Guerry Auditorium, Sewanee Dance Conservatory is pleased to announce its upcoming auditions for a 2012 Sewanee production of Tchaikovsky's timeless ballet, "The Nutcracker." The auditions are set for Friday, Aug. 31, in the Fowler Center. The times and age groups are: 3:15–4:15 p.m., ages 7–11 (possibly younger for boys); 4:30–5:30 p.m., anyone on pointe and males who would like to partner; 5:30–6:15 p.m., adults who would like to be in the ballet's party scene.

The performance will be on Nov. 17 in Guerry Auditorium. Children interested in participating should have some dance experience or be currently enrolled in a dance class. There will also be a make-up audition on September 7.

The production also needs financial sponsors. It costs approximately \$1,000 to stage "The Nutcracker" in Sewanee. This performance is made possible through a combination of dancers from Huntsville Youth Ballet and Sewanee, under the leadership of choreographer and instructor David Herriott. For more information about auditions and sponsorship, contact Herriott via email <deherriott@gmail.com>.

AT THE MOVIES

Sewanee Union Theatre
Next Week

Thursday–Sunday
Aug. 30–Sept. 2

7:30 p.m.

21 Jump Street

Rated R • 109 minutes • \$3

I can't explain how a bad television series from the late 1980s gets made into a big-time movie, but here it is. Jonah Hill and Channing Tatum star in this raunchy but hilarious story about two young cops sent undercover to high school to break up a drug ring. One critic described it as a "cheerfully chaotic, gleefully vulgar action-comedy." It earned its R rating for a reason: don't say I didn't warn you. Rated R for crude and sexual content, pervasive language, drug material, teen drinking and some violence.

—*LW*



Tea on the Mountain

For a leisurely luncheon

or an elegant afternoon tea

11:30 to 4 Thursday through Saturday

DINNERS BY RESERVATION
(931) 592-4832

298 Colyar Street, US 41, Tracy City



Vulcan's Crucible, by Tom Church

Church Chosen "Best of Craft" at TACA

Tom Church will represent Franklin County in "The Best of Tennessee Craft: The 2012 TACA Biennial," which opens today, Aug. 24, at the Tennessee State Museum in Nashville. The Tennessee Association of Craft Artists (TACA) presents the juried exhibition to provide public visibility and recognition for the quality and diversity of craft found throughout the state.

"Every biennial is an opportunity to spotlight not only the best Tennessee craft, but a unique part of our culture. By nourishing artists' passion and honoring their work, TACA will showcase the living legacy of Tennessee craft," said TACA executive director Teri Alea.

"As one of 64 artists selected to participate in the prestigious show, Tom masterfully contributes to this legacy."

Visit the exhibition to see Church's work titled "Vulcan's Crucible" and "Collectible Case." Both pieces highlight the textures, colors and grains of wood. Church's work can also be seen at Local's Gallery in Sewanee and the Copper Fox Gallery in Leiper's Fork. The TACA show will be open through Oct. 21. For more information, visit www.tennesseeecrafts.org.



TINTINNABULATIONS

by John Bordley



Bells in Sewanee: Part 1 of 3

Although this column usually concentrates on the carillon, my Messenger column predecessor and teacher, Laura Hewitt Whipple, used to discuss all sorts of musical activities in her "Tower Tidings." In addition, the word "tintinnabulation" means the ringing or sounding of bells—all bells, not just carillon bells. Therefore, I will mention all of the 71 large bells in Sewanee that I know about in this series on "Bells in Sewanee." Today's column will cover the carillon. The next column will discuss the bells in Breslin Tower, both the change-ringing bells and the "Westminster chime" bells. Another column will concentrate on the single bells at St. Luke's Chapel, Otey Memorial Parish and the Chapel of the Apostles.

The Paccard bell foundry in Annecy-le-Vieux, France, cast Sewanee's carillon bells in 1957. In the summer of 1958, the bells were brought to New Orleans by ship, to Sewanee by train and to the campus by truck. The bells were installed in the summer and fall of 1958, as the tower was being built. There are 56 bells, with the eight larger bells installed below the playing cabin and the 48 smaller bells in a rack above the playing cabin. As presented in a series of these columns earlier in the year, the overtone sounds in bells are very complicated. Although single bells are not usually tuned since their sounds do not need to blend with the sounds of other bells, carillon bells are tuned. Each carillon bell is purposefully cast to be a little thicker than needed. Lathes then remove metal from several areas of the inside of each bell to bring the harmonics (overtones) for each bell into agreement and thus into tune. Two, three or more carillon bells, therefore, can be used to play chords.

The Leonidas Polk carillon is located in the Shapard Tower of All Saints' Chapel. W. Dudley Gale III gave the bells in honor of his great-grandfather Bishop-General Leonidas Polk. The larger bells each have an inscription, and the inscription on the largest bell reads, "To Polk and to Sewanee, my Alma Mater, this carillon is dedicated." The bells range in pitch from a Bb, an octave and two half steps below middle C and weighing 5,000 pounds, to a G, four and one-half octaves higher and weighing 22 pounds. The bells are stationary; via mechanical means that start with the carillonneur pressing batons on the clavier in the playing cabin, clappers strike the bells to make the sounds.

I am the current carillonneur, and there are now five students who play, four adults and one college student. Others who would be interested in learning to play the carillon should contact me. When classes are in session at the college, you can normally expect to hear the carillon on Tuesdays and Thursdays at 12:30 p.m. and on Sundays following the 11 a.m. service in the chapel. The carillon is also used for convocations, weddings, burials and other services at the chapel. There is a "Bells in Sewanee" calendar posted each month in the narthex of the chapel that lists all carillon events. The calendar is also available at www.sewanee.edu/carillon.

HAIR DEPOT

WELCOME, STUDENTS!

KAREN THRONEBERRY, owner/stylist
DANIELLE HENSLEY, stylist/nail tech

17 Lake O'Donnell Rd. • (931) 598-0033
 Sewanee • Find us on Facebook!

Wed-Fri, 9 a.m. to 5 p.m.; Sat, 9 a.m. till last appointment

IS THERE ANYTHING A LITTLE CRÈME BRULÉE CAN'T FIX?

Treat yourself to
something special
from our bakery case!



Breakfast All Day
Salads and Sandwiches
Homemade Desserts

The blue chair Café & Bakery

35 University Avenue, Sewanee (931) 598-5434
www.thebluechair.com / susan@thebluechair.com
 Monday – Saturday 7:00 – 6:00 / Sunday 7:00 – 2:00

Winchester Podiatry

CHARLES D. GANIME, DPM

Board Certified in Foot Surgery
 Diplomate, American Board of Podiatric Surgery
 New Patients of All Ages Welcome! We Treat Your Feet!
 Most Insurance Accepted, Including TennCare

We are at 155 Hospital Road, Suite 1, in Winchester.
www.winchesterpodiatry.com

931-968-9191

Russell L. Leonard

ATTORNEY AT LAW

Office: (931) 962-0447

Fax: (931) 962-1816

Toll-Free (877) 962-0435

rleonard@netcomsouth.com

315 North High Street
 Winchester, TN 37398

WOODY'S BICYCLES—SALES, SERVICE AND RENTALS

A Full-Service Trek Bicycle Dealer

Mon-Fri 9-5 • Sat 10-2 • 598-9793

woody@woodysbicycles.com • 90 Reed's Lane
 (the red building behind Shenanigans in Sewanee)



Check out www.woodysbicycles.com for rates, trail maps, photos, bike club links, races and much more!



WELCOME BACK!

Open Gourmet Wednesdays
 thru Sunday lunch

Grill, Po'Boys, Burrito-Boxx, Soups, Deli,
 Fried Items, Sandwiches, Cakes &
 Desserts, 9 Taps &
 Exceptional specials
 (Stay tuned for University & Student specials)

www.shenanigans-sewanee.com

Serving Generations Since 1974
 A Great Good Place



JUST LISTED ON CEDAR MOUNTAIN. 326 Cedar Mountain Place, three level, 3 BR, 3 BA family home with a view! Lots of fun getaway private nooks and other charming details. 2004 sf on 5 acres. MUST SEE!!! MLS #1366949. **\$199,000**

MIDWAY INVESTMENT PROPERTY/TWO RENTALS

Remodeled 1930 farmhouse. 1 BR, 1 BA plus office, 1342 sf. Currently rented for \$600/mo. Homes have separate water taps and electric.



3 BR, 2 BA remodeled manufactured home. Currently rented for \$600/month. MLS 1340309. **\$149,000**

REAL ESTATE MARKETING, LLC
 931-598-9244 91 University Ave., Sewanee



Speed Baranco, Owner/Broker
 931-598-9244 rem@edge.net

Sally Thomas, Affiliate Broker
 931-636-4993
salthomas@bellsouth.net

Shirley Tate, Broker
 931-598-0044 sj.tate@live.com

www.sewaneerealestate.com



NEW SEWANEE BLUFF LISTING. 8 acres partially cleared bluff lot bordering the South Cumberland Land Trust on Tate Road with 250' bluff line overlooking two land trust coves. **\$130,000.** MLS #1340196



SEWANEE: 237 Lake O'Donnell Rd. Established business location. Perfect for your retail or professional needs. MLS #1296750. **\$145,000**

RESIDENTIAL LAND AVAILABLE

BEAUTIFUL 5.36 ACRE WOODED BUILDING LOT on Hwy 41 adjoining MSSA. Possible bluff view. Utilities and survey available. MLS #1368457. **\$57,500.**

20.5 ACRES IN NEW GATED COMMUNITY: Year-round creek and beautiful hardwoods and pines in The Ridges at Franklin S/D. MLS #1353848.

NEW LISTING: Unrestricted 222x180 residential lot, frontage on South Pittsburg Mtn. Rd. MLS #1348145. **\$15,000.**

NEW LISTING: Smith Rd. 7.7 unrestricted acres. City water, electric and septic on site. MLS #1349336. **\$90,000.**

Bluff Building Lot: 2.4 acres with southerly views, rock promontories & unspoiled woods. End of Ingman & Partin Farm Rd. MLS #1241482. **Reduced to \$29,500.**

Bear Den Lots—3 lots in Monteagle bluff subdivision. City water, electric, paved road frontage. All 3 for **\$30,000.**

Sherwood Road—Eight acres with extensive road frontage, city water and spring. Only minutes from campus. **\$95,000.**

Ravens Den—6.2 wooded acres. City water available. **\$80,000.**

Deerwood at Jackson Point—2 adjoining bluff lots. 4.37 and 4.11 acres. **\$115,000 each.**

6.4 Acres Bluff Land on Partin Farm Road—**\$115,000.**



**10:00 am – 6:00pm
Every Day**







Welcome Back Students and Faculty!

20%-50% Off Select Items

Remember 10% Off
Regular Priced Items With
School ID














903 W Main St. Monteagle TN, 37356 (931)924-4100 www.themountainoutfitters.com

COMMERCIAL MOUNTAINTOP PROPERTIES



MLS#1383326	333 Railroad Ave., Tracy City	\$29,500
MLS#1387682	W. Main St. by Mooney's Has Goat Trail Easement	\$15,000
MLS#1248327	Rocky Top @ Trussell Rd Rezoning needed	\$40,000
MLS#1383005	Commercial Lot abuts Clifftops Exit	\$75,000
MLS#1302468	US 41 The Barn – theatre and shops	\$269,000
MLS#1385926	507 W. Main St. Eagle Liquors Bldg & Land Only	\$295,000
MLS#1387674	922 W. Main St. West Commons Rentals	\$345,000

Monteagle Sewanee, REALTORS®

www.monteaglerealtors.com
931-924-7253

featuring quality homes and building sites in Clifftops, Cedar Rock,
Bridal Veil, Sewanee, Savage Bluffs and all around the Mountain!

Jeanette S. Banks, Broker-Owner, numa@blomand.net
 Dee Underhill-Hargis, Broker, 931-808-8948, aunderhill@blomand.net
 Ray Banks, Affiliate Broker, 931-235-3365, banksgrass@yahoo.com

 Find us on Facebook
 PO Box 293 • 20 W. Main St. • Monteagle • Fax 931-924-7254

Tell them you saw it in
the Messenger!

PLEASE JOIN US FOR
Our 3rd ANNUAL
SUNSET SERENADE



ST. MARY'S
SEWANEE

The Ayres Center for
Spiritual Development

SEPTEMBER 2nd
5:00 p.m.—8:00 p.m.
Supper, Music, Auction

Picnic Supper by Natural Bridge Events * Music by Noel Workman and Friends

AUCTION ITEMS DONATED BY:

MOUNTAIN HOMES:
Bidding **OPEN NOW ONLINE** for
Parents and Graduation Weekend at
www.stmaryssewanee.org for
Dr. and Mrs. Walter Merrill's Home
Mr. and Mrs. Charles Wray's Home

ITEMS/GIFT CERTIFICATES:
The Blue Chair-Gift Certificate
Crossroads Café-Gift Certificate
Edgeworth Inn-Gift Certificate
Glory Be Services-Deer Proofing
Hadley Morris-Yoga
Ivy Wild-Gift Certificate
Jackalope-Beverages
Jean Hastings-Spirits
Julia's Fine Foods-Gift Certificate
June Mays-Garden Design Gift
Certificate

Lorena's Catering-Picnic Lunch
The Lemon Fair-Gift Certificate
Mountain Outfitters-Gift Certificate,
Backpack and Water Pack
Mary Priestley-Wildflower Hike
Pearl's Restaurant-Gift Certificate
Shenanigans-Gift Certificate
St. Mary's Sewanee-Two Retreats and
Hermitage Stay
Taylor's Mercantile-Luxurious Spa Basket
Woody's Bicycles-Trek with Woody

ARTISTS/ARTISANS:
Stephen Alvarez-Framed Photograph
Susan Church-Wooden and Bronze Box
Tom Church-American Black Walnut
Bowl
Bill Davis/John Thompson-Bluebird
House and Photograph
Cathy Ellis-Handmade Journal

Hallelujah Pottery-Coffee Mugs
Leslie Lockhart-Painting
Bob Marshall-Framed Photograph
Mary Knox Merrill-Framed Photograph
Alec Moseley-Hand Carved Wooden
Vessels
Jan Pate-Painting
Susie Ries-Botanical Print
Claire Reishman-Porcelain Bowl
Ed Russell-Outdoor Bench
RaRa Schlitt-Hand Painted Furniture
Heidi Simmonds-Mohair Silk Scarf
Pam Stokes-Knitted Cambridge Shawls
Rene Stubblefield-Painting
Carolyn Tweedy -Painting
Brett Weaver-Painting on Location
at St. Mary's Sewanee
Carol Wray-Painting

Reservations Required — call 931-598-5342 to reserve your ticket

\$50.00 Per Person (\$20.00 is tax-deductible)

Proceeds will benefit St. Mary's Sewanee's Programs, Retreats and Scholarships



Mary Priestley (right) was honored by the Friends of the South Cumberland as recipient of its annual Jim Prince Award for outstanding service, presented by FSC board member Glenn Himebaugh (left). Priestley, outgoing president of the Friends of the South Cumberland, is spearheading a new Tennessee Naturalist Program on the Plateau. To learn more, go to <www.tn.gov/environment/parks/tnnaturalist>.

DuPont Library Fall Hours

Regular Hours:

Monday–Thursday	7:45 a.m.–1 a.m.
Friday	7:45 a.m.–9 p.m.
Saturday	9 a.m.–6 p.m.
Sunday	Noon–1 a.m.

Advent Semester 2012

August 29 (Wednesday)–Oct. 11 (Thursday): Regular hours
 Oct. 12 (Friday): 7:45 a.m.–7 p.m.
 Oct. 13 (Saturday) Fall Break, 10 a.m.–4 p.m.
 Oct. 14 (Sunday) Fall Break, 1 p.m.–10 p.m.
 Oct. 15 (Monday)–Oct. 16 (Tuesday): Fall Break, 8 a.m.–10 p.m.
 Oct. 17 (Wednesday)–Nov. 19 (Monday): Regular hours
 Nov. 20 (Tuesday): Thanksgiving Break begins, 7:45 a.m.–5 p.m.
 Nov. 21 (Wednesday): Thanksgiving Break, 8 a.m.–5 p.m.
 Nov. 22 (Thursday): Thanksgiving/Closed
 Nov. 23 (Friday): University Holiday/Closed
 Nov. 24 (Saturday): 10 a.m.–2 p.m.
 Nov. 25 (Sunday): 1 p.m.–10 p.m.
 Nov. 26 (Monday)–Dec. 13 (Thursday): Regular hours
 Dec. 14 (Friday): 7:45 a.m.–midnight
 Dec. 15 (Saturday): 7:45 a.m.–10 p.m.
 Dec. 16 (Sunday)–Dec. 17 (Monday): Regular hours
 Dec. 18 (Tuesday): 7:45 a.m.–5 p.m.
 Dec. 19 (Wednesday)–Dec. 23 (Sunday): Interim hours
 Dec. 24 (Monday)–Jan. 1 (Tuesday): Christmas Holiday/Closed

Interim Hours:

Monday–Friday: 8 a.m.–5 p.m.; closed Saturday and Sunday

Advertising in the Messenger works!
Phone 598-9949 to find out how to
make it work for you.

Senior Center News

Join in the Fun!

Whether you come for play or to help out, there is something going on every day at the Sewanee Senior Center.

The regular activities for the week include chair exercises at 10:30 a.m. on Mondays and Thursdays; bingo at 10:30 a.m. on Tuesdays; storytelling/writing on Wednesdays; and games on Fridays. Volunteers are also needed to help in the kitchen with prep work and washing dishes, as well as for delivering meals.

To volunteer call Judy Rollins at 598-0645.

Senior Menus

The Sewanee Senior Center serves lunch at noon Monday through Friday. The suggested donation is \$3 (\$0 or older) or \$5 (under \$0). Please call 598-0771 by 10:30 a.m. to order lunch. Menus follow:

Aug. 27: Meat loaf, pinto beans, sweet potatoes, cornbread, dessert.

Aug. 28: White bean soup with Polish sausage, cauliflower salad, bread, dessert.

Aug. 29: Beef and noodles, green beans, slaw, corn muffin, dessert.

Aug. 30: Tuna salad cold plate, cheese, vegetable sticks, watermelon.

Aug. 31: Cheeseburger, baked beans, chips, dessert.

Menus may vary. The center is located at 5 Ball Park Rd. (behind the Sewanee Market). To reserve a meal or for more information, call the center at 598-0771.

Fresh Produce at Markets

Fresh foods grown in our area are plentiful and available in a number of locations.

The Sewanee Gardener's Market is held 8–10 a.m. every Saturday, rain or shine, next to the Hair Depot. Locally grown produce, plants, flowers and baked goods are available.

The Tracy City Farmer's Market is open 2–6 p.m. on Thursdays and 9 a.m.–noon on Saturdays. It has fresh eggs, locally grown plants and produce, local grass-fed beef and pork, and Mountain-made crafts. EBT/SNAP cards are accepted.

The Cumberland Farmer's Market has an online ordering system at <<http://sewanee.locallygrown.net>> or contact Jess Wilson at (931) 924-4539.

1208 Cathey Cove Road, Waynesville, NC



Long-Range Mountain Views

An expansive living/dining area, gourmet kitchen and master suite on the main and separate guest wing perfect for relatives/friends looking for a private place of reverie. 2-car garage, guest suites, hobby room, rec room, office and heated workshop on the lower level. The layout offers breath-taking views from every room!

beverly-hanks.com/488788

Your ad could be here.

PILATES CLASSES

Come learn the fundamentals of this amazing exercise system. Develop strong, lean abdominals and back muscles, better posture, increase flexibility and find relief from back pain, neck and shoulder tension.

New Six-Week Beginner Session Starts August 28 at

11:30 a.m. Tuesday & Thursday

at the Fowler Center in Sewanee

(open to nonmembers with class pass)

Class is \$120 for the six weeks

(See instructor about prorating for absences.)

Ongoing Intermediate/Advanced Class at

9:30 a.m. Tuesday & Thursday

(Must have previous Pilates experience).

Private and duet sessions on Pilates equipment and personal training in Cardio and Weight Training also available Fridays by appointment.

**Contact Kim Butters, AFAA Personal Trainer,
PMA Pilates Instructor, (423) 322-1443**

LAKEFRONT, STREAM OR RIVER FRONTAGE



MLS#1295102. 1000 Winterberry on Clifftops Lake. Private dock. 5026 sf. 4.5 BA, 3 fireplaces. Screened porch, decks, main level master suite. 2-car garage, 2 guest suites. Chef's kitchen in vaulted great room. \$895,000.



MLS#1228450. 310 River Edge Lane on the Elk River. River bend forms lagoon for swimming and boating at your back door! Modern home built 2008, timeless location. 3BR, 2.5BA, 2348 sf. \$239,000.



MLS#1345416. 120 Old Highlander Lane. Original Highland Folk School Library on Highlander Lake. Complete 3/2 apartment. Space for seminars, gatherings, crafts in library where Eleanor Roosevelt once visited. \$179,000.



MLS#1338784. Summerfield Pointe. 78 acres ready for cabins, cottages or castles at Deer Lick Falls. Park-like surroundings—opportunity to acquire rare mountain wonderland property. \$899,000.

—WATERFRONT BUILDING SITES—

MLS#1228265	River Edge Lane, long Elk River frontage	\$65,000
MLS#1285934	7RC Savage Highland Dr. on Ranger Creek	\$159,000
MLS#1285963	4RC Bobcat Hollow Rd. on Ranger Creek	\$169,000
MLS#1342407	1 Summerfield Pointe on stream	\$285,000

Monteagle Sewanee, REALTORS®

www.monteaglerealtors.com

931-924-7253

featuring quality homes and building sites in Clifftops, Cedar Rock, Bridal Veil, Sewanee, Savage Bluffs and all around the Mountain!

Jeanette S. Banks, Broker-Owner, numa@blomand.net

Dee Underhill-Hargis, Broker, 931-808-8948, aunderhill@blomand.net

Ray Banks, Affiliate Broker, 931-235-3365, banksgrass@yahoo.com



PO Box 293 • 20 W. Main St. • Monteagle • Fax 931-924-7254

Summitt Pianos
 CHATTANOOGA
www.summittpianos.com • 6209 Lee Hwy • 499-0600 • Closed Saturday

USED Steinways Are On Sale! Get unheard of pricing on the pianos that never go on sale! Each carries a warranty. <p>Grands \$9,870 from</p>	NEW Uprights Are On Sale! Our entire selection of new upright pianos are on sale! Choose from a variety of styles and finishes. <p>Now starting new at just \$2,995!</p>	NEW Self Player Baby Grand \$1,000 worth of FREE software & matching bench! <p>\$7,995 up!</p>	USED UNIVERSITY Baldwin Pianos! Just Arrived! A selection of UNIVERSITY grands. ALL with warranties! <p>Now starting at only \$3,995</p>
---	--	--	--

Sweeton
Home Restoration, LLC

- New Construction • Remodeling
- Historical Restoration
- Everything else in between

Kevin Sweeton
Tennessee State Licensed
General Contractor
Fully Insured

sweetonhome@blomand.net
1010 W. Main St.
Monteagle, TN 37356

[931] 924-2444

HBAT **NAHB**

The maxim "Nothing but perfection" may be spelled "Paralysis." —Winston Churchill

Stillpoint

Individual and Group
Psychotherapy:



Acupuncture, Massage
and Body/Energy Work:

Maryellen McCone, LPC, MHSP,
931-636-4415

Robin Reed, Ph.D.,
931-636-0010

Tamela Sadler, Ph.D.,
931-581-1124

Kate Gundersen, LCSW,
931-235-4498

Lucie Carlson, Reiki,
865-591-0012

David Sharp, Acupuncture,
423-870-8870

Regina Rourke Childress,
LMT, CNMT,
931-636-4806

Shop Locally!

HEAVEN ON EARTH...
NOW AVAILABLE IN SEWANEE



Lost Cove photography courtesy of Stephen Alvarez.

The Cumberland Plateau is the world's longest hardwood forested plateau. Widely considered one of the most biologically rich regions on earth. Rivaling the biodiversity of tropical rainforests. It is the home of Myers Point.

Seize your once in a lifetime opportunity! Many will call it a great investment. Others will call it the perfect community of like-minded neighbors. For all who desire to live surrounded by nature, history, beauty, quality and serenity, you'll want to call it home.

- 480-acre private gated community
- 24 exclusive home sites; lakeside living or bluff vista life
- Timeless, organic, craftsman architecture standards
- Land Trust of Tennessee perpetually protected forests
- Over four miles of walking and riding trails
- Community barn, pastures, resting benches, and fire pit
- Panoramic views of Champion Cove, Lost Cove and the Cumberland Plateau
- Minutes from The University of the South



For more information call John Currier Goodson
at (931) 968-1127 or visit our website: www.myerspoint.com

©2010 Myers Point, LLC. All rights reserved.



MICHELLE M. BENJAMIN, JD Attorney & Counselor at Law

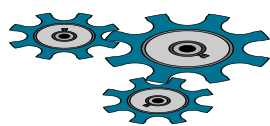
102 FIRST AVENUE, NORTH
WINCHESTER, TENNESSEE 37398

(931) 962-0006
(931) 598-9767

J & J GARAGE

COMPLETE AUTO REPAIR

- Import & Domestic
- Computerized 4-Wheel Alignments
- Shocks & Struts • Tune-ups • Brakes
- Our Work is Guaranteed.
- OVER 26 YEARS EXPERIENCE.



Jerry Nunley
Owner

598-5470 Hwy 41-A between Sewanee & Monteagle • Monday-Friday 7:30-5:30



Chip Manning

New President of Rotary Club

Chip Manning, director of the Babson School of Global Commerce at the University, has been selected to serve as the new president for the Monteagle Sewanee Rotary Club.

Manning has been a Rotarian for several years. As the new president, he wants to sharpen the Club's vision of service in the community and to raise local awareness of Rotarian values and projects. Manning has returned to Sewanee after 30 years in business. He graduated from the University in 1982 with a B.S. in natural resources.

This year's Rotary International theme is "Peace Through Service."

Email <news_messgr@bellsouth.net>

The Gnarled Oak



Furniture refinishing,
chair caning, seat weaving
and furniture repair



Victorian Sea Captain's Desk

Flat Branch Community
2222 Flat Branch Spur
Tracy City, Tennessee 37387
(931) 592-9680
Bill Childers, Prop.

KILLING THYME

by Buck Gorrell



Lord, what a season it has been. From a string of days with temperatures over 100 degrees in June (during which I had no air conditioning), to 77 degrees on the thermometer in the kitchen in the middle of the afternoon in August, we have seen some strange temps. And the moisture, from dry-as-a-bone level 2 "Severe Drought" (as determined by the U.S. Drought Monitor) to rain that has ranged from good drizzles to downpours, the transitions between June through August have perplexed me.

As much as I love life in Sewanee, ever since I was in college here, I have felt the perfect calendar would include escapes to cooler climes in August and September, when we are usually broiling and parched, and anywhere that doesn't have fog in January and February. The Grateful Dead put it best when they sang, "Goin' where the climate suits my clothes."

Currently, I am scheming about growing a garden oriented more toward the culinary than the aesthetic. All sorts of new plants come to mind: essential herbs such as rosemary, thyme, sage and cilantro. And I am thinking of all kinds of peppers. And then there is corn, okra, and cucumbers. What an adventure awaits!

And my fig tree is fruiting like it hasn't in the four years I have lived here. I have pruned it judiciously each winter, something not for the faint of heart. What has resulted is a voluptuous bush, 12 feet tall, loaded with fruit. The greatest aspect of this is that the plant is right off my front porch, allowing one to lounge outside and pluck a ripe, juicy snack whenever the spirit moves.

The Biblical references to the fig (Ficus) stick in my head. Of course there is the infamous fig leaf from Adam and Eve, so popular in many oil painting depictions. Then, the miracles and parables involving Jesus and fig trees, chronicled in Luke, Mark and Matthew.

As unseasonal as climate averages would lead us to believe, now would be a terrific time to plant trees, shrubs and perennials. We might have escaped the withering heat and de facto dry that is normal for the mountain in August and September. I say this with the caveat of watch your water. The rain, as ample as it has been over the past few weeks, could easily cease for several weeks yet. Now would be a terrific time for soil preparation for vegetable and flower gardens.

I encourage everyone to get out and plant something, anything. Even if you are renting your home, beautify a small area with plantings. The joy of nature will always be there to embrace.

Please send any questions or comments to me at <buckgorrell@gmail.com>. I am always happy to correspond on the bottomless topic of gardening.

TDEC Shifts Ginseng Harvest

As part of the Department of Environment and Conservation's role regarding the export of wild American ginseng, the Division of Natural Areas is reminding harvesters about the 2012 law change. Tennessee's ginseng harvest law (T.C.A. § 70-8-203) was amended in July to change the harvest season for wild ginseng to Sept. 1 through Dec. 31. To coincide with the harvest season change, the ginseng buying season begins Sept. 1.

It is illegal to harvest ginseng for resale from the University Domain, said Domain manager Nate Wilson.

The state law was also amended so that it is unlawful to dig, harvest, collect or remove wild ginseng from any land that such person does not own, on any date not within the harvest season.

"August 15 is too early for the wild ginseng fruits to be fully ripened and the original season had the potential to be detrimental to the survival of this species," said David Lincicome, manager with the division's natural heritage and rare plant recovery program.

For more information go to <www.tn.gov/environment/na/ginseng.shtml>.

GET A MICHELIN® TIRE THAT
STOPS SHORTER¹

\$70

AND GET A

Prepaid Card after mail-in rebate.²

Buy any set of four new MICHELIN® brand passenger or light truck tires, and get a \$70 Prepaid Card after rebate.²
Offer valid August 9 - September 3, 2012.

MICHELIN

1 See MichelinMan.com for more details on the shorter stopping benefits of specific MICHELIN® brand passenger and light truck tires.
2 See redemption form at participating dealers for complete offer details. Offer expires 09/03/12. Void where prohibited. Copyright © 2012 Michelin North America, Inc. All rights reserved. The Michelin Man is a registered trademark owned by Michelin North America, Inc.

Nitrogen

Go Green

Free Nitrogen Fill
with the purchase of a set of 4 tires

Extends Life Of Your Tires.
Get Better Gas Mileage

Cannot be combined. See store for details. Expires 9/3/12

University Special

10% OFF

Any Service for University Students!
Bring your ID.

Cannot be combined. See store for details. Expires 9/3/12

**HEATH AUTOMOTIVE
TIRE PROS**

www.heathautomotivetirepros.com

501 1st Ave. SW
Winchester, TN
(931) 967-3880

MasterCard VISA DISCOVER NOVUS

SAS Sports News

Varsity Girls' Soccer

The St. Andrew's-Sewanee School varsity soccer team battled the Lady Raiders from Coffee County on Aug. 21 in a 5-1 loss. Eliza McNair scored near the end of the first half with a chip shot from just outside of the 18.

Goalie Katie Craighill finished the game with an incredible 21 saves. Lucy Howick anchored the defense and set the tone for the level of effort expected. Other key defensive players were Marissa Wilson, Sam Wiegand and Alex Berner-Coe.

Football

Quarterback Kendall Kinslow rushed for four touchdowns and threw for another to lead the SAS Mountain Lions to a season-opening win at Tennessee School for the Deaf, 66-40.

Kinslow rushed for 139 yards and had 124 yards through the air, highlighted by a 52-yard scoring strike to Levi Higgins. J.R. Clay had 82 yards on the ground and two touchdowns. Robert Post scored a touchdown and a two-point conversion. Higgins added a fumble recovery in the end zone for an additional touchdown. Alex Tinsley and Josh Owens each rushed for two-point conversions.

Volleyball

The SAS varsity volleyball team defeated Marion County High School in their season opener on Aug. 21, 25-17, 25-18 and 25-16. Sam Stine led the Mountain Lions with four aces, six kills and two assists; Madison Culpepper had seven digs; Aly Barry had three assists and two aces; Shalon Mooney had one block and one ace; Diana Rinck had four kills and one ace; Stella Parris had three kills.

Golf Team

The SAS golf team defeated Grundy County and Richard Hardy at Willow Brook Golf Course on Aug. 21, shooting a 175. Jenna Burris led SAS with a 38, followed by Thomas Puri with 45. Andrew Heitzenrater and Justin Stubblefield both shot 46; Tommy Oliver shot a 52, Sam Thomas shot a 48, and Jake Wiley shot a 55.



SAS senior Katie Craighill had 21 saves in goal in the recent game against Coffee County High School. Photo by St. Andrew's-Sewanee School

New Golf Course Manager

Sewanee athletic director Mark Webb has named Matthew Daniels as new general manager and head golf professional at the University of the South.

Daniels comes to Sewanee after serving as the general manager and head golf professional at the Bear Trace at Tims Ford State Park from 1999 to 2012.

At Bear Trace, Daniels managed sales of more than \$800,000 a year, while supervising all policies and procedures. Daniels gave 200 hours of lessons a year, while hosting numerous amateur and junior amateur tournaments.

Prior to his time at Bear Trace, Daniels served as the head golf professional at Memphis National Golf Club and the co-head golf professional at Chenal Country Club in Little Rock, Ark. Daniels was also the head golf professional at the Farms Golf Club in Dyersburg, Tenn. He also assisted as a host and rules official at the 1999 U.S. Open qualifier.

A 1992 graduate of the University of Memphis, Daniels earned his Class "A" PGA of America license in 1998. Additionally, Daniels earned certification from the PGA Business School (1994), PGA Business School II (1996), and the Tennessee Turfgrass Association (2002).




Tallulah's Wine Lounge
4 to 7, Saturday, Aug. 25:
25 WINES BY THE GLASS
\$5 per glass
POTTERY & ART EXTRAVAGANZA THIS WEEKEND!
All Italian, Chinese, French and American Pottery
30% Off!
All Art **20% Off!**

Monteagle Inn
RETREAT CENTER

Tallulah's Wine Lounge
(931) 924-3869
www.monteagleinn.com

Welcome back, students!



ROB MATLOCK
CONSTRUCTION COMPANY
NEW HOME BUILDING
AND REMODELING

MEMBER, U.S. GREEN BUILDING COUNCIL

PHONE 931-598-5728

MATLOCK

State Licensed • Fully Insured

OVERTIME

by John Shackelford



Autumn is in the air, and that means football, soccer, volleyball and field hockey are underway at the University. For many people, however, the more important season seems to involve their Fantasy Leagues. I haven't played any of these games yet, but apparently you get to pick your "fantasy players" and you win in this virtual game if the players you pick perform well in their actual games. (So it is not about the real game. It is about your pretend game.)

So I'm in. I want to play Fantasy Sewanee Sports. I'm opening with my All-Messenger Staff Softball team.

I'm picking Virginia Craighill in the leadoff spot. She's feisty, fearless and looks to have a good on-base percentage. Harry Yeatman used to occupy this spot, but he's lost a step on the base paths lately, and we are easing him into the bench coach role. You always need someone wise in the dugout who has been around the block a couple of times. I'm going with Laura Willis as the manager. If we can get her to start chewing tobacco and learning to spit straight, she will be a natural in this role. She is very good at telling others what to do. That makes Janet Graham the pitching coach. I can visualize Janet in a slow stroll out to the mound to provide some coaching tips to Peter Trenchi. "Uh, Pete, we're gonna need you to throw a couple of fastballs right down the middle. Too many curve balls on that last column. And by the way, we're gonna need you to put on some cleats next inning." Buck Gorrell should be good at sliding on the base paths. (Doesn't mind the dirty work.) We'll put Kiki Beavers in the cleanup role. Anyone who can sit through a Franklin County school board meeting and live to report about it is worth watching in my book.

How about a Fantasy University Football team?

You know that John McCardell is going to want to play quarterback. He's got that rep of winning a couple of Heismans up north, so we are going to have to let him call the plays. He can hand off to John Swallow, who will be our workhorse running back. He may not appear to be real tough between the tackles, but he's probably strategic enough to develop a plan that will find the end zone. Nancy Berner and Jon Evans are my wide receivers. There is a dual benefit to letting Nancy play. She helps us to meet the Title IX requirements and can probably outrun Evans in the 40. The problem with having Evans on your team is that he is chiefly concerned with ensuring that we are not damaging the grass on the playing field and that we are meeting sustainability standards by using recycled limestone to chalk the lines.

Debbie Ladd is the general manager of my team. I'm betting that she will refuse to overpay any high-priced free agents I may draft, particularly if I try to use cheap international labor without a valid Social Security card. Eric Hartman will be our middle linebacker. That is a position where you have to be in perpetual motion. His years of chasing students through a variety of crises suits him well for this multi-dimensional role. After being amazed by the six-pack abs of Michael Phelps, Ryan Lochte and our Olympic swimmers last month I am tempted to choose swimming and diving coach Max Obermiller as a cornerback based on what should translate as natural athleticism after five decades in the pool. It may be that he is actually more suited to be on our offensive line at this point.

I like this game. I don't have to do anything or actually win any more real tennis matches. I can just sit back and collect the stats of those I have chosen. But I promise you, if Willis doesn't increase the circulation of the Messenger soon, I am going to trade her for a younger version without the tobacco spitting.

(I also believe that we can make the Berner/Evans 40-yard race actually happen.)

Yoga Class Schedule Updates

Carolyn Fitz, who teaches yoga on Tuesdays and Fridays at the Community Center, will not hold classes from Friday, Aug. 31 through Friday, Oct. 19. Her classes will resume on Tuesday, Oct. 23. Her last class before then will be at 9:30 a.m. this Tuesday, Aug. 28.

Lucie Carlson will be teaching Naam Yoga at 9:30 a.m. on Tuesdays, Sept. 11, 18, 25, Oct. 2 and Oct. 9 at the Community Center, as well as her regular Monday evening Naam Yoga classes, which will begin at 5:30 p.m. Monday, Sept. 10, also at the Community Center.

Home Games This Week

Monday, Aug. 27

5:30 pm South Middle School
V Girls' Soccer v Warren County
6:30 South Middle School
JV Girls' Soccer v Warren County

Tuesday, Aug. 28

5 pm FCHSV Girls' Soccer v SAS
5 pm SAS MSGirls' Soccer
v Webb School

Wednesday, Aug. 29

4 pm FHCS Golf v Lincoln County
at Franklin County Country Club

Thursday, Aug. 30

5 pm SAS MS Girls' Soccer
v Huntland School

Friday, Aug. 31

2 pm Tigers Field Hockey
v Washington and Lee
5 pm SAS V Football
v Franklin Christian Academy
7 pm FCHSV Football
v Shelbyville Central HS



**DOMESTIC VIOLENCE
24-HOUR CRISIS LINE
1-800-435-7739**

CUSTOM Design Studio

Allow us to create your masterpiece.



Repairs, too.



WOODARD'S

Toll-free
(800)
455-9383

DIAMONDS & DESIGN
MASTER JEWELER

www.
Woodards
.net

Inside Northgate Mall in Tullahoma

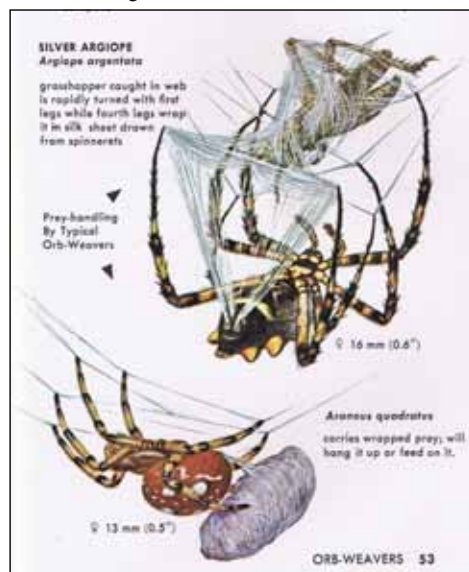


NATURENOTES

By Harry and Jean Yeatman

Sometimes It's a Good Thing to Procrastinate

"The other night I was reading in bed," reports **Jean Yeatman**, "and when I glanced up at the ceiling, I saw a spider walking along. I thought I had better get it down so it wouldn't fall on my pillow."



Above, Orb-weavers. Illustration by Nicholas Strekalovsky from "Spiders, A Golden Nature Guide."

"Well, I kept on reading, and when I looked up an hour later I saw the spider building a nice web. Then, pretty soon a moth flew into the web, and the spider pounced on it and bundled it up in the web, to eat then or save for later. Next, some gnats were trapped. So by waiting I have a nice bug catcher in the corner."

"In the morning," she concluded, "I swept up the remains of the spider's feast."

SHARE YOUR NEWS!

news_messgr@bellsouth.net

Homes with Views



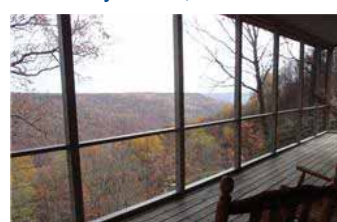
MLS#1334185. 929 Cedar Mountain Rd. Unending vista across Roark's Cove. 10+ acres wildlife sanctuary, 3 mountain springs, fenced, gated. Includes 4-room cabin, workshop/garage. 15 min. from University. \$199,000.



MLS#1252982. Sky High at 2140 Clifftops Ave. A Tuck-Hinton architectural wonder. Tennessee tobacco barn style, walls of windows with open views of receding ridgetops. 3BR, 3.5 BA, 2453 sf. Open decks on main level and at rooftop to watch soaring hawks and eagles! Just Reduced to \$749,000.



MLS#1387679. 1517 Laurel Lake Dr. 4.98 acres with spectacular bluff frontage above Dripping Springs Cove. 3 bedroom, 2 full, 2 half baths. Main floor master w/en suite bath, kitchen, entry powder room are some of renovations. Many custom features, and the views will amaze you! \$487,000.



ML#1364293. 1610 Clifftops Ave. Scenic view southeasterly across Dripping Springs Cove. 1700 sf. 3BR 2BA. Main floor bedroom suite, roomy screened porch along bluff. Stainless kitchen appliances, wood floors, wood-burning mountain stone fireplace. \$489,000.

—BROW RIM BUILDING SITES—

1087526	20 Jackson Point Road	\$76,000
1087538	21 Jackson Point Road	\$78,500
1070454	8 Savage Highland Dr.	\$78,500
1356677	7 Jackson Point Rd.	\$74,000
1356773	9 Horseshoe Lane	\$74,000
135666	8 Horseshoe Lane	\$74,900
1312034	0 Highland Bluffs	\$75,000
1356814	10 Horseshoe Lane	\$84,000
1361476	Hwy 56 Beersheba Springs	\$116,000
1283951	Serenity Lane in Cedar Rock, others available	\$120,000
1345522	18 Old Falls Trail at Monteagle Falls	\$149,000
1374314	Lots 13 and 14 Laurel Lake Dr., each	\$60,000
1310630	1924 Highland Bluffs, 400+ acres, some brow	\$1,590,000

Monteagle Sewanee, REALTORS

www.monteaglerealtors.com

931-924-7253

featuring quality homes and building sites in Clifftops, Cedar Rock, Bridal Veil, Sewanee, Savage Bluffs and all around the Mountain!

Jeanette S. Banks, Broker-Owner, numa@blomand.net

Dee Underhill-Hargis, Broker, 931-808-8948, aunderhill@blomand.net

Ray Banks, Affiliate Broker, 931-235-3365, banksgrass@yahoo.com



PO Box 293 • 20 W. Main St. • Monteagle • Fax 931-924-7254

Pets of the Week

Meet Boo Boo and Coffee

Boo Boo is a darling little Pomeranian-Poodle cross who is affectionate and very quiet. He is quite content to sit in a lap for long periods of time, but he likes to play, too. Boo Boo prefers a home with adults or older children because of his very small size. Boo Boo is up-to-date on shots and spayed.

Sweet Coffee is a handsome young adult Tabby with lovely blue eyes. His color pattern is called "lynx point" because of the tabby stripes that are evident at his "points" (ears, nose and tail). Coffee is negative for FeLV and FIV, house-trained, up-to-date on shots and neutered.

Animal Harbor has a limited-time special on Tuesdays and Thursdays, when you can adopt a tabby at a 50 percent discount, plus get a free bag of cat food. Every Friday is Black Friday at Animal Harbor. On Fridays, adoption fees will be reduced 50 percent for black or mostly black pets more than four months old who have been at Animal Harbor for more than a month. Pets adopted from Animal Harbor qualify for a free post-adoption wellness exam by local veterinarians.

Call Animal Harbor at 962-4472 for information and check out their other pets at <www.animalharbor.com>. Enter their drawing on this site for a free spay or neuter for one of your pets. Ask about their subsidized spay/neuter program for pets of low-income families.



Boo Boo



Coffee

State Park Offerings

Saturday, Aug. 25

Snakes—Join Naturalist Andrea at 8 a.m. at Stone Door ranger station to learn how to tell the difference between venomous and non-venomous snakes.

Boulder Crossing Nature Hike—Meet Ranger Aaron at Collins West parking lot for a strenuous three-mile hike over rocky terrain to view the Collins River. Bring water and a snack.

Sunday, Aug. 26

Butterflies—Join Naturalist Andrea at 8 a.m. at Stone Door ranger station to learn about the life cycle of butterflies.

Savage Gulf Slide Show—Meet Ranger George at Savage Gulf ranger station for a great slide show on Savage Gulf and the Stone Door area.

Greeter Falls Swim—Meet Ranger Aaron at 3:30 p.m. at Greeter Falls for a moderate two-mile hike to take a dip at the base of Greeter Falls. Bring a swimsuit, water and a snack.

Friday, Aug. 31

Stone Door Hike—Meet Naturalist Andrea at 8 a.m. at Stone Door ranger station for this easy two-mile hike to the Great Stone Door. Bring water.

Stargazing: Pictures in the Sky—Meet Ranger Aaron at 8:30 p.m. at Savage Gulf picnic area for a demonstration of how to identify constellations and other celestial bodies using a star wheel (weather permitting). Bring a headlamp or flashlight.

For more information on these or other programs call (931) 924-2980 or visit the website at <www.friendsofscsra.org/activities.htm>.

The Visitors' Center is located on Highway 41 South between Monteagle and Tracy City and is open 8 a.m.—4:30 p.m. seven days a week.

MOUNTAIN VISITORS: Keep up from home!

<www.sewanee messenger.com>

LONG'S LAWN SERVICE

- landscaping & lawn care
- leaf removal • mulch

Local references available.

Jayson Long

(931) 924-LAWN (5296)



Henley's Electric & Plumbing

Randall K. Henley

More Than 25 Years' Experience

598-5221 or cell 636-3753

Weather

DAY	DATE	HI	LO
Mon	Aug 13	78	60
Tue	Aug 14	81	62
Wed	Aug 15	81	65
Thu	Aug 16	84	61
Fri	Aug 17	84	63
Sat	Aug 18	78	65
Sun	Aug 19	78	64

Week's Stats:

Avg max temp =	81
Avg min temp =	63
Avg temp =	65
Precipitation =	1.32"
Water table depth =	27.7'

Reported by Nicole Nunley
University Forestry Technician

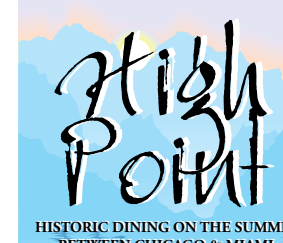


402 West Main St. • Monteagle • 931-924-3355
www.paparons.net
Sunday-Thursday 11-9
Friday and Saturday 11-10

Try our greek salad,
garlic mushroom steak
or spinach and
artichoke pizza.



Celebrate
your next Birthday or
Anniversary with us!



224 East Main St
Monteagle
931-924-4600
Sun to Thu 5 to 9
Fri and Sat 5 to 10
www.highpoint
restaurant.net

Classifieds

CALL US! • 598-9949

Classified Rates:
\$3.25 first 15 words,
10 cents each addl. word

Now you can charge it!
(\$10 minimum)

NANCE CLEANING: Homes, offices, churches. Sewanee and Monteagle area. References available. (931) 598-5463.

**RAY'S
RENTALS**
931-235-3365
Weekend Packages
and Special Events
CLIFFTOPS, BRIDAL VEIL,
ALL AROUND THE MOUNTAIN
Monteagle Sewanee Rentals
931-924-7253
www.monteagle-realtors.com

THE BLUE CHAIR IS HIRING: For all positions. Must have transportation. Call for interview, 598-5434, ask for Michael.

MASSAGE
Regina Rourk Childress
Licensed Massage Therapist
www.reginarourk.com
~ GIFT CERTIFICATES ~
(931) 636-4806

FOR RENT: Clifftops, 4BR/3BA. Great room, 2 masters, fireplace, garage, covered porch, back deck. Furnished or unfurnished. (423) 838-8201, Cliffside Realty.

Mountain Accounting & Consulting
* Accounting * Bookkeeping
* Consulting
Bridget L. Griffith QuickBooks Pro Advisor
M.S. Accounting and (931) 598-9322
Information Systems bh_griffith@yahoo.com

SARGENT'S SMALL ENGINES: Repairs to All Brands of Equipment: Lawnmowers, riding or push, String trimmers, Chainsaws, Chainsaw sharpening, New saw chain. (931) 212-2585, (931) 592-6536. Pickup and Delivery Available.

**CLAYTON
ROGERS
ARCHITECT**
claytonrogers@charter.net
931-598-9425

THE SEWANEE UTILITY DISTRICT OF FRANKLIN AND MARION COUNTIES BOARD OF COMMISSIONERS will hold its regular meeting on Tuesday, Aug. 28, at 5 p.m. at the utility office on Sherwood Road. If a customer is unable to attend but wishes to bring a matter to the board, call 598-5611, visit the office, or call a board member. Your board members are Art Hanson, Randall Henley, Cliff Huffman, Karen Singer and Ken Smith.

COMPUTER HELP
Tutorial & Troubleshooting
A slow computer may not
be a healthy computer.
Judy Magavero, (931) 924-3118

LOVELY: 1BR apartment at lake, clean and quiet. \$650/mo. includes water, cable, washer and dryer. (931) 967-2285.

THE LUNCH BOX
—Home of the Mega Burger—
268 Colyar St., Tracy City
(931) 592-GOOD
Burgers made to order from 100% pure beef.
Dine in or call ahead to have
your food ready for pickup.

CAREGIVER SERVICE FOR THE ELDERLY: 10 years' experience. Partial live-in/shift work. Any shift/any days. References, background check/bonding available. (931) 967-9860 or (256) 599-5689 cell.

A-1 CHIMNEY SPECIALIST
"For all your chimney needs"
Dust Free • Chimneys Swept, Repaired,
Relined & Restored • Complete Line of
Chimney Caps • Waterproofing
Video Scanning
G. Robert Tubb II, CSIA Certified & Insured
931-273-8708

HORSE BOARDING: 7 miles from Sewanee. Arena w/ lights. Jumps. Several grass pastures. Geldings only, No cribs. (931) 247-3071.

Your ad could be here.

**EAGLE MOUNTAIN
STONE**
All phases custom rock and
concrete work including
*Front Entryways featuring wrought
iron with powder-coated finish
*Walls *Patios *Walkways
*Water Features, including Waterfalls
Free estimates. Local references.
(423) 838-3172

The Plant Doctor is Back!

LEONARD KING

Lawn & Landscaping Specialist
1020 Gudger Rd., Sewanee
(931) 588-2049

HOUSE CLEANING: Residential or business. Call Ida York at (931) 636-5769.

MAMA PAT'S DAYCARE
MONDAY-FRIDAY
Open 4 a.m.; Close 12 midnight
3-Star Rating
Meal & Snack Furnished
Learning Activities Daily
Call: **(931) 924-3423**

GILLIAM'S OUTDOORS: Grass-cutting, gutter-cleaning, leaves, plantings. Firewood available. No job too big or small. Local references available. Cory Gilliam, 308-4869.

Needle & Thread
*Alterations * Repairs * Light Upholstery
* Slipcovers * Drapes
For a reasonable price, contact
Shirley Mooney
161 Kentucky Ave.
Sewanee, TN 37375
(931) 598-0766
shirleymooney@att.net

The Moving Man
Moving Services Packing Services
Packing Materials Truck Rental
Local or Long Distance
1-866-YOU-MOVE (931) 968-1000
www.themovingman.com
Decherd, TN
Since 1993 U.S. DOT 1335895

SHAKERAG BLUFF CABIN: Beautiful west-facing bluff view. Near University. Extremely secluded. Sleeps 4-5. C/H/A. Great fishing, swimming. Weekend or weekly rentals. (423) 653-8874 or (423) 821-2755.

DRIVERS: Make \$63,000/yr or more. New \$2,500 Driver Referral Bonus & \$1,200 Orientation Completion Bonus! CDL-A OTR Experience required. Call Now: 1(800)283-3872.

Walk-In Cooler Filled with Flowers!
—TUXEDO RENTALS—
Monteagle Florist
333 West Main Street, Monteagle
(931) 924-3292
www.monteagleflorist.com

EXCELLENT CONDITION: 1947 CV Hammond Organ for sale. Serviced regularly by Albert Holt, Chattanooga, (423) 899-1793. Includes wood bench and tone cabinet. \$500. Must pick up. Call (931) 924-2129.

WAUHATCHIE GLASSWORKS
Prentice Hicks

4313 Kelly's Ferry
Chattanooga, TN 37419
423-821-1988
prenticehicks.com

**GRANITE COUNTERTOPS AND
CERAMIC TILE INSTALLATIONS**
Kevin Geary 423-987-8436
Terry Hutson 931-547-7888
divinegranitemarble@yahoo.com
25 years experience • local references
DIVINE granite/marble/ceramic tile


**South Cumberland
Family Care**
215 College St., Monteagle • 931.924.6222 • scfc@hughes.net

2006 MERCURY GRAND MARQUIS LS: Tundra green with leather package and sunroof. 49,000 miles. Very nice car. \$12,900 firm. Call (931) 592-6017.

**Oldcraft
Woodworkers**
Simply the BEST woodworking
shop in the area.
Continuously in business since 1982.
Highest quality cabinets,
furniture, bookcases, repairs.
Phone 598-0208. Ask for our free video!

FOR RENT: Victorian Charm, recently renovated, 2BR/2BA, fireplaces in two rooms, gorgeous covered porch, private and secluded yet close to town. Perfect for an artist or writer. (423) 838-8201, Cliffside Realty.

EAT IN OR TAKE OUT
Julia's
fine foods
Mon-Fri 11-8; Sat 10-8; Sun 10-2
Sat & Sun Brunch 10-2
24 University Ave., Sewanee
931-598-5193 • juliassavallnet.com
www.juliasfinefoods.com

EXPERIENCED CAREGIVER WANTED: Licensed home care agency seeking to hire an experienced caregiver or CNA in Sewanee to assist the elderly or other adults in their home, P/T to F/T. Must love working with people, be able to pass a criminal background and drug screen, and have reliable transportation. If interested, please forward resume to <rahuffer@hotmail.com>, or call (615)298-3826.

CHURCH NURSERY WORKER: Wanted in Monteagle on Sunday mornings. Must love young children. If interested, e-mail <mbuffington@blomand.net> or call (931) 924-3249

BRICK RANCHER: On 2 quiet acres, 2500 s/f. Million-dollar view. Monteagle. Call (931) 924-2038 for sale/rental details.

ATTENTION: Class A CDL Drivers. Quickway Transportation is looking for drivers in the Chattanooga area! We offer high weekly earnings, excellent home time, excellent benefits, excellent retirement. Call today! 877-600-2121. <www.quickwaycarriers.com>.

BONNIE'S KITCHEN
Real Home Cooking
Open Wed 11-2; Fri 4-8:30
NOW OPEN FOR SUNDAY BUFFET 11-2
Midway Road - 598-0583

WATER SOLUTIONS
Joseph Sumpter
Owner/Licensed Residential Contractor
Specializing in drainage and rainwater
collection systems
598-5565
www.sumptersolutions.com

Tell them you saw it here!

**EAGLE LANDSCAPING &
LAWN MAINTENANCE CO.**
Now Offering Specials for
SUMMER CLEANUP!
We offer lawn maintenance, landscaping,
hedge/tree trimming & more!
Please call for your free estimate
(931) 598-0761 or (931) 636-0383

IDEAL STUDENT HOME FOR SALE: 3BR/2BA. 1620 Laurel Lake Road, Monteagle. \$134,000. Crye-Leike, Realtors, Bedford Allison (423) 667-4695 or (423) 756-0771 Ext. 142.

**CHAD'S LAWN &
LANDSCAPING**
-FREE ESTIMATES-
* Lawn care & Design (Mulch & Planting)
ALSO: * Tree Trimming & Removal
* Pressure Washing * Gutter Cleaning
* Leaf Pickup & Blowing * Road Grading
* Garden Tilling * Rock Work
(931) 962-0803 Home; (931) 308-5059 Cell

ODD JOBS, BIG & SMALL: \$10/hr. Haul away stuff for \$40/load. Clea, (931) 691-9139.

WHY SEEK an impersonal solution to a personal problem? Private, warm, spirit-filled counseling. Family, individual, adolescent. A Place of Hope. (931) 924-0042. <kerstetter@blomand.net>.


King's Tree Service
Topping, trimming,
bluff/lot clearing, stump
grinding and more!
Bucket truck or climbing
Free wood chips with job
Will beat any quoted price!
Satisfaction guaranteed!!
—Fully licensed and insured—
Call **(931) 598-9004—Isaac King**

3BR HOUSE IN COWAN: 5 miles from Sewanee. Brick patio, 3 stone fireplaces, gorgeous view surrounded by mountains, large yard on dead-end street. Available weekends or weekly. (931) 205-3454 or (931) 967-2967.

DRIVERS: Class A CDL Driver Training. NO EXPERIENCE? We train and Employ! Experienced Drivers also Needed! Central Refrigerated, 1(800)567-3867.

**5 BR/3 BA HOUSE
TWO DUPLEXES**
Near St. Mary's available.
No pets, no smoking.
(931) 691-4840 or (770) 598-6059

LOG HOME: Off Highway 156/Jump Off Road between South Pittsburg and Sewanee. Secluded, modern, furnished, 3BR/2BA, C/H/A, fireplace, nice view. \$1500 deposit + \$1500/month, 1-year lease. (423) 316-9504.

RIDGESIDE WOODWORKS
Custom Cabinets & Furniture
Eric Northcutt (931) 581-0412
See our photo gallery on Facebook.
• Free Estimates
• Shipped Worldwide

ART CLASSES WITH JIM ANN HOWARD: Now enrolling students for fall/winter classes: drawing, painting, mixed media, contemporary art history. Each course is five 2-hour classes. Fee is \$125 per course. For complete information regarding course descriptions, times, and materials required, leave message at (931) 598-9562 or email <jimann@bellsouth.net>. (email preferred)

**SIMPLER
TIMES**
Handcrafted treasures and much, much more!
112 Tennessee Ave. in Cowan
931-703-6414 Open Tues-Sat 10 to 7

JOSH OF ALL TRADES: Welding, metal fabrication, water and sewer line installation/repair, lawn maintenance, landscaping. Tree/brush removal. Junk hauling and more. (931) 636-4562.

**LOST COVE
BLUFF LOTS**
www.myerspoint.com
931-968-1127

OFFICE SPACE: Partin Professional Bldg., middle of Monteagle. One room, and two-room suites. Call (931) 580-4538, (931) 580-4539.

class_messgr@bellsouth.net

The Willows Retreat Company, LLC invites you to
OUR WRITER'S RETREAT
at Rivendell Healing Center
September 9-11, 2012
Questions or to register:
call 931-598-5044 or
e-mail admin@willowsretreatcompany.com
or visit www.willowsretreatcompany.com


**June Weber
Gooch-Beasley Realtors**
Serving the Sewanee and Monteagle area
with quality real estate service:
-42 years of experience
-Mother of Sewanee alumnus
www.gbrealtors.com junejweber@bellsouth.net
June Weber, CRB, CRS, GRI Broker 931.636.2246
GOOCH-BEASLEY REALTORS 931.924.5555


piggly wiggly®
Down Home, Down the Street
754 West Main St., Monteagle • (931) 924-3135
8 a.m. to 9 p.m. 7 days a week
Congratulations to NANCY OLIVER, our July
winner of WIN WHAT YOU SPEND TUESDAYS!



BARDTOVERSE

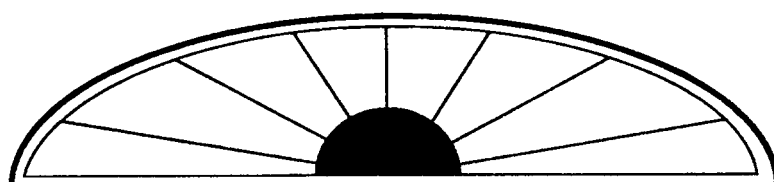
by Scott and Phoebe Bates

Faculty Meeting

Beyond the window is a windy hill
Whose swaying tree-tops never will have done
Flinging their bright, green beauty to the sun,
And cool slopes gather what the branches spill;
And every thought of mine, against my will,
They lure and lift and toss from earth to sky,
In battledore and shuttlecock—and I
Sit here most solemn and discreetly still.

Around me talk of classes, grades and books,
Curricula and all such dusty things,
From men whose speech has somehow taken wings,
Who cannot know how curious it looks
To see some word of theirs caught up and hurled,
A crazy bauble, high above the world.

—By David Morton



wm.c.mauzy construction co.

Bill Mauzy, Owner, General Contractor

www.mauzyconstruction.com 931.598.0686 (office)
billmauzy@bellsouth.net 931.580.0686 (cell)

Welcome, University students and families!



IMAGINE owning or gifting personal or family stories, tributes, and special occasion books designed especially for you. How about hearing and seeing a loved one on DVD?

Celebrate. Share your life with the gift of memoir.

Patricia West, Personal Historian
931.598.5913 or 931.636.6069

KEN O'DEAR

EXPERT HANDYMAN

ALL AREAS OF HOME MAINTENANCE
REPAIR AND REMODELING

Build a Porch, Tile a Bath, Add a Room, Paint a House
If it is broken, I can fix it!

DEPENDABLE AFFORDABLE RESPONSIVE
18 YEARS OF SATISFIED PLATEAU CUSTOMERS
931-235-3294 OR 931-779-5885

Cowan Fellowship Church

(609 E. Cumberland Street, Cowan)

Welcome to Sewanee students and newcomers to the mountain

We are a congregation of followers of Jesus Christ, nestled among the coves of the Cumberland Plateau between Winchester and the University of the South in Sewanee. The Fellowship Church is a union congregation of people with their roots in the United Methodist and Presbyterian churches—nurtured in both the Wesleyan and Reformed traditions of the Christian Faith.

As a group of believers who cross traditional lines, we welcome you and invite you to explore your own Christian journey by worshipping with us, Sundays at 11 a.m.

Check us out at: www.cowanfellowship.org.

Community Calendar

Today, Aug. 24

8:30 am Yoga with Carolyn, Community Center
9:00 am CAC office open until 11 am; 2–3 pm
10:00 am Games day, Senior Center

Saturday, Aug. 25

Beersheba Springs Arts and Crafts Festival, through Sunday
8:00 am Sewanee Gardeners' Market, old pharmacy
9:00 am Mountain Goat Trail hike, meet at Pearl's
9:00 am Tracy City Farmers' Market, Hwy. 41, Tracy City
10:00 am Benefit singing/lunch, Bible Baptist Church, Monteagle
10:00 am Hospitality Shop open, until noon
10:00 am Silver Threads, St. Mary's Convent
10:30 am Mountaintop Tumblers, tiny tumblers, Comm Ctr
11:30 am Mountaintop Tumblers, intermediate/adv, Comm Ctr
2:00 pm Georgia Mooney birthday party, 116 Kentucky Ave.
4:00 pm CCJP Fall Retreat, Welch residence, 170 Faculty Circle
6:00 pm Homecoming celebration, Midway Baptist Church

Sunday, Aug. 26

2:00 pm Carillon concert, Shapard Tower
4:00 pm Lecture, "A Carrot for the Queen," Jarod Pearson, Cowan Center for the Arts
4:00 pm Yoga with Helen, Community Center
5:00 pm Women's Bible Study, Midway Baptist

Monday, Aug. 27

9:00 am CAC office open, until 11 am; 2–3 pm
10:30 am Chair exercise, Senior Center
4:00 pm Girl Scout recruitment meeting, Community Center
7:00 pm Centering prayer, Otey sanctuary
7:00 pm Sewanee Community Council, Senior Center

Tuesday, Aug. 28

8:30 am Yoga with Carolyn, Community Center
9:00 am CAC office open, until 11 am; 2–3 pm
9:00 am Yoga with Hadley, St. Mary's Sewanee
9:30 am Hospitality Shop open, until 2 pm
9:45 am Signing of Honor Code, All Saints' Chapel
10:30 am Bingo, Senior Center
11:00 am College Student Activities Fair, Quad
11:30 am Grundy County Rotary, Dutch Maid, Tracy City
3:30 pm Centering prayer, St. Mary's Sewanee
4:00 pm "Launching of a New Year," All Saints' Chapel
5:00 pm SUD board meeting, SUD office, Sherwood Rd
6:00 pm SUD plant dedication & picnic, 260 Lake O'Donnell Rd.
6:30 pm FC Democratic meeting, party headquarters, Decherd

Wednesday, Aug. 29

College classes begin

7:00 am Monteagle/Sewanee Rotary, Smoke House
9:00 am CAC pantry day, until 11 am; 2–3 pm
5:30 pm School of Theology Matriculation, All Saints' Chapel
5:30 pm Yoga with Helen, Community Center
7:00 pm Bible study, Midway Baptist Church

Thursday, Aug. 30

Sewanee Woman's Club reservations due

School of Theology classes begin

9:00 am CAC office open, until 11 am; 2–3 pm
9:30 am Hospitality Shop open, until 2 pm

10:30 am Chair exercise, Senior Center
10:30 am Tai Chi with Kat, Comm Center
12:00 pm Monteagle/Sewanee Rotary, EQB Club
12:30 pm Episcopal Peace Fellowship, Brooks Hall
1:30 pm Folks@Home support group
2:00 pm Tracy City Farmers' Market, until 6 pm
3:30 pm Yoga with Hadley, St. Mary's Sewanee
3:30 pm Mountaintop Tumblers, beginners, Comm Ctr
4:30 pm Mountaintop Tumblers, advanced, Comm Ctr
4:30 pm STHP board meeting, Blue House
5:00 pm Weight Watchers, Otey parish hall, weigh-in 4:30
6:30 pm Acoustic jam, Miss Gracie's Restaurant, Cowan
7:30 pm "21 Jump Street," SUT

Friday, Aug. 31

9:00 am CAC office open until 11 am; 2–3 pm
10:00 am Games day, Senior Center
3:15 pm "Nutcracker" auditions, Fowler, until 6:15
3:30 pm Creative Modern Fusion Dance, 7–11, Comm Ctr
4:30 pm Creative Dance, 5–6, Community Ctr
5:30 pm Creative Modern Fusion Dance, 12+, Comm Ctr
6:30 pm Project Dance Company, 18+, Community Ctr
7:30 pm "21 Jump Street," SUT

12-Step Meetings

Friday

7:00 am AA, open, Holy Comforter, Monteagle
7:00 pm AA, open, Christ Church, Tracy City

Saturday

7:30 pm NA, open, Decherd United Methodist
7:30 pm AA, open, Otey

Sunday

6:30 pm AA, open, Holy Comforter, Monteagle

Monday

5:00 pm Women's 12-step, Otey parish hall
7:00 pm AA, open, Christ Church, Tracy City

Tuesday

7:00 pm AA, open, First Baptist, Altamont
7:30 pm AA, open, Otey parish hall
7:30 pm Al-Anon, Otey parish hall

Wednesday

7:00 pm NA, open, Decherd United Methodist
7:30 pm AA, open, Holy Comforter, Monteagle

Thursday

12:00 pm AA, open, 924-3493 for location
6:30 pm NA, open, Otey
7:00 pm AA, closed, book study, St. James

Keep up from
anywhere!
<www.sewanee
messenger.
com>



WELCOME, STUDENTS & FAMILIES!
Remember to drink responsibly—we want
you as a customer for a long time!

Village Wine & Spirits Inc.

COMPETITIVE PRICES AND FRIENDLY SERVICE

~ ALL YOUR FAVORITE MAJOR BRANDS
~ Great Wine Selection ~ Special Orders Available

Across Highway 41A from Monteagle's Piggly Wiggly
(931) 924-6900 ~ Mike Gifford, Owner
Open Mon–Thu 9 a.m.–9 p.m.; Fri–Sat 9 a.m.–11 p.m.