



The Sewanee Mountain MESSENGER

VOL. XXVI No. 31

Thursday, September 2, 2010

Published as a public service for the Sewanee community since 1985.



SAS welcomes new faculty members: (front row, L-R) Pratt Paterson, Heather Taylor, Mark Trawick; (middle row, L-R) Kim Bell, Elizabeth Quinn-Stine, Evey Gannaway; (back row, L-R) Paul Ward, Jeff Bell, Joe Brew.

SAS Announces Nine New Faculty Members

St. Andrew's-Sewanee welcomes the following new faculty members for the 2010-11 school year:

Jeff Bell, academic dean and English teacher, was formerly assistant academic dean and chair of the English department at Lake Forest Academy, a boarding and day school in Lake Forest, Ill. He received a bachelor's degree in English and religious studies from the University of Missouri, holds a master's in religion from the University of Chicago's Divinity School, and has completed coursework for a Ph.D. in theology and health care ethics at Loyola University, Chicago. He and his wife, Kim, and their two young daughters, Amelia and Charlotte, will live in Colmore House on campus.

Kim Bell will serve as lead houseparent in Colmore. At Lake Forest Academy, she was an English instructor and co-advisor of the literary magazine. She received her bachelor's in English from the University of Iowa, an M.Ed. from the University of Minnesota, and an M.A. in literary studies from Boston University. She is a published poet.

Sewanee Community Council Begins Year with Full Agenda

The August 23 Sewanee Community Council meeting marked the first session presided over by new Vice-Chancellor John McCardell and the first session of the 2010-11 school year. Following a welcome by McCardell, a long meeting ensued, with the council addressing a number of issues of key importance to the community.

In May, council members agreed to participate in a community e-mail pilot program. Vicki Sells, associate provost and University librarian, reported that the list service was created and a test e-mail was sent to council members on July 2, but since that time there had been no activity on the list service. Some council members had no recollection of receiving the message, and Council representative David Coe pointed out that the message may have gone into members' spam folders. Asked

Joe Brew is teaching Spanish and coaching track. After graduation from the University of the South, he moved to Paris for a year, where he worked on a master's in history at the Institut Catholique de Paris. Following his Paris stay, he spent a summer in Lome, Togo (West Africa).

Evey Gannaway will teach science and coach girls' varsity soccer. A Sewanee graduate, she studied and did research in Freising, Germany, at the Technischen Universität München as a Fulbright Scholar. She is filling in for Marion Knoll this semester.

Pratt Paterson will serve as assistant director of development. He was formerly sports information director and lay chaplain at Sewanee, as well as director of Camp Gailor-Maxon, Monteagle. He received a bachelor's from the University of Alabama and did post-graduate work at the School of Theology. He has served as an EMT with Sewanee EMS and as president of the board of the Sewanee Civic Association and the Sewanee Children's Center.

(Continued on page 4)

if faculty and staff could post event announcements, Sells said that at this point only council members could post messages because they were the only subscribers. Council representative Pam Byerly recommended the council members test the service "among ourselves" before encouraging faculty and staff participation.

David Haskell, Sewanee Leaseholders Association's Issues Committee chair, introduced a list of concerns raised by leaseholders. Haskell prefaced his remarks with the observation that many of the University's lease policies were enacted 20-30 years ago and were likely suitable then. Haskell raised eight issues. One, there is no stated vision or clear plan for Sewanee's future, addressing things such as demographic composition of the community (faculty and

(Continued on page 6)

Cub Scout Parent Meeting Tonight

Tonight at 5 p.m. in the Sewanee Elementary School library, there will be a short informative meeting for parents of children interested in joining Cub Scouts and adults interested in the program. The Pack 152 cubmaster and unit commissioner will be there to answer questions.

This is not the sign up for new Cub Scouts. There are important new rules designed to protect the safety of children about to be involved in the program that parents will need to know. Please come if you are interested in signing your child up for Cub Scouting this year or if you are an adult interested in supporting the program.

Community Chest Applications Due

The Community Chest Fund Drive is gearing up for its fall campaign. Sponsored by the Sewanee Civic Association, the drive raises money for local charitable organizations serving the Sewanee area. Funding applications are now being accepted and can be completed online at <ur.sewanee.edu/alumni/communitychest.> The deadline for submission is Wednesday, Sept. 15. If you prefer to have an application mailed to you, please e-mail Susan Askew at <saskew@sewanee.edu>.

FC School Board Meets Tonight

The Franklin County School Board will hold a work session tonight at 6:30 p.m. in the Board of Education office, 215 S. College St., Winchester. The meeting is open to the public. Steve Ford is Sewanee's representative on the board.

Fran McKendree Comes to Sewanee!

The community is invited to St. Luke's Chapel, located on Georgia Avenue, on Saturday, Sept. 4, at 7 p.m. for a fun, come-as-you-are concert. Fran McKendree is a folk-rock singer/songwriter widely known on the college circuit. Families are welcome and we'll have ice cream on the lawn following the concert! For information contact Catherine Outten, University lay chaplain, at 598-1251.

INSIDE

Letters; Serving; Curb recycle; Labor Day closings; Sr menu; Weight Watchers; GC Historical Soc mtg.....2 House fire; Small business ctr opens; AASC news; CCJP cookbook needs recipes; Emeritus Association meeting; Give blood Sept 9.....3 Church news; Pantry Sunday.....4 King publishes book; GC Food Bank director needed; Mays lecture.....5 Lifelong Learning begins; DREMC mtg report; Sew Civic Assoc meets..7 A&E—Our Town auditions; Cowbell Thunder band to perform; Locals Church exhibit; SAS Darwent exhibit; Ward poetry readg; Malde rcptn....8-9 SCOOP—FCHS student leaders/ Homecoming activities; SAS Claiborne scholars; SES menu.....10-11 SPORTS—SAS sports; Fowler Ctr hrs; Overtime; FCHS highlights.....12-13 NATURE NOTES; WX; Pets; South Cumberland State Park events.....14

Sewanee Woman's Club Welcomes McCardells Sept. 13

The Sewanee Woman's Club will hold its first meeting for the 2010-11 season on Sept. 13 at St. Mary's Sewanee, located on 770 St. Mary's Lane. New Vice-Chancellor John McCardell Jr. and his wife, Bonnie, will attend, and the V-C will be the featured speaker. The social hour begins at 11:30 a.m., and lunch is served at noon.

The Sewanee Woman's Club is celebrating its 80th anniversary this year! The organization is open to all women in the area, and newcomers are welcome. Working women are encouraged to attend and participate during their lunch hours.

This month's menu is grilled salmon with Cobb salad, garlic bread, hummingbird cake, fruited tea and coffee. Annual membership dues are \$5, and the cost of the lunches is \$13.

Reservations for the meeting are due by noon on Sept. 10. Contact Caroline Shoemaker in Sewanee, 598-0982, Marietta Poteet in Monteagle, (931) 924-7666, or e-mail Marianna Handler at <mariannah@earthlink.net>. Specify if a vegetarian meal is preferred and if child care is needed. Members with standing reservations for this year's programs are asked to cancel their September reservation by Friday Sept. 10, if unable to attend.

Revenue from dues and the annual fund-raiser is used to support community projects. The Sewanee Woman's Club also sponsors two groups, the Book Club, which meets the third Monday of each month, and the Garden Club, which meets the fourth Monday of each month. Both clubs meet at 1:30 p.m.



Cowbell Thunder will be the opening band for The Uncalled For concert on Sept. 11 in Manchester. Cowbell Thunder band members are (L-R) standing, Greg Singer of Sewanee, Tyler Wright of Winchester and Will Johannsson of Sewanee; seated, Ben Ayers of Sewanee. (Story on page 9)

TDEC Releases Results of Regional Water Supply Planning Study

Prompted by the drought of 2007, the Tennessee Department of Environment and Conservation (TDEC) launched a project investigating regional water supply planning for the South Cumberland Plateau. At an Aug. 27 meeting in Monteagle City Hall, TDEC summarized the findings of that investigation.

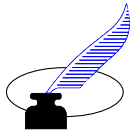
The investigation looked at water supply needs for the South Cumberland Plateau region for the next 20 years. Ben Rohrbach, chief of the Hydrology and Hydraulics Branch of

the U.S. Army Corps of Engineers, Nashville District, presented the data on demand projections and yield estimates for the four water utility districts on the Plateau—Big Creek, Monteagle, Sewanee, and Tracy City. (Big Creek supplies water to the Cagle-Fredonia and Griffith Creek utilities; Tracy City supplies water to the Foster Falls utility.) According to Rohrbach, data from the UT Center for Business and Economic Research indicated the region's population

(Continued on page 14)

THE SEWANEE MOUNTAIN
MESSENGER
P.O. Box 296
Sewanee, Tennessee 37375

Letters



RE-ELECT U.S. REP. FRALEY To the Editor:

I would like to thank our State Representative George Fraley for working hard to bring more than 40 million dollars to Franklin County. I think that it is important to remind people of what he continues to do for our community so that they will be sure to re-elect him on Nov. 2. He is also a person whom you can call whenever you need something done, and he will do his best to resolve the problem for you. When he is re-elected, the people of Franklin County can be sure that Rep. Fraley will work hard to bring money and investment to the area.

Joe D. Yokley
Winchester ■

FOXES AND COYOTES To the Editor:

In response to Mr. Harry Yeatman's statement about the coyote being more dangerous than the fox to your pets [See Nature Notes, Aug. 19 Messenger], tell me, how did we go from the fox to the coyote? Is that statement going to take fear of the public away from the fox? That's like saying the .45 is more dangerous than the .38. They both will kill.

Since you brought up the coyote: there were two in my yard. They spotted my cats, as well. They then saw me and ran away and have not come back.

That old sly fox has come back numerous times. I saw him walking on my front porch. So now my cats have become house cats. And they are wondering why they are being punished. Having broken them from using the litter box, now trying to retrain is very difficult. They think the litter is cat food. Okay, I don't have the smartest cats.

Cats have all kinds of enemies, including the dog, but the leash law prevents these attacks.

The reason I pointed out the dangers of the fox is because there are people feeding them and calling them adorable.

To the pet owner, since Mr. Yeatman pointed out the dangers of the coyote, please for heaven's sake, don't feed the fox, coyote, wild cat, mountain lion or bear.

Reese Cohen
Sewanee ■

MANY THANKS TO THE SEWANEE COMMUNITY To the Editor:

I would like to thank the following folks that took great care of me during my recent illness. The Sewanee Fire Department, Sewanee EMS, Sewanee Police Department and the dispatchers, Grundy EMS, Emerald-Hodgson Hospital and STMC, my family, the Sewanee Senior Citizens' Center and everyone who checked on me that week. Special thanks to all the firefighters and their families that worked on my house while I was in the hospital! You are the best! It is so great to live in a community where there are so many wonderful people that care so much! I truly thank each and every one of you from the bottom of my heart.

David Green
Sewanee ■

THANK YOU To the Editor:

Thanks to all the folks who signed up for the Emergency House markers. The order was turned into Gnarled Oak on August 27th. We will contact you when your marker is ready, and we have procured the house numbers to be affixed. The Sewanee Leaseholders thank you, as will the emergency service workers who serve you and our community so well.

Stephen Burnett, President
Bill Keller, Board Member
Sewanee Leaseholders ■

LETTERS TO THE EDITOR:

Mail your letter to the Sewanee Mountain MESSENGER, P.O. Box 296, Sewanee TN 37375, or come by our office, 418 St. Mary's Ln., or send your e-mail to <news_messgr@bellsouth.net>. Please include your name, address and daytime telephone number. Preference is given to letters under 250 words. Unsigned letters will not be used. Letters are edited for space and clarity.

MESSENGER CONTACTS

News & Calendar:
(931) 598-9949

Display Advertising:
Janet Graham
(931) 598-9949

E-Mail Addresses:
News & Calendar—
news_messgr@bellsouth.net
Display Ads—
ads_messgr@bellsouth.net
Classified Ads—
class_messgr@bellsouth.net

FAX: (931) 598-9685

Labor Day Closings

Labor Day is Monday, Sept. 6, and all federal, state and county offices will be closed, as will banks and public schools. The Sewanee Senior Citizens' Center will be closed, and no lunch will be served that day.

University offices will be open, as will St. Andrew's-Sewanee School. The duPont Library and Fowler Center will observe regular hours.

Senior Center Menus

The Sewanee Senior Citizens' Center is open Monday-Friday from 9 a.m. until 1 p.m. Lunch is served at noon. The suggested donation is \$3 (50 years of age or older); \$5, under 50. To ensure adequate food preparation, please call 598-0771 the day before to reserve a takeout meal or to eat at the center. Menus follow:

Sept. 6: Closed—Labor Day

Sept. 7: Chicken enchiladas, rice, lettuce/tomato salad, spiced apples.

Sept. 8: Meatloaf, pinto beans, slaw, cornbread, dessert.

Sept. 9: Spaghetti, salad, corn on cob, garlic bread, dessert.

Sept. 10: Potato soup, salad, corn muffins, peaches/cottage cheese, assorted desserts.

Menus may vary. For information call the center at 598-0771.

Attention All Canners

The Sewanee Senior Citizens' Center is now collecting homemade jams, jellies, preserves, pickles and relishes for its annual Christmas bazaar. The bazaar is the center's principal fundraiser to support the activities and home-cooked meals offered five days a week. The dates for the bazaar will be announced in October.

If you would like to donate items, they may be dropped off at the center, 5 Ball Park Rd., or you may arrange for someone to pick them up by calling the center at 598-0771.

MESSENGER HOURS

The MESSENGER office is open for your convenience:
Mon, Tue, Wed & Fri
9 a.m. - 5 p.m.
Thursday
11:30 a.m. - 1:30 p.m.

THE SEWANEE MOUNTAIN MESSENGER

418 St. Mary's Ln.
P.O. Box 296
Sewanee, Tennessee 37375
(931) 598-9949
Fax: (931) 598-9685

www.sewaneemessenger.com



Editor/Publisher:

Geraldine Hewitt Piccard

Circulation: Ray Minkler

Contributors:

Staff: Janet B. Graham
Kathy Hamman
Leslie Lytle
April H. Minkler
Peg Palisano

Phoebe & Scott Bates
John Bordley
John Shackelford
Pat Wiser
Jean & Harry Yeatman

Published as a public service to the Sewanee community. 3,700 copies are printed on Thursdays, 46 times a year, and distributed to 26 Sewanee-area locations for pickup free of charge.

This publication is made possible by the patronage of our advertisers and by gifts from The University of the South (print production) and the Sewanee Community Chest.

SUBSCRIPTIONS \$75 first class.



Curbside Recycling Tomorrow

Residential curbside recycling pickup in Sewanee is on the first and third Friday of each month. Friday, Sept. 3, will be a pickup day. Recyclable materials must be separated by type and placed in blue bags by the side of the road no later than 7:30 a.m. Please do not put out general household trash on this day. Blue bags may be picked up in the University Lease Office, 110 Carnegie Hall, at the Physical Plant Services administrative office on Alabama Avenue or at the PPS warehouse on Georgia Avenue.

Weight Watchers Is Back!

Weight Watchers is back in Sewanee and accepting new members on Thursdays, with weigh-in from 4:30 to 5:30 p.m., followed by the weekly information meeting. The meeting is held in the cafeteria of Emerald-Hodgson Hospital, 1260 University Avenue. For information call (901) 388-1234.

Parents' Morning Out Openings

The St. Luke's Parents' Morning Out Program housed at the School of Theology has a few rare openings for children this fall. Parents' Morning Out (PMO) is a ministry of the School of Theology for the seminary and greater Sewanee community. PMO accepts children ages 6 weeks-4 years. PMO is on Tuesday and Thursday mornings from 8 a.m. to noon.

Current openings are in the baby room (ages 6 weeks-15 months) and in the preschool room (2-4 years). If you or someone you know might be interested, please contact the director, Brittany Bowron, for more information and enrollment information at <bbowron@gmail.com>, or by calling the PMO room at 598-3239.

MESSENGER DEADLINES

News & Calendar:
Monday, 5 p.m.

Display Ads:
Friday, 5 p.m.

Display Classifieds:
Friday, 5 p.m.

Classified Ads:
Tuesday, noon

Serving Where Called

Seven years ago this column began to support the large number of reservists and National Guard members called up for active duty to serve in the war in Iraq. About 50,000 troops remain in Iraq to support and train their military and assist with counterterrorism.

On Dec. 1, 2009, President Barack Obama announced he was sending additional troops to Afghanistan to focus on reversing the Taliban's momentum. Today thousands of our troops are deployed in this volatile area.

This is a reminder that someone else is standing guard and facing fire for us. Please keep the following individuals, their families and all those who fight for freedom in your prayers:

Ron Bailey
Nick Barry
William H. Barton IV
James Gregory Cowan
Robert S. Lauderdale
Alan Moody
Brian Norcross
Christopher Norcross
Dustin "Dusty" Lee Parker
Brandon Parks
Michael Parmley
Greg Rinkes
Charles Schaerer
Charles Tate
Jeffery Alan Wessel

If you know of others in our Mountain family who are in harm's way, please give their names to American Legion and Auxiliary member Louise Irwin, 598-5864.

GC Historical Society Meeting

The Grundy County Historical Society will hold its quarterly membership meeting on Saturday, Sept. 11, from 2 to 4 p.m. in the Heritage Center located at 465 Railroad Ave., Tracy City.

The membership will elect officers and board members. The speaker at the meeting will be LaDue Bouldin, and his subject will be on the mining industry. The meeting is open to the public.



402 West Main St. • Monteagle • 931-924-3355
Mon to Thu 11 to 9 • Fri and Sat 11 to 10
Sun 11 to 9 • www.paparons.net

**Sunday thru Thursday
4:00 to 9:00 p.m.**

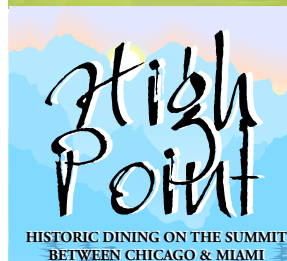
**\$4 APPETIZERS, WINE AND
DRINK SPECIALS**

2 FOR 1 DRAFT BEER

\$9 ENTREES

**Celebrating 10 Years!
2000-2010**
**Sundays
thru Thursdays:**

**\$5 Appetizers, Glasses of Wine and
High Point Cosmopolitans, plus
\$15 Entree Specials!**



224 East Main St
Monteagle
931-924-4600
Sun to Thu 5 to 9
Fri and Sat 5 to 10
www.highpointrestaurant.net



wm.c.mauzy construction co.
Bill Mauzy, Owner, General Contractor

www.mauzyconstruction.com
billmauzy@bellsouth.net

931.598.0686 (office)
931.580.0686 (cell)

Sewanee Police Officer's House Burns

On Friday night, Aug. 27, around midnight, Sewanee police officer Tony Gilliam's home received major fire damage. Tony and his family were all able to get out of the house safely, but it appears all household and personal items were lost. The structure received extensive damage.

Donations of assistance, both money and household items, may be

made through the Sewanee Police Department, and University CFO Jerry Forster reports that the University cashier is set up to take monetary donations for the Gilliams.

To offer furniture or other household items call police dispatch at (931) 598-1111. They will relay the message to Gilliam.



Chamber President Roger Guess, TSBD Councilor Kevin Maxfield, Chamber Executive Director Judy Taylor and County Mayor Richard Stewart.

State Small Business Development Center Opens

The Tennessee Small Business Development Center (TSBDC) has opened a center at the Franklin County Chamber of Commerce, 44 Chamber Way, Winchester. Small business owners and those wanting to start a business may take online classes there. The TSBDC classes

cover business basics, financing, managing a business, human resources, accounting and budgeting, and marketing and sales. Contact the Franklin County Chamber of Commerce to schedule an appointment by calling 967-6788.

Animal Alliance Wish List

Have you thought you'd like to do some volunteer work, but weren't sure exactly where you'd fit in? Animal Alliance-South Cumberland (AASC) is dedicated to reducing pet overpopulation on the Mountain by facilitating low-cost spaying/neutering of pets. Since its inception in 2008, AASC has sent 755 pets to Wally's Friends in Chattanooga to be spayed/neutered and receive rabies vaccinations.

AASC is always in need of new volunteers to help with animal transports, processing of rummage sale items, fund raising and events. The organization is also in need of someone with grant-writing experience.

Items always needed for continued operation are: copy paper, paper towels, 45-gallon trash bags, legal pads, Post-it notes, white duct tape, 2x4-inch white mailing labels, bleach (regular 6 percent), Dawn dishwashing liquid, gift cards (Walmart, office supply stores, Fred's, Dollar General,

etc.), postage stamps and items for the spring and fall rummage sales. Cash donations are, of course, always welcome. AASC is also looking for a site in which to operate a thrift store.

If you'd like to volunteer with AASC, please call (931) 235-9006. Join the team and help make a difference for the pets and people of the Mountain. Also be sure to check out AASC on Facebook.

Seasonal Cookbook: Call for Recipes

Recipes are being sought for a seasonal cookbook showcasing foods available on the South Cumberland Plateau. One of the challenges of preparing meals from locally grown foods is seasonal availability, but for residents of the plateau, local farmers and gardeners offer a great variety and a delightful array of things grown in the wild, ranging from poke salad in the spring to blueberries and blackberries in the summer and elderberries and persimmons in the fall.

The cookbook is a project of the Sustainable Consumerism Committee of the Cumberland Center for Justice and Peace (CCJP). The committee invites you to submit your recipes to be considered for inclusion in the Seasonal Cookbook. Eating locally grown food, raised sustainably without chemicals and pesticides, is good for the environment because it reduces dependence on petroleum products. And it's also good for the consumer.

The committee recently published a brochure, "Who Owns Our Health," highlighting the health benefits of eating chemical- and pesticide-free foods and the companion benefits in avoiding processed foods containing high fructose corn syrup and trans fats.

Do you have a recipe for poke salad and eggs? Pumpkin casserole? Winter squash soup? E-mail your recipes to Leslie Lytle at <sllytle@blomand.net> (with "Recipes" in the subject line) or send them by postal mail to P.O. Box 307, Sewanee, TN 37375. Use these same addresses to request a free copy of the brochure "Who Owns Our Health." Please be advised that, because of their adverse health effects, recipes using processed foods containing trans fats and high fructose corn syrup will not be considered for inclusion in the Seasonal Cookbook. "We look forward hungrily to reading your recipes. Thank you, and happy, healthy eating," says Lytle.

Emeritus Association Meets Sept. 9

John McCardell, Sewanee's new vice-chancellor, will address the opening meeting of the Emeritus Association at 3:30 p.m. Thursday, Sept. 9, in the Hearth Room of the Sewanee Inn. After his presentation, the association will provide a reception to honor John and Bonnie McCardell and to introduce members.

This year's board of directors for the Emeritus Association includes: Sherwood Ebey, president; Eric Naylor, vice-president and program chair; Wayne Maxon, secretary-treasurer; and board members Laurence Alvarez, Brown Patterson and Martha Meeks.

The board has scheduled a series of five programs for the 2010-11 academic year around the theme of describing several different aspects of the mission of the University of the South. The group traditionally meets on the second Thursday of the

month at 3:30 p.m. in the Hearth Room of the Sewanee Inn. Meetings are scheduled for Sept. 9, Oct. 14, Feb. 10 and March 3.

Members of the Emeritus Association are retired (or soon to be retired) faculty members and exempt staff of the University.

Give Blood Sept. 9

The community and the employees of Southern Tennessee Medical Center and Emerald-Hodgson Hospital are invited to participate in the upcoming Blood Assurance blood drive to be held at each facility from 10 a.m. until 3 p.m. on Thursday, Sept. 9.

For information or to schedule a drive at your church or place of business, contact Ava Lynch, STMC, at (931) 967-8259 or Laura Knight, EHH, at 598-4213.

IN SEWANEE

GRAND VIEW ON THE BROW.

Salt water pool, stables, fenced corral, shed, 8.38 acres. 6 BR, 5.5 BA, 6242 sf. Stone fireplace. Custom features, porches and decks all around. Full guest suite. Commanding panorama of Roark's Cove. MLS #1208151. **\$985,000.**



ON THE BLUFF. 187 Carruthers Rd. Walls of windows. Fireplace, great room, deck, greenhouse, wood floors. 2 BR, 1.5 BA. Palladian library. Detached gallery/studio. Convenient to heart of campus activities. You can have it all with spectacular forested views. MLS #1199976. **\$399,000.**

CHERRYWOOD COTTAGE.

207 Wiggins Creek Dr. Custom design, quality craftsmanship, Greek-revival style is nestled among the hemlocks and native hardwoods near Lake Cheston. Circa 2004. 2 BR, 2 BA on main level. Perfect for entertaining with formal and casual areas. MLS #1170000. **\$349,000.**



WILDWOOD COTTAGE behind SAS in an exclusive, natural woodlands area. 4 BR, 2 BA. Full-length covered porches. New carpet, kitchen counters, range and dishwasher. Desirable rental cottage. MLS#1158792. **\$269,000.**

CAMPUS CONVENIENCE.

776 Georgia Avenue. New carpet, great rear deck. Walk or bike to University activities. Add gas logs to the fireplace for those brisk autumn evenings! Circa 1946. 4 BR, 2 BA, 1563 sf. Enjoy the Sewanee lifestyle. MLS #1208341. **\$185,000.**



STONE COTTAGE CIRCA 1900. 412 Lake O'Donnell Rd. The stone cottage you've been dreaming of! 1.6 acres with cleared garden space, set back from street. New carpet, wood floors. 4 BR, 2 BA. Metal roof, stone patio, covered porch. MLS #1208360. **\$175,000.**

The Gnarled Oak

Fine handmade country furniture, refinishing, caning, seat weaving, and restoration



Victorian Sea Captain's Desk

Flat Branch Community
2222 Flat Branch Spur
Tracy City, Tennessee 37387
(931) 592-9680
Bill Childers, Prop.

Escape to Our Treasure, Treasure Your Escape.

Call 931-924-3869
204 W. Main St., Monteagle
www.monteagleinn.com

Village Wine & Spirits Inc.

COMPETITIVE PRICES AND FRIENDLY SERVICE

Great Wine Selection ~ Special Orders Available
ALL YOUR FAVORITE MAJOR BRANDS

Next door to the Smokehouse in Monteagle ~ (931) 924-6900
Mike Gifford, Owner; M-Th 11 a.m.-9 p.m.; F-Sa 9 a.m.-11 p.m.

TO SEE QUALITY HOMES IN CLIFFTOPS, SEWANEE OR AROUND THE MOUNTAIN, CALL RAY OR JEANETTE.

Jeanette S. Banks, Broker 931.924.3103
numa@blomand.net

Ray Banks, Affiliate Broker 931.235.3365
banksgrass@yahoo.com

GOOCH-BEASLEY REALTORS
www.gbrealtors.com 931.924.5555

SAS Welcomes New Faculty Members from page 1 . . .

Elizabeth Quinn-Stine returns to SAS as a mathematics instructor. She was formerly a physics and mathematics teacher at Cary Academy in Cary, N.C. Elizabeth received a bachelor's degree from Brown University and a master's from the University of Washington. She and her husband, Larry Stine, have two children attending SAS, Fritz and Sam.

Heather Taylor will teach physical education for sixth and seventh grades and coach the middle school girls' basketball team. She received a B.S. from Samford University in sports medicine and an M.S. from East Tennessee State University. Last spring she was assistant coach for the SAS tennis team.

Mark Trawick will be a mathematics instructor and assist with

the residential program. He received a B.S. from Davidson College in mathematics with a computer science concentration. He was a tutor coordinator and math center tutor while at Davidson.

Paul Ward will work in the communications and marketing office as graphic designer, communications coordinator and summer program coordinator. A 17-plus-year veteran of coaching, Ward will lead the girls' varsity basketball and softball programs. He was previously director of basketball operations at A-Game in Franklin, Tenn., and served at the Harpeth Hall School as assistant athletic director. He received a B.A. from Christian Brothers University.



LOW TECH INSTANT MESSAGING. Community Engagement House residents extend an invitation via colored chalk to duPont Library patrons.

TANKERSLEY'S HOME IMPROVEMENTS

- New Construction
- Existing Homes
- Barns/Outbuildings

(931) 691-3617 or (931) 967-7631

Free Estimates—Insured • Roy Tankersley, Owner

TANKERSLEY'S TREE SERVICE

- Stump or Tree Removal
- Topping • Trimming
- Cabling • Firewood
- Feeding • Lot Clearing

Sernicola's

Steaks, seafood, pastas, brick oven pizza, hot lunch buffet, plus a 22-item fresh and healthy salad bar. Homemade desserts!



106 Tennessee Avenue • Cowan • 962-3380
Open Tuesday-Saturday • Lunch 11-2 • Dinner 5-8:30

Winchester Podiatry

CHARLES D. GANIME, DPM

Board Certified in Foot Surgery
Diplomate, American Board of Podiatric Surgery
New Patients of All Ages Welcome! We Treat Your Feet!
Most Insurance Accepted, Including TennCare

We are at 155 Hospital Road, Suite I, in Winchester.
www.winchesterpodiatry.com

931-968-9191

AIR DUCT CLEANING

ABBEY ROAD CLEAN-AIRE
MANCHESTER, TN • SINCE 1989

GET RID OF DUST, ALLERGY PROBLEMS

(931) 728-5600 • (931) 273-8899 cell

"We're Your Solution To Indoor Pollution"

RESIDENTIAL
COMMERCIAL
INDUSTRIAL

Church News

Growing in Grace Welcomes McKendree Sunday

Growing in Grace welcomes Fran McKendree, who will speak and perform in All Saints' Chapel on Sunday, Sept. 5, at 6:30 p.m.

McKendree is a folk-rock singer/songwriter well known for his creative and interactive songs. He has toured with Fleetwood Mac, Elton John, Ike and Tina Turner, Joni Mitchell, the Byrds, Van Morrison and others.

Bring friends, and help us make a joyful noise together! For information contact Catherine Outten, lay chaplain, at 598-1251 or the chaplain's office at 598-1274.

Buddhist Sitting Group Meets

A Buddhist sitting group will be meeting on Thursday evenings at 6 p.m. in St. Augustine's Chapel.

The meeting format will begin and end with traditional chanting, 40 minutes of silent meditation between, and if people have the inclination and time, conversing together. The main purpose of the group is to give group support to those who want to meditate regularly.

While zafus (round cushions) and zabutons (square flat cushions on which zafus are placed) are provided for those who want to sit in a cross-legged position on the floor, there are chairs available too.

If you are interested, please come. If you are interested and have no meditation experience, you can contact Sid Brown at <sbrown@sewanee.edu> or arrive a little early to receive some basic instruction and other recommended resources.



**open full-time
beginning Friday:
Mon-Fri 7:30am
to midnight;
Sat & Sun 9am
to midnight**

Georgia Avenue, Sewanee
598-1885

Open Monday-Friday 9-5;
Saturday 10-2

598-9793
90 Reed's Lane, Sewanee



is on the Mountain
in the red building behind Shenanigans
AND OFFERS RENTALS!

Full-Service Bike Shop featuring New Bikes
by Trek, Gary Fisher, Lemond
All Necessary Accessories and Bicycle Repair

E-mail
woody@woodysbicycles.com
www.woodysbicycles.com

This Sunday at Otey Parish

Everyone is welcome to join the Otey Parish congregation on Sunday, Sept. 5, the 15th Sunday after Pentecost, to celebrate the Holy Eucharist at 8:50 and 11 a.m. At 10 a.m., children will register for Sunday School classes. Classrooms will be open, and teachers will welcome new and returning students for a wonderful year of fun, fellowship, and learning.

Otey Parish offers nursery care (ages 0-2) and Godly Play classes for ages 3-5 (Godly Play I), grades 1-2 (Godly Play II), and grades 3-5 (Godly Play III). Middle school students are invited to a new class, "Photography: Grateful Reflections," led by Stephen and April Alvarez. Students will discuss pictures they have taken during the week as a way to explore and understand God's presence in creation. The class will culminate in a parishwide presentation during Epiphany. High school students are invited to participate in "Text and Teach," another new class, led by the Rev. Joe Ballard and Betty Carpenter. This class will have a retreat and outreach opportunity as part of the formation process.

Adults are invited to join the Adult Forum, led by David Bowman and John Bratton, a weekly group that explores God's work in the world and our call to ministry through the spoken word of speakers, video, and book study. Other adult offerings include the Lectionary Class, led by Pete Trenchi, which explores and studies the weekly Gospel lesson with lively discussion of the Bible's message to our world today. Finally, adults may participate in the Seekers Class, which explores specific faith issues in depth in short-term modules.

Everyone is welcome and encouraged to attend Otey Parish. Nursery care is available each week from 8:30 a.m. until 12:30 p.m. Coffee hour follows the second service each week. Questions? Call Robin Reed at 636-0010.

Sept. 5 Is Pantry Sunday

Pantry Sunday for the Community Action Committee (CAC) is Sunday, Sept. 5, for participating churches: St. James, Otey, Cumberland Presbyterian and All Saints' Chapel. Please bring your food offerings to Sunday services. The typical bag of groceries includes rice, beans, pasta, macaroni and cheese, peanut butter, and cans of vegetables, fruit, and soup.

The CAC is an outreach ministry of Otey Parish with generous support from the Sewanee Community Chest and individuals across the Mountain. The CAC provides food, financial assistance and educational support for persons in the greater Sewanee community. For more information, contact the CAC at 598-5927.



LIGHTS ON!!!
It is state law to have your headlights on in fog and rain.

King Publishes New Book on Cardinal Newman

The Rev. Benjamin King's highly acclaimed book, "Newman and the Alexandrian Fathers," chronicles the life of John Henry Cardinal Newman, a 19th century cleric and theologian, who, according to the author, bent church history and reshaped his own philosophy to please the popes of his day. To that end, Pope Benedict will beatify Newman on Sept. 19 during his visit to England and Scotland.

King, assistant professor of church history at the School of Theology, made the case that Newman's public image and writings were the work of his own careful manipulation and King details how Newman was often in trouble with the Catholic authorities. The book reveals that Newman was awarded the cardinal's red hat only because he shaped his views to match those of a new pope.

Newman, in his youth, was a major figure in the Church of England and converted to Catholicism in 1845. King's book traces Newman's slippery use of the Alexandrian Fathers, the early Catholic theologians who helped determine the content of the New Testament and the Creeds.

According to King, Newman quoted, re-quoted and even deliberately misquoted those earliest authorities of Christianity. By the 1870s, Newman was interpreting the Alexandrian Fathers to say just what the new pope, Leo XIII, wanted to hear. It was Pope Leo who elevated Newman from ordi-

nary priesthood to cardinal in 1879.

Newman's Catholic contemporary, the historian Sir John Acton, said that Newman had become an "Ultramontane"—meaning one who recognizes papal precedence over local spiritual authority. Acton suggested that Newman had lurched to the right, looking to Rome for leadership, but that theory upsets modern Catholics who claim Newman as a forerunner of the Church's 1960s reforms at the Second Vatican Council. King finds proof that Acton was right, for Newman put into the mouths of the Church's ancient Fathers words that would please prevalent papal views.

According to King, perhaps that is why Newman is so popular with Pope Benedict today, who has had a similar shift to the right since his youthful participation in the Second Vatican Council.

Grundy County Food Bank Seeks Director

The Grundy County Food Bank is searching for a new director to take office on Jan. 1, 2011. Carol and Glenn VandenBosch will be stepping down as managers and directors of the food bank.

The Grundy County Food Bank is a vital part of the community, reaching more than 200 families a month with several food boxes to subsidize the families' food needs. Food donations from Walmart in Kimball are picked up three times weekly and distributed to Grundy County families in their monthly food boxes, as well as shared with other agencies in Grundy, Marion and Franklin counties.

Anyone interested in the position or in volunteering with this organization should call Glenn VandenBosch at (931) 924-3041.

Mays to Speak at Reflection Riding Plant Sale in Chattanooga

Reflection Riding Arboretum in Chattanooga will hold its annual Fall Native Plant Sale on Sept. 11-12. Admission is free.

Fall is the best time to plant, so be certain to come out and find something special for your garden from hundreds of native trees, shrubs and wildflowers. In addition to the sale, there will be guided wildflower walks, a variety of talks, demonstrations, activities for children and live bluegrass music.

Sewanee resident and garden designer June Mays will speak at noon (EDT) Sept. 11 on "Shade Solutions." Reflection Riding is a 300-acre arboretum, botanical garden and historic site dedicated to the study and conservation of native plant life.

The arboretum is located at 400 Garden Road, Chattanooga. Take I-24 East toward Chattanooga, follow Exit 175 at Brown's Ferry Road and turn right toward Lookout Mountain. At the next traffic light (Cummings Hwy.), turn left. In less than a mile, take the first right following the signs

for Reflection Riding and the Chattanooga Nature Center.

Plant sale hours are Saturday, 9 a.m. to 5 p.m., and Sunday, 1 to 5 p.m. (EDT). For more information, contact June Mays, 598-9014, or Reflection Riding, (423) 821-9582.

**Green is not a color.
It's a philosophy.**



**GOOCH-BEASLEY LLC,
Certified Contractor
Peter R. Beasley
(931) 924-5555
www.gbrealtors.com**

ONLINE AND IN COLOR!
www.sewaneemessenger.com

Senior Center Seeks Volunteers

The Sewanee Senior Citizens' Center offers volunteer opportunities Monday through Friday. For those who would like to participate in the day-to-day life of the center, there are food prep, dish-washing and meal delivery duties available every day. If you would like a regular weekly spot or would like to become a substitute for one of our volunteers, please call 598-0771. All volunteers are welcome to stay for lunch at noon.

**We're glad you're
reading
the Messenger!**



**Exceptional Yarns,
Exceptional Service**

*Noro, Zecca, Be Sweet, Rowan,
Berroco, Araucania, Lantern
Moon, Cascade, Crystal Palace,
Artyarns, Nashua, Sirdar,
Sublime, Skacel ...*

Classes, Workshops, & Private
Lessons Available Year Round

*Hours: Monday 10-5
Tuesday 8:30-8
Wednesday-Closed
Thursday 8:30-5
Friday 10-5
Saturday 10-3
Sunday-Closed*

Small Selection of Gifts

317 S. Jackson St.
Tulahoma, TN 37388
931-461-5648
www.tullahomayarn.com

www.sewaneerealestate.com



NEW CAMPUS LISTING: Elegant refurbished Sewanee home with 4 BR, 4-1/2 BA, separate rental apartment, great living areas and gorgeous grounds. **\$449,000.** MLS #1177837



SEWANEE: 237 Lake O'Donnell Rd. Established business location. Perfect for your retail or professional needs. **\$154,500**

RENTALS

899 Midway Rd.—4 BR, 2 BA, \$800
1691 Otter Falls Rd.—3 BR, 2 BA, \$600
1659 Otter Falls Rd.—2 BR, 1 BA, \$600
Call Sally, 931-636-4993

**REAL ESTATE
MARKETING, LLC**
931-598-9244
91 University Ave., Sewanee



SPEED BARANCO,
OWNER/BROKER
931-598-9244
REM@EDGE.NET

SALLY THOMAS,
AFFILIATE BROKER
931-636-4993

SALTHOMAS@BELLSOUTH.NET

SHIRLEY TATE,
BROKE
931-598-0044
SJ.TATE@LIVE.COM

www.sewaneerealestate.com



BEAUTIFULLY RENOVATED Craftsman home with attractive in-law apartment (single level) Private in-ground heated pool, terrace and hot tub nestled between. Beautiful molding and detail, ceiling fans in all rooms, plus 9-foot ceilings. Crafts shop and music studio. **\$290,000.** MLS #1192442

RESIDENTIAL LAND AVAILABLE

Ravens Den—6.2 wooded acres. City water available. **\$83,500.**

Taylor Road—29.73-acre tract with 3 streams, county road & electricity, backing onto the state forest. Excellent building sites convenient to infrastructure. **\$249,000.**

Lightning Bug Subdivision—only 2 lots left! 1.2 acre, \$23,900; 1.1 acre, \$27,900 (has septic and well)

Jump-Off Mountain Road—13.83 partially cleared acres. **\$124,500.**

Deerwood at Jackson Point—2 adjoining bluff lots. 4.37 and 4.11 acres. **\$115,000 each.**

6.4 Acres Bluff Land on Partin Farm Road—**\$115,000.**

COMMERCIAL

Sewanee—141 University Ave. office bldg.—**\$250,000.**

Sewanee—Incredible retail/office bldg. on 41A—**\$160,000.**



NEW PARENTS: A great investment opportunity. 2 BR, 1 BA, beautifully landscaped yard one block from downtown Sewanee. 12721 Sollace Freeman Hwy. **\$115,000.** MLS #1152174



SEWANEE BRICK RANCH: 2 BR, 1.5 BA, newly updated with office space, On Sewanee Domain, nice walk to St. Mary's Retreat Center. Sherwood Rd. **\$115,000.** MLS #1109122



BEAR DEN LOTS: Three lots in Monteagle bluff subdivision. Lots 5, 6 and 7 on Bear Drive. City water, electricity and paved road frontage. Lot 7 has spring and bluff frontage above Dripping Springs Cove. All three for **\$30,000.** Better hurry! MLS #1202803



INVITING, COZY 2 BR, 2 BA 1400 sf Monteagle cottage with stone fireplace, beautiful hardwood floors, granite kitchen countertops near Laurel Lake on nice wooded lot. MLS #1206207. **\$159,500.**



CHARMING COUNTRY HOME on 27.21 acres surrounded by exquisite English gardens. 4 BR, 4 BA home with 6-stall stable, paddocks and pasture. Two adjoining tracts also available. **\$575,000.** MLS #1193694



PRIVATE SEWANEE COTTAGE: Historic home on 3 acres. Vaulted ceilings, masonry fireplace. Great community at end of Gudger Rd. Option of additional land. **\$235,000.** MLS #1168626



17.7-ACRE MINI-FARM: Bluff property with cottage, mountain stream, large garden, pole barn, city water and well, pond and beautiful woods and view. **\$150,000.** MLS #1173992

www.sewaneerealestate.com

www.sewaneerealestate.com

Sewanee Community Council Begins Year with Full Agenda from page 1...

staff residences vs. second and third homes), transportation, land use, sustainability, etc. Two, ground rent has increased sharply for non-University employees, because ground rent is tied to property assessment values, which have likewise increased sharply; the result is that low and middle income individuals cannot afford to live in Sewanee. (Note: University employees do not pay ground rent). Three, the 6 percent transfer fee, assessed to non-University employees when a lease changes hands, has likewise created a barrier to residing in Sewanee for low and middle income individuals; the

transfer fee was enacted to present a barrier to second and third homeowners, but has had the opposite effect. Four, the University retains all decision-making power of sums it acquires from the community through ground rent and fees; a portion of this money could be allocated to the Sewanee Community Council for community projects. Five, when family members are added to a lease contract, the ground rent is recalculated at the present (and so higher) rate, the same as if the lease had changed hands; for older leaseholders who plan to bequeath their homes to offspring, this presents a financial hardship. Six, leaseholders who are in conflict with the University have no

independent ombudsman or advocate to help them negotiate solutions. Seven, micromanagement by the Lease Committee on issues like paint color and architectural style serves as a disincentive for many who might choose to live on the Domain; the Lease Committee's role might be better oriented toward the "bigger picture," addressing town planning, land use, etc. Eight, a mechanism exists to provide ground rent and fee relief to financially disadvantaged individuals; perhaps a similar concept could be extended to garbage collection fees.

Haskell stressed that the Leaseholders Association wanted a wider conversation. Association President Stephen Burnett praised Lease Committee Chair Barbara Schlichting for reaching out to the Leaseholders Association for advice. Vice-Chancellor McCardell said the introduction of the lease-issues discussion was very timely, since the University was about to embark upon reevaluation of its long-term campus plan. McCardell noted that the firm drafting the master plan was very receptive to community input and suggested that an open community forum with the firm would be appropriate. Commenting on the Domain management plan that will be developed simultaneously, Domain Manager Nate Wilson advocated formation of a committee to explore and offer suggestions on the community component of the plan.

Arthur Knoll, Sewanee area representative to the Franklin County Commission, addressed the council on county budget issues. Knoll attributed the present budget shortfall to the 22 percent decrease in the property tax rate in 2007, which resulted in an annual \$5 million loss in revenues. Putting those figures into perspective, Knoll said that for every penny that the tax was decreased, the county lost \$82,000. He noted that the second largest county budget item is the school budget, at \$12.5 million annually; the state provides the county with an additional \$30 million for education.

The county's largest budget item is the general budget, at \$14 million, with the greatest portion of that going to security, for maintaining the sheriff's department and county jail. To meet the present shortfall, the commission has made budget cuts in overtime pay (not from the school budget) and will sell unneeded assets like the circuit court clerk's office building. Knoll advised that Franklin County residents could expect a 12 percent increase in property taxes. He contrasted this to a 28 percent increase in Coffee County. Questions should be directed to the county Director of Finances Andrea Smith or Property Assessor Randy Kelly.

Coe asked about plans for the area recently clearcut at the airport. Coe noted that cleanup had stalled, and his neighbors and constituents were complaining. Domain Manager Wilson responded that suggestions were made that the area be used for a ballpark or dog park, ideas that could not be implemented because the area was a wetlands, with standing water much of the year; after consulting with the forestry and biology departments, the decision was to let the land revegetate on its own, with the goal being a "wild field." The Federal Aviation Administration mandated the clearcut, and tree plantings would only result in the need for another clearcut in the future, Coe said he would like to see something more "proactive" happen and asked if money from the timber harvested from the area could be used for that purpose. Wilson said there was very little revenue from the clearcut, only several thousand dollars, primarily from fuel wood chips and one load of timber. The subject will be revisited at the October council meeting.

Byerly introduced a discussion about the proposed location for a new Duck River Electric (DREMC) office on Highway 41A, at the Trimble Lane intersection. Byerly noted that the new office site would have a pole yard and parking for equipment trucks, with the advantage being that when Sewanee power outages occurred, repairs could be accomplished more rapidly. According to Jerry Forster, chief

financial officer, when residents near the proposed DREMC office site were contacted by the Lease Committee, they had no objection to the site, but expressed concerns about increased traffic on Kennerly Road, which joins Trimble Lane. Police Chief Robert White said that Kennerly posed a safety hazard regardless of whether or not the new office building was located at the Trimble intersection. White said the same issue was raised a year ago by Council representative Shirley Taylor. White recommended petitioning the county to lower the speed limit to 20 mph on Kennerly Road, signage at the major curves, and brush trimming on state right-of-way property to improve visibility where Kennerly intersected with Highway 41A. Following a motion by Byerly, the Council voted to recommend that White apply for the speed limit reduction and signage and to make arrangements for the brush trimming. (Note: the brush trimming was done the next day.)

Forster noted that spot rezoning would be required for the office to be located at the Trimble Lane site and that the County Planning Commission would take the council's recommendation into consideration. Haskell expressed concerns that residents might object to odors from storage of creosote poles and glare from harsh security lighting. Byerly proposed the council defer a recommendation until more information was available.

Reporting on the request made to state Traffic Manager Alan Wolfe to reduce the speed limit on Highway 41A to 45 mph between Sewanee and Monteagle, White said that Wolfe replied the accident ratio did not warrant a reduction, but the request was still under consideration.

Updating the council on the resolution sent to the Franklin County Commission and Mayor regarding the restricted use of compression brakes on the Domain, Provost Linda Lanekwicz said the mayor responded that "they would find the right solution" and would be in touch when a decision was reached.

According to Council representative Annie Armour, Tinsley Group, the company seeking to locate a rock quarry near the Domain boundary, has applied for a permit for wastewater disposal and has filed suit again the city of Decherd for the manner in which that body addressed Tinsley's annexation request. Armour monitors the Tinsley Group's efforts on the council's behalf.

Forster announced that restructuring will be done at the Highway 41A and University Avenue intersection on the Monteagle side of campus to improve visibility. Half of the \$400,000 project is being paid for by the University and half by donors.

The next meeting of the Community Council is at 7 p.m. on Sept. 27, in the Sewanee Senior Citizens' Center.

—Reported by Leslie Lytle

Scenic Mountain Properties



EAGLE NEST. Brow-front on Ingman Cliff Road. Granite counters, wood floors, wood-burning fireplace. Many custom features. 3 BR, 2.5 BA. MLS #1085092. **\$370,000.**



FERN GARDEN IN CLIFFTOPS. Delightful 2 BR, 2 BA log cabin. Screened and open porches, manicured grounds, fire pit. Metal roof, fabulous great room. Popular rental. MLS #1191053. **\$249,000.**



SEWANEE RANCH, fenced with barns, sheds, on 15 acres. Much of the 3/2 brick residence has been updated for you. MLS #1178871. **\$253,000.**



BRIER PATCH IN CLIFFTOPS. Superior quality custom crafted log home on 5 acres. Screened porch, 4-car detached carport. 3 BR, 2.5 BA. Appliances included. MLS #1201630. **\$329,900.**



LAUREL LAKE LODGE. 4 BR, 3 BA, 3960 sf. Basement media room, hot tub, wrap porches, decks. Panoramic view of Dripping Springs Cove. Stone fireplace, paved drive. MLS #1208081. **\$398,000.**



BROW RIM IN CLIFFTOPS. Home-site cleared, fab southeasterly view across the cove. Tall timber, great area. 5.2 acres. Small garden shed. MLS #1200343. **\$250,000.**



MOSSY OAKS IN CLIFFTOPS. Custom home of inspiring spaces. 3 BR, 2.5 BA, 50x27 deck, mountain stone fireplace. MLS #1126537. **\$499,500.**



EXCLUSIVE SUMMERFIELD POINTE homesite with pond, borders cascading mountain stream. 5.11 acres. MLS #1206392. **\$160,000.**

TO SEE QUALITY HOMES IN CLIFFTOPS, SEWANEE OR AROUND THE MOUNTAIN, CALL RAY OR JEANETTE.

Jeanette S. Banks, Broker 931.924.3103
numa@blomand.net
Ray Banks, Affiliate Broker 931.235.3365
banksgrass@yahoo.com
GOOCH-BEASLEY REALTORS
www.gbrealtors.com 931.924.5555

<ul style="list-style-type: none"> • New Construction • Remodeling • Historical Restoration • Everything else in between 	
Kevin Sweeton Tennessee State Licensed General Contractor Fully Insured [931] 924-2444	sweetonhome@blomand.net 1010 W. Main St. Monteagle, TN 37356

MARKETPLACE
Maternity • Infant • Child • Teen/Young Adult
CONSIGNMENT SALE
Sept. 4 - 11
9 am - 6 pm • Closed Sunday
@ 110 Wilton Circle, Winchester
www.marketplaceconsignment.com
931-967-3544

Free delivery for orders of \$20 or more.

SMOKED PRIME RIB DINNER
EVERY FRIDAY NIGHT—\$12

HOLY SMOKES
BBQ Heavenly Scent

Mouth-Watering Slow Smoked BBQ
Pork • Chicken • Brisket • Ribs • Turkey
Catering Available for Any Size Event
Tue-Thu 11-8; Fri-Sat 11-9; Sun 11:30-8; closed Mon

335 West Main St.
Monteagle
(Across from CVS)
(931) 924-PORK
<www.holysmokesbbqtn.com>

Virginia Cunningham,
Affiliate Broker
45 Living Oak Lane
Winchester, TN 37398
(931) 967-6007 (Office)
(931) 967-6001 (Fax)

For Sale in Monteagle
314 N. Central Ave
\$124,900
Nice corner lot. Across from
The Assembly, east gate.
Beautiful stone fireplace.
Call (931) 841-5037 for showing appt.



Potter Kicks Off Lifelong Learning Program Sept. 9

The Academy for Lifelong Learning at St. Mary's Sewanee is pleased to announce its second season of "lunch and learn" programs begins on Sept. 9 with Bran Potter and ends on Aug. 11, 2011, with storyteller Violet Reid. In between, there are nine other lectures and one field trip.

This year, all programs will be on the second Thursday of each month at noon. Annual dues will remain at \$10 per person, and luncheon prices remain \$10. Bringing your own lunch is still an option. Reservations are only necessary if you wish to purchase a box lunch. Lunch reservations for the Sept. 9 program with Bran Potter, "Sewanee Was a River: The Geology of the Cumberland Plateau," are due by Friday, Sept. 3.

Potter is Snowden Professor of Geology at the University of the South. He received both his master's and his Ph.D. from the University of Massachusetts. He was recognized by the Society of Sewanee Scholars as the Professor of the Year for 2009-10. In 2002, he was named Tennessee Professor of the Year by the Council for the Advancement and Support of Education. His primary research interest is documenting the Cumberland Overthrust of the Southern Cumberland Plateau.

For lunch reservations, call St. Mary's Sewanee at 598-5342 or e-mail <stmaryssewanee@bellsouth.net>.

Future programs include: Oct. 14, Bob Keele, "An Historical Perspective on Midterm Elections"; Nov. 11, Brown Patterson, "C.S. Lewis as a Mentor"; Dec. 9, Rebecca Wright, "Bible Translations and Why They Matter";

Jan. 13, Field trip to the McCrory Hall for the Performing Arts at St. Andrew's-Sewanee, "A Visit with Teddy Roosevelt" with interpreter Joe Wiegand; Feb. 10, David Hiebert, "Walking Wounded: The Many Faces of PTSD [post-traumatic stress disorder]"; March 10, Walter Nance, "The Evolution of Language in Homo Sapiens: How Did It Happen So Rapidly?"; April 14, William Longwell, "Reflections on Africa: A Continent of Contradictions"; May 12, Kelly Oliver, "Women as Weapons of War: Iraq, Sex, and the Media"; June 9, Walter Merrill, "Sundays with Bob: Lessons Learned from a Master Teacher"; July 14, Nancy Boone Allsbrook, "1600's One-Hit Wonder: Remixed, Revamped, and Revisited"; and Aug. 11, Violet Reid, "The Legend of the Blue Bonnet."

Anne Davis and Elaine Goleski, program coordinators, look forward to another successful year. For more information, contact Davis at (931) 924-4465 or Goleski at 924-3227.

DREMC Annual Meeting Elects Officers

An estimated 225 members and guests attended Duck River Electric Membership Corporation's (DREMC) Annual Membership meeting on Saturday, Aug. 21, in Franklin County High School's auditorium to elect directors, hear business reports and honor those who served in various capacities with the cooperative.

Elected to serve three-year terms on the DREMC Board of Directors were Baxter White, Zone 1, Coffee and Warren counties; Buford Jennings, Zone 3, Moore and Lincoln counties; John Moses, Zone 5, Marshall and Giles counties; and Robert DuBois, Zone 6, Maury, Hickman, Lawrence, Lewis and Williamson counties. Laura Willis was reappointed to represent the University of the South for Zone 2.

A reorganizational meeting of the board was held immediately following the annual meeting and Brent Willis from Coffee County was re-elected chair. Jennings was elected vice-chair, Moses as treasurer, and Barry Cooper as secretary.

Focusing on one of the 7 Cooperative Principles, "Commitment to Community," Brent Willis noted that DREMC was recently made aware of plans to establish an Agricultural Learning Center at Franklin County High School. The FCHS vocational agriculture program has been given the opportunity to apply for matching grant funds in the amount of \$150,000 from the Tennessee Department of Agriculture for the construction of new facilities that will enhance the

educational opportunities of students in the county, as well as members of the community. These grant funds, if approved, will be matched by some \$200,000 in local funds solicited from the community to build the learning center. Also envisioned in the project are facilities for soil testing, composting, gardening and harvesting, equipment demonstrations, integration with academic and special education classes, artificial insemination, embryology, genetics, animal and plant nutrition and crop and forage analysis.

Brent Willis announced to the audience that the DREMC Board of Directors agreed to contribute \$5,000 toward the project, along with a matching contribution of \$5,000 from the Tennessee Valley Authority. Rebecca Sharber, the Franklin County director of schools; Diana Spaulding, FCHS principal; Fonda Alsup, FCHS vocational agriculture instructor, and Forrest Duncan, president of the FCHS FFA Chapter, were present to accept the check for \$10,000 from Jim Keiffer, TVA Middle Tennessee general manager of customer service, and Willis. Sharber expressed her gratitude to DREMC and TVA for their generous contribution to the fund raising efforts, emphasizing that these initial contributions will be very helpful as the campaign to solicit local contributions gets underway.

www.sewanee-messenger.com



Civic Association Co-presidents Theresa Shackelford and Elizabeth Duncan

Civic Association Meets September 7

The 2010-11 season of the Sewanee Civic Association begins on Tuesday, Sept. 7, in the Sewanee Inn with John McCardell, Sewanee's new vice-chancellor, as guest speaker. This year marks a break with tradition, as this historic Sewanee group moves its meeting schedule to a more flexible and shortened calendar.

The Civic Association is the governing body for the Sewanee Community Chest, the charter organization for Sewanee Boy Scout Troop 152 and the selection committee for the annual Community Service Award.

The association will meet four times for dinner with a speaker program during the academic year: September, November, February and April.

September's meeting will begin with wine and dinner at 6:30 p.m. in the main dining room of the Sewanee Inn. The menu created by SAS Aramark director and chef Emily Wallace will feature mixed green salad, tomato and goat cheese tarts, spinach aida, salmon filet with strawberry balsamic vinaigrette, wild rice, dessert and tea and coffee. Cost for the meal is \$10 and may be paid at the door.

The cost to join the Civic Association has been changed to a yearly fee of \$5. Reservations are welcomed, either for a standing reservation or for individual dinners, and at this time may be sent to <eduncan44@gmail.com>. All are welcome and a reservation, while helpful for planning purposes, is not required.

Scratch & Patch
COLLISION CENTER

24-HOUR TOWING NOW AVAILABLE!
620 David Crockett Hwy., Winchester

OWNER: Michael Penny **Ph. 931-962-4556**
931-224-1857 **Cell 931-224-1857**
WE ACCEPT MOST CREDIT CARDS! **Fax 931-962-4536**

June Weber
Gooch-Beasley Realtors

Serving the Sewanee and Monteagle area with quality real estate service:
-39 years of experience
-Mother of Sewanee alumnus

gb **www.gbrealtors.com** **juneweber@bellsouth.net**
June Weber, CRB, CRS, GRI Broker **931.636.2246**
GOOCH-BEASLEY REALTORS **931.924.5555**

SEWANEE AUTO REPAIR
—COMPLETE AUTO & TRUCK REPAIR—

- Tune-ups
- Tires (any brand)
- Tire repair
- Batteries
- Computer diagnostics
- Brakes
- Shocks & struts
- Steering & suspension
- Belts & hoses
- Stereo systems installed

All Makes & Models • Service Calls • Quality Parts
ASE Master Certified Auto Technician • 25 Years Experience
7 to 5 M-F • (931) 598-5743 • Across from Regions Bank

BOOK BRAKE
Used and Collectable Books

HOURS: Tues - Thurs @ 3:00 to 7:00 P.M.
Friday @ 3:00 to 9:00 P.M.
Saturday @ 10:00 A.M. to 9:00 P.M.

228 S. Tennessee Ave., Cowan, TN 37318 | 931-636-5752

Joseph's Remodeling Solutions
A division of Sumpter Solutions, LLC

MISSION STATEMENT: To use our collective strengths and expertise, along with the highest quality materials available, for customer renovations, additions, drainage and rainwater needs in a safe and positive environment, being ever mindful of our impact on our community and our world.

WHO WE ARE: Our team includes Joseph and Alyssa Sumpter and five dedicated and experienced employees, who are ready to tackle projects of any size.

10 STRENGTHS:

- Most work is done by our own crew, made up of folks you will trust having in your house. We have carefully chosen each member of our team and each sub-contractor.
- We love remodeling and additions, and these are our specialties.
- Safety is always paramount on our sites for our crew, our customers, and guests to the site. We are O.S.H.A. certified and covered by workers compensation insurance. We are trained in first aid and CPR. We don't sign insurance waivers.
- Job-sites are kept neat and clean. We don't smoke. We don't leave trash in your house.
- We are sensitive to mold and mildew concerns.
- We give careful attention to low-maintenance and high-quality finishes.
- We are highly experienced at restoring and recreating historic trim and details with on-site milling options.
- We are experts at insulating and air-sealing challenging buildings.
- We also specialize in drainage and rainwater collection systems.
- We are certified by the National Association of Home Builders as Certified Green Professionals. We can be as green as the customer wishes.

Call today for a consultation.
Visit our website at www.sumptersolutions.com.

598-5565

CERTIFIED PROFESSIONAL NAHB

Sewanee Union Theatre

Sewanee Union Theatre This Week
Wednesday–Sunday, September 1–5, at 7:30 p.m.
Get Him to the Greek
 109 minutes • R • Admission \$3

Ambitious young record company intern Aaron Green (Jonah Hill) will let nothing get in the way of his planned rise to the top in the music business—not even the unruly rock star (Russell Brand) he must escort to Los Angeles for the start of his anniversary concert. Doing whatever it takes to get the rocker from Point A to Point B, Aaron encounters all manners of mishaps in this comedy directed by Nicholas Stoller and produced by Judd Apatow. (www.netflix.com)

Sewanee Union Theatre Next Week
Wednesday & Friday–Sunday, September 8 & 10–12, at 7:30 p.m.
Letters to Juliet
 105 minutes • PG • Admission \$3

By responding to a letter addressed to Shakespeare's tragic heroine Juliet Capulet, a young American woman (Amanda Seyfried) vacationing in Verona, Italy, sets in motion a series of events that leads her—and the mis-sive's lovelorn author (Vanessa Redgrave)—in search of romance. Directed by Gary Winick, this deeply tender and uplifting drama also features Gael García Bernal and Franco Nero. (www.netflix.com)

Your ad could be here!

BUG PROBLEMS?

We can help! Call us for a free inspection!
BURL'S TERMITE & PEST CO.
 TERMITE—PEST—VAPOR CONTROL
 Bonded • Insured • Home-Owned & Operated
 117 Bypass Road, Winchester
(931) 967-4547
 Charter #3824 • License #17759





ROB MATLOCK
CONSTRUCTION COMPANY
NEW HOME BUILDING
AND REMODELING

MEMBER, U.S. GREEN BUILDING COUNCIL

PHONE 931-598-5728

MATLOCK

State Licensed • Fully Insured

HEAVEN ON EARTH...
 NOW AVAILABLE IN SEWANEE



Lost Cove photography courtesy of Stephen Alvarez.

The Cumberland Plateau is the world's longest hardwood forested plateau. Widely considered one of the most biologically rich regions on earth. Rivaling the biodiversity of tropical rainforests. It is the home of Myers Point.

Seize your once in a lifetime opportunity! Many will call it a great investment. Others will call it the perfect community of like-minded neighbors. For all who desire to live surrounded by nature, history, beauty, quality and serenity, you'll want to call it home.

- 480-acre private gated community
- 24 exclusive home sites; lakeside living or bluff vista life
- Timeless, organic, craftsman architecture standards
- Land Trust of Tennessee perpetually protected forests
- Over four miles of walking and riding trails
- Community barn, pastures, resting benches, and fire pit
- Panoramic views of Champion Cove, Lost Cove and the Cumberland Plateau
- Minutes from The University of the South



For more information call John Currier Goodson
 at (931) 968-1127 or visit our website: www.myerspoint.com

©2010 Myers Point, LLC. All rights reserved.



Performing in the Community Playhouse Inc. production of "It's The 1940s Radio Hour!" are (L–R) Derrick Minnick, Tony Graham, Lucy Majors, Terry Bradford, Emily Barnes, David Ford, Courtney Warren and Jim Zidan.

Enjoy 1940s Big Band Music in Community Playhouse Production

In September the Community Playhouse Inc. of Tullahoma will go live from the fabulous Hotel Astor in New York City, as it presents Walton Jones' nostalgic ode to the glory days of big band music, swing dancing and the backstage antics of a live radio show in "It's The 1940s Radio Hour!" Performances will be Sept. 17, 18, 24 and 25 at 7:30 p.m. and Sept. 19 and 26 at 2 p.m. in the South Jackson Civic Center. For reservations call (931) 581-7767.

Set against the backdrop of World War II, "The 1940s Radio Hour" follows a group of broadcast has-beens and wannabes as they attempt to make it big on the "Mutual Manhattan Variety Cavalcade." The play's composition mimics that of an actual radio broadcast, with backstage hands, musicians and performers straggling

in, preparing for broadcast and, at the top of the hour, going live. The production features nearly two dozen classic songs, including "Blue Moon," "Boogie Woogie Bugle Boy" and "Old Black Magic," as well as comedy segments, radio plays and period commercials.

"They're all grade-B players—taxi driver, waitresses, secretaries—but this is the thing that they love to do," says director Ford. "It is just like a real local performance but you get to see the behind the scenes. We see them come into the studio, work their magic for an hour, celebrate great music and comedy, and then everybody goes home. It's a real slice of life, 1940s style."

Playhouse to Hold Auditions for "Our Town" Next Week

Tullahoma's Community Playhouse Inc. announces auditions for its production of the Pulitzer Prize-winning play "Our Town" by Thornton Wilder, one of the most performed and revered classics of the American theatre. The play, directed by William Baxter, features a large cast and includes several memorable roles. A wide range of ages and types will be needed. Auditions will be held at 7 p.m. on Sept. 13, 14 and 16, in the Rehearsal Hall in the South Jackson Civic Center. Performance dates are November 12, 13, 14, 19, 20 and 21.

"Our Town," set in mythical Grover's Corners, N.H., has been a perennial favorite since its premier in 1938 because its setting and characters are so much like ordinary towns around the United States. It has the one ingredient necessary for a literary work to become great: universality. The play's themes apply to everyone everywhere. In addition, the simple presentation on a nearly bare stage with only a few props and no backdrops underscores universal themes, inasmuch as there are no representations of structures or landscapes associated with specific locales. Grover's Corners could be anywhere.

For information contact William Baxter at (719) 839-1623 or <wbaxter@wcnet.org>.

Chikamaka Band Potluck Saturday

The Chikamaka Band of American Indians will hold a social and coordination meeting for Mountaineer Days. Chikamaka members and Native Americans of Chikamaka (Chickamauga) descent are invited to the monthly meeting and potluck social on Saturday, Sept. 4, at 2 p.m. in the Coalmont Community Center. The center is located at 60 Phipps St., just north of Hwy. 56. For more information call (800) 989-4691, or go to <www.chikamaka.org>.

Cowbell Thunder to Open for Reunion Concert, Sept. 11

Cowbell Thunder, a local band from Franklin County comprised of high school students, will be the opening band for The Uncalled For reunion concert on Sept. 11. The outdoor concert takes place in Rotary Park, next door to the Parks and Recreation Center, 557 N. Woodland St. in Manchester. Please bring a lawn chair.

Tickets are available from parents of Manchester soccer players, Manchester businesses: KK's, Manchester Recreation Center, Family Music Center, and Couch's in Tullahoma. Tickets will also be available at the concert. Visit <myspace.com/uncalledfor> or call (931) 308-8914 for information. For additional information on Cowbell Thunder, call Ben Ayers at (931) 967-9275.

Cowbell Thunder plays alternative rock and punk rock and has been featured at numerous events in Franklin County, including Music by the Lake, the Dogwood Festival, McCrory Hall at St. Andrew's-Sewanee School and the Franklin County Fair.

Band members are St. Andrew's-Sewanee School seniors Ben Ayers, Greg Singer, and Will Johannsson, and Tyler Wright, a freshman at Franklin County High School.

According to Ayres, leader of the band, this will be the largest audience any member of the band has experienced. An audience of 1,500 is expected to attend the reunion concert.

Church Exhibit at Huntsville Museum Through Sept. 9

Tom Church, local artist and regular exhibitor of fine wood turnings and furniture at Locals in Sewanee, is one of five artists selected to present work at the Huntsville Museum of Art "Vignettes" event through Thursday, Sept. 9. Church is presenting 11 works at the museum, including local and rare wood turnings and sculpted furniture. Church is the first three-dimensional artist to ever be included in this annual Huntsville show. The Huntsville Museum of Art is located downtown on 300 Church Street South, near Big Spring Park and VonBraun Civic Center.

For information visit <www.hsvmuseum.org/Pages/calendar_of_events.html> or call (256) 535-4350.

Church's work can be seen this fall at Locals gallery in Sewanee, Sept. 18–Dec. 23. This fall season features hand-blown glass and sculpture by Thomas Spake, and extraordinary walking sticks and staffs crafted by "Raydarr." Locals welcomes back rare copper works from G. Sanford McGee; hand-tooled boxes created by Susan Church with bronze sculpture by Jeanie Stephenson; stunning, functional art from salvaged materials found and sculpted by Clay Binkley; Jamey "Otis" Chernicky's forged steel and hammered iron; and unique landscapes and character paintings on a variety of surfaces by Jimmy Abegg. Locals is always available by appointment and opens with regular hours for the fall season on Sept. 19, Wed.–Sat., noon–5 p.m., with extra days and hours during special event weeks. For information on Locals, call 598-0400 or e-mail <localsgallery@att.net>.

LONG'S LAWN SERVICE

- landscaping & lawn care
- leaf removal • mulch

Local references available.
 Jayson Long



(931) 924-LAWN (5296)

SAS Exhibit Documents National Changes, Reception Sept. 9

St. Andrew's-Sewanee School Gallery will exhibit the work of Shane Darwent titled "The Flag in Our Hands: Seeking America in 2009." The gallery will host a reception for Darwent on Thursday, Sept. 9, 5-7 p.m. The reception is free and open to the public. Darwent will also offer a workshop for the community, "Self Portraits, Vintage Style," on Saturday, Sept. 11, from 9 a.m. to 4 p.m.



"Retired Signs—Dodge City, KS," archival inkjet print by Shane Darwent

Darwent spent the year of 2009 traveling and making photographs across the U.S. in an attempt to gather iconic images and unique perspectives from a nation in flux. With this project, he has received two artist residencies from the Ucross Foundation and the Jentel Artist Residency Program, both in Wyoming, and a project grant from the Chattanooga-based organization CreateHere.

For information and to register for the workshop contact Christi Teasley at <sasgallery@sasweb.org> or 598-5651, ext 3151. Gallery hours are 9 a.m. to 3 p.m., Monday through Friday and by appointment.

American Blues Musician Robert Belfour Performs Sept. 3



Robert "Wolfman" Belfour is a hard driving blues man in the North Mississippi hill country blues styles of R.L. Burnside, Mississippi Fred McDowell and Junior Kimbrough. His assertive vocals and accomplished playing are pure country blues. At nearly 70, Belfour's guitar-playing is mature and highly accomplished, his voice, clear and powerful, and the sound is pure country blues. Robert left the hills of North Mississippi years ago, but his music never did.

Belfour will perform in concert on Friday, Sept. 3, at 7:30 p.m. in the The Arts Center of Cannon County, 1424 John Bragg Hwy., Woodbury. Ticket prices are \$15 for adults, \$12 for seniors, students and groups of ten or more. For reservations or information visit <www.artscenterofcc.com> or call (615) 563-2787 or (800) 235-9073.

Belfour was born in a small plank house several miles south of Holly Springs, Miss., in 1940. The hill country where Robert was born has a distinctly different culture than the more famous Mississippi Delta and the blues from that region is strong and unique.

Belfour's first memory is that of his father playing a resonator guitar in a style similar to that of Charlie Patton. He ate at picnics held by Othar Turner, and at church, sung gospel songs led by Syd Hemphill. When free from chores, he could be found in the company of neighbor,

and future label mate, Junior Kimbrough.

In 1959 Belfour married Norene Norman and they moved to Memphis. A year later, he went to work for Choctaw Construction, a hard gig that lasted 35 years. In the 1980s Belfour began playing on Beale Street and in 1994, he had eight songs featured on the compilation album, "The Spirit Lives On, Deep South Country Blues and Spirituals in the 1990s." This led him to Fat Possum Records and his first album, "What's Wrong With You," released in 2000.

Visit the Sewanee
Food & Flower
GARDENERS'
MARKET



8 a.m. every Saturday at
the corner of Hwy 41A
and Hawkins Lane

Malde Talk Friday at University Art Gallery

The University Art Gallery will open the 2010-11 exhibition season with Pradip Malde's "Reflectance," a series of evocative platinum-palladium prints that juxtaposes uncanny images of ancient Greek sculpture with intimate photographs of the artist's family members. Malde will present his work in an artist's talk on Friday, Sept. 3 at 4:30 p.m. in the newly renovated gallery, located on Georgia Avenue. A reception will follow and the public is invited. The exhibition will be on view Sept. 3 through Oct. 3.

Sewanee's University Art Gallery is free, accessible and open to the public. Hours are 10 a.m.-5 p.m., Tuesday-Friday, and noon-4 p.m. on Saturday and Sunday. Call 598-1223 for information or visit <www.sewanee.edu/gallery>.



Poetry Reading by Reid Ward from New Chapbook

On Wednesday, Sept. 15, at 5 p.m. in the Bishop's Common Hearth Room, Reid Ward will share selections from his recently published chapbook, "The Atrophy of the Sun" (Pudding House).

Ward graduated from Sewanee in 2004 with a B.A. in English and has been writing poetry for years.

All proceeds from his book sales will go to Magdalene House, a two-year residential program in Nashville for women with histories of intense physical and psychological abuse, as well as drug addiction, and its non-profit business, Thistle Farms.

Don't Miss Cowan's Polly Crockett Festival

Come to historic downtown Cowan for the biggest event of the year! The 28th annual Polly Crockett Festival will be held Sept. 17-19 in Cowan. The event is fun-filled and educational commemorating one of Franklin County's most famous citizens! Polly Crockett was the wife of Tennessee's famous settler, statesman and soldier, Davy Crockett.

The festival features more than 100 juried arts and crafts, play are for kids, hands-on demonstrations, Civil War reenactments, horse & buggy rides, food vendors, music and games!

The Polly Crockett festival is one of Tennessee's finest small town events. For information call Franklin County Chamber of Commerce at (931) 967-6788 or visit <www.franklincounty-chamber.com>.



Artisan Depot Features Garrett Artwork

Roxane Binkley Garrett will be the featured artist at the Artisan Depot in Cowan in September and October. The Franklin County artist will exhibit her graphite drawings of rural scenes.

The public is invited to the opening reception for Garrett on Friday, Sept. 10, 5 to 7 p.m. in the Artisan Depot gallery located on 201 Cumberland Street East, Cowan.

The themes evident in Garrett's works are the familiar rural landscape of Middle-Tennessee and the importance of nature in an increasingly urban-industrial setting. Mediums used by Garrett include oils, watercolors, pen and ink and graphite pencil.

After receiving an associate's degree from Motlow State Community College, Garrett earned B.F.A. and B.S. degrees from the University of Tennessee at Chattanooga.

Her artwork won the Best of Show in the UT 2007 Student Exhibition. She was awarded the Lillian B. Feinstein Memorial Scholarship in 2007-08, for which she was included in the UT Cress Gallery exhibition. Her work has been exhibited at local galleries.

For information call (931) 636-0169.

New St. Mary's Book Available Locally

"St. Mary's, The Sewanee Sisters and Their School" is available at a cost of \$19.95 from the University Book and Supply Store, St. Mary's Sewanee and the Sewanee Trust for Historical Preservation, P.O. Box 21, Sewanee, TN 37375.



TUBILEE

Seamless Guttering

931-967-6007

The Ultimate in Leaf Control

FREE ESTIMATES AND INSPECTIONS

September 3 through September 9

OLDHAM THEATER

Winchester • 967-2516

Mon-Fri, 7 p.m. • Sat & Sun 2, 4 & 7 p.m.

Expendables (R) • Vampires Suck (PG-13)

MONTANA DRIVE-IN

Estill Springs • 649-3454

First feature begins at 7:30; second feature follows.*

I: Last Exorcism (PG-13) & Vampires Suck (PG-13)


II: Machete (R) & Expendables (R)

III: Going the Distance (R) & Other Guys (PG-13)

*Beginning Labor Day: first features only, Sun-Thru; double features Fri & Sat

Go to the website or call theaters for more information.

www.montanadrivein.com



August's
Sparkle Award
recipient is
Pete Haight,
age 8, of Sewanee!

Each month, Dr. Chris Mathews
draws the name of one member
of his "No Cavity Club"
from a hat!

For more information,
or call 598-0088.

LET US SPRAY.

Deer-proofing spray service to save your favorite plants!
Janet Graham, (931) 598-0822 or www.glorybeservices.com



GOOCH-BEASLEY REALTORS

9 College St. at Assembly Ave., Monteagle • (931) 924-5555
Peter R. Beasley II, Broker-Owner

www.gbrealtors.com



Owner Financing
WHERE MOTHER NATURE IS THE DEVELOPER! Gorgeous log home, 2 barns, on 11.71 acres. Walk to lake. Owner finance/lease option. MLS #1187216. **\$249,000.**



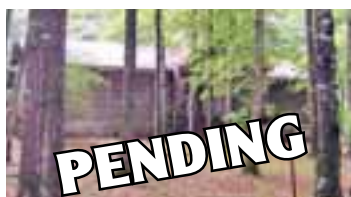
MATURE HARDWOODS ON SNAKE POND ROAD, SEWANEEN. 49.9 acres mature hardwood forest on beautiful rolling terrain with stream. Estimated 500 ft. road frontage. MLS #1140784. **\$199,600.**



WATERFALL VIEWS, 5 acres, **\$260,000.**
PRIVATE LAKE LOT, \$118,500.
PRIVATE LAKE LOT, \$98,500.
PRIVATE LAKE LOT, \$69,900.
WOODED, \$36,500.
WOODED, \$59,900.

LAND & COMMERCIAL Scenic View Tracts

- Dripping Springs
- Jackson Point
- Deerwood Dr.
- Bridal Veil
- Raven's Den
- Mills Hill
- Savage Bluffs



PENDING
CLIFFTOPS CABIN IN THE WOODS. 3 BR, 2 BA, Western Cedar. 3-car garage. Screened porch, gas logs. Beautiful wooded landscape. MLS #1114776. **\$195,000.**



NEW PRICE!
GORGEOUS ROLLING HILLS. 204+/- acre nursery completely stocked with 70 varieties of ornamental trees and shrubs. Stock worth more than asking price. Plus a 35-acre stocked lake. MLS #1133380. **\$400,000.**



HIGHLAND CHALETS with stunning views of Pelham valley. 5+ acre lots, modern with granite counters, walls of windows. MLS #1183440, **\$389,000.** MLS #1183431, **\$399,000.** MLS #1183432, **\$399,500.**

Jeanette S. Banks, Broker, (931) 235-8235, numa@blomand.net
Lex Orr, Affiliate Broker, (931) 841-0315, lexorriv@charter.net
June Weber, CRB, CRS, GRI Broker, (931) 636-2246, junejweber@bellsouth.net
Ray Banks, Affiliate Broker, (931) 235-3365, bankgrass@yahoo.com
Urla Wolkonowski, Affiliate Broker, (931) 636-2022, chrisurla@blomand.net

www.gbrealtors.com



CUSTOM TOUCHES, QUALITY CONSTRUCTION in this Battle Creek log home on Ridge Cliff cul-de-sac. View of neighboring small private lake from rear windows and deck enhance its charm. 2 BR, 2 BA, 1372 sf. MLS #1174578. **\$219,000.**



STUNNING VIEW BLUFF RIM. 5.6 acres in Cumberlands at Sewanee. Minutes from University, restaurants, shopping, I-24. MLS #1153997. **\$75,000.**



BIG CREEK LAKE FRONTAGE. Cabin, pavilion, separate residence, barns, garage, tack room on 8.73 acres. MLS #1122181. **\$350,000.**



NEW PRICE!
FOGGY MOUNTAIN COTTAGE BEHIND ASSEMBLY. Private 2 acres with brow frontage. Rustic but well-built 1336 sf with covered porch. 4 BR, 2 BA. Perfect hideaway for mountain weekends. MLS #1141560. **\$199,000.**



NEW PRICE!
BLUFF VIEW IN BEAR DEN. Stunning vistas from lofts and main floor suites. Library, 3 BR, 2-car garage. Rear deck with hot tub. MLS #1125623. **\$307,000.**



WELCOMING BARN LOG HOME IN CLIFFTOPS with all the extras! Porches, decks, a great kitchen, and the master suite is on the first floor! A must to see ... MLS #1150324. **\$425,000.**

PANORAMIC VIEW BLUFF VISTAS from \$89,700, lots are 5+/- acres. New prices for a new economy. MLS #1193023.

School Scoop



SES WELCOMES NEW TEACHER. Sewanee Elementary students and faculty are happy to welcome Candee Arnold to the school as its new kindergarten teacher. Welcome, Ms. Candee!



READING ROUNDUP. Cowan Elementary kicked off their reading program for this school year with the theme "Reading Roundup." Teachers performed a skit to get children excited about reading. Everyone is ready to "rope" in a good book.

The Franklin County Chamber of Commerce presents the 28th Annual

POLLY CROCKETT FESTIVAL

September 17-18-19 in Cowan

Arts-Entertainment-Food-Fun

Accepting applications for vendors and entertainment. Call 931-967-6788 for information.
www.franklincountychamber.com



MR. POSTMAN, INC.

209 South Jefferson St., Winchester
One block off square across from PO
(931) 967-5777 Fax (931) 967-5719

Professional Fingerprint Service

—SHIPPING AND PACKING SERVICES—
Authorized shippers for UPS and Fed Ex • Open Mon-Fri 9-5



MICHELLE M. BENJAMIN, JD Attorney & Counselor at Law

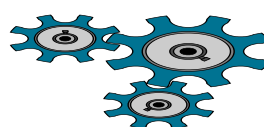
102 FIRST AVENUE, NORTH
WINCHESTER, TENNESSEE 37398

(931) 962-0006
(931) 598-9767

J & J GARAGE

COMPLETE AUTO REPAIR

- Import & Domestic
- Computerized 4-Wheel Alignments
- Shocks & Struts • Tune-ups
- Brakes
- Our Work is Guaranteed.
- OVER 26 YEARS EXPERIENCE.



Jerry Nunley
Owner

598-5470 Hwy 41-A between Sewanee & Monteagle • Monday-Friday 7:30-5:30

What's Cooking at SES?

**Monday-Friday,
Sept. 6-10**

LUNCH

MON: No classes—Labor Day.
TUE: Corn dog, tater tots, vegetarian beans; or grilled cheese sack or tuna tray.

WED: Chicken patty, peas/carrots, creamed potatoes, whole wheat roll; or baked potato tray or grilled cheese sack.

THU: Lasagna, corn, whole wheat breadstick, fruit cup; or chef salad tray or grilled cheese sack.

FRI: Barbecue sandwich, slaw, potato wedges; or grilled cheese sack.

BREAKFAST

MON: No classes—Labor Day.
TUE: Cinnamon roll, toast, cereal, fruit or juice.

WED: Yogurt, toast, cereal, fruit or juice.

THU: Waffles, syrup, toast, cereal, fruit or juice.

FRI: Assorted cereal, buttered toast, fruit or juice.

Milk or juice served with all meals. Menus subject to change.

FCHS Student Leaders for the New Year

Congratulations to new student officers and leaders for Franklin County High School's 2010-11 academic year.

The incoming freshman class officers are Grant Gipson, president; Haley Cardenal, vice president; Michael Richey, secretary; John Bailey, treasurer; Magan Holcomb, sergeant-at-arms; and Christopher Smith, historian/reporter.

Jacob Brown was selected as a delegate from Franklin County to attend Camp Anytown in Nashville this summer.

The new Interact Club officers are T.C. Simmons, president; Rachel Henn, vice president; Ashley Carson, secretary; Hannah Gipson, treasurer; and Faith Gipson, historian.



University freshmen signing the Honor Code in All Saints' Chapel. Photo by Lyn Hutchinson

WE'RE BACK FROM MARKET,

and great new gifts are arriving daily for wedding, babies, pets, birthdays, anniversaries and of course ... just because!

Sinclair's Emporium

Hwy 50, Decherd • 967-7040
Hours Tues-Sat 10-5:30
Gift Wrapping
Free Delivery

SAS Announces 2010–11 Claiborne Scholars

St. Andrew's-Sewanee School is pleased to announce the 2010–11 Claiborne Scholars. Each year, a number of Claiborne merit scholarships are awarded to new boarding students entering ninth or tenth grade. Qualified students retain their scholarships until graduation. To be selected as a Claiborne Scholar, a student must have a strong academic record and exhibit leadership qualities that reflect a sense of honor and a commitment to serving the community. This merit-based program is open to all families, including those who would not qualify for need-based aid. Contact the admissions office for information at 598-5651 or <admissions@sasweb.org>.

The Claiborne Scholars program is named in honor of Archdeacon William Sterling Claiborne, whose lifetime of service included providing education and health care in the areas surrounding Sewanee. Ordained as an Episcopal priest in Sewanee in 1901, he was instrumental in the founding of St. Andrew's School and re-establishing St. Mary's School for Mountain girls.

This year's recipients of the Claiborne Scholarship are:

Hanna Burr of Nashville is the daughter of Todd Burr, owner of Good Neighbor Auto, and Vivian Burr, musician and songwriter. Hanna is a member of the varsity soccer team at SAS. She previously attended Linden Waldorf School, where she played the violin, participated in theatre, and was a member of the swim and cross-country teams. Hanna has attended Girl Scout camp and loves to bake for her theatre group and teachers.

Rebecca Edison of Athens, Ga., is the daughter of University of Georgia professor Diane Edison. She will be taking theatre classes and playing soccer at SAS. Rebecca attended Athens Academy, where she played soccer and basketball and was a member of the Fellowship of Christian Athletes. Rebecca's Girl Scout troop published a book to include in the "Bundles of Joy" bags, which they made and gave to mothers of premature babies. She also helped raise money for Cerebral Palsy.

Jay Faires is the son of Eric and Debbie Faires of Huntsville, Tenn. Jay



St. Andrew's-Sewanee School's 2010–11 Claiborne Scholars are (back, L–R) Jacob Brashear, Katy Hansen, Jessica Honiker, and Bo Craig; (middle, L–R) Rebecca Edison, Sabel Overlin, Jay Faires, and Katie Mobley; (front, L–R) Hanna Burr, Belle Mueller and Lauren Baulch. Not pictured: Michael Rudolph.

plays seven musical instruments: guitar, bass, drums, harmonica, mandolin, dulcimer and piano. He will be a member of the Rock Ensemble at SAS as well as a cross-country runner. Jay, who has been playing the guitar since he was seven, gives lessons to the local Boys & Girls Club in his hometown. He has attended Steve Kaufman's Acoustic Kamp, a camp designed to gather musicians of all levels from around the globe with common goals of learning and playing. He is a Boy Scout and enjoys playing soccer and rock climbing.

Katie Mobley studied classical ballet, tap dance, jazz, pointe dance and modern dance. Katie will be working on an independent afternoon dance program at SAS. Katie helped her community clean up from a tornado and has volunteered at Redbird, a Methodist work camp that repairs homes in remote areas. She is a member of the Ballet Arts, Inc. and the United Methodist Youth Fellowship. Katie's mother, Rachel Mobley, is a mechanical engineer with Leroy Somer North America in Lexington, Tenn.

Belle Mueller has been riding horses for five years and has received numerous awards at competitive horse shows. She is a member of the varsity girls' volleyball team and will

be taking theatre as her winter afternoon program at SAS. Belle attended Richview Middle School, where she was a member of the choir and participated in musical productions. She was a student counselor and member of the Beta Club. Belle's parents are Steven Mueller, a U.S. Army pilot at Fort Polk, and Dianne Mueller, a nurse's manager for the Department of Defense in DeRidder, La.

Sabel Overlin of Paducah, Ky., is the daughter of Stacey Overlin, a teacher in the Paducah City Schools, and Kathleen Overlin, a commercial manager for Chubb Group of Insurance Companies. Among her academic classes at SAS, Sabel is taking Chinese and clay and is playing varsity soccer. She attended Paducah Middle School, where she played soccer, and served as Student Council representative and a member of the National Honor Society. Sabel served as a four-year acolyte, a reading camp volunteer, and a Project Hope Animal Shelter volunteer in her hometown.

This year's new Claiborne Scholars join six current scholars at SAS: seniors Jacob Brashear of Lexington, Ky., Katy Hansen of Wilmington, Del., and Jessica Honiker of Sevierville, Tenn.; junior Michael Rudolph of Woodstock, Ga.; and sophomores Lauren Baulch of Nashville; and Bo Craig of Shelbyville, Tenn.



Mountaintop Cottages

www.gbrealtors.com



CLIFFTOPS KELLY'S KABIN. Vaulted great room combines dining/kitchen. Mountain stone wood-burning fireplace. Covered porch. 2 BR, 1 BA. Stream, hot tub w/ acceptable offer. Great rental history. MLS#1174742. **\$229,000.**

HICKORY COVE COTTAGE IN CLIFFTOPS. 5 acres, 3 BR, 1 BA. Main floor master, screened porch, open deck for entertaining and grilling. Mountain stone fireplace. Easy to rent. MLS#1177319. **\$194,000.**



PENDING

TO SEE QUALITY HOMES IN CLIFFTOPS, SEWANEE OR AROUND THE MOUNTAIN, CALL RAY OR JEANETTE.

Jeanette S. Banks, Broker 931.924.3103
numa@blomand.net

Ray Banks, Affiliate Broker 931.235.3365
banksgrass@yahoo.com

GOOCH-BEASLEY REALTORS
www.gbrealtors.com 931.924.5555

FCHS Announces Homecoming Festivities

Franklin County High School is proud to announce the 2010 schedule of Homecoming festivities. In conjunction with the schoolwide theme "Uncover Your Deepest Potential," festivities this year will have a Mardi Gras theme. Members of the Winchester Merchant's Association are participating by decorating their storefronts in support of the Rebels and Homecoming. Stores will be judged on Tuesday, Sept. 14, and a winner declared for the "Most Rebel Spirit."

On Thursday, Sept. 16, at 6 p.m. there will be a block party on the square with a huge pep rally introducing the Rebels football team, varsity cheerleaders, the Rebel Pride Marching Band and the Dawg Pound Rebel. Coach Jim Carr will give the pregame pep talk. Throughout the evening there will be prize drawings,

discounts at various restaurants and shops on the square, face painting, multiple photo opportunities and a dunking booth. The "Boombox" will be there for music and dancing. Various clubs and organizations representing FCHS will have booths set up with items for sale.

On Friday, Sept. 17, festivities will continue at FCHS with class and club competitions. A parade will begin at FCHS on the bypass at 1 p.m. Retired FCHS teachers Marilyn Davidheiser (of Sewanee) and Darnell Day will serve as grand marshals for the parade. A queen's float will be reintroduced this year for the queen and her court. The queen will be crowned at a ceremony before the game beginning at 7 p.m. in the stadium.

Homecoming shirts are on sale now at FCHS through the Student Council for \$10 each.

A-1 CHIMNEY SPECIALIST

"For all your chimney needs"

Dust Free • Chimneys Swept, Repaired, Relined & Restored • Complete Line of Chimney Caps • Waterproofing Video Scanning



G. Robert Tubb II, CSIA Certified & Insured
931-967-3595

For Your Information...



PEDESTRIANS/BIKERS – EXERCISE CAUTION...

When you are out getting your exercise, following a few simple rules will keep you on the go. When biking on Sewanee sidewalks, cyclists should slow down when passing pedestrians since some may not hear a warning bike bell and know to step to the right. Walkers should walk on the left-hand side of the road, traveling against the traffic; bicyclers should travel in the right-hand lane, going with the flow of traffic. During the day, both walkers and bikers should wear clothing of bright, easily seen colors, and, from dusk on, wear light, reflective clothing. In any case, don't just assume drivers can see you. Be on the lookout for your own safety.



CONVENIENCE/RECYCLING CENTER HOURS

The Convenience Center, for household garbage, trash and recycling, is located on University Avenue by the golf course. Its regular hours are: Monday, 1–6 p.m.; Tuesday through Friday, 3–6 p.m.; Saturday, 8 a.m.–4 p.m.; Closed Sundays and on national holidays. There are recycling bins for metal, newspapers/magazines, plastic, plastic bottles and aluminum cans. Glass is not recycled here.



BE SAFE! OBEY THE BICYCLE HELMET LAW

Tennessee law requires all persons under the age of 12 to wear a helmet while riding a bicycle on any state road. University Avenue is a state road and, therefore, subject to the law. The act also contains provisions requiring restraining seats on bicycles for passengers who are children under 40 pounds or who are less than 40" tall.



PLANNING ON BURNING BRUSH?

You need to call the Sewanee Fire Tower (598-5535) to obtain a permit if you intend to burn brush between October 15 and May 15.



ATTENTION: MOUNTAIN BIKERS & HORSEBACK RIDERS

Be aware of each other on the forest roads and the Perimeter Trail. When attempting to pass riders, bikers should call out to the riders so as not to spook the horses, listen for special instructions from the rider, and pass with caution. When approaching from the opposite direction, bikers should dismount and allow horses to pass by.



PO BOX 794
MONTEAGLE
TN 37356

cell 931.205.2475
office 931.924.5997
fax 931.924.5996

PETER A. MOLLIKA
Licensed General Contractor

Sports Scoreboard

Fowler Center Update

Bill Barry, University facilities director and athletic business manager, announces the fall schedule for the Fowler Center building is as follows: Monday–Thursday, 6 a.m.–11 p.m.; Friday, 6 a.m.–9 p.m.; Saturday, 8 a.m.–9 p.m.; Sunday, 1–7 p.m.

The hours for the Fowler Center pool are: Monday, Wednesday, Friday: noon–2 p.m.; Tuesday, Thursday, 6:30–7:30 a.m., 12:30–2:30 p.m.; Monday, Thursday, 7–9 p.m.; Saturday, Sunday, 2–4 p.m.

The pool will be closed on Sept. 11; Oct. 2. On Oct. 12 it will be open 12:30–2:30 p.m. The pool will be closed for Fall break Oct. 15–19; Nov.

5–6; Nov. 13; Dec. 9–17. The dates for the exam schedule are yet to be announced.

Barry wished to emphasize: “Your ID card is very important for your use of the Fowler Center because of your safety while you are in the building. Always have your card for admission to the center. If you have a guest, they must have a guest pass. If you don’t have one you can request this from me,” he continued. “By this time you should have a sticker for your children over 14 years of age up to 21, and for your spouse if she or he doesn’t work for the University.”

For information call 598-1284.

Sewanee AYSO Report

On Aug. 28, Sewanee’s AYSO U-12 soccer teams completed a sweep of teams from Madison, Ala., with the girls winning 6-1 and the boys winning 6-0.

For the boys’ team, Sam Thomas, Sam Smith, and Blaise Zeitler led the scoring with very nice assists by Joseph McDonough, A.J. Mullins and Elliott Duncan. Dam McNair dominated midfield play and Draven Tate anchored Sewanee’s defense. Zachary Taylor and Jacob Hanson were stellar in goal. Both teams will be in action after Labor Day as they compete against teams from Alabama and Tennessee, so come out and support Sewanee youth soccer.

Epps and Moran Honored by IWLCA

The Intercollegiate Women’s Lacrosse Coaches Association (IWLCA) announced its 2010 Academic Honor Roll today and two Sewanee players

earned recognition. Senior Hanna Moran of Towson, Md., and Elizabeth Epps of Little Rock, Ark., were honored by the IWLCA for their achievements in the classroom. Epps graduated from Sewanee in May 2010.

A total of 184 student-athletes from 81 different Division III schools were named to the 2010 Academic Honor Roll. Honorees were nominated by their schools and must have reached at least junior status academically.

The Sewanee women’s squad was also recently honored by the IWLCA, as they were named an Academic Squad for their 3.115 team GPA. The Tigers finished the year with a 13-4 record.

Burnett Takes First in Churchmen’s Tennis Tourney

Stephen Burnett of Sewanee won the first place award in the Aug. 28 tennis tournament of the Episcopal Churchmen’s Conference held annually at DuBose Conference Center. Burnett won 18 games out of 22 played on the Sewanee outdoor courts. Twelve men participated from all three dioceses of Tennessee.

Expect the best, prepare for the worst and grin at what comes.

From “Two-Liners Stolen From Others” by Joe F. Pruett

Sewanee Realty

931.598.9200 www.SewaneeRealty.info
115 University Ave., Sewanee

Margaret Donohue,
Broker
931.636.5599

John Brewster,
Affiliate Broker
931.636.5864



MLS 998887 - 925 Dogwood Dr., Clifftops. \$199,000



BLUFF - MLS 1177179 - 668 Rattlesnake Spring Road, Sewanee. \$466,000



MLS 1158183 - 1815 Laurel Lake Dr., Monteagle. \$227,000



MLS 1189973 - 216 Kentucky Ave., Sewanee, \$219,000



BLUFF - MLS 1183505 - 2807 Deepwoods Rd., Sewanee. \$465,000



MLS 1203016 - 94 Maxon Lane, Sewanee, \$429,900

LOTS & LAND

Sarvisberry Pl	1207077	\$83,000
Bear Den Ct	1165221	\$97,000
Keith Springs Mtn	1166133	\$46,900
Browbend Dr	1166181	\$95,000
Browbend Dr	1166186	\$95,000
Browbend Dr	1166189	\$180,000
Bear Den Ct	981360	\$35,000
Bear Den Ct	981371	\$35,000
Bear Den Ct	981377	\$35,000
Saddletree Lane	892954	\$38,000
Saddletree Lane	892958	\$35,700
Saddletree Lane	892961	\$28,700
Jackson Pt. Rd	686392	\$29,000

RENTAL - Mississippi Ave., Sewanee, \$1400 monthly.



MLS 1191006 - 635 Alabama Ave., Sewanee. \$299,000



MLS 1193221 - 1425 Clifftops Ave., \$239,900



MLS 1176372 - 104 Morgan’s Steep, Sewanee. \$285,000



MLS 1071445 - 611 Huckleberry Place, Clifftops. \$339,000



MLS 1160269 - 231 North Carolina Ave, Sewanee. \$366,000



MLS 1094735 - 215 Shadow Rock, Monteagle. \$175,000



BLUFF - MLS 1101481 - 196 Oleander Lane, Sewanee. \$859,000



MLS 1094724 - 225 Shadow Rock, Monteagle. \$225,000



MLS 1142954 - 1200 Little St., Winchester. \$98,000



BLUFF - MLS 1198478 - 3335 Jackson Point Rd. \$324,900



MLS 1113783 - 120 University Ave., Sewanee. \$250,000



MLS 1151539 - Clifftops - 921 Poplar Place. \$675,000



MLS 1186739 - CLIFFTOPS BLUFF - 1323 Overlook Dr. \$795,000



MLS 1168430 - 62 Abbott Martin Lane, Sewanee. \$318,000



MLS 1137205 - BLUFF 121 Sherwood Trail, Sewanee. \$929,000



MLS 1170673 - 340 Wrens Nest, Monteagle. \$145,000



BLUFF - MLS 1162042 - 226 Rattlesnake Spring Lane, Sewanee. \$699,000



MLS 1124743 - 296 Sherwood Rd., Sewanee. \$107,000

BLUFF TRACTS

Saddletree Lane	1207074	\$ 85,000
Jackson Point Rd	1193094	\$ 99,998
Deepwoods Rd	1183507	\$185,000
Keith Springs Mtn	1166115	\$159,900
Keith Springs Mtn	1166132	\$126,900
Old Sewanee Rd	951522	\$221,000
Keith Springs Mtn	1153423	\$ 89,000
Jackson Point Rd	1111807	\$ 99,000
Jackson Point Rd	1111815	\$ 99,000
Jackson Point Rd	1099422	\$218,000
Jackson Point Rd	1101401	\$ 99,000
Lot 36 North Bluff	1064111	\$ 99,900
Saddletree Lane	836593	\$ 75,000
Raven’s Den	1015362	\$129,000
Jackson Point Rd	850565	\$ 80,000

FCHS Sports Highlights

The Franklin County High School girls soccer team triumphed over Cannon County High 6-0. Scoring for the girls were senior Rachel Henn (two goals), junior Hannah McDonald, freshman Sarah Coulson. The goal of the match was Brittany Morgan's header off an assist from Hannah Simmons.

The FCHS freshman football team marked a win over Columbia on Aug. 26 with a score of 8-0.



St. Andrew's-Sewanee School 11th-grader Sophie Register of Sewanee (left) sees action Aug. 26 against Mt. Juliet Christian. The Mountain Lions won, 6-1.

SAS Golf Report

The St. Andrew's-Sewanee varsity golf team teed off Aug. 24 in a match at the Hidden Valley Golf Course in Long, Ala. South Pittsburg H.S. (170, final score) and Richard Hardy School (205) also competed in the contest. The mighty Lions finished with a respectable 228.

Andrew Heitzenrater finished at 50, followed by Justin Stubblefield (57), Casey Willis (58) and William Gilchrist (63).

On Aug. 26, the Mountain Lions traveled to Mt. Juliet for a match against region opponent Mt. Juliet Christian Academy. Eighth-graders Willis, Heitzenrater, Stubblefield and Gilchrist teed off. The final match tally was MJCA 180, SAS 246. Willis led the way for the Lions with a final score of 50, followed by Heitzenrater with a 52.

HOME GAMES

Today, Sept. 2
 4 pm SAS V Girls' Soccer v Chattanooga Central HS
 4 pm SAS Co-ed Golf v Riverside Christian Academy
 4:30 pm SAS V Volleyball v Riverside Christian Academy
 6:30 pm FCHS 9th-gr Football v Warren Co
 6:30 pm SAS V Volleyball v Donelson Christian Academy
Friday, Sept. 3
 4 pm Women's Soccer v Berry College (GA)
 7 pm FCHS V Football v Shebyville HS
Saturday, Sept. 4
 Sewanee Invitational
 10 am Women's Cross Country Meet
 11 pm Men's Cross Country Meet
Tuesday, Sept. 7
 4 pm SAS Coed Golf v Grundy Co HS
 4:30 pm SAS MS Volleyball v Fayetteville Jr High
 5 pm FCHS JV Girls' Soccer v Coffee Co
 5:30 pm SAS MS Girls' Soccer v Cascade MS
 7 pm FCHS V Girls' Soccer v Coffee Co
Wednesday, Sept. 8
 6 pm SAS V Volleyball v St. Cecelia Academy
 7:30 pm Women's Soccer v Lee Univ (TN)
Thursday, Sept. 9
 4:30 pm SAS MS Girls' Soccer v Webb School
 6 pm SAS MS Volleyball v Riverside Christian Academy

SAS Varsity Volleyball Team Wins

The St. Andrew's-Sewanee varsity volleyball team won the season home opener Aug. 26 against Berean Academy, 23-25, 25-12, 25-19, 20-25 and 6-15. SAS is 2-0 on the season.

SAS Mountain Lions were the champions of the 8th Annual Bledsoe County High Opening Season Invitational Tournament. On Aug. 28, SAS defeated South Pittsburg in the semi-final round of the single elimination tournament 25-21, 15-25, 14-16 to advance to the championship game against Grundy County High School. They defeated GCHS 16-25, 25-18 and 10-15. Senior Catelyn Hutcherson and freshman Jenna Burris were named to the All-Tournament Team. Senior Elle Gilbert received the Most Valuable Player award for the tournament.

In pool play, SAS defeated Lookout Valley 24-26, 25-23 and 15-7; Bledsoe County 25-23, 18-25 and 6-15; Grundy County High School 8-25 and 13-25; Marion County 25-11 and 25-19; and South Pittsburg 25-11 and 26-24. Gilbert led the Mountain Lions with a total of 14 aces, 76 kills, 18 blocks and 35 digs for the tournament.

Britni Nunley, Hannah Wimberly and Christiana True had solid serving games. Sam Stine and Emily Thomas did a great job of running the offense.



St. Andrew's-Sewanee School 10th-grader Emily Thomas of Sewanee concentrates on the ball during the girls varsity volleyball match against Berean Academy on Aug. 26. The Mountain Lions downed BA 3-2.

Hutcherson, Madison Culpepper and Allyson Crandall led the defensive effort. Burris was second in kills and blocks for the Mountain Lions. SAS is 9-0 on the season.

SAS Middle School Girls Soccer Report

Last week the St. Andrew's-Sewanee Middle School girls soccer team opened their 2010 season on the road, facing Community School of Unionville on Aug. 24, and Fayetteville Junior High School on Aug. 26. Against Community, seventh-graders Isabel Butler and Abigail Owsley, both of Sewanee, split time in net, earning six and one saves respectively. Seventh-grader Sam Weigand of Sewanee had some good chances at the opposite end with help from eighth-grade defenders Cameron Azarbarzin of South Pittsburg and Eva Miller of Sewanee. Despite having stepped up their play, the girls fell to Community 0-6.

Against Fayetteville Junior High School, the play raised even higher. With Butler and Owsley in goal once

more, earning five and three saves respectively, the only shots that could get in were at point blank range. Azarbarzin played out of herself on defense. Anna Stapleton of Sewanee was a rock star up top for SAS, creating many attacking opportunities. FJHS got on the board first with two goals. The Lady Mountain Lions would not let that last long as Miller hit a corner kick into the box that was hammered over the goalkeeper by Owsley. Coming out the second half, SAS had fire in their eyes. Azarbarzin cleared a long ball that was run down by Weigand for the second goal. The play was back and forth, but SAS ran out of time, losing 2-5.

"Overall, it was great to see us step up our play and control the action," said coach Andrea Fisher.



CAMPBELL CONSTRUCTION

Owner: Tommy C. Campbell
 Call (931) 592-2687

DRIVEWAY WORK • GRAVEL HAULING • DOZER & BACKHOE

plus Concrete Work • Water Lines • Clear Lots • Garage Slabs
 • Sidewalks • Porches & Decks • Topsoil & Fill Dirt • Roofing
 • Additions to House • Septic Tanks & Field Lines

Licensed General Contractor

17 Lake O'Donnell Rd

Steve Green Construction

Insured

Let me show you my local projects!

Office (931) 598-9177

Mobile 308-7899

E-mail sgc@bellsouth.net

Happy Hour Thursdays & Saturdays 4 to 8

Daily Lunch Specials!!!
Fiesta Grill
 Mexican Restaurant

former Sidetrax location in Cowan • 226 S. Tennessee Ave • 962-9939
 Sun-Thu 11am-10pm; Fri-Sat 11am-10:30pm

Overtime with Coach Shack

By John Shackelford

Our athletic seasons on the Mountain are now underway, and the games have begun. The real competition, the season that has no beginning and no end, presents an important challenge for our University coaches. It is the season of recruiting, perhaps our most important task. For thousands of high school juniors and seniors, the cycle begins with Internet searches, college guides and advice from parents, teachers and friends. They move from behind those computer screens and book pages out into the campus tour circuit and hope to discover what will be the place they will call home over the next four years. For coaches and our tireless admissions staff, there is always a new junior class and an inquisitive group of seniors who are ready to poke and probe the campuses to see what turns them on.

Athletics can be a great draw for a student—to have the chance to continue to compete, to represent your school, to work closely with a coach and a new set of teammates and to live the championship experience. Sewanee is fortunate to offer 24 sport teams to our student body and to be able to provide great athletic facilities and talented coaches to work with our student-athletes. The athletic staff and the admissions office work hand-in-hand to locate, encourage, educate, recruit and examine the thousands of prospective students each year.

Many years ago, as a new parent, on a walk across a crowded and busy parking lot, I reached down to grab my toddler by the hand and keep her safe. I discovered what many parents find. The hand I grabbed quickly wanted to pull away and assert its independence. When I simply let my arm fall by my side and extended a single finger within reach, my daughter's hand followed and grasped the finger like a magnet, providing a safe connection.

I have found over the years, that is often what this Mountain represents for a prospective student. This Plateau sits here as an invitation much like that extended finger, offering comfort and an opportunity for independence. It is a home where students can discover who they are in the classroom, the playing field and the many trails of the Plateau. Each year over 400 student-athletes take the field to represent Sewanee in competition. Another thousand high school senior athletes (roughly a third of our applicants) will apply for the chance to do the same. Our coaching staff is here, ready to encourage, to educate, to coach and to challenge these amazing, intelligent, willful, curious and independent kids until they are ready to let go.



Russell L. Leonard

ATTORNEY AT LAW

Office: (931) 962-0447

Fax: (931) 962-1816

Toll-Free (877) 962-0435

rleonard@netcomsouth.com

315 North High Street
 Winchester, TN 37398

Tell them you saw it HERE!

The best place in town
 for breakfast all day!

Pick up a hot Breakfast Biscuit
 for only \$1.75!

The blue chair Bakery & Café

41 University Avenue, Sewanee (931) 598-5434
 www.thebluechair.com
 Monday through Saturday 7:00 – 3:30 / Closed Sun



“What worries you, masters you”

—John Locke

Stillpoint
 Individual and Group Psychotherapy Massage and Bodywork

Maryellen McCone, M.A. Individual & Group Psychotherapy **636-4415**

Robin Reed-Spaulding, Ph.D. Clinical Psychologist **636-0010**

Kate Gundersen, LCSW Individual Psychotherapy **235-4498**

Regina Rourk, LMT, CNMT Massage and Bodywork **636-4806**

Betty Phillips, M.A. Individual & Group Psychotherapy **598-5151**

Bethany Lohr, Ph.D. Clinical Psychologist **598-0906**

Nature Notes

Meadow Abounds with Flowers and Prairie Grasses

On Aug. 24, **Jean** (pictured below) and **Harry Yeatman**, **Mayna Nance** and **Joy Dog** went to the meadow of the South Cumberland State Park near Monteagle to observe flowers and prairie grasses. They enjoyed seeing large numbers of yellow Partridge Pea (bottom photo), and many kinds of Goldenrods on the sides of the path. Scarlet Lobelia (top left) was in bloom on the dam of the pond, and Blue Lobelia was in the grassy areas, along with Black-eyed Susans (top right) and Maryland Meadow Beauties. The tall Joe Pye Weeds were in full bloom, attracting Tiger Swallowtail butterflies and Silver-Spotted Skippers. A few tall Iron Weeds were in the tall grasses.

The tall grasses were outstanding. Big Bluestems with "turkey foot" racemes at their tops and Little Bluestems, Indian Grass and switchgrass dominated the area. These western U.S. grasses had been planted from places like May Prairie [a 250-acre natural area in Coffee County near Manchester] years ago. This area was formerly a golf course, but now is enjoyed by all who love the tall plants and learn from them.



Results of Regional Water Supply Planning Study from page 1 . . .

was stable, with only slight growth projected through 2030. Sewanee's and Big Creek's water supplies are sufficient to meet the projected demand through 2030. Sewanee's demand is currently .303 million gallons per day (mgd) with a yield of .498 mgd and a projected demand of .349 mgd by 2030. Big Creek's demand is currently .881 mgd, with a yield of 1.093 mgd and projected demand of .940 mgd. Monteagle's present demand is .434 mgd, with a yield of .468 mgd. Tracy City's present demand is .471 mgd, with a yield of .347 mgd. Tracy City is supplementing its needs by buying water from Big Creek via a contract renewed on an annual basis. For both Tracy City and Monteagle, no increase in population was predicted.

Looking at the region as a whole, the present demand is 2.343 mgd, projected to increase to 2.507 mgd by 2030. The region's present maximum yield is 2.406 mgd.

Rohrbach went on to summarize the regional water supply alternatives identified by the investigation. At the present, for the short term, the region's needs can be met by improving interconnections between the utilities. Big Creek has investigated purchasing Ramsey Lake, which could yield up to .67 mgd. Raising the dam seven feet at Big Fiery Gizzard Lake would increase Tracy City's supply to 1.28 mgd. A new reservoir on Big Creek has a proposed maximum yield of 7.43 mgd. The proposed pipeline transporting water 220,000 feet from Watts Bar Lake in South Pittsburg to Monteagle would yield .6 mgd in Phase I and potentially 3 mgd in Phase II.

Big Fiery Gizzard Lake has a minimum release requirement of .65 mgd. Robert Baker with TDEC's Division of Water Supply commented that the minimum release requirement could be revisited. He noted that all Tennessee streams had designated uses, which ranged from sustaining the aquatic population to livestock watering, and that minimum release requirements maintained streams at the necessary levels.

Tracy Caldwell, engineer with Hydrologics, which specializes in

developing water supply planning models, discussed the reliability of the alternatives relative to meeting water supply needs through 2030. The goals for the South Cumberland Plateau model called for the storage in reservoirs to be no less than 20 percent, to allow for more severe drought than projected and seasonal fluctuations in demand. Caldwell noted that with respect to Sewanee's Lake Jackson, the maximum yield did not take into account water lost to the leak in the dam. The model's goals also called for minimizing the frequency utilities needed to implement drought plan conservation to an average of once every 7-10 years. (Historically, regional severe drought only occurs once every 80 years, with the last severe drought in 1930-31.) The scenarios proposed to meet the goals called for water transfers between utilities and for regionwide drought plan conservation when trigger levels were reached. Commenting on the rationale for limiting the frequency with which drought plan conservation was implemented, Caldwell pointed out that demand conservation lowered a utility's water sales revenues, which could make budgeting for repairs and improvements difficult.

Projections showed that Sewanee and Big Creek would fall below a 20 percent storage buffer once every 80 years, but these utilities could manage by reducing demand with conservation. Tracy City projections showed reaching 11 percent storage once every 16 years. Monteagle projections showed reaching 0 percent storage once every three years.

For the region, drought conservation measures alone would not be sufficient to maintain minimum storage levels at all utilities unless paired with water transfers among utilities; and even with water transfers, regionwide conservation would need to be implemented more frequently than once every 7-10 years to maintain 20 percent minimum storage levels. To meet the goals of 20 percent minimum storage and implementing water conservation no more frequently than every 7-10 years, the region needs additional water supply sources.

The Ramsey Lake purchase alternative met both goals, maintaining



Humane Society Pets of the Week Meet Tenderloin & Mystery

The Franklin County Humane Society's Animal Harbor offers these two delightful pets for adoption.

Tenderloin is a bouncy Jack Russell Terrier who just begs for attention. She would like a home where she has the opportunity to play, as well as lounge on the sofa with her people. Tenderloin is up to date on shots and spayed.

Mystery is a pretty kitten with an unusual white bib marking. Active and playful, she was raised in a foster home with children and dogs. Mystery is negative for FeLV and FIV, house-trained, up to date on shots and spayed.

Call Animal Harbor at 962-4472



for information and check out their other pets at <www.animalharbor.com>.

Please help the Humane Society continue to save abandoned pets by sending your donations to the Franklin County Humane Society, P.O. Box 187, Winchester, TN 37398.

State Park Events

Friday, Sept. 3

SPIDERS—Meet the ranger at Stone Door ranger station at 2 p.m. to learn to ID native spiders, including dangerous ones. Craft supplies will be available for spider web art.

BOULDER CROSSING HIKE—Meet seasonal ranger Aaron at the Collins West parking lot at 4 p.m. for a strenuous three-mile hike over beautiful rocky terrain to view the Collins River and Suter Falls. Along the way you'll ID native trees and wildflowers. Bring water, a snack and sturdy shoes.

NIGHT CANOE FLOAT—Experience the peace of Grundy Lakes at night and gaze at the stars reflected in the water. Meet at the Grundy Lakes main parking lot at 7:30 p.m. Please bring flashlights. Call the Visitors' Center to reserve space. Children will receive their own glow stick for participation, but they must bring their parents with them.

Saturday, Sept. 4

MOUNTAIN OAK LOOP HIKE—Meet seasonal ranger Aaron at Savage Gulf ranger station at 9 a.m. for a difficult 10-mile hike to some beautiful overlooks of Savage Gulf and Big Tree trail. Bring lunch, water, and wear sturdy shoes. This is a trek for seasoned hikers only.

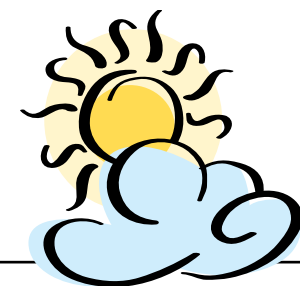
AQUATIC CRITTER HUNT—Hop in the creek at Grundy Forest at 2 p.m. to look for aquatic critters. The rocks are slippery, so wear something you don't mind getting wet.

OUTDOOR PREPAREDNESS—Meet ranger Chase at Stone Door ranger station at 2 p.m. to learn about supplies you need to have with you on the trail, whether out for an hour or a week. Learn about survival tactics in case you become stranded in the wilderness.

EVENING CANOE FLOAT—Watch the sun set as you float peacefully on the lake. Meet at the Grundy Lakes main parking lot at 6:30 p.m. Space and equipment are limited, so call the Visitors' Center to reserve a space.

Sunday, Sept. 5

ANIMAL TRACKS—Meet ranger Chase at Stone Door ranger station at 2 p.m. Learn about native animals and



Weather

DAY	DATE	HI	LO
Mon	Aug 24	84	63
Tue	Aug 25	83	63
Wed	Aug 26	83	65
Thu	Aug 27	85	66
Fri	Aug 28	86	67
Sat	Aug 29	84	70
Sun	Aug 30	79	70

Week's Stats:

Avg max temp =	83
Avg min temp =	66
Avg temp =	72
Precipitation =	0.00"

August Monthly Averages:

Avg max temp =	86
Avg min temp =	69
Avg temp =	74
Total Precipitation =	5.65"

August 52-Year Averages:

Avg max temp =	84
Avg min temp =	65
Avg temp =	74
Precipitation =	4.12"
YTD Rainfall =	38.19"
YTD Avg Rainfall =	41.19"

Reported by Nicole Nunley
Forestry Technician

create your own field guides to take with you to ID tracks left around the park and your yard.

BAT AND MOTH GAME—Ever wondered how bats find their food? Find out what it's like to be a bat as you play this fun game! Meet at the Visitors' Center at 2:30 p.m. Suitable for preschool age and up. Children, bring your parents.

SLIDESHOW—Meet ranger George at Savage Gulf ranger station at 3 p.m. for an informative slideshow on the Savage Gulf/ Stone Door area.

FIND THAT TREE—Use your sense of touch and smell to learn about nature close-up as you play this game. Meet at the Visitors' Center at 3:30 p.m. For preschool kids and up.

Monday, Sept. 6

HORSEPOUND/SUTER FALLS HIKE—Meet seasonal ranger Aaron at the Collins West parking lot at 9 a.m. for a strenuous six-mile hike to beautiful Horsepound and Suter Falls. This is a tough hike, so bring plenty of water, a snack, and wear sturdy shoes.

CHALK DRAWING—Meet at the Visitors' Center pavilion at 2 p.m. to draw your favorite animal, etc.

HIKERS' CHALLENGE—Challenge yourself with the difficult Climbers' Loop hike near Foster Falls. Meet in the Foster Falls parking lot at 4:30 p.m. Bring water and bug spray.

For more information on these and other programs offered by South Cumberland State Park, call (931) 924-2980 or visit the website at <www.friendsofscsra.org/activities.htm>.

The Visitors' Center is located on Highway 41 South between Monteagle and Tracy City and is open seven days a week, 8 a.m.-4:30 p.m.

Bradford's

Nursery & Landscaping

Full Service Landscape Company
Residential & Commercial

FREE ESTIMATES
Quality Work at Affordable Prices

Stop By Our Fully Stocked Garden Center
Largest Selection in the Area
Design Available

Richard, Nancy & Matt Bradford, Owners
Over 61 Years Combined Experience

Mon-Sat 9:00-5:30 931-967-1626
1136 Dinah Shore Blvd. 580-1626
Winchester 607-5629



Fred Saussy, General Contractor

Residential - Remodeling - New Construction
Licensed & Insured

496 Kennerly Rd • Sewanee, TN 37375 • (931) 598-5981
fredsaussy@gmail.com • www.sausseyconstruction.com

Classifieds



CALL US! • 598-9949
Classified Rates:
 \$3.25 first 15 words,
 10 cents each addl. word
Now you can charge it!
(\$10 minimum)

EAGLE LANDSCAPING & LAWN MAINTENANCE CO.

Now Offering Specials for SUMMER CLEANUP!
 We offer lawn maintenance, landscaping, hedge/tree trimming & more!
Please call for your free estimate
(931) 598-0761 or (931) 636-0383

THE HAPPY GARDENER: Planting, weeding, mulching and maintenance of garden beds. Call Marianne Tyndall, 598-9324.

Tomorrow, Sept. 3:
Happy 50th Birthday, Richard Ellis!



DRIVERS - TOP PAY WITH REGIONAL OPPORTUNITIES
 CDL Training in Atlanta, GA
 Teams - New pay up to 48cpm!
 Central Refrigerated:
800-543-4023

Clifftops Home in Peaceful Surroundings for Rent
 Sleeps 10. Available weekends (2-night minimum). Special occasions. Fully furnished. 251-937-5942 (ask for Toni) or ttupen@gmail.com.

MULTI-FAMILY YARD SALE: Saturday, Sept. 4, 8:30 a.m. - 12 noon, 240 Maple Street, Sewanee.

BONNIE'S KITCHEN
Real Home Cooking
Wednesday Lunch, 11 to 1
Friday Dinner, 4 to 9
 Eat-In • Take-Out • Delivery
 Taking Short Orders
598-0583

FOR RENT: 3BR house w/beautiful yard 1/2 mile from Winchester hospital. Ideal for retired persons. \$650/month with security deposit and references. (931) 636-0162.

EAT IN OR TAKE OUT
Julia's
 fine foods
 Mon-Fri 11-6; Sat-Sun Brunch 10-2
 24 University Ave., Sewanee
 julias@vallnet.com • 931-598-5193

3 BR DOUBLE-WIDE MOBILE HOME FOR RENT
 \$550/month includes water.
 \$400 deposit. 598-0646.

Laurel Brae Home for Rent
 Available now. 3 BR, 2 BA, master bedroom downstairs, on 2 acres, pond, yard maintenance included. No pets, nonsmokers. 46 Appletreewick. \$1,000/month; \$1,000 deposit. Call Bonnie and Lisa (707) 321-0297 (cell).

COMPUTER HELP
 Tutorial & Troubleshooting
 Computer slow? You may need to add memory. Please call
Judy Magavero, (931) 924-3118

Tell them you saw it in the MESSENGER!

TOWN OF MONTEAGLE JOB OPENING—DISPATCHER (PART-TIME): For Mountain Central 911. Hiring starting date: Tuesday, Sept. 14, 2010. Previous dispatch experience preferred. Good computer keyboard skills, ability to multi-task a must. Good communication skills for interaction with the public. Must be able to deal with people in crisis/stressful situation via telephone. High school graduate or equivalent. Basic responsibilities: Receive incoming calls and dispatch emergency services, monitor the status of police and fire units on duty via computer systems and radio and send administrative messages, etc. How to apply: Application can be picked up at Monteagle City Hall office. Closing date for this position will be Wednesday, Sept. 8, 2010. Note: Must be able to work any shift. Equal Opportunity Employer.

WOODARD'S
 DIAMONDS & JEWELRY
 (800) 455-9383 • www.Woodards.net
 Inside Northgate Mall in Tullahoma

FIREWOOD FOR SALE: \$50/rick. Stacked, \$60. If no answer, leave message. (931) 592-9405.

RAY'S RENTALS
931-235-3365
 Weekend Packages and Special Events
CLIFFTOPS, COOLEY'S RIFT, ALL AROUND THE MOUNTAIN
 Gooch-Beasley Vacation Rentals
931-924-5555
www.gbrealtors.com

Needle & Thread
 *Alterations *Repairs *Light Upholstery
 *Slipcovers *Drapes
 For a reasonable price, contact
Shirley Mooney
 161 Kentucky Ave.
 Sewanee, TN 37375
 (931) 598-0766
 shirleymooney@att.net

ANTIQUE MALL FOR SALE IN WINCHESTER: Well established. 3,000 sq. ft. of merchandise. Reasonably priced. Call Janet, (931) 967-9930, (931) 967-7294 or (931) 308-8668.

RECEPTIONIST POSITION AVAILABLE: In busy pediatric office. Please send your resumé to: Sewanee Pediatrics, Att. Heather Layne, P.O. Box 249, Sewanee, TN 37375. Fax (931) 598-5038. No phone calls, please.

CLAYTON ROGERS ARCHITECT
 claytonrogers@charter.net
931-598-9425

SHELTERING ARMS ELDERLY CARE HOME: Accepting new patients. 24-hour care. Private rooms. Home-cooked meals. On-staff nurse. Visiting physician. References available. Located on 10 private acres. For more info call (931) 779-8080. Or check us out on www.facebook.com. Search: Sheltering Arms Home.

MASSAGE THERAPY
 Regina Rourk, LMT, CNMT
 Relaxation Massage, Deep Tissue Massage, Craniosacral Therapy, Reiki
 Seated Massage
 Gift Certificates
 Call: 931-636-4806

MIDWAY MARKET: Now accepting winter items. Clothes must be priced and on hangers. No stains. Before bringing clothing for consignment call Wilma, 598-5614. Open Monday-Saturday 12-7. Closed Sunday.

GRUNDYSOLAR.COM
 Build your own solar panels with an easy-to-follow video guide. **BONUS** easy-to-follow instructions to build wind generators.

THE SEWANEE CHILDREN'S CENTER is looking for a part-time, afternoon preschool teacher. Prior experience with children preferred. Contact Maggie Hanson at (931) 598-5928.

CENTRAL CAMPUS HOME FOR RENT: Great location on Running Knob Hollow Lake. Large yard, shade trees, swim dock, hammock, 5BR, 2BA, 80% hardwood floors, newly updated kitchen and bath, new carpet in finished daylight basement, soon to be freshly painted—choose your own colors! Great place to raise children or as multifamily getaway. \$1200/month. (931) 636-5690.

DRIVERS: Are you a reliable Owner Op Team?
 Did you earn 250k last year?
 If not call Dan Howard,
 1-866-204-8006,
 dan.howard@randrtruck.com

class_messgr@bellsouth.net

HORSE Boarding, Lessons, Camps
 6 miles from campus
 www.realityfarm.org
 931-247-3071

TWO MIDWAY RENTALS

—1691 Otter Falls Rd.—
 3 BR, 2 BA remodeled mobile home with open living space separating bedroom areas. Nice yard. \$600/month.
 —1659 Otter Falls Rd.—
 Recently restored 2 BR, 1 BA farmhouse. Large living room and kitchen areas. \$600/month.
Call Sally Thomas, 931-636-4993

NEW APARTMENT FOR RENT: For any occasion. On Domain. Full kitchen. Full bath. King-sized bed. \$115 per night, two-night minimum. Flexible for longer stays. No pets. Call (931) 598-9369.

King's Tree Service
 Topping, trimming, bluff/lot clearing, stump grinding and more!
 Bucket truck or climbing
 Free wood chips with job
 Will beat any quoted price!
 Satisfaction guaranteed!!
 —Fully licensed and insured—
 Call (931) 598-9004—Isaac King

NEED GRAVEL for your road or driveway, bulldozer work, driveways put in, house site clearing? Call David Williams, 308-0222 or 598-9144.

KSC Construction
SCOTT COKER
 Licensed & Insured
 * Home Repairs * Flooring
 * Exterior & Interior Staining
 Phone (931) 598-0843 After 4:00 PM
 Cell Phone (931) 636-1098

SHORT-TERM RENTAL, located on campus across from football field. 1BR, 1BA, living area/kitchen combination; accommodates up to 3. No smoking, no pets, 2-night minimum; call for rates and availability. (931) 691-1058 or (931) 598-5602.

—RENTAL—

4 bdrm, 4 bath house, heat pump, very secluded w/large front porch, off Gudger Rd. 8 min. & 3 stop signs from campus. \$1,000/month. 598-0686 or bill@mauzyconstruction.com

MODERN LOG CABIN RENTAL: 2BR, 1BA, kitchen, porches. 6 minutes to University, 2 minutes to SAS. \$100/night. (931) 636-0743.

LOST COVE BLUFF LOTS
 www.myerspoint.com
 931-968-1127

Available for Parents' Weekend and Homecoming 2010!
RAINBOW'S INN
 Beautiful 2 BR/2 BA Sewanee coach house, 10 minutes from campus, available for short-term rental. Central air & heat, full kitchen, W/D, deck, fireplace. Check us out at <www.rainbowsinn.net>. For rates & availability e-mail <info@rainbowsinn.net> or call 866-334-2954.

DRIVERS: CDL-A. NEW PAY INCREASES, REGIONAL/SHORT HAUL DIVISIONS.
Short Haul—Elevated mileage pay plus hourly. Regional up to .36 cpm. Home every weekend.
OTR—Dedicated accounts up to .38 cpm + delivery bonuses. Home every week! Plenty of miles. 6 terminals in Alabama. 6 months OTR required.
866-215-3659

WANTED: EXPERIENCED GRILL COOK AND SERVER. Apply in person at High Point, 224 East Main St., Monteagle, Mon-Thu, 2 to 5 p.m., or e-mail resumé to <highpointrestaurant@yahoo.com>.

CHARLEY WATKINS PHOTOGRAPHER
 Sewanee, TN
 (931) 598-9257
 http://www.photowatkins.com

www.sewanee messenger.com

The Moving Man
 Moving Services Packing Services
 Packing Materials
 Local or Long Distance
 1-866-YOU-MOVE (931) 968-1000
 www.the-moving-man.com
 Decherd, TN
 Since 1993 U.S. DOT 1335895

TWO HOUSES IN MONTEAGLE: For rent, sale or lease-purchase. For more information call (931) 924-5296.

RENTALS

~Bluff house: 3 BR, 1 large BA
 ~Big house: 5 BR, 3 BA
 ~Duplex: 2 BR, 1 large BA
 Near St. Mary's. No pets, no smoking. Call for info. 598-0697.

FOR LEASE/SALE: 1106 Nicholson St., Decherd. 3BR brick, C/H/A, hardwood + vinyl, covered patio, garage, paved drive. Close to shopping. (931) 808-6748

DANA GUESS TAX & BOOKKEEPING SERVICE
 Phone 931-598-9857
 E-mail danaguess@dishmail.net
RAPID REFUNDS AVAILABLE
 Other Filing Options Also Available

MAMA PAT'S DAYCARE
MONDAY-FRIDAY
Open 4 a.m.; Close 12 midnight
 3-Star Rating
 Meal & Snack Furnished
 Learning Activities Daily
Call: (931) 924-3423

TREE SHEPHERDS: Woodlands care, brush + bluff clearing, tree pruning, tree climbing, limb or tree removal. Joseph Bordley, 598-9324.

Oldcraft Woodworkers
 Simply the BEST woodworking shop in the area.

Continuously in business since 1982.
 Highest quality cabinets, furniture, bookcases, repairs.
 Phone 598-0208. Ask for our free video!

A NEW DOG IN TOWN
Mobile Pet Salon
 (Now doing cats, too!)
931-308-5612

TWO-ROOM OFFICE SUITE FOR RENT: Great location. Ideal for new business. Partin Professional Bldg., Monteagle. (931) 580-4538.

CHAD'S LAWN & LANDSCAPING
-FREE ESTIMATES-
 * Lawn care & Design (Mulch & Planting)
 ALSO: * Tree Trimming & Removal
 * Pressure Washing * Gutter Cleaning
 * Leaf Pickup & Blowing * Road Grading
 * Garden Tilling * Rock Work
(931) 962-0803 Home; (931) 308-5059 Cell

Fresh flowers & deliveries daily
—TUXEDO RENTALS—
Monteagle Florist
 333 West Main Street, Monteagle
 (931) 924-3292
 www.monteagleflorist.com

MONTEAGLE MOUNTAIN STARTER HOME: 3BR, 2BA, 2-car garage, C/H/A, hardwood floors, new granite countertops and energy-efficient windows, sitting quietly on 5-1/2 acres. Must see to appreciate. Appraised at \$150,000. Willing to accept any reasonable offer. Serious calls only. (931) 205-4086.

THE WOOD DEN
 Handmade rustic/traditional furniture built to order. Hutches, bedroom suites, trestle tables, etc.
Steve Sorrell
 (931) 235-3936 or (931) 692-9585
 109 Catherine Ave., Monteagle (behind new CVS)
 Open Fri-Sat-Sun, 8 a.m.-3 p.m.

SHAKERAG BLUFF CABIN: Beautiful west-facing bluff view. Extremely secluded. Sleeps 4-5. C/H/A. Pond with dock. Great fishing, swimming. Three miles from University. Weekend, weekly rates. (423) 821-2755.

Under New Ownership!
NEWLY REMODELED TWO BR APARTMENTS FOR RENT
 with wood laminate floors, dishwashers and on-site laundry. Water/sewer furnished. Good rental history or good credit and 12-month lease required.
FIRST MONTH HALF PRICE!!!
 (\$400/month regular price.)
Hidden Creek Apartments
 310 Spring St. • Monteagle • (931) 703-6312

FOR SALE: '97 John Deere Dozer, 450G; '94 Ford 9000 truck w/30-ft. trailer w/electric ramps. Call (931) 592-2267 or cell (423) 902-0687.

Henley's Electric and Plumbing
Randall K. Henley
 Over 25 Years Experience
598-5221 or cell 636-3753

Need More Room?
Mountain Storage
 (931) 598-5682
 ■ Security Trail ■ Security & Camera
 Hwy 41 - Between Sewanee & Monteagle
 For Your Antiques and Prized Possessions
Climate Control
 Temperature and Humidity Regulated

WOOD FLOORS by PHIL & TIM
931-636-5603 or 931-636-1230
Install-Finish-Refinish-Recoat
 *35 years combined experience
 *NWFA & NOFMA certified
 *Quality constructed basic or detailed installation
 *Swedish Finish: Low VOC (volatile organic compounds)
 *Refinish or pre-finished flooring
 *Recoat of pre-finished flooring
 *Double money-back guarantee on the wood we provide

C.W. Smith Construction
 General & Electrical Contractor
 Est. 1986
 Sewanee, Tennessee 37375
(931) 598-0500
 New Homes • Additions • Remodeling
 National Association of Home Builders



From Bard to Verse

by Scott and Phoebe Bates

The gingham dog and the calico cat
Side by side on the table sat;
'Twas half-past twelve, and (what do you think!)
Nor one not t'other had slept a wink!
The old Dutch clock and the Chinese plate
Appeared to know as sure as fate
There was going to be a terrible spat.
(*I wasn't there; I simply state*
What was told to me by the Chinese plate!)

The gingham dog went "bow-wow-wow!"
And the calico cat replied "mee-ow!"
The air was littered, an hour or so,
With bits of gingham and calico,
While the old Dutch clock in the chimney-place
Up with its hands before its face,
For it always dreaded a family row!
(*Now mind: I'm only telling you*
What the old Dutch clock declares is true!)

... Next morning, where the two had sat
They found no trace of dog or cat;
And some folks think unto this day
That burglars stole the pair away!
But the truth about the cat and pup
Is this: they ate each other up!
Now what do you really think of that!
(*The old Dutch clock it told me so,*
And that is how I came to know.)

—from "The Duel" by Eugene Field (born Sept. 2, 1850)

www.sewaneemessenger.com

Ivy Wild
NEW AMERICAN CUISINE

36 BALL PARK ROAD, SEWANEE
THURSDAY - SATURDAY, 5:30 - 9PM

BYO WINE

RESERVATIONS RECOMMENDED
IVYWILDRESTAURANT@GMAIL.COM
931.598.9000

b.true
WELCOME BACK, STUDENTS!
New fall items are here!
Located next to the Piggly Wiggly in Monteagle
Wed-Sat 10-6 ▪ (931) 924-5647

Full Service Copy Center

- Make 1 Copy or 1000's
- Photos To Canvas
- Booklets & Newsletters
- Business Cards - Make 12 or 1000's
- Custom Invitations & Announcements
- Wedding Invitations & Programs
- Fax Services
- 2 and 3 part Carbonless Forms
- Coil & Comb Binding
- Lamination up to 40"
- Foam Core Mounting
- Graphic Design

931-461-0034
www.mcmurr.com

McMurr's
WE MAKE COPIES
For Your Personal & Business Needs!

Got Plans?
Contractors
Realtors
Engineers
Architects
Print, Scan, Reduce
or Enlarge your drawings!

Copies

101 West One ST, SUITE 100
TULLAHOMA, TN 37388

Make The Drive and Experience the McMurr's Difference!

community calendar

EVENTS

Today, Sept. 2

3:30 pm Mtntop Tumblers, ages 5-7,
Sew Cmty Ctr, till 4:30
3:30 pm Yoga w/Hadley, St Marys Sewanee
4:30 pm Mtntop Tumblers, Sew Cmty Ctr,
ages 8 and up, till 5:30
5:00 pm Cub Scout parent mtg, SES lib
6:00 pm Buddhist sitting grp, St Augustines
6:30 pm FC Bd of Ed work sess, Bd of Ed ofc

Friday, Sept. 3

7:00 am AA, (open), Holy Comforter, M'eagle
7:30 am Curbside recycling pickup
9:30 am CAC open, Otey, till 11:30
10:00 am Game day, Sr Cit Ctr, till 11:45
12:00 pm Men Bible study, Otey
4:30 pm Artist talk, Malde, Univ Gallery,
rcptn follows
5:00 pm MESSENGER display ad dline
6:00 pm First Friday Fun, St James
7:00 pm AA, Christ Church, Tracy City
7:30 pm ACOA, Otey parish hall

Saturday, Sept. 4

8:00 am Gardeners mkt, Hawkins Ln
10:30 am Mtntop Tumblers, Sew Cmty Ctr,
beginners, till 11:30
11:30 am Mtntop Tumblers, Sew Cmty Ctr,
intermediate/advanced, till 12:30
7:00 pm Fran McKendree conc, St Luke chpl
7:00 pm NA, Decherd United Methodist
7:30 pm AA (open), Otey parish hall

Sunday, Sept. 5

4:00 pm Adult yoga w/Helen, Sew Cmty Ctr
4:00 pm Women Bible study, Otey
6:30 pm AA (open), H Comforter, M'eagle

Monday, Sept. 6 Labor Day

SES, MES no classes
8:30 am Body Recall, Sew Cmty Ctr
11:00 am Chair exercise, Sr Cit Ctr, till 11:45
5:00 pm MESSENGER news dline
5:00 pm Women 12-step, Otey parish hall
7:00 pm AA, Christ Church, Tracy City
7:00 pm Centering prayer, Otey sanctuary

Tuesday, Sept. 7

9:00 am Yoga w/Hadley, St Marys Sew
10:30 am Bingo, Sr Cit Ctr, till 11:45
12:00 pm MESSENGER classified ad dline
4:00 pm Centering prayer, St Marys, till 5:30
7:00 pm Civic Assn, Sew Inn, dinner 6:30
7:00 pm NA, Decherd United Methodist
7:30 pm AA (open), Otey parish hall
7:30 pm Al-Anon, Thurmond Lib, Otey

Wednesday, Sept. 8

9:30 am CAC open, Otey, till 11:30
10:00 am Sewing/quilting group, Sr Cit Ctr
12:00 pm NA, Otey
5:30 pm Adult yoga w/Helen, Sew Cmty Ctr
6:30 pm Catechumenate, Bairnwick Wom Ctr
7:30 pm AA (open), H Comforter, M'eagle

Thursday, Sept. 9

8:30 am Body Recall, Sew Cmty Ctr
9:30 am CAC open, Otey, till 2
10:00 am Blood drive, EHH, till 3
11:00 am Chair exercise, Sr Cit Ctr, till 11:45
12:00 pm AA (open), 924-3493 for location
12:00 pm Lunch & Learn, St Marys Sew
12:30 pm EPE, Otey parish hall

3:30 pm Emeritus Assn, Sewanee Inn
3:30 pm Mtntop Tumblers, ages 5-7,
Sew Cmty Ctr, till 4:30
3:30 pm Yoga w/Hadley, St Marys Sewanee
4:30 pm Mtntop Tumblers, Sew Cmty Ctr,
ages 8 and up, till 5:30
5:00 pm Darwent rcptn, SAS Gallery, till 7
6:00 pm Buddhist sitting grp, St Augustines

CHURCH SERVICES

This Evening, Sept. 2

4:30 pm Evening Prayer, Otey
5:00 pm Evening Prayer, St Marys
5:45 pm Holy Eucharist, COTA
6:30 pm Worship svc, Church of God

Friday, Sept. 3

7:00 am Morning Prayer/HE, St Marys
7:30 am Morning Prayer, Otey
7:30 am Morning Prayer, St Augustines
8:10 am Morning Prayer, COTA
12:00 pm Holy Eucharist, COTA
4:30 pm Evening Prayer, Otey
4:30 pm Evening Prayer, St Augustines
5:00 pm Evening Prayer, St Marys
5:40 pm Evening Prayer, COTA

Saturday, Sept. 4

8:00 am Holy Eucharist, St Marys

Sunday, Sept. 5 Pantry Sunday

All Saints' Chapel

8:00 am Holy Eucharist
11:00 am Holy Eucharist
6:30 pm Growing in Grace

Cumberland Presbyterian

9:00 am Worship Service
10:00 am Sunday School

Chapel of the Apostles

8:00 pm Compline

Grace Fellowship

10:30 am Sunday School/Worship Service

Harrison Chapel Methodist

10:00 am Sunday School
11:00 am Worship Service

Jump-Off Baptist

10:00 am Sunday School
11:00 am Worship Service
6:00 pm Worship Service

Midway Baptist

10:00 am Sunday School
6:00 pm Evening Service

Midway Church of Christ

10:00 am Bible Study
11:00 am Morning Service
6:00 pm Evening Service

Otey Memorial Church

8:50 am Holy Eucharist
10:00 am Christian Education
11:00 am Holy Eucharist

St. James Episcopal

9:00 am Worship and Fellowship
9:00 am Children Church School

St. Mary's Convent

8:00 am Holy Eucharist

Sewanee Church of God

10:00 am Sunday School
11:00 am Morning Service
6:00 pm Evening Service

Society of Friends

9:30 am Meeting, 598-5031

Monday, Sept. 6

7:00 am Morning Prayer/HE, St Marys
7:30 am Morning Prayer, Otey
7:30 pm Morning Prayer, St Augustines
8:10 am Morning Prayer, COTA
12:00 pm Holy Eucharist, COTA
4:30 pm Evening Prayer, Otey
4:30 pm Evening Prayer, St Augustines
5:00 pm Evening Prayer, St Marys
5:40 pm Evening Prayer, COTA

Tuesday, Sept. 7

7:00 am Morning Prayer/HE, St Marys
7:30 am Morning Prayer, Otey
7:30 pm Morning Prayer, St Augustines
8:10 am Morning Prayer, COTA
12:00 pm Holy Eucharist, COTA
4:30 pm Evening Prayer, Otey
4:30 pm Evening Prayer, St Augustines
5:00 pm Evening Prayer, St Marys
5:40 pm Evening Prayer, COTA

Wednesday, Sept. 8

7:00 am Morning Prayer/HE, St Marys
7:30 am Morning Prayer, Otey
7:30 pm Morning Prayer, St Augustines
8:10 am Morning Prayer, COTA
11:00 pm Opening Eucharist, COTA
4:30 pm Evening Prayer, Otey
4:30 pm Evening Prayer, St Augustines
5:00 pm Healing, Rite III HE, St James
5:00 pm Evening Prayer, St Marys
5:40 pm Evening Prayer in Spanish, COTA
7:00 pm Catholic Mass, COTA

Thursday, Sept. 9

7:30 am Morning Prayer, Otey
8:10 am Morning Prayer, COTA
8:30 am Morning Prayer, St Augustines
4:30 pm Evening Prayer, Otey
4:30 pm Evening Prayer, St Augustines
5:45 pm Holy Eucharist, COTA



Tea on the Mountain

OPEN WITH NEW HOURS
For a leisurely luncheon
or an elegant afternoon tea
11:30 to 4 Thursday through Saturday

OPEN FOR DINNER
Friday and Saturday by reservation
(931) 592-4832

298 Colyar Street, US 41, Tracy City

Buy 4 and Get



Offer Valid September 1st-30th, 2010

Buy any set of four new MICHELIN® brand passenger or light truck tires between Sept 1-30, 2010, and receive a \$70 pre-paid American Express card when you submit your redemption form. This is an in-store dealer provided discount promotion. See store for details.

* See restrictions here or store for details. Copyright © 2010 Michelin North America, Inc. All rights reserved. The Michelin Man is a registered trademark owned by Michelin North America, Inc.



**HEATH AUTOMOTIVE
TIRE PROS**

www.heathautomotivetirepros.com

Oil Change

**\$5.00
OFF**

Up to 5 qts of oil
and new filter

Cannot be combined. See store for
details. Expires 9/30/10

A/C Service

**\$10.00
OFF**

A/C Service

Cannot be combined. See store for
details. Expires 9/30/10

501 1st Ave. SW
Winchester, TN
(931) 967-3880

