



# THE SEWANEE MOUNTAIN MESSENGER

Volume XL No. 5

Published as a public service since 1985

Friday, Feb. 9, 2024



Folks at Home lending library.

## Folks at Home Lending Library

By Beth Riner, Messenger Staff Writer

Sewanee-based Folks at Home has a new lending library for its members thanks to a grant from the South Cumberland Community Fund.

"Folks at Home empowers Sewanee's senior citizens to live at home with dignity by supporting them with everyday tasks and increasing their access to wellness programming," said Philanthropy Intern Delana Turner, who presented the \$561 award to the organization. "This grant will fund the implementation of a lending library, providing members access to various readings from Harvard Health. By promoting health awareness and education, we are fostering a culture of wellness right here on the Plateau, and this grant will allow Folks at Home to continue enriching the lives of our senior community members."

Mercedes Ingles, services coordinator for Folks at Home, said the lending library books purchased with the grant are from Harvard Medical School, considered a reliable and trusted source.

The agency purchased three copies of each of the following books: "Osteoarthritis," "Aging in Place," "Caregiver's Handbook," "Stretching," "Better Bladder," "Mobility and Independence," "Improving Memory," "Osteoporosis," "Joint Pain Relief," "Coping with Hearing Loss," "Healthy Eating for Type 2 Diabetes," "Alzheimer's Disease," "Vitamins/Minerals," "Grief and Loss," "Life After Cancer," "Advance Care Planning," "Living Will," "Walking for Health," and "Cognitive Fitness."

"The lending library is a resource for our membership to hopefully be able to stay a little more active and fit as they age in place," Ingles said. "To check out a title, simply give us a call, come by, or just let us know if you would like to have them dropped off. We have a check out system that will note how many issues — not what titles — you have for a time period of two weeks."

One of the reasons for creating the lending library was ease of accessibility for its membership.

"For some of our membership, using technology is difficult and distracting," Ingles explained. "Even for myself, I often prefer a book in my hand as opposed to reading a book online. The books are a great resource for information and hopefully include topics that will be useful to our membership."

Folks at Home recently hit a big membership milestone.

"Right before the end of the year, we broached 100 members for our organization — for the first time in its history," Ingles said.

The nonprofit agency focuses on elder care in Sewanee and its surrounding area.

"Our mission is to assist members to stay home and thrive as much as possible as opposed to going to a nursing home or a facility," she explained.

Free services offered to members include transportation to medical appointments; errands such as grocery shopping or pharmacy pickups; phone check-in calls if requested; health and in-home care assessment; home safety, fall risk and emergency preparedness review; participation in events, classes, activities, and excursions; and connections with individuals to talk about travels, volunteering, work, health care, moving, care giving, and adjusting to the death of a loved one.

Fee-based services include prepared meals and catering; home repairs; computer assistance; home medication consultation and planning; comprehensive care management; access to medical and non-medical home health care; financial and retirement consultation and planning; and minimum cost assistance with specific tasks such as transportation, shopping, pet walking, and outings.

"Anybody that wants to can become a member of Folks at Home," Ingles said, noting there are two types of membership: service and sustaining.

"With service memberships, we are actively assisting with possibly meal deliveries or transports, which range from medical to non-medical to errands or grocery runs. We also do vendor referrals," Ingles explained. "Sustaining members still have access to our programs, but don't necessarily utilize us for our services. They are still paying a membership fee, but more as a donor role to support our cause and mission."

Yearly membership is \$400 per person or \$700 for a two-person household.

For more information on Folks at Home, visit <www.folksathome.org> or call (931) 598-0303.

## Monteagle Postpones Campgrounds in C-3 Decision

by Leslie Lytle, Messenger Staff Writer

Following lengthy discussion at the workshop preceding the Feb. 6 Monteagle Planning Commission meeting, the commission decided to postpone for 90 days a solution that would allow a resident to move forward with locating a campground on Trussell Road on the far side of I-24 across from the Convenience Center. The commission also elected officers for 2024.

The proposed campground property owned by Randy Hill does not allow campgrounds due to Commercial C-3 zoning. Monteagle allows campgrounds in C-2, Residential R-3 (on review), and R-4. In looking at ways the project could move forward, Chair Ed Provost said the commission was considering allowing campgrounds in C-3 "instead of changing the zoning, which could be considered spot zoning." Elaborating on the reason for the 90-day delay, Commissioner Katie Trahan said, "During that time the AIA [American Institute of Architects] group will be here... we'll have an opportunity to hear their findings and hear community reaction to their findings. It's very important to us the community comes out and meets with them." AIA Community by Design advisors and planners will help the town draft a town plan to guide future development and growth. More details will follow on the community meetings with the AIA group scheduled for April 25-27.

Provost said town planner Johnathan Rush will draft an ordinance amendment allowing campgrounds in C-3 with Board of Zoning Appeals approval. During the 90-day waiting period, the commission will have ample time to review the ordinance change with a view to town planning considerations.

Turning to another project, Hill asked if he could locate a driveway on C-3 property to connect to a proposed commercial project outside the city limits. "The planning commission doesn't approve or disapprove driveways," Rush said, "unless there is a building permit associated with the driveway."

The commission re-elected Provost chair, Richard Black vice chair, and Trahan secretary. Taking minutes will fall to city recorder Debbie Taylor to free the secretary to participate in meeting discussion and data analysis.

## Happy 40th Birthday, Sewanee Mountain Messenger



The Sewanee Children's Center Ladybug Class of 4 and 5 year olds visited the University Art Gallery on Feb. 2 to view and discuss the landscape paintings on display by Philip Juras.

## The Uncommon Phenomenon of Black Nuns: Why?

by Leslie Lytle, Messenger Staff Writer

In her Feb. 1 lecture, Dr. Shan-nen Dee Williams made two points that raised a baffling question. One, Catholicism was the first black articulation of Christianity in the United States, and, two, the vast majority of Catholics in America have not been European, but are people of African and Native American descent. So why are black sisters even today an uncommon phenomenon? Williams unpacked the answer to that question.

Williams is an associate professor of history at the University of Dayton. Her book "Habits: Black Catholic Nuns in the Long African American Freedom Struggle" was

among the top five book on religion published in 2022 and received the Letitia Woods Brown Award for Best Book on African American Women's History.

Williams grew up Catholic and black, but she acknowledged, "I knew very little about black history beyond my own family." In a graduate studies seminar on black history, contemplating a paper on black Catholic women's history, Williams discovered an article about the 1968 National Black Sisters' Conference (NBSC). "I was unaware of the existence of black nuns in our church," Williams said.

(Continued on page 5)

## Strategic Planning at the University

Scott Wilson, acting provost, announced an update on the strategic planning process, which will provide a number of opportunities for our various constituents to participate in the coming months.

The University is organizing its strategic plan around the following three pillars:

Mind: A Renewed Curriculum for the 21st Century

Heart: Preparing Students for Citizenship, Leadership and Lives of Meaning and Significance

Place: The Domain as Laboratory, Recreation Site, Sanctuary and Home.

As part of the information gathering process, the strategic planning committee is inviting all members of the Sewanee community to participate in open town hall meetings. The open town hall sessions will be at the following dates and times: at 7 p.m., Tuesday, Feb. 13, and at 10 a.m., Wednesday, Feb. 21, both in Convocation Hall.

These meetings are an important opportunity for you to participate in planning the direction of the University's development, and your engagement with this process is encouraged. The University has contracted Dr. Dawn Wiese, former vice president for student affairs at Washington and Lee, as a consultant to facilitate these conversations. Wiese is both knowledgeable about Sewanee and liberal arts colleges, and she has assisted a variety of organizations with strategic planning processes.

P.O. Box 296  
Sewanee, TN 37375



# FROM THE EDITOR

by Kiki Beavers

## Happy Birthday, Sewanee Mountain Messenger!

Forty years ago this month, the Messenger published its first issue. And in March, we will be grateful for a total of 57 years of a community newspaper!

In March 1967, Phoebe Bates embarked on a journey to create a community paper at the behest of the Sewanee Civic Association, because “people needed to know what was going on.” For 18 years, Phoebe gathered the news and events for the community newspaper, The Sewanee Siren. When she decided to step down, the University, the Sewanee Civic Association and the Sewanee Woman’s Club joined in to find someone to take over the helm. Geraldine Hewitt Piccard answered the call, and, for 26 years she diligently served as editor and publisher of the free weekly local newspaper, The Sewanee Mountain Messenger.

Geraldine wanted to launch the community newspaper beginning in early February, but the catastrophic ice storm of 1985 slowed her plans. The first issue was printed on Feb. 14, 1985. With the help of Mary Smalley as business manager, Geraldine sold the ads, wrote the copy, and produced that eight-page issue on 9 by 12 inch white paper. The University Press did the printing, and Geraldine distributed it to post offices and businesses in the area.

On page 1 of the first issue, under the headline, “Community Spirit,” she described the many people who helped the residents survive that historic storm with food, heat and shelter: Carl Reid, Doug Seiders, Dwight Sholey, Ernie Butner, Galon Sherrill, Jim Franklin, Dan Rather, Bob Ayres, John Kildoo, Tom Watson, Doug Cameron, John Greeter, Lisa and Tim Keith-Lucas, and the members of the Sewanee Fire Department. For those new to the area, some of these people have passed, some have moved away, and some are still active in the community—all served the community well.

In that first issue there are advertisements, many of which remain on the Messenger pages today. For their continuing support from Volume 1 to Volume 40, I want to give a shout out to these long-standing community businesses and loyal advertisers: Rob Matlock Construction, Monteagle Florist, Sewanee Auto Repair, Shenanigans, and Taylor’s. Without these advertisers, and the many other advertisers throughout the years, there would not be pages to fill with community news. Please support local businesses!

From Phoebe Bates’ Sewanee Siren, 1967 to 1984, to Piccard’s Messenger, to Laura Willis and Janet Graham’s Messenger, this community newspaper continues to evolve. Along with original reporting, there are hundreds of submissions from those who want to share their news with the readers of the Messenger. And, whether you read the newspaper at the local coffee shop or view it online, the mission of this newspaper remains the same: community comes first.

I purchased the newspaper almost eight years ago. Owning a newspaper is at times a blessed mix of a labor of love and pure joy, but I am grateful. In addition to our wonderful advertising support, the University continues to contribute towards the printing costs, and the annual donation from the Sewanee Community Chest helps to keep the Messenger as a free community newspaper.

I believe in our free, weekly community newspaper. And by the number of issues picked up from 100 area locations and the clicks online, you do too. May the Messenger continue to be a voice to and for all of you.

Thank you for reading and being a part of the Messenger!

# University Job Opportunities

**Exempt Positions:** Advancement Officer, University Relations; Assistant Dean of Residential Life, Residential Life; Assistant Director of Operations, Residential Life, Student Success; Assistant Director, Sewanee Fund, University Relations, Sewanee Fund; Assistant/Associate Director for Student Programs, Student Services; Associate Men’s and Women’s Tennis Coach, Athletics; Content & Communications Strategist, M&C for Admission & Financial Aid, M&C; Energy Specialist, Facilities Management; Equity, Equal Opportunity, and Title IX Coordinator, Diversity, Equity, and Inclusion; Financial Aid Counselor/Senior Financial Aid Counselor, Financial Aid; Lay Chaplain, All Saints’ Chapel.

**Non-Exempt Positions:** Catering Team Lead, Sewanee Catering; Childcare Provider, University Child Care Center; Domain Recreation Post-Baccalaureate Fellow, OESS; Equestrian and Farm Hand, Sewanee Equestrian Center; GIS and Database Technician, Facilities Management; Golf Shop Assistant, (Part-Time) Business Services, Golf Course; Golf Course Greenskeeper (10-Month Position), Grounds and Landscaping; On-Call Catering Attendant, Sewanee Dining;



# — THE SEWANEE MOUNTAIN — MESSENGER

Published as a public service to the community since 1985, this newspaper is printed on Fridays, 47 times a year. Free of charge, copies are distributed to 100 locations, including businesses and post offices across the Plateau. This publication is made possible by the patronage of our advertisers and by contributions from the University of the South (print production) and the Sewanee Community Chest.

Kiki Beavers <i>editor/publisher</i>	Janet Graham <i>publisher emerita</i>
April Minkler <i>office manager</i>	Laura Willis <i>editor/publisher emerita</i>
Emily Ricks <i>proofreader</i>	Geraldine Hewitt Piccard <i>founder, editor/publisher emerita</i>
Leslie Lytle <i>staff writer</i>	
Beth Riner <i>staff writer</i>	

## SUBSCRIPTIONS \$75 first class

418 St. Mary’s Lane, P.O. Box 296, Sewanee, TN 37375  
Phone (931) 598-9949 | <news@sewanee-messenger.com>

All material in the Sewanee Mountain Messenger and on its website are copyrighted and may not be published or redistributed without written permission.

Police Officer (Full-Time), Sewanee Police Department; Second Cook, Sewanee Dining; Sewanee Dining Associate, Sewanee Dining; Tiger Bay Pub, Sewanee Dining; Associate, Sewanee Dining; Technology Access and Support Technician, LITS, Technology and Access Support; University Choir Recruitment Coordinator, All Saints’ Chapel.

For more information call (931) 598-1381. Apply at <https://jobs.sewanee.edu>.

# Sobriety Checkpoint

The Franklin County Sheriff’s Office will conduct a multi-agency Sobriety Checkpoint on Saturday, Feb. 17, 2024. The Checkpoint or Checkpoints will be conducted between 6 p.m. and 12 a.m. The location or locations can be Hwy. 41A and the Hwy 156 intersection, Hwy. 41A (Decherd Blvd.) at the Winchester/Decherd City limits, and Old Tullahoma Rd. (Hwy. 130) in the area of North Lake Elementary. Thank you for your continued support as we strive to keep the roadways safe for you, the citizens of Franklin County.

# Local Food Available

The South Cumberland Farmer’s Market has breads, fruits, vegetables, eggs, coffee, meats and more available. Ordering takes place each week online from Friday at 9 p.m. to Monday at 10 a.m. Curbside pickup is on Tuesdays, 4:30–6 p.m., at the Sewanee Community Center. To order go to <https://southcumberlandfarmersmarket.com>.



**SALES, SERVICE AND RENTALS**  
**A Full-Service Trek Bicycle Dealer**

Tues - Fri 9-5 | Sat 10-2 | 90 Reed’s Lane  
598-9793 | woodybike@gmail.com

Check out [www.woodysbicycles.com](http://www.woodysbicycles.com) for rates, trail maps, photos, bike club links, races and much more!

# SERVING WHERE CALLED

Please keep the following individuals, their families and all those who are serving our country in your thoughts and prayers:

Blaze Cassidy Barry  
Brandon Brawley  
Justin Brawley  
James Gregory Cowan  
Mark Gallagher  
Nathaniel P. Gallagher  
Peter Green  
Zachary Green  
Jackson B. Guenther  
Steven Tyler Jeffery  
Gabriel Lloyd  
Waylon Case McBee  
Wiley Colton McBee  
Bailey Jackson McLean  
Andrew Midgett  
Jose D. Ramirez III  
Troy (Nick) Sepulveda  
Zachary Sherrill  
Allison Tucker  
Nick Worley

If you know of others in our Mountain family who are serving our country, please give their names to American Legion and Auxiliary member Shirley M. Lawson at <slawson@sewanee.edu>.

# SEWANEE AUTO REPAIR

## Complete Auto & Truck Repair

Tune-ups • Tires • Tire Repair • Brakes • Steering  
• Oil Changes • Batteries • Computer Diagnostics



All Makes & Models • Service Calls •  
Quality Parts

ASE Master Certified Auto Technician •  
35 Years’ Experience



Open 9 to 5 M-F  
(931) 598-5743 • 76 University Ave.



PUB & GRILL / PIZZA / DELI / CATERING

CALL FOR TAKE-OUT OR DELIVERY

931-598-5774

OPEN EVERY DAY 11 a.m. to 11:30 p.m. (later on weekends!)

12595 Sollace M Freeman Hwy, Sewanee, TN  
(on the corner of University Ave and 41A)

FIND YOUR HAPPY PLACE...AT SHENANIGANS

## Letters to the Editor Policy

Letters to the editor are welcome at the Sewanee Mountain Messenger and are a vital part of our community’s conversation. Letters need to be no longer than 250 words and may be edited for space and clarity. We make exceptions from time to time, but these are our general guidelines. We strive to print all letters we receive, but publication is not guaranteed. Letters should be factually accurate. Letters that are deemed unsuitable for publication shall not be printed elsewhere in the newspaper, including as a paid advertisement.

Letters and/or their author must have some relationship to our community. We do not accept letters on national topics from individuals who live outside our print circulation area. Please include your name, address and a daytime telephone number with your letter. You may mail it to us at Sewanee Mountain Messenger, P.O. Box 296, Sewanee, TN 37375, leave it at our office, 418 St. Mary’s Ln., or send your email to <news@sewanee-messenger.com>. — KB



# MESSENGER INFORMATION

Phone: (931) 598-9949

## Display Advertising

Deadline: Monday, 5 p.m.  
<ads@sewanee-messenger.com>

## News and Calendar

Deadline: Tuesday, 5 p.m.  
Kiki Beavers  
<news@sewanee-messenger.com>

## Classified Advertising

Deadline: Wednesday, noon  
April Minkler  
<classifieds@sewanee-messenger.com>

# MESSENGER HOURS

Monday, Tuesday and  
Wednesday  
9 a.m. to 4 p.m.  
Thursday — Production Day  
Closed  
Friday — Circulation Day  
Closed



## Upcoming Meetings

### Coffee with the Coach

Coffee with the Coach, an opportunity to learn more about Sewanee's sports teams, will live stream the meeting at 9 a.m., Monday, Feb. 12, with Nate Burns, baseball coach. The livestream will be available at <sewaneetigers.com/watch>. The meeting will also be in-person at the Blue Chair.

### Monteagle-Sewanee Rotary Club

The Monteagle-Sewanee Rotary Club will meet at 8 a.m., Thursday, Feb. 15, at St. Mary's Sewanee. The presentation will be an overview of the Rotary International Program, given by club member, John Solomon.

### Franklin County Federated Republican Women

The FCFRW monthly meeting will be on Thursday, Feb. 15, 2024 at the Oasis Restaurant in Winchester. Lunch is at 11 a.m. with the meeting beginning immediately after. Speakers will be Kelly Hall Brown who is running for Tax Assessor and Amy Dennis, Franklin County GOP Vice Chair.

### Franklin County School Board

The Franklin County School Board will meet at 6 p.m., Thursday, Feb. 15, at 215 South College St., Winchester.

### Franklin County Historical Society

The Winter meeting of the Franklin County Historical Society will be at 2 p.m., Sunday, Feb. 18, at the Franklin County Library, 105 S. Porter St., Winchester. The program will be "Show and Tell." Attendees are invited to bring photographs, clothing, jewelry, tools or other interesting things that tell about their ancestors or the county's history. All are welcome.

### Sewanee Utility District

The Sewanee Utility District of Franklin and Marion Counties Board of Commissioners is scheduled to meet at 5 p.m., Tuesday, Feb. 20, at the utility office on Sherwood Road. If a customer is unable to attend but wishes to bring a matter to the board, call (931) 598-5611, visit the office, or call a board member. The board members are Doug Cameron, Johnny Hughes, Donnie McBee, Charlie Smith, and Clay Yeatman.

### Town of Monteagle

There will be three public hearings of the Monteagle City Council for Ordinance 01-24 Unit Size, Ordinance 02-24 Dubose rezoning, and Ordinance 03-24 Water Rate increase at 4:45 p.m., Monday, Feb. 26, 2024. The Monteagle City Council will have the regular monthly meeting Feb. 26, 2024 in the Conference Room at City Hall at 5 p.m.

### Sewanee Community Council

The next meeting of the Community Council is scheduled for Monday, March 25, 2024, at 7 p.m.

We have reserved Monday, Feb. 26, 2024, as a possible meeting date and will meet then if there are urgent concerns. If there are any items for discussion that cannot wait until March, please submit them to the Provost's office by noon on Wednesday, Feb. 14.

## MMUMC Curbside Food Distribution

Morton Memorial United Methodist Church will have its monthly community food distribution from 8–10 a.m., Saturday, Feb. 10. Please arrive at the back of the church and parking lot attendants will direct you. All are welcome. We shall load your car for you so please be aware of volunteers in the parking area. Morton Memorial United Methodist Church is located at 322 West Main St., Monteagle.

## SCA to Meet March 4

The Sewanee Civic Association will meet at 6 p.m., Monday, March 4, in Kennerly Hall, St. Mark and St. Paul. Social time with wine begins at 5:30 p.m., followed by dinner and a brief business meeting. Presenting the program will be Executive Director of the Mountain Goat Trail Alliance, Patrick Dean. Dean is also the author "Window to Heaven" and "Nature's Messenger."

Reservations for dinner are due by Friday, March 1, via email <sewaneecommunitychest@gmail.com>. The SCA is celebrating 115 years of social and service opportunities for the community. The SCA is the sponsoring organization for the Sewanee Classifieds, and the Sewanee Community Chest. Any adult who resides in the area and shares concerns of the community is invited to participate.

## Hospitality Shop News

The Hospitality Shop will be open Tuesday and Thursday, 10 a.m. to 1 p.m., and Saturday, 10 a.m. to 2 p.m. As you consider donations for the Shop please evaluate your gifts using the following criteria. Donations can be left in the bins by the back door if the Shop is closed.

Good donations are: fully assembled, working, and clean with all parts and pieces; free of mold, mildew, and smells; free of chips, breakage, food residue, grease, rust; free of rips, tears, stains, missing buttons, broken zippers or excessive wear.

The children's clothing section is now closed. Children's clothing can be taken to Good Samaritan in Winchester or to Goodwill in Kimble. We do accept children's books and puzzles.

The Shop is looking for reliable volunteers as clerks and cashiers, especially people who could work on Friday, between 10 a.m. to 2 p.m. If you are interested, please contact Mary Ann, the Shop manager at <maystrob@gmail.com>. We can use people to sort donations any afternoon, except Sundays. Regular volunteers get a 20 percent discount on their total purchase cost. Come join a great group of volunteers and be a vital part of making Sewanee a sustainable community.

## Body Recall Exercise

A weekly exercise program meets on Thursdays from 9:30–10:30 a.m., at the Monteagle City Hall in the large meeting room. Participants are encouraged to do a leisurely warmup walk in the hall. Then we'll do chair and standing exercise for stretching, flexing and a few easy balance exercises to help us deal with aches and improve mobility. These exercises are gentle and no impact. Optional floor exercise will be at the end of the class for those who would like a little more challenge.

Do wear comfortable clothes and shoes. Bring a yoga mat, camping mat, or large towel if you plan to try floor exercises.

This program is free, although a small donation to the May Justus Library will be appreciated.

Questions? Contact Judy Magavero, <msjmagoo@gmail.com>.

## Annual Presidents' Day Spelling Bee

The Franklin County Democratic Party invites you to a night of food, fun, and friendly competition. The spelling bee will be at 6 p.m., Monday, Feb. 19, at the Sewanee Community Center. 39 Ball Park Rd., Sewanee

Enjoy an all-you-can-eat soup/salad/sandwich buffet. Kids can win a \$50 cash prize in one of two Spelling Bees. Spelling lists will be age-appropriate. Fifth-graders will be spelling from a fifth grade list, while first graders will be spelling from a first grade list. Registration will take place the night of the contest. For more information, please contact Helen Stapleton at <hfstaple@yahoo.com>.



### Winchester Podiatry

**CHARLES D. GANIME, DPM**

*Board Certified in Foot Surgery  
Diplomate, American Board of Podiatric Surgery  
New Patients of All Ages Welcome! We Treat Your Feet! Most Insurance Accepted, Including TennCare*

**155 Hospital Road Suite 1, Winchester.**  
**www.winchesterpodiatry.com**

**931-968-9191**



**MICHELLE M. BENJAMIN, JD**  
**Attorney & Counselor at Law**

201 FIRST AVENUE, NORTHWEST  
WINCHESTER, TENNESSEE 37398

(931) 962-0006  
Fax: (931) 967-8613



**Innovate with Intention**

*Adding distinction and value to your entryway with mahogany constructed doors has never been easier.*

**Custom availability, measurements, installation and free quotes available!**

*In stock discounts!*

**Call for pricing!**



**HENLEY**  
MILLWORK FACTORY OUTLET  
"Home of Quality Millwork"

1765 Decherd Blvd.,  
Decherd, TN  
**(931) 967-0020**

HOURS: Mon-Fri 8 am-4:30 pm | Sat 8 am-noon | Closed Sun



Celebrate all the special people in your life this Valentine's Day...Country Mart can help!!

Featuring:

- ♥ Mountain Top Meal Prep & Catering
- ♥ Village Laundry & Coffee Shop
- ♥ Shull Chiropractic Clinic, PLLC
  - ♥ Fade at Monteagle
- ♥ Monteagle Nutrition
  - ♥ Eco E-Bikes, LLC
  - ♥ High Vibes Healing
- ♥ NOVA by Sarah Sulfridge
- ♥ Compassion Home Care & Community Service

1045 West Main St. Monteagle TN 37356

**VACATION RENTAL MANAGEMENT**

*Are you a property owner looking to maximize your vacation rental potential?*

**JOIN South Cumberland Getaways!**

We specialize in boosting property's bookings, increasing revenue, and providing top-notch management services such as customer service, housekeeping, and maintenance.

South Cumberland Getaways is your ultimate rental partner!

**SouthCumberland getaways**  
VACATION RENTALS

931.407.1017 | [info@SouthCumberlandGetaways.com](mailto:info@SouthCumberlandGetaways.com)

CONTACT us today to make your property a profitable paradise!



# Church News

## All Saints’ Chapel

On Sunday, All Saints’ Chapel will gather for worship during the academic year at 8 a.m., Holy Eucharist, Rite 1 and at 11 a.m., Holy Eucharist, Rite 2. The 6:30 p.m. service is Growing in Grace, an informal, student-led service.

## Christ Church

On Sunday, Feb.11, Christ Church will have its Mardi Gas and an Episcopal visit of Bishop John Greaves. Following the 10:45 a.m. service of Holy Communion there will be party in the Great Hall. Bishop Greaves will be the celebrant and preacher at the Sunday service. On Ash Wednesday the service will be at noon. Should anyone who cannot attend a noon service desire the Imposition of Ashes just notify us by email: <bpmillsaps@benlomand.net>. For those unfamiliar with Lenten practices, please attend any service or stop by Christ Church or inquire by email.

## Community Ash Wednesday Service

The various Cowan churches will join for a shared Ash Wednesday Service at 6 p.m., Feb. 14, at Cowan Cumberland Presbyterian Church. Rev. L. Z. Johnson will be our speaker and the host church will lead in music and song.

Ash Wednesday is the first day in the Season of Lent, a 40-day period of fasting and prayer that leads to Easter Morning.

Come and join us in this special time of worship, reflection and preparation. Cowan C.P. Church is located at 206 W. Cowan St. The service is sponsored by the Cowan Ministerial Association.

## Morton Memorial UMC

Sunday, Feb. 11 is Transfiguration Sunday. Morton Memorial UMC will celebrate the day with an emphasis on the light of Jesus Christ illuminating our journey. All God’s Children, the children’s sermon, will include the use of light and experience of light breaking out from darkness.

We invite the public to participate in our Ash Wednesday service on Wednesday, Feb. 14, at

6:30 p.m. The ashes came from burning palm branches that were used in our Palm Sunday worship last year. Worshippers will have an opportunity for imposition of ashes (a small amount of ash placed on one’s forehead or the back of the hand) as we consider our own lives in relation to God and others. This time begins our observation of a Holy Lent.

There are several readings suggested by the Common Lectionary for this week. In Mark 9:2-9, Peter, James and John were witnesses at a remarkable meeting of Jesus, Moses and Elijah. Another is 2 Kings 2:1-12, where we learn that Elijah didn’t die but rather was taken from Earth in a Golden chariot leaving his protege Elisha in the dust.

On Tuesday, Feb. 13, Tracey Weibert will begin leading sessions of GriefShare, a weekly seminar and support group that will meet on Tuesdays at 5:30 p.m. at the Wesley House located between CVS in Monteagle and the Church. It’s an opportunity to rebuild one’s life when struggling with the loss of a loved one. At a GriefShare group, there’s understanding, guidance, relief, and a safe place to navigate the challenge of grief.

Come for the music, the prayers and the celebration of worship of God this and every Sunday. Morton welcomes all, regardless of where they may be in their faith journeys.

## St. James Episcopal

St. James, located at 898 Midway Rd., is a thriving, growing, and warmly welcoming church. Our weekly service, Holy Eucharist Rite II is at 9 a.m., on Sunday, followed by a time for fellowship. These services are also live streamed on our Facebook page.

Ash Wednesday, February 14, Holy Eucharist Rite II and Imposition of Ashes will be at noon.

## St. Mark and St. Paul

The 8:30 a.m. Sunday Holy Eucharist is in the church. The 11 a.m. service will be livestreamed on our Facebook page and remains available there afterward.

Nursery services: Infants and toddlers through three year olds are invited to gather on the playground

or in the child care classroom at the lower level of Claiborne Hall on Sunday mornings from 8:30 a.m. to noon. The nursery will be held at the playground of St. Mark and St. Paul.

Phoebe Pearigen will talk about “Dance: A Healing Art” at St. Mark and St. Paul’s Sunday Forum, Feb. 11, at 9:45-10:45 a.m. The talk is part of the parish’s “Creating in God’s Image” series.

Having studied and taught dance for over 60 years, Phoebe has frequently observed that we are happiest when we are moving. She will discuss her involvement with programs that have allowed communities to experience the joy of dance and the physical and emotional healing that can happen through their participation. During the Forum, attendees will have the opportunity to do a few movement exercises in their chairs.

Phoebe was the former director of the Sewanee Dance Conservatory and Perpetual Motion, and

taught dance for the Sewanee Theatre department. She has degrees from Birmingham-Southern College and Southern Methodist University and currently serves on the board for the USA International Ballet Competition.

The Holy Eucharist with Imposition of Ashes will take place at 12:15 p.m. and 7 p.m., on Wednesday, Feb. 14, 2024.

Lenten Soup Series: “Green Gospel: Foundations of Ecotheology” Wednesdays, Feb. 21-March 20 beginning at 5:30 p.m. We will share a simple meal and talk about Dr. John Gatta’s new book “Green Gospel: Foundations of Ecotheology,” with the author facilitating discussion. The book comes out March 5; we have a PDF copy to share with those who pre-order from Amazon.

## ‘The Disappearing Night Sky’ Prayer Service

Do you wonder where all the stars have gone? Ever miss seeing

the night sky? Come learn how the night sky has been disappearing and ways you can bring it back. All are welcome to join the Sisters of St. Mary for a time of prayer, music, readings, and video reflections at 7 p.m., Friday, Feb. 23, at St. Mary’s Convent at 1110 St. Mary’s Lane in Sewanee.

## Trinity Episcopal Church

Trinity Episcopal Church will have their annual Shrove Tuesday Pancake Supper from 5-7 p.m. on Tuesday, Feb. 13. All are welcome. The church is located at 213 1st Ave NW, Winchester.

## Unitarian Universalist

The service begins Sunday at 10 a.m., followed by refreshments and a discussion period. The church is located at 3536 New Manchester Hwy., Tullahoma. For more information call (931) 455-8626, or visit the church’s website at <www.tullahomauu.org>.

# Church Calendar

5 p.m. Evening Service, Sunday  
6 p.m. Mid-week Service, Wednesday

## Midway Baptist Church

9:45 a.m. Sunday School, Sunday  
10:45 a.m. Morning Service, Sunday  
6 p.m. Evening Service, Sunday  
6 p.m. Bible Study, Wednesday

## Midway Church of Christ

10 a.m. Bible Study, Sunday  
11 a.m. Morning Service, Sunday  
6 p.m. Evening Service, Sunday

## Monteagle Church of Christ

11 a.m. Morning Service, Sunday  
6 p.m. Bible Study, Wednesday

## Monteagle First Baptist Church

11 a.m. Worship Service, Sunday  
6 p.m. Bible Study, Wednesday

## Monteagle Seventh-day Adventist Church

10 a.m. Bible Study, Saturday  
11 a.m. Worship, Saturday  
7 p.m. Prayer and Study, Tuesday

## Morton Memorial United Methodist, Monteagle

service available online after noon Sunday, link is at <https://www.mortonmemorialumc.com> on FB  
10 a.m. Sunday School, until 10:45 a.m.  
11 a.m. Worship Service, Sunday

## Mountain of God Tabernacle, Monteagle

online worship services. Call (931) 924-5339 or go to <https://www.tdworldministries.org>

11 a.m. Worship Service, Sunday  
6 p.m. Prayer Service, Wednesday

## New Creations Ministries, Rayburn Chapel

4 p.m. Prayer Meeting, Sunday

## New Hope Church of God in Christ, Cowan

11 a.m. Sunday Service, Sunday  
6 p.m. Sunday Service, Sunday

## Pelham United Methodist Church

9:45 a.m. Sunday School, Sunday  
11 a.m. Worship Service, Sunday

## St. Agnes’ Episcopal Church, Cowan

11 a.m. Holy Eucharist, Sunday

## St. James-Midway Episcopal Church

9 a.m. Holy Eucharist Rite II, (and Facebook livestream), Sunday

## St. Margaret Mary Catholic Church, Alto

8 a.m. Mass, Sunday

## St. Mark & St. Paul

8:30 a.m. Nursery, basement of Kennerly Hall (Sewanee Children’s Center), Sunday

8:30 a.m. Holy Eucharist, Sunday

9:45 a.m. Godly Play, Sunday

9:45 a.m. Youth Sunday School, Brooks Hall

9:45 a.m. Sunday Forum, Kennerly Hall

11 a.m. Holy Eucharist, Sunday, livestream Facebook

## St. Mary’s Sewanee Retreat Center

3:45 p.m. Centering Support Group, Thursday

## Sewanee Church of God

10 a.m. Worship Service, Sunday

## Sisters of St. Mary Convent Chapel

7 a.m. Morning Prayer, Tuesday–Friday

7:30 a.m. Morning Prayer, Saturday

8 a.m. Holy Eucharist, Sunday

## Tracy City First Baptist Church

10:45 a.m. Morning Worship, Sunday

## Trinity Episcopal Church, Winchester (STEM)

10:30 a.m. Holy Eucharist, Sunday

12:30 p.m. Lectionary Bible Study, Tuesday

## Unitarian Universalist Church, Tullahoma

10 a.m. Service, Sunday

6 p.m. Tullahoma Sangha, Wednesday

## Valley Home Community Church, Pelham

10 a.m. Sunday School

11 a.m. Morning Service, Sunday

# Celebration of Life

## James Madison Pierce

James Madison Pierce, age 81, died on Feb. 2, 2024, at Alexian Village, Signal Mountain, Tenn. He was born on June 6, 1942, in Cleveland, Tenn., to Ernest Clifton Pierce and Mary Sue North Pierce. He was a graduate of the University of the South, C’65.

A Celebration of Life gathering will be from 3-6 p.m. on Saturday, Feb. 17, 2024, at the McGriff Alumni House, 120 Georgia Ave., Sewanee. For complete obituary go to <https://www.companionfunerals.com/chattanooga-obituaries>.

# Obituary

## Winfield James Sinclair

Winfield James Sinclair, age 69, died on Dec. 20, 2023. He was born on March 10, 1954, in Baltimore, Md., to James Edward and Pauline Shoemaker Sinclair of Sewanee, He graduated cum laude from the University of the South, with honors in Religion, in 1975, and the Cumberland School of Law in 1978. He was a life-long public servant, working 44 years in total as a special agent for the F.B.I., an Assistant U. S. Attorney for the Northern District of Alabama, an Assistant District Attorney in the Fourth Judicial Circuit, and an Assistant Attorney General for both the States of Alabama and Missouri. He was preceded in death by his parents.

He is survived by his wife of 45 years, Julie (nee Williams); brothers, Mark Edward (Thea), Scott Gambrell, and Craig Andrew (Debra Carol); and 20 nieces, nephews, grand-nieces, and grand-nephews. He was excited to oversee restoration of the 1930s cottage on the Sewanee campus previously occupied by his aunt and uncle, Caroline and Andrew Shoemaker, where he planned to host family and friends and to continue his patronage of the University Choir, a special passion of his.

A Memorial Service will be 1 p.m. on Saturday, Feb. 10, 2024 at All Saints’ Chapel. A reception immediately follows the service in the upstairs Parlor at the Sewanee Inn. In lieu of flowers, please consider donating in his name to the University Choir or to the animal rescue of your choice.



**Black Nuns** (continued from page 1)

Her mother concurred, "only white sisters taught us."

Williams tracked down Patricia Grey, founder of the NBSC. Grey bore the distinction of being the first sister of African American descent admitted into the Sisters of Charity of Nazareth. Three years earlier, in 1960, Grey had been denied admittance by the Sisters of St. Josephs founded in 1836, an order long honored for its selfless service. "I don't want to look back," Grey repeatedly told Williams, but she finally agreed to talk.

Williams set upon a journey of recovering the voices of the black women "ignored, dismissed, and assigned to myth." She calls the story she found "a chapter on colonialism and segregation in the church, both male and female ... an overlooked chapter in the freedom struggle."

In 1828, two free women of color, Elizabeth Lange and Maria Balas, founded the Oblate Sisters of Providence in Baltimore, Md., the first Roman Catholic sisterhood in the world established by women of African descent. Other orders had denied the women admittance, in keeping with the prevailing belief women born into slavery were not fit for the religious life. A French priest assisted the two women who came to his attention as teachers of black children. The Oblate sisters accepted women born into slavery and those still enslaved. Women entering the sisterhood were expected to bring a dowry. Many black women found donors to satisfy the requirement. However, the Oblate sisters refused to accept enslaved people as part of the dowry.

Some nuns left the Oblate sisters to found orders in Michigan and Georgia. When the French priest died, the church told the Oblate sisters "go back to the world." A Belgian priest took up the sisters' cause. The Oblate sisters opened missions in Philadelphia and New Orleans where black women were refused admission to existing Catholic orders. Initially, the black sisters were not allowed to wear habits and, later, not allowed to wear the same habits as sisters in white orders. The Oblate sisters took in children of lynching vic-

tims, victims of the Tulsa Massacre, and were themselves attacked by white supremist, when joining black sisters to support their efforts to desegregate white Catholic communities and allow black women to join the sisterhood.

In the 1940s, following WWII, the mother of a Chicago order appealed to her superiors for help with the "colored girls" applicant "problem." A New York priest would ask, "Are we Catholic enough to accept black vocations?" The answer Williams said was a firm "no."

Williams cited a curious phenomenon, Catholic orders in the United States were more likely to accept black women born outside the United States. "The vast majority of black communities in the United States have never taken a U.S. born black woman," Williams said. Many black women had to leave the United States to enter the sisterhood.

Researching the story solidified Williams fraying bond with her faith "I had one foot outside of the church when I came to the project. I didn't see my place in the church ... As these women were telling me their stories, they were also preaching to me ... communities started inviting me in ... but the archive can only tell you so much." Many black women never applied because their teachers discouraged them from doing so. Black women admitted were relegated to the role of domesticate servitude and not educated. In the 1960s, orders began requesting photographs so they would know if the applicants were black. "Thousands of vocations were lost to the church," Williams said. "Communities trying to reconcile, to welcome in diversification now are having to grapple with the realization they did not welcome in people before and now they don't have the leadership and experience and in certain instances it's too late."

In 2020, the Sisters' of St. Josephs made a formal apology to Dr. Patricia Grey for rejecting her application for admittance in 1960. In 1974, Grey left religious life and pursued a career outside the church. When Grey learned of the apology, she wept.

**Fat Tuesday at St. Mark and St. Paul**

Come one come all and let the good times roll for a New Orleans themed celebration in Kennerly Hall of Claiborne Parish house. On Tuesday, Feb. 13, at 5 p.m., you won't want to miss the Fat Tuesday festivities and feast hosted by the St. Mark & St. Paul Parish Life Crew! Everyone and every age are welcome, so invite all your friends and neighbors!

The menu will delight your taste buds with Cajun red beans and rice. Vegetarian options will be provided. There will be King Cake for all, and sausage and pancakes. Coffee and tea will be provided. Entertainment will include jazz and Mardi Gras favorites (dancing and beads are encouraged). Live entertainment provided by Sewanee Conglomerate and Rob Lamborn. No charge, but donations are greatly appreciated. Costumes of all kinds are strongly encouraged but not required.

**Out of Darkness Walk on Saturday, March 2**

A life is lost to suicide every 12.8 minutes in the United States. However, most people remain unaware that suicide is a national health problem. Many people believe that only licensed mental health professionals should talk about suicide, but this is one of many harmful myths about suicide. Having open conversations about suicide reduces anxiety, shame, and stigma, and is a key part of preventing suicide. On Saturday, March 2, at 10:30 a.m., the American Foundation for Suicide Prevention (AFSP) will host the Out of the Darkness Community Walk on campus at Sewanee. A major goal of this event is to show support for the families and friends of the more than 41,000 Americans who die by suicide, and the 20 million people who suffer from depression, each year. Support of the community walks also helps to raise funds for suicide prevention research and educational programs, erase the stigma surrounding suicide and its causes, and encourage those who are suffering from mental illness to seek treatment.

On-line registration is now available at <www.afsp.org/sewanee>. You may register individually or as part of a team. We hope you will consider walking with us as we walk to raise awareness and funds for suicide prevention. Please consider inviting your family, friends, neighbors, and co-workers to walk with you or to support your walk. If you are not able to join us, perhaps you would consider sponsoring a walker or making a donation to this walk. Thank you for your support in bringing suicide Out of the Darkness.

**A Spirituality of Hope: Listening to Four Quartets**

St. Mary's Sewanee, Ayres Center for Spiritual Development, is honored to host Bishop Henry Parsley presenting a Literature and Spirituality program. Bishop Parsley, member of St. Mary's Sewanee Board of Trustees and retired 10th Bishop of Alabama Episcopal Diocese, will lead guests in a spiritual journey through readings of T.S. Eliot's "Four Quartets." The retreat will be Feb. 23-25, 2024.

In this retreat guests will listen to these four poems, with the help of Ralph Fiennes' recent reading of them. Through lecture and the contemplative practice of lectio divina, participants will engage with the Quartets and enter into their spiritual wisdom and transformational power.

To register, visit the website at <www.stmaryssewanee.org>, or contact Reservations at (931) 598-5342 or <Reservations@stmaryssewanee.org>.

SH♥P  
LOCAL

**MONTEAGLE CLINIC NOW OPEN**

**SHULL CHIROPRACTIC CLINIC, PLLC**

**Dr. Eric Shull**

1045 W. Main St., Suite D-3  
Monteagle, TN 37356  
(931) 924-4869  
[shullchiropractic.com](http://shullchiropractic.com)

M, W, Th: 9am-12pm & 2pm-6pm  
Tues. 3pm-5pm  
Fri. 9am-11am

**RIVENDELL SPIRITUAL CENTER**

*Empowering spiritual seekers and all who desire to strengthen their connection and alignment with God through group and personal retreats, healing, writing, music, and workshops.*

For more information (931) 598-5555 / [info@rivendellspiritualcenter.com](mailto:info@rivendellspiritualcenter.com)  
<https://www.rivendellspiritualcenter.com>

**SEWANEE REALTY, LLC**

*Let us help you find your special place, in this special place.*

115 University Ave., Sewanee • 931.598.9200  
[www.SewaneeRealty.com](http://www.SewaneeRealty.com) • [Realtors@SewaneeRealty.com](mailto:Realtors@SewaneeRealty.com)



MLS 2617003 - 1058 Deepwoods Rd., Lot 118, Sewanee. \$850,000



MLS 2539919 - 684 Jump Off Mtn. Rd., Sewanee. 19+ac. \$540,000



RENTAL - Clifftops, Westlake Ave. 3 BR, 2 BA. Fully furnished. Pet friendly. \$3,000 per month. Contact Marie at 931.952.2468



MLS 2551836 - 215 Shadow Rock Rd., Monteagle. \$289,500



LAKE FRONT - MLS 2597407 - 637 Magnolia Dr., Winchester. \$699,500



322 Chase Circle, Fox Run Phase II, Winchester. \$290,000



MLS 2599861 - 76 Wood Bluff Rd., Winchester. \$389,500



0 Johnny's Way, Tracy City - MLS 2410583 - Lot 1. 6.17 ac. \$149,000.



MLS 252194 - 244 Rattlesnake Springs Rd., Sewanee. \$435,000



MLS 2487987 - 18546 S. Pittsburg Mountain Rd., Sewanee. 150 ac. \$1,800,000



MLS 2595082 - 776 Georgia Ave., Sewanee. \$389,500

**LOTS & LAND**

Jump Off Rd., 5+ ac SOLD	2509339	\$60,000
515 Beersheba Springs SOLD	2482328	\$55,000
William B. Martin Rd. 4+ac	2420264	\$60,000
0 Timberwood, 335 SOLD	2495526	\$65,000
0 Timberwood, 6+ac, 339 SOLD	2539084	\$64,900
0 Timberwood, 13+ac, 340 SOLD	2539090	\$128,900

**BLUFF**

Box House Rd. 5.6 ac	2497235	\$108,000
Falling Cliffs Dr., SOLD	2389298	\$119,000
Preservation Dr., 6.63 ac	2349236	\$70,000

**Patsy Truslow**  
Owner, Principal Broker  
931.636.4111  
[patsy@sewaneerealty.com](mailto:patsy@sewaneerealty.com)

**Marie Ferguson**  
Owner, Affiliate Broker  
931.952.2468  
[marie@sewaneerealty.com](mailto:marie@sewaneerealty.com)

**Ron Williams**  
Affiliate Broker  
423.598.9817  
[tideron2000@yahoo.com](mailto:tideron2000@yahoo.com)

**Tabitha Staples**  
Affiliate Broker  
931.581.2149  
[tabitha@sewaneerealty.com](mailto:tabitha@sewaneerealty.com)

**Lynn Willis**  
Affiliate Broker  
865.599.4236  
[lynn@sewaneerealty.com](mailto:lynn@sewaneerealty.com)

**Beth Rudder**  
Affiliate Broker  
931.224.1935  
[beth@sewaneerealty.com](mailto:beth@sewaneerealty.com)



# Call for SCA Board Nominations

The Sewanee Civic Association invites nominations for the 2024-25 Board of Directors. Experience working in fundraising and for nonprofits is a plus, but any adult who resides in the area and shares concerns of the community is welcome. The secretary and treasurer positions are open. For more information, email <sewaneecommunitychest@gmail.com>.

Nominations are due by Monday, Feb. 12. The slate will be presented at the March 4 membership meeting. Voting will occur at the annual membership meeting on May 6.

The Sewanee Civic Association manages the Sewanee Community Chest and the Sewanee Classifieds, and sponsors projects deemed by the membership to be beneficial to the community.

# Mountain T.O.P. 2024 Friends Weekend

Join Mountain T.O.P. on Feb. 22-25, for a weekend of service, fellowship, and remembrance. There will be optional in-camp facility work during Friday and Saturday. Payment is not required for this program but is greatly appreciated to cover some of the costs.

There will also be the 11th annual Brick and Mortar Dinner at 5 p.m., Saturday, Feb. 24. There will be an online and in-person auction.

Friends Weekend 2024 is our 11th annual celebration of the community of servant-hearted volunteers that Mountain T.O.P. has built. We spend the weekend focusing on in-camp repairs, exploration of the Cumberland Plateau and fellowship with life-long friends.

To register, go to <https://www.mountain-top.org/>, under the Register tab. For more information contact Jacey Brady at <jacey@mountain-top.org>.



## Need More Room?

# Sewanee Mountain Storage

(931) 598-5682  
Evan Barry  
Hwy 41 - Between Sewanee & Monteagle

■ Video Monitoring

5x10 | 10x10 | 10x20

■ Security Camera

Temperature Controlled Units  
5x5 | 5x10 | 10x10 | 10x15 | 10x20  
Temperature and Humidity Regulated



# CANDLER Piano Service

TUNING + REPAIR  
Sewanee, TN  
Churches, homes, and schools

RICHARD CANDLER  
678-876-0130  
rocandler@gmail.com  
candlerpiano.com







**Anne Chenoweth**  
REALTOR® | Class of '81  
931.205.1299  
anne.sewanee@gmail.com  
annechenoweth.parksathome.com

# Find Your Sewanee Home

#LoveSewanee

---

PARKS REAL ESTATE  
615.383.6964

# Voter Registration and Voting Information

Tuesday, March 5, 2024 Presidential Preference Primary and County Primary. Early voting in Franklin County begins Wednesday, Feb. 14, from 8 a.m. to 4:30 p.m. Voting continues Monday through Friday, 8 a.m. to 4:30 p.m., and on Saturday, 8 a.m. to noon, through Tuesday, Feb. 27. The Franklin County Election Commission is located at 839 Dinah Shore Blvd., Winchester.

Early Voting in Marion County is Wednesday, Feb. 14 through Tuesday, Feb. 27, 2024. Closed Monday, Feb. 19, in observance of Presidents' Day. Hours are Monday through Thursday 8 a.m. to 4 p.m. CST, Fridays 8 a.m. to 6 p.m. CST, Saturdays 8 a.m. to noon, CST. Early voting location is the Marion County Election Commission, 109 Academy Avenue, Jasper.

Grundy County Early Voting Site(s): Scruggs Municipal Building (City Hall), Room 3, at 433 Main Street, Altamont. Hours are Feb. 14 through Feb. 27, Monday through Friday, 9 a.m. to 4 p.m., Saturday 9 a.m. to noon. Closed Monday, Feb. 19 for Presidents' Day.

Plainview Community Center at 1235 SR 56 Highway, Tracy City. Hours are Feb. 14 through Feb. 27, Monday through Friday, 9 a.m. to 4 p.m., Saturday 9 a.m. to noon. Closed Monday, Feb. 19 for Presidents' Day

For more information, go to Franklin County <http://franklincotn.us>, phone (931) 967-1893. In Grundy County <http://grundycountyttn.net>, phone (931) 692-3551. In Marion County <www.marionvotes.com>, phone (423) 942-2108.

Contact information for election offices, samples ballots and more can also be found at <https://sos.tn.gov/elections>.

Tennesseans voting should remember to bring valid state or federal photo identification with them to the polls. For information about what types of ID are acceptable, visit <GoVoteTN.com> or call (877) 850-4959.

Voters can also download the GoVoteTN app. Voters can find early voting and Election Day polling locations, view sample ballots, see names of elected officials and districts, as well as access online election results through the application. Go to <GoVoteTN.com>.

# Marion County Hazard Mitigation Plan Survey

Marion County EMA is updating the Marion County Hazard Mitigation Plan. Your feedback on this survey <https://www.surveymonkey.com/r/MarionEMA24> will help ensure our plan revision reflects the citizens' needs. The purpose of the Hazard Mitigation Plan is to identify hazards that could affect our county and develop plans and strategies to protect our citizens during these emergencies.

The Marion County Emergency Management Agency will be hosting public meetings in February 2024 to review and update our plan. If you would like information regarding the dates of public meetings, please go to the Marion County EMA website at <www.tnmcema.org>. If you have further questions or would like more information, please contact Steve Lamb, Marion County EMA, <slamb@marioncountyttn.net>, phone (423) 605-1288.



We are accepting new clients and applications for CNA/Caregivers  
**1045 WEST MAIN STREET MONTEAGLE**  
We accept LTC, VA, SETAAD, TNCARE CHOICES, ECF CHOICES and Private Pay  
931-327-5276 (office)



# piggly wiggly

**Down Home, Down the Street**  
754 West Main St., Monteagle  
(931) 924-3135  
8 a.m. to 9 p.m. 7 days a week

# SENIOR CENTER NEWS

The Sewanee Senior Center serves lunch at noon Monday through Friday. The suggested donation is \$4, regardless of your age. Please call (931) 598-0771 by 9 a.m. to order lunch. Menus follow:

**Monday, Feb. 12:** Meat-loaf, mashed potatoes, broccoli & cheese, roll.

**Tuesday, Feb. 13:** Smoked sausage, pinto beans, cabbage cornbread.

**Wednesday, Feb. 14:** Philly steak sandwich, chips, dessert..

**Thursday, Feb. 15:** Black bean chili, toasted cheese sandwich, dessert.

**Friday, Feb. 16:** Chicken Alfredo, salad, garlic bread.

Menus may vary. For information call the center at 598-0771.

Chair exercise with Ruth Wendling is from 10:30-11:45 a.m. on Mondays and Wednesdays.

The Sewanee Senior Center does not charge any membership fee. All persons 50 or older who take part in any of the activities are considered members.

# Seed Giveaway

There will be a seed giveaway sponsored by the UT Extension Crimson Clover Master Gardeners from Grundy, Franklin, Marion, and Coffee counties. The seeds are from local gardens and are being distributed free to encourage gardeners to plant native, heirloom and local varieties not available commercially. Stop by the May Justus Memorial Library on the dates below for your free seed packet: 9 a.m. to 1 p.m., Thursday, March 7, and 11 a.m. to 4 p.m., Friday, March 8. The library is located at 24 Dixie Lee Ave., Monteagle.



# Mooney's

Market & Emporium

- ✦ ORGANIC, LOCAL FOODS
- ✦ SUPPLEMENTS & TOILETRIES
- ✦ GARDEN & BIRD SUPPLIES
- ✦ YARN & ACCESSORIES
- ✦ ANTIQUES, JEWELRY, GIFTS
- ✦ CALL FOR CURB SERVICE

Store open 10-6 daily  
931-924-7400  
1265 W Main • Monteagle



REUSE  
REDUCE  
RECYCLE



## SES MENUS

**Monday–Friday,  
Feb. 12–16  
BREAKFAST**

**Monday, Feb. 12:** Breakfast pastry, fruit, fruit juice, milk

**Tuesday, Feb. 13:** Meat biscuit, fruit, fruit juice, milk.

**Wednesday, Feb. 14:** Breakfast pancakes, fruit, juice, milk.

**Thursday, Feb. 15:** Canadian bacon, egg & cheese sandwich, fruit, fruit juice, milk.

**Friday, Feb. 16:** Breakfast waffles, fruit, fruit juice, milk.

### LUNCH

**Monday, Feb. 12:** Cherry blossom chicken, steamed broccoli, emoticon potatoes, rice, fruit, milk, fortune cookie.

**Tuesday, Feb. 13:** Hot dog or hamburger, French fries, baked beans, bun, fruit, milk.

**Wednesday, Feb. 14:** Breakfast for lunch: meat, eggs, Tennessee tots, salsa, biscuit, gravy, fruit, milk.

**Thursday, Feb. 15:** Corn dog, tossed salad, buttered corn, crinkle-cut fries, fruit, milk.

**Friday, Feb. 16:** Pizza, green beans, seasoned potato wedges, cookie, fruit, milk.

*A variety of fruit, fruit juice and milk is offered daily for breakfast. Daily offerings for lunch may include yogurt bag, sandwich, wrap, Bento box or pizza munchable. Menus subject to change. Go to <<https://www.fcstn.net/menus-mealpricing>>.*

## Cookie Walk and Open House

Cowan will host a Cookie Walk and Open House on Wednesday, Feb. 14. Shop for your sweetheart at Prissy & Judd's, The Sole Shop, Valley Vintage, The Franklin House, and Artisan Depot.

Be our Valentine on Feb. 14 from noon to 6 p.m. at our open house event.

Most businesses in town will have cookies and other refreshments.

We are eager to give you and your Valentine a small town experience as you support local businesses.

HEAVEN ON EARTH... NOW AVAILABLE IN SEWANEE



**M**YERS POINT at Sewanee offers a rare opportunity to enjoy a private community that celebrates American architecture, lifestyle, protected forests, cultivated lakes and panoramic views on Middle Tennessee's Cumberland Plateau. If you want to live surrounded by nature, history, beauty, quality and serenity, you'll want to call it home.



**John Goodson**  
(931) 703-0558  
[jgoodson@myerspoint.com](mailto:jgoodson@myerspoint.com)  
[myerspoint.com](http://myerspoint.com)

## Free Income Tax Prep Available to Local Residents

Beginning next week, the IRS-certified BetterFi Volunteer Income Tax Assistance (VITA) Program will begin processing and filing qualifying residents' income taxes for its 11th year in a row after transitioning from the Sewanee VITA Program. This year BetterFi is working with volunteers from the University of the South through the Office of Civic Engagement's Canale Leaders Program and South Cumberland Plateau AmeriCorps Program to assist local residents in filing their taxes.

BetterFi is working with partner sites to host on-site filing by appointment only. The planned schedule is below, but there is still availability for additional partners to schedule on-site tax preparation on Feb. 10, Feb. 28, March 21, or March 27. Any potential partner who would like to inquire about hosting tax filing at their location on one of these days should contact our AmeriCorps service member Georgia at <[georgia@betterfi.co](mailto:georgia@betterfi.co)>.

Any residents of Bedford, Coffee, Franklin, Grundy, Marion, or Moore county who make less than \$64,000 a year, are disabled, or are elderly qualify for a free tax return.

Each resident interested in filing must bring proof of identification (a photo ID), social security cards (if filing jointly with another person then bring both social security cards and both individuals must be present), wage and earning statements (W-2, 1099, etc.), dividend and interest statements (if this applies to the resident filing), birth dates of the resident(s) and dependent(s), and banking account and routing numbers for direct deposit (found on a blank check).

If a resident filing does not have a social security card, then he/she must bring an IRS Individual Taxpayer Identification Number (ITIN) assignment letter.

There is no walk-in filing — anyone interested in having their taxes prepared should contact the partner site below to sign up for one of their available time slots. Additional sites and availability will be announced on BetterFi's website <[www.betterfi.co/vita](http://www.betterfi.co/vita)> and on the BetterFi Facebook page <[www.fb.com/betterfi](http://www.fb.com/betterfi)>.

To file from your own home, most filers qualify for free filing with online assistance or by filing on their own at <[www.getyourrefund.org](http://www.getyourrefund.org)>.

The current schedule is as follows — please watch BetterFi's Facebook page <[www.fb.com/betterfi](http://www.fb.com/betterfi)> for announcements of delays or closures in the event of weather.

Shelbyville-Bedford County Public Library — Thursday, Feb. 15, with time slots available from 4-6:30 p.m. Call (931) 684-7323 to sign up for an appointment.

Coffee County Manchester Public Library — Thursday, Feb. 22, with time slots available 4-7:30 p.m. or Saturday, Feb. 24, with time slots 11 a.m. to 2:30 p.m. Call (931) 723-5143 to sign up for an appointment.

Franklin County Senior Citizens Center — Thursday, Feb. 29, with time slots available 9 a.m. to noon. Call (931) 967-9853 to sign up for an appointment.

Coffee County Lannom Library — Wednesday, March 6 with time slots available 2-5:30 p.m. or Saturday, March 9 with time slots available 11 a.m. to 2:30 p.m. Call (931) 455-2460 to sign up for an appointment.

## Spring Classes at Cumberland Folk School

The Cumberland Folk School, located at Sequatchie Cove Farm, is a place to celebrate and commune around traditional crafts and skills, offering weekend workshops taught by skilled craftspeople. Our classes are built upon the inherent connection between traditional skills, sustainable land management, and farming to teach self, reliance and the use of natural materials to create beautiful utilitarian objects. Go to <[www.cumberlandfolkschool.com](http://www.cumberlandfolkschool.com)> for more information, detailed class listings, and to sign up for upcoming classes.

The Apothecary Garden, Feb. 10, Growing, gathering and herbal medicine making in your own back yard with Leah Larabell of High Garden Tea.

Baking with Einkorn, March 30, Introduction to milling and baking with Einkorn with Erik Zilen of Chattanooga's beloved Niedlov's Bakery.

Birding by Ear, April 27, Join local birder Richard Candler, author of Birding Sewanee, on a morning bird walk around Sequatchie Cove Farm. A class for both beginners, who will learn some ID basics, and also advanced birders to gather with others and bird Sequatchie Cove Farm's Property.

Indigo Dyeing and Katazome printing, May 5, In love with indigo? In this class, Katazome and Indigo dyeing, you will explore the centuries-old Japanese technique of using stencils and a rice paste resist to make patterns on fabric then dipped into an indigo vat.

## Monteagle Florist



333 West Main Street  
Monteagle, TN 37356  
(931) 924-3292

Bonnie Nunley - Owner  
Daily deliveries to Sewanee  
for more than 40 years.

**Valentine's Day  
Headquarters!**

## Sewanee Children's Center Open House

The Sewanee Children's Center (SCC) is having an open house from 9–11 a.m., Saturday, March 2, 2024. SCC is a cooperative preschool that provides developmentally appropriate teaching and learning for children ages two to five years old in the preschool program and for children in kindergarten through third grade in the afterschool program. A summer program is also available for children ages three to nine.

SCC provides an environment that uses the constructivist theory of learning to address children's intellectual, emotional, physical, and social growth. Constructivist learning is based on children's active participation in problem-solving and critical thinking in a learning activity that they find relevant and engaging. They are "constructing" their own knowledge by testing ideas and approaches based on their prior knowledge and experience and applying these to a new situation that they then integrate with what they already know. SCC relies on a network of communication between the children, parents, and teachers to create a spirit of cooperation, collaboration and co-construction of knowledge to build a culture which respects childhood as a time to explore, create and be joyful. SCC strives to create a school environment that provides children with a sense of belonging in a world that is alive, welcoming and authentic. SCC wants all children to experience success, a feeling of self-worth, and a love for learning.

If you are interested in learning more about the programs SCC offers, meeting the teachers, and talking to currently enrolled families, please come to the open house on March 2. SCC is located at 216 University Avenue in Sewanee. The Sewanee Children's Center is a nonprofit 501(c)(3) organization and is supported by the Parish of St. Mark & St. Paul and the Sewanee Community Chest.

For more information, please visit the SCC website at <[www.sewaneechildrencenter.org](http://www.sewaneechildrencenter.org)>, email at <[sewaneechildrencenter@gmail.com](mailto:sewaneechildrencenter@gmail.com)>, or call the Director, Sarah Ralston Stark, at (931) 598-5928.

### ST. ANDREW'S-SEWANEE SCHOOL

**Shadow Day: Have your child experience the day with an SAS student!**

**Friday, February 16, 8:30 AM to 3:15 PM**  
RSVP Required at [admission@sasweb.org](mailto:admission@sasweb.org) or call 931-598-5651

**Coffee and Tours: No RSVP needed**  
**Presidents' Day, Monday, February 19 at 10:00 AM**  
**Every Thursday at 10:00 AM**

Day and Boarding | Grades 6-12

*Let us create space  
you will LOVE to come  
home to...*

*"Open your door to all  
the possibilities"*

Custom home remodeling begins with...

**Joseph's Remodeling  
Solutions**  
A Division of Sumpter Solutions, LLC

Taking Quality to the Next Level  
**931-598-5565**  
[joseph@josephsremodelingsolutions.com](mailto:joseph@josephsremodelingsolutions.com)  
[www.josephsremodelingsolutions.com](http://www.josephsremodelingsolutions.com)



# Documentary Screening of ‘The Philadelphia Eleven’

Exclusion of women from ordination and other church leadership roles made headlines earlier this summer when the Southern Baptist Convention banned women from the most senior leadership roles. Women in many parts of the Christian church continue a struggle for full inclusion in the sacraments and leadership of the church, a struggle that some women started 50 years ago.

In 1974, there was a dramatic breakthrough of the so-called stained glass ceiling that gave hope to Christian women everywhere. At a church in Philadelphia, a group of 11 women were ordained to the Episcopal priesthood in violation of the constitution and canons of the Episcopal Church – which at the time stated that only men were eligible for ordination. This story is told in a compelling new documentary The Philadelphia Eleven.

The feature documentary film will screen at 6 p.m., Monday, March 4, in All Saints’ Chapel.

This film tells a story that continues to resonate today as women seeking ordination continue to face resistance, disrespect and exclusion from roles reserved by men for men. The documentary explores the lives of these remarkable women who succeeded in transforming an age-old institution despite the threats to their personal safety and the risk of rejection by the church they loved. These women became and remain an inspiration for generations of women in the ministry, and a clarion call for the entire Christian Church.

The Rev. Nancy H. Wittig is one of the Philadelphia Eleven featured in the movie. “It’s amazing that women are still fighting for rights in the church, and continuing to feel blowback, similar to what we experienced 49 years ago,” she reflected, and then went on to comment, “we are proud of the changes we have accomplished through our priesthood and the ordinations in Philadelphia.”

The film’s director, Margo Guernsey, is not Episcopalian. She reminds others, “this is a story for all of us. It is about how to break down barriers with grace and be true to oneself in the process. This story reveals ways in which voices that are inconvenient, are often buried. It also provides a vision for what a just and inclusive community looks like in practice.”

The Episcopal Women’s History Project (EWHP) honors women’s ministries in the Episcopal Church by listening, recording, and continuing to tell their stories.

*We’re glad you’re reading the Messenger.*

**G. Robert Tubb II, Owner**  
**931-967-3595**  
**A1ChimneySpecialist.com**

**CSIA Certified Technicians**  
Video Inspections • Sweeping  
Restoration • Masonry Repair  
Custom Caps & Dampers  
Leak Repair & Water Proofing  
Wood Stove & Chimney Installs  
Gas Log Service & Installs  
Dryer Vent Cleaning/Repair

**HELP!**

**A-1 CHIMNEY SPECIALIST**

**Sewanee**  
**DOOR-TO-DOOR**  
**TRANSPORTATION SERVICE**  
Nashville • Chattanooga • Huntsville  
*Local trips available, too. Policies available online.*

Book now by phone or online:  
**423.394.0725**  
[sewaneedoor-to-door.com](http://sewaneedoor-to-door.com)

Cash App  
 PayPal  
 Zelle  
 venmo

**2024 Winter Programs**  
*at*  
**St. Mary’s Sewanee**  
*Retreat Center*

**A SPIRITUALITY OF HOPE: LISTENING TO THE FOUR**  
**QUARTETS WITH BISHOP PARSELY**  
**FEBRUARY 23-25**

**BEYOND THE FIVE SENSES**  
**WITH BECCA IMPELLO**  
**MARCH 15-17**

To Register  
[www.stmaryssewanee.org](http://www.stmaryssewanee.org)  
[Reservations@stmaryssewanee.org](mailto:Reservations@stmaryssewanee.org)  
931-598-5342

# Nashville Opera Presents ‘Opera OUT LOUD’

Nashville Opera presents “Opera OUT LOUD,” a light and lively 30-minute recital introducing the great operatic repertoire. Enjoy meeting four emerging professional opera singers as they bring to life the art form they love, right at the University of the South. After the performance, the Nashville Opera Artists will take questions from the audience and unpack what the life of an opera singer is like. The recital will be at 4:30 p.m., Monday, Feb. 12, at Guerry Auditorium.

# ‘One with the Whale’ Screening

Environmental Arts & Humanities, Sewanee’s Indigenous Engagement Initiative, and the Jessie Ball duPont library present a special public screening of a 2023 documentary centering on indigenous whaling and the conflicting view of environmental engagement that surround it. The screening of the documentary “One with the Whale” will be at 3 p.m., Sunday, Feb. 11, in Naylor Auditorium.

This 2023 film, to be featured on PBS’s Independent Lens later this year, is directed by Jim Wickens, Peter Chelkowski, and Yaari Walker and centers on the controversial issue of native subsistence whaling in North America. The film documents a Siberian Yupik whale hunt and its aftermath in Sivuqaq/Gambel, Alaska on St. Lawrence Island.

The film will appeal to faculty, students, and community members engaged with environmental issues, justice, policy, & activism in the age of climate change as well as those interested in Indigenous lifeways and culture: including but not limited to religion and food studies.

For more information go to <<https://www.onewiththewhale.com/>>.

# The Intersection of Arts and Activism: Making Performance for Social Change

The Office of Civic Engagement, English department, Theatre department, and Art department present a conversation with Barbara Pitts McAdams, at 4:30 p.m., Thursday, Feb. 15, in Naylor Auditorium.

McAdams is the co-author of “Moment Work: Tectonic Theater Project’s Process of Devising Theater.” She has crafted numerous theatrical productions that center social justice and change, including: “The Laramie Project” (with Tectonic), “#HereToo Project” (GVP youth activism at Western Washington University, Penn State and Columbia College Chicago), “Who Gets to be an American” (Mississippi State Univ), “Ephigenia in Aulus” (a climate activist adaption at Drew Univ), “Once a Belle...” (inclusion and diversity challenges at Saint Mary’s College, Notre Dame), and “iPromise: A Moment to a Movement” (in partnership with NYC family justice centers for domestic violence and IPV victims and survivors).

# ‘Studying the Landscape’ at the UAG

The University Art Gallery is delighted to present Philip Juras’s “Studying the Landscape: Observation, Conservation, and Restoration,” on view in the University Art Gallery through March 31.

Landscape paintings invite and construct a relationship between the viewer and the place depicted.

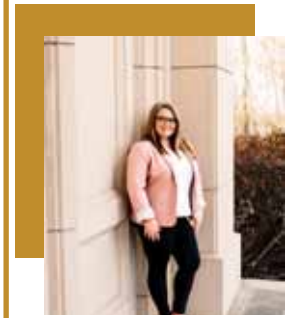
Philip Juras paints in oil on canvas in a visual language familiar from the American tradition of landscape painting, but turns that visual tradition to close observation of lesser known and forgotten ecosystems, with the purpose of inviting conservation and restoration.

In “Studying the Landscape,” Juras portrays fire adapted grasslands, woodlands and savannas in Tennessee, Illinois, and Georgia. Some record the artist’s impressions from particular managed natural areas. Some, especially among the larger works, recreate views of sites as they might have appeared before European-American settlement.

When Juras observes and depicts a landscape, he sees things many of us might not — soil type, centuries-long histories of growth and disturbance, native plants and habitats.

His paintings invite viewers to read the landscape differently; to attend to environments that have not historically been the focus of attention, to understand their histories and the disturbances that make them possible, to value the biodiversity they support, as well as to see and enjoy their aesthetic effects.

# Resident applications accepted!



*Michelle Morrison, ceo*



*A Home for the Aged*

423-403-4062 423-488-1847

931-463-9008

[info@serenityonthefarm.com](mailto:info@serenityonthefarm.com)

544 Gilliam’s Cove Rd., S. Pittsburg

# Esparza Voice Recital

Vocalist Victor Esparza, C’24, presents “Love Like You,” a recital about love in all its beauty and horror. This musical journey reminds us that from its birth til its inevitable end, love somehow manages to forever be. With Vicki Collinsworth, piano, and student guests. The recital will be at 3 p.m., Saturday, Feb. 10, in St. Luke’s Chapel.

# ‘The Ambient Pause’ at the Carlos Gallery

The Carlos Gallery in the Visual Arts Building at the University of the South is pleased to present “The Ambient Pause (A Rest from the Noise)” by artist Christina Foard. The exhibit is on display through March. An artist talk and reception will be at 5 p.m., Tuesday, March 5.

Painting interior/exterior scenes and making objects is a necessary personal Christina Foard response to experiences, emotions, and environments. Regardless of shifts in iconography, her work incorporates perceptions about time, memories, and often includes quotidian objects as symbolic placeholders. Foard translates observed scenes and incorporates invented components. Structure and pattern tend to be her preferred starting place, and throughout, she strives to remain in a state of “play,” housed in a curiosity and openness. She responds most to marks where there’s an intuitive response, a humanness, captured sensitivity, or personification over highly controlled or known outcomes. When Foard gets stuck in the puzzle of formal aesthetic concerns, she finds that altering and experimenting with materials advances and deepens her ideation. The history of the marks and movements within a piece, the history of a specific place, and her own history converge as primary elements in the making of the work.

Carlos Gallery is located at 105 Kennerly Rd., Sewanee. Gallery hours at 8 a.m. to 5 p.m., Monday-Friday, and 1–5 p.m., Saturday.

# Electric Arcadia Super Lunar Sunday Sonic Salon

Join us Sunday, Feb. 11, from 2–5 p.m. CST for our open home and studio gathering with demonstrations/performances by guest artists Arjun Kulharya (Atlanta) and Bunny Nunn (Nashville). Check our website for more information about the artists and for last-minute updates (especially in case of severely inclement weather) <<https://www.electrarcadia.org/>>.

We expect to be indoors with air cleaners, although we hope for a fine spring day for those who might enjoy a little forest walk. We will have light snacks and assorted beverages, and you may BYOB.

There is street parking, with the driveway reserved for artists and those who need closer access (please message us if you need assistance).

Electric Arcadia, 874 Lake O’Donnell Road in Sewanee, is a music & art studio and retreat on the Cumberland Plateau fostering exploration, community, discovery and healing through creative practices.



## Marr's Season-High 32 Points Highlights Win

Russ Marr netted a season-high 32 points and Sewanee lost a 17-point halftime lead, but hung on to defeat Birmingham-Southern, 82-77, in men's basketball action Feb. 4, at Juhan Gymnasium.

Marr made a pair of 3-pointers in the game, none bigger than a triple with just over six minutes to play, only the second field goal in a six-minute stretch for the Tigers (10-12, 6-5), who have won five of their last six outings.

Sewanee had multiple chances to seal the game in the final minute, but a pair of turnovers and three missed free throws opened the door for the Panthers (13-10, 7-5). Eric Robinson made just 2-of-4 at the line for BSC on consecutive trips and after a short jumper from Brandan Copeland, Kalib Thomas missed a 3-pointer with 5.1 seconds remaining.

Fletcher Bigham finally iced the game for Sewanee with two free throws after the rebound on Thomas' miss, securing the victory and moving the Tigers into a three-way tie for third place in the conference standings.

Sewanee led 49-32 at the half and maintained a 59-46 lead after a layup by Avaliani with 13 minutes to play, but Birmingham-Southern ran off 11 straight points. Dylan Patrick started the run with a layup and Eric Robinson added a basket before a dunk by Davis cut the Tigers advantage to five.

Patrick made a jumper and Garrido connected on 1-of-2 foul shots, making it 59-57 Sewanee with 9:53 remaining. Avaliani's layup increased the lead to four and a putback by Marr pushed the lead to 65-60, but a 10-4 spurt by the Panthers gave the visitors their first lead since midway through the first half.

Davis scored underneath and Robinson made two free throws before consecutive 3-pointers by Tyler Andrews and Robinson for a 70-69 BSC edge with 4:30 to play. Rashaun Williams made two free throws for the Tigers on the other end, putting the home team ahead for good.

Marr put together a personal 7-0 run that proved to be decisive, with the junior converting an old-fashioned 3-point play followed by two free throws and then a steal and a layup, the last bucket coming with 1:06 remaining in the game.

Marr made 10-of-17 overall from the field and 10-for-11 at the foul line, leading four players in double figures. Luka Avaliani netted 11 points while Bigham and Cody Baerlocher recorded 10 apiece off the bench.

Senior Blake Bouldin got the Tigers on the board with a 3-pointer and Marr added a triple after a layup from Williams, who collected another basket and 1-of-2 free throws before a steal and a layup by Bigham tied the game at 13.

Birmingham-Southern regained the lead thanks to a 3-pointer from Gobinson and two free throws by Copeland. Baskets by Marr, Williams and Bigham gave Sewanee a 23-18 advantage midway through the period. Baerlocher's layup and two free throws from Marr increased the lead to 27-19 for the Tigers.

Sewanee maintained a 5-7 point edge for more than three minutes before ending the half on a 19-7 run, starting with a 3-pointer by Baerlocher and a layup by Bigham. The two added baskets, including a dunk from Baerlocher, before a beautiful driving layup off the glass from Marr pushed the lead to 42-28.

Marr added another field goal before two free throws from Avaliani and then two by Marr in the final minute. BSC made 3-of-8 from the field and committed five turnovers over the final six minutes of the half, with Bigham blocking a pair of shots that turned into points on the other end for the Tigers.

## SAS MS Girls' Basketball Season Ends

In their final regular season game on Jan. 30, 2024, the St. Andrew's-Sewanee School middle school girls' basketball team faced defeat against Monteagle Elementary, with a final score of 26-15. Despite the loss, standout performances came from Savannah Blosser, who scored eight points, and Aubrey Blosser, who contributed six points. Rosa Thompson and Maggie Mayo also made notable contributions with two and one points, respectively.

Moving on to the league's tournament, the team encountered Swiss Elementary in the first round. Although they put up a valiant effort, the Mountain Lions were narrowly edged out, with Swiss Elementary claiming victory with a final score of 19-18 on Feb. 1. High scorers for the Mountain Lions in this match were Savannah Blosser, Aubrey Blosser, and Adeline Pond, each securing five points. Additionally, Maggie Mayo added two points to the scoreboard, while Catherine Barnett contributed one.

Despite the tournament loss, Coach Paige Lowe expressed pride in the team's progress throughout the season, stating, "I am proud of the girls for the improvements we made this season. It was a great group to work with." While the season may have come to a close, the resilience and dedication of the SAS Middle School Girls' Basketball will help to lay a foundation for future teams.

## SAS MS Basketball Battles Rivals Despite Setbacks

Following a significant delay to the season because of weather conditions, the St. Andrew's-Sewanee middle school boys' basketball team returned to action for their final regular season game. The boys traveled to cross-town rival Monteagle Elementary School. The boys faced a talented squad but, in the end, came up short. Coach MacLellan commented, "Following the long lay-off, the boys still managed to play hard."

The team faced Tracy-City Elementary School in the first round of the Super 6 tournament. Despite missing three starters, SAS played well and kept the game close until halftime. SAS could not match the size and strength of Tracy City, and they pulled away in the third and fourth quarters. Coach MacLellan committed, "The boys played well and never gave up." Congratulations to Mason Rudder for being named to the Super 6 All-Conference team.

## Women's Hoops Hangs on for 81-77 Victory

Olivia Falvey and Cydney Wright each posted 20-point games and Sewanee made 26-for-32 at the foul line including 6-of-8 in the final minute, outlasting Birmingham-Southern, 81-77, to sweep the season series in women's basketball action on Feb. 4, at Juhan Gymnasium.

The Tigers (6-16, 4-7 SAA) made all 10 attempts at the foul line in the third quarter and 7-of-11 in the final period, attacking the basket the entire second half and holding off the Panthers (5-18, 2-10).

After combining for 50 points in the second quarter, neither team scored for more than three minutes in the third period, with Falvey's layup and two free throws by Wright putting the Tigers in front, 45-42. Faith Humphrey's two foul shots made it 51-50 Tigers with 3:36 left in the quarter before the Panthers posted a 7-0 spurt thanks to two baskets by Montana Harris and a 3-pointer from Maya Cable.

Wright added two more free throws and Falvey collected a layup, cutting the deficit to three, but Sheraton Foster's heave from 30-feet swished at the buzzer for a 60-55 BSC advantage.

Sewanee erased the deficit quickly to open the fourth quarter with a layups from Wright and Falvey and 1-of-2 foul shots by Falvey, knotting the game at 60. Faith Humphrey's layup tied the contest again and back-to-back 3-pointers by Falvey and Brianna Keating-Rendon put the Tigers ahead, 68-62, midway through the period.

Lilly Phillips added another triple for Sewanee, keeping the lead at six, but two straight field goals by Harris made it a two-point game. Falvey's short jumper stretched the edge back to four with two minutes remaining and a layup by Humphrey gave the Tigers a 75-69 lead with 1:29 to play.

Wright connected on 1-of-2 free throws twice in a 15-second stretch but the Tigers kept putting BSC at the line as well, with Harris making two and Foster netting all four of her attempts in the last minute. Humphrey's two shots with 21.5

seconds and two more by Phillips with 11.0 seconds remaining iced the game for Sewanee.

Falvey finished with 22 points and 12 rebounds and Wright netted 21. Phillips made four 3-pointers and collected 14 points and Kayla Antoine recorded 12 points. Wright and Antoine each grabbed seven boards.

The Panthers scored the first six points of the game but the Tigers answered with an 8-0 spurt, including layups by Antoine and Falvey and a 3-pointer from Phillips. The run was part of a larger 15-3 stretch for Sewanee, with Antoine and Falvey each hitting two foul shots and Falvey netting a triple.

Harris scored four straight points for Birmingham-Southern before another three by Phillips and Sewanee took an 18-15 advantage after one period.

BSC put together a 9-1 spurt early in the second quarter, sparked by a 3-pointer by Cable, who netted two foul shots before a layup Ajailah Ogiemwonyi gave the Panthers a 25-21 edge. Wright made a layup and Phillips connected on her third 3-pointer of the half on the next possession and the teams traded baskets for the final six minutes of the half.

Antoine netted a pair of layups and Wright completed an old-fashioned 3-point play before a triple by Falvey knotted the game at 36. Antoine added another layup and Wright hit a 3-pointer, but Cable's two foul shots with just over a minute remaining put the Panthers in front, 42-41, at intermission.

Wright led the Tigers with 11 points while Antoine and Falvey registered 10 apiece and Phillips posted nine. Cable paced BSC with 11 points and Foster added nine.

## SAS Wins on Senior Night

St. Andrew's-Sewanee boys' varsity basketball team defeated Berean Academy Jan. 30, 45-43. Before the game SAS honored their four seniors: Ethan Allen of Sewanee, son of David and Cassie Allen; Raulston Barnett of Sewanee, son of Rob and Jana Barnett; Abbott McDougal of Jasper, son of Mark McDougal and Ruby Calhoun; Jack Shattuck of Monteagle, son of Trevor and Lindsay Shattuck.

The game winning shot was hit by Ethan Allen assisted by Hatch McNabb with 17 seconds left in the game, putting SAS up 43-42. Allen sealed the win by sinking two free throws with seven seconds left in the game, 45-43. Allen led SAS with nine points; Alejandro Miranda nine; Elijah Stark seven; Petre Gotsiridze six; Hatch McNabb five; Harper Thompson five; Raulston Barnett four. SAS's record is 8-9.

Head Coach Rob Zeitler said, "After losing a nailbiter the night before against South Pittsburg, I am so proud of the toughness this team showed tonight, gutting it out and getting the win at the end of the game. It was a true team victory with 10 different players contributing to the win and a great way to celebrate our seniors. We'd also like to extend a thank you to their families, friends, and our energetic crowd, all of whom made the game last night an incredible one."

The team lost to South Pittsburg Jan. 29, 52-45. SAS went into halftime leading 26-19, but were outscored in the third quarter 12-5. South Pittsburg hit some key free throws down the stretch to get the win. SAS was led by Ethan Allen 14; Harper Thompson 12; Elijah Stark eight; Sam Goodpaster seven; Hatch McNabb two; Alejandro Miranda two.

## Russell L. Leonard

ATTORNEY AT LAW

Office: (931) 924-0447

Fax: (931) 924-1816

1016 W. Main St., Suite 3  
Monteagle, TN 37356

rleonardlegal@gmail.com  
www.rleonardlegal.com

## HOME GAMES

2 p.m., Friday, Feb. 9, Baseball vs. Toccoa Falls College

10 a.m., Saturday, Feb. 10, Men's Tennis vs. Cumberland University

11 a.m., Saturday, Feb. 10, Baseball vs. Toccoa Falls College, DH

3 p.m., Saturday, Feb. 10, Men's Lacrosse vs. Transylvania University

5 p.m., Saturday, Feb. 10, Men's Tennis vs. UT Southern

11 a.m., Sunday, Feb. 11, Women's Tennis vs. Cumberland University

5:30 p.m., Tuesday, Feb. 13, SAS MS Girls' Volleyball vs. Monteagle

Saturday, Feb. 17, University Track and Field, Sewanee Indoor Meet

9 a.m., Saturday, Feb. 17, Equestrian (NCEA) vs. Bridgewater College

9:30 a.m., Saturday, Feb. 17, Men's Tennis vs. Wallace State CC-Hanceville

11 a.m., Saturday, Feb. 17, Baseball vs. Anderson University, DH

## BUG PROBLEMS?

We can help! Call us for a free inspection!

### BURL'S TERMITE & PEST CO.

TERMITE—PEST—VAPOR CONTROL

Bonded • Insured • Home-Owned & Operated

101 N. Main Street, Estill Springs

(931) 967-4547 or [www.BurlsTermite.com](http://www.BurlsTermite.com)

Charter #3824 • License #17759



**Ann R. McNair, CPA**  
TAX & ACCOUNTING SERVICES

(615) 268-1040  
[annmcnaircpa@gmail.com](mailto:annmcnaircpa@gmail.com)

*You earned the money. I'll help you keep it.*

**CMA**  
COUNTRY MUSIC ASSOCIATION

Registered QuickBooks ProAdvisor & Member of American Institute of Certified Public Accountants



# NATURENOTES

by Yolande Gottfried



Crocus. Photo by David Rowe



Snowdrop. Photo by David Rowe

## Crocus and Snowdrop

The crocus and the snowdrop, as reported in bloom by David Rowe, are two beloved signs of spring in our gardens. Our spring crocus originated in the Mediterranean region and was spread to the botanical gardens of Europe starting in the 16th century. It was brought to our continent by English colonists, probably by the women who brought their gardens with them. John Bartram, the famous Philadelphia gardener, received some in a shipment in 1740 from Peter Collinson, an English merchant and botanist. His son, William Bartram, reported them as “above ground”, along with snowdrops, narcissus, and tulips, on Jan. 15, 1802. Crocus has been called “Valentine’s flower” because it was often in bloom by then.

There is tradition of snowdrops being in bloom by Feb. 2, Groundhog Day or Candlemas Day, which also coincides with the midpoint between the winter solstice and the spring equinox. Abbo’s Alley is a good place to look for them if you don’t have any in your yard. The scientific name, Galanthus nivalis, can be translated as Snowy Milkblossom, a nice description of the flower. Other old names are Fair-Maids-in-February and Candlemas Bells. They, like crocus, are native to the Mediterranean region, and were introduced in Europe around the sixteenth century.

Of course, neither is a native plant. Who will be the first to report hepatica or harbinger-of-spring, our own early bloomers?

# WEATHER

DAY	DATE	HI	LO	DAY	DATE	HI	LO
Mon	Jan 22	45	40	Mon	Jan 29	39	27
Tue	Jan 23	51	50	Tue	Jan 30	52	34
Wed	Jan 24	58	56	Wed	Jan 31	42	28
Thu	Jan 25	67	51	Thu	Feb 01	55	44
Fri	Jan 26	61	51	Fri	Feb 02	64	41
Sat	Jan 27	59	35	Sat	Feb 03	62	43
Sun	Jan 28	37	29	Sun	Feb 04	50	39
Week’s Stats:				Week’s Stats:			
Avg max temp =		54		Avg max temp =		52	
Avg min temp =		45		Avg min temp =		37	
Avg temp =		49		Avg temp =		44	
Precipitation =		3.86”		Precipitation =		0.4”	

Reported by Sandy Gilliam, Domain Ranger

# State Park Offerings

Please note: To confirm that these events will occur as listed go to <<https://tnstateparks.com/parks/events/south-cumberland>>, <<https://tnstateparks.com/parks/events/savage-gulf>> or call (931) 924-2980.

**Ranger Falls Loop Hike—Savage Gulf State Park, Saturday, Feb. 10, 8:15 a.m. CST. Cost, \$10.** <<https://tnstateparks.com/parks/events/savage-gulf>>. (Registration closes at midnight the day before the event. Please pre-register.) Looking for a challenging all-day hike with rewarding views and waterfalls? Meet Park Ranger Todd Childress at Stone Door Ranger Station, 1183 Stone Door Rd., Beersheba Springs, for this moderately intense 11-mile hike from the Stone Door and travel the Big Creek Rim Trail, then down into the Gulf at Alum Gap and back up through the Stone Door. While on the Big Creek Gulf Trail, we will stop for lunch at the stunning Ranger Falls. Guests will need to be able to hike long distances, transition across boulder fields and water crossing and be comfortable making steep elevation gains and descents, wear weather appropriate clothing with hiking shoes, bring snacks with lunch, and have ample amounts of water. Weather permitting. The areas around overlooks and waterfalls can be treacherous in terms of keeping your footing. The potential to slip and fall exists, and extreme care is needed.

**Day Loop Hike—Savage Gulf State Park, Tuesday, Feb. 13, 8:15 a.m. CST. Cost, \$5/12+under, \$10. Adults** <<https://tnstateparks.com/parks/events/savage-gulf>>. (Registration closes at midnight the day before the event. Please pre-register.) Join Park Ranger Mark Greenwood at Savage Gulf East Ranger Station, 3157 SR 399, Palmer, for a 5-mile (round trip, approximate) guided hike of the Savage Gulf Day Loop. Bring along desired water and food, as these are not provided. Wear sturdy shoes in which to hike! Weather permitting. This is a basic, introductory hike to the east side of Savage Gulf. The challenge lies mostly in the overall distance. The areas around overlooks and waterfalls can be treacherous in terms of keeping your footing. The potential to slip and fall exists, and extreme care is needed. This event will be offered on Wednesday, Feb. 14 at the same time.

# DREMC to Host Free Home Energy Workshops

Get valuable advice on how to improve the energy efficiency of your home before summer arrives. The Home Energy Workshop will be held in Decherd on Tuesday, March 19, at 6 p.m. at the DREMC office located at 1738 Decherd Blvd.

Home Energy Workshops are conducted by DREMC’s Residential Energy Advisor who helps attendees better understand how energy is used in the home, what repairs or upgrades will make the biggest impact on your energy bill and more.

Workshop participants will also learn about rebates available through the TVA EnergyRight Residential Services Program for existing homes and new home construction that encourage energy efficiency. The rebates are designed to assist DREMC members in achieving their goals to improve energy efficiency year-round and create a more comfortable home.

The event includes a light supper, plus each participating household will receive a free energy-saving starter kit.

For more information about DREMC’s Home Energy Workshops or to enroll, visit <[www.dremc.com/workshop](http://www.dremc.com/workshop)> or call (931) 680-5880. Due to limited space, please reserve your seat in advance. Dates and locations of other Home Energy Workshops being offered by DREMC are listed on their website.

# Nature Journaling Continues

The Nature Journaling group, sponsored by the Sewanee Herbarium, meets Thursdays, 9-11 a.m. Grab a pencil and paper and plan to join us. Email <[mpriestley0150@gmail.com](mailto:mpriestley0150@gmail.com)> for more information and meeting location.



Wolfgang



Romeo

# MARC’s Mountain Adoptables

## Meet Wolfgang & Romeo

Wolfgang is a very nice, well mannered German Shepherd Dog boy, black and cream colored, around 11-12 months old, and weighing around 70 pounds. He may growl a little at strangers but warms up easily and is quite loving. Wolfgang almost never barks or complains. He is fine with chickens just in case you have some. Wolfgang has been training to be a support dog and obeys commands readily. He always comes when he is called. Wolfgang will fit very nicely into your family. If you are looking for the perfect companion, Wolfgang may very well be the one. Wolfgang also needs a foster home and that is a great way to “try out” a dog to see if he/she is a good fit for you.

Romeo is a very cool dude. And very handsome. He is an Orange Tabby Domestic Short Hair cat, around maybe four or five years old and weighs about 13.5 pounds. Romeo is a big laid-back guy who enjoys just chilling (since being rescued from roaming in the winter chill!) and gobbling up treats. Having been an outdoor roamer, he does like to explore. Romeo’s a lover, not a fighter, and is actually a bit timid around other cats. Romeo will make a perfect new family member.

If you would like to learn more about Wolfgang and Romeo, please fill out an Adoption Application on the MARC website <[www.marc4change.org](http://www.marc4change.org)> and/or contact Sue Scruggs, cell phone (423) 619-3845. These pets are fostering on the Sewanee-Monteagle Mountain and are easy to meet. All MARC animals ready for adoption are spayed or neutered and up to date on their vaccines and preventatives.

MARC - Marion Animal Resource Connection is a 501(c)(3) nonprofit animal welfare organization. It is not a shelter and relies on foster homes to save animals.

## DONATIONS NEEDED 4 MARC

Dog treats • Wet cat food  
Purina One puppy chow



## DONATIONS DROPPED OFF @

MARC, 225 Sequatchie Ln., Sequatchie, TN  
Taylor’s Mercantile, 10 University Ave., Sewanee, on  
Thursday and Friday before noon  
SCAN the Amazon Wish List <https://a.co/7119w5J>





# Messenger Classifieds

## ENGINE REPAIR

**SARGENT'S SMALL ENGINES:** Repairs to All Brands of Equipment: Lawn mowers (riding or push), String trimmers, Chainsaws, Chainsaw sharpening, New saw chains. Pickup and Delivery Available. (931) 212-2585, (931) 592-6536.

**SMALL ENGINE REPAIR:** Most makes/models. New/used parts. Pickup/delivery. 20 years' experience. Decherd. (931) 434-3511.

## ESTATE SALE

**ESTATE SALE:** Friday and Saturday, Feb. 9-10: 8 a.m. - 5 p.m. This home is full to the top! Lots of great items, Vintage collectable books different genres, dresser, chest of drawers, bed frame, collectable hats, upright piano, vintage sheet music, fosteria glassware, vintage pottery, vintage christmas, wooden rocking chairs, wooden chairs, yard items, corning ware, Pyrex items, vintage baby toys, strollers, yard tools, mechanic tools, costume jewelry, plus many other high-quality household items. 601 Marbury Road Tullahoma, TN 37388. Cash, Venmo, Credit Cards Accepted, Checks with ID. Pictures at <estatesale.net, Barbara's Classy Finds> Barbara Bull (931) 607-1101, or Mary Summitt (502) 422-2221 <bbullll@comcast.net>.

## FOR RENT

**FOR RENT:** Family Retreat, Cowan, Tenn., area: 3 tiny houses, very private mountain setting, 15 minutes from The University of The South. Features: spa, hot tub, hiking trail, fire pit, grill area. Sleeps six+. Each unit is unique and rents for \$206/night. (Minimum 3-Nights). Experience Gatlinburg Right Here At Home. Perfect Weekend Get Away. Points of contact: Joshua, (931) 636-3356; Donnie, (931) 308-9150.

## FOR SALE

**FIREWOOD FOR SALE:** \$100/rick, picked up or delivered and stacked. If delivered, \$1/mile (one way) delivery charge. (423) 322-7639 or (931) 212-2585.

**FOR SALE:** 43" Kenmore riding mower, \$300; Air Compressor, \$150; Push mower, \$35; Welder w/torch, \$150. (931) 691-4629.

## LAWN CARE

**CHAD'S LAWN & LANDSCAPING**  
-FREE ESTIMATES-  
\* Lawn care & Design (Mulch & Planting)  
ALSO: \* Tree Trimming & Removal  
\* Pressure Washing \* Road Grading  
\* Stone Patio/Fireplace \* Garden Tilling  
\* Leaf Pickup & Blowing  
(931) 308-5059

**EAGLE LANDSCAPING & LAWN MAINTENANCE CO.**  
Now Offering Specials for the SPRING!  
We offer lawn maintenance, landscaping, hedge/tree trimming & more!  
Please call for your free estimate  
(931) 598-0761 or (931) 636-0383

## LOCAL SERVICES

**MASSAGE**  
Regina Rourk Childress  
Licensed Massage Therapist  
www.reginarourk.com  
~ GIFT CERTIFICATES ~  
(931) 636-4806

**GARMENT HEMMING:** Embroidered scarves. Call Bonnie Gilliam, (931) 691-4629.

**King's Tree Service**  
Topping, trimming, bluff/lot clearing, stump grinding and more!  
\*Bucket truck or climbing\*  
Free wood chips with job  
Will beat any quoted price!  
Satisfaction guaranteed!!  
-Fully licensed and insured-  
kingtreeservice.com  
Call (931) 598-9004—Isaac King

**MARK'S HOME REPAIR**  
KITCHEN AND BATH REMODELING  
Decks, Home Building, Electrical, Plumbing, Drywall, Tile & Hardwood Floors, Outbuildings, Pressure Washing  
MARK GREEN, owner  
931-636-4555 | mdgreen41@gmail.com

**Lakeside Collision**  
"Done Right, the First Time"  
103 Mabee Ave., Monteagle  
Ph: 931.924.3316 | Cell: 931.235.3316  
lakesidecollision00@gmail.com

**JP JUNK REMOVAL:** We do most jobs -- garage and storage cleanouts. Call (931) 308-2675.

**Valentine's Day**  
Love is in the air. Order early for best selection. Finest quality - best prices!  
**TAYLOR'S MERCANTILE**  
10 University Ave. • Sewanee • 931.598.5899  
10 am - 4 pm • Tuesday - Saturday

## PUBLIC NOTICE

**NOTICE:** The Sewanee Utility District of Franklin and Marion Counties Board of Commissioners is scheduled to meet at 5 p.m., Tuesday, Feb. 20, at the utility office on Sherwood Road. If a customer is unable to attend but wishes to bring a matter to the board, call (931) 598-5611, visit the office, or call a board member. The board members are Doug Cameron, Johnny Hughes, Donnie McBee, Charlie Smith, and Clay Yeatman.



# Sewanee

## COMMUNITY CHEST

### Grateful for the Gifts

100%

SES Parent Organization

Sewanee Senior Center

Sewanee Children's Center

Housing Sewanee

Sewanee Mountain Messenger

MARC

Folks at Home

Community Action Committee

Animal Harbor

St. Mark's Community Center

Sewanee Community Center

Fourth of July Celebration

Early Literacy Embassadors

Reach Out and Read

Mountain Goat Trail Alliance

Little Bellas





## DONATE TODAY

sewaneecivic.org



# ARE YOU REGISTERED TO VOTE?



## REGISTER TODAY AT GoVoteTN.gov





# FROM BARD TO VERSE

by Robin Bates

## Valentine's Day

Wild nights - Wild nights!  
Were I with thee  
Wild nights should be  
Our luxury!

Futile - the winds -  
To a Heart in port -  
Done with the Compass -  
Done with the Chart!

Rowing in Eden -  
Ah - the Sea!  
Might I but moor - tonight -  
In thee!

--Emily Dickinson

**HOUSE CALL SERVICE AVAILABLE**  
Full Service Veterinary Care for Dogs, Cats & Horses  
Offering Acupuncture, Chiropractic & Herbal Therapies

**Midtown Veterinary**  
Services & Hospital

Traci S. Helton  
DVM

Jessie Richardson  
DVM

**Monday-Friday 7:30 am-6 pm**  
**931-962-3411**

505 S. Jefferson St., Winchester (41-A toward Winchester. First left after Domino's Pizza)

**Michael A. Barry**  
**LAND SURVEYING & FORESTRY**

★ ALL TYPES OF LAND SURVEYS  
★ FORESTRY CONSULTING

**(931) 598-0314 | (931) 308-2512**

**MEMBERSHIP MEETING, Monday, March 4, KENNERLY HALL**  
Social time begins at 5:30 pm, dinner at 6 pm  
**RSVP by Friday, March 1, 2024**

**Sewanee CIVIC ASSOCIATION**



Patrick Dean will present the program. Dean is the executive director of the Mountain Goat Trail Alliance. He is also the author of two books, "A Window to Heaven," and "Nature's Messenger."

**WWW.SEWANEECIVIC.ORG | SEWANEECOMMUNITYCHEST@GMAIL.COM**



**MONTEAGLE SECURITY OPERATIONS**

INTRODUCING  
**QOLSYS**  
Quality Of Life Systems  
IQ Panel 4 alarm system and home automation hub

Protect your home or business and control your alarm system, locks, garage doors, lights, thermostats, most anything, from anywhere, using your phone.  
7" touchscreen, professionally installed, professionally monitored, or we can assist with DIY installation. Call for more information or a demonstration.

931 924 3216 office  
931 273 9814 cell  
800 764 7489 toll free  
www.monsecurity.com

Serving Grundy, Franklin, Marion Counties,  
And surrounding areas  
Tennessee license 2188

# Community Calendar

## Friday, Feb. 9

- 9 a.m. CAC office open, until 11 a.m.
- 9 a.m. Yin Yoga, Anneli, High Vibes, Country Mart, Monteagle, until 10:15 a.m.
- 10 a.m. You Fit, Betsy, Community Center; and at noon; sign up required

## Saturday, Feb. 10 • Lunar New Year

- 8 a.m. MMUMC monthly curbside food distribution 322 W. Main St., Monteagle, until 10 a.m.
- 9 a.m. American Legion Post 51, Legion Hall, Sewanee
- 9:30 a.m. Flow Yoga, Anneli, High Vibes, Country Mart, Monteagle, until 10:45 a.m.
- 10 a.m. Hospitality Shop open, until 2 p.m.
- 3 p.m. Voice recital, Victor Esparza, Vicki Collinsworth, piano, and student guests, St. Luke's Chapel

## Sunday, Feb. 11

- 1 p.m. You Fit, Betsy, Community Center; Introductory class at 2:30 p.m.; sign up required
- 2 p.m. Knitting Circle, Mooney's, until 4 p.m.
- 3 p.m. Documentary Screening, "One with the Whale," Naylor Auditorium, Gailor Hall
- 4 p.m. Hatha Yoga, Helen, Community Center

## Monday, Feb. 12

Last Day to submit Sewanee Civic Association Board nominations; more info, <sewaneecommunitychest@gmail.com>

- 9 a.m. CAC office open, until 11 a.m.
- 9 a.m. Coffee with the Coach, in person and livestream, Blue Chair
- 9 a.m. Tai Chi, Shao-nian, High Vibes, Country Mart, Monteagle, until 10 a.m.
- 9 a.m. Pilates, intermediate, Kim, 293 Ball Park Rd.
- 10:30 a.m. Chair Exercise, Ruth, Community Center, until 11:45 a.m.
- 11:30 a.m. Sewanee Woman's Club, St. Mary's Sewanee; lunch at 11:50 a.m.; program, Julie Cobb, FC Country Club, follows
- 4 p.m. Flow Yoga, Anneli, High Vibes, Country Mart, Monteagle, until 5:15 p.m.
- 4:30 p.m. "Opera OUT LOUD," Nashville Opera, Guerry Auditorium

## Tuesday, Feb. 13

- 8 a.m. GC Food Bank, 114 S. Industrial Park Rd., Coalmont, until 10 a.m.
- 9 a.m. CAC office open, until 11 a.m.
- 9 a.m. Flow Yoga, Anneli, High Vibes, Country Mart, Monteagle, until 10:15 a.m.
- 10 a.m. Pilates, beginners, Kim, 293 Ball Park Rd.
- 10 a.m. Hospitality Shop open, until 1 p.m.
- 10:30 a.m. La Leche League, Pippa, 39 Ball Park Rd.
- 11:30 a.m. Grundy County Rotary, Dutch Maid Bakery, Tracy City
- noon Pilates, intermediate, Kim, 293 Ball Park Rd.
- 4:30 p.m. S. Cumberland Farmers' Market pickup, Community Center, until 5:30 p.m.
- 5 p.m. GriefShare support group/weekly seminar, MMUMC Wesley House
- 5 p.m. Fat Tuesday Celebration, Kennerly Hall, St. Mark & St. Paul

- 5:30 p.m. Gentle Flow Yoga, Pippa, 293 Ball Park Rd., until 6:30 p.m.
- 7 p.m. U of S Strategic Planning, open Town Hall meeting, Convocation Hall

## Wednesday, Feb. 14 • Ash Wednesday • Valentine's Day

- 9 a.m. CAC office open, until 11 a.m.
- 9 a.m. Pilates, intermediate, Kim, 293 Ball Park Rd.
- 9 a.m. Tai Chi, Shao-nian, High Vibes, Country Mart, Monteagle, until 10 a.m.
- 10 a.m. Writers' Group, 212 Sherwood Rd., more info: (931) 598-0915
- 10:30 a.m. Chair Exercise, Ruth, Community Center, until 11:45 a.m.
- 5 p.m. Mobility & Flexibility (\$15), Camp, High Vibes, Country Mart, Monteagle, until 6 p.m.
- 5:30 p.m. Hatha Yoga, Helen, Community Center
- 6:30 p.m. Kundalini Yoga/Meditation, Pippa, (\$15) High Vibes, Country Mart, Monteagle

## Thursday, Feb. 15

- 8 a.m. Monteagle-Sewanee Rotary, John Solomon, St. Mary's Sewanee
- 9 a.m. CAC office open, until 11 a.m.
- 9 a.m. Herbarium Nature Journaling, more info email <mpriestley0150@gmail.com>
- 9 a.m. Flow Yoga, Anneli, High Vibes, Country Mart, Monteagle, until 10:15 a.m.
- 9:30 a.m. Body Recall exercise class, Judy, Monteagle City Hall, until 10:30 a.m.; more info <msjmagoo@gmail.com>
- 10 a.m. Hospitality Shop open, until 1 p.m.
- 10 a.m. Pilates, beginner, Kim, 293 Ball Park Rd.
- 11 a.m. FCFRW, Oasis Restaurant, Winchester; meeting follows lunch, speakers Kelly Hall, Amy Dennis
- noon Pilates, intermediate, Kim, 293 Ball Park Rd.
- 4:30 p.m. Making Performance for Social Change: Conversation with Barbara Pitts McAdams, Naylor Auditorium, Gailor Hall
- 5:30 p.m. Pilates Mat Class, Bruce Manuel, High Vibes, Country Mart, Monteagle
- 6 p.m. Franklin County School Board, 215 S. College St., Winchester

## Friday, Feb. 16

- 9 a.m. CAC office open, until 11 a.m.
- 9 a.m. Yin Yoga, Anneli, High Vibes, Country Mart, Monteagle, until 10:15 a.m.
- 10 a.m. You Fit, Betsy, Community Center; and at noon; sign up required

## Local 12-Step Meetings

### Friday

7 p.m., AA, open, Christ Church, Tracy City

### Saturday

7 p.m., NA, open, Decherd United Methodist

### Sunday

6:30 p.m., the Wesley House, MMUMC

### Monday

4 p.m., 12-Step Women's Study Group, Brooks Hall, (931) 327-5551, not on Dec. 25 or Jan. 1, resumes at 5 p.m., Jan. 8

7 p.m., AA, open, Christ Church, Tracy City

### Tuesday

7 p.m., AA, open, First Baptist, Altamont

7 p.m., AA, open, Trinity Episcopal Church, Winchester

### Wednesday

10 a.m., AA, closed, Clifftops, (931) 924-3493

7 p.m., NA, Decherd United Methodist

### Thursday

6 p.m., Life's Healing Choice, Grundy County Recovery Alliance, Coalmont

7 p.m., Al-Anon, First UMC, Winchester



**ROB MATLOCK**  
CONSTRUCTION COMPANY  
NEW HOME BUILDING  
AND REMODELING

PHONE: 931-598-5728  
CELL: 931-580-5728  
EMAIL: RMATLOCKCONSTR@GMAIL.COM

**MATLOCK**

State Licensed • Fully Insured



**MR. POSTMAN**  
209 South Jefferson St., Winchester  
One block off square across from PO  
(931) 967-5777 Fax (931) 967-5719  
mrspostwoman@gmail.com

**Full Line Packing Supplies**

**-SHIPPING AND PACKING SERVICES-**  
Open Mon-Fri 8:30-4:30 Authorized shippers for UPS and Fed Ex