

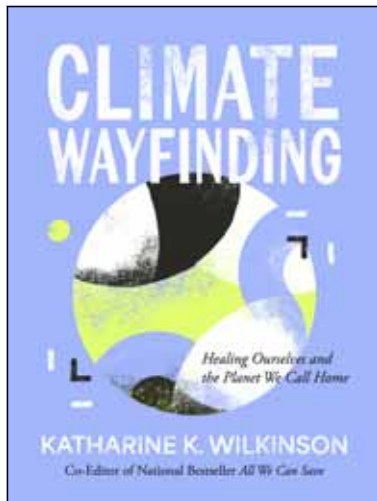


— THE SEWANEE MOUNTAIN — MESSENGER

Volume XLII No. 18

Published as a public service since 1985

Friday, May 15, 2026



"Climate Wayfinding" cover. Courtesy of Andrews McMeel Publishing, design by Ampersand.

'Climate Wayfinding': A Book Event

When maps come up short and the path ahead is uncertain, how do we find our way? In her new book "Climate Wayfinding: Healing Ourselves and the Planet We Call Home," Dr. Katharine K. Wilkinson, C'05, (co-editor of the bestseller "All We Can Save") offers a compassionate and empowering guide for navigating through ache to action, doubt to possibility. Bill McKibben calls it "invaluable."

Join Dr. Wilkinson for a reading and conversation at 10:30 a.m., Saturday, May 23, at the Sewanee Bookstore. Signing to follow.

Monteagle Planning: How to Delineate Boundaries Puzzle

by Leslie Lytle, Messenger Staff Writer

With the goal in sight of amending ordinance to foster a walkable, high-density downtown corridor, at the May 7 meeting the Monteagle Planning Commission bumped up against the unexpected challenge of deciding on the best mechanism to delineate the use of specific sectors in the corridor. As presented, a color-coded map delineated the boundaries. Commissioner Dan Brown pointed to a boundary division running through a parking lot. "I don't want ambiguity to resolve later on," Brown stressed. The commission discussed a written description based on streets and parcel boundaries as alternative mechanisms for locating boundaries. The ordinance amendment under consideration delineated three use-specific categories: Primary Commercial; Secondary Commercial; and Residential Overlay.

"In the primary the focus is on commercial development with limited residential," explained Monteagle Alderman Nate Wilson who worked closely with the planning consultants who drafted the ordi-

(Continued on page 5)



The new elementary sign was unveiled at the May 8 SES 100th celebration.

100 Years of Making Children Feel Loved

by Leslie Lytle, Messenger Staff Writer

More than 300 people joined together to sing "Happy Birthday" and celebrate Sewanee Elementary School, the guest of honor at the 100th birthday fête on May 8 at the school. In anticipation of the celebration, for the past two years SES students met with former students who talked about their experiences at the school. They shared stories about friends, teachers, and things they learned. But one theme recurred in all the former students' memories. Said SES librarian Kathryn Bruce, who coordinated the event, "Mostly they remembered the love."

Bruce welcomed the birthday party guests with a mini-history lesson. "Although Billy Goat Hill School had served the community's children for a number of years, it needed repairs. It needed running

water. The people of the community decided they wanted more for their children. The Sewanee Civitan Club said, 'let's raise the money and build a school.' That commitment to children continues today, whether it be the community offering educational experiences through the Friday School, bringing college students to engage students in creating Asian art, or donating supplies and clothing. The love is shown in little things, like that smile given every day, and in big things like the community raising money to build more classrooms so the school could integrate without anyone using lack of space as a reason not to."

Two former students spoke about their years at SES, Barbara Reed Bedford, who attended SES

(Continued on page 5)



The 34 members of St. Andrew's-Sewanee's Class of 2026 were officially inducted into the school's Alumni Association last on April 30. Following tradition, each senior was presented with a commemorative mug that displays the names of the entire class. Commencement services will be on May 17.



SAS's Class of 2030 confidently presented their *This I Believe* essays on May 4, in McCrory Hall. Students delivered their moving, impactful, and poignant essays about their core beliefs in front of a packed and supportive audience. For 15 years, this event has been an important rite of passage marking the end of middle school at SAS.

Franklin County Schools: Budget; Stricter Cellphones Policy

by Leslie Lytle, Messenger Staff Writer

"Can we do better?" asked Franklin County School Board member Sarah Marhevsky at the May 11 meeting, arguing for higher salaries for certified staff. After long discussion, the board approved the 2026-2027 budget as presented without increases in teachers' wages beyond the standard years-of-experience increase. The board also approved a more restrictive communication devices policy.

"We could do better, but we would be broke," said Vice Chair Lance Williams in response to Marhevsky's appeal for higher wages for teachers. "Seventy-nine to 80 percent of the budget is sala-

ries. We would need to cut from somewhere else."

Human Resources Supervisor and rising director of schools Roger Alsup concurred. "I would like the bottom line to be better, but I don't want to bankrupt the school."

"It will be interesting to see what other schools are doing," said board member Sara Liechty. "I think we'll be in line."

At the request of Deputy Director of Finance Jenny Phillips, the budget was approved unconditionally, with or without the county commission allocating growth from property taxes to the schools.

(Continued on page 5)



Sarah Grace Burns of Sewanee, shown here with her parents Doug and Margot, graduated from the University of the South, Magna Cum Laude with a major in Biology on May 10. Photo by Lyn Hutchinson

P.O. Box 296
Sewanee, TN 37375

Letter

PANCAKE BREAKFAST SUCCESS

To the Editor:

The Sewanee Community Fire Support Group wishes to thank everyone that attended and supported our Pancake Breakfast at the Mont Milner Camp on April 18. Your attendance and donations are greatly appreciated and needed to support our Sewanee Fire Department.

Sewanee Fire Department not only serves the Sewanee University of the South, but its rural neighbors that surround it. With the vast territory surrounding the The University and the community growing with new construction, there is a call for volunteers and equipment. An additional fire station in the Stagecoach Road area is much needed to provide adequate emergency response times to that area since it is so many miles from Station 1 in Sewanee. Having a fire station closer to your home also helps with lowering your fire insurance. Sewanee Community Fire Support has pledged to raise money for this fire station and additional equipment. We cannot do it without your help.

Thank you again for support! We are a 501(c)3 organization. Please keep us in mind at the end of the year and support your community. All Donations should be sent to: Sewanee Community Fire Support, 3335 Jackson Point Rd., Sewanee, TN 37375

We look forward to our next fund raiser event! Please watch for future announcements.

Norine Gill, Sewanee Community Fire Support, President

Hospitality Shop News

The Hospitality Shop is located at 574 Georgia Ave., Sewanee. Regular hours for the Shop are 10 a.m. to 1 p.m., Tuesday and Thursday, and 10 a.m. to 2 p.m., Saturday. The donation bins are on the side of the new Shop. We ask that all donations are in good resale condition and come bagged or boxed when placed in the bins.

University Job Opportunities

Exempt Positions: Assistant Coach, Volleyball, Athletics; Assistant Football Coach, Linebacker Coach/Special Teams Coordinator, Athletics; Major Gift Officer, Advancement

Non-Exempt Positions: Accounting Administrator, Facilities Management Administration; Assistant Manager, Cup & Gown, Business Services, Sewanee Dining, Campus Security Officer, On-Call, Public Safety, Sewanee Police Department Catering Logistics Coordinator, Sewanee Dining, Catering; Fire Alarm Technician, Facilities Management, Trades; FitWell Group Exercise Instructor, Flourishing Wellness Center; Mineral Physics, Postdoctoral Fellowship, Earth and Environmental Systems; On-Call Catering Attendant, Sewanee Dining, Catering On-Call, Stable Assistant, Athletics, Equestrian Center Police Officer (Full-Time), Sewanee Police Department Police Officer (Part-Time), Sewanee Police Department; Second Cook/Commissary Chef, Sewanee Dining,

Published as a public service to the community since 1985, this newspaper is printed on Fridays, 47 times a year. Free of charge, copies are distributed to 100 locations, including businesses and post offices across the Plateau. This publication is made possible by the patronage of our advertisers and by contributions from the University of the South (print production) and the Sewanee Community Chest.

Kiki Beavers
editor/publisher
April Minkler
office manager
Emily Ricks
proofreader
Leslie Lytle
staff writer
Blythe Ford
staff writer

Janet Graham
publisher emerita
Laura Willis
editor/publisher emerita
Geraldine Hewitt Piccard
founder, editor/publisher emerita

SUBSCRIPTIONS \$75 first class
418 St. Mary's Lane, P.O. Box 296, Sewanee, TN 37375
Phone (931) 598-9949 | <news@sewanee-messenger.com>

All material in the Sewanee Mountain Messenger and on its website are copyrighted and may not be published or redistributed without written permission.

McClurg; Sewanee Dining Associate, Sewanee Dining, McClurg; Sewanee Shuttle Driver, Sewanee Police Department.
For more information call (931) 598-1381. Apply at <https://jobs.sewanee.edu>

Sewanee Community Chest Needs You

The 2025-26 Sewanee Community Chest Fund Drive is \$1,900 away from the \$118,500 goal to support 19 local organizations providing essential services — quality of life programs, community aid, children's initiatives, and more.

The Sewanee Community Chest is a 501(c)(3) nonprofit organization, and donations are tax-deductible. Send your donation to Sewanee Community Chest, P.O. Box 99, Sewanee, TN 37375. For more information go to <www.sewanee-civic.org>. To give through PayPal Giving go to <https://www.paypal.com/us/fundraiser/charity/119597>.

SPREAD GOOD NEWS.

Help friends get information. Help local businesses succeed. Help our Mountain communities.

Letters to the Editor Policy

Letters to the editor are welcome at the Sewanee Mountain Messenger and are a vital part of our community's conversation. Letters need to be no longer than 250 words and may be edited for space and clarity. We make exceptions from time to time, but these are our general guidelines. We strive to print all letters we receive, but publication is not guaranteed. Letters should be factually accurate. Letters that are deemed unsuitable for publication shall not be printed elsewhere in the newspaper, including as a paid advertisement.

Letters and/or their author must have some relationship to our community. We do not accept letters on national topics from individuals who live outside our print circulation area. Please include your name, address and a daytime telephone number with your letter. You may mail it to us at Sewanee Mountain Messenger, P.O. Box 296, Sewanee, TN 37375, leave it at our office, 418 St. Mary's Ln., or send your email to <news@sewanee-messenger.com>. — KB

SERVING WHERE CALLED

Please keep the following individuals, their families and all those who are serving our country in your thoughts and prayers:

Prescott Atkinson
Brandon Brawley
Justin Brawley
James Gregory Cowan
Mark Gallagher
Nathaniel P. Gallagher
Peter Green
Zachary Green
Jackson B. Guenther
Steven Tyler Jeffery
Gabriel Lloyd
Waylon Case McBee
Bailey Jackson McLean
Andrew Midgett
Jose D. Ramirez III
Troy (Nick) Sepulveda
Zachary Sherrill
Allison Tucker
Nick Worley

If you know of others in our Mountain family who are serving our country, please give their names to American Legion and Auxiliary member Shirley M. Lawson at <slawson@sewanee.edu>.

MESSENGER INFORMATION

Phone: (931) 598-9949

Display Advertising
Deadline: Monday, 5 p.m.
<ads@sewanee-messenger.com>

News and Calendar
Deadline: Tuesday, 5 p.m.
Kiki Beavers
<news@sewanee-messenger.com>

Classified Advertising
Deadline: Wednesday, noon
April Minkler
<classifieds@sewanee-messenger.com>

MESSENGER HOURS

Monday and Tuesday
9 a.m. to 4 p.m.
Wednesday
9 a.m. to noon
Thursday — Production Day
Closed
Friday — Circulation Day
Closed

Upcoming Meetings

Town of Monteagle

The Monteagle City Council will have a workshop at 5 p.m., Monday, May 18 in the conference room at City Hall.

There will be a special called meeting of the Monteagle City Council at 3 p.m., May 26, 2026, in the conference room at City Hall. The purpose of the meeting is to approve a grant application for the Safe Streets and Roads for All.

The regular City Council meeting will be at 5 p.m., Tuesday, May 26, due to Memorial Day being on Monday.

The Monteagle Planning Commission is scheduled to meet at 4 p.m., Tuesday, June 2, in the conference room at City Hall.

Sewanee Garden Club

Art in the Garden by June Mays will be featured by the Sewanee Garden Club at 1:30 p.m., Monday, May 18 at the Clifftops Lake Clubhouse. We are pleased to offer this program by June. She is a very knowledgeable gardener and landscape designer. Her garden was recently featured on Volunteer Gardener.

Reservations are required for this program. RSVP to Chris Lotti at <howardlotti@gmail.com> if you would like to attend.

Sewanee Community Council

The following items are on the agenda for the Sewanee Community Council meeting scheduled for 7 p.m., Monday, May 18, 2026, in person at the Sewanee Community Center and online via Zoom.

Approval of the March Minutes; Proposal for Dog Park Upgrades – Wilson; Report from the Traffic Committee and Proposal for Traffic-Calming Measures – Wilson; Election Plans and the Appointment of an Election Officer – Wilson; Election of Community Council Rep to University Lease Committee – Green; Announcements and/or Questions.

Join Zoom Meeting: <https://sewanee-edu.zoom.us/j/94237343134>
Meeting ID: 942 3734 3134

Sewanee Utility District

The Sewanee Utility District of Franklin and Marion Counties Board of Commissioners is scheduled to meet at 5 p.m., Tuesday, May 19, at the utility office on Sherwood Road. If a customer is unable to attend but wishes to bring a matter to the board, call (931) 598-5611, visit the office, or call a board member. The board members are Amanda Bailey, Chris

Power Outage

TVA has notified DREMC that the transformer currently in service at the TVA Sewanee Substation must be taken out of service for emergency repairs.

To maintain reliability, TVA will transfer service operations to the spare transformer located in the substation yard. This process is expected to take approximately four hours, during which all of Sewanee will experience a power outage while the transfer is completed.

TVA and DREMC have scheduled the outage to occur Saturday, May 16, beginning at midnight.

While it is understood there is never an ideal time for a service interruption, taking a proactive approach and addressing this issue now will help reduce the risk of an unplanned outage in the future.

McBee, Donnie McBee, Charlie Smith, and Clay Yeatman.

Monteagle-Sewanee Rotary Club

The Monteagle-Sewanee Rotary Club is scheduled to meet at 8 a.m., Thursday, May 21, at St. Mary's Sewanee.

Franklin County Board of Commissioners

The Franklin County Board of Commissioners is scheduled to meet at 6 p.m., Tuesday, May 26, at the Franklin County Courthouse, Winchester.

FCDP Monthly Meeting

The Franklin County Democratic Party is scheduled to meet at 6 p.m., Tuesday, May 26, at the Franklin County Annex Small Meeting Room, 839 Dinah Shore Blvd., Winchester. We will discuss GOTV strategy for the upcoming elections.

Sewanee Fourth of July

The next planning meeting is at 5 p.m., Tuesday, June 2, via Zoom. Volunteers are needed for the children's games. If community members don't volunteer, we can't offer this event. To volunteer and to get the Zoom link, please email <sewaneejuly4th@gmail.com>.

Visit <sewanee4thofjuly.org> for event registration, upcoming grand marshal announcements, and the upcoming full schedule.

Franklin County School Board

The Franklin County School Board is scheduled to meet at 4 p.m., Monday, June 8, at 215 S. College St., Winchester.

Local Food Available

The South Cumberland Farmers' Market has breads, fruits, vegetables, eggs, coffee, meats and more available. Ordering is online from Friday at 9 p.m. to Monday at noon. Pickup is on Tuesdays, 4–6 p.m., at the Sewanee Community Center. To order go to <https://openfoodnetwork.net/south-cumberland-farmer-market/shop>.

Three Seasons Market will be open the first Friday of each month, through October, 3–6 p.m., at the Old Roundhouse Park, 366 Railroad Ave., Tracy City. We offer fresh homegrown seasonal produce, plants, crafts, small livestock, food trucks, music, kid activities, and much more.

The Sewanee Gardeners' Market will open for the season on Saturday, May 23. It is open 8–10 a.m., every Saturday until September at Hawkins Lane. Locally-produced fruits and vegetables, baked goods, plants and flowers will be available.

The Fresh Mess Farmers' Market is getting ready for the upcoming season, beginning June 4, 2026. The market takes place every Thursday afternoon from 3–6 p.m., at Harton Park, 123 College St., Monteagle. Stop in to buy, sell, or barter fresh produce, crafts, clothing, jams, candles, boutique goods, flowers, and other creative products from local artisans. Watch <facebook.com/groups/freshmess> for information on weekly vendors and rainy day calls. Call or text Rhonda at (931) 273-0606 if you are interested in becoming a vendor.

Tell them you read it in the Messenger.

LUNCH



24 university ave
sewanee, tn, 37375

lunch counter • bakery •
local goods & produce •
community events

for catering & private event inquiries, please email us at lunch.sewanee@gmail.com

Your taxes. Done right.

So you can enjoy the view....



ANN R. McNAIR, CPA

TAX & ACCOUNTING SERVICES

(615) 268-1040

AnnMcNairCPA@gmail.com

Savage Gulf State Park Development Update

The Beersheba Springs Historical Society (BSHS) is hosting an event at 4 p.m., Saturday, May 23, to share an update on the Savage Gulf State Park development project. Join park manager, Aaron Reid, to learn the most current plans and see renderings and also learn about other park activities including land acquisitions, trail projects, and resource management initiatives. Attendees will also hear announcements on BSHS events, projects and participation opportunities for the summer season. This free public event will take place at the Beersheba Springs Community Center, 19224 State Route 56. A reception will follow to greet the presenter and other attendees.

Questions may be emailed to <info@BeershebaSpringsHistorical-Society.org>.

Messenger Break Ahead

The Messenger will be on break May 18–25. There will not be an issue on Friday, May 22. We will be back in the office on Tuesday, May 26, and back in print on Friday, May 29, to officially welcome summer. Important updates will be available on the website <www.sewaneeemessenger.com> or on our Facebook page.

If your organization or church has a different schedule during the summer than we normally post, please send the updates to <news@sewaneeemessenger.com> or call the office at (931) 598-9949.

Memorial Day Closings

Memorial Day is a federal holiday in the United States for mourning the U.S. military personnel who have died while serving in the United States armed forces. Memorial Day is Monday, May 25, 2026. Federal and Tennessee State Government Offices will be closed. The Franklin County Convenience Center will be closed. Banks and post offices will be closed.



SEWANEE REALTY, LLC

Honesty. Expertise. Service. Value

SEWANEE REALTY WELCOMES
Keith Killebrew

 Patsy Truslow Owner, Principal Broker 931.636.4111 patsy@sewaneerealty.com	 Marie Ferguson Owner, Af- filiate Broker 931.952.2468 marie@sewaneerealty.com	
 Tabitha Staples Affiliate Broker 931.581.2149 tabitha@sewaneerealty.com	 Lynn Willis Affiliate Broker 865.599.4236 lynn@sewaneerealty.com	 Beth Rudder Affiliate Broker 931.224.1935 beth@sewaneerealty.com
 Kristy McAbee Affiliate Broker 931.581.6163 kristy@sewaneerealty.com	 Morgan Johnstone Affiliate Broker 615.663.9892 morgan@sewaneerealty.com	 Dee Underhill-Hargis , Broker 931.808.8948 dee@sewaneerealty.com
 Samantha Meeks Affiliate Broker 615.971.0878 samantha@sewaneerealty.com	 Dylan McClure Affiliate Broker 931.636.5711 dylan@sewaneerealty.com	 Keith Killebrew Affiliate Broker 931.625.3837 keith@sewaneerealty.com

115 University Ave., Sewanee • 931.598.9200
www.SewaneeRealty.com • Realtors@SewaneeRealty.com

Church News

All Saints' Chapel

Please note that starting Sunday, May 17 and running through Sunday, July 19, there will still be two services at 8 a.m. and 11 a.m.

Christ Episcopal Church

Christ Episcopal Church of Tracy City is beginning a study of the Lectionary readings for each Sunday before the service. The study is at 10 a.m., Sundays, in the Parish House which is next door to the Church. The study will be hosted by the Rev. Marion Rectenwald. Marion is a retired priest who served for many years on a Lakota Indian reservation in South Dakota. Our regular service hour is 11 a.m. each Sunday with Eucharist and organ music.

City Light Church

City Light Church in Monteagle exists to see people changed by the love of Jesus and fulfill their purpose. We are located at 841 W. Main St., Monteagle, and offer services at 9:30 a.m. and 11 a.m. on Sundays. Our children's ministry offers a safe and exciting environment for children newborn to fifth grade. Find out more at <www.citylightchurch.cc>.

Draw Near

Draw Near is a new church at 301 Montgomery St., Cowan, that is all about becoming disciples of Jesus one person at a time through real relationships. Come as you are and experience authentic worship at 10 a.m., Sunday. Classes for 2 years through fifth grade.

Monteagle SDA

Weekly prayer meeting is at 9 a.m., Wednesday, and Sabbath school is at 10 a.m., Saturday, followed by worship service at 11

a.m. A vegetarian potluck takes place each week after the worship service. Please join us. Monteagle SDA Church is located at 497 College St., Monteagle.

St. James Episcopal

St. James Episcopal Church celebrates The Holy Eucharist each Sunday at 9 a.m. We have a Parish Potluck the first Wednesday of the month at 6 p.m. Our Daughters of the King chapter meets the second Tuesday of the month at 1:30 p.m. The Men's Breakfast Group meets the first Saturday of the month. We gather each Sunday after church for refreshments and fellowship. St. James is located at 898 Midway Rd., Sewanee. All are welcome to experience love, hope, and joyful fellowship at St. James.

St. Mark and St. Paul

Sunday the Holy Eucharist is celebrated at 8:30 a.m. and 11 a.m. The 11 a.m. service will be livestreamed on our Facebook page and remains available there.

Summer Schedule: Beginning Sunday June 7, service times will be at 8:30 a.m. and 10 a.m. The 10 a.m. service will be livestreamed to Facebook.

Nursery Services: Infants and toddlers through three years old are invited to gather downstairs in Claiborne Hall.

Morning and Evening prayer services are at 8:30 a.m. and 4:45 p.m., Monday through Thursday in the sanctuary.

Centering Prayer Group: Mondays at 7 p.m. and Tuesdays at 2:30 p.m., both in the sanctuary.

Lectionary Bible Study: meets every Tuesday at 3:30 p.m., in Brooks Hall. The class begins with a brief prayer and a reading of the Gospel lesson appointed for the

coming Sunday.

Adult Choir: Adult choir practice is Sunday, 12:30-1:30 p.m. Adult Choir will take a summer break following Pentecost services on May 24.

Godly Play continues this Sunday at 9:45 a.m. for children (3 years old through fifth grade).

Youth Sunday School meets upstairs in Brooks Hall.

Rite-13 and J2A: Young people in grades 6-10 are invited to participate in Rite 13 and Journey to Adulthood (J2A) on Sunday afternoons. Please contact Hilary Bogert Winkler <hbwchurch@gmail.com> for details.

Altar Flower Donations: There are several open dates for the donation of altar flowers to honor a

family member, deceased loved one, or a community member or group. Available dates are May 31, June 7, June 14, June 28, July 5, and July 19. If you are interested in donating, please email Cheryl Lankhaar, Altar Flower Coordinator at <cheryllankhaar@gmail.com> to confirm your donation. Altar Flower Donations are \$50.

Unitarian Universalist

The service begins Sunday at 10 a.m., followed by refreshments and a discussion period. The church is located at 3536 New Manchester Hwy., Tullahoma. For more information call (931) 455-8626, or visit the church's website at <www.tullahomauu.org>.

Winchester First United Methodist Church

Embrace a new beginning with Jesus in a new kind of faith community. Come home to Winchester First United Methodist Church, 100 S. Jefferson St.

Worship services are on Sundays at 10 a.m. On the first Sunday of the month, our service is followed by a free lunch.

For more information, contact senior pastor, Eric Bronkala, at (865) 591-8823, or visit us on Facebook.

Church Calendar

Abundant Life Assembly of God, Cowan

10:30 a.m. Worship, Sunday

All Saints' Chapel

8 a.m. Holy Eucharist, Rite 1, Sunday

11 a.m. Holy Eucharist, Sunday

Bible Baptist Church, Monteagle

10 a.m. Worship Service, Sunday

5:30 p.m. Evening Service, Sunday

5:30 p.m. Evening Worship, Wednesday

Calvary Baptist Church, Winchester

10 a.m. Sunday School

11 a.m. Worship Service, Sunday

4 p.m. Evening Worship, Sunday

7 p.m. Prayer Meeting, Wednesday

Chapman Chapel Church of the Nazarene, Pelham

9:30 a.m. Sunday School, Sunday

10:45 a.m. Morning Worship, Sunday

6 p.m. Evening Worship, Sunday

7 p.m. Bible study, Wednesday

Christ Church Monteagle

10:45 a.m. Holy Communion, Sunday

Christ Church, Tracy City

10 a.m. Bible Study, Sunday

11 a.m. Holy Eucharist, Sunday

Christ the King Anglican Church, Decherd

9 a.m. Sunday Service, Sunday

6:30 p.m. Healing/prayer service

Church of Jesus Christ of Latter-day Saints, Winchester

9 a.m. Worship Service, Sunday

City Light Church, Monteagle

9:30 a.m. Worship Service, Sunday

11 a.m. Worship Service, Sunday

Cowan Fellowship Church

11 a.m. Worship Service, Sunday

Cumberland Presbyterian Church, Cowan

11 a.m. Worship, Sunday

Cumberland Presbyterian Church, Monteagle

9:45 a.m. Sunday School, Sunday

11 a.m. Worship Service, Sunday

Cumberland Presbyterian Church, Sewanee

9 a.m. Worship Service, Sunday

10 a.m. Sunday School, Sunday

Decherd Presbyterian Church

11 a.m. Worship (Sunday)

Decherd United Methodist Church

9:45 a.m. Sunday School, Sunday

10:50 a.m. Worship Service, Sunday

Draw Near (non-denominational), Cowan

10 a.m. Worship, Sunday

Epiphany Mission, Sherwood

10 a.m. Holy Eucharist Rite II, Sunday

First Baptist Church, Cowan

9:15 a.m. Sunday School, Sunday

10:25 a.m. Worship, Sunday

First Church of the Nazarene, Cowan

11 a.m. Worship Service, Sunday

Good Shepherd Catholic Church, Decherd

5 p.m. Mass, Saturday

10:30 a.m. Mass, Sunday

12:30 p.m. Spanish Mass, Sunday

Goshen C. P. Church, Winchester

11 a.m. Worship Service, Sunday

Grace Fellowship Church

10:30 a.m. Sunday School/Worship Service

Harrison Chapel Methodist Church, Midway

10 a.m. Sunday School

11 a.m. Sunday Morning Service

5 p.m. Sunday Evening Service

Highpointe Apostolic Church, Monteagle

10 a.m. Sunday School, Sunday

11 a.m. Worship, Sunday

7 p.m. Worship, Wednesday

Hobbs Hill Community Church, Tracy City

10 a.m. Sunday School, Sunday

11 a.m. Morning Service, Sunday

5 p.m. Evening Service, Sunday

6 p.m. Evening Service, Wednesday

Marble Plains Baptist Church, Winchester

9:30 a.m. Sunday School, Sunday

10:30 a.m. Morning Service, Sunday

5 p.m. Evening Service, Sunday

6 p.m. Mid-week Service, Wednesday

Midway Baptist Church

9:45 a.m. Sunday School, Sunday

10:45 a.m. Morning Service, Sunday

6 p.m. Evening Service, Sunday

6 p.m. Bible Study, Wednesday

Midway Church of Christ

10 a.m. Bible Study, Sunday

11 a.m. Morning Service, Sunday

6 p.m. Evening Service, Sunday

Monteagle Church of Christ

11 a.m. Morning Service, Sunday

6 p.m. Bible Study, Wednesday

Monteagle First Baptist Church

11 a.m. Worship Service, Sunday

6 p.m. Bible Study, Wednesday

Monteagle Seventh-day Adventist Church

10 a.m. Bible Study, Saturday

11 a.m. Worship, Saturday

7 p.m. Prayer and Study, Tuesday

Morton Memorial United Methodist, Monteagle

10 a.m. Sunday School, until 10:45 a.m.

11 a.m. Worship Service, Sunday

Mountain of God Tabernacle, Monteagle

Online worship services. Call (931) 924-5339 or go to

<<https://www.tdworldministries.org>>

11 a.m. Worship Service, Sunday

6 p.m. Prayer Service, Wednesday

New Creations Ministries, Rayburn Chapel

4 p.m. Prayer Meeting, Sunday

New Hope Church of God in Christ, Cowan

11 a.m. Sunday Service, Sunday

6 p.m. Sunday Service, Sunday

Pelham United Methodist Church

9:45 a.m. Sunday School, Sunday

11 a.m. Worship Service, Sunday

St. Agnes' Episcopal Church, Cowan

11 a.m. Holy Eucharist, Sunday

St. James-Midway Episcopal Church

9 a.m. Holy Eucharist, Sunday

St. Margaret Mary Catholic Church, Alto

8 a.m. Mass, Sunday

St. Mark & St. Paul

8:30 a.m. Nursery, basement of Kennerly Hall, Sunday

8:30 a.m. Holy Eucharist, Sunday

9:45 a.m. Godly Play

9:45 a.m. Youth Sunday School

11 a.m. Holy Eucharist, Sunday, also available livestream Facebook

St. Mary's Sewanee Retreat Center

4 p.m. Centering Prayer Group, Thursday

Sewanee Church of God

10 a.m. Worship Service, Sunday

Sewanee Zen, Stone Nest Dojo

7 a.m. Zazen, Tuesday-Thursday

10 a.m. Zazen and Ceremony, Sunday

Sisters of St. Mary Convent Chapel

7 a.m. Morning Prayer, Tuesday-Friday

5 p.m. Evening Prayer, Tuesday-Friday

7:30 a.m. Morning Prayer, Saturday

5 p.m. Evensong, Saturday

8 a.m. Holy Eucharist, Sunday

5 p.m. Evensong, Sunday

Tracy City First Baptist Church

10:45 a.m. Morning Worship, Sunday

Trinity Episcopal Church, Winchester

10:30 a.m. Holy Eucharist, Sunday

12:30 p.m. Lectionary Bible Study, Tuesday

Unitarian Universalist Church, Tullahoma

10 a.m. Service, Sunday

Valley Home Community Church, Pelham

10 a.m. Sunday School

11 a.m. Morning Service, Sunday

Winchester First United Methodist

10 a.m. Worship, Sunday

VB-U's 2026: Wings, Wind, & Fire

Save the date! Join us for four evenings of our special Vacation Bible School for all of us, June 1-4, at St. Mark and St. Paul. Our theme this year focuses on the Holy Spirit, who is our Comforter but is also described in terms like wind and fire. After a family style dinner and singing, adults will engage in a lecture series while the children learn Bible stories through craft and play.

We need volunteers for setup, meals, cleanup, music, children's activities, and more. Please let me know how you feel called to help <formation@stmarkstpaul.org>. It's always so much fun, and a great time for growing together.

Death Notice

The Rev. Dr. Emery McLuen

The Rev. Dr. Roy Emery McLuen, School of Theology, '88, died on April 18, 2026, in Washington state. He moved his family to Sewanee in 1985 to attend. After leaving Sewanee, he led several congregations around the country, the last being The Episcopal Church of the Good Shepherd in Federal Way, Wash. A service will take place at a later date in Washington.

Memorial Service

Connie Entrikin Gibson

Connie Entrikin Gibson, age 94, died on March 2, 2026. A memorial service will be at 11 a.m. on Saturday, May 16, 2026, at All Saints' Chapel. The service will be preceded by interment in the University Cemetery, followed by a reception for family and friends at Convocation Hall.

In lieu of customary remembrances, please consider a donation to the Community Action Committee (CAC), 216 University Avenue, Sewanee TN 37375. Donations may also be made through the CAC website at <www.cacsewanee.org>. For complete obituary go to <<http://www.woodfinchapel.com>>.

If your church is in our print circulation area and would like to be listed in the Church Calendar, please send service times, church address and contact information to <news@sewaneemessenger.com> or phone (931) 598-9949.

Monteagle (from page 1) SES (continued from page 1)

nance changes. In the sector designated as Primary Commercial, residential is only allowed on the second story or at the back of the lot. "Secondary Commercial allows some residential uses," Wilson said. "The difference between primary and secondary and the rationale behind that is they [the planning consultants] didn't think we have enough rooftops to support pure commercial all the way through the corridor." The Residential Overlay proposed applies to all residentially zoned property touching the C-1 commercial corridor, Wilson said. Residential property within the proposed overlay designation allowed homes on smaller lots and more housing options such as connected residences. "We're not changing the zoning," Wilson insisted. The rules for residence size would remain the same: 800 square feet minimum for R-1 and 600 square feet minimum for R-2 and R-3.

"The purpose is to increase residential density close to downtown," said town planner Jonathan Rush. "What do you want from this as a town?" he asked. "You should be able to have walkable all the way to the interstate." As initially proposed, the residential overlay extended to the interstate, which offered a clear cut boundary. The idea was rejected, Wilson said, because of complaints it incorporated too large an area. Wilson pointed out, however, if a larger residential overlay area was desirable in the future, "The outer boundaries of the residential overlay can move."

The commission supported the goal of increased density and a walkable downtown to foster economic development. "I want the growth," Brown said.

Regarding the color-coded map delineating a parcel partially in one sector and partially in another, Wilson observed that was sometimes the case with zoning as well. Ordinance provided for the owner requesting the property be all in one zone or the other.

Commissioner Alec Mosley proposed parcel boundaries be used to delineate sectors. Rush cited a problem with that mechanism. "A parcel could change in the future if somebody divides a parcel," Rush observed.

Mayor Greg Maloof spoke in favor of delineating the boundaries by streets, with commissioners' comments largely in agreement. Wilson and Rush will work on drafting a street-based boundary mechanism.

Revisiting the newly adopted checklist for developers to keep them informed about what needed done for a project to move forward, Rush suggested clarifying the sequence followed when a site plan was submitted. "A site plan can't be reviewed until the engineering fee is paid," Rush said. He proposed adding the engineering fee to the checklist as the first step and stipulating that, following payment of the engineering fee, the site plan would then go to the engineer and town planner for review, as well as to any other professional staff with a stake in the project; following review by professional staff, the site plan would go to the commission. Rush will draft language for the zoning code to reflect the sequence he proposed.

Asked about the controversial fence on Main Street property, Wilson said the codes officer granted permission for the fence based on the relevant ordinance, but there was "an error in the language," causing misinterpretation. The error has been corrected, and the council is seeking "an amicable solution" with the property owner.

in the late 1950s and early 1960s, and Erik Taylor, who attended in the 1990s. Both spoke about how SES changed their lives.

"Phoebe Bates came to my class and taught French as a volunteer. That brief weekly encounter made me keep studying French through college. I travelled to France many times and continue to travel all over the world," said Reed. "SES means family, friends, and community all helping to shape me in a positive way."

"My father came to Sewanee in the 1950s working for the dining hall," Taylor said, commenting on his family's origins as among the African Americans in the Sewanee community. "Mr. Baird was my first basketball coach in the fourth grade. He put me on the team and taught me the game. It catapulted what I was able to do in sports in my career. I played at the University of Memphis, graduated from there, and went on to play professional football for 11 years. Sewanee Elementary was the hope that allowed me to do that, because Mr. Baird took a chance on me."

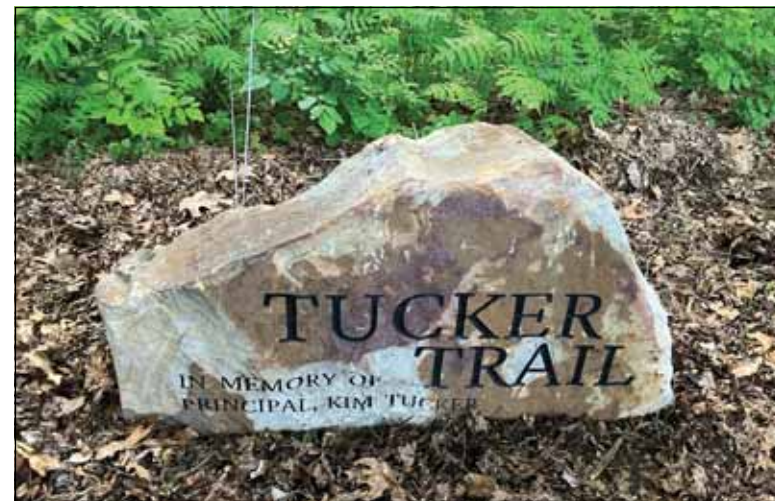
The birthday party paid special tribute to three former teachers. Dedicating the stage and cafeteria to music teacher Teresa Brown, Bruce said, "She was more than a music teacher. She was a champion for every student who stepped into the spotlight." The celebration also paid tribute to former principal Kim Tucker, naming the trail leading to the school's outdoor classroom "Tucker Trail." "Kim Tucker looked at the beauty the school was set in, and said, 'How do we get our children out there more?'" Bruce observed. "Kim Tucker was a champion of children being outside and learning through their senses." The final tribute went to David Gilliam. In naming the gym after Gilliam, Bruce said, "He made fitness feel like an adventure."

Stationed throughout the school, children dressed in period costumes charmed the birthday party guests with displays and stories about the eras in SES's history they represented.

The celebration closed with the unveiling of the new sign, an elegant monument made from local mountain stone and crafted by Belvidere Monument. Plans call for a plaque on the back of the sign footnoting the school's history.

Special thanks went out to the Sewanee Civic Association, the later iteration of the Civitan Club. The SCA, through its nonprofit the Sewanee Community Chest, has donated more than \$250k to SES programs and needs in the last decade.

"Community members have always been the backbone of this school since 1926," said SES Principal Allison Dietz. "Sewanee Elementary isn't just a building. It's a place where curiosity is sparked, where friendships are forged, and where every child is truly known and loved by their neighbors. Thank you to the Sewanee community for being our village."



The celebration also paid tribute to former principal Kim Tucker, naming the trail leading to the school's outdoor classroom "Tucker Trail."

School Board (continued from page 1)

"We always put this [stipulation] in," said Phillips. Marhevsky abstained from the vote.

Franklin County High School Principal Brittney Butner and North Middle School Principal Holly Eslick led the discussion about the communications devices policy. The previous policy allowed principals discretion in disciplinary actions for violation of the policy. "Each school created their own [disciplinary procedures]," Eslick said. Butner and Eslick served on a committee tasked with standardizing the policy and disciplinary procedures for violating the personal communication device use rules.

The policy applies to all personal communication devices and personal electronic devices, from cellphones to gaming devices. Students in grades K-5 are not allowed to have PCDs unless their individual education program, health care needs, or managing a disability call for PCD use.

Students in grades 6-12 can have PCDs but they must be stored (for example, in a backpack or locker) and may be taken out only during lunch.

Butner observed many students had jobs or other commitments they needed to check on. "We wanted to allow them some time to do that," Butner said.

For the first offense, the device is confiscated; for the second offense, the device is confiscated and a parent must pick it up; for the third offense, a parent must pick up the device, and the student is assigned two days of ASD (After School Detention), one day of ISS (In School Suspension), or one week of lunch detention; for the fourth offense, the device is not allowed back on campus, the student serves two days of ISS, and the student may be suspended or lose driving privileges.

Eslick stressed the committee wanted the same disciplinary actions to apply in middle school and high school.

Both Butner and Eslick said with use restricted to lunch, "the cafeteria was loud." Even though

phone use was allowed, instead of staring at their phones as might have been expected, students were talking and interacting.

The board also approved amendments to three other policies. Employees' sick leave and vacation time will be prorated if the employee works less than the specified hours to account for less time on the job. The Attendance Policy was amended to allow a principal to excuse a student to attend a course in religious moral instruction for up to one class period per school day.

Marhevsky updated the board on recent legislative action related to the public schools. The Tennessee legislature voted to increase the number of Education Freedom Scholarships to 35,000, instead of the increase to 25,000 called for when the program was adopted last year. Other legislation established an oversight board to manage the Memphis-Shelby County Schools to counter the district's lagging behind in academic performance. The oversight board has broad authority, which could include firing and hiring a superintendent, textbooks, and classroom curriculum, and will have final say over the district's \$1.7 billion budget.

Franklin County High School graduate and former student school board representative Cason Orr advised the board of a unique educational opportunity in conjunction with the Remote Area Medical clinic to take place June 6-7 at FCHS. The clinic will offer free medical, dental and vision care. Ten spots are available on a first-come, first-served basis for students to shadow medical professionals during the clinic, gaining valuable experience and a useful credential for college applications.

Rock Creek Elementary hosted the May 11 board meeting to celebrate the unveiling of the "Rocket Chair," a creation of world-renowned mosaic artist Sherri Hunter. The chair with a rocket ship motif design symbolizes the school's pride, community, and ambition.

Memorial Day
We remember and honor the sacrifices for our freedom.

"Open your door to all the possibilities"

Custom home remodeling begins with ...

Joseph's Remodeling Solutions
A Division of Sumpter Solutions, LLC
Taking Quality to the Next Level
Licensed - Insured - Green Certified
931-598-5565
joseph@josephsremodelingsolutions.com
https://josephsremodeling.com

+ ORGANIC, LOCAL FOODS
 + SUPPLEMENTS & TOILETRIES
 + GARDEN SUPPLIES
 + YARN & ACCESSORIES
 + ANTIQUES, JEWELRY, GIFTS
 + CALL FOR CURB SERVICE

Mooney's
Market & Emporium

Store open 10-6 daily • 931-924-7400 • 1265 W Main • Monteagle

ST. MARY'S SEWANEE
The Arnes Center for Spiritual Development

8 Days of Silence
CENTERING PRAYER RETREAT
June 5-12, 2026

>www.stmaryssewanee.org<
931-598-5342
scholarships are available

SENIOR CENTER NEWS

The Sewanee Senior Center serves lunch at 11:30 a.m., Monday through Friday. The suggested donation is \$5, regardless of your age. Please call (931) 598-0771 by 9 a.m. to order lunch. Menus follow:

Monday, May 18: Chicken hashbrown casserole, broccoli salad, roll.

Tuesday, May 19: Reuben and Swiss sandwich, chips.

Wednesday, May 20: Tenderloin, mac and cheese, green beans, roll.

Thursday, May 21: Goulash, Mexican cornbread.

Friday, May 22: Stuffed peppers, mashed potatoes, green peas, roll.

Monday, May 25: Memorial Day. Center closed.

Tuesday, May 26: Meatloaf, mashed potatoes, green beans, roll.

Wednesday, May 27: Grilled chicken salad.

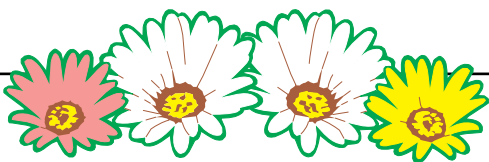
Thursday, May 28: Smoked sausage, pinto beans, cabbage.

Friday, May 29: Swedish meatballs, noodles, salad, garlic bread.

Menus may vary. For information call the center at (931) 598-0771.

Chair Exercise Class is 10:30–11:30 a.m., every Monday and Wednesday at the Community Center. Contact Susan Roberson at (516) 987-8440.

The Sewanee Senior Center does not charge any membership fee. All persons 50 or older who take part in any of the activities are considered members.



RUSTIC GREENHOUSE NOW OPEN!

Call 423.637.9218 for appointment.

Wide Variety of Herbs, Perennials, Hardy Ferns, & Unusual Annuals. Save when you buy on-site!

Old CCC Road

Highway 156, 8 miles from the Sewanee Airport

Matt & Linda Barry

SEWANEE AUTO REPAIR

Complete Auto & Truck Repair

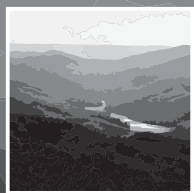
Tune-ups • Tires • Tire Repair • Brakes • Steering
• Oil Changes • Batteries • Computer Diagnostics

All Makes & Models • Service Calls •
Quality Parts

ASE Master Certified Auto Technician •
35 Years' Experience



Open 9 to 5 M-F
(931) 598-5743 • 76 University Ave.



ANNE CHENOWETH
ON THE MOUNTAIN

Find Your Sewanee Home.

#LoveSewanee



Anne Chenoweth
REALTOR®

931.205.1299

anne.sewanee@gmail.com

@anneonthemountain

COMPASS RE

615.383.6964 • compass.com

Statehood Celebration Day

The Tennessee State Museum will commemorate both America's 250th and Tennessee's 230th birthdays with special public programming from 9:30 a.m. to 2 p.m., Saturday, May 30, and additional events scheduled from 10 a.m. to 3 p.m., Monday, June 1.

Presented in partnership with the Folklife Program at the Tennessee Arts Commission, programming on Saturday, May 30 will include folklife demonstrations and performances throughout the Museum, as well as Storytime with Miss Tennessee Zoe Scheiderich, guided tours of the exhibit Tennessee Voices, American Stories, hands-on activities, historical wet-plate photography, and the annual festive cupcake celebration.

"This Statehood Day will feature a dynamic lineup of activities that celebrate our culture and community" said Jeff Sellers, director of public programs and community engagement at the Tennessee State Museum. "We are proud to offer programming that reflects the richness and diversity of Tennessee's history and folklife traditions."

One of the event highlights is the premiere screening of A Grand Design: "Captain Le Roy Reeves and the Tennessee State Flag," a new short documentary about the origins of the TriStar design of the state flag and the history of the very first template flag, which is part of the Tennessee State Museum collection. Produced by the Tennessee State Museum with Nashville PBS, the film will screen on the hour in the Museum's Digital Learning Center on both May 30 and June 1.

Each screening will conclude with a rare opportunity to view the original template flag, which was recently conserved and has not been displayed since 2005. The flag will go on view again when the new Capitol Visitors Center opens in the former Legislative Plaza in 2027.

For this year's celebration, the Museum is honored to partner with the Folklife Program at the Tennessee Arts Commission, featuring artists from the Traditional Arts Apprenticeship Program, "an initiative created to sustain our state's diverse folklife traditions and support its traditional artists," as stated on their website. Now celebrating its ten-year anniversary in 2026, the program has supported over 100 projects and 200 traditional artists across the state working to preserve rare, endangered, and significant Tennessee traditions.

Participating artist demonstrations and performances include Stump Jumper Boat Making with Hunter Calhoun, Flint Marble Making with Paul Davis, Kurdish Music with Arkan Doski, Choctaw beadwork with Sally Wells – a previous recipient of the Governor's Folklife Heritage Award, Buck Dancing with Thomas Maupin – a previous recipient of a National Heritage Fellowship from the National Endowment for the Arts, Quilting with Aundra McCoy, and more.

"These artists represent the breadth and richness of Tennessee's cultural traditions. Through their participation in the Traditional Arts Apprenticeship Program, each has helped ensure that their deeply rooted art form is preserved into the future," said Director of Folklife Bradley Hanson. "On Statehood Day, and as we celebrate America's 250th birthday, these folklife practices remind us of who we are, and show us plainly what our state is and what it can be."

The celebration continues on Monday, June 1, with the State of Tennessee Employee Photo Contest winners exhibition, living history print shop demonstrations, guided tours of the Tennessee Voices exhibit, and hands-on history tables throughout the galleries. A full schedule of events for both days is available on the Museum's calendar of events at <TNMuseum.org>.

SHARE YOUR NEWS.

Help friends get information. Help local businesses succeed.

Help our Mountain communities.

<news@sewaneeemessenger.com>

Highlander Folk School at Heritage Center

A symposium of those in attendance will be at 2 p.m., Saturday May 16, in the teaching center of the Heritage Center located at 465 Railroad Ave., Tracy City. Oliver W. Jervis, JD, Museum Chair, Director of Exhibits and Historian will initiate the symposium with a summary of Highlander in Grundy County from 1932 to 1962. After revocation of its charter by the State of Tennessee, the school secured a new charter as Highlander Research and Education Center to be located in Knoxville. After 10 years it relocated in New Market, Tenn., where it now thrives.

In 2024 Highlander Research and Education Center acquired around 9 1/2 acres of the Highlander Folk School campus in Grundy County including the Harry Lasker Memorial Library that, after restoration, was placed on the National Register of Historic Places by the United States Secretary of Interior.

The symposium will explore future use of the Grundy County campus.

Liturgical Arts Conference

On Saturday, May 30, in St. Luke's Chapel, St. Augustine's Altar Guild of All Saints' Chapel will host a liturgical arts conference featuring Marianna Garthwaite Klaiman, an expert in the field of church textiles. The morning presentation will begin at 10 a.m., and Marianna will cover many aspects of Episcopal Church vestments, including their history and specific information about care and restoration. For more information about the conference and to reserve a spot, email <staugustinesguild@gmail.com>.

LiveWell
BY BLAKEFORD
B

Plan well. Be well. At home.



LiveWell by Blakeford is for healthy and independent older adults who wish to live at home as they age. It combines home care assistance, a personal care coordinator, and financial coverage into one innovative package.

LiveWell makes it possible for you to age in place at home on the Mountain.

CONTACT US:

615-665-0694

Mary.Dosen@Blakeford.com

SES MENUS

Monday–Wednesday
May 18-22
BREAKFAST

All reimbursable breakfast meals must include a minimum of three items with at least one being fruit or fruit juice. A variety of fruit, fruit juice & milk offered daily. All entrees = 2 items. Every effort will be made to follow the published menu; however, last minute changes may be necessary.

Monday, May 18: Egg bites, fruit, juice, milk.
Tuesday, May 19: Steak biscuit, fruit, juice, milk.
Wednesday, May 20: Packaged items, fruit, juice, milk.
Thursday, May 21: School's Out for the Summer!
Friday, May 22: Y'all Have a Great Summer Vacation!

LUNCH

All reimbursable meals must include a fruit or vegetable on the tray. Students may decline 2 of the 5 meal components – meat/meat alternative; grain; fruit; vegetable; milk. Daily offerings may include Yogurt Fun Packs and/or PB&J Power Packs.

Monday, May 18: Whole School Field Trip: PBJ Sack Lunch.
Tuesday, May 19: Asian chicken, roasted veggies, green beans, fried rice, dinner roll, fruit, milk.
Wednesday, May 20: Cheese pizza, potatoes, buttered corn, fruit, milk, birthday cupcake, fruit, milk.
Thursday, May 21: School's Out for the Summer!
Friday, May 22: Y'all Have a Great Summer Vacation!
For meal pricing, go to <<https://franklincountyttn.schoolsites.com/menus-mealpricing>>.

SCHOOL CALENDAR

May 15, Graduation, Huntland High School
May 15–17, SAS Commencement Weekend
May 21, Last day of school, abbreviated day, Franklin County
May 22, Last day of school, Marion County
June 7–July 17, School of Letters
June 8, First day of classes, College, School of Letters, School of Theology Advanced Degrees Program
June 14–July 12, Sewanee Summer Music Festival



The Winchester Christian Academy Wrestling Club finished their Spring training program and are looking forward to the wrestling season starting in late October.

duPont Library Hours

The duPont Library hours through June 5 will be Monday–Friday, 8 a.m. to 5 p.m., closed Saturdays and Sundays. Starting June 6, hours will be Saturday, 9 a.m. to 6 p.m., Sunday, 1–7 p.m., Monday–Friday, 8 a.m. to 5 p.m., through June 11. Go to <https://library.sewanee.edu/library_hours> for more information.

Sewanee Dining Summer Hours

McClurg Dining Hall: The dining hall reopens on May 31 for dinner only, 5–7 p.m. Summer Hours: June 1–July 31, abbreviated hours are Breakfast 7–9 a.m., Lunch 11 a.m. to 1:30 p.m., and Dinner 5–7 p.m.

Stirling's Coffee House: through Sunday, June 7, Monday–Friday, 8 a.m. to 3 p.m. Closed weekends. Closed Monday, May 25 for Memorial Day. Monday, June 8 through Friday, July 17: Monday–Friday, 7:30 a.m. to 10 p.m. Saturday and Sunday, 9 a.m. to 10 p.m. Closed July 4. Monday, July 20 through Tuesday, Aug. 25: Monday–Friday, 8 a.m. to 3 p.m. Closed weekends. Return to regular hours of operation: Wednesday, Aug. 26.

The Cafe at Biehl Commons, Cup & Gown and Tiger Bay Pub: Closed until Fall First Day of Classes, Wednesday, Aug. 26

Sewanee Seed Library at duPont

As spring arrives on the Cumberland Plateau, we invite you to visit the Sewanee Seed Library to dig into a diverse collection of heirloom and native seeds. Housed in the lobby of duPont Library on Sewanee's campus, the seed library is accessible anytime the library is open, and everyone is welcome! We have recently introduced several new varieties to the collection, so please come by if it has been a while since your last visit. Be sure to check out the collection of gardening-related books shelved right next to the seeds!

This spring's offerings highlight a rich mix of heirloom vegetables, fruits, herbs, pollinator-friendly plants, and more! Gardeners can find time-honored varieties like Early Wonder beets — an heirloom dating back to 1911 and prized for both its tender roots and nutritious greens—as well as regional favorites such as creasy greens, a traditional Appalachian spring green rich in vitamin C.

Interested in flowers? We are also offering a few different mixes, such as the Southeast Native wildflower blend, Songbird and Butterfly blend, and Bee Feed, all of which support our pollinators and local biodiversity.

Please join us in our mission to cultivate a more sustainable and connected community. By sharing a diverse variety of organic, regionally grown seeds, we hope to strengthen access to healthy food, foster environmental stewardship, and support a greener lifestyle for our entire campus community.

BUG PROBLEMS?

We can help! Call us for a free inspection!

BURL'S TERMITE & PEST CO.

TERMITE—PEST—VAPOR CONTROL
Bonded • Insured • Home-Owned & Operated
101 N. Main Street, Estill Springs
(931) 967-4547 or www.BurIsTermite.com
Charter #3824 • License #17759



Lakeside Collision

“Done Right, the First Time”

We Handle Insurance Claims
103 Mabee Ave., Monteagle TN 37356
Ph: 931.924.3316 | Cell: 931.235.3316
Email: lakesidecollision00@gmail.com



HENLEY

MILLWORK FACTORY OUTLET
“Home of Quality Millwork”

SUMMER TENT SALE

U **50%**

EXCLUSIVE TENT SALE ITEMS
AT THE LOWEST PRICES
EVER!

SAVE **BIG** ON PREMIUM-
QUALITY DOORS, WINDOWS,
MOULDINGS,
AND MORE!

**BEGINNING
MAY 1, 2026**

WINDOWS
STARTING AT

\$99

UP TO
50% OFF
retail price

INTERIOR DOORS
STARTING AT

\$100

*WHILE SUPPLIES LAST, CALL FOR STYLE & SIZING OPTIONS

1765 DECHERD BLVD., DECHERD TN • (931) 967-0020 • MON-FRI 8-4:30 • SAT. 8-12



PACO'S CANTINA
AND SPORTS BAR

NOW SERVING

MARGARITAS & FULL BAR

PATIO COMING SOON!

202 E MAIN ST. MONTEAGLE, TN
(931) 317-1010



Open Saturday 12 - 5pm



1863 Lake Louisa Loop
 Monteagle, Cooley's Rift
 4 BR, 3 BA, 3136 SF, 4.28 Acres, \$1,538,000
 Brand new home loaded with amenities



Open Saturday 12 - 5pm



1651 Lake Louisa Loop
 Monteagle, Cooley's Rift
 4 BR, 4/1 BA, 4024 SF, 7.78 Acres, \$1,857,000
 Modern-rustic estate with panoramic views

SOME OF RICHARD'S MOUNTAIN SALES

Stage Coach Rd	\$2,240,000	Cooleys Rift Blvd	\$1,225,000	Laurel Lake	\$650,000
Clifftops Dr	\$2,195,000	Yoder Rd	\$1,100,000	Winterberry (Lot)	\$550,000
Clifftops Dr	\$1,975,000	Oklahoma	\$1,100,000	Morgans Steep	\$475,000
Clifftops Dr	\$1,900,000	Clifftops (Lot)	\$850,000	Myers Point	\$435,000
Clifftops Dr	\$1,600,000	Longview Ln	\$783,000	Destineys Way	\$430,000
Myers Point	\$1,375,000	Tulip Tree	\$665,000	1st Street	\$275,000



Sewanee
 Mountain
 Partners
 Team



Richard Courtney
 M: 615.300.8189



John Morrissey
 M: 615.828.9636

**FRIDRICH
 & CLARK**
 REALTY, LLC

O: 615.327.4800



Open Saturday 12 - 5pm *Refreshments served*



167 POLLYWOOD DRIVE
Sewanee - \$3,200,000

This is a rare opportunity to own a compound in Sewanee. Two houses situated on 12.98 acres on a bluff with one of the best views on the Mountain. The houses rest at 167 Pollywood which is a private street right off of the Natural Bridge entrance. The main house was built in 2008 while the guest house (1933) was constructed by a stone artisan who crafted a circular outdoor picnic table from stone along with the chairs. The interior of the guest house features stone walls and floor with inlaid decorative tile. The main home is 2,846 square feet of comfortable, inviting luxury with soaring 25 foot ceilings in the gathering room leading onto an enormous screened entertaining area, Named for Polly Crockett, wife of David Crockett (Fess Parker, John Wayne, Billy Bob) of Alamo fame. New roof and HVAC along with a new deck. Come see it.



Richard Courtney

M: 615.300.8189
richard@richardcourtney.com



O: 615.327.4800

Whit Clark

M: 615.300.3826
clark.whit@gmail.com



Congratulations to the 2026 Class of St. Andrew's-Sewanee School



Lowell Brainerd, Seattle, WA



Katherine Carpenter, Sewanee



Meridian Cloniger, Nashville



Reuben Cloniger, Nashville



Lillian Crigger, Sewanee



Myah Dejean, Roseau, Dominica



Kira Dombrowski, Sewanee



Samuel Goodpaster, Sewanee



Eliza Griffey, Sewanee



Melissa Haworth, Lumberton, NJ



Korbin Helton, Belvidere



Ketiah Inganji, Rome, Italy



Keziah Ingeli, Rome, Italy



Keely Kendrick, Decherd



Sarah Russell Leonard, Sewanee



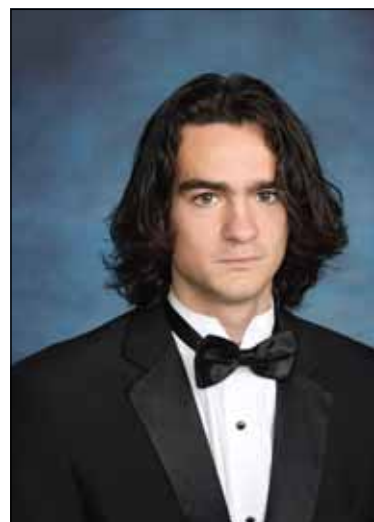
Kiran Malde, Sewanee



Jackson Mayo, Sewanee



Briley Meador, Decherd



Micah Moody, Sewanee



Caroline Neubauer, Belvidere



Eoin Pate, Sewanee



Amelia Pond, Sewanee



William Schrader, Sewanee



Jack Sherrill, Manchester



Eliot Sparacio, Sewanee

Class of 2026 (continued from page 10)



Annika Stefanut, Sewanee



James Steffner, Chattanooga



Abigail Stephens, Kingsport



Alexandra Syler, Monteagle



Mia Val, Tracy City



Madeline Van de Ven, Sewanee



Vie Virkhaus, Sewanee



Samuel Weintraub, Decherd



Griffith Wilson, Sewanee

Meditations in Paper Inspired by Rumi

The show at Frame Gallery Gifts and Art “A Lamp, a Ladder, or a Lifeboat: Meditations in Paper, inspired by Rumi,” features the work of two paper-cutting artists with ties to the area, Kate Gundersen and Kim Phillips. The exhibit continues through May 30.

The ancient tradition of paper-cutting first appeared during the 4th-century Han dynasty in China. While the art has evolved over the centuries influenced by cultural preferences, the Guild of American Papercutters states, “One traditional distinction most styles share in common is that the designs are cut from a single sheet of paper as opposed to multiple adjoining sheets as in collage, although one style of papercutting, *découpage*, or ‘cutting-out,’ builds up an image or pattern in a way somewhat similar to collage.”

Jalal ad-Din Muhammad Rumi (Rumi meaning “the Roman”) was a Persian poet and Sufi master who lived from 1207 to 1273. According to the BBC, Rumi is the most popular poet in the United States, with millions of copies of his poetry sold. His poems have gained immense global popularity by transcending religious and cultural boundaries.

To learn more about Frame Gallery’s “A Lamp, a Ladder visit: <www.framegals.com/events/a-lamp-a-ladder-or-a-lifeboat-opening-reception>.


‘Let Us Praise the Pollinators’ Events in Cowan

Artisan Depot will have an exhibit, “Let Us Praise the Pollinators.” We invite you to bring in your artwork. The show will be on exhibit from through June 28, during gallery hours of noon to 5 p.m., Thursday–Sunday. Additionally, we invite all to join us on Saturday, May 16, for some very special Celebrating Pollinators events in collaboration with Franklin House and Ruby’s Antiques.

At 11 a.m. and 3 p.m., May 16, tour the Franklin House with Ikebana floral arrangements. At 1:15 p.m., there will be a honey and sour dough tasting. At 2 p.m., Patrick Dean will be signing his book, “Nature’s Messenger.”

At noon, May 16, at the Artisan Depot, there will be a garden walk and meditation. At 12:30 p.m., join Sarah Lantier for humming for joy and harmony. At 1 p.m., Morgan Bolton Evans will share on how to start a pollinator garden. From 2–5 p.m., there will be an artist reception.

Ruby’s Antiques will have a special drawing on May 16, with proceeds donated to the Franklin County Arts Guild.



MYERS POINT
At Sewanee

MYERS POINT at Sewanee offers a rare opportunity to enjoy a private community that celebrates American architecture, lifestyle, protected forests, cultivated lakes and panoramic views on Middle Tennessee’s Cumberland Plateau. If you want to live surrounded by nature, history, beauty, quality and serenity, you’ll want to call it home.

John Goodson # (931) 703-0558
myerspoint.com # jgoodson@myerspoint.com



Story Time at Cowan Center for the Arts


Join us for Story Time and a craft project from 10–11:30 a.m., Tuesdays, at Cowan Center for the Arts, 303 Montgomery St., Cowan. We will read seasonally themed stories and poems and experiment with many varieties of arts and craft materials, provided by support from the Tennessee Arts Commission Arts Build Community project. Kids and guardians of all ages are welcome.

If you would like to be a guest host, community partner, or volunteer for stories and activities, please contact <info@cowancenterforthearts.org>.




Winchester Podiatry
CHARLES D. GANIME, DPM
Board Certified in Foot Surgery
Diplomate, American Board of Podiatric Surgery
New Patients of All Ages Welcome! We Treat Your Feet! Most Insurance Accepted, Including TennCare
155 Hospital Road Suite 1, Winchester.
www.winchesterpodiatry.com
931-968-9191

June Weber
Gooch-Beasley,
Realtors
Serving the Sewanee and Monteagle area with quality real estate service:
-50+ years of experience
-Mother of Sewanee alumnus



June Weber, CRB, CRS, GRI Broker
(931) 636.2246
juneweber@me.com



GOOCH BEASLEY REALTORS
<https://gbrealtors.com>
931.924.5555



WE ARE HIRING

Weekend Reservations Team

Rewarding work in hospitality on weekends

Competitive wages, part time weekend hours, benefits, positive work environment - great for students!

For more information:

931-598-5342
Reservations@stmaryssewanee.org
770 St. Mary’s Lane, Sewanee, TN



Steve and Kim Young - Owners
Brandon Carson - Shop Manager

710 College St. • Winchester
931-967-1755 • Fax 931-967-1798
Come by and see us. We appreciate your business.

Our Work is Guaranteed!

Video Inspections • Sweeping • Restoration • Masonry Repair
Custom Caps & Dampers • Leak Repair & Water Proofing
Wood Stove & Chimney Installs • Gas Log Service & Installs
Dryer Vent Cleaning/Repair • Fireplace Sales & Installation



A-1 CHIMNEY SPECIALIST

G. Robert Tubb II, Owner
931-967-3595 | A1ChimneySpecialist.com
Visit our showroom at 1632 Decherd Estill Rd., Winchester





Konrad Knoll in action.

Knoll Named to TSSAA Division 2 Class A All Region Soccer Team

SAS Soccer sophomore goalkeeper Konrad Knoll has been named to the 2026 All Region Team for TSSAA's Division 2 Class A East Region Tournament. Knoll faced 45 shots on frame and made 36 saves in SAS's two Region Tournament appearances against Lakeway Christian Academy and Grace Christian Academy, both of Knoxville, for an 80% save percentage. Assistant Coach Ricky Scriptor praised Knoll saying, "There is simply no more deserving player on the SAS soccer team of All Region Honors than Konrad. His dominance in the goal and leadership on the back line kept us in the game time and again against Lakeway Christian, just as it did many times this season. He is a leader on and off the field, and he never stops trying to improve. He's dedicated to the sport of soccer and has a tremendous desire to keep learning and succeed. Because of his work ethic, he's a remarkable player, particularly for such a young keeper".

Sewanee Tigersharks Registration Open

The Tigersharks swim team provides an organized athletic experience for children ages 4-19 years old in the spring and summer, with the goals of developing strong swimmers, building self-esteem, and encouraging youth of all ages to work together as a team.

The cost is \$200 per individual swimmer, \$190 for additional swimmers in a family. Some scholarship money is available for those in need. Direct scholarship inquiries to Tigershark Board at <sewaneetigersharks@gmail.com>.

Registration for the 2026 Sewanee Tigersharks season is now open at <www.sewaneetigersharks.com>. Whether you have years of swimming experience or want to learn the best sport in the world for the first time, sign up!

New Swimmer Evaluations: Monday, May 18 at 4 p.m.

4-4:30 p.m., for 6 and under

4:30-5 p.m., for 7-8 year olds

5-5:30 p.m., for 9 and over

The season will run from May 26 through July 11, with the Championship Meet on July 11 and the team party on July 12.

Interested families can find more information on the website or by emailing <sewaneetigersharks@gmail.com>.

Register for the 2026 SAS Summer Camps

Registration is open for SAS Summer Camps. Go to <https://www.sasweb.org/summer> for complete information.

Climbing Camp: May 25-29 (Monday-Friday), 9 a.m. to 4 p.m., grades fourth through high school, \$475. SAS faculty member and climbing instructor Jeff Christopher brings our newest camp to fruition! Camp will include skills and safety time, expert instruction in our state-of-the-art new climbing facility, outdoor rope days, outdoor bouldering on or near campus, climbing movies, games, and competitions. Camp includes lunch in our infamous "Hogwarts-esque" dining hall — or a to-go boxed lunch if out and about on the Plateau. All gear is provided and no experience is necessary. Bus pick up is available from Kimball.

Basketball Camp: May 26-29, (Tuesday-Friday), 9 a.m. to noon, grades 1-8, \$125. SAS Varsity Coach Larson Heitzenrater heads up camp this year where campers gain a solid foundation of the fundamentals of basketball while learning to be a team player. Players work on fundamentals, participate in dribbling and shooting contests, and play full court games.

Soccer Camp: June 8-12 (Monday-Friday) 9 a.m. to 3 p.m., grades three through eighth, \$275 (discounts available for siblings). Peewee (rising 3rd graders), Junior (rising 4th-5th graders) and Youth (rising 6th-8th graders) Soccer Camps offer players instruction and drills to promote better ball handling skills and game strategy. Our coaches reserve the right to place children in camp divisions by skill level rather than strictly by grade level. Campers should bring an extra pair of socks, gym shoes and cleats, lunch, shin pads, soccer ball, sunscreen, a water bottle, a swim suit, and a towel. All campers should be dropped off and picked up at the SAS gymnasium.

Camp SAS: Grades first through rising fifth, June 1-5, June 15-19, June 22-26, Monday-Friday, 9: a.m. to 3 p.m., \$275 per week per camper (discounts available for third and fourth siblings). Camp SAS is a traditional summer day camp offering an opportunity to play games, do crafts, take hikes, and go swimming while hanging out with old and new friends. The daily schedule includes morning groups with a focus on sports and field games, arts and crafts, and STEM activities plus nature walks alongside relaxing and hanging out. Afternoons include movies, water games and swimming (lifeguards provided), and possible field trips. If you are considering enrolling your child at SAS, this camp is a great way for them to get to know the campus. This program is limited to 30 participants per each session. Campers bring their own lunch.

It's Better Than Camp! July 11-18 and/or July 18-25. Our residential sleep-away camp for boys and girls ages 11-15 provides an intimate approach to traditional camp by combining instruction in a variety of specialty sessions with summer favorites all kids love. Each camper enjoys their own schedule as they live in our air-conditioned dorms, dine in our Hogwarts-esque dining hall, and swim, hike, bike, camp, cave, and play as they take advantage of our 550-acre campus — named one of the most beautiful in the southeast. Camp is a member of the American Camp Association and follows ACA guidelines and protocols. Our special programming, small group settings, talented staff, and unique campus offer a relaxed one-of-a-kind "better-than-camp" summer experience!

In our sixth year, SAS's It's Better Than Camp! offers specialty sessions in an array of pursuits that have included American Sign Language, ceramics, computer technology, woodworking, culinary arts, music lessons, digital music production, dance, painting, mountain biking, karate, and theater. This year, we continue to offer two morning specialty sessions and one outdoor adventure afternoon block for everyone. We also take a one-night camping trip each Friday with optional camping on Thursday. We continue to build our leadership program for our older campers as well (14-15 year olds). Cost of the camp includes specialty session instruction, air-conditioned accommodations, all meals, camp T-shirt and lanyard, laundry facilities, off-campus excursions, and all transportation during camp. There will be several snack trips to Piggly Wiggly or Dollar General. Please contact us at <sassummer@sasweb.org> with any questions you may have.

SHOP LOCAL

Country Mart

Conveniently located off Exit 134 on I-24 between Murfreesboro and Chattanooga- minutes away from University of the South and downtown Monteagle.

@countrymartllc



1045 West Main Street, Monteagle, TN 37356

Advertising in the Messenger works. Phone (931) 598-9949 or email <ads@sewaneemessenger.com> to find out how to make it work for you.

ROB MATLOCK
CONSTRUCTION COMPANY
NEW HOME BUILDING
AND REMODELING
CELL: 931-580-5728
EMAIL: RMATLOCKCONSTR@GMAIL.COM

MATLOCK

State Licensed • Fully Insured

Need More Room?

Sewanee Mountain Storage

(931) 967-5682
Evan Barry
Hwy 41 - Between Sewanee & Monteagle

■ Video Monitoring ■ Security Camera

Temperature Controlled Units
5x5 | 5x10 | 10x10 | 10x15 | 10x20

Rent online today! www.mountainstorage.net

SAS Track and Field Advance to State

The TSSAA Division II-A East Regional Track and Field Meet events were historic for the SAS track and field program, as two athletes broke long-standing school records with outstanding performances and others qualified for state competition.

Senior Keely Kendrick set a new high school girls' shot put record with a throw of 33' 1", surpassing the previous school record of 31, 4.25" that had stood since 2018. Kendrick's performance earned her a fourth-place finish in a highly competitive regional field and marked a major milestone in her continued development as a thrower.

In middle school competition, Will Moody ('30) broke the school record in the 800-meter run, clocking a time of 2:21.6 at the regional meet. Moody's time eclipsed the previous record of 2:24.19 and highlighted an impressive season for the young distance runner.

Additionally, Lilly Crigger, also a senior, took second in the 800-meter run at regionals and will compete in the state meet on May 20. The varsity boys 4x800 relay team of Grayson Clark ('28), Arthur Glacet ('27), Timi Stefanut ('28), and Micah Moody ('26) also set a new school record with a time of 8:29.02, breaking the previous record set in 2023 of 8:37.91 and taking third in the region. They will also compete in the state meet.

The record-breaking performances further mark a strong season for the SAS track and field program as athletes compete against some of the top performers in the state.

Tigers Fall to No. 2 CMS

Sewanee's men's tennis team fell to No. 2-ranked Claremont Mudd Scripps on May 9, in the Round of 16 in the NCAA Division III Championships, 4-0.

The Staggs took control early, as Lucas Wrigley and Max Verellen fell at three, 6-1, and the Staggs secured the doubles point at one, as Andre-Remi Jakobi and Samuel Schroerlucke fell to Advik Mareedu and Caleb Steeles, the No. 1-ranked doubles team in the country.

In singles, Ben Lammert fell at three, 6-0, 6-1, and the No. 1-ranked singles player in Division III, Mareedu, got his team within one point of a spot in the Elite Eight, as he defeated Jakobi, 6-2, 6-3. At four, Schroerlucke fell to Raja, 6-3, 6-4, securing the win for Claremont-Mudd-Scripps. When play was halted, Henry Hyden was down 6-3, 5-3 to the No. 18-ranked singles player in Division III, Warren Pham. Verellen lost the first set on court five before battling back to take the second, 6-2, and was at 2 all in the third set. At six, Wrigley dropped a tight first set in a tiebreaker, 7-5, and was at 1-3 in the second.

The Tigers finish the season 22-2 on the year, and ranked 14th in the country, capping off the best record in program history, and marking their fifth consecutive trip to the NCAA Championships since COVID-19, and their fourth consecutive Sweet 16 appearance.

Samuel Schroerlucke and Andre-Remi Jakobi were named as the first alternates for the Division III Doubles championships in Chattanooga, Tenn.

Baseball Season Ends with 7-3 Loss to Oglethorpe

Owen Andress doubled, tripled and drove in two runs and Tyler Pinson added two hits, but Oglethorpe University plated four runs in the seventh, defeating Sewanee, 7-3, to eliminate the Tigers from the SAA Baseball Championships May 8, at Advent Health Stadium.

The Stormy Petrels (22-20) advance to face the winner of Friday's second game between Trinity University and Berry College in another elimination contest later Friday night.

Andress plated a run in the second with a double and his triple in the fifth followed by an RBI double from Pinson gave Sewanee (21-19-1) a 3-2 edge. Austin Graber (4-3) worked six-plus innings, allowing one run on six hits with two walks and four strikeouts before running into trouble in the seventh.

The Stormy Petrels chased Graber from the game with a pair of one-out singles in the seventh. Reliever George Kell hit two batters, forcing in a run, and Ryan Causey's bases-clearing triple gave Oglethorpe a 6-3 advantage. The Stormy Petrels added an insurance run in the eighth for the final tally.

Oglethorpe starter Micah Knox tossed 4.2 innings, giving up three runs on six hits with three walks and five strikeouts. Will Lumpkin (2-1) worked the final 4.1 scoreless innings, walking one with four strikeouts for the win.

Cade Eidam was 4-for-5 with a run and one RBI while Causey recorded two hits and three RBIs and Trey Kinnan posted two hits and scored twice. The top four players in the Oglethorpe lineup accounted for eight of the team's 10 hits with five RBIs and five runs scored.

Oglethorpe third baseman Jace Armstrong made two tremendous defensive plays to end the game, reaching into his team's dugout to catch a pop-up and then diving for a line drive for the final out.

The Stormy Petrels took advantage of a two-out error to plate a run in the first inning to take an early lead.

Kinnan singled to center with

one out and Evan Smallwood was hit, but Graber struck out Causey. Brick Conway hit a two-hopper to short but Zach Fortman threw to third, and well off the bag, allowing a run to come across.

The Tigers stranded a pair of runners in the second inning after a leadoff single from Pinson. Max Kilburn's fly ball down the rightfield line pushed the runner to third and John Bagwell walked with two outs before Sebastian Leinberger struck out to end the threat.

In the third Aidan Petrocco led off with a walk and scored on a two-out double to leftcenter by Andress, with Petrocco sliding around the tag at the plate to even the contest at one.

Causey doubled to rightcenter to start the fourth for Oglethorpe and Conway walked. Both runners moved up on a sacrifice bunt by Armstrong and Causey scored on Aidan Hosford's line drive to left, putting the Stormy Petrels in front, 2-1.

Sewanee took its first lead of the game in the fifth after Charlie Teel singled with one out and moved to second on Fortman's groundout. Andress then tripled to deep rightcenter, past a diving Conway, and Pinson followed with a double down the leftfield line, giving the Tigers a 3-2 edge.

Sewanee nearly added a run in the seventh when Petrocco walked, moved to second on Teel's sac bunt and third on a wild pitch, but Fortman popped out and Eidam made a terrific diving catch in leftcenter to rob Andress of another extra-base hit.

In the bottom of the inning Nick Morgan singled to right and Eidam's soft single to left chased Graber from the game. Kell hit both Kinnan and Smallwood, forcing in a run. Causey greeted Davis Jones with a bases-clearing double down the leftfield line, giving the Stormy Petrels a 6-3 advantage.

Oglethorpe added an insurance run in the eighth when Ben Chatham walked and pinch-runner Drew Jabaley stole second. He scored on Eidam's single to center for a 7-3 lead.

Congeni, Wilson Selected for NCAA Individual Championships

Sewanee women's tennis juniors Mariella Congeni and Ivy Wilson were selected to compete in the NCAA Division III Individual Championships, set for May 22-25 at the Champions Club in Chattanooga, Tenn., as announced by the NCAA.

Congeni will compete in the 32-player singles draw, while the duo of Congeni and Wilson will compete in the 16-team doubles bracket. Both players earn their first career appearances at the NCAA Division III Championships.

Congeni and Wilson enter the championship ranked No. 18 nationally in doubles and hold a 14-6 record this season. In singles play, Congeni owns a 13-6 overall mark.

2026 Sewanee Golf Classic

The Associated Alumni invite you to participate in our Sewanee Golf Classic, June 12-13, for alumni, parents, and friends of the University to be played at The Course at Sewanee. Registration is open at <<https://new.sewanee.edu/alumni/sewanee-golf-classic/>>.

Each player will receive tournament favor and will be eligible for great daily prizes, as well as awards for our first, second, and third place winners.

Entry Fee: \$390. The entry fee will include green fees, carts, refreshments, tournament favors, prizes and meals. Tournament registration is limited to the first 96 players. Guest Only Fee: \$150. Spouses and guests are welcome to join us for the weekend and all meals.



MR. POSTMAN
209 South Jefferson St, Winchester
One block off square across from PO
(931) 967-5777 Fax (931) 967-5719
mrspostwoman@gmail.com

Notary Service

—SHIPPING AND PACKING SERVICES—
Open Mon-Fri 9-5 Authorized shippers for UPS and Fed Ex

Michael A. Barry

LAND SURVEYING & FORESTRY

* ALL TYPES OF LAND SURVEYS
* FORESTRY CONSULTING

(931) 598-0314 | (931) 308-2512



CANDLER Piano Service

TUNING, CLEANING, REPAIR

RICHARD CANDLER | rocandler@gmail.com
Sewanee, TN | 678-876-0130
candlerpiano.com



H&H HOME SOLUTIONS

Property Management

Joey Harrison
Handyman Services
931-636-1141
Drywall Repair, Painting, Electrical and Plumbing
Home Repair and Maintenance
Licensed and Insured



RIVENDELL SPIRITUAL CENTER

Let our paths help you along your journey.

Retreats, group and personal Healing Writing Music

Three month sabbatical Workshops

(931) 598-5555
info@rivendellspiritualcenter.com
rivendellspiritualcenter.com

BODYWORKS YOUNIVERSITY

YOGA TO RELEASE MYOFASCIAL TENSION

4 sessions – Wednesdays, through June 3 at 5:00-6:15 pm

Life stress and other lifestyle issues often leave our connective tissue ("fascia") tense, which restricts the natural flow of lymph fluids, resulting in muscle pain, restricted range of motion, less beneficial sleep, decreased immunity, and a tendency toward negative moods. This series of yoga classes will help people of all ages and abilities to learn breath practices, physical movements, and meditations that open lymphatic pathways and relax connective tissues. Participants will notice less stiffness, more sense of spaciousness, more beneficial rest, and more frequent positive moods.

Tom Camp is a Registered Yoga Teacher, Certified Yoga Therapist, clergy member, and psychotherapist, with 40+ years experience. Space is limited to eight participants, sign-up at www.bodyworksyouniversity.com or call 423-322-1443 to reserve your space!

NATURENOTES

by Yolande Gottfried



Tulip-tree moth. Photo by Al Partee

Tulip-Tree

The reader has probably noticed the flowers of the Tulip-Tree which have lately been knocked to the ground, looking indeed like tulips, orange and yellow at the base and light green elsewhere. The leaves are also distinctive—where almost all leaves come to some kind of a point at the tip, these leaves come to a notch or “V.” These two features give the tree its scientific name, *Liriodendron tulipifera*, or lily-tree tulip-bearer, a most melodious name. This tree has had many other common names — Tulip Poplar and Yellow Poplar among them. It is not a poplar at all but a member of the Magnoliaceae plant family, one of the ancestral plant families, with flowers that are not highly specialized. The “poplar” name probably comes from the nature of the wood, which, though classified as a hardwood, is almost as soft as White Pine. Another name is Canoe wood and indeed it was used for that purpose, easy to work and floating well. These are the trees that grow to such magnificent size in old-growth forests, the second biggest and one of the tallest east of the Mississippi. And, of course, it is the state tree of Tennessee. A prize specimen grows in England in Kew Gardens, imported there from North America. The only other species of *Liriodendron* grows in China.

The larva of the Tulip-tree Moth, one of the giant silkworm moths, feeds exclusively on Tulip-Trees, high above the ground. The courtship and mating flight of the adults also takes place high in the canopy of these trees for a short time at dusk, an amazing sight if one is lucky enough to catch it at the right time.

WEATHER

DAY	DATE	HI	LO	Week's Stats:	
Mon	May 04	64	46	Avg max temp =	68
Tue	May 05	75	54	Avg min temp =	52
Wed	May 06	71	62	Avg temp =	60
Thu	May 07	66	50	Precipitation =	2.70"
Fri	May 08	64	42		
Sat	May 09	68	51		
Sun	May 10	70	56		

*Reported by Sandy Gilliam
Domain Ranger*

State Park Offerings

To confirm that these events will occur as listed and to register, go to <<https://tspg.itinio.com/register/>> and select the park. Fiery Gizzard State Park <<https://tnstateparks.com/parks/fiery-gizzard#happenings>>, (931) 924-2980; Head of the Crow State Park <<https://tnstateparks.com/parks/head-of-the-crow#happenings>>, (615) 762-5917; Savage Gulf State Park <<https://tnstateparks.com/parks/savage-gulf#happenings>>, 931-692-3887. All times are central.

The Intrepid Trailbuilders, Volunteering — Head of the Crow State Park, Thursday, May 21, 9 a.m.–4 p.m. Go to <https://tnstateparksvolunteer.galaxydigital.com/need/detail/?need_id=1180277>. Join Master Trailbuilders every third Thursday and Saturday for the ongoing quest to fully flesh out the trail system at Head of the Crow State Park. Our current objective is rerouting a treacherous section of the Buggytop Trail to increase its accessibility to our visitors. From newbies to pros all volunteers are welcome and we will supply all tools, gloves, and eye protection. All you need to bring are snacks, water, closed-toe shoes, and a happy attitude. Volunteers should expect to hike 3 miles over difficult uneven terrain, work with various hand tools, and leave with a warm sense of fulfillment after a good day's work.

The Tom Pack Cave Adventure — Head of the Crow State Park, Saturday May 23, 8 a.m.–5 p.m. \$30–\$50. Register for event. Meet at Buggytop Trailhead, 6615 Sherwood Rd., Sherwood. This will be a very intense program that includes a 6.25-mile round-trip hike with a 3-4-hour cave tour. 4 miles of the hike will be along our strenuous Buggytop Trail, and around 2.25 miles will be off-trail. The cave tour will be very active as well. You will get dirty and wet. It will involve crawling on your hands and knees, climbing wet rocks and waterfalls, and possibly wading through water up to waist-deep. You also won't be the only thing crawling! Various salamanders, insects, and aquatic critters call the cave their home. The park will provide helmets, headlamps, and size large gloves if you don't have your own, but everything else is on you. Bring water, snacks, lunch, a can-do attitude, kneepads, sunscreen, a smaller pack for taking water and snacks inside the cave, and extra socks and shoes for the hike back. Please wear durable outdoor clothing with minimal to no cotton (no jeans); wool or synthetics are recommended. Optional: Bug spray, camera, and an emergency wag bag for in the cave.

We highly recommend that you sign up only if you have attended one of our Buggytop Cave Tours or have caved in a wild, undeveloped cave before. Registration is limited to a small number of people to ensure a safe experience and minimize impact on the cave's ecosystem. If you have any questions about the program or registration, please email Ranger Allen. Additional Notes: This program is weather-dependent. There is no bathroom at the trailhead, so please use the restroom before arrival.

Birding Hike to Savage Falls — Savage Gulf State Park, Tuesday, May 26, 8–10:30 a.m. \$5. Register for event. Join Ranger Jamie <jamie.ownby@tn.gov> as she observes migratory and year-round resident birds on an approximately 3-mile roundtrip hike to Savage Falls. Please meet at the Savage Gulf East Trailhead, 3157 SR 399, Palmer, to begin the hike. Binoculars are not required but are highly recommended. Park does not supply binoculars. Please bring plenty of water and wear adequate hiking shoes. Terrain of the hike is moderate and may approach near ledges, so care is needed. Weather dependent. Please pre-register. All times listed are Central. Please cancel no later than 24 hours before the start of the hike for a full refund.

Sherwood Day Loop Nature Hike — Head of the Crow State Park, Sunday, May 31, 1 p.m. \$3-\$15. Register for event. Join us for a casual hike around the three-mile Sherwood Day Loop to cap off Mental Health Awareness Month. Unlike our usual programs, the topics for this hike will be a little more fluid and impromptu. Essentially, we will get out and enjoy the recharging presence of nature during a leisurely hike, talking about as much or as little as participants want. Depending on how much participants wish to discuss, this hike will take anywhere from 2 to 4 hours. This hike is free to attend. This hike is weather-dependent. Please dress appropriately for the weather. There is no restroom at this trailhead, so please plan accordingly.

Junior Ranger Weekend Camp — Head of the Crow State Park, Saturday, June 6, June 13, June 20, 9 a.m.–3 p.m. \$50. Register for event. Meeting place for each day in description. Join Head of the Crow staff as we share the history, ecology, and recreation of the park with intrepid young Junior Rangers. Our Junior Ranger program caters to children age 8-12 who are curious about parks, rangers, and Tennessee's beautiful outdoors. At the end of this three day camp, we'll hold a graduation to honor Head of the Crow's 2026 Junior Rangers. Sign-up for the full Day Camp will close on June 1. Campers will be dropped off at the day's location at 9 a.m. and picked up at 3 p.m. from the same location. Campers should bring plenty of water (64-plus ounces) and a packed lunch for each day.

Day 1: Meet at Buggytop Parking Lot at 9 a.m., June 6. Campers will join park staff on a trip into Buggytop Cave, where they'll have the opportunity to safely experience the excitement of subterranean exploration with a Ranger. Helmets and lights will be provided. Besides the cave, we'll have time to learn about (and try!) nature journaling.

Day 2: Meet at Pack Hollow Parking Lot at 9 a.m., June 13. This is a day for survival. By that, campers will learn the basics of a map and compass, and try their hand at orienteering. Then, we'll go over all the “wants” and “needs” anytime you venture into the wilderness. The afternoon will be a look to the past, as we'll go over two historic tools used for hunting, skinning, and so much more! Campers will even get to try their hand at launching an atlatl.

Day 3: Meet at Pack Hollow Parking Lot at 9 a.m., June 20. In the morning, campers will join trained professionals at some of our parks small rock faces for some beginner rappelling! All gear will be provided and is inspected before use. After a thrilling morning on the rocks, we'll slow down with a hike in the afternoon. We'll discuss the geology and how the plateau (and the rocks we just climbed) came to be, and how they shape the entire environment of the region. Campers who complete one of the two Junior Ranger options will have the opportunity to join Head of the Crow staff in the Sewanee Fourth of July Parade to help represent the park, and show off their newly earned status as Junior Ranger graduates! Contact Ranger Matthew Thomas <matthew.j.thomas@tn.gov> with shirt sizes for signed up campers, and reach out with any questions.



Jasmine



Rocky

MARC's Mountain Adoptables: Meet Jasmine & Rocky

Jasmine is a happy little puppy girl with a bright personality and lots of love to give! She is around nine weeks old, weighs about seven pounds and is black and tan white highlights of white. This sweet pup is outgoing, smart, playful, and always ready for fun. She loves exploring, learning new things, and playing with her toys, but her favorite thing might just be cuddle time. Jasmine is a total snuggle bug who enjoys being close to her people and soaking up all the affection she can get. With her loving nature and cheerful spirit, Jasmine is sure to bring joy and laughter wherever she goes!

Meet Rocky, a handsome 11 months old black and white Lab/Great Pyrenees mix, weighing around 65 pounds who has a calm, gentle soul and a heart full of love. Rocky is friendly with everyone he meets and has an easygoing personality that makes him such a joy to be around. While he enjoys playtime now and then, he's happiest just hanging out with his people and soaking up affection. Rocky is learning his obedience skills and is doing wonderfully. He walks nicely on a leash, is house trained, and is eager to keep learning and making his people proud. With his sweet nature and mellow temperament, Rocky would make a wonderful companion for a family or anyone looking for a loyal best friend.

If you would like to learn more about Jasmine or Rocky, please fill out an Adoption Application on the MARC website <www.marc4change.org> and/or contact Sue Scruggs, (423) 619-3845.

MARC - Marion Animal Resource Connection is a 501(c)(3) nonprofit animal welfare organization. It is not a shelter and relies on foster homes to save animals. MARC also provides low cost spay/neuter procedures for animals.

Chiropractic For All Ages • Spinal Decompression • Dry Needling • Infrared Therapy

SHULL CHIROPRACTIC CLINIC, PLLC

Eric Shull, D.C. 16 1st St. Monteagle, TN 37356 931-924-4869	Kurt Shull, D.C. 1025 S. College St. Winchester, TN 37398 931-967-4232	Drake R. Shull, D.C. 107 E Grundy St. Tullahoma, TN 37388 931-408-9567
--	--	--

Most Insurances Accepted • Accepting New Patients

www.shullchiropractic.com

THE Sewanee institution since 1974

Shenanigans RESTAURANT

PUB & GRILL / PIZZA / DELI / BREAKFAST
CALL FOR TAKE-OUT AND BIG GROUPS
931-598-5774

Mon-Wed 11 a.m. to 10 p.m. (kitchen closes at 9)
Thurs-Sat 8 a.m. to 11 p.m. (kitchen closes at 10)
Sun 8 a.m.-10 p.m. (kitchen closes at 9)

12595 Sollace M Freeman Hwy, Sewanee, TN
www.shenanigans1974.com / IG: @shenanigans.sewanee

FIND YOUR HAPPY PLACE...AT SHENANIGANS

Messenger Classifieds

EMPLOYMENT

HIRING: We are looking for a dependable, hard-working person to be a part of our team. Various creative projects, cleaning, and maintenance on a beautiful piece of property 20 minutes from campus. Inquire for details! Call (423) 809-2283 or email <info@cavevalleygetaway.com>.

HIRING: The Parish of St. Mark & St. Paul is hiring caregivers for our nursery program, \$15/hr. Caregivers are scheduled Sunday mornings, with opportunities for special events as well. Background check and training provided. Contact Jeannie Babb <formation@stmarkstpaul.org>.

NOW HIRING WEEKEND COORDINATOR: St. Mary's Sewanee: The Ayres Center for Spiritual Development has a weekend position coming open this summer on the Reservations Team. Qualified candidates will have a background in working with the public, excellent computer skills, and interest in diverse spiritual offerings. This position is ideal for college or graduate student. Competitive wages, paid time off, positive work environment. Send resumes to <reservations@stmaryssewanee.org> or call (931) 598-5342 for more information.

HIRING: Assistant Director of Sewanee Children's Center: Sewanee Children's Center is hiring an Assistant Director to help lead daily operations of their early childhood programs serving children ages 6 weeks through 3rd grade — with a start date of July 27, 2026. This role works closely with the Director across staffing, scheduling, licensing compliance, and family communication in a research-based, child-centered environment. Preferred candidates hold a degree in Early Childhood Education or a related field and bring prior supervisory or administrative experience. Familiarity with Tennessee DHS childcare regulations is a plus. Send your resume to <sewaneechildrenscenter@gmail.com>.

PRESCHOOL TEACHER: Full-Time | Start Date: August 2026 | Pay \$15-\$17/hour. The Sewanee Children's Center is seeking a creative, nurturing Preschool Teacher to co-lead a classroom in our child-centered program. Responsibilities include lesson planning, classroom management, family communication, and supporting children's social-emotional growth. Qualifications:
 • 1-2 years preschool/childcare experience preferred
 • High school diploma required
 • CDA or Early Childhood Education credentials preferred
 • Must pass TN DHS background and health screenings
 To apply, send resume and 3 non-related references to: <sewaneechildrenscenter@gmail.com>.

PUBLIC NOTICE

NOTICE: There will be a special called meeting of the Monteagle City Council at 3 p.m., May 26, 2026 in the conference room at City Hall. The purpose of the meeting is to approve a grant application for the Safe Streets and Roads for All.

FOR SALE

FIREWOOD FOR SALE: Available for woodstove, fireplace or firepit. (Please designate your preference.) Stock up for next year. \$125/pickup load, delivered and stacked. (423) 322-7639 or (931) 212-2585.

FOR SALE: Travel trailer, Keystone Ultra-light Passport. Bunkhouse camper edition. Loaded. Located in Sewanee. (931) 213-0387

FOR SALE: Solid Maple Table & four chairs. \$150. Garment hemming also available. Call (931) 691-4629.

ESTATE SALE
97 Mississippi Ave., Sewanee
 40+ years in residence. Furniture, pottery, books. Men and women's vintage clothing.
 9 a.m.—3 p.m.
 Thursday, May 21
 Friday, May 22
 Saturday, May 23
 For pictures & more go to <www.estatesales.net>
 See you then!
 MWT Estate Services

LAWN CARE

CHAD'S LAWN & LANDSCAPING
 -FREE ESTIMATES-
 * Lawn care & Design (Mulch & Planting)
 ALSO: * Tree Trimming & Removal
 * Pressure Washing * Road Grading
 * Stone Patio/Fireplace * Garden Tilling
 * Leaf Pickup & Blowing
 (931) 308-5059

EAGLE LANDSCAPING & LAWN MAINTENANCE CO.
 Now Offering Specials for the SUMMER!
 We offer lawn maintenance, landscaping, hedge/tree trimming & more!
 Please call for your free estimate
 (931) 598-0761 or (931) 636-0383

LONG'S LAWN SERVICE
 • landscaping & lawn care
 • leaf removal • mulch
 Local references available.
 Jayson Long
 (423) 304-1260

LOCAL SERVICES

King's Tree Service
 Topping, trimming, bluff/lot clearing, stump grinding and more!
 Bucket truck or climbing
 Free wood chips with job
 Will beat any quoted price!
 Satisfaction guaranteed!!
 —Fully licensed and insured—
 Call (931) 598-9004—Isaac King

DRIVEWAYS
 by
Michael Johnson
 • Professional
 • Affordable
 • Prompt
 • Friendly service
 615-414-6177
 Text or Call

CAR WASH/DETAIL: By Appointment. Located at Sewanee Auto. (931) 691-7883. Email <Laurenthomas0217@gmail.com>.

Mountain Mini-Dozer Services
John Huddleston
 Small property cleanup, fence line clearing, backhoe work, tree/brush cleanup, post holes dug, gravel road maintenance, tree/junk removal.
Phone or text:
 (931) 213-0387
 References gladly provided

MARK'S HOME REPAIR
 KITCHEN AND BATH REMODELING
 Decks, Home Building, Electrical, Plumbing, Drywall, Tile & Hardwood Floors, Outbuildings, Pressure Washing
MARK GREEN, owner
 931-636-4555 | mdgreen41@gmail.com

A PLACE OF HOPE Monteagle, Main, Mental/behavioral health services. William Kerstetter, MHSP. (931) 924-0042.

MONTEAGLE SECURITY OPERATIONS
 CCTV, BURGLAR & FIRE ALARMS
 931-924-3216 800-764-7489
 monsecurity.com TN license 1912



Local 12-Step Meetings

Friday
 7 p.m., AA, open, Christ Church, Tracy City

Saturday
 7 p.m., NA, open, Decherd United Methodist

Sunday
 6:30 p.m., AA, open, the Wesley House, Morton Memorial United Methodist Church

Monday
 5 p.m., 12-Step Women's Study Group. Call (931) 327-5551 for information and for the Zoom link
 7 p.m., AA, open, Christ Church, Tracy City

Tuesday
 11 a.m., Grundy Recovery Alliance Community Endeavor Open Narcotics Anonymous Meeting
 7 p.m., AA, open, First Baptist, Altamont
 7 p.m., AA, open, Trinity Episcopal Church, Winchester
 7 p.m., AA, open, the Wesley House, Morton Memorial United Methodist Church

Wednesday
 10 a.m., AA, closed, Clifftops, (931) 924-3493
 6 p.m., NA, community room at 187 Raulston Ave., Monteagle
 7 p.m., NA, Decherd United Methodist

Thursday
 6 p.m., Life's Healing Choice, Grundy County Recovery Alliance, Coalmont
 7 p.m., Serenity in Sewanee AA, open, Brooks Hall, Sewanee
 7 p.m., Al-Anon, First UMC, Winchester

Support local businesses. Shop and dine locally.

DONATIONS NEEDED 4 MARC
 Cat beds • Lemon cleaner • Kitchen trash bags



DROP OFF @
 MARC, 225 Sequatchie Ln., Sequatchie, TN
 or Taylor's Mercantile, 10 University Ave., Sewanee
 before noon, Thursday and Friday
 SCAN the Chewy.com wish list for easy delivery!
 FOSTERS ARE NEEDED!




DONATIONS WORK HERE

Housing Sewanee \$10,000

Sewanee COMMUNITY CHEST



PO BOX 99, SEWANEE TN 37375
 www.sewaneecivic.org

FROM BARD TO VERSE

by Robin Bates

Graduation

As you set out for Ithaka
 hope your road is a long one,
 full of adventure, full of discovery.
 Laistrygonians, Cyclops,
 angry Poseidon—don't be afraid of them:
 you'll never find things like that on your way
 as long as you keep your thoughts raised high,
 as long as a rare excitement
 stirs your spirit and your body.
 Laistrygonians, Cyclops,
 wild Poseidon—you won't encounter them
 unless you bring them along inside your soul,
 unless your soul sets them up in front of you.

Hope your road is a long one.
 May there be many summer mornings when,
 with what pleasure, what joy,
 you enter harbors you're seeing for the first time;
 may you stop at Phoenician trading stations
 to buy fine things,
 mother of pearl and coral, amber and ebony,
 sensual perfume of every kind—
 as many sensual perfumes as you can;
 and may you visit many Egyptian cities
 to learn and go on learning from their scholars.

Keep Ithaka always in your mind.
 Arriving there is what you're destined for.
 But don't hurry the journey at all.
 Better if it lasts for years,
 so you're old by the time you reach the island,
 wealthy with all you've gained on the way,
 not expecting Ithaka to make you rich.

Ithaka gave you the marvelous journey.
 Without her you wouldn't have set out.
 She has nothing left to give you now.

And if you find her poor, Ithaka won't have fooled you.
 Wise as you will have become, so full of experience,
 you'll have understood by then what these Ithakas mean.

--C.P. Cavafy, *Ithaka* (trans. Edmund Keeley and Philip Sherrard)

Community Calendar

Friday, May 15

SAS Commencement Weekend, through May 17
 9 a.m. CAC office open, until 11 a.m.
 5:45 p.m. Kundalini Yoga, Breathwork, Meditation, Nati, Sewanee Community Center, until 7:15 p.m.

Saturday, May 16

10 a.m. Hospitality Shop open, until 2 p.m.
 2 p.m. Symposium, "Highlander Folk School," 465 Railroad Ave., Tracy City

Sunday, May 17

1 p.m. Knitting Circle, Mooney's, until 3 p.m.
 4 p.m. Hatha Yoga, Helen, Community Center

Monday, May 18

9 a.m. CAC office open, until 11 a.m.
 9 a.m. Pilates, intermed, Kim, 293 Ball Park Rd.
 9 a.m. Monteagle City Council and CPA budget workshop, conference room, City Hall
 10:30 a.m. Chair Exercise, Susan, Sewanee Community Center, until 11:30 a.m.
 1:30 p.m. Sewanee Garden Club, "Art in the Garden," June Mays, Clifftops Lake Clubhouse, RSVP <howardlotti@gmail.com>
 7 p.m. Sewanee Community Council, Sewanee Community Center, or via Zoom

Tuesday, May 19

8 a.m. GC Food Bank, 114 S. Industrial Park Rd., Coalmont, until 10 a.m.
 9 a.m. CAC office open, until 11 a.m.
 10 a.m. Hospitality Shop open, until 1 p.m.
 10 a.m. Pilates, beginner, Kim, 293 Ball Park Rd.
 10 a.m. Story Time, Cowan Center for the Arts, 303 Montgomery St., until 11:30 a.m.
 11 a.m. Social Fabric Group, Hospitality Shop lawn, 574 Georgia Ave., until 1 p.m. (rain location St. Mark & St. Paul)
 11:30 a.m. Grundy County Rotary, Dutch Maid Bakery, Tracy City
 noon Pilates, intermed, Kim, 293 Ball Park Rd.
 4 p.m. S. Cumberland Farmers' Market pickup, Community Center, until 6 p.m.
 5 p.m. Monteagle City Council, conference room, City Hall
 5 p.m. Sewanee Utility District, Utility Office, Sherwood Road

Wednesday, May 20

9 a.m. CAC office open, until 11 a.m.
 9 a.m. Pilates, intermed, Kim, 293 Ball Park Rd.
 10 a.m. Art Wednesday, (free), Artisan Depot, 204 E. Cumberland St., until noon
 10:30 a.m. Chair Exercise, Susan, Sewanee Community Center, until 11:30 a.m.
 5 p.m. Yoga to Release Myofascial Tension, Tom Camp, 293 Ball Park Rd. until 6:15 p.m.
 5:30 p.m. Hatha Yoga, Helen, Community Center

Thursday, May 21

Last day of school, Franklin County
 8 a.m. Monteagle-Sewanee Rotary, St. Mary's Sewanee
 9 a.m. CAC office open, until 11 a.m.
 9 a.m. Nature Journaling, email <Mpriestley0150@gmail.com> for details/meeting location
 9:30 a.m. Body Recall, Judy, conference room, Monteagle City Hall
 10 a.m. Hospitality Shop open, until 1 p.m.
 10 a.m. Pilates, beginner, Kim, 293 Ball Park Rd.
 noon Pilates, intermed, Kim, 293 Ball Park Rd.

Friday, May 22 • No Messenger

9 a.m. CAC office open, until 11 a.m.
 5:45 p.m. Kundalini Yoga, Breathwork, Meditation, Nati, Sewanee Community Center,

until 7:15 p.m.

Saturday, May 23

8 a.m. Sewanee Gardeners' Market, Hawkins Lane, until 10 a.m.
 10 a.m. Hospitality Shop open, until 2 p.m.
 10:30 a.m. "Climate Wayfinding: Healing Ourselves and the Planet We Call Home," Wilkinson book reading and signing, Sewanee Bookstore
 4 p.m. Beersheba Springs Historical Society, update on Savage Gulf State Park development, Beersheba Springs Community Center, 19224 S.R. 56; reception follows

Sunday, May 24

1 p.m. Knitting Circle, Mooney's, until 3 p.m.
 4 p.m. Hatha Yoga, Helen, Community Center

Monday, May 25 • Memorial Day

9 a.m. Pilates, intermed, Kim, 293 Ball Park Rd.
 10:30 a.m. Chair Exercise, Susan, Sewanee Community Center, until 11:30 a.m.
 6:30 p.m. Kundalini Yoga, Pippa, Sewanee Community Center

Tuesday, May 26

8 a.m. GC Food Bank, 114 S. Industrial Park Rd., Coalmont, until 10 a.m.
 9 a.m. CAC office open, until 11 a.m.
 10 a.m. Hospitality Shop open, until 1 p.m.
 10 a.m. Pilates, beginner, Kim, 293 Ball Park Rd.
 10 a.m. Story Time, Cowan Center for the Arts, 303 Montgomery St., until 11:30 a.m.
 11 a.m. Social Fabric Group, Hospitality Shop lawn, 574 Georgia Ave., until 1 p.m. (rain location St. Mark & St. Paul's)
 11:30 a.m. Grundy County Rotary, Dutch Maid Bakery, Tracy City
 noon Pilates, intermed, Kim, 293 Ball Park Rd.
 3 p.m. Special called meeting, Monteagle City Council, conference room, City Hall
 4 p.m. S. Cumberland Farmers' Market pickup, Community Center, until 6 p.m.
 5 p.m. Monteagle City Council meeting, conference room, City Hall
 5:30 p.m. Yoga, Pippa, 293 Ball Park Rd.
 6 p.m. Franklin County Commissioners, Courthouse, Winchester

Wednesday, May 27 • Eid al-Adha

9 a.m. CAC office open, until 11 a.m.
 9 a.m. Pilates, intermed, Kim, 293 Ball Park Rd.
 10 a.m. Art Wednesday, (free), Artisan Depot, 204 E. Cumberland St., until noon
 10:30 a.m. Chair Exercise, Susan, Sewanee Community Center, until 11:30 a.m.
 5 p.m. Yoga to Release Myofascial Tension, Tom Camp, 293 Ball Park Rd. until 6:15 p.m.
 5:30 p.m. Hatha Yoga, Helen, Community Center

Thursday, May 28

8 a.m. Monteagle-Sewanee Rotary, St. Mary's Sewanee
 9 a.m. CAC office open, until 11 a.m.
 9 a.m. Nature Journaling, email <mpriestley0150@gmail.com> for details/meeting location
 9:30 a.m. Body Recall, Judy, conference room, Monteagle City Hall
 10 a.m. Hospitality Shop open, until 1 p.m.
 10 a.m. Pilates, beginner, Kim, 293 Ball Park Rd.
 noon Pilates, intermed, Kim, 293 Ball Park Rd.

Friday, May 29

9 a.m. CAC office open, until 11 a.m.
 5:45 p.m. Kundalini Yoga, Breathwork, Meditation, Nati, Sewanee Community Center, until 7:15 p.m.

TELE THERAPY COUNSELING

Adam Randolph, B.A. Brown University; M.S.W., University of Tennessee.

RPCV - Sierra Leone, United States Peace Corps.
 Counseling since 1992

I specialize in the overlapping nature of anxieties, neurodiversity, ADHD, trauma-informed stress, and cultural and social challenges.

I provide intentional, enthusiastic, aspirational, and achievable goals.

202-669-8557 • randolph.adam@gmail.com • \$75/hr.



piggly wiggly

Down Home, Down the Street

754 West Main St., Monteagle
 (931) 924-3135
 8 a.m. to 9 p.m. 7 days a week

Woody's
 BICYCLES
 SEWANEE, TN
SALES, SERVICE AND RENTALS
 New and Used Bicycles | Electric Bicycles
NOW RENTING MOUNTAIN BIKES!
 90 Reed's Lane | 931-598-9793 | woodysbicycles.com

12-step listings on page 15 of this issue

WEAR WHITE AT NIGHT.

Walkers and bikers should wear light, reflective clothing after dusk. Don't assume drivers can see you — be on the lookout for your own safety.

