



# THE SEWANEE MOUNTAIN MESSENGER

Volume XXXIV No. 40

sewaneemessenger.com

Friday, Nov. 2, 2018

## Election Day, Nov. 6

On Election Day, Tuesday, Nov. 6, the voting precincts are open 7 a.m.–7 p.m. Voters will need a valid government-issued identification card to participate.

The Franklin County election ballot includes: Governor, U.S. Senate, U.S. House of Representatives, District 4, Tennessee House of Representatives, District 39 and District 92.

The sample general election ballot is at [www.franklincountn.us/departments/election\\_commission/](http://www.franklincountn.us/departments/election_commission/).

Sewanee residents will also elect members to the Sewanee Community Council, District 1, District 2, District 3 and two at-large seats. There is no candidate for the open District 4 seat. See page 7 for more information on the Community Council candidates.

There are four candidates in the Town of Monteagle Alderman election, where you can vote for two of the candidates.

Marion County has a consumption on the premises referendum on the ballot. For a sample election ballot in Marion County, go to <http://marionvotes.com>.

In Grundy County, the sample ballot includes: Governor, U.S. Senate, U.S. House of Representatives, District 4, Tennessee House of Representatives, District 43, and several mayor and alderman races. There is also a consumption on the premises referendum in the Town of Tracy City. For the Grundy County sample election ballot, go to <https://tnsos.org/elections/ballots/408.pdf>.

For more information about voting, go to [http://tnsos.org/elections/election\\_commissions.php](http://tnsos.org/elections/election_commissions.php).



### Election Day Parking at SES

Handicap parking at the back of the Sewanee Elementary School near the cafeteria will be open so that folks with handicaps and problems with walking can park in the back near the play ground and will be much closer to the voting place.

### Rides to the Polls

The Franklin County Democratic Party members will be providing rides to the polls on Election Day, Tuesday, Nov. 6. Please call Tom Phelps (931) 581-9020 or Bob Zimmerman (931) 308-7202 to arrange.

### Election Night Party

CCJP will be holding its traditional Election Night party from 5–9 p.m., Tuesday, Nov. 6, at Brooks Hall by Otey Memorial Parish. Everyone is invited to attend.



*The children from the University Child Care Center went trick or treating through campus this week. They were also able to enjoy a snack and special story time with Bonnie McCardell at Chen Hall on their journey.*

## Sewanee Summer Music Festival Revamps Management

by Kevin Cummings, Messenger Staff Writer

The recent chilly temperatures testify that summer is gone, but Sewanee Summer Music Festival leaders are looking forward to the sunscreen and sonatas of 2019.

Organizers have restructured the administration for next summer's festival, including adding staff positions.

"Our festival leadership has contributed to some of the new vision and efforts towards hopefully growing the festival," said Hilary Dow Ward, the event's managing director. "I think that energy and vision is really an important part to running any business, any festival, any program of our nature."

One of the changes include Dow Ward's position change/re-naming from assistant director to managing director. John Kilkenny, who took the helm of the festival in 2018 as artistic director, said the change refines leadership duties.

"It's a reflection of her work with the festival so far and basically it clarifies what the position is and allows for us to all have more understanding of what our roles are," he said. "Hilary will be managing a lot of day to day operations of the festival during the summer, coordinating community engagement work and outreach in the community, and managing our work study students and the office staff in the summer. My role can then be focused on development and artistic work," he said.

The administration also tabbed Anna Burklin, a 2018 Sewanee graduate, as office assistant and front of the house manager. Burklin previously performed work-study duties for the festival. Dow Ward said festival leaders are excited to develop the new staff position and potentially partner with the University of the South to give recent graduates an opportunity to learn about the behind-the-scenes work.

"This position focuses a lot on the business of the festival and how the festival is run, the planning, the organizing and some of the budget-

ary types of things," Dow Ward said. "So, they're getting a good introduction into the world of arts management and that is definitely a very dominant field these days for our business, the music industry."

Dow Ward, an assistant professor in Sewanee's Department of Music and the School of Theology, said the 2019 event will also boast co-directors of residential life, who will organize the outdoor and other recreation activities when participants aren't playing music.

"In the more than 60 years of the festival there has not been a focused director of student life," Dow Ward noted.

Seth Shaffer, an alum of the festival and professional tuba player in the Dallas-Fort Worth area, is one co-director, and Natalia Agredo, a bi-lingual school teacher from New York City, is the other co-director.

Being bi-lingual is an important asset for communicating with international parents and students, Dow Ward said.

This past summer's festival featured 187 participants selected from approximately 400 students who submitted applications, she said, including participants from Mexico, Costa Rica, Chile, the Czech Republic and Canada.

Both Kilkenny and Dow Ward noted that their first season leading the festival was a great experience.

"I think there was a tremendous amount of energy this summer. We had excellent conductors, a lot of new conductors, new faculty members, and some faculty who returned to the festival that had not been here for a few years," Dow Ward said. "This new combination of professional musicians really provided a fresh breath of air in the life of the festival and also gave students an opportunity to have some new faculty to study with, which was really energizing for many students."

Kilkenny, director of percussion studies and an associate professor at

(Continued on page 6)

## SSO Celebrates 32nd Season

by Bailey Basham, Messenger Staff Writer

The 32nd season of the Sewanee Symphony Orchestra (SSO) will begin on at 7:30 p.m., Tuesday, Nov. 6, at Guerry Auditorium on Georgia Avenue. The concert is free and open to the public.

The first event of the season will feature Kaitlyn Vest, visiting instructor of cello at the University, performing the Cello Concerto No.1 in C major by Haydn.

"This year, we focus on bringing artistic collaborations to the forefront of our artistry. Each concert experience of the season will feature guest artists from the national and international music scene," said César Leal, artistic director and assistant professor of music history. Leal has been with the orchestra for 6 years, and he said planning for the next season starts about a year in advance. "Dr. Vest is a cello teacher and a wonderful first-class cellist. The orchestra has never sounded better."

"We select the music, audition the musicians and choose the music based on the students' technical level and musicianship. We design a program that challenges their artistic techniques and enables them to play music successfully," he said. "We schedule all the production dates, spaces, collaborations, contracts with guest artists, and a group of students from the Artistic Leadership Program manages the orchestra."

(Continued on page 6)

## Monteagle Approves Codes Officer, Changes Tree Management

by Leslie Lytle, Messenger Staff Writer

At the Oct. 29 meeting, the Monteagle City Council voted to hire John Knost to serve as Codes Enforcement Officer. The Council also decided to adopt new tree management practices for the 2018 Christmas lighting display.

John Knost will handle enforcing property maintenance violations, previously the charge of building inspector Earl Geary who issues building permits.

Addressing Knost's need for a vehicle, Police Chief Virgil McNeese proposed he be given use of the Police Department's Crown Victoria. The department recently purchased a new Ford Explorer and has three backup vehicles, the Crown Victoria, a Tahoe, and a non-working Explorer.

"The old Explorer needs a starter and has nearly 200,000 miles," McNeese said. The council approved McNeese's recommendation to declare the old Explore surplus and sell it on GovDeals. The police department firearms instructor and fire investigator needed to haul apparatus and used the Tahoe, McNeese explained.

(Continued on page 6)



*Homecoming Queen Eunice Muchemi, was sponsored by Omega Chi Psi, and King David Johnson, was sponsored by the Student Government. Photo by Lyn Hutchinson*

P.O. Box 296  
Sewanee, TN 37375



# Letters

## THANK-YOU

### To the Editor:

St. Mary's Sewanee would like to thank everyone who came to New Hope Bluff on a breezy Saturday afternoon to celebrate the life and faith of our beloved friend, Bob Ayres. Joined by his closest family and friends, we shared memories about the remarkable impact Bob had on St. Mary's Sewanee and on so many places across our community.

One of Bob's favorite places on this Mountain was at the bluff of St. Mary's Sewanee. He began coming here for quiet and for prayer when he was Vice Chancellor of the University. Because of his love for this place and his vision of it as a place for others to find peace and hope, he helped create St. Mary's Sewanee retreat center. It was such a delight for us to gather outside after a day of foggy rain to see the clouds break open for an extraordinary sunset. Bob was surely pleased.

St. Mary's Sewanee exists to offer people a place to rest, renew, and reconnect to their deepest selves. Thank you to all those who make this place possible.

*The Rev. Andy Anderson,  
Executive Director,  
St. Mary's Sewanee*

## MONUMENTS

### To the Editor:

It's surely worth addressing Mr. Shannonhouse's concerns about the removal of monuments (Oct. 19, 2018), since so many of our fellow Americans see us on the same slippery slope as he does.

Yet imperfect though our Founders were — including slave-

holders like Washington, Jefferson, and Madison—the nation we love today is the nation they bequeathed us, and our best traditions have developed out of the ideas they enshrined in our founding documents.

This is the legacy that Dr. Martin Luther King, Jr. embraced and carried forward on the steps of the Lincoln Memorial in August 1963, when he cited the Declaration of Independence and the Constitution as “a promissory note to which every American was to fall heir,” and by which “yes, black men as well as white men, would be guaranteed the unalienable rights of life, liberty, and the pursuit of happiness.”

That legacy upon which King built is the same legacy that Confederate Vice-President Alexander Stephens repudiated back in 1861 when he declared—citing Jefferson by name—that “Our new government is founded upon exactly the opposite idea; its foundations are laid, its corner-stone rests, upon the great truth that the negro is not equal to the white man; that slavery, subordination to the superior race, is his natural and normal condition.”

With these two men's words in mind, I would argue that monuments to our Founders, flawed men though they were, nonetheless are monuments for a united American people in a way that Confederate monuments can never be.

*Matthew Mitchell,  
Monteagle*

## SOARING COST OF MEDICATIONS

### To the Editor:

Are you amazed and bewildered by the soaring cost of certain medications lately?

Prices for drugs which have been generic and affordable for decades suddenly explode to ridiculous levels. Sixty-year-old antibiotics like doxycycline and nitrofurantoin that cost under \$20 for treatment of an infection now cost hundreds to thousands of dollars per bottle. Remember the Epipen? It still costs hundreds. Why? Because the companies that sell these drugs have brought the rights to make the drugs, thus becoming a monopoly. How is this the free market? While legal under the laws passed by our congress, it is pure greed.

There is little wonder why your health insurance premiums are also increasing, as they pay the cost of this greed. The drug companies have done no research on these old drugs; their only costs are lobbying and marketing.

Marsha Blackburn has taken hundreds of thousands of dollars from pharmaceutical companies and has allowed this Big Pharma hanky-panky to happen. If your medication costs, or your health insurance premiums have increased, you can blame it on Marsha Blackburn and the politics of her boss.

*Thomas F. Phelps, M.D.,  
Sewanee*

## CONSTITUTIONAL LAW

### To the Editor:

On Oct. 30, Donald Trump announced that by executive order he will end birthright citizenship. Birthright citizenship, guaranteed by the Constitution, means that if you are born in this country, you're a citizen of this country.

Trump stated that the U.S. is the only country that has birthright citizenship, which is untrue. Thirty other countries, such as Mexico and Canada, have such a policy.

Please think about this as you vote in the midterm elections.

*Faye Walter,  
Sewanee*



# THE SEWANEE MOUNTAIN MESSENGER

Published as a public service to the community since 1985, the newspaper is printed on Fridays, 46 times a year. Free of charge, copies are distributed to 100 locations, including businesses and post offices across the Plateau. This publication is made possible by the patronage of our advertisers and by contributions from the University of the South (print production) and the Sewanee Community Chest.

## SUBSCRIPTIONS \$75 first class

Kiki Beavers  
editor/publisher  
April Minkler  
office manager  
Ray Minkler  
circulation manager  
Leslie Lytle  
staff writer  
Bailey Basham  
staff writer

Sandra Gabrielle  
proofreader  
Janet Graham  
publisher emerita  
Laura Willis  
editor/publisher emerita  
Geraldine Piccard  
editor/publisher emerita

*owned by the Mountain Messenger, LLC*

418 St. Mary's Lane, P.O. Box 296, Sewanee, TN 37375  
Phone (931) 598-9949 | <news@sewaneemessenger.com>

*All material in the Sewanee Mountain Messenger and on its websites are copyrighted and may not be published or redistributed without written permission.*

## University Job Opportunities

**Exempt Positions:** Assistant Vice President for Facilities Management, Facilities Management; Managing Editor, Sewanee Review; Purchasing Manager, Business Services.

**Non-Exempt Positions:** Assistant Manager, Sewanee Dining; Baker, Sewanee Dining; Campus Security Officer (10 positions), Police Department; Catering Attendants (on call), Sewanee Catering; Classroom and Computer Lab Technician, Technology Access & Support; Custodial Supervisor, Facilities Management; Custodian, Facilities Management; Food Service Worker (Temporary), Sewanee Dining; Food Service Worker, Sewanee Catering; Multimedia Services Technician, Technology Access & Support; Office and Logistics Coordinator, School of Theology; Part-Time Police Officer, Police Department; VISTA Coordinator, Civic Engagement. For more information call (931) 598-1381. Apply at <jobs.sewanee.edu>.

## Serving Where Called

Please keep the following individuals, their families and all those who are serving our country in your thoughts and prayers:

Blaze Cassidy Barry  
James Gregory Cowan  
Nathaniel P. Gallagher  
Peter Green  
Zachary Green  
Forrest McBee  
Andrew Midgett  
Jose D. Ramirez III  
Troy (Nick) Sepulveda  
Nick Worley

If you know of others in our Mountain family who are serving our country, please give their names to American Legion and Auxiliary member Louise Irwin, 598-5864.

**THE LOCAL MOVER**  
615-962-0432

**Need More Room?**

**We Sell Boxes!**

**Sewanee Mountain Storage**  
(931) 598-5682

■ Security Gate Dan & Arlene Barry ■ Security Camera  
Hwy 41 - Between Sewanee & Monteagle

**U-HAUL MOVING BOXES and SUPPLIES!**  
—Various Sizes—

**KIT TO PROTECT YOUR FLAT-SCREEN TV!**

**Drive Safely in School Zones!**

P.O. BOX 88  
SEWANEE, TN 37375

**McBee Dozing**

**Stump Grinding**

**Skid Steer Work**

JOHNNY MCBEE  
OWNER

(931) 308-8453  
jmcbec@bellsouth.net

TELL THEM YOU READ IT  
IN THE MESSENGER!

## Letters to the Editor Policy

Letters to the editor are welcome at the Sewanee Mountain Messenger and are a vital part of our community's conversation. Letters need to be no longer than 250 words and may be edited for space and clarity. We make exceptions from time to time, but these are our general guidelines.

Letters and/or their author must have some relationship to our community. We do not accept letters on national topics from individuals who live outside our print circulation area. Please include your name, address and a daytime telephone number with your letter. You may mail it to us at Sewanee Mountain Messenger, P.O. Box 296, Sewanee, TN 37375, come by our office, 418 St. Mary's Ln., or send your email to <news@sewaneemessenger.com>. —KB



Would you love to be entertaining in areas personally designed for your lifestyle?

*"Open your door to all the possibilities"*

Custom home remodeling begins with...

**Joseph's Remodeling Solutions**  
A Division of Tanager Solutions, LLC

**Taking Quality to the Next Level**  
Licensed - Insured - Green Certified

**931-598-5565**  
joseph@josephsremodelingsolutions.com  
www.josephsremodelingsolutions.com

## MESSENGER DEADLINES & CONTACTS

Phone: (931) 598-9949

**News and Calendar**  
Tuesday, 5 p.m.  
Kiki Beavers  
news@sewaneemessenger.com

**Sports**  
Tuesday, 5 p.m.  
sports@sewaneemessenger.com

**Display Advertising**  
Monday, 5 p.m.  
ads@sewaneemessenger.com

**Classified Advertising**  
Wednesday, noon  
April Minkler  
classifieds@sewaneemessenger.com

## MESSENGER HOURS

Monday, Tuesday and Wednesday  
9 a.m.—4 p.m.

Thursday—Production Day  
9 a.m. until pages are completed  
(usually mid-afternoon)

Friday—Circulation Day  
Closed



## Upcoming Meetings

### Coffee with the Coach

Coffee with the Coach, an opportunity to learn more about Sewanee's sports teams, continues at 9 a.m., Monday, Nov. 5, with University of the South Sports Information Director Layton Jackson. Gather at the Blue Chair Tavern for free coffee and conversation.

### EQB Meeting

Members of the EQB Club will gather at 11:30 a.m., Wednesday, Nov. 7, at St. Mary's Sewanee. Lunch will be served at noon. Following lunch, approximately 12:30 p.m., we will have the pleasure of a Lead, titled "A Stitch in Time" from Diane Getty, EQB member and fabric artist. Interested non-members are welcome to arrive at 12:30 p.m. and sit in on the presentation.

### Area Rotary Club Meetings

The Grundy County Rotary Club meets at 11:30 a.m., Tuesdays at Dutch Maid Bakery in Tracy City. The Montecagle-Sewanee Rotary Club will meet at 8 a.m., Thursday, Nov. 8, at the Sewanee Inn. The presentation will be given by Alan Clark, Rotary Assistant District Governor.

### Caregivers Groups

The Folks at Home's Caregivers Group meets weekly on Thursday, 1-2:30 p.m., in Otey Parish's St. Mark's Hall. Those taking care of chronically or fatally ill loved ones come together to tell the week's ups and downs, to listen to each other from the heart, to cry and laugh, to share something that worked, or to recommend a residential facility or employee who can help us. There is no charge and new members are welcome. Contact Folks at Home at (931) 598-0303 or <folksathomesewanee@gmail.com>.

### Village Update Meeting

Meet with Frank Gladu, Special Assistant to the Vice-Chancellor, to discuss the Village development updates. Meet at 10-11 a.m., or 5:30-6:30 p.m., Tuesday, Nov. 6, at the Blue Chair Tavern. The discussion will update the five priority projects: the road, bookstore, Village Green, specialty food market and housing as well as updates on other projects underway. The featured topic will be the Pattern Book and the design process. Coffee will be served and everyone in the community is welcome.

### Franklin County School Board

The Franklin County School Board is scheduled to meet at 6 p.m., Monday, Nov. 12, at the Franklin County Board of Education Building, 215 S. College St., Winchester.

### La Leche League

The next meeting of the La Leche League, which provides breastfeeding support and information for new mothers, will be at 10:30 a.m., Tuesday, Nov. 13, at the Sewanee Community Center, 39 Ball Park Rd. All pregnant women, mothers and babies are welcome. For more information call Pippa, (931) 463-2050.

## Convenience Center Holiday Hours Announced

Closed Monday, Nov. 12, for Veterans Day;

Closed Thursday and Friday, Nov. 22-23, and open Saturday, Nov. 24, for Thanksgiving weekend;

Closed Monday, Dec. 24 and Tuesday, Dec. 25, for Christmas, and closed Monday, Dec. 31 and Tuesday, Jan. 1 for New Years.

In addition, the hours at the Convenience Center will change as of Sunday, Nov. 4, when Daylight Saving Time ends. The Center will be open noon-5 p.m. on Mondays; 2-5 p.m. on Tuesdays-Fridays; 8 a.m.-4 p.m. on Saturdays, and closed on Sundays.

For more information go to <www.franklincountyttn.us>.

ONLINE AND IN COLOR!

[www.sewaneemessenger.com](http://www.sewaneemessenger.com)

**Come Enjoy The Mountain's  
Best Gourmet Breakfast,  
8 to 10 Each Morning,  
and Saturday Wine Social,  
4 to 7 p.m., in Tallulah's  
Wine Lounge**

*Monteagle Inn*  
RETREAT CENTER

**Tallulah's  
Wine Lounge**

(931) 924-3869 ~ [www.monteagleinn.com](http://www.monteagleinn.com) ~ 204 West Main St.

## Thirst for Knowledge

Please join community members for Thirst for Knowledge, a monthly event featuring diverse experts discussing a wide range of topics in a casual environment.

Remington Loose will present "The Perils of Social Media: An Introduction to Internet Self-defense," at 7 p.m., Wednesday, Nov. 7, at the Blue Chair. Haynes Roberts will be the moderator.

What do Kim Kardashian, the Dalai Lama, and your best friend from second grade have in common? They all use social media! But, how secure is the information they (and you) share? In this talk, Loose, an IT Architect, will provide insight on the variety of methods that social media platforms use for data gathering. He'll offer concrete steps we can take to increase our online security. He'll also explore how social media, and the Internet in general, activate our biases and affect how we interact with each other.

## Messenger Break Ahead

There are three more Messenger issues for November: Nov. 9, Nov. 16, and Nov. 30. There will be three issues in December: Fridays, Dec. 7, Dec. 14, and Dec. 21. The staff will take a two-week break and return to the office on Monday, Jan. 7, with the first issue of 2019 on Friday, Jan. 11.

If your organization or church has a different schedule during these upcoming holidays than we normally post, please send the updates to <news@sewaneemessenger.com> or call the office at 598-9949.



## It's Time to Fall Back!

Don't forget to set your clock back one hour before you go to bed Saturday night, Nov. 3. Daylight saving time officially ends at 2 a.m., Sunday, Nov. 4, which means everyone gets an extra hour of sleep!

## Sewanee Emeritus Association

The Sewanee Emeritus Association will meet at 3:30 p.m., Thursday, Nov. 8, in the Torian Room of duPont Library at 3:30 p.m. Everyone is invited, and refreshments will follow the presentation.

Professor Jennifer Matthews and Assistant Professor Courtney World, both in the University's Theatre and Dance Department, will talk about their passion for drama, dance and costumes. Matthews' specialty is in Costume Design Technology. She has a B.C.A. in Theater, and an M.F.A. in Sceneography, where she studied at UNC Greensboro with Tony Award Winner Desmond Heeley. With extensive experience in theaters in North and South Carolina, Pennsylvania, and Tennessee, Matthews has been at Sewanee for 18 years, designing over 30 shows as well as mentoring student designers and technicians. Most recently, she was responsible for more than 120 costumes in the University's production of "Cabaret."

World, a dance artist and educator, has been teaching here since 2013. Because of her extensive dance background, both tap and modern and in choreography, she has developed a minor in dance. She was named the 2015-2017 recipient of the James D. Kennedy III Endowed Faculty Fellowship. She has a B.A. in Dance and a Master of Fine Arts degree in Choreography and Performance. She currently performs tap and modern dance with companies and independent artists on a project basis. As a member of its leadership group, World represents a new tap dance organization, Southern Open Rhythm Collective.

## 'Sweet and Savory' Fundraiser at the SWC

The next meeting of the Sewanee Woman's Club will be held at noon, Monday, Nov. 12, at the DuBose Center in Monteagle.

This month's program is the annual "Sweet and Savory" fundraiser. Instead of lunch, you will have the chance to sample a wide variety of dishes made by women in the club and in the local community. This event is our primary fundraiser and will feature a cookbook of recipes. The cookbook is for sale at \$10 a copy and an excellent gift opportunity if you want to do some early holiday shopping.

The cost per person is \$15 and reservations are required. To make a reservation, contact Glyn Ruppe Melnyk at <g.ruppemelnyk2015@gmail.com> or Janet Miller Schmidt at (504) 858-5221.

## Yoga Class Time Change

The time for the yoga class taught by Darylann Ferguson on Tuesday afternoons at St. Mary's Sewanee will change to 4:30 p.m. (it had been 5:30). The location will be the McRae Room, adjacent to the Anna Guest House. She will not teach this class Tuesday, Nov. 13. For more information call St. Mary's Sewanee, (931) 598-5342.



**piggly wiggly**

**Down Home, Down the Street**

754 West Main St., Monteagle  
(931) 924-3135

8 a.m. to 9 p.m. 7 days a week

## Monteagle Sewanee, REALTORS®



Ray Banks, Broker/  
Owner  
931-235-3365  
[rbanks564@gmail.com](mailto:rbanks564@gmail.com)



Deb Banks, Realtor  
931-235-3385  
[debbanks8@gmail.com](mailto:debbanks8@gmail.com)



Dee Underhill, Hargis,  
Broker  
931-808-8948  
[aduuhargis@gmail.com](mailto:aduuhargis@gmail.com)



Tom Banks, Realtor  
931-636-6620  
[tombanks9@yahoo.com](mailto:tombanks9@yahoo.com)



Anne C. Deutsch,  
Affiliate Broker  
931-205-1299  
[anne.sewanee@gmail.com](mailto:anne.sewanee@gmail.com)

Competent, Caring, Friendly, Fair—We're Here for You!

[www.monteaglerealtors.com](http://www.monteaglerealtors.com) • 931-924-7253

337 W. West Main Street, Monteagle

Find all the area MLS listings on our updated website!



# Church News

## All Saints' Chapel

Growing in Grace continues Sunday, Nov. 4, at 6:30 p.m. in All Saints' Chapel. Elizabeth Harden, a member of senior class at the School of Theology, will be sharing her story with us. This informal worship service is designed for students and community members, featuring student-led acoustic music, a different guest speaker each week, and Holy Communion.

The Catechumenate continues this Wednesday, Nov. 7, at 6:30 p.m., in the Bairnwick Women's Center. A catered meal will be provided. Catechumenate, from a Greek word meaning "learning and exploring," is a place where we explore what it means to be a human being and what it means to be a person of faith in our community. This is a great place to meet new people and build relationships. Food, prayer, questions, and conversation power this process. This week we will be discussing the baptismal covenant.

Email Lay Chaplain Kayla Deep at <kayla.deep@sewanee.edu> for directions or more information.

Choral Evensong will be sung Sunday, Nov. 11, at 4 p.m. in All Saints' Chapel. The choir will sing pieces by Farrant, Wills, and Gardiner. We will commemorate the centenary of Armistice Day during the service. The choir will be conducted by Geoffrey Ward, university organist & choirmaster and accompanied by Zachary Zwahlen, assistant university organist.

## Bible Baptist Church

Bible Baptist Church in Monteagle is hosting a benefit dinner for Nathan Garner. Nathan is a 25-year-old Marine with stage 2

non-Hodgkins Lymphoma. The benefit is noon–4 p.m., Nov. 10, at 360 Wells St. Plates, \$7, includes chili, spaghetti or barbecue. To go plates are available. There will also be special singing from Crystal Elam and others. For more information contact Josh Garner at (931) 691-2042.

## Christ Church Monteagle

Sunday, Nov. 4 will be a busy day at Christ Church Monteagle, as Fr. Paul Oxner gives a brief report from the Synod of The Episcopal Missionary Church held last week in Columbus, Ohio. Christ Church will also honor All Saints Sunday and the International Day of Prayer for the Persecuted Church.

In the 1970s Pastor Richard Wurmbbrand asked the churches he had visited to pray for persecuted Christians and all other faith groups which were suffering persecution. He was proud of his Jewish heritage, and in light of the attack on the Tree of Life Synagogue in Pittsburgh, it seems even more important that hatred and persecution of any people anywhere should be addressed. Prayers were offered last week at Christ Church for all those killed and injured in Pittsburgh. They will continue to be offered for our country during this election week and beyond. We continue to pack shoeboxes for the Christmas Child project and we plan to have the blessing of the boxes on Nov.11.

## Otey Parish

Infants 6 weeks to children 4 years old are invited to the nursery beginning at 8:30 am. There will be nursery for both services and the Sunday School Hour. Children ages 3-11 are invited to join

us in the Godly Play 2 room, next to the Adult Ed. room where the Lectionary Class meets. Youth Ministry meets in Brooks Hall. The Lectionary Class will explore Sunday's gospel, Claiborne Parish House, Adult Education Room.

The subject for the Adult Forum at Otey this Sunday will be "Poetic Religious Voices for Our Time." Poetry may be an expression of the soul as well as the heart and mind. Sewanee's own poet Wyatt Prunty will present some of its special characteristics, especially religious ones, on Sunday, November 4, in St. Mark's Hall in the Parish House

at Otey Memorial Parish, beginning at 9:45 a.m. Questions and discussion are very welcome. Coffee and tea will be provided.

## St. Mary's Convent

The Sisters of St. Mary understand the demands and joys of caregiving. Come learn from our friendly discussion and panel of speakers how to care for yourself to provide the best care for others. The panel of speakers are Lane Price, M.D., retired oncologist and Fellow of the American College of Radiation Oncology; Cynthia Crysdale, Ph.D., Professor

of Christian Ethics and Theology at the School of Theology; and Fran Gray, Regional Coordinator for the South Central office of Alzheimer's Tennessee. Join us from 9 a.m.–2 p.m. on Saturday, Nov. 3, at St. Mary's Convent for wisdom sharing from our panel of speakers, time for Qi Gong exercise and lunch, and tour of the convent and garden by Sister Hannah, CSM. Learn how the Sisters support caregivers and provide space for retreats, prayer, and time for breaks away from caregiving. Cost is \$40. RSVP by calling (931) 598-0046.

# Church Calendar

## Weekday Services Nov. 2–9

- 7 a.m. Centering Prayer, Taylor's Creek Greenway, Estill Springs (W)
- 7 a.m. Morning Prayer, St. Mary's Convent (not M)
- 7:30 a.m. Holy Eucharist, St. Mary's Convent (not M)
- 7:30 a.m. Morning Prayer, Otey
- 8:30 a.m. Morning Prayer, St. Augustine's
- 9 a.m. Communion, Good Shepherd, Decherd (M,W)
- 9 a.m. Mass, Good Shepherd, Decherd (T/Th/F)
- 11:30 a.m. Prayer/Healing, Morton Memorial (1st/3rd Th)
- Noon Contemplative Eucharist and Healing, St. Mary's Sewanee (T)
- 3:30 p.m. Centering Prayer, St. Mary's Sewanee (T)
- 4 p.m. Centering Prayer, McRae Room, adjacent to Anna's House, St. Mary's Sewanee (W)
- 4 p.m. Evening Prayer, St. Augustine's
- 4:30 p.m. Evening Prayer, Otey (M–F)
- 5 p.m. Evening Prayer, St. Mary's Convent, (not M)
- 7 p.m. Centering Prayer, St. Paul's, Otey (M)
- 7 p.m. Mass in Spanish, Good Shepherd, Decherd (Th)

## Saturday, Nov. 3

- 7:30 a.m. Morning Prayer, St. Mary's Convent
- 8 a.m. Holy Eucharist, St. Mary's Convent
- 10 a.m. Sabbath School, Monteagle Seventh Day Adventist
- 11 a.m. Worship Service, Monteagle Seventh Day Adventist
- 5 p.m. Evensong, St. Mary's Convent
- 5 p.m. Mass, Good Shepherd, Decherd

## Sunday, Nov. 4 • CAC Pantry Sunday

### All Saints' Chapel

- 8 a.m. Holy Eucharist
- 11 a.m. Holy Eucharist
- 6:30 p.m. Growing in Grace

### Baha'i Faith

- 10 a.m. Devotions, (931) 598-9517 for directions

### Bible Baptist Church, Monteagle

- 10 a.m. Worship Service
- 5:30 p.m. Evening Service

### Chapman Chapel Church of the Nazarene, Pelham

- 9:30 a.m. Sunday School
- 10:45 a.m. Morning Worship
- 6 p.m. Evening Worship

### Christ Church, Monteagle

- 10:30 a.m. Holy Eucharist

### Christ Episcopal Church, Alto

- 9 a.m. Sunday School
- 10 a.m. Holy Eucharist

### Christ Episcopal Church, Tracy City

- 10 a.m. Adult Bible Study
- 11 a.m. Holy Eucharist (child care provided)

### Christ the King Anglican, Decherd

- 9 a.m. Sunday Service

### Cowan Fellowship Church

- 10 a.m. Sunday School
- 11 a.m. Worship Service

### Cumberland Presbyterian Church, Monteagle

- 9:30 a.m. Bible Study
- 11 a.m. Worship Service

### Cumberland Presbyterian Church, Sewanee

- 9 a.m. Worship Service
- 10 a.m. Sunday School

### Decherd United Methodist Church

- 9:45 a.m. Sunday School
- 10:50 a.m. Worship Service

### Epiphany Mission Church, Sherwood

- 10 a.m. Holy Eucharist Rite II

### Good Shepherd Catholic Church, Decherd

- 10 a.m. Mass
- 2 p.m. Spanish Mass

### Grace Fellowship Church

- 10:30 a.m. Sunday School/Worship Service

## Harrison Chapel Church

- 10 a.m. Sunday School
- 11 a.m. Worship Service
- 5 p.m. Worship Service

## Midway Baptist Church

- 9:45 a.m. Sunday School
- 10:45 a.m. Morning Service
- 6 p.m. Evening Service

## Midway Church of Christ

- 10 a.m. Bible Study
- 11 a.m. Morning Service
- 6 p.m. Evening Service

## Monteagle First Baptist Church

- 10 a.m. Sunday School
- 11 a.m. Worship Service
- 6 p.m. Evening Worship

## Morton Memorial United Methodist, Monteagle

- 9:45 a.m. Sunday School
- 11 a.m. Worship Service

## New Beginnings Church, Monteagle

- 10:30 a.m. Worship Service

## New Beginnings Church, Pelham

- 9:45 a.m. Worship Service

## Otey Memorial Parish Church

- 8:30 a.m. Holy Eucharist
- 9:45 a.m. Stewardship Breakfast
- 11 a.m. Holy Eucharist

## Pelham United Methodist Church

- 9:45 a.m. Sunday School
- 11 a.m. Worship Service

## St. Agnes' Episcopal Church, Cowan

- 11 a.m. Holy Eucharist Rite I

## St. James Episcopal Church

- 9 a.m. Holy Eucharist Rite II

## St. Margaret Mary Catholic Church, Alto

- 8 a.m. Mass

## Sewanee Church of God

- 10 a.m. Sunday School
- 11 a.m. Morning Service
- 6 p.m. Evening Service

## Sisters of St. Mary's Convent

- 8 a.m. Holy Eucharist
- 5 p.m. Evensong

## Tracy City First Baptist Church

- 9:45 a.m. Sunday School
- 10:45 a.m. Morning Worship
- 5:30 p.m. Youth Group
- 6 p.m. Evening Worship

## Trinity Episcopal Church, Winchester

- 9:30 a.m. Christian Formation
- 10:30 a.m. Holy Eucharist Rite II
- 5 p.m. Blessing of the Animals

## Valley Home Community Church, Pelham

- 10 a.m. Sunday School, Worship Service

## Wednesday, Nov. 7

- 6 a.m. Morning Prayer, Cowan Fellowship
- 9 a.m. Communion, Good Shepherd, Decherd
- 10 a.m. Bible Study, Sewanee C.P. Church
- Noon Communion, Christ Church, Monteagle
- 4 p.m. Evening Prayer, All Saints'
- 5 p.m. KAs/Bible study/meal, Monteagle First Baptist
- 5:30 p.m. Evening Worship, Bible Baptist, Monteagle
- 5:45 p.m. Youth Bible study/meal, Monteagle First Baptist
- 6 p.m. Bible study, Monteagle First Baptist
- 6 p.m. Prayer and Bible study, Midway Baptist
- 6 p.m. Evening Prayer, Trinity, Winchester
- 6:30 p.m. Community Harvest Church, Coalmont
- 6:30 p.m. Prayer Service, Harrison Chpl, Midway
- 6:30 p.m. Youth group, Tracy City First Baptist
- 7 p.m. Adult Formation, Epiphany, Sherwood
- 7 p.m. Bible study, Chapman's Chapel, Pelham
- 7 p.m. Evening Worship, Tracy First Baptist

# CAC Pantry Sunday

Pantry Sunday for the Community Action Committee (CAC) is Sunday, Nov. 4, for participating churches: St. James, Otey, Cumberland Presbyterian and All Saints' Chapel. Please bring your food offerings to Sunday services. The typical bag of groceries includes: rice, beans, pasta, macaroni and cheese, peanut butter, and cans of vegetables, fruit and soup. The cost for a complete bag is less than \$15.

The CAC is an outreach ministry of Otey Parish, with generous support from the Sewanee Community Chest and individuals across the Mountain. For more than 42 years, the CAC has provided food, financial assistance and educational support for persons in the greater Sewanee community. For more information contact the CAC at 598-5927.



# Obituary

## Alexis Jane Mauldin

Alexis Jane Mauldin, of Round Rock, Texas, and formerly of Sewanee, died on Oct. 5, 2018. She was a high school teacher for more than 25 years, most recently at Coffee County High School, Manchester. She was larger than life, and lived every moment to the fullest. She was preceded in death by her parents, Ruth E. and Patrick Freeman; first husband, Jeff Harmon of San Antonio, Texas; and second husband, Davis Mauldin of Sewanee.

She is survived by her children, Alyssa (Andrew) Wang and Luke (Barry Dersh) Harmon, three grandchildren, best friend, Rose Padilla and countless other friends.

Funeral mass was on Oct. 26 at St. William Catholic Church, Round Rock, Texas. Donations to honor her memory are sincerely appreciated, to The Society Vincent de Paul and/or St. William Catholic Church.

# Death Notices

## William Douglas Dick

William Douglas Dick, age 85 of Montreal, Canada, and father of Sewanee resident George Dick, died on Oct. 31, 2018, in Montreal.

## Virginia Hairston Whitfield

Virginia Hairston Whitfield, age 81 of Detroit, died on Oct. 22, 2018. She is the mother of University of the South assistant professor Gwendolyn Whitfield. Funeral services will be on Nov. 3, at First Baptist Church of Detroit, Southfield, Mich.



**Ward Cammack,**  
*Associate Broker • 615.319.9862*

**Shelley Cammack,**  
*Associate Broker • 615.289.2453*

# Sewanee Realty

**SewaneeRealty@inSewanee.com**  
**www.SewaneeRealty.com**  
**115 University Ave., Sewanee, Tenn.**

**Margaret Donohue,**  
*Principal Broker • 931.598.9200*

**Patsy Truslow,**  
*Broker • 931.636.4111*

*“The best preparation for tomorrow is doing your best today.” H. Jackson Brown Jr.*



MLS 1983502 - 174 Carpenter Cir.,  
Sewanee. \$525,000



MLS 1514972 - 202 Main St.,  
Monteagle. \$112,000



BLUFF - MLS 1936071 - 162 St. Clare Lane,  
Sewanee. 7+acres. \$495,000



MLS 1956405 - 171 Maple St.,  
Sewanee. \$274,500



BLUFF - MLS 1886899 - 569 Haynes  
Rd., Sewanee. 5.1 acres. \$499,900

CAMPUS RENTAL - 2 bd, 2 ba, \$1,400  
monthly - call 931-598-9200



MLS 1982786 - 212 Tennessee Ave.,  
Sewanee. \$315,000



246 Curlicue Rd., Sewanee. \$348,000



MLS 1952909 - 1573 Carter Rd.,  
Decherd. \$234,500



BLUFF - MLS 1810644 - 294 Jackson  
Point Rd., Sewanee. 20.9 acres. \$299,500



MLS 1884814 - 143 Winns Circle,  
Sewanee. \$375,000



BLUFF - MLS 1959372 - 1844 Ridge Cliff  
Dr., Monteagle. \$338,000



BLUFF - MLS 1923054 - 1833 Laurel Lake  
Dr., Monteagle. \$439,000



BLUFF - MLS 1906326 - 208 Vanderbilt Ln.,  
Sewanee. \$849,000



MLS 1901778 - 52 Sherwood Trail,  
Sewanee. \$348,000



MLS 1975100 - 677 Breakfield Rd.,  
Sewanee. \$479,000



BLUFF - MLS 1964395 - 211 Rising Sun  
Lane, Sewanee. 5.26 acres. \$295,000



BLUFF - MLS 1945408 - 506 Ingman Cliff  
Rd., 3.05 acres. \$688,000



MLS 1975436 - 57 Diamond Dr.,  
Winchester. \$235,000



BLUFF - MLS 1878711 - 226 Rattlesnake  
Springs Ln., Sewanee. \$749,000



BLUFF - MLS 1974844 - 1613 Laurel Lake  
Dr., Monteagle. 5.3 acres. \$445,000



BLUFF - MLS 1930811 - 146 Jackson  
Point Rd., Sewanee. 13+acres. \$299,500



MLS 1891347 - 715 Orange Hill Rd.,  
Tracy City. \$279,000



BLUFF - MLS 1850420 - 1710 Stage  
Coach Rd., Sewanee. 31+ acres.  
\$765,000



MLS 1924650 - 890 Boswell Ct.,  
Monteagle. 3+acres. \$319,000



LAKEFRONT - MLS - 1949994 - 681  
Magnolia Dr., Winchester. \$779,500

## BLUFF TRACTS

Old Sewanee Rd. 53+ac	1846822	\$296,000
14 Jackson Pt. Rd 18.6 ac	1803643	\$129,500
3 Horseshoe Ln. 5.6 ac	1608010	\$60,000
38 Long View Ln. 2.56 ac	1954806	\$99,000
1 Jackson Pt. Rd. 12.45 ac	1911600	\$125,600
11 Jackson Pt. Rd. 19+ ac	1911497	\$120,000
7 Saddletree Ln.	1954791	\$75,000
15 Saddletree Ln. 6.12 ac	1978546	\$75,000
Partin Farm Rd. 6.5 ac	1902508	\$64,500
9 Saddletree Ln. 2.01 ac	1948632	\$66,000
37 Jackson Pt. Rd. 3.97 ac	1965687	\$85,000
12 Saddletree Ln. 2.15 ac	1960834	\$79,500

## LOTS & LAND

20 Jackson Pt Rd.	1974540	\$37,500
126 Deep Woods 6.4 ac	1948499	\$34,900
127 Deep Woods 5.8 ac	1948503	\$34,900
13 Deerwood Dr. 2.98 ac	1946339	\$18,500
14 Deerwood Dr. 2.97 ac	1946347	\$18,500
16 Deerwood Dr. 2.98 ac	1946349	\$18,500
33 Westlake Ave. 5.3 ac	1800077	\$75,000
57 Edgewater Ct. Win.	1906419	\$32,000
St. Mary's Ln. 10 ac	1820182	\$85,000
Montvue Dr. 5 ac	1714856	\$54,900
55 Lake Louise	1900500	\$38,880
Pine Dr. 16.1 ac	1894605	\$149,000
Pine Dr. 3.22 ac	1894027	\$40,000
#22 Shadow Rock 1.18 ac	1906497	\$24,000
362 Haynes Rd. 10 ac	1910953	\$84,000
Hwy 41, Jasper 10 ac.	1906899	\$125,000



# Ministry Center Expansion to Open at MMUMC

by Bailey Basham, Messenger Staff Writer

Morton Memorial United Methodist Church (MMUMC) will celebrate the completion of a 3,000-square-foot expansion at 12:15 p.m., Sunday, Nov. 4.

The Ministry Center expansion, which was the first since the education building was added to Morton in the 1950s, features the same Sewanee stone that was used to build the sanctuary.

"We are planning a consecration service in the United Methodist tradition, which will involve prayers and music, followed by a meal," said MMUMC Reverend Jodi McCullah. "We've invited past ministers and members, and we're also inviting all who worked on the addition and those who are connected to the ministries at the church."

The church expansion, connected to the front portion of the existing sanctuary by a hallway, was done by RVC Construction in Winchester. Estimates for the project were at \$900,000, and the project totaled around \$980,000, including furnishings.

Rich Wyckoff, who is on the church's building committee, said one of the main goals of the expansion is to increase accessibility on the church grounds.

"The sanctuary was built in 1902 and is not handicap accessible," he said. "The new addition provides an accessible pathway into the sanctuary, and it also provides accessible restrooms."

The church's food ministry program, which was previously held upstairs in the education building, will be relocated to the Ministry Center.

"We do the food ministry, and roughly a third of our recipients were not physically able to go up the stairs. The food ministry will now be on one level, enabling everyone to shop for their food. Previously, many folks couldn't navigate the steep stairs to the old gym, and now, the new facility enables us to grow our other ministries and provide a meeting space for community gatherings," Wyckoff said.

In addition to providing accessibility to the church's programs and congregation, fellowship lunches on Sundays will be made easier — Sunday morning worship averages around 85 people, and instead of being spread over three different rooms for the post-service meal, all members will have a space to fellowship together. The facility is able to accommodate 150 people.

The expansion also features a walk-in cooler, which will allow food ministry volunteers to broaden the types of food available.

"[Before the expansion,] if food needed refrigeration, we couldn't store it. Now, we'll have fresh produce and dairy offerings for our recipients. The expansion is going to really help us with our different ministries," Wyckoff said.

McCullah said it is the hope of the congregation that Morton continues to be a space of welcoming in the community.

"We will be more welcoming to our community because we will be more accessible, and all visitors and members will be able to enjoy the activities, fellowship and worship," McCullah said. "Folks on the mountain are already so active in showing their great care for one another and for those who pass through, and in the future, we expect to be able to better support the ministries that already use our facilities and to be open to other ministries and activities that will serve area residents and visitors."



The Morton Memorial expansion. Photo by Tonya Salas

## The Lemon Fair

OPEN SUNDAYS!!!

Downtown Sewanee

Shop Local! 15% discounts T, W, Th

FREE GIFT WRAPPING !!!

## SSO (from page 1)

In February, the Chattanooga Symphony will join the orchestra for a special collaborative concert.

"The entire symphony will play alongside the students, and the students are going to be in the leadership roles. I will conduct and share the podium with Kayoko Dan, musical director of the Chattanooga Symphony," Leal said. "The students will get to experience someone else at the podium and having a guest conductor who is a recognized female conductor. That is especially important—so they can see women in positions of leadership and see themselves represented."

For the final concert of the season, Reggie Smith, a Grand Finals winner of the 2015 Metropolitan Opera National Council Auditions will join the orchestra.

## Music Festival (from page 1)

George Mason University, said the 2018 festival exceeded expectations and he praised the community and University for their support.

He added that the festival hired a record number of Sewanee students to work for the festival this year.

The community will get an early taste of the music ahead with the

"Reggie has one of those voices that just gives you the chills when you hear it. He's a wonderful, charismatic, beautiful singer," he said. "We have been friends for a long time, and to book these people, it takes more than a year in advance because they're so busy performing all over the world."

Leal said in addition to collaborations, the program this season will include performances of the Nutcracker Suite by Tchaikovsky and Peress' arrangement of Bernstein's Overture to West Side Story.

"The orchestra is always a collective effort. There is a reflection of what Sewanee is. There is a whole department and a whole group of people behind what we do. I just wave my hands. I'm very proud to see the department continue to grow and solidify," Leal said.

Sewanee Summer Music Festival faculty concert on April 26, 2019 at 7:30 p.m. A reception prior to the concert, sponsored by the Friends of Sewanee Summer Music Festival, will welcome SSMF faculty to campus and provide the repertoire list and performance calendar for the 2019 festival, Dow Ward said.



Logo for new pictorial book.

## Grundy County Pictorial Cover Logo Chosen

The Grundy County Historical Society announces the cover logo for the upcoming pictorial history book. It will be a gold foil embossed seal of the county courthouse centered on the luxurious leatherette cover.

Brochures describing the project and inviting all those with ties to Grundy County are being handed out by members of the Historical Society. The brochure includes sample photos with captions—all photos submitted must have a caption—that are examples of what you can submit for free, and a book order form so you can order your book now and save at least \$5.

Mail your photos with captions and name/address/phone number to the Grundy County Historical Society at P.O. Box 1422, Tracy City, TN 37387, or drop them off at the Society at 465 Railroad Ave., Tracy City. The deadline to submit your photos or order books is Nov. 15.

### HOUSE CALL SERVICE AVAILABLE

Full Service Veterinary Care for Dogs, Cats & Horses  
Offering Acupuncture, Chiropractic & Herbal Therapies



Monday–Friday 7:30 am–6 pm; Saturday 8 am–noon

**AFTER-HOURS EMERGENCY SERVICE AVAILABLE**

Traci S. Helton, DVM 931-962-3411

505 S. Jefferson St., Winchester (41-A toward Winchester. First left after Domino's Pizza)

## BUG PROBLEMS?

We can help! Call us for a free inspection!

### BURL'S TERMITE & PEST CO.

TERMITE—PEST—VAPOR CONTROL  
Bonded • Insured • Home-Owned & Operated  
105 Ake St., Estill Springs  
(931) 967-4547 or [www.BurIsTermite.com](http://www.BurIsTermite.com)  
Charter #3824 • License #17759



## Trees (from page 1)

The council also approved allocating \$5,000 for Christmas lights and not trimming the Main Street trees before installing the lights.

Monteagle resident Nate Wilson who oversees Domain management for the University said the annual trimming was causing the oaks to develop a fungus infection at the wound where the trimming was done.

In the past, the trees were trimmed to facilitate decorating. Vice Mayor Jessica Blalock who oversees Parks and Recreation will look into net type lighting as a possibly less harmful alternative.

Wilson suggested the council also consider fiber optic displays that mount to the bottom of the trees.

Acknowledging the tight schedule, with the Christmas parade planned for Dec. 1, decorating priority will be given to the park. The parade theme is "A Charlie Brown Christmas," Blalock said. Awards will go to the best themed float and the best decorated float. Awards will also go to the best decorated residence and business. Blalock is looking for judges for both categories. Citizen's Tri-County Bank will donate the trophies and plaques. Tower Bank will donate the hot chocolate and cookies for the Harton Park meet and greet with Santa after the parade.

The parade starts at 4:30 p.m., with lineup at 3:45 p.m. at the old VFW for vehicles and at the Depot for walkers and bicycles.

Revisiting the Seventh Day Adventist Church's request to put a sign in the median, Alderman Ron Terrill pointed out that unlike the other churches, the Seventh Day Adventist Church was located on Main Street and their sign was visible. Terrill none the less recommended allowing the signage since all the other downtown area churches had median signs.

The council approved the Seventh Day Adventist Church's request, but Terrill said, "I hope we can protect the area from additional signs in the future."

Reporting on operations, Fire Chief Mike Holmes said the department received a \$1,500 traffic safety grant, which would be used for the purchase of traffic safety vests and a portable radio. The department has applied for a \$99,000 FEMA Assistance to Firefighters Grant to purchase 14 air packs. If received, the grant will require a 5 percent match (\$4,700). Holmes said the department's \$19,000 budget for air packs could be used to cover the match.

The council meets next Nov. 26.

## Shop and Dine Locally

HEAVEN ON EARTH... NOW AVAILABLE IN SEWANEE

At Sewanee

MYERS POINT at Sewanee offers a rare opportunity to enjoy a private community that celebrates American architecture, lifestyle, protected forests, cultivated lakes and panoramic views on Middle Tennessee's Cumberland Plateau. If you want to live surrounded by nature, history, beauty, quality and serenity, you'll want to call it home.

**John Goodson**  
**(931) 703-0558**  
[jgoodson@myerspoint.com](mailto:jgoodson@myerspoint.com)  
**myerspoint.net**



# Community Council Candidates

Six council seats are open for election for the Sewanee Community Council. Pam Byerly (District 2) and Kate Reed (at-large seat) will seek reelection. Anna Palmer seeks election to the open District 1 seat, and Eric Keen seeks election to the open District 3 seat. Charles Whitmer who currently holds the District 3 seat will seek election to the other open at-large seat. There is no candidate for the open District 4 seat. Voting takes place at Sewanee Elementary School, 7 a.m.–7 p.m., Tuesday, Nov. 6.

District 1, Anna Palmer—Anna is a '17 graduate from the University with a degree in Psychology. She was also an honors business Carey Fellow who did an internship in NYC at Walrus Ad, a Sewanee alum-founded boutique advertising agency with clients like General Mills. After graduating, she worked for a year in the Environmental Sustainability Office at the University and then began working in the Admission Office at St. Andrew's-Sewanee this July. She loves calling Sewanee home.



Anna Palmer

District 2, Pamela C. Byerly—I came to Sewanee in November 1998, and was happily employed by the Office of Marketing and Communication. Still there, still happy. After a couple of years, I moved to 288 Willie Six Rd., in District 2 and decided to run for community council; on council I have served as secretary. I am a council member of the leasehold committee and a liaison to the trustees community committee, which meets twice a year. I also serve on the downtown committee and the stormwater committee at the University. I enjoy working for our community. As a downtown resident it is important to be aware of downtown development and make sure its impact on

current residents is positive. I would be pleased to continue working on the council.



Pamela Byerly

District 3, Eric Keen—Eric (C'08) and his wife Emily Ezell (C'11) live near the Mountain Goat Trail and Sherwood Road, where they are excited about putting down roots. He is an oceanographer and whale biologist by training, and he teaches courses in Biology and Environmental Studies in the college. The proposed changes to the downtown area will be a turning point for Sewanee's community life, and Eric wants to contribute to making those changes positive and inclusive. His priorities are 1) the inclusion of community organizations in the planning process; 2) a small grocery with fresh food and minimal waste; and 3) a kid-friendly downtown commons -- overall: changes that will create a livable, enjoyable, affordable space in which the entire Sewanee community can flourish organically.



Eric Keen

At-Large Candidate, Katherine Reed—I first came to Sewanee as an undergraduate in the college and studied English and Economics. I returned to Sewanee in August of 2013 to work in Residential

Life at the college. I have served on the Community Council since March of 2016 first completing an unexpired term as a Representative to District 1 and most recently as an At-Large Representative. In my spare time, I am renovating a historic home in the downtown village area.



Kate Reed

At-Large Candidate, Charles Whitmer—Charles Whitmer came to Sewanee in 2010 with his wife Kelly who is a professor of History at the College. As a council member, he has focused on advocating for more transparent policies in regard to the University's relationship with the broader Sewanee community and addressing the unintentional adverse consequences of those policies.



Charles Whitmer



PHOTO ARCHIVE!

[www.sewaneemessenger.smugmug.com](http://www.sewaneemessenger.smugmug.com)

# Student Mentoring Program Coming to FCHS

by Leslie Lytle, Messenger Staff Writer

Franklin County High School (FCHS) will soon launch a new program pairing students and adult mentors. There are a lot of students with limited experiences, said FCHS teacher Anna Mullin who designed the program, "students who have never left Franklin County."

The program will match students and mentors with shared interests in the hope of broadening students' horizons and offering them a nontraditional source of adult support. Mullin wants students to have the opportunity to connect to adults outside the typical parent-teacher dynamic.

Mullin also started the Transition from School to Work program at FCHS. "We engaged with students over several years. It took a while to get to the point where students would communicate, but eventually they began to reach out to us."

Mullin served as a mentor in the Tennessee Promise college scholarship program, and while acknowledging the benefits, she regretted "there was no time for developing a relationship. I really served no purpose other than to send out reminders. My mentees didn't stay in touch with me after they left the program."

Mullin plans for mentors and mentees to have once a month contact through group activities such as hiking and going out to eat, "fun stuff," she said. Mullin referenced a mentor-style program her son participated in at Sewanee Elementary School where University students were paired with SES students. "My son loved it."

Those interested in serving as mentors should contact Mullin at <anna.mullin@fcstn.net> or by phoning FCHS, (931) 967-2821.

Potential mentors will participate in an orientation and those who decide to continue in the program will undergo a background check followed by mentor training.

"We'll need to pay for the background checks," Mullin said. Several area churches are considering funding the program. Mullin also plans to reach out to area businesses for financial support as well as for potential mentors.

"The mentor program is not a religious initiative," Mullin stressed.

Mullin emphasized in the planning stages a program "needs to be reflective of many groups."

The working committee assisting with developing the program includes FCHS Principal Roger Alsup as well as Chelle Daniels (STEM teacher); Angelia Hannah (resources English teacher); B. J. Mathis (youth pastor at Winchester Cumberland Presbyterian Church); Eric Vanzant (director of the Campora Family Resource Center); Brenda Welch (FCHS guidance counselor); and Urla Wolkonowsky (current director of the FCHS Transition from School to Work program).

Alsup signed on as supervisor of the project in its incipient stages. "The project never would have gotten off the ground without his help," Mullin said. The committee both provides feedback and engages in planning, taking on tasks that range from identifying curriculum resources to funding.

Mullin has appealed to the Franklin County School Board for assistance in addressing legalities such as transportation and mentors engaging with students in non-group settings.

Students will be invited to apply for the program based on referrals from guidance counselors, teachers, and school administrators. "They have a good handle on who will benefit," Mullin said.

Mullin plans for the first mentor orientation to take place in November with the first mentor-mentee activity occurring before the Christmas break.

Mullin came to education after several other careers and acknowledges in the past "I felt like I was only working to make money."

"The over arching goal of the program is for mentors and mentees to develop a long term relationship that extends beyond high school. I want to make a difference."

**We're glad you're reading the Messenger!**

**GOOCH-BEASLEY REALTORS**  
**www.gbrealtors.com • (931) 924-5555**

**9 College Street, Monteagle, TN**  
**gb Shirley Tate, Broker (931) 598-0044**

**—LAND FOR SALE—**

**RAVENS DEN LOT 7: 6.2 acres with beautiful building site. Minutes from campus. \$52,000. MLS 1883763**

**WOODARD'S**  
**DIAMONDS & DESIGN**



We Celebrate Life and Love

**HOURS**  
Mon–Fri • 10–6  
Saturday • 10–6  
Closed Sunday

**woodards.net**  
**(931) 454-9383**  
Northgate Mall  
Tullahoma

**QUIET** tuesdays



Come spend Tuesdays at  
St. Mary's Sewanee for a day of quiet  
reflection each week.  
Bring lunch if you'd like to enjoy the  
campus between events.

7 am Qi Gong on the Bluff  
Noon Contemplative Eucharist & Healing  
3:30 pm Centering Prayer  
4:30 pm Yoga (\$8/session)

*Rest Renew Reconnect*

AT ST. MARY'S SEWANEE: THE AYRES CENTER FOR  
SPIRITUAL DEVELOPMENT



## SENIOR CENTER NEWS

The Sewanee Senior Center serves lunch at noon Monday through Friday. The suggested donation is \$4, regardless of your age. Please call 598-0771 by 9 a.m. to order lunch. Menus follow:

**Monday, Nov. 5:** Chili, pimento cheese sandwich, dessert.

**Tuesday, Nov. 6:** Grilled chicken salad, crackers, dessert.

**Wednesday, Nov. 7:** Philly steak sandwich, chips, dessert.

**Thursday, Nov. 8:** Chicken enchilada, refried beans, rice, dessert.

**Friday, Nov. 9:** Cheeseburger, French fries, dessert.

Menus may vary. For information call the center at 598-0771.



**UNIVERSITY REALTY**  
SEWANEE TENNESSEE

91 University Ave. Sewanee  
sewaneehouses.com | (931) 598-9244





**807 TIMBERWOOD TRACE.** Stunning custom home, gated community, gourmet kit, 5 BR 3 BA, 5.54 ac. Loaded with extras. \$445,000



**101 CARRUTHERS RD.** Extraordinary sunset view on the Domain. 2820 sq. ft. w/unfinished basement. Two fireplaces and views from every room.



**MYERS POINT.** 480 acre gated community w/ 24 exquisite bluff or lake home sites overlooking Lost & Champion Coves. Exceptional amenities. Call Lynn Stubblefield 423-838-8201 for a private tour. Prices begin at \$275,000



**1728 RIDGE CLIFF DR.** Custom log home with a wonderful view. Great rm, large screened in porches. Priced to sell. \$219,500



**SUNSET BLUFF VIEW.** 15 acres, private and close to town, priced at \$125,000



**CAN-TEX RD.** 10.56 beautifully wooded acres joining the University. All utilities at the road, gently rolling, easy to build on.



**20+ PICTURESQUE ACRES.** Near Savage Gulf, open pasture, barn and pond. Simply stunning!



**414 TATE RD.** Charming new country home on 2.44 beautiful acres w/detached garage. Priced to sell. \$175,000



**30.50 ACRES** Bluff views, waterfall, creek, rocky face, giant hemlocks. 30.50 acres \$200,000



**219 LIGHTNING BUG LANE.** Fantastic new construction. 3 BR, 2 BA. Minutes from campus, beautiful wooded lot. \$219,000



**1.08 ACRE LOT #1** Saussy Sub-division. Very nice building lot. \$23,500



**SHERWOOD RD.** Stunning sunrise view over Lost Cove. 3.3 miles from Univ. Ave 1,000+ feet of view 17.70 ac. \$330,000

A PORTION OF SALES  
MADE THROUGH OUR  
OFFICE WILL BE DONATED  
TO HOUSING SEWANEE

Lynn Stubblefield (423) 838-8201  
Susan Holmes C'76 (423) 280-1480  
Freddy Saussy, C'99 (931) 636-9582

## 2018 Philanthropy Internship Program Grant Awards Announced

South Cumberland Community Fund (SCCF), in partnership with the University of the South, is pleased to announce the recipients of its second round of grants in collaboration with the University's Philanthropy Internship Program (PIP). The public is invited to attend the awards presentation on Thursday, Nov. 15 from 5–7 p.m. in Convocation Hall, on the University campus. Dr. Arvind Singhal will provide the keynote address at the awards ceremony on the subject of "Positive Deviance." A world-renowned communications and social change scholar, Dr. Singhal's reach spans public health, education, human rights, poverty alleviation, sustainable development, civic participation, democracy and governance, and corporate citizenship.

SCCF has conducted an annual grants program on the Plateau since 2012, investing more than \$700,000 in local nonprofit organizations. This is the tenth round of grants since the establishment of the Fund in 2012, and the second in collaboration with the PIP.

PIP, an expansion of the partnership between SCCF and the University of the South, was developed to provide an opportunity for University students to learn firsthand about community-based philanthropy. "We believe this is an excellent way to expand the funds available to our community partners and an opportunity for SCCF to share what it has learned about grant-making on the Plateau," said Sheri Lawrence, SCCF board chair.

As part of the PIP, participating students were introduced to the history and practice of philanthropy through readings, workshops, and local speakers. They then shadowed SCCF's grants committee as it reviewed and evaluated proposals for its 2018 grants that were awarded in July of this year.

After learning the theory and seeing it in practice through the SCCF grants committee, the students underwent their own grants process with organizations that had applied for SCCF grants in July, and who were invited to submit applications for this second round of grant-giving. The students reviewed project applications, interviewed applicants, and, after much de-

liberation, awarded grants to the following recipients:

**Beersheba Springs Medical Clinic**—Grant for \$1,002 to support a 6-week reversing diabetes seminar and A1C tests to track participants' progress.

**Mountain T.O.P.**—Grant for \$3,855 to support the development of a pilot, low-cost, new construction housing program in collaboration with Rural Studio, a design-build architecture studio run by Auburn University.

**BetterFi**—Grant for \$5,000 to support a website and Facebook domain purchase, a new online payment system, and software integration for their low-interest loan program.

**Morton Memorial United Methodist Church**—Grant for \$1,987 to support a motorized pallet jack to move heavy inventory in their food pantry.

**Coalmont Elementary School**—Grant for \$4,879 to support the conversion of a special education classroom into a sensory room.

**The Town of Tracy City**—Grant for \$5,000 to install parking curbs and landscaping as part of a larger renovation of Tracy City Old Roadhouse Park into greenspace.

**Mountain Heritage Preservation Society**—Grant for \$4,843 to create indoor handicap-accessible restroom facilities in their building.

**Grundy County Historical Society**—Grant for \$5,000 to install new wiring and light fixtures as part of the renovation of its President's Room.

PIP students awarded a total of \$31,566 to seven organizations in the fall 2018 grants cycle. In addition to expanding the grant-making capacity of SCCF, the program provides University students with meaningful and direct experience in philanthropy.

The internship program is directed by Nicky Hamilton, Director of Community Development for SCCF and the Office of Civic Engagement (OCE), with assistance of Kai Koopman, OCE office coordinator. University students participating this year in the PIP are Hollis Adams (C'19); Emily Badgett (C'20); Malicat Chouyouti (C'20); Morgan Jennings (C'20); Olivia Lu (C'20); Loring McDonald (C'19); and Wint Thu (C'19).

## Contra Dance

Sewanee Dining, Farm Club, University Farm, Swing That Thing, Green House, Sustain Sewanee, SoCo (Socially Conscious Investment Club), PMo (Perpetual Motion) and OESS are hosting a student/farmer mixer on Saturday, Nov. 10. These groups want to create a sense of community between our neighboring farmers and the students at Sewanee. They hope this can lead to even more collaboration and support in the local economy.

The event starts at 5 p.m., with dinner at McClurg Dining Hall. Dancing, featuring music from local musicians, begins at 6 p.m. Cost is \$6.75 for faculty and staff; \$9.75 for community members; \$5 for children 5–12; and free for students, farmers and producers, and children under 4 years of age. Price does not include tax.

## Invitation from the Friends of Canon Gideon

All are invited to an informal supper Saturday, Nov. 10, in support of Canon Gideon Byamugisha's Hope Institute in Uganda. Join us at 5 p.m. at St. Mark's Hall of Otey Parish Church to hear Professor Amy Patterson and Sewanee interns Peter Bahr and Taylor Sprouse discuss their work and experiences in Uganda last summer.

Canon Gideon came to Sewanee in 2013 to teach a course about world religions' response to HIV/AIDS. Three members of Otey Parish have since visited and volunteered at his school, and committed to annual fundraisers for its benefit. Every day's mail brings invitations to contribute to hungry and poor children in developing countries, but we have the opportunity to send funds to people we know, with no distributing agency taking a share of the donations for overhead or profit. Every tax-deductible dollar contributed will reach Hope Institute.

Please join us. For information and to RSVP, contact Sally Hubbard at <sally@hubbard.net> or Betty Carpenter at <camppc2@msn.com>.

## No Time to Cook?

Let St. Mary's Sewanee help you with your Thanksgiving meal needs. Get an entire meal or just a pie or side dish.

Traditional turkey and dressing family meal, serves up to 6 people, complete with sliced turkey breast, dressing, gravy, green bean casserole, sweet potato casserole, cranberry relish and rolls: \$75.00

Deep dish Southern-style pecan pie: \$12.00  
Traditional pumpkin pie: \$9.50

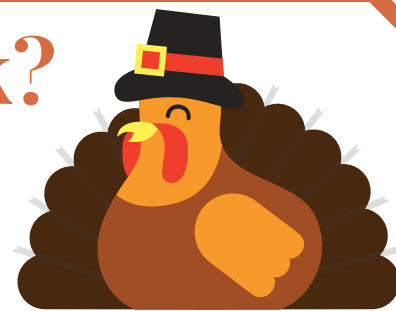
Call St. Mary's Sewanee with orders or questions.



**Deadline for orders: Noon, Tuesday, Nov. 13**

Pick-up will be 9 am - 3:30 pm, Tuesday, Nov. 20  
8:30 am - 10 am, Wednesday, Nov. 21

Orders are limited. Call 931-598-5342





## SES MENUS

**Monday–Friday,  
Nov. 5–9  
LUNCH**

**Monday, Nov. 5:** Chicken and waffle or grilled cheese, oven fries, seasonal soup, veggie juice.

**Tuesday, Nov. 6:** Election Day – No School.

**Wednesday, Nov. 7:** Chicken/noodles or pork sliders, mashed potatoes, cooked broccoli, carrot dippers, dinner roll, hotdog bun.

**Thursday, Nov. 8:** Corn dog or hamburger/cheeseburger, baked beans, oven fries, veggie dippers, hamburger bun.

**Friday, Nov. 9:** Pizza or chicken fajita, shoepeg corn, potato wedges, roasted veggies, tortilla, cookie.

### BREAKFAST

Each day, students select one or two items.

**Monday, Nov. 5:** Yogurt, popstart or breakfast pizza.

**Tuesday, Nov. 6:** Election Day – No School.

**Wednesday, Nov. 7:** Egg omelet, donut holes, banana bread slice or breakfast bun.

**Thursday, Nov. 9:** Biscuit, sausage or chicken, gravy, jelly.

**Friday, Nov. 10:** Oatmeal bar, cheese stick, or pancake/sausage stick, syrup.

*Options available every breakfast: assorted cereal, assorted fruit and juice, milk varieties.*

*Menus subject to change.*

## CES Fall Festival Tickets

Ticket sales are underway at Coalmont Elementary School for the Friday, Nov. 2, fall festival featuring the return of the chili and cornbread cook-off.

This year's festival will feature games, prizes, and a silent basket auction featuring themes such as family game night, movie night, cooking and more from each home-room. The events begin at 5 p.m. and will conclude at 8 p.m. Ticket sales and sign-ups for the chili and cornbread cook-off are available at the school during school hours Monday through Friday until the festival. Tickets may be purchased at the gate.

For more information about this year's festival events and activities, please contact the school at (931) 592-9453.

*Support local businesses!*



**MOLICA  
CONSTRUCTION LLC**

931 205 2475

WWW.MOLICAConstruction.COM

- CRAFTSMANSHIP ▪
- CREATIVITY ▪
- SUSTAINABILITY ▪



*Coalmont Elementary School Pre-K recently explored the Cedarwood Pumpkin Patch, giving students an opportunity for a first-hand look at agriculture and fall harvesting. The onsite visit took classroom learning and put ideas into action and real-world experiences for the students. Pictured front row left to right are Patricia Layne (Teacher Assistance), Journey Rhea, Elaina Jackson, Lorali Combs, Farrah Lott, Emily Bean, Karmyn Fults, Aydan Whitman, Crew Nolan, Lily Higgins, and Barbara Bryant, (Pre-K Teacher). Back row are Peyton Haynes, Jace Sweeton, Braden Clark, and Saban Bryant.*



*Students enjoyed a dance party in the gym followed by a Reverse Parade down University Avenue as part of Sewanee Elementary School's Halloween activities. Pictured are students Daisy Knight, left, and Jordan Meeks.*

## SCHOOL CALENDAR

Nov. 6, Staff Development Day, Franklin County  
Nov. 17–25, Thanksgiving Break, St. Andrew's-Sewanee  
Nov. 19–23, Thanksgiving Break, Marion County  
Nov. 21–23, Thanksgiving Break, Franklin, Grundy Schools  
Nov. 21–26, Thanksgiving Break, University of the South  
Dec. 8–9, Service of Lessons and Carols, University of the South



**TOMMY C. CAMPBELL**  
FOR YOUR IMPROVEMENTS

Call (931) 592-2687

Free Estimates • No Job Too Small!

**DRIVEWAY WORK • GRAVEL HAULING  
• DOZER & BACKHOE**

plus Land Clearing • Concrete Work • Water Lines • Garage Slabs • Sidewalks • Porches & Decks • Topsoil & Fill Dirt • Septic Tanks & Field Lines

**WOODY'S BICYCLES**  
SALES, SERVICE AND RENTALS  
A Full-Service Trek Bicycle Dealer  
Mon–Fri 9–5 • Sat 10–2 • 90 Reed's Lane  
598-9793 • woodybike@gmail.com

Check out [www.woodysbicycles.com](http://www.woodysbicycles.com) for rates, trail maps, photos, bike club links, races and much more!

## Grown-Up Show and Tell at Sewanee Elementary

The children of Sewanee Elementary want to know more about their world beginning with their neighbors. If you have a special interest, passion, skill, or knowledge and would be willing to share it with the teachers and students of SES, please contact Sarah Marhevsky, the president of the Sewanee Parents' Organization. This year the SPO is reaching out to pull the town into the children's lives by compiling a directory of visitors and speakers from the community. Maybe you are an herbalist, a modern-day Johnny Appleseed, a local historian, a ballroom dancer, a fly fisherman, a train-spotter, a collector. There is nothing like the wide-eyed wonder and curiosity of a five to ten-year-old child. Teachers are hoping to use a directory of local speakers to supplement their curriculum, giving life to chapters in a textbook. Such a directory will be invaluable to the SPO as it organizes two of its most popular programs: Wednesday Wonderings and Friday School. Please write Sarah Marhevsky at <sesptonews@gmail.com> or leave your name at the front desk of SES if you would be willing to share your own curious nature with some young explorers.

## Grundy County Imagination Library on the Move!

In August of 2011, the Rotary Club of Grundy County adopted the Dolly Parton Imagination Library program as a club program for the benefit of Grundy County children. Seventy-six percent of Grundy County children age 0 to 5 are currently receiving a free Imagination Library book every month. This program, which costs \$24 per child per year, half of which is paid by the Governor's Books from Birth Foundation and half paid by local donations, is one of several Rotary Club initiatives for improving learning and work habits of our county's youth. Tax deductible donations to the Grundy County Imagination Library may be made to the Grundy Rotary Service Fund, P.O. Box 1903, Tracy City, TN, 37387.

Eighty percent of the brain development of a child occurs before age three. Learning to read during this period enormously increases the chances of success for the child. Reading with the child increases parent involvement which further leads to better family relationships and less behavioral problems for the child. Children who have been engaged in the program also have better relations with peers when they start school. A child who is read to by a parent three or more times a week is twice as likely to achieve reading scores in the top 25 percent of students. Reading skills are essential to the success of individuals, regardless of trade or profession. Sadly, nearly one-half of correctional facility inmates cannot read or write and 85 percent of juvenile offenders have reading problems.

The Rotary Imagination Library committee is committed to enrolling every child in Grundy County in this program. We regularly ask parents with young children if their child is enrolled in Imagination Library. The answer is mostly yes. The parents are quick to point out how greatly this program has contributed to their child's development. Every parent interviewed has said that their children anxiously look forward to receiving their personally addressed book each month in the mail. They express their appreciation for the efforts of the Rotary Club of Grundy County to keep this program available for their children.

**Winchester Podiatry**  
**CHARLES D. GANIME, DPM**  
Board Certified in Foot Surgery  
Diplomate, American Board of Podiatric Surgery  
New Patients of All Ages Welcome! We Treat Your Feet! Most Insurance Accepted, Including TennCare  
155 Hospital Road Suite 1, Winchester.  
[www.winchesterpodiatry.com](http://www.winchesterpodiatry.com)  
**931-968-9191**

**FOR SALE!** Beautiful custom brick home at the foot of Monteagle Mtn! Master on main, big kitchen w/built-ins, screened porch- 2 car gar. Minutes to Sewanee & Monteagle Assembly! Don't miss it! \$285,000

**Benchmark REALTY LLC**  
Linda Morris, Realtor  
Benchmark Realty LLC  
615-594-4455/615-510-3006

**WAGS AND WIGGLES**  
Doggie Day Care, Boarding and Grooming

**Making Pets Feel  
Right at Home**

Full-Service Doggie Day Care  
Full Grooming Services  
34 Indoor/Outdoor Kennels

1660 Decherd-Estill Rd. • Winchester  
[www.wagesandwiggles.com](http://www.wagesandwiggles.com) • 931.247.1699

2nd year in a row!





SAS cast members front row from left, Jayla McLaurin and John Beavers, and back row from left, Pete Haight and Palmer Whittington in a scene from "Leaving Iowa." Photo by St. Andrew's-Sewanee

## SAS Players Present 'Leaving Iowa'

This weekend, the St. Andrew's-Sewanee School theatre program presents "Leaving Iowa," a comedy about family vacations written by Tim Clue and Spike Manton. Performances will be Friday, Nov. 2 and Saturday, Nov. 3 at 7 p.m. and Sunday, Nov. 4 at 4 p.m. at McCrory Hall for the Performing Arts on the SAS campus (290 Quintard Rd., Sewanee). Admission is available at the door and is \$7 for adults and \$5 for children. SAS students, faculty, and staff are admitted for free. The show is appropriate for all ages.

Twenty-seven students in grades six-12 are participating in the production. "I chose 'Leaving Iowa' because it is a delightful ensemble piece that can support a large cast," said SAS theatre teacher and director, Robie Jackson. "I saw a production of it at the Edinburgh Fringe Festival when we took the SAS production of 'The Ants' in 2013, and I made a mental note that it would be a great show for our students in the future." The SAS production stars John Beavers and Pete Haight of Sewanee, Jayla McLaurin of Las Vegas, Nev., and Palmer Whittington of Memphis.

"Leaving Iowa" is a toast to the idealism and character and a little roast of the "greatest generation's" undying dedication to the classic family road trip. Don Browning, a middle-aged writer, returns home and decides to finally take his father's ashes to his childhood home, as requested. When Don discovers Grandma's house is now a grocery store, he begins traveling across Iowa searching for a proper resting place for his father. This father-and-son road trip shifts smoothly from the present to Don's memories of the annual, torturous vacations of his childhood. Don's journey leads him to reconcile his past and present at the center of the United States.

"Leaving Iowa" is a postcard to everyone who has ever found themselves driving alone on a road, revisiting fond memories of their youth.



ROB MATLOCK  
CONSTRUCTION COMPANY  
NEW HOME BUILDING  
AND REMODELING


MEMBER, U.S. GREEN BUILDING COUNCIL

PHONE 931-598-5728

**MATLOCK**

State Licensed • Fully Insured





## Eagle Military ANTIQUES

Buyers of Civil War, WW1, WW2 military weapons, uniforms, equipment, and all interesting antiques.

Call Colonel (ret.) Ron Bailey, 931-636-1794

## ADAPTIVE LANDSCAPE LIGHTING

**Paul Evans | 931.952.8289**  
[adaptivelandscape-lighting.com](http://adaptivelandscape-lighting.com)

## American Shakespeare Center Returns to Sewanee, Nov. 7-8

The American Shakespeare Center returns to Sewanee Nov. 7-8 with Sophocles' "Antigone" and Shakespeare's "The Winter's Tale." The performances in Guerry Auditorium are free and open to the public.

"Antigone"—Wednesday, Nov. 7, at 7:30 p.m. Doors open at 7 p.m. with period music from the company beginning at that time.

In the aftermath of her brothers' bloody war, Antigone is left torn. Her brother Eteocles will be honored, but her brother Polyneices will be shamed and denied funeral rites. In this ancient tale, Antigone stands for morality in spite of punishment as one of the earliest heroines in drama. Sophocles' drama from 441 BC holds startling relevance today, examining divinity, obedience, and law—and how love overcomes them all.

"The Winter's Tale"—Thursday, Nov. 8, 7:30 p.m. Doors open at 7 p.m. with period music from the company beginning at that time.

Shakespeare's magnificent late play is a roller-coaster ride from romance to tragedy to comedy and finally to a place of transcendent beauty that few other works of art have ever achieved. "A sad tale's best for winter," but after unleashing a wintry tempest onto his characters, Shakespeare ultimately conjures spring's miraculous rebirth.

The performances are thanks to a generous donation to the School of Letters, and are sponsored by the School of Letters, the Sewanee Performing Arts Series, the office of the Dean of the College, and the Classics, English, and Humanities departments.

## Artisan Depot Announces Paint-and-Sip Series

The Artisan Depot in Cowan is beginning a series of paint-and-sip nights in the gallery. The first two sessions are Tuesday, Nov. 13 and Tuesday, Dec. 11; both are from 6-8:30 p.m. The workshops will be led by artist Carolyn Evey, who is locally well-known for her popular Mountain Painting Parties in Tracy City. Everyone from beginning painters to professional artists are invited to participate; pre-registration is required.

At the Nov. 13 event, participants will paint trees in their fall colors. Easels, acrylic paints, and 11 by 14 inch canvases are included with the \$30 registration fee; go to <http://www.franklincoarts.org/workshops.html> to register. Participants may bring their favorite wine or beer; water and iced tea will be available. The gallery will also provide light snacks.

Carolyn Evey has taught elementary art in the public school system and for homeschool tutorials. For more than 15 years, she has created original home portraits in pen and ink for realtors and clients in the Nashville/Brentwood area. Since moving in 2017 to Monteagle Mountain, she began instructing Mountain Painting Parties on a regular basis, in and around Tracy City. She said, "It is a privilege to be involved in the community, encouraging creativity and providing artistic inspiration for participants, even those who may have never before held a paintbrush to canvas!"

The Artisan Depot is the gallery and gift shop of the Franklin County Arts Guild and is located at 204 Cumberland St. E, Cowan. Questions? Call workshop coordinator Kim Phillips at (615) 829-0772.



Carolyn Evey

## J & J GARAGE

### COMPLETE AUTO REPAIR

- Import & Domestic
- Computerized 4-wheel alignments
- Shocks & Struts • Tune-ups • Brakes

Our work is guaranteed  
More than 37 years of experience  
Hwy 41-A between Sewanee & Monteagle  
Mon.-Fri. 7:30-5:30



Jerry Nunley,  
owner  
598-5470

The Sewanee institution since 1974

## Shenanigans

### RESTAURANT

PUB & GRILL / PIZZA / DELI / CATERING  
CALL FOR TAKE-OUT OR DELIVERY  
**931-598-5774**

OPEN EVERY DAY 11 a.m. to 11:30 p.m. (later on weekends!)

12595 Sollace M Freeman Hwy, Sewanee, TN  
(on the corner of University Ave and 41A)

FIND YOUR HAPPY PLACE...AT SHENANIGANS

## AT THE MOVIES

SUT

Friday-Sunday, Nov. 2-4, 7:30 p.m.

*Slender Man*

PG-13 • 91 minutes

Small-town best friends Hallie, Chloe, Wren and Katie go online to try and conjure up the Slender Man—a tall, thin, horrifying figure whose face has no discernible features. Two weeks later, Katie mysteriously disappears during a class trip to a historic graveyard. Determined to find her, the girls soon suspect that the legend of the Slender Man may be all too real.

CINEMA GUILD

Wednesday, Nov. 7, 7:30 p.m., free

*Wind River (2017)*

R • 107 minutes

Cory Lambert is a wildlife officer who finds the body of an 18-year-old woman on an American Indian reservation in snowy Wyoming. When the autopsy reveals that she was raped, FBI agent Jane Banner arrives to investigate. Teaming up with Lambert as a guide, the duo soon find that their lives are in danger while trying to solve the mystery of the teen's death.

SUT

Thursday-Sunday, Nov. 8-10, 7:30 p.m.

*Mission Impossible: Fallout*

PG-13 • 148 minutes

Ethan Hunt and the IMF team join forces with CIA assassin August Walker to prevent a disaster of epic proportions. Arms dealer John Lark and a group of terrorists known as the Apostles plan to use three plutonium cores for a simultaneous nuclear attack on the Vatican, Jerusalem and Mecca, Saudi Arabia. When the weapons go missing, Ethan and his crew find themselves in a desperate race against time to prevent them from falling into the wrong hands.

*Movies are \$3 for students and \$4 for adults, unless otherwise noted. Cinema Guild movies are free. The SUT is located on South Carolina Avenue, behind Thompson Union. The SUT accepts Domain Dollars and credit/debit cards.*

Support local businesses!



## Mooney's

### Market & Emporium

- ♦ ORGANIC, LOCAL FOODS
- ♦ SUPPLEMENTS & TOILETRIES
- ♦ GARDEN & BIRD SUPPLIES
- ♦ YARN & ACCESSORIES
- ♦ ANTIQUES, JEWELRY, GIFTS
- ♦ CRESCENT CAFE JUICE BAR

**NOW OPEN EVERY DAY 11-3**

**Store open 10-6 daily**  
**931-924-7400**  
1265 W Main • Monteagle 



## Friday Night Jazz

Talented jazz pianist Karlton Taylor will bring his Nashville-based jazz Quartet, with vocalist Fernando Richardson, to Sewanee to perform Friday, Nov. 9, from 7:30–11:00 p.m. at the Ayres Multi-Cultural Center. Karlton is an active and respected member of the Nashville jazz-community.

Mr. Taylor has performed with Bela Flack and Victor Wooten, and at the Telluride Jazz Festival. He trained classically as a pianist. As a developing musician, jazz-great pianist Phineas Newborn Jr. mentored him. He has played also with the legendary trumpeter, Donald Byrd.

This will be an eclectic night of fun music and improvisation, featuring cool jazz. If you are looking for a change of pace, this might be the event. Coffee, tea, and pastries will be free. Admission is free and the public is invited. For additional information contact <ebenjami@sewanee.edu>.

## Sewanee Chorale Fall Concert

The Sewanee Chorale Fall Concert will be at 7:30 p.m., Friday, Nov. 9, at All Saints' Chapel. There will be guest vocalists and instrumentalists from the Sewanee Student Chamber Group. The concert will feature Broadway tunes, American folk songs, poplar and classical tunes by Stopford, Gjeilo, Paulsen, and others. The event is free and open to the public.



The MC, (Jonathan Herring, center) shows off the charms of the KitKat Club chorus in 'Cabaret.' Photo by Lyn Hutchinson

## 'Cabaret' Adds Matinee Performance

Every scheduled performance of "Cabaret" has been fully reserved, so a matinee performance has been added.

Now, in addition to performances on Friday and Saturday, Nov. 2–3, at 7:30 p.m., there will be a Saturday matinee at 2 p.m. at the Tennessee Williams Center. Reserve your free tickets here <<https://www.eventbrite.com/e/cabaret-113-matinee-tickets-51994840969?aff=ebdssbdestsearch>>.

If you want to come to a performance that's already sold out, we recommend that you come to the Tennessee Williams Center box office 30 minutes before show time. There are no-shows every night, and the first 20-30 people in line are likely to get in. All audiences should be aware that due to the configuration of the theatre, there is no late seating.

After Saturday's matinee there will be a post-show discussion with the audience led by the student leaders of the Sewanee Jewish Association and a couple of Sewanee faculty members. In light of the horrific events in Pittsburgh this past weekend, many audience members have expressed a desire to discuss some issues raised by the play. "Cabaret" is set in Berlin in 1931, and the rise of fascism and anti-Semitism portrayed have made many viewers aware of uncomfortable parallels in our own world. The post-show discussion is open to everyone, and will start at 4:30 p.m. on Saturday in the theatre.

"Cabaret" is not recommended for children under 13.



## Tea on the Mountain

For a leisurely luncheon  
or an elegant afternoon tea  
11:30 to 4 Thursday through Saturday

**DINNERS BY RESERVATION**  
(931) 592-4832  
178 Oak Street, Tracy City

## Frame Gallery Announces New Show

Frame Gallery's upcoming exhibit, "Art of the Spirit: Woodcuts and Etchings" by Margaret Adams Parker will be on display Nov. 7–Dec. 22. There will be a reception for the artist at 5:30–7 p.m. Friday, Nov. 9, with an artist talk by Parker at 6 p.m.

Margaret Adams Parker is a working artist with an extensive exhibition record. Her works are included in the collection of the Library of Congress, Washington National Cathedral, Virginia Theological Seminary, and Duke Divinity School, and have been published by the United High Commissioner for Refugees, Christian Century, Tikkun, The Church of England Reader, ARTS (The Arts in Religious and Theological Studies), and Episcopal Journal. She is the co-author, with Ellen Davis, of "Who Are You, My Daughter? Reading Ruth through Image and Text" (Westminster John Knox Press, 2002) and, with Katherine Sonderegger, of "Praying the Stations of the Cross – Finding Hope in a Weary Land" (Eerdmans Publishing, 2019.) As a member of ECVA (The Episcopal Church and the Visual Arts) she has served as both juror and exhibitor.

She has completed multiple commissions for churches and church institutions across the country. Mary as Prophet, her sculpture commissioned by Virginia Theological Seminary, won an Honor Award from Faith&Form, the Interfaith Forum on Religion, Art, and Architecture. She is contracted for the first of three planned sculptures on the life of Andrew the Apostle, and other ongoing projects include etchings of the Easter Vigil Readings and a set of large painted Stations, contemporary icons of suffering and redemption.

Parker holds the B.A. degree, Phi Beta Kappa, Summa cum Laude, from Wellesley College and the Master of Fine Arts from The American University, where she was awarded the Wolpoff Prize for Drawing and Works on Paper and the Glassman Award as Outstanding Woman Artist. She worked as Artist in Residence at Wesley Seminary, received a Virginia Commission for the Arts Fellowship in Painting, and has served as a Coolidge Fellow of ARIL (The Association for Religion in Intellectual Life) and a Calvin Summer Symposium Fellow.

The Frame Gallery is located at 12569 Sollace M. Freeman Hwy., Sewanee. The frame shop and gallery's regular hours are 10 a.m. to 5 p.m., Tuesday through Friday, and 10 a.m. to 2 p.m. on Saturday.

## 'Google Beach' at Carlos Gallery

The Carlos Gallery in the Nabit Art Building at University of the South is pleased to present "Google Beach," an exhibition of photographic prints by artist and former Visiting Professor of Art Stefan Jennings Batista. There will be an artist talk and reception at 4:30 p.m., Friday, Nov. 2. Everyone is invited to attend.

The series "Google Beach" is a photographic exploration of Batista's home state of Florida via the use of Google's street view application. In recent years, that photo based interactive platform has been expanded beyond the street to visually map the entire Florida coastline. Having grown up along the Gulf coast in Southwest Florida, Batista is able to revisit places he once stood as a child and walk the beaches he has walked in reality through his computer. However, as a digital viewer and navigator, questions arise as to the complex nature of this kind of interactive photo archive. Who or what is being implicated in such a vast automated photographic record of an intimate type of landscape like the beach? Why does such a universally accessible archive exist in the first place? What does it reveal about the present and future of the photographic medium and information sharing?

The photographs in "Google Beach" take the forms of large-scale printed triptychs referencing romantic era painting and 3 by 5 inch black & white snapshots that recall a post war leisure culture along the American shoreline. The visual digital distortions inherent to the automated 3d mapping process reference their origin and stand in opposition to their physicality as seemingly intentional photographic objects. Informed by issues of privacy, intimacy and landscape representation "Google Beach" is at once a nostalgic framing of the past as well as a look into the questionable status quo of the photographic and larger digital future.

Stefan Jennings Batista is a visual artist and educator working primarily in lens-based media and the printed image. From South Florida originally, his work is focused on intersections of identity & place often with an emphasis on the social landscape, and informed by a family history of constant relocation. His work has been featured in exhibitions, publications & projects across the USA & abroad. He is currently an instructor of photography & illustration at Central New Mexico Community College, in Albuquerque, NM, where he recently received an MFA in studio art from the University of New Mexico. He misses the beach and plays music sometimes.

The Carlos Gallery is at 105 Kennerly Rd., Sewanee. Hours are 8 a.m. to 5 p.m., Monday through Friday, and 1 to 5 p.m., Saturday and Sunday. For more info contact Jessica Wohl at (931) 598-1256 or <[jewohl@sewanee.edu](mailto:jewohl@sewanee.edu)>.



Google Girl

**G. Robert Tubb II, Owner**  
931-967-3595  
A1ChimneySpecialist.com

CSIA Certified Technicians  
Video Inspections • Sweeping  
Restoration • Masonry Repair  
Custom Caps & Dampers  
Leak Repair & Water Proofing  
Wood Stove & Chimney Installs  
Gas Log Service & Installs  
Dryer Vent Cleaning/Repair

**Monteagle-Sewanee Rotary Club**  
–Service Above Self

*Visit one of our meetings and get to know what Rotary is all about.*

Attend a local meeting and meet some of our Monteagle-Sewanee Rotarians. Our Rotary Club often hosts programs of interest to our community at large, including presentations by artists, business leaders and government representatives. Visitors are always welcome!

**Breakfast Meeting Thursday, 8 a.m., Sewanee Inn**

This month's presentations:

Nov. 1: Club Assembly  
Nov. 8: Alan Clark, Rotary District Assistant Governor  
Nov. 15: Sister Elizabeth Mills, Community of St. Mary's  
Nov. 29: Nate Wilson, Domain Manager, University of the South

For more information, or to plan a visit, email Lee Harmon at [suites@monteagleinn.com](mailto:suites@monteagleinn.com)  
[www.monteaglerotary.org](http://www.monteaglerotary.org)

**Sweeton Home Restoration**  
LICENSED • INSURED • TRUSTED

NEW CONSTRUCTION  
REMODELING  
HISTORIC RESTORATION

931-924-2444 [sweetonhome.com](http://sweetonhome.com)

**MICHELLE M. BENJAMIN, JD**  
Attorney & Counselor at Law

201 FIRST AVENUE, NORTHWEST  
WINCHESTER, TENNESSEE 37398

(931) 962-0006  
Fax: (931) 967-8613





*Evan Fox at a recent mountain biking competition.*

## SAS Mountain Biking Update

The St. Andrew's-Sewanee mountain biking team competed during the weekend of Oct. 20-21, in the third race of the Tennessee High School Cycling League season. The race was held at Shelby Farms Park in Memphis, with 257 middle school and high school athletes competing. Seventeen SAS varsity riders and eight middle school riders raced on the flat and fast course covering distances from eight to twenty miles. In the girls' races, top five finishes were earned by Riley Burnette (fifth, freshman girls), Libby Neubauer (third, eighth grade girls), Madeline Sumpter (first, eighth grade girls), and Julia Sumpter (third, sixth grade girls). In middle school boys' races, Chris Moore earned a spot on the podium in fourth place in the sixth grade category. Zolon Knoll had his best race of the season in Memphis, finishing in fourth place in the sophomore boys' category, while Finn Michler raced hard to earn fifth place in the JV category. Aidan Smith improved two positions from his previous race in Knoxville to gain a spot on the podium in fourth place in the challenging 20-mile varsity boys' race.

All SAS riders are showing improvements in fitness and skills as the season progresses. The team is looking forward to competing in the State Championship race during the weekend of Nov. 10-11, at St. Andrew's-Sewanee. Many volunteers are needed to support our league race series—opportunities to help on Saturday with course setup and on Sunday with various jobs are open for signup on the league website at <www.tennesseemtb.org>. Please come out to support our league and mission to get more kids on bikes.

The SAS varsity and middle school mountain biking program is led by head coach Speed Baranco and assistant coaches Beth Pride Ford and Michael Short, with valuable assistance from volunteers Jill Mollica, Karen Singer, Barbara Fox, Sian Baranco, Steve Holt, Alex Krongard, John Fox, Alex Neubauer and Pete Mollica. The team and coaches are grateful for continued support from our SAS middle school and upper school families.

## SAS MS Boys' Basketball at 2-1

St. Andrew's-Sewanee cruised to a 34-24 win over Swiss Memorial Oct. 25, at home. Tyler Cantrell dominated the inside for SAS, ending up with 15 points. Ethan Hargis contributed to the offensive efforts as well with seven points including a 3-pointer. Aiden Tate and Cecil Rodgers both chipped in four points each, and Ryan Ostrowski added two along with several key rebounds.

The Mountain Lions faced a finely-tuned Tracy City squad Oct. 29, and fought hard but fell short of a win, 40-24. The fast-paced game was much closer throughout, with both teams playing tough defense and sprinting to fast-break baskets. The Eagles converted theirs more often, especially Sam Parson with off the glass lay-ups. Parson finished with 21 points. For SAS, Kyler Cantrell and Aiden Tate led with nine points each, followed by Ethan Hargis, Spears Askew and Cecil Rodgers with two each. It was an unusual shooting night for SAS, who could not seem to find the basket and turned the ball over too many times against a finely-tuned team. The Mountain Lions look forward to improving between the next meeting early in December.



*The local NICA-GRT group (National Interscholastic Cycling Association-Girls Riding Together) met at Shenanigans in Sewanee. Brian Schaefer of Woody's Bicycles offered a repair clinic (pictured here). This was followed by an amazing talk by Grace Ragland, a NICA coach in the Alabama Interscholastic Cycling League.*

## Volleyball Tabbed at No. 4 Seed for SAA Championship

The Southern Athletic Association has announced the seedings and bracket for the 2018 SAA Volleyball Championship. Sewanee will open play in the quarterfinals on Friday against 5-seeded Rhodes at 3 p.m. ET (2 p.m. CT).

Entering the postseason with the best seeding in the SAA Championship at No. 4, the Tigers finish the regular season with a 19-7 overall record and a 9-5 mark in conference play.

In both regular season meetings, the Tigers took both meetings from the Lynx, winning at home on Sept. 23, 3-1, before sweeping the match on the road on Oct. 20.

The three-day, eight-team tournament will be hosted by Berry College in Mount Berry, Ga. The winner of Friday's contest will face top-seed Berry, Saturday at 4 p.m. ET (3 p.m. CT). The SAA Volleyball Championship Match will be played at 1 p.m. ET (noon CT) Sunday, with the winner earning the automatic bid to the NCAA Championships.

## HOME GAMES

### Tuesday, Nov. 6

6 p.m., SAS MS Girls' Basketball vs. Pelham

7 p.m., SAS MS Boys' Basketball vs. Pelham

### Thursday, Nov. 8

7 p.m., SAS Varsity Swimming vs. Fayetteville City and Lincoln County

### Friday, Nov. 9

6 p.m., University Men's Basketball vs. Huntingdon

### Saturday, Nov. 10

1 p.m., University Swimming and Diving vs. Transylvania

### Sunday, Nov. 11

SAS Mountain Biking, Tennessee Interscholastic Cycling League State Championships

### Monday, Nov. 12

6 p.m., SAS MS Girls' Basketball vs. Palmer

7 p.m., SAS MS Boys' Basketball vs. Palmer

### Tuesday, Nov. 13

3:30 p.m., SAS JV Boys' Basketball vs. Lookout Mountain

5 p.m., SAS Varsity Girls' Basketball vs. Lookout Mountain

6 p.m., University Women's Basketball vs. Berea

6:30 p.m., SAS Varsity Boys' Basketball vs. Lookout Mountain

## The Depot Emporium

367 Railroad Ave., Tracy City  
(931) 808-2590

*Specializing in Antiques, Gifts and Things*

Open Thur-Fri-Sat 10 a.m.-5 p.m.

## Squeaky Clean Housekeeping

My reputation is built upon your satisfaction.  
Dependable, hardworking, fast service and reasonable rates!

VACUUMING  
DUSTING  
LAUNDRY  
FLOORS

FREE ESTIMATES  
**KATHY WILSON**  
(520) 260-5959

PLANT CARE  
BATHROOMS  
DISHES  
FURNITURE

## K&N Maintenance and Repair

Your "honey-do" list helper!

A one-stop solution  
for all your home  
improvement needs

**931-691-8656**

**DEPENDABLE AFFORDABLE RESPONSIVE  
HOME REPAIR AND REMODELING  
EXPERT HANDYMAN**

**KEN O'DEAR**

25 YEARS EXPERIENCE  
SATISFACTION GUARANTEED  
**931.235.3294**  
**931.779.5885**



## Online and in color!



View it. Click it. Share it.



*The*  
**blue chair**  
*Café & Tavern*

41 university avenue  
sewanee, tennessee



(931) 598-5434  
thebluechair.com



## Field Hockey Wins on Senior Day Enters SAA Tourney as No. 3

The Sewanee field hockey team used a three-goal second half to defeat the Falcons of Concordia Wisconsin, 3-1, Saturday afternoon at a chilly Puett Field.

In the 14th minute, off a Concordia Wisconsin corner, Rachel Larson found Sam Dunn's pass for her second goal of the year to give the visitors the early 1-0 lead.

That lead would hold until the halftime intermission, but it did not last long in the second half. 59 seconds into the period, Ceara Caffrey scored her 18th goal of the season off an Alex Hornsby assist to even the contest at a goal each.

Sewanee found the lead for the first time in the contest in the 53rd minute thanks to a Molly Wheeler goal.

In the 63rd minute, Alex Hornsby notched her first goal of the season thanks to Hannah Tompkins' pass off the penalty corner.

Sewanee has reached the double-digit mark in the win column for the first time since 2015 when they won 11 contests.

The Southern Athletic Association has announced the seedings for the 2018 SAA Field Hockey Championship. The Tigers will enter as the three-seed, and they will face Transylvania in the opening round Friday afternoon at 4 p.m.

Sewanee finished with a 10-5 record and a 3-2 conference mark. Sewanee has reached the double-digit mark in the win column for the first time since 2015 when they won 11 contests.

Transylvania and Sewanee met twice in the regular season. In the non-conference matchup on Oct. 14, the Tigers used a 13th-minute goal from Milly Etheridge and a defense that allowed five shots and no goals in 70 minutes to win the contest, 1-0.

In the regularly scheduled conference meeting in Lexington, Ky., Elisabeth Domittner scored the game-winning goal in the 55th minute to lift Sewanee to a 1-0 win over Transy.

The three-day, six-team tournament will be hosted by Hendrix College in Conway, Ark. The winner of Friday's contest will face Rhodes, who earned a first round bye, Saturday at 2 p.m. The SAA Field Hockey Championship Game will be played at noon Sunday, with the winner earning the automatic bid to the NCAA Championships.

## Edmund Orgill Cup Returns to Sewanee

For the first time since 2011, the Edmund Orgill Cup returns to the Cumberland Plateau, as the Sewanee football team captured a 27-14 win on the 70th Homecoming at the University of the South, Saturday afternoon from Historic Hardee-McGee Field at Harris Stadium. Final score was 27-14.

A total of 22 seniors between the football team and the cheerleading squad were recognized prior to kickoff: Karim Antoine, Daniel Armagh, Elle Barnes, Sabrina Caldwell, Trey Claus, Anna Kate Foshee, Tristan Fuller, John Gaither, Chris Howe, Michael Jacobs, Kalon Johnson, Zach Keller, Conoly Koontz, Jo Jo Matlock, Lee Menefee, Travis Nadalini, Allan Parrott, Brinley Rhys, Jack Spencer, Will Sutton, Rocky Tips and Melanie Vaughn.

On the opening drive, Rhodes was threatening to strike first. However, on the 11th play of the drive at the Sewanee 11-yard-line, PJ Settles was picked off by Pierce Johnson to keep the Lynx out of the end zone.

From there, each team was forced to punt the ball away for most of the opening half. With two minutes left in the second quarter, Rhodes' Cameron Cluney punted the ball away to their own 49. However, the visitors were guilty of holding the facemask, which gave the Tigers great field position.

Two plays later, Sewanee was unable to complete the pass thanks to defensive holding, which gave Sewanee the ball at the Rhodes 24.

On the next play, Grayson Baker connected to Micah Maes for the touchdown as Sewanee struck first on the scoreboard, leading 6-0 with 1:48 left in the half.

On the ensuing drive, after a completed pass by Settles, he was picked off again, this time by Wesley Porter.

Sewanee responded on the next drive that saw the Tigers find the end zone again. Maes caught his second touchdown reception with a 13-yard catch from Baker. Sewanee took the 13-0 lead into the locker room.

Sewanee started with possession to start the half and attempted to get the lead to three scores, but a blocked 50-yard field goal gave Rhodes possession.

The Memphis institution responded with a seven-play, 67-yard drive to cut the score to 13-7 on a one-yard run by Settles.

On the next Sewanee possession, the Tigers used a 13-play, 75-yard drive to push the lead back to 13. Zach Milan punched himself across the goal line for the score.

Early in the fourth quarter, Rhodes made it interesting. The Rhodes offense found themselves at the Sewanee 21, but after the Warren Matthews sack that pushed Settles back nine yards, the quarterback took the rest of the drive in his hands. He called his number not once, but twice, first on a 21-yard run, followed by a nine-yard touchdown run to make it 20-14 in favor of the Tigers.

However, as they did earlier in the half, after Rhodes scored, Sewanee responded with a touchdown of its own. Another 13-play drive, Warren Holland capped the drive with a two-yard run to make it 27-14.

With 4:24 left in regulation, the Rhodes got the ball in the red zone. Getting it down to a first and goal from the 10-yard-line, Settles and his offense was able to get nine of the 10 on three downs.

On the fourth down play, Settles, who is the all-time Rhodes holder in passing and rushing yards with over 10,000 yards in his four-year career, could not gain the one yard needed for the touchdown with 1:57 left.

That stop by the defense sealed the contest for the Purple and Gold, as they win their first game against Rhodes since 2011 and their first win over the Lynx at home since 2002.



Players celebrate a touchdown with Micah Maes in Sewanee's Homecoming win over Rhodes College. Photo by Lyn Hutchinson



Freshman Gabby Acker won three races in the weekend's swim meet. Photo by Lyn Hutchinson

## Swimming and Diving Places Second at Invitational

The Sewanee swimming and diving teams competed at the Sewanee Invitational at the Fowler Center Pool last weekend. Both the men's and women's teams finished in second place overall.

For the men, Anthony Carbone (28.53) and Lee Haber (28.55) finished third and fourth respectively in the 50 breast. Haber also competed in the 100 individual medley, where he earned a second place result of 56.50 seconds. Carbone finished .02 of a second behind the sophomore for third (56.62).

In the 400 individual medley, Carbone and Haber, once again, finished back-to-back, with Carbone leading the Tigers in this event with a 4:21.96. Haber earned a 4:23.70.

Carbone captured another second place finish in the breast with a 1:01.48, while Haber also earned second in the 200 free (1:48.71). Later in the 200 IM, the freshman swam to a 2:02.05 mark. Haber also won the 200 breaststroke with a 2:14.21 time.

In the 50 back, Carl Failing earned a second place mark at 25.05 seconds.

James Hoyt swam the 1,650 free at 17:39.24 and the 500 free at 5:05.30, good for second in both events.

For the women, Gabby Acker won the 50-yard, 100-yard and 200-yard breaststroke events with times of 31.86 seconds, 1:10.61 and 2:34.06, respectively.

In the 50-yard backstroke, Kate Mabry won the event with a time of 28.23 seconds. In the 100 IM, the freshman swam to a 1:03.01, second place, finish. She also won the 200 backstroke with a 2:12.74 mark. Her third win of the weekend came in the 200 IM, she earned a 2:17.62. Later in the 100 back, Mabry swam a 1:00.88 time for second place.

Delaney Wood finished in third at the 400 IM with a 5:28.38 time. Late, she also earned third place in the 500 free (5:53.64).

In the 200 medley relay, the quartet of Mabry, Acker, Kate del Balzo and Annie Heller earned a time of 1:55.87 for a second place finish.

On the boards, Noel Whitlock won her second one- and three-meter dive events in as many meets with a 229.73 score on the one and a 253.57 score on the three.

## MGT Parkrun

The Mountain Goat Trail Parkrun is a free, weekly, timed 5k event. The fun starts on Saturdays at 9 a.m. at Pearl's. All skill levels are welcome and participants can walk, jog or run. The event is stroller and kid friendly. Register at <parkrun.us/register>, print the barcode and show up.

## Brown's Body Shop

Leonard Brown - Owner  
Steve Young - Gen. Mgr.  
Steve Hartman - Shop Mgr.

710 College St. • Winchester

931-967-1755 • Fax 931-967-1798

*Come by and see us. We appreciate your business.*

Our Work is Guaranteed!

**MGT**  
MOUNTAIN GOAT TRAIL

**SHARE the TRAIL**

**Rule #3**  
Be safe.  
Yield to cars at all road crossings.

**WALK • RUN • CYCLE TOGETHER**

[mountaingoattrail.org](http://mountaingoattrail.org)

shop local

**Small BUSINESS**

buy local

neighborhood merchants

downtown markets

support community

main street stores

brick and mortar shops

**FG** CUSTOM FRAMING  
ARCHIVAL FRAMING & RESTORATION  
ART CONSULTING & INSTALLATION

T-F: 10-5, Sat: 10-2 • (931) 463-2300  
12569 SEWANEE HIGHWAY • SEWANEE, TN

**UPCOMING EXHIBIT**

ART of the SPIRIT  
WOODCUTS & ETCHINGS  
By Margaret Adams Parker

**November 7-December 29**  
ARTIST RECEPTION  
Nov. 9 • 5:30 p.m.



## NATURENOTES

by Yolande Gottfried



Some fall colors

### Reports from the Field

**Linda Matherly** on Midway Road, a friend of the Yeatmans (who wrote Nature Notes for so many years) writes: "I have two distinctly different persimmon trees. One is just starting to ripen and puts out runners as you describe. It has squat, orangey fruit. The other is finishing up, and doesn't eagerly put out runners. It has more elongated brownish fruit, and far surpasses the squat one in flavor." In "A Natural History of Trees," author Donald Culross Peattie comments on this variability in persimmons, in quality and size of fruit and in the season of ripening.

More late-breaking hummingbird sightings:

**Olline Summers** saw one on the feeders she hadn't taken down yet on October 23. She said it looked rather thin and wondered if it was going to make it. She noted that she had significantly fewer hummers this year than in past years.

**Frank and Barbara Hart** had one at their feeder on Oct. 26. From the tiny to the great:

**Linda Boynton** called to report a sighting of a bald eagle flying overhead on the Summerfield Road on Monday morning, Oct. 29, the first she had ever seen. The adult bald eagle is distinctive, with its white head and tail. It develops this plumage at 4 to 5 years of age.

Fall foliage color:

Leaf color changes are late this year, with the main factor being warmer than average temperatures, especially warmer lows. Sunny days and cool nights usually bring out the brightest colors. We crossed the mountains from Tennessee to North Carolina on I-40 on Oct. 26, and saw only muted colors. However, returning five days later, colors were noticeably more brilliant. Maybe we'll get some color yet in our area.

### SHARE YOUR NATURE NOTE!

<news@sewaneemessenger.com>

## EQUITABLE

## LAND & FARM

A DIVISION OF EQUITABLE PROPERTY CO., LLC

FOR SALE | Bridal Veil Bluffs | 17 OLD FALLS TRAIL  
± 5.24 Acres | MLS# 1927917

CONTACT: Kipper Worthington :: 615.948.1077 :: kipper@equitabletn.com

3201 Trevor Street, Suite 200, Nashville, TN 37209  
615.669.5480 Office | equitabletn.com

## Michael A. Barry

# LAND SURVEYING & FORESTRY

★ ALL TYPES OF LAND SURVEYS  
★ FORESTRY CONSULTING

(931) 598-0314 | (931) 308-2512

## State Park Offerings

Please note: To confirm that these events will occur as listed go to <http://tnstateparks.com/parks/events/southcumberland/#/?park=southcumberland> or call (931) 924-2980.

### Saturday, Nov. 3

**Stone Door Historical Hike (\$5)**—Join Seasonal Interpretive Ranger (SIR) John Radford at 10 a.m., at Stone Door Ranger Station, 1183 Stone Door Rd., Beersheba Springs, for a 2-hour, 1.8-mile hike, down the Great Stone Door staircase. You will learn how the park was formed and about some of the incredible history of the area, and see some fabulous overlooks as well. Visitors are encouraged to wear sturdy shoes or hiking boots, bring water, a camera, and sun/bug protection.

### Sunday, Nov. 4

**Savage Falls Hike (free)**—Meet SIR John Radford at 9:30 a.m. at Savage Gulf Ranger Station, SR 399, Palmer, for a moderately difficult hike through the beautiful woods up to the scenic Savage Falls. Wear appropriate footwear, and bring water and bug repellent.

### Friday, Nov. 9

**Grundy Forest Day Loop Hike (free)**—Meet SIR John Radford at 10 a.m. at Fiery Gizzard pavilion, 131 Fiery Gizzard Rd., Tracy City, for a 2-mile hike on the Day Loop of the famous and beloved Fiery Gizzard Trail. You will be exploring natural features and some human-made ones. This hike is short but has some uneven terrain, so proper footwear (shoes or boots) are recommended. Bring water, snacks, sun/bug protection.

### Friday, Nov. 23

**Hike For Hunger (suggested cash donation or one bag of non-perishable food items)**—Come join us here at South Cumberland State Park in the fight against hunger by joining us on our annual Hike For Hunger! We will be leading a hike up the Grundy Lakes Trail while discussing the natural and historic attributes of our park. Admission for this hike will be a suggested cash donation or one bag of non-perishable food items. Meet at 9:30 a.m. at 587 Lakes Rd., Tracy City.

The South Cumberland State Park Visitors' Center is located on Highway 41 South between Monteagle and Tracy City and is open 8 a.m.—4:30 p.m. seven days a week. For more information call (931) 924-2980.

## WEATHER

DAY	DATE	HI	LO
Mon	Oct 22	62	37
Tue	Oct 23	65	41
Wed	Oct 24	67	47
Thu	Oct 25	53	45
Fri	Oct 26	51	45
Sat	Oct 27	50	42
Sun	Oct 28	70	39

Week's Stats:  
 Avg max temp = 60  
 Avg min temp = 42  
 Avg temp = 51  
 Precipitation = 0.95"  
*Reported by Sandy Gilliam  
Domain Ranger*

ads@sewaneemessenger.com



Kenickie



Lauralee

## Pets of the Week

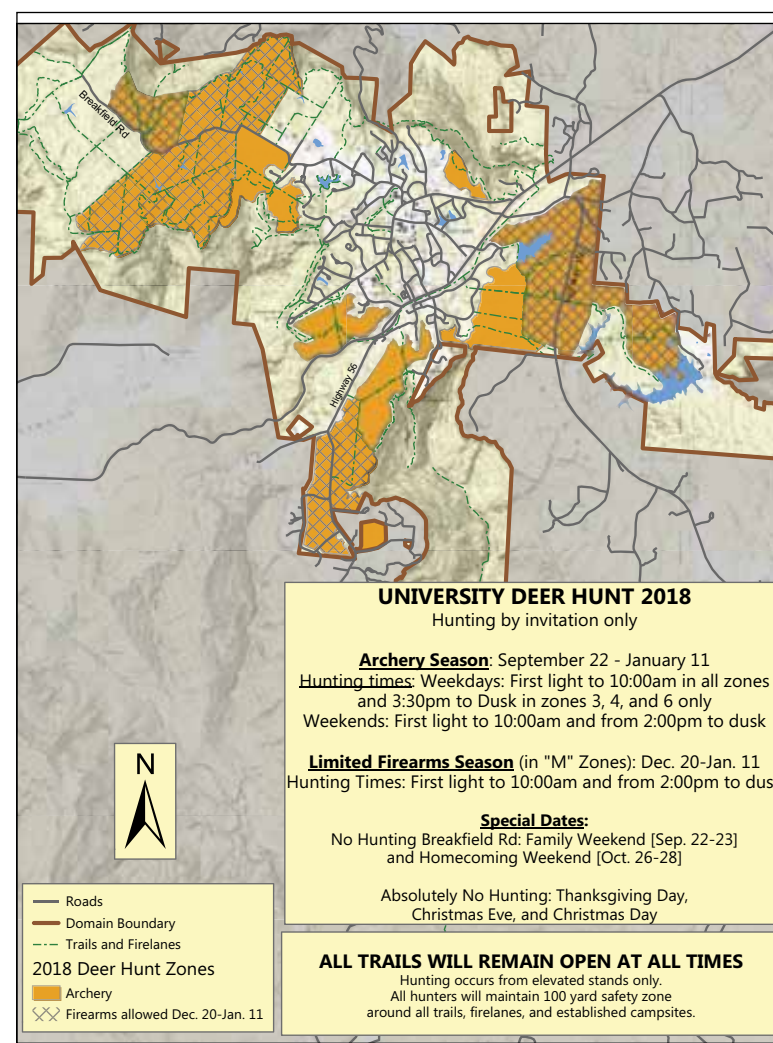
### Meet Kenickie & Lauralee

Kenickie is a 2-year-old small to medium-sized mixed breed dog. He is very friendly and loves affection and treats. He is very calm indoors at the shelter but outdoors he comes alive running and playing. He is heartworm-negative, current on vaccinations, and will be neutered before leaving the shelter.

Lauralee is a 2-year-old brown tabby with medium-length fur. She is somewhat independent and not needy, but likes to be petted. She is ok with other cats. She loves to spend time outdoors on our screened-in cat patio. Lauralee is Fiv/Felv negative, current on vaccinations, and spayed.

Animal Harbor offers substantial adoption fee discounts for seniors and veterans. Pets adopted from Animal Harbor qualify for a free post-adoption wellness exam by local veterinarians. Animal Harbor offers substantial adoption fee discounts for seniors and veterans. Pets adopted from Animal Harbor qualify for a free post-adoption wellness exam by local veterinarians.

Animal Harbor is located at 56 Nor-Nan Rd., off AEDC Road, in Winchester. Call Animal Harbor at 962-4472 for information and check out the other pets at <www.animalharbor.org>. Enter the drawing on this site for a free spay or neuter for one of your pets. Please help Animal Harbor continue to save abandoned pets by sending your donations to Animal Harbor, P.O. Box 187, Winchester, TN 37398.



Deer hunt map

## Sewanee Deer Hunt

The 2018 hunting season in Sewanee runs discontinuously until Jan. 11, 2019. This year marks the 16th year of organized hunting on the Domain.

This year the largest change to the hunt is map-related. In previous years, there have been two maps; one for hunting while students are on campus, and another map for when students leave. While the rules for the two time periods remain largely unchanged, we have combined the two different maps to minimize confusion for the general public.

There are minor changes to the hunting hours. During the week, hunters must be out of the woods by 10 a.m., the same as on weekends. As always, all trails and firelanes remain open to recreational use during the season and hunters maintain a 100-yard safety zone around all recreational trails.

As in previous years, there may be a surplus of animals available for local families. If you are interested in picking up a field-dressed deer for processing, please email <domain@sewaneedu>. For more information on the University hunting program and specific rules and times, please visit <http://sustain.sewaneedu/domain/ecosystem-management/deer-hunting/>.



# Classifieds

## ART

the **ARTISAN** DEPOT  
Gallery & Gifts  
NOW JURYING FOR FINE CRAFTS  
204 E. Cumberland St., Cowan  
Open Thurs-Sun • 931-308-4130

## ENGINE REPAIR

**SARGENT'S SMALL ENGINES:**  
Repairs to All Brands of Equipment:  
Lawn mowers (riding or push), String  
trimmers, Chainsaws, Chainsaw  
sharpening. New saw chains. Pickup  
and Delivery Available. (931) 212-  
2585, (931) 592-6536.

## FLORIST

Walk-In Cooler Filled with  
Flowers!  
**Monteagle Florist**  
333 West Main Street, Monteagle  
(931) 924-3292

## HAIR SALON

(931) 598-0033  
**HAIR DEPOT**  
17 Lake O'Donnell Rd., Sewanee  
**KAREN THRONEBERRY**, owner/stylist  
**MONICA HAYWORTH-SCARLETT**, stylist/  
nail tech

## HOMES FOR RENT OR SALE

**FOR RENT WITH OPTION TO  
PURCHASE:** 4BR/2BA home on  
8 private acres, Deepwoods, behind  
SAS. All appliances, C/H/A, pri-  
vate, quiet, yet close to SAS. Four  
miles from Sewanee. Magnificent  
bluff view. Call (931) 212-0447 days.

## INDOOR/OUTDOOR GARAGE/YARD SALE

**MIDWAY MARKET:** Great bar-  
gains on everything! Children's/  
adults' apparel, household items,  
movies/games and more. Open Fri-  
day/Saturday, 8 a.m.-??, 969 Midway  
Rd., Sewanee. (931) 598-5614.

**White Elephant Sale**  
"The Original"  
Indoor Yard Sale at the  
**American Legion Post 44**,  
106 N. Vine St., Winchester  
**Friday, Nov. 2, 8 to 5**  
**Saturday, Nov. 3, 8 to 1**  
Household items, furniture,  
clothes, shoes, jewelry, and  
more

**CALL US! • 598-9949**  
**Classified Line Ad Rates:**  
\$3.25 first 15 words,  
10 cents each addl. word  
**You can charge it!**  
(\$10 minimum)

**DIAL  
911**

**When You Need  
a Police Officer,  
a Fire Truck or an  
Ambulance**

Sewanee residents  
should only  
call 598-1111  
for non-emergency  
issues.

## LAND FOR SALE

**LOST COVE  
BLUFF LOTS**  
www.myerspoint.net  
931-703-0558

**BEAUTIFUL WOODED HOME-  
SITE:** 2.3 acres. R-1 zoned. Laurel  
Lake Road in Monteagle. All utili-  
ties/city service. Spring-fed creek.  
\$29,000. Call (850) 261-4727 or  
(850)255-5988.

## LAWN CARE

**CHAD'S LAWN &  
LANDSCAPING**  
-FREE ESTIMATES-  
\* Lawn care & Design (Mulch & Planting)  
ALSO: \* Tree Trimming & Removal  
\* Pressure Washing \* Road Grading  
\* Stone Patio/Fireplace \* Garden Tilling  
\* Leaf Pickup & Blowing  
(931) 308-5059

**EAGLE LANDSCAPING &  
LAWN MAINTENANCE CO.**  
Now Offering Specials for the  
**FALL!**  
We offer lawn maintenance, landscaping,  
hedge/tree trimming & more!  
Please call for your free estimate  
(931) 598-0761 or (931) 636-0383

**LONG'S LAWN SERVICE**  
• landscaping & lawn care  
• leaf removal • mulch  
Local references available.  
Jayson Long  
(931) 924-LAWN (5296)

## CURBSIDE RECYCLING

Residential curbside recycling  
pickup in Sewanee is on the first  
and third Friday of each month.  
Recyclable materials must be  
separated by type and placed in  
blue bags by the side of the road no  
later than 7:30 a.m. Please do not  
put out general household trash on  
this day. Blue bags may be picked  
up in the University Lease and  
Community Relations Office, 400  
University Ave. (the Blue House) or  
at the Facilities Management office  
on Georgia Avenue.



## WHERE DO I RECYCLE THIS?

**Special Garbage:**  
Items for drop off only at  
Franklin County Solid Waste  
Management, 419 Joyce Lane,  
Winchester:  
Electronics  
Computers and Monitors  
Televisions  
All Other Electronics  
Ink Cartridges  
Rechargeable Batteries

**Special Waste:**  
Waste Oil and Waste Anti-  
freeze: Used oil (oil must  
be oil only and not contain  
any gas, water or antifreeze)  
and antifreeze is collected for  
recycling at Franklin County  
Solid Waste Management  
located on Joyce Lane in  
Winchester and at the fol-  
lowing Convenience Centers:  
Alto, Capital Hill, Center  
Grove, Cowan, Estill Springs,  
Lexie Crossroads, Old Salem,  
Sewanee and Winchester  
Springs.  
Don't clog up your pipes  
and sewer lines; take your  
used cooking oil to 419 Joyce  
Lane, Winchester.

## LOCAL SERVICES

**DAVID M. BURNETT**  
LADAC II, NCAC I, QCS  
ADDICTIONS & CODEPENDENCY  
COUNSELOR  
DAVIDM.BURNETT1@GMAIL.COM  
PHONE: 423-280-0756  
WWW.DAVIDMBURNETT.COM

**King's Tree Service**  
Topping, trimming,  
bluff/lot clearing, stump  
grinding and more!  
\*Bucket truck or climbing\*  
Free wood chips with job  
Will beat any quoted price!  
Satisfaction guaranteed!!  
-Fully licensed and insured-  
kingtreeservice.com  
Call (931) 598-9004—Isaac King

**WATER SOLUTIONS**  
Joseph Sumpter  
Owner/Licensed Residential Contractor  
Specializing in drainage and rainwater  
collection systems  
598-5565  
www.josephsremodelingsolutions.com

**CHARLEY WATKINS  
PHOTOGRAPHER**  
Sewanee, TN  
(931) 598-9257  
http://www.photowatkins.com

**MASSAGE**  
Regina Rourk Childress  
Licensed Massage Therapist  
www.reginarourk.com  
~ GIFT CERTIFICATES ~  
(931) 636-4806



## Did You Know?

At one time, the Sewanee Civitan  
Club owned the  
Sewanee Public School building.  
In the last seven years, \$148,300  
has been donated to the school  
through Community Chest funding.

*Donate today!*

Visit [www.sewaneecivic.org](http://www.sewaneecivic.org)  
for more information.  
SEWANEE COMMUNITY CHEST  
PO BOX 99, SEWANEE TN 37375

**One-Stop Transportation  
Information: dial 511**

## LOCAL SERVICES

**Needle & Thread**  
\*Alterations \*Repairs \*Cushions & Pillows  
For a reasonable price contact  
**Shirley Mooney**  
161 Kentucky Ave.  
Sewanee, TN 37375  
(931) 598-0766  
Monday-Wednesday, 9 a.m. to 4 p.m.

**Lyn Hutchinson  
PHOTOGRAPHY**  
lynhutchinson.smugmug.com

**MONTEAGLE  
SECURITY OPERATIONS**  
CCTV, BURGLAR & FIRE ALARMS  
931-924-3216 800-764-7489  
monsecurity.com TN license 1912

**MARK'S HOME REPAIR**  
KITCHEN AND BATH REMODELING  
Insured. Decks, Roofing, Electrical,  
Plumbing, Drywall, Tile & Hardwood  
Floors, Outbuildings, Pressure Washing.  
MARK GREEN, owner  
931-636-4555 | mdgreen41@gmail.com



Like the Messenger?  
Let us know on Facebook!

## MOBILE WELDING

**MOBILE WELDING:** Skid-Steer,  
Track Loader, Dirt Work. Franklin,  
Grundy, Marion Counties. Refer-  
ences. Reasonable Rates. Quick  
Response. Call Paul, (615) 796-8720.

## WEBSITE

**Web  
forU2**  
**COMPLETE MEDIA SOLUTIONS**  
We make the web work for you  
Website • Mobile Friendly • Video  
Tom.Womack@webforu2.com  
615.995.5640  
www.webforu2.com

## WOODWORKING

**The Gnarled Oak**  
Antique  
furniture refinishing  
(931) 592-9680  
Bill Childers, Prop

**Oldcraft  
Woodworkers**  
Excellence in custom  
woodworking.  
Kitchen and bath cabinets,  
bookcases, furniture and  
furniture repairs.  
Est. 1982. Phone 931-598-0208

**If it matters to you,  
it matters to the  
community.**



Share your good news with more people weekly!

call: (931) 598-9949

email: [news@sewaneemessenger.com](mailto:news@sewaneemessenger.com)

view: [www.sewaneemessenger.com](http://www.sewaneemessenger.com)

# GLASS RECYCLING GUIDELINES

■ Recycle empty glass  
containers only.  
Remove caps and lids.

■ Keep it clean.  
No food residue.  
No ceramics,  
mirrors, lightbulbs,  
drinking glasses.

■ Glass recycling bins are available on Kennerly Avenue in Sewanee,  
behind the Facilities Management compound.  
This effort in landfill waste reduction and glass recovery is provided  
by the University of the South.



■ Separate by color:  
■ BLUE/GREEN  
■ BROWN  
■ CLEAR

■ Do not leave items  
outside of bins. Do  
not leave trash and  
boxes behind.





# BARDTOVERSE

by Phoebe Bates

## Election Day, Nov. 6

HEY  
C'MON  
COME OUT  
  
WHEREVER YOU ARE  
  
WE NEED TO HAVE THIS MEETING  
AT THIS TREE  
  
AIN' EVEN BEEN  
PLANTED  
YET  
  
*Calling on All Silent Minorities,  
by June Jordan (1936-2002)*

**WEALTH MANAGEMENT**

Greensview Wealth Management LLC ("Greensview") is a federally registered investment advisor under the Investment Advisers Act of 1933. Greensview's Form ADV Part 2 can be obtained by email at [info@GreensviewWealth.com](mailto:info@GreensviewWealth.com)

**Wealth management built on values shared in backyards instead of boardrooms**

[Wilkes@GreensviewWealth.com](mailto:Wilkes@GreensviewWealth.com)

## Tree of Life Homecare, LLC

*"Neighbors Helping Neighbors"*

- \* Licensed and insured home-based services for the elderly and disabled
- \* CHOICES provider, Private Pay, Veterans Affairs\* Long-term care plans

**931-592-8733**  
**treeoflifehomecare.com**

NOW ACCEPTING APPLICATIONS FOR CAREGIVERS

## SEWANEE AUTO REPAIR

**Complete Auto & Truck Repair**

**Tune-ups • Tires • Tire Repair • Brakes • Steering • Oil Changes • Batteries • Computer Diagnostics**

**All Makes & Models • Service Calls • Quality Parts**

**ASE Master Certified Auto Technician • 31 Years' Experience**

Open 7 to 5 M-F  
(931) 598-5743 • 76 University Ave.

Put this space to work for your business.

Phone 598-9949 or  
[ads@sewaneemessenger.com](mailto:ads@sewaneemessenger.com)

**YOUNG LIVING**  
ESSENTIAL OILS  
*Independent Distributor*

Ray and April Minkler  
[styraco@blomand.net](mailto:styraco@blomand.net), [aprilminkler@blomand.net](mailto:aprilminkler@blomand.net)  
931-592-2444 931-434-6206  
For over 8,700 testimonials see  
[www.oil-testimonials.com/1860419](http://www.oil-testimonials.com/1860419)

# Community Calendar

**Today, Friday, Nov. 2 • All Souls Day**  
*MC Schools staff development day*  
*Sewanee Woman's Club lunch RSVP deadline, <g.ruppemelnyk2015@gmail.com> or Janet Miller Schmidt at (504) 858-5221*

7 a.m. Curbside Recycling  
8:30 a.m. Deep Stretch Yoga, Darylann, Comm Ctr.  
9 a.m. CAC office open, until 11 a.m.  
9 a.m. STLS Holiday Market, FC Annex, 839 Dinah Shore Blvd., Winchester, until 5 p.m.  
10 a.m. Game day, Senior Ctr.  
Noon Spinal Spa, Kim, Fowler Ctr.  
3 p.m. Ralston Rm., Irish tenor John McCormack's best, until 5 p.m.  
4:30 p.m. Art talk, reception, Batista, Carlos Gallery, 105 Kennerly Rd.  
5 p.m. Coalmont Elementary Fall Festival/Chili Cook-off, 7862 SR 56, until 8 p.m.  
7 p.m. SAS Players present "Leaving Iowa," McCrory Hall  
7:30 p.m. Movie, "Slender Man," SUT  
7:30 p.m. Theatre/Sewanee, "Cabaret," Tennessee Williams Ctr.

**Saturday, Nov. 3**  
*Set your clocks back one hour before you go to bed. Daylight savings time ends 2 a.m., Sunday, Nov. 4*

8:30 a.m. Yoga, Richard, Comm Ctr., until 10 a.m.  
9 a.m. STLS Holiday Market, FC Annex, 839 Dinah Shore Blvd., Winchester, until 3 p.m.  
9 a.m. MGT 5K Parkrun, Pearl's parking lot, <parkrun.us/register>  
9:30 a.m. Hospitality Shop open, until noon  
2 p.m. Theatre/Sewanee, "Cabaret," Tennessee Williams Ctr., discussion to follow  
7 p.m. SAS Players present "Leaving Iowa," McCrory Hall  
7:30 p.m. Theatre/Sewanee, "Cabaret," Tennessee Williams Ctr.  
7:30 p.m. Movie, "Slender Man," SUT

**Sunday, Nov. 4 • CAC Pantry Sunday**

2 p.m. Knitting circle, Mooney's, until 4 p.m.  
2 p.m. Ralston Room, Study Break, until 5 p.m.  
3:30 p.m. PFLAG, Trinity Episcopal, Winchester  
4 p.m. SAS Players present "Leaving Iowa," McCrory Hall  
4 p.m. Hatha Yoga, Helen, Comm Ctr.  
6 p.m. Ralston Room, Opera, until 8 p.m.  
7:30 p.m. Movie, "Slender Man," SUT

**Monday, Nov. 5**  
*Lease agenda deadline, <pealsup@sewanee.edu>*

9 a.m. Coffee with Coach, Layton Jackson, Blue Chair  
9:30 a.m. Yoga, Darylann, St. Mary's Sewanee  
10:30 a.m. Chair Exercise, Ruth, Community Ctr  
3 p.m. Ralston Room, Paganini, until 4 p.m.  
5 p.m. Pilates for Golfers, Kim, Fowler Center  
5 p.m. Ralston Room, Bossa Nova, until 6 p.m.  
5:30 p.m. Yoga for Strength and Healing, Pippa, Comm Ctr.  
6:30 p.m. Sewanee Chorale rehearsal, Guerry Hall Room 220

**Tuesday, Nov. 6 • Election Day**  
*FC Schools Staff Development Day*

7 a.m. Qi Gong on the Bluff, Wall, St. Mary's Sewanee  
8 a.m. Godly Play/PMO, Otey, until 10:30 a.m. <oteyformation@gmail.com>  
8:30 a.m. Deep Stretch Yoga, Darylann, Comm. Ctr.

9 a.m. CAC office open, until 11 a.m.  
9 a.m. Pilates, beginners, Kim, Fowler Ctr.  
9:30 a.m. Crafting ladies, MMUMC, Monteagle  
9:30 a.m. Hospitality Shop open, until 1 p.m.  
10 a.m. Village Update, Gladu, Blue Chair, until 11 a.m.; also 5:30–6:30 p.m.  
10:15 a.m. Tai Chi, beginners, Kathleen, Comm Ctr.  
10:30 a.m. Bingo, Senior Ctr.  
11:30 a.m. Grundy Co. Rotary, Dutch Maid Bakery  
Noon Pilates, intermediate, Kim, Fowler Ctr.  
3 p.m. Ralston Room, Rumours, until 4 p.m.  
5 p.m. CCJP Election Night party, Brooks Hall, Otey, until 9 p.m.  
4 p.m. Ralston Room, Couperin, until 5 p.m.  
4:30 p.m. Yoga, Darylann, St. Mary's Sew, McRae Rm  
6 p.m. Acoustic Jam, Water Bldg, Tracy City  
6:30 p.m. Beginners ballroom dance, Valerie and Phillip, Comm Ctr.; intermed. 7:30 p.m.  
7:30 p.m. Sewanee Symphony Orchestra concert, Guerry

**Wednesday, Nov. 7**

9 a.m. CAC office open, until 11 a.m.  
9 a.m. Pilates, intermediate, Kim, Fowler Ctr.  
10 a.m. Writers' group, 212 Sherwood Rd.  
10:30 a.m. Chair Exercise, Ruth, Comm Ctr.  
11 a.m. Computer class (free), May Justus Library, Monteagle, until noon  
11:30 a.m. EQB, St. Mary's Sewanee; lunch at noon  
3:30 p.m. Ralston Rm., Mahler's 7th, until 5 p.m.  
5 p.m. Pilates for Tennis, Kim, Fowler Center  
5:30 p.m. Hatha Yoga, Helen, Comm Ctr.  
6:30 p.m. Catechumenate, dinner, Women's Center  
7 p.m. Ralston Rm., Indie Rock, until 8 p.m.  
7 p.m. Thirst for Knowledge, Loose, Blue Chair  
7:30 p.m. Movie, "Wind River," (CG, free) SUT  
7:30 p.m. American Shakespeare Center, "Antigone," (free), Guerry

**Thursday, Nov. 8**

7 a.m. Qi Gong on the Bluff, Wall, St. Mary's Sewanee  
8 a.m. Monteagle-Sewanee Rotary, Sewanee Inn  
9 a.m. CAC office open, until 11 a.m.  
9 a.m. Pilates, beginner, Kim, Fowler Center  
9 a.m. Nature Journaling, Woods Lab G-10  
10 a.m. Tai Chi, beginners, Kathleen, Comm Ctr  
11 a.m. Tai Chi, ongoing, Kathleen, Comm Ctr  
Noon Pilates, intermediate, Kim, Fowler Ctr.  
1 p.m. Folks@Home Caregiver's Group, St. Mark's Hall, Otey  
2 p.m. Knitting circle, Mooney's, until 4 p.m.  
3:30 p.m. Emeritus Assoc., Torian Rm, duPont  
3:30 p.m. Tutoring, K-5, St. James, until 5 p.m.  
6 p.m. Karate, youth, Legion Hall; adults, 7 p.m.  
6 p.m. Ralston Rm., Beastie Boys, until 7 p.m.  
7 p.m. Ralston Rm., Blues, until 8 p.m.  
7:30 p.m. Movie, "Mission Impossible: Fallout," SUT  
7:30 p.m. American Shakespeare Center, "Winter's Tale," (free), Guerry

**Friday, Nov. 9**

8:30 a.m. Deep Stretch Yoga, Darylann, Comm Ctr.  
9 a.m. CAC office open, until 11 a.m.  
10 a.m. Game day, Senior Ctr.  
Noon Spinal Spa, Kim, Fowler Ctr.  
3 p.m. Ralston Rm., Beethoven, until 5 p.m.  
7:30 p.m. Sewanee Chorale Fall Concert, All Saints'  
7:30 p.m. Friday Night Jazz, Karlton Taylor Quartet, Ayres Multi-Cultural Center, until 11 p.m.  
7:30 p.m. Movie, "Mission Impossible: Fallout," SUT

**Stirling's**  
COFFEE HOUSE

**Be sure to check out our made-from-scratch cookies, scones, pies, & quiches!**

Mon-Wed, 7:30am-midnight;  
Thurs & Fri, 7:30am-10pm;  
Sat, 9am-10pm; Sun, 9am-midnight  
Georgia Ave., Sewanee  
**598-1786**

Like Us On for specials and updates

## Local 12-Step Meetings

**Friday**  
7 p.m. AA, open, Christ Church, Tracy City

**Saturday**  
7:30 p.m. NA, open, Decherd United Methodist  
7:30 p.m. AA, open, Claiborne Parish House, Otey

**Sunday**  
6:30 p.m. AA, open, Holy Comforter, Monteagle

**Monday**  
5 p.m. Women's 12-step, Brooks Hall, Otey  
7 p.m. AA, open, Christ Church, Tracy City

**Tuesday**  
7 p.m. AA, open, First Baptist, Altamont  
7:30 p.m. AA, open, Claiborne Parish House, Otey

**Wednesday**  
10 a.m. AA, closed, Clifftops, (931) 924-3493  
7 p.m. NA, open, Decherd United Methodist  
7:30 p.m. AA, open, Holy Comforter, Monteagle

**Thursday**  
6 p.m. ACA, open, St. James Episcopal, Midway  
7 p.m. Al-Anon, First UMC, Winchester