



THE SEWANEE MOUNTAIN MESSENGER

Volume XXXVII No. 42

Published as a public service since 1985

Friday, Nov. 5, 2021



Sewanee Community Chest stewards, Clay and Paula Yeatman, and Kathy and John Solomon, pose by the Sewanee Community Chest fundraising thermometer at the Sewanee Post Office. Rambles and Tinker joined in to help share the announcement. The goal this year is \$102,291 for 20 local organizations. Go to <www.sewaneecivic.org> for more information.



At the Oct. 26 Monteagle Town Council meeting, Scott Parrish, general manager of the Monteagle Sunday School Assembly, presented Mayor Maribyn Rodman a check for \$55,250. The funds, representing donations from the Assembly and some of its individual members, will be used to purchase a used, certified fire truck to help the Town of Monteagle replace a recently retired engine. Pictured are Mayor Rodman, Assistant Fire Chief Travis Lawyer, Fire Chief Geron Brewer and Scott Parrish. Photo by Debbie Taylor

Civic Association Learns About CAC Pandemic Pluses

by Leslie Lytle, Messenger Staff Writer

At the Oct. 26 Sewanee Civic Association meeting, Community Action Committee Director David Goodpaster talked about new food-pantry programs jump started by “thinking outside the box” to navigate the pandemic’s challenges. During the business portion of the meeting, Co-President Kiki Beavers updated the membership on the children’s thank-you-note design competition and plans to form a Service Committee.

Pre-pandemic, the food-pantry ministry of the Parish of St. Mark and St. Paul welcomed clients 9-11 a.m., Monday through Friday. “People would often hang out and talk,” Goodpaster said. But COVID “blew up” the “relationship” based model. “People weren’t giving as much and people weren’t

as amped up about driving here,” Goodpaster acknowledged. Two Sewanee based institutions introduced innovative dynamics that breathed new life into the food pantry.

In the Kitchen2Table program, Sewanee Dining weekly delivers unused portions from the kitchens of McClurg Dining Hall and St. Andrew’s-Sewanee School. The CAC then assembles meals in three-compartment trays, freezes them, and distributes them to food pantry ministries serving Winchester, Decherd, Sherwood, Monteagle, Tracy City and more.

“The amount of food thrown away in America is awful,” Goodpaster said. Forced to guess how much students will eat, Sewanee

(Continued on page 5)

Monteagle Planning: Zoning Amendment Allows Taller Motels

by Leslie Lytle
Messenger Staff Writer

At the Nov. 2 Monteagle Planning Commission meeting, the commission approved a zoning ordinance amendment allowing motels, hotels, and other structures to exceed the current height limit of three stories or 40 feet. The council also approved a C-3 to C-2 commercial rezoning and looked at possible site plan violations by the RBT developers. At the outset of the meeting, the commission welcomed new commissioner Ed Provost.

Town planner Garret Haynes said town officials conveyed to him the need for the building-height amendment. “Properties in town were being looked at [for] hotel and motel” development, Haynes said. The amendment applies to C-1, C-2, and C-3 commercial property and I-1 industrial property. A structure taller than the defined limit will be allowed as a “special exception” which must be approved by the Board of Zoning Appeals. The amendment does not set a maximum height.

“I think the biggest restriction would be with fire,” commissioner Richard Black said. “[If] the equipment that’s here didn’t have that big of ladder trucks.”

“The fire marshal will need to review the plans,” building inspector Earl Geary said.

Haynes noted the amendment addressed fire risk by stating, “Developments which exceed these heights [three stories or 40 feet] shall provide adequate fire protection in the event reciprocating fire protection is unavailable.”

The amendment must be approved by the Monteagle council before being incorporated into the city’s codes.

Revisiting the long-debated approval of Lakeside Collision’s site plan, attorney Paul Cross representing owner Christian Ojeda said Ojeda agreed with the recommendation to rezone from

(Continued on page 7)



Alice Sholey holding a baby goat. The calendar is dedicated to her.

University Farm Goats: Too Cute Not to Love

by Leslie Lytle, Messenger Staff Writer

Friends of the Farm, an informal coalition of volunteers, has created a calendar featuring a year of goat antics. In the usual way of things, people who decide to create a calendar will ponder engaging themes. In this case, though, the theme—the University Farm goats—inspired the project.

“The goats are so cute and photogenic, and they sometimes do strange things,” said Sue Hiller. Hiller and Deb Dreves, Friends of the Farm volunteers, and farm manager Carolyn Hoagland even found themselves pausing from what they were doing to pull out their phones to photograph the goats. What to do with all these photographs of the too-cute-not-to-love goats? Simple answer: make a calendar. “It was a project people would enjoy while raising awareness about the farm and, perhaps, raising a little money, as well,” Hoagland said.

The farm’s 30-goat herd provides meat for McClurg Dining Hall. Goat meat stars as the protein source in Mexican, Greek, and Indian dishes during festival seasons. The hybrid herd, genetically tending toward the meat-muscle Boer breed, does well on an all-grass diet and has better disease resistance than purebred Boers, Hoagland stressed. In addition to pasture, the goats browse on woodland vegetation helping to control invasive species such as kudzu. Tannin-rich bitter leaves most grazing animals shun help the goat expel intestinal parasites, a win-win for the farm and goats.

But for the farm, the goats’ biggest calling card is they are great ambassadors. Hoagland, joking, dubbed the goats a “gateway drug.” “They’re smaller than cattle and less intimidating,” she said. In the summer, 400-500 children, ages kindergarten through grade three, visit the farm. Pampered and petted throughout the year by University students, the entire goat herd will amble casually up to visitors to welcome them. These welcome visitors become eager learners about the farm’s sustainable practices. Greens and lettuces, likewise featured farm products, supply McClurg with 2,000 pounds of salad each year.

The farm has had goats for at least 10 years, Hoagland said. There were already three goats when she signed on as farm manager in 2014. Sewanee resident Randall Henley grew up on the farm in the 50s and 60s when his father managed the dairy operation. The Henleys also raised hogs and chickens, but mainly for the family’s use.

Today, goats are the University Farm’s only livestock. The money raised from the goat calendar will help restore the in-need-of-repair barn, where the goats kid in inclement weather or when they want seclusion from too curious herd mates. The calendar is dedicated to Friends volunteer Alice Sholey who mothered three orphaned pygmy goats and still visits the goat herd daily. Rick Dreves, who had experience with calendar design, cropped and enhanced photos and lent his magic to the layout.

In another Friends project, the farm sold the mums it grew and donated half the proceeds to the Sewanee Children’s Center. This fall until frost, folks can enjoy picking their own flowers Fridays, 8:30-10:30 a.m. and 3:30-5:30 p.m., and Saturdays, 9 a.m. to noon.

Meet the too-cute-not-to-love goats by purchasing a calendar online at <<https://bit.ly/GoatCal2022>>. And, don’t miss out on opportunities to meet the goats in person. Join Friends of the Farm at <<http://bit.ly/FOTUF>> to stay informed about farm events and get involved in hands-on learning about the farm and its sustainable practices.

P.O. Box 296
Sewanee, TN 37375



It’s Time to Fall Back!

Don’t forget to set your clock back one hour before you go to bed Saturday night, Nov. 6. Daylight saving time officially ends at 2 a.m., Sunday, Nov. 7.

Letter

GO BRAVES! GO TIGERS!

To the Editor:

Leading up to Thanksgiving I wanted to give a shout-out for the Atlanta Braves in the World Series, especially to all the old Braves fans on the Mountain.

Braves Fans from the Beyond: Mr. Bubby Winn, Mr. Lonnie Yates, Mr. Roy Hughes, Mr. Kenneth Drummer Brown, Mr. Walter Kokomo Malone, Mr. Willie D. Hill (my grandfather), Mr. Mickey Childress, Mr. Sammy Ray Bright, Mr. Willie H. Winton, Mr. Jackie Terrill, Mr. Simon Smith Jr., Mr. Harold Turrentine, Mr. Joe Lappin, Mr. Willie Lee Turner, and Mr. David Patton Jr.

All right, all right! Let's tighten up! Let's go Braves! P.S. To the rest of the Mountain folks I don't know coming for Homecoming: Where is Pierre? Yea, Sewanee's Right! Go Tigers!

Carl P. Hill
Sewanee



Graduates of the cooking and catering class can apply for jobs in hotels and restaurants.

Friends of Canon Gideon-USA Donates \$8,500

The Friends of Canon Gideon-USA are delighted and grateful to announce that they have sent \$8,500 to Hope Institute in Uganda as a result of their ninth fundraiser. The project this year was stipends for faculty and staff to support and encourage their loyalty while the school was closed for Covid. Education and job training were impossible during the closure because few students have access to WiFi, phones, or internet. The students will return to campus Nov. 1, so any donations received in the future will be used to help the staff re-open school and begin again. Donations can be made electronically by Venmo at Focagifo-UG-USA or sent to FOCAGIFO, PO Box 213, Sewanee, TN 37375. For more information contact Sally Hubbard at <sally@hubbard.net>.

University Job Opportunities

Exempt Positions: Academic Services Manager, Academic Services & Institutional Research; Admission Counselor, Admission; Area Coordinator, Residential Life; Assistant Athletic Director for Internal Operations, Athletics; Assistant Chief, Sewanee Police Department; Assistant Farm Manager, University Farm; Budget Analyst, Treasurer's Office; Director, Community Health, University Wellness Center; Financial Aid Counselor, Financial Aid; Men's Lacrosse Intern, Athletics; Nurse Practitioner, University Wellness Center; Post-Doctoral Fellow in Clinical Molecular Biology, Sewanee Molecular Diagnostics Lab; Student Success and Career Readiness Coach, Integrated Advising & Career Readiness.

Non-Exempt Positions: Assistant Manager, Sewanee Dining; Assistant University Organist, Chaplain's Office; Catering Food Service Worker, Sewanee Catering; Catering Logistics Coordinator, Sewanee Catering; Catering Team Lead, Sewanee Catering; Childcare Provider, University Child Care Center; Compliance Clerk, Sewanee Police Department; Custodian, Facilities Management; Building Services; Faculty Technology Coordinator, Technology Access & Support; First Cook, Sewanee Dining, Sewanee Dining; Food Service Worker, Tiger Bay Pub, Sewanee Dining; Golf Course Mechanic, Golf Course; HVAC Technician, Facilities Management; IT Help Desk Technician, Technology Access & Support; On-Call Catering Attendant, Sewanee Dining; Second Cook, Sewanee Dining; Sewanee Dining Associate, Sewanee Dining; Sewanee Dining Assistant Manager, Sewanee Dining.

For more information call (931) 598-1381. Apply at <https://jobs.sewanee.edu>.



— THE SEWANEE MOUNTAIN — MESSENGER

Published as a public service to the community since 1985, this newspaper is printed on Fridays, 46 times a year. Free of charge, copies are distributed to 100 locations, including businesses and post offices across the Plateau. This publication is made possible by the patronage of our advertisers and by contributions from the University of the South (print production) and the Sewanee Community Chest.

Kiki Beavers
editor/publisher
April Minkler
office manager
Emily Ricks
proofreader
Leslie Lytle
staff writer
Bailey Basham
staff writer

Janet Graham
publisher emerita
Laura Willis
editor/publisher
emerita
Geraldine Piccard
editor/publisher
emerita

SUBSCRIPTIONS \$75 first class

418 St. Mary's Lane, P.O. Box 296, Sewanee, TN 37375
Phone (931) 598-9949 | <news@sewaneemessenger.com>

All material in the Sewanee Mountain Messenger and on its websites are copyrighted and may not be published or redistributed without written permission.

Messenger Break Ahead

The Messenger will be on Thanksgiving break Nov. 22 through Nov. 26. We will be back in the office on Monday, Nov. 29, and back in print on Friday, Dec. 3. There will not be an issue on Friday, Nov. 26.

For the upcoming Christmas and New Year's holidays, the Messenger will be on break Dec. 20 through Jan. 7, 2022. The staff will return to the office on Monday, Jan. 10, 2022, with the first issue of the new year on Friday, Jan. 14, 2022.

Important updates will be available on the website <www.sewaneemessenger.com> or on our Facebook page during these breaks.

If your organization or church has a different schedule during these upcoming holidays than we normally post, please send the updates to <news@sewaneemessenger.com> or call the office at (931) 598-9949.

SERVING WHERE CALLED

Please keep the following individuals, their families and all those who are serving our country in your thoughts and prayers:

Blaze Cassidy Barry
Brandon Brawley
Justin Brawley
James Gregory Cowan
Mark Gallagher
Nathaniel P. Gallagher
Peter Green
Zachary Green
Jackson B. Guenther
Steven Tyler Jeffery
Cheyenne N. Kelly
Gabriel Lloyd
Andrew Midgett
Jose D. Ramirez III
Troy (Nick) Sepulveda
Zachary Sherrill
Nick Worley

If you know of others in our Mountain family who are serving our country, please give their names to American Legion and Auxiliary member Louise Irwin, 598-5864.

ROB MATLOCK
CONSTRUCTION COMPANY
NEW HOME BUILDING
AND REMODELING

PHONE: 931-598-5728
CELL: 931-580-5728
EMAIL: RMATLOCKCONSTR@GMAIL.COM

MATLOCK
State Licensed • Fully Insured

Country Mart

1045 WEST MAIN STREET MONTEAGLE, TN
@countrymartllc (931) 924-3301

Conveniently located off Exit 134 on I-24, between Murfreesboro and Chattanooga. Minutes away from the University of the South and downtown Monteagle.

OFFICE SPACE FOR RENT
ONLY 2 SPACES LEFT!

1244 W. MAIN STREET • MONTEAGLE, TN
11'x11' w/ Tall Ceilings • Security System • High Speed Internet
Sound-proof Construction • Electric & Water Included
Shared Conference Room, Kitchen & Restrooms
Convenient to I-24 and Sewanee

joseph@josephsremodelingsolutions.com • (931) 924-5565

Letters to the Editor Policy

Letters to the editor are welcome at the Sewanee Mountain Messenger and are a vital part of our community's conversation. Letters need to be no longer than 250 words and may be edited for space and clarity. We make exceptions from time to time, but these are our general guidelines.

Letters and/or their author must have some relationship to our community. We do not accept letters on national topics from individuals who live outside our print circulation area. Please include your name, address and a daytime telephone number with your letter. You may mail it to us at Sewanee Mountain Messenger, P.O. Box 296, Sewanee, TN 37375, come by our office, 418 St. Mary's Ln., or send your email to <news@sewaneemessenger.com>. —KB



MESSENGER INFORMATION

Phone: 598-9949

News and Calendar

Tuesday, 5 p.m.
Kiki Beavers
<news@sewaneemessenger.com>

Display Advertising

Monday, 5 p.m.
<ads@sewaneemessenger.com>

Classified Advertising

Wednesday, noon
April Minkler
<classifieds@sewaneemessenger.com>

MESSENGER HOURS

Monday, Tuesday and Wednesday

9 a.m.—4 p.m. The office is currently closed to visitors at this time. The phone is being monitored, as are the email accounts.

Thursday—Production Day
9 a.m.—noon

Friday—Circulation Day
Closed

Upcoming Meetings

Coffee with the Coach

Coffee with the Coach, an opportunity to learn more about Sewanee's sports teams, will be livestreamed at 9 a.m., Monday, Nov. 8, with Max Obermiller, Swimming and Diving head coach. The livestream will be available at <Facebook.com/SewaneeTigers>. The meeting will also be in-person at the Blue Chair.

Opportunities will be available on Sunday for fans to submit questions in advance or during the live show on the social media platforms. Be sure to follow on Facebook, Twitter and Instagram pages @SewaneeTigers.

For those unable to make it live, the content will be accessible on-demand on the Facebook page. It will also be available on the website, <sewaneeigers.com>, and on the University of the South's YouTube Channel by midday on Mondays.

Sewanee Trust for Historic Preservation

The Sewanee Trust for Historic Preservation welcomes Meg Beasley and Mary O'Neill, who will present the program on the history of downtown Sewanee. The meeting will be at 4 p.m., Monday, Nov. 8, in Kennerly Hall at St. Mark and St. Paul. Everyone is invited. Masks are required.

Franklin County School Board

The Franklin County School Board is scheduled to meet at 6 p.m., Monday, Nov. 8, at the Franklin County Board of Education Building.

Sewanee La Leche League

The La Leche League breastfeeding support meeting is at 10:30 a.m., Tuesday, Nov. 9. Email <LaLecheLeaguesewanee@gmail.com> for a Zoom link to the meeting.

EQB Club

Members of the EQB Club will gather at 11:30 a.m., Wednesday, Nov. 10, at St. Mary's Sewanee. Lunch will be served at noon. Following lunch, approximately 12:30 p.m., we will have the pleasure of a Lead, titled "Adventures of a Photo Journalist" from National Geographic photographer and CEO of the Ancient Art Archive Stephen Alvarez. Interested vaccinated non-members are welcome to arrive at 12:30 p.m. and sit in on the presentation.

Rotary Club Meeting

The Monteagle-Sewanee Rotary Club will meet at 8 a.m., Thursday, Nov. 11, at LaBella Pearl's. There will be a special celebration of our members who served in the military as a tribute to Veterans Day celebrations.

Sewanee Emeritus Association

The November meeting of the Sewanee Emeritus Association will take place in the Torian Room of duPont Library at 3:30 p.m. on Thursday, Nov. 11. We are delighted to welcome Professor Amy Patterson to speak about her research regarding African youth, ages 18-35, in Tanzania, Ghana, Zambia, and South Africa. How can they cultivate a sense of citizenship in an environment of rapid urbanization, high unemployment rates, and poor state services in the midst of the Covid pandemic? Youth comprise 65 percent of Africa's population and play a critical role in politics. Patterson explores how youth engage with the state through voting, and how they interact with friends and neighbors. The public is welcome; masks and distancing are required by the university.

Town of Monteagle

There will be a Public Hearing at 5:30 p.m., Monday, Nov. 15, to rezone parcel 084.46 Grundy County tax map 101 from R-3 high density Residential to C-2 Commercial. This will be held in the conference room at City Hall.

There will be a special called meeting of the city council to approve several Ordinances on second reading, Ordinance 18-21 Personnel Policy change, Ordinance 19-21 rezoning, Ordinance 20-21 delete subsection C from the zoning ordinance, and Ordinance 21-21 Beer Ordinance. This will be held at 6 p.m., Nov. 15, in the conference room at City Hall.

The Board of Zoning Appeals will hold a meeting at 6:30 p.m., Nov. 15, in the conference room at City Hall.

Sewanee Utility District

The Sewanee Utility District of Franklin and Marion Counties Board of Commissioners is scheduled to meet at 5 p.m., Tuesday, Nov. 16, at the utility office on Sherwood Road. If a customer is unable to attend but wishes to bring a matter to the board, call (931) 598-5611, visit the office, or call a board member. The board members are Doug Cameron, Randall Henley, Ronnie Hoosier, Charlie Smith and Paul Evans.

Hospitality Shop Silent Auction

The Hospitality Shop will have a Silent Auction from 10:30-11:30 a.m., Saturday, Nov. 6. The auction will take place at the shop on 1096 University Ave. Payment for winning bids by check or cash only.

Some of the items offered in the sale will be: vintage Singer sewing machine with case (1943), Ann Hadly pottery, Strawberry Shortcake dolls, Beautifully Dressed dolls from Germany, Charles Howell Woodman oil paintings (1866) framed and signed, Flavia "Travel, Romance" print framed and signed, 1940's Paul Wood "Irish Setters" framed and signed, Fernand Nathan Flash Cards, sets of marbles, wooden blocks in wooden box, and Vintage American Sweetheart White Opalescent White cake plate and dessert plates from the 1930's. There will be something for everyone, so please come and support the Save Our Shop Campaign.

Curbside Food Distribution

On Saturday, Nov. 13, Morton Memorial UMC's monthly curbside food distribution will begin at a.m. and continue until 10 a.m. Morton Memorial does not discriminate, and welcomes all in need. We continue to practice safety measures and appreciate those coming to Morton Memorial participating in keeping everyone safe by wearing a mask in our parking area. If you do not have one, we will provide one for you. Drivers should enter our parking area from behind the church where you will be directed to the loading area. The volunteers will load your car for you, so please leave plenty of room for groceries.

Morton Memorial United Methodist Church is located at 322 West Main St., Monteagle.

Mobile Health Clinic

The next mobile health clinic will be from 9 a.m. to 1 p.m., Saturday, Nov. 13, at the Adamz Parish House, Christ Episcopal Church, at 530 10th St., Tracy City. Breakfast will be served. All are welcome.

All costs are covered by a grant from the South Cumberland Community Fund including co-pays and deductibles. Doctor visits and prescriptions are available free of charge at the mobile clinic.

Summary of the October Lease Committee Meeting

The following items were approved: September minutes; request to transfer Lease No. 697, located at 210 Willie Six Rd., to Anna Palmer and Spike Hosch; request to transfer Lease No. 653, located at 293 Ball Park Rd., to Kimberly and Robert Butters; request to transfer Lease No. 766, located at 161 Curlicue Rd., to James and Ashley Cusack; request to transfer Lease No. 902, located at 290 Clara's Point Rd., to David and Linda Ettensohn; request from Lease No. 791, located at 21 Oak St., to renovate exterior porch area and replace roof; request from Lease No. 328, located at 144 Willie Six Rd., to install a shed; request from Lease No. 1078, located at 379 Green's View Rd., to install a shed; request from Lease No. 723, located at 135 Maple St., to install a wooden fence around perimeter of house and remove carport; request from Lease No. 700, located at 110 Willie Six Rd., to replace roof; request from Lease No. 553, located at 130 Ballpark Rd., to replace roof; request from Lease No. 499, located at 291 Florida Ave., to paint exterior of house.

Leasehold information is available online at <leases.sewanee.edu> or by calling the lease office at 598-1998.

Please be sure and contact the Franklin County Planning and Zoning for any needed permits as well as the local utility companies to ensure there are no issues before beginning your project.

Planning and Zoning office, (931) 967-0981; Duck River Electric Membership Corporation, (931) 598-5228; Sewanee Utility District, water and sewer, (931) 598-5611; Elk River Public Utility District, natural gas, (931) 967-2110.

Agenda items are due by the fifth of each month for Lease Committee meetings. If the fifth falls on a weekend, then items are due the following Monday. Lease Committee meetings are normally the third Tuesday of the month.

We're glad you're reading the Messenger!

Michael A. Barry
LAND SURVEYING & FORESTRY
 * ALL TYPES OF LAND SURVEYS
 * FORESTRY CONSULTING
 (931) 598-0314 | (931) 308-2512

• REMODELING
 • HISTORIC RESTORATION
 • NEW CONSTRUCTION
 • CUSTOM WOODWORK
 • REPAIRS

Sweeton Home
 www.sweetonhome.com
 931-924-2444
 "Come home to Sweeton Home"

IAOMAI RETREAT

"IAOMAI is retreats, a family, yoga, coaching, being a stand for each other, and being a stand for ourselves."
 -David G.

LOCATED IN THE RETREAT AT WATERS EDGE TRACY CITY, TN

**MUSIC
 YOGA
 REIKI
 MEDITATION
 WELLNESS**

FOLLOW US FOR CLASSES + EVENTS

@iaomairetreats

"AYE-OM-EYE"


Tea on the Mountain
 Dining room is open. All health requirements are in place.
 11:30 to 4 Thursday through Saturday
DINNERS BY RESERVATION
 (931) 592-4832
 178 Oak Street, Tracy City


Contact Mike Maxon, C'73,
for all your real estate
needs. (931) 308-7801
maxonm@bellsouth.net

FOR SALE
Sam
HATFIELD
Realty, Inc.
931-968-0500

Offering professional and courteous service from Tims Ford Lake to the Mountain since 1985.

Church News

All Saints' Chapel

All Saints' Chapel Holy Eucharist will occur at 8 a.m. and 11 a.m. on Sunday mornings. You can livestream our services at <<https://new.sewanee.edu/campus-life/believing/all-saints-chapel/>>.

Growing in Grace continues at 6:30 p.m., Sunday. Our semester-long theme is "Becoming Rooted," where speakers will share about their root systems and how they find sustenance in times of strife so that we can understand who or what roots us and to use that connection to grow and develop.

The Catechumenate continues at 7 p.m., Wednesday, with dessert from Stirling's. The Catechumenate is a brave, safe space to explore the Christian faith or go deeper into your own spirituality. If you are looking for a small group setting that offers a place to question, share, or simply be present, we encourage you to join us. All are welcome to attend.

Monteagle First Baptist

Gospel award-winning Bluegrass Band, The Farm Hands, will be coming to Monteagle First Baptist Church on Sunday, Nov. 7, for the 11 a.m. service. Everyone is invited for an enjoyable time of worship through music.

St. Mark and St. Paul

The 8:30 a.m. Holy Eucharist is in the church for those fully vaccinated for at least 2 weeks. Masking is required indoors. The 8:30 a.m.

service is also livestreamed on our Facebook page. It is available there and on our YouTube channel at 11 a.m. and afterward.

The 11 a.m. Holy Eucharist is outside for all.

The Sunday Forum meets at 9:45-10:45 a.m., in Kennerly Hall. It also streams on the Facebook page. Presenters this Sunday are Beth and George Chamberlain. Their Forum presentation and discussion will use the story of the widow's mite as found in the passage from Mark, Chapter 12:38-44, to lead us to reflect on the ways we have been influenced by the saints in our lives. Through a modern-day parable from Lynne Twist's book "The Soul of Money," we will consider the effect of offering to God our intention, integrity and energy to serve God and our neighbor.

Godly Play for Children meets 9:45-10:45 a.m. on the playground, weather permitting. In case of rain, age 3 through first grade meet on the porch at the back of Claiborne Hall near the entrance to CAC, and grades 2-5 meet on the porch of Brooks Hall.

Youth Sunday School is 9:45-10:45 a.m. on the upstairs porch of Brooks Hall.

Nursery is Sunday, 8:30 a.m. to noon. Infants and small children are invited to gather at the playground. In case of rain, nursery will meet outside the entrance to Sewanee Children's Center, on the ground floor at the back of Claiborne Hall.

Gipson Memorial Service Sunday, Nov. 7

A Memorial Service for James Elywin Gipson, who died on Oct. 3, 2021, will be at 3 p.m., Sunday, Nov. 7, 2021, at Eastern Star Cemetery, Sewanee. Please come help celebrate James and his love for our community.

'Wisdom to Know the Difference' Zoom Event

Daily we are bombarded by an overwhelming amount of media, and we find ourselves in a time of unprecedented access to information, opinions, and data – from politics to the pandemic. How do we determine what is true and beneficial when so much misinformation and disinformation exists? How might we change our relationship with the media we consume and our presence on social media?

The Sisters of St. Mary kick off their 2021-2022 program series with a virtual event titled "Wisdom to Know the Difference: Finding Serenity in a Time of Misinformation" 9–10:30 a.m., Saturday, Nov. 6, via Zoom. The cost is \$15 per attendee. In this two-part workshop, Amanda Sprott-Goldson will explore current trends in misinformation and best practices for how to understand, filter, and engage with various information. Then, Casey Perkins-Lawrence will discuss how to practice social media with intention using the model of the well-known Serenity Prayer as a guide. Finally, there will be some time for questions and answers from participants.

Learn more about this event and register at <www.communityofstmarysouth.org>.

Upcoming Retreats at St. Mary's Sewanee

A full day of Centering Prayer will be from 6:30 a.m. to 5 p.m., Saturday, Nov. 6, via Zoom. The cost is \$90. Centering Prayer is a form of Christian silent meditation where one lets go of thoughts during periods of prayer typically lasting 20 minutes. It is rooted in the self-emptying love that forms the heart of Jesus' teaching and life. The effect on those who practice it is an ever-increasing awareness of God's action and presence in the course of ordinary life.

Join us for an afternoon with Anneli Virkhaus. This in-person workshop "Waking Up: Developing a Morning Ritual & Cultivating Positive Habits" will be from noon to 4:30 p.m., Saturday, Nov. 13. The cost is \$65. Lunch is included.

How you start each morning influences the rest of your day. The way you start your day is incredibly important. It sets the tone for the day. If you've wanted to develop a morning ritual or routine, and just can't seem to make it stick, come and receive some guidance on how to do so. You will leave the workshop with ideas and coping skills on how to cultivate positive habits in your life and leave with multiple versions of morning rituals tailored to you and written by you.

Bring your yoga mat and yoga accessories; dress comfortably for gentle movement and asana.

Go to <<https://www.stmaryssewanee.org>> to register and for more information.

CAC Pantry Sunday

Pantry Sunday for the Community Action Committee (CAC) is scheduled for Sunday, Nov. 7. St. James (Midway), the Parish of St. Mark and St. Paul, Sewanee Cumberland Presbyterian, All Saints' Chapel, and Monteagle Cumberland Presbyterian are participating churches, and all are welcome to contribute. Please bring your food offerings to your church for collection or deliver directly to the CAC located at 216 University Ave., Sewanee. The typical bag of groceries includes rice, beans, pasta, macaroni and cheese, peanut butter, and cans of vegetables, fruit, and soup. The cost for a complete bag is less than \$15.

The CAC is an outreach ministry of the Parish of St. Mark and St. Paul, with generous support from the Sewanee Community Chest



and individuals across the Mountain. For more than 47 years, the CAC has provided food, financial assistance, and educational support for persons in the greater Sewanee community. For more information contact the CAC at (931) 598-5927.



Church Calendar

Monteagle Church of Christ

11 a.m. Morning Service, Sunday
6 p.m. Bible Study, Wednesday

Monteagle First Baptist Church

11 a.m. Worship Service, Sunday
6 p.m. Bible Study, Wednesday

Monteagle Seventh-Day Adventist

11 a.m. Worship, Saturday

Morton Memorial United Methodist, Monteagle

service available online after noon Sunday, link is at <<https://www.mortonmemorialumc.com>> on FB

9:45 a.m. Sunday School

11 a.m. Worship Service, Sunday

Mountain of God Tabernacle, Monteagle

online worship services, Zoom. Call (931) 924-5339 or go online, <<https://www.tdworldministries.org>>

11 a.m. Worship Service, Sunday

6 p.m. Prayer Service, Wednesday

New Creations Ministries, Rayburn Chapel

4 p.m. Prayer Meeting, Sunday

New Hope Church of God in Christ, Cowan

11 a.m. Sunday Service, Sunday

6 p.m. Sunday Service, Sunday

9:45 a.m. Godly Play

11 a.m. Holy Eucharist, outdoors

Pelham United Methodist Church

9:45 a.m. Sunday School, Sunday

11 a.m. Worship Service, Sunday

St. Agnes' Episcopal Church, Cowan

11 a.m. Holy Eucharist, Sunday

St. James Episcopal Church

9 a.m. Holy Eucharist Rite II, in-person and Zoom, Sunday

St. Margaret Mary Catholic Church, Alto

8 a.m. Mass, Sunday

St. Mark & St. Paul

8:30 a.m. Holy Eucharist, indoors (for those fully vaccinated, masks required), livestream Facebook, YouTube later

9:45 a.m. Sunday Forum, Kennerly Hall

9:45 a.m. Godly Play

11 a.m. Holy Eucharist, outdoors (masks optional but recommended)

St. Mary's Sewanee

6:30 a.m. Full Day Centering Prayer, Zoom (\$90). <<https://www.stmaryssewanee.org>> to register, until 5 p.m.

3:30 p.m. Centering Prayer, Zoom, Tuesday

4 p.m. Centering Prayer, Zoom, Wednesday

Sewanee Church of God

10 a.m. Worship Service, Sunday

Sisters of St. Mary Convent Chapel

7:30 a.m. Morning Prayer, Tuesday–Friday;

(7 a.m., feast days; 8 a.m., Saturdays)

8 a.m. Holy Eucharist, Sundays, sign up online <<https://www.communityofstmarysouth.org>>

5 p.m. Evening Prayer, Tuesday–Sunday

Tracy City First Baptist Church

10:45 a.m. Morning Worship, Sunday

Trinity Episcopal Church, Winchester (STEM)

10:30 a.m. Holy Eucharist, Sunday, Service is broadcast live via Zoom

12:30 p.m. Noonday Prayer and Lectionary Bible Study, Tuesday

For more information email <tec213@bellsouth.net>

United Pentecostal, Monteagle

10 a.m. Sunday School, Sunday

11 a.m. Worship, Sunday

7 p.m. Worship, Wednesday

Unitarian Universalist, Tullahoma

6 p.m. Tullahoma Sangha, Wednesday

Valley Home Community Church, Pelham

10 a.m. Sunday School

11 a.m. Morning Service, Sunday

Abundant Life Assembly of God, Cowan

10:30 a.m. Worship, Sunday

All Saints' Chapel

8 a.m. Holy Eucharist, Sunday

11 a.m. Holy Eucharist, Sunday

6 p.m. Growing in Grace, Sunday

7 p.m. Catechumenate, Wednesday

Bible Baptist Church, Monteagle

10 a.m. Worship Service, Sunday

5:30 p.m. Evening Service, Sunday

5:30 p.m. Evening Worship, Wednesday

Chapman Chapel Church of the Nazarene, Pelham

9:30 a.m. Sunday School, Sunday

10:45 a.m. Morning Worship, Sunday

6 p.m. Evening Worship, Sunday

7 p.m. Bible study, Wednesday

Christ Church Monteagle

10:45 a.m. Morning Prayer, Sunday

noon Holy Eucharist, Wednesday

Christ Church, Tracy City (STEM)

10 a.m. Bible Study, Sunday

11 a.m. Holy Eucharist, Sunday

Christ the King Anglican Church, Decherd

9 a.m. Sunday Service, Sunday

6:30 p.m. Healing/prayer service

City Light Church, Monteagle

10:45 a.m. Worship Service, Sunday, available online

Cowan Fellowship Church

11 a.m. Worship Service, Sunday

Cumberland Presbyterian Church, Cowan

11 a.m. Worship, Sunday

Cumberland Presbyterian Church, Monteagle

9:45 a.m. Sunday School, Sunday

11 a.m. Worship Service, Sunday

Cumberland Presbyterian Church, Sewanee

9 a.m. Worship Service, Sunday

10 a.m. Sunday School, Sunday

Decherd United Methodist Church

9:45 a.m. Sunday School, Sunday

10:50 a.m. Worship Service, Sunday

Epiphany Mission, Sherwood (STEM)

10 a.m. Holy Eucharist Rite II, Sunday

First Baptist Church, Cowan

9:15 a.m. Sunday School, Sunday

10:25 a.m. Worship, Sunday

First Church of the Nazarene, Cowan

11 a.m. Worship Service, Sunday

Good Shepherd Catholic Church, Decherd

8 a.m. Mass, Sunday

10:30 a.m. Mass, Sunday

2 p.m. Spanish Mass, Sunday

5 p.m. Mass, Saturday

Goshen Cumberland Presbyterian Church

11 a.m. Worship Service, Sunday

Grace Fellowship Church

10:30 a.m. Sunday School/Worship Service, Sunday

Harrison Chapel Methodist Church, Midway

10 a.m. Sunday School

11 a.m. Sunday Morning Service (available on Facebook Live)

5 p.m. Sunday Evening Service

Hobbs Hill Community Church, Tracy City

10 a.m. Sunday School, Sunday

11 a.m. Morning Service, Sunday

5 p.m. Evening Service, Sunday

6 p.m. Evening Service, Wednesday

Midway Baptist Church

9:45 a.m. Sunday School, Sunday

10:45 a.m. Morning Service, Sunday

6 p.m. Evening Service, Sunday

6 p.m. Bible Study, Wednesday

Midway Church of Christ

10 a.m. Bible Study, Sunday

11 a.m. Morning Service, Sunday

6 p.m. Evening Service, Sunday

CAC (from page 1)

Dining typically has leftovers that would otherwise be thrown away. Instead, the CAC transforms the surplus into 150-300 meals a week.

In another pandemic spawned program, Farm 2 Table, the South Cumberland Farmers' Market began inviting customers to donate money earmarked for the CAC. Donors' gifts buy food raised by local farmers, and the CAC adds the fresh produce to the bags of groceries clients pickup. Goodpaster also delivers 15-20 bags of fresh produce to Sewanee Elementary School weekly, where the SES administration distributes the fresh locally grown food to families who will benefit. The CAC receives Community Chest support to fund its food pantry ministry and other work to help those in need.

Looking ahead, CAC plans two art related initiatives. The Empty Tables project invites area artists to create food-themed artwork to be sold at the December Tennessee Craft-South tour in Sewanee. Artists who want to participate should contact Claire Reishman at <creishman@gmail.com>. Empty Table proceeds will go to the CAC and Morton Memorial Church food-pantry ministries. In a project planned for spring, the CAC will recruit students and community groups to buy canned food and build theme-based structures with cans. Stay tuned for details about this fun and community centered "Canstruction" project.

During regular business, Beavers reported 51 children participated in the thank-you-note design contest. Honorable mention entries received gift certificates for the SES bookfair, while the six winning designers received gift certificates as well as art supplies. Look for the notecards on sale at area businesses. Proceeds will go to the Community Chest fund drive currently underway.

The 2021-2022 Community Chest set a goal of raising \$102,291 to support 20 Plateau initiatives including food pantries, children's programs, animal rescue, senior citizens' needs, and more. Send donations to P.O. Box 99, Sewanee, TN 37375 or donate online at <sewanecivic.org/community-chest/>.

Updating the membership on plans to establish a Service Committee to address needs as they arise, Beavers said the SCA will circulate a survey to assess needs, upcoming community projects, and community assets. To get involved, email <sewanecommunitychest@gmail.com>.

News from Arcadia at Sewanee

Arcadia at Sewanee's Board of Trustees is considering both an innovative approach to bringing a "Life Plan at Home" concept to the Mountain and engaging a national leader in market research for retirement communities.

Discussions are ongoing with a Nashville-based nonprofit organization, Blakeford Senior Life, to establish a life plan at home program for the Sewanee area. Blakeford's program, LiveWell by Blakeford, provides a personalized approach to healthy and independent people who want to live at home as they age. This program incorporates personalized wellness and preventative services with, should health unexpectedly change, a full plan of services for the member's lifetime. The working group in dialogue with Blakeford includes representation of Sewanee's Folks at Home based on the premise that both programs could successfully co-exist and grow.

Arcadia's second initiative is to undertake a second, more in depth, market study of the demand for an independent living facility in Sewanee. This evaluation, the cost of which will be borne by Arcadia, is deemed necessary for all vested parties, including Blakeford, to quantify the demand for a facility, the type of facility, and programs and services desired.

Arcadia board members and David Shipps, the University's Vice President of Development and Community Affairs, have had very productive discussions related to the above approaches and longer-term University and Arcadia objectives.

Veterans Day Closings

Veterans Day is Thursday, Nov. 11. Federal, state and local government agency offices are closed; banks and the post office are closed; the Franklin County convenience center is closed.

Sewanee Elementary, St. Andrew's-Sewanee and the University of the South will hold classes. The Sewanee Senior Center is open.

Support local. Shop local.

HOUSE CALL SERVICE AVAILABLE

Full Service Veterinary Care for Dogs, Cats & Horses
Offering Acupuncture, Chiropractic & Herbal Therapies

Traci S. Helton
DVM



Jessie Richardson
DVM

Monday-Friday 7:30 am-6 pm

AFTER-HOURS EMERGENCY SERVICE AVAILABLE

931-962-3411

505 S. Jefferson St., Winchester (41-A toward Winchester. First left after Domino's Pizza)



TOMMY C. CAMPBELL

FOR YOUR IMPROVEMENTS

Call (931) 592-2687

Free Estimates • No Job Too Small!

**DRIVEWAY WORK • GRAVEL HAULING
• DOZER & BACKHOE**

Land Clearing • Concrete Work • Water Lines • Sidewalks
Topsoil • Septic Tanks & Field Lines • Various Retaining Walls
Yard Drainage Problems

Sewanee Realty

Let us help you find your special place, in this special place.

115 University Ave., Sewanee, Tenn. • 931.598.9200

www.SewaneeRealty.com

Realtors@SewaneeRealty.com

Patsy Truslow, Owner | Principal Broker • 931.636.4111

Marie Ferguson, Owner | Affiliate Broker • 931.952.2468

*"If you cannot do
great things, do small
things in a great way."
-Napoleon Hill*



MLS 2300638 - 119 Walton Lane, Tracy City.
\$298,000



MLS 2248088 - 9787 SR 56, Coalmont. \$179,900



MLS 2269209 - 290 Clara's Point Rd., Sewanee.
\$699,900 <https://youtu.be/Ov3stdQDyZA>



MLS 2257193 - 520 Lautzenheiser Place,
Monteagle. \$259,500



MLS 2290034 - 458 Lake O'Donnell Rd., Sewanee.
\$59,900



MLS 2278224 - 13242 US 41, Monteagle. \$259,000



446 Favre Circle, Winchester. \$305,000



MLS 2249228 - 603 5th St. Tracy City. \$219,900



MLS 2290475 - 515 Beersheba St., Tracy City.
\$54,900



MLS 2285816 - 211 Timber Lane, Winchester.
\$745,000



MLS 229648 - 12053 S.R. 56, Coalmont. \$156,000



MLS 2228046 - 136 Parsons Green, Sewanee.
\$345,000



MLS 2243237 - 1387 Cooley's Rift Blvd.,
Monteagle. \$449,500



MLS 2250344 - BLUFF - 1841 Laurel Lake Dr.
\$410,000



MLS 2240840 - 240 Maple St., Sewanee. \$298,000



MLS 2263714 - 310 Wiggins Creek. \$399,500

BLUFF TRACTS

16A Laurel Lake Dr. 2131429 \$82,000

LOTS & LAND

Savage Bluff Lot RC 10.5 ac	2178470	\$59,000
0 Chickory Ln, 2 ac	2228484	\$65,000
0 Buck Church Rd., 10+ ac	2220082	\$99,900
0 Buck Church Rd., 10+ ac	2229469	\$149,900
Hwy. 41A, Ingman Rd 10+ ac	2229469	\$149,900
Hwy. 41A, Ingman Rd 10+ ac	2229469	\$149,900
0 Bear Ct. Lot 18	2268952	\$29,000
0 Bear Ct. Lot 19	2268949	\$29,000
0 Bear Ct. Lot 20	2268951	\$29,000
0 Browbend Dr. Lot 13	2268945	\$54,000
0 Browbend Dr. Lot 14	2268946	\$54,000
171 Main St., Tracy (SOLD)	2226423	\$69,000
Jackson Point Rd., 6.4ac	2273904	\$57,000
0 E of 10th St., 7.03 ac	2280962	\$65,900
St. Mary's Lane, 10+ ac	2304904	\$95,000

GRAND RE-OPENING

THIS SATURDAY
NOV. 6TH, 11-6PM

Stop by to meet the new owners and see the remodeled store. Explore new items in home goods, decor, creations from your local artisans, as well as your familiar Sewanee Angel favorites. Refreshments and entertainment all day long!



THE LEMON FAIR

OPEN 11-6PM / MONDAY-SATURDAY
THELEMONFAIR.COM

Find your place ON THE MOUNTAIN

OPEN HOUSE 9-11AM
SATURDAY, 11/6



\$1,100,000

1033 EVA ROAD
SHERWOOD

3.4 ACRES
5 BD | 4 BA | 4500 SF



\$480,000

95 BOB STEWMAN ROAD
BOB TOWN COMMUNITY



\$799,999

276 TENNESSEE AVENUE
UNIVERSITY OF THE SOUTH



\$710,000

21 POPLAR LANE
SEWANEE BLUFF



\$475,000

315 GREENS VIEW ROAD
SEWANEE GOLF COURSE



Anne Chenoweth
Deutsch
REALTOR®
931.205.1299
anne.sewanee@gmail.com



Will
Reynolds
REALTOR®
404.984.3858
wreynolds@villagetn.com



Hampton
Mauzy
REALTOR®
615.828.5989
hmauzy@villagetn.com

VILLAGE

2206 21st Ave S.
Nashville TN 37212
615.383.6964
villagerealestate.com

Planning (from page 1)

C-3 to C-2 to satisfy the landscaping requirements.

“[The rezoning] will eliminate some of the screening and landscaping he will have to do,” Geary said.

The site plan faces two other hurdles, Haynes said. One, the Board of Zoning Appeals would need to rule on whether a chain link fence covered with screening material met the city’s screening fence requirement, and two, the site plan street yard (i.e., setback) needed to be increased from 5 feet to 10 feet to comply with ordinance requirements.

Cross said Ojeda agreed to increasing the setback, as well as the rezoning.

To be final, the rezoning must be approved by the city council and subject to a public hearing.

Monteagle resident and structural engineer Jim Waller brought to the commission’s attention that based on his observations “The construction taking place on the RBT property is not consistent with the site plan you approved... my analysis is based on the ponds designed by Sadler and Associates [the project engineers] and the inverts specified on those drawings.” Asked if a revised site plan had been approved, the commission responded, no.

Geary said he was “not qualified” to evaluate the irregularities cited by Waller. Waller said if no new site plan had been approved, the developers were “in violation of their permit with TDEC (Tennessee Department of Environment and Conservation).”

“We could reach out to TDEC and see if they’ve had anyone inspect it recently,” Haynes said.

“I think we should do that,” Provost said. “We need to have them [TDEC] inspect that as often as we can make them.”

Monteagle resident Will Foehring pointed out, except for one, “Every TDEC inspection so far has found a NOV [Notice of Violation].”

The commission also approved the final plat for the Van Hooser property on South Central Avenue and expressed willingness to hold a special called meeting in December to accommodate hospitality business developers and investors faced with a Dec. 31 deadline.

SEWANEE VILLAGE UPDATE

by David Shipps



As you may have read, the University recently announced a \$10 million investment effort in Sewanee Village-related initiatives. This is incredibly exciting, and is the first (large) step in realizing the promise of the Village revitalization plan that was kicked off more than six years ago and managed by Frank Gladu. In essence, this marks the beginning of an execution phase, and is a meaningful demonstration of the importance to the University of having a thriving, active downtown area.

It’s important to note that these funds are a reallocation of existing investments within the University endowment. As such, the funds will be invested in a manner that generates reasonable and acceptable financial returns in accordance with laws that govern the use of all endowments. Along with financial returns will come meaningful and important qualitative benefits that enrich the experiences of students, residents, and visitors, and help Sewanee continue to be a wonderful place to live and attend college or seminary.

As you may know, new residential and commercial offerings are contemplated by the established Village Masterplan. All initiatives will take the form of proposals, and will be approved by the University Board of Regents before they are acted on. At the top of the agenda are identifying near-term investments with clear and strategic benefits. That process will get underway in the weeks ahead.

On a related note, the University announced that eight vacant leaseholds are now available to residential builders. This is significant in that it marks the first time in many years that vacant leaseholds have been available for new construction by those in the business of building and selling new homes to people seeking residences on the Domain. This is one additional step taken to help increase housing options for full-time residents in the Sewanee area.

Finally, for those of us driving through the Village, it’s evident that the road work at University Avenue and 41-A is very much underway. As a reminder, the estimated remaining project schedule as indicated by TDOT is:

2021
Oct. 21 - Nov. 22: Phase I concrete (curb, gutter, sidewalk, and ramps)
Dec. 6: Lanes shift; temporary striping
2022
Feb. 23 - Mar. 28: Phase II concrete (curb, gutter, sidewalk, and ramps)
May 9: Lanes shift to final alignment
May 31: Estimated project completion
I look forward to updating the community on a regular basis during this very exciting time.

David Shipps is vice president of economic development and community relations.

Annual Holiday Studio Tour, Dec. 4 and 5

Tennessee Craft-South invites the public to its annual Holiday Studio Tour on the mountain on Saturday, Dec. 4, 10 a.m. to 5 p.m., CST and Sunday, Dec. 5, 11 a.m. to 4 p.m., CST. Tennessee Craft-South is the regional branch of Tennessee Craft, the state-wide organization which supports and promotes all handmade crafts in Tennessee.

Several dozen local and regional artists will show their work during the weekend: textiles, sculpture, jewelry, pottery, glass, paintings, metal work, and woodwork. Sewanee artist studios open to the public include those of Bob Askew, Pippa Browne, Ben Potter, Claire Reishman, and Merissa Tobler. Other Sewanee locations are the American Legion Hall, Locals Gallery, and The Frame Gallery. In Monteagle, open studios include The Gallery in the Monteagle Sunday School Assembly and Hallelujah Pottery. Light refreshments will be available at most locations and masks are required at all locations.

Once again, there is a group exhibition of multiple artists’ work in the St. Andrew’s-Sewanee Art Gallery, located in the center of the Simmonds Building at St. Andrew’s -Sewanee School. While many sites host individual artists showing their work, the SAS Art Gallery presents an exhibition from members of the group, in addition to SAS faculty and students and other members of Tennessee Craft-South.

A special addition to the Tour this year is the Empty Tables project, an artist initiative sponsored by Tennessee Craft-South—partnering with Sewanee Locally Grown, the Community Action Committee, and Morton Memorial Church—designed to address local hunger. While many artists don’t have the means to donate substantial funds to programs addressing this issue, they do have talents to contribute. Participating artists will set aside time to create art celebrating the growing, serving, and eating of food: bowls, plates, napkins, paintings, candlesticks, etc. These art pieces will be available for purchase at the American Legion Hall and 100 percent of money raised will be used to purchase food for those in need.

There are six sponsors for the Holiday Studio Tour this year: The Blue Chair, The Lemon Fair, Locals, Mooney’s, Shenanigans, and the Sewanee Inn. Studio Tour brochures are available at each of these local businesses and at all participating studios.

Bright yellow signs mark the tour route, and maps are available at all locations on the tour as well as at all sponsors’ locations, in the Sewanee Messenger, and on the Tennessee Craft website <<http://tennesseecraft.org/members/chapters/south/>>.

Support local businesses! Shop and dine locally.

SHULL | CHIROPRACTIC CLINIC, PLLC

Dr. Kurt A. Shull

1025 S. College St. • Winchester

931.967.4232

www.shullchiropractic.com

Mon. Wed. Thurs. - 9 am–noon, 2–6 pm

Tue. 9–11 am | Fri. 8–9 am | Sat. by appointment only

A Chiropractic, Wellness, Nutritional, Dry Needling, Non-Surgical, Spinal Decompression Clinic

G. Robert Tubb II, Owner
931-967-3595
A1ChimneySpecialist.com

CERTIFIED CHIMNEY SWEEP

HELP!

A-1 CHIMNEY SPECIALIST

CSIA Certified Technicians
Video Inspections • Sweeping
Restoration • Masonry Repair
Custom Caps & Dampers
Leak Repair & Water Proofing
Wood Stove & Chimney Installs
Gas Log Service & Installs
Dryer Vent Cleaning/Repair

SEWANEE AUTO REPAIR
Complete Auto & Truck Repair

Tune-ups • Tires • Tire Repair • Brakes • Steering
• Oil Changes • Batteries • Computer Diagnostics

All Makes & Models • Service Calls • Quality Parts
ASE Master Certified Auto Technician • 33 Years’ Experience

Open 7 to 5 M-F
(931) 598-5743 • 76 University Ave.

MICHELLE M. BENJAMIN, JD
Attorney & Counselor at Law

201 FIRST AVENUE, NORTHWEST
WINCHESTER, TENNESSEE 37398

(931) 962-0006
Fax: (931) 967-8613

Stirling's

COFFEE HOUSE

Masks required!
Indoor seating is open.
Order inside, with the Toast App, or at the takeout window.

Mon–Wed, 7:30am–midnight;
Thurs & Fri, 7:30am–10pm;
Sat, 9am–10pm; Sun, 9am–midnight
Georgia Avenue, Sewanee

598-1786

**REUSE
REDUCE
RECYCLE**

Monteagle Florist

333 West Main Street
Monteagle, TN 37356
(931) 924-3292

Bonnie Nunley - Owner
Daily deliveries to Sewanee
for more than 35 years.

piggly wiggly

Down Home, Down the Street

754 West Main St., Monteagle
(931) 924-3135
8 a.m. to 9 p.m. 7 days a week

SENIOR CENTER NEWS

The Sewanee Senior Center serves lunch at noon Monday through Friday. The suggested donation is \$4, regardless of your age. Please call 598-0771 by 9 a.m. to order lunch. Menus follow:

Monday, Nov. 8: Pizza, salad.

Tuesday, Nov. 9: Thanksgiving meal: Turkey, dressing, sweet potato casserole, green beans, corn salad, cranberry sauce, roll, dessert. (\$8)

Wednesday, Nov. 10: Potato soup, ham and cheese sandwich.

Thursday, Nov. 11: Barbecue, baked beans, pasta salad.

Friday, Nov. 12: Meat loaf, mashed potatoes, green peas, roll. Menus may vary. For information call the center at 598-0771.

The Sewanee Senior Center does not charge any membership fee. All persons 50 or older who take part in any of the activities are considered members.

Order Thanksgiving Dinner from St. Mary's Sewanee

St. Mary's Sewanee will once again be catering Thanksgiving dinner. Meals serve up to six people and include traditional sliced turkey breast and dressing, gravy, green bean casserole, sweet potato casserole, cranberry relish and rolls for \$80. Deep dish pecan pie (\$12) and pumpkin pie (\$10) are available. Dinner items can also be ordered a la carte.

Orders are limited and the deadline for orders is Friday, November 19 at 1 pm. Contact Heather at (931) 598-5342 or email <turkeys@stmaryssewanee.org>.



Need More Room?

Sewanee Mountain Storage

(931) 598-5682

Evan Barry

Hwy 41 - Between Sewanee & Monteagle

■ Video Monitoring
5x10 | 10x10 | 10x20
■ Security Camera

Temperature Controlled Units

5x5 | 5x10 | 10x10 | 10x15 | 10x20

Temperature and Humidity Regulated

91 University Ave. Sewanee
sewaneehouses.com | (931) 598-9244



UNIVERSITY REALTY

SEWANEE TENNESSEE



Lynn Stubblefield (423) 838-8201
Susan Holmes C'76 (423) 280-1480
Freddy Saussy, C'99 (931) 636-9582
Dana Yokley (931) 691-8162



UNDER CONTRACT

NEW LISTING. 3 Br., 2 1/2 Ba., private 4 acres. 1,800 sq. ft., newly remodeled, 5G internet, two fireplaces, oversized garage, and shop, 1,500 sq. ft., fully equipped for painting cars. Great package. \$320,000

A PORTION OF SALES MADE THROUGH OUR OFFICE WILL BE DONATED TO HOUSING SEWANEE



WOODY'S

BICYCLES

SALES, SERVICE AND RENTALS

A Full-Service Trek Bicycle Dealer

Tues - Fri 9-5 | Sat 10-2 | 90 Reed's Lane
598-9793 | woodybike@gmail.com

Check out www.woodysbicycles.com for rates, trail maps, photos, bike club links, races and much more!



BOOKMARKED

by Margaret Stephens

Breaking Barriers

I love Pennsylvania.

It's the late lovely Mr. Rogers' real neighborhood.

It's Philadelphia, where decades ago my mother and I got off a train from wherever we lived in Princeton while my father one year was doing a professor thing, to buy my first recital dress, a froth of pale lime-sherbet that still hangs in the closet of my mind.

It's the midway state in the interminable long-ago Greyhound bus trips from east Tennessee to Boston where I went to college.

It's ModPo, 10 weeks of engagement with Modern and Contemporary Poetry through the free virtual course from the Kelly Writers' House at the University of Pennsylvania which allows thousands of people from around the world to read and write and talk, talk, talk, until the very air crackles with the energy of new ideas and new ways of expressing old ideas.

If you hurry, you can join in the last week; join as we temporarily shut the door on the rest of our lives to meet with others from around the world who are also stepping out of the deep loneliness of the rest of the year to talk about poetry and how and why poetry means and why poetry is meaningful.

And how and why we communicate at all.

(Though some of us occasionally leave the door open and bring our children or significant other along for a poem or two.)

ModPo isn't meant for academics or teachers—though there are a number who participate and a whole section devoted to ways teachers can use the course with students, nor for writers—though there are a lot of those as well.

It's a course for the rest of us. Who sometimes find poetry incomprehensible or dull or just plain irrelevant, who are too practical, hurried, or downright impatient to want to slow down and read lines that don't immediately shoot meaning out at us with the instant clarity of a Facebook post or news headline.

It's the perfect course for fall, when we need to pay attention to each leaf that drifts down, store up that movement and color for the long months of winter ahead. Because ModPo teaches us how to pay that kind of attention. We must, as we learn to read poets who use words in ways we don't expect, poets who expect us to participate with them in reading their lines, not just skim surfaces and grab meaning as we usually do.

ModPo begins with Emily Dickinson and Walt Whitman, old familiar faces—though we quickly discover they may not be as familiar as we thought—then leads us gently through a succession of modern poets new to most of us until before it, we're swimming in the deep end without drowning. Always with cheerleading and company: there are daily office hours where we can talk with the TAs and even Al Filreis, the UPenn professor who created and heads the course. There are live weekly webcasts where we can call in. There are lively discussions going on 24/7 with fellow students who are also reading and watching the exploratory videos.

All this means we're part of a worldwide exercise in collaborative close readings of works guaranteed to challenge the way we read, think, and look at what's around us.

And in an era where isolation is a continuing threat to our health and mental wellbeing, that's a benefit worth sharing.

Interested? Look up <modpo.org>. As always, you can reach me at <mgtstep@gmail.com>.

Our readers want to know your business!

<ads@sewaneeessenger.com>



Downtown Sewanee

(931) 598-5434

thebluechair.com

#1

20

BREAKFAST IN SEWANEE FOR YEARS





Jimmy's Masonry

931.450.0047

Walkways • Patios • Walls • Fire Pits • Waterfalls

Small or Large Projects • Construction or Repair

Why Crypto Is Taking Over the World

As Bitcoin, cryptocurrency and blockchain technologies make headlines, many are joining the most important debate of our time: What is money and who controls it? For those who understand money, it's no surprise to see today's investors, corporations, and governments engaged in a cryptocurrency tug-of-war. But why?

In his new book, "Money Revolution: Fintech Disruption from Bullion to Bitcoin" released Nov. 1 by Conversation Publishing, Shaun M. Rowles cracks open a treasure chest of history to show us why money, as we know it, is the result of frequent technological disruption. Coins, credit, the gold standard, central banks — all of these financial technologies both shaped society and revolutionized how we live. Bitcoin is only the latest disruptor on the scene, redefining what money is and who controls it. But Bitcoin won't be the last. Money was, is, and always will be a story of revolution.

"So many people are wondering what all the fuss is over Bitcoin and they're not alone," said Rowles. "Cryptocurrency has clearly come to dominate the news over the past few years and yet, only a handful of people actually understand what is really going on. My book aims to explain both what cryptocurrency is and the reason why it has become so mainstream. Most importantly, I want to share with readers that the underlying technology is much bigger than just Bitcoin. Blockchain will change our world in more ways than just money. This is only the beginning."

A book signing will be at 5 p.m., Tuesday, Nov. 16, at the Vanderbilt University Book Store, 2501 West End Avenue, Nashville. The book can be purchased on Amazon.

Rowles is an institutional consultant and portfolio manager with two decades of experience and specialization in risk management. He is an author, founder, and guest lecturer in applied macroeconomics at the Vanderbilt University Owen Graduate School of Management. He has a passion for financial history with an emphasis on financial crises and fintech disruptions. An avid conservationist, he's a supporter of socially responsible ESG-themed investing. He lives in Nashville, with his wife and four children.

HEAVEN ON EARTH... NOW AVAILABLE IN SEWANEE



MYERS POINT

At Sewanee

MYERS POINT at Sewanee offers a rare opportunity to enjoy a private community that celebrates American architecture, lifestyle, protected forests, cultivated lakes and panoramic views on Middle Tennessee's Cumberland Plateau. If you want to live surrounded by nature, history, beauty, quality and serenity, you'll want to call it home.

John Goodson
(931) 703-0558
jgoodson@myerspoint.com
myerspoint.com

SES MENUS

**Monday–Friday,
Nov. 8–12
LUNCH**

Monday, Nov. 8: Macaroni/cheese, garlic breadsticks, lattice potatoes, pinto beans, fruit.

Tuesday, Nov. 9: Hamburger/cheeseburger, French fries, baked beans, carrot dip-pers, fruit.

Wednesday, Nov. 10: Spaghetti w/meat sauce, twisted breadstick, battered potato bites, garden salad, fruit.

Thursday, Nov. 11: Oven-roasted chicken, chef salad, cheesy broccoli, mashed potatoes, dinner roll, fruit.

Friday, Nov. 12: Pizza, green beans, buttered corn, fruit.

BREAKFAST

Each day, students select one or two items.

Monday, Nov. 8: Breakfast pizza, fruit.

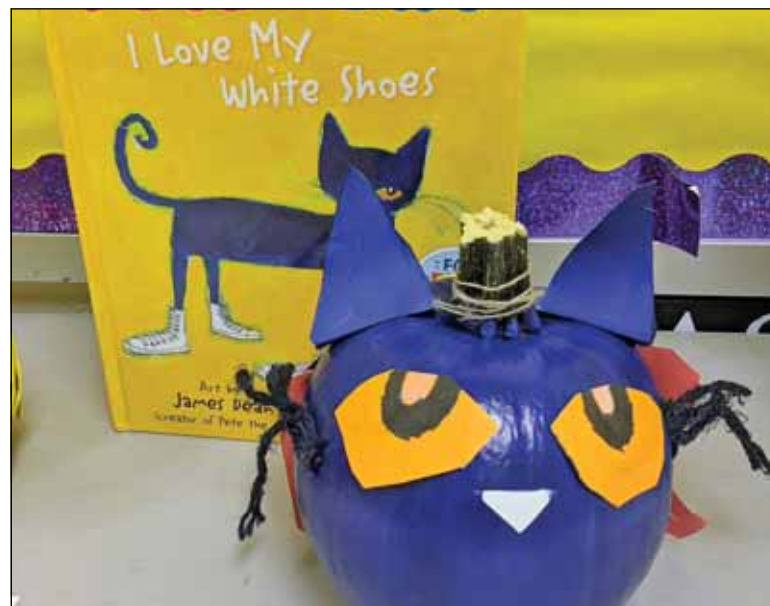
Tuesday, Nov. 9: Meat biscuit, fruit.

Wednesday, Nov. 10: Mini donuts, fruit.

Thursday, Nov. 11: Meat biscuit, juice.

Friday, Nov. 12: Cereal, cheese stick, juice.

Options available every breakfast: assorted cereal, assorted fruit and juice, milk varieties. Menus subject to change.



First grade students at Sewanee Elementary completed a book character pumpkin project for the month of October. Students were asked to choose a favorite book, pick a favorite character, and use decorations to turn a pumpkin into that character. Faculty, staff, and students were able to go on a gallery walk to view the creative pumpkin characters.



Monteagle Elementary's annual "Literacy in the Library" and Trunk-or-Treat event is always a big hit with students and parents alike. However, this year we partnered with United for Literacy, the town of Monteagle, and multiple local businesses and churches. The theme was "Storybook Characters," and the event nearly doubled in size. The turnout was phenomenal! We had many little spooks from wrestlers to wizards. Seeing teachers and community members don costumes and treating our kids was truly spooktacular. On behalf of Monteagle Elementary - Thank you for participating, donating, and caring. We want to instill the words of Margaret Fuller in all who enter, "Today a reader, tomorrow a leader."

SCHOOL CALENDAR

Nov. 5–7, Homecoming, College

Nov. 11, Veterans Day, Marion County

Nov. 20–28, Thanksgiving Break, SAS

Nov. 22–26, Thanksgiving Break, Marion County

Nov. 24–26, Thanksgiving Break, Franklin County

Nov. 24–29, Thanksgiving Break, University

Dec. 3, Last day of classes, School of Theology

Dec. 4–5, Services of Lessons and Carols

Dec. 8, Last day of classes, College



ARCHIVAL FRAMING & RESTORATION
ART CONSULTING

Fall Hours

Tue-Sat • 10-2:00 | Appt. • 10-4:30

CALL HARRIET: (931) 636-2211

12569 Sewanee Highway • Downtown Sewanee
(931) 463-2300 • framegallerysewanee@gmail.com

- ♦ ORGANIC, LOCAL FOODS
- ♦ SUPPLEMENTS & TOILETRIES
- ♦ GARDEN & BIRD SUPPLIES
- ♦ YARN & ACCESSORIES
- ♦ ANTIQUES, JEWELRY, GIFTS
- ♦ CALL FOR CURB SERVICE



Store open 10-6 daily • 931-924-7400 • 1265 W Main • Monteagle

Winchester Podiatry

CHARLES D. GANIME, DPM

Board Certified in Foot Surgery
Diplomate, American Board of Podiatric Surgery
New Patients of All Ages Welcome! We Treat Your Feet! Most Insurance Accepted, Including TennCare

155 Hospital Road Suite 1, Winchester.
www.winchesterpodiatry.com

931-968-9191

Sewanee
DOOR-TO-DOOR
PICK-UP & DROP-OFF

Need a ride?

TOMMY SHELBY • 423.394.0725
sewaneedoor-to-door@gmail.com
sewaneedoor-to-door.com

BUG PROBLEMS?

We can help! Call us for a free inspection!

BURL'S TERMITE & PEST CO.

TERMITE—PEST—VAPOR CONTROL
Bonded • Insured • Home-Owned & Operated
101 N. Main Street, Estill Springs
(931) 967-4547 or www.BurIsTermite.com
Charter #3824 • License #17759



SCCF

South Cumberland Community Fund
BUSINESS OUTREACH INITIATIVE

Support area businesses this weekend and make a donation to South Cumberland Community Fund while you're there. Thank you to the following businesses for their support:

The Blue Chair Cafe & Tavern - University Realty
Oakes & Oliver - Shenanigans - Taylor's Mercantile
Tower Community Bank - Bodyworks Youniversity

southcumberlandcommunityfund.org

Compassionate Home Care
& Community Services LLC
"Providing Care From The Heart"

We are accepting new clients and applications for CNA/Caregivers

**1045 WEST MAIN STREET
MONTEAGLE**

We accept LTC, VA, SETAAD, TNCARE CHOICES, ECF CHOICES and Private Pay

931-327-5276 (office)

Welcome to the South Music Lineup Announced ‘Imagining Matriarchy’ at the UAG

Corey Layne, organizer of the Welcome to the South Music Festival, is pleased to announce the music lineup for Saturday, Nov. 6, in downtown South Pittsburg. The outdoor event will be held in a field next to U.S. Stove Company between 4th and 5th street. Gates open at 10 a.m. with the concert beginning at 11 a.m. and ending at 5 p.m.

Kyndal Inskeep, 11–11:35 a.m.

Brent Michael Wood, 11:40 a.m.–12:25 p.m.

Chase Wilson Band, 12:35–1:15 p.m.

Dave Fenley, 1:20–2:20 p.m.

Corey Layne, 2:25–3:15 p.m.

Texas Hill, 3:30–5 p.m.

Texas Hill is composed of Craig Wayne Boyd (The Voice/NBC), Adam Wakefield (The Voice/NBC) and Casey James (American Idol/ABC); Corey Layne is a former contestant on The Voice/NBC, Dave Fenley (The Voice/NBC); Kyndal Inskeep (The Voice/NBC), Texas native singer/songwriter Brent Michael Wood and Nashville-based singer/songwriter Chase Wilson. Special guest Jack Flute Holland will perform briefly before Texas Hill.

In support of the festival, Lodge Cast Iron has graciously donated products as giveaways during the festival. The products can also be purchased at the Lodge Store in South Pittsburg. The giveaways will be announced twice during the day after Brent Michael Wood performs and after Corey Layne’s performance.

Layne says, “We could not have made this event happen without the generous support of Collins Building Materials, Adventure Off Road Park, US101 Martin & Company Advertising the City of South Pittsburg, SPARQ and 104.9, The River. We are excited also for the donations from Lodge Cast Iron in support of the concert and want to thank in advance all the volunteers that will participate Saturday to make this a success.”

Layne says, “We are excited to bring this caliber of live music to South Pittsburg. Rain or shine this event will go on and we hope everyone will come out and enjoy a fun day of music and good food. My goal is to produce this annually here and possibly other locations in the South.”

Tickets are only to be sold on the day of the event beginning at 10 a.m. The price is \$20 per person and children 10 and under are admitted free of charge. Admission for healthcare workers, first responders, veterans and military (all branches) will be half-price with a valid I.D. Children 10 and under are free. It is advisable to bring your own chair or blanket for this event and to not enter with a cooler or alcohol. The event will have food trucks and other food options and beer will be sold at the SPARQ tent.

For more information about the festival including bios and what to bring, COVID protocols, and more, visit <www.coreylayne.com/festival>.

The University Art Gallery of the University of the South is delighted to present “Imagining Matriarchy,” an exhibition of vibrant, dazzling quilts by artist and associate professor of art Jessica Wohl.

In “Imagining Matriarchy,” Wohl works with brilliantly colored found fabrics to build complex, celebratory compositions. Her quilts evoke suns, seeds, dense forests and flags. Found fabrics with past lives are carefully and painstakingly hand quilted, hundreds of hours of labor made visible in pieces of cloth and thread. Contrasting colors and tones – pinks, reds and blues, yellows and black – are combined in compositions that reimagine established associations. With these quilts, associated with comfort and women’s labor, Wohl “envision(s) what a matriarchal society might feel like.”

The Free Patch Work Project is an essential piece of “Imagining Matriarchy.” You are invited to bring garments that need mending to the University Art Gallery. Select a fabric swatch from the wall, a type of patch (exterior, interior with raw or tucked edge), thread color, type of stitching, and leave your garment with us. Your garment will be mended for you, and carry evidence of care out into the world.

Artist Jessica Wohl will be in the UAG at the mending station from noon to 1 p.m. on select Thursdays (Nov. 18, Dec. 2, Dec. 9) and from 3 to 4 p.m. on Wednesdays (Nov. 10, Nov. 17, Dec. 1, and Dec. 8). Drop by and learn how it’s done, and share your stories about your clothes as they’re mended.

On Nov. 11, from 3 to 5 p.m., please join us in the UAG for a mending circle! Bring a garment to mend from the pile you never quite get to, any other sewing project, or simply your curiosity, and join us for some hot apple cider and cookies, and time making both literal and figurative repairs.

Jessica Wohl is associate professor of art at the University of the South. She received a B.F.A. from the Kansas City Art Institute, and an M.F.A. from the University of Georgia. Wohl’s work has been exhibited nationally and internationally, including at the Museum of Design Atlanta, the Knoxville Museum of Art, the Belfast Photo Festival, the Robert Mann Gallery in New York and the Zeitgeist Gallery in Nashville. Her work has also been exhibited at venues in Miami, Atlanta, New Orleans, England, Finland, Norway, Italy, Hong Kong and Korea. Her work is collected by the Nerman Museum of Contemporary Art, the Sprint-Nextel Corporation, the H&R Block World Headquarters, numerous private collectors and is included in the Drawing Center’s Viewing Program.

Regular University Art Gallery hours are 10 a.m. to 5 p.m. Tuesday through Friday, and noon to 5 p.m. Saturday and Sunday. Follow them on Facebook or go to <https://new.sewanee.edu/university-art-gallery/>.

Sewanee Senior Center Christmas Bazaar Dec. 6–11

The Sewanee Senior Center, located at 5 Ball Park Rd., announces its 2021 Christmas Bazaar, which will be open each day Monday, Dec. 6 through Saturday, Dec. 11, 2021.

Featured will be baked goods including cookies, cakes, pies and candies; crafts, canned goods (jams and jellies), handmade items and White Elephant items.

A door prize will be given away each day of the Bazaar. Tickets are for sale at \$2 each for the Christmas Quilt. The winner of the quilt and a \$250 cash prize will be announced at 1 p.m., Tuesday, Dec. 14. You do not have to be present to win the main drawing or door prizes.

All donations except clothes are accepted. Donations help keep the Center in operation. For more information call the Center at (931) 598-0771.

Enchanting Chamber Music Concert

At 3 p.m., Saturday Nov. 6, at Morton Memorial United Methodist Church in Monteagle, Rebecca Van de Ven, Bernadette Lo, and Rebecca Murphy will present a personal perspective: enchanting chamber music by unique female composers of the 20th century.

Van de Ven, oboe, Murphy, flute, and Lo, piano, have gathered to present music of Lili Boulanger, Madeline Dring, Katherine Hoover, and Alyssa Morris. The afternoon will begin with “Four Personalities” by Alyssa Morris. These accessible pieces describe musically the Yellow, White, Blue, and Red personality types based on the Hartman Test. Reaching back historically, the Morris will be followed by three female arias from Mozart’s “Marriage of Figaro,” “Magic Flute,” and “Don Giovanni.” Following Mozart, Murphy will recount a Native American tale with a presentation of Katherine Hoover’s “Winter Spirits” on solo flute. Van de Ven and Lo will then perform seven songs by Lili Boulanger from the song cycle “Clairières dans le ciel,” which was written in 1914. These songs, while traditionally sung, translate well to the range and melancholy color of the oboe. The program will wrap up with a delightful, crowd pleasing “Trio for flute, oboe, and piano” by Madeline Dring. This three movement work explores fun soaring melodies with frequent meter changes, followed by a sweet and simple second movement in which the flute and oboe trade the melody back and forth. The final movement is a fast tempo, raucous piece reminiscent of circus music.

The concert is free and open to the public. Masks are required regardless of vaccination status.

Fall Vocal Showcase

On Friday, Nov. 12 at 7 p.m., the students of the Sewanee Voice Studio will present an exciting and eclectic concert of vocal works from the musical theatre, pop, folk, and classical repertoires. The performers, all students of Sewanee faculty Kerry Ginger and Erik Gustafson, will be joined by piano faculty Bernadette Lo. The concert will take place in Guerry Auditorium, and is open to all Sewanee students, faculty, and community members. Audience masking is required.

“This is a proud moment for the combined voice studios,” says Ginger. “Our students have worked hard all semester on a variety of repertoire, and are developing not only as vocalists but also as singing actors.” The voice students represent many majors and experience levels, she adds, and “all share a commitment to storytelling, craft, and musical excellence.” For Gustafson, the energy is palpable, especially following the pandemic: “Covid presented so many challenges for singing, and now we are ready to share and connect. We can’t wait to sing for you!”

From Adele to Sondheim, Simon and Garfunkel to Man of La Mancha, and Britten to Bring It On, the program draws on many traditions, all under one banner: connecting through song.

Exhibitions on Campus

“Impact and Influence, An exhibition of photographs” by Paul Caponigro, David Dennard and Pradip Malde, in the Museum Gallery, William R. Laurie Archives and Special Collections through Dec. 8, 1–5 p.m., Monday through Friday.

“Picking Up the Shift” by Donna Woodley and Karen Seapker, in the Carlos Gallery, Studio Art Building through Dec. 8, 8 a.m. to 5 p.m., Monday through Friday.

HOSPITALITY SHOP

SILENT AUCTION

Save our shop!

Saturday, Nov. 6 10:30-11:30 a.m.

Payment for winning bid by check or cash.

1096 UNIVERSITY AVE., SEWANEE, TN 37375

Made with PosterMyWall.com

New to the Mountain? Read what you have been missing!

<www.sewaneemessenger.com>



*Everywhere you look,
your donation works.*

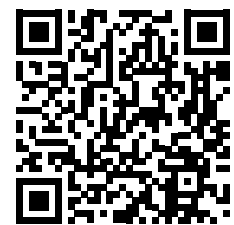
Goal: \$102,291

This year's goal will help 20 local organizations that have requested basic needs:
food, elder care, books, animal welfare, recreational spaces, children's education, and more.



Donate today!

PO Box 99 • Sewanee TN 37375 • sewaneecivic.org





Sewanee's women's soccer team beat Hendrix 2-1 on Saturday to go on to the semi-finals in the conference championship. Bea Richardson No. 6, celebrates her game tying goal in the first half. Photo by Lyn Hutchinson

Women's Soccer Rallies to Eliminate Hendrix in the SAA QuarterFinals

The University of the South women's soccer advanced to the semifinals of the 2021 Southern Athletic Association (SAA) Women's Soccer Tournament with a 2-1 come-from-behind victory of Hendrix College, Saturday afternoon from a rainy Puett Field.

Hendrix started the scoring early as Brianna Willis found Camy McKenzie's pass in the 12th minute for the early goal.

Almost 10 minutes later, Sewanee responded with a Bea Richardson goal from Kiera Giacomini off a corner kick to even the game at one goal apiece.

Gabby Elve netted the eventual game-winner in the 45th minute that gave the Tigers the lead for good.

Sewanee kept Hendrix in check in the second half, as the Warriors took two shots and none on goal.

Brianna Fee had four shots on goal to lead Sewanee, while Abbie Kleckley had two on target.

Hanna Judycki (6-2-1) stopped one shot in 90 minutes.

Volleyball Ends Regular Season with Dramatic Five-Set Triumph of Rhodes

The University of the South volleyball team concluded the regular season on Saturday with a home contest versus Rhodes College, and it did not disappoint. The Tigers edged the Lynx in five sets, Saturday inside Juhan Gymnasium.

Truly a see-saw match throughout, the first set saw a lot of ups and downs for both teams. Rhodes won five of the first six points as they had a 17-11 lead at one point.

Sewanee went on a strong run, winning the next eight points to lead, 19-17, but Rhodes came roaring back to regain the lead, 21-19.

The teams went back-and-forth from there, but it was Sewanee, thanks to kills by Ellie Pedersen and Laurel Burkhardt, that won the opening set, 30-28.

The Lynx evened the match at one set apiece with a 25-21 victory before Sewanee reclaimed the lead in the third set, 25-14.

The visitors fended off the hosts in the fourth set to force the deciding frame, 26-24.

Sewanee rolled in the fifth set, 15-10, to take the match. The Tigers posted a .625 hitting percentage (10-0-16).

Ellie Pedersen had a remarkable day for the Purple and White, as she set a new career-best in 20 kills and a .421 attack percentage (20-4-38). The senior surpassed her previous high of 15 set her freshman year against Centre on Sept. 18, 2018. The senior also added 1.5 blocks on the day.

Lilly Reilly dropped 18 kills on a .429 swing percentage (18-3-35) and added 12 digs.

Lexi Williams recorded 47 assists and two service aces, while Anna Ball contributed 13 digs.

Adele Cassidy led all defenders with 25 digs.

On the day, the Purple and White tallied a .251 swing percentage with 67 kills and just 22 errors.



Sewanee volleyball went five games to win against Rhodes on Saturday, the final game of the regular season. Photo by Lyn Hutchinson

Men's Soccer Advances to SAA Semifinals

The University of the South men's soccer team knocked out the 2-seed in Rhodes College, 1-0, in the quarterfinals of the 2021 Southern Athletic Association (SAA) Men's Soccer Tournament, Saturday afternoon from the Rhodes Soccer Field.

Rhodes had nine shots in the first half, and they limited the visitors to four shots, but the contest remained scoreless after 45 minutes of play.

Sewanee's defense stood tall in the second half. In the 60th minute, after a Sewanee yellow card was issued, JP Furman made a big save off a free kick.

However, after Rhodes committed a foul in the midfield, Sewanee's Connor Dail sent a free kick just to the left of the midfield stripe perfectly in the box. However, a deflection off the Lynx keeper had the ball roll into the back of the net for an own goal.

Evan Poole and Severin Velasco had two shots on target to pace the Sewanee offense.

JP Furman (8-6-1) secured the clean sheet with a career-best seven saves in full time.

Grady Has Remarkable Weekend at Maryville

The University of the South equestrian team wrapped up the fall slate on Oct. 23-24 at the Maryville Show from Scots Ridge. Sewanee wraps up the fall portion of the 2021-22 Intercollegiate Horse Shows Association (IHSA) schedule currently atop the Zone 5, Region 1 standings.

Nell Grady took home Reserve High Point Rider honors in Saturday's show. The freshman won the Limit Over Fences event and earned second in the Limit Flat class.

Sarah Buchholz took second in the Intermediate Over Fences class and fourth in the Open Flat.

Gigi Aiken secured third place in both the Open Over Fences and Open Flat sessions.

Grady improved her efforts from Saturday's class to secure High Point Individual Rider laurels on Sunday. The Andover, Mass. native won both the Limit Over Fences and Limit Flat classes.

Liza Shoaf won the Sunday portion of the Open Over Fences class, while Buchholz finished in second in the Intermediate Over Fences.

Aiken finished in second in the Open Flat and Open Over Fences events.

Caroline Gramig took second place in the Introductory class.

Sewanee currently holds the top spot in the Zone 5, Region 1 Rankings with 144 points, followed by Vanderbilt (64) and Middle Tennessee State (62).

Four Sewanee riders have qualified for the IHSA Regional Championships on March 6, 2022: Revie Atkinson (Novice Flat), Siena London (Intermediate Flat and Intermediate Fences), Sarah Buchholz (Intermediate Flat and Intermediate Fences) and Catherine Bratton (Novice Flat).

Russell L. Leonard

ATTORNEY AT LAW

Office: (931) 924-0447

Fax: (931) 924-1816

1016 W. Main St., Suite 3
Monteagle, TN 37356

rleonardlegal@gmail.com
www.rleonardlegal.com

Need a designated study space in your home? We are full of ideas. Let's talk...



Custom home remodeling begins with...

Joseph's Remodeling Solutions
A division of Sumner Solutions, LLC

Taking Quality to the Next Level
Licensed - Insured - Green Certified

931-598-5565

joseph@josephsremodelingsolutions.com
www.josephsremodelingsolutions.com

HOME GAMES

1:30 p.m., Saturday, Nov. 6, Football vs. Centre
6 p.m., Nov. 9, Women's Basketball vs. Covenant
6 p.m./7 p.m., Thursday, Nov. 11, SAS Middle School Basketball vs. Monteagle

7 p.m., Thursday, Nov. 11, SAS Swimming vs. Fayetteville, and Lincoln County

1 p.m., Saturday, Nov. 13, Football vs. Hendrix
6/7 p.m., Monday, Nov. 15, SAS Middle School Basketball vs. Swiss Memorial

6/7 p.m., Tuesday, Nov. 16, SAS Middle School Basketball vs. Pelham

YOUR LOCAL DEALER



Get Electricity Savings with Replacement Windows
Starting @ only \$135

We sell:

MARVIN

ANDERSEN

JW JELD-WEN

Installation Available

1765 Decherd Blvd.,
Decherd, TN
(931) 967-0020



HENLEY
MILLWORK FACTORY OUTLET
"Home of Quality Millwork"

HOURS: Mon-Fri 8 am-4:30 pm | Sat 8 am-noon | Closed Sun



Libby Neubauer placed third for varsity girls.

Schrader Finishes First in State Mountain Biking

The St. Andrew's-Sewanee mountain biking team concluded its fall season over the weekend of Oct. 23-24 in the Tennessee High School Cycling League State Championship race. The event was held at Cedar Hill Park in Madison, with more than 300 high school and middle school riders competing. Cedar Hill Park was a new venue for league racing in 2021, so riders took advantage of a course pre-ride on Saturday to check the route and enjoy riding trail features that included fast corner berms and small rollers. On Sunday, athletes raced multi-lap distances ranging from six to 16 miles on the fun and fast course.

Twenty SAS riders (middle school and high school) competed in the State Championship race. In middle school, Grayson Clark (sixth), Will Roberts (15th), and Dylan Bruscato (20th) earned top-20 finishes in the Boys sixth grade category. Harper Thompson put in another excellent personal effort to finish seventh out of almost 40 riders in the Boys seventh grade category. William Schrader added to his previous three-race winning streak with a first place finish in the Boys eighth grade category. Miren Colbert (seventh) continued her consistent performance throughout the race season in the Girls seventh grade category.

In the Freshman Boys category, Jack Hale (26th), Kieran McCrorey (28th), Hayden Kralj (44th), and Riley Caufield (48th) put out big efforts in their last race of the season. For Sophomore Boys, Elliott Benson (ninth), Cameron Crawford (13th), and Agus Rosety (39th) showed outstanding physical effort and mental focus in their race. In the competitive JV Boys category, four riders finished strong in the top 10: Patrick Murphy, fourth; Caleb Palmertree, seventh; Eli Wilson, ninth; Eli Thompson, 10th, with Jon Wert (32nd) also working hard for SAS. In Varsity categories, both Libby Neubauer (Varsity Girls) and AJ Clements (Varsity Boys) had outstanding performances to cap their 2021 season with third place finishes.

Several SAS riders had top five finishes overall for the race series final points awards, earning cumulative points for four out of five races over the entire season. Will Schrader led SAS riders for overall race standings with a first place finish in the Boys eighth grade category. Other SAS riders with high point totals for the season include Patrick Murphy (fourth, JV Boys), Caleb Palmertree (fifth, JV Boys), Libby Neubauer (fourth, Varsity Girls), and AJ Clements (third, Varsity Boys).

SAS finished the mountain biking season in fourth place out of 20 teams overall for high school competition and in fifth place out of 17 teams overall for middle school competition.

SAS head coaches Speed Baranco, Beth Pride Ford, and Michael Short are grateful to their SAS riders for their hard work and positive attitudes throughout the season. They especially recognize and express their appreciation for volunteer coaches Jill Mollica, Barbara Fox, Amy Neubauer, Abby Colbert, Eric Young, Matt Schrader, and Alex Neubauer, and for support from team families, the Sewanee community, SAS faculty and staff, and Woody's bike shop.

Because of efforts by the National Interscholastic Cycling Association (NICA), mountain biking is becoming a popular sport across the country for kids in middle school and high school. Future growth for interscholastic mountain biking will require community awareness and participation, trail accessibility, and financial support from individuals and businesses. More information about how to support interscholastic mountain biking can be found on the national website <www.nationalmtb.org>. Community members and local businesses interested in sponsoring the Tennessee league may also find information at <www.tennesseemtb.org>.

Women's Swimming & Diving Wins Sewanee Invitational

The University of the South swimming and diving teams hosted the 20th annual Sewanee Invitational on last Friday and Saturday, and the women's squad secured the top spot at the meet.

Mary Louise LeMieux won the 100 freestyle with a 55.13-second performance. She finished second in the 1,650 freestyle (18:30.60) and the 200 freestyle (1:58.77). She also clocked a 1:03.92-mark in the 100 IM.

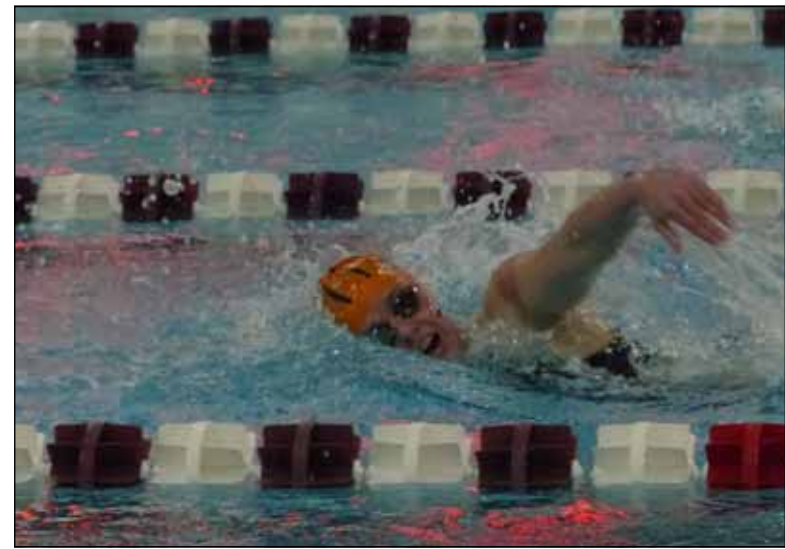
Kate Mabry won the 200 IM with a 2:18.20. She earned second place finishes in the 50 backstroke (28.46), the 100 backstroke (1:01.60) and the 200 backstroke (2:14.70).

Aurelia Willett swam to a third place finish in the 100 back (1:02.37) and fourth place results in the 50 back (28.97) and the 200 IM (2:19.86).

Olivia Durfee (236.5), Mary Butler (227.05) and Sarah MacKinnon (207.00) were the top-three on the one-meter board. Margaret Cobb (217.30), MacKinnon (203.40) and Butler (200.60) were the leaders on the three meters.

Aurelia Willett, LeMieux, Jackie Brettschneider and Anna Hawkins Dulaney won the 100 free relay with a 48.47-second mark.

In the 200 medley relay, Mabry,



Freshman Mary Louise LeMieux won first place in the 100 free and second places in the 1650 and the 200 free. Photo by Lyn Hutchinson

Élodie Cardon-Cole, Maddy DuBois and Morgan Howat came in second with a 1:54.76. In the 200 free relay, LeMieux, Sarah Mehany, DuBois and Howat also had a second place time of 1:44.25.

Anthony Carbone posted a second place finish in the 200 individual medley with a 2:04.48 and third place finishes in the 50 breaststroke (28.25) and 100 freestyle (47.58). He also timed in the 100 IM (55.93) and the 200 free (1:45.14).

Peter Heck (133.10) and Noah Young (121.66) led the Tigers on the one-meter diving boards.

Max Peraza, Christian Snead, Patrick Eikenhorst and Heck took third place in the 100 free relay with a 48.48-second mark.

In the 200 medley relay, George Mabry, Carbone, Wiley Reddick and Daniel Shrader came in third place with a 1:43.18. In the 200 free relay, Snead, Peraza, Eikenhorst and Heck posted a 1:45.91 time for third overall.

STORIES and MEMORIES
FROM
Depot Village
TO
Downtown
CHRONICLING 150 YEARS

Conversation with Meg Beasley & Mary O'Neill
Monday • November 8 • 4:00 p.m.
St. Mark's & St. Paul's • Kennerly Hall

SPONSORED BY THE SEWANEE TRUST FOR HISTORIC PRESERVATION



Dayton



Liberty

Pets of the Week

Meet Dayton & Liberty

Dayton was found with his siblings on the side of the road at only six weeks old, and was brought to us by a good Samaritan in Franklin County. He's an adorable black and white shorthair tuxedo cat. He's very friendly and likes to play or to be cuddled. Dayton has spent most of his kitten life in the shelter, and would love a chance to grow up in a real home. He's up-to-date on his shots, FIV/FelV negative, and neutered. He's a young guy at five months old, and would love to have some humans to call his own. If you are interested in adopting sweet Dayton, please visit <www.animalharbor.org/adoption-policy>.

You have never seen a kitten as unique as Liberty. Found injured around the Fourth of July and taken to Town and Country Vet, she found her way to Animal Harbor after she was all fixed up. The bob-eared, bobtail Liberty is an amazing jumper—she's a joy to watch. Agile and acrobatic, this leggy cat likes leaping but has an equal affinity for laps. When you take Liberty home, you won't need to pursue happiness; you will have found it in her. Liberty is a female domestic shorthair kitten who is up-to-date on vaccinations, spayed, and microchipped. She wants freedom to ring. If you are interested in adopting Liberty, please visit <www.animalharbor.org/adoption-policy>.

Animal Harbor is located at 56 Nor-Nan Rd., off AEDC Road, in Winchester. Call Animal Harbor at (931) 962-4472 for more information and check out the other pets at <www.animalharbor.org>.

Thank you for reading the Messenger!

State Park Offerings

Please note: To confirm that these events will occur as listed go to <<http://tnstateparks.com/parks/events/southcumberland/#/?park=south-cumberland>> or call (931) 924-2980. Please note that all programs, events and tours require masks for all participants.

Friday, Nov. 5

Ranger's Ramblings (\$5/Adults, 12/under free) (Registration closes at midnight the day before the event. Please preregister.)—Meet Park Ranger Mark Greenwood at 2 p.m. CDT at Stone Door Ranger Station, 1183 Stone Door Rd., Beersheba Springs, for a chat. The topic will be "What does it take to be a Ranger at Savage Gulf?" Check back in the future for different topics. Note: cancellations must be made no later than 48 hours prior to the program's scheduled conclusion in order to receive a refund. Fee-based programs help support Tennessee's State Parks.

Saturday, Nov. 6

Rattlesnake Point/Savage Falls Hike (\$10/Adults, \$5/12+under)—Meet Park Ranger Kristin Willis at 9:45 a.m. CDT at Savage Gulf Ranger Station, 3157 S.R. 399, Palmer, for a 5-mile round-trip hike with moderate elevation change, visiting Savage Falls first and then hiking to Rattlesnake Point to enjoy the cool weather and changing leaves. Please bring lunch, snacks, water, weather-appropriate clothing and sturdy closed-toe shoes.

Saturday, Nov. 13

Savage Falls Fall Color Hike (\$10) (Please pre-register at the link above.)—Meet Park Ranger Kristin Willis at 8:45 a.m. CST at Savage Gulf Ranger Station, 3157 S.R. 399, Palmer, for a guided moderate 3-mile roundtrip hike to Savage Falls, and see how many colors you can find in Nature if you take the time to notice them. Please wear sturdy shoes and weather-appropriate clothing, and bring snacks and water, as there will be a break at the Falls. This is a great hike for children and families.

The South Cumberland State Park Visitors' Center is located on Highway 41 South between Monteagle and Tracy City and is open 8 a.m. to 4:30 p.m. seven days a week. For more information call (931) 924-2980.

Hazardous Waste Collection

The Franklin County Solid Waste Management facility on Joyce Lane will have its annual Hazardous Waste Event from 8 a.m. to 1 p.m., Saturday, Nov. 13.

Hazardous household waste is defined as corrosive, flammable, toxic or reactive materials used in your home, car or truck, garden and lawn, such as:

Household Cleaners—drain openers, oven cleaners, wood/metal cleaners and polishes, toilet bowl cleaners, disinfectants;

Automotive Products—fuel additives, grease/rust solvents, air conditioning refrigerants, starter fluids, auto body putty, coolants, carburetor/fuel injector cleaners;

Lawn/Garden Chemicals—fungicides, herbicides and pesticides;

Home Maintenance Chemicals—oil-based paint, paint thinner, wood preservatives, paint strippers/removers, adhesives;

Miscellaneous—fingernail polish remover, pool chemicals, photo processing chemicals, medicines/drugs go to the Sheriff's Department, reactive aerosols, compressed gas, mercury thermometers and thermostats;

Accepted daily at Joyce Lane: TVs and other electronics, fluorescent light bulbs, computers and accessories, dried latex paint, antifreeze, motor oil, home use needles, batteries.

No explosive, ammunition, radioactive, or medical waste materials will be accepted.

For more information call (931) 967-1139 or go to <www.ISWArecycle.net>.

Nature Journaling Continues

The Sewanee Herbarium-sponsored nature journaling group meets 9–11 a.m., on Thursdays, at Stirling's Coffee House. Stirling's is located on Georgia Avenue.

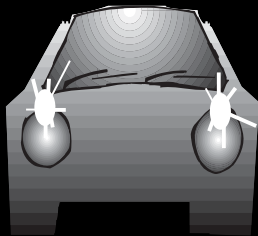
Bring a notebook (preferably small and unlined), a pen or pencil, and something to sit on if you wish. Come as early or as late as you like and stay for as long you like. For more information email <mpriestley0150@gmail.com>.

WEATHER

DAY	DATE	HI	LO
Mon	Oct 25	70	44
Tue	Oct 26	58	42
Wed	Oct 27	68	51
Thu	Oct 28	56	46
Fri	Oct 29	48	47
Sat	Oct 30	50	45
Sun	Oct 31	60	45

Week's Stats:
Avg max temp = 59
Avg min temp = 46
Avg temp = 52
Precipitation = 2.23"

*Reported by Sandy Gilliam
Domain Ranger*



TRAFFIC REMINDER

It is state law to have your headlights on in fog and rain.

NATURENOTES

by Yolande Gottfried



Photo by John Palisano



Photo by MarthaLee McCarthy



Photo by Deborah Tucker

Turtles, Turtleheads and Ichneumon

John Palisano followed up on previous Nature Note about box turtles with a photo of one eating a mushroom. He writes: "I have attached the box turtle near the mushroom it was eating. While the turtle never withdrew its head into its shell, it would not eat any more while I had the camera focused on it."

From turtles to turtleheads: **MarthaLee McCarthy** spotted a single White Turtlehead last week at Lake Cheston, blooming near the edge of the water. This is one of our latest blooming wildflowers, but this seems late even for the turtlehead. I am glad to know there is still one there.

Deborah Tucker had an ichneumon wasp land near her recently and got a great photo. It is in the same order as wasps, bees, and ants but it belongs to a different family from the stinging wasps. That scary-looking appendage is an ovipositor. These larvae of these giant ichneumons are parasitic on the larvae of another type of wasp, the Pigeon Horntail, which feed on decaying wood. The ichneumon wasp uses its ovipositor to reach into the wood and lay its eggs on the other wasp's larvae. "Big fleas have little fleas upon their backs to bite 'em, and little fleas have lesser fleas and so ad infinitum."

Messenger Classifieds

EMPLOYMENT

CUSTODIAN: Regular cleaning of church buildings, and some moving/setup of tables and chairs. Must be able to lift at least 40 pounds. Ability to perform minor interior and exterior maintenance preferred. Full COVID vaccination and compliance with church masking policies required. Approximately 12-15 hours per week; specific workdays and times arranged with supervisor. Hourly rate based on ability and experience. Call the Parish of St. Mark & St. Paul at (931) 598-5926.

HIRING: Looking to hire handy, dependable worker to help with carpentry and other construction workload. Call to schedule interview. Qualified hard workers only. \$20/hr to start D.O.E. (931) 203-4684.

HIRING: Starting pay \$12/hour. Benefits include paid vacation, paid holidays, 401K. This is a PART TIME position, 31 hours per week. You will earn your Chiropractic Therapy Assistant license in one year while you are trained with an on the job internship. Position includes hands on therapy with patients while multi-tasking with other job responsibilities. Our team is looking for that individual that is high energy, highly motivated, a team player, and loves working with people in a busy environment. Fax resumes to 931-962-1988, email to office-manager@shullchiropractic.com, or drop off at 1025 South College Street, Winchester, TN.

ENGINE REPAIR

SARGENT'S SMALL ENGINES: Repairs to All Brands of Equipment: Lawn mowers (riding or push), String trimmers, Chainsaws, Chainsaw sharpening. New saw chains. Pickup and Delivery Available. (931) 212-2585, (931) 592-6536.

FOR RENT

FOR RENT: Furnished office space, across street from Mountain Goat Market. High-speed internet available. Partin Professional Building, 23 Main St., Monteagle. (931) 580-4538.

Advertising in the Messenger works! Email <ads@sewaneemessenger.com>

FOR SALE

FIREWOOD FOR SALE: You pick up, \$50/rick - we will load it. Delivered and stacked, \$100/rick. Average 16-20 inches. (423) 322-7639 or (931) 212-2585.

FOR SALE OR RENT: Commercial, 1/2-acre lot, road frontage, at corner of 212 E. Main St. and 12 Payne St. in Monteagle. Marion County. Property includes an 1850-s/f manufactured home with four offices and two baths. Plenty of parking. \$239,000 or \$1500/mo. lease. Email <drp4421@gmail.com> or call (931) 924-7253.



University Farm
2022 Goat Calendars
ORDER HERE:
<https://bit.ly/GoatCal2022>

LAWN CARE

CHAD'S LAWN & LANDSCAPING
-FREE ESTIMATES-
* Lawn care & Design (Mulch & Planting)
ALSO: * Tree Trimming & Removal
* Pressure Washing * Road Grading
* Stone Patio/Fireplace * Garden Tilling
* Leaf Pickup & Blowing
(931) 308-5059

EAGLE LANDSCAPING & LAWN MAINTENANCE CO.
Now Offering Specials for the WINTER!
We offer lawn maintenance, landscaping, hedge/tree trimming & more!
Please call for your free estimate
(931) 598-0761 or (931) 636-0383

LONG'S LAWN SERVICE
• landscaping & lawn care
• leaf removal • mulch
Local references available.
Jayson Long
(931) 924-LAWN (5296)

LOCAL SERVICES

MASSAGE
Regina Rourk Childress
Licensed Massage Therapist
www.reginarourk.com
- GIFT CERTIFICATES -
(931) 636-4806

MARK'S HOME REPAIR
KITCHEN AND BATH REMODELING
Insured. Decks, Roofing, Electrical, Plumbing, Drywall, Tile & Hardwood Floors, Outbuildings, Pressure Washing.
MARK GREEN, owner
931-636-4555 | mdgreen41@gmail.com

TaiChi Class
Monday & Wednesday
9-10 am
High Vibes Healing
Country Mart, Monteagle



Lyn Hutchinson
PHOTOGRAPHY
lynhutchinson.smugmug.com

NEW HOURS! VILLAGE LAUNDRY and DRY CLEANING is now open from 9 a.m.-4 p.m. on Mondays, and from 7 a.m.-2 p.m. Tuesdays, Wednesdays, Thursdays and Fridays. (931) 463-2045. Come see us!

King's Tree Service
Topping, trimming, bluff/lot clearing, stump grinding and more!
Bucket truck or climbing
Free wood chips with job
Will beat any quoted price!
Satisfaction guaranteed!!
-Fully licensed and insured-
kingstreeservice.com
Call (931) 598-9004-Isaac King

MESSENGER DEADLINES

News and Calendar:

Tuesday, 5 p.m.

Display Advertising:

Monday, 5 p.m.

Classified Advertising:

Wednesday, noon

Please note the office is currently closed to visitors. We are monitoring the phone and emails.

LOCAL SERVICES

GARMENT HEMMING: Hand-made wildlife greeting cards. Embroidered scarves. Call Bonnie Gilliam, (931) 691-1366.

CHARLEY WATKINS
PHOTOGRAPHER

Sewanee, TN
(931) 308-7920

PUBLIC NOTICE

NOTICE: The Sewanee Utility District of Franklin and Marion Counties Board of Commissioners is scheduled to meet at 5 p.m., Tuesday, Nov. 16, at the utility office on Sherwood Road. If a customer is unable to attend but wishes to bring a matter to the board, call 598-5611, visit the office, or call a board member. Your board members are Doug Cameron, Randall Henley, Ronnie Hoosier, Charlie Smith and Paul Evans.



WHERE DO I RECYCLE THIS?

Special Garbage:

Items for drop off only at Franklin County Solid Waste Management, 419 Joyce Lane, Winchester:

Electronics
Computers and Monitors
Televisions
All Other Electronics
Ink Cartridges
Rechargeable Batteries

Special Waste:

Waste Oil and Waste Antifreeze: Used oil (oil must be oil only and not contain any gas, water or antifreeze) and antifreeze is collected for recycling at Franklin County Solid Waste Management located on Joyce Lane in Winchester and at the following Convenience Centers: Alto, Capital Hill, Center Grove, Cowan, Estill Springs, Lexie Crossroads, Old Salem, Sewanee and Winchester Springs.

Don't clog up your pipes and sewer lines; take your used cooking oil to 419 Joyce Lane, Winchester.

WIPE CLOG PIPES

They may be flushable but the pipes say



ALL WIPES for FACE, BODY & BEHIND must go in the TRASH.



Do your part to avoid costly plumbing headaches at home and for the equipment at Sewanee Utility District.

GLASS RECYCLING GUIDELINES

■ **Recycle empty glass containers only.**
Remove caps and lids.

■ **Keep it clean.**
No food residue.
No ceramics, mirrors, lightbulbs, drinking glasses.



■ **Separate by color:**
■ BLUE/GREEN
■ BROWN
■ CLEAR

■ **Do not leave items outside of bins. Do not leave trash and boxes behind.**

Glass recycling bins are available on Kennerly Avenue in Sewanee, behind the Facilities Management compound. This effort in landfill waste reduction and glass recovery is provided by the University of the South.



BARDTOVERSE

by Phoebe Bates

November

Much have I spoken of the faded leaf;
Long have I listened to the wailing wind,
And watched it ploughing through the heavy clouds,

For autumn charms my melancholy mind.

When autumn comes, the poets sing a dirge:
The year must perish; all the flowers are dead;
The sheaves are gathered; and the mottled quail
Runs in the stubble, but the lark has fled!

Still, autumn ushers in the Christmas cheer,
The holly-berries and the ivy-tree:
They weave a chaplet for the Old Year's bier,
These waiting mourners do not sing for me!

I find sweet peace in depths of autumn woods,
Where grow the ragged ferns and roughened moss;

The naked, silent trees have taught me this,—
The loss of beauty is not always loss!

-Elizabeth Drew Stoddard, November

ADAPTIVE LANDSCAPE LIGHTING

TRUSTED | PERSONALIZED | 931.952.8289

Design | Install | Maintain

The Sewanee institution since 1974

Shenanigans

RESTAURANT

~~~~~

**PUB & GRILL / PIZZA / DELI / CATERING**  
**CALL FOR TAKE-OUT OR DELIVERY**  
**931-598-5774**

**OPEN EVERY DAY 11 a.m. to 11:30 p.m. (later on weekends!)**  
**12595 Solace M Freeman Hwy, Sewanee, TN**  
**(on the corner of University Ave and 41A)**

**FIND YOUR HAPPY PLACE...AT SHENANIGANS**

# Community Calendar

## Friday, Nov. 5 • Homecoming

- 9 a.m. CAC office open, until 11 a.m.
- 9 a.m. Yin Yoga, Anneli, High Vibes Studio, Country Mart, Monteagle
- noon Vinyasa Yoga, Anneli, High Vibes Studio, Monteagle

## Saturday, Nov. 6

Set clocks back one hour at bedtime, Daylight Saving Time ends at 2 a.m. Sunday

- 9:30 a.m. Flow Yoga, Anneli, High Vibes Studio, Country Mart, Monteagle
- 10 a.m. Hospitality Shop open, until 2 p.m.; Silent Auction 10:30–11:30 a.m.
- 11 a.m. Welcome to the South Music Festival, downtown South Pittsburg, until 5 p.m.
- 3 p.m. Chamber Music Concert, Van de Ven, Lo, Murphy, Morton Memorial UMC, 322 W. Main St., Monteagle
- 5 p.m. Taste of Italy Dinner, (\$10 adults/\$5 under 12), Good Shepherd Parish, 2037 Decherd Blvd., until 7 p.m.

## Sunday, Nov. 7 • CAC Pantry Sunday

- 1:30 p.m. Zumba, Ren, Legion Hall
- 3 p.m. Children's Yoga, Ren, Legion Hall
- 4 p.m. Hatha Yoga, Helen, Community Center

## Monday, Nov. 8

- 9 a.m. CAC office open, until 11 a.m.
- 9 a.m. Coffee With the Coach
- 9 a.m. Pilates, intermediate, Legion Hall/Zoom, <kim@bodyworksyouniversity.com>
- 9 a.m. Tai Chi, Shaonian, High Vibes Studio, Country Mart, Monteagle
- 10:30 a.m. Chair Exercise, Ruth, Senior Center, until 11:15 a.m.
- 11 a.m. Sewanee Woman's Club, Tablescapes, St. Mary's Sewanee; lunch at noon
- noon Pilates, Stretch/Straighten, Legion Hall/Zoom, <kim@bodyworksyouniversity.com>
- 3:30 p.m. Children's Yoga, Ren, Legion Hall
- 4 p.m. Flow Yoga, Anneli, High Vibes Studio, Country Mart, Monteagle
- 4 p.m. Sewanee Trust for Historic Preservation, History of downtown Sewanee, Beasley/O'Neill, Kennerly Hall, St. Mark & St. Paul
- 6 p.m. FC School Board, 215 S. College St., Winchester

## Tuesday, Nov. 9

- 8 a.m. GC Food Bank, Tracy City, drive-through pick-up only, until 10 a.m.
- 9 a.m. CAC office open, until 11 a.m.
- 9 a.m. Pilates, beginners, Legion Hall/Zoom, <kim@bodyworksyouniversity.com>
- 10 a.m. Hospitality Shop open, until 1 p.m.
- 10:30 a.m. Flow Yoga, Anneli, High Vibes Studio, Country Mart, Monteagle
- 10:30 a.m. La Leche League, Zoom, email <LaLecheLeaguesewanee@gmail.com>
- 11 a.m. Zumba, Ren, Legion Hall
- noon Pilates, intermediate, Legion Hall/Zoom, <kim@bodyworksyouniversity.com>
- 4:30 p.m. S. Cumberland Farmers' Market, pickup, Community Center, until 6:30 p.m.
- 4:30 p.m. Vinyasa Yoga, Anneli, High Vibes Studio

- 5:30 p.m. Pilates, beginners, Legion Hall/Zoom, <kim@bodyworksyouniversity.com>

## Wednesday, Nov. 10

- 9 a.m. CAC office open, until 11 a.m.
- 9 a.m. Pilates, intermediate, Legion Hall/Zoom, <kim@bodyworksyouniversity.com>
- 9 a.m. Tai Chi, Shaonian, High Vibes Studio, Country Mart, Monteagle
- 10:30 a.m. Chair Exercise, Ruth, Senior Center, until 11:15 a.m.
- 11:30 a.m. EQB, St. Mary's Sewanee; lunch at noon
- 12:30 p.m. EQB Lead, Stephen Alvarez
- 5:30 p.m. Hatha Yoga, Helen, Community Center

## Thursday, Nov. 11 • Veterans Day

- 8 a.m. Flow Yoga, Anneli, High Vibes Studio, Country Mart, Monteagle
- 8 a.m. Monteagle-Sewanee Rotary, LaBella Pearl's
- 9 a.m. CAC office open, until 11 a.m.
- 9 a.m. Nature Journaling, Priestley, more info, <mpriestley0150@gmail.com>
- 9 a.m. Pilates, beginners, Legion Hall/Zoom, <kim@bodyworksyouniversity.com>
- 10 a.m. Hospitality Shop open, until 1 p.m.
- 10 a.m. Kundalini Yoga, Pippa, Zoom, <pippa-browne64@gmail.com>
- noon Pilates, intermediate, Legion Hall/Zoom; <elizabethlsweeting@gmail.com>
- 1:30 p.m. Folks@Home Caregivers' Group, St. James outdoor pavilion, Midway Road
- 3:30 p.m. Sewanee Emeritus Association, Patterson, Torian Room, duPont Library
- 5:30 p.m. Pilates, beginners, Legion Hall/Zoom, <kim@bodyworksyouniversity.com>
- 7 p.m. Ecstatic Dance, Anneli, High Vibes Studio, Country Mart, Monteagle

## Friday, Nov. 12

- 9 a.m. CAC office open, until 11 a.m.
- 9 a.m. Yin Yoga, Anneli, High Vibes Studio, Country Mart, Monteagle
- noon Vinyasa Yoga, Anneli, High Vibes Studio, Country Mart, Monteagle
- 7 p.m. Sewanee Voice Studio student recital, Guerry Auditorium

## Local 12-Step Meetings

### Friday

- 7 p.m. AA, open, Christ Church, Tracy City

### Saturday

- 7 p.m. NA, open, Decherd United Methodist

### Sunday

- 6:30 p.m. AA, open, Morton Memorial, Wesley House porch, Monteagle

### Monday

- 5 p.m. Women's Recovery, Brooks Hall
- 7 p.m. AA, open, Christ Church, Tracy City

### Tuesday

- 7 p.m. AA, open, First Baptist, Altamont

### Wednesday

- 10 a.m. AA, closed, Clifftops, (931) 924-3493

- 7 p.m. NA, Decherd United Methodist

### Thursday

- 7 p.m. Al-Anon, First UMC, Winchester

# No Time to Cook?

Let St. Mary's Sewanee help you with your Thanksgiving meal needs.

Get an entire meal  
or just a pie or side dish.



Traditional turkey and dressing  
family meal, serves up to 6 people,  
complete with sliced turkey breast,  
dressing, gravy, green bean  
casserole, sweet potato casserole,  
cranberry relish and rolls: \$80.00

Deep dish Southern-style  
pecan pie: \$12.00  
Traditional pumpkin pie: \$10.00

Call St. Mary's Sewanee with  
orders or questions.



**Deadline for orders: Friday, Nov. 19 1:00**

Pick-up will be 10 am - 4 pm, Tuesday, Nov. 23

9:00 am - 12 pm, Wednesday, Nov. 24

Orders are limited. Call 931-598-5342



## ELECTRONIC SECURITY SYSTEMS

**VIDEO SURVEILLANCE  
BURGLAR ALARMS  
FIRE ALARMS  
MONITORING SERVICES  
TV ANTENNAS**

Member of:



47 years experience

931 924 3216 office  
931 273 9814 cell  
800 764 7489 toll free  
www.monsecurity.com

Serving Grundy, Franklin,  
Marion Counties,  
And surrounding areas  
Tennessee license 2188

# New to the Mountain?

Read what you have been missing!

<www.sewaneemessenger.com>

Follow us on Facebook