



THE SEWANEE MOUNTAIN MESSENGER

Volume XXXVIII No. 33

Published as a public service since 1985

Friday, Sept. 2, 2022

Franklin County Schools Abandon \$4.4 Million Activity Center Plans

by Leslie Lytle, Messenger Staff Writer

At an Aug. 30 emergency meeting, the Franklin County School Board approved Director of Schools Stanley Bean's recommendation to "repurpose ESSER money to another fund." The state approved allocation of the \$9.7 million Elementary and Secondary School Emergency Relief III funds included \$4.4 million for an Activity Center located at Franklin County High School. [See Messenger, June 11, 2021] The recommendation to "repurpose" the ESSER III money came on the heels of an Aug. 29 vote by the Franklin County Commission rejecting the school budget, with the primary objection being the \$4.4 million earmarked for the Activity Center.

The commission previously rejected the school budget Aug. 1. Commissioner David Eldridge argued the ESSER money could be used for the Energy Efficiency

Upgrade the school system had contracted for with Trane Technologies. This would free up the Trane money for school employee raises, Eldridge argued. ESSER III money cannot be used for teacher and employee raises.

The commission refusal to approve the budget, meant the raises allocated to school employees were on hold. Bus drivers had lobbied for and received a \$10,000 per route increase by the provisions of the 2022-2023 school budget. Protesting the commission's refusal to approve the budget, some of the bus drivers did not run their routes.

In her motion to approve Bean's recommendation, board member Christine Hopkins said, "Our school staff, our school bus drivers deserve a raise."

The board also voted to amend the 2022-2023 budget, removing

(Continued on page 5)

Monteagle Hammers Out Rules for Accessory Dwellings

by Leslie Lytle
Messenger Staff Writer

At a joint Aug. 29 workshop, the Monteagle Town Council and Planning Commission hammered out the details of a proposed ordinance amendment allowing both attached and detached Accessory Dwelling Units (ADU). Commonly known as mother-in-law suites, these small, secondary residences on the same lot as the principal residence include a kitchen, bath, and sleeping quarters. At present, Monteagle does not allow ADUs. In the proposed amendment, rules for attached and detached ADUs are mostly the same, but with some differences in size regulations.

In size, attached ADUs cannot exceed 700 square feet or 30 percent of the principal residence, whichever is less. Detached ADUs cannot exceed 700 square feet or 50 percent of the principal

(Continued on page 5)



Firefighters from Sewanee, Monteagle, South Pittsburg Mountain, and Beersheba Fire Departments were certified in vehicle extrication with state instructor and Monteagle Assistant Chief Kevin Gilliam. The departments wish to thank Ikard Towing for providing the junk cars, without which the course would have been impossible.

Monteagle: Runoff Concerns, Proposed Flooding Ordinance

by Leslie Lytle, Messenger Staff Writer

At the Aug. 29 Monteagle Town Council meeting, city engineer Travis Wilson presented results from the Water and Sewer Capacity Study underway since February 2021. Addressing flooding on July 30 from stormwater runoff at the RBT/Petro construction site, Wilson recommended adopting a "flooding ordinance."

"It makes sense to provide overall protection of flooding throughout the whole drainage basin and the town," Wilson said. Consultation is underway with the Municipal Technical Advisory Service. Not satisfied with the strategy, residents expressed concern about hydrocarbons entering the drinking water supply from untreated storm water shed by the Petro truck stop once completed.

Summarizing the Capacity Study, Wilson said the water supply had 70 percent remaining capacity, however, lower capacity existed in some areas depending on density of development and distance from the water plant. The sewer system study showed 49 percent remaining capacity in dry weather. "The catch is wet weather," Wilson said. The sewer system could handle a 1-inch storm in 24 hours, but in a 2-inch storm rainfall exceeded capacity by 200,000 gallons and in a 3-inch storm rainfall exceeded capacity

by 400,000 gallons. "What that means is you have excessive I & I," Wilson said, explaining I & I referred to inflow and infiltration from storm water entering the sanitary sewer system. He said sewer lines from the Monteagle Assembly and Tracy City were the two largest "triggers" for I & I and recommended additional flow monitoring and "TV" examination of the lines during wet weather to determine what areas needed repair. Monteagle has qualified for grant funding from the Appalachian Regional Commission and American Recovery Plan (ARP) for sewer rehabilitation.

Responding to concerns about runoff entering Laurel Lake from the July 30 flooding, Wilson read an Aug. 5 correspondence from the Tennessee Department of Environment and Conservation (TDEC) which stated, "Cloudy water was observed flowing from the lowest sediment track, but there were no sediment deposits off site." TDEC regulates pollution, not flooding, Wilson stressed. He said the 15-acre Petro site accounted for only 1 percent of the runoff into the 1,200-acre Laurel Lake drainage basin.

Several residents disagreed with the assessment, citing the red hue

(Continued on page 5)



New students gathered outside of All Saints' Chapel for a group photo.
Photo by Lyn Hutchinson



Signing of the Honor Code at All Saints' Chapel.
Photo by Lyn Hutchinson

Community Chest Applications Available

For more than a century, the Sewanee Civic Association (SCA) has overseen the distribution of grants to nonprofit organizations across the South Cumberland Plateau. The SCA is delighted to sponsor the 2022-23 Sewanee Community Chest grant cycle. All nonprofits that benefit the community are encouraged to apply.

The 2022-23 funding application can be downloaded from the website at <<http://sewanee.org>>. The application deadline is Friday, Sept. 16, 2022. Grant funds will be distributed starting April 2023, contingent on funding availability.

This year, organizations can apply online with this form <<https://forms.gle/fxGNMW2cgSv7DsVx6>>. It does require you to have a Gmail email account.

The SCC is a nonprofit organization and relies on funding from the community in order to support charitable programs throughout the greater Sewanee area. As the 2022-23 grant cycle begins, the SCC is also kicking off its yearly fundraising campaign.

The SCA urges everyone who benefits from life in this community, whether you live, work, or visit, to give generously. Donations are tax deductible. Contributions, payroll deductions and pledges are accepted at any time at P.O. Box 99, Sewanee, TN 37375. You can also make a donation through PayPal Giving.

For more information, email <sewaneecommunitychest@gmail.com>.

P.O. Box 296
Sewanee, TN 37375

Letters

THANKS TO THE SUMPTER FAMILY

To the Editor:
This amazing and talented family presented the highlights of their year long circumnavigation of the Eastern United States this past weekend. The four Sumpters bought a boat (The Willing) and launched from Scottsboro and returned a year later. They are official “Loopers” now. The teenagers kept up with their school work while Mom and Dad continued to run their business remotely. Along the way, they toured 27 museums and exhibitions, explored New York and Chicago, and visited isolated islands in bays and off the mainland. They endured a boat jam in the Erie Canal, choppy waters in the Chesapeake Bay and a tricky boat docking along the Hudson.

Thanks for sharing this adventure with the Sewanee Community and Welcome Home!

*Stephen Burnett
Sewanee*

SHANNONHOUSE TRIBUTE

To the Editor:
I had the honor of working as a chauffeur for the late Mr. Don Shannonhouse, and I want to give thanks for the experience, and for his life. He talked, and I listened, to his stories, experiences, and inspirations.

As you soldiers all tell us, you don’t die, you regroup on the Other Side. Thank you, sir!

*Carl P. Hill
Sewanee*

SPECIAL PLACES PROJECT

To the Editor:
On behalf of South Cumberland Community Fund, I wish to publicly thank members of the community who have helped install the panels on which our Special Places Project mural will be painted. Buck and Leslie Parson helped with installation of the poles holding the structure up. Both Mountain T.O.P. and a group of students from the PRE Program at the University of the South helped paint and install the panels. In addition, John Reed of Coalmont and Rick Wright of Tracy City (and an SCCF board member) were instrumental in

getting the panels installed. With community input, SCCF will be installing the mural as the inaugural “Special Places Project” in celebration of the 10th anniversary of our partnership with organizations across the South Cumberland Plateau. It will celebrate what makes the Plateau special, with ideas for images submitted by the public.

We hope to schedule these conversations later this summer and fall and will post the plans as they develop.

For now, we are most grateful for the interest and involvement of friends and neighbors from Tracy City, Coalmont, Cumberland Heights, and Sewanee (along with Sewanee students from far and wide).

Tom Sanders, Executive Director, South Cumberland Community Fund

MAKE A DIFFERENCE DAY

To the Editor:
Thank you to everyone who turned up to help make SES's Make a Difference Day a rousing success! The volunteer efforts of children and adults alike led to a snappy-looking schoolyard, just in time for the start of school. We send our special thanks to King’s Tree Service for providing mulch. Together, our community really made a difference.

The Sewanee Parent Organization

THANK-YOU FROM THE SPO

To the Editor:
The Sewanee Parent Organization (SPO) wishes to thank the Community Chest for our 2022 grant. As we discussed at the recent Sewanee Elementary School open house, the Community Chest is the major source of funding for our support group. This continued support allows us to provide enrichment programs like Friday School, field day, and new library books. Each first time student is provided with a tiger tee as a warm welcome to our school family.

In addition to the Community Chest, we also want to thank each community member who supports the Sewanee Civic Association which makes this gift possible.

Thank you on behalf of SPO and Sewanee Elementary.

SPO Board

University Job Opportunities

Exempt Positions: Archivist, Library & Information Technology Services; Area Coordinator, Student Life, Residential Life; Assistant Men’s and Women’s Tennis Coach, Athletics; Assistant Softball Coach, Athletics; Director of Digital Presence, University Advancement; Director, Environmental Stewardship & Sustainability, Environmental Services; Energy Specialist, Facilities Management; Purchasing Manager, Business Services; University Registrar, Student Success.

Non-Exempt Positions: Assistant Manager, Sewanee Dining; Baker, Sewanee Dining; Barn/Stable Worker, Equestrian Center; Campus Security Officer (Part-Time), Sewanee Police Department; Catering Logistics Coordinator, Sewanee Catering; Catering Team Lead, Sewanee Catering; Childcare Provider, University Child Care Center; Custodian (Multiple Positions)—Facilities Management, Building Services; Faculty Technology Coordinator, Library & Information Technology Services; First Cook, Sewanee Dining, Sewanee Dining; Food Service Worker, Tiger Bay Pub, Sewanee Dining; GIS and Database Technician, Facilities Management; Golf Course Greenskeeper, Grounds and Landscaping; Golf Course Greenskeeper (10-Month Position), Grounds and Landscap-



— THE SEWANEE MOUNTAIN —
MESSENGER

Published as a public service to the community since 1985, this newspaper is printed on Fridays, 46 times a year. Free of charge, copies are distributed to 100 locations, including businesses and post offices across the Plateau. This publication is made possible by the patronage of our advertisers and by contributions from the University of the South (print production) and the Sewanee Community Chest.

Kiki Beavers
editor/publisher

April Minkler
office manager

Emily Ricks
proofreader

Leslie Lytle
staff writer

Bailey Basham
staff writer

Janet Graham
publisher emerita

Laura Willis
editor/publisher emerita

Geraldine Hewitt Piccard
founder, editor/publisher emerita

SUBSCRIPTIONS \$75 first class
418 St. Mary’s Lane, P.O. Box 296, Sewanee, TN 37375
Phone (931) 598-9949 | <news@sewaneemessenger.com>
All material in the Sewanee Mountain Messenger and on its websites are copyrighted and may not be published or redistributed without written permission.

ing; HVAC Technician, Facilities Management; Office and Communications Manager, Library & Information Technology Services; Office Manager, Sewanee Summer Music Festival; On-Call Catering Attendant, Sewanee Dining; Police Officer (Part-Time), Sewanee Police Department; Second Cook, Sewanee Dining; Sewanee Dining Associate, Sewanee Dining; Sewanee Dining Assistant Manager (temporary), Sewanee Dining.
For more information call (931) 598-1381. Apply at <https://jobs.sewanee.edu>.

August Lease Committee Meeting

The following items were approved: July minutes; request to transfer Lease No. 500, located at 130 Carruthers Rd., to Dirk Essary and Kathleen Mandato; request to transfer Lease No. 928, located at 231 Ball Park Rd., to Apphia Page Schley; request to transfer Lease No. 776, located at 112 Kentucky Ave., to Stephen and Margo Burns; request to approve updated lease policy; request from Lease No. 963, located 174 Carpenter Circle, to repaint exterior of home; request from Lease No. 756, located at 32 Abbott Martin Lane, to replace roof.

Leasehold information is available online at <leases.sewanee.edu> or by calling the lease office at 598-1998.

Please be sure and contact the Franklin County Planning and Zoning for any needed permits as well as the local utility companies to ensure there are no issues before beginning your project.

Planning and Zoning office, (931) 967-0981; Duck River Electric Membership Corporation, (931) 598-5228; Sewanee Utility District, water and sewer, (931) 598-5611; Elk River Public Utility District, natural gas, (931) 967-2110.

Agenda items are due by the fifth of each month for Lease Committee meetings. If the fifth falls on a weekend, then items are due the following Monday. Lease Committee meetings are normally the third Tuesday of the month.

SERVING WHERE CALLED

Please keep the following individuals, their families and all those who are serving our country in your thoughts and prayers:

Blaze Cassidy Barry
Brandon Brawley
Justin Brawley
James Gregory Cowan
Mark Gallagher
Nathaniel P. Gallagher
Peter Green
Zachary Green
Jackson B. Guenther
Steven Tyler Jeffery
Cheyenne N. Kelly
Gabriel Lloyd
Waylon Case McBee
Wiley Colton McBee
Andrew Midgett
Jose D. Ramirez III
Troy (Nick) Sepulveda
Zachary Sherrill
Allison Tucker
Nick Worley

If you know of others in our Mountain family who are serving our country, please give their names to American Legion and Auxiliary member Shirley M. Lawson at <slawson@sewanee.edu>.

Online and in color!
<SEWANEE MESSENGER.COM>



TOMMY C. CAMPBELL
FOR YOUR IMPROVEMENTS
Call (931) 592-2687
Free Estimates • No Job Too Small!

DRIVEWAY WORK • GRAVEL HAULING • DOZER & BACKHOE
Land Clearing • Concrete Work • Water Lines • Sidewalks
Topsoil • Septic Tanks & Field Lines • Various Retaining Walls
Yard Drainage Problems

HOUSE CALL SERVICE AVAILABLE
Full Service Veterinary Care for Dogs, Cats & Horses
Offering Acupuncture, Chiropractic & Herbal Therapies



Traci S. Helton
DVM

Jessie Richardson
DVM

Monday–Friday 7:30 am–6 pm
931-962-3411
505 S. Jefferson St., Winchester (41-A toward Winchester. First left after Domino’s Pizza)

Michael A. Barry
LAND SURVEYING & FORESTRY
★ ALL TYPES OF LAND SURVEYS
★ FORESTRY CONSULTING

(931) 598-0314 | (931) 308-2512

Letters to the Editor Policy

Letters to the editor are welcome at the Sewanee Mountain Messenger and are a vital part of our community’s conversation. Letters need to be no longer than 250 words and may be edited for space and clarity. We make exceptions from time to time, but these are our general guidelines. We strive to print all letters we receive, but publication is not guaranteed. Letters should be factually accurate. Letters that are deemed unsuitable for publication shall not be printed elsewhere in the newspaper, including as a paid advertisement.

Letters and/or their author must have some relationship to our community. We do not accept letters on national topics from individuals who live outside our print circulation area. Please include your name, address and a daytime telephone number with your letter. You may mail it to us at Sewanee Mountain Messenger, P.O. Box 296, Sewanee, TN 37375, leave it at our office, 418 St. Mary’s Ln., or send your email to <news@sewaneemessenger.com>. —KB

MESSENGER INFORMATION

Phone: 598-9949
News and Calendar
Tuesday, 5 p.m.
Kiki Beavers
<news@sewaneemessenger.com>

Display Advertising
Monday, 5 p.m.
<ads@sewaneemessenger.com>

Classified Advertising
Wednesday, noon
April Minkler
<classifieds@sewaneemessenger.com>

MESSENGER HOURS

Monday, Tuesday and Wednesday
9 a.m. to 4 p.m.
Thursday—Production Day
Closed
Friday—Circulation Day
Closed

Franklin County NAACP Book Study

The Franklin County NAACP invites you to attend a book study based on the book, “Caste” by Isabel Wilkerson. These sessions will be held 5:45–7 p.m., Tuesdays, Sept. 6, Sept. 20, Sept. 27 and Oct. 4 via Zoom. Chris Colane, Franklin County NAACP Education Committee Chairperson, will be the facilitator.

In 1994 Isabel Wilkerson became the first African American Pulitzer Prize winner. She was also awarded the National Humanities Medal from President Barack Obama in 2015. Her reader friendly book, “Caste,” compares the global caste system of India, Nazi Germany and South Africa with racism in the United States. The author explores America’s unacknowledged caste system and how the concept of caste explains our country’s legacy of discrimination.

Contact our Franklin County NAACP at <fcfnbranchnaacp@gmail.com> to register for a Zoom link to attend. There is no charge, other than the purchase of the book.

MMUMC Curbside Food Distribution

Morton Memorial United Methodist Church will conduct its monthly curbside food distribution on Saturday, Sept. 10, from 8–10 a.m. Morton Memorial UMC distributes food the second Saturday of every month, come rain, snow, sleet, or shine.

In order to maintain social distancing, drivers should enter the food distribution line from behind the church where they will be directed to the loading area. If you are unable to load your own vehicle, volunteers will be there to assist.

Morton Memorial United Methodist Church is located at 322 West Main St., Monteagle.

Labor Day Closings

Labor Day is Monday, Sept. 5. All federal, state and county offices will be closed, as will banks and public schools. The CAC and St. Mark and St. Paul offices, the Sewanee Mountain Messenger office, and the Sewanee Senior Center will be closed. The Franklin County Convenience Center will be closed. The University and St. Andrew’s-Sewanee School will be open.



Tea on the Mountain

Dining room is open. All health requirements are in place.

11:30 to 4 Thursday through Saturday

DINNERS BY RESERVATION

(931) 592-4832

178 Oak Street, Tracy City

Upcoming Meetings

Work Day in the Railroad Park

Various organizations will come together in Cowan at 9 a.m., Saturday, Sept. 3, to clean up, repair and decorate the Railroad Park and Railroad Museum for the fall season and for the Fall Heritage Festival. All are invited to bring gloves and tools and lend a helping hand to get our beloved park and museum ready to welcome visitors. Drinks and ice will be provided. For more information leave a voice-mail at (931) 967-3078.

Coffee with the Coach

Coffee with the Coach, an opportunity to learn more about Sewanee’s sports teams, will live stream the meeting at 9 a.m., Monday, Sept. 5, with Travis Rundle, head football coach. The live stream will be available at <facebook.com/SewaneeTigers>. The meeting will also be in-person at the Blue Chair.

Opportunities will be available on Sunday for fans to submit questions in advance or during the live show on the social media platforms. Be sure to follow us on Facebook, Twitter and Instagram pages @SewaneeTigers.

For those unable to make it live, the content will be accessible on-demand on our Facebook page. Additionally, it will also be available on our website, <sewaneetigers.com> and on the University of the South’s YouTube Channel by mid-day on Mondays.

Caregivers Group

The Caregivers Group is sponsored by Folks at Home as a place where those caring for another and grieving for their sick, dying or deceased relative, pet, significant other, or wife or husband can meet to support each other in all the ways that they need. The group is open to all, and meets on the first Tuesday of each month beginning Sept. 6, at 12:30 p.m. in Brooks Hall. All sessions are confidential. Contact Folks at Home at (931) 598-0303 for more information.

Franklin County School Board

The Franklin County School Board is scheduled to meet at 6 p.m., Tuesday, Sept. 6, at 215 S. College St., Winchester.

Sewanee Writing Group

The Sewanee Writing Group will meet at 10 a.m., Wednesday, Sept. 7. Meetings will be held at 212 Sherwood Rd., Sewanee. Anyone interested in writing is welcome to attend the group when it meets each week. Any questions can be emailed to <jpkkelley934@gmail.com> or call (931) 598-0915.

EQB Club

Members of the EQB Club will gather at 11:30 a.m., Wednesday, Sept. 7, at St. Mary’s Sewanee. Lunch will be served at noon. We will then have the pleasure of a lead by Dr. Robin Bates. He will speak about the life and legacy of his mother, Phoebe Bates. Interested non-members are welcome to arrive at 12:30 p.m. and sit in on the presentation.

Rotary Club Meeting

The Monteagle-Sewanee Rotary Club will meet at 8 a.m., Thursday, Sept. 8, at LaBella Pearl’s. The guest speaker will be The Very Rev. James F. Turrell, Vice Provost and

Dean of the School of Theology since 2020. Dean Turrell’s talk will include information about the School of Theology — where it is now, where it is going, and its connection to the college.

Sewanee Emeritus Association Meeting

The 2022-23 year’s first gathering of the Sewanee Emeritus Association will be at 3:30 p.m., Thursday, Sept. 8, in the duPont Library’s Torian Room. The guest speaker for this occasion will be John Kilkenny, Director of the Sewanee Summer Music Festival.

The Summer Music Festival has long represented one of the cultural gems of University life and the surrounding community. Each summer, without the trouble or expense of travel to distant cities, the Festival offers us ready access to world-class musical performances.

Kilkenny, himself a talented musician and able administrator, is also a music educator dedicated to the personal development of young people. He will discuss the Festival’s current and future activities, and will explain how those wishing to become more involved in support of the Festival might do so.

Attendance by members and guests at this meeting will be in person. Masks are optional but strongly encouraged.

SCRLT Annual Membership Meeting

The South Cumberland Regional Land Trust (SCRLT) will host their annual membership meeting and potluck starting at 5:30 p.m., Saturday, Sept. 10, at the end of Tate Trail Road. All community members are welcome to attend and invited to bring a side dish if they would like, although not required. A main dish of local smoked pork, cutlery, plates, and beverages will be provided along with a presentation on local organizations and efforts working towards farmland conservation.

SCRLT is a 501(c)(3) organization with a mission of conservation, education, and stewardship of ecologically unique land in and around the South Cumberland Plateau. You can learn more about SCRLT at our Facebook or Instagram pages, <www.scrlt.org>, or contact us at <southcumberlandrlt@gmail.com>.

Sewanee Woman’s Club

The Sewanee Woman’s Club will have its first meeting of the 2022 – 2023 season on Monday, Sept. 12. Meetings are held at St. Mary’s Conference Center. Hospitality begins at 11:30 a.m. Lunch is served at noon. Programs begin at 12:30 p.m., with every effort being made to finish by 1 p.m. so that women can attend during their lunch hour. Lunches are \$15 and dues are \$10.

Nancy Berner, acting Vice-Chancellor of the University of the South, will present the program for this month. She will discuss future plans for the University and bring us up to date on the search for a new Vice Chancellor.

Reservations are due by Wednesday, Sept. 7. Please contact Martha Ann Pilcher at <maspilcher@gmail.com> or call/text (615) 517-1659 with your reservation.

We have lined up some exciting programs for this year. We hope you join us as we celebrate 92 years on the Mountain.

Sewanee Community Deer Survey

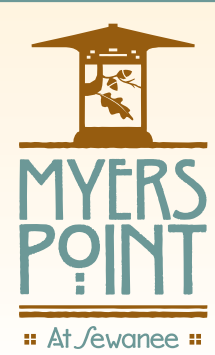
Each year the University conducts a community impact survey about Sewanee’s white tailed deer population and associated hunting program. The survey is intended to quantify impacts of both the white tailed deer and the hunting program on the community.

Decades of botanical research yields a clear understanding of the ecological impacts current deer population levels are having on the Domain, but there are also social impacts that are less easy to quantify. The hunting program was started partially in response to an increase in automobile/deer collisions and many complaints of landscape damage on leaseholds. Balancing these perceived negatives, many leaseholders enjoy seeing deer roam in town and are concerned about an active hunting program close to residences.

The annual community survey is an attempt to understand more about the social context of the herd and the hunt. We use the data to focus hunter effort where social impacts of the deer are the greatest and where the social impact of the hunters is minimized. Eight years of data has shown an overall decline in the number of people concerned about the safety of the hunt, and geographically focused successes and failures in ameliorating the social impacts of the herd.

If you have opinions on the herd or the hunt, please take a few moments to fill out the survey <https://docs.google.com/forms/d/e/1FAIpQLSeSmWS_VnE1Lu5rqXAdM1uzMMGEoxxiW8EiS1Eu-oiUY9QvnQ/viewform>. If you choose to include your address, it will be used to create an impact map used to focus hunting efforts. This survey is the primary tool we use to locate hunter efforts in the community, so whether you are strongly for or against the hunting program, we would like to hear from you.

If you want to learn more about the hunting program, please visit: <https://new.sewanee.edu/offices/university-offices/environmental-stewardship-sustainability/the-domain/ecosystem-management/deer-huntin/>.



MYERS’ POINT at Sewanee offers a rare opportunity to enjoy a private community that celebrates American architecture, lifestyle, protected forests, cultivated lakes and panoramic views on Middle Tennessee’s Cumberland Plateau. If you want to live surrounded by nature, history, beauty, quality and serenity, you’ll want to call it home.

John Goodson ■ (931) 703-0558
myerspoint.com ■ jgoodson@myerspoint.com

BUG PROBLEMS?

We can help! Call us for a free inspection!

BURL’S TERMITE & PEST CO.

TERMITE—PEST—VAPOR CONTROL
Bonded • Insured • Home-Owned & Operated
101 N. Main Street, Estill Springs
(931) 967-4547 or www.BurIsTermite.com
Charter #3824 • License #17759



ST. MARY’S SEWANEE

2022 Retreats & Workshops

Centering Prayer Introductory Workshop
9am-3pm, Saturday, September 10th, \$70

One River Wisdom
September 16-18, \$400/\$300

A Labyrinth Journey
September 16-18, \$400/\$300

Spirituality of the Enneagram
September 30-October 2, \$525/\$425/\$325

Lectio Divina Introductory Workshop
9am-3pm, November 12, \$70

Mindfulness on the Mountain
December 2-4, \$575/\$475/\$375

Advent Centering Prayer Retreat
December 9-11, \$515/\$415

Rest Renew Reconnect

For more information and registration, go to <www.StMarysSewanee.org>

Support local. Shop local.

Obituaries

Joyce Yvonne Baggenstoss

Joyce Yvonne Baggenstoss, age 85, of Tracy City, died on Aug. 24, 2022. She was born on Sept. 13, 1936, in White City, Tenn., to William Monroe and Lena Rivers Byers. She loved to sing, and sang in the Junior Grand Ole Opry along with Betty Jo Gross and Joan Nunley as the “Three J’s”. She attended Bethel Community Church and Myers Hill First Congregational Methodist Church. She was preceded in death by her parents; husband, Ronald Baggenstoss; siblings, Jewell Willene Byers, Ruth Byers Baker, James Edward Byers, Charles William Byers, Stanley Leon Byers, and Mildred Kathleen Byers; cousin, Jim Byers; and a special friend, Ray Sartain.

She is survived by her sons, Kenneth Emil Baggenstoss and Malcolm “Rick” Baker III; cousins, Kevin Sweeton and Ricky Caldwell, three grandchildren, and many nieces, nephews, and other family members.

Funeral Services were on Aug. 27, 2022, from the Foster and Lay Chapel of Cumberland Funeral Home in Tracy City with Bro. Claude Hoback and Bro. Barry Nolan officiating. Interment followed in Plainview Cemetery. Foster and Lay Chapel. The family thanks all the relatives and friends who have been supportive and helped for the past few years, and also extends a special thanks to all the staff at Amedysis. For complete obituary go to <www.cumberlandfuneralhome.net>.

Freddie Ray Cater

Freddie Ray Cater, 75, of Avon, Ind., died on Aug. 22, 2022, in Avon. He was born on Nov. 12, 1946, in Fayetteville, Tenn., to Fred and Emma Lucille Swinford Cater. He retired from the U.S. Air Force after 22 years as a Master Sergeant before going to work for the Federal Aviation Administration as an electronics technician.

He is survived by his wife of 52 years, Rita; daughter, Nicole (John) Manley; brother, Roger (Ann) Cater of Tucson, Ariz.; and sister, Loretta (Bennie) Christian.

A Celebration of Life service will take place at a date and location to be announced. He will be laid to rest at the Middle Tennessee State Veterans’ Cemetery in Nashville. For complete obituary go to <www.flannerbuchanan.com>.

Betty Irma Jean Pattie Street Dykes

Bettye Irma Jean Pattie Street Dykes, age 92, died on June 9, 2022, in Jacksonville, Fla. She was born on Dec. 12, 1929, in Sewanee, to William Benjamin and Dillie Hazeline Cope Pattie. She was a social worker, and a teacher of special needs children. As a long-time resident of Tracy City, she graduated from both James K. Shook School and Grundy County High School. She was preceded in death by her parents; husbands, Paul T. Street and Carl E. Dykes; and brother, William B. Pattie Jr.

She is survived by children, Paula Street Paseur, and Shirley Street Hunziker; stepchildren, Patricia Dykes Campbell, Ronnie and Harold Dykes; four grandchildren, eight great-grandchildren, four step-grandchildren, and one great-step-grandchild.

A Celebration of Life ceremony will take place later this year. For complete obituary go to <www.adignifiedalternative.net/obituaries>.

Hazel Isabell Kilgore

Hazel Isabell Kilgore, age 95, of Tracy City, died on Aug. 25, 2022. She was born on July 14, 1927, to Hubert and Martha Shrum Kilgore. She was preceded in death by her parents; former husband and father of her 14 children, Leon Crisp; brothers, Thomas Kilgore, Phillip Kilgore, and Paul Kilgore; and sisters Margie Baker and Virginia Adams; grandsons Chris Haynes, Jamey Meeks, Jeremy Meeks, and Alan Crisp; granddaughters Rhonda Fults, Natalie Martin, and Christy Meeks; great-grandchildren Joshua Hampton, Whitney Gipson, Dustin Nunley, Trey Fults, and Kasey Fults; daughters-in-law Linda Crisp and Evelyn Crisp; sons-in-law Perry Haynes, Stephen Eldridge, and Wayne Meeks; and granddaughter-in-law, Tanya Crisp.

She is survived by her children, Anthony (Helen) Crisp, Ophelia (Ricky) Williams, Darlene (Richard) Blazier, Lloyd Crisp, Jerry (Carolyn) Crisp, Martha (Billy Ray) Nunley, Naomi (Brent) Parsons, Rebecca (Johnie) Hobbs, Shirley Kay Crisp, Faron (Jana), Sheila (Bobby) Geary, Sara (Mike) Scott, Angelia Crisp, and Nathan Crisp; sister Beulah Hannah; sisters-in-law, Grace Kilgore and Beatrice Kilgore; 31 grandchildren; 37 great-grandchildren with two more on the way; several great-great-grandchildren, and several nieces and nephews.

Funeral Services were on Aug. 28, 2022, from the Foster and Lay Chapel of Cumberland Funeral Home, Tracy City with Bro. Ralph Shrum and Bro. Josh Layne officiating. Interment followed in Pryor Ridge Cemetery. For complete obituary go to <www.cumberlandfuneralhome.net>.

Mary Caroline Smith

Mary Carolyn Smith, age 81, of Winchester, died on Aug. 26, 2022, at St. Thomas Mid-Town, Nashville. She was born on Aug. 11, 1941, in Sherwood, to Arthur and Sally Hannah Birdwell. She retired from Lanier Clothes where she worked for more than 25 years in the shipping department. After her retirement she went to work at Southern Tennessee Regional Health Systems-Winchester in the medical records department. She was preceded in death by her parents; husband, Bobby Joe Smith; and sisters, Betty Birdwell and Dorothy Birdwell.

She is survived by her children, Cindy (Mike) Moore and Robert Smith; brother, William Birdwell; two grandchildren; two great-grandchildren, several nieces, nephews, cousins, and other family.

Funeral services were on Aug. 28, 2022, from the Chapel of Moore-Cortner Funeral Home with Bro. Charles Houston officiating. Interment followed in Franklin Memorial Gardens. For complete obituary go to <www.moorecortner.com>.

Death Notice

Sam Lloyd

Sam Lloyd died on Aug. 31, 2022. A service will be at 2 p.m., Wednesday, Sept. 7, 2022, in All Saints’ Chapel, followed by burial in the University cemetery.

Church News

All Saints’ Chapel

On Sunday, All Saints’ Chapel will gather for worship at 8 a.m., 11 a.m. and 6:30 p.m. The 8 a.m. service is simple and quiet with no music, and the congregation sits in the choir stalls. The 11 a.m. service features the organ, the University Choir, and the congregation sits in the nave, the main part of the Chapel. The 6:30 p.m. service is Growing in Grace, an informal, student-led service.

Christ Church

On this Sunday, Sept. 4, the service at Christ Church will be Holy Communion. Although Ordo Calendars give no notice of Labor Day to churches that follow the liturgical year, there has been a tradition of recognizing those who work in industry and agriculture, and of human labor in general. Hymns which celebrate the

word “labor” abound, and Christ Church’s service will include several of these.

You are invited to celebrate the day with Christ Church. We begin around 10:45 a.m.

St. Agnes’ Church

St. Agnes’ Church in Cowan will remember the life and faithful witness of Constance and Her Companions on Sunday, Sept. 4, during the 11 a.m. service. Sister Constance and her co-workers cared for the sick and dying during the deadly 1878 Yellow Fever Epidemic in West Tennessee. Ultimately, all but one of the workers in the Order of St. Mary lost their lives along with another 5,150 Tennesseans. All are invited to a meaningful time of worship as we honor their steadfast commitment to the faith and their tireless work for the mission of the church. St.

Agnes’ is located at 105 England St. E in Cowan. For more information log on to <www.saintagnescowan.org>.

St. Mark and St. Paul

The 8:30 a.m. Holy Eucharist is in the church for those fully vaccinated plus at least 2 weeks. The 8:30 a.m. service is also livestreamed on our Facebook page. Masking is required indoors for ages 2 and up.

The 11 a.m. Holy Eucharist is open to all.

Nursery, 8:30 a.m. to noon, Sunday. Infants and toddlers are invited to gather either at the playground at St. Mark and St. Paul, or in the child care classroom at the lower floor of the Office Building.

Godly Play, 9:45–10:45 a.m., Sunday, through the fall. Two Montessori-based classes meet in the Godly Play rooms or outdoors, depending on weather and Covid risk. Please bring a mask.

Youth Sunday School, 9:45–10:45 a.m., Sunday, meets on the

(Continued on page 5)

Church Calendar

Abundant Life Assembly of God, Cowan

10:30 a.m. Worship, Sunday

All Saints’ Chapel

8 a.m. Holy Eucharist, Sunday
11 a.m. Holy Eucharist, Sunday
6:30 p.m. Growiing in Grace, Sunday

Bible Baptist Church, Monteagle

10 a.m. Worship Service, Sunday
5:30 p.m. Evening Service, Sunday
5:30 p.m. Evening Worship, Wednesday

Chapman Chapel Church of the Nazarene, Pelham

9:30 a.m. Sunday School, Sunday
10:45 a.m. Morning Worship, Sunday
6 p.m. Evening Worship, Sunday
7 p.m. Bible study, Wednesday

Christ Church Monteagle

10:45 a.m. Morning Prayer, Sunday
noon Holy Eucharist, Wednesday

Christ Church, Tracy City (STEM)

10 a.m. Bible Study, Sunday
11 a.m. Holy Eucharist, Sunday

Christ the King Anglican Church, Decherd

9 a.m. Sunday Service, Sunday
6:30 p.m. Healing/prayer service

City Light Church, Monteagle

10:45 a.m. Worship Service, Sunday, available online

Cowan Fellowship Church

11 a.m. Worship Service, Sunday

Cumberland Presbyterian Church, Cowan

11 a.m. Worship, Sunday

Cumberland Presbyterian Church, Monteagle

9:45 a.m. Sunday School, Sunday
11 a.m. Worship Service, Sunday

Cumberland Presbyterian Church, Sewanee

9 a.m. Worship Service, Sunday
10 a.m. Sunday School, Sunday

Decherd United Methodist Church

9:45 a.m. Sunday School, Sunday
10:50 a.m. Worship Service, Sunday

Epiphany Mission, Sherwood (STEM)

10 a.m. Holy Eucharist Rite II, Sunday

First Baptist Church, Cowan

9:15 a.m. Sunday School, Sunday
10:25 a.m. Worship, Sunday

First Church of the Nazarene, Cowan

11 a.m. Worship Service, Sunday

Good Shepherd Catholic Church, Decherd

8 a.m. Mass, Sunday
10:30 a.m. Mass, Sunday
2 p.m. Spanish Mass, Sunday
5 p.m. Mass, Saturday

Goshen Cumberland Presbyterian Church, Winchester

11 a.m. Worship Service, Sunday

Grace Fellowship Church

10:30 a.m. Sunday School/Worship Service

Harrison Chapel Methodist Church, Midway

10 a.m. Sunday School
11 a.m. Sunday Morning Service
5 p.m. Sunday Evening Service

Hobbs Hill Community Church, Tracy City

10 a.m. Sunday School, Sunday
11 a.m. Morning Service, Sunday
5 p.m. Evening Service, Sunday
6 p.m. Evening Service, Wednesday

Midway Baptist Church

9:45 a.m. Sunday School, Sunday
10:45 a.m. Morning Service, Sunday
6 p.m. Evening Service, Sunday

6 p.m. Bible Study, Wednesday

Midway Church of Christ

10 a.m. Bible Study, Sunday
11 a.m. Morning Service, Sunday
6 p.m. Evening Service, Sunday

Monteagle Church of Christ

11 a.m. Morning Service, Sunday
6 p.m. Bible Study, Wednesday

Monteagle First Baptist Church

11 a.m. Worship Service, Sunday
6 p.m. Bible Study, Wednesday

Monteagle Seventh-Day Adventist

11 a.m. Worship, Saturday

Morton Memorial United Methodist, Monteagle

service available online after noon Sunday, link is at <https://www.mortonmemorialumc.com> on FB

10 a.m. Sunday School, until 10:45 a.m.

11 a.m. Worship Service, Sunday

Mountain of God Tabernacle, Monteagle

online worship services. Call (931) 924-5339 or go to <https://www.tdworldministries.org>

11 a.m. Worship Service, Sunday

6 p.m. Prayer Service, Wednesday

New Creations Ministries, Rayburn Chapel

4 p.m. Prayer Meeting, Sunday

New Hope Church of God in Christ, Cowan

11 a.m. Sunday Service, Sunday
6 p.m. Sunday Service, Sunday

Pelham United Methodist Church

9:45 a.m. Sunday School, Sunday
11 a.m. Worship Service, Sunday

St. Agnes’ Episcopal Church, Cowan

11 a.m. Holy Eucharist, Sunday

St. James Episcopal Church

9 a.m. Holy Eucharist Rite II, in-person and Zoom, Sunday

St. Margaret Mary Catholic Church, Alto

8 a.m. Mass, Sunday

St. Mark & St. Paul

8:30 a.m. Holy Eucharist, indoors, livestream Facebook, YouTube later

8:30 a.m. Nursery, basement of Kennerly Hall (Sewanee Children’s Center), until noon

9:45 a.m. Godly Play, until 10:45 a.m.

9:45 a.m. Youth Sunday School, Brooks Hall

9:45 a.m. Connection for Parents, Brooks Hall

9:45 a.m. Sunday Forum, Kennerly Hall

11 a.m. Holy Eucharist, Sunday

Sewanee Church of God

10 a.m. Worship Service, Sunday

Sisters of St. Mary Convent Chapel

7 a.m. Morning Prayer, Tuesday–Friday
7:30 a.m. Morning Prayer, Saturday

8 a.m. Holy Eucharist, Sunday

Tracy City First Baptist Church

10:45 a.m. Morning Worship, Sunday

Trinity Episcopal Church, Winchester (STEM)

10:30 a.m. Holy Eucharist, Sunday
12:30 p.m. Noonday Prayer and Lectionary Bible Study, Tuesday, <tec213@bellsouth.net>

Unitarian Universalist Church, Tullahoma

10 a.m. Service, Sunday
6 p.m. Tullahoma Sangha, Wednesday

United Pentecostal, Monteagle

10 a.m. Sunday School, Sunday
11 a.m. Worship, Sunday

7 p.m. Worship, Wednesday

Valley Home Community Church, Pelham

10 a.m. Sunday School
11 a.m. Morning Service, Sunday

Church (from page 4)

upstairs porch of Brooks Hall and/or in the upstairs youth room. Please bring a mask.

Connections for Parents, 9:45–10:45 a.m., Sunday, through the fall. All parents and caregivers are invited to gather for conversation on Sunday mornings while the children have Sunday school. The class will meet on the front porch of Brooks Hall for fellowship, support, and reflection on the hopes we have for our children.

Sisters of St. Mary Hosting a Rosary Workshop

Want to learn how to pray the rosary? Unsure of whether it's the right prayer technique for you? Join the Sisters of St. Mary from 9:30 a.m. to noon, Saturday, Sept. 24, to learn about the history of the Anglican and Dominican rosaries, how to pray them, and how to make a knotted rosary of your own. The workshop will end with a group prayer of the Anglican rosary. Cost is \$20. The rosary workshop will be taught by Sister Felicity. Sister Felicity first came to the Community of St. Mary as an intern from 2019-2020. She attended the University of the South and graduated in 2019. During her undergraduate studies she was involved in the University Choir and Gamma Tau Upsilon sorority. In 2020 she was clothed as a novice of the Community and now serves as Sister Sacristan for the convent chapel. Sr. Felicity is working toward an MA from the School of Theology. Her hobbies include knitting, cooking, and gardening – skills she puts to use creating products for the convent gift shop including knotted rosaries, lavender salve, and recycled candles. Sign up online for this rosary workshop at <communityofstmarysouth.org>.

Tullahoma Sangha

Tullahoma Sangha, a Zen Buddhist meditation and study group, meets each Wednesday at 6 p.m. at Unitarian Universalist Church of Tullahoma. The service will consist of zazen (meditation), a short lesson, and discussion. Newcomers are welcome; please call ahead and we will have a short orientation at 5:45 p.m. The church is located at 3536 New Manchester Hwy., Tullahoma. For more information, call (931) 588-8935.

Universalist Unitarian

The service begins Sunday at 10 a.m., followed by refreshments and a discussion period. The church is located at 3536 New Manchester Hwy., Tullahoma. For more information call (931) 455-8626, or visit the church's website at <www.tullahomauu.org>.

Dwellings (from page 1)

residence, whichever is less. For both, the height cannot exceed 24 feet or two stories. For both, the size of the ADU and principal residence combined cannot exceed 30 percent of the total lot area. ADUs must be of a similar character, style and appearance as the principal dwelling. ADUs will be allowed only in the back or side yard and the same setbacks apply as for residences. One on-site parking space must be provided for the ADU.

No more than one ADU will be allowed per lot. ADUs will be allowed on any lot zoned for principal residences and allowed by "special exception" on any lot zoned commercial which already has a principal residence. ADUs will not be allowed in conjunction with duplexes, multi-family dwellings, or single-wide mobile homes. Existing ADUs will be grandfathered-in and will be regulated under the conditions by which they were approved.

All ADUs must be on a permanent foundation whether they are site built or manufactured units and must adhere to all Monteagle building codes. Manufactured units must meet the Uniform Standards Code for Manufactured Units and Tennessee Modular Building Act. ADUs on wheels will not be allowed. The owner of the principal residence and the ADU must be the same person and the owner must reside in one of the residences at least six months of the year, with temporary exceptions for some circumstances such as military service. A floor plan and/or architectural rendering must accompany the application for an ADU permit.

Mayor Marilyn Campbell Rodman pointed out, according to Monteagle Utility Department rules, detached separate residences must have separate water meters.

Alderman Nate Wilson asked if a person had a site plan that included both an ADU and principal residence, if the ADU could be built first. The consensus was, yes, but an ADU under 600 feet would not be eligible for an occupancy permit until the principal residence was constructed since, by ordinance, the minimum size for principal dwellings is 600 square feet.

The planning commission Sept. 15 meeting agenda will include recommending the council approve an ordinance amendment allowing ADUs with the stipulations agreed on at the workshop.

Monteagle: Runoff (continued from page 1)

of water in the creek as runoff evidence. Utilities manager John Condra said "turbidity," cloudy water, could be treated at the water plant. Alderman Nate Wilson concurred but observed treating turbidity increased the treatment cost.

Resident Lucy Keeble pointed out TDEC investigated five days after the flooding and insisted, "Once the red clay is replaced with hydrocarbons [from the Petro site], we will have something that doesn't silt out."

Engineer Jim Waller, who designed the drainage system for the Miami airport, said the Petro site shed 9.8 million gallons of water in 24 hours. "When it's paved, it will be worse," Waller stressed. "It will be hydrocarbons instead of silt. The main source of hydrocarbon pollution in the United States comes from places where they have refueling stations and truck plazas." Waller said the Petro building permit had expired and insisted a new site plan be submitted which adequately addressed storm water treatment.

"TDEC sent [Monteagle] a certified letter stating they [the RBT developers] are polluting Laurel Lake," said resident Will Foehring. "You got it a long time ago. It wasn't recent."

Alderman Wilson acknowledged the need for storm water regulations that "will address not only sediment, but also hydrocarbons." He observed, according to the state, the detention pond treatment called for at the Petro site was "adequate for sediment, but whether it's adequate for our terms is something that needs to be talked about." He added the RBT developers "are now having to stabilize the site and stop [the runoff] from happening."

Mayor Marilyn Campbell Rodman said she did not know if the RBT permit had expired and would look into it.

Keeble also questioned whether the 70 percent capacity figure cited for Laurel Lake took into account drought, pointing to past extreme drought conditions. Rodman said Monteagle had agreements with neighboring water utilities to supply water in the event of drought.

In other business the council approved contracting with LJA Engineering for engineering services paid for with an ARP grant and approved appointing Southeast Tennessee Development District to administer the ARP funds, in keeping the ARP requirement for

an outside administrator.

The council also approved on second reading an ordinance amendment allowing apartments as a special exception on property zoned C-2 commercial. A resident questioned allowing apartments in C-2. Alderman Wilson explained the town likely had too much commercial property and not enough residential property and was considering possible changes to the zoning map in addition to the amendment.

Taking up the terms of office ordinance, the council voted to amend the rule to stipulate that for the upcoming election cycle the two alderperson candidates receiving the most votes would serve four years, and the next two highest vote winners would serve two years to allow for staggered four-year terms beginning with the 2024 election cycle.

Rodman reported on meeting with the Tennessee Association of Utility Districts. Monteagle has not had a water utility rate increase in 12 years and rates were not adequate to cover expenses, Rodman said. The council discussed increasing the commercial tap fee and whether the fee should fluctuate depending on the installation cost of the job.

Asked about possible codes violations at Rocky Top Truck Stop, codes enforcement officer Travis Lawyer said he would allow owner Rodney Kilgore until the fall to comply with landscape planting requirements given the weather. The possible fencing violations depended on "what you called the finished side and unfinished side of the fence," Lawyer said. By ordinance, the finished side must face out. A third possible violation stemmed from the large number of vehicles parked on the lot, since Kilgore's permit did not allow a junk yard. Lawyer will speak with Kilgore to clarify the issues in question. "I'm a believer in mediation," Lawyer said.

The Monteagle Trunk or Treat will be Oct. 27, 5-8 p.m., at Monteagle Elementary School with both inside and outside activities including a hotdog supper for \$6.

School (from page 1)

\$350,000 allocated for principal and interest payments to Trane for lighting upgrades and returning the \$350,000 to the fund balance. Board member Sarah Liechty said she hoped the board "would explore the opportunities and look at current needs" when deciding how to spend the \$350,000. Bean contended the money allocated for payments to Trane "was a wash." The contract with Trane guaranteed the cost savings from the energy upgrades would offset what the school system paid for the upgrades. [See Messenger, March 13, 2020]

The board did not stipulate what the ESSER III money would be used for. Bean said consultation was needed with the school system's Federal Projects Supervisor Jenny Crabtree to determine what ESSER III spending allowed.

When promoting the Activity Center, Bean had argued it would help alleviate overcrowding and accommodate social distancing. Currently, special education students must share the gym with other groups, the wrestling team and cheerleaders have no space to practice, and the football teams' indoor space was far too small, according to Bean. The center would have included an indoor turf area the size of one-third a football field. [See Messenger, June 11, 2021] The ESSER III funds must be spent by September 2024.

At a special called meeting on Aug. 31, the county commission approved the amended school budget.

Folks want to know your business!

Reasonable rates.
Loyal readership.
Reach more people with your advertisement.

(931) 598-9949
<ads@sewaneemessenger.com>
<www.sewaneemessenger.com>

SEWANEE AUTO REPAIR**Complete Auto & Truck Repair**

Tune-ups • Tires • Tire Repair • Brakes • Steering
• Oil Changes • Batteries • Computer Diagnostics



All Makes & Models • Service Calls •
Quality Parts

ASE Master Certified Auto Technician •
35 Years' Experience



Open 9 to 5 M-F
(931) 598-5743 • 76 University Ave.

SHULL | CHIROPRACTIC CLINIC, PLLC

Dr. Kurt A. Shull

1025 S. College St. • Winchester

931.967.4232

www.shullchiropractic.com

Mon. Wed. Thurs. - 9 am–noon, 2–6 pm

Tue. 9–11 am | Fri. 8–9 am | Sat. by appointment only

A Chiropractic, Wellness, Nutritional, Dry Needling, Non-Surgical, Spinal Decompression Clinic

THE Sewanee institution since 1974

Shenanigans

RESTAURANT

=====

PUB & GRILL / PIZZA / DELI / CATERING
CALL FOR TAKE-OUT OR DELIVERY
931-598-5774

OPEN EVERY DAY 11 a.m. to 11:30 p.m. (later on weekends!)
12595 Sollace M Freeman Hwy, Sewanee, TN
(on the corner of University Ave and 41A)

FIND YOUR HAPPY PLACE...AT SHENANIGANS

 **Ann R. McNair, CPA**
(615) 268-1040
annmcnaircpa@gmail.com

For All Your Accounting, Tax Preparation and Bookkeeping Needs
Now Serving Grundy, Marion and Franklin Counties

Over 25 years of providing specialized accounting services with a personal touch

American Institute of Certified Public Accountants Member
Registered QuickBooks ProAdvisor

aT
Apparel
WINCHESTER, TN

About Town Apparel

301 S College Street
931.915.8033
abouttownapparel.com

Diabetes Lifestyle Makeover Classes

Calling all diabetics, pre-diabetics and family members of diabetics. Beersheba Springs Medical Clinic (BSMC), will conduct a series of eight classes beginning on Sept. 20. Diabetics, pre-diabetics and family members of diabetics are encouraged to attend every other Tuesday from 5-7 p.m. at the clinic, located at 19592 TN 56, Beersheba Springs. Topics will include, nutrition, food choices, weight loss, lifestyle changes and goal setting. Each meeting will include a healthy snack, exercise and support.

There is no charge and all materials and snacks are provided through a grant from the South Cumberland Community Fund. Students from the Diabetes Prevention Project at the University of the South will assist.

Lifestyle Makeovers and Diabetes Reversal Explained is a program developed by Stephen and Karen Wickham and will be taught by Sandra Rice, RN.

The incidence of diabetes and pre-diabetes is common in our communities and not only greater than our state and national averages, but is expected to increase. More than a having a bit of sugar in the blood, diabetes is a disease that affects major organs with life threatening consequences. An increasing number of medications are available for control but changes in lifestyle like diet, weight control, exercise and family support can reduce the pills and shots, costs and risks, as well as minimize, reverse and prevent the diabetes. Come and learn how you can make a difference in your health and future. Bring along someone you love and help them avoid a diagnosis of diabetes in their future.

Class dates are as follows: Sept. 20, Introduction; Oct. 4, 18, Weight loss, Carbs; Nov. 1, 15, 29, Fats, Proteins, Exercise; Feb 7, 21, 2023, Stress, Genes.

To register, contact Rice at (678) 613-5574 or the clinic at (931) 692-5574.



**SEWANEE
REALTY, LLC**

Let us help you find your special place, in this special place.
115 University Ave., Sewanee • 931.598.9200

www.SewaneeRealty.com • Realtors@SewaneeRealty.com



MLS 2400306 - 13971 US Hwy 41., Tracy City. 7.13 acres. \$1,500,000



MLS 2310714 - 333 Main St., Monteagle. Monteagle Florist, profitable business for 38 years. Current owner will help the new owner get established. \$525,000



MLS 2414637 - 237 Melissa Rock Rd. \$389,000



MLS 2381087 - 929 Dutchtown Rd., Tracy City. \$189,900



Patsy Truslow
Owner, Principal Broker
931.636.4111
patsy@sewaneerealty.com



Marie Ferguson
Owner, Affiliate Broker
931.952.2468
marie@sewaneerealty.com



MLS 2377994 - 2925 Jackson Point Rd., Sewanee. BLUFF. \$515,000



MLS 2300638 - 119 Walton Lane, Tracy City. 1.6 acres. \$249,900



MLS 2412094 - 95 McBain Rd., Altamont. \$335,900



MLS 2415518 - 282 Smith Rd., Sewanee. \$200,000

LOTS & LAND

Jackson Pt. Rd., #20&21	2380429	\$48,000
0 Bear Ct. # 20 PENDING	2268951	\$29,000
0 Browbend Dr. Lot 13	2422872	\$54,000
0 Browbend Dr. Lot 14	2422864	\$54,000
William B. Martin Rd. 4+ac	2420264	\$60,000
Sherwood Trl. Lot 14	2402371	\$79,900

BLUFF

Falling Cliffs Dr., 15 ac	2389298	\$175,000
Preservation Dr., 6.63 ac	2349236	\$89,500
Johnny's Way, Tracy, 6+ ac	2410583	\$149,000
Johnny's Way #3, 5.6 ac	2423649	\$159,000



Sally Thomas
Affiliate Broker
931.636.4993
salthomas@bellsouth.net



Ron Williams
Affiliate Broker
423.598.9817
tideron2000@yahoo.com



by David Shipps and William Shealy

SEWANEE VILLAGE UPDATE

A few weeks have passed, students have returned to campus, and we wanted to provide an update on Village-related projects and initiatives for the Sewanee community.

The summary narrative of recommendations to the University from the Urban Land Institute (ULI) study that took place in April of this year is now available and posted on the Office of Leases and Community Relations website page. We encourage you to read ULI's very relevant and timely recommendations. It was an exceptional study, and we are fortunate that it was funded by a generous gift to the University.

ULI encourages the University to have a sense of urgency in considering and making progress on the many different projects that could positively impact our community, especially the construction of various forms of rental and owned homes. Sewanee Village Ventures (SVV) is in the process of considering these and other new investment opportunities recommended within this study, and we will be excited to share information with the Sewanee community as it becomes available.

Sewanee Village Ventures is making progress with the two new investments that were approved by the Board of Regents and announced earlier in July. First, a request for proposals (RFP) related to constructing as many as five new homes for employees was delivered to area builders, and the goal is to contract with a chosen bidder in September so that a construction timeline and final expense estimates can be established to allow work to begin.

Second, the commercial building located at 24 University Avenue (formerly the location of 1866 Revival and Julia's Fine Foods) has been purchased by SVV from the University, and SVV is actively working with a new business owner on needed repairs so that she can be open for business as early in 2023 as possible. This will be an exciting new addition to the business community for all to enjoy.

As you may have noticed, the Highway 41A road construction project was completed in mid-August, and remaining orange cones and equipment for the project will be removed in the coming weeks. A significant improvement was recently made to the long iron railing at the southeast corner of the intersection of 41A and University Avenue. The removal of a large section of that railing has greatly improved visibility for drivers looking east, and we are appreciative that TDOT was very responsive to this particular issue.

We look forward to continuing to keep the community updated on these and other initiatives in the coming weeks.

David Shipps is vice president of economic development and community relations. William Shealy is the director of economic development initiatives.

EfM Director to Speak at Sunday Forum

Karen Meridith will deliver a lecture called "Oikos: Community in the Greco-Roman World" at the St. Mark and St. Paul Sunday Forum at 9:45 a.m., Sunday, Sept. 4, at Kennerly Hall. When we say, "We receive you into the household of God," at an Episcopal baptism, we are echoing the Greco-Roman concept of oikos (household), the model for organizing early Christian communities. We will look at some common characteristics of households and other kinds of associations/communities in the Greco-Roman world, their place in the overall concept of the polis (the greater community), and how these classical concepts contribute to our present-day concept of the church (local and beyond the local) as a community.

Meridith describes herself as a practical theologian "most interested in faith in action, faith on the ground." She came to Sewanee in 2010 and is the executive director of Education for Ministry and associate director of the Beecken Center. She is the designer and managing editor of the latest curriculum in the Education for Ministry program.

Winchester Podiatry

CHARLES D. GANIME, DPM

Board Certified in Foot Surgery
Diplomate, American Board of Podiatric Surgery
New Patients of All Ages Welcome! We Treat Your Feet! Most Insurance Accepted, Including TennCare

155 Hospital Road Suite I, Winchester.
www.winchesterpodiatry.com

931-968-9191

ADAPTIVE LANDSCAPE LIGHTING

TRUSTED | PERSONALIZED | 931.952.8289

Design | Install | Maintain

SACA Fall Craft Fair, Sept. 17

Sewanee Arts and Crafts Association will hold its fall craft fair from 9 a.m. to 4 p.m., Saturday, Sept. 17, in Shoup Park on University Avenue. This annual event coincides with the University of the South's Family Weekend providing students, their families and the public an opportunity to meet artists and purchase their work. Some of the arts and crafts for sale include clay, wood, bronze, paintings, jewelry, candles and handmade soaps.

Mountaineer Day

Mountaineer Day will be held Saturday, Sept. 10, at 265 14th Street, Tracy City.

Gate opens at 8:30 a.m. Admission fee is \$3.

Booth fees are \$35. You can pay the day of the festival. For more information call Jimmy Williams at (931) 409-6844.

SENIOR CENTER NEWS

The Sewanee Senior Center serves lunch at noon Monday through Friday. The suggested donation is \$4, regardless of your age. Please call (931) 598-0771 by 9 a.m. to order lunch. Menus follow:

Monday, Sept. 5: Labor Day. Center closed.

Tuesday, Sept. 6: Chicken livers, mashed potatoes, slaw, biscuit.

Wednesday, Sept. 7: Lasagna, salad, garlic bread.

Thursday, Sept. 8: BLT soup, grilled cheese, dessert.

Friday, Sept. 9: SOS, green beans, corn on cob.

Menus may vary. For information call the center at 598-0771.

Chair exercise with Ruth Wendling is from 10:30-11:45 a.m. on Mondays and Wednesdays.

Game days are from 10 a.m. to noon on Fridays.

The Sewanee Senior Center does not charge any membership fee. All persons 50 or older who take part in any of the activities are considered members.



SES MENUS

**Monday–Friday,
Sept. 5–9
LUNCH**

Monday, Sept. 5: Labor Day - no meals served.

Tuesday, Sept. 6: Hamburger/cheeseburger, turkey sandwich, French fries, baked beans, carrot dippers, fruit, milk.

Wednesday, Sept. 7: Spaghetti, meat sauce, yogurt bag, potato bites, garden salad, dinner roll, fruit, milk.

Thursday, Sept. 8: Macaroni & cheese, chef salad, green beans, sweet potato fries, fruit, milk.

Friday, Sept. 9: Pizza, Bento box, pinto beans, buttered corn, cookie, fruit, milk.

BREAKFAST

Each day, students select one or two items.

Monday, Sept. 5: Labor Day - no meals served.

Tuesday, Sept. 6: Yogurt cup w/Grahams, fruit juice, milk; PK; fruit juice, unflavored milk.

Wednesday, Sept. 7: Pancake wrap, fruit, fruit juice, milk; PK; Pancake wrap, fruit, unflavored milk.

Thursday, Sept. 8: Breakfast meal kit, fruit, milk; PK; cereal, cheese stick, fruit juice, unflavored milk.

Friday, Sept. 9: Meat biscuit, fruit, milk; PK: Meat biscuit, fruit juice, unflavored milk.

Options available every breakfast: assorted cereal, assorted fruit and juice, milk varieties. Menus subject to change.

SCC Annual Mum Sale

The Sewanee Children's Center (SCC) is pleased to announce its annual Fall Mums Sale, Sept. 8–17. The mums are for sale at the University Farm. The sale is Monday through Friday, 3–5 p.m. and Saturday, 9–11 a.m. Please pay in cash, check, or by Venmo (@universityfarm).

Fifty percent of the proceeds from this sale are used to support and enhance the unique and creative educational opportunities for which SCC is known. The SCC also receives vital funding from the Sewanee Community Chest. Their teachers and staff thank you for stopping by the farm to buy beautiful mums to decorate your porch.

Hospitality Shop Sale

There will be a Labor Day Sale at Hospitality Shop on Saturday, Sept 3 and Tuesday Sept. 6. Housewares are 50 percent off and books are 25 cents.

Yes, there is a connection between the term housewares and the history of Labor Day. Both have to do with mass production, discretionary income, and status symbols. Labor Day came into being in 1886. The Library of Congress creates classroom materials on historic periods. It notes factories and mass production began in the late 19th century. The good news/ bad news aspects were that while the costs of household goods were greatly reduced, workers' lives became more highly regulated. Those owning and managing the factories made enough money that they could purchase the housewares that now lined the shelves of stores thanks to increased production. Workers, however, didn't reap the benefits as fully.

Workers organized into unions to put pressure on owners and managers to change the experience of work: lunch breaks, a more limited work week, and higher wages were among the demands. In the 1880s the Knights of Labor and the American Federation of Labor proposed a September holiday recognizing Labor. President Grover Cleveland opted for September as opposed to May 1, which was known as International Workers' Day. That date was associated with socialist ideals and more violent worker uprisings.

The strikes were effective for improving the lives of workers who could begin to have some discretionary income and could invest in 'housewares' beyond the bare necessities like their more middle class managers and owners. The term 'housewares' was first used in 1859, somewhat ironically the same year as the term "holier-than-thou." The term referred to small household items such as kitchen utensils, tableware, linens, and decorative objects. Social status was conferred by the presence and quality of these items.

Status symbols in the 19th century included parlors, and the pianos or organs within them, and hall hat trees. A parlor and hat tree indicated that a family could afford to entertain at home. Guests could leave coats and hats in an entry way. A piano or organ provided musical accompaniment and showed off the skills of those who could afford lessons. The parlor would also include upholstered chairs and sofas, decorative pictures and candle sticks, and carpets on the floor. A cycle of mass production and non-necessary consumption gained speed which only accelerated into the 20th century after WWII.

Our Labor Day Sale this weekend features everything in the gift and kitchen rooms and the books in the hall. All linens and housewares are 50 percent off. All books, except antique and coffee table, are 25 cents.

The Shop is open 10 a.m. to 1 p.m., Tuesday and Thursday, and 10 a.m. to 2 p.m., Saturday. The Shop is located at 1096 University Ave., Sewanee.



These first-grade students at Sewanee Elementary demonstrated excellent skills during Coach Hobbs's physical education class where they focused on learning how to bowl! Students, faculty, and staff welcome Chris Hobbs as the new Physical Education teacher at SES. From left, Darien Kaluzny and John Austin.

GCHS Reunion

Grundy County High School Classes of 1980, 1981, 1982 will be holding a reunion on the lawn of the old high school at 2 p.m., Sunday, Sept. 25. Everyone is asked to bring finger foods and a drink. For more information contact Rhonda Winton at <wintonr77@charter.net>.



MICHELLE M. BENJAMIN, JD Attorney & Counselor at Law

201 FIRST AVENUE, NORTHWEST
WINCHESTER, TENNESSEE 37398

(931) 962-0006
Fax: (931) 967-8613

SCHOOL CALENDAR

Sept. 5, Labor Day, No School, Franklin, Grundy, Marion counties

Sept. 16–18, Family Weekend, College

Sept. 16, Foundation Day Convocation, College

Sept. 23–25, Upper School & Boarding Family Weekend, SAS

Sept. 27–29, Alumni Lectures and Homecoming, School of Theology

Oct. 7, Staff Development, Marion County

Oct. 10–14, No School, Franklin County, Marion County

Oct. 15–18, Fall Break, College

Happy Labor Day!



**Cheers to the American workers of
past and present!**

Country Mart

1045 W Main Street, Monteagle, TN 37356



CUSTOM FRAMES • ART • GIFTS
ART CONSULTING • INSTALLATION

Tue-Fri • 10-5:00 | Sat • 10-2:00
And by appointment

— framegallerysewanee@gmail.com —
Main: (931) 463-2300 • Cell: (931) 636-2211
12569 Sollace M. Freeman Hwy. • Sewanee

Monteagle Florist



333 West Main Street
Monteagle, TN 37356
(931) 924-3292

Bonnie Nunley - Owner
Daily deliveries to Sewanee
for more than 35 years.

End of Summer Sale!

Wednesday 6-8pm
Thursday-Saturday 10am-7pm
Sunday 10am-2pm

60 Colyar Street Tracy City
931.592.5625



VIBRANT SYNERGY
BOUTIQUE

Compassionate Home Care & Community Services LLC

"Providing Care From The Heart"

We are accepting new clients and applications for CNA/Caregivers

**1045 WEST MAIN STREET
MONTEAGLE**

We accept LTC, VA, SETAAD, TNCARE CHOICES, ECF CHOICES and Private Pay

931-327-5276 (office)

2022 White Oak Craft Fair

Come spend an early fall day in the country at the 32nd annual White Oak Craft Fair scheduled from 9 a.m. to 5 p.m. on Saturday, Sept. 10, and 10 a.m. to 4 p.m. on Sunday, Sept. 11. The White Oak Craft Fair returns for its 32nd year, offering something of interest for everybody who delights in items and products that are individually designed and hand-crafted. See artists and craft vendors display their beautiful and unique wares along the banks of the East Fork Stones River just down from the Arts Center of Cannon County. Top craft artisans from throughout the region will offer for sale their original textiles, jewelry, woodcarving, metalwork, pottery, rocking chairs, baskets, ironwork, stained glass and much more.

The White Oak Craft Fair will present an enormous variety of work, all of which is chosen for its excellence and integrity by a highly respected selection panel. In an age when mass production makes so many things widely available, the White Oak Craft Fair celebrates the inspiration and skill of the individual maker and creates an opportunity to appreciate uniqueness. Although a high percentage of the participants in the show are typically perennial favorites, new exhibitors join the show each year, so there is always something fresh for visitors to look forward to. Continuing this year is a "Children's Tent" sponsored by Fast Pace Urgent Care that will offer free children's activities including balloon animals on Saturday, coloring, face painting, temporary tattoos, and free "make and take" crafts. There will also be craft artist presentations throughout the fair showing our youngest patrons how crafts are made.

This year the fair will again include a special exhibit in Cannon Hall featuring master basket maker Sue Williams who was awarded the Tennessee Governor's Folklife Heritage Award, Tennessee's highest honor in the arts. Basket weaving is one of the oldest art forms — from gathering and preparing the materials to patiently weaving them together into a functional and beautiful design. This is a not-to-be missed opportunity to watch a master basket-maker at work.

Admission to the fair is free with a \$3 donation for supervised parking benefiting the Cannon County High School's Cross Country Team and The Arts Center. Make your plans now to visit the White Oak Craft Fair and be sure that you give yourself plenty of time, because you will not want to miss all that this year's fair has to offer.

The White Oak Craft Fair is sponsored in part by White Oak Tennessee, The Arts Center of Cannon County, The Tennessee Arts Commission, Fast Pace Urgent Care, and realtor Gregory Goff. The fair will be at The Arts Center of Cannon County, 1424 John Bragg Hwy., just west of the town of Woodbury, approximately 20 minutes from Murfreesboro, Manchester, and McMinnville, and one hour southeast of Nashville. For additional information call (615) 563-2787 or go to <whiteoaktn.org>.



Anne Chenoweth Deutsch

REALTOR®

931.205.1299

Anne.Sewanee@gmail.com

annechenoweth.villagerealestate.com

Find your Sewanee Home.

VILLAGE REAL ESTATE
615.383.6964 | VILLAGEREAL ESTATE.COM

Mahogany Wood Doors



Energy Efficient,
Durable, and
Impact Rated

FREE QUOTES

Installation Available

1765 Decherd Blvd.,
Decherd, TN
(931) 967-0020



HENLEY
MILLWORK FACTORY OUTLET
"Home of Quality Millwork"

Exterior doors, Interior doors, Moldings, Hardware, & Windows

WOODY'S
BICYCLES
SALES, SERVICE AND RENTALS
A Full-Service Trek Bicycle Dealer

Tues - Fri 9-5 | Sat 10-2 | 90 Reed's Lane
598-9793 | woodybike@gmail.com

Check out www.woodysbicycles.com for rates, trail maps, photos, bike club links, races and much more!

'Stay Healthy and Strong' at University Art Gallery

The University Art Gallery is delighted to present Nathalie Miebach's "Stay Healthy and Strong."

Beginning with numbers, Miebach tells stories. Meteorological data from extreme weather events, data about Covid-19 deaths and infection rates, and anecdotal information from news reports and social media are painstakingly translated into delicate, complex, colorful objects and musical scores.

Miebach's work asks us to consider the representation and interpretation of data. It makes overwhelming events intimate and personal, and asks us to connect numbers with experience.

Climate change and its devastating impact on communities, Covid-19 and our distance from our loved ones are made visible. Aesthetics is used to further the understanding of complex scientific systems.

"Stay Healthy and Strong" is on view in the University Art Gallery through Oct. 9.

Miebach will present her work in conversation with Anne Duffee (Mathematics) and Jason Rosenberg (Music) in in Guerry Auditorium at 5 p.m., Wednesday, Sept. 14. Reception to follow.

Miebach's exhibition and campus visit have been made possible with the support of Art, Art History and Visual Studies, Music, SIPE, and the University Lectures Committee.

The Gallery is located on Georgia Avenue between Convocation Hall and Guerry Hall. The hours are Tuesday–Friday, 10 a.m. to 5 p.m. and Saturday–Sunday, noon to 4 p.m. The Gallery is closed during the summer and for all academic breaks.

44th Annual Fall Tennessee Craft Fair

Tennessee Craft presents the 44th annual Fall Tennessee Craft Fair, Oct. 7, 8 and 9, in Nashville's iconic Centennial Park. Artists from across the nation will exhibit their handmade craft on the Great Lawn adjacent to the Parthenon, showcasing original artwork from clay, jewelry and leather to wood, glass, painting and more.

The ever-popular Kids' Tent, sponsored by The Community Foundation of Middle Tennessee, will return with hands-on activities for families. Organizational partners will be onsite throughout the weekend sharing a variety of craft techniques. Volunteers from the Country Music Hall of Fame and Museum, East Nashville Hope Exchange, Frist Art Museum, Hatch Show Print, Nashville Public Library, Shimai Gallery of Contemporary Craft, Tennessee State Museum, and Turnip Green Creative Reuse will guide children through art activities that they can recreate at home using ordinary materials and their creativity. Family favorite Wishing Chair Productions Puppet Truck will perform 'Hansel and Gretel' on Saturday and Sunday.

In the Demonstration Tent, watch and learn "how it's made" from the Tennessee Association of Woodturners and the Clay Lady's Campus. Roger Smith of Culleoka will demonstrate peach pit carving on Friday and Saturday, while 2022 Master Artist Apprentice Program fiber/textile artist M Kelley of Nashville will join the Demonstration Tent on Sunday.

The MW Real Estate Emerging Makers Tent is another exciting place to be during the fair. Artists who are just beginning their craft careers or are exhibiting in a craft fair for the first time work together in a group selling environment to support each other in set up, display, sales and customer service.

Through the fairs and a robust calendar of year-round programs, Tennessee Craft impacts current and future generations of craft artists and collectors. Tennessee Craft Fairs (held each Spring and Fall) are the premier outdoor events for artists to showcase and sell their work in an intimate and personal setting. Craft artists connect with the community by demonstrating their craft knowledge and processes.

As always, this free event is accessible to the public — with free parking and free shuttle service on Saturday and Sunday. Shuttles will run in 15-minute loops from the HCA Parking Lots located on Park Plaza to the entrance of the Tennessee Craft Fair. Gray Line of Tennessee generously provides this free service.

Fair hours are 10 a.m. to 6 p.m., Friday and Saturday, 10 a.m. to 4 p.m. on Sunday. For more details, maps and event information, please visit <tennesseecraft.org/fallfair>.

*Tell them you saw it here! Advertisers do
make the news go 'round.*



*Empowering spiritual seekers and all who desire to strengthen
their connection and alignment with God through group and
personal retreats, healing, writing, music, and workshops.*

For more information (931) 598-5555 / info@rivendellspiritualcenter.com
<https://www.rivendellspiritualcenter.com>

Forest Landowner Field Day

A free Forestry Field Day is planned for local landowners on Friday, Sept. 16, in Grundy County. The field day will begin at 8:30 a.m. CDT with registration, the program to begin at 9 a.m. and conclude with a free, hot lunch. The field day will take place at the Grundy County Outdoor Classroom near the address of 24970 SR 108, Coalmont; follow the signs once you park inside the gate. The field day will be hosted by the Grundy County Soil Conservation District, the Tennessee Division of Forestry, the USDA Natural Resource Conservation Service, and the University of Tennessee Extension, Grundy County Office. Local and regional sponsors will assist in providing everything needed to put the event on. Topics at the field day will include timber sales, forest pests, cost share programs, forestry/wildlife management, and the day will finish with a controlled burn demonstration. Please call (931) 592-3971 or (931) 592-5220 by Tuesday, Sept. 13, if you wish to attend.

There will be several natural resource biologists, professionals, and vendors at the event for participants to consult with about their own private lands. Attendees will gain new knowledge and skills on land management techniques, tree insects and diseases, timber contracts and sales, wildlife management concepts and much more. Attendees will also gain new knowledge on cost share programs that could add value to their lands and/or possibly save them lots of money if they should choose to participate in these incentives on their own private forests or lands.

The Tennessee Division of Forestry says that Tennessee's forests cover 14 million acres of the state. Of these large acres, 83 percent of forests in Tennessee are privately owned. These forests provide several benefits including beauty, wildlife habitat, timber production, recreation, air and water quality, energy conservation, carbon sequestration, enhanced property values, storm water control and natural heritage. According to the Tennessee Department of Agriculture, the forest industry contributes nearly \$24 billion towards the state's economy. That fact is just another reason why it pays to actively manage your privately-owned forested lands.

Please contact the UT/TSU Extension, Grundy County Office at (931) 592-3971 with any questions about this event or any forestry/wildlife questions you might have.



- ♦ ORGANIC, LOCAL FOODS
- ♦ SUPPLEMENTS & TOILETRIES
- ♦ GARDEN & BIRD SUPPLIES
- ♦ YARN & ACCESSORIES
- ♦ ANTIQUES, JEWELRY, GIFTS
- ♦ CALL FOR CURB SERVICE

Store open 10-6 daily
931-924-7400

1265 W Main • Monteagle

SAS Volleyball Drops Hard Fought Contest

St. Andrew's-Sewanee School varsity volleyball team played Grundy County on Aug. 25, in a hard fought loss, 26-24, 22-25, 25-12 and 25-20. Lexi Taylor dominated the net with 21 kills, four aces and eight digs; Anja Dombrowski 22 assists and three aces; Ava Carlos 15 digs and four aces; Emilie Leathers four kills and two blocks; Reese Michaels three aces; Laura Crigger five digs. Head Coach Rob Zeitler said, "This was a great battle by both teams, with a lot of exciting play and fan enthusiasm. I am so proud of our effort and focus."

Mottern Chosen as Head Women's Golf Coach

Announced by Director of Athletics John Shackelford, Taylor Mottern, C'18, has been selected to lead the women's golf program at the University of the South. He will officially begin his post on Sept. 6.

He becomes the third head coach in the program's history since its inception in 1995, and it is the first time that the program has a dedicated full-time coach.

"We are excited to add Taylor to our coaching staff. As an alum, a successful contributor to our advancement team and a skilled athlete, we know that Taylor will be a tremendous representative of Sewanee Athletics both with the young women he will coach daily and with those prospective student-athletes," said Shackelford.

A former four-year starter with the men's golf program, his peers elected him co-captain during his senior campaign. Averaging 75.3 strokes in 14 rounds in 2018, Mottern earned Second Team honors on the All-Southern Athletic Association postseason listing, as he finished 11th at the SAA Championships with a 226.

In 51 career rounds with the Purple and White, he averaged 76.4 strokes.

Mottern makes the shift to the athletic department after nearly four years as Assistant Director of The Sewanee Fund. He also served as a volunteer assistant with the men's golf program.

Additionally, he was also a P.J. Boatwright Intern for the Georgia State Golf Association in the summer of 2018.

"Coaching the women's golf team at Sewanee is a dream come true and a goal I have been working toward since I graduated in 2018," said Mottern. "It is a huge honor to serve the University in this capacity, and I am thankful for the opportunity to serve as a coach for a team and a sport that I love so much. Looking ahead to this season and the years to come, I am confident that this group of incredibly talented Tiger golfers will continue to compete at a high level for conference titles and showcase their superb skills on a national stage. YSR!"

He earned a Bachelor of Science with a music minor from the University of the South in 2018, where he was a member of the Order of the Gown, the Chi Psi fraternity and was a french horn performer with the Sewanee Symphony Orchestra.

Curry to Lead Women's Basketball Program

Director of Athletics John Shackelford has announced that Brody Curry, C'17, will serve as the next head women's basketball coach at the University of the South. In addition, he was appointed as the Athletics Diversity and Inclusion Designee (ADID) for the department.

Curry becomes the 13th head coach in the history of the women's basketball at Sewanee. The program enters its 48th year in 2022-23.

"We are thrilled to see Brody's transition into our Head Women's Basketball coaching role. He is a dynamic and energetic young coach with a vision that will translate into a championship program for our women's team. I know that prospective students will gravitate toward his magnetic personality and his passion for the game, and our current team will be motivated by his ability to build long lasting relationships with his student athletes," said Shackelford.

Curry, who spent the previous three seasons as an assistant coach with the men's basketball team, was a former four-year letterwinner at Sewanee from 2014-17. He was a two-time member of the Southern Athletic Association's (SAA) All-Conference Team, and he was a D3hoops.com All-Region selection.

In 100 career games, Curry scored 904 points and had a 54.1 field goal percentage. On ball control, he corralled 650 rebounds.

Earning All-SAA Second Team honors his junior year, he averaged 8.7 points and 7.0 rebounds per game.

In 2017, he was named a First Team All-SAA selection, as he was the only player to average a double-double in the conference. Averaging 34.2 minutes per game, he led the league in rebounds (10.9) and was fourth in scoring (15.1) en route to a Third Team All-Region selection by <D3hoops.com>.

On a national level, he was 30th in both rebounds per game and defensive rebounds per game (7.48). On the offensive glass, he posted 3.4 per game for 46th-best in all of NCAA Division III. Recording 14 double-doubles, 26th-most in the nation, his 295 rebounds was a Sewanee record and 24th in the country.

"I am truly honored to be chosen to lead the women's basketball program at Sewanee. I'm excited to start building relationships with the players and working to create a new identity for Sewanee Women's Basketball," said Curry.

Also announced on Monday, Curry was named Sewanee's Athletic Diversity and Inclusion Designee (ADID).

"The University of the South is committed to fostering an equitable environment of inclusion and belonging that allows our students and staff to thrive and flourish. Brody's new role in the department of athletics helps us to narrow that focus onto the experiences of our student-athletes and coaching staff members. Brody is a terrific coach and leader in our department and will help guide our administrative decisions and policies as we prepare for the future of Sewanee Athletics," said Shackelford.

The ADID is a staff member who serves as the conduit for information related to national-, local- and campus-level issues of diversity and inclusion and supports diverse and inclusive practices related to athletics.

"In my role as ADID, I will work to create and support a department that attracts, retains and celebrates a diverse staff. I will also work to develop programming to educate and sustain an inclusive community for our athletes," said Curry.

Graduating Cum Laude from the University of the South in 2017, Curry has a Bachelor's Degree in Economics. He earned his Master's Degree in Business Administration from Lee in 2019.

We're glad you're reading the Messenger!

Custom Home Remodeling Preserves the Historical Charm



"Open your door to all the possibilities"

Custom home remodeling begins with...



Joseph's Remodeling Solutions
A division of Sumpster Solutions, LLC
Taking Quality to the Next Level
Licensed - Insured - Green Certified
931-598-5565
joseph@josephsremodelingsolutions.com
www.josephsremodelingsolutions.com

Dombrowski Named Senior Woman Administrator

Announced by Director of Athletics John Shackelford, the University of the South has elevated Michele Dombrowski to the department's Senior Woman Administrator.

Dombrowski will also retain her head coaching duties with the women's lacrosse program, as she enters her 17th season with the team. In addition, she will continue to serve as an assistant with Sewanee's field hockey squad.

The senior woman administrator (SWA) is the highest-ranking female in each NCAA athletics department or conference office. The purpose of the SWA designation is to promote meaningful representation of women in the leadership and management of college sports.

"Michele is a strong and thoughtful leader in our department. Her experience in building relationships, not only with the many student-athletes she has coached, but also within our coaching staff and campus community, will help guide the department of athletics vision as we invest in competitive long-term planning and focus on our immediate operational objectives," said Shackelford.

Along with her time on the athletic field, she has led the charge in the department's latest strategic planning operation and also serves as eligibility coordinator for Sewanee's 24 varsity sports.

A former NCAA All-American in field hockey and lacrosse, Dombrowski has compiled a

career record of 272-230 as a collegiate head coach. Founding the Tigers' women's lacrosse program that started varsity competition in 2008, she has compiled a 158-83 record with three conference championships and two appearances at the NCAA Championships.

In 15 seasons with the Tigers, she is a three-time SAA Coach of the Year, and an All-West Region Coach of the Year member.

She has coached 39 to All-Region honors with the Inter-collegiate Women's Lacrosse Coaches Association (IWLCA), 80 All-Conference honorees and 157 selections to the league's Academic Honor Roll. In addition, the program has earned the IWLCA Academic Honor Squad award 10 times, including eight straight years the award has been produced.

Dombrowski served on the IWLCA Board of Directors as one of three representatives for NCAA Division III from 2017-20, and she has served on several committees within the coaches organization.

"I am looking forward to taking on a more formal role in the leadership of our athletic department during this exciting time for the university and Sewanee Athletics. I treasure my interactions with the student-athletes, fully believe in Sewanee and our department, and can't wait to work with the rest of our leadership team in this role," said Dombrowski.

Sewanee


DOOR-TO-DOOR

TRANSPORTATION SERVICE

Nashville • Chattanooga • Huntsville
Local trips available, too. Policies available online.

Book now by phone or online:
423.394.0725
sewaneedoor-to-door.com

Cash App
PayPal
Zelle
venmo



EST. 1972

THE
LEMON FAIR

A CURATED LIFESTYLE STORE
FEATURING HOME DECOR, APPAREL,
GIFTS AND CREATIONS FROM
LOCAL ARTISANS.

OPEN 11-5PM / MONDAY-SATURDAY
THELEMONFAIR.COM



piggly wiggly

Down Home, Down the Street

754 West Main St., Monteagle
(931) 924-3135
8 a.m. to 9 p.m. 7 days a week

NATURENOTES

by Yolande Gottfried



Copperhead. Photo by Wilbur Matthews

Wilbur Matthews sent this in: When I was a student, C'94, there were nature notes about animal and bird sightings in the paper. Here is ours: Wilbur Matthews and Eric Stevenson (both C'94) were in town to drop off their matriculating freshman (Mary Lamar Matthews and Cole Stevenson, C'26, hopefully!) in late August. While hiking the Perimeter Trail and taking in the view at EQB Point, Wilbur's wife Catherine saved Eric's life, calmly telling him, "Smooth there's a snake right behind you." This friendly copperhead was sunning himself only inches away from Eric's feet. Watch out for these guys. While he wasn't aggressive, he blended in perfectly with the leaf litter and was right along the trail. Nature Notes is a community column and always welcomes "notes" on local nature happenings.

Entries Accepted for the 2023 Tennessee Wildlife Calendar Photo Contest

The Tennessee Wildlife Resources Agency is now accepting entries for its 2023 photo contest for publication in Tennessee Wildlife's annual calendar and license cards. All interested photographers are invited to submit up to 10 of their best photos on fishing, hunting, boating, and wildlife species native to Tennessee. Photographers must submit their photo entries by the Sept. 30, 2022 deadline. Photos must be horizontal (landscape), in JPEG format, and submitted online at <https://stateoftennessee.formstack.com/forms/photo_submissions> or by CD. They must be sized to print no smaller than 8.5 by 11 inches and resolution should be at least 300 pixels/inch. The photos will be reviewed for publication for the 2023 calendar. If a photo is selected for the calendar edition, the photographer will receive a cash stipend of \$60. This year the TWRA is also picking a few entries for its collector license card. Photographers must be sure to provide their name, address, phone number, and e-mail address with their disk. Disks cannot be returned. Entries may be mailed to: Tennessee Wildlife Calendar Issue, Tennessee Wildlife Resources Agency, 5107 Edmondson Pike, Nashville, TN 37211. Tennessee Wildlife is the official magazine for the Tennessee Wildlife Resources Agency. Subscription rates are \$10 for one year, \$17 for two years and \$25 for three years.

Greeter Falls Staircase Volunteer Opportunity

Join South Cumberland State Park and the Friends of South Cumberland in our ongoing project to build a brand new staircase and trail at the Savage West (Greeter Falls) area of Savage Gulf State Natural Area. This event will involve working with park staff and Friends group members to move building materials and supplies to the future sight of a brand new staircase and trail. This will be a physically demanding event, moving lumber, rebar, and other heavy construction materials to the work site. Volunteers will need to wear sturdy boots/shoes, gloves, and work/weather appropriate clothing. Be sure to bring plenty of water and food for the day. This event will begin at 9 a.m., Saturday, Sept. 17, at the Savage West (Greeter Falls) parking lot, where park staff will orient and go over the day's event.

State Park Offerings

Please note: To confirm that these events will occur as listed go to <<https://tnstateparks.com/parks/events/south-cumberland>> or call (931) 924-2980.

Saturday, Sept. 3

International Vulture Day Guided Hike (\$5)—Meet Seasonal Interpreter JD Dickerson at 8:45 a.m. at Stone Door Ranger Station, 1183 Stone Door Rd., Beersheba Springs, to celebrate International Vulture Day by taking an 8-mile intermediate hike around the rim of the Cumberland Plateau, to bird watch for vultures at the north side of South Cumberland State Park. Vultures are extremely important birds for South Cumberland, and they love to hang out around the overlooks where we will be hiking. To learn more about these cool birds and get a chance to see some in real time, please register at the link above. As this event will last a good portion of the day, please bring all sufficient gear (a backpack, packed lunch, additional snacks, plenty of water, sturdy hiking shoes or boots, a hat, and any other items you feel you might need.) There will not be a great deal of elevation gain, but you will be treading around overlooks, and these locations can be treacherous.

Monday, Sept. 5

Labor Day Waterfall Hike (\$5)—Meet Seasonal Interpreter JD Dickerson at 7:45 a.m. at Stone Door Ranger Station, 1183 Stone Door Rd., Beersheba Springs, for an all-day 9-mile hike to see the Great Stone Door, several Savage Gulf overlooks, and Ranger Falls. You will be going into and out of the Gulf, so there will be a lot of elevation change, plenty of breaks, and the group will stick together so nobody gets left behind. The usual precautions around overlooks will apply, and you will need lunch, snacks, plenty of water, sturdy shoes, and you might like to bring a hiking stick. To download the map available, go to the link above.

Saturday, Sept. 10

Full Moon Night Hike to Great Stone Door (\$10) (This hike is limited to the first 10 people who pre-register. Please pre-register at link above)—Join Park ranger Spencer Baxter at 6:45 p.m. at Stone Door Ranger Station, 1183 Stone Door Rd., Beersheba Springs, for a 2-mile roundtrip hike to several overlooks to experience the night sky and full moon in beautiful Savage Gulf State Natural Area. Bring your own (non-phone) headlamp, sturdy hiking boots, appropriate clothing for the weather and your spirit of adventure.

Friday, Sept. 16

Night Hike on the Plateau (\$5)—Join Park Ranger Mark Greenwood at 7:45 p.m. at Savage Gulf East Ranger Station, 3157 S.R. 399, Palmer, for a 2-mile roundtrip guided hike from the Ranger Station to the first mile marker of the Day Loop and back. Weather permitting. Bring at least one (non-phone) headlamp or flashlight, and wear sturdy shoes or boots. (Notice: Non-phone flashlights are recommended, as the light from a cellphone is limited and batteries tend to die quickly. Since the potential to slip and fall is amplified with night hiking, care is needed to make sure this is a positive experience.)

The South Cumberland State Park Visitors' Center is located on U.S. Highway 41 South between Monteagle and Tracy City and is open 8 a.m. to 4:30 p.m., seven days a week. For more information call (931) 924-2980.

Annual 'Picture the Park' Photo Contest Open

Area photographers are invited to submit their most picturesque photos of the South Cumberland State Park (SCSP) to the annual Picture the Park photo contest sponsored by the Friends of South Cumberland (FOSC). The photos will be used on the Friends' website, in printed literature, in physical products offered in exchange for donations to the Friends, or to sell in order to raise money for projects facilitated for the SCSP. Deadline to submit photos is midnight on Sept. 7. More information, submission requirements and categories are available at <www.friendsofsouthcumberland.org>. FOSC is a group of volunteer citizens dedicated to supporting the SCSP, which, at 30,837 acres, is the state's largest. As a 501(c)(3) nonprofit membership corporation, funding for the Friends is derived from individual and corporate memberships and from private donations. Visit the website to learn more.

Nature Journaling Continues

The Nature Journaling group, sponsored by the Sewanee Herbarium, meets Thursdays, 9-11 a.m., often at Stirling's Coffee House. Grab a pencil and paper and plan to join us. Email <mpriestley0150@gmail.com> to be sure of where we'll be.



Jesse



Belinda

MARC's Mountain Adoptables Meet Jesse & Belinda

Jesse is an adorable and personable neutered puppy of small stature. He could possibly end up in the 20-25 pound range when grown. He loves to play with all the other animals in his foster home even if the feeling isn't always mutual. He loves cats as well as dogs. He recently learned to use the dog door and loves to go out, retrieve a twig, and bring it in to demolish. At night and at nap time he can usually be found snuggled up next to one of the three other dogs in the his foster family. He still needs some work on house training but he knows his name and responds well to requests. Jesse will do well in a household with other animals and with children. Don't wait to apply for Jesse.

You can't help but fall in love with Belinda. She is sweet, spunky, friendly, and happy even though just a few weeks ago she was thrown out of a car window with her brother (who is just as irresistible as she is) when not even fully weaned. Belinda loves life and plays very well with her brother. She is almost too tolerant of the family dogs, even allowing one of them to drag her around the house. She is a good eater and always uses the litter box. She will sit in your lap and purr if you like that. She is good with children. She is going to make a family very happy. Apply for her now and come meet Belinda.

If you would like to learn more about Jesse and Belinda, please fill out an Adoption Application on the MARC website <www.marc4change.org> or contact Sue Scruggs at (423) 619-3845. These pets are fostering on the Sewanee-Monteagle Mountain and are easy to meet. All MARC animals ready for adoption are spayed or neutered and up-to-date on their vaccines and preventatives.

WEATHER

DAY	DATE	HI	LO
Mon	Aug 22	78	67
Tue	Aug 23	83	67
Wed	Aug 24	81	63
Thu	Aug 25	81	68
Fri	Aug 26	89	68
Sat	Aug 27	86	64
Sun	Aug 28	88	68

Week's Stats:
Avg max temp = 84
Avg min temp = 66
Avg temp = 75
Precipitation = 0.1"

Reported by Sandy Gilliam
Domain Ranger

Messenger Classifieds

CONSIGNMENT SALE

MARKETPLACE CONSIGNMENT'S 28TH ANNUAL FALL POP UP! SHOP, SAVE, BLESS & BE BLESSED! Reduce. Reuse. Rewear. Recycle. Amazing selection of quality, stylish clothing and shoes (for infants through young adults!) plus furniture, home décor, toys, baby gear, and SO MUCH MORE! Open to public (free admission/parking) 10 a.m. to 7 p.m., Saturday, Sept. 3; CLOSED Sunday, Monday, Wednesday; Reopened and restocked 10 a.m. to 7 p.m., Tuesday, Thursday & Friday, Sept. 6, 8 & 9; then 10 a.m. to 2 p.m., Saturday, Sept. 10 (last day); Clearance days 9th & 10th! @ Monterey Station, 104 Monterey St., Cowan, TN.! Worth the drive for this twice a year mega savings sustainable shopping! Cash and Cards* (*with photo ID + 3.5% fee applied to all cards). BYOBags/totes. All bags checked upon exit. More details: <www.marketplaceconsignment.com> or (931) 308-7324.

ENGINE REPAIR

SARGENT'S SMALL ENGINES: Repairs to All Brands of Equipment: Lawn mowers (riding or push), String trimmers, Chainsaws, Chainsaw sharpening. New saw chains. Pickup and Delivery Available. (931) 212-2585, (931) 592-6536.

FOR SALE

FIREWOOD FOR SALE: \$100/rick, picked up or delivered and stacked. If delivered, \$1/mile (one way) delivery charge. (423) 322-7639 or (931) 212-2585.

FOR SALE: 2305 John Deere, 62" deck, 23-hp Yanmar Diesel; 66" Finishing Mower, 20-hp Bridgestone; 4-ft. Scraper; 2-1/2-yd. Pond Scoop, \$6,200.00 for all. Individual items negotiable. Walk-behind Leafblower, 6.5-hp, 1800 rpm, \$250. (931) 636-2333.

GARAGE SALE

GARAGE SALE: 8 a.m. ??, Saturday, Sept. 3, 2022. Follow signs (take U.S. Hwy. 41 toward Tracy, first right just past GC Housing Authority). Rain or shine.

YARD SALE

MULTI-FAMILY YARD SALE: Saturday, Sept. 3, 8 a.m.-?? Baby items, adult clothing, home decor, Milwaukee tools, clawfoot tub, GMC grill, Matilda Jane, so much more. 2556 Sherwood Rd., Sewanee.

LAWN CARE

CHAD'S LAWN & LANDSCAPING
-FREE ESTIMATES-
* Lawn care & Design (Mulch & Planting)
ALSO: * Tree Trimming & Removal
* Pressure Washing * Road Grading
* Stone Patio/Fireplace * Garden Tilling
* Leaf Pickup & Blowing
(931) 308-5059

EAGLE LANDSCAPING & LAWN MAINTENANCE CO.
Now Offering Specials for the FALL!
We offer lawn maintenance, landscaping, hedge/tree trimming & more!
Please call for your free estimate
(931) 598-0761 or (931) 636-0383

LONG'S LAWN SERVICE
• landscaping & lawn care
• leaf removal • mulch
Local references available.
Jayson Long
(931) 924-LAWN (5296)

LOCAL SERVICES

GARMENT HEMMING: Hand-made wildlife greeting cards. Embroidered scarves. Call Bonnie Gilliam, (931) 691-1366.

MARK'S HOME REPAIR
KITCHEN AND BATH REMODELING
Decks, Home Building, Electrical, Plumbing, Drywall, Tile & Hardwood Floors, Outbuildings, Pressure Washing
MARK GREEN, owner
931-636-4555 | mdgreen41@gmail.com

King's Tree Service
Topping, trimming, bluff/lot clearing, stump grinding and more!
Bucket truck or climbing
Free wood chips with job
Will beat any quoted price!
Satisfaction guaranteed!!
—Fully licensed and insured—
kingstreeservice.com
Call (931) 598-9004—Isaac King

MOUNTAIN MOBILE MASSAGE
Lauren Laurino, LMT
(908) 328-8769

MONTEAGLE SECURITY OPERATIONS
CCTV, BURGLAR & FIRE ALARMS
931-924-3216 800-764-7489
monsecurity.com TN license 1912

PROFESSIONAL TUTORING: For children grades 1-6, in Reading, Writing, and Math. \$35/hour. Call or text for more info, qualifications etc. (931) 636-8120.

LOCAL SERVICES

MASSAGE
Regina Rourk Childress
Licensed Massage Therapist
www.reginarourk.com
- GIFT CERTIFICATES -
(931) 636-4806

Lyn Hutchinson PHOTOGRAPHY
lynhutchinson.smugmug.com

TAYLOR'S MERCANTILE
10 University Ave. • 931.598.5893

CHARLEY WATKINS PHOTOGRAPHER
Sewanee, TN
(931) 308-7920

Reserve ad space!
<ads@sewaneemessenger.com>

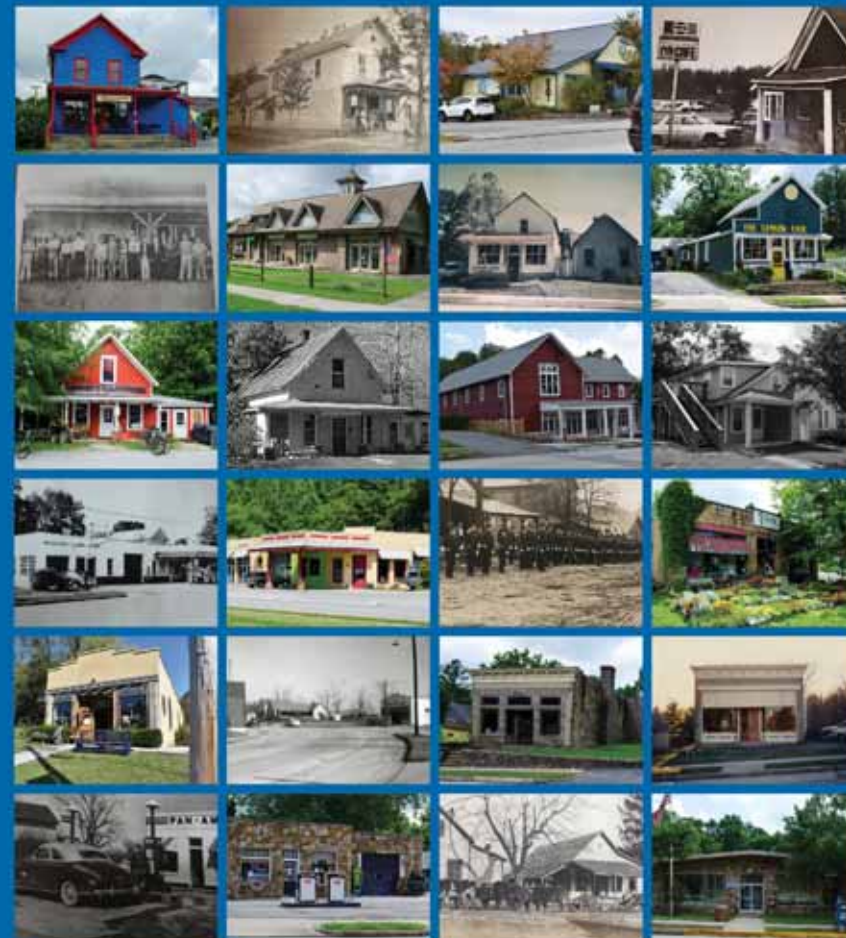
TENNESSEE ONLINE VOTER REGISTRATION
#GoVoteTN

ARE YOU REGISTERED TO VOTE?

REGISTER TODAY AT **GoVoteTN.gov**

Tennessee Secretary of State

shop local
Small BUSINESS support community
buy local
neighborhood merchants
downtown markets
main street stores
mom and pop
brick and mortar shops



Historic Downtown Sewanee

A project supported by the University of the South and the Sewanee Trust for Historic Preservation



Locally grown vegetables, fruits, flowers and plants, plus home-baked and home-canned items!



Sewanee Food and Flower Gardener's Market

8-10 a.m. every Saturday through September at the corner of Hwy 41A and Hawkins Lane

POSTERS FOR SALE:

14"x18" - \$16
The Frame Gallery
12569 Sollace M. Freeman Hwy.

24"x36" - \$30
University Print Services
107 Mitchell Ave., Sewanee

FROM BARD TO VERSE

by Robin Bates

Labor Day

What are we set on earth for? Say, to toil --
Nor seek to leave thy tending of the vines,
For all the heat o' the day, till it declines,
And Death's mild curfew shall from work assoil.
God did anoint thee with his odorous oil,
To wrestle, not to reign; and He assigns
All thy tears over, like pure crystallines.
For younger fellow-workers of the soil
To wear for amulets. So others shall
Take patience, labor, to their heart and hand,
From thy hand, and thy heart, and thy brave cheer,
And God's grace fructify through thee to all.
The least flower, with a brimming cup, may stand.
And share its dew-drop with another near.

--Elizabeth Barrett Browning, *Work*


blue chair
CAFÉ & TAVERN

Downtown Sewanee
(931) 598-5434
thebluechair.com



#1 BREAKFAST
IN SEWANEE FOR
20 YEARS



Fade II
LLC

Your locally owned and operated weight management/wellness clinic and medical spa. Call or text anytime to schedule your free consultation. Visit their website at <https://fadellcandfadeiillc.com> for a list of services.

115 Woodland Dr., Jasper, Tenn.
423-710-4912 | <https://fadellcandfadeiillc.com>

Medical Director: Dr. Palmella Haws certified by The American Board of Family Medicine



Sewanee Mountain Storage

(931) 598-5682
Evan Barry
Hwy 41 - Between Sewanee & Monteagle

■ Video Monitoring 5x10 | 10x10 | 10x20 ■ Security Camera

Temperature Controlled Units
5x5 | 5x10 | 10x10 | 10x15 | 10x20
Temperature and Humidity Regulated



BODYWORKS
YOUNIVERSITY

NEW BEGINNER PILATES CLASS STARTS SEPT. 6, 9 am on T/TH AT BODYWORKS YOUNIVERSITY.
Email kim@bodyworksyouniversity.com or 423-322-1443 to sign up.

Bodyworks is a fully equipped Pilates Studio offering Private/Duet/Trio appointments and Intermediate level classes as well as Yoga and You Fit. Scheduling and pricing information available at www.bodyworksyouniversity.com



Mountain Massage
Matthew Sias, LMT

AUGUST SPECIAL AT MOUNTAIN MASSAGE-UPGRADE ANY MASSAGE TO A CBD FOR ONLY \$5
CBD helps the muscles attain a deeper state of relaxation. Your body will thank you! Matthew specializes in Deep Tissue, Sports, and Swedish Massage, Myofascial Release, & Stretching/Range of Motion.

Contact him for an appointment at mountainmassage.matthew@gmail.com or 615-397-8348

Community Calendar

Friday, Sept. 2

- 9 a.m. CAC office open, until 11 a.m.
- 10 a.m. Game Day, Senior Center, until noon
- 10 a.m. You Fit, Betsy, Community Center

Saturday, Sept. 3

- 8 a.m. Sewanee Gardeners' Market, Hawkins Lane, until 10 a.m.
- 8:30 a.m. Gentle Flow Yoga, Robie, Community Center, until 9:45 a.m.
- 9 a.m. Work Day in Cowan Railroad Park, more info (931) 967-3078
- 10 a.m. Hospitality Shop open, until 2 p.m.
- 4 p.m. Community Bike Ride on on MGT, meet at Hawkins Lane; more info email <bethprideford@gmail.com>

Sunday, Sept. 4

- 1 p.m. You Fit, Betsy, Commjunity Center
- 2:30 p.m. You Fit, Betsy, Community Center
- 3 p.m. SVFD Car Wash Fundraiser, \$8. Sewanee Fire Hall
- 3 p.m. Sewanee GoGirls MTB Bike Ride, meet at Lake Cheston parking lot; more info email <bethprideford@gmail.com>
- 4 p.m. Hatha Yoga, Helen, Community Center

Monday, Sept. 5 • Labor Day

- 8:45 a.m. Pilates, intermediate, Kim, 293 Ball Park Rd.
- 9 a.m. Coffee with Coach, Travis Rundle, Blue Chair Tavern; also on FB and on <www.sewaneetigers.com>
- 9 a.m. Tai Chi, Shaonian, High Vibes Studio, Country Mart, Monteagle
- 10:30 a.m. Chair Exercise, Ruth, Community Center, until 11:45 a.m.
- 5:30 p.m. Pilates, intermediate, Bruce, 293 Ball Park Rd.

Tuesday, Sept. 6

- 8 a.m. GC Food Bank, Tracy City, until 10 a.m.
- 9 a.m. CAC office open, until 11 a.m.
- 9 a.m. Flow Yoga, Anneli, High Vibes, Country Mart, Monteagle, until 10:15 a.m.
- 9 a.m. Pilates, beginner, Kim, 293 Ball Park Rd.
- 10 a.m. Hospitality Shop open, until 1 p.m.
- noon Pilates, intermediate, 293 Ball Park Rd.
- 12:30 p.m. Caregivers Group, Brooks Hall, Parish of St. Mark & St. Paul
- 4:30 p.m. S. Cumberland Farmers' Market pickup, Community Center, until 6:30 p.m.
- 5 p.m. Vinyasa Yoga, High Vibes, Country Mart, Monteagle, until 6:15 p.m.
- 5:30 p.m. Easy Flow Yoga, Robie, 293 Ball Park Rd.

- 5:45 p.m. FC NAACP Book Study, Zoom; to register <fctnbranchnaacp@gmail.com>
- 5:45 p.m. Zumba, Ren, Tenacity Fitness, Tracy City
- 6 p.m. Franklin County School Board Meeting
- 6:30 p.m. Social Dance class, Lorenz, Community Center

Wednesday, Sept. 7 • Sewanee Woman's Club Reservations due

- 8:45 a.m. Pilates, intermediate, Kim, 293 Ball Park Rd.
- 9 a.m. CAC office open, until 11 a.m.
- 9 a.m. Tai Chi, Shaonian, High Vibes, Country Mart, Monteagle, until 10 a.m.
- 10 a.m. Sewanee Writers' Group, 212 Sherwood Rd.
- 10:30 a.m. Chair Exercise, Ruth, Community Center, until 11:45 a.m.
- 11:30 a.m. EQB Club meeting, St. Mary's Sewanee noon Pilates, intermediate, Kim, 293 Ball Park Rd.
- 12:30 p.m. EQB Club Lead, Bates
- 3 p.m. Gymnastics, Georgia, Community Center
- 5:30 p.m. Hatha Yoga, Helen, Community Center
- 5:30 p.m. Pilates, intermediate, Bruce, 293 Ball Park Rd.

Thursday, Sept. 8

- 8 a.m. Flow Yoga, Anneli, High Vibes, Country Mart, Monteagle, until 9:15 a.m.
- 8 a.m. Monteagle-Sewanee Rotary, Turrell, LaBella Pearl's
- 9 a.m. CAC office open, until 11 a.m.
- 9 a.m. Nature Journaling, until 11 a.m.; more info: <mpriestley0150@gmail.com>
- 9 a.m. Pilates, beginner, Kim, 293 Ball Park Rd.
- 10 a.m. Hospitality Shop open, until 1 p.m.
- 10 a.m. Kundalini Yoga Pippa, Zoom, <pippabrowne@yahoo.com>
- noon Pilates, intermediate, Kim, 293 Ball Park Rd.
- 1 p.m. Body Groove, Community Center
- 3:30 p.m. Sewanee Emeritus Association, Torian Room, duPont Library
- 5:30 p.m. Ecstatic Dance, Anneli, High Vibes, Country Mart, Monteagle, until 6:30 p.m.
- 5:45 p.m. Zumba, Beginners, Ren, Tenacity Fitness, Tracy City, until 6:45 p.m.

Friday, Sept. 9

- 9 a.m. CAC office open, until 11 a.m.
- 10 a.m. Game Day, Senior Center, until noon
- 10 a.m. You Fit, Betsy, Community Center

Local 12-Step Meetings

Friday

7 p.m., AA, open, Christ Church, Tracy City

Saturday

7 p.m., NA, open, Dechard United Methodist

Sunday

6:30 p.m., AA, open, Morton Memorial, Wesley House porch, Monteagle

Monday

5 p.m., 12-Step Women's Study Group, Brooks Hall
7 p.m., AA, open, Christ Church, Tracy City

Tuesday

7 p.m., AA, open, First Baptist, Altamont

Wednesday

10 a.m., AA, closed, Cliff-tops, (931) 924-3493
7 p.m., NA, Dechard United Methodist

Thursday

7 p.m., Al-Anon, First UMC, Winchester

Russell L. Leonard

ATTORNEY AT LAW

Office: (931) 924-0447
Fax: (931) 924-1816
rleonardlegal@gmail.com
www.rleonardlegal.com

1016 W. Main St., Suite 3
Monteagle, TN 37356



A-1 CHIMNEY SPECIALIST

G. Robert Tubb II, Owner
931-967-3595
A1ChimneySpecialist.com

CSIA Certified Technicians
Video Inspections • Sweeping
Restoration • Masonry Repair
Custom Caps & Dampers
Leak Repair & Water Proofing
Wood Stove & Chimney Installs
Gas Log Service & Installs
Dryer Vent Cleaning/Repair



MATLOCK

ROB MATLOCK
CONSTRUCTION COMPANY
NEW HOME BUILDING
AND REMODELING

PHONE: 931-598-5728
CELL: 931-580-5728
EMAIL: RMATLOCKCONSTR@GMAIL.COM

State Licensed • Fully Insured



PHOTO ARCHIVE!

www.sewaneemessenger.smugmug.com